

Applications to MIT Class of 2001 Down By Almost 2 Percent

By Douglas E. Heimburger
ASSOCIATE NEWS EDITOR

The number of high school students applying to MIT this year is projected to be at least 100 fewer than the number of applications last year.

Last year, a record total of 8,022 high school seniors applied for admission, said Associate Director of Admissions Elizabeth S. Johnson.

While some applications have yet to be processed, "we definitely won't hit 7,900 this year," Johnson said. MIT has processed 7,812 applications so far, compared with 7,968 processed by last year at this time.

This year's numbers should not change appreciably, Johnson said. "I don't think [the number of additional applications still to be processed] will be significant," she said.

While the number of applications decreased slightly, the candidates for admission this year are "very comparable" to those in last year's application pool, she said.

Early decision plays a role

The gradual shift from early action to early decision programs by some colleges in recent years is cited as a reason for much of the changes in MIT admission figures.

Most Ivy League schools — many of which compete with MIT for potential students — have implemented binding early decision programs in recent years. Such programs require students to attend their first choice school if admitted early.

As more students receive binding early acceptances to other schools, they do not apply to MIT for regular admission, Johnson said.

In addition, many of the Ivy League schools are admitting more of their class under the early decision plan than in prior years, Johnson said. "Someone said that unless you apply early and get in early, you won't get in," she added.

The number of high school

seniors in the United States has been increasing in recent years. "If nothing had changed, we would expect our pool to grow" as a result, Johnson said. Instead, while early action applications continue to increase, the number of applications received for the regular decision process is decreasing.

While the total applicant pool has decreased, the number of applications received from foreign citizens has remained stable in recent years, Johnson said. International students are generally not permitted to file early admissions applications, and thus are not affected by the shift to early decision programs, she said.

Other schools also see declines

MIT is not the only school to see a decline in the number of applications this year. According to a *Boston Globe* report, the number of applications fell at all the Ivy League schools except Columbia University, where applications increased 9 percent.

"This could be the beginning of a return to greater sanity and less of a craze of applying practically to any place in sight," said William Fitzsimmons, dean of admissions and financial aid at Harvard University in the *Globe*. The number of applications to Harvard fell 8 percent this year.

"Those students who would have applied to numerous schools are instead committing early to one," said Richard Shaw, dean of undergraduate admissions at Yale University in the *Globe*.

While applications fell dramatically at some Ivy League schools, the drop was smaller at MIT. Still, other Ivy League universities "had been up much more" than MIT during the early 1990s, when the number of applications to Ivy League schools increased dramatically, Johnson said.

Between 1991 and 1996, the

Admissions, Page 16

LCA Brother Hospitalized

By Thomas R. Karlo
EXECUTIVE EDITOR

William Alex Goodwin '97, president of Lambda Chi Alpha, was listed in stable condition at Beth Israel Hospital after falling four stories down an elevator shaft at his fraternity house Sunday evening.

Goodwin had been drinking before the accident, according to a Boston Police report that cited statements made by members of LCA.

Goodwin was originally in stable but serious condition following the accident. He sustained "no serious head injuries," said Robert B. Gray '98, a member of LCA, who is acting as the fraternity's spokesperson on this case.

"He should be out of the hospital by Sunday." Goodwin is expected to return to class and complete the term, Gray said. Gray declined to comment whether Goodwin was drinking before the fall.

The elevator shaft was not in operation at the time of the accident.

Goodwin was found at the bottom of the shaft following the sounding of the house's fire alarm. He "ruptured a water pipe during his fall," and the resulting drop in pressure in the sprinkler system activated the fire alarm, said Chief of Campus Police Anne P. Glavin.

Tyler J. Moeller '98 discovered Goodwin in the bottom of the shaft and held him until the arrival of the Boston Emergency Medical Technicians and the fire department, according to police reports. Moeller told police that Goodwin had been drinking prior to the accident. Moeller could not be reached for comment.

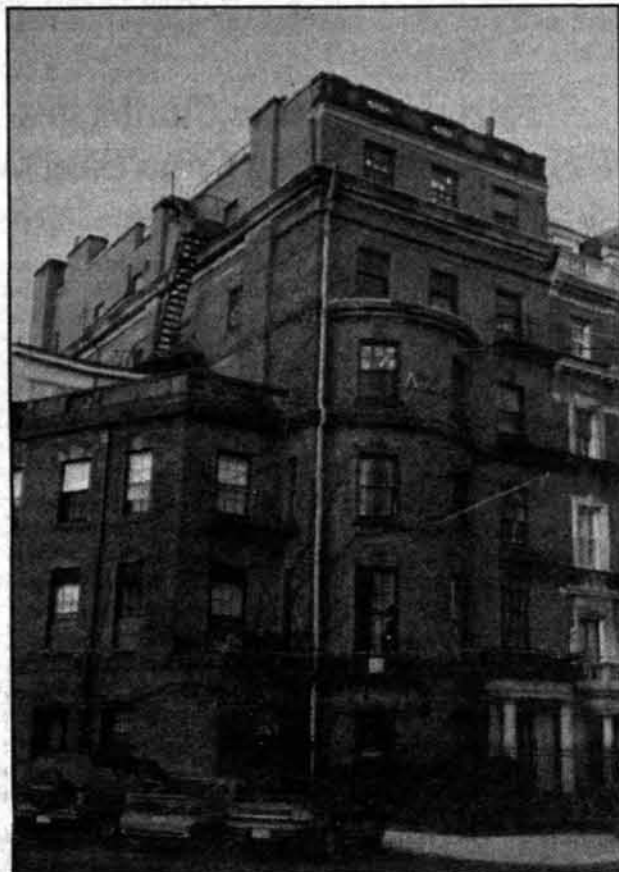
"No more than five minutes elapsed" between the accident and Goodwin being discovered, Gray said.

Boston emergency workers were already on the scene as a result of the fire alarm, Glavin said. The Campus Police were con-

tacted by the Boston Police and arrived as firefighters worked to reach Goodwin.

Boston firefighters and emergency workers reached Goodwin by tearing down a wall to gain access to the bottom of the shaft, Glavin said.

Gray declined to comment on the extent and cost of the damage resulting from the incident.



TIFFANY LIN—THE TECH

The Lambda Chi Alpha fraternity house at 99 Bay State Rd. in Boston.

CPs Issue Bulletin Amid Reports Of 'Date Rape Drug' on Campus

By David D. Hsu
EDITOR IN CHIEF

On Tuesday the Campus Police issued a special advisory bulletin on Rohypnol, also known as the "date rape drug," after receiving a report that it may have been used at MIT.

Rohypnol — which also goes by "roofie," "rope," "circles," "rib," "roaches," "R2," "party poppers,"

and "the forget pill" — is a depressant 10 times stronger than Valium. It dissolves almost instantly in liquid and reduces the inhibitions of those who ingest it. The drug can also cause memory loss for periods from eight to 24 hours.

The drug is almost impossible to detect. "You can't taste it, can't smell it, can't even tell it's there," said Chief of Pediatrics and Student Health Services Mark A. Goldstein.

The bulletin said that the Campus Police have received reports that date rape drugs may have been used at MIT parties in drinks reserved for female guests.

So far, MIT is aware of only one incident where Rohypnol may have been used, said Associate Dean for Residence and Campus Activities

Margaret A. Jablonski.

In that incident, a student from another college became intoxicated and may have been under the influence of the drug, Jablonski said.

However, because the student could not identify the place or remember any details, no disciplinary action was taken, said Chief of Campus Police Anne P. Glavin.

The Campus Police also said that the drug GHB (gamma-hydroxybutyrate) was used on campus. A student admitted to possessing and ingesting GHB, which produces effects similar to those of Rohypnol, Glavin said. The student who ingested it suffered a medical problem, she said.

The Medical Department, through an outside laboratory, can test for the presence of Rohypnol, Goldstein said. It can be detected in the bloodstream up to four hours after ingestion and in urine up to 48 hours after ingestion.

Bulletin to increase awareness

The Campus Police bulletin was circulated to living groups and graduate resident tutors, Jablonski said.

The bulletin was designed to increase awareness of this class of drugs and to alert students that those drugs may be present on campus, Glavin said. Those affected by Rohypnol and similar drugs sometimes think that their symptoms result from too much drinking, Glavin said. The bulletin should alert them that there may be other causes.

Rohypnol, Page 11



RITA H. LIN—THE TECH

Youssef Marzouk '97 energetically plays a Scarlatti sonata on Wednesday in Killian Hall.

INSIDE

- The Tech investigates Coop pricing. Page 9
- Faculty hear from COD, task force. Page 10
- Police Log Page 21
- On the Town Page 7
- Comics Page 13

WORLD & NATION

World Bank President Plans To Spend \$250 Million for Changes

THE WASHINGTON POST

WASHINGTON

World Bank President James D. Wolfensohn has sent to the bank's board a major proposal for revitalizing the 50-year-old institution by making it less bureaucratic and out of touch with the poor nations that borrow from it.

Under the initiative, dubbed "The Strategic Compact," the bank's 180 member nations would authorize the spending of \$250 million over two years on training, staff transfers and information systems, according to documents released by the bank Thursday.

But the bank's management is vowing to make the institution considerably more lean and efficient at the end of those two years. The documents, while stressing that no specific target for job reductions has been set, said that "the best estimate we have is a range of 500-700 separations over (fiscal years) 97-99."

The initiative marks the most comprehensive and detailed effort by the Australian-born Wolfensohn to put his stamp on the bank since he took the helm in June 1995, vowing to transform the institution.

European Union Challenges U.S. Law Regarding Cuba Sanctions

LOS ANGELES TIMES

WASHINGTON

The European Union posted a formal challenge Thursday to a U.S. law that would penalize European companies that do business in Cuba, intensifying pressure on the United States to negotiate a settlement of the dispute.

At the EU's request, the Geneva-based World Trade Organization appointed a three-member panel to adjudicate the case, overriding U.S. protests that the law was intended to protect U.S. security interests and was not a matter for the trade body.

The Clinton administration expressed "disappointment" over the European action but stopped short of trying to block establishment of the panel — providing leeway for the two sides to continue their own negotiations, albeit under more intense pressure.

In an unusual joint statement, the Commerce Department and the U.S. Trade Representative's Office challenged the jurisdiction of the trade group to pass judgment on the sanctions law and said that Washington would not cooperate if the panel calls a hearing.

The U.S.-European dispute centers on the 1996 Helms-Burton Act, which allows U.S. citizens to sue foreign companies found to be using buildings or equipment seized by the government of Cuban Premier Fidel Castro. It also denies U.S. visas to executives of the companies.

Clinton Endorses Effort to End 'Gag Rules' on Medical Treatment

THE WASHINGTON POST

WASHINGTON

Sick people deserve to know about all possible treatments regardless of their cost, President Clinton said Thursday, endorsing legislation that would bar health care plans from imposing "gag rules" on their physicians.

The health care industry denies that such "gag rules" are a widespread practice. But Clinton said there is enough doubt to justify a new law that would ensure that cost-conscious health maintenance organizations and other "managed care" plans tell patients about all medical options — even the most expensive ones they don't cover.

Clinton made his announcement while publicizing efforts his administration is making to ensure that patients in managed care plans under the federal Medicaid program for poor people are not subject to the alleged gag rules.

The legislation Clinton endorsed Thursday died last year in Congress, but one of its principal sponsors, Rep. Greg Ganske, R-Iowa, said the bill has 150 co-sponsors this year from both parties.

The Ganske-Markey legislation would not require health plans to provide the more expensive treatments, only that physicians are free to tell patients such treatments exist. "If a patient needs a bone marrow transplant, they should know that, even if they have to pay for it on their own," Ganske said.

WEATHER Reality Check!

By Marek Zebrowski

STAFF METEOROLOGIST

April-like weather will make one more appearance late this week before the seasons and the calendar are in agreement again. As the high pressure moves off the east coast, colder and clearer weather will be replaced by increasing clouds, strengthening southerly winds and rains, approaching from the south and west. During Friday, a low pressure system in the Mississippi Valley will move into the eastern Great Lakes, along a cold front advancing slowly eastward. Plentiful moisture ahead of it will cause widespread rains in the Appalachians and the Ohio Valley. Moisture associated with this feature will reach our region by late Friday and cause numerous showers during Saturday. As this front moves off-shore, colder weather and fair skies will return for Sunday and early next week.

Today: Partly sunny and mild with increasing clouds. High 58°F (14°C) with fresh southwesterly breezes.

Tonight: Partly to mostly cloudy with a few sprinkles or scattering of showers moving in from west to east. Low 48°F (9°C).

Saturday: Mild with showers likely. Some breaks in overcast late in the day. High 62°F (17°C)

Sunday outlook: Clearing and turning colder. Lows in high 20s (-2 to -3°C), highs near 40°F (4°C)

China Mourns Deng's Death With State-Run Ceremonies

By Steven Mufson

THE WASHINGTON POST

BEIJING

China began six days of mourning for Deng Xiaoping Thursday as officials announced plans for a grand but tightly controlled farewell to the man who reshaped China's economy. Deng will be cremated, and 10,000 invited guests will honor his memory Tuesday at a "memorial meeting" to be held in Beijing's cavernous Great Hall of the People.

Unlike Communist Party Chairman Mao Zedong, whose death in 1976 caused a vast national outpouring of grief and whose embalmed body rests on display in a mausoleum in Tiananmen Square, Deng requested that his corneas be donated to an eye bank, his body dissected for medical research and his ashes cast into the sea, his family said in a letter released Thursday by the official New China News Agency.

"Comrade Xiaoping always believed in simple and frugal funerals," Deng's family said in the Feb. 15 letter sent to President Jiang Zemin, head of the official funeral committee, and to the Communist Party's Central Committee. "We hope that the last thing we do for him will reflect the essence of his mental outlook, and express our grief in an utterly plain and solemn way."

They asked that the casket containing his ashes be covered with the flag of the Chinese Communist Party, with a color photo on top "that displays the superb mental outlook of Comrade Xiaoping ... and to express the solemn atmosphere."

No foreigners will be among those invited to the memorial service, apparently because of Deng's formal status as a private citizen since he gave up his last official post in 1990.

Thursday flags in China's capital flew at half-staff and the streets were calm. State television repeatedly replayed this morning's news broadcast announcing Deng's death Wednesday night of complications from Parkinson's disease and a lung infection, and other programs showed highlights of Deng's life followed by dirges and a smiling photo of Deng with the words "eternal glory." All newspapers carried the same 5,000-word eulogy prepared for the occasion.

The official news agency carried tributes from various dignitaries, ranging from school administrators to military leaders, from President Clinton to North Korean leader Kim Jong Il.

Still many people, especially in rural areas, were slow to learn of the death of Deng, architect of a new economic order that transformed China without loosening his political grip.

The funeral will not only be the closing political act for Deng, who entered politics in his mid-teens, but it will also be the opening act in a highly political year that will climax in a major Communist Party congress in the fall that is expected to reshuffle several of the top government and party posts.

For President and party chief Jiang, Deng's funeral offers an opportunity to further cement his position as the country's top leader. Jiang will be seen on national television inheriting the mantle of leadership from the man who handpicked him in 1989, and leading the Communist Party's call to rally around flag, party and leadership.

"Party organizations at all levels should organize officials and the masses to listen to or watch the live transmission of the memorial meeting," the funeral committee said in a statement.

Although funeral committees for

top Communist leaders frequently have one or more deputy chairmen, Deng's has none, which some analysts saw as an attempt by Jiang, as chairman, to set himself apart from potential rivals.

The committee is an unwieldy group with 459 members, twice the size of the Communist Party's Central Committee. That was seen as an effort to include a wide variety of national constituencies, including the Communist Party, nonparty members, military leaders and even newly appointed leaders and civil service figures from Hong Kong and Macao.

The funeral will showcase people believed to be busy jockeying for position at the party congress.

At that time, because of constitutional limit of two terms, Premier Li Peng will have to step down, setting off a chain reaction of new appointments. Some leading candidates for the position include deputy premiers Li Lanqing and Wu Bangguo as well as Li Ruihuan, chairman of the Chinese People's Political Consultative Congress.

In the past, funerals for Chinese leaders — Zhou Enlai in 1976 and Hu Yaobang in 1989 — helped launch protest movements that shook the hold of the party or government. This time, the government has asked Beijing students, who are just drifting back from Chinese new year's vacations, to limit their going out at night.

The funeral presents not only an opportunity for Jiang to alter his image, but also a chance for China to change the most memorable images of the past eight years. Those are still the images of 1989: student demonstrators for democracy, tanks firing on the protesters, and an individual standing alone to keep a tank column from advancing before he was dragged away by friends.

Judge Denies Defense Motions On Witnesses in McVeigh Case

By Tom Kenworthy

THE WASHINGTON POST

DENVER

The federal judge presiding over the Oklahoma City bombing case Thursday denied motions by attorneys for Timothy J. McVeigh to exclude critical eyewitness testimony linking McVeigh to the rental of the Ryder truck used in the 1995 explosion that killed 168 people.

The ruling by U.S. District Judge Richard P. Matsch represents a significant victory for government prosecutors, who will rely to a great extent on a web of circumstantial evidence when the case against McVeigh goes to trial on March 31. A loss Thursday would have ripped a large hole in that web.

After two days of testimony, Matsch rejected defense arguments that identifications of McVeigh by eyewitnesses in Junction City, Kan., and elsewhere had been tainted by massive publicity and government manipulation, including the widely broadcast pictures of McVeigh leaving a county jail after his arrest.

"The bottom line is I do not find there is such suggestibility or impermissible influence," Matsch said from the bench. "This is the test, really: Would it be unreasonable for a fair-minded jury to believe their testimony?"

Prosecutors hailed Matsch's ruling as an important victory but maintained their case would have been strong enough to survive an adverse ruling. "It's a vindication of

the government's techniques," Assistant U.S. Attorney Scott Mendeloff said. "It reflects very favorably on the approach we've taken."

Stephen Jones, the lead attorney for McVeigh, conceded the ruling was a setback to the defense, but said the motion to exclude the testimony was an "uphill battle" that still gave him an important tactical advantage. The two days of hearings, Jones said, gave the defense an invaluable sneak preview of key government testimony by both FBI investigators and eyewitnesses who had refused to meet with the defense.

"I'll take my acorns where I can find them," Jones said. "I found a few over the last few days."

The most important testimony that Matsch allowed to proceed will come from two employees of Elliott's Body Shop in Junction City, the Ryder outlet where McVeigh allegedly rented the bomb vehicle on April 17, 1995. McVeigh's attorneys argued that the identifications by rental outlet owner Eldon Elliott and mechanic Tom Kessinger had been unduly influenced by publicity and coaching by government investigators.

Other witnesses who also will be allowed to testify include a man who asserts he saw McVeigh refuel the truck north of Oklahoma City in the early hours of April 19; a racing-fuel salesman who says McVeigh inquired about purchasing

highly explosive chemicals in the fall of 1994; a Kansas farmer who says he saw McVeigh and co-defendant Terry L. Nichols together that fall shortly before Nichols allegedly purchased 4,000 pounds of ammonium-nitrate fertilizer; and the farm-store manager who allegedly sold the fertilizer used in the massive bomb.

Nichols is to be tried separately after conclusion of the McVeigh case.

Attorneys for McVeigh and Nichols also previewed what is likely to be a pillar of their defense. They argued that procedures at the FBI crime lab in Washington were so sloppy as to invalidate testing of bomb residues found at the scene of the explosion and on McVeigh's clothing and personal effects.

The attorneys said a recent Justice Department investigation that found instances of sloppy evidence handling and lax procedures will aid their defense. "The government should be required to prove their methods are reliable," said McVeigh attorney Rob Nigh in urging Matsch to hold a pretrial hearing into the lab's procedures.

However, prosecutor Beth Wilkinson said the government's explosive-residue experts are world-renowned for their expertise. Notwithstanding any problems at the FBI lab, she said, "there is no evidence these items themselves were contaminated."

Albright Tries to Soften Russian Opposition to NATO Expansion

By Michael Dobbs and David Hoffman
THE WASHINGTON POST

MOSCOW

Secretary of State Madeleine K. Albright sought Thursday to persuade Russian leaders that they have nothing to fear from the proposed expansion of NATO to the borders of the former Soviet Union, but there was no sign of any softening in Russian hostility to the idea.

As Albright flew into Moscow, on the sixth leg of her 11-day around-the-world tour, a senior foreign policy adviser to President Boris Yeltsin said the West was pushing Russia toward "an aggressive confrontation." The Kremlin is demanding major changes in the plan, including a binding agreement between Russia and NATO and guarantees that Western military equipment will not be moved closer to Russia's borders.

U.S. officials said Albright attempted to allay Russian concerns by outlining a new Western proposal on conventional weapons limits in Europe that could lead to a significant reduction in American arms stocks on the continent.

The proposal could reduce the U.S. stockpile of tanks, aircraft and artillery by as much as 50 percent, NATO officials said in Brussels Thursday.

The United States also is offering to formalize the practice of political and military consultations with Moscow by setting up a Russia-NATO council with its own permanent secretariat.

The Western proposals for a special relationship between Russia and NATO, as outlined by Albright to Russian Foreign Minister Yevgeny Primakov, still fall well short of Moscow's minimum demands. Nevertheless, the process of diplo-

matic haggling clearly has gotten underway.

The difficult task of coming to some kind of understanding with Russia over NATO expansion has been further complicated by Yeltsin's prolonged illness and the resulting political disarray within the Kremlin. Albright is to see the 66-year-old leader Friday before wrapping up the European portion of her world tour and heading for Asia, where she has stops scheduled in Seoul, Tokyo and Beijing.

State Department spokesman Nicholas Burns said the Beijing portion appeared likely to go ahead, despite the death Wednesday of senior Chinese leader Deng Xiaoping, although it probably will be shortened to less than a day. The Chinese have said foreign representatives will not be invited to Deng's funeral on Tuesday, the day after Albright's arrival.

Advisory Panel Calls for Studies Of Marijuana's Medical Benefits

By Marlene Cimons
LOS ANGELES TIMES

WASHINGTON

A federal advisory panel, thrusting into the center of a standoff between federal drug authorities and advocates of marijuana use for medicinal purposes, said Thursday that the drug may have promising therapeutic results, calling for clinical trials of its medical effectiveness.

Following a two-day workshop at the National Institutes of Health, panel members said they believed marijuana could have some value in treating nausea among cancer patients receiving chemotherapy, wasting syndrome among AIDS patients, and glaucoma.

The call for research stopped well short of advocating that doctors be allowed to prescribe marijuana, but neither did the specialists dis-

miss anecdotal evidence indicating that the drug helped certain patients.

The advisory panel shied away from discussing the national debate after voters in California and Arizona approved initiatives allowing doctors to prescribe marijuana for medical purposes — and the Clinton administration responded by announcing it would go after any doctors who did.

California's Proposition 215, approved by 56 percent of the voters, decriminalized possession of marijuana by patients and caregivers if the drug was recommended by a physician. Arizona's Proposition 200 allows patients to use stronger drugs, including heroin or LSD, if approved by two physicians.

Federal drug officials responded with stern warnings that the propositions were in conflict with U.S.

drug laws and that physicians who prescribed marijuana would be criminally prosecuted. But they have suggested they do favor more scientific research into marijuana.

National Drug Policy Director Barry R. McCaffrey has indicated he would support studies that examined the medical value of marijuana.

Immediately after the panel's announcement Thursday, the director of the National Institute on Drug Abuse, which is part of the National Institutes of Health, immediately urged researchers to seek federal funding for marijuana studies.

Director Dr. Alan I. Leshner stressed the "openness and willingness" of the federal biomedical research agency to review such grant proposals and, if they are approved, to "provide the product," in other words, the drug.

Diplomat Loses Immunity, Charged in Fatal Traffic Accident

LOS ANGELES TIMES

WASHINGTON

In a court appearance made possible by a rare waiver of diplomatic immunity, an embassy official of the Republic of Georgia was charged with involuntary manslaughter and four counts of aggravated assault Thursday for his role in the traffic accident death of a Washington area teenager last month.

Gueorgui Makharadze, the second-ranking diplomat here for Georgia, expressed "deepest sorrow" for causing a multi-car pileup at a busy intersection in which 16-year-old Joviane Waltrick lost her life and four other people were injured.

The case of Makharadze, 35, became an instant talk-show topic in early January when public outrage grew with the realization he enjoyed diplomatic immunity from criminal charges in the United States, as do U.S. diplomats who serve overseas.

But Eduard Shevardnadze, the former Soviet foreign minister who became Georgia's president after the breakup of the Soviet Union, announced recently he would waive Makharadze's immunity so the diplomat could be charged and stand trial here.

The accident in which young Waltrick died seemed particularly egregious. Makharadze's speeding car, which police estimated was traveling 80 miles an hour, slammed into a smaller vehicle at a busy Washington intersection. The second auto was knocked into the air and crashed onto a third car in which the girl was a passenger.

A hospital test later showed Makharadze's blood alcohol level was 0.185, which is above the 0.10 level at which a driver is considered intoxicated.

Ex-Postmaster of House Post Office Sentenced to 4 Months In Prison

THE WASHINGTON POST

WASHINGTON

Robert V. Rota, the former postmaster of the House Post Office, was sentenced Thursday to four months in prison for supplying former Reps. Dan Rostenkowski, D-Ill., and Joseph Kolter, D-Pa., with cash in exchange for stamps.

Rota, 61, wept throughout the hearing where U.S. District Judge Norma Holloway Johnson refused to put him on probation. He reached out and held onto a podium as she imposed the prison term, a \$2,000 fine and ordered him to pay \$5,000 in restitution to Congress.

In deciding to send Rota to prison despite his cooperation with authorities, Johnson accepted prosecutor Thomas J. Motley's view that Rota had to be punished for lying to investigators in 1980 when the allegations about congressmen getting cash for stamps first surfaced, as well as coercing others to lie.

There is a chance that Rota could serve his time in a half-way house because Johnson, at the request of Rota's attorney, Charles Leeper, said she would not object if the Bureau of Prisons put him in one. But she refused to make it part of her sentencing order.

Leeper said Motley had a point when he argued that Rota should have cooperated sooner. But he said Motley, seeing it from a "tough trial lawyer's" point of view, could not possibly understand "what it's like to be under the thumb of someone as powerful as Mr. Rostenkowski."

Adaptec — Cure for the Common Career



System and network **indigestion.** It's as common as pulling an all-nighter or dining on **pizza** for breakfast. Assignments today are just more data-intensive, with multimedia and massive files to download, manipulate, and forward. Enter Adaptec. Our formula helps systems run more **efficiently** so people can be more productive. We've shown a healthy profit every quarter for the last 12 years, resulting in continuous **growth** and numerous opportunities for you. Discover our fast, proven **cure** for the common career — at Adaptec.

ULTRA SCSI GIVEAWAY

Attend an upcoming Information Session with Adaptec at your school and you'll be entered into a drawing for a chance to win an Adaptec 2940 Ultra SCSI host adapter kit for your PC (a \$300 value).

MIT INFORMATION SESSION

Thursday, February 20 • 4:00 - 6:00 pm • Room 4-145
Have dinner on us! Pizza and drinks will be served.

Engineers, sign up at your career center for an ON-CAMPUS INTERVIEW Monday, February 24

If unable to attend any of our events, please send your resume to: Adaptec, University Relations, Dept. MIT, 691 South Milpitas Blvd., MS-15A, Milpitas, CA 95035. Fax (408) 957-7810. Email: jobs@corp.adaptec.com. An equal opportunity employer. Principals only, please. All trademarks belong to their respective companies.



www.adaptec.com

Guaranteed Relief Instantly

OPINION

Letters To The Editor



Chairman
Daniel C. Stevenson '97

Editor in Chief
David D. Hsu '98

Business Manager
Angela Y. Liao '98

Managing Editor
Josh Bittker '99

Executive Editor
Thomas R. Karlo '97

NEWS STAFF

Editors: Venkatesh Satish '98, Dan McGuire '99; **Associate Editors:** Brett Altschul '99, Jean K. Lee '99, May K. Tse '99, Frank Dabek '00, Douglas E. Heimburger '00, Zareena Hussain '00; **Staff:** Eva Moy G, Kyle Young G, James M. Wahl '97, Christopher L. Falling '98, Noémi Giszpenc '98, Orli G. Bahcall '99, Shawdee Eshghi '99, Carina Fung '99, Fenny Lin '99, Eric Sit '99, Liz Krams '00, Dudley W. Lamming '00; **Meteorologists:** Michael C. Morgan PhD '95, Gerard Roe G, Marek Zebrowski.

PRODUCTION STAFF

Editors: Saul Blumenthal '98, Russell S. Light '98, Jason C. Yang '99; **Staff:** Betty Chang '98, Larry Chao '98, Moksha Ranasinghe '99, Sharon Shen '99, Binh Truong '99, Stephanie Yang '99, Brent Yen '99, Erica Pfister '00, Brian T. Sniffen '00, Billie Wang '00.

OPINION STAFF

Editor: Stacey E. Blau '98; **Staff:** Anders Hove G, A. Arif Husain '97, David S. Kelman '99.

SPORTS STAFF

Editor: Erik S. Balsley G; **Staff:** Hana Ohkawa G, Martin Duke '97, Chris Lin '97, Jason Weintraub '97, Chris Brocoum '00.

ARTS STAFF

Editor: David V. Rodriguez '97; **Staff:** Thomas Chen G, Jonathan Litt G, Teresa Esser '95, Brian Hoffman '97, Teresa Huang '97, Kamal Swamidoss '97, Rob Wagner '97, Hur Koser '98, Yaron Koren '99, Daniel Ramirez '99, Joel M. Rosenberg '99, Stephen Brophy.

PHOTOGRAPHY STAFF

Editors: Gábor Csányi G, Indranath Neogy '98; **Staff:** Rich Fletcher G, Alkan Kabakcioglu G, Jonathan Li G, Gabriele Migliorini G, Arifur Rahman G, Jiri Schindler G, Helen Lin '97, Tiffany Lin '97, Adriane Chapman '98, Ahmed Ait-Ghezala '99, David Tarin '99, Ian Chan '00, Gregory F. Kuhn '00, Rita H. Lin '00.

FEATURES STAFF

Hugo M. Ayala G, Pawan Sinha, Zachary Emig '98, Jessica Wu '99.

BUSINESS STAFF

Advertising Manager: Cristián A. González '99; **Operations Manager:** Pamela Shade '98; **Staff:** Jessica Maia '98, Terri A. Wilson '99, Joey Dieckhans '00, Jennifer Koo '00.

TECHNOLOGY STAFF

Director: Timothy K. Layman '97; **Associate Director:** Christina Chu '98; **Staff:** Ifung Lu '97, Christine Chan '98, Laurie M. Leong '00.

EDITORS AT LARGE

Contributing Editors: Shang-Lin Chuang '98, Jennifer Lane '98; **Senior Editor:** Ramy A. Arnaout '97.

ADVISORY BOARD

V. Michael Bove '83, Robert E. Malchman '85, Thomas T. Huang '86, Reuven M. Lerner '92, Josh Hartmann '93, Jeremy Hylton '94, Garlen C. Leung '95, Scott C. Deskin '96.

PRODUCTION STAFF FOR THIS ISSUE

Night Editors: Russell S. Light '98, Josh Bittker '99, Jason C. Yang '99; **Staff:** Saul Blumenthal '98, Moksha Ranasinghe '99.

The Tech (ISSN 0148-9607) is published on Tuesdays and Fridays during the academic year (except during MIT vacations), Wednesdays during January and monthly during the summer for \$35.00 per year Third Class by The Tech, Room W20-483, 84 Massachusetts Ave., Cambridge, Mass. 02139-7029. Third Class postage paid at Boston, Mass. Non-profit Organization Permit No. 59720. **POSTMASTER:** Please send all address changes to our mailing address: *The Tech*, P.O. Box 397029, Cambridge, Mass. 02139-7029. Telephone: (617) 253-1541, editorial; (617) 258-8324, business; (617) 258-8226, facsimile. Advertising, subscription, and typesetting rates available. Entire contents © 1997 *The Tech*. Printed on recycled paper by Mass Web Printing Co.

Quickstations Should Log Users Out

Well, Information Systems has really dropped the ball on this whole quickstation idea. It certainly looked good in theory — I could breeze in, check my e-mail, breeze out. However, like many great ideas at MIT, this

one appears to be on its way to being botched.

What's up with this 10-minute time limit? If I stay logged in for more than 10 minutes, the quickstation is going to... nag me? If I log in on an express dialup for too long, I get kicked off. But if I log into a quickstation for too long, I get asked nicely to leave? I suspect that this is some symp-

tom of political correctness run rampant; it's just too mean to kick someone off a machine in the middle of a heartfelt Zephyr conversation.

Face it, guys: Nagging is not an effective tool for enforcement. If you're going to do quickstations, do it right. After 10 minutes, log the user out.

Sean W. McGinnis '97

Safe Ride Needs Reliable, Wider Service

Column by Erik S. Balsley
SPORTS EDITOR

If I could use one word to describe MIT's campus, it would be "long." Walking and biking are two convenient ways to get around campus, but when they aren't feasible — because of distance or safety — things become a bit more difficult. Safe Ride is a good alternative means of transportation, but let's face it — it's just not cutting it and needs some major work.

The need for a more convenient means of transportation about our nearly two-mile campus was noted recently in a column by A. Arif Husain '97 entitled "Monorail Will Expand Creative Potential" [Nov. 26, 1996]. Despite the charm of the idea, I somehow doubt the Institute would be willing to risk its bond rating on funding such a multimillion dollar project.

With or without a monorail, the campus needs to think about ways to transport people about the campus. A round-the-clock expansion of Safe Ride — which has become in effect MIT's transportation system — and larger vehicles may help alleviate this problem. It may also be a low-cost way to solve the intracampus transportation dilemma as well.

Recently, I was walking along Cambridge Street in Boston when a small bus passed by on the street. When I looked up to observe the little bus, I was shocked to realize it was painted red and on the side bore a sign saying "Harvard University Shuttle Services." As it passed, I realized that I had seen similar buses rolling through Harvard Square. Upon returning home I called a friend up river, and she told me that the buses are a shuttle service — the "Harvard Shuttle" — that runs for most of

the day every day. That includes daylight hours.

Imagine a Cambridgeside Galleria Bus that would run around our campus. It would be able to carry more passengers than the existing Safe Ride. In addition, expanded daylight hours would be a great benefit to the campus. If a route were extended to include the MIT Museum and outer areas of campus that manage to appear in tourist guides, it would help make our campus a bit more

Safe Ride ridership appears to have leveled off or dropped, the vans tend to run behind schedule, and some drivers make the "safe ride" feel like a suicide run from hell.

friendly to outside visitors. Instead of having to ask for directions to the hard to find MIT Museum for instance, visitors could board a little red bus and be dropped off at its big red door.

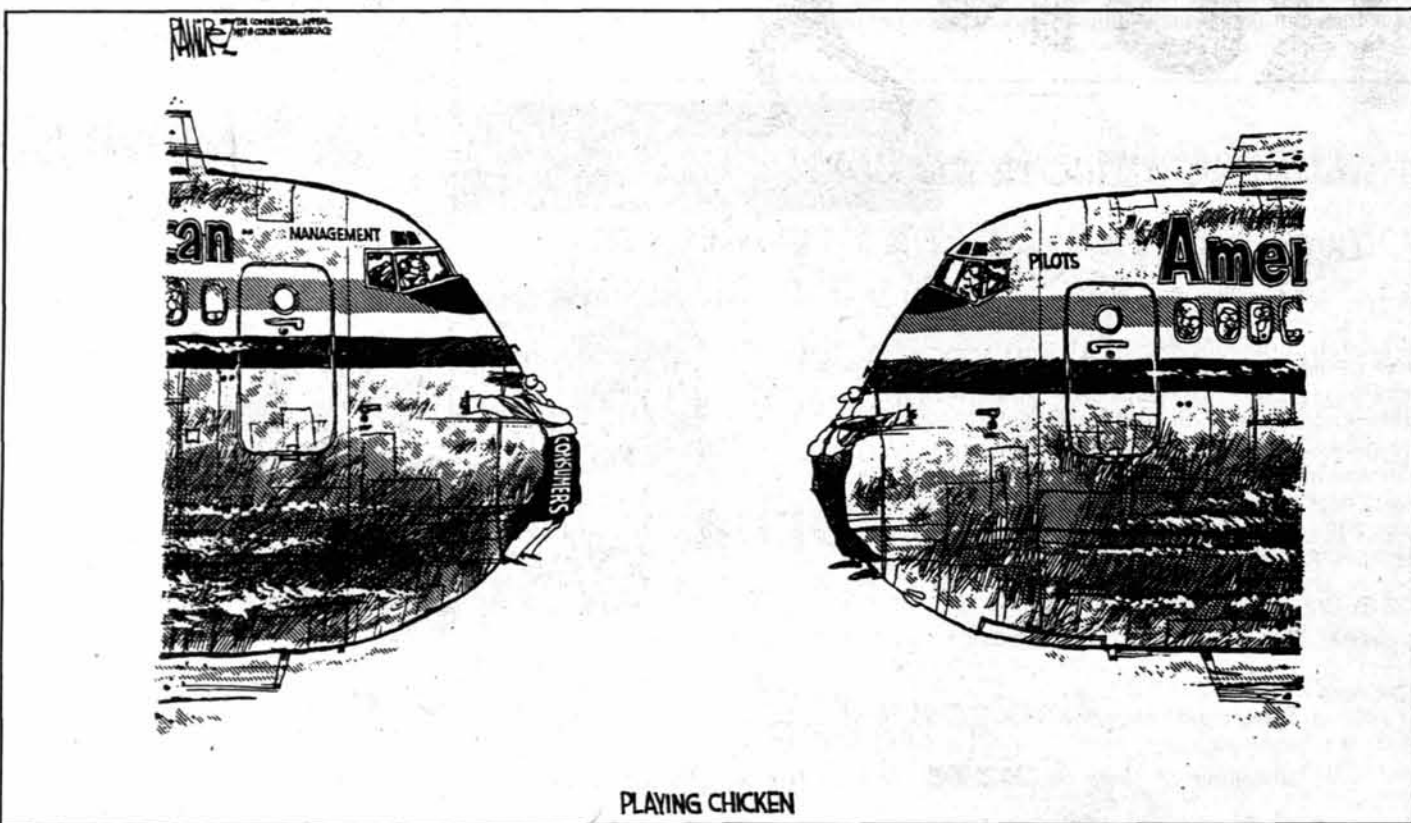
However, before such an expansion could occur, some of the problems of the existing Safe Ride need to be addressed. Safe Ride ridership appears to have leveled off or dropped, the vans tend to run behind schedule, and some drivers make the "safe ride" feel like a suicide run from hell.

These observations are colored by my recent dependence on Safe Ride. Because of a knee injury, I often find it difficult to walk back to my room at Tang Hall at night. To prevent my tendon from feeling like a plucked rubber band, I began to take Safe Ride home each night. Several nights, I had to wait over 30 minutes for the van to arrive, often wet in cold snow or rain. In addition, some nights I found that the safety belt came to good use as the driver made the trip down Amherst Alley at what felt like 55 miles per hour.

When I entered the van, I was shocked at how few people were riding it or boarding it at the stops. However, when it is raining or snowing, it is almost impossible to get a spot on any Safe Ride, especially the two that run across the Harvard Bridge. When weather permits, most people like to walk. But at night or during bad weather, people would like to be sheltered from the elements. Convenience also plays a role in Safe Ride usage.

When the shuttles run on time, people can count on a reliable source of transportation and may think to use it more. Waits like the ones I had to endure do not make people want to use the service. The other thing that may be affecting ridership is the size of the vehicles. I dare anyone to try to catch a Safe Ride across the river on a rainy night. Chances are you won't get on.

Expanding the Safe Ride fleet with small buses would allow people to use a more reliable and guaranteed system of transportation. Increasing the driving ability of some drivers may also help. Increasing hours of operation would also help fix the problems of getting around such a long campus. In short, we need a larger, safer, more convenient Safe Ride.



Opinion Policy

Editorials, printed in a distinctive format, are the official opinion of *The Tech*. They are written by the editorial board, which consists of the chairman, editor in chief, managing editor, executive editor, news editors, and opinion editor.

Dissents, marked as such and printed in a distinctive format, are the opinions of the signed members of the editorial board choosing to publish their disagreement with the editorial.

Columns and editorial cartoons are written by individuals and represent the opinion of the author, not necessarily that of the newspaper.

Letters to the editor are welcome. They must be typed, double-spaced and addressed to *The Tech*, P.O. Box 397029, Cambridge, Mass. 02139-7029, or by interdepartmental mail to Room W20-483. Electronic submissions in plain text format are encouraged, and may be mailed to letters@the-tech.mit.edu. All submissions are due by 4:30 p.m. two days before the date of publication.

Letters and cartoons must bear the authors' signatures, addresses, and phone numbers. Unsigned letters will not be accepted. No letter or cartoon will be printed anonymously without the express prior approval of *The Tech*. *The Tech* reserves the right to edit or condense letters; shorter letters will be given higher priority. Once submitted, all letters become property of *The Tech*, and will not be returned. We regret we cannot publish all of the letters we receive.

To Reach Us

The Tech's telephone number is (617) 253-1541. Electronic mail is the easiest way to reach any member of our staff. Mail to specific departments may be sent to the following addresses: ads@the-tech.mit.edu, news@the-tech.mit.edu, sports@the-tech.mit.edu, arts@the-tech.mit.edu, photo@the-tech.mit.edu, circ@the-tech.mit.edu (circulation department). For other matters, send mail to general@the-tech.mit.edu, and it will be directed to the appropriate person. *The Tech* can be found on the World Wide Web at <http://the-tech.mit.edu>.

vacation
spring break

Garber Travel Professionals are ready to treat you to rest and relaxation you deserve

MAKE THE GREAT
escape

GARBER TRAVEL

The lowest prices anywhere, anytime,
GUARANTEED

Cambridge
1105 Mass. Ave. (617) 492-2300



FactSet Research Systems
is Looking for
Software Engineers

FactSet provides online stock market data and analysis applications to institutional investors, including mutual fund and pension fund managers and investment banks. Founded in 1978, the company has grown at a 25% rate, enjoys a commanding market share in the U.S., and is expanding in Europe and in Asia. With offices in Greenwich, Connecticut, San Mateo, California, London, and Tokyo, we currently employ about 150 young, hard-working professionals.

Software Engineers

We need software engineers who are:

- Ready to take on responsibility and create opportunities
- Eager to learn from experienced engineers and use the latest development tools

Specific skills we desire include:
C/C++, Windows/GUI development, Database design and implementation, Graphics, Financial Modeling/Analysis, Communications and networking

Our Rewards

- A high level of responsibility from the outset that grows with proven performance
- An entrepreneurial environment with the stability of a successful company
- A generous compensation package including salary, bonus, and stock ownership programs

Information Session

Monday, February 24, 7 - 9 pm
Room 4-153, Refreshments will be served

Interviews

Tuesday, February 25, Career Center

Visit our Web site at

<http://www.factset.com>

FACTSET

FROM THE DIRECTOR OF "DAZED AND CONFUSED"

"WONDERFUL!"
A Winning Cast. Elegantly Directed.
Janet Maslin,
The New York Times

suburbia

Soundtrack on DG Records featuring new music from: SONIC YOUTH ELASTICA WITH STEPHEN MALCOLMUS BECK THE FLAMING LIPS BOSS HOG U.K.K.L.E. SUPERCHUNK also including: GIRLS AGAINST BOYS SKINNY PUPPY BUTTHOLE SURFERS THURSTON MOORE BEKE PITNEY <http://www.giff.com>

CASTLE ROCK ENTERTAINMENT PRESENTS A NETOUR FILM PRODUCTION "SUBURBIA" JANICE BARTON ANNE CAREY WICKY KATT AJAY NADU PARKER POSEY GIOVANNA ROBBI SAMRA SHOUH DNA SPYDEY STEVE ZANN CASTING BY JUDY HENDERSON & ALYSON AUMULLER MUSIC BY SONIC YOUTH MAKEUP BY RANDALL POSTER COSTUME DESIGNER SANDRA ADAR PRODUCTION DESIGNER CATHERINE HARDWICKE DIRECTOR OF PHOTOGRAPHY LEE DANIEL EXECUTIVE PRODUCERS JOHN SLOSS PRODUCED BY ANNE WALKER-MORAY SCREENPLAY BY ERIC SOGGOSIAN BASED ON THE PLAY BY RICHARD LINKLATER

CASTLE ROCK ENTERTAINMENT LANDMARK'S KENDALL SQUARE CALL THEATRE FOR SHOWTIMES.
EXCLUSIVE ENGAGEMENT, STARTS FRIDAY, FEBRUARY 21ST! One Kendall Square • Cambridge • 617-452-8800

RUN

Run for an office in the UA!!

Offices up for election: **UA President** and **UA VP** as a team, Class offices: President, VP, Treasurer, 2 Social Chairs, 2/Publicity Chairs; and 4 members of the UA Finance Board.

Packets available from the UA Office: **W20-401**

DEADLINE: February 26th

Questions? Email: ua-elect@mit.edu

Spring Weekend

Attention Student Groups

If you are interested in getting your group's activity in Spring Weekend, come to a planning session any Thursday night in W20-401. Contact jrdailey@mit.edu or ritlin@mit.edu. **SPRING WEEKEND** sponsored by the UA, organized by the Social Committee.

INFLUENCE POWER LEADERSHIP

The UA Nominations Committee will be interviewing applicants for various **Faculty, Presidential, and Corporation** committees such as the **Committee on Academic Performance**.

Interviews this Saturday and Sunday!

Interviews will be conducted on February 22nd and 23rd, and then again on March 1st.
If you are interested sign up in The Student Center, Room 401.
Details concerning the committees are also available. Questions? nomcomm@mit.edu

Classical Music

MIT Faculty Concert

Killian Hall, 160 Memorial Dr., Cambridge. Feb. 21, 8 p.m. Admission: free. Information: 253-9800. Margaret O'Keefe, soprano; Charles Shadle, piano. Songs by Schumann, Mompou, Shadle, Persichetti, Fiday, Cohen and songs from *The Lion King*.

Student Recitals

Killian Hall, 160 Memorial Dr., Cambridge. Admission: free. Information: 253-9800. Feb. 23, 3 p.m. Eric Sawyer, piano; Bayla Keyes, violin; and He-Kun Wu, cello. Eric Sawyer's Selections from *Twelve Piano Pieces*, *Sonata for Violin and Piano*, and the *Sonata for Cello and Piano* by Caesar Franck. Feb. 26, 5 p.m. Admission: free. Information: 253-9800. Chris Rohrs '99, clarinet. Schumann, *Fantasiestücke Op. 73*, *Lutoslawski, Five Dance Preludes*, John Yi '97, piano; Copland, *Concerto for Clarinet and String Orchestra*, Cathy Labelle (G), piano.

MIT String Sinfonietta

Killian Hall, 160 Memorial Dr., Cambridge. Feb. 24, 8 p.m. Admission: free. In their Sinfonietta debut concert, student musicians perform Bach's *Brandenburg Concerto #3*, Britten's *Simple Symphony*, and Grieg's *Holberg Suite*.

MIT Chapel Series

MIT Chapel, across from 77 Massachusetts Ave., Cambridge. Feb. 20, noon. Mark Small and Robert Torres, guitar duo. Music of Grieg, Bach, DeFalla, Bellinatti.

The Longy School of Music

One Follen St., Cambridge. Information: 876-0956, x120. *Opera at Longy*. Feb. 21-22, 8 p.m. Directed by Donna Roll, presents opera scenes and arias by Mozart, Beethoven, Puccini, Verdi, and others. *Schubert Celebration Series*. Feb. 23, 7 p.m. Cellist Ronald Lowry and pianist Ossie Borosh perform the *Sonata in A Minor, D. 821* (Arpeggione). Borosh will also perform *Four Impromptus, D. 935*. Violinist Eric Rosenblith and pianist Gabriel Chodos will perform the *Fantasy in C Major, D. 934*. *Faculty Artist Series*. Feb. 27, 8 p.m. Dana Mazurkevich, violin, performs with guest artists the Leontóvych String Quartet.

Jazz Music

Jazz Vespers

University Lutheran Church, 66 Winthrop St., Cambridge. Feb. 16, 6 p.m. Admission: free. Information: 876-3256. *Music and meditation in the night*, featuring the Jeff Robinson Trio.

Popular Music

Bad Taste '97

77 Massachusetts Ave., Room 10-250, Cambridge. Feb. 21, 11:59 p.m. Admission: free. Information: 437-7795. Chorallaries' annual concert.

Middle East

472 Massachusetts Ave., Cambridge. 9 p.m. Admission: cover varies. Casual attire. All shows 18+. Information: 497-0576, 354-8238.

Feb. 14: Lilies, Syrup USA.

Feb. 15: Lyres, The Prissteeens, Devotions.

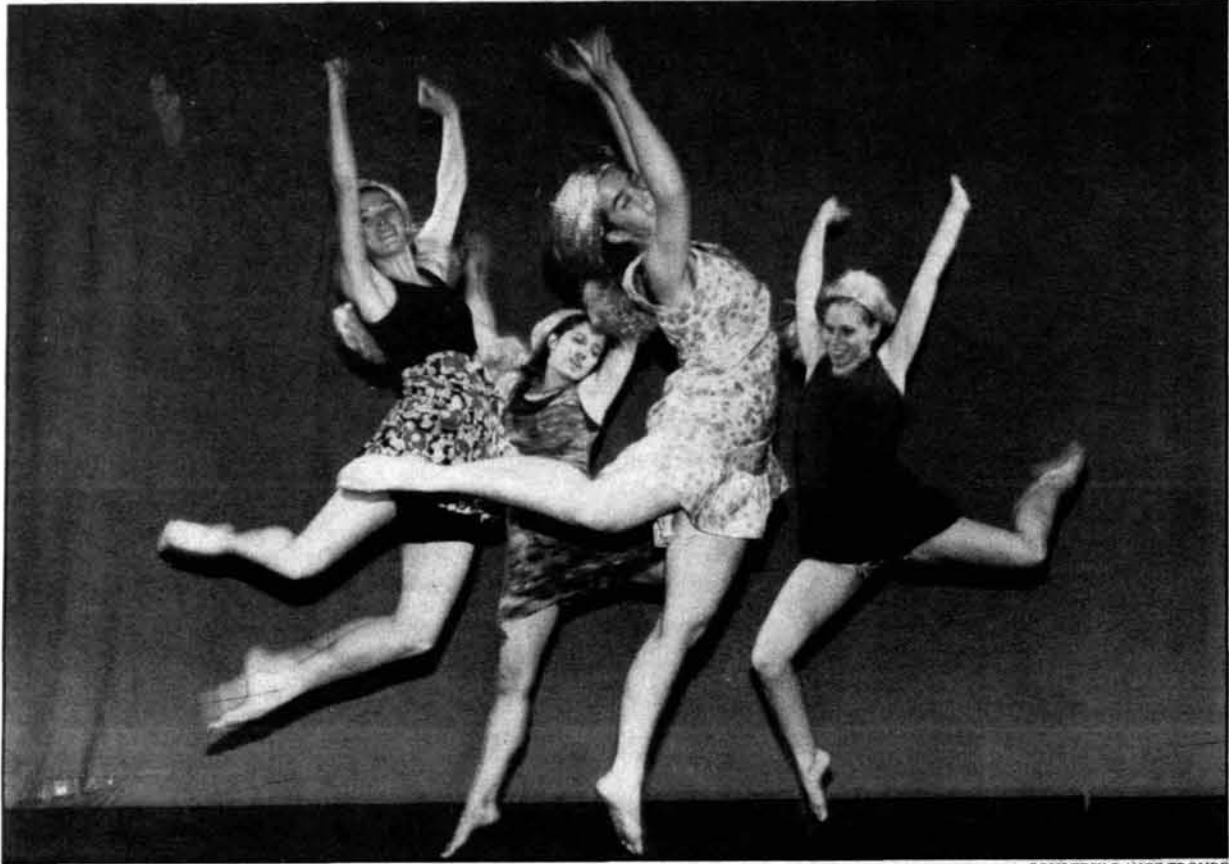
Feb. 16: Residency Series with Buttercup, Chris Colbourn, Voodoo Glow Skulls.

On The Town

A weekly guide to the arts in Boston
February 21 - 27

Compiled by Cristián A. González

Send submissions to ott@the-tech.mit.edu or by Interdepartmental mail to "On The Town," The Tech, W20-483.



COURTESY DANCE TROUPE

The Dance Troupe performs in a fall 1995 concert. The troupe will present a special concert, "Breaking Bounds," today, Saturday, and Sunday in Little Kresge.

Feb. 17: Apartment Three, The Blue Route, Scott Mackey.
Feb. 18: Spacetruck, Unionsuit, Glans.
Feb. 19: The Doosies, Sameasyou, Movable.
Feb. 20: Cambridge Concerts for Housing Justice.
Feb. 21: Miracle Legion, Humidifiers, Lockgroove Lullaby.

Film

Lecture Series Committee

77 Massachusetts Ave., Cambridge. Admission: \$2. Information: 258-8881.

Fargo. Feb. 21, 7 p.m. and 10 p.m., Room 26-100. A charmingly dark comedy about a Minnesota car dealer who schemes to extort money from his rich father-in-law. When things begin to go sour, Marge, a pregnant cop from upstate, follows a trail of clues to his doorstep.

The 39 Steps. Feb. 21, 7:30 p.m., Room 10-250. Directed by Alfred Hitchcock; starring Robert Donat. A secret service agent is assassinated in the London apartment of Richard Hannay (Donat), but Hannay manages to escape both the police and the assassins in order to find the members of the spy

ring called "The 39 Steps" in Scotland and thus clear his name. This film is Hitchcock's most famous work of his English period. *Twelfth Night*. Feb. 22, 7 p.m. and 10 p.m., Room 26-100. An update of Shakespeare's comedy of the late 19th century. It is an entertaining, fast-paced story of mistaken identity, cross-dressing, and unrequited love.

Of Mice and Men. Feb. 23, 7 p.m. and 10 p.m., Room 26-100. Based on Steinbeck's novel, this film tells of George and his dimwitted brother, Lennie, as they travel across the country as migrant workers. Lennie, who doesn't know his own strength, doesn't understand why he ends up causing trouble wherever they go. Stars Gary Sinise and John Malkovich.

The Museum at the John F. Kennedy Library

Columbia Point, Boston. Through June 1: Fri.-Thurs., 9 a.m.-5 p.m. Admission: \$6; seniors and students, \$4; ages 6-12, \$2; under 6, free. Information: 929-4523. Films run continuously during the day.

Cuban Missile Crisis. Film documenting the October 1962 confrontation with the Soviet Union. Through June 1.

Fight Against Segregation. A film

on events leading up to JFK's national address on civil rights. *Son of Ireland*. Portrays Kennedy's visit to his ancestral home. Through June 1.

Legacy of a Dream: Martin Luther King. Narrated by James Earl Jones, this film shows the historic chronology of the events that secured the vote for African Americans and led to the death of a great leader. Showing Feb. 21. *Eyewitness: The U.S. vs Mississippi*. The story of James Meredith and the Kennedy Administration's struggle to de-segregate the University of Mississippi. Features interviews by, among others, a very young Dan Rather in one of his earliest assignments. Showing Feb. 22.

Whales

Museum of Science, Science Park, Cambridge. Through April 30. Admission: \$7.50; seniors and ages 3-14, \$5.50 (Tues., bargain nights for all shows 7 p.m. and later, \$5; seniors and ages 3-14, \$3). Information: 723-2500. Film follows the life cycles and travels of blue, humpback, and right whales from Argentina to Alaska.

Belle de Jour

The French Library and Cultural Center, 53 Marlborough St., Boston. Feb. 21, 8 p.m. Admission: members, \$10; non-members, \$6; 10-pass, \$40. Information: 266-4351. In French with English subtitles. Film directed by Luis Buñuel, with Catherine Deneuve, Jean Sorel, Michel Piccoli. Buñuel's wry and disturbing tale of a virginal newlywed who works the day shift in a high-class Parisian brothel, unknown to her patient husband.

Leona's Sister Gerri

140 Commonwealth Ave., Chestnut Hill. Feb. 18, 7:30 p.m. Admission: free. Information: 552-4295. Part of Social Issues Film Series. Film to be introduced by its maker.

tion: 266-4351. In English. Play in one act conceived and directed by Julian Cairol, with the No Exit players. There are no racks, red-hot tongs, nor other instruments of torture in hell, as it is supposed, but out-of-fashion armchairs in a Second Empire drawing-room where the condemned sinners, Garcin, Ines, and Estelle are received. As we follow the hallucinating development of the play, however, we discover that the instruments of torture really do exist. The performance will be accompanied by musical illustration played by Lucienne Davidson.

Ongoing Theater

On the Town

Student Center La Sala de Puerto Rico (84 Massachusetts Ave.). Feb. 14-15 and Feb 20-22, 8 p.m.; Feb 16, 2 p.m. MIT Musical Theatre Guild production of show by Leonard Bernstein, Betty Comden, and Adolph Green which follows the one-day shore leave of three sailors anxious to see the "sights and lights" of New York City. \$9; MIT faculty and staff and other students, \$8; MIT/Wellesley students, \$6 (discount of \$1/ticket for groups of 10 or more). 253-6294 or e-mail mtg-tickets@mit.edu.

Rent

Shubert Theatre, 265 Tremont St., Boston. Through April 27. Tues.-Sat., 8 p.m.; Sun., 7 p.m.; matinees, Sat.-Sun., 2 p.m. Admission: \$25-\$67.50. Information: (800)447-7400. Musical based on Puccini's 1896 opera *La Bohème*.

South Pacific

Turtle Lane Playhouse, 283 Melrose St., Newton. Through March 16. Admission: \$12-\$18. Information: 244-0169. Rodgers and Hammerstein musical.

Openings

A Performance of No Exit

The French Library and Cultural Center, 53 Marlborough St., Boston. Feb. 22, 6:30 p.m. Admission: \$6; members, students, and seniors, \$4. Informa-

Dance

Dance Troupe Breaking Bounds Concert

Little Kresge, Rear 48 Massachusetts Ave., Cambridge. Feb. 21, 8 p.m.; Feb. 22, 8 p.m.; Feb. 23, 2 p.m. Admission: \$4 in advance; \$5 at the door for MIT community;

non-MIT add \$1 to the ticket price. Information: 225-8744. A Dance Troupe special concert showcasing works by professional dance choreographers and dancers, as well as favorites from Dance Troupe's performing past.

Lectures

The City is a Landscape: Urban Design and Landscape Architecture

77 Massachusetts Ave., Room 10-250, Cambridge. Feb. 25, 6:30 p.m. Admission: free. Information: 253-7791. Lecture by Laurie Olin, landscape architect.

Virtuality and Vaudeville: Think-a-Drink Hoffman meets the World Wide Web

Bartos Theatre, 20 Ames St., Cambridge. Feb. 22, 3 p.m. Admission: free. Information: 253-4680. This talk, being presented in connection with the current LVAC exhibition "Port: Navigating Digital Culture" (artnetweb.com/PORT), will discuss links between turn-of-the-century vaudeville and turn-of-the-millennium digital culture while charting, historically and metaphysically, the differences between these popular social technologies. The point is to endow the Web with a sense of history while noting what has shifted in cultural experience from the days of Think-a-Drink Hoffman to the present of America Online, and the burgeoning of digital, interactive artwork.

Exhibits

MIT Museum

265 Massachusetts Ave., Cambridge. Tues.-Fri., 10 a.m.-5 p.m.; Sat.-Sun., noon-5 p.m. Admission: \$3; non-MIT students, seniors, and under 12, \$1; MIT students, free. Information: 253-4444.

What's So Funny About Science? Cartoons of Sidney Harris offer a hilarious look at unexpected and incongruous moments in science. Through May 31.

Maps from the Age of Atlases. Rare maps from the Museum's Hart Nautical Collections illuminate the golden age of cartography. Through May 4.

Gestural Engineering: The Sculpture of Arthur Ganson. Ganson's kinetic sculptures exude the wit of their creator, a self-described cross between a mechanical engineer and a choreographer. Ongoing.

LightForest: The Holographic Rainforest. Large-scale hologram exhibit by Betsy Connors. Ongoing.

Holography. The exhibition explores the holographic universe from its inception in the late 1940s through its artistic and technical evolution and highlights works by the world's foremost holographers. Ongoing.

Math in 3D. Morton C. Bradley's mathematical sculptures inspire inventors of all ages to create their own structures in the adjacent MathSpace activity center. Ongoing.

MIT Hall of Hacks. Chronicling MIT's rich hacking tradition, this exhibition features historic photographs and a collection of artifacts. Ongoing.

Light Sculptures. Vivid interactive plasma sculptures by Center for Advanced Visual Studies alumnus Bill Parker. Ongoing.

Hart Nautical Gallery

55 Massachusetts Ave., Cambridge. Mon.-Sun., 9 a.m.-8 p.m. Admission: free. Information: 253-4444.

Ships for Victory: American Shipbuilding's Finest Hour. Historic photographs and artifacts explore the shipbuilding programs of World War II, the vital and unprecedented contribution of women to these programs, and MIT's pivotal role in the shipbuilding effort. Ongoing.

Ship Models. Rare models illustrate the evolution of ship design from the 16th to 20th centuries. Ongoing.

On the Surface of Things: Images in Science and Engineering by Felice Frankel.

Compton Gallery, 77 Massachusetts Ave., Cambridge. Feb. 14-June 27: Mon.-Sun., 9 a.m.-8 p.m. Admission: free. Information: 253-4444. Stunning photographs communicate recent research in a variety of disciplines at MIT and other institutions.

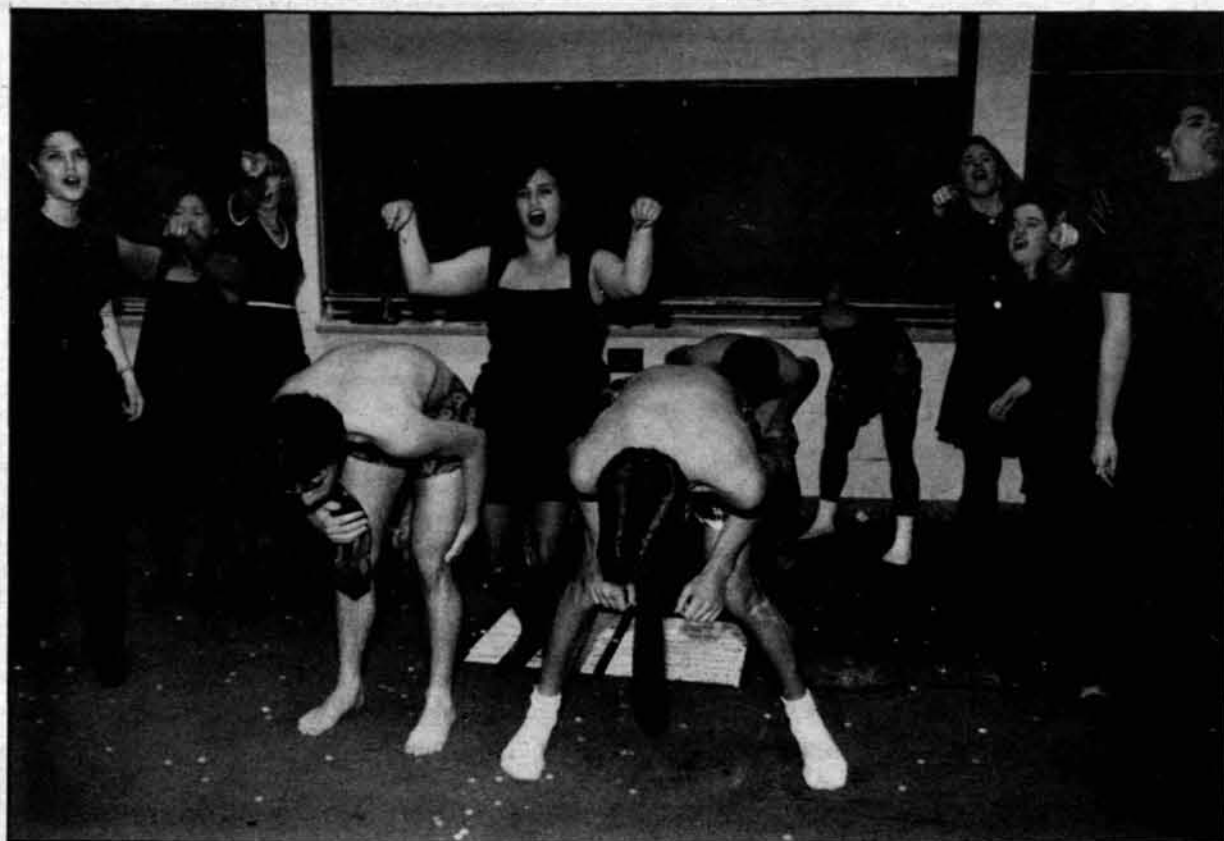
List Visual Arts Center

20 Ames St., Cambridge. Through March 29: Sat., Sun., Tues.-Thurs., noon-6 p.m.; Fri., noon-8 p.m. Admission: free. Information: 253-4680.

Joseph Kosuth: Re-Defining the



Empire Strikes Back Special Edition opens today across Boston.



A moment from *The Chorallaries' Bad Taste '96*, which was likely the raunchiest campus show of the year. This year's show is tonight at 11:59 p.m. in 10-250.

Context of Art: 1968-1997. Works by this renowned Conceptual artist.

The Shape of Breath. Works by this Seattle-based artist. Explores the metaphorical properties of materials.

Port: Navigating Digital Culture. Exhibition of collaborative, performative art projects taking place over the Internet.

The Race to the Moon

The Museum at the John F. Kennedy Library. Off Morrissey Boulevard, Dorchester. Through June 1: Fri.-Thurs., 9 a.m.-5 p.m. Admission: \$6; seniors and students, \$4; ages 6-12, \$2; under 6, free. Information: 929-4523. Exhibit on America's pioneering space exploration.

Museum of Fine Arts

465 Huntington Ave., Boston. Mon.-Tues., 10 a.m.-4:45 p.m.; Wed.-Fri., 10 a.m.-9:45 p.m.; Sat.-Sun., 10 a.m.-5:45 p.m. Admission: \$10; seniors and college students, \$8; ages 17 and under, free; Wed. after 4 p.m., voluntary contribution; Thurs.-Fri., after 5 p.m., \$2 discount. Information: 267-9300.

Herb Ritt's Work. Several works of the renowned photographer. Through Feb. 23.

Face and Figure in Contemporary

Art. Survey of the variety and complexity of contemporary approaches to the theme of the human figure. Through March.

Dressing Up: Children's Fashions 1720-1920. Explores the relationship between children's and adults' fashions in the past couple of centuries. More than 40 costumes, predominantly from the museum's permanent collection, are on view along with accessories, toys, dolls, furniture, and paintings. Through March 23.

The Art of John Biggers: View from the Upper Room. Exhibit of the black artist's drawings, prints, paintings, and sculptures. Through April 20.

Beyond the Screen: Chinese Furniture of the 16th and 17th Centuries. The exhibit aims not only to explore the beauty of Chinese art forms, but also to carry the viewer into the physical surroundings of their time. Through May 18.

This is the Modern World: Furnishings of the 20th Century. The exhibit relates the look of objects intended for everyday use to the creative vision of the artist-maker or designer, and the demands of technology, function, cost, and the needs and desires of the potential buyer or user. Through September.

Arthur M. Sackler Museum

485 Broadway, Cambridge. Mon.-Sat., 10 a.m.-5 p.m.; Sun., 1-5 p.m. Admission: \$5; seniors, \$4; students, \$3; under 18 and Saturday morning, free. Information: 495-9400.

Masterworks of Ukiyo-e. Printed works by two important artists of the period, Toshiaki Sharaku (active 1794-1795) and Kitagawa Utamaro (1754-1806). Through Feb. 16.

Building the Collective: Soviet Graphic Design, 1917-1937. Over 100 posters and graphic work on display. Through March 30.

Computer Museum, Museum Wharf

300 Congress St., Boston. Two blocks from South Station T station. Tues.-Sun., 10 a.m.-5 p.m. Admission: \$7; seniors and students ages 5 and up, \$5; ages 4 and under, free; Sun., 3-5 p.m., half-price. Information: 423-6758.

Robots! Robots! Robots! Guided explorations into the world of robots and artificial intelligence. Through Feb. 23.

Mission Impossible. Discover the difference between humans and smart machines, self-guided activities, talk with a computer program.

Botticelli's Witness: Changing Style in a Changing Florence

Isabella Stewart Gardner Muse-

um, 280 The Fenway, Boston. Through April 6: Tues.-Sun., 11 a.m.-5 p.m. Admission: \$9; seniors, \$7; college students with ID, \$5; ages 12-17, \$3; under 12, free. Information: 566-1401. Works by Sandro Botticelli, one of the most influential artists of the Italian Renaissance.

USS Constitution Museum

Navy Yard, Charlestown. Mon.-Sun., 10 a.m.-4 p.m. Admission: \$4; seniors, \$3; ages 6-16, \$2; under 6, free; under 16 when unaccompanied by an adult, free. Information: 426-1812.

Old Ironsides in War and Peace. Retrospective celebrating the USS Constitution's upcoming 200th birthday. Includes artifacts such as the sea bag and possessions of an 1812 crew member, hands-on activities, and photographs. Ongoing.

Strengthening Old Ironsides. Color photographs documenting the four-year rehabilitation and restorations of the ship. Ongoing.

Capturing Old Ironsides on Canvas. Works by artist Cheslie D'Andrea. Ongoing.

Living with Ants and the Science of E.O. Wilson

Harvard Museums of Cultural and Natural History, 26 Oxford St., Cambridge. Through April 30:

Mon.-Sat., 9 a.m.-5 p.m.; Sun., 1-5 p.m. Admission: \$5; seniors and students, \$4; ages 3-13, \$3; Sat. 9 a.m.-noon, free. Information: 495-3045.

Supermercado

Children's Museum, Museum Wharf, 300 Congress St., Boston. Tues.-Sun., 10 a.m.-5 p.m.; Fri. until 9 p.m. Admission: \$7; ages 2-15 and seniors, \$6; 1-year-olds, \$2. Information: 426-8855. Latin American supermarket exhibit.

Clildo Meireles

Institute of Contemporary Art, 955 Boylston St., Boston. Through March 30: Wed.-Sun., noon-5 p.m.; Thurs. until 9 p.m. Admission: \$5.25; students with ID, \$3.25; children and seniors, \$2.25; free Thurs. after 5 p.m. Information: 266-5152. Survey exhibit of the works by this Brazilian artist.

Invaluable Prints

Fogg Art Museum, 32 Quincy St., Cambridge. Through March 2: Mon.-Sat., 10 a.m.-5 p.m.; Sun., 1-5 p.m. Admission: \$5; seniors, \$4; students, \$3; under 18 and Saturday morning, free. Information: 495-9400. Works by Durer, Canaletto, Daumier, Manet, Winslow Homer, Jasper Johns, and others that are worth comparatively little on the art market but are priceless as teaching tools at Harvard.

Building the Collective: Soviet Graphic Design, 1917-1937

Busch-Reisinger Museum, 32 Quincy St., Cambridge. Through March 30: Mon.-Sat., 10 a.m.-5 p.m.; Sun., 1-5 p.m. Admission: \$5; seniors, \$4; students, \$3; under 18 and Saturday morning, free. Information: 495-9400.

Inside Fort Independence: An Archaeological View of Military Life

Commonwealth Museum, 220 Morrissey Blvd., Dorchester. Mon.-Fri., 9 a.m.-5 p.m.; Sat., 9 a.m.-3 p.m. Admission: free. Information: 727-9268.

The Pyramids and the Sphinx: 100 Years of American Archaeology at Giza

Semitic Museum, Harvard University, 6 Divinity Ave., Cambridge. Mon.-Fri., 10 a.m.-4 p.m.; Sun., 1-4 p.m. Admission: free. Information: 495-4631. Collection of photos and artifacts. Ongoing.

New England Aquarium

Central Wharf, Boston. Mon.-Fri., 9 a.m.-5 p.m.; Sat.-Sun. and holidays, 9 a.m.-6 p.m. Admission: ages 12 and up, \$9.50; seniors, \$8.50; ages 3-11, \$5; under 3, free. Information: 973-5200.

The Otter Limits. Construction

relocation of aquarium's colony of harbor seals and sea otters to a new, enlarged habitat behind the aquarium.

Ponds: The Earth's Eyes. Self-guided tour of freshwater habitats.

Go with the Flow. Problems and solutions for Boston Harbor.

Giant Ocean Tank. 187,000-gallon coral reef tank.

Rivers of America: Amazon and Connecticut.

Old State House Museum

State and Washington Streets, Boston. Mon.-Sun., 9:30 a.m.-5 p.m. Admission: \$3; seniors and students, \$2; children, \$1.50. Information: 720-3290.

Trophies and Treasures: Two Centuries of Luxury at Shreve, Crump and Low. Through July 31.

When the Boys Came Marching Home. Everyday life in post-World War II Boston. Through August.

Museum of Our National Heritage

33 Marrett Rd., Lexington. Mon.-Sat., 10 a.m.-5 p.m.; Sun., noon-5 p.m. Admission: free. Information: 861-6559.

Collecting the Southwest: The Harvey Family Legacy. The Harvey Company was instrumental in opening the southwest to commercial tourism at the turn of the century. Premiere examples of native American weavings and paintings are found in two exhibitions. Through Sept. 14.

The Art and Artistry of Appliqué. These appliquéd quilts made between 1845 and 1895 are selected from the collection of Robert and Ardis James. Through March 23.

Over There: The Yankee Division in World War I. The story of the 26th "Yankee" Division is dramatized through military artifacts, documentary photographs, and memorabilia from the homefront. Through June 22.

Original Visions: Shifting the Paradigm, Women's Art 1970-1996

Boston College Museum of Art, 140 Commonwealth Ave., Chestnut Hill. Through May 18. Mon.-Fri., 11 a.m.-4 p.m.; Sat.-Sun., noon-5 p.m. Admission: free. Information: 552-8100. Exhibit includes paintings, photographs and sculptures.

Events

Skating on the Public Garden

Public Garden Lagoon, Boston Common. Through Feb. 23: Fri., 4-9 p.m.; Sat, Sun., and holidays, 10 a.m.-8 p.m. Information: 635-4505. Skate rentals available.

OPEN HOUSE

THIS SUNDAY, FEBRUARY 23, 1-5 P.M.

Did you ever wonder what it takes to put together *The Tech*? Then this Sunday is your chance to find out! Come to our open house, have some free Tosci's, get a tour of our office, and meet the staff of MIT's Oldest and Largest Newspaper. No EXPERIENCE NECESSARY!

Student Center, Room 483

253-1541

join@the-tech.mit.edu



WE INVEST IN THE BEST.

SO SHOULD YOU.

Career decisions should be made prudently because they determine your long-term future. When you join us, the Government of Singapore Investment Corporation Pte Ltd (GIC), you are making a prudent decision which gives you good long-term returns. We are the largest global fund management company in Singapore. A career with us means prestige, challenging and interesting work, financial rewards and excellent career prospects. We also provide the global exposure and training which few others can match.

Reflecting our worldwide orientation, we have our headquarters in Singapore and overseas offices in London, New York, San Francisco, Frankfurt, Tokyo, Hong Kong and Bangkok.



INVESTMENT OFFICERS

To meet our growing needs, we are welcoming outstanding and committed people to join us as Investment Officers in the non-traditional assets such as real estate, unlisted companies and infrastructure projects.

Your broad job scope will be to source, evaluate, assess, recommend and monitor investments in companies, properties or infrastructure projects that will yield a higher return than investing in listed companies.

You must have a good University Degree from any discipline. You should also have excellent analytical ability, strong interpersonal skills and a working knowledge of at least one Asian language.

Both fresh graduates and those with relevant working experience are welcome to apply. Successful candidates can look forward to an attractive remuneration package. You will be based in Singapore and depending on the corporation's needs, you should be prepared to travel or be posted to one of our overseas office.

If you would like to invest your career with one of the best fund management companies in the world, send a comprehensive resume with your academic transcripts including GPA scores and all supporting documents to:

The Director
Government of Singapore Investment Corporation Pte Ltd
 250 North Bridge Road, #38-00 Raffles City Tower
 Singapore 179101
 Or fax in confidence to (65)3308537.
 E-mail: apdcym@gic.com.sg

Closing Date: 28 February 1997

We regret that only shortlisted applicants will be notified.

WE INVEST IN THE BEST AROUND THE WORLD

GIC

GOVERNMENT OF SINGAPORE
 INVESTMENT CORPORATION

Coop Markup, Publisher Rules Make Textbooks More Pricey

By Douglas E. Heimburger
ASSOCIATE NEWS EDITOR

Each semester, most students rush to The Coop to buy their textbooks, often grumbling about the high cost in the process.

In an effort to determine what factors influence the costs of textbooks, *The Tech* conducted an investigation of prices of common MIT textbooks at various bookstores in the Boston area and on the World Wide Web.

The investigation showed that The Coop's textbook prices were as much as 13 percent above prices quoted from trade bookstores in the area.

The Coop also quoted a lower price over the phone for several textbooks than the price for which the book was being sold in the textbook department.

Manufacturer partly responsible

The high prices on textbooks at The Coop are in part because of the high costs that the manufacturers charge for books, said Coop General Manager Allan E. Powell. "Our prices are based on what we are charged" for the book, he added.

Book manufacturers charge differently depending on whether the bookstores are trade or textbook retailers, Powell said. Manufacturers often charge more for textbooks than they do for trade books. In addition, the same book is sometimes classified as both a trade book and a textbook and may be sold at different prices depending on its use. Unlike general books, which have printed prices, most textbooks lack published list prices.

Bookstores are then expected to apply a markup representing their costs and profit, Powell said. "It's our disadvantage to be a college textbook store," Piotti said.

For example, McGraw-Hill Publishing, which publishes "Fundamentals of Applied Probability" for Probabilistic Systems Analysis (6.041), offers trade publishers a 16.7 percent discount off list price for orders of nine or fewer books, said Martha E. Piotti, store manager of The Coop at Kendall Square.

"Discrete Mathematics," a book by Kenneth Rosen used in Mathematics for Computer Science (6.042J), is sold to The Coop at \$51.25, Piotti said. However, trade bookstores are quoted a price of \$42.69, she said. The book sells for \$71.50 at The Coop.

Book manufacturers charge textbook stores higher prices because they are trying to recoup the costs of their investment in marketing the book to college professors, Powell said. "Their rationale for the markup is that the marketing is done by the manufacturer," and the textbook store is not expected to have additional marketing costs, he added.

Trade bookstores, on the other hand, are expected to have additional manufacturing costs that will be passed on to the consumer, Powell said.

All manufacturers do not follow the process, Piotti said. "There are certain textbook publishers that do not give agency discounts [to trade bookstores]. They have their list price, and their cost comes off of that price."

McGraw-Hill did not return calls seeking comment on their textbook pricing policies.

Textbooks receive preset markup

Once a textbook arrives at The Coop, it is assigned a price that incorporates a preset markup, Piotti said. "The process is all done by computer," she added.

Books that arrive with a preprinted price, however, are sold at that price. "The Coop's policy is if it is prepriced from the manufacturer, that's the price we sell it at," Piotti said.

The selling price is also adjusted for books that are being offered less expensively at other stores in the area, Piotti said. "We won't take much of a markup on MIT Press books" since they are located across the street, she said.

The maximum markup on textbooks without a preprinted price is 28 percent, while the markup on books with preprinted prices can be as high as 40 percent due to markups incorporated into the printed price, Piotti said. On the 6.041 textbook, the markup was 25 percent.

The textbook markup, compared to markups for other items, "is the lowest in the store," Piotti said.

The costs of running a textbook operation contribute to the high costs of textbooks, Powell said.

"It's an expensive process to order books, receive them, price them, and shelve them," Powell said. "It's a business that doesn't produce any profit," he added.

If the text fails to sell, The Coop must return the text, often incurring a restocking fee, Piotti said. In addition, The Coop is required to pay shipping costs in all instances, she added.

"If textbooks were a good business, competitors would be knock-

ing down the doors," Powell said. The Coop, however, considers it to be "our mission," he said.

Professors contribute to high costs

One of the major difficulties of running a textbook store is consulting with professors to determine what books are required and recommended for subjects, Powell said.

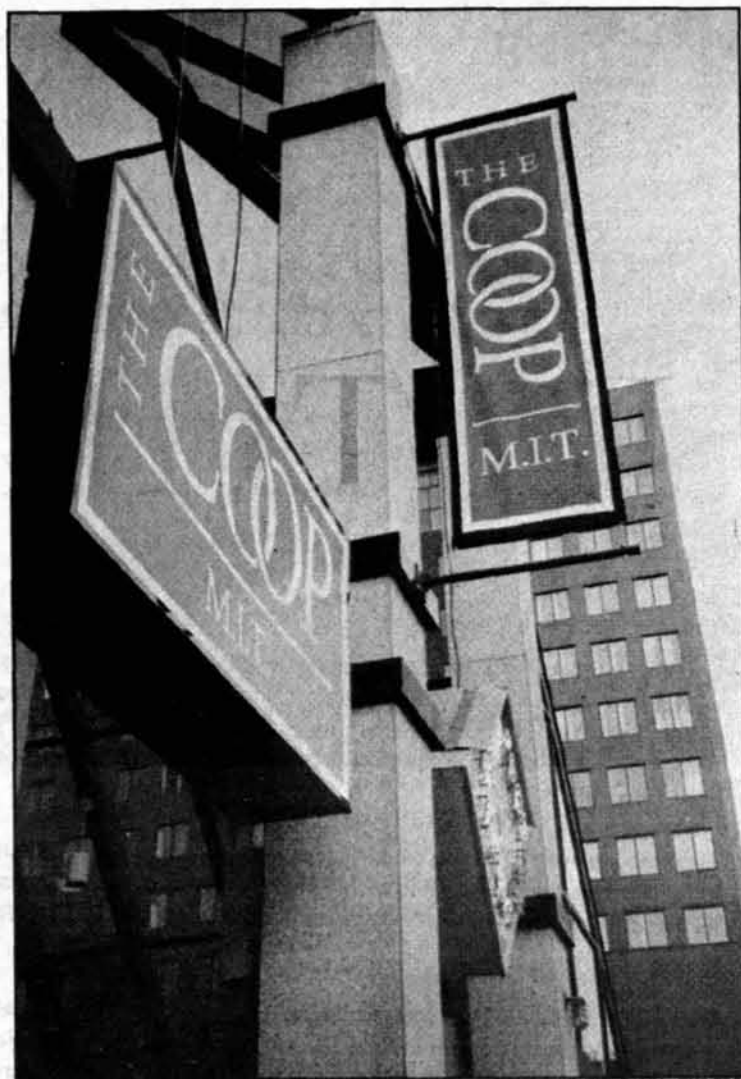
Most professors fail to return the textbook forms to the Coop by its preferred date of Nov. 15 for the spring semester, Piotti said. "Our busiest day to receive forms is the first day of classes," she said.

As a result, many textbooks that could have been kept by The Coop because they were being sold in the previous semester have already been returned to the manufacturer, Piotti said. They must then be repurchased, often at a higher price, and shipping is again required, she said.

In addition, receiving the purchase forms by the Nov. 15 deadline allows The Coop to purchase more used books. "Our first attempt is to purchase used books" through various means, Powell said.

"The money we make on used books is more than on new books,"

Coop, Page 17



DAVID TARIN—THE TECH

The idea
explosion
created by
Simulate
started at MIT.

We're coming back for more fuel.

Simulate was founded by Mark Stiffler (BS I '84, BS XV '84, MS XV '87) in 1991. Our explosive growth over the last several years has led us back to MIT to look for the best minds in computer science, information technology, and business.

We deliver management consulting and information services to Fortune 500 companies. Our innovative approach has enabled us to grow by over 100% per year. If you want to participate in the excitement and rewards of a dynamic, entrepreneurial company, we want to talk with you.

At Simulate, you will find:

- Advanced information technology
- High-energy entrepreneurial environment
- Rapid growth
- Pre-IPO equity participation

If you want to learn more about what a job at Simulate can offer, you have three opportunities.

Campus Presentation - Meet Mark Stiffler on Wednesday, February 26th from 6 to 8pm in Room 4-153 and learn about "Working at Simulate: How You Can Help Transform the Way Companies Produce and Distribute Information."

On-campus Interviews - Contact Ed Steinberg, (610) 664-7433, x419 to arrange an on-campus interview for Thursday, February 27th.

Tau Beta Pi Career Fair - Visit our booth on Friday, February 28th from 9AM to 5PM.

Simulate[®] Inc.
turning information into action[®]

401 City Ave., Suite 722
Bala Cynwyd, PA 19004
Attn: Ed Steinberg

610-664-7433 • FAX: 610-664-7343

Visit our website: www.simulate.com

**INVENTA CORPORATION
SANTA CLARA, CALIFORNIA**

CAMPUS VISIT

Inventa Corporation is an international consulting and systems integration firm that teams with corporate clients to rapidly develop and implement Internet business applications within a guaranteed fixed-price, fixed-time model. Our unique LightSpeed™ approach to projects results in high-impact business solutions for our clients that begin generating return on investment in only 10 weeks.

Our rapid growth (over 120% per year) and IPO ambitions have fueled our need for talented, high energy achievers capable of and eager to assume rapidly increasing development and leadership roles. In this context, Inventa seeks to attract a few extremely talented graduates to join our team.

We will be conducting on-campus interviews at MIT Monday, March 3rd. This will be a closed schedule, so please sign up in advance in order to reserve a slot. For those unable to attend we will also be hosting an open house Sunday, March 2nd in the Crispus Attucks Room on the lobby level at the Hyatt Regency Cambridge located at 575 Memorial Drive from 7PM until 10PM. There will be a software demonstration at 8PM and refreshments will be served throughout the evening.

For more information please visit our web site at <http://www.inventa.com>.

**Discipline, Education
Addressed at Meeting**

By Jean K. Lee
ASSOCIATE NEWS EDITOR

At Wednesday's faculty meeting, Institute groups, including the Committee on Discipline and the presidential task force on student life and learning, presented reports summarizing their progress.

Professor of Science, Technology, and Society Jed Z. Buchwald, chair of the COD, began the meeting with a presentation of the committee's annual report, which showed a continuing decrease in the number of disciplinary cases.

During the past three academic years, there have been 21 discipline cases which resulted in nine expulsions, two suspensions, four formal probations, an informal probation, a degree revocation, and two reprimands.

There have been three academic discipline cases so far this school year, Buchwald said. There is "not much of a problem," and "things look like they're in pretty good shape."

Dean for Student Life Margaret R. Bates followed with the Dean's Office report on disciplinary actions. While the report indicated that number of disciplinary actions similar to last year, the system is "intrinsically working well," Bates said.

Task force continues research

The task force on student life and learning also reported the results of an alumni survey and proposed long-term changes.

The task force is charged by President Charles M. Vest to evaluate and guide MIT's educational mission as the Institute approaches the next century.

MIT may need to make changes

in its core education, especially with the changing student demographics and career paths, said Professor of Chemistry Robert J. Silbey, who heads the task force.

Silbey cited statistics which showed that 20 percent of the Class of 1997 are medical school applicants, a significant increase from past trends. In addition, students' careers paths are changing as more consulting and finance companies recruit MIT students.

Also troubling the task force are alumni surveys indicating dissatisfaction with some of the Institute's curriculum. While alumni generally felt that an MIT education improved their problem solving skills, it contributed very little to the development of their self-esteem and writing skills, which play important roles in the workplace.

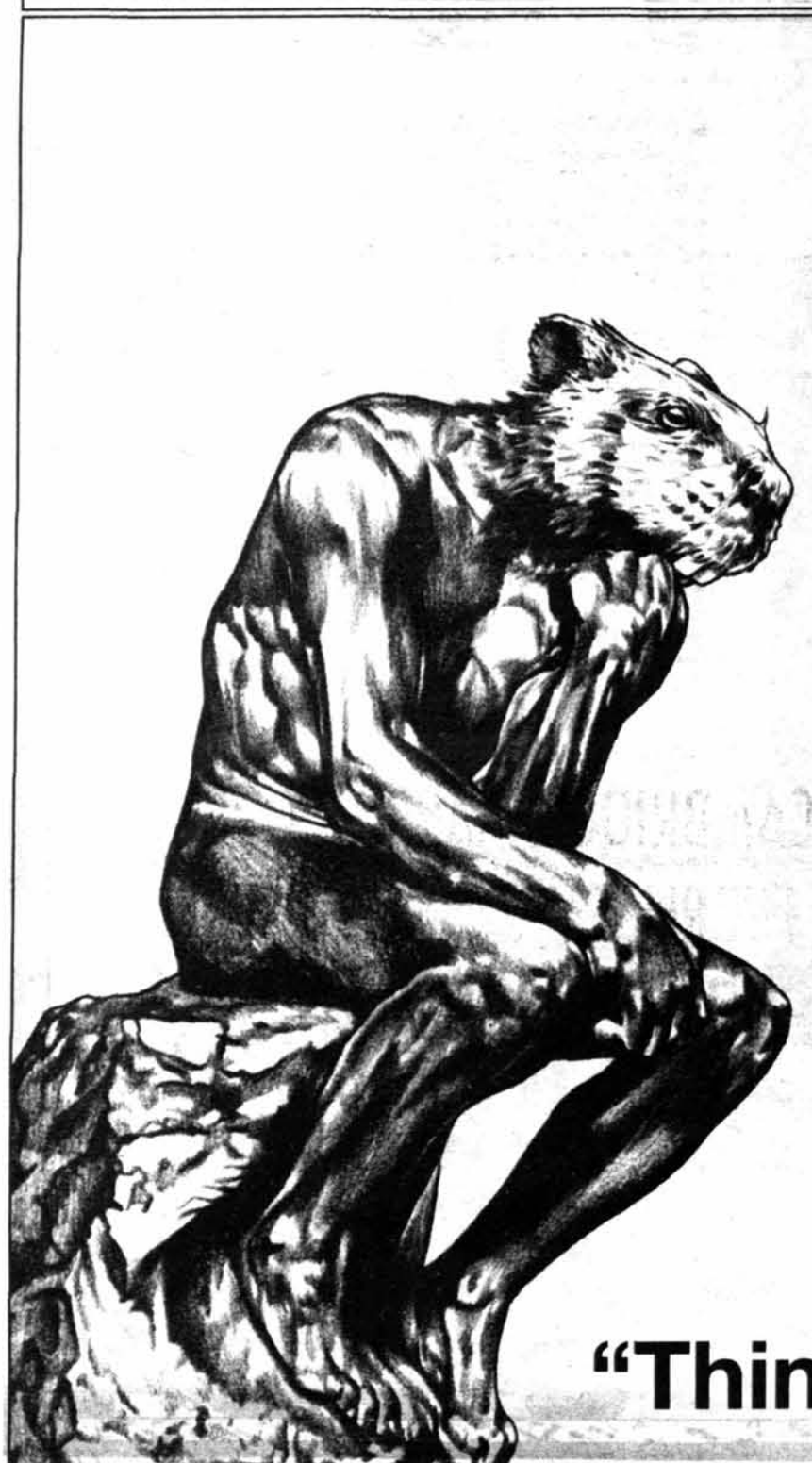
MIT's education should be reworked to resolve the "disparity between what people think is important and what MIT did for them," Silbey said.

The task force is considering core curriculum modifications, changes to Residence and Orientation Week, and better student advising and counseling, Silbey said. The group is also looking at more structural changes that would improve interaction within departments and reconsidering student demographics, Silbey said.

As it stands, the committee is still considering what problems should be dealt with, Silbey said. Solutions will not be implemented "until we can put things in order," he added.

"This faculty and institution really care about the students, much

Faculty, Page 11



**Class of 1999
RING
PREMIERE**

**Saturday, March 1 • 7 PM
WALKER MEMORIAL**

"Think"...again



Faculty Hear About New EECS Building

Faculty, from Page 10

more deeply than at many other institutions," Vest said.

Renovation plans addressed

Provost Joel Moses PhD '67 announced tentative information about the replacement for Building 20. The provisional plan is for the building to consist of two wings — one will hold mainly computer and informational sciences and the other will hold part of the Department of Brain and Cognitive Sciences. The construction is expected to cost

between \$90 million and \$95 million.

Institute is proceeding with plans to build a new swimming pool, Moses said. In addition, Building 16 should be ready for use in January 1998.

Also at the meeting, Professor of Linguistics and Philosophy Samuel J. Keyser announced the results of a harassment survey of faculty and staff. In general, harassment incidences are declining. The top type of harassment was "offensive comments," followed by general mistreatment and sexual harassment.

Banned Drug Surfaces At Other Universities

Rohypnol, from Page 1

With the increased publicity, the Campus Police is expecting more reports on the use of Rohypnol. "It is normal any time a new situation surfaces that there is a flurry of reporting," Glavin said. Even so, "I'd rather have people make reports rather than not be aware of it."

In addition to the Campus Police bulletin, MIT has incorporated information on Rohypnol into Medlinks training, Jablonski said. The Medlinks hold seminars and are available as points of contact on issues regarding drugs, alcohol, and sexual activity.

Still, "the largest preventative measure is not to accept any type of beverage in an open container," Jablonski said.

While available in Latin America and Europe, the drug, manufactured by Hoffman-La Roche Inc., is illegal in the United States. In March, the Customs Service made importing the drug a crime, according to *The Chronicle of Higher Education*.

If someone was found possessing or using Rohypnol, "we would

definitely take it very seriously," Jablonski said.

Other colleges report possible use

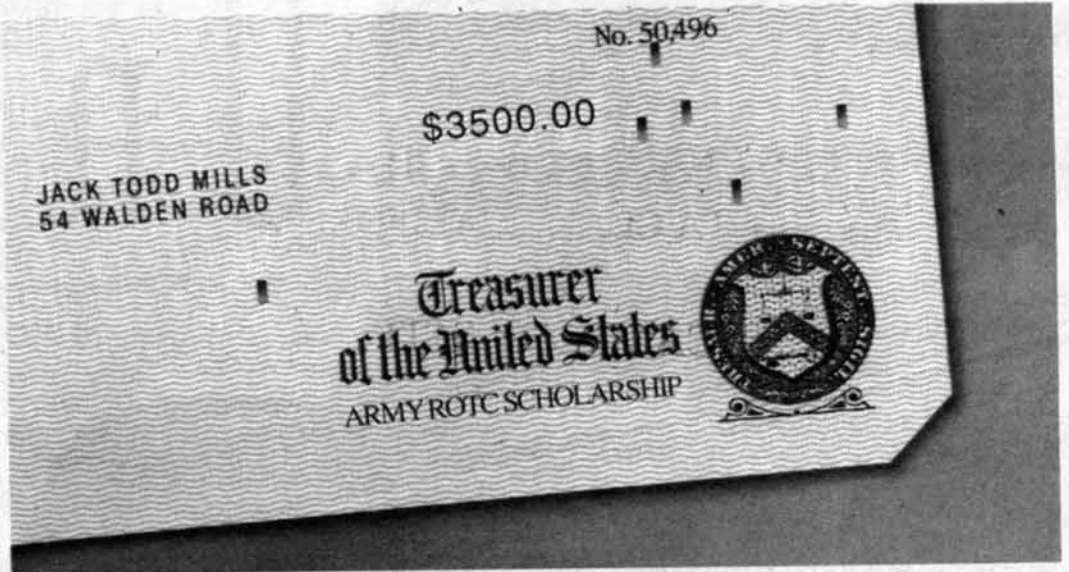
Although university police are aware of Rohypnol, most have received few complaints about its use, according to *The Chronicle*.

Harvard University has not had any incidents involving Rohypnol in recent years, said Andy Green, managing editor of *The Harvard Crimson*.

Other colleges, though, have had reports of Rohypnol use. "It has been used, and it's a problem," Goldstein said.

The Chronicle cited incidents at the University of California at Los Angeles, the University of Florida, and the University of Maryland at College Park which may have been Rohypnol-related.

At least 10 students at Pennsylvania State University were suspected of having been slipped the drug, *The Daily Collegian* reported. The University of Iowa has had three suspected cases of Rohypnol use and the University of Minnesota two.



CASH IN ON GOOD GRADES.

If you're a freshman or sophomore with good grades, apply now for a three-year or two-year scholarship from Army ROTC. Army ROTC scholarships pay

tuition, most books and fees, plus \$150 per school month. They also pay off with leadership experience and officer credentials impressive to future employers.



ARMY ROTC

THE SMARTEST COLLEGE COURSE YOU CAN TAKE

For details, visit Bldg. 20E-116 (18 Vassar St.) or contact MIT Army ROTC at 494-8710 or kfilosa@mit.edu

Need to talk?
Call Nightline
x3-8800

This space donated by *The Tech*

GMAT • GRE • LSAT • MCAT

THE PRINCETON REVIEW MEETS ON THE BU CAMPUS FREE TESTS

Take a sample test and find out where you stand without having an official score on your record.
 LSAT: Saturday, March 1 9:00am - 1:30pm
 MCAT: Saturday, March 1 9:00am - 4:30pm BU Campus
 GRE: Saturday, March 1 10:00am - 2:30pm CAS
 GMAT: Saturday, March 1 11:00am - 3:30pm
 College of Arts and Sciences (CAS) is located at 685 Commonwealth Ave
 Call today to reserve a spot for one of our FREE tests.

THE PRINCETON REVIEW (617) 558-2828

GMAT • GRE • LSAT • MCAT

Publishing Unbound

Simon & Schuster, a leader in multimedia

publishing, has edited out boundaries to set the pace in today's digital world.

With the strength and reach of parent company, Viacom, Inc., we have become a frontrunner in the presentation of information, knowledge, ideas and entertainment through books, audio, video, multimedia and online databases. We have long attracted the best managerial, creative and technological talents in the industry by encouraging individual expression and achievement.

Join us as we lead the way in this digital age.

**Executive Presentation
& Summer
Fellowship Program
Thursday, February 27
at 6pm
E51 Sloan School of
Management, Room 315**

Michael Packer, Executive Vice President of Planning, Operations & Technology and an alumnus of MIT's Masters and Ph.D. programs, will give an overview of the company and present actual business issues to be solved. It's up to you to determine the best possible solutions in essay form. If your essay is selected, you'll have the opportunity for a summer fellowship at one of Simon & Schuster's many divisions. You'll also have the chance to see your ideas implemented in a real life business situation. It's a great way to express yourself, gain valuable business experience, and have Simon & Schuster pay your tuition for one semester.

TOPICS PRESENTED:

- Electronic Commerce
- Multimedia Learning Systems
- SAP •Internet/Intranet Demos

Don't miss out on this opportunity. This is your chance to launch your career in The New Age of Publishing.



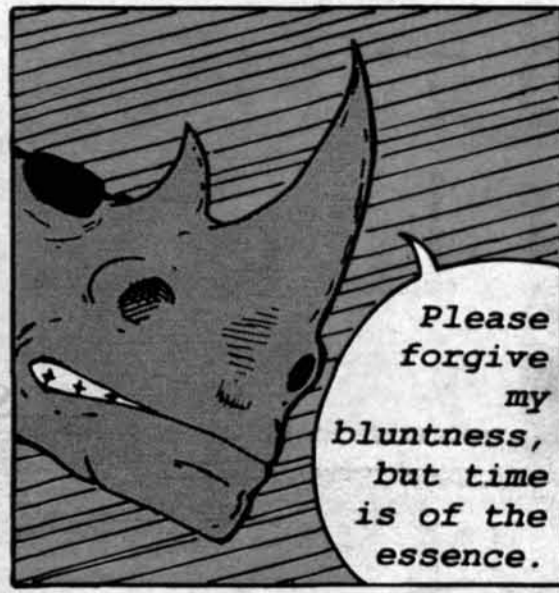
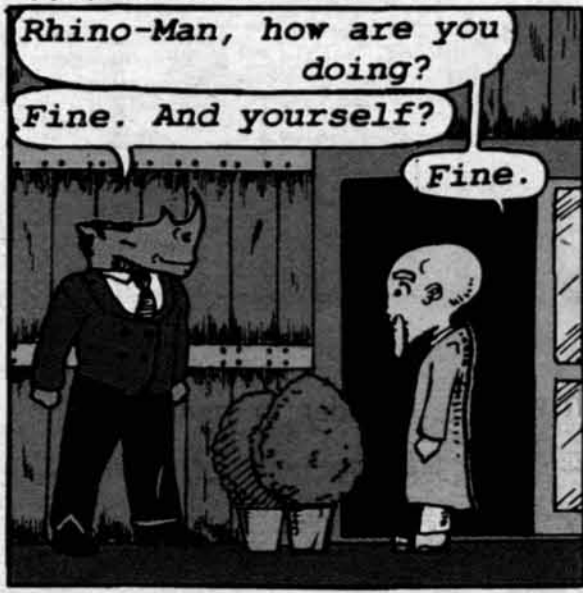
SIMON & SCHUSTER

A VIACOM COMPANY

An equal opportunity employer m/f/d/v.

犀牛 "RHINO-MAN"

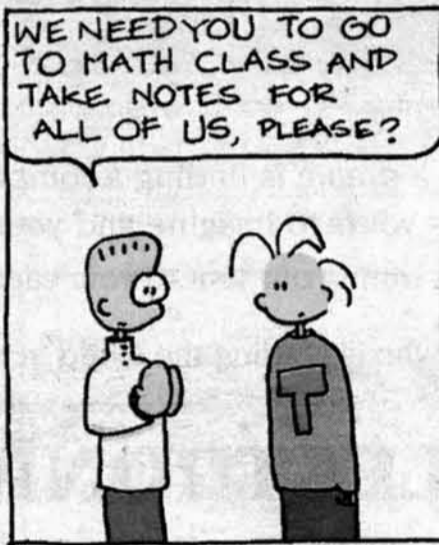
by Zachary Emig



To be continued...

Off Course

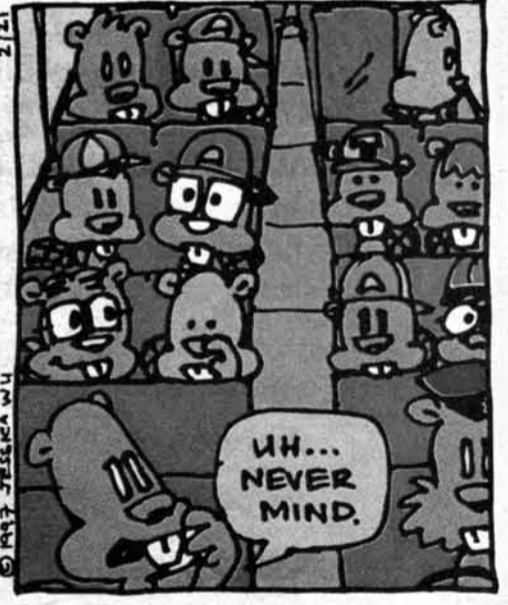
By Hugo



COMICS

Dammed for Life

by JESSICA WU



tumbleweed garden

pawan sinha

HOROSCOPES

by Swami Aloo Paratha

'cuz someone has to tell you the truth.™



AQUARIUS 21 Jan. - 19 Feb. Saturn is on the upswing. So, showers are out. No sponge-baths either.	PISCES 20 Feb. - 20 March Beware the Ides of February! Avoid the use of semi-colons in your C programs.	ARIES 21 March - 20 April Eros approacheth! Your libido will peak in the middle of the week with regrettable consequences.	TAURUS 21 April - 21 May Girls whose names include the letters 'a', 'e', 'i', 'o' or 'u' are out of the question. Focus on 'q' and 'x'.	GEMINI 22 May - 21 June Caducius is impatient! Expect a surprise injury in the groin area while flossing on Tuesday.	CANCER 22 June - 23 July Good fashion-sense shall finally prevail. You will decide to make laundry bags out of your 'loose-fit' Levi's.
LEO 24 July - 23 August The antiChrist will disguise himself as your Physics prof. Confront him with garlic.	VIRGO 24 August - 23 Sept. Time to lose your inhibitions! Go natural in public and reveal the body beautiful for all to admire and worship. Lucky #: 1-800-GET-BAIL	LIBRA 24 Sept. - 23 Oct. A chance encounter in lobby 10 with the ARA head-cook will trigger a romantic escapade spanning 5 continents and 2/3rd of NATO.	SCORPIO 24 Oct. - 22 Nov. Your starring role in Lucas' epic film 'Structure and Interpretation of Computer Programs', will require a steamy 'R' rated sequence.	SAGITTARIUS 23 Nov. - 21 Dec. Mars-Uranus alignment will wreak havoc with your hormones. The sight of people flossing will induce uncontrollable rage.	CAPRICORN 22 Dec. - 20 Jan. Your life-insurance policy will finally prove useful!

THE FUTURE IS HUGHES. THE CHANCE IS YOURS.

Today, the only thing as important as having a dream is finding a company that believes in it. You've found your company. The future is yours to imagine and your chance begins by meeting Hughes Electronics during our visit to your campus.

Get answers to all your questions from a company who is leading the world in next-generation technology.

HUGHES ELECTRONICS SIGN-UP & INFORMATION DAY

THURSDAY, FEBRUARY 27, 1997, 10:00 AM - 3:00 PM
TWENTY CHIMNEYS

- **GET THE FACTS:** Obtain direct, first-hand information on engineering and scientific opportunities at Hughes. You can gather valuable information which is generally unavailable from other sources.
- **LEADING THE WORLD:** Learn about our diverse breakthrough discoveries in Satellite Communications, Software Engineering, Sensors, Radar Systems, and Optical Applications to name a few.

We have opportunities for BS, MS or PhD level candidates:

- **Aero/Astro Engineering**
- **Applied Physics/Physics**
- **Computer Engineering**
- **Electrical Engineering**
- **Mechanical Engineering**
- **Applied Math/Math**
- **Computer Science**

We have opportunities for BS and MS candidates:

- **Optical Engineering**
- **Systems Engineering**

For detailed information on career opportunities currently available and to be considered for our formal interview process, see your Career Services Center.

At Hughes, we pride ourselves on bringing together diverse experiences and perspectives.

Proof of U.S. Citizenship may be required. We are an Equal Opportunity Employer.

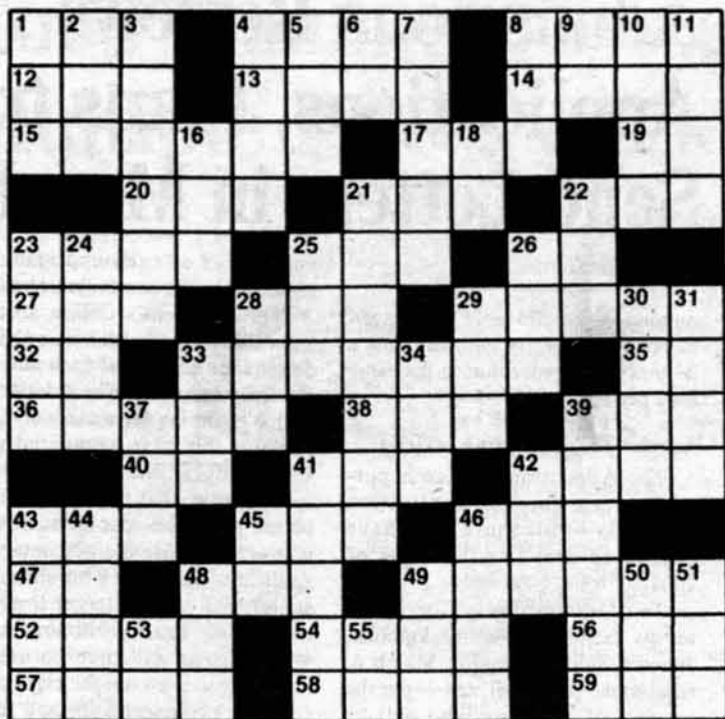
**WANT HOME
ENTERTAINMENT
AT ITS BEST?**



WIN A DSS® MINI-DISH SYSTEM

Participate in a drawing for a DSS Home Entertainment System while planning your future career with Hughes Electronics. To be eligible, you must be a registered participant at our Sign-Up & Information Day. The winner will be selected at 3:00 PM (winner need not be present).

HUGHES
ELECTRONICS



ACROSS

- 1. Ungentlemanly man
- 4. Lady
- 8. Podium
- 12. Low number
- 13. Fencing sword
- 14. On top
- 15. Give meaning
- 17. Plaything
- 19. Symbol for tantalum
- 20. Abstract concept
- 21. Dog
- 22. Camping vehicle
- 23. Footed base vessels
- 25. Knock
- 26. Southern state (abbr.)
- 27. Cushion
- 28. Corn-on-the-_____
- 29. Part of flower
- 32. Without (suf.)
- 33. Carried to the limit
- 35. Direction (abbr.)
- 36. Soak in liquid
- 38. Presently
- 39. Put on
- 40. Beast of burden
- 41. Put
- 42. Outdoor shelter
- 43. Winter month (abbr.)
- 45. Pad
- 46. Keep out
- 47. Exist
- 48. Drunkard
- 49. Characteristic of old age

- 52. Twist
- 54. Thought
- 56. Animal doctor (abbr.)
- 57. Whirlpool
- 58. Uncluttered
- 59. _____ Gabor

DOWN

- 1. Fish
- 2. Saturated hydrocarbon (suf.)
- 3. Come to one's aid
- 4. Camera glass
- 5. Monkey
- 6. Direction (abbr.)
- 7. Put in upright position
- 8. Light time
- 9. Near
- 10. Small particle
- 11. Bridge
- 16. Those in office
- 18. Either
- 21. Storage area
- 22. Large tub
- 23. Arrow poison
- 24. Rave
- 25. Reel
- 26. Jelly-like substance
- 28. Hat
- 29. Animals foot
- 30. Anonymous (abbr.)
- 31. Pre-Easter period
- 33. _____ Allen (cowboy)
- 34. Temporary bed

- 37. Forever
- 39. Obtain from
- 41. Smooth silk
- 42. Browed skin
- 43. Green gem
- 44. Among
- 45. Midwest state (abbr.)
- 46. Hit hard
- 48. Coy
- 49. Salt-water
- 50. Bulgarian money unit
- 51. 7th Gr. letter
- 53. Motion toward (pref.)
- 55. Removal (pref.)

PUZZLE SOLUTIONS FROM LAST ISSUE



SOLUTIONS IN THE NEXT EDITION OF THE TECH

what film?

THE GREAT ADVANTAGE OF HAVING A REPUTATION FOR BEING STUPID IS PEOPLE ARE LESS SUSPICIOUS OF YOU!

Find out at council

London \$278
Paris \$374
Athens \$408

Student regular
travel \$41* legal applies


Council Travel
MIT Student Center W20-024,
84 Massachusetts Ave.,
Cambridge, MA
Tel: 617-225-2555

travel:
real life flicks!

THE MOST FUN YOU'LL GET OUT OF THE DMV.

MOTORCYCLE OPERATOR LICENSE

Howard G. Nichols
8381 Center Ave.
Hometown 27670



H. Nichols
ANY STATE, USA

© 1997 Teachers Insurance and Annuity Association/College Retirement Equities Fund, New York, N.Y.

TIAA-CREF
extends sincere appreciation to
Dr. Paul A. Samuelson
for providing the
vision and inspiration for the

Paul A. Samuelson Award


and congratulates
Economics Professor
James M. Poterba
as a recipient of the
1996 Samuelson Certificate
of Excellence Award.



Teachers Insurance and Annuity Association
College Retirement Equities Fund
730 Third Ave., New York, NY 10017 • 1 800 842-2733

TIAA-CREF Individual & Institutional Services, Inc.

Unlicensed riders are over-represented in fatal crashes. So get to the DMV. Because having a motorcycle operator license is something you can live with.



MOTORCYCLE SAFETY FOUNDATION

MIT Hillel - Dorot Foundation
ISRAEL TRAVEL GRANTS 

Summer 1997

- Ten \$1,000. travel grants available.
- Applicants must be current MIT students. All are encouraged to apply, regardless of religious background.
- Must be used for organized, accredited academic, research, archaeological or language program.
- Application forms and program information available at MIT Hillel, Bldg W11
- Deadline March 3; Notification March 17
- For information 253-2982

Admissions Reviews Applications, Plans to Send Letters in March

Admissions, from Page 1

number of applications to Harvard increased by 49 percent. MIT saw a 23 percent increase during the same time period.

Admissions completing reviews

The Admissions Office is currently reviewing the application materials of all those who have applied to enroll in the Class of 2001.

Two admissions officers will review each applicant's background, Johnson said. Beginning March 6, admissions personnel will begin the process of choosing who will be admitted. "Unlike other schools, we bring everything to the table," and

summaries of each applicant are reviewed by the committee, she said.

The President's Office, in consultation with the Planning Office, determines the size of each entering class, Johnson said. The Admissions Office is aiming for a class of 1,070 students this year, compared with 1,080 last year, she added.

To ensure that the class will not be too large, the Admissions Office is predicting that the percentage of applicants accepted who choose to attend MIT will be larger this year than last year, Johnson said. Waiting lists will then be used if necessary to even out the class size.

Letters of acceptance and rejection should be mailed in mid-March, barring any difficulties, Johnson said.

Coop Student Board Election Update

The following student Coop members have been nominated by the stockholders as candidates for the Board of Directors for the 1997-98 academic year.

M.I.T. Undergraduate Students:
 George Berkowski John Choe

M.I.T. Graduate Student:
 John Hollywood

Harvard Undergraduate Students:
 David Boggs Matthew Kramer
 Alice Lee Chana Schoenberger

Harvard Graduate Students:
 Julie Chow Carlos Lopez
 Jay Olson

Any student Coop member may still petition to be on the ballot. Petition papers are available at the customer service desks of any Coop location or at the Customer Service/Credit Office, 4th floor, main building at the Coop at Harvard Square.

For Information Call or e-mail:
 Allan Powell, 499-2025,
 aepowell@thecoop.com



[HTTP://www.thecoop.com](http://www.thecoop.com)

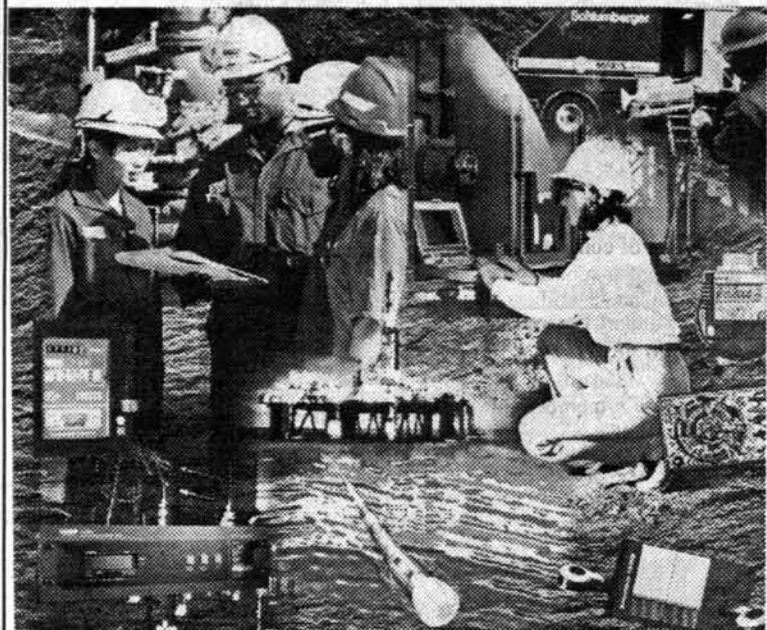
NEED TO TALK? NIGHTLINE

x3-8800

7 pm - 7 am every night of the term. All calls confidential

One female and one male staffer at all times.

This space donated by *The Tech*



SCHLUMBERGER

Shape The Future Of Technology!

From downhole testing and monitoring in the oilfield to metering systems, semi-conductor testing and diagnostic equipment - including the latest in electronic transaction and "smart card" systems - Schlumberger sets the technology standards. **Worldwide.**

But companies don't create technology. People do. 54,000 talented individuals at Schlumberger generate annual revenues of \$8.96 billion. They do the work. They get the recognition. From us, and their industry peers.

If you're studying **Engineering, Computer Science, Geosciences** and/or **Applied Sciences**, talk to us. We want you to create the future of high technology. And be recognized.

Your attendance at the Information Meeting is a prerequisite to the interviewing process. Please attend. Refreshments provided!

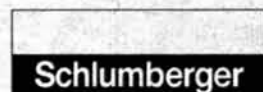
MIT Interviews!

Information Meeting - February 24, 1997

5:30pm-7:30pm • Room 4-163

Interviewing - February 25 & 26, 1997

Sign-up Now for Interviews. Check with Placement Center for Details.



An Equal Opportunity Employer

www.slb.com



Today

HE THERE

Interested? We'll be on campus:

Friday, February 21, 1997

For more on our benefits, fellowship programs, and the kind of work we do, see your career center or visit our web sites:

www.hac.com and www.occ.com

Share Our Vision

For more information, please contact college recruiting
Sensors and Communications Systems
 Telephone: (310) 334-6000 Fax: (310) 334-7299
 e-mail: rcsad@ccgate.hac.com



A HUGHES ELECTRONICS COMPANY

Coop Computer System Allows Multiple Prices on Same Book

Coop, from Page 9

since the manufacturer's markup is not charged, Piotti said.

Receiving the forms early also allows students to learn what books are required for each course, Piotti said. Copies of the forms are sent to the MIT Libraries and are available for review in the store.

Coop concerned about system

Several books, including "General Chemistry" by Peter Rock and Donald A. McMurry, used in Principles of Chemical Science (5.11), were quoted by The Coop's trade book division at \$74.95, while it sells in the textbook division for \$90.50.

"It's possible now to have books at different prices within the same stores" as a result of a changeover to new computer systems a few years ago when Barnes and Noble took over day-to-day management of The Coop, Piotti said.

"We should be competitive with ourselves," Powell said. The Coop is working to remedy this problem, he added.

"Prior to the reorganization, we had a book system that ensured there was a one price to book ratio," Piotti said.

"We just got a new device that will help us cross-reference the two databases," which use incompatible formats, Piotti said. The system will be used for the first time with textbooks in the fall, she added.

Coop will try to compete

"We will meet any competition's price that is viable competition ... if you could go next door and buy it the same day at a lower price, we would price match," Piotti said.

One area of concern for students is the lack of a rebate on all purchases for Coop members over the last few years. "The rebate was not supposed to be an offset to higher pricing," Powell said.

The Coop's membership agree-

Textbook Price Comparison

Class	Title	Coop	Amazon.com
5.11	General Chemistry	\$90.50	\$80.95
5.12	Organic Chemistry	\$87.00	\$79.56
7.013	Life: The Science of Biology	\$79.50	\$70.95
7.05	Biochemistry	\$90.50	\$80.95
8.01	Physics for Scientists and Engineers	\$56.50	\$49.75
14.01	Microeconomics	\$79.50	\$76.00
18.04	Fundamentals of Complex Analysis	\$74.00	\$65.33
21H.302	A History of the Roman People	\$68.00	\$64.84

SOURCE: THE COOP AND AMAZON.COM

ment provides that profits will be returned to members in the form of a rebate. The last rebate was 1.1 percent in 1992. During the 1980s, it was as high as 10 percent. A 10 percent refund on textbooks was offered in place of a rebate in fall of 1994.

"It'd be really dumb if we thought that we could gouge consumers" by offering the bait of a

rebate, Powell said. Textbooks are "a business that doesn't produce any profit," he added.

Unlike many universities, MIT has no licensing agreement for a company to operate an official bookstore, Powell said. Instead, "it is a relationship that has developed over many years," and that remains informal, he said.



DAVID TARIN—THE TECH

Campe Goodman G buys books at The Kendall Square Coop.

DIONYSOS



FINE GREEK CUISINE

661-6800

Open Mon.-Wed. 5pm-11pm
Thurs.-Sun. 5pm-1am

Conveniently located on the second floor of the Howard Johnson's Hotel
777 Memorial Drive • Cambridge, MA

FREE

Platter of Appetizers with Dinner
Every Monday, Tuesday, and Wednesday
with M.I.T. I.D.

We feature authentic Greek Cuisine
in a relaxed atmosphere
Nice view of the Charles River
Live Greek music on weekends
Free Parking

MIT

Emile Bustani Middle East Seminar presents

Professor Marvin Zonis
University of Chicago

"Rethinking the Middle East: US Foreign Policy and the Political Economy of Iran, the Arab World, and Israel"

Tuesday, February 25, 1997

4:30 - 6:30 p.m.

E51-095

70 Memorial Drive
Cambridge

OPEN TO THE PUBLIC

Sponsored by the Center for International Studies

Career Fair:
February 21st

ON CAMPUS

February 25 & 26

March 12 & 13

Very soon you're gonna have your hands on a degree from MIT. And every player in the high-tech market is going to be in hot pursuit of your skills. Choosing where to work can be as important as where you went to school. Oracle can give you the opportunity to revolutionize the high-tech industry. We're serious. Come see for yourself.

Oracle Corporation, 500 Oracle Parkway,
Box 659202, Redwood Shores, CA 94065.
Fax (415) 633-1073. E-mail: kgraci@us.oracle.com
Equal talent will always get equal opportunity.

ORACLE®

Enabling the Information Age™

Come shake up
the industry!

www.oracle.com

MALLAPALOOZA UNPLUGGED



See **JENNIFER TRYNIN** in a **FREE WBCN Acoustic Concert**

Saturday, Feb. 22 at 3pm
In the Food Festival • CambridgeSide Galleria

It's Mallapalooza Unplugged and it's coming to CambridgeSide Galleria.

See Jennifer Trynin – one of the hottest singer/songwriters on college campuses today –
in a free WBCN Acoustic Concert. Then meet Jennifer after
the concert and check out the rest of the Mallapalooza Unplugged celebration.



Flash your college I.D. at the Customer Service Desk
at CambridgeSide Galleria during the **COLLEGE PIG-OUT,**
FEBRUARY 22 & 23. That'll get you a voucher for
\$5 WORTH OF FREE FOOD good at Arby's, Burger King,
Damon's, Great Steak & Potato, Panda Express, Sakkio Japan and

Sbarro. *Plus, stop by the Customer Service Desk to pick up your **COLLEGE DISCOUNT PASS**
and get 10% off at participating stores. At the same time, you can enter to win great prizes from
stores like, The Gap, The Limited and Cambridge SoundWorks. Just enter at each store by Sunday, Feb. 23.

*Must present valid college I.D. Limited to first 1,200 students. See Customer Service Desk
for complete details. Sweepstakes winners will be notified by telephone. No purchase necessary.



RED MEAT

pigeon pudding in your propellor

from the secret files of
Max Cannon

Going fishing, honey...see you in a few hours.



©1997 MAX CANNON

Why do you need a power drill for fishing?



HTTP://REDMEAT.COM/REDMEAT/

Well...not only can't you count on a turtle to swallow a hook, but the spinning action dries them off quite nicely.



Oh. At least you're not using my blow dryer to electrocute and dry them off anymore.

SPRING BREAK IN EUROPE

Non-Stop Boston to Frankfurt Roundtrip from only \$269

	Student	Non-Student
Midweek	\$269	\$387
Weekend	\$289	\$437

Departure taxes of \$34.35 additional

- Great Central European destination with good rail connections to all European Capitals!
- Eurail Passes available!
- Skiers... Go Where There's Snow!

HURRY! Valid for travel through 3/31/97.

(Inquire about rates for travel after March)



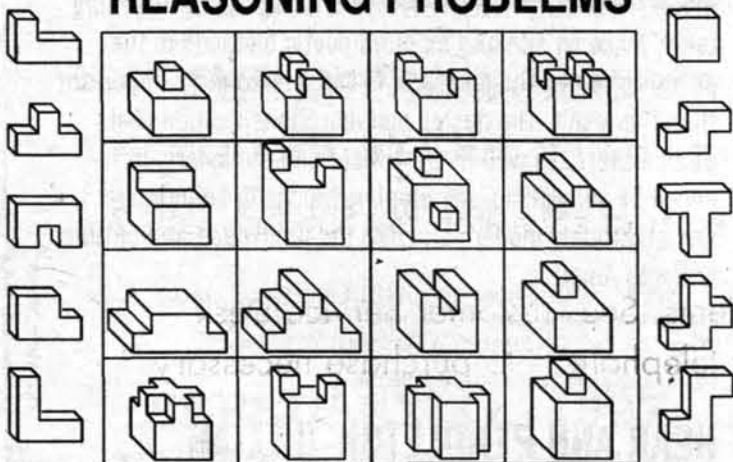
HARVARD SQ. 39 J.F.K. Street **868-2600**

Rates per person, double occupancy, subject to availability & change without notice, vary by departure date, flight, times, # of nights, hotel & category selected. Capacity controlled. Restrictions, blackout dates & cancellation charges may apply. Surcharges, gratuities, departure & arrival taxes add'l. American Express Travel Related Services Company, Inc. acts solely as sales agent for travel suppliers and is not responsible for the acts or omissions of such travel suppliers, or for any errors or omissions in the contents of this ad. Europe Special Student/youth fare valid for youth under 26 or for full-time students under 32 with valid student ID. Availability of these rates is limited. Saturday night minimum stay required. Maximum stay is 90 days. \$100 change/cancellation penalty. Other restrictions may apply.

Travel

AMERICAN EXPRESS TRAVEL

FIFTY 3-D REASONING PROBLEMS



Order the CUBE5 Three Dimensional Reasoning Puzzle. Test your thinking skill solving three dimensional piece fitting problems. Different selections of the ten wooden pieces make a 3x3x3 cube, 2 1/4 inches on a side, or specific problem shapes. Fifty puzzles in the 16 page Puzzle Booklet. CUBE5 is \$25 plus \$5 S/H. (MA residents 5% sales tax.) Call 800-298-4947 or send a check. Receive a catalog of our other puzzle systems with your order.

Organized Thinking, 220 Boylston Street, Newton, MA 02167 mit2

Fourth in a series.

THE PURPOSE OF CREATIVITY

The purpose of education is to develop basic thinking skills and to obtain a basis of knowledge in our chosen field. This provides the foundation for problem solving abilities across a range of disciplines.

However, development of better solutions to challenging problems requires dimensions beyond basic thinking skills and knowledge of the field; it requires creativity in conception and in approach.

The ability to be "creative" is often regarded with a sense of mystery and apprehension. Sometimes it is considered the exclusive purview of artists or others with the "right aptitudes."

Of the many studies of creativity there is one common conclusion: If we give creativity enough attention, we get better at it. This suggests that creativity is a challenge like any other, a "problem" to be solved. It also suggests that, as with any other challenge, our attitude towards it, our desire for a solution, and our belief in the intrinsic worth of the task are the most important ingredients for success.

The principal obstacle to achieving creative breakthroughs is a premature conclusion that a better solution is not possible. For a "creative" solution is by definition one that is different from those that have preceded it and one that often runs counter to accepted knowledge.

To overcome this obstacle we need to add to our basic thinking skills and technical foundation the following elements of attitude:

1. A strong desire for a creative breakthrough.
2. Confidence in our ability.

3. An expectation that many false starts may be necessary.
4. Sufficient immersion in the problem to engage all our faculties.
5. A willingness to pursue solutions until a breakthrough is achieved.
6. Analysis of each attempt to aid in the development of insight.

In these cases where a task appears to be routine, we may also need to intentionally "spark" the creative process. We do this simply by asking how the task can be done better, for "better" implies a different approach, which in turn requires creativity.

There are, of course, other considerations. Especially important are the environment within which we work and the caliber of our associates. As with every other part of the problem solving process, interaction with capable associates can be an important catalyst. However, most important is the awareness that the foundations for creativity rest inward with our attitudes. This includes a recognition that superior creativity is something we must intensely desire and that success does not occur without effort and many false starts.

During our education, we usually are faced with solving problems that have two characteristics: A) We know that a solution exists. B) We know that the solution can be obtained with the techniques under study.

When we begin work, these conditions do not hold, and yet we face the challenge of finding solutions. If we are aware of the foundations of creativity during our education we can better prepare ourselves for this challenge.

For more information, please contact Lyn Van Huben, Bose Corporation, The Mountain, Framingham, MA 01701-9168. Fax: (508) 820-4865.

BOSE

Better sound through research.

CLASSIFIED ADVERTISING

Help Wanted

Healthy men needed as sperm donors. Help others and earn up to \$120/wk. Must be between 19-34 & 5'9" or over. Call 497-8646 to see if you qualify! California Cryobank, Inc., Cambridge.

Advanced Internet Web site creation - VirtuFlex software offers aspiring web developers weekly training sessions every Thursday evening from 7 pm to 9 pm. People with a basic working knowledge of HTML can learn more advanced methods of creating web sites for most telecommunications via the internet. This training seminar is free. Please call for more information: VirtuFlex Software 930 Mass. Ave. Cambridge, MA 02139. 617-497-8006 ext. 32. Or find out more via the internet: <http://www.virtuflex.com>.

Visual C / Visual Basic Programmers wanted - work at school or our office. Exciting Global Positioning System software. Salary negotiable, full or part-time. <http://www.teletype.com/gps>, 734-9700.

Web page designer to help create new web site, must be experienced, motivated, creative. Resume & URL references to 259 Walnut St. #2, Newton, MA 02160. Fax to 617-527-7074.

College financial aid - Student Financial Services has information on 3,400+ public and private sector funding sources. A must for anyone seeking financial aid! For information: call 1-800-263-6495 ext. F50332 (We are a research and publishing co.)

Brigham & Women's Hospital Research Lab Earn up to \$1600 in 4 weeks. Eligible candidates will be 20-40 years old who have no medical problems and are currently not taking any medication. Candidates must keep a regular sleep schedule from 10pm to 6am for three weeks prior to the study's start date. Candidates must also be available to work about 58 hours per week on a rotating shift schedule. Non-smokers only please. Call Liz for more information at (617) 278-0698 or E-mail to: liz@gcrc.bwh.harvard.edu.

For Sale

Memory for Macintosh PowerBook. 8MB memory upgrade chip for 5300/2300 models. Over \$400 new; 8 months old for \$100. Contact daniels@the-tech.mit.edu.

Travel

Spring break '97! Cancun, Bahamas, Jamaica & Florida. Campus reps & group organizers. Earn free trips & cash... Call us today 1-800-700-0790.

Spring Break - Daytona Beach luxury oceanfront condo. Fully furnished sleeps 6, beach, pool, jacuzzi, barbecues. March 22-29. All must be 21. \$700.00 Phone 561.589.1096 / CaptJac@aol.com

Surf & Sun Tours Cancun, Jamaica and Nassau \$399.00 all inclusive: air, trans, hotel (20 to choose from), 2 free meals daily, 3 hrs free drinks every night, VIP cover to all clubs. Call Toll free (888) 244 3733. Group discounts and greek specials. Ask how you can travel free.

Information

The deadline to apply for on campus summer and fall 97-98 vacancies in family and single graduate student apartments and dormitories is 5:00 p.m. on Friday, February 28, 1997. On March 1, 1997 there will be a housing lottery for any fully-registered continuing graduate student wanting on-campus housing for the 97-98 academic year. Applications are available in Graduate Housing in E32-133, and must be returned by the deadline to the same office. Any questions, call 3-5148. The Graduate Housing Office will be closed Monday, March 3rd due to the lottery.

Advertising Policies

Classified ads are due at 4:30 p.m. two days before day of publication, and must be prepaid and accompanied by a complete address and phone number. Send or bring ads, with payment, to W20-483 (84 Mass. Ave., Room 483, Cambridge, MA 02139). Account numbers for MIT departments accepted. Sorry, no "personal" ads. Contact our office for more details at 258-8324 (fax: 258-8226) or ads@the-tech.mit.edu.

\$5 per insertion per unit of 35 words.



THE INTERNET
All Kinds Of People
Doing All Kinds
Of Things

LOTUS
Ditto

With the advent of Domino™, the leading server software technology, Lotus is giving Internet technology an entirely new look. As a member of our team, you'll have an impact on how our clients "work the web" and tap the power of a new generation of powerful technology tools.

Lotus has a variety of opportunities for forward-thinking professionals to work with leading-edge software such as Domino and its many components. To find out more about these opportunities, bring your resume and attend our Information Session
FEBRUARY 27, 5:00 - 7:30PM
Room 4 - 149
Pizza will be served during the Information Session.



To arrange an interview, sign-up by February 24 in your Career Center. Lotus representatives will conduct on campus interviews
MARCH 12, FROM 8:30AM - 5:00PM.

Lotus Development Corporation, 55 Cambridge Parkway, Cambridge, MA 02142. E-mail: resume@crd.lotus.com
Fax: (617) 693-1909. Forwarded resumes should be on plain white bond paper suitable for scanning. Resumes sent via the Internet should be in ASCII format; no file attachments please. Visit our web site and job opportunities page: www.lotus.com Lotus is an equal opportunity employer. Valuing diversity is the difference.

Entry Level Opportunities

Software Engineer • Technical Writer • Quality Engineer • Product Marketing Specialist
Candidates must have a Bachelor's or Master's degree in CS, CE, EE, or comparable technical field.

Communication Networks. Simulation.
Software Engineering.
Today's hottest fields.



We're at the intersection of all of them.

MIL 3 is the developer of OPNET, the leading family of products for modeling and simulating communication networks. The original concepts leading to OPNET were developed at MIT in the EECS department. Since its commercial introduction in 1987, OPNET has become widely acknowledged as the most powerful and complete tool set for simulation of communication networks. Today, MIL 3 is expanding its product lines into new areas, including network management and Electronic Design Automation. These expansion plans and significant revenue growth are creating many exciting career opportunities.

MIL 3 wishes to meet Course 6 engineers, or other students with solid computing backgrounds and interest in network issues, to fill a variety of positions in its software and applications engineering groups.

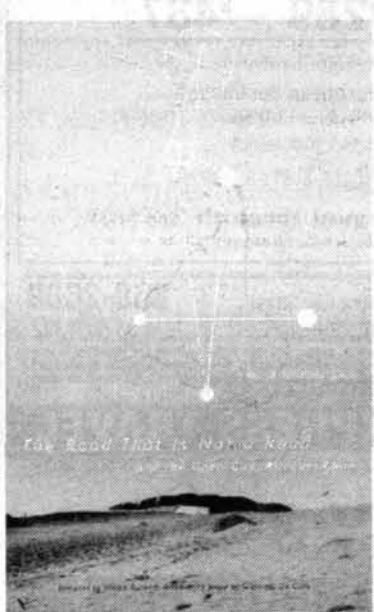
MIL 3 offers a casual yet intense work environment in an "MIT spin-off" atmosphere. The entrepreneurial emphasis of the company supports career flexibility and excellent compensation. MIL 3 employees routinely work with communication technologies and the systems of the future, conducting research and development with the world's foremost telecommunications organizations.

MIL 3 will be interviewing at the Marriott-Kendall Square on February 26 and 27. To sign up for interview times, either visit the Career Center or contact Lori Vetro at lvetro@mil3.com. Refreshments will be provided.



3400 International Drive, NW
Washington, DC 20008
Tel: 202.364.4700
<http://www.mil3.com>

The Road That is Not a Road



The Road That is Not a Road and the Open City, Ritoque, Chile
Ann Pendleton-Jullian

The Open City is a designed city still in formation — strange buildings placed among dunes and grasslands that reflect natural phenomena and the construction of memory, rather than an imposed order based on a master plan. Teaching

takes place on site and employs poetic methods in the design process; the endeavor is considered more important than the result. The design collaborations include poets and painters, as well as architects and engineers, influenced by Surrealism, the utopian visions of LeCorbusier and other early modernists, and the landscape and culture of South America.

Ann Pendleton-Jullian is Associate Professor of Architecture at MIT. 179 pp., 134 illus., \$17.50 paperback. Published by The MIT Press. Signed copies available at a discount at the talk.

HEAR ANN PENDLETON-JULLIAN
Thursday, February 27 6 pm
14E-304, MIT, 160 Memorial Drive, Cambridge
FREE.

authors@mit.edu
a series sponsored by The MIT Press Bookstore and The MIT Humanities & Dewey Libraries. Wheelchair accessible.

Kendall Square T 617.253.5249 The MIT Press Bookstore

292 Main Street
Cambridge, MA 02142
books@mit.edu

POLICE LOG

The following incidents were reported to the Campus Police between Feb. 7 and 13:

Feb. 7: New House, annoying phone call; Bldg. E51, bicycle stolen from rack, \$500.

Feb. 8: Bldg. 26, printer and VCR stolen, \$700.

Feb. 10: Bldg. 13, suspicious activity; Bldg. E51, VCR stolen, unknown value; Bldg. 20, hardware stolen, \$100; Bldg. NE43, harassing phone calls; Student Center, cellular phone stolen, \$200; Bldg. E51, laptop computer stolen, \$2,814.

Feb. 11: Next House, noise complaint; Bldg. 7, bicycle seat stolen, \$50; Senior House, wallet stolen, \$10; Bldg. 4, file cabinet stolen, \$140; Baker House, peeping tom; Memorial Drive at Ashdown House, Carlos Silva, of 3232 Washington St., Jamaica Plain, arrested for receiving stolen property.

Feb. 12: Albany Garage, simple assault between a pedestrian and operator of a motor vehicle; Bldg. E52, printer stolen, \$300; Senior House, clothing and credit card stolen, \$310; Bldg. E52, suspicious activity; Bldg. 3, suspicious activity.

Feb. 13: East Campus, annoying phone calls; Kappa Sigma, coat and wallet stolen, \$170; Albany open lot, indecent exposure; Next House, bicycle stolen, \$800; Bldg. E53, annoying phone calls; Bldg. E19, cash stolen, \$50; Bldg. 20, computer stolen, \$2,595.

The Tech
News Hotline
253-1541

This space donated by The Tech



Q Audio

Your Complete Stereo Store @ MIT

•Sales •Service •Delivery •New/Used

SONY. Paradigm NAD NHT

http://www.qaudio.com 95 Vassar St. 547-2727

M-F 10-8 Sat. 10-6 Sunday-Ah! Rest

Just a fraction of our time watching movies could help bring many happy endings.

It's so easy to help your community, when you think about it.

Millions of people have helped make five percent of their incomes and



five hours of volunteer time per week the standard of giving in America.

Get involved with the causes you care about and give five.

Give Five.
What you get back is immeasurable.

This space donated by The Tech



SOME COMPANIES OFFER YOU THE SUN, THE MOON AND THE STARS.

WE'RE A LITTLE MORE DOWN TO EARTH.

As a student intern, you will hear career promises from varied companies. Many will offer the opportunity to be entrepreneurial, innovative and creative. But take a good look. Do they have competitive products? Market demand? The resources and stability for the long run?

PairGain Technologies does. We are a world leader in the design, manufacture and marketing of High-bit-rate Digital Subscriber Line (HDSL) products and systems. We have been listed 9th by *Fortune* and 3rd by *Inc.* in their ranking of the country's fastest growing public companies. With annual revenues in excess of \$200 million and a 70% market share, our promise of a stellar future is a down-to-earth proposition. Gain valuable experience toward your engineering degree by taking part in one of our internship programs in the following areas:

- Analog and Digital Circuit Design Engineers
- Communications Systems Engineers
- Firmware Engineers
- Software Engineers
- VLSI Design Engineers

Find out more about our company's internship programs by interviewing with us on Tuesday, March 4 or Wednesday, March 5. Please sign up in advance at Career Services for Internship Interviews. Or if you're unable to meet with us, please forward a resume to: PairGain Technologies, Inc., Employment Dept.-KP/MIT, 14402 Franklin Avenue, Tustin, CA 92780; fax: (714) 730-3199; e-mail: hr@pairgain.com. Equal Opportunity Employer.

PAIRGAIN
THE COPPEROPTICS COMPANY
http://www.pairgain.com

The MIT Panhellenic Association
proudly presents

THE IMPROBABLE PLAYERS in "I'll Never Do That."

A comedic and educational performance on
substance abuse that hits home.

FEBRUARY 21, 1997
KRESGE AUDITORIUM
7:30 PM

Funded by: The DeFlorez Humor Fund
MIT Dining Services



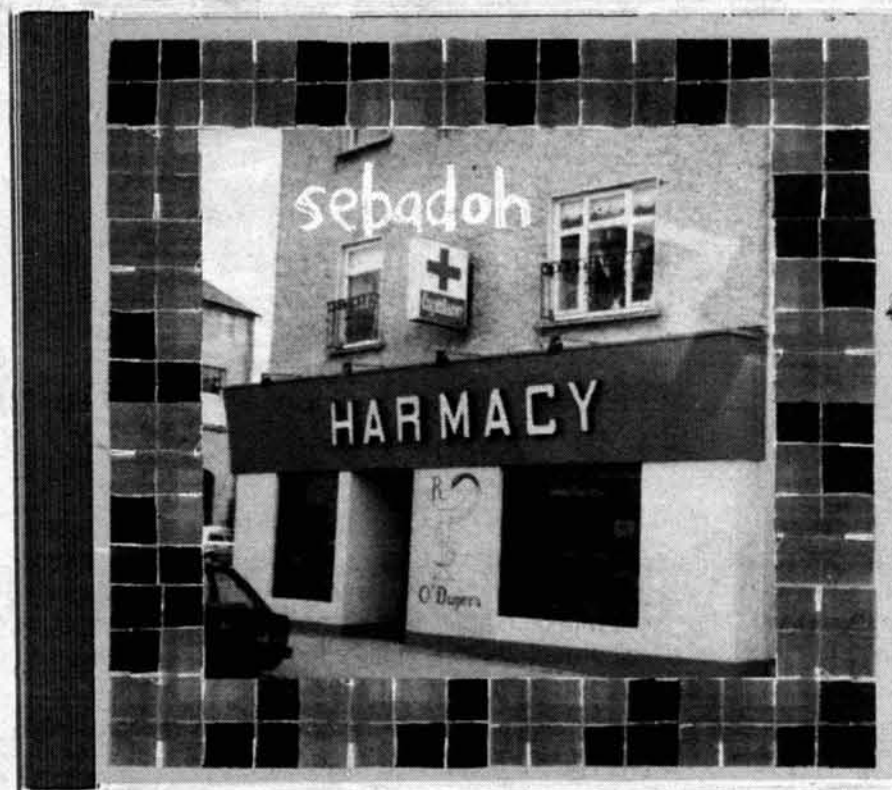
FORTY BIG YEARS



JUST LIKE YOU.
WE'RE STILL SPINNING.



ODDS NEST ELEKTR



SEBADOH PHARMACY SUB POP



OVER 700 LOCATIONS WORLDWIDE.
CALL 1-888-REPLY-1 FOR THE LOCATION NEAREST YOU.

Enter To Win \$50,000!

The MIT \$50K Entrepreneurship Competition

Executive Summary for a business concept due next Wednesday, February 26, 5:00 PM.

It's Easy!

- 3-5 Page Executive Summary
- Use our online entry form
- Get feedback from experts
- Enter on your own or with a team
- Submit your idea for a technology or a service business



Deadline Wednesday, February 26

Enter online on our web site!

<http://web.mit.edu/50k/www/>

Rowers Finish Well At CRASH-B Sprints

By Erik S. Balsley
TEAM MEMBER

On Sunday, members of most of the crew squads competed in the 15th annual CRASH-B Sprints World Indoor Rowing Championships. Although no rower affiliated with MIT medaled, each squad finished the day with many strong performances.

This year the championships were held at the Reggie Lewis Track and Athletic Center at Roxbury Community College for the first time. In past years, the CRASH-Bs have been held in Rockwell Cage or at Harvard University.

The sprints are divided into events which run in heats. Participants are randomly assigned to a heat in a given event. Each participant then rows an exhaustively grueling 2,000-meter piece on the Concept II Model C ergometer.

The sprints attract rowers from all over the world. The top 10 finishers in the lightweight and open men's and women's events then compete in the international final later in the day. Because of the large number of international competitors, a separate ranking of collegiate rowers is kept. The next 10 collegiate competitors, who do not finish in the overall top 10 in these events, then compete in the collegiate finals. For the finals, competitors must row another 2,000-meter piece.

The day began at 8 a.m. with the women's lightweight event. Amy Gieffers '97 finished in 11th place

overall in a time of 7:31.7. She was followed by teammates Mariah Luff '99 in 43rd (8:08.2), Heidi Chang '98 in 51st (8:16.8), and Jeanne Yu '98 in 61st (8:45).

The next event was men's lightweight. Most of the members of the lightweight squads who competed rowed to personal best times. Overall, it was one of the strongest showings by the lightweights in the event's history. They were led by Dan Frisk '99, who finished in 26th place in a time of 6:33.6 and missed making the collegiate finals by two spots.

Frisk was closely followed by Kris Kendall '98 who finished in 30th place with a time of 6:35.2. Other finishers were Torrey Radcliffe '97 in 62nd (6:43.6), Jorge Broggio '97 in 84th (6:47.9), Garrett Shook '97 in 107th (6:52.3), and Sean Hwang '99 in 160th (7:04.6).

Seth Newburg '00 was the first freshman finisher in a time of 6:55.1 which earned him 116th place. Following him was Chad Brodel '00 in 149th (7:02.9), Harald Hoegh '00 in 161st (7:04.9), James O'Donnell '00 in 179th (7:12.4), Jeremy Hui '00 in 192nd (7:18.4), Ben Boehm '00 in 194th (7:19.3), and Kartik Mani '00 in 197th (7:23.7).

Some coxswains and rowers, who could make the weight requirement, competed in the next event, which was for coxswains. Stuart Jackson '00 was the top finisher for MIT in seventh with a time of 7:33.20. Following him were Haiwei Guo in ninth (7:36.0),



ERIK S. BALSLEY—THE TECH

Brian M. Smith '97 competes in the open men's event at the CRASH-B sprints Sunday, held at the Reggie Lewis Track and Athletic Center at Roxbury Community College.

and Joe Irineo '98, who rowed a smart piece, to finish in 17th (7:46.9).

The heavyweights then competed in the men's open event. "With 11 of 12 personal bests, it was the best performance as a squad we have ever had," said Gordon Hamilton, coach of the heavyweight varsity team. "This indicates that we have good racers, since it is quite difficult to perform under so much pressure."

Four oarsmen finished with times among the top nine fastest times ever at MIT. In addition, the Engineers placed seven rowers in the top 100 of a field of 240 collegiate oarsmen. Michael Perry '99 had the highest Engineer finish in

33rd collegiately with a time of 6:13.3. He was closely followed by Robert Lentz '98 in 36th (6:14.4), Karsten Kallevig '99 in 46th (6:16.5), and Brian Smith '97 in 50th (6:17.1).

The heavyweight team also saw good finishes in the collegiate field of 240 rowers from Dan Parker '99 in 82nd (6:25.7), Solar Olugebefola '99 in 91st (6:27.3), Karl Richter '99 in 97th (6:29.2), Mads Schmidt '98 in 120th (6:34.2), Shane Wu '99 in 138th (6:37.3), Charley Able '97 in 140th (6:37.4), and Jeb Keiper '99 in 167th (6:47.3).

The open men's division had a new world record set by Matthias Seijkowski from Germany with a mind-boggling time of 5:39.7. MIT

alumnus Brad Layton '92 rowed a strong time of 6:05.8 and barely missed the international finals.

The final event of the day was the women's open event. The women were led in the overall standings by Jesse Kleiss '00 who rowed a strong 7:16.2 to finish in 39th. The next MIT finishers were Stephanie Chen '00 in 89th (7:30.9), Susan Dey '98 in 92nd (7:31.4), Katy Croff '00 in 143rd (7:47.2), and Sarah Folscroft '98 in 178th (8:05.9).

All crews are looking forward to returning to the river in the near future to begin training on the water for the spring season.

Robert Lentz '98 contributed to the reporting of this article

Men's Hoops Dribbled By Norwich University

Basketball, from Page 24

severe disadvantage. The back-breaker was a Paul Pecor 3-pointer that made it 64-52 with 5:02 remaining. From there, both teams played out the string to the 70-53 final.

Other leading scorers for MIT were Pullen with 12, and John Fluker '97 and John Miller '98 with

eight. Benjamin and Pullen led both teams with 10 rebounds, and Miller had nine.

MIT is 2-20, 1-11 in the Constitution Athletic Conference, not including Thursday's game against Worcester Polytechnic Institute.

The Norwich victory brings their record to 12-11, 5-8 in the conference.

THIS SUNDAY,
FEB 23, 1-5 P.M.

OPEN HOUSE

Free Tosci's!

THE TECH

Student Center,
Room 483

EATING RIGHT CAN HELP REDUCE THE RISK OF CANCER.

This space donated by The Tech

FREE DELIVERY

Introducing!
THE PUB AT CPK

We offer a lively atmosphere and a great place for your computer to sit (thanks to the modems at the counter)! In addition to our great tasting traditional menu we have added great food such as wings, burgers, nachos and a 14" build your own pizza, plus 30 varieties of beer and our new CPK Pub PizzaZZ specialty frozen drink.

16-18 ELIOT STREET, CAMBRIDGE

(across from JFK School of Government)

Serving full menu until 1 a.m.

(P.S. Don't forget to visit our website at www.CPK.com)

SPORTS

In Spite of Strong Second Half, Men's Basketball Loses 70-53

By Martin Duke
STAFF REPORTER

The men's basketball team, though showing heart in the second half, fell 70-53 to the Norwich University Cadets Tuesday in front of a crowd of 176 at Rockwell Cage.

The game can be divided neatly into three segments. Throughout the first half, Norwich took advantage of numerous Engineer turnovers (the final margin was 23 to 9) to open up a 12-point lead. After the break, however, MIT pulled off a 19-3 run to take their

first lead of the game. But the ball started bouncing the other way again in the back end of the second half, and Norwich produced an easy win.

Kareem Benjamin '97 was the key man for the Engineers in the first half and, at times, had two-thirds of MIT's points well into the game. He finished with 18 points.

MIT again had trouble against the full-court press, which created turnovers and opened up a 25-10 Cadet lead with 8:30 left in the half. To counter, the Engineers sped up the offense, capped off with

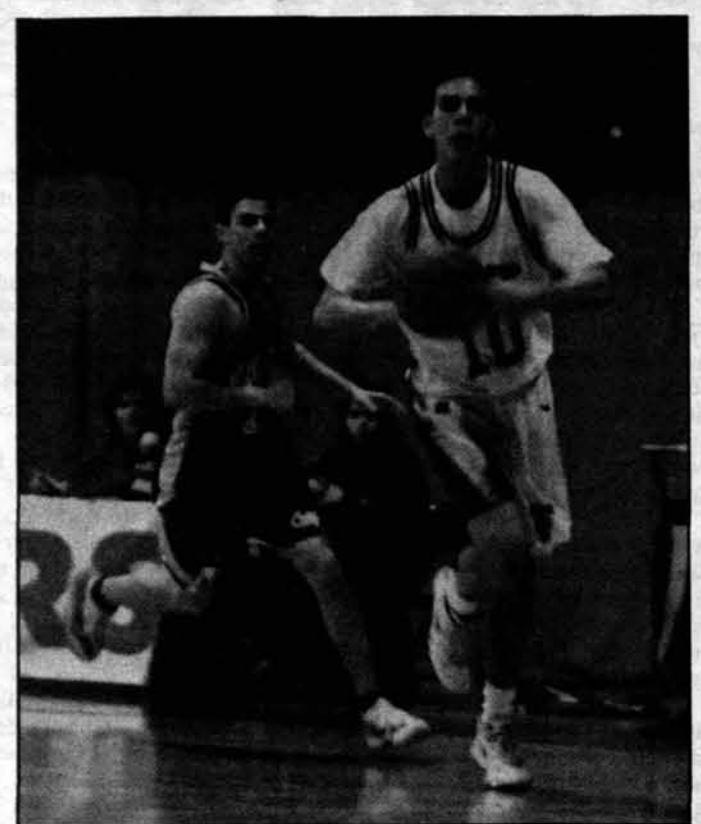
Benjamin finding John Schaeffer '00 open on the fast break to close the gap to 25-20.

At that point, the Engineers inexplicably slowed it down again, and the Cadets regained their shooting touch to make it a 36-24 Norwich margin at the break.

Whatever Coach Larry Anderson said during halftime, he should write down, because the Engineers came out on fire — Melvin Pullen '98 got his first points of the game, MIT maintained a quick tempo, everyone shot well from everywhere on the floor. At the same time, Norwich could not buy a basket.

All contributed to eliminate the deficit and give the Engineers a 50-46 lead of its own at the midpoint of the half. But just as quickly as this new MIT team appeared, it vanished. Norwich shot well the rest of the way, and the Engineers got cold again.

A 13-0 Cadet run put MIT at a



THOMAS R. KARLO—THE TECH

Eric Lindauer '98 passes to avoid Norwich University's full-court press during Tuesday's game. Norwich defense helped them beat MIT 70-57.

Basketball, Page 23

UPCOMING HOME EVENTS

Friday, Feb. 21

Pistol in the Intercollegiate Sectionals

Saturday, Feb. 22

Women's Basketball vs. Mount Holyoke College, 1 p.m.

Men's Gymnastics vs. the University of Vermont, 2 p.m.

Pistol in the Intercollegiate Sectionals

THIS SUNDAY, FEB. 23, 1-5 P.M.
TOUR OUR OFFICES!

SPORTS

PHOTOGRAPHY

NEWS

OPINION

TECHNOLOGY

PRODUCTION

FEATURES

ART

BUSINESS

FREE TOSCI'S!

Student Center, Room 483

THE TECH