



WAN YUSOF WAN MORSHIDI—THE TECH

**Kristie Tate '01 struggles to gain possession of the ball in a field hockey match against Middlebury College last Saturday. MIT lost the game 1-6.**

## ACUS Rate to Drop After Renegotiation

By Dudley Lamming  
STAFF REPORTER

Students will see reduced long-distance rates this year as a result of the renegotiation of AT&T's contract with the Institute.

Rates through the AT&T College and University System are now at 20 cents per minute for phone calls placed between 8 a.m. and 5 p.m., Monday through Friday, and nine cents per minute at other times, down from 15 cents per minute last year.

Information Systems formed a task force last year to investigate rates and companies in preparation for the July contract expiration. Extensive surveys conducted by IS revealed that the 59 percent of MIT students who use ACUS were dissatisfied with the system's pricing scale.

Almost half of the students who use ACUS rated the service poor,

and only 14 percent ranked it good. The old rates were "simply uncompetitive," said Christine Cavanna, a business analyst for Information Systems.

The Graduate Student Council also conducted a comparison between MIT's rates and the rates at other universities last year and found MIT's pricing scale to be unacceptable, said John P. Mellor G, then-member of the GSC Housing and Community Affairs Committee, in an interview last year.

The search process was conducted with a great deal of haste; MIT began negotiating with AT&T, MCI, and Sprint in April, three months before the last contract was due to expire. "This was simply the best deal that we could obtain," Cavanna said. The new rate structure will last for three years.

### Student Advantage comes to MIT

Along with the reduced rates, all ACUS members will receive a Student Advantage card. Student Advantage is a program that enables students to receive discounts from many national retailers along with a 15 percent discount on Amtrak and Greyhound service, according to information released by AT&T.

Originally, MIT students were not going to receive Student Advantage cards due to the Institute's reluctance to give out student data.

"No one at MIT was interested

Rush, Page 14

ACUS, Page 14

## Rush on Par with Predictions, Previous Year

By Steve Lim

The host of parties, trips, and dinners that mark rush week paid off for many fraternities, sororities and independent living groups. Most of the houses posted results on par with those they achieved last year.

Several houses saw an increase in pledge numbers this year, including Zeta Psi, Pi Lambda Phi, and Alpha Delta Phi.

Zeta Psi almost doubled the number of pledges it had last year, with an increase from 12 pledges to 21 this year.

"A lot of [brothers and fresh-

men] were around on Friday and Saturday night," said Zeta Psi Rush Chair Chris R. Laughman '99, who also said he was satisfied with this year's rush.

"There was a lot of enthusiasm from work week which carried itself through rush. Every couple of years, everything works perfectly, and you have the feeling that rush will run well," Laughman said.

PLP's pledge numbers increased from 7 to 12 this year, and ADP saw a rise from 11 pledges last year to 16 this time.

### Pledge yields fall for some houses

On the other hand, some fraterni-

ties, such as Chi Phi, Phi Beta Epsilon, and Theta Delta Chi, saw their numbers drop slightly this year.

The number of students pledging Chi Phi fell to 5 from 13 last year. This "was below what we expected but we chose quality over quantity," said Todd S. Harrison '98, the fraternity's rush chair.

"We are very pleased with the group we got... I think [rush] was a success," Harrison said. Chi Phi will not be impacted adversely by the

relatively low numbers, because most of the current house membership will remain next year and the fraternity plans to look for freshman members throughout the fall, he said.

PBE member Dante Roulette '98 said he was not disappointed with this year's results despite a reduction in the number of pledges. "I think that we did just as well as last year," he said.

"There was no difference in the

## MIT Dining Introduces New Stations To Offer a Wider Variety of Cuisine

By Sylvia Gonzalez

As returning students begin the new school year, they may notice that MIT dining services is offering a selection of new food items. The changes are intended to diversify the traditional cafeteria menu, according to Aramark district manager Beth Emery.

The biggest change in MIT dining services is the newly trademarked Pan-Geos. The new option includes thirty or forty recipes and emphasizes fresh ingredients. The idea of Pan-Geos, whose name

implies foods from across the world, includes various stations across campus.

Last year, Pan-Geos was piloted at Lobdell Food Court, and was called Singing Pan at the time, Emery said. That station was moved this year to Baker House, Emery said. "This year was more aggressive. We're getting better and fresher everyday," said Dave Daniels, operations manager for Aramark.

### New food options are varied

Fresh Flavors of Asia is located at both Walker Memorial and

Lobdell. Some of the recipes are from such regions as Malaysia, Japan, Korea, Taiwan, India, and Thailand. While the choices are varied, Fresh Flavors of Asia serves rice daily with a choice of noodles or broth on alternating days.

These two main dishes are offered with two protein options, meat or vegetarian. The meat selections include beef, chicken, pork, and shrimp. In order to accommodate vegetarians, certain pans are

Lobdell, Page 13

## MIT Takes Second Place In Solar Vehicle Car Race

By Yvonne Lai

The MIT Solar Electric Vehicle Team car Manta GT raced to second place in Sunrayce '97, an intercollegiate solar vehicle race held on June 28th. The ten-day, 1,150-mile race began on June 19th at the Indianapolis Speedway and finished on the 28th in Colorado Springs, Colo.

The team's vehicle finished eighteen minutes behind the car run by the team from California State University at Los Angeles.

Sunrayce competitors come from Canada, United States, Mexico, and Puerto Rico. Teams build cars within regulatory constraints, which limit the total battery power and solar-cell technology. Before the competition, all cars must first endure an eight-hour qualifying round.

This preliminary course determines the initial placements of the cars in the actual race.

All vehicles are then given a daily as well as an overall ranking at the end of each day.

According to Bonnie W. Tom '99, presiding president of the solar vehicle team, the Manta GT runs on 1500 Watts. "We have a car going on the power needed to dry your hair in the morning," she said.

A core of Sunrayce 95's winning team led this year's entry: then-Team President David A. Hampton

G, Ivano Gregoratto '97, Masahiro Ishigami '97, Matthew N. Condell '95 and Wandy Sae-Tan '97. The team also included Jorge A. Barrera '99, Andy Buttner '99, Christopher E. Carr '99, Brian B. Graham '99, Stanley R. Hunter '00, Tasos G. Karahalios '97, Kudzaishe G. Takavarasha '97, Tom, and Jimmie D. Walker III '99.

Historically, MIT has done well competitively, placing first in the last Sunrayce and breaking the world record in 1989.

### Team faced several obstacles

Manta GT, so named for its

Solar Car, Page 9

## INSIDE

- A new shuttle operates throughout Cambridge. *Page 8*
- Comics *Page 6*
- Many Bostonians mourn loss of Princess Diana. *Page 12*



RITA H. LIN—THE TECH

**Erica I. Shelton '99 watches as Lucy Carter prepares her food at Pan-Geos, a new food station in Lobdell.**

# WORLD & NATION

## Mir Computer Fails Again

THE WASHINGTON POST

KOROLYOV, RUSSIA

The main computer aboard the troubled Mir space station inexplicably broke down again Monday, shutting off systems that automatically keep the station's power-gathering solar panels properly aligned with the sun.

With the computer down, Mir slipped into a slow rotation, with its arrays of long, rectangular solar panels only intermittently catching the sun's rays. Cosmonauts Anatoly Solovyev and Pavel Vinogradov and American astronaut Michael Foale turned off a power-consuming oxygen system and began burning solid-state canisters that produce oxygen through chemical interaction. The three also turned off other systems and worked in semi-darkness to conserve electricity.

To right the station, the crew fired thruster rockets to keep the panels oriented to the sun. There was no danger to the crew or any thought of abandoning ship, Russian officials said. "I think this is nothing frightening, although it is unpleasant," said Valery Udalov. Mission Control chief Vladimir Solovyev said he expects the attitude control system to be back in operation within two days.

The breakdown was the third computer malfunction aboard Mir this year, a period marked by numerous mishaps, including a collision with an unmanned cargo vessel, docking malfunctions, an on-board fire and breakdowns in the oxygen-generating and cooling systems. In July, a member of the previous Russian crew accidentally disconnected a power cable to a computer, throwing the spaceship into a slow tumble similar to its current pattern.

## Paula Jones' Attorneys Withdraw

LOS ANGELES TIMES

WASHINGTON

The two lawyers representing Paula Corbin Jones in her sexual harassment suit against President Clinton officially withdrew from the case Monday, citing "fundamental differences of opinion" with her about "the future course of this litigation."

The move throws the case into turmoil, and increases the chance the president will be forced to stand trial next year on the embarrassing charges, say legal sources on both sides.

"There's not going to be a settlement. Clearly this case is going to trial," predicted one lawyer who is familiar with the case.

Attorneys Joseph Cammarata and Gilbert K. Davis, who have represented Jones at no cost since 1994, filed a motion with a judge in Little Rock, Ark., seeking permission to quit the case.

They wanted to settle her suit for a \$700,000 payment and a vaguely worded statement from Clinton saying the former Arkansas state worker was a person of good character.

But Jones refused, saying she wanted Clinton to apologize for his conduct in a Little Rock hotel room six years ago.

"It's never been about money; it's about language," said Susan Carpenter McMillan, a friend and spokeswoman for Jones.

## Activists Hope to Halt Launch Of Plutonium

NEWSDAY

WASHINGTON

Anti-nuclear activists vowed Monday to take non-violent steps, including trying to reach the launch pad for a sitdown, to prevent the National Aeronautics and Space Administration from lofting an unmanned spacecraft to Saturn soon with 72 pounds of plutonium aboard.

The activists say NASA has been understating the health risks if the Cassini spacecraft were to break apart during a rocket explosion at liftoff or were to re-enter the atmosphere during a swing around Earth on its seven-year mission.

"They've taken the most optimistic figures they can find," said Michio Kaku, a theoretical physicist at the City University of New York who has studied the NASA risk analysis.

But NASA and Energy Department officials said the mission is safe and called critics' charges unsubstantiated.

Radioactive plutonium provides energy for electricity-generating devices on Cassini. Scientists say Saturn is too far from the sun to allow practical use of solar power cells.

## WEATHER

### Golden Rule Days

By Chris E. Forest  
STAFF METEOROLOGIST

A golden rule: if the winds come off the ocean, expect oceanic weather. Being in Cambridge, we sometimes forget that the ocean lies just to our east but today's weather will be a firm reminder. With that in mind, we take a look ahead to this week's weather. As a high pressure system sits to our north, the anticyclonic winds (CCW) around the system are bringing oceanic air onto the eastern parts of Massachusetts and with it, the requisite cool and damp air for today and this evening. Embedded in this flow, we find possible showers or drizzle this afternoon and continuing through Wednesday.

The main weather event, though, will approach on Wednesday night and arrive on Thursday as a low-pressure system develops over Appalachia and proceeds towards New England. Before it arrives though, temperatures should rise slightly until significant rain occurs sometime between Wednesday night and Friday depending on the development of the upper tropospheric flow.

**Today:** Drizzle and rain, high 67°F (19°C).

**Tonight:** Continued drizzle, low 58°F (14°C).

**Wednesday:** Partly cloudy with chance of showers, high 72°F (22°C), low 60°F (16°C).

**Thursday:** Warmer with developing rain, high 75°F (24°C), low 59°F (15°C).

# Saudi Cleared of Terrorism Charges by United States

By Robin Wright

LOS ANGELES TIMES

WASHINGTON

The Justice Department, its case weakened by Saudi Arabia's failure to provide sufficient evidence or intelligence to U.S. investigators, moved Monday to dismiss terrorism charges against the Saudi dissident suspected of involvement in the 1996 bombing that killed 19 American airmen in Saudi Arabia.

At a court hearing scheduled for Wednesday, U.S. attorneys will ask instead to have suspect Hani Sayegh deported, a Justice Department statement disclosed. Sayegh, who was captured in Canada last spring and extradited to Washington in June, had been the most promising independent lead in the case for the FBI and the Pentagon.

Court documents filed earlier in Canada alleged that Sayegh, who admits he trained in Iran, was a driver and lookout during the attack on Khobar Towers in eastern Saudi Arabia. The collapse of the prosecution case is a major setback and embarrassment for U.S. counter-terrorism efforts, Clinton administration officials conceded.

The Justice Department did not attempt to place blame for the abrupt change in tactics after six months of maneuvering behind the scenes to build the case. "Since we have not been able to develop the requisite evidence, it is necessary that this prosecution be withdrawn," the statement said.

But the shift was forced in large part because Saudi Arabia has not provided sufficient evidence to support its claim that Sayegh was a participant in the second of two attacks since November 1995 that killed 25 Americans and triggered questions

about political stability in the oil-rich kingdom.

Despite pressure from the White House and repeated visits by FBI Director Louis J. Freeh, the Saudis also have not provided sufficient independent access to other suspects who allegedly implicated Sayegh, the sources said.

A statement issued by Saudi Ambassador Prince Bandar ibn Sultan ibn Abdul Aziz late Monday said his government had cooperated "in all aspects of the investigation," while noting that its own investigation is ongoing. "We do not accuse or absolve anyone of the responsibility," the statement said.

But the case also became a legal minefield because of mishandling by U.S. investigators after Sayegh was captured in Ottawa while shopping with a friend, according to Francis D. Carter, Sayegh's court-appointed lawyer.

Sayegh, who does not speak much English, claims the plea bargain worked out with U.S. attorneys was initially brokered with only the help of a detention-center interpreter and without legal counsel present. He also says he did not understand his options or the American judicial system, including trial by jury. In addition, he was not given a copy of the plea agreement until after he was extradited to Washington.

"This case has been badly bungled on all sides," an administration official acknowledged Monday.

In the plea bargain worked out with U.S. officials, Sayegh was in fact not named in the Khobar bombing. He was instead charged with conspiracy to commit murder and "international terrorism" related to his assignment to locate guns for a separate, unsuccessful anti-American attack.

In exchange for a 10-year prison sentence for that conspiracy, Sayegh agreed to tell U.S. officials what he knows about anti-Saudi movements and Iran's involvement in Gulf dissident activities. But after he was extradited, Sayegh repudiated the plea agreement, and opted for a formal trial.

With limited evidence, U.S. attorneys have chosen to drop criminal charges, for now at least. But that may not mean an end to the case — or his imminent deportation.

Legal sources said Justice Department officials apparently hope the threat of deportation to Saudi Arabia will prompt Sayegh to start cooperating with U.S. authorities, possibly as part of a new plea agreement.

Saudi Arabia has already notified the Clinton administration that it will seek formal extradition of Sayegh to face trial for the Khobar bombing, despite the absence of a bilateral treaty between the two allies.

The Justice Department pledged that it will "respond appropriately" if the kingdom meets requirements for extradition. If convicted, Sayegh, whose wife and children are still in Saudi Arabia, could face a death sentence by beheading.

"This is one way of putting pressure on the guy to see if he'll come around to being of assistance to them," said a legal source close to the case.

The Justice Department left open the possibility of future prosecution of Sayegh. Its two-page statement pointedly noted that the investigations into both the Khobar Towers bombing and the separate conspiracy to kill Americans disclosed by Sayegh would continue on a "priority basis."

# Education Department Halts Program to Restructure Itself

By Rene Sanchez

THE WASHINGTON POST

WASHINGTON

The Education Department, long maligned by congressional Republicans who say its management is a mess, has given critics new reason to howl.

The department announced last week that it will not accept any more applications from recent college graduates trying to consolidate or refinance their tuition loans until the contractor it hired for the job clears up an enormous backlog of those requests.

There are more than 70,000 college students nationwide whose loan payments might soon be in limbo because of the lengthy processing delays, and the waiting list has been growing longer each month. The department said it had no choice but to suspend the popular program indefinitely in order to begin fixing the problem.

"It's a terrible embarrassment," said David Longanecker, the assistant secretary for postsecondary education. "We were falling farther and farther behind, but by doing this we are confident that we'll get on top of the problem soon."

The department faced a similar predicament last year when more than 900,000 student aid applications handled by private contractors it hired were delayed because of serious management problems. The incidents raise new questions about the department's ability to manage its direct lending program, which allows students to get tuition loans from the federal government and

offers a range of repayment options.

Direct lending, one of President Clinton's most important education initiatives, has been under fire from Republicans and many private lenders ever since it was created five years ago. There have been several campaigns in Congress to abolish or severely limit the program, but it remains largely intact, serving more than 1,200 universities. Many college officials say they have been quite pleased with the program so far.

But to some Republican leaders, the latest trouble is proof the department is not up to managing college loans at a time when a record number of students — at last count, more than 7 million — depend on them.

"From the very start of the program, I doubted the department's ability to become one of the largest banks in this country," Rep. William F. Goodling, R-Pa., chairman of the House Committee on Education and the Workforce, said last week. He called the department's inability to consolidate student loans quickly and efficiently "irresponsible."

"Up to now, they've done a pretty good job on this," said Terry Hartle, a vice president for the American Council on Education, a Washington group that represents more than 1,500 universities. "But what we have here is a huge embarrassment in one of the president's signature education programs."

With tuition costs at most campuses continuing to exceed inflation,

and college loan debt soaring, more and more students are taking advantage of new opportunities to restructure their loans over longer periods of time or in ways based on what they earn after graduation.

Education department officials said that often in the past year they have received nearly 15,000 applications a month from students to consolidate loans, a rate nearly twice what they said they had expected when the program began.

But they adamantly reject criticism that direct lending is in shambles.

"I can understand the frustration, but I think we have to keep it in perspective," Longanecker. "One reason we have this problem is because of the great popularity of the program."

Longanecker said the department is disappointed with the contractor it hired last year, Electronic Data Systems, which was founded by billionaire Ross Perot. Longanecker said there were start-up problems in processing student requests, and that ever since the volume of applications has overwhelmed the system.

Some officials said it had been taking more than seven months in some cases — an unpaid student loan falls into default after six months — to process applications.

The department has no estimates yet as to when the loan-consolidation program will be re-opened. But Longanecker said he expects it certainly will be before December, which is when the most recent class of college graduates are supposed to start repaying tuition loans.

# GOP Investigators Say Former DNC Leader Violated Policy

By Marc Lacey  
LOS ANGELES TIMES

WASHINGTON

Senate investigators intend to present evidence Tuesday that former Democratic Chairman Donald L. Fowler flouted an internal Democratic National Committee policy when he repeatedly lobbied federal agencies on behalf of major contributors.

The roster of donors represented by Fowler includes American Indian tribes, a controversial oil financier and a Southern California businessman dismissed by a White House aide as "a hustler."

Fowler, who is to appear as a witness at Tuesday's Senate hearings on campaign fund-raising abuses, contacted officials in the White

House, the Interior Department, the Central Intelligence Agency, the Energy Department and a handful of other agencies to assist key contributors, investigators said.

His advocacy — or "selling of influence," as GOP investigators call it — ran counter to an internal policy prepared by General Counsel Joseph Sandler that forbade "any DNC staff" from "ever contact(ing) an administration official on behalf of a donor for any reason."

Investigators said that Fowler helped oilman Roger Tamraz attend White House functions after receiving "a very strong warning" from an aide that Tamraz could prove to be an embarrassment to the Democrats.

National Security Council aides had objected to the White House

visits by Tamraz, who was pushing an oil pipeline project near the Caspian Sea that administration officials opposed. Critics say that Tamraz used his donations to the Democrats — at least \$177,000 — to sidestep White House officials who opposed his project and pitch the venture directly to the president.

Fowler also assisted Johnny Chien Chuen Chung — a major donor who ran a fax machine business in Torrance, Calif. — in setting up a meeting between former Energy Secretary Hazel O'Leary and a businessman from China, investigators said. A National Security Council aide had described Chung in a 1995 memo as "a hustler" trying to exploit his contacts with the White House.

# America Online Purchases Rival Network Provider CompuServe

By Rajiv Chandrasekaran

THE WASHINGTON POST

America Online Inc. reached a deal Sunday night to take over its biggest competitor, the faltering CompuServe Inc. online service that has 2.6 million customers, sources close to the negotiations said.

Under terms of the deal, which is expected to be announced Monday, CompuServe still would exist as a separate service, but would be fully operated by AOL, the sources said. AOL would have a combined customer base of more than 11 million subscribers.

Va.-based AOL intends to keep CompuServe's content focused on business and technology issues, the sources said. "AOL is going to use

its scale and its resources to make it more focused and efficient in servicing the business and professional market," a source said.

AOL would acquire the service under a complex transaction also involving telecommunications giant WorldCom Inc.

As tentatively structured, WorldCom would buy CompuServe as part of a \$1.2 billion stock swap, then give AOL all the content and subscribers and \$175 million in exchange for AOL's ANS network service. AOL executives have said that through combined operations, the CompuServe unit could become profitable.

Gary Arlen, an independent industry analyst based in Bethesda,

Md., said the deal "strengthens AOL tremendously."

The deal would give AOL, which recently has faced its own financial challenges, much-needed cash to develop new online content and expand its base of 9 million subscribers. Whether the consumer-focused company can maintain the loyalty of CompuServe customers over the long term is unclear.

Spokesmen for AOL and CompuServe refused to comment on the matter Sunday night. Executives at WorldCom did not immediately return phone calls. The CompuServe spokesman, Steve Conway, said Saturday that the company was "in active talks" to sell itself.

# Former General Insists Russia Lost Portable Nuclear Bombs

LOS ANGELES TIMES

MOSCOW

Alexander Lebed, the former Russian general and presidential hopeful, has been broadcasting his claim over the past week that Russia has lost track of 100 nuclear bombs the size of suitcases.

"A very thorough investigation is necessary," Lebed reiterated to reporters Monday. "The state of nuclear security in Russia poses a danger to the whole world." The general's allegations are roundly denied by Russian officials, who contend that all of Russia's nuclear weapons are safely under control.

Despite the official denials, Lebed is pursuing his allegations undeterred. In an interview with CBS' "60 Minutes" aired Sunday, Lebed said the suitcase bombs were ideal weapons for terrorists because they could be armed and detonated by a single person within half an hour.

One of the one-kiloton bombs could kill 100,000 people, he said. Of 250 suitcase devices made by the Soviet Union, he said, 100 are unaccounted for.

According to Lebed, the suitcase bombs, measuring about 23 by 16 by 8 inches, were deployed by the Soviet Union in special brigades in some of the empire's remote regions. After the breakup of the Soviet state, many of the suitcases vanished in what became independent republics, where they could fall into the hands of terrorists, he said.

# Panel Backs Postmaster in Urging Negotiating Individual Bulk Rates

THE WASHINGTON POST

A panel composed of large commercial mailers recommended Monday that Congress give the U.S. Postal Service authority to negotiate postage rates with individual bulk mailing companies.

To overcome the high labor costs, the committee said, the agency should boost its investment in automation and work with employees "to reduce the unit costs of handling and delivering all classes of mail."

The committee supported allowing the Postal Service Board of Governors, the panel of presidential appointees that oversees the agency, to overrule by a majority vote stamp-price decisions issued by the independent Postal Rate Commission. Currently, all nine governors must agree to overrule the commission.

John T. Estes, executive director of the Main Street Coalition for Postal Fairness, a group of newspapers and other mailers, attacked the report, saying its findings would hurt small mailers.

"We have consistently questioned the appropriateness of large volume discounts and a weakened Postal Rate Commission," Estes said.



## Graduate Student Council

### September Calendar

- 9 Housing and Community Affairs Meeting \*
- 11 Career Fair Meeting \*
- 16 Extracurricular Activities and Athletic Meeting \*
- 17 Activities Meeting \*
- 19 Friday Social \*

\* at 5:30 PM in Room 50-220. All graduate students are welcome. Food is provided.

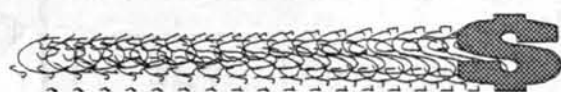


Winners of the T-shirt raffle:

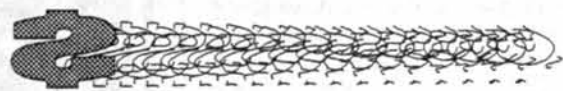
- Sally Buta
- Wendy Katstra
- Mike Noel

please come to the GSC to pick up your shirts or email emoy@mit.edu.

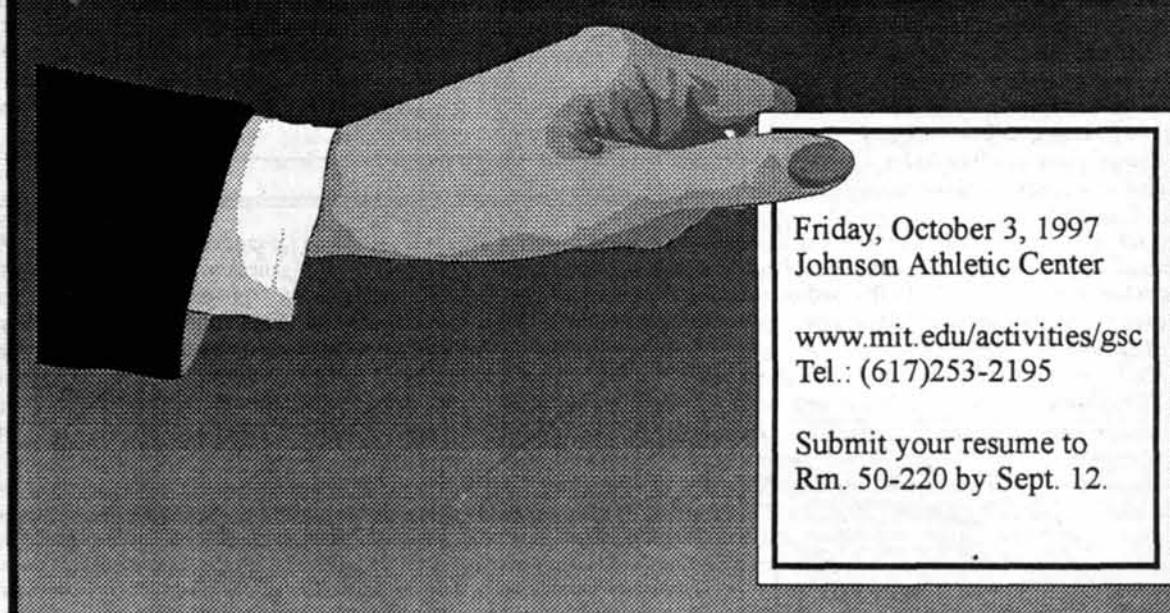
✉ gsc-request@mit.edu 📍 Walker Memorial, 50-220  
☎ (617)253-2195 🌐 www.mit.edu/activities/gsc



Graduate students, get your free Student Advantage Card (\$20 value) this week at the Graduate Student Council!



## Graduate Student Career Fair



Friday, October 3, 1997  
Johnson Athletic Center

www.mit.edu/activities/gsc  
Tel.: (617)253-2195

Submit your resume to  
Rm. 50-220 by Sept. 12.

# OPINION

## Dissent in the Ranks

Every year, U.S. News & World Report publishes a widely followed ranking of the nation's best universities, and in doing so it holds these schools hostage by forcing its specious criteria on masses of prospective students hoping to gain admission to the "best" institution.

**Editorial** While MIT is usually ranked among the top handful on this list, the system used by U.S. News emphasizes factors that do not reflect the unique nature of the Institute or any other top school. The magazine arbitrarily decides on a set of criteria and then presents its method as an absolute measure by making spurious distinctions in the importance of different measures of educational quality. For instance, in its rankings this year, it assigned a weight of 20 percent to a school's retention rate; this criterion particularly hurt scientifically-oriented schools, since they generally had lower retention rates than schools of comparable caliber with different emphases. MIT had the 15th highest retention rate among national universities, but this factor represented its worst-rated attribute. Similarly, the California Institute of Technology was ranked ninth overall because it had a retention rate of 82 percent, a value significantly lower than that of other schools in the top 10 slots. However, it gained the top spots in financial and faculty resources, and was demonstrably hurt by the high weight given to retention rate.

Another factor that hurt MIT in the standings was a recently contrived statistic called "value added." U.S. News calculated an expected graduation rate based on test scores and class standing and then compared that value to the actual rate. MIT, Cal Tech, Carnegie Mellon University, and the Georgia Institute of Technology all had negative values in this category thereby lowering their overall rankings. This criterion is especially ludicrous since it would reward a school that automatically graduates all of its incoming freshmen.

Overall, the methodology employed by the magazine was sci-

entifically absurd. One of the overall categories U.S. News used to rate schools was student selectivity. In order to create a rating in this area, it compiled an index for each school based on the attributes of the incoming class that year, including test scores, high school class standing, acceptance rate, and yield, or the proportion of those accepted who attend. Denoting acceptance rate and yield as independent factors indicates a statistical illiteracy on the part of the magazine's editors. Schools typically factor in yield when extending offers of admission, so these two statistics are correlated. For instance, MIT typically admits twice the number of students it expects to enroll. If its yield were higher, however, it could afford to award admission to fewer applicants and its acceptance rate would decline, making it appear more selective in these rankings. So, some of the factors actually measure the same attribute twice but are presented by the magazine as different measures of academic quality. The focus on low acceptance rates also hurts the Institute because its applicant pool is somewhat self-selected, making its acceptance rate appear relatively high.

Furthermore, the rankings provide an artificial sense of precision, and they create the impression that there is a significant difference between the top few schools. However, the magazine goes on to group lower ranked schools by tier. It is more likely that schools in lower tiers differ more from one another than those at the very top, which are separated by mere fractions of a point in the magazine's composite index.

The low ranking of the Institute is not necessarily undeserved. There may well be solid reasons that the Institute should be ranked lower than some of its Ivy League peers even though many consider it the premiere technical institution. MIT may fail to give its students as well-rounded an experience as the Ivies ranked above it in the survey. The ranking system itself is flawed beyond repair, and it is indeed shameful that students devoted to scientific reason must submit to such a ridiculously constructed system.



### Chairman

Shang-Lin Chuang '98

### Editor in Chief

Jennifer Lane '98

### Business Manager

Cristián A. González '99

### Managing Editor

Jason C. Yang '99

### Executive Editor

Dan McGuire '99

### NEWS STAFF

**Editors:** David D. Hsu '98, Venkatesh Satish '98, Brett Altschul '99, May K. Tse '99; **Associate Editors:** Carina Fung '99, Jean K. Lee '99, Frank Dabek '00, Douglas E. Heimbürger '00, Zareena Hussain '00; **Staff:** Eva Moy G, Kyle Young G, James M. Wahl '97, Christopher L. Falling '98, Noémi Giszpenc '98, Orli G. Bahcall '99, Shawdee Eshghi '99, Carina Fung '99, Fenny Lin '99, Eric Sit '99, Sharmin Ghaznavi '00, Stuart Jackson '00, Liz Krams '00, Dudley W. Lamming '00, Susan Buchman '01; **Meteorologists:** Michael C. Morgan PhD '95, Chris E. Forest G, Gerard Roe G, Marek Zebrowski.

### PRODUCTION STAFF

**Editors:** Saul Blumenthal '98, Russell S. Light '98, Josh Bittker '99; **Associate Editors:** Moksha Ransinghe '99, Erica S. Pfister '00; **Staff:** Betty Chang '98, Larry Chao '98, Nancy Hsiung '99, Binh Truong '99, Billie Wang '00.

### OPINION STAFF

**Editor:** Anders Hove G, Stacey E. Blau '98; **Staff:** A. Arif Husain '97, David S. Kelman '99.

### SPORTS STAFF

**Editor:** Erik S. Balsley G; **Staff:** Hana Ohkawa G, Chris Brocoum '00.

### ARTS STAFF

**Editor:** David V. Rodriguez '97; **Staff:** Thomas Chen G, Jonathan Litt G, Teresa Esser '95, Teresa Huang '97, Yaron Koren '99, Joel M. Rosenberg '99.

### PHOTOGRAPHY STAFF

**Editors:** Gábor Csányi G, Gregory F. Kuhnen '00; **Staff:** Rich Fletcher G, Alkan Kabakcioglu G, Jonathan Li G, Wan Y. W. Morshidi G, Gabriele Migliorini G, Arifur Rahman G, Jiri Schindler G, Helen Lin '97, Tiffany Lin '97, Christine Chan '98, Adriane Chapman '98, Ahmed Ait-Ghezala '99, David Tarin '99, Ian Chan '00, Rita H. Lin '00, Chun Hua Zheng '00, Ágnes Borszédi.

### FEATURES STAFF

**Editors:** Pawan Sinha SM '92, Hugo M. Ayala G, Calista E. Tait G, Katy King G, Zachary Emig '98, Jessica Wu '99.

### BUSINESS STAFF

**Advertising Manager:** Jennifer Koo '00; **Operations Manager:** Joey Dieckhans '00; **Staff:** Jessica Maia '98, Terri A. Wilson '99.

### TECHNOLOGY STAFF

Laurie M. Leong '00.

### EDITORS AT LARGE

**Contributing Editor:** Daniel C. Stevenson G, Indranath Neogy '98.

### ADVISORY BOARD

V. Michael Bove '83, Robert E. Malchman '85, Thomas T. Huang '86, Reuven M. Lerner '92, Josh Hartmann '93, Jeremy Hylton '94, Garlen C. Leung '95, Scott C. Deskin '96.

### PRODUCTION STAFF FOR THIS ISSUE

**Night Editors:** Russell S. Light '98, Josh Bittker '99; **Staff:** Larry Chao '98, Kevin Fu '98, Cristián A. González '99, Kevin Chao '01, Ryan Ochylski '01, Anand Sarwate '01.

*The Tech* (ISSN 0148-9607) is published on Tuesdays and Fridays during the academic year (except during MIT vacations), Wednesdays during August and monthly during the summer for \$45.00 per year Third Class by *The Tech*, Room W20-483, 84 Massachusetts Ave., Cambridge, Mass. 02139-7029. Telephone: (617) 253-1541, editorial; (617) 258-8324, business; (617) 258-8226, facsimile. Advertising, subscription, and typesetting rates available. Entire contents © 1997 *The Tech*. Printed on recycled paper by MassWeb Printing Co.



## Opinion Policy

**Editorials** are the official opinion of *The Tech*. They are written by the editorial board, which consists of the chairman, editor in chief, managing editor, executive editor, news editors, and opinion editor.

**Dissents** are the opinions of the signed members of the editorial board choosing to publish their disagreement with the editorial.

**Columns** are written by individuals and represent the opinion of the author, not necessarily that of the newspaper.

**Letters to the editor** are welcome. Electronic submissions are encouraged and may be sent to [letters@the-tech.mit.edu](mailto:letters@the-tech.mit.edu). Hard copy submissions are accepted as well, although e-mail is preferable. Hard copy submissions may be addressed to *The Tech*, P.O. Box 397029, Cambridge, Mass. 02139-7029, or sent by interdepartmental mail to Room W20-483. All submissions are due by 4:30 p.m. two

days before the date of publication.

**Letters** must bear the authors' signatures, addresses, and phone numbers. Unsigned letters will not be accepted. No letter will be printed anonymously without the express prior approval of *The Tech*. Once submitted, all letters become property of *The Tech* and will not be returned. *The Tech* reserves the sole right to edit or condense letters. *The Tech* makes no commitment to publish all the letters we receive.

## To Reach Us

*The Tech's* telephone number is (617) 253-1541. E-mail is the easiest way to reach any member of our staff. If you are unsure who to contact, send mail to [general@the-tech.mit.edu](mailto:general@the-tech.mit.edu), and it will be directed to the appropriate person. *The Tech* can be found on the World Wide Web at <http://the-tech.mit.edu>.

# My New Quick Fix

## Soda and Coffee Are the Drugs of Choice at MIT

Stacey E. Blau

I drink Coca-Cola, perhaps too much at this point, but it's probably too early in the term to really tell. I stopped drinking Coke when I was 13 and stayed clean for a full seven years, but I started again at the beginning of this summer. I wasn't caving into a need or even going through post-term withdrawal. It was, after all, late May, and the stress of the last weeks of school was well behind me.

The reason I decided to start again, at least the reason in my mind at the time, was that it seemed like it would be fun. Yes, drinking Coke is a fairly pathetic notion of fun and particularly comic compared to the idea of snorting the lower-case variety of the same name. But in the context of a very dull and strained night, fun it most certainly was.

When I made the decision I was with two friends, working to finish the layout and paste-up of one of the several booklets that freshmen received this summer. The work was pretty dull, and at 2 a.m. when I lifted my heavy head up off a table, the glowing red Coke machine five feet in front of me was quite a sight to behold. I wasn't especially thirsty, but it would cost me only 40 cents to pick up a nifty little aluminum can full of sweet, caffeinated carmel stuff. The appeal became pretty clear pretty fast.

The drink has proved more than a novelty. Since that night, I've been drinking a can or two a day, and it's been powerful stuff for a person like me. The reason I had stopped in the first place was I thought it hurt my stomach. It didn't strike me how strong the canned stuff was until I had some diluted Coke with ice in a cup from a Store 24. I like the taste of the diluted stuff better, but I must say that with the strafing carbonation and extra caffeine, the condensed contents of the neat little Coke can wins hands down.

I'm not sure I'm quite addicted to Coke yet, but I'd say my level of consumption is approaching an unhealthy level. I certainly wouldn't be the first person to reach that stage at MIT. But as the term begins, I'm growing quite wary in getting to the point a lot of students are at come the middle of the term, when caffeine is a necessity to get through a night of work.

It isn't just Coke that's the drug of choice around here. Most people I know with an out-

of-control caffeine habit like Mountain Dew for soda. When they don't want soda, they go for a straight cup of Joe or sometimes more exotic options like the caffeine-heavy Vietnamese varieties of coffee and chocolate-covered espresso beans. Coke, especially diet Coke (*sans* sugar), is pretty much the mainstream poor man's caffeine beverage for 4 a.m. problem sets and the like.

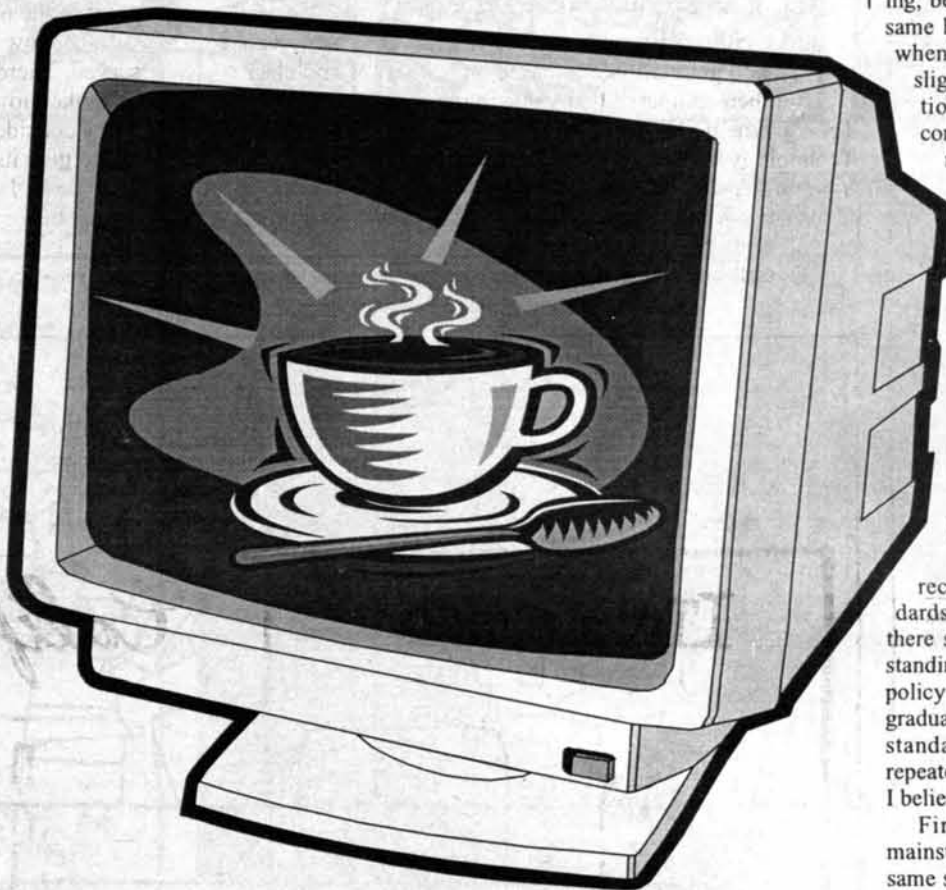
Caffeine drinks serve other purposes beyond the mundane role of fuel for late-night work. I don't usually use Coke to keep myself awake. Pathetic though it may seem, it's just kind of fun to drink. More than one person, however, has suggested to me that there may be other reasons I began drinking Coke this summer.

My seemingly separate aim beginning at the end of last term to completely stop cursing coincided perhaps none too coincidentally with the start of my Coke consumption. The start and stop, some people said to me, amounted to a zero-sum game for my addictions: an exchange of one bad habit for another. I'm not sure that that's quite true, but even if it is, the exchange seems worth it.

Professor of Mathematics Gian-Carlo Rota uses cans of Coke in his Differential Equations (18.03) class for the theatrics and attention. "I need some caffeine to keep myself going," Rota says. In addition to the Hershey bars he gives out as rewards during lecture, the Coke "is kind of an act. It's been going on for heaven knows how long now."

But the caffeine use is not much of a habit for Rota. "I don't take any caffeine except in the form of Coke. I don't drink coffee," he says. "I don't think that caffeine is a good stimulant in general."

When it comes down to it, the yummy factor is the thing, I think. I drink Coke because I like it. There are lots of different types of soda and coffee with lots of levels of caffeine, but a whole lot of them seem nothing more than a way to prove how much awful or strange-tasting caffeinated junk your mouth and stomach can take. Particularly the way some people consume caffeine around here come midterm time, you wouldn't know whether they ever respect the limits of their tongue and stomach. But midterm or no, as far as I'm concerned, a can of Coke is it.



# Taking on God in Course VI

Guest Column

J. Ryan Bender

There's something new this term in Course VI: Christianity. The Lord works in mysterious ways and, if Postdoctoral Associate Anne Foerst is correct, he motivates much of the work in the field of artificial intelligence. Foerst's class, entitled *God and Computers* (6.915), is a new offering with the not-so-innocent intent of exploring the relationship between AI and Christian myth.

Recently, there has been a torrent of debate within AI circles over whether *God and Computers* ought to be offered. The debate began with an e-mail from Professor of Electrical Engineering and Computer Science Marvin L. Minsky, one of the founders of AI, to several other AI researchers. Minsky called the course an "evangelical enterprise" that wrongly treats AI as a myth rather than a goal. A heated exchange of e-mail flames ensued involving people both inside and outside AI. The debate concerned the value of *God and Computers*, its appropriateness for Course VI, and its evangelical intentions. One of Minsky's students, Pushpinder Singh G, even wrote to the head of the department, Professor of Electrical Engineering and Computer Science Paul L. Penfield, imploring him to remove *God and Computers* from the curriculum. Penfield responded saying that *God and Computers* is a "welcome addition" to the department's mostly technical offerings. He denied that the subject is an evangelical enterprise, even while he admitted that "the primary religious framework of 6.915 will be Judeo-Christian."

Is *God and Computers* an evangelical enterprise? Judging by its description in the *MIT Bulletin*, it certainly appears to be. Students "will analyze the meaning of the Christian symbols of life after death and resurrection and will show which explanations

and solutions Christianity offers for humankind's daily problems and sufferings."

As far as I know, Christianity has no solution to humankind's daily problems and sufferings. Indeed, Christianity caused centuries of suffering by stifling technological progress.

That point aside, a more salient question is, why is Christian doctrine relevant to AI at all? The subject description for *God and Computers* makes no reference to real AI problems. Perhaps this is because the course instructor is a theologian and not an AI researcher.

Anne Foerst herself is a research fellow at the Harvard Divinity School and an ordained Lutheran minister. While that may be an unusual background for a position at the MIT AI Lab, she has found her niche nevertheless. Using her knowledge of theology, she seeks to "trace out hidden myths within AI." That is, she seeks to uncover the secret motives of AI researchers, such as "the hubristic wish to be like God" and the dream of "imitating God's creative powers."

Foerst's analysis pretentiously and presumptuously psychologizes AI researchers. She claims that AI researchers harbor an unspoken wish "to be like God" and imitate "God's creative powers." A warning to all AI types at MIT: Anne Foerst knows your secret motives. She knows why you have dreams of creating an artificial intelligence: It's because you wish you were the Christian God. She understands your minds better than you do, and she sees your true intentions through all your scientific jargon. All rules of evidence, logic and proof are suspended, for Foerst has special access to your subconscious. She knows that you are motivated by Christian mythology to do AI.

Fond of discussing Christian myth, Foerst explains that "these myths and symbols lose their richness and power when taken literally and unfold their wisdom within Judeo-Christian

tradition." In other words, Judeo-Christian dogma is literally meaningless, but makes sense to those afflicted with the set of pathologies collectively known as religious faith.

The absurd babble coming from the Christian mystics has absolutely nothing to do with the problems faced by artificial intelligence researchers. These mystics, possessed by faith and suspicious of reason, have nothing useful to contribute to the AI endeavor except the mindless drivel of religion. *God and Computers* has no place in Course VI and is an insult to MIT. This Institute, one of the last bastions of rational thought, ought to leave the evangelists on the steps of 77 Massachusetts Avenue.

Anne Foerst's perverse convolution of AI and Christianity is disturbing, to say the least. Mixing one of mankind's greatest goals with the myth of the Fall and concepts of sin and estrangement is more than just an attempt to endow AI with Christian meaning. It is an attempt to sully the grand vision of AI itself and the "hubris" of those who are working to attain that vision. The myth of the Fall (the Edenic myth of Adam and Eve, who fell from God's grace upon eating from the tree of knowledge) is Christianity's declaration of war on science. Nietzsche's analysis of this myth is dead-on: "Science makes godlike — it is all over with priests and gods when man becomes scientific. The moral is that science is forbidden as such; it alone is forbidden. Science is the first sin, the seed of all sin, the original sin. This alone is morality. 'Thou shalt not know' — the rest follows."

If you want further insights into Christianity and the secret motives of AI researchers, Anne Foerst's class has much to offer you. The real problems of AI, however, will require productive thought and effort to be overcome.

J. Ryan Bender is a member of the Class of 2000.

# Gender Affirmation

## MIT Still Uninformed on Affirmative Action

Anders Hove

Many MIT students would be surprised to learn that the Institute's affirmative action policy has been wildly successful at attracting the best women in the country. It has done so

without lowering admissions standards or changing the curriculum. And yet, MIT students know little about MIT's affirmative action policy, successful or not.



Gary Bass, investigating for *The New Republic*, confirms this assertion. "Nearly every [MIT woman] I interviewed said she thought she'd been held to lower admission standards." This is surprising, because in reality women are held to the same high standards as other applicants. And when it comes to academics, MIT women slightly outperform MIT men, not to mention that they are much more likely to complete the undergraduate program than male entrants.

What is MIT affirmative action, and why is it successful? Affirmative action here has nothing to do with quotas or different standards. Affirmative action only comes into play during the recruitment process. MIT aggressively recruits women, underrepresented minorities, and "academic superstars" starting in grade school. Because of this recruitment, many qualified women apply to MIT, whereas they often do not apply to other universities that ignore recruiting. Therein lies our success.

The distinction between aggressive recruiting and different admissions standards seems simple enough to me. Why is there so much misinformation and misunderstanding about MIT affirmative action if the policy is so straightforward? Why do undergraduates persist in the belief that admissions standards are different when the facts are repeatedly and blatantly brought before them? I believe there are two explanations.

First, MIT students are recruited from mainstream American society; they hold the same stereotypes about women and minorities that other Americans do. Many schools have used quotas in the past, and anecdotal horror stories about reverse discrimination are commonly known. People come to MIT believing that all affirmative action involves quotas or, barring that, skewed admissions standards. Information to the contrary fails to persuade because it simply does not jibe with the stereotypes that are out there.

Although societal perceptions certainly exist, they cannot explain all of the misinformation about affirmative action. More fundamentally, the Institute's recruitment process fails to inform students about what type of education they should expect from MIT. Many people at MIT would agree that the Institute admits the smartest people and tries to give them a technical education. There is an element of truth to this: students are smart, and the curriculum does concentrate on science and technology. Yet the MIT faculty consider that the Institute's mission is to give the student a general life education, one that is not constrained to a student's narrow technical interests. Passion for academics is part of an MIT education, but not the central part, in spite of what many students believe.

Because of this misconception, students are likely to conclude that their peers were selected based only on their academic records or college board scores. MIT tries to admit people who have the ability to succeed socially as well as academically. Achievement at MIT means participation in the community, membership in activities, and the ability to interact positively with one's peers.

The misunderstanding of affirmative action at MIT is a widespread phenomenon. To a large extent, this misunderstanding is an indictment of the education we receive here. The faculty's goal is to provide a broad, overall education, yet students cannot take full advantage of the curriculum outside of academics if they remain unaware of its purpose. As long as students hold such wild misconceptions about race, gender, and the purpose of an MIT education, we cannot call our affirmative action policy a success.

# C O M I C S

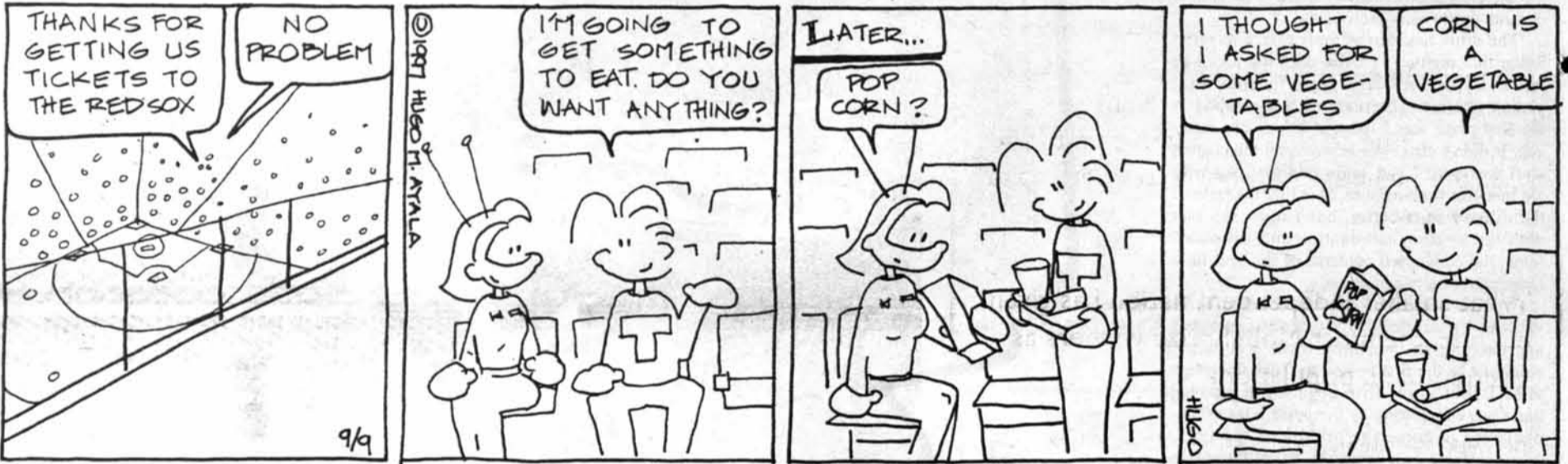
## dammed for life

by jessica



## Off Course

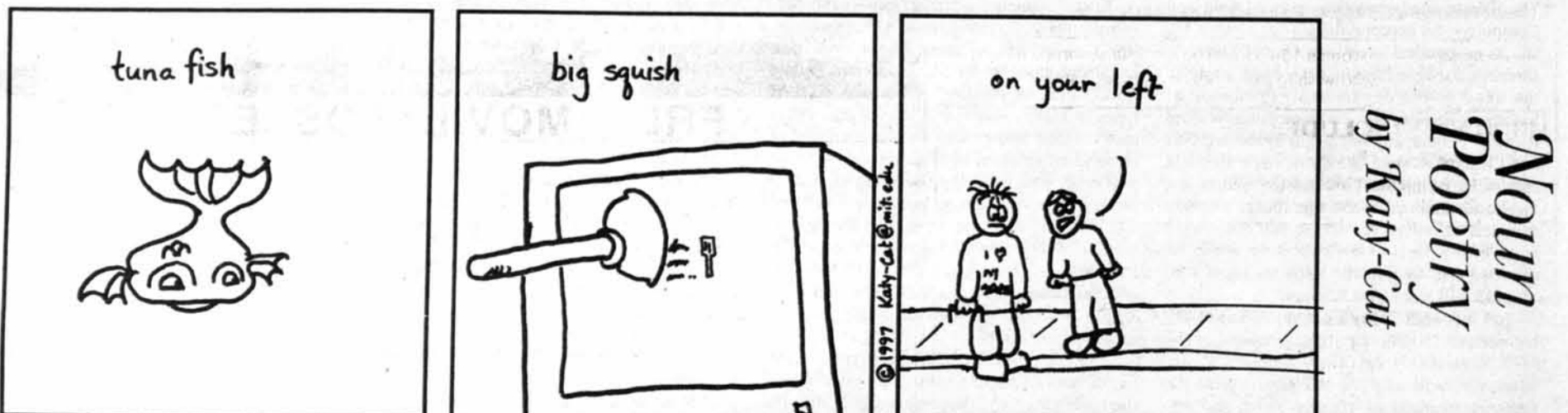
By Hugo



# RHINO MAN

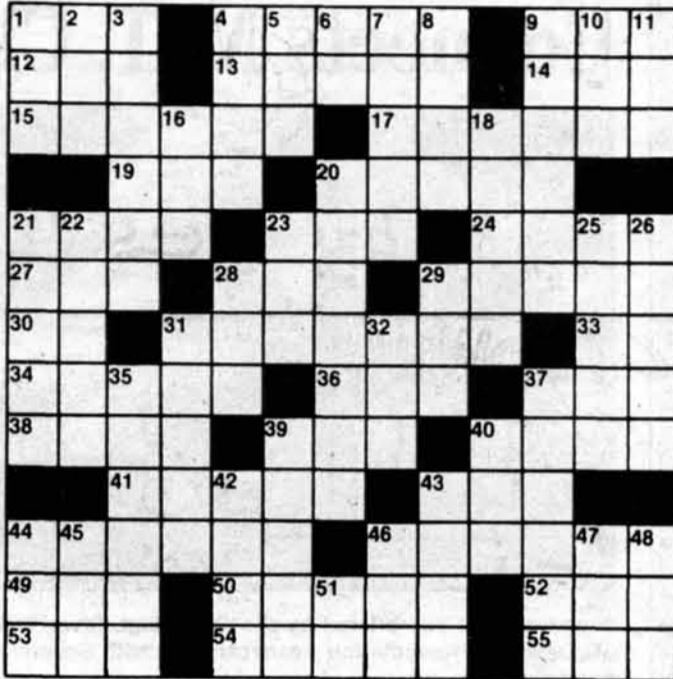
THE STORY SO FAR: Burned in the explosion that destroyed Kaibatsu 5, Rhino-Man was no match for the assassin Cupid's tranquilizers. As he passed out, Cupid revealed that he'd been hired to acquire R-Man's head for a trophy.

by Zachary Emig



**NOUN**  
**POETRY**  
 by Katy-Cat

Next Issue: Answers. Is Rhino-Man alive, or is he dead?



- ACROSS**
1. Light rap
  4. Equipment for long distance detection
  9. Kind of tide
  12. Alcoholic beverage
  13. Copy
  14. Confederate general
  15. Vote
  17. Divide into branches
  19. Vacant property
  20. Medical man (military)
  21. A Barrymore
  23. Enemy
  24. Number
  27. Decay
  28. 5th son of Jacob
  29. Performer
  30. Silver element symbol
  31. A, an, or the
  33. Eastern state (abbr.)
  34. Pear cider
  36. Tip
  37. Poor
  38. Great lake
  39. Steal
  40. Green gem
  41. Glare
  43. Conflict
  44. Begs

46. Poetry rhythm
  49. Ever (poetic)
  50. Large
  52. Night before
  53. Petroleum
  54. Put into force
  55. Grain
- DOWN**
1. Pop top
  2. Winglike
  3. Shot
  4. Chaos
  5. Amount (abbr.)
  6. Prosecutor (abbr.)
  7. Assent
  8. Peruse
  9. Bring out
  10. Brit. Expeditionary Force (abbr.)
  11. Turkish prince
  16. Down
  18. Mix
  20. Watch closely
  21. Place a cloth over
  22. OK (CB jargon)
  23. Obese
  25. Roving
  26. Eat away
  28. Arid
  29. High mountain

31. Indoor sport area
32. Ear of corn
35. Vertical stair steps
37. Hair cutter
39. Balm
40. Bind (slang)
42. Lip
43. Wish
44. Wooden pin
45. Meadow
46. Incorporated (abbr.)
47. Climbing plant
48. The letter C
51. Alcoholics group (abbr.)

**PUZZLE SOLUTIONS FROM LAST ISSUE**



SOLUTIONS IN THE NEXT EDITION OF THE TECH

**Trivia Corner**



Starting with Theodore Roosevelt, who won the Nobel Peace Prize in 1906, 172 Nobel laureates have been born in the United States. This is more than were born in any other country. However, due to the high population of the U.S., the number of Nobel prizes per capita is very low.

What smaller independent nation has given birth to the most Nobel prize winners as a fraction of its population?

This week's two winners will each win two LSC movie tickets, two sodas, and one large tub of popcorn. Showing this weekend:

- Fri 7 & 10 p.m. "Volcano" in 26-100
- Fri 7:30 p.m. "Laura" in 10-250
- Sat 7 & 10 p.m. "Addicted to Love" in 26-100
- Sun 4 & 7 p.m. "Volcano"/"Addicted to Love" in 26-100

Send your answer to [trivia@the-tech.mit.edu](mailto:trivia@the-tech.mit.edu). Two random drawings from all of the correct entries will be held to determine this week's two winners. This feature was brought to you by the CAC Program Board. Today's factoids are by the MIT Quiz Bowl team. Members of the quiz bowl team are not eligible.

**PUT YOUR VALUABLES IN A SAFE PLACE.**



Helmets make riding more comfortable and fun. Not to mention safer. In a crash without one, you are five times as likely to suffer a serious head injury than a helmeted rider. No matter how short your ride, wear a helmet. It's the best protection for your most valuable asset. **MOTORCYCLE SAFETY FOUNDATION**

This space donated by *The Tech*

**ABNORMAL MENSTRUAL BLEEDING STUDY**

Looking for healthy women 15-50 years of age with abnormal menstrual bleeding who wish to participate in a research study.

**BENEFITS INCLUDE:**

- FREE study-related Exams
- FREE Investigational Medication
- Up to \$200.00 Compensation for Qualified Participants.

Participants will be required to come in for 5 study related office visits, take their medication reliably, and complete a daily diary.

**FOR MORE INFORMATION PLEASE SEE:**

Reproductive Clinical Trial Unit-  
Clinical Coordinator, Karen Reece, CRA  
1-617-667-0312

**SPECIAL ADVANCE SCREENING**

FROM THE DIRECTOR OF "SEVEN"



**MICHAEL DOUGLAS**  
**THE GAME**  
**SEAN PENN**

PLAYERS WANTED

POLYGRAM FILMED ENTERTAINMENT Presents A PROPAGANDA FILMS Production A DAVID FINCHER Film MICHAEL DOUGLAS SEAN PENN "THE GAME"  
JAMES REBHORN DEBORAH KARA LINGER PETER DONAT CARROLL BAKER ARMIN MUELLER-STAHLE DON PHILLIPS JOHN BRANCATO MICHAEL FERRIS  
IONATHAN MOSTOW MICHAEL KAPLAN HOWARD SHORE JAMES HAYGOOD JEFFREY BEECROFT HARRIS SAVIDES  
PROPAGANDA READ THE ROADWARD BOOK STEVE GOLIN CEAN CHAFFIN JOHN BRANCATO MICHAEL FERRIS DAVID FINCHER  
www.the-game.com

**FREE MOVIE POSTERS**

Thursday Sept 11

8:00 PM

26-100

Courtesy of



Pick Up Free Passes at the Door

MIT/Wellesley I.D. Required

Presented By

MIT Lecture Series

Available at MIT Computer Connection



As part of its ongoing series of performing arts excursions the **Council for the Arts at MIT** offers

**FREE TICKETS FOR MIT STUDENTS**

to

## The Game of Love and Chance

Huntington Theater, Boston

Thursday, September 25, 7:30pm

Required: \$5 deposit which will be returned to you day of the show & a valid MIT student ID

You must sign up for yourself, in person at E15-205

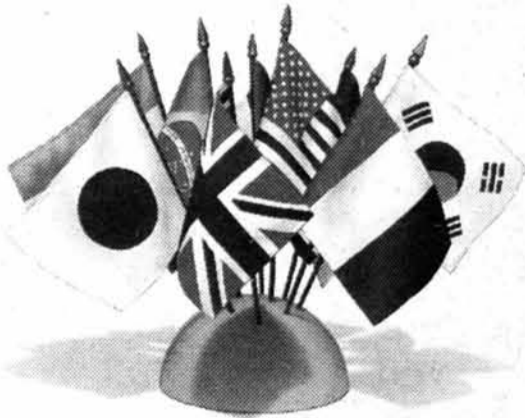
This delightfully funny love story is about a young man and woman of noble birth who are betrothed to each other although they have never met. Wanting to learn about each other before they wed, they both secretly exchange social positions with their servants. Before the play ends, servants and masters alike discover the true nature and irresistible power of love. Boston's professional premiere of this 1730 French masterpiece

Watch this space or check our web page: <http://web.mit.edu/arts/> for free tickets in the future

Tickets will be handed out at 5pm on the day of the show

INTERNATIONAL PERSONAL BANKING

# At BankBoston, we understand the needs of the international student.



In a foreign place, a little understanding goes a long way. And since all of our International Personal Banking employees have lived or worked abroad, they know more than just banking, they know your culture and language.

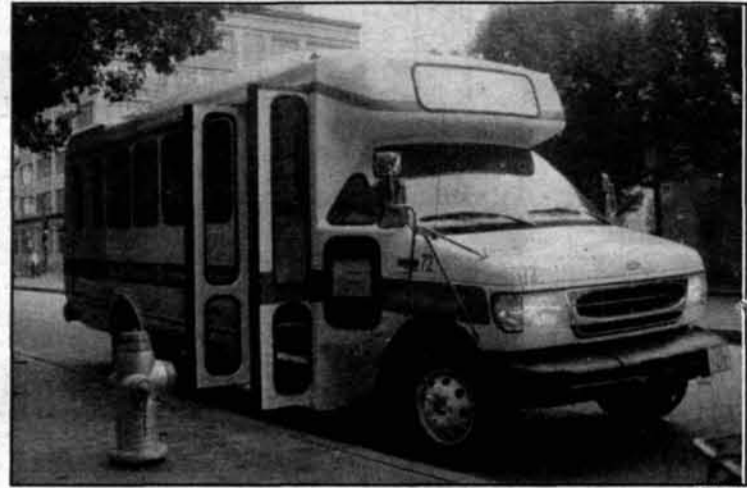
With expertise in over 30 languages, our staff can help you understand banking in the U.S. so you can choose the services you need. And that, you'll find, can help you feel right at home.

To open an account or find out the location of one of our BankBoston International Personal Banking offices, call us at (617) 556-6037.



It's Amazing What You Can Do.™

## Cambridge Shuttle Connects MIT, City



AMY YEN

A new shuttle bus offered by the Cambridge River Transportation Management Association connects MIT with several Cambridge businesses.

By Susan Buchman  
STAFF REPORTER

A new shuttle service connecting MIT, Kendall Square, and other Cambridge businesses, sponsored by the Cambridge River Transportation Management Association, began service on August 11.

The twenty-eight passenger bus, operated by Paul Revere Transportation, will be available to MIT students and employees of other participating companies. The shuttle runs from 7 a.m. to 7:15 p.m. MIT students may take advantage of the service using their student IDs.

The Charles River TMA now operates in addition to Safe Ride, which runs at night, the MIT/Wellesley bus, and the Lincoln Laboratory shuttle. "This shuttle is being established on a trial basis," said Lydia S. Snover, assistant director for Planning Information.

"I think it will be most useful to Tang or Westgate students, especially during the winter. Off-campus students will probably find it's faster to walk to their labs on the east side of campus rather than waiting for the shuttle to get from the Kendall," said Geoffrey J. Coram G, president of the Graduate Student Council.

"I applaud MIT for being involved in the project, and hope its success will encourage other trans-

portation options for the campus," he said.

For MIT, the shuttle is also a tool to facilitate employee training. "W89 contains a computer training center where employees are trained to use the new accounting system as well as other computer based applications," Snover said. The shuttle should improve access to this site.

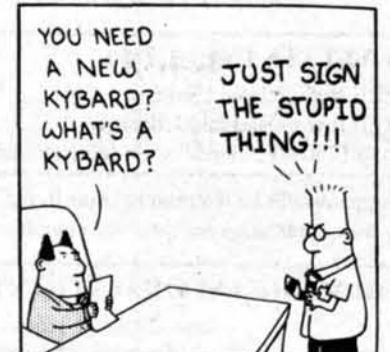
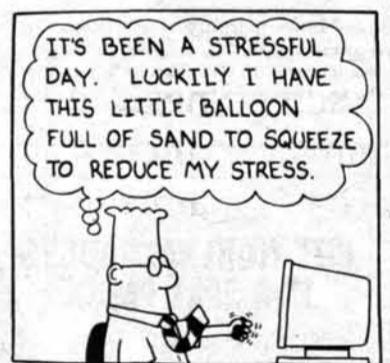
### Program's future uncertain

The fate of the shuttle program is contingent upon ridership in the first six months, and the Planning Office encourages students and employees to try out the shuttle and inform the office of their opinion.

The schedule for the shuttle may undergo changes as well. The route and schedule have undergone many revisions in response to rider input and a new schedule was implemented on Monday, September 8.

The new schedule will use separate morning, afternoon, and evening routes to best fit the different demands for each time of day. The stops are located at Technology Square, Binney Street (One Kendall Square), 238 Main St., MBTA, MIT Building, 39, the intersection of Vassar and Amesbury, the intersection of Vassar and Memorial, and 640 Memorial Drive. The Charles River TMA will publish detailed schedules in the near future.

Dilbert® by Scott Adams



# MIT Solar Vehicle Team Forced to Tackle Obstacles

Solar Car, from Page 1

resemblance to a sting ray, began the race in third position; by the end of the second day, it had charged up to second place, leading the third place team from California State University at Los Angeles by 90 seconds.

That afternoon, the MIT team switched to a newer, more efficient motor to beat highway traffic. It cruised to first place for the next three days. However, at the five-day mark, disaster struck.

"GT's lost power," transmitted driver Gregoratto to the team. Subsequently, they replaced the controller, only to see the motor refuse to spin.

It was not until after another forty minutes that they discovered the true problem: a broken wire leading to the motor sensor. Replacing the motor generally consumes several hours. However, the team, now wary of the new engine and determined to keep going, reverted back to the original engine in twenty minutes.

This rapid work and the lead they accumulated during the past several days saved Manta from complete loss. They placed tenth for the day, but fourth overall.

With the original motor, Manta GT passed nearly half the field in the first fifty minutes after the replacement, and maintained speed while climbing the Colorado hills. It then raced to first place for the seventh and eighth day.

But on the last day, sharp rocks punctured two tires, costing the

team valuable time.

Interestingly, MIT also accumulated the greatest time penalty: 53 minutes. Time penalties are given to teams who exceed the race's speed limit of 55 mph.

### Team looks to future

One of the goals for their next vehicle, Manta GTX, is to make little changes in minute details, which eventually add up to major ones.

"Manta GT is a good car. We plan to experiment more on the new techniques we developed; we didn't have much time to research what we used, so we hope to do that next year. We will basically tweak the Manta GT a bit," Tom said.

Manta GTX's expected finish date is 1998, just in time for the World Solar Challenge 98.

"We will be competing not only against colleges but also against companies; but with a few modifications, we can beat the best," Graham said.

The Manta GT is an improved version of the Manta, the winning Sunrayce 95 vehicle. Construction of Manta GT began years ago in fall semester 1995, aiming to reduce weight, improve component reliability and increase the vehicle's overall efficiency.

In this direction, they used a Computer Numeric Controlled machine to create the body's mold,



GABOR CSANYI—THE TECH

The MIT Solar Electric Vehicle Team's car, Manta GT, named after its resemblance to a sting ray, placed second in Sunrayce 97 on June 28th.

researched a new drive mechanism, and developed a new solar cell array technique.

The previous method of creating a body mold was largely manual, relying on hand-sanding to smooth the mold into the desired shape.

Now, with CNC, a computer cuts the mold, given three dimensional cartesian coordinates designed by the team. This lends higher accuracy and thus, a finished mold more similar to the ideal.

Most teams usually arrange their

solar cells in a matrix formation, without overlap. MIT SEVT used a roof-shingle formation for the Manta GT solar cells.

While this does not increase the overall power, it does pump up the efficiency.

Many Americans love their domesticated animals.



Sometimes, however, there are too many of them.



Please have your cat or dog spayed or neutered.

This space donated by The Tech



## STUDENT Job OPPORTUNITIES FOR FALL 1997

- OFFICE ASSISTANT
- GRAPHICS AND PUBLICITY COORDINATOR
- OPERATIONS ASSISTANT/SIGN MAKER
- STUDENT SCHEDULER
- SOURCE MANAGER & STAFF
- VENDOR ASSISTANT
- COFFEEHOUSE CASH ASSISTANT AND WORKER



Applications Available:  
CAMPUS ACTIVITIES COMPLEX  
IN THE STRATTON STUDENT CENTER  
(W20-500)

FOR MORE INFORMATION CALL 3-3913

Depression is a serious threat to anyone that has a brain.

Depression is a suppression of brain activity that can strike anyone. It can make life unbearable, but it is also readily, medically treatable. And that's something you should always keep in mind.

#1 Cause of Suicide  
**UNTREATED DEPRESSION**

Public Service message from SAIVE (Suicide Awareness/Voices of Education)

<http://www.save.org>

This space donated by *The Tech*

welcome back to  
Cheap tickets.  
Great advice.  
Nice people.

**Council** Travel

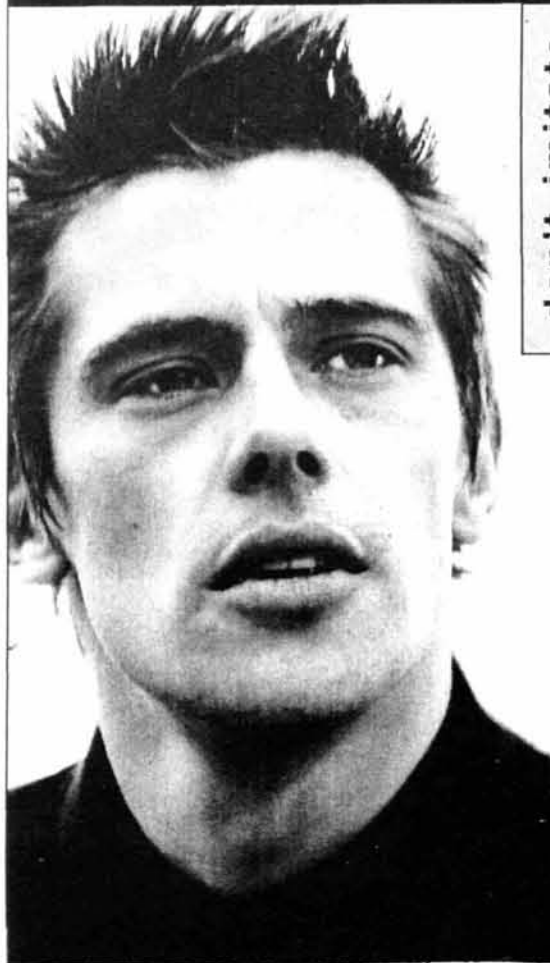
CIEE: Council on International Educational Exchange

273 Newbury St. Boston (617) 266-1926	12 Eliot Street, 2nd Fl. Cambridge (617) 497-1497	MIT Student Center W20-024 84 Massachusetts Ave. Cambridge (617) 225-2555
---	---	--

<http://www.hugo.com>



INNOVATE



don't imitate



Filene's

Dilbert® by Scott Adams



S. Adams © 1997 United Feature Syndicate, Inc.

**THE MOST FUN YOU'LL GET OUT OF THE DMV.**

Unlicensed riders are over-represented in fatal crashes. So get to the DMV. Because having a motorcycle operator license is something you can live with.

**MOTORCYCLE SAFETY FOUNDATION**



This space donated by *The Tech*



(speak easy)

Get AT&T One Rate. FREE.

And don't worry about the time or the distance.

free  
from  
AT&T

If you live off campus, choose AT&T Long Distance and sign up for AT&T One Rate. Free. You'll also get a free one-year membership to Student Advantage®—the largest student discount program ever.

- AT&T One Rate: only 15¢ a minute on calls from home—to anybody, anytime, anywhere in the U.S.
- Student Advantage: use your card to get special offers and up to 50% off every day at thousands of your favorite neighborhood places and national sponsors—like Kinko's®, Tower Records® and Amtrak®.

Live off campus? Get AT&T One Rate  
and a Student Advantage membership. FREE.

Call 1-800-878-3872

or visit [www.att.com/college/np.html](http://www.att.com/college/np.html)

It's all within your reach.





**Princess Diana  
1961 — 1997**

The memorial service was given by Rev. Jep E. Streit in Trinity Church, Boston.



AGNES BORSZEKI—THE TECH

# YOU DEMAND POWER, SPEED, AND MOBILITY.



Save another  
**\$50**  
cash back\*

Color StyleWriter\* 4500



**Power Macintosh\* 6500/225**  
32/2GB/12XCD/Multiple Scan 15AV/L2  
Zip Drive/Ethernet/Kbd

# \$300

cash back\*



**Power Macintosh\* 7300/200**  
32/2GB/12XCD/Multiple Scan 15AV(not as pictured)  
L2/Ethernet/Kbd

# \$200

cash back\*

## WANT SOME CASH TO GO WITH THAT?

Now is the right time to get an Apple Power Macintosh or PowerBook. Because in addition to getting the computer that lets you do more than you can imagine, you can save big time. For a limited time, students are eligible for special cash rebates.

\*This is a limited time rebate coupon offer. See your Apple campus reseller today for complete details.



**Power Macintosh\* 4400/200**  
16/2GB/8XCD/Multiple Scan 15AV/L2  
Ethernet/Kbd

# \$100

cash back\*

got it yet?



**MIT Computer Connection**

Student Center, Lower Level

(617) 253-7686

<http://www-mcc.mit.edu/>

Recommended Products @ <http://web.mit.edu/desktop/>

\*\*Offer expires October 10, 1997. ©1997 Apple Computer, Inc. All rights reserved. Apple, the Apple logo, Mac, Macintosh, PowerBook, Power Macintosh and StyleWriter are registered trademarks of Apple Computer, Inc. OneScanner and QuickTake are trademarks of Apple Computer, Inc. Apple mail-in rebate offer valid from July 12, 1997 through October 10, 1997, while supplies last and subject to availability. Void where prohibited by law. See participating reseller for further rules and details. All Macintosh computers are designed to be accessible to individuals with disability. To learn more (U.S. only), call 800-600-7808 or TTY 800-755-0601.

# Granary Presents Healthy Options

Lobdell, from Page 1

used exclusively with meat.

At the Granary in Lobdell, three selections are offered daily, including pilaf, flatbread, and potato. The Granary is intended to offer healthy options in Lobdell, said Margaret Derby, Lobdell manager.

Some of the Granary's ingredients are organic, or grown without the use of artificial pesticides. If enough interest is demonstrated, the Granary may use organic ingredients entirely, although that would be more expensive than the current method, Emery said.

Lobdell is open from 7 a.m. to 7 p.m. during the week, but on Fridays it closes at 3 p.m.

Networks has added wraps and flatbread pizza to its menu this year and has also added a new window to view dishes while they are prepared.

Networks is open until 11 p.m., later than Lobdell. Cappuccino, espresso, and latte are now on the menu, and coffee refills are free.

Wraps have also been introduced at the Refresher Course, a station located in Building 52 that is open for continental breakfast and lunch.

Aramark is hoping to replace the cafeteria atmosphere with one closer to a restaurant style. The short-order cooks working at the cook-to-order stations are trained by Aramark chefs with formal culinary experience, Emery said.

## Students mixed on changes

The price of an average dish at MIT dining is between four and five dollars. The general sentiment about the prices is favorable. "I think some prices are really good and others aren't, but overall it's pretty good. You get sick of it because you eat it everyday," said Anna E. Park '01.

Others were not necessarily aware of the changes. "I haven't heard anything about it," said Peter S. Kurzina '98.

"It may not be home cooking but at least the mashed potatoes are real," said Shaun Neumann '01.

"I think that the things we are doing will change what students view as dining," Daniels said. He said Aramark's desire is to make the food "closer to what you're going to get at home... the next best thing."

## ACTIVISTS PROMOTE SOCIAL RESPONSIBILITY

At the Share Group, **EMPOWER** yourself to make a difference by working with a company that directly supports the issues that matter to you. We're a national telecommunications firm that partners with innovative, socially responsible businesses and non-profit organizations to help them create awareness, increase sales and raise funds. **EMPOWER** yourself to take action towards key issues.

- Protect Choice
- The Environment
- Gay Rights
- Fight AIDS

- We can offer you:
- Employee Stock Ownership Program
  - Healthcare • Base pay plus bonus
  - Flexible schedules • Paid leave
  - Profit sharing, 401(k)
  - Convenient Davis Square location, right off the Red Line
  - Full and part-time

For immediate consideration, please call Wendy at: 617.629.4571; fax: 617.629.4510. An EOE.

**SHARE**  
The business of social change

## MIT International Science and Technology Initiative

*Live abroad and work for the World's leading companies!!*

MISTI China Program ~  
Informational Meeting:  
**Wednesday, September 10**  
5:30-7:30pm

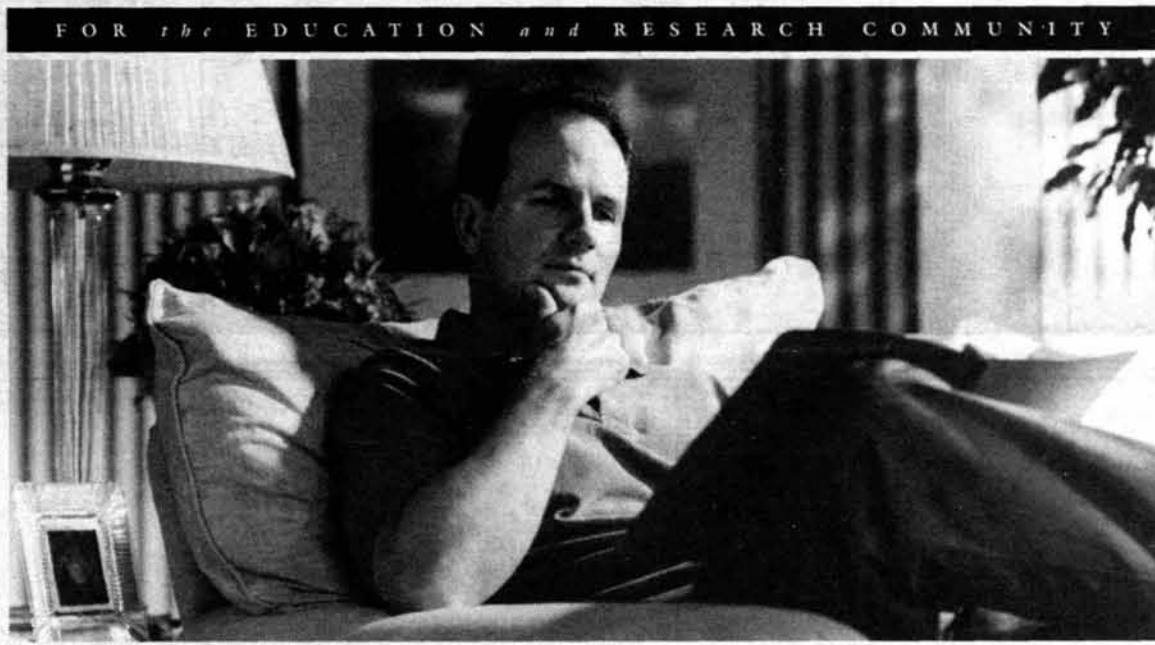
~ MIT Germany Program ~  
Informational Meeting:  
**Thursday, September 11**  
5:30-7:30pm

MIT Bldg. E38 - 7th Floor Conference Room  
(Above the MIT Press book store - next to the Kendall Square (T) stop.)

**Meet Returning Interns!!**  
Begin an International Career Path that takes you successfully through the 21st century!!

More info on China?  
Email: china@mit.edu

More info on Germany?  
Email: sberka@mit.edu



## HELPING YOU BUILD A SECURE FINANCIAL FUTURE IS AN IMPORTANT JOB. FORTUNATELY, WE HAVE THE PERFECT RESUME.

With nearly 80 years of leadership experience in our field, TIAA-CREF is eminently qualified to help you build a comfortable, worry-free retirement.

Our references are equally impeccable—today, nearly two million of the best minds in America trust us with their financial future. Allow us to review our qualifications.

### Superior strength

With over \$200 billion in assets, TIAA-CREF is the world's largest retirement organization—and among the most solid. TIAA is one of only a handful of companies to have earned top ratings for financial strength, and CREF is one of Wall Street's largest investors.

### Solid, long-term performance

We seek out long-term opportunities that other companies, in pursuit of quick gains, often miss. Though past performance can't guarantee future results, this patient philosophy has proven extremely rewarding.

### Surprisingly low expenses

TIAA-CREF's operating costs are among the

lowest in the insurance and mutual fund industries. Therefore, more of your money goes where it should—towards ensuring your future.

### Easy diversification

We offer a wide variety of expertly managed investment options to help build your assets. With stock, bond, money market, and real estate accounts—as well as a guaranteed annuity to choose from—TIAA-CREF makes diversification easy.

### Unrivaled service

We believe that our service distinguishes us from every other retirement company. In the latest Dalbar Consumer Satisfaction Survey, a study of 2,000 financial companies, TIAA-CREF was voted the leading provider of retirement plans.

If you work in education, research, or related fields, why not put TIAA-CREF's experience to work for you? To find out more, visit our Web site at [www.tiaa-cref.org](http://www.tiaa-cref.org) or call us at 1-800-842-2776.



Ensuring the future for those who shape it.™

AAA (Superior), A.M. Best Co.; AAA, Duff & Phelps; Aaa, Moody's Investor Services; AAA, Standard and Poor's for stability, sound investments, claims-paying ability, and overall financial strength. These ratings of TIAA as an insurance company do not apply to CREF. Standard & Poor's Insurance Rating Analysis, 1996; Lippert Analytical Services, Inc., Lippert Director's Analytical Data, 1996 (Quarterly). For more complete information, including charges and expenses, call 1-800-842-2733, extension 5509, for CREF and TIAA Real Estate prospectuses. Read them carefully before you invest or send money. TIAA-CREF Individual and Institutional Services, Inc. distributes CREF certificates and the variable component of TIAA contracts.

© 1997 Teachers Insurance and Annuity Association/Collage Retirement Equities Fund, 730 Third Avenue, New York, NY



## BELIEVE IT OR NOT, THIS GUY IS IN CLASS.

Excitement and adventure is the course description, and Army ROTC is the name. It's the one college elective that builds your self-confidence, develops your leader-

ship potential and helps you take on the challenge of command.

There's no obligation until your junior year, so there's no reason not to try it out right now.



### ARMY ROTC

THE SMARTEST COLLEGE COURSE YOU CAN TAKE

For details, visit Bldg. 20E-116  
(18 Vassar St.)  
or contact MIT Army ROTC at  
494-8710 or kfilosa@mit.edu

### Join the People's Republic of Cambridge: Register to Vote!

Become a student activist: Attend Meetings and Vote November 4 in City Elections.

#### Meetings of Interest:

Wednesday, September 10 at 7 p.m. at the Cambridge Boat House (on riverbank past Harvard Sq., just before [Eliot] Bridge). Charles River Stream Team Goal-setting and Strategy Session: Learn the Shoreline Survey results, Suggest/Lead projects to help the river, Join ongoing cleanup and lobbying efforts.

Wednesday, September 17 at 7:30 p.m. at MIT's Bldg. E-25, 45 Carleton St. Room 111. MBTA plans for a new transit line passing by or THRU the MIT campus: Will stops be at Vassar St.? or 77 Mass Av? Will trains be in tunnels or at street level? Will West campus be served at all? Come Help Decide.

Monday, September 29 at 7 p.m. in Volpe Transportation Bldg. 55 Broadway at Kendall Sq.: Public Hearing on the MWRA plan to continue dumping sewage into the Charles River. Come Advocate for CLEAN WATER!

I decided to run for city council while participating in the Charles River Shoreline Survey last June. Between the B.U. Bridge and the harbor, where an EPA map had 32 pipes shown emptying into the river, I found almost 200. I was properly disgusted: 30 were flowing in dry weather! I am now involved with the Charles River Watershed Association getting GPS coordinates for each pipe and beginning effluent testing. Goal: ZERO sewage in the river!

#### STUDENTS SHOULD REGISTER AND VOTE BECAUSE:

IT'S FUN! Between city, state, and federal elections, we get to vote Every November; Intriguing Referenda are often on the ballot; and the People's Republic of Cambridge system of Proportional Representation is weird and wonderful.

IF ALL students eligible did vote, you could take a majority on the council! Only 18,870 votes were cast in 1995 council elections.

SIDEWALK Registration is available each Saturday in September in Central and Harvard Squares, and the Election commission is open for Registration each weekday 8:30 till 5:00 on Green St. until October 14.

For more information on the meetings, registering to vote, or my City Council campaign, call me anytime: 492-0180.

The preceding is a political advertisement paid for by

ROGER DOYLE FRYMIRE 22 Fairmont Avenue, Cambridge, MA 02139-4423.

# Mediocre Rush Worsens Crowding

Rush, from Page 1

quality of people, and we were expecting fewer pledges this year," Roulette said.

#### Crowding worsens in dormitories

Crowding in the dormitories is typically impacted by the success of FSILGs during rush, since low rush numbers translate into more students living in campus dormitories.

In order to provide housing for all freshmen, rooms in residence halls are crowded, a process in which, for instance, large singles are converted to doubles, or large doubles into triples. Since fewer freshmen pledged FSILGs this year, the number of stu-

dents beyond capacity who require living space increased by about 30.

There are approximately 143 individuals beyond regular housing capacity that require accommodations this year, compared to 114 last year, and 120 in 1995, according to Phillip M. Bernard, program director of residential life.

"I think that the slow rush this year, as well as the increase in rents due to the changes in Cambridge rent control laws have had an impact on those numbers," Bernard said.

Burton-Conner House had the most number of excess students of all the dormitories with 33, followed by Next House with 32 and East Campus with 30.

Independent Living Group	Blds Accepted '97	Blds Accepted '96
Alpha Delta Phi	16	11
Alpha Epsilon Pi	10	13
Alpha Tau Omega	15	12
Beta Theta Pi	12	12
Chi Phi	5	13
Delta Kappa Epsilon	9	10
Delta Psi (No. 6 Club)	11	8
Delta Tau Delta	13	12
Delta Upsilon	11	10
Epsilon Theta	4	6
Fenway House	2	5
Kappa Sigma	15	15
Lambda Chi Alpha	15	14
Nu Delta	8	12
Phi Beta Epsilon	7	12
Phi Delta Theta	13	14
Phi Gamma Delta	12	13
Phi Kappa Sigma	6	8
Phi Kappa Theta	10	8
Phi Sigma Kappa	11	9
pika	10	8
Pi Lambda Phi	12	7
Sigma Alpha Epsilon	12	15
Sigma Chi	8	8
Sigma Nu	N/A	5
Sigma Phi Epsilon	N/A	18
Student House	8	8
Tau Epsilon Phi	5	11
Theta Chi	12	12
Theta Delta Chi	7	12
Theta Xi	6	5
Women's Independent Living Group	14	13
Zeta Beta Tau	12	11
Zeta Psi	21	12
<b>Total</b>	<b>332</b>	<b>362</b>

Dormitory	Freshman Population	Freshmen Crowded
Baker	80	11
Bexley	21	0
Burton	107	33
East Campus	108	30
MacGregor	80	0
McCormick	68	23
New House (and Language Houses)	77	14
Next House	129	32
Random House	21	0
Senior House	32	0

SOURCE: RESIDENCE AND CAMPUS ACTIVITIES

## MIT Cable Offerings Will Include ESPN2

ACUS, from Page 1

in lifting the privacy restrictions," said GSC President Geoffrey J. Coram G. However, a compromise was reached and the cards will be distributed.

Currently, the GSC has distributed some cards to graduate students. The GSC, along with Information Systems, will handle distribution of the cards. Undergraduates will have to wait until October, at the earliest, to receive the cards, Coram said. Detailed instructions for obtaining the cards will be sent with the September ACUS bill, he said.

It is hoped that this bonus will, at least in part, increase satisfaction

with ACUS. "I think it's a much better bonus," than T-shirts or water bottles, Coram said.

#### Campus cable rates rise

While ACUS rates on campus decrease this semester, students will have to pay more for cable. MediaOne, formerly known as Continental Cablevision, has raised its rates slightly to \$14.75 per month, with a nine-month option at \$125.

With this rate increase, cable service customers can now receive ESPN2, which was "the most requested during the last year," said Randy Winchester of MIT Cable Television. These rates will be locked in for the next two years.

**BE A TEACHER. BE A HERO.**

Call 1-800-45-TEACH.



This space donated by The Tech



**Dilbert® by Scott Adams**

I'M THINKING OF GROWING A BEARD TO DISGUISE THE FACT THAT I HAVE NO CHIN.



THEN I'LL GET SOME LOOSE SWEATERS TO DISGUISE THE FACT THAT I HAVE NO WAIST.



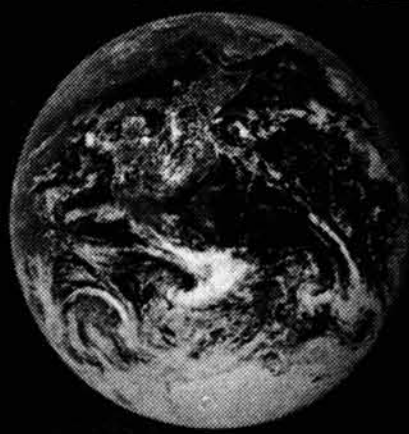
MAYBE YOU SHOULD GET A SHERLOCK HOLMES OUTFIT TO DISGUISE THE FACT THAT YOU HAVE NO CLUE.

MAYBE SOME MANNEQUINS AS FRIENDS...



S. Adams © 1997 United Feature Syndicate, Inc.

**IF YOU'RE NOT RECYCLING YOU'RE THROWING IT ALL AWAY.**



This space donated by *The Tech*

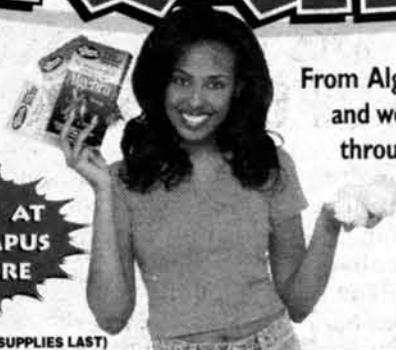
**WHEN DRINKING, CALL A FRIEND. OR GET A RIDE WITH A STRANGER.**



Drinking and riding can lead to a loss of license, a conviction, or even worse. That's if you're lucky. The fact is, 50% of motorcycle fatalities involve riders who have been drinking. So if you have been drinking, get a ride with a friend. It's the best call you can make. **MOTORCYCLE SAFETY FOUNDATION**

This space donated by *The Tech*

**FREE BRAINS!**



From Algebra to Statistics our videos and workbooks will help you get through your toughest classes.

AVAILABLE AT YOUR CAMPUS BOOKSTORE



\*WITH PURCHASE (WHILE SUPPLIES LAST)

www.cerebellum.com

**MIT Student Health Plan**

most services are **Free** with tuition

Unre**MIT**ting convenience for a world-class student body

MIT Medical takes care of student health care needs around the clock.

- 24-hour urgent care on campus
- Some services open Tuesdays til 8pm
- One-stop shopping for medical services
- More than 40 medical services right here on campus
- State-of-the-art fully-equipped inpatient unit

....and more

- WEB** web.mit.edu/medical
- EMAIL** stuplan@med.mit.edu
- STOP** by MIT Medical @ E23-308
- CALL** MIT Student Health Plan @ 617/ 253-4371



At MIT we do things a little differently



# Start at the top and work upwards.

McKinsey only wants the best. So, if you're a graduating M.I.T. Ph.D. student - *in any discipline* - McKinsey is your chance to start at the top and keep excelling.

As a management consultant with McKinsey, you'll be confronted with a succession of varied and contrasting challenges. We are one of the world's leading international management consulting firms and a career with us means working closely with the most senior people in major corporations to help their businesses perform better.

It is an exceptionally stimulating and intellectually demanding role. You'll work with highly talented and supportive colleagues in an environment capable of stretching even the brightest minds.

The rewards are high - not least in terms of job satisfaction.

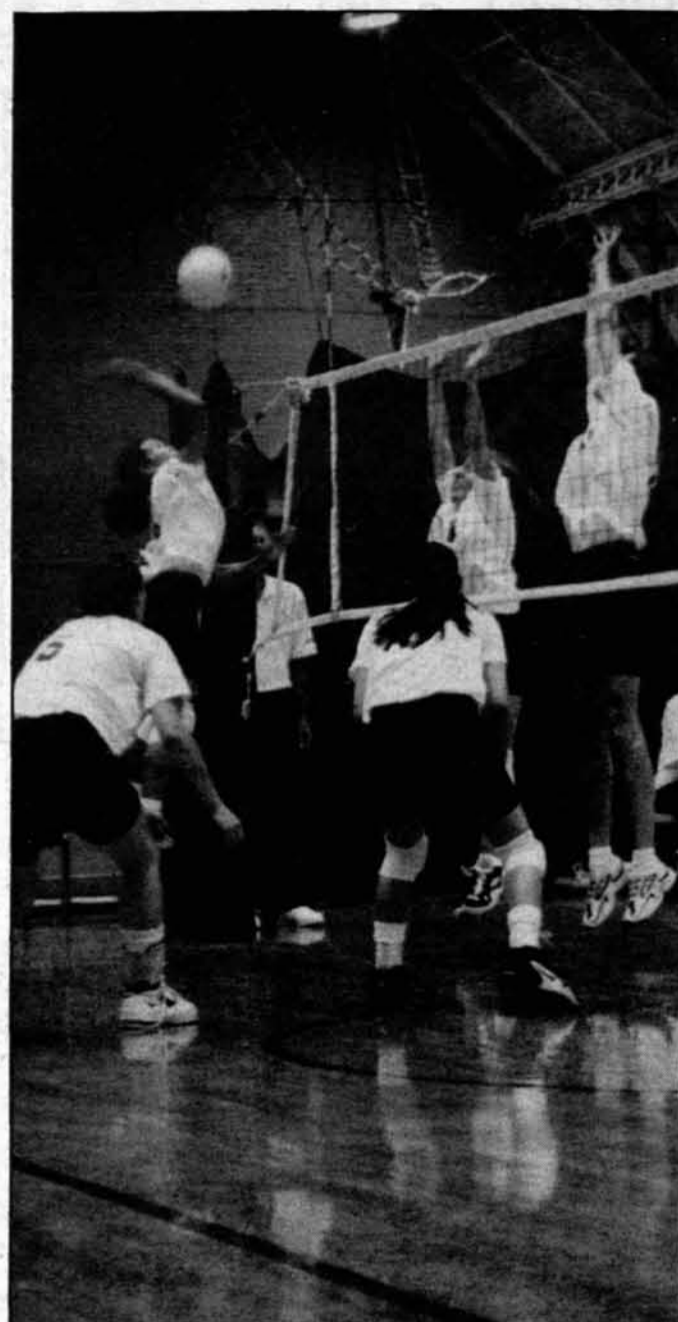
If you'd like to hear more about what a career with McKinsey offers, come to our presentation on Wednesday, September 17th at 6:00 PM at the Cambridge Marriott. A reception will follow.

Dress - informal. Atmosphere - relaxed. You are welcome to either bring your resume or C.V. with you or submit it at a later date.

For additional information, please contact Katherine Padgett at 800-221-1026, ext. 8826.

McKinsey is an equal opportunity employer committed to diversity in the workplace.

## McKinsey & Company



RITA H. LIN—THE TECH  
Outside hitter, Mayleen Ting '99, spikes the ball as her teammates block during Saturday's scrimmage in DuPont.

# Members of the Class of 2001

Want to make a difference for your class?  
Interested in improving the MIT experience?

## ***Run for Class Council Office!***

The following positions are open:

President  
Vice-President  
Treasurer  
Secretary  
Publicity Coordinator(s)  
Social Chair(s)

Information/Election Packets and Petitions are available in the U.A. Office, W20-401 (fourth floor of the Student Center). Petitions must be completed and turned in by Friday, September 19. Elections are to be held on Friday September 26. If you have questions, email us at [ua-elect@mit.edu](mailto:ua-elect@mit.edu).