



Tracy M. Sadowski '99 speaks with R. Douglas Martinides, Aramark national marketing director for Campus Dining Services, during an Aramark focus group meeting yesterday.

## Aramark Proposes New Dining Options

By Shawdee Eshghi  
STAFF REPORTER

Four small focus groups were conducted at the Baker House and 'Next House' dormitories this week to present the opportunity for students to discuss with National representatives from Aramark on what can be done to improve food service at MIT.

"Our purpose was to figure out what kinds of products and services would best meet the needs of west campus," said Aramark's National Marketing Director for Campus Dining Services R. Douglas Martinides, who led the focus group discussions.

The main emphasis of the focus

groups was how to improve Baker Dining so that it could attract more people. Baker Dining was revitalized two years ago by Baker residents who feared that their dining hall would close.

The issue of the Next House dining hall was not really touched. "We are pretty secure that the dining hall will not be shut down. We're just too far from the rest of the campus," said Next House Social Chair Brian A. D'Amato '96.

Ideas such as selling prepared food which can be reheated later, adding a TV to the Baker Dining

Aramark, Page 7

## New MEng Approval By Faculty Deferred

Dan McGuire  
ASSOCIATE NEWS EDITOR

The approval of the proposed Masters of Engineering Degree offered by the Department of Nuclear Engineering was deferred by President Charles M. Vest at Wednesday's faculty meeting.

Other issues presented at the meeting include the report by the Committee on Discipline and the MIT ROTC task force.

Vest made the decision to table the new Master's proposal after problems arose regarding the choice of names for the new degree.

The Nuclear Engineering department wanted to award two separate degrees: a Master of Engineering in Nuclear Systems Engineering and a Master of Engineering in Radiological Health and Industrial Radiation Technology.

"Typically, it has been Institute practice that the degree descriptions are without specifications," said Senior Associate Dean of the Graduate School Isaac M. Colbert. Masters programs usually include just the name of the department and not include a description of the area of study.

"We want to be ... consistent in the matter" of naming degrees, Vest said at the meeting.

"It's such a minor point in the course of discussion [but] it became an issue at the last minute when

someone asked about," Colbert said.

"The typical process here is that the approval takes two meetings, the program is approved at one meeting and voted on at the next meeting," Colbert said. "This process allows questions like the one that came up to be resolved along the way."

Colbert said that he expected the issue to be resolved by the next meeting and that both approval and a vote on the program would take place then.

### Degree to emphasize practicality

The new Masters of Engineering degree places less emphasis on a final thesis and more emphasis on design and practical experience. The Nuclear Engineering department will also continue to offer the traditional Master of Science degree.

The program will also generally not provide financial aid such as research assistantships, according to the proposal.

The changes are designed to adapt the department's graduate program to "actual and anticipated changes in the nature of professional practice," said Professor of Nuclear Engineering Richard K. Lester in his presentation to the faculty.

The program acknowledges and tries to compensate for the "increasing scarcity of research support for

Faculty, Page 6

## Astronaut Alumn Talks to Seminar

By Oril G. Bahcall  
ASSOCIATE NEWS EDITOR

Kenneth D. Cameron '78 spoke Wednesday at a talk entitled "International Cooperation in Space" as part of an undergraduate seminar course on space science and engineering sponsored by the Massachusetts Space Grant Consortium.

Cameron served as commander of the space shuttle mission that docked with the Russian space station Mir last year and also as a Marine Corps Colonel. He presented President Charles M. Vest at the talk with a paperweight-size version of the Brass Rat, the MIT class ring, that he took into space and into the Mir.

The shuttle "crew gets the opportunity to fly items for mementa, and I flew Vest's Brass Rat for him and for MIT," Cameron explained. He presented Vest with a plaque and certificate to attest its authenticity.

Cameron also presented a Unified Engineering (16.001, 16.002, 16.003, 16.004) T-shirt, with a Space Transportation System mission patch on the back, that he flew for the students of MIT aeronautics. The shirt was presented to the teaching assistants of Unified and will be kept in the Unified teaching assistants' room in Building 33.

Cameron received his Bachelor's degree in 1978 from MIT in the Department of Aeronautics and Astronautics. He began his carrier with NASA in 1985 and has served as

Cameron, Page 7



Astronaut Kenneth D. Cameron '78 gave a talk entitled "International Co-operation in Space" on Wednesday.

## Amgen CEO Discusses Company's Secrets of Success

By Ramy A. Arnaout  
EDITOR IN CHIEF

Chairman and Chief Executive Officer of the biotechnology company Amgen Gordon Binder spoke before a packed audience of students, faculty, and guests in Bartos Theater yesterday.

The talk, part of a series sponsored by the School of Engineering and the Sloan School of Management, profiled the world's largest biotech company while highlighting the conditions and culture that have helped Amgen succeed.

"Every biotech drug available today was started by an American," Binder said.

Part of the reason why Amgen is so successful is the ease with which companies can raise money here in the United States, he said.

"Amgen raised \$400 million before it sold anything at all. ... [That] shows why British biotech

companies are coming over here to raise money," Binder said. "That, combined with the university research base, is why America leads and will continue to lead the world in biotechnology."

### Amgen and MIT closely linked

Amgen itself is both a product and a sponsor of the university research base, particularly MIT. It was co-founded by Professor Emeritus of Chemical Engineering Raymond F. Baddour PhD '49. And two years ago it sealed a 10-year, \$30 million research collaboration pact with the Institute.

In all, a third of Amgen's investment money goes to outside researchers at universities at home and abroad, Binder said. "When it works really well it's a cooperative relationship," as opposed to simple subcontracting.

Binder went on to describe the

company's first two government-approved products. Epogen, a hormone that stimulates bone marrow to make red blood cells, is used to alleviate anemia. Neupogen boosts white cell counts to counteract the side effects of chemotherapy and the AIDS drug AZT, making those treatments safer and more useful.

"These two products are the best sellers in biotech," Binder said. And although they do not come cheap, "by the end of this year we'll have 12 products on the market," he said.

"We did one small clinical trial," Binder said. "The hospital charged us \$25,000 per patient."

Every drug must be extensively tested on many people for statistical relevance. As a result, "it's not unusual for a trial to cost \$10 million," he said.

### Inside Amgen's culture

The talk also offered a look at

the kind of corporate culture that made Amgen a multi-billion-dollar success. Among the key ingredients, Binder said, are teamwork, risk-taking, and pursuit of excellence.

"You need to be the kind of company good people want to work in," Binder said. Managers and the higher ranks are treated no differently from other workers.

"Sure I get a higher salary, more stock options. But everyone else gets stock options. When we say we're all in this together, we mean it," Binder said.

Worker inclusion in higher-level decisions is also stressed.

"The people who do the work should help plan the work," Binder said. "The enthusiasm this creates for people who make the plan more than makes up for the time it takes to come up with that plan."

Amgen, Page 6

## INSIDE

- Short Takes Page 6
- MIT Chamber Music Society performs with bright spirit. Page 8
- Cafe Mojo offers funky ambience, food. Page 8
- Before and After hard to take seriously. Page 9
- Gold Rush features Marks' piano accompaniment. Page 9

# WORLD & NATION

## North Korea Suffering Massive Food Shortages, Deutch Says

LOS ANGELES TIMES

WASHINGTON

In one of the Clinton administration's harshest public assessments of the worsening economic conditions in North Korea, CIA Director John Deutch warned Congress that the isolated Communist regime is suffering massive food shortages that threaten the dictatorship's stability.

Previously, administration officials have privately discussed what they see as the growing possibility that North Korea is in the initial stages of collapse. Deutch's statements put the U.S. intelligence community clearly on the record as warning that a "downward spiral" inside North Korea threatens the stability and survival of the regime of Kim Chong-il.

In the CIA's annual survey of global security threats, Deutch said North Korea still refuses to take steps toward economic reform that might reverse its rapid slide. Although the regime still devotes 25 percent of its economy to maintaining a massive military capable of invading South Korea, Deutch predicted that North Korea will find it increasingly difficult to "insulate the armed forces from worsening economic problems."

He added that social and political instability could bring down the regime quickly if the nation's food shortages spread to front-line Army units.

## More Charged in Indian Scandal

THE WASHINGTON POST

NEW DELHI, INDIA

Government investigators filed corruption charges against 14 politicians Thursday and disclosed plans to prosecute another, an opposition leader who promptly resigned as head of a state government.

The new round of charges increased to two dozen the number of political figures formally accused of accepting illegal payments from a foreign-exchange dealer. The investigation is based on diary entries of accused money launderer S.K. Jain, whose notations indicate a total of \$18 million in payments made to 114 persons beginning in 1988.

Of the recipients, prosecutors say 62 were politicians. The most prominent of those named Thursday was Madan Lal Khurana, chief minister of the state encompassing New Delhi, the national capital, and a leader of the opposition Bharatiya Janata Party (BJP). In a brief letter resigning the state leadership, Khurana denounced the charges as unfounded and politically motivated.

The 14 others include four cabinet members who resigned earlier this week in anticipation of being charged Thursday at a Supreme Court hearing. Nine of the 14 are members of the ruling Congress Party, three belong to the left-leaning Janata Dal party, one to the Hindu nationalist BJP and one to a smaller opposition party.

## Justice, State Department Officials Investigate Farrakhan

NEWSDAY

WASHINGTON

Justice and State Department officials said Wednesday they are awaiting the return of Nation of Islam leader Louis Farrakhan to determine whether he violated U.S. law while visiting Iraq and Libya to deliver fiery denunciations of U.S. policy.

State Department spokesman Nicholas Burns said U.S. passport holders are required to obtain a special passport validation to travel to Iraq or Libya, and there was no indication that Farrakhan or his party of more than 30 had requested such validations.

But Carl Stern, the Justice Department spokesman, said Farrakhan may escape prosecution by not having had his passport stamped. The Supreme Court has ruled that U.S. citizens cannot be barred from traveling to any country but they can be barred from using a U.S. passport on such trips. If Farrakhan did not use his passport or was not asked for it, there would be no basis for prosecution, he said. "But if you have a Libya stamp, then you're in big trouble."

The question can only be determined when Farrakhan returns, expectedly later this week, he said. Burns said there is no restriction on using the U.S. passport to enter Iran, where Farrakhan delivered another anti-U.S. speech.

## WEATHER

### Play Misty!

By Marek Zebrowski

STAFF METEOROLOGIST

A persistent trough over the slow-moving Northeast surface fronts and a stream of disturbances passing through the area will continue our cloudy and wet spell for a few more days. As a weak cold front crawls offshore early on today, a small wave may develop just off Nantucket, keeping the moist low-level flow in, especially in the coastal sections. By late today, a better-organized low pressure system will begin to move towards eastern Great Lakes. Moisture associated with it will reach us by tomorrow; there is a good potential for soaking rains throughout the region. With a chance of a secondary low forming by late tomorrow on the mid-Atlantic coast and the main system slowing down on its eastward progress in response to a blocking ridge offshore, no wholesale clearing can be hoped for before early next week.

**Today:** Cloudy and cool with a chance of coastal drizzle and locally dense fog. Few afternoon breaks may occur well to the west and north. High 46°F (8°C) with damp, onshore winds.

**Tonight:** Mostly cloudy near the coast with spotty fog and drizzle, partly cloudy elsewhere. Low near 40°F (4°C).

**Tomorrow:** Cloudy with rain developing in the morning. Strengthening southeasterly winds. Milder high of 54°F (12°C).

**Sunday outlook:** Continued mostly cloudy, unsettled and cooler. Highs in low to mid 40s (4-6 °C).

## Navy Orders Three-Day Halt Of F-14 Flights after Crashes

By Bradley Graham

THE WASHINGTON POST

WASHINGTON

The Navy ordered a three-day halt to flights of F-14 fighter aircraft Thursday after losing another of the supersonic jets off a carrier in the Persian Gulf.

It was the third crash of an F-14 in less than a month and left defense officials baffled about what could explain the sudden spike in naval air accidents. Each of the recent crashes has occurred under widely dissimilar circumstances and involved different squadrons, although all the planes and crews were based at Miramar Naval Air Station near San Diego.

"We do not know what has caused these three crashes this year with the F-14s," Pentagon spokesman Kenneth Bacon told reporters.

In pulling the fighters out of service temporarily, Navy commanders hope to use the pause to search for common threads among the recent mishaps, compare them to past accidents and re-evaluate training, maintenance and other related procedures.

Bacon said the respite also will serve "as a warning, as a period of reflection, for the whole F-14 community," allowing them time "to sit down and to sort of replot everything they've learned."

The more than 330 F-14s constitute about one-fifth of the Navy's fighter fleet and have been relied on heavily lately to patrol skies over Bosnia and Iraq. But defense officials said taking the planes out of action would not impair U.S. mili-

tary operations around the world, since other Navy jets as well as Air Force fighters could be substituted.

Pentagon officials continued to defend the F-14's flying record, saying its accident rate has improved substantially since the aircraft's introduction 23 years ago and now compares favorably with the average for all carrier-based warplanes.

Holding up a chart showing a steady decline in F-14 mishap rates, Bacon pointed to several years in which the rate suddenly — and, to this day, inexplicably — shot up, only to recede again the following year.

Nonetheless, a General Accounting Office report released earlier this month said Navy and Marine Corps planes scored higher mishap rates per 100,000 flying hours than Air Force and Army aircraft — a fact that Navy officials attribute to the greater challenges of operating off aircraft carriers.

The latest surge in crashes clearly has rattled the Navy's leadership. Adm. Jeremy "Mike" Boorda, the chief of naval operations, wasted little time in ordering the stand down after learning of Thursday's crash. He had been considering such a move for several days, since another F-14 went down off the coast of California Sunday, according to Navy officials.

Thursday's crash occurred at 2:30 p.m. (6:30 a.m. EST) over international waters in the Persian Gulf after the F-14D had taken off from the aircraft carrier USS Nimitz on what one Navy official termed a "post-maintenance check flight," testing a piece of equipment or sys-

tem that had needed repairs or maintenance.

"They were testing it to make sure it was doing what it was supposed to be doing," the official said. Initial indications were that pilot error was to blame, according to another source familiar with the incident.

The plane's pilot and radar intercept officer ejected safely and were rescued by helicopter about 30 miles from the carrier, according to a Navy statement.

In Sunday's crash, an F-14D assigned to the carrier USS Carl Vinson was speeding low over water about 120 miles off the Southern California coast, simulating a cruise missile as part of a routine exercise to help surface ships practice their tracking systems. The plane's two crew members ejected before the plane broke up and sank.

Aviators have complained for years that the engines on the older "A" model F-14s are not powerful enough to suit their needs and require a very sensitive touch on the throttle. The Navy has since introduced more powerful "B" and "D" models.

"Each of these crashes occurred under very different circumstances," observed a Navy official. "One was a take-off situation; another plane was flying fast and low; and the most recent one was flying at a higher altitude."

Among the things likely to be considered during the stand down, the official said, is whether to tighten restrictions on speed and maneuvers for F-14 aircraft.

## Chirac Pushes Plan to Cut Back French Army, Eliminate Draft

By William Drozdiak

THE WASHINGTON POST

PARIS

President Jacques Chirac went on national television Thursday night to outline a plan for the most drastic overhaul of this country's armed forces in nearly four decades, including the scrapping of all land-based nuclear missiles and creation of a leaner, volunteer army capable of projecting power far beyond French borders.

In a startling break with tradition for a country that has long cherished national military service, Chirac declared that over the next six years France would abolish conscription and establish a professional army that would be smaller, much more mobile and cheaper to maintain. The new force will be designed to counter distant threats to European stability rather than merely to shield French territory.

Citing the extraordinary transformation of Europe's strategic environment in the post-Cold War era, Chirac said that as commander in chief of the military he recognized that the armed forces must be radically reshaped for the first time since the Algerian War of the 1950s and early '60s to meet potential conflicts in the 21st century.

Insisting that the current half-million-member military is "excessive and ponderous," Chirac said he is confident that the number could be safely cut to no more than 350,000, at considerable savings to the government.

At the same time, Chirac made clear that French forces must become more flexible to meet new deployment requirements. "We must learn the lessons of the wars in

the (Persian) Gulf and in Bosnia, where we were not able to assume our responsibilities," Chirac said. France could muster barely 10,000 troops in response to each of those crises, and Chirac said that in the future five to six times that number would be needed to defend vital national interests that may be jeopardized by conflicts in faraway theaters.

In abandoning two centuries of strategic doctrine focused primarily on protecting French soil, Chirac reaffirmed his conviction that friendship with Germany is permanent, that Moscow's aggressive intentions toward the West are gone and that future challenges to French interests lie along an explosive regional periphery — notably in the Balkans and North Africa.

Since Chirac took office last May, France has ended its 30-year refusal to participate in NATO's military command and called for a more equal partnership with the United States in the Atlantic alliance. Chirac believes that with French borders now safe, France should be prepared to take the lead in helping make Europe more secure through use of a rapid intervention force that could snuff out small brush-fire wars around the continent.

Chirac acknowledged that his plan to abolish conscription had caused consternation in Germany and that some French troops stationed at NATO bases there would be brought home over Bonn's objections. But he offered to sustain French participation in Eurocorps — a large-scale military detachment created last year as an experimental embryo of a European army, with

units from France, Germany and other European Union members.

He also vowed to uphold French promises to eliminate all land-based nuclear weapons and concentrate the world's third-biggest nuclear arsenal on missiles that could be launched from submarines and airplanes. Germany had long criticized the placement of short-range missiles on the Albion plateau in eastern France—missiles intended to help repel a Soviet invasion of Western Europe but could only reach German territory.

The biggest impact of the reforms, however, will undoubtedly be felt at home. Chirac promised that as many regiments and military bases are demobilized the government would do whatever possible to minimize the economic consequences in affected regions.

Chirac's proposal has already generated heated debate within the French military, evoking strong opposition among those officers who believe that the required 10 months of compulsory service helped nurture common values. Former defense minister Francois Leotard said he fears that moving toward a professional army would divorce soldiers from the rest of society.

But proponents of the change point to the success of all-volunteer armies in the United States and Britain, and they argue that forcing young people to serve in the military drags down army morale and fighting skills.

A parliamentary report estimates that even though professional soldiers would have to be paid higher salaries, the country could save as much as \$2.8 billion.

# IMF Agrees to Loan \$10.2 Billion To Help Russia's Ailing Economy

By Lee Hockstader  
THE WASHINGTON POST

MOSCOW

The International Monetary Fund agreed Thursday on a \$10.2 billion loan package to help Russia's struggling economy over the next three years, providing an enormous boost for President Boris Yeltsin on the eve of his reelection campaign.

If approved as expected by the fund's executive board, the deal — bigger than any IMF loan except the bailout for Mexico last year — will begin in April to pump more than \$300 million a month in credits into the Russian economy during the critical run-up to the first round of presidential elections scheduled for June 16. It would also allow Yeltsin to meet his promise to pay about \$2.8 billion in back wages owed to workers in state enterprises in March.

By mid-July, when some analysts think Yeltsin will face Communist Party leader Gennady Zyuganov in a runoff election, the

IMF program will have delivered about \$1.3 billion to Russia — a massive fiscal shot in the arm for the president at a crucial political moment.

The fund's managing director, Michel Camdessus, dismissed suggestions that the IMF intended to help the Russian leader survive a strong Communist challenge, declaring in a news conference: "We do not take sides. We have a program, we have a country which needs support. It is our duty and moral obligation to support this country."

Camdessus said the IMF would continue its massive help for any elected government of Russia that stuck to the agreement reached Thursday, and he suggested that if a new president takes power he will be "confronted with the hard realities of this country" and forced to stay on course with reforms.

Nonetheless, Camdessus issued a thinly veiled warning to the Communists, whose program of massive social spending, renationalization of

industry and a beefed-up role for the central government hardly squares with the fund's objectives. "If they don't comply with the commitments of Russia established in these documents, our support would be interrupted," he said flatly.

A deal between the IMF and the government had been widely expected, not least because it had previously been endorsed by President Clinton and German Chancellor Helmut Kohl. Still, the agreement announced Thursday exceeded expectations both in the size of the package — initially pegged at \$9 billion by the IMF — and the speed with which it was agreed to.

Government officials made no effort to hide their glee at reaching an agreement on a deal that will help them make good on at least some recent spending promises.

As in the previous IMF loan package, this one will be delivered in monthly dollops and fund officials will review Russian compliance with the agreement before each new credit is extended.

# United States to Compensate Families Of Iranians Killed in '88 Plane Crash

By Robin Wright  
LOS ANGELES TIMES

WASHINGTON

At a time when the United States is trying to defuse tensions with Iran, the U.S. government announced Thursday that it will pay almost \$62 million to families of 248 Iranians killed when an American warship shot down an Iran Air passenger plane over the Persian Gulf in 1988.

No money will go to the Iranian government.

The settlement does not signal a change in relations with Iran, said State Department spokesman Nicholas Burns. "There is no change to our opposition to objectionable Iranian policies such as support for terrorism and pursuit of weapons of mass destruction."

Yet it comes as the Clinton administration, alarmed that the United States and Iran may be slipping toward some kind of collision, is sending strong signals to Tehran that it does not want any kind of showdown, according to senior administration officials.

One Pentagon official said: "The political pressure in both countries has increased the rhetoric and actions in dangerous ways."

The accident settlement ends a

prolonged dispute. The past three U.S. administrations have stuck to the claim that the U.S. action, which killed 290 people, was defensive. But the Iranian airbus was clearly a civilian flight.

Under the settlement, which came after Iran agreed to drop its case at the International Court of Justice in The Hague, the United States will pay \$300,000 for each wage-earner killed and \$150,000 for each non-wage-earner, Burns said. One recent cause of the deteriorating relationship between the United States and Iran came last week in Bosnia-Herzegovina, where NATO troops arrested two Iranians equipped with weapons and explosives and who appeared to be running an extremist cell.

In the Balkans, Iranian agents have been monitoring U.S. diplomats in Bosnia and Croatia. In the Middle East, Iranian covert operations have been visible in Saudi Arabia and in Iraq, where Iran has been working with the Kurdish population, Pentagon sources said.

Three other factors have sparked growing U.S. concern. First, Iran is expanding production of long-range missiles and chemical weapons — both primitive mustard gas and more sophisticated nerve gases such

as sarin, the Pentagon reports.

Second, most of Iran's recently purchased conventional weaponry is offensive systems that could disrupt Persian Gulf shipping. Over the last two months, for example, Iran has tested new anti-ship missiles bought from China, according to Pentagon officials.

Third, Iran remains the most active opponent of the U.S.-orchestrated Middle East peace process. Iran continues to support and train extremist Palestinian groups that have pledged to disrupt the peace, U.S. officials said.

But the officials are also worried about recent signals from the U.S. Congress.

Last year, House Speaker Newt Gingrich, R-Ga., called for a \$20 million appropriation for covert operations designed to oust Iran's Islamic government — a move that Iran saw as a violation of the 1981 accord that brought freedom for 52 American hostages held in Tehran in exchange for a U.S. vow to keep out of Iran's internal affairs.

And Sen. Alfonse M. D'Amato, R-N.Y., introduced legislation last year requiring the president to impose economic sanctions on any foreign company that sells oil equipment to Iran.

# NATO Threatens to Maintain Bosnian Serb Sanctions as Compliance Levels Stay Low

By Dean E. Murphy  
LOS ANGELES TIMES

SARAJEVO, BOSNIA-HERZEGOVINA

NATO officials said Thursday that contacts have still not been established with top Bosnian Serb military leaders, despite assurances last weekend in Rome that the boycott would end.

The continued lack of cooperation, described by NATO commanders as a serious breach of the Dayton, Ohio, peace accord, led to an ultimatum by NATO on Thursday: Resume required ties within 48 hours or economic sanctions against the Bosnian Serbs will not be eased.

"What we are hoping is that the commitment that everybody showed to the Rome agreement will now be carried through," NATO Lt. Gen. Michael J.D. Walker said in an interview. "It isn't. We can see that clearly."

The tough stance came just a day after the NATO command here issued a statement that it will recommend to the North Atlantic Council, the governing body of the Atlantic alliance, that the Bosnian

Serbs be deemed in general compliance with military aspects of the peace accord.

Such an assessment is necessary for economic sanctions against the Bosnian Serbs, imposed near the beginning of the war, to be suspended by the U.N. Security Council. Negotiators in Rome pledged last week to have the sanctions discontinued as an incentive for greater Bosnian Serb cooperation.

But Walker, who commands NATO ground forces in Bosnia-Herzegovina, said the statement of compliance has been put on hold until the 48-hour deadline passes and NATO determines whether military contacts have been reinstated. The issue is so serious, he said, that lack of cooperation in that one area — despite general Bosnian Serb fulfillment of other provisions — would result in a recommendation that sanctions remain intact.

The continuing tug-of-war with the Bosnian Serbs has frustrated NATO's top commanders, who were left standing Monday on the deck of a U.S. aircraft carrier wait-

ing — in vain — for Bosnian Serb Maj. Gen. Zdravko Tolimir to show up for a planned meeting of Muslim, Croat and Serb military commanders from Bosnia-Herzegovina.

Walker, in a candid acknowledgment of NATO's awkward negotiating stance, said it has become clear in sessions with Tolimir that Gen. Ratko Mladic, the Bosnian Serb military leader indicted on war crimes, is still running military operations.

Under the Dayton accord, NATO does not officially recognize Mladic's authority because of the criminal charges against him, thereby elevating Tolimir to the position of No. 1 contact.

"He doesn't, sadly, act with the authority of the representative commander in chief of an army," Walker said of Tolimir. "He is quite clearly looking over his shoulder back at the main headquarters."

The standoff with the Bosnian Serb military continued Thursday as the evacuation of Serb-populated suburbs of Sarajevo shifted into high gear.

# Boutros-Ghali Warns of Debt Crisis

LOS ANGELES TIMES

WASHINGTON

Secretary-General Boutros Boutros-Ghali warned Wednesday that the United Nations' financial crisis, contrary to what doubters think, is so real and dangerous that he may have to start closing the organization next summer if the United States and others refuse to pay what they owe.

The American failure to pay has induced many other countries to hold back, the secretary-general told reporters and editors in the *Los Angeles Times* Washington bureau.

As a result, Boutros-Ghali said, the United Nations is now owed \$3.2 billion by its members, half of it by the United States.

The secretary-general, a former professor and one-time acting foreign minister of Egypt, derided the idea advanced by optimists that somehow something will turn up soon to save the United Nations. He said he wants "to show to the American people the gravity of the situation."

He said he would be forced to start closing down programs next June, July or August and that he anticipates controversy in the United Nations about the programs selected for the first cuts, because countries have different favorites.

The Washington "apparatchiks," he said, using the Russian word for bureaucrats, keep promising that the United States will soon do something to pay its debt, but nothing is ever done.

# Texas Governor Seeks Disaster Aid

LOS ANGELES TIMES

HOUSTON

Fueled by a late-winter heat wave and fanned by bone-dry winds, dozens of wildfires continued their blistering march across the Texas grasslands Thursday, leading Gov. George W. Bush to request that the entire state be declared a federal disaster area.

Since the beginning of the year, Texas has been erupting like a giant tinderbox, with state emergency officials reporting more than 2,900 blazes — nearly double the number in all of 1995. So far, more than 78,000 acres have been charred, mostly in rural counties, from the parched prairies of West Texas to the dense forests of the east.

The latest hot spot is Poolville, a small community about 35 miles northwest of Fort Worth, where flames have charred more than 16,000 acres, damaged 90 structures and injured at least 49 people, most of them firefighters. Before flying over the burn zone on Thursday, Bush called on Texas National Guard troops and U.S. Forest Service air tankers to help battle the blaze, which was 70 percent controlled by the evening.

"We are in an extremely dangerous situation," said Bush, adding that the state has been spending about \$350,000 a day to fight the flames. "We're pouring manpower and equipment as best as we possibly can."

But no single fire has remained in the forefront for long. Emergency officials say it is the sheer quantity, not the intensity, of the blazes that has stretched resources so thin.

# New Type of Stellar Object Found

LOS ANGELES TIMES

Astronomers have discovered a strange sputtering and pulsing object in the center of the Milky Way galaxy that appears to be a completely new species of stellar object.

"This repeated bursting behavior ... is unlike anything we've ever seen before," said Don Lamb, a University of Chicago astronomer.

Since its X-ray signal was first picked up by Chryssa Kouveliotou of NASA's Marshall Space Flight Center in December, scientists all over the world have been trying to make the first visual sighting of the object, said MIT Professor of Physics Walter H. G. Lewin.

The object of excitement appears to a strange hybrid of several types of previously detected — but little understood — exotic stars. Adding to the mystery is that the rhythm of the object's signals have changed substantially since December.

When NASA's orbiting Compton Gamma Ray Observatory detected the object's signal, it was spitting out erratic streams of high energy X-rays every few minutes; but two days later, the bursts had settled down to one per hour. At the same time, the object was pulsing with the steady beat of rapidly spinning stellar core — a rhythm steadier than even atomic clocks, said Cominski.

# Greenspan Re-Nominated to Fed

LOS ANGELES TIMES

WASHINGTON

Voting for continuity in monetary policy, President Clinton on Thursday nominated Alan Greenspan to a third term as chairman of the Federal Reserve Board, and chose to fill two other central bank vacancies with a moderate White House budget official and a centrist economic consultant.

The nominations signaled White House acceptance of an eight-year Greenspan stewardship of the Fed that has emphasized price stability over economic growth. Greenspan "has inspired confidence, and for good reason," Clinton said in an Oval Office announcement.

In addition to Greenspan, Clinton nominated Alice M. Rivlin, the White House budget director, who is more conservative on fiscal policy than some of her administration colleagues, to serve as vice chairman. He named Laurence H. Meyer, an economic forecaster from St. Louis, to fill the board's other vacancy.

Senate confirmation of Greenspan, 69, appeared certain, and approval of the other two seemed highly likely. Sen. Alfonse D'Amato, R-N.Y., chairman of the Senate Banking Committee, said he "sees no impediments" to quick confirmation of the three.

Clinton aides said soundings they have taken on Rivlin and Meyer also suggested they would be confirmed.

The seven-member Federal Reserve Board sets the nation's monetary policy, influencing the level of interest rates and availability of money through purchases and sales of bonds. Under Greenspan's tenure, it has held a strengthening grip on inflation, much to the satisfaction of Wall Street.

Rivlin and Meyer may broaden the perspective of the Fed with new views, some fellow economists said. White House officials asserted that both are independent-minded practitioners who may invigorate the debate on economic prescriptions.

# OPINION

## Letters To The Editor



**Chairman**  
Scott C. Deskin '96

**Editor in Chief**  
Ramy A. Arnaout '97

**Business Manager**  
Christine Chan '98

**Managing Editor**  
Saul Blumenthal '98

**Executive Editor**  
Anders Hove '96

**NEWS STAFF**

**Editors:** A. Arif Husain '97, Stacey E. Blau '98, Shang-Lin Chuang '98, David D. Hsu '98; **Associate Editors:** Venkatesh Satish '98, Orli G. Bahcall '99, Dan McGuire '99; **Staff:** Oleg E. Drozhinin '97, Ifung Lu '97, James M. Wahl '97, Christopher L. Falling '98, Sam Hartman '98, Brett Altschul '99, Shaw-dee Eshghi '99, Carina Fung '99, Yaron Koren '99, Jean K. Lee '99; **Meteorologists:** Michael C. Morgan PhD '95, Gerard Roe G, Marek Zebrowski.

**PRODUCTION STAFF**

**Editors:** Teresa Lee '96, Jennifer Peltz '98; **Staff:** Amy Hsu '94, Laura DePaoli '97, Jimmy Wong '97, Larry Chao '98, Yun-Ju Lee '98, Josh Bittker '99, Michael D. Forbes '99, Jeremy J. Lilley '99, Arthur Murakami '99, Sharon Shen '99, Binh Truong '99, Jason C. Yang '99, Khelga Karsten.

**OPINION STAFF**

Raajnish A. Chitale '95.

**SPORTS STAFF**

**Associate Editors:** Bo Light '96, Jennifer N. Mosier '96; **Staff:** Thomas Kettler SM '94, Darren Castro G, Brian Petersen '96, David Berl '97, Jeremy Cohen '97, Daniel Wang '97, Jason Weintraub '97, Farhan Zaidi '98.

**ARTS STAFF**

**Editor:** Craig K. Chang '96; **Associate Editor:** David V. Rodriguez '97; **Staff:** Thomas Chen G, Teresa Esser '95, Audrey Wu '96, Brian Hoffman '97, Kamal Swamidoss '97, Rob Wagner '97, Hur Koser '98, Daniel Ramirez '99, Stephen Brophy.

**PHOTOGRAPHY STAFF**

**Editors:** Adriane Chapman '98, Indranath Neogy '98; **Associate Editor:** Helen Lin '97; **Staff:** Gábor Csányi G, Rich Fletcher G, Arifur Rahman G, Jiri Schindler '96, Sharon N. Young Pong '96, Tiffany Lin '97.

**FEATURES STAFF**

Hugo M. Ayala G, Pawan Sinha G, Willy Ziminsky G, Steven D. Leung '96, Cherry Ogata '96.

**BUSINESS STAFF**

**Operations Manager:** Pamela Shade '98; **Advertising Manager:** Angela Liao '98; **Staff:** Mary Chen '97, Ricardo Ambrose '98, Jessica Maia '98, Winnette McIntosh '98, Karen Chan '99, Terri A. Wilson '99.

**TECHNOLOGY STAFF**

**Director:** Daniel C. Stevenson '97; **Associate Directors:** Christina Chu '98, Cristian A. Gonzalez '99; **Staff:** Kathleen Lynch.

**EDITORS AT LARGE**

**Contributing Editors:** Eva Moy G, Thomas R. Karlo '97, Jennifer Lane '98.

**ADVISORY BOARD**

V. Michael Bove '83, Robert E. Malchman '85, Thomas T. Huang '86, Reuven M. Lerner '92.

**PRODUCTION STAFF FOR THIS ISSUE**

**Night Editors:** Daniel C. Stevenson '97, Jennifer Peltz '98; **Staff:** Saul Blumenthal '98, Hoi Wong '99

*The Tech* (ISSN 0148-9607) is published on Tuesdays and Fridays during the academic year (except during MIT vacations), Wednesdays during January and monthly during the summer for \$20.00 per year Third Class by *The Tech*, Room W20-483, 84 Massachusetts Ave., Cambridge, Mass. 02139-7029. Third Class postage paid at Boston, Mass. Non-profit Organization Permit No. 59720. **POSTMASTER:** Please send all address changes to our mailing address: *The Tech*, P.O. Box 397029, Cambridge, Mass. 02139-7029. Telephone: (617) 253-1541, editorial; (617) 258-8324, business; (617) 258-8226, facsimile. Advertising, subscription, and typesetting rates available. Entire contents © 1996 *The Tech*. Printed on recycled paper by MassWeb Printing Co.

### Merger Could Offer Opportunity for Empowered Students

I was disappointed by the mixed-to-unfavorable reaction that student leaders and *The Tech* editorial ["Student Input Should Guide Merger," Feb. 16] gave to the proposed merger of the housing functions of Residence and Campus Activities and the Department of Housing and Food Services. Specifically, I was disappointed that the students feel their

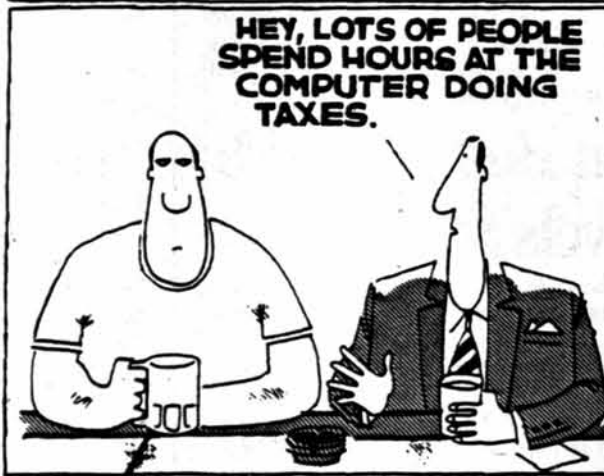
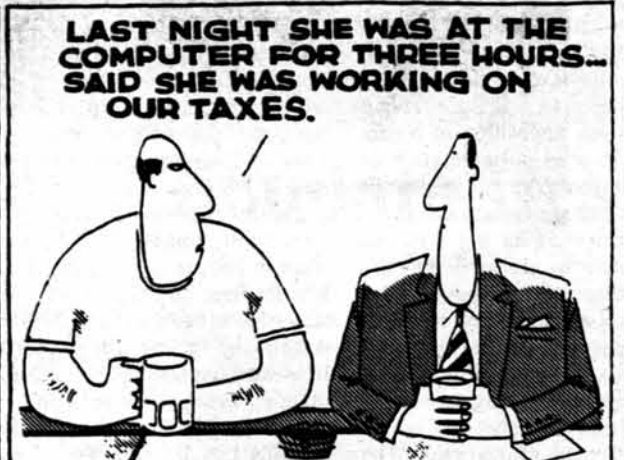
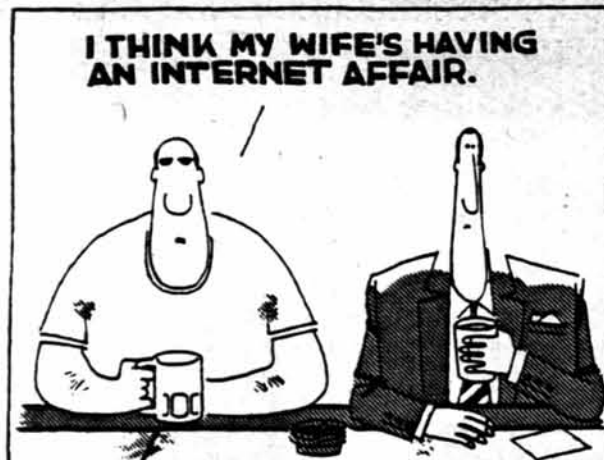
ability to "manage and guide life in the housing system" would be threatened. I suggest that this is indicative of the lack of trust that exists in a climate where students have to garner their "political turf" as a result of organizational chaos, rather than by mutual agreement with administrators.

Instead of viewing the merger as a threat to student self-determination in their living groups, I view it as an opportunity for a "Magna Carta" moment where the rights and responsibilities of student self-determination can be defined. The result would be a system where the MIT professionals (currently in

HFS and RCA) can align their experience and skills (rather than being at cross-purposes) and work with empowered students to create living and learning communities that are educationally and socially more rewarding, without many of the frustrations and complications that currently exist.

I hope that students, the re-engineering team, and the other decision-makers are able to take advantage of this rare opportunity for an improvement that re-engineering is presenting the Institute with.

Joseph J. Bambenek G



### Opinion Policy

**Editorials**, printed in a distinctive format, are the official opinion of *The Tech*. They are written by the editorial board, which consists of the chairman, editor in chief, managing editor, executive editor, news editors, and opinion editors.

**Dissents**, marked as such and printed in a distinctive format, are the opinions of the signed members of the editorial board choosing to publish their disagreement with the editorial.

**Columns and editorial cartoons** are written by individuals and represent the opinion of the author, not necessarily that of the newspaper.

**Letters to the editor** are welcome. They must be typed, double-spaced and addressed to *The Tech*, P.O. Box 397029, Cambridge, Mass. 02139-7029, or by interdepartmental mail to Room W20-483. Electronic submissions in plain text format may be mailed to letters@the-tech.mit.edu. All submissions are due by 4:30 p.m. two days before the date of publication.

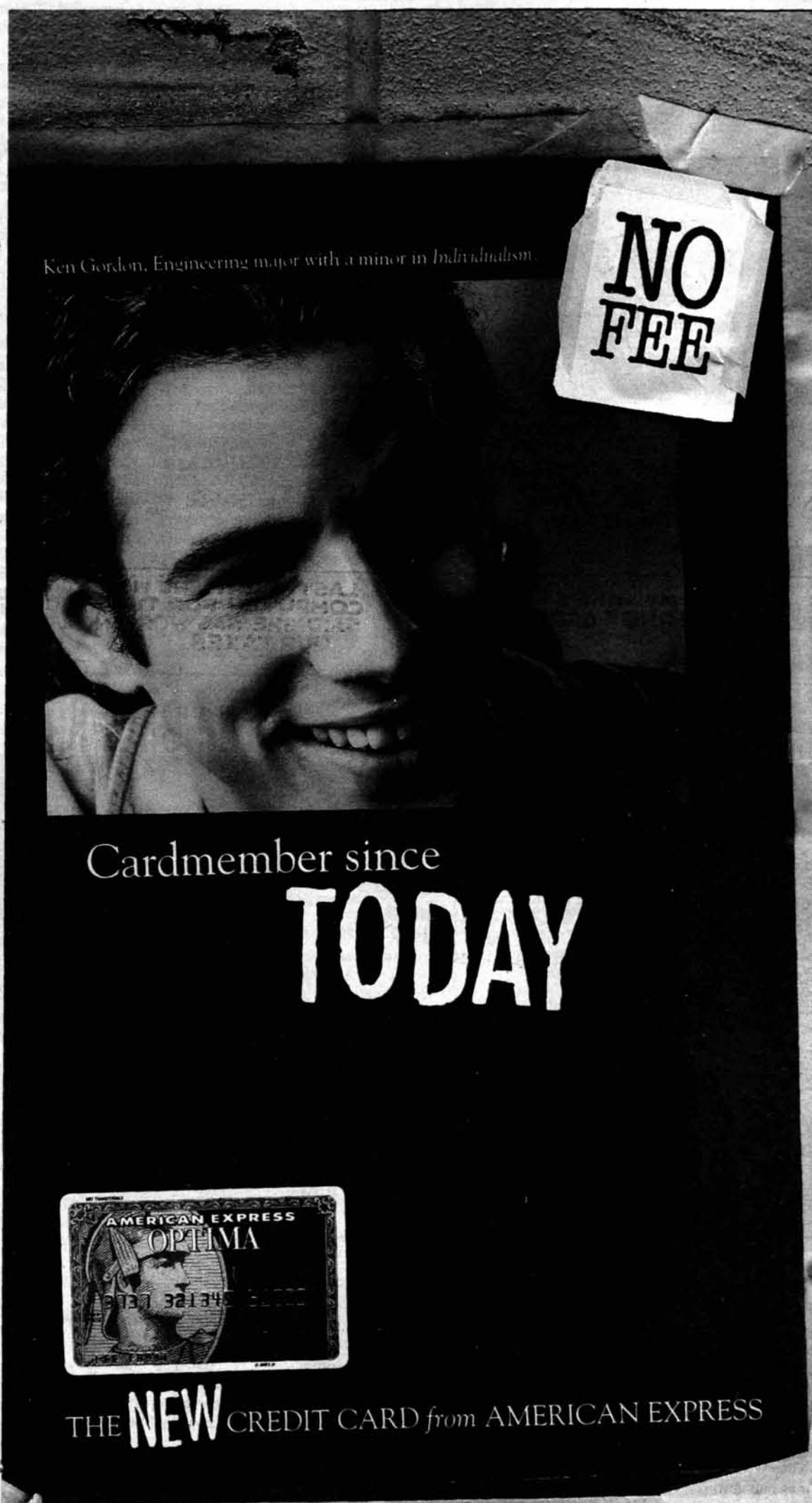
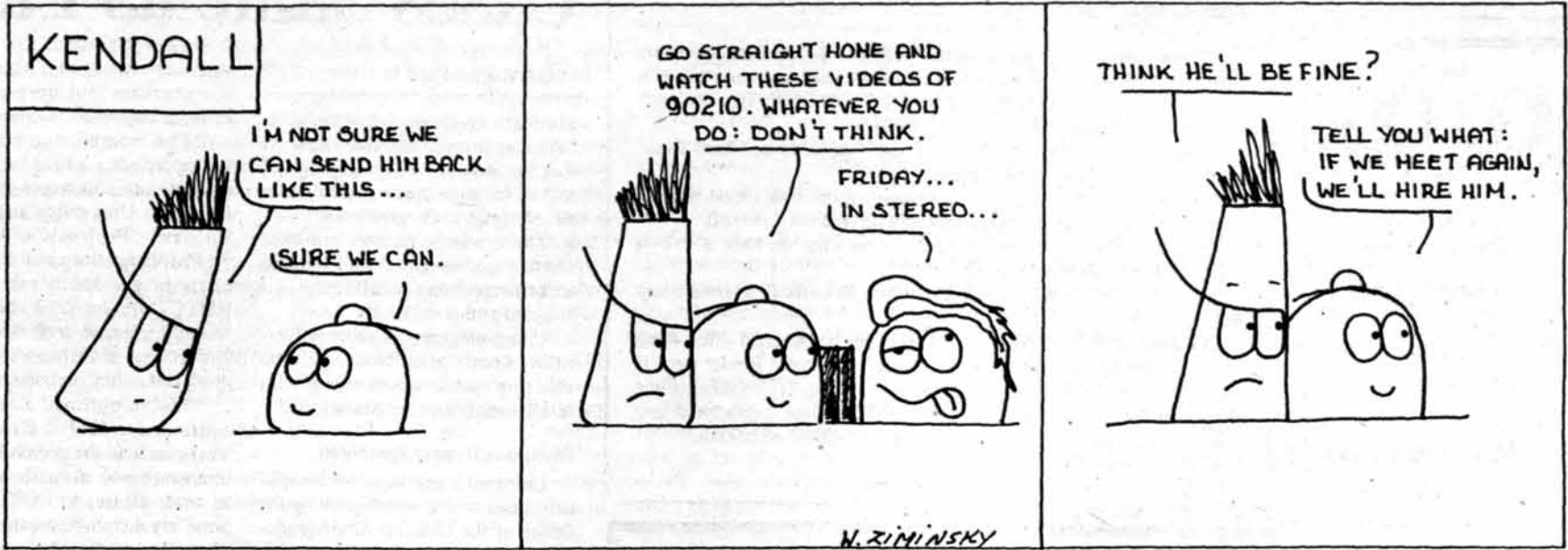
**Letters and cartoons** must bear the author's signatures, addresses, and phone numbers. Unsigned letters will not be accepted. No letter or cartoon will be printed anonymously without the express prior approval of *The Tech*. *The Tech* reserves the right to edit or condense letters; shorter letters will be given higher priority. Once submitted, all letters become property of *The Tech*, and will not be returned. We regret we cannot publish all of the letters we receive.

### To Reach Us

*The Tech's* telephone number is (617) 253-1541. Electronic mail is the easiest way to reach any member of our staff. Mail to specific departments may be sent to the following addresses on the Internet: ads@the-tech.mit.edu, news@the-tech.mit.edu, sports@the-tech.mit.edu, arts@the-tech.mit.edu, photo@the-tech.mit.edu, circ@the-tech.mit.edu (circulation department). For other matters, send mail to general@the-tech.mit.edu, and it will be directed to the appropriate person.

# rookies

# by willy ziminsky



Ken Gordon, Engineering major with a minor in Individualism.

Cardmember since  
**TODAY**



THE **NEW** CREDIT CARD from AMERICAN EXPRESS



The new Optima® Card from American Express has the kind of benefits every student can appreciate. Like no annual fee. The option to make payments over time. Big savings on Continental airfares and MCI long distance calling. A low introductory interest rate. And the unsurpassed service only American Express can provide. So why settle for an ordinary credit card? Declare yourself a Cardmember, today.

To apply, call

**1 800 344-4057**



Tap into a new online resource: American Express University. Visit us at <http://americanexpress.com/student/>

# Tax info, toll-free.

Tax questions? Call TeleTax for recorded information on about 150 tax topics, 24 hours a day.



Department of the Treasury  
Internal Revenue Service  
<http://www.ustreas.gov>

This space donated by *The Tech*

**Spring Break**  
GUARANTEED LOWEST PRICES ON CAMPUSES!!!  
Sell Trips, Earn Cash & Go Free!!! Call For Details!!!  
On Campus Contact  
Council Travel @ 255-2555  
Charles @ 266-5737  
John @ 437-7...

Cancun from \$399  
Jamaica from \$439  
Florida from \$119



1344 Ashton Dr., Hanover, MD 21076  
Toll free 1-800-648-4849  
<http://www.ststravel.com/>

## Amgen Risks Paid Off

Amgen, from Page 1

Peer pressure plays an important role in Amgen's model. Peers expect each other to do their best, so "the pressure that people feel is peer pressure. The boss is there to help them deal with the pressure," not add to it, he said.

Binder stressed the importance of high standards and hard work, even at the risk of making mistakes.

"We all know how to avoid mistakes. A cadaver could do that for us. Some people in government have that figured out," he said.

One slide Binder presented read, "Every time we took a risk, it paid off. And when we didn't, it hurt us."

"You need to be mistake-tolerant or else no one will ever take any risk," he said.

But hard work and risk taking should not be stressful. "We think everyone should have fun, at least most of the time," Binder said. If you're not, "you're probably doing the wrong thing. If you come home and yell at your spouse and kick your dog... that doesn't do anyone any good. ... As long as we do [have fun], Amgen will be successful."



GABOR CSANYI—THE TECH

Nobel Laureate Murray Gell-Mann PhD '51 explains the complexity of the universe to an eager audience at the Media Laboratory on Tuesday.

**WHEN DRINKING, CALL A FRIEND.**

Drinking and riding can lead to a loss of license, a conviction, or even worse. When you drink, get a ride with a friend. It's the best call you can make.



MOTORCYCLE SAFETY FOUNDATION

This space donated by *The Tech*

## Number of COD Cases Same as Past

Faculty, from Page 1

graduate students," Lester said. "The department has concluded ... that the proposed MEng [degree] will be an important complement to our offerings at the grad level."

There was some concern over whether the "market of students who are self-supporting [will] engage in a program of that duration."

Citing programs at other universities, Lester said, "We should be able to populate this program with an acceptable number of students."

### Discipline Report Presented

Last year there were 36 disciplinary cases where intervention by the Office of the Dean for Undergraduate Academic Affairs was necessary, according to Associate Dean for Residence and Campus Activities for Margaret A. Jablonski, as part of the report by COD and UAA.

"Based on my experiences of the last two years, I think ... the numbers are about the same," said Professor Stephen L. Buchwald. "This

year there has been ... no perceptible decrease but no perceptible increase either."

"The numbers are stable.... We're probably a little bit low compared to other universities" such as Princeton University and Harvard University, Buchwald said.

Professor Stephen C. Graves, chair of the MIT task force on ROTC, summarized the group's recently released draft report on the Department of Defense's don't-ask-don't-tell policy on homosexuals.

"We've outlined five possible options for MIT," Graves said. These include the possibility of recommending to maintain status quo, to sever all ties to ROTC, to postpone any action, to create some type of arm's-length relationship, or to remove ROTC from campus and make cross-town arrangements for students.

"We're now in the process of trying to get [information] out to the faculty and the community," Graves said. "We've sent out requests to dormitories and [independent living

## Harvard Official May Have Misallocated Dorm Funds

Dan McGuire  
ASSOCIATE NEWS EDITOR

An investigation started by the House Committee at Harvard University's Currier House has unearthed evidence that a committee officer last year may have misappropriated \$12,000 from the house's budget last year.

"The case has now gone to the district attorney's office," according to a letter sent to house residents. The main person responsible for the misappropriation in question has not yet been identified. The letter said that any possible financial difficulty as a result of this misappropriation was

not expected. [*The Harvard Crimson*]

### Yale Union on Strike

Clerical employees at Yale University went on strike to force concessions on benefits. Half of Local 34's 2,100 workers left their jobs, and productivity slowed as managers, professors, and administrators filed paperwork, worked on photocopies, and answered phones.

"I think [managers and administrators] are feeling it. We're being told we're being missed," said one striking worker. The 1,100-member Local 35 Union, made of maintenance and service workers, plans to go on strike on March 25 if concessions are not granted. [*The Yale Daily News*]

Friday  
7&10pm  
26-100



2 bucks  
(MIT ID)  
<http://web.mit.edu/lsc/www>  
movieline  
8-8881

## The Gold Rush



Friday Classic with live piano accompaniment by Prof. Martin Marks  
7:30pm in 10-250

Saturday  
7&10pm  
26-100



ANTONIO BANDERAS  
DESPERADO

**LSC**  
FEB 23-25, 1996



THE  
JOY  
LUCK CLUB

Sunday  
7&10pm 26-100

# Aramark Discussions Target Baker Dining

Aramark, from Page 1

Hall, and creating a central food location were brought up by Martinides.

Invitations were sent to students who had complained to Aramark General Manager Rob McBurney last term about the firing of employee Eddie Cogliano.

## Baker dining options discussed

"I can honestly say that I have no idea what Aramark's plans are for the Baker or the rest of west campus," Martinides said. "I'm just here to ask your ideas and get your input."

"This campus is probably the purest competitive environment for us, as nothing is mandatory," Martinides said. "We really want what is best for you, the students."

The small number of students who went to the focus groups were bombarded with new ideas from Martinides. Student reaction to the new ideas was mixed.

The idea of the "home-replacement" foods that could be bought

and assembled or reheated later appealed to students who had late classes or athletic practices. But others were not as enthusiastic, not wanting to have to clean up after themselves.

Martinides brought up a number of options for Baker Dining, such as adding music or a TV, bringing in franchises, extending the hours, expanding the Baker Snack Bar, and exploring dining plan options. One of these was the "country club plan," where residents of Baker would have the cost of dining added on to their house bills. The added cost could pay for meals in addition to a refurbished dining hall.

"Bakerites would have to pay for membership, and of course, membership has its privileges," said Martinides.

Students immediately had reservations to such a plan, citing that not all Bakerites use the dining facilities. "It would be tough to make it appeal to everyone in Baker," said Baker President Catherine D. Conley '96.

On the issue of the food itself, Martinides stressed that the Aramark hires only professional chefs who quite frequently come from major hotels and restaurants.

These chefs have large repertoires and are open to suggestion, Martinides said. "It doesn't just have to be cafeteria food."

Martinides also brought up some options that would change food service at MIT on a larger scale. One such idea was to expand the "tie-ins" such as Domino's Pizza.

## Central location proposed

Martinides also mentioned consolidating west campus food services at a central location. The idea would bring together a snack bar and a convenience store in addition to a dining hall.

Consolidation would allow for extended hours, said Martinides. Students responded negatively, saying that having the dining hall in the dorm was very convenient.

"In the past four years Baker Dining has been such a positive

experience for me, and not really because of the food," said Baker resident Julie E. Goodman '96. "I have had such quality time with my friends there."

"The dining hall is a part of the culture here at Baker," said one Baker freshman.

The participants in the focus groups seemed enthusiastic, but hesitant about Aramark's interest. "They listened to what we had to say and gave the impression that they actually cared, so now were just waiting to see what becomes of it," said Baker Dining Committee Chair Albert L. Hsu '96.

**AMERICAN  
CANCER  
SOCIETY**

**CALL THE AMERICAN  
CANCER SOCIETY AT  
1-800-ACS-2345  
FOR FREE NUTRITION  
INFORMATION.**

This space donated by *The Tech*

# Astronaut Cameron Encourages International Cooperation in Space

Cameron, from Page 1

the first NASA director of operations in Star City, Moscow. There he worked with the Cosmonaut Training Center staff to set up a support system for astronaut operating and training in Star City.

Cameron is one of the more than 20 astronauts who have graduated from MIT.

## Missions to better relationship

NASA and the Russian Space Agency agreed to conduct a series of joint missions between the space shuttle and the Mir to encourage U.S. and Russian cooperation in the development of the International Space Station, which is scheduled to begin assembly in late 1997.

One of the most important aspects of the mission — aside from studying the newly developed hardware and performing scientific experiments — was communicating with the Russian astronauts, Cameron said.

"Ten years ago, most of the people involved [with this mission] were busy with a much different purpose ... flying fighter planes aimed at each other," Cameron said.

During this mission, Cameron appreciated the personal interactions between the astronauts. "Through my many travels [in the Marine Corps and elsewhere] I've seen that one of the most important things for any traveler is contact with other people" and the outside world, he said.

Not only did the Russian and American hardware and scientific experiments work together, but more significantly, the people also worked together, Cameron said.

The rendezvous with Mir is a big step towards an international space station. International collaboration in space is important in furthering our own technologies, Cameron said.

To do this, the United States and Russia needed to communicate and break a language barrier, Cameron said. But "it is very hard to take a

cram course in Russian or Japanese" to communicate effectively with colleagues in space, he said.

Recognizing the significance of a language barrier, NASA is increasingly looking for astronaut candidates with knowledge and interest in another language.

## Advice given to undergraduates

Cameron shared his early experiences with applying to NASA and encouraged all interested students to apply even before they feel they have sufficient credentials.

Although Cameron was accepted the first time he applied to the space program, most applicants apply early in their careers and leave their applications on file to be reconsidered at a later date.

"There is just no chance of being part of a mission if you don't send in an application. And you never know what will happen if you do," he said. While waiting to be accepted to the space program, "you should keep working predominantly in whatever field you find most satisfying," Cameron said.

Crew of recent missions "include specialists as varied as military pilots, engineers, astronomers, and astrophysicists," Cameron added.

## Seminar provides insight

The undergraduate seminar, Modern Space Science and Engineering (16.S26), is co-taught by Professor of Earth, Atmospheric, and Planetary Sciences Thomas A. Herring and Professor of Aeronautics and Astronautics Laurence R. Young, who is also the director of the Massachusetts Space Grant Consortium.

The 10 students participating in the seminar, mostly freshmen, meet weekly to discuss different aspects in space science with a guest speaker.

Other guest speakers will include representatives from Hughes Space and Communication, Draper Laboratories, Lincoln Laboratories, Wellesley astronomy, Boston University, and a unified

professor.

Student presentations on the topic of modern space science and space engineering have been scheduled for the last meeting of the course.

"We discuss different aspects in space science, things like technology, failure investigation methods, the Mir rendezvous, or the mission to Saturn. Each speaker gives a talk on their specialty" said seminar participant Stephanie Sharo '99.

The seminar "shows you what people who have studied aero/astro have done, some have gone on to be astronauts, others have studied radar technologies, stellar navigation, or asteroids. We are exposed to the many opportunities out there," Sharo said.

## Kasparov Beats Big Blue

## Pizza Pad beats Pizza Hut, Domino's & everyone else at MIT.

For Quality Service, & Value

MIT WEEKLY SPECIAL

ORDER NOW

Limited Time

**\$8.49**

Free Pizza

Free Topping

Free Soda

Free Delivery

Buy our famous two for one pan pizza and receive one FREE pizza, two FREE toppings, and two Free sodas.

Save \$4.99.

**PIZZA PAD**

Free Delivery until 3:00 AM Cambridge/Boston

547-2208 <http://www.digitalrag.com/pizza.html>  
239 Massachusetts Avenue  
Opposite NECCO at MIT  
Next to N42

## Computer Engineering/Computer Science and Engineering Majors:

**WE NEED MORE CANDIDATES!  
SANDERS, A LOCKHEED MARTIN COMPANY, IS  
GROWING AND WE WANT YOU TO BE PART OF OUR  
TEAM IN THIS EXCITING TIME.**

Today at Sanders, there are more than 200 programs in place, and more on the way. The Lockheed Martin merger, which formed one of the world's premier technology enterprises, has further strengthened Sanders' position. There are currently over 300 openings, 100 of which are for entry-level engineers.

**WE'VE BEEN ON CAMPUS... BUT WE NEED MORE  
... WE NEED YOUR RESUME.**

### What are we looking for?

Candidates with degrees in Electrical Engineering, Computer Science, Computer Engineering and Mechanical Engineering.

### What do we do?

Sanders is engaged in the development and manufacture of advanced defense electronic systems and products. We are also leveraging the company's capabilities to commercial telecommunications requirements.

### Where are we located?

Sanders' Southern New Hampshire location, with no state sales or income tax, combines the beauty and sports excitement of the mountains and ocean with the night life of nearby Boston.

### How do you apply?

Mail your resume to: Sanders, A Lockheed Martin Company, Attn: 6503CR, P.O. Box 2029, Nashua, NH 03061. Sanders is an Equal Opportunity Employer. Applicants selected may be subject to a security investigation and must meet eligibility requirements for access to classified information.

**SANDERS**  
A Lockheed Martin Company

## INTERNET PROJECTS

Intern Positions Available

Work on exciting Internet projects. HTML experience required. Windows programming, database, or Java experience a plus. Can work from home. Excellent pay. Positions available immediately.

Send resume to [hresources@mktplace.com](mailto:hresources@mktplace.com)

Or mail/fax resume to:

Human resources  
MarketPlace Information Corp.  
460 Totten Pond Road  
Waltham MA 02154  
Fax: 617-672-9290  
<http://www.mktplace.com>

# THE ARTS

## Student quintet delivers solid, enjoyable recital

### CHAMBER MUSIC IN KILLIAN HALL

MIT Chamber Music Society.  
Works by Beethoven, G. Cobb, and A. Dvorak.  
Featuring Kay Ann Chen '97, violin; Susan M. Park '98, violin; Jennifer E. Gruczka '98, viola; Edward C. Wu '98, cello; Jason C. Wong, '99, piano.  
Monday, Feb. 19.  
Killian Hall.

By Michael K. Chung  
STAFF REPORTER

This past Presidents' Day was celebrated in grand style by a piano quintet of the MIT Chamber Music Society. Having delayed their performance from the end of the fall semester because of an injured pianist, the ensemble chose to add to their program a movement of an early period Beethoven quartet and a short ragtime piece

titled *Russian Rag*. The hour-long performance was marked by impassioned playing, contrasted with bright spirit, and a sense of enjoyment by the audience as well as the performers.

The concert opened in dramatic fashion with the first movement of Beethoven's *String Quartet No. 4*. Beethoven's early-period chamber music is distinguished in the emulation of his contemporaries' string quartet compositions, notably those of Haydn and Mozart. Opening with mystery and suspense, the quartet captured the essence of the dramatic piece. First violinist Kay Ann Chen '97 competently met the challenges presented to her. Aside from several minor intonational errors, Chen deftly handled the sixteenth-note passages in their scale-wise ascents to the upper register of the instrument.

Overall, the blend and balance of the group

was solid and consistent. Particularly noteworthy was cellist Edward C. Wu's '98 dramatic glissando in his solo toward the end of the movement. Second violinist Susan M. Park '98 also performed lyrically and precisely in her solo. Also contributing to the blend of the quartet was the playful exchange between the bass instruments and the violins in the almost conversational chord sequences at cadences. The piece ended powerfully with a strong and well-conceived conclusion.

*Russian Rag*, a gem by twentieth-century composer G. Cobb, was enjoyed by the audience but even more so by its performers. From the opening descent in unison, the drama and mood of Russia were encapsulated by playful dotted rhythms contrasted with lyrical melodic lines floating above the background pizzicatos. Clearly, the ensemble adored the work: The players traded smiles

throughout the performance. Who could blame them? Especially wonderful was a double-stop passage of descending thirds by Chen. More important, though, was the charming style and warm tone of all the players and their instrument.

Antonin Dvorak's *A Major Piano Quintet* is a long and difficult work, demanding much technique and emotion. The opening movement is itself a complete work, combining lush romanticism with strains of Czechoslovakian folk melodies. The piece starts with a calm cello introduction; then, almost without warning, except for a rapid crescendo, accelerando, and ascent by the piano, the piece launches into the allegro section. While this movement is highly romantic, it is not to be presented as gushy as one would perform a

Quartet, Page 13

## Funky ambience and menu items abound at Cafe Mojo

### CAFE MOJO

94 Massachusetts Ave., Boston.

By Aaron R. Prazan

What is a Mojo? Doors fans have asked this question for years. Who knew the answer lied in a funky little bistro at 94 Massachusetts Ave.? Cafe Mojo is almost as much an attitude as it is a dining room. Entering the Mojo immediately lowers the heart rate and clears the mind. A brightly colored Miro-esque mural covers the back wall. With the cool jazz in the background, polished mahogany everywhere, and the Edward Scissorhands style furnishings, the rest of the room is mellow. Indeed, all is casual; and you can wear whatever color you want, as long as it's black.

To be sure, the flavor of the room is a prelude to that of the food. First, the menu is almost as esoteric as the decorating. Nuances of Middle Eastern, Mediterranean, and many American regional cuisines abound. In the course of a meal, there was hummus, couscous, hearty beef stew, polenta, penne, and pancetta, to name a few. To most patrons' delight, Mojo tries very hard to use fat sparingly, but makes up for it with exotic flavor

mixtures and unusual ingredients. Creative vegetarian dishes dot the menu also.

The uncommon combinations of ingredients make for an exciting meal, but sometimes seem contrived. For example, I tried two appetizers, Sweet Potato Gnocchi and Vegetable Chips. The gnocchi, which are small Italian potato dumplings, were made with tender sweet potatoes and had a wonderful new texture. They had been broiled, creating a crispy crust. The effect was almost like sweet melted cheese and was worth trying. On the other hand, the Vegetable Chips were not so successful. Ripple-cut beets, sweet potatoes, and Idaho potatoes were fried in oil until crispy. Although I applaud the chef for creativity and a sun dried tomato ketchup that was to die for, the potato chips were actually the best. Though novel, the dish wasn't worth ordering.

Truly, the entrees at the Mojo reminded me of an old saying about pizza and sex: "When it's good, it's really, really good; when it's bad, it's still pretty good." I sampled the Beef Stew over Polenta, Penne al Amatriciana and a Grilled Tuna Sandwich with lime and ginger. The stew was light, with enormous

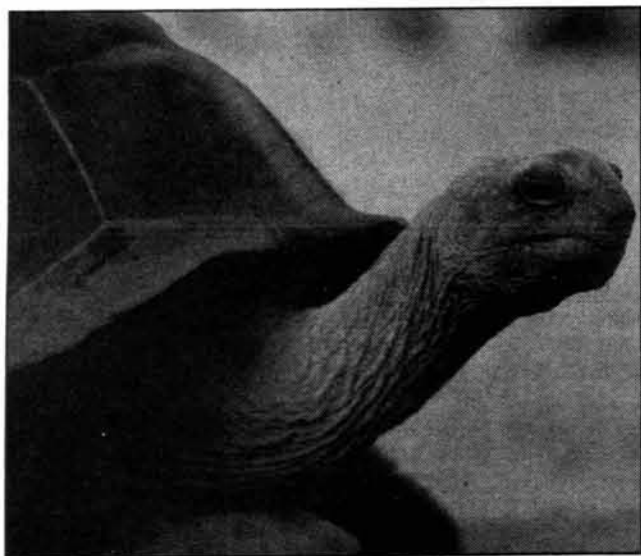
Mojo, Page 13



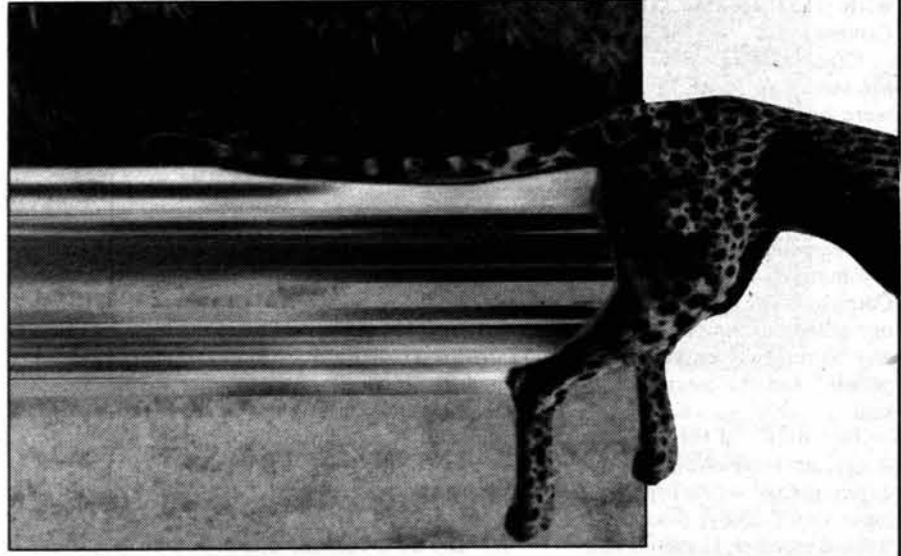
GABOR CSANYI—THE TECH

Patrons enjoy the unique atmosphere of the Cafe Mojo.

## THE RESEARCH AND DEVELOPMENT



Theirs.



Ours.

With a running investment of over one-quarter of a billion dollars in research and development, no wonder Oracle is known for breakthrough technology. If you're eager to work with this decade's top graduates on the world's fastest moving products, join us. Our software solutions are changing the way human knowledge is gathered, stored, retrieved and utilized. With record sales of \$3 billion and nearly 50% growth in the last year alone, we're now hiring over 100 of the best of the Class of '96. If you have a BS/MS in EE/CS, CS/Math, MAS or Manufacturing Systems Engineering, you could become an Oracle Software Developer, Consultant or Product Manager and work on any number of advanced technologies and products, including:

Digital Library—"Alexandria"  
Media Objects  
Enterprise Applications  
Massively Parallel Products  
Linguistics Based Products

Internet Products  
Object Oriented Development Tools  
Interactive Multimedia  
Mobile Computing  
Data Warehousing & Mining

Object Oriented Databases  
Distributed Computing & Networking  
Data Security Architecture  
Vertical Applications

We'll be interviewing on campus March 13 & 14. Sign up at the Career Center and pick up your copy of "Projects at Oracle" today. E-mailed resumes strongly encouraged.

# ORACLE®

Enabling the Information Age

Oracle Corporation, 500 Oracle Parkway, Box 659501, Redwood Shores, CA 94065. E-mail: jobs@us.oracle.com FAX: 415-506-1073  
For additional information, visit our WEB SITE at: <http://www.oracle.com/info/hr/recruiting.html>. Equal talent will always get equal opportunity.

# Emotions overwrought, ineffective in *Before and After*

## BEFORE AND AFTER

Directed by Barbet Schroeder.  
Written by Ted Tally.  
Starring Meryl Streep and Liam Neeson.

By David V. Rodriguez  
ASSOCIATE ARTS EDITOR

As I was leaving the theater after *Before and After*, I heard a woman say, "I guess even Meryl Streep can have a bad day." This accurately sums up the movie: There is a lot of talent between Meryl Streep and Liam Neeson (*Schindler's List*), but it is wasted in this overly sentimental and ineffective drama.

The story begins when the police show up on Ben (Neeson) and Carolyn's (Streep) doorstep looking for their teenage son, Jacob. Jacob's girlfriend has been murdered and he was the last one seen with her. While trying to find his son, Ben discovers bloody rags in the garage, which he destroys before the police can find them.

By this point it seems pretty clear Jacob is the killer, but we eventually learn he's innocent. This isn't a spoiler. When we first see

Jacob, he is pale, skinny, with his hair greased back, and refusing to say a thing — your basic Hollywood evil-type. The only thing that makes the story worth pursuing is his innocence; otherwise we'd be siding with the angry mob.

The second hour of the movie shows the family dealing with the emotional and legal problems of the crime. The movie gets into trouble by focusing too much on the first and not enough on the second. When Ben destroyed evidence, he created an interesting legal problem. Unfortunately, this detail isn't fully followed, nor is it resolved in any satisfying way. The movie focuses on these legal problems only because the lawyer is the only interesting character.

*Before and After* spends most of its time trying to show us how anguished the family is. This is done through many similar scenes, each trying to look all-important. But this quickly grows old. In the final heart-wrenching scene, when Ben started looking serious and the heavy background music kicks in, most of the audience started laughing. It's hard to take this film seriously.



Carolyn (Meryl Streep) and Ben (Liam Neeson) confront their son in *Before And After*.

# Kinky Angels, comical *Midwinter's Tale* open at Kendall

## THIS WEEK AT THE KENDALL

Kendall Square Theatre.  
One Kendall Square, Cambridge.

By Stephen Brophy  
STAFF REPORTER

After a sojourn in the Amazon and a shipwreck on the way home, the young naturalist William takes up residence at a rural estate in England. He is the guest of the lord of the manor, formerly a man of God who has now become a follower of Darwin. But he excites the class antipathy of the estate's heir, especially as he begins to court the young man's sister.

Such is the situation of *Angels and Insects*, opening today at the Kendall Square Theatre. Set up to take a fall are the aristocrats of the story. I'm no fan of aristocracies based on birth or wealth, but the values of this tale are so primly middle-class that the upper-class characters become underdogs, and I felt my sympathies go unwillingly towards them. You

see, the aristocrats are sexual transgressors, and although the taboo they break in this story is nearly impossible to defend, it carries the burden of representing all such violations against a narrowly defined sexual morality.

The movie is as sumptuously presented as any Merchant-Ivory costume production, but is decidedly more kinky, its passion more more smolderingly. As a curious note, Mark Rylance who plays the young naturalist, gave us as credible, if histrionic Hamlet at the American Repertory Theatre a few seasons ago. *Angels and Insects* is lovely to watch, and an intelligent incitement to thought, but its closet conservatism ultimately scuttles it.

In *A Midwinter's Tale*, Kenneth Branagh shows that he still has a surprise or two in him. After giving us two dreadful movies in a row (*Peter's Friends* and *Mary Shelley's Frankenstein*), Branagh presents an entertaining and enjoyable meditation on theater life. The movie (titled *In the Bleak Midwinter* at the Boston Film Festival) follows the travails

of a group of misfit actors who come together to put on a production of *Hamlet* in a drafty church during the Christmas season.

Everyone associated with this *Hamlet*, except maybe the director's agent (airily portrayed by Joan Collins), is in dire need of long-term therapy. Still, the collection of strangers becomes a sort of dysfunctional family that uses the play to work things out. Much of the story is hysterically funny, and the mawkish moments are kept to a minimum. This would make a great double bill with *Last Summer at the Hamptons*, which is also currently playing at the Kendall.

*Things To Do In Denver When You're Dead* is another crime story filled with male criminals who have strong feelings for each other. They hug and hold each other a lot, and spend more time worrying about their butts than any comparable crew since *Pulp Fiction*. But Scott Rosenberg (*Beautiful Girls*), the hotshot heterosexual screenwriter who created these guys, wants us to be sure that his cool

criminals aren't a bunch of queers. From the first dialog, every opportunity for a disgusting homosexual reference is taken.

In this world women are at best adornments (Gabrielle Anwar) or little lost waifs (Fairuza Balk) who have to be saved from themselves. Within the logic of the story, most of the killing seems pretty pointless and at times becomes repellently ugly. Director Gary Fleder puts this all together with more interesting visual flair than it deserves. And the roles, while not very sensible, give the actors lots of room to show their chops. Treat Williams is especially entertaining as the most psychotic of the crew.

*Things To Do In Denver When You're Dead* includes some meditations on the meaning of death that could provoke productive thought if the senselessness and offensiveness of the rest of the package didn't get much in the way. This is ultimately a disappointing movie because it's clear that it could have been much better.

# You are cordially invited to attend our presentation

CPI (Cardiac Pacemakers) develops and markets implantable medical devices used in the treatment of cardiac arrhythmias. Our St. Paul, Minnesota, worldwide headquarters include research, manufacturing operations, marketing, finance and all other areas of business management.

CPI is one of the five companies that formed Guidant Corporation in order to focus resources on providing innovative, cost-effective products and services to the global cardiology and minimally-invasive surgery marketplaces. Guidant comprises:

- Advanced Cardiovascular Systems (ACS)
- Cardiac Pacemakers (CPI)
- Devices for Vascular Intervention (DVI)
- Heart Rhythm Technologies (HRT)
- Origin Medsystems

In 1996 CPI will have excellent opportunities for engineering candidates in the areas of computer science, electrical, mechanical, biomechanical and biomedical engineering.

**Presentation:**  
February 22, 1996  
7:00 p.m. Room 2-131  
Reception immediately following

**Interviews:**  
February 26, 1996

Stop by our booth at the Career Fair 2/23.

## GUIDANT

CARDIAC PACEMAKERS (CPI)

# ON THE SCREEN

— BY THE TECH ARTS STAFF —

★★★★: Excellent  
 ★★★: Good  
 ★★: Average  
 ★: Poor

### ★★★ Black Sheep

This film, the latest attempt by Lorne Michaels to milk money out of *Saturday Night Live*, is truly funny. Chris Farley and David Spade revive their roles as big fat spaz and wimpy sarcastic guy, both the same type of characters they played on *SNL*. The story is predictable, but the film works because Farley's wild antics make the film fun. The fact that their routine still seems fresh shows that Farley and Spade are a great comedy team. — Rob Wagner. *Sony Copley*.

### ★★★ 1/2 Braveheart

Mel Gibson's *Braveheart* is a curious combination of historical legend and modern dramatic techniques woven together into a tapestry of connected stories. With the plot based loosely on Scotland's real-life attempt for independence from England and the screenplay straight from modern Hollywood, the three-hour show reminds one more of *Lethal Weapon* than *Rob Roy*.

A Scottish commoner, William Wallace (Mel Gibson), returns to his native land after an education in continental Europe with his uncle. He yearns for an idyllic life on a farm with his childhood sweetheart and new wife, Murron (Catherine McCormack). His domestic bliss is shattered when British lords kill his beloved wife; in response, Wallace assembles his friends and neighboring clansmen into an army, burns the British forts, and charges toward the English border.

*Braveheart* increases its appeal by contrasting these highland goings-on with portrayals of British royalty, especially the powerful King Edward I (Patrick McGoohan). Queen-to-be Princess Isabelle (Sophie Marceau) is bored with her marriage to the king's homosexual son and becomes infatuated with Wallace in a distracting subplot. The battle scenes in *Braveheart* may be gruesome

and a bit extreme, but the film as a whole is immensely satisfying. —Teresa Esser. *Sony Cinema 57*.

### ★★ 1/2 Broken Arrow

John Travolta and Christian Slater play Vic Deakins and Riley Hale, two Air Force pilots who fly a Stealth bomber on a predawn run over the Utah desert. Travolta is the older, wiser mercenary who steals the two nuclear warheads from the bomber's cargo bay; Slater is the young, idealistic whipper-snapper who enlists a spunky park ranger (Samantha Mathis) to foil the plan. The action sequences shouldn't disappoint fans of director John Woo — they're all executed with humor and finesse, with people leaping across the screen in slow-motion with both barrels blazing. But the story is trite and predictable in comic-book fashion (it's basically a rewrite by Graham Yost of his own script for *Speed*), and the pivotal fight scenes feel staged and choreographed. But you don't get to see an exploding nuclear warhead (below-ground) everyday, and more often than not the special effects team delivers the goods. —Scott C. Deskin. *Sony Cheri*.

### ★★★★ Dead Man Walking

*Dead Man Walking*, directed by Tim Robbins and starring Sean Penn and Susan Sarandon, addresses the death penalty issue unflinchingly and comprehensively. It follows convicted killer Matthew Poncellet (Penn) from the murders, through his several appeals, and finally to his execution in excruciating detail, escorted by his spiritual adviser, Sister Helen Prejean (Sarandon). Don't look to this movie for much action, adventure, or excitement. This emotionally brutal film challenges you to think about the issues surrounding the death penalty. You'll walk away from the theater with a profound sense of the tragedy that any murder is, whether it is committed by a person or by the government. And you will leave with a bitter sense of pity both for the original victims and the convicts on death row. —Audrey Wu. *Sony Nickelodeon*.

### ★★★ Desperado

Former indie-whiz-kid-turned-Hollywood-darling Robert Rodriguez delivers the goods in this tongue-in-cheek rewrite of Sergio Leone and Sam Peckinpah westerns. Armed with a budget a thousand times greater than his debut feature *El Mariachi*, Rodriguez casts Antonio Banderas as a brooding man with no name who slays entire bars of hostile characters in search of a Mexican drug lord (Joaquim de Almeida) who killed his woman and maimed his hand in the first film. Objectively, the story is weak and offers little pretense for Rodriguez's bloody, over-the-top action scenes. But in spite of the film's loose ends and rough plot edges, the supporting performers (Steve Buscemi, Cheech Marin, and Salma Hayek as Banderas' love interest) are

memorable, if not charming. Time will tell if we have another Quentin Tarantino in our midst. —SCD. *Saturday at LSC*.

### ★★★ Georgia

The title character is a popular country-pop singer, played by Mare Winningham (who received an Oscar nomination for best supporting actress). But her little sister Sadie, played with an almost unbearable, naked intensity by Jennifer Jason Leigh, runs away with the show. Leigh documents the dissolution of Sadie, who dreams of topping her sister's success, even as she slides into a self-destructive haze of drugs, alcohol, and abusive sex. Not for the faint-hearted. —SB. *Kendall Square*.

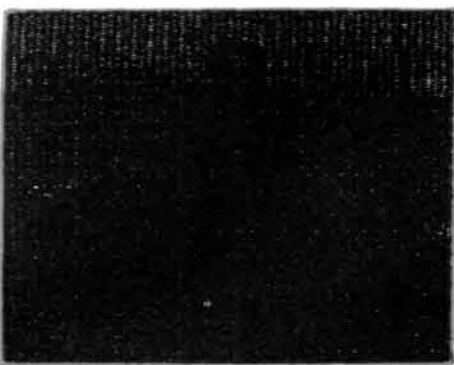
On The Screen, Page 12



Ellen DeGeneres with Bill Pullman as Mr. Wrong.



## CHANGING THE VOICE OF BUSINESS WORLDWIDE



"ConferTech International, located just north of Denver, Colorado, is thriving on the telecommunications revolution. It is a great place for bright, hard-working engineers to launch exciting careers."

One project I completed at ConferTech, a system which records teleconferences for future playback, now generates over a million dollars a year.

I am involved with many diverse projects and have travelled all over the country. Recently, I managed the technical startup of two new businesses within ConferTech: the Fax service bureau, and the new Multimedia Call Center. ConferTech has so much going on that it has been easy for me to choose great projects.

Since moving to Colorado, I have learned to ski, been camping a dozen times, and purchased a house. You can't beat the Colorado lifestyle."

Brian Brown MIT 6.3 '93

Since 1976, ConferTech International has set the standards for creative multimedia teleconferencing solutions and is a leading provider of services within the rapidly growing teleconferencing industry. ConferCall manages teleconferences for companies of all sizes throughout the world. The company also develops, manufactures and markets the industry's most advanced digital teleconferencing bridge equipment for customers who prefer to handle their teleconferencing needs on an in-house basis.

### ENGINEERING

Systems Software Engineer  
 Software Applications Engineers  
 Firmware Engineers  
 Technical Support Engineers  
 Field Service Engineers  
 Information System Programmers

### LOOK FOR US ON CAMPUS:

#### INTERVIEWS:

Thursday March 7, 1996  
 from 8:00am until 5:00pm  
 Building 12; Room 170

If you are interested in opportunities at ConferTech, please send resume to:



ConferTech  
 International Inc.

12110 N. Pecos St.  
 Westminster, CO  
 80234-2076

Fax: (303)633-3001

Internet: <http://www.confertech.com>

An Equal Opportunity Employer

LONDON  
 \$149\*

Frankfurt \$209\*  
 Paris \$215\*  
 Rome \$249\*  
 Tel Aviv \$329\*  
 Tokyo \$402\*  
 Bangkok \$469\*  
 Los Angeles \$178\*

\*Fares are each way from Boston based on a roundtrip per class. Taxes do not include fuel surcharges or ITCs totaling \$13 and \$45, depending on destination or departure charges paid directly to foreign government. Call for fares to other worldwide destinations.

CALL FOR A FREE STUDENT TRAVELS MAGAZINE!

Council Travel

STRATTON STUDENT CENTER  
 M.I.T. W20-024  
 84 MASSACHUSETTS AVE.  
 CAMBRIDGE, MA 02139

(617) 225-2555

<http://www.ctee.org/cts/ctshome.htm>

EURAILPASSES ISSUED ON-THE-SPOT!



JESSIE CHAN

CHINESE RESTAURANT

MANDARIN, CANTONESE, AND  
 SZECHUAN CUISINES

24 PEARL STREET

CAMBRIDGE, MA 02139

(ON THE CORNER OF PEARL AND  
 GREEN STREETS)

354-8881

EAT IN OR TAKE OUT

FREE ROLL/SOUP  
 FOR ORDER  
 OVER \$10

來利樓

Larry's Chinese  
 Restaurant

302 Massachusetts Ave., Cambridge  
 Orders to go, or dining in

FREE DELIVERY TO THE M.I.T. CAMPUS — \$10 MINIMUM  
 Luncheon Specials served daily, 11:30 a.m. — 5:00 p.m., starting at \$3.75  
 Special Dinner Plate just \$4.95 all day long

15% off with this ad

(for dine-in diners only; \$10 minimum purchase)

Call 492-3179 or 492-3170

Monday — Thursday, 11:30 a.m. to 10:00 p.m.  
 Friday — Saturday, 11:30 a.m. to 11:00 p.m.  
 Sunday, 5:00 p.m. to 10:00 p.m.

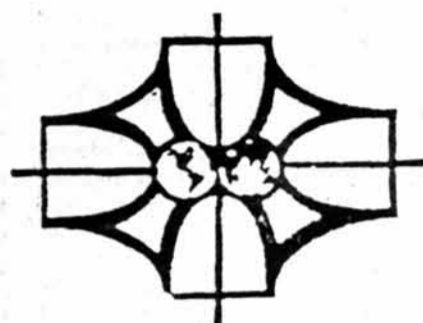
# The Seventh Annual



American Indian Science  
and Engineering Society



National Society  
of Black Engineers



Society of Hispanic  
Professional Engineers

## Career Fair

**When: Friday, February 23, 1996**

**Time: 12:00-6:00pm**

**Where: M.I.T. du Pont Gym (Bldg. W31) on Mass. Ave.  
(Corner of Massachusetts Avenue & Vassar Street)**

3M Company  
Advanced Micro Devices  
Applied Materials  
AT&T Corporation  
Camp Dresser & McKee, Inc.  
Cray Research Incorporated  
Eaton Corporation  
Gordian  
IBM  
Kyocera America  
Lockheed Energy Systems, Inc.  
Microsoft  
MIT Lincoln Lab  
Oracle Corporation  
Procter & Gamble  
Intersystems  
Sphere Consortium Inc.  
Texas Instruments  
United States Navy

Abdul Latif Jameel Group  
American Management Systems  
Applix  
Bellcore  
Cardiac Pacemakers/Guidant  
Draper Laboratory  
First USA  
Hewlett-Packard Company  
Intel Corporation  
Lawrence Livermore National Lab  
Malcolm Pirnie, Inc.  
MIT Graduate School  
Motorola  
Parametric Technology Corp.  
Rohm & Haas  
Millipore  
Stratus Computers  
Trimble Navigation  
US Air Force

Adaptec  
Amoco  
ASTEX  
Black Ops Entertainment  
Convergence Technologies  
DuPont  
Ford Motor Company  
Hoechst-Celanese  
JP Morgan & Company  
Lehrer McGovern Bovis  
Mercer Management Consulting  
Tessera  
MTS - Boston Info. Services  
Picturetel  
Schlumberger  
Second Nature  
Sun Microsystems Inc.  
TRW, Inc.  
Xilinx

**OVER 60 COMPANIES ATTENDING!!!**

**EVERYONE IS WELCOME!**

<http://web.mit.edu/aíses/www/career.html>

# ON THE SCREEN

— BY THE TECH ARTS STAFF —

On The Screen, from Page 10

### ★★★ Last Summer at the Hamptons

*Last Summer* is a surprisingly effective ensemble production which invites its actors to improvise thinly disguised autobiographical roles. The centerpiece is a powerhouse performance by the late Viveca Lindfors in her last screen appearance. She plays the matriarch of a large family presiding over the final gathering at their summer home, which will have to be sold when the season is over. Written and directed by Henry Jaglom, the film borrows heavily from Anton Chekhov, James Joyce, and Jean Renoir. It not only steals some of their best bits, but also recreates some of their sad and funny contemplation of human comedy. —SB. *Kendall Square*.

### ★★★ Leaving Las Vegas

This sometimes-harrowing, often-redemptive look at a relationship between a destructive alcoholic (Nicholas Cage) and a prostitute (Elisabeth Shue) could be a spiritual antidote to the excesses of *Showgirls*. Cage is a newly-fired screenwriter whose vices have torn apart his family and led him to Las Vegas, where he resolves to drink himself to death. Shue falls in love with him for his lack of pretense, and both embark on a journey of love and self-revelation. Director Mike Figgis completely redeems himself for the pathetic *Mr. Jones*; here, he paints the characters with warm, natural emotions and uses the garish backdrop of the Vegas Strip (where even the golden arches of McDonalds are adorned with a multitude of flashing lights). The soundtrack of soulful contemporary songs by Sting, Don Henley, and other performers is hypnotic and artfully used. It's definitely worthwhile and uplifting for those who can take it. —SCD. *Sony Nickelodeon*.

### ★★★ Nixon

Oliver Stone's most recent flick, *Nixon*, manages to capture the essential features of Richard Nixon's twisted character. While Anthony Hopkins doesn't exactly resemble Nixon, he does effectively mimic many of the president's nervous mannerisms. *Nixon* con-

tains a number of fictional scenes created by director Stone — scenes that blur the already unseemly facts of the Nixon scandal. In spite of the canards, Stone accurately lays out some of the late president's strange psychoses, including phantasms of his saintly mother, dead brothers, and "enemies." The outstanding supporting cast helps weave the entire story into a tapestry of deceit and betrayal that can't fail to impress even true Nixon aficionados. — Anders Hove. *Sony Copley*

### ★★★ Restoration

This 17th-century tale focuses on James Merivel (Robert Downey Jr.), a ne'er-do-well English physician who has an amazing stroke of luck and falls into the court of King Charles III (Sam Neill). Merivel lets his healing talents go to waste when he wallows in opulence and pleasures of the flesh. However, Charles soon bestows on him the ultimate reward-temptation: a title, an estate, and a wife (Polly Bergen) — actually one of the king's mistresses with whom he must never fall in love. But Merivel blows it, and is consequently banished from this paradise to the plague and squalor of the real world; there he must learn how to regain his faith in medicine and in himself, aided by fellow doctor John Pearce (David Thewlis) and mental asylum inmate Katherine (Meg Ryan), a woman who isn't really crazy and manages to teach him a few things about love.

If you aren't overwhelmed by the decadent set designs, this film can be a very rewarding experience; anchored by Downey's poignant performance, the protagonist's journey in this film is like a more cerebral *Forrest Gump*. —SCD. *Sony Nickelodeon*.

### ★★★ Richard III

Even when translated to the big screen, many Shakespeare plays can often feel too rote or constrained. Writer-director Richard Loncraine's version of *Richard III* tries to dispel this feeling of "boredom." As the title character, Ian McKellen (also co-screenwriter) remakes Richard as an Anglicized Hitler in the midst of an updated, 1930s Eng-

land. Richard's reign of terror doesn't end with the brutal killing of the opposing monarchs at the beginning of the film; he sets his sights on the throne, secretly implicating his younger brother Clarence (Nigel Hawthorne) as traitor to the royal court headed by his older brother King Edward (John Wood). Along the way, Richard must get rid of his brothers, deal with Queen Elizabeth (Annette Bening) and prevent Edward's young sons from reaching the throne. McKellen is the standout, playing his villainous part to gleeful, devilish perfection.

This latest Shakespeare adaptation may not be a masterpiece, but it helps revitalize the genre in much the same way *Pulp Fiction* did for gangster pictures. —SCD. *Kendall Square*.

### ★★★ 1/2 Sense and Sensibility

Director Ang Lee (*The Wedding Banquet*) and screenwriter-actress Emma Thompson present one of the newest Jane Austen adaptations this year. Despite the similarities to BBC-TV's *Pride and Prejudice*, the film is a treat to watch. Thompson plays Elinor, the older, more sensible sister of the family, while Kate Winslet plays Marianne, her younger, more passionate sister.

When struck by the loss of their father, the family must look to its daughters to seek out prospective husbands; through their trials and misfortunes (including liaisons with prospective suitors Hugh Grant and Alan Rickman), the family stands together and never forsakes its honor. The dialogue and ruminations on sexual impropriety may seem quaint by today's standards, but Thompson's screenplay does justice to 18th-century romance and chivalry. —SCD. *Sony Nickelodeon*.

### ★★ To Wong Foo, Thanks for Everything!

This recent film expands the repertoire of Wesley Snipes and Patrick Swayze, who play dragsters stuck in middle America during a cross-country road trip. About the changes the drag queens bring to rural America, the film remains too haphazard to be believable — even among funny slapstick. The film also borrows too often from the better *The Adven-*

*tures of Priscilla, Queen of the Desert*. —Teresa Esser. *Friday at LSC*.

### ★★ 1/2 Twelve Monkeys

In this science-fiction offering from director Terry Gilliam (*Brazil, The Fisher King*) and writer David Peoples (*Blade Runner, Unforgiven*), Bruce Willis plays Cole, a prisoner in a post-apocalyptic future. Scientists hand-pick him as a "volunteer" to go back in time to uncover information regarding a mysterious virus that wiped out most of the earth's population. He runs into problems, however, when he gets thrown in a mental institution and meets a sympathetic doctor (Madeleine Stowe) and a defective inmate (Brad Pitt). Cole trips through time much like Billy Pilgrim in Kurt Vonnegut's *Slaughterhouse-Five*. Unlike Pilgrim, Cole seems trapped in an infinite loop; he's haunted by an image from his childhood, and once we see what this means for his mission, we pity him even more.

What results is an incredibly bleak picture; a romantic development between Stowe and Willis toward the end is a pretentious and unsuccessful attempt to offset the film's inevitable, depressing conclusion. However, *Twelve Monkeys* is partially redeemed by some comic relief from Pitt's character and Gilliam's distinctive, engaging visuals. —SCD. *Sony Harvard Square*.

### 1/2 White Squall

"Dead Sailors Society" is a more apt title for this drivel. Although it is a true story and the film arguably contains the best "at sea" action sequence this season, the movie is awful. Seeing half-naked teenage boys prance around a ship, exposing more flesh and buttocks than a Calvin Klein ad, is not what I want out of a movie. The only recognizable star in the movie is Jeff Bridges, who is awful. The boys who makes up his crew are supposedly inspired by his monotone voice — so much so that when the ship goes down and he winds up on trial, all the boys support him. The film in general is unbelievably emetic and completely worthless. —RW. *Sony Copley*.

# WANTED

Candidates for the following positions:

UA President/Vice-President

Members of the UA Finance Board (4)

Class Officers:

President

Vice-President

Secretary

Treasurer

Social Chair(s)

Publicity Chair

**Deadline Extended-March 1**

Packets available at the UA Office (Student Center 401).  
Call Amy W. Ng at x5-1619 (ua-elections@mit.edu)  
for more info.

# FREE FOOD!!!

Come Meet the Candidates At the Baker  
Study Break Tuesday Night at 10 pm

# Chaplin's *Gold Rush* features piano accompaniment

## THE GOLD RUSH

LSC Friday Classics.

Written and directed by Charles Chaplin.

Starring Charles Chaplin, Georgia Hale, and Mack Swain.

10-250, 7:30 p.m.

By Stephen Brophy

STAFF REPORTER

If you saw the modern biopic in which Robert Downey, Jr. re-created Charlie Chaplin, you probably remember the graceful little dance he did using two bread rolls and forks. You can see the original tonight at the LSC Classics screening of Chaplin's *The Gold Rush*, and have the extra special treat of listening to Professor of Music

and Theater Arts Marty Marks' piano accompaniment.

Chaplin dreamed up this story, his favorite among all his works, after reading a book about the infamous Donner party tragedy. The Donner party was travelling to California by wagon train in the last century and got caught by an early blizzard in the Sierra Nevada mountains. Soon out of food, their desperation led them to consume clothing, including leather boots, and eventually the bodies of their friends who had frozen to death.

That such a sublime comedy could be inspired by such a gruesome tragedy is amazing, though not unique. Chaplin even chose to do his exterior shooting in Truckee, Nevada, close to site of the Donner catastrophe. The first scene of the film, with several hundred

prospectors slogging up a mountain towards the gold fields, and in which the Little Tramp is followed by a bear, is the most memorable of these location shots.

Many elements of what would come to be considered the quintessential Chaplin are present in *The Gold Rush*. The Little Tramp, who represents all of struggling humankind, maintains a graceful demeanor as he faces trial after trial, and only shows the hurt in his eyes when he is beset by surly miners or heartless dance hall workers. Besides the dancing rolls routine, this little gem of a film contains the famous Thanksgiving feast, for which Charlie cooks one of his boots. (The prop boots were made of licorice, the laxative qualities of which were only discovered by Charlie and his co-star, Mac Swain, after they had con-

sumed the boot.)

Another great scene takes place as the cabin in which Chaplin and Swain are sleeping moves during a blizzard to the edge of an abyss, and teeters dangerously back and forth as the two wake up. (They think the unusual movement is only the result of serious hangovers.) Watch also for the snow-shoveling sequence.

Chaplin was at the height of his powers when he made *The Gold Rush*. In fact, Chaplin formed United Artists — a successful partnership with Douglas Fairbanks, Mary Pickford, and D.W. Griffith — to guarantee their independence from the studios. The first UA film in which Chaplin took a starring role, *The Gold Rush* is a real classic.

# Student chamber quintet plays with precision, passion

Quartet, from Page 8

piece by twentieth-century composer Sergei Rachmaninov, and the ensemble did well in playing passionately, but not overindulging.

The first movement is patterned in a style similar to the weather patterns of this past winter in Boston — calm, storm, calm, storm, and so on. Each solo section was performed very cleanly and artfully, particularly by Jennifer E. Grucza '99 (viola) and Wu (cello). Though Wu's cello solos were performed beautifully, it seemed that his decrescendo was a little rushed in handing the melody over to the rest of the ensemble. No doubt, though, this took nothing away from their rendition of this work.

Pianist Jason C. Wong '99 is to be commended for not only leading the group smoothly through gracefully executed tempo changes, but also managing to play his part with such accuracy and precision, especially after coming back from a broken finger.

The second movement, called the *Dumka*, is a collection of dances, and is known to be quite tricky in keeping the tempo changes in harmony with the spirit of the piece. The quintet performed these changes very effectively, with uniformity, precision, and solid execution. Again, all the solos were performed lyrically, especially the first violins solo on the G string. Reaching halfway up the fingerboard, Chen was able to produce an ethereal tone of breathtaking effect. Also notable was the viola solo serving as a

calm after the storm. Reaching into the upper range of her instrument, Grucza played with a serenity that transported us with its mood.

Throughout the movement, the effects of syncopation contributed to driving the tempo forward very effectively. The only noticeable difficulty was that sometimes the melody line was clouded over by the other voices, mostly because of the playing of high notes on the lower strings. The ending faded out very effectively, giving an ethereal and withdrawing effect.

The scherzo was marked by a sprightly and lively spirit. Aside from some minor international slips on the second violin part, the dance-like spirit was captured beautifully. Particularly catching was the soft, almost rain-

drop-like playing on the high keys of the piano. The opening of the fourth movement was bold and powerful, but at times had a slightly uncertain cadence.

The piece was performed with much clarity, precision, passion, and bright spirit. The ending of the Dvorak was well-executed, accurate, and exciting. Without doubt, this ensemble performed some considerably difficult music of the repertoire very competently. After the performance, Park noted that she was pleased because they had "nailed the spots that [they] had practiced in their last rehearsal."

Overall, the recital was an exciting, impressive, and enjoyable one. And it was a fitting tribute to the vast amount of musical talent on campus.

# Cafe Mojo specializes in eclectic fare for the daring

Mojo, from Page 8

blocks of what appeared to be prime rib cuts. Sweet caramelized onions and fresh greens mingled with stewed potato and carrot slices to round out the dish. Underneath all this was a bed of polenta, which is an Italian corn meal recipe. I can't complain about any part of the stew, for it held my interest and made me forget that the broth had virtually no fat in it.

The penne was almost as satisfying. I was happy to find that Mojo is one of the few restaurants around that fearlessly serves al dente pasta and not the mush that is so com-

mon. The pancetta, a spicy Italian bacon, was also a welcome addition. My only complaint was the lack of moisture. Too much starch with not enough sauce left me calling for more water. Overall though, the penne was a great meal with depth of flavor and aroma.

The last dish I tried was the grilled tuna sandwich. It came on a chilled plate with three unlikely sides of couscous, orzo pasta salad, and a pureed sweet potato salad. When ordering, I had a mental picture of a fresh filet of tuna marinated and grilled over searing heat. Actually, it was a grilled tuna salad sandwich. At first I was disappointed, but soon found out

that the salad was homemade and the vegetables were extremely fresh and ripe, a rarity for Boston in the winter. As a light alternative to the entrees, the sandwiches at Mojo are just the thing for a weekday lunch or early supper. The triad of sides Mojo serves up also sends me to cloud nine, but have turned off some of my more timid friends.

Of course, desserts bear the same eclectic variety as the rest of the menu. Try poached pears or the chocolate torte. I had vanilla bean ice cream with a Cabernet and apricot sauce. It was good, but I kicked myself for not trying something less mundane. Very strong coffee

with no aftertaste ended the feast. Iced tea is sadly not an option at Mojo, but such coffee will appease my caffeine addiction anytime. Certainly, it was a fitting end to an above average meal.

In general, Cafe Mojo is a great haunt. For anyone who is not afraid of something new, I highly recommend it. The prices hover around ten dollars, and it is a great place to take a date. It's fifty yards from the Hynes T stop right off of Newbury St. Put down your problem sets and experience this facet of Boston dining enlightenment. Coming soon: Jose's, The Cottonwood Cafe, and Grill Fish.



Bored?

## Join The Tech!

253-1541

6 p.m. Sunday, W20-483

join@the-tech.mit.edu

Tired?



WHEN DRINKING,  
CALL A FRIEND.

OR GET A RIDE  
WITH A  
STRANGER.



Drinking and riding can lead to a loss of license, a conviction, or even worse. When you drink, get a ride with a friend. It's the best call you can make.

MOTORCYCLE SAFETY FOUNDATION

## SOFTWARE ENGINEERING

SEDONA Systems Corporation, a well capitalized start-up company located in Scottsdale, Az, has developed an Internet based document communications system which will be marketed by several major telecommunication and computer companies. Business partners now include IBM, MCI and Fujitsu, with initial product introductions scheduled for this summer. We need to rapidly expand our engineering staff and currently have openings for qualified software engineers. Requirements include a B.S. in Computer Science with experience in large scale software integration for distributed systems. Internet standards experience with a working knowledge of Windows or Macintosh operating systems is also required. Compensation includes competitive salaries, founder stock options, full relocation reimbursement and flexible working hours. Qualified individuals should FAX their resumes to SEDONA Systems Corporation at 602-970-3745. All responses will be kept in strictest confidence.

## IRI SOFTWARE

WISHES THE CLASS OF 1996 THE VERY BEST  
AND INVITES YOU TO JOIN US FOR  
REFRESHMENTS AT OUR

INFORMATION SESSION

ON

MONDAY, FEBRUARY 26, 1996

AT 7 P.M.

ROOM 4-149

PERSONAL INTERVIEWS TO BE HELD ON  
MONDAY, MARCH 18, 1996

IRI SOFTWARE, 200 FIFTH AVE., WALTHAM, MA 02154  
an equal opportunity employer.

"A STUNNING WORK OF SPECULATIVE FICTION"- JAMES CAMERON  
 "JAPAN'S FIRST WORLD-CLASS ANIMATED MOVIE"-HOLLYWOOD ONLINE  
 "EXPLORES HUMAN MORALITY IN A MECHANICAL WORLD"-Paula Parisi-WIRED  
**Memoru Oshii's Animated Thriller**

# GHOST IN THE SHELL

IT FOUND A VOICE...NOW IT NEEDS A BODY

Based On The Original Manga By Masamune Shirow

FEATURING "ONE MINUTE WARNING" BY PASSENGERS (BRIAN END & U2)

© 1996 MANGA ENTERTAINMENT, INC. ALL RIGHTS RESERVED

EXCLUSIVE ENGAGEMENT  
 STARTS FRIDAY, MARCH 1ST!

GOLDWYN LANDMARK  
**KENDALL SQUARE**  
 One Kendall Square • Cambridge • 494-9800

### Express Photo

Specialized in Slide & Photo Services

- 35mm slides from PC/Mac files - as low as \$3.75/slide
- Slide from hard copy - Color/B&W - as low as \$2.75/slide
- 2 hrs. E6 processing
- B&W for publication
- Slide duplication - Quantity discount
- Full service photo lab

- Panic Rush service available
- Standing P.O. welcome
- Satisfactory guarantee
- Open 7 days

\* Years of experience serving major Hospitals & Universities \*

32 Kneeland Street, Boston MA 02111  
 Tel: 617-423-4487 Fax: 617-423-3135

TAKE THE KEYS.  
 CALL A CAB.  
 TAKE A STAND.



FRIENDS: DON'T LET FRIENDS  
 DRIVE DRUNK.

This space donated by The Tech

The hottest movie releases, upcoming plays and exhibits ...



James



Museum of Fine Arts Boston

THEY MIGHT BE GIANTS

PULP FICTION

BRATTLE THEATRE

Join The Tech Arts staff and review these events.  
 Call Scott at 253-1541.



## Intel is Coming to MIT!

Intel Corporation is the world's largest semiconductor manufacturer and a leading supplier of microcomputer components, boards, systems and software.

Please stop by and submit your resume at the following campus events:

### AISES/NSBE/SHPE Career Fair

Friday, February 23, 1996

Noon to 6:00 pm at DuPont Gym

### Intel Open House

(meet and chat with recruiters one-on-one informally)

Dress: very casual ("come as you are")

Monday, February 26, 1996

11:00 am to 4:00 pm at Student Center, Mezzanine Lounge  
 (NOT a formal presentation: just drop by anytime during these hours)

>>> Please bring TWO copies of your resume and an unofficial student transcript <<<



### WE ARE SEEKING BS, MS, and PhD STUDENTS IN THE FOLLOWING DISCIPLINES:

- Electrical Engineering
- Computer Engineering
- Computer Science
- Chemical Engineering
- Mechanical Engineering
- Materials Science
- Industrial Engineering
- Applied and Engineering Physics
- Environmental and Safety Engineering

### STUDENTS INTERESTED IN A CAMPUS INTERVIEW OR EMPLOYMENT WITH INTEL MAY:

- Submit resumes to Intel recruiters at the AISES/NSBE/SHPE Career Fair on February 23rd.
- Submit resumes to Intel recruiters at the Intel Open House on February 26th.

*Intel Corporation is an equal opportunity employer and fully supports affirmative action practices.*

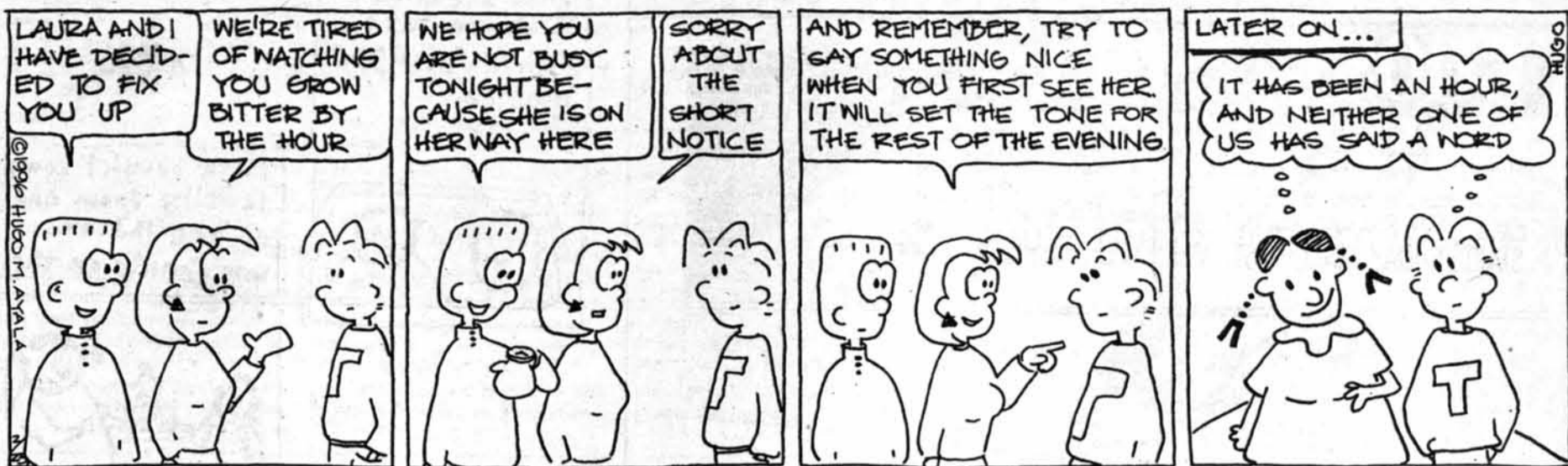
*Intel also supports a drug-free workplace and requires that all offers of employment be contingent on satisfactory pre-employment drug test results.*

*Intel seeks to hire U.S. Citizens, Permanent Residents, Asylees, Refugees, and Temporary Residents. We will consider MS- and PhD-level foreign national candidates where there is a demonstrated shortage of qualified U.S. candidates.*

For more information about Intel, visit our Worldwide Web home page at: <http://www.intel.com>

# Off Course

By H. Ayala



## The Tech

MIT's oldest and largest newspaper (and the oldest student activity) has openings in all departments.

Stop by our offices in Room 483 of the Student Center every Sunday at 6 p.m. for our general meetings

or call 253-1541 and ask for Scott

**No experience necessary.**



They *shelled* it out for your orthodontist bills.

*Coughed* it up for your car insurance.

And *forked* it over for that **fish tank** accident.

Yet they still *insist* you call **collect**.

*Touched* by their undying love, you spare them further expense.

You dial **1 800 CALL ATT.**

**1 800 CALL ATT** always costs less than 1-800-COLLECT.\*

And always gets you the reliable AT&T Network.

Use it whenever you're off campus.

Know the Code. 1 800 CALL ATT. That's Your True Choice.™

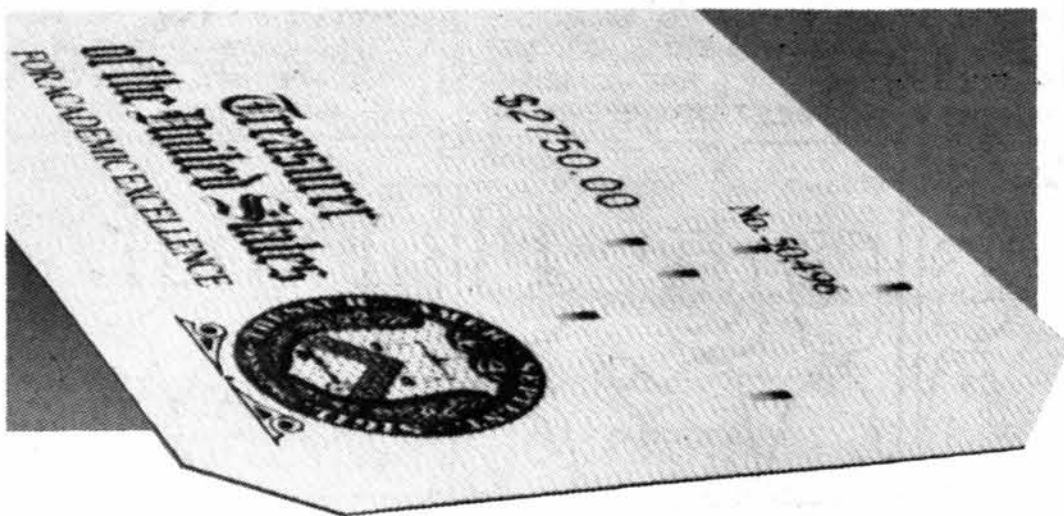


**AT&T**

Your True Choice

\* For interstate calls. Promotions excluded. 1-800-COLLECT is a registered trademark of MCI.

## RESERVE OFFICERS' TRAINING CORPS



# CASH IN ON GOOD GRADES.

If you're a freshman or sophomore with good grades, apply now for a three-year or two-year scholarship. From Army ROTC.

Army ROTC scholarships pay tuition, most books and fees, plus \$100 per school month. They also pay off with leadership experience and officer credentials impressive to future employers.



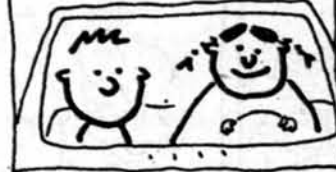
**ARMY ROTC**

**THE SMARTEST COLLEGE  
COURSE YOU CAN TAKE.**

For details, visit Building 20E-126 (18 Vassar St.) or call  
**494-8710**

## Jim's Journal

Today Ruth and I drove into Santa Fe, New Mexico.



Ruth bought some jewelry from one of the Indian merchants on the street.



It was a ring, which she put on as soon as she bought it.



**by Jim**

She said she couldn't believe all the stuff you could buy here.



GCC Technologies is a leading developer of high performance personal computer products. We offer exciting opportunities in the following technical areas:

- Internet software products
- Advanced networking protocols
- ASIC and gate array design
- PostScript RIP software
- PowerPC and AMD 29k embedded controllers
- Memory compression
- Advanced image processing
- High performance software design

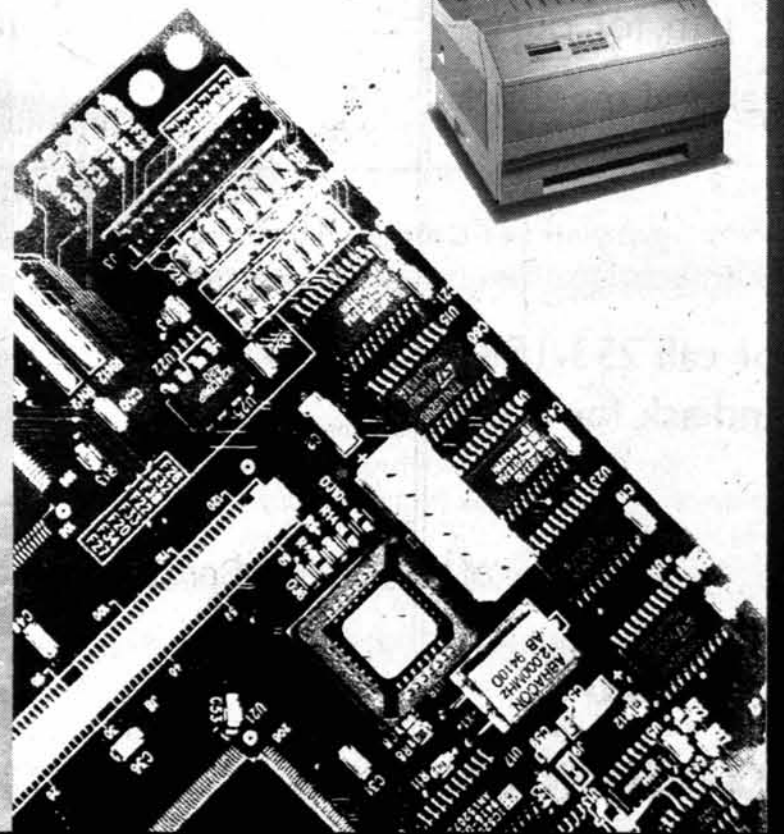
## GCC got its start at MIT. Interviews will be conducted on Tuesday, February 27. (Room 12-170)

See Office of Career Services for details.

Founded in 1981 by 3 MIT engineering graduates, GCC has developed innovative products in fields ranging from video games to laser printers. GCC offers you the opportunity to advance your career by developing state-of-the-art technology in a challenging, creative and informal atmosphere.

At GCC, we design leading edge computer peripherals including high-resolution laser printers for the graphics arts and prepress market. WebAdmin™, our latest innovation, allows you to manage your printer via the World Wide Web. We are seeking talented individuals to join our team.

GCC offers a competitive salary and benefits package including a 401k program. GCC is based in the Boston area at 209 Burlington Road in Bedford, MA. Visit us on the Internet at <http://www.gcctech.com>.



 **GCC  
TECHNOLOGIES**

# Baker, Protz Ski to Best Times in Recent MIT History

Alpine, from Page 20

perhaps even for several years before then," said Coach Jonathan S. Shefftz.

Co-captain Ari Gerstle '97, Sean Lavin '97, and Nate Kushman '98 also all turned in their best slalom results of the season. The crucial fifth time from co-captain Geoff Johnson '97 reflected his having missed a gate.

In the cumulative standings, the men were still behind UConn, but

ahead of Trinity. Baker flew through the wind to lead the MIT women with 14th place, earning her 22nd place in the season's cumulative individual standings.

According to Coach Shefftz, "This is not only the best race of any MIT woman during my three years as coach, but I strongly suspect it is the best race of any MIT woman ever in the history of our varsity ski team."

Valderrama and Hartmann also turned in their best giant slalom per-

formances of the season.

Protz once again led the men with his best giant slalom result of the season, this time with Johnson only a few tenths of a second behind him. Lavin, Gerstle, and Jeremy Gerstle '99 all turned in their best giant slalom results of the season. This strong performance almost caught up for the day with sixth-place Babson College, and narrowed UConn's lead for the season to only two points.

Need to talk?  
Call Nightline  
x3-8800

This space donated by The Tech

## Plan your party at Ryles.



The S&S will come across with great food.

If you're throwing a party for up to 200 people, it doesn't sound or taste any better than our party combo. The newly refurbished Ryles has a state of the art sound system and a great dance floor. And the S&S just won the award for best caterer from the Cambridge Chronicle.

So call today. Because if you're going to party hearty, a little something like Hampshire St. shouldn't come between you and a nice meal too.

**JAZZ RYLES CAFE**



354-0620 • INMAN SQUARE • CAMBRIDGE, MA

Restaurant

Bring a friend to  
**SUNDAY DINNERS**  
*at Baker Dining!*  
**5:00 pm - 7:30 pm**  
**(or order a late meal by calling 3-3161)**

**This Sunday:**  
**Chicken Parmesan**  
**Vegetarian Stew**

# OPEN HOUSE

## STUDENT SERVICES REENGINEERING

### MONDAY, FEBRUARY 26TH

10:30 am - 2:30 pm

LOBBY 10

Come and hear about our ideas to improve

- Career Services
- Co-curricular Support
- Educational Program Support
- Orientation
- Housing
- Personal Support
- Provision of Supplies and Materials

We want your feedback.  
Members of the Student Services Reengineering Teams will be present to discuss proposed ideas.  
Stop by anytime.

Snacks will be provided.

<http://web.mit.edu/reeng/www/studentserve/>

# CLASSIFIEDS

- Events**
- Housing**
- Travel**
- Help Wanted**
- Services Offered**
- Information**
- Positions Wanted**
- Lost & Found**
- Clubs**
- For Sale**
- Greeks**
- Miscellaneous**

**Advertising Policies**  
Classified ads are due at 5 p.m. two days before day of publication, and must be prepaid and accompanied by a complete address and phone number. Send or bring ads, with payment, to W20-483 (84 Mass. Ave., Room 483, Cambridge, MA 02139). Account numbers for MIT departments accepted. Sorry, no "personal" ads. Contact our office for more details at 258-8324 (fax: 258-8226) or ads@the-tech.mit.edu.

**Rates per insertion per unit of 35 words**

MIT community:

1 insertion	\$3.00
2-3 insertions	\$2.75
4-5 insertions	\$2.50
6-9 insertions	\$2.25
10 or more insertions	\$2.10

All other advertisers .....\$5.00

**■ Help Wanted**

**Earn \$5,000 each and every week** with our unique method. Guaranteed. Free information. Learn How. Send SASE to DJR Marketing, Box 120206-MIT1, San Antonio, TX 78212.

**Retire Before You're 30:** Entrepreneur/lawyer/businessman seeking partner(s) for high tech start-up and eventual IPO. If you think you have a profitable and feasible high tech idea or invention, let's talk. (202) 217-2260.

**Earn up to \$120/wk** by donating your sperm. Must be a healthy male between 19-34 & 5'9" or taller. Call California Cryobank, Inc. at 497-8646 to see if you qualify!

**Academic couple** seeking woman to be a surrogate mother to enable us to have a child. Compensation \$20,000. (800) 718-4450.

**\$1750 weekly** possible mailing our circulars. No experience required. Begin now. For info call 301-306-1207.

**■ Help Wanted**

**Attention Students:** Earn while you learn! Part-time Internet Business. Full details at <http://www.autohomebiz.com>.

**Wanted - Software wiz;** assist researching producing CD Roms compatible with Mac; Windows; IBM and UNIX stations. Inputs from ADOBE Illustrator. Pay \$12 hourly; call Haitham 524-5566 anytime (phone/fax) for details.

**Fletcher Spaght,** a Boston-based strategy consulting firm focusing on technology-oriented companies, will be holding an information session on Wednesday, February 28th, at 7pm in Room 4-163. Recruiting: Thursday, February 29th.

Healthy subjects needed to study the effects of a dietary amino acid on blood vessels. The study takes approximately 5 hours, involves 3 blood draws, and pays \$50. Please call x3-3684 or email [sheriff@mit.edu](mailto:sheriff@mit.edu) for details.

**■ Help Wanted**

**Extra Income for '96 -** Earn \$500-\$1,000 weekly stuffing envelopes. For details - RUSH \$1.00 with SASE to: Group Five, 57 Greentree Drive, Suite 307, Dover, DE 19901.

**■ Services Offered**

**Legal problems?** I am an experienced attorney and a graduate of MIT who will work with you to solve your legal problems. My office is conveniently located in downtown Boston, just minutes from MIT via the MBTA. If you have a question involving litigation, high tech law, consumer or business law, family law, real estate or accidents, call Attorney Esther J. Horwich at 523-1150 for a free initial consultation.

Are you interested in finding out if smoking has affected your blood vessels? Volunteers needed for a harmless, short test and a free cholesterol measurement. If you smoke please call x3-3684 or e-mail [sheriff@mit.edu](mailto:sheriff@mit.edu) for details.

**■ Services Offered**

**AIDS and Sexually Transmitted Disease testing and treatment.** Totally confidential, private MD office. Dr. Robert Taylor. 1775 Beacon St. Brookline. Call 232-1459 for appt.

**The deadline** for apply for on campus summer and fall 96-97 vacancies in family and single graduate student apartments and dormitories is 5:00 p.m. on Thursday, February 29, 1996. On March 1, 1996 there will be a housing lottery for any fully-registered continuing graduate student wanting on-campus housing for the 96-97 academic year. Applications are available in Graduate Housing in E32-133, and must be returned by the deadline to the same office. Any questions, call 3-5148. The Graduate Housing Office will be closed Friday, March 1st due to the lottery.

**■ Services Offered**

**Weight Loss Breakthrough** Exclusive product will change diet industry forever. Extremely high income potential for those who take action. No joke! Call 1-800-497-9484.

**■ Travel**

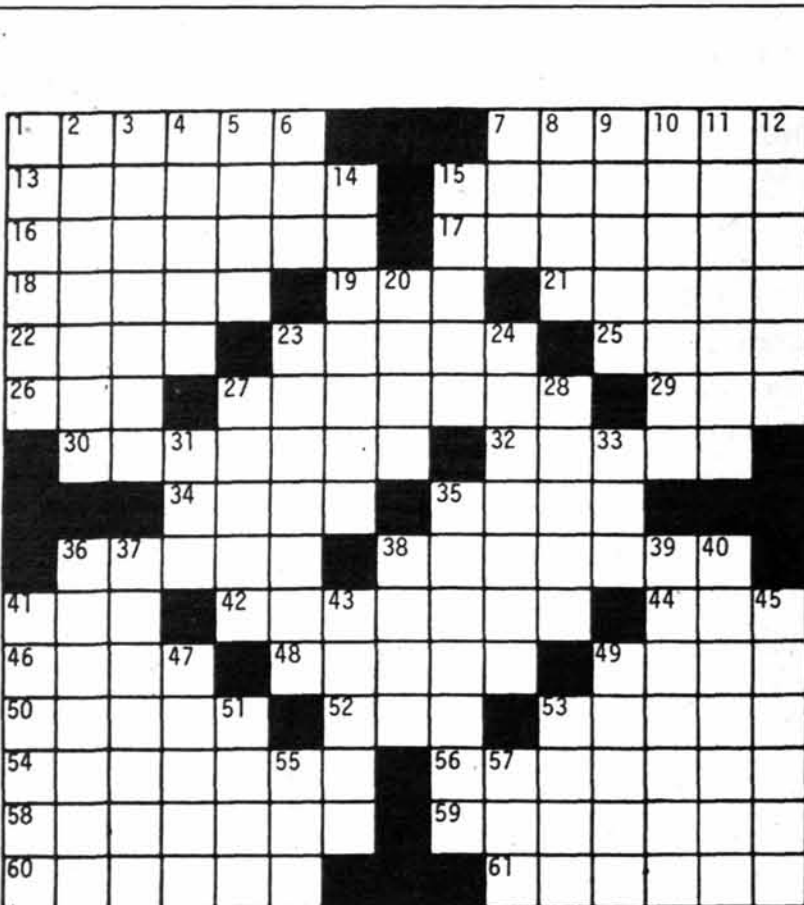
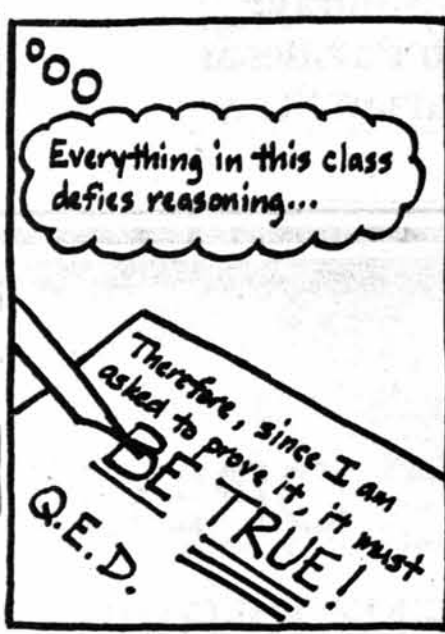
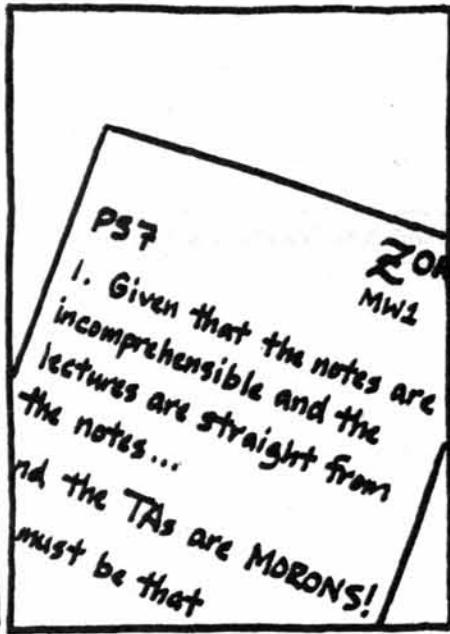
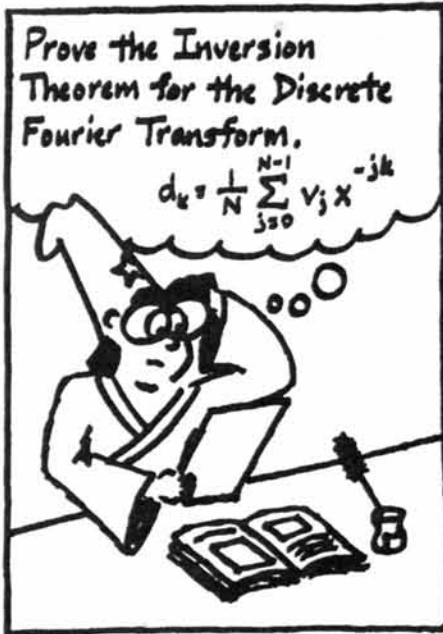
**Spring Break '96** With only 1 week to live- Don't blow it!! Book now!! Organize a small group and travel free!! Florida & Padre \$109 Bahamas \$359 Jamaica/Cancun \$399 For free information: Call Sunsplash Tours 1-800-426-7710

**■ Clubs**

**MHT Women's Ultimate Frisbee Team:** Join now! Come to practice Sunday, February 25, 6-8 pm, in field of indoor track (above ice rink). Beginners welcome. Contact [roottwo@mit.edu](mailto:roottwo@mit.edu) with questions.

## ZORK'S PLACE

### By Steven D. Leung



**ACROSS**

- 1 Jet
- 7 Shoes away
- 13 Belonging to Dobie Gillis's girlfriend
- 15 Small crown
- 16 Senior citizen, usually
- 17 Dance performance
- 18 Formation
- 19 Roman 151
- 21 system
- 22 Polynesian warriors
- 23 Statement of faith
- 25 College in Houston
- 26 Telephone-dial trio
- 27 Actress Norma
- 29 Synephrine
- 30 Gulf-state food fishes
- 32 Jazz instrument
- 34 First-rate
- 35 Manny of baseball
- 36 Actor Navarro
- 38 Gridiron play
- 41 Comedy producer
- 42 Reads
- 44 Editor's insertion in a quote

- 46 Lupino and Cantor
- 48 Woodturning machine
- 49 Sound amplifier
- 50 Covered with hoarfrost
- 52 neck shirt
- 53 Pioneer in mental health
- 54 Varnish ingredient
- 56 Do car work
- 58 Oscar
- 59 box, in psychology
- 60 U.S. industrialist, Samuel
- 61 Avaricious

- 10 Dye ingredient
- 11 Dangerous ones
- 12 Car accessory
- 14 Discharge
- 15 Town
- 20 Pastures
- 23 Waterway
- 24 Aficionado
- 27 Ex-Senator Jackson
- 28 Last
- 31 On the
- 33 Harbor, Maine
- 35 Flirtatious fellows
- 36 Math symbol
- 37 California city or shaded walk
- 38 Stringed instrument of old
- 39 Stupid
- 40 Compared
- 41 Former Senator Fong, et al.
- 43 Poe's bird
- 45 Dieter's food
- 47 What to do with a new watch (2 wds.)
- 49 Creator of Winnie-the-Pooh
- 51 Measure of medicine
- 53 Possible poker hand
- 55 And not
- 57 Record of heart activity

**DOWN**

- 1 Layers
- 2 Richard Burton film (2 wds.)
- 3 Frantic scramble (2 wds.)
- 4 Inventor Howe
- 5 Breezy
- 6 Busch, Clarke, or West
- 7 "Barney Miller" actor, Jack
- 8 Technical name for the shank
- 9 Helicopter part

**PUZZLE SOLUTIONS FROM LAST ISSUE**



© Edward Julius Collegiate CW8725

# IVC Sweeps Game against UMass-Lowell

Volleyball, from Page 20

Poor blocking contributed as MIT never got back into the game, dropping it 15-10 to Tufts.

Brian Rexing G brought an early lead to IVC in game three with four points during his service. But Tufts countered with four points of their own during the same rotation in which they started their game two streak, despite Niemeyer's presence in the front row. Neither team played strongly for the rest of the game, but errors from IVC eventually gave Tufts the 16-14 advantage.

Game four opened similarly, with Tufts going up 3-2 with three straight points again in the same rotation that cost IVC so many points in games two and three. Three points from the serve of Gene Van Buren G took MIT ahead before Tufts scored their only other point of the game.

Setter Koji Asari '96 then began serving to Tufts primary passer

while the passer was hitting right side. The strategy, chosen by coach Satoshi Asari '94, worked so well that Koji Asari's service finished off the game with nine straight points.

Rally scoring was in effect for the deciding fifth game, and side-outs dominated until three servers in a row scored an extra point for Tufts. IVC called a timeout as Tufts' lead reached 11-7, managing to score the next sideout and the following point.

But that was it for MIT as Tufts' biggest hitter scored twice through the outside block to swell their lead. Hitting errors from MIT preceded a block on MIT's outside attack which won the match for Tufts.

## IVC Sweeps UMass-Lowell

IVC also hosted UMass-Lowell this past Tuesday in Rockwell Cage. The match was a good opportunity for all of the Club's players to see court time as the Engineers swept UML 15-4, 15-10, 17-15.

Knowing that UML had improved upon last year's team, IVC put in its normal starting six to begin the match. IVC's blockers applied initial pressure to the outside attack of UML, earning early points for the Club.

As UML began tipping and rolling over the block, Koji Asari set outsiders Alberto Lazaro G and Rad Roberts G who ripped balls over the opposing blockers. Le and Niemeyer also fared well against weak middle blockers to help Tech to a 15-4 win.

John Lee G helped IVC start the second game quickly with well-placed attacks from the right side, and strong serving. As the lead-built up, coach Satoshi Asari replaced the starting middles with Tom Kelsch G and John Modzelewski '98. UML was able to reduce MIT's advantage to 13-10, but the final two points went IVC's way.

By the middle of the third game, Lazaro was the only starter still in

the lineup for IVC. Bickering among UML's players did not help their struggle, and the Club was able to stay even despite numerous errors. Down 13-14, IVC's players dug in and finished the match strongly with a 17-15 third game win.

IVC improved its record to 2-1 for the season with the win over UMass-Lowell. Their next home match is against Salem State on March 5.

Age 18, 1993



Elizabeth Suto.

Killed by a drunk driver on February 27, 1994, on Bell Blvd. in Cedar Park, Texas.

This space donated by The Tech

## ADAPTEC TO THE RESCUE



HAVE NO FEAR!  
I'LL SEE YOU ON  
FEBRUARY 27!

ADAPTEC WILL SOON BE ON  
CAMPUS GET READY.  
WWW.ADAPTEC.COM



# JV Squash Wins 5-4 Against Tufts University

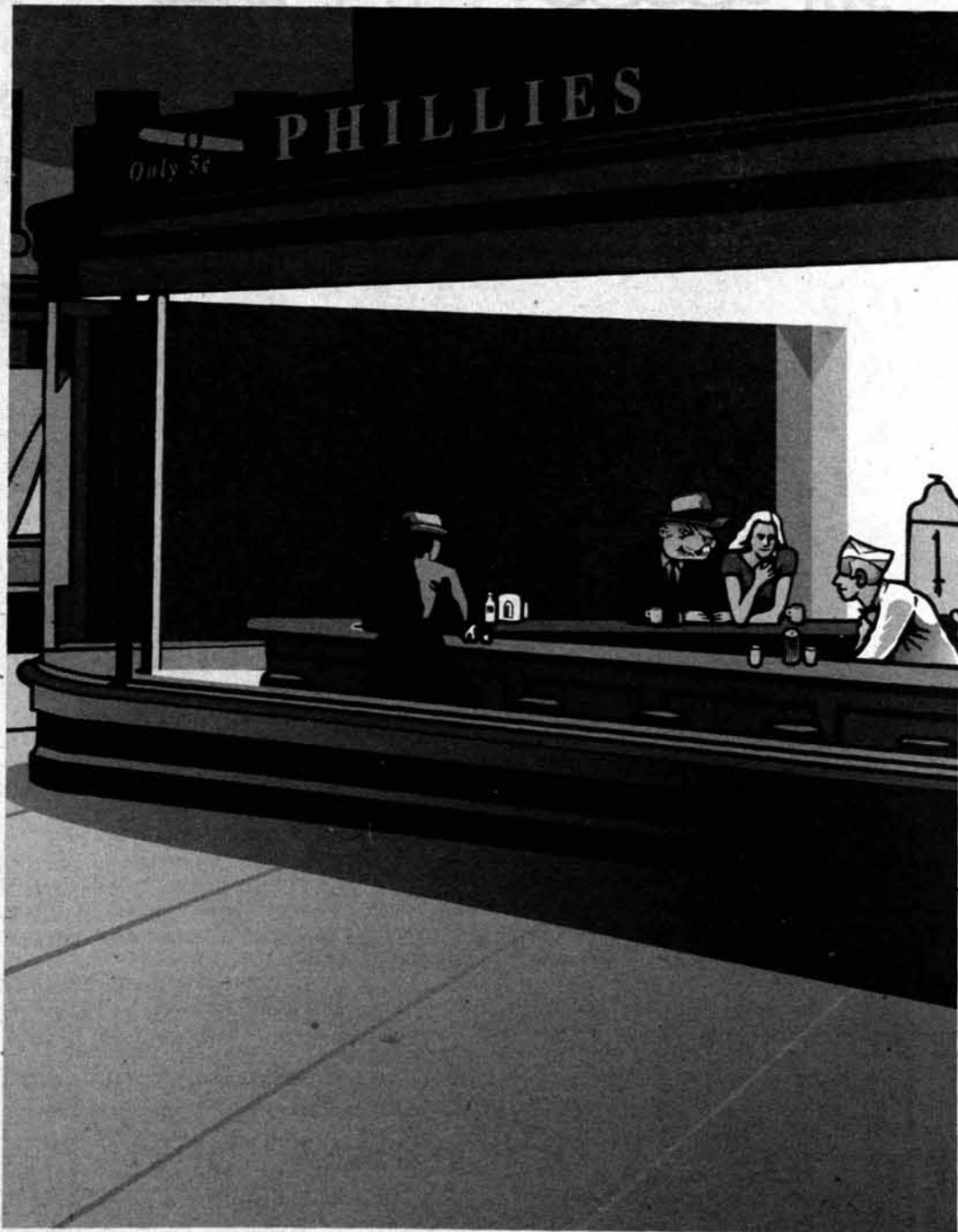
Squash, from Page 20

At this point, MIT and Tufts were tied at 3-3 with 3 matches in progress. Ait-Ghezala overcame a 2-1 deficit as he took control of a fatiguing five-game match. His opponent could not keep up with him, as Ait-Ghezala took the last two games at 15-4 and 15-10.

With MIT up 4-3, they needed to win one of the two matches left to clinch the dual match victory.

Goldman brought the fifth point home for MIT as he dominated over his opponent 3-1. Kashmiri lost his match 3-0, but it was a moot win for Tufts, as MIT had already won five matches.

The MIT team has shown tremendous improvement under first year Head Coach Mark Johnson. He has turned a relatively inexperienced group of athletes into decent squash players in a short period of time. They hope to continue their success next season.



# It's a Classic

1998 Brass Rat  
Premieres  
on Monday,  
March 4,  
at 9<sup>PM</sup> in  
Walker Memorial  
Refreshments and  
Free Brass Rat

## SPORTS

## JV Squash Fights For Season-End Victory Over Tufts

By Carol Matsuzaki  
TEAM MEMBER

The MIT JV Squash Team ended their 1995-96 season on a good note as they fought to a 5-4 victory over Tufts University Tuesday, finishing off an otherwise winless season.

Strong performances from the middle and bottom of the lineup helped MIT to only its second 5-4 victory over Tufts in as many years.

Mike Chatwin '97, Carol Matsuzaki '96, Torkel Engeness '96 and Alex Chu '98 started the first round of matches for MIT. Chu capped off an undefeated season as he easily took his match 3-0, giving MIT its first point.

Matsuzaki, after winning her first two games, played a sloppy third game, losing 15-12. However, she came back strong in the fourth (15-8) to give MIT its second team point.

Engeness took his first two games handily. However, his opponent soon discovered his weakness and took the next two games to tie the match at 2-2. Engeness regrouped in the fifth to make it close, but his opponent edged him out 17-15 to win the match.

Meanwhile, Chatwin had quite a battle of his own going on. After losing the first two games, he stayed tough to win the next two at 7-15. However, his opponent came right back and won the fifth 15-8 to tie the dual match score at 2-2.

Saim Kashmiri '99, Jon Goldman '98, Ahmed Ait-Ghezala '99, Bryan Robinson '98, and Don Hyun '97 started the second round of matches to settle the tie. While Robinson lost 3-0, Hyun won 3-0.

Squash, Page 19

## Alpine Ski Teams Finish Season Well

Individuals race to fastest MIT times

By Jonathan S. Shefftz  
TEAM COACH

The men's and women's alpine squads of MIT's varsity ski racing team completed their fifth and final regular season race weekend this past Saturday and Sunday at Berkshire East Ski Area in western Massachusetts. There were some strong individual finishes during another seesaw battle against the team's close rival, the University of Connecticut.

Brooke Baker '99 led the women with her first "clean" slalom race of the season, to finish in 15th place out of approximately 60 skiers. Both Marcela Valderrama '97 and Christy Hartmann '98 also had their best slalom finishes of the season (35th

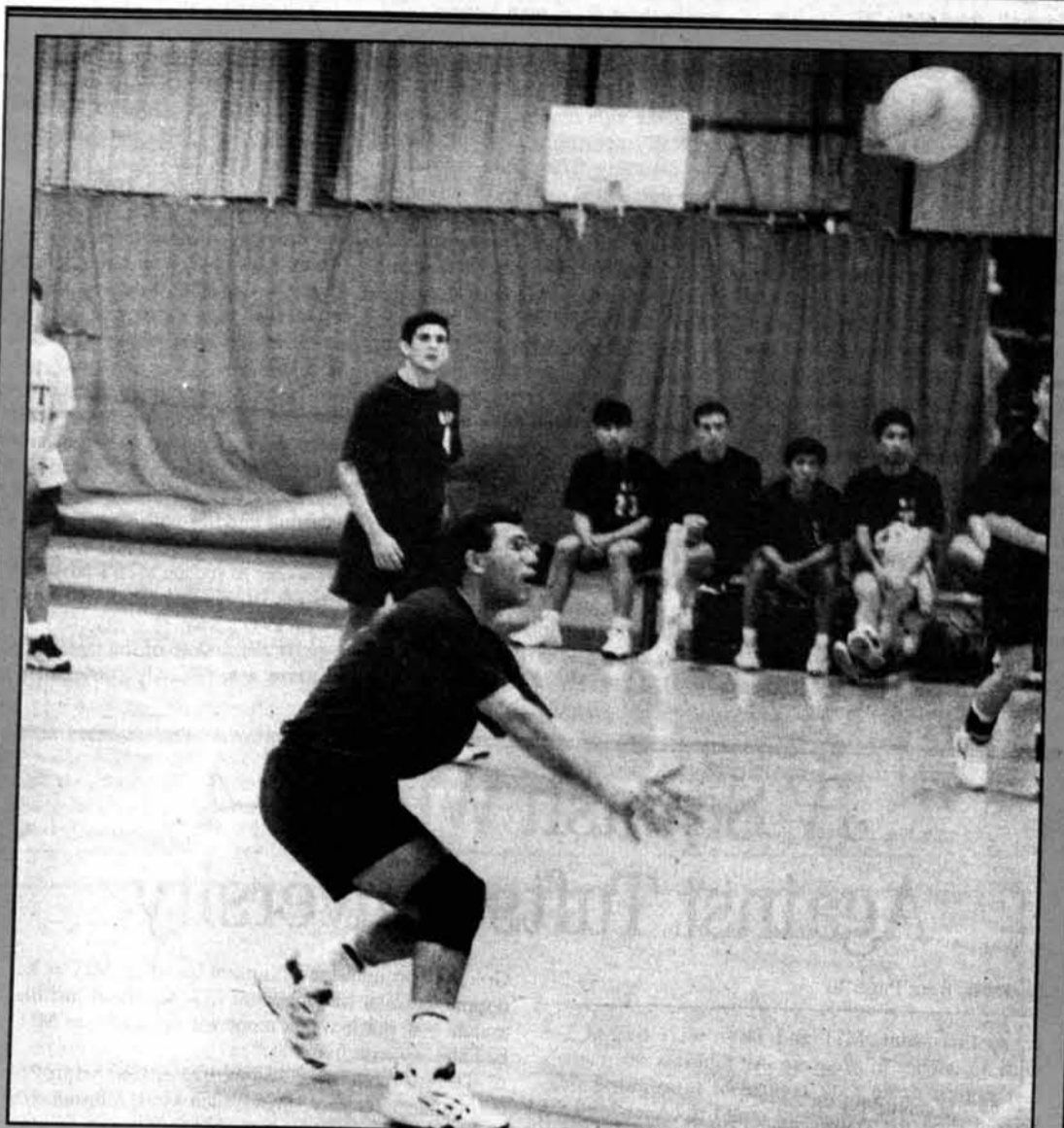
and 44th, respectively), resulting in an eighth place team finish for the day.

In the cumulative team standings for the season, this placed the women only three points behind the number eight UConn and cemented their lead over Trinity.

For the men, Mike Protz '96 followed up on his blazingly fast slalom result last weekend with an even faster result this time to cap off the season in slalom.

"As measured by the national competitor classification system that the U.S. Ski Association maintains, this is the best race of any MIT male during my three years as coach, and

Alpine, Page 17



Gene van Buren G digs out the ball against UMass-Lowell Tuesday. MIT won 15-4, 15-10, 17-15.

## IVC Drops Close Match to Tufts Despite Good Team Effort

By Gene Van Buren  
TEAM MEMBER

Thursday, Feb. 15 saw the first divisional loss for the Intercollegiate Volleyball Club. In a tightly contested match held in DuPont Gymnasium lasting over two hours, Tufts University won by a score of 9-15, 15-10, 16-14, 4-15, 15-9.

This was IVC's first match since losing its premier player, Parry J.R. Husbands G, to a sprained ankle. Husbands hopes to return to action by the end of this week.

MIT started the match well, taking the initial lead with two points from the service of Phil Le G. The Club earned 14 of its 15 points in the first game while middle hitter Gunter Niemeyer G was in the front row. IVC lost its lead only once on its way to the 15-9 game win when it was unable to score for nearly two full rotations midgame.

The second game began slowly for both teams until Tufts took six in a row to take the lead 12-9.

Volleyball, Page 19



Lynn D. Cornell '96 overtakes a competitor from West Point on her way to sixth place on Sunday. MIT finished second behind Cornell overall.

## Nordic Ski Team Races Well at High Point

By Erin Lavik  
TEAM MEMBER

The MIT Nordic skiing team had another successful race last weekend in High Point, New Jersey. Because of the inclement weather, MIT was only able to attend the classic races on Sunday, but made the most of the events with two male skiers and one female skier in the top ten.

In the men's 12k, Christian Lund G lead the team with a third place finish of 36:37, followed closely by Jeffrey Doering '99 in fifth (37:02). Benjamin Young of Cornell University won the race in a time of 34:39. Jiri Schindler '96 and Jeff Bradenbach '96 rounded out the skiers for MIT.

In the 8k women's classic race, Lynn Cornell led for MIT with a sixth place finish and a time of 35:49, six minutes behind winner Majorlein Schat of Cornell (29:44). Erin Lavik completed MIT's team.

Overall, MIT finished second behind Cornell and in front of West Point, Syracuse, and Clarksons.

This weekend, MIT will compete in Regionals at Lapland Lake. Saturday's events will include men's and women's classic races and a relay, and Sunday's events will be skating races.

## UPCOMING HOME EVENTS

Saturday, Feb. 24

Women's Basketball — NEW-8 Tournament Semifinals, 6 and 8 p.m.  
Men's Gymnastics against University of Vermont

Sunday, Feb. 25

Women's Basketball — NEW-8 Tournament Finals, 2 p.m.