



JIRI SCHINDLER—THE TECH

Forward David S. Danese '99 scores in the men's soccer team's Saturday game against Fontbonne College. MIT won 7-0.

## MIT Card Changes Prompt Concerns

By Stacey E. Blau  
EDITOR IN CHIEF

The Department of Housing and Food Services is in the process of responding to concerns over changes made to the new MIT Card, which is valid starting today.

The new card features two major changes this year. The word "student," which previously appeared on the front face of the card, was taken off. The expiration date on the card, which used to be one year from the date it went into effect, was extended to four years, until Sept. 26, 2000.

Several students called to complain about the omission of the word "student," said Lucy Ann Barrera, manager of the MIT Card Office.

While the card, with its unique silver background, is recognizable as a student card at MIT, people

outside MIT might not recognize it as such, perhaps causing problems for students who use it as identification or for special student discounts, she said.

Director of Housing and Food Services Lawrence E. Maguire made the decision to take off the "student" tag last year. The idea was to remove any extra, unnecessary information on the card because "a clean card makes sense," Maguire said. Less information on the card means more privacy and security if the card falls into the wrong hands, he said.

"I don't know if it was a conscious decision in hindsight," Maguire said. "Looking at it now, it probably makes more sense to have 'student' on it" because of the iden-

Card, Page 19

## Rosemary D. Grimshaw MARCH '78

Rosemary D. Grimshaw MARCH '78, former assistant professor of architecture, died on Sept. 15 after a three-year battle with amyotrophic lateral sclerosis, also known as Lou Gehrig's disease. She was 53.

Grimshaw would "want people to remember her as a teacher, a person who inspires her students by giving them glimpses of life that are passionate and real," said Professor of Architecture William L. Porter PhD '69, former dean of the School of Architecture and Planning. "She hoped that those glimpses would inform their designing."

Grimshaw provided her students with these glimpses by holding several active positions outside of the Institute. She was founder of the Cambridge architectural firm Linea 5. She served as principal designer for several projects, including the Atlantic Union College Master Plan, the Strategic Land Plan for the Taconic Foundation in Vermont, the Great Pond Bay Resort on St. Croix, and the Support and Administration Building for the New York Power Authority.

Grimshaw was also a senior member of the Arrowstreet Inc., design team for the Massachusetts Archive on Columbia Point, and had recently completed work on new homes in Boston, New Milford, CT, and Jackson, MS.

### Outside experiences add dimension

These outside experiences added an extra dimension to her teach-

Grimshaw, Page 16

## As Dining Group Solicits Input, Confusion Remains on Contract

By Douglas E. Heimbarger  
STAFF REPORTER

The dining review working group met this week with residents of McCormick Hall, Burton-Conner House, and Baker House despite lingering confusion among members of the group over its relationship to the future of dining services on campus.

The group, created during the end of the spring semester, is in charge of formulating a framework for dining on campus, said Director of the Campus Activities Complex Philip J. Walsh, who serves as head of the review group.

In the next two weeks, the group plans to solicit input from residents of all other dormitories and several independent living groups, Walsh said.

But the group will not be making a report until the end of January to Senior Vice President William R. Dickson '56, who along with Dean for Undergraduate Education Rosalind H. Williams, is responsible for the final decision on what

MIT will do with its dining services.

Members of the dining group remain confused, however, about the potential one-year renewal of the Aramark contract.

"We're waiting to hear from Bill Dickson," said John S. Hollywood G, a member of the group. "Right now, we're working to have the review done by the end of the Independent Activities Period. If it is, the requests for proposals [for new dining providers] will be done this year."

However, such a timeline would preclude the selection of a new dining vendor or vendors for the 1997-98 school year, said Associate Director for Food Services John T. McNeill. For this reason, "the Aramark contract will probably be renewed," he said.

### Group not involved with bidding

The purpose of the working group is to create a food services system that will be economical while building community and

emphasizing student participation and nutrition, Walsh said.

Walsh emphasized that the dining review group is not involved in the issuing of contracts. "We're looking at dining at a more conceptual level to find a system that meets our dining needs," Walsh said. "The framework will become the basis for Housing and Food Services to use in any [requests for proposals] that are developed."

"It was our intention last year to extend [the Aramark contract] only one year," Dickson said. "However, the dining group should be and is driven by doing the job they set out to do and not by the rebidding issue."

The review group was not going to rush its efforts to finish by an arbitrary deadline, Walsh said. "We're trying to do this by the beginning of the second term."

Still, "there may be areas where we have to explore into more

Aramark, Page 11

## Intel CEO Grove Speaks About Industry Changes

By Christopher L. Falling  
STAFF REPORTER

On Wednesday, Andrew S. Grove, president and CEO of Intel Corporation, spoke in the fifth lecture of the Industry Leaders in Technology and Management seminar series.

The School of Engineering and Sloan School of Management are sponsoring the series in conjunction with the Center for Technology, Policy, and Industrial Development. The series will bring to MIT leading CEOs who have distinguished themselves in endeavors involving technology and management.

The lecture, titled "Exploiting the Crisis Points: Challenging Every Company and Career," was held in a full Wong Auditorium in the Tang Center. An overflow room was quickly filled with a standing room only crowd.

### Grove discusses major changes

Grove talked for most of his lecture about "strategic inflection points." These points are fundamental changes in a business or industry. Grove also addresses these inflection points in his new book, *Only the Paranoid Survive*.

An example of a strategic inflection point would include a Walmart moving into a small town and forc-



JIRI SCHINDLER—THE TECH

Aurea F. Maldonado '99 fights for the ball with a Nichols College player in Tuesday's women's soccer team's match at Steinbrenner Stadium. MIT tied Nichols in double overtime 2-2.

## INSIDE

Work starts to replace tennis courts. Page 10

Mamet's *American Buffalo* an honest, thoughtful film. Page 12

Students can enjoy arts for free. Page 12

# WORLD & NATION

## U.N. to Lift Sanctions on Bosnia

THE WASHINGTON POST

UNITED NATIONS

The U.N. Security Council is expected to formally lift economic sanctions against Serbian-led Yugoslavia and the Bosnian Serbs next week following the certification in the next day or two of results of the Sept. 14 Bosnian elections, a senior U.S. diplomat said Thursday.

The sanctions have been suspended since last autumn's Dayton peace accords, but it has been possible for the United States or another power to insist on reimposing them at any time. Once the sanctions are abolished, as now expected, it would take a unanimous vote of the council to reimpose them.

Assistant Secretary of State John Kornblum, the U.S. point man for Bosnia, outlined the timetable for lifting sanctions after Secretary of State Warren Christopher met here with foreign ministers of the five-nation "contact group" on Bosnia, President Alija Izetbegovic of Bosnia and the foreign ministers of Yugoslavia and Croatia.

His announcement indicated that differences have been resolved within the contact group of mediators over ending sanctions. There had been suggestions that the Clinton administration had wanted to delay lifting sanctions until the Serbs cooperated in such steps as participating in a joint meeting of the new, three-member presidency in Sarajevo, the traditional Bosnian capital.

The United States wants to maintain maximum pressure on the Bosnian Serb faction to avoid secessionist tendencies and help ensure that the new government is a viable confederation of Muslims, Serbs and Croats.

Initially, the newly elected Serb representative on the presidency, Momcilo Krajisnik, had refused to go to Sarajevo for the joint meeting. However, that roadblock was pushed aside Thursday by Kornblum's announcement that an organizational meeting of the presidency now is scheduled for Sarajevo early next week.

## Senate Upholds Clinton's Veto Of Late-Term Abortion Ban Bill

LOS ANGELES TIMES

WASHINGTON

The Senate Thursday upheld President Clinton's veto of a bill that would have outlawed a controversial late-term abortion procedure, an issue that could tip scales in congressional elections but so far has failed to resonate in the presidential campaign.

But even as senators rebuffed efforts to ban "partial-birth abortion," abortion foes claimed victory and plotted a move into the high-stakes game of presidential politics.

"It's a winning issue" for Bob Dole, insisted Christian Coalition president Ralph Reed, who renewed calls for the Republican nominee to confront Clinton over his April veto of the bill.

Fifty-seven senators voted to override the veto, nine short of the two-thirds majority required. Forty-one lawmakers sided with Clinton.

The Dole campaign responded to the vote with a stinging denunciation of Clinton's veto. "Bob Dole knows, like every mother and father, that there is no defense — none — for a procedure so cruel that even members of Bill Clinton's own party describe it as 'infanticide,'" said Christina Martin, deputy press secretary of the Dole campaign.

## Lebed Blasts Leaders for Gridlock

LOS ANGELES TIMES

MOSCOW

With Russian President Boris N. Yeltsin hospitalized and out of the Kremlin for the rest of the year, the ambitious general who is considered most likely to succeed him jumped into the power vacuum Thursday with a damning harangue against the current administration.

Alexander I. Lebed, a retired war hero, celebrated his first 100 days as Security Council chief with loud public laments that Russian leaders have begged their armed forces to the point of mutiny and pushed this society's neglected citizens to the verge of revolt.

He directed most of the blame toward his chief rival for power, Prime Minister Viktor S. Chernomyrdin, but also distanced himself from the ailing Yeltsin.

Lebed complained in one newspaper interview that some in Yeltsin's inner circle are "yesterday's men"; in another he said that he was excluded from the clique making decisions in the president's absence.

## WEATHER

### Showery Weather Ahead

By Michael Morgan  
STAFF METEOROLOGIST

From the Blue Hills of southeastern Massachusetts to the White Mountains of northern New England, it appears as though only the first half of the upcoming weekend will be salvageable. An anticyclone currently located just east of Boston will slowly move east during the weekend.

As the anticyclone travels east, brisk southerly winds will move in warmer, more moist air from the South. This moist southerly flow of air, together with a cold front arriving from the West late Saturday, brings the possibility of rain and rain showers for late Saturday in western New England. Rain and rain showers will spread eastward to the coast on Sunday.

**Today:** Partly sunny and mild. Winds southwest 5-10 mph (8-16 kmh). High 65°F (18°C).

**Tonight:** Partly cloudy. Low 56°F (13°C).

**Saturday:** Increasing clouds and warm. Showers possible after sunset in western New England. Winds increasing from the South 10-20 mph (16-32 kmh). High 73-76°F (23-25°C). Low 60-65°F (16-18°C).

**Sunday:** Rain and rain showers developing. Breezy and mild. High 68-73°F (20-23°C). Low around 60°F (16°C).

# With Violence in Israel Rising, Both Sides Face Hard Choices

By Glenn Frankel

THE WASHINGTON POST

WASHINGTON

With a sudden burst of bloodshed, the conflict between Israel and the Palestinians has reverted to the time-honored pattern of provocation and response, kill and be killed. But this time there is a crucial difference: Palestinians have a paramilitary police force and automatic weapons, and Israelis are taking heavier losses than in the past.

The confrontation leaves Israel's new and untested leader, Prime Minister Benjamin Netanyahu, with a stark choice. He can seek to satisfy his right-wing base and permanently shatter the terms of the Oslo peace agreement between Israel and the Palestine Liberation Organization by sending Israeli troops back to the cities and populated zones of the West Bank and Gaza Strip to restore order. Or he can try to move to the political center by seeking to reestablish the partnership with Palestinian leader Yasser Arafat that was the centerpiece of the accord between the two longstanding enemies.

By contrast, Yasser Arafat, who called for the demonstrations that led to the violence, so far appears to be the beneficiary. The turmoil has put the Palestinian cause back on the world's television screens, increased his stature both at home and in the Arab world at large, and forced the Clinton administration to focus on the region in the midst of an election campaign. But there are indications the violence has intensified to the point where Arafat cannot keep it under control.

"While the confrontation is good

for him because it teaches the Israelis that freezing the peace process is not cost-free, it can also escalate and get totally out of his control, as happened today," said Khalil Shikaki, director of the Center for Palestinian Research and Studies in the West Bank city of Nablus.

The collapse of relations between Netanyahu and Arafat during the Israeli leader's first 100 days in office is the context that in large part explains why Israel's decision to dig through 20 inches of dirt and open a new door to an existing tunnel in the Old City of Jerusalem has triggered such an explosion of rage among Palestinians.

Netanyahu defeated the architect of the Oslo accord, Shimon Peres, in last May's election by promising a "secure peace" that would honor the accord while emphasizing Israel's security needs. For more than three months Netanyahu repeatedly has scorned and humiliated Arafat, treating him like a vanquished but recalcitrant enemy rather than a peace partner.

Netanyahu's right-of-center government has been confrontational in its rhetoric, resistant to carry out Israel's commitment to withdraw troops partially from the West Bank city of Hebron and critical of Arafat's alleged failure to honor parts of the accord.

Yet the new government has been reluctant to resume discussions on a range of issues that divide the two sides. These slights have weakened Arafat's stature among Palestinians.

Jerusalem is sacred ground to both sides, and any move there tra-

ditionally has provoked unrest. By sanctioning this week's show of strength in the Old City, Netanyahu in effect gave Arafat the weapon he needed to reassert his own authority.

"He's given Arafat a golden opportunity on a silver platter," said Yosef Alpher, a strategic analyst who directs the American Jewish Committee's Israel office. "This kind of move hits at the primeval fears of Muslims everywhere. It gives Arafat the perfect cause to rally his forces."

Ironically, the one sphere in which cooperation between Israelis and Palestinians had continued despite the change in government was the military. The Israeli army and Palestinian police had established cooperation and trust through continual meetings, joint patrols and the sharing of intelligence.

Now that, too, is shattered. The decision by Palestinian forces to open fire on Israeli soldiers — responding in part to the army's use of live ammunition against Palestinian civilians — is the critical new element that makes this new confrontation the most dangerous and volatile yet.

"Both sides have been trying to redefine the rules of the game," said former ambassador to the United States Itamar Rabinovich, a member of the opposition Labor party. "Now we are at a stage of mutual inflicting of pain and damage."

For Israelis, the clashes have the depressingly familiar ring of the old intifada, the Palestinian uprising of 1987 to 1993 that led to the Oslo accord and the end of Israel's military occupation of most of the West Bank and Gaza.

# House Panel Delves Further Into Ethics Probe on Gingrich

By John E. Yang

THE WASHINGTON POST

WASHINGTON

The House ethics subcommittee investigating Speaker Newt Gingrich (R-Ga.), voted unanimously Thursday to expand its probe and directed its outside counsel to examine whether the speaker provided "accurate, reliable and complete information" to the ethics committee.

The action by the panel of two Republicans and two Democrats represents a significant broadening of the 20-month ethics probe of the speaker and gives James M. Cole, the Washington white-collar criminal attorney who has been assisting the panel, considerably expanded authority to conduct the investigation.

The panel's statement said it was reacting to "certain facts (that) have been discovered in the course of" its inquiry. It did not specify those facts, but noted that it has been reviewing a preliminary report Cole submitted last month.

Since January, Cole has been looking into whether Gingrich violated federal tax law by using tax-deductible charitable contributions to foundations to further a partisan political agenda through a college course he taught.

Thursday, the subcommittee voted to expand its probe to include whether any part of Gingrich's relationship with two tax-exempt foundations similarly violated federal tax law.

While the subcommittee noted that the "scope of the preliminary inquiry has been carefully focused," its new directions to Cole did not limit him in his examination of Gingrich's relationships with the

Progress and Freedom Foundation, a conservative think tank run by Gingrich allies that help finance the course, and the Abraham Lincoln Opportunity Foundation, a charitable organization that funded a television "town meeting" featuring Gingrich.

In a statement, Gingrich press secretary Tony Blankley said he was "confident the committee will conclude this matter to be groundless."

Democrats had long sought broad authority for the outside counsel. The ethics panel's outside counsel in the Gingrich-initiated investigation that led to the 1989 resignation of House Speaker Jim Wright (D-Tex.), had wide-ranging authority and developed charges that went well beyond the original charges against Wright.

"This is no longer just a simple investigation — this is a whole new ball game," said House Minority Whip David E. Bonior (D-Mich.), Gingrich's chief House antagonist.

Some House Democrats, who have been stepping up their assault on the speaker over the ethics charges as Election Day approaches, called on Gingrich to step aside as speaker until the matter is settled.

"The integrity and the honesty of the speaker of the House has been seriously called into question," said Rep. John Lewis (D-Ga.). "The only appropriate course of action for Newt Gingrich... is to step aside... Until that time a cloud will continue to hang over the House and over the speaker."

The development virtually ensures that the investigation will continue after the November election, although the subcommittee — which has the authority to file for-

mal charges — said it expected to finish its work by early January.

The subcommittee was not responding to any complaint filed against Gingrich when it broadened its investigation, relying instead on an ethics committee rule that allows it to "consider any information in its possession that a Member... may have committed a violation."

Reps. Porter J. Goss (R-Fla.), the subcommittee's chairman, and Benjamin L. Cardin, D-Md., the panel's top Democrat, both left the committee meeting without speaking to reporters. Committee Chairman Nancy L. Johnson, R-Conn., declined to discuss the committee's action in any detail, saying only to reporters: "We are doing our job."

Gingrich's critics have alleged that GOPAC has been the financial engine for all of his efforts to build a GOP majority in the House. "All roads lead to GOPAC," Bonior said Thursday.

The subcommittee acted as House Democrats have been stepping up the political pressure for the release of Cole's report, charging that Republicans are seeking to suppress it until after the election. Bonior has urged Democratic House challengers to use the issue in their campaigns against GOP lawmakers.

Cole will report his findings to the four-member investigative subcommittee. If at least three subcommittee members agree there is "reason to believe that a violation has occurred," they can draw up formal charges against Gingrich. If that happened, the three Republicans and three Democrats on the ethics committee who are not on the investigative subcommittee would hold hearings.

# Mexican Ruling Party Remains Under Fire as Probe Concludes

By Mark Fineman  
LOS ANGELES TIMES

MEXICO CITY

Just days after this nation's ruling party passed sweeping internal reforms, opposition leaders and independent analysts charged that the Institutional Revolutionary Party, or PRI, took a leap backward Thursday.

The PRI majority in Mexico's lower Chamber of Deputies officially ended an investigation that many Mexicans viewed as a crucial test of government accountability — a 10-month legislative probe of a multi-billion-dollar government food-distribution company. The company was suspected of widespread corruption in past PRI administrations.

Amid opposition charges of cover-up, the deputies voted along party lines to send to President Ernesto Zedillo a legislative report finding no evidence of high-level corruption and listing only isolated irregularities in the operations of the National Food Staples Co., known by its Spanish acronym, Conasupo.

The investigation included questions about the role Zedillo had played, while serving as federal budget director, in a controversial \$7-million Conasupo payment to one of its suppliers. The commission report cleared him of any wrongdoing.

It also found insufficient evidence to support allegations of widespread fraud and endangering public health in Conasupo's purchase and supply of billions of dollars worth of subsidized tortillas, flour, powdered milk and other staples to Mexico's poor.

Staging an opposition walkout in the commission's final session, congressman Javier Gutierrez Vidal of the National Action Party declared: "In this case, the PRI is showing its true face — the face that pretended to cleanse itself at its (national party) assembly last weekend and that today shows itself being the same as before."

Manuel Hinojosa, the investigating commission's PRI chairman, defended the report: "We can't

invent things. ... If they don't like the results, well that's not our fault."

During Thursday's heated, day-long parliamentary debate, a succession of opposition deputies charged the PRI with "sweeping its dirt under the rug."

Some accused it of limiting the investigation to shield senior Conasupo officials, some of whom also were PRI officials. Others asserted that the commission, dominated by PRI congressmen, spent insufficient time and resources investigating the now-jailed elder brother of former President Carlos Salinas de Gortari.

"We're not covering up for anyone. We will fight corruption wherever we find it," responded PRI deputy Juan Manuel Cruz Acevedo.

"I think (the Conasupo report) shows the PRI feels sufficiently strong to do both things at once — talk about reform and protect its own interests," concluded Emilio Zebadua, political science professor at Mexico City's Colegio de Mexico.

# Mutated Gene Common in Whites Discovered to Slow Effects of HIV

By Rick Welsch  
THE WASHINGTON POST

WASHINGTON

A genetic mutation common in U.S. whites slows the progression of AIDS in people infected with the AIDS-causing virus, and in some cases protects individuals against the disease, according to a new study.

Scientists said the new information on the role played by the defective gene could lead to advances in the fight against AIDS by spurring the development of medicines or vaccines that mimic the protective mutation's effects.

"It's a beautiful study," said Robert C. Gallo, head of the University of Maryland's Institute of Human Virology in Baltimore, who in 1984 co-discovered the human immunodeficiency virus.

The new work shows that about 1 in 7 U.S. whites and about 1 in 59 U.S. blacks inherit the protective, mutant gene from one parent, along with a normal copy of the gene from the other parent. This harmless genetic condition naturally slows the progress of AIDS, giving an average of three extra years of life to those infected with HIV, according to the study in today's issue of

Science.

The study also confirms previous hints that about 1 percent of American whites inherit a mutant version of the gene from both parents — a doubly protective dose that makes these individuals virtually impervious to infection even if they are repeatedly exposed to the virus.

The new research, led by the National Cancer Institute's Stephen J. O'Brien, Michael Dean and Mary Carrington, helps explain why some people exposed to HIV fare better than others. It also shows that the protective mutation is rare in African blacks, which suggests that the genetic glitch may have arisen in an ancestral Caucasian after the two races diverged.

Researchers praised the findings as an example of the benefits that can accrue from the dogged and unglamorous work of community-based AIDS organizations, which have for more than a decade collected blood samples from thousands of HIV-infected people and kept track of each individual's fate. It was through the NCI team's genetic analysis of those samples, that the naturally occurring protective factors were found.

"It's the extensive epidemiological data collected on these patients that made this work possible," said O'Brien, who directs NCI's laboratory of genomic diversity in Frederick, Md.

The work is the latest in a rapid-fire series of discoveries since June that has shifted AIDS researchers' attention away from the virus itself and onto a protein studding the surface of some human cells.

The protein, known as CKR5 or CCR5, is part of a portal system that allows the AIDS virus to enter cells of the immune system. People with mutant CKR5 genes cannot make the crucial portal protein, and hence are protected to varying extents from viral invasion.

The researchers focused on the CKR5 gene, which carries instructions for making a protein on macrophages, the white blood cells that HIV initially infects. That protein serves as a docking site for an immune system hormone, but the AIDS virus can usurp the site to infect macrophages.

No one knows what that disease was, or whether it still exists. "It probably wasn't AIDS," O'Brien said. "But whatever it was, it probably had a high mortality."

# Census Bureau Reports Income Rose, Poverty Rate Fell During Past Year

By Barbara Vobejda  
and Steven Pearlstein  
THE WASHINGTON POST

WASHINGTON

Household income rose for the first time in six years while the proportion of Americans living below the poverty line fell last year, the Census Bureau reported Thursday. Among African Americans and the elderly, poverty rates were the lowest on record.

Median household income rose 2.7 percent last year, to \$34,076, after being adjusted for inflation. Over the same period, the poverty rate declined from 14.5 percent to 13.8 percent and the number of poor fell by 1.6 million, the largest decrease in 27 years.

By the government's calculation, the poverty level for a family of four was \$15,569.

"The news is remarkably good," said President Clinton, who quickly claimed the numbers as proof of the nation's economic health. "It is clear that we are moving on the right track."

Although the U.S. economy emerged from recession more than four years ago, the benefits from the economic recovery had largely eluded not only the poor but even the average family — with most of the gains concentrated in the upper-income brackets.

But in 1995, the benefits of economic growth were spread widely through the economy — in nearly all occupations, education levels and income categories.

In fact, according to the government's official measures, the gap between rich and poor actually narrowed slightly last year for the first time since 1990. Although the amount was statistically insignificant, it is one with plenty of political saliency at a time when public opinion polls show voters unusually anxious about their living standards and the inequality of incomes.

Last year, the share of national income earned by households in the bottom 60 percent rose by half a percentage point, while the share of national income declined for the

richest 40 percent — those with household incomes above \$65,124.

And after a decade in which it appeared that the size of the middle class was shrinking, the government found it actually grew slightly — the proportion of households with incomes between \$25,000 and \$75,000 rose by 1 percent.

At the same time, household income adjusted for inflation still remains below its 1989 pre-recession peak.

Also, despite increases in household and family income, median earnings for full-time, year-round workers did not improve. The figure for men showed no significant change, while median earnings for full-time working women fell \$337 to \$22,497.

But overall household income improved for two reasons. First, more household members were working more hours. In addition, other kinds of income might have been rising, such things as Social Security, pensions, and interest and dividend income.

# Ongoing Mideast Violence Leads Clinton into New Policy Dilemma

THE WASHINGTON POST

WASHINGTON

The latest flareup of violence in the Middle East has plunged the Clinton administration into a profound policy quagmire as it struggles to assuage Arab rage and salvage the Mideast peace process without getting into a public dispute with Israel during the run-up to a presidential election.

U.S. officials were privately furious at Israel's decision earlier this week to open an exit from a tourist tunnel under the Temple Mount in Jerusalem — an act sure to spark Palestinian rage — without telling the United States or the Palestinians in advance. Then the Americans were upset again Thursday when Israeli Prime Minister Benjamin Netanyahu rebuffed a request to seal the tunnel back up, U.S. officials and diplomatic sources said.

But U.S. officials from President Clinton down limited their public comments to appeals to both sides to restore order. The administration made a decision "not to play the blame game," State Department spokesman Nicholas Burns said.

"Over the past 24 hours we have been in constant touch with the Israelis and the Palestinians," Clinton said at the White House. "Our message to them is this: It is in everyone's interest to resolve their differences peacefully, to work together on security and to avoid any actions that could make progress on the peace between Israelis and Palestinians so difficult."

At the State Department and in New York, where Secretary of State Warren Christopher is meeting foreign leaders gathered for the U.N. General Assembly, U.S. officials described frantic hours of telephone calls to Netanyahu and Palestinian leader Yasser Arafat, pleading with them to meet and to bring the violence under control.

Their immediate objective, officials said, was to persuade Netanyahu and Arafat to meet, Friday if possible, and come to an agreement to stop the cycle of violence.

# New FDA, NIH Rules Promise Therapies in Emergency Medicine

THE WASHINGTON POST

WASHINGTON

To Newt Gingrich, it was an outrageous example of overregulation. In a December 1994 appearance on NBC's "Meet the Press," the House speaker held up a medical device for performing cardiopulmonary resuscitation and said it could not be tested in America because of government rules: "You can't get a test on a person who has a heart attack because they're unconscious, so you can't get informed consent."

Thursday the Food and Drug Administration and the National Institutes of Health moved to resolve that problem. The FDA announced final regulations for providing access to promising new therapies in emergency medicine, and the NIH issued new policies for putting the rules into action.

Emergency care research presents one of the toughest balancing acts in medicine. Many patients coming into an emergency room with heart attacks, strokes or serious head injuries are in no condition to agree to experimental procedures.

But the situation presents a dilemma for those who protect the public health. Too little innovation risks denying patients lifesaving therapies. Too much innovation — or therapies without adequate proof of effectiveness — could violate patient rights and risk their lives besides. Because of abuses in the past, "people legitimately fear being used as guinea pigs," said Marlene K. Tandy, a doctor and attorney who has worked on the issue for the Health Industry Manufacturers Association. "On the other hand, you have to balance that against the fact that we need new therapies."

Tandy said that Thursday's proposal was "a real positive step." "FDA and NIH have produced a coherent approach to protecting patients who may be helped by an experimental procedure but who cannot give consent on their own," Donna E. Shalala, secretary of the health and human services, said in a statement.

# Company Probed by FBI For Gang, Drug Leads

LOS ANGELES TIMES

LOS ANGELES

The FBI is probing Death Row Records, the leading independent rap music label where rapper Tupac Shakur recorded his last songs, for links to street gangs and drug trafficking, law enforcement sources said Wednesday.

Federal authorities began investigating the 4-year-old company and some of its officers months before Shakur was fatally wounded in a Sept. 7 shooting in Las Vegas, according to sources familiar with the probe. Shakur was a passenger in a car driven by Death Row's co-founder and CEO, Marion "Suge" Knight, when it was attacked.

Sources said the investigation of Death Row Records extends beyond individual members of the recording company to the activities of the company itself. One source close to the probe said federal officials are trying to determine whether the company was involved in money laundering and racketeering as well as drug trafficking. FBI officials declined to either confirm or deny the existence of a criminal investigation.

Since 1992, the FBI has actively investigated Southern California street gangs, part of its attempt to crack down on violent street crime. Those investigations have resulted in scores of arrests, mostly on drug-related charges including interstate trafficking of cocaine.

Asked if the company would cooperate with the investigation, Death Row spokesman George Pryce said: "Absolutely no comment" and hung up on a reporter.

Shakur joined Death Row label last year after Knight put up \$1.4 million to bail him out of Rikers Island prison in New York City, where he was in custody while appealing a conviction for sexual abuse.

While the federal probe appears to be the first major criminal investigation of the Los Angeles-based company, Death Row's executives and marquee artists have faced a raft of legal troubles.

In 1995, Knight, a former defensive end for the University of Las Vegas football team, pleaded no-contest to assaulting two aspiring rappers in a Hollywood recording studio.

# OPINION

## Letters To The Editor



**Chairman**  
Daniel C. Stevenson '97

**Editor in Chief**  
Stacey E. Blau '98

**Business Manager**  
Christine Chan '98

**Managing Editor**  
Saul Blumenthal '98

**Executive Editor**  
Anders Hove G

### NEWS STAFF

**Editors:** Shang-Lin Chuang '98, David D. Hsu '98, Jennifer Lane '98, Dan McGuire '99; **Associate Editor:** Orli G. Bahcall '99; **Staff:** Eva Moy G, Kyle Young G, James M. Wahl '97, Christopher L. Falling '98, Brett Altschul '99, Shawdee Eshghi '99, Carina Fung '99, Kai-yuh Hsiao '99, Yaron Koren '99, Jean K. Lee '99, Fenny Lin '99, Eric Sit '99, May K. Tse '99, Rochelle Tung '99, Frank Dabek '00; **Meteorologists:** Michael C. Morgan PhD '95, Gerard Roe G, Marek Zebrowski.

### PRODUCTION STAFF

**Editor:** Jen Peltz '98; **Associate Editors:** Josh Bittker '99, Jason C. Yang '99; **Staff:** Jimmy Wong '97, Betty Chang '98, Larry Chao '98, Yun-Ju Lee '98, Russell S. Light '98, Jeremy J. Lilley '99, Arthur Murakami '99, Sharon Shen '99, Binh Truong '99, Hoi Wong '99, Stephanie Yang '99, Brent Yen '99, Douglas E. Heimburger '00, Zareena Hussain '00, Erica Pfister '00, Brian T. Sniffen '00, Khelga Karsten.

### OPINION STAFF

**Editor:** A. Arif Husain '97; **Staff:** David S. Kelman '99.

### SPORTS STAFF

Erik S. Balsley G, Darren Castro G, David Berl '97, Jeremy Cohen '97, Jason Weintraub '97, Farhan Zaidi '98, Chris Brocoum '00.

### ARTS STAFF

**Editor:** David V. Rodriguez '97; **Staff:** Thomas Chen G, Teresa Esser '95, Brian Hoffman '97, Kamal Swamidoss '97, Rob Wagner '97, Hur Koser '98, Daniel Ramirez '99, Stephen Brophy.

### PHOTOGRAPHY STAFF

**Editors:** Helen Lin '97, Indranath Neogy '98; **Associate Editor:** Gábor Csányi G; **Staff:** Rich Fletcher G, Jonathan Li G, Arifur Rahman G, Jiri Schindler G, Brian Vanden Bosch '96, Tiffany Lin '97, Adriane Chapman '98, Ian Chan '00, Gregory F. Kuhnen '00.

### FEATURES STAFF

Hugo M. Ayala G, Pawan Sinha G, Jessica Wu '99.

### BUSINESS STAFF

**Operations Manager:** Pamela Shade '98; **Advertising Manager:** Terri A. Wilson '99; **Staff:** Angela Liao '98, Melody A. Lynch '98, Jessica Maia '98, Karen Chan '99, Joey Dieckhans '00.

### TECHNOLOGY STAFF

**Director:** Cristián A. González '99; **Associate Directors:** Timothy K Layman '97, Christina Chu '98; **Staff:** Ifung Lu '97, Kathleen Lynch.

### EDITORS AT LARGE

**Contributing Editors:** Thomas R. Karlo '97, Venkatesh Satish '98; **Senior Editor:** Ramy A. Arnaout '97.

### ADVISORY BOARD

V. Michael Bove '83, Robert E. Malchman '85, Thomas T. Huang '86, Reuven M. Lerner '92, Jeremy Hylton '94, Garlen C. Leung '95.

### PRODUCTION STAFF FOR THIS ISSUE

**Night Editors:** Russell S. Light '98, Saul Blumenthal '98; **Associate Night Editors:** Stephanie Yang '99, Brent Yen '99; **Staff:** Douglas E. Heimburger '00, Zareena Hussain '00.

*The Tech* (ISSN 0148-9607) is published on Tuesdays and Fridays during the academic year (except during MIT vacations), Wednesdays during January and monthly during the summer for \$35.00 per year Third Class by *The Tech*, Room W20-483, 84 Massachusetts Ave., Cambridge, Mass. 02139-7029. Third Class postage paid at Boston, Mass. Non-profit Organization Permit No. 59720. **POSTMASTER:** Please send all address changes to our mailing address: *The Tech*, P.O. Box 397029, Cambridge, Mass. 02139-7029. Telephone: (617) 253-1541, editorial; (617) 258-8324, business; (617) 258-8226, facsimile. Advertising, subscription, and typesetting rates available. Entire contents © 1996 *The Tech*. Printed on recycled paper by Mass Web Printing Co.

## Student Board Sponsors New IAP Activities

While most people are still reeling from the shock of being in classes again, one group of students is looking ahead to our next big break.

The Independent Activities student board, nearly one-and-a-half years old, has represented students' interests with regard to IAP, and promoted the "cause" of IAP among students (in other words, tried to make everyone realize what a fun and funky time it could be).

This year, there are a number of new projects under way to improve the IAP experience for students as well as the rest of the MIT community. One of the board's missions is to send representatives to meetings with Institute committees and department IAP coordinators — not the most exciting job, but to keep the spirit of IAP from morphing into "MIT's third semester," they have to lobby for more not-for-credit activities and classes and fewer credit and required classes.

Apart from communicating with the administrators of IAP, the board tries to get the student body involved in a number of different ways. For instance, for people whose fingers like to do the surfing, the board has set up the IAP preview on the World Wide Web. Soon people will be able to pre-register for activities just by logging in.

But if they feel more active, students will have a chance to see what is being offered and pre-register at the student board's IAP expo. Before the winter break, Lobby 10 will showcase many of the upcoming activities. And if students have questions about IAP, like how to start and run their own activities, living group representatives recruited by the board will be available in-house to address concerns, hand out and collect forms (one-stop shopping), and direct students to other helpful resources. In addition, the representatives will be collecting information on how people enjoy their IAPs to pass on to the student board.

The board itself is expanding and seeking new members to help with this year's projects and carry on when current members begin to graduate. All undergrads and grads who are interested should contact iap-

board@mit.edu, or Undergraduate Academic Affairs Program Director Marshall Hughes (devil@mit.edu).

Noemi L. Giszpenc '98 and the other members of the IAP student board

## Student Life Includes More Than Academics

MIT has a serious problem on its hands when its students complain constantly about how much stress there is.

Some would say that since MIT is ranked the fifth best university in this country, nothing needs to be changed. Well, someone needs to wake up and realize that stress isn't good for us and that something needs to be done to help us reduce our stress. Why? It destroys our minds and keeps us from performing at our best.

Where does stress really come from? Is it from the amount of work that we get? Is it from the level of difficulty of the problems we are given? I don't think so.

In order to get a good education, you have to be challenged to think and be innovative. Then what causes stress? Stress is a result of our not being happy with what we are doing. I have seen so many people afraid to pursue non-academic interests because of the belief that there isn't enough time. Maybe there isn't enough time. But if we give up what we love doing, then we are defeating ourselves.

Here is a personal example. I came to MIT very eager to join the MIT Symphony Orchestra. I talked to many people about what this performing arts group was like and the thing that I kept hearing was that it took up too much time. In fact, it does take up a lot of time. Rehearsals are Tuesday and Thursday nights from 7:30 to 10 p.m. I consider that to be a rather large time commitment, but it is worth it because I love playing in an orchestra.

Just this past week I found out that I was named one of the co-principal cello players. I wasn't expecting this honor in my wildest dreams — I'm only a freshman. Now imagine if I had listened to people's statements that Symphony isn't worth the time and effort and decided not even to audition. I would never have found out what Symphony is really like. Time plays too big a role in our lives. If we

are truly having fun doing what we love, then time is a secondary issue. When we are having fun, academics will fall into place.

But is it our fault — the fault of the students — that we always feel that we don't have enough time? I think that we are responsible for our own lives, but MIT is responsible for making its students call MIT "hell" after four years.

This image of MIT begins with Residence and Orientation Week. From a male perspective, R/O was a difficult time. In just three days, we were asked to choose between 32 independent living groups (fraternities, co-ed living groups, etc.) and 10 dormitories. Why doesn't MIT just assign housing to all of its students like other colleges? Wait, it can't. MIT would be in big trouble if every single incoming freshman decided to live in a dorm. Why? There isn't enough housing for every single freshman. The administration thus encourages a very active rush.

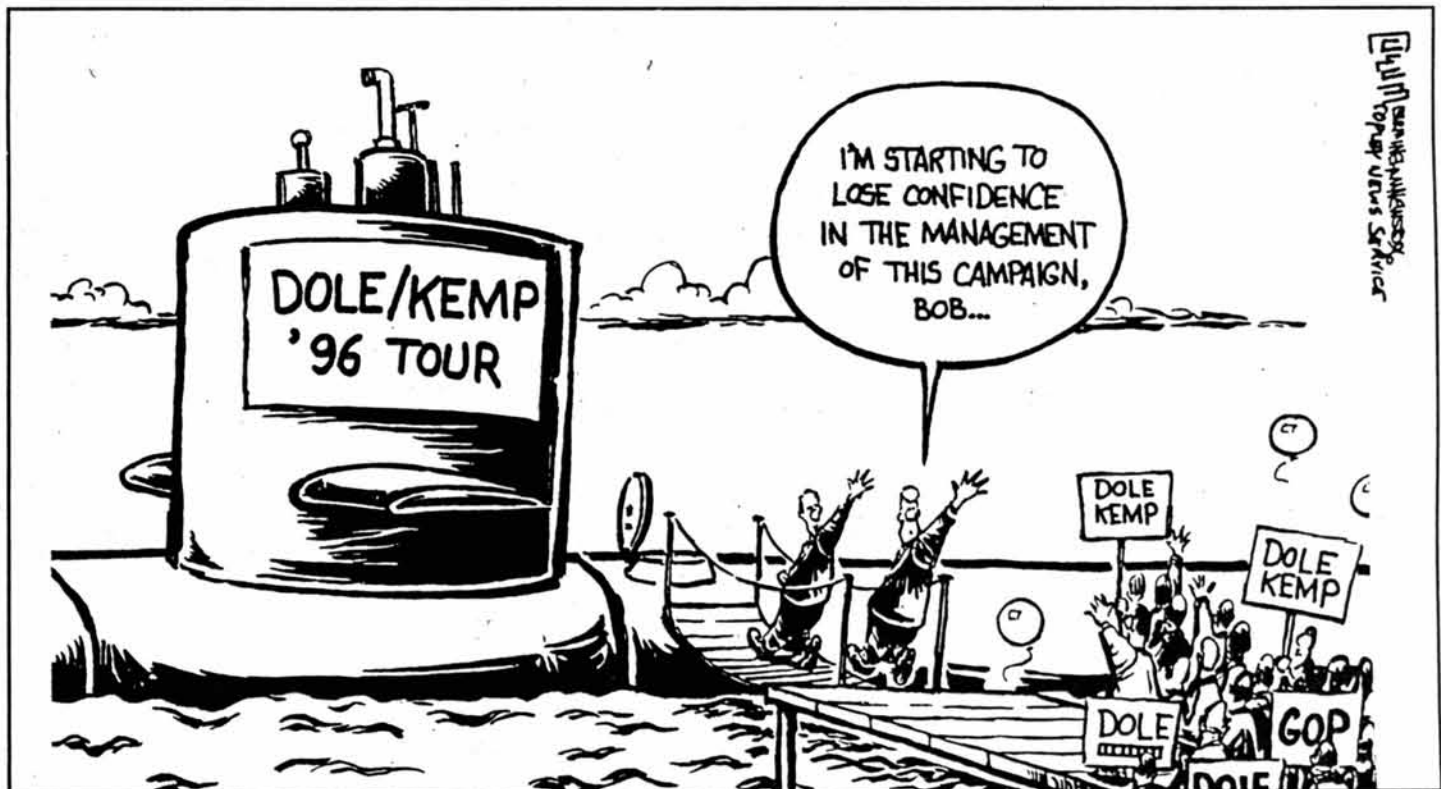
So, while we should be getting information to make an informed decision in choosing what classes we should take or what activities we want to participate in, we are instead pre-occupied with where we want to live. Imagine how much fun we could have had during that week just meeting people and exploring Boston and Cambridge.

Imagine if we all lived on campus in dormitories that were all close to each other. Imagine how many more people we would know. The housing situation at MIT segregates us. It ends up pooling together certain types of people together in a particular fraternity or dormitory. That isn't how life should be. I hope that MIT realizes that its housing situation is the root of many of its problems and investigates the feasibility of building another dormitory.

Many more things can be done to improve MIT and to improve the quality of student life. Even if the academics here are given five stars, something is wrong when MIT receives only three stars for the quality of life that its students enjoy. I hope that the MIT community, the students, the faculty, and the administration realize that living is supposed to be a rewarding experience and not something to be described as "hell."

Jui-Chen Chang '00

Class of 2000 presidential candidate



## Opinion Policy

**Editorials**, printed in a distinctive format, are the official opinion of *The Tech*. They are written by the editorial board, which consists of the chairman, editor in chief, managing editor, executive editor, news editors, and opinion editor.

**Dissents**, marked as such and printed in a distinctive format, are the opinions of the signed members of the editorial board choosing to publish their disagreement with the editorial.

**Columns and editorial cartoons** are written by individuals and represent the opinion of the author, not necessarily that of the newspaper.

**Letters to the editor** are welcome. They must be typed, double-spaced and addressed to *The Tech*, P.O. Box 397029, Cambridge, Mass. 02139-7029, or by interdepartmental mail to Room W20-483. Electronic submissions in plain text format are encouraged, and may be mailed to letters@the-tech.mit.edu. All submissions are due by 4:30 p.m. two days before the date of publication.

**Letters and cartoons** must bear the authors' signatures, addresses, and phone numbers. Unsigned letters will not be accepted. No letter or cartoon will be printed anonymously without the express prior approval of *The Tech*. *The Tech* reserves the right to edit or condense letters; shorter letters will be given higher priority. Once submitted, all letters become property of *The Tech*, and will not be returned. We regret we cannot publish all of the letters we receive.

## To Reach Us

*The Tech's* telephone number is (617) 253-1541. Electronic mail is the easiest way to reach any member of our staff. Mail to specific departments may be sent to the following addresses on the Internet: ads@the-tech.mit.edu, news@the-tech.mit.edu, sports@the-tech.mit.edu, arts@the-tech.mit.edu, photo@the-tech.mit.edu, circ@the-tech.mit.edu (circulation department). For other matters, send mail to general@the-tech.mit.edu, and it will be directed to the appropriate person. *The Tech* can be found on the World Wide Web at <http://the-tech.mit.edu>.

# Institute Must Recognize Importance of Identification

Column by A. Arif Husain  
OPINION EDITOR

The cost of an MIT education is by all means immeasurable. An average student will devote four youthful years to this end and will spend close to a \$100,000 in the process. Countless sacrifices will be required on the part of students as they struggle to maintain the status of an MIT student. Emotionally, physically, and financially, there are huge investments to be made in pursuit of technical excellence. But what are the returns?

Clearly, there is much to be said about the "mastery of fundamentals, motivation for learning, and intellectual discipline and self-reliance," which MIT seeks to develop in its students in order to foster "a respect for moral values, the duties of citizenship, and the basic human understanding and knowledge required for leadership." At least, this is what I am told in the overview section of the MIT Course Bulletin. Perhaps there is some truth to it. But what I'm getting at here is not philosophy and moral development, but rather recognition. Pure and simple, hardcore recognition.

All intangibles aside, the only real evidence I have of my hard-earned and hard-maintained MIT student status is the MIT Card that bears my likeness. I might cite my Brass Rat as well, but I'm not convinced that I couldn't get one if I weren't a student. Some day I will be fortunate to have a lovely paper diploma as permanent renown, but for now, my heart and soul is pure plastic. At least it was.

Three days ago I received this year's issue of my cherished MIT Card. The font was smaller, and slightly thicker, and the surface was shinier and less scratched; but aside from that it was nearly identical to my old card, save two significant changes. First, it took a friend to point out to me that the expiration date of year "00" was four years away, rather than the usual one year, which seemed to mean that I could claim student status well into my alumnus days. Just as I was pondering the ramifications of this seeming anomaly, it occurred to me that the card no longer even recognized me as a student. The boldface word "STUDENT," which had thus far appeared in the top center of the card, was no longer there. Frankly, I was dumbstruck.

True, it has only been some three years since the inception of the plastic pocket panacea, but attachment takes little time. I racked my wits, trying to understand why the Institute would take away the one small token that distinguished me, physically and tangibly,

*Some day I will be fortunate to have a lovely paper diploma as permanent renown, but for now, my heart and soul is pure plastic.*

from the populace at large. Would ink savings be that much? Perhaps the printer charged per letter. Was this the latest casualty of a re-engineering plan gone awry?

There are countless instances which call for student identification, which it seems we all now lack. Aside from a different background color, there is no telling an

undergraduate from a staff member or a professor. I doubt that the local vendor who offers a student discount will be privy to this sort of chromatographic distinction. This thoughtlessness, I am afraid, is unacceptable.

The Department of Housing and Food Services claimed that removal of the "STUDENT" tag was a security benefit, although I am unable to fathom how. The MIT Card Office claimed that the expiration date extension would reduce the pressure of producing so many new cards each year. A choice thought, but I'm sure the Registrar's Office, the Bursar's Office, and all of the other offices of the Institute responsible for yearly repetitive chores would enjoy the same work ethic. Both of these explanations seem inadequate and unreasonable.

Personally, my MIT Card has no meal account associated with it, nor do I take advantage of any of its other putative functions. It opens the door to my dorm, and it identifies me as a student. As the situation now stands, I'm getting only 50 percent productivity. Which makes me wonder why my expenses haven't gone down commensurately. There's no telling, but the time is now to take action.

Burn your MIT Card. This injustice requires quick and multilateral support from a unified student body. Burn your cards at once. One and all, share the common flame of a spirited revolt. Burn, burn, burn. Let the heat of combustion warm the cold air of oppression. Know that the twisted goopy mass that lies before you represents a bold statement in MIT life. Burn now and together. Burn, burn, burn.

Revive the social uprising of the '60s. Lower a binding fog of thick chemical fumes on this campus. Let the rising plumes of vapor denote a revolution in progress. But in a shift from the freedom years, I suggest that one not inhale.

If possible, we should begin a pile-up of card carcasses on the stage area in front of the Student Center. Twelve thousand or so lumps of heat-charred polymer is enough to make a lasting impression on any interested administrator.

This is a serious matter and requires cooperation and organization on all parts. My driver's license identifies me as a driver, as my scuba certification identifies me as a diver. By Joule, my student identification must identify me as a student. Future classes will thank us.

## Student Center Needs Express Elevators

Column by Anders Hove  
EXECUTIVE EDITOR

Last weekend I attended the annual Alumni/ae Leadership Conference. After sitting in on a spirited yet probably pointless small group discussion, I attended the cocktail hour where I ran into a couple of former members of the Student Center Committee. Keying off the discussion of MIT's bad decision-making processes, the alumni related several horror stories of botched planning and contracting involving the Student Center. It's obvious that many things are wrong with the Student Center, but they both agreed that a major no-brainer from the architectural standpoint should have been the elevator system.

Now here's an experience most MIT veterans have had all too often: You get on the elevator at the first floor, along with 12 other people. The elevator stops at the second floor, but there's no room for the two Aramark employees who couldn't handle the one flight of stairs up to the third floor where they had planned to eat. Fortunately, they had hit the elevator buttons on both sides, so the other lift will be stopping for them in no time. Unfortunately for you, the elevator door won't be closing for another few minutes, especially since someone's hand just grazed the door sensor. Lo and behold, you get a glimpse of the Aramark employees when your car stops on the third floor to pick up — surprise! — nobody. Total time to fifth floor this time

around? Actual experimentation reveals a scenario travel time of four minutes, mostly time spent waiting for the doors to close.

Or take this humorous episode that just occurred downstairs: A Campus Police officer and I were standing by the elevator. I pressed the "up" arrow; he pressed "down." Now, granted, the officer was violating the express elevator concept of Student Center elevator norms, but I figured maybe he'd sprained his ankle tracking down hijacked bicycles. Just as the elevator door opened, 12 other people arrived and piled in, not suspecting that the elevator was going down, adding at least three minutes to their journey.

Hove, Page 8



# Undergraduate Association

MIT's Student Government



FRESHMAN  
ELECTIONS  
VOTE  
TODAY

vote for your president, vice pres., secretary, treasurer, social chairs, publicity chair

make a difference. VOTE

at Athena:  
add ua  
vote

elections  
run from  
9/26 - 9/29

# Electronic Mail Might Be the End of Communication

Column by Brett Altschul  
STAFF REPORTER

Essentially no one denies the facility of e-mail, especially at a place like MIT. It keeps students in touch with their friends and family members, wherever they happen to live. Within the Institute, it allows busy people with little chance to see one another to remain in frequent contact. Moreover, it's easy to send a message to a large number of people quickly and without wasting large quantities of paper.

Unfortunately, e-mail is also a perilous tool — a two-edged sword that draws blood more

*Often, it becomes easier to pulse some electrons across a segment of coaxial cable than to converse with a physically present human.*

often than one might think. Often, it becomes easier to pulse some electrons across a segment of coaxial cable than to converse with a physically present human. We must be wary of the tendency to while away our time secreted in a donjon of differential voltages, occasionally slipping a PGP-encrypted note under the portcullis.

Some people take the use of e-mail to unrealistic extremes. One common justification is convenience. Too many times, I've offered to write something down for somebody whom I'm talking to, and they tell me to send them e-mail instead. Usually, this is accompanied by a statement that I needn't trouble myself to write the information now. Then they tell me their e-mail address, as if that's somehow easier to write down.

When pressed to accept non-electronic media, these characters rapidly become flustered. They behave as if they've lost the ability to communicate by more traditional means, as if they don't trust paper any more, unless it comes out of a laser printer. One person said he was afraid that he might lose what I wrote down, yet the notebook he carried was organized with about the same depth, rigidity, and complexity as a corporate tax return. Maybe his filing system just lacked a category for information that didn't arrive via e-mail.

Extensive reliance on electronic epistles can also get people into trouble because e-mail is extremely easy to ignore. Blowing somebody off becomes much easier when that somebody doesn't look at your face, only your username. But it can be highly frustrating (or worse) when you need a prompt reply to your queries, and the person on the other end doesn't feel like typing a response.

Typically, when you hunt down the dilatory e-mailer, they respond in one of two ways. Most frequently, they offer to send you whatever information you needed as soon as they get a chance. It seems inconceivable to these people that you might have wanted a question answered before the problem set was due. Alternatively, they might state that they don't care at all about whatever you needed and that you shouldn't count on them to help with anything. Usually this sort of response comes via e-mail, as it's significantly easier to insult a faceless electronic citizen than a warm body.

Perhaps the greatest problem with communicating entirely by computer is the bad manners it breeds. The casual rudeness of ignoring people's messages is just a single example of the trend toward remarkably thick-skinned, thick-headed Internet communication. Although e-mail isn't the medium of choice for serious flammers, there's no shortage of scurrilous messages sent thereby. For a while,

I received 40 to 60 pieces of mail a day from some cretin who went by the name of Poison. Each one attempted to convince me that my law-abiding beliefs were diametrically opposed to the basic content of human nature, using a wide variety of expletives to make the point.

It doesn't really shock me that there are people like Poison out there. I knew that already. What I see as hazardous is the strong tendency I see in computer-centered society to treat this sort of behavior as perfectly reasonable. While mailbombs haven't quite

reached the level of general acceptance, the more subtle insults practiced by the online culture seem to go largely unnoticed. How often do people actually pay attention to the boorish behaviors I've described? The many practitioners of these crudities certainly fail to notice them.

The extreme rudeness that seems to go part and parcel with it and the tendency to cut off all other types of communication makes e-mail a perilous tool. While it has a great deal of potential for assisting communication, e-mail could also take a big part in destroying it

## Election Commission Is Justified In Denying Perot

Column by David S. Kelman  
COLUMNIST

Last week, the Commission on Presidential Debates decided to include only Bill Clinton and Bob Dole in their debates this year. As a result, Ross Perot has found himself excluded from an important event in the presidential campaign. Perot, of course, has not passively accepted this news; he is attempting to get a restraining order issued to stop the debates. Perot argues that he has a right to be included in the debates as a serious candidate and that he is a victim of partisan politics. The commission ruled that Perot does not have a realistic chance of winning the election. I agree with the commission's ruling and think little reason exists to include Perot in the debates.

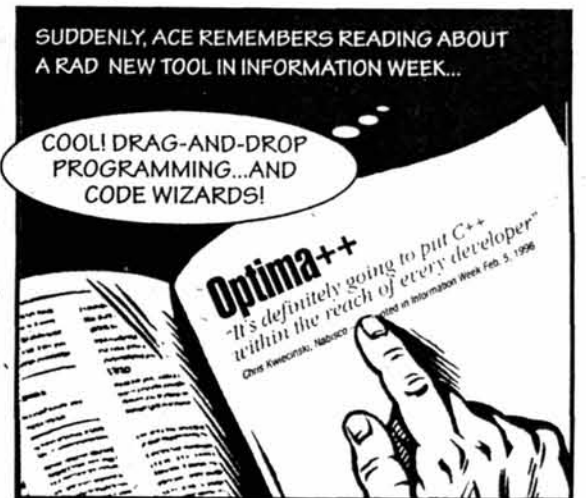
First, I would like to examine just how much of a chance Perot really has of winning the election. In 1992, Perot gained 19 percent of the popular vote, but he did not win a single state. Thus, Perot received no votes in the Electoral College, the means to winning the

presidency. This time around, various polls have consistently placed Perot's support in the single digits. If 19 percent of the vote did not net Perot any states, winning even a single state in 1996 with single digit support would require an unforeseen concentration of support in a single state. Needless to say, a remote possibility of winning a single state does not translate into a reasonable chance of winning the entire election.

Of course, some people may now argue that Bob Dole does not have a real chance of winning the election anymore, either. Recent polls assert that Dole has the support of slightly under 40 percent of the voting population, while Clinton has slightly more than 50 percent. Allowing for a reasonable possibility of a five percent shift in support, the two candidates could find themselves running almost even. Add the peculiarities of the Electoral College system to this (keep in mind that

Kelman Page 8

# The RADical Adventures of Learning C++



**Optima++**  
The RAD new way to build applications in C++.

Optima++™ Developer is the first rapid application development tool to combine the productivity of a component-based client/server environment, with the performance and power of the industry-standard, object-oriented C++ language. With drag-and-drop programming, seamless integration of ActiveX components, over 150 pre-built components and classes, robust just-in-time debugging, and the built-in Sybase® SQL Anywhere™ database, you'll start developing serious apps immediately. So stop poring over C++ manuals. Visit your nearest Micro Center and get Optima++ today!

**\$99 SAVE \$100**  
Buy at Micro Center through Sept. 30, 1996

**MICRO CENTER**  
THE COMPUTER DEPARTMENT STORE  
Cambridge 727 Memorial Drive Cambridge, MA (617) 234-6400

**Powersoft**  
1-800-395-2525  
www.powersoft.com

Copyright © 1996 Sybase, Inc. All rights reserved. Sybase, Powersoft, the Powersoft logo, Optima++, SQL Anywhere are trademarks of Sybase, Inc. or its subsidiaries. All other trademarks are property of their respective owners. ® indicates registration in the United States. All prices quoted in U.S. dollars. Specifications and prices subject to change without notice. Use is prohibited by law.

## **Global Graduate Recruitment**



# **SBC Warburg**

A DIVISION OF SWISS BANK CORPORATION

*As one of the world's foremost financial organizations, SBC Warburg offers opportunities for graduate students to join a leader who is strategically positioned for success in today's global economy.*

---

**Please come to our Corporate Presentation to discuss full-time and summer job opportunities in Risk Management Advisory (Sales & Trading), Latin America & Asia.**

**Thursday, September 26th  
6:00 PM  
Cambridge Marriott Hotel  
Salon 3  
All First & Second Year Students  
Are Welcome To Attend!  
Casual Attire**

**Interested students may forward resume to:**

**Ellen Travers (Risk Management Advisory-Sales & Trading) Latin America & Asia  
SBC Warburg, P.O. Box 395**

**Church Street Station, NY, NY 10008**

**E mail: [sbcw-am.recruiting@swissbank.com](mailto:sbcw-am.recruiting@swissbank.com)**

**Visit our website at: [www.sbcwarburg.com](http://www.sbcwarburg.com)**

*An Equal Opportunity Employer.*

## Time Has Come for Fast Elevator in Student Center

Hove, from Page 5

Now get this: The campus police officer, who originally pressed the "down" arrow, did *not* get in the elevator. Instead, he milled about for a little while, then sauntered out the door. What's the deal?

Earlier I mentioned the "express elevator concept." Those of us who spend almost all our lives in the Student Center have developed an informal set of norms to govern elevator behavior. First, we never take the up elevator fewer than three stories. So it's okay to go from the lobby to the fourth floor, or from Lobdell to the cluster. It's not okay to go from the lobby to the basement, or from the third floor to the Office of Residence and Campus Activities. This first norm allow us to minimally inconvenience each other in our daily comings and goings.

The second norm involves down elevator usage. It is only acceptable to take a down elevator from the fifth floor to the first floor. Anything else can be done faster on the stairs. The only exception is when there is an open elevator on your floor already. At that point, you might as well get in, since the damage to the express elevator norm has already been done.

The third norm involves the pressing of elevator buttons. Under no circumstances is it okay to press more than one elevator call button for the same trip. Poorly designed building that it is, the Student Center provides two unlinked sets of elevator call buttons per floor, thus enabling one person to hold up two elevators for one trip.

The beauty of express elevator norms is that they are easily enforced. If an individual stepping into an elevator has violated express elevator norms everyone else in the elevator knows it. They'll heap insults upon the perpetrator once he or she egresses, say, on the third floor. In other cases, I've heard audible groans and even abusive comments while the

individual was actually still in the car. As police chief Wiggum always says, "That's nice work, boys."

The problem, of course, is that there is no way of indoctrinating newcomers to the express elevator notion. Freshmen and Aramark staff — the people who have the least information about how the MIT campus works — are the most flagrant violators of express elevator norms. Like any honor code, express elevator norms demand a certain amount of self-sacrifice if they are to work. And frankly, they don't.

Silliness aside, there is a much simpler solution to the Student Center elevator problem. First, the two sides' elevator buttons should be linked, just like in any other modern building. Second, one of the two elevators could be made an actual express elevator. An express elevator would service the first and fifth floors only — meeting the transportation needs of at least half the current elevator users. Non-express users could take the slow elevator, or just take the stairs down from the fifth if that suited their druthers.

The final option — bringing the speed of the elevators up to a reasonable speed — is probably beyond MIT's heavily downsized budget. That fact makes the linked button and express elevator options all the more attractive.

A Student Center express elevator is an idea whose time has come. Just think of how many currently disgruntled people would turn their lives around if they could get where they wanted to go in a reasonable amount of time. If express elevators had been installed years ago, RCA would never have fallen so far behind in its management of student accounts. With express elevators, students could get to classes on time, stress would be reduced, and alumni contributions would rise dramatically. In fact, it seems clear that MIT can not afford to do without an express elevator in the Student Center.

## Lack of Support for Perot Is Grounds for Exclusion

Kelman, from Page 6

Clinton won the 1992 election with less than a majority of the popular vote), and Dole certainly has a reasonable enough chance of winning the election to be included in the debates.

Second, let's examine Perot's claim that he is a victim of partisan politics. The fact that Dole benefits from Perot's exclusion is fairly clear; Perot has indicated that he has more desire to attack Dole and his policies than Clinton. Indeed, after the commission's ruling, the Clinton campaign attempted to get Perot in, while the Dole campaign threatened to skip out on a Perot-inclusive debate.

The fact of the matter is, though, that the group that unanimously decided on Perot's exclusion consisted of an equal number of Democrats and Republicans. The Democratic party is quite possibly more united behind Bill Clinton this year than any candidate or election in recent memory. Yet every Democrat involved in the decision voted against Perot, and thus against the Clinton campaign's desires. This result certainly does not appear to be partisan politics.

Third, the fact that Perot receives more attention than your average third party candidate does not necessarily translate to a reasonable chance of winning the election. A significant reason Perot is able to even garner so much attention is his capability of using his own wealth to advertise himself.

For a similar example, take Michael Coles, co-founder of the Great American Cookie Company. Coles, who is running against House Speaker Newt Gingrich, is currently using his personal wealth to blitz the public in Gingrich's congressional district in Georgia. Coles may be getting a lot more attention than the average candidate, but does that give him a fighting chance in Cobb County, Georgia, infamous for its consistently conservative vote and an anti-gay resolution that resulted in an Olympic boycott? No way, no how.

Finally, some may argue that Perot should be included on the basis that the Reform Party is a legitimate up-and-coming political party. While the Reform Party may have had the chance to prove its earnestness this summer, Perot himself effectively prevented it. The fact that Perot, the party's overwhelming

*The fact is, Ross Perot needs to accept the fact that his support is minimal and that the Commission on Presidential Debates is well within its bounds to exclude him.*

financial supporter, ran for the party's nomination makes the Reform Party appear as little more than a self-funded device for Perot to look more legitimate in the presidential election.

The continuing accusations that the actual vote for a nominee was accidentally or purposely rigged or slanted in Perot's favor adds little to the Reform Party's legitimacy. If the commission awarded debate spots based on a party's legitimacy alone, then perhaps the Libertarian Party, which has been around consistently for many years, would deserve a spot before the Reform Party would.

The fact is, Ross Perot needs to accept the fact that his support is minimal and that the Commission on Presidential Debates is well within its bounds to exclude him. Maybe as a consolation, Perot will take Maine this time around.



We like to think of this as  
our home office.

**A** world of opportunity awaits you when you go to work for our management consulting firm. With 60 offices all over the globe, A.T. Kearney can give you a chance to experience multiple functional areas, industries and cultures throughout your career. And you don't just help companies theorize about how to become market leaders, you implement and follow through on all projects. So talk to us when we visit your campus.

*It could make all the difference in the world to your career.*

For those interested in career opportunities with us in Tokyo, Japan, mail or fax your résumé and a cover letter by Friday, October 4, to the address listed below. We are looking for individuals who speak Japanese and English fluently and are pursuing their master's or Ph.D. in engineering.

**ATKEARNEY**

Management Consulting  
<http://www.atkearney.com>  
An EDS Company

HOMITJ.092596

Misty Knox, International Recruiting Coordinator  
A.T. Kearney, Inc., 26533 Evergreen Road,  
13th Floor, Southfield, MI 48086  
Telephone: (810) 262-7558 Fax: (810) 262-7673

# “FROM DAY ONE, I MADE A REAL DIFFERENCE.”

Today, DLJ is one of Wall Street's fastest growing and most profitable securities firms. It's also one of the leanest—which means our associates are exposed to

CONTACT DLJ  
ON THE  
INTERNET AT  
[netresource.com/dlj](http://netresource.com/dlj)

significant responsibility and have contact with senior bankers and clients almost immediately. At DLJ, you can go as far—and as fast—as your talents will take you.

PRESENTATION TO  
FIRST AND SECOND  
YEAR STUDENTS  
MONDAY, SEPTEMBER 30TH,  
6:00 PM IN THE FACULTY CLUB  
RECEPTION FOLLOWS

## Donaldson, Lufkin & Jenrette

New York Atlanta Boston Chicago Dallas Houston Los Angeles Miami Philadelphia San Francisco  
Buenos Aires Geneva Hong Kong Johannesburg London Lugano Mexico City Paris São Paulo Tokyo

# Work to Build New Tennis Courts Starts

## Longy

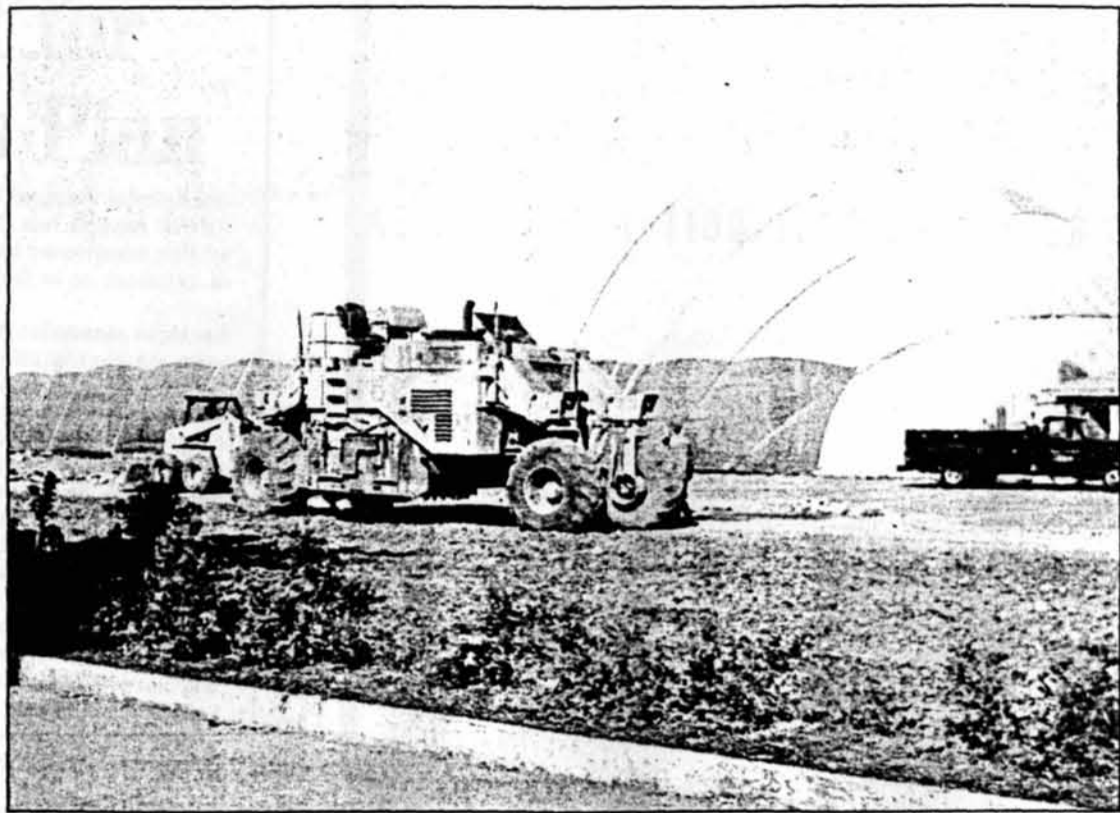
School of Music

*The professional music school for the whole community*

### ANYONE CAN PLAY

Whether you play violin or piano, whether you are a soloist or a member of the chorus, you will find plenty of opportunities to play and sing at the Longy School of Music. Perform in chamber music ensembles, orchestra, Early Music consorts, jazz bands, wind ensembles or flute orchestra, vocal chamber groups, chorus, or opera...all with Boston's finest teachers and performers.

For a catalog contact  
Longy School of Music  
One Follen Street  
Cambridge MA 02138  
(617) 876-0956 x120



The old tennis surface is torn up yesterday to make way for six new lighted courts.

THOMAS R. KARLO—THE TECH

By A. Arif Husain  
OPINION EDITOR

Amherst Alley sports a new-found airiness along its fraternity house strip — an openness whose nature is not all at once apparent, if not for the telltale bulldozers scattered in its midst.

In place of the well-hidden fenced tennis courts that once occupied the area just beyond the steps of Kappa Sigma, a cordoned-off field of tilled rubble, lined with the sawed-off stumps of long standing shrubbery, now stands for residents from Theta Delta Chi to Burton-Conner House to look upon. The courts are no more.

The upheaval of the area is expected to be completed in about eight weeks, according to Jeff Hamilton, the men's tennis coach. The rubble will be replaced with six new lighted courts — four doubles courts and two singles courts — a significant improvement over the five unlit courts that were demolished.

The courts were in "such disrepair" that "recreational play was marginal, anyway," Hamilton said.

Two of the five were "almost unplayable," said Jim Taylor '63, assistant women's tennis coach. Fissures along the play area, caused by weather changes, were so prevalent that the courts were on the verge of being unsafe, Taylor said.

The cracking was "unrepairable," he said.

### 16 courts will soon be available

Including the four indoor courts within the J. B. Carr Indoor Tennis Facility, there are now a total of 10 courts available in that area of west campus for use by physical education classes, varsity teams, and the general public. After the renovation project is complete, there will be 16 courts available.

Hamilton did not expect much of an inconvenience during the renovation period since daily practices of men's and women's teams are usually staggered in their times.

Taylor expected the largest potential difficulty to occur during the Rolex New England Division III regional tennis tournament, which MIT hosts next weekend. He also presumed some difficulty with PE courses.

"We didn't play on the courts because they weren't in very good shape," said Nora A. Humphrey '98, a member of the women's varsity tennis team. The renovations should open up more court space for practices and meets.

Despite the inconvenience, Hamilton said it is "better for the community to have the project go forward."

The five outdoor courts that are being replaced were built roughly the same time as the six that are currently still in use, Taylor said. A different contractor was used, and the construction may not have been of the same quality, he said.

MIT Information Systems

## Mac and PC Fans!

### Here's a Great Student Job at MIT

The Computing Help Desk is now hiring student consultants to provide telephone, walk-in, and on-line support for the MIT community. Training begins in October. A mandatory orientation session for interested candidates will be held from 5:15-6:45 PM on Tuesday, October 1st in room 3-133.

#### If You:

- ...are comfortable with...
  - Macintosh or DOS/Windows
  - some major applications and utilities
  - electronic mail
  - on-line resources
  - MITnet
- ...and you can...
  - communicate well
  - handle crisis situations
- ...and you enjoy...
  - working with people
  - teamwork
  - troubleshooting problems
  - getting to the bottom of things
- ...and you are...
  - reliable
  - bright
  - friendly
  - determined

#### The Job:

- ...includes 6 hours or more per week of:
  - troubleshooting cases over the phone
  - providing help for walk-in clients
  - attending weekly training meetings
  - developing on-line resources
  - mentoring new student consultants
  - TA-ing computer training classes at MIT
  - helping with equipment diagnosis
  - providing "housecalls" for clients
- Benefits include...
  - lots of perks
  - competitive salary (starting at \$8.00/hr)
  - access to lots of equipment and software
  - a fun group of coworkers
  - attendance at local computer exhibitions parties!!!

If you are interested in a position with us, please bring the following to the orientation session, and be ready to sign up for an interview:

- 1.) Your name, contact info (phone numbers, address, etc.), and date of graduation.
- 2.) Names and phone numbers of at least 2 references. (preferably employers or faculty)
- 3.) Your up-to-date resume.

Direct any questions to Alicia Allen, helpsuper@mit.edu

## BOOK NOW FOR YOUR FALL GETAWAYS!

DETROIT	\$ 69
MIAMI	\$ 98
SAN FRANCISCO	\$175
HOUSTON	\$178
LONDON	\$195
PARIS	\$275
BERLIN	\$299
ATHENS	\$335

FARES ARE EACH WAY FROM BOSTON BASED ON A ROUNDTRIP PURCHASE. FARES DO NOT INCLUDE FEDERAL TAXES OR PFCs TOTALING BETWEEN \$3 AND \$45, DEPENDING ON DESTINATION OR DEPARTURE CHARGES PAID DIRECTLY TO FOREIGN GOVERNMENTS.

CALL FOR A FREE STUDENT TRAVELS MAGAZINE!

### Council Travel

STRATTON STUDENT CENTER  
M.I.T. W20-024  
84 MASSACHUSETTES AVE.  
CAMBRIDGE, MA 02139

**(617) 225-2555**

<http://www.clee.org/travel.htm>

**EURAILPASSES ISSUED ON-THE-SPOT!**

Absolutely no experience necessary.

# Dining Group Seeks Student Input for Food Services Plan

Aramark, from Page 1

depth," he said. He emphasized that the committee will work until it can develop a strategy that meets the needs of the community.

## Community input sought

Students attending the first dining work group meeting at McCormick had varied opinions on the current dining options on campus.

"If you have a house dining hall, it gives the appearance of a central

pling of 200 randomly selected students, staff, and alumni, Walsh said. Selected participants will be offered a meal as an incentive to attend.

After the comments received from the focus groups are analyzed, the committee will draft potential ideas and get feedback from the community through a "router" system, Walsh said. Volunteers, or routers, would compile comments into more structured reviews that the committee will use in its final construction of a dining framework.

This framework will be presented to Dickson and Williams, Walsh said. At that point, Dickson and Williams will determine what decisions of the committee will actually be implemented and in what forms, Walsh said.

The committee needs the assistance of interested parties in order to succeed, Walsh said. "We need people to assist in running the focus groups and to serve as routers."

Walsh encouraged individuals interested in helping the committee or those with comments to e-mail the working group at [fswg@mit.edu](mailto:fswg@mit.edu).

*"If I cook for myself, I know what I'm putting in. I don't trust the food at Lobdell."*

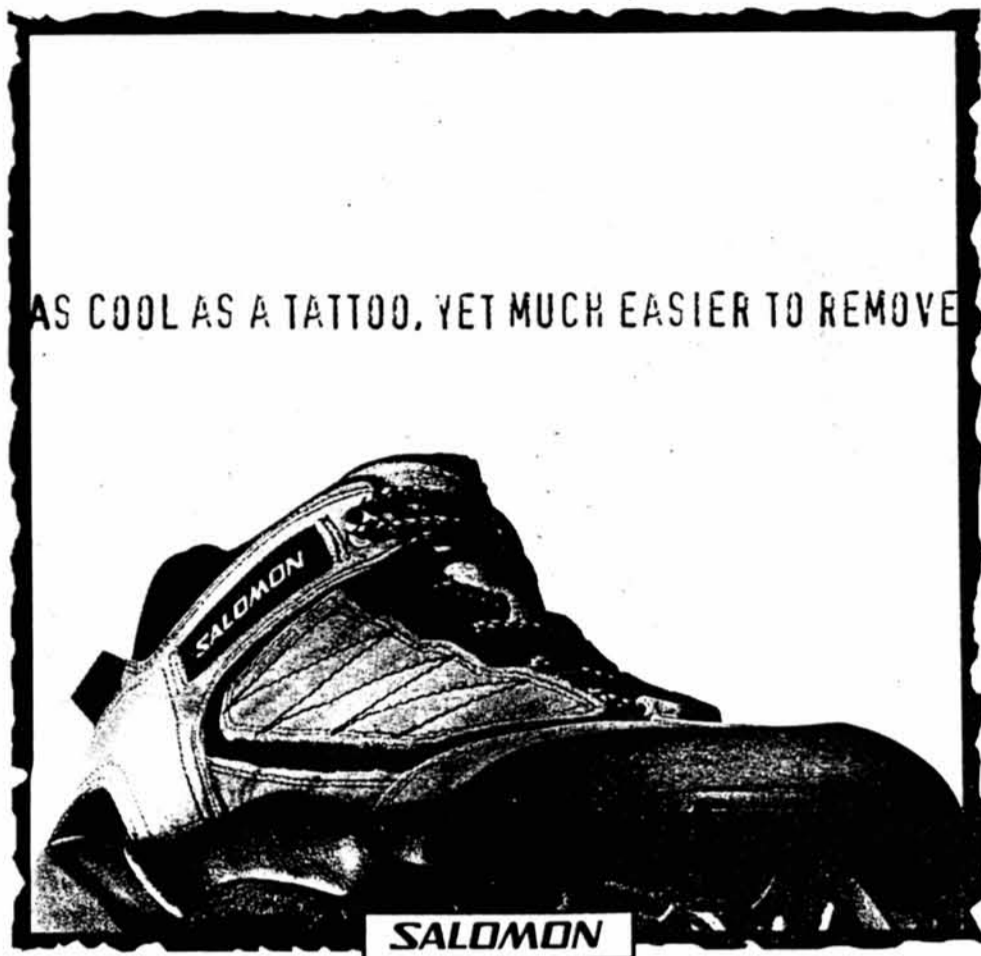
—Melanie P. Born '98

meeting place for the dorm. Professors used to come visit the house dining halls. It's something that is missing now," said Angela Kwan '97.

Others were concerned about the nutritional value provided by current dining system. "If I cook for myself, I know what I'm putting in. I don't trust the food at Lobdell," said Melanie P. Born '98.

These meetings represent the first interactive step for the committee, Walsh said.

Next month, the committee will be forming approximately 20 focus groups to gather "more detailed information" from a scientific sam-



AS COOL AS A TATTOO, YET MUCH EASIER TO REMOVE

Outside and Backpacker Magazines Editor's choice, just \$8 per toe.\*

\*YOU MUST HAVE AT LEAST 10 (TEN) TOES TO TAKE ADVANTAGE OF THIS GREAT DEAL. SORRY NO FREAKS OR CLUMSY LUMBERJACKS.

**Ski Market**

860 Commonwealth Ave Boston, 731-6100

## TechnologyReview

MIT's National Magazine

### INTERN NEEDED

Interested in learning about the publishing field? Need a little extra cash? Read on.

### THE WORK

- handling/shipping book orders
- data entry to sales databases
- special projects & promotions

### COMPUTER SKILLS

- filemaker
- microsoft word

### THE HOURS

8-10 hrs a week  
(more is negotiable)

Call Liz Surano or Linda Mannion  
at 617-253-8292  
e-mail: [surano@mit.edu](mailto:surano@mit.edu)



no matter  
how wet  
you are,  
or  
what  
health  
insurance  
you have,  
most  
mit medical  
services  
are

**free**

if you're a  
registered  
MIT  
student

(even  
if you've  
waived)

**urgent care**  
24 hours a day,  
every day  
of the year  
253-1311 (voice, TDD)

**regular  
internal  
medicine**  
and nurse  
practitioner  
appointments:  
253-4481 (voice, TDD)  
8:30am-5pm,  
monday-friday  
(ask about  
appointments on  
Tuesdays til 8pm)

**mit medical**



What's so special about these articles?  
They were all written by **new** writers for *The Tech*.

It's never too late to become a part of MIT's oldest student activity. Call the newsroom at x3-1541 and ask for Stacey, or come by on Sundays at 5 p.m. for pizza.

**Absolutely no experience necessary.**

Mid-Year Report Shows  
Increase in Crime

Fact Extension  
by for Aramark

Not Ready  
at Loan Program

LaVerde's Sees  
As Market Costs  
Greek Week Fu  
Social, Comm  
List (

# THE ARTS

## FILM REVIEW

### American Buffalo plays well on the screen

#### AMERICAN BUFFALO

Screenplay by David Mamet, based on his play.  
Directed by Michael Corrente.  
Starring Dennis Franz, Dustin Hoffman, and Sean Nelson.  
Coolidge Corner Theatre.

By Yaron Koren  
STAFF REPORTER

David Mamet's *American Buffalo* is a rarity in mainstream movies with top-rate talent. It's a movie that shows the ugly side of human nature without condemning it or glamorizing it. Mamet gives us a thoughtful, honest examination of the loss of trust that occurs when business is mixed with friendship.

Donny Dubrow (*NYPD Blue*'s Dennis Franz) is a junk shop owner who knows a great deal about business and dealing with clients but little about coins. His friend, known as "Teach" (Dustin Hoffman), has a very close rapport with Donny, but there are some tensions between the two even from the start. Teach, as befits the name, acts as an instructor, and considers himself the more sophisticated and worldly of the two, the man who will save Donny from his foolish mistakes.

The plot revolves around a single coin, a somewhat rare Buffalo-head nickel, which was bought at the store by a mysterious customer who paid much more for the coin than its listed price. Donny, confused by the customer's arrogance and convinced that the coin



Dustin Hoffman, Dennis Franz, and Sean Nelson star in *American Buffalo*, David Mamet's play about betrayed friendship.

is worth even more than the customer paid for it, decides that he will try to steal the coin back from the man's house when he is away on vacation. He drafts Bobby (Sean Nelson), a local boy whom Donny has been treating as a surrogate son, to perform the actual theft. Soon Teach gets into the plan as well and begins to second-guess Donny's decisions on how to carry it out. Most of the rest of the movie deals with the events leading up to the planned break-in that night — and its unexpectedly botched execution.

The two costars are superb, with Hoffman providing the manic energy in a necessarily over-the-top performance and Franz the ponderous gravity as a man weighed down by years of banal existence. The sparks fly between the two during their prolonged scenes together.

The only other cast member, the 15-year-old Nelson, coming out of his brilliant new-

comer performance in the underappreciated *Fresh*, once again is solid as a street-smart novice whose alienation to the world of the coin-selling is easily (but wrongly) construed as naive.

*American Buffalo*'s dialogue is spellbinding, as is to be expected from a movie based on a David Mamet play. The characters' interchanges are well-timed, with an ear for the authentic. As in *Glengarry Glenn Ross*, internal squabbles and desperation are forced out through a stream of idle chatter. Hoffman and Franz both understand this, conveying a variety of hidden agendas through their lines, although Franz clearly has the upper hand here. Franz turns out to be the undiscovered jewel of this production, a sort of softer, more angst-filled Harvey Keitel. This role may yet turn him into a bankable screen star.

Of course, any play-based movie must eventually come to terms with the same prob-

lem: how to translate into film, a visually-based medium, from theater, which is essentially verbally-based. In *American Buffalo* the problem is acute, given the minimal cast, a single setting, and no action. Director Michael Corrente (*Federal Hill*) does his best here to open up the film, having the actors make full use of the junk shop setting — especially at the confrontational ending — and bringing them out into the Chicago streets at times.

This remains a small movie, however, with our focus trained on the dialogue and the exchange of ideas. Still, it should not be ignored in favor of its flashier, slicker on-screen contemporaries. Not as successful as *Glengarry Glenn Ross*, which had a bigger cast and more complex plotting, *American Buffalo* nevertheless lets you into the souls of its characters and communicates a powerful message about the corrupting influence of money on even the closest of friendships.

## ARTS AROUND BOSTON

### Hot things around town — from the BSO to Mama Kin for free

By Joel M. Rosenberg  
STAFF REPORTER

Free time is enjoyed too infrequently by too many of us, thanks to the workload provided by the hell we call Tech. Still, every once in a while we get a recreation break and are faced with the problem of what to do. Two weeks ago I told you where to find out what's going on; today I'm going to tell you some stuff they don't print in *The Phoenix*.

Your \$30,000 a year here will get you more than free tutors. With a student ID, you can get free admission to the Museum of Science, the Museum of Fine Arts, and perhaps the best kept secret of all — the Boston Symphony Orchestra.

For the BSO, tickets are available to shows Tuesday nights at 8 p.m. and Friday afternoons at 1:30 p.m. Tickets are available for rehearsals Wednesday at 7:30 p.m. and Thursday at 10:30 a.m. This is how it works: if there are 100 tickets left for a show, an MIT student can get two tickets for that day's performance with two valid IDs (yours plus a friend's). You can check on ticket availability by calling 638-9478 after 10 a.m. the day of the show. A schedule for the BSO, which opened this past Wednesday, can be obtained by calling 266-1492, or checking their new Web site,

<http://www.bso.org>. This program is amazing and often puts cheap MIT students in better seats than the high-paying Boston socialites. Makes for a great date, too.

If museums and the BSO aren't your thing, you can check out the live music scene at clubs around Boston and Cambridge. As a good rule, if there's a band you want to see at a club and it says 19+ or 21+, it might well be worth your time to go down there and try to get in. Especially with 19+, if you say you're not drinking and don't have an ID out, they probably won't care how old you are — they're just trying to keep out high school kids. I've gotten into Middle East and Mama Kin for shows I shouldn't have been able to get into. Another method which might be more costly is to buy a ticket and then go to the show — they might be less inclined to turn you away if you already have a ticket.

So those are a few suggestions on where to go. Check *The Tech* for ads from the MIT Council for the Arts, which regularly gives away free tickets to good cultural stuff going on around town. Their office is on the second floor of the Media Lab. Great places to learn check on what's going on are *The Boston Phoenix* (available Thursdays for \$1, or free Friday afternoons at some dormitories and on the first floor of the Student

Center) and *The Improper Bostonian* (free every other Wednesday at street boxes).

#### This Weekend

The Heavy Metal Horns play the Regattabar in Harvard Square tonight at 8 p.m. and 10 p.m., \$10 per set. Call 661-5000 for tickets to see this funk'n' brass band.

Medeski Martin and Wood will be at the Somerville Theater off at Davis Square on the red line of the T on Sunday at 8 p.m. They're a funk-rock-jazz band with an organ. This Sunday, Color Me Bad will be playing at Paradise on Commonwealth Avenue. Tickets for both can be bought from Ticketmaster by calling 931-2000.

If you want to go to the movies, Spike & Mike's Sick and Twisted Animation Festival

is highly recommended. It's playing at Coolidge Corner Theater in Brookline (easy to get to from the green line on the T) at 7:45 and 9:45 p.m. every day except Mondays through Oct. 3, with midnight shows on Friday and Saturday and midnight shows only on Oct. 4 and 5. The show isn't for the weak — probably more for the easily entertained (*Beavis and Butthead* came from here).

Finally, this Sunday afternoon there will be jazz bands and other entertainment all over Newbury Street trying to draw people to enter the many little-known art galleries on that famous street. If it's nice out, Sunday might be a great day to go listen to CDs at Tower, buy them at Newbury Comics, eat at Friday's, and watch tourists and the body-pierced. Should be fun.

Museum of Fine Arts  
Museum of Science  
Boston Symphony Orchestra  
Newbury Street

## FILM REVIEW

### Bride of Frankenstein combines horror and comedy successfully

#### BRIDE OF FRANKENSTEIN

Directed by James Whale.  
Starring Boris Karloff, Colin Clive, and Elsa Lanchester.  
Written by John L. Balderston and William Hurlbut.  
LSC Friday Classic.  
Tonight in 10-250, 7:30 p.m.

By Stephen Brophy  
STAFF REPORTER

LSC Classics takes a giant step from the ridiculous to the sublime this week. Last Friday they programmed what is generally acknowledged to be the most hilariously inept effort to make a monster movie that has ever reached the screen, *Plan 9 from Outer Space*. This evening they go to the opposite extreme with James Whale's *Bride of Frankenstein*, perhaps the most perfect blend of horror and comedy in film history.

Whale had made the phenomenally successful *Frankenstein* — only his second movie — for Universal Studios four years before and meanwhile created *The Old Dark House* and *The Invisible Man* as well as half a dozen other non-horror features for them. He resisted a sequel but eventually gave in, insisting that he be allowed to develop the project in his own way. The mordant humor of *Bride* is the delicious result.

Whale was one of the few people in that more repressive time who was able to live relatively openly as a homosexual. He attracted others from Hollywood's queer community to work with him, notably Ernest Thesiger, who plays Dr. Praetorius, the demented mentor of Dr. Frankenstein, and is given some of the best lines in the movie. Watch for his midnight meal with the monster in an underground crypt.

**The Tech Arts**  
Established 1881

If you want to review the latest movies and CDs, join *The Tech Arts* staff!  
Call us at 253-1541 and ask for David.

# The Tech Comics

Established 1881

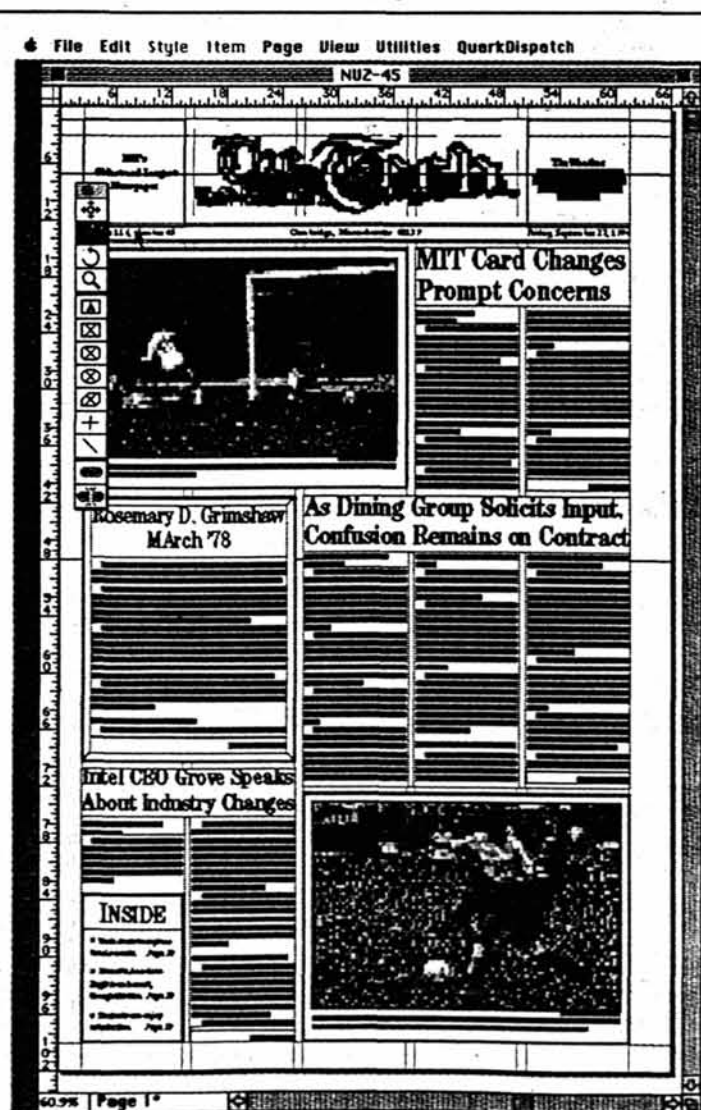
## Dammed for Life

by Jessica Wu



## Off Course

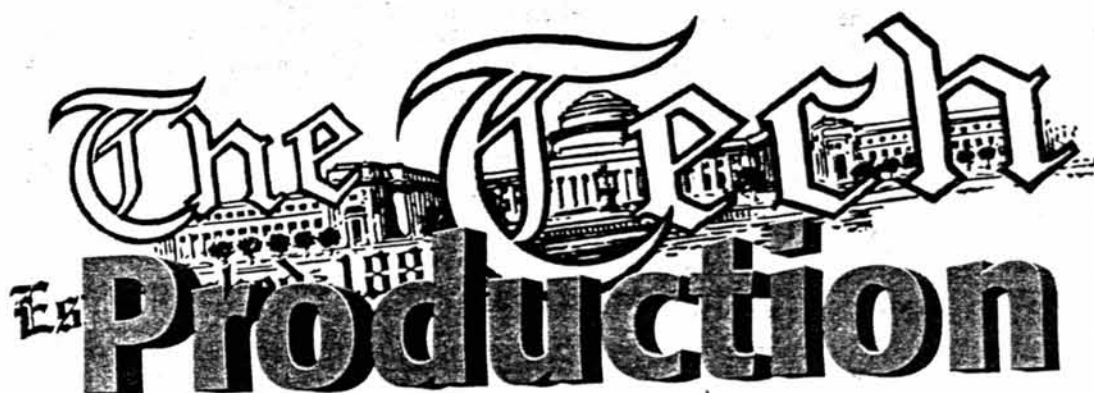
By Hugo



**Join *The Tech* Production staff and you'll never look at the paper the same way again.**

No experience at all is necessary to help lay out and put together MIT's Oldest and Largest Newspaper.

Stop by room 483 of the Student Center at 6 p.m. on Sundays for pizza, or any Monday, Wednesday or Thursday evening. Or call us at 253-1541 and ask for Saul.



# Bride of Frankenstein this Friday's LSC classic

Frankenstein, from Page 12

Elsa Lanchester, the bride of another notorious homosexual, Charles Laughton, was recruited to play both Mary Shelley in a prologue and then the Bride in the climax. One of the in-jokes in the film involves her husband, who had won great acclaim playing the randy king in *The Private Life of Henry VIII*; when Praetorius shows his pupil his collection of miniaturized humans, one of them is a tiny

Henry desperately trying to get into the container which holds a tiny queen.

Whale had wanted to recruit Brigitte Helm, — who played the two Marias in *Metropolis* — and his conception of the Bride's movements in the climactic sequence replicate Helm's spasmodic portrayal of the robot Maria. The general influence of German impressionism on Whale, manifested in bizarrely angled sets and stark lighting, is apparent throughout this work.

Boris Karloff returns as the Monster, but was reportedly unhappy with the changes wrought in this new version. He did not approve of the humanizing of his character, nor of the fact that the creature learns to speak a few words, drink wine, and smoke cigars. Karloff was to do only one more stint in this role, in the underappreciated *Son of Frankenstein*, but his creation, with its brooding look designed by make-up genius Jack Pierce, has entered the pantheon of monster immortals.

*Bride of Frankenstein* is packed from beginning to end with droll bits of business and jokes, like the almost sacrilegious hint of crucifixion when the Monster is captured for the second time. But it is also genuinely scary. It's one of those movies that you can watch again and again, and enjoy a little more with each re-viewing. MIT audiences might particularly enjoy the opportunity to check out the mad scientist's laboratory — it sets a standard for all that were to come in this durable sub-genre.

# E x p l o r e

## Theater

# The Arts

Film  
**Boston**  
 Music  
 Concerts

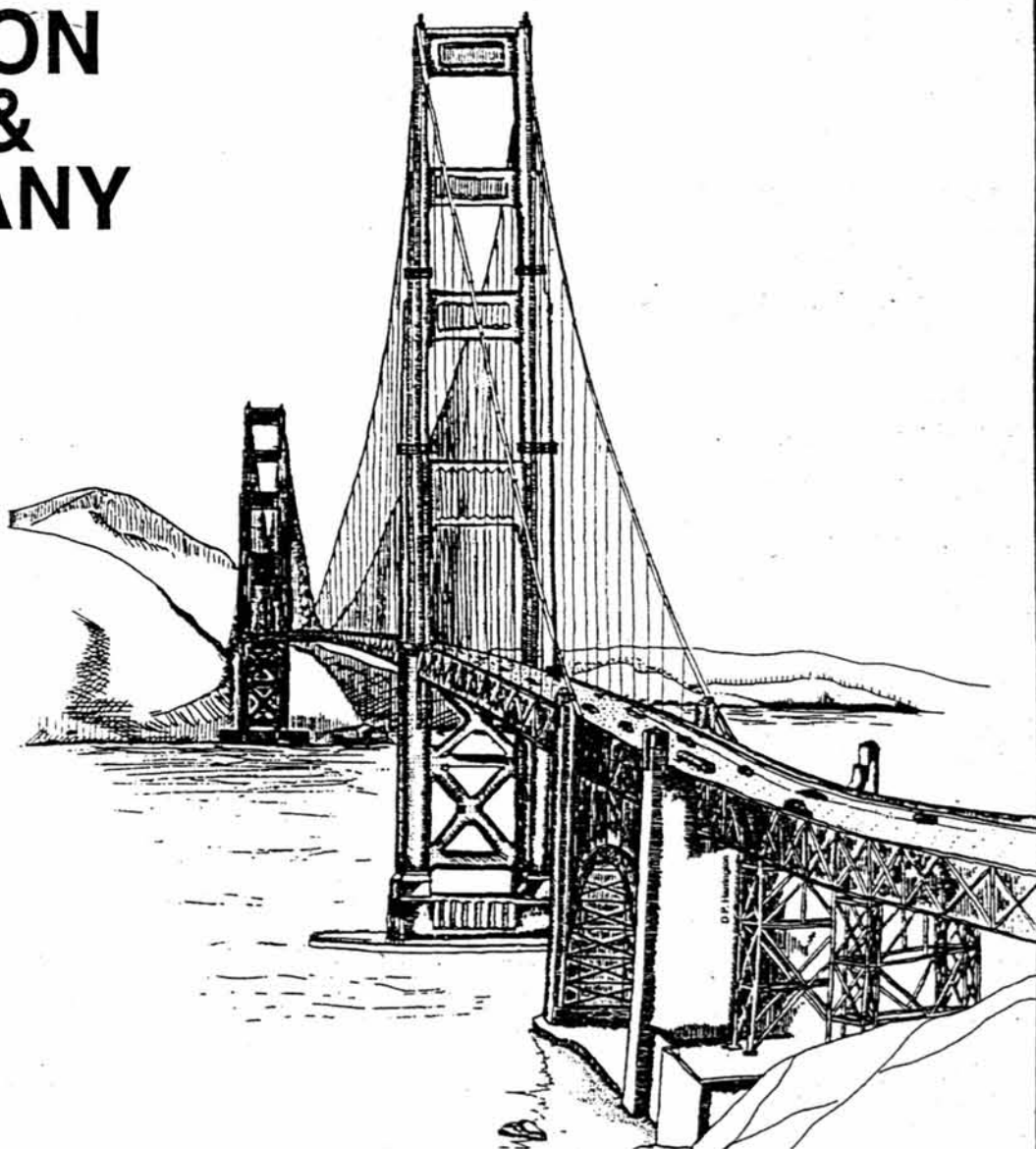
## Dining

And write about it for *The Tech*!

Contact David Rodriguez at x3-1541 or send mail to: arts@the-tech.mit.edu.

# Investment Banking

## ROBERTSON STEPHENS & COMPANY



Positions Available:  
 Financial Analyst  
 Research Associate

Submit resumés to:  
 Maggie Alexandre  
 Human Resources  
 Robertson, Stephens & Company  
 555 California Street, Suite 2600  
 San Francisco, California 94104

Presentation Date: October 1, 1996, 6:00-8:00 pm, Room 4-145  
 Interview Date: February 4, 1997 at the Charles Hotel

With a different view

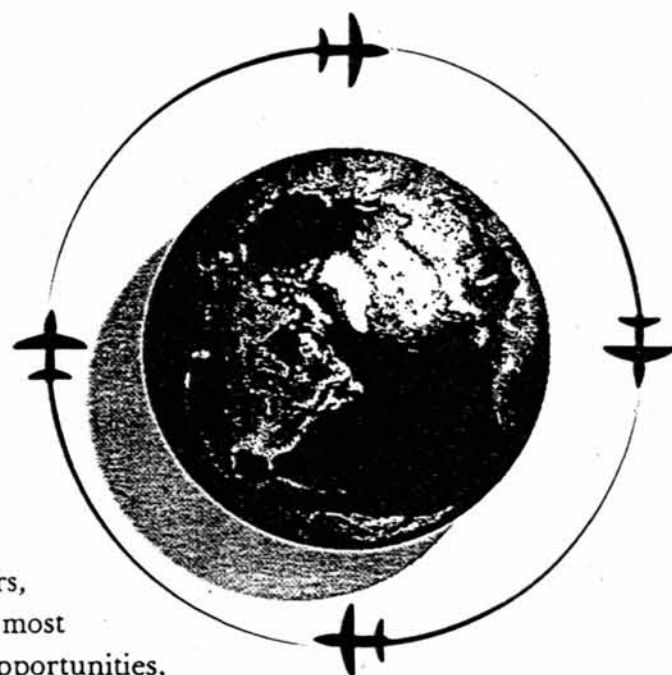
# THE BOSTON CONSULTING GROUP

**MIT Graduating Seniors** interested in Management Consulting:  
Please join us for an *informal* reception and briefing to learn  
more about our **Associate Program**

## Thursday, October 3 at 7:00pm

### Cambridge Marriott—Salon Four

Hors d'oeuvres and Refreshments will be Served



**The Boston Consulting Group** is a leading international management consulting firm which has concentrated on helping clients develop and execute strategies to succeed in competitive markets. Because we constantly seek new answers, and because we tailor our approach to each client's specific needs and circumstances, most of our work is with companies facing critical and difficult challenges, in the form of opportunities, competitive threats and changes in their technological or market environment. We work with a wide range of businesses, in manufacturing, high technology, healthcare, financial and other service industries, and consumer goods. Most of our clients are major corporations in the FORTUNE 500 or of comparable size internationally. Generally we work with our clients over long time spans, in creating long-range strategies and helping them make the operational and organizational changes required to put new strategies into practice. BCG currently has 39 offices worldwide. As we grow we are continuing to open new offices in order that we may be located nearer to our clients, and to maintain our offices at sizes that foster cohesiveness and vitality. We believe that some critical qualities of our organization and our people make us successful: inventiveness and the freedom to pursue new ideas; tenacity, rigor and intellectual honesty in pursuit of the best answers for our clients; and a practical sense of the nature of effective leadership. BCG provides an opportunity in our Associate Program that is unmatched.

AMSTERDAM	BRUSSELS	FRANKFURT	KUALA LUMPUR	MELBOURNE
ATLANTA	BUENOS AIRES	HAMBURG	LISBON	MILAN
AUCKLAND	CHICAGO	HELSINKI	LONDON	MONTERREY
BANGKOK	DALLAS	HONG KONG	LOS ANGELES	MOSCOW
BOSTON	DÜSSELDORF	JAKARTA	MADRID	MUMBAI
	MUNICH	SEOUL	TOKYO	
	NEW YORK	SHANGHAI	TORONTO	
	OSLO	SINGAPORE	WASHINGTON, D.C.	
	PARIS	STOCKHOLM	ZÜRICH	
	SAN FRANCISCO	SYDNEY		

# SPORTSDAY

**MONDAY 30 SEPTEMBER 96**  
**stratton student center lobby**  
**9am-5pm**

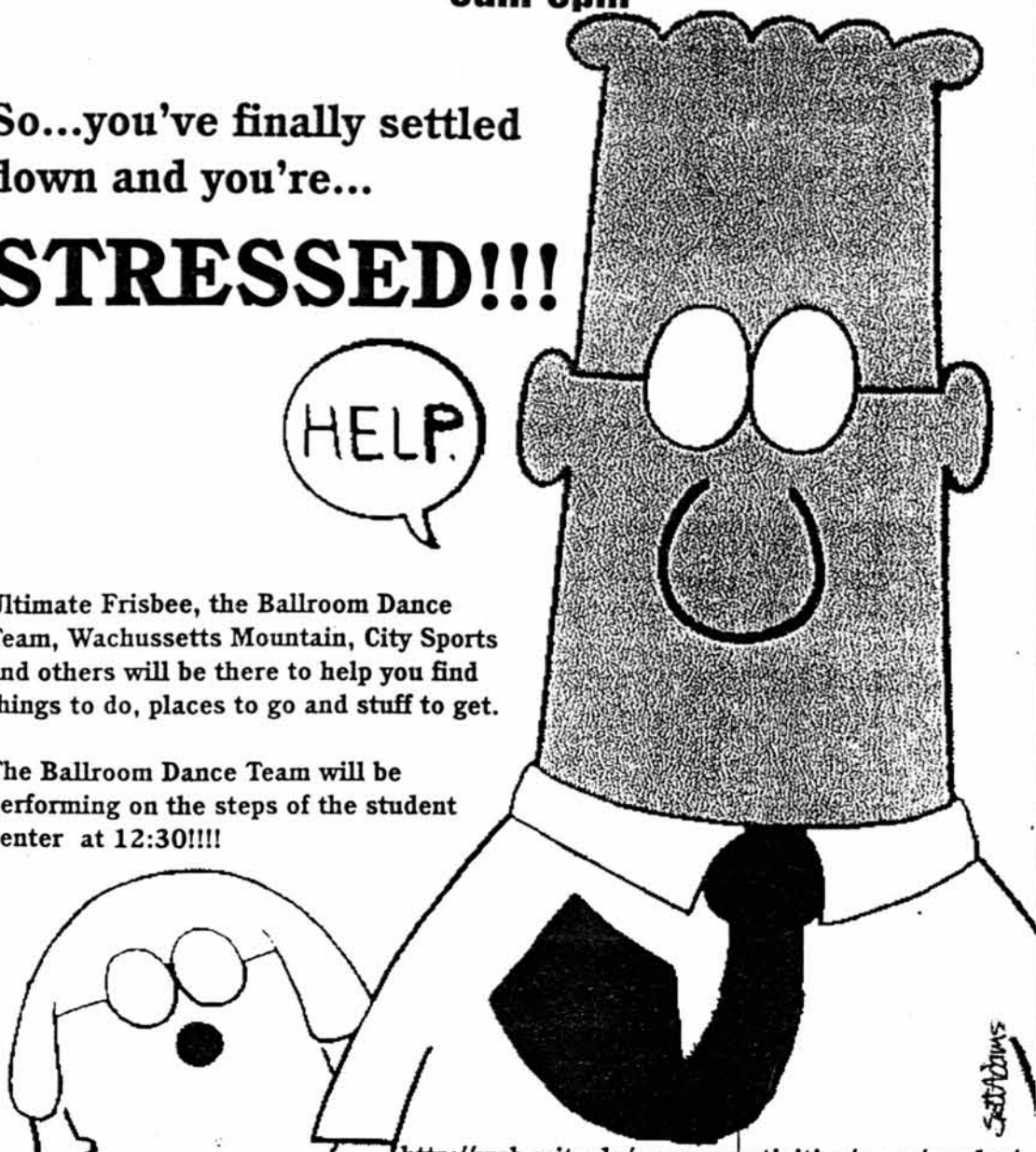
So...you've finally settled down and you're...

## STRESSED!!!



Ultimate Frisbee, the Ballroom Dance Team, Wachussetts Mountain, City Sports and others will be there to help you find things to do, places to go and stuff to get.

The Ballroom Dance Team will be performing on the steps of the student center at 12:30!!!!



<http://web.mit.edu/campus-activities/www/vendor/>

## Grimshaw Dead at 53

Grimshaw, from Page 1

ing, Porter said. Grimshaw was able to bring elements from her real life experiences into the classroom, he said.

Grimshaw dealt with problems in "a warm and compassionate and human way," Porter said. She "tried to bring architectural form into that vision."

Grimshaw graduated from Emmanuel College in 1965, received her master's degree from MIT in 1978, and joined the faculty in 1980. She was associated with the Center for Real Estate up until she was diagnosed with Lou Gehrig's disease in 1994.

Grimshaw won several awards for design excellence, including a Governor's Design Award for the Harvard Square Garage and Builder's Design Awards for the site plan and houses at Nahaquisset on Nantucket.

She was also a member of the American Institute of Architects and the Boston Society of Architects. She served on the board of directors of Smokey House in Vermont, a Taconic Foundation program that trains impoverished citizens in farming and forestry.

Grimshaw is survived by her mother, Rose Danehy; three brothers, Kevin Danehy, Sean M. Danehy, and Alfred Danehy; a sister, Ann McMullan; and several nieces and nephews.

Memorial contributions may be made to The Hospice of Cambridge, 245 Winter Street, Waltham, MA 02154 or to Smokey House Center, RFD 292, Danby, VT 05739.



MIT COMMUNICATIONS OFFICE  
**Former Assistant Professor of Architecture Rosemary D. Grimshaw MArch '78**

OVER THE NEXT 30 YEARS, YOU'LL SPEND  
**60,000 HOURS**  
 MAKING A LIVING.  
 YOU MIGHT AS WELL  
**ENJOY**  
**it!**

The fun doesn't have to stop when the paychecks start. Especially if you join Adobe. We offer big-company success with a small-company attitude. Of course, we didn't become the world's third-largest personal computer software developer without lots of hard work. But when your products lead the industry year after year, enriching the way

that everyone communicates, you have plenty to smile about. So if you agree that it's possible to have fun while doing satisfying, interesting work, Adobe may be the place for you. To find out more about job opportunities at Adobe, contact Student Career Services and sign up for an interview.

**Evening Presentation - Tues, Oct 15 • 7 - 9pm, Room 4 - 415**  
**On Campus Interviews - Wed and Thurs, Oct 16 and 17**  
**SWE Career Fair - Fri and Sat, Oct 25 and 26**

Or send your resume to Adobe Systems, College Relations, Dept. COLRE9697, 333 W. San Carlos St., San Jose, CA 95110. FAX (408) 536-6614. EOE.  
 Adobe, the Adobe logo, and the tagline, "If you can dream it, you can do it" are trademarks of Adobe Systems Incorporated.  
 © 1996 Adobe Systems Incorporated. All rights reserved.

I don't need to get an HIV test, do I?  
 Questions? Call Contact Line x36460

This space donated by The Tech

### Coming to a city near you—the U.S. Mathematica Empowerment Tour!

Wolfram Research is hitting the road to show the world what Mathematica 3.0 is all about. Climb aboard our colorful traveling display for an inside look at what makes Mathematica indispensable in fields such as science, technology, engineering, finance, medicine, research, education, and many, many more.

Come and try Mathematica, share ideas with people in your field, sign up for product giveaways, view spectacular

## THE MATHEMATICA EMPOWERMENT TOUR

graphics, and talk with members of the Wolfram Research staff in a creative and casual environment. Sample our many specialized application packages, and get a firsthand look at some interesting products created using Mathematica—you'll be inspired to use Mathematica for your next project!

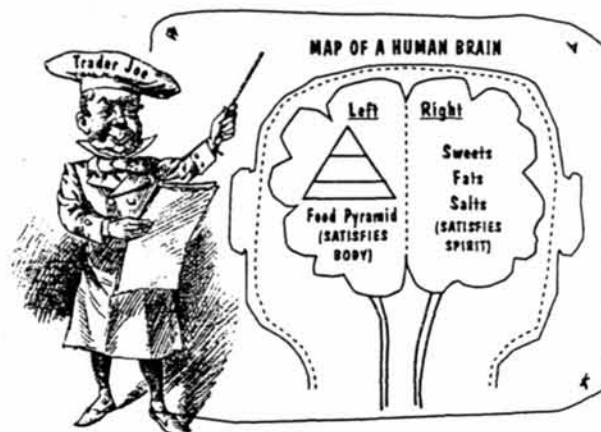
Check out the Wolfram Research web site: <http://www.wolfram.com/empower> for information on this and other Empowerment Tour stops!

Where: MIT—Look for the colorful traveling display near the Chapel Turnaround on Amherst • When: Monday, September 30, 1996 • Time: 2:00 to 6:00pm

**WOLFRAM RESEARCH**

# TRADER JOE'S®

A Unique Grocery Store



Trader Joe's: The Whole Brain Company

### Double Rainbow Super Premium Ice Creams and Sorbets • \$1.89 per pint.

Super premium is a trade term which describes ice cream which has at least 15% butterfat and low (20 to 25%) overrun, the amount of air whipped into the finished product. It's the richest, smoothest ice cream available commercially. We have tasted Double Rainbow award winning ice creams and sorbets against many of the top names in the super premium ice cream business, and our panel consistently chooses Double Rainbow for the flavors and the value. They use all natural flavors and colors, and no preservatives.

**Ice Creams...** French Vanilla, White Pistachio Chocolate Swirl, Mint Chocolate Chip or Cappuccino Chocolate Crunch.

**Sorbets... Fat Free & Dairy Free...** Marion Blackberry, Mango Tangerine, Raspberry or Strawberry Kiwi. (Chocolate Sorbet has no dairy and is 99% fat free.)

### Peanut Butter Pretzels \$2.49

Peanut Butter Pretzels are Trader Joe's originals. These little bite size pretzels are baked with peanut butter inside, and the first taste is a real surprise. The sweet smoothness of the peanut butter and the crunchy saltiness of the pretzel combine to make a snack which one respected food writer calls "addictively delicious!"

They're made for us by a company in Pennsylvania, in the heart of pretzel country, with no preservatives or artificial ingredients. We sell the pretzels in one pound bags for \$2.49. We also have Trader Joe's Peanut Butter Pretzels with no salt on the pretzel for the same price.

### Ready-to-Eat in less than 8 minutes ..... A Variety of Entrées

In our freezer cases, we have a variety of entrees from basic to unusual. They're easy to prepare, healthy to eat, and priced well: Trader Joe's Rice Bowls are balanced one-dish meals of rice with toppings. We have a Vegetarian Rice Bowl (\$1.99) and a Teriyaki Chicken Rice Bowl (\$2.29). We have traditional Spinach Lasagna for \$1.69. We also have low-fat burritos (Organic Bean & Rice for \$1.79 or Chicken, Bean & Rice for \$2.29). These burritos have authentic Mexican flavor and good nutritional profiles. Both are made with fresh salsa and hand-stretched flour tortillas.

Free T-Shirt for the first 1000 people to return this form! (MT)

Name \_\_\_\_\_  
 School \_\_\_\_\_  
 Year \_\_\_\_\_ Major \_\_\_\_\_ Zip \_\_\_\_\_  
 Housing: On Campus  Off Campus  Commuter   
 Faculty  Student   
 One shirt per person



Open 7 days a week

- \* Brookline - On Beacon Street, at Coolidge Corner, 9AM-10PM
- \* Cambridge - On Memorial Drive, next to MicroCenter, 9AM-9PM
- Framingham - On Rte. 9, between Staples and Walgreens, 9AM-9PM

\* Beer & Wine available at these locations

For information about the Trader Joe's nearest you,  
**CALL: 1-800-SHOP-TJS**

Apparel Designer Zone Presents

# TWEEDS®

## one 212

# CLOTHING LIQUIDATION SALE

## 50%-90%

BELOW ORIGINAL RETAIL PRICES on the hottest European fashion catalogue including sweaters, dresses, jackets, shoes, pants, tops and much, much more.

**SEPTEMBER 26-29**

Hours: Thurs & Fri: 10am - 9pm Sat & Sun: 10am - 7 pm

**BAYSIDE EXPO CENTER**

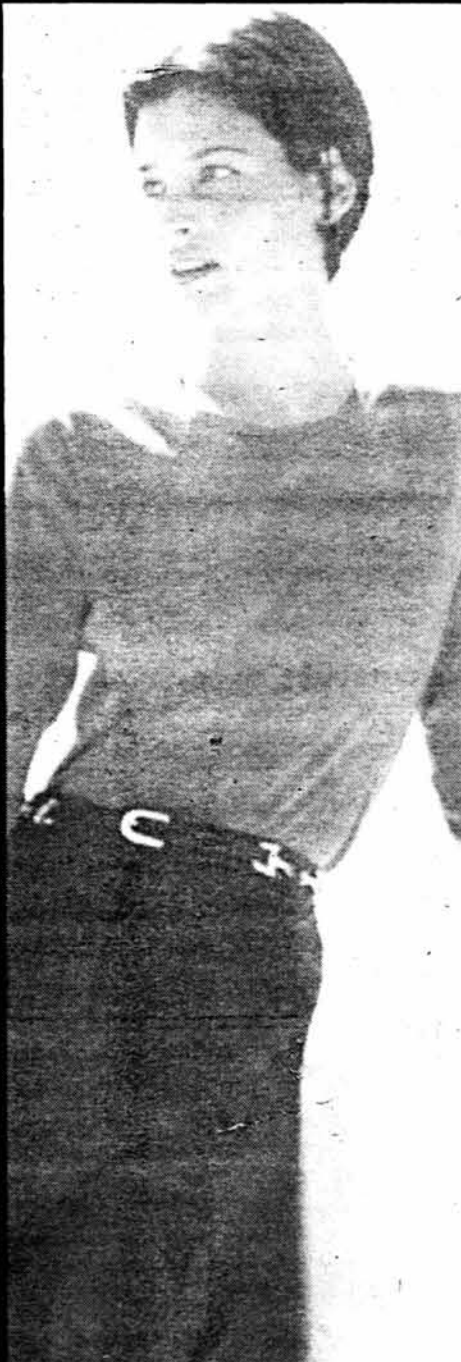
200 Mt. Vernon St. • Exit 15 off I-93

T Redline to JFK/UMASS Stop

(617) 474-6000

All sales final, no refunds or exchanges. MasterCard, VISA, AMEX, Discover, cash and personal checks accepted.

Admission only \$1.



You're a leader...  
You're eager for a career that challenges you to grow...  
You're looking for a world-class company recognized for innovation and focused on the future...

## Consider a career with... **Procter & Gamble**

Representatives will be on campus

**Thursday, October 3, 1996**

Please stop by and talk to recent MIT grads at our

**Open House  
6:00 to 9:30 pm**

And join Mr. Irv Simon, Director of Oral Care Product Development, to learn more about career opportunities and technical challenges at P&G

**Technical Presentation  
7:00 to 8:00 pm**

Refreshments & Career Opportunities Discussion immediately following

Focusing on the following BS and MS majors: 2, 3, and 10

**We're interested in learning more about you, so please be sure to bring your resume!**

Full-time and summer candidates welcome.

# Technology Forces Industry-wide Shifts

Grove, from Page 1

tion point would include a Walmart moving into a small town and forcing the local retailers to change the fundamental nature of their business, Grove said.

A larger-scale example is the development of the personal computer, an event that changed not just one company or town but forced many industries to reinvent themselves.

In a business, a strategic inflection point may be something that is largely unnoticed by senior management but may cause front-line employees to start behaving differently, Grove said.

"A sign that the Internet is resulting in a [strategic inflection point] is that the original people involved in the Internet found a large influx of people who had no business being in the Internet," Grove said.

After describing strategic inflection points, Grove examined strategies that can be used to deal with them. "Every right decision I have made has been made at least a year late," he said.

Grove divided the process of dealing with fundamental changes into two different phases: one where chaos can reign and one where one reigns in chaos. These different phases will require different management strategies, Grove said.

#### Individuals in control of careers

Grove also applied his analysis to individuals. Since companies are no longer guaranteed a lifelong existence, they can not afford to

give lifelong employment, he said. Because of this, every individual is the owner of his own career.

During the question and answer section of the lecture, Grove spoke of Intel's next strategic inflection point — that of communication-based applications. The spread of such applications will result in increased demand for computing power and thus more business for Intel, Grove said.

"Intel cannot really grow by increasing market share, so [we are] trying to expand the entire industry," Grove said, citing that most of the development that Intel has is in diversifying its technology.

#### 3M CEO to speak

Levio Desimone, the CEO of 3M will be speaking on Dec. 3 and will be last lecture of this term. However, the speaker series is ongoing, said Donna Carty, the program manager for the Center for Technology, Policy and Industrial Development.

"We don't have anyone booked after Desimone, but our goal is to have one lecture a month during the term," Carty said. "The series is limited to chairmen and CEOs of major corporations but we are looking for student input of who to invite."

Jack Smith, CEO of GM spoke last week at the fourth lecture of the series. Alex Trotman of Ford Motor Company, Gordon Binder of the biotechnology firm Amgen, and Jorma Olliva of Nokia, a cellular phone and consumer electronics company, spoke in the first three lectures of the series last year.

**The Tech news hotline: 253-1541**

You want to be the first to \_\_\_\_\_

\_\_\_\_\_

\_\_\_\_\_

\_\_\_\_\_



### Macintosh. More flexible than ever.

We don't know how you'll fill in the blank. That's why we make Macintosh computers so flexible. To help you be the first to do whatever you want to do. And with word processing, easy Internet access, powerful multimedia and cross-platform compatibility, a Mac makes it even easier to do it. How do you get started? Visit your campus computer store today and pick up a Mac.

Leave your mark.

Visit your campus computer store or <http://campus.apple.com/>



# Decision to Remove 'Student' Designation a Mistake

Card, from Page 1

tification benefits, he said.

"We realize students are a special case," Barrera said. "It was a mistake."

HFS will not be reprinting the cards to put the word "student" on them. Reprinting 10,000 cards would take two to five weeks and cost a great deal of money, Barrera said.

Instead, HFS is offering students the opportunity to have the word "student" printed on the back of the cards they already received. Students can go to E23-200 to have the printing done for free, Barrera said. The printing takes only a few minutes, she said.

The batch of cards printed for next year's incoming class will have the word "student" on them, she said.

## Expiration date extended to 2000

As part of a pilot program intended to save money and manpower, the expiration date of the MIT Card was extended from one to four years.

It costs "more than \$30,000" to print the usual run of 10,000 cards every year, Maguire said. The additional work required to assemble the information that goes on the cards' magnetic strips is a substantial job to do every year. "It's a big drain," he said.

"We're trying to cut down on costs," Barrera said. "We're trying

to see whether it will be effective or not."

Maguire said that the cost-cutting effort was not a result of the re-engineering process.

If the plan works, future cards issued will also be valid for four years, Barrera said.

The cards may wear out before the four years are up, but "if we see that there's natural wear and tear," students can replace cards for free, Barrera said. Currently, MIT Cards cost \$15 to replace.

Even though the date on cards says that the cards will expire in four years, the magnetic strips on the cards — where much of the card's personal information is contained — will be deactivated once students leave MIT.

There is a concern that students might still use the card for student discounts even after they graduate, but Barrera is not worried about it. "We thought about that," she said. "We like to think that students are honest."

The only reason that the change in the expiration date was not made sooner was because "not all departments are hooked up to the Student Information System," making it more difficult for them to gain access to the most updated information, Barrera said.

"We've had to deal with the Registrar's Office" to get that done, Barrera said.

Campus Police are not tied to SIS, for example, Barrera said. "I

don't know how they're going to handle it."

Chief of Police Anne P. Glavin expressed some concern about both the ambiguous expiration date and the lack of student designation on the card. When an officer asks to see identification, "it may be slower for us sometimes" to verify information, she said.

"It's not a crisis issue for us," Glavin said. But "it doesn't make our job any easier."

There were no other glitches with getting the cards out that were especially out of the ordinary this year, although the "the U.S. mail was a lot slower than we had anticipated," Barrera said.

An additional 50 or so cards sent through interdepartmental mail were returned because of errors in the addresses, she said.

"It's hard," Barrera said. There is "a whole lot of information to put into the system, and it doesn't happen overnight."

## New functions may be in store

This year's MIT Card has no new functions added since last year, but there may be some changes in store down the road, Maguire said.

Currently, the card is used for dining plans, use of campus libraries, and access to dormitory entrances, parking lots, and various buildings on campus.

Compared to the number of services other schools offer on their identification cards, MIT is in the

"upper middle," Maguire said.

Future possibilities for the MIT Card may include linking it to bank functions and allowing it to be used for supermarket purchases, like a credit or debit card. "This stuff is all very exciting," Maguire said.

Currently, the MIT Card Steering Committee and the MIT Card Privacy Committee are looking at a number of security and privacy issues. Any new application must be looked at before it is made

part of the card.

Currently, the issue of whether or not the card can be used as collateral for items loaned by dormitory desks is still being examined.

HFS instructed dormitories to stop accepting the card as collateral in April 1995. But while dormitories officially are not supposed to ask for the card, Maguire acknowledged that many still do. "It's a hard thing to mandate," he said. "We need a better system, no question."

**Christ The King ...  
Proclaiming the  
historic Gospel and  
bringing compassion  
to the city.**

**Be challenged to think about God, yourself and your world through worship and liturgy that blends both traditional and contemporary styles.**

**Christ The King  
Presbyterian Church**

99 Prospect Street ♦ Cambridge ♦ 11:00 AM Sunday ♦ 864.5464  
The Rev. Terry L. Gyger, Senior Pastor

The **VISION** of **MATHEMATICA**

Learn about the ideas, the technology, and the future of Mathematica from the creator of the system, and experience firsthand the dazzling potential of the new Mathematica 3.0.

- BOSTON
- NEW YORK CITY
- PHILADELPHIA
- WASHINGTON, DC
- BALTIMORE
- ATLANTA
- CHICAGO
- MINNEAPOLIS
- AUSTIN
- SEATTLE
- LOS ANGELES
- SAN DIEGO
- SAN FRANCISCO
- BOULDER

Attend Stephen Wolfram's Vision of Mathematica Tour:

Location: **M.I.T., Kresge Hall, Main Auditorium, Cambridge, MA**

Date: **Monday, September 30, 1996**

Time: **1:00pm**

**STEPHEN WOLFRAM**

Science, technology, engineering, finance, medicine, research, and education: Mathematica has revolutionized the way over a million professionals and students do their work.

<http://www.wolfram.com/vision/enp>

Visit the web site, email [vision@wolfram.com](mailto:vision@wolfram.com), or call this toll free number: 1-800-976-5302



**Caribbean Dining & Entertainment  
in a relaxed atmosphere**

**DINNER SEVEN DAYS PER WEEK  
AFTER 5:30PM**

**LIVE MUSIC & DANCING  
EVERY FRIDAY & SATURDAY  
at 10:30pm 21+  
SOCA & REGGAE**

Only \$4 cover with this ad (offer expires October 19)

**RHYTHM & SPICE**  
315 Mass. Ave. Cambridge, Ma 02139  
(617)497-0977

**GATERING AND TAKE OUT AVAILABLE**

**Get an Apple Computer Loan. Get a Mac.  
Don't pay for 90 days.**

MIT Computer Connection  
Student Center, Lower Level  
3-7686, [mcc@mit.edu](mailto:mcc@mit.edu)  
<http://web.mit.edu/mcc/www/>

We're your back-to-school computer source.

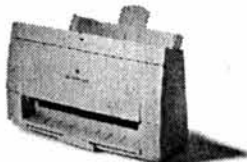
**Free one-year Apple warranty.**



**Power Macintosh 7200**  
PowerPC 601/120 MHz/16MB RAM  
1.2GB/8X CD-ROM/15" display



**Power Macintosh 5400**  
PowerPC 603e/120 MHz/16MB RAM  
1.6GB/8X CD-ROM/15" display



**Color StyleWriter 2500**  
720x360 dpi  
Only \$340

Offer expires October 11, 1996. No payment of interest or principal will be required for 90 days. Interest accruing during this 90-day period will be added to the principal and will bear interest, which will be included in the repayment schedule. For example, the month of May 1996 had an interest rate of 12.15% with an Annual Percentage Rate (APR) of 13.93%. A monthly payment of \$4749 for the Power Mac 7200/120 system is an estimate based on a total loan amount of \$2,765.96, which includes a sample purchase price of \$2,560 and a 6% loan origination fee. Interest is variable based on the Prime Rate as reported on the 5th business day of the month in The Wall Street Journal, plus a spread of 3.9%. Monthly payment and APR shown assumes deferral of principal and does not include state or local sales tax. The Apple Computer Loan has an 8-year loan term with no prepayment penalty and is subject to credit approval. Monthly payments may vary depending on actual computer system prices, total loan amounts, state and local sales taxes and a change in the monthly variable interest rate. ©1996 Apple Computer, Inc. All rights reserved. Apple, the Apple logo, AppleCare, LaserWriter, Mac, Macintosh, Performa, PowerBook, Power Macintosh and StyleWriter are registered trademarks of Apple Computer, Inc. Power Mac is a trademark of Apple Computer, Inc. PowerPC is a trademark of International Business Machines Corporation, used under license therefrom.

**Nomination to the MIT Corporation for  
Final Year Students and Recent Graduates  
(1995, 1996, 1997 Graduates)  
DUE DATE: NOVEMBER 4, 1996**

Nominee: \_\_\_\_\_  
 Degree: \_\_\_\_\_ Year: \_\_\_\_\_  
 Address: \_\_\_\_\_  
 \_\_\_\_\_  
 Phone: \_\_\_\_\_ (h)  
 \_\_\_\_\_ (w)

Please briefly state why you have chosen to nominate this individual (self-nominations welcome). Any additional information you can provide (relevant activities, references, etc.) is also welcome.

Your Name: \_\_\_\_\_  
 MIT Affiliation: \_\_\_\_\_  
 Address: \_\_\_\_\_  
 \_\_\_\_\_  
 Phone: \_\_\_\_\_ (h)  
 \_\_\_\_\_ (w)

Please forward nominations to Bonnie Jones at 3-8212 or <jonsey@mit.edu> no later than Nov. 4. Your nominee will be contacted for further information.

**Attention  
1996 or 1997  
Graduates:**

*Make a difference!*

Discover how you can make a difference on issues such as **Student Life, Graduate Funding, MIT Research** and more on October 3 when members of the Corporation will be on hand to discuss how to be elected to the Corporation.

The ballot to elect young alumni/ae (1995, 1996, 1997 graduates) to the Corporation needs strong candidates. Could that be you or a friend at MIT? Herald your interests and concerns by nominating yourself or a friend.

Watch your mail for nomination notices and come to the Open Meeting on **Thursday, October 3, 1996** in the Simonides Conference room, 3-207, from 6:30 to 8:30 p.m. Share a pizza with members of the Corporation and learn how you can make a difference for the student body at MIT.

See left for nomination form.



ZAREENA HUSSAIN  
 Sabrina A. Birnbaum '98 guards the ball from a Nichols College player during the women's soccer team's match on Tuesday. The Engineers tied 2-2 after two overtimes.

**MIT students:**

**September 30  
is your last chance  
to catch the waive**



**MIT students  
pay for  
individual  
health insurance**

**unless they file a waiver by September 30  
Family enrollment also ends September 30**

**To find out more,  
stop by E23-308 or call 3-4371**

**mit student health**

**Opportunities for Research and Development**

SRI International is a world-renowned scientific and engineering research organization. The Applied Electromagnetics and Optics Laboratory at SRI International, is now recruiting for exceptionally talented scientists and engineers to participate in a variety of remote sensing, optical and commercial electronics programs.

Positions for Research Engineers, Physicists, and Computer Science professionals offer opportunities to participate in challenging and very advanced research on visible-IR-microwave remote sensing, physical phenomena and related signal processing algorithms as well as participation in analog/digital design process.

We invite you to apply for these positions if you have a degree in Physics, Engineering, Meteorology, Computing Sciences or other related fields. You should also have demonstrated innovative approaches to scientific research and computational problems, good communication skills, a publication record, and experience in several of the following areas:

- Terrestrial or deep space remote sensing with electro-optics, radars, and radiometers.

- Space, atmospheric and oceanographic phenomenology
- Scientific computing using super computers and Massively Parallel Processors
- Signal and/or image processing algorithms and information theory
- Analog/digital design
- Electromagnetic processes
- Computational physics

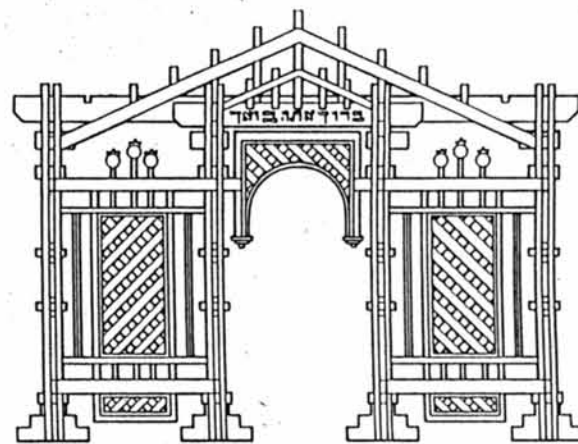
SRI International is an equal opportunity employer. U.S. citizenship required. Applicants selected will be subject to a security investigation and must meet eligibility requirements for access to classified information.

Please mail, fax or e-mail your resume to:

Jeanie Tooker, SRI International  
 333 Ravenswood Ave., Dept. 717RA  
 Menlo Park, CA 94025  
 Fax: (415) 859-4222  
 E-mail: jean\_tooker@qm.sri.com  
 EOE/M/F/D/V.

**SRI International**

**VISIT THE  
M.I.T. SUKKAH**

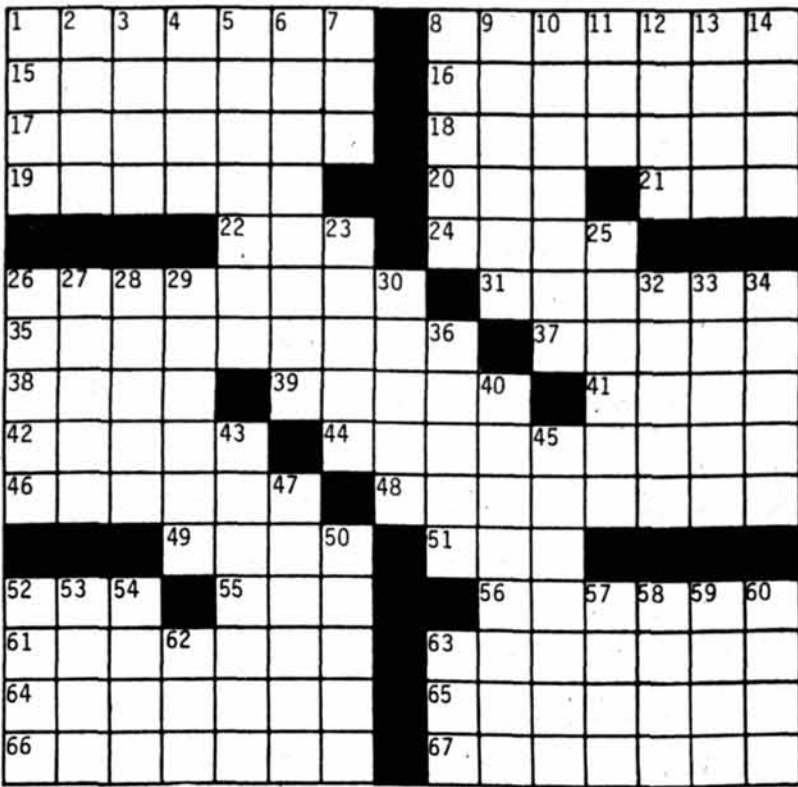


**SEPTEMBER 27  
to OCTOBER 5  
KRESGE OVAL**

- Open for meals & visits •
- Lulov & etrog available •

**Open for the  
M.I.T. Community**

Sponsored by M.I.T. Hillel #253-2982



© Edward Julius Collegiate CW8811

**ACROSS**

- 1 Book covers
- 8 Western hemisphere country
- 15 Chilean seaport
- 16 Rules
- 17 Promote the development of
- 18 Wolfgang — Mozart
- 19 Patriot Hale
- 20 Family member
- 21 Depot (abbr.)
- 22 Jazz form
- 24 Greek letters
- 26 Adjusted, as currency
- 31 California desert
- 35 Gilbert and Sullivan output
- 37 Ancient Greek Valley
- 38 Swelling
- 39 Cut
- 41 Actress Grey, et al.
- 42 Paul Bunyan activity
- 44 City near San Bernardino
- 46 Donald Trump, e.g.
- 48 Like Liberace's clothing

- 49 First word of Clement Moore poem
- 51 Sister
- 52 U. of Michigan's arch-rival
- 55 Lawyer (abbr.)
- 56 A friend —...
- 61 Income statement item
- 63 Daughter of Minos and Pasiphae
- 64 Pause in a line of verse
- 65 Certain fringe benefit
- 66 Collected
- 67 Most uptight
- 13 Scandinavian king (var.)
- 14 Organization (abbr.)
- 23 Tchaikovsky
- 25 Chinese province
- 26 Actor who played Mr. Chips
- 27 Powerful glue
- 28 Hindu language
- 29 "Things — what they seem"
- 30 Famous cup
- 32 With full force
- 33 Sells: Sp.
- 34 Let up
- 36 " — Little Foy's"
- 40 Like some courses
- 43 Section of Brooklyn

- 45 — joke
- 47 Disposition
- 50 Beginning for fast
- 52 Killer whale
- 53 Line of stitching
- 54 Eye layer
- 57 Prefix: nose
- 58 Miss Adams
- 59 Baseball hall-of-famer Slaughter
- 60 Fender imperfection
- 62 Suffix for count
- 63 Mighty Joe Young, for one

**DOWN**

- 1 Islamic spirit
- 2 Beginning for lung
- 3 Mr. Gowdy
- 4 — and kin
- 5 Unchanging
- 6 Attendances
- 7 Meet a poker bet
- 8 Let out — (displayed shock)
- 9 Oedipal symptom
- 10 Tax —
- 11 Roulette color
- 12 Angers

**PUZZLE SOLUTIONS FROM LAST ISSUE**



SOLUTIONS IN THE NEXT EDITION OF THE TECH

Confused?  
- Call Nightline  
x 8-8003

Wait -  
That's not it.

Confused?  
Call Nightline  
x 08083

Nope, wrong  
again ...

One more  
time ...

Confused?  
- Call Nightline  
x 38800  
from 7pm  
to

7am,  
We're  
here to  
listen.

This space donated by The Tech

*Computers*

*Displays*

*Peripherals*

*Software*

*...and other*

*miscellaneous stuff*



# Yard Sale

September 30, 1996  
Sala de Puerto Rico  
12-6

Cash, check, or MIT requisition.  
MIT ID required.  
All sales final.

*Sponsored by the MIT Computer Connection*

Which of the following artistic geniuses are coming soon to MIT?

- I) Elvis: Rock Music
- II) Jimi Hendrix: Guitar
- III) Ravi Shankar: Sitar
- IV) Ali Akbar Khan: Sarod
- V) Kelucharan Mohapatra: Odissi Dance

Answer: (IV) and (V) Only

Sangam, Asha-MIT, and Prabashi present  
**Guru Kelucharan Mohapatra**  
**Sunday September 29, 1996**  
**1:30 PM in Main Kresge Auditorium**  
<http://web.mit.edu/asha/www/kelu.html>

Sangam, MITHAS, and MIT Council for the Arts present  
**Ali Akbar Khan**  
**Saturday October 12, 1996**  
**8:00 PM in Main Kresge Auditorium**  
**Call (617) 258-7971 for more information.**

## Financial Aid Deadlines

Undergraduate renewal financial aid applications for the 1996-97 academic year were due in the Student Financial Aid Office April 26, 1996 to insure a financial aid decision would be reflected on the first Bursar's bill (mailed last July).

Applications have been and will continue to be accepted, but applicants will be responsible for making arrangements to pay any Bursar charges until a financial aid decision can be made. Applicants will also be responsible for payment of any finance charges or late fees incurred on unpaid balances.

Applications from students registered for (or planning to be registered for) the fall term, which are completed after October 4, 1996 (fall term Add Date), will be designated as late. Late applicants will be assessed a penalty in reduced MIT Grant eligibility equaling 5% of the initially calculated parents' contribution, or \$500.00, whichever is greater. The penalty will double if applications are completed after November 20, 1996 (fall term Drop Date). MIT Grants for 1996-97 will not be available at all to students whose applications for financial aid for the fall term become complete after March 7, 1997 (spring term Add Date).\*

Students unable to meet these deadlines because of extenuating circumstances should notify the Student Financial Aid Office.

\* Students who register for only the spring term will be designated as late if their applications for financial aid become complete after March 7, 1997 (spring term Add Date). The penalty will double after April 24, 1997 (spring term Drop Date). MIT Grants will become unavailable to these students on May 15, 1997.

## CLASSIFIED ADVERTISING

### Help Wanted

**Childcare for 3mo and 2yr girls** wanted. 4 days/week, 40 hours total. Brookline Coolidge Corner location on Green Line. Requirements: infant and toddler experience, non-smoking, excellent references. Call 734-4701.

**Students make \$5,000** each and every week with our unique method. Guaranteed free information. No experience required. Rush long SASE to: DJR Marketing, PO Box 120206-MIT3, San Antonio, TX 78212

**Statistician Ph.D.** Statistician needed for investment management company. Person to develop statistical models for international equities trading. Compensation includes guaranteed base plus bonus or royalties based on actual model performance. Resumes to Kronos Asset Management, 168 Brattle Street Cambridge, MA 02138 or fax 617-876-5006

### For Sale

**Personal Computers.** Shopping and delivery at your doorstep. Check out our 'Roadrunners Series'. Visit: <http://www.asacomputers.com>

### Housing

**Nice 3Br Apt** quiet neighborhood mod. B&K 2 Porches, 2 ceiling fans w/w.3 minute walk for bus #80,96,94 for Harvard & Davis Square. Near shopping west Medford looking for 3 or 4 professional 10 50+. Call 393-4827 or leave message 1 800 564 1234 x958 Anal ASAP

### Travel

**Spring Break '97 - Sell Trips,** earn cash, and go free. STS is hiring Campus Reps/Group Organizers to promote trips to Cancun, Jamaica, and Florida. Call 800-648-4849 for information on joining America's #1 Student Tour Operator.

### Advertising Policies

Classified ads are due at 5 p.m. two days before day of publication, and must be prepaid and accompanied by a complete address and phone number. Send or bring ads, with payment, to W20-483 (84 Mass. Ave., Room 483, Cambridge, MA 02139). Account numbers for MIT departments accepted. Sorry, no "personal" ads. Contact our office for more details at 258-8324 (fax: 258-8226) or send e-mail ro ads@the-tech.mit.edu.

### Rates per insertion per unit of 35 words

MIT community:	
1 insertion	\$3.00
2-3 insertions	\$2.75
4-5 insertions	\$2.50
6-9 insertions	\$2.25
10 or more insertions	\$2.10
All other advertisers	\$5.00

### Travel

**Free Trips & Cash!** Find out how hundreds of student representatives are already earning free trips and lots of cash with America's #1 Spring Break company! Sell only 15 trips and travel free! Cancun, Bahamas, Mazatlan, Jamaica or Florida! Campus Manager positions also available. Call now! Take a break student travel (800)95-BREAK!

### Information

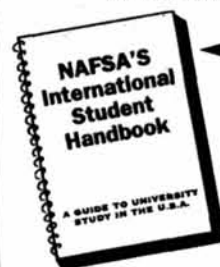
**Do You Need To A. Lose Weight B. Feel More Energy C. Make More Money D. Have Better Health E. All of The Above** if you answered YES to any of the above... Call: 553-1420



© 1996 AT&T

## Studying in the USA

Sure, it's tough. That's why every International Student needs this.



It's free when you sign with AT&T. Call 1 800 533-6198.

NAFSA



## STUDENT TRAVEL



STA Travel is the world's largest travel organization specializing in low-cost travel for students.

- Student Airfares
- Domestic Discounts
- Eurail Passes
- ID Cards & Hostel Membership
- Around the World
- Spring Break
- Travel Insurance
- Packages for 18-34 yrs.

PSST! Going somewhere else? STA Travel has great student airfares to destinations around the world.

**617-576-4623**

65 Mt. Auburn St.  
 Cambridge, MA 02138  
[www.sta-travel.com](http://www.sta-travel.com)

**STA TRAVEL**  
 We've been there.

# Rugby's Tradition In English Roots Reaches Engineers

By Chris Townsend and Mike Fife

TEAM MEMBERS

In 1822, William Webb Ellis, a 16-year-old student at the Rugby school in England, picked up the ball during a soccer match and created the game of rugby.

For over a century, the sport remained strictly amateur, due in part to its connections with the English schools. But the influence of the game has spread far and wide, and modern rugby has become truly international.

During the past 20 years, the traditional northern hemisphere teams (England, France, Scotland, Ireland, and Wales) have been consistently outplayed by teams from Australia, New Zealand, and South Africa, which have developed levels of fitness and skill that have continually set new standards, leading the game into the professional era.

In 1987, 16 nations participated in the first Rugby World Cup in New Zealand, which was won by the home country. Public interest in the event has risen dramatically in the two competitions since then. In 1995, a television audience of 200 million saw South Africa defeat New Zealand in the final in Pretoria, South Africa in front of Nelson Mandela.

Rugby football at MIT has its own distinguished history. There are school records of playing dating back as early as 1882, making the club one of the oldest in the United States. Flourishing membership during the 1950s was a driving force for the development of rugby in New England and led to the establishment of the New England Rugby Football Union, of which MIT is the oldest member.

In 1960, MIT rugby alumni founded the Boston Rugby Football Club, now one of the premier teams in the country. With encouragement from the men's team, the MIT Women's RFC was formed in 1976.

Both the men's and women's teams have had considerable success in competitions on the East Coast. In particular, the men's team is the only college team to ever win the NERFC championship (in

1974). A tradition that started in the mid-1980s is a biannual international tour. England, Wales, France, and Japan have all played host to MIT during the past decade. In return, the club has welcomed teams from Scotland, England, and Canada.

Last season was both bitter and sweet for MIT's men's team. In the fall, the Engineers competed in the challenging New England Club division with hopes of rising to the occasion and increasing their level of play. They were able to hold their own against difficult teams like Worcester and Charles River but were not able to secure any wins. Most disappointing was a three-point loss to the Harvard Business School team.

The men's team made a great comeback in the spring and was undefeated up until the last game against the Boston Rattlers club side. They seemed to draw upon their fall experiences and showed up in force to annihilate Harvard Business School 45-0.

The squad showed depth in numbers by competing most of the season with several reserve players covering for injured regulars, including team captain Dave Stracher who was out with a broken leg from the second game.

Coming off a near-perfect record in spring play, the Rucking Beavers are excited about scrumming down with some old adversaries this fall.

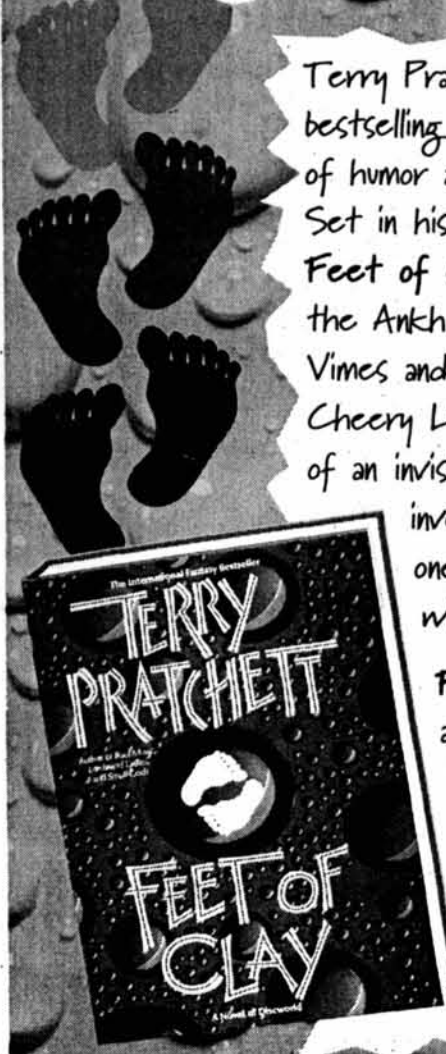
The highlight of the schedule is the local match against Harvard Business School, which will be looking to avenge its defeat at the hands of MIT last April.

However, MIT is confident about the game. "HBS had nothing but excuses after we crushed them in April," said Coach Stephen Wilhelm. "We don't expect anything different this fall."

All MIT affiliates are welcome to play rugby with the Rucking Beavers. The team caters to both novice and experienced players, regardless of age. For more information contact team captain Jeff Bucci (x3-5701, jbucci@wccf.mit.edu) or visit the team's Web site at <http://minihelix.mit.edu/art/rugby.html>.

Want to Talk? Call Nightline x3-8800  
This space donated by The Tech

## Journey beyond the edge of reality.



Terry Pratchett, England's number one bestselling author, brings his unique sense of humor and fantasy to his latest work. Set in his bizarre and beloved Discworld, *Feet of Clay* follows the Commander of the Ankh Morpork City Guard, Sir Samuel Vimes and his Dwarf companion, Corporal Cheery Littlebottom on the trail of an invisible killer. Their highly unusual investigation leads them to the one thing the city could do without—a King.

*Feet of Clay*, one of more than a dozen Discworld titles.

HarperPrism  
An Imprint of HarperPaperbacks  
<http://www.harpercollins.com>

Meet Terry Pratchett Sunday, 9/29 at Waterstones Booksellers in Burlington: 2-4PM

## What do college students want in a bookstore?

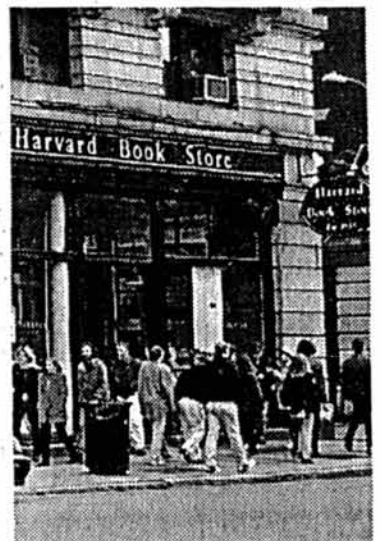
### Convenience

- On Mass. Ave. in Harvard Square
- Open Mon-Thur 9:30am-11:00pm  
Fri. & Sat. till Midnight  
Sundays 10:00am-10:00pm

### Selection

Setting the standard for academic depth and strength, we feature "a deep focus on philosophy, cultural and critical theory, women's studies, cognitive science, and Judaica."

1995-96 Unofficial Guide to Life at Harvard



### Value

- Save 20% with "Books Plus," -- our frequent buyer program
- Save 20% with our "Featured Fifty," -- a monthly selection of fifty notable books
- Used paperbacks 50% off -- named "Best in Cambridge"
- 50-80% off list price on our award-winning remainders

1256 Massachusetts Ave. (617) 661-1515  
FAX (617) 497-1158 E-mail: [harvardbk@aol.com](mailto:harvardbk@aol.com)

Upset that the Sox didn't make the post-season and that the Yanks did? Let everyone know how you feel... write sports for The Tech!

Stop by room 483 of the Student Center or call us at 253-1541.

# SPORTS



The women's cross country team placed fifth at the UMass-Dartmouth Invitational on Saturday.

SHUE-FEN TUNG

## Women's X-Country Places 5th at UMass

By Lauren Klatsky  
TEAM MEMBER

The women's cross country team finished fifth at the UMass-Dartmouth Invitational meet last Saturday.

The UMass-Dartmouth meet is the first large invitational of the season and offers MIT the opportunity to race against some of the best teams in New England. Among the field of 27 teams were Division I Brown University and Division II Southern Connecticut College.

While the experience can be daunting, MIT ended the meet with 129 points, beating a few schools that had defeated them last season, including Springfield College (156 points), Bates College (158 points), and the U.S. Coast Guard Academy (184 points).

As the race was delayed a half hour the runners were able to relax and regroup before the gun. Once competition began, MIT elbowed its way into good position when forced to merge 200 meters from the starting line.

Despite warm, sunny weather, patches of mud and wet grass dotted the five-kilometer course. Nevertheless, the Engineers attacked the terrain without hesitation and continued to move farther ahead as the race progressed.

Janis Eisenberg '98 was the first MIT runner to cross the finish line, with a seventh-place finish in a time of 19:10. Lauren Klatsky '97 finished in 12th with a time of 19:23, a 16-second improvement from last season.

Crossing the line in 19:52 in 18th place was Shue-Fen Tung '00, the third MIT runner to finish in the top 20. The final two scorers for MIT were Debbie Won '00 and Robin Evans '99 who took places 39 and 56 respectively in 20:31 and 21:14. Leah Nichols '00 and Tanya Zelevinski '99 rounded out MIT's varsity squad with times of 21:27 and 21:52 to finish in places 62 and 72.

The team seemed to have transcended any anxiety caused by the sheer magnitude of the field and the names written on the jerseys. Coach Joseph Sousa was pleased with the women, saying that they exhibited the qualities of a "true team."

MIT looks forward to tomorrow when they will travel to the Rhode Island College Invitational.

## Field Hockey Drops One to Springfield

By Stephanie Maifert  
TEAM MEMBER

The MIT field hockey team had a good showing against Springfield College Tuesday night, although they lost the game 3-1.

The former Division I Springfield team, which still consists of many Division I players, came into the match with a 4-0 record, making it the toughest competition MIT has so far faced this season. The Engineers played with intensity and determination. However, they were defeated in regular time.

Springfield scored two goals in the first half with 22:55 and 6:23 minutes remaining.

Despite the two goal deficit, MIT kept up a strong offensive drive. With only 54 seconds left in the half, the Engineers answered back with a goal to pull them within one of Springfield.

The goal, which sent the Springfield goalie to the turf, was scored by Maddy Burke '99 off a pass from Tracy Sadowski '99. The goal marks the first time Springfield has been scored on this season.

Despite a strong second-half showing by MIT, Springfield was able to score one final goal minutes before the buzzer to seal their victory at 3-1.

The team played strongly against the former Division I team. Springfield said that MIT provided them with some of their toughest competition this season.

Although the team lost the game, one highlight for the Engineers this week was the naming of senior co-captain Katherine Merilees '97 as New England Women's 8 player of the week. She received the honor after scoring her 100th point for the team. Merilees is the first MIT field hockey player to score over 100 points.

The team's next home game is Tuesday against Amherst College at 7 p.m.

## Brocoum Misses 6-7 in Week Packed with NFL Surprises

By Chris Brocoum  
SPORTS COLUMNIST

Last week was quite eventful. A north Korean submarine ran aground off the coast of South Korea after dropping off covert military commandos. The international community held its breath at reports of Boris Yeltsin's serious heart problems. The Rocket Roger Clemens tied his own 10-year-old strikeout record for a game at 20. The Dallas Cowboys lost yet another game to go 1-3 for the season... and I was 6-7. What was that last little thing? 6-7. Oops.

In the interests of career advancement and job security, I will be moving up to the big time to cover MIT B-league intramural football, and see if I can at least break .500.

I know my limits and I acknowledge my disaster last week. I am a reasonable guy and I must therefore learn from this experience. I must try to figure out why the NFL screwed up so bad last week. The most rational explanation I can develop is that a bizarre zodiacal coincidence caused all the planets to align and thus altered the trajectory of the football all day Sunday.

Another possibility is that maybe I have no idea what I am talking about. These hypotheses are currently being tested by the strictest experimental methods. Results to follow.

What a wild week. The unbeatable Packers looked a little green as the Vikings pulled off a huge upset. Dallas is digging itself a bigger and bigger hole with each ugly loss. San Francisco slept from about noon Sunday to around four o'clock. No, that wasn't just a bad dream, Mr. Young.

As the league begins to diverge, I just want to make a case for how much parity exists around the NFL. The four undefeated teams — Indianapolis, K.C., Minnesota, and Carolina (silly me, I thought they were an expansion team) — are nicely offset by the four goose egg teams — N.J. Jets, Tampa Bay, New Orleans, and Atlanta. I think that evens out rather nicely, don't you?

Always eager to rise to the challenge, I have carefully picked this week's games. I even double checked the rules making sure that touchdowns do, in fact, count more than field goals. So, the picks, week five:

Carolina is having no trouble finding NFL talent. Jacksonville will discover just what NFL talent is — Carolina.

Denver and Cincinnati. Is there any reason anyone would bet FOR the Bengals?

Detroit looked good last week over da Bears, Tampa Bay is just

looking like Tampa Bay.

Houston at Pittsburgh. I will guarantee victory for the Steelers.

Minnesota is undefeated. The Giants are the Giants. (I must apologize to all those Vikings fans out there. I like the Vikings, I even have a big purple Vikings jacket and I still got influenced by the Green Bay bandwagon last week. I guess I got what I deserved.)

Being a Pittsburgh fan, I have no love for the former Browns. However, I do respect the Ravens a lot more than I respect the Saints.

Da Bears over the Raiders. San Francisco merely had an out of body experience or something last week. They will be back against the Falcons.

Green Bay may have stumbled, but they still have too much poise for the Seahawks.

Kansas City is doing well for some odd reason. Look out San Diego.

St. Louis at Arizona. Does any-

one care? Take St. Louis.

The Jets quarterback is Neil O'Donnell. The red hot Redskins win easily.

Monday Night Special: Dallas

Coach Barry Switzer better watch his back. Getting Michael Irving back is a good thing? The Eagles win a good battle.

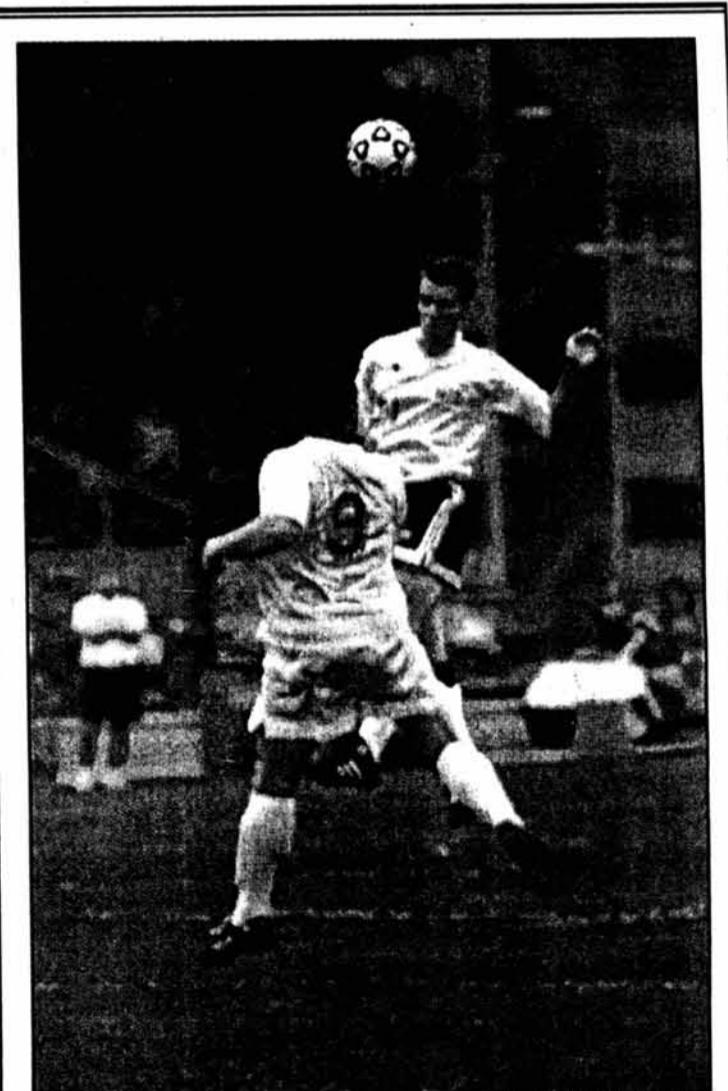
Last week: 6-7. Season: 15-11.

### UPCOMING HOME EVENTS

**Friday, Sept. 27**  
Baseball vs. Massasoit Community College, 3 p.m.  
Golf vs. Tufts and Worcester Polytechnic Institute, 1 p.m.  
Men's Tennis vs. Babson, 3:30 p.m.  
Women's Volleyball Invitational Tournament, 4:30 p.m.

**Saturday, Sept. 28**  
Football vs. Western New England College, noon.  
Sailing, New England Single-Handed Elimination, 9:30 a.m.  
Men's Soccer vs. Norwich, 3:30 p.m.  
Women's Tennis vs. WPI, 1 p.m.  
Women's Volleyball Invitational, 9 a.m.

**Sunday, Sept. 29**  
Sailing, New England Single-Handed Elimination, 9:30 a.m.



JIRI SCHINDLER—THE TECH

Forward Scott Q. Barnard '97 jumps over a Fontbonne College's defenseman to head the ball to Andres J. Villaquiran '97 in Sunday's men's soccer team's game against Fontbonne. MIT won 7-0.