

### The Weather

Today: Mostly sunny, 74°F (23°C)  
Tonight: Mostly clear, 59°F (15°C)  
Tomorrow: Pleasant, 76°F (24°C)  
Details, Page 2

## Dormitories See Departure From Previous Years' Trends

By Stacey E. Blau  
EDITOR IN CHIEF

Wednesday's residence hall lottery results indicated a number of departures from prior classes' preferences.

Senior House, consistently one of the most undersubscribed dormitories, was the third most oversubscribed dormitory in this year's lottery, with 34 freshmen placing it as their first choice, exceeding the 26 spots available. As a result, only freshmen who ranked Senior House first were placed there.

Bexley Hall, another perennially undersubscribed dorm, had 17 freshmen rank it first, only two

fewer than the 19 spots available. Of the 19 freshmen placed there, 14 ranked it first. This compares favorably with the results from last year, when only 11 of the 33 freshmen placed in Bexley ranked it first.

### Some dormitories less popular

Baker House, usually one of the more popular choices, was the most undersubscribed dorm this year. Only 51 freshmen ranked Baker first, compared with 118 spots open.

"I think we had a quiet rush this year," said George R. Lee '98, a rush worker who worked desk at Baker during the week. "That might have contributed to it."

"Baker does not look like a really nice dorm compared to Senior House" after its renovations, Lee said.

East Campus, usually one of the least popular dormitories, was second most undersubscribed, with only 49 first-place rankings compared with 100 spots. For both Baker and East Campus, a significant number of freshmen, 28 in each case, were placed there who ranked it third or lower.

### Popular choices unchanged

As usual, MacGregor House, McCormick Hall, and Burton-

Lottery, Page 15

## Cambridge Students Converge on Institute for City Days Festivities

By Brett Altschul  
STAFF REPORTER

Today in Kresge Oval, about 470 students from grades three through six from all 15 of Cambridge's public elementary schools will assemble for the fifth annual City Days Festival.

About 600 MIT students — roughly 75 percent of them freshmen — from 35 living groups will assist with the event, leading elementary student groups around campus and organizing activities, said Tracy F. Purinton, senior office assistant in the Public Service Center and the event's coordinator.

This marks the first year that third graders were included in the event, Purinton said. She said that they were added because the number of MIT students participating in

City Days had increased.

"It's become more and more of an expected event during" Residence and Orientation Week, she said. "Many fraternities and independent living groups are now making it a required activity for their pledges."

### Events focus on education and fun

The events this year focus both on education and enjoyment, Purinton said. "We try to set up activities that teach them skills they can apply later on."

In the traditional egg-drop activity, children will design packages for eggs, aiming to keep them from breaking after being dropped, Purinton said.

In other activities, students will construct primitive helicopters, make pinhole cameras, and build

bridges that will hold the greatest possible weight, Purinton said. There are also more pure fun activities, like a water balloon toss and a no-hands-allowed jello-eating race, she said.

At the opening of the event, President Charles M. Vest and Cambridge Vice-Mayor Kathleen L.

City Days, Page 14

## As R/O Ends, Orientation For Frosh Parents Begins

By Frank Dabek

After acclimating freshmen to life at MIT, Residence and Orientation Week will wind down with a set of activities during the last few days of this week focused on new MIT parents.

The events for parents are a "series of open houses," said Dean for Student Life Margaret R. Bates. Activities will begin this afternoon with a welcome ceremony at the Student Center.

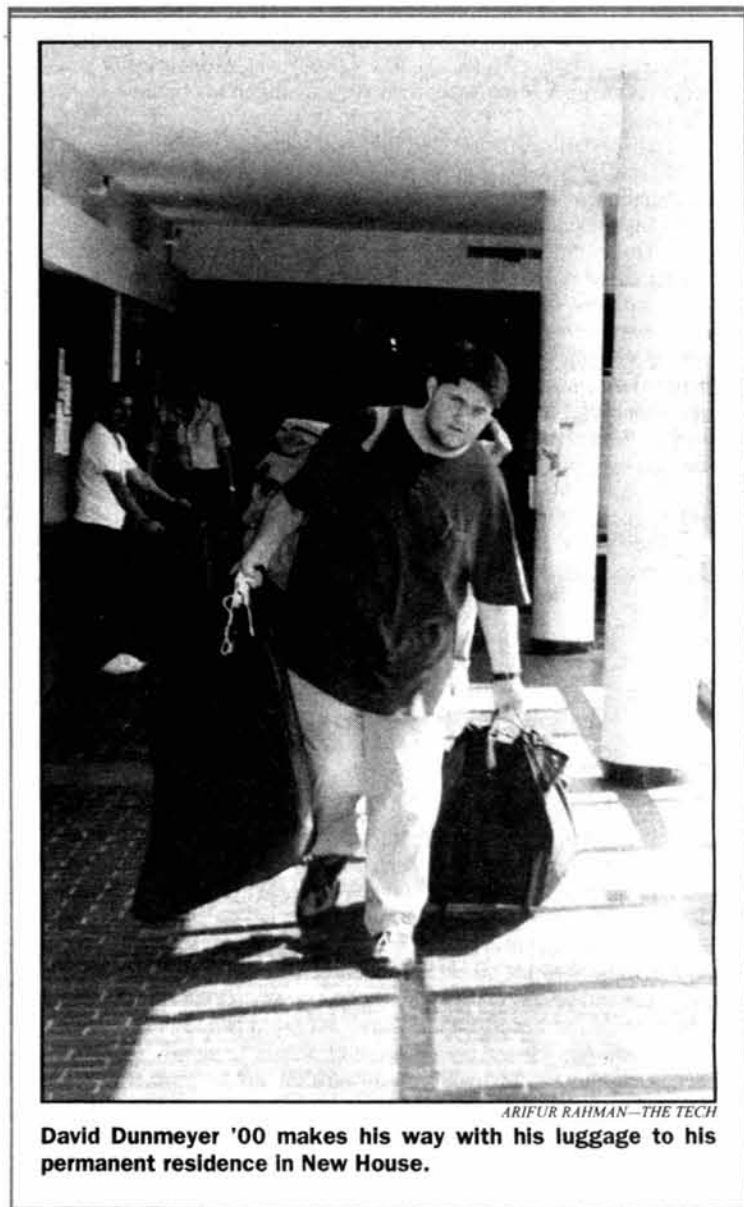
The weekend is "a chance for parents to ask questions and get answers and a sense of where their sons and daughters are going," Bates said.

In the past, up to 400 parents have attended the weekend, said Esther Y. Lee '98, a member of the Committee on Parents' Weekend. Lee said that she is "prepped for 400, but more would be wonderful."

Lee called the weekend a kind of "mini parents R/O" and said that the 16 events scheduled for this year will be the most ever done. Parents will be able to attend an open house on religion, a tour of food services at MIT, a freshman-parent dinner for underrepresented minorities, an athletic open house, and a presentation on the history and tradition of MIT by the MIT museum.

Saturday morning will begin for parents with a continental breakfast at Walker Memorial followed by a meeting with President Charles M. Vest.

Parents, Page 14



David Dunmeyer '00 makes his way with his luggage to his permanent residence in New House.

## ATMs Open 24 Hours in Lobby 10

By Victoria Chen

The ATMs in the Infinite Corridor have been made available 24 hours a day. The three ATMs, located next to Lobby 10, were previously available only from 8 a.m. to 10 p.m.

"Originally, we had a limited window on when the ATMs could be used," said Chief of Campus Police Anne P. Glavin. "We received comments from students, and since the area is relatively safe, we have made it open 24 hours a day."

The three ATMs consist of two Baybank cash machines and one

Fleet Bank machine.

A spokeswoman from Baybank said she was happy with the change. "It's a great thing since students now have access to this convenient feature" of 24-hour banking, she said "That adds value, even though to my knowledge Baybank didn't make a request for the change."

Some students are also happy with the change. "I'm usually up at 3 a.m.," said Jason James '00. "It's convenient for me to go get some more money when I have a late night binge."

Others are not so pleased.

"That ATM ate my card," said Sohail N. Husain '98. "So I hate it and will never use it again."

"I don't really find it convenient now," said Amy Kang '99. Kang said she uses the Baybank ATM in the Student Center and that change would have seemed more convenient if she were with Fleet because one of Fleet's few ATMs at MIT is in Lobby 10.

### Convenience and safety important

The ATMs were originally available only during the day because of previous safety concerns, but stepped-up security in the area has made increased availability an option.

ATMs, Page 13



The three ATMs near Lobby 10 in the Infinite Corridor are now open 24 hours a day.

## INSIDE

- Scam artist strikes at MIT. Page 13
- Banks offer credit card options. Page 11
- Police Log. Page 11
- Dormcon rush changes were fair. Page 4
- On The Screen. Page 8

Today is *The Tech's* last daily issue. Starting next Friday, Sept. 6, *The Tech* will resume its normal Tuesday/Friday publication.

Also starting Sept. 6, *The Tech's* normal distribution route, covering the entire Institute, will resume. Copies of *The Tech* will no longer be delivered to independent living groups.

# WORLD & NATION

## ValuJet Could Be Back in Sky By Next Week

LOS ANGELES TIMES

WASHINGTON

ValuJet Airlines, grounded since June, has improved its maintenance operations and will be permitted to resume some flights, perhaps as early as next week, federal regulators said Thursday.

The Federal Aviation Administration said it has reviewed the discount airline's revised maintenance and operations programs and will permit ValuJet to resume flights with nine to 15 aircraft in seven days, unless serious objections are raised from "interested parties."

The Atlanta-based airline had 51 planes in the air until it agreed to suspend all flights on June 18 following the crash of a DC-9 in the Florida Everglades on May 11. All 110 persons aboard were killed.

The Department of Transportation, the FAA's parent, also issued a tentative finding Thursday that ValuJet was economically sound and that its present top executives were qualified to continue running the company.

Transportation officials said they had found no reason to accede to a demand by Susan Clayton, president of the Atlanta chapter of the Association of Flight Attendants, that Lewis Jordan be removed as company president.

If credible objections to ValuJet's new maintenance procedures are raised within the next week, FAA officials said they could delay the resumption of flights while the complaints were reviewed.

Seeking to assure the public that ValuJet is airworthy, the FAA said the airline has passed an "intensive review" of its improved maintenance system and will be subjected to special oversight by additional federal inspectors.

Bill White, FAA deputy director of flight standards services, said the agency returned ValuJet's operating certificate because the company "addressed and completed all the items outlined in the consent order" that grounded planes in June.

"They are in compliance with the safety regulations," White said. "It's up to ValuJet to maintain the safe operation of the aircraft."

## WEATHER All Eyes on Edouard

By Gerard Roe

STAFF METEOROLOGIST

There is currently a solid high-pressure anticyclone building across the eastern half of the country. In the short term, this produces clear, sunny skies and dry air. However, we may come to rue its presence by the end of the Labor Day weekend. Typically, hurricanes head off from Africa in a west-northwest direction. Normally, when the hurricane then begins to work its way out of the tropics, it comes under the influence of the westerly jet stream which turns it away from the coast and causes it to recurve out towards mid-ocean.

Because hurricanes rely on warmer waters to supply them with latent heat energy, this recurving toward the colder northern waters causes a gradual diminution of their intensity. However, the anticyclonic clockwise circulation around a high-pressure ridge lying to the northwest of the hurricane will tend to halt its northward progress and steer it closer to the coast.

As of Thursday night, the official National Hurricane Center forecast has the track leaving the storm 500 miles (800 km) due south of us on Sunday lunchtime, with peak winds of 120 mph (192 kmh) and moving on a northward course at about 10 mph (16 kmh). Because the twists and turns of hurricane tracks are notoriously hard to predict, this very powerful storm bears close watching over the holiday weekend — all in all, a potentially grim outlook. It is not even as though the danger ends with Edouard; some forecast models have Hurricane Fran slamming into the east coast (the Carolinas) by Monday night.

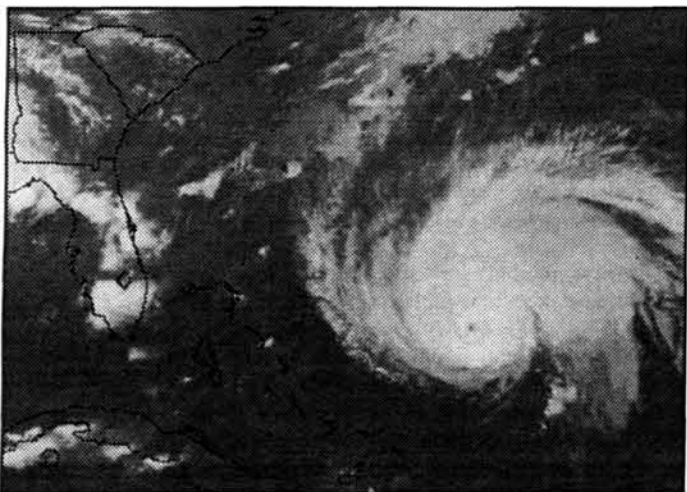
**Friday:** Mostly sunny skies. Moderate winds from the north or northwest, keeping temperatures down to a high of 74°F (23°C). Very pleasant.

**Friday night:** Mostly clear, meaning strong radiational cooling, causing some patchy fog. Low 59°F (15°C).

**Saturday:** Again pleasant, with clear blue skies expected, winds light and easterly. A good day to be out. However, 12 foot (3.5 meter) coastal swells from Edouard's churning of the Atlantic mean any and all ocean sports should be considered extremely hazardous. High 76°F (24°C). Low 62°F (17°C).

**Sunday:** Getting trickier due to possible influence of Edouard. Barring major coastal catastrophes, some clouds coming in off the ocean, bringing with them a chance for rain. Southeasterly winds pushing temperatures up toward 80°F (27°C). Low 64°F (18°C).

**Outlook:** It would be a foolish man who tried to predict detail beyond Sunday, but there is the potential for high winds, strong rain, and flooding.



Hurricane Edouard.

UNIVERSITY OF WISCONSIN

## Clinton Aims to Draw Center With Speech at Convention

By John M. Broder

LOS ANGELES TIMES

CHICAGO

President Clinton on Thursday accepted the renomination of his party with an appeal aimed squarely at the middle of the American electorate and a soaring vision of the nation's future — and his own place in history.

"Hope is back in America," the president proclaimed.

But Clinton's moment of triumph was sullied by the overnight resignation of his closest political adviser, Dick Morris, who abruptly left Chicago following reports that he had consorted with a high-priced Washington prostitute as recently as last week and had shared with her sensitive conversations with the president.

The Morris revelations tarnished a Democratic convention that had been meticulously scripted to present the party as the tribune of the American family and the struggling middle class.

Thus began the final campaign of a politician whose career has seen more heights and depths than any American public figure since former President Nixon.

In his speech, Clinton reprised the "bridge to the future" theme that Vice President Al Gore had introduced in his address Wednesday night. The language was designed in part to remind listeners that Bob Dole, the 73-year-old Republican nominee, had promised to serve as "a bridge" to return America to the values of its past.

"Tonight, let us resolve to build that bridge to the 21st century, to meet our challenges, protect our basic values and prepare our people for the future," Clinton said in the prepared text of his address.

"Let us build a bridge to help parents raise their children, to help

young people and adults get the education and training they need, to make citizens feel safer on our streets, to help Americans succeed at home and at work, to break the cycle of poverty and dependence, to protect our environment for generations to come and to maintain our world leadership in the face of new threats and new opportunities," Clinton said.

And, in a reminder of his veto of the Republican budget plan which marked the beginning of his political resurrection last winter, Clinton vowed to block any effort to radically scale back popular government programs.

"As long as I am president, I will never allow cuts that devastate education for our children, pollute our environment, end the guarantee of health care under Medicaid or violate our duty to our parents under Medicare," Clinton said.

The until-now smooth-running White House political operation, which seemed at midweek to be coasting toward an easy re-election victory, was thrown into disarray by the Morris episode.

Officials declined to confirm the report of Morris' activities, which was carried in the Star tabloid. But the Star's story, based on an account by the woman herself, was accompanied by photographs of the two together at a Washington hotel in their bathrobes as well as by a photograph of a canceled check that Morris had signed over to her.

White House aides sought to downplay the damage Clinton would suffer, insisting that it was Clinton, and not his widely resented political guru, who was running for president.

How much lasting damage the affair might cause remains uncertain. Many convention delegates

were stunned by the revelations, which seemed to crystallize the ambivalence many feel about Clinton, a brilliant candidate but an exasperating man who, as even his friends and aides say, can at once give voice to humanity's noblest sentiments and keep company with its lowest impulses.

"This could not have come at a worse time," said California Sen. Dianne Feinstein.

While many delegates, anticipating victory in November, had overcome their doubts about Clinton's newly conservative social and fiscal policies, Clinton has not fully stilled their uneasiness about his character, his steadiness — or his choice of friends.

Morris had few friends in the White House, where most aides considered him untrustworthy, in part because of his past work for conservative Republican candidates. He feuded openly with Deputy Chief of Staff Harold M. Ickes over such policy decisions as Clinton's signing of the welfare reform bill earlier this month, which Morris supported and Ickes opposed.

White House aides said that Clinton revised his speech Thursday afternoon in the wake of the Morris affair in recognition that conventioners had been ambushed by the news.

Press secretary Mike McCurry said that Clinton knew that the matter had been a "diversion" from the previously successful convention and included language in the final draft to "lift up the spirits" of the delegates.

While Clinton delivered the expected recitation of the achievements of his first four years in office, his focus was chiefly on his intentions and his hopes for a second term.

## Israeli Government Seeks To Stop Palestinian Strike

By Barton Gellman

THE WASHINGTON POST

JERUSALEM

Israel's new Likud Party government sought to dispel a crisis atmosphere Thursday with a flurry of high-level emissaries to Palestinian Authority leader Yasser Arafat as Palestinians shuttered shop fronts in their first general strike since the signing of the peace accord three years ago.

Prime Minister Benjamin Netanyahu, who had frozen peace talks since taking office on June 18, gave hasty permission for Israel's chief negotiator to introduce himself this afternoon to his Palestinian counterpart. The two men, former Israeli military chief of staff Dan Shomron and Palestinian cabinet minister Saeb Erekat, spent an hour at a Jerusalem hotel and said substantive talks will commence next week.

Netanyahu also dispatched a private emissary, lawyer Yitzhak Molcho, to deliver a message to Arafat in the West Bank town of Ramallah, according to a source. The premier's senior foreign policy adviser, Dore Gold, was scheduled to meet Thursday night with Arafat's ranking deputy, Mahmoud Abbas.

But even as it opened new lines of communication, the government approved construction of another 2,000 apartments for Jewish settlers in the Israeli-occupied West Bank, according to Israel Radio. The announcement Tuesday of

similar plans for 1,800 apartments, together with the pre-dawn demolition of an unlicensed East Jerusalem community center, prompted an angry speech by Arafat in which he said Israel was "declaring a state of war against the Palestinian people."

A half-day general strike, intended as a pointed reminder of the intifada, the six-year uprising against Israeli occupation of territory captured from the Arabs, closed most Palestinian businesses Thursday but proceeded without violence or great passion. Israeli troops, who once used to force open shuttered businesses during the intifada, patrolled quietly in East Jerusalem and Hebron but made no effort to interfere.

Israeli officials continued to worry about a mass prayer rally called for Friday at Jerusalem's Al Aqsa Mosque. That holy site on the Temple Mount, adjacent to Judaism's Western Wall, has seen serious violence in years past. Police said they were mobilizing to prevent Palestinians from crossing illegally from the West Bank, which remains under a broad Israeli closure, to pray at the mosque.

The U.S. Consulate in Jerusalem, citing an increased risk of "demonstrations and disturbances" this weekend, faxed an advisory to news organizations Thursday night asking American citizens to "avoid unnecessary travel to the Old City of Jerusalem and the West Bank."

Fresh alarms in Israel's security establishment followed the reported illness Thursday evening of Sheik Ahmed Yassin, the imprisoned spiritual leader of the Islamic Resistance Movement, or Hamas. Yassin, 61, a quadriplegic who was given a life sentence by Israel in 1989 on charges of ordering the deaths of alleged collaborators, is widely revered even by Palestinians who do not approve of Hamas. Israelis and Palestinians alike believe his death in prison could easily prompt rioting and terrorist attacks.

Yassin, whose health has been failing for months, was taken from his prison cell for unspecified tests at Assaf Harofeh Hospital. By Thursday night, authorities said his condition had improved and he had returned to the Ramle Prison's medical center.

Most shops were closed and shuttered from 8 to 12 this morning in the West Bank, Gaza Strip and East Jerusalem, prodded where necessary by strong-arm youths and members of Arafat's security forces. But plenty of merchants kept one steel panel open a crack and willingly did business out of sight if asked.

"I'm considered closed, but if one of my clients comes here I can't tell him to go home," said Ibrahim Joulani, completing the sale of a polo shirt at the Saddle, his stylish western-wear boutique on East Jerusalem's Saladin Street. "I don't agree with the strike. It destroys the Palestinian economy."

# Russian Leadership Crisis Looms As Yeltsin's Chechen War Goes On

By Richard Boudreaux  
LOS ANGELES TIMES

MOSCOW

This month, since an ailing Boris N. Yeltsin began a new term, two changes are testing his leadership: Separatist rebels have recaptured much of the breakaway region of Chechnya from Yeltsin's dispirited army, and his ambitious new security aide has seized the moment to sue for peace.

One hopeful result is that a 20-month-old conflict that has cost Russia more than 30,000 lives, billions of dollars and much of its international prestige is closer than ever to a negotiated settlement — an outcome Yeltsin promised at every stop of his re-election campaign.

But it remains doubtful whether Yeltsin, the man who started this war, is capable of the decisive action that only he can take to end it. As in many other critical moments of his presidency, he has dropped from public view and gone on vacation.

He has refused to meet with

Alexander I. Lebed since assigning him Aug. 10 to resolve the Chechen conflict and has moved in other ways to undercut his security aide's vaguely defined authority. Even after Lebed returned from his fourth trip to the war zone Sunday with a draft peace treaty to discuss, Yeltsin's office told him, in effect, to mail it in.

Late Wednesday, a spokesman said the vacationing president had received and studied the draft and issued unspecified instructions "designed to consolidate the peace process." The terse statement gave no clue of the president's own vision or sense of urgency.

"This is very much the president's war," said retired army Gen. Dmitri Trenin, a Moscow defense analyst. "I don't see how these divisions can be reconciled without a very energetic and potent leader at the helm of state. Unfortunately, we do not have such a leader at the moment."

It is unclear whether Yeltsin is simply indecisive or physically

incapable of such a task. His only public appearance since his re-election last month, aside from film clips on television, was a slurring, stiff-legged performance at his Aug. 9 inauguration. Hospitalized twice last year for heart ailments, he is rumored to need bypass surgery.

Kremlin watchers say Yeltsin may be distancing himself from Lebed. Yeltsin's style is to play off underlings against each other. Lebed suspects he got the Chechen mission because "someone very much wants me to break my neck."

But the 46-year-old Lebed, who makes no secret of his ambition to succeed Yeltsin, has stubbornly put his case on television to a war-weary public and brought the Chechen issue to a head. Much like Yeltsin in the dying days of the Soviet Union, the brash former paratroop general has barreled his way into a vacuum.

"He is forcing Yeltsin to make a decision that Yeltsin wouldn't have to make otherwise," the Western diplomat said.

# Democrats React with Dismay To Morris Affair with Prostitute

By Kevin Merida  
THE WASHINGTON POST

CHICAGO

First there was disbelief. Then anger. Then denial. Then spin.

It wasn't long before word of Dick Morris's demise reached the hotel lobbies and meeting rooms and Democratic National Convention floor at the United Center. And it wasn't long before some Democrats were suggesting deep, dark Republican conspiracies had been hatched to slow President Clinton's momentum.

"Does anybody in America believe this is happenstance timing?" asked a visibly perturbed Rep. Steny H. Hoyer of Maryland. "That the story broke on this day is a coincidence? Give me a break."

It was all Democrats could do to explain away such a bizarre occurrence: On the very night that Clinton was to tell the nation why he deserves another four years in office, the convention was abuzz with the tabloid news of a sex-for-hire scandal concerning the president's chief strategist.

That Morris quickly resigned was gratifying to the assembled Democrats, many of whom said the story would soon be forgotten by a

public more concerned about bread-and-butter issues. That the Morris development detracted from the most important speech of the convention, some said, was painful and troubling.

"You take the final day of the convention," said Democratic pollster Peter Hart, "and instead of having a single story you have two. And that hurts. It doesn't help the campaign, and it doesn't help the convention."

"Obviously it's a problem," said Rep. Bill Richardson of New Mexico, "but I believe it will blow over."

Hart said the episode will likely cause wayward Democratic professionals — previously upset by Morris's influence with Clinton — to come to the White House's rescue. "The one thing I know about Democratic consultants," he said, "is everybody will end up pitching in. Even those who may have felt left out will end up putting their oar back in the water."

Ironically, there was a blend of muted compassion and outright contempt for Morris, whom some described Thursday as political genius and others derided as an evil Republican infiltrator.

Among the most compassionate

was Jesse L. Jackson, who was quoted in USA Today this morning as calling Morris "amoral." But he was quick to clarify Thursday afternoon that he was referring to the consultant's "indifference to the poor," not his personal life.

"While I disagree with him politically," Jackson said, "I regret he fell on a sword this way. To have this embarrassment to his family. To face humiliation. This is most unfortunate."

Others were not so kind.

"If those allegations are accurate, I think he shouldn't have been given a chance to resign," said Dale Vernon, a Minnesota delegate. "He should have been fired."

The allegations, raised by the tabloid publication the Star and published in Thursday's editions of the New York Post, say that Morris had a yearlong relationship with a prostitute with whom he shared information about the president and those around Clinton.

"I never buy the Star," said Sylvia Schmidt, another Minnesota delegate. "But I guess they're going to sell a lot of copies now. It's just too bad because we're trying to do family values and it's not going to go over too well, right?"

# Second-Quarter Surge Surprises Economists, Renews Inflation Fears

By Albert B. Crenshaw and John M. Berry  
THE WASHINGTON POST

WASHINGTON

The nation's economy grew more rapidly this spring than economists had realized, the government said Thursday — stoking fears of renewed inflation and rising interest rates, and sending the stock market sharply downward.

Reinforcing the market's worries that the economy is overheating was a second report showing that sales of new homes during July reached the highest level in five months.

The Federal Reserve and many private economists have been expecting the economy to slow during the second half of the year, relieving pressure on the central bank to raise interest rates. However, the new data caused several economists to wonder whether the slowdown would come soon enough.

"This was a real shocker," said Dave Seiders, chief economist of the National Association of Home

Builders here.

But some analysts cautioned that the Federal Reserve may pay little attention to the latest upward revision in second-quarter growth. They noted that Fed officials already knew that the economy had bounced back in the spring following a winter weak spell.

Fed officials, who left rates unchanged at a recent policy-making session, have predicted growth would slow in the second half of the year and, despite the housing sales numbers Thursday, some signs still point to a slowdown. Consumer spending, for instance, was subdued in both June and July.

The new reports caused a decline in the Dow Jones industrial average Thursday: It finished the day at 5647.65, down nearly 65 points. Bond prices also sagged, though not as sharply as stocks. As bond prices fell, the yield on 30-year Treasury bonds increased to 7.03 percent from 6.98. Bond prices move in the opposite direction from expected changes in interest rates.

As is often the case, though, the upbeat reports that worried Wall Street will be viewed as good news by many Americans and the White House. The upward revision of the growth rate "strengthens our view that the U.S. economy is achieving the kind of strong economic growth that can raise America's living standards," said Clinton administration economist Joseph E. Stiglitz.

And the figures may make it harder for the Dole campaign to argue that the nation needs the stimulus of the Republican presidential candidate's proposed 15 percent reduction in personal income tax rates.

"These data do little to change our view that the second half will be slower," analysts at Stone & McCarthy, a financial markets research firm, told clients Thursday. They expect growth this quarter to be in the range of 2 percent to 2.5 percent — exactly in line with what Fed officials say they would like to see.

# Bad Weather May Halt Flight 800 Salvage Operations

LOS ANGELES TIMES

SMITHTOWN, N.Y.

Already frustrated with the slow pace of recovery efforts, officials searching for clues to the crash of TWA Flight 800 may have to shut down their salvage operation over the holiday weekend because of bad weather.

Three storms that could develop into hurricanes off the Florida coast are expected to move up the Eastern Seaboard, potentially producing waves as high as 10 feet and endangering scuba divers.

Rear Adm. Ed Kristensen, director of the Navy salvage and scuba-diving efforts, said that heavy winds and storms this weekend could shut down the recovery operation.

"We're watching it and we've made contingency plans to bring all our small boats off the water," Kristensen said. "And we'll have to knock off the scuba diving if the water is too rough."

He added that the storm could sweep unrecovered material and bodies further out to sea. "The potential is there to disrupt the debris field," he said. "We'll have to come back out after the storm and see what we have."

Officials have warned local police departments and the Coast Guard to be on the lookout for aircraft pieces that might wash ashore from New York as far south as the Washington area.

"With the Labor Day weekend coming, I would ask all of the bathers and beachgoers and lifeguards and all of the people on the beach to please take this very, very seriously," said FBI assistant director James Kallstrom.

# U.S. Troops Detain Serb Police After Attack on Muslims

LOS ANGELES TIMES

A futile attempt by Muslims to go home escalated Thursday into a tit-for-tat clash that ended only after U.S. troops detained and disarmed Bosnian Serb police while an angry Serb mob seized U.N. hostages.

In one of the most volatile confrontations since the Dayton, Ohio, peace accord halted Bosnia's war nine months ago, U.S. troops detained 25 Serb police who allegedly opened fire on a group of Muslim refugees who had tried to return to their war-destroyed village of Mahala. Ten Muslims were badly beaten, NATO officials said.

Mahala is in Bosnian Serb territory. But the Muslims had hoped to rebuild their homes and move in, a right guaranteed but rarely enforced in the peace treaty.

The episode revived the specter of wartime hostage-taking just 17 days before national elections are meant to mark another step in Bosnia's peacetime recovery.

With one contingent of Bosnian Serb police detained in Mahala, reinforcements arrived but were also taken into custody by the Americans, who confiscated assault rifles, pistols and grenades before releasing the men late Thursday.

Bosnian Serb radio meanwhile broadcast a call to the defense of its "police under siege"; within hours, more than 600 hostile Serbs surrounded the U.N. police station in nearby Zvornik, trashed U.N. vehicles and stoned U.N. personnel.

# Gore Defends Inconsistency On Tobacco Issue

THE WASHINGTON POST

CHICAGO

Vice President Gore said it was "emotional numbness" that caused him to defend tobacco for years after his sister's death from lung cancer and said the need to break through that same "numbness" in society about the dangers of smoking caused him to tell the story of her illness in his speech at the Democratic National Convention Wednesday night.

Gore denied there was any political motivation behind the Clinton administration's new war against teenage smoking, just as he said there was no political calculation behind his defense of tobacco growers at a time he was campaigning in southern, tobacco states during his 1988 presidential campaign.

On Wednesday, Gore said that his sister's death and statistics showing that 3,000 teenagers a day take up the habit had caused him to vow that, "Until I draw my last breath, I will pour my heart and soul into the cause of protecting our children from the dangers of smoking."

But in 1988, four years after his sister, Nancy Gore Hunger, died in "nearly unbearable pain," Gore said at a campaign rally in North Carolina, "Throughout most of my life, I raised tobacco. I want you to know that with my own hands, all of my life, I put it in the plant beds and transferred it. I've hoed it. I've chopped it. I've shredded it, spiked it, put it in the barn and stripped it and sold it."

# Church Opens Arms to Simpson

THE WASHINGTON POST

WASHINGTON

O.J. Simpson, an outcast from the rich, mostly white celebrity world he long inhabited, was given a thunderous, adoring welcome last night on a gritty block in Washington's Shaw neighborhood, where he told a church audience of more than 2,000 that he has always been attuned to black America's struggle.

"I don't think to an extent, I'm late to this game," Simpson told a standing-room-only crowd in Scripture Cathedral. "And I keep hearing everybody say, 'He's back.' Well, maybe there's a point there to an extent."

The former football star, sports commentator and commercial pitchman, acquitted of double-murder charges last October, was smothered in the church with the sort of adoration he no longer receives in packed stadiums and corporate boardrooms.

With more than 30 television cameras lining the side aisles and the church's balcony railing, the program began about 7:20 p.m. and featured an array of speakers before Simpson, most of whom condemned what they described as news media distortion of the truth about Simpson.

Outside, about 20 protesters stood silently behind yellow police tape, but they did not disrupt the appearance.

# OPINION

## Letters To The Editor



### Chairman

Daniel C. Stevenson '97

### Editor in Chief

Stacey E. Blau '98

### Business Manager

Christine Chan '98

### Managing Editor

Saul Blumenthal '98

### Executive Editor

Anders Hove G

#### NEWS STAFF

**Editors:** Shang-Lin Chuang '98, David D. Hsu '98; **Associate Editors:** Orli G. Bahcall '99, Dan McGuire '99; **Staff:** Eva Moy G, Kwong H. Yung G, James M. Wahl '97, Christopher L. Falling '98, Brett Altschul '99, Shawdee Eshghi '99, Carina Fung '99, Kai-yuh Hsiao '99, Yaron Koren '99, Jean K. Lee '99, Fenny Lin '99, Eric Sit '99, May K. Tse '99, Rochelle Tung '99; **Meteorologists:** Michael C. Morgan PhD '95, Gerard Roe G, Marek Zebrowski.

#### PRODUCTION STAFF

**Editor:** Jen Peltz '98; **Associate Editors:** Josh Bittker '99, Jason C. Yang '99; **Staff:** Amy Hsu '94, Laura DePaoli '97, Jimmy Wong '97, Betty Chang '98, Larry Chao '98, Yun-Ju Lee '98, Jeremy J. Lilley '99, Arthur Murakami '99, Sharon Shen '99, Binh Truong '99, Hoi Wong '99, Douglas E. Heimbürger '00, Khelga Karsten.

#### OPINION STAFF

**Editor:** A. Arif Husain '97; **Staff:** David Kelman '99.

#### SPORTS STAFF

Darren Castro G, David Berl '97, Jeremy Cohen '97, Jason Weintraub '97, Farhan Zaidi '98.

#### ARTS STAFF

**Editor:** David V. Rodriguez '97; **Staff:** Thomas Chen G, Teresa Esser '95, Brian Hoffman '97, Kamal Swamidoss '97, Rob Wagner '97, Hur Koser '98, Daniel Ramirez '99, Stephen Brophy.

#### PHOTOGRAPHY STAFF

**Editors:** Helen Lin '97, Indranath Neogy '98; **Associate Editor:** Gábor Csányi G; **Staff:** Rich Fletcher G, Jonathan Li G, Arifur Rahman G, Jiri Schindler G, Brian Vanden Bosch '96, Tiffany Lin '97, Adriane Chapman '98, Ian Chan '00, Gregory F. Kuhnen '00.

#### FEATURES STAFF

Hugo M. Ayala G, Pawan Sinha G, Jessica Wu '99.

#### BUSINESS STAFF

**Operations Manager:** Pamela Shade '98; **Advertising Manager:** Terri A. Wilson '99; **Staff:** Angela Liao '98, Melody A. Lynch '98, Jessica Maia '98, Winnette McIntosh '98, Karen Chan '99.

#### TECHNOLOGY STAFF

**Director:** Cristián A. González '99; **Associate Directors:** Timothy K. Layman '97, Christina Chu '98; **Staff:** Ifung Lu '97, Kathleen Lynch.

#### EDITORS AT LARGE

**Contributing Editors:** Thomas R. Karlo '97, Jennifer Lane '98, Venkatesh Satish '98.

#### ADVISORY BOARD

V. Michael Bove '83, Robert E. Malchman '85, Thomas T. Huang '86, Reuven M. Lerner '92, Jeremy Hylton '94, Garlen C. Leung '95.

#### PRODUCTION STAFF FOR THIS ISSUE

**Night Editors:** Timothy Layman '97, Jason C. Yang '99; **Staff:** Saul Blumenthal '98, Dan McGuire '99.

*The Tech* (ISSN 0148-9607) is published on Tuesdays and Fridays during the academic year (except during MIT vacations), Wednesdays during January and monthly during the summer for \$35.00 per year. Third Class by *The Tech*, Room W20-483, 84 Massachusetts Ave., Cambridge, Mass. 02139-7029. Third Class postage paid at Boston, Mass. Non-profit Organization Permit No. 59720. **POSTMASTER:** Please send all address changes to our mailing address: *The Tech*, P.O. Box 397029, Cambridge, Mass. 02139-7029. Telephone: (617) 253-1541, editorial: (617) 258-8324, business: (617) 258-8226, facsimile. Advertising, subscription, and typesetting rates available. Entire contents © 1996 *The Tech*. Printed on recycled paper by Mass Web Printing Co.

## Other Rush Alternatives Exist

I would like to add one more to your list of "no-rush alternatives" ["Alternatives Provide Rush-Free Atmosphere," Aug. 25]. The Christian Fellowship Lounge, centrally located in the basement of the Religious Activities Center on Massachusetts Ave., is a place for Christians and interested non-Christians to relax, socialize, peruse our library, and, if desired, pray together in a mellow environment. The CFL is organized by United Christian Residence and Orientation, a collection of sixteen different MIT Christian groups whose members represent denominations from Catholic to Evangelical and is the location of several of our joint activities. The CFL is open every day from 9 a.m. to 11 p.m. except during required freshmen activities.

Adam C. Powell IV G

## Support of Pi Lambda Phi Appreciated

We, the brothers and pledges of Pi Lambda Phi, are writing this letter to thank the MIT community for their sympathy and support

after Monday night's fire at our house. Everyone involved has done a great job of making an otherwise difficult situation at least a little easier. We would like everyone to know that their efforts have not gone unnoticed and that we truly are in their debt.

We would also like to clear up a few details and make a few corrections to *The Tech's* Wednesday article ["Fire Destroys Roof At Pi Lambda Phi," Aug. 28] on the fire. Thankfully, the condition of the house is not as bad as it may have initially seemed. Electricity was restored to the entire house on Tuesday afternoon, and only on Monday night did Pi Lam's pledges and a few brothers sleep in Ashdown House. The rest of the brotherhood volunteered to spend all night at the house doing an initial cleanup job, which mostly involved removing debris, water, and a few damaged pieces of furniture.

The fire occurred on the section of the roof directly overhead our fourth-floor lounge, and only that room was significantly affected. Fortunately, the fire never actually moved below the roof, and the only damage was done by the firefighters' water and their need to axe a few holes in the ceiling and walls for precautionary measures. Not a single personal room was affected aside from a soggy carpet or two, and we are all glad to be

back to living in our rooms. As for the roof itself, the fire was very much localized. Outside of the four-by-four foot section that burned, the roof deck is perfectly fine. As we write this, professional contractors and cleaning crews are working on our house, and things should be back to the way they were in a matter of days.

Our house was completely renovated three years ago, and the brotherhood takes great pride in the physical condition of the house. Although the house is currently in a livable condition, we will not rest until it is returned to its original state. With the community's help and our determination, we are confident that this will happen in no time.

The Brothers and Pledges of Pi Lambda Phi

## Altschul Overly Protective

I'd like to thank Brett Altschul '99 for his timely advice in this past issue of *The Tech* ["Recitations for Class Should Not Be Ignored," Aug. 29]. I'd like to add that freshmen should also keep their rooms neat and look both ways before crossing the road.

Victor Tsou '97

# Dormcon Rush Rules Changes Were Fair

Guest column by Christopher H. Barron

My name is Christopher H. Barron '97, and I'm the Dormitory Council president for 1996. In Wednesday's issue of *The Tech*, the article "Fraternity Rush Goes Slowly; Results Decline This Year," gave a rather one-sided interpretation of fraternity, sorority, and independent living group rush results. The Dormcon officers and I hope this column will clarify some misconceptions about rush this year.

First, Dormcon didn't change any of its rush rules right before rush began. If our rules seemed new to FSILGs, they should be aware that we went out of our way to communicate new rules to the Interfraternity Council. It was their responsibility to inform their members — not ours. Dormcon released a memo last spring which listed its major rule changes since last rush. This memo was circulated to

all Dormcon members, the IFC, and the Office of Residence and Campus Activities.

In addition, the final copy of Dormcon's rush rules for 1996 was sent to the previously mentioned parties before the end of the spring term. The Dormcon officers even attended the last regular IFC rush meeting of the spring term to explain these changes. I remember explaining our rules — and specifically answering questions about — our policies regarding trespassing on dorm property. I also explained our policies on not providing information about freshmen and not taking messages for them at dorm desks.

One change that we did implement at the last minute was the messaging system. This change was made because the IFC would not agree on or take action on a message system all summer. If Dormcon didn't put together the message system at the last minute, FSILGs wouldn't have had any way to send messages

to freshmen at all. When we informed the IFC and RCA that Dormcon was abandoning the Clearinghouse system and that we would be much stricter about trespassing, we said that these policies also meant that FSILG members would not be able to deliver messages for freshmen at dorm desks.

We put forth proposals for alternative messaging systems in the spring and also during the summer. We initially proposed a more centralized system which would largely eliminate dorm desk involvement and minimize trespassing and loitering. RCA declined the proposal. The IFC never got back to us. Realizing that this should have been a major concern to the IFC, we repeatedly tried to contact the IFC rush chair over the summer to discuss a messaging system. Again, we never got a reply.

Barron, Page 5

# Clinton's Policy on Cigarettes Lacks Teeth

Column by David Kelman

#### COLUMNIST

By now, most people are probably aware that President Clinton declared nicotine an addictive substance last week. Accompanying this announcement was a list of new regulations on tobacco products. The goal of these regulations is to reduce or eliminate teenage smoking. I applaud this announcement as a step in the right direction, but I am also skeptical as to how effective the president's new regulations may be.

One of the new rules involves the elimination of cigarette vending machines from any place that minors may be, like restaurants or convenience stores. This regulation is a good start, but the fact of the matter is that many minors do not need to resort to sneaking packs of cigarettes out of vending machines when no one is looking. Unfortunately, buying cigarettes over the counter is all too easy for minors today. When I was in high school, people in my class who smoked needed only to go to several of the many gas stations in the

area to buy cigarettes. None of the people at these gas stations cared who they sold their packs to.

In fact, just last week I was getting some things at an area food store (which shall

*Regulations on cigarette vending machines alone may do some good but not nearly enough.*

remain unnamed) when two girls ahead of me, who I would judge to be about 14 or 15, each bought a pack of cigarettes. As they left, another cashier asked the one ringing up my items if she had asked the girls for identification. She nonchalantly replied that she had not and that she did not care. Frankly, I was sur-

prised the second cashier had even thought about it (which is why I remember this story).

Surely, those setting Clinton's tobacco policy must know to an extent that the situation is usually as I have described it. Thus, I think that heavy strengthening of the enforcement of minimum-age statutes is vital to reducing teenage smoking. I reiterate that regulations on cigarette vending machines alone may do some good but not nearly enough.

Another part of the new tobacco regulations states that any kind of tobacco advertising will be eliminated within a 1000-foot radius around schools. This sounds to me to be a lot like the "drug-free school zones" that were set up near the beginning of this decade. The gist of these drug-free zones was that fines and other penalties were stiffer inside the 1000-foot radius for infractions dealing with illegal drugs.

Basically, the government said "don't make or deal drugs anywhere, but now we

Kelman, Page 6

## Opinion Policy

**Editorials**, printed in a distinctive format, are the official opinion of *The Tech*. They are written by the editorial board, which consists of the chairman, editor in chief, managing editor, executive editor, news editors, and opinion editor.

**Dissents**, marked as such and printed in a distinctive format, are the opinions of the signed members of the editorial board choosing to publish their disagreement with the editorial.

**Columns and editorial cartoons** are written by individuals and represent the opinion of the author, not necessarily that of the newspaper.

**Letters to the editor** are welcome. They must be typed, double-spaced and addressed to *The Tech*, P.O. Box 397029, Cambridge, Mass. 02139-7029, or by interdepartmental mail to Room W20-483. Electronic submissions in plain text format are encouraged, and may be mailed to letters@the-tech.mit.edu. All submissions are due by 4:30 p.m. two days before the date of publication.

**Letters and cartoons** must bear the authors' signatures, addresses, and phone numbers. Unsigned letters will not be accepted. No letter or cartoon will be printed anonymously without the express prior approval of *The Tech*. *The Tech* reserves the right to edit or condense letters; shorter letters will be given higher priority. Once submitted, all letters become property of *The Tech*, and will not be returned. We regret we cannot publish all of the letters we receive.

## To Reach Us

*The Tech's* telephone number is (617) 253-1541. Electronic mail is the easiest way to reach any member of our staff. Mail to specific departments may be sent to the following addresses on the Internet: ads@the-tech.mit.edu, news@the-tech.mit.edu, sports@the-tech.mit.edu, arts@the-tech.mit.edu, photo@the-tech.mit.edu, circ@the-tech.mit.edu (circulation department). For other matters, send mail to general@the-tech.mit.edu, and it will be directed to the appropriate person. *The Tech* can be found on the World Wide Web at <http://the-tech.mit.edu>.

# Students Should Not Allow Cliques to Restrict Them

Guest column by Jul-Chen Chang

I came from a science and technology magnet school. The education was great, but there were too many cliques. I felt uncomfortable in high school having to be defined by my clothes or by how I spoke. I felt uncomfortable about having to fit a particular preconceived image. When I got into MIT, I was thrilled; I would finally be at a place where everyone wanted to learn. After a week of rush, I am tired and sad that cliques seem to have taken over MIT and that so many people seem to be uneager to learn. A lot of freshmen have started to treat people as part of a group, instead of as real people.

I've been walking all around campus trying to get to know people. I visited fraternities

and I visited dorms. It was sad seeing dorm managers so eager to issue a rush violation. It was sad seeing freshmen herded around Boston and Cambridge like they were objects and not real people. Why can't we just be ourselves?

Ten of us are here from my high school, but all of us are different people. I've seen some of them go off to fraternities and sororities and other independent living groups, never even looking at dorms. I've seen people that have had a bad rush experience and have decided not to associate with ILGs. Everyone, including me, wants to feel accepted. MIT is a big place, and there are many different types of people, so I can understand why some people want to feel accepted right away. But being accepted is not worth the cost of chang-

ing your lifestyle at the risk of emotional and mental stress.

For those of you who believe that I hate ILGs, I must say that I am not against them. They are a great way for some to meet people and learn social skills. But some people pledge ILGs without even considering dorms as an option. I was walking down the sidewalk from the Academic Expo, and I said "hi" to one of my friends from high school. He didn't say anything to me; he just gave me a chuckle as if I were now a loser.

If we are to do well here, I think that everyone needs to be themselves. We must stop looking at people's course numbers or their interests as reasons to dismiss someone; we must use them to help us decide who we want to be. We share one common purpose —

to get the best possible education. Learning is hard here, but if we all have a little more fun, we would all be much happier.

For those that joined a ILG, don't feel like you have to only socialize with people in the group. If you have decided to stay in a dorm, like me, don't feel like everyone in an ILG is a certain type of person. Every freshman comes into MIT wondering about life and worrying about fitting in. I've found that if I am honest with myself, I am much happier.

I hope that everyone realizes what MIT is really all about and why they chose to come here. Those that look sad and confused are those that need support the most. Don't hesitate to give someone a smile. It can bring about a lot of happiness.



## Compliance, Not Complaints, Needed for Airport Safety

Guest column by Eric J. Plosky

Although apparently well-intentioned, Brett Altschul '99 comes off as bitter, intolerant, and unnecessarily impatient in his critique of the Federal Aviation Administration's new airline safety precautions ["Airline Safety Precautions Seem More Pain than Gain," Aug. 25]. His pompous "I have no time for this nonsense" attitude is distinctly in the minority on this issue. Recent surveys have shown that a large majority of the flying public supports the FAA's security overhauls, even if more time is required at the airport for identification checks and luggage searches, and even if, indeed, "these security precautions are just a pain for travelers," as Altschul claims.

Altschul's mention of mathematician John Allen Paulos, intended to imply that airline security upgrades are not worth the trouble ("more people are killed driving to the airport," he says), is misplaced. The issue is not the statistical significance of deaths and injuries brought on by plane crashes. It is that relatively minor tweaks of airport security could help to end airline terrorism. Surely Paulos (and Altschul, as well) would agree that the elimination of airline terrorism is not wholly a matter of statistics.

The story of Altschul's recent airport experience, as told by him, perfectly illustrates the beneficial common-sense approach the FAA is taking. In fact, it makes clear that his negative attitude toward the whole process, and not toward the security procedures themselves, resulted in his having an exceptionally difficult time at the airport. His one experience should not be the benchmark by which the procedures are judged.

Altschul had to show photo identification before boarding his flight. This step is designed to make sure that the person boarding the plane is the person to whom the ticket was issued. Altschul's defiant, "of course, I could have just lied and said I was [a minor], since minors don't need to show any identification," is exactly the kind of inexplicable uncooperativeness that needlessly irritates airline personnel and the people waiting in line behind him.

Additionally, I refuse to believe that the airline clerk "demanded" to see identification, and a driver's license at that. I am a frequent traveler, and airline personnel have been nothing but courteous in asking for photo identification, be it a driver's license, a passport, or — and Altschul should have had no trouble with this — a student identification card.

Altschul was admonished not to leave his bags unattended, an entirely sensible measure from even the most elementary viewpoint. Forget bombs, what about theft? And does Altschul really think that the airline desk

would like nothing better than to keep an eye on the bags of someone who hasn't checked in as a passenger? In any case, Altschul should have followed the old frequent-flyer maxim: Confirm your reservation before showing up at the airport. And he probably should have had someone on hand to help him with his "quite large and bulky" possessions if it was all he could do to feebly drag them through the terminal.

One of his carry-on items was thoroughly searched: "The woman emptied out the entire bag." Again, a logical precaution, as there are rules about carrying certain compressed gases, knives, and other materials in the passenger cabin. Although Altschul "can't imagine what sort of suspicious object they saw on the X-ray scanner," he probably can't imagine how a bomb, a blade, or a can of industrial-strength insect repellent might show up on the scanner, either, and therefore he has no basis for complaint.

In this case, too, airport personnel have never been anything but courteous to me. Never once has anyone made "sarcastic comments" about my carry-on items or their contents. In fact, there is always a business-like atmosphere around the conveyor belt when I travel, a sense of professionalism that helps to put me at ease. Realize that the conveyor belt, along with the other security measures, makes it virtually impossible for all but the most determined and clever to sneak a bomb aboard a plane.

Altschul also notes that since Rhine-Mein airport in Germany introduced "machine-gun-toting guards" into the corridors, there haven't been any "significant" security breaches. I say, and Paulos might agree, that there is probably no correlation between the machine guns and the lack of problems. Most major U.S. airports, though lacking in heavy weaponry, do not experience "significant" security breaches sufficiently often to consider letting an army of guards "patrol the corridors." I would wager that Altschul believes, also, that the threat of capital punishment deters would-be criminals — a theory that has been consistently disproved in death-penalty states.

Although Altschul concludes by labeling the FAA's security procedures as "largely worthless," his own story demonstrates their efficacy. Airport officials made certain, before he boarded his flight, that he had no bomb, large knife, or hazardous materials in his possession. Additionally, the "innumerate" fear experienced by the flying populace, who are suspicious of terrorism, is offset in large part by the presence of the FAA's measures.

Though Altschul can't deign to cope with these common-sense precautions, most travelers are relieved and grateful when they take note of upgraded airport security.

## Dormcon Tried to Negotiate With IFC on Message System

Barron, from Page 4

Finally, at Dormcon's last regular rush meeting, the Wednesday before rush, we invited the IFC officers. At that meeting, the IFC rush chair informed us that he had never heard before that meeting that we would not allow FSILGs to deliver messages at dorm desks and that this would hurt FSILGs during rush. Later that evening, RCA's advisor to FSILGs called me to say that he wasn't aware of that change either. All summer, we couldn't understand why the IFC would not remedy a problem that would affect their rush so directly. This is not a shot at the IFC; we later found out that many of the parties involved were simply hard to contact over the summer.

We also acknowledge that all parties were operating in good faith, and we, of course, share any fault for miscommunications. This account is simply meant to show what point of view we operated from during rush.

Dormcon doesn't have a grudge against the IFC or FSILGs. In fact, we value a good rush for FSILGs greatly — if FSILGs don't fill up, we get crowded dorms. After that Wednesday rush meeting, we, the Dormcon officers, spent the next two days with hardly any sleep as we tried to formulate a message system to help FSILG rush.

At about 1 a.m. on Thursday morning, we formulated a system which would centralize message collection, deliver messages to dorm desks, and still uphold Dormcon's rush policies. By 2 a.m., we had informed the IFC rush chair and IFC Judicial Committee chair and received their approval. The system required less effort by FSILGs to send messages to freshmen than before — they could simply send e-mail from their house or make a single stop in the Student Center to drop off all their messages.

Prior to this, we had asked the IFC to work with us to come up with a solution. However, the IFC was reluctant to adopt a last-minute solution. Even after we convinced them to accept our proposed system, we had to provide all the manpower (the IFC rush chair informed us that FSILGs wouldn't be able to spare any human resources at the last minute, which is understandable), and I personally assured them that Dormcon would get all the dorms to cooperate — even Bexley Hall, which doesn't participate in Dormcon.

We committed to running the message system 13 hours a day from Saturday to Monday, attempting to deliver messages at hourly intervals. Our Dormcon officers staffed the system all three days from open to close. We had even initially offered to personally deliver a written copy of the instructions for the system to every FSILG before Killian Kick-Off, but the RCA advisor to FSILGs offered to contact the FSILGs instead. All in all, some FSILGs used the message center a lot more than others. But if some FSILGs weren't aware of the system, they should verify with their rush chair that they were contacted by RCA.

It's unfortunate that FSILGs feel a need to blame Dormcon for a rush that did not meet all their expectations. The numbers printed in *The Tech* show that 11 out of the 20 FSILGs which supplied a target number had actually met or exceeded their target. Dormcon implemented policies affecting all FSILGs equally, so if we really had set out to hurt FSILGs, as some would claim, then they all would have

suffered, not just a few.

Also, it's unfortunate that FSILGs felt the message system was deficient. We provided the system when the IFC had no other contingency plan. Still, we had FSILGs tell us that we were being malicious and that they had decided the system was inadequate because not all freshmen were returning their messages. Even in the old system, dorm desks got a lot of harassing phone calls from FSILG members who accused them of not delivering messages and sometimes berated them profanely. It's important to point out that because freshmen are busy, tired, and sometimes fed-up with people rushing them, they simply do not return all messages. We could staple messages to their foreheads and they still wouldn't return all messages. Blaming the people who are voluntarily providing the message service is quite ungrateful.

Dormcon has no grudge against the IFC or FSILGs. On the contrary, we tried our hardest to help FSILG rush within the boundaries of our own policies. If FSILGs do not support the policies set forth by Dormcon last spring, they should contact their IFC representatives and encourage them to work closer with

Dormcon in the future. If FSILGs think we are being unreasonable for enforcing trespassing rules, talk to me sometime and I'll give you accounts of FSILG members threatening to assault dorm residents, abusing dorm property, outright lying to dorm desks, and sometimes just being plain-old jerks.

If FSILGs think we're being unreasonable for not taking messages at dorm desks, our reasons are

*If FSILGs think we're being unreasonable for not taking messages at dorm desks, our reasons are straightforward.*

straightforward. Dorm desks are staffed by student employees of the Department of Housing and Food Services. They are not dormitory rush workers. Their primary job is to maintain dorm security and check residents in and out of their rooms. In the past, dorm desks were overrun by FSILG members trying to leave messages, both in person and over the phone, and hence could not fulfill their primary functions as desk workers. Dorm desks also have only one phone, and the constant barrage of calls posed a security concern since emergency calls could have difficulty getting through. In general, Dormcon received complaints from dorm desks that they were verbally abused by FSILG members in the past and that they were no longer willing to accommodate such an enormous workload.

I am completely aware that these acts were committed by a few "bad apples." I am happy to say that the vast majority of FSILG members have been really cooperative and generally easy-going toward dorm rush workers. However, we can not ignore the gross abuses that have happened. It may not seem fair to some that we implement policies affecting all FSILGs instead of those specifically we have had problems with, but we don't exist to police FSILGs — that's the IFC's job.

Ideally, though, IFC and Dormcon have different views on rush. We should be able to negotiate competitively and agree upon fair policies that we will both respect. If this cannot take place, we will continue to take a conservative stance during rush to protect dorm interests — that's our job. FSILG members who want to take issue with this past rush should do so with their IFC representative and should urge them to open negotiations with Dormcon far in advance for next year's rush.

# Clinton Plan on Cigarettes A Timely Political Move

Kelman, from Page 4

really, really mean it inside our nifty sounding drug-free zone." In my view, all this zone did was lower the overall credibility of the enforcement of illegal drug laws in our communities. Why shouldn't selling crack behind the local McDonald's — where kids will surely be — be as bad as drug dealing three football-field lengths from a school? Along the same lines today, why should a billboard for cigarettes be any less of a terrible thing near the local mall — where kids will surely be — than near a school? How much did teen drug use rise in the period of 1992 to 1995, at the same time these drug-free zones have been in effect? A resounding 105 percent. Again, this new regulation is a start, but let us not kid ourselves into thinking that any kind of partial zone-based stance is enough.

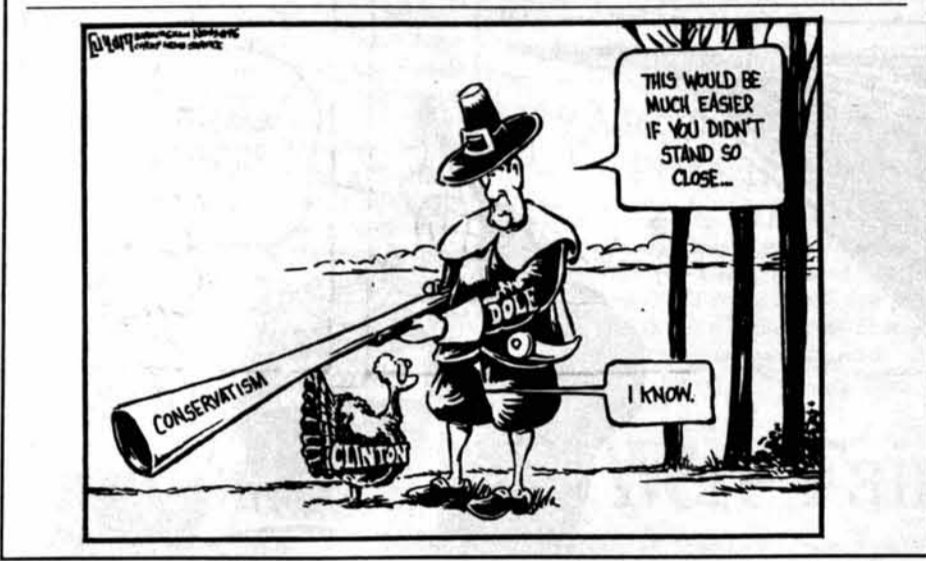
Finally, I can not deal with this issue without commenting on it on a more politicized level. The tobacco regulation announcement appeared as part of Clinton's recent flurry of policy announcements before the Democratic National Convention in Chicago. This particular announcement is especially convenient; it came on the heels of a report on the rise in

teenage drug use during the Clinton administration.

I cannot resist questioning whether Clinton's announcement is really intended to do anything or if it is meant just to sound good and diffuse the potentially ruinous drug use report. I would like to hope that the answer is the former. The list of causes that Clinton has championed at one time and then later allegedly abandoned is not easy to ignore. Supporters of gay rights and welfare come to mind as groups where some have recently cried betrayal.

In general, I support Clinton's new policies regarding tobacco, but I urge him (and Bob Dole — perhaps our next president), to take even more action to stop the plague of nicotine among our teenagers. I grant that the 1,000-foot no-billboard zone is more easily enforceable than the drug-free zone is, but that credibility is lost through a partial, area-based ban on advertisements. I assert that vending machine regulations do not get to the root of the problem regarding the purchase of tobacco by minors. I have seen friends of mine from high school destroy much of their lives, beginning with tobacco use. America owes it to the youth of today and those of the 21st century not to stop halfway regarding tobacco control.

*I assert that vending machine regulations do not get to the root of the problem.*



## Newbury Comics™

**WICKED COOL BACK TO SCHOOL CD BLOWOUT SALE!**

**\$3.00 OFF ALL DISCS \*  
REGULARLY PRICED \$12.99 OR MORE!**

M.I.T. STUDENT CENTER  
225-2872

**SEPT. 3RD ONLY!!  
FREE NEWBURY COMICS T-SHIRT WITH ANY PURCHASE OF \$30 OR MORE!**



\*SALE ENDS 9/8/96  
NO DOUBLE DISCOUNTS  
SALE ITEMS EXCLUDED

Reached your credit limit and still have free time?

Join *The Tech*.

We have openings in every department.

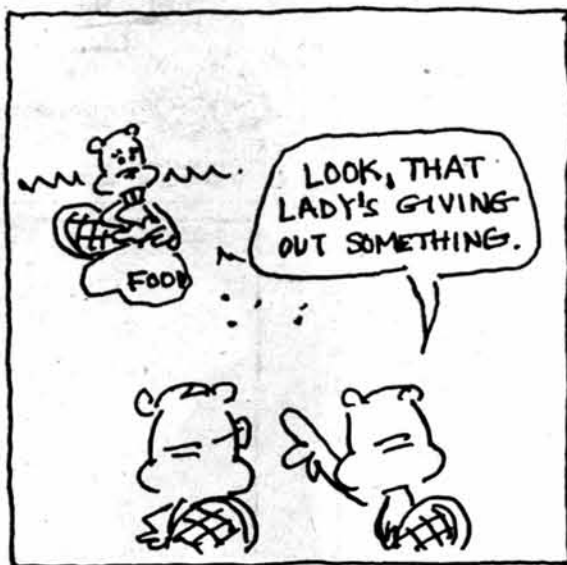
Our motto is "No Experience Necessary."

Stop by our Open House Sunday, September 8, 2-6 p.m. in Room 483 of the Student Center

Plus, there's no credit limit.

# Dammed for Life

by Jessica Wu



Why do so many people join *The Tech*? The free food? The fun people? The thrill of working for MIT's oldest and largest newspaper? You decide — come to our Open House, Sunday, September 8, from 2 to 6 p.m., in Room 483 of the Student Center. Remember, "No Experience Necessary." See you there!

For more information, call 253-1541.

## The Baker Foundation's Guidelines for Upperclass Advising

### Advisors should...

- Offer academic advice and counseling. This could include assistance in choosing classes, fulfilling degree requirements, deciding on research interests, finding faculty/staff for UROPs, theses, etc., and pointing students in the right direction to find out about administrative procedures.
- Get to know students and their record well enough so that they can provide informed assistance in case of academic difficulties (e.g., when students are discussed at CAP, when they are not performing well in classes, etc.) and give them friendly support.
- Offer assistance or direct students to the right place to determine post-MIT plans (e.g., choosing graduate schools and advice on jobs).
- Inform advisees of office hours, and encourage them to drop by at that time or to schedule an appointment to meet at a later time. Let advisees know the best way and time to reach them.
- Take the initiative to meet with their advisees, particularly during their sophomore year, because often times students who need the most help are afraid to ask for it.
- Maintain the confidentiality of advisees' records.
- Create an environment in which students feel comfortable talking to them.
- Respect their advisees' decisions and support their goals, while challenging them to think through their plans.
- Be concerned with their advisees as people.
- Communicate their expectations of their advisees to their advisees.

### Advisees should...

- Expect their advisors to be available at least by appointment during the regular academic term. Students should not necessarily expect to be able to drop into their advisors' offices to meet with them.
- Not expect their advisors to be close, personal friends.
- Expect their advisors to act as mentors and not just as paperwork signers.
- Take the initiative to meet with their advisors more than just on Registration Day.
- Be sure to meet with their advisors if they are having academic difficulties.
- Expect to assume a gradual increase in responsibility for maintaining their relationships with their advisors, as they progress through MIT.
- Believe that they are worthy of their advisors' time.
- Feel comfortable talking about non-academic issues.
- Take the initiative in developing good relationships with their advisors so that they will have someone to talk to about their problems and concerns and so that they will have someone to write a letter of recommendation for them when it comes time to applying for graduate/professional school.
- Know that they have the right to change their advisors if they feel that they are not getting adequate advice.
- Communicate their expectations of their advisors to their advisors.

### Departments should...

- Make every effort to match interests (e.g., research, personality) of advisors and students.
- Make it clear to students that they have the right to change their advisors if they feel that they are not receiving good advice or they have trouble talking to their advisors.
- Inform advisors and students of all the resources available within the department and in the Institute (perhaps in the form of a guidebook).
- Have some type of orientation for incoming majors (towards the end of freshman year) and new advisors to familiarize them with the department and its procedures.
- Monitor students' fulfilling of degree requirements.
- Provide an effective support system to advisors and advisees in the form of an undergraduate office that is knowledgeable and helpful.

The Baker Foundation is a student group committed to improving undergraduate life at MIT, and is best known for giving out the annual teaching award. For the past two years, the Foundation has worked on the issue of upperclass advising. These guidelines are based on conversations with department administrators and faculty members, and the results of a student survey.

## THE ARTS

## ON THE SCREEN

— BY THE TECH ARTS STAFF —

★★★★:Excellent  
 ★★★:Good  
 ★★:Average  
 ★:Poor

## ★★ Chain Reaction

Keanu Reeves is a student machinist in a lab perfecting a clean and limitless energy source. Once it is completed, someone breaks into the lab, kills the inventor, and blows up the invention (taking several city blocks with it). Keanu is framed for the crime and is forced into hiding until he can prove his innocence. *Chain Reaction* was directed by the same person who directed *The Fugitive*, which may explain the similar story line. But *Chain Reaction* pales in comparison — the story isn't as good, and Keanu is no Harrison Ford. The one high point of

the film is Morgan Freeman, who easily steals the movie. —David V. Rodriguez. *Sony Copley*.

## ★1/2 Escape From L.A.

Part action movie, part comedy, part-something else that can't be identified. *Escape from L.A.* tries to be all of these and succeeds at none of them. The story is about Snake (Kurt Russell), a man who has committed major crimes in the new hyper-ethical future and is banished to the island of Los Angeles, now the holding area for all criminals (people who use profanity and have premarital sex). Snake is given an offer — a full pardon if he can retrieve from L.A. a dangerous high-tech device stolen from the president and now in the hands of a L.A. gang leader. Much of the humor is about L.A., as when Snake is taken



Claudia (Vanessa Angel) and Roy (Woody Harrelson) watch as Ishmael (Randy Quaid) practices in *Kingpin*.



Eddie (Steve Buscemi, right) awaits the outcome of a standoff between Snake (Kurt Russell) and ruthless gang boss Hershe (Pam Grier).

captive by a plastic surgeon who wants to cut him up and use him for his parts. The film's weakest point is the lack of an interesting main character: Snake is unnecessarily raspy and does everything he can to look like a comic book character. —DVR. *Sony Cheri*.

the two of them head off to Vegas. *Kingpin* was made by the two who made *Dumb and Dumber*, but it is far better — the jokes are funnier, and there is a storyline strong enough to stand on its own. It's likely the best comedy of the year. —DVR. *Sony Copley*.

## ★★★★1/2 Kingpin

Roy Munson (Woody Harrelson) is a promising young bowler, but he makes the mistake of teaming up with Bill Murray, whose scam results in his losing his hand. Twenty years later, he's left bitter, perpetually drunk, and wearing the world's worst plastic hand. Dreaming of a comeback (and a large cash prize), he persuades a promising Amish bowler (Randy Quaid) that he needs a manager, and

## ★★★★ Trainspotting

*Trainspotting* tells the story of a group of Scottish heroin users. Already released in England, it has become the third-largest grossing British-made film and has received a large amount of criticism for not condemning heroin use. The story is told from the view of heroin user, without judgement, which makes the story feel completely genuine and totally fascinating. —DVR. *Sony Nickelodeon*.

Massachusetts Institute of Technology  
**ORIENTATION WORKSHOP FOR  
 NEW GRADUATE TEACHING STAFF**  
**SATURDAY, SEPTEMBER 7, 1996**

Wong Auditorium (E51-115)  
 Jack C. Tang Center for Management Education  
 70 Memorial Drive  
 (entrance at Wadsworth and Amherst Streets)

**Registration:** 8:30 am-9:00 am  
 Foyer, Tang Center

**Program:** 9:00 am-2:30 pm

**Luncheon Guest Speaker:**

Ms. Carol Symes  
 Derek Bok Center for Teaching and Learning  
 Harvard University

Sponsored by:  
 The MIT Provost's Office  
 The MIT Graduate Education Office

**RSVP MANDATORY**

Contact: Jackie Sciacca, Workshop Coordinator,  
 Graduate Education Office, Room 3-136A, MIT.  
 e-mail: jsciacca@mit.edu

NIGHT MUSIC

IMPRESS  
 YOUR DATE...  
 GO CLASSICAL

266-3605  
 call for a student  
 brochure now!

students:  
**\$10**  
 a person



H&H

The Handel & Haydn Society  
 Christopher Hogwood, Artistic Director  
 Sample our music at <http://www.handelandhaydn.org>

Maximize Your Scores:

**LSAT  
 GRE  
 GMAT  
 MCAT**

Courses in Cambridge starting soon!



THE  
 PRINCETON  
 REVIEW

**(617) 558-2828**



© M.I.T. 1981, 1995

Burton-Conner House?                      New House?  
 Baker House?                                  Senior House?  
 Next House?                                    MacGregor House?

# No, the Open House!

Whether or not you got into your first choice dorm, or got the bid from the living group you wanted, you're welcome to come to  
***The Tech's Fall Open House.***

---

**Sunday, September 8, 2:00 p.m.**  
**Room 483, Student Center.**

---

Come meet the staff at MIT's oldest and largest newspaper, and get a tour of our offices. We'll also be giving out free Tosci's ice cream!

**The Open House**  
 Established 1861



## Technique 1997: Yearbook of the Massachusetts Institute of Technology

In the maze of twisty passages beneath the hallowed halls of the Institute, led by a band of renegade hackers, you explore. Dense steam billows from cracked pipes, and the heat is almost overpowering. You seek escape; a ladder to a rooftop obliges. Now above the concrete jungle of columns and classrooms, the cool evening fills your lungs and moonlight washes over your face. So begins your first sleepless night.

Welcome to MIT.

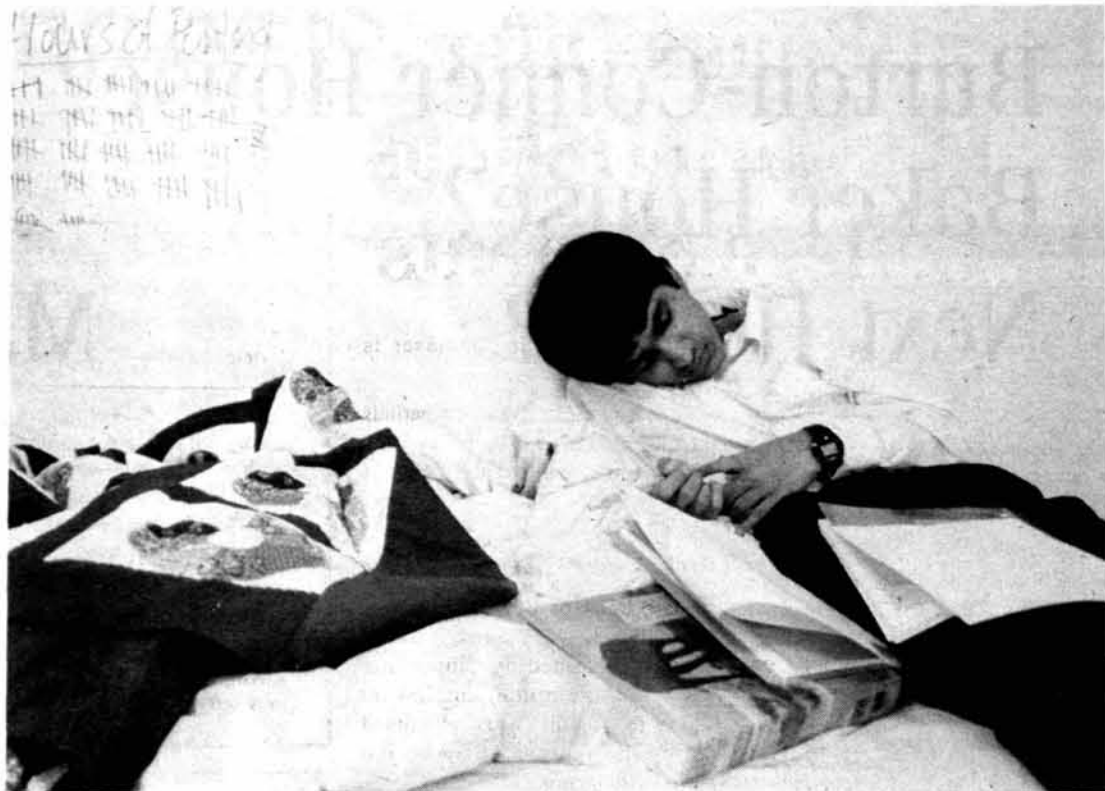
Here, in the international capital of technology, you will walk the same hallways where pioneering entrepreneurs and academicians tread. Following in their footsteps, you inherit their legacy of scientific discovery and engineering excellence. You will breathe the same air as Nobel Laureates, sit in their classrooms, work in their labs...

Prepare to join ranks with the world's best and brightest.

### Are you ready?

In a stark and sterile clean room, surrounded by flashing instrument panels and droning fume hoods, you work silently with a concentrated determination. A connection made, an insight revealed, and you've uncovered the crucial gene that will unlock the cure for AIDS.

Ho hum. Just another day in the lab.



Donald C. Lee, *Technique*

In the stairwell outside the exam room, books and binders balanced in your arms, you desperately struggle to absorb a term's worth of material in the few seconds remaining. The doors open, the crowd surges, and you're herded into a field of desks and partitions.

# Welcome to Hell.

The gun fires. The race is on.

Here, in the heart of darkness and despair, you will be beaten down and pushed to the far

limits of your ambition and of your ability. You will fall to your knees and crawl when you can no longer stand. But, crawl if you must...and never stop. For there is, if you can believe it, a light at the end of this tunnel.

Capture the reality of MIT behind the columns: *Technique 1997*.

*Technique* is this Institute's yearbook, chronicling the year in photos and reflections.

*Technique* captures the spirit, the joys, the frustrations, and the torments of the undergraduate experience.

From the chaos and confusion of R/O to the celebration and satisfaction of graduation day, *Technique* has it all—the sweet taste of victory...and the bitter sting of defeat.

For better or worse, these are four years you will never forget. Let *Technique* help you to remember. Reserve your copy now.

Do not abandon all hope, all ye who enter here.

And see you in Hell.

Through September 3 (Registration Day), freshmen can save \$15 off the regular \$55 price of *Technique 1997*. Upperclassmen can order *Technique* for \$45.

Bring cash or check to our table in Johnson Athletic Center on **Registration Day** to reserve your copy, or use the form below.

Yes, I would like to purchase \_\_\_\_\_ copies of *Technique 1997* at a \$10 discount off the regular price of \$55. Enclosed is a check for \_\_\_\_\_ made payable to *Technique* (\$45/book). Orders must be received by October 11, 1996.

Yes, I would like to become a *Technique 1997* patron. Enclosed is a check for \_\_\_\_\_ (\$75 for Patron, \$100 for Silver Patron, \$200 for Gold Patron) made payable to *Technique*. Please print my name as indicated below, and send my yearbook to the following address.

Name: \_\_\_\_\_

Address: \_\_\_\_\_

Phone: \_\_\_\_\_ Email: \_\_\_\_\_

Please send check and this coupon via US mail to *Technique*, P.O. Box 397005, Cambridge, MA 02139 or via Interdepartmental mail to W20-451.



Zhi-Da Zhong, *Technique*

# Local Banks Offer Credit Card Options To College Students

By **Cristián A. González**  
TECHNOLOGY DIRECTOR

Credit cards are becoming the payment method of choice among the population at large, and choosing a credit card to use is often a matter of concern for incoming students.

Credit cards, however, must be used with care. National Credit Counseling Services, an organization that tracks consumer spending, reports that college students on average have a student loan balance of \$10,146 after four years, leaving little room for credit card debts.

Most financial firms require that applicants be at least 18 years old to obtain a credit card. Credit cards can be obtained from local banks or, in other cases, directly from credit card companies.

## Baybank

Baybank offers a classic Visa card with a \$21 annual fee, a \$1,000 credit line, and an annual percentage rate of the prime (currently 8.25 percent, though as a prime, the number varies) plus 8.4 percent, usually totalling somewhere over 16 percent in interest per year. Baybank has a grace period of 30 before interest is charged on purchases.

Student value packages are also available for those who wish to get a checking and savings account at Baybank. Some include credit cards with no annual fees and debit cards.

## Citibank

Citibank's Visa card features a photograph of the owner for identification purposes and charges no annual fee. Their APR is currently 18.15 percent (9.4 percent added to the prime).

Their grace period before bills must be paid is 20 to 25 days. Citibank will charge a fee of \$15 on past-due purchases and cash advances.

## Fleet Bank

Fleet Bank offers several options, including a Visa credit card with an APR equal to 3 percent plus the prime, as well as a Caldor Visa with a 9.9 percent APR on balances transferred from any other credit card for one year. The Caldor card also gives a 1 percent rebate for purchases made at Caldor stores.

Fleet has no annual fees on any of its credit cards. A Mastercard with 3.4 percent APRs on transac-

tions on first-year purchases is available.

There is a 250-day grace periods on purchases. Credit limits vary with income, but normally start at around \$500.

## Bank of Boston

The Bank of Boston's student card offers an APR currently at 6.4 percent (obtained by subtracting 1.85 from the prime) and has no annual fee. Credit line is determined during the approval process, and varies with income.

Bank of Boston offers a grace period is of 25 days, provided the previous balance was paid in full.

Bank of Boston offers both Mastercard and Visa credit cards.

## Cambridge Trust Company

Cambridge Trust Company has an annual fee of \$21 and a fixed APR of 16.45 percent. Credit limits normally range from \$500 to \$1,000, but it is relatively easy to get it increased.

The grace period for payments is 28 days. Only Mastercard is available.

## American Express Optima

American Express offers the Optima student card as an option for college students. Unlike American Express's other cards, the Optima has no annual fee, and currently has a 18.15 percent APR for purchases. It also has a 30-day grace period for purchases.

The Optima card allows discounts in Continental Airlines airfares, Continental frequent flier miles, and 30 minutes per month of long distance calls on MCI for a year.

## The Discover Card

Discover does not charge an annual fee and has an APR of 19.8 percent a 25-day grace period.

A special anniversary offer allows cardholders to get back 2.5 percent of the first \$1,000 spent during this year and 0.5 percent for the second \$1,000, and 1 percent for any \$1,000 after that.

# POLICE LOG

The following incidents were reported to the Campus Police between August 21 and 28:

**Aug. 21:** Bldg. E23, dietary supplement stolen, \$25; Bldg. 20, suspicious activity; Bldg. E39, suspicious activity; Endicott St., Honda broken into, electric base, sunglasses, and CD player stolen, \$700; Phi Beta Epsilon, Honda broken into and CD player and cash stolen, \$200; Student Center, food stolen, \$25; Kirk L. Rooks, of Westgate #5A, arrested for assault and battery between persons know to each other.

**Aug. 22:** Ames St. near Bldg. 66, MIT student scammed by con artist for a large sum of money.

**Aug. 23:** Bldg. 3, aluminum chassis stolen, \$287; Rockwell Cage, wallet stolen while person played basketball, \$60; Tang Residence Hall, bicycle stolen, \$100; LaVerde's Market, David Williams, of 11 Nelson St., Dorchester, arrested for larceny.

**Aug. 24:** Bldg. 7, Timothy Donehey, of the Pine Street Inn, Boston, arrested for trespassing and on an outstanding warrant; Westgate lot, Honda broken into and CD player and CD stolen, \$900; Student Center, cash stolen, \$28; Windsor lot, Mercury broken into and briefcase and CD player stolen, \$350; MacGregor House, vandalism to a car; Westgate lot, Toyota broken into and car stereo stolen, \$240.

**Aug. 25:** Next House, annoying phone calls; Bexley Hall, doll stolen.

**Aug. 26:** Bldg. E51, suspicious activity; Bldg. 37, annoying mail; Bldg. N52, wallet stolen, \$50; Bldg. E40, bicycle stolen, \$50; Albany Street Garage, Ford broken into and radio stolen, \$500; Bldg. 3, suspicious activity; LaVerde's, John Hose, of 12 Rand Circle, Danvers, arrested for shoplifting.

**Aug. 27:** Westgate, domestic dispute; Bldg. 66, juvenile arrested for attempted larceny; Bldg. 3, suspicious activity.

R/O is over...

...you've already pre-registered for classes...

...you've moved into your new room...

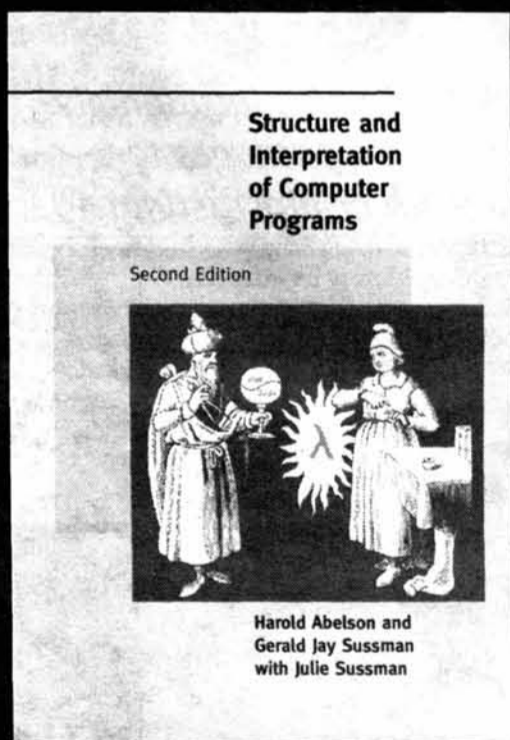
...but...

**It's not too late to join *The Tech!***  
Don't miss our Open House on Sunday, September 8, from 2 to 6 p.m. in the Student Center, Room 483.

No experience is necessary. For more info, call 253-1541.

# Buy the book

Get the T-shirt FREE!



STRUCTURE AND INTREPRETATION OF COMPUTER PROGRAMS  
Second Edition  
Harold Abelson and Gerald Jay Sussman with Julie Sussman

"[The book] is never dull and reinforces my belief that one of the main attractions of computing is that it is fun."  
—The Times Higher Education Supplement  
\$60 cloth

<http://mitpress.mit.edu/bookstore>  
books@mit.edu

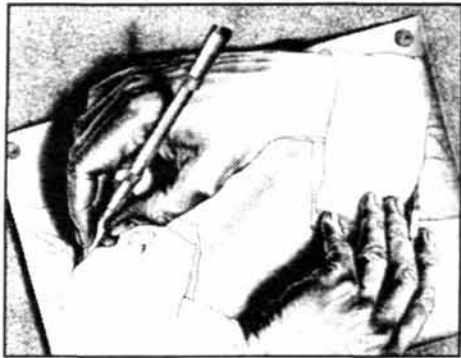
The MIT Press Bookstore  
Kendall Square T 292 Main St Cambridge 253.5249

\* while supplies last. T-shirts are \$12.95 if purchased.



GABOR CSANYI—THE TECH

The Ballroom Dance Club holds its first gathering of the year at the Athletics Gateway Wednesday evening.



Change your scenery with our vast selection of posters and prints. (Framed from \$24<sup>99</sup> up, and unframed from \$3 and up).



Jazz up your dorm room or apartment. From extra-long sheets to pillows and kitchen goods, we have everything you need to call your place "home."

# Everything you need.

We keep you supplied



for class, lab or office work.

# you need.

# Lots

# of stuff

# you

# want.



We've pumped up the volume... of our electronics and sound system selection. Tune in to this Aiwa CD Boom Box (Model# CA-D205).

**\$129<sup>99</sup>**

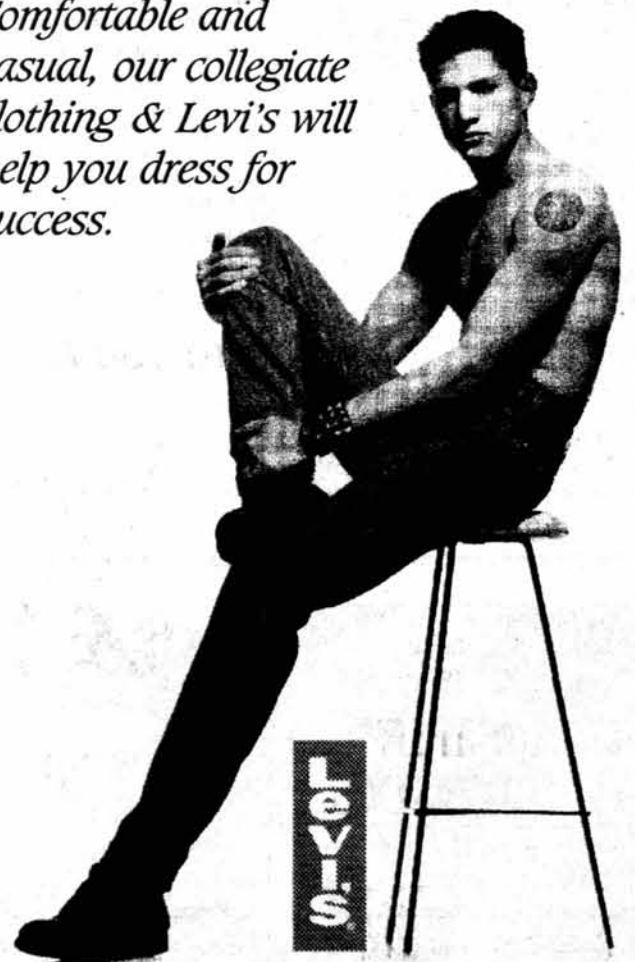


**\$44<sup>95</sup>**

We stock over 500 educationally priced\* software packages to help you work or procrastinate.

\*Software packages are available only to students, faculty, and staff members of an accredited educational institution. Valid identification must be presented at the time of purchase. Only one copy of a particular title may be purchased by each individual.

Comfortable and casual, our collegiate clothing & Levi's will help you dress for success.



**Levi's**



Take a spin through our newly expanded music department.



You won't be far from home with our South Western Bell Freedom Phones® (FC2540).

**\$14<sup>99</sup>**

## What you need.



# Campus Police Educate Against New Scam Artist

By Eric Sit  
STAFF REPORTER

Campus Police have released a "scam alert" warning the MIT community that a con artist has been approaching individuals in the area.

Two people affiliated with MIT, in addition to several Cambridge residents and Harvard University affiliates, have been victims of the scam.

According to the CPs, victims are approached by the scam artist and are told a sob story about a broken-down car or a sick child and an urgent need to get money.

The scam artist will give the victim a check and ask in return that the person obtain cash from an ATM. The check which is given to the victim is usually a stolen check. The suspect will usually insist that the victim get into a cab or a car driven by a female accomplice and is taken to locations as far away as Quincy to go to an ATM machine.

The most recent description of the suspect is a black male, approximately 5'11", 170 pounds, in his early 30s, with close-cropped hair and a mustache. His accomplice is described as a black female, 5'3" and "chunky."

## Education can prevent crime

In an effort to reduce the occurrence of this scam and other crimes, CPs are trying to educate the MIT community about the issues involved in living in an urban campus area. To this end, CPs are offering a number of crime-prevention seminars.

The seminars are slated to cover urban crime, acquaintance rape, and personal safety. CPs are willing to give presentations to any fraternities, sororities, independent living groups, or dormitories or any other group who makes a request for one, said Sergeant Cheryl deJong.

Vossmer of the Crime Prevention and Sensitive Crimes Unit.

"Our main focus is to be invited to... many FSILGs to give vital information," Vossmer said. "We want students to survive MIT as safely as possible without being victims of crime."

Vossmer stressed the importance of the educational seminars. There are simple steps that students can take to avoid being victims of crime. Any items students do not keep locked up, for example, will "more than likely grow legs and walk away," Vossmer said.

Chief of Police Anne P. Glavin, Sergeant Paul J. Baratta, and Vossmer will speak at President Charles M. Vest's reception this Saturday morning as part of Parents Orientation.

They will speak to graduate students on Tuesday on urban crime and learning to be streetwise.

## New CP Web page available

A new CP homepage on the World Wide Web can be found at <http://web.mit.edu/cp/www/>. The first 450 people who visit the site will receive a free gift.

"The Safety, Security, and Crime Prevention Handbook for MIT" distributed by the CPs is available on the page. Crime statistics and Saferide shuttle information can also be found there.

Other services available on the CP's site include a new bicycle registration form and a campus lost-and-found section. Anonymous crime tips can also be sent online.

## Course helps women fight rape

Rape Aggression Defense classes will also be offered again this year. "We focus heavily on rape because that's what women fear most," Glavin said.

The course teaches practical defense techniques that require no

special skills. RAD also offers women the opportunity to test their newly-learned skills on a real person during a simulated attack.

Assailants attack people who look vulnerable and are, for example, walking around with headphones on and their head in a book, Glavin said. "We want people to avoid those encounters to start with," she said.

"If you know what types of situations to avoid, there is a very good chance of not having to encounter a situation like that," she said.

The fee to cover materials for the class is \$20, payable to MIT within three days of registration for the class. Subsequent classes are free, Vossmer said.

Attendance is limited to the first 16 women who register with pay-

ment. Two physical education credits will be given for successful completion of the course.

RAD classes are limited to women, but special classes that include men or are designed for a specific group on campus can be conducted upon request, Glavin said.

"We'll make it worth their while," Vossmer said.



INDRANATH NEOGY—THE TECH

Workmen in Lobdell Food Court change the sign at the D'Angelo's counter into the new Dell Corner.

# Students Should Still Be Vigilant at ATMs

ATMs, from Page 1

"We haven't had any problems" at the ATM, Glavin said. "There was one attempted theft by students a few years back. But in regard to safety, that has never been an issue with that ATM."

Glavin cautioned that people should still remain vigilant. "Try and use a well-traveled ATM," Glavin said. "Remember what time of day it is and the fewer people around the more isolate you're going to be and the further away you're going to be from help."

Glavin said that there have been robberies at ATMs in Kendall Square, on Massachusetts Ave., and at the intersection between Massachusetts Ave. and Vassar St. in recent years.

"Don't flash cash, since that advertises to the area that you are flush with money," she said.


"Since students keep all sorts of

hours and sometimes do their banking at midnight or 1 a.m., I would see if I could bank at some other times," she added.


"I don't feel insecure about using the ATMs over there," James said. "Robbers tend to be in open areas, and since I'm in an enclosed area, if I scream, the entire corridor will hear it."

## Come Teach With Us!

On November 23rd and 24th, the MIT Educational Studies Program will bring over 600 7th-12th grade students onto the MIT campus to enjoy **Splash**, a program of lectures, seminars, and workshops. **Splash** courses are designed by our volunteer instructors, and in the past have included everything from Chess, The Calculator In Your Head, Technology Risks, and Beginning Knitting, to African Literature, Philosophy Lounge, and Build Your Own Robot. If you have an idea for a course you'd like to present, please call **253-4882** and request teacher information. All are welcome. Application deadline is September 13th.



**MIT Educational Studies Program**  
**MIT Student Center**  
**77 Mass. Ave., Room W20-467**  
**Cambridge, MA 02139**  
**(617) 253-4882**



Are you a frustrated artist? Do you want to:



sing?



paint?



play?



act?

**We can help.**

**The Council for the Arts at MIT Grants Program**

Next deadline: September 20

The Council for the Arts at MIT Grants Program was created to give members of the MIT community the opportunity to create, learn about and participate in the arts. The Grants Guidelines are now on line, at: <http://web.mit.edu/arts/www/grantguide.html>

Application forms are available at the MIT Office of the Arts E15-205 or by interdepartmental mail. Contact Susan Cohen, Director of the Council for the Arts at MIT at 253-4005 or [cohen@media.mit.edu](mailto:cohen@media.mit.edu) for more information.

## CLASSIFIED ADVERTISING

### For Sale

**Pentium Computer:** 120-MHz, 16-MB Ram, 1.3-GB HD, 8-Speed CD ROM, Sound Card, 1-MB VRAM, 28.8 fax/Modem, 14" SVGA Monitor, 1-Year Warranty: \$1,280. Or design your own computer. Brand name parts available. 617-396-9309.

### Information

**All first time loan borrowers** of Perkins or Federal Direct loans are required to have entrance counseling. Call 258-5664 to obtain dates and times. All borrowers with Technology loans must schedule individual interviews. Call Lynn Flury 258-5663 (A-G), Sarah Hernandez 253-5006 (H-O), or Gerry Purdy 253-5630 (P-Z) to schedule an appointment.

# Parents to Attend Open House Events for Parents Orientation

Parents, from Page 1

Martha R. Jennings, manager of president's house, expected between 1000 and 1200 guests, both parents and freshmen. The breakfast, which includes a receiving line, is "a chance [for administrators] to introduce themselves" to parents, Jennings said.

The Chorallaries will also regale parents as they wait to meet Vest.

### Presentations to inform parents

Saturday continues with an panel discussion called "Cutting the Apron Strings." Lee said that the event, which will be as informal as possible, is designed "to assure parents that their freshmen will be taken care of academically, socially, and in all aspects of campus life."

The program will also "let them know about the facilities at MIT," Lee said. MIT is not an easy place, but parents "should pretty much leave [their] students alone. Students will do well here and if not, we have the resources in terms of tutoring, counseling, and support offices to help them," she said.

This panel will be made up of Associate Dean for Residence and Campus Activities Andrew M. Eisenmann '75, Bexley Hall Housemaster Carol Orme-Johnson, Associate Dean of Counseling and Support Services Arnold R. Henderson Jr., and three students.

"Greek 101," a presentation by Adviser to Fraternities, Sororities and Independent Living Groups Neal H. Dorow, assistant dean for RCA, will answer parents' questions concerning Greek life.

For parents of students residing in dormitories the "Mi Casa Es Su Casa" event will provide an oppor-

tunity to meet housemasters and tour dormitories.

A new event this year is the Boston brunch and cruise on Sunday for which over 30 parents have already registered.

### Family weekend in October

This weekend's events for parents is a precursor to a broader Family Weekend in October. Bates said that the programs do not totally overlap.

Theresa J. Lee, program manager for alumni/alumnae activities, said that this weekend is intended for "freshmen's parents while family weekend is for all parents."

In addition, she said that since Family Weekend occurs when MIT is in session, parents have the chance to see a different aspect of the school than they will this weekend. Any similarities are "not anything that would prevent parents from coming again."

# City Days to Promote Community Relations

City Days, from Page 1

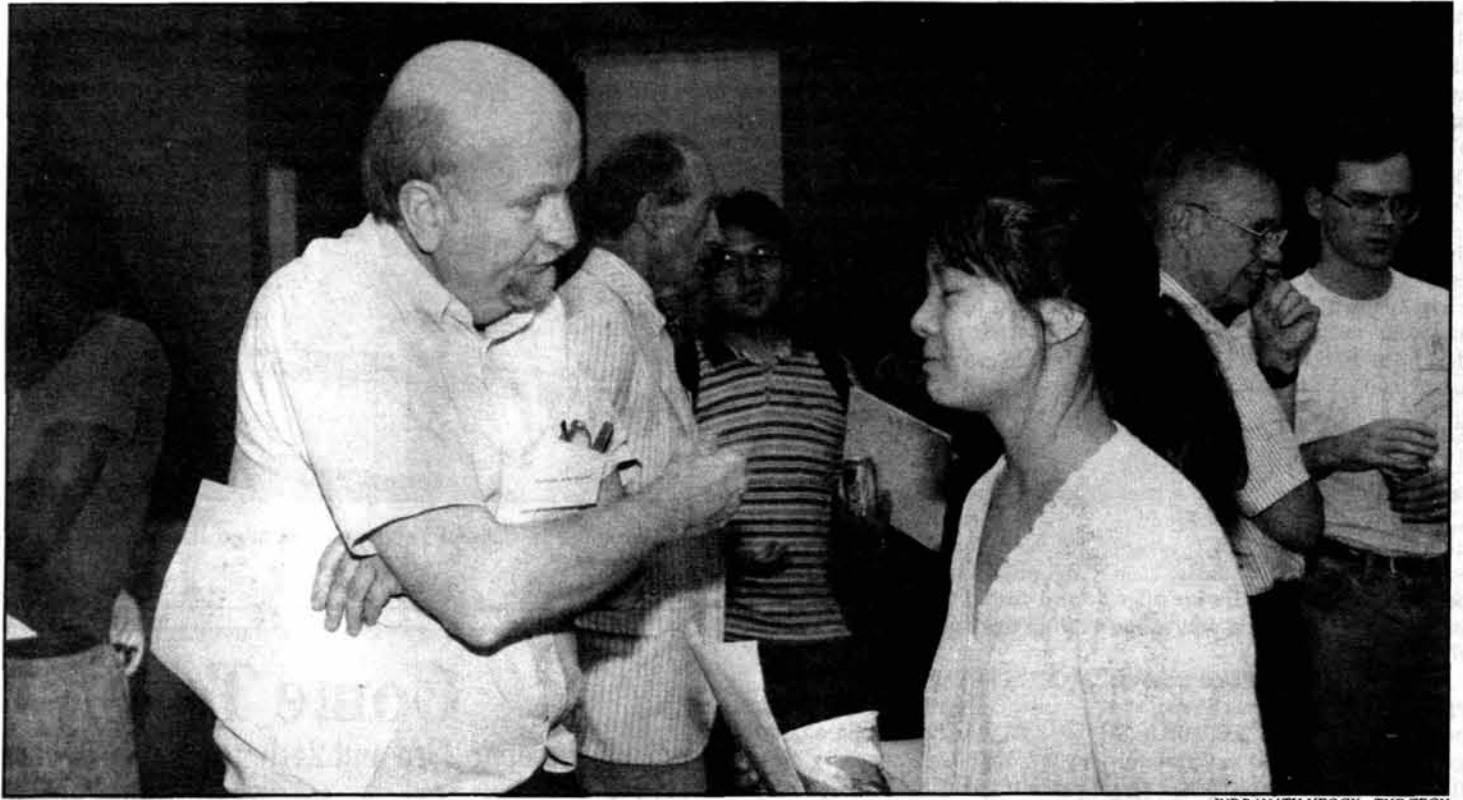
Born MArch '77 will address participants.

Purinton said that City Days is an event important to the building of good relations between MIT and the local community. "It helps incoming MIT students to realize they're part of a larger community than MIT," she said.

"It kicks off the PSC's Links program, where we send students

into the public schools on a weekly basis," she said. "It helps build up familiarity for both the elementary school students and the MIT people."

It has also helped relations between groups within MIT, Purinton said. Groups that have traditionally had disagreements have scheduled events together to help smooth over past enmity, she said.



INDRANATH NEOGY—THE TECH

Professor of Physics John W. Belcher talks to Grace H. Wang '00 at the Freshmen Meet the Professors event yesterday afternoon in the Bush Room (10-105).

You want to be the first to \_\_\_\_\_  
\_\_\_\_\_  
\_\_\_\_\_  
\_\_\_\_\_

### Macintosh. More flexible than ever.

We don't know how you'll fill in the blank. That's why we make Macintosh computers so flexible. To help you be the first to do whatever you want to do. And with word processing, easy Internet access, powerful multimedia and cross-platform compatibility, a Mac makes it even easier to do it. How do you get started? Visit your campus computer store today and pick up a Mac.

Leave your mark.

Visit your campus computer store or <http://campus.apple.com/>



# Housing Lottery Results Better; Dorm Crowding Down This Year

Lottery, from Page 1

Conner House were significantly oversubscribed.

Out of 665 freshmen who entered the lottery (excluding the language houses, Chocolate City, and freshmen who later pledged to independent living groups), 368, or 55 percent, chose one of these three dormitories.

In general, the results of the housing lottery were far better this year. Seventy-six percent of freshmen received their first choice of dormitory, compared with 67 percent last year.

Ninety-two percent received either their first or second choice, compared with 80 percent last year.

This improvement, however, did not come from a better computer algorithm, according to Residence and Campus Activities Staff Associate for Residence Programs Philip M. Bernard. Rather, the improvements likely are due to the smaller class size, approximately 20 fewer than last year.

### Moderate crowding expected

Wednesday, Bernard stated that there would be a maximum of about 146 crowds, with the precise number to be determined as pledging continues.

This level of crowding is slightly better than last year, when approximately 155 crowds were required. At this number, most freshman rooms in

East Campus will be crowded into doubles and doubles in Burton-Conner, McCormick, and New House will be crowded into triples.

Based on patterns from the past few years, it will not be necessary to convert the lounges in the MacGregor tower into doubles. In addition, quadruples in Baker Houses will not be crowded into quints.

Both these situations were considered particularly serious situations in past years, and the Institute has attempted to avoid them, in part by housing approximately 50 members of the Sigma Kappa sorority in the basement of Ashdown House, a graduate dormitory, until a sorority house is obtained for them.



ARIFUR RAHMAN—THE TECH

With the help of an upperclassman, Jeffrey Sheldon '00 moves into Next House yesterday afternoon.



GABOR CSANYI—THE TECH

The List Visual Arts Center gives a preview on Wednesday afternoon of works of art available for students to borrow for their rooms during the school year.

### Interested in...

- Java coding
- CGI programming
- Web server redesign
- Unix server maintenance
- AppleShare server upkeep

Join *The Tech's* Technology Staff!



# welcome back!

■ most services are FREE for MIT students - even if you've waived

■ always open for urgent care

■ right on campus in building E23, 25 Carleton St.

■ open every day of the year



## mit medical

questions? call 617-253-4371

<p><b>Power Macintosh<sup>®</sup> 7200</b> PowerPC<sup>™</sup> 601/120 MHz/16MB RAM 1.2GB/8X CD-ROM/15" display</p>	<p><b>Power Macintosh<sup>®</sup> 5400</b> PowerPC<sup>™</sup> 603a/120 MHz/16MB RAM 1.6GB/8X CD-ROM/15" display</p>	<p><b>Color StyleWriter<sup>®</sup> 2500</b> 720x360 dpi Only \$340</p>
---	--	---

Save \$100 on an Apple printer when you buy a Mac.

MIT Computer Connection  
Student Center, Lower Level  
3-7686, mcc@mit.edu  
<http://web.mit.edu/mcc/www/>

We're your back-to-school computer source.

Free one-year Apple warranty.



Save \$100 when you purchase a qualifying Macintosh<sup>®</sup> computer and Apple<sup>®</sup> printer; offer valid through October 11, 1996. No payment of interest or principal will be required for 90 days. Interest accruing during this 90-day period will be added to the principal and will bear interest, which will be included in the repayment schedule. For example, the month of May 1996 had an interest rate of 12.15% with an Annual Percentage Rate (APR) of 13.93%. A monthly payment of \$47.49 for the Power Mac<sup>™</sup> 7200/120 system is an estimate based on a total loan amount of \$2,765.96, which includes a sample purchase price of \$2,560 and a 6% loan origination fee. Interest is variable based on the Prime Rate as reported on the 5th business day of the month in The Wall Street Journal, plus a spread of 3.9%. Monthly payment and APR shown assumes deferral of principal and does not include state or local sales tax. The Apple Computer Loan has an 8-year loan term with no prepayment penalty and is subject to credit approval. Monthly payments may vary depending on actual computer system prices, total loan amounts, state and local sales taxes and a change in the monthly variable interest rate. ©1996 Apple Computer, Inc. All rights reserved. Apple, the Apple logo, AppleCare, LaserWriter, Mac, Macintosh, Performa, PowerBook, Power Macintosh and StyleWriter are registered trademarks of Apple Computer, Inc. Power Mac is a trademark of Apple Computer, Inc. PowerPC is a trademark of International Business Machines Corporation, used under license therefrom.

The Tech reprints The Daily Confusion as provided to us by the Residence and Orientation Week Committee. Any questions or complaints about The Daily Confusion should be directed to the R/O Center at x3-2500

**Activities**

6:00p: **Hillel.** Shabbat Services at Hillel: Join us for either Egalitarian or Orthodox services. Both take place at 6:00pm at Hillel.\*  
 6:00p: **Asian Baptist Student Koinonia.** Join Asian Baptist Student Koinonia for a kimbap dinner followed by Bible

**Study on campus. Meet on the Student Center Steps.\***  
 7:00p: **Hillel.** Shabbat Dinner at Hillel: Location- Hillel, Main Dining Room. Cost- \$8.95. Please reserve by Wednesday, 8/28.\*  
 7:00p: **Logarithms.** Hey freshman! Like to sing? Like to make other people laugh? Then audition for the Logarithms, MIT's oldest and best a cappella group. Come

with a prepared song and a joke (not necessarily original). Also, expect to do a little sight-singing. Come to 4-148 between 7:00 and 9:30, even if you haven't signed up for a time slot. We're looking for all voice ranges. See you there!  
 7:30p: **Chinese Student's Club.** MOVIE NIGHT Watch Casablana on the Explanade Meet at 7:30 Student Center Steps\*

In case of emergency, dial 100 from any MIT phone. Other important numbers:  
 Campus Police: 253-1212  
 Med Center Emergency: 253-1311  
 R/O Center: 253-2500  
 UAA: 253-6772  
 Nightline: 253-8800  
 Delta Psi or St. Anthony Hall: please see No.6

**The Daily Confusion**  
 Editors: Kelly K Chan, Angela Chou, Jason Davis  
 NOTE: A single asterisk (\*) following a listing indicates a coed or female living group. A double asterisk (\*\*) indicates an activity to which women are cordially invited.

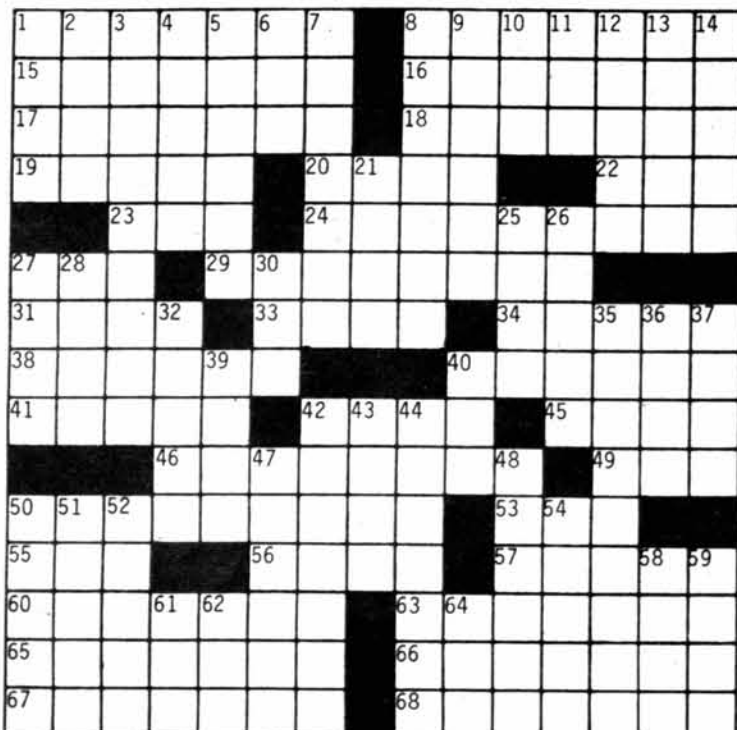
**The Tech would like to thank everyone who helped make the 1996 daily R/O issues a success.**

The easiest equation you'll see at MIT:

Arts + Business + News +  
 Opinion + Photography +  
 Production + Sports + Technology  
 = ???

Hint: Answer appears at the top of page 1 and every other page.

It takes all kinds of people to put together MIT's oldest and largest newspaper. And it takes **no experience** to get involved. Stop by room 483 of the Student Center or call us at 253-1541.



© Edward Julius Collegiate CW8807

**ACROSS**

- 1 Partner for Rogers
- 8 House styles (2 wds.)
- 15 Former Yankee manager
- 16 Campus building
- 17 Delighted
- 18 Cereal garnish
- 19 Prefix: straight
- 20 Grider Dickerson
- 22 College basketball tourney
- 23 Bear: Sp.
- 24 Goes backwards
- 27 Clamor
- 29 Bookstore category
- 31 Annoy
- 33 Wen
- 34 \_\_\_ share
- 38 L.A. suburb
- 40 Gossip dose
- 41 Quebec peninsula
- 42 Baseball hall-of-famer Aparicio
- 45 \_\_\_ consequence
- 46 Sweet pepper
- 49 Chicago time (abbr.)
- 50 Ready for use
- 53 \_\_\_-tse

- 55 \_\_\_ de plume
- 56 Alpine goat
- 57 Peach or cherry
- 60 Address part (2 wds.)
- 63 River in Hades
- 65 Finished (2 wds.)
- 66 "\_\_\_ d'Amour," 1958 song
- 67 W. Indies islands
- 68 Pauper's wear

**DOWN**

- 1 Concerning (2 wds.)
- 2 Mix up
- 3 Science of construction
- 4 Egyptian emblems
- 5 Arctic dwellings
- 6 Dakotas Indian
- 7 Aged
- 8 O.K.
- 9 Small horse-drawn carriage
- 10 Baseball statistic
- 11 "\_\_\_ longa, vita brevis
- 12 Water pipes
- 13 Ford or Banks
- 14 Methods (abbr.)
- 21 Sports officials

- 25 Noted jazz vocalist
- 26 First name of former VP
- 27 Piece of sediment
- 28 New Rochelle college
- 30 Galbraith's field, for short
- 32 Fra Filippo \_\_\_
- 35 Astray (2 wds.)
- 36 Sisters
- 37 Scheduled time position
- 39 Playwright Simon
- 40 Boston time (abbr.)
- 42 Social reformers

- 43 River to the Ubangi
- 44 Estimated
- 47 \_\_\_ voyage
- 48 Passé (2 wds.)
- 50 Soldier from Melbourne
- 51 French interjection
- 52 With plenty to spare
- 54 Verbal contraction
- 58 Impecunious
- 59 River to the Danube
- 61 Part of NCO (abbr.)
- 62 Eggs
- 64 Half a Latin dance

**PUZZLE SOLUTIONS FROM LAST ISSUE**

