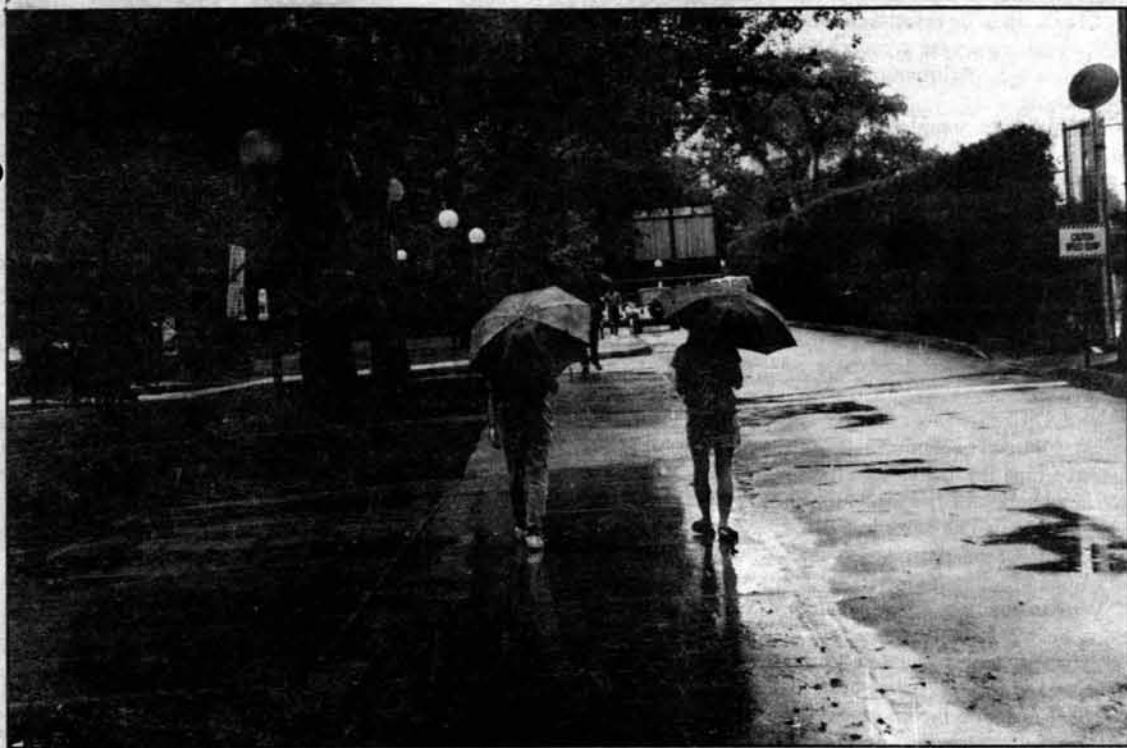




The Weather
Today: Sunny, warm, 84°F (29°C)
Tonight: Clear, mild, 66°F (19°C)
Tomorrow: Partly sunny, 82°F (28°C)
Details, Page 2



SHOWERS canceled some early rush events yesterday morning, leaving Amherst Alley deserted.

Showers Dampen Some Rush Events

By May K. Tse
STAFF REPORTER

The second day of rush got off to a soggy start as a downpour canceled rush events and kept some freshmen indoors during the morning.

"We've rescheduled our trip to the state park, and we're doing a lot of other small things, such as indoor sports, bowling, [and] a trip to various entertainment centers, which are indoors," said Phi Gamma Delta Rush Chair Han B. Chou '97.

"We're going to have some sandwiches and a picnic in the dining room instead of a rooftop barbecue," said Tau Epsilon Pi Rush Chair David A. Pooley '98. "You can always improvise something."

The rain also impacted various dorm rush activities. "The rain is affecting us a bit since we can't

have our barbecue; we're grilling food inside instead," said James S. Robertson '99 of East Campus.

Others chose to ignore the morning rain. "We're still going to the beach," said Benjamin T. Kolin '98, rush chair for Alpha Epsilon Pi. "We're hoping for the best. The rain has been a concern but not really a factor so far. We haven't been having very many problems so far."

"We were a little worried about the rain but actually we've had a fine rush," said Abigail Vargus '97, Women's Independent Living Group rush chair.

"We just canceled the picnic that was supposed to be on the Esplanade, but we had events scheduled at the house at the same time, so

Rush, Page 10

Freshmen Women May Search For Single-Sex Housing Options

By Eric Sit
STAFF REPORTER

The percentage of women in this year's freshman class is close to last year's record high, and many women may once again be searching for single-sex housing options.

Forty-two percent of the 1,081 freshmen are female. Despite that statistic, Residence and Campus Activities Staff Associate Phillip M. Bernard, who is in charge of dormitory assignments, said that there may actually be less of a need for single-sex housing this year.

While the percentage of freshmen women this year is about the same as last year, the actual class size is smaller, meaning a small drop in the number

of female students, according to Bernard.

"To me, we have less demand for single-sex housing this year," Bernard said. "It seems we will have fewer requests."

McCormick will likely be heavily oversubscribed

As the number of women at MIT has increased in the past few years, Bernard and other housing officials have been faced with concerns from parents and new students citing religious, ethical, and medical reasons for wanting single-sex housing.

There has been difficulty accommodating the all-female housing requests since McCormick Hall is

Women, Page 10

Dorms Will Sustain 120 Crowded Frosh

By Brett Altschul
STAFF REPORTER

Once all of the 1,081 members of the Class of 2000 have chosen housing, dormitories will be oversubscribed by about 120 spaces, according to estimates from the Office of Residence and Campus Activities.

The new dormitory residents will receive their assignments from the housing lottery on Athena later this week. Freshmen will be able to enter their preferences in the lottery program starting today at 4 p.m.

The crowding this year was not so severe as last year, when the dor-

mitories were overcrowded by more than 140 spots. This year's decrease resulted from the smaller size of the the freshman class. Last year's class numbered 1,130 students, 49 more than the Class of 2000.

However, crowding is still significant because the capacity of Senior House will be 15 to 20 spaces smaller this year.

Staff Associate for Residence and Campus Activities Phillip M. Bernard also indicated that fraternities have predicted a slightly more successful rush this year than in recent years.

While the numbers could fluctuate somewhat, they are likely to remain fairly close to the optimistic estimate.

No room conversions needed

Since this level of crowding is below that of last year, no new rooms will need to be created, Bernard said. In the past, some MacGregor House lounges have been converted to doubles and Baker House quadruples have been crowded with five people.

Bernard said that most of the crowding would occur at Burton-

Crowding, Page 10

Alternatives Provide Rush-Free Atmosphere

By Stacey E. Blau
EDITOR IN CHIEF

During the hectic week of rush, freshmen can find an escape from the fray at a number of no-rush alternatives.

Elsewhere, located in the International Reading Room on the fifth floor of the Student Center, opened Friday to provide a place away from the pressures of rush.

Elsewhere is "a place for people confused by the whole madness of rush to get away," said Elsewhere worker Petra S. Chong '99.

Freshmen can relax, playing with Play-doh, crayons, paints, and even a piano in that's in the room.

Not many freshmen have come by Elsewhere yet. "It picks up at night," said Linda D. Chin '99, also an Elsewhere worker.

Freshmen begin coming by when they "start feeling dizzy from all the stuff going on" with rush, said Elsewhere worker Lin-Chi Yen '98.

"I'm not really big on the whole rush thing," said Kristin Raven '00, who went to Elsewhere. "I don't seem to be finding any peo-

ple who aren't into it, so I came here."

Queer Elsewhere for gay frosh

Queer Elsewhere, located in 14E-304, provides a gay-positive atmosphere for freshmen with food and movies.

Queer Elsewhere opened on Friday and will be open until Wednesday, from 8 p.m. to midnight every night, said Damon W. Suden '99, one of the organizers of Queer Elsewhere.

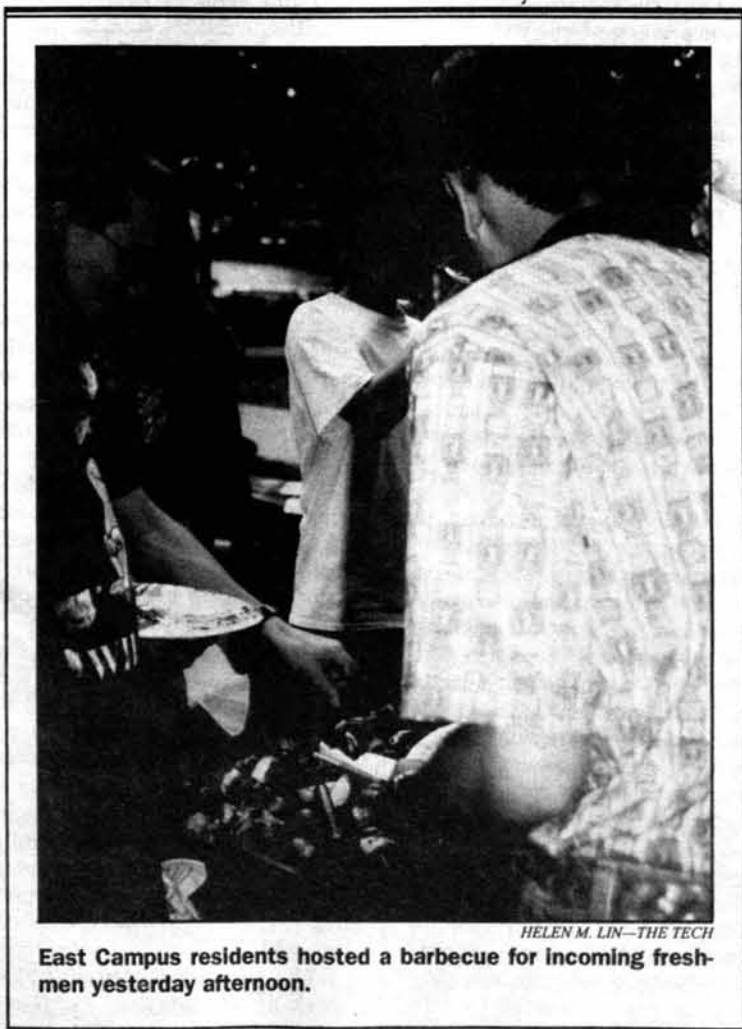
"So far, it's been going well," Suden said.

Queer Elsewhere is a place for gay, lesbian, bisexual, and transgender students to find support in an informal atmosphere where they can meet other such students, he said.

A couple of people have stopped by so far, and once dead week begins, more people will probably visit, Suden said.

Queer Elsewhere is sponsored by the Raw Perspectives Committee, which was formerly the Human Sexuality Committee, a branch of

Alternatives, Page 10



HELEN M. LIN—THE TECH
East Campus residents hosted a barbecue for incoming freshmen yesterday afternoon.

INSIDE

- Dormitories have a wide variety of personalities. Page 6
- Former Yale student may receive a prison sentence. Page 9
- Sig Ep rush advertisement should make freshmen think twice. Page 4

WORLD & NATION

India Challenges Great Powers Over Nuclear Test-Ban Pact

LOS ANGELES TIMES

NEW DELHI, INDIA

Last week, India showed it could say "No" to the great powers. After the United States and the four other avowed nuclear-weapons nations declined to bind themselves to a timetable for liquidating their arsenals, India effectively vetoed the global nuclear test-ban pact being negotiated in Geneva by refusing to sign it.

International criticism was immediate, but the Indian government has vowed not to budge. "There is no question of a change in our position even if we get isolated," Prime Minister H.D. Deve Gowda said.

For frustrated U.S. disarmament ambassador Stephen J. Ledogar, the Indian position smacked of insincerity. "The real reason is that the current government in New Delhi wants to maintain the Indian nuclear weapon option," he charged.

That is true, Indian security experts acknowledged in interviews. Their country, they contend, is in a unique predicament. China, a known nuclear power, and Pakistan, like India a "threshold" state that may already have nuclear bombs, are its immediate neighbors, and India has fought wars with both.

By agreeing to the Comprehensive Test Ban Treaty negotiated during the past 2 years, the Indian specialists maintain, India would be handcuffing its defense options.

Clinton Reveals Aspirations Of Greatness in Second Term

WASHINGTON

President Clinton will spend the next 72 days seeking the blessing of voters and, if he is successful, he will spend the next four years seeking the blessing of history.

Clinton is a politician who has wanted since he was a young man not merely to win the presidency but to join the small company of large presidents, to be one of those rare leaders who stamp an imprint deep on an era. But he has failed in his first four years when he tried to sponsor large changes, and succeeded when he has stood in opposition to the Republicans and offered a more modest and incremental agenda.

His methods in the past two years have produced an impressive political comeback but, in the eyes of presidential scholars and many of his contemporaries in government, they have yet to yield a presidency that will echo through time. And the reality of recent decades is that second terms are rarely more successful than first terms, and are often dramatically less so.

Health Officials Worry Over Effects of Welfare Reform Bill

LOS ANGELES TIMES

WASHINGTON

The welfare reform signed by President Clinton Thursday might achieve its objective of prodding millions of Americans to get productive jobs but some public health officials are expressing the fear that it could cause many to simply get sick.

And the poor, they said, might not get sick alone.

As legal immigrants lose access to Medicaid and families run up against a new five-year limit on cash benefits, these health experts anticipate a resurgence of tuberculosis and sexually transmitted diseases not likely to confine themselves to low-income neighborhoods. Over time, they foresee a rising infant mortality rate and a gradual lowering of life expectancy for many Americans, not just those on welfare.

"Sooner or later, we will find ourselves with housekeepers who are tubercular, workers dying of infectious illnesses. No matter how much we create isolated enclaves, we depend on people who live in poor communities to make our clothes, package our food, work at our McDonald's," said David Rosner, professor of history and public health at City University of New York.

WEATHER

Salubrious Sunday

By Marek Zebrowski
STAFF METEOROLOGIST

A small area of high pressure will be perfectly positioned and timed just right to give our region a wonderful late summer Sunday. The next system coming from the northwest appears to pack no punch and little moisture, and thus only a scattering of showers is expected for the first day of the work week.

Meanwhile, the tropics have become alive after a ho-hum July. Hurricane Edouard, located about 1,000 miles (1,610 km) east of Lesser Antilles, packing 115 knot gales and sporting a well-defined eye, may threaten eastern edges of the Caribbean, and eventually progress towards the United States mainland on a track resembling Bertha's vagaries of early summer. Another tropical depression, just emerging from the hurricane spawning spot of Cape Verde Islands has a potential for gaining more strength during the next few days.

Sunday: Sunny and warm, especially inland, where temperatures may reach 85-90°F (30-32°C) by late afternoon. Boston's high of 84°F (29°C) will be similar to the temperatures on the Cape and along the beaches, where early sea breezes will gradually fade away by mid afternoon.

Sunday night: Clear with a scattering of high clouds. Mild southwesterly winds. Low near 66°F (19°C).

Monday: Mostly sunny early, becoming partly cloudy during the day. Chance of scattered showers, especially to the north. Midday high of 82°F (28°C) may drop off a few degrees along the shoreline in response to weak seabreezes kicking in.

Pakistan Secretly Building Missile Factory with China

By R. Jeffrey Smith

THE WASHINGTON POST

WASHINGTON

U.S. intelligence officials have concluded that the government of Pakistan is secretly building a medium-range missile factory using blueprints and equipment supplied by China, in a development that officials said raises the prospect of a major new U.S. proliferation dispute with Beijing.

The partially completed factory, said by U.S. officials to be located in a suburb of the northern city of Rawalpindi, near Islamabad, is expected to be capable in a year or two of producing most of the major components of a missile modeled after the Chinese-designed M-11. Some officials believe the factory will produce precise duplicates of the missile.

The United States has twice imposed limited economic sanctions against China for selling M-11 missile launchers and finished missile components to Pakistan, but lifted them after China promised to halt such deliveries.

Washington only recently settled a dispute with China over a sale to Pakistan of nuclear-related equipment, and officials say the construction of the missile factory raises the possibility that broad economic sanctions eventually could be imposed on both nations.

The existence of the Pakistani factory has been known to U.S. intelligence officials since last year, when construction evidently began, but it has never been publicly disclosed. Its purpose is described in a recent, classified U.S. National Intelligence Estimate on China's missile-related assistance to Pakistan, which also states that Pakistan may have developed nuclear warheads to be placed atop its M-11 missiles. A National Intelligence Estimate is a consensus view of U.S. intelligence agencies.

U.S. officials said that comple-

tion of the factory would for the first time give the Pakistani government an ability to match India's indigenous production of the Prithvi medium-range ballistic missile, which could also be equipped with nuclear warheads. India and Pakistan are archenemies, and Washington fears that any deployment of such weapons could bring the two nations close to the brink of war.

If the U.S. intelligence report about the factory is heeded by U.S. policy-makers, the Clinton administration could be forced once again to take up the politically delicate task of confronting China's prickly leadership with an allegation that Beijing is spreading advanced, mass-destruction weaponry to a U.S. ally, according to several officials.

"There is no question there is an involvement" by China in the missile factory, said a U.S. policy-maker privy to the intelligence reports. The official cautioned, however, that Washington is seeking additional information about this assistance, and that no formal ruling has been made that China is subject to sanctions under U.S. nonproliferation laws. He called it "a current case" before officials responsible for making such a determination.

A U.S. complaint earlier this year that China sold ring magnets to Pakistan for use in enriching uranium for nuclear arms raised hackles in Beijing and Islamabad and soured China's relations with the United States.

The administration eventually decided to avoid a major diplomatic confrontation by agreeing not to impose economic sanctions in exchange for a Chinese pledge that the nuclear sales would not be repeated.

But top administration officials in recent months have been trying to avoid provoking a further confrontation with China. U.S. officials who traveled to Beijing last month for

consultations on Chinese policies governing the export of weapons-related goods did not raise the issue of the M-11 factory.

According to one official, Washington has complained about it to Pakistan, but the Pakistani leadership denied that such a factory exists.

Four U.S. officials who spoke about the factory on condition they not be named said it appeared to constitute a particularly serious violation of China's repeated pledge to observe the provisions of the Missile Technology Control Regime (MTCR), an agreement among roughly 30 nations that restricts exports of missiles or missile technology capable of carrying nuclear warheads more than 185 miles. The M-11 is assessed at having a range slightly greater than 185 miles when equipped with such warheads.

Under a 1990 law mandating economic sanctions for MTCR violations, the penalty for transferring missile production technology is a cutoff of certain U.S. export licenses and, for communist nations, a ban on most exports to the United States for a period of two years.

The sanctions can be waived if the president determines that doing so is required by "national security."

Such sanctions would affect U.S. exports to China of electronics items, military goods and space-related equipment, as well as imports of Chinese-made goods in these categories.

The exact value of the goods that might face sanctions is unclear, but in recent years China has exported about \$30 billion in goods annually to the United States, while U.S. exporters have shipped about \$9 billion a year in goods to China.

U.S. officials said they believe China may have signed a secret contract with Pakistan nearly a decade ago to furnish the missile factory as well as roughly three dozen completed M-11 missiles.

Gov't to Set up Computerized Database of Sex Offenders

By Peter Baker

THE WASHINGTON POST

WASHINGTON

The federal government will set up a national computer registry within the next six months to keep track of at least 250,000 sex offenders, an effort to prevent rapists and molesters from simply crossing state lines to terrorize unsuspecting communities, President Clinton announced Saturday.

Earlier this summer, Clinton pledged to find a way to tie state databases into a single system so that authorities can obtain information instantaneously on sexual predators from across the country.

"This national registry sends a simple message to those who would prey on our children — the law will follow you wherever you go," Clinton said in his weekly radio address.

He unveiled the program on the eve of his departure for the Democratic National Convention in a speech in which he sought to burnish his crime-fighting credentials and present himself again as a champion of children. He also highlighted other law-and-order actions during his first term, including passage of gun control laws and legislation to put more police officers on the street.

The announcement capped a week of carefully orchestrated events intended to provide political

momentum heading into the convention that will renominate him and to draw the focus away from his Republican challenger, Robert J. Dole. In rapid succession last week, Clinton signed bills raising the minimum wage, expanding health care access and revamping the welfare system, then moved to regulate the tobacco industry for the first time.

The sex offender registry plan effectively pre-empts bipartisan legislation moving through Congress that would have achieved the same goal. A Clinton aide said the president does not need new legislation to start the system on his own.

The Dole campaign was quick Saturday to accuse Clinton once again of political plagiarism. "Bill Clinton has proved to be the Xerox president," said Dole campaign spokeswoman Christina Martin. "For the second time on the same subject, he has actually lifted a page out of the 1992 Republican platform."

Prodded by the federal government, all 50 states have enacted laws requiring sex offenders to register with authorities, though not all have established computerized tracking systems yet.

In May, Clinton signed a bill requiring that communities be notified when sex offenders released from prison move in, a measure dubbed Megan's Law after a mur-

dered 7-year-old New Jersey girl whose alleged killer was a convicted molester.

Under Saturday's plan, the FBI will quickly set up a registry on an interim basis by linking it to an existing computer system that will collect information provided by the states. By mid-1999, the registry will become part of a broader law enforcement computer network containing more sophisticated records, including fingerprint matching, mug shots and DNA information. The administration is earmarking \$25 million to help states set up or improve their databases.

Associate Attorney General John R. Schmidt said the registry will be available not only to law enforcement officers but also to anyone else authorized by individual state laws, such as licensing agencies conducting background checks on applicants for day-care or teaching jobs.

Civil liberties advocates have complained that such a registry could violate the constitutional rights of people who have properly completed their sentences, preventing them from finding work or even a place to live. Lawsuits challenging state registries have been filed in New York, New Jersey, Alaska and elsewhere.

But Clinton said the high recidivism rate among sex criminals required such a step.

Chechnya Closer to Achieving Peace, Gaining More Autonomy

By Richard Boudreaux
LOS ANGELES TIMES

MOSCOW

As their soldiers shifted from warfare to joint monitoring of a day-old truce, Chechen separatist and Russian leaders opened the first talks in more than a year Saturday on the issue that started the conflict — the republic's demand for independence.

The talks centered on a Russian-proposed treaty allowing both sides to save face after more than 20 months of fighting and 30,000 dead. Russian troops would leave, but tiny Muslim-majority Chechnya would remain part of the Russian Federation with as much autonomy as its voters opt for in a referendum.

Russian security chief Alexander I. Lebed and Aslan Maskhadov, the chief of staff of Chechen separatist forces, were reported near agreement on political points of the draft but at odds over whether Chechnya may keep an independent army. Their talks in the Chechen village of Noviy Atagi were to continue

Sunday.

The talks began Saturday after nearly 600 Russian and Chechen soldiers, their gun barrels pointed downward, lined up in a field not far away and signed an oath as peacekeepers.

"This war has cost us a great deal, and now in our hands we have the chance to end the war or to continue it, to kill people or not," Russian Maj. Gen. Vyacheslav Ovchinnikov said during a televised ceremony initiating the patrols. "Let us put our grudges behind us."

The soldiers then launched joint patrols in Grozny, the Chechen capital overrun by separatists Aug. 6 in the worst fighting since the war's first month. Russian and Chechen troops began leaving Grozny under Thursday's truce accord, which for the first time put the ruined city under shared military command.

The cease-fire and Saturday's peace talks grew from a determined initiative by Lebed, a general-turned-politician, to save his army from its worst humiliation of the

post-Soviet era.

This month's two-week rout in Grozny cost the army more than 500 lives and could well have led, defense analysts say, to its disintegration and total defeat in Chechnya.

After appearing to obstruct his protégé's peace bid with untimely criticism and contradictory orders, Russian President Boris N. Yeltsin telephoned Lebed late Friday to offer his support.

Russian Prime Minister Viktor S. Chernomyrdin, a rival of Lebed's for power in the Kremlin, said he and Yeltsin congratulated the security chief for resolving "the first part of this problem."

The second part — a lasting peace — will be much harder. Chernomyrdin and other officials here said Lebed's proposal, endorsed by Yeltsin, calls for election of a Chechen regional government and a constitutional assembly following the withdrawal of 90 percent of Russia's 40,000 troops now in the republic.

Citadel Accepts Four Women To Previously Male Cadet Corps

By Bill Mc Allister
THE WASHINGTON POST

CHARLESTON, S.C.

The Citadel formally ended 153 years of male-only education Saturday, welcoming four young women into its cadet corps and acknowledging it was bowing to "a clear message" from the Supreme Court that publicly financed single-sex education was unconstitutional.

The decision leaves Virginia Military Institute as the only publicly financed college in the nation that has refused to accept women. Unlike VMI officials, Citadel officials proclaimed they would make coeducation, which they fought more than three years, work.

"Some people read a little history, some make it," said Cadet Chad Fox, 21, the regimental athletic officer, sounding a theme Citadel officials hope will win support for the four female cadets. A year ago many of the school's 1,900 cadets erupted into raucous cheers of delight after Shannon Faulkner, ordered into The Citadel by a local federal judge, dropped out of school after a half-day.

Saturday, there were no public protests or signs of opposition as the

four women registered. "I'm so happy to be here," a nervous Petra Lovetinska, who graduated from Woodrow Wilson High School in Washington, D.C., told Acting Citadel President R. Clifton Poole shortly after she arrived on a scholarship from the school's Washington alumni. "I feel like I'm in a dream. I'm afraid I might wake up."

Lovetinska, whose father works for the Czech Embassy, was to be housed with three other women — Nancy Mace of suburban Charleston, daughter of a retired Army general; Jeanie M. Mentavlos of Charlotte, N.C., a former finalist in The Citadel's homecoming court whose brother is a Citadel senior; and Kim Messer of Clover, S.C., daughter of a retired Army master sergeant. They will live in a dorm that has been renovated to accommodate women.

All four were described by Citadel officials as outstanding high school athletes whom Fox said could outlast the average male freshman in the rigorous physical training that forced Faulkner to quit.

Poole said of Faulkner, "That is the past," and predicted cadets will

accept the women because the school's board changed admission policy after the Supreme Court made clear on June 26 it would not tolerate single-sex education at a public college. Asked to explain the board's reversal, Citadel Chairman Jimmy Jones said, "It's part of our training: Number One, you don't break the law."

Even so, the state-supported school's willing acceptance of female students two months after the court rejected VMI's arguments for its male-only policy still has some of The Citadel's critics amazed. "It's incredible that it is happening, but it's incredible that it has taken so long," said Deanna Caveny, a spokesperson for 52%, a local women's group that stood a support vigil outside the school's main gate.

The scene around the white castle-like buildings that sit on the edge of the Ashley River was in sharp contrast to Virginia's Shenandoah Valley, where some VMI administrators and students cling to the hope that alumni may raise enough money to buy the school and retain its all-male status as a private school.

Over 70 Contributors Spent Night In Clinton White House, Study Says

By Ruth Marcus
THE WASHINGTON POST

WASHINGTON

More than 75 people who contributed to or raised money for President Clinton or the Democratic Party have spent the night in the Clinton White House, according to a new study by the Center for Public Integrity.

Among the overnight guests listed by the center, which studies money and politics, were some longtime friends of President Clinton and First Lady Hillary Rodham Clinton.

But managing director Alex Benes said a number of others appeared to have been invited, not out of personal friendship with the Clintons, but because of their political and financial connections.

Benes said he thought the Clintons' use of the White House to entertain overnight guests was "pretty much exactly the same" as previous presidents. But, he said, "I don't think another presidential candidate made as much of a point of

campaigning on the idea of ending business as usual, and this is just another example of business as usual."

The White House, the Clinton re-election campaign and the Democratic Party dismissed the report's findings. Democratic National Committee press secretary Amy Weiss Tobe said the idea that the party arranged for contributors to stay at the White House "has become an urban myth, like the alligators in the sewers of New York. It is just not true."

Ann Lewis, Clinton's deputy campaign manager, said the Clintons have invited hundreds of people to stay at the White House, both old and new friends. "Whether or not people contribute has absolutely nothing to do with whether they spend the night," she said. "I find that an outrageous accusation, without one shred of evidence."

About the center's report, she said, "How do they know that people who have given to the party are

not also friends? Wouldn't it make more sense to conclude that friends and admirers of Bill Clinton who support what he's trying to achieve would, if they can, also contribute?"

The White House does not release the lists of overnight guests. Benes said the center's study was based on news reports and other sources of information.

The study, called "Fat Cat Hotel" and written by Margaret Ebrahim, found that most of the guests stayed in the historic Lincoln bedroom or Queen's bedroom. The guests included people from Hollywood, an important source of money for Clinton and the party, including actors Chevy Chase, Richard Dreyfuss, Tom Hanks and Barbra Streisand, and producers Gary David Goldberg, Sidney Sheinberg and Steven Spielberg.

The guests who were the biggest contributors included: David Geffen, co-founder of the DreamWorks SKG studio and Peter Norton, the computer whiz who created Norton Utilities.

Dole Tries to Reassure Elderly On Medicare Policy

THE WASHINGTON POST

TAMPA, FLA.

Robert J. Dole campaigned Saturday for votes of the elderly in America's land of retirement, attempting to repel Democratic charges that he would ravage Medicare to pay for tax cuts benefiting the wealthy.

At a boisterous rally at the University of Tampa, he accused President Clinton of using scare tactics and invoked the memory of his mother, Bina, who lived on Social Security benefits, in pledging to repeal the tax increase on Social Security benefits for upper-income recipients that Clinton had proposed in 1993.

He criticized Clinton for vetoing the Republican proposal last year to slow the growth of Medicare costs, a plan that Democrats described in national television attacks as "cuts" designed to pay for \$270 billion in family and business tax breaks.

The plan, said Dole, would have saved Medicare from bankruptcy while still allowing costs to rise at twice the rate of inflation. "Remember that veto the next time the White House plays politics with Medicare," he told hundreds of supporters, many of whom were waving pompoms and Dole-Kemp placards in a crowded and humid gymnasium here.

"We're going to save the programs, not devastate the programs," Dole said. Playing off the retirees in the audience, he added, "Welcome to the retirement party for President Clinton."

Dole has pledged to cut taxes by \$548 billion while balancing the budget. Last week, he moved to assure veterans that their benefits would not be compromised, and weeks ago put off-limits Social Security and further cuts in Medicare beyond last year's GOP plan. But his restatement of those assurances Saturday in a state bulging with senior citizens reflects the campaign's concerns that Democratic charges are sticking. The last time Florida, with 25 electoral votes, voted for a Democratic president was in 1976.

He had a warm-up for his Medicare reprise in the GOP response to Clinton's weekly radio address, where he blamed the president for ignoring the 6.2 percent annual spending increase in the Republican proposal for Medicare. Under the plan, spending would increase from \$5,300 to \$7,100 per beneficiary in the next six years.

"Instead of offering solutions, he offers a harsh and negative advertising campaign, hoping to scare you into believing that our plan would harm those Americans who rely on Medicare," Dole said.

Democrats Stress Unity For Convention

THE WASHINGTON POST

CHICAGO

Twenty-eight years after their most tumultuous convention of the century, Democrats returned to Chicago Saturday for what they hope will be one of their most placid, a four-day celebration designed to launch President Clinton toward a second term and secondarily to bring the party back to power in Congress.

The convention that opens here Monday has been carefully staged to show off what party leaders claim is unprecedented unity among the once-brawling Democrats. But for most of the week, the convention hall largely will be a sideshow to the president's campaign train trip through the Midwest.

The president's advisers promise that Clinton will deliver proposals on crime, education and the environment from the train trip through Ohio and Michigan that they hope will dominate the evening news early in the week and set the stage for his ambitious acceptance speech Thursday night. In that speech, aides said, Clinton will begin to sketch the outlines of what a second term would mean for the country, if he defeats Republican presidential nominee Robert J. Dole in November.

With Clinton preparing to embark on his train ride through middle America on Sunday, Vice President Al Gore arrived here Saturday afternoon to plant the administration's flag and act as the president's stand-in until Wednesday night. Gore, who will deliver two prime-time speeches at the convention, told a rally in downtown Chicago, "I am confident of victory because the American people are not buying what the other party is offering."

Gore trumpeted the economic progress under the administration, including lower inflation, a lower deficit, 10 million new jobs and a stock market that has nearly doubled in value and said the president's record shows "what leadership can provide."

Infant Swapped for Rent

THE HARTFORD COURANT

TORRINGTON, CONN.

The Connecticut couple who reported their infant son missing on Wednesday had actually made a deal weeks earlier to give the child to their landlord in exchange for several months' back rent, law enforcement officials said Friday.

The landlord in turn planned to deliver the child to his lesbian sister and another woman in Maryland, authorities said.

James and Lynn Luddy, who claimed their child was abducted from their third-floor apartment in Torrington, were arrested early Friday on risk of injury to a minor and conspiracy charges. Their landlord and another woman allegedly involved in the baby-selling scheme were also charged.

As the result of a tip from a consignment shop owner in Danbury, the infant, James Timothy Luddy Jr., was found late Thursday with Carol M. Brooks, 42, of Brookfield, whom law enforcement officials described as a conduit for the baby's transfer. The 6-week-old boy was in good condition and is now in the custody of the state Department of Children and Families, Torrington police said.

The mastermind behind the scheme, police say, was Jerry Petrovits, 44, of Goshen, a bail bondsman and the Luddys' landlord. One police source said Petrovits hatched the plot to take the child before he was born.

The Luddys, who have been married three years, and Brooks were held in lieu of \$200,000 bail after their arraignments Friday morning in Superior Court in Litchfield.

Petrovits' bail, set by police, was \$50,000; and it was posted by his daughter shortly after 9 a.m. Friday. The landlord's arraignment is scheduled for Sept. 3. Petrovits could not be reached for comment.

OPINION



Chairman

Daniel C. Stevenson '97

Editor in Chief

Stacey E. Blau '98

Business Manager

Christine Chan '98

Managing Editor

Saul Blumenthal '98

Executive Editor

Anders Hove G

NEWS STAFF

Editors: Shang-Lin Chuang '98, David D. Hsu '98; **Associate Editors:** Orli G. Bahcall '99, Dan McGuire '99; **Staff:** Eva Moy G., Kwong H. Yung G., Oleg E. Drozhinin '97, James M. Wahl '97, Christopher L. Falling '98, Brett Altschul '99, Shawdee Eshghi '99, Carina Fung '99, Yaron Koren '99, Jean K. Lee '99, Fenny Lin '99, Eric Sit '99, May K. Tse '99, Rochelle Tung '99; **Meteorologists:** Michael C. Morgan PhD '95, Gerard Roe G., Marek Zebrowski.

PRODUCTION STAFF

Editor: Jen Peltz '98; **Associate Editors:** Josh Bittker '99, Jason C. Yang '99; **Staff:** Amy Hsu '94, Laura DePaoli '97, Jimmy Wong '97, Betty Chang '98, Larry Chao '98, Yun-Ju Lee '98, Jeremy J. Lilley '99, Arthur Murakami '99, Sharon Shen '99, Binh Truong '99, Hoi Wong '99, Khelga Karsten.

OPINION STAFF

Editor: A. Arif Husain '97.

SPORTS STAFF

Darren Castro G., David Berl '97, Jeremy Cohen '97, Jason Weintraub '97, Farhan Zaidi '98.

ARTS STAFF

Editor: David V. Rodriguez '97; **Staff:** Thomas Chen G., Teresa Esser '95, Brian Hoffman '97, Kamal Swamidoss '97, Rob Wagner '97, Hur Koser '98, Daniel Ramirez '99, Stephen Brophy.

PHOTOGRAPHY STAFF

Editors: Helen Lin '97, Indranath Neogy '98; **Associate Editor:** Gábor Csányi G.; **Staff:** Rich Fletcher G., Jonathan Li G., Arifur Rahman G., Jiri Schindler G., Brian Vanden Bosch '96, Tiffany Lin '97, Adriane Chapman '98, Ian Chan '00.

FEATURES STAFF

Hugo M. Ayala G., Pawan Sinha G., Jessica Wu '99.

BUSINESS STAFF

Operations Manager: Pamela Shade '98; **Advertising Manager:** Terri A. Wilson '99; **Staff:** Angela Liao '98, Melody A. Lynch '98, Jessica Maia '98, Winnette McIntosh '98, Karen Chan '99.

TECHNOLOGY STAFF

Director: Cristián A. González '99; **Associate Directors:** Timothy K. Layman '97, Christina Chu '98; **Staff:** Ifung Lu '97, Kathleen Lynch.

EDITORS AT LARGE

Contributing Editors: Thomas R. Karlo '97, Jennifer Lane '98, Venkatesh Satish '98.

ADVISORY BOARD

V. Michael Bove '83, Robert E. Malchman '85, Thomas T. Huang '86, Reuven M. Lerner '92, Jeremy Hylton '94, Garlen C. Leung '95.

PRODUCTION STAFF FOR THIS ISSUE

Night Editor: Saul Blumenthal '98; **Associate Night Editor:** David D. Hsu '98; **Staff:** Timothy K. Layman '97, Jennifer Lane '98, Brett Altschul '99, Cristián A. González '99, Douglas E. Heimburger '00, Tony Lu '00, David Z. Maze '00, Josh Silberman '00.

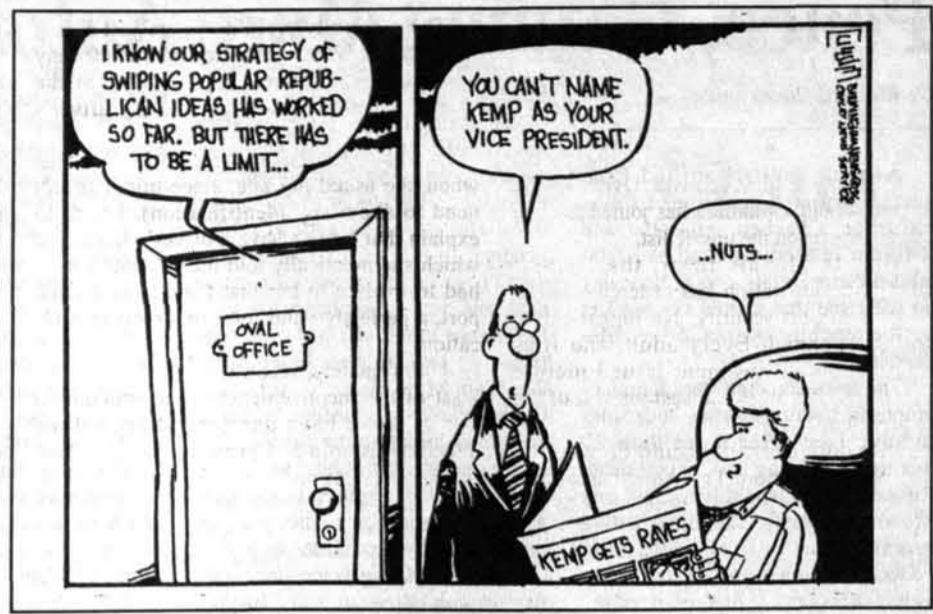
The Tech (ISSN 0148-9607) is published on Tuesdays and Fridays during the academic year (except during MIT vacations), Wednesdays during January and monthly during the summer for \$35.00 per year Third Class by *The Tech*, Room W20-483, 84 Massachusetts Ave., Cambridge, Mass. 02139-7029. Third Class postage paid at Boston, Mass. Non-profit Organization Permit No. 59720. **POSTMASTER:** Please send all address changes to our mailing address: *The Tech*, P.O. Box 397029, Cambridge, Mass. 02139-7029. Telephone: (617) 253-1541, editorial: (617) 258-8324, business: (617) 258-8226, facsimile: (617) 258-8324. Advertising, subscription, and typesetting rates available. Entire contents © 1996 *The Tech*. Printed on recycled paper by MassWeb Printing Co.

Letters To The Editor

The Tech Should Be More Responsible

Your acceptance of Sigma Phi Epsilon's advertisement in Friday's issue of *The Tech* was reckless and irresponsible. Maybe Sig Ep somehow managed to miss the fact that *The Tech* always comes out in the mornings; whether they're at fault is still under review. In any case, *The Tech* knew but accepted the ad anyway. Heck, it gave you money plus a juicy story for the next day. This isn't ethical any way you look at it.

Jeremy D. Sher '99
President, *Counterpoint*



Sig Ep Ad Should Make Frosh Wary

Column by A. Arif Husain

OPINION EDITOR

I took Introduction to Psychology (9.00) my freshman year, and it still ranks up among my favorite courses taken at MIT. I enjoyed it because it made me reconsider the knowledge that I took for granted about my own ideas and my ability to be influenced by my environment.

As the trillion-plus-dollar worldwide advertising industry can attest to, people need information to make judgments. As any litigator could tell you, it doesn't take much to sway opinions. Often inadmissible evidence is presented in court then retracted from record, since it is well known that the impact on the jury can not be so easily erased. Apparently, some of the brothers at Sigma Phi Epsilon are familiar with this strategy.

In last Friday's issue of *The Tech*, a full page advertisement touting Sig Ep's rush activities was run, and appeared on campus several hours before rush campaigning was allowed to begin. Interfraternity Council Judiciary Committee Chair Christopher G. Rodarte '97 said he "is looking into this violation." IFC President and Sig Ep member Jason D. Pride '97, however, claims that he thought the ad would not appear until the 6 p.m. Killian Kick-Off, and he maintained that the violation is "just not our fault." Frankly, I'm disappointed in Pride's creativity. He might

have at least tried to blame it on the dog.

Obviously, *The Tech* does not publish at six o'clock in the evening. I haven't been around for all 116 years of *The Tech*'s publication, but I can say that in the last three, it has never been distributed later than early

*Frankly, I'm disappointed in
Pride's creativity. He might
have at least tried to blame
it on the dog.*

afternoon and usually appears around 10 a.m. Giving the benefit of the doubt, I would accept that perhaps the brothers of Sig Ep are well versed in the philosophic doctrines of David Hume, and so fail to rely on inductive reasoning. The publication time for last Friday's issue, however, was made clear to Sig Ep by *The Tech*'s chairman, Daniel C. Stevenson '97. Even Hume would have been without doubt.

So we all must wonder, then, why Sig Ep has apparently violated IFC rush rules. Hmm... that's a hard one. *The Tech* issues over 7000 copies of each daily issue during Residence and

Orientation Week. Last Friday, that meant that over 7000 full page Sig Ep rush advertisements went out all over campus, several hours before any other dormitory, fraternity, sorority, or independent living group had a chance. Since FSILGs dedicate a significant chunk of their yearly budgets to rushing, it's not surprising that Sig Ep was apparently ready to accept any fine that IFC might levy. Besides, according to IFC rules, no action can be taken before a hearing is arranged, and such proceedings require a 96 hour notice. For this rush, that means that Sig Ep will go scot-free until next year.

Whatever action IFC decides to take, and whether or not they eventually confirm that the Sig Ep ad was a true violation is not my concern. I'll leave those internal dealings to IFC. What I'm interested in is the apparent disregard by a fraternity of its governing body's rules in order to one-up all of its competitors in a race that is intended to be for the betterment of our freshman class.

From the perspective of this year's rushees, I would have to wonder if such side-stepping would do more harm than good. If I were rushing, I'd be wary of groups that had to resort to such measures in order to gain my interest. As an example, Massachusetts General Hospital rarely advertises in the local papers. Less eminent institutions require much more marketing.

Rushees Should Consider Other Options

Column by Thomas R. Karlo

CONTRIBUTING EDITOR

Today and tomorrow, many of the freshman men will be asked to make what may be the largest decision of their stay at MIT. They'll have to decide not only where they'll live for the next four years, but who they'll associate with, and, to a large degree, what ethics and attitudes they'll align themselves with. And they'll have to make this decision after only a couple of days at MIT. If you're one of the guys in this position, I don't envy you. But maybe I can at least help you make a more informed decision.

Despite what you may have been told, you're basically about to make the biggest purchase decision of your life. Yes, fraternities offer a lot of wonderful things, especially from the viewpoint of a freshman arriving at a new university. And yes, they've probably welcomed you like long lost friends during the last few days. But if you are given a bid and you decide to pledge tomorrow, what will be the cost of finalizing this deal?

What fraternities are asking you for — in return for membership, the support of existing brothers, and the use of whatever social reputation the fraternity may have — is a lot. They're asking for your money, your unquestioned loyalty, and the next four years of your life. This is a lot to ask of a person. If you went to buy a car, you'd expect to pay thousands of dollars, but you wouldn't expect to have to swear undying allegiance to the dealer, and clean the bathrooms there for the next four years of your life, would you? Fortunately for the fraternities, they don't have to put a sticker in the window of their car. Unless you're smart enough to do your own balance sheet, you'll be buying based only on how the car was in the test drive, without any regard for what it's going to cost you.

This doesn't mean joining a fraternity isn't the right choice for many people. It just means that freshmen need to be aware of the costs of joining. You've just sat through a three-day sales pitch for the fraternity system. Now you're being hit with what they call a "mem-

bership ploy" in the marketing business. Make someone feel they're part of the group (give them a bid, hang out with them), and you can sell them just about anything. If you're considering buying into the system, you should consider the pitch you've been given.

The fact is, while fraternities try to market membership as a privilege, it's much closer to a commodity. There are a lot of spots up for sale this weekend, and fraternities need to get buyers for those spots or risk declining membership. They've gone to great lengths to make their product attractive to you. Most have been working on their houses all week, if not longer, preparing them for you, the customer. The question is, are they selling you the real thing, or a pig in a poke?

Nor is this pitch done on an even playing field. Like a government protecting domestic goods with tariffs on imported merchandise, the MIT administration works hard to ensure a successful fraternity rush. It has to, or the

Karlo, Page 5

Opinion Policy

Editorials, printed in a distinctive format, are the official opinion of *The Tech*. They are written by the editorial board, which consists of the chairman, editor in chief, managing editor, executive editor, news editors, and opinion editor.

Dissents, marked as such and printed in a distinctive format, are the opinions of the signed members of the editorial board choosing to publish their disagreement with the editorial.

Columns and editorial cartoons are written by individuals and represent the opinion of the author, not necessarily that of the newspaper.

Letters to the editor are welcome. They must be typed, double-spaced and addressed to *The Tech*, P.O. Box 397029, Cambridge, Mass. 02139-7029, or by interdepartmental mail to Room W20-483. Electronic submissions in plain text format are encouraged, and may be mailed to letters@the-tech.mit.edu. All submissions are due by 4:30 p.m. two days before the date of publication.

Letters and cartoons must bear the authors' signatures, addresses, and phone numbers. Unsigned letters will not be accepted. No letter or cartoon will be printed anonymously without the express prior approval of *The Tech*. *The Tech* reserves the right to edit or condense letters; shorter letters will be given higher priority. Once submitted, all letters become property of *The Tech*, and will not be returned. We regret we cannot publish all of the letters we receive.

To Reach Us

The Tech's telephone number is (617) 253-1541. Electronic mail is the easiest way to reach any member of our staff. Mail to specific departments may be sent to the following addresses on the Internet: ads@the-tech.mit.edu, news@the-tech.mit.edu, sports@the-tech.mit.edu, arts@the-tech.mit.edu, photo@the-tech.mit.edu, circ@the-tech.mit.edu (circulation department). For other matters, send mail to general@the-tech.mit.edu, and it will be directed to the appropriate person. *The Tech* can be found on the World Wide Web at <http://the-tech.mit.edu>.

Airline Safety Precautions Seem More Pain than Gain

Column by Brett Altschul

STAFF REPORTER

Over the past several months, airline safety seems to have declined. A ValuJet plane crashed into the thick Everglades muck. TWA flight 800 went down over the Atlantic Ocean, and speculation of terrorism has been rife. Overseas, the airport in Bogota, Columbia has joined the one in Lagos, Nigeria on the unsafe list.

Thanks to all this furor, the Federal Aviation Administration has ordered a major increase in airport security. No luggage may be left unattended. Every adult who flies needs to show government-issued picture identification. It's all in the best interest of the American people, right?

A little dose of reality could do wonders for the whole situation. The American people suffer from wholesale "innumeracy," to use the word coined by mathematician John Allen Paulos. Sure, plane crashes are really impressive when they appear on the evening news, but more people are killed driving to the airport than die on their flights.

These security precautions are just a pain for travelers. When I flew to Colorado for my vacation this summer, the attendant at the check-in desk demanded to see my driver's license after I announced my age. (Of course, I could have just lied and said I was seventeen when she asked my age, since minors don't need to show any identification). I tried to explain that I don't have a driver's license, at which she practically told me I couldn't fly. I had to explain to her that I did have a passport, a perfectly valid form of airport identification.

Unfortunately, identification is almost the least of the inconveniences. The admonition not to leave bags unattended caused me unending trouble as I arrived at the Portland International Airport for my trip back to MIT. I had two suitcases, and two carry-ons. One of the latter, my viola case, is quite large and bulky; it just barely fits within the restrictions for carry-on luggage.

When I reached the check-in desk, after lugging these bags from the curb, I discovered

that an error had been made in my reservation, and I needed to talk to somebody else, in a different place in the terminal. Of course, until I took care of that, I couldn't check my bags. I asked whether I could leave my suitcases at the desk; the answer was a resounding "No!" Thanks to recent FAA security measures, all my luggage had to remain in my view at all times.

I resigned myself to dragging my possessions from one end of the terminal to the other. After doing just that, then having a 20-second conversation, I dragged my bags back to the check-in desk, where I was finally able to check my two bulkiest bags.

At the security station, I ran into another consequence of the beefed-up airport security. One of my carry-ons was pulled off the conveyor belt to be searched by hand. The woman emptied out the entire bag, making sarcastic comments about my choice of airplane reading. I can't imagine what sort of suspicious object they saw on the X-ray scanner. The only metal objects in the bag were a

pair of scissors and the sliding metal cover on a three-and-a-half-inch computer disk.

To an outside observer, the silliness of these measures is obvious. Security at many foreign airports is vastly superior to what we have in the United States. At Rhine-Mein airport in Frankfurt, Germany, all passengers need to state the location of any electronic devices in their luggage, and machine-gun-toting guards patrol the corridors. The whole atmosphere, while somewhat intimidating at first, is not nearly as annoying as the much less serious security measures in the United States. The German system works; since these measures were established, there have been no significant security problems at Rhine-Mein.

The "innumerate" atmosphere that pervades the United States provides us with a collection of aggravating and largely worthless security measures. Thanks to television images of frogmen diving through the Florida swamp, constantly in fear of hungry alligators, U.S. airplane travel is now more difficult than any time in the last 10 years.

Hove Misses Mark in His Criticism of *Institutve* Foundation

Guest column by John S. Hollywood

To an extent, we are grateful to Anders Hove for his surprise attack on the Institutve Foundation ["*Institutve* Lacks Credibility to Represent Student Affairs," Aug. 22]. We have run, with limited success, a series of publicity campaigns to try to introduce *Institutve* to the MIT community. With one column, Hove has introduced *Institutve* to the community as a whole. Of course, we would have preferred that our introduction be under better circumstances.

With that in mind, Hello. My name is John S. Hollywood G, and I am the president of the Institutve Foundation of MIT. We are a service group whose purpose is to provide students and the entire MIT community with information they can use to understand what's going on at MIT and to gain more control over their lives and over what happens at MIT in general.

We currently offer two services. The first, the student resource service, is a network of students who help other students find the MIT resources they need to get problems solved. We have about 20 members, and our "Quick Guides" to MIT resources are distributed through student-service offices. The second, *Institutve*, is an e-mail journal that gives the MIT community information about issues that affect students. We do give specific attention to what goes on "behind the closed doors" of MIT's administrative and faculty processes, so that students (and the MIT community in general) won't be left in the dark on what Hove's "Building 7 Bigwigs" are doing.

Unfortunately, Hove apparently has decided that the e-mail journal represents a threat to students on campus, and attacked us with a column that contains a series of misrepresentations and untruths. One of MIT's most important principles is that students should think for themselves. Don't let us — or Hove, for that matter — tell you what to believe. With that in mind, we'll look at Hove's charges one at a time.

Coverage. Hove attacks us for heavily covering administrative business and focusing on student life issues. Now, he is correct to say that our coverage does tend to focus on student life issues. That is because that is what gets sent to us, and what we have access to.

Because *Institutve* is a volunteer service group, whose members are involved with many other activities, we are unable to do the same level of search reporting that we might want to do. Consequently, we are dependent on information that we hear about. We have asked our readers repeatedly to send in any information on student issues — especially on things that academic affairs and that student groups are doing. Hove is welcome to help us find stories about interesting things that students are doing. We would greatly appreciate being able to run them.

As far as the fact that we have a large focus on administrators, Institute committees, and other "campus improvement efforts" — we plead guilty as charged. We try to supplement things that other publications don't cover. For whatever reason, this has meant covering these efforts before they lock their decisions into concrete.

We believe that allowing students to see what these groups are thinking about, and giving them the information on how to influence the processes (all these articles include information on how to reach these efforts) gives students unparalleled control over projects that could affect their lives. Honestly, we are surprised that other publications do not run similar articles.

Conflict of interest. Hove accuses sources of writing articles. To save time, let me say that this is absolutely true. We routinely block copy report results, proposals, and administrative memoranda directly into our news section. Further, we're proud of it. Remember, a big part of *Institutve*'s mission is to let you know what MIT's various administrative efforts are doing that could affect your life. Now, who is in the best position to tell you what an effort is thinking about doing to your life: a reporter or columnist, or the members

of the effort themselves? We believe that you should see the clearest representation of the facts as possible and going straight to the primary sources is the best way to do it.

Anonymity. Hove attacks us for not signing articles and not having a masthead. We admit that we should have signed articles from the beginning, but this error was pointed out months ago, and we've been signing them since then. (Note that unsigned editorials represent the consensus of the *Institutve* staff, just like *The Tech*'s editorials.) As for the masthead with our staff — it's printed at the bottom of every e-mail issue. It is quite large; we are surprised Hove missed it.

Editorial Policy. Hove implies that we slant our editorials in favor of the administration. Interestingly enough, he doesn't mention any specifically. Since he won't give you examples, we will. We've run articles calling for embargoed surveys to be released, holding off on a \$280 parking fee hike, and urging that

our Analysis section. If that makes us lackies, then I suppose we have no defense.

"The be-all and end-all." Hove accuses us of presenting ourselves as the be-all and end-all of MIT student affairs. This is not true. Our statements say simply that we try to provide useful information on developments that could affect students' lives, with a special emphasis on what's going on behind closed doors. And, as stated, our own editorials have admitted that our coverage is far from flawless and have asked for help in improving coverage.

Similarly, Hove implies that we misrepresent ourselves as the voice of the student body. We have never made such a claim. There is only one voice of the students, and that is the students themselves. Period. The only time we ever claim to represent the students on something is when we have survey or referendum data to back it up.

Everything else is presented as the opinions of the editorial writers themselves. If our editorials are influential, it is because they are well-researched and logical.

Hove threw a lot of charges at us, and I probably missed some of the minor ones, but I hope I have clarified things a little. As I said, though, don't take our words for it; check out *Institutve* for yourself, and see what you think.

One final note: Hove makes the claim "that anyone holding the belief that students have power and influence, or that they ought to have more power to manage their own lives, would find scant evidence in *Institutve*." We disagree. Most of the efforts we cover are joint administration-faculty-student efforts. It's hard to see how students aren't involved there. The worlds of students and administrators are not separate; rather (as common sense tells us) students are profoundly affected by administrative decisions. One of our major goals is to let students (and the entire community) know what improvement efforts are going on that could affect their lives and how students can get involved with them. We believe that knowledge is one of the best paths to empowerment. We are deeply saddened if Hove does not agree.

There is only one voice of the students, and that is the students themselves. Period.

reports by students and others not be thrown into a file cabinet and ignored. We've also proposed detailed plans on how to end dormitory overcrowding and how MIT can support student leadership. Not much kowtowing here.

Now, it is true that we spend a great deal of time on our editorials — we check our facts and arguments carefully. We even vet them to others to ask them for their opinions and to check facts before we run them. Concerning topics, we do try to be constructive — we try to share ideas to help improve campus life rather than break things and ream people. We also try to treat everyone with respect in our editorials; flames, obscenities, and *ad hominem* attacks are things you won't find in

Rush System Unfairly Favors Fraternities over Dormitories

Karlo, from Page 4

shortage of on-campus housing will become even more dire. To ensure that fraternities can get new members, the administration starts fraternity rush a full day before dorm rush, ensuring that many freshmen guys never even go to dorm rush events. And it

The MIT administration works hard to ensure a successful fraternity rush.

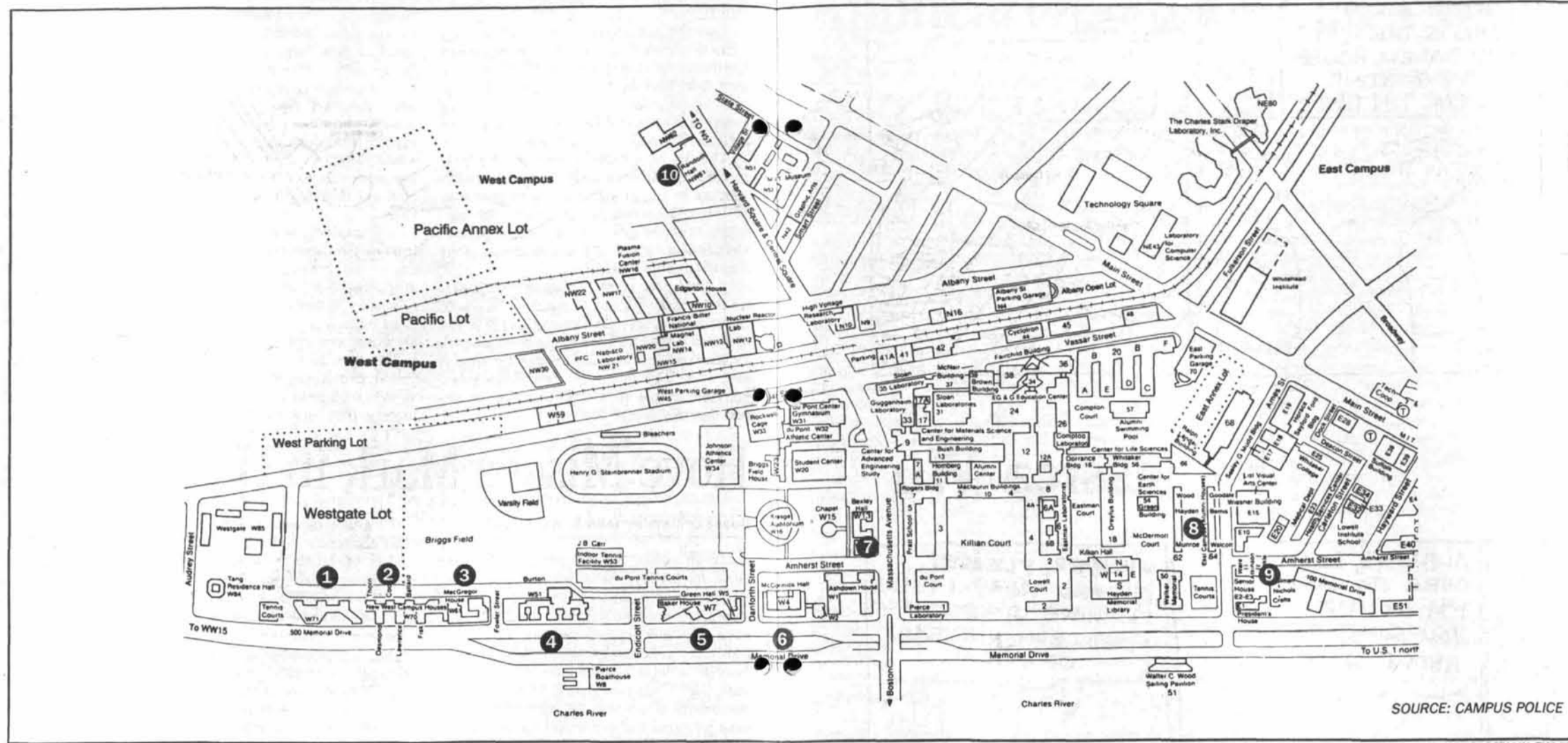
keeps the student activities, which represent a tremendous option for on-campus life, entirely out of the picture during rush. Finally, while fraternities bring every single one of their members back to campus to help woo freshmen during rush, the dormitory system is only allowed to bring back a tiny fraction of their residents to help promote that aspect of campus life.

The tremendous advantage given to fraternities during rush, and the incredible amount of work that they pour into it, should give freshmen pause during rush. If fraternity life is so much better than life in the dormitories, why aren't students at MIT allowed to experience dorm life for a term, or a year, like at other schools? And why are dorms not allowed to compete for the minds of freshman on an equal footing with the fraternities? Is the system of dorm rush meant to ensure that you, the freshman, makes the best decision for yourself, or is it meant to herd enough students into the fraternity system to keep it alive?

I'm sure that for many of you, you've already made up your minds about whether or not you intend to pledge a fraternity. If you're unsure of what to do, I urge you to go and take a look at the dormitories. No, they're not selling as hard as the folks across the river. But often the product being sold the hardest isn't the best for you — it's just the best commission for the salesman. You're about to make a big purchase that will be with you for many years. Think carefully, and look hard. And remember: buyer beware.



Dormitories' Unique Personalities Accommodate Diverse Undergraduates



SOURCE: CAMPUS POLICE

GRAPHIC BY DAVID D. HSU AND JOSH SILBERMAN—THE TECH

Next House

1

Next House is divided into four floors. Each floor has two wings, said Rush Chair Anshu Sinha '98. There is one kitchen in the basement, and several bathrooms per floor.

One section of a wing is all-female, but all other wings and bathrooms are coed, Sinha said.

Next House has a dining hall and a convenience store and a microwave oven in each wing, along with other facilities, she said.

Next House is pretty social, very friendly, and "almost everyone knows each other," Sinha said.

During rush, Next House is serving food, giving tours, playing volleyball, and holding parties.



TECH FILE PHOTO

Next House.

MacGregor House

3

MacGregor is divided into nine entries, each of which is subdivided into suites of six to eight people, said House President Suma Dutta '97. Each suite has a lounge, kitchen, and bathroom.

One entry is all-male, and suites can be single-sex depending on the needs of the residents, Dutta said.

There are several dorm events during the year, but there is a lot of social interaction on the suite level, she said. "We have a small community spirit within the context of the whole dorm."

MacGregor's facilities include a seminar room, dark-room, and television lounge. MacGregor also houses a convenience store.

During rush, MacGregor will have a barbecue, carnival, and a plethora of softball games, she said.



TECH FILE PHOTO

MacGregor House.

By Jennifer Lane
CONTRIBUTING EDITOR

Amid the steak and lobster, paint and glitter of sorority and fraternity rush, many freshmen will forget to visit dormitories.

But regardless of preparation, the majority of freshmen will enter the housing lottery starting this afternoon.

To help with the decision, *The Tech* has compiled a brief description of the 15 living groups listed in the housing lottery, each with its own distinct personality and setup.

Cristián A. González and David D. Hsu contributed to the reporting in this story.

New House

2

New House is divided into nine living groups. Language houses and Chocolate City make up five of the houses, said Michael S. Allen '97, New House rush chair.

There are no single-sex housing options in the four remaining numbered houses, Allen said.

There are kitchens on the first floor and some others in various locations on other floors, he said.

New House is the only dormitory with air conditioning and offers lounges, terraces, a pool table, and other facilities.

During rush, which is going well for New House, freshmen will be fed brunches, dinners, and will be able to play in New House's "playroom," Allen said.

Chocolate City is a group of 28 brothers living within New House. All residents live in single rooms, said Rush Chair Ian A. Pancham '97.

Chocolate City residents have two kitchens, three lounges, and other equipment for common use, Pancham said.

Chocolate City is looking for freshmen males who would promote the advancement of African-American men on campus, Pancham said.

Although Chocolate City is a historically black living group, Pancham said that when residents look for new members, they disregard race and religion.

During rush, Chocolate City will be holding socials and mixers and having a party each night, he said.

French House is a group of 26 people located in New House. They have a fully-equipped kitchen and cook dinner six nights a week, said Vice President of French House Austina M. Vainius '97.

Freshmen interested in living at French House should speak some French and be prepared to speak French at all house events including meetings, dinners, and study breaks, she said.

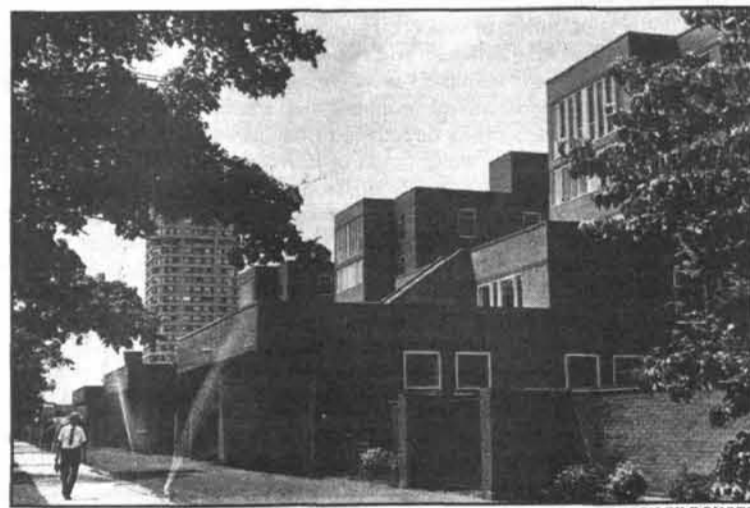
French house is a quiet, friendly place, she said. "We're like a family."

During rush, French House is hosting a number of events, including kite-flying, make-your-own pizza, and movie nights, with a mandatory meeting at 10:30 a.m. tomorrow for interested freshmen, she said.

German House is a group of 21 people living within New House. All residents live in single rooms, said Rush Chair Dena E. Cohen '99.

Interested freshmen should have a strong desire to learn more about German language and culture, she said.

During rush, German House residents will be feeding freshmen breakfasts and dinners as well as a Vienna Cafe.



TECH FILE PHOTO

New House.

Russian House is a group of about 18 people in New House, with numerous other "social members," said Christopher C. Stratton '97, house president.

On occasion, sections of the house have been all-female or all-male, said Stratton.

Russian House residents share a large kitchen and eat together five nights a week. Each resident helps with dinner in some way, Stratton said.

Interested freshmen should have a strong interest in the Russian language and culture, he said.

Russian house is hosting numerous events during rush, including a traditional Russian dinner tonight.

Spanish House is a group of 24 people living within New House. Residents share a large kitchen, said Amilcar Fuertes '98, rush chair.

Residents have varying levels of fluency in Spanish, but all interested freshmen should have a strong interest and motivation to learn about the Spanish language and culture, Fuertes said.

During rush, Spanish house is giving dancing lessons and tours of Boston.

Interested freshmen must attend at least one of Spanish House's evening informal meetings during rush.

Bexley Hall

7

Several Bexley residents near Bexley's desk phone had "no comment." One student said that Bexley had "nothing" to offer freshmen.



TECH FILE PHOTO

Bexley Hall.

Burton-Conner House

4



INDRANATH NEOGY—THE TECH

Burton-Conner House.

Burton-Conner is made up of nine different floors, five on the Burton side, and four on the Conner side. Each floor has a unique personality and is divided into suites, said Burton-Conner Rush Chair David M. Shapiro '97. Each suite has a bathroom, lounge, and kitchen.

Burton-Conner has several facilities including a weight room, music room, dark room, library, a big-screen television and VCR, video games, and a pool table, Shapiro said.

Most suites are coed, but all-female or all-male suites are available if requested early, he said.

Shapiro categorized Burton-Conner as a very social dorm. There are many dorm-wide events during the year as well as events that each floor sponsors.

During rush, Burton-Conner will be having an "infinite barbecue," several parties, a movie marathon, and breakfast for early-risers, Shapiro said.

Senior House

9

After its summer face-lift, Senior House is now divided into floors instead of suites, said Raymond Q. Luk '99, a Senior House rush chair.

There is a kitchen on every floor, and two to four bathrooms per floor, Luk said.

The basement of Senior House, which will house facilities for residents is still under construction, so plans for a band room, weight room, and storage space are still in the works, he said.

Currently, there is no single-sex housing in Senior House, but single-sex requests could be accommodated if a group of people wanted it, Luk said.

Senior House is a tolerable, laid-back place with residents who "let people live the way they want to live," he said.

During rush, Senior House residents will be mostly hanging out in the courtyard and watching movies, he said.



LAN CHAN—THE TECH

Senior House.

Baker House

5

Unlike other dormitories, Baker is not divided up by floor or suite. "Anyone in Baker is a Bakerite," said Baker Rush Chair Misha K. Hill '98.

Consequently, there are no sections that are single-sex, and all bathrooms are coed, he said.

Baker is a very social and friendly place, Hill said. There is always stuff going on, from talking and studying to trips, parties, and social events, he said.

Baker has a dining hall which serves dinner four nights a week, but purchasing a meal plan is not mandatory, Hill said.

During rush, Baker residents will be playing volleyball, hosting a barbecue, and holding a virgin happy hour, Hill said.



INDRANATH NEOGY—THE TECH

Baker House.

East Campus

8

The largest dorm on campus is arranged into halls. Some halls have single-sex bathrooms, depending on the needs of the residents, said Rush Chair Stephen V. Baird '97.

There is a kitchen on every floor and a sink in every room, he said.

East Campus residents are an "eclectic sort of group" where a lot of diverse people can fit in, Baird said.

East Campus offers a variety of facilities for residents, including a weightroom, pool table, and a well-equipped desk where residents can check out a wide variety of things, he said.

During rush, East Campus will have live bands, a carnival, dance party, a cafe, and the "oddball olympics," Baird said.



INDRANATH NEOGY—THE TECH

East Campus.

McCormick Hall

6

The only single-sex dorm on campus is made up of two towers. One tower is divided into suites and one into floors, said Christina L. Kalb '98, McCormick rush chair. Each suite or floor shares a kitchen and a bathroom.

McCormick has a number of facilities for its residents, including a gym, dance room, and several pianos.

McCormick is a very friendly and clean place as well as a little on the quiet side, Kalb said.

During rush, McCormick is feeding freshmen everything from S'mores to wings and fajitas in addition to watching lot of movies.



TECH FILE PHOTO

McCormick Hall.

Random Hall

10



TECH FILE PHOTO

Random Hall.

Random Hall is arranged into halls with four double rooms and six single rooms, said Rush Chair Lorraine E. Hertzog '99.

There are two all-female floors and four all-male floors in Random Hall, she said.

Random is a smaller dorm, with 93 residents. Its small size makes for a casual atmosphere and very friendly people, Hertzog said.

Random Hall is located on Massachusetts Avenue near Central Square, a location that allows residents to take advantage of restaurants and the T stop in Central Square, Hertzog said.

Random offers several facilities including a rooftop and laundry machines that are hooked up to the World Wide Web, allowing residents to know from their rooms whether there are open machines, Hertzog said.

During rush, Random Hall will be having rooftop movies in addition to playing games and making liquid nitrogen ice cream, she said.

Off Course

By Hugo



Dammed for Life

by Jessica Wu



Smiled at by
one too many
sorority chicks?

Grabbed by
one too many
frat boys?

BORED BY
ONE TOO
MANY DORMS?

Confused by one
too many ILGs?

Yes? Then...

JOIN



Write about it.

Come to room 483 in the Student Center, or call x3-1541.
Ask for Stacey, and tell her you're m'okay.

East Campus Dorms Target Frosh Women

Women, from Page 1

currently the only all-female dormitory on campus. The dormitory is perennially oversubscribed.

There is a need to expand female housing since only 60 of the 225 women who chose McCormick could be placed there last year, said Margaret A. Jablonski, associate dean for RCA. Approximately 100 additional all-female accommodations would have been required to satisfy the demand last year.

This year, there will be 50 slots available at McCormick, said Angela Kwan '97, McCormick president. "The freshmen who have visited have been pretty enthusiastic," she said. Kwan expects rush to go very well again this year.

"McCormick will have quite a number of requests, but we have found that people request McCormick not only for single gender, but because it's physically very nice," Bernard said.

"Freshmen generally pick McCormick because it is the cleanest dorm on campus and not really because it's single-sex," Kwan said. "But being single-sex is still a factor."

RCA works with dormitories

RCA hopes to work with room assignment coordinators from each dormitory to make more all-female housing areas available on both the east and west ends of campus.

"RCA is looking for more single-sex solutions," said Christopher H. Barron '97, president of Dormitory Council. "Dorms realize that with more incoming students, single-sex housing demand is increasing from year to year."

RCA has worked with room assignment chairs from Next House and Random Hall among others, Bernard said. "They have areas in their halls where they choose to have single-sex accommodations, he said. However, "we are not mandating any new halls to be single gender."

"Currently, there doesn't seem to be any room in the system to accommodate more single-sex housing," Barron said. The undergraduate housing system needs physical expansion to accommodate the demand, he said.

RCA must determine needs

This summer, RCA was supposed to send a survey to incoming freshmen about different aspects of single-sex housing, according to Dhaya Lakshminarayanan G, last year's Dormcon president. The survey was supposed to find out not only whether students wanted wholesale single-sex housing, but if they wanted single-sex options in the form of entries, halls, suites, or bathrooms, she said.

"Nobody really knows what kind of single-sex housing students really want," Lakshminarayanan said.

"Maybe students don't realize that we can easily arrange to have a single-sex bathroom," she said.

"RCA met with Senior House to discuss single-sex options," Barron said. If residents want to live in a single-sex group, it would be possible for them to live together at the end of a hall, he said. "It will give a semblance of a single-sex hall, though not technically single-sex," he said.

Parents will have to be prepared for the reality "that not everybody will get all-female housing. We must be straight with parents [and] ask students what they are looking for," Lakshminarayanan said.

RCA searches for new options

"We could build another dorm but not just because we need single-sex housing," Lakshminarayanan said.

RCA has indicated that since no all-female housing exists on the east side of campus, that area may be emphasized in future plans for single-sex housing.

"Previously we've had lots of problems attracting women to live on the east side of campus," Lakshminarayanan said. The situation has improved, however, as east campus has started to portray its dormitories as attractive options for women, Lakshminarayanan said.

The women's event held Friday evening for East Campus and Senior House was one example of this effort.

"Women's event was great in that we got women to see that living at the east was another option, and not just another mini-McCormick," Lakshminarayanan said.



Freshmen women meet with Sigma Kappa sisters at an informal event last night at the barbecue pits near the Johnson Athletic Center. Earlier in the evening, rushees received invitations to the various informals held by the sororities as well as to tonight's theme parties.

Burton-Conner, EC, Next To House Frosh Crowds

Crowding, from Page 1

Conner House, East Campus, and Next House. "Those are the places that have received most of the crowding in the past," he said.

"In the past, Next House has received a significant number of crowds," said Sarah B. Tegen '97, the housing chair at Next House.

Tegen characterized the situation as unfortunate but not overly onerous for the dormitory. "All our freshmen live in crowded rooms... but I don't foresee any adverse effects," she said.

East Campus Vice President Stephanie A. Jenrette '97, echoed

Tegen's sentiments. "It seems like we're crowded every year," she said. "We have a certain number of rooms that are assigned to be doubles."

"We've always got about 30 to 35 people crowded here," Jenrette said. "It would be big news if we had to fit in more than that."

Bernard also said that no crowding was planned for Senior House, despite its loss of beds during renovations over the summer. "RCA has no plans for there to be crowding in Senior House this year," he said.

Rain Alters Some Events

Rush, from Page 1

we just had everyone participate at the house events. Rush has been pretty par for the course so far," she said.

"We were afraid of people not coming because of the rain, but it seems that people have been showing up anyway, so it hasn't been much of a problem," said Candace L. Davias '99, rush chair for Random Hall.

The sororities weren't very affected by the morning rain either. "Since it's indoors, it seems pretty successful. The freshmen are very excited and there's a lot of energy. It's been going very smoothly," said Panhellenic Rush Chair Wanda A. Chin '97.

EC rush affected by CP problems

Other factors have been affecting rush. "We had some big problems with the Campus Police turning off our Green Building lights," said Stephen V. Baird '97, rush chair for East Campus.

"It was in the pattern of 'EC' until 9:30 p.m." Friday night, at which point CPs came to turn off the lights, Baird said.

"We got voluntary consent for all of it" from people in the offices, Baird said. Baird said that there were plans to put the lights up again yesterday but that CPs refused to allow it.

East Campus also had problems with CPs over the live bands they hired to play at a rush event.

The bands had to be moved from outside and Walker Memorial because of the rain, Baird said.

CPs arrived and forced EC to stop the bands. "They didn't have to shut down the whole event," Baird said. Baird estimates EC lost about two hours of rush time and about \$600, more than 10 percent of EC's rush budget.



Because of early showers, East Campus moved its live band into Walker Memorial yesterday morning. Campus Police later forced them to leave Walker because of confusion about the live band registration process during rush.

Frosh Can Ask for Invisibility On Clearinghouse System

Alternatives, from Page 1

the Residence and Orientation Week Committee.

Frosh can hide on Clearinghouse

Freshmen have the option of removing themselves from Clearinghouse, the computerized system at FSILGs that tracks freshmen.

"If a freshman wishes not to be seen, then all he needs to do is come up," to the Office of Residence and Campus Activities, said Associate Dean for RCA Neal H. Dorow, who serves as adviser to fraternities, sororities, and independent living groups.

The option to be made invisible "is something that people know about," said Jonathan Z. Litt G, who is administers Clearinghouse. The option is listed on page 31 of

The Hitchhiker's Guide to R/O as well as in some other RCA literature.

If freshmen choose to hide on Clearinghouse but still want to rush, getting messages to them can be difficult, and "we explain that to them," Dorow said. "We just want to make sure that they make an informed decision."

One freshman has chosen to hide on the system this year, Dorow said. "The person this year is actively rushing fraternities, and he was being interrupted too many times when he was rushing."

"It was not a case where he was trying to hide from one fraternity" but rather that "too many fraternities were trying to talk to him," Dorow said. "It was disruptive."

Erik S. Balsley contributed to the reporting in this story.

Read *The Tech* online
before it hits the presses!

<http://the-tech.mit.edu>

The Tech
Established 1881

Residence

All day: **ΦΚΘ**. Our house? Well, it's still cool, and you still have time to check it out. So hurry! We'll be playing some ball and watching some ball, and you might still be able to catch a glimpse of the Wild Talon! Need a ride? Call 437-7795.

All day: **ΑΔΦ**. Come sailing with ΑΔΦ on the Charles River! Don't love the water all that much? **Ultimate Frisbee!** Rollerblade from Cambridge to Boston and back with the self-proclaimed world-famous Rolling Power Vacs! Just call 576-ULTIMATE-FUN (576-2792) for a ride.

All day: **Epsilon Theta**. Visit Epsilon Theta's amazing stuffed pets! See Gauss, Fourier, Maxwell, Schroedinger, Samantha Bunny, Elmo, George, Nancy, Chulhu, Vector, Doppler Bear, Godzilla, and the rest of the menagerie. Oh, wait... Godzilla's just Army. cops. Anyway, call 734-9211 or MIT x3-8888 for a ride.

All day: **Sig Ep**. Hot Tubs. Relax in one of the hot tubs on our back lot. Jiu-Jitsu. Learn some elementary Jiu-Jitsu techniques from SigEp brothers, including Sensai Jason McCarthy Rappelling. Hang out on one of our 3 roofdecks and rap off the side of our house. Food. We have plenty of it.

All day: **ΣΝ**. TOURS OF THE SIGMA NU HOUSE!

All day: **Fenway House**. Too old to rock and roll, too young to dye? NEVER! Tie-dyeing at Fenway continues... as does the FFWMZMDFRE. Call for a ride: 437-1043.

All day: **Spanish House**. SPEAK SPANISH? WANT TO LEARN? COME OVER FOR A TOUR AND FIND OUT WHAT LIVING AND EATING WITH 30 PEOPLE IS LIKE. DELICIOUS FOOD AND GOOD COMPANY AWAIT YOU AT LA CASA!!

All day: **Theta Chi**. bl THETA CHI. We have things going on all day. Call us anytime! bl 267-1801.

All day: **WILG**. Meet the women of WILG! Plenty of everything to do - or nothing, if you prefer - so stop by anytime. Feel free to call 253-6799 or 354-1263 for a ride. No invitations necessary!

All day: **Next House**. surprise surprise- we're still playing beach volleyball at next! okay, maybe it's not exactly sand... well, there is no grass on the court. okay, fine-it's just dirt- come join us for DIRT volleyball.

All day: **New House**. NH Playroom (noon-midnight) If you are frazzled from Rush or worn out by the hot weather, find the cure in the air conditioning of New House. Watch our board games, color on our walls, play our TV, or just hang out with us all day.

All day: **pika**. Tired? Come over to pika and relax on the velvet-striped couches. Wired? Play with electrical components. Jumpy? Jump down the stairs while reciting the alphabet backwards. Hungry? Eat here. Find out what it is like to eat tofu. Find out what it is like to eat meat. Artistic? Tie-dye. Blow bubbles. Beat on pots and pans. Tour the house. Cook. Talk. Find out what it is like to live in a co-op. Call 492-6983 anytime for a ride over!

5:12a: **Student House**. You can still sleep, we'll start breakfast only at 9AM!

5:17a: **Random Hall**. Starting to feel a little sleepy? Captain Jolt would tell you that sleep is a bad habit to be broken. Caffeine certainly helps, and we've got all you need.

6:17a: **Random Hall**. Lorraine's favorite all-nighter tradition, a sunrise trip across the river to IHOP. Just don't ask Candace about BHT's.

7:17a: **Random Hall**. Breakfast time! If you missed both the Orange Tour Breakfasts AND the IHOP run, come on over and try Crepes a la Candace.

7:30a: **Baker House**. You're up already? Well so's Jen, so come on over and go running with her. By the time you're back a few more of us might be up and we can have some breakfast.

7:55a: **Epsilon Theta**. DING! FIRST BELL! Breakfast in five minutes.

7:56a: **Epsilon Theta**. Elliot, could you please stop ringing that <censored>bell?! It's so early!

8:00a: **ΦΚΘ**. Start off your morning right with a hearty homestyle breakfast at PKT with all your helpings of eggs, bacon, sausages, pancakes, and more. For food, call 437-7795.

8:00a: **ΑΔΦ**. **ΑΔΦ Stuffed Omelet and Pancake Breakfast**. Ready for some food? It's ready for you! Come to ΑΔΦ for an amazing flapjack feast. Call 576-FEEDME (576-2792) for a ride over.

8:00a: **Epsilon Theta**. DING! DING! BREAKFAST IS SERVED! Omelettes made to order! Call 3-8888 for a ride.

8:00a: **La Maison Française**. Petit Déjeuner. Des croissants, des bagels, des beignets, et d'autres choses. Sème étage de New House 6.

8:00a: **Sig Ep**. Breakfast Eat breakfast food.

8:00a: **AETI**. If you're one of those early risers on a Sunday, come on over for the best breakfast in town. Eggs, omelettes, pancakes, bagels, french toast, muffins, you name it, we've got it! Women welcome (as always). Call 247-3170 for a ride.

8:00a: **Theta Chi**. bl THETA CHI. Still not too late to be looking around. Come meet our brothers and enjoy a big breakfast to kick off your third day of rush. Call bl 267-1801.

8:00a: **Burton-Conner**. Rush rush rush. It's always rush with you. Never time to smell the roses. You just woke up, and off you go. Can't you even get breakfast at Burton? Paintball??

8:00a: **WILG**. Feel like going for a jog? Come on over to WILG for some Exercise. We'll even match your pace! (That is, if you're not too fast for us!) Give us a call at 354-1263 or 253-6799.

8:00a: **Next House**. PITSTOP!! DINER BREAKFAST!! come to Next house for a scrumptious breakfast featuring fine french toast, bagels, cereals and more!

8:00a: **Phi Gamma Delta**. early morning tasties. 262-3529

8:00a: **Phi Deltas**. Belgian Waffle Fest. Belgian waffles smothered with your choice of delicious fruit compotes. Need we say more? Save that energy, 'cause you'll be needing it once we head out on our Canoe Trip, promising to be the wildest and wettest adventure ever on the Concord River.

8:01a: **Epsilon Theta**. WHAM! The person responsible for the incessantly ringing bell has been sacked.

8:01a: **La Maison Française**. Breakfast: Croissants, bagels, donuts, and more. 5th floor of New House 6.

8:01a: **WILG**. Wander over to WILG and wonder at our Waffle Breakfast. Call 253-6799 or 354-1263 anytime.

8:03a: **pika**. Awake bright and early on a Sunday morning? Well, you must be crazy. But that's ok, cause

so is Graham. You should eat sugar cereal together. Froot, Crunch, and Smacks. UmmmNummNummNumm.

8:17a: **ΑΔΦ**. **ΑΔΦ Stuffed Omelet and Pancake Breakfast**. Get moving, sleepyhead! It's time for Uncle Bleck's patented Monster Pancakes! Pour on the syrup and the butter, enough to make you scream. Call 576-PANCAKE (576-2792) for a ride.

8:17a: **Random Hall**. Make huge bubbles on our roofdeck, and surprise unsuspecting pedestrians on the street below. Or stop by the lounge for breakfast and cartoons.

8:30a: **Spanish House**. WAKE UP!! TAKE A SHOWER!! SPANISH HOUSE WILL BE COOKING BREAKFAST IN AN HOUR!!

8:30a: **Phi Gamma Delta**. Juices, muffins, danishes...and the grill is still hot. Call to order: 262-3529

8:36a: **Number Six Club**. Did you miss it yesterday? Be sure you don't today! Jim's crepes, omelettes, pancakes and everything else that make this a complete breakfast!

8:45a: **Spanish House**. OUR MEETING IS IN 15 MINUTES!! DON'T MISS THIS OPPORTUNITY TO MINGLE WITH LA CASA MEMBERS AND FIND OUT WHAT LIVING HERE IS REALLY ALL ABOUT!!

9:00a: **Epsilon Theta**. It's early, so sleep in at ETI! We guarantee no-one scary will wake you up. Remember that, Barry. NO scaring the freshthings.

9:00a: **ΣΝ**. Breakfast cooked by our very own Olympic Torch Bearing Brother - SIGMA NU!

9:00a: **Phi Beta Epsilon**. Start your day off right with a delicious breakfast prepared by our fabulous chef!

9:00a: **Spanish House**. HALF AN HOUR UNTIL OMELETS AND FRUIT SALAD AT LA CASA!!!

9:00a: **Senior House**. Heavy Metal Breakfast. What better way to wake up than with pancakes and Nine Inch Nails.

9:00a: **Pi Lam**. Did you miss Mr. Liu's world famous pancakes yesterday? Well, that's not a problem, because today we have more pancakes, french toast, eggs, and other breakfast foods. Stop by 450 Beacon Street, or call BOS-ROCK for a ride.

9:00a: **Phi Gamma Delta**. Championship round of Fiji Soccer! 262-3529

9:00a: **Baker House**. What are you doing up so early? Well, some of us are up too so come on over for breakfast. We've got dozens of bagels and all the milk and OJ you need to wash them down!

9:00a: **XΦ**. Blue Berry Pancakes...hmm pancakes.

9:00a: **Student House**. WAKE UP! We have started having breakfast at Student House! Come by and eat what you wish, just the way you want it! Call 247-0506 or 247-8172 for a ride!

9:00a: **East Campus**. Dim Sum in Talbot. Get it super quick like before it all goes.

9:01a: **East Campus**. There may still be Dim Sum left...if you're lucky.

9:02a: **WILG**. In the WILG living room we prefer to think of Sunday as Saturday: The Sequel. And today's **CARTOONS** are even better - we'll skip the commercials. Call us at 253-6799 for a ride!

9:09a: **MacGregor**. TOURS! All day long.

9:11a: **pika**. Batimiki and TieDye! Let the artistic juices flow and make a big mess. Hot melted wax, emphatic colours, and even a ride. Call B492-6983

9:17a: **Random Hall**. Play your favorite games, we promise we'll let you win.

9:22a: **TEΦ**. Paul Bunyan & Babe Breakfast. A hearty breakfast sure to give you enough energy to do something. The number is 262-5090. Call Now.

9:23a: **Fenway House**. Is that French toast made with real loafed French people? Come find out. French Toast is a Jessica at Fenway House. 437-1043.

9:30a: **ΦΚΘ**. Take a relaxing cruise on the Harbor to George's Island where you can join us for some frisbee, volleyball, soccer, or football. And then, you could always explore the famous fort that resides there if you're not in the mood for sports. Need a ride? Call 437-7795.

9:30a: **Spanish House**. FEELING HUNGRY? LET SPANISH HOUSE SERVE YOU UP A DELICIOUS BREAKFAST. CARL'S MADE-TO-ORDER OMELETS AND KATHRYN'S FRUIT SALAD. 1ST FLOOR OF NEW HOUSE 3.

9:30a: **Phi Gamma Delta**. The brick-front of our house is rated 5.11. call 266-2325

9:30a: **East Campus**. Come by and pick up our super duper fact sheet at the welcome desk. They're going like hotcakes!

9:34a: **pika**. B.Y.O.B.O.T.M. Bring Your Own Batik or Tiedye Materials. or use our t-shirts. call for a ride 492-6983.

9:35a: **pika**. Pflagh. Rargle. Naft. Yorkug. Words fail me. pika. Come over! 4926983

9:35a: **East Campus**. Come get hotcakes! They're going like EC Fact Sheets.

9:44a: **TEΦ**. I said NOW!

9:59a: **ΑΔΦ**. Don't go on some Megalame walking trip! Be there for our killer blading expedition! Call ΑΔΦ at 576-ABEC-7 (576-2792) for a ride.

10:00a: **ΑΔΦ**. Sailing, Tennis, & Blading. Sound like fun? Come on down to ΑΔΦ and join the Rolling Power Vacs for a blading expedition to Boston and back, or sail with Bill and the gang, or play tennis, or Ultimate, or... heck, call 576-PLAY-SPORTS (576-2792) for a ride.

10:00a: **Epsilon Theta**. CARD GAMES YOU'VE NEVER HEARD OF! Ever played Dalmut? What about Once Upon a Tale? Have you played Chulhu, the Mercifully Uncollectible Card Game? Come try it out at ETI! Call 3-8888 for a ride.

10:00a: **Spanish House**. BREAKFAST IS THE MOST IMPORTANT MEAL OF THE DAY. SO COME ON OVER WHILE WE STILL HAVE OMELETS AND FRUIT SALAD LEFT!! 1ST FLOOR OF NEW HOUSE 3.

10:00a: **Theta Xi**. Join us for a Continental Buffet Breakfast - there's nothing like coffee and pastries to start Sunday night! 266-2827

10:00a: **Burton-Conner**. No bids yet? Poor you. Visit Burton-Conner. We'll be showing movies and giving tours. We'll also have food all day.

10:00a: **Next House**. Come on over- breakfast is still served!

10:00a: **Phi Gamma Delta**. Eat up! You'll need lots of energy for BATTLE DEATH CANOES. 266-2325

10:00a: **German House**. Pancake Breakfast If pancakes tempt your palate, come join German House for a genuine pancake feast. Start with banana, blueberry, or chocolate chip pancakes, and then add scrambled eggs and fruit salad. Wunderbar!

10:00a: **Phi Deltas**. CANOE TRIP. The wildest and wettest adventure ever on the Concord River! Bring a towel (just in case...) We'll stop down the river to have a picnic and play some soccer.

10:00a: **New House**. Brunch (10am-2pm) Have a hearty meal before a tough day of Rush in the comfort and air conditioning of New House.

10:00a: **pika**. EARLY MORNING RUNNING WITH STEPHEN. do a dry run of the Boston Marathon. or the 3-mile bridge circuit. or just laugh at the folks who move so much so early. 492-6983 and we'll pick you up so you can run?

10:01a: **ΣΝ**. CRANE'S BEACH Trip with SIGMA NU Come along for a day in the sun and a lot of FUN - SIGMA NU style!

10:01a: **German House**. Fruehstueck Kommt und isst unsere koestliche Banane-, Heidelbeer-, und Schokoladeplanduechen zum Fruehstueck. Spricht auch ein wenig Deutsch mit uns.

10:07a: **Epsilon Theta**. It's Rush! (tm) The Collectible Card Game! Have you ever played it? Neither have we! Come help Will invent it! Call 3-8888 for a ride.

10:12a: **Student House**. We're still having breakfast! Actually, I think most of us is still sleeping. But you can come by, and make your own breakfast! If you are of the sleepy kind, you can wait, because WE WILL HAVE BRUNCH AT 11! Call us at 247-0506 or 247-8172, when you want to drop by for a ride!

10:15a: **Spanish House**. HURRY OVER TO SPANISH HOUSE BEFORE ALL THE FOOD IS GONE!! OMELETS, FRUIT SALAD, AND PLEASANT COMPANY ON THE 1ST FLOOR OF NEW HOUSE 3.

10:17a: **ΑΔΦ**. Come sailing with ΑΔΦ on the scenic Charles River! Join us as we dodge the river's searing acid belches and attempt to navigate to safely under Bill's steady hand! Just call 576-CLEAN-RIVER (576-2792) for a ride.

10:17a: **Random Hall**. Make a accurate, scale gingerbread replica of Random complete with plenty of goodies to snack on.

10:18a: **AETI**. So you like to sleep late on Sunday? No problem...come on over for breakfast, complete with eggs, pancakes, toast, bagels, juice, and lots more! Women welcome (as always). Call 247-3170 for a ride.

10:21a: **pika**. polychromatism is still running rampant. batik and tyedye a splendid array of tapestries, pillow shams, billowing skirts, and tea-shirts. 492-6983

10:22a: **TEΦ**. Coffee Hour. Mmm... dough-nuts! We do this every week to wake up on Sunday Morning. Come steal the comics and Slam Ask Marilyn with us! Find out why coffee is the 22nd element at 262-5090.

10:30a: **Theta Chi**. bl THETA CHI. Join the brothers of Theta Chi for a Canoe Trip! Both men and women invited. For more information call bl 267-1801.

10:30a: **WILG**. Feeling wild? Our dealers have a few tricks up their sleeves for Bridge and Canasta. We'll find you a partner, and teach you how to play, naturally. Call us at 253-6799 or 354-1263 for a ride.

10:30a: **Phi Gamma Delta**. One last chance for adventure on the high seas! 266-2325

10:30a: **East Campus**. Good morning East Campus. Rise and shine. Wake up to music in the courtyard.

10:31a: **Epsilon Theta**. Come help Cathy take over the world!

10:32a: **Epsilon Theta**. Or maybe you're better off coming over and joining us in the titanic struggle to keep Cathy from taking over the world.

10:57a: **WILG**. Grab a towel, sunscreen, a camera, and a friend. We're going on a BEACH TRIP to Ipswich that you won't want to miss. Call us at 253-6799 or 354-1263 for a ride.

11:00a: **Phi Beta Epsilon**. Join PBE for food, soccer, volleyball, and food out on George's Island. Call 494-8677 for rides.

11:00a: **Spanish House**. WE'VE STARTED COOKING LUNCH SO WHY DON'T YOU START GETTING READY TO COME OVER TO SPANISH HOUSE FOR OUR GENUINE MEXICAN LUNCHEON IN ONE HOUR!!

11:00a: **Pi Lam**. Come, embark on the odyssey of a lifetime. Take... THE PI LAM TROLLEY TOUR!! Yes, it's the rush event you've been waiting for! Act now, while supplies last. Take Pi Lam's own guided tour of Boston, Cambridge and Wellesley. Listen to our amusing commentary, or make some comments of your own with our megaphones. Finish it with a picnic at Wellesley College, the salvation of many an MIT man. Stop by 450 Beacon Street, or call BOS-ROCK for a ride.

11:00a: **Senior House**. Computer Stoning. Fight back at the technology that will soon control your lives.

11:00a: **Baker House**. Good Morning! Just getting up? Us too, and we're hungry. So come on over and we'll finish off the bagels those early-rising freaks were eating. We've still got lots of milk and OJ too.

11:00a: **Sigma Chi**. Canoe Trip!

11:00a: **Nu Delta**. PICNIC! Come with us to Wellesley for some food, sports, and fun!

11:00a: **ΘΑΧ**. Roadtrip to one of Rhode Island's best beaches, or hang out at a Wellesley College society house.

11:00a: **Student House**. Come over and have some European food for breakfast, or lunch! For a ride, call 247-0506 or 247-8172

11:06a: **Number Six Club**. Come sail away with us to beautiful Georges Island in Boston harbor! The salt breezes, gorgeous view, superlative companions, and great picnic food will all revive and refresh you! Vans leave from No. 6 starting at 11:06 and every half hour until 12:36. In case of rain, bring your MIT ID and explore the Museum of Fine Arts with us!

11:11a: **pika**. Brunch. Omelettes. Scrumptious, mouth-watering, and even tasty. Tomatos, basil, scallions, goat cheese... what's your pleasure? 492-6983

11:13a: **pika**. Blueberry muffins, chocolate chip muffins, blueberry and chocolate chip muffins. Melting butter. Well-onioned potatoes. Carved fruit. 492-6983 for a vehicle.

11:16a: **WILG**. We're off to Crane's Beach, rated among the top five in New England. Don't miss out! (Sorry, swimsuits not included.) Call 253-6799 now!

11:17a: **Random Hall**. Grab a hammer and destroy our accurate, scale gingerbread replica of Random Hall.

11:22a: **Fenway House**. come with us to one of the few green places kept in captivity in Boston. trip to the Esplanade! call 437-1043 for a ride.

11:22a: **TEΦ**. Arnold Arbor-EAT-UM-trip. Trees. Dirt. Ride the T with us and play frisbee (even before we get off the T)! Food. Sun. No Cars. No Noise. Interested? Call 262-5090.

11:30a: **ΦΚΘ**. Hungry again? Nothing else to do? Come by for our roofdeck barbeque, and maybe you can get a glimpse of our pool. Call 437-7795 for rides.

11:30a: **Senior House**. Yes, once more we will be traveling through the building we will someday again call home. We invite you all to share in the experience.

11:30a: **AETI**. We're going canoeing on the Charles River! (Where it's clean) Women welcome (as always). Call 247-3170 for a ride.

11:30a: **WILG**. Investigate WILG's therapy for T-shirts. The best Tie Dyeing available campus-wide or your money back! Call 253-6799 or 354-1263 for a ride.

11:30a: **ΦΚΣ**. Check out the best WATERPARK in New England with the Brothers of Phi Kappa Sigma.

11:45a: **Spanish House**. WE'VE ALMOST FINISHED COOKING LUNCH SO WHY DON'T YOU HEAD ON OVER FOR SOME TASTY MEXICAN FOOD, INCLUDING POLLO EN MOLE POBLANO, CLACAYOS, AND ARROZ!!! 15 MINUTES UNTIL LUNCH TIME AT LA CASA ON THE 1ST FLOOR OF NEW HOUSE 3.

11:45a: **Senior House**. Tire Swing with Sean. You gotta love it.

11:47a: **ΑΔΦ**. The nascent sport of HillJumping was invented on this trip last year, but now you can join the Alpha Delt's in bringing this low-gravity pastime into the popular eye. Our trip to Hopkinton includes burgers and hot dogs, frisbee and football, volleyball and more! Call 576-SERIOUS-AIR (576-2792) for a ride!

11:53a: **pika**. personal pan omelettes. green eggs if you like, but no spam. 4926983

11:54a: **Student House**. Are you hungry? We are having french toast, scrambled eggs, and other European meals for brunch! Give us a call at 247-0506 or 247-8172 and we'll give you a ride!

11:55a: **Epsilon Theta**. DING! FIRST BELL! Tacos in just five minutes.

11:59a: **East Campus**. Doug is going sailing again. Find him, and you can be on the luxury cruise of your dreams. Hopefully Kathy Lee won't be there.

12:00p: **ΑΔΦ**. Fun in the Sun. Join the brothers of Alpha Delta Phi in a cookout at Hopkington Park. Toss around the football and the frisbee, and our Rush Chair and President. We hear the lake is extremely cold this time of year. Heh heh heh. Call 5-GET-HIM (576-2792), and we'll pick you up before we take off.

12:00p: **Epsilon Theta**. TACO BUFFET. Look at all these fabulous prizes! Amazing taco shells! Mounds of glorious shredded cheese! Lettuce like you've never seen before! Beef and bean fillings! Call 3-8888 to redeem your winning numbers.

12:00p: **Phi Beta Epsilon**. PBE is breaking out the grills once again. Stop by if you are hungry.

12:00p: **La Maison Française**. Pique-nique à Kresge Oval. (à côté de la Student Center.) Venez étudier les tourmés et d'autres exemples de la vie fondée sur le carbone pendant que vous mangez.

12:00p: **ZY**. Watch the Boston Red Sox take on the Seattle Mariners at historic Fenway Park.

12:00p: **Spanish House**. COME TO SPANISH HOUSE FOR TALIA'S GENUINE MEXICAN LUNCHEON!!! TRY POLLO EN MOLE POBLANO, CLACAYOS, OR SOME DELICIOUS MEXICAN RICE!!! GOOD FOOD AND GREAT COMPANY AT LA CASA, ON THE 2ST FLOOR OF NEW HOUSE 3.

12:00p: **Senior House**. food

12:00p: **Theta Xi**. Here's a chance to burn off all that free lobster you've eaten. Catch the Olympic spirit and come out to an Island in Boston Harbor for our Theta Xi Olympiad! Fun, competitive sports and a beautiful ocean view! A must do!! 266-2827

12:00p: **Burton-Conner**. Sick of probing questions? Come to the Burton BBQ!! We'll be cooking lots of meat all day.

12:00p: **Next House**. HAVE LUNCH- we've concocted our own home Philly hoagies! plus, PBJ for all you non-hoagie eaters. Join us- it's all you can eat! What more could you ask for???

12:00p: **Baker House**. Ummmmmm, fire and meat. What more could you want? People? Well come on over, that's what Baker's all about. Have some food, make some friends, and have a good time. We can't wait to meet you.

12:00p: **XΦ**. Trip to George's Island

12:00p: **East Campus**. More live bands are appearing at East Campus today than you can shake a stick at. They're purty durm durm. It all starts now in the courtyard.

12:01p: **La Maison Française**. Picnic at Kresge Oval. (next to the Student Center.) Come exercise your entomological skills while you eat!

12:01p: **East Campus**. The Fire and Water Carnival starts at East Campus. Like, come or something.

12:02p: **pika**. Crazy colours. Twisted bodies writing in paint. Lovely views.... Come on, you know you want to.... Twister on pika's roofdeck! 4926983

12:02p: **East Campus**. Cyrus will teach you to juggle. Isn't he sweet?

12:05p: **Senior House**. Kindergarten Corner. Get back to your youth. Come eat crayons and paste with us in the courtyard as we reminisce about the good of days.

12:06p: **Number Six Club**. Lunch at No. 6.

12:09p: **MacGregor**. Come Play with us!!! Once again free food. We will have a Caricature Artist, Moonwalk, Dunking Booth, and Cotton Candy until 5pm. Also impromptu games of softball.

12:12p: **WILG**. We're still Tie Dying, and we've got t-shirts and boxers to spare. Have you turned your favorite sports bra purple and green yet? Give us a call at 253-6799 or 354-1263.

12:16p: **East Campus**. The E.C. beauty salon opens for business; get your favourite Sanrio characters painted on your face.

12:17p: **Random Hall**. Make your own shishkabobs on our roofdeck grill. Impale tomatoes! Spear some onions! Stab some cow!

12:17p: **East Campus**. Steph will paint your nails all sorts of funky fresh colours.

12:18p: **East Campus**. Jess will dye your hair. I hear green is in this season.

12:19p: **East Campus**. Hate your new hair colour? Not to worry, there's hair shaving in the house.

12:22p: **TEΦ**. Learn how to digest air! Develop you potential for Total Air Metabolism, and no matter what your skill level, we guarantee satisfaction. Not legal in some states. Must be at least 2.2 to play. Call 262-5090. Do not taunt happy fun ball.

12:25p: **Student House**. Did you know that Student House is the cheapest living group if you receive Financial Aid? Come over and find out what co-operative living really means! Call 247-0506 or 247-8172 to talk to a friendly Stud, or to ask for a RIDE.

12:30p: **ΦΚΘ**. MARINERS vs. RED SOX...Junior vs. Me...Nuff said...Call to claim a ticket! They're going fast! 437-7795

12:30p: **Spanish House**. MIMM!! MEXICAN FOOD STILL BEING SERVED HERE AT SPANISH HOUSE. DROP BY FOR A TASTY MEAL AND A HOUSE TOUR!! 1ST FLOOR OF NEW HOUSE 3.

12:30p: **Senior House**. Tie Dying and Hair Dying in the courtyard. Bring yourself, your clothes, and your pets and leave looking like a new person.

12:30p: **Phi Deltas**. Missed our Canoe Trip? No problem. Come on over anyway, and we'll hang out. No pressure, no stress, nothing to worry about.

12:34p: **pika**. HUNGRY?! BRUNCH! EGGS! MUFFINS! OMELETTE BARS! pika! 4926983

12:40p: **pika**. HUNGRY?! BRUNCH! STILL! EGGS! MUFFINS! OMELETTE BARS! pika! 4926983

12:43p: **Fenway House**. Lunch? What is it? It's the meal in the middle of the day, but that's not important right now. 437-1043.

12:44p: **pika**. HUNGRY?! EVEN MORE BRUNCH AT pika! Same bat-time, same bat-place... 4926983

12:44p: **TEΦ**. Moxie and Jooky at TEP. Made from the oldest stuff on earth. Call 262-5090 for a ride

12:45p: **East Campus**. The live bands are still going on strong at East Campus.

1:00p: **ΑΔΦ**. More Fun in the Sun. We're still at Hopkington Park, but you can still join us in the second shipment of people. Call 576-WAIT-FOR-ME (576-2792), and we'll reserve a spot for you in the grass in Hopkington (yes, we said grass, and no, you won't find much of it on this campus).

1:00p: **Senior House**. Come see the Haus before the chains and black paint go up.

1:00p: **Theta Chi**. bl THETA CHI. Come watch the Red Sox play the Mariners. Call 267-1801.

1:00p: **Burton-Conner**. Taken a tour of Burton yet? Some people have taken 5 or 6. Quality never gets old. Tours all day.

1:00p: **WILG**. Join us as we eat the lunch we've been Dye-ing for all day. We're having a Barbecue on the patio with the guys next door at ΑΔΦ. Call 253-6799 or 354-1263 anytime!

1:00p: **Baker House**. Volleyball! I think this is the same game that started last spring. I quit keeping score about a thousand points ago, but the game's still going strong. Come on over and join in, maybe it'll end sometime this century!

1:00p: **McCormick**. A Boston classic- WING-ITS. Lots of food and volleyball.

1:00p: **East Campus**. Hippily hippily hoop. Hooping hooping hooping! Bounce around and look silly on our hippy hoops!

1:02p: **pika**. We've got juggling balls and a unicycle and lions and tigers and bears! Oh my! Well, OK, no lions. Or tigers. Or bears. But we do have Stephen! Give us a call if you'd like to take lessons from our resident clown.... 4926983

1:06p: **Epsilon Theta**. The Epsilon Theta Lecture and Workshop Series presents "A Workshop on the Imitation of Freshman Class Professors." Alternatively titled: "A Workshop on the Imitation of Masa" or "The Vectah go Ovah Theah." World renowned guest speakers.

1:07p: **Fenway House**. Elsewhere has the right idea... colour boxes and finger paints abound.... (we prefer you not to eat the crayons but if that makes you happy...) 437-1043 shades of color...

1:09p: **MacGregor**. Have you heard we have Free Food?

1:11p: **pika**. "Beneath the cool exterior of our house lie the subtle dynamics of a nursery school recess." Come to the Children's Museum with Graham and we'll show you what we mean. :) 4926983 (pika)

1:17p: **Random Hall**. Movie marathon in our air-conditioned lounge all afternoon. Beat the heat. Plus, we still have lots of food left for lunch.

1:22p: **TEΦ**. Water War II Kind of like Duke Nukem, but different. Join us for history in the making! Dry shirts and bandages from Auntie Jean provided. Call 262-5090 for a rip-roaring good time.

1:30p: **Spanish House**. WHAT BETTER WAY TO SPEND A SUNDAY THAN SIGHTSEEING IN HISTORIC BOSTON? JOIN LA CASA IN HALF AN HOUR TO VISIT FANUIEL HALL, QUINCY MARKET, AND THE AQUARIUM!!! MEET ON THE FIRST FLOOR OF NEW HOUSE 3.

1:30p: **East Campus**. Slip and slide bowling. You know you want it. It's like a dream come true, only wetter.

1:35p: **East Campus**. Live bands all day in the courtyard!

1:38p: **pika**. Did you ever get in trouble for throwing balls around in the house when you were young? Well now you can amaze your parents with wondrous feats of balance and dexterity! Come to pika and learn how to juggle with Stephen! We have a unicycle too.... 4926983

1:45p: **East Campus**. Have more water fun than you can possibly imagine with the E.C. water chunnel.

2:00p: **Epsilon Theta**. Rollerblading, canoeing, ultimate, and much more. . . fun whether you're athletic or not. Some of us have never been on blades before! Call 3-8888 for a ride.

2:00p: **Spanish House**. WE'RE GOING TO WORK OFF OUR LUNCH WITH A TOUR OF BOSTON. FIRST WE'LL TAKE YOU TO THE BOSTON AQUARIUM, THEN WE'LL DROP BY FANUIEL HALL AND QUINCY MARKET. MEET US ON THE FIRST FLOOR OF NEW HOUSE 3. CALL TALIA AT x57552 FOR MORE INFO.

2:00p: **Next House**. NEXT stop... the Great White Way. Or at least NEXT HOUSE's version of a Broadway show. Read scenes with us and help the NEXT ACT 97 director pick a musical. Meet cast and crew of past NEXT ACTS. Or just come hang with the rockin' residents of NEXT. no talent required. we promise.

2:00p: **Baker House**. It's so hot out! Actually, I have no idea what the weather is like. I wrote this 3 weeks ago. But come on over, the weather's probably great, which means there's someone in the dunking booth waiting to get soaked!



Hackers activated lights in the Green Building to advertise East Campus for rush. However, Campus Police shut off the display within an hour.