

Re-engineering Team Issues New Services Redesign Plans

By Shang-Lin Chuang
NEWS EDITOR

In an effort to solicit community feedback, the student services re-engineering team will hold an open house today to present information on the seven processes recommended for redesign and its new proposed model of student services to the campus.

The team has examined a range of services that affect student life. It

will recommend to the re-engineering steering committee on Tuesday the redesign of programs in career assistance, educational program support, residence and orientation, personal support, provision of supplies and materials, student housing, and support for co-curricular life.

The key ideas proposed by the team last week to reduce work and improve service include a new model of service delivery, a new

centralized database location, and changes to the processes involved in on-campus student employment, balancing student accounts, and tracking student records, the last of which would be done electronically and with an earlier deadline.

The open house will be held in Lobby 10 and Room 10-100 from 10 a.m. to 4 p.m.

Re-engineering, Page 15

MIT Worker Victim of Mugging; CPs Say Robbery Is Off Campus

By Stacey E. Blau
NEWS EDITOR

An MIT employee was mugged on Wadsworth Street on the far east side of campus at about 6:30 a.m. last Wednesday.

Constance L. Emanuel, an administrative assistant at the Sloan School of Management, was walking from Kendall Square down Wadsworth Street to Amherst Street, where she works in Building E40, when she was approached from behind by the perpetrator.

"Someone tugged on my purse, and I turned around to see what was going on, and the person poked me

in the right eye," Emanuel said. The purse fell down, and "the person picked it up and ran," she said. The attacker was not armed, she said.

Emanuel said that the robbery occurred right outside of Building E40 on Wadsworth Street. The building houses offices of the Sloan School as well as parts of Information Systems and other programs.

But according to Campus Police, the attack took place further up Wadsworth Street at the parking lot across from 51 Wadsworth St.

Cambridge Police place the incident even closer to Kendall Square, at the intersection between Wadsworth

Street and Main Street, said Frank Pasquarello, public information officer for the Cambridge Police.

The perpetrator was about six feet tall and was wearing a blue coat, blue jeans, and gloves, Emanuel said. Although Emanuel claimed that she was unable to identify the sex of her attacker, a Campus Police report states that the perpetrator was male. The Cambridge Police have no suspects, Pasquarello said.

Mugging classified as off campus

Although the crime took place on

Mugging, Page 10



JIRI SCHINDLER—THE TECH

The pyramid structure in Lobby 7 has been revealed as a computer terminal connected over the Internet with the Modern Art Museum in Lyon, France, that translates speech on-the-fly. Jeffrey C. Krause G demonstrated the facility yesterday morning. See article, page XYZ.

Litster Takes on Research, Graduate Education

By Orli G. Bahcall
STAFF REPORTER

As the concerns of researchers and graduate students become more closely linked in an era of threatened federal funding, J. David Litster PhD '65 began his job as dean for graduate education this week. Litster continues to serve as the vice president and dean for research.

"I would guess that one of the reasons that motivated the president and provost to decide to fill the two jobs [with one person] is that there are big issues coming up that have an impact on graduate education," Litster said.

These issues "are going to be strongly coupled with research funding and are issues with which

the vice president of research" is directly involved, Litster said.

"It makes sense to put them together — to have one person worrying about all of those things," Litster said.

"It is very appropriate in these times when research funding is growing tight to appoint someone whose focus is in gathering funds," Graduate School Council President Barbara J. Souter G said.

"At many schools now we see the dean of the graduate school also the dean of research," Souter said. Litster's strengths and experience in these two areas complement each other very well, she said.

"Litster is a strong advocate of graduate education on a national

level," Souter said. His appointment "is likewise great for MIT's reputation on a national level. Many graduate students are concerned that MIT [retain its] good reputation — their futures depend upon this reputation."

Litster balances two positions

"This was my first week actually back at MIT and in this position," Litster said. Litster is still in the process of figuring out how things operate in the graduate office and learning about what his new job entails.

The new post of dean of graduate education replaces the previous position of dean of the graduate school.

The office of the dean of the graduate school "has a huge administrative task — all the stuff associated with research assistants, teaching assistants, and fellowships," Litster said.

The office is also responsible for counseling of graduate students and recruiting of new students.

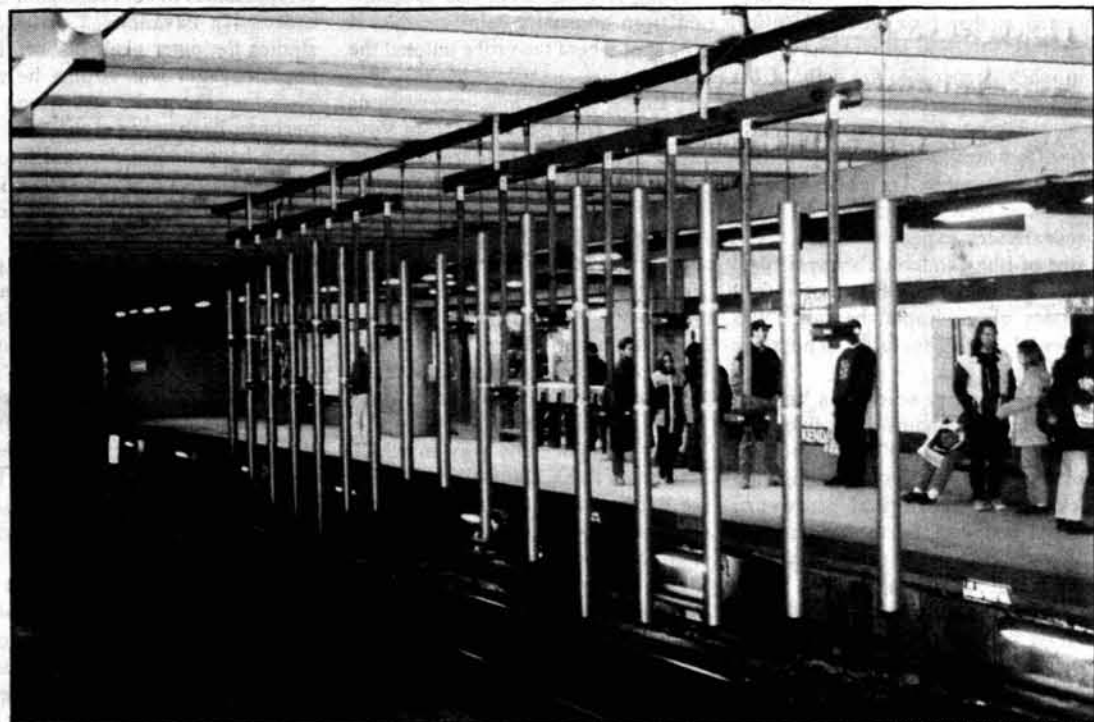
"The thing I know least about are the recruiting issues that the office has engaged in. I haven't spent a lot of time recruiting, and especially not for minority students," Litster said.

"I am interested in learning more about how all these things work. I have sort of figured out how to do

Litster, Page 16

INSIDE

- Lobby 7 computer setup translates trans-Atlantically. Page 8
- Early acceptance rate drops slightly. Page 9
- On The Screen. Page 6
- Female cast shines in *Waiting to Exhale*. Page 7



JIRI SCHINDLER—THE TECH

The most well-known of Paul Matisse's musical sculptures in the Kendall Square MBTA station is "Pythagoras," a series of hanging tubes.

Kendall Sculptures Bring Music, Talk to Strangers

By Eva Moy
STAFF REPORTER

Local artist Paul Matisse looks like an artist, with his beard, longish hair, and baggy clothes. But his musical sculptures displayed at the Kendall Square MBTA station are nothing short of engineering.

Matisse spoke about the three works at the Kendall T station — Pythagoras, Kepler, and Galileo — last Wednesday at a talk sponsored by the Media Laboratory.

The sculpture-instruments are operated by the passengers waiting for their trains. The music brings together the people, allowing them to make eye contact and exchange a few words, something they otherwise might be scared to do, Matisse said.

"Everybody can play, but nobody can force their music [style], because their music is coming from the sculpture itself," he said.

Matisse won an MBTA commission for the artwork in 1981. However, because of the T station reconstruction, the Kendall Band was not installed until 1987.

"I found this very dirty, abandoned station back in 1981," Matisse said. He worried that the sculpture would be covered with black brake dust, and that people would vandalize or climb on his sculpture.

Matisse chose to put the artwork at the station's center. "It had a third rail on one side, a third rail on the other side, and I thought it would be safe."

Kendall, Page 17

WORLD & NATION

AOL, Netscape Consider Alliance

THE WASHINGTON POST

WASHINGTON

America Online Inc. and Netscape Communications Corp., maker of the leading software used on the Internet's World Wide Web, are in talks about a possible alliance, according to company sources.

The aim would be to combine forces to fight off competitors, notably software giant Microsoft Corp., which last August launched an online service called the Microsoft Network and has its own version of Web software.

Under one scenario, America Online, the country's largest consumer on-line service, would license Netscape's popular software program, Netscape Navigator, and integrate it into the package of software used by America Online customers.

The talks also have raised the possibility of America Online chief executive Steve Case taking a seat on Netscape's board of directors. However, officials are concerned that Netscape customers such as AT&T Corp. which compete with America Online might object.

Sources at America Online called the talks "preliminary" and described them as just one front in a larger fight for dominance of the Internet services industry.

Yeltsin May Be in Presidential Race

NEWSDAY

MOSCOW

President Boris N. Yeltsin Monday all but announced that he will run for re-election in June, even as a once staunch political ally renounced him and the Chechen rebel who led the latest hostage taking surfaced to ridicule Moscow's bungling of events.

The Russian leader, recently recovered from heart trouble and now facing political attacks on all fronts, said that he will make a formal announcement next month but that a tentative decision has been made.

"It seems I will agree to stand in the presidential election," he told a group of foreign investors in Moscow. "I realize that if I do agree, there will be an intense, difficult struggle."

Yeltsin's comments coincided with another round of angry criticism over handling of events in the Northern Caucasian republic of Dagestan, where Chechen fighters seized more than 2,000 hostages Jan. 9.

Rabin Assassin Denies Premeditation

LOS ANGELES TIMES

TEL AVIV, ISRAEL

At the start of his trial on Tuesday, Yitzhak Rabin's assassin admitted he fatally shot the Israeli prime minister following a Tel Aviv peace rally last fall, but said he was not guilty of premeditated murder because he would have been just as happy to paralyze his victim.

Yigal Amir, a 25-year-old Jewish law student, pointed out to the three-judge panel in Tel Aviv District Court that he had aimed his pistol at Rabin's spinal cord, "at the seam of the suit," rather than at the prime minister's head.

"I did not mean to murder Prime Minister Yitzhak Rabin the man. I meant, as a prime minister, to remove him from the road," Amir said. "The goal was to stop his political activity. My intention was to shoot him in such a way that would prevent him from serving as prime minister, either by paralysis or, for lack of another choice, by death."

When Judge Edmond Levy asked why Amir had fired three times, the defendant said, "Just to make sure that I hit him."

Amir appeared to be hoping for a manslaughter conviction, which carries a maximum 20-year sentence rather than the mandatory life sentence of a premeditated murder conviction.

WEATHER

Wild Wednesday

By Marek Zebrowski

STAFF METEOROLOGIST

A fast-moving low pressure system will strengthen and deepen as it tracks from the Ohio to the St. Lawrence valley. Ahead of the system, rainy and mild weather accompanied by southerly gales is expected. A vigorous cold front trailing this surface feature will sweep off our coast by late Wednesday, bringing colder, seasonable weather in its wake.

The next feature on our radar will be a clipper-type storm from the Plains, approaching by late Friday. Even though a limited amount of moisture is likely to be available, this low bears watching: the air mass over New England by late Friday will be cold enough to support a frozen rather than liquid precipitation. Afterwards, a modified arctic high will bring still colder but tranquil weather to the Northeast, with the bulk of frigid air confined to the northern Lakes and Plains.

Today: Cloudy, showery, and mild. High 54°F (12°C) with very strong southerly winds, averaging 20-30 mph (32-48 kmh) with higher gusts likely. Local downpours and coastal flooding (especially along the south coast) are expected.

Tonight: Cloudy early, turning colder with a flurry possible before daybreak. Low 32°F (0°C), winds shifting to northwest.

Thursday: Mostly sunny and cold with diminishing winds. High 37°F (3°C).

Thursday night: Clear and cold. Lows in low 20s (-6 to -5°C) in town, teens (-11 to -7°C) elsewhere.

Friday: Some sun early through high overcast, then thickening clouds. Winds gradually turning onshore. Highs in low-to-mid 30s (0-2°C). Chance of light snow after dark, with temperatures hovering near freezing.

Weekend outlook: Mixed precipitation near the coast and snow inland should be ending from west to east, giving way to clear and colder weather by late Saturday. Highs will be in mid 30s (2-3°C), lows near 20°F (-6°C). Sunny and still colder weather is expected on Sunday.

French Nuclear Test Caused Leak of Radioactive Material

By William Drozdiak

THE WASHINGTON POST

PARIS

France acknowledged Tuesday that radioactive materials have leaked into the sea from its nuclear tests in the South Pacific but insisted that the quantities were so minimal that they posed no threat to the environment.

The confirmation that radioactive elements such as iodine 131 have seeped into the lagoon near the Mururoa test site seemed likely to revive the storm of protests that followed President Jacques Chirac's decision to conduct a final series of underground nuclear explosions before signing a global test-ban treaty.

Japanese Foreign Minister Yukihiko Ikeda said he will demand a full explanation from France about the nature of the leaks. Other countries in the Pacific region, notably Australia and New Zealand, are expected to follow suit, French officials said.

Defying international criticism, France has carried out five nuclear tests since September to verify a new warhead and to perfect simulation technology that will be used to monitor the reliability of its nuclear weapons.

A final test will take place next month before the test site is shut down permanently, French officials said.

But the latest accounts of radioactive leakage at the Mururoa test site have raised questions about the credibility of the French government's arguments that the nuclear explosions present no menace to the environment.

"There is no way to assess whether there is a coverup because the French do not allow independent verification," said Tom Cochran, a nuclear-testing specialist at the Natural Resources Defense Council in Washington. "What makes people suspicious about whether they are hearing the truth is the fact that these tests were really unnecessary in the first place."

France has always contended that its underground nuclear blasts inflict no damage on the fragile ecology of the Mururoa coral atoll, 750 miles southeast of Tahiti, which serves as its principal test site. Explosive devices are bored deep within the basalt foundation of the atoll, and French scientists say the intense heat from the blast vitrifies the rock and traps all radioactivity before it can escape.

But Alain Barthoux, director of nuclear tests at France's Atomic Energy Commission, acknowledged that traces of radioactive material are usually "vented" into the lagoon when scientists drill down into the rock to obtain samples after every blast.

Barthoux claimed, however, that such leaks involve "insignificant amounts" of radioactive substances, such as cesium, tritium or iodine, that vanish quickly in the environment. Quantities of iodine 131, for example, which can cause cancer when ingested by humans, shrink by half within eight days and disappear entirely within 80 days, he said.

Barthoux denied a report in the Japan's Yomiuri Shimbun newspaper that small amounts of radioactive iodine were continuing to leak into the water as a result of the latest

round of nuclear tests and that officials from his agency were striving to suppress the information.

The paper quoted sources at the Geneva disarmament conference, where the global test-ban treaty is being negotiated, as saying a French nuclear expert disclosed the radiation leakage at a meeting in Washington last November.

The French specialist was quoted as saying the information was "extremely confidential" and as requesting that participants in the meeting "forget what they had just heard."

France first acknowledged the release of radioactivity from its nuclear tests when oceanographer Jacques Cousteau visited the Mururoa site in 1987 and was allowed to conduct independent tests of the water in the lagoon. He found the presence of radioactive iodine, cesium, cobalt and europium, but in quantities that were considered dangerous.

But he warned that Mururoa's coral crown was deeply cracked and could pose a problem if testing continued. He said risks grew that higher levels of radioactive residue could seep into the lagoon.

French Defense Minister Charles Millon denounced reports from last year of widening fissures in the atoll as "unreliable." Foreign Minister Herve de Charette told the National Assembly that "never have any cracks of any kind been spotted."

But a confidential Defense Ministry report acknowledged that the government has been aware, at least since 1979, that Mururoa's underwater basalt foundation is fracturing in several places.

Scientists Begin to Decipher Surprising Jupiter Probe Data

By K.C. Cole

LOS ANGELES TIMES

Prying open a cosmic tomb that has been tightly sealed for 4.6 billion years, the Jupiter probe Galileo has revealed puzzles and surprises that promise to alter scientists' thinking about the giant gas planet, and perhaps even the evolution of the solar system.

Jupiter is a lot drier, hotter, darker and more turbulent than previously thought, scientists announced Monday, as they released the first data from Galileo, which plunged into Jupiter's clouds last December. About half of the expected helium is missing, as well as some of the predicted methane, oxygen and sulfur. And its 330 mph jet streams appear to reach deeper into the belly of the planet than expected.

Acknowledging that these early findings are still tentative, Galileo project scientist Torrence Johnson said the new data didn't fit what researchers expected to see. "It's sort of like Cinderella's stepsisters" trying to fit their big feet into a dainty glass slipper, he said. "It's darned uncomfortable. The shoe pinches."

Since many scientists believe that Jupiter remains a pristine blob of the original cloud that formed the solar system, the probe findings are like an archeological discovery about our past. Earth can trace its ancestry back to the original swirl of gases that formed Jupiter.

The data shows that astronomers know less than they thought they did about the birth and evolution of planets. "There's always a sense of humility when the data comes in," said Johnson.

Gathered Monday at NASA Ames Research Center in Mountain

View, Calif., the scientists had been waiting almost 20 years for this first-ever look at the gaseous insides of the planet.

The probe had a "very rough ride down" Dec. 7, said planetary meteorologist Al Feiff from Santa Clara University. The extreme turbulence, he said, "would have made for a very uncomfortable airplane ride."

Nevertheless, all of the instruments on board performed "remarkably well," said Galileo project manager William O'Neill, who called it a "marvelously successful mission."

It's possible that some of the surprising readings were due to resulted from unusually calm weather at the spot where the probe entered the atmosphere.

Based on previous observations of Jupiter from Earth and from Voyager spacecraft, researchers had expected to find significant quantities of carbon, sulfur, nitrogen and oxygen. They had assumed that Jupiter got these heavier elements from the same source as Earth's — notably, bombardment by icy comets during the early, more violent, years of the solar system.

But instead they found only traces of these gases, a finding that could influence the way in which scientists think about the evolution of Earth and other planets. "I don't think anybody fully understands the implications," said David Morrison, head of space science at Ames Research Center.

The finding that Jupiter seems to be almost entirely made of hydrogen and helium means it's surprisingly like the sun.

Until now, scientists entertained two conflicting views of how Jupiter became the biggest planet in the

solar system: One scenario had it forming like a partner to the sun — a star that never ignited.

The other scenario had it starting out with a rocky core about the size of Earth, then sucking in surrounding gas by sheer force of its enormous gravity.

The new findings seem to tilt opinion toward the failed star scenario. They also make scientists wonder about the composition of Jupiter's sister planets, Uranus and Neptune, which were also studied from Voyager and Earth observations.

"This is really strange," said Kevin Baines of Jet Propulsion Laboratory in Pasadena, Calif., who studies the outer giant planets. Perhaps Voyager was wrong, he suggested, or the probe was wrong. Or perhaps both were right, and the probe happened to descend into an anomalous place where "some very strange chemistry (was) going on," he said.

The biggest surprise of the latest mission was that Jupiter's high winds do not taper off, even at a hundred miles below its ammonia clouds, said Morrison.

On Earth, the energy that drives the winds comes streaming in from the sun. Jupiter's weather, however, appears to be inside out — with heat energy rising from the core and setting up strong convection currents.

"That's a major change in our thinking about the weather on Jupiter," said Morrison. Another major revision is likely to come from finding about half the expected amount of helium. Researchers speculated that it might be raining into the planet's core (along with neon, which also failed to make its expected appearance).

Clinton Pushes Small Government In His State of the Union Address

By Ann Devroy
THE WASHINGTON POST

Borrowing generously from Republican themes, President Clinton Tuesday night declared that the "era of big government is over" and sought to ease middle-class anxieties with an upbeat vision of a nation pulling together to ready itself for the new century.

With Republicans bruised by weeks of vicious partisan budget battles sitting mostly silently in their seats, Clinton used his election-year State of the Union address before a joint session of Congress to point out how many goals he and Republicans share, without dwelling on how strenuously he and Congress have fought over how to achieve them.

He is for a balanced budget, but not their balanced budget. He is for welfare reform, but not their welfare reform. He is for family. Individual responsibility. Self-reliance. The

fight against crime. The battle against drugs. But they disagree on government's role.

Senate Majority Leader Robert J. Dole, Kan., the leading Republican presidential candidate, made the differences between the presidential rhetoric and presidential action the theme of his televised response. In a tough, mince-no-words address, Dole said that though Clinton's "words speak of change, his deeds are a contradiction."

Clinton, Dole said, is the "chief obstacle" to a balanced budget, the "rearguard of the welfare state" and "the last defender of a discredited status quo." Predicting a winter of challenge, Dole said congressional Republicans will keep sending Clinton the elements of their agenda and "challenge President Clinton again and again to walk the talk he talks so well."

The president offered a handful of modest proposals aimed primarily

at easing middle-class anxieties, including a \$1,000 scholarship for the top 5 percent of all high school graduates.

He called for tax incentives for businesses that clean up abandoned properties and expansion of a federally funded college work-study program to 1 million students, up from 700,000 now.

He called for an FBI-led war against youth gangs and for legislation protecting workers' pensions and insuring health care benefits for employees who change jobs or have preexisting conditions.

By federal program standards, the money involved was a thimble of water in a receding ocean of federal spending.

Next week, Clinton is to formally lay down a 1997 budget that cuts \$297 billion in domestic discretionary spending over seven years, \$159 billion more than the president was proposing only a month ago.

Colombian Defense Minister Charges Samper with Accepting Drug Money

By Douglas Farah
THE WASHINGTON POST

BOGOTA, COLOMBIA

New accusations that President Ernesto Samper knowingly accepted drug money for his campaign plunged Colombia into crisis Tuesday, appearing to confirm the country's worst fears about itself.

The charges leveled Monday against Samper — from a respected ex-official in a position to know — come in a country that prides itself on being one of the hemisphere's most stable democracies.

If confirmed, the allegations would mean that not only have the judicial system and Congress been polluted by drug money, as is widely reported here, but that drug traffickers also have corrupted the electoral process and presidency.

For many Colombians, after

years of chafing at being portrayed abroad as a nation where drug traffickers exercise pervasive influence, it was humiliating to have a wave of corruption scandals culminate with one of their most respected political leaders publicly saying the president solicited and took drug money.

A political analyst who once was close to Samper said the most traumatic thing is "that now, after having foreigners telling us for years that we are corrupt, this crisis has forced us to look into the cesspool our political system has become and face it ourselves. It hurts."

Ramon Jimeno, another political analyst who worked in Samper's campaign, said that "after so many years of denying the reality of the power of the drug traffickers to corrupt, we are faced with evidence of drug financing of the campaign and

that narcos have a great influence in our power structure."

Leading politicians across the political spectrum called on Samper to resign. But the president, whose political support already has eroded, vowed he would only leave office "with my head held high, or dead." He urged Colombians to remain calm. In a radio interview, he categorically denied the allegations and called the man making them — Fernando Botero, his erstwhile friend, campaign manager and defense minister — a "liar."

Accusations that Samper's campaign took up to \$6 million from the Cali cocaine cartel surfaced in August 1994, a few days before the president was sworn in. They have been widely discussed since then here and abroad. But Botero's accusations carried particular weight.

Miss NY Wants Crown, \$2 Million

NEWSDAY

NEW YORK

Helen Goldsby, the embattled Miss New York State, announced Tuesday that she is suing pageant officials for \$2 million. And she brought 1993 titleholder Marcia Cillan to a Manhattan news conference to back up her charge that she's been done wrong.

Goldsby said she's charging "intentional" emotional distress, breach of contract and attempted wrongful termination of her title in her suit.

Pageant officials contend she voluntarily gave up her crown when she took a job as lead understudy in Broadway's "Master Class." She refused to give it up, saying the pageant's stinginess forced her to get a job. The pageant announced that first runner-up Sunita Paramsothy would be crowned next month, and Goldsby went to court.

Her attorney, Dominic Barbara of Long Island, said Goldsby is physically hanging on to the crown — and wouldn't say where.

Goldsby said that she was "hurt, very hurt," not merely because the pageant tried to fire her, "but in the manner I was told — I found out in the middle of an interview" when a reporter told her. She said she hadn't had much sleep since the dispute began two weeks ago and has suffered migraines.

She agreed to audition for the Broadway role only because pageant officials "weren't making bookings for me," she said. "I couldn't pay my rent."

Sun Microsystems May Buy Apple

NEWSDAY

Sun Microsystems Inc. is reportedly planning a takeover of Apple Computer Inc. in a deal analysts say would bring an infusion of corporate discipline to the personal computer maker at a time when it is losing money and market share.

The Wall Street Journal, quoting people it said were familiar with the negotiations, said a deal is imminent between Apple, developer of one of the earliest desktop machines, and Sun, the premier maker of more powerful workstation computers.

Apple Computer Inc. Chairman A.C. Markkula told reporters Tuesday at the company's annual shareholders meeting in Cupertino, Calif., that Apple was not for sale, but many analysts say it's only a matter of time before Apple agrees to a deal. Sun, IBM, Oracle Corp. and Hewlett-Packard have all been cited as potential buyers.

Neither company Tuesday would comment on the Journal report, which quoted one source as saying the deal could entail a stock swap valued at about \$4 billion.

"Theoretically speaking, the merging of two disparate corporate cultures has not turned out to be so harmonious and successful," Geran said. "However, given the situation Apple finds itself in, unless they can rapidly adjust to a new strategy and in this fast-moving PC business, they're going to have to consider really different ways of doing business."

The prospect of a sale to Sun left cold some users of Apple's Macintosh computers, which have a near-religious following.

"You have to figure out what Sun is bringing to the table. Is it knowledge of a Mac customer? No. Is it a new management team? Well, there are other ways of doing that. Is it a cash bailout? Apple has other options there," said Richard Doherty, whose New York company, Envisioneering, is heavily dependent on Macintoshes. "What do they bring to the party?"

Graduate Student Council

Next meetings:
Formal Ball - Jan 31
General - Feb 7
APPC - Feb 8
HCA - Feb 13
Activities - Feb 22

THE GRADUATE STUDENT NEWS IS COMING....
 - cartoons - letters - photos - articles - great info. -
 All submissions are due Jan 26th in the GSC office.
 Contact gsc-secretary@mit.edu for more information.

The GSC Activities Committee
 has been busy...
**Here are just some of the
 events being planned...**

Ice Skating Party

Fri., Feb. 9th

Ski Trip

Sat., Feb. 24th

The One and Only Formal Ball

Sat., April 6th

tickets will be available soon - stay tuned for updates

**Can We Talk? A Communication
 Workshop for Men and Women**
 Aimed primarily at grad students!

NEW DATE AND TIME

**TONIGHT, Wed. Jan 24th from 7:30 - 9:30 in
 the Student Center Mezzanine Lounge**

Come join us for an evening of role-playing and
 discussion. Please preregister
 (contact Holly Sweet: hbsweet@mit.edu, 3-7786).

**GRADUATE STUDENTS:
 REENGINEERING AFFECTS YOU!**

FIND OUT HOW:

Discussions led by grad students on reengineering
 topics that will affect their everyday lives:
 January 30th from 4-6 pm in Walker Memorial.

Free food too!

See our other ad in this paper!

**Deadline for spring term (Feb. 15th to June
 14th) funding applications is Tuesday, Feb
 6th at 4 pm. Applications should be dropped
 off in the GSC office (50-222).**

***** there is a special funding process for
 competitive athletic teams - check it out*****

All Graduate Students are invited to all our meetings. Most are held at 5:30pm in 50-222 and dinner is served.

Stay informed about all our events! Check out our web page <http://www.mit.edu:8001/activities/gsc/gsc.html>

Add yourself to our mailing list by sending email to gsc-request@mit

Questions, comments, ideas? Give us a call at 3-2195 or send email to gsc-admin@mit

OPINION

Letters To The Editor



Chairman

Scott C. Deskin '96

Editor in Chief

Daniel C. Stevenson '97

Business Manager

Christine Chan '98

Managing Editor

Jimmy Wong '97

Executive Editor

Ramy A. Arnaut '97

NEWS STAFF

Editors: Stacey E. Blau '98, Shang-Lin Chuang '98, David D. Hsu '98; **Associate Editors:** A. Arif Husain '97, Jennifer Lane '98, Venkatesh Satish '98, Orli G. Bahcall '99, Dan McGuire '99; **Staff:** Eva Moy G., Ifung Lu '97, James M. Wahl '97, Christopher L. Falling '98, Sam Hartman '98, Brett Altschul '99, Shawdee Eshghi '99, Caripa Fung '99, Yaron Koren '99; **Meteorologists:** Michael C. Morgan PhD '95, Gerard Roe G, Marek Zebrowski.

PRODUCTION STAFF

Editors: Teresa Lee '96, Michelle Sonu '96, Saul Blumenthal '98; **Associate Night Editor:** Jen Peltz '98; **Staff:** Amy Hsu '94, Laura DePaoli '97, Christine J. Sonu '97, Warren Chang '98, Larry Chao '98, Susan J. Kim '98, Yun-Ju Lee '98, Michael D. Forbes '99, Jeremy J. Lilley '99, Arthur Murakami '99, Binh Truong '99, Jason C. Yang '99, Khelga Karsten.

OPINION STAFF

Editor: Anders Hove '96; **Staff:** Raajinsh A. Chitale '95.

SPORTS STAFF

Associate Editor: Bo Light '96; **Staff:** Thomas Kettler SM '94, Darren Castro G, Brian Petersen '96, David Berl '97, Jeremy Cohen '97, Daniel Wang '97, Jason Weintraub '97, Farhan Zaidi '98.

ARTS STAFF

Editor: Craig K. Chang '96; **Staff:** Thomas Chen G, Teresa Esser '95, Audrey Wu '96, Brian Hoffman '97, David V. Rodriguez '97, Kamal Swamidoss '97, Rob Wagner '97, Hur Koser '98, Daniel Ramirez '99, Stephen Brophy.

PHOTOGRAPHY STAFF

Editor: Thomas R. Karlo '97; **Associate Editors:** Helen Lin '97, Adriane Chapman '98, Indranath Neogy '98; **Staff:** Gábor Csányi G, Rich Fletcher G, Arifur Rahman G, Sherrif Ibrahim '96, Jiri Schindler '96, Lenny Speiser '96, Juan P. Vernon '96, Sharon N. Young Pong '96, Tiffany Lin '97, Carol C. Cheung '98, Justin Ging '98, Rayshad Oshatory '98.

FEATURES STAFF

Hugo M. Ayala G, Pawan Sinha G, Willy Ziminsky G, Steven D. Leung '96.

BUSINESS STAFF

Operations Manager: Ricardo Ambrose '98; **Staff:** Mary Chen '97, Angela Liao '98, Jessica Maia '98, Winnette McIntosh '98, Pamela Shade '98, Karen Chan '99, Terri A. Wilson '99.

TECHNOLOGY STAFF

Director: Jeremy Hylton G; **Staff:** Christina Chu '98, Cristian A. Gonzalez '99, Kathleen Lynch.

ADVISORY BOARD

V. Michael Bove '83, Robert E. Malchman '85, Thomas T. Huang '86, Reuven M. Lerner '92, Josh Hartmann '93.

PRODUCTION STAFF FOR THIS ISSUE

Night Editors: Jen Peltz '98, Josh Bittker '99, Arthur Murakami '99; **Associate Night Editor:** Jason C. Yang '99; **Staff:** Laura DePaoli '97, Daniel C. Stevenson '97, Saul Blumenthal '98, Jeremy Lilley '99.

The Tech (ISSN 0148-9607) is published on Tuesdays and Fridays during the academic year (except during MIT vacations), Wednesdays during January and monthly during the summer for \$20.00 per year Third Class by *The Tech*, Room W20-483, 84 Massachusetts Ave., Cambridge, Mass. 02139-7029. Third Class postage paid at Boston, Mass. Non-profit Organization Permit No. 59720. **POSTMASTER:** Please send all address changes to our mailing address: *The Tech*, P.O. Box 397029, Cambridge, Mass. 02139-7029. Telephone: (617) 253-1541, editorial; (617) 258-8324, business; (617) 258-8226, facsimile. Advertising, subscription, and typesetting rates available. Entire contents © 1996 *The Tech*. Printed on recycled paper by MassWeb Printing Co.

Kappa Sigma Letter Will Not End Hacking Zeal

The recent letter from Joshua Bennett '96 and Kappa Sigma ["Students Should Stay Off The Green Building Roof," Jan. 17] makes me wonder why Kappa Sigma has decided to make this public service announcement for the entire MIT community, and to pass on a bit of wisdom to those at MIT who hack. Apparently, Bennett fails to realize that what makes hacking the thrill that it is is uncovering the secrets hidden deep within MIT. The fact that students are not allowed within the bowels of the Institute is an integral part of this. The more the Institute doesn't want you to be somewhere, the more of an accomplishment it is when you get there.

MIT's hackers have been taking a lot of heat recently, in large part due to inexperienced hackers who fail to take adequate precautions when hacking or who breach the hackers' code of ethics, bringing attention to both themselves and to the hacker community in general. The fundamental glue holding hacking together is that if the Institute never knew you were there, they won't try to stop you from coming back. What gives hacking a bad name is when you do get caught — they knew you were there, so they will try to stop you from coming back, whether by imposing fines, or by changing locks, or, as is the case with the Green Building, installing motion detectors in the machine rooms.

I can assure Bennett that neither the capture of some members of his fraternity nor his advice to hackers to "not hack at all," will have any impact whatsoever on MIT hackers' zeal or determination when hacking. While it is a shame that his friends were caught, it is their fault and theirs alone, and is most definitely not worthy of being branded "an extraordinarily serious problem plaguing undergraduate life at MIT." Perhaps if they had been properly prepared for their expedition, they would have known that it is possible to avoid the motion detectors entirely en route to the Green Building's roof.

Kevin D. McCormick '98

Robicheau Has Right to Hold Seminar

A recent article about an Independent Activities Period event ["IAP Seminar on Gay Conversion Prompts Angry Student

Response," Jan. 17] gave me the impression that some students objected to the offering of the non-credit seminar entitled "An Introduction to Change for the Homosexual and the Ex-Gay Movement." The seminar, presented by Peter N. Robicheau, addressed conversion methods from homosexuality to heterosexuality. In response to this seminar, some students distributed leaflets entitled "MIT Sponsors Hatred" that stated that this seminar "directly offends and harms many in the queer community here." I would like to address the students who produced this leaflet.

First, as stated in the article, the IAP guidelines specifically state that the inclusion of a non-credit seminar "does not imply MIT endorsement." These are the same guidelines that have allowed the gay community, as well as other minority groups on campus, to present their own seminars, even if MIT or the majority of the student body should happen to disagree with these students' views. This is what is called freedom of speech and expression. What I do not understand is why some groups believe that they have the right to express their beliefs and that another group does not. This is not to say that I agree with Robicheau's opinions, which I am very much opposed to. However, he has every right to hold a seminar on this or any subject he chooses as long as it is appropriately titled. This would be a whole different situation if this seminar were a required course or even an official MIT sponsored event. If you are offended by the views presented in this seminar, then do not attend the seminar.

This reaction is a part of a long standing problem with activist groups, whether they are opposed to racism, sexism, homophobia or other human rights concerns. The platform of most of these movements, as I understand them, is to gain equal treatment for all human beings. People should be judged on their individual actions and not their race, religion, sex, sexual orientation or other genetic factors which they themselves have no control over. This is very different from the idea that these minority groups deserve special treatment. If you think you deserve the right to freely express your views on homosexuality and still be treated decently, then you should offer that same courtesy and right to other individuals, even those who disagree with your views.

There is, of course, a very fine line between what constitutes freedom of expression and what is infringement on someone else's well-being. It is not appropriate to van-

dalize posters, threaten the safety of students, or other hate crimes that have plagued this campus. However, the offering of a non-credit seminar that is appropriately titled as to its content is in my opinion clearly within the bounds of freedom of expression. If activist groups protest events that are not infringing upon their rights in addition to those that are legitimate claims of harassment, the majority of people will stop listening and just chalk up the legitimate claims as an overreaction to an innocent situation. Yes, there is a problem of discrimination on this campus against many groups, including the queer community. These hate crimes should not go unnoticed, but please refrain from crying wolf, or no one will take us seriously when there really is a problem.

Jennifer N. Mosier '96

Robicheau Seminar Is Matter of Free Speech

According to a recent article ["IAP Seminar on Gay Conversion Prompts Angry Student Response," Jan. 17], Gays, Lesbians, Bisexuals, Transgenders, and Friends appears to be saying that the sexuality-change class is inappropriate for IAP because it is hateful or belittling of homosexuals. But it is wrong to say that MIT is "supporting hate," because MIT does not sponsor and does not take any responsibility for IAP activities. That MIT allowed the seminar to be held is a matter of free speech.

Let me draw an example: I am Jewish, and it makes me pretty mad to have to walk past the woman from Jews for Jesus on my way to Lobby 7. She has the letters "Jesus" formed into a Jewish star on her shirt. It's insulting to me and demeaning to my religion. But does she have a right to be there? Yes.

Just as the "change" seminar is demeaning to homosexuals, the Jews for Jesus confront Jews with unwelcome pity. I'll bet, in fact, that my feelings toward this woman are pretty close those of GAMIT members toward Peter N. Robicheau, who sponsored the seminar. But the Institute isn't supporting either one. Robicheau has as much of a right to lead his seminar as the Jew for Jesus lady has to stand out on Massachusetts Avenue in front of Lobby 7. As distasteful as it may be, that's free speech and MIT shouldn't interfere with it.

Jeremy D. Sher '99



Opinion Policy

Editorials, printed in a distinctive format, are the official opinion of *The Tech*. They are written by the editorial board, which consists of the chairman, editor in chief, managing editor, executive editor, news editors, and opinion editors.

Dissents, marked as such and printed in a distinctive format, are the opinions of the signed members of the editorial board choosing to publish their disagreement with the editorial.

Columns and editorial cartoons are written by individuals and represent the opinion of the author, not necessarily that of the newspaper.

Letters to the editor are welcome. They must be typed, double-spaced and addressed to *The Tech*, P.O. Box 397029, Cambridge, Mass. 02139-7029, or by interdepartmental mail to Room W20-483. Electronic submissions in plain text format may be mailed to letters@the-tech.mit.edu. All submissions are due by 4:30 p.m. two days before the date of publication.

Letters and cartoons must bear the author's signatures, addresses, and phone numbers. Unsigned letters will not be accepted. No letter or cartoon will be printed anonymously without the express prior approval of *The Tech*. *The Tech* reserves the right to edit or condense letters; shorter letters will be given higher priority. Once submitted, all letters become property of *The Tech*, and will not be returned. We regret we cannot publish all of the letters we receive.

To Reach Us

The Tech's telephone number is (617) 253-1541. Electronic mail is the easiest way to reach any member of our staff. Mail to specific departments may be sent to the following addresses on the Internet: ads@the-tech.mit.edu, news@the-tech.mit.edu, sports@the-tech.mit.edu, arts@the-tech.mit.edu, photo@the-tech.mit.edu, circ@the-tech.mit.edu (circulation department). For other matters, send mail to general@the-tech.mit.edu, and it will be directed to the appropriate person.

Off Course

By H. Ayala



JESSIE CHAN

CHINESE RESTAURANT

MANDARIN, CANTONESE, AND SZECHUAN CUISINES

24 PEARL STREET
CAMBRIDGE, MA 02139
(ON THE CORNER OF PEARL AND GREEN STREETS)

354-8881
EAT IN OR TAKE OUT

PRESENT THIS AD FOR 10% DISCOUNT



Dexter's not his usual self.

You suspect the **salsa**.

So you call *Dr. Nusblatt*, your family vet back home.

The **call** is *cheap*.

(Too bad about the *consultation* fee.)

Live off campus? Sign up for AT&T True Reach SavingsSM and save 25% **no matter who, how, when or where** you call in the U.S.

Life can be complicated. AT&T True Reach SavingsSM is simple. Save 25% on every kind of call on your AT&T phone bill—direct dial, calling card, directory assistance, local toll, cellular, fax and modem—when you spend just \$25 a month*. No other plan gives you all these different ways to save**. Just call 1 800 TRUE-ATT to sign up. Save on every call. *That's Your True Choice*.SM



AT&T
Your True Choice

Ever Get A Pal Smashed?



TAKE THE KEYS.
CALL A CAR.
TAKE A STAND.

FRIENDS DON'T LET FRIENDS DRIVE DRUNK.

Ad Council U.S. Department of Transportation

*Refers to long distance calls billed to AT&T home or AT&T Calling Card accounts. Discounts off AT&T basic rates. Certain exclusions apply. Subject to billing availability. Offer available to residential AT&T customers. Minimum spending requirement is per residential line. **Compared to major long distance carriers.

THE ARTS

Women in *Exhale* cut the strings of strained love

WAITING TO EXHALE

Directed by Forest Whitaker.
Starring Angela Bassett, Whitney Houston,
Lela Rochon, and Loretta Devine.
Sony Copley Place.

By Audrey Wu
STAFF REPORTER

For those of us who are undergraduates, it's somewhat early to be actively searching for "The One." Ladies, you know who I mean by The One: He has to be a man with a sense of humor and a sense of purpose; a man who is tender, strong, and confident without being wimpy, rude, or arrogant. He probably isn't on this campus, that's for sure (or if he is, was snatched up by someone else a long time ago). But this hardly means that we aren't keeping our eyes (and hearts) open, hoping to find HIM. And in searching for The One, we also open ourselves up to heartbreaking encounters with several Definitely-NOT-The-Ones.

Waiting to Exhale, the provocative motion picture based on the bestseller by Terry McMillan, is the story of thirty-something women coping with the string of losers they stumble over in their search for decent men. The film has generated considerable interest since its release; Oprah Winfrey recently devoted a show to the *Waiting to Exhale* "parties" held by women with the same problems.

Despite the almost entirely black cast, women (and a few brave men) of all colors have been flocking to movie theaters in droves to see it. And this should not be surprising given the commercials, which show a classily-dressed Whitney Houston explaining how she's been asking God for years to send her a decent man. Instead, she got Lionel, a suave two-timing free-loader, and Kenneth, who would be perfect if he weren't already married. "God's got a lot of explaining to do," she says as the commercial cuts to a very pissed-off-looking Angela Bassett coolly walking away from an expensive sports car going up in flames. A commercial like that would probably generate at least a little interest in any woman who has even

once gone through the anguished throes of heartbreak. *Waiting to Exhale* is not meant to be an incisive commentary on relationships, but instead a movie to be watched with a few of your closest single girlfriends to help reaffirm why it's okay (and often times better) NOT to have a man.

The film should be commended for bringing the vibrant voices of middle-class African-American women to the fore. In addition, the performances by the four heroines were quite good; although the characters often times act as dumb as dishwater, the actresses manage to shine and the camaraderie among the four women appears heartwarming genuine. Whitney Houston plays Savannah, who is intent on fulfilling two ambitions: to become a successful TV producer and to snag the Mr. Right who has eluded her all these years. She would actually let go of the latter if it weren't for her meddling but well-meaning mother, who doesn't want Savannah to end up old and alone like herself (even if it means settling for the lying, two-timing Kenneth). Angela Bassett plays Bernadine, who has the heart-wrenching misfortune of sacrificing eleven years of her life to support her husband and

advance his business. In a particularly ugly scene, her husband announces that, after years of treating her like standard office help, he is leaving her and their two children for his white bookkeeper.

Robin, played by Lela Rochon, is the dumbest of the four when it comes to men. She continuously ends up in bed with men who are basically the scum of the Earth. The group's fourth, Gloria, played by Loretta Devine, looks to food instead of men for solace, resulting in extra pounds and low self-esteem. In addition, she is having a difficult time letting go of her precocious but difficult son, Tarik, who aspires to spend a year playing the saxophone with an orchestra in Spain. She turns to her intriguing new neighbor, Marvin (Gregory Hines) for comfort, who, fortunately for her, "likes his women with a little meat on their bones."

The film opens with a lot of promise. The heroines are interesting, the men deserve to be shot, and there are several funny scenes (admittedly, the funniest scenes of the movie were also the ones that earned it an R-rating and showcased the men's ineptness as lovers). In addition, the film does make some rather incisive observations of post-relationship-trau-

ma female behavior. It is empowering to watch Bernadine do only what most women dream of doing after her husband leaves her: In a rather frightening fit of rage, she crams his expensive sports car with his clothes and sets it ablaze. She then proceeds to sell the rest of his belongings — skis, trophies, everything — at a \$1-for-everything garage sale. And when she confronts her husband in the middle of a board meeting, she slaps him and the hapless white bookkeeper, and then cuts off all of her hair. Later, when she is drunk, she attempts to call the white bookkeeper, because, as she sobs, "I have to get things off of my chest!" These are scenes which women can relate to.

The film's weakness, however, lies in its disjointedness and the extreme blindness of the characters. The movie never quite manages to hit home because the four friends somehow encounter almost every kind of bad man there is (except, thankfully, the wife-beater). Every clichéd line is said in the movie, from the divorce-takes-time line to the yes-I-love-you-now-can-we-have-sex line. After the first 45 minutes of the film, I started wondering why the women were so stupid. I stopped relating to them and started wanting to beat them over the head with a stick. Then suddenly and for no good reason, except that the film was nearing the two-hour mark, the women suddenly got their lives together and rid themselves of the leeches. And although I was happy for them, I was left feeling rather let down and confused. It would have been better if the movie had shown how the women gained the strength to leave those losers behind (I suppose I should read the book for that).

You will enjoy the movie if you are a female in a vengeful, "men suck, I hate them all" sort of mood. If you are male, I would suggest not choosing this film for your first date; furthermore, unless you want to watch two hours of movie bashing, I wouldn't suggest seeing it at all. The male friend with whom I saw the film left feeling pretty harassed. *Waiting to Exhale*, along with the Alanis Morissette CD, a big tub of ice cream, and your best friend's phone number, definitely belongs in your stockpile of things to turn to when you've been dumped.



A group of four modern women gossip and struggle with men in *Waiting to Exhale*.

OPEN HOUSE

STUDENT SERVICES REENGINEERING

WEDNESDAY, JANUARY 24TH

10 am - 4 pm

LOBBY 10 and ROOM 10-100

SCHEDULED 30-MINUTE PRESENTATIONS IN ROOM 10-100

11 am and 1 pm

"You're doing WHAT to Reg day!?"

A new way to select classes and register.

noon and 2 pm

"Why can't there be one place where....?"

One-stop shopping for students.

We want your feedback.

Members of the Student Services Reengineering Teams will be present to discuss proposed ideas.

Stop by anytime.

Snacks will be provided.

ON THE SCREEN

— BY THE TECH ARTS STAFF —

★★★★: Excellent
 ★★★: Good
 ★★: Average
 ★: Poor

★★★ Heat

Rarely do Hollywood films play both sides of the fence in a cops-and-robbers saga, but that's exactly what writer-director Michael Mann does in his latest film. Robert De Niro is the robber determined to make one last big score, but complications develop when he falls in love with a young graphic designer won over by his candor; Al Pacino is the cop who doggedly pursues De Niro at the expense of his crumbling third marriage. Although the dialogue is a bit excessive at times — the film is about three hours long — Mann's sense of pacing serves him well in setting up the pulse-pounding action sequences. The supporting actors, too, deserve a lot of credit for bringing life and credibility to the scores of characters in the film. —SCD. Sony Cheri.

★★★★ Leaving Las Vegas

This sometimes-harrowing, often-redemptive look at a relationship between a destructive alcoholic (Nicholas Cage) and a prostitute (Elisabeth Shue) could be a spiritual antidote to the excesses of *Showgirls*. Cage is a newly-fired screenwriter whose vices have torn apart his family and led him to Las Vegas, where he resolves to drink himself to death. Shue falls in love with him for his lack of pretense, and both embark on a journey of love and self-revelation. Director Mike Figgis completely redeems himself for the bathetic *Mr. Jones*; here, he paints the characters with warm, natural emotions and uses the garish backdrop of the Vegas Strip (where even the golden arches of McDonalds are adorned with a multitude of flashing lights). The soundtrack of soulful contemporary songs by Sting, Don Henley, and other performers is hypnotic and artfully used. It's definitely worthwhile and uplifting for those who can take it. —SCD. Sony Nickelodeon.

★★★ Nixon

Oliver Stone's most recent flick, *Nixon*, manages to capture the essential features of Richard Nixon's twisted character. While Anthony Hopkins doesn't exactly resemble Nixon, he does effectively mimic many of the president's nervous mannerisms. *Nixon* con-

tains a number of fictional scenes created by director Stone — scenes that blur the already unseemly facts of the Nixon scandal. In spite of the canards, Stone accurately lays out some of the late president's strange psychoses, including phantasms of his saintly mother, dead brothers, and "enemies." The outstanding supporting cast helps weave the entire story into a tapestry of deceit and betrayal that can't fail to impress even true Nixon aficionados. —Anders Hove. Sony Cheri.

★★★ Sabrina

Good romance-comedy. Sabrina (Julia Ormond) falls in love with David (Greg Kinnear), but David barely knows she exists. Sabrina's father sends her to Paris to help her forget David. She comes back a new woman and David is attracted to her, but

en, but maybe that's just because of his lines. The direction is magical; for example, it's very easy to see how Sabrina grows up in Paris. Julia Ormond makes a much more sophisticated, independent Sabrina, part of the modernization of the story. Harrison Ford has always shown a knack for comedy in previous films, and this knack develops into downright skill in *Sabrina*. —Kamal Swamidoss. Sony Nickelodeon.

★★★½ Shanghai Triad

Director Zhang Yimou's (*Ju Dou*, *Raise the Red Lantern*) latest film, is absolutely stunning. Set in the westernized Shanghai of 1930, the film deals primarily with the fate of a woman living in a society controlled by the Mafia. The result of this shift of focus is refreshing — rest assured that there is not a



Harrison Ford and Greg Kinnear square off in *Sabrina*.

he's now engaged to another woman. Linus (Harrison Ford), David's brother, woos Sabrina in the hope that she'll forget David and fall for him. A lot more complicated than the original one with Humphrey Bogart and Audrey Hepburn. This version is more believable, and the characters' complexity was essential to this end. Harrison Ford and Julia Ormond make this film very 90's, yet they retain the story's classic charm. Greg Kinnear is much funnier than William Hold-

bloody horse head to be found. Although there are impressive performances all around — most notably Li Baotian in his role as Mr. Tang, the ruthless godfather chief of the Tang family-run underground Green dynasty, and Shun Chun as Song, his backstabbing number two man — it is the incomparable Gong Li's performance as the conceited, hot-tempered prostitute/singer Xiao Jinbao that grips the audience's attention for almost two hours. —Audrey Wu. Kendall Square Cinema.

★★★ Toy Story

Toy Story, Disney's most innovative feature-length film to date, not only is a landmark in computer animation, but also manages to retain the action-packed plot line and light-hearted comedy that have given Disney a virtual stranglehold on children's films. But besides the fact that the film is practically one big special effect, its premise is also a lot of fun: the supporting characters of the film are such familiar toys as Mr. Potato Head, Etch-a-Sketch, Slinky, and those miniature green plastic army men that are packaged in buckets. The film stars a talking cowboy doll named Woody (voice of Tom Hanks) and a "Space Ranger" named Buzz Lightyear (voice of Tim Allen). The villain is the bully who lives next door, a juvenile delinquent named Sid who thoroughly enjoys torturing his toys. Woody and Buzz ultimately become "lost toys" trapped in Sid's house with his hideous toy creations, and have to escape before Andy's family moves away without them. *Toy Story* is a lot of fun and the computer animation is, for lack of a better phrase, really cool. —AW. Sony Copley Place.

★★½ Twelve Monkeys

In this science-fiction offering from director Terry Gilliam (*Brazil*, *The Fisher King*) and writer David Peoples (*Blade Runner*, *Unforgiven*), Bruce Willis plays Cole, a prisoner in a post-apocalyptic future; scientists hand-pick him as a "volunteer" to go back in time to uncover information regarding a mysterious virus that wiped out most of the earth's population. He runs into problems, however, when he gets thrown in a mental institution and meets a sympathetic doctor (Madeleine Stowe) and a defective inmate (Brad Pitt). Cole trips through time much like Billy Pilgrim in Kurt Vonnegut's *Slaughterhouse-Five*. Unlike Pilgrim, Cole seems trapped in an infinite loop; he's haunted by an image from his childhood, and once we see what this means for his mission, we pity him even more. But what results is an incredibly bleak picture; a romantic development between Stowe and Willis toward the end is a pretentious and unsuccessful attempt to offset the film's inevitable, depressing conclusion. However, *Twelve Monkeys* is partially redeemed by some comic relief from Pitt's character and Gilliam's distinctive, engaging visuals. —SCD. Sony Cheri.

The Rewards of Distinctive Leadership.

Understanding what it takes to be a cut above.
 Cultivating talents that give you an edge.

It has distinguished you academically.

Now you're ready to prove yourself on the next level.
 You're ready for a career with Citadel Investment Management, L.P., (formerly Wellington Partners).

We're an international multifund trading firm specializing in relative-value trading strategies and statistical and merger arbitrage. We employ a highly-quantitative mathematical approach unique to the industry. We also utilize innovative computer modeling and unique investment strategies.

The result? More than \$1.3 billion in positions. And annual returns averaging over 20% for our investors. We invite ambitious individuals with an entrepreneurial flair to join our diverse team of accomplished trading professionals.

We require exceptional analytical skills and a proven mathematics and economics background. Securities industry experience and foreign language fluency a plus.

Discover challenges and rewards unlike any other. We will be on campus for interviews Tuesday, January 30. For more information, please contact the Placement Office or send a resume to: Citadel Investment Management, L.P., Human Resources, 225 W. Washington, 9th Floor, Chicago, IL 60606. Equal Opportunity Employer.



Lobby 7 Computer Pyramid Translates Trans-Atlantically

By Brett Altschul
STAFF REPORTER

The pyramid structure that has graced Lobby 7 for the last week went into full operation yesterday. A computer terminal inside was connected to the Modern Art Museum in Lyon, France as part of the Lyon Third International Art Biennial, a modern art exhibition.

Microphones allow the transmission of human speech across the Atlantic Ocean, from Lobby 7 to Lyon. The words are translated by computer and are both displayed on the screen and generated by a voice synthesizer, in either a masculine, feminine or childlike voice, depending on the speaker. This allows real-time communication between people on distant continents.

Cameras in Lobby 7 and the museum foyer send visual images between the sites. There are two cameras in each location, one showing the entire room, the other showing a view of the person at the terminal.

The computer display presents a split view, with images of the people at either end and each person's words in both French and English.

Although the connection was established on Tuesday, problems plagued the initial transmission, said Piotr Kowalski, an artist affiliated with the Center for Advanced Visual Studies.

"We're getting about 20 to 50 percent recognition with the translation," said Jeffrey C. Krause G, a technical worker on the project.

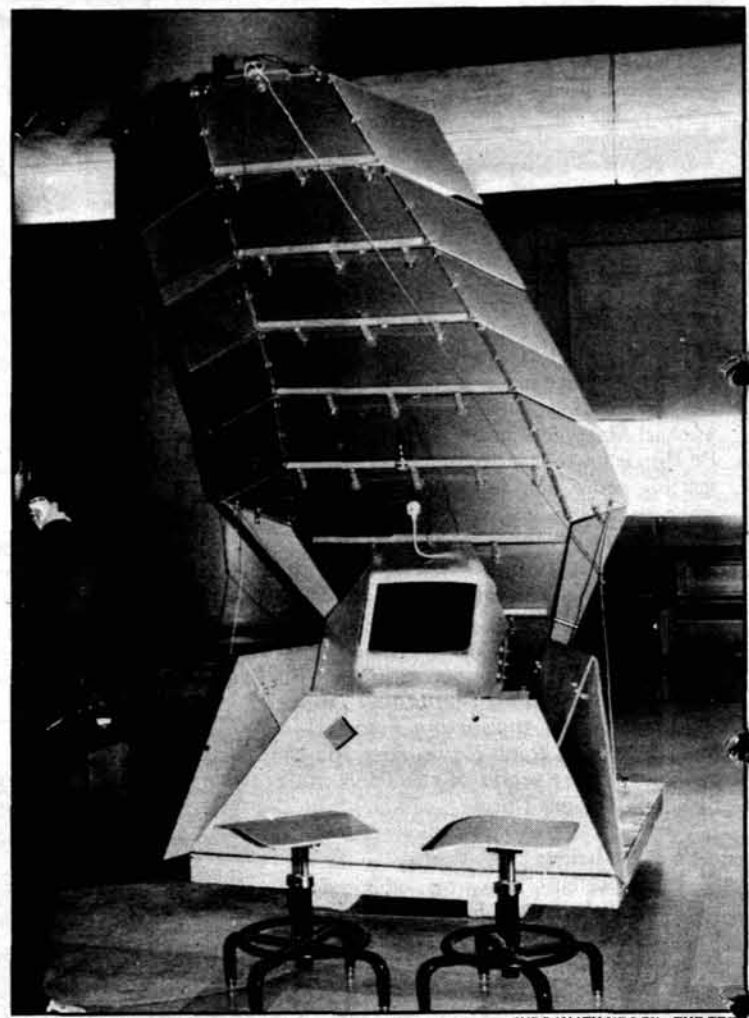
"The translator works fine for what we're doing now — just one or two sentences at a time."

The system makes use of two computers at each end, one for transforming spoken words to written text and one for translating between French and English. The information is sent digitally over the Internet.

Kowalski is directing the project in association with the Center for Advanced Visual Studies and the School of Architecture and Planning. "It's basically an attempt to help communication," said Krause.

The computers at MIT are housed within a wood and plastic pyramid that will be sealed when the connection is not operating. The setup in Lyon is less elaborate with just a plain casing for the computer, Krause said.

The hookup will remain in Lobby 7 through next week and will be at various places around the Institute until Feb. 18. Because of the six-hour time difference between here and Lyon, the connection operates only from 9 a.m. to 1 p.m. each week day, except Mondays.



INDRANATH NEOGY—THE TECH
The pyramid seen in Lobby 7 last week was unfolded to reveal a trans-Atlantic speech translation system.

You can't cure colorectal cancer if you don't know you have it.
Call us.

AMERICAN CANCER SOCIETY

This space donated by *The Tech*



EAPS Spring Courses

Earth



Atmospheric



& Planetary Sciences



New Courses!

12.330J Fluid Physics

Prof. Kerry Emanuel, Prof. Paul Joss
3-0-9

12.333 Atmospheric and Ocean Circulation

Prof. R. Alan Plumb
3-0-9
(Prerequisite 12.003; Corequisite 12.330J is optional.)

12.340J Atmospheric Chemistry

Prof. Mario Molina, Prof. Jeffrey Steinfeld
3-0-9

...And Some Old Favorites!

12.001 Introduction to Geology

Prof. John Southard
3-4-5 REST

12.004 Introduction to Planetary Science

Prof. Tim Dowling
3-0-9

12.119 Analytical Techniques for Studying Environmental and Geologic Samples

Prof. Sam Bowring, Prof Ed Boyle, Prof Fred Frey, Prof Tim Grove
2-6-4 LAB

12.214 Environmental Geophysics

Prof. Dale Morgan
3-3-6

12.401 Beyond the Solar System

Prof. Chuck Counselman, Dr. Heidi Hammel
2-2-5

For more information, contact
burns@mit.edu

Ad

Age 7, 1982



Age 18, 1993



Elizabeth Suto.

Killed by a drunk driver on February 27, 1994, on Bell Blvd. in Cedar Park, Texas.

1 year old, 1991



2 years old, 1992



Stevie Ace Flores.

Killed by a drunk driver on March 23, 1993, on Pacific Coast Highway in Wilmington, Calif.

If you don't stop your friend from driving drunk, who will? Do whatever it takes.

FRIENDS DON'T LET FRIENDS DRIVE DRUNK.
U.S. Department of Transportation

This space donated by *The Tech*

Early Action Acceptance Rate Drops Slightly; Recentered SATs Don't Affect Admissions

By Christina Chu
STAFF REPORTER

The number of early action acceptances for the Class of 2000 remained about the same as last year, according to Associate Director of Admissions Elizabeth S. Johnson.

According to Johnson, a total of 511 students, or 29 percent of the applicant pool, were admitted early this year.

This year saw an increase of five percent in the number of early action applicants. The percentage of admitted students decreased from 33 percent, but that is a normal variation, Johnson said.

There was no significant change in the number of admitted underrepresented minorities. The percentage of female students admitted under early action was 39 percent, close to last year's 40 percent.

Admittees on new scoring scale

In 1995, students admitted under early action had an SAT verbal mean of 657. This year the SAT verbal mean is 722, Johnson said. All scores are out of a possible 800 points.

"This is not due to the fact that the group of admitted students are stronger, or that we have changed our criteria on admissions, but because the SATs have been recentered," Johnson said.

Since April of 1995, SAT scores have been rescaled so that nationwide verbal and math means fall around 500. "In the past, the math mean has been higher than the verbal mean, but now because of recentered scores, verbal scores are on average higher. As a result, we see an artificial inflation," Johnson said.

In the article "Recentering the SAT," published in the *Faculty Newsletter*, Director of Admissions Michael C. Behnke explained the reasoning behind recentering scores.

"The SAT is a norm-referenced test for use in making comparisons within a population of test takers at a particular time. Most such tests are renormed on a regular basis. The SAT, however, has also become a 'yardstick' ... to measure educational attainment over time," Behnke wrote.

The reference group used up until now was the original group of about 10,000 test takers in 1941.

"Since then the average verbal has gone down to the 420s and the average math has gone down to around 480. The changes have been attributed to changes in the make-up of the test-taking population [and] the increase in the volume of test takers," Behnke wrote.

Recentering affects admissions

The Admissions Office has studied converting the scores of this past year's applicants to the recentered scale and seeing how that might have affected decisions.

"It is important to note that the level of difficulty of the test will remain the same and that percentiles will be virtually unchanged," Behnke wrote.

"Because the scores had to be 'stretched' up to use the whole top of the scale and other scores were bunched near the bottom, the validity and reliability of the test were weakened."

But not all scores will be changed for the better. Apparently, the math scores from 660 to 710 go down after recentering. This will affect applicants that fall in this range and make them look weaker, Behnke wrote.

"If the 1995 verbal scores were recentered for students accepted under early action, then norm would fall at 717, instead of 657," Johnson said.

Changes in the math mean were not so dramatic. In 1995 the math mean was 756 — with recentering it would be 766. For the 1996 admittees, the mean is 764.



Entry-Level Office Life*

UNREAL-WORLDFLY LANGUAGE

"So I go, so she goes, so I go, so she goes..."

"Awesome!"

"Totally!"

"Not."

"Duh!"

"That sucks."

"Later, dude/babe."

REAL-WORLDFLY LANGUAGE

"So I said, so she said, so I said, so she said..."

"Satisfactory!"

"Entirely so!"

"I am jesting of course."

"I believe that point is self-evident."

"That is unfortunate."

"Goodbye, sir/madam."

WHAT'S SO FUNNY ABOUT LIFE AFTER COLLEGE?

Find out when *Rolling Stone* reporter Dan Zevin delivers his hilarious crash course on post-college survival...

at

**CHARM SCHOOL COMMENCEMENT
TUESDAY, JAN. 30, ROOM 10-250, 5:00**

* Dan Zevin, *Entry-Level Life: A Complete Guide to Masquerading as a Member of the Real World* (Bantam)

Fun Stuff!

Earn \$10-\$20 for less than 1 hour participating in bargaining exercises. 200 undergraduates needed! Have your friend called.

Where? Harvard Business School
When? Wed. January 24th
6 pm, 7 pm or 8 pm
or Thurs. January 25th
6 pm, 7 pm or 8 pm
or Sat. January 27th
1 pm, 2 pm or 3 pm

Call Julia Morgan at 495-6484

free
**DELIVERY
TO MIT
Until 2am Daily
497-4849**
Let us cook
for you!

TOMMY'S HOUSE OF PIZZA
offers free delivery service!

Large Cheese Pizza \$8.95
Extra Toppings \$1 each

Try our Gourmet Pizza Edges:
Sesame Seeds • Poppy Seeds
Pretzel Salt • Minced Onion
Minced Garlic

We are conveniently located
about 1350 smoots
away from MIT.
Call us for late night delivery
of all your favorite
party foods.

Also Available:
Pasta dishes • Subs/Grinders
Salads • French Fries • Burgers
Onion Rings • Calzones • Sodas

497-4849 49 Mount Auburn St., Camb. 497-4849

UNIVERSITY BARTENDING COURSE™

**50%
Off!!**

Of Basic Program with valid college
Student I.D.

Free Info Session
Tuesday, Feb. 6th
7:00 pm
Ho Jo's/Kenmore Square

Now Accepting Visa, M/C, AMEX & Discover

Shop Around & Compare!

1-800-U-CAN-MIX
Act Now! Space is Limited!!

SELF-REALIZATION

"I REALLY DID IT LAST NIGHT, BARRY THOUGHT. GOT DRUNK, ACTED STUPID, AND WENT HOME WITH WHO IS THAT?"

"WHAT AM I STUPID? HOW DID I DO THIS?" BARRY BEGAN TO WORRY, REALLY WORRY.

WHAT ABOUT AIDS?

THEN HE REMEMBERED, "HEY, I'M JUST A CARTOON CHARACTER. I DON'T EVEN HAVE TO SLOWER."

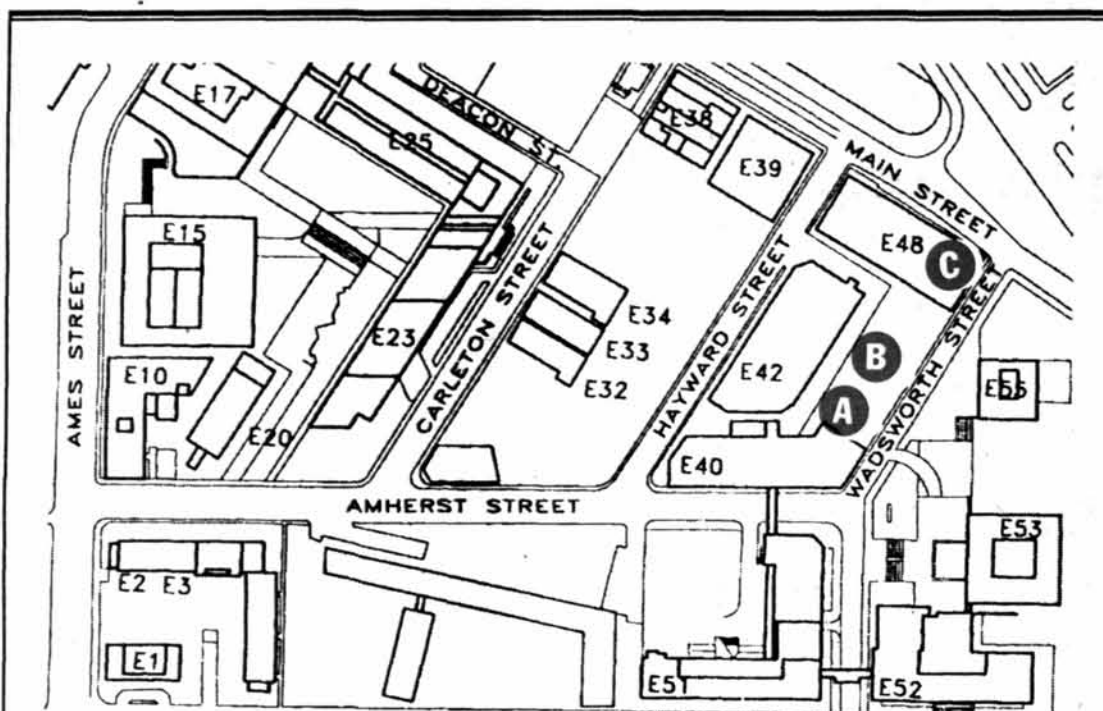
GET HIGH, GET STUPID, GET AIDS.

FOR MORE INFORMATION CALL: **1-800-662-HELP**

NATIONAL INSTITUTE ON DRUG ABUSE
U.S. DEPARTMENT OF HEALTH AND HUMAN SERVICES

This space donated by The Tech

Mugging Location Considered 'Off Campus' by CPs



DANIEL C. STEVENSON—THE TECH

Institute employee Constance L. Emanuel was mugged around 6:30 a.m. last Wednesday on Wadsworth Street. Emanuel said the mugging took place near Building E40 (location A on the map). Campus Police reports place the incident further along Wadsworth (location B), while the Cambridge Police said it happened close to Main Street (location C). All three locations are on the sidewalk of Wadsworth Street, outside of Campus Police jurisdiction. The unidentified suspect fled with Emanuel's purse.

Mugging, from Page 1

a sidewalk right outside MIT property, the Campus Police have classified the incident as an off-campus crime, and Cambridge Police have handled the case. Both departments responded to the initial call.

The portion of the sidewalk on which the mugging took place is owned by Cambridge, as is most of Wadsworth Street, Pasquarello said.

Cambridge and MIT each own some of the streets in the MIT area. The owner "depends from street to street," Pasquarello said. "Cambridge and MIT may each own different parts of one street," he said. "It could vary from one foot to the next. Every spot is different."

Wadsworth Street is owned by Cambridge, but Carleton Street, two blocks over, is owned by MIT, said Chief of Campus Police Anne P. Glavin.

The CPs responded to the incident even though it was not on campus. In general, the CPs will respond to any incident that takes place in the MIT area and even some in non-MIT areas of Cambridge when the Cambridge Police are busy, Glavin said.

Since the mugging officially took place off campus, it will not be reported in the annual crime statistics, Glavin said.

"Everything that we report [on campus] is what occurred on MIT property," Glavin said. In recent years, the number of robberies at and around MIT has been low. There were four robberies on campus in 1993 and 1992, three near campus in 1993, and two near campus in 1992.

The 1995 Campus Police Annual Report is currently being prepared, Glavin said.

Emanuel scared by incident

"I'm a little more scared now than before," Emanuel said. "I'm always looking now."

After the mugging, Emanuel went to her office and called the CPs, who quickly responded and were followed by Cambridge Police.

"I was happy the way they handled the incident," Emanuel said.

Emanuel did not sustain any serious injuries from the incident, but a Cambridge Police cruiser took her to the Medical Center. "My eye was all swollen" for a few days, Emanuel said. "It still hurts."

"The person was just waiting for someone" to attack, Emanuel said. "It didn't have to be me."

Emanuel, who used to work earlier hours, has changed her hours. "I'm coming in when it's lighter," she said. "I'm being more careful."

Daniel C. Stevenson contributed to the reporting of this story.

At Austin, Texas-based Crystal Semiconductor, you could be part of a team of engineers

designing one of the highest performance mixed-signal VLSI integrated circuits in **the** world. The most talented Analog and Digital IC designers in the industry work for Crystal, and we're looking for bright, creative people to join them. If you have an MSEE or BSEE and the desire to work on today's **most**

advanced integrated circuits

we'd like to talk to you. Opportunities are available at Crystal in IC design, Software, Product & Test, CAD and Applications Engineering. We'll be on the MIT campus for interviews on February 20 & 21. To be included **in the** pre-selection process, please submit your résumé to the Career Center or fax it to us at 512-445-4379. Crystal, an

industry leader in integrated circuit design, offers competitive salaries, comprehensive benefits, growth potential, and the chance to be in Austin, the live music capital of the world. In the heart of the beautiful Texas Hill

Country, Austin has miles of lakes, almost 12,000 acres of parks, great weather and a vibrant social scene.

CRYSTAL
A Cirrus Logic Company
your future is clear
An AAP/Equal Opportunity Employer

Crystal College Recruiting P.O. Box 17847 Austin, TX 78760
fax (512) 445-4379 crystalhr@crystal.cirrus.com

The Council for the Arts at MIT as part of its continuing series of performing arts excursions offers:

FREE TICKETS
for MIT students ONLY

to the concert production of

the Gershwins'
Porgy & Bess

presented by
the MIT Black Student Union
and Opera unMET

on
Friday January 26, 1996
8:00pm
Kresge Auditorium

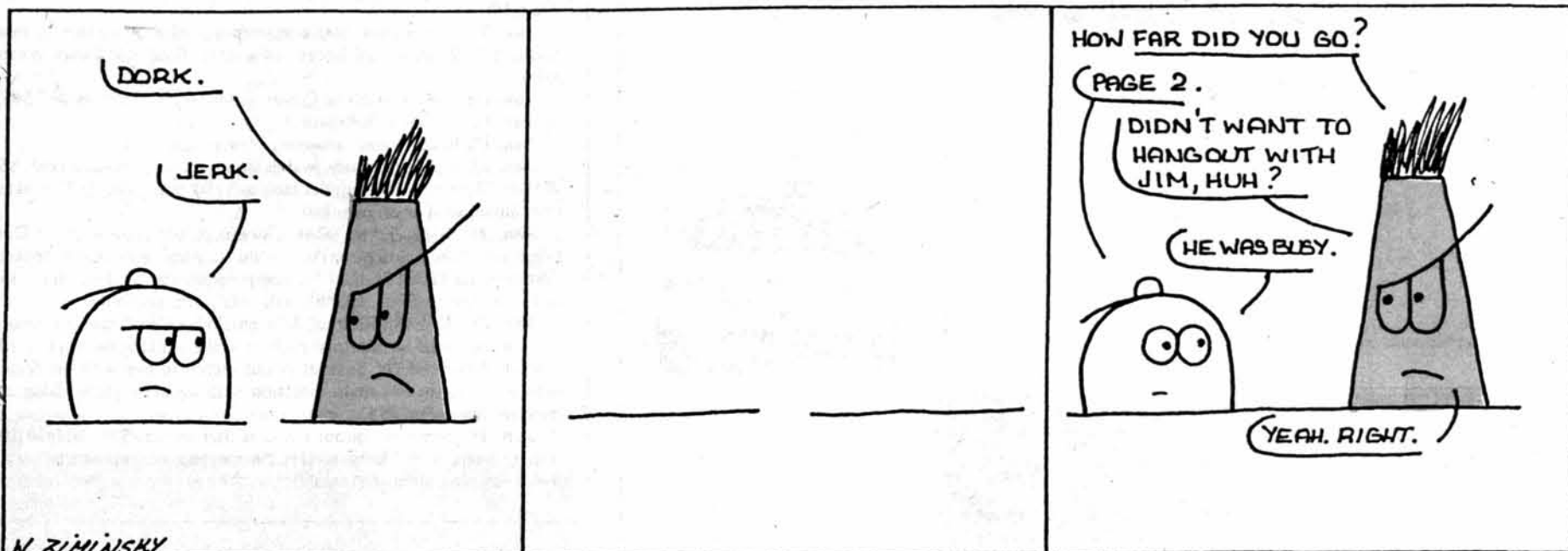
Tickets may be reserved
IN PERSON ONLY
at the Office of the Arts
(E15-205)

You must have a
valid MIT student ID
and a \$5 deposit

(which will be returned to you
the week following the show)

rookies

by willy ziminsky



The Tech

MIT's oldest and largest newspaper (and the oldest student activity) has openings in *all* departments.

Stop by our offices in Room 483 of the Student Center every Sunday at 6 p.m. for our general meetings

or call 253-1541 and ask for Scott or Dan

or email join@the-tech

Most of our people wear jeans to work.



Except, of course, during lunch.

ViaSat

Phone 619/438-8099
 Fax 619/438-8489
 E-mail resume@viasat.com.

Grads in EE, CS, Math Sci:
 ViaSat is the ideal place to start your high-tech career, both intellectually and geographically. We're a dynamic, fast-growing digital communications company founded and run by engineers. Our forte is digital communications and signal processing for defense and commercial communications products.

We are interested in meeting highly motivated grads (3.2 GPA, MS preferred) with training in Digital Signal Processing, Hardware Design,

Communication Systems and/or Computer Networking.

At ViaSat we foster an open, comfortable environment. We encourage free-flowing, creative thinking, and we like our people to enjoy work as well as free time. And with everything San Diego offers, some of us like to ride over to the beach or a nearby park during the lunch break.

ViaSat Inc.'s corporate headquarters is located at 2290 Cosmos Court, Carlsbad, California 92009-1585. WE ARE INTERVIEWING ON CAMPUS FEBRUARY 9TH WITH TWO SCHEDULES. For consideration, please fax your resume to Stephanie Steers, Sr. Recruiter at: 619/438-8489 or E-mail (in ASCII text) to resume@viasat.com See us on the web at www.viasat.cerfnet.com EOE.

**MIT Washington
Summer Internship
Program**



**Deadline for Applications is
February 9, 1996.**

**Final information session
Thursday, January 25
10:00 - 12:00
8-105.**

For more information call 252-1844 or send email to: summerwash@mit.edu

**WHEN DRINKING,
CALL A FRIEND.**



Drinking and riding can lead to a loss of license, a conviction, or even worse. When you drink, get a ride with a friend. It's the best call you can make.



MOTORCYCLE SAFETY FOUNDATION

This space donated by The Tech

POLICE LOG

The following incidents were reported to the Campus Police between Jan. 5 and 25:

Jan. 5: Bldg. 14, Charles Gray, of 9 Newtowne Court, Cambridge, arrested for trespassing; Hayden Library, walkman stolen from jacket left unattended, later recovered from person arrested in Bldg. 14.

Jan. 9: Dupont gym, suspicious activity; Student Center, 1) bike stolen, \$90, 2) attempted larceny of a table; Bldg. 13, wallet stolen, \$109.

Jan. 10: Johnson Athletic Center, indoor track, wallet stolen, \$45.

Jan. 11: Westgate, harassment.

Jan. 12: Baker House, annoying phone calls.

Jan. 15: Hayden Library, wallet stolen from unattended coat, \$5; Walker Memorial, file cabinet stolen, \$150; Eastgate, TCC broken into, unknown if anything taken.

Jan. 16: Bldg. 5, two photos stolen, \$700; Johnson, two Doc Edgerton photos stolen, unknown value; Bldg. E18, room broken into, nothing taken; Bldg. E51, computer stolen, \$3,910; Bldg. 16, laptop computer stolen, \$2,000; Bldg. 14E, harassing mail.

Jan. 17: Wadsworth Street, MIT employee Constance Emmanuel was the victim of an unarmed robbery while walking on Wadsworth towards Memorial Dr. Suspect poked victim in eye with his finger before fleeing in unknown direction with victim's purse; Bldg. 5, paperweight stolen, \$15.

Jan. 18: Johnson, indoor track, wallet stolen, \$25; Bldg. E40, wallet stolen, \$10; Burton-Conner House, musical instrument, cash, jewelry, stolen, attempt to steal laptop, \$2,270.



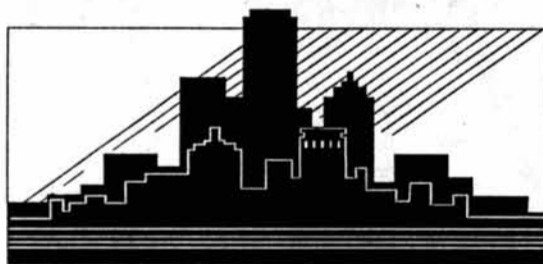
www.spiv.com

**Look! Did you just
see that?
Call The Tech
News Hotline:
253-1541**

Students Of Color*

Find Your Job At Career Expo '96

**January 30
Hynes Convention Center
900 Boylston Street
Boston, Massachusetts**



Diversity in the '90s - Making the Dream a Reality

Schedule of Events:

9:00 A.M. - 4:30 P.M. Career Fair

- * Admission Free, Business Attire Required, Bring Plenty of Resumes!!!
- * Meet Informally With Representatives From Over 50 Companies

9:00 A.M. - 4:00 P.M. Workshops (1 hr. sessions)

- * Resume Consulting
- * Job Search and Career Development Seminars

5:00 P.M. Scholarships Awards

For More Information contact:

Your Career Placement Office or The C.E.P.C. Office at: (617) 426 - 6667

* African American, Asian, Hispanic, Native American, Pacific Islander

Sponsored By: The Career Expo Planning Committee, Inc.



Providing Career Opportunities for Students of Color for Over 20 Years

Jim's Journal

by Jim



Oh, Say, Can You C?

- C/C++ developers for Unix and Windows
- Network/Systems Architects & Administrators
- Software Quality Assurance testers

The Cambridge office of D.E. Shaw & Co., one of Wall Street's most technologically sophisticated investment banks, is looking for exceptionally bright and motivated software developers and systems engineers. World-class talent is needed to develop and support major new on-line services, including a free e-mail service and a Web-based personal finance service. We have assembled a team of world-class computer and software experts who have distinguished themselves academically and professionally; if you'd like to be on this team, we'd like to hear from you.

Please send resumes to:

**STRATEGIC GROWTH
D.E. SHAW & CO.**

201 Broadway
Fourth Floor
Cambridge, MA 02139
Fax: (617) 621-4300
recruit@deshaw.com



"Freedom on My Mind"

a riveting documentary about Mississippi civil rights workers during the 1960's

Wednesday January 24

7:00 - 10:00 pm
6-120

Film starts at 7:00.
Stay for discussion after screening
with one of the "stars" of the film, former organizer and instructor
at the JFK School of Government, Marshall Ganz.

Co-sponsored by the Department of Political Science and the
Office of Minority Education. For more information, contact
Tobie Weiner, 253-3649, tguinatw@mit.edu

TOP TEN MOST BOGUS THINGS ON EARTH

10. The Donut Diet.
9. Cars that can talk.
8. "Do Not Remove Under Penalty Of Law" tags on mattresses.
7. Pop quiz on Monday following major weekend.
6. 1-900-DEBBY.
5. Lawn flamingos.
4. Imitation cheese.
3. Referee in Professional wrestling.
2. Did we mention the pop quiz?
1. Drugs.

PARTNERSHIP FOR A DRUG-FREE AMERICA

This space donated by The Tech

OPPORTUNITIES FOR PhDs OUTSIDE THE LABORATORY

A series of talks during IAP for all who are interested

LAST TWO TALKS

Thursday, January 25 Room 4-163
STARTING YOUR OWN BUSINESS
 Dr. Beth A. Marcus,
 Founder and President,
 EXOS, Inc.

Tuesday, January 30 Room 4-163
TECHNOLOGY POLICY
 Dr. Robert E. Roberts,
 Vice President, Research,
 Institute for Defense Analyses

Both talks will be at 4 p.m. in the room indicated

Contact: Robert Weatherall, 3-4733

Second in a series.

THE PURPOSE OF EDUCATION

We begin our education believing that the facts we learn and the technologies we master are the foundations for our careers.

But changes in careers are common and technologies become obsolete quickly. In fact, alumni records show that it is likely for many of us to work in multiple fields or to change fields entirely. We may also move from Engineering and Science into non-technical areas such as Marketing or General Management.

The ability to do excellent work in a range of fields and to meet diverse challenges with clear bold thinking and creative solutions is the hallmark of a good education.

However, to work effectively in fields that are new to us we cannot rely on facts and technologies that may have become obsolete or are not applicable; we must depend on fundamental thinking and problem solving skills that are effective in any discipline and in working on virtually any type of problem.

These skills are analogous to the basic skills, strength and coordination that a superb athlete will learn in preparation for a lifetime of competition,

skills that will serve him or her in a variety of different sports.

For the scientist or engineer the heart of the learning process is finding and solving interesting problems. This is as true if the subject is Quantum Physics as it is in managing a company. With proper mentoring, the mental struggle of dealing with a difficult and important problem results in the development of mental skills that cannot be learned in any other way and that are applicable to a wide range of new situations.

The skills we learn are an acute ability to observe all aspects of a problem, to integrate a wide range of knowledge, to analyze in depth, to obtain insight, to find creative solutions, and to rigorously test the solutions.

These problem solving skills are taught by a fine teacher no matter what the subject. For maximum benefit the student must realize the importance of these skills to his or her education and must consciously focus on developing them not only in every course in college but over a lifetime of learning.

NOTE: Each year the Bose Foundation sponsors a one year fellowship (approximately \$34,000) for a first year graduate student in Engineering. Please see your faculty advisor for more information or write: Melanie Murphy, Bose Foundation, The Mountain, Framingham, MA 01701-9168.
Deadline for application: February 16, 1996.

BOSE FOUNDATION

*Being Pregnant
Doesn't Mean
Being Alone.*

DAYBREAK
CRISIS PREGNANCY CENTER

Free, Confidential Pregnancy Test, Pregnancy Support Services And Post-Abortion Counseling.

Not A Medical Clinic.

HARVARD SQUARE, CAMBRIDGE

Call 24-Hour Helpline 576-1981

**February 29
is your last chance
to catch the waive**

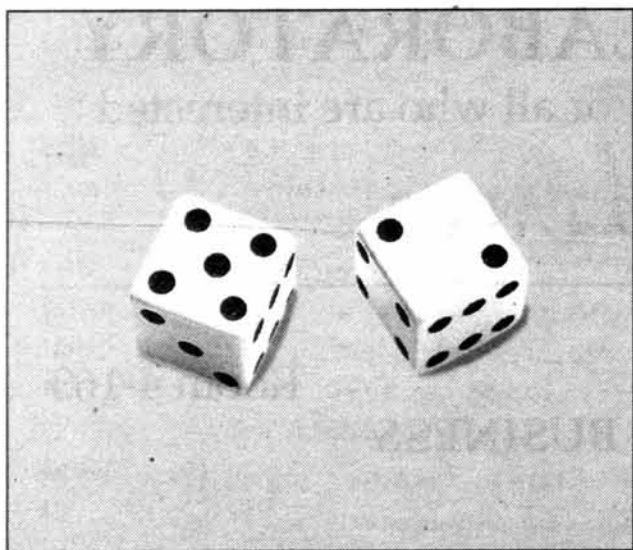


**MIT students
pay for
individual
health insurance**

**unless they file a waiver by February 29
Family enrollment also ends February 29**

**To find out more,
stop by E23-308 or call 3-4371**

THE PROMOTION POTENTIAL



Theirs.



Ours.

What's your career strategy? If you want to work with this decade's top graduates on the world's hottest information technology, plan to join Oracle. Our software solutions are changing the way human knowledge is gathered, stored, retrieved and utilized. Record sales of \$3 billion and nearly 50% growth in the last year alone, have put us in an excellent position to hire—and promote—over 100 of the best of the Class of '96. If you have a BS/MS in EE, CS, CS/Math, MAS or Manufacturing Systems Engineering, you could become an Oracle Software Developer, Consultant or Product Manager working on any number of advanced technologies and products, including:

Digital Library—"Alexandria"
Media Objects
Enterprise Applications
Massively Parallel Products
Linguistics Based Products

Internet Products
Object Oriented Development Tools
Interactive Multimedia
Mobile Computing
Data Warehousing & Mining

Object Oriented Databases
Distributed Computing & Networking
Data Security Architecture
Vertical Applications

We'll be interviewing on campus February 7 & 8. Sign up at the Career Center and pick up your copy of "Projects at Oracle" today. E-mailed resumes strongly encouraged.

ORACLE
Enabling the Information Age

Oracle Corporation, 500 Oracle Parkway, Box 659501, Redwood Shores, CA 94065. E-mail: jobs@us.oracle.com FAX: 415-506-1073
For additional information, visit our WEB SITE at: <http://www.oracle.com/info/hr/recruiting.html>. Equal talent will always get equal opportunity.

Redesign Plans Will Create Efficient Services

Re-engineering, from Page 1

"There is so much overlap in student services," said Undergraduate Association President Carrie R. Muh '96. "There is no communication between departments right now, and that causes a lot of problems."

"Institutions grow to a size where the old methods of serving students is less efficient and less convenient for both the students and staff," said Stefanie L. Speaker '97, a participant in a Monday meeting at which the new redesign plans were discussed. "MIT has reached this point, and it is good that MIT is trying to make adjustments."

"Several student services can be made more convenient simply by making them into automated functions through the telephone," Speaker said. "I think most of the proposals will make life much easier."

Re-engineering "is a great idea in theory," said Nancy H. Chan '96. "I just really hope that things start happening and change visibly. I just hope it isn't fancy ideas on paper that end up being implemented incorrectly."

"Student services really need to be revamped. There seems to be so much red tape and hassle," Chan said. "Students really should not be wasting their time going all over campus to remote offices and dealing with bureaucracy."

Chan liked almost everything [in the redesign] except the ridiculous idea of moving pre-registration day to the eighth week of the term," said Sumit Agarwal '98. "By giving students less time to think about their classes, they will increase the disparity between pre-registration forms and finalized schedules."

"Student services, as they stand, are terrible," said Jeremy D. Sher '98. "A central office for student services would be perhaps the best favor MIT could do itself right now."

Seven processes may change

The opportunity assessment team, whose purpose is to review administrative and educational support processes and to recommend

areas where changes are needed, has been holding meetings with various student, staff, and faculty groups to identify faulty processes since its appointment in October.

"The seven processes were chosen based upon a set of criteria developed by the team," said team coordinator Anand Mehta G.

The criteria include importance to customer, level of dissatisfaction, opportunity to complement the educational mission, cross-functional interaction, ease of implementation, cost, and volume, he said.

Alumni services and dining processes were not recommended for change because they dealt mainly with one office, and "they are not significantly broken," Mehta said.

"There was not much dissatisfaction with the admission process, and the space allocation process will be dealt with in some of the seven processes that are being recommended for changes," he said.

The team will be making significant recommendations about the seven processes to the steering committee, which is composed of the vice presidents of MIT who will be ultimately responsible for making the decisions on what needs to be re-engineered.

"We will make recommendation on making redesign teams or some other changes for these seven processes to better meet the needs of the community," Mehta said. "We are not sure what those changes will be exactly. Those plans will be sure within two weeks, after receiving feedback from the steering committee."

In addition to recommending the processes to be changed, the assessment opportunity team will also be recommending some general ideas to follow in dealing with student services, Mehta said.

Some of these include ensuring that student services support MIT's educational mission, that student needs come first, and that a better feedback mechanism on how the services are working be established.

New service structure planned

The redesign team, whose pur-

pose is to design a draft of the improved administrative services to student in areas identified by the assessment team, proposed to the steering committee a set of preliminary redesign ideas early last week.

"The team will be refining the design with inputs by the community. The basic idea of the redesign will be fairly firm within the next week or two," Mehta said. The team will also be getting cost estimates during this time.

The team will then meet with the steering committee again on February 13 to go over the final draft of the proposed redesign, said Jagruti S. Patel, treasurer of Senior House and a member of the assessment team.

The implementation team will then be formed to define the details and implement the changes in phases.

"Changes proposed by the redesign team will start to be seen hopefully as early as this coming fall," Mehta said.

The overall student services re-engineering effort will come to an end in two to three years, he said.

The ideas have two major components: the new service structure and the new process changes.

The new model for service delivery includes automatic services, self services, general services, and specialist services. These services are ranked in order of the increasing cost of each transaction and decreasing number of transactions.

Automatic services are performed automatically on behalf of students, faculty, and staff without any intervention other than the initial set-up. They include electronic funds transfers, academic early warning notification, and the notification of impending deadlines.

Self services are routine transactions initiated online by students, faculty, and staff, including transcript requests and billing, inquiries regarding the status of student loans, filing MIT health insurance waivers, class selection, student address updates, and class list generation by faculty and department personnel.

General services will help stu-

dents resolve situations that require counseling, approval, specialized knowledge, or interdepartmental involvement. They will provide assistance in using the self-service transactions that are available, cross-registration, and emergency short-term cash advances.

Specialist services will provide behind-the-scenes services and those requiring high-level policy decisions or negotiation with outside agencies. They will include federal regulation management and compliance, need analysis, loan processing, and enrollment statistics.

Student records will be kept in a central database that is complete, timely, and standardized to reduce the need for many separate database systems, which result in redundant paperwork. The central database will provide easy access to informa-

tion to authorized users and appropriate security technology to provide privacy.

A student services center is a centrally located office where students can obtain assistance when the self services are not serving their needs. The center will be staffed by broadly-trained personnel who will be able to address a wide range of student needs. The center will be a centralized site where information and forms are easily available to students and where other services for students will be integrated.

Processes to be more efficient

The changes proposed for the processes of employing students on campus include data processing at individual academic departments,

Re-engineering, Page 19

Salomon Brothers Financial Strategy Group

will be on campus Thursday, Jan. 25, 1996
at 7-9 p.m. in Room 4-149 to talk
about full-time employment opportunities
within our group

FSG is the primary analytical and quantitative resource for Salomon Brothers' Investment Banking department and its clients. We are looking for analyst applicants who have a Bachelor's degree in a quantitative field such as finance, mathematics, engineering, computer science or economics.

We will be back on campus Monday, Feb. 12, 1996
for a closed interview schedule.

Refreshments will be served.

Salomon Brothers

Graduate Student Council

REENGINEERING WORKSHOP FOR GRADUATE STUDENTS

January 30th from 4-6pm in Walker Memorial

Find out what is next on the list for "repairs"
Give your input! - This is an information exchange!
Discuss the problems and possible solutions

Each reengineering team captain will be present; however, discussions will be lead by graduate students. There will be many topics (listed below) and you can move from topic to topic. Pick the ones in which you are interested. Bring yourself, bring friends, bring ideas and comments, and bring a desire for food because snacks will be provided!

Student Services
(registrar, bursar, medical,...)

Help Desk
(new info center)

Travel

General Reengineering

Training

Pro. Card
(new credit card for
MIT purchases)

Publishing
(graphic arts,
thesis)

Electronic Catalogue

There will also be a table with general MIT information.
This activity is aimed at graduate students, but all are welcome!

All Graduate Students are invited to all our meetings. Most are held at 5:30pm in 50-222 and dinner is served.

Stay informed about all our events! Check out our web page <http://www.mit.edu:8001/activities/gsc/gsc.html>

Add yourself to our mailing list by sending email to gsc-request@mit

Questions, comments, ideas? Give us a call at 3-2195 or send email to gsc-admin@mit

Litster Sets Goals as Dean for Graduate Education

Litster, from Page 1

the job I do now, so now I'll try to figure out to do something else," he said.

The former Dean of the Graduate School Frank E. Perkins '55 also served half time running the graduate school.

"The scenario we had initially was whether I had enough time to do the job decently. I don't like to take on jobs and screw them up," Lister said. "I don't think that will happen in this case."

"I wouldn't have taken on this

job if I thought I couldn't handle it," but it will be difficult and further limit the amount of time spent conducting research, Litster said. Litster also regrets that he will no longer have time to supervise graduate students on his own.

But during the transition period, things "have been very hectic. I have not had the full 50 percent of my time to devote" to the graduate office, Litster said. Litster said that he will be depending upon Isaac M. Colbert, the new senior associate dean for graduate education, to help with much of the administrative

work.

Litster does plan to dedicate more time to his new post at the graduate school by clearing his schedule of other commitments. "I was serving on the re-engineering steering committee, but this will have to go," he said.

Litster sets graduate school goals

"I hope to bring the graduate and undergraduate offices closer together," Litster said. "I have been talking to Rosalind Williams," dean of undergraduate education, about possible ways to reach this goal.

"I would like to pay more attention to postdocs," Litster said. "We have been running workshops where we do skits or scenarios, little things on questions of ethics or research conduct."

"It would be interesting to try some other things in a workshop situation" for other graduate-student scenarios similar to what is done for postdoctoral students, Litster said. Discussing subjects like the authorship of scientific papers would be very beneficial to graduate students, he said.



INDRANATH NEOGY — THE TECH

J. David Litster PhD '65

"This is the sort of thing that the sooner you pick it up, the better. It is like sex education in that you don't necessarily talk about it as much as you would like to," Litster said.

Another change Litster would like to see concerns the faculty Committee on Graduate School Policy. "The committee has a large representation of all the departments,"

but contrary to its title, "a lot of what it does is not related to student policy," Litster said. The committee is dominated by discussions of student academic performance, he said.

"I think we should have two separate committees" — one committee to manage academic performance "and one smaller committee which really talks about graduate student policy," Litster said.

Litster does not plan to place priority on any single graduate department. "I am not in a position to do that. It is a bit like asking which of your children you like best," he said.

Although the administrative responsibilities of the job of dean of graduate education are "still part of the office, I hope that the re-engineering team, which is looking at this student services, is going to help make all of that easier," Litster said. It would be nice to have to do less of this administrative work "so that we can spend more time doing other things."

Jeremy Hynton contributed to the reporting of this story.

GMAT•GRE•LSAT•MCAT THE PRINCETON REVIEW is administering FREE TESTS

Take a sample test and find out where you stand without having an official score on your record.

LSAT:	Sat., February 3	9am - 1:30pm	CAS, Room 310
MCAT:	Sat., February 3	9am - 4:30pm	CAS, Room 213
GRE:	Sat., February 3	10am - 2:30pm	CAS, Room 214
GMAT:	Sat., February 3	11am - 3:30pm	CAS, Room 208

Princeton Review FREE tests will be held at Boston University at the College of Arts and Sciences, located at 685 Commonwealth Avenue.

** FREE tests are also available at Harvard University, February 10th, call for more information!

Call today to reserve a spot for one of our FREE tests.

THE PRINCETON REVIEW (617) 558-2828

GMAT•GRE•LSAT•MCAT

If you didn't get your hair cut at

Technicuts

keep it under your hat!!

Quality cuts at reasonable prices

Student discount rates

Hours: M-F	8-6	Walk in or call 225-CUTS for appointment
W	8-7	
Sat	9-5	

Conveniently located in MIT Student Center lower level

OVER THE NEXT 30 YEARS, YOU'LL SPEND
60,000 HOURS
MAKING A LIVING.
YOU MIGHT AS WELL
ENJOY
it!

The fun doesn't have to stop when the paychecks start. Especially if you join Adobe. We offer big-company success with a small-company attitude. Of course, we didn't become the world's third-largest personal computer software developer without lots of hard work. But when your products lead the industry year after year,

enriching the way that everyone communicates, you have plenty to smile about. So if you agree that it's possible to have fun while doing satisfying, interesting work, Adobe may be the place for you. To find out more about job opportunities at Adobe, contact your campus career planning center and sign up for an interview.

**On Campus Interviews
Wednesday and Thursday
February 7th and 8th**

Or send your resume to Adobe Systems, College Relations, Dept. MIT96, 1625 Charleston Rd., P.O. Box 7900, Mountain View, CA 94039-7900. FAX (415) 969-7491. EOE.

Adobe, the Adobe logo, and the tagline, "If you can dream it, you can do it" are trademarks of Adobe Systems Incorporated. © 1996 Adobe Systems Incorporated. All rights reserved.

Check out our World Wide Web site at <http://www.adobe.com>

FUN AND INTERESTING PEOPLE

FREE SOFT DRINKS!

HEY! (THIS COULD BE YOU!)

EXCELLENT BENEFITS

NO MONKEY SUITS!

COOL PROJECTS

If you can dream it, you can do it.

Adobe

BEFORE AFTER

Artist Describes Difficulties In Making Kendall Sculptures

Kendall from Page 1

But the sculpture is more than something to look at. With no sound in the station except for the screech-stop of the trains' brakes, "it seemed very clear to me that we needed a bell-like sound... especially with the stone walls and ceiling of that station."

In the nine years since its installation, Matisse has had to make many repairs and upgrades, including the recent ones this past month. Matisse cannot start working until after the trains stop at 1:30 a.m., so he doesn't get to see people interact with the Kendall Band.

Each time, he writes a letter explaining the repair, and passengers reply with their praises and admonitions. The comments allow him to connect with his audience in a way that artists rarely experience, Matisse said. "There were many messages that made this sculpture very particular to me."

"Music in the subway is like bringing the sunshine underground," wrote one of his admirers.

Built by trial and error

The local artist creates art out of basic materials, like metal, rubber, gears, and bearings. Despite his many years of experience as an artist, he constantly found that he could not rely solely on his intuition, Matisse admitted.

Throughout the design process, he consulted a physics book and even used high-speed photography to make the project a success.

Pythagoras is a set of long tube bells tuned in B minor struck by a line of pendulum hammers. When the passenger moves the handle on the station wall, the hammers swing back and forth, striking the tubes. The short tubes create the high pitches, and the long tubes the low. If a person swings at the right frequency, he can access both sets of tones.

Although the design of the bells may seem simple, the design process was full of trial and error. "I thought the sizing should be intuitive," Matisse said. He chose 6061 aluminum, a 10-foot length, 4-inch diameter, and 1/4-inch wall thickness.

The first tube he hung up, "I hit it every which way, and there was no way for me to hit this piece of metal to make the sound," Matisse said. Unlike organ tubes, his sculpture depended upon the nodal points of the tubes and had nothing to do with the air inside.

Closer analysis revealed that the two major nodes were a major seventh apart or, in layman's terms, in discordance. In addition, the two notes interfered with each other, quickly damping out the sound.

Matisse experimented with ways to bring out only the first overtone. First, he adjusted the lower note to become an octave apart, which is musically pleasing. Holding the nodes of the first overtone (the major tone), Matisse slowly shortened the tube until the note converged.

Then he cut slits into the tube at the nodes of the first overtone. This did not affect the first overtone — nodes are points that do not vibrate, by definition — but greatly weakened the power of the higher overtones.

Matisse accidentally discovered that when the cuts were slightly asymmetric, the note was no longer pure but played with a vibrato, a pulsing effect on a note by rapid variations in pitch.

Without the vibrato, "you just didn't feel anything for the music," Matisse said.

"I was really just delighted," he said. "It's arriving at these moments

that are a great pleasure in doing these things."

Kepler, Galileo a challenge

Kepler is a 125-pound ring of metal, struck by a ratchet-controlled hammer. Matisse said he was fascinated by the way the word "ring" described both the object and the sound.

The pitch of the ring depends on its diameter, so Matisse was lucky that the ring strikes an F sharp, a perfect fifth to complement Pythagoras' B minor.

Galileo is a thunder sheet, similar to those used in theaters. When passengers shake this metal sheet, the sound of thunder reverberates throughout the subway tunnel.

Every step of the design process

posed a great challenge for Matisse. Every cut, notch, and hole affected the vibrations within the solid pieces of metal. He had to be especially careful of the way the parts were mounted so that crucial vibrations were not dampened.

Matisse was driven by the desire to solve each problem as it presented itself. But his continual upkeep is one of paternal love.

"I have been going in and fixing it like I would [take care of] my children," Matisse said. "The hope is, ultimately, it really is MIT's baby."

Matisse hopes that one day, when he no longer can travel down to the T station to make repairs, that people will maintain both the sculptures and the idea that music can still bring strangers together.



Paul Matisse

INDRANATH NEOGY—THE TECH

VANDALISM ISN'T A JOKE. IT'S AN OUTRAGE.

Vandalism is what I call wreck-creation. Wrecking other people's property. Very selfish. Not very cool. Find out what you can do to stop it. If you see



someone trashing your school, library, corner drug store—anywhere!—call the police. You don't even have to give your name. To help...

TAKE A BITE OUT OF CRIME

A message from the Crime Prevention Coalition and the Ad Council © 1995 The Advertising Council

This space donated by The Tech

NetScape: Pizza Pad 617-547-2208

Back Forward Home Reload Images Open Print Find Stop

Location: <http://www.digitalrag.com/pizza.html>

What's New? What's Cool? Handbook Net Search Net Directory Newsgroups

Pizza Pad

617-547-2208

OPEN 'til 3:00 AM

EVERY NIGHT!

Serving ►

- Pizza
- Wings
- Dinners
- Subs
- & More

Use our Web Menu

To deliver to your cluster, get mondo discounts, and defeat Das ÜberGeek® in our On-line contest to win glory, free pizza, and Groovy Hacker Gear.

<http://www.digitalrag.com/pizza.html>

Visit us Late Nite

239 Mass. Ave
Opposite NECCO
Next to N42 at MIT

Das ÜberGeek © H3R3T1C 1995

SCHOOL OF ENGINEERING ENGINEERING INTERNSHIP PROGRAM (EIP) ORIENTATION LECTURE

TUESDAY, FEBRUARY 6, 1996, 4-5PM, RM-6-120

TO ALL SOPHOMORES IN THE DEPARTMENTS OF AERO/ASTRO, CIVIL, MATS. SCIENCE & ENG., MECHANICAL, NUCLEAR, OCEAN AND UNDESIGNATED, LEARN TO RELATE TRADITIONAL ON CAMPUS ACADEMIC PROGRAMS WITH OFF CAMPUS WORK EXPERIENCE IN INDUSTRY/GOVERNMENT WHILE EARNING JOINT SB/SM IN ENGINEERING.

ALSO, THERE IS A NEW PROGRAM WITHIN THE EIP FRAMEWORK - A SUMMER JOBS PROGRAM. STUDENTS WILL HAVE A WORK ASSIGNMENT AT A COMPANY SITE FOR ONE SUMMER, INVOLVED WITH PROJECTS OF INTEREST TO THE COMPANY.

FOR MORE INFORMATION, PLEASE CONTACT--

LAURA ROBINSON '80 (lmr@mit.edu)
or SUSIE MCCLAIN (suzm@mit.edu)
Rm 1-211 / Tel: 253-8051
<http://web.mit.edu/afs/athena.mit.edu/org/e/eip/www/eip.html>

CLASSIFIEDS

- Events
- Help Wanted
- Positions Wanted
- For Sale

- Housing
- Services Offered
- Lost & Found
- Greeks

- Travel
- Information
- Clubs
- Miscellaneous

Advertising Policies

Classified ads are due at 5 p.m. two days before day of publication, and must be prepaid and accompanied by a complete address and phone number. Send or bring ads, with payment, to W20-483 (84 Mass. Ave., Room 483, Cambridge, MA 02139). Account numbers for MIT departments accepted. Sorry, no "personal" ads. Contact our office for more details at 258-8324 (fax: 258-8226) or ads@the-tech.mit.edu.

Rates per insertion per unit of 35 words

MIT community:	
1 insertion	\$3.00
2-3 insertions	\$2.75
4-5 insertions	\$2.50
6-9 insertions	\$2.25
10 or more insertions	\$2.10
All other advertisers	\$5.00

Help Wanted

Earn up to \$120/wk by donating your sperm. Must be a healthy male between 19-34 & 5'9" or taller. Call California Cryobank, Inc. at 497-8646 to see if your qualify!

Retire Before You're 30

Entrepreneur/lawyer/businessman seeking partner(s) for high tech start-up and eventual IPO. If you think you have a profitable and feasible high tech idea or invention, let's talk. (202)217-2260.

Make Money? Lower Phone Bills?

Excellent part-time opportunity for motivated individuals to make money and lower their long distance phone bills. Network Pre-paid Phone Cards. Call 617-932-5435

Alaska Employment

Students needed! Fishing industry. Earn up to \$3,000-\$6,000+ per month. Room and board! Transportation! Male or female. No experience necessary. Call (206)971-3510 extA50332

Travel Abroad And Work

Make up to \$25-45/hr. teaching basic conversational English in Japan, Taiwan, or S. Korea. No teaching background or Asian languages required. For information call:(206)971-3570 ext.J50332

Teach English in Korea

Positions available monthly. B.A or B.S degree required. US\$18,500-\$23,400/yr. Accomodation & round-trip airfare provided. Send resume, copy of diploma and copy of passport to: Bok Ji Corporation, Chun Bang Bldg., 154-13 Samsung Dong, Kang Nam Gu, Seoul, Korea 135-090 Tel:011-82-2-555-JOBS(5627) Fax: 011-82-2-552-4FAX(4329)

The Advanced Technology Group of Coopers & Lybrand Consulting

is looking for an intern to perform ongoing research projects on exciting topics such as knowledge management, Internet use, groupware, decision support systems, etc. The prospective intern will be expected to spend approximately 15 hours/week (although this is flexible) for 9-12 months on a variety of projects. Pay will commensurate with skills and experience. If interested, please contact Peter Brooks at 74477.3043@compuserve.com or (617)478-3754.

Internet:Search Engines/Intelligent Agents

Know anything about the above? Embryonic start-up looking for a few people who know a lot about the Net and want to have fun while inventing a company. I got the idea, some seed money, and the connections that will eventually get us venture capital money. Goal is to be up and running by April. Our product will turn the Net into a research/info/entertainment tool for the masses who haven't the time nor the dexterity to deal with the Lycos/Yahos of the world. Give your blood and sweat to SPIKE! for the next couple of months and we're rolling in it by the end of '96. Skills we need: programming, AI, linguist/semanticist, research librarian, and an unrelenting desire to succeed. Tell us why you're the one. SPIKE! PO Box 382537 Cambridge, MA 02138

Clubs

Stuyvesant High School Alumni-MIT has a Stuy alumni chapter for YOU! Get involved and keep those Stuy bonds strong! Get to know more upperclassmen who are in your major! For more information, contact Angela at 225-8547.

Services Offered

AIDS & Sexually Transmitted Disease testing and treatment. Totally confidential, private MD office. Dr. Robert Taylor. 1775 Beacon St. Brookline. Call 232-1459 for appt.

Legal Problems? I am an experienced attorney and a graduate of MIT who will work with you to solve your legal problems. My office is conveniently located in downtown Boston, just minutes from MIT via the MBTA. If you have a question involving litigation, high tech law, consumer or business law, family law, real estate or accidents, call Attorney Esther J. Horwich at 523-1150 for a free initial consultation.

Mrs Cora Palm and Card Readings

For personal and professional confidential readings. No matter what your problems are she can help you! She can see into all areas of your life. 1074 Boylston St, At Hines Convention Center MBTA Stop, Boston. 236-4465. I can reveal the past so you can believe the future.

Announcements

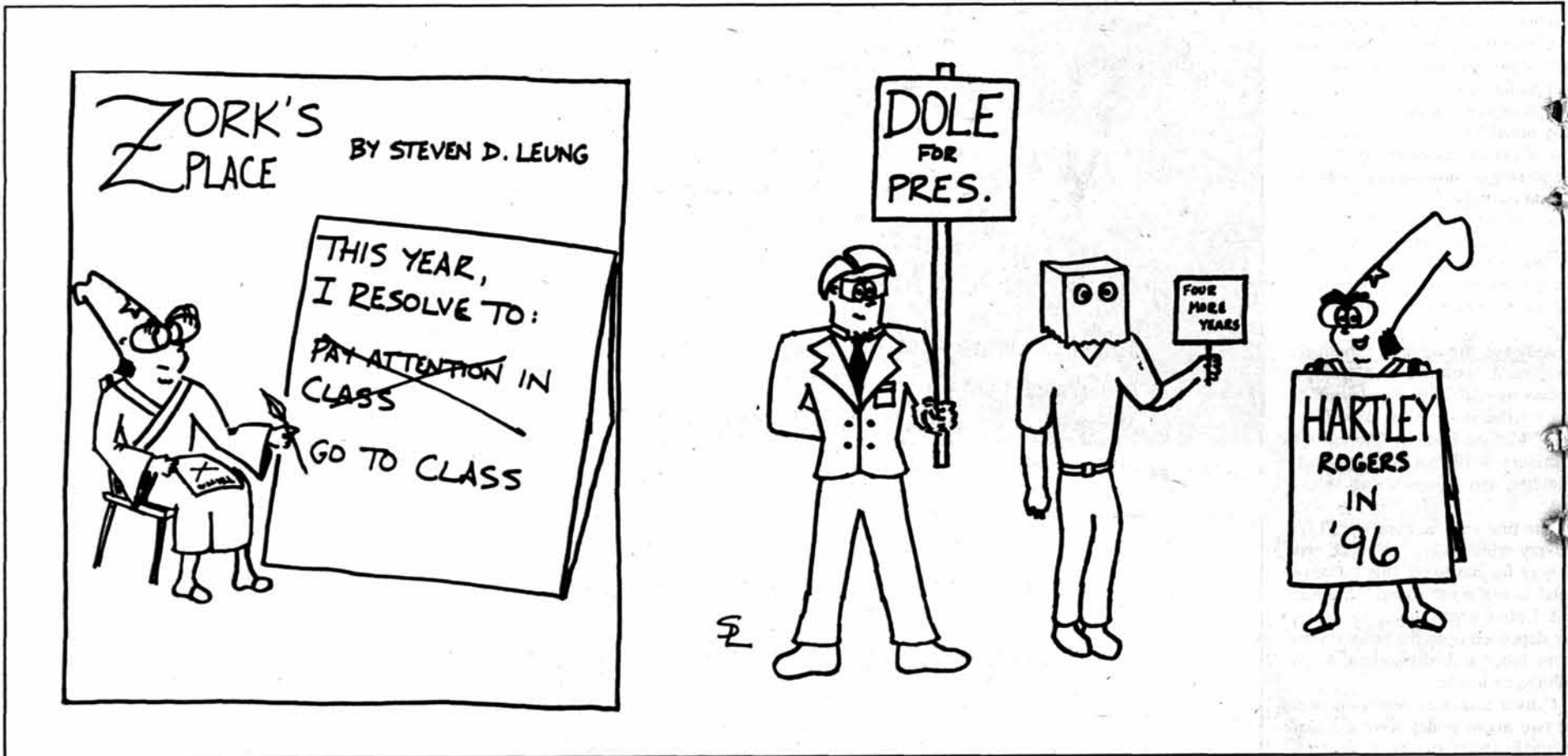
Scholarships Guaranteed 300,000 source data-base. All students eligible. \$69 for your profile. Send large self addressed stamped envelope for application to Haranco, P.O. Box 235 (I), Boston, MA 02118-0235.

T Prize Program is currently accepting applications for its \$30,000 Student Prize to be awarded on May 1 to an MIT graduating senior or graduate student who displays a remarkable talent for inventing-innovating. Please call 253-3352 or send email to to <msouth@mit.edu> for more information and for an application form. Application Deadline: March 8,1996.

For Sale

2 Great Mercedes Benz for sale, Call Fauzi-244 9607 190E '91, auto, black pearl,CD, spoiler, low mil., \$14,000. 300TE '88, auto, silver, 3rd seat, new wheels, runs exp, \$15,000.

Houseshare in Lincoln 14 min. from Harvard Square by car or train. Great country setting adjacent conservation land for hiking, canoeing, bicycling, cross-country skiing, (We are 4 min walk from train station) 617 259 9497.



1	2	3	4	5	6	7	8	9	10	11	12
13							14	15			
16							17				
18							19				
20							21			22	
23			24	25	26					27	
	28			29					30	31	
			32								
33	34	35		36					37	38	39
40				41					42		43
44				45					46		
47		48					49	50	51		
52							53				
54							55				
56							57				

ACROSS

- Slangy children
- Mixes
- Bakery item
- Incrustations on old copper coins
- Oxygen-supplying apparatus
- Descendant of Esau
- Most like Jack Sprat's food
- Label
- Have ___ with (have connections)
- Mischievous child
- Suffix for mason
- Plant again
- Certain doctors, for short
- Swiss river
- Followers of Lions and Tigers
- Army officers (abbr.)
- San ___, Texas
- College entrance exam
- Necessity for 7-Down
- ___-Jongg
- Impudence
- More suitable
- Simian
- Likely
- Shoe part
- Class of ball-player
- Novelist ___ France
- Atom ___
- Applied an ointment
- Rapidly-maturing plants
- Like some kitchens, in color
- Held back, as water
- Sounded a warning signal
- Well-known magazine
- Monogram component
- Knocking sound
- Singer Pete, and family
- Confessors
- Tracy/Hepburn movie (2 wds.)
- Outer garment, as a fur
- Ones who impair
- Stiff-collared jackets
- Buying everything in sight (3 wds.)
- Short-billed rail
- Gathered together
- Town on southern tip of N.J. (2 wds)
- Toe ___
- Albany, in relation to New York City
- Was atop (2 wds.)
- Greek
- Like a clarinet or oboe
- Sap-sucking insect
- ___ of Wight
- Rental listings (abbr.)
- "___ lay me..."
- Love, in Spain

DOWN

- Having only magnitude
- Cashed a pawn, in chess
- Hoist
- Beginning of George Washington saying
- Part of i=prt
- Ring decisions
- Spanish painter
- Jazz dance

PUZZLE SOLUTIONS FROM LAST ISSUE

A	T	E	S	T	P	A	D	P	A	C	E	R		
T	O	R	A	H	E	M	U	A	L	I	V	E		
B	R	A	V	E	R	E	T	S	A	V	E	S		
A	C	T	O	R	F	R	I	E	S	T	I	N	T	
T	H	O	R	A	C	I	C	S	P	E	L	T	S	
C	H	I	P	M	I	S	T	E	R	M	I	N	G	
H	O	R	A	T	I	O		A	N	T	I	Q	U	E
I	N	E	L	O	Q	U	E	N	T	A	S	T	O	
R	E	C	E	D	E	H	U	R	R	I	N	G		
A	X	I	A	L	G	I	S	I	O	N	I	A		
F	A	L	S	E	I	C	I	M	U	T	T	S		
F	L	I	E	R	B	A	A	A	T	R	I	P		
S	T	A	R	S	E	L	L	S	H	A	D	S		

Redesign To Create Efficient Services

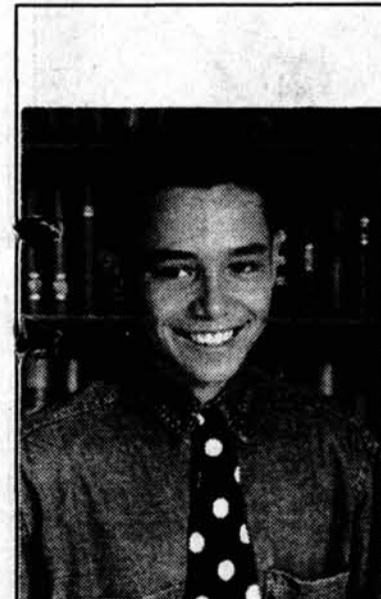
Re-engineering, from Page 15

increased flexibility and use of electronic fund transfer from stipend to students' accounts, tracking of employment-related requirements on the central database, online availability of job reviews, recommendations, and evaluations; and electronic processing of student and faculty appointments.

Electronic submission of grades, one updates of addresses, and online availability of add/drop forms, transcripts, and requests for certifications are some of the proposed changes.

Students will be able to choose classes for the next term electronically about halfway through the term with lotteries that will be run immediately, reserving an appropriate number of slots for freshmen. Students also will be able to enroll electronically and have access to services involved in housing, Visa accounts, and the MIT Card.

Student account balancing will be changed by maximizing bill clarity to reduce questions, simplifying loan processes, and investigating the present financial hold policy. The changes will also include directly depositing student salaries into students' MIT accounts or personal bank accounts, reducing errors in the generation of financial aid packages, addressing the seasonality of work loads, and increasing automatic capability in the Student Financial Aid Office through online financial aid applications.



Aaron Rodriguez
Ballplayer freshman year.
Little League Coach sophomore year.
Killed junior year.
December 28, 1993
San Antonio, TX

If you don't stop someone from driving drunk, who will? Do whatever it takes.

FRIENDS DON'T LET FRIENDS DRIVE DRUNK.

SHELL INTERNATIONAL OPPORTUNITIES FOR INTERNATIONAL STUDENTS

We are looking for exceptional students with a fine balance of business acumen, intellectual agility and personal commitment ... the qualities that distinguish the good from the excellent.

In return we offer a truly international future—varied, stimulating and intellectually challenging.

So, if you think that you have these qualities we are keen to talk to you.

We will consider any degree subject for a career in **Commercial Management** and any numerate/scientific degree subject for a career in **Exploration and Production**.

We are interested in international students of any nationality. US nationals, however, should apply directly to Shell Oil, Houston.

To be considered for an interview fax us your resume at 44 171 934 7606 now!

Open Presentation will be held on Thursday 8th February on campus as MIT at 7:00 p.m. (contact MIT careers office for further details).

Scheduled interviews will be held on Friday 9th February at MIT careers service.



Wireless Star Signs Contract

Various sources have confirmed that Chip Setter has signed a development deal with PCSI, a global leader in wireless and internetworking technologies.



"It's rare that you can find a company as creative and open to new ideas as PCSI is," says Chip. "And with the warm San Diego location, I'll have the best of all worlds."

In his new role, Chip will work as a team member on cutting-edge mobile computing projects from concept to completion.

Casting on Location!

If you're a rising star in Electrical or Electronics Engineering, or Computer Science or Engineering, you can join the gang at PCSI and work on today's hottest wireless and internetworking technology. We'll be casting on campus Feb 6th.

Be the superhero in our next episode.

If you're waiting to be discovered, send a resume to: PCSI, Attn: Professional Staffing, Dept. 1002, 9645 Scranton Rd., San Diego, CA 92121. Fax: 619/535-9850. Job Hotline: 619/535-9505. Internet mailbox: careers@pcsi.cirrus.com Website: <http://www.pcsi.com/> Equal Opportunity Employer/Smoke-Free Environment. Principals Only, Please.



A Cirrus Logic Company

SPORTS

Men's Track Trounces Coast Guard, 3 Others After Close Dartmouth Win, Gymnasts Lose Two Meets

By Todd Chamoy
TEAM MEMBER

The varsity track team entered their meet this past Saturday expecting tough competition. Facing their archrival Coast Guard as well as teams from WPI, Colby, and UMass-Dartmouth, MIT took an early lead and coasted to a 93-point victory.

The Engineers dominated in the 1500-meter, where Daniel S. Helgesen '97, Joel S. Ford '98, Arnold H. Seto '96, and Joshua D. Feldman '97 finished first, second, third, and fifth, respectively.

MIT swept the top four places in the long jump, led by Ravi V. Sastry '98, who also won the 55 high hurdles, placed third in the triple jump and fourth in the high jump.

Leif Seed '99 could not compete in the sprinting events due to injury. Although he had only competed in the pole vault in high school, Seed was called upon with less than a day's notice to pole vault. All Seed

needed to do was clear the opening height of nine feet and he was guaranteed at least eighth place. He cleared ten feet, placing sixth in the event and earning three more points.

MIT placed at least three athletes in thirteen of the fifteen non-relay events. This is especially impressive considering that the team is limited to just four entries per event.

Perhaps the most exciting race of the afternoon was the 500-meter, where Edgar R. Ngwenya '96 inched out a Coast Guard runner at the finish line to win by eight-hundredths of a second. Ngwenya trailed by a few meters going into the last straightaway, and turned on the afterburners to catch the leader.

Stand-out athletes from the meet include Sastry, who placed in four events; Lincoln Bonner '97, Bo Light '96, Akin A. Aina G and Hung Q. Hoang '96, who placed in three events each.

By Raymond W. Li
TEAM MEMBER

The men's gymnastics team is off to an exciting season after competing in three close meets.

On Jan. 13 the men's team traveled to Dartmouth. On the first of six Olympic events, floor exercises, MIT started the day with a 30.85-30.40 lead over Dartmouth. Jason Miller '99 and team co-captain Rob Cooper '97 scored 8.00+ and Bernd Schoner G and team co-captain Andy Lobban '97 scored 7.00+.

After the next event, the pommel horse, Dartmouth had a 59.65-56.70 lead, which they increased in the rings. In the vault, the performances by Eric Cosman '99 and Brian Young '96 (high 7's), and Schoner, Brian McCraith '98, Cooper, and Miller (high 8's) decreased Dartmouth's lead to only 0.75.

On the parallel bars, MIT made a spectacular comeback with all 7.00's, giving them the lead. The Engineers cleaned up at the high

bar, finishing the day with a 175.95-172.80 win.

The following Tuesday, MIT traveled to Springfield for another competition. The men started out behind, 30.60-32.55. Springfield led throughout the meet, despite strong performances by MIT such as 8's on the vault, 8.1 by Cooper on floor, and 8.0 by Lobban on high bar. The final score was Springfield 189.15, MIT 171.6.

Narrow loss to S. Conn.

After a long week of competitions and practices, MIT went up against a tough Southern Connecticut in the first home meet last Saturday. Despite MIT's generally strong performance on the floor exercises, S. Conn. was quickly off to a 33.40-31.80 lead.

MIT gained some ground on the pommel horse, and made a comeback during the third event, rings. With Cooper (8.05) and Lobban (8.20) being the only two of both

teams who scored 8's in this event, MIT led 87.55-87.25.

On the vault, S. Conn. threw 8's to regain the lead, 121.15-120.00. After the parallel bars, MIT was ahead by less than one point.

The last event was the high bar. The all-arounders were very tired, mentally and physically. Both sides gave equally good performances with MIT slightly ahead. The last gymnast of S. Conn. had a score of 8.55, the highest in that event, which finished the meet at 181.05 for S. Conn. to MIT's 180.80.

Despite S. Conn.'s close victory, MIT's team had an impressive performance. The team broke 180 at the meet and all four of the team's all-arounders scored high—Cooper with a 45.10, Miller 45.35, Robert Spina '99 41.70, and Schoner 43.85.

The next meet is this Saturday at UVM. The next home meet will be on Saturday, Feb. 10 at 4 p.m. in Dupont against CCNY.

Women's Team Loses 2 in Florida

By Amy MacKay, Maisha Gray, and Victoria Best
TEAM MEMBERS

The women's basketball team started off the new year by traveling to sunny Orlando for the Sunshine Shootout at Warner Southern College. The Lady Engineers performed well but lost to Division II schools Warner Southern and Bethel in the round-robin tournament. They came back strong on the third day to defeat Anderson, the other Division III school.

Victoria Best '99 led the Lady Engineers against Warner Southern with 22 points and 4 steals. Other major contributors were Sarah Davis '97 and Katie Spayde '99 who each scored 13 points and shot 100 percent from the free-throw line.

Jen Boyle '96 was strong on the boards, ripping down 11 rebounds for MIT. Nicole Gerrish '98 also chipped in with 6 rebounds and 3 steals. MIT was in the game early, leading at halftime 34-33, but the Lady Engineers shot poorly in the second half and lost to the home team 70-61.

MIT had high hopes going into the second game against the Division II team Bethel College. With the scrappy defense and fast break offense that epitomizes the Engineers, they took a four point lead at the half, 41-37. Davis led the Engineers with 18 points and 4 assists. Amy MacKay '97 and Best each added 16 points.

In the second half, the Bethel height advantage proved to be too much for MIT. The Lady Engineers

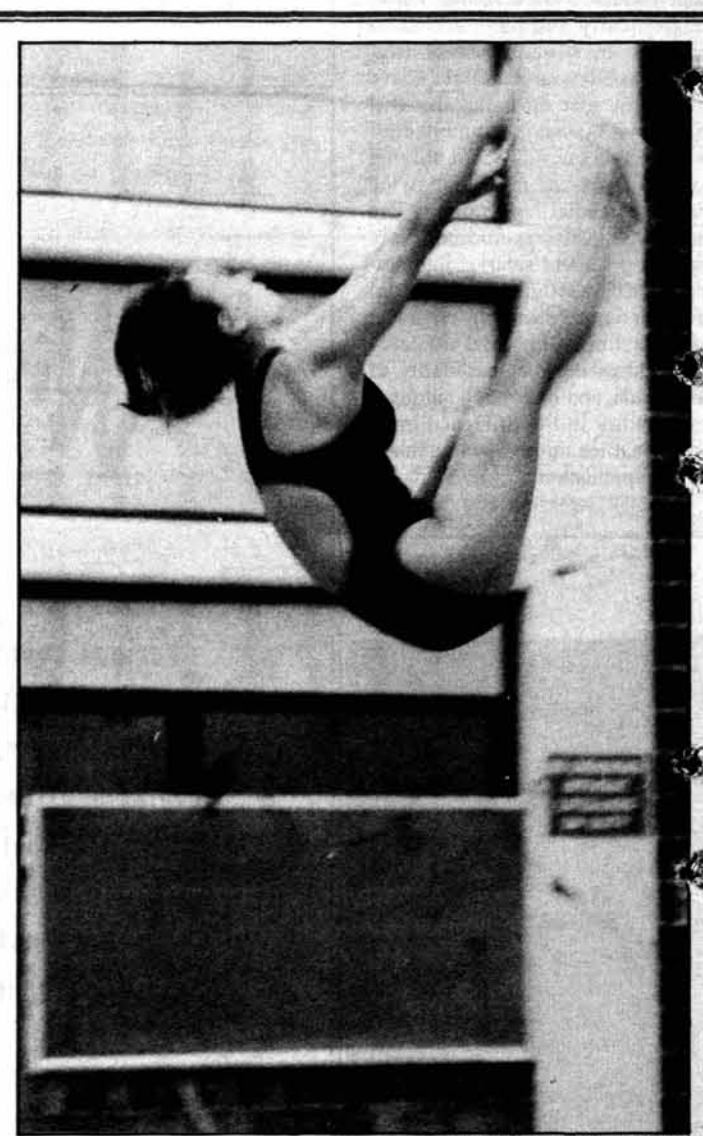
fell short by a final score of 89-75.

MIT's final game was against Anderson University. Anderson could not handle the intense defensive pressure of the Lady Engineers, and MIT pulled away at the half, 31-22. Best contributed to the pressure to lead MIT with 5 steals and 24 points. Other high scorers were MacKay with 13 points and Davis with 12 points.

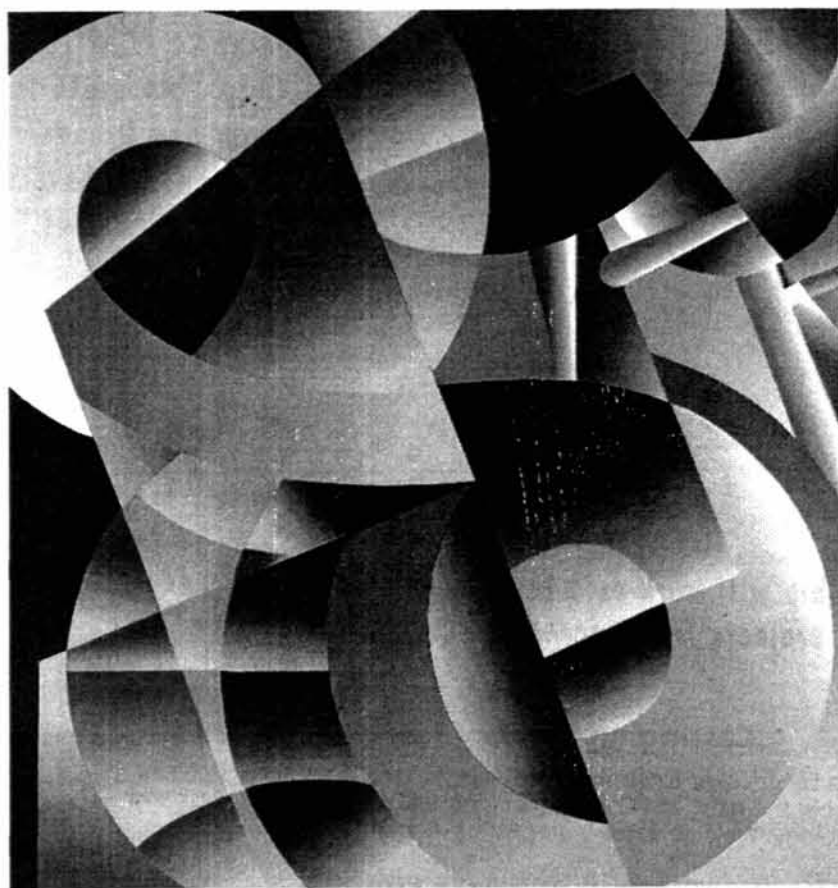
MIT's rebounding was outstanding in this contest led by Davis with 9, and Boyle, Gerrish, Michelle Fox '99, and Spayde each with 7 boards.

MIT sealed the game with good free-throw shooting, defeating Anderson 62-46, and securing third place. Best made the all-tournament team for the Engineers.

The next home game is Saturday at 2 p.m.



ADRIANE CHAPMAN—THE TECH
Elaine D. Haberer '97 competes in a women's diving meet against Tufts last Thursday.



YIELD TO THE INFINITE.
KLA Instruments is the world's leading manufacturer of Optical Inspection Equipment for the Semiconductor Capital Equipment market. Located in the heart of Silicon Valley.
KLA will be visiting MIT SLOAN for a corporate presentation on **January 30th** at 6 pm at the Faculty Club, as well as on-site interviews on **January 31st**. Please see Career Center for details.
<http://hrweb.kla.com/empl/>
KLA
KLA INSTRUMENTS CORPORATION

來利樓
Larry's Chinese Restaurant
302 Massachusetts Ave., Cambridge
Orders to go, or dining in
FREE DELIVERY TO THE M.I.T. CAMPUS — \$10 MINIMUM
Luncheon Specials served daily, 11:30 a.m. - 5:00 p.m., starting at \$3.75
Special Dinner Plate just \$4.95 all day long
15% off with this ad (valid through 1/31/96)
(for dine-in dinners only; \$10 minimum purchase)
Call 492-3179 or 492-3170
Monday - Thursday, 11:30 a.m. to 10:00 p.m.
Friday - Saturday, 11:30 a.m. to 11:00 p.m.
Sunday, 5:00 p.m. to 10:00 p.m.