

THOMAS R. KARLO—THE TECH

Immigration lawyer Ralph A. Donabed speaks last night in Room 1-390 about student immigration issues. The talk was presented by the Indian student group Sangam.

## Focus Groups Aid Re-engineering

### Student services plan due next month

By Shang-Lin Chuang  
NEWS EDITOR

The student services re-engineering team is meeting with various administrative, faculty, and student groups as it prepares a new plan, scheduled for completion by mid-December.

The team — composed of separate redesign and assessment teams — is part of the Institute-wide effort to reduce complexity, improve quality, and reduce costs of processes and services offered.

Officially started in mid October, the team has talked to several groups involved in the offering of student services, said team member Anand Mehta G.

Some of these groups include the Bursar's Office, Student Financial Aid Office, Department of Athletics, Dean's Office, housemasters, faculty committees, the Undergraduate Association, Dormitory Council, Interfraternity Council, and the

Graduate Student Council.

The team has also held meetings with focus groups — smaller groups of people who are invited to participate in discussions on specific topics.

**Students want changes soon**

Andrew J. Rhomberg G, who attended a focus group meeting on Nov. 14, is involved with many extracurricular activities. "One area that needs to be looked at is the relationship between the Association of Student Activities and clubs."

"Issues such as student club accounts and liability require a lot of time, a lot of paperwork, and few people are satisfied by it," he said.

"On issues such as extracurriculars, there is a lot more that can be done," said Olapeju A. Popoola '96, who also attended a focus group meeting. "We spend so much of our

Re-engineering, Page 16

## Graduate Population Faces 15 Percent Cut

By Orli G. Bahcall  
STAFF REPORTER

Proposed cuts in federal support of research may significantly affect the size of the graduate student body.

At last week's faculty meeting, President Charles M. Vest projected that the decrease in spending will total nearly \$125 million annually.

The funding cuts directly affect research programs at MIT, and "could mean a 15 percent or higher reduction in the size of the student body, depending upon what specific programs and research projects are affected," said Isaac M. Colbert, acting dean of the Graduate School.

"I don't think [the cuts are] necessarily disastrous," Colbert said. "We will continue to offer among the best program in the country and attract some of the most talented students."

The Institute's excellence is "based on two things - the excellent

faculty and students," said Dean for Research David J. Litster. "We would still have these even if the cuts take place."

Colbert's expectation is that in five years there will be "closer parity between the number of graduates and undergraduates on campus." There are currently 4,500 undergraduates and 5,300 graduate students.

"We were excellent in 1983, when we had only 1,900 research assistants," Litster said, and "we can be excellent again even if we have to drop to that level." The Institute currently has 2,200 RAs, according to the Bulletin.

Departments that will be most affected by the funding cuts include those that rely on grants from the Department of Defense and Department of Energy, such as the physics department, Colbert said.

**Grad school to examine situation**

In order to overcome these difficulties and maintain MIT's excellence, the Graduate School is "taking steps to hold onto extraordinarily talented faculty by ensuring the stability of faculty salaries" Colbert said.

The Institute is also "evaluating its course strengths by asking what MIT does best," Colbert said. "In a time of limited resources, we need to maintain and build MIT's excellence."

The effects of these cuts on the Graduate School "can also be offset somewhat by recent changes in the type of graduate programs offered" Colbert said.

"We are refocusing on shorter programs," such as the primarily self-funded five year MBA programs, he said.

"It clearly takes too long to get a PhD," Colbert said. "We must re-examine if a PhD in every field is really necessary, or are there other programs we can develop in some departments."

The Institute is also looking to

Graduate, Page 13

## Attorney Addresses Students' Immigration Concerns

By Dan McGuire  
STAFF REPORTER

Boston immigration lawyer Ralph A. Donabed spoke yesterday afternoon on the federal regulations on immigration in an event organized by Sangam, the Indian students group.

"There's some hysteria about the new [immigration] bills [before Congress], and we wanted to clear up the misconceptions," said Sangam Vice President Neeraj N. Karhade '98. The number of student and work visas are threatened by various bills under consideration by Congress.

In immigration law, "the broader issues should be something you familiarize yourself with," said Donabed, who spoke to more than 60 people in Room 1-390. "Our immigration laws — even with today's restrictions — are among the most liberal in the world, especially for the technically educated."

"You have nothing to worry about if you enter the U.S. labor force with a degree from this institution. You will be welcomed with open arms" by an American company, he said.

**Changes may affect medical students**

Proposed congressional "bills are getting changed

every day. They don't mean anything until they go to the floor for approval," Donabed said. "I'm not worried about this, and I don't think you should be. Wait until a bill is ready to be signed by the president."

Foreign medical graduates are losing their support and may face increasing problems in the next few years, Donabed said. The American Medical Association no longer lobbies as hard as it once did for foreign doctors.

"There seems to be an opinion out there that there are too many doctors," he said.

"A lot of the regulations that have come out of the White House during the Clinton administration have made getting the H1 visa more difficult," Donabed said.

It used to take two weeks to get this kind of employment visa that is sponsored by a company and expires in less than six years, he said. "Now it takes six weeks."

The Department of Labor scrutinizes the salaries that companies offer foreign graduates to ensure the companies are not attempting to import inexpensive labor, Donabed said.

Immigration, Page 11

## Goodall Lecture on Chimpanzee Work Fills 10-250

By Brett Altschul  
STAFF REPORTER

Jane Goodall, the world-renowned primatologist, spoke about her work with chimpanzees last Monday in Room 10-250.

The talk was sponsored by the List Visual Arts Center, which is currently exhibiting *Next of Kin: Looking at the Great Apes*. The exhibit features works by six contemporary American artists in a wide range of media and runs through Dec. 10.

Over five hundred people gathered to hear Goodall. Due to the large turnout, many who attended were not seated in the lecture hall. Speakers were placed outside the lecture hall for people who couldn't fit inside.

**Goodall relates childhoods experiences**

Goodall described the childhood experiences that led her to choose her field and spend thirty-five years working with the chimpanzees of the Gombe Stream Research Center in Tanzania, and her fundraising activities.

Goodall described her earliest scientific

observations which were made when she was a child living on a farm. On one occasion, she hid in a henhouse for four hours, waiting for a hen to lay an egg.

Goodall's parents had called the police in the meantime, but her mother was supportive and interested in her discovery when she emerged from the henhouse.

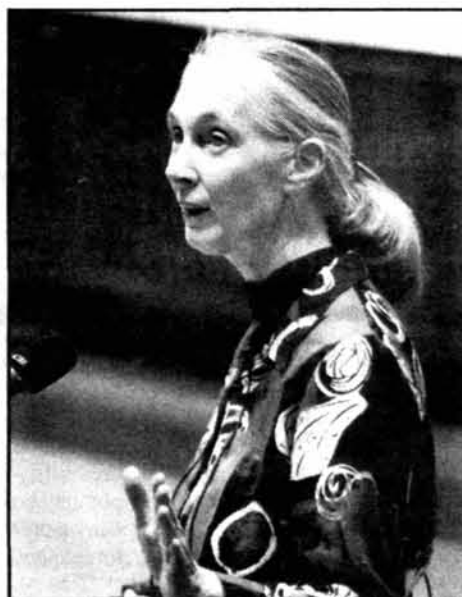
"From that time, I knew I wanted to study animals," Goodall said.

When Goodall first traveled to Tanzania at the request of paleontologist Louis Leakey in 1960, her mother accompanied her, since the colonial government would not allow her to go alone.

Goodall credited her mother's skill in dealing with the native inhabitants as establishing a lasting trust between the natives and the foreign researchers.

Currently, the Gombe Stream Preserve employs many of the local villagers as researchers, she said.

Goodall addressed the close ties between



THOMAS R. KARLO—THE TECH

Primatologist Jane Goodall speaks last Monday in Room 10-250.

Goodall, Page 7

# WORLD & NATION

## U.S. Sees Rise in Haitian Refugees

THE LOS ANGELES TIMES

MIAMI

U.S. authorities have moved to return hundreds of fleeing Haitians to their homeland over the last several days as uncertainty over next month's election and an eruption of violence on the island trigger a refugee exodus of the kind unseen since that nation's 1994 political crisis.

Sunday, a vessel loaded with 581 Haitian refugees was stopped off the coast of Andros Island in the Bahamas on its way to Florida. Another overloaded craft sank, drowning 47. In all more than 1,100 Haitians have been interdicted at sea in the last week.

Although U.S. State Department officials expressed concern about the sudden jump in Haitians attempting to flee their homeland, spokesman Nicholas Burns said "the number does not represent the kind of crisis that we have seen in the past ... and we certainly hope that this situation will not come to that."

Nonetheless, the number of Haitians found aboard just two boats — both apparently operated by smugglers — is the highest since the chaotic summer of 1994, when tens of thousands of Haitians and Cubans attempted to reach Florida in rafts and sailboats, and more than the total stopped in the 11 months since President Jean-Bertrand Aristide was returned to power.

In addition to the 581 Haitians rescued from a 75-foot wooden-hulled freighter Sunday, the Coast Guard last Tuesday stopped a similar freighter 140 miles southwest of Miami. That boat was packed with 516 Haitians who reported paying smugglers up to \$3,000 apiece for standing room on a voyage from Cap Haitien on the north coast.

A third boat overloaded with Haitians bound for the U.S. reportedly capsized over the weekend off the coast of Port-de-Paix.

Since October 1994, when U.S. military forces cleared the way for Aristide's triumphant return to Haiti, the number of Haitians attempting to illegally enter the U.S. by sea has dropped off markedly. Between October 1994 and last month, the Coast Guard reports interdicting 997 Haitians at sea. By comparison, in July 1994 alone more than 16,000 Haitians were picked up.

## Report Says 200,000 Russian Clerics Were Slain in Soviet Era

THE BALTIMORE SUN

MOSCOW

About 200,000 clerics were slain during the Soviet era, many of them strangled, shot, crucified, or slowly frozen to death after being drenched with water and sent into the winter cold, a Russian government commission reported Monday.

President Boris N. Yeltsin will issue decrees "rehabilitating" the 500,000 clerics who were officially repressed by being killed or jailed, said Alexander Yakovlev, chairman of Yeltsin's commission for the rehabilitation of the victims of political repressions. Religious repression also will be declared criminal, he said.

Government archives have yielded ample evidence of Communist confiscation of millions of dollars worth of church valuables and land in the Soviet Union, Yakovlev said.

"Local authorities will probably be instructed to participate in restoration of church property to the extent that they can," he said.

## Key Israeli Opposition Party Accepts Peace Accord

LOS ANGELES TIMES

JERUSALEM

A key opposition party said Monday that it accepts the Israeli-Palestinian peace accord as an irreversible fact and is negotiating an agreement to support the Labor Party from outside the ruling coalition.

The National Religious Party issued a statement after a stormy session Monday night backing its chairman's declaration that the party must reassess its political platform in the wake of Prime Minister Yitzhak Rabin's Nov. 4 assassination.

The statement said that the NRP — which has six seats in Parliament — and Labor have reached a draft agreement under which the NRP will abstain from parliamentary no-confidence motions brought against the left-wing Labor-led government.

In return, Labor is prepared to consult with the NRP before carrying out the unspecified "further redeployments" from the West Bank that the government promised, in its agreement with the Palestine Liberation Organization, to make next year.

The NRP insisted in its statement that it still opposes the September 1993 Israeli-Palestinian peace accord in principle but that "nevertheless, the NRP's view is that any future government will not wage war in order to go back to the cities which we left unless security circumstances or severe violations will necessitate a reaction."

## WEATHER

### Rain rules

By Gerard Roe  
STAFF METEOROLOGIST

A large cyclone migrating eastwards dictates our weather in the short term. A little clearing can be expected this morning as the warm front passes. But the reprieve is short lived; in advance of a cold front winds will blow briskly from the southwest, clouds will thicken, and there is a good chance of a sprinkle. Temperatures will rise unseasonably towards the low sixties. Colder air follows in behind, and as the cyclone redevelops out over the ocean, rain and snow showers will cover New England on Wednesday.

**Today:** Cloudy and blustery. A few sprinkles of rain. Strong winds from the southwest. High 63°F (17°C).

**Tonight:** Rain likely. Low 38°F (3°C).

**Wednesday:** Rainy. Snow to the north and west. High 43°F (11°C). Low 25°F (-4°C). Rain stopping by nightfall.

**Thursday:** Clearer. High 44°F (11°C). Low 25°F (-4°C).

# Clinton Says U.S. Presence In Bosnia Needed for Peace

By Ann Duvroy  
and Helen Dewar  
THE WASHINGTON POST

WASHINGTON

President Clinton Monday night said U.S. participation in the peace-keeping operation in Bosnia means the difference between war and peace there and said Americans, despite the risks, "must choose peace."

Clinton laid out his rationale for using American troops to implement the Bosnian peace agreement, brokered by the United States in recent talks in Ohio, during a prime-time Oval Office address, his 10th as president. Its themes of a limited mission, a strict exit strategy and an operation aimed at securing peace rather than making war were all aimed at reassuring a nation and a Congress wary of risky military operations and concerned that the country might be pulled into a civil war.

The United States cannot police the world or stop warfare everywhere, Clinton said, but "America — and America alone — can and should make the difference" when it is called on to "defend our fundamental values as a people and serve our most basic strategic interests."

Clinton acknowledged the mission will not be without danger, and he issued a blunt warning to anyone threatening the peacekeepers: "America protects its own. Anyone — anyone — who takes on our troops will suffer the consequences. We will fight fire with fire and then some."

Congressional leaders, particu-

larly in the Senate, Monday appeared likely to raise sharp questions and even to put conditions on the U.S. involvement, but in the end to let Clinton go forward. House members were more dubious.

In a speech on the Senate floor a few hours before Clinton spoke, Majority Leader Robert J. Dole, R-Kan., said Congress has a responsibility to advise Clinton but said, "The president has the authority and the power under the Constitution to do what he feels should be done, regardless of what Congress does."

After Clinton's address, Dole said in a television interview that it was "a good speech" and "a first step in the right direction," but added that the president "still has a ways to go."

"I hope he'll have my support," said Dole, the leading candidate for next year's Republican presidential nomination. "It depends on the case that's made and on how the American people respond."

House National Security Committee Chairman Floyd D. Spence, R-S.C., said he was unswayed by the president's speech. Acknowledging the heavy toll war has taken on the Bosnian people, Spence said in a statement: "We must weigh American security interests as well as American moral interests, and this is where the president has a lot of convincing to do."

Spence questioned Clinton's claim that European stability is at risk and challenged the president's call for America to show leadership. "Leadership without clear direction is dangerous and a recipe for disaster when it involves deployment of

tens of thousands of American combat troops," he said.

Clinton, who has heard numerous voices from both parties raise significant questions over the Bosnia operation over the past two weeks, tried to answer some of those questions or at least offer some reassurances. Beyond that he sought to make the case that the United States must pick up the mantle of leadership because no other nation or collection of nations can.

"If we're not there, NATO will not be there," Clinton said in his 22-minute speech. "The peace will collapse. The war will re-ignite. The slaughter of innocents will begin again."

"Let us lead," Clinton implored. "That is our responsibility as Americans."

And as if to answer a common Republican charge — that Clinton naively wants America to police the injustices and miseries of the world — the President offered reassurances that it is not the case. "America cannot and must not be the world's policeman," he said. "We cannot stop all war for all time, but we can stop some wars. We cannot save all women and all children, but we can save many. We cannot do everything, but we must do what we can do."

Clinton said the Bosnia mission "can succeed because the mission is clear and limited. Our troops are strong and very well prepared." And yet, Clinton acknowledged, "no deployment of American troops is risk free and this one may well involve casualties."

# GOP Rivals Attack Clinton's Plan to Send Troops to Bosnia

By Dan Balz  
THE WASHINGTON POST

WASHINGTON

With Senate Majority Leader Robert J. Dole (R-Kan.) equivocating on whether to support President Clinton's decision to send U.S. troops to Bosnia, many of his rivals for the Republican nomination have staked out positions strongly opposing the deployment of ground forces there.

Dole said Monday he spoke with Clinton over the weekend about the plan to send 20,000 U.S. troops to enforce the new peace agreement in Bosnia. "I think he's got a big challenge ahead of him," Dole said Monday morning in advance of Clinton's nationally televised speech outlining the reasons why U.S. troops are needed.

"I told him ... that he hasn't yet persuaded the American people," Dole added. "If he can't persuade the American people, it will be very difficult to persuade the Congress." But Dole added that he wants "to be able to support the president" on the decision, if possible.

Dole finds himself in a difficult position. He has consistently called for a more muscular U.S. policy with regard to the conflict in Bosnia, particularly in lifting the arms embargo, while resisting the introduction of U.S. ground forces into the conflict. But he may be unwilling to oppose the deployment fearing that it would undermine the credibility of the United States or possibly scuttle the agreement — or deny a president the right to conduct foreign policy.

That could set up a clear contrast with his rivals in the fight for the nomination, although it is not clear the issue will become central to the

GOP nomination fight, unless U.S. forces sent to Bosnia incur heavy casualties.

Eddie Mahe, a Republican strategist, said Dole could leave himself vulnerable in the event of a U.S. debacle. "If it blows up over there and if Dole has even seemed to have given qualified support for what Clinton is doing, on whatever basis he provides support, I think the likes of (Patrick J.) Buchanan, (Texas Sen. Phil) Gramm and (publisher Malcolm "Steve") Forbes would swing real hard."

Buchanan, the conservative commentator who has positioned himself as the most isolationist candidate in the GOP field, sharply criticized Dole's posture at a news conference hours before Clinton's speech.

Buchanan said he does not believe Clinton has the constitutional authority to deploy the troops and called on Republican leaders in Congress not to duck the issue. But he called Clinton more principled than the GOP leadership. "While I disagree with the president ... he is leading," Buchanan said. "I think the Republican Party should stand up and say we oppose American troops in Bosnia."

Buchanan said that if Dole and House Speaker Newt Gingrich (R-Ga.), who also has said he wants to give Clinton an opportunity to make his case, believe the deployment is justified, they should state that now at the beginning of the debate. "What I think would be deplorable would be for Congress to sit back, not take a stand, let the American troops be put into Bosnia and that, if some disaster occurs, say it's Clinton's fault, it's Clinton's war (and) we're not responsible."

Gramm and Forbes also strongly oppose the deployment. On the day the peace accord was signed in Dayton, Ohio, the Texas senator accused Clinton of mishandling Bosnia for three years and predicted that the peace agreement will fail. "I have no confidence in the Clinton-brokered peace deal and I will oppose sending American troops into Bosnia," Gramm said.

Forbes, interviewed on CNN's "Inside Politics Weekend," said the peace agreement has "the makings of a fiasco" and said Clinton's "casually made" commitment to send troops to help enforce it did not represent a long-term solution to the problem. Forbes said he feared that the "nebulous" nature of the agreement invited another Lebanon or Somalia — two incidents where U.S. forces deployed as peacekeepers suffered casualties that cut short their mission.

Former Tennessee governor Lamar Alexander has expressed skepticism about Clinton's decision to send U.S. troops, saying if he had been president, he would never have made such a commitment. In a statement issued before Clinton's speech Monday, Alexander said Clinton needed to answer three questions: why the U.S. has a vital interest in enforcing the agreement; how Americans can be sure that the peace agreement is working before U.S. troops reach Bosnia; and clear terms for ending the U.S. mission.

"The president is our commander-in-chief and he has the right to make his case to the Congress and to the American people," Alexander said in the statement. "But he has not yet done that — and he must before our troops are sent into an open-ended peacekeeping mission."

# White House, Congress Restarting Budget Talks Amidst Pessimism

By Eric Pianin and Ann Devroy  
THE WASHINGTON POST

WASHINGTON

The White House and congressional Republicans begin budget and tax cut talks this week in a mood of pessimism, with both sides already pondering the political and practical fallout of not reaching an agreement.

With less than three weeks in which to resolve spending disputes that have bitterly divided Republicans and Democrats for nearly a year, prospects for a quick agreement on a comprehensive plan to balance the budget within seven years appear remote at best.

"My gut feeling is that these are politicians and politics is the art of compromise and somehow they will work out an agreement," Robert D. Reischauer, former director of the Congressional Budget Office, said

Monday. "But my analytical side says, 'I don't see how the two sides can come together.'"

Congress and the White House face two major tasks before Dec. 15, when the current short-term spending bill funding much of the government expires: First, to finish work on seven of 13 spending bills for fiscal 1996, or agree to a long-term continuing resolution, to avert another government shutdown in mid-December. And second, to try to hammer out an agreement on the GOP's long-term budget reconciliation legislation, including major changes in Medicare, Medicaid, welfare and agriculture as well as tax cuts.

A senior administration official said Monday that an outcome without a reconciliation bill "preserves our priorities, not theirs," in that the major changes in Medicare and Medicaid, the large tax cuts and the

changes in the Earned Income Tax Credit, all could fall by the wayside and the status quo for all these programs would remain in effect.

If that happened, the official said, Clinton would still want to work with Congress to see if they could get a negotiated welfare reform bill.

While both sides are committed to bargaining in good faith to achieve a seven-year balanced budget plan, Republicans appear more anxious than Democrats to reach a budget deal.

Republicans pledged during last fall's campaign to balance the budget, scale back the federal government and reduce taxes, and they urged voters to hold them accountable if they failed to deliver. In the event the upcoming talks collapse, Republicans have vowed to make the president's obstinacy a major issue in the 1996 campaign.

## Fuhrman May Be Charged With Perjury at Simpson Trial

LOS ANGELES TIMES

LOS ANGELES

Los Angeles District Attorney Gil Garcetti, saying he feared "the appearance of a conflict of interest," on Monday turned over to the California attorney general's office the responsibility of determining whether to charge former police detective Mark Fuhrman with perjury at O.J. Simpson's double murder trial.

Garcetti said his office could not handle the investigation because members of his office have taken a public position on the perjury question that undermines a criminal charge. He also cited the high level of emotionalism in his office about the Simpson case.

To prove perjury, Garcetti noted, the law requires that a witness be shown not only to have knowingly lied, but that the lie be proven "material" to the case.

In the Simpson trial, Garcetti's prosecutors argued strenuously that any lies Fuhrman may have told under oath were insignificant in deciding Simpson's guilt or innocence in the murders of his ex-wife, Nicole Brown Simpson, and her friend Ronald Lyle Goldman.

In his allegedly perjured testimony, Fuhrman denied that he had used a racial slur that denigrates black people during the last decade. He was later flatly contradicted by four defense witnesses, including an aspiring screenwriter who brought to court tape recordings of Fuhrman using the slur at least 41 times and bragging about illegal and unethical conduct.

A main thrust of Simpson's defense was that Fuhrman is a white "genocidal racist" who could have framed a black man like Simpson.

## 1,400 U.S. Troops Will Be in NATO Advance Group Arriving in Bosnia

THE WASHINGTON POST

WASHINGTON

About 1,400 U.S. troops will be in a 2,600-strong NATO advance group that will arrive in Bosnia and Croatia next week or earlier to set up headquarters, communications lines and supply routes for the full-scale peacekeeping operation to come later, Pentagon and administration officials said Monday.

President Clinton said in his speech Monday night that a "small number" of American troops would be part of the advance mission, "starting sometime next week." Clinton previously had informed Congress that some U.S. units would be sent ahead of the main peacekeeping mission of up to 25,000 U.S. troops, and administration officials had estimated the number at several hundred.

New details were provided about the advance deployment after a two-page "mission statement" was approved Saturday by the Joint Chiefs of Staff. The Joint Chiefs traditionally approve such a document before any deployment of U.S. troops.

Titled "Mission, Tasks, Exit Strategy," it reinforces the 18-page military annex to the Balkans peace accord signed just outside Dayton, Ohio last week. Both give the NATO-led force "enormously broad authority" in Bosnia, one high-ranking administration official said Monday.

The troops would create the military infrastructure necessary to support a larger deployment of up to 60,000 NATO troops.

The primary mission of the NATO-led force will be to enforce a so-called "zone of separation" among the warring parties: Serbs, Muslims and Croats. All forces must withdraw from the zone within 30 days.

# Canada's Leader Offers Concessions To Quebecers' Separatist Intentions

By Anne Swardson and Charles Trueheart  
THE WASHINGTON POST

TORONTO

Four weeks after a strong pro-independence vote in Quebec nearly broke apart the Canadian federation, Prime Minister Jean Chretien Monday offered Quebec significant concessions, including recognition of the French-speaking province as a "distinct society."

His proposals effectively called the bluff of Quebec's separatist leaders, who now must either oppose measures they have favored in the past or accept Chretien's offer. The Chretien initiatives, which he said were undertaken "in a spirit of partnership," also seem likely to raise objections in the rest of Canada.

es to some of the concerns that separatists say drive them toward independence, but they also offer fewer changes than many Quebecers say they require to make them choose Canada over separation. Chretien's changes would not be enshrined in the Canadian constitution, as many Quebecers wish, but instead would be enacted by the House of Commons or by both houses of Parliament.

The prime minister's announcement came less than a month after Quebec's voters rejected separation by the razor-thin vote of 50.6 percent to 49.4 percent. Chretien, who had successfully campaigned for election in 1993 by promising to stay away from the Quebec issue, pledged in the last desperate days of the referendum campaign that he would "deliver the changes that are

necessary" to Quebec.

His unexpected announcement in essence throws the initiative back to Quebec Premier Jacques Parizeau, who will leave office at the end of the year, and especially to Lucien Bouchard, leader of the separatist bloc in the Canadian Parliament and Parizeau's presumptive successor.

"Mr. Parizeau and Mr. Bouchard warned Quebecers during the referendum campaign that a vote in favor of Canada would lead to a show of force and an attempt to strip Quebec of its powers; that is totally false," Chretien said in announcing the measures Monday afternoon. By introducing these changes, he said, "I am following up on the commitments I made to the Quebec population during the referendum campaign."

## Graduate Student Council

The GSC will shortly be nominating 10 grad students to serve on the new **Committee on Discipline.**

The GSC will also be nominating grad students to a committee to find a new **Asst. Dean for Residence and Campus Activities** and to the **MIT Martin Luther King Committee.**

Details are being finalized. If you are interested or want more information, email [gsc-vice-president@mit.edu](mailto:gsc-vice-president@mit.edu).

### Next meetings:

**General Dec. 6, 5:30**  
**APPC Dec. 7, 5:30**  
**HCA Dec. 12, 5:30**  
**Activities Dec. 14, 5:30**

**The Nutcracker**  
7:30pm, Friday,  
Dec. 1, 1995

Tickets only \$20  
available now in the  
GSC office  
(only a few left!)

**NEW TUESDAY NIGHT  
GROCERY SHUTTLE  
RUNS AT 8, 9 & 10 PM!**

For exact pick-up times email  
Geoffrey ([gicoram@mit.edu](mailto:gicoram@mit.edu)) or call  
Karen (x7-5793)  
Add yourself to the Grocery Shuttle  
email list by typing  
*blanche grocshut - a username*

## A Workshop on Acquiring Tools for Working with Your Advisor

November 28, 3-5PM  
50-220, GSC Lounge  
**SIGN UP REQUIRED - NO CHARGE**  
registration forms available in 50-222

The MIT GSC is organizing a workshop for student and post-doc advisees. It will feature a led discussion and some role playing. Topics include improving assertiveness and communication, learning support strategies, dealing with different expectations, and gaining tools for assessment and response. Participation is limited to the first 30 who register.

### GSC SKI TRIP

Ski Sunday River - December 10, 1995  
**CHEAP RATES**  
full lift ticket - \$28 ❄️  
ski rental - \$17 ❄️  
snowboard rental - \$30  
many learn to ski packages also!  
**FREE TRANSPORTATION**

❄️ SIGN UP NOW IN 50-222 ❄️

## Jesus Christ Superstar

at the Wang Center  
Friday, Jan. 12, 8pm  
Tickets only \$25

The GSC will accept orders until Dec. 13 for this show so sign up early!

## Holiday Shopping Trip to the Maine Outlets!

Sunday, December 3, 1995

Sign up now in the GSC office (50-222) and shop til you drop.

All Graduate Students are invited to all our meetings. Most are held at 5:30pm in 50-222 and dinner is served.

Stay informed about all our events! Check out our web page <http://www.mit.edu:8001/activities/gsc/gsc.html>

Add yourself to our mailing list by sending email to [gsc-request@mit](mailto:gsc-request@mit)

Questions, comments, ideas? Give us a call at 3-2195 or send email to [gsc-admin@mit](mailto:gsc-admin@mit)

# OPINION



**Chairman**  
Scott C. Deskin '96

**Editor in Chief**  
Daniel C. Stevenson '97

**Business Manager**  
Christine Chan '98

**Managing Editor**  
Jimmy Wong '97

**Executive Editor**  
Ramy A. Arnaut '97

**NEWS STAFF**

**Editors:** Stacey E. Blau '98, Shang-Lin Chuang '98, David D. Hsu '98; **Associate Editors:** A. Arif Husain '97, Jennifer Lane '98, Venkatesh Satish '98; **Staff:** Eva Moy G, Oleg D. Drozhinin '97, Ifung Lu '97, Christopher L. Falling '98, Sam Hartman '98, Brett Altschul '99, Orli G. Bahcall '99, Shawdee Eshghi '99, Carina Fung '99, Yaron Koren '99, Dan McGuire '99; **Meteorologists:** Michael C. Morgan PhD '95, Gerard Roe G, Marek Zebrowski.

**PRODUCTION STAFF**

**Editors:** Teresa Lee '96, Michelle Sonu '96, Saul Blumenthal '98; **Associate Night Editor:** Jennifer Peltz '98; **Staff:** Amy Hsu '94, Laura DePaoli '97, Christine J. Sonu '97, Warren Chang '98, Larry Chao '98, Susan J. Kim '98, Yun-Ju Lee '98, Michael D Forbes '99, Jason C. Yang '99, Khelga Karsten.

**OPINION STAFF**

**Editor:** Anders Hove '96; **Staff:** Raajnish A. Chitaley '95.

**SPORTS STAFF**

**Associate Editor:** Bo Light '96; **Staff:** Thomas Kettler SM '94, Darren Castro G, Brian Petersen '96, David Berl '97, Jeremy Cohen '97, Daniel Wang '97, Jason Weintraub '97, Farhan Zaidi '98.

**ARTS STAFF**

**Editor:** Craig K. Chang '96; **Staff:** Thomas Chen G, Teresa Esser '95, Audrey Wu '96, Brian Hoffman '97, David V. Rodriguez '97, Kamal Swamidoss '97, Rob Wagner '97, Hur Koser '98, Daniel Ramirez '99, Stephen Brophy.

**PHOTOGRAPHY STAFF**

**Editor:** Thomas R. Karlo '97; **Associate Editors:** Helen Lin '97, Adriane Chapman '98, Indranath Neogy '98; **Staff:** Gábor Csányi G, Rich Fletcher G, Arifur Rahman G, Sherrif Ibrahim '96, Jiri Schindler '96, Lenny Speiser '96, Juan P. Vernon '96, Sharon N. Young Pong '96, Tiffany Lin '97, Carol C. Cheung '98, Justin Ging '98, Rayshad Oshtory '98.

**FEATURES STAFF**

Hugo M. Ayala G, Pawan Sinha G, Willy Ziminsky G, Steven D. Leung '96.

**BUSINESS STAFF**

**Operations Manager:** Ricardo Ambrose '98; **Staff:** Mary Chen '97, Angela Liao '98, Jessica Maia '98, Winnette McIntosh '98, Pamela Shade '98, Terri A. Wilson '99.

**TECHNOLOGY STAFF**

**Director:** Jeremy Hylton G; **Staff:** Christina Chu '98, Cristian A. Gonzalez '99, Kathleen Lynch.

**ADVISORY BOARD**

V. Michael Bove '83, Robert E. Malchman '85, Thomas T. Huang '86, Reuven M. Lerner '92, Josh Hartmann '93.

**PRODUCTION STAFF FOR THIS ISSUE**

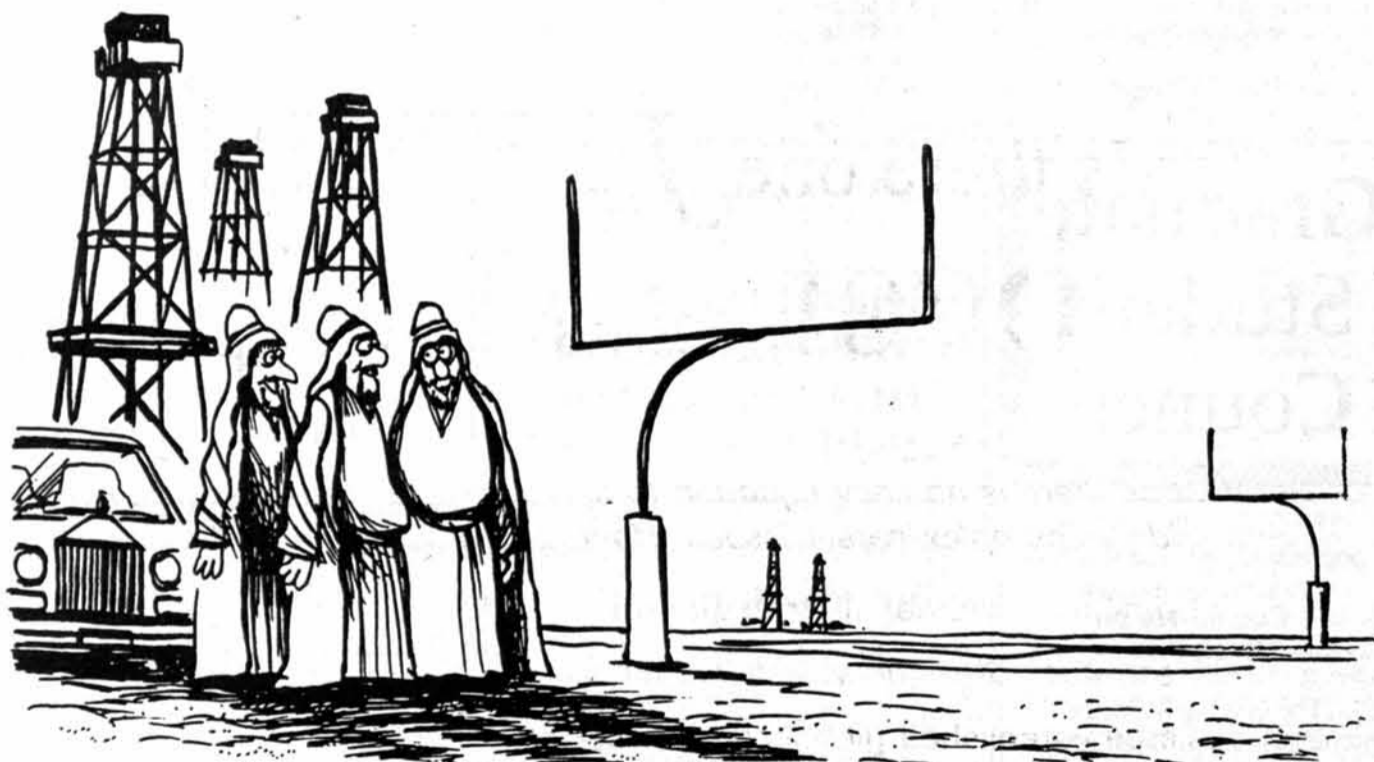
**Night Editors:** Jimmy Wong '97, Saul Blumenthal '98; **Staff:** Venkatesh Satish '98, Dan McGuire '99, Khelga Karsten.

*The Tech* (ISSN 0148-9607) is published on Tuesdays and Fridays during the academic year (except during MIT vacations), Wednesdays during January and monthly during the summer for \$20.00 per year Third Class by *The Tech*, Room W20-483, 84 Massachusetts Ave., Cambridge, Mass. 02139-7029. Third Class postage paid at Boston, Mass. Non-profit Organization Permit No. 59720. **POSTMASTER:** Please send all address changes to our mailing address: *The Tech*, P.O. Box 397029, Cambridge, Mass. 02139-7029. Telephone: (617) 253-1541, editorial, (617) 258-8324, business; (617) 258-8226, facsimile. Advertising, subscription, and typesetting rates available. Entire contents © 1995 *The Tech*. Printed on recycled paper by MassWeb Printing Co.



BEATIE  
Copley News Service  
©95 Daytona Beach Sunday News-Journal

©95 Daytona Beach News-Journal  
Copley News Service  
BEATIE



"I wonder... are there any NFL owners greedy enough to move a team to Riyadh?"

## Opinion Policy

**Editorials**, printed in a distinctive format, are the official opinion of *The Tech*. They are written by the editorial board, which consists of the chairman, editor in chief, managing editor, executive editor, news editors, and opinion editors.

**Dissents**, marked as such and printed in a distinctive format, are the opinions of the signed members of the editorial board choosing to publish their disagreement with the editorial.

**Columns and editorial cartoons** are written by individuals and represent the opinion of the author, not necessarily that of the newspaper.

**Letters to the editor** are welcome. They must be typed, double-spaced and addressed to *The Tech*, P.O. Box 397029, Cambridge, Mass. 02139-7029, or by interdepartmental mail to Room W20-483. Electronic submissions in plain text format may be mailed to letters@the-tech.mit.edu. All submissions are due by 4:30 p.m. two days before the date of publication.

**Letters and cartoons** must bear the author's signatures, addresses, and phone numbers. Unsigned letters will not be accepted. No letter or cartoon will be printed anonymously without the express prior approval of *The Tech*. *The Tech* reserves the right to edit or condense letters; shorter letters will be given higher priority. Once submitted, all letters become property of *The Tech*, and will not be returned. We regret we cannot publish all of the letters we receive.

## To Reach Us

*The Tech's* telephone number is (617) 253-1541. Electronic mail is the easiest way to reach any member of our staff. Mail to specific departments may be sent to the following addresses on the Internet: ads@the-tech.mit.edu, news@the-tech.mit.edu, sports@the-tech.mit.edu, arts@the-tech.mit.edu, photo@the-tech.mit.edu, circ@the-tech.mit.edu (circulation department). For other matters, send mail to general@the-tech.mit.edu, and it will be directed to the appropriate person.

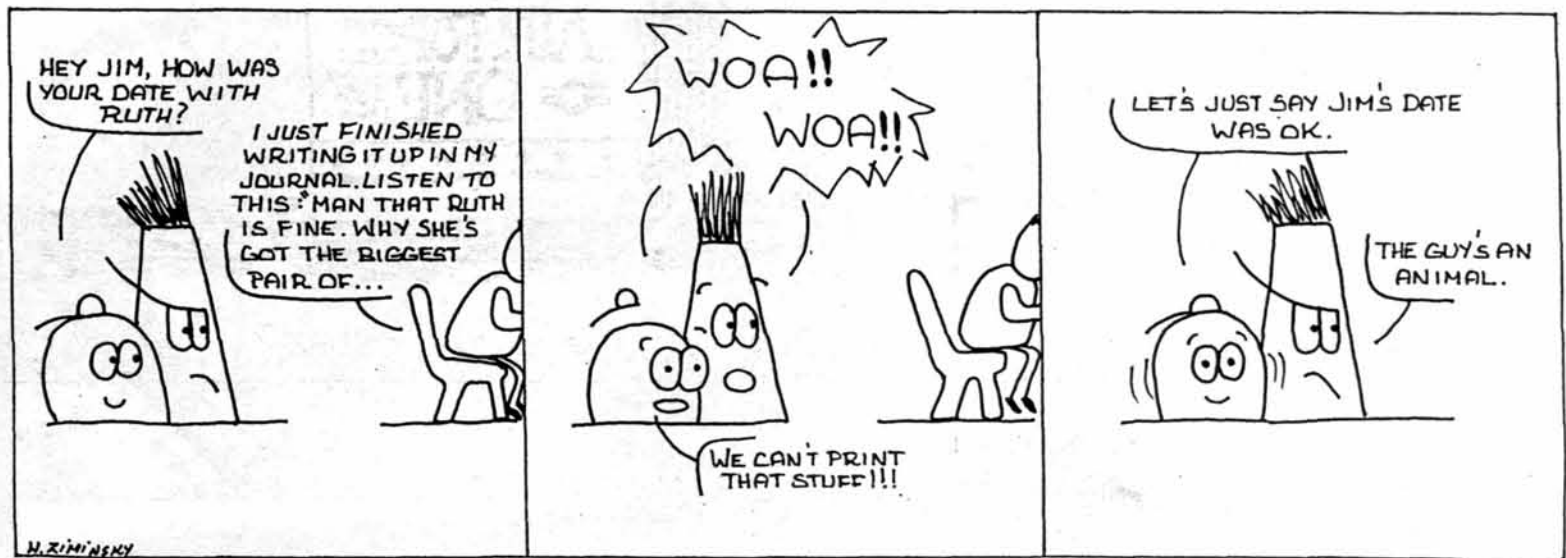
# Off Course

By H. Ayala



# rookies

by willy ziminsky



Is there one *formula* for the **best** consulting opportunity?

*No. Just as there is no easy equation to solve complex business problems, there is no one formula to address complex career issues. However, the right individual may consider these variables:*

- Small non-traditional strategy firm
- Resources of worldwide \$700 million diversified consulting firm
- Large established global client base

Learn more about our **opportunity**

**Tuesday, November 28  
8:00 p.m. Room 4-163**

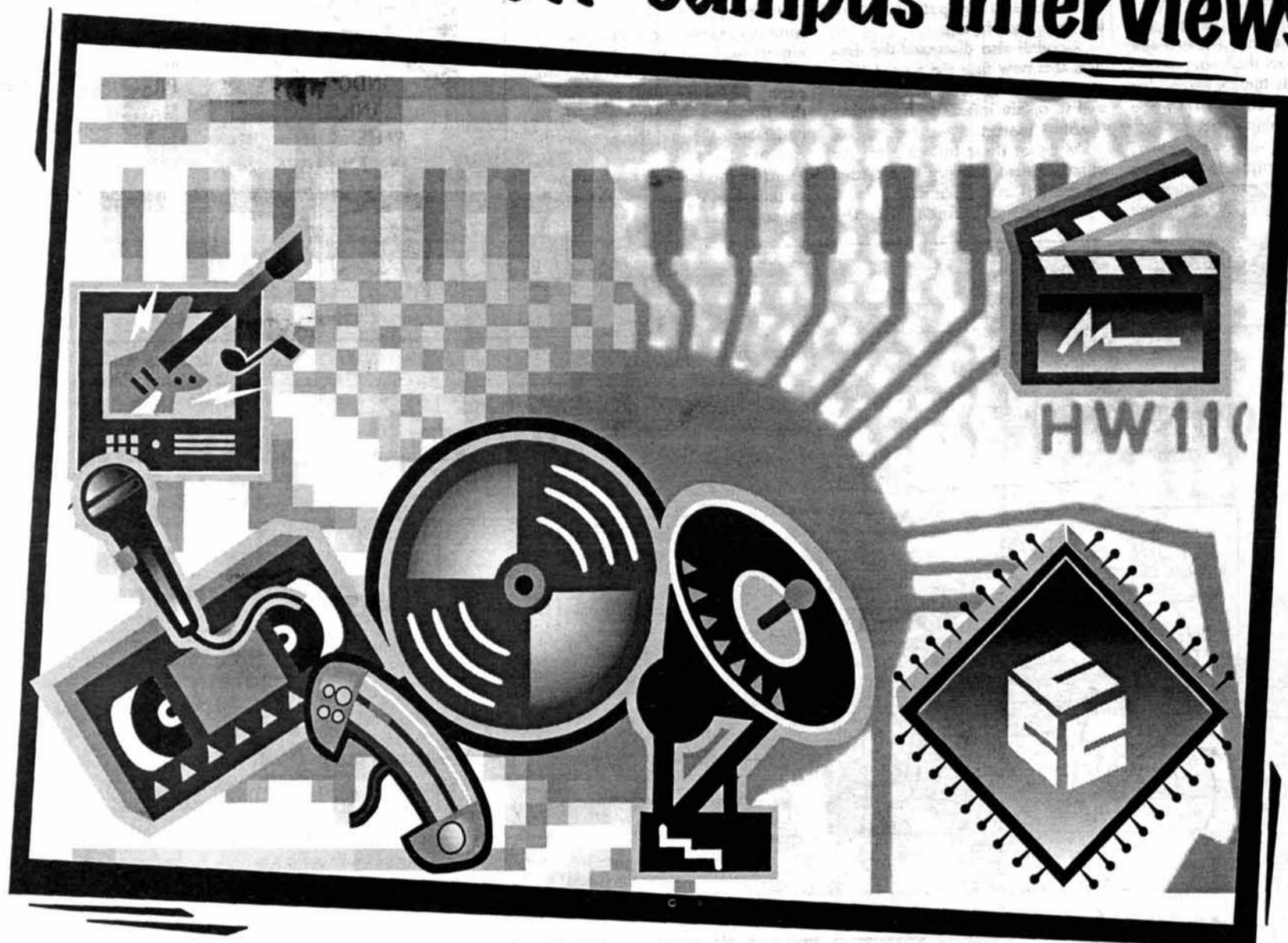
# Telesis

Interested students please submit cover letter, resume, and unofficial transcript to Career Services Recruiting Office by **January 28, 1996**. Contact: Ed Busby, Telesis, 56 Pine Street, Providence, RI 02903 • (401) 455-2400

**A Towers Perrin Company**  
Business Strategy Consultants

*Telesis specializes in assisting major international corporations develop business and functional strategies. Our approach is fact-based and customized for each assignment – we offer no formulas, equations or fads. We're a small firm with resources that are far-reaching and with client issues that take us around the world.*

## Off-campus interviews



# Capture imagination

Encoders, decoders, and codecs. Full-motion video and true-color images for multimedia computers, CD-based consumer electronics, and digital television. Anything that's being done in this fast-moving field is being done with technology from **C-Cube Microsystems, Inc.** An early leader in the field, we've not only captured the imagination of the world, we also won an Emmy last September for our "Outstanding Achievement in Engineering Development for the television industry." Imagine how much you could do, in one of these areas at C-Cube.

All positions require a BS/MS in EE/CS, and the following skills:

### Design Engineers

VLSI Design, Verilog behavior and gate modeling, logic design and synthesis, circuit design and SPICE simulation, layout and post-layout verification.

### Algorithm Software Engineer

Prototyping in C under UNIX, porting and performance tuning to video DSPs, real-time multitasking, error analysis.

### Architecture

Register transfer level (RTL) behavioral modeling, memory hierarchy tradeoffs, validation suites, programming in C.

### System Software/Hardware

Device drivers, Windows user interfaces, programming tool construction: assembler, linkers, compilers, debuggers.

**C-Cube** will be conducting off-campus interviews in your area, the week of December 4th. We will be pre-screening candidates, so if you are interested, please FAX your resume to C-Cube at: (408)944-8167.

C-Cube is headquartered in the heart of the Silicon Valley, California. We're minutes from San Jose. Less than an hour from San Francisco. And just a little farther from the Santa Cruz mountains and beaches. And in addition to growth, technology and scenery, C-Cube offers an excellent compensation plan, including stock options, flexible spending accounts, and comprehensive insurance benefits. For more information about our College Recruitment program, please call (408) 944-6321. We are an Equal Opportunity Employer.



**C-Cube  
Microsystems**

# Goodall Addresses Connection Between Humans, Chimpanzees

Goodall, from Page 1

humanity and chimpanzees, placing special emphasis on her first major discovery, the fact that chimpanzees make tools. This finding earned her funding she required from the National Geographic Society.

She showed many slides of chimpanzee activities, focusing on the children and grandchildren of Flo, one of the most famous Gombe

chimpanzees. The slides pictured the animals eating, patrolling their territory, and playing.

Goodall also discussed the dangers that now face the apes. Chimpanzees are hunted both for meat and to obtain infants to be sold on the black market.

Many of these infants enter the entertainment industry or are used for medical testing, she said.

Goodall explained how the


abject poverty common in sub-Saharan Africa hurts both apes and humans, showing slides of the almost totally deforested shores of Lake Tanganyika. However, she expressed a great deal of hope for the future, as society begins to understand the problems the world currently faces.

After the speech, Goodall was swamped during an autograph signing session.



THOMAS R. KARLO—THE TECH

The last few latecomers able to get in were forced to sit in the aisle during Jane Goodall's lecture to a packed 10-250 last Monday. Due to the overwhelming attendance, many people could not view the speech and were forced to listen to a loudspeaker placed outside the auditorium.

**THE GREAT ESCAPE!**   
from BOSTON:  
Fares are STUDENT fares, each way based on a round trip purchase and are subject to change. International Student ID may be required. Taxes & surcharges are NOT included.

LONDON	\$159	PRAGUE	\$249
FRANKFURT	239	MADRID	259
ATHENS	210	PARIS	215
COPENHAGEN	249	MOSCOW	299

CALL FOR A FREE "STUDENT TRAVELS" MAGAZINE!

**Council Travel**

CIEE: Council on International Educational Exchange

On the Web: <http://www.ciee.org/cts/ctshome.htm>  
Downstairs in the Stratton Student Ctr, W20-024, MIT!

**225-2555**

## 來利樓

### Larry's Chinese Restaurant

302 Massachusetts Ave., Cambridge  
Orders to go, or dining in

FREE DELIVERY TO THE M.I.T. CAMPUS — \$10 MINIMUM

Luncheon Specials served daily, 11:30 a.m. – 5:00 p.m., starting at \$3.75  
Special Dinner Plate just \$4.95 all day long

15% off with this ad (valid through 11/30/95)

(for dine-in dinners only; \$10 minimum purchase)

Call 492-3179 or 492-3170

Monday – Thursday, 11:30 a.m. to 10:00 p.m.  
Friday – Saturday, 11:30 a.m. to 11:00 p.m.  
Sunday, 5:00 p.m. to 10:00 p.m.

The Council for the Arts at MIT offers:

**FREE TICKETS FOR  
MIT STUDENTS**

## Letters from Sarajevo

At the Boston Center for the Arts  
Round-trip transportation provided

Sunday, December 3

8:00pm



## The Tempest

At the American Repertory Theater  
Brattle Street, Harvard Square

Tuesday, December 12

8:00pm



Sign-up in person only at the  
MIT Office of the Arts (E15-205)  
Valid MIT student ID and  
a \$5 returnable deposit are required

## Montgomery

Interested in Investment Banking?  
Emerging Growth Companies?  
A Wall Street Experience in San Francisco?

Learn about Montgomery's  
Corporate Finance Analyst Program

WEDNESDAY, NOVEMBER 29, 1995

RITZ-CARLTON HOTEL IN BOSTON

7:30 PM

The Investment Bank of Choice  
for Growth Companies

- National Firm in San Francisco
- Bulge Bracket Capabilities
- Focused on Four Industry Sectors:
  - Technology
  - Consumer
  - Health Care
  - Financial & Real Estate Services

Interview Date • January 1996 • Boston

Please Send Cover Letter, Transcript & Resume to  
Maggie Woodward

MONTGOMERY SECURITIES  
INVESTMENT BANKING, BROKERAGE, ASSET MANAGEMENT  
600 MONTGOMERY STREET, SAN FRANCISCO, CALIFORNIA 94111

# need a little extra cash?

...then sign up for a 2am-6am\* shift at the

**JAVAHUT**  
SCC's 24hr Coffeehouse  
3rd floor Student Center

— **Or** —

Put your marketing skills to work to help **promote** the  
**JAVAHUT.**

### *job description*

PR student will work closely with managers to work on various projects including: developing an advertising budget, LSC slides, posters, menus, promotions, and developing a homepage. Some desktop publishing knowledge preferred. No prior knowledge of the JavaHut/Coffeehouse needed.

hours: 2-10 week (will vary with project)  
rate: \$7.00/hr

**for more info contact:** Michael R. Evans, head manager  
x3-3916 (leave message in Coffeehouse box)  
mike\_e@mit.edu

\*other shifts available

## POLICE LOG

The following incidents were reported to the Campus Police between Nov. 11 and Nov. 24:

**Nov. 11:** Baker House, vandalism; Student Center, bicycle stolen, \$40.

**Nov. 12:** Burton-Conner House, bicycle parts stolen, \$10; Senior House, bicycle stolen, \$320; 33 Massachusetts Ave., bicycle stolen, \$400; Pacific St. lot, damage to motor vehicle, \$7,000.

**Nov. 13:** Student Center, wallet and credit cards stolen, \$50; 33 Massachusetts Ave., bicycle stolen, \$250; Burton, diamond bracelet stolen, \$600.

**Nov. 14:** Bldg. 4, power supplies stolen, \$500.

**Nov. 15:** Bldg. 20, vandalism; Bldg. 1, computer stolen, \$3,000; Student Center, 1) suspicious activity, 2) Thomas J. Hoods, of 67 George St., Arlington, arrested on warrant; 33 Massachusetts Ave., bicycle stolen, unknown value; Bldg. 26, bicycle stolen, \$550.

**Nov. 16:** Student Center, Michael Sample, address unknown, arrested for trespassing and disorderly conduct; Dupont Gym locker room, laser printer stolen, \$500; Senior House, suspicious activity; Bldg. 33 by Bldg. 9, armed robbery, \$13; Jonathan Snoek, of 1200 Massachusetts Ave., Cambridge, arrested for violating a domestic abuse restraining order; 33 Massachusetts Ave., bicycle stolen, \$450; Bldg. N51, assault and battery and unarmed robbery, \$40; Random Hall, violation of restraining order; Tang Hall, bicycle stolen, \$200; Networks, attempted breaking and entering; Bldg. 50, leather jacket stolen, \$250.

**Nov. 17:** Faculty Club, laptop computer stolen, \$3,000; Bldg. 6, harassing phone calls; Westgate lowrise, baby bed stolen, \$50; 33 Massachusetts Ave., 1) bicycle stolen, \$520, 2) bicycle stolen, \$400, 3) bicycle stolen, \$120; Bldg. N52, camera stolen, \$400.

**Nov. 18:** 77 Massachusetts Ave., bicycle stolen, \$100.

**Nov. 19:** 428 Memorial Dr (No. 6 Club), William Iroala, of 28 Parker St., Chelsea, arrested for assault and battery of a police officer; West garage, cellular phone Stolen, \$79.

**Nov. 20:** Dupont, wallet and credit cards stolen, of unknown value; Bldg. 13, band saw stolen, \$300; Bldg. 2, bicycle stolen, \$295; 33 Massachusetts Ave., bicycle stolen, \$500; West Annex lot, car speakers stolen, \$100; Tang Hall, bicycle stolen, \$180; Senior House, harassing phone calls.

**Nov. 21:** 33 Massachusetts Ave., bicycle stolen, \$160; Bldg. NW21, stainless steel pipe stolen, \$600; Bldg. 48, walkman stolen, \$35; Bldg. 68, bicycle stolen, \$700.

**Nov. 22:** 33 Massachusetts Ave., bicycle stolen, \$350; Student Center Optical Shop, eyeglass frames stolen, \$250; Bldg. 66, gold chain stolen, unknown value; Bldg. 16, bicycle tire stolen, \$100; Johnson Athletics Center, bicycle stolen, \$200; E52, suspicious activity.

**Nov. 23:** East Campus, suspicious activity.

## Burchard Scholars Program

### All MIT Juniors and Sophomores

The 1996 Burchard Scholars Program Is Now Accepting Applications

The Burchard Scholars Program brings together distinguished members of the faculty and promising juniors and sophomores who have demonstrated excellence in some aspect of the humanities and social sciences. 25 Burchard Scholars are invited to a series of dinner-seminars throughout the year to discuss topics of current research or interest by faculty members, visiting scholars, and Burchard Scholars. The 1996 program begins in February.

For information or an application, contact: Dean's Office, SHSS, E51-255 (x3-8961) or the HASS Information Office, 14N-408 (x3-4443).

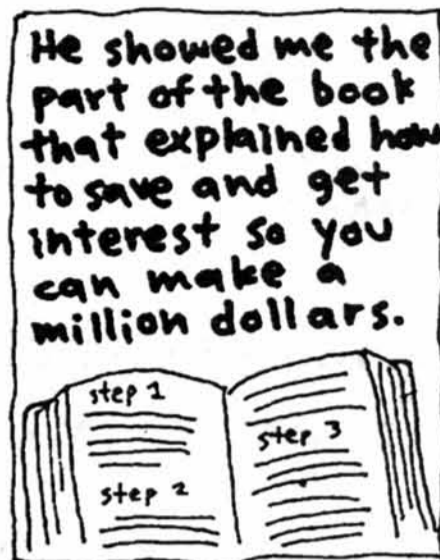
PLEASE NOTE THAT AN ESSAY QUESTION IS PART OF THE APPLICATION.  
PLEASE CALL US WITH ANY QUESTIONS.

**Application Deadline: Friday, December 1, 1995**

*Sponsored by the Dean's Office, School of Humanities and Social Science*

# Jim's Journal

by Jim



## SPECIAL ADVANCE SCREENING

EMMA THOMPSON    ALAN RICKMAN    KATE WINSLET    HUGH GRANT



Lose your heart and come to your senses.



# SENSE AND SENSIBILITY

COLUMBIA PICTURES PRESENTS  
A LANGUAGE PRODUCTION BY ANG LEE THE "SENSE AND SENSIBILITY" EMMA THOMPSON ALAN RICKMAN KATE WINSLET AND HUGH GRANT "PRIDE AND PREJUDICE" JULIE WATSON JENNY HEAVY AND JOHN BURTON "THE SHOTTERS" MICHAEL COOPER  
EXECUTIVE PRODUCERS MICHAEL COOPER, J.C.C. PRODUCED BY JAMES SCHWAB AND LAURE BOOS SCREENPLAY BY SYDNEY POLLACK BASED UPON THE NOVEL BY JANE AUSTEN  
COLUMBIA PICTURES

## FREE MOVIE POSTERS

Thursday, Nov. 30th  
8:00 PM  
26-100

Pick up Free Passes  
At The Door  
MIT/Wellesley I.D. Required  
Presented By  
MIT Lecture Series Committee

KNOW THE CODE: dial 1 800 CALL ATT

Always costs less than 1-800-COLLECT

# AT&T BIG GAME SWEEPSTAKES

Win 1 of 4 Grand Prize Trips  
To The Big Game That Could Decide The  
**College Football Champion**

20 FIRST PRIZES: AT&T Telephone/Clock Radio  
100 SECOND PRIZES: New Music CD  
250 THIRD PRIZES: T-Shirt

## MAIL IT TODAY!

Abbreviated Rules • No Purchase Necessary

Prizes: (4) Grand Prizes: Trip for two to the January 2, 1996 college football game in Tempe, AZ. Approximate Retail Value (ARV) = \$3500 ea. (20) First Prizes: AT&T Telephone/Clock Radio (ARV=\$43). (100) Second Prizes: Compact Disc (ARV=\$12). (250) Third Prizes: T-Shirt (ARV=\$8). In the event a winner cannot be contacted or take the trip on designated travel dates, he or she will forfeit the prize and an alternate winner will be named. Sweepstakes subject to full official rules which may be obtained by sending a stamped self-addressed #10 envelope for receipt by 12/31/95 to: AT&T Big Game Sweepstakes Rules, P.O. Box 3065, Milford, CT 06460-2088. Open to legal US residents 18 years of age or older. Void in Florida and where prohibited. Odds of winning depend on the number of eligible entries received.

Two Ways To Enter: Complete the official entry form available in your college newspaper or at one of the Premiere movie screenings of *Sense and Sensibility*. You may give the completed official entry form, or a plain 3" x 5" piece of paper including your: hand printed name, home and school addresses, corresponding ZIP codes, e-mail address, school name and telephone number where you can be reached on the date of the drawing (12/18/95) to one of the student representatives at the screening or mail it to be received by 12/15/95 to:

AT&T Big Game Sweepstakes, P.O. Box 3500, Milford, CT 06460-2088  
Entries must be received by 12/15/95

Please Print

Mail to: AT&T Big Game Sweepstakes, P.O. Box 3500, Milford, CT 06460-2088

Entries must be received by 12/15/95

Name (First,Last) \_\_\_\_\_  
Home Address \_\_\_\_\_  
City \_\_\_\_\_ State \_\_\_\_\_ Zip \_\_\_\_\_  
School Address \_\_\_\_\_  
City \_\_\_\_\_ State \_\_\_\_\_ Zip \_\_\_\_\_  
E-mail Address \_\_\_\_\_  
School Name \_\_\_\_\_  
Phone number where I can be reached  
on date of drawing (12/18/95) (\_\_\_\_) \_\_\_\_\_

*Gore Will Speak Here Tomorrow*  
*Hayden Now Closes at Midnight*  
*Molina, others Recaps Million Man March*  
*Environment*

**What's so special about these articles?**  
 They were all written by **new** reporters for *The Tech*

It's never too late to become a part of MIT's oldest student activity... call the newsroom at x3-1541 and ask for Stacey, Shang-Lin, and David.

*Absolutely no experience necessary*

*Dean's Office Seeks Outside Student Gr...*  
*Blocked C...*  
*Evacuates Random*  
**Officials Address Dormitory Disasters; Resident Suspected**

**WOULD YOU LIKE TO BE ON THE BOARD OF IBM? HOW ABOUT GM?  
 MAYBE TIME WARNER-TURNER?**

**OR**

**WOULD YOU CONSIDER  
 THE COOP!**

**YES, YOU COULD BE A MEMBER OF THE COOP'S BOARD OF DIRECTORS !**

PETITIONS TO BE ON THE BALLOT FOR THE  
 ACADEMIC YEAR 1996-97 ARE AVAILABLE AT THE CASHIER'S OFFICE OF ANY  
 COOP BRANCH, OR AT THE PRESIDENTS OFFICE AT THE HARVARD SQUARE STORE.

**FINAL DATE FOR RETURN OF PETITIONS IS  
 WEDNESDAY, DECEMBER 20, 1995.**

**FOR ADDITIONAL INFORMATION,  
 CONTACT ALIX ARNOLD, 499-2002,  
 agarnold@the coop.com,  
 OR SEE THE COOP'S HOME PAGE <http://www.thecoop.com>.**



# Immigration Lawyer Addresses Slow Visa Process, Green Cards

Immigration, from Page 1

For foreign students who do not have blood relatives who are U.S. citizens, the easiest way of getting a green card is through the labor certification process, Donabed said.

"A U.S. employer says that this is the job I want someone to do and

this is the skill set one would need to do this job," Donabed said. "If the company cannot find a person to do that job, we'll give [the] foreign worker labor certification."

"It is probably the most difficult process," Donabed said. "But if you get a labor certification, unless you are an undesirable alien, you will probably get a green card," he said.

**Spring Break**  
 Sell Trips, Earn Cash & Go Free!!! Call For Details!!  
 On Campus Contact:  
 Charles @ 266-5737  
 John @ 437-7592

**Cancun** from \$399  
**Jamaica** from \$439  
**Florida** from \$99

**STS STUDENT TRAVEL SERVICES**  
 1344 Ashton Dr., Hanover, MD 21076  
 Toll free 1-800-648-4849

**TOMMY'S HOUSE OF PIZZA**  
 offers free delivery service!

**free DELIVERY TO MIT**  
 Until 2am Daily  
**497-4849**  
 Let us cook for you!

**Large Cheese Pizza \$8.95**  
**Extra Toppings \$1 each**  
 ★ ★ ★ ★ ★ ★ ★ ★ ★ ★  
 Try our Gourmet Pizza Edges:  
 Sesame Seeds • Poppy Seeds  
 Pretzel Salt • Minced Onion  
 Minced Garlic

*We are conveniently located about 1350 smoots away from MIT. Call us for late night delivery of all your favorite party foods.*

**Also Available:**  
 Pasta dishes • Subs/Grinders  
 Salads • French Fries • Burgers  
 Onion Rings • Calzones • Sodas

497-4849 49 Mount Auburn St., Camb. 497-4849

**WHEN DRINKING, CALL A FRIEND.**

Drinking and riding can lead to a loss of license, a conviction, or even worse. When you drink, get a ride with a friend. It's the best call you can make.

**MOTORCYCLE SAFETY FOUNDATION**

This space donated by The Tech

**GMAT • GRE • LSAT • MCAT**

**THE PRINCETON REVIEW**  
 is administering  
**FREE TESTS**

Take a sample test and find out where you stand without having an official score on your record.

LSAT: Sat., December 2 9am - 1:30pm CLA, Room 323  
 MCAT: Sat., December 2 9am - 4:30pm CLA, Room 214  
 GRE: Sat., December 2 10am - 2:30pm CLA, Room 310  
 GMAT: Sat., December 2 11am - 3:30pm CLA, Room 325

Princeton Review FREE tests will be held at Boston University at the College of Liberal Arts, located at 685 Commonwealth Avenue.  
 \*\* FREE tests are also available at Harvard University, December 9th, call for more information!  
 Call today to reserve a spot for one of our FREE tests.

**THE PRINCETON REVIEW** (617) 558-2828

**GMAT • GRE • LSAT • MCAT**

**STUDENT TRAVEL**

London ..... \$295  
 Paris ..... 470  
 Frankfurt ..... 476  
 Rome ..... 510  
 Madrid ..... 517  
 Tel Aviv ..... 657  
 San José ..... 451

Also call us for student discounts on domestic flights. Tax not included. Some restrictions apply.  
<http://www.sta-travel.com>

**617-576-4623**  
 65 Mt. Auburn St.  
 Cambridge, MA 02138

**STA TRAVEL**  
 We've been there.

Tens of thousands of people will need blood during the holidays.

Still wondering what to give?

**American Red Cross**

Give blood again. Once more will be felt for a lifetime.

PHOTO BY JERRY VALENTI

Ad Council

This space donated by The Tech

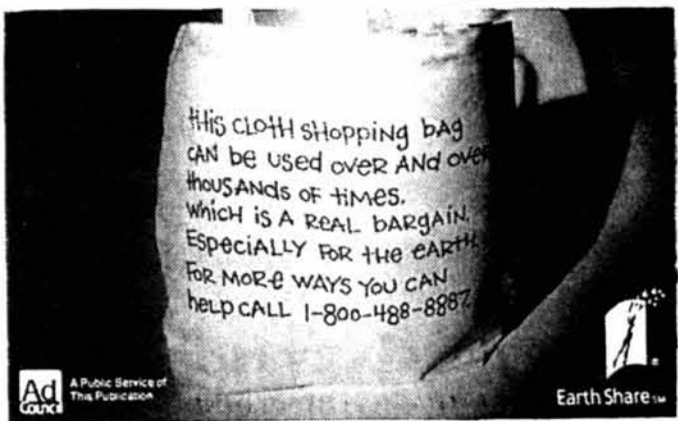
Because all-nighters aren't always spent in the library.

**VISA**

4000 4000 1234 5678 9010  
 12/95 01/96  
 A. MELLOP

It's everywhere you want to be.

© Visa U.S.A. Inc. 1995



This space donated by The Tech



# Cambridge has three great institutions.

♦ ♦ ♦  
Educate at theirs. Eat at ours.

For 76 years, people have gone to school on the cuisine at the S&S. From the traditional deli Ma Edlestein started serving in 1919 to our '90s fare which includes our famous chicken soup, Buffalo wings, grilled salmon and chocolate mousse pie.

While we may not be as well known as Harvard and MIT, students at both say they prefer our courses.



A Great Find Since 1919

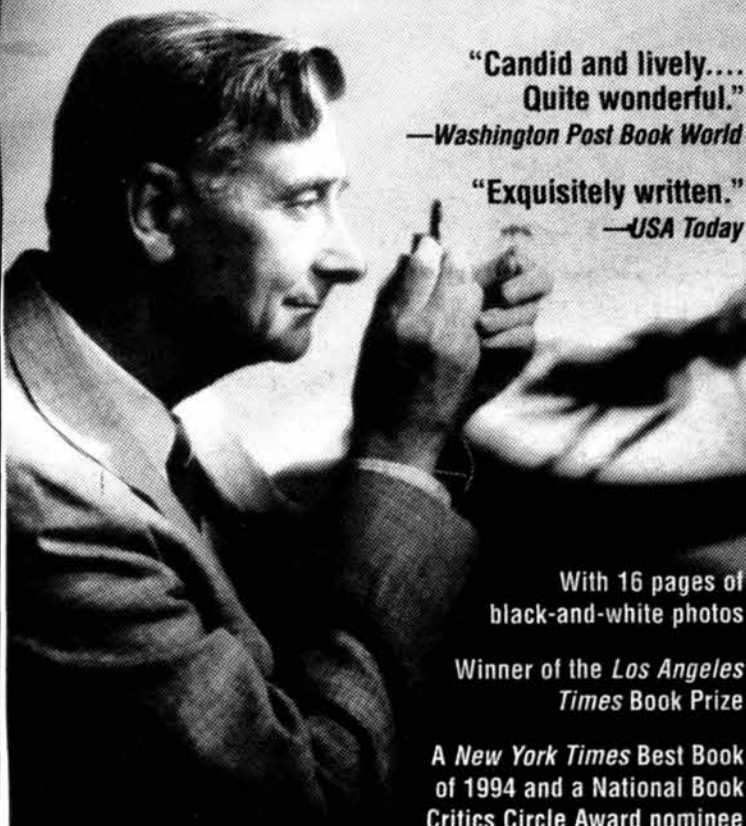
Catering • Deli • Restaurant • Function Room  
1334 Cambridge St., Cambridge, MA, Tel. (617) 354-0620

"A pleasure to read and reread....One of the finest scientific memoirs ever written, by one of the finest scientists writing today."—*Los Angeles Times Book Review*

Edward O. Wilson

TWO-TIME PULITZER PRIZE-WINNING AUTHOR

NATURALIST



"Candid and lively.... Quite wonderful."  
—*Washington Post Book World*

"Exquisitely written."  
—*USA Today*

With 16 pages of black-and-white photos

Winner of the *Los Angeles Times* Book Prize

A *New York Times* Best Book of 1994 and a National Book Critics Circle Award nominee

Available in Paperback from Warner Books



## Jim's Journal



by Jim

# Grand Opening!

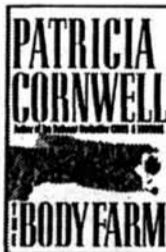
# foozles

an extraordinary bookstore

FOOZLES, the largest bargain multimedia superstore in the Boston area, is here!

At FOOZLES you'll find over 225,000 discounted books including bestsellers, over 10,000 music cd's and cassettes, video, periodicals, 500 CD-ROM titles, audio tapes and stationery... geared to inform, educate and entertain the entire family.

SAVE UP TO  
**85% off**  
Publishers' List Prices



BESTSELLER!  
HARDCOVER  
**\$6**  
LIST PRICE \$23



COMPUTER TUTORIAL VIDEOS  
**\$9.99**  
SUPER SELECTION!

MUSIC CD's  
**\$4.99 TO \$9.99**  
VALUES TO \$17.99



KID'S MINI CLASSICS  
BUY 6...  
**GET 3 FREE!**  
\$1.99 EACH 12/1-12/3

SATURDAY, DECEMBER 2

SUNDAY, DECEMBER 3

C & C++ MULTIMEDIA CD-ROM  
Demonstration with authors Dr. Harvey Deitel & Paul Deitel. 11 AM & 1 PM



RICHARD HOFFMAN author of *HALF THE HOUSE*. Reading and book signing. 11 AM - NOON



**Mix985** AT FOOZLES!  
The Mix Van and Mix Moose on site with Contests, Prizes and more. NOON - 2 PM

MARIANNE DONNELLY, performing artist, will delight audiences of all ages. 1 PM - 3 PM

FREE FOOZLES CANVAS TOTE with purchase of \$25 or more.

FREE GIFT with any purchase  
THE AMERICAN GIRLS COLLECTION

MEET 'CLIFFORD THE DOG' each day 11 AM - 4 PM

PORTER EXCHANGE 1815 Massachusetts Ave., Cambridge 617-661-7311

MONDAY - SATURDAY 10 AM - 10 PM, SUNDAY 11 AM - 5 PM

# Graduate Students Affected By Cuts

Graduate, from Page 1

increase financial support for graduate students by "more aggressively seeking resources," he said.

The Graduate School will try "to expand relationships with industrial sponsors, hoping that industry will play a larger role in support of graduate education," Colbert said.

### Cuts will have long-term impact

There is clearly "a national focus on the long term balancing of the budget, but how it gets budgeted and what priorities get set will determine directly how MIT's research program looks," Colbert said.

We "will not know the extent to which research is affected until the national budget is finalized," Colbert said. However, it is clear that there is a "general trend downward."

The extent to which research support is cut "depends upon how persuasive the administration is in convincing appropriate committees in Washington and the American public that these funds need to be maintained," Colbert said.

With President Vest and his Washington advisers "making the case for basic research and science in Washington, we stand a chance," Colbert said. "Hopefully this will help to clarify to the American people that what we do is really serving their interests."



## Ever Get A Pal Smashed?

TAKE THE KEYS.  
CALL A CAB.  
TAKE A STAND.



FRIENDS DON'T LET FRIENDS DRIVE DRUNK.

Ad Council U.S. Department of Transportation

This space donated by The Tech



### ATTENTION!!!

## MIT SENIORS & GRADUATE STUDENTS

Do you enjoy working with people?  
Are you good at solving problems?

## Become a GRADUATE RESIDENT TUTOR

in an UNDERGRADUATE LIVING GROUP

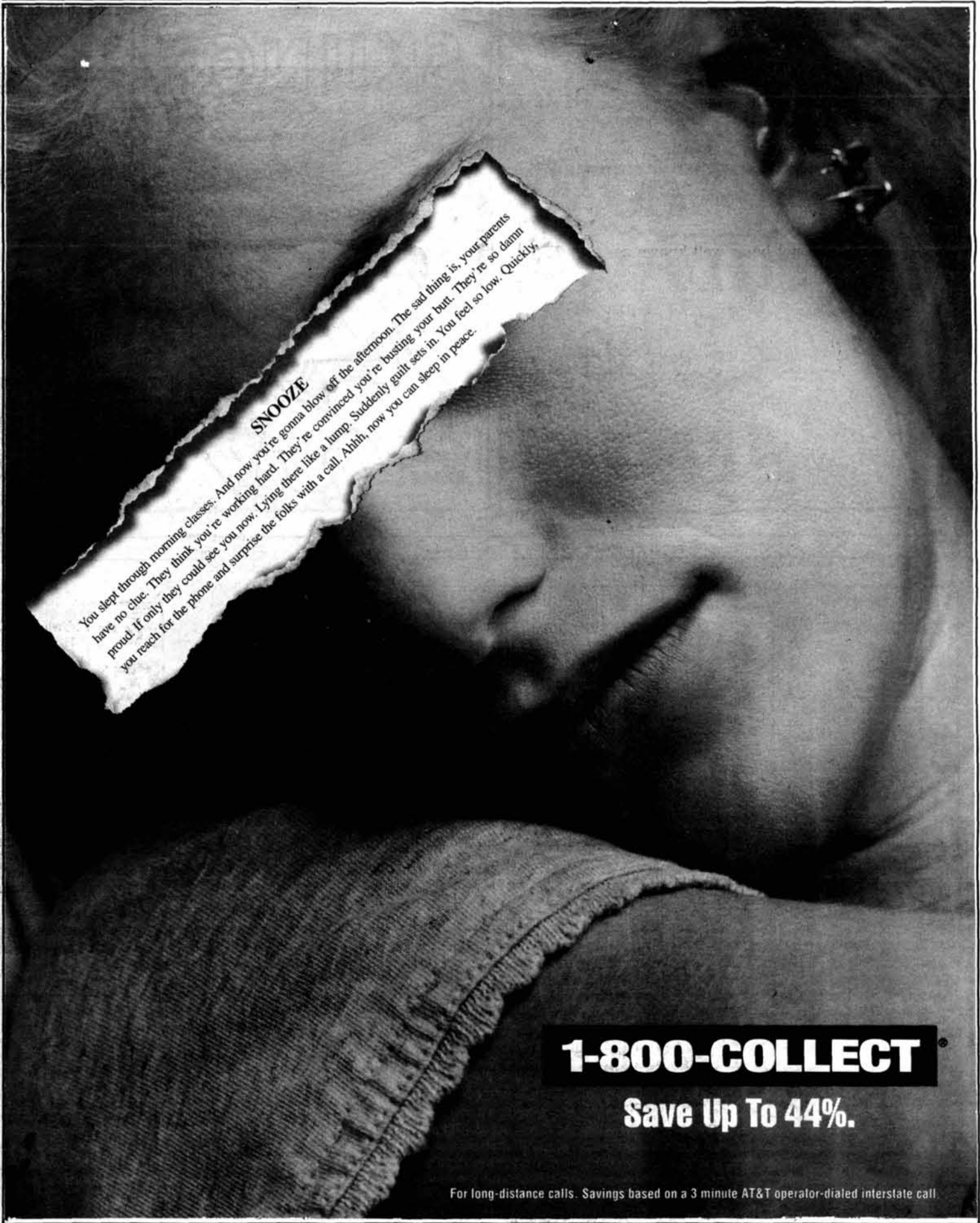
IF YOU ARE INTERESTED, PLEASE ATTEND ONE OF THE MANDATORY INFORMATION SESSIONS:

5:00PM-6:00PM in Bldg 4; Room 153

TUESDAY, NOV. 28TH  
THURSDAY, NOV. 30TH  
WEDNESDAY, DEC. 6TH

You may also come to the U.E.S.A. Residence and Campus Activities Office in W20-549, or call Pam at x3-6777 for more information and an application.

Application deadline is January 15, 1996  
for the 1996-1997 academic year.



### SNOOZE

You slept through morning classes. And now you're gonna blow off the afternoon. The sad thing is, your parents have no clue. They think you're working hard. They're convinced you're busting your butt. They're so damn proud. If only they could see you now. Lying there like a lump. Suddenly guilt sets in. You feel so low. Quickly, you reach for the phone and surprise the folks with a call. Abhh, now you can sleep in peace.

## 1-800-COLLECT

### Save Up To 44%.

For long-distance calls. Savings based on a 3 minute AT&T operator-dialed interstate call.

# CLASSIFIEDS

- Events
- Housing
- Travel
- Help Wanted
- Services Offered
- Information
- Positions Wanted
- Lost & Found
- Clubs
- For Sale
- Greeks
- Miscellaneous

**Advertising Policies**

Classified ads are due at 5 p.m. two days before day of publication, and must be prepaid and accompanied by a complete address and phone number. Send or bring ads, with payment, to W20-483 (84 Mass. Ave., Room 483, Cambridge, MA 02139). Account numbers for MIT departments accepted. Sorry, no "personal" ads. Contact our office for more details at 258-8324 (fax: 258-8226) or ads@the-tech.mit.edu.

**Rates per insertion per unit of 35 words**

MIT community:	
1 insertion	\$3.00
2-3 insertions	\$2.75
4-5 insertions	\$2.50
6-9 insertions	\$2.25
10 or more insertions	\$2.10
All other advertisers	\$5.00

**Help Wanted**

**For 1996 summer,** counselors sought for unique, prestigious co-ed children's camp. Spectacular, pristine location, coastal Maine on both fresh water lake and the ocean. Specialists needed for 30 activities: trip leaders, equestrians, photographers, WSI swimmers; tennis, gymnastics, basketball, baseball, lacrosse, golf, riflery and sailing instructors; archers, fishermen, kayakers, canoeists, naturalists, marine biologists; visual, musical, dramatic and martial artists; waterskiers and windsurfers...to mention a few. Interview in Cambridge possible. Inquire early. Salary structure dependent upon age, activity expertise and experience. Call (617) 721-1443.

**Help Wanted**

**Software Consultant**—Seeking consultant to assist, on as-needed basis, with natural language software project. General knowledge of UNIX, Scheme, compilers required. (All hackers welcome.) Knowledge of PC-KIMMO a definite plus. Pay from \$15-25/hr depending on qualifications. Anyone interested should email jhobart@mit.edu.

**Cruise Ships Now Hiring** - Earn up to \$2000+/month working on Cruise Ships or Land-Tour companies. World travel. Seasonal & full-time employment available. No experience necessary. For more information call 1-206-634-0468 ext. C50332

**National Parks Hiring** - Positions are now available at National Parks, Forests & Wildlife Preserves. Excellent benefits + bonuses! Call: 1-206-545-4804 ext. N50331

**Help Wanted**

**Responsible, reliable** and caring person needed to care for a 2-year-old boy in Waltham. 4.5 week days (~35 hours) a week, with flexibility. English or Chinese speaking. Non-smoker only. References required. Call 258-5668.

**WEBMASTERS** GRADUATE STUDENTS WITH TECHNICAL AND/OR CONTENT MANAGEMENT BACKGROUND, FOR EXISTING WWW & MSN BUSINESS. COMMITMENT A MUST. CAREER TRACK. CONTACT: webster@getsmart.com WITH RESUME LISTING ON-LINE & WEB AND/OR CONTENT MANAGEMENT EXPERIENCE.

**Housing**

**NORTH CONWAY, NH** available weekly. Modern tri-level private home on Sacco River. Ski 5 mountains, sleigh, x-country. Sleeps 6/8. 100 outlet stores/no tax! All amenities. Victor (617) 254-2299.

**Travel**

**Wanted!!!** Individuals, Student Organizations and Small Groups to Promote SPRING BREAK '96. Earn MONEY and FREE TRIPS. CALL THE NATION'S LEADER, INTER-CAMPUS PROGRAMS <http://www.icpt.com>, 1-800-327-6013

**Information**

**Free Financial Aid!** Over \$6 Billion in public and private sector grants & scholarships is now available. All students are eligible regardless of grades, income, or parent's income. Let us help. Call Student Financial Services: 1-800-263-6495 ext. F50331

**Clubs**

**Stuyvesant High School Alumni**—MIT has a Stuy alumni chapter for YOU! Get involved and keep those Stuy bonds strong! Get to know more upperclassmen who are in your major! For more information, contact Angela at 225-8547.

**Services Offered**

**Legal problems?** I am an experienced attorney and a graduate of MIT who will work with you to solve your legal problems. My office is conveniently located in downtown Boston, just minutes from MIT via the MBTA. If you have a question involving litigation, high tech law, family law, real estate or accidents, call Attorney Esther J. Horwich at 523-1150 for a free initial consultation.

**Miscellaneous**

Earn up to \$120/wk donating your sperm. Must be a healthy male between 19-34 & 5'9" or taller. Call California Cryobank, Inc. at 497-8646 to see if you qualify!

**ZORK'S PLACE** BY STEVEN D. LEUNG




**ZORK'S GUIDE TO SKIING**




**1. DON'T CROSS THE SKIS**



**2. STOPPING IS INTUITIVE**



**3. DISPLAY THE NUMBER OF PEOPLE YOU'VE KILLED WHILE SKIING PROMINENTLY ON YOUR CHEST**



1	2	3	4	5	6	7	8	9	10	11	12	13
14				15					16			
17				18					19			
20				21					22			
		23	24					25				
26	27						28			29	30	31
32							33					34
35							36					37
38							39					40
41				42						43		
				44						45		
46	47	48							49			50 51 52
53									54			55
56									57			58
59									60			61

**ACROSS**

1 Shave off  
5 Miss Bara  
10 Pretense  
14 — Steven  
15 Desert spot  
16 Wife of Zeus  
17 Movie musical (4 wds.)  
20 Peculiar  
21 To laugh: Fr.  
22 — play  
23 Well-known magazine  
25 Type of silk  
26 Fraternity initiation  
28 Metal restrainers  
32 Fairies  
33 Kills  
34 Beer  
35 Bert Lahr role  
36 Eschews  
37 Competent  
38 French coin  
39 — and a prayer  
40 Bent  
41 Young bird  
43 Sings like Crosby  
44 Pro football team

45 Sci-fi thriller  
46 Plays a guitar  
49 Soft drinks  
50 Onassis, for short  
53 Movie musical (4 wds.)  
56 — of Eden  
57 Bungling  
58 Treaty group  
59 Intellectual powers  
60 Omar's output  
61 Vigor

**DOWN**

1 Mazatlan money  
2 Enthusiastic  
3 Romantic meeting  
4 Famous Siamese twin  
5 Changing the sound quality  
6 Hirsute  
7 Anglo-Saxon slave  
8 Surnamed: Fr.  
9 Receptacles for smokers  
10 Dwindle  
11 Pile  
12 Seed covering

13 Part of a horse  
18 Golf clubs  
19 Sevaireid, et al.  
24 Tres —  
25 Brother of 4-Down  
26 Miss Reddy  
27 Mrs. Kramden  
28 Hurler  
29 Formed by the lips and the nose  
30 Actress Vera—  
31 Ovules  
33 Leg parts  
36 Bikini  
37 Bitter drug  
39 "Remember the —"  
40 Optical device  
42 Has faith in  
43 Kirk Douglas features  
45 Take into one's family  
46 Worry  
47 Siamese

48 Repose  
49 Gulf of —  
51 Miss Hayworth  
52 Religious image  
54 Compass point  
55 French number

**PUZZLE SOLUTIONS FROM LAST ISSUE**

R	O	S	T	E	R	S	R	E	L	A	T	E	S
E	C	H	E	L	O	N	E	R	U	D	I	T	E
S	T	A	M	I	N	A	M	A	C	A	B	R	E
T	O	M	A	D	I	P	O	S	E	E	U	R	
A	B	B	R	O	L	I	V	E	E	T	R	E	
R	E	L	A	Y	S	K	I	A	L	A	I	S	
T	R	E	P	A	N	I	N	D	I	A	N	A	S
	P	L	O	W	G	E	M	S					
A	L	L	O	T	T	E	D	R	E	T	A	R	D
M	E	A	R	A	A	U	S	D	I	V	E	R	
B	A	R	T	E	T	A	T	S	C	A	V	A	
I	R	A	A	S	H	L	A	N	D	R	I	P	
E	N	M	A	S	S	E	M	O	R	T	I	S	E
N	E	I	T	H	E	R	P	R	A	N	C	E	R
T	R	E	M	E	N	S	S	E	T	T	E	R	S

### Jim's Journal



by Jim

## BEST FOOD ON MIT CAMPUS !

- DELICIOUS PIZZA
- GIANT SLICES
- HOMEMADE PASTA
- SALADS, SANDWICHES
- VEGETARIAN SPECIALS
- SNACKS
- LUNCH, DINNER, LATE NIGHT, EAT IN, TAKE OUT, OR DELIVERY
- OPEN 9.00 A.M. TO 3.00 A.M.

**PIZZA PARTY SPECIALISTS AT MIT. FREE PIZZA DELIVERY.**

**PIZZA PAD 547-2208**

239 MASS. AVE. (former location of Campus Pizza across from NECCO next to the MIT Museum)

**TOOFER \$8.95 (SPECIAL)**  
BUY ONE 12" PAN PIZZA AND GET ONE FREE

Arts

Opinion

News

Business

Photo

Production

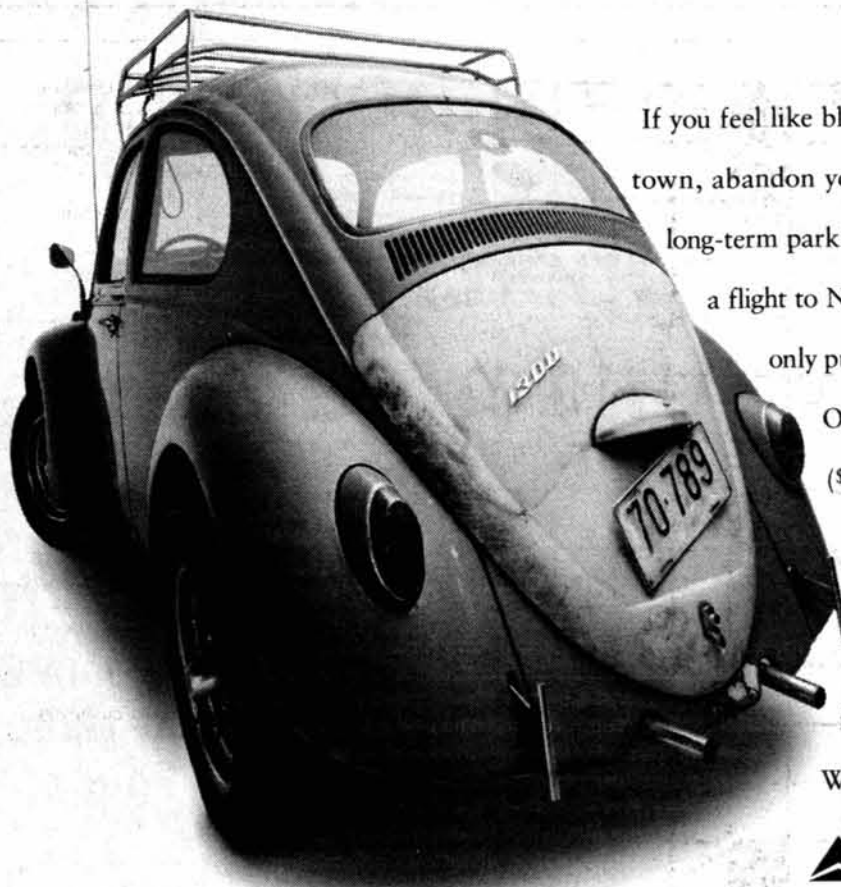
Sports

Be a part of MIT's oldest and largest newspaper



Stop by our office in W20-483 or call 253-1541.

# With These Fares, Your Car Won't Have To Survive A Trip To New York. Just To The Airport.



If you feel like blowing out of town, abandon your buggy in long-term parking and catch a flight to New York. It'll only put you out \$77.

The New York Roadtrip

**\$77** One Way

Or you can buy a Flight Pack of four (\$57 each way) or eight (\$52 each way) coupons and save even more. We have plenty of flights leaving whenever you want to go. Manhattan's waiting folks, you can sleep on the way back. Which is hard to do when you're driving.

**Delta Shuttle**  
You'll love the way we fly

# World AIDS Day Events

## Wednesday, November 29

**8:00 pm** Screening of *People Like Us*, a film about AIDS and HIV in young men and women  
678 Mass. Ave. on 4th floor

## Thursday, November 30

**8:00 pm** Anonymous vs. Confidential HIV Testing  
GAMIT Lounge, 50-306 (Walker Memorial)  
Discussion about HIV testing and prevention

## Friday, December 1: WORLD AIDS DAY

**10am-4pm** AIDS Quilt and HIV/AIDS Information Booth  
Lobby 7 (77 Mass. Ave.) 10am-4pm  
Red Ribbons available at booth

**5:45 pm** Candlelight March and Ceremony  
Meet at 77 Mass. Ave. and walk to State Capitol  
Candlelight march: 6:15 from State Capitol  
Candlelight ceremony: 7:00 at Faneuil Hall

## Thursday, December 7

**8:00 pm** Performance: *Acts Against AIDS*  
*Theatre offensive* uses a series of monologues to portray how AIDS affects people  
Performance at 66-110

For more HIV/AIDS information and prevention resources, please contact Health Education (E23-205) at 253-1316.

World AIDS Day Sponsored by: MedLINK of MIT Medical, GAMIT, Amnesty International, Women's Forum, Names Project of Cambridge, and Cambridge Cares about AIDS.

# Students Actively Participate In Identifying Faulty Processes

Re-engineering, from Page 1

time doing classwork and homework, I wish there is more that I can do socially."

"As a first year grad student, I have not experienced that many problems," said Brian J. Schneider G. "I went to the meeting to contribute ideas from my undergraduate school, University of Rochester, that was undergoing re-engineering."

"I think career and academic counseling needs to be changed," Bharati Kommineni '97. "Knowing first hand how hard it is to try to decide what major to choose, how to go about to find a job, there needs to be improvement to help students."

"I was highly encouraged to go to the focus group meeting by a friend," said Dora M. Paolucci G. "I had a lot of problems, and I wanted to see if my problems are being addressed."

"I had a lot of problems getting paid and getting tuition taken care of," she said. "The communication between department, payroll, bursar's is very confusing and needs to be improved."

"I hope that things will get changed soon," Rhomberg said. "The Institute needs to change sooner or later. It would be best to be done in the next year or two based on the recommendations made."

"I think it is good that the Institute is at least thinking about the student," Popoola said. "They are asking the students what they need, which is not usually done. They are

putting the students, the biggest population on campus first."

## Implementation starts in February

The plan formulated next month will be refined with comments collected from the community in January, and implemented beginning in February, Mehta said.

"A lot of things could be done more efficiently with less trouble for students," Paolucci said. "It will be interesting to see what actually happens."

"If the reengineering is done properly, it will be very beneficial to the student," Kommineni said. "But I don't think they will be able to complete the new design by January like they said they would."

The assessment team appointed last month, whose purpose is to review administrative and educational support processes and to identify and recommend areas where changes are needed, is made up of Peggy Berkovitz, graduate administrator in the physics department; Stephen D. Immerman and Jennifer D. Dougherty of the Office of Senior Vice President; Lynn M. Flury, assistant to the bursar; Amy C. Haritatos of the Graduate School; Associate Director of Admissions Vincent W. James '78; Mehta; S. Anders Oakland of Information Systems; Senior House Treasurer Jagruti S. Patel '97; Professor of Electrical Engineering and Computer Science Marty F. Schlecht ScD '82; Associate Registrar Constance C. Scribner; and Assistant Director of Student Financial Aid Robert E. Weinerman '87.

The redesign team, whose purpose is to design a draft of the improved administrative services to student in areas identified by the assessment team, is made up of Dougherty, Associate Dean of Undergraduate Academic Affairs Margaret S. Enders; Associate Director of Career Services Jeanette L. Gerzon; Immerman; Anthony J. Ives '96; Associate Director of Admissions Marilee Jones; Mehta; Associate Planning Officer Michael K. Owu '86; Schlecht; and Director of Educational Services in the Sloan School of Management David A. Weber SM '83.

## Teams identify processes

The teams, coordinated by James and Mehta, have been soliciting community input through newspaper advertisements, meetings, and presentations to various groups, Mehta said.

The assessment team has identified several student services for potential re-engineering. These processes include academic advising and support, admission, alumni services, career assistance, extra-curricular support, supplies and materials, space scheduling, student dining, and student housing.

The team wants to know what needs to be changed, what needs to be maintained, and what is in most need to be changed, Mehta said.

"People's jobs will change quite a bit," Dougherty said. "The teams are coming to the community with raw materials that are not polished, and the teams want the community to help shape these new processes."



News Hotline: 253-1541

## The Field of the Future: Transportation



# Graduate Education Opportunities in Transportation

## Open House for Undergraduates

Graduate Programs in New England:  
(Master's and PhD Programs)

Massachusetts Institute of Technology  
University of Massachusetts  
University of Rhode Island  
University of Connecticut  
Harvard University

Friday, December 1, 1995  
MIT Student Center  
9:00am Breakfast Goodies  
10:00am-12:00pm Presentations  
1:30pm Tour of the Central Artery

For information call 617/253-0753

Tour the Boston Central Artery/Tunnel Project with us in the afternoon

