

Institute Appeals \$4.5M Cogen Fine

By Daniel C. Stevenson
EDITOR IN CHIEF

Calling a \$100,000 per month penalty from the Massachusetts Department of Public Utilities "arbitrary, capricious, and abusive of the department's discretion," the Institute appealed the ruling to the Supreme Judicial Court last Thursday.

The DPU ruling, handed down earlier this month, assessed MIT a customer transition charge related to the new cogeneration power plant.

Lawyers for the Institute further charged in the appeal that the ruling violated federal law protecting cogeneration plants, exceeded the authority of the DPU, and was unprecedented.

The ruling stemmed from a petition filed last March by Cambridge Electric Light Company, which is trying to recoup the costs from pur-

chases for anticipated power consumption by the Institute.

The ruling acknowledged that Cambridge Electric "took on a lot of financial expense following state regulations on MIT's behalf," said Peter Dimond, a Cambridge Electric spokesman.

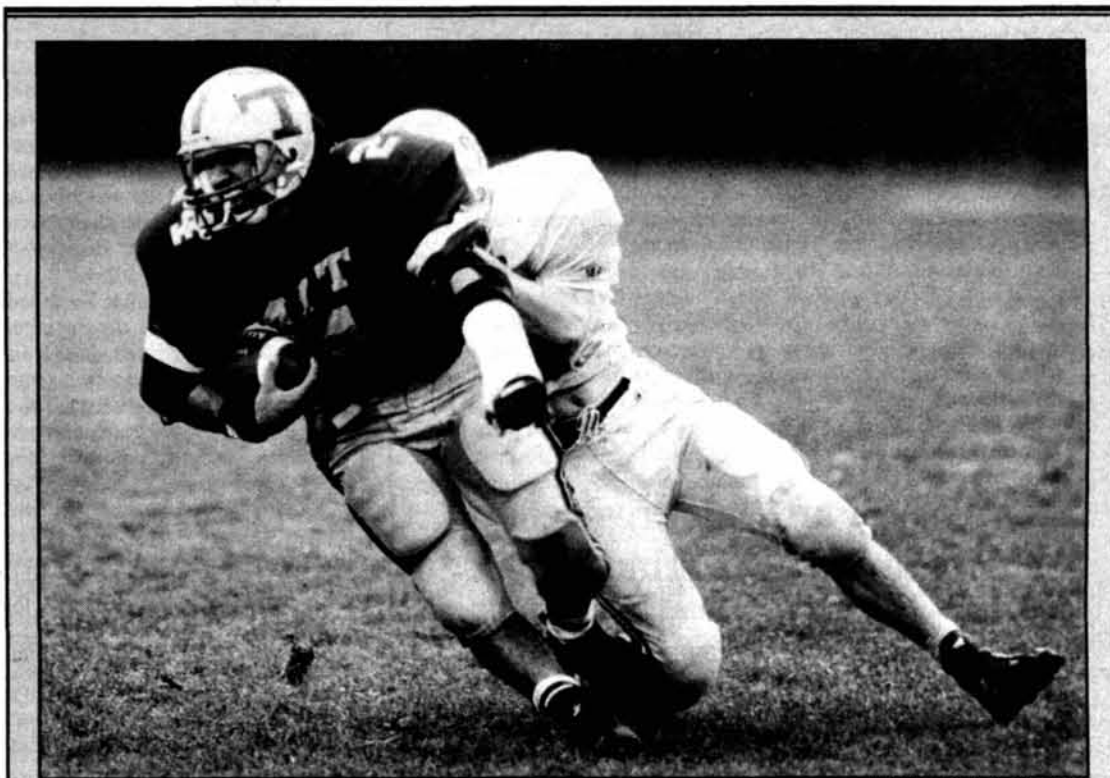
"We're very optimistic that the courts will uphold the DPU's ruling," Dimond said.

The ruling stipulated that MIT should be liable for 75 percent of the costs that Cambridge Electric accrued when it made advance purchases of power for the Institute's future use.

The stranded cost Cambridge Electric incurred totals about \$6 million. Under the ruling MIT must pay \$4.5 million.

"We don't believe they have the

Appeal, Page 11



Running back José DeLeón '97 took the Nichols College defense for a ride Saturday on the way to breaking two rushing records. MIT won the Homecoming game, 35-2.

THOMAS R. KARLO—THE TECH

Course VI Continues as Top Major Choice; Biology, Physics Trends Stabilize

By Brett Altschul
STAFF REPORTER

The Department of Electrical Engineering and Computer Science continues to attract the most sophomore majors, with 317 students overall, according to the annual report of major declarations from the Registrar's Office.

Mechanical engineering, biology, and chemical engineering rounded out the top four. Each department saw an enrollment similar to last year's figure.

The number of students choosing the VI-2

(Electrical Engineering and Computer Science) division of EECS rose dramatically, from 66 last year to 154 this year. The number of students choosing VI-1 (Electrical Science and Engineering) and VI-3 (Computer Science and Engineering) remained about the same, at 66 and 97, respectively.

Biology, physics trends stabilize

The growth of the biology department leveled off this year with 120 majors. The Class of 1997 had 130 majors, compared to 75 from the

Class of 1996.

Another trend, the decline in physics majors, ended this year. The department saw a 13 percent increase over last year's enrollment as the number of sophomores rose from 48 to 54.

The distribution of students between the School of Engineering and the School of Science changed very little from last year. About 62 percent of sophomores declared engineer-

Majors, Page 17

Funding, Staff Shortfalls Doom HowToGAMIT

By Venkatesh Satish
ASSOCIATE NEWS EDITOR

Due to a lack of funding and staff support, the How To Get Around MIT guide for freshmen was not published this summer and may never be printed again.

"Basically, it's dead," said Traci L. Williams '95, a former editor of

the guide to student life and culture and MIT lore. "Right now, no one wants to write it."

The Technology Community Association, which oversees the production of HowToGAMIT, does not have the funds to cover the publishing costs, Williams said.

One problem in funding the

guide is the cost associated with providing free copies to incoming freshmen, said TCA President Ameet Singh '96.

HowToGAMIT generates revenue through sales of both the individual guides and advertising, Singh said. This money is used to pay an outside publisher to print the guide.

TCA did not obtain sufficient money from advertisements to offset the cost of the free copies, Singh said.

Editor expresses disappointment

"I'm sad to see it go away given the time and effort put into it previously," Williams said.

HowToGAMIT has had problems recruiting staff members in the past, she said.

Two years ago, the guide was in danger of folding, but was saved when an electronic mail request for help by Williams received a significant response. The e-mail succeeded in recruiting about 20 people for the fall 1994 edition.

However, when Williams solicited help in publishing the guide at the end of last spring, she did not receive such a response. "No one has shown any desire to work," for this year's guide, Williams said.

"It's depressing to know that the last two years have been such a struggle," Williams said.

"I think [the guide] provided a way to organize all the information that seemed relevant about the campus... It was a great resource."

Apparently, there was little response to the guide's cancellation, Williams said. "I haven't noticed any big outcry." She received comments expressing that the guide was a useful reference, but "no one said

HowToGAMIT, Page 9

Wolpert Named Libraries Director

By Angela Liao
STAFF REPORTER

Ann J. Wolpert, the executive director of library and information services at the Harvard Business School since 1993, has been selected as the new director of Libraries. Wolpert, appointed by Provost Joel Moses PhD '67, will assume her duties in early January.

The decision was made after a recommendation by the Libraries Search Committee, headed by Professor of Literature Peter S. Donaldson.

"I think Ann is going to be fantastic and can't wait for her to come on board," Moses said.

Wolpert will replace the previous director, Jay K. Lucker, who retired in September after 20 years of service at MIT. Until Wolpert takes the office in January, Associate Director for Library Collection Carol Fleischauer and Associate Director for Public Services David S. Ferriero will continue acting as director and co-director of the

Libraries, Page 13

INSIDE

■ MITSO, soloists give excellent season opener. *Page 7*

■ Merchant exhibits talents in *Tigertily*. *Page 7*

■ Police Log. *Page 14*

■ Beavers win Homecoming, 35-2. *Page 20*



JIRI SCHINDLER—THE TECH

Caria Villacorta and Natalie Courant examine some of the offerings at the craft fair held last week in Lobby 10.

WORLD & NATION

Wu Says World Bank Funds Forced Labor in China

THE WASHINGTON POST

WASHINGTON

Human rights activist Harry Wu accused the World Bank Monday of extending at least \$90 million in loans to an irrigation project that may be benefitting several of China's forced labor camps.

Wu, a former political prisoner who was convicted of spying and expelled from China two months ago, said that the bank made the loans to support China's Tarim Basin Project but ended up servicing China's "gulag" prison system.

In a report, Wu said that seven large forced labor camps run by China's Ministry of Justice and at least 14 smaller camps run by the People's Liberation Army are located in the area encompassed by the irrigation project in remote Xinjiang Province.

Also within the World Bank project area are at least 30 special farms operated by the quasi-military Xinjiang Production and Construction Corps, which is run by the army, Wu said. Wu alleged that the project, designed to bring water to impoverished peasants, also is benefiting the labor camps and quasi-military farms.

"Maybe the Chinese were cheating the World Bank," said Wu at a news conference. "Maybe the World Bank never knew it. Whatever, we have to tell about this."

Former Fan Club President Convicted of Murdering Selena

LOS ANGELES TIMES

HOUSTON

The former president of the Selena fan club was found guilty Monday of murdering the 23-year-old Tejano superstar, whose legions of fans cheered the verdict as a victory for the Latino community.

Yolanda Saldivar, 35, who also managed the singer's boutiques, slumped forward and sobbed inconsolably after learning that she will face a maximum term of life in prison for the March 31 shooting at a motel in Selena's home town of Corpus Christi, Texas. A sentencing hearing is scheduled for Tuesday.

"Finally, justice has been served," said Joanna Salguero, 28, a Houston nurse who joined the jubilant crowd outside the county courthouse in her blue medical scrubs. "When the judgment came through, it was like Selena mattered. For once, our community has a voice."

The two-week trial which was moved to Houston because of extensive publicity, offered two starkly contrasting versions of the Grammy-winner's death. Prosecutors called it a cold-blooded killing, sparked after Selena accused Saldivar of fleecing her business accounts. Defense attorneys contended the shooting was accidental, an unfortunate mistake by a suicidal confidante.

In what some legal analysts considered a gamble, Saldivar's lawyer asked the jury to weigh only the allegation of first-degree murder, dismissing the possibility of a conviction on less charges. The jury took three hours Monday afternoon to agree on her guilt.

Agency Urges Online Security For Credit Card Data

LOS ANGELES TIMES

WASHINGTON

The Clinton administration on Monday proposed that communications networks obtain "explicit authorization" from consumers before they disclose credit card data but suggested a lower standard for the release of some other personal information.

The 28-page report by the Commerce Department's National Telecommunications and Information Agency, or NTIA, said that reform was needed to address longstanding concerns about privacy and security that the report says has discouraged "vigorous consumer activity" over emerging electronic networks such as the Internet.

"Our concern is that people will be reluctant to participate in the 'information age' if they're afraid that personal information is used for unintended purposes, or for purposes that are embarrassing, harmful or improper," Assistant Commerce Secretary Larry Irving, who heads NTIA, told gatherers at a White House ceremony Monday.

The report urged voluntary industry compliance but warned that if "industry self-regulation does not produce adequate notice and customer consent procedures, government action will be needed."

WEATHER

Baby Showers

By Nili Harnik

Satellite pictures show a beautiful rain spiral over the northern Midwest, associated with a mutual interaction of a surface cyclone and an upper level trough. This system will pass north of us tomorrow evening, leaving tails of rain over northern New England. We will feel its effects as the wind will shift direction and the temperature will drop slightly; we may even get a bit of rain. The effects of this system will linger in the area through Wednesday, with slight clearing on Thursday. So far, this month has been wetter than usual. We are rapidly catching up with the deficit left over from the extraordinarily dry summer.

Today: A sunny but deceptive start, clouds building up later on in the day. Moderate winds from the southwest, becoming gusty in the middle of the day. High 75°F (24°C).

Tonight: Winds changing direction to westerly as the cold front passes. Chance of light rains all through the night. Low 52°F (11°C).

Wednesday: Partial clearing during the day. High 70°F (21°C). Low 45°F (7°C).

Thursday: A bit colder than Wednesday. Partly cloudy. High around 62°F (17°C). Low 42°F (6°C).

Bosnia Discussed at Jovial Summit for Clinton, Yeltsin

By John F. Harris

THE WASHINGTON POST

HYDE PARK, N.Y.

President Clinton and Russian President Boris Yeltsin Monday met for a jovial summit in which the two leaders proclaimed agreement over the best way to resolve their latest sharp differences over Bosnia — but to say nothing about them.

Clinton reported what he called "some progress" over the question of how Russian forces would fit with what is proposed to be a large NATO force to go to Bosnia if the warring parties there reach a peace settlement, but he refused to elaborate.

Yeltsin has said he will not tolerate putting Russian troops under NATO command, and he did not back off from that position Monday. But both leaders expressed optimism that progress on the details on how to run the peace force could be achieved when Defense Secretary William J. Perry and his Russian counterpart, Pavel Grachev, meet later this week.

And that, both leaders asserted, was all they cared to say about unpleasant differences at a meeting that they said otherwise flowed with good feeling.

"The more we say about this the worse things will be," said Clinton. The Hudson Valley home of Franklin D. Roosevelt was in full autumn glory for the summit, which began with a bear hug between the two leaders, and ended with a rollicking joint news conference in which Yeltsin referred repeatedly to his good friend "Bill." Yeltsin sent Clinton into hysterics with a curmudgeonly dismissal of the Russian and U.S. differences.

The Russian leader said he had

read the news reports about how the split could turn Monday's summit into "a disaster" and confessed that he had arrived here filled with "a lot of apprehensions." But, full of good cheer afterward, he told reporters he had reached a different conclusion: "Now for the first time I can tell you that you (journalists) are a disaster."

"Be sure you get the right attribution there," Clinton said, his body shaking with laughter.

It wasn't clear before the summit that all would be so jolly. At his speech in New York on Sunday for the 50th anniversary of the United Nations, Yeltsin had complained that NATO was improperly taking over lanning for the Bosnian force from the United Nations, and said that the proposed expansion of NATO eastward threatened to spark new conflict in Europe.

NATO expansion barely came up at the sessions, U.S. officials said, as the nearly four hours of meetings between the two leaders concentrated on Bosnia. And here the two leaders made a calculated, stubborn decision to accentuate the positive.

"We agreed today that Russian armed forces will participate in these (peacekeeping operations)," said Yeltsin, although the question of whether — never mind how — had been regarded as solved long ago.

Trying to reconcile his optimism Monday with his sour comments Sunday, Yeltsin scolded reporters: "You are underestimating the presidents of two great powers. Maybe you can't quite figure out how we solved it, but it came to us."

A U.S. official acknowledged later that the two were being "somewhat Delphic," but said that was

intentional. While the differences haven't been solved, one senior administration official said, there remains the possibility that Perry and Grachev, who will meet in Washington on Friday, can stitch together some sort of patchwork arrangement that will satisfy both sides.

For the United States, the issue is keeping military command and control tightly under NATO authority. The Pentagon regards dispersal of authority as a recipe for a military disaster, particularly if the United Nations is in charge. Russia meanwhile, is intent on avoiding the humiliation of putting its forces under NATO command.

"It is a military question of how you can resolve the difference here," said a senior administration official.

The idea of having the summit here at FDR's ancestral home, U.S. officials said, was to pay homage to the cooperation between the Soviet Union and the United States in defeating Nazi Germany during World War II.

Yeltsin seemed genuinely impressed by what he called "this most lovely place to host such a meeting" — a setting that included the Roosevelt family's large stucco mansion, its wide lawns, and exquisite vistas of the Hudson and the golden fall foliage.

As a welcoming gift, Clinton gave Yeltsin a copy of FDR's famous "fireside chats," translated into Russian. Yeltsin presented Clinton with two Moscow Penguins hockey jerseys, one with Clinton's name and the other with Yeltsin's — and both emblazoned with the politically significant number "96."

Separatists Gain Momentum In Quebec as Vote Approaches

By Craig Turner

LOS ANGELES TIMES

QUEBEC

With one week remaining before voters in the French-speaking province of Quebec vote on whether to set themselves on the path to independence, Canadians are awakening to the possibility that their country is on the brink of fracture.

The separatist campaign has closed a 10-point deficit in the polls, pulling into a virtual tie in surveys released over the weekend. Their growing strength was apparent at a rally in this provincial capital Sunday that drew more than 4,000 people, the largest crowd of the campaign so far.

The upturn in separatist fortunes also was reflected Monday in financial markets. The Canadian dollar took a hard drop for the second straight trading day as fearful investors fled Canadian currency. When the markets closed in Toronto, the Canadian dollar was valued at 72.99 U.S. cents, down more than 10 cents since Friday morning.

Backers of Canadian national unity pointed to the plunge to support one of their main campaign themes — that a separatist win would be economic bad news both for Quebec and the rest of Canada. But the federalists have found themselves on the defensive for much of the week as they lost ground in the polls.

Quebec Liberal Party leader Daniel Johnson, the flag-bearer for unity forces in the province, declared in a speech Monday that "the hour is grave" and the referen-

dum carries "eternal consequences."

Despite the adverse polls, Canadian Prime Minister Jean Chretien, who is calling the shot in the anti-separatist campaign, remains a figure of unflappable confidence. The Globe and Mail newspaper of Toronto reported Monday that he rejected advice to change campaign tactics, instead sticking to a message that extols Canada while emphasizing the economic risks of independence.

Quebec's separatist government is asking voters to endorse a two-pronged ballot measure on Monday.

The proposal calls for the province to declare its "sovereignty" — the term used here instead of independence — at an unspecified date. But it also requires the Quebec government to try to negotiate a new political and economic partnership with what would remain of Canada. The partnership offer is intended to cushion against the potential economic hardships of separation by maintaining trade relationships, a currency union and other financial links with Canada.

A separatist victory would contradict the conventional wisdom in Canada, which is that Quebecers like to flirt with independence but shy away from full commitment. A similar referendum in 1980 was defeated 60 percent 40 percent.

Mindful of that, most Canadians outside Quebec have been mostly blasé about the campaign. In the last week, however, with polls showing the race tightening, Canada has begun to snap to attention.

More than 70 city councils across

British Columbia have passed resolutions urging Quebecers to reject separation. School children in the prairie province of Saskatchewan have been telephoning Quebec families with a message of unity. A farmer in Ibërta plowed his field with the phrase "It's better together" in French in letters large enough to be read from a passing airliner.

The separatist comeback is largely attributed to one man — Lucien Bouchard, the charismatic leader of the separatist opposition party in the Canadian parliament. On Oct. 7, with the separatists falling in the polls and drawing small and desultory crowds, Bouchard displaced Quebec Premier Jacques Parizeau, an aloof, professorial economist, as principal campaigner.

Bouchard is a fiery orator who has long been Quebec's most popular politician. His recovery last December from an attack by a muscle-destroying disease that forced the amputation of one leg further elevated him to near-hero status.

He transformed and energized the separatist campaign. Quebecers flocked to hear Bouchard speak, chanted his name and struggle to shake his hand.

The polls immediately went into reverse. The most recent surveys show a slight lead for the separatist cause among decided voters, with about 11 percent saying they are undecided.

One factor in the federalists' favor, however, is that polls in Quebec traditionally overestimate the separatist vote

International Leaders Criticize \$1B U.S. Debt to United Nations

By John M. Gshko
THE WASHINGTON POST

UNITED NATIONS

A parade of speakers, including the leaders of such close American allies as Britain and France, used the 50th anniversary summit meeting of the United Nations Monday to criticize the United States sharply for failing to pay the \$1.3 billion it owes the world body.

No one mentioned the United States by name. But there was no doubt about the nation to which French President Jacques Chirac, British Prime Minister John Major and others were referring. Their remarks continued the international criticism that has grown louder and more insistent as Congress continues to shy away from appropriating funds necessary to settle U.S. debts.

"It is not acceptable that many countries, including the foremost among them, should let their arrears

pile up, thereby leading to bankruptcy in an organization to which all the world's heads of state and government have come in an unprecedented event, to affirm that it is irreplaceable on this, its anniversary day," Chirac said.

"It is not sustainable for member states to enjoy representation without taxation," Major added, picking up a phrase that has gained wide currency in U.N. circles after it first was used in a speech here last month by British Foreign Secretary Malcolm Rifkind.

In his keynote address opening the celebration on Monday, President Clinton said he is working with Congress to get the payments made. But he did not elaborate, and the delinquency is becoming a mounting embarrassment to the Clinton administration and its claims to world leadership.

In his Monday speech, Clinton appealed for international cooperation

to fight terrorism and other cross-border crime such as the drug trafficking of Colombia's notorious Cali cartel. But, judging by the responses from other countries' leaders, Clinton's attempt to make these matters a new set of priorities for the United Nations has been virtually ignored.

Instead, the topics mentioned most frequently in other speeches have been disarmament, demands by Third World countries for greater power in U.N. affairs and for more development aid from industrial nations, and fears that the U.N. financial crisis could thwart realization of these goals.

That fear has been echoed widely here by countries from every part of the world, both rich and poor. It was one of the principal topics at a news conference held on behalf of the 15-nation European Union by Spain's Prime Minister Felipe Gonzalez, the current president of the EU.

Senate Budget Committee Approves Republican Budget, Medicare Plans

By Eric Pianin
THE WASHINGTON POST

WASHINGTON

The Senate Budget Committee Monday cleared massive Republican legislation to overhaul Medicare and Medicaid, slash taxes and balance the budget, helping to set the stage for showdown votes in the Senate and House this week on the heart of GOP efforts to remake government.

With no sign of a thaw in the budget cold war between Republicans and the White House, congressional leaders prepared to push their historic budget proposals through both chambers despite increasingly tough administration veto talk.

Along strict party lines, the Senate Budget Committee voted 12 to 10 to bundle the work of 11 different committees designed to help

meet the goal of balancing the budget by 2002 and sent the package to the floor for action beginning Wednesday. The House Rules Committee, meanwhile, will put the finishing touches on the House GOP version of the budget "reconciliation" plan on Wednesday, with a floor vote set for Thursday.

"This is an exercise in declaring once and for all it's not just what we want to give our citizens (in government program), but it's what we can afford," said Senate Budget Committee Chairman Pete V. Domenici (R-N.M.).

However, President Clinton, citing GOP cuts in Medicare, Medicaid, education and the Earned Income Tax Credit for the working poor, and changes that would allow raids on corporate pension programs, pledged to use his veto power whenever nec-

essary. Addressing cheering delegates to an AFL-CIO meeting in New York City Monday night, Clinton declared: "I will use the tools at my command. If it takes a veto, you'll have it."

Earlier in the day, White House Chief of Staff Leon E. Panetta said that House and Senate GOP leaders were "wasting their time" and "wasting the time of the country" by refusing to negotiate a plan more in line with the administration's goals.

Senate and House GOP leaders appeared confident of passing their budget plans and ironing out the differences in conference. But given the time constraints and the tension between Capitol Hill and the White House, it is increasingly unlikely Republicans can complete work on all the annual spending and budget legislation before a Nov. 13 deadline.

Somalis Not Starving But Not Coalescing

THE WASHINGTON POST

NAIROBI, KENYA

Markets are flourishing across Somalia, local governing councils have sprouted, and refugees are returning home to find solid supplies of food. But many Somalis cannot afford the food when it goes on sale in the markets. The refugees are returning to villages and towns razed in four years of civil war. Local administrations face the constant threat of power-hungry warlords, who operate without a national government to rein them in.

One poor harvest could catapult the country toward a food crisis of the kind that has vexed Somalia for decades.

As 6 million people battle to rebuild their country more than seven months after a United Nations force pulled out, Somalia is better off in many respects, according to reports here from relief workers and diplomats.

But it remains as politically unstable and as economically fragile as it was when foreign troops left — their campaign to restore order and alleviate famine having broken down into periodic skirmishing with Somalia's clan-based militias.

"The problem is that an area may be relatively secure and stable today, but that may not be the case tomorrow," one U.N. official said.

Clan conflicts, which killed tens of thousands at the height of the civil war, have ebbed, according to officials. But the battles for power among the country's principal militia leader, Mohamed Farah Aideded, and his chief rivals, Ali Mahdi Mohamed and Osman Ato, threaten to keep Somalia mired in political chaos for the long term, they say.

5 Agents Fired as Border Patrol Tries to Improve Agency

LOS ANGELES TIMES

SAN DIEGO

In its sternest disciplinary action in recent history, the U.S. Border Patrol has moved to fire five agents in a case that began with an agent hitting an illegal immigrant on the head with a rock and escalated into a conspiracy to cover up the incident, officials said Monday.

The case also resulted in a campaign of harassment against a rookie agent who told the truth, underscoring the difficulties of investigating wrongdoing in the tightknit brotherhood of border agents.

The multiple dismissals are apparently intended to send a message that the Border Patrol is rooting out rogue officers and professionalizing its image.

"It's important to put everyone on notice: there are some things which you cannot do and continue to be a U.S. Border Patrol agent," said Deputy Chief William T. Veal, who declined to discuss particulars or identify the agents because of potential appeals. "I am very concerned about the nature of the misconduct."

The incident occurred Nov. 18, 1993, when six agents from the Chula Vista, Calif., station chased seven border-crossers into a marsh and hurled rocks at them to flush them out, according to law enforcement sources. An illegal immigrant, Marco Antonio Cardenas Ruiz, suffered a bloody head wound that later required stitches, authorities said. The agents abruptly left the scene and, in a strange role reversal, the injured Cardenas went to a nearby store and called the San Diego Police to complain.

Let's get down to business.
Consider **FIDELITY.**

We're almost there. Fidelity Investments® will be on campus on Saturday, October 28th. This could be the first step in your terrific career path. Intrigued? We hope so. If you're a dynamic, hard-working individual with an entrepreneurial spirit, there could be a place for you at Fidelity. If you're interested, come talk to us.

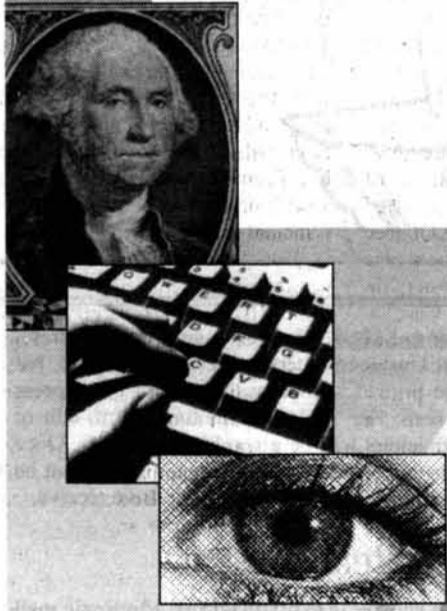
**Fidelity Management and Research Company
Undergraduate Information Session**

**Saturday, October 28 from 11:00 a.m. - 4:00 p.m.
DuPont Athletic Center
Business Casual Attire**

The Equity Research Associate will initially assist an analyst with industry and data analysis in order to gain industry and company knowledge. A training program is in place which teaches the fundamentals of investing. Classes designed to prepare the associates for the Chartered Financial Analyst exam are also offered. He/she will then be assigned a group of companies comprising a subsector of a specific industry, and will work closely with the analyst and portfolio managers to analyze stocks, companies, and industries. The associate will meet with members of corporate management, industry experts, and Wall Street analysts, in order to develop investment recommendations for the Fidelity portfolios. After two-three years of small cap investment research, associates generally become an equity analyst, a member of Fidelity's corporate management, or further develop their investment skills in business school.



Fidelity Investments is committed to creating a diversified environment and proud to be an equal opportunity employer.



OPINION

Letters To The Editor



Chairman

Scott C. Deskin '96

Editor in Chief

Daniel C. Stevenson '97

Business Manager

Christine Chan '98

Managing Editor

Jimmy Wong '97

Executive Editor

Ramy A. Arnaout '97

NEWS STAFF

Editors: Stacey E. Blau '98, Shang-Lin Chuang '98, David D. Hsu '98; **Associate Editors:** A. Arif Husain '97, Christopher L. Falling '98, Jennifer Lane '98, Venkatesh Satish '98; **Staff:** Eva Moy G, Charu Chaudry '96, Deena Disraelly '96, Oleg D. Drozhinin '97, Ifung Lu '97, Sam Hartman '98, Raymond W. Hwang '98, Don Lacey '98, Brett Altschul '99, Orli G. Bahcall '99, Yaron Koren '99, Carina Fung '99, Dan McGuire '99; **Meteorologists:** Michael C. Morgan PhD '95, Gerard Roe G, Marek Zebrowski.

PRODUCTION STAFF

Editors: Teresa Lee '96, Michelle Sonu '96, Saul Blumenthal '98; **Staff:** Amy Hsu '94, Laura DePaoli '97, Christine J. Sonu '97, Warren Chang '98, Larry Chao '98, Susan J. Kim '98, Yun-Ju Lee '98, Jennifer Peltz '98, Michael D. Forbes '99, Jason C. Yang '99, Khelga Karsten.

OPINION STAFF

Editor: Anders Hove '96; **Staff:** Raajnish A. Chitale '95.

SPORTS STAFF

Associate Editor: Bo Light '96; **Staff:** Thomas Kettler SM '94, Darren Castro G, Brian Petersen '96, David Berl '97, Jeremy Cohen '97, Daniel Wang '97, Farhan Zaidi '98.

ARTS STAFF

Editor: Craig K. Chang '96; **Staff:** Thomas Chen G, Teresa Esser '95, Audrey Wu '96, Brian Hoffman '97, Kamal Swamidoss '97, Rob Wagner '97, Hur Koser '98, Stephen Brophy, David V. Rodriguez.

PHOTOGRAPHY STAFF

Editor: Thomas R. Karlo '97; **Associate Editors:** Helen Lin '97, Adriane Chapman '98, Indranath Neogy '98; **Staff:** Gábor Csányi G, Rich Fletcher G, Arifur Rahman G, Sherrif Ibrahim '96, Jiri Schindler '96, Lenny Speiser '96, Juan P. Vernon '96, Sharon N. Young Pong '96, Tiffany Lin '97, Carol C. Cheung '98, Justin Ging '98, Rayshad Oshatory '98.

FEATURES STAFF

Hugo M. Ayala G, Steven D. Leung '96.

BUSINESS STAFF

Operations Manager: Ricardo Ambrose '98; **Advertising Manager:** Jin Park '96; **Staff:** Mary Chen '97, Angela Liao '98, Jessica Maia '98, Winnette McIntosh '98, Pamela Shade '98, Terri A. Wilson '99.

TECHNOLOGY STAFF

Director: Jeremy Hylton G; **Staff:** Christina Chu '98, Cristian A. Gonzalez '99, Kathleen Lynch.

ADVISORY BOARD

V. Michael Bove '83, Robert E. Malchman '85, Thomas T. Huang '86, Reuven M. Lerner '92, Josh Hartmann '93.

PRODUCTION STAFF FOR THIS ISSUE

Night Editors: Jimmy Wong '97, Saul Blumenthal '98; **Staff:** Christopher L. Falling '98, Josh Bittker '99, Khelga Karsten.

The Tech (ISSN 0148-9607) is published on Tuesdays and Fridays during the academic year (except during MIT vacations), Wednesdays during January and monthly during the summer for \$20.00 per year Third Class by *The Tech*, Room W20-483, 84 Massachusetts Ave., Cambridge, Mass. 02139-7029. Third Class postage paid at Boston, Mass. Non-profit Organization Permit No. 59720. **POSTMASTER:** Please send all address changes to our mailing address: *The Tech*, P.O. Box 397029, Cambridge, Mass. 02139-7029. Telephone: (617) 253-1541, editorial; (617) 258-8324, business; (617) 258-8226, facsimile. Advertising, subscription, and typesetting rates available. Entire contents © 1995 *The Tech*. Printed on recycled paper by MassWeb Printing Co.

Institute Should Trim Administrative Fat First

Last month, some MIT workers demonstrated at 77 Massachusetts Ave. about measures aimed at reducing the budget of the Institute. Flyers they distributed mentioned various incidences of loyal employees who have given 15, 30, or 40 years of their lives to the school who are now being callously dismissed. I felt sad upon reading these accounts, but soon put them aside as I rarely come into contact with these people anyway.

However, I tried to go to Hayden Library the other day at 11 a.m. on a weekend, and found that the library is no longer open 24 hours, due to budgetary constraints ["Hayden Now Closes at Midnight," Oct. 6]. I had always felt comfort in the knowledge that Hayden would be open at all hours, and that its stacks were always accessible to me. Alas, no more.

By this time, I was ready to put two and two together. The Department of Anthropology and Archaeology lost a great administrator recently, Priscilla Cobb, who was the nicest, most helpful, and accommodating resource I'd ever encountered at MIT. She had worked there forever, it seemed, but was dismissed because there were no longer the funds to support her position. She had been very sad when she related the situation to me; she had no idea where she was going to go, now that MIT's restructuring schemes didn't include her.

My grievance is this: I am extremely disturbed to finally recognize the nature of MIT's priorities when it comes to budget manipulation. I worked at Rebecca's Cafe this summer, as a caterer, and delivered thousands of dollars a week of food to offices at MIT, our "best customer."

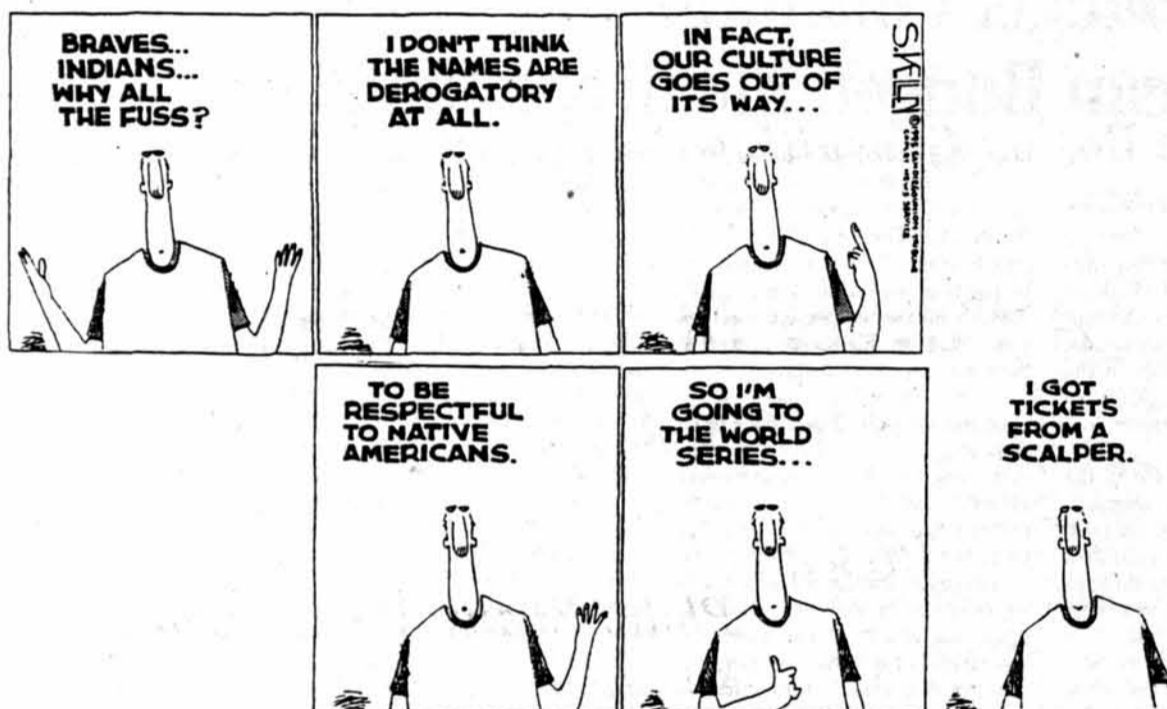
We loved MIT as a customer because they had even bagels and coffee catered, which could easily have been provided by some office lackey. Instead, meetings such as the Committee on Academic Performance sessions in June had six or eight bagels, cream cheese, jam, and coffee sent in for prices

which were far from thrifty. Most orders, though, were for fancy sandwiches and cookies which we delivered to, besides MIT, fat-cat corporate executives who were billing it to their customers anyway. But in the case of the Institute, who pays the price for this prodigality and reckless squandering?

I don't begrudge MIT big-wigs and professors their bagels and coffee cake, but why is it that we have to slash people's pay, or put long-time workers out to pasture, or downgrade resources for students, rather than downgrade the perks that go along with a seat on the Committee on Academic Performance?

Why do we keep getting propaganda stuffed in our faces about this huge deficit under which the Institute is straining ["Deficit Higher Due to Re-engineering," Oct. 20], when a ponderous burden seems to be coming from wasteful practices like the ones I've described? When the accountants and financial wizards meet next about "trimming the fat," I suggest they start with the fat-cats in our corporation.

Elizabeth Tang '96



Opinion Policy

Editorials, printed in a distinctive format, are the official opinion of *The Tech*. They are written by the editorial board, which consists of the chairman, editor in chief, managing editor, executive editor, news editors, and opinion editors.

Dissents, marked as such and printed in a distinctive format, are the opinions of the signed members of the editorial board choosing to publish their disagreement with the editorial.

Columns and editorial cartoons are written by individuals and represent the opinion of the author, not necessarily that of the newspaper.

Letters to the editor are welcome. They must be typed, double-spaced and addressed to *The Tech*, P.O. Box 397029, Cambridge, Mass. 02139-7029, or by interdepartmental mail to Room W20-483. Electronic submissions in plain text format may be mailed to letters@the-tech.mit.edu. All submissions are due by 4:30 p.m. two days before the date of publication.

Letters and cartoons must bear the author's signatures, addresses, and phone numbers. Unsigned letters will not be accepted. No letter or cartoon will be printed anonymously without the express prior approval of *The Tech*. *The Tech* reserves the right to edit or condense letters; shorter letters will be given higher priority. Once submitted, all letters become property of *The Tech*, and will not be returned. We regret we cannot publish all of the letters we receive.

To Reach Us

The Tech's telephone number is (617) 253-1541. Electronic mail is the easiest way to reach any member of our staff. Mail to specific departments may be sent to the following addresses on the Internet: ads@the-tech.mit.edu, news@the-tech.mit.edu, sports@the-tech.mit.edu, arts@the-tech.mit.edu, photo@the-tech.mit.edu, circ@the-tech.mit.edu (circulation department). For other matters, send mail to general@the-tech.mit.edu, and it will be directed to the appropriate person.

THE BOSTON CONSULTING GROUP

AMSTERDAM	BUENOS AIRES	HELSINKI	LOS ANGELES	MUNICH	SINGAPORE
ATLANTA	CHICAGO	HONG KONG	MADRID	NEW YORK	STOCKHOLM
AUCKLAND	DALLAS	JAKARTA	MELBOURNE	PARIS	SYDNEY
BANGKOK	DÜSSELDORF	KUALA LUMPUR	MILAN	SAN FRANCISCO	TOKYO
BOSTON	FRANKFURT	LISBON	MONTERREY	SEOUL	TORONTO
BRUSSELS	HAMBURG	LONDON	MOSCOW	SHANGHAI	ZÜRICH

The Boston Consulting Group invites all PhD students to a presentation:

A Career in Management Consulting: Demystifying What We Do

*Presented by: Philippe Amouyal, Vice President
Philip Evans, Vice President
Ken Keverian, Vice President*

- *Thursday, November 16, 1995 at 7:00 p.m.*
- *The Marriott Hotel, Kendall Square, Cambridge, MA*
- *Reception to follow*

The Boston Consulting Group is an international leader in management consulting. Our mission is to help our clients attain uncommon success by capitalizing on opportunities for growth and improvement. At this presentation we will discuss two examples from our practice and describe opportunities in management consulting at BCG for PhD students.

Ms. Karen M. O'Sullivan
The Boston Consulting Group
 Exchange Place, Boston, Massachusetts 02109

C Y P E S S T H R O U G H I N N O V A T I O N
S U C C E S S T H R O U G H I N N O V A T I O N

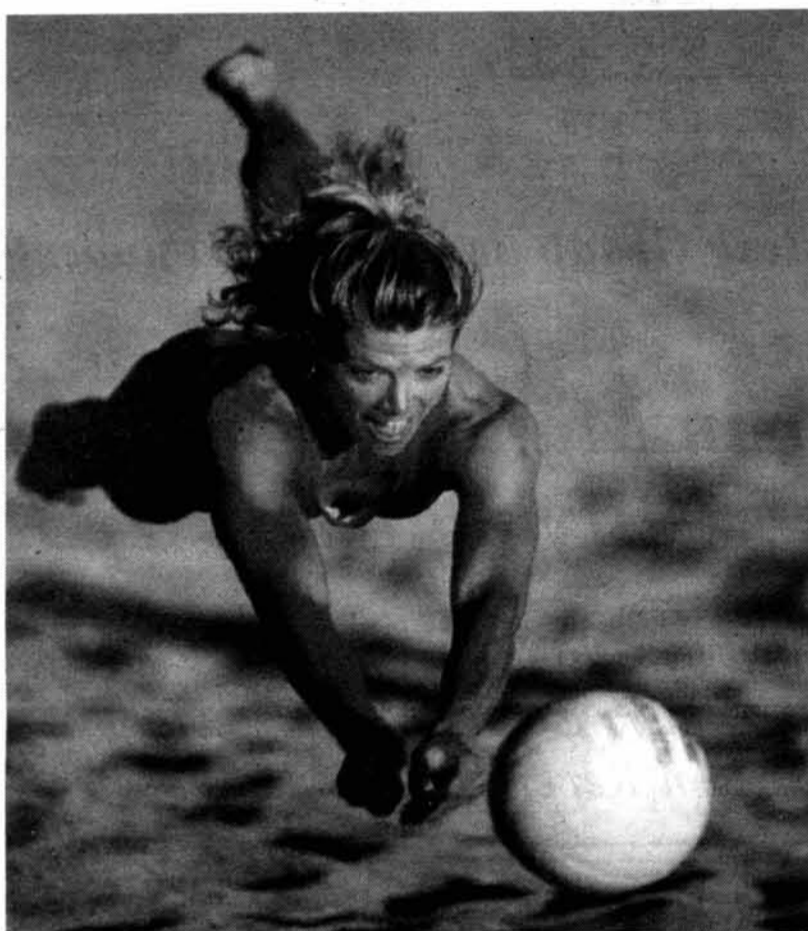
It's About
**Winners Who Rise Above,
Thriving On Competition,**

Playing to Win, Life's too short to lose.

So we play to win.

It's the only way to play the game.

W o r k i n g w i t h t h e B e s t



We're talented individuals. Aggressive competitors. Disciplined and innovative. People who keep their eye on the ball. Excelling in all we do. Building on past successes. Always learning. Continually challenging. And ultimately—Winning.

The pace is fast. We're gutsy, stable and growing. Opportunities abound. We don't let success go to our heads. And hard work is handsomely rewarded through company ownership with incentivized stock options, a stock purchase plan and profit sharing. That's Cypress.

MSEE/MSCS/MBA is preferred for some positions. Opportunities exist in locations including California, Texas, Minnesota, Mississippi, Colorado, and Washington.

- Applications Engineers (CA)
- CAD Engineers (CA/TX/MS)
- Reliability Engineers (CA)
- SRAM Design Engineers (CA/CO)
- Device Engineers (CA/CO/MS/TX)
- MIS Engineers (CA)
- Process Engineers (TX/MN)

- Process Development Engineers (CA/TX/MN)
- Product Marketing Engineers (CA)
- Product Engineers (CA)
- Circuit Design Engineers (CA/CO/MS/WA)
- Wafer Fabrication Engineers (MN/TX)
- Technology Development Engineers (CA)
- Quality Assurance Engineers (CA)
- Production Control Planners (CA)

All employees are granted stock options, receive stock discounts, tuition reimbursement, and comprehensive medical/dental benefits.

**WE'LL BE INTERVIEWING ON CAMPUS
NOV. 1. SEE YOUR CAREER PLANNING
AND PLACEMENT OFFICE FOR DETAILS.**

Send us your resume by fax to (408) 943-6859. On-line via
<http://www.careermosaic.com/cm/cypress>. Or by mail: Cypress,
Human Resources Dept., 3901 No. First St., San Jose, CA 95134. EOE.



Trademarks are registered to their respective companies.

THE ARTS

A new season for MITSO starts off with promise

MIT SYMPHONY ORCHESTRA

Jolivet *Concertino for Trumpet, Piano, and Strings*, Schubert *Unfinished Symphony No. 8*, Mozart *Flute Concerto in G*, Alan Pierson *Music for Orchestra*.

Conducted by David Epstein.

Featuring soloists Stephen G. Tistaert '98, trumpet; Patricia Y. Lee '98, flute.

By Craig Chang

ARTS EDITOR

Last Friday introduced an almost new MIT Symphony Orchestra, filled with a fresh batch of excellent players. This year's orchestra expresses itself more subtly; its newfound resilience surges with assurance, shrinks back to balance soloists, and knows exactly the kernel that links players to musical drama.

The evening began with a deceptively good performance of André Jolivet's *Concertino for Trumpet, Piano and Strings*. The piece began on a dissonant note, which extended into funky and bluesy lines. Soloist Stephen G. Tistaert '98 maneuvered around the piece's multiple personalities with contemporary cool. Like an inhabitant of a blues bar, the performance blew a distant smoke — and this was perfect for the piece's sophisticated, scattered character.

Reflecting today's eclectic tastes, the program next featured Schubert's *Unfinished Symphony No. 8*. Here the fresh character of the ensemble emerged. As though they were the inner parts of the piece itself, the players captured the mysterious undercurrents of the symphony. The sonorous calling that opens the first movement layered a near haunting

texture, over which the players traced urgent shapes of melody.

When the cellos began to sing the second subject, melody unraveled with such natural ease from the initial textures that one could have forgotten it was invention. Other players built upon this inspiration, but stopped short of growing organically from it. The *Unfinished* is notoriously difficult to coordinate, and conductor David Epstein often drew lonely moments of understated heroism from the orchestra.

If the group's craft wavered by the Schubert's second movement, the reading of Mozart's *Flute Concerto in G* by Patricia Y. Lee '98 regained control of it. By the first notes of the third movement, the talented flutist made one forget that Mozart is extremely difficult to play. Lee brought one into the world of Mozart and made her instrument seem facile, its sound

unfolding naturally from thin air.

Lee played the *Rondo* as if it were part of her own language, joyful and pure. Mozart is often overplayed, but Lee cut past all overworn sentimentality and simply played, never letting us ponder her interpretation. She drew that invisible, taut string between the music and listeners.

The program closed with a reminder that the MITSO feeds itself with its own love for music. Symphony president Alan E. Pierson '96 composed *Music for Orchestra* solely for members of the group. Pierson describes influence from Hindemith, but his piece really is as much fun and accessible as Gershwin's *Rhapsody in Blue*. Pierson has a way of making majestic contour out of the simplest motives. His thoughtful composition was fitting for the collective strength of the entire orchestra.

Tigerlily marks Merchant's independence and talent

TIGERLILY

Natalie Merchant.
Electra Entertainment.

By Jin Park

ADVERTISING MANAGER

Singer-songwriter Natalie Merchant debuts with a solo album entitled *Tigerlily*. The much anticipated release comes after her departure from the 10,000 Maniacs. *Tigerlily* presents eleven elegant songs that highlight Merchant's lyrical poise without the overbearing support by members of the group.

Her previous recordings with the Maniacs were compromised by other musicians vying for the spotlight. Their songs often sounded like a circus of musicians and distracted the listener from fully appreciating Merchant's vocal talent.

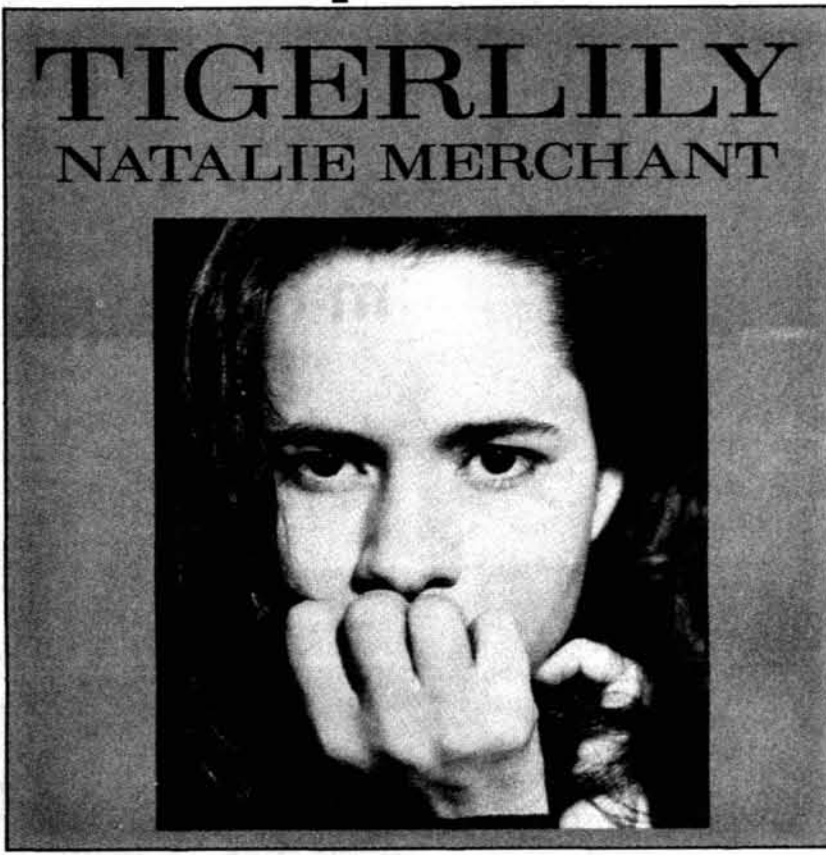
However, *Tigerlily* provides competent and controlled instrumental support. Guitarist Jennifer Turner, bassist Barrie Maguire, and percussionist Peter Yanowitz allow Merchant to shine. They all have a keen sense of Merchant's unique melodic phrasing. In the song "Where I Go," Turner's guitar and Merchant's vocals complement each other in a crafty duet.

In Merchant's hit single "Carnival," bassist Maguire and Adrian Guevarra on congos provide the atmosphere of New York City's crazed streets. Merchant's insightful lyrics refer to them as a "virtual stage" filled with

"cheap thrill seekers" and "wild eyed misfit prophets." Merchant describes the surreal life in the city and her hesitance to "play along/hypnotized/paralyzed."

The song "River" is dedicated in memory of River Phoenix, the young Hollywood star who died of an apparent drug overdose. Her lyrics are a plea to leave River Phoenix's soul to rest. She decries the media who have recklessly sought to expose Phoenix's life. She sings "he's gone / we know / give his mother and his father peace / your vulture's candor / your casual slander / you murder his memory / he's gone / we know / it's nothing but a tragedy."

In "I May Know The Word," Merchant sings of indifference and self-doubt. Like many of the other songs in the album, this one is marked by its utter simplicity. It begins with Merchant singing the first line "I may know the words" while playing single chords on the vibraphone. She is accompanied by a restrained percussion. The bass and guitar sneak up in the



middle of the song with a mellow sound. The song lasts for eight drawn out minutes and ends with a fiery guitar solo.

The strength of *Tigerlily* lies in Merchant's simple, haunting lyrics. She sings them as a woman possessed, delivering each word with mysterious inflections and overtones. No matter how simple the chord progression and structure of her songs may be, Merchant does not allow them to be ordinary by any means. She sings with intrigue, inviting the listener to ponder over her words. As both poet and musician, Natalie Merchant knows how to bring to life her commanding lyrics. Not a single word in the entire album is sung without enchantment. *Tigerlily* is both comforting and chilling at the same time.

STOP SLEEPING WITH YOUR PROFESSORS.

Is it the sound of that whispery voice, or those big, intellectual words? If your professors are putting you to sleep, Revive with Vivarin®. Don't let fatigue get the best of you. Vivarin's® the safe way to stay mentally alert, with the same caffeine as about two cups of coffee. So stay sharp in class. Don't sleep your way to the bottom.

Revive with



©1995 SB SmithKline Beecham Consumer Healthcare

Each tablet contains 200 mg of caffeine, equal to about two cups of coffee. Use only as directed.

we are **not**
 a hyper-aggressive,
 caffeine-crazed company
 that **hammers**
 the competition and
 drives its employees
 to work crazy hours for
 mediocre pizza.



the pizza's actually
 quite good.

wild rumors abound.

find out which are true.

Microsoft

WHERE DO YOU WANT TO GO TODAY?

Microsoft Company Presentation
 Sunday, October 29, 1995, 7:00-9:00pm
 Room 34-101
 Pizza! Software Raffle!
 Come see us and bring your resume.

HowToGAMIT May Be Published Online

HowToGamit, from Page 1

that they couldn't survive freshman year without it."

Guide may go online

HowToGAMIT might be placed on the World-Wide Web, Singh said.

The guide "would be easy to maintain, and there would be no cost in doing so," he said. "It would be very simple to update."

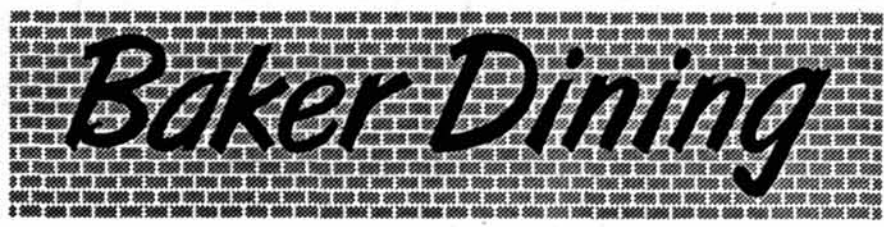
Despite the lower costs of a Web page, TCA may still want to print the guide. "Not everybody uses the Internet," and a printed version may be more accessible, Singh said.

TCA's debt has decreased from approximately \$10,000 two years ago to about \$2,000, Singh said. This may allow the funds necessary to resume the publishing of the guide.

"We are trying to recruit new members, and if there are people out there who are interested in continuing this project, we could very well do it for next year."

The shortage of enthusiasm and support for HowToGAMIT still remains a problem, however. "We need a lot more manpower to keep it updated so that it is actually a useful product," Singh said.

We hope to see you at-



The place to go for dinner!

- ENTREES ARE MADE FROM SCRATCH DAILY
- FRESHLY BAKED BREADS AND COOKIES
- DAILY VEGETARIAN OFFERINGS WITH VEGAN ENTREES EVERY TUESDAY AND THURSDAY
- HALLOWEEN COSTUME CONTEST ON TUESDAY, OCTOBER 31

WE'RE LOCATED ON THE LOWER LEVEL OF BAKER HOUSE
 MONDAY - THURSDAY
 5PM - 7:30PM

Baker Dining



FREE

Soda Refills

with this coupon

Good thru 11/02/95

THE GREAT ESCAPE!

from BOSTON:

Fares are STUDENT fares, each way based on a round trip purchase and are subject to change. International Student ID may be required. Taxes & surcharges are NOT included.

LONDON	\$125	NAIROBI	\$635
FRANKFURT	239	SYDNEY	678
ATHENS	259	SAN JOSE C.R.	225
CASABLANCA	249	HONG KONG	425

CALL FOR A FREE "STUDENT TRAVELS" MAGAZINE!

Council Travel

CIEE: Council on International Educational Exchange

On the Web: <http://www.ciee.org/cts/ctshome.htm>
 Downstairs in the Stratton Student Ctr, W20-024, MIT!

225-2555



is interviewing at MIT

October 30, 1995

Stop by the

Career Services Office

for job posting descriptions and information about opportunities in:

Aerospace

AlliedSignal Aerospace designs, manufactures, markets and services hundreds of products found on virtually all types of aircraft flying today. We are the leading global producer of predictive windshear devices, turbofan engines for business aircraft, auxiliary power units, environmental control systems, engine control systems, avionics for general aviation, Traffic Collision Avoidance Systems and global positioning systems.

Automotive

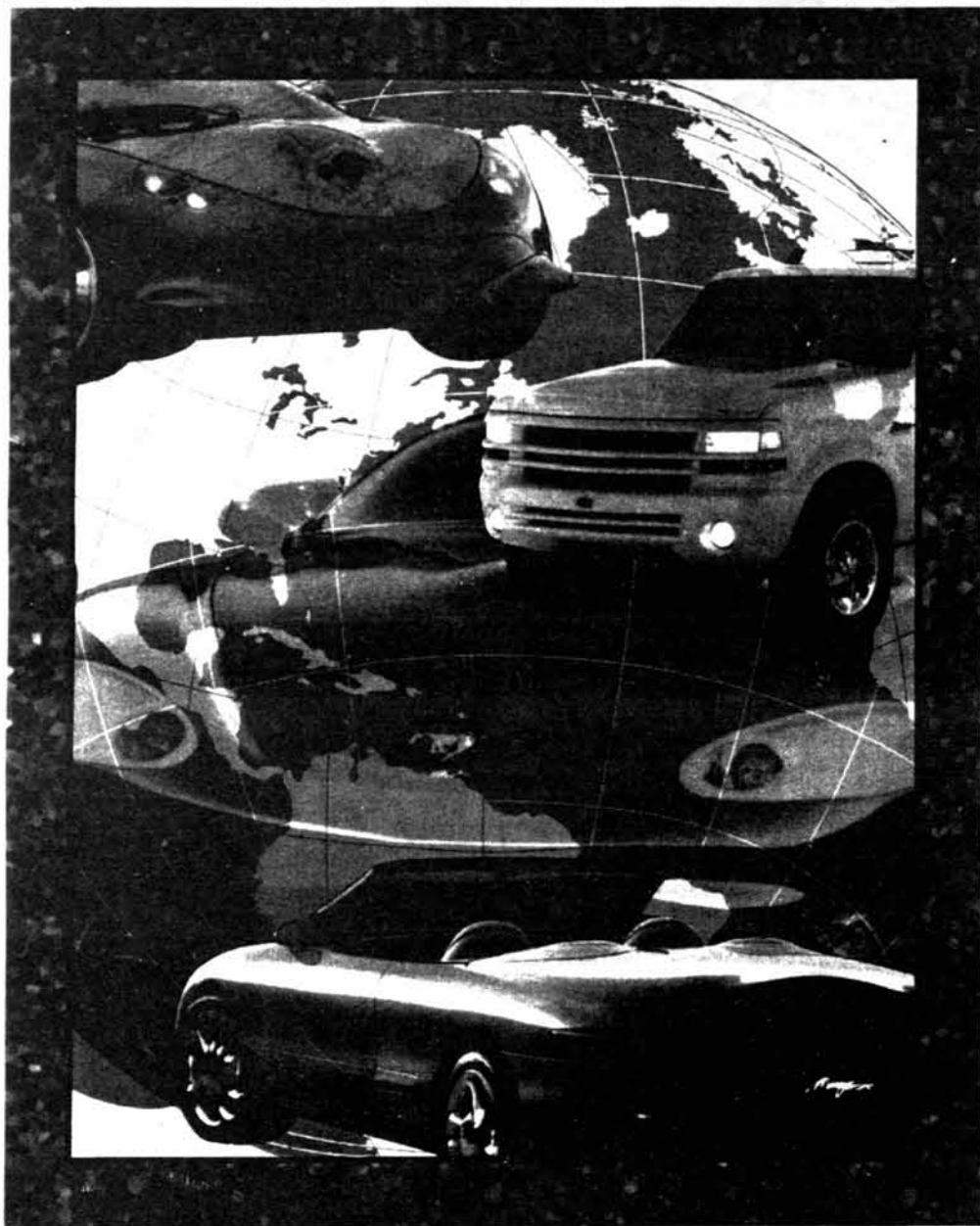
AlliedSignal Automotive supplies systems and components to manufacturers of passenger cars, light, medium and heavy trucks, buses and off-highway vehicles as well as replacement parts through aftermarket distribution channels. Most notable are passenger safety restraint systems, antilock braking systems, zero emission vehicles, turbochargers, friction materials and spark plugs, with brand names like Bendix, Fram, Autolite and Garrett.

Engineered Materials

AlliedSignal Engineered Materials produces an array of specialty materials with applications for a number of industries including automotive, utilities, construction, consumer, aerospace, refrigeration, electronics and computers, as well as the petrochemical industry through joint ventures. We are a leading producer of high performance fibers, light-weight plastics, circuit board laminates and environmentally safe chemicals.

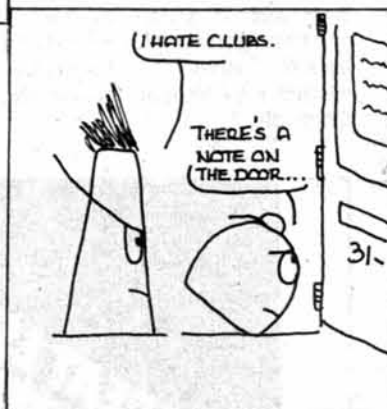


INFORMATION SESSION



Cambridge Marriott • October 24, 1995 • 6:00-9:30 p.m.

rookies



W. ZIMINSKY

by willy ziminsky

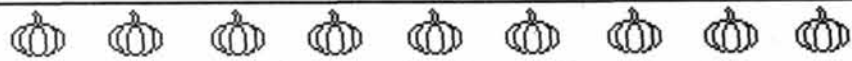
Graduate Student Council

Next meetings:

Activities Oct. 25, 5:30
 General Nov. 1, 5:30
 APPC Nov. 9, 5:30

Become a GSC representative.
 Vote on important stuff.

All you need is 20 signatures (or 20%, which ever is less) of your department, living group or grad students at large.
 For more info., email gsc-vice-president@mit.edu.
 Get involved -What have you got to lose?



Hey Grad Students!



The Ashdown Halloween Party
 is coming...



Friday, Oct. 27th!



Be afraid!



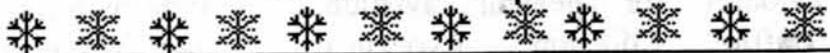
Important note:

We will be voting on an important amendment to the ASA (association of student activities) constitution at the next general meeting!

❄️ ❄️ ❄️ ❄️ ❄️ ❄️ ❄️ ❄️ ❄️ ❄️ ❄️
 Come to the Activities meeting.

Winter is almost here.

It is time to start planning the GSC ski trips!



All Graduate Students are invited to all our meetings. Most are held at 5:30pm in 50-222 and dinner is served.

Stay informed about all our events! Check out our web page <http://www.mit.edu:8001/activities/gsc/gsc.html>
 Add yourself to our mailing list by sending email to gsc-request@mit
 Questions, comments, ideas? Give us a call at 3-2195 or send email to gsc-admin@mit

Institute Optimistic In Cogen Fine Case

Appeal, from Page 1

authority to impose such a penalty on us," said Kenneth D. Campbell, director of the News Office.

The penalty is not something the Institute can afford, he said. "When you compare an additional million dollars to the ten million dollar deficit we have, it's not an insignificant amount of money."

While the legal proceedings continue, the Institute will be paying the charges, Campbell said.

"We're quite optimistic that we have a good shot because it flies in the face of the law which says that cogen plants should not be discriminated against," Campbell said.

Process could take several months

MIT's case "is very strong," said Andrew J. Newman, the attorney representing the Institute. "We've got a lot of support from all over the country."

"Basically, the decision by the department is out of left field, and very clearly in violation of federal law that encourage cogeneration."

MIT claims the ruling violates

the 1978 Public Utilities Regulatory Policies Act and regulations of the Federal Energy Regulatory Commission, which promote cogeneration.

"There is no precedent for the department's order of stranded costs," Newman said. Cogeneration plants have been built for many years, but this is the first time such a penalty has been levied.

The next step is for procedural filings and a certification of records from the DPU, Newman said. Legal briefs will be submitted to the court, followed by oral arguments, and ultimately a decision, all of which could take several months.



The new cogeneration power plant is at the center of a legal dispute between the state Department of Public Utilities and MIT.

HELEN LIN—THE TECH

The Tech

MIT's oldest and largest newspaper (and the oldest student activity) has openings in all departments.

Stop by our offices in Room 483 of the Student Center every Sunday at 6 p.m. for our general meetings

or call 253-1541 and ask for Scott or Dan

No experience necessary.



KNOW THE CODE™

dial 1 8 0 0
CALL
ATT

You are *NOT* a **mooch**. But when a hole in your pocket renders you *changeless*, you *reluctantly* call the folks **collect**.

You dial **1 800 CALL ATT**.

Your pangs of guilt are *minimal*.

1 800 CALL ATT always costs less than 1-800-COLLECT.*
Always works from any phone. And always gets you the reliable AT&T Network.
Use it whenever you're off campus.

Know the Code. 1 800 CALL ATT. That's Your True Choice.™



AT&T
Your True Choice

* For interstate calls. Promotions excluded.
1-800-COLLECT is a registered trademark of MCI.



Deloitte & Touche Consulting Group

Cordially Invites Interested Seniors to Attend an Information Session and Reception

Today
Tuesday October 24, 1995

6 p.m. - 8 p.m.

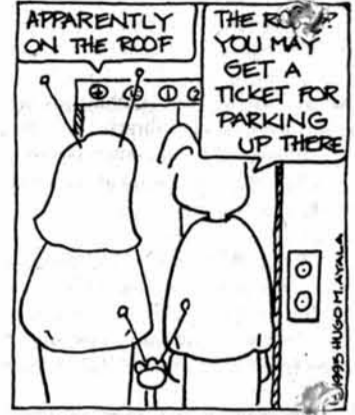
Room 4-163

Hors D'oeuvres and Refreshments will be served

On-Campus interviews scheduled on:
Systems Analysts November 14, 1995
Business Analysts January 23, 1996

Interested students should submit a resume to the Office of Career Services

Off Course



By H. Ayala

17th Annual MIT Society of Women Engineers Career Fair

Open to everyone in the MIT Community

Saturday, October 28, 1995

DuPont Gymnasium

11am-4pm



- Adobe Systems Incorporated
- Advanced Technology Laboratories
- Air Products & Chemicals, Inc.
- Allied Signal Inc.
- Argonne National Laboratory
- Astex
- Banyan Systems, Inc.
- Bay Networks
- Bell Core
- The Boeing Company
- Bolt Beranek and Newman Inc. (BBN)
- Brooklyn Union
- Capital One
- Cardiac Pacemakers, Inc.
- Carnegie Group, Inc.
- Case Corp.
- Central Intelligence Agency
- CIGNA Corporation
- Cisco Systems
- Cognex Corporation
- Cummins Engine Company
- Digital Equipment Corp. (DEC)
- Dow Chemical Company
- Draper Laboratory
- DuPont

- Eastman Kodak
- Ernst & Young Technology Services
- FactSet Data Systems, Inc.
- Fidelity Management & Research Co.
- First USA Bank
- General Motors Corp. (GM)
- Goldman, Sachs & Company
- Green Hills Software, Inc.
- Hoechst Celanese Corporation
- Hughes Space & Communications
- IBM
- IDX
- Intel Corporation
- J. P. Morgan & Company, Inc.
- Lawrence Livermore National Laboratory
- Lincoln Laboratory
- Looking Glass Technologies, Inc.
- Malcolm Pirnie, Inc.
- Maxim Integrated Products
- Mercer Management Consulting
- Michelin North America
- Micron Technology, Inc.
- Microsoft Corporation
- Monitor Company
- Naval Research Laboratory

- Oracle Corporation
- Parametric Technology Corp.
- Pacific Communications Sciences, Inc.
- Picture Tel Corporation
- Procter & Gamble
- Prudential Preferred Financial Services
- Qualcomm Inc.
- Rockwell International
- Sapient Corporation
- SatCon Technology
- Schlumberger
- Simulate, Inc.
- Sony Electronics
- Swiss Bank Corporation
- Tandem Computers, Inc.
- Teach For America
- TELCO Systems, Inc.
- Teradyne, Inc.
- Texas Instruments
- Trilogy
- TTC
- United States Air Force
- Visix Software, Inc.
- Williams Energy Services Co.
- Wind River Systems

New Director Will Address Funding

Libraries, from Page 1

Libraries.

Wolpert "sees changes which will move our libraries to libraries of the future, with emphasis in computers and communication technology," Moses said.

Focus on electronic information

Wolpert will have to face several challenges as the new director of Libraries. "The major challenge facing all research libraries now is managing the transition to a world where more and more information will be delivered electronically, rather than in print on paper," Fleischauer said. "This is especially true within the environment of MIT where Athena has provided a robust infrastructure for undergraduate learning and where faculty and other researchers use a wide variety of computer applications in their daily work."

At the same time, the Libraries will also be challenged to continue traditional services while rapidly developing new electronic services, Fleischauer said.

Wolpert will also have to address the need for new funding in order to keep up with changing equipment and networking needs. In addition, the Libraries' physical

spaces are in need of retrofitting to provide more comfort and efficiency, Fleischauer said.

With 16 years at Arthur D. Little, Inc., starting as a technical information specialist and ultimately becoming director of the Cambridge Information Center, Wolpert is well-experienced with information management. She joined the Harvard Business School Library in 1992 as director of research and information services.

"We are impressed by her professional expertise and managerial talent," Moses said.

"I am very enthusiastic about Ann Wolpert's appointment. She brings unique experience and skills," Fleischauer said. "Her background in a corporate library environment and as a library consultant will enable her, and through her, the entire staff, to see our mission and tasks from a different perspective."

At the present time, MIT Libraries is well-poised to participate with Wolpert in reshaping of the core mission and services, Fleischauer said. "We have an excellent staff which is full of energy and commitment, and who have a strong service ethic."

Vice President Albert Gore

has been invited to address the Society for Environmental Journalists during their Fifth National Conference which will be held at MIT on 26-29 October 1995. The Address is scheduled on Saturday, 28 October 1995 at 7:15 pm in Kresge Auditorium.

A limited number of seats are being made available for members of the MIT community who wish to attend. These badges will be issued on a first-come, first-served basis on Saturday, 28 October beginning at 10:00 am in McCormick Hall Dining Hall.

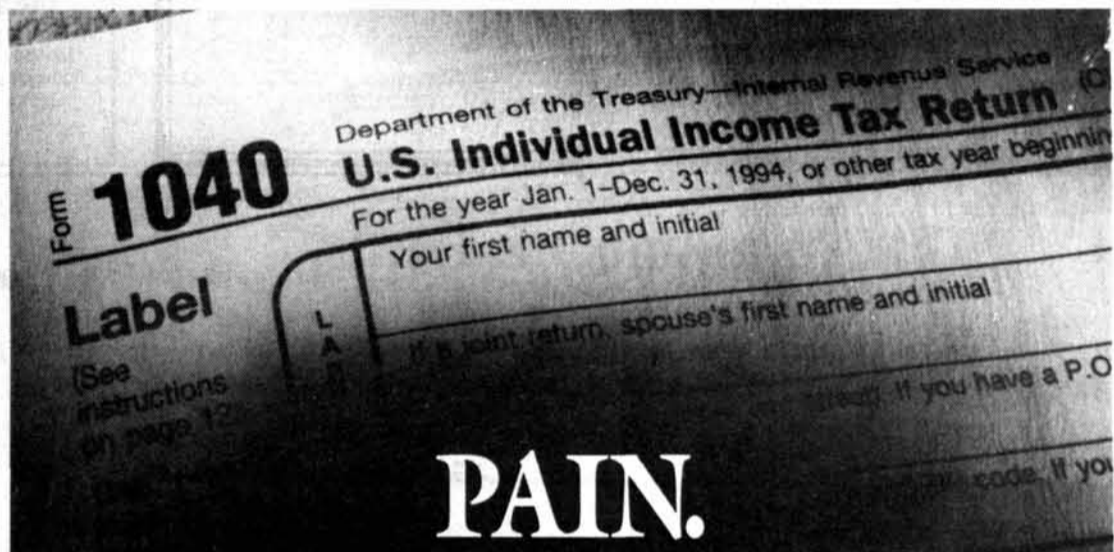
Access to this facility will be from the entrance on Amherst Alley (only). MIT student, faculty or staff identification is required to obtain a badge. This badge will permit access to Kresge only at the time of the Vice President's Address on Saturday evening.

This Address will broadcast on the MIT Cable TV system.

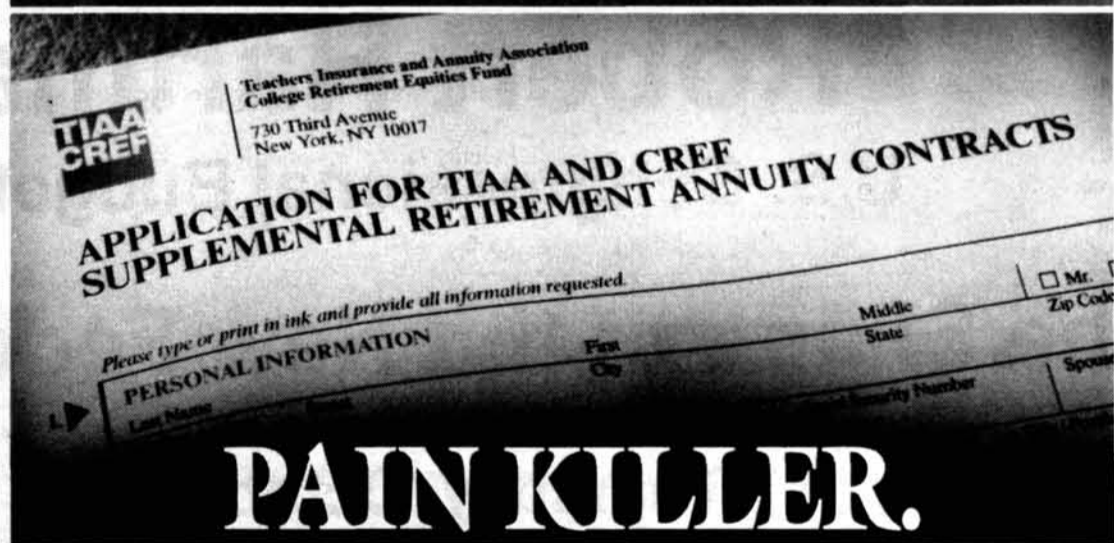
Any changes to these plans will be announced on the MIT Cable TV system on Saturday morning.

Questions regarding the registration for this event may be directed to the Conference Services, Events and Information Center at 253-4795 (email to kbarrett@mit.edu).

PRINCIPLES of SOUND RETIREMENT INVESTING



PAIN.



PAIN KILLER.

For fast relief from the nagging ache of taxes, we recommend TIAA-CREF SRAs. SRAs are tax-deferred annuities designed to help build additional assets—money that can help make the difference between living and living well after your working years are over.

Contributions to your SRAs are deducted from your salary on a pre-tax basis. That lowers your current taxable income, so you start saving on taxes right away. What's more, any earnings on your SRAs are also tax-deferred until you receive them as income. That can make a big difference in how painful your tax bill is every year.

As the nation's largest retirement system, we offer a wide range of allocation choices—from TIAA's traditional annuity, with its guarantees of principal and interest, to the seven diversified investment accounts of CREF's variable annuity. What's more, our expenses are very low,* which means more of your money goes toward improving your future financial health.

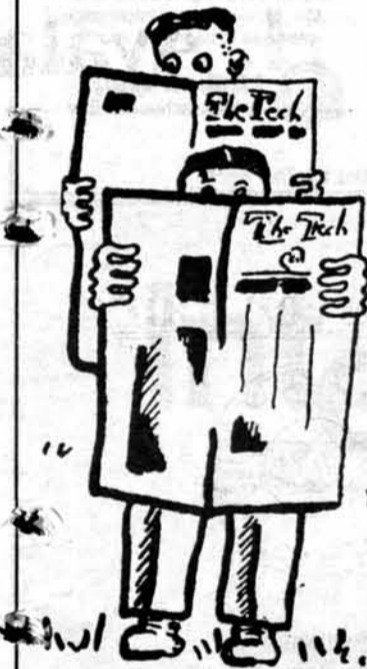
To find out more, call our planning specialists at 1 800 842-2888. We'll send you a complete SRA information kit, plus a free slide-calculator that shows you how much SRAs can lower your taxes.

Call today—it couldn't hurt.



Ensuring the future for those who shape it.™

*Standard & Poor's Insurance Rating Analysis, 1995; Lipper Analytical Services, Inc., Lipper-Directors' Analytical Data, 1995 (Quarterly). CREF certificates are distributed by TIAA-CREF Individual and Institutional Services, Inc. For more complete information, including charges and expenses, call 1 800-842-2733, ext. 5509 for a CREF prospectus. Read the prospectus carefully before you invest or send money.



Students read it on the way to class ... during class ... even after class.

It's The Tech. MIT's oldest and largest student newspaper.

© 1995 Teachers Insurance and Annuity Association (College Retirement Equities Fund).



CS FIRST BOSTON

TECHNICAL CAREER OPPORTUNITIES

CS First Boston, a leading global investment bank, headquartered in New York City, is recruiting for its Technical Graduate Program in the Fixed Income Trading Technology (FITT) department. The FITT department is responsible for development and support of technologies and systems that are used by Fixed Income trading and sales professionals. The Technical Graduate Program is designed to help build a superior systems staff. All interested Massachusetts Institute of Technology graduate students with technical and computer skills should submit their names through the career placement office.

SUBMISSION DATES:

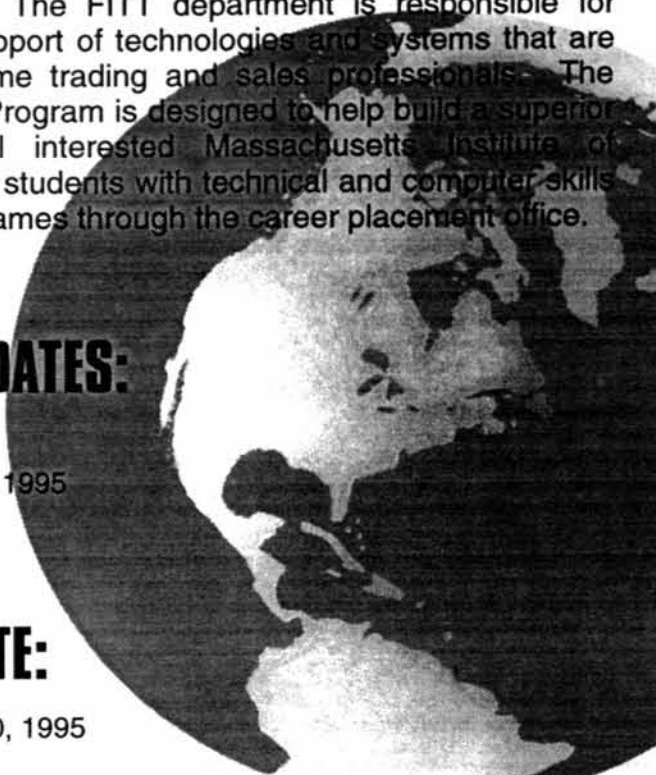
Resumes are due by:
Monday, November 13, 1995

INTERVIEW DATE:

Thursday, November 30, 1995

FOR FURTHER INFORMATION PLEASE CONTACT:

Erica Weiner
Manager, Fixed Income Recruiting
(212) 909-2952



POLICE LOG

The following incidents were reported to the Campus Police between Oct. 11 and Oct. 20:

Oct. 11: Lobdell Food Court, wallet stolen, \$40; Herman Garage, bicycle stolen, \$50; Student Center, Karshi F. Hasanov, of 240 Albany St., Cambridge, arrested for trespassing; Bldg. 7 Lobby, Gays, Lesbians, Bisexuals, Transgenders, and Friends at MIT drop poster was partially torn down and a hateful message written on the remaining half, Campus Police investigating.

Oct. 12: Bldg. 12, sports coat stolen, \$300; Bldg. 36, laptop computer stolen, \$3,595; Bldg. 14E, suspicious activity; Bldg. 24 bicycle rack, bicycle stolen, \$80; Bldg. 34 bicycle rack, tire stolen, \$60.

Oct. 13: Bldg. 14 bicycle rack, bicycle stolen, \$120; Student Center, 1) bicycle stolen, \$520, 2) wallet stolen, \$70; 3) José Cruz Perez, of 199 Harvard St., Cambridge, arrested for trespassing; Kresge Auditorium lot, suspicious activity; Jonathan P. Snoek '96, of 1200 Massachusetts Ave., Cambridge, arrested for violation of a restraining order; rear of Bldg. NW12, larceny of wire, \$300.

Oct. 14: MacGregor House, bicycle stolen, \$200.

Oct. 15: 500 Memorial Dr., harassing phone calls; Lobdell, food stolen, \$20.

Oct. 16: Senior House, bicycle stolen, \$130; Baker House, wallet stolen, \$40; DuPont Gymnasium, \$80 stolen from jacket.

Oct. 17: Bldg. 10, backpack stolen, \$100; Bldg. 48, suspicious activity; Bldg. 18, clock stolen, \$50; Walker Memorial, tools stolen, \$375; Bldg. 3, suspicious activity; Johnson Athletic Center, 19 lockers broken into and a total of \$920 cash stolen; New House, bicycle stolen, \$300.

Oct. 18: Bldg. 4, lost MIT key; Bldg. 68, backpack stolen, \$60; Bldg. E15, computer parts stolen, \$2,000; Bldg. 20, Eduardo Rodrigues, of 312 Bute St., Norfolk, Virginia, arrested for breaking and entering; Student Center, larceny of clothing, \$160.

Oct. 19: Bldg. 4, vandalism; Bldg. 57, 1) bicycle stolen, \$140, 2) bicycle taken, \$89; Bldg. 14, bicycle stolen, \$200; Amherst Alley, José Perez, of 240 Albany St., Cambridge, arrested for trespassing; MacGregor, harassing phone calls; Bldg. 20, 1) cash stolen, \$10, 2) cash stolen, \$15; Student Center, bicycle pedals stolen, \$50.

Oct. 20: Student Center, bicycle stolen, \$600; Bldg. W11, suspicious mail; West Annex lot, Volkswagon Golf broken into in an attempt to steal the radio; Bldg. W59, suspicious package; Westgate, parking problem.

Questions about your local United Way?

Please call our Inquiry Line: (617) 422-6899.
Monday - Friday, 9:00 a.m. - 5:00 p.m.
from now until the 1992 Campaign ends
(November 25th).

The United Way staff is on hand to provide you with factual information. We hope to hear from you.



United Way
of Massachusetts Bay

This space donated by *The Tech*

Robert Hartman

U.S. Congressional Budget Office

The Shape of the New Federal Budget

Thursday, October 26

Noon - 1:15 PM

Room 4-370

A State of the Union Lecture Sponsored by the Department of Urban Studies and Planning and the Dean of Architecture and Planning

Jim's Journal

Today Ruth and I ate at a pancake restaurant.

While we were waiting for our food, we read the paper placemats.



by Jim

On the backs they had games and puzzles for kids to play.

Ruth wanted to play the dot-to-dot but neither of us had a pen.



Altera Corporation, located in the heart of Silicon Valley in beautiful Northern California, has set the pace from the start in high-performance, high density programmable logic devices and associated computer-aided engineering (CAE) logic development tools. We're growing and have plenty of seats still available for EE/CS graduates.

Or you may also send a resume to: Altera Corporation, Human Resources, College - MS 1101, Attn: Heelie Drury, 2610 Orchard Parkway, San Jose, CA 95134-2020. Fax: (408) 435-5065. World Wide Web Address: <http://www.altera.com>. E-mail: hdrury@altera.com. An equal opportunity employer.

We will be conducting on campus interviews Monday October 27.



Intel is Coming to MIT!

Intel Corporation is the world's largest semiconductor manufacturer and a leading supplier of **microcomputer components, boards, systems and software.**

Please stop by and submit your resume at one of the following campus events:

MITSWE Career Fair
Saturday, October 28th, 1995
11:00 am - 4:00 pm
DuPont Gym

Intel Open House
(meet recruiters one-on-one informally)
Monday, October 30th, 1995
11:00 am to 4:00 pm
Student Center Mezzanine Lounge, 3rd Floor
Dress: very casual ("come as you are")

>>> **Bring your resume and unofficial student transcripts** <<<

WE ARE SEEKING BS, MS, and PhD STUDENTS IN THE FOLLOWING DISCIPLINES:

- Electrical Engineering
- Computer Engineering
- Computer Science
- Chemical Engineering
- Mechanical Engineering
- Materials Science
- Industrial Engineering
- Applied and Engineering Physics
- Environmental and Safety Engineering

STUDENTS INTERESTED IN A CAMPUS INTERVIEW OR EMPLOYMENT WITH INTEL MAY:

- > Submit resumes to Intel recruiters at the MIT SWE Career Fair on October 28th.
- > Submit resumes to Intel recruiters at the Intel Open House on October 30th.

Intel Corporation is an equal opportunity employer and fully supports affirmative action practices.

Intel also supports a drug-free workplace and requires that all offers of employment be contingent on satisfactory pre-employment drug test results. Intel seeks to hire U.S. Citizens, Permanent Residents, Asylees, Refugees, and Temporary Residents. We will consider MS- and PhD-level foreign national candidates where there is a demonstrated shortage of qualified U.S. candidates.

For more information about Intel, check out our Internet home page at: <http://www.intel.com>

EARN \$200.

Healthy Men needed between the ages of 21-35 For a 2 Session study involving Cocaine, Blood Sampling and Brain MRI at the Brain Imaging Center, McLean Hospital.

Taxi is provided.

Conducted by Dr. Perry Renshaw

LEAVE MESSAGE at 855-2860.

**WHEN DRINKING,
CALL
A FRIEND.**

Drinking and riding can lead to a loss of license, a conviction, or even worse. When you drink, get a ride with a friend. It's the best call you can make.



MOTORCYCLE SAFETY FOUNDATION
This space donated by The Tech

Jim's Journal

I let Mr. Peterson outside for a little while today.



Like usual, she was really scared, and stayed pretty much in one place.



by Jim

But she eventually explored all the stairs near the door.



After she did that, she went back to her space and stayed there.



Our people see things others can't.

They see the next generation of ultrasound technology. As a worldwide leader in the development, manufacture, distribution and service of diagnostic medical ultrasound systems, ATL is dedicated to the innovation and development of ultrasound technology that broadens its clinical applications while reducing the cost and trauma of diagnosis and treatment. Our people also see the most advanced design and manufacturing tools available and a level of personal satisfaction that is hard to find. Entry level opportunities now exist in the following areas for new grads.

SOFTWARE DEVELOPMENT

- System Architecture
- Digital Signal Processing
- User Interface/Clinical Applications
- Design Analysis & Validation
- Tools and Integration
- Technical Writing

Entry-level positions require a BSCS/EE or MSCS/EE and software development knowledge in C/C++ in a UNIX/ embedded systems environment. Knowledge of Make, Shell scripts, x-window tool kits, and UNIX utilities (Awk, Yacc, Sed, etc) is a definite plus. Entry level technical writing requires BS in Technical Communication or equivalent; and knowledge of technical manual generation process.

ATL is located in Washington State, just 30 minutes northeast of downtown Seattle. Considered by many to be one of the most desirable places to live in America, the Puget Sound region boasts some of the most spectacular scenery in the world.

Visit with us at the SWE Career Fair
Saturday, October 28th.

ATL offers a team-oriented environment with competitive, comprehensive benefits including a 401(k) and tuition reimbursement. If you are unable to attend please send resume to: Advanced Technology Laboratories, PO Box 3003, 22100 Bothell-Everett Highway, Bothell, WA 98041-3003. ATTN: MIT ATL maintains a smoke and drug free workplace. Equal Opportunity Employer.



WE ARE ULTRASOUND

free DELIVERY TO MIT Until 2am Daily 497-4849
Let us cook for you!

TOMMY'S HOUSE OF PIZZA
offers free delivery service!

Large Cheese Pizza \$8.95
Extra Toppings \$1 each

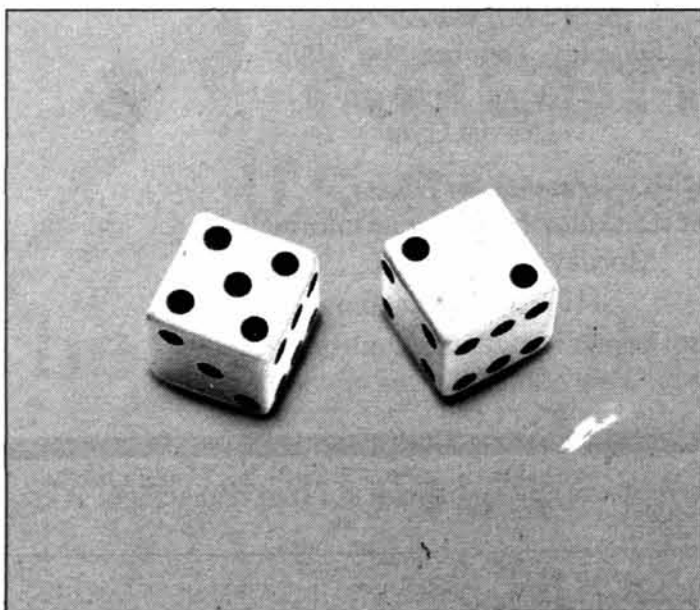
Try our Gourmet Pizza Edges:
Sesame Seeds • Poppy Seeds
Pretzel Salt • Minced Onion
Minced Garlic

Also Available:
Pasta dishes • Subs/Grinders
Salads • French Fries • Burgers
Onion Rings • Calzones • Sodas

We are conveniently located about 1350 smoots away from MIT.
Call us for late night delivery of all your favorite party foods.

497-4849 49 Mount Auburn St., Camb. 497-4849

THE PROMOTION POTENTIAL



Theirs.



Ours.

Why gamble with your career? Work with the world's largest supplier of software for information management and you'll work where the opportunities match your abilities. At Oracle, you can choose your game. Here, we give you the resources you need to excel...and the challenges you need to grow. Join the dynamic company that gives professionals the power to move up, over and into winning positions. For sure.

BS/MS CS/EE. You can become a: Software Developer • Technical Analyst • Consultant • Product Manager

We'll be interviewing on campus October 24 & 25. E-mail your resume TODAY!

Oracle Corporation, 500 Oracle Parkway, Box 659501, Redwood Shores, CA 94065. E-mail: jobs@us.oracle.com / FAX: 415-506-1073 / PHONE: 415-506-6991
For additional information, visit our web site at: <http://www.oracle.com/info/hr/recruiting.html>. Equal talent will always get equal opportunity.

ORACLE
Enabling the Information Age

Most Sophomore Major Choices Remain Unchanged; Ocean Engineering Increases

Majors, from Page 1

ing majors while 26 percent chose majors in science.

In addition, the School of Humanities and Social Science and Sloan School of Management each garnered 4 percent of the major choices while 2 percent chose majors in the School of Architecture and Planning. Three percent, or 32 students, did not designate a major. The distribution of students into the different schools did not significantly change from last year.

One department that did see a remarkable change was ocean engineering, which realized an increase from just one sophomore last year to five this year. "We don't think it is a random fluctuation," said Professor of Naval Architecture Justin E. Kerwin '53.

"We have been developing a new undergraduate curriculum in ocean engineering and have been making an effort to encourage freshmen to consider it. We hope that this is a trend, and that there will be another increase this year," Kerwin said.

The total number of registered students for the Class of 1998 rose to 1,087, compared to 1,067 in the class of 1997.

Major	Class of 1996	1997	1998
Civil and Environmental Engineering	48	42	35
Mechanical Engineering	126	130	136
Materials Science and Engineering	35	35	36
Architecture	25	14	20
Chemistry	33	42	40
Electrical Engineering and Computer Science	327	300	317
Biology	116	130	120
Physics	60	48	54
Brain and Cognitive Sciences	23	16	12
Chemical Engineering	123	111	120
Urban Studies and Planning	4	3	2
Earth, Atmospheric, and Planetary Sciences	3	8	9
Ocean Engineering	2	1	5
Economics	26	23	29
Management	17	35	26
Aeronautics and Astronautics	42	35	26
Political Science	6	3	2
Mathematics	48	43	44
Humanities	4	1	4
Nuclear Engineering	10	4	6
Linguistics and Philosophy	1	0	1
Undesignated	64	42	32
Total Registered	1143	1067	1087

SOURCE: REGISTRAR'S OFFICE

Ad

Age 7, 1982



Age 18, 1993



Elizabeth Suto.
Killed by a drunk driver on February 27, 1994, on Bell Blvd. in Cedar Park, Texas.

If you don't stop your friend from driving drunk, who will? Do whatever it takes.

FRIENDS DON'T LET FRIENDS DRIVE DRUNK.

U.S. Department of Transportation

This space donated by The Tech

Want to get more writing done at MIT?

Join MIT's Oldest and Largest Newspaper.

General meetings every Sunday, 6 p.m.

W20-483

¿ERES DE LOS MEJORES? ¿UNETE AL MEJOR!
Procter & Gamble LATINOAMERICA

Te invita a:
"Un Mundo de Oportunidades"

2 de noviembre 1995
6:00 - 8:00 p.m.
Boston Sheraton Hotel and Towers
39 Dalton Street, Boston
COMMONWEALTH ROOM

Ejecutivos de Procter & Gamble Latinoamérica hablarán de tus oportunidades para ocupar posiciones permanentes o realizar prácticas de verano en nuestras subsidiarias de Argentina, Brazil, Chile, Colombia, Guatemala, México, Perú, Puerto Rico y Venezuela. Ofrecemos la posibilidad de una carrera en las áreas de Mercadeo, Finanzas, Ingeniería, Sistemas, Ventas y Recursos Humanos, entre otros.
Procter & Gamble líder mundial en el mercado de productos de consumo,

está a la búsqueda de estudiantes con características de dinamismo y liderazgo.
Qué debes hacer:
Lleva tu resumé (SIN FALTA) antes del 31 de octubre a:

MIT
Office of Career Services
Room 12-170

Unete tú también al grupo líder de:
Procter & Gamble
División Latinoamericana

CLASSIFIEDS

- Events
- Housing
- Travel
- Help Wanted
- Services Offered
- Information
- Positions Wanted
- Lost & Found
- Clubs
- For Sale
- Greeks
- Miscellaneous

Advertising Policies
 Classified ads are due at 5 p.m. two days before day of publication, and must be prepaid and accompanied by a complete address and phone number. Send or bring ads, with payment, to W20-483 (84 Mass. Ave., Room 483, Cambridge, MA 02139). Account numbers for MIT departments accepted. Sorry, no "personal" ads. Contact our office for more details at 258-8324 (fax: 258-8226) or ads@the-tech.mit.edu.

Rates per insertion per unit of 35 words
MIT community:
 1 insertion.....\$3.00
 2-3 insertions.....\$2.75
 4-5 insertions.....\$2.50
 6-9 insertions.....\$2.25
 10 or more insertions.....\$2.10
All other advertisers.....\$5.00

■ **Help Wanted**

Need a Job? LOGAL software Inc is looking for students to perform software quality testing on Educational software. If you have experience with Macintosh computers and Windows and you have an interest in Physics, Chemistry, Biology or Math call Dr. Haris Papamichael at 800-LOGAL-US.

Entrepreneurship Opportunity. Expanding national company with global vision/integrity seeks smart, hard-working individuals to promote our superlative natural products that enhance mental/physical functioning/energy. Excellent business opportunity for students. Generous compensation. Work from home/apt./dorm. Flexible hours. 1-800-622-8590.

Earn up to \$120/wk donating your sperm. Must be a healthy male between 19-34 and 5'9" or taller. Call California Cyrobank, Inc. at 497-8646 to see if you qualify!

■ **Travel**

SPRING BREAK - Bahamas, Cancun, Jamaica; Packages from \$299. Organize a group and earn a FREE trip plus commissions. Call 1-800-822-0321

■ **Travel**

Spring Break! Travel Free with SunSplash Tours, "The Reliable Spring Break Company". We Pay the Highest commissions, at the lowest prices. Campus Reps wanted to sell Jamaica, Cancun, Bahamas, Daytona, Panama City and Padre. 1-800-426-7710.

■ **Clubs**

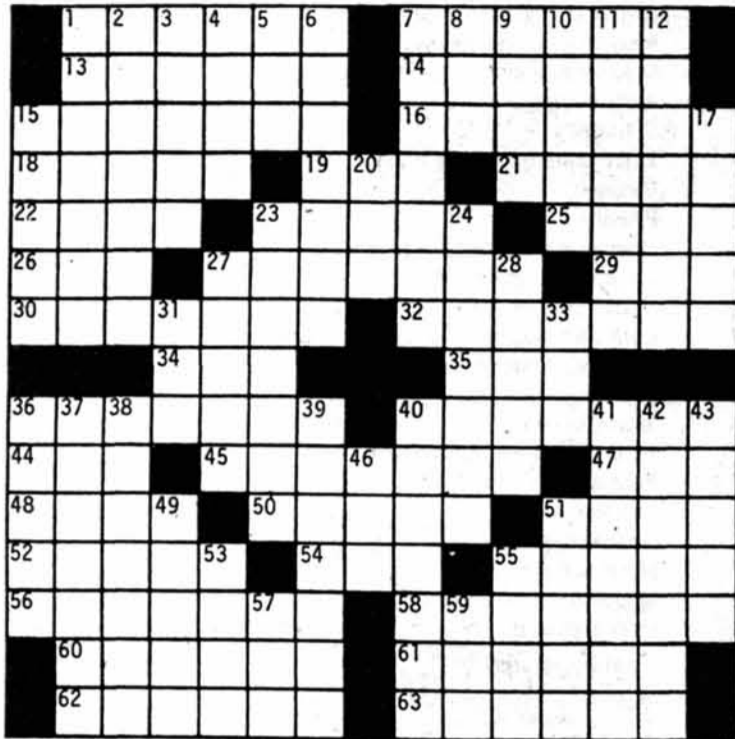
Stuyvesant High School Alumni-MIT has a Stuy alumni chapter for YOU! Get involved and keep those Stuy bonds strong! Get to know more upperclassmen who are in your major! For more information, contact Angela at 225-8547.

■ **Services Offered**

Attention inventors! Intellectual property attorney Charles Katz provides patent and related legal services at reasonable cost. Call (617) 864-8055 or e-mail cbklaw@ix.netcom.com.

■ **Miscellaneous**

AIDS & Sexually Transmitted Diseases testing and treatment. Totally confidential, private M.D. office. Dr. Robert Taylor 1755 Beacon St. Brookline. Call 232-1459 for appt.



© Edward Julius Collegiate CW8716

ACROSS

- 1 Like test scores, sometimes
- 7 Street workers
- 13 Famous gangster
- 14 Fierce feline
- 15 Paralyzes
- 16 Like a zebra
- 18 — Island
- 19 — Ballou
- 21 Cubic meter
- 22 "Untouchables" character
- 23 Frolic about

- 25 Do newspaper work
- 26 Black cuckoo
- 27 — Mills
- 29 — de France
- 30 Like some test graders
- 32 Wrench
- 34 Razing material
- 35 Be nosy
- 36 Position of uneasiness (2 wds.)
- 40 Compared
- 44 Ending for pay
- 45 Asian headdresses

- 47 Miss Gabor
- 48 Menu item
- 50 Feeling regret
- 51 French for eight
- 52 Shakespeare's river, et al.
- 54 India —
- 55 Travesty
- 56 Mexican shawls
- 58 Philippine headhunters
- 60 Shoot over again
- 61 Geological period
- 62 Unusual feats
- 63 Like relief work

DOWN

- 1 Type of triangle
- 2 Summons (2 wds.)
- 3 Orbital point
- 4 — Lane
- 5 Chemical suffix
- 6 Say at great length
- 7 Placards
- 8 Statute
- 9 — libre
- 10 Type style
- 11 Tricked (2 wds.)
- 12 Antiseptic
- 15 Involving punishment
- 17 Prevent
- 20 Gibbon
- 23 Mythological creature
- 24 Having a chat
- 27 Relative of the civet
- 28 Small songbirds
- 31 Part of TGIF
- 33 Comedian Louis —
- 36 Israeli dances
- 37 Hardy and North
- 38 Stool
- 39 Obviously factual statements
- 40 Longer and leaner
- 41 Brain cell
- 42 Thrown out
- 43 Coin inscriptions
- 46 Container
- 49 Throw into disorder
- 51 Leverets
- 53 Gyrate
- 55 Points in geometry
- 57 Young pig
- 59 Region of India

PUZZLE SOLUTIONS FROM LAST ISSUE



SOLUTIONS IN THE NEXT EDITION OF THE TECH



MIT Capitalizes on Turnovers

Homecoming, from Page 20

On the first play of the following drive, DeLeón ran for four yards from the slot formation to break the record. "The offensive opened up big holes and I just followed them," DeLeón said.

Head coach Dwight E. Smith said, "That's pretty impressive... He's got 11 games left to play here

— two this year and nine next year. He'll have that record for quite awhile unless something happens." The Beavers moved the ball to the 47 before the drive stalled and the Bisons took over on downs.

Nichols lost its one scoring opportunity here. The Bisons had a completed pass to Tom Fredericks called back on an illegal motion penalty. After losing the TD, they

lost the ball on downs and the half ended after MIT got it back.

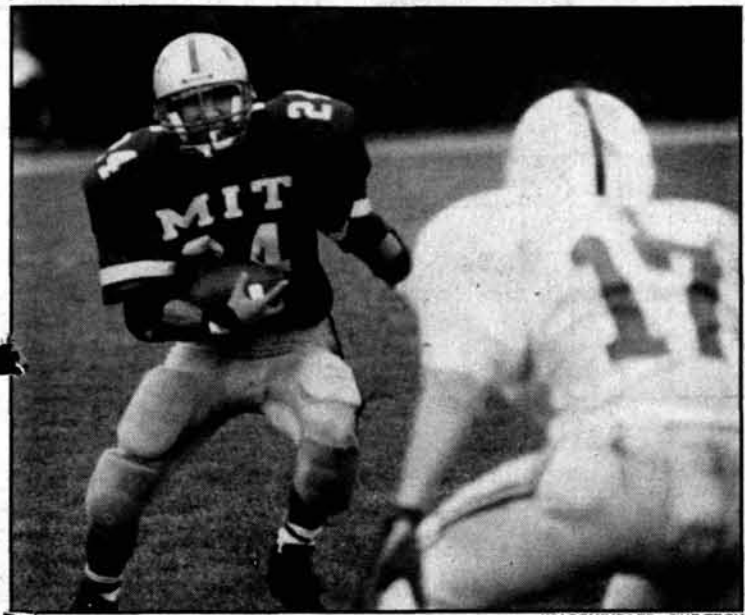
Five minutes into the third quarter, the Beavers scored their third TD on DeLeón's 15-yard run following a recovery of a miffed punt by Walter B. Krebs '99. His successful two-point conversion made the score 22-0.

One minute later, Christopher M. Yanney '97 recovered another Schmidt fumble and Troy A. Gayeski '98 scored on the next play, a 59-yard out route pass. The score was 28-0 as the PAT failed. Another Nichols drive stalled when Yanney intercepted a pass. MIT drove to the Bisons' 24 as the quarter ended.

On the first play of the final quarter, DeLeón scored his third TD of the game on a 24-yard screen pass. The kick made the score 35-0. The end of the quarter was uneventful, as Nichols scored its only points on a safety. Brad Gray '98 and Maik C. Flañagin '99 recovered fumbles.

The difference in the game was turnovers. Nichols outgained MIT, 326 to 316. However, that wasn't enough to compensate for the four fumbles and three interceptions the Bisons gave up during the game.

Smith was pleased with the generated turnovers: "That was one of our goals — to start doing more of that like we did two years ago where we had a very good turnover ratio... that helps our offense."



JIRI SCHINDLER—THE TECH

Star running back José DeLeón '97 led the MIT offense in Saturday's Homecoming game, scoring three touchdowns and breaking two rushing records.

UPCOMING HOME EVENTS

Tuesday, Oct. 24

Women's Volleyball vs. Springfield College, 7 p.m.

Thursday, Oct. 26

Men's Soccer vs. Gordon College, 3 p.m.



Cambridge has three great institutions.

♦ ♦ ♦

Educate at theirs. Eat at ours.

For 76 years, people have gone to school on the cuisine at the S&S. From the traditional deli Ma Edlestein started serving in 1919 to our '90s fare which includes our famous chicken soup, Buffalo wings, grilled salmon and chocolate mousse pie.

While we may not be as well known as Harvard and MIT, students at both say they prefer our courses.



Restaurant

A Great Find Since 1919

Catering • Deli • Restaurant • Function Room
1334 Cambridge St., Cambridge, MA, Tel. (617) 354-0620

HAVE YOU MADE YOUR NOMINATION

to the

1996 CORPORATION BALLOT TO ELECT A RECENT GRADUATE

Deadline is **NOVEMBER 3, 1995**

Students, Faculty and Staff May
Nominate Anyone Who Has or Will
Receive a Degree Between
September 1993 and June 1996
(Self-Nominations Also Accepted)

For More Information and Nomination
Forms, Call Kathleen Cragin Gailitis
617/253-8212 or FAX 617/258-7886
Building 10, Room 110



The Leader In Videoconferencing Wants To Meet With You.

Please submit
your resume
Oct. 24 - Nov. 13.
Come to our
information session
and Videoconference
on Nov. 8th, 6-8 pm.
We will be on campus
for interviews on
Nov. 14.

Board meetings that span continents...a marketing associate in Ohio sharing ideas (and spreadsheets!) with an accountant in Malaysia. Colleagues on opposite coasts meeting face-to-face from their own desktops. PictureTel is bringing people together for a meeting of the minds.

PictureTel is all about videoconferencing technology that's redefining the way the world meets. As an employer, we're all about providing a forum for creative thinking, where engineering college graduates can let their ideas flow. In an upbeat jeans and t-shirt environment, we have built a diverse and exciting company that offers hands-on involvement as soon as you come aboard. Make time to meet with the leader in videoconferencing technology!

More information about PictureTel is available in the Placement Office, or at our Web Site: <http://www.picturetel.com>



Redefining The Way The World Meets

If you cannot join us on campus, please send your resume to PictureTel, MAILSTOP 635C, 222 Rosewood Drive, Danvers, MA 01923.
email: resumes@pictel.com

PictureTel is an equal opportunity employer

SPORTS

DeLeón Leads MIT in Homecoming Rout of Nichols

By Thomas Kettler
STAFF REPORTER

The Beavers football squad continued their Homecoming winning streak, trouncing the Nichols College Bisons 35-2 Saturday afternoon in front of drenched crowd at Steinbrenner Stadium.

The victory, aided by a record-breaking performance by running back José L. DeLeón '97 and seven Nichols' turnovers, brings the team to a 3-3 record overall and in the Eastern Collegiate Football Conference.

During the game DeLeón overtook two MIT rushing records. He now holds the career rushing yardage record with 2,245 and the rushing touchdown record with 23.

The first quarter started with Nichols receiving the ball, but their first drive stalled. After the Bisons punted, MIT took the ball at the Nichols' 44. Six plays later and only five minutes into the game, DeLeón scored on a nine-yard run which gave him the career rushing touchdown record. A quarterback keeper by Scott J. Vollrath '96 on the two-point conversion made the score 8-0, Beavers.

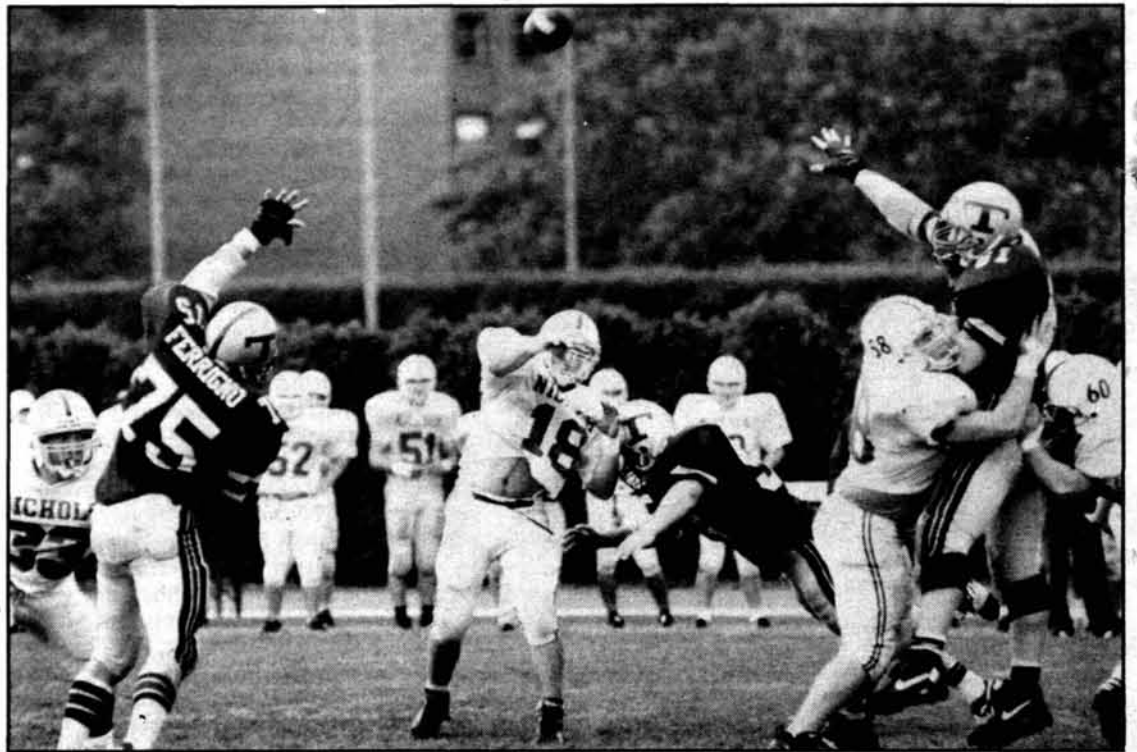
The following Nichols drive again stalled and the Bisons punted. On the ensuing drive, MIT needed only four plays to score, capped by a 38-yard gain off-tackle by Chris Brown '96 for the touchdown with three minutes left in the first. The Beavers failed to convert on the point after, so the score remained 14-0, MIT.

On the following two drives, neither team scored and the first quarter ended. One minute into the second quarter, Jimmie D. Walker '99 recovered a Nicholas Schmidt fumble to give MIT the ball at the Nichols' 40. Two plays and 95 seconds later, DeLeón ran for two yards on a draw to tie the career rushing record. However, MIT's drive stalled and the Beavers punted.

DeLeón breaks second record

The Bisons had their first consistent drive next and moved the ball to the Beavers' 15. However, Tom DeLuca's pass for Dave Sokolnicki was intercepted by Edward K. Chung '99 in the MIT endzone for a touchback.

Homecoming, Page 19



The Nichols College quarterback releases as defensemen close in on him. The MIT defense made a strong showing in Saturday's Homecoming matchup against Nichols College, forcing seven turnovers and refusing to allow the Bisons a single touchdown during the 35-2 rout.

JIRI SCHINDLER—THE TECH

MIT Crews Capture Two Medals in Head of the Charles

By Daniel C. Stevenson
EDITOR IN CHIEF

Several MIT crews raced in Sunday's Head of the Charles Regatta, bringing home two medals.

"As always, we had a lot of boats entered in many divisions," said Director of Crew Stu Schmill '86. "Most of our boats raced well."

The men's heavyweight Club Four, with two freshmen (Karl K. Richter '99 and Daniel P. Parker '99), placed fourth ahead of 52 other crews. The other rowers were Amit Etkin '98 and Damon L. McMillan '98, with coxswain Tom S. Lee '97.

The crew's boat had been doing poorly the week prior to the race, but they were able to pull it together for Sunday, McMillan said. "The start was good," he said. "We slacked off a little bit in the middle, but towards the end we had a good sprint."

The women's Club Eight crew was set to win until they had a boat-stopping collision with the Triton crew. The team finished up fourth, for the Engineers' second medal.

Four crews including the MIT crew were navigating through a bridge when the women's boat collided with Triton, bringing them to a dead stop. The team recovered to miss first place by only five seconds, but the collision was "heartbreaking," said Sarah J. Black '96, team captain.

The crew consisted of Louise L. Wells '96, Black, Lynn I. Yang G, Susan A. Dey '98, Stacey J. Morris '96, Jessica R. Oleson '96, Amy C. Gieffers '97, Linda M. Rosenband

'96, and Shruti Sehra '96.

The men's varsity finished 13th in the Championship Four, "a pretty good finish in a very tough field," Schmill said. The men's Lightweight Eight crew finished 21st.

MIT well-represented

"The MIT crew program has spawned quite a large number of leaders and participants in the world of rowing," Schmill said. "I saw an almost uncountable number of alumni who were either coaching or rowing or involved in other capacities in the regatta."

Linda Muri '86, a member of the last two world championship women's Lightweight Four crews, came in second in the championship doubles event.

In all, 10 crews from MIT participated: for heavyweight men, the Championship Four, two Club Fours; for lightweight men, the Lightweight Eight and a Club Four; for women, a Club Eight and a Lightweight Eight crew; and the graduate women's club competed in the Championship Two.

Schmill in Masters winning boat

Schmill himself raced in the Masters Four, as coxswain for the Albatros Klagenfurt crew from Austria. The Austrian crew won the race, beating last year's winner, the Leander Boat Club from Ontario.

"They are very experienced rowers and I know the course pretty



Professor Hartley Rogers Jr. competes in the Veteran Singles class of the Head of the Charles Regatta. The annual event, the largest of its kind in the world, was held Sunday on the Charles River.

INDRANATH NEOGY—THE TECH

well, which was an advantage in this race," Schmill said.

The language barrier was not a problem with the crew, Schmill said. "I gathered them together before we went out to reinforce what the major commands I would use would be in English."

"In the heat of battle, I start yelling and things get excited and I wanted to make sure they would be clear on what was going on," he said. "It worked out great — they were very professional about their rowing, they just pulled hard and let me steer."

Men's Soccer Wins Two Against Curry, Clark

By Melissa N. Ronge
TEAM STATISTICIAN

The men's soccer team got back to its winning ways last week with wins against Curry College and Clark University. The victories bring the team's league record to 3-3 (10-6 overall).

In the Thursday game against Curry, MIT started out slowly but came around to record a 5-3 win. Curry came out quickly, scoring the first goal. MIT answered midway through the first half when Douglas C. MacIvor '98 threw the ball in to Jeffrey L. Steinheider '99, who crossed the ball in front of the goal for Jaime E. Sarabia '98 to finish off. A little later Curry took the lead again but MIT kept battling back. Andres J. Villaquiran '97 stole the ball from a defender, dribbled in a slide shot passed an out stretched keeper to tie the score up for half-time.

In the second half, the Engineers came out pumped up as they scored the next three goals. Villaquiran took a pass from Andre B. Brandao '96 to start things off. The next goal was scored when Thomas A. Barber '97 saved a corner kick from going out of bounds and in the process passed the ball to Samuel M. Pearlman '96, who put the ball through the back of the net. Pearlman finished off the Engineer's scoring after taking a pass from Villaquiran.

Curry fought back scoring a goal late in the game but it was too little too late as MIT won its ninth game of the season.

Scoring problems against Clark

Against Clark, the Engineers had a number of scoring opportunities, but was unable to put many in. Halfway through the first half, Clark scored a goal to give them their only lead of the game. Five minutes later, Christopher J. Danielian '97 put in a shot from Villaquiran to tie up the game. Throughout the first half, MIT lost some key players to injuries.

As the Engineers started the second half, there was definite doubt how effective the team would be without these players. The bench rose to the occasion, holding Clark scoreless for the remainder of the game.

MIT took 13 shots on Clark in the second half but was unable to convert any of them, so the game went into overtime.

The two teams played through the first overtime without any score, but less than one minute into the second overtime, Scott Q. Barnard '97 took a pass from Villaquiran and hit a looping shot over the goal-keeper.

This score put MIT up for good as they went on to win the game 2-1.



The MIT women's Lightweight Eight crew competes in the Head of the Charles Sunday.

INDRANATH NEOGY—THE TECH