

Scientist Falsified Data, Report Says Ruling on '86 Cell Paper Case

By Sarah Y. Keightley
EDITOR IN CHIEF

The federal Office of Research Integrity released a report last Friday, finding researcher Thereza Imanishi-Kari guilty of 19 charges of scientific misconduct for work she had done at the Institute.

Imanishi-Kari "deliberately falsified research ... and then covered up her initial scientific misconduct with additional falsifications when the original data were challenged," according to a statement released by the Department of Health and Human Services. The Office of Research Integrity is under the Department of Health and Human

Services.

Imanishi-Kari was charged with fabricating data used in a paper published in the April 25, 1986 issue of *Cell*, in a letter of correction published in *Cell* soon after, and in two grant applications to the National Institutes of Health.

At the time, Imanishi-Kari was working under Professor of Biology David Baltimore '61. Baltimore left MIT to become president of Rockefeller University, and returned to the Institute this past spring.

Baltimore, a Nobel laureate, was one of the paper's co-authors, and

Report, Page 12



SHARON N. YOUNG PONG—THE TECH

Twin faux concrete pillars were placed on the sidewalks in front of 77 Massachusetts Avenue on Wednesday.

\$6.2M Budget Deficit Lower Than Projected for FY 1994

By David D. Hsu
STAFF REPORTER

MIT concluded fiscal year 1994 with a deficit of \$6.2 million, \$4.1 million less than projected, according to a report issued by Vice President for Finance and Treasurer Glenn P. Strehle '58.

This is down from the \$10.1 million deficit recorded in FY 1993.

The deficit decrease resulted

from several factors, including a lower draw on unrestricted resources which resulted from lower expenses, according to Strehle.

The decrease is not expected to affect the FY 1995 budget — with an estimated deficit of \$8.9 million — or re-engineering plans, Strehle said.

"The continued search for ways to improve efficiency and self-

imposed conservatism across the Institute were important to this [year's] outcome," Strehle said in *Tech Talk*.

Underexpended budgets for academic programs, administrative support, and other related expenses also saved \$3.4 million, according to *Tech Talk*. Unrestricted funds used for undergraduate financial aid decreased \$2 million, while unrestricted resources increased by \$2.6 million.

MIT's revenues come from four sources: tuition, overhead recovery from research, gifts, and earnings from the endowment, according to Senior Vice President William R. Dickson '56. During the past few years, MIT has had to draw money from the endowment to cover insuff-

Deficit, Page 12

Sigma Iota Phi Will Soon Become AEPi

By Angela Liao
STAFF REPORTER

Sigma Iota Phi, which is currently a local sorority, will become a chapter of the national sorority Alpha Epsilon Phi by the beginning of February, according to SIP president Deena S. Disraelly '96.

Although the sorority will initially be granted colony status, it will become a fully recognized chapter when its membership reaches 25 sisters.

"We are very excited to get involved in a national sorority and we hope to be a great asset" to the Panhellenic Association, said SIP Vice President Ophira J. Segal '96.

"We look forward to being part of something larger," said Naomi S. Korn '96. A "national [organization] can give us more focus and a lot of support, especially during

rush."

SIP came into existence as a local MIT sorority in the spring of 1993 and has been an associate member of Panhellenic since then.

Panhel approved SIP's request for national chartership in November 1993. The national AEPi organization will help by sending a representative to aid the group during the transitional period, Disraelly said.

"We look forward to the spring rush and we will continue to give continuous open bids," Segal said. "We are looking for motivated, dynamic people with leadership abilities and an interest in becoming involved."

Panhel President A. Rebecca Mallin '95 foresees a lot of restruc-

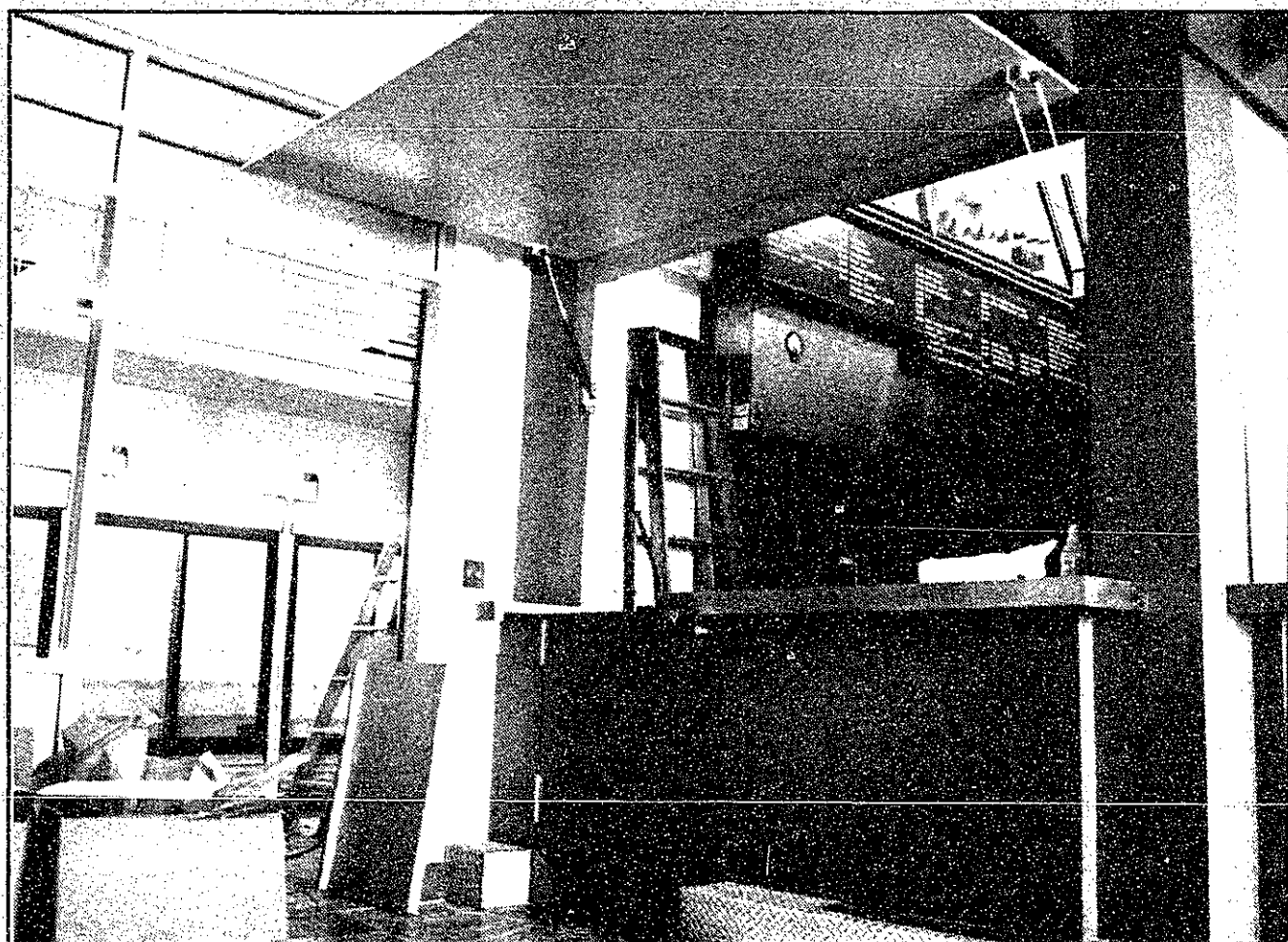
SIP, Page 13

WIESNER MEMORIAL TODAY

A memorial service for Jerome B. Wiesner, the 13th president of MIT who died in late October, will be held in Kresge Auditorium at 3 p.m. today. The service is open to the public.

The service will be followed by an informal reception in McCormick Hall, which will feature a video retrospective of Wiesner's life.

Pritchett Continues to Experience Delays in Opening



SHARON N. YOUNG PONG—THE TECH

Renovations to Pritchett Snack Bar, which is on the second floor of Walker Memorial, are expected to conclude soon. Pritchett will boast a '50s-style dining facility and a late-night convenience store.

By Jennifer Lane
STAFF REPORTER

Three months after the Pritchett Snack Bar was originally scheduled to open, there is still no definite opening date for the renovated diner-style facility, according to District Manager of Aramark Food Services Rob McBurney.

The delays are caused by the fact that Walker Memorial is a very old building, and "there are a lot of surprises behind the walls," McBurney said.

Though Aramark, formerly called ARA, is ready to stock Pritchett with food, detail work still needs to be completed, McBurney said. For example, the fire alarms and light fixtures need to be installed, he said.

Students have been dealing with Pritchett's delays since the beginning of the term, said East Campus President Parag Gupta '95. Students are "somewhat annoyed, but they understand that delays like this are to be expected," he said.

When complete, Pritchett will be "two stores in one," McBurney said. The '50s-style diner will be open for dinner on weekdays and lunch and dinner on weekends. The food will be cooked to order, he said.

Pritchett's hot food service will close after meals while the convenience store will remain open from 7 p.m. to 2 a.m., McBurney said.

The color scheme for Pritchett was taken from the original floor, which was retained, McBurney said. There will be '50s-style bar stools and a pool table, he said. "It's really a fun place."

Students consulted in decisions

Aramark decided to renovate Pritchett last summer after students protested its closure last September, Gupta said.

The student effort to reopen the facility had an effect on the administration, and they committed to satisfying the needs and addressing the complaints on east campus, Gupta said. Members of the administration met with students to discuss Pritchett's new look, and the '50s-style diner

Pritchett, Page 13

WORLD & NATION

Croatian Troops Battle Rebel Serbs

THE WASHINGTON POST

ZAGREB, CROATIA

Croatian army troops battled rebel Serb forces in the biggest engagement since a cease-fire was signed last March, U.N. officials said Thursday, voicing concerns that a coordinated Serb attack on the Bihac pocket, just across the border in Bosnia, could draw Croatia into the Bosnian war.

Croatia's two top military officials vowed that if Bihac falls, Croatian troops will fight to free it. The officials, Defense Minister Gojko Susak and Gen. Janko Bobetko, chief of the general staff, said Croatia had been poised to stop the Serb assault on the Bosnian pocket when it began but was persuaded to halt its attack by the United States and other NATO members.

U.N. spokesman Michael Williams said that on Wednesday Croatian forces around the town of Limar near the Dalmatian coast fired 33 mortar rounds at Serb-held territory in Croatia during a five-hour fire-fight. He said it marked the most intense clash between the Croatian army and rebel Serbs, who hold 27 percent of Croatia, since March 29 when the two sides agreed on a comprehensive cease-fire.

Tension had been rising in Croatia ever since Bosnian and Croatian Serbs joined forces to attack the Muslim-held Bihac pocket in northwestern Bosnia three weeks ago. U.N. officials said clashes had erupted at six places along the front line separating Croats from rebel Serbs.

Key Lawmaker Retreats from GOP 'Contract' on Welfare Reform

LOS ANGELES TIMES

WASHINGTON

A Republican lawmaker whose panel will draft the House version of welfare reform expressed deep reservations Thursday about denying benefits to unmarried teen-age mothers — a central element of the GOP's "Contract with America."

The unexpected retreat from a key contract provision suggests the new Republican majority on Capitol Hill is not fully united behind the aggressive legislative agenda promoted by incoming House Speaker Newt Gingrich of Georgia.

Rep. Clay Shaw (R-Fla.) who will chair the House subcommittee with jurisdiction over welfare reform, said he cannot support Gingrich's proposal to permanently deny cash benefits to poor women who have children while they are teen-agers.

Under the plan, even if a mother who had her baby before she was 18 applied for welfare years later, she and that baby would not be eligible. The plan would also allow states to extend ineligibility to babies born to mothers aged 18 to 20.

42 Nations Sign Declaration To Support Rights of AIDS Victims

LOS ANGELES TIMES

PARIS

With the Eiffel Tower wearing a ribbon of bright red lights, political leaders from 42 countries signed a global declaration here Thursday, promising to protect the rights of people with AIDS and to work more closely with organizations representing them.

The declaration, like the ribbon on the Eiffel Tower, was largely symbolic. But delegates vowed it would launch a solid, international political effort to drum up more money for research, improve the safety of the blood supply and bring the world's largest nations together in the battle against AIDS.

Leaders of AIDS support groups cautiously welcomed the Paris Declaration, saying they were pleased that the issue was being discussed on a world stage by powerful political leaders but also worried that most countries will not take the document seriously.

Many agreed with the AIDS activists who marked World AIDS Day on Thursday with a protest on the Champs-Élysée, laying prone beneath the Arc de Triomphe on the famed avenue and chanting: "Not words but action!"

"This declaration doesn't do much for the needs of people with the disease," said Arnaud Lavauzelle, president of AIDES Federation, the main association representing AIDS victims in France. "It's a compromise, a political decision that doesn't really help in our fight."

WEATHER

Remember November

By Marek Zebrowski
STAFF METEOROLOGIST

With a record high of 79°F (26°C), a low of 22°F (-6°C), and a tenth of an inch of snowfall, November was, all in all, a very mild and sunny month, averaging over four degrees per day above the norm. This mild pattern, assured by a fair weather ridge positioned off the mid-Atlantic coast is going to hold through the weekend, giving us a chance of record-breaking warmth on Saturday, especially away from the coast. Meanwhile cold and stormy weather will be confined to the northwestern quadrant of the nation, with a cold rain changing to snow in Seattle! For us, clouds will increase by late Sunday, and Monday looks like a cold, cloudy day with a chance of rain — a transition to a more seasonable and fair weather which is to follow later next week.

Today: Partly sunny, windy and mild. High 56°F (13°C) with brisk west-southwesterly winds 15-20 mph (24-32 kph) at times.

Tonight: Mostly clear, winds slowly diminishing. Low 42°F (6°C) in the city, in the 30s (1-4°C) in the suburbs.

Saturday: Partly to mostly sunny and quite warm. Slight chance of local sea breezes. High 58-62°F (14-16°C) with a chance of breaking a 65°F record set in 1932.

Sunday: Fair and continued mild with increasing clouds late. Lows near 40°F (4°C), highs in mid 50s (12-14°C).

Senate Rallies Bipartisan Vote to Pass GATT, 76-24

By Helen Dewar

THE WASHINGTON POST

WASHINGTON

The Senate Thursday gave final congressional approval to American participation in the biggest and most ambitious trade agreement in history.

Joining the House in a triumphant bipartisan finale to the debilitating partisan strife of the 103rd Congress, the Senate approved President Clinton's legislation to implement the latest expansion of the General Agreement on Tariffs and Trade (GATT) by a vote of 76 to 24. Moments before, the Senate scaled an even more critical procedural hurdle in producing eight more than the required 60 votes to overcome objections that the agreement broke budget rules because revenue lost from tariff cuts was not fully offset by spending reductions. The vote on the budget waiver was 68 to 32.

Sen. Robert C. Byrd, D-W.Va., had challenged the agreement on budget grounds, calling it a "budget-buster" that would increase the deficit by \$25 billion over the next decade. But GATT supporters argued its costs would be more than offset by revenue from economic growth stimulated by expanded exports.

The historic agreement, the product of seven years of negotiations, will create a new framework for trade among 124 nations around the world, lowering tariffs by one-third, bringing down costly subsidies for farm exports, strengthening protection for patents, inventions and recorded entertainment and taking the first steps toward regulating trade in services and investment. It creates a World Trade Organization to resolve disputes and enforce the

rules.

The agreement will benefit U.S. manufacturers of medical instruments, farm equipment, drugs and electronic products, whose exports will no longer face other nation's tariffs. Some less-efficient smaller farmers and the nation's textile and clothing manufacturers are most at risk from increased imports resulting from the lowering of U.S. trade barriers.

"Any way you cut it, we're the big beneficiary," said incoming Senate majority leader Robert J. Dole, R-Kan. Even though both benefits and drawbacks have probably been exaggerated, it is a "net gain for the American people," he added.

Approval of the pact "affirms the leadership role of the United States around the world," while its rejection would have constituted a "signal of American weakness," added outgoing Majority Leader George J. Mitchell, D-Maine.

But Sen. Ernest F. Hollings, D-S.C., who led opposition to the pact, described the vote as "the gravest mistake the U.S. has ever made on economic policy."

On both votes in the Senate, a majority of Democrats and Republicans supported the agreement. On the critical procedural vote, 37 Democrats and 31 Republicans voted yes, while 17 Democrats and 15 Republicans voted no.

The House also produced a big bipartisan vote for the agreement Tuesday in approving it, 288 to 146.

With the help of business executives and Republican leaders in both houses, Clinton lobbied for the agreement to the end, even after supporters concluded they had enough votes to pass it. Clinton hosted a breakfast Thursday at the White House for wavering senators

of both parties and lobbied senators by phone through the rest of the day.

At the White House, Clinton hailed the vote and said, "Just like the historic vote on NAFTA (North American Free Trade Agreement) a year ago, this vote for GATT shows once again that our country is moving in the right direction, reaching out to the rest of the world and looking at the best interests of our own people."

Joining Clinton in the reflected glory of the vote was Dole, who endorsed the pact after wresting some concessions from Clinton and the put his prestige on the line in trying to assure a big Republican vote for the agreement.

The pact's supporters contended that it would produce hundreds of thousands of American jobs by increasing exports generated by lower foreign tariffs and give American consumers access to cheaper goods from abroad. Revenue lost through lower U.S. tariffs will be more than offset by tax revenue from economic growth-up to \$3 for every \$1 in reduced tariffs, according to U.S. Trade Representative Mickey Kantor.

But opponents argued that it would encourage multinational companies to move jobs to countries that compete unfairly with low wages and widespread use of child labor, leading to job losses rather than gains, and warned that the U.S. would be ceding sovereignty to a new trade bureaucracy over which it has little control.

Thirty-six other countries have already ratified the agreement, and Treasury Secretary Lloyd Bentsen has said he anticipates that the rest will follow by Jan. 1.

Clinton Proposes Adding \$25B to Defense Spending

By Art Pine

LOS ANGELES TIMES

WASHINGTON

President Clinton, seeking to blunt a Republican attack over the politically explosive issue of U.S. military readiness, proposed Thursday spending an extra \$25 billion over the next six years to bolster military preparedness and modernization of weapons.

The proposal is Clinton's first major policy initiative since the GOP victory in the Nov. 8 elections. It would finance more training and equipment maintenance, grant new cost-of-living pay increases, upgrade military housing and expand child-care services.

The president also announced he will ask Congress next January for an extra \$2.3 billion for the current year's defense budget to help reimburse the military for peacekeeping and rescue operations, which it says has siphoned off monies needed to maintain readiness.

Although administration officials contend that the increases had been in the works for months, the timing of the announcement — which Clinton made at a Rose Garden ceremony flanked by the Joint Chiefs of Staff — clearly was intended as a pre-emptive strike against the GOP.

Restoring many of the defense cuts that Clinton had made earlier was Item No. 6 in the 10-point "Contract With America" that Republicans used to help seize control of the House in last month's election. The GOP had been plan-

ning a push for more defense spending in 1995.

Only two weeks ago, the Pentagon disclosed that five key Army divisions had suffered significant declines in readiness as a result of the cash-flow problems — despite earlier assertions by top officials that preparedness levels were high.

White House and Pentagon officials declined to say how the president would find the money needed to pay for the increase — by cutting domestic programs, proposing new tax hikes or allowing the federal budget deficit to grow.

Reaction from Republicans was muted. Rep. Floyd D. Spence, R-S.C., expected to be chairman of the House Armed Services Committee next year, said he was heartened by the announcement, but said defense spending still falls short of what is needed.

There was some dispute over how far the initiative would go to close the gap between the long-term goals of the Clinton's defense program and what he actually has budgeted for defense.

John M. Deutch, the deputy secretary of defense, told reporters that with some additional cuts from delaying or reducing weapons programs, the administration could eliminate the gap, which is now officially estimated at \$49 billion over the six-year period. But many outside analysts disagreed.

Administration officials listed four separate parts of the initiative:

—Some \$2.7 billion over five

years to boost morale and retention rates by improving military housing conditions, expanding child-care, welfare and recreation programs and providing an extra pay allowance for personnel stationed in high-cost areas.

—About \$12.5 billion during the period to provide maximum cost-of-living allowances to military personnel — an increase that the administration eliminated as a cost-cutting move in its first defense budget but was later forced by Congress to provide.

—Up to \$9.8 billion in additional funds, most of it toward the end of the decade, for modernizing the armed forces by buying new, presumably more high-technology weapons to replace aging aircraft, warships, tanks, missiles and guns.

—A request for an emergency appropriation in January — probably for about \$2.3 billion — to reimburse the services for money they spent carrying out peacekeeping and rescue missions. Without this, they would have to cut training and maintenance.

For all the White House hoopla over the \$25 billion, officials disclosed that almost three-fourths of the money would not be disbursed until fiscal 1999, three years after Clinton's current term in office.

As a result, despite the president's new package, overall defense spending still is expected to decline through fiscal 1997 before finally turning up again. By 1999, it would rise 1 percent more than inflation.

Mexico's New President Vows Era of Reform in Next Century

By Mark Fineman
LOS ANGELES TIMES

MEXICO CITY

To the applause of world leaders, Ernesto Zedillo Ponce de Leon assumed the green, white and red sash of the Mexican presidency Thursday and, in his first presidential address, declared a crusade against the violence, poverty, corruption and injustice that litter Mexico's path to the next century.

Facing deep political uncertainty, public insecurity and pockets of crushing poverty, Zedillo told Mexico's newly elected legislature in a nationally aired speech that he will continue free-market reforms. But he promised an aggressive jobs-creation program, plans to help small and medium businesses "as never

before," and an unprecedented effort to educate all Mexicans through high school.

Amid lingering skepticism from opposition leaders and an angry protest by thousands of peasants calling for civil insurrection, the 42-year-old Yale-educated economist also vowed to usher in a new era of political pluralism and reform.

Zedillo, a Mexicali shoeshine boy who rose to the highest post in the land, promised to reduce the power of the presidency and separate it for the first time from his Institutional Revolutionary Party, which has governed Mexico for 65 years. And he vowed to radically restructure a judicial system that has made corruption synonymous with the police and the courts in a nation

he cast as being on the brink of historic change.

As he outlined Mexico's new course after taking the presidential sash from outgoing president Carlos Salinas de Gortari in an emotional 15-second handshake, Zedillo also ordered immediate acceleration of official investigations into two major political assassinations.

Fueling the widespread sense of national insecurity, Zedillo said, are the yet-unsolved Sept. 28 killing in Mexico City of the ruling party's secretary-general, Francisco Ruiz Massieu, and the murder in Tijuana last March of Luis Donaldo Colosio, Zedillo's predecessor as the party's hand-picked presidential candidate.

North Korea to Get Almost \$2B In Benefits From Nuclear Deal

By Jim Mann

LOS ANGELES TIMES

WASHINGTON

The Clinton administration revealed Thursday that under the agreement it recently signed with North Korea, the Pyongyang government will get nearly \$2 billion in benefits before it has to submit to special international inspections of its nuclear program.

South Korea will contribute most of the money by supplying the equipment for new nuclear reactors which make it much harder for North Korea to make weapons-grade fuel. However, Ambassador-at-large Robert Gallucci, the Clinton administration's top negotiator, also estimated that the costs to the Unit-

ed States will be "tens of millions of dollars."

The disclosures came at the first congressional hearing on the nuclear agreement. During the session, held by the Senate Foreign Relations Subcommittee on Asia, Republicans voiced considerable unhappiness about the deal the administration signed in Geneva in October.

"We seem to be giving up, virtually, on every front," complained Sen. Frank Murkowski, R-Alaska. He argued that the financial benefits North Korea are to receive will serve to "prop up" the impoverished Pyongyang government, so that it will be less susceptible to the threat of international economic sanctions.

The Clinton administration

began negotiating with North Korea last year, after it refused to submit to the International Atomic Energy Agency's demand to carry out special inspections of two waste sites. Those inspections could show how much weapons-grade fuel North Korea produced in the past.

Under the deal, North Korea does not have to submit to the special inspections for approximately five years — until after "a significant portion" of the work is finished for the new nuclear reactors. Gallucci said that work was worth nearly \$2 billion. North Korea will not get any of the key components for the reactors, however, until the special inspections are carried out.

Science Experts Criticize Schools For Failing to Kindle Excitement

THE WASHINGTON POST

WASHINGTON

A panel of leading scientists and science educators, unveiling the nation's first national standards for the teaching of science, criticized America's schools Thursday for failing to kindle excitement about the subject in their students.

"We're failing to communicate what science is," said Bruce Alberts, the president of the National Academy of Sciences and a panel member. "We've killed all the curiosity."

The draft standards, released after more than two years of debate, urge educators to emphasize the subject much more in elementary grades and to revise how it is taught to middle and high school students. They broadly define what "scientific literacy" should be for students by the time they reach the fourth, eighth and 12th grades, and they call on schools to emphasize hands-on instruction in science classes far more than memorization of scientific theories and terms.

The standards also ask educators to teach an array of science subjects — such as biology, chemistry or geology — over many grade levels.

"This will take a long time and tremendous commitment," said Richard D. Klausner, the chairman of the project and the chief of cell biology at the National Institute of Child Health and Human Development. "We need to set a vision far from where we are now."

Defeated Calif. Candidate Finances Ads to Report 'Suspicious Activity'

THE WASHINGTON POST

LOS ANGELES

Still clinging to the hope he can force a new election, defeated Republican Senate candidate Michael Huffington is financing a radio ad campaign asking listeners to call a toll-free "hotline" to report "suspicious activity" by illegal immigrants who may have voted in the Nov. 8 balloting.

Huffington, who spent more than \$27 million of his money in his losing race against Sen. Dianne Feinstein, so far has committed \$15,000 to broadcast the ads in six areas in California with large Hispanic populations, according to Harold Ezell, president of the Voter Fraud Task Force, an advocacy group pressing to overturn the election.

"Everybody's heard stories. All we're asking is that if they have any information, tell us," said Ezell, co-author of Proposition 187, which would deny health care, education and social services to illegal immigrants. Huffington endorsed the proposition, which passed by a wide margin but which has been put on hold pending a court challenge, and has claimed fraudulent voting by non-citizens opposed to the measure cost him the election.

Immigrant rights advocates said the radio ads will inflame an already highly charged atmosphere in California and lead to increased "scapegoating" of non-citizens.



Celebrate the Holidays
at The Coop!

Stay Organized with Sharp!

Sharp YO-110 Electronic Organizer.
With 34K ram. Reg. \$54.99
Sale \$47.99

Sharp YO-350 Wizard Electronic Organizer.
With 64K ram.
\$89.99

SHARP

Brother® HL-630 Laser Printer Prints up to 6 Pages Per Minute

The Brother® HL-630, the printer that's great to give, and even greater to get. It's PC compatible, easy to use and it's 50% faster than 4 ppm engines. The HL-630 reduces annoying jams and curls, prints on different paper stocks and sizes, and prints envelopes reliably.

\$399.95

brother

For Information Call (617) 499-2000

Special Holiday Hours Until Christmas!

the Coop HARVARD HILL	The Coop at Harvard Square Cambridge Mon-Sat 9:15-9:00 Sun 10:00-6:00	The Coop at Kendall Square 3 Cambridge Center Mon-Fri 8:45-8:30 Sat 9:15-6:00 Sun 12:00-6:00	The Coop at Longwood 333 Longwood Ave. Mon-Fri 9:15-8:30 Sat 9:15-6:00 Sun 12:00-6:00
---------------------------------	--	--	---

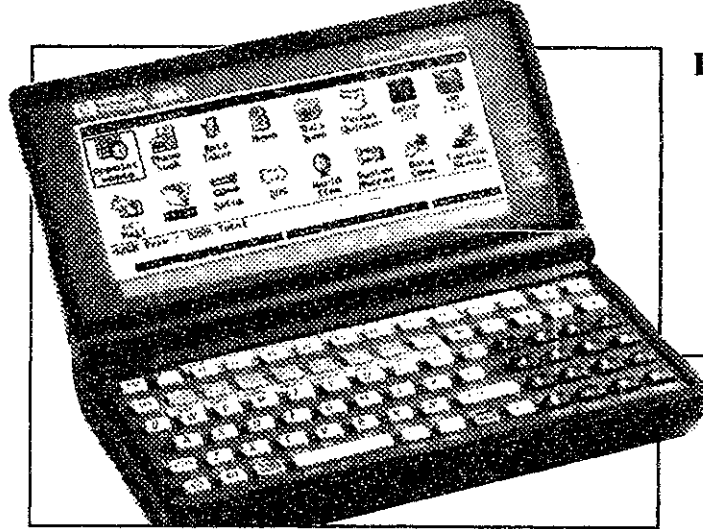
Winning Savings on Software Games!

Rebel Assault
Mac CD. Reg. \$49.95
Sale \$44.95



Under A Killing Moon.
DOS CD.
Reg. \$54.95
Sale \$49.95

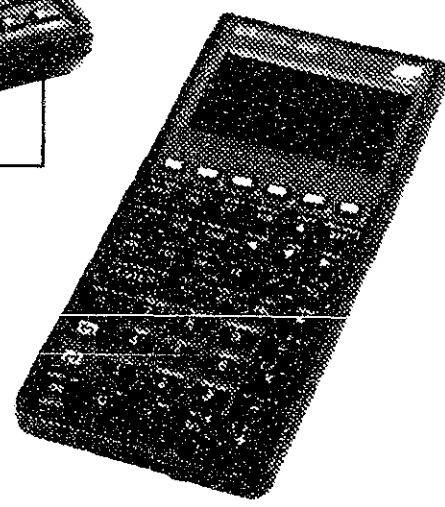
Work Smarter with Hewlett Packard!



Hewlett Packard HP-200LX Palmtop Computer. Features 2 meg ram and weighs just 11 oz. With 80 column by 25 row display, MS-DOS, Pocket Quicken, Lotus 1-2-3 rel 2.4, cc: mail mobile, and HP financial calculator built into ROM.
\$649.95

hp HEWLETT PACKARD

Hewlett Packard HP-48GX Expandable Calculator. With built-in 128K ram, equation library, expansion port, optional plug-in memory and software cards.
Reg. \$299.99
Sale \$269.99



OPINION



Chairman

Jeremy Hylton G

Editor in Chief

Sarah Y. Keightley '95

Business Manager

Pradeep Sreekantham '95

Managing Editor

Michelle Sonu '96

NEWS STAFF

Editors: Hyun Soo Kim '96, Ramy Arnaout '97, Daniel C. Stevenson '97; **Associate Editor:** Ifung Lu '97; **Staff:** Trudy Liu '95, Eric Richard '95, Nicole A. Sherry '95, Charu Chaudhry '96, Deena Disraeli '96, A. Arif Husain '97, Stacey E. Blau '98, Shang-Lin Chuang '98, Christopher L. Falling '98, David D. Hsu '98, Don Lacey '98, Jennifer Lane '98, Angela Liao '98, Venkatesh Satish '98, Stream S. Wang '98; **Meteorologists:** Michael C. Morgan PhD '94, Gerard Roe G. Marek Zebrowski.

PRODUCTION STAFF

Editors: Matthew E. Konosky '95, Teresa Lee '96, Jimmy Wong '97; **Staff:** Dan Dunn '94, Laura DePaoli '97, Christine J. Sonu '97, Saul Blumenthal '98, Larry Chao '98, Joseph Irineo '98, Gilbert Kim '98, Jennifer Peltz '98.

OPINION STAFF

Editor: Anders Hove '96; **Staff:** Raajnish A. Chitale '95, Matt Neimark '95.

SPORTS STAFF

Editor: Daniel Wang '97; **Staff:** Thomas Kettler SM '94, Bo Light '96, Farhan Zaidi '98, Gara Mendez '98.

ARTS STAFF

Editor: Scott Deskin '96; **Staff:** Thomas Chen G, Dave Fox G, Adam Lindsay G, J. Michael Andresen '94, John Jacobs '94, Gretchen Koot '94, Christopher Chiu '95, Teresa Esser '95, Evelyn Kao '95, Carrie Perlman '95, Craig K. Chang '96, Brian Hoffman '97, Robert W. Marcato '97, Kamal Swamidoss '97, Hur Koser '98, Anne Wall.

PHOTOGRAPHY STAFF

Editors: Sharon N. Young Pong '96, Thomas R. Karlo '97; **Associate Editor:** Helen M. Lin '97; **Staff:** Rich Fletcher G, Rich Domonkos '95, Justin Strittmatter '95, Sherrif Ibrahim '96, Lenny Speiser '96, Adriane Chapman '98, Carol C. Cheung '98, Indranath Neogy '98.

FEATURES STAFF

Christopher Doerr G, Pawan Sinha G, Mark Hurst '94, Steve Hwang '95, Ben Reis '95.

BUSINESS STAFF

Advertising Manager: Anna E. Lee '97; **Associate Advertising Manager:** Jin Park '96; **Accounts Manager:** Oscar Yeh '95; **Staff:** Diana Bancila '95, Jeanne Thienprasit '95, Syed Abid Rizvi '96, Mary Chen '97.

TECHNOLOGY STAFF

Director: Garlen C. Leung '95.

EDITORS AT LARGE

Contributing Editor: Yuch Z. Lee '95; **Senior Editor:** Eva Moy '95.

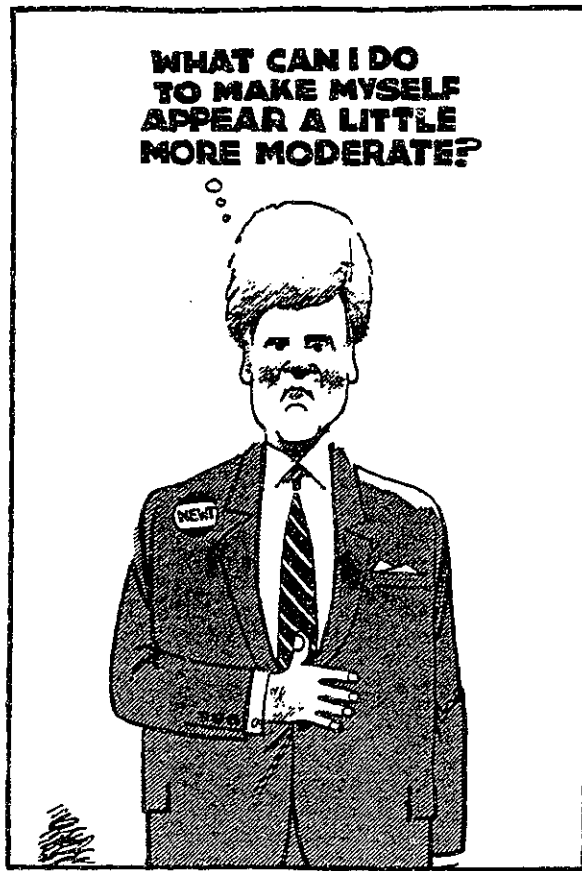
ADVISORY BOARD

V. Michael Bove '83, Robert E. Malchman '85, Thomas T. Huang '86, Jonathan Richmond PhD '91, Reuven M. Lerner '92.

PRODUCTION STAFF FOR THIS ISSUE

Night Editors: Dan Dunn '94, Matthew E. Konosky '95, Garlen C. Leung '95; **Staff:** Sarah Y. Keightley '95, Michelle Sonu '96, Laura DePaoli '97, Daniel C. Stevenson '97, Jimmy Wong '97, Saul Blumenthal '98.

The Tech (ISSN 0148-9607) is published on Tuesdays and Fridays during the academic year (except during MIT vacations), Wednesdays during January, and monthly during the summer for \$20.00 per year Third Class by *The Tech*, Room W20-483, 84 Massachusetts Ave., Cambridge, Mass. 02139-7029. Third Class postage paid at Boston, Mass. Non-profit Organization Permit No. 59720. **POSTMASTER:** Please send all address changes to our mailing address: *The Tech*, P.O. Box 397029, Cambridge, Mass. 02139-7029. Telephone: (617) 258-8324. FAX: (617) 258-8226. Advertising, subscription, and typesetting rates available. Entire contents © 1994 *The Tech*. Printed on recycled paper by MassWeb Printing Co.



Letters To The Editor

Decisions Regarding Status of Residence Halls Should Be Deferred

The Tech received a copy of this letter addressed to President Charles M. Vest, Provost Mark S. Wrighton, Senior Vice President William R. Dickson '56, Dean for Undergraduate Education and Student Affairs Arthur C. Smith, and Dean of the Graduate School Frank E. Perkins '55.

As you are no doubt aware, the much talked about housing plans are a source of great concern to many within the MIT community. Unfortunately it appears that the Strategic Housing Planning Committee has been forming these proposals with minimal input from faculty, alumni, and students.

We are unclear as to the educational benefits of any of these proposals. We understand that there is some urgency in regard to the

renovation of Senior House, and that if it is not renovated this summer the building will continue to deteriorate.

However, we believe that there is a grave risk of damaging, if not destroying, the best features of the Senior House, East Campus, and Ashdown communities should these renovations take place without significant input from those who would be affected by any moves that may follow.

We therefore respectfully ask that any decisions affecting the status of these three dormitories be deferred until such time that faculty, alumni, and student input can be taken into account. We are not asking for inaction in regard to Senior House renovations. We would like to propose the following in an effort to satisfy the need to renovate Senior House and also allow for input from faculty, alumni, and students:

- Renovations of Senior House be such that residents, faculty, and house managers are consulted regarding the renovations and any possible changes in the status of the dormitory as an undergraduate residence hall.

- That Senior House, East Campus, and Ashdown retain their current status as undergraduate and graduate residence halls, at least until the affected communities have had time to present their findings to President Vest, Provost Wrighton, Senior Vice President Dickson and Dean Smith.

Vijay P. Sankaran '95
President, Undergraduate Association
Roger G. Kermodé G
President, Graduate Student Council
Thomas H. Burbine G
Chair, Ashdown House Executive Committee
Dhaya Lakshminarayanan '96
Anders Hove '96
and Rebecca Richkus '96
Chairs, Senior House-East Campus
Action Committee
Professor Suzanne H. Corkin
Chair, Committee on Student Affairs

Ashdown Students Petition for Time To Assess Options

The Tech received a copy of the following petition, which has been circulating among the resident of Ashdown House.

We, the undersigned, believe that the decision to eliminate Ashdown as a graduate housing option is proceeding in an imprudently fast manner. We believe that many members of the MIT community would greatly benefit if housing decisions were postponed until Jan. 31.

This delay would allow time for: (1) graduate students to research the benefits and value of retaining Ashdown as a graduate housing option, (2) presenting our findings as well as our own independently considered options, (3) the MIT administration to coherently communicate its short and long term goals, and (4) an accurate assessment of the impact of the various proposals on alumni donations.

We request that you take into consideration the short amount of time we have been given to evaluate these issues, as well as the heavy academic demands students face at the end of the term.

Thomas H. Burbine G.
Chair, Ashdown House Executive Committee
and 202 others



Opinion Policy

Editorials, printed in a distinctive format, are the official opinion of *The Tech*. They are written by the editorial board, which consists of the chairman, editor in chief, managing editor, executive editor, news editors, and opinion editors.

Dissents, marked as such and printed in a distinctive format, are the opinions of the signed members of the editorial board choosing to publish their disagreement with the editorial.

Columns and editorial cartoons are written by individuals and represent the opinion of the author, not necessarily that of the newspaper.

Letters to the editor are welcome. They must be typed, double-spaced and addressed to *The Tech*, P.O. Box 397029, Cambridge, Mass. 02139-7029, or by interdepartmental mail to Room W20-483. Electronic submissions in plain text format may be mailed to letters@the-tech.mit.edu. All submissions are due by 4:30 p.m. two days before the date of publication.

Letters and cartoons must bear the author's signatures, addresses, and phone numbers. Unsigned letters will not be accepted. No letter or cartoon will be printed anonymously without the express prior approval of *The Tech*. *The Tech* reserves the right to edit or condense letters; shorter letters will be given higher priority. Once submitted, all letters become property of *The Tech*, and will not be returned. We regret we cannot publish all of the letters we receive.

To Reach Us

The Tech's telephone number is (617) 253-1541. Electronic mail is the easiest way to reach any member of our staff. Mail to specific departments may be sent to the following addresses on the Internet: ads@the-tech.mit.edu, news@the-tech.mit.edu, sports@the-tech.mit.edu, arts@the-tech.mit.edu, photo@the-tech.mit.edu, circ@the-tech.mit.edu (circulation department). For other matters, send mail to general@the-tech.mit.edu, and it will be directed to the appropriate person.

MONITOR COMPANY

STRATEGY CONSULTING

Amsterdam

Cambridge

Frankfurt

Johannesburg

Invites MIT seniors from all majors
to apply for the position of Consultant

London

Los Angeles

Applications are due at the
Office of Career Services by
Monday, December 5, 1994

Madrid

Milan

New York

Paris

Seoul

Tokyo

An application includes resume, transcript (original or
copy), and a cover letter addressed to:

Toronto

JoAnn Kienzle
Recruiting Coordinator
Monitor Company
25 First Street
Cambridge, MA 02141

THE ARTS

Ensemble transforms Gothic violence in *Titus*

TITUS

MIT Shakespeare Ensemble
Kresge Little Theater
Nov. 30 through Dec. 3, 8 p.m.

By Gretchen Koot
STAFF REPORTER

The Shakespeare Ensemble's production of *Titus Andronicus*, perhaps the bloodiest of all of Shakespeare's plays, is a little over two hours of solid entertainment. Of course, it is not for the faint of heart, and I wouldn't recommend a pretheater dinner consisting of rare beef. There are murders aplenty, beheadings, hewn limbs, and a rape. Thankfully this is a college play and not an Oliver Stone film; so while the mayhem is deeply disturbing, it is not quite nauseating.

The strength of the play, which is strongly emphasized in Kim Mancuso's direction of this production, is its timelessness; Mancuso is a lecturer in the music and theater arts departments. One theme explored in the play

is man's dual nature of brutality and familial loyalty and love. This nature persists.

Another prominent theme is the struggle for political power. We see today that this drive for power can supersede all other desires and push nations into war. Lust for power and xenophobia still take their toll in human blood and pain. A love of what is like self and a fear and hatred of all that is different still mark our own society in the form of nationalism and racism.

The quotes and poem in the program remind the audience of the current conflict in Bosnia. Before the first scene of the play, the actors come down to the stage, and to the accompanying sound of machine gun fire, each describes a scene in which the theater and the actors might be destroyed or altered by a war. Of course, we realize that we are sitting in a theater on the MIT campus in the United States, and surely such hardships would never happen here.

At the same time, exactly what the actors

describe is happening in other places in the world and has happened here at other times in history and may happen again. The sound of machine gun fire which brackets the play was a nice touch, although in the beginning some of the actors' words were drowned out by the sound. The actors' initial address of the audience felt a little heavy-handed. It was hard not to resist such a blatant stab at our emotions. However, it served its purpose, for it forced the audience to look for insights into our present world in the bloody spectacle of *Titus*.

Although there is certainly a wide range of talent and experience in the Shakespeare Ensemble, all of the actors' performances were fairly good. Robert J. Pensalfini's G performance as Aaron, the Moor, was simply fabulous — as good as any professional performance I've seen. He revealed in his villainy. Wickedness oozed from his pores. And yet when he gazed at his infant son, his face was transformed to reveal fierce paternal pride.

Tamora, queen of the Goths, came across

quite clearly as lusty and conniving through Natalia Fuentes' '95 fine portrayal of the ruthless matriarch. Sean P. Ningen '95 as the weak, yet power hungry emperor Saturninus, made the character perfectly hateful.

As for Orin J. Percus' G performance in the title role, I found that his careful body positioning and limping convincingly conveyed a Titus rheumatic with age. Lavinia's misfortune robs her of the possibility of having many lines, but Portia L. Vescio '95 wordlessly expressed Lavinia's suffering well enough to break one's heart.

The set was simple but inspired. Designed by Elizabeth A. Stoehr '96 with consultation by technical instructor William A. Fregosi, the floor of the stage was made to look like a warped chessboard, an appropriate setting for this play.

The conclusion is a departure from the original text, but I liked it. Without revealing it, I'll just say that it was powerful and thought provoking.

ON THE SCREEN

— BY THE TECH ARTS STAFF —

★★★★: Excellent
★★★: Good
★★: Average
★: Poor

★★★ *Bullets Over Broadway*

Woody Allen's latest film deals with the Mafia, the theater, and trademark comic escapades in Roaring '20s-era New York City. It's a terrific, light-hearted portrait of playwright David Shayne, played by John Cusack, who struggles to resist the commercialism of show business during the film's time frame. His latest theater work, funded by Mafia boss Nick Valenti (Joe Viterelli), proceeds under the condition that the boss' speakeasy-dancer girlfriend (Jennifer Tilly) gets a lead role. Another actress, Helen Sinclair (Dianne Wiest), seduces Shayne into rewriting the script for her and her eccentric, over-the-hill career. The comic entanglements on screen are balanced by the splendid set design of Allen's set designer, Santo Loquasto, and the jazz soundtrack definitely adds to the film's general presence. — Carrie Perlman. *Loews Nickelodeon*.

★★★ *Hélas Pour Moi*

Prospective viewers (especially those not familiar with the directorial style of Jean-Luc Godard) should watch this film prepared for the unexpected. The film's title, roughly trans-

lated as "woe is me," doesn't indicate what the film is about, but it leaves the viewer with such a feeling. Godard's film is a modern retelling of the Greek myth of Heracles' birth, where Zeus takes the form of a mortal to have sex with the mortal's faithful wife. As this god-like figure descends from the heavens, he targets a strong woman named Rachel Donnadieu (Laurence Masliah) and assumes the form of her husband, Simon (Gerard Depardieu). During the process of the seduction, the creator seeks answers from his mortal creations in the form of human desire and affection from Rachel. The flood of images and discordant bits of classical music envelop the viewer with the horror and magnitude of the event. *Hélas Pour Moi* is not light viewing, but rather a disturbing and thought-provoking dissertation on romanticism and human suffering. — Evelyn Kao. *Harvard Film Archive*.

★★★ *Interview with the Vampire*

At many points, *Interview with the Vampire* risks drowning in the gloom that pervades it, but just enough comic relief keeps it afloat. Tom Cruise plays Lestat, a vampire who draws his vitality from his way of life, who bestows the gift of immortality on Louis (Brad Pitt), a sorrowful man who can't come out of the depression that he enters when his wife and infant daughter die. This film is basically a variation on the Bram Stoker legend, a

cautionary tale about the dangers of our own animal. Director Neil Jordan, best known for his Oscar-winning film *The Crying Game*, does well to remain faithful to Rice's story and give emotional weight to the gruesome accounts on the screen. — Gretchen Koot. *Loews Cheri*.

★★½ *A Low Down Dirty Shame*

The latest effort from Keenen Ivory Wayans (creator of the television series *In Living Color*) is a personal foray from pure comedy into the action genre, and it gives this film an identity crisis: A comedy trapped in the body of an action film. As the undercover-cop-turned-detective Andrew Shame, Wayans uses his comic talents as writer to give his character some genuinely funny lines. However, the uneasy mix of action and comedy detracts from the film that give it an overall feel of a parody (like Wayans' other action-comedy *I'm Gonna Get You Sucka*) — some scenes are played genuinely for dramatic effect, which only confuses the viewer. The film's serious side is developed in a love triangle between Shame's secretary, Peaches (Jada Pinkett), and femme fatale Angela Flowers (Salli Richardson); however, in the action sequences, one feels that Wayans would have done better if he didn't stray from comedy, the genre that gave him his start. — J. Michael Andresen. *Loews Fresh Pond*.

★★½ *Mary Shelley's Frankenstein*

Kenneth Branagh has remained fairly close to the original story in the newest film version of this tale of science-gone-bad. Branagh has created a film which is visually chilling — the cinematography is fantastic — but not as psychologically affecting as it should be. Doctor Victor Frankenstein (Branagh) becomes obsessed with immortality in medical school, where he gathers "raw materials" from the city morgue, stitches them together, and brings his creation to life via electricity. He's convincing as a lunatic-genius who later lives to regret his actions. As the monster, Robert DeNiro is nearly unrecognizable under his makeup, but he gives the character a lot of pathos and depth. Tom Hulce is enjoyable as Frankenstein's bumbling companion from medical school; but Helena Bonham Carter, as Frankenstein's adopted sister and love interest, becomes the weak link in the chain, making what is intended to be a climactic and dramatic scene rather silly. As a whole, the film is weakened by an eagerness to revel in Victorian-era excess, but the monster story remains a good one. — CP. *Loews Cinema 57*.

★★★★ *Pulp Fiction*

Winner of the *Palm d'Or* at this year's Cannes Film Festival, this movie combines

Screen, Page 7

26-100 without STRESS

L S C

This Weekend:

Friday

THE MASK

7 & 10

26-100

Friday Classic

STAGECOACH

7:30 in 10-250

Saturday

thirty two short films about

GLENN GOULD

7 & 10

26-100

For more information:

call the Movieline at x8-8881

or check out our Web pages. At an Athena prompt, enter:

add lsc; lsc &

ON THE SCREEN

— BY THE TECH ARTS STAFF —

Screen, from Page 6

standard plots of hit men, junkies, and criminals, with an amazing facility with storytelling. The plot consists of three principle stories: First, the daily experiences of two hit men (John Travolta and Samuel L. Jackson); second, Travolta's character involved with his gangster boss' wife (Uma Thurman) as an escort; and third, the plans of a boxer, who has been paid off to take a dive in the ring, instead choosing to win the fight and take off with the money and his girlfriend. Although these *film noir* concepts may seem a bit clichéd, writer-director Quentin Tarantino infuses his characters with crackling dialogue and a sense of purpose (i.e., Jackson's hit-man character quoting Bible verses as a prelude to execution). Tarantino's career may still be young, beginning with the cult hit *Reservoir Dogs* (1992) and recently surfacing in his scripts for *True Romance* and *Natural Born Killers*, but his latest film confirms his mission to shake up the current course of cinema. — Rob Marcato. *Loews Nickelodeon*.

★ ★ The Santa Clause

This vehicle for television-sitcom star Tim Allen is cute enough in its initial premise: Once Scott Calvin (Allen) climbs into Santa Claus' sleigh after the fat-man in the red suit has fallen dead in a pile of snow, he is committed to fill Santa's shoes by the little-known legal contract of the film's title. Not only does Allen's character feel a moral obligation to do this duty, but he undergoes the physical transformation into Santa as well. As the new Santa, he fights for the rights of children everywhere, much to the dismay of his ex-wife (Wendy Crewson) and her psychiatrist boyfriend (Judge Reinhold). In the end, the

film scores high for its compassionate view of children, but it rings false when it condemns adults for not understanding the world as it really is. The film is tailored to children under 12: If you must go, take one with you. — Teresa Esser. *Loews Copley Place*.

★★★★ The Shawshank Redemption

This extraordinary movie about hope, friendship, and renewal in the face of suffering in life is much more heartfelt than its title suggests. Tim Robbins embodies the classic protagonist in Andy Dufresne, a banker who is imprisoned for two murders he swears he did not commit, and he is forced to face the abrasive reality of prison life. He eventually comes out of his shell and cultivates a friendship with Red (Morgan Freeman), whose con-

nections inside the prison provide a neat counterpart to Andy's own talents as a financial planner, which he eventually exploits to get on the good side of the prison guards. Through all of Andy's suffering in prison, he never loses the hope of being free, and this carries both Andy and Red through the tough times. This film transcends its short-story basis (originally written by Stephen King) with excellent performances and artful direction — it has "Oscar" written all over it. — John Jacobs. *Loews Harvard Square*.

★★★ Star Trek Generations

The latest installment in the *Star Trek* series bridges the gap between the original crew, headed by Captain James T. Kirk (William Shatner), and the "next generation,"

led by Captain Jean-Luc Picard (Patrick Stewart). The story is mostly fluff — a shadowy villain who wants to cast himself into a heaven/nirvana "nexus," at the expense of an entire solar system and countless life forms, must be stopped by the two captains, who are joined by fate and a bit of time-space trickery. The villain, Dr. Soran (Malcolm McDowell) joins forces with the Klingons, and Soran's plan is set in motion when he kidnaps Geordi (LeVar Burton), the chief engineer of Picard's *Enterprise*. Apart from stilted dialogue and the soap-opera-perfect female crew of the *Enterprise* contending with wounded bodies, this film delivers the requisite stardom and flashy special effects that a Trekkler could hope for. — Charolette Iverson. *Loews Cheri*.

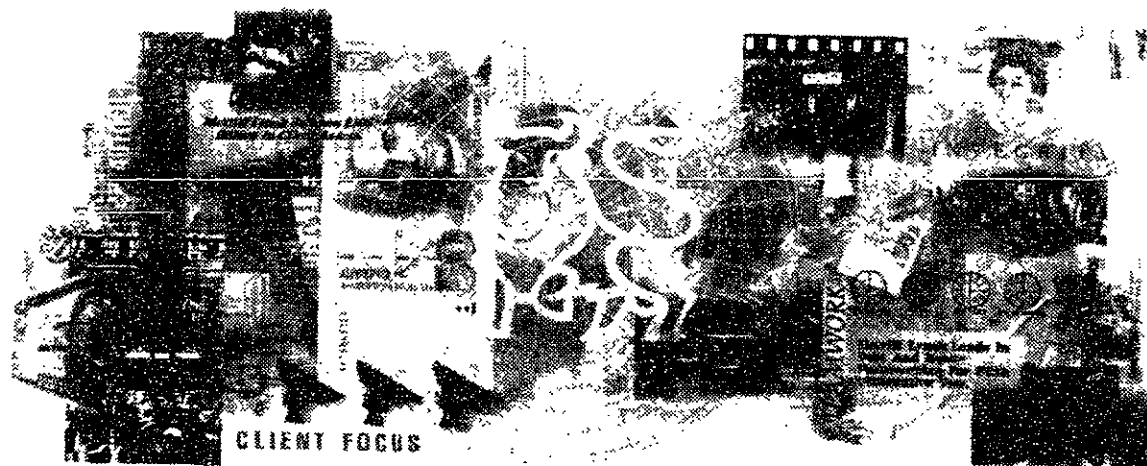
★½ Stargate

This is one of the strangest, most ill-conceived movies in recent memory in quite a while. The previews for the film suggest the standard ingredients for a science-fiction film of this caliber — a distant planet, lots of good action, good special effects. It sort of plays like a hybrid between *Raiders of the Lost Ark* and *Return of the Jedi*: In fact, the movie seems to borrow (or steal) a lot of its source material from other films such that *Stargate* is less than the sum of its parts. James Spader plays an expert on ancient Egypt and Kurt Russell is the serious army officer who brings his platoon, along with Spader, through an ancient alien space portal. The tyrannical leader of the alien civilization is played by Jaye Davidson, from *The Crying Game*, only now wearing a lot of eye shadow. Even the typical Hollywood fight between good guys and bad guys seems especially canned. This film isn't the worst I've ever seen, just the most disjointed. — Mark P. Hurst. *Loews Fresh Pond*



Captain Jean-Luc Picard (Patrick Stewart) accompanies Captain James T. Kirk (William Shatner) on an unexpected excursion in *Star Trek Generations*.

HAVE YOU EVER CONSIDERED THE DIFFERENCE IT WOULD MAKE TO JOIN A FIRM WITH A GLOBAL PERSPECTIVE?



Career Opportunities

First-year students interested in interviewing for domestic summer associate positions are invited to submit a cover letter and resume to the appropriate contact person listed below.

Global Debt & Municipal Markets
Roslyn Dickerson, Vice President
Merrill Lynch
250 Vesey Street, 2nd Floor
New York, NY 10281

Global Equity Markets & Institutional Sales
Kate Teitel, Vice President
Merrill Lynch
250 Vesey Street, 2nd Floor
New York, NY 10281

Please send a cover letter and resume by December 16, 1994.

The difference is Merrill Lynch.



Merrill Lynch

A tradition of trust.

BURCHARD SCHOLARS PROGRAM

ALL MIT SOPHOMORES AND JUNIORS

The 1995 BURCHARD SCHOLARS PROGRAM
IS NOW ACCEPTING APPLICATIONS

The Burchard Scholars Program brings together members of the MIT faculty and promising juniors and sophomores who have demonstrated excellence in some aspect of the humanities and social sciences as well as in science or engineering.

Twenty Burchard Scholars are invited to a series of dinner-seminars throughout the year to discuss topics of current interest introduced by faculty members and visiting scholars.

The 1995 program begins in February.

For information or an application, contact: Dean's Office,
School of Humanities and Social Science, E51-234 (x3-8961) or the
HASS Information Office, 14N-408 (x3-4443).

APPLICATION DEADLINE: FRIDAY, DECEMBER 2, 1994

SPONSORED BY THE OFFICE OF THE DEAN,
SCHOOL OF HUMANITIES AND SOCIAL SCIENCE

SUMMER OPPORTUNITIES

INVESTMENT BANKING • DEBT MARKETS • EQUITY MARKETS • INSTITUTIONAL SALES

Merrill Lynch is seeking applicants with language skills applicable for
Europe, Latin America and Asia
to work in our London, Tokyo and Hong Kong offices.

Please send a cover letter and resume by January 4, 1995 to:

Investment Banking
Sharon Woods
Merrill Lynch
World Financial Center
North Tower, 24th Floor
New York, NY 10281-1324

Debt & Equity Markets & Institutional Sales
Lianne Marshall
Merrill Lynch
World Financial Center
North Tower, 2nd Floor
New York, NY 10281-1302

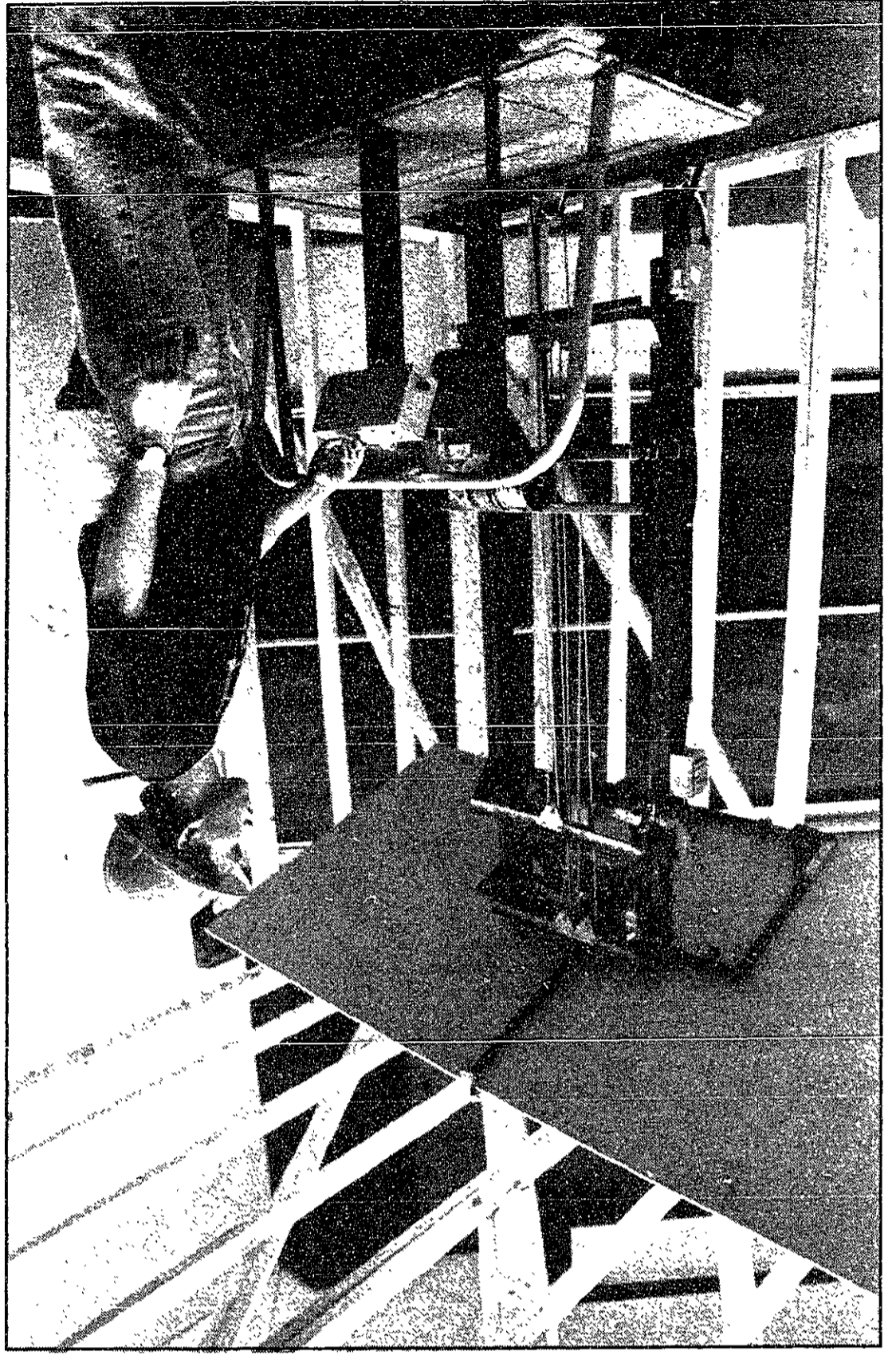
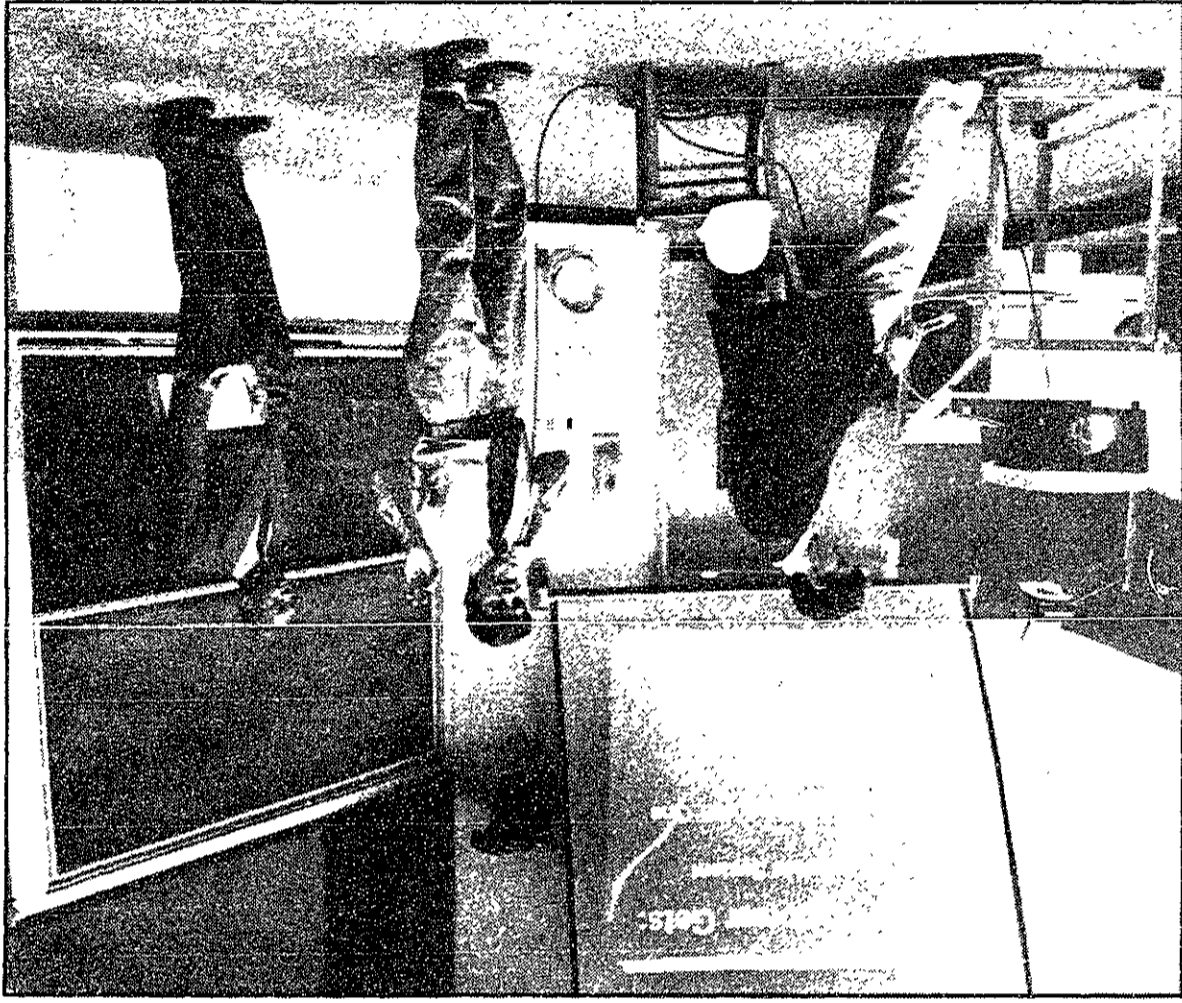
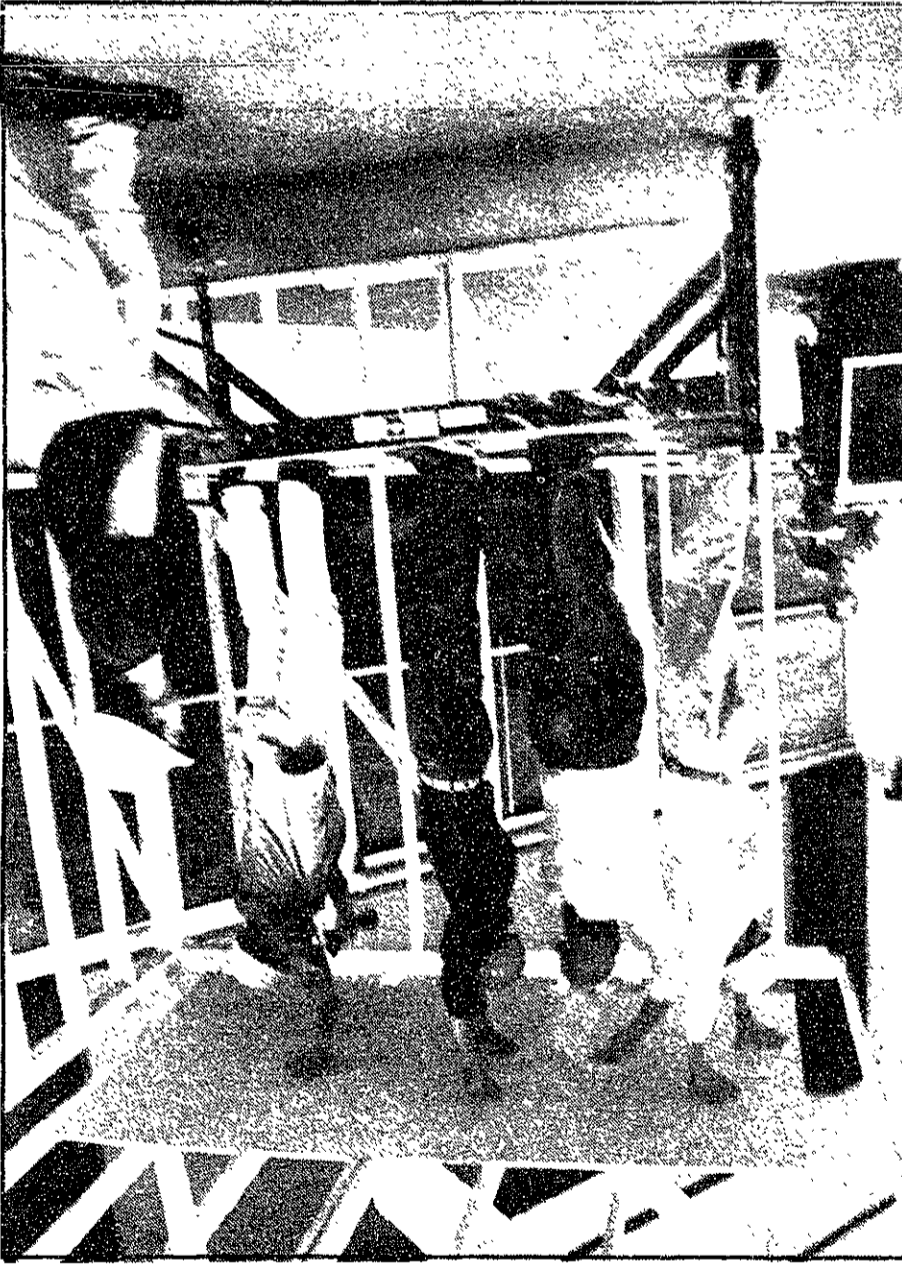
All interviews will be conducted off-campus.

The difference is Merrill Lynch.



A tradition of trust.

DESIGN 2.73 PROJECTS



Photos by Yueh Z. Lee

Every year juniors and seniors in Design Projects (2.73) design and build machines to solve a particular problem presented by industry. This year's project focused on a mechanized wallboard installation machine. Six teams, with about 25 students and two faculty advisers per group, operated like a small company, incorporating engineering, prototyping, marketing, and, of course, bureaucracy. After 11 weeks of building and debugging, the teams faced their final test on Wednesday night: presentations to a review board of faculty and representatives from industry, demonstrating proof of the concept and feasibility of the market. All six machines functioned as designed, and at the end of each presentation, the faculty members demonstrated their wallboard removing skills.

Classical Music

Boston Symphony Orchestra
Symphony Hall, Boston. Admission: \$21-59. Information: 266-2378. Tickets and reservations: 266-1200. The Oslo Philharmonic Orchestra, with Mariss Jansons, conductor; Truls Mork, cello; Otto Berg, viola. Program: Strauss, Shostakovich, and Ravel.

Wellesley Classical Music
Pendleton Concerton Salon, Wellesley College. Dec. 2, 12:30 p.m. Information: 283-2028. Art songs from Russia's Golden Age; works by Verstovsky, Alabiev, and Glinka. Commentary by Charles Hodge, Assistant Professor of Russian.

Harvard-Radcliffe Orchestra
Sanders Theatre, Harvard University. Dec. 2, 8 p.m. Admission: \$7-12; \$5-9, students. Information: 496-2222. The second concert of the orchestra's 187th season features selections from Bernstein, Beethoven, and Brahms. James Yannatos, conductor.

Boston Conservatory Orchestra
Seully Hall, 8 The Fenway, Boston. Dec. 2-3, 8 p.m. Information: 536-6340. "Opera Scenes," directed by Cecelia Schieve and Patricia Weinmann.

Boston Cecilia
Church of the Advent, 30 Brimmer St., corner of Mt. Vernon Street, Boston (Dec. 2, 8 p.m.) and All Saints Church, 1773 Beacon St., corner of Dean Rd., Brookline (Dec. 4, 3 p.m.). Admission: \$10-27; student/senior/group discounts available. Information: 232-4540. Featuring Susan Trout, soloist, in Copland's virtuosic vocal piece "In the Beginning," with selections by Poulenc and Bruckner, and the Boston Cecilia Chamber Singers performing yuletide music by Berlioz and Brahms. Donald Teeters, musical director.

Isabella Stewart Gardner Museum
280 The Fenway, Boston. Both concerts begin at 1:30 p.m. Admission (in addition to museum admission): \$4, \$2 members. Information: 734-1359. Dec. 3: Young Artists Showcase — "Jazz at the Gardner," with Patrice Williamson, vocalist. Dec. 4: Sunday Concert Series — New England Conservatory Concert Opera; John Moriarty, pianist and musical director, performs scenes from French opera.

Harvard Department of Music
John Knowles Paine Concert Hall, Music Building, Harvard University. Two separate performances, listed below. Information: 496-6013. 1) Dec. 3, 8 p.m. Harvard Group for New Music presents works by Alexandros Kalogeras, Donald Martino, Stefan Hakenberg, Arnold Schönberg, and others. 2) Dec. 7, 8 p.m. Performers from the department perform the works of Betsy Jolas for harp, clarinet, violin, and piano performance.

Handel & Haydn Society
Symphony Hall, Boston. Dec. 3-4, 8-11: Sun., 3 p.m.; all other shows, 7:30 p.m. Admission: \$17-50; rush tickets, \$7 each, available on Dec. 8 at Symphony Hall. Information: 266-3605. The H&H chorus and orchestra offer their 141st annual production of G.F. Handel's *Messiah*, conducted by William Christie.

MIT Two-Plane Student Recital
Kresge Auditorium, 84 Massachusetts Ave. Dec. 4, 1 p.m. Information: 253-2826. Performers include Julia Rosolovsky '97, Dan Brooks '98, Shuaichen Susan Shi '97, Mohab Gurunathan '97, and others.

Museum of Fine Arts, Boston
465 Huntington Ave., Boston. Dec. 4, 3 p.m. Admission: \$17; \$14, MFA members/students/seniors. Information: 267-9300. Saturday Brass Quintet, a group in residence at the Manhattan School of Music, features music by Gabrielis, Bach, and Schiedt, as well as some works that celebrate the holiday season.

The Spectrum Singers
First Congregational Church, 11 Garden St., Cambridge. Admission: \$15. Information: 469-3723. The Spectrum Singers and Music Director John W. Ehrlich present *Fröhliche Weihnachten!* as their annual holiday concert, featuring the works of German baroque composer Heinrich Schütz, with Schütz's *Historia der Gerburt Jesu Christi* as the centerpiece.

Bank of Boston Celebrity Series
Jordan Hall, New England Conservatory, Boston. Dec. 4, 3 p.m.

On The Town

A weekly guide to the arts in Boston
December 2 - 8
Compiled by Scott Deskin

Send submissions to ott@the-tech.mit.edu or by interdepartmental mail to "On The Town," The Tech, W20-483.

Admission: \$27-30. Tickets: 482-6661 or 266-1200. Emerson String Quartet performs works by Haydn, Bartok, and Dvorak. Walter Pierce, Executive Director.

Longy School of Music
Edward Pickman Concert Hall, 27 Garden St., Cambridge. All performances begin at 8 p.m. and all events free unless otherwise noted. Information: 876-0956 x130. 1) Dec. 4: Benefit Concert Series. Renowned pianist Abbey Simon performs the music of Schumann, Brahms, and Liszt. Admission: \$12; \$6, students/seniors. 2) Dec. 6: Longy Chamber Orchestra; Jeffrey Rink, conductor. Program features seasonal music of Corelli and Respighi.

MIT Chamber Music Society
Killian Hall, 14W-111, 160 Memorial Dr. Dec. 5-15. Information: 253-9800 or 253-2826 for complete schedule.

Tufts Early Music Ensemble
Alumnae Lounge, Tufts University, Medford. Dec. 5, 8 p.m. Information: 627-3564. Italian Renaissance Music, with *Frottole*, *Carmine*, and dances for violas da gamba, recorders, lute, harpsichord, and voices. Jane Hershey, director.

Federal Reserve Bank of Boston Concert Series
Bank Auditorium, 600 Atlantic Ave., Boston. Dec. 8, 12:30 p.m.

Information: 973-3453. Li San of the Longy Music School presents a piano solo performance.

Popular Music

MIT Chorallaries Winter Concert
77 Massachusetts Ave., Rm. 10-250. Dec. 3, 7:30 p.m. Information: 225-8884. MIT's coed a capella singing group with guest groups, the New Group from Wesleyan and the Spizzwinks from Yale.

MIT Concert Band
Kresge Auditorium, 84 Massachusetts Ave. Dec. 3, 8 p.m. Information: 253-2826. The Concert Band, performs original works: Russian Christmas Music by Reed, *Al Fresco* by Husan, *Canzona* by Mennin. John Corley, director; Lawrence Isaacson, assistant director.

Premiere Orchestra Concert
Kresge Auditorium, 84 Massachusetts Ave. Dec. 4, 5 p.m. Information: 225-6615. Works by MIT Affiliated Artist Julian Wachner, New England Conservatory graduate student Jake Parker, and Professor Noam Elkies of Harvard University. David Alt '93, guest conductor.

MIT Brass Ensemble
Houghton Memorial Chapel, 106 Central St., Wellesley College.

Dec. 4, 8 p.m. Information: 253-2826. Christmas Vespers performance of *Gabrieli Hodie Christus Natus Est* with the Wellesley and Harvard Choirs. Lawrence Isaacson, director.

Kendall Cafe
233 Cardinal Medeiros Way, Cambridge. Admission: varies, see below. Information: 661-0993. Each week will feature local and national artists including contemporary singer-songwriters, unplugged rock acts, blues and traditional folk. Dec. 3, 8:30 p.m. (\$7 cover): Richard Shindell performs songs from his latest album, a diverse mix of folk and country.

The Middle East
472/480 Massachusetts Ave., Cambridge. Some shows have age limits. Admission: varies; tickets may be purchased in advance at Strawberries, the In Year Northampton Box Office (1-800-THE-TICK), and the Middle East Box Office (Mon.-Sat., 10 a.m.-6 p.m.; call 492-5162 to charge tickets). Information: 497-0576.

The Green Dragon Tavern
11 Marshall St., Boston. Free admission every Wed. and Thu. night with a college ID. Information: 367-0055.

Jamaica Plain Firehouse Multicultural Arts Center
659 Center St., Jamaica Plain.

Nov. 20, 11 a.m.-2 p.m. Free admission. Information: 524-3816. Bagels 'n Bop presents the *Paul Combs Duo*.

Jazz

Boston Musicians' Festival for Project Bosnia
Berklee Performance Center, 136 Massachusetts Ave., Boston. Dec. 4, 7 p.m. Admission: \$13.50; \$5, students. Information: 621-9595. Featured jazz performers Mili Bermejo, Luciana Souza, Bevan Manson, and Bob Moses will perform in a concert to raise funds to send medical supplies to Bosnia.

Film

Brattle Theatre
40 Brattle St., Harvard Square, Cambridge. Admission: \$6 for all shows; \$4 for Brattle members; \$3 for seniors/children under 12. Information: 876-6837.

Special Engagements. Dec. 2-3: *The Good, the Bad, and the Ugly* (Sergio Leone, 1966); 7 p.m., w/ Sat. matinee at 1:30 p.m. *McCabe and Mrs. Miller* (Robert Altman, 1971); 4:30, 10 p.m. **Shakespeare.** Dec. 4: *Throne of Blood* (Akira Kurosawa, 1957); 2:10, 7 p.m. *Macbeth* (Roman Polanski, 1971); 4:20, 9 p.m. **Forbidden Hollywood.** Dec. 5: *Fog over Frisco* (William Dieterle, 1934); 5:10, 8 p.m. *Three on a Match* (Mervyn LeRoy, 1932); 3:50, 6:35, 9:30 p.m. *The Monster Within*. Dec. 6: *Eraserhead* (David Lynch, 1976); 5, 8 p.m. *The Blood of a Poet* (Jean Cocteau, 1930); 3:45, 6:45, 9:45 p.m. **Recent Raves.** Dec. 7: *The Adventures of Priscilla, Queen of the Desert* (Stephan Elliott, 1994); 4, 7:30 p.m. *Glen or Glennda?* (Ed Wood, 1953); 6, 9:30 p.m. **Bergman and Friends.** Dec. 8: *Smiles of a Summer Night* (Ingmar Bergman, 1955); 4, 7:50 p.m. *Wild Strawberries* (Bergman, 1957); 6, 9:50 p.m.

French Library and Cultural Center, Ciné Club
53 Marlborough St., Boston. Admission: \$5, \$4 for members. Information: 266-4351. All screenings are Fri.-Sat., 8 p.m., or Sun., 7 p.m. The Ciné Club presents a retrospective of the career of French actor Jean Gabin, lasting through December. Nov. 18-20: *Maigret Tend un Piège* (Jean Delannoy, 1957).

Harvard Film Archive
24 Quincy St., Cambridge. Admission: \$6, \$5 for students/seniors/children under 12. Information: 495-4700.

Feature Presentations. Dec. 2-8: *Hélas Pour Moi* (Jean-Luc Godard, 1993); Fri.-Sun., 6:30 & 8 p.m.; Mon., 7:30 & 9 p.m.; Tue., 6, 7:30, & 9 p.m.; Wed., 6 & 9:30 p.m.; Thu., 6:30, 8, & 9:30 p.m. Through Dec. 4: *Killing Zoe* (Roger Avery, 1994); Fri.-Sun., 9:30 p.m.; Sat.-Sun., 3:30 p.m. **Classics of the World Cinema I.** Dec. 5 & 7: *Ashes and Diamonds* (Andrzej Wajda, 1958); Mon., 5:30 p.m.; Wed., 7:30 p.m. **Perspectives in Film.** Dec. 6: Double feature — *A Walk through H* (Peter Greenaway, 1978) and *M is for Man, Music and Mozart* (Greenaway, 1991); 7:30 p.m. Dec. 7: *Until the End of the World* (Wim Wenders, 1991); 5:30 p.m.

Museum of Fine Arts
465 Huntington Ave., Boston. All films screened in Remis Auditorium. Unless otherwise noted, admission is \$6.50, \$5.50 for MFA members/students/seniors. Information: 267-9300.

The Alloy Orchestra Accompanies Silent Classics. Dec. 2: *Lonesome* (Paul Fejos, 1928); 6:30 p.m. *Metropolis* (Fritz Lang, 1926); 8:15 p.m. Dec. 3: *The*

Lost World (Harry O. Hoyt, 1925) and *Trip to the Moon* (Georges Méliès, 1902); 1:30 p.m. *Lonesome*; 3 p.m. **Week of Abruzzo Cinema.** Dec. 8: *Condominium* (Felice Farina, 1991); 10:30 a.m., 8 p.m. *Cabiria* (Giovanni Pastrone, 1914); accompanied by pianist Bob Winterj; 5:45 p.m.

Theater Openings

"Titus Andronicus"
Kresge Little Theater, 84 Massachusetts Ave. Through Dec. 3: Fri.-Sat., 8 p.m. Admission: \$7; \$5, MIT students. Information: 253-2903. The Shakespeare Ensemble's Fall Production of the Bard's most violent play, directed by MIT Theater Arts lecturer Kim Mancuso.

"The Best Christmas Pageant Ever"
First and Second Church, 66 Marlborough St., Boston. Through Dec. 3: Fri.-Sat., 8 p.m. Admission: \$5. Information: 578-8727. Presented by the Emerson Stage, Barbara Robinson's heart-warming story of the "worst kids in the world" who collide head-on with the Christmas spirit.

"Equus"
Brimmer Loft Theatre, 69 Brimmer St., Boston. Through Dec. 4: Fri.-Sat., 8 p.m.; Sun., 2 p.m. Admission: \$5. Information: 578-8727. Presented by the Emerson Stage, this play by Peter Shaffer explores the line between sanity and madness.

"Tales from the Vienna Woods"
Zero Church Street Performance Space, Cambridge. Through Dec. 4: Fri. & Sun., 8 p.m.; Sat., 2 p.m. Admission: \$10; \$8, A.R.T. subscribers; \$5, students/seniors. Information: 547-8300. This comedy, by Odón von Horváth, depicts the inner struggles and relationships among working-class Viennese in the 1920s.

"The Workroom"
Studio Theatre, 69 Brimmer St., Boston. Dec. 7-11: Wed.-Sat., 8 p.m.; Sun., 2 p.m. Admission: \$10; \$7, Pro-Arts Consortium students. Information: 578-8727. Presented by the Emerson Stage, Jean-Claude Grumberg's post-holocaust drama explores the struggles and memories of women laboring in a tailor's workshop in Europe.

"The Merchant of Venice"
Spingold Theater, Brandeis University, Waltham. Through Dec. 11: Fri.-Sat., 8 p.m.; Sun., 7 p.m. (except Dec. 11 at 2 p.m.); Wed.-Thur., 10 a.m. Admission: \$11-15. Information: 736-3400. Shakespeare's magical, sardonic, and passionate play about love, trust, and money, staged by Penny Cherns of the BBC and the Royal Shakespeare Company.

"The Well of Horniness"
Paramount Penthouse Theater, 58 Berkeley St., Boston. Through Dec. 17: Wed.-Sat., 8 p.m.; matinee Sun., Dec. 11 at 3 p.m. Admission: \$15; \$10, students with ID; Sat., Dec. 3 — Special performance (\$25 includes champagne reception with the cast and crew following the performance; reservations recommended. Information: 426-3550. A raunchy spoof of Hollywood film noir from the 1940s, written by lesbian-feminist playwright Holly Hughes.

"Judevine"
Boston Playwrights' Theatre, 949 Commonwealth Ave., Boston. Through Dec. 18: Thu.-Fri., 8 p.m.; Sat., 5 & 9 p.m.; Sun., 3 p.m. Admission: \$18-20; \$5 off, students/seniors; student rush tickets, half price. Information: 499-9599. The play, based on David Budbill's moving collection of poems of the title, is built around the lives and relationships of more than two dozen characters living in a fictional village in northern Vermont.

"A Child's Christmas in Wales"
Lyric Stage, 140 Clarendon St., Boston. Dec. 2-23: Wed.-Fri., 8 p.m.; Sat., 5 & 8:30 p.m.; Sun., 2 p.m.; Tue. and Thu. matinees (Dec. 6, 8, 13, and 15) at 11 a.m. Admission: \$17-26; group, student, and senior discounts available. Information: 437-7172. Fully-staged production of Dylan Thomas's famous autobiographical story that captures the excitement of holidays past and present.

"The Oresteia: Agamemnon, The Libation Bearers, and The Eumenides"
Loeb Drama Center, 64 Brattle St., Cambridge. Through Jan. 8, 1995: Tue.-Fri., 8 p.m.; Sat., 2 & 8 p.m.; Sun., 3 & 7 p.m.; some parts of trilogy shown separately — call for details. Admission: \$19-45. Information: 547-8300. An adaptation of the Greek dra-



The Spectrum Singers and Music Director John W. Ehrlich perform *Fröhliche Weihnachten* as their annual holiday concert on Sunday at 4:15 p.m.

matic trilogy by Aeschylus, by Robert Auletta, directed by François Rochaix.

league begins its 12-week winter series. Teams of improvisors square off over three periods, just like in hockey. The audience gets involved by deciding the fate of the performers.

tion of artifacts, including props used in the recent police-car-on-the-dome hack. Ongoing. "From Louis Sullivan to SOM: Boston Grads Go to Chicago." This exhibit explores the explosive growth of the city of Chicago in the last quarter of the 19th century and the contributions to this building boom by MIT and Boston architects. Through Jan. 29, 1995.

"Roni Horn: Inner Geography." This exhibit comprises drawings and books based directly upon New York artist Roni Horn's experiences in Iceland's preglacial landscape through her frequent visits to that country. Horn incorporates crayon, watercolor, and graphite drawings with literature, photography, and typefaced Icelandic words in her body of work, all of which is on display. Through Dec. 18.

"People and Computers: Milestones of a Revolution." Travel back through computing history via "time tunnels" and trace today's personal computers back to their giant ancestors of the 1940s and 1950s, with the help of touchscreen video displays and interactive computing stations. Ongoing. "The Networked Planet: Traveling the Information Highway." In one hour, visitors learn how vast "invisible" networks move and manage the flow of information and dollars all over the world. An animated ride down a phone line shows visitors what the information highway looks like on the inside. Ongoing.

among the different mediums. Masterpieces of English silver and soft-paste porcelain and pieces of English furniture will illustrate the artistic currents of this period. Through July 25, 1995.

Isabella Stewart Gardner Museum
280 The Fenway, Boston. Open Tue.-Sun., 11 a.m.-5 p.m. Admission: \$6, \$5 for students/seniors, \$3 youths (ages 12-17), free for members and children under 12; Wed, \$3 for students with current ID. Information: 566-1401. The museum, itself an example of 15th-century Venetian palaces, houses more than two thousand arts objects, including works by Rembrandt, Botticelli, Raphael, Titian, and Matisse. Ongoing.

Museum of Our National Heritage
33 Marrett Rd., Lexington. Admission and parking for the Museum of Our National Heritage is free. Hours: Mon.-Sat., 10 a.m.-5 p.m.; Sun., noon-5 p.m. Information: 861-6559.

"By a Fine Hand: Quilts from the SPNEA Collection." This exhibition, comprised of 30 splendid quilts from the collections of the Society for the Preservation of New England Antiquities, represents the talent and social climates of 18th, 19th, and early 20th-century New England quilt-makers. Through Dec. 4.

"Posters of Protest: Selections from the Haskell Collection." Lexington resident and attorney Mary Haskell provides several examples of contemporary graphic art from her collection, dealing with various social issues of importance from the 1960s and early 1970s. Through Jan. 8, 1995.

"The Flag in American Indian Art." This exhibition celebrates the creativity, sense of design, and highly-skilled craftsmanship of American Indian cultures. The 125 objects date from 1880 to the 1920s, represent Native American tribes from across the country, and use the American flag as a decorative element. The exhibition is drawn from the collection of the New York State Historical Association. Through Feb. 5, 1995.

"Fixed in Time": Dated Ceramics of the 18th, 19th, and 20th Centuries." In celebration of their 60th anniversary, the Boston China Students' Club presents an exhibition featuring works from the members' collections. The ceramics, 80 items in all, are displayed to give a feeling for their historical context. Through May 14, 1995.

"Gathered at the Wall: American and the Vietnam Veterans Memorial." This exhibit is designed to provide visitors an opportunity to examine the continuing impact of the Memorial on the generation of Americans who lived through the conflict. More than a thousand items have been selected to represent the diversity of the Vietnam Veterans Memorial Collection, and award-winning photographers will further enhance the event with pictures. Through June 4, 1995.

"Let It Begin Here: Lexington and the Revolution." Explore the causes and the consequences of the American War for Independence as seen through the eyes of typical New England men and women. The exhibit begins with an introductory audiovisual presentation about the events on Lexington Green. Ongoing.

Davis Museum and Cultural Center
Wellesley College, 106 Central St., Wellesley. Hours: Tue., Fri., and Sat., 11 a.m.-5 p.m.; Wed.-Thu., 11 a.m.-8 p.m.; Sun., 1-5 p.m.; closed Mon. Free admission. Information: 283-2051.

"Bodies and Boundaries, 1500-1800: Works from Wellesley Collections." At the Gerald and Marjorie Schecter Bronfman Gallery: an exhibition of European prints, drawings, books, and maps from three centuries, selected by Wellesley College participants. The works focus on various topics in our evolution and concepts of the body, humanity, gender and sexuality, and ethnic pluralism. Through Dec. 18.

"The Body as Measure." At the Chandler Gallery: the major emphasis on this exhibition is on the meanings of the body's physical form, not of its internal functions. Each artist addresses the body's external characteristics in relation to its social standing or expression of emotion. Through Dec. 18.

Museum of Fine Arts
465 Huntington Ave., Boston. Information: 267-9300.

"Grand Illusions: Four Centuries of Still Life Painting." Selections from the MFA's permanent collection, augmented by works on loan from friends of the Museum, trace the origins, emergences, and full flowering of the still life genre. Dutch and Italian masters, Renoir, Gauguin, Millet, Maurice Prendergast, and Stuart Davis will be represented. Through Jan. 1, 1995.

"Printed Allegories: Dürer to Picasso." This exhibition will feature prints from the museum's permanent collection from the 16th century to the early 20th century that represent allegorical subjects. Some of the greatest prints of all time are allegories, including Dürer's *Knight, Death, and the Devil* and Picasso's *Minotaur-machia*. Through Feb. 12, 1995.

"Sweet Dreams: Bedcovers and Bed Clothes from the Collection." This exhibition of quilts, coverlets, blankets, futon blankets, lingerie and sleeping caps will be drawn primarily from the permanent collection. Asian, Western, Mediterranean, and contemporary designer approaches to the ritual of the bed will be represented. Through Mar. 12, 1995.

"The Taste for Luxury: English Furniture, Silver, and Ceramics 1690-1790." This exhibition explores the influences of stylistic developments in the decorative arts throughout the eighteenth century and examines stylistic parallels

Sloan School Dean's Gallery
50 Memorial Dr., Rm. E52-466. Hours: Mon.-Fri., 8 a.m.-5 p.m. Information: Michelle Fiorenza, 253-9455. "Mirage." Oil and acrylic paintings by Sal Puleo. Through Jan. 27, 1995.

Rotch Library Visual Collections
77 Massachusetts Ave., Rm. 7-304. Information: 253-7098. Through Dec. 16: "Silent History: Images of Israel," by Emily Corbató, photographer.

Brickbottom Art Association
1 Fitchburg St., Somerville, Nov. 19-20, noon-6 p.m. Free Admission. Information: 625-5965. Annual Open Studios, featuring painters, sculptors, printmakers, photographers, ceramicists, jewelers, textile artists, and others. The event draws around 5,000 visitors annually.

Museum of Science
Science Park, Boston. 1) Mugar Omni Theater. Through April 1995: shows hourly most days, call for showtimes. Admission: \$7; \$5, children (3-14)/seniors. information: 723-2500. Through April 1995: *Africa: The Serengeti* (George Casey, 1994), narrated by James Earl Jones. 2) Charles Hayden Planetarium. Through Dec. 31, 1994: Thu.-Sat., 8:30 p.m. Information: 723-2510. "LaseRage," a new show that presents vivid laser-light visuals with a mix of popular rock, including Pearl Jam, Smashing Pumpkins, Red Hot Chili Peppers, and Nine Inch Nails.

The Computer Museum
300 Congress St., Boston. Hours: Tue.-Sun., 10 a.m.-5 p.m. (closed Mondays). Admission: \$7, \$5 for students/seniors, free for members and children four and under; half-price, Sun. 3-5 p.m. Information: 423-6758 or 426-2800 x310.

"Robots & Other Smart Machines." See how "smart" robots and computers are in this exhibit focusing on artificial intelligence and robotics. Over 25 hands-on computer stations illustrate advances in creativity, games, problem-solving, and communication, including a chance to meet Robot-in-Residence "R2-D2"™ from the *Star Wars* movies. Ongoing.

"Tools & Toys: The Amazing Personal Computer." Over 35 interactive stations illustrating many leading-edge applications enable you to experience virtual reality, pilot your own DC-10 flight simulator, record music, and do much more. Ongoing. "The Walk-Through Computer." The world's largest and only two-story model of a personal computer allows you to climb on a giant mouse, operate a larger-than-life keyboard, and watch the actual flow of information within the machine. Ongoing.

Compton Gallery
"mechanical e. motions@mit.edu." MIT Artist-in-Residence Arthur Ganson's ingenious kinetic sculptures address emotional and philosophical issues between the animate and inanimate, human and machine. Through Jan. 31, 1995.

Strobe Alley
Ongoing. Information: 253-4444. "Optical Alchemy." Full-color fluorescent photographs of corals and anemones by Charles H. Mazel SM '76, a research engineer in the Department of Ocean Engineering, taken at night during underwater dives. Matched pairs of images offer a comparison between the subject under "normal" reflected-light photography and under illumination with ultraviolet light.

Hart Nautical Gallery
55 Massachusetts Ave. Ongoing. "Course 13, 1893-1993: From Naval Architecture to Ocean Engineering." Exhibition includes historic photos, models, and computer graphics and highlights a sampling of current research including that performed by the department for Bill Koch's '62 successful America's Cup campaign with *America*™. "Permanent Exhibition of Ship Models." Models which illustrate the evolution of ship design from the 16th century through the 20th century.

List Visual Arts Center
20 Ames St. Hours: Tue., Thu. and Fri., 12 noon-6 p.m.; Wed., 12 noon-8 p.m.; Sat.-Sun., 1-5 p.m. Information: 253-4680.

"Critical Mass." This project commemorates the 50th anniversary of the detonation of the first atomic bomb by using as its theme the actual story of Edith Warner, whose small restaurant at Otawi Bridge in New Mexico became a meeting place for Manhattan Project scientists and local Navajo Indians. Photographer Meridel Rubenstein, videographers Woody and Steina Vasulka, and writer Ellen Zweig incorporate still photographs, video, sculpture, music, and performance to depict the exhibit's serious focus. Through Dec. 18.

"The Ghost in the Machine." The capabilities of digital image-making challenge our assumptions about photography's role in relation to issues of authenticity and reality, while also revealing how sophisticated new technologies allow artists unprecedented freedom in the creation and manipulation of photographic images. Artists in the exhibition employ conceptual art strategies while maintaining a focus on the human form and human condition in relation to identity and social order. Artists include Anthony Aziz and Sammy Cucher, Keith Cottingham, Yoshinoro Tsuda, Jeff Wall, Michael Weyon and Susan Gamble. Through Dec. 18.

Boston Baked Theater
255 Elm St., Davis Square, Somerville. Sat. evenings, 10:30 p.m. Admission: \$10; \$5, students. Information: 396-2470. The improvisational comedy group Guilty Children performs weekly on the stage.

ImprovBoston
Back Alley Theater, 1253 Cambridge St., Cambridge. Ongoing. Fri.-Sat., 8 p.m.; Sat., 10:30 p.m. Admission: \$10; \$5 with college I.D. Information: 641-1710. The area's longest-standing improvisational comedy group (12-years old) continues with a new season, composed of funny, energetic, creative performers who create scenes, dialogue, and characters on the spot, based entirely on audience suggestions.

The Comedy Project
Hong Kong Restaurant, Third Floor, 1236 Massachusetts Ave., Cambridge. Ongoing. Fri.-Sat., 9 p.m. Admission: \$10. Information: 247-1110. "The Big-Time Comedy Project Show"; dinner and dancing available.

Poetry

Poetry at MIT.
Bartos Theater, Bldg. E15, 20 Ames St. Dec. 8, 7:30 p.m. Information: 253-7894. Ed Barrett, senior lecturer in the MIT Program for Writing and Humanistic Studies, and photographer Ben Watkins will speak.

Exhibits

MIT Museum
265 Massachusetts Ave. Tue.-Fri., 9 a.m.-5 p.m.; Sat.-Sun., 1-5 p.m. Free to members of the MIT community, seniors, and children under 12. For all others there is a requested donation of \$3. Information: 253-4444.

"Holography: Artists and Inventors." The Museum of Holography Moves to MIT.

"Crazy After Calculus: Humor at MIT." The history of MIT "hacks." "Doc Edgerton: Stopping Time." Photographs, instruments and memorabilia documenting the invention and use of the strobe light by the late Harold E. Edgerton ScD '27.

"Light Sculptures by Bill Parker '74." Vivid interactive light sculptures, each with its own personality and set of moods.

"Math in 3D: Geometric Sculptures by Morton G. Bradley Jr." Colorful revolving sculptures based on mathematical formulae. "MathSpace." Hands-on exploration of geometry is the theme as visitors linker with math playthings. Ongoing.

"MIT Hall of Hacks." Reopening of the exhibition which chronicles MIT's rich history of wit and wizardry, featuring historic photographs and a fascinating collec-

Ongoing Theater

"Telbele and Her Demon"
New Repertory Theatre, 54 Lincoln St., Newton Highlands. Through Dec. 18: Wed., 2 & 7 p.m.; Thu.-Fri., 8 p.m.; Sat., 5 & 8:30 p.m.; Sun., 3 & 7:30 p.m. Admission: \$14-26. Information: 332-1646. In this story by Isaac Bashevis Singer and Eve Friedman, a poor scholar's lust for a beautiful widow in a 19th-century Polish village, and the spiral of passion and deceit which ensues.

Dance

Boston Ballet
Wang Center, 270 Tremont St., Boston. Through Jan. 1, 1995: Tue.-Sat., 7:30 p.m.; Sun., 6:30 p.m.; Sat. and Sun. matinees, 2 p.m. Admission: \$18-58; group discounts available. Information (tickets): 931-ARTS for TicketMaster. The traditional holiday favorite makes its annual appearance in Boston, with the famous Tchaikovsky score and more than 100 performers on stage.

Boston Center for the Arts
539 Tremont St., Boston. Through Dec. 4: Fri.-Sat., 8 p.m.; Sat., 2 p.m.; Sun., 3 p.m. Admission: \$18 (advance), \$20 (at door); group rates available. Information: 695-8020. Boston's Spanish dance company, **Amaya, Flamenco Sin Limites**, performs *Pasión Flamenca*, a program of tradition and modern flamenco dance, starring dancer-choreographer Omayra Amaya.

Dance Umbrella and Ruth Birnberg Dance
C. Walsh Theatre, Suffolk University, 55 Temple St., Boston. Dec. 2-4: Fri.-Sat., 8 p.m.; Sun., 2 p.m. Admission: \$15; \$10, students/seniors. Information: 573-8680. Igor Stravinsky's *Rite of Spring* will be performed in a version for two pianos and other dance and music works.

ALEA III at Boston University
Tsay Performance Center, 685 Commonwealth Avenue, Boston. Dec. 7, 8 p.m. Admission: \$6; \$3, students/seniors; free with BU I.D. Information: 353-3340. Dramatic and choreographic works, conducted by Theodore Antoniou, will be presented at a concert with dancers, mimes, singers, and actors as featured soloists. Program includes Paul Hindemith's ballet *Hérodiade*, Jacob Druckman's *Animus II*, Jani Christou's *Anaparas-tasis*, and Antoniou's *Monodrama*.

Comedy

U.S. Improvisational Theatre League
Lyric Stage, 140 Clarendon St., Copley Square, Boston. Sunday nights (beginning Nov. 6). 8 p.m. Admission: \$10. Information: 864-1344. The highly-acclaimed

COMPUTER BLOWOUT

TONS OF COMPUTER SURPLUS
Equipment is too good to scrap!

**DEC, STRATUS, IBM
MASSCOMP, PLEXUS**
Power Supplies, Printers, Boards
PC's, Monitors, Modems

**Mark Your Calendar
SATURDAY, DEC 3**

BOSTON FINANCIAL & EQUITY CORPORATION
20 Overland Street - 4th Floor
GREEN LINE to KENMORE STATION
off of Brookline Ave.
617-267-2900 OPEN: 9-4

So, You're Wondering About
I. A. P. and Spring Housing Information??

IMPORTANT DEADLINES FOR SUBMITTING REQUESTS

- WEDNESDAY, NOVEMBER 30th Room Change Within House request, Contact your Room Assignment Chair for more information.
- FRIDAY, DECEMBER 2nd House-to-House Change request, forms available in W20-549
Decrowding Preference request, form sent to students currently living in crowds
Spring Cancellation request, forms available in W20-549
9th+ Term Housing request, send letter to W20-549
- MONDAY, JANUARY 9th, 1995 Last Day of Fall Term Occupancy

Please stop by the RCA office in W20-549, or call 3-6777, or e-mail Phil Bernard <pmberner@mit.edu> with any questions!!

Imanishi-Kari Could Lose Funding for 10 Years

Report, from Page 1

had staunchly defended the paper since its publication. However, he and the other co-authors retracted the paper in spring 1991 when the NIH concluded that the data had been falsified. Baltimore was not accused of fraud himself, but has been criticized for not reviewing the case.

"I do not believe that Dr. Imanishi-Kari actually did the things that are charged in the report," Baltimore said yesterday.

"I'm disappointed that the report came to that conclusion," said Head of the Department of Biology Phillip A. Sharp. "I'm not privy to the material they have used to come to that conclusion; I'd like to see it on public display," he said.

The report says that Imanishi-Kari's article raised false hopes in the scientific community, and that other scientists could have wasted their time following-up on her studies. Other biologists have been unable to reproduce the results, according to the press release.

Imanishi-Kari's work showed that when a gene from one mouse strain was transplanted to another mouse strain, the second mouse strain produced high levels of antibodies that it would not have normally produced.

With the current charges, Imanishi-Kari cannot receive federal grants or contract money, or be able to participate in cooperative agreements for 10 years.

Imanishi-Kari has appealed the decision to the Human Health and Services Departmental Appeals Board.

"I am hopeful the appeal process will show the true situation," Baltimore said.

Federal funding pays for about 93 percent of the biology research done at the Institute, Sharp said. By not allowing a scientist to be federally-funded, "it's an exclusion from doing significant, skilled research," Sharp said.

This "makes it virtually impossible to continue in research, and I think that she'd almost have to leave the country [to be able to do research] if those findings are upheld," Baltimore said.

The federal office used three methods to come to their findings: a statistical analysis program showed that the data was consciously falsified to reach a certain result and that the errors were not made by chance; the Secret Service performed a forensic analysis on when the notations in the laboratory notebook were made; and the office relied on scientific evidence.

Lower Deficit Due To Certain Factors

Deficit, from Page 1

efficient revenues. Reduced endowment cuts future earnings, which is an unacceptable choice, Dickson said.

"The factors that caused the favorable budget in 1994 are largely non-recurring, but do show a large effort by faculty and staff," Strehle said. Factors include decreases in employee benefits, tuition revenue, and student financial aid.

Because these factors change from year to year, the Executive Committee has not made any budget changes for the immediate future, said Director of Financial Operations John A. Currie.

Another liability is the lower indirect cost recovery on research programs. The indirect recovery for FY 1994 declined \$3.9 million, according to *Tech Talk*.

Indirect research costs are shared by MIT and the government, company, or other sponsors, but the contracts and formulas have changed in recent years. "We believe that the

indirect cost recovery on research programs will be slightly less favorable than in previous years," Strehle said.

The Institute's total expenditures in FY 1994 were \$1.138 billion, and revenues, funds, and gifts amounted to \$1.132 billion, according to *Tech Talk*.

Re-engineering effort unchanged

The deficit decrease was unrelated to the re-engineering plan, according to Dickson. "I think it had more to do with constraint on the part of people at MIT," he said.

The re-engineering effort aims to streamline support services without affecting quality, Dickson said. Thus, MIT can moderate increases in tuition and provide funds for new initiatives, he said. The effort will evaluate everything from mail circulation and custodial services to the process of appointing people and purchasing equipment.

"The first meaningful effect [of re-engineering] would take place in fiscal year 1996," Strehle said. A deficit of \$1.1 million is projected for FY 1996, and a surplus of \$2.7 million is expected in FY 1997, according to *Tech Talk*.

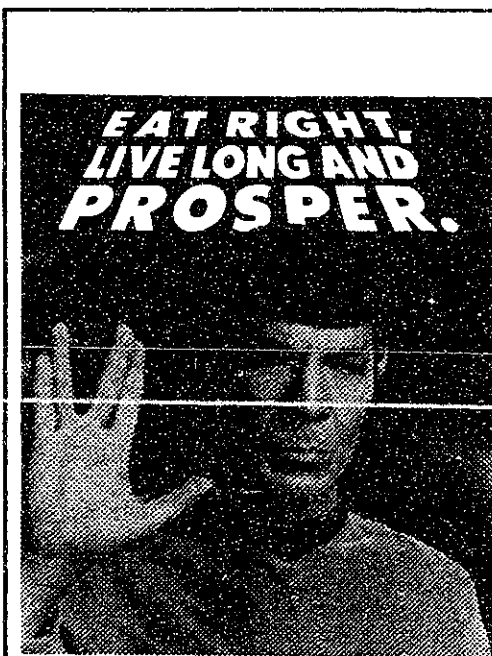
"The future is based on the optimism on the re-engineering program," Currie said. "It's too early to tell if we'll meet that timetable."

Two essential ingredients for a perfect date:

A date and this.



It's everywhere you want to be.®

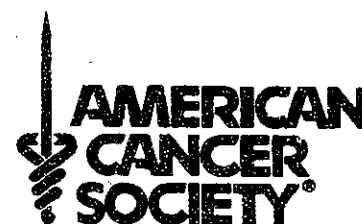


EAT RIGHT, LIVE LONG AND PROSPER.

EATING RIGHT IS HIGHLY LOGICAL.

Recommendations:
Eat high-fiber foods, such as fruits, vegetables, and whole grain products. Eat fewer high-fat foods. Maintain normal body weight. And live long and prosper.

CALL THE AMERICAN CANCER SOCIETY AT 1-800-ACS-2345 FOR FREE NUTRITION INFORMATION.



STAR TREK • & • 1989 PARAMOUNT PICTURES CORPORATION ALL RIGHTS RESERVED. THE AMERICAN CANCER SOCIETY AUTHORIZED USER.

Students Help in Plans to Renovate Pritchett

Pritchett, from Page 1

...s decided upon, Gupta said. Since the project began last year, Pritchett's menu has "been in a state of flux" with student input being taken into consideration, Gupta said. The menu will feature frappes and filled items that have been popular on the east side of campus, McBurney said. The convenience store will be stocked with high-selling items similar to those at the MacGregor

House Convenience store, he said. Pritchett will be managed by a team of students and will only require about seven employees at a time to keep it running, McBurney said. "Students are very happy with the way the administration has been getting student input and actually using that input to shape Pritchett," Gupta said. "It's been a pleasure to work with" the administration, he said.

SIP to Join National Sorority

SIP, from Page 1

turing for the sorority. Joining a "national means extra support and a chance for [Sigma Iota Phi] to get stronger," Mallin said. "I am nervous for them, and I hope things go smoothly for the sisters of SigIPhi."

SIP, AEPHi share common values

The decision to obtain charter-ship from AEPHi was reached by the sisters of Sigma Iota Phi and the Panhellenic Association, after AEPHi representatives visited the

sorority. "It was an easy decision for most of the sisters," Disraelly said. "AEPHi came in, answered our questions, and talked to us. I think that they impressed people with their openness and their willingness to answer questions," she said.

The two sororities also have similar histories. Before becoming a national sorority, AEPHi started out locally at Barnard College with a sisterhood of seven Jewish women. SIP was started at MIT by seven women.

SIP chose to affiliate with AEPHi

because it was "founded on Jewish values, principles, and morals which are similar to ours," Segal said. "However, we are not any more Jewish than other [sororities] are Christian. AEPHi does not discriminate, and it has an open policy."

"I got involved in Sigma Iota Phi because of the people, and becoming part of AEPHi excites me because it will give us a more recognizable name and another way to attract great people," Disraelly said.

"It's a great opportunity for first-year students to become involved with a national sorority," Segal said.

A look back. Fifth in a series.

THINKING ABOUT YOUR EDUCATION

In this series we have discussed topics that are at the heart of the educational process. Your awareness of them and your conscious application of them during your education can aid you in getting the most out of your years in school.

HERE IS A SUMMARY OF THE POINTS OF EACH ESSAY.

The purpose of education.

"... alumni records show that it is likely for many of us to work in multiple fields or to change fields entirely.

The ability to do excellent work in a range of fields and to meet diverse challenges with clear, bold thinking and creative solutions are the hallmarks of a good education.

The skills we learn are an acute ability to observe all aspects of a problem, to integrate a wide range of knowledge, to analyze in depth, to obtain insight, to find creative solutions, and to rigorously test the solutions."

Pressure, confidence and self-esteem.

"Pressure to excel is inherent in any institution that strives to be the best of its kind.

There is a temptation to suggest changes to reduce this pressure: a lighter course load, easier grading, easier courses, less homework, etc.

Experience teaches us that in the long run, confidence and self-esteem cannot come from reducing the challenges we face.

When we face the challenges of solving real and difficult problems; when we solve problems others have attempted and have not solved; when we break ground with any new knowledge; when we see our own solutions tested by reality and found satisfactory, then we acquire confidence and self-esteem. There simply is no other way.

And recognition, when it comes, is fully deserved."

The foundations of creativity.

"The principal obstacle to achieving creative

breakthroughs is a premature conclusion that a better solution is not possible.

To overcome this obstacle we need to add to our basic thinking skills and technical foundation the following elements of attitude:

1. A strong desire for a creative breakthrough.
2. Confidence in our ability.
3. An expectation that many false starts may be necessary.
4. Sufficient immersion in the problem to engage all our faculties.
5. A willingness to pursue solutions until a breakthrough is achieved.
6. Analysis of each attempt to aid in the development of insight."

Developing your thought process.

"As students of science and engineering, you have an excellent opportunity to develop your thought process by working on problems whose correct analysis yields a unique answer.

Searching for the correct solution causes you to rethink the problem until comprehension develops and you get the right answer.

The homework problems you solve often involve fundamental concepts that are applicable in areas far removed from the original area of study. To further your understanding of these concepts, simply ask yourself what are the basic concepts of the problem and write them down in a few words.

Another useful exercise in the development of your thought process is to explain the concepts to another student. This process provides feedback and reactions to confirm or challenge your understanding.

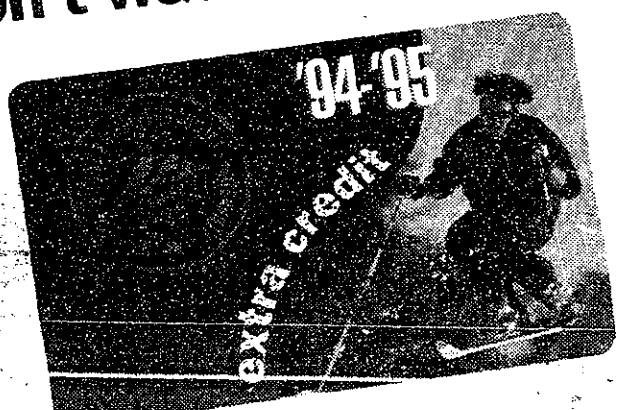
In summary, work on problems that have verifiable answers, articulate the central concepts in a few words, then try to explain (teach) the concepts. This will substantially increase your ability to derive the full benefit from your education."

NOTE: Each year the Bose Foundation sponsors a one year fellowship (approximately \$34,000) for a first year graduate student in electrical engineering and computer science. Please see your faculty advisor for more information or write: Heather Sweeney, Bose Foundation, The Mountain, Framingham, MA 01701-9168. Deadline for application: February 17, 1995.

For the full text of this series write
Bose Foundation, The Mountain, Framingham, MA 01701-9168.

BOSE FOUNDATION

Play time is limited.
So is cash.
We won't waste either one.



Wherever your school is located you're probably less than 90 minutes from all the excitement of the best snow resorts in the east - challenging steep, bumps you won't believe, half-pipe thrills and action that doesn't stop when the sun goes down. Now you can get all this for just \$27 a day - a 40% savings over the daily price!

Just purchase the Extra Credit Card for \$30, then get a one-day or multi-day ski pass at Killington, Mount Snow, Sugarloaf or Waterville Valley* for just \$27 a day.**

If you've never skied or snowboarded, and have always wanted to learn, get a complete package (lower mountain lift ticket, lesson, and equipment) for the same \$27 a day.

Don't waste another minute, call 1.800.9.SKIERS (1.800.975.4377) to order your extra credit card today!



- 72 lifts
- 443 trails
- 10 mountains
- 5 halfpipes
- 4 snowboard parks
- 186 miles of terrain

*Whether the Extra Credit Card is honored at Waterville Valley this season is conditional on Waterville Valley becoming a Ski-USA owned ski area.
**Some restrictions apply. Must be a full-time college student.

CLASSIFIEDS

- Events
- Housing
- Travel
- Help Wanted
- Services Offered
- Information
- Positions Wanted
- Lost & Found
- Clubs
- For Sale
- Greeks
- Miscellaneous

Advertising Policies

Classified ads are due at 5 p.m. two days before day of publication, and must be prepaid and accompanied by a complete address and phone number. Send or bring ads, with payment, to W20-483 (84 Mass. Ave., Room 483, Cambridge, MA 02139). Account numbers for MIT departments accepted. Sorry, no "personal" ads. Contact our office for more details at 258-8324 (fax: 258-8226) or ads@the-tech.mit.edu.

Rates per insertion per unit of 35 words

MIT community:	
1 insertion	\$3.00
2-3 insertions	\$2.75
4-5 insertions	\$2.50
6-9 insertions	\$2.25
10 or more insertions	\$2.10

All other advertisers.....\$5.00

Help Wanted

Japanese Linguist Detail-oriented linguist to translate, edit & proofread technical documentation. Native Japanese speaker with English fluency, 3 year translation/editing exp. (software & medical). Computer literacy (esp. Japanese Windows) essential. Cover letter (detailing translation & software exp.) & resumé. to Harvard Translations, 137 Newbury St., Boston, MA 02116. Fax: 617-424-8983.

Travel Abroad and Work. Make up to \$2000-\$4000+/mo. teaching basic conversational English in Japan, Taiwan, or S. Korea. No teaching background or Asian languages required. For information call: (206) 632-1146 ext J50333.

Healthy men needed as sperm donors. Help others and earn up to \$105/week. All ethnicities needed, call to see if you qualify: 497-8646 M-F, 8:00-4:00. California Cryobank, Cambridge.

Help Wanted

Ideal part-time childcare job Carry your course load! Get free room/board in Navy yard triplex! Make Money! In exchange for occasional before/after help for bright 9-year-old girl. Private bedroom/bath; city skyline view. References. 242-0905 after 9 pm.

Japanese Localization Manager Technical manager for Japanese software localization projects. Native Japanese speaker with English fluency; 3 years exp. in Japanese localization (Windows) required. Exceptional computer skills, familiarity with multiple environments & resource editing essential. Cover letter (detailing localization, linguistic, & software exp.) & resume to: Harvard Translations, Inc., 137 Newbury St., Boston, MA 02116; Fax: 617-424-8983.

\$1500 weekly possible mailing our circulars! No experience necessary! Begin now! For info call 202-298-0955.

For Sale

ANEW by AVON 4 & 8% alpha hydroxy skin creams, affordable, with wonderful results. If interested, please phone Linda at 576-6798 for free sample.

Computer for sale 486DX, 40 MHz, 120 MB hard drive, VGA monitor /w 1 Meg video, 256 K cache memory, 4 MB RAM, 2400 baud modem, sound card, mouse, keyboard, Windows 3.1 and Dos 5.0 are included. \$950 firm. Call Jin at 494-8677.

Kramer guitar for sale 3 pick-ups, Peavey amplifier with distortion, 2 patchcords, leather case. All for \$250, negotiable. Call Jin at 494-8677.

Housing

Apartment/room wanted near Kendall Square. Non-smoker, extremely nice guy. Call Abid at 225-8173.

Services Offered

Legal problems? I am an experienced attorney and graduate of MIT who will work with you to solve your legal problems. My office is conveniently located in a downtown Boston, just minutes from MIT via the MBTA. If you have a question involving litigation, high tech law, consumer or business law, family law, real estate or accidents, call Attorney Esther J. Horwich at 523-1150 for a free initial consultation.

Travel

Hitch The Skies With Airhitch Carrib/Mex \$189 R/T, Europe \$169, California \$129. Call for FREE program description 800-326-2009.

Spring Break- Nassau/Paradise Island, Cancun, Jamaica from \$299! Air, hotel, transfers. Parties and more! Organize a small group-earn free trip plus commissions! Call 1-800-822-0321.

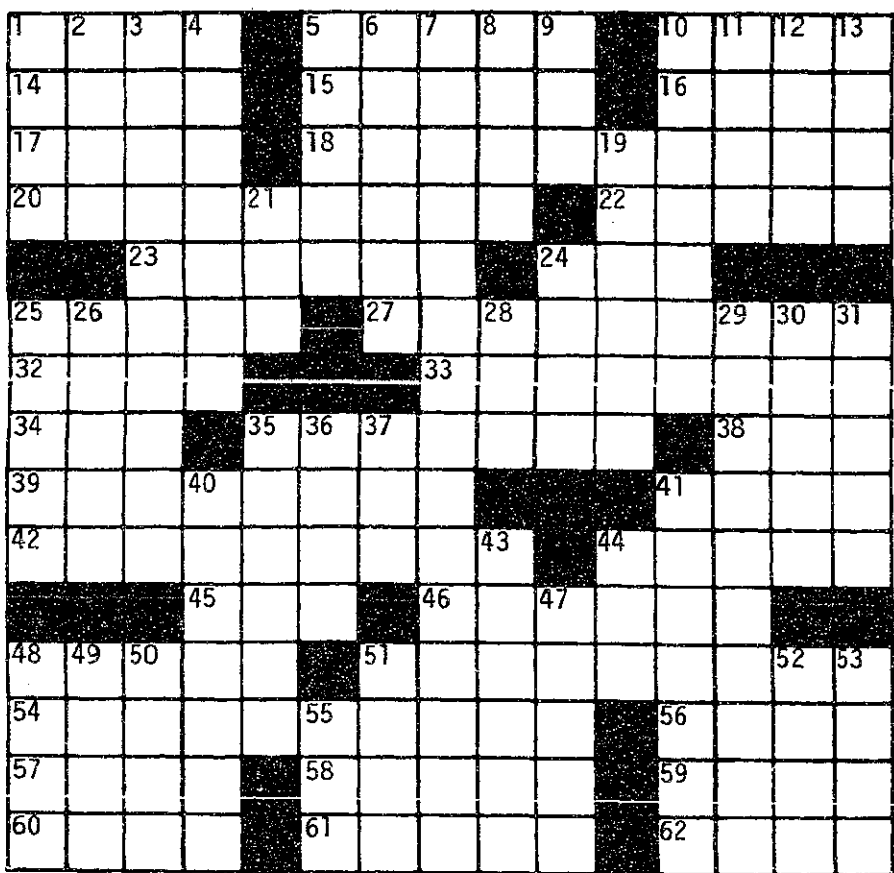
Clubs

Stuyvesant High School Alumni-MIT has a Stuy alumni chapter for YOU! Get involved and keep those Stuy bonds strong! Get to know more upperclassmen who are in your major! For more information, contact Angela at 225-8547.

The **Boston Audio Society**, a forum for audiophiles, schedules guest lecturers, publishes a newsletter, meets locally every third Sunday to hear & discuss audio developments: 259-9684 or PO Box 211, Boston, MA 02126.

Events

Sangam Fall Colloquium India: Caste Warfare or Integrated Democracy? Caste reservations: Socio-Economic consequences, A Panel discussion on the Caste-based reservation policy in India. Panelists: Dr. Myron Weiner, MIT, Dr. Pratap Mehta, Harvard University, Dr. Sougata Bose, Tufts University. Room 9-150 on Thursday, Dec 8. 7:00-8:30 PM. Admission is free. QUESTIONS: Amit Dhadwal (adhadwal, 621-9955), Ravi S (sravi@mit), Gauri Sikri (kate@mit).



© Edward Julius Collegiate CW8705

ACROSS

- 1 Fishing need
- 5 Code word for the letter "A" (pl.)
- 10 Blue of baseball
- 14 Sigh words
- 15 Stir up
- 16 Ever and —
- 17 Lariat
- 18 Filming site (2 wds.)
- 20 Alone (2 wds.)
- 22 Part of TNT
- 23 Pea-picking machines
- 24 Dog show initials
- 25 Mrs. Peel's partner
- 27 Writer Mickey, and family
- 32 Sound possibly made by Garfield
- 33 Seaport near Tijuana
- 34 Miss MacGraw
- 35 Part of Bogart film title (2 wds.)
- 38 "— the season..."
- 39 Disheartened
- 41 Content of some humor books
- 42 Lasting a short time

- 44 Formation
- 45 Mornings, for short
- 46 Miss Loren
- 48 River to the Seine
- 51 Brook
- 54 Restaurant offering (2 wds.)
- 56 Taj Mahal site
- 57 Saturday night specials
- 58 Deserve
- 59 Do detective work
- 60 Pro —
- 61 Colonist William, and family
- 62 Anglo-Saxon slave

DOWN

- 1 Pointed remark
- 2 Nautical cry
- 3 Deprive of necessities
- 4 More minuscule
- 5 Got up
- 6 Recluses
- 7 Unusual ship-command (3 wds.)
- 8 Up until (2 wds.)
- 9 Trigonometry abbreviation
- 10 European tourist mecca

- 11 "What's — for me?"
- 12 ———die
- 13 Part of A.D.
- 19 Leg ornament
- 21 Football position
- 24 And
- 25 Bogart role, Sam —
- 26 Dutch bloom
- 28 Tavern
- 29 House warmer (2 wds.)
- 30 Minneapolis suburb
- 31 Impertinent
- 35 Detective Mike —
- 36 Votes for
- 37 To see: Sp.
- 40 As — junkyard dog

- 41 Man or ape
- 43 Ohio city on Lake Erie
- 44 Shout of discovery
- 47 Rains hard
- 48 Courier (abbr.)
- 49 Prefix for lung
- 50 Litter member
- 51 "Peter Pan" pirate
- 52 — go brag
- 53 Story
- 55 Napoleon, for one (abbr.)

PUZZLE SOLUTIONS FROM LAST ISSUE

C	A	L	A	S	H	S	Q	U	A	R	E	S				
U	N	I	Q	U	E	S	S	P	U	N	S	I	L	K		
T	I	E	U	P	S	P	R	O	T	E	G	E	E			
U	L	N	A	E	S	L	I	T	S	E	W					
P	E	S	R	E	N	E	G	A	D	E						
						F	L	A	N	S	O	P	C	I	T	
L	O	A	I	B	I	D	C	O	R	G	I					
O	P	T	I	C	A	L	I	L	L	U	S	I	O	N		
P	A	R	T	I	F	O	A	M	B	R	A					
E	L	I	Z	A	S	E	R	V	E							
						A	L	G	E	R	I	A	N	S	T	A
S	T	S	E	N	O	S	T	E	L	A	R					
K	A	T	M	A	N	D	U	S	A	X	O	N	Y			
A	P	I	A	R	I	E	S	A	R	I	S	T	A			
T	E	R	R	I	E	R					P	Y	T	H	O	N

SOLUTIONS IN THE NEXT EDITION OF THE TECH

WE'RE KNOWN FOR GIVING OUR PATIENTS CHOICES. BUT WHEN IT COMES TO A PREGNANCY TEST, WE ONLY OFFER ONE:



We give a complete pregnancy test at no charge. We believe it's such an important part of a woman's health that no woman should have to choose a less reliable test method.

However, when it comes to other areas of women's health care, we offer all the choice you'll ever need at every stage of life. From comprehensive obstetrical, gynecological, and midwifery care, that includes family planning, to pre-natal care, preventative health and menopausal services. Being a multi-cultural and multi-lingual practice, we also understand a woman's emotional needs. In addition, we're associated with *Great Beginnings - The Malden Hospital's maternity services.*

So, if you think you might be pregnant, why not call for an appointment? Our pregnancy test can be arranged at any of our locations, even during evening hours. Please call the office most convenient for you.

PARTNERS IN WOMEN'S HEALTH

Come visit us in our new, larger location!
10% Discount with MIT or Wellesley ID!



TANDOOR HOUSE
Finest Authentic Indian Cuisine
569 Massachusetts Avenue
(in the heart of Central Square)
Cambridge, Massachusetts 02139 USA
Telephone (617) 661-9001 • Fax (617) 497-6777
Open every day 11 to 2:30 and 5 to 10:30
Reservations accepted • Parties accommodated
Parking available in municipal lot behind restaurant (free after 6 pm)

"Sometimes it seems Cambridge must have more Indian restaurants than Bombay. But another good one is always welcome, and Tandoor House is very good indeed."—*The Boston Globe*

"Not only the best Indian restaurant in Cambridge (which it is, resoundingly), but one of Cambridge's finest restaurants, period.... Dining at Tandoor House is a constant source of delight."—*The Unofficial Guide to Life at Harvard*

POLICE LOG

The following incidents were reported to the Campus Police from Nov. 12 to Nov. 25:

Nov. 12: Hayden Library, backpack, contact lens, and \$30 cash stolen; ATO house, coat stolen, \$80.

Nov. 13: Tang laundry room, clothing stolen, \$125; Bldg. 54, stationary items stolen, \$20.

Nov. 14: Bldg. 16, suspicious person sleeping in women's restroom; Bldg. 16, laser pointer stolen, \$259; Bldg. 35, graffiti; Lobby of Bldg. 10, ficus tree stolen, \$200; Bexley Hall alley, bicycle stolen, \$280; near Kresge Auditorium, bicycle stolen, \$250; 33 Massachusetts Ave., bicycle stolen, \$300.

Nov. 15: Bldg. E40, male arrested for trespassing; 33 Massachusetts Ave. bicycle rack, bicycle stolen, \$400; Bldg. 7, bicycle stolen, \$200.

Nov. 16: Bldg. 2; two chairs stolen, \$260; Bldg. 31, suspicious activity; Bldg. 11, backpack stolen, \$65 cash and contents; East Garage, '90 Honda CRX stolen; Bldg. 26, male arrested for trespassing.

Nov. 17: Bldg. 5, checkbook stolen and \$750 withdrawn from account; Bldg. 68, bicycle parts stolen, \$80; DuPont bicycle rack, bicycle stolen, \$260; Student Center, backpack stolen, \$100; Bldg. 11, mouse ball stolen, \$70; Bldg. 24, malicious damage; Kresge Oval, two individuals known to each other involved in a simple assault and battery.

Nov. 18: Bldg. 13, computer wrist rest stolen, \$100; Bldg. 66, 1) compact discs stolen, \$250; 2) leather jacket stolen, \$260; East Garage, '87 Buick stolen, Bldg. 26 bicycle rack, bicycle stolen, \$300; Bldg. 36, briefcase and contents stolen, \$250; Bldg. 13, bicycle stolen, \$280; Windsor St. lot, dispute over parking spot.

Nov. 19: Bldg. 54, disorderly person; Bldg. 36, cash stolen, \$100; Next House, vandalism to a door.

Nov. 20: Westgate lot, Jeep broken into and compact disc player, sunglasses, and radar detector stolen, \$820; Burton-Conner House, suspicious person; West Garage, malicious damage to a vehicle.

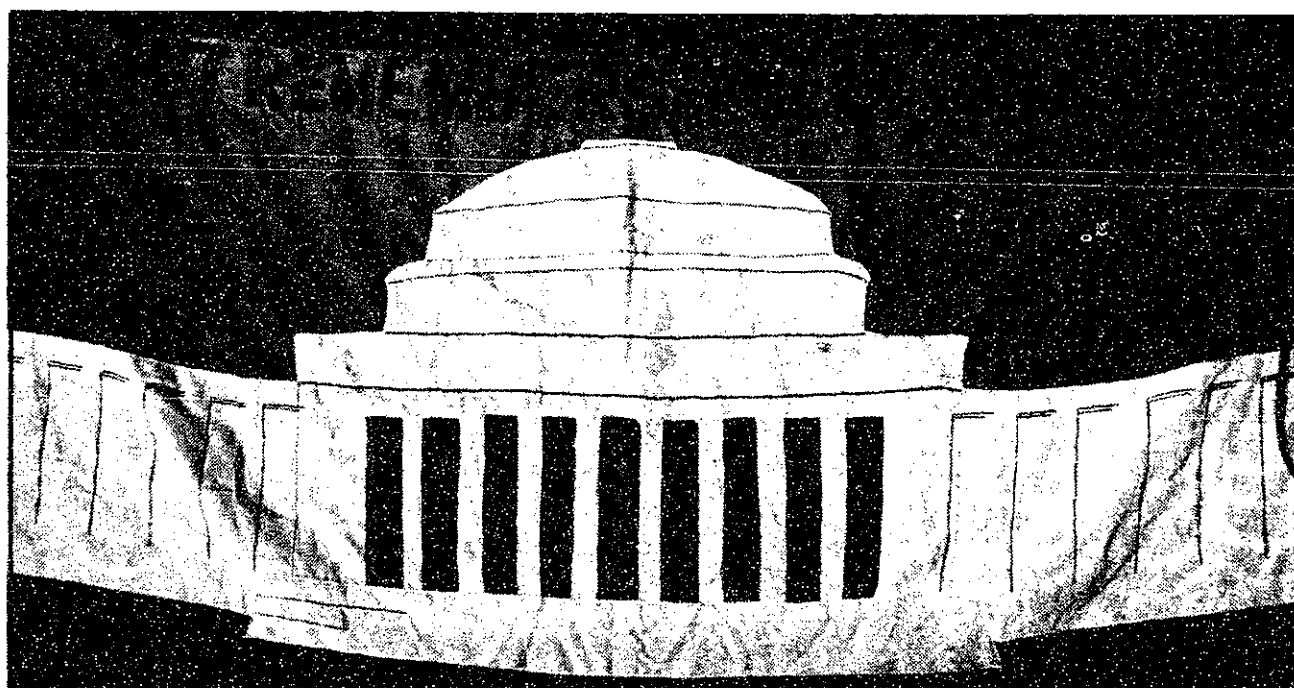
Nov. 21: Bldg. W11, suspicious activity; Eastgate, male arrested for domestic violence; Student Center, radio stolen, \$100.

Nov. 22: Alumni Pool, wallet broken into and cash stolen; Bldg. 54 bicycle rack, bicycle stolen, \$300; Student Center Athena cluster, backpack stolen, \$300; Windsor St. lot, male arrested for breaking and entering a motor vehicle; Bldg. 1, vending machine broken into.

Nov. 23: Bldg. 50, tape deck stolen, \$1,500; Bldg. 8, tools stolen, \$250; Bldg. 6, harassing phone calls.

Nov. 24 and 25: No reports.

You can register your bicycle at the Campus Police department for 25 cents. Of the 10 bicycles recently stolen, only two were registered. Registering helps in locating the owner in case another police department recovers your stolen bike.



This quilt hung in Lobby 7 yesterday, commemorating World Aids Day. Between the pillars are the names of AIDS victims that were affiliated with MIT: Sandra, David, Kirk, Bob, Don, David, Bill, Andrew, and Mark.

SHARON N. YOUNG PONG—THE TECH

Tens of thousands of people will need blood during the holidays.

Still wondering what to give?

American Red Cross

Give blood again. Once more will be felt for a lifetime.

PHOTO BY JERRY M. ...

This space donated by The Tech

medical fact

No matter what health insurance you have, most MIT Medical services are free if you're a registered MIT student

- 24 Hour Urgent Care 253-1311 (voice, TDD)
- Internal Medicine and Nurse Practitioner Appointments 253-4481 (voice, TDD)
- Psychiatry Service 253-2916
- Student Health Program 253-4371

mit medical

GARBER TRAVEL

wants to send you HOME FOR THE HOLIDAYS!

We guarantee the Lowest Available Airfare to your Hometown!

call your nearest Garber Travel Agent at: 1105 Mass. Ave. CAMBRIDGE 492-2300

來利樓

Larry's Chinese Restaurant

302 Massachusetts Ave., Cambridge
Orders to go, or dining in

FREE DELIVERY TO THE M.I.T. CAMPUS — \$10 MINIMUM
Luncheon Specials served daily, 11:30 a.m. — 5:00 p.m., starting at \$2.95
Special Dinner Plate just \$4.95 all day long

15% OFF WITH THIS AD (VALID THRU 12/30/94)
(for dine-in dinners only, \$10 minimum purchase)

Call 492-3179 or 492-3170

Monday — Thursday, 11:30 a.m. to 10:00 p.m.
Friday — Saturday, 11:30 a.m. to 11:00 p.m.
Sunday, 5:00 p.m. to 10:00 p.m.

Career opportunities at J.P. Morgan in Asia

A dinner by invitation only, for MIT graduating Seniors and qualifying Juniors, will be held on Thursday, February 9, with on campus interviews scheduled for the following day for full time and summer intern positions in

Corporate Finance
Sales, Trading, and Research

Candidates must be fluent in English and an Asian language and be willing to be based in Singapore, Hong Kong, or Tokyo.

Interested candidates should fax a cover letter and resume to: Lynn Aritabile at (212)-648-5148 by January 12.

JPMorgan

J.P. Morgan is an equal opportunity employer

SPORTS

Crain, Darley Lead Men's X-C to 10th at NCAAs

By Arnold Seto
TEAM MEMBER

On Nov. 19th, the men's cross country team competed in the National Collegiate Athletic Association Division III Championships in Bethlehem, Pa. Racing against the best in the nation, the Engineers scored 298 points, tying Haverford College for 10th place.

Ethan Crain '95 and Jesse Darley '95 took their rightful place among the champions with All-American performances. The pair went out with the lead pack of runners and remained there for the entire race.

Both had hopes of winning the race outright, but Crain was plagued with a recurring stomach ailment,

while Darley, on this day, didn't possess the concentration to match his desire.

Darley said, "I felt like a spectator with a very good seat," with little control over the events unfolding.

Still, both Crain and Darley finished extremely well. Crain ran the five-mile race in 25 minutes, 15.0 seconds for ninth place, and Darley was right behind in 25:15.8 for 10th. Thus, both received All-American honors, the highest award available to college athletes.

Most of the other MIT team members also fared well in the race, even if not as well as they hoped.

Josh Feldman '97 and Dan Helgesen '97 ran a conservative

race strategy, and together passed many runners in the later miles. Of the approximately 190 elite runners in the race, both Feldman and Helgesen started near the 150th position before gradually moving up to finish in the 102nd (26:43) and 120th places (27:03), respectively.

Arnold Seto '96 had a disappointing race, possibly due to pre-race anxiety. He started in good position but lost ground quickly as cramps and tightness came on. Struggling to maintain position, he finished 146th in 27:28.

Mark Feldmeir '96 ran one of his best races of the year. He steadily pounded out the miles to finish 153rd in 27:43. Tye Schlegelmilch '98, the only freshman in the varsity top seven, used the excitement of the race positively to finish 169th in 28:23.

MIT tied for 10th place in a tight team competition. Their score of 298 (individual runners were removed from the team score calculation) narrowly beat out the 11th place score of 301 and the 12th place score of 306. All of the MIT runners fought hard for every place, which made a big difference in the

final results.

Even though the Engineers were ranked 12th going into the meet, they anticipated that they could finish anywhere from eighth to 14th, depending on how well each member raced.

Coach Halston Taylor summed up the result in stating, "It was a good race. About what we expected."

The race gave the team some much needed experience running against elite competition.

Darley, the team captain, stated that he was "happy to have the team gain some experience running in nationals" so that next year it can be even more prepared.

Williams defeats North Central

Williams College, MIT's main rival in the New England Region, ran a well-executed race to defeat the perennial powerhouse North Central College and capture the championship.

Williams scored 98 points, besting North Central by 12 points. Williams' performance was exemplified by Jeremie Perry, who took over the lead after two miles and won by a large margin.

The race and its accompanying athletes' dinner was made into quite an event by the host institution, Moravian College. Billy Mills, the famous winner of the 1964 Olympic 10,000 meter race, gave the athletes a moving motivational speech Friday night, urging them to focus on positive goals and believe in themselves.

The college held a fabulous fireworks show that woke up the sleepy town of Bethlehem. The race itself featured more fireworks, a marching band, and a deejay-like announcer. The atmosphere was festive yet intense.

Despite its good performance this year, the cross country team is looking ahead to their next season. Five of the top seven runners will be returning next year, including Crain. Although Darley will be graduating, with everyone else improving steadily, his loss should be more than overcome.

Williams College will once again be a major challenge next season, as the Ephs graduate only their seventh man and will be looking to win back-to-back championships.

UPCOMING HOME EVENTS

Saturday, Dec. 3

Women's Gymnastics vs. Rhode Island College, 1 p.m.
Squash vs. Bowdoin College, 2 p.m.
Men's Basketball vs. Wentworth Institute of Technology, 4 p.m.

Tuesday, Dec. 6

Women's Basketball vs. Simmons College, 6 p.m.
Men's Basketball vs. U.S. Coast Guard Academy, 7:30 p.m.

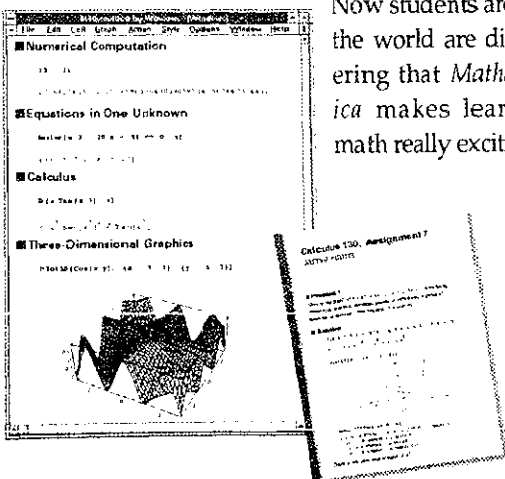
MATH MADE EASY!

FOR STUDENTS!
Mathematica
The Essential Tool for Math and Science Learning

No kidding. More and more students are telling us how much they enjoy math after they start using *Mathematica*.

Whether you're in engineering, computer science, physics, economics, or any other technical major, you know how critical your knowledge of math is to your future.

Now students around the world are discovering that *Mathematica* makes learning math really exciting.



FOR STUDENTS! Mathematica

The Essential Tool for Math and Science Learning

Students use *Mathematica* to understand topics better and finish homework faster. *Mathematica* speeds you through tedious calculations, and is a great tool for making sure your answers are accurate. It's ideal for any course where the assignments involve algebra, calculus, linear algebra, differential equations, statistics... and the list goes on.

Mathematica isn't just fast—it's easy. You'll start getting answers the moment you type your first equation on the screen. And *Mathematica: The Student Book* is included to help you quickly through the basics of the

program and beyond. It shows you how to use *Mathematica* to solve equations, make spectacular 2D and 3D plots and graphs, and write reports that will impress even your toughest professors.

Students everywhere approach math with a whole new attitude when they use *Mathematica*. So treat yourself to this Holiday Special and ring in the new year with *Mathematica* on your desktop.

HOLIDAY SPECIAL
Limited Time Offer Expires Jan. 31, 1995

WAS \$149
NOW! \$109
Now Available at Campus Bookstores near You!

For more information or to order from home, call
1-800-441-MATH (6284)

Wolfram Research
Wolfram Research, Inc.
+1-217-398-0700; fax: +1-217-398-0747; email: info@wri.com

Mathematica for Students is available to all currently enrolled full-time students. Student identification required. Mathematica for Students is a full-function version of Mathematica and is available on Macintosh and Microsoft Windows systems. Numeric coprocessor support not included. MathLink support not included on the Windows version. Academic discounts are available for professional versions of Mathematica on all personal computers, workstations, and supercomputers. Lab and site programs are also available.
© 1994 Wolfram Research, Inc. Mathematica and MathLink are registered trademarks of Wolfram Research, Inc. or MathTech, Inc. All other product names mentioned are trademarks of their producers.

Merrilees Earns All-American Honors

By Roger Crosley
SPORTS INFORMATION DIRECTOR

MIT can now claim its first ever field hockey All-American. Katherine Merrilees '97 has been named to the College Field Hockey Coaches Association 1994 Division III third team. Merrilees, a midfielder who was Player of the Year in the New England Women's Eight Conference, led the Engineers in scoring with 12 goals and 11 assists.

Water Polo

Five MIT water polo players have been named to the Eastern Water Polo Association All-East team.

Javier Nazario '95 was a first team selection. Honored with second team status were David Brandenberger '95, goalie Sandy Fitch '96, Matt Lau '97, and Jon Pfautz '98.

Women's Volleyball

The 1994 GTE College Sports Information Directors of America (CoSIDA) Academic All-District College Division Volleyball Team has been announced and MIT has placed a player on the first and the second teams.

Captain PAREN Dhalla '95 is a first team selection, while Colleen Johnson G was a second team pick. By being named to the first team, Dhalla's name will be placed on the national Academic All-America ballot.

Men's Ice Hockey

The men's ice hockey team is off to a strong start having compiled a 4-0-2 record through the first six games.

Tetsu Inada '97 leads the Engineers in scoring, and picked up a hat trick in to go along with two assists in the Engineers recent 7-1 victory over Johnson & Wales University.