

Safe and Structurally Sound, Walker Gym Reopens

By Ramy A. Arnaout
NEWS EDITOR

Sporting a newly-refinished floor and a team of student supervisors, Walker Memorial gymnasium reopened in September, nearly a year after safety concerns forced its closing.

The decision to close the gym last year was primarily designed to put an end to non-MIT residents' use of the facility, said Director of the Campus Activities Complex Phillip J. Walsh. But concern that the floor might be unsafe due to the age of the building was also an important issue, he said.

"It was felt that the floor was very old and in a deteriorating condition that required the removal of the top planking as well as the sub-flooring," at a projected cost of about \$60,000, Walsh said.

Luckily, when the floor was actually pulled up to check the condition "we found that we could actually sand the floor down and refinish it, and that was the work that was done over the summer," Walsh said. "A new finish was put on the floor, with new lines." As a result, the total cost of the renovations was only \$13,300, he said.

All in all, both students and administrators are pleased with the reopening, and called the work to reopen the gym a collaborative effort.

"I felt that the action taken by the CAC to refurbish the flooring and re-open the gym was a display of good response to student requests," said Jason Olson '95, student captain of Walker gym. Olson is in charge of the group of students who will be supervising the gym's use, and reports to the CAC.

"Several students... were very upset when the gym closed. The CAC heard their complaints and did something about it."

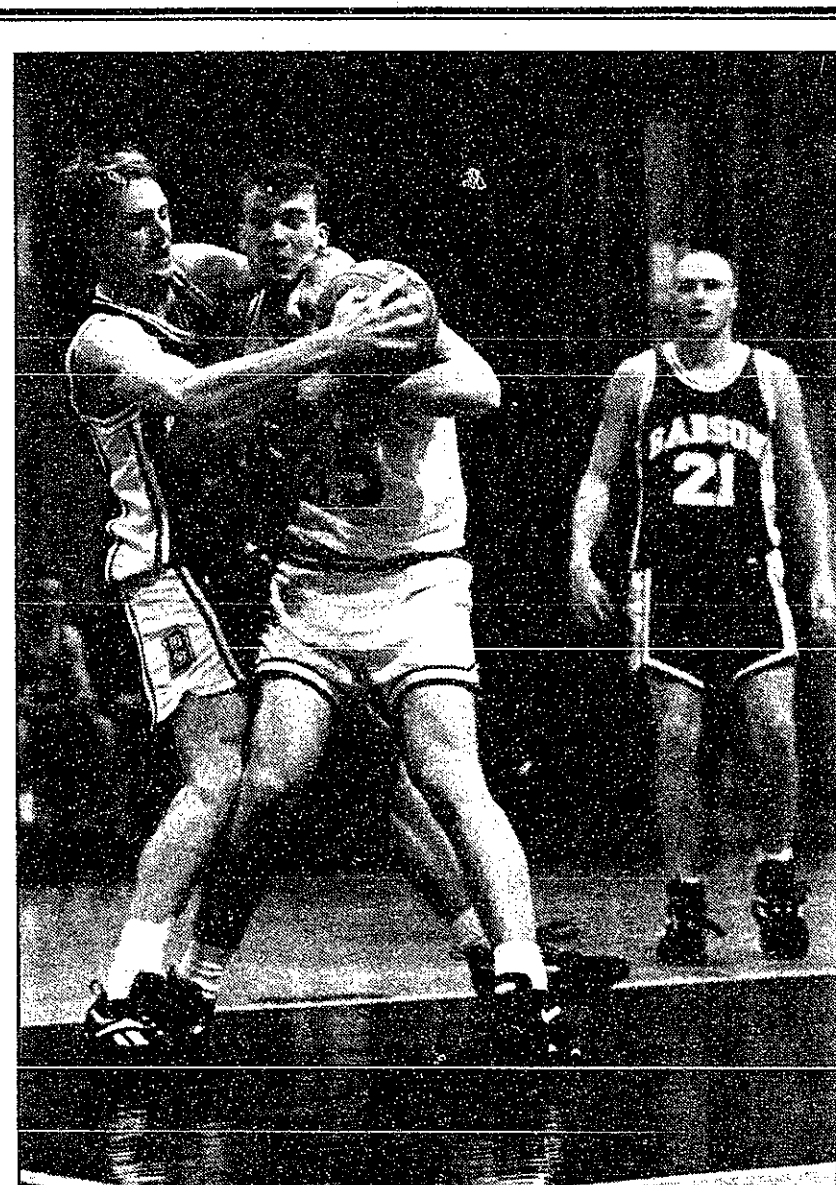
For his part, Walsh credits east-side students for pushing hard for the reopening. "The expectation on our part was to at some time get the gym back open," he said. But reopening the gym was not a priority until "the student governance of East Campus and Senior House came forward and said, 'this is important to us.'"

The third-floor gym, which doubles as a testing hall during the week, is open for basketball and vol-

Walker, Page 9



After repairs were made this summer the Walker Memorial gymnasium, seen here prior to renovation, is now open for students' use.



John Miller '98 struggles as a Babson college player grabs for the ball in the final seconds of MIT's 100-77 loss last Tuesday.

SIS Improvements Aid Administrators

By Daniel C. Stevenson
NEWS EDITOR

An extensively revised and optimized Student Information System was released earlier this month culminating a four-year development effort, according to James J. Culliton, vice president for administration.

The changes affect registration, transcripts, Bursar's Office bills, financial aid forms, and departmental information, Culliton said. SIS provides academic, biographical, and financial information to students, faculty, academic departments, and administrative offices.

The Registrar's Office, which manages the system, consulted with all administrative users of the sys-

tem, department offices, faculty committees, and faculty and student advisory groups during the development process, Culliton said.

The part of SIS that students can access on the Athena Computing Environment has not yet changed, according to Registrar David S. Wiley '61. The update of the Athena program, which allows students to make some changes to their name and address as well as to review their grades, turned out to be more difficult than expected, Wiley said.

Once the Athena interface is fully updated sometime next year, students will also be able to pre-reg-

SIS, Page 13

Gray, Pei, Others to Remember Wiesner

By Sarah Y. Keightley
EDITOR IN CHIEF

A memorial service for Jerome B. Wiesner, the 13th president of MIT who died in late October, will be held this Friday in Kresge Auditorium at 3 p.m.

Wiesner died of heart failure on Oct. 21 at the age of 79. His accomplishments include serving as a science advisor to President John F. Kennedy and leading the development of public policy regarding science and technology over the last 30 years, with a particular emphasis on curbing the arms race.

At MIT, Wiesner was instrumental in expanding research and teaching programs in the humanities, arts, and social sciences. He was also one of the founders of the Media Laboratory, which is housed

in the building that is named after him.

Chairman of the Corporation Paul E. Gray '54 will open Friday's program, according to Director of Special Events and the Information Center Mary L. Morrissey.

Several people will make remarks for the first part of the service, including President Emeritus of the National Academy of Sciences Frank Press, Institute Professor Emeritus Walter A. Rosenblith, President of the MacArthur Foundation Adele S. Simmons, folklorist Alan Lomax, President Charles M. Vest, Professor Emeritus Carl Kayser, and architect I.M. Pei '40.

After these speakers, Vincent Dion Stringer, the music coordina-

Wiesner, Page 9

Two Compete in Local Comedy Contest; Stahovich Wins Prize

By Sarah Y. Keightley
EDITOR IN CHIEF

Thomas F. Stahovich '96 was the grand prize winner in a local comedy contest searching for Boston's funniest college comedian, and Catherine D. Conley '96 was a finalist in the event which took place in late October.

The contest was part of the annual College Fest "Way More Weekend" at the Hynes Convention Center.

As the winner, Stahovich received two round-trip airline tickets to any destination in the continental United States, as well as a chance to perform at the Comedy Connection, a Boston comedy club. The contest promoters chose 15 finalists from dozens of entries to compete at the College Fest.

Both Stahovich and Conley auditioned on-campus in the Student Center, where they each performed a routine before a video camera. "I ran over and auditioned," Stahovich said. "It was completely unexpected."

Conley also auditioned unexpectedly, using a comedic monologue from a play that she had performed in last year's Sigma Kappa Late Nite variety show, she said.

For the contest, the finalists had

to prepare three to five minutes of original material. Half of them competed on Saturday, and the other half competed on Sunday. Conley was leading the contest after the first day of competition, but Stahovich garnered more points for his performance on Sunday to win the contest.

Stahovich expected students from Emerson College, which is a performing arts school, to dominate the competition. "It's really surprising that MIT students were funnier than people from performing arts schools," he said.

"They did emphasize that I was from MIT, to my chagrin," Conley said. "I hope that people saw that I was from MIT, and I was not the one doing the Star Trek jokes, that was some geek from Tufts [University]."

"My humor is very much about getting the audience thinking in a particular direction, and getting them to realize I was talking about something different," Stahovich said. "My comedy is a guy who thinks he's smart but doesn't realize he's missing the boat."

Stahovich said this is one of his best jokes:

"I'm really confused by Sally Struthers. On one channel she's cry-

ing about famine-stricken children drinking from the same disease-infested water that animals bathe in, and on another channel she's telling you how to make more money in your own home through correspondence courses. I finally got so confused I called the 800 number and enrolled an entire Latin American village in computer repair."

"I had jokes on everything from driving to sneezing. My biggest bit was about crew, it being Head of the Charles weekend and all," Conley said. Part of her routine was: "What gets me is this weight class thing [in crew]. I mean, for guys they have lightweight and heavyweight. For girls, they really ought to call it

Comedy, Page 9

INSIDE

Wayans' A Low Down
Dirty Shame brings
action and humor to the
screen. Page 7

WORLD & NATION

Norwegians Say 'No' to Membership In EU by Slim Margin

LOS ANGELES TIMES

OSLO, NORWAY

In a move heavy with significance both for Norway and the drive toward a united Europe, Norwegians voting in a national referendum Monday narrowly rejected membership in the European Union.

With more than three quarters of the vote counted, Norwegian Television Corp. computer projections indicated Norway would say no by a slim 53 percent to 47 percent.

Monday's ballot effectively split the country. The rural, agrarian north, fearful of losing subsidies, had enough no votes to counter the urban, business-oriented south, which voted strongly in favor of EU membership.

The biggest personal loser in the referendum is undoubtedly the country's prime minister, Gro Harlem Brundtland, who staked much of her political prestige in heading the yes movement. "The result is a heavy defeat for her," said Knut Heidar, an Oslo University political scientist.

However, her overall popularity and the absence of any obvious challenger within her own party would seem to assure her future as premier for at least the short term.

The implications for Norway and for the drive to create politically and economically united Europe seem less certain in the wake of Monday's vote.

Court Clears Way for Suit Against Joe Camel Ads

THE WASHINGTON POST

WASHINGTON

The Supreme Court Monday cleared the way for a lawsuit that accuses a cigarette maker of using the hip "Joe Camel" cartoon character to tempt young children to take up smoking.

The justices without comment denied an appeal by R.J. Reynolds Tobacco Co. of a California court decision that allows an anti-smoking activist to sue the company under California law for using advertising that allegedly weakens children's resistance to tobacco products. Reynolds contends the smooth, sax-playing camel is a gimmick aimed at adults.

The California case, brought under a state law barring unfair business practices, is one of several pending legal actions nationwide attacking Joe Camel and Reynolds' cigarette advertising campaigns. Reynolds had sought dismissal of the state case by asserting that was pre-empted by a federal law regulating tobacco advertising.

A provision of the Federal Cigarette Labeling and Advertising Act says: "No requirement or prohibition based on smoking and health shall be imposed under state law with respect to the advertising or promotion of any cigarettes."

The court said that although the allegations against the seven-year-old Joe Camel campaigns, which promote Camel cigarettes, were based on "health" concerns, normally requiring federal law pre-emption, the allegations relate more to manufacturer's general obligation not to deceive and not to engage in unfair competition.

VW to Let Loose a New Bug

NEWSDAY

Volkswagen AG says it will produce an updated version of the weird-looking, noisy and phenomenally popular economy car within the next five years, following the positive reaction to two experimental Beetle reincarnations — a hardtop and convertible — displayed earlier this year at U.S. auto shows. The new model will look something like them, VW said Monday.

How well it sells, says New Jersey-based auto industry consultant Mike Luckey, will depend on price, which VW says will be "competitive," and on quality.

"There are probably enough old-Beetle buffs to support a niche product for a couple of years," he said. VW hasn't decided yet what to name it, but it probably won't be "Beetle," said U.S. spokesman Tony Fouladpour. That never was its predecessors' real name, anyway — just a nickname that stuck.

WEATHER

Gusty and Cooler

By Gerard Roe
STAFF METEOROLOGIST

A tightly curled low pressure sitting over the northern Midwest is driving our weather at the moment. The passage of a warm front Monday raised temperatures by 16 degrees in just a few hours. Consequently the low temperature will not be reached until around eight in the morning. The drizzly rain will clear and we will see some sun Tuesday as a low pressure trough moves away from us. Because of the dominating effect of the low to the north, pressure gradients are tight and thus conditions will be gusty. Skies will cloud back up on Wednesday as the large low drifts off eastward and a cold front builds over the eastern states bringing with it a thirty percent chance of showers.

Today: Dry and breezy with maybe a few scattered clouds. High 53°F (12°C). Winds 20-25 mph.

Tonight: Clouds reappearing. Winds from the west at 10-15 mph. Low 40°F (4°C)

Wednesday: Chillier. Starting off with broken clouds later changing to overcast. Possible showers from late morning onwards. High 47°F (8°C). Low 37°F (3°C). Winds 10-15mph.

Thursday: Pretty much as Wednesday with cloud cover broken sporadically and continuing chance of rain. The colder temperatures gives an increased chance that the precipitation will fall as snow. High 43°F (6°C). Low 30°F (-1°C).

Clinton Aides Now Favor Concessions for Serbs

By Daniel Williams
and Ruth Marcus

THE WASHINGTON POST

WASHINGTON

Top Clinton administration policymakers Monday abandoned their long-standing support of allied military force to prod separatist Serbs in Bosnia to the negotiating table and decided instead to offer them significant diplomatic concessions, U.S. officials said.

The new U.S. policy, if approved by President Clinton, would move the United States much closer to the relatively conciliatory position on the Serbs maintained by the United States' European allies and Russia. Those allies have supported only limited use of military power on behalf of Bosnia's Muslim-led government and earlier Monday had harshly criticized Washington's Bosnia policy.

The United States has repeatedly labeled the Serbs as aggressors in the three-year-old Bosnian civil war. But after a White House meeting Monday afternoon, Washington is prepared to support concessions including some form of political link between the Serbs in Bosnia and those in neighboring Serbia.

The U.S. shift came as Serb forces tightened their hold on the Bihac pocket in northwestern Bosnia. The continued Serb advance there, in defiance of United Nations and NATO efforts to prevent it, has triggered a major confrontation between the United States and its European partners over how to best handle the deteriorating situation.

Earlier Monday, top officials in

France and Russia criticized a recent U.S. decision to stop enforcing part of an international arms embargo against Bosnia. A senior United Nations official called on all powers with peacekeeping forces in Bosnia to agree on a common policy or consider withdrawing.

The new approach was agreed to by Clinton's top foreign policy advisers, who met for three hours Monday to assess options for Bosnia. The immediate focus for U.S. diplomats, along with fellow "contact group" negotiators from Britain, Russia, France and Germany, will be to get the Serbs to agree to a temporary cease-fire, U.S. and Western diplomats said.

The lure will be the prospect of relief from economic sanctions and of political gains.

"We decided to get the contact group going and not push for military action," one administration official said.

While there was broad agreement on the diplomatic route as the only available potential solution, senior officials said that the issue of what inducements to offer the Serbs to accept a cease-fire remains "problematic" and a subject for further discussion.

For the second day in a row, top administration officials kept up a drumbeat of pessimistic assessments of the war in Bosnia. "It's obviously a deteriorating situation and our only hope is that at some point the parties recognize that there's no use in continuing the kind of carnage that is going on there," White House Chief of Staff Leon E. Panetta said on NBC's "Today."

On Sunday, Defense Secretary William J. Perry indicated that the Serbs had essentially won the war.

With that perspective, it was difficult to see how contact group diplomacy would succeed, particularly after the Bihac assault. The Serbs had already rejected a proposal to divide Bosnia nearly in half with the Muslims, even before the successful attack on the enclave. U.S. officials strained to explain why, with a major victory over the Muslims, the Serbs would be ready to deal, even with new concessions.

The decision to seek no further military action was made with an eye toward the upcoming meeting of NATO foreign ministers scheduled for Thursday in Brussels. Britain and France in particular opposed the frequent American calls for some sort of action to be taken, and the disagreements were straining the alliance. To get a cease-fire and eventual peace agreement, Washington and its mediating partners are relying on Serbian President Slobodan Milosevic to exert pressure on his erstwhile allies, the Bosnian Serbs. He already cut supplies that crossed his border, but a major loophole existed. Supplies going to Serbs in Croatia ended up in Bosnian Serb hands, U.S. officials said.

To close that hole, Milosevic is now being offered relief from economic sanctions that are strangling his country. He is also being pressed to recognize both Bosnia and Croatia as a step toward eased tensions. Contact group negotiators met four hours with him Monday in Belgrade.

Gramm Declares Support For World Trade Agreement

By James Risen
and Paul Richter

LOS ANGELES TIMES

WASHINGTON

With critical congressional votes looming, the world trade agreement won another key ally Monday, when Sen. Phil Gramm, R-Texas, declared his support for the pact, which would reduce tariffs and other barriers to trade among 124 nations.

As the agreement heads for a ratification vote in the House Tuesday and the Senate Thursday, Gramm told reporters that he will join Senate Minority Leader Bob Dole, R-Kan., in supporting the pact on all votes in the Senate.

Gramm, a leader among conservative Senate Republicans and a likely presidential candidate, said he decided to support the accord — which would create a new World Trade Organization to succeed the General Agreement on Tariffs and Trade as the regime that governs global trade — despite what he sees as dangerous and extraneous provisions in the ratification bill.

Gramm's support was hailed by the White House and other proponents of the pact as critical to shoring up support among Senate Republicans during this week's lame-duck legislative session. Gramm's decision was especially significant because he said he would vote yes on the most critical issue — a waiver of the Senate's budget rules, which requires 60 votes.

Some advocates of the trade pact had feared that Gramm might declare his support for the agreement but vote against the budget waiver. And they feared that other conservative senators might follow

that lead. The budget waiver is necessary because the trade agreement calls for deep reductions in import tariffs — potentially reducing federal revenues by \$30 billion to \$40 billion over 10 years. Despite that, the Clinton administration has not proposed offsetting tax and revenue increases to finance those cuts, meaning that the budget deficit would be allowed to grow in violation of the current budget rules.

One administration official, told that Gramm had pledged to vote for the waiver, predicted the move "would send a very strong signal" to other undecided members of Congress. Others added, however, that proponents of the trade agreement were close to having the needed 60 votes in the Senate even before Dole and Gramm announced their support. Dole gave his endorsement in a White House ceremony last Wednesday.

Administration officials said they believe they will easily achieve the 218 votes needed for passage in the House. Most observers had said that the Senate would provide the toughest test for the trade agreement because of the budget waiver rule. And as President Clinton began phoning senators Monday afternoon to line up their support, some administration officials remained worried that, under pressure from opponents, some senators might try to delay the vote until next year. Such a move, they argued, could kill the agreement.

"We can't take anything for granted," said one administration aide.

Meanwhile, a bipartisan array of Washington notables from previous administrations crowded the East

Room of the White House Monday to join Clinton in expressing their support for the agreement. Among them were James A. Baker III, secretary of state in the George Bush administration; James C. Miller III, director of the Office of Management and Budget under President Reagan; former Federal Reserve Board Chairman Paul N. Volcker; six members of the Clinton Cabinet and economists from both the private sector and government.

But the White House could not line up appearances from all the living former presidents, as it did last year before the vote for the North American Free Trade Agreement. Officials blamed logistic difficulties.

Three former presidents, Gerald R. Ford, Jimmy Carter, and George Bush, signed a joint letter of support that was read at the event. (White House officials said they did not want to bother Reagan, in light of his recent announcement he is suffering from the early stages of Alzheimer's disease.)

Baker, in an allusion to the dark predictions of Texas billionaire Ross Perot, said that during the debate over NAFTA, "the misguided and the misinformed predicted a vast sucking sound as American jobs went south." Instead, he said, the pact between the United States, Mexico and Canada had brought only the "powerful wind of economic freedom."

In his remarks, Clinton expanded on the same theme, asserting that since the North American agreement went into effect expanding U.S. auto exports to Mexico by 500 percent — auto workers' biggest complaint is excessive overtime.

Convicted Murderer Jeffrey Dahmer Beaten to Death in Prison

THE WASHINGTON POST

CHICAGO

Jeffrey L. Dahmer, whose grotesque rampage of murder, necrophilia and cannibalism shocked the nation when it was discovered in 1991, was beaten to death Monday in a prison bathroom at the Columbia Correctional Institute in Portage, Wis.

Dahmer, 34, savagely beaten in the head, was discovered in the staff bathroom of the prison gymnasium he had been assigned to clean shortly after 8 a.m. and was pronounced dead an hour later at Divine Savior Hospital in Portage.

At a news conference in Madison, Wisconsin Corrections Secretary Michael Sullivan said law enforcement authorities were questioning another inmate in connection with Dahmer's death.

Jeffrey Dahmer's shadowy, nightmarish life burst into public view on July 22, 1991, when police entered his dingy second-floor apartment just west of downtown Milwaukee and found severed heads and other body parts of 11 of his victims. His trial early the next year disclosed searing details of his ghoulish behavior.

According to the testimony, Dahmer had sex with the bodies of his victims, skinned and dismembered them and attempted to perform a crude lobotomy on at least one of his victims, a 14-year-old boy. Two Milwaukee police detectives said Dahmer told them he had cleaned and spray painted his victims' skulls, preserved body parts in formaldehyde so he could "look at them and masturbate," and kept preserved human hearts in the freezer of his refrigerator.

Physicists Take a Quarky Step To Explain the Fourth Dimension

LOS ANGELES TIMES

Ever since Albert Einstein showed that the three-dimensional space we live in actually curves into an unseen fourth dimension, mathematicians have been trying to understand the shape of our universe. It could curve, like Earth, into a familiar sphere. Or it could have a hole, like a donut.

Now two physicists, Ed Witten of Princeton's Institute for Advanced Studies and Nathan Seiberg of Rutgers, have made studying these strange spaces tantalizingly simple.

Their discovery has electrified mathematicians who have spent decades trying to find ways to describe four-dimensional space.

Witten and Seiberg have found a way to tackle these complex four-dimensional problems using methods essentially as simple as a two-dimensional problem. The physicists are pleased because they have a model, "a practice case," Witten calls it, where the problems of quark behavior look workable. Because it's simpler than the real world, it can be solved.

Cappell says the discovery has the potential of simplifying an entire field of mathematics into a single 10-page paper.

McKinsey & Company, Inc.

Management Consultants

OPPORTUNITIES IN MCKINSEY'S HEALTHCARE PRACTICE

MIT graduating Ph.D. students and Postdocs in the biological/ health and medical sciences are invited to join us for a presentation

Date: Tuesday, November 29, 1994
Time: 6:00 p.m. - 8:00 p.m.
 Refreshments will be served
Place: Marriott Hotel Cambridge
 2 Cambridge Center
 (corner of Broadway and 3rd Street)
 Salon 4 (2nd Floor)
Attire: Casual

McKinsey & Company, Inc., is seeking men and women for full-time consulting positions. Candidates should have an outstanding record of academic achievement, exceptional analytic and quantitative skills, strong communication skills - both written and verbal - and the ability to contribute collaboratively in a team environment.

Background literature on McKinsey will be available at the presentation and at Career Services. For additional information you may contact:

Kathy Padgett
 McKinsey & Company, Inc.
 55 East 52nd Street
 New York, NY 10022
 (800) 221-1026 ext. 8826
 Fax (212) 446-7150



- Amsterdam
- Atlanta
- Barcelona
- Berlin
- Bogota
- Bombay
- Boston
- Brussels
- Buenos Aires
- Caracas
- Chicago
- Cleveland
- Cologne
- Copenhagen
- Dallas
- Dublin
- Düsseldorf
- Eurocenter
- Frankfurt
- Geneva
- Göthenburg
- Hamburg
- Helsinki
- Hong Kong
- Houston
- Lisbon
- London
- Los Angeles
- Madrid
- Melbourne
- Mexico City
- Milan
- Minneapolis
- Monterrey
- Montreal
- Munich
- New Delhi
- New Jersey
- New York
- Osaka
- Oslo
- Paris
- Pittsburgh
- Prague
- Rome
- San Francisco
- San Jose
- Sao Paulo
- Seoul
- Shanghai
- Stamford
- Stockholm
- St. Petersburg
- Stuttgart
- Sydney
- Taipei
- Tokyo
- Toronto
- Vienna
- Warsaw
- Washington, D.C.
- Zurich

Graduate Student Council

Nutcracker Ballet
 at the Wang Center

Thursday, December 8, 1994
 7:30 pm

Balcony Seats \$20 : Orchestra Seats \$30
 Sign up now!!!!

GSC LEADERSHIP WORKSHOP!!!

Saturday, December 3, 1994 8 am - Noon

Join us for a morning exercise aimed at improving your leadership skills including running meetings, motivating others, and goal setting.

All graduate students are welcome!!
 Those interested in becoming more involved with the Graduate Student Council are especially encouraged to attend. To sign up, contact the GSC in Walker Memorial 50-222, call 3-2195, or send email to gsc-admin@mit.

See you there!!!

Full Council Meeting TONIGHT

Tuesday, November 29, 1994
 5:30 pm

All Welcome!

SKI TRIP Sunday River Ski Resort

Saturday, December 10

\$25 Full Lift Ticket
 \$16 Ski Rentals
 \$18 Learn to ski package
 incl. limited lift, rental, and lesson

Transportation to and from resort provided!
 SIGN UP NOW!!!

All Graduate Students are invited to all our meetings. All are held at 5:30pm in 50-222 and dinner is served.

Stay informed about all our events! Add yourself to our mailing list by typing **blanche gsc-students -a username**, or send email to **gsc-request@mit**. Questions, comments, ideas? give us a call at 3-2195 or send email to **gsc-admin@mit**.

OPINION

SHPC Should Have Sought a Consensus

"You don't do anything on this campus unless you build a consensus," said Senior Associate Dean for Undergraduate Education and Student Affairs Robert M. Randolph. Randolph was talking about including student representation on an administration committee formulating plans to move undergraduates out of east campus dormitories.

Unfortunately, the workings of Randolph's Strategic Housing Planning Committee and the process that will determine the fate of the east-side dormitories seem to have been planned from the outset to avoid building any kind of a consensus.

Tomorrow, the SHPC is scheduled to make its recommendation about the future of Senior House to the senior administration.

The timing could not have been better planned to stymie input from MIT students. In order for any renovations to be made at Senior House next summer, important decisions about the status of the dormitory will need to be made by the end of Independent Activities Period. This schedule severely limits input from graduate and undergraduate students, faculty, and alumni.

Given the short timeline one wonders how much time, if any, the administration would have allowed for community input had *The Tech* not broken the story about the plans four weeks ago. If the SHPC's activities had not gone public, would

student groups have been allowed more than a meek protest after a decision had already been made?

Randolph said students could be most effective by meeting with individual SHPC members. President Charles M. Vest said that the committee will see that Dean for UESA Arthur C. Smith and others are informed of concerns and ideas. If Randolph and Vest see the SHPC as a vehicle for transmitting student concerns, why was it kept secret from the people whose input it will now supposedly convey?

Many members of the SHPC don't seem to recognize that the issues involved are larger than a minor reshuffling of students to different residence halls. While those who will make the final decisions seem ill-equipped at this point to evaluate broad changes in the fabric of student life, they have continued to assert that they alone can gauge the "totality" of the issues involved, and that residents' concerns are either not helpful, or have already been considered.

If administrators had been more forthcoming earlier, and if they had cooperated fully with students in making their proposals, they would have found student input more useful. They might have even built a consensus. However, it would seem that the planning so far is still geared toward shutting off the student discussion at the very time it would be most beneficial.



Chairman

Jeremy Hylton G

Editor in Chief

Sarah Y. Keightley '95

Business Manager

Pradeep Sreekantham '95

Managing Editor

Michelle Sonu '96

NEWS STAFF

Editors: Hyun Soo Kim '96, Rany Arnaout '97, Daniel C. Stevenson '97; **Associate Editor:** Ifung Lu '97; **Staff:** Trudy Liu '95, Eric Richard '95, Nicole A. Sherry '95, Decna Disraeli '96, A. Arif Husain '97, Stacey E. Blau '98, Shang-Lin Chuang '98, Christopher L. Falling '98, David D. Hsu '98, Don Lacey '98, Jennifer Lane '98, Venkatesh Satish '98, Stream S. Wang '98; **Meteorologists:** Michael C. Morgan PhD '94, Gerard Roe G. Marek Zebrowski.

PRODUCTION STAFF

Editors: Matthew E. Konosky '95, Teresa Lee '96, Jimmy Wong '97; **Staff:** Dan Dunn '94, Laura DePaoli '97, Christine J. Sonu '97, Saul Blumenthal '98, Larry Chao '98, Joseph Irineo '98, Gilbert Kim '98, Jennifer Peltz '98.

OPINION STAFF

Editor: Anders Hove '96; **Staff:** Raajinsh A. Chitale '95, Matt Neimark '95.

SPORTS STAFF

Editor: Daniel Wang '97; **Staff:** Thomas Kettler SM '94, Bo Light '96, Farhan Zaidi '98, Gara Mendez '98.

ARTS STAFF

Editor: Scott Deskin '96; **Staff:** Thomas Chen G. Dave Fox G. Adam Lindsay G. J. Michael Andresen '94, John Jacobs '94, Gretchen Koot '94, Christopher Chiu '95, Teresa Esser '95, Evelyn Kao '95, Carrie Perlman '95, Craig K. Chang '96, Brian Hoffman '97, Robert W. Marcato '97, Kamal Swamidoss '97, Ilur Koser '98, Anne Wall.

PHOTOGRAPHY STAFF

Editors: Sharon N. Young Pong '96, Thomas R. Karlo '97; **Associate Editor:** Helen M. Lin '97; **Staff:** Rich Fletcher G. Rich Domonkos '95, Justin Strittmatter '95, Sherrif Ibrahim '96, Lenny Speiser '96, Adriane Chapman '98, Carol C. Cheung '98, Indranath Neogy '98.

FEATURES STAFF

Christopher Doerr G. Pawan Sinha G. Mark Hurst '94, Steve Hwang '95, Ben Reis '95.

BUSINESS STAFF

Advertising Manager: Anna E. Lee '97; **Associate Advertising Manager:** Jin Park '96; **Accounts Manager:** Oscar Yeh '95; **Staff:** Diana Bancila '95, Jeanne Thienprasit '95, Syed Abid Rizvi '96, Mary Chen '97.

TECHNOLOGY STAFF

Director: Garlen C. Leung '95.

EDITORS AT LARGE

Contributing Editor: Yueh Z. Lee '95; **Senior Editor:** Eva Moy '95.

ADVISORY BOARD

V. Michael Bove '83, Robert E. Malchman '85, Thomas T. Huang '86, Jonathan Richmond PhD '91, Reuven M. Lerner '92.

PRODUCTION STAFF FOR THIS ISSUE

Night Editor: Jimmy Wong '97; **Staff:** Dan Dunn '94, Sarah Y. Keightley '95, Scott C. Deskin '96, Michelle Sonu '96, Daniel C. Stevenson '97.

The Tech (ISSN 0148-9607) is published on Tuesdays and Fridays during the academic year (except during MIT vacations), Wednesdays during January, and monthly during the summer for \$20.00 per year Third Class by *The Tech*, Room W20-483, 84 Massachusetts Ave., Cambridge, Mass. 02139-7029. Third Class postage paid at Boston, Mass. Non-profit Organization Permit No. 59720. **POSTMASTER:** Please send all address changes to our mailing address: *The Tech*, P.O. Box 397029, Cambridge, Mass. 02139-7029. Telephone: (617) 258-8324. FAX: (617) 258-8226. Advertising, subscription, and typesetting rates available. Entire contents © 1994 *The Tech*. Printed on recycled paper by Mass Web Printing Co.

Editorial

The timing could not have been better planned to stymie input from MIT students. In order for any renovations to be made at Senior House next summer, important decisions about the status of the dormitory will need to be made by the end of Independent Activities Period. This schedule severely limits input from graduate and undergraduate students, faculty, and alumni.

Given the short timeline one wonders how much time, if any, the administration would have allowed for community input had *The Tech* not broken the story about the plans four weeks ago. If the SHPC's activities had not gone public, would

Letters To The Editor

East Campus and Senior House Petition for Time To Weigh Options

The *Tech* received a copy of the following petition being circulated by the Senior House-East Campus Action Committee.

A Petition: We, the undersigned, believe that undergraduates should have the choice of living in residence halls on the East side of campus.

Further, we believe that the entire MIT community would benefit if we were allowed until Jan. 31 to (1) research the benefits and value of retaining Senior House and East Campus as undergraduate residence halls, and (2) present our findings as well as our own independently considered options.

We request that you take into consideration the short amount of time we have been given to fully understand and evaluate these issues, as well as the heavy academic demands students face at the end of the term.

Dhaya Lakshminarayanan '96

Rebecca Richkus '97

Anders Hove '96

and 368 others

Letter Writers Misinterpret Card Key Arguments

I am writing to address the concerns of two recent letters in response to my recent argument against card keys ["MIT Card Puts Safety at Risk," Nov. 18].

Brad J. Bartley '96 claims my arguments are not rational ["Misovec Criticism of Card Key System is Flawed," Nov. 22]. Indeed nothing is more edifying than to find contradictions and inaccuracies in the letter of one who purports to advocate rationality. Bartley claims that I "never compare it to the current system of keys" and then proceeds to contradict himself by attempting to refute my claims that card keys cause more risk than metal keys.

One major risk factor is having the card fail completely and the possibility of being stranded outside late at night. I maintain my position that these cards can fail more easily than metal keys due to their sensitivity to

minor scratches and also due to possible demagnetization. My own card broke down completely last term, and I had to get another one.

Bartley is inaccurate in stating my concerns about risks due to card duplication are "simply wrong." Although it is debatable how "widely available" card duplication techniques are, the recent New Jersey ATM card scandal proves that they are possible. Furthermore, as magnetic strip cards become more widely used, duplication techniques will become more widely available.

I must admit to being completely baffled by the logic of Bartley's statements about key identification. He agrees with me that card keys are flawed because they identify the owner explicitly. He then notes that the metal key labeling exists and is "more cryptic" and that an "intent criminal" could find the dorm which corresponds to a given key. Yet this is precisely another of the many reasons that card keys are less secure than metal keys; a lackadaisical criminal or just anyone could simply look in an MIT directory to find out where the card key owner lives.

Regarding unauthorized use, the MIT Card is more susceptible than other financial cards because it doesn't have password or signature protection and because of its added functionality as a key.

Furthermore, we may not have a choice about the cash option. Future card plans are worrisome because the Housing Office representative who came to Ashdown House could not answer our questions about whether we would still be able to use cash in laundry and vending machines or if we will be forced to have an account, as we were forced to have a card key.

I would urge the second letter writer, Daniel J. Weber '97 ["Card Key Article, Column Falls Short Of Mark," Nov. 22], to examine the issues more carefully and from a perspective different from his own.

For example, he questions why the 30 percent reduction in crime attributed to the new card system was not included in the headline of a related article ["Card Keys Sometimes a Problem" Nov. 18]. I certainly believe that card keys should be continued in parking lots where they are reducing car theft. However, I question this statistic. What percent of this includes personal safety and how are these statistics measured? The recent murder of Yngve K. Raustein '94 was not included in

campus crime statistics because the sidewalk was not considered part of the campus.

Weber does not believe that the exposure to mugging theft and rape is increased, citing that "front doors are visible" to people both outside and inside the building. He has never had to swipe his card through six or seven times as other people have. He finds it "puzzling that" carrying both card keys and a wallet is an annoyance because he personally always carries his wallet everywhere. And he suggests that people not willing to take the risk of financial loss simply not sign up for a meal plan.

On all of these points, Weber should consider that others' habits are different than his own. Other people return late. Other people may carry their cards differently and may have more scratches on their cards. Other people going jogging or to lab may prefer not to carry their wallets everywhere. And finally, students may not have a choice about the cash option on their card, and meal plans have sometimes been mandatory at MIT.

Weber believes that my only plausible point is privacy concerns because the potential to track people exists. I believe the people in the MIT Card office when they say they would not use this feature, and I personally am not too concerned about this issue. However, I respect that people have a right to privacy. Weber apparently does not believe that these potential privacy invasions are at all significant and presents us with a small list of his actions and bodily functions that are not accessible to the computer.

I think Weber's investigation is trite because he looked up where I live and pointed out incorrect directory information that two people quoted in the related article live on my floor.

I believe the cards are a poorly designed embarrassment to a technical institution. Being a woman I am sensitive to issues that affect student safety, and I believe these security risks are real.

I am happy to read in *The Tech* that the administration is responding to student concerns about the future of several dorms and parking and I sincerely hope they respond to safety concerns by the simple solution of issuing a separate, non-identifiable and sturdier type of key which can be placed on a standard key ring.

Kathleen Misovec G

Opinion Policy

Editorials, printed in a distinctive format, are the official opinion of *The Tech*. They are written by the editorial board, which consists of the chairman, editor in chief, managing editor, executive editor, news editors, and opinion editors.

Dissents, marked as such and printed in a distinctive format, are the opinions of the signed members of the editorial board choosing to publish their disagreement with the editorial.

Columns and editorial cartoons are written by individuals and represent the opinion of the author, not necessarily that of the newspaper.

Letters to the editor are welcome. They must be typed, double-spaced and addressed to *The Tech*, P.O. Box 397029, Cambridge, Mass. 02139-7029, or by interdepartmental mail to Room W20-483. Electronic submissions in plain text format may be mailed to letters@the-tech.mit.edu. All submissions are due by 4:30 p.m. two days before the date of publication.

Letters and cartoons must bear the author's signatures, addresses, and phone numbers. Unsigned letters will not be accepted. No letter or cartoon will be printed anonymously without the express prior approval of *The Tech*. *The Tech* reserves the right to edit or condense letters; shorter letters will be given higher priority. Once submitted, all letters become property of *The Tech*, and will not be returned. We regret we cannot publish all of the letters we receive.

To Reach Us

The Tech's telephone number is (617) 253-1541. Electronic mail is the easiest way to reach any member of our staff. Mail to specific departments may be sent to the following addresses on the Internet: ads@the-tech.mit.edu, news@the-tech.mit.edu, sports@the-tech.mit.edu, arts@the-tech.mit.edu, photo@the-tech.mit.edu, circ@the-tech.mit.edu (circulation department). For other matters, send mail to general@the-tech.mit.edu, and it will be directed to the appropriate person.

Being pregnant doesn't mean being alone.

DAYBREAK
Crisis Pregnancy Center

Free, confidential pregnancy tests, pregnancy support services and post-abortion counseling. Not a medical clinic.

Harvard Square, Cambridge
Call 24-hour hotline 576-1982

Sponsored by M.I.T. Pro-Life

Materials and Catalysts for a New Generation of Clean, Efficient Automobiles

Dr. Kathleen C. Taylor
Head, Physical Chemistry Department
General Motors Research Laboratories
Warren, Michigan

The 1994 Wulff Lecture for Freshmen and Undesignated Sophomores

Sponsored by the

Department of Materials Science and Engineering
Course III

Wednesday, November 30, 1994 4:00 p.m.
(Refreshments at 3:15)

Room 10-250

MINORITY CAREER FORUM

PARTIAL LIST OF EMPLOYERS

- Arthur Andersen & Co.
- Bain & Company
- BBDO New York
- Beth Israel Hospital
- The Boston Company
- The Boston Consulting Group
- Chase Manhattan Bank
- Chemical Banking Corp.
- Gemini Consulting
- Goldman, Sachs & Co.
- Leo Burnett Company, Inc.
- Massachusetts General Hospital
- McKinsey & Co., Inc.
- Mercer Management
- Monitor Company
- Salomon Brothers
- SmithKline Beecham
- Time Inc.
- Towers Perrin
- PLUS MANY MORE

free admission for all minority Juniors and Seniors!

Friday December 2

New England

The Cambridge Marriott
2 Cambridge Center
Cambridge, MA
10:00 am to 4:00 pm

Meet and Interview with leading employers!
Attend educational seminars!
Network with company representatives!

Crimson & Brown Associates, Inc.
For more information call us at (617) 868-0181

MARK YOUR CALENDAR TO ATTEND THE MINORITY CAREER FORUM!

UA Course Evaluation Guide

Try something new..

Go to class!

Evaluations Period

Nov. 28 – Dec. 2

Let your voice be heard.

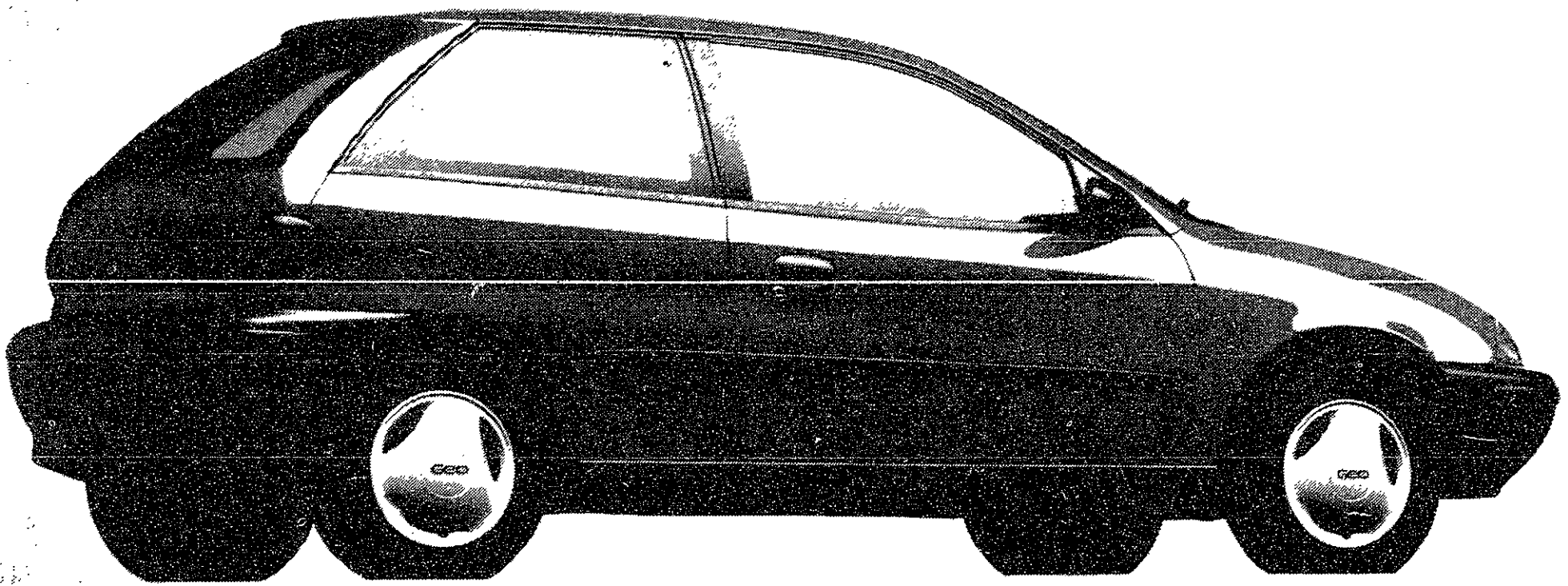
Read about your professors before everybody else does.

Earn \$7/hour over IAP writing for the CEG.

Applications are available in W20-401.

The deadline is Friday, Dec. 9. For more information, call x3-7984

At \$8,395, you'll have
plenty of money left for gas.
At 44 mpg/city,
you might not need it.



The newest Geo. Metro, from \$8,395.*

- ◆ Metro Coupe gets an EPA est. MPG of 44 in the city and 49 on the highway. ◆
- ◆ A warranty covers Metro from one end to the next.
And that's with no deductible... zero... none whatsoever! ◆
- ◆ Metro comes with first-time buyer assistance.** ◆
- ◆ Get to know the newest Geo. Metro. At your Chevrolet/Geo dealer's. ◆
- ◆ Want to know more? Give us a call. 1-800-Get-2-Kno. ◆

GET TO KNOW
Geo
metro

*\$8,695 M.S.R.P. of Metro LSi Coupe as shown. M.S.R.P. includes dealer prep and destination charge. Tax, license and optional equipment additional. †See your dealer for terms of this limited warranty.
**Up to \$500 down payment assistance for qualified first-time new car buyers financing with GMAC. Chevrolet and Geo are registered trademarks and Metro is a trademark of the GM Corp. ©1994 GM Corp. All Rights Reserved. Buckle up, America! ®

THE ARTS

Wayans' formula action film gets mixed comic results

A LOW DOWN DIRTY SHAME

Written and directed by Keenen Ivory Wayans. Starring Keenen Ivory Wayans, Charles S. Dutton, Jada Pinkett, and Salli Richardson. Loews Fresh Pond.

By J. Michael Andresen
STAFF REPORTER

Keenan Ivory Wayans' latest effort marks his personal foray from pure comedy into the action genre. *A Low Down Dirty Shame* is heavy on both and meets with mixed success. Wayans is clearly more comfortable writing comedy, and the movie actually has too many funny moments. Although comic relief is good during suspenseful scenes, Wayans goes too far, leading the viewer at times to wonder if the film is supposed to be a parody. The action scenes themselves don't smack of parody at all, giving the film an identity crisis of sorts: It's a comedy trapped in the body of an action film.

Wayans plays Andre Shame, an undercover

cop expelled after a botched drug raid. Now he works as a private investigator taking dangerous and semi-legal jobs to eke out a living. Peaches (Jada Pinkett), his sidekick and secretary, sticks around only because she is infatuated with Shame. When Shame is hired by DEA agent Rothmiller (Charles S. Dutton) to track down \$20 million in missing drug money, he discovers some things about Ernesto Mendoza (Andrew Divoff), the man he supposedly killed in the failed drug raid. He also meets up with a former flame: Angela Flowers (Salli Richardson) is a femme fatale whom Shame still adores, completing an interesting love triangle which is one of the better parts of the serious side of the film.

Creator of the Emmy-Award winning television series *In Living Color* and the feature film *I'm Gonna Get You Sucka*, Wayans is a brilliant comic writer, and this effort is no less hilarious. He puts words in Shame's mouth that keep the audience roaring. "Don't act like it's your first time," he says to the surprised

looking-bad guy while sticking the barrel of his gun into the guy's mouth.

One particularly well-delivered one-liner kept the audience laughing for a full 60 seconds, obscuring several lines of ensuing dialogue. The comedy is a bit one-sided as only Shame gets the one-liners, but this doesn't detract from the film's effect. *A Low Down Dirty Shame* is entirely Wayans' production, but it isn't boastful. It's just very funny.

However, the uneasy mix of action and comedy detracts from the film. One potentially funny moment that has been hyped in ads for the film happens when Wayans keeps three attack dogs at bay by singing a James Brown tune at them. Earlier in the film Shame ridicules Peaches when she reads in a supermarket tabloid that Brown's music has a calming effect on canines. Up to this point, the tension has been building in classic action style, and the James Brown was more distracting than funny. The film is full of scenes like this give it the feel of a parody.

The action sequences don't feel like parody at all, though. The fights are serious (with the possible exception of the cat fight between Peaches and Angela near the end of the film) and don't shy away from the graphic violence that parodies de-emphasize. One scene, shot in slow motion, features some flying blood that would have made Doc Edgerton proud. If Wayans had been able to keep his comedy out of the action, the movie would have been much more coherent.

The film's treatment of women and gays is a minor but refreshing point. Both women leads are strong and independent, even if Peaches does enjoy soap operas a tad much. And while the two gay characters are stereotyped and rather eccentric (this is primarily a comedy, after all), they are treated with respect and no one seems to be uncomfortable with their orientation.

In the end, Wayans would be better off sticking with comedy, the genre that gave him his start.

COMPUTER BLOWOUT

TONS OF COMPUTER SURPLUS

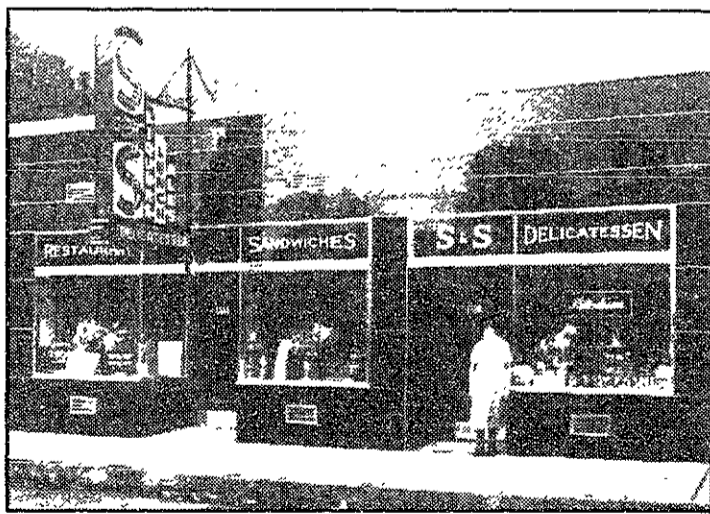
Equipment is too good to scrap!

**DEC, STRATUS, IBM
MASSCOMP, PLEXUS**
Power Supplies, Printers, Boards
PC's, Monitors, Modems

**Mark Your Calendar
SATURDAY, DEC 3**

BOSTON FINANCIAL & EQUITY CORPORATION
20 Overland Street - 4th Floor
GREEN LINE to KENMORE STATION
off of Brookline Ave.
617-267-2900 OPEN: 9-4

**WE'VE BEEN
USING THE SAME RECIPE
FOR 75 YEARS.**



In 1919 Ma Edlestein opened her new restaurant. The S&S. The name came from the Yiddish expression *essen essen, or eat eat!* And it summed up Ma's philosophy.

75 years later Ma's great grandson and granddaughter are keeping up the tradition and serving a lot more than just deli.

These days you can get everything from grilled salmon, to a boursin burger, to chocolate mouse pie, to great deli. In portions that Ma would have been proud of.

Stop by and see why, the more things change the more they stay the same, if you have the right recipe.



Restaurant

A Great Find Since 1919

Catering • Deli • Restaurant • Function Room
1334 Cambridge St., Cambridge, MA. Tel. (617) 354-0620

Fourth in a series.

THE FOUNDATIONS OF CREATIVITY

The purpose of education is to develop basic thinking skills and to obtain a basis of knowledge in our chosen field. This provides the foundation for problem solving abilities across a range of disciplines.

However, development of better solutions to challenging problems requires dimensions beyond basic thinking skills and knowledge of the field; it requires creativity in conception and in approach.

The ability to be 'creative' is often regarded with a sense of mystery and apprehension. Sometimes it is considered the exclusive purview of artists or others with the 'right aptitudes'.

Of the many studies of creativity, there is one common conclusion; if we give creativity enough attention, we get better at it. This suggests that creativity is a challenge like any other, a 'problem' to be solved. It also suggests that, as with any other challenge, our attitude towards it, our desire for a solution, and our belief in the intrinsic worth of the task are the most important ingredients for success.

The principle obstacle to achieving creative breakthroughs is a premature conclusion that a better solution is not possible. For a 'creative' solution is by definition one that is different from those that have preceded it and one that often runs counter to accepted knowledge.

To overcome this obstacle, we need to add to our basic thinking skills and technical foundation the following elements of attitude:

1. A strong desire for a creative breakthrough.

2. Confidence in our ability.

3. An expectation that many false starts may be necessary.

4. Sufficient immersion in the problem to engage all our faculties.

5. A willingness to pursue solutions until a breakthrough is achieved.

6. Analysis of each attempt to aid in the development of insight.

In these cases where a task appears to be routine, we may also need to intentionally 'spark' the creative process. We do this simply by asking how the task can be done better, for 'better' implies a different approach, which in turn requires creativity.

There are, of course, other considerations. Especially important are the environment within which we work and the caliber of our associates. As with every other part of the problem solving process, interaction with capable associates can be an important catalyst. However, most important is the awareness that the foundations for creativity rest inward with our attitudes. This includes a recognition that superior creativity is something we must intensely desire and that success does not occur without effort and many false starts.

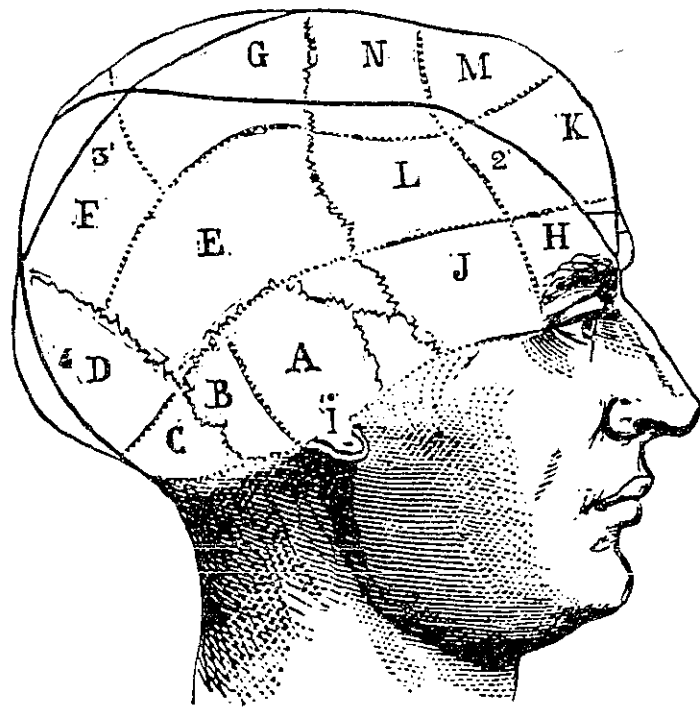
During our education, we usually are faced with solving problems that have two characteristics: A) we know that a solution exists; B) we know that the solutions can be obtained with the techniques under study.

When we begin work, these conditions do not hold, and yet we face the challenge of finding solutions. If we are aware of the foundations of creativity during our education, we can better prepare ourselves for this challenge.

NOTE: Each year the Bose Foundation sponsors a one year fellowship (approximately \$34,000) for a first year graduate student in electrical engineering and computer science. Please see your faculty advisor for more information or write: Heather Sweeney, Bose Foundation, The Mountain, Framingham, MA 01701-9168. Deadline for application: February 17, 1995.

BOSE FOUNDATION

*Think About The People Who
Started Today's Software Giants*



Think About being One Of Them

**Think About
TRILOGY**

**Information Session
Tuesday, Nov. 29, 6pm, Room 4-270**

Trilogy, one of Fortune's "25 Coolest Companies" develops and sells enterprise software the Wall Street Journal heralds as "one of those rare programs that changes the way business is done." The fastest growing software company in the country is looking for brilliant people with ambition, energy, and entrepreneurial spirit to grow with us. Trilogy is hiring software engineers and consultants looking for challenge and reward in a unique company culture. We want the best of the best -- the type who will use his/her autonomy to shape his/her own projects and thrive in our energetic, rapid growth environment. If you are ready to make an impact right away, you're too good to be anywhere else.

6034 WEST COURTYARD DRIVE, SUITE , AUSTIN, TEXAS, 78730, (512) 794-5900, FAX (512) 794-8900

Gym Closed Because Of Safety Concerns

Walker, from Page 1

leyball on Friday nights and weekends, Olson said.

The gym is scheduled for open use on Friday and Saturday nights and Sunday afternoons, and by reservation for the rest of the weekend.

Security was another concern for the CAC. "We were having increasing problems with non-MIT people showing up and using the gym," Walsh said. The problem was made more immediate by a feeling that crime was rising on campus, he said.

"A serious issue was developing and we had to address that. [Security] really became the dominant issue," Walsh said. "I felt from my position in consultation with others," such as the Campus Police, "that the decision to close the gym really needed to be made."

The final decision to close the

gym last year resulted from a long period of discussion and consultation, Walsh said. While students were not consulted on the closing, due to what Walsh said was his group's mistake, they took part in discussions on the reopening in a series of summer meetings, said East Campus President Parag Gupta '95.

In response, the new arrangement for gym use provides for greater security. Groups wanting to use the gym must reserve a time with the student supervisors, who report to the CAC, Walsh said. As an added measure, when the gym is not in use, the hoops will be locked.

In addition, a student will oversee the gym during open hours, Walsh said. To help these student supervisors, part of the summer's renovations included installing a gym phone that the student can use to report or ask for help in case of injury.

Friends to Speak at Wiesner Memorial

Wiesner, from Page 1

tor for the Isabella Stewart Gardner Museum, will perform two musical pieces.

In the second half more remarks will be made by Elma Lewis, who is the founder and artistic director of the Elma Lewis School of Fine Arts, Institute Professor Emeritus Victor F. Weisskopf, Professor of Media Arts and Sciences Glorianna Davenport, and columnist Anthony Lewis, who writes for *The New York Times*.

This will be followed by a musical interlude, sung by Cheryl L. Morse, who was Wiesner's administrative assistant, and played by Professor of Computer Science and Engineering Michael J. Hawley PhD '93.

Wiesner's three children, Joshua, Lisa, and Zachary, will then speak. After Gray's closing statement, the postlude will be performed by John Andrew Ross, the music director for the National Center of Afro-American Artists Inc.

The service will be followed by an informal reception in McCormick Hall, which will feature a video retrospective of Wiesner's life.

Wiesner was inaugurated as president on July 1, 1971 and remained in this position until June 30, 1980, when he retired. During his time at MIT, he also served as provost, dean of the School of Science, head of the Department of Electrical Engineering, and director of the Research Laboratory of Electronics.

Stahovich and Conley Pursue Comedy Prize

Comedy, from Page 1

lightweight and underweight. ... Why can't they just tattoo 'Moo Cow' on my forehead backwards so I can read it every morning when I look in the mirror?"

Conley said she had never done stand-up comedy before "but there was always this part of me that knew I would love it. ... I came up with a couple of ideas and ran them by a couple of close friends."

Stahovich has been seriously performing comedy for two years. "When I was an undergrad at [Uni-

versity of California at] Berkeley, all my friends told me to leave comedy to train professionals," he said. He has been part of the MIT improvisational group Roadkill Buffet, and has also performed at amateur nights in comedy clubs and participated in other contests. Last year he was a semi-finalist in the WBCN Comedy Riot, which was a contest open to amateur comedians.

"This is something I'd love to be a professional at," Stahovich said. However, he has not had much time to devote to it recently because he is finishing his thesis.

So, You're Wondering About I. A. P. and Spring Housing Information??

IMPORTANT DEADLINES FOR SUBMITTING REQUESTS

- WEDNESDAY, NOVEMBER 30th Room Change Within House request, Contact your Room Assignment Chair for more information.
- FRIDAY, DECEMBER 2nd House-to-House Change request, forms available in W20-549
Decrowding Preference request, form sent to students currently living in crowds
Spring Cancellation request, forms available in W20-549
9th+ Term Housing request, send letter to W20-549
- MONDAY, JANUARY 9th, 1995 Last Day of Fall Term Occupancy

Please stop by the RCA office in W20-549, or call 3-6777, or e-mail Phil Bernard <pmbernar@mit.edu> with any questions!!

SPECIAL ADVANCE SCREENING

STEVE MARTIN

MIXED NUTS
A COMEDY ON THE EDGE

FRUSTAR PICTURES PRESENTS A WOLFE THOMAS PRODUCTION A STEVE MARTIN FILM
"MIXED NUTS" MADELINE KAHR ROBERT KLEIN ANTHONY LAPOINTE JULES ET JIM BOB BLUMER ADAM SANDLER BOB WILSON GEORGE HANCOCK JEFFREY MAYER AND JAMES GARDNER
BILL BRIDGMAN SVENNYKVIST DEBRA FERRELL JAMI SW SCOTT THOMPSON PETER WELCH TONY THOMAS JOSEPH HARVEY
PAUL JUNJER WITT TONY THOMAS JOSEPH HARVEY
MUSIC BY JAMES NEWTON HOWARD
COSTUME DESIGNER JANE WILSON
EDITED BY JAMES NEWTON HOWARD
EXECUTIVE PRODUCERS JAMES NEWTON HOWARD
PRODUCED BY WOLFE THOMAS
WRITTEN BY JAMES NEWTON HOWARD
DIRECTED BY STEVE MARTIN

來利樓

Larry's Chinese Restaurant

302 Massachusetts Ave., Cambridge
Orders to go, or dining in

FREE DELIVERY TO THE M.I.T. CAMPUS — \$10 MINIMUM

Luncheon Specials served daily, 11:30 a.m. - 5:00 p.m., starting at \$2.95
Special Dinner Plate just \$4.95 all day long

15% OFF WITH THIS AD (VALID THRU 12/30/94)
(for dine-in dinners only; \$10 minimum purchase)

Call 492-3179 or 492-3170

Monday - Thursday, 11:30 a.m. to 10:00 p.m.
Friday - Saturday, 11:30 a.m. to 11:00 p.m.
Sunday, 5:00 p.m. to 10:00 p.m.

FREE MOVIE POSTERS

Brought to you courtesy of

Thursday
December 1

8:00 PM

26-100

Metro LSi Sedan

GEO

Pick up Free Passes at the Door - MIT ID Required

Presented By
M.I.T. LECTURE SERIES COMMITTEE

© 1994 Citibank (South Dakota), N.A.

CHEAP FLIGHTS:

- ✈ **Fly standby.**
It's like camping out for concerts, but the people bathe.
- ✈ **Buy your tickets in August.**
That's when airfares are lowest. Consider reserving a vegetarian meal.
- ✈ **Look into courier flights.**
Ask what you'll be delivering. So you don't end up in a Third World prison.
- ✈ **Organize a charter.**
Bring your friends. If you have none, classmates and relatives will do.
- ✈ **Get a Citibank Classic card.**
You'll get discounts off domestic and international flights.

Get an ISE International Student I.D. card to qualify for international flights and other travel-related savings.

WE'RE LOOKING OUT FOR YOU.™
To apply, call 1-800-CITIBANK.





tumbleweed garden

pawan sinha

Summer Undergraduate Research Programs in the *Graduate Biomedical Sciences*

**WE HELPED BILL.
We Can Help You!**



New York University Medical Center
June 5 - August 4, 1995

The Sackler Institute of Graduate Biomedical Sciences invites applications from students for participation in a summer research internship program in the medical sciences at New York University Medical Center. The Purpose of the program is to give students who may be interested in pursuing careers in the biomedical sciences (M.D.-Ph.D. or Ph.D.) the opportunity to conduct research and to be exposed to the excitement of an academic medical environment at a major research center. Students may work with faculty in the disciplines of biochemistry, cellular and molecular biology, immunology, microbiology, molecular oncology, neuroscience and physiology, parasitology, pharmacology, and virology.

Trainees enrolled in the program will receive a stipend of \$2,500, round trip travel expenses to New York City, and housing at the Medical Center.

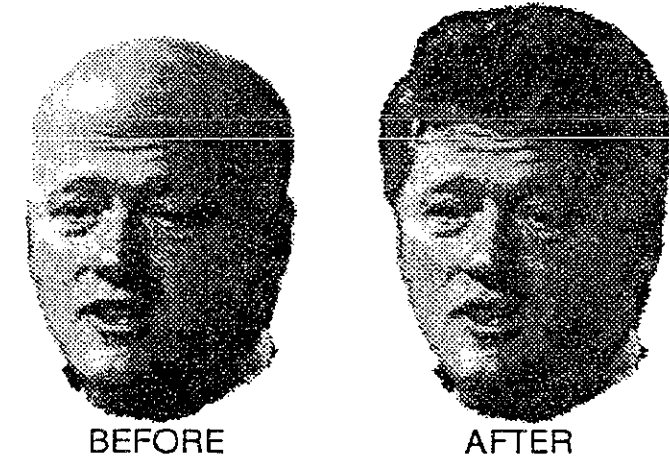
Underrepresented minority students are encouraged to apply.

For an application, please write to either:

Mr. Antonio J.D. Rocha, Coordinator
Summer Undergraduate Research Program
New York University School of Medicine
550 First Avenue
New York, NY 10016

Ms. Dionne Sandiford, Coordinator
Office of Minority Affairs and Student Services
New York University School of Medicine
550 First Avenue
New York, NY 10016

Application Deadline: February 1



Listen to Bill C.'s amazing story:
Without hair, my life sucked! I was stuck in a dead-end job in Arkansas and I was getting no dates. My self-esteem was in the pits. Then, one day, I heard about the amazing HAIR system. I went to their office and signed up. Within days I had a crisp crop of hair! There's been no looking back for me since. It's been one date after another. My friends don't make fun of me anymore. A couple of years back, I even became the president of a major western nation. All I can say now is, 'I am not only the president, I am also a client!' Thank you HAIR!

HAIR™
S Y S T E M

Hippocampal Androgynous Interferon Revitalization
A revolutionary new technology for hair regrowth developed through intense collaboration between the departments of Computer Science and Brain and Cognitive Sciences at MIT. Not tested on animals... only on graduate students.

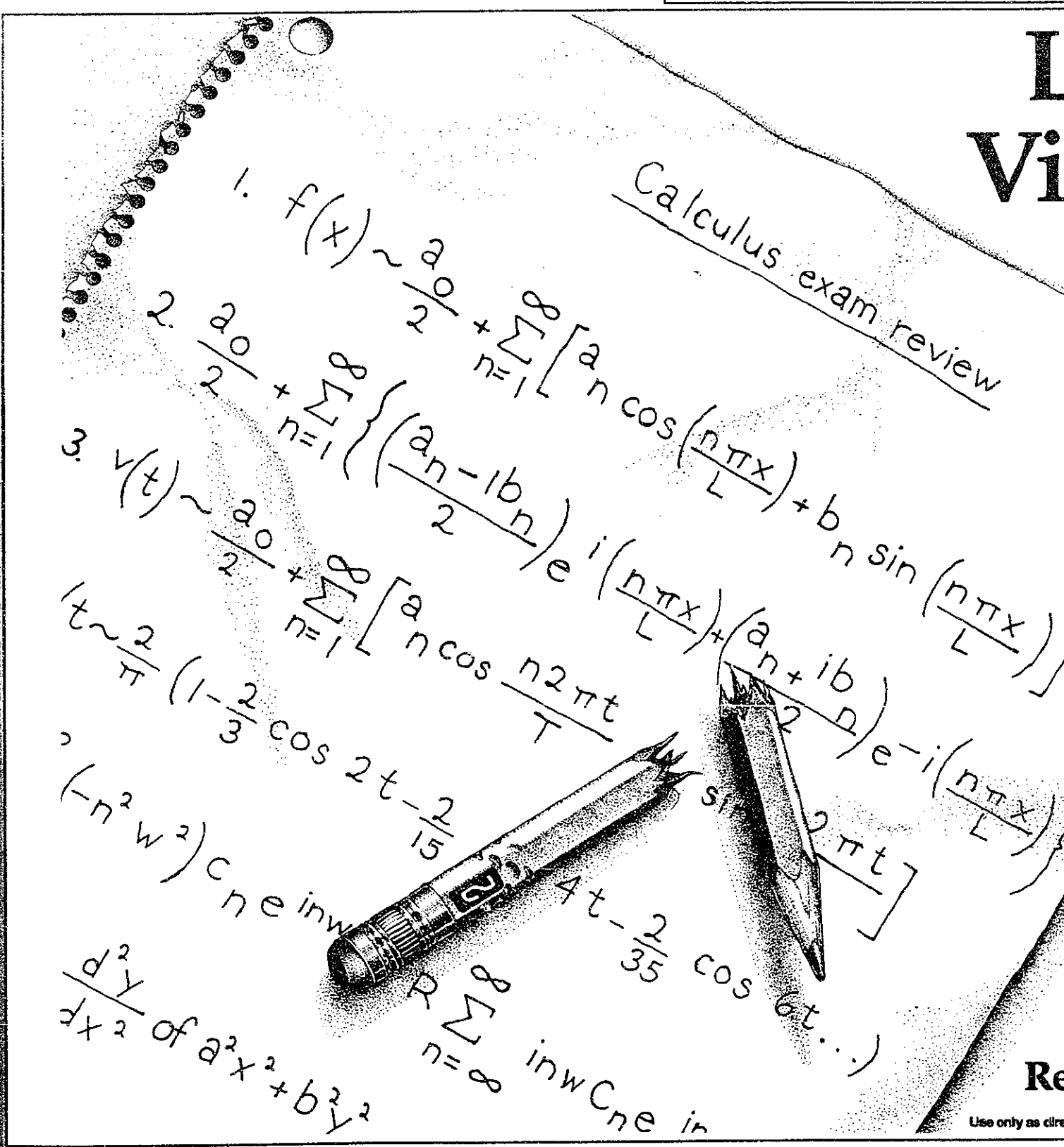
For more information, call: 1-800-WOW-HAIR

Looks like a Vivarin night.

The big one's only 12 hours away. You could have paid more attention in class, but tonight you've gotta cram. First, you better keep those eyes from closing. Revive with Vivarin. Safe as coffee, it helps keep you awake and mentally alert for hours. So when your most difficult problem to solve is how to stay awake...make it a Vivarin night!



Revive with VIVARIN.®



BURCHARD SCHOLARS PROGRAM

ALL MIT SOPHOMORES AND JUNIORS

The 1995 BURCHARD SCHOLARS PROGRAM
IS NOW ACCEPTING APPLICATIONS

The Burchard Scholars Program brings together members of the MIT faculty and promising juniors and sophomores who have demonstrated excellence in some aspect of the humanities and social sciences as well as in science or engineering.

Twenty Burchard Scholars are invited to a series of dinner-seminars throughout the year to discuss topics of current interest introduced by faculty members and visiting scholars.

The 1995 program begins in February.

For information or an application, contact: Dean's Office,
School of Humanities and Social Science, E51-234 (x3-8961) or the
HASS Information Office, 14N-408 (x3-4443).

APPLICATION DEADLINE: FRIDAY, DECEMBER 2, 1994

SPONSORED BY THE OFFICE OF THE DEAN,
SCHOOL OF HUMANITIES AND SOCIAL SCIENCE



MASSACHUSETTS SPACE GRANT CONSORTIUM SUMMER POSITIONS

PARTICIPATING COMPANIES

HUGHES
LOCKHEED
THE AEROSPACE CORPORATION
MARTIN MARIETTA
MIT LINCOLN LABORATORY
NASA GODDARD SPACE FLIGHT CENTER
JET PROPULSION LABORATORY
ORBITAL SCIENCE CORPORATION
ROCKWELL INTERNATIONAL
TRW
UNITED TECHNOLOGIES
TRIMBLE NAVIGATION

THE SPACE GRANT PROGRAM IS NOW OFFERING AN OPPORTUNITY FOR A SUMMER POSITION IN THE FIELDS OF SPACE SCIENCE AND SPACE ENGINEERING. THERE WILL BE A MEETING ON NOVEMBER 30, 1994 AT 3:00pm IN 37-252 AND ANOTHER MEETING ON DECEMBER 1, 1994 AT 12:00 noon IN 37-252. THIS MEETING WILL INTRODUCE THE PROGRAM AND WE WILL ALSO HAVE INFORMATION AVAILABLE ON THE PARTICIPATING COMPANIES.

IF YOU ARE INTERESTED IN A SUMMER POSITION, PLEASE SEE HELEN HALARIS, 33-212, X8-5546 OR LISA SASSER, 33-212, X3-4929 FOR AN APPLICATION OR FURTHER INFORMATION

DEADLINE FOR APPLICATIONS: DECEMBER 16, 1994

New SIS Improves Access to Records

SIS, from Page 1

ister for classes, update their emergency information card, view their Bursar's Office statement, and see financial aid awards, Wiley said.

The Athena changes might also let students update their motor vehicle information and evaluate courses using SIS on Athena, Wiley said.

Registration, billing changed

Several changes in SIS affect the registration process, Culliton said. The four registration forms previously used have been integrated into a single form.

Registration status reports have also been redesigned to better display course information and include a projected degree audit showing current progress toward degree requirements, Culliton said.

Some students have complained to the Registrar's Office that the date on their status report — 1995 FA — is incorrect, Wiley said. However, in the language of the report, the date correctly refers to the fall term of the 1994-95 academic year, he said.

Doctoral students working only on a thesis will have automatic pre-registration through the new system, Culliton said. More details about the registration changes will be provided in the Registration Information and Class Schedules booklet to be distributed in early December.

Transcripts will now be prepared electronically, a move that represents a major improvement in quality and speed ["Registrar Updates Transcript System for Improved Efficiency," Oct. 25]. Among other features, the new transcripts will show whether a student took an Undergraduate Research Opportunity Program project for pay, credit, or as a volunteer, Culliton said.

The Bursar's Office bill was redesigned to be readable and understandable following a survey of 1,500 students and parents. The bill now lists the transactions for registered students.

The Student Financial Aid Office will also be affected by the SIS change, Culliton said. Students will be able to receive results of changes in their aid awards as soon as the decision is made. The financial aid award notice has been revised to clearly describe grant, loan, and work-study awards.

Students have received new, randomly-assigned MIT ID numbers in order to address privacy issues, Wiley said. The Registrar's Office has received many complaints from students who say their ID number is wrong, Wiley said. The numbers have only been changed, Wiley said, and students can still use their old ID numbers when completing forms.

Academic departments will be able to use SIS to access academic and biographical information on students for academic and administrative purposes, Culliton said. Departments will be able to enter data directly on the system to support teaching, advising, and graduate aid.

The new SIS also provides departments with online class lists with search capability, Culliton said. In addition, a new final exam scheduling system allows better tailoring of the exam schedule and better management of conflict exams.



CHANUKAH SALE LOBBY 7 Monday, November 28 Tuesday, Nov. 29

- Menorahs
- Dreidels
- Decorations
- Latkes (potato pancakes)
- Candles
- Chocolate Gelt
- Hillel T-shirts

Items are also available for purchase at Hillel, lower level of W11

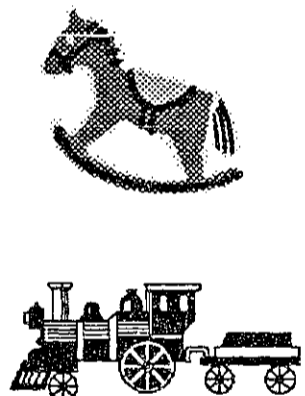
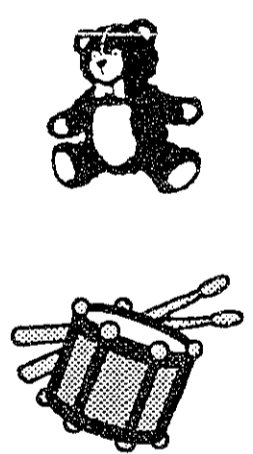
Chanukah begins Sunday evening, November 27!
Sponsored by M.I.T. Hillel, 253-2982



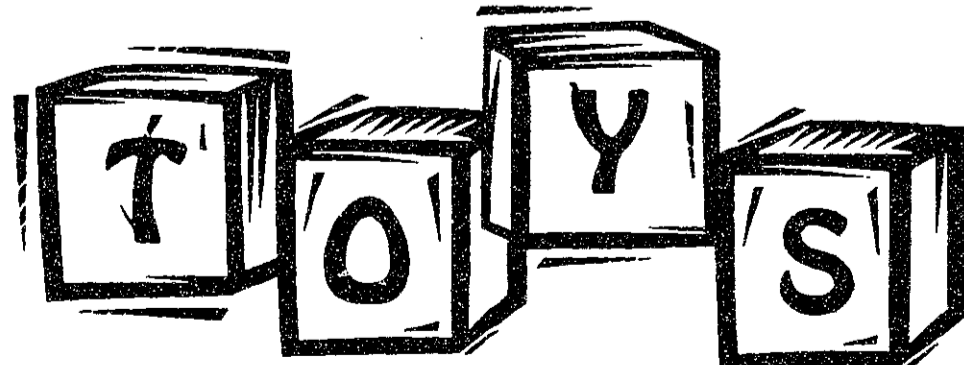
HOLIDAY GIFT BOX

TOYS, NEW CLOTHING, AND NON PERISHABLE FOOD ITEMS CAN BE DROPPED OFF AT
MIT CAMPUS POLICE STATION, NETWORKS
LOBDELL FOOD COURT, WALKER, AND REFRESHER COURSE

*Bring Happiness
to an
Underprivileged
Family
This Holiday
Season*



TOYS, NEW CLOTHING, AND
NON PERISHABLE FOOD ITEMS
WILL BE COLLECTED
MONDAY, NOVEMBER 28
THROUGH
WEDNESDAY, DECEMBER 21



Contributions will be donated to Cambridge area Agencies

Sponsored by MIT Campus Police, MIT Food Service and



CLASSIFIEDS

- Events**
- Housing**
- Travel**
- Help Wanted**
- Services Offered**
- Information**
- Positions Wanted**
- Lost & Found**
- Clubs**
- For Sale**
- Greeks**
- Miscellaneous**

Advertising Policies

Classified ads are due at 5 p.m. two days before day of publication, and must be prepaid and accompanied by a complete address and phone number. Send or bring ads, with payment, to W20-483 (84 Mass. Ave., Room 483, Cambridge, MA 02139). Account numbers for MIT departments accepted. Sorry, no "personal" ads. Contact our office for more details at 258-8324 (fax: 258-8226) or ads@the-tech.mit.edu.

Rates per insertion per unit of 35 words

MIT community:	
1 insertion	\$3.00
2-3 insertions	\$2.75
4-5 insertions	\$2.50
6-9 insertions	\$2.25
10 or more insertions	\$2.10
All other advertisers	\$5.00

Help Wanted

Japanese Linguist Detail-oriented linguist to translate, edit & proofread technical documentation. Native Japanese speaker with English fluency, 3 year translation/editing exp. (software & medical). Computer literacy (esp. Japanese Windows) essential. Cover letter (detailing translation & software exp.) & resumé. to Harvard Translations, 137 Newbury St., Boston, MA 02116. Fax: 617-424-8983.

Travel Abroad and Work. Make up to \$2000-\$4000+/mo. teaching basic conversational English in Japan, Taiwan, or S. Korea. No teaching background or Asian languages required. For information call: (206) 632-1146 ext J50333.

\$1500 weekly possible mailing our circulars! No experience necessary! Begin now! For info call 202-298-0955.

Healthy men needed as sperm donors. Help others and earn up to \$105/week. All ethnicities needed, call to see if you qualify: 497-8646 M-F, 8:00-4:00. California Cryobank, Cambridge.

Help Wanted

Ideal part-time childcare job Carry your course load! Get free room/board in Navy yard triplex! Make Money! In exchange for occasional before/after help for bright 9-year-old girl. Private bedroom/bath; city skyline view. References. 242-0905 after 9 pm.

Japanese Localization Manager Technical manager for Japanese software localization projects. Native Japanese speaker with English fluency; 3 years exp. in Japanese localization (Windows) required. Exceptional computer skills, familiarity with multiple environments & resource editing essential. Cover letter (detailing localization, linguistic, & software exp.) & resume to: Harvard Translations, Inc., 137 Newbury St., Boston, MA 02116; Fax: 617-424-8983.

Programmer Wanted: Experienced Excel macro programmer to help develop an automated lexicon at the Neuropsychology Lab at MGH. Work for pay or credit through the Brain and Cognitive Science Department. Call 726-3274 for information.

Help Wanted

Earn big rewards! Brave New World will pay the most brilliant scientists, mathematicians and engineers, of both sexes to donate their sperm and egg cells. Call 1-800-651-2780.

Positions Wanted

AutoCAD Drafting and Design Temp. or P/T, 25 years experience in designing, detailing, and checking of Electrical, Mechanical, Architectural and drawings of all kinds. 10 years an AutoCAD Designer. Call George (617) 284-0736

For Sale

ANEW by AVON 4 & 8% alpha hydroxy skin creams. affordable, with wonderful results. If interested, please phone Linda at 576-6798 for free sample.

Kramer guitar for sale 3 pick-ups, Peavey amplifier with distortion, 2 patchcords, leather case. All for \$250, negotiable. Call Jin at 494-8677.

For Sale

Computer for sale 486DX, 40 MHz, 120 MB hard drive, VGA monitor /w 1 Meg video, 256 K cache memory, 4 MB RAM, 2400 baud modem, sound card, mouse, keyboard. Windows 3.1 and Dos 5.0 are included. \$950 firm. Call Jin at 494-8677.

Housing

Apartment/room wanted near Kendall Square. Non-smoker, extremely nice guy. Call Abid at 225-8173.

Services Offered

Legal problems? I am an experienced attorney and graduate of MIT who will work with you to solve your legal problems. My office is conveniently located in a downtown Boston, just minutes from MIT via the MBTA. If you have a question involving litigation, high tech law, consumer or business law, family law, real estate or accidents, call Attorney Esther J. Horwich at 523-1150 for a free initial consultation.

Clubs

Stuyvesant High School Alumni-MIT has a Stuy alumni chapter for YOU! Get involved and keep those Stuy bonds strong! Get to know more upperclassmen who are in your major! For more information, contact Angela at 225-8547.

Travel

Hitch The Skies With Airhitch Carib/Mex \$189 R/T, Europe \$169, California \$129. Call for FREE program description 800-326-2009.

Travel Free! Spring Break '95! Guaranteed lowest prices to Jamaica, Cancun, Bahamas, Florida, South Padre, Barbados. Book early and save \$\$\$! Organize small group and travel free! Call for free info packet. Sun Splash Tours 1-800-426-7710.

Spring Break- Nassau/Paradise Island, Cancun, Jamaica from \$299! Air, hotel, transfers. Parties and more! Organize a small group-earn free trip plus commissions! Call 1-800-822-0321.

The City of New York announces

SUMMER INTERNSHIPS: THE GOVERNMENT SCHOLARS PROGRAM

The New York City Government Scholars Program offers a select group of college students a unique opportunity to learn about New York City government. The exciting ten-week program combines full time employment in City government with a comprehensive seminar series exploring the mechanics of local government and issues facing the City. Through work experiences and weekly discussions, the Scholars come to understand the enormous variety and complexity of the challenges in New York City government.

The 10-week Government Scholars Program begins in June and runs through mid-August. Government Scholars are paid a taxable \$3000 stipend in bi-weekly installments throughout their tenure.

ELIGIBILITY AND SELECTION

Candidates must meet the following requirements as of May of the program year:

- Applicants must be college sophomores, juniors or graduating seniors.
- Applicants must be willing to commit to full-time employment during the course of the internship.

Application and supporting materials should be postmarked no later than January 13, 1995. Upon receipt and review of applications by the selection committee, 24 candidates will be notified as to the status of their application by mid-March.

Please note: Individuals may not participate in, or apply to, both the Government Scholars and Urban Fellows programs in the same year.

FOR APPLICATIONS AND ADDITIONAL INFORMATION, contact:

NINE-MONTH FELLOWSHIPS: THE URBAN FELLOWS PROGRAM

The New York City Urban Fellows Program is a 9-month fellowship that combines work in Mayoral offices and city agencies with an intensive seminar component. Functioning as full time employees, Fellows become instrumental in the policy planning, long term research efforts, direct service delivery and day to day problem solving responsibilities of the office. Fellows typically work closely with their supervisors who provide substantial direction and feedback regarding their performance.

Urban Fellows are selected annually and serve a full academic year from September through May. They receive a taxable stipend of \$18,000 and a choice of paid health insurance plans.

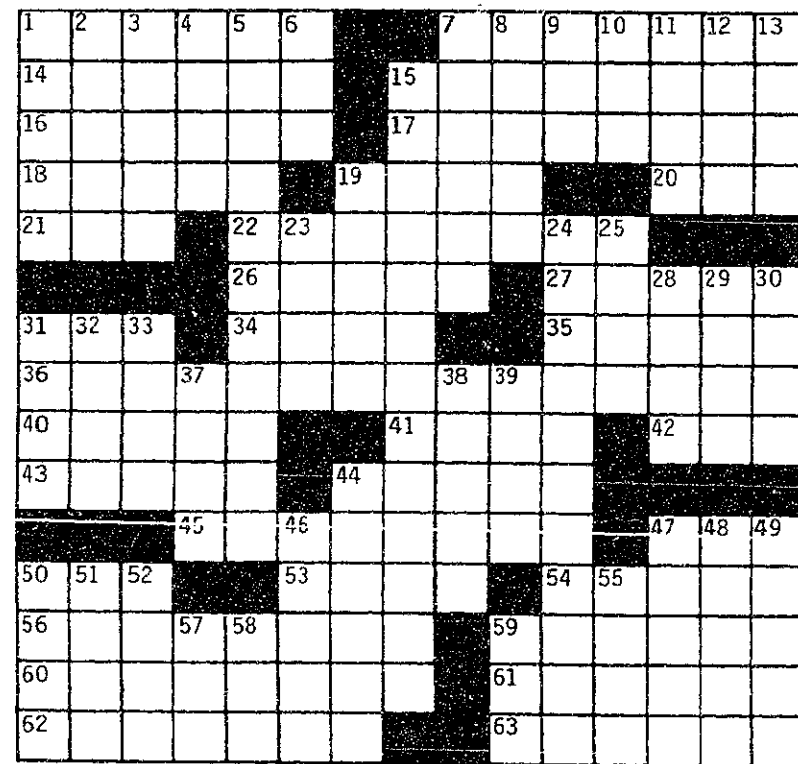
ELIGIBILITY AND SELECTION

Candidates must meet the following requirements as of the beginning of the program year in September:

- Applicants must be recent college graduates, no more than 2 years out of college.
- Applicants must be willing to participate in the program on a full-time basis for one academic year.

Application and supporting materials should be postmarked no later than January 20, 1995. Upon receipt and review of applications by the selection committee, finalists will be invited to interview in New York City. Participants will be selected on the results of these interviews.

Nancy Lehman
Director, Fellowship Programs
NYC Government Scholars Program
NYC Department of Personnel
2 Washington Street, 15th Floor
New York, NY 10004
(212) 487-5698



© Edward Julius Collegiate CW79-24

ACROSS

- 1 Horse-drawn carriage
- 7 Hollywood
- 14 One of a kind
- 15 Cobwebs, in a way (2 wds.)
- 16 Traffic jams
- 17 43-Across, to Henry Higgins
- 18 Arm bones
- 19 Narrow opening
- 20 How to save nine
- 21 Hebrew letters
- 22 Deserter
- 26 Tartlike pastries
- 27 Footnote term
- 31 Mauna
- 34 Another footnote term
- 35 Fox-headed dog
- 36 Trompe l'oeil (2 wds.)
- 40 Initial installment (2 wds.)
- 41 Rubber
- 42 Bikini part
- 43 Miss Doolittle
- 44 Tennis stroke
- 45 President Boume-dienne, e.g.

- 47 Depot (abbr.)
- 50 James and John (abbr.)
- 53 Adam's grandson
- 54 Of tissue
- 56 Himalayan capital
- 59 German region
- 60 Colonies of bees
- 61 Grain appendage
- 62 Airedale, for one
- 63 Monty

DOWN

- 1 Clown
- 2 Like an old woman
- 3 Legal claims
- 4 Prefix for plane or marine
- 5 Shallow
- 6 Masculine contraction
- 7 Parsley pieces
- 8 Pro rata share
- 9 Ride to 'ounds?
- 10 Peer Gynt's mother
- 11 Offshore sights
- 12 "Waiting for the Robert"
- 13 Slant
- 15 Magnificent
- 19 's pace
- 23 Napoleon's exile island
- 24 Serious TV show
- 25 Heroic poetry
- 28 Cheat sheet
- 29 Dr. Frankenstein's aide
- 30 Turner
- 31 Leisurely gait
- 32 Iridescent gem
- 33 Italian bell town
- 37 Chichen
- 38 Nocturnal lemur
- 39 Popocatepetl output
- 44 Return to
- 46 Lamp dweller
- 47 Walk in water
- 48 So much, in music
- 49 Of Indo-European languages
- 50 Game played with 32 cards
- 51 Office supply
- 52 Direction from Julia Child
- 55 Theatre sign
- 57 Calendar abbreviation
- 58 Onassis, for short
- 59 Enervate

SOLUTIONS IN THE NEXT EDITION OF THE TECH

PUZZLE SOLUTIONS FROM LAST ISSUE

ENDS	NABOB	TARA
ROUT	AGORA	AVON
ITER	PARADEREST	
CELIBATE	INGRES	
DELE	ANTE	
REDEEM	SPARTANS	
AGENT	STAGE	PEP
GELT	SPICE	PAGO
EST	STALE	BURRO
STALWART	BOLTON	
LANK	MALI	
STRAND	DONATION	
TRANSITION	ZANE	
AUTO	NACRE	EMIT
TEES	GREER	RATS

Numerous Honors For Football Players

Shorts, from Page 16

All-America honors.

Football

Football honors have also recently been announced, and MIT players are prominent on two of these teams.

Five MIT players have been named to the GTE College Sports Information Directors of America Academic All-District team.

Running back Chris Brown '96; defensive end Kevin Ferrigno '96; Corey Foster '95; defensive back David Hwang '96; and punter Scott Vollrath '96, will all now appear on the national Academic All-America

ballot. Undefeated Bentley College was the only other institution to place more than one player on the team, with two students named to the team.

Eastern Collegiate Football Conference All-Star honors were announced last week and MIT was represented by eight players.

First team selections were offensive guard Nick Bollweg '95, and Vollrath. Included on the second team were offensive guard Foster, running back Jose DeLeon '97; Trent Redman '97; linebacker Andy Carnell '95; and strong safety Mike Butville '98. Defensive tackle Chris Yanney '97 is an honorable mention selection.

UPCOMING HOME EVENTS

Wednesday, Nov. 30

Squash vs. United States Naval Academy, 6 p.m.
Men's Ice Hockey vs. Springfield College, 7 p.m.
Wrestling vs. University of Massachusetts at Lowell, 7 p.m.

Thursday, Dec. 1

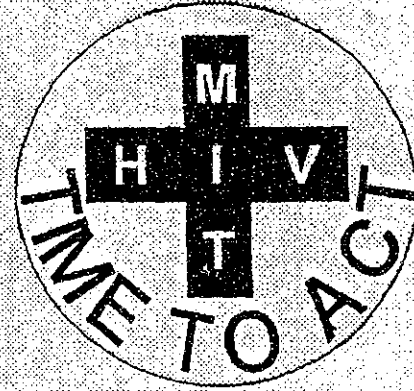
Women's Basketball vs. Wentworth Institute of Technology, 5:30 p.m.
Women's Ice Hockey vs. Wheaton College, 7 p.m.
Men's Basketball vs. Gordon College, 7:30 p.m.

**WANT TO TALK?
NIGHTLINE
x3-8800**

7 pm - 7 am
All calls confidential

This space donated by *The Tech*

**WORLD AIDS DAY
DECEMBER 1, 1994**



MIT AIDS Memorial Quilt - Lobby 7, 11 am - 3 pm

In honor of World AIDS Day, the MIT Quilt panel will be displayed to acknowledge the lives of people affiliated with MIT who have died of AIDS

Information Table - Lobby 7

*educational materials and resources
community volunteer opportunities
red ribbons to support AIDS awareness*

Video Screening - Lobby 7

"People Like Us" and "We Bring A Quilt"

Safer Sex Information and Supplies

MedSTOP 3-123, all week while supplies last

Pedro Zamora Memorial and Discussion - 14E-304, 8:00 pm

Join us to reflect on the remarkable life and numerous contributions to AIDS education this gifted individual from the MTV series "Real People" has made worldwide. Pedro worked tirelessly to increase awareness about HIV until the day he died, last month, at the young age of 22.

World AIDS Day activities at MIT are cosponsored by the Health Education Service and MedLINKs of the Medical Department and GAMIT. For more information, please call 253-1316.

**SALES AND TRADING
and
INVESTMENT BANKING
OPPORTUNITIES
PARIBAS CAPITAL MARKETS**

Paribas Capital Markets, a leading financial institution will be participating in Sloan's 1994-95 recruiting programs for positions in Sales and Trading and Investment Banking for our New York office and other international offices. All students are cordially invited to meet representatives from our firm on:

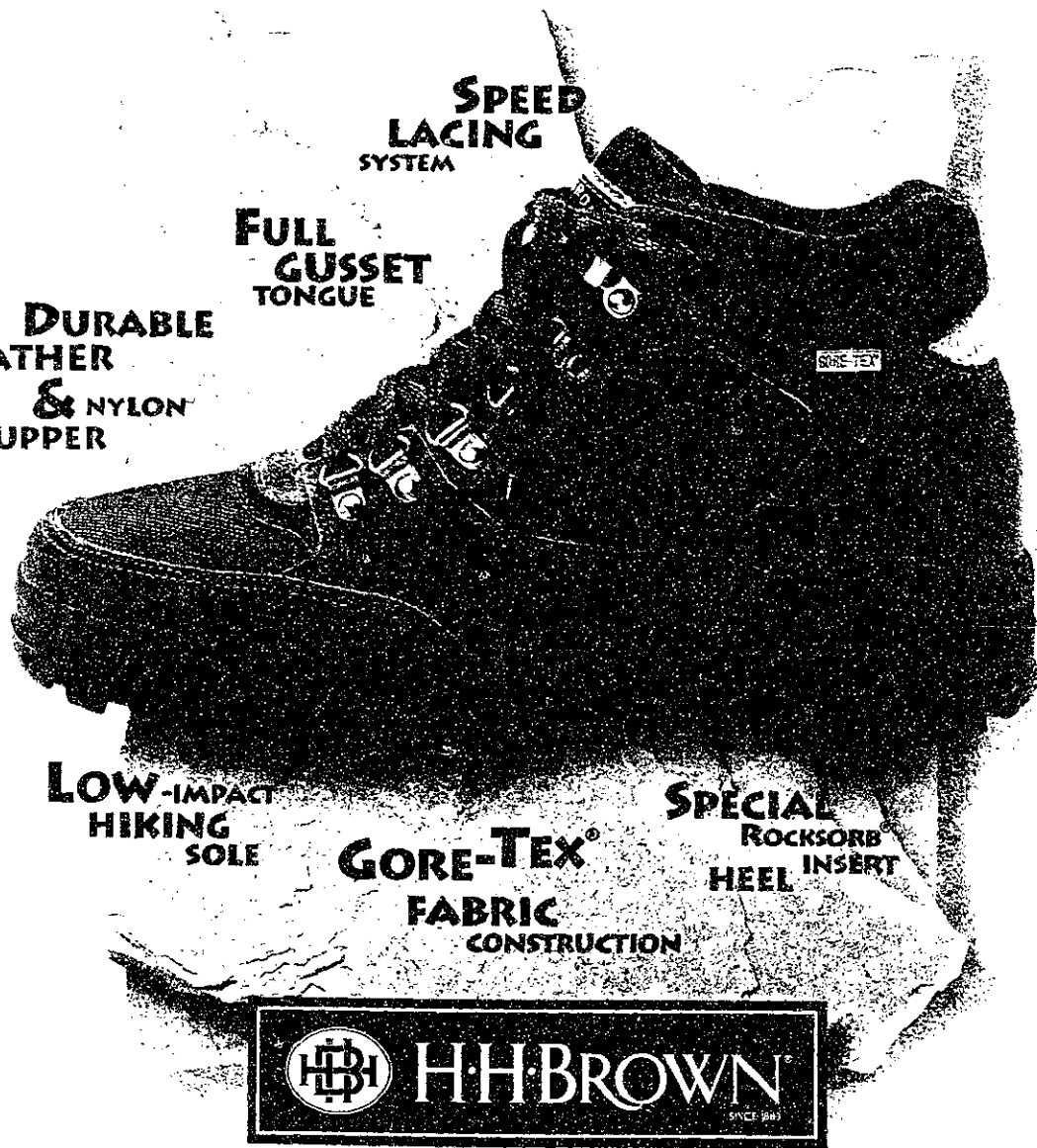
THURSDAY, DECEMBER 1, 1994

**BUILDING E51, ROOM 302
4:30 - 5:30**

**Reception to follow presentation
Casual Attire**

SPORTS

ROCK THE WORLD!



SPEED LACING SYSTEM

FULL GUSSET TONGUE

DURABLE LEATHER & NYLON UPPER

LOW-IMPACT HIKING SOLE

GORE-TEX FABRIC CONSTRUCTION

SPECIAL ROCKSORB HEEL INSERT



Rock Macs

AND DON'T GO BROKE DOING IT.

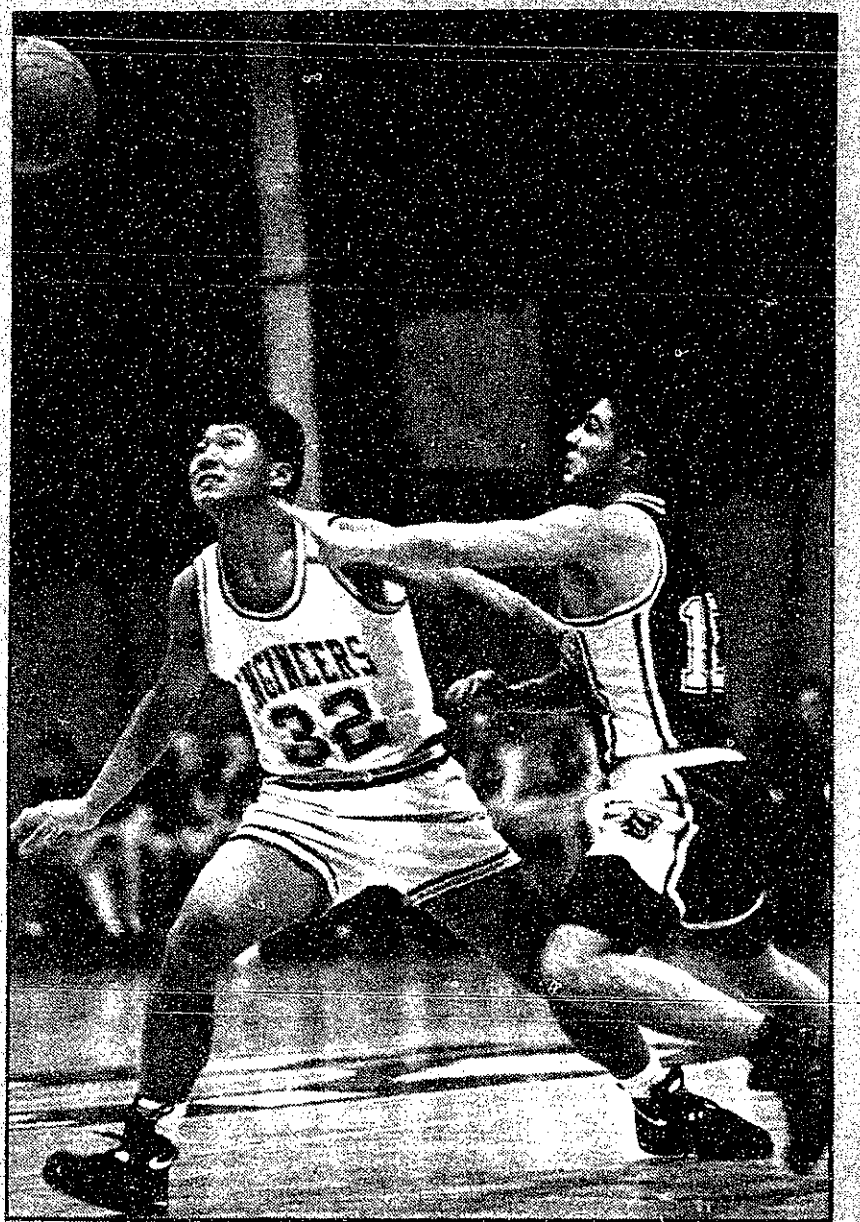


OVERLAND TRADING COMPANY THE TANNERY
MASS ARMY & NAVY HARVARD CO-OP



GORE-TEX IS A TRADEMARK OF W.L. GORE & ASSOCIATES, INC.

OFFICIAL SUPPLIER OF RUGGED AND CASUAL FOOTWEAR



THOMAS KARLO THE TECH
Ron Cao '96 races a Babson defender for a loose ball after it was knocked out of his grip during last Tuesday's game.

3 X-C Runners Earn All-America Honors

By Roger Crosley
SPORTS INFORMATION DIRECTOR

The men's and women's cross country teams together gained three more All-American winners a little over a week ago.

Ethan Crain '95 and Jesse Darley '95 placed ninth and 10th respectively in the National Collegiate Athletic Association Division III Men's Cross Country Championship, while Janis

Eisenberg '98 ran to 34th place in the women's competition.

Darley's honor was his second, and Eisenberg's honor is the first ever in cross country by an MIT woman. Eisenberg was an individual qualifier.

As a team MIT's men tied for 10th at the meet which was hosted by Moravian College in Bethlehem, Pa. Twenty-one teams qualified by region throughout the country. MIT had been ranked 12th going into the championship.

NEW-8 Selections

The New England Women's Eight Conference all-star teams have been selected in all sports and MIT athletes have received the top honors in each sport.

Cross country runner Eisenberg was the both Runner of the Year and Rookie of the Year in the conference based on her first place finish in the conference championship.

In field hockey, Katherine Merriees '97 was the Player of the Year and has been named an All-Region selection by the College Field Hockey Coaches Association.

Becky Hill '95 was the Player of the Year in soccer. Carol Matsuzaki '95 was the All-NEW-8 selection in the first singles position in tennis. Matsuzaki has played competitive tennis for only three years.

For the second consecutive year Kamilah Alexander '96 is the volleyball Player of the Year. Alexander has also been named to the American Volleyball Coaches Association All-Region team.

In addition, several other athletes are NEW-8 All-Conference selections. They are:

- Cross Country: Marjorie Delo '95
- Soccer: Emily Brown '96
- Tennis: "Bobby" Kommineni '98, Lily Koo '97
- Volleyball: Stacey Dozono '97

Dozono and Pareen Dhalla '95 were named, along with Alexander, to the American Volleyball Coaches Association All-Region team. All three athletes are now eligible for

CHANUKAH MENORAH LIGHTING

M.I.T.'s Lobby 7

Tuesday, November 29

Thursday, December 1

4:30 p.m.

• Featuring MIT Hillel's "Test Tube Menorah"

• Performance by Tech-ya, MIT's Jewish A Cappella Group

Sponsored by M.I.T. Hillel
For information call 253-2982

