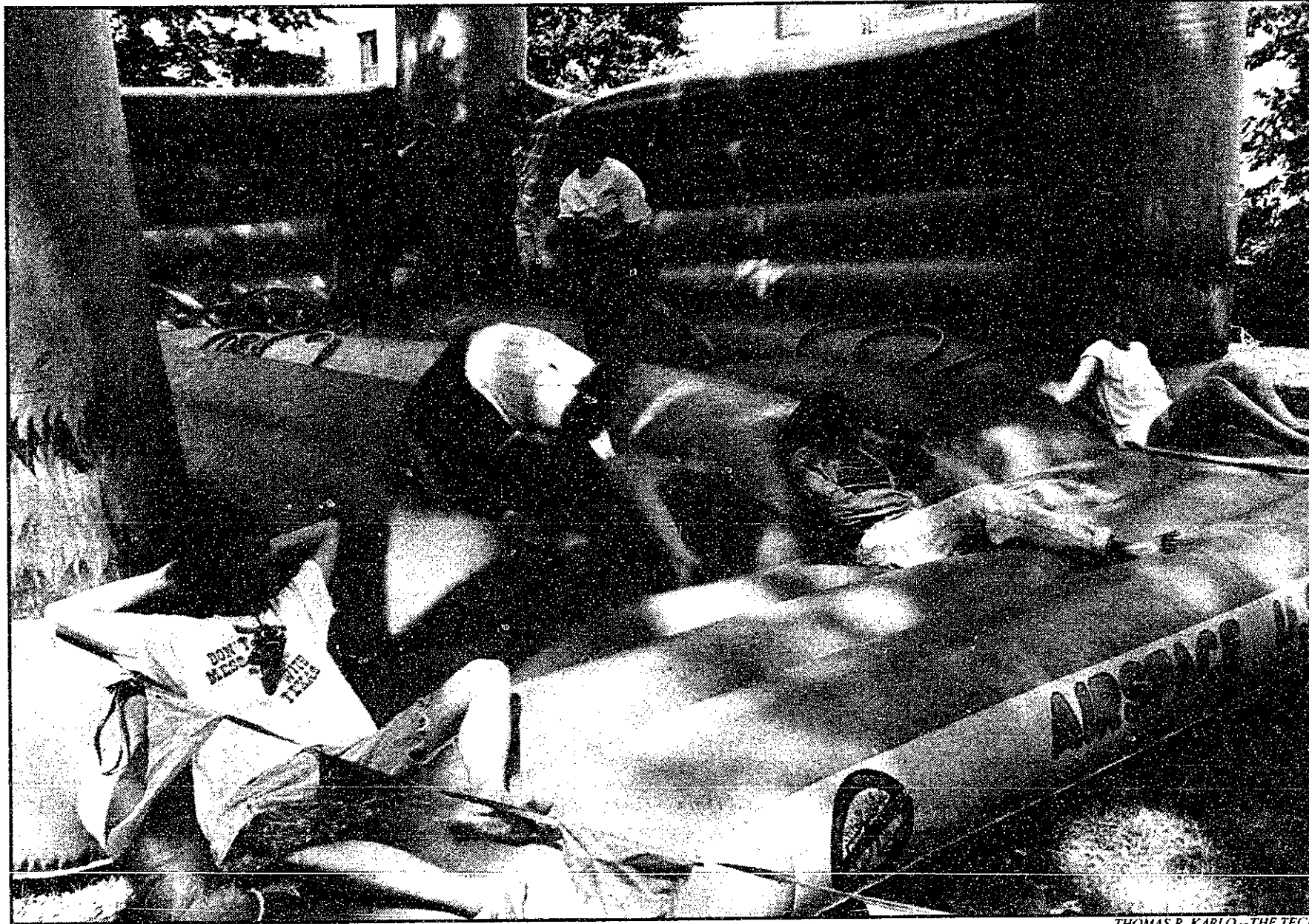


### The Weather

Today: Mostly sunny, 80°F (27°C)  
Tonight: Clear, cool, 45°F (7°C)  
Tomorrow: Pleasant, 80°F (27°C)  
Details, Page 2



Some relaxed in the shade as others frolicked during the carnival put on by East Campus yesterday afternoon.

THOMAS R. KARLO—THE TECH

## Rush Going Well

### Many Freshmen Look into ILGs

By Hyun Soo Kim  
NEWS EDITOR

Rush '94 seems to be going well for most Independent Living Groups.

"The general impression is that there are fewer men [interested in ILGs], but rush chairs have a good impression of the men they've met," said IFC Rush Chair Yeh-Jiun Tung '95.

"We're very satisfied with how things are going so far. We're confident that we are going to reach our goal or even surpass it without any problem," said Colin M. Page '95, rush chair of Theta Xi.

However, Page said that overall numbers of freshmen coming to the house was slightly less than last year.

Phi Beta Epsilon is also doing well this year, despite negative publicity last year when one of its members allegedly shouted racial epithets at African Americans walking past their house.

PBE Rush Chair Oliver Schneider '95 said, "Rush has been going very well so far. Many freshmen have visited, and they've been very interesting freshmen."

He added that very few freshmen have asked about the incident last year. "They've reacted very positively when we explained the entire situation," Schneider said.

Pika, one of MIT's coed ILGs, also feels it is doing well. "It seems like there is a large flux of people," said Pika Rush Chair James A. Boiani '96. "I would say that more

Housing, Page 13

Fraternity, Page 13

## INSIDE

- Assassins explores criminal mind Page 7
- Bumps cut speed on Amherst Alley Page 11
- Sororities urge thorough consideration of rush options Page 11

## Dorm Lottery Starts Strong

By Jeremy Hylton  
CHAIRMAN

Freshmen were supposed to begin submitting their electronic housing lottery forms at 4 p.m. yesterday, but S. Anders Oakland, the program's creator, turned the program on half-an-hour early. By the time of the official start, 80 freshman had already logged in and entered their preferences.

New students' enthusiasm for this year's housing lottery conducted with a new program developed for the Athena Computing Environ-

ment was overwhelming. Many students said the system was convenient and easy to use.

"Things are going well," said Oakland, a programmer for Information Systems. "Freshmen are very enthusiastic."

By 6 p.m. more than 280 of the approximately 1,110 freshmen had entered their choices.

The program, developed over the last three months, uses a graphical interface to let freshmen enter their dormitory preferences and submit them electronically. The program

will be available for freshmen until 3 p.m. today, and students can change their choices at any time until then, Oakland said.

Students run the program by typing "add forms; froshpref &" from their personal Athena accounts.

A few students had trouble using the system, but the problems were not caused by the program, Oakland said. He said a pair of freshmen had trouble with the roommate feature, which allows groups of students to

## New Check-in Easier With Clearinghouse

By Eric Richard  
CONTRIBUTING EDITOR

Clearinghouse, the system used to keep track of rushees, was redesigned this summer because of changes in the Athena Computing Environment.

The new system functions in exactly the same way, "but moves much faster is theoretically more accurate ... and makes rush as a whole better," said Daniel J. Dunn '94, Clearinghouse and Interfraternity Council Judicial Committee Chair.

The software had to be completely rewritten because the old version only ran on DEC Vax computers which are no longer supported by Information Systems.

One of the primary advantages of the new system is that indepen-

dent living groups can more efficiently determine where freshmen most recently checked in or out.

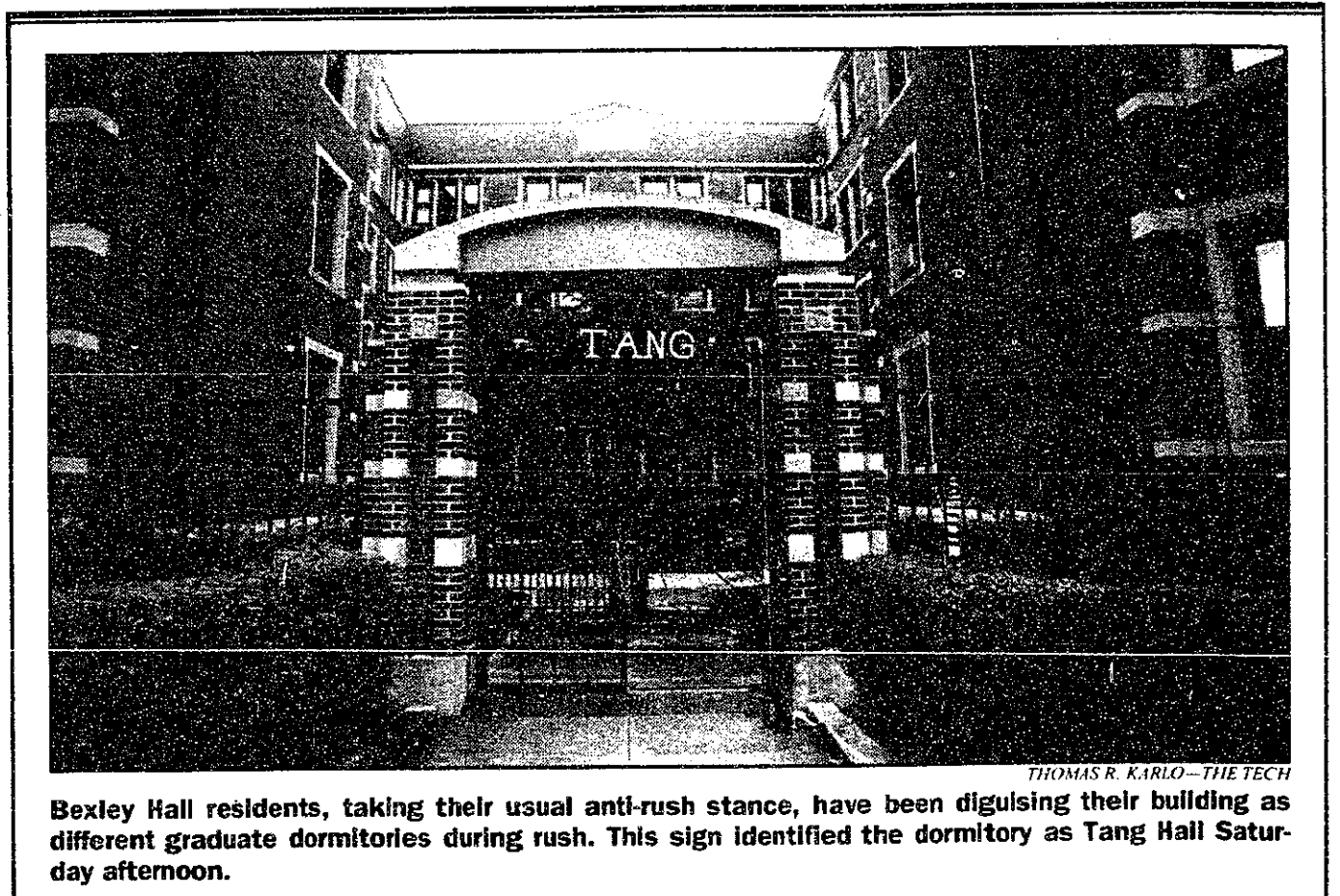
"It should make everything more efficient for [the ILGs]," Dunn said. "They will have to spend fewer man-hours tracking people down."

### Check-in updates immediate

While some living groups connect to Clearinghouse via the Athena dialup machines, others use MITnet to telnet in directly, Dunn said. This allows rush workers to update and access the database as rushees check in and out. In contrast, under the previous system, rush workers needed only to submit their sign-in lists every half-hour.

"Most people are pretty satis-

Clearinghouse, Page 13



Bexley Hall residents, taking their usual anti-rush stance, have been disguising their building as different graduate dormitories during rush. This sign identified the dormitory as Tang Hall Saturday afternoon.

THOMAS R. KARLO—THE TECH

# WORLD & NATION

## Kennedy Camp Jumps In With Quick Ad on Crime Bill

THE WASHINGTON POST

BOSTON

Less than 12 hours after passage of the crime bill, the re-election campaign of Sen. Edward M. Kennedy, D-Mass., had created a television ad incorporating the crime-busting message into this year's political mix.

By editing film of the senator shot earlier, the campaign assembled a 30-second spot that gives Kennedy credit for putting "2,300 new police on Massachusetts streets" and imposing life sentences on third-time violent offenders.

The ad also reminds voters that Kennedy, a former Judiciary Committee chairman, earlier wrote laws abolishing parole for federal crimes and denying bail to dangerous suspects.

Although Kennedy has no Democratic opponent and faces no primary, the campaign decided to air the advertisement now in order to address the public's concern about crime, according to Kennedy's nephew and campaign manager, Michael Kennedy.

He said the "tough-on-crime" theme is not an attempt to reposition the senator, who is one of the nation's foremost liberals, but an effort to build awareness of the senator's record.

The ad, which was produced by the political consulting firm of Doak, Shrum, Harris, Carrier, Devine, began its airing Friday evening, during the New England Patriots football game.

## Israeli-Appointed Mayor Steps Aside in Jericho

THE WASHINGTON POST

JERICHO, WEST BANK

The Israeli-appointed mayor here resigned Sunday, handing over power to a new council made up of members from all the major Palestinian political factions.

"Now, thank God, I'm free," said Jamil Khalaf, as he stood under a picture of Palestinian leader Yasser Arafat and gave his desk keys, official car and a pile of dog-eared financial records to Hassan Saleh, chairman of the new council.

Khalaf, who said he had asked Arafat to accept his resignation, added that the new council "will have to start from zero and work. We are starting with our test to have peace, to be a democracy."

The 13-member council is a significant achievement because of the participation of all the political groups, including the Islamic Resistance Movement, Hamas, and the Popular Front for the Liberation of Palestine, both of which reject the self-rule accord that Arafat signed with Israel.

"If a dog bites a man, it's not news. But if a man bites a dog, it's news. So now, if we have unity among the Palestinians, it's news," Saeb Erekat said. As local government minister in the Palestinian Authority, Erekat brokered the long, arduous negotiations among the factions that preceded the council's formation.

"I think it's a very, very important day not only for Jericho but for the Palestinian people, to have been able to achieve a national unity list with the participation of all the parties," he added.

His success contrasts with the troubles encountered in forming a Gaza City council. After the new mayor appointed by Arafat there took too long in setting up a council, Arafat abruptly replaced him and approved a council heavy with supporters of his own Fatah faction and without the consent of other Palestinian political groups.

## Clintons Vacate Capital For Martha's Vineyard

THE WASHINGTON POST

EDGARTOWN, MASS.

President Clinton, bruised from the battle over the crime bill and bracing for a fight on health care next month, began his vacation here Saturday in the classic Clinton style: frenetically.

After arriving with his family Friday night for their second annual Martha's Vineyard summer retreat, Clinton was up for an early morning, four-mile jog before playing 18 holes at the Farm Neck Golf Club with Washington lawyer Vernon Jordan, Berkshire Hathaway Inc. chairman Warren E. Buffett and movie producer George Stevens.

Clinton shot an 82, short of his birthday wish to break 80. "I didn't make a single putt," the president said.

Then, the Clintons were off to dinner at the house of Washington Post Co. executive committee chairman Katharine Graham, where the guest list included Buffett, Jordan and Microsoft Corp. founder William H. Gates.

## WEATHER Cooler and Drier

NATIONAL WEATHER SERVICE

Monday will be less humid with mostly sunny skies across southern New England. Northern New England will have variable clouds with a chance of showers across northern New Hampshire and Maine. Monday night will be mostly clear and cool. Tuesday will be mostly sunny and pleasant.

A very active cold front will move through New England Monday morning. Pressure will bring cooler, drier air to the region through Tuesday.

**Today:** High temperatures will range from the mid 60s (18°C) over northern Maine to the lower 80s (27°C) across southern New England.

**Tonight:** Lows will range from the mid 40s (7°C) to around 60°F (16°C).

**Tuesday:** Highs will be in the mid 60s (18°C) to near 80°F (27°C).

# Christopher Indicates U.S. May Strike Deal on Cuba

By Doyle McManus

LOS ANGELES TIMES

WASHINGTON

Secretary of State Warren Christopher on Sunday sent a signal outlining a possible U.S. deal with Cuba over migration, saying the Clinton administration may allow more Cubans to enter the United States through legal immigration if Fidel Castro agrees to stop his citizens from going to sea in rafts.

In a television interview, Christopher suggested that the administration is willing to change current policies, broaden the categories of Cubans who can immigrate legally and speed up the processing of their applications if that will help end the crisis.

His statement was the clearest public signal yet of the administration's willingness to meet one of Castro's longstanding demands: easier legal migration for discontented Cubans.

"We're quite prepared to talk to them about legal, lawful migration to the United States, how to make that more effective, what categories of people can come in to the United States," Christopher said on the CBS' "Face the Nation." "We're quite prepared to consider lawful migration, perhaps enhanced lawful migration, if they're prepared to stop the unlawful migration."

Until now, U.S. immigration policy has granted legal entry to the United States only to about 3,000 Cubans a year in three categories: those with close relatives already in the country, those with needed skills, or those with a documented history of political persecution.

At the same time, however, U.S. law allows Cubans who enter the country illegally to stay and apply for refugee status.

Castro has long complained that the effect of that policy was to encourage illegal emigration, including boat and aircraft hijacks.

Earlier this month, when Cubans rioted over economic problems and emigration restrictions, Castro announced that his government would no longer stop citizens from going to sea — producing an exodus of more than 17,000 Cubans in two weeks.

Last week, the Clinton administration proposed formal talks with Cuba on the migration problem, and the negotiations are expected to begin in New York on Wednesday.

Christopher's statement appeared aimed at encouraging the Cubans to come to the talks ready to make a deal that could help end the crisis.

"We want them to know that we are serious about having substantive, productive talks," a Christopher aide said.

Although Castro has used the crisis to renew his demand for a lifting of the three-decade-old U.S. trade embargo on Cuba, experts say they believe that his real objectives are far more modest: easier legal migration, U.S. prosecution of Cubans who make it to Florida in stolen aircraft or boats, and restoration of permission for Cuban-Americans to send money to relatives on the island.

On Sunday, Castro took a small step toward reimposing control over seaborne emigration from Cuba, announcing that he has ordered his coast guard to stop people from taking children to sea on unsafe boats and rafts.

Officials said the number of rafts found in the Florida Straits decreased further Sunday, apparently because of scattered rain showers and choppy seas.

By late afternoon, only 30 Cubans had been plucked from the 90-mile stretch of sea separating Cuba and Florida, a U.S. Coast Guard spokesman said.

The migration crisis has placed Castro and Clinton in paradoxical

positions: Castro is now actively assisting Cubans who want to flee to the United States, and Clinton is implicitly asking him to use his repressive police forces to stop them.

Castro wants to allow discontented Cubans to leave as a "safety valve" that removes potentially dangerous dissidents from the island — but he does not relish the damaging image of his countrymen fleeing desperately on rafts.

Under a 1984 agreement, the United States agreed to admit up to 20,000 Cubans each year as legal immigrants, but in practice the U.S. government has only admitted a small fraction of that number.

Christopher also held out a slim signal of hope to Castro on a broader issue: the Cuban leader's desire for wide-ranging talks with the United States toward normalizing political relations and lifting the trade embargo.

"If he moves toward democracy in a tangible, significant way, we'll respond in a carefully calibrated way," Christopher said, but refused to offer any specifics.

But he repeated the administration's insistence that this week's talks on migration will not be allowed to spill over into broader issues.

"On other subjects, we really don't have very much to say to Castro. He knows what he needs to do," Christopher said.

This week, most criticism of the administration has come from both Republicans and Democrats who argue that Clinton is making a mistake when he rules out broader political negotiations with Castro.

Sen. Richard G. Lugar, R-Ind., a leading Republican foreign policy spokesman, said Clinton should offer to gradually lift the U.S. trade embargo on Cuba in exchange for the release of political prisoners and other moves toward democracy.

# Consensus Bill Would Scrap Mandates, Cost Controls

By Spencer Rich

THE WASHINGTON POST

WASHINGTON

Following the apparent collapse of efforts to pass a comprehensive health reform bill, lawmakers may seek to enact a modest "consensus" bill in the remaining weeks of Congress, based on proposals with broad support in both parties.

A bill of that type, many observers said, would scrap the controversial provisions — including employer "mandates" requiring firms to pay part of the cost of employee coverage, federal cost control measures and expansion of Medicare — that have made it all but impossible to pass President Clinton's plan or bills sponsored by Senate Majority Leader George J. Mitchell, D-Maine, and House Majority Leader Richard A. Gephardt, D-Mo.

Many observers feel that a "consensus" bill with the best chance of passage in the current Congress would focus on health insurance regulation and federal subsidies for low-income Americans. Thus it would seek incremental changes in the health system, not a broad restructuring.

It conceivably could extend insurance coverage to between 15 million and 20 million of the 39 million people who now lack it, experts said, though the number might be smaller if Congress proved unwilling to provide substantial

amounts of money for federal subsidies to help pay premiums for the poor and near-poor.

First and foremost, a bipartisan consensus bill would reform the rules that govern health insurance, making it easier for people to buy and retain insurance without being denied access because of the state of their health. Insurers would be required to sell insurance to all individuals and small businesses seeking it.

Price variations based on criteria such as age would be reduced, though probably not eliminated. Refusal by an insurer to pay for care of a "pre-existing" health condition would be limited to six months, and would be allowed only the first time a person obtained insurance or after a long period without coverage.

All the major Democratic bills, as well as those introduced by Republican Sens. Dole and John H. Chafee (R-I.) and GOP Reps. Michael Bilirakis (Fla.) and Robert H. Michel (Ill.) include insurance reform provisions.

Second, consensus legislation would authorize billions of dollars annually (and perhaps hundreds of billions over the next decade) for federal subsidies to help the poor and near-poor buy insurance. Most bills already on the table would subsidize the entire premium for people with incomes below the poverty line (\$12,320 this year for a

family of three), with partial subsidies up to 240 percent of the poverty line.

The money would be obtained in part from some new taxes such as the 45-cent-a-pack cigarette tax increase initially proposed by Mitchell and Gephardt (one of the few identical provisions in both bills), but mainly from cuts in Medicare and Medicaid.

In the consensus scenario, the most controversial provisions that have blocked the Clinton bill and the Democratic leadership bills — and that were opposed by some businesses or the public as imposing excessive bureaucratic control or economic hardship — would be dropped.

One controversial provision is the "mandate" on all employers to help pay for insurance premiums for their employees. That requirement would have gone into effect either within the next few years (Gephardt) or in the long run only if a large number of people still remained without health insurance despite reform (Mitchell).

Small businesses, among which employer-paid coverage is far less prevalent than among large businesses, fiercely opposed this proposed requirement, claiming they could not afford it and would go out of business or have to fire people if it were enacted. Many large businesses saw it as an unwanted extension of government control.

# Feds Base Interest Rates On 'Natural' Unemployment

By James Risen  
LOS ANGELES TIMES

JACKSON, WYO.

With little public debate, the Federal Reserve Board is increasingly basing interest rate decisions on the controversial assumption that the nation's unemployment rate cannot be reduced much below 6 percent without igniting inflation.

At an annual Federal Reserve conference on economic and labor policy held this weekend in Jackson Hole, Wyo., Fed officials privately acknowledged that they have come to rely on the 6 percent jobless figure as a key benchmark for setting interest rates.

The nation's central bank already has raised interest rates five times this year in an effort to curb the threat of rising prices that often accompany rapid economic growth. While Fed officials concede there has been little evidence so far of surging prices, they argue that the relatively fast pace of growth this year would ultimately fuel inflation

if they failed to intervene.

In public and private alike, Fed officials insist that their long-term goal is not to force the country into a recession for the sake of low inflation, but to keep the economy on an even keel, growing at a rate that can be sustained without rapid price increases.

"Monetary policy actions geared to promoting price stability will enhance real growth over time," argued Jerry Jordan, president of the Federal Reserve Bank of Cleveland and one of the participants in the weekend conference.

Yet increasingly, Fed officials tend to gauge whether the economy is overheating partly by referring to what they call the "natural rate of unemployment." That is defined by economists as the lowest level of unemployment that can be sustained without putting inflationary pressures on the economy.

In the 1970s, economists used a benchmark called "full employment," and it was generally agreed to

mean an unemployment rate of about 4 percent. But today, Fed officials and many economists believe that the economy cannot long sustain an unemployment rate below about 6 percent without causing wages and prices to begin to spiral upward.

Fed officials here acknowledged there is still considerable debate about the precise level of "natural" unemployment; some conservatives believe that it could be as high as 6.5 percent, while others believe it could be slightly under 6 percent. But there is general agreement inside the central bank that U.S. unemployment, which drifted down from 6.9 percent in mid-1993 to 6 percent in June of this year, is very close to the natural rate. That, in turn, helps explain why the Fed has moved repeatedly in recent months to boost interest rates. Fed officials stress that they use many other economic barometers as well but the natural rate of unemployment is clearly one of the most controversial at the central bank's disposal.

# World Population Conference Sets Stage for Confrontation

By Larry B. Stammer  
LOS ANGELES TIMES

The stage is set for a confrontation between two world views — one secular, another sacred — when 180 nations gather in Cairo, Egypt, next month at the International Conference on Population and Development to debate global strategies for stabilizing world population.

Incensed by the inclusion of abortion and contraception, Pope John Paul II has mounted one of the most intensive diplomatic offensives by the Vatican in recent memory to bend an international program into conformity with Catholic teaching.

"We cannot accept the systematic death of the unborn," Pope John Paul said earlier this year. "Every family must know how to resist the false sirens of the culture of death." He condemned contraception as "an assault on the sacredness of life" and "contrary to moral law."

Equally adamant, U.N. officials, the Clinton administration as well as Catholic dissidents and leaders of other denominations and faiths are no less certain of their own moral grounding.

How does the Vatican maintain the moral high ground of defending

the sanctity of human life and the "dignity of the family" when the consequences of its opposition to contraception and legal abortion seem to many scientists, demographers and policy makers to be self-defeating?

The world's population, now numbering 5.6 billion, has doubled since mid-century. It is growing at a rate of about 90 million a year — roughly equal to the population of Mexico.

At issue is a U.N.-sponsored 20-year program to stabilize world population at 7.27 billion by the year 2050. Unless the brakes are applied, world population could reach 8.9 billion by 2030, leveling off at 11.5 billion about 2150, according to a U.N. population projection.

Although it is not binding, the Cairo plan would serve as an internationally recognized model as nations fashion their own population policies.

The Vatican is having difficulty laying exclusive claim to the moral high ground.

"Calling those with whom they disagree spiritually false, politically imperialist, morally and ethically deficient is as intolerant as it is self-righteously arrogant," Rabbi Bal-

four Brickner, a co-founder of the World Conference on Religion and Peace, told reporters earlier this week.

In Brussels, Belgium, 24 religious thinkers from a dozen variants of major world religions convened at the behest of the Ford Foundation and the Pew Global Stewardship Initiative to fashion a religious response to the Vatican.

"We don't dare let the pope pull off the notion that one side of this is moral because it opposes contraception and the other side is immoral and less religious," said Martin E. Marty, a noted religion scholar from the University of Chicago who chaired the Brussels meeting in May.

Some, like the Rev. Gordon L. Sommers, president of the National Council of Churches, questioned the morality of denying contraceptives to poor women when there are 25 million unsafe and illegal abortions each year. Others speak of the Biblical imperative of stewardship of God's creation.

At the heart of the Vatican's opposition to contraception and abortion is the belief that every person, as a creation of God, has a dignity and worth that is unconditional and inalienable.

to demonstrate to the American public the cost effectiveness of drug abuse treatment," said Alan Leshner director of the National Institute on Drug Abuse, an arm of the National Institutes of Health. "Most people don't believe treatment works, and they're wrong. That's why a study like this is so important."

The study, which officially will be released Monday by the California Department of Alcohol and Drug Programs, estimated that \$1.5 billion in savings resulted from the \$209 million the state spent on treatment between Oct. 1991 and Sept. 1992.

In the year before treatment, the study found, those enrolled in drug abuse programs cost state taxpayers \$3.1 billion. Of that, \$2.4 billion — or 70 percent — was attributed to crime, including the cost of police protection, prosecution and incarceration. Victims of crimes committed by drug abusers, meanwhile, incurred \$1.3 billion in medical costs, damaged or stolen property and lost work. Health care for drug

abusers totaled \$442 million.

Fifteen months after treatment, the cost of crimes tied to the group in treatment had dropped by \$1 billion, the study said, accounting for the biggest chunk of savings.

The study based its conclusions on subjects' recollections of their behavior — including crimes they committed — before and after they had undergone treatment. But the authors say they took pains to avoid exaggerating savings, noting that previous research had shown such self-reporting to be "as valid as drug testing."

Leshner and other experts say they hope to use the \$2 million study to persuade skeptical elected officials that they should continue to invest public money in drug abuse treatment. In this regard, the research may prove more a benefit to states other than California, which has already increased annual spending on treatment by nearly \$120 million since the study was conducted.

## Doctors Perform First Ever Open-Heart Surgery on Ape

LOS ANGELES TIMES

SAN DIEGO

In the first open-heart surgery done on an ape, a medical team led by an internationally known heart surgeon worked for seven hours Saturday to repair a life-threatening hole in the heart of a young orangutan at the San Diego Zoo.

A team of surgeons, nurses, anesthesiologists and medical technicians from the University of California San Diego Medical Center, assisted by veterinarians and animal keepers from the zoo, worked to patch a gaping hole in the heart of a 2-year-old Sumatran orangutan named Karen, a member of an endangered species.

"If Karen were human, I'd tell her parents that everything went fine, and her prognosis is excellent," lead surgeon Dr. Stuart Jamieson said after emerging from the operating room at the zoo's hospital.

Despite its apparent success, the veterinary surgery is unlikely to be repeated soon because heart problems are rarely detected among zoo animals.

Without surgery to correct the congenital defect, the 22-pound orangutan faced the risk of a fatal heart attack as her heart arteries hardened and her blood became depleted of oxygen.

## Cuban, Haitian Refugees Separated by Culture

LOS ANGELES TIMES

GUANTANAMO BAY NAVAL BASE, CUBA

As one of the elected leaders of Haitian Camp No. 4, Declacin St. Paulin vows he is prepared to live in the U.S. military tent city here for years if necessary, as long as it takes for his country to be liberated.

In the new Cuban camp erected on the other side of the point on the southeastern coast of Cuba, Jesus Diaz, a 31-year-old engineer from Havana, says staying here very long is inconceivable.

The difference may reflect the impact of time on the two quite different communities, Haitian and Cuban, being established at the United States' oldest overseas military base.

But their different attitudes also reflect starkly different cultures and circumstances between the 14,000 Haitians and the roughly equal number of Cubans who have transformed this once sleepy paradise of a naval base into a massive refugee camp.

Those two cultures present different sets of challenges for the roughly 6,000 U.S. troops who are responsible for running the camps that are expected to turn the base into a canvas-tent metropolis of perhaps 70,000 people.

There are Cubans in these camps who can recite the wording of the latest resolutions from the U.S. Senate about their situation.

The Haitians, for the most part, believe that having lived under military strongmen, Bill Clinton is the biggest strongman of all, and that he could decide who is president of Haiti with a phone call.

## Diplomat Blames U.N. Chief For Somalia Failure

THE WASHINGTON POST

WASHINGTON

The failure of the United Nations effort to restore order in Somalia is attributable partly to inherent weaknesses in the organization but in large measure to incompetence and arrogance on the part of U.N. Secretary General Boutros Boutros-Ghali, according to a memoir by the former head of the U.N. Somalia operation.

In "Somalia: The Missed Opportunities," to be published in October by the Washington-based U.S. Institute of Peace, Algerian diplomat Mohamed Sahnoun accuses Boutros-Ghali of taking actions that undermined Somali confidence in the United Nations, undercut Sahnoun's authority and tolerated corruption.

If Sahnoun's assessment is accurate, Boutros-Ghali bears personal responsibility for much of what went wrong in Somalia and, by extension, for the Clinton administration's disillusionment with the United Nations as an instrument of multilateral peacekeeping. The Somalia experience led the Clinton administration to develop prohibitive guidelines restricting U.S. participation in future U.N. peacekeeping operations.

The gist of Sahnoun's indictment is that the United Nations and its chief first waited too long to respond to the Somalia crisis, and then acted in ways that increased Somali suspicion of U.N. activities and made violent conflict inevitable between the armed clans and U.N. troops.

## Plague of Grasshoppers Invades India

THE WASHINGTON POST

NEW DELHI

The first evidence of the invasion was the crunching sound beneath Vinoo Samuel's motorcycle wheels. Then came the sting of tiny bodies slamming into his face. Within minutes, he was surrounded.

"They flew in hordes," said Samuel, 30, who witnessed the invasion of the grasshoppers while driving home from his job as a copy writer at an advertising agency. "People panicked. They were hopping around, brushing them off. They covered the windshields of the cars."

Hundreds of thousands of the winged creatures rose from their usual habitat in the marshes surrounding the Yamuna River last week and headed for the lights of the big city.

Evening rush-hour traffic stopped dead for two hours on the Nizamuddin Bridge as soon as the street lights blinked on. Thousands of housewives screamed in terror as the green-and-brown grasshoppers slipped through the wide cracks that can be found in many Delhi windowsills, drawn to the lamps inside. Children fled in fear from city parks where clouds of insects settled on every available blade of grass.

The grasshopper's life cycle should come to an end sometime in the next week, Malhi said, ending the siege of the insects.

# Study Finds Drug Treatment Lowers Crime, Health Costs

By Sheryl Stolberg  
LOS ANGELES TIMES

For every dollar spent on treatment for drug and alcohol abuse, California taxpayers reap \$7 in savings, mostly due to reductions in crime and health care costs, a new statewide survey has found.

The cost-benefit analysis, billed as the most comprehensive ever conducted in the United States, also confirmed what smaller studies have already shown: Treatment is highly effective, regardless of the type of program or the drug, and success cuts across all racial and socioeconomic lines.

The study, financed by the state but conducted by an independent research institute, comes at a time of great public skepticism over the benefits of such social programs. There was intense debate over whether President Clinton's health care reform should cover treatment; ultimately, it was included.

"It's very important that there be a continuously developing data base

# OPINION



**Chairman**  
Jeremy Hylton '96

**Editor in Chief**  
Sarah Y. Keightley '95

**Business Manager**  
Pradeep Sreekanth '95

**Managing Editor**  
Michelle Sonu '96

**NEWS STAFF**

**Editor:** Hyun Soo Kim '96; **Associate Editors:** Ramy Amaout '97, Ifung Lu '97, Daniel C. Stevenson '97; **Staff:** Trudy Liu '95, Ben Reis '95, Nicole A. Shery '95, Kevin Subramanya '95, Charu Chaudhry '96, Deena Disraelly '96, Michael A. Soginow '96, Abhilash R. Vaishnav '96, Roopam Banerjee '97, Lavashna K. Chang '97, A. Arif Husain '97, Matt Mucklo '97, Gabriel J. Riopel '97, Rishi Shrivastava '97, Andy Stark '97; **Meteorologists:** Yeh-Kai Tung '93, Armol Seto '96, Marek Zebrowski.

**PRODUCTION STAFF**

**Editors:** Matthew E. Konosky '95, Teresa Lee '96; **Associate Editor:** Ernst Smith '97; **Staff:** Ling Liao '95, Geoff Lee Seyon '97, Joo Youn Park '97, Christine J. Sonu '97, Jimmy Wong '97.

**OPINION STAFF**

**Editor:** Anders Hove '96; **Staff:** Michael K. Chung '94, Matt Neimark '95.

**SPORTS STAFF**

**Associate Editors:** Eric M. Oliver G, Daniel Wang '97; **Staff:** Mike Duffy G, Andrew Heitner G, Thomas Kettler G, Ognen J. Nastov G, Bo Light '96, Koichi Kunitake '97.

**ARTS STAFF**

**Editors:** Ann Ames '92, J. Michael Andresen '94; **Associate Editor:** Scott Deskin '96; **Staff:** Thomas Chen G, Dave Fox G, John Jacobs '94, Gretchen Koot '94, Adam Lindsay '94, Christopher Chiu '95, Craig K. Chang '96, Robert W. Marcato '97, Anne Wall.

**PHOTOGRAPHY STAFF**

**Editors:** Sharon N. Young Pong '96, Thomas R. Karlo '97; **Associate Editor:** Helen Lin '97; **Staff:** Jason Fleischer G, Rich Fletcher G, Simson L. Garfinkel '87, Mark Bockmann '94, Dan Gruhl '94, Domonkos '95, Delano J. McFarlane '95, Sherrif Ibrahim '96, Lenny Speiser '96, Justin Strittmatter '96.

**FEATURES STAFF**

Christopher Doerr G, Pawan Sinha G, Mark Hurst '94, Steve Hwang '95.

**BUSINESS STAFF**

**Advertising Manager:** Anna Lee '97; **Accounts Manager:** Oscar Yeh '95; **Staff:** Diana Bancila '95, Jeanne Thienprasit '95, Jin Park '96, Syed Abid Rizvi '96, Mary Chen '97.

**TECHNOLOGY STAFF**

**Director:** Garlen C. Leung '95.

**EDITORS AT LARGE**

**Contributing Editors:** Vipul Bhushan G, Josh Hartmann '93, Yueh Z. Lee '95, Eric Richard '95.

**ADVISORY BOARD**

V. Michael Bove '83, Robert E. Malchman '85, Thomas T. Huang '86, Jonathan Richmond PhD '91, Reuven M. Lerner '92.

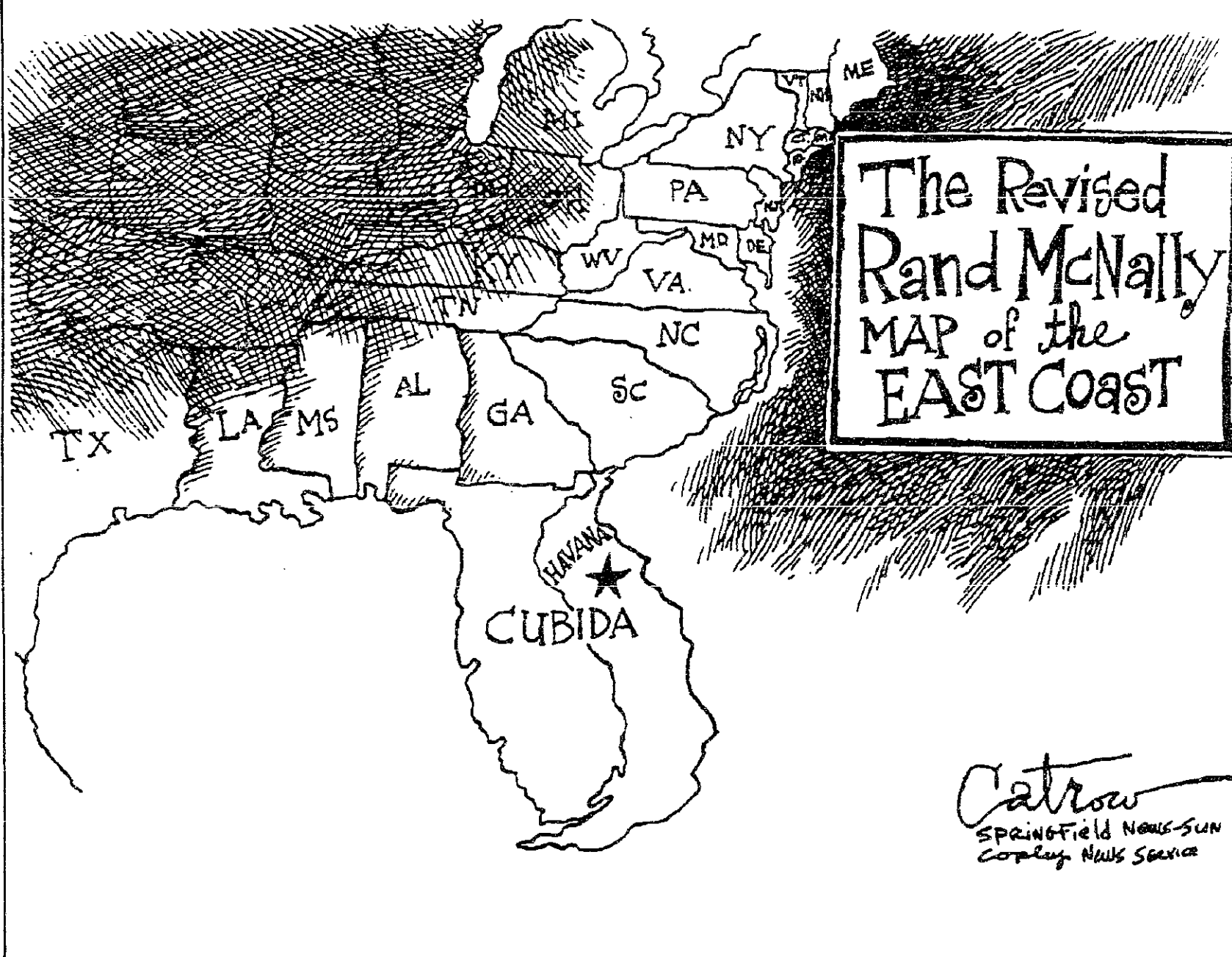
**PRODUCTION STAFF FOR THIS ISSUE**

**Night Editors:** Garlen C. Leung '95, Jimmy Wong '97; **Staff:** Eva Moy '95, Teresa Lee '96, Michelle Sonu '96, Daniel C. Stevenson '97, Gilbert Kim '98.

*The Tech* (ISSN 0148-9607) is published on Tuesdays and Fridays during the academic year (except during MIT vacations), Wednesdays during January, and monthly during the summer for \$20.00 per year. Third Class by The Tech, Room W20-483, 84 Massachusetts Ave., Cambridge, Mass. 02139-0901. Third Class postage paid at Boston, Mass. Non-profit Organization Permit No. 59720. **POSTMASTER:** Please send all address changes to our mailing address: The Tech, P.O. Box 397029, Cambridge, Mass. 02139-7029. Telephone (617) 258-8324. FAX: (617) 258-8220. Advertising, subscription, and operating rates available. Entire contents © 1994 The Tech. Printed on recycled paper by MassTech Printing Co.

©1994 SAN DIEGO JOURNAL TRIBUNE  
COPYRIGHT NEWS SERVICE

SKELLY



## Opinion Policy

**Editorials**, printed in a distinctive format, are the official opinions of *The Tech*. They are written by the editorial board, which consists of the chairman, editor in chief, managing editor, executive editor, news editors, and opinion editors.

**Dissents**, marked as such and printed in a distinctive format, are the opinions of the signed members of the editorial board choosing to publish their disagreement with the editorial.

**Columns and editorial cartoons** are written by individuals and represent the opinion of the author, not necessarily that of the newspaper.

**Letters to the editor** are welcome. They must be typed, double-spaced and addressed to *The Tech*, P.O. Box 397029, Cambridge, Mass. 02139-7029, or by interdepartmental mail to Room W20-483. Electronic submissions in plain text format may be mailed to letters@the-tech.mit.edu. All submissions are due by 4 p.m. two days before the date of publication.

Letters and cartoons must bear the author's signatures, addresses, and phone numbers. Unsigned letters will not be accepted. No letter or cartoon will be printed anonymously without the express prior approval of *The Tech*. *The Tech* reserves the right to edit or condense letters; shorter letters will be given higher priority. Once submitted, all letters become property of *The Tech*, and will not be returned. We regret we cannot publish all of the letters we receive.

## To Reach Us

*The Tech's* telephone number is (617) 253-1541. Electronic mail is the easiest way to reach any member of our staff. Mail to specific departments may be sent to the following addresses on the Internet: ads@the-tech.mit.edu, news@the-tech.mit.edu, sports@the-tech.mit.edu, arts@the-tech.mit.edu, photo@the-tech.mit.edu, circ@the-tech.mit.edu (circulation department). For other matters, send mail to general@the-tech.mit.edu, and it will be directed to the appropriate person.

Meet the House.

Check Out Our New Lobsters.

See How Many Brothers You Can Eat.

# The Tech

We're not a living group...  
...but sometimes we sleep here.



See us at the Activities Midway on Tuesday, Aug. 30  
or stop by the Student Center, Room 483.

# CLOSE YOUR ACCOUNT WITH THE BANK OF DAD.

YOU'RE not independently wealthy, but you can be INDEPENDENT. With a Discover® Card you get a \$1,000 CREDIT line and NO annual FEE. That's something you can BANK ON.



IF YOU DON'T GOT IT,  
GET IT.™

MEMBER NOVUS NETWORK ©1994 Greenwood Publishing Company, Member FDR

## WHERE TO GO TO GET IT:

NORTH TEXAS BOOK & SUPPLY STORE, 9AM-4PM, THURSDAY & FRIDAY, SEPTEMBER 1-2

# THE ARTS

## Assassins explores dark side through criminal mind

### ASSASSINS

MIT Musical Theatre Guild.  
August 26 & 27, September 2, 3 & 8-10: 8 p.m.  
August 28 and September 4, 2 p.m.

By Adam Lindsay  
STAFF REPORTER

The premises of Stephen Sondheim's musicals seem to be based on bar bets. "I'll bet you can't write an uproarious funny musical about cannibalism. Or animate characters in an impressionist painting. Tell a story in reverse chronological order. How about one about completely dysfunctional romances? Just how many fairy tale plots can you intertwine?" The master of modern American musicals has handled all of these brilliantly, and recently has tackled a poser: "Compose a revue of presidential assassins, and give *their* side of the story."

Sondheim thus gives the world "Assassins," which MTG has ably rendered and presented in Kresge Little Theater. The implausible basis of the musical results in a pastiche of American musical styles and a series of episodes in which potential killers are goaded on by their fellows to make their mark on history.

Following the example set by John Wilkes Booth (Richard Jamieson), America's downtrodden, disillusioned, and somewhat imbalanced attempt to rise above their stations in the ultimate crime within this country. History shows this group to be a motley bunch of characters, and John Weidman's clever book neatly exploits this, often to hilarious effect.

Time is suspended for these assassins as they live and meet at a run-down carnival and

shoddy bar. There they belly-ache about their miserable lives and how they wish to be someone. The proprietor of the bar (Carson Schutze G) offers them a chance by selling them firearms and encouraging them to take a shot towards that dream. Booth goes first and as he is cornered in a barn, tries to justify what he has done to opposing commentary by the Balladeer (Richard Damaso '95). Jamieson (as Booth) is a powerful presence on stage, and handles the character of both an actor and example to future generations quite well. Damaso's flexible tenor is as good as ever, though marred by the direction to adopt a pseudo-southern twang. It might be appropriate for the character, but it sounds silly with his clear voice when matched with his jerky movements on stage.

After Booth, others follow. In general, the successful assassins are more serious characters than the comedic attempted assassins. "Squeaky" Fromme (Erin H. Fujioka '96) and Sara Jane Moore (Jennifer Gasser), both of whom made attempts on Ford's life, are an especially funny comedic pairing. Although some of their comedy comes across as forced (most noticeably in their squeals when they realize that they know the same Charlie Manson), they provide ample comic relief.

Leon Czolgosz (Stephen Serieka) and Giuseppe Zangara (Jose I. Ortiz '92) are immigrants who killed McKinley and shot at FDR, respectively. Serieka shows a pathetic, lost soul in search of some way to make his mark. Ortiz's character is similarly lost in search of a way to improve his life, but has an impressively angry song as he is placed upon the electric chair. James Kirtley G, as Charles

Guiteau (Garfield's assassin), was very funny in his caricature of a self-deluding egotist.

Also of note is the character of Samuel Byck (David Reiley G), who tried to kill Nixon. Although the most outlandish of the characters (his assassination plan was to hijack a plane and crash it into the White House), he also speaks to us as an everyman, full of rage at where America is headed and confused about the casual lies we are fed every day. Reiley's monologues convey that anger, and get us outraged with him. He carries the buffoon with every bit of energy necessary to carry the audience with him into the final scene with the century's ultimate assassin, Lee Harvey Oswald (Derek Andrew Clark '90).

Sondheim's take on Oswald is quite different from Oliver Stone's. In the musical, Oswald is coaxed, nearly brow-beaten, into killing Kennedy by Booth, and then all the other assassins. They tell him of the immortality that truly awaits him: "Fifty years from now they will still be arguing about a grassy knoll." Clark, as usual, handles his character's conflicts and inner turmoils quite readily.

The closing number, "Another National Anthem," ends with the characters wondering what their promised reward will be, and warns the audience that there is always an undercurrent of dissatisfaction within the nation. The final fury of the killers is set bare for the audience, and the ensemble handles it very well. The direction is simple and effective, letting the actors express themselves by laying their emotions bare. It is a rewardingly unsettling moment, fueled by the ensemble's energy.



Daniel Peisach '90 handled the orchestra quite well through Sondheim's characteristi-

cally devious score. There was a better tone and higher quality playing than many of MTG's orchestras, due, in no small part, to the multiple talents of the woodwind players. Balance was a small problem early on, but either the orchestra or my ears adjusted, so it was not annoying later.

The set was at first befuddling, looking rather crowded and sloppily built on stage, but it eventually became clear that this was a 'concept' reflecting the squalor of these potential killers' lives. I warmed to it, though the designer might have gone further with the idea of decay, since it was not clear.

The lighting design was surprisingly inconsistent, considering the experience of designer James Grimm '94 in Kresge Little Theater. Although the numerous special effects — including a burning barn and a silhouetted carnival on the backdrop — were spectacularly done for a student production, the basic lighting was uneven and often put important scenes in shadow.

Although "Assassins" is a creditable production for MTG, it doesn't have the usual high-budget sheen characteristic of past summer shows. Everything is in place and as it should be, with a solidness throughout. One just shouldn't expect a glossy sheen over the couple warts. The musical itself is more desperate, and this urgency is reflected all around, without actors hiding behind flashy sets. Perhaps this is more appropriate for this musical, with the exposed players conveying more convincing anger. One should definitely see MTG's production for an example of a musical with more depth than a high-stepping kick line.

 Interested in reviewing albums, movies, plays, or books? 

Join *The Tech's* Arts Department!

See us at the Activities Midway or stop by our office in room 483 in the Student Center

Everyone is Talking About

# THE COOP

"It's Great!"  
Tracy Feldman,  
Student

More Than Just a Bookstore!

Here are a few "valuable" reasons why M.I.T. Students should shop at The Coop:

 **Wide Selection, Great Service & Every Day Discounts.**

**10% Off** all regularly priced hardcovers, paperback books and books-on-tape.\*  
\*text and professional reference excluded.

**25% Off** all current hardcover New York Times Bestsellers.

Everyday Music Savings for Students:

 **15% Discount** for Coop Members on regularly priced CDs and Tapes. Sale items excluded.


You Won't Find Better Music Prices Anywhere!  
Shop around and compare, day after day The Coop offers the best values on CDs and Tapes.

The Coop will meet any competitor's advertised sale price on featured titles with presentation of ad. Sale items excluded.

The Coop has the largest selection of M.I.T. insignia clothing and gifts anywhere!

 **15% Discount** for Students off ALL Insignia Merchandise.  
Sale items & Offers excluded.

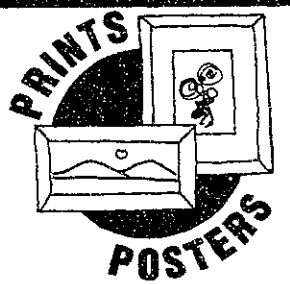
Make The Coop Your Headquarters for Every Day Value Prices. Our pricing policy applies to almost everything you'll need on campus and off.

 Check out our Everyday Value Prices on Levi's!


Levi's 501 & 505 Jeans **\$29<sup>99</sup>**  
Levi's 550 & 560 Jeans **\$34<sup>99</sup>**

Save on clothing and accessories, computers and electronics, stationery and school supplies, and all the housewares necessary to furnish your dorm or apartment with style, quality and value.

We Make Saving on Prints & Posters a Work of Art!

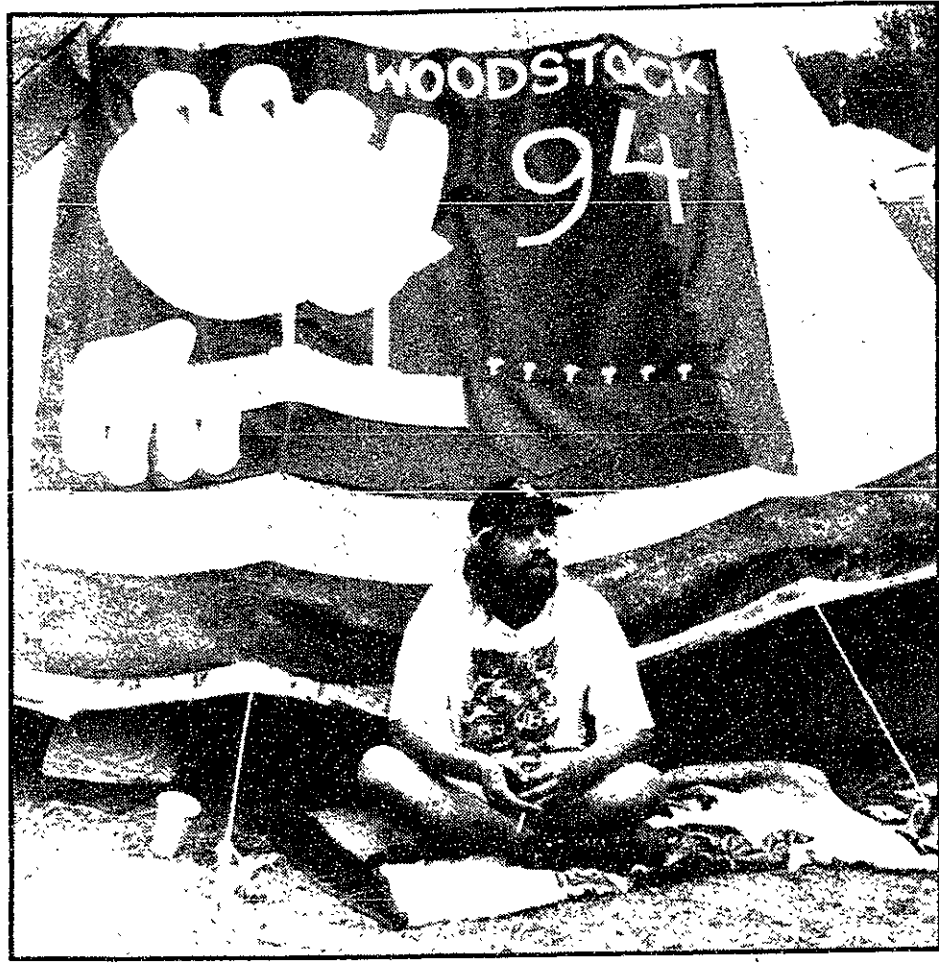
 The Coop has America's widest and wildest selection of fine art prints and popular posters. Ready-made frames and custom framing are also available.

Be Sure To Check Out Our Money Saving Coupon Posters Around Your Campus!



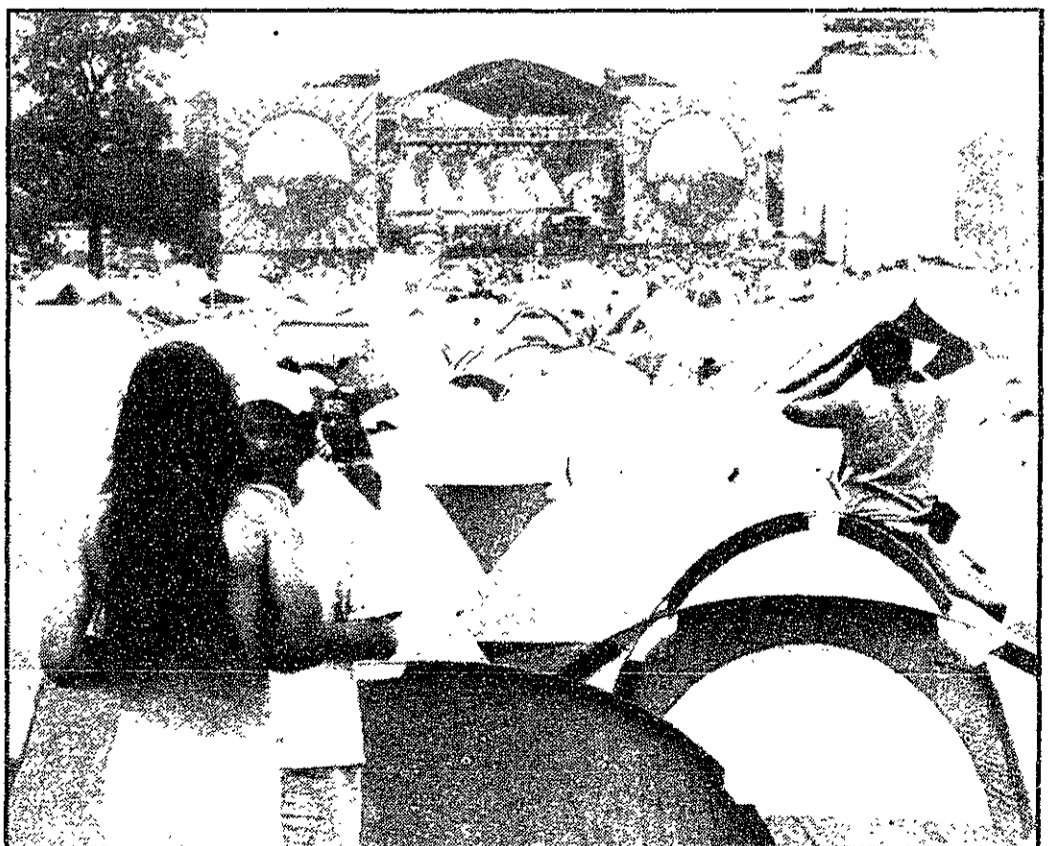
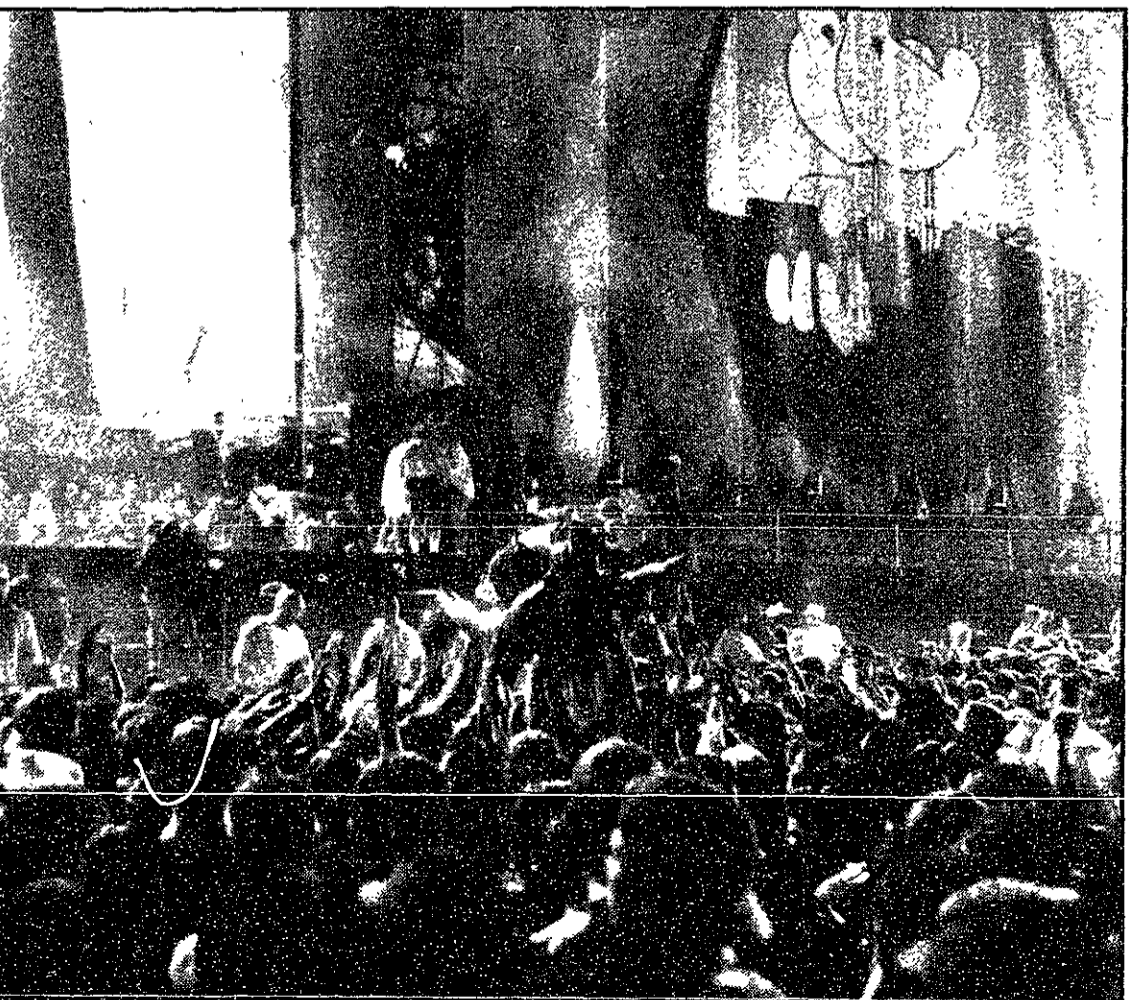
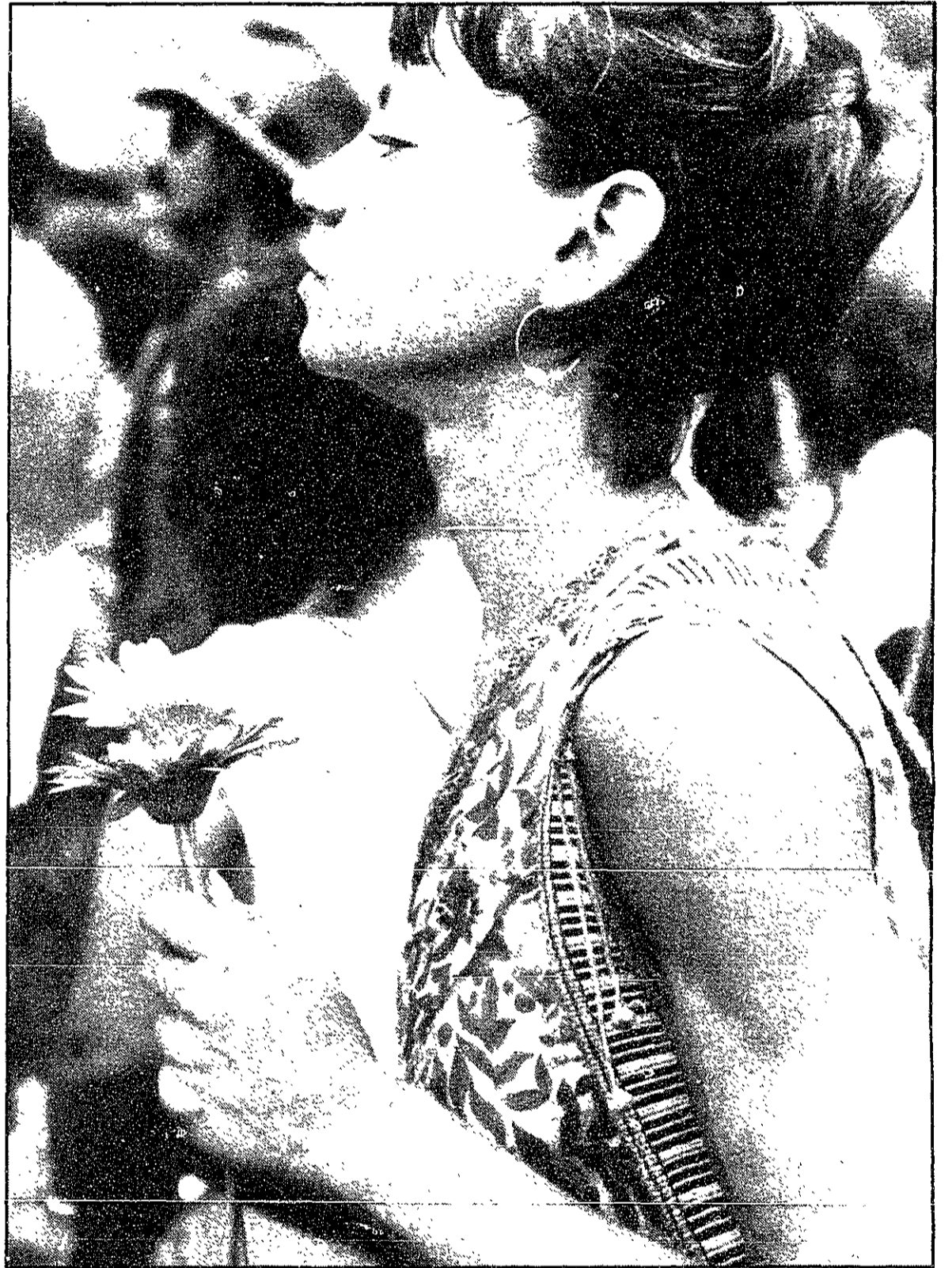
The Coop at Kendall Square 3 Cambridge Center Mon-Fri 8:45-7:00 Thur-Th 8:30 Sat 9:15-6:00	The Coop at Stratton Ctr. 84 Mass. Ave Mon-Fri 8:45-5:30 Sat 10:00-4:00
--	--

# 2 More Days of Peace, Love, and Rain...





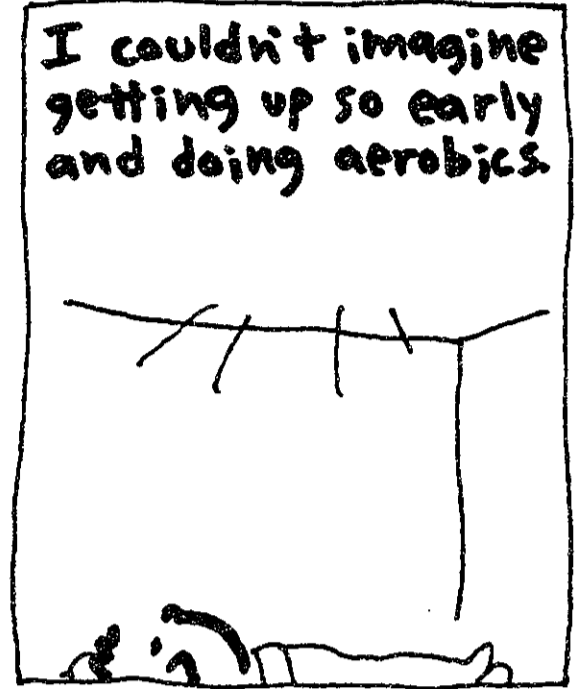
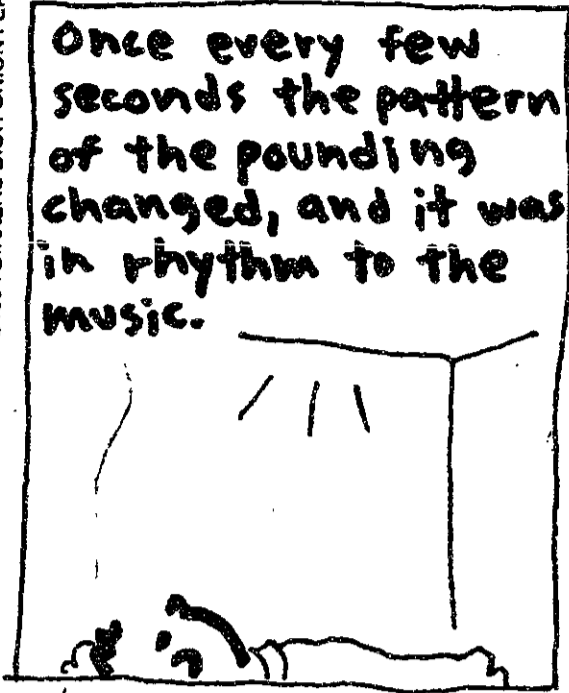
# Photos by Rich Fletcher



# Jim's Journal



©1994 DICKERS DIST. ONION FEATURES



by Jim

## A genius figured it out— HP built it in.

$$E=MC^2$$



- **The HP 48G has built-in equations, functions, and menus to guide you through complex calculations.**
  - Access over 300 built-in equations.
  - Push a button, choose from a pull-down menu, and fill in the blanks. Entering data is that easy.
  - View 3-D graphs.
  - Perform algebra and calculus operations on equations before entering values.
  - Enter and see equations like they appear on paper.
  - Work with different units of measure. The HP 48G will convert them for you. So, enter inches, centimeters, yards, and feet, together in one equation — it'll convert them.
- **You'll quickly learn to operate it!**

Pull-down menus guide you through problem-solving smoothly and quickly. Push a button, select an entry from the pull-down menu, and fill in the blanks.
- **Check it out at your college bookstore.**

The HP 48G graphic calculator gives you a whole lot more for a whole lot less than you think. Compare — the HP 48G fits your budget.



### CLASSIFIED ADVERTISING

**Research Assistant Needed** to work on a project involving adaptive technology; more specifically, a computing environment for the physically, sight and/or hearing impaired. For more information contact Steve Sherman of Adaptive Technology Research and Associates at (617)846-3733.

**EUROPE ONLY \$169 Calif-\$129!** Chicago-\$79! AIRHITCH® 1-800-326-2009. Call for Program Description!

**Donate Your Live Brain to Science!** (well, for 15 minutes anyway...) The Dept. of Brain & Cognitive Sciences seeks subjects whose first language is American English for exciting psycholinguistic research. Pays \$3 for 15 minutes. Call Marie at 225-7599 or send e-mail to lissa@mit.edu.

**Donate Your Live Brain, Part II** The Department of Brain & Cognitive Sciences seeks subjects with various linguistic backgrounds for experiments about all kinds of cool stuff that pay some amount of money for varying lengths of time. Send e-mail to lissa@psyche.mit.edu for a questionnaire and details.



Sure air bags work great in front-end collisions, but only a safety belt can protect you from side and rear-end collisions. So buckle up. And you'll cover all the angles.

**YOU COULD LEARN A LOT FROM A DUMMY. BUCKLE YOUR SAFETY BELT.**

For more information, call the Airbag & Child Safety Hotline: 800-424-5333

This space donated by The Tech

# Bumps Reduce Speed on Amherst

By Daniel C. Stevenson  
ASSOCIATE NEWS EDITOR

New and returning students traversing Amherst Alley will notice four new speed bumps, courtesy of the Campus Police Department.

"The reason for the speed bumps was very simple — student complaints," said Chief of Campus Police Anne P. Glavin. Officers' observations also influenced the decision to install the bumps, Glavin said.

The bumps, marked with double-sided caution signs, are located near the Westgate Store, New House, MacGregor House, and the DuPont Tennis Courts.

"A speed bump is designed to get you to reduce your speed sharply," Glavin said. The bumps "essentially do work," Glavin said. "They're used on many other campuses just for that reason." Because of the high concentration of dormitories and living groups along the alley and the number of children at Westgate, Glavin said the problem "boils down to one issue — it's a personal safety factor."

"There were speed bumps on Amherst Alley several years ago," Glavin said, but "they were taken out primarily because they were too high."



THOMAS R. KARLO—THE TECH

This new speed bump in front of MacGregor House is one of four installed during the summer along Amherst Alley.

# Sororities Try to Maintain Fair, 'Civilized' Atmosphere

By Daniel C. Stevenson  
ASSOCIATE NEWS EDITOR

Panhellenic Association sorority rush at MIT is strikingly different from fraternity rush, said Panhellenic Rush Director Nicole A. Wainwright '95. "As women we try to be a little more civilized and present you with your options rather than dragging you kicking and screaming from Killian court," Wainwright said at the Women's Convocation Friday night.

"We don't rush 24 hours a day," said Alpha Chi Omega Rush Chair Lori A. Callaghan '96. Sorority rush doesn't have the entertainment element of fraternity rush — they have "no paintball, no sumo wrestling," or other events planned, Callaghan said. Instead, "we always have conversation."

At the convocation, freshmen were told about Panhel rush and living options for women at MIT. Following the convocation, the women were assigned a Rho Chi, rush counselor, in groups of about 26 women, according to Rho Chi Chair Valerie A. Jordan '95.

The freshmen toured each of the five sorority rush rooms, after which they could attend two open houses on Friday and Saturday. Some women are then invited back to the sororities for informal events Saturday and Sunday, as well as theme parties Sunday night. By Monday night, a lower number of women are invited back for preference parties, and final bids are sent out by the Rho Chis on Tuesday.

## Larger rush predicted

In the past, "approximately one-third of all women got bids," Wainwright said. "New member classes this year are expected to be slightly larger than previous years," she said. Two possible reasons are the addition of Sigma Iota Phi into formal rush and the fact that MIT "admitted about 100 more women than they did last year," Wainwright said.

The class of 1998 has approximately 450 women representing 40 percent of the class size, the largest number ever according to Assistant Director of Admissions Zaragoza A. Guerra III.

Stephanie H. Newman '96, rush chair for Sigma Kappa, said that they were expecting a bigger number of freshmen this year, but they really wouldn't know an exact number for several days.

The four larger sororities (AXO, Kappa Alpha Theta, Alpha Phi, and SK) have a bid goal this year of approximately 35, which was set by Panhel, Callaghan said. However, this number is not firm and can change either up or down, she added.

"We're looking for fewer freshmen than the other sororities," said SIP Rush chair Aliza E. Mezrich '95. SIP, MIT's fifth and newest sorority, had a pledge class of five last year compared to around 30 for the four other sororities.

## 'Eye-catching' skits

Rush Counselors led the sorority tours following the convocation, Jordan said. All the rush rooms are located in the Student Center, with two (AXO and SK) on the fourth floor. SIP, APhi, and KAT are in rooms on the third floor.

During the tours, the sororities typically "put on a skit, then talk to them [the rushees] for a few minutes," Wainwright said.

The skits AXO performs are designed to be "something eye-catching which will bring the girls back" to the open houses after the

tours, Callaghan said.

Following the tours, women could return to any of the rooms during Open House I on Friday night, and Open House II mid-Saturday, Jordan said.

Open Houses I and II are the only two non-invited parties, Wainwright said. Rushees are encouraged to spend as long as they want with each sorority during the allotted times, Wainwright said.

Following the open houses, freshmen can spend only a limited time with the sororities outside of the rush room, and only by invitation, Wainwright said.

These events, also called informals, occur Saturday night, Sunday morning, and Sunday afternoon. The informals typically involve trips around Boston or tours of the sorori-

Sorority, Page 14

We offer authentic cuisine from various regions of Thailand  
Come And Join Us!

10% off dinner  
WITH THIS COUPON

Valid For dining-in only  
One Per Order. Not To Be Combined With Other Offers  
Drinks Are Not Included



Thai Dish

437-9611

257-259 Newbury Street  
Boston

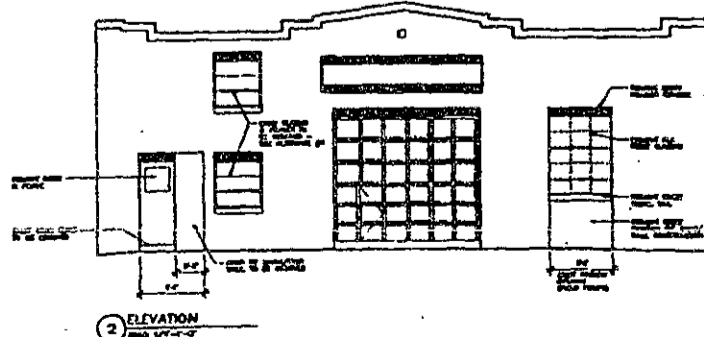
Expires 10/31/94

## Theater Arts Open House

Tour the new design and technical center for Theater Arts and meet students and faculty who are doing theater at MIT. Refreshments will be served. Frosh are welcome.

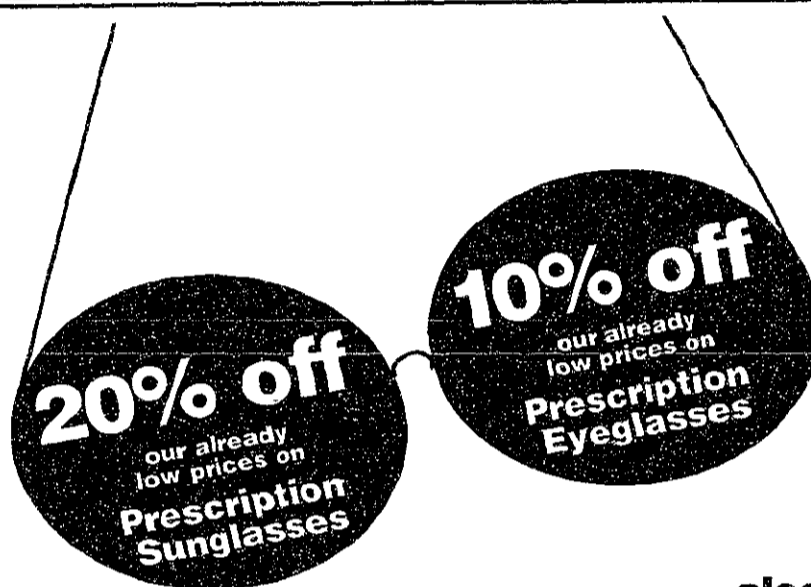
RENOVATION PLAN

RENOVATIONS TO E33



Wednesday, 7 Sept. 1994  
7:30 pm  
Building E33 (Carleton St.)  
For more info. call 253-2877

## The Tech: Your Source For News



10% off  
our already low prices on  
Prescription Eyeglasses

20% off  
our already low prices on  
Prescription Sunglasses

also check out our sharply reduced everyday prices on all non-prescription sunglasses

MIT 60 Optical

Open 9am-6pm, M-F  
Sratton Student Center  
617-258-LENS  
Quality eyewear at reasonable prices

sale runs through Sept. 30, 1994 ■ sale not valid with any other discount sale applies only to complete pair of prescription glasses, not from Value Line

## medical fact

We assign each incoming student a personal physician to coordinate their health care at MIT.

Your doctor can help keep you healthy, treat your illnesses, and give you advice when you want it.

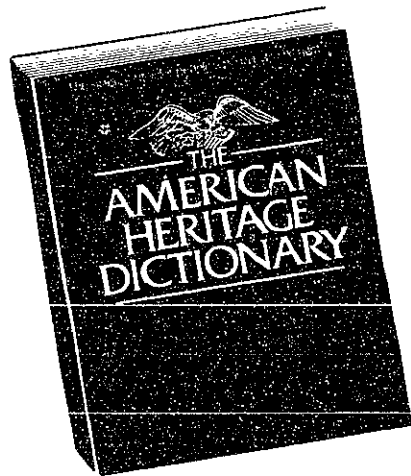
- 24 Hour Urgent Care 253-1311 (voice, TDD)
- Internal Medicine and Nurse Practitioner Appointments 253-4481 (voice, TDD)
- Psychiatry Service 253-2916
- Student Health Program 253-4371

mit medical

# Hobbledehoy:



Open an ATM Convenience Account  
and you'll never be at a loss for words.



We'll give you an  
American Heritage Dictionary.

We designed our ATM Convenience Account especially to meet the needs of students. *And if you open one by September 30, you'll get an American Heritage Dictionary as a gift!* In fact, we'll give you a dictionary if you open a checking, NOW, savings, money market or ATM Convenience Account.

For student lifestyles, the ATM Convenience Account is what we'd really call plenitudinous. And once you open one and get your dictionary, you may find yourself calling it commodious, efficacious, expeditious or even wieldy if you dare!

We're small enough to offer friendly, personal service, yet large enough to help students in many ways—with MasterCard, direct deposit, Credit Reserve, safe deposit boxes and storage lockers, student loans and foreign currency to name a few.

## A few words about ATM Convenience Accounts.

- No minimum balance
- No regular monthly maintenance fee
- No charge for first five checks
- No charge for using Cambridge Trust ATMs
- Unlimited POS transactions
- Complimentary photo I.D.
- Free American Heritage Dictionary



## Cambridge Trust Company

Kendall Square, across from the MIT Coop

Harvard Square | University Place | 1720 Massachusetts Ave. | Huron Ave. | 876-5500 | Member FDIC

# LGs Dial Directly To Clearinghouse

Clearinghouse, from Page 1

fied," Dunn said. "We've received five or so rave reviews, although there are two houses that want to destroy [the system]."

The software "has a lot of potential, but there are still a lot of things about it that make it hard to use," said Sean M. Beckett '97 of Sigma Chi. "It does have some really cool functions, and it gives us a lot more options. It makes it a lot less hectic if you know what you are doing."

Currently, living groups must use their own computers to connect to the system. While IFC mentioned the idea of providing computers to each of the living groups, the idea was not pursued, Dunn said. "It is not worth the investment for [IFC]."

According to Dunn, Bexley Hall is the only living group that is not using the system. "They haven't entered a single person," Dunn said.

Security, privacy are design goals

"One of the driving goals [of the

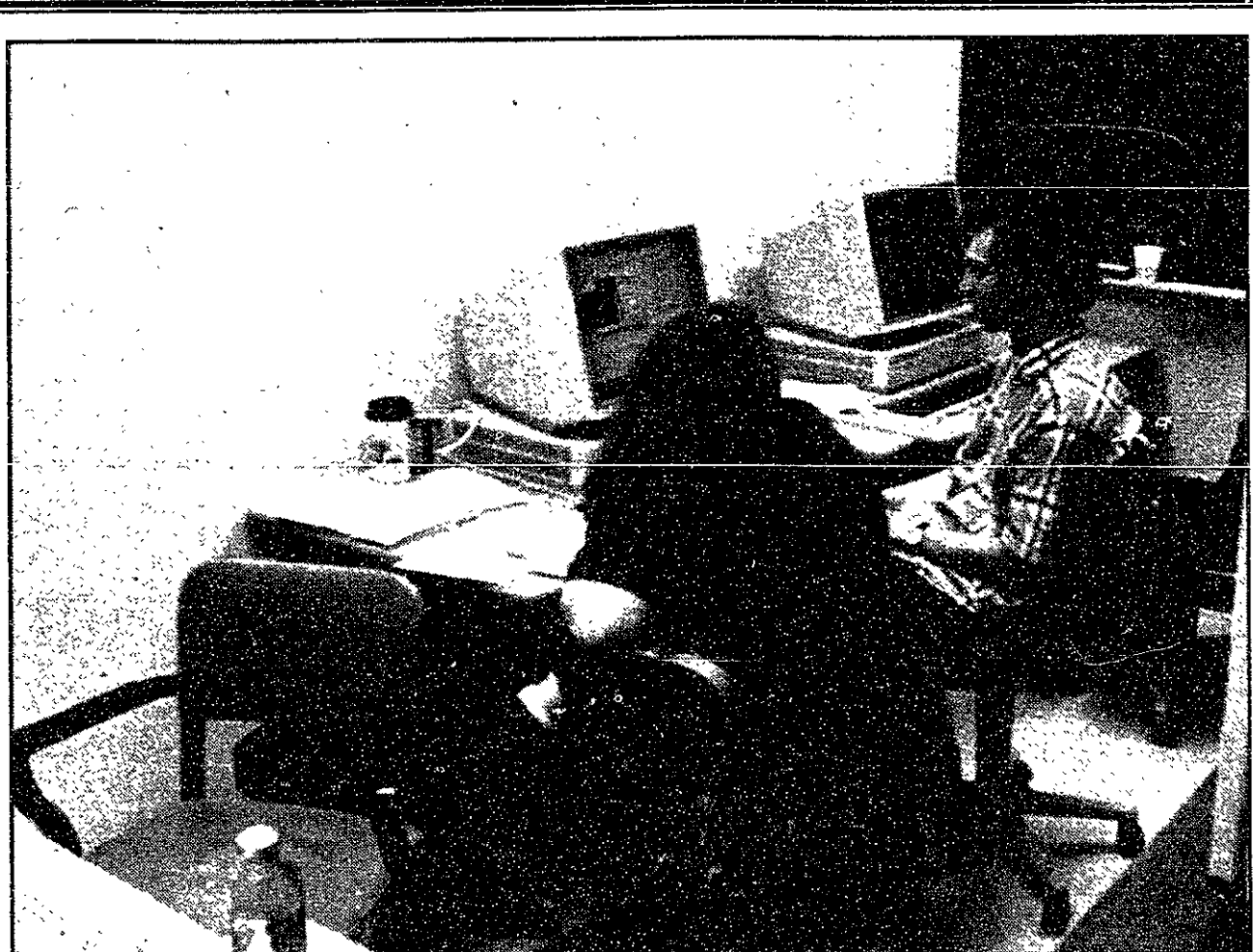
system] was to protect the goals and actual number of pledges" from becoming public knowledge, Dunn said.

In order to protect the security of information in the database, 14 different user profiles have been set up, Dunn said. "The system is very versatile in terms of creating user permissions."

While dormitory rush workers only have permission to check people in and out of their dormitory, ILG workers have more privileges. ILGs can either look at the activities of a particular freshman or monitor changes in the locations for a list of rushees.

In addition, IFC officials and deans can send messages to individual freshmen using the system.

While Dunn acknowledged that the system's security had been compromised in the test stage, he felt that the bugs had been fixed, and the program has withstood additional break-in attempts.



THOMAS R. KARLO—THE TECH

The Clearinghouse system, which tracks the movements of freshmen during rush, was revised over the summer. The traditional room full of operators has been replaced by this small terminal group.



THOMAS R. KARLO—THE TECH

Freshman and upperclassmen participated in Burton House's tie-dyeing activity Saturday afternoon to the music of the band 1.

## Some ILGs Keep In Touch Via Radio

Fraternity, from Page 1

people are going through our house this year, especially women."

ILGs extended bids to freshmen starting at 8 a.m. yesterday. According to Tung, freshmen can start accepting bids starting today at 8 a.m. The majority of freshmen accept bids by Monday, even though the deadline to accept bids is Friday, according to Schneider. ILGs can extend bids throughout the week.

Technology has impact mixed

Mithran C. Mathew '95, rush chair of Alpha Delta Phi, said that the whole rush is more computerized this year. "All houses are using more computers and technologies like cellular phones. They can also plan trips better because they have better communications," he said.

"Our system ... of keeping track of the freshmen is totally computer-

ized," Page said. "We've also got walkie-talkies with the vans. Many drivers are connected to the house via shortwave radio."

Although the new Clearinghouse tracking system was redesigned to have a faster update and response time, some ILGs have experienced trouble.

Phi Gamma Delta (Fiji) Rush Chair Bill Churm '95 said that Fiji's Clearinghouse connection went down for three hours Friday night. "As a result, we started behind the other fraternities," Churm said.

Churm said that about 30 to 35 freshmen visited Fiji. "Not many freshmen randomly stop by our house because we are on the Fenway," he added.

Schneider said, "The new Clearinghouse has crashed a couple of times. It does give us a number of advantages than in previous years, however. You can get information on freshmen much faster."

## Frosh Explore on Athena after Ranking Dormitories

Lottery, from Page 1

request rooms together.

"They knew they wanted to be roommates, and they had the same first choice, but after that their selections were different," Oakland said. Eventually, the two organized their lists so they had the same choices.

Consultants for Athena and rush

Most new students have only been on campus for four days, but their lack of exposure to the Athena system has not been a problem. "Everything is moving very smoothly. There haven't been any problems," explained Eric F. Gilmour '97, an Athena consultant on duty yesterday in the Student Center cluster.

There were three consultants answering students' questions yesterday in the Student Center cluster, but many of the questions didn't have anything to do with the lottery program. "People are just asking random rush questions," Gilmour said.

Questions ranged from advice on lottery strategy to basic information. For example, question: "What's Huntington?" Answer: A dormitory in Boston rented from the Massachusetts College of Art. Or, "Is it better to rank a dorm last if you don't want to live there, or not to rank it at all?" Answer: Gilmour said it

was best to rank them all.

On a normal day, Gilmour said that Athena consultants answer about 25 questions an hour. He estimated that yesterday he was answering about twice that number.

"We try to be as helpful as possible," Gilmour said. "We try to answer every question — even the time and date of Star Trek showings."

"What people say they're really interested in is sending electronic mail," Gilmour said.

Students like program

Most students felt that using Athena to enter their preferences was convenient. Some said that it was better than waiting in line for a computer at the R/O Center, as previous year's freshmen had. Others liked the fact that they could log in later and change their selections.

For Ramone Rodriguez '98, one of the advantages of the program was that he could take more time to fill out the form. "Another thing is that you have more chances to ask questions," he said.

Eric Ramsay '98 thought getting used to using Athena was easy. "I think it works really well because it introduces people to Athena before classes begin," he said.

Because the only way to enter dormitory preferences is through Athena, more than 1,000 freshmen had registered for accounts by Sat-

urday morning, Oakland said. He said that the number, which represents more than 90 percent of the class, is substantially higher than in previous years.

Cecilia Lozada '98 has been using her account for two days now, and thought that the lottery system was an efficient one. In the two days she has had her account, she has begun sending electronic mail to friends, but prefers to use the talk program. "I've been talking to a lot of people I met on IRC," she said, referring to the Internet Relay Chat program that lets groups of people carry on conversations over a computer network.

Lozada said getting used to Athena was not too hard. "There are lots of people helping me," she said. The help she got was not from the Athena consultants, though; her temporary roommate, Erika Perez '98, and other new students were lending a hand.

Perez learned how to use Athena when she was at MIT last summer for the Minority Introduction to Engineering and Science program. She said it took a little time to remember how, but it was not hard.

Gilmour said that it should take about five minutes to fill out the electronic form and save it. He encouraged students to decide on their selection before coming to Athena to enter them.

But many students spent far more than five minutes on Athena. Tseh-Hwan Yong '98, from Singapore, said the form was "simple and easy," but she spent more time because she likes to communicate via zephyr.

Yong, who has been on campus for a week, said she has been writing to six or seven upperclassmen from Singapore. She said she spent about five hours using Athena on Saturday.

Plans began in spring

Oakland worked with three other IS staffers to develop the program: Regina L. Gogol, Jennifer Lu, and Karen Fortoul '82.

The project began when Oakland met with Andrew M. Eisenmann '75, assistant dean for residence and campus activities, in February to discuss how Athena could be used to help with housing. The program actually began development in June, Oakland said.

The software on Athena enters all the student information into a database, which Eisenmann uses to run the housing lottery. The actual lottery is run using Macintosh software developed by Adriana Christopher, another IS programmer, Oakland said.

The results of the lottery will be sent to students via e-mail on Tuesday afternoon. Students should

check their e-mail after 6 p.m. for information about the lottery results and their new dormitories, according to Eisenmann.

The lottery program was developed by the same IS group that devised the lottery for Humanities, Arts, and Social Sciences Distribution classes, and much of the code was reused, Oakland said. But the system is "much more complex than the HASS-D lottery," he said.

For example, the part of the program that lets students form roommate groups was particularly tricky, Oakland said. The programmers had to be sure that one student in a group could not affect another student's selections without the second student's permission.

Programming the roommate selection was the hardest part of the development, but ironically, Oakland expects "only about 15 people to use the roommate feature."

Another problem that students face is waiting too long to register for an Athena account. After registering for an account, students must wait until the next day to use the account.

Oakland said special arrangements could be made for students who register for accounts today, but still want to participate in the lottery. "A consultant can help them register, even though the account is not fully active," he said.



THOMAS R. KARLO—THE TECH

Yesterday's computer stoning event in the Senior House courtyard let this group of students vent their frustrations and relieve a little of the stress of rush.

# Rush Counselors Help Frosh Differentiate Sororities

Sorority, from Page 11

ty houses for AXO and APhi, Callaghan said. Rushees may only attend four informals.

### Paris and jungle themes

Women invited to the informals also received invitations to the theme parties, which took place last night. They can only attend three of the theme parties, Callaghan said, even if they receive four or five invitations. AXO had a jungle theme, with sisters dressing up a parts of a jungle, Callaghan said.

Sigma Kappa's party, entitled "Vive La Sigma," has the theme of

a night in Paris, Newman said.

SIP is featuring a college version of the game of life, Mezrich said.

"Informals are not mandatory," Callaghan said, but the theme parties are mandatory if a woman wants to receive a bid from that sorority.

AXO emphasized its new sorority house — which only opened this fall — to its rushees, Callaghan said. "It's a big draw and practically everybody we've talked to has seen our house."

### Rush Counselors provide support

Rush counselors provide impartial advice to freshmen as they

decide which sorority to rush or even whether they should rush at all. They answer general questions about the sororities and rush policies, and encourage freshmen to "look at the sororities for themselves rather than make snap judgments based on somebody else's opinions," Jordan said.

A Rho Chi, temporarily de-affiliated from her sorority, cannot discuss or even identify her sorority, Jordan said. "Because they don't know which one we're in they're not afraid to tell us their concerns," she said.

Rush counselors also function as a third party between the sororities

and the rushees, said Callaghan said. "I think it's good [to have counselors hand out bids] because it protects the Rushee," she said.

The Rho Chis prepared for rush with role-playing situations, including parent problems, cross rushing (receiving invitations from several sororities), and personal problems, Jordan said. They are "there to remind them [the rushees] to be themselves," she said.

"I enjoy being able to help the freshman women," Jordan said. "Rho Chis feel that they can be more assistance to the freshmen as counselors than as rushers."

One of the goals of the National

Panhellenic Conference is to have a no-frills rush for all sororities, Jordan said. Sororities are limited to spending \$2,800 for rush this year, and that number will be reduced by \$200 a year until only \$1,500 is spent.

"National Panhellenic is pushing really hard for rush costs to be lower," Wainwright said. The ultimate goal of the reductions is to have "no decorations, no costumes, no party favors, no food — just ice-water and people," Wainwright said. This is "so that girls concentrate less on the decorations and more on the people."



## ROSH HASHANA DINNER FOR STUDENTS MONDAY, SEPT. 5

- ◆ Come celebrate the new year and visit our new building.
- ◆ A delicious holiday dinner with traditional specialties will be served following services at 8:30 p.m.
- ◆ Special student price of \$7.00. Reserve by Wednesday, Aug. 31 at Hillel.
- ◆ Conservative and Reform Rosh HaShana services are held on campus.
- ◆ MIT Hillel has a full schedule of holiday and general events. Stop by or give us a call.
- ◆ MIT Hillel is now located in the Religious Activities Center, 40 Mass. Ave., MIT Bldg. W11 (corner of Mass. Ave. and Amherst St.) #253-2982.
- ◆ This dinner is sponsored by MIT Hillel and supported with funds from the United Synagogue of Conservative Judaism.

**The Samaritans**

HELPING THE SUICIDAL AND DESPAIRING, 24 HOURS A DAY, 7 DAYS A WEEK

**ANXIOUS?**  
LAY IT ON THE LINE.  
617-247-0220

### THE LUTHERAN-EPISCOPAL MINISTRY AT MIT

#### R/O ACTIVITIES

**SUNDAE MONDAY!!**  
Monday, August 29; 3:00-4:00pm in the Lower Level of the Religious Activities Center (W11)  
Grab a mid-afternoon ice cream sundae and meet the Lutheran and Episcopal Chaplains, staff and students.

**FIRST WEDNESDAY SERVICE**  
Wednesday, August 31; 5:10pm in the MIT Chapel  
Joint weekly worship alternating between Lutheran and Episcopal liturgies. If you are new to MIT, we would like to meet you and introduce you to our community. And if you're a returning student—welcome back!! And please join us!

**VIVA ITALIA!!**  
Wednesday, August 31; 6:00pm  
Share a delicious Italian repast with members of the Lutheran-Episcopal Ministry at MIT in the brand-new Religious Activities Center (W11, corner of Massachusetts Avenue and Amherst)

**EVENSONG (VESPERS) SERVICE**  
Sunday, September 4; 7:00pm in the MIT Chapel  
Special music featuring renowned New England tenor Marshall Hughes (who also happens to be the Edgerton Center's new Program Coordinator!) followed by a gourmet dessert party catered by *Cezanne Desserts* of Cambridge.

All are welcome to attend!!

The Lutheran-Episcopal Ministry at MIT  
40 Massachusetts Avenue, Bldg. W11  
Cambridge, MA 02130  
253-0108 or 253-2983

2:38p: **pika**. if you have finished filling out your dorm preference card, you should come to pika to play with the friendly rats. brass, ratbut, and mitia are all sisters. they're so cute. they have brown butts. Toad is 4 months older than the sisters; so she's bigger (but still much smaller than you)\*

2:57p: **Fenway House**. Call for a ride, we'll be there in a jiffy.\*

2:58p: **Fenway House**. Well, in a car...\*

2:59p: **Fenway House**. How long is a jiffy? 437-1043\*

2:59p: **WILG**. It's an outing to Mike's famous pastries (canolis are a must!) in Boston's own Little Italy. Give us a call at 253-6799 or 354-1263 for a ride!\*

3:00p: **ΦΚΘ**. >>>ROOFDECK BBQ<<< BBQ's are great, aren't they? I remember when I was a kid, and my dad used to take us out to the backyard and fry us up some burgers. Well, this one is on the roof, and it'll be just grand. So come! Call for a ride: 437-7795\*\*

3:00p: **ΑΔΦ**. **ΑΔΦ Ping-pong**. Fun uponna cloud klear, unique sundeck. Ping-pong on our patio. Call 5-WE'RE-RUNNING-OUT-OF-PHONE-NUMBERS (576-2792) and we'll give you a ride over here right now.\*\*

3:00p: **Epsilon Theta**. CANDLE MAKING. Tall ones, short ones, red ones, blue ones. . . Call 3-8888 for a ride.\*

3:00p: **Next House**. Are you an /bf Animanics Maniac? The Animanics festival starts NOW! If you don't know, Animanics is a cartoon with a lot of adult humor. Come experience the mania in the 5th East lounge at /it Next House!\*

3:00p: **Baker House**. It's the final battle between the forces of good and evil as each side gathers for the ultimate goal: to CAPTURE THE FLAG!! Come out to play the game, or just bask in the melodrama of it all!\*

3:07p: **Spanish House**. Detente en La Casa en el salon del segundo piso del New House Cuatro. It's not too late! You should come by even if you have found a place to live (be wild)\*

3:16p: **WILG**. It's a trip to New Words Bookstore! Join Alexis in a search for feminist prose and poetry. Give us a call at 253-6799 or 354-1263 for a ride!\*

3:17p: **pika**. well, in the purple trim room there lived once a person who had lots of plants. while she was away, pikans set up lights and traced the shadows of her plants on the wall, then painted the shadows purple. well, they didn't finish them all, so you can help danielle (that's one I on purpose) paint purple flowers. it'll be fun at pika 4 9 2 6 9 8 3\*

3:19p: **WILG**. Now that the cookies are out of the oven, it's time for some advanced cooking. (This isn't just surviving college; it's a new art form!) Arley's Amazing Zucchini Bread. Give us a call at 253-6799 or 354-1263 for a ride!\*

3:21p: **Fenway House**. It's dino day! Join the dino egg hunt!\*

3:22p: **TEΦ**. Wanna go look around the A.I. Lab? You can see the place where Attila the walking robot was born, as well as tactile virtual reality experiments, a big arm that catches things, and lots of large, red panic buttons. 262-5090 for a ride.\*\*

3:33p: **Fenway House**. Listen to good music at Fenway. Destroy bad music. It's the Best of Both worlds! Call for a ride- 437-1043\*

3:59p: **WILG**. MOVIE MOVIE MOVIE. This time, Cris is picking the flick and she luuvs action, but you never know! Give us a call at 253-6799 or 354-1263 for a ride!\*

3:59p: **pika**. it's almost 4 o'clock p.m. "p.m." means post meridian, meridian means middle which indicates noon, and post means after; so it's 4 (hours) on the clock after noon. o'clock is pretty archaic in my opinion. funny how expressions that seem out of date persist\*\*

4:00p: **Next House**. Animanics maniacs are still watching!!\*

4:00p: **Student House**. MADE UP YOUR MIND YET? Come over and tour the house, may be we can help you. call 247-0506 for a ride\*

4:13p: **Fenway House**. Play-doh or Plastique? Hit it hard and find out. 437-1043\*

4:14p: **WILG**. Have you been to Harvard Square yet? There's food, clothes, books, and great people-watching. We're going! Give us a call at 253-6799 or 354-1263 for a ride!\*

4:16p: **pika**. sixteen sixteen on the twenty-four hour clock. that's really 4.16. In 2 hours dinner will be ready. it will be Noah's chick (that's lemon chicken & lemon chickpeas) as well as ert's garlic death salad. i never really understood garlic death salad, because although vegetables are alive, how does one determine their death? when they stop growing? when they are cooked? hmm. quandries at pika @ 492.6983\*

4:17p: **Fenway House**. Come juggle with us! Or juggle us! We're not picky! Call for a ride- 437-1043\*

4:17p: **RANDOM HALL**. Last call for four years of fun at Random. Try us, you'll like us!\*

4:30p: **Spanish House**. Okay, your decision is made. You've filled your housing preferences. Now the waiting has begun. Forget you stress and come with us to Harvard Square for an early dinner at the BORDER CAFE for an evening of LIVE ENTERTAINMENT around the Square. Meet us in the Spanish House lounge in the second floor of New House Four.\*

4:39p: **Spanish House**. Okay, tu decision esta hecha. Tu has decidido tus preferencias sobre tu alojamiento. Ahora la espera ha empezado. Olvia el stress y venite con nosotros a cenar a HARVARD SQUARE. Reunete con nosotros en La Casa en el salon del segundo piso de La Casa numero Cuatro del New House.\*

4:44p: **TEΦ**. F.A.O. Schwarz trip. If you like hearing "welcome to our world of toys" over and over and over again until your spleen is ruptured, come with us. You'll see stuffed animals that cost more than your average motorcycle and truckloads of other toys. 262-5090 for your trip to toyland.\*\*

4:47p: **pika**. if you look in the cambridge phone book under pika, joe zelda; you will find a phone number approximating 4926983. if you call that number, you shall discover convenient, courteous, and genteel (as well as gentle, and likely genteel) conveyance to pika, where you can help danielle paint purple plants. and can wait for dinner (lemon chicken ert's garlic death salad, with vegetarian main course option), to recapitulate, pika. 492.6983\*

4:51p: **Epsilon Theta**. HAPPY BIRTHDAY!! Help us celebrate Rachel and Erin's birthdays today. If your birthday is also today, the party can easily expand.\*

5:17p: **Fenway House**. It's dino day! Come fingerprint some dinosaurs!\*

5:18p: **pika**. when radioactive material first came into common use, people didn't really know what they were getting into. they would paint radium red on watch faces to make them glow in the dark. the people who painted the faces, would tip their brushes in their mouth, injecting enough for some of them to glow when they opened their mouth. they, like marie curie (whose given name was marya when she was born, in poland, but which she changed when she moved to france to study at the sorbonne) died of cancer, you can see fluorescent crayons glow in the black light room; we don't think it will harm you; but do we really study things so much more carefully these days that we can rule out any risk? come to pika. 4926983\*

5:20p: **WILG**. Maturity is being able to say that it's okay to be immature! So come by for some cold milk and fresh homebaked cookies! Give us a call at 253-6799 or 354-1263 for a ride!\*

5:39p: **pika**. dinner will be at 6:15 pm. Noah ert are making lemon chicken garlic death salad. you can eat it because it's food. it will not kill you unless you are allergic to any of the ingredients. (no ingredi-ants - we usually don't eat insects for dinner) you can ask noah ert for a list of ingredients to make sure you are not allergic to any of them, assuming you know all the

things to which you are allergic. while you're waiting for dinner, you can play with the rats, (they're pets, and clean as cats) unless you are allergic to them because we don't want you to sneeze unnecessarily (like Ryan, who's allergic to most everything, but he's fine with the rats as long as they don't climb on him too much). if you are allergic to rats, come anyway, and talk to humans; unless you're allergic to them too, in which case you can come sit by yourself. we'll try to be as sterile as possible. pika. 492.6983\*

5:55p: **Epsilon Theta**. DING! Dinner in five minutes. . .\*

6:00p: **ΣΝ**. Stop by Kresge for dinner and movies with the brothers of SIGMA NU.

6:00p: **ZBT**. HUNGRY STILL? Come on over to ZBT for an old fashion BBQ Dinner. Call Rick @ 232-3257 for ride.\*\*

6:00p: **ΑΔΦ**. **ΑΔΦ Chinese food**. "I'd like an order of Peking Raws, some stirfry, and a bladder." "Do you want that to go, sir?" "Well, what else would I use it for?" Call 5-AHH-STIRFRY (576-2792) and someone will come pick you up before you can stop laughing.\*\*

6:00p: **AETI**. Beef Fajitas - a taste of the south brought to you. Call 247-3170 for a ride.

6:00p: **Epsilon Theta**. DINNER IS SERVED. Stir-fried goodies and lots of rice. Call 3-8888 for a ride.\*

6:00p: **Next House**. Relax and watch movies in 3rd East or watch Monday Night football in the TV lounge of /it Next House.\*

6:00p: **Baker House**. NACHO MANIA!!! Sure it's cheesy, but it won't kill you - you'll love. So run, don't guac(amo)le, to our Mega Mighty Morphin' Nacho Night!\*

6:00p: **ΚΣ**. Dinner- Orange Chicken and SinoIn Tips at the Kappa Sigma

6:00p: **XΦ**. Come to Chi Phi and enjoy a backyard cookout. Try the bbq ribs, chicken, pasta salad, corn on the cob, and watermelon. After that feast, ice cream sundae!\*

6:01p: **Fenway House**. Dramatic readings from the Weekly World News, the IFC Rush Rules, Archie McPhee, Lisa Bermbeck, and the Green Tortoise. Croatian recitations if Bert is let out of Belgium.\*\*

6:01p: **WILG**. DINNER TIME! To conclude a day of college have-to's, we're having PIZZA! Give us a call at 253-6799 or 354-1263 for a ride!\*

6:02p: **Fenway House**. If immigration is greedy and keeps him all to themselves, we have "I can't believe it's not Bert!" readings in Norwegian. Call for a ride, yah! 437-1043\*

6:04p: **Phi Delta Theta**. Chinatown Dinner- Ride the T with us into Chinatown and have a real meal at the Golden Dragon, one of the finer Chinese restaurants in Boston. Don't worry about cash because it's on us.

6:09p: **Pi Lam**. Come on over for a delicious Tex/Mex dinner at Pi Lam. Call BOS-ROCK for a ride.\*\*

6:16p: **pika**. dinner @ pika. lemon chicken garlic death salad. pika. eat. 4eat9eat2eat6eat9eat8eat3eat\*

6:22p: **TEΦ**. "Diamonds are for TEP's." You meet with the Godfather at his world-class Italian Restaurant to discuss the smuggling of diamond tie clips (Quincy recommends the Fettuccine Alfredo for vegetarians). Cannolis in the North end afterwards.\*\*

6:30p: **Nu Delta**. Dinner at the house.\*

6:36p: **Fenway House**. It's dino day! Come build shrinky-dink dinos!\*

7:00p: **ZBT**. PAINTBALL. Rush is war! Call Rick @ 232-3257\*\*

7:00p: **Baker House**. "Speed" has a bus with a bomb on it. "Die Hard 2" has exploding planes. "Murder on the Orient Express" has, well, murder on the Orient Express. Traveling has just become way too dangerous. Why, you're not even safe on those giant Death Stars any more! Wouldn't it be better to forget traveling, and instead just kick back and relax for a night of movies at Baker? (Forget for the moment that you had no intention of traveling anywhere - I've got a theme thing going here.)\*

7:00p: **Russian House**. MONOPOLY Tournament at Russian House. Russian and English versions will be played simultaneously.\*

7:00p: **Student House**. We're either going to have Brian cook for us at the house, go on the traditional trek to Chinatown where we'll be dining at the TASTY AND AFFORDABLE HOLE IN THE WALL (otherwise known as the Chinatown Eatery). Help us decide. call us at 247-0506\*

7:01p: **WILG**. More relaxation - movies, games, crayons...you name it, we've got it! Give us a call at 253-6799 or 354-1263 for a ride!\*

7:02p: **pika**. dinner's done-ish. come sing canadian songs with noah (i.e. red canadian girl, god save the queen, if i had a million \$\$\$). if you want dessert, you can go with avi, derek, heather, clay to Ben Jerry's and get a Vermonster. That's lots of ice cream other sweet stuff. it'll make you sick if you're not careful. the Vermonster was the first time i had ever had ben Jerry's ice cream. i like the pint single flavors better, though. but it's still really good so you should come to pika {4\*9\*2\*6\*9\*8\*3}\*

7:22p: **TEΦ**. Tired of being able to see where you're going? Haven't run into enough trees lately? You know it's been too long since you played KICK THE CAN! Come to TEP and run around in the dark on the mall. We'll throw a Frisbee around, too! Maybe even both at the same time.\*\*

7:29p: **WILG**. Dessert, Dessert, Dessert! Let's have some of those treats we made this afternoon!\*

7:34p: **pika**. Anyone remember how to integrate? Call 11110110-1101101000111 for a ride!\*

7:46p: **Fenway House**. It's foreign film night at the FFMFFREI! Manon of the Fens, Mama There's a Man in Your Futon, La Cage Aux Fen, Fenfolk on the Verge of a Nervous Breakdown! All your FenFavorites! Call for a ride 437-1043!\*

7:48p: **pika**. if you didn't go to get the vermonster at ben jerry's, then you can jam with pika's own resident vermonster, Rob, as well as jd james fletcher pika 4926983\*

8:00p: **ΑΔΦ**. **ΑΔΦ Live band**. Come listen to our house band wail on the guitar and drums. Call 5-ROCKON (576-2792) and we'll provide you with all the transportation you need. Why, we'll even drive you to somewhere else if you'd like! Desk workers are standing by.\*\*

8:00p: **Theta Xi**. OUT ON THE TOWN Explore Boston and see a comedy show, concert or just hang out at an outdoor cafe with the brothers of THETA XI.

8:00p: **Epsilon Theta**. COOKIE BAKING. Chocolate chips, peanut butter, lots of sugar. . . Call 3-8888 for a ride.\*

8:07p: **Russian House**. Again, it's 0:07 GMT, and the Bond marathon concludes with License to Kill. But James Bond will be back in Goldeneye - next year.\*\*

8:19p: **Fenway House**. Malia bakes ginger cheesecake!!! Yum, yum! 437-1043\*

8:22p: **TEΦ**. Cannolis in the North End. We'll lurk through the awesome ethnic North End searching for the dessert that could bring tears to your eyes. 262-5090 to go Italian.\*\*

9:00p: **ΔΥ**. THE MESSAGE PARTY!! Come unwind and meet all of Boston at Delta Upsilon's famous Message Party. All are welcome.\*

9:00p: **Theta Chi**. PARTY! Everyone is invited to our first open party of the term! Music, dancing, snacks, refreshments... you get the point. See you there!\*

9:00p: **Epsilon Theta**. STAR TREK. Enjoy your freshly-baked treats (with lots of milk and apple cider) while watching everyone's favorite program in our own "unique" manner (haven't you always wanted to make fun of Wesley Crusher?). Call 3-8888 for a ride.\*

9:02p: **Epsilon Theta**. We regret to inform you that the individuals making fun of Star Trek have been sacked.\*

9:06p: **Epsilon Theta**. The individuals who sacked the individuals making fun of Star Trek have been sacked. We regret the inconvenience.\*

9:23p: **Fenway House**. They grow and grow and grow! Come meet our shrimp chips! 437-1043\*

9:30p: **ΑΔΦ**. **ΑΔΦ Dance party**. Shake dat body. Bust a move. Strike a pose. There's nothing to it. Come dance with us and the women of WILG next door and party all night! Call 5-VOGUE-VOGUE-VOGUE (576-2792) and we'll pick you up from any location.\*\*

10:00p: **Stg Ep**. Live Band Party - Liquid Courage

10:00p: **Epsilon Theta**. EVENING CROQUET. Come join in the 3.5th Annual Croquet Game for the Control of the Universe. We don't know the rules, either. Call 3-8888 for a ride.\*

10:22p: **TEΦ**. **Hot Cocoa**. Homemade cocoa, cookies, and other goodies that will give you a sugar high which should last until the Activities Midway. It's a tradition!! (wait, did someone say tuition?)\*

11:34p: **Fenway House**. I Scream Or Geal!!!! 437-1043\*

11:36p: **Fenway House**. Green beans almondine. Or is it a la mode? You make the call! Call for a ride- 437-1043\*

1:03a: **Fenway House**. Oobleck!!!! 437-1043\*

3:19a: **Fenway House**. THINGS GO WILD!!!!\*

3:23a: **Fenway House**. Up ridiculously late... 437-1043\*

Notices

6:08a: **Elsewhere**. Tired of rush? Go Elsewhere. 5th floor, student center. Piano. Play-Doh. Popcorn.\*

11:11a: **Elsewhere**. A piece of non-Rush broke off and fell right through the roof of w20. Join us in Elsewhere to make your own ceremonial sacrifice to the goddess of non-Rush. 5th floor, student center.\*

8:00p: **Sexual Identity**. Queer Elsewhere in rm. 14E-304 running 8-12 pm: Fun, food, air conditioning..\*

8:00p: **Contact Line**. if you have questions dealing with sexuality, call Contact Line. We are a student-run, anonymous and confidential peer hotline dealing with issues of sexuality, 8p-12mid, x3-6460, every day thru Registration Day.\*

10:11p: **Elsewhere**. Two roads diverged in a wood, and I...I just went to Elsewhere. 5th floor student center.\*

In case of emergency, dial 100 from any MIT phone. Other important numbers: Campus Police: 253-1212 Med Center Emergency: 253-1311 R/O Center: 253-2500 UAA: 253-6772 Nightline: 253-8800 Delta Psi or St. Anthony Hall: please see No.6


The Daily Confusion  
Editors: Jo-Anne Koskoski, Jen Lee

NOTE: A single asterisk (\*) following a listing indicates a coed or female living group. A double asterisk (\*\*) indicates an activity to which women are cordially invited.

**GET A HEAD START**

Never Miss A Call

RENT OR OWN A MOTOROLA PAGER

NEC MVP ONLY \$39.95\*

**CellularPlus**  
communications & more  
1853 COMMONWEALTH AVE. BOSTON  
(617) 787-4100

FREE DELIVERY HOME • OFFICE

**CELLULAR PHONES • PAGERS**

\*Activation and minimum 200 day service required, one time \$40 Activation Fee for new cellular service subscriptions and MA sales tax apply.

TRADE-INS & RECONNECTIONS WELCOME

PAGER SERVICE AVAILABLE FROM \$6.95 PER MO.

CAMPUS REPS WANTED

CELLULARONE

The brothers of ZETA BETA TAU invite you to join us for:

<b>Daytime Event</b> (11:00 am)	<b>Monday</b> George's Island Cruise	<b>Tuesday</b> Leisure Picnic
<b>Dinner</b> (6:00 pm)	BBQ Buffet	Stuffed Chicken
<b>Evening Event</b> (8:00 pm)	Paintball	Movie Night

Call Rick for Rides  
232-3257 or 232-3258

**Z B T**

**We need someone with the confidence of a surgeon, the dedication of a marathoner and the courage of an explorer.**

We need a Peace Corps volunteer. Interested? The first step is easy. Call 1-800-424-8580, Ext. 93.

**Peace Corps.**  
The toughest job you'll ever love.

This space donated by The Tech

