

The Weather

Today: Cloudy, humid, 84°F (29°C)
Tonight: Possible showers, 65°F (18°C)
Tomorrow: Rain, 78°F (26°C)
Details, Page 2

Programs Differ In Teaching Style

By Eric Richard
ASSOCIATE NEWS EDITOR

In addition to the traditional course offerings, freshmen have the opportunity to choose from three alternative programs that offer variations on the traditional lecture and recitation format.

Concourse, the Experimental Study Group, and the Integrated Studies Program all rely on smaller learning environments to help students gain a better understanding of the fundamentals of the freshman core curriculum and allow for more freedom in exploring related material. But the programs differ in their approach and personality.

Professor Robert M. Rose '58, program director for Concourse, described the idea of using small classes and a few staff members as "the oldest idea in education." Members of Concourse "become

part of a small community," he said.

"MIT, in itself, is a very intimidating place," said Vernon M. Ingram, director of ESG. "But because of its size, ESG is less intimidating."

Debra G. Aczel, administrator of ISP, described ISP as "an alternative to being part of a large body" which provides "special attention to all students."

However, outside of the idea of using a small learning community, the three programs each use very different methods for improving the educational experience.

Concourse emphasizes structure

Concourse attempts to present students with the freshmen curriculum in as unified a manner as possible. It "emphasizes the connections

Alternatives, Page 7



YUEH Z. LEE—THE TECH

Independent Studies Program alumni and freshmen gaze skyward awaiting the dropping of the next egg at the ISP Egg Drop contest held yesterday. Eggs were dropped from the roof of the Green Building.

The Jack in Black Is Back

By Jack Florey

One of MIT's oldest students has returned again this rush to contribute to the delinquency of the Class of 1997. Starting last Friday and continuing through Sunday night, Jack Florey led the infamous "Orange Tours," showing students all the sights around MIT they should see ... and a few they shouldn't.

At the start of the Orange Tours, freshmen were introduced to the numerous guides who, by some remarkable coincidence, were all named Jack. After instructions and a warning about the "men in blue suits," the crowd was divided into three groups, each accompanied by a full set of guides.

According to one guide, Jack Florey '94, "Moving 40 people into a basement or on a roof without being seen or heard is rather tricky. But the Jacks move quickly, and so

long as the freshmen remain quiet, things go smoothly."

Another guide, Jack Florey '92, added, "We've been doing this for a long time. We have it down to a science now, complete with scouts, radios, and a headquarters monitoring our progress."

The first stop for one group was a roof location overlooking Killian Court. As they waited for the go-ahead from Central, they shared some of the legends, lore, and myth of MIT hacking with the new arrivals on campus. The story of the Cathedral hack of Lobby 7 was very popular this year, as this is the first set of Orange Tours that had the opportunity to chronicle last year's hack. Once the go-ahead signal was received via radio, the group moved off to the next location.

The back drop of a 15-foot-tall Jack Florey mural in a sub-basement made an impressive setting for

one Jack to explain the do's and don't's of signing in. "Most hackers aren't proud to discover Lobby 7. Hence, it is poor form to sign in there. Sign-ins should be small, discrete, and in places difficult to reach. When individuals become over zealous, sign-ins become graffiti, and wall murals like the ones here get painted over by physical plant." The freshmen here listen attentively, as they no doubt will be making their first sign-ins before midterms this year. More stories of hacking are told before the group heads out again.

A few twisting corridors bring them to a ladder that leads them into the deepest bowels of MIT — the steam tunnels. The heat here is almost unbearable, and the group is forced to go slowly, in single file through the narrow passageway. It

Florey, Page 7

MCC Presents Advice For Computer Needs

By Jeremy Hyton
EDITOR IN CHIEF

"Go slow. Don't buy something just because it's there," cautioned Ginny Williams at yesterday's presentation, "Everything You Always Wanted to Know About Buying a Computer (But Were Afraid to Ask)."

Williams, marketing coordinator for the MIT Computer Connection, discussed many of the factors new students should consider before buying a personal computer. Joined by Jeffrey R. Solof '81, MCC sales manager, Williams also answered questions about how the expansion of the campus-wide network into dormitories may effect the decision to buy a computer.

The presentation, which was

given twice yesterday and will be repeated twice on Friday, started with an introduction to computing resources available to students.

"You're not required to have a computer here, and we have a very rich computing resource here called Athena," Williams said.

Over 100 classes use the Athena Computing Environment for coursework, and public workstations are available around-the-clock, Williams explained. A personal computer could be convenient for late night work or when public clusters are crowded, she said.

Many personal computers, however, do not come with the wealth of software available on Athena, Solof

Computers, Page 7



Students sign up for bank accounts at BayBank on the first floor of the Student Center.

Local Banks Differ In Benefits

By Hyun Soo Kim
ASSOCIATE NEWS EDITOR

Choosing a bank is usually one of the first priorities for incoming students. In making this decision, new students should consider the location, interest rates, Automatic Teller Machine accessibility, and any additional benefits a bank offers. The following are seven banks with branches near the MIT campus:

The Bank of Boston's One Fee checking account offers a minimum opening deposit of \$10, \$8 monthly service charges, and free ATM access on Bank of Boston ATMs, and unlimited checks. For non-bank ATMs, the

fee is \$1.25 for each transaction. The First Step savings account has an interest rate of 2 percent, \$10 minimum opening deposit, and a monthly \$1 service charge. (Senior Customer Service Representative Christina Williams)

The BayBank Student Value checking account has no minimum balance requirement and no monthly service charges for students under 19. If a customer writes more than eight checks per month, each additional check costs 75 cents. The savings account, opened concurrently with the checking account, offers

Banks, Page 7

WORLD & NATION

Officers in King Beating Case Will Stay in Jail during Appeal

LOS ANGELES TIMES

A federal appellate court has denied requests for Los Angeles police officers Stacey C. Koon and Laurence M. Powell to remain free while they pursue their appeals in the Rodney G. King civil rights case, making it almost certain that the officers will begin serving their prison sentences next month.

The decision by the 9th US Circuit Court of Appeals, handed down Monday, is a setback for the officers. They and their lawyers have argued that the two men should not go to jail until an appellate court has the chance to decide whether their convictions were proper.

"It's incredibly disappointing," said Michael P. Stone, one of Powell's lawyers.

Prosecutors, by contrast, welcomed the 9th Circuit's ruling. "I'm very pleased with the court's decision," said Assistant U.S. Attorney Steven D. Clymer, one of two lead prosecutors in the case.

In its brief order, the appellate panel found that the two officers each were convicted of a "crime of violence," rejecting the position argued by the lawyers for the officers — that the civil rights violations charged in this case did not necessarily amount to violent crimes.

U.S. Releases Names of 5,000 Medical Profession Loan Defaulters

LOS ANGELES TIMES

In an unusual effort to pressure medical professionals into paying overdue student loans, federal officials released the names Monday of nearly 5,000 doctors, dentists, and other health workers who have defaulted on more than \$228 million in government loans.

The names also will be turned over to the IRS and the U.S. Justice Department for collection, said a spokeswoman for the Department of Health and Human Services, which loans to students in health care fields. Debtors also will be barred from receiving payment for Medicaid and Medicare patients they treat.

Shalala ordered the debtors' names and the amounts they owe printed in Monday's *Federal Register*, a widely read publication that contains information on new federal regulations.

"We want to get the taxpayers' dollars back," said Patricia Campbell, a spokeswoman for the Health Resources and Services Administration. "Basically, we're embarrassing them."

GAO Finds Job Rehab Serves Few

THE WASHINGTON POST

WASHINGTON

The nation's \$2 billion-a-year vocational rehabilitation program serves only a small proportion of potential beneficiaries, and the gains achieved by disabled participants tend to fade substantially after two years, according to a new analysis by the General Accounting Office.

"We found that only a small fraction of those potentially eligible are served and that those who do take part in the program receive on the average only modest services," the GAO concluded.

William L. Smith, acting commissioner of the Education Department's Rehabilitation Services Administration, said Monday that "we agree with the statistics presented in the report, but we are talking about severely disabled people who may experience letdowns. Our main mission is to get severely disabled people employed. There is no way to guarantee they are going to be employed for life." He said that while the success rate is not "astounding," it shows good progress for many people.

Under the program, the federal government makes grants to states to evaluate whether disabled people would be able to work if given adaptive equipment, special education and training, and to help find them jobs and provide special services such as transportation assistance.

WEATHER

Watching for Emily

By Michael Morgan
STAFF METEOROLOGIST

Hurricane Emily is expected to turn north and then northeast away from the southeast and Mid-Atlantic states in this forecast period. The hurricane will likely weaken as part of its circulation encounters land and cooler sea-surface temperatures in the Atlantic south of New England. While it is anticipated that Emily will give portions of southern New England — particularly Connecticut and Rhode Island — only a "glancing blow," stay tuned to local radio and TV for updates on Emily's progress over the next 36 to 48 hours.

The ridge of high pressure which blocked Emily's northward progress the last few days will move offshore allowing the hurricane to move to the north and then northeast. This same high, is also responsible for turning our winds into the southwest winds — resulting in more moist and warm air from the southern U.S. This moisture, coupled with the effects of Emily, and an approaching cold front should increase our chances for showers and thunderstorms during the latter half of Wednesday. Increasing east to northeast winds will be experienced, shifting to northwest as Emily moves toward and then away from the area.

The extended outlook calls for a more fall-like weather pattern to gradually begin setting up toward week's end. This will mean cooler, less humid weather.

Today: Increasing clouds, warm and humid. High 84°F (29°C).

Tonight: Partly cloudy, and humid with areas of fog. Showers likely.

Wednesday: Increasing east to northeast winds 10-25 mph (16-41 kph) and gusty. Occasional rain and rain showers arriving during the afternoon or evening. Becoming foggy. High 72-78°F (22-26°C). Low 65-69°F (18-21°C).

Israeli Cabinet Approves Palestinian Self-Rule Plan

By David Hoffman
THE WASHINGTON POST

JERUSALEM

The Israeli government Monday night approved a broad understanding worked out jointly with the Palestine Liberation Organization calling for the transfer of authority to Palestinians for governing the occupied Gaza Strip and the West Bank town of Jericho.

Prime Minister Yitzhak Rabin said a written version of the agreement could be ratified this week by Israeli and Palestinian delegations, which resume peace talks Tuesday in Washington.

Ultimately, the declaration of principles, if fully implemented, could clear the way for Israeli troops to begin pulling back from Gaza and Jericho, and for a new Palestinian government to take charge of health, education, welfare, agriculture and tourism. Over a five-year period, the Palestinian government would be expanded to much of the rest of the West Bank.

But extensive negotiations over the details must still take place, starting with the 11th round of peace talks in Washington this week, and Israeli officials said the document leaves open many questions. "There is potential to blow it up in every sentence," an Israeli official said.

Opponents among both Israelis and Palestinians vowed to block any agreement. Militant Palestinians threatened to kill PLO Chairman Yasser Arafat, who has supported the plan. Crowds of Jewish protesters clashed with police here Monday night and a prominent opposition member of parliament locked himself inside a synagogue in Jericho in protest.

"Every solution entails risks, but the time has come to take a risk for

peace," Rabin told members of his governing coalition in parliament. "There is movement along the whole Arab front in readiness for peace. There are obstacles. There are difficulties. But I'm convinced the horizons for peace are open."

The proposal touched off a fierce debate in parliament, and Foreign Minister Shimon Peres, heckled as he defended it, shouted at the opposition: "You are the men of yesterday. The world has changed. There is no conflict between America and the Soviet Union. There is no supply of weapons from the Soviet Union to the Arab countries."

"We bring news to the younger generation that after 100 years of terror, there is no return to the same situation. Rather, we will start 100 years of understanding and living together, each people with its flag, each people with its book of prayer."

Rabin acknowledged for the first time that there had been secret contacts with Palestinians "from outside the (occupied) territories," although he did not directly say the PLO. In the past, he had insisted Israel would deal only with Palestinians from the West Bank and Gaza. But last week, Peres worked out an understanding with a senior PLO figure while in Norway that formed the basis for the plan approved Monday night by the cabinet.

Peres told the parliament that Israel will not recognize the PLO unless it removes from its charter a call for armed struggle against Israel and halts violent attacks on Israeli targets. Officials said there was no agreement for mutual Israeli-PLO recognition in the plan, but that could follow later if Israel's conditions are met.

The plan would designate the Gaza Strip, a territory of 140 square miles and a population of about

650,000, and Jericho, where fewer than 30,000 of the West Bank's 1 million Palestinians live, as the first areas where Palestinians could begin to run their own affairs as Israeli troops depart. Later, self-rule for the Palestinians would be gradually expanded to the rest of the West Bank, but with all Israeli Jews and their settlements in the territory excluded. The Palestinians would exercise control through an elected council.

In effect, the plan gives the Palestinians somewhat more authority over the topics and regions under their control than previous Israeli proposals would have. For example, the Palestinians would be allowed to pass legislation and field their own police force. But at the same time, the scope of the Palestinians' authority appears to be less than they had sought in previous proposals. It would not cover Jerusalem nor Jewish settlements in the occupied territories, which would be separate and remain under the authority of Israel. Israeli army bases and all roads and highways would also be exempt from Palestinian control.

"Arafat may get a bit more autonomy, and less territory," a senior Israeli government official said.

The cabinet approval means Israel's delegation is under instructions to support the plan once it is submitted by the United States.

In parliament Monday, however, the opposition accused Peres of appeasement of the PLO, which Israel long regarded as a terrorist organization. Binyamin Netanyahu, leader of the opposition Likud, said the plan is "leading to one thing — PLO statehood right next to Tel Aviv and Jerusalem."

Rafael Eitan, leader of the nationalist Tsomet Party, said, "Gaza first means Israel the end."

Stampede to Avoid Emily Begins

By Mary Jordan
THE WASHINGTON POST

JARVISBURG, N.C.

The stampede to avoid Hurricane Emily started at the General Store at 5 a.m., as some of the tens of thousands of people being evacuated today from coastal islands stopped for hotcakes.

"The shop was so busy, I had to call in three extra people," said Keith VanCuren, who owns the General Store one mile across Currituck Sound from Duck. Overnight, that popular vacation spot became a virtual ghost town as officials ushered people off North Carolina's Outer Banks and coastal areas.

Emily, whose maximum sustained winds were 95 mph, was on a course that forecasters said could bring it ashore in the Outer Banks region as early as Tuesday afternoon. A hurricane warning was posted from Bogue Inlet, 20 miles southwest of Morehead City, N.C., to the Virginia line.

At 8 p.m., Emily was reported about 260 miles southeast of Cape Hatteras, N.C., and moving west-northwest about 8 mph, according to forecasters at the National Hurricane Center in Coral Gables, Fla. Hurricane-force wind extended 35 miles from its center, and sustained winds could strengthen, they said.

Most people in the predawn traffic jam here had driven the seven miles on Rte. 158 from the Wright Memorial Bridge, northernmost of two two-lane spans that connect the mainland with the Outer Banks. Many stopped at the General Store to eat 99-cent hotcakes and try to put off believing that winds raging far at sea had just stolen their last week of summer vacation.

"We just bought \$400 worth of

groceries," said Lee Crosby, director of Your House, Inc., a youth center in Leesburg, Va. "We left a lot of it back there at the cottages because it had to be refrigerated."

Only Sunday, Crosby and his group of 17 teenagers and adults had settled in for a beach week near Duck. Now, they were driving toward an emergency shelter in Wilson, Va.

"They said it was about an hour and half away in the Wilson High School," said Crosby's wife, Cindy, who like almost everyone else at the General Store was watching television accounts of Emily's latest gyrations.

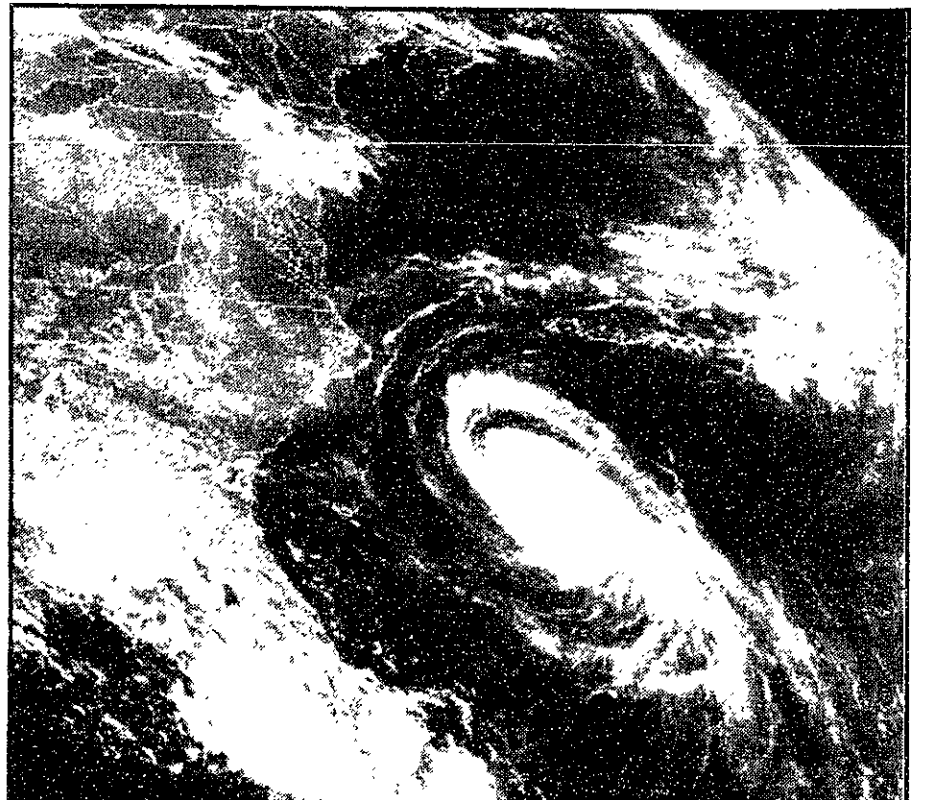
While the Crosbys planned to stay on cots in a school gymnasium, others were jamming every hotel

and motel for more than 100 miles inland, authorities said.

North Carolina residents were driving into Norfolk and back with plywood for their windows. Farmers formed makeshift vegetable stands along major roads, offering reduced prices. Twenty-pound watermelons were going for 75 cents.

"The fields of corn are probably going to be blown flat," said Tillie Powell, owner of Powell's Market not far from here on Rte. 158. "We are going to shut up all the doors and get in all the furniture."

Neon highway signs warned that visitors were barred from returning to the Outer Banks, and residents had identification checked before gaining access to many blocked roads.



Hurricane Emily approaches the Southeastern United States in a satellite photograph taken at 12:31 p.m. Monday.

Russia Agrees to Resume Troop Withdrawal from Lithuania

By Ken Fireman
NEWSDAY

MOSCOW

Resolving a dispute that had raised anxieties throughout the Baltic region and in Washington, Russia agreed Monday to resume withdrawing its remaining troops from Lithuania and to complete the pullout quickly.

Lithuanian President Algirdas Brazauskas said the last 2,400 Russian soldiers would leave his country by Tuesday, as had originally been scheduled before Moscow suspended the withdrawal earlier this month. Russian officials did not set a date for completion of the withdrawal, but confirmed that the pullout was resuming and would be completed soon.

"This will turn a page in relations between our countries," Brazauskas said in a nationwide radio address announcing the agree-

ment, the Russian news agency Itar-Tass reported from Vilnius.

The agreement to resume the withdrawal was reached during a lengthy telephone conversation between Brazauskas and Russian President Boris N. Yeltsin. Overcoming the biggest obstacle to a resolution, the leaders agreed to set aside the issue of compensation for the half-century-long Soviet occupation of Lithuania for future negotiations.

"This was a good and frank conversation during which we found ... an acceptable compromise for both sides and agreed on a summit meeting in September," Brazauskas said.

Russian officials suspended the withdrawal Aug. 18 because of what they called unreasonable Lithuanian demands for financial compensation. A few days later, they broke off negotiations over the dispute and issued a toughly worded statement threatening to deal with any "provoca-

tions" against Russian servicemen "quickly, practically and decisively."

The Russian moves triggered worry among leaders of the other Baltic states, Latvia and Estonia, that Moscow was signaling a general hardening of its position toward the region.

The moves also prompted a warning from the Clinton administration that \$700 million in U.S. aid to Russia could be jeopardized.

Russia, which inherited the 129,000 Soviet army soldiers stationed in the Baltics when the Soviet Union split apart in 1991, began withdrawing them last year. Today only 25,000 of those troops remain, the majority in Latvia, where the Baltic army group is headquartered. But Russia has refused even to commit itself to a timetable for a final withdrawal from Estonia and Latvia because of disputes with those governments over the treatment of ethnic Russian minorities.

U.S. Will Continue to Target Aidid Despite Failed Weekend Mission

By Art Pine
and John M. Broder
LOS ANGELES TIMES

WASHINGTON

The Clinton administration acknowledged Monday that lieutenants of fugitive Somali warlord Mohammed Farrah Aidid had been the target of a weekend raid in Mogadishu by elite U.S. troops and warned that despite the failure to capture them more such efforts would be forthcoming.

In an unusually candid admission, the Defense Department confessed that intelligence reports indi-

cating the whereabouts of Aidid's lieutenants were incorrect and that U.S. troops — which included some of the 400 elite Army Rangers sent to Mogadishu last week — erroneously apprehended eight U.N. workers instead.

Asked about the incident at a news conference, President Clinton defended the need to capture Aidid and his top aides as necessary to securing stability in Mogadishu. While saying he was "open to other suggestions," he said Aidid had "provoked" the raid by killing U.S. and U.N. troops.

Despite the obvious embarrassment, there was no immediate sign that the United States intended to cut back on its pursuit of Aidid in the wake of Sunday's mishap. Maj. David Stockwell, the U.N. military spokesman, hinted that other such raids were likely.

Military officers and private defense analysts on Monday dismissed the episode as one of the foibles of such a manhunt mission, and predicted that similar incidents would occur with some frequency as the United States continues to pursue its quest for Aidid.

U.S. Plans to Back Bosnia Peace Pact With 20,000 Troops

LOS ANGELES TIMES

WASHINGTON

The Clinton administration is making preliminary plans for deploying up to 20,000 U.S. ground troops to help with U.N. peace-keeping efforts in the Bosnia if talks in Geneva produce a peace accord to end the bitter conflict, U.S. officials said Monday.

But President Clinton said no final decision will be made on the precise number of troops and how they will be deployed until he is certain that any peace agreement is "fair, fully embraced by the Bosnian government, and is enforceable."

"The United States is prepared to participate in a multinational effort to keep the peace in Bosnia, but I want to see what the details are," Clinton said at a news conference. "I also want to know whose responsibility it is to stay for how long."

At the same time, both U.S. officials and private military experts cautioned that the decision will be a difficult one, complicated by the shrinking U.S. military budget, limited sea lift and airlift capability and a much smaller total force structure.

The president promised in February to provide U.S. troops to help enforce what then was expected to be the Vance-Owen peace accord in Bosnia, but that pact fell through and never was completed. Officials said the promise would hold for a new peace accord.

With the three warring factions in Bosnia — the Bosnian Serbs, Croats and Muslims — edging closer to a peace agreement, U.N. mediator Thorvald Stoltenberg has asked for assurances that U.S. troops will help enforce it. The administration's statements Monday were aimed at reiterating its intention to carry out its pledge.

With Washington's approval, military planners at NATO also have begun drafting plans for some 40,000 NATO troops to take on the enforcement operations. U.S. authorities estimate that if that number holds firm, the United States will provide about 20,000 of these troops.

NATO officials say the preliminary planning now under way amounts mainly to updating and refocusing plans that the 16-country organization made in anticipation of the Vance-Owen accord last February, which have been kept on the shelf since the pact folded.

They said the organization has been reluctant to engage in full-scale, public planning operations because the details of the new pact are not settled and because NATO still is maintaining its threat to launch air strikes against the Serbs if Sarajevo is attacked.

Even if a new accord is signed in Geneva, the job of enforcing the pact could be a dangerous and lengthy one, military analysts say — particularly if one or more of the three warring factions is unwilling to cooperate with the peacekeepers.

U.S. officials are pushing to move artillery and heavy equipment into the region as soon as they can after the pace is agreed to — mostly from U.S. arsenals in Germany and other depots in Europe. They then would seek to impound the heavy weapons now being used by all three sides.

Graduate Student Council

Orientation Week Events

Sunday	Monday	Tuesday	Wednesday	Thursday	Friday	Saturday
29	30	31	1	2	3	4
5	6	7	8	9	10	11

13: Red Sox vs. Kansas City, Fenway Park

9-16: ID Photos, Lobby 13

10-16: GSC Information booth and Tickets, Lobby 10

19-21: Activities Midway, Johnson Center

11: Campus Walking Tour

10-16: GSC Information, Lobby 10

13-16: MIT Fair, Lobby 13

19-21: Athletics Midway, Johnson Center

19-21: Medical/Safety Seminar, 10-250

11: CWT

10-16: GSC Information booth and Tickets, Lobby 10

12-14: Picnic!

15: CWT

13-18: Blood Drive, Student Center

17:30-19:30: GSC Open House, 50-222. Ice Cream!

19:30- : Night On the Town. 50-222

11: CWT

10-16: GSC Information, Lobby 10

12-18: Refreshments at Muddy Charles, 50-120

13-18: Blood Drive, Student Center

19-22:30 Harbour Cruise, Long Wharf

15: CWT

17-19: Women Students Orientation, Ashdown.

17-20: Minority Students Orientation, Ashdown.

OPINION



Chairman
Matthew H. Hersch '94

Editor in Chief
Jeremy Hylton '94

Business Manager
Benjamin A. Tao G

Managing Editor
Garlen C. Leung '95

NEWS STAFF

Editors: Karen Kaplan '93, Katherine Shim '93, Sarah Y. Keightley '95, Eva Moy '95; **Associate Editors:** Eric Richard '95, Hyun Soo Kim '96, Michael A. Saginaw '96; **Staff:** Nahul T. Rao '94, Trudy Liu '95, Matt Niemark '95, Ben Reis '95, Nicole A. Sherry '95, Kevin Subramanya '95, Charu Chaudhry '96, Deena Disraelly '96; **Meteorologists:** Michael C. Morgan G, Yeh-Kai Tung '93, Arnold Seto '96, Marek Zebrowski.

PRODUCTION STAFF

Editors: Vipul Bhushan G, Matthew E. Konosky '95, Michelle Sonu '96; **Associate Editor:** Teresa Lee '96; **Staff:** Sasha K. Wood '93, Ravi Dalal '96, Rolf Rando '96; **TEN Director:** Josh Hartmann '93.

OPINION STAFF

Editor: Michael K. Chung '94.

SPORTS STAFF

Editors: Lynn Albers G, Haider A. Hamoudi '93; **Associate Editor:** Ann Ames '92; **Staff:** Mike Duffy G, Andrew Heitner G, Ognen J. Nastov G, Eric M. Oliver G, Bo Light '96.

ARTS STAFF

Editor: Chris Roberge '93; **Associate Editor:** Allen Jackson '94; **Staff:** Dave Fox G, John Jacobs '94.

PHOTOGRAPHY STAFF

Editors: Josh Hartmann '93, Yueh Z. Lee '95; **Staff:** Sarah Wheeler '93, Rich Domanos '95, Raluca G. Barbulescu '96, Sherrif Ibrahim '96, Lenny Speiser '96.

FEATURES STAFF

Christopher Doerr G, Pawan Sinha G, Mark Hurst '94, Cherry Ogata '94, Steve Hwang '95.

BUSINESS STAFF

Advertising Manager: Aaron Belenky '96; **Associate Advertising Manager:** Pradeep Sreekanthan '95; **Accounts Manager:** Oscar Yeh '95; **Staff:** David Gomez '94, Shawn Bolan '96, Peter Park '96.

CONTRIBUTING EDITORS

Michael J. Franklin '88, Jadene M. Burgess '93.

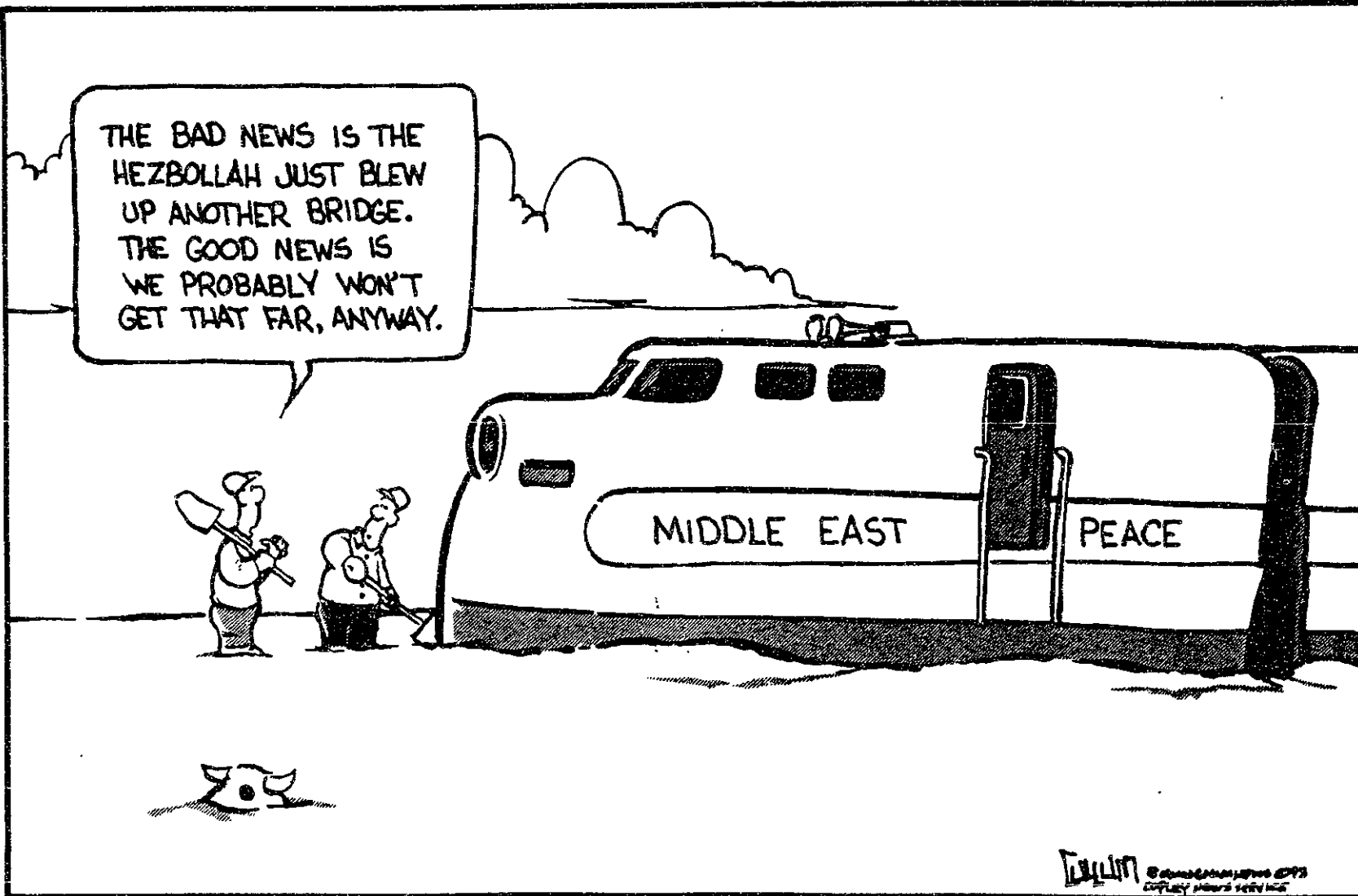
ADVISORY BOARD

V. Michael Bove '83, Jon von Zelowitz '83, Bill Coderre '85, Robert E. Malchman '85, Thomas T. Huang '86, Deborah A. Levinson '91, Jonathan Richmond PhD '91, Reuven M. Lerner '92.

PRODUCTION STAFF FOR THIS ISSUE

Night Editors: Teresa Lee '96, Michelle Sonu '96; **Staff:** Jeremy Hylton '94, Garlen C. Leung '95, Jared Cottrell '97.

The Tech (ISSN 0148-9607) is published on Tuesdays and Fridays during the academic year (except during MIT vacations), Wednesdays during January, and monthly during the summer for \$20.00 per year. Third Class by *The Tech*, Room W20-483, 84 Massachusetts Ave., Cambridge, Mass. 02139-0901. Third Class postage paid at Auburn, Mass. Non-profit Organization Permit No. 59720. **POSTMASTER:** Please send all address changes to our mailing address: *The Tech*, P.O. Box 29, MIT Branch, Cambridge, Mass. 02139-0901. Telephone: (617) 253-1541. FAX: (617) 258-8226. Advertising, subscription, and typesetting rates available. Entire contents © 1993 *The Tech*. Printed on recycled paper by MassWeb Printing Co.



Opinion Policy

Editorials, printed in a distinctive format, are the official opinion of *The Tech*. They are written by the editorial board, which consists of the chairman, editor in chief, managing editor, executive editor, news editors, and opinion editors.

Dissents, marked as such and printed in a distinctive format, are the opinions of the signed members of the editorial board choosing to publish their disagreement with the editorial.

Columns and editorial cartoons are written by individuals and represent the opinion of the author, not necessarily that of the newspaper.

Letters to the editor are welcome. They must be typed, double-spaced and addressed to *The Tech*, P.O. Box 29, MIT Branch, Cambridge, Mass. 02139, or by interdepartmental mail to Room W20-483. Electronic submissions in plain text format may be mailed to letters@the-tech.mit.edu. All submissions are due by 4 p.m. two

days before the date of publication.

Letters and cartoons must bear the author's signatures, addresses, and phone numbers. Unsigned letters will not be accepted. No letter or cartoon will be printed anonymously without the express prior approval of *The Tech*. *The Tech* reserves the right to edit or condense letters; shorter letters will be given higher priority. Once submitted, all letters become property of *The Tech*, and will not be returned. We regret we cannot publish all of the letters we receive.

To Reach Us

Electronic mail is the easiest way to reach any member of our staff. Mail to specific departments may be sent to the following addresses on the Internet: ads@the-tech.mit.edu, news@the-tech.mit.edu, sports@the-tech.mit.edu, arts@the-tech.mit.edu, photo@the-tech.mit.edu, circ@the-tech.mit.edu (circulation department). For other matters, send mail to general@the-tech.mit.edu, and it will be directed to the appropriate person.

meal plans

Drop off your completed Meal Plan application at any dining center cashier, at the Customer Service Center (W20-507), or at the Meal Plan Office (E32-200).

For more information, call 3-2814 or 3-2815.

sign up today

AFFILIATION MEETING

WED. SEPT 8 @ 7:30 PM IN 4-370

AGENDA:

- I. AFFILIATION
- II. SPORT ANNOUNCEMENTS
 - FOOTBALL — ENTRY MEETING 9/10
 - SOCCER — ENTRY MEETING 9/10
 - BADMINTON — ENTRIES DUE 9/13
 - TENNIS — ENTRY MEETING 9/13

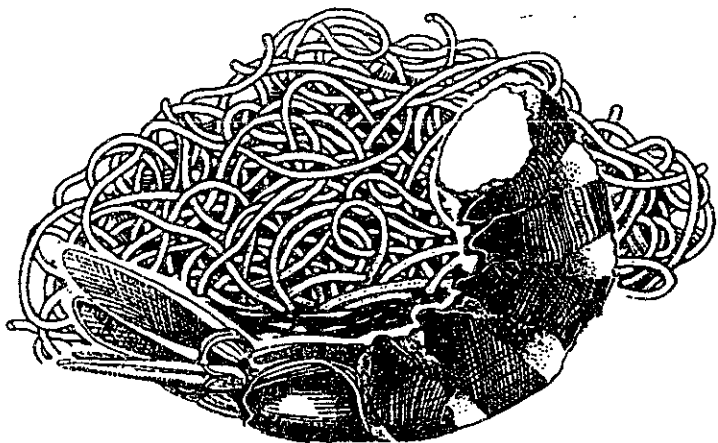
TIMES AND ROOMS OF MEETINGS TBA
— SEE W32-123 FOR MORE INFO —

- ☛ THIS IS THE ONLY TIME
- ☛ OF THE TERM
- ☛ TO AFFILIATE!!

Make Capucino's your next project.

What should I order? Appetizer? Pasta? Veal? Seafood? Decisions, decisions. Over 50 entrees to choose from. Capucino's has generous portions, and modest prices.

So make Capucino's the eating place for your next project. And don't forget our famous \$9.95 Sunday Brunch, 10 to 2:30 PM.



Value is always on our menu.

Capucino's
Ristorante Italiano

BROOKLINE 617-731-4848 CAMBRIDGE 617-547-8228
FRAMINGHAM 508-872-1231 SAUGUS 617-233-3765

A Great Look Starts with a Great Cut

Shampoo, Conditioner & Precision Cut **\$7⁹⁵**

With this ad (REG. \$12)



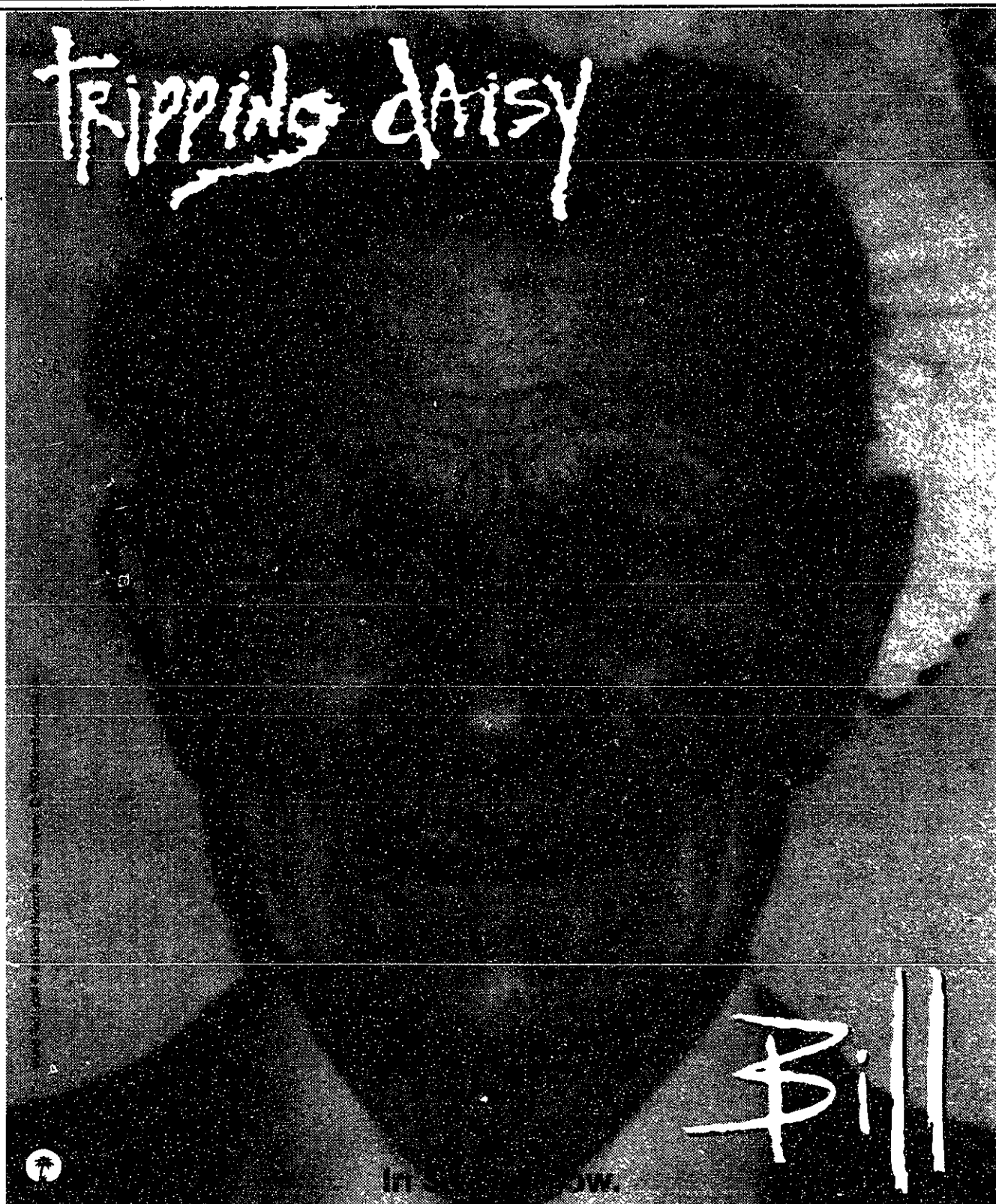
Great Cuts ...for great looking hair!

• CAMBRIDGE - 1 Elliot Square, Cambridge - (617) 576-3920
In Harvard Square • HOURS: Mon-Fri 9 to 8, Sat 9 to 6, Sun 12 to 5

• NEWBURY STREET - 286 Newbury Street, Boston - (617) 267-3225
Between Gloucester & Hereford • HOURS: Mon-Fri 10 to 8, Sat 9 to 6, Sun 12 to 5

Not valid with other offers

TT - Expires 10/31/93



Free Computing for all MIT Students!

R/O 1993 Schedule

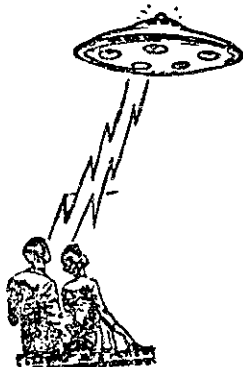


New Students! Please...

...take two minutes to read this!

Thank you. We have to tell you about free computing at MIT:

- **Hello, new MIT Students:** There are computers all over campus. You can use them. You're *supposed* to use them. You're going to *need* to use them. This IS NOT a special computer club for someone else -- it's for YOU. The system is named *Athena*.
- **Okay, got it?** Here's what to do about it: Come to our one-hour classes (4 different topics, on 4 days, as shown) and learn to use Athena:



August-September						
Sun	Mon	Tue	Wed	Thu	Fri	Sat
29	30	31	1	2	3	4
5	6	7	8	9	10	11

Dates	Tue 31 Aug	Thu 2 Sep	Fri 3 Sep	Wed 8 Sep
Room	26-100	10-250	10-250	10-250
9:00am	Intro	Intro	Basic WP	Latex
10:00am	Intro	Intro	Basic WP	EZ
11:00am	Intro	Intro	Basic WP	Latex
12:00noon	Intro	Intro	Basic WP	EZ
1:00pm	Intro	Intro	Basic WP	Latex
2:00pm	Intro	Intro	Basic WP	EZ
3:00pm	Intro	Intro	Basic WP	Latex
4:00pm	Intro	Intro	Basic WP	EZ

ATHENA MINICOURSES R/O Week 1993 -- All Day Long

- Note locations: First day in 26-100, others in 10-250.
- Please tell your friends.
- **No Pre-Registration or Reservations Needed...** Just show up for class!



Classes are one hour each, and begin hourly, as shown.

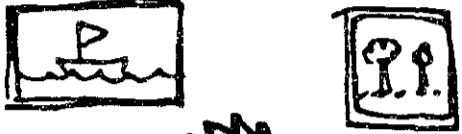
COME JOIN THE TECH!!!

You can find us in Room 483 of the Student Center

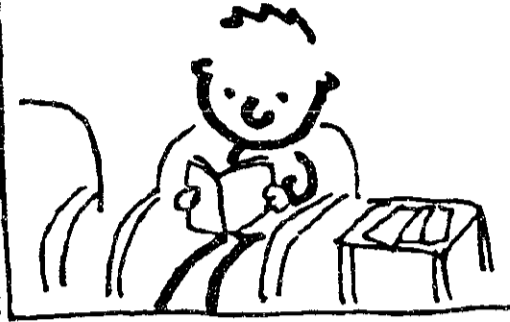
Jim's Journal

by Jim

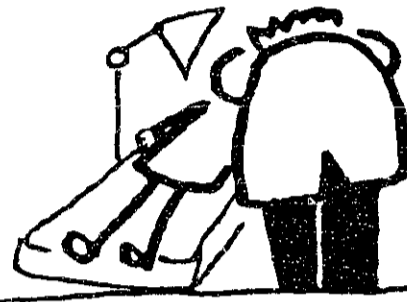
I had my dentist appointment today.



I sat in the waiting room for a few minutes and read People magazine.



The dentist used rubber gloves when he cleaned and checked my teeth, and I could taste and smell the rubber.

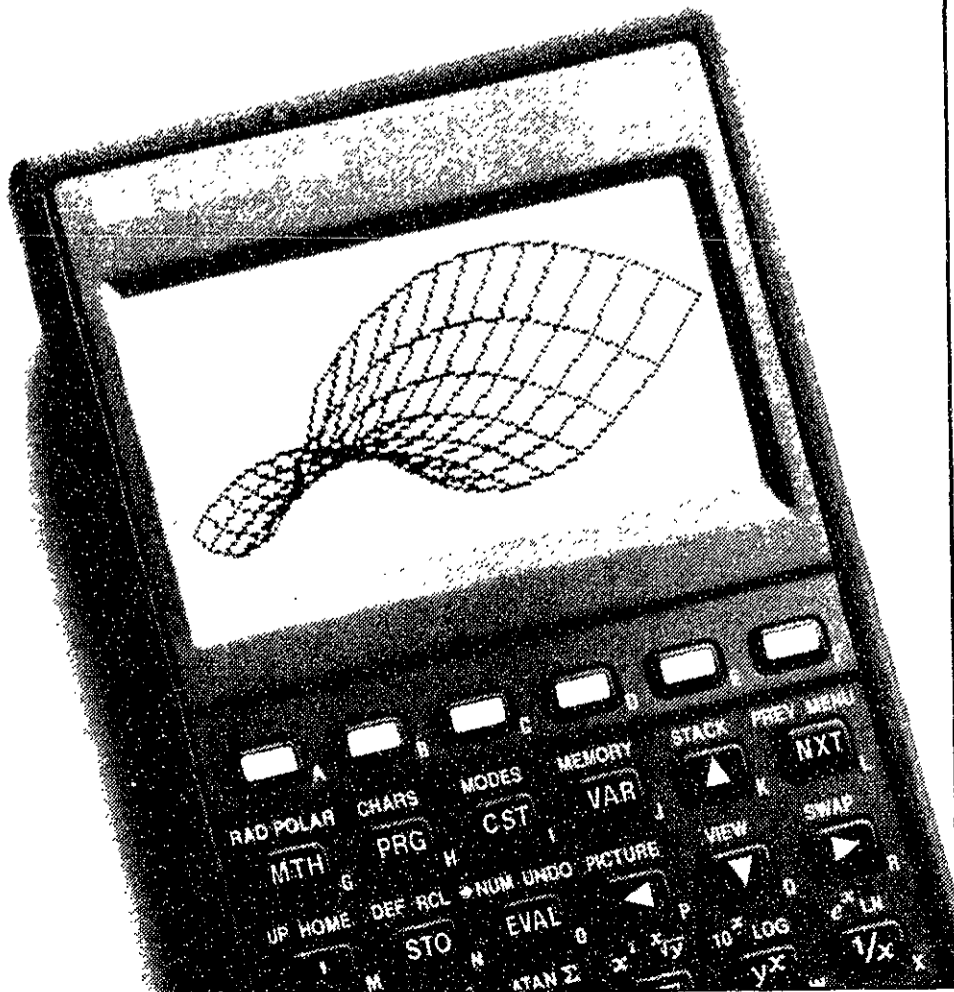


My teeth felt smooth and clean when I left.



3-11

The new
3-D graphing
grade-making
easy-learning
fast-answering
budget-pleasing
headache-busting
HP 48G



Check it out

The new HP 48G graphic calculator gives you a whole lot more for a whole lot less than you think.

Get more

- Push a button, choose from the pull-down menu, and fill in the blanks. Entering data is that easy.
- View 3-D graphs.
- Access over 300 built-in equations.
- Perform algebra and calculus operations on equations before entering values.
- Enter and see equations like they appear on paper.
- Work with different units of measure. The HP 48G will convert them for you. For example, enter inches, centimeters, yards, and feet, together in one equation — it'll convert them.

Get more ... for less

- Compare prices — the HP 48G fits your budget.

Special introductory offer*

When you buy an HP 48G or HP 48GX, you can get free software (plus games!) and a free cable for connecting to your desktop PC. Write programs for the HP 48 using your PC keyboard, or store HP 48 files and programs on your desktop PC.

Pick up a coupon at your college bookstore.



*Offer good while supplies last on purchases made from August 1, 1993 through October 31, 1993. See coupon for terms and conditions.
©Hewlett-Packard Company. PG 12306B

Win!
Free!
Sex!

According to the headline-writers of British tabloids, these are the three words that are most likely to grab the attention of readers.

You can learn many more secrets of journalism like this *if* you Join *The Tech!*



Service Should Also Be Factor

Computers, from Page 1

warned. Software like Maple, a symbolic math program, and most courseware are not available for personal computers, he said.

"Make sure you're familiar with Athena," Williams said. Students would benefit from waiting if they are not certain about their specific computing needs or and whether Athena will satisfy them.

For students who were interested in buying a computer, Williams described some of the trade-offs involved in choosing between desktop and notebook computers, and between Macintosh, PC-compatible, and UNIX-based computers.

"Notebooks computers are everywhere. They're portable. They're convenient. And they can be pricey," Williams said. Desktop computers offer more options for expansion, displays, and different keyboards, she said.

Some students may be interested in buying workstations, like the those used at Athena, Williams said. Workstations are very powerful and have become more affordable, noting that a minimally equipped Sun workstation sells for \$3300, she added. Because of the cost and complexity of using such a machine, Williams warned, "Do a lot of research before you buy one."

Resnet links computers

Many students asked questions about Resnet, the network being constructed to connect all undergraduate housing to the campus-

wide network. With the purchase of an ethernet card, personal computers can connect to Resnet and the rest of the Internet.

Solof said there would be no charge for connecting to the Resnet or for maintaining a connection. Information Systems is also developing Macintosh- and PC-based versions of some Athena software, like zephyr and discuss, he said.

There are a number of difficulties that personal computer users will face using Resnet, Solof said. Programs like Mac X and DesqView/X will be of little use, because they act as terminals for other computers. Athena does not provide servers for those kinds of programs.

Connecting a computer to Resnet also complicates a computer purchase, Solof said. Off-campus independent living groups will have substantially slower ethernet connections to Resnet than on-campus ILGs and dormitories, he added.

"Try to get the specifics of your living arrangement set, and then start thinking about things like ethernet," Solof advised.

Students who want to buy UNIX workstations or run UNIX on a personal computer will also face extra hurdles, Solof said. There will be no official support for the PC-based version of UNIX, PC Linux, though the Student Information Processing Board will offer support.

Workstation owners could also purchase a version of the Athena release software and effectively install Athena workstations in their

rooms. The Athena software will cost \$350 a year for installation and support, according to Gregory A. Jackson, director of academic computing.

MCC offers service, advice

Williams also talked about practical considerations, such as where to buy the computer and how to get it serviced. She said there were many stores in the area other than the MCC that sell computers, including Lechmere, Sears, and Circuit City.

She cautioned that students should consider things other than price, though. Computer buyers should consider the quality of the available service and of the sales force.

The MCC sells products at an educational discount to members of the MIT community, Williams said. She added that MCC salesmen are not paid on commission and provide consulting both before and after the purchase.

"You're not going to come to us and get something you don't really need," Williams said.

The MCC will also sell special educational bundles during September and October, Williams said. Bundles may include a computer and either selected software or peripherals. "The bundles are a great deal because they're cheaper than buying the individual components," she said. The disadvantage of bundles is that buyers lose the freedom to mix and match components, she added.

Banks Offer Different Benefits

Banks, from Page 1

a current 2 percent interest rate and no minimum balance. For students over 19, however, there is a \$5 monthly service charge for the combined checking and savings package. ATM transactions are free on the bank's machines.

Cambridge Savings Bank's Personal Checking Account has a minimum opening deposit of \$100 and no minimum balance, no check fees or monthly maintenance fees, and free ATM access to the bank's machines. The savings account has a \$1 minimum opening deposit requirement and a current 2.85 percent interest rate.

The Cambridge Trust Company's ATM Convenience Account offers no minimum balance, no

maintenance fees, and a limit of five check transactions per month, with a \$3 charge for additional checks. Cambridge Trust offers free usage of its ATMs, but charges a \$1 fee for other ATMs. The savings account offers a 3 percent interest rate, a \$200 minimum balance, and no maintenance fees. (Robert C. Gray, customer service representative)

Cambridgeport Bank's Value Checking Account has a \$10 opening deposit, no minimum balance, unlimited checking transactions, and free usage of the bank's ATMs. Customers also receive three free transactions per month on other banks' ATMs, and additional transactions cost \$1. The savings account offers a 2.85 percent interest, a \$100 minimum balance, and a \$10 opening deposit. (Aurora Pineta, teller)

Shawmut Bank's Streamline checking account has no minimum balance requirement, a \$1 opening deposit, no maintenance fees, and a limit of seven checking transactions a month. Transactions on the bank's ATMs are free. Additional checks processed each month incur a \$5.25 transaction fee. The Basic Savings account has an 0.9 interest rate and a \$100 minimum balance.

US Trust's Student Checking Account has a \$250 minimum balance, no monthly service charges, unlimited checking transactions, and no service charge for any ATMs. The savings account offers a 3 percent interest rate and a \$250 minimum balance. (Michael Lafrance, manager of Kendall Square branch)

Jacks Lead Frosh on Orange Tour

Florey, from Page 1

doesn't last long however, as a few twists bring them out suddenly into the night air. The freshmen cluster silently in the darkness, and the Jacks whisper more stories.

Shortly after the entire group has assembled outside, the scouts report back that the passage is clear, and they can start towards their next destination. This time they are headed back to the roof.

This high point provides a dramatic view of the campus, and a perfect opportunity to cool off after the heat of the basement. As the wide-eyed freshmen look out over the Student Center and the nearby Campus Police headquarters, the Jacks answer questions.

One freshman, Fred T. Dormi-

tore '97, asks, "What do those signs mean by 'No Toad Sexing?'" Jack explains the history of those messages, and the freshmen already seem to be preparing to find a place where such an act would be permissible. As hour approaches 3:00 a.m., some of the group begins to show fatigue. This is the Jacks' cue to get the group going again.

A short journey brings the 40 freshmen and Jacks back to the East Campus courtyard, where they meet with the other two groups. After a round of donuts and punch, the oldest and most knowledgeable Jacks begin to address the full crowd. They tell stories of the most spectacular hacks that have taken place over the years, including the "No Knife" exhibit, and the legend of the USS Tetazoo.

A few of the less hardy freshmen fall asleep, lulled by the soft breezes and distantly breaking dawn. The group slowly thins out, and by 5:30 am, the last legends have been passed to the next generation of hackers, some of whom will certainly return next year with a new name, Jack Florey.

About the author: Jack Florey is a mythical character created on the spur of a moment to help cover an insufficiently planned hack. He has been registered for classes at MIT twice before, but has reportedly never passed a class. It has been the tradition of the residents of East Campus to become Jack Florey for a few nights each year to educate incoming students in the ways, means, and ethics of hacking.

Concourse, ESG, ISP Offer Smaller Classes

Alternatives, from Page 1

between the different subjects and so enhances both the memory and understanding," Rose wrote in a letter to freshmen.

Concourse is "a small school within a school." It has its own classroom, lounge, and faculty, Rose continued.

Students enrolled in Concourse take at least three core classes each term within the Concourse program. Since all lectures are provided by Concourse faculty, Rose explained that the classes can move at their own pace. "If it looks like people are failing behind in calculus, we can slow down the pace in physics until calculus catches up. ... If I am not satisfied with the pace of things, I will meet with the freshmen over breakfast and discuss it with them."

Rose summarized the program saying, "We try to get all the advantages of a small school, without giving up the resources of MIT."

Rose added that the program is strongly structured and warned that Concourse is not well-suited for students who have advanced placement credit and are planning to move ahead.

Concourse may also not be for students who prefer to work alone, since Concourse encourages students to work together, Rose said.

In addition to the regular classes offered during the term, Concourse has also begun offering a special class during Independent Activities Period on a trial basis. The class is a problem solving course using the methods taught in Soviet-style schools. "In the old Soviet Union, this is how they learned," Rose said. "This appears to be a very powerful educational tool."

Students taking the seminar last year used entrance exams to Moscow University to learn problem solving skills as well as the fundamentals of both math and physics, he added.

Ultimately, Rose hopes to be able to expand the seminars into regular classes.

ESG allows for personal pace

ESG courses are taught in small study groups, self-paced tutorials, and discussion-oriented seminars which allow for personalized teaching.

According to one student enrolled in ESG last term, ESG provides "a personalized teaching environment — a class that would adjust to my pace — and instructors that would take the lectures in the direction that interested me."

ESG courses are not even limited by the standard semester format of classes, as ambitious students can finish a course before the end of the term while others can take more time to finish a course without penalty. "While there may be one group that will finish [18.01] in 8 weeks, another group may take 16 weeks to do the same thing," said Holly B. Sweet, associate director of ESG.

Students can also begin the next

subject in a sequence whenever they want. According to Ingram, this makes ESG ideal for students who have one month of 18.02, but not enough to place out.

He also said that ESG is ideal for "students from abroad who have big holes in some areas but great strengths in others." In fact, ESG commonly attracts one-fourth of the international students in the freshman class, Sweet added.

The lack of defined structure in the classes also allows students to "make their lives more interesting [by] exploring sub-topics that interest them," according to Ingram.

"We were able to learn the material more effectively in my ESG calculus class because we spent a greater amount of time on the more difficult topics and less time on the easier ones," said one student enrolled in ESG in Fall 1992. "We were also able to set our own pace as far as taking exams was concerned."

However, because of this freedom, both Ingram and Sweet say that ESG is not for those who are not motivated or who can not pace themselves.

ISP provides hands-on experience

"If you want to learn about technologies, then you'd better try it," said ISP Director Aczel. "What they hear about theoretically, we let them practice."

Students enrolled in ISP take the standard core of classes with the rest of the freshmen, but attend special recitations. They also enroll in a humanities class particular to ISP, which Aczel described as "the center of the program." In this sense, ISP tries to integrate its students into MIT since they have "one foot here, and one foot [in the mainstream] with everybody else," Aczel said.

ISP students learn about "how cultures have dealt with different materials" in a very hand-on manner, according to Aczel. "They try their hands at blacksmithing. ... They try cooking using materials of different cultures. ... They weave in the tradition of Andean weavers. ... And they take apart an engine."

Aczel said that ISP seems to attract a wide cross-section of MIT students. "Some come here because they need extra help. ... Others have [placed] out of many courses."

ISP Assistant Marshall Hughes said, "It's a mutt course, and that is its strong point."

Openings still available

With each of the alternative programs emphasizing small community learning, spaces in the programs are limited. While ISP works on a first come, first serve basis, both Concourse and ESG are available through lotteries.

ISP and ESG will be holding open houses today and Concourse will be having a mandatory meeting in the afternoon for interested students. Each of the programs will also be represented at the Academic Expo tomorrow afternoon.

80,000 PEOPLE GAVE SOMETHING TO THE IRS THIS YEAR. AND THEY CAN'T WAIT TILL NEXT YEAR TO GIVE AGAIN.

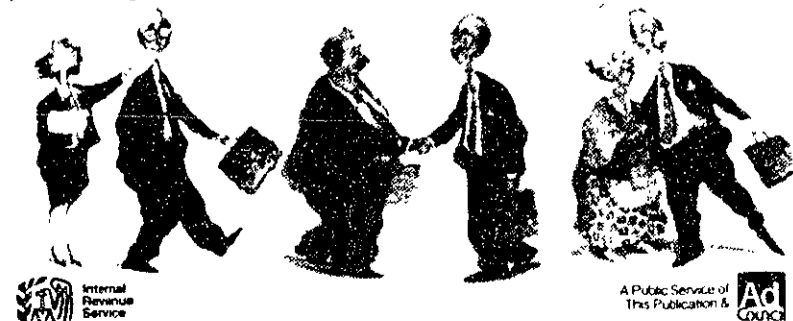
They volunteered their skills to people who needed help doing their taxes. And it made them feel great.

They weren't necessarily accountants. They were people, like you and your club or group members, who have

a basic aptitude for math and a desire to help others.

You know, you can help people with what taxes them. And feel great, too.

To find out about the free IRS training program, call 1-800-424-1040 now.



Volunteer now. And you'll make someone's taxes less taxing later.

This space donated by *The Tech*

Read *The Tech* On-Line!

athena% add sipb
athena: xmosaic &

Click on "Open" to request a specific document and type:

<http://the-tech.mit.edu:80/The-Tech>

The Daily Confusion Tuesday, August 31, 1993

Residence

All day: **Epsilon Theta**. Legos and modeling clay, for the "young engineer" in all of us. Call 734-9211 or MIT extension 3-8888 for a ride.*

All day: **pika**. It's pika, not just a fun place to hang out (though it is that), it's also a fun place to hang out and have fun. We'll be doing fun stuff all day. Some of it unadvertised in the Daily Confusion! Some of it so spontaneous that even we didn't know we were gonna do it until it was over. It's wacky, it's fun, it's pika! Seriously, we'll have tiny treasures and roller blading and devil sticks and juggling and pika blocks and bath tubs and exit signs and stuff like that all day! Call 492-6983 at any time for a roller blading escort or vehicular type transport to pika!*

All day: **ΦΚΣ**. Still Rushing? Then come on over to **SKULLHOUSE** and help us eat all of the left over food while it's still free. Call for a ride: 536-3683.

7:30a: **Student House**. Co-ed naked aerobics! But, seriously, come join a scenic jogging tour of Boston's renowned Esplanade, led by Dave and Brian. 247-0506.*

7:55a: **Epsilon Theta**. DING! FIRST BELL! Five minutes to breakfast.*

8:00a: **Epsilon Theta**. BREAKFAST is served... you know what they say about skipping "the most important meal of the day." Call 3-8888 for a ride.*

8:00a: **Phi Beta**. How 'bout some French Toast, French Fries, or some French Bread.*

9:23a: **Pi Lam**. Breakfast. You know the deal. Eat.*

9:36a: **pika**. Come have a real pikan breakfast...Lucky Charms, a banana, and some juice...or Fruit Loops, an orange, and milk...or some toast...or just the juice or milk...or some dry cereal...it's a breakfast like your Mom used to make (or my Mom at least)...492-6983*

9:51a: **Fenway House**. Eat some fiber! Grape nuts and prune juice for breakfast. Call for an enema: 437-1043.*

9:51a: **Epsilon Theta**. Help wake Eric up. Our trip to Walden leaves in just nine minutes, so he must still be in bed...*

9:57a: **pika**. Seriously, we're eating breakfast at pika...*

10:00a: **Epsilon Theta**. TRIP TO WALDEN POND. Come see the place where Thoreau built his cabin. Lots of swimming, lunch on the beach, and a trip to the nearby DeCordova outdoor sculpture museum. Call 3-8888 for a ride.*

10:03a: **Fenway House**. Or just grab some Cheerios. 437-1043.*

10:14a: **pika**. Pain is good...*

10:24a: **Student House**. Are you wondering how you're going to make ends meet? At **Student House**, we understand because we're in the same boat. We're inexpensive, and we live in a beautiful house in a great neighborhood. Give us a try. 247-0506.*

10:29a: **pika**. In the beginning...there was anaerobic exercise...then the Earth changed...the primeval soup mutated into what would one day become life...and the atmosphere changed...suddenly, there was lots of oxygen and the little microbes invented aerobics so they could stay in shape and their flagella wouldn't get flabby. Aerobics have come a long way since then. Now, we play cool music and have a lot of fun. Come join pika in this fun and healthy early morning jaunt into the world of aerobics...492-6983 gets you a ride...*

10:30a: **Phi Beta**. Canoeing down the mighty Mississippi, the 'Ol Man...DEEP RIVER*

10:30a: **pika**. It's Aerobics at pika...Either low or high impact, either fast or slow...We're just out to have fun and get healthy. Come join Laurel and her cohorts in an aerobic adventure (oxygen not included)...*

10:41a: **Fenway House**. Shampoo and dry ice. 437-1043.*

11:00a: **pika**. Well, aerobics is still going on...and breakfast is still going on...and

aren't you sad you're missing all these great goings on...492-6983*

11:30a: **pika**. pika in the morning...really you just have to see it to believe it...492-6983*

11:37a: **Pi Lam**. We'll throw around a frisbee and have lunch on Boston's Esplanade, a beautiful park on the Charles.*

11:45a: **Fenway House**. Lunch, such as it is. Yum yum. Call for food. 437-1043.*

12:00p: **Theta Chi**. OXHUNT 3.5! We're trekking to the great outdoors to play some paintball-come work out your passive aggressions, and maybe have some fun in the process!

12:00p: **pika**. pika at noon, really you just have to see it to believe it, 492-6983*

12:01p: **pika**. seriously, I don't want to put you off or anything, but pika really is pretty cool, whether we're talking noon or mid afternoon or before noon. it's just a fun place to hang out all the time...492-6983*

12:30p: **Phi Beta**. French in the morning and Italian for lunch! Spaghetti with varied meatballs!

12:30p: **pika**. Well, everyone at pika is just hanging out, shooting the breeze, maybe playing pool or something. In about a half of an hour we're all going to have Fondue so that's pretty exciting...492-6983*

12:35p: **pika**. Wait! Did that last pika entry say Fondue in half an hour? It did! Just look half an hour in the future and see for yourself... It's fondue at pika...come join in the fun...call 492-6983 to reserve a skewer!

12:45p: **Fenway House**. The Museum of Science. It's fun. 437-1043.*

12:59p: **pika**. The fondue pots are ready...the skewers are arranged on the table...the fruit looks delicious...a horde of hungry fondue enthusiasts is descending on the dining room like vultures...492-6983*

1:00p: **pika**. See, it's Fondue at pika. Yum...*

1:06p: **Epsilon Theta**. The Epsilon Theta Lecture and Workshop Series presents "Wombat Poetry" and "Mammoths and the Evolution of the Conversational Lull" at Walden Pond. Bring your silly French accent.*

1:15p: **pika**. Fondue is still fonduing at pika. Skewers are skewing and all the normal stuff you'd expect from a fondue feast...only at pika...only at 492-6983*

1:30p: **pika**. Fondue is winding down, but there still might be some left if you hurry over...otherwise, we're all gearing up for an exciting journey to the Science Museum...Call 492-6983 and our shuttle craft will come and get you.*

1:45p: **pika**. I know what you're saying...Is science really old enough to have a museum of it's own? Of course it is! Don't be silly. The Science Museum is great. It just is...that's all you can say about it...*

1:47p: **pika**. ...you conned me into it...I'll say more (I always do). The Science Museum is this great museum about, well, science. There are all sorts of cool things to do and see. Including a giant T-Rex and an awesome lightning display! I use awesome in the really big and awe inspiring meaning of the word... At any rate, pika's going to the Science Museum and you can come along. Call 492-6983 and we'll have O'Brien beam you up (wait he transferred to Deep Space Nine, hmmm, maybe we'll bring Scotty out of retirement or something).*

2:00p: **pika**. Science Museuming we go...Science Museuming we go...Hi ho a dare ye go...a Science Museuming we go...We're leaving for the Science Museum now...*

2:31p: **Fenway House**. The sanitizer is not a dishwasher. The bannister is not structural. Call for a ride. 437-1043.*

2:33p: **pika**. This is an entry encouraging you to visit pika!*

2:34p: **pika**. This is an entry explaining that the last entry was self referential!*

2:35p: **pika**. This entry tells you that this entry has nothing to do with the two previous pika entries!*

2:36p: **pika**. This entry tells you that the previous entry lied when it told you that it had nothing in common with the previous two pika entries because all those entries (and indeed the entry within which you find this parenthetical comment) are self referential!*

3:00p: **pika**. Does Coca Cola taste different than Pepsi? How about Pepsi and Crystal Pepsi? Come to pika and we'll let you try lots of different food like items to determine if there really is a difference between competitors products. It's fun, it's wacky (it's a good excuse to drink lots of pop), it's only at pika, it's an event we just had to call Taste Tests! Call 492-6983 and let the tasting begin!*

3:01p: **Fenway House**. Air supply Festival! We have nitrogen, oxygen, carbon dioxide, and other scattered molecules. Only while supplies last! 437-1043.*

3:08p: **Epsilon Theta**. The water is dry. The water is dry and warm. Come, experience the water...*

3:08p: **Epsilon Theta**. Hey! What are you doing to the rush chair?*

3:15p: **pika**. Tasting is still going on! I can't tell the difference between these two products...come put your taste buds to the test...492-6983 is the number*

3:36p: **Fenway House**. You may not have noticed, but we are hardly doing anything worthwhile. Come help us not do anything, or save us from ourselves and suggest something. Your merest whim is our most pressing command. 437-1043.*

3:44p: **pika**. I can't tell the difference between this entry and the next two!

3:45p: **pika**. I can't tell the difference between this entry and the previous one and the next one!

3:46p: **pika**. I can't tell the difference between this entry and the previous two!

4:00p: **Epsilon Theta**. Random mellowness continues at Epsilon Theta. Games, laughter, and Adrian the Pondered Rush Chair™.*

4:09p: **Fenway House**. Performance Art: Dangling on the Edge of a Rush Violation, by Robert C. Pace. 437-1043.*

4:15p: **pika**. We're still hanging out at pika...but we're lonely...we want to hang out with you!

4:45p: **pika**. Devil Sticking, Juggling, pika Blocks, Roller Blades! The fun just doesn't stop at pika! Call 492-6983 for a ride!*

5:01p: **Fenway House**. Get your fat and cholesterol while its hot. Fried Cheese at Fenway. 437-1043 for a ride.*

5:09p: **Fenway House**. OK. So we're tired of cheese. Come eat fried ice cubes! 437-1043.*

5:15p: **pika**. It's 5.15 do you know where you're going to eat dinner? At pika, of course! Dinner is in one hour! We're having Lemon Chick -en and peas! Call 492-6983 and be here in time for dinner!*

5:45p: **pika**. Dinner is almost ready. Noah has made his fabulous Lemon Chicken and his fabulous Lemon Chick Peas. It's a meal we like to call Lemon Chick...Come experience it at pika...Call 492-6983 and the Lemon Mobile will swing by and pick you up!*

5:52p: **Student House**. Come listen to Nate's death metal.*

5:55p: **Epsilon Theta**. DING! Dinner in five minutes.*

6:00p: **Epsilon Theta**. MAC AND CHEESE! No one makes it better than our cook Karen, and no one eats it better than we do! Call 3-8888 for a ride.*

6:00p: **Phi Beta**. French toast, Italian spaghetti...now Tex-Mex Fajitas with plenty of beans!*

6:01p: **Fenway House**. Come for dinner. Indian-like attempts at food. Come show us the proper way to make it. 437-1043.*

6:09p: **Pi Lam**. Enjoy an authentic Italian dinner prepared by Master Chef Cheslin. His garlic bread is world-famous. Mama Mia! Call 267-ROCK for a ride.**

6:15p: **pika**. It's dinner at pika! Dinner! Dinner! Noah's made Lemon Chick Peas for the vegetarian crowd and Lemon Chicken for the carnivorous

crowd. It's yummy for my tummy, it's fun to eat with my feet...*

6:45p: **pika**. Well, dinner's about over and everyone is gearing up for Miniature Golf! Call 492-6983 to join in the action!*

6:58p: **Fenway House**. Come watch Malia and James get married. 437-1043.*

7:00p: **ZBT**. Rush is winding down? You're wound out? Hang out and watch movies with us. Maybe take a trip to a couple local ice cream places. call Rick, 232-3257, 232-3258 for ride.*

7:00p: **pika**. Miniature Golfers unite! Last train to the place where people go to play Miniature Golf leaving now! All aboard! Chugga chugga chugga chugga...*

7:30p: **Phi Beta**. The Sox versus the bad boys from the South, THE TEXAS RANGERS*

7:49p: **Fenway House**. Play "Spot the Fenway House Resident" at the Activities Midway. Collect the whole set. 437-1043.*

7:59p: **Fenway House**. Come take part in our percussion jam. Culinary equipment of all types will be on hand. 437-1043.*

8:00p: **pika**. pika in the evening, so serene, so peaceful...come have fun in our black light room...or just chill on our roof deck...or in a bathlun in the murph...or on a chair in the dining room...or on a couch in the tv room...or on the back porches...or in the front yard...or in the garage (well, probably not in the garage)...*

8:13p: **Fenway House**. After a long day, sometimes you just have to meditate, and sometimes you get a little closer to heaven. Levitation at Fenway. 437-1043.*

8:45p: **pika**. Bwoop, bwoop, bwoop, bwoop...Bowling trip leaving pika in 15 minutes...Call now (or even earlier) to come join in the Bowling Action...492-6983*

9:00p: **pika**. Let me explain bowling to you. First, you get these shoes. The shoes are great. They're two or three different gaudy colors and they are usually the wrong size and they're just so cool. Then you get this large black ball with these little holes in it. You place your fingers in the holes and your roll the ball very fast down this long wooden thing called an alley, towards these pins. You knock down the pins and you get points. Then there are these things called gutters. That's where all my balls end up...and there are these things called strikes and spares which are supposed to be good but I never get any of those. Actually, pika is home to some mean bowlers (mean in the really good sense), but I'm not one of them. So come bowling at pika. It'll be a fun challenging adventure into the fabulous world of the bowling alley. I love it. Call 492-6983 and we'll send Snack Bar over to get you...*

9:13p: **Epsilon Theta**. Share your adventures from the Activities Midway. Learn of the perils of times past...*

9:15p: **Fenway House**. Spoooo III: Revenge of the non-dairy whipped topping. 437-1043.*

10:04p: **Fenway House**. Get a head start on 8.01! Come play with our brand new used pool table. We know it's cliché, but call for a ride anyway. 437-1043.*

10:38p: **Fenway House**. Silverware Anarchy! 437-1043.*

11:58p: **Phi Beta**. Once again...best wishes and sweet dreams as you slumber*

11:59p: **Fenway House**. If only our Rush Chair could write legibly, we would have an event here. 437-1043.*

10:12a: **pika**. Jump...jump... jump...kick... jump...kick... jump...kick... kick...kick... It's aerobics at pika...492-6983*

All day: **Science Fiction Society**. The largest public science fiction library known to mankind will be open most of the hours between noon and midnight today. Come by W20-473 (Student Center), relax, and read a good book. Meet Hope, the Thing with Flippers.*

All day: **WMBR 88.1 FM**. We prepared you for the 80s, then the 90s, now you're on your own.*

Notices

All day: **Elsewhere**. 24 hours Reading Room Elsewhere lounge is open! Do you want to be anywhere but Rush? Come to Elsewhere.*

8:00a: - Midnight La Sala de Puerto Rico R/O Center Open Call 253-2500 for 24-hour information.*

9:00a: - 6:00 pm 26-100 Athena Mini-courses One-hour Athena Minicourse: "How to Get Around Athena." Taught on the hour.*

11:00a: **Tours**. - 2:00 pm Meet on Student Center Steps Museum of Fine Arts Tour A must for the artistically inclined. See the world-famous Egyptology exhibits as well as the works of many artists of renown. (Rain location: Meet by Student Center information desk.)*

12:00p: - 4:00 pm Lobby 7 Freshman Explorations Sign-Up Come sign up for your favorite explorations (held on Thursday 9/2 and Friday 9/3). Many explorations have a limited capacity so you must be signed up to attend them. Transfers welcome.*

1:00p: - 2:30 pm 4-163 Office of Minority Education Orientation Come and learn about the various resources available to all minorities.*

2:00p: **Tours**. - 3:00 pm Meet on Student Center Steps Bridge Circuit Take a relaxing walk along the Charles River and see the Esplanade, the MIT boathouse and more. (Cancelled if rain.)*

2:30p: - 4:00 pm 7-143 OME Open House An informal opportunity for you to relax and meet the Office of Minority Education's staff.*

7:01p: - 9:00pm At the Activities Midway Phone Home Program Make a free one-minute phone call home, sponsored by the MIT Alumni/ae Association and the Student Alumni/ae Council (SAC).*

8:00p: **Sexual Identity**. sponsors Queer Elsewhere. 14E-304 until 2 am. Fun, friends, air conditioning...*

9:30p: - 10:00 pm Your dorms or ILG Academic Preview Now that you have a place to live (hopefully), it is time to think about taking some classes. Associate Advisors will prepare you for Academic Orientation, including the Advisor/Advisee Picnic. Mandatory for all incoming students.*

Announcement

THURSDAY, September 2nd
There Will be a **Mandatory** program for all Freshmen at 5PM in Kresge. Stay tuned for more information.

In case of emergency, dial 100 from any MIT phone. Other important numbers:
Campus Police: 253-1212
Med Center Emergency: 253-1311
R/O Center: 253-2500
UAA: 253-6772
Nightline: 253-8800

The Daily Confusion
Editors: Lana Luoma, Celia Huey

NOTE: A single asterisk (*) following a listing indicates a coed or female living group. A double asterisk (**) indicates an activity to which women are cordially invited.

Activities

All day: **Chorallaries**. Heard of us? We'd love to hear you. Audition for Chorallaries! Call Rena at 225-8484 for details.*

Now It's Our Turn

Now that rush is over, *The Tech* will have an Open House on Tuesday, September 7, 2-6 p.m.

- You have nothing better to do...
- We've still got free food...
- It's not yet Registration...

So come and visit MIT's oldest student activity.