

The Weather

Today: Wet, snow, 34°F (1°C)
Tonight: Heavy snow, 28°F (-2°C)
Tomorrow: Snow ending, 34°F (1°C)
Details, Page 2

Salinas To Speak at Graduation

By Jeremy Hylton
CONTRIBUTING EDITOR

The "education president" will be the Institute's next commencement speaker. No, not soon-to-be-former President Bush, but President Carlos Salinas de Gortari of Mexico.

Though Salinas has been widely praised for economic and social reforms in Mexico, Sergio Covarrubias G, a Mexican citizen, thinks one of Salinas's most important reforms has come in the field of education. Covarrubias credits Salinas with revitalizing a fellowship program that provides low-interest loans for Mexican students studying in Mexico and abroad. "There have been a lot of students coming to study in the States," he said. "[Salinas] is taking care of education and people are willing to go back and repay our country for what it did for them."

The Institute announced this morning that Salinas, a Harvard University-educated economist in the third year of his six-year term, will speak at commencement ceremonies on May 28.

"As a world leader, and as president of our great neighboring nation to the south, his experiences and views on issues that will be of critical concern to the generation of professionals just beginning their careers are most suitable for this occasion," said MIT President Charles M. Vest.

It is likely that Salinas's speech will not focus on education, but on his efforts to reform the Mexican government and liberalize and modernize Mexico's economy. He has played a key role in negotiating the North American Free Trade Agreement linking Mexico, the United States, and Canada.

Covarrubias, who may graduate



MEXICAN EMBASSY
President Carlos Salinas de Gortari of Mexico

in May, said, "What he has done for the country has been good. ... He made some very tough decisions."

The 44-year-old Salinas began

Salinas, Page 10

IFC Officers Set Priorities for Year

By Hyun Soo Kim
ASSOCIATE NEWS EDITOR

New InterFraternity Council officers, elected at the end of last term, will focus on party alcohol policy and sexual harassment issues, according to IFC President Prashant B. Doshi '95.

"Priority one is the alcohol issue. It's like the way the [Delta Kappa Epsilon] incident occurred. ... We can avoid those incidents. We need to check ID's better, and be more hard core about things like that," Doshi said.

"We want to set up networks on campus to reduce risk ... and have social chair meetings in different houses," Doshi added. He also plans to start a branch of the national alcohol abuse prevention group GAMMA, Greeks Advocating the Mature Management of Alcohol. GAMMA will set up workshops and seminars on alcohol abuse.

Doshi also wants to address the issues of sexual assault and harassment through seminars among fra-

ternities and sororities. "Date rape is another priority — everyone has talked about it, but now it is time to work on it," Doshi said. "I am planning to start GAR, Greeks Against Rape, at MIT as a formal set-up for programs to fall under."

Doshi plans to provide more structure for junior IFC members so that pledges from different houses can meet to discuss house events, pledge life, alcohol, hazing, and academic pressures. "The main purpose is to eliminate stereotypes among houses," Doshi said.

Doshi added, "We will try to make fresh more aware of what substantive questions to ask during rush: like time commitments, responsibilities, and duties."

IFC will take on bigger role in rush

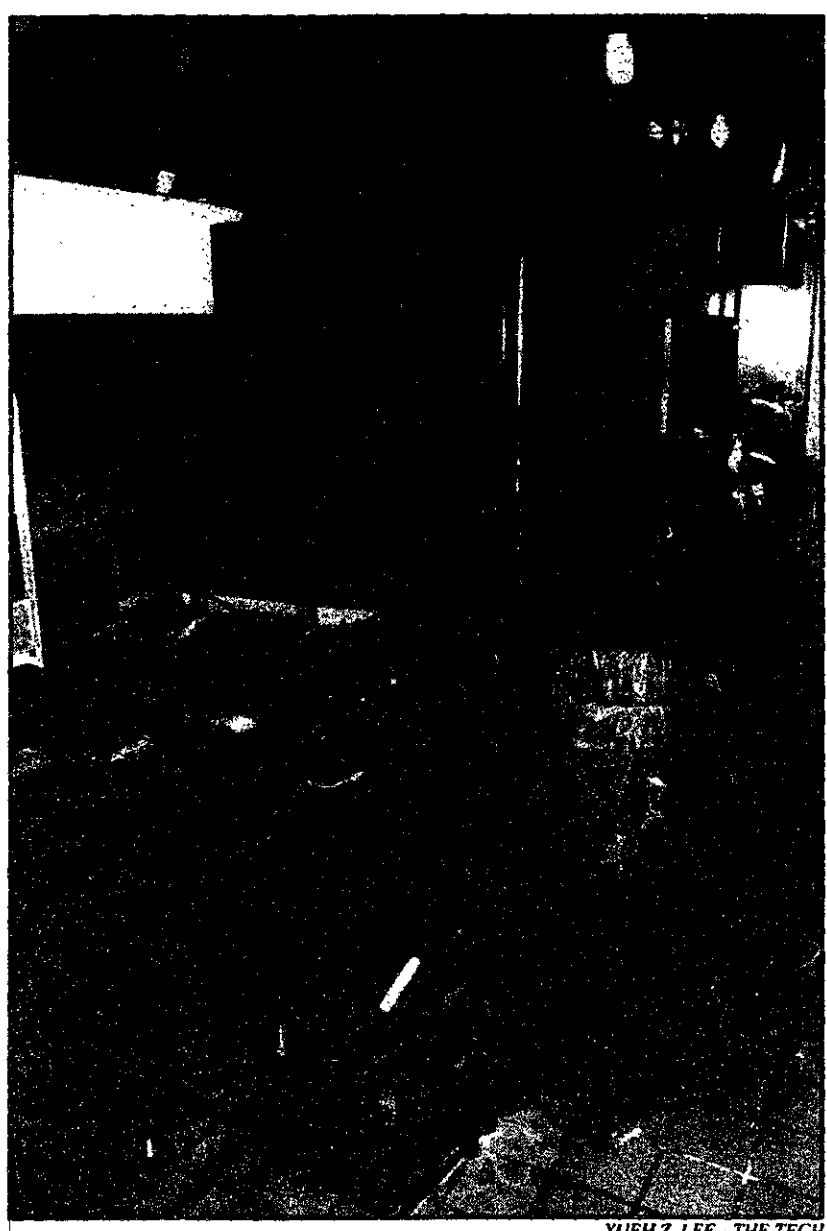
The goal of Karl Cheng '94, the new rush chair, is to actively help fraternities with rush. "Some frats didn't have a good rush [last fall], and the IFC will help them out more individually next year," Cheng said.

Emil H. Mertz '93, rush chair at Tau Epsilon Phi, welcomed the added help from the IFC, though he was skeptical about its effectiveness. "The result of our rush was typical. We have a full house, but rush itself has been more and more difficult for us. This past rush, some anti-fraternity propaganda was mailed to fresh and parents, and whether or not it affects our rush is a concern of mine," said Mertz.

"IFC should continue to help us be a thriving living group on campus and counteract things like housing proposals and frat-bashing," Mertz said. "I like the movement to honesty about rush. I see that in a positive light."

Judicial Committee Chair David H. Hijirida '94 believes an increased awareness of alcohol policies will be necessary, especially during rush. "I want to suggest ways to decrease alcohol liabilities. For example, make more frats use wristbands [to

IFC, Page 10



YUEH Z. LEE—THE TECH
A fire in the Networks kitchen early Sunday morning resulted in the evacuation of the Student Center.

Lit Burner Starts Small Networks Fire

By Michael A. Saginaw
STAFF REPORTER

Students evacuated the Student Center shortly after midnight on Sunday morning when a small grease fire broke out in the kitchen of Networks. The fire started because a burner on a gas range was left on, according to the Cambridge Fire Department.

An MIT employee walked by Networks, noticed the fire, and set off the fire alarm, according to John T. McNeil, associate director of food services. The Cambridge Fire Department arrived three minutes after the alarm went off, and they quickly extinguished the blaze with a fire extinguisher, according to the fire department.

Networks, Page 10

Trespassers Arrested in MacGregor

By Eric Richard
ASSOCIATE NEWS EDITOR

On Thursday, Dec. 31 at approximately 2:30 p.m., Campus Police arrested three individuals at MacGregor House for trespassing, possession of a dangerous weapon, and receiving stolen property.

The three were set to be arraigned in Cambridge District Court on Monday, Jan. 11, but failed to appear. Standing warrants have been issued for their arrest, and if caught again, it is likely they will be held on

bail until they can be arraigned.

The individuals were identified as Neddie Smith of Baltimore, Md. and Frank Boaf and Micah Nelson of Boston. According to Capt. John Driscoll of the Campus Police, all are adults and none have any affiliation with MIT.

The Campus Police were first contacted by MacGregor deskworker Craig E. White '93, after the individuals were let into the dormitory and claimed to be looking for a student who no longer lived there.

According to White, he gave the three the student's forwarding address and asked them to leave. White said he saw them "wandering around and checking out other doors. ... They were just kind of hanging around, and I didn't like it." He then called the Campus Police.

When the officers arrived on the scene and questioned the individuals, they found one to be in possession of Mace, while another carried traveler's checks which had been reported stolen.

Bomb Threat Empties Buildings 6, 8

By Brian Rosenberg
EDITOR IN CHIEF

A bomb threat on the morning of Jan. 7 emptied Building 6 and part of Building 8. The threat was the third since late November.

"This [number of threats] is unusual," said Campus Police Chief Anne P. Glavin. "In the past, we've averaged either none or one [threat] per year. We're looking to see if there's any discernible pattern to the threats, but there's no obvious single factor," she added.

The bomb threat was telephoned in to an answering machine, and Campus Police were notified of the

threat at around 9:30 a.m.

According to Associate Director of the MIT News Office Robert C. Dilorio, an Institute employee in Building 6 "heard the phone ringing in their office from outside the door, and when they got in and answered, the caller had hung up. When the person checked the answering machine, there was a message saying, 'There's a bomb in your office.'"

Glavin would not release the Campus Police's estimate of how long the message had been on the machine.

The standard procedure for

bomb threats was followed and the fire alarm was sounded. "The edge of Building 8 was affected because the alarms overlap slightly in that region," Glavin said. Units of the Cambridge Fire Department responded to the alarm.

A search of the area revealed nothing unusual, and the all-clear signal was given around 10:20 a.m., Glavin said.

The two earlier bomb threats occurred on Dec. 3 and Nov. 18. The December threat was targeted at Building 3, while the November threat mentioned "seven bombs at 77 Massachusetts Ave."

Phyllis A. Wallace

Phyllis A. Wallace, a labor economist who pioneered the study of racial and sexual discrimination in the workplace, died in her apartment this weekend of natural causes. The professor emeritus of management at the Sloan School of Management and trustee of the Museum of Fine Arts was 69.

Wallace spearheaded a precedent-setting legal decision in a federal case that reversed sex and race discrimination in American industry. She directed studies for a federal lawsuit against AT&T, a suit which led to a 1973 decision that the company had discriminated against women and minorities. The company agreed to pay millions in back wages and change its transfer, promotion, and recruitment policies.

Sloan School Dean Lester C. Thurow described the AT&T case as "one of the pioneering discrimination cases — opening up AT&T to women and minorities." He also cited Wallace's work as research director at the Equal Employment Opportunity Commission from 1966 to 1969 as influential in combating discrimination.

Wallace, who taught at the Sloan School for fifteen years, also conducted an important longitudinal study of women graduates of the Sloan School and their success in the workplace, where she tracked the progress of a group of women versus a group of men. She had planned to work with Thurow to study how the Sloan School responded to sexual harassment, and how that response could be integrated into the school's curriculum.

In a letter to the Sloan faculty on her death, Thurow said that as a labor economist, Wallace "widened all our knowledge." Her study of female Sloan graduates "made everyone wiser about the issues of women attempting to advance in the business world."

Wallace was also a trustee of the Museum of Fine Arts in Boston, and had been recently named chair of the visiting committee of the Department of Ancient Egyptian, Nubian, and Near Eastern Art. She

Name, Page 10

WORLD & NATION

Freedom Appears Imminent for Cancer-Ridden Honecker

LOS ANGELES TIMES

BONN, GERMANY

Freedom appeared imminent Wednesday for Erich Honecker after Berlin's highest court ruled that it violated the "human dignity" of the former East German Communist leader to try him for manslaughter when he is dying of liver cancer.

Although the 80-year-old Honecker remained in a prison hospital overnight, preparations were under way for his departure to Chile, where he is expected to be reunited with his exiled family and live out his remaining days in a Santiago clinic.

Defense attorney Wolfgang Ziegler said Honecker was too ill and "depressed" over his failing health to celebrate his legal victory after a two-year battle to avoid trial. The chief architect of the Berlin Wall "can no longer display normal reactions," Ziegler told reporters after charges were dropped on humanitarian grounds.

The state prosecutor's office immediately challenged the decision, but the complaint was unlikely to prevent Honecker from leaving.

The sensational trial was aborted after Berlin's Constitutional Court ruled Tuesday that Honecker "in all likelihood would not survive" the process, expected to drag on for at least a year. The criminal court where Honecker went on trial Nov. 12 quickly agreed to drop the charges.

A second criminal court in Berlin is expected to follow suit early Wednesday and lift its own warrant against Honecker on embezzlement charges, clearing the way for him to leave the country.

Honecker had been charged in the deaths of 13 East Germans, shot while trying to flee across what was once the world's deadliest frontier. Human rights organizations estimate that at least 200 East Germans were killed along the frontier that split the two Germanys for most of the Cold War. Countless others who never made it that far were imprisoned, if they were even suspected of plotting an escape.

Prosecutors argued that the Stalinist leader who ruled East Germany with an iron fist for 18 years must be held responsible for "shoot-to-kill" orders he allegedly issued to his border guards. The number of counts against him had been reduced from 75 to expedite the trial.

Doctors have said that an inoperable liver tumor will likely kill Honecker in three to six months, but the frail patient has outlived such grave predictions several times in the past and was pronounced fit enough to withstand the long flight to South America.

Ruling on a motion by the defense team, the Constitutional Court said there was "no justifiable reason for the continuation of such a trial" in the face of convincing medical testimony that Honecker would not live long enough for a verdict.

Send Your Congressman E-mail

NEWSDAY

By April, all members of the House, their staffs, their committees and even standing subcommittees will be able to connect to the Internet, a worldwide network of computer networks and more than 6 million users. Assuming you have their e-mail address — and just how you would have such a thing is still unclear — subscribers to information services such as CompuServe and GENie, as well as commercial e-mail services like MCI Mail and ATTmail, would be able to send electronic messages to their elected representatives. So far, there are no plans to put the Senate on line.

"We want people who have a need to use electronic mail to use it," said Jack Belcher, who is overseeing the project at the House Information Services, a congressional computer networking department. He added that "access to the public" was the main reason the system is being offered, though how that will occur is still being hashed out.

Don't expect a directory of congressional e-mail addresses soon.

For starters, "it's up to the individual member to decide if he even wants Internet access," Belcher said. If so, the member may opt to set up a "public" mailbox, where unsolicited correspondence could be mailed. Or the member of Congress could make a personal mailbox address publicly known. Some of the more technophobic members of the House could even opt to have all e-mail messages be printed out upon receipt, Belcher said.

Only a handful of representatives and 2,000 of 12,000 staff members currently have Internet access.

WEATHER

SNOW!!!

By Michael Morgan

STAFF METEOROLOGIST

A cyclone developing along the mid-Atlantic coast today will slowly move northeast and intensify over the next 24 hours. As it moves north, surface winds will advect colder air into the region changing any mixed snow, ice pellets, and rain to all snow. The snow will also become heavier later tonight. As the storm moves away from the area Thursday morning, the heaviest snowfall will be over. Light snow and flurries will linger in coastal sections into the afternoon. At least 6 inches are likely in the local area by early Thursday. A weak disturbance may spread a bit more snow in the area on Friday before conditions really clear for the weekend.

Today: Wet snow, sleet, and or rain changing to all snow. Winds east-northeast 10—15 mph. High 34°F (1°C).

Tonight: Snow—becoming heavy at times with blowing and drifting snow. Winds increasing northeast 15—25 mph. Low 28°F (-2°C).

Tomorrow: Heavy snow early, then cloudy with occasional light snow. Blowing and drifting continuing. High 34°F (1°C). Low 25°F (-4°C). Winds north-northeast 15—25 mph (24—40 kph).

Friday: Mostly cloudy with a period of light snow possible. High 32—36°F (0—2°C). Low 25—28°F (-4 to -2 °C).

Haiti's President Asks Citizens To Avoid Mass Exodus to U.S.

By Douglas Farah

THE WASHINGTON POST

PORT-AU-PRINCE, HAITI

After an unusual diplomatic effort involving the incoming Clinton administration, Haiti's exiled president, Jean-Bertrand Aristide, has made an appeal to his countrymen aimed at preventing an expected flood of boat people to the United States.

At the same time, the country's military leadership, which has ruled the country since violently ousting Aristide 15 months ago, has agreed in writing for the first time to recognize the populist leader as president and accept his eventual restoration to power, according to sources here and in Washington.

Aristide, who in 1990 won the presidency in Haiti's first democratic election, made his appeal on a Voice of America broadcast Monday night as part of a complex diplomatic initiative coordinated in part by senior members of the Clinton transition team.

President-elect Bill Clinton's campaign promise to change President Bush's policy of intercepting and returning Haitian refugees has prompted fears of a mass exodus of Haitians following the inauguration next week.

To avert that, the Clinton team, acting principally through J. Brian Atwood, a former assistant secretary who heads the transition team at the State Department, has been working to broker an agreement that would end the long-standing political impasse in Haiti and allow Aristide's eventual return.

Sources said the military high command signed a general document given to the United Nations committing themselves to accepting Aristide's return, without setting a specific date. Until now the military leaders, led by Gen. Raoul Cedras, had vowed never to let Aristide

return.

In exchange, under a complicated deal still under negotiation among Aristide, the military, the United Nations and the Organization of American States, Aristide would grant a blanket amnesty for any action related to his overthrow, choose a prime minister from a list of candidates submitted by the opposition and agree not to return immediately, according to the sources.

To create a climate that would allow Aristide to return, the Clinton camp is negotiating with Aristide to get him to agree to write a letter to U.N. Secretary General Boutros Boutros-Ghali accepting multinational observers, who would be spread across the country to try to stem political violence and acts of repression.

One knowledgeable source said the idea was to "replicate" the massive foreign presence before and during the 1990 presidential elections, which helped guarantee free, nonviolent voting.

As part of the Clinton team's effort, the president-elect is to issue a statement supportive of Aristide and a return to democracy in Haiti, the sources said.

The steps, according to sources familiar with the negotiations, are important because they represent progress on issues that have blocked a settlement since Aristide's overthrow and the imposition of an OAS trade embargo on Haiti. Still under discussion, according to the sources, is whether the embargo would be lifted incrementally or all at once.

It remained unclear whether Aristide's appeal had come in time to slow the expected exodus of thousands of people, waiting by already built boats, for Clinton to take office Jan. 20.

Several sources who have witnessed the ebb and flow of earlier

negotiations, while admitting more progress has been made this time, said that until the deal was fully implemented, there was a chance it would blow up.

They said that details on the U.N. observers have yet to be worked out, and the military remains divided between the high command and the enlisted men, who are said to fear the plan.

"The Haitian oligarchy has 200 years of experience in dealing with international pressure," said a source close to Aristide who has been involved in the negotiations. "They are masters at saying yes to everything and then doing nothing." In the past, Aristide also has backed off of agreements reached.

In his speech, broadcast in Creole on the Voice of America and retransmitted here by Radio Metropole and other radio stations Monday night, Aristide sounded generally conciliatory. But he also lashed out at Cedras, as he has in the past.

"We will start to rebuild the country, and we shall prepare ourselves to harvest the crop of democracy that will come about with your remaining in the country, resisting peacefully and without violence," Aristide said.

"I am quite sure that if (Haitians) stay home and remain mobilized, not remain passive, and don't leave the country, ... with the commitment made by President-elect Clinton, jointly with the last steps taken by the U.N. and OAS, we will soon see the changes we are looking for," Aristide said.

Aristide said that after a new prime minister was chosen, a new cabinet would be named, and then he would set a specific date for his return.

"I am not going to proceed unilaterally because we are talking about a consensus and of unity," Aristide said.

Tanker Wrecked in Shetlands Breaks Up, Releasing More Oil

By Eugene Robinson

THE WASHINGTON POST

LONDON

The wrecked oil tanker Braer broke up against the rocky cliffs of the Shetland Islands Tuesday, releasing virtually all that remained of its cargo of 25 million gallons of Norwegian crude oil.

The ship, which ran aground Jan. 5 on the southern Shetland coast, had been battered for a week by the fierce winds and towering waves of some of the heaviest storms the islands have seen in many years.

"The vessel has broken up," Capt. George Sutherland, director of marine operations for the Shetland Islands local government, told reporters. "In the light of the weather conditions she's been exposed to ... it's very unsurprising."

As darkness fell, the ship was described as being in three or four pieces, which were heaving and falling independently in the once pristine cove at Garths Ness.

As recently as Monday, authorities were holding out hope that much of the Braer's cargo was still inside the ship. But hurricane-force winds overnight reduced the tanker to scrap and drove the oil into the roiling waters — twice the amount released in the Exxon Valdez spill in Alaska nearly four years ago.

"It's obvious that most of the oil has now gone," said Geert Koffeman of the Dutch salvage firm Smit Tak, which had been planning an elaborate operation to recover what

was left of the Braer's cargo. "She is a total loss, that is for sure."

The Braer's bow was pointing skywards, its middle section completely submerged and its stern shifting in the surf.

Koffeman said that if any oil remained inside the ship, it would amount to only "hundreds of tons," as opposed to the 85,000 tons of crude that the Braer had been carrying from Norway to Quebec when it lost all power and was driven onto the rocks. Authorities assumed that all of the tanks had ruptured.

It was unclear what immediate environmental impact the ship's disintegration would have. Local officials insisted that despite the enormous quantity of oil released into Shetland waters, the action of the waves was continuing to disperse the light-grade crude oil and prevent thick oil slicks.

A thin, patchy slick has spread up the western coast of the main island for more than 25 miles, affecting salmon farms and forcing officials to declare a fishing exclusion zone. But most of the thick accumulations of oil have been restricted to Garths Ness, adjacent Quendale Bay and nearby stretches of coastline.

According to authorities, more than 600 birds have been killed by the oil and scores of others have been rescued. The Shetlands are an important breeding ground for several seabird species, but most winter elsewhere.

The high winds have whipped the oil into an aerosol spray, which now coats thousands of acres of former pastureland. Officials have provided face masks for islanders living near the spill who are concerned about possible health risks. Liver, lung and kidney checks are planned.

The first fish caught near the islands outside the exclusion zone arrived at port Wednesday and was met with good prices at auction. Samples will be sent to mainland laboratories to determine whether there is any contamination.

Several major British food chains have announced they will not buy Shetland salmon or other fish until the possibility of contamination is eliminated.

The ship's operators, Connecticut-based Bergvall & Hudner Ship Management Co., said their insurers have set up a \$310,000 compensation fund for islanders, with the first payments by Thursday.

It was unclear what would be done with the wrecked ship. One option was to tow its pieces offshore and let them sink. Another was to try to salvage as much as possible, although it was feared that by the time the weather abates enough to allow a salvage operation, there will be little worth saving.

The final option was to leave the ship where it is. "There have been many wrecks around Shetland," said Capt. Sutherland, "and those remain in place."

OMB Nominee Rivlin Has Credibility, Honest Reputation

By Steven Mufson
THE WASHINGTON POST

WASHINGTON

When then-Rep. Jim Wright, D-Texas, wanted to pass a spending measure and claim it would boost the economy enough to pay for itself in about a year, Alice Rivlin would not let him do it.

And when Republican lawmakers under President Ronald Reagan wanted to say that tax cuts would pay for themselves by boosting the economy, Alice Rivlin would not let them do it.

As the first director of the Congressional Budget Office from 1975 to 1983, Rivlin attempted to create an agency in her own image: low key, but tough-minded and unwilling to bend her economic judgment to the prevailing political winds. Though she was not well-loved by many lawmakers, she earned widespread respect for her honesty as the nonpartisan chief economist of Congress.

Wednesday she goes before the Senate Governmental Affairs Committee to win approval to serve as President-elect Bill Clinton's deputy director of the Office of Management and Budget. At a time when Clinton's budget proposals are under attack and reconsideration, Rivlin will lend the president-elect a voice of authority.

"She brings an enormous amount of credibility," said Robert D. Reischauer, the current CBO director who has sparred on and off over budget figures issued by President Bush's OMB. "She is someone who's called the shots straight."

Rivlin, 61, has a tough approach to budget numbers and a steely determination to resist political pressure to deny budget realities.

The biggest and ugliest budget reality staring at her and the rest of the Clinton administration is the large federal government deficit. "The budget deficit has paralyzed policy for more than a decade," Rivlin says in her recent book, "Reviving the American Dream."

"She feels really strongly that the deficit is a problem that needs to

be dealt with over the next four to eight years," says Raymond C. Scheppach, her former deputy at CBO, who is now executive director of the National Governors Association.

Over the years, Rivlin has backed tough measures — including an increase in the federal gasoline tax, a value added tax and a redistribution of federal responsibilities to state governments — in order to cut the federal deficit.

Most of those measures have been opposed by Clinton, but recent increases in deficit projections have forced Clinton to take a closer look them.

She has, she has written, a "bias ... against magic wands and painless solutions. Everyone looks for ways of accomplishing ambitious goals without effort — lose weight without dieting, learn French while you sleep." For years, she says, the government has practiced the equivalent in tax and spending policies in pursuing "supply-side economics."

Supply-side economics, a theory promoted by a handful of economists and journalists, said that lower tax rates would encourage people to invest more and work harder and would provide such a big economic stimulus that tax revenues actually would grow.

The theory was embraced by President Ronald Reagan as a reason for backing deep tax cuts in 1981, though most mainstream economists say the supply side effect of tax cuts was grossly exaggerated. It was, in Harvard University economist Benjamin M. Friedman's words, "a fairy tale."

"It sounded too good to be true, and it was," she says.

Though a longtime Democrat, Rivlin's recent suggestions on reorganizing government sound somewhat similar to the "new federalism" that conservatives espoused in the early 1980s.

Her recent book suggests a national value added tax, similar to a sales tax, that would provide funding for state governments to carry out more programs. The federal

government, which she compares to a conglomerate that no longer can manage all its subsidiaries effectively, mostly would eliminate its programs in education, housing, highways, social services and job training.

Rivlin also possesses background in key spending areas — health, Social Security and welfare — that Clinton might want to reform to avoid tax increases and deliver services more effectively.

Rivlin, born in Philadelphia in 1931, graduated from Bryn Mawr College and then earned a PhD in economics from Harvard University. Afterward, she joined the Brookings Institution and wrote about federal financing of higher education.

In the 1960s, she worked for the Department of Health, Education and Welfare from 1966 through 1969 finishing as assistant secretary for policy and evaluation. Afterward, she returned to Brookings.

In the early 1970s, President Richard M. Nixon began impounding funds appropriated by the Congress. In the wake of a heated dispute over the separation of powers, Congress overhauled the budget process.

In addition to creating a more formal budget schedule and budget committees in the House and Senate, the legislation created the CBO.

"Not a lot of people thought long and hard about what it should be and it could have developed in many different forms," said Reischauer. "The form it has taken is in large measure her vision."

Rivlin was particularly well-suited to carry out that vision.

In her recent book, "Reviving the American Dream," Rivlin wrote, "I am a fanatical, card-carrying middle-of-the-roader." Her views, she said, "cannot easily be classified as either liberal or conservative" and "reflect both a strong belief in the efficacy of private markets and a conviction that public action is often necessary and constructive."

Serb Leader Accepts Bosnian Plan

THE WASHINGTON POST

GENEVA

The leader of Bosnia's Serbs, after a day of confusion, Tuesday provisionally accepted a compromise peace plan to end the Bosnian war.

Radovan Karadzic said he will sign a peace plan that denies his people a separate state inside Bosnia, but only if the assembly of his self-proclaimed government supports the agreement within seven days.

Karadzic said he came around to this qualified concession, which followed a morning meeting during which he bluntly rejected the peace plan, after retiring to his Geneva hotel room for a 20-minute nap.

But a far more important factor may have been the pressure exerted on him Tuesday afternoon by Serbian President Slobodan Milosevic, the hard-line nationalist blamed for instigating the Bosnian war last April who suddenly has presented himself this week as an impassioned believer in the Geneva peace process.

The co-chairman of the peace talks, Cyrus Vance for the United Nations and David Owen for the European Community, were considerably less ebullient about Karadzic's conversion. In fact, they refused to meet the Bosnian Serb leader when he came back to the Palais des Nations conference center to announce his change of heart.

Vance and Owen "have to greet this development as a step forward," according to their spokesman, Fred Eckhard. But Eckhard added that they have "very mixed feelings" about another delay in the conference while fighting continues in Bosnia, where tens of thousands of people face death this winter from lack of fuel and food.

Another suspension in the peace talks occurred last week, on almost precisely the same language in the peace plan, when Karadzic insisted he had to return to his assembly for its approval. Only last Friday, that body, which is not recognized as a legal institution by any world government, overwhelmingly rejected the peace plan, which would divide Bosnia into 10 autonomous provinces under a weak central government.

Tax Charges Delay Appointment Of Israeli Envoy to U.S.

LOS ANGELES TIMES

JERUSALEM

In a further embarrassment to the government of Prime Minister Yitzhak Rabin, Israel's supreme court delayed the appointment Tuesday of the new Israeli ambassador to the United States until prosecutors have examined charges of tax evasion against him.

The order temporarily barring Itamar Rabinovich, former rector of Tel Aviv University, from taking up his post in Washington followed charges by the state comptroller Monday that Rabin's Labor Party had accepted illegal contributions amounting to more than \$100,000 in last year's parliamentary elections.

The court order was sought by a member of Parliament from the right-wing opposition Tsomet Party in what Israeli political commentators read as much as a protest against Israel's negotiations with its Arab neighbors as against Rabinovich, who has been Israel's chief negotiator in peace talks with Syria.

"Discredit Rabinovich, discredit the peace talks," a Rabin adviser said angrily. "Our opponents are trying to leave the impression that we play fast and loose and consequently would sell out the country. It's nonsense — worse than that actually — but Rabinovich is now seen as less than honest."

Rabinovich, a Middle East specialist, disclosed this week that he had paid a \$14,000 fine to settle a dispute with Israeli tax authorities over a \$26,000 bank account that he had while teaching in the United States and had not immediately closed when he returned home as required by Israeli law.

Crayola Looks to Public for Help In Naming 16 New Crayon Colors

THE ALLENTOWN MORNING CALL

EASTON, PA.

A spokesman for Binney & Smith Inc., maker of Crayola crayons, denies that the company has run out of ideas. But he admitted that the Easton company had failed to develop names for 16 new crayons and is asking for help.

"No one is losing a job because of this," said Brad Drexler, a spokesman for Binney & Smith. "The job is usually done by individuals from our art department and our research and development department ... There's a very scientific way for naming a new crayon." Not this time.

Binney & Smith is asking boys and girls, men and women, artists and scientists from across the world to name these 16 new brilliantly colored crayons.

The prize is eternal, or as long as kids enjoy the newly named crayons. Once chosen, new names will appear on an estimated 20 million crayons annually, ensuring the author a place in crayon history.

In addition, contest winners' personal names will appear on crayons for about one year, and their likenesses will be enshrined in the Crayola Hall of Fame in Easton.

The new crayons have been placed in Crayola's 96 "Big Box," which is being introduced in stores this week. Entry instructions are on the new "Big Box."

But Drexler said that name suggestions and one-sentence descriptions of why thenames are appropriate should be sent to: Crayola New Color Contest, P.O. Box 342, Conshohocken, Pa., 19428, by Aug. 31.

Presidential Inauguration Is The Hottest Ticket in Town

By Kent Jenkins Jr.
THE WASHINGTON POST

WASHINGTON

Forget the deficit. Put health care on hold. On Capitol Hill these days there's only one issue that matters, only one that makes politicians perspire and staffers stick by their telephones late into the night:

Tickets. Inaugural tickets.

Everybody — well, more non-Republicans than you can count — wants them. Congress has them. But supplies are limited, and many Democrats are discovering that demand isn't. So, in offices all over the Hill, harried aides spend endless hours begging, horse-trading and scrounging — no-one's been caught stealing yet — to get their constituents invited to Washington's biggest blowout.

"I just got off the phone with a delegate to the Democratic National Convention who didn't get an invitation, and she's in tears every time I talk to her," said Mame Reiley, the top aide to Rep. James P. Moran Jr.,

D-Va. After a deluge of 5,000 requests, Reiley said, "we got four people on the phone and called the entire Congress" looking for extra tickets.

"That's all I do," said Donna Brazile, the top aide to Del. Eleanor Holmes Norton, D-D.C. "I got a call (about tickets) at 7:15 this morning. Powerful people get their secretaries to bug me every day. The demand is obscene. Every meeting I go to, I find a way to hustle for tickets."

Inauguration week will offer an overwhelming array of official ceremonies and social events, and lawmakers are being asked to snag invitations to almost all of them. But because they have no say in planning the festivities, most members of Congress have relatively little power to get people inside.

The only event at which legislators have any real clout is the swearing-in ceremony for President-elect Bill Clinton. All House members, regardless of party, are given 177 tickets apiece to distribute to the

public, and all senators are given 250. They also are allowed to buy about a dozen tickets to an inaugural ball at \$125 each. But for everything else, even legislators are on their own.

Like Moran and Norton, many lawmakers found their ticket allotments won't begin to take care of the requests they received. So the Capitol has given birth to an underground economy in which tickets to inaugural events are hard currency, to be acquired, exchanged or provided now in anticipation of a favor to be claimed later.

"It's dog-eat-dog, every member for himself," said Peggy Wilhide, press secretary for Sen. Charles S. Robb, D-Va. "We cold-called congressmen, we swapped and traded with Democrats and Republicans. Sen. Robb told his own daughters he couldn't get them tickets." As granddaughters of former President Johnson, however, Robb's daughters were entitled to passes beyond Robb's office allotment.

Join us next Tuesday night for one of the tastiest IAP activities on campus.

Watch us put out an issue of *The Tech* and join us for Toscanini's ice cream.

The Tech: It's not just a newspaper. It's dessert!

OPINION



Chairman
Josh Hartmann '93

Editor in Chief
Brian Rosenberg '93

Business Manager
Jadene M. Burgess '93

Managing Editor
David A. Maltz '93

Executive Editor
Karen Kaplan '93

NEWS STAFF

Editors: Katherine Shim '93, Sarah Y. Keightley '95, Eva Moy '95; **Associate Editors:** Eric Richard '95, Hyun Soo Kim '96; **Staff:** Kevin Frisch '94, Joey Marquez '94, Sabrina Kwon '95, Matt Neimark '95, Ben Reis '95, Nicole A. Sherry '95, Charu Chaudhry '96, Deena S. Disraelly '96, Michael A. Saginaw '96; **Meteorologists:** Michael Morgan G, Yeh-Kai Tung '93, Marek Zebrowski.

PRODUCTION STAFF

Night Editors: Daniel A. Sidney G, Matthew Konosky '95, Garlen C. Leung '95; **Associate Night Editor:** Chris Council '94; **Staff:** Sasha K. Wood '93, Ravi Dalal '96, Rolf Rando '96, Michelle Sonu '96, Vivian Tung '96; **TEN Director:** Reuven M. Lerner '92.

OPINION STAFF

Editors: Bill Jackson '93, Matthew H. Hersch '94; **Staff:** Christopher M. Montgomery '93, Michael K. Chung '94, Jason Merkoski '94.

SPORTS STAFF

Associate Sports Editor: Lynn Albers '92; **Staff:** Mike Duffy G, Andrew Heitner G, Mike Purucker '93, Nick Levitt '94.

ARTS STAFF

Editor: Chris Roberge '93; **Staff:** Dave Fox G, Mark Webster G, Michelle P. Perry '91, Joanna E. Stone '92, Joshua Andresen '93, Roy Cantu '93, Allison M. Marino '93, Brian Rose '93, Nic Kelman '94, David Zapol '94, Chris Wanjek.

PHOTOGRAPHY STAFF

Editor: Douglas D. Keller '93; **Staff:** William Chu G, Morgan Conn G, David-Henry Oliver '91, Ben Wen '92, Michelle Greene '93, Sang H. Park '93, Pamela Street '93, Ben Gordon '94, Hugh B. Morgambesser '94, Anna G. Fortunato '95, Yueh Z. Lee '95, Michael Oh '95; **Darkroom Manager:** Douglas D. Keller '93.

FEATURES STAFF

Christopher Doerr G, Jon Orwant G, Pawan Sinha G, Mark Hurst '94, Cherry M. Ogata '94, Steve Huang '95.

BUSINESS STAFF

Advertising Manager: Haider A. Hamoudi '93; **Associate Advertising Manager:** Karen Schmitt '95; **Circulation Manager:** Pradeep Sreekanthan '95; **Staff:** Tomas Matusaitis '95, Oscar Yeh '95, Aaron Belenky '96.

CONTRIBUTING EDITORS

Vipul Bhushan G, Michael J. Franklin '88, Marie E.V. Coppola '90, Deborah A. Levinson '91, Lois E. Eaton '92, Reuven M. Lerner '92, Benjamin A. Tao '93, Jeremy Hylton '94.

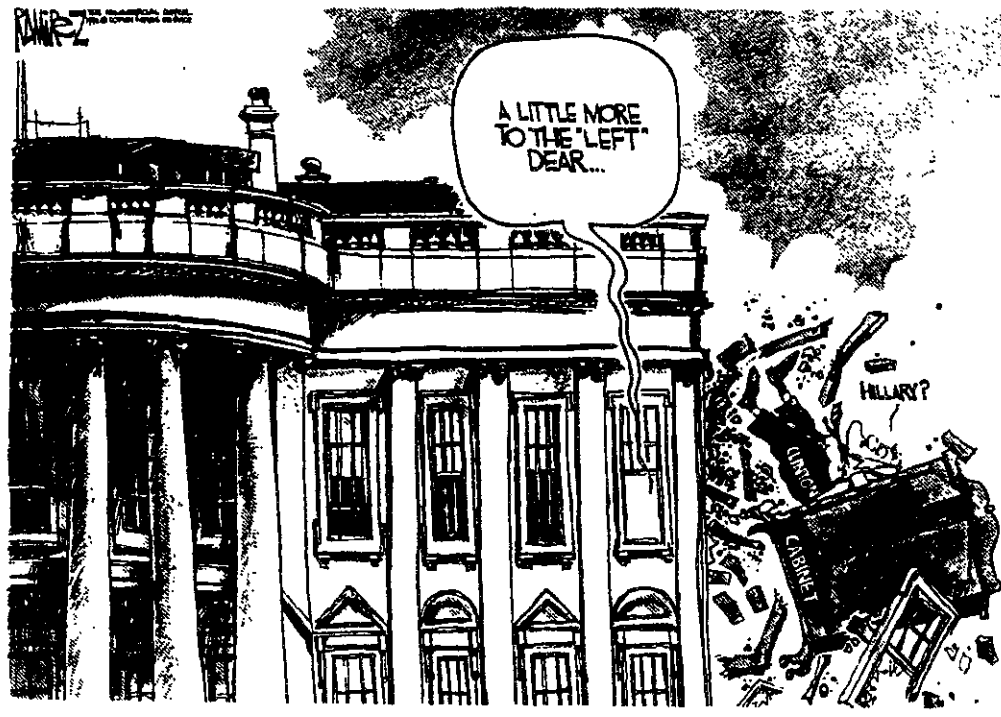
ADVISORY BOARD

V. Michael Bove '83, Jon von Zelowitz '83, Bill Coderre '85, Robert E. Malchman '85, Thomas T. Huang '86, Jonathan Richmond PhD '91.

PRODUCTION STAFF FOR THIS ISSUE

Night Editors: Vipul Bhushan G, Garlen C. Leung '95; **Staff:** Deborah A. Levinson '91, Douglas D. Keller '93, Brian Rosenberg '93, Jeremy Hylton '94.

The Tech (ISSN 0148-9607) is published on Tuesdays and Fridays during the academic year (except during MIT vacations), Wednesdays during January, and monthly during the summer for \$20.00 per year Third Class by The Tech, Room W20-483, 84 Massachusetts Avenue, Cambridge, Mass. 02139-0901. Third Class postage paid at Auburn, Mass. Non Profit Org. Permit No. 59720. POSTMASTER: Please send all address changes to our mailing address. The Tech, PO Box 29, MIT Branch, Cambridge, Mass. 02139-0901. Telephone: (617) 253-1541. FAX: (617) 258-8226. Advertising, subscription, and typesetting rates available. Entire contents © 1993 The Tech. Printed on recycled paper by MassWeb Printing Co.



LETTERS TO THE EDITOR

Bottled Water Needed In MIT Halls

Water, water, everywhere, but not a drop to drink. Here's the situation: you're sitting in the Student Center Athena cluster and you're suddenly aware of the fact that you've been tooling for 15 hours and really could go for a cold gulp of water. So you finally get up from that blue chair and stretch your aching legs. You mindlessly stumble out of the cluster and hunch over the drinking fountain. But, as usual, it's dry. The button's not even there.

"What?" you think, "They still haven't fixed this thing?" Trying not to dwell on the dried, encrusted residue in the drain, you cross the fifth floor to the reading room only to be greeted by the sight of a fountain mummified by a strange plastic garbage bag.

Is there some sort of conspiracy going on? You envision a saboteur from Coca-Cola, in a bold plan to boost sales within a sagging economy, inconspicuously ripping drinking fountains out of walls and spiriting them off to the legendary drinking fountain graveyard in some obscure corner of a sub-sub-sub-basement. On second thought, there does seem to be a lot of protruding pipes where fountains used to be...

I'm considering the acquisition of a body-suit from the movie *Dune*. One of those suits that recycle your body fluids for you to drink. I think that drinking recycled sweat (and other unpleasant liquids) would be preferable to drinking from an MIT water fountain. Anyone who has ever had a drink in a library, at duPont Gymnasium, or even from a dormitory faucet knows of the perils of Cambridge water. Have you ever noticed the inflated price of bottled water? Or that Lobdell charges you for a cup of water? Good old H₂O is a precious commodity here.

What is it about the water that makes it so toxic? Can any Course V folks out there try analyzing the crud left behind after some of it dries? Perhaps we'll discover a new life form.

I read recently that the city is adding a new chemical to the water in order to pass Federal drinking water standards. One small side effect of this chemical is that it is FATAL for aquatic animals. That's right, if you fill your fish tank with some harmless-looking tap water, you'll find some floating bodies the next time you check on your little flipped friends. This new chemical destroys gill tissues. Cambridge water just gets more and more appetizing, doesn't it?

Physical Plant should just stop bothering to fix the fountains that break down every other

day. Thirsty students of MIT unite — bug your UA rep to install bottled water around campus, and especially in the Athena clusters!
Jimmy M.D. Hsu '95

Comic Sends Wrong Message

I am by no means the most politically correct person on campus; nor am I an extreme feminist, but I took offense upon reading a comic ["Zwink's," Jan. 6] in *The Tech* in which the hero slaps a woman. After this, she "comes to her senses" and becomes a "slut."

Holding a different opinion than other persons is not cause for physical or verbal abuse. I am disheartened to see that *The Tech* could print both this comic and an ad clearly opposing physical abuse in relationships in the same issue. When are men and women going to learn that stating an opinion, "nagging," protesting, etc. are not causes for physical abuse?

Additionally, women do not have to bow down, bend over, or kneel and kiss any part of a man's anatomy to be respectable. The heroine of the comic did not have to "come to her senses." Entropy Man should have.

Markuene Sumler '94

Safe Ride Service Demonstrates MIT's Failures

Column by Matthew H. Hersch

OPINION EDITOR

I was all set to write a column about Iraq this week when my political inclinations were tempered by a sudden urge to reassess my place in the universe.

I am, I believe, destined to be more than just another two-bit foreign affairs newspaper hack. My real purpose in life, I have now discovered — the reason for which I was born, bred, and taught to hold pen in hand — is to lie like an oozing, itchy boil on the fleshy buttocks of the MIT administration.

They most certainly deserve it.

My journey of self-discovery was prompted by a recent ride on MIT's bastion of inefficient mass transit, the Safe Ride van. Monday evening I decided to take my first long-distance hop on the van, from the Student Center to the end of West Campus. I had taken the van before, but never over the entire journey and never when I really needed to be someplace quickly — as the stops along the van circuit are random and unscheduled, waiting forty minutes for a van to take me to a place I could walk to in fifteen never made much sense.

For some reason, though, I thought my Monday night trip would be different. Indeed, I was struck at first by the van's splendor. Its walls were gleaming white, its seats comfortable, and its windows clear and smudge-free. The driver was a pleasant and amiable fellow, and his cockpit was bedecked with the latest digital equipment (equipment which, I might add, allowed us to engage and destroy two Iraqi MiG-25s in the course of transit).

Unfortunately, a few stops into my flight I learned that I had made a tragic mistake. I had taken the Boston route shuttle through FratLand, not the Cambridge circuit, and would have to endure a 25 minute ride through greater Boston before I could even get back to where I had started.

This mistake seemed an honest one, especially considering that both van lines originate from the same place. When I inquired how I, Joe Average student, was supposed to know which bus I had wandered onto, the driver

explained that the numeral "2" scribbled on the side of the bus indicated that it was the Boston van. When I asked why they just don't write "Boston" or "Cambridge" on the side of the van instead, he was understandably befuddled.

Such mistakes, I soon learned, happen quite frequently. Yet whenever I bring this point up I am faulted by students and staffers alike for general mental sluggishness, a failure to read all twelve volumes of the Safe Ride van instruction manual, or some psychological discomfort with numerical thinking. One plucky van driver even dismissed my grievance just as he was shooing away another student who had made the same blunder.

Though I cannot rule all of these objections out, the fact remains that using numerical codes unnecessarily is patently stupid. But I don't think that's the issue at all. For all of its triviality, this snafu indicates something very basic about MIT — that when the MIT administration, due to accidental oversight, sheer incompetence, or bureaucratic inefficiency, makes mistakes, MIT students will

sooner grin and bear it (and mock their fellow classmates who don't) than take an active role in lobbying the administration to fix whatever is wrong.

Compared to other prestigious schools, MIT is almost shockingly ignorant of student (particularly undergraduate) concerns. Campus life — even academic life — is openly student-hostile, while much of the administration (particularly Bursar's Office employees) seem to want to have as little to do with students as possible. MIT students, similarly, are shockingly timid in confronting MIT when it screws up.

It's about time something changed. Perhaps my metaphysical transformation will kindle a similar change in others. Probably not — but there is still a lot the administration can do to restore student confidence in it, and fixing Safe Ride would be a good first step.

Matthew H. Hersch, a Junior in the Department of Political Science, believes that ARA's mismanagement of food service during IAP has been an insult to the MIT community.

OPINION POLICY

Editorials, printed in a distinctive format, are the official opinion of *The Tech*. They are written by the editorial board, which consists of the chairman, editor in chief, managing editor, executive editor, news editors and opinion editors.

Dissents, marked as such and printed in a distinctive format, are the opinions of the signed members of the editorial board choosing to publish their disagreement with the editorial.

Columns and editorial cartoons are written by individuals and represent the opinion of the author, not necessarily that of the newspaper.

Letters to the editor are welcome. They must be typed, double-spaced and addressed to *The Tech*, PO Box 29, MIT Branch, Cambridge, Mass. 02139, or by interdepartmental mail to Room W20-483. Electronic submissions in plain text format may be mailed to letters@the-tech.mit.edu. All submissions are due by 4 p.m. two days before the issue date.

Letters and cartoons must bear the author's signatures, addresses, and phone numbers. Unsigned letters will not be accepted. No letter or cartoon will be printed anonymously without the express prior approval of *The Tech*. *The Tech* reserves the right to edit or condense letters. Shorter letters will be given higher priority. We regret we cannot publish all of the letters we receive.

special invitation to MIT Students, Faculty, and Business Community

1993 IAP course, Massachusetts Institute of Technology
sponsored by MIT Enterprise Forum of Cambridge, Inc. ®

STARTING AND RUNNING A HIGH TECH COMPANY

Learn What it Takes to be a High Tech Entrepreneur !

Tue-Fri, Jan 19-22

- Speakers and examples from diverse technologies -
computers and electronics, materials science, robotics, medical and biotech
- Practical advice from experienced entrepreneurs on: fund raising, finding good people,
marketing and sales — and on dealing with the many pitfalls of new ventures
- Live presentations of a startup business plan, and of a company case study

Tue **Insiders' Views of Starting a Company**

Recognizing Opportunity and Running With It
1-4 PM in Room 35-225, 125 Mass Ave

Nuts and Bolts of Preparing a Business Plan

6-8:30 PM in Room 6-120, 77 Mass Ave (*)

Wed **Team Building and the Human Side**

Including a Live Company Case Study
1-4 PM in Room 35-225

Post-Election Economy for the Entrepreneur

A Panel's Outlook, 6-8:30 PM in Room 10-250, 77 Mass Ave

Thu **High Tech Marketing and Sales**

Plus Intellectual Property, 1-4 PM in Room 35-225, followed with:
Reception sponsored by 10K Competition and Sullivan & Worcester

War Stories from Entrepreneurs

6-8:30 PM in Room 6-120 (*)

Fri **Raising Money and Launching Your Company**

Live Presentation and Analysis of a Startup Business Plan
1-4 PM in Room 35-225

MIT Enterprise Forum IAP Committee:

Matthew K. Haggerty '83

Peter A. Quigley '85

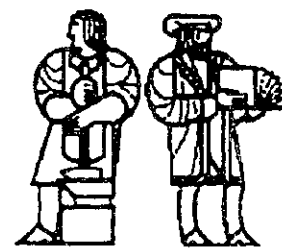
(*) in conjunction with the Fourth Annual MIT 10K Business Plan Competition

Ralph E. Grabowski '63

Karen Mathiasen GM '71

Dr. Barry Unger '69

Bardwell C. Salmon '62



This course is **FREE** for MIT students/faculty/staff. Business community registration is \$100 for the full, integrated four-day program. Scholarship aid, and a single-day ticket for \$30 is available. Make checks payable to the MIT Enterprise Forum and send to 201 Vassar Street, Room W59-219, Cambridge MA, 02139. Call (617) 253-8240 for more information.

MIT ENTERPRISE
FORUM ®

OPPORTUNITIES IN EVERY ASPECT OF BANKING WITH J.P. MORGAN IN EAST ASIA

The global banking firm of J.P. Morgan is eager to receive resumes from Asian and East Asian students at MIT who would like to be considered for opportunities with the bank in its East Asian operations. The opportunities exist in corporate finance, sales and trading, trading analytics, and banking technology.

Candidates can come from any academic discipline. The bank seeks talented individuals who have an interest in finance and have the requisite personal qualities - good social and communication skills and the ability to work in a team. They should be fluent in English as well as their mother tongue. They should also be willing to re-locate to other countries.

The bank is interested in candidates from the following countries:

China	Malaysia
India	Philippines
Indonesia	Singapore
Hong Kong	Taiwan
Korea	Thailand
Japan	Viet Nam

Candidates should submit their resume and a cover letter to the Careers Office, Room 12-170, by Friday, January 15. (The cover letter should be addressed to Ms. Penny L. Palevsky, Associate, J.P. Morgan & Co. Inc., 60 Wall Street, New York, NY 10260-0060). The bank will interview selected candidates at MIT on February 3.

Additional information about J.P. Morgan is available at the Careers Office, Room 12-170.

See something cool happening?
Call *The Tech!* 253-1541

OPPORTUNITIES FOR PhDs OUTSIDE THE LABORATORY

A series of talks during IAP 1993 for PhDs
(and others who may be interested)

Thursday, January 14
MANAGEMENT CONSULTING
Dr. John A. Griffin
Principal, McKinsey & Company, Inc.

Tuesday, January 19
THE BUSINESS SIDE OF INDUSTRY
Dr. Kristina Isakovich, (MIT '91, Physics)
Advanced NMR Systems, Inc.

Thursday, January 21
WALL STREET
Dr. Amaury Fonseca Junior, (MIT '92, Mech. E.)
J.P. Morgan & Co., Inc.

Tuesday, January 26
INTELLECTUAL PROPERTY LAW
Dr. Sam Pasternack, (MIT '66, Aero & Astro)
Partner, Choate, Hall & Stewart

All talks at 4 p.m. in Room 4-159

Sponsored by the Office of Career Services

CLASSIFIED ADVERTISING

Classified Advertising in The Tech: \$5.00 per insertion for each 35 words or less. Must be prepaid, with complete name, address, and phone number. The Tech, W20-483; or P.O. Box 29, MIT Branch, Cambridge, Mass. 02139

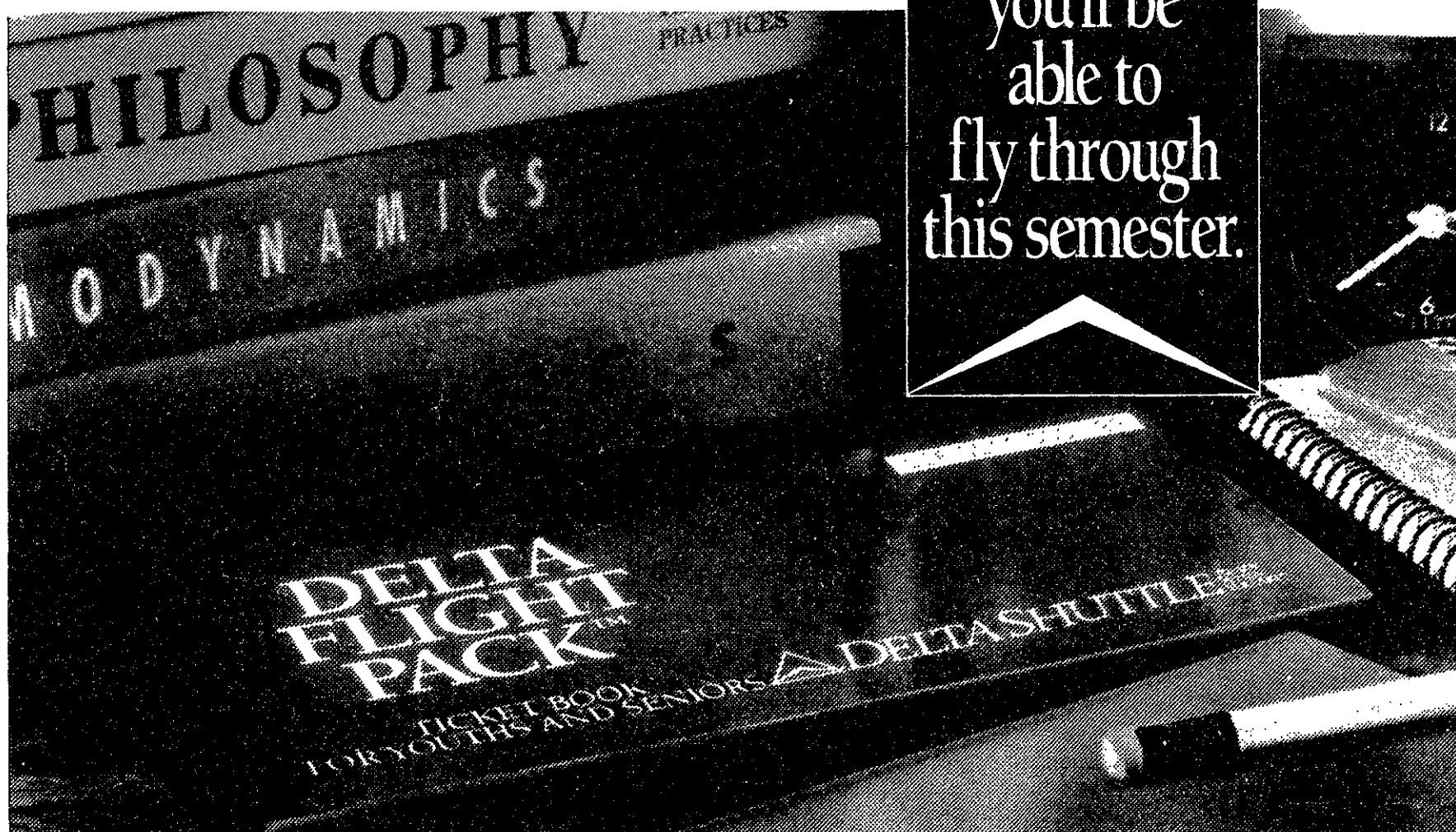
Looking for ride to Philadelphia this weekend. Dates of departure and return flexible. Willing to share gas money and tolls. Call Marie at 253-8408 or 625-5486 or email to marie@psyche.mit.edu.

Tax Returns Professionally Prepared and Economically Priced: 20 years experience. Foreign income and overseas relocations. Tax returns for any year, any state. Convenient MIT location. James Moore, One Kendall Square, (617) 621-7060.

Save \$60 off Brochure Rates!!! Sign up by 12/10/92 for this savings! Heatwave Vacations Spring Break 1993! Call 1-800-395-WAVE!

Counselors for prestigious Maine children's camp with strong skills in tennis, lake and ocean sailing, fencing, martial arts, water-skiing, kayaking, gymnastics, archery, riflery, horseback riding, baseball, windsurfing, crew, lacrosse, fishing and photography. Also need canoe trip leader and WSI swimmer. June 19 to August 18. Salary dependent on age and skill. References & interview required. Call (617) 721-1443 during regular office hours.

The Tech subscription rates: \$20 one year 3rd class mail (\$37 two years); \$55 one year 1st class mail (\$105 two years); \$52 one year air mail to Canada or Mexico or surface mail overseas; \$140 one year air mail overseas; \$10 one year MIT Mail (2 years \$18). Prepayment required.



One book
you'll be
able to
fly through
this semester.

One-way tickets under \$55

It's the Delta Shuttle Flight Pack.™ And if you thought your textbooks would get you far, take a look at our book.

A Flight Pack is a book of four one-way tickets for just \$219. Or a book of eight one-way tickets for just \$399; that's \$50 for each ticket.

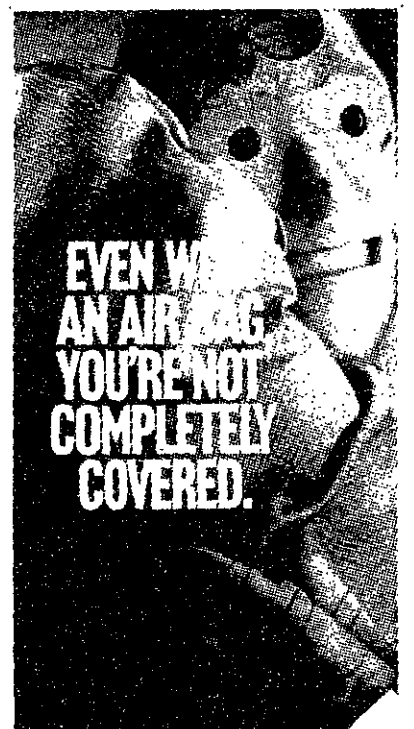
You can use these tickets to fly between New York's LaGuardia Airport and Washington D.C.'s National Airport, or New York and Boston's Logan Airport.

Flight Pack tickets can be used Monday thru Friday, 10:30 a.m. to 2:30 p.m. and 7:30 p.m. to 9:30 p.m. On Saturdays and Sundays you can use them anytime you want. Don't worry, if

you don't finish the book this semester, it's good for a full year.

And just by enrolling in Delta's Frequent Flyer program you can accumulate valuable mileage for future travel.

For more information call your travel agent or Delta at 1-800-221-1212. And learn the true value of flying the Delta Shuttle.



Sure air bags work great in front-end collisions, but only a safety belt can protect you from side and rear-end collisions. So buckle up. And you'll cover all the angles.

YOU COULD LEARN A LOT FROM A DUMMY. BUCKLE YOUR SAFETY BELT.

For more information, call the Airbag & Child Safety Helpline: 800-424-0202



A Public Service of The Publication



Conditions of Travel: Travel valid for one (1) year from date of issue. Books and coupons are non-transferable to different individuals. Entire books must be presented at time of travel. Coupons are invalid if detached from book. Valid for youths 12-24 years of age. Proof of age required. Travel at non-designated youth times is permitted upon payment of the difference between the fare in effect at the time of travel and the value of the Flight Pack discount coupon. Refund and cancellation penalties will apply. There are no refunds for lost or stolen books. Passenger facility charges may apply. Fares and rules are subject to change without notice.

THE ARTS

Corporal Politics reveals the power of the human form

CORPORAL POLITICS

List Visual Arts Center.

Through Feb. 14.

By Deborah A. Levinson

CONTRIBUTING EDITOR

The body is a strange thing, a mix of lean curves and misshapen lumps, of angles and lines, of functionality and sensuality. It can be an object of beauty or an object of disgust, whether in parts or as a whole. It is simultaneously an instrument of power and a symbol of weakness.

Corporal Politics comprises works by eight artists who use dissociated body parts to examine this dichotomy between form and function, turning a simple arm or leg or foot into a political statement. (The exhibit itself became a political statement when Anne-Melda Radice, then-director of the National Endowment for the Arts, denied federal funding for *Corporal Politics*, prompting Aerosmith and other proponents of free speech to fund the exhibit themselves.)

The most overt political statements are certainly those of David Wojnarowicz, who died last year of AIDS-related causes. Wojnarowicz produced mixed-media work, here represented by combinations of photographs and text or paint and text. While his *Why the Church Can't/Won't Be Separated from the State or a Formal Portrait of Culture* takes easy potshots at familiar targets (part of the work includes a skeletal bishop or pope figure made out of money), his *Untitled (for Peter Hujar)* uses a long text to bring an added dimension to the piece. Over nine stark photographs of a man's head, feet, and hands in a hospital bed, Wojnarowicz writes "there's a thin line a very thin line and as each T-cell disappears from my body it's replaced by ten pounds of pressure ten pounds of rage ..."

Other artists in the exhibit use sexual organs to make political statements, as Robert Gober does in his delightful *Male and Female Genital Wallpaper*, featuring silkscreened "chalk drawings" of genitalia in a very funny parody of typical household wallpaper. His untitled beeswax sculpture of a disembodied human torso, half-male and half-female, one side with a small, sagging breast, the other with a sparse covering of dark human hair, has a peculiarly gruesome unity to it. *Untitled (Candle)* is a thick, stubby white candle on a square base covered with what looks like pubic hair, perhaps to show us how ridiculous it is to look upon images of the penis as something forbidden, perhaps to show how even the simplest objects can be sexualized.

Kiki Smith's work also deals with simplicity, among other issues — the simplicity and normalcy of sperm, of bodily fluids, and of the human uro-genital system. Her 200 oversized glass sperm tumble over each other on a black background, looking like surreal tadpoles; her series of 12 cider jugs, each embossed with the name of a bodily fluid in black-letter type, brings a clinical matter-of-factness to something most people find repulsive.

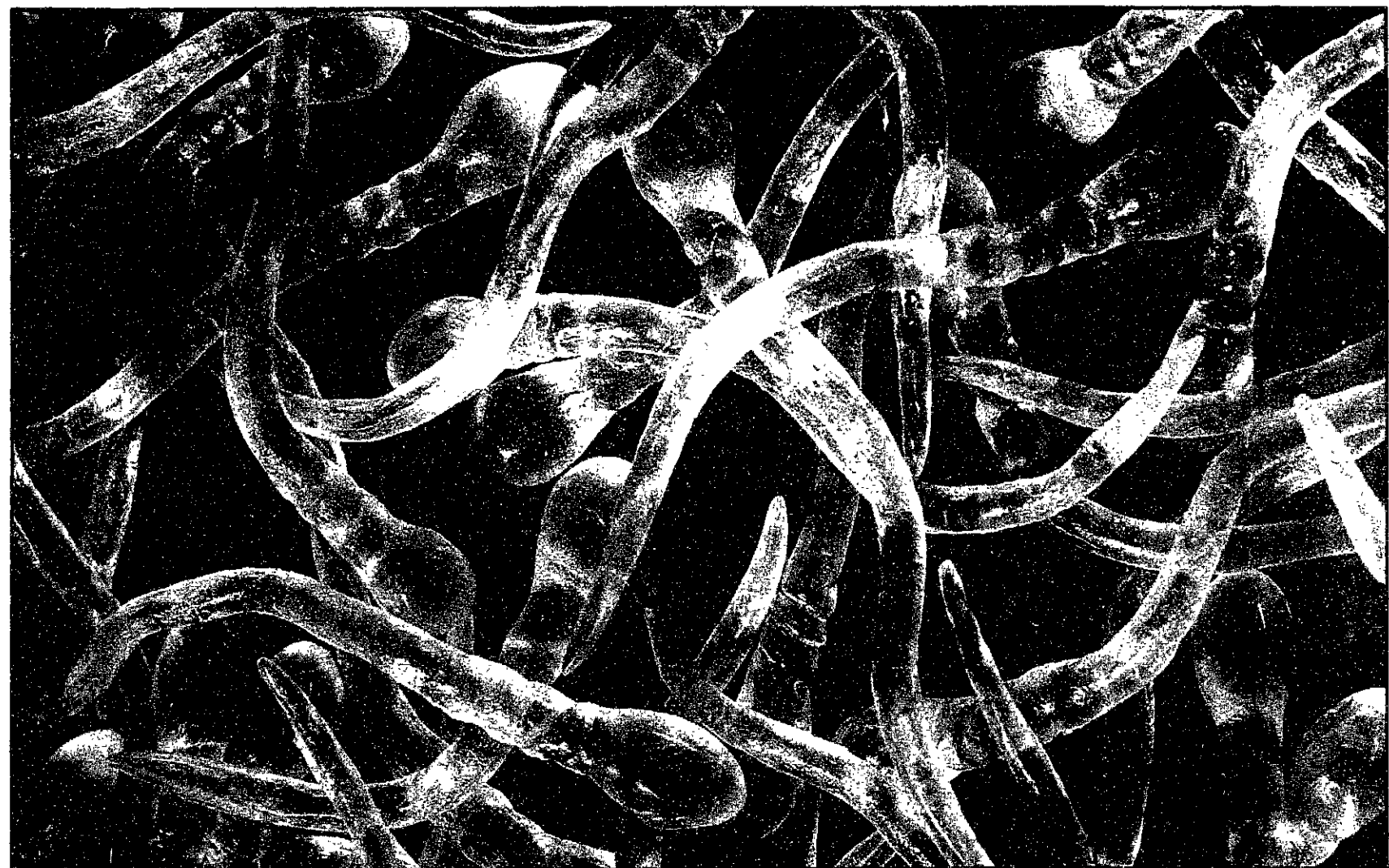
The final work in *Corporal Politics* is a large installation by Lilla LoCurto and

William Outcault in the adjacent Bakalar Gallery. Entitled *Self-Portrait*, it consists of a giant transparent sphere encompassing four stacked video monitors trapped within a chain-link fence. One sits facing the monitors, where a video camera films the viewer's face and incorporates it as the head of a body formed by pictures on the monitors. The three lower pictures fade to different body sections every few seconds. *Self-Portrait*, created after a friend of the artists died of AIDS-related causes, shows how we are all the same: inhabiting different bodies, but trapped within the same world, and within the same fence of our auto-immune system. It is a striking work, best viewed alone and in absolute silence.

Only someone who finds the body obscene will say the same of *Corporal Politics*. For generations, the pornography industry has been doing approximately what these artists have been doing: taking selected body parts and blowing them grossly out of proportion to serve a specific purpose. But like gay activists who have reclaimed the word "queer" by voutarily applying it to themselves, these artists are reclaiming the breast, the penis, the vagina, and the male and female form as the images of natural beauty and vehicles of free expression they were always meant to be.



Above: "Henriette," by Louise Bourgeois
Right: "Untitled," by Kiki Smith



Hoffa distorts life of labor leader with one-sided approach

HOFFA

Directed by Danny DeVito.

Screenplay by David Mamet.

Starring Jack Nicholson and Danny DeVito.

By Joshua M. Andresen

STAFF REPORTER

Danny DeVito does to James R. Hoffa what Oliver Stone did to John F. Kennedy. *Hoffa* is a biographical film based somewhat on fact, but also based in large part on the imaginations of writer David Mamet and director Danny DeVito. They extol Hoffa so much that the film turns out one-sided and boring.

Jack Nicholson plays Jimmy Hoffa, the labor movement leader who shaped the history of the International Brotherhood of Teamsters, the most powerful labor union in America. Nicholson gives an intense acting performance.

Danny DeVito plays Bobby Ciaro, a fictional character who is intended to be an amalgam of several of Hoffa's lieutenants.

DeVito also directs this film, playing the double role of actor and director for the first time since *War of the Roses*. DeVito read the script in 1989 and decided he really wanted to do it, with Nicholson playing the part of Jimmy Hoffa. DeVito admits that at the time, he did not know anything about the labor leader, but he claims to have done extensive research about the man, including viewing all the existing film footage of Hoffa's public appearances.

It seems odd, then, that an exclusively positive view of Jimmy Hoffa emerged. Just as

most people agree that John F. Kennedy was killed by a lone gunman, most also agree that Jimmy Hoffa was intimately involved in organized crime. The film does not totally ignore this aspect of Hoffa's life (doing so would be blatantly off the mark) but it assigns Hoffa only a peripheral involvement with the Mafia.

Despite this flaw, DeVito does many interesting things with the script. Most of the film is made up of flashbacks from Ciaro as he sits with Hoffa waiting for someone to show up for a meeting. The action flips back and forth from the waiting period to the flashbacks. The transitions are very well done, taking you back and forth smoothly, as though you were having a flashback yourself. This works well.

In the end, *Hoffa* spends too much time on what Jimmy Hoffa did (or what Mamet imagines he did) and too little time on who Jimmy Hoffa was. The film covers four decades, from before Hoffa's rise to the Teamster presidency to his disappearance. A touch of a personal slant would perhaps have made the film more engaging. Furthermore, the film

would have been improved with some element of conflict concerning the opinion of Hoffa. The only people in the movie who have a bad opinion of Hoffa are portrayed as wrong.

If this film gets any Academy Award nomination, it should be for best make-up. Jack Nicholson is made to look almost exactly like Jimmy Hoffa. For those who know what Hoffa looked like, it is almost scary to see Nicholson up on the screen.

The most interesting part of this film is the explanation it presents for Hoffa's disappearance. It is creative and amusing, even if it is not at all factual.

If you lived in the era of James R. Hoffa, this will perhaps be worth seeing. Otherwise, the film's blatantly one-sided picture of the Teamster leader makes it not worth your while.



Jack Nicholson gives an intense performance as the powerful Teamster boss Jimmy Hoffa, but director Danny DeVito's film belittles all characters with unfavorable opinions of the leader.

Toys wastes excellent sets with inane anti-war story

TOYS

Directed by Barry Levinson.
Written by Valerie Curtin and Barry Levinson.
Starring Robin Williams, Michael Gambon, Joan Cusack, Robin Wright, and LL Cool J. Loews Paris.

By Garlen C. Leung
NIGHT EDITOR

Set design. That's about the only positive aspect of *Toys*, an otherwise dreary and inane story that is a bigger waste of time than its amusing commercials might lead one to believe.

Barry Levinson's latest creation, *Toys*, is one of the holiday season's true lemons. The zafy Robin Williams performs only modestly and is sadly disappointing as Leslie Zevo, the son of Kenneth Zevo (Donald O'Connor), founder of Zevo Toys.

Just before he dies, Kenneth decides not to hand over control of Zevo Toys to Leslie because he is too irresponsible. Rather, he

gives the helm to his brother, General Leland Zevo (Michael Gambon). Leland is appalled by the lunacy that abounds in the factory, where the workers actually enjoy their jobs. His arrival to the company results in many changes, including the formation of a stupid counter-subversive security force led by his son Patrick (LL Cool J), a specialist in

counter-espionage and camouflage.

Leland is fresh out of the army and has left his heart behind. Hoping to return to military dominance, he comes up with a plan for a "Top Secret" toy army that would dominate over all others.

This is a weak attempt to create an anti-war film, and it fails miserably. The plot is oddly unique, but Levinson does not take full advantage of it. Instead, the movie wanders in and out of subplots such as Leslie's relationship with Kenneth's hand-picked employee Gwen (Robin Wright). Finding one's way through this meandering story may be more difficult than navigating through the overly complex factory. Also, the film is not much of a comedy, providing only short and discontinuous bits of humor with very few laughs overall.

Production designer Ferdinando Scarfioffi created the set for Zevo Toys in the Dada style.

The rainbow colored Zevo factory rises out of a beautiful open plain of tall grass. The equally intriguing Zevo mansion is an ingenious pop-up playhouse.

Only one of the actors seems at home in this fanciful setting. Joan Cusack actually does an amusing job portraying Alsatia,

Leslie's extremely odd sister. Her screws are just a bit too loose, though.

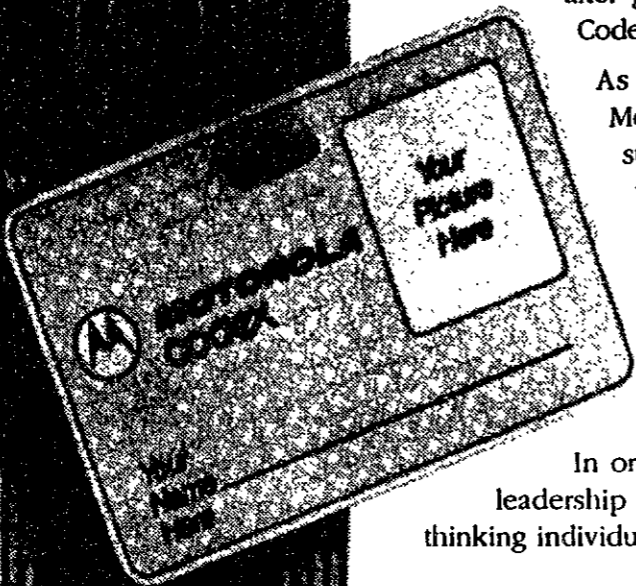
Except for the interestingly designed sets, *Toys* is a terrible disappointment with a corny plot and poor direction. If you missed this holiday film, good. Save your money for something more worthwhile.



Leslie Zevo (Robin Williams), son of deceased toymaker Kenneth Zevo, bids farewell to his cousin Patrick (LL Cool J) as Gwen Tyler (Robin Wright) and Alsatia Zevo (Joan Cusack) look on.

Proper Attire For The Well-Dressed Software Graduate.

Although fashions sometimes seem to change as quickly and with as much regularity as the weather, the simplest way to dress for success after graduation is still as easy as putting on a Motorola Codex employee identification tag.



As a wholly owned subsidiary of Motorola, Inc., Motorola Codex is the world's leading independent supplier of complete networking solutions. We provide all the elements for distributed data and voice networks, from a broad line of communication products to a full range of services including systems integration. And when it comes to starting a successful and rewarding career, few companies can offer you the unbounded opportunity you'll find at Motorola Codex.

In order to help us maintain and further strengthen our leadership standing, we seek to add open-minded, forward-thinking individuals to our staff in the following area:

Data Communications Software Opportunities Canton, MA

Several immediate and future opportunities exist in a variety of challenging product development areas for recent graduate and undergraduate degreed students who have achieved GPA's of 3.0 or better, and possess solid backgrounds in the area of software engineering. These positions will involve performing design, development, test and sustaining engineering functions for our networking products.

To qualify for these opportunities, applicants must possess an MS or BS degree in Computer Science or Computer Engineering, be proficient in "C" programming language, and have experience in a UNIX® or PC environment.

Applicants must be presently authorized to work in the United States on a full-time basis as we are unable to sponsor individuals for the purpose of obtaining visas.

If you possess the intelligence and imagination it takes to be a leader, we invite you to join us - and finish off your wardrobe. To respond, please forward a copy of your resume to: Motorola Codex, College Relations Department-MIT, 20 Cabot Boulevard/C1-60, Mansfield, MA 02048-1193.

We are an equal opportunity employer, M/F/D/V.



We need someone with the confidence of a surgeon, the dedication of a marathoner and the courage of an explorer.

We need someone to fill a unique job opening. Someone to spend two years in another country. To live and work in another culture. To learn a new language and acquire new skills.

We need someone who wants to help improve other people's lives. Who's anxious to build lasting friendships. To gain memories and experience that will last a lifetime. And a sense of fulfillment few jobs can match.

We need a Peace Corps volunteer. Interested? The first step is easy. Call 1-800-424-8580, Ext. 93.

Peace Corps. The toughest job you'll ever love.

ON THE SCREEN

— BY THE TECH ARTS STAFF —

- ★★★★: Excellent
- ★★★: Good
- ★★: Mediocre
- ★: Poor

★★★★ Aladdin

Never less than enormously entertaining, Disney's latest animated delight is a hilarious musical adventure based loosely on the Arabian Nights tale of a peasant boy and a magical lamp. Thanks to the vocal talents of comedians Robin Williams and Gilbert Gottfried and clever animation by Disney artists, this is probably the funniest animated film ever, but it never loses sight of the exuberant sense of wonder that permeates all of Disney's best works. And with a breakneck pace and an abundance of wonderful images, only a second viewing reveals most of the background gags and beautiful artistry that went into producing this absolute pleasure. -Chris Roberge. *Coolidge Corner Theatre*

★½ The Bodyguard

Whitney Houston essentially plays herself, a temperamental pop singer who lacks song-writing ability and good musical taste, and Kevin Costner is a Secret Service agent hired

to protect her after she begins to receive death threats in this mediocre romantic thriller. The romance in particular is emotionless, thanks to Costner's dry character and Houston's undeveloped acting abilities. Most of *The Bodyguard*, including the casting of Houston merely to cash in on the sale of a soundtrack, is little more than an unpleasant reminder that Hollywood is an industry more interested in producing money than art. -John Jacobs. *Loews Cheri*

★★★ Bram Stoker's Dracula

Director Francis Ford Coppola has fashioned a film with a frenetic pace and ubiquitous visual tricks in a style that is closer to that of MTV and *Batman* director Tim Burton than it is to the Victorian gothic horror of *Dracula* author Bram Stoker. The movie's appearance completely dominates over the disjointed plot and poorly drawn characters, making most of the film an attractive muddled mess. But the effects, sets, and costumes are so vivid and excessive that *Dracula* manages to be very interesting even as it frustrates with a lack of coherence and drama. -CR. *Loews Fresh Pond*

★★★★ The Crying Game

Neil Jordan's story of an IRA terrorist (Stephen Rea) is a remarkably well-written piece of work that at first seems to follow its protagonist in aimless yet intriguing directions, but eventually reveals itself to be a perfectly structured look at violence, race, love, and sexuality. Rea is ordered to guard a kidnapped British officer (Forest Whitaker), but he begins to care for the hostage and later flees to London, where he meets the officer's girlfriend (Jaye Davidson). The two halves of the film, which contain some completely unpredictable plot twists, become mirrors of one another, reflecting how understanding and compassion may be a means of salvation. -CR. *Loews Harvard Square*

★★½ A Few Good Men

Nearly every element of director Rob Reiner's adaptation of the military murder/courtroom drama clicks into place with the efficiency of a finely tuned machine designed to churn out entertainment. Sure it's unoriginal, but it's also extremely effective. The performances by Tom Cruise and Jack Nicholson are stirring, and the photography, with crystal clarity and frequent symmetry in its images, is polished until it shines. For the officers in the story, precision leads to tragedy, but for the film it leads to a triumph of sorts. -CR. *Loews Cheri*

★★½ Malcolm X

Spike Lee has translated the complex life of Malcolm X into a fascinating and involving epic which, like most of Lee's work, raises more questions than it answers. Despite occasional lapses into excess and the omission of some of Malcolm's more incendiary remarks, the film is a well-balanced portrayal of a man who went through many different phases, each flawlessly acted out by Denzel Washington, in an attempt to right the injustices done to blacks. Although the film, like *Malcolm*, never comes to a truly workable solution, it expresses the racist problems at the roots of society more powerfully than any other recent movie. -CR. *National Amusements Circle Cinema*

★★½ The Muppet Christmas Carol

The latest film featuring the late Jim Henson's Muppets provides a few solid laughs and is a fair version of Charles Dickens' perennial classic, but it is easily the weakest of the four Muppet movies. Michael

Caine does a commendable job at playing a straight Scrooge while his more lively artificial co-stars contrast nicely with the dark London setting. And the movie makes the most it can out of amusing scenes involving singing vegetables, Dr. Bunsen Honeydew and Beaker as charity collectors, and Fozzie Bear as Scrooge's former employer, Fozziewig, but most of the humor comes from the audience's prior knowledge of the Muppets rather than any genuine wit. -CR. *Loews Copley Place*

★½ Peter's Friends

After going two for two with *Henry V* and *Dead Again*, actor/director Kenneth Branagh has made his first disappointing film. A comic drama about six college friends who reunite for the first time in years, the movie is fine when it sticks with its smart sense of humor. Unfortunately, it ventures all too often into smarmy and contrived melodramatic territory as every one of the characters faces some type of crisis. All the performers are good, particularly Emma Thompson and Stephen Fry, but for every extremely funny one-liner there is a scene in which the host walks up to someone and spurts, "Well, congratulate me! I just did X to Y and ruined Z and..." -CR. *Loews Nickelodeon*

★★★★ The Player

Robert Altman's comedy about the intellectual decay of Hollywood is as hilarious as it is true to life. Tim Robbins is very good as a movie executive troubled both by an upstart moving in on his job and by threatening postcards from a writer whom he ignored in the past. The film's self-reflective style entertains immensely while revealing the highly constructed and constricted nature of today's movies. -CR. *Loews Copley Place*

★★★ Singles

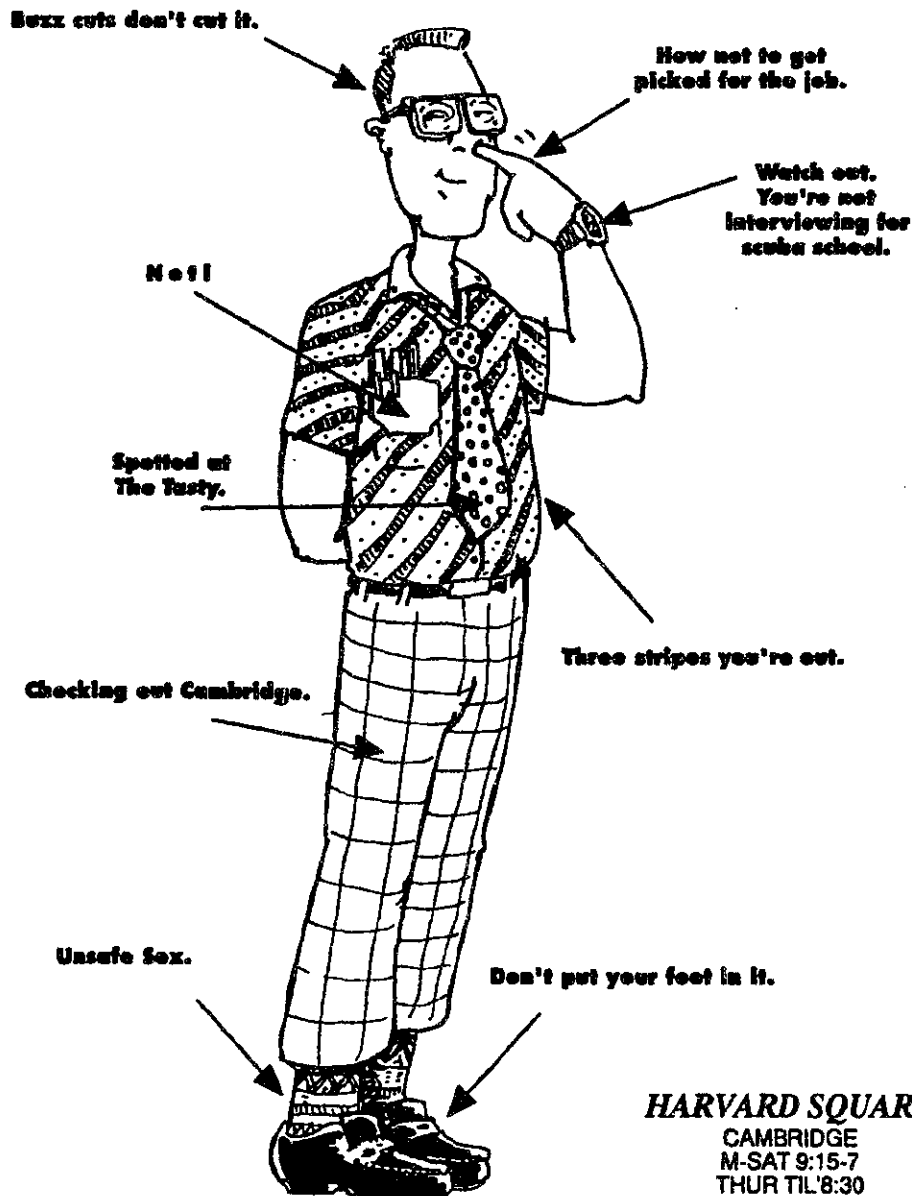
This light and entertaining film focuses on the struggles of six singles in their 20s as they try to understand love and relationships. Steve Cambell, Kyra Sedgwick, Bridget Fonda, and Matt Dillon are all good, the script by director Cameron Crowe is often extremely funny, and Seattle locations and music provide an interesting backdrop. Although it is not as realistic as Crowe's *Say Anything*, the movie is filled with wonderful isolated moments that are filled with truthful familiarity. -CR. *Arlington Capitol Theatre*



Malcolm X (Denzel Washington) addresses a Harlem audience outside of the Apollo Theatre in Spike Lee's complex film of racial injustice.

How Not to Dress for Success.

How should you dress for that interview? Ask the experts during Career Night at The Harvard Coop! January 14th, 5-8PM, Third Floor, Main Building Refreshments will be served!



In the business world, sometimes clothes do make the man or woman, and first impressions really do count. So it's very important that you look your best once you start interviewing.

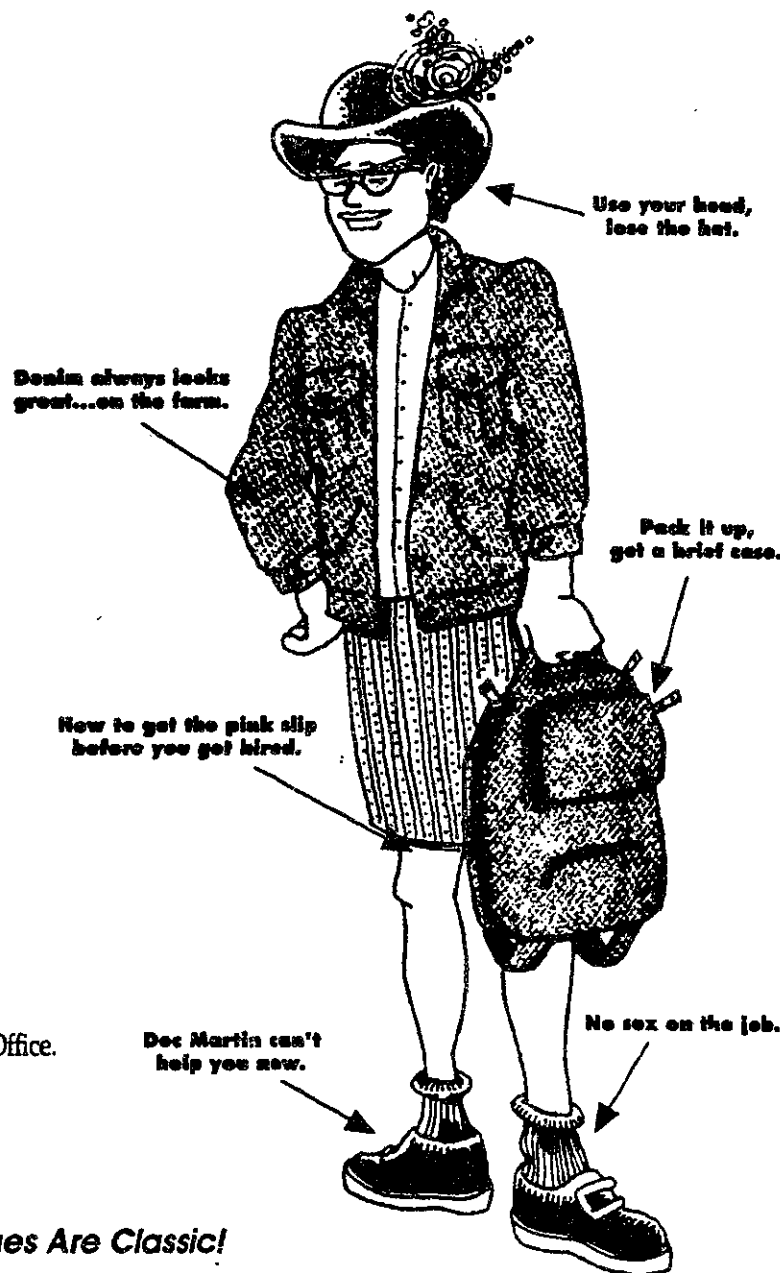
At Career Night you'll be able to talk to special representatives from a number of men's and women's clothing and furnishings companies. They'll be on hand to answer questions and to suggest various ways you can dress for your chosen field. You'll also be able to select the looks that are right for you from an extensive (but not expensive) collection of clothing and accessories for men and women.

You can be fitted for your purchases on Career Night, or come at your convenience and have one of our helpful Sales Associates pick out everything you need. As always, Alterations are Free at The Coop.

Best of all, you can Save 25% on your entire interview wardrobe purchase with our special Dress for Success Coupon for Students Only available on Career Night at The Coop and at the Harvard Career Placement Office.

HARVARD SQUARE
CAMBRIDGE
M-SAT 9:15-7
THUR TIL 8:30
SUN 12-6

the Coop
The Values Are Classic!



COOP CHARGE. MASTER CARD, VISA AND AMERICAN EXPRESS ARE WELCOME! FREE PARKING AT HARVARD: 1 HR. CHURCH ST LOT OR 2 HRS UNIVERSITY PL OR CHARLES SQ GARAGES. *WITH SALES RECEIPT SHOWING \$5 MIN. COOP PURCHASE. VALIDATE AT CASHIER'S DESK AT THE COOP.

Mexican President Will Speak at Commencement

Salinas, from Page 1

both his educational and political careers in the late Sixties. He studied at the National Autonomous University of Mexico and became a militant member of the youth movement of the Institutional Revolutionary Party (PRI), which has ruled Mexico for over 100 years.

Salinas's career as a public servant began in 1974 in the Mexican Secretariat of Finance. He spent five

years in the Secretariat in various positions, before becoming General Director of Economic and Social Policy at the Programming and Budget Secretariat. He became Secretary of that office in 1982.

In 1972, Salinas received a master's degree in public administration at Harvard. Two years later, he received a second master's degree in political economy and government. He received a PhD from Harvard in 1978.

IFC Officers Detail Priorities

IFC, from Page 1

identify legal drinkers," he said.

"Also, we need to make sure rush chairs at fraternities know the [rush] rules," he said. "I was on the review board and I found that not a lot of rush violations were malicious, but were made just through ignorance of the rules."

According to former IFC President James F. Miskel III '93, the alcohol policy, sexual harassment, hazing, and anti-fraternity sentiment in campus publications were issues singled out by the IFC's Improvement Committee, which was set up by the Executive Committee, though no real action has been taken on these issues. The Improvement Committee will continue to meet until the new officers get settled in.

As community relations co-chairs, Jeffrey M. D'Urso '94 and David M. Frohman '95 plan to institute ongoing community service through the IFC Service Corps, which will match fraternities, sororities and living groups with community service agencies.

The new IFC president is Doshi of Delta Tau Delta, the vice president is Jeremy D. Rishel '94 of Sigma Phi Epsilon, the treasurer is Daniel E. Stine '94 of Kappa Sigma, and the secretary is Rahul A. Shendure '95 of Delta Upsilon. The community relations co-chairs are D'Urso and Frohman, both from Theta Chi.

Also elected to the Executive Committee were JudComm Chair Hijirida of Phi Sigma Kappa, Public Relations Representative Meelan Lee '95 of Alpha Phi, Rush Chair

Wallace Active in Nubian Art

Wallace, from Page 1

was also co-chair of the Committee on New Connections, which was charged with finding new audiences for the museum, particularly minorities.

The Nubian Art Gallery was a focus of Wallace's interest in the museum. She was active with the new Friends of the Nubian Gallery group and made a donation that allowed the museum to distribute a book written about Nubia to local schools and community groups. "She also was quite a force in meeting with staff members and meeting with gallery instructors," said Amy

Greer of the museum's department of education.

Rita Freed, curator of the department, said, "Her energy and enthusiasm combined with her love of the Nubian collection and her desire to make this collection available to the people of the city make her shoes impossible to fill."

Wallace was born in Baltimore. She received a bachelor's degree in 1943 from New York University. She received graduate degrees from Yale in 1944 and 1948.

After receiving her PhD from Harvard, she joined the National Bureau of Economic Research as an economist and statistician, while teaching part-time at the College of the City of New York.

She served on the faculty of Atlanta University from 1953 to 1957, when she became a senior economist for the U.S. government, specializing in Soviet economic studies. She worked for the EEOC from 1966 to 1969 and was vice president of research for the Metropolitan Applied Research Center from 1969 to 1972.

After serving as a visiting professor at the Sloan School, she became the school's first female professor in 1975.

She was also a national trustee of TIAA/CREF, the prestigious professional retirement program.

Her books include: *Equal Employment Opportunity and the*

AT&T Case (1976), *Women, Minorities and Employment Discrimination* (1977), *Pathways to Work: Employment Among Black Teenage Females* (1974), and *Black Women in the Labor Force* (1980).

Survivors include her mother, Stevella Wallace; a brother, Samuel Wallace; three sisters, Lydia Mills, Ophelia Wallace, and Margaret Campbell; and a niece, Carolyn Mills.

Funeral services will be held Friday, Jan. 15, at 7:30 p.m. in the Metropolitan United Methodist Church in Baltimore. Contributions can be made in her memory to the Friends of the Nubian Art Gallery of the Boston Museum of Fine Arts.



MIT NEWS OFFICE
Professor Phyllis A. Wallace

Cheng of Chi Phi, and Panhellenic Association President Mariquita C. Giffilan '94 of Alpha Phi.

A total of 26 open positions remain in the IFC. They include: eight positions in the cabinet, six in the Judicial Committee Review Board, and eleven for JudComm investigators. The Women's Conference representative position on the Executive Committee is also open.

According to Neal H. Dorow, adviser to fraternities and independent living groups, these offices will be filled by the spring semester through additional elections.

Fire Closes Networks for Two Days

Networks, from Page 1

"The automatic fire alarm systems did not go off. The fire never reached that level," McNeil said.

"It was not a serious fire," said Alan Leo, general manager of food services. "If an employee had been inside, he could have put it out with a fire extinguisher," he said. He added that equipment near the fire was not damaged.

Because the fire alarm sounded, all students were evacuated from the Student Center. "An alarm went off, so we all logged off and left. We could see smoke coming from

Networks when we got out," said Abhilash R. Vaishnav '96, who was in the fifth-floor Athena cluster.

Networks was not allowed to open until yesterday afternoon, when an inspector from the Cambridge Health Department came to look at the restaurant.

"Networks was closed Sunday and Monday. On Monday we brought in our usual repair crew to make sure that something in the stove itself had not malfunctioned. They broke it down piece by piece and assured us that it was all right. We've had the burner lit and we know it's fine," McNeil said. He

added that while the restaurant was closed, the staff also did some cleaning.

The burner that started the fire is on the only stove in the Networks kitchen. The fire department tagged it, and Networks is not allowed to remove the tag or use that stove until it is inspected by a Cambridge plumbing inspector. However, Cambridge does not currently have a full-time plumbing inspector. As a result, an inspector has not yet been able to come to Networks. Until one does, Networks can only use the two broilers, McNeil said.



FREE!
Airline Reservations &
Ticketing Service

Thomas Cook

★★★★★
RATED BEST!
by Condé Nast
Traveler Magazine
★★★★★

1 BROADWAY, CAMBRIDGE

THOMAS COOK is an official authorized agent for all airlines and there is NO EXTRA CHARGE when you pick up your tickets at THOMAS COOK!

IF YOU'RE TRAVELING ON ANY OF THESE AIRLINES . . .

American, United, Continental, America West Delta, TWA, Northwest, USAir, British Air, Qantas, Air Canada, Iberia, Lufthansa, Swiss Air, Air India, El Al, Icelandair, Alitalia, Aer Lingus, Viasa, or even shuttle flights.

AVOID LONG LINES AT THE AIRPORT, MAKE YOUR RESERVATIONS AND PICK UP YOUR TICKETS AT

Thomas Cook

Open Mon.-Fri.
8:30 am-5:00 pm

1 BROADWAY, CAMBRIDGE

868-2666

POLICE LOG

The following incidents occurred on or near the MIT campus during the period Jan. 1-8, 1993:

Jan. 1: Albany garage, radio stolen from a car, \$300; Alpha Delta Phi, reports door broken into and unknown if person still in building, check of building proved negative.

Jan. 2: Bldg 13, pocketbook left unlocked and unattended, \$30.

Jan. 3: Lobby 7, male arrested for outstanding warrant; West Garage, '88 Chevy stolen.

Jan. 4: Bldg. E51, \$1,000 in stamps stolen; Bldg. 56, bike stolen from rack, \$160; Whitehead lot, VW stolen sometime since October; suspicious activity 1) Tang Hall, 2) Bldg. 8, and 3) E52; bike stolen from rack at Bldg. 14, \$250; Albany garage, car radio stolen, \$200; Bldg. 3, AC adapter stolen, \$190.

Jan. 5: Bldg. 3, vandalism; Bldg. 54, answering machine stolen, \$90; MacGregor, bike stolen, \$400; Bldg. 13, wallet stolen from an unlocked and unattended office, \$30; Alpha Delta Phi, compact disc player stolen, \$200; Audrey St., attempted larceny of a car.

Jan. 6: Pick up a male arrested in Boston on an outstanding MIT warrant; Bldg 16, unattended wallet stolen, \$60; Bldg. 13, a \$250 backpack containing \$11 cash was stolen, backpack later recovered; Tang Hall, malicious damage, Audrey St., '86 Pontiac stolen.

Jan. 7: duPont locker room, lockers broken into 1) jacket, \$25; 2) wallet, \$10 cash and \$190 in travelers checks stolen; Bldg. 6, bomb scare, buildings evacuated, nothing showing, all clear given; Bldg E25, harassing phone calls.

Jan. 8: An attempted kidnapping and armed robbery took place at 9 a.m. in the East Garage between Four and Five Cambridge Center. The incident did not occur on MIT property and was reported to the Cambridge Police. The suspect is described as a white male, 30-35 years old, 5 feet 9 inches tall, slender build, thin face, fair complexion, wearing blue jacket, blue pants, dark knit cap, and sunglasses, according to Cambridge Police. The suspect was armed with a silver handgun, demanded the victim's car keys and forced her into the car where he gagged and handcuffed her and placed a cloth bag over her head. As he began to drive away, the victim began to scream. At this point the suspect abandoned the vehicle and fled on foot.

In a memo to Cambridge Center tenants, Melanie Waldron, a vice-president at Boston Properties, which owns the garage, wrote, "There has been no incident like this to our knowledge from the time we first opened the East Garage in 1983 until today." Anyone who may have information about the incident should call Cambridge Police at 349-3237.

Last year your contributions helped 145,000 families find child care. This year your contributions will be needed more than ever.

United Way
of Massachusetts Bay

This space donated by The Tech

Ottawa Senators Surge Ahead of Amy Fisher Movies

Let's Argue, from Page 12

for Andre Thornton. Hmm... Babe Ruth, Hank Aaron, and Andre Thornton — names that seem to just roll right off the tongue...

Ohio State running back Robert Smith is a big hypocrite. Before the start of the season, he looked to be a noble student-athlete who won an ideological victory over a University where Woody Hayes and Basket Weaving 101 reign supreme. To protest the lack of emphasis Coach John Cooper was putting on academics, Smith sat out the '91 football season after a record-setting freshman year. Now, however, Smith is declaring himself eligible for the draft as a junior. We guess priorities can be re-evaluated when \$1 million is staring you in the face...

Look for Oscar De La Hoya to be the '90s version of a young Roberto Duran. De La Hoya has too much power for anybody in the Lightweight division, as evidenced by the fact that he has destroyed 3 opponents in 8 minutes of pro boxing. The only American gold medal boxer in Barcelona will milk the lightweight ranks for as many big pay days as possible before moving up to tougher opponents in the Welterweight division.

With its television contract up for renewal, Major League Baseball is looking for ways to make its games more attractive to the networks, as well as shake up the sport and bring its popularity back to the level of the NBA. One proposal that has been batted about is expansion and realignment. We suggest the following 3-division format (with the three division winners and a wild card emerging from interleague play and entering the playoffs): EAST: Montreal, Toronto, Mets, Yankees, Boston, Philadelphia, Baltimore, Atlanta, Florida, and Tampa-St. Pete (expansion team). HEARTLAND: Detroit, Milwaukee, Cubs, White Sox, Minnesota, St. Louis, Cincinnati, Cleveland, Pittsburgh, and Memphis (expansion team). WEST: Los Angeles,

California, Oakland, San Francisco, San Diego, Colorado, Texas, Houston, and Kansas City.

You Heard It Here First

Look for Washington Redskins defensive coordinator Richie Pettibone to return to the Windy City as the new Bears coach...

With the new labor agreement signed and delivered, the NFL will expand in 1994 by awarding new franchises to St. Louis and Charlotte...

Race For Futility

Ottawa Senators: 4-37-3
Dallas Mavericks: 2-26

The Senators win total is one more than the number of Amy Fisher movies made (and this is because there are only three major networks), while Doug DeCinces got as many votes for the Hall as the Mavs have victories...

Mundango's Hueso de la Semana

Vai Sikahema for catching Lin Elliot's kickoff bound for the sidelines with 45 seconds left in the first half of the Cowpokes-Speagles game on Sunday. He caught the ball, returned it 10 yards, and then promptly fumbled, leading to a Cowpoke field goal and 17-3 half time lead...

Simson's Top 5

1. Kentucky
2. Kansas
3. Michigan
4. Duke
5. Indiana

Trivia Question of the Week

The 'Skins or 'Niners have participated in every NFC Championship game since 1981 but one. Can you name these two opponents and the year. Send answers to sports@the-tech.mit.edu

Answer to last week's question: The Patsies, who beat the Jets, Raiders, and Fish en route to a 46-10 spanking at the hands of Da Bears. Kudos to Daniel Schwartz '93, Upendra Shardanand '93, Brian

J Christensen '94, Eric Amundsen '94, and Keith Whalen '96, who all got it right (P.S. The '80 Raiders only won two on the road). All our winners receive a free subscription to *The Tech* for the spring semester.

MIT TWIB Notes

The men's basketball team has fallen to 2-7 after being hosed by Coast Guard on Saturday, 82-57. The Engineers are led by freshman center Keith Whalen (18 ppg) and sophomore guard Diamond Caruthers (13 ppg). Come cheer on the locals at their next home game on Thursday at 7:30 p.m. in The Cage...

In track news, MIT played host to the Beaver Relays on Sunday at the Howard Johnson Athletic Center. Injured Bo "Hurdler" Light received a perfect 10 from the judges for his role as assistant at the high jump area...

VIX Picks

'Pokes 24, 'Niners 23: Head groundskeeper for the IBM OS/2 Fiesta Bowl brought in to "work with" shoddy turf at Candlestick Park this week. Four players sink knee-deep into ground, though, during pre-game calisthenics. Bill Parcels rumored to be next in line for the job. Troy Aikman rolls left and spots Jay Novacek in the end

zone for the game-winning TD with 10 seconds left in this thriller... *Fish 27, Bills 17*: Jim Kelly set to return to lineup for Bills, but injures his arm throwing a bottle of Diet Coke in a commercial. Frank "Rise and Fall of the Third" Reich loses his magic touch, as Lewis "Food,

Glorious Food" Oliver picks him off twice. To the amazement of your humble scribes, Pete Stoyanovich actually hits a 71-yarder at the end of first half to give Miami momentum for the victory.

Last Week (including Bowl games): 9-3. Season Record: 42-19.

來利樓

Larry's Chinese Restaurant

302 Mass. Ave., Cambridge
Orders to go, or dining in

FREE DELIVERY TO THE M.I.T. CAMPUS — \$10 MINIMUM

Luncheon Specials served daily, 11:30 a.m. — 5:00 p.m., starting at \$2.95
Special Dinner Plate just \$4.50

10% OFF DINNER EVERY SATURDAY, DINING IN AND TAKE OUT (\$10 MIN.)

Call 492-3179 or 492-3170

Monday — Thursday, 11:30 a.m. to 9:30 p.m.
Friday — Saturday, 11:30 a.m. to 10:00 p.m.
Closed Sunday

INTRODUCING

The
MIT Card



Cash-Free Convenience
for MIT Employees
AVAILABLE NOW

THE MIT CARD is a new card service offered by MIT Housing and Food Service designed to provide greater purchasing power and convenience to MIT employees.

CASH-FREE CONVENIENCE with the MIT Card allows you to make purchases at most MIT Food Service locations, such as Lobdell Food Court or the Building 4 Coffee Shop, without worrying about carrying cash.

VAL-U-MEAL DISCOUNTS give you greater purchasing power with special discounts at most MIT Food Service locations.

AUTOMATIC ACCOUNTING for your purchases through payroll deduction makes The MIT Card that much more valuable.

Get The Card at the following times & locations:

Every Weekday Office of Housing & Food Service E32-200	9am-4pm
Thursday & Friday, January 14-15 Lobby 10	10am-2pm
Thursday & Friday, January 21-22 E19 Lobby	10am-2pm
Friday, January 29 Faculty Club Lobby	11am-2pm
Thursday & Friday, February 4-5 Faculty Club Lobby	11am-2pm

**SKIP
PSYCHOLOGY
FOR YOUR
MENTAL
HEALTH.**

\$25 COLLEGE LIFT TICKET.

We think it was Freud who said, when you start dreaming of textbooks, you need help. The cure? Mount Snow's \$25 college lift ticket. It's available Monday through Friday. Or Saturday and Sunday at our Haystack area. So go ahead and cut class. And rip up a few trails.

Mount Snow
NO ONE ELSE IS CLOSE

Not valid on holidays. Current college I.D. required. For information call 1-800-245-SNOW. For the latest ski report call 1-802-464-2151.

SPORTS

Track Hosts Beaver Relays **Lyren Breaks Two MIT Records**

By Halston Taylor
TEAM COACH

The MIT track team hosted the Beaver Relays on Sunday, Jan. 10 at the Johnson Athletic Center's indoor track. The Beaver Relays was a low-profile invitational open to all New England schools. A medley of seven schools, representing all three NCAA Divisions, took part in a very relaxed meet.

Among the schools represented were University of Connecticut, Bates, Westfield State, Salem State, University of Hartford, Fitchburg State, and Stonehill College. The meet's atmosphere was low-key because no score was kept and the meet was not recorded in team win/loss records.

This was a tune-up meet for the Engineers, who have practiced for only two weeks prior to exams and one week prior to the meet. Despite the lack of preparation, MIT team members put in some very good performances.

Most notable in the field events were Andy Ugarov '95 and James Kirtley '95, respectively clearing 6'5" and 6'3" in the high jump; Matt Robinson '94 and Scott Rixner '94, pole vaulting at heights of 14'6" and 13'0"; and Brad Bolivar '94, throwing 47'2" in the 35-pound weight throw.

In the track events, Colin Page '95 crossed the line at 8.17 in the 55-meter high hurdles. Brad Geiffuss '94 and Dan Corcoran '94 placed first and second in the 400 meters with times of 52.0 and 52.4, respectively. Ethan Crain '95 was another first place finisher for MIT, completing the 3000-meter race in 8:44.23. Placing third in both the 55-meter and 200-meter events was Chiang, with times of 6.83 and 24.05. Finishing third and fourth in the 800 meters were Ed Patron '95 and John Rodkin '95.

MIT's relay teams had excellent finishes, coming in first in the distance medley relay, and second in both the 1600 relay and 3200 relay. Overall, the invitational was dominated by the University of Connecticut, a Division I team, which placed first in 11 events and swept two. MIT dominated the remaining seven teams.

The quadrangular series, which is a four-week regular season group of meets between the best New England Division III teams, begins next week. MIT is one of the favorites, along with Williams College and the U.S. Coast Guard Academy. The next meet is at home on Saturday at 1 p.m. against Bowdoin, Westfield State, and Dartmouth College.

By Catherine Rocchio
TEAM COACH

Julie Lyren '93 broke two MIT records at the first home meet of the women's gymnastics team's 1993 competitive season, against Division I Yale University. Lyren, the team's captain, set an all-around score record of 36.1, breaking the previous mark of 35.65, set last year by Lisa Arel '92. Lyren also set a record in the balance beam event.

Though Yale won the meet with a score of 176.1 to MIT's 154.95, the match-up was an excellent showcase for the individual talents of MIT's gymnasts.

The meet began on the vault, where Kim Cornwell '94, Gwen Gray '93, Karen Oda '93, and newcomer Melissa Kaye '95 all performed front handspring vaults.

Janet Sollod '96 earned an 8.2 for her home meet debut vault, a handspring 1/1 twist, while team captain Julie Lyren unveiled her new vault for the first time this year. A 1/2 on, 1 1/2 twist off earned her an impressive score of 8.85 and third place overall in the event.

Uneven bars brought some new team members to the competitive arena at MIT as Jean Wong '93 and Erica Carmel '96 competed in their first meet at DuPont Gymnasium. Their routines, as well as Kaye's,

included an impressive straddle back release move that provided a solid beginning for the rest of the MIT bar squad.

Oda was next, completing her routine for a consistent score of 7.55. Sollod followed with a score of 7.95 after performing an impressive 1 1/2 front somersaulting dismount. Lyren brought the home crowd to its feet by landing her Comaneci 1/2 twist back somersaulting dismount for a score of 8.7, giving her second place overall on the event.

The challenges of the balance beam proved to be an excellent showcase of the strengths of the MIT team. Carmel stuck her back walkover and cartwheel back somersault dismount. Oda nailed a back handspring and chalked up a "no falls" routine for her collegiate personal best score of 7.45. Beth Chen '94 followed with yet another "no falls" performance of solid leaps and difficult jumps for a 7.6.

Kaye debuted her beam routine with some of the most difficult beam acrobatics of the competition. She stuck a cartwheel back handspring series and an aerial (no hands) cartwheel. Despite a slip before her full-twisting dismount, she scored an 8.45 for the event. Sollod had a few problems with her

twisting jumps and leaps but stuck her two back handsprings for a score of 7.05.

The star of this event was Lyren, who broke the MIT balance beam record of 9.1 with her routine of powerful leaps, back handsprings, a somersaulting dismount, and a score of 9.2.

The final event of the afternoon, the floor exercise, proved to be the best overall event for the MIT women. Cornwell, Gray, and Stephanie DeWeese '95 all worked through brand new routines for respective scores of 6.35, 7.15, and 7.2, while Oda again earned a personal best score of 7.85 for her fluid performance.

Sollod's full-twisting first tumbling pass and graceful dance scored an impressive 8.6, while Lyren confidently finished off the afternoon with a personal best score of 9.35 for a dynamic and enthusiastic exercise.

Overall, Oda and Sollod both had their collegiate personal best all-around scores. Oda tallied a 30.45 and Sollod a 31.80.

The women's final home meet is on Saturday, Jan. 23, when they will host Division III rival Rhode Island College in DuPont Gymnasium at 1 p.m.

Men's Basketball Falls to 2-7 Despite Good Rebounding

By Halder A. Hamoudi
ADVERTISING MANAGER

The men's basketball team was defeated in its last two home games, dropping the first to a strong U.S. Coast Guard Academy and narrowly losing the second to New England College. The Engineers have now fallen to 2-7 for the season.

The Coast Guard game was close for the first few minutes of the first half, with the Coast Guard Bears opening up an early 10-7 lead. Soon after this, however, the Coast Guard scored 15 points to MIT's two, thus widening their lead to 25-9.

The Bears built their lead to 19 points before a Coast Guard player was called for a blocking foul. The Bears' head coach, Pete Barry, who had felt the need to question every call the officials had made up to that point, thought that this was an exceptionally bad call because the foul should have been, in his opinion, charging against MIT. Barry began to run up and down the sidelines uncontrollably with his hand behind his head until he was finally given a technical foul, after which he stopped running but kept his hand behind his head for the remainder of the half, constantly reminding the referees of their unforgivable error.

As a result of the technical foul, MIT was able to reduce the lead to 14 points, but before the half was over, Coast Guard

scored four unanswered points, and the Engineers went into the locker room down 42-24.

The Bears widened the gap even further in the second half, despite the magnificent efforts of Captain Nikki Carruthers '95. With his team down 57-34 midway through the second half, Carruthers hit a three-point shot to bring the lead down to 20.

Carruthers then made a 10-foot field goal to make the score 57-39. Before fouling out with 5:53 remaining, the MIT captain managed to make two more three-pointers (he was 75 percent from behind the three point line for the day), as well as two rebounds. Largely because of his effort, the Coast Guard lead shrunk to sixteen. But the Engineers were never to get any closer than this, and when the game was over, the Bears had triumphed 82-57.

Despite the score, the Engineers performed well in some categories. They shot an excellent 55.6 percent from behind the three-point line, and Keith Whalen '96 captured eight rebounds, a big part of the team's total of 27. However, the Engineers shot abysmally from the field, averaging only 39 percent as a team. This figure can be compared with the 67 percent field goal percentage of the Coast Guard Academy. While the Bears did have some excellent shooters on their team, part of the reason their percent-

age was so high was the poor performance of the MIT defense, which seemed confused and unable to deal with the quick Bears offense.

Pilgrim game much closer

The Engineers played a much closer game last Monday night against the New England College Pilgrims. At first it appeared as if the Engineers might be able to run away with this game when they scored the first 10 points of the first half.

The Pilgrims were able to quickly reduce this lead to five points, but, led by Mark Milton '93, who had three steals in two minutes, MIT reasserted itself quickly, going on a 13-2 run to make the score 26-10 midway through the first half. Showing remarkable persistence, the Pilgrims slowly climbed back into the game, and by halftime the score was 38-37.

During the first five minutes of the second half, the game was very close and the lead changed several times. However, with 11:22 remaining, Stacey Messiah registered the only dunk of the entire game, and this seemed to spark the Pilgrims. They soon extended their lead to 11 points, and though MIT was able to reduce this to five with only minutes remaining, New England College held on to their lead and won the game 80-76.

MIT again rebounded well in this game, pulling down six more than their opponents. Whalen and Victor Van Bertel '96 led the Engineers with nine rebounds each. Whalen was the leading scorer for the Engineers with 17 points, but it was Travis Aronson of the Pilgrims who led all scorers with 34.

The Engineers played much better defensively in this game than in the Coast Guard matchup. They were more successful at preventing easy layups, and the ball did not get inside as often as it had for the Coast Guard. The field goal percentage was also better, but the Engineers shot much worse from behind the three-point line, averaging only 15.4 percent in this region.

But undoubtedly the team's most glaring weakness is its free throw percentage. In the second half of the game against New England College, when they needed to make free throws to reduce the lead, they shot a horrendous 33.3 percent. Over the past two games, MIT has averaged 51.4 percent from the free-throw line, barely edging out Random Hall's C-league intramural team, which has made exactly half of its free throw shots in its past two games. In contrast, their opponents have averaged about 64 percent from the line.

The team's next home game is Thursday night at 8 p.m.

UPCOMING HOME EVENTS

Wednesday, January 13

Women's Ice Hockey vs. Colgate College, 7 p.m.

Thursday, January 14

Men's Basketball vs. Curry College, 8 p.m.

Saturday, January 16

Indoor Track vs. Bowdoin College, UMass-Dartmouth, and Westfield State College, 1 p.m.

Sunday, January 17

Rifle vs. U.S. Naval Academy, Norwich College, and Depaul College

Wednesday, January 20

Men's Ice Hockey Alumni Game, 7 p.m.

Write Sports for The Tech!
Call Lynn at 253-1541.

All-Star Votes and Free Granola Pizza

Column by Mike Duffy
and Andrew Heltner
SPORTS COLUMNISTS

Two thumbs up to Pizza Hut and Golden State's Tim Hardaway. Pizza Hut has a promotion at selected Warrior home games in which fans are given coupons for free pizzas if the Warriors win and score at least 120 points. In what turned out to be a 118-97 blowout win over Miami last Thursday, the Warriors needed two points at the end of the game so that the locals could receive their free 'zas. Hardaway fouled a Heat scrub with 0.5 seconds left so that Golden State could get one last crack at 120. After the two Heat freebies, Hardaway received the in-bounds pass 70 feet from the basket and tossed in a 3 pointer. In a move that sent the Alameda Coliseum into a frenzy, the officials did not count the basket and then had to leave the arena with a police escort amidst a showering

of Perrier, Napa Valley Vino, and tofu from fans yearning for granola and alfalfa sprout pizza. In order to prevent civil unrest, Pizza Hut officials said that they would "count" the basket and honor the promotional freebies. WE LOVE THIS GAME!!!

Speaking of lucky long-distance shots, why do football announcers insist that a field goal kicker should be able to hit a 60-yarder just because he hit a 70-yarder in practice? For example, during a Dolphins game a couple of weeks ago, ESPN's Mike Patrick noted that the Fish just needed to gain 10-15 yards to put field goal kicker Pete Stoyanovich into range (at 57 yards), since Stoyanovich has kicked a 71-yarder in practice. This is equivalent to a basketball announcer saying that because he saw a player throw in a 75-foot hook shot in practice that he is in a comfortable shooting range once he

reaches half court...

The media always makes a big deal of how fans vote for All-Stars. Some of it may be justifiable. This year, Moses Malone (who has yet to play a game this season) is currently ahead of Robert Parrish and Pervis Ellison, while Mugsey Bogues ranks ahead of Joe Dumars and Reggie Lewis in current NBA All-Star voting. In the NHL, Wayne Gretzky (who also has not suited up this year) finished third in the voting for Campbell Conference centers. While these selections may seem insane, the fans pay to see the games and they should see the players they want. Meanwhile, the tabulations for Baseball's Hall of Fame voting have come in. Nineteen know-it-all scribes voted to put Bill Madlock into the Hall, while 29 voted for George Foster, 38 for Vada Pinson, 8 for Ron Cey, and 2