



Hugh B. Morgenbesser

In one of the recent changes at Lobdell Court, the grill was renamed Leghorn's. At press time, Foghorn could not be reached for comment.

New meal plan to be proposed

By Katherine Shim

Director of Housing and Food Services Lawrence E. Maguire will bring a tentative meal plan proposal before the Academic Council today. The plan will be a hybrid of both administrative and student meal plan ideas.

Pending discussion and recommendations by the Academic Council, a final draft of the meal plan proposal should be completed by the end of the week, according to Maguire.

Both Maguire and Undergraduate Association Food Services Committee Chair Paul L. Antico '91 refused to give specifics about the terms of the meal plan, citing the quickly changing nature of the plan in the past few days.

The required plan would cost \$1000, \$800 of which must be spent on commons dining and \$200 of declining balance that could be spent at dinner only. This meal plan would not cover breakfast or lunch.

The survey asked dormitory residents if they would prefer to have dormitory dining halls remain open under the terms of the MIT Food Services plan or if they would rather have the dining halls closed.

In Baker, approximately 90 percent of students who responded said they would rather close down the dining hall, according to the Baker representative to the UA Food Service Committee Andrew E. Bloch '91.

One student who responded said, "It's totally ridiculous, and if I'm forced to eat from this meal plan, I'll move out."

Another student said, "As an athlete, I don't want to be required to eat a meal that I can't fit into my schedule."

Other students stated that the MIT meal plan discouraged the food service from making edible meals and providing reasonably priced service, while other students raised questions of whether Lobdell Court currently had the facilities to bear increased numbers of diners.

Both MacGregor UA Food Service Committee representative Jay M. Goodliffe '92 and Next House representative Seth M. Cohen '92 were reluctant to give the exact results of their surveys. However, both said that their results were "very similar — both in terms of figures and student concern" to the Baker survey.

Student surveys may affect committee's plan

The plan may be influenced by results of surveys conducted over the weekend in Baker, MacGregor and Next Houses, said members of the UA Food Service Committee.

Surveys asked for student response to the MIT Food Services plan which proposed that residents of Baker, MacGregor and Next House eat four out of every five dinners per week in a dormitory dining hall. The dinners "would cost \$7 each and would be limited commons: one entree, two vegetables, one dessert, one piece of fruit, unlimited beverages and unlimited salad bar," according to the survey. The dining halls would remain closed on the weekends.

Use of house tax probed

By Chris Schechter

The issue of spending dormitory house taxes on alcohol was raised by the Undergraduate Association Committee on Student Life at an open forum last Tuesday.

The meeting followed a survey conducted by the committee on Registration Day, Jan. 31. Of the 305 people who answered the survey, 43 percent responded that they were against using dormitory funds for alcohol. Over half of the others who responded disapproved of spending a large proportion of house taxes on alcohol.

The committee has been wrestling with the issue of underage students paying a house tax which, when it becomes part of a house social fund, is often spent on alcohol.

Several alternatives to spending dormitory funds on alcohol were discussed at the meeting. The possibilities ranged from keeping the status quo of using house taxes to purchase alcohol, to not spending dormitory funds on al-

cohol, to separating house funds for alcohol purchases.

The issue was raised by a large number of students who voiced their discontent with the situation. "The trust behind our efforts is coming from the concern expressed over and over by the students who don't have a choice but to live on campus," said J. Paul Kirby '92, chair of the Committee on Student Life.

The committee will submit a set of recommendations to James R. Tewhey, associate dean for student affairs, by the end of March. The dean made it clear that he would take the students' input into account before he makes any decision on the alcohol policy, according to members of the committee.

Most of the committee is made up of students; other members include William B. Watson, Baker House headmaster, Sylvain Levesque G, a floor tutor in Baker House, Andrew M. Eisenmann, assistant dean for student affairs and Neal H. Dorow, advisor to fraternities and indepen-

dent living groups.

Due to the low turnout at the forum, most of the student input so far has been restricted to the results of the poll. The committee judged the poll's 15-percent response rate to be good.

The options debated at the forum ranged from not spending any house tax funds on alcohol to having over-21 students regulate underage drinking in the dorms. Although the committee's goal is to achieve a student-based policy, the latter option was rejected by Watson based on past experience.

(Please turn to page 17)

NIS may study MIT overhead

By Dave Watt

Federal investigators have charged that some universities are spending too much of their federal research grant money on internal overhead costs, and not enough on the direct costs of research.

A criminal investigation at Stanford University conducted by the Naval Investigative Service has uncovered cases of mismanagement of federal money. These findings have prompted audits of universities, including Harvard Medical School.

Several newspapers, including the *San Francisco Chronicle*, have mentioned that MIT is likely to be a target of later investigations by the NIS, citing congressional aides. However, James J. Culliton, vice president for financial operations, said he is hopeful that MIT will not be a target of the NIS investigations.

Federal investigators found that Stanford had used federal research money to depreciate the purchase of a yacht and pay for athletic equipment, flowers and antiques, according to the *Chronicle of Higher Education*. Stanford will forgo overhead charges on other items totaling at least \$680,000 to repay the money.

Stanford's problems have received widespread attention in West Coast media, and have led Rep. John D. Dingell (D-MI) to announce plans to hold congressional hearings on Stanford's overhead charges.

Mass. law change delays UA shuttle

By Brian Rosenberg

The startup of the Undergraduate Association safety shuttle has been delayed by a complication in the procedure for hiring a driver, according to Judith L. Yanowitz '91, co-chair of the UA's Campus Safety Committee. Last year, the committee stipulated that the shuttle's driver not have a criminal record of any kind, Yanowitz said. In order to verify this, a background check

of each applicant is necessary. But in 1991, Massachusetts law changed the way potential employers could conduct such checks, she explained.

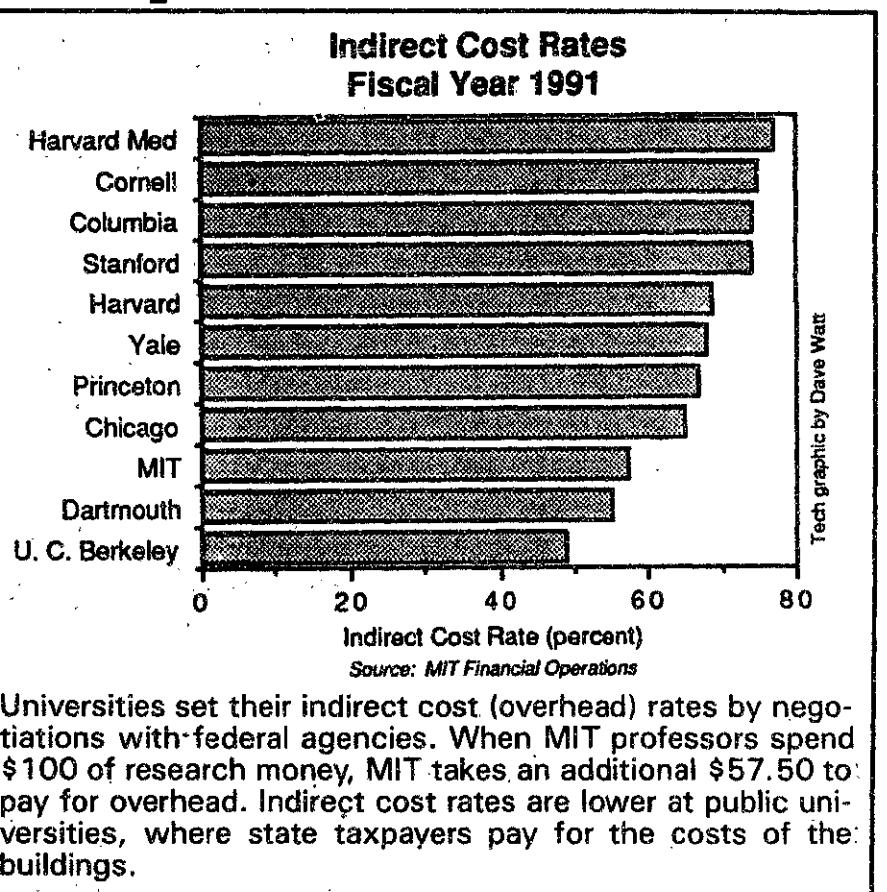
"The change [in the law] meant that MIT had to change its hiring procedures," Yanowitz said. "That change delayed the posting of the advertisement for drivers until about two weeks ago."

The UA plans to hire two drivers, Yanowitz said.

Holly L. Simpson '92, a member of the safety committee, said there was also a delay in buying a van to serve as the shuttle. "When we went to buy a van, we had to wait until a 12-passenger van was in stock," she said.

The cost of the van was around \$20,000, and was paid for by the Department of Housing and Food Services, according to Yanowitz. Money for different aspects of the shuttle services will

(Please turn to page 2)



Universities set their indirect cost (overhead) rates by negotiations with federal agencies. When MIT professors spend \$100 of research money, MIT takes an additional \$57.50 to pay for overhead. Indirect cost rates are lower at public universities, where state taxpayers pay for the costs of the buildings.

"I think we're in a good position. . . . [The General Accounting Office] has had intensive audit activity here this past year," so they are not going to be surprised by MIT's accounting records, Culliton said.

Furthermore, MIT has been participating in a pilot program with the GAO to see if there can be a "better, more comprehensive, less costly way to carry out university audits," according to Culliton. The program is the reason for the more intense audit ac-

tivity at MIT, Culliton explained. He added that the program has been "very successful."

University administrators around the country are watching the Stanford and Harvard audits closely, fearing that higher education's image with the public may be tarnished as a result of the allegations, according to the *San Francisco Chronicle*.

If MIT is forced to decrease its overhead charges as a result of a federal investigation, it would

(Please turn to page 2)

inside

Frank Bucci celebrated American post modernism

George Bush

Shades of the Camps

NIS may study MIT overhead

(Continued from page 1)

mean that professors and graduate students might be able to spend more research money on equipment. But it could also lead to higher tuition as the Institute tried to recover its costs by other means.

All universities collect overhead

Much of the federal money paid to professors to carry on research is not directly spent on research equipment and salaries. At MIT, the indirect cost or overhead rate is 57.5 percent, according to Culliton. For every \$100 a professor actually spends from a federal research grant, the university takes another \$57.50 to pay for its overhead costs.

The fees for indirect costs pay for administration, physical plant operations, libraries, and for part of the cost of the buildings in which research actually takes place, according to Culliton. The cost of the buildings themselves is the largest part of the indirect cost rate, he explained.

Since most MIT buildings are used both for teaching and research, a percentage of the build-

ing cost is charged to the indirect cost rate, based on the percentage of the building used for research, Culliton explained.

If more teaching occurs in the building, then MIT general funds — including funds from the endowment and tuition — pay for more of the building. On the other hand, if more building space is used for research, then the federal government pays more of its cost. Thus, in the long run, the more research that takes place in MIT buildings, the less MIT has to pay for them.

A memo from Culliton to department heads explained the impact of instructional growth on indirect costs. "An increase in the instructional program relative to the sponsored research program increases the percentage allocation of indirect costs to instruction," Culliton wrote.

"This increase reduces the indirect costs allocated to [federally] sponsored research and adds to the demand on MIT general funds for payment of shared indirect costs. To the extent that an increase in instructional activity adds to total indirect costs, the demand on MIT funds is in-

creased further," Culliton added. Overhead rates at MIT are determined through a long process of accounting, negotiation and auditing with the Office of Naval Research, according to Culliton. They are also based on how much grant money professors spend during a given fiscal year. Because professors' spending is unpredictable, setting indirect cost rates becomes an inexact science, Culliton noted.

Private universities use federal money for buildings

Public universities usually have lower overhead rates on their federal research contracts than private ones. For example, the University of California at Berkeley has an indirect cost rate of 49 percent.

But at public universities, the cost of the buildings is borne by the taxpayers of the state, not by the federal government, Culliton explained.

MIT's new biology building, to be constructed at the site of the parking lot behind Building 66, is likely to drive overhead rates up by another four percentage points over the next several years, Culliton said.

Volunteer Opportunities

The Children's Wish Foundation is dedicated to providing terminally ill children with fulfillment of a wish. Craig Shergold is a seven-year-old boy suffering from terminal leukemia. His wish is to receive more postcards than any other person, ever, before he dies, and to make it into the Guinness Book of World Records. Please take a few moments to send Craig a postcard. Take a few more moments and ask your family and friends to send Craig a postcard. His address is: Craig Shergold, c/o Children's Wish Foundation, 32 Perimeter Center East, Atlanta, GA 30346.

Franklin Park Coalition Help kids and adults build kites for a kite-fest. Help is needed with the "how-to's" of building kites and the assembly of kites from 9 a.m. to 2 p.m. this Saturday May, 12. Contact: Jamiese Martin at 524-9685.

Fair Food Make a difference tomorrow morning by helping make sure perishables get to hundreds of children who need them - donate an hour of your time to help load bread onto trucks, 7:30-8:30 a.m. at the end of Windsor St. in Cambridge (Arnold's Bakery). Loaders are needed Monday, Thursday, and Saturday mornings. Contact: Nancy Jamison at 282-0728.

MIT Homelessness Initiative If you have a free Saturday this summer why not visit Dorchester with MIT Homelessness Initiative? Students from HI will be taking a field trip to Dorchester every Saturday beginning June 9th to work with Fair Foods - a food salvage program that obtains extra food, that would otherwise be thrown out, to hundreds of people. The group will meet in Lobby 7 at 10 a.m. For more info contact: Rosina Samadani at 5-9542.

Women's Lunch Place This soup kitchen for women needs volunteers to help move them to their summer location of Arlington Street Church. Their new summer schedule is to serve meals Mondays through Fridays. They also need help with wrapping gifts for Mother's Day. Contact: Susan at 267-6803 or 267-0200.

Compiled by the MIT Public Service Center, rm. 3-123, x3-0742.



Shuttle may begin in March

(Continued from page 1)

come from several sources. "The Campus Police will pay for radios and maintenance for the van, while the drivers will be paid from the provost's budget," Yanowitz said.

The UA and Graduate Student Council are providing publicity money for the shuttle, she added.

Yanowitz was unsure when the shuttle would begin service. "I don't want to make any promises, but [the shuttle] will probably be running by mid-March, and almost certainly by the end of spring break," she said. She thought the committee has "moved quickly for a project like this."

"The fact that the administra-

tion provided money out of budget for this shows that safety is an important issue for them," Yanowitz said.

When the shuttle first begins service, it will be operated on an on-call basis through the Campus Police dispatcher. The shuttle will run from 6 pm to 3 am Sundays through Wednesdays, and from 6 pm to 4 am Thursdays through Saturdays.

The shuttle will travel to every dormitory and Independent Living Group, as well as to the areas of Boston, Cambridge and Brookline around the ILGs, Yanowitz said. "If you want to go the Holiday Inn in the Back Bay, the shuttle will go there," she said. "The shuttle will go into

Central Square and Kendall Square as well."

When the shuttle begins operation, it will be in a "test period," Yanowitz said. "If the shuttle is heavily used, it may be expanded to several vans with set stops. However, we don't want to have people walking from a stop to their house, since that would defeat the shuttle's purpose."

How Do You Transform A World-Class Degree Into A World-Class Career?

You're about to receive a technical degree from MIT, one of the world's most renowned educational institutions. Congratulations!

At Intel, we're carrying our legacy of technological innovation on into the '90s and beyond — with a variety of development programs in advanced technologies, systems and components. The type of projects that transform world-class degrees into world-class careers!

To learn more about our challenging opportunities, unique benefits and desirable locations, you are invited to attend the Intel Presentation/Reception scheduled:

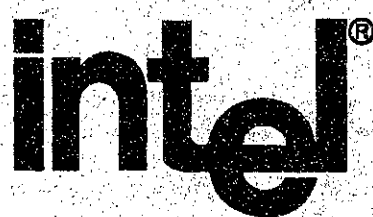
Tuesday, February 26
5:00pm - 7:00pm
Building 4.149

Campus interviews will be conducted in the Career Placement Center.

- February 27 & 28**
- BS/MS - EE, CS (Courses 6.1, 6.3)
 - MS/PhD - ChemE, Solid State Physics, Material Science, EE, (Courses 10, 8, 3, 6.1)

- March 1**
(Summer Schedule Only)
- EE, CS (Courses 6.1, 6.3)

If you can't meet with us on campus, send your resume to: College Recruiting, Intel Corporation, Dept. C589, 5000 W. Chandler Blvd., Chandler, AZ 85226. Intel Corporation is an equal opportunity employer and fully supports affirmative action practices. Intel also supports a drug-free workplace and requires that all offers of employment be contingent on satisfactory pre-employment drug test results.



FATHER'S FORE
300 Mass Ave
Cambridge - Near MIT

Best Bar For Hanging Out With Friends:

FATHER'S FORE.
"Mainly MIT students hang out there";

Weekly Special
LARGE pitcher of BUD or BUD Lite **\$4.99**

- Darts — Dart League
- Basketball — Video Games
- Pinballs
- 51" TV with cable

NEW ITEM
BUSCH BEER
12 oz Bottle — \$1.65

FREE CHICKEN WINGS
EVERY WEDNESDAY,
THURSDAY, AND FRIDAY
AT 5PM

Never A Cover Charge

news roundup

from the associated press wire

World

IRA bombs London train stations

Two London rail stations were bombed yesterday morning, and all terminals at Heathrow airport were evacuated yesterday afternoon because of a bomb threat. One person died and 37 were injured at Victoria Station, while a blast at Paddington Station did not hurt anyone.

The Irish Republican Army claimed responsibility for the blast at Paddington Station, and blamed the casualties on "a cynical decision of senior personnel not to evacuate railway stations."

Soviet Union proposes price reforms

The Kremlin is proposing sweeping price reforms to help deal with a crippling budget deficit in the Soviet Union. The plan would cut subsidies on many basic goods and lift price controls on a third of retail items, from cigarettes to washing machines.

Israelis to ease curfew in occupied territories

Military officials in Israel said yesterday that the army will partially lift a curfew on the occupied territories that has been in effect since the Persian Gulf war began. Starting Tuesday, the curfew will be lifted during daylight hours.

Colombian government, rebels to begin peace talks

The Colombian government and rebels have agreed to begin peace talks. The decision followed two months of guerrilla violence that has claimed some 350 lives. A government official in Bogota said a rebel statement has eliminated all obstacles to negotiations.

North and South Korea suspend talks

The fourth round of high-level talks between North and South Korea has been suspended. The talks were to take place this week, but North Korea pulled out, accusing Seoul of undermining the dialogue by holding military exercises with the United States.

Former contra leader murdered

No one has claimed responsibility and no suspects have been found for the slaying of a former contra leader in Nicaragua. The country's Sandinista-controlled security police is promising a full-scale investigation into the shooting death of Enrique Bermudez.

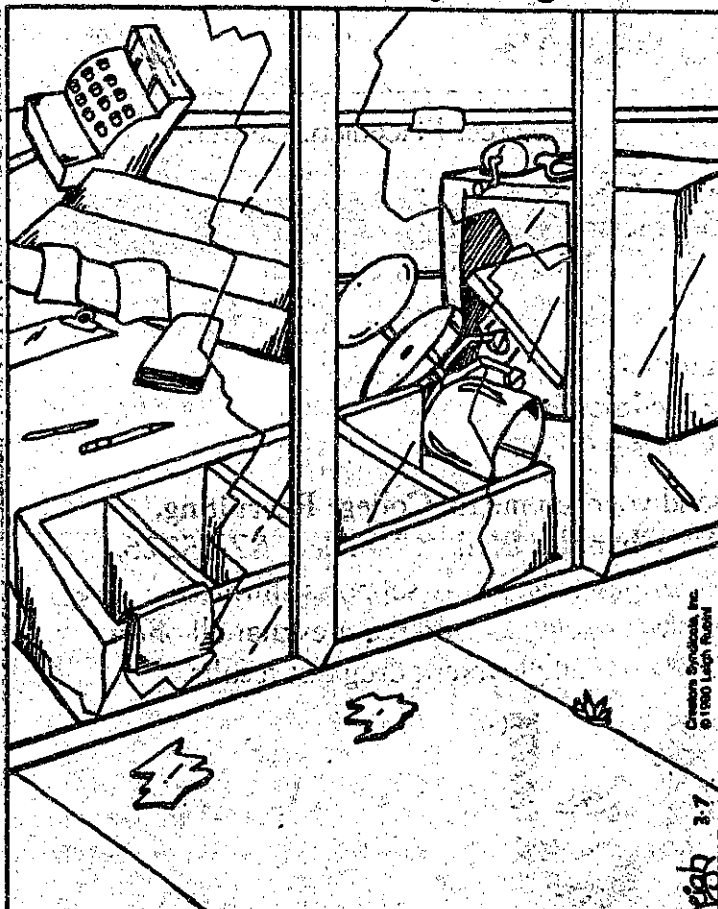
Local

Texaco must clean up Jamaica Plain station

Texaco has been ordered to pay \$400,000 toward the cleanup of gasoline contamination at a former Texaco station in the Jamaica Plain section of Boston. The contamination included gasoline vapors from a leaking underground tank that seeped into neighboring homes. The rest of the \$575,000 cost will be paid by the station's operators and the Metro Realty Trust.

Rubes

By Leigh Rubin



During the earthquake the stationery store wasn't.

Gulf War

US ships hit mines

Allied mine sweepers went to work in the northern Persian Gulf yesterday after two US warships hit mines. Officials said seven sailors were injured, but that the ships were not disabled.

US troops near Kuwait's border

An Associated Press reporter said that allied forces are being repositioned near the northern front in Saudi Arabia in anticipation of a ground war. At the same time, allied warplanes are continuing their bombing runs against Iraqi troop positions. One military source said American warplanes are having "a field day" taking out Iraqi tanks and artillery.

Gorbachev asks about CBS News crew

A Soviet official said yesterday that Iraq's foreign minister had promised to take action on the issue of a missing CBS News crew, which the network said is being held in Baghdad. According to the official, Foreign Minister Tariq Aziz was asked about the fate of the four men during yesterday's meeting with Soviet President Mikhail S. Gorbachev.

US denies that date is set for ground war

The US military continues to say that no date has been set for an allied ground offensive in the Persian Gulf war. In a radio interview in Paris on Sunday, the French foreign minister said the allies are "on the eve" of the ground offensive for the liberation of Kuwait.

Bush considers Soviet peace proposal

After receiving a cable from Moscow, the White House said yesterday evening that President George Bush saw nothing in the Soviet peace proposal to warrant stopping the Persian Gulf war.

But spokesman Marlin Fitzwater said Bush will review the plan and send President Mikhail S. Gorbachev a response.

Fitzwater refused to characterize the administration's view of the peace initiative. Bush discussed it with his senior advisers in a two-hour meeting yesterday evening.

The Soviets would not say what was in the peace initiative they presented to Iraqi Foreign Minister Tariq Aziz yesterday. A spokesman for Soviet President Mikhail S. Gorbachev indicated the Soviets were still waiting for Iraq's unconditional withdrawal from Kuwait.

A German newspaper reported that the plan calls for Iraq's unconditional withdrawal from Kuwait, but rules out any punishment for Saddam Hussein. Additionally, a French newspaper said Iraq had no more than 36 hours to accept the Soviet proposal or face a massive allied ground offensive.

But Iraq's ruling party newspaper said the Soviet plan raises high hopes for peace. An article written before the talks in Moscow concluded said the negotiations would be a "decisive turning point between war and peace."

Oil prices in London dropped because of optimism about the Soviet plan. American commodity and stock markets were closed yesterday for Presidents' Day.

Fitzwater said the war will go on while Iraq is considering the proposal. Secretary of State James A. Baker III said the proposal must demand that Iraq get out of Kuwait quickly and unconditionally to be deemed acceptable.

Motivation for bunker bombing questioned

Newsweek reported that the target of last week's allied bombing of a bunker in Baghdad was a group of Saddam Hussein's closest advisers. The magazine said the bunker may have been one of two dozen designed to shelter Iraqi leaders.

Military briefers in Riyadh repeated allied claims that the bunker was a military target. Iraq claims it was a civilian air raid shelter and that hundreds of civilians who had taken refuge there were killed in the bombing.

Soldiers killed by friendly fire

Friendly fire killed two American soldiers Sunday. Officials said a US Army helicopter fired on allied armored vehicles by mistake during a clash with Iraqi forces at the Saudi border.

Nation

Amherst peace activist sets himself on fire

Police in Amherst, MA, said a man carrying a peace sign died yesterday after setting himself on fire and refusing help from onlookers who tried to smother the flames. Witnesses told police the unidentified 20-year-old man poured a flammable liquid on himself. An Amherst police officer said the man lit a match which went out, then lit another which resulted in a fireball that engulfed him.

There were unconfirmed reports that another person may have participated in the immolation.

The incident occurred around 2 pm on the Amherst Common, a park in the center of town.

More than 100 people gathered on the Common after the incident. Police used squad cars to block the body from view while they photographed it. Some peace protesters tried to break through police barricades to approach the body. One woman who laid a wreath on the body was arrested, eyewitnesses said.

Protester arrested in church where Bush attended services

John Schrohardt, a 51-year-old lawyer from Ipswich, MA, is being held on a misdemeanor charge of disorderly conduct for interrupting a church service President George Bush was attending.

The incident began when Pastor Patricia Adams asked members of the congregation if they had any special concerns to express. Schrohardt, seated about 20 feet away from the president and first lady in the First Congregational Church in Kennebunkport, ME, stood up and demanded that the United States halt the bombing of Iraq. He was silenced only after police moved in and stood by his side.

After a second outburst half an hour later, Schrohardt was dragged outside by security agents and arrested. As he was led away, Schrohardt shouted, "In the name of God, stop the bombing."

Workers at shell plant end strike

About 1300 workers at 10 Alliant Techsystems plants are returning to their jobs after a week-long strike. Workers at the Minneapolis-area plants voted overwhelmingly to accept a wage increase. The plants produce 25-millimeter shells considered critical for a Persian Gulf ground war.

Durenberger's finances suspect again

The financial dealings of Senator David Durenberger (R-MN) are coming under scrutiny again. A spokesman for Durenberger said he had gotten notice from the Justice Department that it will examine the same dealings that were the subject of a Senate Ethics Committee probe last year.

Maryland legislature votes for abortion rights

A yearlong battle to protect abortion rights has ended in the Maryland legislature. The state House has approved a bill maintaining women's abortion rights — even if the Supreme Court overturns its ruling making abortion legal. The state Senate has already passed the measure.

Ford recalls 1991 Capris

The Ford Motor Company has announced a recall of nearly 3900 1991 Capri automobiles. Ford said there could be a problem with transmission oil cooler hoses and clamps. The affected cars have automatic transmissions.

Weather

Milder times ahead

A warm front will move north of the area this morning, introducing milder temperatures to southern New England. Showery weather will persist until a frontal system now in the Midwest crosses the area late Wednesday.

Tuesday: Frozen precipitation changing to rain by late morning. Cloudy with rain and rain showers during the afternoon. Southeast winds at 10-15 mph (17-25 kph). High around 45°F (7°C).

Tuesday night: Cloudy with passing showers. Temperatures holding steady, in the lower 40s (4-7°C).

Wednesday: Cloudy and milder with rain showers. Rain ending during the early evening. High 55-60°F (13-16°C). Low 39-43°F (4-6°C).

Thursday: Partly sunny and cooler. High 43-47°F (6-8°C). Low 25-30°F (-4 to -1°C).

Forecast by Michael C. Morgan

Compiled by Brian Rosenberg, Karen Kaplan, and Dave Watt

opinion

It was a nice night for a long, long drive . . .

Column by Gregory T. Huang

The smell of the sea was in the air. I woke up, rubbed my eyes, and looked around. The beach was totally deserted. Only an hour earlier, there were hundreds of people around; now there was only me sitting on my towel. Had it been only an hour? The sun was drifting down over the water, painting the clouds on the horizon pretty shades of purple and orange.

I checked my watch, but it had stopped at 5:16. I stood up and gasped in pain as I realized my back had been terribly sunburned. I had come to the beach with three friends earlier in the day, but they were nowhere to be seen. Had they left in my car, without me? Quickly checking my pockets, I found that my keys were still there. Good. I put on my shirt and grimaced as the fabric irritated the stinging skin on my back. I started across the sand

toward the parking lot. As I climbed up the tall ridge behind the beach, the parking lot came into view. The whole scene before me was bathed in a dim orange glow. The vast lot was completely empty, except for a small maroon Volkswagen in the distance that I recognized as my own. Farther away, I could see roads and the main highway that I had taken to get here. But, as far as I could see, there were absolutely no cars on the roads, and there wasn't a single person in sight. I turned around to look at the beautiful sunset and the waves crashing up on the shore. It was really quite peaceful.

"Hey there," said a soft female voice. I almost slipped off the ridge as I whirled around to face her. She was about my age, with long brown hair and warm brown eyes. Dressed in a T-shirt and shorts, she looked strikingly pretty. And strangely familiar, but I couldn't place it.

"Hi," I replied cautiously. "What happened here? I feel like the last guy on Earth or something." She stared at me for

a moment. I felt like I'd just said something stupid.

She smiled and said, "It must be lonely. Why did you decide to stay?" A gust of wind blew her hair over her face. She brushed it aside as I wrestled with the question.

"Well, uh, I fell asleep," I mumbled. There was something very odd about this conversation, but I couldn't figure out what. I knew I hadn't answered her question.

"Ah," she said, nodding. Then she laughed. A cute little laugh, as if she understood something I didn't. I didn't think it was funny. "Don't worry, you'll get used to it. Well, I'll see you around." And she turned to go down the hill.

"Wait a second," I called. "Do you need a ride into town?"

She stopped, looked at me, and then looked over at my car in the lot. "No thanks," she said with a slight smile, "I'll walk." And she did. Soon, she was out of sight and out of my life.

A chill ran up my spine. I'll get used to it? I thought. My world had betrayed me. All of a sudden, I was overwhelmed by a wave of confusion. I collapsed to my knees, hearing the loud rush of air in my ears as a gust came over the ridge.

I woke up sweating in my bed, hearing the wind as it screamed through the cracks in the wall next to my head. I was back in the familiar surroundings of my room. What a weird dream, I thought. I looked at my alarm clock and saw that I still had 12 minutes to sleep. I hate it when I wake up right before my alarm goes off, I thought. Today would be a tough day, with meetings in the morning, classes in the afternoon and a presentation dry-run in the evening. After that, I needed to fix computer programs for my work with Lincoln Lab. What a crazy school. I remembered that I had planned to finish

my math homework as soon as I'd get up. Of course, now that the time had come, I really didn't feel like doing it. Was grad school really for me?

I sat up and looked out the window. The river was partially frozen over. I was relieved to see cars moving on the street and people walking along the river. I realized that those people made my life what it is. All my goals involved those people: earning respect, making them think, making them laugh, sharing experiences, loving and caring, helping those in need. Yet, it was so easy to lose perspective here, to forget about others, indeed, to lose yourself. To not think about what's going on in the world, to not bother to tell somebody that you care about them, to put off learning something you always wanted to learn, just because there wasn't enough time in your busy schedule.

I thought to myself, From now on, I'm going to make time for those things, because they're important to me as a human being. Work is very important, but you have to live as a thinking, caring person too. I put my head back down on my pillow, hoping my alarm clock would stay quiet for a little while longer. But it went off right away, sounding like, of all things, a splash of water.

I woke up, this time with a jolt, on the ridge overlooking the ocean and the parking lot. The tide had come in, and the waves were rolling up high on the beach. That was a very strange dream, I thought. It was fading quickly, but it reminded me of something, I wasn't quite sure what. By now, the sun had set, and it was getting chilly. I put on my jacket and walked down the hill toward my little maroon Volkswagen. It was a nice night for a drive. In fact, it was one of those nights where you feel like driving forever. I just might do that, I thought to myself. I just might do that.

Gregory T. Huang is a graduate student in the Department of Electrical Engineering and Computer Science.

Letters policy

Editorials, marked as such and printed in a distinctive format, are the official opinion of *The Tech*. They are written by the editorial board, which consists of the chairman, editor in chief, managing editor, executive editor, news editors, and opinion editor.

Columns and editorial cartoons are written by individuals and represent the opinion of the author, not necessarily that of the newspaper.

Letters to the editor are welcome. They should be typed double spaced and addressed to *The Tech*, PO Box 29, MIT Branch, Cambridge MA 02139, or by interdepartmental mail to Room W20-483. Electronic submissions may be mailed to tech@athena.

Letters and cartoons must bear the authors' signatures, addresses, and phone numbers. Unsigned letters will not be accepted. No letter or cartoon will be printed anonymously without express prior approval of *The Tech*.

The Tech reserves the right to edit or condense letters. Shorter letters will be given higher priority. We regret that we cannot publish all of the letters we receive.

For the price of a fishing rod, we can lure a dropout back to school.



This space donated by *The Tech*



Spring Break is Right Around the Corner. And so is Garber Travel.

- BERMUDA
- BAHAMAS
- CANCUN
- FLORIDA

GARBER TRAVEL
1105 Mass. Ave., Cambridge
492-2300

**Angry?
Anxious?
Befuddled?
about the
War?**

DISCUSSION
on

February 20
WEDNESDAY, 12 NOON
WEST LOUNGE, STUDENT CENTER

BROWN BAG LUNCH
SPONSORED BY THE MIT CHAPLAINS

For FURTHER INFORMATION, CALL 253-2983 OR 253-2981

NOMINATIONS COMMITTEE INTERVIEWS

So you're interested in making a difference at MIT? You can do so by becoming the student representative on an institute committee.

Here is a list of all the committees.

- | | | | | | |
|------|-------|-------|----------|-------|----------|
| CAP | CSA | AMITA | FINBOARD | MCAC | CSR |
| COC | CUAFA | CC | COFS | CMICR | COUHES |
| COD | CUP | CSFB | HASS | COP | Well-MIT |
| FPC | ACSR | CJAC | IAPPC | ROTC | WAB |
| COLS | AFB | EOC | CIIC | COS | CWR |

For more info on these committees watch for "Shaping the Future," NomComm's guide to Institute Committees. Available February 21 in the Open House !!

Open House Time February 21 and February 28
from 2:00 pm to 5:00 pm
and Place Vannevar Bush Room 10-105

Interview Time March 2 and March 9
from 10:00 am to 5:00 pm
and Place Room 1-135

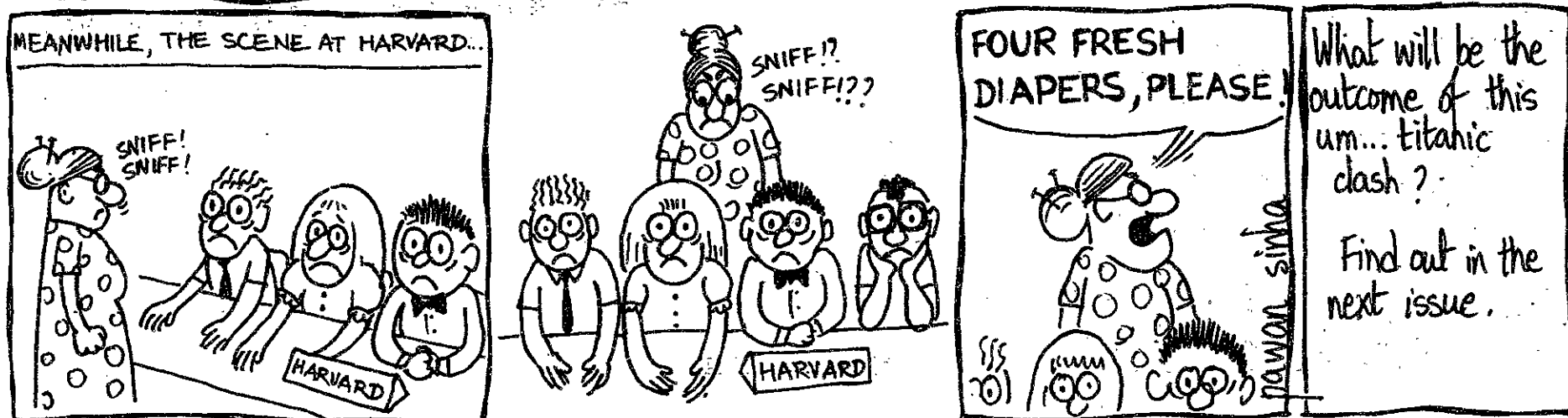
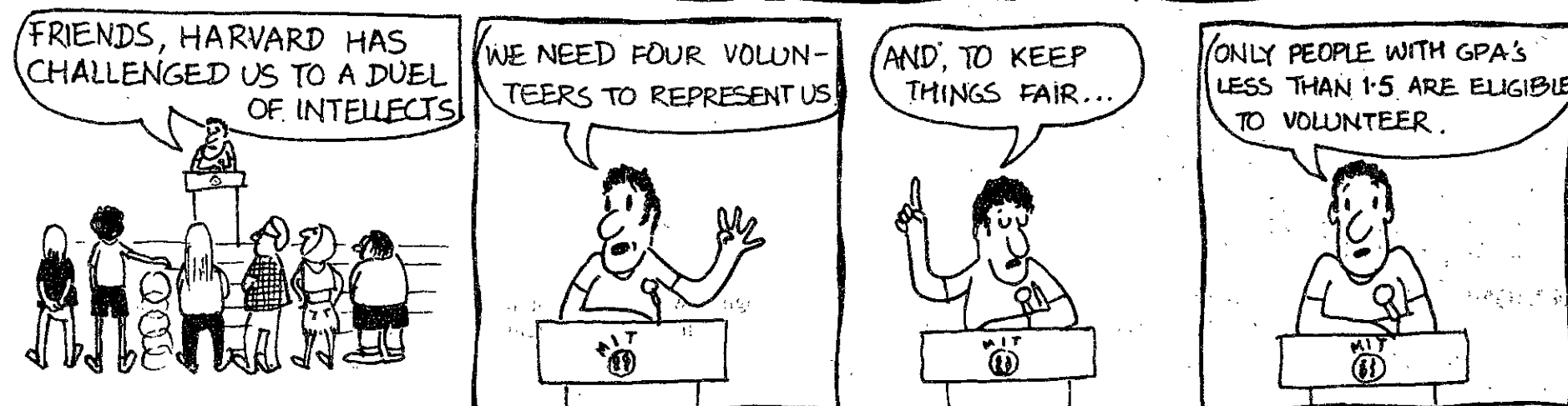
SIGN UP IN W20-401 OR CALL THE UA AT x3-2696.

PHOTOGRAPH

COMICS

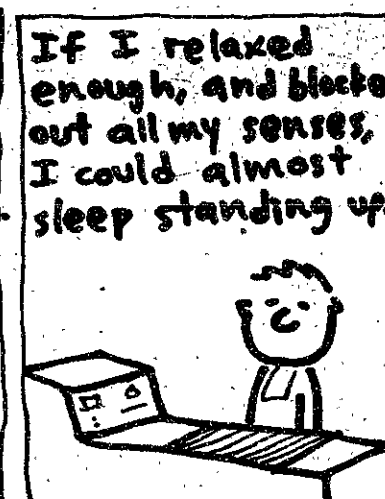
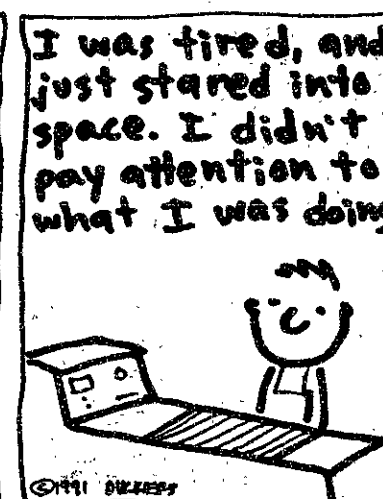
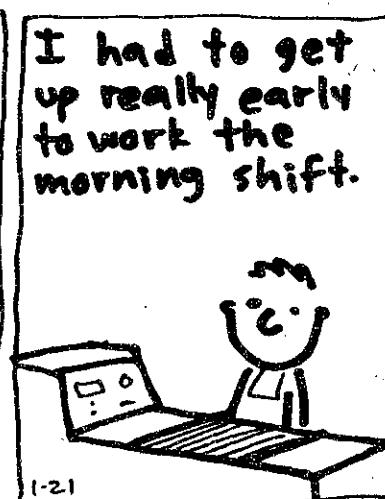
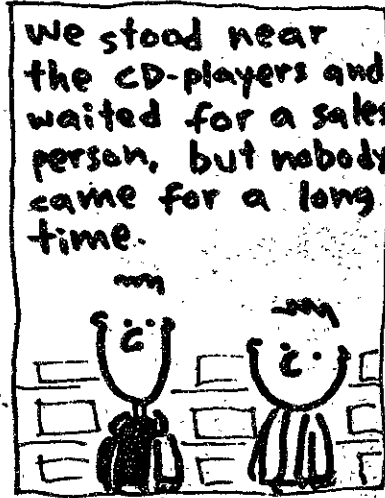
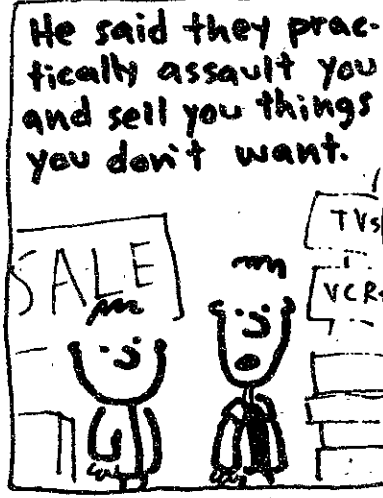
tumbleweed-garden

pawan sinha



Jim's Journal

by Jim



A R T S

In the Western Night celebrates Bidart's poetry

IN THE WESTERN NIGHT
By Frank Bidart.
Farrar Strauss Giroux, \$19.95, 244pp.

By JOSEPH M. SORCI

IN THE WESTERN NIGHT celebrates a rite of passage in contemporary American poetry. Frank Bidart's collected poems (from the period 1965-1990) span 25 years of intense and often visceral aesthetic evolution. The book encapsulates his earlier works *The Sacrifice*, *The Book of the Body* and *Golden State*, between two newer sections, *In the Western Night* and *The First Hour of the Night*. Anthologizing his work thus, Bidart creates a scheme of interpretation of his earlier work that transcends the merely biographical or temporal. Rather, a single, seminal poetic utterance emerges.

Bidart is a direct heir to the American school of post-modern poets, a friend to both Elizabeth Bishop and Robert Lowell (among others), and the executor of Robert Lowell's literary estate. The title of his book *In the Western Night* is, in fact, the last line of Allen Ginsberg's famous "Howl."



With such a legacy, it is no wonder that Bidart's first poetical gropings are intensely personal and confessional. The *Golden State* section centers on the poet's family, the father in particular, a perfect example of confessional exorcism. Bidart begins this section with the poem "Herbert White," a spooky recreation of a serial killer's inner turmoil and macabre lust. It puts the question in one's mind of whether the poems that follow, so ostensibly raw and self-spoken, are not also dramatic monologues.

Bidart turns outward in *The Book of the Body* section, but still retains his penchant for self-examination. What is uncomfortably personal in "Happy Birthday" transmutes into voyeuristic shame at the precision with which the poet renders the self-destruction of the anorexic "Ellen West." Bidart proves himself able to create an audience in his readers for disturbing, but often fertile, mental phenomena.

Nowhere is this more evident than in the third book, *The Sacrifice*, in a poem about a ballet dancer who takes on his shoulders the weight of World War I and strives to expiate the bloodshed through dance.

Appropriately titled "The War of Vaslav Nijinsky," the poem is rough-edged and skillfully executed. It is a powerful work that marks the full flowering of Bidart's style of philosopher-poet. To Nietzsche he retorts, "though He was dead, God was clever and strong. God struck back, AND KILLED US."

The final poem, "The First Hour of the Night," is the natural successor to this earlier work. It is nothing less than an attempt to catalogue and unite all of human thought within the mind of the author. Visions of the great philosophers and their ongoing debates through history mix with sentimental longings of a boy for his dead pony. The concepts of the individual and humanity are inextricably jumbled together with a painful realization of the plurality of truth. Bidart does credit to his confessional predecessors by carrying their ideas to a more perfect fruition. The book succeeds admirably as it strives to "reach the VEIN."

Frank Bidart will read his poetry on Wednesday, Feb. 20 at 7:30 pm in the Bartos Theater as part of the *Poetry at the Media Lab* series.

Anne-Sophie Mutter, Tanglewood Chorus shine with BSO

BOSTON SYMPHONY ORCHESTRA
With the Tanglewood Festival Chorus.
Works by Bartok and Mozart.
Anne-Sophie Mutter, soloist.
Directed by Seiji Ozawa and John Oliver.
Symphony Hall, Feb. 16.

By KAI-TEH TAO

LAST SATURDAY, the Boston Symphony Orchestra performed an exciting double-header beginning with Bartok's *Violin Concerto No. 2* — featuring internationally renowned violinist Anne-Sophie Mutter as soloist — and concluding with Mozart's *Mass in C Minor*. Mutter, who has appeared with the Cleveland and Philadelphia orchestras, recently concluded a Far East tour featuring concerto performances with the Tokyo Symphony Orchestra. In the past, she has recorded various works by the masters with the Vienna Phil-

harmonic and the Boston Symphony. Her recent engagement in Boston marks the beginning of her six-week North American tour.

Mutter's interpretation of the work demonstrated a unique virtuosity that reminded one of the great Italian violinist, Paganini. Her command of the quick runs, combined with her ability to keep the piece moving at *presto*, made the concerto exciting to listen to. At times, it seemed like Mutter was presenting a show of the many different string techniques, ranging from sliding glissandos to sharp staccatos and pizzicatos.

The second half of the performance featured the Tanglewood Festival Chorus under the baton of MIT Senior Lecturer in Music and Theater Arts John S. Oliver. Due to soprano Sylvia MacNair's unexpected illness, the audience was greeted with a surprise soloist, Heidi Grant, whose brilliant performance suggested a promising future career. Grant's voice, which ran

through a whole range of notes, blended richly with the instrumental accompaniment.

The solemnity of the mass' first movement, "Kyrie," contrasted strongly with the liveliness of the famous "Gloria," which featured soprano Susanne Mentzer and the rich tenor voice of Jerry Hadley. Mentzer did not seem as confident in singing her part, with her voice quivering at times. It was apparent that both sopranos were more comfortable singing the high notes than the low ones near the alto range.

The two sopranos managed to complement each other with contrasting harmonies, singing similar parts at different times in a skillful overlap. As the chorus

rejoined the soloists in singing "Qui tollis," the dynamics changed drastically once again, with constant crescendos and diminuendos. The way the voices were blended with the orchestra suggested a conversation between the instruments and the voices.

The symphony continued this theme when the chorus sang "Cum sancto Spiritu," featuring bass soloist John Ostendorf, who was accompanied by Hadley's booming tenor. During the "Sanctus," the lively blasts of the horn section, whose fanfare suggested the coming glory of the Lord, joined the chorus. The night ended with the audience's roar of approval for Grant, whose performance erased any possible doubts to her ability.

Arts Arts

P R E S I D E N T S' D A Y
S A L E

America's Most Unique Music Department!

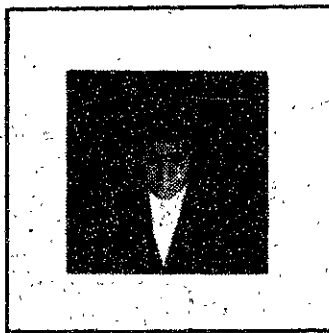
If you're a jazz or pop music fan, get over to The Coop for hot savings on all your favorite sounds of music! Shown: just a few of the titles you'll find on sale right now, including a select group of CBS Nice-Price titles.

20% OFF

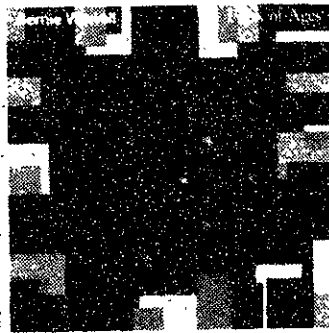
ALL Regularly Priced Pop & Jazz CDs & Tapes! All Titles! All Labels! All Artists!



Strunz And Farsh
Primal Magic
\$6.99 Tape \$11.99 CD



Peter Gabriel
Shaking The Tree
\$6.99 Tape \$11.99 CD



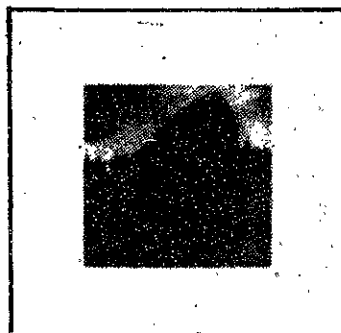
Bernie Worrell
Funk Of Ages
\$6.99 Tape \$11.99 CD



John Cale
Vintage Violence
\$8.79 CD

20% OFF

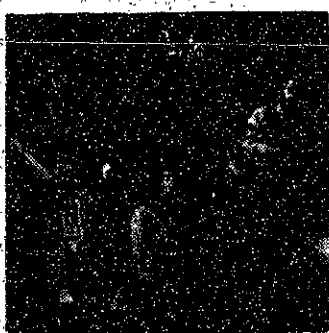
Select Group Of CBS Nice-Price Titles Including:



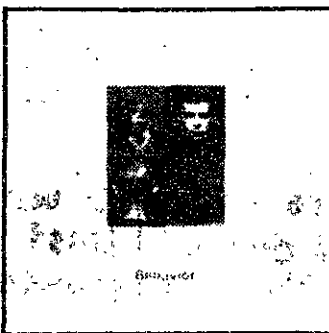
Sting
The Soul Cages
\$7.99 Tape \$11.99 CD



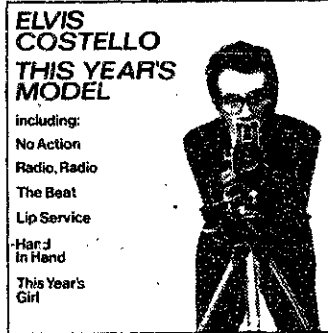
John Hiatt
Hangin' Around
The Observatory
\$8.79 CD



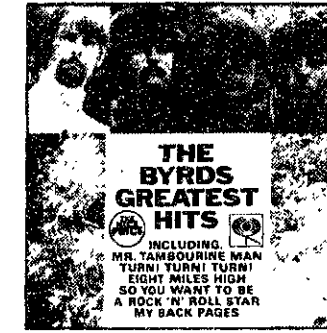
Deee-Lite
World Clique
\$6.99 Tape \$11.99 CD



Pet Shop Boys
Behavior
\$6.99 Tape \$11.99 CD



Elvis Costello
This Year's Model
\$3.99Tape \$8.79 CD



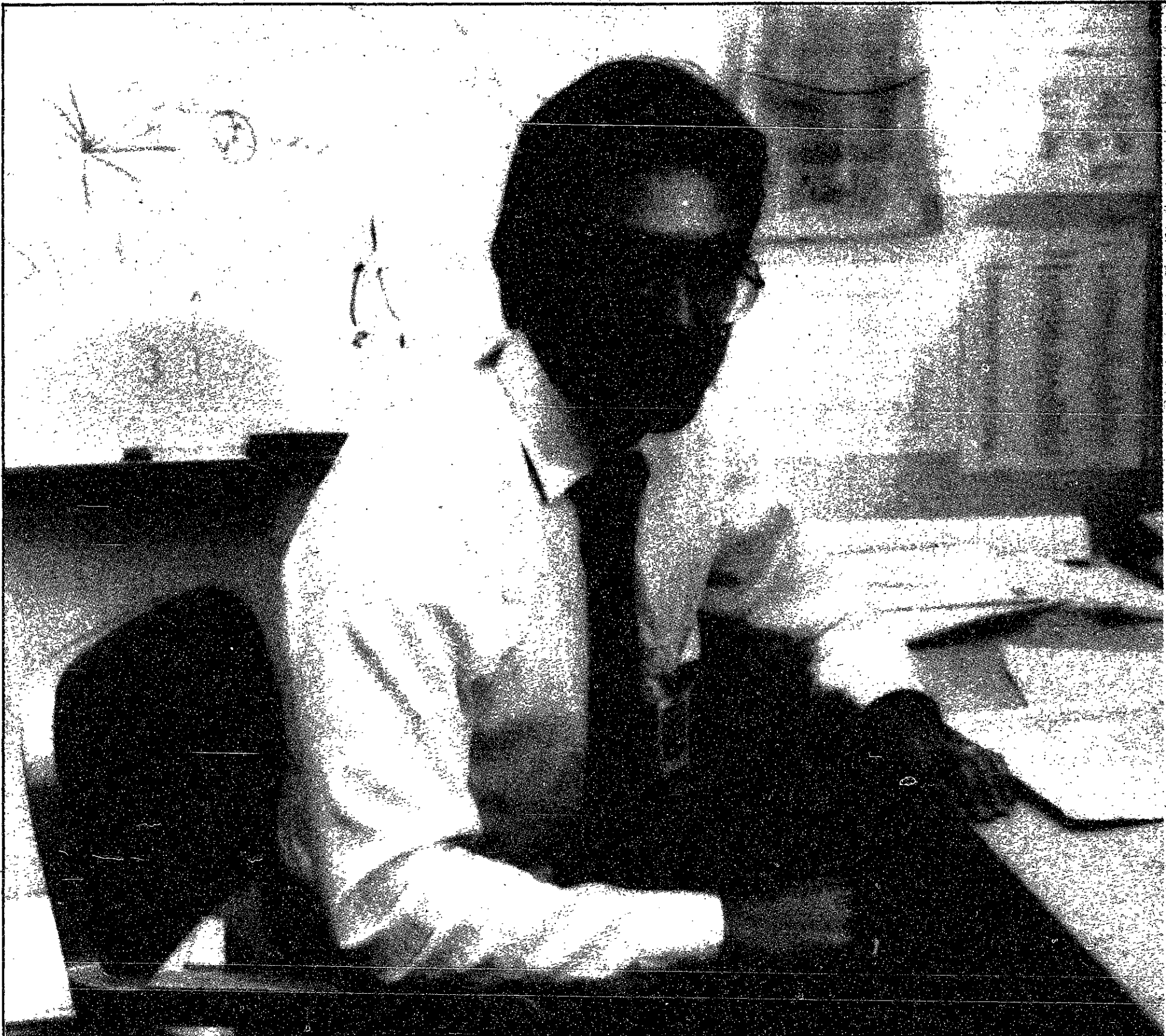
The Byrds
Greatest Hits
\$3.99Tape \$8.79 CD

*Prices shown reflect 20% savings.

MIT COOP AT KENDALL
3 CAMBRIDGE CENTER
M-F 9:15-7 THUR 'TIL 8:30
SAT 9:15-5:45



COOP CHARGE, MASTER CARD, VISA AND AMERICAN EXPRESS ARE WELCOME!
FREE PARKING AT KENDALL - AFTER 5 WEEKDAYS AND ALL DAY SAT AT CAMBRIDGE CENTER GARAGE
*WITH SALES RECEIPT SHOWING \$5 MIN. COOP PURCHASE. VALIDATE AT CASHIER'S DESK AT THE COOP



*Merle Crutchfield III, BS Aerospace/Aeronautics & Astronautics, MIT University.
Graduated June, 1989.*

When Merle graduated in '89, he knew where to go. And how to get there.

Merle Crutchfield III joined our Missile Systems Group as a Member of the Technical Staff to work with the most advanced and exciting technology around. He found exactly what he expected. "The work was interesting and the people were knowledgeable and helpful."

What Merle didn't expect was the support he received for continuing his education. "I've applied for a fellowship program as I plan to go back for my Master's degree. Hughes has encouraged this tremendously."

You can get to know Hughes the same way Merle did. At our Information & Interview Sign-Up Day. It's a unique opportunity for you to gain valuable information about a wide range of Hughes organizations. You can be selective and present your resume in person to the Hughes organizations that interest you most. And by talking directly with us, you'll discover career advantages that can't be seen in a brochure while showing us those qualities that just don't show up on a resume.

Campus interviews will be scheduled for February 22.

Stop by anytime during the day and discover engineering/scientific opportunities in:

- Mechanical Engineering
- Electrical Engineering
- Computer Science
- Physics
- Aeronautical Engineering

Explore these exciting challenges at Hughes' Information & Sign-Up Day. It's the perfect chance to find an ideal match between you and Hughes.

You'll never know how far your education can take you until you take that first step.

Equal Opportunity Employer.

Proof of U.S. citizenship may be required.

Interview Sign-Up & Information Day

Thursday, February 21, 10:00am-3:00pm
Mezzanine Lounge, Student Center, 3rd Floor
Please bring five resumes

Interviews Will Be Scheduled For February 22

*Hughes: Exploring new worlds
through technology.*

HUGHES

ARTS

Silence of the Lambs is a terrifying, grisly thriller

SILENCE OF THE LAMBS

Directed by Jonathan Demme.
Based on the novel by Thomas Harris.
Starring Jodie Foster, Anthony Hopkins and Scott Glenn.
Now playing at Loews Charles.

By MICHELLE P. PERRY

SILENCE OF THE LAMBS, based on the Thomas Harris novel, is the most nerve-wracking movie of the year.

Jodie Foster plays Clarice Starling, an FBI trainee who is recruited by her mentor, FBI agent Jack Crawford (Scott Glenn), to help track down a serial killer. Clarice's first assignment is to interview Dr. Hannibal Lecter (Anthony Hopkins), a murderous psychiatrist currently under maximum security in a forensic hospital ("He's our prized asset, from a research point of view," says the doctor in charge of Hannibal's care).

The movie is less about the search for the killer than the interaction between Clarice and Hannibal. Beneath Hannibal's carefully chosen words lie the clues Clarice needs to find the killer. However, he demands a price for their conversations —

for every piece of information he reveals, she must tell him an anecdote about her past, *quid pro quo*.

Clarice is heroically human. She is given a past which infects her present, and weaknesses to compliment her strengths. No one could have been a better choice for the role than Jodie Foster. Foster firmly reassured us that her own past as a child actor would not hinder her acting future when she deservedly won an Academy Award for her role in *The Accused*. She seems to be building on everything she learned from *The Accused*: her performance is intelligent, precise and thoroughly moving. Clarice is a character to empathize with.

Dangerous, gruesome, horrifying, ingenious, cultured, twisted — the list of adjectives which describe Hannibal go on and on, but nothing can adequately recreate the experience of watching Hopkins bring his character to life. Perhaps it's his lovely British accent and refined manners contrasted with his power to manipulate and destroy people; perhaps it's the evil that emanates from his soft blue eyes (no joke — look at the photos). Somehow, these characteristics combine to make Hannibal appealing, yet utterly horrifying.

Scott Glenn and Anthony Heald give fine supporting performances. Keep an eye out for singer Chris Isaak as a SWAT commander.

Director Jonathan Demme's other credits include *Melvin and Howard*, *Something Wild*, *Married to the Mob* and the Talking Heads concert film *Stop Making Sense*. *Something Wild* is the best example of a previous film in which he dealt with an insanely homicidal character, but his past work only hints at the intensity he has achieved in *Lambs*.

Lambs is based on Thomas Harris' novel of the same name. His previous two novels, *Black Sunday* and *Red Dragon*, were also made into films (*Red Dragon* was retitled *Manhunter*). *Lambs* is in one sense a sequel to *Manhunter*: Lecter's



Clarice Starling (Jodie Foster)

character appears in both, though his role in *Manhunter* is relatively minor. However, *Lambs* sets itself apart by being a much more faithful adaptation of Harris' story.

The climax of each book relies on the "blindness" of one of the characters. This is obviously difficult to interpret visually, and the ending of *Manhunter* is altered to simplify things for the filmmakers. Unfortunately, this watered-down version eliminated a truly unexpected plot twist.

Demme is clever enough to keep the ending of *Lambs* as Harris wrote it.

Demme and scriptwriter Ted Tally also deserve praise for retaining Harris' gruesome sense of humor, as well as some absolutely grotesque (though not necessarily gory) moments in the book.

Silence of the Lambs is not an easy film to see. It's not the usual slice-and-dice masquerading as a psychological thriller. This one *does* do something to your mind. Leaving the theater does not mean leaving the film behind — it lingers in the back of your mind and in the pit of your stomach. Enjoy!



Hannibal Lecter (Anthony Hopkins)

TICKETS ON SALE NOW!

BEN HUR

"Unless you have seen this breathtaking historical epic on the big screen, you haven't seen it at all."

-critics in Seattle said last month

See Ben Hur at
The Wang Center the way
movies were meant to be
seen on an enormous screen
70mm, six-track stereo, surround sound



Friday, February 22, 7:30 p.m.
Saturday, February 23, 7:30 p.m.
Sunday, February 24, 2:00 p.m.

General admission tickets: \$6.00
Group rates for 20 or more (call 426-6444)

For information, call 482-9393

ARTS

Tuesday, Feb. 19

CONTEMPORARY MUSIC

The Pact, Brain Thrust, Overdrive, Big Chirkus, and Sarcazm perform at 9 pm in an 18+ ages show at the Channel, 25 Necco Street, near South Station in downtown Boston. Tickets: \$5. Telephone: 426-3888.

Peter Morton and Chris Chandler perform at Johnny D's, 17 Holland Street, Davis Square, Somerville, near the Davis Square T-stop on the red line. Telephone: 776-9667.

JAZZ MUSIC

Flor de Caña performs at 9 pm at the Regattabar, Charles Hotel, Harvard Square, Cambridge. Tickets: \$7. Telephone: 661-5000.

Trumpeter Mark Whitfield performs at 7:30 & 10:30 at Nightstage, 823 Main Street, Cambridge, just north of MIT. Tickets: \$10 advance/\$11 day of show. Telephone: 497-8200.

The Phil Person Quartet performs at the Willow Jazz Club, 699 Broadway, Ball Square, Somerville. Telephone: 623-9874.

The Debbie Kochman Group performs at the Western Front, 343 Western Avenue, Cambridge. Telephone: 492-7772.

CLASSICAL MUSIC

Chanticleer performs works by Bach, Rorem, Haydn, Bartok, and Smetz at 8 pm in First Church Congregational, 11 Garden Street, Cambridge. Tickets: \$16 general, \$12 seniors and students. Telephone: 776-1266.

The New England Conservatory Bach Ensemble performs at 8 pm at 30 Gainsborough Street at Huntington Avenue, Boston. No admission charge. Telephone: 262-1120.

Soprano Sara Goldstein and flutist Eleanor Preble perform works by Purcell, Schubert, Wolf, and Rouse at 8 pm in Scully Hall, Boston Conservatory, 8 The Fenway, Boston. No admission charge. Telephone: 536-6340.

THEATER

CRITICS' CHOICE
Penn & Teller present *The Refrigerator Tour* at the Colonial Theater, 106 Boylston Street, Boston. Continues through March 3 with performances Tuesday-Saturday at 8:00, Sunday at 5:30, with matinees Saturday & Sunday at 2:00. Tickets: \$17.50 to \$34.50. Telephone: 426-9366.

Safari Sagoodi, a '40s Hollywood movie studio trying to avoid bankruptcy with a boffo jungle epic, opens today as a presentation of the Hasty Pudding Theatricals at the Hasty Pudding Theatre, 12 Holyoke Street, Cambridge. Continues through March 19 with performances Tuesday-Friday & Sunday at 8 pm and Saturday at 5 pm & 9 pm. Tickets: \$17 to \$19. Tel: 495-5205.

FILM & VIDEO

CRITICS' CHOICE
The Harvard Film Archive continues its Tuesday series *Oneiro Cinema* with Kenji Mizoguchi's *Ugetsu Monogatari* (1953, Japan) at the Carpenter Center for the Visual Arts, Harvard University, 24 Quincy Street, Cambridge. Tickets: \$4 general, \$3 seniors and children. Telephone: 495-4700.

The Brattle Theatre continues its Tuesday series *Independent Filmmaking* with *Voices of Sarafina!* (1988, Nidel Noble) at 8:00 & 9:30 at 40 Brattle Street, Harvard Square, Cambridge. Tickets: \$5.50 general, \$3 seniors and children. Telephone: 876-6837.

Blue Planet, a panoramic view of our home planet from a vantage point 200 miles above Earth; and *To the Limit*, the story of three world-class athletes in their quest for the ultimate performance, continue indefinitely at the Museum of Science, Science Park, Boston at the Science Park station on the Green line. *Blue Planet* screenings are Tuesday-Sunday at 11, 1, 2, 3, 4, 7, & 8; Friday also at 9; Saturday also at 10, 12, 5, 6, & 9; Sunday also at 12, 5, & 6. Tickets: \$6 general, \$4.50 seniors and children. Telephone: 523-6664.

CRITICS' CHOICE
The Somerville Theatre presents the Bugs Bunny Film Festival at 3:00, 5:15, 7:30, & 9:45 at 55 Davis Square, Somerville, near the Davis Square T-stop on the red line. Continues through February 25. Tel: 625-5700.

The Institute of Contemporary Art presents Michelangelo Antonioni's *Red Desert* (1964, Italy) at 7:30 in the ICA Theater, 955 Boylston Street, Boston. Also presented February 20 and 21. Tickets: \$5 general, \$4 ICA members, seniors, and students. Telephone: 266-5152.

The Coolidge Corner Theatre presents *My Twentieth Century* (1990, Ildiko Enyedi) at 5:45, 7:45, & 9:45, *Theif of Bagdad* (1940, Alexander Korda) at 1:00 & 5:45, *Vincent and Theo* (1990, Robert Altman) at 7:15, *The Time Machine* at 2:30, and *To Sleep With Anger* (1990, Charles Burnett) at 5:15 & 9:45 at 290 Harvard Street, Brookline, at the Coolidge Corner T-stop on the 'C' green line. Films continue indefinitely. Tickets: \$6. Telephone: 734-2500.

The Regent Theater presents *Raiders of the Lost Ark* at 7 pm and *Indiana Jones and the Temple of Doom* at 9 pm at 7 Medford Street, Arlington Center, on the #7 MBTA bus line from Harvard Square. Also presented February 20. Telephone: 643-1198.

Wednesday, Feb. 20

CONTEMPORARY MUSIC

Blind Rhino, Nirvana Groove, Witch Bonnie, and Atanga perform at 9 pm in a 19+ ages show at Axis, 13 Lansdowne Street, Boston, near Kenmore Square. Telephone: 262-2437.

Migrants. The Cads, The Answer, Cool Blue Sky, and Aram Island perform at 9 pm in an 18+ ages show at the Channel, 25 Necco Street, near South Station in downtown Boston. Tickets: \$4.50. Telephone: 426-3888.

On The Town

Compiled by Peter Dunn.

Whoville, The 360's, and Grand Theft Auto perform in an 18+ ages show at the Paradise, 967 Commonwealth Avenue, Boston. Admission: \$1.01. Telephone: 254-2052.

One World performs at the Western Front, 343 Western Avenue, Cambridge. Telephone: 492-7772.

Incredible Casuals and Hypnotic Clambake perform at Johnny D's, 17 Holland Street, Davis Square, Somerville, near the Davis Square T-stop on the red line. Telephone: 776-9667.

Marimolin performs works by Simon Bainbridge, Gunther Schuller, Andrew Frank, and Wolfgang Muthspiel at 8:15 at the Berkeley Performance Center, 136 Massachusetts Avenue, Boston. Tickets: \$4. Telephone: 327-6803.

JAZZ MUSIC

The Cedar Walton/Ron Carter/Billy Higgins Trio performs at 9 pm at the Regattabar, Charles Hotel, Harvard Square, Cambridge. Also presented February 21 to 23. Tickets: \$8 to \$12. Telephone: 661-5000.

Greg Howe & Howe II and The John Finn Group perform at 9 pm at Nightstage, 823 Main Street, Cambridge, just north of MIT. Tickets: \$7 advance/\$8 day of show. Telephone: 497-8200.

CLASSICAL MUSIC

The Boston Symphony Orchestra, Simon Rattle conducting, performs Mahler's *Symphony No. 7* in an open rehearsal at 7:30 in Symphony Hall, corner of Huntington and Massachusetts Avenues, Boston. Regular performances are February 21, 23, & 26 at 8:00 and February 22 at 2:00. Tickets: \$18 to \$47.50. Telephone: 266-1492.

The Mozart-Prokofiev Festival — Program II is presented at 8 pm in the Tsai Performance Center, Boston University, 685 Commonwealth Avenue, Boston. Tickets: \$5 general, \$3 seniors and students. Telephone: 353-3345.

Ein Liederabend, featuring works by Purcell, Strauss, Hahn, Scarlatti, Donizetti, Fauré, and Schubert, is presented at 8:30 in the Boston University Concert Hall, 855 Commonwealth Avenue, Boston. No admission charge. Telephone: 353-3345.

The New England Conservatory Honors String Quartet performs Debussy's *String Quartet* and Bartok's *Quartet No. 1* at 8 pm at 30 Gainsborough Street at Huntington Avenue, Boston. No admission charge. Telephone: 262-1120.

THEATER

Celebrating Shakespeare II, scenes, speeches, sonnets, and songs from the works of William Shakespeare, is presented at 8 pm at the Boston University Theatre, Studio 210, 264 Huntington Avenue, Boston. Also presented February 21-23 at 8 pm and February 23-24 at 2 pm. Tickets: \$5 general, \$3 seniors and students. Telephone: 353-3345.

FILM & VIDEO

CRITICS' CHOICE
The Brattle Theatre continues its Wednesday series *On the Road* with David Lynch's *Wild at Heart* (1990) at 3:30 & 7:50 and Jonathan Demme's *Something Wild* (1986) at 5:40 & 10:00 at 40 Brattle Street, Harvard Square, Cambridge. Tickets: \$5.50 general, \$3 seniors and children (good for the double feature). Telephone: 876-6837.

The Harvard Film Archive continues its Wednesday series of *Italian Cinema* with *Nights of Cabiria* (1956, Federico Fellini) at 5:30 & 8:00 at the Carpenter Center for the Visual Arts, Harvard University, 24 Quincy Street, Cambridge. Tickets: \$4 general, \$3 seniors and children. Telephone: 495-4700.

The Museum of Fine Arts continues its series *Frida Kahlo & Diego Rivera* on film with *Diego Rivera: I Paint What I See* (1989, Mary Lance) and *The Life and Death of Frida Kahlo* (1966, David & Karen Crommie) at 4 pm & 8 pm and *Frida* (1985, Paul Leduc) at 6 pm in Remis Auditorium, MFA, 465 Huntington Avenue, Boston. Tickets: \$5 general, \$4.50 MFA members, seniors, and students. Telephone: 267-9300 ext. 306.

Raiders of the Lost Ark and *Indiana Jones and the Temple of Doom* at the Regent Theater. See February 19 listing.

Bugs Bunny Film Festival at the Somerville Theatre. See February 19 listing.

Red Desert (1964, Michelangelo Antonioni, Italy) at the Institute of Contemporary Art Theater. See February 19 listing.

Thursday, Feb. 21

CONTEMPORARY MUSIC

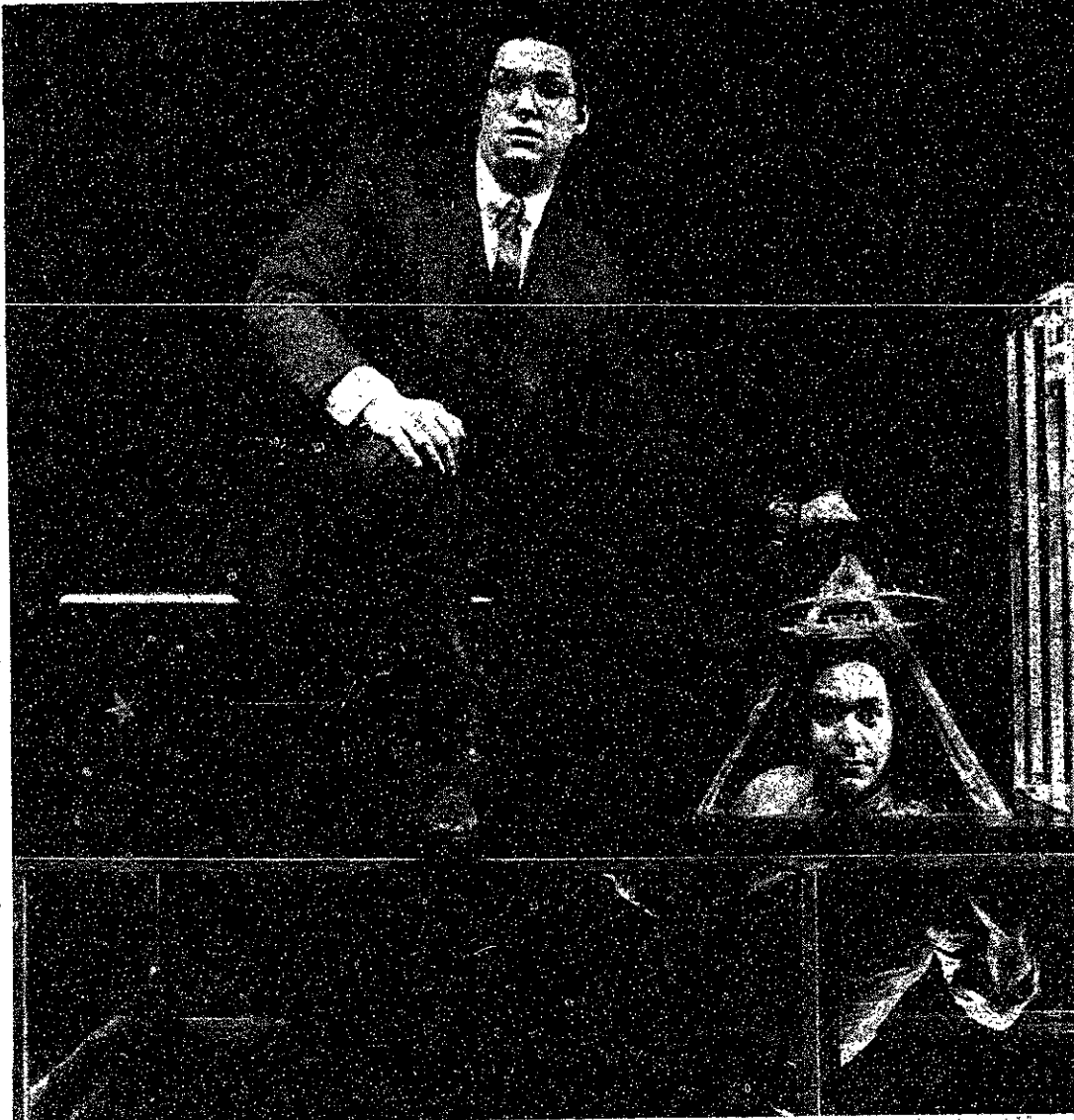
SCC Stray's Rat presents *Wild West* at 9:30 in the MIT Student Center. Admission: \$1 with MIT/Wellesley. Telephone: 258-7356.

Nevada Beach, Love it to Death, Hammersmith, Hellbent, and Bay of Pigs perform at 9 pm in an 18+ ages show at T.T. the Bears, 10 Brookline Street, Cambridge, just north of MIT. Telephone: 492-0082.

The Gordons, Childhood, Furious Wigs, and Kitchens of Distinction perform in an 18+ ages show at Axis, 13 Lansdowne Street, Boston, near Kenmore Square. Telephone: 262-2437.

June Tabor & The Oyster Band and The Judy Bats perform at 9 pm at Nightstage, 823 Main Street, Cambridge, just north of MIT. Tickets: \$10 advance/\$11 day of show. Telephone: 497-8200.

Danny Tucker performs at the Western Front, 343 Western Avenue, Cambridge. Telephone: 492-7772.



Con artistes extraordinaire Penn & Teller present their *Refrigerator Tour* at the Colonial Theater from Feb. 19 to March 3.

Cartoon Factory, Carnal Carnival, Pipes, and Sam Hill perform in an 18+ ages show at the Rat, 528 Commonwealth Avenue, Kenmore Square, Boston. Telephone: 536-2750.

Big Clock and Laurie Geltman Band perform at Johnny D's, 17 Holland Street, Davis Square, Somerville, near the Davis Square T-stop on the red line. Telephone: 776-9667.

The Fat City Band performs at Ed Burke's, 808 Huntington Avenue, Boston, on the 'E' green line. Telephone: 232-2191.

The Cedar Walton/Ron Carter/Billy Higgins Trio at 9 pm at the Regattabar. See February 20 listing.

The Bruce Gertz Trio performs at the Willow Jazz Club, 699 Broadway, Ball Square, Somerville. Telephone: 623-9874.

The Suzanna Sifter Trio performs at 8 pm in the Blacksmith House, Cambridge Center for Adult Education, 56 Brattle Street, Cambridge. Tickets: \$3.50. Telephone: 547-6789.

CLASSICAL MUSIC
Cellist David Cho performs works by Bach, Crumb, and Casadio in an MIT Chapel Series concert at 12 noon in the MIT Chapel. No admission charge. Telephone: 253-2906.

The Jordan Winds, Michael Webster conducting, performs works by Varese, Revueltas, and Holst at 8 pm at 30 Gainsborough Street at Huntington Avenue, Boston. No admission charge. Telephone: 262-1120.

A Kurt Weill Cabaret is presented at 8 pm in the Edward Pickman Concert Hall, Longy School of Music, 27 Garden Street, Cambridge. Also presented February 22 to 24. Tickets: \$5. Telephone: 876-0956.

The Boston Symphony Orchestra, Simon Rattle conducting, at Symphony Hall. See February 20 listing.

THEATER

Queer Notions, a captivating blend of physical theatre, mime, mask, and voice, is presented by Shoda Moving Theatre at 8 pm at The Performance Place, 277 Broadway, Somerville, near the Sullivan T-stop on the orange line. Also presented February 22 and 23. Tickets: \$12. Telephone: 625-1300.

The Brides, Harry Kondoleon's flood of imagistic language centered around the hopes and frustration of the powerful icon of "bride," is presented at 8 pm by Pilgrim Theatre at the Black Box Theatre, Boston Center for the Arts, 539 Tremont Street, Boston. Also presented February 22-24. Tickets: \$10. Telephone: 723-2170.

The Plough and Stars, Sean O'Casey's bawling, poetic tragedy about the Easter Rising of 1916 in Dublin, opens today at the New Repertory Theatre, 54 Lincoln Street, Newton Highlands, near the Newton Highlands T-stop on the 'D' green line. Continues through March 24 with performances Thursday & Friday at 8:00, Saturday at 5:00 & 8:30, and Sunday at 3:00 & 7:30. Tickets: \$12 to \$18. Telephone: 332-1646.

DANCE

The Independent Company of Alla Sigalova, Contemporary Dance Theatre from the Soviet Union, performs at 8 pm at the Emerson Majestic Theatre, 219 Tremont Street, Boston. Also presented February 22 at 8 pm and February 23 at 2 pm & 8 pm. Tickets: \$10, \$12, and \$15. Telephone: 578-8785.

FILM & VIDEO

The Brattle Theatre continues its Thursday series of *Works of Andrei Tarkovsky* with *Andrei Rublev* (1966) at 5:00 & 8:30 at 40 Brattle Street, Harvard Square, Cambridge. Tickets: \$5.50 general, \$3 seniors and children. Telephone: 876-6837.

The Coolidge Corner Theatre begins its *Human Rights Film Festival* with *Taxi Blues* (1990, Pavel Lounguine, USSR) at 7:30 at 290 Harvard Street, Brookline, at the Coolidge Corner T-stop on the 'C' green line. Film continues indefinitely. Telephone: 734-2500.

Bugs Bunny Film Festival at the Somerville Theatre. See February 19 listing.

Red Desert (1964, Michelangelo Antonioni, Italy) at the Institute of Contemporary Art Theater. See February 19 listing.

Friday, Feb. 22

CONTEMPORARY MUSIC

CRITICS' CHOICE
The Replacements and They Eat Their Oats perform at 7:30 at the Orpheum Theatre, Hamilton Place, Boston. Also presented February 23. Tickets: \$19.50. Telephone: 482-0650.

Dresden Dance performs at 10:30 in an 18+ ages show at Axis, 13 Lansdowne Street, Boston, near Kenmore Square. Telephone: 262-2437.

Urban Blight and Style perform at the Paradise, 967 Commonwealth Avenue, Boston. Telephone: 254-2052.

Physical Graffiti and 40 Thieves perform at 9 pm at the Channel, 25 Necco Street, near South Station in downtown Boston. Tickets: \$7.50 advance/\$8.50 day of show. Telephone: 426-3888.

Heavy Metal Horns, Agent 13, and Swing perform in an 18+ ages show at T.T. the Bears, 10 Brookline Street, Cambridge, just north of MIT. Telephone: 492-0082.

One People performs at the Western Front, 343 Western Avenue, Cambridge. Also presented February 23. Telephone: 492-7772.

The Titanics, Menta, Crazy Alice, and The Ballistics perform at the Rat, 528 Commonwealth Avenue, Kenmore Square, Boston. Telephone: 536-2750.

Spanic Boys and Memphis Rockabilly perform at Johnny D's, 17 Holland Street, Davis Square, Somerville, near the Davis Square T-stop on the red line. Telephone: 776-9667.

Boogaloo Swamis, Miss Xanna Don't, and The Willin' perform at Ed Burke's, 808 Huntington Avenue, Boston, on the 'E' green line. Telephone: 232-2191.

JAZZ MUSIC

CRITICS' CHOICE
Trumpeter Mark Isham performs at 8 pm & 11 pm at Nightstage, 823 Main Street, Cambridge, just north of MIT. Tickets: \$10 advance/\$11 day of show. Telephone: 497-8200.

The Cedar Walton/Ron Carter/Billy Higgins Trio at 8 pm & 10 pm at the Regattabar. See February 20 listing.

The Jay Branford Septet performs at the Willow Jazz Club, 699 Broadway, Ball Square, Somerville. Also presented February 23. Telephone: 623-9874.

Tufts Jazz Ensemble and Tufts Small Jazz Ensemble perform at 8 pm in Cohen Auditorium, Tufts University, Medford. No admission charge. Telephone: 381-3564.

CLASSICAL MUSIC
The Lydian String Quartet performs works by Professors Peter Child and John Harbison '49 in an MIT Faculty Series concert at 8 pm in Killian Hall, MIT Hayden Memorial Library Building 14. No admission charge. Tel: 253-9800.

Joyce Wong G, cello; Nancy Flske, clarinet; and Ronnie Schwartz, piano, perform works by Barber and Brahms in an *Advanced Music Performance* concert at 12 noon in Killian Hall, MIT Hayden Memorial Library Building 14. No admission charge. Telephone: 253-2906.

The Vienna Philharmonic, Claudio Abbado conducting, performs Weber's *Six Pieces for Orchestra, Op. 6* and Bruckner's *Symphony No. 4 in E-flat Major* at 8 pm in Symphony Hall, corner of Huntington and Massachusetts Avenues, Boston. Tickets: \$40, \$50, and \$60. Telephone: 266-1492.

Banchetto Musicale performs Haydn's *Mass in Time of War* at 8 pm in Jordan Hall, New England Conservatory, 30 Gainsborough Street at Huntington Avenue, Boston. Tickets: \$13, \$19, and \$24. Telephone: 864-5988.

Chorus Pro Musica performs works by Gibbons, Byrd, Brahms, Poulenc, Gabrieli, Woolen, and Bruckner at 8 pm in Old South Church, Copley Square, Boston. Tickets: \$10, \$15, and \$25. Telephone: 267-7442.

Winners of the Boston Conservatory Student Concerto Competition, with the Conservatory Orchestra, perform works by Handel, Mozart, Haydn, and Chopin at 8 pm in Scully Hall, 8 The Fenway, Boston. No admission charge. Telephone: 536-6340.

The Boston University Concert Choir and Chamber Orchestra perform works by Beethoven, Füssell, and Mozart at 8:30 in the BU Concert Hall, 855 Commonwealth Avenue, Boston. No admission charge. Telephone: 353-3345.

Organist Victoria Wagner performs at 12:15 in Trinity Church, Copley Square, Boston. No admission charge. Telephone: 536-0944.

The Boston Symphony Orchestra, Simon Rattle conducting, at Symphony Hall. See February 20 listing.

A Kurt Weill Cabaret at the Edward Pickman Concert Hall, Longy School of Music. See February 21 listing.

THEATER

Vision of Dreaming Branch, the adventures — based on Hopi mythology — of an orphan girl who set across the desert to find her name, song, and story, is presented as 7:30 by the Underground Railway Theatre at the Arlington Center for the Arts, 41 Foster Street, Arlington. Also presented February 23 at 1:00 & 3:00. Tickets: \$8 general, \$6 seniors and students. Telephone: 643-6916.

Queer Notions presented by Shoda Moving Theatre at The Performance Place. See February 22 listing.

The Brides presented by Pilgrim Theatre at the Black Box Theatre, Boston Center for the Arts. See February 21 listing.

DANCE

The Independent Company of Alla Sigalova at the Emerson Majestic Theatre. See February 21 listing.

FILM & VIDEO

The MIT Lecture Series Committee presents *The Defiant Ones* (1958, Stanley Kramer) at 7:30 in 10-250 and *Wild at Heart* (1990, David Lynch) at 6:30 & 10:00 in 26-100. Tickets: \$1.50. Telephone: 258-8881.

The MIT Black Student Union presents films by Marlon Riggs, *Tongues Untied*, *Paris is Burning*, and *Affirmation*, at 7 pm in the Black Student Union Lounge, MIT Room 50-105, Walker Memorial Building. Telephone: 253-4861.

CRITICS' CHOICE
The Wang Center presents *Ben Hur* at 7:30 at 270 Tremont Street, Boston. Also presented February 23 at 7:30 and February 24 at 2:00. Tickets: \$6. Telephone: 482-9393.

The Coolidge Corner Theatre continues its *Human Rights Film Festival* with a Constantine Costa-Gavras double feature, *The Confession* (1970, France) at 4:50 & 9:50 and *Missing* (1983) at 2:30 & 7:25 at 290 Harvard Street, Brookline, at the Coolidge Corner T-stop on the 'C' green line. Also presented February 23. Telephone: 734-2500.

The Coolidge Corner Theatre presents *Barbarella and Multiple Maniacs* (John Waters) at 12 midnight at 290 Harvard Street, Brookline, at the Coolidge Corner T-stop on the 'C' green line. Also presented February 23. Tel: 734-2500.

The French Library in Boston concludes its series *Two Films by Roman Polanski* with *Repulsion* (1965) at 8 pm at 53 Marlborough Street, Boston. Also presented February 23 and 24. Tickets: \$4 general, \$3 Library members. Telephone: 266-4351.

The Museum of Fine Arts continues its series *Celebrating Melvin Van Peebles* with *Identity Crisis* (1990) at 6 pm and *Sweet Sweetback's Baadasssss Song* (1972) at 8 pm in Remis Auditorium, MEA, 465 Huntington Avenue, Boston. Tickets: \$5 general, \$4.50 MFA members, seniors, and students. Telephone: 267-9300 ext. 306.

The Brattle Theatre presents *Solaris* (1972, Andrei Tarkovsky) at 5:15 & 8:30 and *Repo Man* (1984, Alex Cox) at 12 midnight at 40 Brattle Street, Harvard Square, Cambridge. *Solaris* also presented February 23-28 with weekend matinees at 2:15. Tickets: \$5.50 general, \$3 seniors and children. Tel: 876-6837.

The Cambridge Center for Adult Education continues its series *Eastern European Cinema: Before Glasnost* with *Moonlighting* (1982, Jerzy Skolimowski) at 7 pm & 9 pm at the Blacksmith House, 56 Brattle Street, Cambridge. Admission: \$3.50. Telephone: 547-6789.

The Harvard Film Archive continues its weekend series *North African Film* with *Omari Gatlato* (1977, Mezzak Allouch, Algeria) at 7 pm and *Reed Doll* (1981, Jilali Farhat, Morocco) at 9 pm at the Carpenter Center for the Visual Arts, Harvard University, 24 Quincy Street, Cambridge. Tickets: \$4 general, \$3 seniors and children, \$6/\$3 for the double feature. Telephone: 495-4700.

The Institute of Contemporary Art presents *Twister* (1989, Michael Almeredy) at 7:30 in the ICA Theater, 955 Boylston Street, Boston. Also presented February 23-27. Tickets: \$5 general, \$4 ICA members, seniors, and students. Telephone: 266-5152.

The Boston Film/Video Foundation continues its series *In Person: Local Focus* with *Company Town* (1983, James Ruttenbeck) and *Losing Ground* (1988, James Ruttenbeck) at 8 pm at 1126 Boylston Street, Boston. Tickets: \$5 general, \$4 seniors and students. Tel: 536-1540.

Bugs Bunny Film Festival at the Somerville Theatre. See February 19 listing.

Repulsion (1965, Roman Polanski) at the French Library in Boston. See February 22 listing.

Saturday, Feb. 23

CONTEMPORARY MUSIC

The Barley Boys perform in *Rock for Shelter '91* at 9:30 in Memorial Hall, Harvard University. Telephone: 493-2783.

Warrant performs at 9 pm in an 18+ ages show at the Channel, 25 Necco Street, near South Station in downtown Boston. Tickets: \$12.50 advance/\$13.50 day of show. Telephone: 426-3888.

Uncle Tupelo, Great Outdoors, and We Saw the Wolf perform in an 18+ ages show at T.T. the Bears, 10 Brookline Street, Cambridge, just north of MIT. Telephone: 492-0082.

Sara Hickman and Cliff Eberhardt perform at 7:30 at The Edge, 25 Necco Place, near South Station in downtown Boston. Tickets: \$9. Telephone: 426-7744.

Master Ibrahim, Camara performs at Johnny D's, 17 Holland Street, Davis Square, Somerville, near the Davis Square T-stop on the red line. Telephone: 776-9667.

Uptown Rhythm Kings and 9 Below Zero perform at Ed Burke's, 808 Huntington Avenue, Boston, on the 'E' green line. Telephone

ARTS

The Cedar Walton/Ron Carter/Billy Higgins Trio at 9 pm & 11 pm at the Regattabar. See February 20 listing.

The Jay Bradford Sextet at the Willow Jazz Club. See February 22 listing.

CLASSICAL MUSIC

The MIT Concert Band performs works by Jarrett, Levy, McGah, Packham, and Shadle at 8 pm in Kresge Auditorium. No admission charge. Tel: 253-2906.

Pianist Hélène Wickert performs works by Schubert, Brahms, Rodriguez, Debussy, and Chopin at 8 pm in Jordan Hall, New England Conservatory, 30 Gainsborough Street at Huntington Avenue, Boston. Tickets: \$5 and \$7.50. Telephone: 536-2412.

*** CRITICS' CHOICE ***
Live Oak and Compa performs 12th-14th century music of Spain at 8 pm in Lindsey Chapel, Emmanuel Church, 15 Newbury Street, Boston. No admission charge. Tel: 244-1027.

King's Chapel Concert Series: Daniel Pinkham conducting, presents works by Haydn, Beethoven, and Mozart at 5 pm in King's Chapel, 58 Tremont Street at School Street, Boston. Tel: 227-2155.

The Boston Symphony Orchestra, Simon Rattle conducting, at Symphony Hall. See February 20 listing.

A Kurt Weill Cabaret at the Edward Pickman Concert Hall, Longy School of Music. See February 21 listing.

THEATER

Queer Notions presented by Shoda Moving Theatre at The Performance Place. See February 22 listing.

The Brides presented by Pilgrim Theatre at the Black Box Theatre, Boston Center for the Arts. See February 21 listing.

DANCE

The Independent Company of Alla Sigalova at the Emerson Majestic Theatre. See February 21 listing.

FILM & VIDEO

The MIT Lecture Series Committee presents *Narrow Margin* at 7 pm & 10 pm in 26-100. Tickets: \$1.50. Tel: 258-8881.

The MIT Student Center Committee presents *This Is Spinal Tap* (1984, Rob Reiner) at 12 midnight in Lobdell Dining Hall, MIT Student Center. No admission charge. Telephone: 258-7356.

The Harvard Film Archive continues its weekend series *North African Film with Fatma 75* (1975, Selma Baccar, Tunisia) at 4 pm, *Halpbaouine* (1990, Ferid Boughdir, Tunisia) at 7 pm, and *Omar Gatlato* (1977, Merzak Allouache, Algeria) at 9 pm at the Carpenter Center for the Visual Arts, Harvard University, 24 Quincy Street, Cambridge. Tickets: \$4 general, \$3 seniors and children, \$6/\$5 for a double feature. Tel: 495-4700.

The Boston Film/Video Foundation continues its series *In Person: Local Focus* with *My Uncle Joe* (1991, William Rogers) and *Federam* (1990, Catherine Russo and Carlota Charrier) at 8 pm at 1126 Boylston Street, Boston. Tickets: \$5 general, \$4 seniors and students. Telephone: 536-1540.

Ben Hur at the Wang Center. See February 22 listing.

Bugs Bunny Film Festival at the Somerville Theatre. See February 19 listing.

The Confession (1970, Constantine Costa-Gavras, France) and *Missing* (1983, Constantine Costa-Gavras) at the Coolidge Corner Theatre. See February 22 listing.

Repulsion (1965, Roman Polanski) at the French Library in Boston. See February 22 listing.

Barbarella and Multiple Maniacs (John Waters) at the Coolidge Corner Theatre. See February 22 listing.

Twister (1989, Michael Almereyda) at the Institute of Contemporary Art Theater. See February 22 listing.

Solaris (1972, Andrei Tarkovsky) at the Brattle Theatre. See February 22 listing.

EXHIBITS

Juan Francisco Elso Padilla, works by the Cuban sculptor drawing on Afro-Cuban and Indian traditions in an attempt to embody a Latin American mythology; Robert Ameson: The Jackson Pollock Series, including portrait busts and heads of Pollock; and a recreation of Pollock's final car crash; and Barbara Broughel: *Storytelling Chairs*, eight richly doctored and decorated early American chairs reflecting on the extent to which colonial American culture was indebted to the Iroquois, all open today at the List Visual Arts Center, MIT Wiesner Building E15. Continue through April 14 with gallery hours weekdays 12-6 and weekends 1-5. Tel: 253-4680.

Sunday, Feb. 24

CONTEMPORARY MUSIC
Thokozza performs as part of *The Indestructible Beat of South Africa* at 3 pm in the African Meeting House, 46 Joy Street, Boston. Tickets: \$12. Telephone: 876-4275.

The Kentucky Headhunters, Miss Kanna Don't, and The Whills perform at the Paradise, 967 Commonwealth Avenue, Boston. Telephone: 254-2052.

Too Short performs at 9 pm in an 18+ ages show at the Channel, 25 Necco Street, near South Station in downtown Boston. Tickets: \$9.50 advance/\$10.50 day of show. Telephone: 426-3888.

Henry Pappas, Ronnie Earl, Paul Ribshell, Dave Howard, and The High Rollers perform at Johnny D's, 17 Holland Street, Davis Square, Somerville, near the Davis Square T-stop on the red line. Telephone: 776-9667.

JAZZ MUSIC

*** CRITICS' CHOICE ***
The Stan Getz, Kenny Barron Duo performs at 7:00 & 9:30 in the Charles Hotel Ballroom, Charles Hotel, Harvard Square, Cambridge. Tickets: \$28.50. Telephone: 661-5000.



Legendary sax man Stan Getz (with Kenny Barron) at the Charles Hotel Ballroom on Feb. 24.

The Jim Hall/Ron Carter Duo performs at 7:00 & 9:30 at the Regattabar, Charles Hotel, Harvard Square, Cambridge. Tickets: \$12 (\$8 with Stan Getz tickets). Telephone: 661-5000.

Full Metal Revolutionary Jazz Ensemble performs at the Western Front, 343 Westway Avenue, Cambridge. Tel: 492-7732.

CLASSICAL MUSIC

Collage New Music perform works by MIT's Peter Child and Robert Rowe, Jonathan Harvey, and Tod Machover at 8 pm in Symphony Hall, corner of Huntington and Massachusetts Avenue, Boston. Tickets: \$10. Telephone: 266-1492.

Violinist Kinloch Earle and The Boston Museum Trio perform works by Mozart, Buxtehude, Handel, and Vivaldi at 3 pm in Remis Auditorium, Museum of Fine Arts, 465 Huntington Avenue, Boston. Tickets: \$15 general, \$12 MFA members, seniors, and students. Tel: 267-9300 ext. 306.

Pianist Lawrence Berman performs works by Mozart, Chopin, Prokofiev, and Debussy at 5:30 in the Fogg Art Museum, Harvard University, 32 Quincy Street, Cambridge. Tickets: \$5 general, \$4 seniors and students. Tel: 495-4544.

Paula Robison, flute, and Kenneth Cooper, harpsichord, perform *concerto's of Vivaldi and Bach* at 1:30 at the Gardner Museum, 280 The Fenway, Boston. Admission: \$6 general, \$3 seniors and students. Telephone: 566-1401.

A Kurt Weill Cabaret at the Edward Pickman Concert Hall, Longy School of Music. See February 21 listing.

THEATER

The Brides presented by Pilgrim Theatre at the Black Box Theatre, Boston Center for the Arts. See February 21 listing.

FILM & VIDEO

The MIT Lecture Series Committee presents *Who Framed Roger Rabbit?* (Robert Zemeckis) at 7 pm & 10 pm in 10-250. Tickets: \$1.50. Tel: 258-8881.

The Harvard-Epworth Church presents John Ford's *Three Bad Men* (1926) at 8 pm at 1555 Massachusetts Avenue, Harvard Square, Cambridge. Admission: \$3 contribution. Telephone: 354-0837.

The Harvard Film Archive continues its weekend series *North African Film with Reed Doll* (1981, Jilali Farnati, Morocco) at 4 pm, *Fatma 75* (1975, Selma Baccar, Tunisia) at 7 pm, and *Halpbaouine* (1990, Ferid Boughdir, Tunisia) at 9 pm at the Carpenter Center for the Visual Arts, Harvard University, 24 Quincy Street, Cambridge. Tickets: \$4 general, \$3 seniors and children, \$6/\$5 for a double feature. Telephone: 495-4700.

The Coolidge Corner Theatre continues its *Human Rights Film Festival* with *The Persecution and Assassination of Jean-Paul Marat as Performed by the Inmates of the Asylum of Charenton Under the Direction of the Marquis de Sade* (1965, Peter Brook) at 3:10 & 7:40 and *The Pawnbroker* (1965, Sidney Lumet) at 5:25 & 9:50 at 290 Harvard Street, Brookline, at the Coolidge Corner T-stop on the 'C' green line. Also presented February 25. Telephone: 734-2500.

Ben Hur at the Wang Center. See February 22 listing.

Bugs Bunny Film Festival at the Somerville Theatre. See February 19 listing.

Solaris (1972, Andrei Tarkovsky) at the Brattle Theatre. See February 22 listing.

Twister (1989, Michael Almereyda) at the Institute of Contemporary Art Theater. See February 22 listing.

Monday, Feb. 25

CLASSICAL MUSIC

Pianist Deborah Yardley Beers performs works by Barber, Rabebe, Chopin, Field, Bartok, Liszt, and Dohnanyi in a *Longy Faculty Artists Series* concert at 8 pm in the Edward Pickman Concert Hall, Longy School of Music. No admission charge. Telephone: 876-0956.

FILM & VIDEO

The MIT Japan Program and the Japanese Language Program at MIT present *Bakayaro!* at 7:30 in MIT room 10-250. Admission: \$2 donation. Tel: 253-8095.

The Harvard Film Archive continues its Monday series *Human Rights and Cinema with In Defense of People* (1981, Rafig Pooya, Iran) at 5:30 & 8:00 at the Carpenter Center for the Visual Arts, Harvard University, 24 Quincy Street, Cambridge. Tickets: \$4 general, \$3 seniors and children. Telephone: 495-4700.

Bugs Bunny Film Festival at the Somerville Theatre. See February 19 listing.

The Persecution and Assassination of Jean-Paul Marat as Performed by the Inmates of the Asylum of Charenton Under the Direction of the Marquis de Sade (1965, Peter Brook) and *The Pawnbroker* (1965, Sidney Lumet) at the Coolidge Corner Theatre. See February 24 listing.

Solaris (1972, Andrei Tarkovsky) at the Brattle Theatre. See February 22 listing.

Twister (1989, Michael Almereyda) at the Institute of Contemporary Art Theater. See February 22 listing.

POETRY
Tom Sleigh, author of *After One and Waking*, reads at 8:15 at the Blacksmith House, Cambridge Center for Adult Education, 56 Brattle Street, Cambridge. Tickets: \$2. Telephone: 547-6789.

EXHIBITS
The Loft, historical paintings, photos, articles, and memorabilia from The Friends of Great Black Music Loft, opens today as part of the *Festival of Women Improvisers - Boston* at Cambridge City Hall, 795 Massachusetts Avenue, Cambridge. Continues through March 11. Telephone: 349-4380.

Women in Jazz, a photo-exhibition, opens today as part of the *Festival of Women Improvisers - Boston* at Cambridge Public Library, 449 Broadway, Cambridge. Continues through March 3. Telephone: 349-4040.

Tuesday, Feb. 26

CONTEMPORARY MUSIC

*** CRITICS' CHOICE ***
The Charlatans UK perform in an 18+ ages show at the Paradise, 967 Commonwealth Avenue, Boston. Also presented February 27. Telephone: 254-2052.

Shockra, Rice and Beans, and TBS Mob perform at 9 pm in an 18+ ages show at the Channel, 25 Necco Street, near South Station in downtown Boston. Tickets: \$5 advance/\$6 day of show. Tel: 426-3888.

Chris Smither performs at Johnny D's, 17 Holland Street, Davis Square, Somerville, near the Davis Square T-stop on the red line. Telephone: 776-9667.

JAZZ MUSIC

Deborah Henson-Conant: Jazz Harp performs at 9 pm at the Regattabar, Charles Hotel, Harvard Square, Cambridge. Tickets: \$7. Telephone: 661-5000.

Saxophonist Macio Parker and Roots Revisited perform at 7:30 & 10:00 at Nightstage, 825 Main Street, Cambridge, just north of MIT. Tickets: \$13 advance/\$14 day of show. Telephone: 497-8200.

CLASSICAL MUSIC

The Griffin Music Ensemble performs works by Noel Da Costa, Ariene Zallman, Giacinto Scelsi, Donald Martino, and Luigi Dallapiccola at 8 pm in the Wang Center Grand Lobby, 270 Tremont Street, Boston. Tickets: \$10 general, \$5 students. Telephone: 482-9393.

Chunson Park Piano Recital, featuring works by Bach, Mozart, Chopin, Debussy, and Barber, is presented at 8 pm in the Tsai Performance Center, Boston University, 685 Commonwealth Avenue, Boston. No admission charge. Telephone: 353-3345.

Sarah Cunningham, viola da gamba, performs works by Marais, De Machy, Forqueray, and Bach in a *Longy Guest Artists Series* concert at 8 pm in the Edward Pickman Concert Hall, Longy School of Music. Tickets: \$5. Telephone: 876-0956.

The Boston Symphony Orchestra, Simon Rattle conducting, at Symphony Hall. See February 20 listing.

FILM & VIDEO

The Harvard Film Archive continues its Tuesday series *Oetric Cinema* with *The Trial* (1962, Orson Welles, France/Italy/West Germany) at 5:30 & 8:00 at the Carpenter Center for the Visual Arts, Harvard University, 24 Quincy Street, Cambridge. Tickets: \$4 general, \$3 seniors and children. Telephone: 495-4700.

The Coolidge Corner Theatre continues its *Human Rights Film Festival* with *Diary for My Children* (1984, Marta Meszaros, Hungary) at 3:40 & 7:50 and *Interrogation* (1982, Richard Bugajski, Poland) at 5:40 & 9:50 at 290 Harvard Street, Brookline, at the Coolidge Corner T-stop on the 'C' green line. Telephone: 734-2500.

Solaris (1972, Andrei Tarkovsky) at the Brattle Theatre. See February 22 listing.

Twister (1989, Michael Almereyda) at the Institute of Contemporary Art Theater. See February 22 listing.

Ongoing Theater

Butley, Simon Gray's examination of how an English university lecturer chooses to confront his disintegrating marriage, his friendships, university politics, and dissenting, protesting students, continues through March 17 at the Lyric Stage Theatre, 54 Charles Street, Boston, near the Charles Street T-stop on the red line. Performances are Wednesday-Friday at 8:00, Saturday at 5:00 & 8:30, and Sunday at 3:00. Tickets: \$13.50 to \$17.50. Telephone: 742-8703.

Contemporary Insanity II: The Sequel, tackling censorship, ethics, sex, and scandal, continues indefinitely at the Boston Baked Theatre, 255 Elm Street, Davis Square, Somerville. Performances are Friday & Saturday at 8:15. Tickets: \$14.50 and \$16. Telephone: 628-9575.

Double Vision, Barbara Blumenthal's comic examination of six urbanites on a journey through modern life in the 1990s, continues through March 3 at the New Ehrlich Theatre, 539 Tremont Street, Boston. Performances are Thursday & Friday at 8:00, Saturday at 5:00 & 8:30, and Sunday at 2:00. Tickets: \$15. Telephone: 482-6316.

Forbidden Broadway 1991, parodist Gerard Alessandrini's long-running commercial theater spoof, continues indefinitely at the Terrace Room, Boston Park Plaza Hotel, 64 Arlington Street, Boston. Performances are Tuesday-Friday at 8 pm, Saturday at 6 pm & 9 pm, with matinees Thursday at 2 pm and Sunday at 3 pm. Tickets: \$16.50 to \$24.50. Telephone: 357-8384.

ImprovBoston, Boston's longest-running improvisational comedy troupe, continues its late-night performances every Friday and Saturday indefinitely at 10:30 at the Back Alley Theater, 1253 Cambridge Street, Inman Square, Cambridge. Tickets: \$8 general, \$6 students. Telephone: 491-8166.

Nonsense, Dan Goggin's comedy about the Little Sisters of Hoboken who stage a talent show to raise money to bury four of their number, continues indefinitely at the Charles Playhouse, 74 Warrenton Street, Boston. Performances are Tuesday-Friday at 8 pm, Saturday at 6 pm & 9 pm, with matinees Thursday at 2 pm and Sunday at 3 pm. Tickets: \$15.50 to \$26.50 general, half-price for seniors and students on Thursday matinee. Telephone: 426-6912.

Peter Pan, the musical fantasy about the boy who refuses to grow up, continues through February 24 at the Wheelock Family Theatre, 200 The Riverway, Boston, near the Fenway T-stop on the 'D' green line. Performances are Friday & Saturday at 7:30 and Saturday & Sunday at 3:00. Tickets: \$7.50 and \$8. Telephone: 437-2730.

Shear Madness, the long-running comic murder mystery, continues indefinitely at the Charles Playhouse, 74 Warrenton Street, Boston. Performances are Tuesday-Friday at 8:00, Saturday at 6:30 & 9:30, and Sunday at 3:00 & 7:30. Tickets: \$18 and \$23. Telephone: 451-0195.

*** CRITICS' CHOICE ***
When We Dead Awaken, Henrik Ibsen's haunting and elegant work about the waning days of an aging, world-famous sculptor, continues through March 9 at the American Repertory Theatre, Loeb Drama Center, 64 Brattle Street, Cambridge. Performances are Tuesday-Friday at 8 pm, Saturday at 2 pm & 8 pm, and Sunday at 2 pm & 7 pm. Tickets: \$17 to \$35. Telephone: 547-8300.

Ongoing Exhibits

ON CAMPUS

American Color: Photographs by Rodger Kingston, a visual documentation of the ways advertising, architecture, and celebrity define us as American, continues through March 24; Works by Robert Freusser, an overview of paintings done since the 1930s by the former MIT Professor of Visual Design, continues through April 4; and Doe Edgerton: *Stopping Time*, photographs and memorabilia documenting the invention and use of the strobe light, continues indefinitely at the MIT Museum, 265 Massachusetts Avenue, Cambridge. Museum hours are Tuesday-Friday 9-5 and Saturday-Sunday 1-5. Admission: \$2 requested donation, free to MIT community. Telephone: 253-4444.

Rembrandt and His Contemporaries: Selection of Their Works, Part I, 30 to 40 prints and drawings by Dutch artists of late 16th and 17th centuries, continues through March 24 at the Fogg Art Museum, Harvard University, 32 Quincy Street, Cambridge. Museum hours are Tuesday-Sunday 10-5. Admission: \$3 general, \$2.50 seniors and students, free to children. Telephone: 495-9400.

Golden Age of Russian Ballet in America, moments in the American careers of prima ballerina Anna Pavlova and Mikhail Mordkin, continues through March in the Mugar Memorial Library, Boston University, 771 Commonwealth Avenue, Boston. Library hours are Monday-Thursday 8-midnight, Friday & Saturday 8-11, Sunday 10-midnight. Telephone: 353-3696.

The Paintings of Shohaku, about 50 screens and hanging scrolls exemplifying the new spirit of individualism and experimentation of Japanese painting in the 18th century, continues through April 14 in the Japanese Painting Galleries, Museum of Fine Arts, 465 Huntington Avenue, Boston. Museum hours are Tuesday-Sunday 10-5 and Wednesday 10-10. Admission: \$6 general, \$5 seniors and students, free with MIT ID. Telephone: 267-9300.

The Art of Architecture: The Christian Science Church Center 1894-1990, historical artwork by the five architects who designed the Church buildings and plaza, continues through March 8 in the Compton Gallery, between MIT buildings 9 and 13. Gallery hours are weekdays 9-5. No admission charge. Tel: 253-4444.

OFF CAMPUS

Spectrum, a Black American art exhibition, continues through February 21 in the Anderson Auditorium and the Weems Center, School of the Museum of Fine Arts, 230 The Fenway, Boston. Gallery hours are weekdays 10-8, Saturday 10-5, and Sunday 1-5. Telephone: 267-6100 ext. 718.

Photographic Works, 1978-90, works by Carrie Mae Weems, continues through February 23 at the Trustman Art Gallery, Simmons College, 300 The Fenway, Boston. Gallery hours are Monday-Friday 10-4:30. Telephone: 738-2145.

As Seen by Both Sides, works by 20 American and 20 Vietnamese artists, continues through February 24 at the Boston University Art Gallery, 855 Commonwealth Avenue, Boston. No admission charge. Telephone: 353-3345.

Convergence: Eight Photographers, photographs by African-American artists, continues through February 24 at the Photographic Resource Center, Boston University, 602 Commonwealth Avenue, Boston. Hours are Tuesday-Sunday 12-5 and Thursday 12-8. Admission: \$3 general, \$2 members, seniors, and students. Telephone: 353-0700.

Majestic Ruins: Great Zimbabwe, photographs by Hakim Raquim interpreting the ruins of architectural structures that remain from the old East African kingdom of Monomatapa, continues through February 28 at the Museum of the National Center of African-American Artists, 300 Walnut Avenue, Boston. Gallery hours are Tuesday-Sunday 1-5. Admission: \$1.25 general, \$0.50 seniors and students, free to members. Tel: 442-8614.

Photographs of the Venice Carnival, by French photographer Pierre Faury, continues through February 28 at the French Library in Boston, 53 Marlborough Street, Boston. Library hours are Tuesday-Saturday 10-5 and Wednesday & Thursday 10-8. No admission charge. Telephone: 266-4351.

Heart of the Sunrise, a Batik painting exhibit by Jeri Levitt, described as a "culmination of light, spirituality, and passion," continues through February 28 at the Gallery at Indigo, 823 Main Street, Cambridge. Telephone: 497-7200.

Kaleidoscopes: Reflections of Science and Art, ingenious interactive displays conveying the physical and mathematical principles of the kaleidoscope, continues through March 3 at the Museum of Science, Science Park, Boston at the Science Park station on the Green line. Museum hours are Tuesday-Sunday 9-5 and Friday 9-9. Tickets: \$6 general, \$4.50 seniors and children, free with MIT ID. Telephone: 523-6664.

Gerhard Richter: 18. Oktober 1977, 15 figurative paintings by the German contemporary artist which depict events associated with the imprisonment and deaths of three members of the German Red Army Faction group, and *Currents*, the ICA's yearly exhibition devoted to presenting important new work by emerging artists and recent work by established artists, continue through March 17 at the Institute of Contemporary Art, 955 Boylston Street, Boston. ICA hours are Wednesday & Sunday 11-5 and Thursday-Saturday 11-8. Admission: \$4 general, \$3 students, \$1.50 seniors and children, \$1 with MIT ID, free to ICA members. Telephone: 266-5152.

Minor White: The Eye that Shapes, works by one of the most significant photographic artists active after World War II, continues through March 17 in the Torf Gallery, Museum of Fine Arts, 465 Huntington Avenue, Boston. Museum hours are Tuesday-Sunday 10-5 and Wednesday 10-10. Admission: \$6 general, \$5 seniors and students, free with MIT ID. Telephone: 267-9300.

Rembrandt and His Contemporaries: Selection of Their Works, Part I, 30 to 40 prints and drawings by Dutch artists of late 16th and 17th centuries, continues through March 24 at the Fogg Art Museum, Harvard University, 32 Quincy Street, Cambridge. Museum hours are Tuesday-Sunday 10-5. Admission: \$3 general, \$2.50 seniors and students, free to children. Telephone: 495-9400.

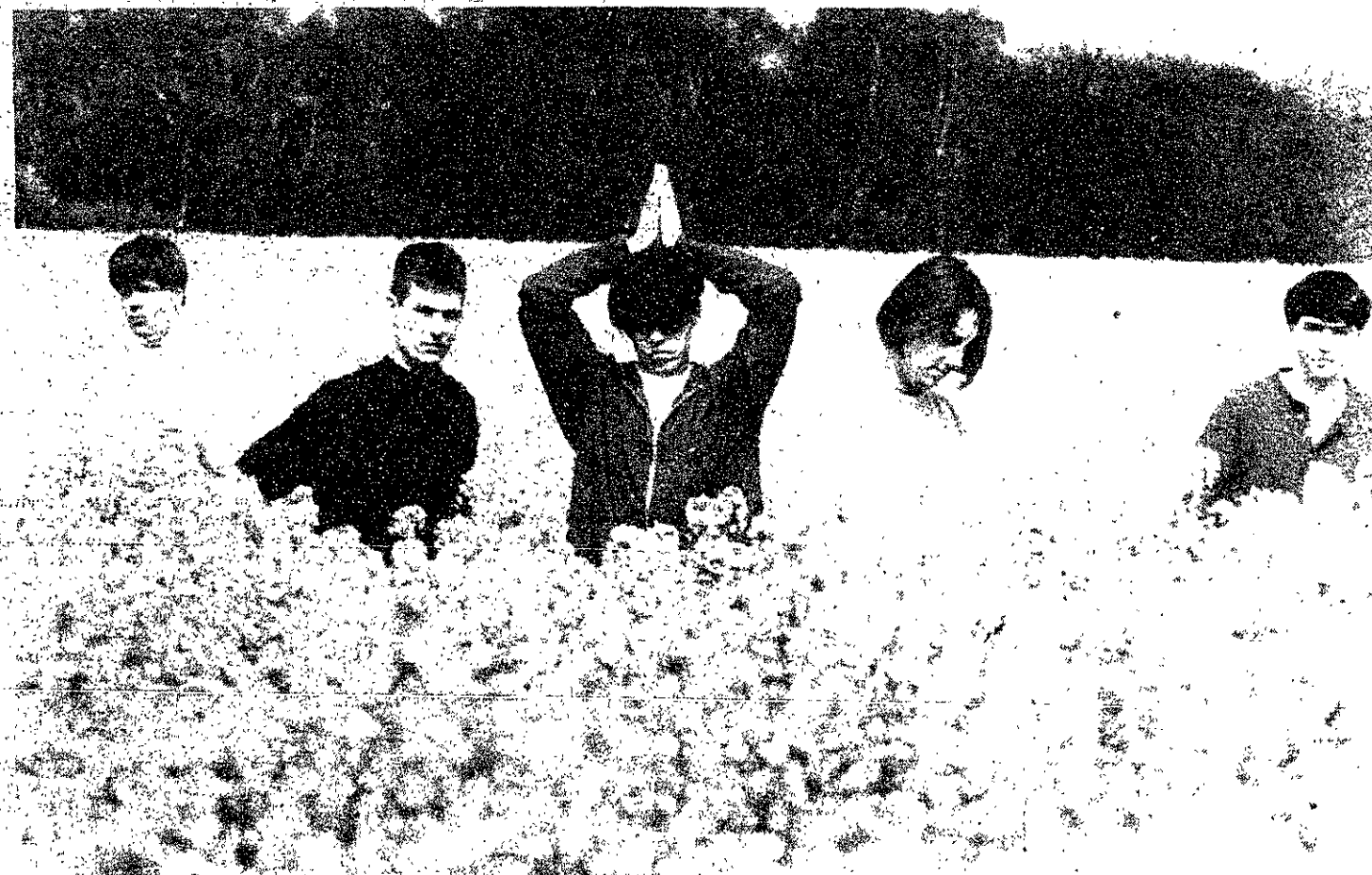
Golden Age of Russian Ballet in America, moments in the American careers of prima ballerina Anna Pavlova and Mikhail Mordkin, continues through March in the Mugar Memorial Library, Boston University, 771 Commonwealth Avenue, Boston. Library hours are Monday-Thursday 8-midnight, Friday & Saturday 8-11, Sunday 10-midnight. Telephone: 353-3696.

The Paintings of Shohaku, about 50 screens and hanging scrolls exemplifying the new spirit of individualism and experimentation of Japanese painting in the 18th century, continues through April 14 in the Japanese Painting Galleries, Museum of Fine Arts, 465 Huntington Avenue, Boston. Museum hours are Tuesday-Sunday 10-5 and Wednesday 10-10. Admission: \$6 general, \$5 seniors and students, free with MIT ID. Telephone: 267-9300.

*** CRITICS' CHOICE ***
Robert Wilson's *Vision*, a mixture of two- and three-dimensional objects with video imagery, accompanied by a unique use of sound, light, and space, continues through April 21 in the Gund Gallery, Museum of Fine Arts, 465 Huntington Avenue, Boston. Museum hours are Tuesday-Sunday 10-5 and Wednesday 10-10. Admission: \$6 general, \$5 seniors and students, free with MIT ID. Telephone: 267-9300.

Upcoming Events

George Carlin at Symphony Hall on March 1. The Dizzy Gillespie Quintet at the Charles Hotel Ballroom on March 7. Bo Diddley at the Channel on March 9. Bob Mould at Nightstage on March 10. The Chick Corea Akoustic Band at the Charles Hotel Ballroom on March 24.



The Charlatans UK perform at the Paradise on Feb. 26 and 27.

notices

Listings

Student activities, administrative offices, academic departments and other groups — both on and off the MIT campus — can list meetings, activities, and other announcements in *The Tech's* "Notes" section. Send items of interest (typed and double spaced) via Institute mail to "News Notes, *The Tech*, room W20-483," or via US mail to "News Notes, *The Tech*, PO Box 29, MIT Branch, Cambridge, MA 02139." Notes run on a space-available basis only; priority is given to official Institute announcements and MIT student activities. *The Tech* reserves the right to edit all listings, and makes no endorsement of groups or activities listed.

Donald Asher of Asher Associates is looking for a copy of your best letter of recommendation and top graduate essays written for law school, medical school, graduate business programs, and doctoral, postdoctoral and fellowships programs for possible publication in their forthcoming book, *Graduate Essays: What Works, What Doesn't, and Why*. Examples of creative essays, and essays from unusual or borderline candidates welcome, too. Info: Patty O'Keefe or Donald Asher at (415) 543-2020 or (415) 543-7130.

The "Statement of Registration Status" is still required of all male students who are expected to register for the draft, if they want to receive federal financial aid. Women, underage students and those who have completed the statement in previous years do not have to file statements.

MIT requires male students who have completed the statement by indicating they are "underage" to submit the statement annually until they have registered.

Project Contact: Undergraduates who are interested in communicating with high school students (and guidance counselors) about what it is like to be an MIT student are encouraged to join Project Contact. For more information please contact the Educational Council Office, Room 4-240; 253-3354.

The sports medicine division of the MIT Athletic Department sponsors a fitness training program for all interested students and employees of the Institute who hold valid athletic cards. Individuals over the age of 35 must obtain medical clearance from a personal physician before being allowed to participate in the program. The tests consist of a submaximal aerobic ergometer test, flexibility exercises, body fat percentage, and muscular strength and endurance measurements, and takes about 40 minutes to complete. For further information call x3-4908, 2:30-6:00 pm, Monday-Thursday. The tests are free of charge.

The Boston University Astronomy Department sponsors **Open Observatory Night** every Wednesday from 8:30-9:30 pm. For more information call 353-2360.

Harvard University Graduate School of Design is sponsoring lectures. For more information call 495-9340.

All first-time student loan borrowers (Perkins, Technology, or Stafford Student Loans) are required to attend a loan counseling session. Please contact the Bursar's Office for a schedule of the sessions.

Surplus equipment is available for departments and members of the MIT community in the **Equipment Exchange**, building NW30, every Tuesday and Thursday from 11-3 pm. Thirty days after being advertised in *Tech Talk* the equipment is sold.

Employment is available for an undergraduate student interested in statistical analysis. We wish to examine statistical trends in our graduate admissions data and to test for possible correlations among various admissions criteria and subsequent student performance. Should have a background in statistics and be very comfortable with computer programming. Familiarity with our database software (R:BASE; DOS) is helpful, but not essential. Hourly wage \$6.25/hr. Contact Professor Lienhard in Room 3-164. Please submit your vita.

Los Niños, a non-profit community development organization with projects along the Mexico/U.S. border, seeks applicants for its summer internship program. Interns teach summer-school classes in low-income Mexican communities, and take part in educational experiences concerning Mexico and the border region. For more information call 661-6912.

The **Japanese Lunch Table** will be held every Tuesday in Walker, Room 220 at 1 pm.

The **Science and Humanities Libraries** (Hayden Building Libraries) are now open from noon Sunday to 8 pm Friday — 24 hours a day — and from 8 am to 8 pm on Saturday. From midnight to 8 am access to the libraries is limited to members of the MIT community. Circulation and reference services are not available during restricted hours.

The **Off-Campus Housing Service** welcomes any member of the community who either has available housing or who is searching for housing to contact our office in Room E32-121, x3-1493.

The Beth Israel Hospital hosts a **Rape Crisis Group** on Tuesdays at 7:30 am for women who are experiencing disruption in their lives immediately following or up to six months after being raped. The long-term crisis group meets Thursdays at 6 pm. For more information, call (617) 735-4738.

Today, more than one million men and women are demonstrating by their personal example that alcoholism is an illness that can be arrested. If you have an alcohol related problem please get in touch with the **Alcoholics Anonymous** group nearest you — with complete assurance that your anonymity will be protected. Call 426-9444 or write: Alcoholics Anonymous, Box 459, Grand Central Station, NY 10163. You will receive free information in a plain envelope.

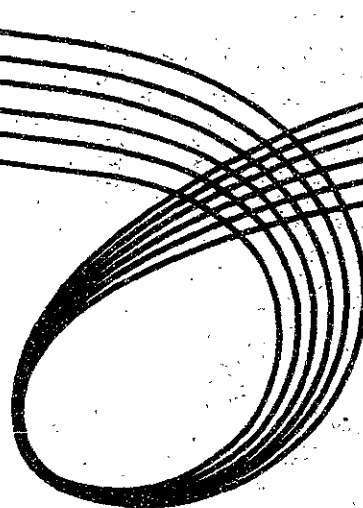
The **Cambridge Dispute Settlement Center** has announced that it is making its service of mediating disputes available to roommates in the Cambridge area. Those interested in using CDSC's service to resolve a roommate dispute or any other dispute should contact the mediation center at 876-5376.

Counseling

The **Samaritans** — someone to talk to and befriend you, are on call 24 hours a day, 7 days a week. The center, at 500 Commonwealth Avenue, Kenmore Square, is open from 8 am to 8 pm every day for people to come in and talk. Service is free and completely confidential. Call 247-0220.

SRI International
Menlo Park, California

David Sarnoff
Research Center
Princeton, New Jersey



ON-CAMPUS INTERVIEWS

Monday & Tuesday February 25 & 26

SRI International and the David Sarnoff Research Center are known for advanced research and development conducted by the nation's most talented individuals. As a graduate of one of the premier institutions of higher learning, we invite you to add your abilities to our own.

Within SRI International, the Engineering Research Group in Menlo Park, California, makes significant contributions to the knowledge and application of acoustics, signal

processing, systems development; and many other areas. We are particularly interested in outstanding candidates possessing U.S. Citizenship and an MS/PhD in Electrical Engineering, Computer Science, Physics, or Math.

An integral subsidiary of SRI International, the David Sarnoff Research Center in Princeton, New Jersey, has a worldwide reputation in consumer electronics, solid state electronics, materials sciences, information systems, and communications. We're seeking graduates with an MS/PhD in Electrical Engineering, Computer Science, and Physics.

Please contact your Placement Center to set up an appointment for an On-Campus Interview or send your resume to: Professional Recruiting Engineering Research Group, SRI International, 333 Ravenswood Ave., Menlo Park, CA 94025. Phone: (415) 859-2148. FAX: (415) 859-4222.

For positions at David Sarnoff Research Center, contact Director, Employment & Development, David Sarnoff Research Center, CN 5300, Princeton, NJ 08543-5300. Phone: (609) 734-2431. FAX: (609) 734-2111.

We are an equal opportunity employer.

classified advertising

Classified Advertising in *The Tech*: \$5.00 per insertion for each 35 words or less. Must be prepaid, with complete name, address, and phone number. *The Tech*, W20-483; or PO Box 29, MIT Branch, Cambridge, MA 02139.

Jim's Journal Merchandise. T-shirts, boxers, mugs. Send for free catalog. Ameriprint Features, P.O. Box 680, Marshall, WI 53559. (608) 655-4248.

DAYTONA BEACH Spring Break '91
March 22-31. Oceanfront hotel on the strip. Best beach, best clubs, best party!! Includes seven nights hotel, roundtrip motorcoach trans. \$259.00 quad occ. Call Yankee Tours 268-8891 M-F, 9-5.

Earn as much as \$1,000 organizing whitewater rafting trips in Maine and New York for Unicorn Expeditions. You bring the people and we take care of everything else. Call 1-800-UNICORN for details.

Legal Problems? I am an experienced attorney and a graduate of MIT who will work with you creatively to solve these problems, answer your legal questions and provide legal representation. My office is conveniently located in downtown Boston just minutes from MIT via MBTA. Call Attorney Esther Horwich, MIT '77 at 523-1150.

Wake N' Bake!! Spring Break is hot in Jamaica from \$429.00! This year's hottest destinations at low prices! Don't be left in the cold! Call 1-800-426-7710!

**LSAT
GMAT
MCAT
GRE**

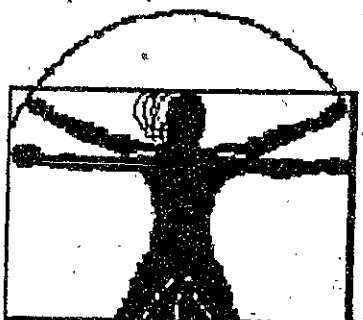
The Test Is When Classes Forming Now
STANLEY H. KAPLAN
Take Kaplan Or Take Your Chances

Call now for Spring Exam schedules.
(617) 868-TEST

• Refreshments • Ideas for socializing on campus and around town •

Planning Your Next Social Event?

Social Midway



Staying Healthy at MIT

- February 28
- 7:00 - 10:00 pm
- La Sala de Puerto Rico

• Door prizes include a Macintosh LC • Entertainment •

Council Travel

SPRING BREAK
from Boston
Cancun starting at \$489
Jamaica starting at \$509
Price includes:
• Round trip airfare & transfers
• 7 nights accommodation & hotel taxes
Low Student Airfares!

CALL FOR MORE INFORMATION

Stratton Student Center, W20-024
M.L.T., Cambridge
225-2555

America's oldest & largest Student Travel Agency

AXO LIP SYNC CONTEST '91

MARCH 1, 8 pm, KRESGE
ALL PROCEEDS GO TO EASTER SEALS!
PRIZES TOTAL OVER \$700! SIGN UP NOW!

REGISTER: Student Center, 2/12 - 2/15; 2/19 - 2/22, 2/25 - 2/26, Lobby 10.
 ANY QUESTIONS? Ask at the Registration Desk, or call Patti Lee at x5-8202.



American Express Announces A Great New Travel Program.

**Now students can get the Card
 and get 3 roundtrips on Continental
 Airlines, for only \$129 or \$189 each.**

There's only one way to cover a lot of territory without spending a lot of money. And that's by getting the American Express® Card. It's the only card that offers an exciting new travel program exclusively for students—including three roundtrip certificates on Continental Airlines.

Just look at the map and pick the place you'd like to visit. If it's on your side of the Mississippi River, you can use a certificate to fly for only \$129 roundtrip. Or, you can cross the Mississippi for \$189 roundtrip. You have your pick of more than 150 cities in the

48 contiguous states. And you can fly almost anytime—because there are no blackout dates. But you must make your reservations within 14 days of the day you leave. And the maximum stay is 7 days/6 nights and must include a Saturday night.

In addition to this great travel program, you'll also enjoy all the benefits of Cardmembership as well as other exclusive student privileges. They include a quarterly magazine filled with informative articles on summer jobs, careers, campus life. Plus valuable discounts from leading retailers.

But remember, there's only one way to get all this—and that's by getting the American Express Card. Just call us (have your bank address and account number on hand). What's more, with our special student offer, it's easier to get the Card now while you're still in school than it may ever be again.

So get the Card. And get ready to cover new territory on either side of our Great Continental Divide.



Membership Has Its Privileges®

CALL 1-800-942-AMEX

If you're already a Cardmember, there's no need to call. Information about your certificates will be arriving soon.



BILLY'S SURFER BOY ZERO
By Kevin Benjamin



Meet

Professor Victor Weisskopf

Thursday, February 21st At 1 PM
At The MIT Coop At Kendall

He'll be autographing copies of his latest book:
The Joy Of Insight
Passions Of A Physicist

About The Author!

Victor Weisskopf is Professor Emeritus of Physics at MIT and the author of many books including *The Privilege of Being a Physicist*. He has made seminal contributions to quantum electrodynamics, nuclear physics, and elementary particle physics, and he worked on the most important scientific project of the day - the Manhattan Project. In addition, he helped found the *Bulletin of the Atomic Scientists*; served on the Pontifical Academy of Science as an advisor to Pope John Paul II; and became Director General of CERN, the European particle physics laboratory that was the first multinational European venture in modern science.

About His Book!

The Joy Of Insight is a fascinating portrait of the 20th Century scientific community and a wonderful memoir of growing up in a loving Austrian Jewish family. This book also provides important insights into the role scientists can and must play in influencing society and governments in the post-atomic age. The story Weisskopf tells is truly international, moving from the Vienna of his childhood through Copenhagen with Niels Bohr, Zurich with Wolfgang Pauli, and on to Cambridge and Los Alamos. At each stopping point, he recreates the scientific ambience of the place, giving the reader an exciting sense of the close-knit community that existed among the brilliant scientists with whom he worked.

\$24.95 Published by Basic Books

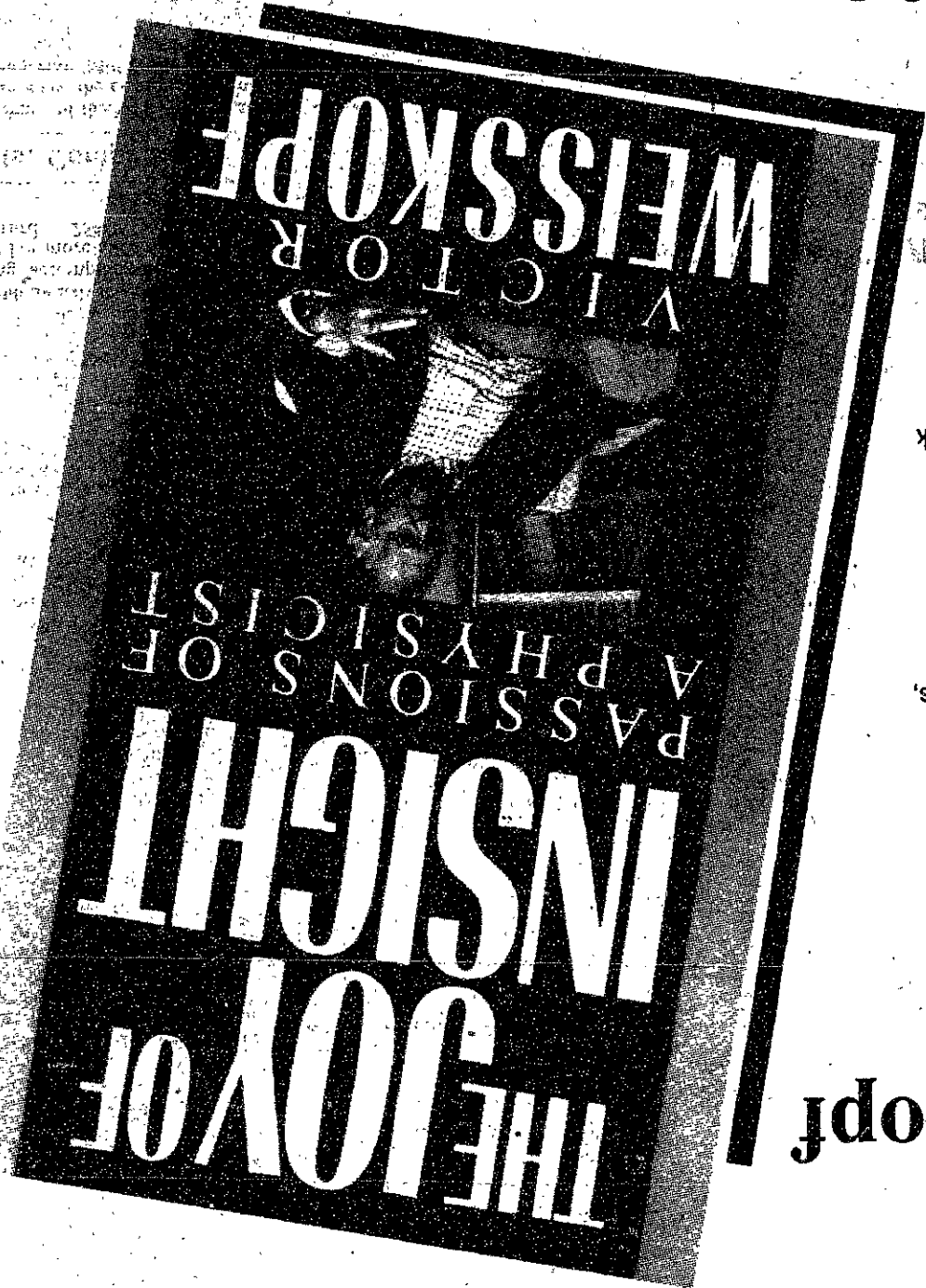
10% DISCOUNT

On ALL Hardcover & Paperback Books, Including Our Already Specially Priced New York Times Bestsellers. Except text & professional reference.

MIT COOP AT KENDALL
3 CAMBRIDGE CENTER
M-F 9:15-7 JR TIL 8:30
SAT 9:15-5:45



COOP CHARGE, MASTER CARD, VISA AND AMERICAN EXPRESS ARE WELCOME!
FREE PARKING AT KENDALL: AFTER 5 WEEKDAYS AND ALL DAY SAT AT CAMBRIDGE CENTER GARAGE
WITH SALES RECEIPT SHOWING \$5 MIN. COOP PURCHASE. VALIDATE AT CASHIERS DESK AT THE COOP



TEACH FOR AMERICA
Interview spots available
March 15, 1991

Teach for America is a national teacher corps of talented, dedicated individuals from all ethnic backgrounds and academic majors who commit two years to teach urban and rural areas that have persistent teacher shortages.

- Salary: \$17,000-\$29,000
- Loans: deferment (Stafford/GSL) or cancellation (Perkins/NSDL) possible

to sign up for an interview and pick up an application, stop by the MIT Office of Career Services

(applications must be submitted to Career Services by 3/1/91)

The Tech

No experience required.

notices

Counseling and HTLV-III blood screening services are available for individuals concerned about exposure to the virus associated with AIDS. For more information about this free confidential service sponsored by the Department of Public Health and Counseling Services, call 322-4090, weekdays from 9 am to 5 pm. Outside Boston call collect.

Parenting is a tough job. If you need help surviving the parenting experience, the Family Support Network and Parents Anonymous are co-sponsoring a support group for isolated or overwhelmed parents. Every Tuesday night from 6 pm to 8 pm at Roxbury Children's Service, 22 Elm Hill Ave., Dorchester.

The Family Support Network is also sponsoring a support group for teen parents, every Thursday night from 6 pm to 8 pm at Roxbury Children's Service.

Getting High? or Getting Desperate? If drugs are becoming a problem, call or write: Narcotics Anonymous, 264 Meridian St., East Boston 02128, (617) 569-0021. Local meetings held at the MIT Medical Department, E23-364, on Mondays from 1-2 pm.

The Greater Framingham Area Veteran's Outreach Center is holding rap sessions for Vietnam veterans every Wednesday (except the third week of the month, when they will be held Thursday) at 7 pm. There is also a group for the wives of Vietnam veterans. For more information, call 879-9888.

Student Group Notices

The MIT Folk Dance Club sponsors two evenings of international dancing at MIT on Sunday nights in the Sala de Puerto Rico and Wednesday nights in Walker Gym, both at 7:30 pm. Beginners are welcome; no partner is needed. Call 253-3655 (FOLK) for more information.

The MIT Outing Club holds office hours every Monday and Thursday from 5:30 to 6:30 pm in W20-461. Stop by and help plan, lead or participate in trips ranging from one day outings to month long treks. The club is especially active in rock climbing, kayaking, canoeing, backpacking, hiking, and winter mountaineering. Beginners are more than welcome. The club rents a variety of equipment at low rates and has two cabins in NH available for rent. Contact Dave @ 492-6983.

Meeting Times

Men Against Sexual Assault: Monthly discussion group for concerned men on issues of rape and violence against women meets the first Wednesday of every month from 7:30-9 pm in room E51-218. The sessions are supported by the MIT Office of Student Affairs and sponsored by MIT students. Sessions will be devoted to such topics as discussions of rape, sexual violence, sexual harassment, pornography and rape, and other subjects. The discussion group is aimed at university students as well as the larger Boston/Cambridge area community. For further information, call Jeff at x3-2633.

Fellowships, Scholarships, Grants, and Awards

The MIT Japan Program is now accepting applications for the MIT Japan Science and Technology Prize. The award is made possible by the Japan-US Friendship Commission and will cover airfare and local expenses for the winner to attend a professional meeting in Japan during the 1991-92 academic year. Application deadline is April 19, 1991. For applications and further info: Cornelia Robart, E38-700, x3-2839.

The Samuel Huntington Public Service Award provides an annual stipend of \$10,000 for a graduating senior to pursue public service anywhere in the world. The Award allows recipients to engage in meaningful public service activity for up to one year before proceeding on to graduate school or a career. Proposal requested. Deadline Feb. 15, 1991. Applications should be submitted to: The Samuel Huntington Fund, Attn: D. F. Goodwin, 25 Research Drive, Westborough, MA 01582, (508) 366-9011.

The Massachusetts Risk and Insurance Management Society is making an educational scholarship available to business administration majors with a strong interest in risk management. For more information and an application, please contact Lauren Feinman at (617) 890-6352.

In View, a magazine for college women, is offering \$2500 awards to college women for outstanding accomplishments beyond the classroom. For more information, contact David Jarrard at 254-0575.

Contests, Competitions

The MIT Museum and the MIT Alumni/ae Association announce the establishment of the annual Edgerton/Mili Photography Contest to encourage and reward the talent of student photographers at MIT. Contest entries will be judged on their artistic merit and must, in some way, relate to MIT. Several cash prizes and MIT Museum Shop gift certificates will be awarded. Entries will be accepted from Jan. 2 through March 8, 1991. Entry forms are available in Rooms 10-110, 7-121, 4-405, W20-429, N51-315, N52-2nd, and in the MIT Museum Shop in the Student Center.

A free financial aid handbook is available for prospective and present college students. The Handbook for College Admission and Financial Aid is available by writing or calling the Association of Independent Colleges and Universities, Suite 1224, 11 Beacon Street, Boston, 02108-3093; (617) 742-5147.

Free Information

Do you have questions about HASS-D(istribution) subjects and categories, HUM-D(istribution) subjects and fields, concentration requirements or procedures, HASS Elective subjects or HASS Minor programs? Come to the Humanities, Arts, and Social Sciences Information Office, 14N-408 for help with anything to do with the HASS Requirement. We are open 9-5. Stop by or call us at x3-4441.

The Office of Consumer Affairs and Business Regulation has prepared a pamphlet called "College Consumer" that summarizes students' consumer rights. For a free copy, write the Office of Consumer Affairs and Business, One Ashburton Place, Boston, MA 02108 or call 727-7755.

There is a Food Addiction Hotline being provided by the Florida Institute of Technology and the Heritage Health Corporation. This hotline is to provide information about food addiction, gather data about the nature and extent of food addiction, and raise the awareness in the population that food addiction exists. The hotline number is 1-800-USA-0088.

CALL, a toll-free information service, provides free information about colleges, graduate schools, financial aid sources, and career opportunities. CALL operates Monday through Thursday, 9 am to 9 pm; Friday and Saturday 9 am to 5 pm; and Sunday 2 pm to 6 pm at 1-800-442-1171. Counselors are also available on a walk-in basis at the Higher Education Information Center located at the Boston Public Library, 666 Boylston Street, next to the Copley Plaza.

Study Help

The professional tutor staff of the MIT Writing and Communication Center (14N-317) will be glad to consult with you on any writing or oral presentation project (papers, theses, letters, etc.) from 10 am to 6 pm Monday through Friday. You may either phone for an appointment (x3-3090) or just drop in. In addition, workshops for those for whom English is a second language are held in the Center on Wednesdays from 6:15-7:15 pm. All services are free.

Miscellaneous

"Senior Days" are back at the New England Aquarium. Until May 20, all senior citizens will be entitled to free admission to the Aquarium on Mondays from 12:30 to 4 pm. The Aquarium is wheelchair accessible. Info: 973-5200.

The Buddy Program of the AIDS ACTION Committee is looking for volunteers to provide emotional and practical support to our clients on a one to one basis. Interested persons need to fill out an application and attend our orientation and training. Info: 437-6200 x450.

Boston Partners in Education is seeking area college students to serve as school volunteers in the city's public elementary, middle and high schools. Be a tutor, mentor, classroom assistant, story reader, enrichment presenter or motivational speaker. Help especially needed in math and science, Reading Aloud, and English as a second language. Info: 451-6145.

If you are interested in spending a few hours a week with a child who has emotional problems, call Dr. Judy Osher at the Cambridge Youth Guidance Center, 354-2274. You will discuss your experience weekly with a group of other volunteers and a clinical supervisor.

Help a newly arrived family build a new life: Soviet Immigrants in Boston area need volunteers to help with language and understanding life in America. Please give two to three hours a week. More info: Joanne Spector at 566-1230. Jewish Family & Children's Service, 637 Washington Street, Brookline.

Volunteers needed to bag fresh produce for the Red Cross at 99 Brookline Ave., Boston, on Mondays and Fridays from 10:30 to 12 am. Call Nancy Jamison at 282-0728 or Lynne Klumb at 262-1234 ext. 236.

Women's shelter needs women volunteers to stay overnight once a month. Male or female volunteers needed from time to time to do general maintenance and fix-up work. The shelter is open on Tuesday, Thursday, Friday, and Sunday nights. Call Beth Greeney at 524-3431 or Meg Smith at 265-6006.

Students interested in volunteering in the medical field can find great opportunities at the Mass. Eye and Ear Infirmary. There is a full range of regular volunteer opportunities including work in the vision rehabilitation center, pathology lab, and on the patient floors. Contact Ruth Doyle at 573-3164.

The Church of Jesus Christ of Latter-Day Saints holds Sunday services at 3 pm in Cambridge. For more information, call Elder Butler or Elder Alder at 648-5605.

The Cambridge Department of Human Services needs volunteers during after school hours to tutor, be a Big Brother/Big Sister, help with elementary school sports (gymnastics especially) and special one-time events. Lots of schools and locations to choose from. Contact Judy Bibbins or Laurel Shepard at 498-9072.

Council Travel Services is offering student tours of the Soviet Union. For a free brochure and information, contact Council Travel Services at the Student Center, W20-084 or by calling (617) 225-2555.

A new Pentagon Audit Project provides detailed listings of military contracts awarded to local companies and colleges across the United States. The system can help requesters determine what weapons systems are made or based in their area, or find out whether companies in which they own stock are doing military-related work. For more information contact Paul Brink at (215) 241-7060.



• Reduce stress
• Revitalize

\$40 per month 523-6318

719 Boylston St., 2nd Floor, Boston, MA.
One Block from Copley T Station
FREE WEEK OF CLASSES WITH THIS AD

what's NEW

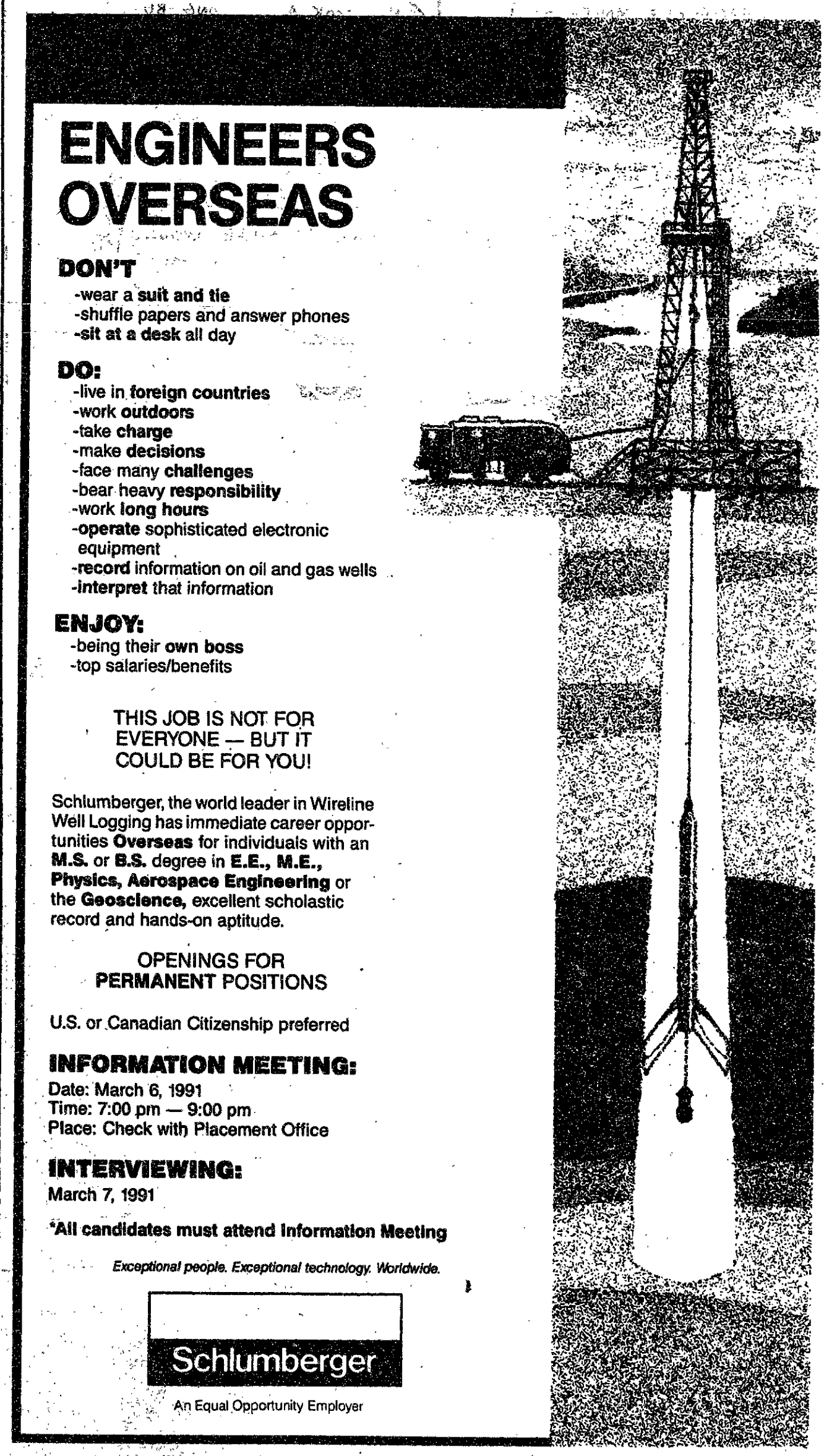
CURRENTS

A SURVEY OF ART OF THE MOMENT

Currents is supported by the National Endowment for the Arts.

JANUARY 18-MARCH 17

THE INSTITUTE OF CONTEMPORARY ART
955 Boylston St. (next to the Hynes/ICA stop), Boston. Call 266-5152.



ENGINEERS OVERSEAS

DON'T

- wear a suit and tie
- shuffle papers and answer phones
- sit at a desk all day

DO:

- live in foreign countries
- work outdoors
- take charge
- make decisions
- face many challenges
- bear heavy responsibility
- work long hours
- operate sophisticated electronic equipment
- record information on oil and gas wells
- interpret that information

ENJOY:

- being their own boss
- top salaries/benefits

THIS JOB IS NOT FOR EVERYONE — BUT IT COULD BE FOR YOU!

Schlumberger, the world leader in Wireline Well Logging has immediate career opportunities **Overseas** for individuals with an **M.S. or B.S. degree in E.E., M.E., Physics, Aerospace Engineering or the Geoscience**, excellent scholastic record and hands-on aptitude.

OPENINGS FOR PERMANENT POSITIONS


U.S. or Canadian Citizenship preferred

INFORMATION MEETING:
Date: March 6, 1991
Time: 7:00 pm — 9:00 pm
Place: Check with Placement Office

INTERVIEWING:
March 7, 1991

***All candidates must attend Information Meeting**

Exceptional people. Exceptional technology. Worldwide.

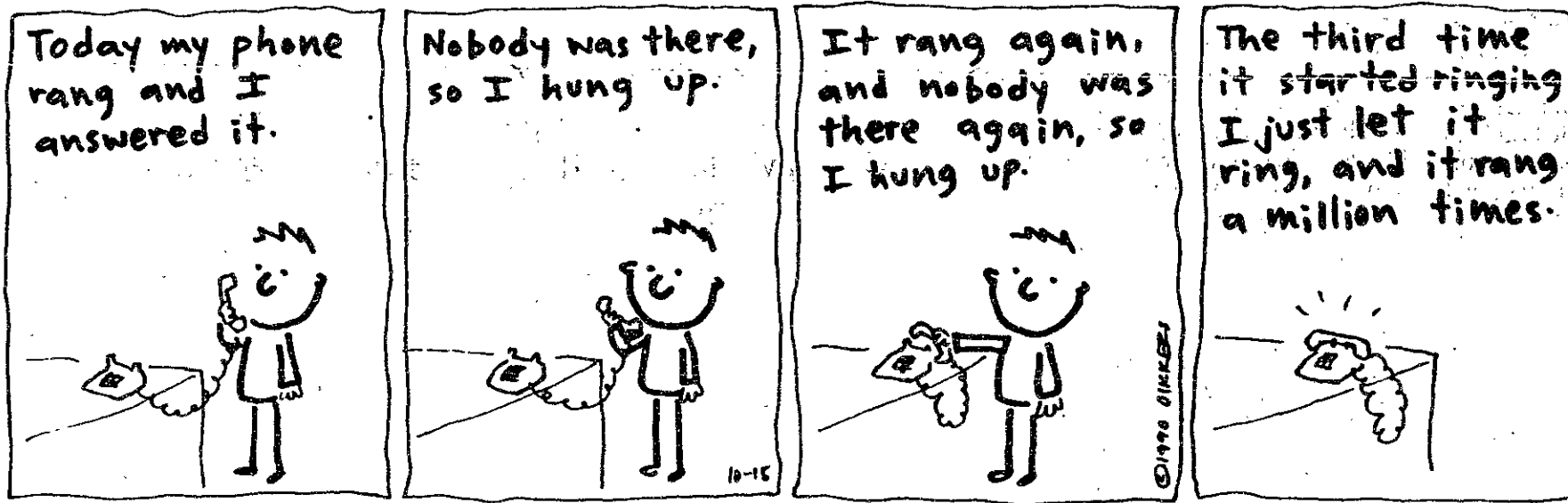


An Equal Opportunity Employer

comics

Jim's Journal

by Jim



HARVARD MEDICAL SCHOOL
Department of Dermatology

ACNE

- NEW MEDICINE for acne under study
- NO CHARGE for participation
- INFORMATION about acne provided
- REMUNERATION (\$) provided

(617) 726-5066

DERMATOLOGY CLINICAL
INVESTIGATIONS UNIT
Massachusetts General Hospital



SCHLUMBERGER FIELD ENGINEERS

DON'T:

- wear suits and ties
- shuffle papers
- answer phones all day
- sit at a desk

DO:

- take charge
- work long hours
- assume heavy responsibility
- work outdoors
- make decisions
- face many challenges and risks
- perform data acquisitions and measurements of physical properties of subsurface formations
- interpret that information

ENJOY:

- working with a great deal of autonomy
- acting on an idea and risk carrying it to fruition
- taking pride in a job well done

MECHANICAL ENGINEERING
ELECTRICAL ENGINEERING
(and other engineering disciplines)

GEOSCIENCES
APPLIED SCIENCES

INFORMATION MEETING:

Date: March 5, 1991
Time: 7:00 pm — 9:00 pm
Place: Room 4-149

INTERVIEWING:

Date: March 7 & 8, 1991
Place: Please check with Placement Office

PLEASE NOTE: Open to all interested students. Your attendance at the Information Meeting is a prerequisite to our interviewing process. Please attend. Casual attire.

*Exceptional People.
Exceptional Technology.
Worldwide.*

Schlumberger

An Equal Opportunity Employer



FREE! Airline Reservations & Ticketing Service

Heritage Travel

Thomas Cook

★★★★★
RATED BEST!
by Condé Nast
Traveler Magazine

★★★★★

Badger Building • 1 Broadway • CAMBRIDGE

HERITAGE/THOMAS COOK is an official authorized agent for all airlines and there is NO EXTRA CHARGE when you pick up your tickets at HERITAGE/THOMAS COOK!

**PURCHASE YOUR TICKETS NOW
BEFORE ANOTHER FARE INCREASE**

**IF YOU'RE TRAVELING ON ANY
OF THESE AIRLINES ...**

American, United, Continental, Pan Am, Delta, TWA, Northwest, USAir, British Air, Qantas, Air Canada, Iberia, Lufthansa, Swiss Air, Air India, El Al, Icelandair, Alitalia, Aer Lingus, Viasa, or even shuttle flights.

**AVOID LONG LINES AT THE AIRPORT,
MAKE YOUR RESERVATIONS AND
PICK UP YOUR TICKETS AT**

Heritage Travel

Thomas Cook

Badger Building • 1 Broadway • CAMBRIDGE

Open Mon.-Fri. 8:30 am-5:00 pm

868-2666

Dorm spending on alcohol questioned

(Continued from page 1)

"We are trying to reach a pragmatic and applicable solution," said Levesque. In order to achieve this, the committee has consulted with the Medical Department, graduate resident tutors, dormitory headmasters and Robert A. Sherwood, former associate dean of student affairs at MIT and current dean of student development at Boston College.

The problem of the house tax is a multifaceted one. There are concerns over the insurance liability of the Institute as well as the effectiveness of any proposed remedy. "How do we know if a decreased dormitory budget will lead to decreased alcohol purchases?" Dorow asked.

Currently, students pay a house tax to the Bursar's Office. The Bursar's Office then redistributes lump sums to each dorm. One of the possibilities discussed was to have the Bursar keep the sums and control all purchases by the dorms.

"Before any action is taken, we have to institute a comprehensive educational program such as the

one in Boston College," Levesque said. The role of the committee is not to make the campus dry, but rather to institute responsible drinking, he said.

A second forum on the issue will be held at the beginning of March, before the report is submitted to the dean and the UA. Kirby expects a better turnout at the next forum. "I don't think the students realize that we are trying to give them more choice," he said.

Student & Youth Travel

**WAY
TO GO
FOR LESS!**

ROUNDTrips

New York	\$ 118.00
Denver	\$ 280.00
West Coast	\$ 303.00
Colorado Springs	\$ 280.00
Salt Lake City	\$ 280.00
Tokyo	\$ 725.00
Bangkok	\$ 999.00
Sydney	\$1169.00
London	\$ 425.00
Amsterdam	\$ 398.00
Brussels	\$ 398.00

Flights Worldwide
Low cost one way fares
ISIC, Eurail, AYH, Britrail
Call or write for free brochure

1208 Mass. Ave. #5
Cambridge, Mass. 02138

617-576-4623

Worldwide **STJ**
STATRAVEL
123 OFFICES WORLDWIDE

We know
you have
a heart.

Donate
some
blood.

A Public Service of This Newspaper
& The Advertising Council

This space donated by The Tech

Students

Get The Card
and Get

3 Round Trips
on
Continental Airlines

Fly Anytime. Over 150 Cities

\$129 or \$189 Round Trip

NO BLACKOUT
DATES

See Representatives for Details

DATE: **Thursday & Friday**
Feb. 21 & 22

LOCATION: **Stratton Student Center**
9:00 - 5:00



Attention: Software Developers

Are you an exceptional 'C' programmer, with PC experience? Interested in being on the development team of leading-edge products for GUI environments? If so, then hDC can offer you a unique opportunity. hDC is the manufacturer of **Windows Express** and **FirstApps**, two best-selling applications for the Windows 3.0 environment. We are currently working on our next wave of product offerings and are looking for a few star developers to join our team.

A job at hDC offers a lot: A chance to learn and grow in a fast-paced, dynamic environment; a chance to work on leading-edge products; a great physical environment including fast machines, private offices, an exercise room, and all the food and drink you can consume; a progressive management philosophy; an in-house lecture series; and much more.

hDC will be recruiting on campus March 1, 1991. If interested please contact you Placement Center to sign up for an interview, or send a resume to:



hDC Computer Corporation
6742 185th Avenue NE
Redmond, WA 98052
Attention: MIT Recruiting
No phone calls, please.

Call for Papers MIT-ACM Computer Science Conference

The third MIT-ACM Undergraduate Computer Science Conference will recognize and display quality research done by MIT undergraduates. MIT undergraduates will present papers on a wide variety of Computer Science subjects. The authors of the best papers will receive cash awards. All accepted papers will be distributed.

The goal of this conference is to assemble undergraduates in a forum which:

1. Expands the realm of undergraduate education to issues beyond class subjects;
2. Encourages communication of technical ideas among a peer group;
3. Allows undergraduates to present their work in a formal setting;
4. Provides undergraduates experience with writing and presenting papers.

The conference will cover topics relating to Computer Science. Suitable sources include:

- Term projects for classes (e.g. 6.111 or 6.036);
- UROP projects;
- Summer jobs, including non-proprietary VI-A assignments;
- In-progress theses;
- Personal hacks, which others would find technologically interesting.

We enthusiastically solicit short papers, of about six typed single-spaced pages, or 1500 words. Please submit three copies of papers to the Conference Chairperson by March 15, 1991. Papers must not have been published or submitted elsewhere for publication. Authors of accepted and rejected papers will be notified by April 1, 1991.

Papers will be judged on technical content, cleverness, interestingness, and quality of writing.

For information, contact: Conference Chairperson, Michael de la Maza, MacGregor E124; x5-9240; mdlm@ai.mit.edu.

A PC* WHEN YOU NEED IT!

WE RENT AND SELL PCs - IBM - & MACINTOSH
DAY • WEEK • MONTH or longer
 Printers, Hard Disks and other peripherals too...
 WE'LL MEET OR BEAT ANY PRICE
 - CALL FOR QUOTATION.
 ON-SITE DTP FACILITY - RENT & MACINTOSH
 BY THE HOUR - LASERPRINTING

TERMINAL EXCHANGE 731-6319
 171 Amory Street - Brookline, MA - A Full Service Computer Store
 (Around the corner from the Comm. Ave. Ski Market)

The MIT Ring



Collection By **JOSTENS**

Exclusively At **the Coop**

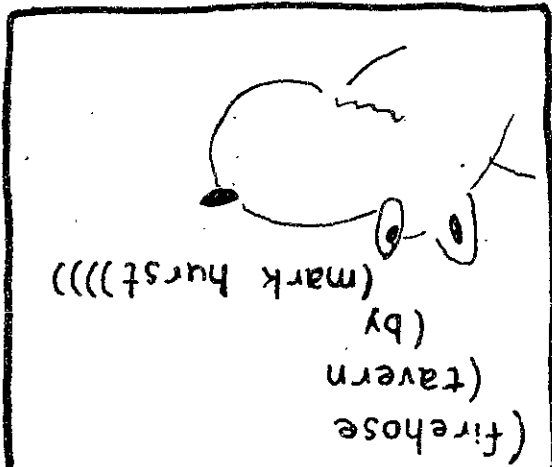
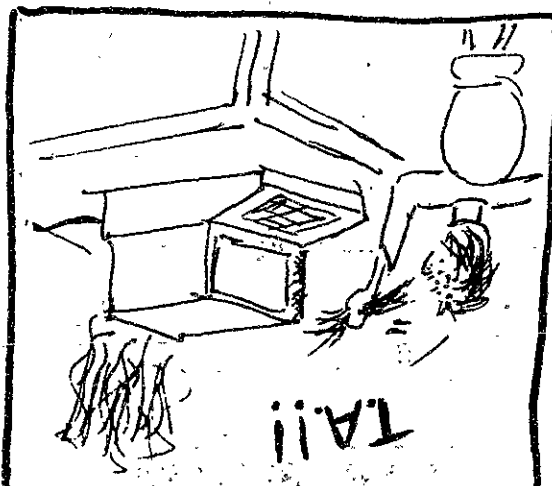
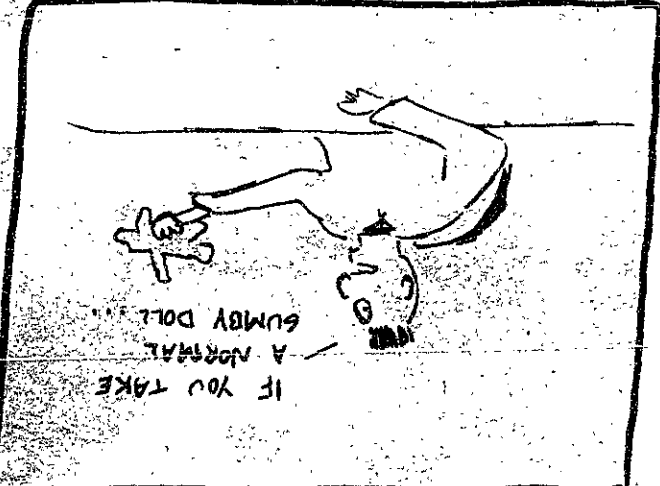
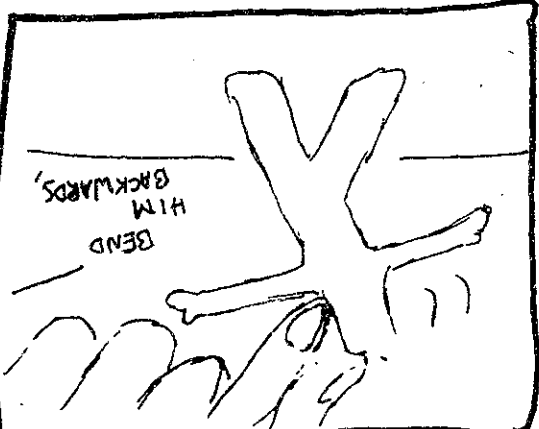
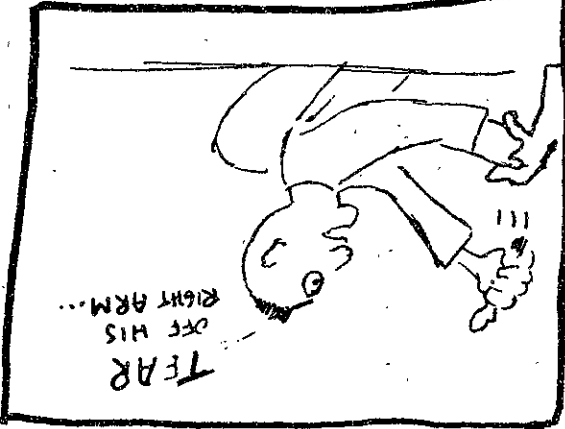
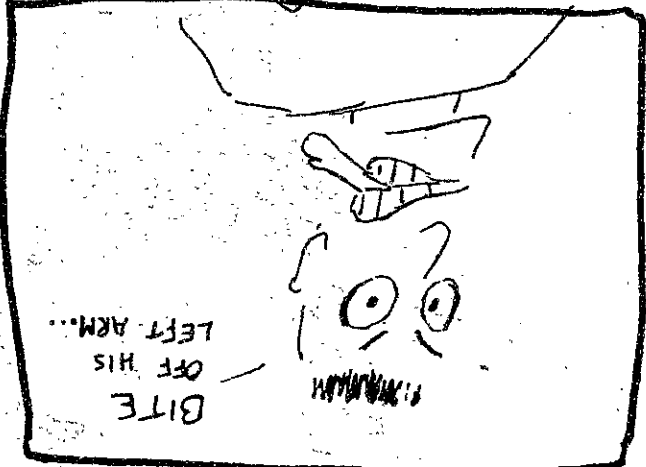
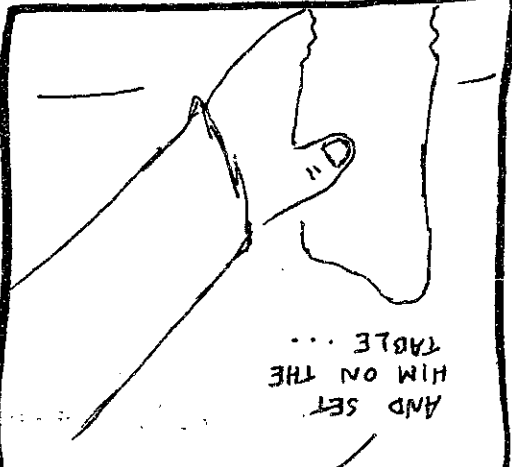
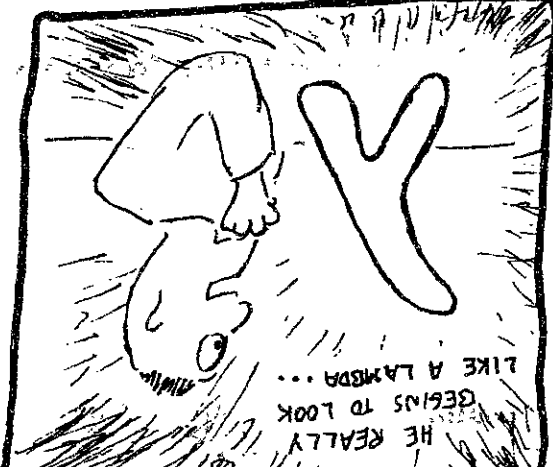
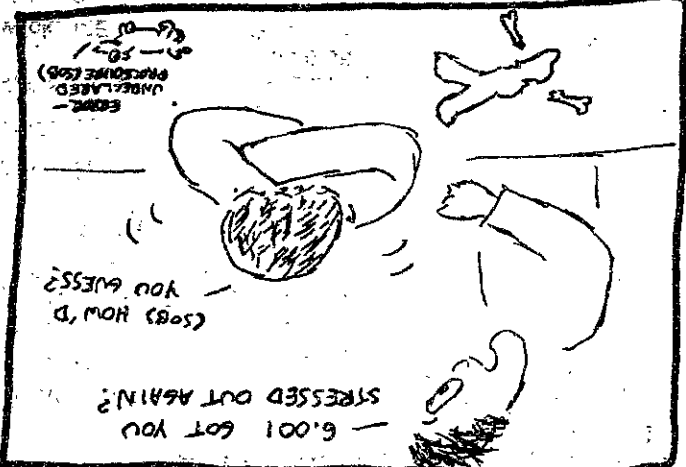
MIT COOP AT KENDALL
 2 CAMBRIDGE CENTER
 SAT 10:00-11:00
 SAT 12:00-1:00

**ATTENTION SENIORS
 POSITION AVAILABLE IN THE
 ADMISSIONS OFFICE AS AN
 ADMISSIONS COUNSELOR**

The Office of Admissions is now accepting applications for the position of Admissions Counselor. This is a one year full-time position beginning in July, 1991 (some flexibility is possible). Duties will include:

- * conducting question and answer sessions
- * interviewing prospective applicants
- * visiting secondary schools
- * coordinating MIT student involvement in reception area
- * participating in admissions committee decisions

Applications for this position are available from Greg Pierson in the Admissions Office (3-108) and should be returned no later than March 1, 1991.
 Note - This is for 1991 (January or June) MIT graduates.



THE EMILE BUSTANI MIDDLE EAST SEMINAR

presents

PROFESSOR SHIBLEY TELHAMI

Government Department
 Cornell University
 Former Adviser to the American Ambassador
 to the
 United States Missions

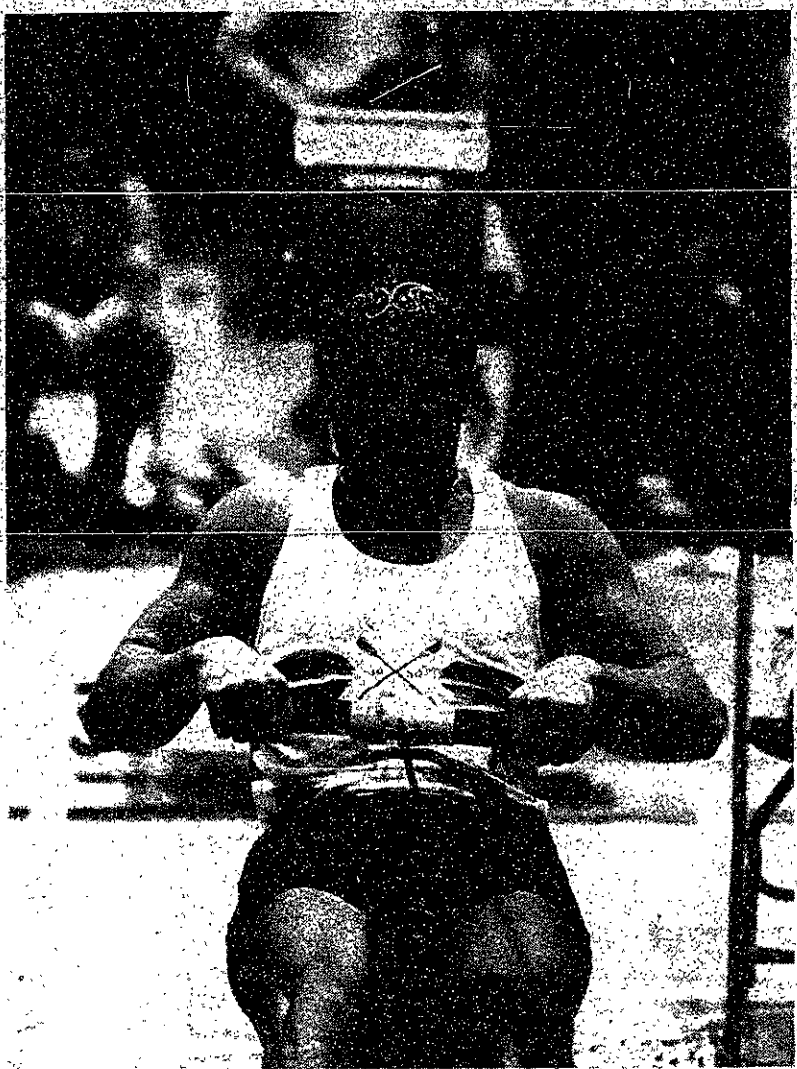
"The Regional Context of the Gulf Crisis"

Tuesday, February 26, 1991
 4:30 - 6:30 PM
 E51-332 (Schell Room)
 70 Memorial Drive

OPEN TO THE PUBLIC

Sponsored by the Center for International Studies

sports



Morgan Conn/The Tech
 Jeffrey A. Kuehn '92 rows in the 1991 Crash-B Sprints in Rockwell Cage Sunday. The grueling 2500-meter race pits competitors against one another and the clock in a race to be the world's best.

Indoor Track at New England Div. III Championships

at Brunswick, ME
 February 16, 1991

55 meters - 1. Dunzo, MIT, 6.51; 2. Moda, Fitch, St., 6.53; 3. Domingos, Brandeis, 6.64.
55 hurdles - 1. Pryor, Tufts, 7.74; 2. Lopes, SMU, 7.76; 3. Lee, Brandeis, 7.82.
200 meters - 1. Moda, Fitch, St., 22.57; 2. Hutton, Tufts, 22.62; 3. Dunzo, MIT, 22.67.
400 meters - 1. Conrad, Bowdoin, 50.22; 2. Smith, Williams, 50.29; 3. Guglielmo, Tufts, 50.35.
500 meters - 1. Boldman, Amherst, 1:05.67; 2. Moore, Brandeis, 1:06.07; 3. O'Brien, Bates, 1:06.15.
800 meters - 1. Ford, Brandeis, 1:53.56; 2. Ince, Wesleyan, 1:53.92; 3. Wirth, Coast Guard, 1:55.46.
1000 meters - 1. Yim, Bowdoin, 2:34.16; 2. Leahy, Bates, 2:34.24; 3. Shearer, Colby, 2:34.84.
1500 meters - 1. Trevor, Colby, 4:00.83; 2. Maher, Westfield St., 4:00.86; 3. Campbell, Westfield St., 4:01.63.

5000 meters - 1. Rich, Tufts, 15:06.79; 2. Sears, Bates, 15:14.59; 3. McClennan, Williams, 15:15.42.
1600 relay - 1. Tufts, 3:23.17; 2. Westfield St., 3:23.62; 3. MIT, 3:26.55.
3200 relay - 1. Bates, 7:55.93; 2. Bowdoin, 7:56.43; 3. Coast Guard, 8:01.52.
Distance medley relay - 1. Bowdoin, 10:30.20; 2. Bates, 10:35.02; 3. Brandeis, 10:40.22.
High jump - 1. Johnson, Brandeis, 6'-5"; 2 (tie), Navin, Fitch, St. and Ducharme, Williams, 6'-3".
Long jump - 1. Hutton, Tufts, 21'-8 1/4"; 2. Fenton, Brandeis, 21'-5 1/4"; 3. Capozza, Colby, 21'-3".
Pole vault - 1. Robinson, MIT, 14'-0"; 2 (tie), Shim, Bates and Smith, Fitch, St., 13'-6".
Shot put - 1. Thibert, WPI, 48'-6 1/2"; 2. Clarke, MIT, 47'-9 1/2"; 3. Frisoli, Tufts, 46'-10 1/2".
Triple jump - 1. Domingos, Brandeis, 45'-9 3/4"; 2. Mao, Bowdoin, 45'-5 3/4"; 3. Simmons, Wesleyan, 44'-4 1/2".
Weight thros - 1. Clarke, MIT, 54'-6 3/4"; 2. Hammond, Tufts, 52'-6 3/4"; 3. Wheatley, Bates, 51'-7".
1 mile - 1. Tufts, 92; 2. Brandeis, 77; 3. MIT, 58; 4. Bates, 57; 5. Bowdoin, 53; 6. Williams, 35; 7. Fitchburg St.; 8. Coast Guard, 31; 9. Colby, 28; 10. Westfield St., 23.

Seniors & Other Long-time Scribe Users -- Please Read This!

Last Chance for SCRIBE THESIS Minicourse!

Scribe Thesis is being offered *one last time* for the benefit of experienced Scribe users.

As previously announced, Project Athena now recommends using Latex or EZ, rather than Scribe. Although Scribe will continue to be available on the current Athena hardware platforms, and though there is extensive documentation in On-Line Help; the amount of Athena support for Scribe will continue to decrease:

- Fewer on-line consultants will be familiar with Scribe, so you may wait longer for OLC answers to your Scribe questions, answers which may be less comprehensive or detailed than previously.
- Fewer of your fellow Athena users have experience with Scribe, so even getting informal help from other users is becoming more difficult.
- The Scribe Thesis minicourse is being offered *only once* during the current round of minicourses. Depending on response, this may be *the last time* that the course will be presented.

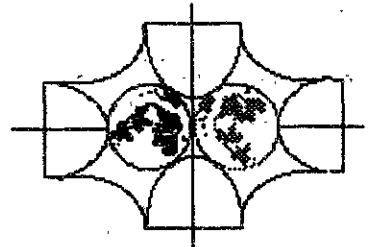
If you are an experienced Scribe user, and are planning to use Scribe to format your thesis, then you should attend the one-hour Scribe Thesis minicourse on



Thursday, February 21, 1991
 8:00 pm
 Room 3-343

Note: This course is intended for users who have already invested time and effort in learning Scribe, and want to do their thesis without having to learn another text formatter. For other users, the Latex and Latex Thesis minicourses are more appropriate. For more information, write to training@athena

No Pre-Registration or Reservation is needed... just show up!



CAREER FAIR

FRIDAY
 FEBRUARY 22, 1991
 12:00 - 6:00 p.m.

M.I.T.
 du Pont Gym (Bldg. W31) on Mass. Ave.
 (Corner of Massachusetts Avenue & Vassar Street)

EVERYONE WELCOME!

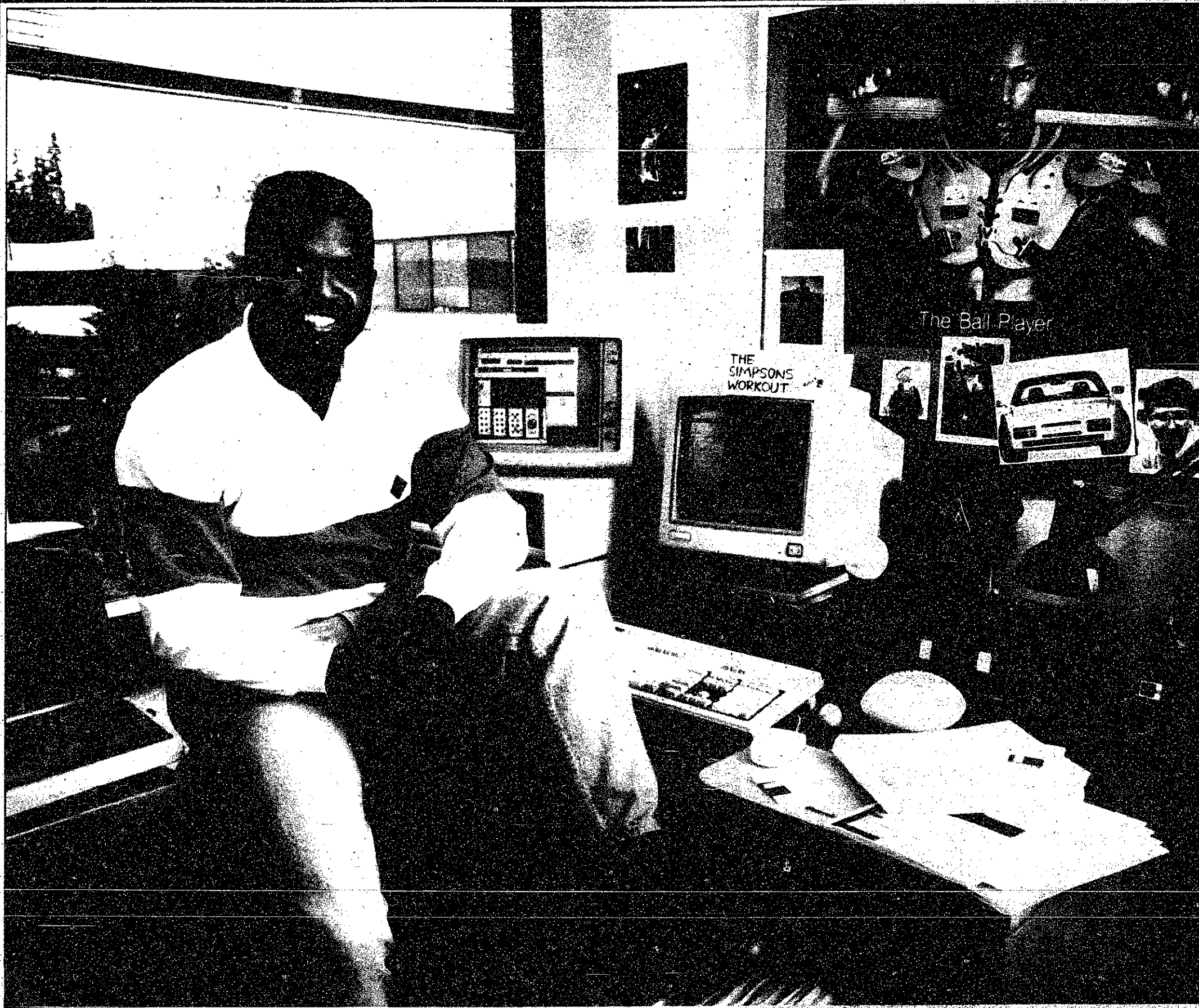
COMPANIES ATTENDING INCLUDE

- | | | |
|----------------------------------|--------------------------------|-------------------------------|
| Advanced Cardiovascular Systems | Federal Reserve Bank of Boston | Millipore |
| Air Products and Chemicals, Inc. | General Dynamics | MIT Graduate School |
| Alcoa Laboratories | GE Aircraft | MIT Lincoln Labs |
| Amdahl Corporation | General Electric | Mobil Chemical Co. |
| Amoco Corporation | General Foods | Monsanto Company |
| Anderson Consulting | GTE | Motorola |
| Apple Computer | Harrison Radiator | NASA-Langley Research Center |
| Applied Physics Lab | Hercules Inc. | National Semiconductor |
| AT&T Bell Laboratories | Hewlett-Packard | Newport News Shipbuilding |
| Bellcore | Honeywell, Inc. | Northern Telecom |
| BNR Inc. | Hughes | Nynex |
| Camp Dresser & Mckee Inc. | IBM | Pacific Gas & Electric Co. |
| Citibank | Intel | Pepsi-Cola |
| Colgate-Palmolive | Johnson & Johnson | Prime Computer |
| Cray Research | Kraft General Foods | Schlumberger |
| Digital Equipment Corporation | Lockheed | SRI International |
| Draper Laboratory | McDonnell Douglas | 3M |
| E.I. Du Pont | Merck & Co. | US West Advanced Technologies |
| Eastman Kodak | Microsoft | |

For the price
 of a roll of film,
 we can develop
 programs for
 the elderly.



This space donated by The Tech



Mitch Duncan, Howard '89

Why Microsoft?

I was amazed that I was able to step from Howard's campus onto Microsoft's campus and make an instant impact in the development cycle. I even won 1990's "Rookie of the Year" for my efforts. Microsoft did their part by giving me access to as much hardware and software as I needed, without the proverbial "red tape" involved.

The environment allows me to set my own hours and play on Microsoft's athletic fields when I want a break. I have the freedom to dress as I like—my typical attire at work is a t-shirt, shorts and Birkenstock sandals. The walls of my office are plastered with Bo Jackson posters, and I'm either listening to rap or jazz. When people hear Tuck and Patti or Public Enemy in the halls, they know it's coming from my office! On the social tip, some friends and I started an organization called BAM (Blacks at Microsoft) and we get together to do cultural, community and social things.

Coming from DC, Seattle had the "big city" mentality I was looking for. It has liberal thinking people, a pleasant climate, good night life, cultural diversity, and the

largest assortment of microbreweries I've ever seen!

When I combined this with the chance to work with the smartest people in the industry on projects that would shape the next computer generation, it made my decision easy. I've been here a year, and I love every bit of it!

Now let's talk about you.

We are looking for Software Design Engineers and Program Managers. If you are pursuing an AB/SB, MS or PhD degree in Computer Science, Electrical Engineering, Math, Physics or related technical discipline with programming experience, design skills and/or exposure to managing projects, then we want to talk with you. See your Career Center about signing up to interview with us on campus February 28th. Relocation is available for both summer and full-time positions.

We are an equal opportunity employer and are working toward a more culturally diverse workplace.

See us at the
Minority Career
Fair in the
Dupont Gymnasium
12:00 p.m.-6:00 p.m.
Feb. 22, 1991

Microsoft
Making it all make sense™