

Wrighton will fund CEG improvements

By Judy Kim

Provost Mark S. Wrighton has decided to provide additional finances and resources necessary to markedly improve the *Course Evaluation Guide*, with goals of complete coverage of all undergraduate subjects and the upgrading of the CEG to make it a more reliable tool in tenure decisions.

In a letter sent to faculty members during the end of November, Wrighton described the CEG as "an important guide to undergraduate subjects at MIT. It is of use to both our students and our faculty."

Wrighton pledged to provide "a capital contribution to upgrade existing computational equipment" as well as resources to allow the CEG to cover all undergraduate subjects with more than 10 students.

In his letter, Wrighton wrote that CEG staff members guaranteed "100 percent subject coverage in each term of the academic year" once improvements begin. As a result, he strongly encouraged faculty members to "make adequate time available to provide input necessary for the CEG" during class time.

Wrighton's decision came after meeting with Associate Dean of Student Affairs Travis R. Merritt, Undergraduate Association President Stacy E. McGeever '93 and CEG Editor Dawn L. Nolt '92 earlier this term.

They met "to review the status of the CEG in view of the discussions held in connection with" the Institute colloquium, "Teaching Within a Research Universi-

ty," Wrighton wrote in his letter.

McGeever said the main focus of the meeting was to have Wrighton recognize the need for changes to the CEG and to ask him for financial assistance in bringing about these changes. Since Wrighton is an influential figure on the MIT campus, making changes in the CEG with Wrighton's support would ensure its success, McGeever said.

CEG may be used in tenure process

After improvements are made, Wrighton said, the CEG "will be able to provide a rapid response to faculty regarding the data from individual subjects." Since teaching is an important consideration in deciding whether a professor receives tenure, the CEG improvements could have an impact on the tenure-approving process, he said.

Chemistry Department Head Robert J. Silbey said that "we always use the CEG," among other sources, when assessing a professor's teaching.

Thomas H. Jordan, head of the Department of Earth, Atmospheric and Planetary Sciences, said the CEG is an important tool, and that "I'm a big fan of the CEG." In terms of using the CEG in discussing tenures, Jordan said that "we find the CEG very useful for evaluating teaching."

Emilio Bizzi, head of the Brain and Cognitive Sciences Department, also said that the CEG is one of the factors involved in tenure decisions.

"There has been some confusion because people weren't aware that a change was taking place," O'Ryan said. "A lot of confusion also arose with people not being able to read the number 1 and number 2 stickers" that distinguish the Cambridge and Boston vans, O'Ryan said.

Riders also complained a having to wait outside for long periods of time, and some said they felt unsafe while waiting outside, O'Ryan said.

"The 25-minute waiting time (Please turn to page 2)

Year-long search for VP nears end

By Reuven M. Lerner

The search for a permanent associate provost and vice president for research appears to be nearing completion, with a new appointment possible within the next month.

The post is now held by Professor J. David Litster PhD '65, who was temporarily named to the post following last year's retirement of Kenneth A. Smith '58. Litster had previously headed the Francis Bitter National Magnet Laboratory.

While Birgeneau and a recent "help wanted" advertisement in the *Chronicle of Higher Education* said the new vice president would take office on Jan. 15, Birgeneau admitted that this would depend in part on whether the new provost came from inside or outside of MIT. The "length of time that process takes would bias the committee toward an inside person, especially since there are a number of qualified people on the MIT faculty," he said.

A high-ranking administrator, who insisted on anonymity, said Litster was appointed to give President Charles M. Vest and Provost Mark S. Wrighton time to redefine the job and determine the new vice president's specific responsibilities. The administrator said this might very well include an increased emphasis on relations with government agencies, partly in light of MIT's failed bid for the National Science Foundation's new National Magnet Laboratory project.

A search committee, chaired

by Institute Professor Mildred S. Dresselhaus, has met regularly over the last few months to recommend a permanent appointment to the post. Birgeneau said the committee had "talked to a very large number of people on the MIT campus, myself included," about specific candidates as well as the position in general.

Birgeneau praised Litster's performance so far, saying that "he's unusually strong technically — very intelligent, very strong person." He added that "just from listening to him, I sense he has understood well broadly what the research issues are here."

Litster and Dresselhaus were both unavailable for comment.

Classroom Discussion forum set for IAP

By Bill Jackson

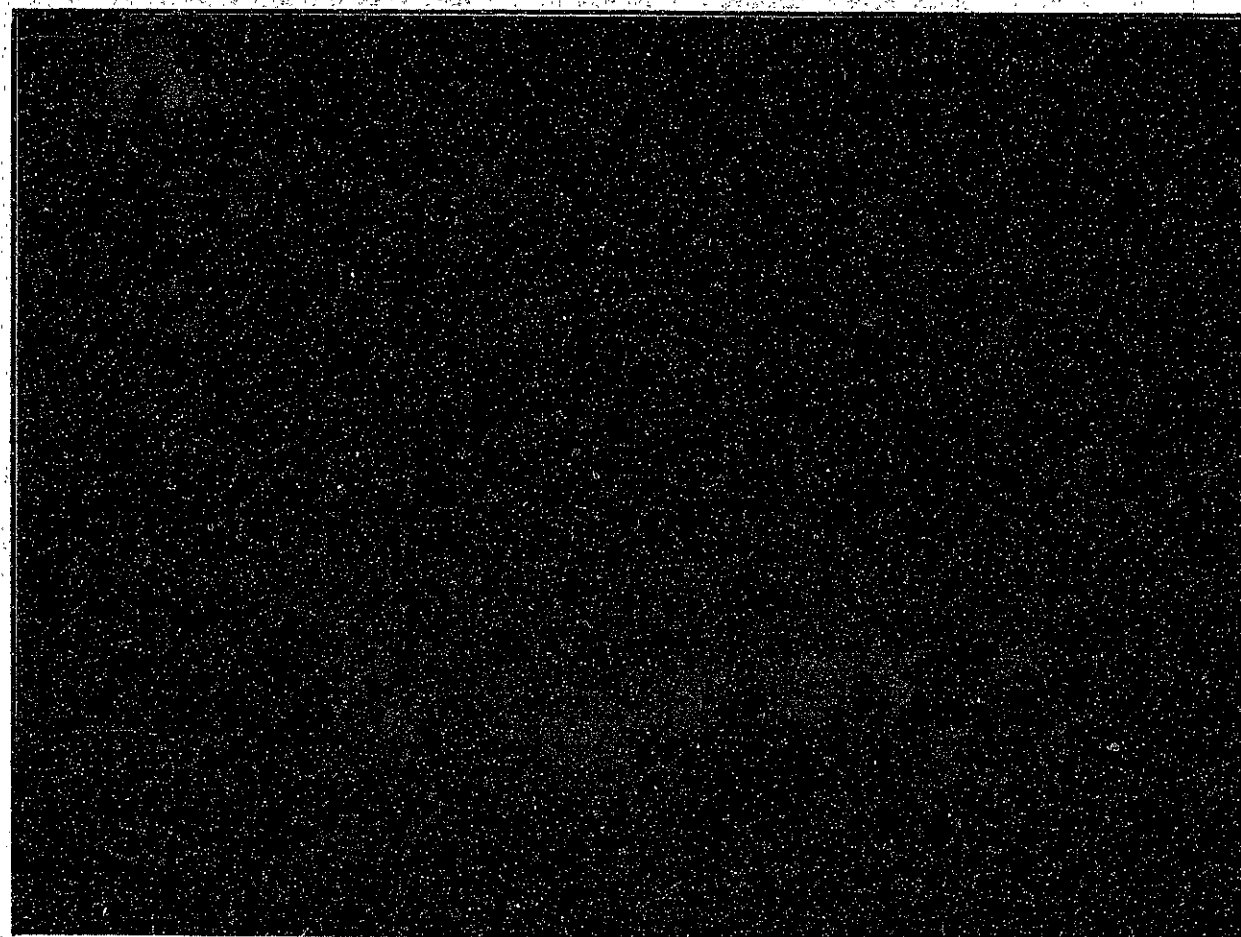
The Undergraduate Association, the Undergraduate Academic Support Office and the MIT Colloquium Committee will sponsor a set of workshops during Independent Activities Period designed to explore methods of fostering discussion in MIT classrooms.

The nine-hour workshops, called "Classroom Discussion: Making It Happen," will be headed by a management trio consisting of one graduate student or post-doctoral fellow, one undergraduate student and one faculty member. The groups, each limited to a maximum of 15 people, will meet over a period of three days to exchange information about the various perspectives that professors, teaching assistants and students have about classroom interaction.

The workshop groups will be grouped into three broad areas: humanities and social sciences, engineering and science. The management trio will prepare some readings, but the actual structure of the sessions will be determined by the group itself.

"This was spurred by the 'Teaching Within a Research University' colloquium," said UA President Stacy E. McGeever '93, "as one of many programs in an effort for better teaching at MIT."

McGeever said the program would be a good chance for undergraduate students to get to know their professors and teaching assistants better, and for faculty to hear the students' perspectives. He went on to emphasize that the program was designed to be a two-way street, with students and faculty both contributing to the process.



Tech file photo

Kenneth S. Rogoff PhD '80 wins 25 games and draws the remaining six in a four-and-a-half-hour-long chess marathon held in Lobby 7 on Jan. 25, 1977.

Twin Safe Ride service begins

By Pablo Castro

The Safe Ride shuttle service switched to a two-van, set-route system yesterday. The switch was met with mixed reaction and some confusion, with van users complaining of not being able to distinguish between the Cambridge and the Boston van and other users complaining of long

wait times, said Cambridge route van driver Katie O'Ryan.

"Changes were originally made because Campus Police was getting swamped with calls from people going to parties," said O'Ryan. "The van was becoming a party van, not a police-run escort van. The system had to be changed," she said.

Entrepreneurs hold contest for the best business project

By Kathy Sun

The MIT Entrepreneurs Club is currently gearing up for one of its major events, the annual 10K Contest. The event, jointly sponsored with the Sloan School of Management's New Venture Association, is a contest in which participants compete to present the best business project. Contest kits will be available starting on Dec. 11, according to Douglas

C. Ling '87, the club's president.

The Entrepreneurs Club was founded in 1988 by a group of undergraduate students who shared a common interest in brainstorming business ventures. From a small group of friends who met on a regular basis to compare and argue over potential entrepreneurial capers, the club has now achieved a membership exceeding 100, Ling said.

The club "is actively involved in putting mere ideas into strategic, real-life enterprises," Ling added.

"As a forum, the members have the benefit of seeing how their ideas are viewed by others with many different disciplines and backgrounds," Ling said.

First prize is \$10,000

In the first round of the contest, each participant submits a five-page proposal for a new business idea. The best proposals, as determined by a panel of judges, continue on to the second round, in which participants present 30-page business plans that include financial projections.

Teams that make it to the final round are interviewed and asked to clarify specific points in their proposals. In this way, students are allowed to take part in a various aspects of the real business world, Ling said.

The first-place winner receives \$10,000.

Examples of past winners include Dial a Fish, which is in the process of being marketed; Cyclone, an idea based on using bicycle covers for car roof decks; MegaKnowledge and Edible Holograms.

Other projects include Firestation Earth, a project to use technology to alleviate the hunger stress in Russia, and projects involving real estate marketing research.

The club is also sponsoring an Independent Activities Period course entitled "Start new ventures, steps, and technical licensing."

Activity Profile

Safe Ride switches to two-route system

(Continued from page 1)

for the Cambridge van is not very realistic," said O'Ryan. "The Cambridge route has 17 stops. With 2 minutes waiting time at each stop, the total time it takes to run the entire circuit is greater than 25 minutes," said O'Ryan.

Average waiting time totaled 45 minutes for the Cambridge shuttle and 35 minutes for the Boston shuttle, O'Ryan said.

A memorandum released earlier this term by Chief of Campus Police Anne P. Glavin estimates a 25-minute waiting time for the Cambridge shuttle and a 35-minute waiting time for the Boston

shuttle.

"I haven't gotten much feedback about the shuttle so far," said Stacey E. McGeever '93. "But my prediction for the future is that come February when people have more time, the van will become less effective. Only 12 people fit in one van. With a crowd waiting for a van, the van will have to pass people. People will have to wait for really long amounts of time," she said.

"It will be a matter of people getting used to the system," O'Ryan said. "People aren't used to it right now, but after a few weeks the system should run more smoothly," she said.

Use of the safety van has been minimal so far, she said.

Glavin said large groups going to the same destination should not use the safety van, adding that the shuttle service is there for lone travelers.

Previously the shuttle had been available on a per-demand basis, in which users called in for rides to requested destinations in the Boston and Cambridge area. The program was expanded to a two-van, set-route system last night.

classified advertising

Cheap! FBI/U.S. Seized 89 Mercedes \$200, 86 VW \$50, 87 Mercedes \$100, 65 Mustang \$50. Choose from thousands starting \$25. Free 24 hour recording reveals details 801-379-2929. Copyright #MA12KJC

Counselors for prestigious Maine children's camp with strong skills in tennis, lake & ocean sailing, fencing, martial arts, waterskiing, kayaking, gymnastics, archery, rifle, horseback riding, baseball, windsurfing, crew, lacrosse, fishing. Also need canoe trip leader and WSI swimmer. June 13 - Aug. 12. Minimum age 18. Salary dependent on age and skill. References & interview required. 617-721-1443.

\$40,000/yr! Read books and TV scripts. Fill out simple "like/don't like" form. Easy! Fun, relaxing at home, beach, vacations. Guaranteed paycheck. FREE 24 hour recording 801-379-2925. Copyright #MA12KEB.

Legal Problems? I, am, an, experienced attorney and a graduate of MIT who will work with you creatively to solve these problems; answer your legal questions and provide legal representation. My office is conveniently located in downtown-Boston just minutes from MIT via MBTA. Call Attorney Esther Horwich, MIT '77 at 523-1150.

TOKYO \$729
From BOSTON round trips starting at

LONDON	\$350
MADRID	658
PARIS	538
BRUSSELS	490
DUBLIN	518
CARACAS	410
SYDNEY	1033
LOS ANGELES	338
NEW YORK	118

Taxes & surcharges not included. Fares subject to change.
★★★ It's not too late to book your tickets home for the holidays for our LOW fares!★★★
Also: **EURAIL PASSES ISSUED ON THE SPOT!**
Work & Study Abroad programs, International Student & Teacher I.D.

Council Travel
Stratton Student Center,
MIT W20-024
Cambridge, MA 02139
225-2555



★ ATTENTION!!!! ★

MIT Seniors and Graduate Students

Do you enjoy working with people?
Are you good at solving problems?

**Become a
GRADUATE RESIDENT / TUTOR
in an
UNDERGRADUATE LIVING GROUP**

**INFORMATION SESSIONS: TUESDAY, NOV. 26
WEDNESDAY, DEC. 4, or THURSDAY, DEC. 12
at 5:30 p.m. in Room 4-163.**

You can also come to the Dean for Student Affairs Office, Room 7-133
(x3-4051)
or W20-549 (x3-6777) for more information and an application.
Application deadline is January 3, 1992.

Our colleges have placed too much emphasis on the imparting and gaining of knowledge and too little on developing opportunities for the acquisition of wisdom and understanding.
-- Everett Moore Baker, 1950

Let MIT know that you care about good teaching.

Nominate your favorite faculty member for:

Baker Foundation Teaching Award

The winning professors will receive a \$1000 honorarium and a bronze medal, to be presented at the Awards Convocation in May

Past winners include Professors Bose, Lazarus, Kemp, Gurney, Thilly, and Flowers.

Look for a nomination cover letter in your mail or in the UASO office, Room 7-104. Deadline: Friday, Dec. 6, 1991.

news roundup

from the associated press wire

World

Cicippio released after 5 years

Former hostage Joseph Cicippio is in Germany, where he will be taken to a US Air Force hospital in Wiesbaden. Cicippio was released yesterday after more than five years of captivity. His brother Thomas said Cicippio underwent surgery within the last two months for intestinal blockage. Doctors in Germany will decide whether Cicippio should be sent on to the Washington area for treatment.

Cicippio's release has raised hopes that the hostage crisis will end soon. He said his kidnapers told him the other Western hostages would be released by the end of the year. UN Secretary General Javier Perez de Cuellar predicted another American will be freed in a few days. And he said he hoped all hostages and Arab prisoners will be released this month. Two Americans — Terry Anderson and Alann Steen — are among the remaining hostages.

US pays Iran \$260 million for ten-year financial dispute

US officials said the State Department has paid \$260 million to Iran to settle a longstanding financial dispute.

An American Embassy official in the Netherlands said the money is compensation for weapons Iran bought but never received. The United States impounded the arms after Iran took 52 American hostages in Tehran in 1979.

Though the payment coincides with the release of American Joseph Cicippio who has been held by pro-Iranian kidnapers, both the United States and Iran deny any connection between the release and the payment.

Ukraine votes for independence

The president-elect of the Ukraine declared yesterday that "the Soviet Union has disintegrated." Voters in the Soviet republic voted overwhelmingly in favor of independence and have picked former communist Leonid Kravchuk as their president. There has been no reaction from Soviet President Mikhail Gorbachev. Before the election, Gorbachev warned that the secession of the Ukraine could ruin his efforts to hold the crumbling union together.

White House Spokesman Marlin Fitzwater has made it clear that the United States plans to recognize the Ukraine as an independent state, but not right away. He said the Bush administration is moving toward full diplomatic recognition. Secretary of State James A. Baker III is scheduled to visit Moscow and the Ukraine later this month to discuss the republic's transition to independence.

Nation

Bush stresses programs for jobless

President George Bush is trying to demonstrate concern for unemployed Americans. He is not announcing any new programs or funding, but he is ordering his cabinet to make sure that programs to help the unemployed are operating at peak efficiency. He also said he will sign a transportation bill next week that should create thousands of construction jobs.

US may admit PLO members

The State Department said it will consider admitting members of the Palestine Liberation Organization to the US for the Mideast peace talks. Palestinian negotiators have agreed to attend this week's talks in Washington, but they want seven PLO advisers to be allowed into the country as well.

State Department spokeswoman Margaret Tutwiler noted that US law bans entry for PLO officials, but said Secretary of State James A. Baker III can recommend a waiver. Earlier, members of the Palestinian negotiating team said they have resolved the issue of the visas.

OSHA to force hospitals to provide greater protection for workers

New government guidelines will force hospitals and other businesses to provide clothing and free hepatitis vaccinations to health care workers. The idea is to protect the workers from the deadly hepatitis-B virus and other blood-borne diseases.

Many hospitals and health care clinics already require their employees to wear latex gloves and other protective clothing. But the Labor Department said the guidelines issued yesterday by the Occupational Safety and Health Administration establish penalties for those that do not make such requirements.

Besides providing protective gear, employers would be required to offer, at their expense, voluntary hepatitis-B vaccinations. OSHA's director said the greatest blood-borne risk that workers face is the threat of infection from the hepatitis-B virus.

The Labor Department estimates that about 5 million health care workers will fall under the new guidelines. Also affected are about 500,000 workers in other businesses, such as funeral homes, correctional facilities and law enforcement.

Smith trial underway

The trial of William Kennedy Smith is underway in West Palm Beach, Fla. In opening arguments, the chief prosecutor and defense attorney presented their versions of what happened on the night a woman claims Senator Edward Kennedy's nephew raped her. Earlier yesterday, the defense got a boost when the judge decided the prosecution could not present testimony from three other women who claim Smith attacked them. If convicted, Smith could face up to four-and-a-half years in prison.

The prosecutor said that the alleged incident was "cruel" and "violent," while the defense said the woman made up the story because she felt rejected after the pair made love.

Weather

Everything but the kitchen sink

Our first full week of December will feature some of the coldest weather so far this season and a dose of frozen and freezing precipitation for portions of New England. A cyclone to our west will weaken as a second cyclone develops to our south this afternoon. This second cyclone will help keep in place very cold air at low levels in the atmosphere as warmer, more moist air at higher levels ascends over the colder air. The result will be a wintry mix of snow, sleet and freezing rain away from the coast with plain rain, possibly mixing with sleet at times along the coast. Much colder weather is indicated for the latter half of the week.

Tuesday: Cloudy with snow, sleet and freezing rain mixing with or turning to all rain. Highs 34 - 38 °F (2 - 6 °C). Winds northeast to east 15 - 25 mph (24 - 40 kph).

Tuesday night: Cloudy, damp and chilly. Low 30 °F (-2 °C).

Wednesday: Clearing, breezy and mild early. High around 48 °F (16 °C). Winds northwest 5 - 10 mph (8 - 16 kph). Low 25 °F (-7 °C).

Thursday: Mostly sunny and cold. High 35 °F (3 °C). Low 23 °F (-9 °C).

Forecast by Michael C. Morgan G

Compiled by Brian Rosenberg and Katherine Shim

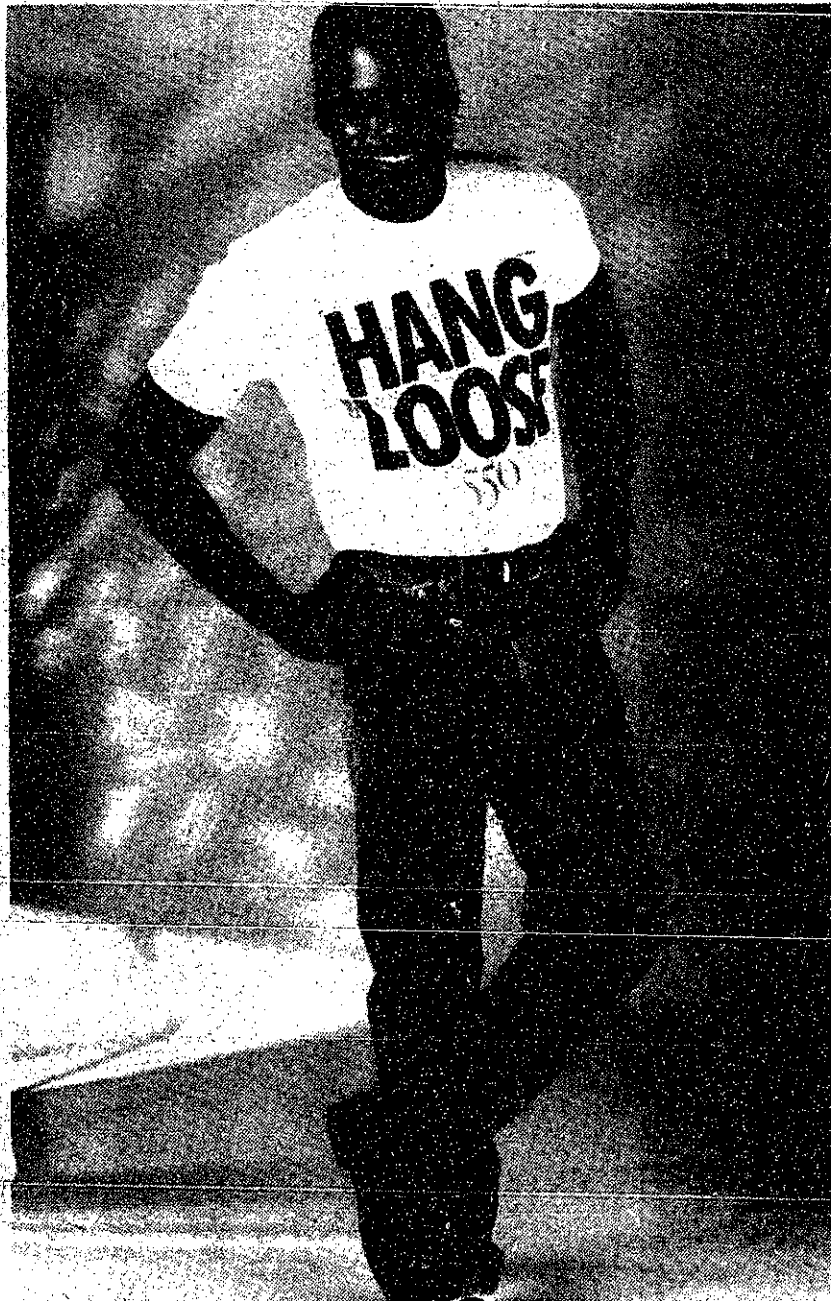
A Very Fitting Deal:

Buy a Pair of Levi's® 550® Jeans with Guaranteed Fit & get a 550® T-Shirt FREE!

We're so sure you'll enjoy Levi's® 550® jeans, that we guarantee their fit. Just try a pair of these relaxed fit jeans, and if you're not completely satisfied with their comfort and fit, return them to The Coop for a full refund. Offer good now through Christmas.

\$36-\$38

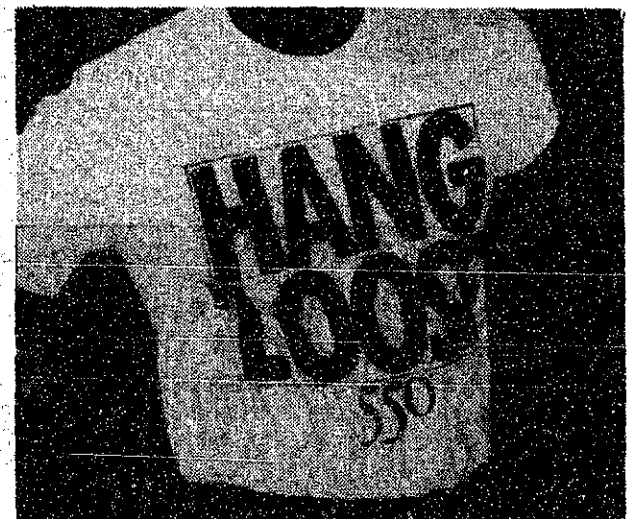
MIT COOP AT KENDALL
3 CAMBRIDGE CENTER
M-FRI 9:15-8:30
SAT 9:15-5:45
SUN 12-6



the Coop

FREE 550® Bonus!

As an extra added attraction, get a FREE Levi's® 550® T-shirt with every pair of 550® jeans you purchase. Offer good while supplies last.



FREE PARKING AT KENDALL: AFTER 5 WEEKDAYS AND ALL DAY SAT AT MARRIOTT HOTEL. *WITH SALES RECEIPT SHOWING \$5 MIN. COOP PURCHASE. VALIDATE AT CASHIER'S DESK AT THE COOP.

opinion

EDITORIAL

Use the CEG, but fix it first

In a recent letter to members of the faculty, Provost Mark S. Wrighton announced his support for the *Course Evaluation Guide*, calling it a useful resource for students and faculty alike. While it is good to see faculty members interested in student perceptions of MIT classes, there are many problems with using the CEG to make this determination.

The administration should be aware of the CEG's problems. Not all students respond to the CEG, especially when they do not feel strongly about the course. While many professors try to give students time to fill out the forms, others wait until class is over to hand out the forms as the students are preparing to leave. Others hand the forms out at the beginning of class, forcing students to choose between taking notes and filling out the forms. CEG workers need to take measures to ensure uniform administration and collection of the forms.

Another problem lies in the CEG's format. The guide is difficult to understand, with confusing bar graphs and perplexing numerical evaluations. The candid remarks, which more accurately reflect student opinion and are far more interesting, are found at the back of the book. However, they are not accompanied by the name of the course they refer to, so students and faculty cannot fully benefit from them. Since these comments are the best way to gauge student opinion on a class or professor, they should be listed alongside the appropriate class. This change would help make the CEG a more honest reflection of the academic environment.

It is heartening to see that the faculty is interested in student opinion, and the CEG has the potential to become a valuable resource. Today's CEG, though, is an imperfect window into student opinion, and the guide needs substantial revision if it is to be an effective decision-making tool.



LETTERS TO THE EDITOR

End-of-term regulations relieve stress

With finals just around the corner, the Undergraduate Association's Committee on Educational Policy wants everyone to be aware of the Faculty End-of-Term Regulations, which are meant to relieve some of the stress associated with the end of the term. Below is an excerpt from the *MIT Bulletin 1991-1992* regarding the regulations, violations of which can be reported to SCEP.

"The Faculty Regulations governing end-of-term examinations and assignments, together with the Faculty Policy Committee's interpretation, are the following, and apply to both undergraduate and graduate subjects:

- For each subject that has a final exam, no examination may be given and no assignment, term paper or oral presentation may fall due during the six days preceding the Reading Period. The scheduled time for a final exam cannot be changed once it has been officially published; inquiries about limited exceptions to this policy should be directed promptly to the Registrar.

- Each subject in which no final exam is given may have at

- most one of the following during the six days preceding the Reading Period: either a one-hour quiz may be given during a regularly scheduled class period or one assignment (term paper, lab report, take-home exam, problem set, oral presentation, etc.) may fall due. (A quiz of one and one-half hours is allowed, but only if done within a regular class period.)
- It is inappropriate for comprehensive examination (exams covering most of the term's work to be given at any time other than during the final exam period.
- No classes, examinations or exercises of any kind may be scheduled beyond the end of the last regularly scheduled class in a subject, except for final exams scheduled through the Registrar's Office. Any formal reviews of subjects should be held during regular class periods, but the rule does not exclude the possibility of sessions after the last days of classes at which the instructing staff is available to answer questions of students who choose to attend. (The Architecture design reviews that occur during finals

week are considered to be equivalent to final examinations and are scheduled by the Department.)

- No assignment of any kind may be given that falls due after the last regularly scheduled meeting of the class for that subject. This does not prevent an instructor from giving an extension to an individual student, but an extension should not be given to the majority of the class.
- Any departure from these rules requires permission from the [Committee on Academic Performance] for undergraduate subjects or the [Committee on Graduate School Policy] for graduate students — and that any such approved exception will be announced early in the term and emphasized appropriately. Asking students to vote on some deviations from the rules is not an acceptable procedure.

Faculty or students with questions regarding the interpretation or application of any of these provisions should contact the chairman of the faculty or request the assistance of the CAP." Keelan K. Yang '94
Chair, UA Committee on Educational Policy

The Tech

Volume 111, Number 55 Tuesday, December 3, 1991

Chairman Lois E. Eaton '92
 Editor in Chief Reuven M. Lerner '92
 Business Manager Mark E. Haseltine '92
 Managing Editor Josh Hartmann '93

News Editors Karen Kaplan '93
 Brian Rosenberg '93
 Katherine Shim '93
 Night Editors Daniel A. Sidney G
 David A. Maltz '93
 Jeremy Hylton '94

Opinion Editors Bill Jackson '93
 Matthew H. Hersch '94

Arts Editor Deborah A. Levinson '91
 Photography Editors Vipul Bhushan G
 Douglas D. Keller '93

Contributing Editors Peter Dunn G
 Michael J. Franklin '88
 Russell Wilcox '91
 Dave Watt

Advertising Manager Benjamin A. Tao '93
 Production Manager Marie E. V. Coppola '90

NEWS STAFF

Associate News Editors: Alice N. Gilchrist '94, Judy Kim '94, Joey Marquez '94, Sarah Keightley '95, Sabrina Kwon '95; Senior Writers: Andrew L. Fish '89, Linda D'Angelo '90; Staff: Lakshmana Rao G, Joanna E. Stone '92, Shannon Mohr '93, Sharon Price '94, Chris Schechter '94, Kai-Teh Tao '94, George Ipe '95, Eric Richard '95; Meteorologists: Michael C. Morgan G, Yeh-Kai Tung '93, Marek Zebrowski.

PRODUCTION STAFF

Associate Night Editors: Matthew Konosky '95, Garlen C. Leung '95; Staff: Jonathon Weiss '93, Minh S. Le '95; TEN Director: Jeremy Hylton '94.

BUSINESS STAFF

Associate Advertising Manager: Shanwei Chen '92; Accounts Manager: Jadene Burgess '93; Circulation Manager: Pradeep Sreekanthan '95; Staff: Karen Schmitt '95, Oscar Yeh '95.

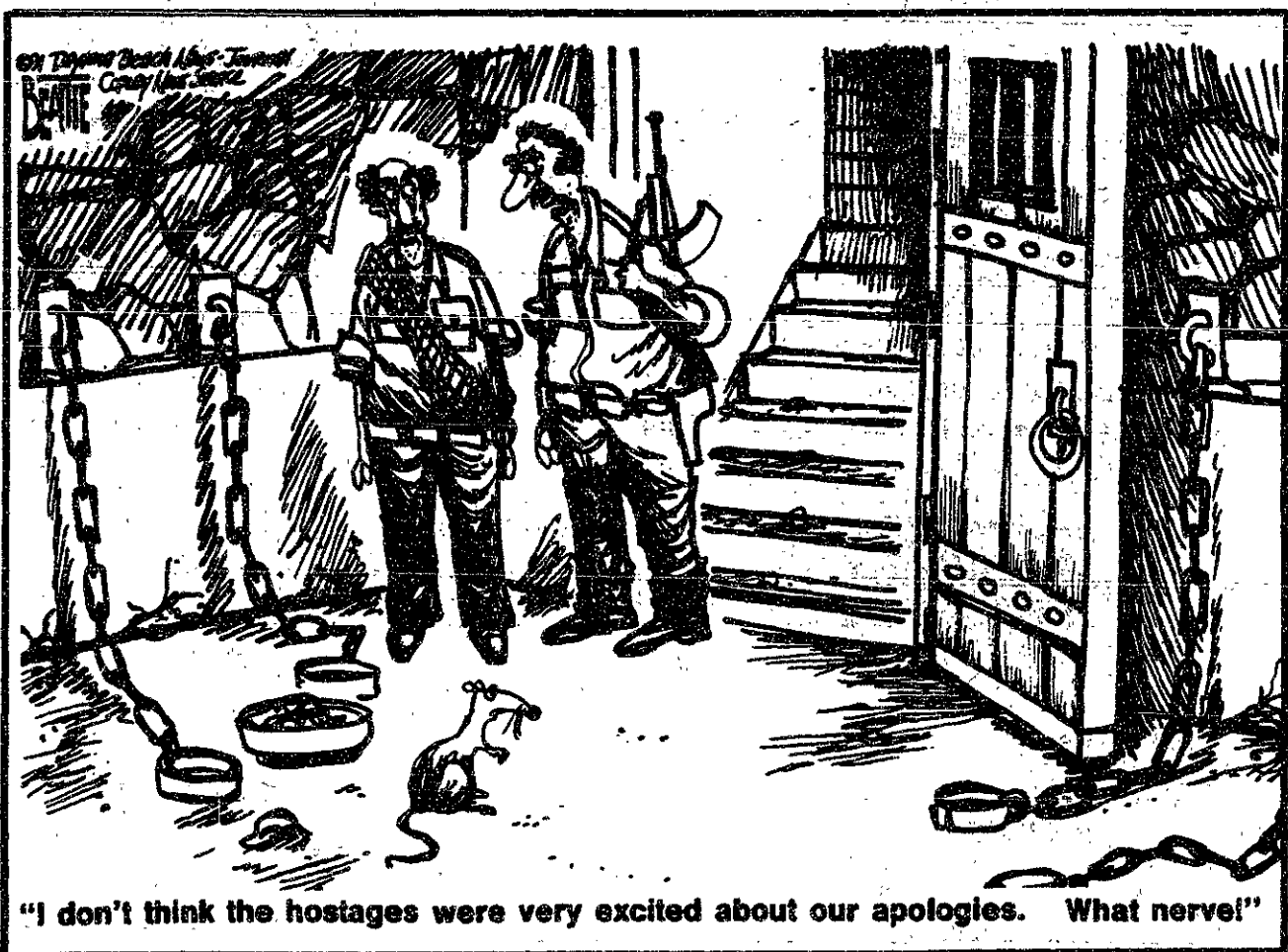
ADVISORY BOARD

V. Michael Bove '83, Harold A. Stern '87.

PRODUCTION STAFF FOR THIS ISSUE

Night Editors: Vipul Bhushan G
 Josh Hartmann '93
 Matthew Konosky '95
 Staff: Peter Dunn G, Marie E. V. Coppola '90, Deborah A. Levinson '91, Lois E. Eaton '92, David A. Maltz '93, Garlen C. Leung '95.

The Tech (ISSN 0148-9607) is published on Tuesdays and Fridays during the academic year (except during MIT vacations), Wednesdays during January, and monthly during the summer for \$20.00 per year Third Class by The Tech, Room W20-493, 84 Massachusetts Avenue, Cambridge, MA 02139-0901. Third Class postage paid at Boston, MA. Non-Profit Org. Permit No. 69720. POSTMASTER: Please send all address changes to our mailing address: The Tech, PO Box 29, MIT Branch, Cambridge, MA 02139-0901. Telephone: (617) 253-1541. FAX: (617) 258-8228. Advertising, subscription, and typesetting rates available. Entire contents © 1991 The Tech. The Tech is a member of The Associated Press. Printed by Mass Web Printing Co.



Computer Manager:

Person to manage UNIX and VMS workstation network and computer graphics in an X-ray Crystallographic lab; develop and implement software, train lab personnel, and interact with various research groups involved in structural biology and drug design. BS and experience in VMS and UNIX operating system and FORTRAN programming required. Send resume and salary requirements to Dr. Robert Liddington, Dana-Farber Cancer Institute, D-1040, 44 Binney Street, Boston, MA 02115

Technical Services Representative

Cambridge Isotope Laboratories, the world's leading supplier of stable isotope labeled chemicals, has a challenging position available in its sales group.

Responsibilities include handling technical inquiries, technical problem solving for the sales department, providing marketing assistance and acting as a liaison between the sales and production groups. Excellent communication skills required. MS or Ph.D. in chemistry or biochemistry with a minimum of two years experience in a similar position preferred.

CIL offers an excellent salary, stock option and benefit package. For consideration, send your resume and salary history to Diane Weatherbee.

CIL

CAMBRIDGE ISOTOPE LABORATORIES
20 Commerce Way, Woburn, Massachusetts 01801



How American Express helps you cover more territory. For less money.

Become a Student Cardmember today and get 3 roundtrips on Continental Airlines, for only \$129 or \$189 each.

Only the American Express® Card offers an exciting travel program exclusively for students—including three roundtrip certificates on Continental Airlines. And much, much more.

Just look at the map and pick the place you'd like to visit. If it's on your side of the Mississippi River, you can use a certificate to fly for only \$129* roundtrip. Or you can cross the Mississippi for \$189 roundtrip.

You have your pick of more than 150 cities in the 48 contiguous states. And you can fly almost anytime—because there are no blackout dates. But you must make your reservations within 14 days of the day you

leave. And the maximum stay is 7 days/6 nights and must include a Saturday night.

By becoming a Student Cardmember, you'll also enjoy other benefits from the American Express® Student Privileges® Program. Such as up to 30 minutes** of MCI long-distance calling every month for an entire year—absolutely free. And that's just one example of how the Card can help you save.

For just \$55 a year, the Card gives you all these savings. And it's easy to apply. Just call us (have your bank address and account number on hand). What's more, with our special student offer, it's easier to get the Card now while you're still in school than it may ever be again.

So get the Card. And get ready to cover new territory on either side of our Great Continental Divide.



Membership Has Its Privileges®

* Minneapolis/St. Paul, St. Louis and New Orleans are considered cities east of the Mississippi River.
** A credit of up to \$3.70 for calls will appear on each billing statement for 12 months after enrollment. \$3.70 is equal to the charges for a domestic 30-minute night/weekend MCI Card Compatibility call and appropriate surcharges. You must enroll for this service by December 31, 1991.



CALL 1-800-942-AMEX



Continental



If you're already a Cardmember, there's no need to call. Information about your certificates will be arriving soon.

ARTS

On The Town

Compiled by Deborah A. Levinson

Wed. Dec. 4

CONTEMPORARY MUSIC
In the Pink, Electric Angels, and Restless Souls perform at 10 pm in a 19+ ages show at Axis, 13 Lansdowne Street, Boston, near Kenmore Square. Tickets: \$6. Telephone: 262-2437.

Small Town, No Airport, Coloring Tunes, and Pale Black perform at Bunratty's, 186 Harvard Avenue, Allston. Telephone: 254-9820.

Savante, Fighting Cocks, Naked Age, and Hammersmith perform at 9 pm in an 18+ ages show at the Channel, 25 Necco Street, near South Station in downtown Boston. Tickets: \$7.50. Telephone: 451-1050.

Good Devil, What's Gnu, and Najarian perform at Club 3, 608 Somerville Ave., Somerville. Telephone: 623-6957.

The Immortals and Hyena Club perform at Johnny D's, 17 Holland Street, Davis Square, Somerville, near the Davis Square T-stop on the red line. Telephone: 776-9667.

Talking to Animals, Jane Elizabeth, Paper Squares, and Fortunate Son perform in an 18+ show at the Middle East in Central Square. Telephone: 354-8238.

CRITICS' CHOICE
Texas and Michael McDermott perform at Club 3, 608 Somerville Ave., Somerville. Telephone: 254-2052.

Elle Marshall Band and Rick Berlin perform at the Tam, 1648 Beacon Street, Brookline. Telephone: 277-0982.

Kirkland Bodie and Spya perform at The Western Front, 343 Western Avenue, Cambridge, near Central Square. Telephone: 492-7772.

JAZZ MUSIC
CRITICS' CHOICE
The Boston University Jazz Lab Band, with special guests, The MIT Fringe, and the Tsai Performance Center, 685 Commonwealth Avenue, Boston. No admission charge. Tel.: 353-3345.

The Steve Kuhn Trio, with David Fink and Victor Lewis, performs at 9 pm at the Regattabar, Charles Hotel, Harvard Square, Cambridge. Tickets: \$10. Telephone: 661-5000.

The Boston Jazz Orchestra performs at Scullers Jazz Club, in the Guest Quarters Suite Hotel, 400 Soldiers Field Road, Boston. Tickets: \$8. Tel.: 783-0811.

The Fringe performs at the Willow Jazz Club, 699 Broadway, Ball Square, Somerville. Telephone: 623-9874.

CLASSICAL MUSIC
The MIT Musicians-Behind-the-Desk Series continues with Cynthia Wooley, flute, and Karen Sauer, piano, performing works by Telemann, Mozart, Beethoven, and Sances at noon in Killian Hall. No admission charge. Tel.: 253-9800 or 253-2826.

Yuri Mazurkevich, violin, performs at 12:30 at the Marshall Room, 855 Commonwealth Avenue, Boston. No admission charge. Telephone: 353-3345.

The Longy Faculty Artist Series continues with Beth Anderson, flute, performing works by Luening, Bergsman, Jacob, and Piston at 8 at Edward Pickman Concert Hall, 27 Garden Street, Cambridge. No admission charge. Tel.: 876-0956.

NME, Tufts University's new music ensemble, performs works by John McDonald, Mark DeVoto, student composers, and others at 8 at the Alumnae Lounge, Tufts University, Medford. No admission charge. Telephone: 627-3564 or 381-3564.

admission charge. Telephone: 627-3564 or 381-3564.

THEATER
The Lyric Stage presents A Child's Christmas in Wales, by Dylan Thomas, tonight through Dec. 23, Wed.-Sat. at 8, Sat. at 5, and Sun. at 3 at 140 Clarendon Street, Copley Square. Tickets: \$14-\$18, depending on date. Telephone: 437-7172.

COMEDY
A. J. Jamal performs at 8:30 Tue.-Thurs. and Sun. and at 8:30 and 10:45 Fri. & Sat. through Nov. 17 at the Improv, downstairs at the Wilbur Theater, 246 Tremont Street, Boston. Tickets: \$12 Fri. & Sat., all other dates \$8. Telephone: 695-2989.

FILM & VIDEO
The Brattle Theatre continues its series CinemaScope with Reflections in a Golden Eye (1967, John Huston) in 4 and 7:45 and The Tarnished Angels (1957, Douglas Sirk) at 40 Brattle Street, Harvard Square, Cambridge. Tickets: \$5.50 general, \$3 seniors and children (good for the double feature). Tel.: 876-6837.

The Harvard Film Archive presents Beyond Good and Evil (1977, Laura Cavani) at 5:30 and His Girl Friday (1940, Howard Hawks) at 8 at the Carpenter Center for the Visual Arts, 24 Quincy Street, Cambridge. Tickets: \$6.50. Telephone: 496-6046.

CRITICS' CHOICE
The Somerville Theatre presents Forever (1989, John Dahl) and Tomorrow (1991, David Siegel) at 25 Davis Square, Somerville, near the Davis Square T-stop on the red line. Tel.: 625-5700.

Thursday, Dec. 5

CONTEMPORARY MUSIC
Cartoon Factory, Sexploitation, and Love Pollution perform at 10 pm in a 19+ ages show at Axis, 13 Lansdowne Street, Boston, near Kenmore Square. Tickets: \$6. Telephone: 262-2437.

Miles Death Muffin, Mr. Right, and The Barneys perform at Bunratty's, 186 Harvard Avenue, Allston. Tel.: 254-9820.

Little Fest and Kate Taylor perform at the Channel, 25 Necco Street, near South Station in downtown Boston. Tickets: \$15.50 in advance, \$17.50 day of the show. Telephone: 451-1050.

Miriam, Frank & Jim, and Rache Alpert perform at Club 3, 608 Somerville Ave., Somerville. Telephone: 623-6957.

This is Not Here performs at Ed Burke's, 808 Huntington Avenue, Boston, on the 'E' green line. Telephone: 232-2191.

Shirley Lewis, Boston Baked Blues, The Band that Time Forgot, Universal Language, Motor City Rhythm Kings, Radio Kings, Rick Russel Band, and Nickl Skipper & Rhythm Method perform at Harpers Ferry, corner of Harvard and Brighton Aves. Telephone: 254-9743.

CRITICS' CHOICE
Chucklehead perform at Johnny D's, 17 Holland Street, Davis Square, Somerville, near the Davis Square T-stop on the red line. Tel.: 776-9667.

Zen Under Fire, Zug Zug, Bonesaw, and Who is God perform in an 18+ show at the Middle East in Central Square. Telephone: 354-8238.

Defunkt performs at 8 and 11 at Nightstage, 823 Main Street, Cambridge, just north of MIT. Tickets: \$10 in advance, \$11 day of the show. Tel.: 497-8200.

Southside Johnny and the Asbury Jukes and The Freewheelers perform at the Paradise, 967 Commonwealth Avenue, Boston. Telephone: 254-2052.

Notary Public, Barbed Wire, Piece of

Three, and Eva Goodman perform at the Rat, 528 Commonwealth Avenue, Kenmore Square, Boston. Tel.: 536-2750.

From Good Homes perform at the Tam, 1648 Beacon Street, Brookline. Telephone: 277-0982.

The Speakers, Plan B, Agent 99, and Cactus Gallery perform in an 18+ ages show at T.T. the Bears, 10 Brookline Street, Cambridge, just north of MIT. Telephone: 492-0082.

RD Riddim perform at The Western Front, 343 Western Avenue, Cambridge, near Central Square. Tel.: 492-7772.

JAZZ MUSIC
The Heavy Metal Horns perform at 9 pm at the Regattabar, Charles Hotel, Harvard Square, Cambridge. Tickets: \$7. Telephone: 661-5000.

The Geoff Keezer Quartet performs at Scullers Jazz Club, in the Guest Quarters Suite Hotel, 400 Soldiers Field Road, Boston. Tickets: \$11. Tel.: 783-0811.

Bruce Gertz Quartet performs at the Willow Jazz Club, 699 Broadway, Ball Square, Somerville. Tel.: 623-9874.

CLASSICAL MUSIC
The MIT Chapel Series continues with Claudia Valci, harp, and Zeheng-Rong Wang, violin performing works by Fauré, Saint-Saëns, Debussy, and Massenet at noon at the MIT Chapel. No admission charge. Telephone: 253-2826.

The Harvard Glee Club, Radcliffe Choral Society, and Harvard-Radcliffe Collegium Musicum perform Mozart's Requiem at 11 pm tonight and at 8 on Dec. 7 at Sanders Theatre, Harvard University, Harvard Square. Tickets: \$14, \$12, and \$10 (students half-price). Tel.: 495-5730.

The Boston University Wind Ensemble performs works by Mozart, Stravinsky, and Foss at 8 at the Tsai Performance Center, 685 Commonwealth Avenue, Boston. No admission charge. Telephone: 353-3345.

The Longy Flute Orchestra performs at 8 at Edward Pickman Concert Hall, 27 Garden Street, Cambridge. No admission charge. Telephone: 876-0956.

The New England Conservatory Honors Brass Quintet performs holiday/seasonal music at 12:30 at the Federal Reserve Bank of Boston, 600 Atlantic Avenue, near South Station. No admission charge. Telephone: 973-3453.

CRITICS' CHOICE
The Boston Symphony Orchestra, Seiji Ozawa, conductor, and guest artists perform at the Symphony Hall, Boston. Tickets: \$19-\$52.50. Telephone: 266-1492.

Taylor, mezzo-soprano; Phillip Langridge, tenor; John Del Carlo, baritone, and The Tanglewood Festival Chorus, John Oliver, director, perform Stravinsky's Apollo and Mozart's Requiem at 8 tonight, Dec. 7, and Dec. 10 and at 2 on Dec. 6 at Symphony Hall, Boston. Tickets: \$19-\$52.50. Telephone: 266-1492.

Underground Composers present works by Aldins, Stadelman, Kastner, Vishio, White, and a guest composer at 8 at First and Second Church, 66 Marlborough Street, Boston. Telephone: 437-0222.

THEATER
CRITICS' CHOICE
The Shakespeare Ensemble at MIT performs The Merchant of Venice through Dec. 7 at 8 in room 35-225. No admission charge. Tel.: 253-2903.

The Harvard/Radcliffe Gilbert & Sullivan Players present The Pirates of Pezance tonight through Dec. 7 and Dec. 12-14 at 8 (matinees at 2 on Dec. 7, 8 & 14) at Agassiz Theatre, Radcliffe Yard, Harvard Square. Tickets: \$7 and \$9 for evening shows and \$5 and \$7 for matinees, with a \$2 student discount. Telephone: 493-3846.

Emerson Stage presents Car Plays, three one-acts honoring the American icon of the automobile, through Dec. 8 at 8 (Dec. 8 matinee at 2) at the Brimmer Street Studio Theatre, 69 Brimmer Street, Boston. Tickets: \$3. Telephone: 578-8785 or 578-8786.

POETRY
Poetry at the Media Lab continues with Lucie Brock-Broido at 7:30 at the Bartos Theatre in the Wiesner Building. No admission charge. Telephone: 225-6126.

COMEDY
A. J. Jamal at 8:30 at the Improv. See Dec. 4 listing.

FILM & VIDEO
The Museum of Fine Arts continues its series Premiere Engagements with Paris 1900 (1950, Nicole Vedres) at 8 in the Remis Auditorium, 465 Huntington Avenue, Boston. Tickets: \$5 general, \$4.50 MFA members, students, and seniors. Telephone: 267-9300.

The Museum of Fine Arts begins its series Artists, Paris and the 1920s with Matisse, Voyages (1988, Didier Bussuy) and Henri Matisse (1945, Andre-Léville) at 4 in the Remis Auditorium, 465 Huntington Avenue, Boston. Tickets: \$5 general, \$4.50 MFA members, students, and seniors. Telephone: 267-9300.

The Brattle Theatre continues its series CinemaScope with Far From the Madding Crowd (1967, John Schlesinger) at 4:15 and 7:30 at 40 Brattle Street in Harvard Square. Tickets: \$5.50. Telephone: 876-6837.

The Harvard Film Archive presents The Swedish Avant Garde, 17 films by Swedish directors, at 7 and 9 (10 films at 7, 7 films at 9) at the Carpenter Center for the Visual Arts, 24 Quincy Street, Cambridge. Tickets: \$6.50. Telephone: 496-6046.

The Museum of Our National Heritage begins its series Hollywood at War with The Human Comedy at 2 at 33 Marrett Road, Lexington, at the corner of Route 2A and Massachusetts Avenue. No admission charge. Telephone: 861-6559 or 861-0729.

Forever Activists at the Somerville Theatre. See Dec. 4 listing.

Friday, Dec. 6

CONTEMPORARY MUSIC
KINIWE, the Tufts University West African Ensemble, performs at 8 at the Alumnae Lounge, Tufts University, Medford. No admission charge. Telephone: 381-3564.

Concussion Ensemble, Dog Bowl, Common Aliments, and Grin UK perform at Bunratty's, 186 Harvard Avenue, Allston. Telephone: 254-9820.

CRITICS' CHOICE
Yo Le Tengo, Big Dipper, God's Eye, and The Uninvited perform at 9 pm in an 18+ ages show at 25 Necco Street, near South Station in downtown Boston. Tickets: \$5. Telephone: 451-1050.

The Still, Derailers, and Peter Cico &

ESP perform at Club 3, 608 Somerville Ave., Somerville. Telephone: 623-6957.

Ray Greene and Universal Language perform at Ed Burke's, 808 Huntington Avenue, Boston, on the 'E' green line. Telephone: 232-2191.

B Street Bombers perform at Harpers Ferry, corner of Harvard and Brighton Aves. Telephone: 254-9743.

CRITICS' CHOICE
Barrence Whitfield & the Savages perform tonight and tomorrow at Johnny D's, 17 Holland Street, Davis Square, Somerville, near the Davis Square T-stop on the red line. Telephone: 776-9667.

The Holmes Brothers perform at 8 at Nightstage, 823 Main Street, Cambridge, just north of MIT. Tickets: \$9 in advance, \$10 day of the show. Telephone: 497-8200.

CRITICS' CHOICE
O-Positive perform at the Paradise, 967 Commonwealth Avenue, Boston. Telephone: 254-2052.

The Voodoo Dolls, Digger, and The Ballistics perform at the Rat, 528 Commonwealth Avenue, Kenmore Square, Boston. Telephone: 536-2750.

Boston Baked Blues perform at the Tam, 1648 Beacon Street, Brookline. Telephone: 277-0982.

Miracle Legion, Wadi Trip, and Burning Giraffe perform in an 18+ ages show at T.T. the Bears, 10 Brookline Street, Cambridge, just north of MIT. Telephone: 492-0082.

The I-Tones perform tonight and tomorrow at The Western Front, 343 Western Avenue, Cambridge, near Central Square. Telephone: 492-7772.

JAZZ MUSIC
CRITICS' CHOICE
The MIT Festival Jazz Band performs at 8 in the Remis Auditorium. Tickets: \$1 at the door. Telephone: 253-9800 or 253-2826.

The Mike Stern-Bob Berg Band performs tonight at 8 and 10 and tomorrow at 9 and 11 at the Regattabar, Charles Hotel, Harvard Square, Cambridge. Tickets: \$12 for Dec. 6 shows, \$14 for 9 pm show Dec. 7, \$12 for 11 pm show. Telephone: 661-5000.

Harry "Sweets" Edison performs tonight and tomorrow at Scullers Jazz Club, in the Guest Quarters Suite Hotel, 400 Soldiers Field Road, Boston. Tickets: \$11. Telephone: 783-0811.

Bill Mobley/Ed MacEchen Quintet performs tonight and tomorrow at the Willow Jazz Club, 699 Broadway, Ball Square, Somerville. Tel.: 623-9874.

CLASSICAL MUSIC
The MIT Musicians-Behind-the-Desk Series continues with Andreas Erfurth, cello, performing works by Bach, Boismortier, and Degli Antonii at noon at the MIT Chapel. No admission charge. Telephone: 253-9800 or 253-2826.

CRITICS' CHOICE
Alea III, with guest artists Joan Heller, soprano, and Thomas Stumpf, piano, perform works by Bernstein at 8 at Commonwealth Avenue, Boston. Tickets: \$6 general, \$3 seniors and BU alumni and faculty, free with BU student ID. Telephone: 353-3345.

The Boston University Concert Orchestra performs works by Dvorak, Gluck, Rossini, and Handel at 8:30 at the Concert Hall, 855 Commonwealth Avenue, Boston. No admission charge. Telephone: 353-3345.

The Handel & Haydn Society Chorus and Period Orchestra perform Handel's Messiah tonight, Dec. 11, and Dec. 13 at 7:30, with matinees Dec. 7 and Dec. 8 at 3, at Symphony Hall, corner of Massachusetts and Huntington Avenues, Boston. Tickets: \$100, \$40, \$32, \$23, and \$16. Telephone: 262-1815.

The Boston Cecilia presents Sing We Nowell! — An English Christmas at 8 tonight and at 3 on Dec. 8 at Church of the Advent, Beacon Hill (Dec. 8 concert at All Saints Church, Brookline). Tickets: \$25, \$16, and \$8, with a \$2 discount for students and seniors. Tel.: 232-4540.

Friday at Trinity continues with Lois Begestein at Trinity Church, Copley Square, Boston. No admission charge, but donations requested. Tel.: 536-0944.

The Boston Symphony Orchestra at 2 at Symphony Hall. See Dec. 5 listing.

THEATER
The Pirates of Pezance at 8 at Agassiz Theatre. See Dec. 5 listing.

DANCE
The MIT Dance Workshop presents A Concert of Student Works in Progress, directed by Beth Soil, and with guest choreographers Meinda Sullivan, Jacqueline Blomback, and Julia Boynton, at 8 tonight and tomorrow at Kresge Little Theatre. No admission charge. Telephone: 253-2877.

FILM & VIDEO
The MIT Lecture Series Committee presents Rebel Without a Cause (1954, Nicholas Ray) at 7:30 in 10-250 and Bill and Ted's Bogus Journey at 7 & 10 in 26-100. Tickets: \$1.50 with MIT/Wellesley ID. Telephone: 253-8881.

The French Library in Boston continues its series Films of Robert Bresson with The Eternal Return (1943, Jean Delannoy) at 8 tonight through Sunday at 53 Marlborough Street, Boston. Tickets: \$4 non-members, \$3 members. Telephone: 266-4351.

The Museum of Fine Arts continues its series Artists, Paris and the 1920s with The Henry Miller Odyssey (1973, Robert Snyder) at 6 and Matisse, Voyages (1988, Didier Bussuy) and Matisse in Nice (1986, Michael Gill) at 8 at the Remis Auditorium, 465 Huntington Avenue, Boston. Tickets: \$5 general, \$4.50 MFA members, seniors, and students. Telephone: 267-9300.

CRITICS' CHOICE
The Brattle Theatre continues its series CinemaScope with The History of Superman at 8:30 and 8 (Saturday matinee at 1) and Star Trek Festival at 6:15 and 9:45 (Saturday matinee at 2:45) tonight and tomorrow at 40 Brattle Street, Harvard Square, Cambridge. Tickets: \$5 general, \$3 seniors and students (good for the double feature). Telephone: 876-6837.

The Institute of Contemporary Art continues its series The New Mexican Cinema with Nocturno Amor Que Te Vas (Love Lost in Darkness, 1987, Marcela Fernández Violante) at 5:45 and 8 through Dec. 1 at 955 Boylston Street, Boston. Tickets: \$5 general, \$4 ICA members, seniors, and students; series pass (3 screenings) available for \$12. Telephone: 266-5151.

The Harvard Film Archive continues its series The Swedish Avant Garde with six films by various directors at 7 and seven films by various directors at 8:30 at the Carpenter Center for the Visual Arts, 24 Quincy Street, Harvard Square. Tickets: \$6.50. Telephone: 495-7100.

The Somerville Theatre presents Animation from Europe tonight and Dec. 8 at 55 Davis Square, Somerville, near the Davis MBTA station. Telephone: 625-5700.

Tech Sports Hotline: 253-1541



CHANUKAH SALE

LOBBY 7
Mon., Dec. 2 & Tues., Dec. 3

- Menorahs • Candles
- Dreidels • Chocolate Gelt
- Decorations • Hillel T-shirts
- Latkes (Potato Pancakes)

Chanukah begins Sunday evening, December 1!

Sponsored by M.I.T. Hillel, #253-2982



SO YOU'RE GOOD IN MATH

If you have a *strong math aptitude* and a *business orientation*, (math major not required) the actuarial profession offers unlimited career potential.

The Equitable, a financial giant, is one of the nation's largest life insurance companies. As a member of our Actuarial Development Program, your skills will be developed through a series of varied job assignments and continued formal education.

A unique work-study summer internship is also available. (Housing provided for interested students.)

To schedule an interview on *February 7* for a *summer of full time* position submit your resume at the Office of Career Services by *December 9th*.

Denis W. Loring SM '71, FSA
Vice President and Actuary



THE
EQUITABLE

787 7th Avenue, New York, NY 10019

EQUAL OPPORTUNITY EMPLOYER

ARTS

Saturday, Dec 7

CONTEMPORARY MUSIC

★★★ CRITICS' CHOICE ★★★
The MIT Symphony Orchestra performs works by Beethoven and Brahms at 8:30 at the Kresge Auditorium. Tickets: \$11-\$22. Telephone: 253-9800.

Agent 13, Mercy Beat, Gypsy Stretch-marx Orchestra, and Squid perform at Bunratty's, 186 Harvard Avenue, Allston. Telephone: 254-9820.

★★★ CRITICS' CHOICE ★★★
Frog, Corrosion of Conformity, and Ballet LaValta perform at 9 pm in an 18+ ages show at the Chamber of Music, 250 South Street, downtown Boston. Tickets: \$6.50 in advance, \$7.50 day of the show. Telephone: 451-1050.

Creeching Anatomy, Delayed Reaction, and Foundation perform at Club 3, 608 Somerville Ave., Somerville. Telephone: 623-6957.

Voice of the Turtle performs at the Somerville Theatre, 55 Davis Square, near the Davis MBTA station. Telephone: 625-5700.

The Incredible Casuals, The David Alex-Barton Band, Paper Squares, Dear Sir, and Kildevil Blues perform at the Rat, 528 Commonwealth Avenue, Kenmore Square, Boston. Telephone: 536-2750.

The Band That Time Forgot performs at the Tam, 1648 Beacon Street, Brookline. Telephone: 277-0982.

Uncle Tapelo, Pouch, and The Laurells perform in an 18+ ages show at T.T. the Bears, 10 Brookline Street, Cambridge, just north of MIT. Telephone: 253-8881.

Jumpin' Blues Dance Party, featuring Roll With It, from 5-9 at the Western Front, 343 Western Ave., Central Square. Tickets: \$2 with MIT ID. Telephone: 262-3800.

Barrence Whitfield & the Savages at Johnny D's. See Dec. 6 listing.

The 1-Tones at the Western Front. See Dec. 6 listing.

JAZZ MUSIC

The Mike Stern-Bob Berg Band performs at 9 and 11 at the Regattabar. See Dec. 6 listing.

Harry "Sweets" Edison at Scullers Jazz Club. See Dec. 6 listing.

Bill Mobley/Ed MacEben Quintet at the Willow Jazz Club. See Dec. 6 listing.

CLASSICAL MUSIC

The MIT Symphony Orchestra, with Mina Miller, pianist, performs works by Mozart, Janacek, and Schubert at 8:30 at Kresge Auditorium. Tickets: \$1 at the door. Telephone: 253-9800 or 253-2826.

The Boston University Concert Choir performs works by Palestrina and Bach at 8:30 at the Concert Hall, 855 Commonwealth Avenue, Boston. No admission charge. Telephone: 353-3345.

The Boston University Choral Union/Chamber Choir perform selections from Handel's *Messiah*, works by Mozart and Palestrina, and modern jazz and show tunes at 8 at Marsh Chapel, 735 Commonwealth Avenue, Boston. No admission charge. Telephone: 353-3345.

The Simmons College Chorale performs works by Fauré, Haydn, Pachelbel, Vaughan Williams, and others at 8 at the Emmanuel College Chapel, 400 The Fenway, Boston. No admission charge. Telephone: 738-2124.

Paul Gjording, violin, and Mark Salzman, piano, perform at 4 at the All Newton Music School, 321 Chestnut

Street, West Newton. No admission charge. Telephone: 527-4553.

The Harvard Glee Club, Radcliffe Choral Society, and Harvard-Radcliffe Collegium Musicum at 8 at Sanders Theatre. See Dec. 5 listing.

The Boston Symphony Orchestra at 8 at Symphony Hall. See Dec. 5 listing.

The Handel & Haydn Society Chorus and Period Orchestra at 3 at Symphony Hall. See Dec. 5 listing.

THEATER

★★★ CRITICS' CHOICE ★★★
The New Repertory Theatre of New York presents *A Company of Angels*, winner of the Streisand Center for Jewish Culture's 1990 Eisner Award for the Best New Play with a Jewish Theme. At 8 at the New Repertory Theatre, 250 South Street, Boston. No admission charge. Tel.: 253-5623 or 332-1646.

The Pirates of Penzance at 2 and 8 at Agassiz Theatre. See Dec. 5 listing.

COMEDY

Dennis Wolfberg and Tom Agis perform at the Paradise, 967 Commonwealth Avenue, Boston. Telephone: 254-2052.

A. J. Jamal at 8:30 at the Improv. See Dec. 4 listing.

DANCE

A Concert of Student Works in Progress at 8 at Kresge Little Theatre. See Dec. 6 listing.

FILM & VIDEO

The MIT Lecture Series Committee presents *Robin Hood: Prince of Thieves* (1991, Kevin Costner) at 6:30 and 10 in 26-100. Tickets: \$1.50 with MIT/Wellesley ID. Telephone: 253-8881.

The Harvard Film Archive presents *The Tourist* (1991, Robb Moss) at 7 and *Pictures From a Revolution* (1991, Susan Meiselas, Richard Rogers, and Alfred Guzzetti) tonight and tomorrow at the Carpenter Center for the Visual Arts, 24 Quincy Street, Harvard Square. Tickets: \$6.50.

The History of Superman at 1, 4:30, and 8 and *Star Trek Festival* (2:45, 6:15, and 9:45) at the Brattle Theatre. See Dec. 7 listing.

The Eternal Return at 8 at the French Library in Boston. See Dec. 7 listing.

EXHIBITS

Beuys and Warhol: The Artist as Shaman and Star, an exhibition of works by two of the most controversial artists of the 1960s and '70s, begins today and continues through Mar. 8, 1992 at the Museum of Fine Arts, 465 Huntington Avenue, Boston. Telephone: 267-9300.

Sunday, Dec 8

CONTEMPORARY MUSIC

Ozzy Osbourne performs at 7:30 at the Orpheum Theatre, Hamilton Place, Boston. Telephone: 482-0650.

Duke Robillard performs at Johnny D's, 17 Holland Street, Davis Square, Somerville, near the Davis Square T-stop on the red line. Telephone: 776-9667.

The Ocean Blue and Springhouse perform at the Paradise, 967 Commonwealth Avenue, Boston. Tel.: 254-2052.

Roll With It and Jeff Robinson perform at The Western Front, 343 Western Avenue, Cambridge, near Central Square. Telephone: 492-7772.

JAZZ MUSIC

The Sounds of Angels: Christmas with Deborah Henson-Conant and Jazz Harp performs at 7 and 9 at the Regattabar, Charles Hotel, Harvard Square, Cambridge. Tickets: \$9. Telephone: 661-5000.

CLASSICAL MUSIC

The Harvard University Wind Ensemble performs music by Surinach, Chavez, Chance, Sochinski, and Villa-Lobos at 8 at Sanders Theatre, Harvard University, Harvard Square. Tickets: \$6 general, \$4 students and seniors. Tel.: 495-2000.

The New England Conservatory Contemporary Ensemble performs works by Donald Martino at 8 at John Knowles Paine Concert Hall, Harvard University, Harvard Square. No admission charge. Telephone: 495-6013.

The Boston University Concert Band performs works by Shostakovich, Schumann, Heisinger, and Grainger at 8 at the Tsal Performance Center, 685 Commonwealth Avenue, Boston. No admission charge. Telephone: 353-3345.

The Boston University Chorus performs traditional holiday carols at 2 at the Tsal Performance Center, 685 Commonwealth Avenue, Boston. No admission charge. Telephone: 353-3345.

The Boston University Undergraduate Opera Theatre presents scenes from Mozart's *The Magic Flute* and Don Giovanni, Menotti's *The Medium*, and Beethoven's *Fidelio* at 7:30 at the Concert Hall, 855 Commonwealth Avenue, Boston. No admission charge. Telephone: 353-3345.

Chamber Music Series at the Isabella Stewart Gardner Museum continues with *The Walden Trio* performing works by Brahms at 1:30 at 280 The Fenway, Boston. Concert free with museum admission. Tel.: 566-1401.

Musicians John Roberts, Tony Barrand, Fred Breunig, and Andy Davis present *Nowell Sing We Clear*, a pageant of mid-winter carols, at 7:30 at the Old Cambridge Baptist Church, 1151 Massachusetts Avenue. Tickets: \$12 in advance, \$14 at the door. Telephone: 623-1806.

The Church Cecilia at 3 at All Saints Church. See Dec. 6 listing.

The Handel & Haydn Society Chorus and Period Orchestra at 3 at Symphony Hall. See Dec. 5 listing.

COMEDY

A. J. Jamal at 8:30 at the Improv. See Dec. 4 listing.

FILM & VIDEO

The MIT Lecture Series Committee presents *Star Trek II: The Wrath of Khan* at 7 and 10 in 10-250. Tickets: \$1.50 with MIT/Wellesley ID. Telephone: 258-8881.

The Brattle Theatre continues its *Sunday Series Scoresse Retrospective* with *New York, New York* (1977) at 1:45 and 7 and *The Last Waltz* (1978) at 4:45 and 10 at 40 Brattle Street, Harvard Square, Cambridge. Tickets: \$5.50 general, \$3 seniors and children (good for the double feature). Telephone: 876-6837.

The Tourist at 4 and 7 and *Pictures From a Revolution* at 5:10 and 8:10 at the Harvard Film Archive. See Dec. 7 listing.

Animation from Europe at the Somerville Theatre. See Dec. 6 listing.

The Eternal Return at 8 at the French Library in Boston. See Dec. 7 listing.

Monday, Dec 9

JAZZ MUSIC

The Boston University Jazz Ensemble, Jazz Workshop, and Jazz Combo perform at 8:30 at the Concert Hall, 855 Commonwealth Avenue, Boston. No admission charge. Telephone: 353-3345.

James Williams Sextet performs tonight and tomorrow at the Willow Jazz Club, 699 Broadway, Ball Square, Somerville. Telephone: 623-9874.

CLASSICAL MUSIC

Mina Miller, piano, gives a lecture-recital on the work of Carl Nielsen at noon in Killian Hall. No admission charge. Telephone: 253-9800 or 253-2826.

The MIT Concert Choir, with guest artists Margaret O'Keefe, soprano, Pamela Murray, mezzo-soprano, James Ruff, tenor, and Mark McSwesey, baritone, performs works by Stravinsky, Mozart, and Bach at 8 at Kresge Auditorium. Tickets: \$5. Telephone: 253-9800 or 253-2826.

The Lydian String Quartet performs works of Brandeis composers at Slosberg Recital Hall, Brandeis University, on South Street in Waltham. No admission charge. Telephone: 354-6015.

★★★ CRITICS' CHOICE ★★★
Esmaeil Ax, piano, and Yo-Yo Ma, cello, perform works by Beethoven, Brahms, and Schubert at 8 at Symphony Hall, corner of Massachusetts and Huntington Avenues. Tickets: \$25 and \$20. Tel.: 266-1492.

The Longy School of Music Student Performance Series continues with students of Dorothea Briakmann performing Handel and Hayden arias at 8 at Edward Pickman Concert Hall, 27 Garden Street, Cambridge. No admission charge. Telephone: 876-0956.

COMEDY

Roadkill Buffet, MIT's student improvisational comedy troupe, performs at 8 at Kresge Little Theatre. No admission charge. Telephone: 253-5623.

DANCE

The Ballet Theatre of Boston presents Tchaikovsky's classic *The Nutcracker* through Dec. 30 at the Emerson Majestic Theatre, on Tremont Street near the Boylston MBTA station. Tickets: \$10.50-\$22.50, with discounts available for students and seniors. Telephone: 262-0961.

POETRY

★★★ CRITICS' CHOICE ★★★
Pamela Alexander, Visiting Writer in the MIT Program of Writing and Humanistic Studies, reads from her book *Commonwealth of Wings* at 8:00 at the Blacksmith House, 56 Brattle Street, Harvard Square. Tickets: \$2. Telephone: 547-6789.

FILM & VIDEO

The Brattle Theatre continues its Monday series *Film Noir* with *Laura* (1944, Otto Preminger) at 4:15 and 7:50 and *Angel Face* (1953, Otto Preminger) at 6 and 9:30 at 40 Brattle Street, Harvard Square, Cambridge. Tickets: \$5.50 general, \$3 seniors and children (good for the double feature). Tel.: 876-6837.

The Harvard Film Archive presents *The Tourist* (1991, Robb Moss) at 5, *Pictures From a Revolution* (1991, Susan Meiselas, Richard Rogers, and Alfred Guzzetti) at 6:10, and *The Entertainer* (1960, Tony Richardson) at 8 at the Carpenter Center for the Visual Arts, 24 Quincy Street, Harvard Square. Tickets: \$6.50. Telephone: 495-4700.

The Somerville Theatre presents *Thelma & Louise* and *Strangers in Good Company* tonight through Dec. 12 at 55 Davis Square, Somerville, near the Davis MBTA station. Telephone: 625-5700.

Tuesday, Dec 10

CONTEMPORARY MUSIC

Rush performs at 7:30 at the Worcester Centrum, 50 Foster Street, Worcester. Telephone: 931-2000.

JAZZ MUSIC

The Brian Walkley Sextet perform at Scullers Jazz Club, in the Guest Quarters Suite Hotel, 400 Soldiers Field Road, Boston. Tickets: \$7. Telephone: 783-0811.

James Williams Sextet at the Willow Jazz Club. See Dec. 9 listing.

CLASSICAL MUSIC

Young Artist Showcase continues with The New England Conservatory Wind Ensemble performing a Christmas program at 6:30 at the Isabella Stewart Gardner Museum, 280 The Fenway, Boston. Tickets: free with museum admission. Tel.: 566-1401.

The New England Conservatory presents *Tuesday Night New Music*, new works by Conservatory students, at 8 at Williams Hall at New England Conservatory. No admission charge. Telephone: 262-1120, x237.

The Boston University Symphony Orchestra performs at 8 at the Tsal Performance Center, 685 Commonwealth Avenue, Boston. No admission charge. Telephone: 353-3345.

The Boston Symphony Orchestra at 8 at Symphony Hall. See Dec. 5 listing.

THEATER

★★★ CRITICS' CHOICE ★★★
MIT Theater Arts, Medical Department, and GAMIT present *This is Not a Test*, a solo vaudeville act featuring songs, dance, and comedy to confront the impact of HIV/AIDS on gay culture, at 8 at Kresge Little Theatre. Tickets: \$8.50. Telephone: 547-7728.

Two plays at Boston University: *A Man's A Man*, Bertold Brecht's burlesque attack against the military and the militarized man, continues through Dec. 14 in Studio 210 of the Boston University Theatre; and *Execution of Justice*, Emily Mann's play about the courtroom drama following the murder of Harvey Milk, continues through Dec. 15 at the Mainstage of the Boston University Theatre, 264 Huntington Avenue, Boston. Telephone: 353-3345.

The Tufts Early Music Ensemble presents *The Virgin & The Nightingale*, two original plays by Graham Wolff based on medieval French and English tales, at 8 at Goddard Chapel, Tufts University, Medford. No admission charge.

COMEDY

Anthony Griffith performs at the Improv, downstairs at the Wilbur Theatre, 246 Tremont Street, Boston. Telephone: 695-2989.

FILM AND VIDEO

The Brattle Theatre continues its Tuesday series *Luis Bunuel: Cinema of the Surreal* with *Wuthering Heights* (1953) at 4:15 and 7:45 and *Susana* (1951) at 6 and 9:30 at 40 Brattle Street, Harvard Square, Cambridge. Tickets: \$5.50 general, \$3 seniors and children (good for the double feature). Tel.: 876-6837.

The Harvard Film Archive presents *Five on the Black Hand Side* (1973, Oscar Williams) and *Tauw* (1969, Ousmane Sembene) at 5:30 and *Letter From an Unknown Woman* (1948, Max Ophüls) at 8 at the Carpenter Center for the Visual Arts, 24 Quincy Street, Harvard Square. Tickets: \$6.50. Telephone: 495-4700.

Thelma & Louise and *Strangers in Good Company* at the Somerville Theatre. See Dec. 9 listing.

Ongoing Theater

A Christmas Carol, Charles Dickens' holiday classic, continues through Dec. 29 at the Huntington Theatre, 264 Huntington Avenue, Boston. Performances: Tue.-Sat. 8, Sun. at 7, matinees Sat., Sun. and Dec. 11 & 18 at 2:30. Tickets: \$19.50-\$34.50. Tel.: 266-7900.

Hamlet continues through Jan. 12, 1992 (Tue.-Fri. at 8, Sat. and Sun. at 2 and 8) at the Loeb Drama Center, 64 Brattle Street, Cambridge. Tickets: \$17-\$38. Telephone: 547-8300.

Lost in Yonkers, Neil Simon's story of two brothers left in the care of a domineering grandmother, starts tonight and continues through Dec. 29 at the Shubert Theatre, 265 Tremont Street, Boston. Performances: first three weeks, Tue.-Sat. at 8, with matinees Thu. and Sat. at 2 and Sun. at 3 (Dec. 3 at 7:30); final week, Mon. & Fri. at 8, Thu. & Sat. at 2 and 8, Sun. at 3 and 7:30. Tickets: \$22.50-\$42.50, depending on date. Telephone: 1-800-233-3123.

Romeo and Juliet, William Shakespeare's classic play about two star-crossed lovers, continues through Dec. 11 at Spingold Theatre, Brandeis University, on South Street in Waltham. Performances: Dec. 3-5 at 10 am, Dec. 5-7 at 8, Dec. 8 at 3, and Dec. 10-11 at 10 am. Tickets: \$9-13, depending on date of performance. Telephone: 736-4207.

Tree West, by Sam Shepard, continues through Dec. 15 (performances Thurs. & Fri. at 8, Sat. at 5 and 8:30, Sun. at 3 and 7:30) at the New Repertory Theatre, 54 Lincoln Street, Newton Highlands. Tickets: \$12-\$20. Telephone: 332-1646.

Ongoing Exhibits

ON CAMPUS

Buckminster Fuller: *Harmoolizing Nature*, a retrospective of the life and work of the late visionary scientist, philosopher, and Renaissance man, continues through Dec. 15; *Crazy After Calculus: Humor at MIT*, chronicling MIT's rich history of wit and wizardry, continues indefinitely; *Doc Edgerton: Stopping Time*, photographs and memorabilia documenting the invention and use of the strobe light, continues indefinitely at the MIT Museum, 265 Massachusetts Avenue, Cambridge. Museum hours are Tuesday-Friday 9-5 and Saturday-Sunday 1-5. Admission: \$2 requested donation, free to MIT community. Tel.: 253-4444.

Burry Plank, photographs experimenting with long exposure times to capture the motion of runners, continues through Dec. 14 at the Wiesner Student Art Gallery in the Stratton Student Center. No admission charge.

Architectural Illusions: Sculptures by Raymond Barreis, an exhibition of the Barreis Column, continues through Dec. 27 at the Compton Gallery, near Lobby 10. Gallery hours: Monday through Friday, 9-5. No admission charge. Telephone: 253-4422.

OFF CAMPUS

Ansel Adams: *The Early Years*, an exhibit of the photographer's work from the 1920s to the 1940s, continues through Dec. 29 at the Museum of Fine Arts, 465 Huntington Avenue, Boston. Telephone: 267-9300.

★★★ CRITICS' CHOICE ★★★
El Corazon Sangrante/The Bleeding Heart, an exhibition linking recent work by 18 Mexican, Cuban, and Central American artists as Aztec iconography, Catholic religious traditions, and paintings by Frida Kahlo, continues through Jan. 5, 1992 at the Institute of Contemporary Art, 955 Boylston Street, Boston. Gallery hours: Tue., Wed., and Sun. 11-5, Thurs., Fri., and Sat. 11-8. Admission: \$4 general, \$3 students, \$2 seniors and children under 16, \$1 MIT and UMass-Boston students, free to ICA members; free to the public Thursday evenings from 5-8. Telephone: 266-5151.

Upcoming Events

Bad Brains at the Channel on December 15. Lloyd Cole at the Berkeley Performance Center on December 20. Barry Crimmins at the Somerville Theatre on December 28. The Cramps at the Channel on December 31.

Prep Plus For the MCAT. The Best Medical Insurance

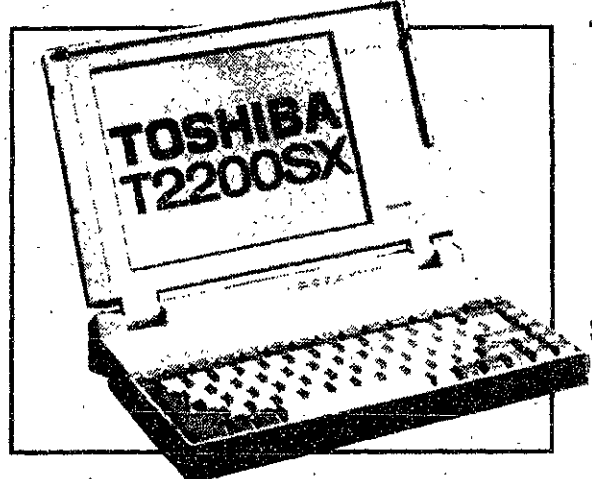
No one can guarantee your acceptance to medical school. But we can guarantee that you'll score your highest on the MCAT. Our unique Test Your Best™ guarantee is your insurance policy. If you're not completely satisfied with your MCAT score, we'll let you repeat the entire course... at no charge!

We offer expert live instruction, innovative home study materials, unlimited review in our TEST-N-TAPE® labs and lots of personal attention. That's why Stanley H. Kaplan has prepared more test takers, and produced more top MCAT scores, than everyone else combined!

STANLEY H. KAPLAN
Take Kaplan Or Take Your Chances

CLASSES STARTING NOW!
Get your home study materials early!
Call 1-800-KAP-TEST

Your Work Takes Off with Toshiba!



Toshiba T2200SX/60 Computer.
Get state-of-the-art features in a 5.5 lb. notebook format. It comes with 80386™ SX running at 20MHz, 2MB RAM standard, 60MB hard drive, 1.44MB 3 1/2" diskette drive, and MS-DOS® 5.0 operating system. Its battery pack has a 3 hour average battery life and recharges in 2 hours.

\$3479

TOSHIBA



Toshiba T1200XE/40 Computer.

This personal computer has all the features you've been looking for including: 80C286 microprocessor running at 12MHz, 1MB RAM, 40 Meg hard drive, 3.5" floppy disk drive, Sidelit Supertwist LCD display, with adjustable brightness and contrast and 640X400 pixel graphics display.

\$1889

University ID required for Toshiba purchase.

For more information call (617) 499-3200 Ext 3223

MIT COOP AT KENDALL
3 CAMBRIDGE CENTER
M-FRI 9:15-8:30 SAT 9:15-5:45
SUN 12-6



FREE PARKING AT KENDALL: AFTER 5 WEEKDAYS AND ALL DAY SAT AT MARRIOTT HOTEL. *WITH SALES RECEIPT SHOWING \$5 MIN. COOP PURCHASE. VALIDATE AT CASHIER'S DESK AT THE COOP.

ATTENTION International Students

If you plan to travel outside of the United States, please remember to stop by the International Student Office, 5-106. You need to have page 4 of your I-20 or the pink page of your IAP-66 signed by one of the International Student Advisors. If your I-20 or IAP-66 has already been signed this semester, you do not need another signature. Also be sure to pickup the appropriate travel handouts. Please keep in mind that most international students travel during the holidays. The International Student Office is generally flooded with requests at this time. Stop by early to ensure that your documents are in order, especially if you need to apply for a new visa!

**FOR \$25 WE'LL LET
YOU HANG
OUT IN THE QUAD.**

\$25 mid-week lift ticket. Why hang around between the library and the student union, when you can hang out in our high-speed quad? This year, check out our 43 new Haystack runs, and ski 127 trails in all, the most in the East. And for a week of parties and skiing, make plans for SnowBreak™ '92: Jan. 3-5, Jan. 6-10, and Jan. 13-17. For conditions call 802-464-2151.

800-245-SNOW



Offer good Monday through Friday, non-holiday, with a current college I.D.

A FREE SCREENING OF A MAJOR MOTION PICTURE FROM TRISTAR PICTURES
PRESENTED BY

L. S. C.



Tuesday, December 3
8:00 p.m.
26-100

Cosponsored by ABC Day TV
MIT ID required

GRAB THESE GREAT GIFT IDEAS FROM THE MIT PRESS

HUGE HOLIDAY SAVINGS

Snarf the Season!

- * 20% off all MIT Press publications with this ad (one ad per customer, expires 1/6/92)
- * Grab extra bargains in hurt books
- * Gorge on sale-priced gift books
- * Feast on specials and other surprises

THE NEW HACKER'S DICTIONARY

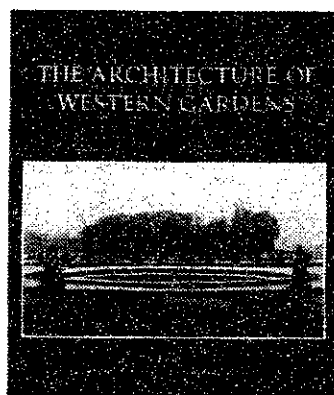
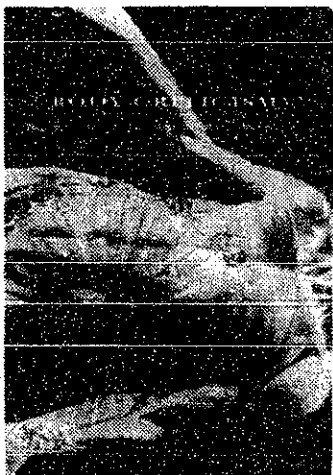


THE NEW HACKER'S DICTIONARY

edited by Eric Raymond
foreword and cartoons by Guy C. Steele, Jr.
From ack to zorch — and with hundreds of other entries in between — *The New Hacker's Dictionary* offers an armchair tour of hackerdom's myths, heroes, folk epics, in-jokes, taboos, and dreams — a riotous and thought-provoking unveiling of the continent-spanning electronic communities that knit hackers together.
433 pp., illus. \$25.00 cloth, \$10.95 paper.

BODY CRITICISM

Imaging the Unseen in Enlightenment Art and Medicine
Barbara Maria Stafford
"Rarely has the study of the visual representation of the body been undertaken with the intelligence and innovation of Barbara Stafford's *Body Criticism*...a major addition to the study of the Enlightenment and its repertoire of fantasies about the seen and unseen nature of the body." — Sander L. Gilman, Cornell University
608 pp., 254 illus. \$55.00

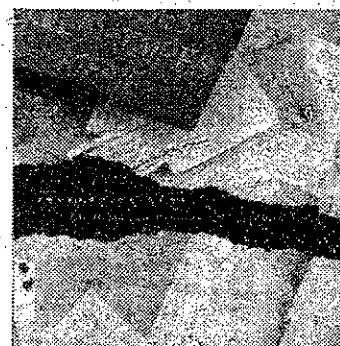
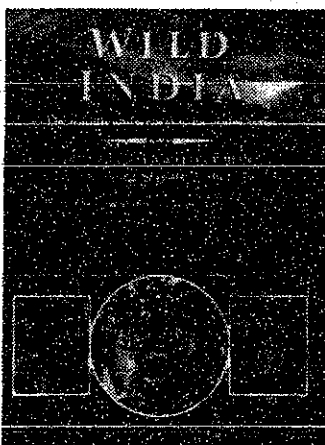


THE ARCHITECTURE OF WESTERN GARDENS

A Design History from the Renaissance to the Present Day
edited by Monique Mosser and Georges Teyssot
"A monumental and brilliantly illustrated physical and intellectual history of gardens since the Renaissance that belongs in every serious library; invaluable to every student" — Henry Mitchell, Garden Columnist, *Washington Post*
544 pp., 652 illus., including 130 4-color plates.
\$95.00 prepublication price through 1/31/92
\$125.00 thereafter

WILD INDIA

The Wildlife and Scenery of India and Nepal
Guy Mountfort
photographs by Gerald Cubitt
Wild India is a valuable current record of the subcontinent's wild places and wilderness areas. Guy Mountfort provides a discerning account of the ecological and human history of the region, focusing on present-day pressures on India's irreplaceable natural heritage. The superb 400 full-color photographs are informatively captioned and divided into sections on the Himalayas, the Indo-Gangetic Plain, and the Deccan.
Published in association with the World Wide Fund for Nature. Also in the same series: *Wild Malaysia* 208 pp., 400 4-color illus., map \$39.95

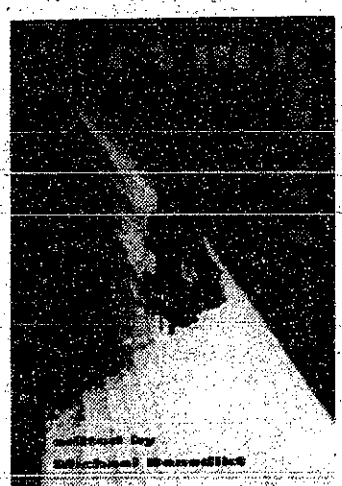


THE DEFINITELY UNFINISHED MARCEL DUCHAMP

edited by Thierry de Duve
The Duchamp scholars represented here are the leading European and American critics of their generation — a number of whom have staked out opposing territories, making for a particularly animated critique of this fascinating artist and his provocative work. Lavishly illustrated. Copublished with the Nova Scotia College of Art and Design
550 pp., 137 illus. \$50.00

CYBERSPACE

First Steps
edited by Michael L. Benedikt
Cyberspace, "an infinite artificial world where humans navigate in information-based space" is the most radically innovative of today's computer developments. Original contributors like science fiction writer William Gibson explore the philosophical basis for cyberspace in ancient thought, the relevance of the body in virtual realities, basic communications principles for cyberspace, the ramifications of cyberspace for future workplaces, and a great deal more.
304 pp., illus., 8 pp. in color. \$24.95



* **snarf**: "i. To grab, esp. to grab a large document or file.... This term was mainstream in the late 1960s, meaning 'to eat piggishly.'" (Eric Raymond, ed., *The New Hacker's Dictionary*, p. 326).

MIT Press Bookstore

Kendall Square 292 Main Street Cambridge MA 02142 617.253.5249 Hours: M-F 9-7, Sat 10-6, Sun 12-6

A R T S

Sparkling performance of witty Poulenc by Pinnock

BOSTON SYMPHONY ORCHESTRA

Trevor Pinnock, soloist.
Conducted by Seizi Ozawa.
Poulenc's Concert champêtre for Harpsichord and Orchestra, and works by Berlioz and Franck.
Symphony Hall, Nov. 29.

By JONATHAN RICHMOND

POULENC'S CONCERT CHAMPÊTRE for harpsichord and orchestra is a sparkling piece of music. It makes ideal use of the harpsichord's percussive, brilliant sound to make an instrument for which there have been few 20th-century compositions shine in a new light.

Trevor Pinnock proved to be just the right person to extract the maximum wit from Poulenc's music in his solo performance with the Boston Symphony Orchestra last Friday night, and to do it both adrenally and with sensitivity. The clarity and precision of his playing was wonderful, the harpsichord sound vivid and penetrating. The delicious silliness of many passages was delivered with particular aplomb; but so, too, were the reflective moments of the second movement, and the

exhilarating fast-paced virtuoso dashes of the *Finale*. There were elements of Bach and Handel — a snippet of *The Harmonious Blacksmith*, perhaps? — in the third movement, but Pinnock made everything sound surprising and new.

Orchestral performance, under Seizi Ozawa's direction, was tops. The entry of brass in the first movement was as glorious as it was glowing, and the chamber-style combinations of instruments used to in turn provide the soloist company evoked a miscellany of intriguing coloration. The piece flowed nicely, the endless variety bound together felicitously by Ozawa.

There was some especially effective playing on flute, elements of breathless urgency underlining the humor of the harpsichord. The melancholic *Alegretto* drew gripping dance-like textures from the strings, woodwinds casting a wistful golden light through their sound.

The concert had begun with Berlioz' *Roman Carnival Overture*, Op. 9: suspense was developed nicely in a full-blooded performance. It ended with Franck's *Symphony in D minor*. This is a work I admit to disliking, but it was played with such alertness and power that Ozawa might well change my mind about it.



This space donated by The Tech

*If You Want To
Get In
You've Got to
Stand Out!*

IAP Classes Forming NOW
GMAT • GRE • LSAT

THE
RONKIN
EDUCATIONAL GROUP

8 Story Street
Cambridge, MA 02138
617-876-7730

SHARING...

your time and talents as a volunteer can be satisfying and fun. The United Way Voluntary Action Center (VAC) can match your time and talent with rewarding volunteer opportunities, whatever your interests, wherever you live.

Call the VAC at 617-422-6775

United Way

Voluntary Action Center



This space donated by The Tech

FREE TICKETS FOR STUDENTS!

EL CORAZON SANGRANTE "THE BLEEDING HEART"

An exhibit of works by Mexican, Chicano, and Cuban artists at

The Institute of Contemporary Art, Boston

•Friday Dec. 6 at 1-2:30pm •

An Office of the Arts excursion featuring a special curator's tour conducted by Matthew Teitelbaum of the ICA

- Reservations may be made IN PERSON ONLY at the Office of the Arts, E15-205 •
- One ticket per MIT student ID •
- A \$5.00 deposit is required (and will be returned after the trip) •
- Valid MIT student IDs must be presented •
- Round trip transportation provided •
- Come to the Lobby of E15 at 12:15pm •
- We will return approximately 3pm •
- For information call: 253-4003 •

The MAC Group, a Gemini Consulting company, invites juniors and seniors to join us for a presentation on job opportunities as an Analyst at this international general management consulting firm.

A reception will follow.

Thursday, December 5, 1991

Presentation 6 p.m.
Reception from 7 to 8 p.m.
The MAC Group/Gemini
124 Mount Auburn Street
Suite 600N
Cambridge, MA

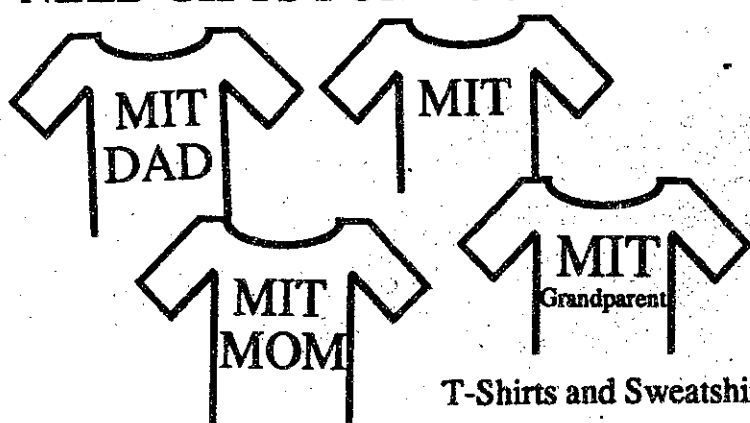
RSVP: Michelle Desaulniers, 491-5200

THE MAC GROUP
a Gemini Consulting company

- Boston
- Chicago
- Morristown
- New York
- San Francisco
- Barcelona
- Lisbon
- London
- Madrid
- Milan
- Munich
- Oslo
- Paris
- Rome
- Tokyo

★ ★
GEMINI

NEED GIFTS FOR YOUR FAMILY?



T-Shirts and Sweatshirts

sold **Thursday, Dec. 5** and
Friday, Dec. 6 from 10 am to 5 pm

FIRST FLOOR - STUDENT CENTER

t-shirts - M, L, XL \$10 XXL \$12
sweatshirts - M, L, XL \$22

Fundraiser for MIT Women's Varsity Softball

**A Conversation about
Career Opportunities
for Potential Law School Students
Find out Now!**

Please join us as we discuss traditional and non-traditional career paths available once you receive your Law Degree. Recruiters and recent grads will be on hand to discuss how you can further control your career path in or out of New England with your graduate degree.

Cambridge, MA
8 Story Street, Bsmr Suite
617-876-7730

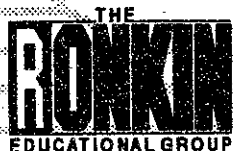
Thur. Dec. 5
7:00PM - 8:30PM

Who is Ronkin

The Ronkin Educational Group focuses on educational counseling, skill enhancement and test preparation for college and graduate school. We have been in business for over 10 years, with 140 centers nationally. Our commitment is to a no-gimmick curriculum, individual attention, and well trained motivating teachers. The end result of each course is to build skills, develop familiarity with the test, and reduce test anxiety.

RSVP

Since seating is limited, and appetizers will be served, we would appreciate the courtesy of an RSVP by 5:00 two days prior to the event. There is no charge for this evening.



DO SOMETHING GOOD.
FEEL SOMETHING REAL.

This space donated by The Tech

25% OFF
The Finest Vitamins in America!
NATURES BOUNTY

• Vitamin C & Multi Day Vitamins		Reg.	NOW
C500 mg Vitamins WITH ROSE HIPS			
C500 mg Rose Hips, 100 count.....	\$3.99	\$2.99	
C500 mg with Rose Hips, 250 count.....	8.99	6.74	
C500 mg Chewable Rose Hips, 90 count.....	5.09	3.82	
C500 mg Time Release Rose Hips, 100 count....	5.09	3.82	
C500 mg Time Release Capsules, 100 count.....	6.59	4.94	
C500 mg Ascorbic, 100 count.....	2.49	1.87	
C500 mg Ascorbic, 250 count.....	6.49	4.87	
• Multi Day Vitamins		Reg.	NOW
Multi Day Tablets, 100 count.....	\$2.69	\$2.02	
Multi Day Tablets, 365 count.....	7.89	5.92	
Multi Day Plus Minerals, 100 count.....	5.09	3.82	
Multi Day with Iron, 100 count.....	2.89	2.17	
Multi Day with Iron, 365 count.....	7.99	5.99	
Multi Day with Calcium & Iron, 100 count.....	4.99	3.74	
ABC to Z, 100 count.....	5.97	4.34	
Theravim, 130 count.....	5.59	4.19	
Theravim with Minerals, 130 count.....	6.49	4.87	



MIT COOP AT KENDALL
3 CAMBRIDGE CENTER
M-FRI 9:15-9:30 SAT 9:15-9:45
SUN 12-6

ATTENTION GRADUATING STUDENTS

**START PLANNING YOUR SCHEDULE FOR FEBRUARY AND
COME IN TO SIGN UP FOR
ON-CAMPUS COMPANY INTERVIEWS.
TWO OF THE SPRING RECRUITING FLYERS
(JANUARY 23RD - FEBRUARY 7, 1992)
ARE ALREADY AVAILABLE.
DON'T MISS YOUR CHANCE
TO TALK TO THE COMPANIES
YOU WOULD LIKE TO WORK FOR!**

**STUDENTS WHO ARE INTERESTED IN THE
MANAGEMENT/FINANCIAL FIRMS:**

**THERE ARE 26 FIRMS SCHEDULED TO COME THE WEEK OF
FEBRUARY 3-7. COVER LETTERS AND RESUMES FOR THESE
COMPANIES ARE DUE IN OUR OFFICE
ON FRIDAY, DECEMBER 6TH.**

**DON'T MISS OUT ON OPPORTUNITIES
BY WAITING!**

ACT NOW!

OFFICE OF CAREER SERVICES
ROOM 12-170
253-4733

A magician's spell, the innocence of young love, and a dream of revenge unite to create a tempest.

"STUNNING!"

-Caryn James, The New York Times

"A PHANTASMAGORIA!"

John Gielgud is incomparable!
I wouldn't want to miss it!"

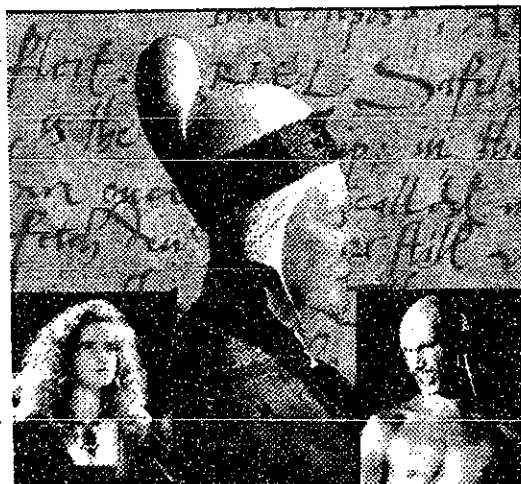
-Vincent Canby, The New York Times

"A LANDMARK!"

CONSISTENTLY ORIGINAL!

Peter Greenaway floods the screen with erotic pageantry, cinematic bravura and more nudity per reel than any film in memory."

-Bruce Williamson, Playboy



"DAZZLING!"

John Gielgud is astounding!"

-Peter Travers, Rolling Stone

"VISUALLY BEAUTIFUL!"

John Gielgud gives a magisterial performance!"

-John Anderson, New York Newsday

"MAGNIFICENT!"

Leaves you goggling in amazement!"

-Graham Fuller, Interview

PROSPERO'S BOOKS

The new film from the director of The Cook, The Thief, His Wife & Her Lover

ACT Theatre Screen #1, Grand Lake 2 Renaissance
Landmark Varsity, Park, Camera III #1, Castro

comics

NICK'S ENGINEERING JOKES PART II

NOT BACK BY POPULAR DEMAND

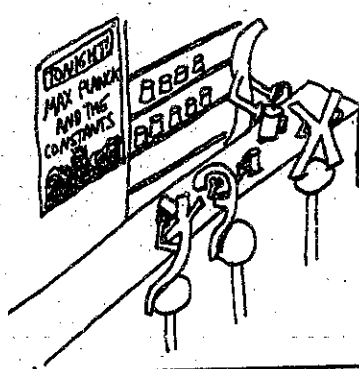
#1. WHAT DO FUNCTIONS SAY AFTER THEY'VE BEEN INTEGRATED AND DIFFERENTIATED TOO MUCH?



#2. WHAT DO YOU CALL EIGENVALUES THAT ARE ALWAYS GETTING INTO TROUBLE?

DEGENERATES

#3. WHERE DO FUNCTIONS GO TO DRINK THEIR SQUARE ROOT BEER?



PLUS ONE HUMANITIES JOKE:

WHAT DID ARNOLD SCHWARTZNEIGER SAY WHEN HE WAS ASKED WHAT ROLE HE WANTED IN A MOVIE ABOUT FAMOUS MUSICAL COMPOSERS?

I'LL BE BACH

By Chris Doerr

TOSHIBA

T2200SX

- 40/60 MB hard disk
- 2 MB RAM, 5.5 lbs
- 3.5" 1.44 MB floppy
- 386SX/20 processor

Also:
T1000SE/LE
T1200XE
T2000SX/e
T3200SX
T5200

UNIVERSITY DISCOUNTS

on all TOSHIBA models and other hardware...
MOST POPULAR SOFTWARE available at guaranteed LOWEST PRICES.
Call for our catalogue.

DSR, Inc. 800-875-0037

*VISA, Mastercard & American Express Accepted
Authorized TOSHIBA Warrantee & Repair Service

We begin our education believing that the facts we learn and the technologies we master are the foundations for our careers.

But changes in careers are common and technologies become obsolete quickly. In fact, alumni records show that it is likely for many of us to work in multiple fields or to change fields entirely. We may also move from engineering and science into non-technical areas such as marketing or general management.

The ability to do excellent work in a range of fields and to meet diverse challenges with clear bold thinking and creative solutions is the hallmark of a good education.

However, to work effectively in fields that are new to us we cannot rely on facts and technologies that may have become obsolete or are not applicable; we must depend on fundamental thinking and problem solving skills that are effective in any discipline and in working on virtually any type of problem.

These skills are analogous to the basic skills, strength and coordination that a superb athlete will learn in preparation for a lifetime of competition, skills that will serve him in a variety of different sports.

For the scientist or engineer the heart of the learning process is finding and solving interesting problems. This is as true if the subject is quantum physics, as it is in managing a company. With proper mentoring, the mental struggle of dealing with a difficult and important problem results in the development of mental skills that cannot be learned in any other way and that are applicable to a wide range of new situations.

The skills we learn are an acute ability to observe all aspects of a problem, to integrate a wide range of knowledge, to analyze in depth, to obtain insight, to find creative solutions, and to rigorously test the solutions.

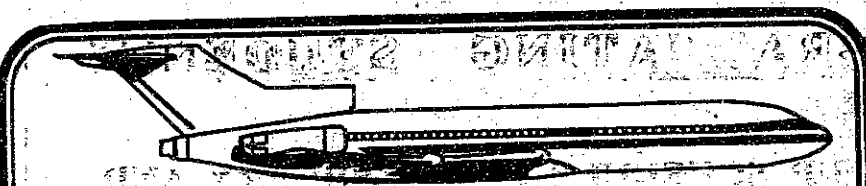
These problem solving skills are taught by a fine teacher no matter what the subject. For maximum benefit the student must realize the importance of these skills to his or her education and must consciously focus on developing them not only in every course in college but over a lifetime of learning.

Note: Each year the Bose foundation sponsors a one year fellowship for a first year graduate student in electrical engineering. Please see your faculty advisor for more information or write Rhonda Long, Bose Foundation, The Mountain, Framingham, MA 01701-9168.

The second in a series.

The purpose of education.

BOSE



FREE! Airline Reservations & Ticketing Service

Thomas Cook

★★★★★
RATED BEST!
by Condé Nast
Traveler Magazine
★★★★★

1 BROADWAY, CAMBRIDGE

THOMAS COOK is an official authorized agent for all airlines and there is NO EXTRA CHARGE when you pick up your tickets at THOMAS COOK!

IF YOU'RE TRAVELING ON ANY OF THESE AIRLINES . . .

American, United, Continental, Pan Am, Delta, TWA, Northwest, USAir, British Air, Qantas, Air Canada, Iberia, Lufthansa, Swiss Air, Air India, El Al, Icelandair, Alitalia, Aer Lingus, Viasa, or even shuttle flights.

AVOID LONG LINES AT THE AIRPORT, MAKE YOUR RESERVATIONS AND PICK UP YOUR TICKETS AT

Thomas Cook

Open Mon.-Fri.
8:30 am-5:00 pm

1 BROADWAY, CAMBRIDGE

868-2666

sports

MIT rows well at Foot of the Charles

By Ben Reis and Jayant Kumar

Last Saturday MIT varsity and freshmen men's crews competed against area schools in the Foot of the Charles, a small-scale version of the Head of the Charles regatta. Coaches agreed that both crews made one of their best showings in recent years.

The two-and-a-half mile race ran from the MIT boathouse to the Harvard boathouse.

In the varsity competition a total of 42 boats, each with four rowers, raced on calm waters against a slight headwind. Crews hailed from Boston College, Boston University, Cambridge Boat Club, Dartmouth College, Harvard University and Northeastern University.

MIT fielded six varsity heavyweight boats, the first of which placed 10th with a time of 14:42.0 — 43.9 seconds behind first place Harvard. The rowers in the first boat were Godard Abel '92, Bradley Layton '92, Kevin Corgan '93, Tyler Worden '92 and coxswain Neeraj Gupta '93. The remaining five boats came in 20th, 22nd, 36th, 37th and 38th.

Varsity heavyweight coach Gorton Hamilton said the showing was "the best they've done in fifteen years."

The MIT varsity lightweight crew fielded five boats. The first boat came in third among the lightweights (15th overall), with a time of 14:54.7 — a mere 31.2 seconds behind Harvard's first lightweight boat. The remaining four boats placed 4th, 7th, 10th and 11th (16th, 31st, 40th and 42nd overall).

MIT also participated in dou-

bles competition against the Cambridge Boat Club and the Boston Rowing Club. The MIT varsity entered two boats which came in fourth and fifth in a field of seven. The first boat, with Jeffrey Myjak '92 and William Tucker '94 as rowers, came in with a time of 15:25.6. The second boat finished with a time of 16:12.1.

The freshmen crew raced next with eight rowers per boat. MIT entered four heavyweight boats into a field of 37. The others boats were from BC, BU, Dartmouth, Harvard Business School, Harvard University, Hull High School, Northeastern and Roger Williams College.

MIT's first heavyweight boat came in eighth with a time of 14:12.7, 68.4 seconds after first-place Harvard. Rowing in the first MIT boat were Gregor Andrade '92, Jeffrey Tomasi '94, Vasik Rajlich '93, Ryan Ehler '95, Nathaniel Crosswhite '95, Brad Pearson '95, Michael Schlosser '95, Bradley Lichtenstein '95 and coxswain Albert Mowatt '95.

Freshman heavyweight coach Stuart Schmill '86 was pleased with this year's results, pointing out that MIT's third and fourth boats did not finish far behind the first and second. "Coupling this with such a good performance from the first and second boats, we should have a very good year this year," he said.

MIT freshmen also put in four lightweight boats, the first coming in fourth with a time of 14:25.7 (13th overall). The rowers were Babak Azad-Tatari '95, Vijay Krish G, Rahul Shendure '95, William Samec '95, James Brooks, Andrew Percey '95, Jock

Jones '95 and Kendrick Boardman '95.

MIT's second boat, a mere 4.2 seconds behind MIT's first, beat Harvard's second boat by a crucial seven seconds, an achievement heralded by freshman lightweight coach Mike Welch. The third and fourth freshman lightweight boats came in 10th and 13th (29th and 34th overall).

All coaches were happy with the outcome of the race and with each individual rower's effort. The Foot is the final fall race for all the MIT crews and now, said Schmill, "It's time to go indoors and begin training for the spring."

Jayant Kumar '95 and Ben Reis '95 are members of the men's freshman lightweight crew.

\$30!! 4-volume color set, **Dynamics: The Geometry of Behavior** (Abraham & Shaw) 700 pages, 850 illus.

Aerial Press
P.O. Box 1360
Santa Cruz, CA 95061
408-425-8619

LAST CHANCE
Offer good 'til 12/20/91

SUBJECTS WANTED
HYPNOSIS AND IMMUNITY STUDY

PAYS UP TO \$360

SUBJECTS MUST:
- Be In Good Health
- Be Available Beginning January 1992

CALL: Jean Wolcott for more information at 617-735-3293

Steven Locke, MD
Beth Israel Hospital

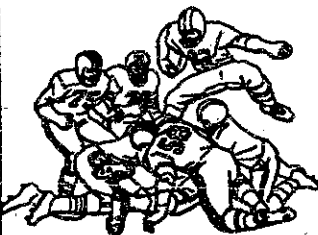


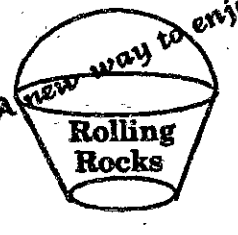
IM COUNCIL MEETING WED 12/4 7:30 PM IN RM 4-370

BEGINNING DEC. 8, GYM SUPERVISORS WILL MATCH FACES TO ATHLETIC CARDS. IF YOU USE SOMEONE ELSE'S CARD, OR DO NOT HAVE YOUR OWN WITH YOU, YOUR TEAM WILL BE SUBJECT TO A FINE OF \$30 PER INFRACTION!

Enjoy different events every day at...

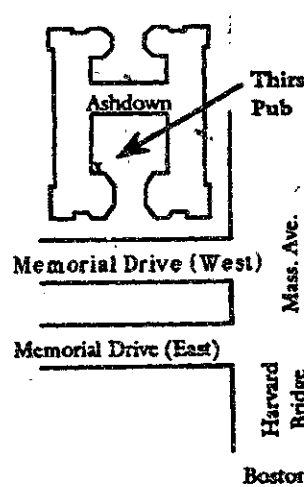
The Thirsty Ear Pub

In the basement of Ashdown House 305 Memorial Drive

Monday	Tuesday	Wednesday	Friday
Monday Night Football 	featuring Wing-It Buffalo Wings  7 pm	The Thirsty Ear's movie of the week  9 pm	"Bucket of Rocks"  A new way to enjoy Rolling Rocks

The Thirsty Ear Pub has a full selection of beers including:

- Anchor Steam • Belhaven Ale • Guinness • McEwans • Sam Smith's Oatmeal Stout • Sam Smith's Nut Brown Ale • Watney's Red Barrel • Amstel Light • Heineken • New Castle Brown • Beck's • Dos Equis • Harp • Killian's Red • Sam Adams • Labatt's • Moosehead • Molson • and other fine beers.



Low Prices

Massachusetts drinking age 21. Positive ID required.

Hours:
Mon-Thu 6 pm - 1 am
Fri 4 pm - 1 am

classified advertising

Classified Advertising in The Tech: \$5.00 per insertion for each 35 words or less. Must be prepaid, with complete name, address, and phone number. The Tech, W20-483; or PO Box 29, MIT Branch, Cambridge, MA 02139.

Come to the Minority Career Forum Dec. 6! Minority Juniors, Seniors: Free. Meet & interview with 30 corporations (Merrill Lynch, McKinsey, P&G, Citibank and MORE!) 12/6/91 Sheraton-Boston, 10-4. Seminars too! Questions? Call (617) 868-0181.

Marketing Liaison. Enthusiastic and outgoing juniors and seniors needed to market a national educational services company. Work on campus, flexible hours, hourly wage and commission. Call 876-7730 for interview.

Cambridge: On private way. Smashing cottage style single, two bedrooms, newer systems, deck, yard, parking. \$144,000. Rene 864-9488 Agt.

Ski Sugarbush Vermont. Special Student Rates. Example: 5 nights lodging, 5 1/2 days of skiing, \$225 all inclusive. POWDERHOUND 800-548-4022.

Spring Break in Cancun! It will be here before you know it! Outgoing campus representative wanted by the nation's largest and most successful spring break operator. Receive a free trip and cash for promoting our trips to your friends and classmates. Call 1-800-395-4896 for more information!

Spring Break '92. Prices from \$299 Cancun - Bahamas - Jamaica - Carnival Cruises. Guaranteed lowest prices on campus!!! Save \$25.00 if you book by Dec. 20, 1991. For more information call advance travel toll free 800-755-7996.

Daytona Beach! Spring break '92 March 20 - 29. Oceanfront hotel on strip. Best beaches, clubs, party! Includes seven nights hotel, plus roundtrip motorcoach. Only \$259.00! (quad. occ.) Call Yankee Tours at 1-800-9DAYTONA, M - F, 8 - 6.

The Tech Subscription Rates: \$20 one year 3rd class mail (\$37 two years); \$55 one year 1st class mail (\$105 two years); \$52 one year air mail to Canada or Mexico or surface mail overseas; \$140 one year air mail overseas; \$10 one year MIT Mail (2 years \$18). Prepayment required.

Faster, Hotter, Cleaner, Cheaper: Exhaust Catalyst Materials for Improved Automotive Performance

Dr. Kathleen C. Taylor
Head of Physical Chemistry Department
GM Research Laboratories

The 1991 Wulff Lecture for Freshmen and Undesignated Sophomores

Sponsored by the
Department of Materials Science and Engineering

Wednesday, December 4, 1991 4:00 p.m.
(Refreshments at 3:15)

Room 10-250