

Vipul Bhushan/The Tech

Piggy banks like this one at Ashdown House have been donated by The Coop to collect relief funds for the cyclone victims in Bangladesh.

## Baltimore regrets fraud Apologizes for defense of fabricated data

By Katherine Shim

On Thursday, David Baltimore '61, former Whitehead Institute director and current president of Rockefeller University, released a statement formally apologizing for his staunch defense of the work of a former researcher in his laboratory, Thereza Imanishi-Kari. The statement comes in response to a draft report released in March by the Office of Scientific Integrity (OSI) at the National Institutes of Health which concluded that Imanishi-Kari's work had been falsified.

In his 14-page statement, Baltimore also rebutted some of the criticisms of the OSI draft report and apologized for his criticisms

of Congressional intervention in the matter. Baltimore's statement, along with a rebuttal written by Imanishi-Kari, will be considered by the OSI before its final report is released in June.

"I realize now that I erred in failing to heed the warnings" of Margot O'Toole, who had been first to question Imanishi-Kari's work, Baltimore said in his statement to NIH. "The better course would have been to suspend further comment on the matter until I had a full opportunity to review and digest all of the new information," he added.

"In good conscience, I feared a rush to judgment, and I accorded [Imanishi-Kari] the benefit of ev-

ery doubt. I now recognize that I was too willing to accept Dr. Imanishi-Kari's explanations and to excuse discrepancies as mere sloppiness. Further, I did too little to seek an independent verification of her data and her conclusions," Baltimore said.

"I recognize that I may well have been blinded to the full implications of the mounting evidence by an excess of trust, and I have learned from this experience that one must temper trust with a healthy dose of skepticism. This entire episode has reminded me of the importance of humility in the face of scientific data," he said.

In his statement, Baltimore maintained that he had no personal knowledge of misconduct, and that his staunch support of Imanishi-Kari resulted from relying too heavily on those investigating the matter at MIT, Tufts University and the NIH.

Controversy began in 1986 when Imanishi-Kari, Baltimore and several others published a paper in the scientific journal *Cell* whose conclusions were found to be unsubstantiated. The paper asserted that the insertion of a foreign gene into a mouse would stimulate the production of related antibodies, a finding that other researchers have not been able to confirm.

that effect."

Additionally, Simonides said, the committee reaffirmed its commitment for continuing educational initiatives for advanced study at MIT for black South Africans. According to the Executive Committee statement, two black South African students are currently enrolled in the MIT Graduate School, one in the Department of Economics and one in the Department of Urban Studies and Planning.

Sue E. Nissman G said last  
(Please turn to page 15)

(Please turn to page 13)

## Corporation keeps investment policy

By Andrea Lamberti

The Executive Committee of the MIT Corporation Friday stated its intent to maintain a policy of "selective investment" in United States companies with operations in South Africa. The statement is an official notice of what the Executive Committee expressed in mid-April to the Coalition Against Apartheid, which continues to urge MIT to divest from companies doing business in South Africa.

The coalition has recently pressured the Corporation to divest through a series of meetings and information exchanges with Corporation members, the most recent being April 4, when CAA members met with members of the Executive Committee, and with Vice President and Secretary of the Corporation Constantine B. Simonides.

In its public statement, the Executive Committee also announced its support for interna-

tional economic sanctions. "The Executive Committee . . . recognizes the constructive role of international economic sanctions in the process of political and economic reform in South Africa. The objective of these sanctions is to abolish apartheid and to establish a representative form of government, and the committee calls for their continuation."

President Charles M. Vest, chair of the Executive Committee, sent letters with the statement to Secretary of State James A. Baker III, National Security Adviser Brent Scowcroft and the Massachusetts Congressional delegation.

At the informal April 4 meeting, the CAA asked the Executive Committee to: divest from companies directly invested in South Africa, divest from companies identified as "the most blatant examples" of indirect investment in the South African economy, and make a public

statement reaffirming MIT's support for economic sanctions until a non-racial democracy has been established in South Africa.

Simonides said that the discussions with the CAA members and information they provided was taken into consideration at the April 5 meeting of the Executive Committee. The public statement was the outcome of the Executive Committee meeting, he said. "[It] was a judgment of the Executive Committee that sanctions should continue and that [the committee] should make a statement to

## UA rejects two APC recommendations

By Alice N. Gilchrist

The Undergraduate Association Council voted on the 17 recommendations of the UA-sponsored Alcohol Policy Committee (APC) at its final meeting last Thursday. The council effectively rejected the two most controversial points of the APC proposal, which recommended that dormitory house taxes no longer be spent on alcohol and that a dean for alcohol education be created. The council also discussed revised undergraduate academic requirements, possible housing changes and next year's Residence/Orientation week.

The council passed an amended version of the controversial recommendation to abolish the use of house tax funds to purchase alcohol, after striking the first sentence of the original recommendation, which read, "The

committee recommends that house tax funds not be spent on alcoholic beverages."

The UAC then overwhelmingly passed the remainder of the recommendation, which read, "The manner in which alcoholic beverages are purchased in the dormitories for parties and other common functions of the dormitories should be the decision of the residents of each dormitory."

The APC's recommendation to create the position of assistant dean for alcohol and drug education was also defeated by a vote of 7-14 with 11 abstentions. Although the UA did not approve these two recommendations, the APC has already publicly released all 17 recommendations.

Recommendations that the UA approved include the "implementation of a comprehensive, sustained and pro-active drug and alcohol awareness program," and that "each living group host at least one alcohol education program per year."

Former UA Vice President Colleen M. Schwingel '92 said that the vote of the UA will have an affect on the administration. "There's a lot that is not seen or perceived in the dean's office. They really do strongly consider any recommendations that the UA makes," she said.  
(Please turn to page 2)



William Chu/The Tech

In this interesting twist on the sack race known as "Becky's Hop," four teammates raced in one sack at the Johnson Games Saturday.

## Johnson Games start Inaugural week

By Sharon Price

Approximately 60 teams totaling over 2500 people competed in Saturday's Johnson Games, the first event in this week's Inaugural festivities. The games were organized to involve many members of the MIT community in the Inauguration celebration of President Charles M. Vest, who will be formally inaugurated as the 15th president of MIT this Friday.

Saturday's games marked the second time the Johnson Games have taken place at MIT. The games first took place in 1988 to celebrate the dedication of the Johnson Athletics Center to Howard W. Johnson, former president and chairman of the MIT Corporation.

"President Vest wanted to include the whole community in the Inaugural festivities, and [the Inaugural Planning Committee] remembered the success of the first Johnson Games," according

to Kathryn W. Lombardi, executive assistant to the president and a member of the Inaugural Planning Committee.

In the future, the games will probably take place about every three years, Lombardi said.

The competition was supervised by Safaris, a San Francisco-based company that specializes in organizing field days for large groups. Fifty student volunteers also participated in running the games.

Each team participating consisted of a balanced ratio of faculty and staff to students, and women to men. "The idea was to get a nice mix of everyone from the community, so people could interact with people they normally don't," said Sarah Swett, a member of the Johnson Games Committee.

Each team centered around a core group, aca-  
(Please turn to page 15)

### inside

INSIDE: A student  
leader of the  
Inaugural Week  
celebrates with  
other students and  
faculty members  
at the Johnson  
Games. Page 2

# MIT celebrates Vest Inauguration this week

By Jeremy Hylton

Centered on the theme "MIT: Shaping the Future," the Institute is sponsoring a week-long celebration this week for the Inauguration of President Charles M. Vest as MIT's 15th president. The celebration began Saturday with the Johnson Games and will continue this week with the burying of a time capsule and a series of concerts. The Inaugural Ceremony will take place Friday morning.

"[The Johnson Games were] really a great event. There were faculty, vice presidents and freshmen all hopping through tires side by side," said Claude R. Canizares, professor of physics and chairman of the Inaugural Planning Committee.

This week's events will begin

on Thursday morning with the burial of a time capsule near the Henry Moore sculpture in Killian Court. The 18-inch deep cylinder, made by the Nuclear Engineering Laboratory machine shop, has a cover cast in the shape of the Great Dome.

While the time capsule commemorates the Institute's recent past, the theme marks the "next phase of MIT's existence," according to Canizares.

"It was a conscious effort to say that the Inauguration is not simply a celebration, but it is also a time for some introspection," he said.

The theme was worded vaguely by design, Canizares added. "Shaping the future" represents both the future of MIT, and the way MIT will shape the future of

science and technology.

The highlight of the week's events will be the Inaugural Ceremony on Friday morning. Starting at 9:30 am an 800-person procession, decked out in full academic regalia, will enter Killian Court. Carl M. Mueller '43, chairman of the MIT Corporation's presidential search committee, will serve as chief marshal of the ceremony.

Among the marchers will be faculty, administrators, alumni and delegates from student living groups and activities. "We have a large number of invited delegates from universities around the world," Canizares said. Representatives from cultural and scientific institutions will also attend.

Vest will present his inaugural address during the ceremony. Also speaking will be Frank H. T. Rhodes, president of Cornell University, and Stephen J. Tapscott, professor of literature, who will read his original poem, "Poem of Welcome." [See Inauguration schedule, this page, and arts story on the Inauguration, page 11.]

Four members of the music and theater arts faculty composed fanfares for the inauguration: Peter Child, associate professor, Edward Cohen, senior lecturer, John H. Harbison, Class of 1949 professor and Evan Zi-poryn, assistant professor. The MIT Chamber Chorus, under the direction of William C. Cutter, an affiliated artist of music and theater arts, will also perform.

Immediately after the ceremony, at 11:30 am, a reception will be held on Kresge Oval. Canizares expects about 4000 people to attend the ceremony and reception.

Friday's events were scheduled despite the conflict with classes meeting that morning. "That is

certainly a conflict and we regret that," Canizares said. "We hope that people can take part in one or other of the events and not have it be too disturbed."



Tech file photo

President Charles M. Vest

The inaugural committee's scheduling options were limited. A weekend inauguration would create greater conflicts, and Commencement forces the inauguration before June, Canizares said.

On Thursday night four of the

Institute's student music groups will perform at the Inaugural Concert — the MIT Concert Band, the MIT Symphony orchestra, the MIT Chamber Chorus, and the MIT Festival Jazz-Ensemble. Four works composed by students will be performed by artists-in-residence Carol Lynn Bennett and John D. McDonald. Afterward a reception will be held on the third floor of the Julius A. Stratton '23 Student Center.

Friday night the MIT Concert Choir, conducted by Amy Kaiser, will perform in Kresge Auditorium. The next evening Professor of Music and Theater Arts David M. Epstein will conduct the MIT Symphony concert. The program will include the "Academic Festival Overture" by Johannes Brahms, a clarinet concerto by Wolfgang Amadeus Mozart, and "Appalachian Spring" by Aaron Copland.

The Charles M. Vest Inaugural Road Race will be run on Saturday morning at 9:30. The race, sponsored by the Community Service Fund, will begin at the Sailing Pavilion.

## Inauguration schedule

Thursday, May 9

- 11 am Time capsule burial, Killian Court
- 8 pm Inaugural Concert, Kresge Auditorium

Friday, May 10

- 9:30 am Inaugural Ceremony, procession from 77 Massachusetts Ave. to Memorial Drive and into Killian Court
- 11:30 am MIT community reception and celebration, Kresge Oval
- 8 pm MIT Concert Choir performance, Kresge Auditorium

Saturday, May 11

- 9:30 am Charles M. Vest Inaugural Road Race, beginning at the Sailing Pavilion
- Registration in McDermott Court from 7:45 am to 9 am
- 8 pm MIT Symphony concert, Kresge Auditorium

The Inauguration Ceremony will be shown in the Johnson Athletics Center.

Tickets for the Thursday night concert are available in the Information Center (Room 7-121), the MIT Museum Shop in the Stratton Student Center and Room A-165 at Lincoln Laboratory. The concert will also be shown on a large screen in the Athletic Center. If weather permits, the concert will be broadcast in the barbecue area near Kresge Oval.

Tickets for the Friday and Saturday night concerts are available in Lobby 10 and the MIT Museum Shop in the Student Center.

## UA rejects two APC proposals

(Continued from page 1)

Students debate house tax, dean for alcohol education

Prior to the meeting, UAC Senior House Representative Michael J. Bauer '91 said the initial recommendations he had seen earlier "looked good, except for a few points." Bauer objected to both the "effective prohibition on using house taxes towards the purchase of alcohol" and to the creation of a new dean, expressing uncertainty about what the full-time responsibilities of the dean could be.

During discussion, UAC East Campus Representative Christine M. Coffey '93 said the recommendations to create a dean for alcohol education and to prevent house taxes from being used for alcohol seemed to "treat students like minors" rather than adults.

Another student criticized the house tax recommendation by saying, "Just because the administration touches house tax money, and gives it out to the dormitories, doesn't give them sole authority over it."

Other students objected to the alcohol policy saying many of the proposed recommendations simply reiterated state law. Other UA members objected to the creation of a new dean because of the "sole responsibility he would have" over all students.

An APC member responded to criticism by saying, "There are a number of different groups at MIT who have responsibility for students, but none have sole responsibility. The dean for alcohol will have responsibility, but he will not be a disciplinarian."

The members of the committee included Chair and UA Vice President J. Paul Kirby '92, Baker House graduate resident tutor Sylvain Levesque G. Professor of History and Baker House Head-

master William B. Watson, Lars E. Bader '91, Assistant Dean for Student Affairs Andrew M. Eisenmann '75, Advisor to Fraternities and Independent Living Groups Neal H. Dorow, Director of Campus Activities Susanna C. Hinds, Interfraternity Council President Holly S. Simpson '92 and Schwingel. The committee had been developing the recommendations since October.

### Other business

Janelle Gunther '92, student representative to the Committee on the Science Requirement, spoke about the proposed implementation of a biology requirement. Gunther felt that the biology requirement "will probably pass" at the May 15 faculty meeting. At that meeting, the faculty will vote on a proposal to require biology as part of the General Institute Requirements by eliminating one Science Distribution requirement.

Thus far, the biggest objection to the biology requirement has come from the chemical engineering department, whose undergraduates must also take General Biochemistry (7.05).

Gunther also spoke about the possibility of administering a diagnostic mathematics test to freshmen. She said the administration is considering giving the test during Residence/Orientation Week or during the first week of classes. It was alternately proposed that the test be mailed to incoming freshmen over the summer, but Gunther said, "[this could] scare our students away."

The UAC also discussed the Freshman Housing Committee Report, introduced two years ago, which recommended that fraternity and independent living group rush be postponed until the sophomore year and that all

freshmen be preassigned to specific dormitories and rooms. Students at the meeting said the housing issue may be considered by the administration next year.

Plans for a new dormitory to be built by 1995 on the current site of the West Parking Garage were also discussed.

In two elections at the meeting, Hans C. Godfrey '93 was elected floor leader for next year and Anne S. Tsao '94 was confirmed for the position of secretary general.

Student & Youth Travel

**WAY TO GO FOR LESS!**

### Roundtrips

New York	\$ 114.00
LAX/San Fran	\$ 303.00
London	\$ 379.00
Amsterdam	\$ 489.00
Brussels	\$ 489.00
Caracas	\$ 429.00
Rio	\$ 699.00
Sao Paulo	\$ 699.00
Tokyo	\$ 799.00
Bangkok	\$ 999.00
Singapore	\$ 1,039.00

Rates subject to change  
Flights worldwide  
Eurail, Britrail issued on spot  
Call or write for free brochure

1208 MASS. AVE. #5  
CAMBRIDGE, MA 02138

576-4623



When you look at a stone, do you see a pet rock?

Then it's time to visit the Fall River Office of Economic Development (FROED). We can help young, creative, energetic entrepreneurs turn their business dreams into business reality. With FROED's low-interest financing, you can take full advantage of Fall River, one of New England's leading industrial areas. Combining inexpensive industrial space ideal for R&D, with a panoramic waterfront, Fall River is the perfect home as you leave MIT and venture into the "real world". For more information, call Joseph Raposo at (508) 324-2620.



One Government Center  
Fall River, Massachusetts 02722

**LSAT  
GMAT  
MCAT  
GRE**

Test Your Best!  
Classes Forming Now

There's still time to prepare for June exams!  
Reserve your place now in summer classes  
preparing for October exams! Call for details!

868-TEST

STANLEY H. KAPLAN  
Take Kaplan Or Take Your Chances

# news roundup

from the associated press wire

## Nation

### Bush released from hospital

Aides cheered as President George Bush arrived at the White House from Bethesda Naval Hospital. Bush said, "It's great to be back." He had been treated for an irregular heartbeat that he developed while jogging at Camp David Saturday.

Bush has resumed his normal schedule. He met with former Soviet Foreign Minister Eduard Shevardnadze in the Oval Office yesterday afternoon. Bush said he is not concerned about his condition and does not anticipate changes in his lifestyle or working pace.

His doctors said his condition should not slow him down. One doctor said he has no reservations about Bush resuming his busy schedule, saying, "It's not a major league rhythm disturbance." Another said Bush is in overall excellent physical condition. The doctors are keeping his heart rate down to the right speed with medication.

The doctors said Bush did not need electroshock to restore his heart to normal rhythm because it returned to normal last night. Since then, they said, it slipped out of rhythm early this morning, and then returned to normal later in the morning. The doctors track his heart rate with a small, portable cardiac meter.

The White House said the decision not to treat Bush with electrical shock meant there was no need for Vice President Dan Quayle to temporarily assume presidential powers. Aides said Quayle is keeping a normal schedule today in his office.

### American worker productivity rises

The Labor Department reported that the productivity of American workers rose 1 percent in the first quarter of this year, despite the fact that the recession deepened during that period. This is a major revision of a report the Labor Department issued Monday morning.

The initial report said that productivity had declined nine-tenths of a percent during the first quarter.

The department said a mistake had been made in transmitting data between two government agencies and the error was only discovered after the incorrect report had been released.

### White House aides develop plan for spouses to travel at taxpayer expense

White House aides quietly developed a plan late last year to make it easier for the spouses of White House and Cabinet officials to travel at taxpayers' expense. Under the proposal, government policy would allow Cabinet-level spouses to travel on government planes or in government cars, or have the Treasury pay for commercial transportation, if their trips were for "official spousal activities."

It is not known whether the White House will support the proposal in light of the criticism surrounding recent trips taken by Chief of Staff John H. Sununu '61.

The documents, which show the administration considered changing the policy by executive order, acknowledge the change would run counter to a long-held federal policy that frowns on government-paid travel for spouses. White House officials said the proposal never reached President George Bush's desk. Instead, the White House staff changed strategy and decided to approach Congress quietly to make the change legislatively.

### Iacocca declines US Senate seat

Chrysler Corporation Chairman Lee Iacocca said he was not ready to take on the "heavy responsibilities" of the United States Senate.

Pennsylvania Gov. Robert Casey had offered to appoint Iacocca to the seat left vacant by the death of Senator John Heinz (D-PA). Casey flew to Detroit last week to meet with Iacocca.

In a statement released by Chrysler, Iacocca said he was flattered but that he was not prepared to make the commitment necessary to do the job. Whoever Casey appoints will serve until a Nov. 5 special election.

Heinz was killed April 4 when an airplane and helicopter crashed over a schoolyard in a Philadelphia suburb.

### Violence hits in Washington DC

Police in Washington, DC, said a disturbance involving hundreds of people broke out after a District of Columbia police officer shot a man in the chest.

Police said 150-200 youths were out in the streets of Northwest Washington. Most of the youths were throwing rocks and bottles and standing on top of cars.

The disturbance apparently began after a female police officer tried to arrest a man. When one of the officers attempted to handcuff the man, he pulled away. He then produced a knife. The officer shot the man after he refused to put the knife down.

Witnesses said both the man's hands were handcuffed when he was shot, which caused the outbreak of violence.

## Space Shuttle *Discovery* lands

The Space Shuttle *Discovery* came home yesterday, shortly before 3 pm EST. The shuttle landed at Cape Canaveral, FL, after traveling almost 3.5 million miles in eight days.

The shuttle was diverted to Florida because because it was too windy for a landing at Edwards Air Force Base in California, the usual landing site.

Space shuttles have landed at the Kennedy Space Center only 6 times before. The last time was in November, when bad weather at Edwards forced the Space Shuttle *Atlantis* to land in Florida.

The runways at Edwards and Kennedy are the same length, but the National Aeronautics and Space Administration prefers Edwards because the dry land bed gives the shuttle more room to land.

On its 12th mission, the *Discovery* crew gathered information for Strategic Defense Initiative research which will help the Pentagon develop sensors for detecting and destroying enemy missiles.

### Pilot in February crash took a drug

A federal investigation into February's fatal collision of a USAir jetliner and a commuter plane in Los Angeles has turned up new information. A report released yesterday said an autopsy revealed that the jetliner's pilot concealed the use of a sedative and tested positive for the drug after he died. The crash killed 34 people. Officials have not determined what effect the sedative, phenobarbital, had on the pilot's performance. Federal investigators said an air traffic controller's error may have also caused the crash.

## Local

### Pamela Smart's sentence increases

Pamela Smart was sentenced to up to 15 years in prison in addition to the mandatory life sentence she is already serving for helping plan her husband's murder.

A judge in Exeter, NH, sentenced Smart to three and a half to seven years on a witness tampering conviction and seven and a half to 15 years on a murder conspiracy conviction. The judge said the two sentences will run concurrently at the New Hampshire State Prison for women in Goffstown.

Smart was given an automatic life sentence without parole for her murder accomplice conviction in March. Her lawyers plan to appeal.

The sentence came after an emotional statement by Gregory Smart's father, in which he told Smart he hopes she lives a long, long life in prison, so she could suffer for his son's death.

### Low-income homeowners scam victims

Low-income homeowners reportedly said they are victims of a scam by people posing as contractors. They said in some cases they never saw the loan money and the contractor disappeared after doing shoddy work.

Boston Housing Authority Chief Stephen Coyle said the homeowners are being gouged by home improvement hustlers and unregulated mortgage companies. The broadcast and published reports came from WDDH-TV and *The Boston Globe*. Attorney General Scott Harshbarger said his office is investigating housing scams. However, he acknowledged the cases can be difficult to prosecute.

Harshbarger said he supports a bill before the legislature that would require contractors to register with the state, as well as set up a computer complaint mechanism.

### Parks speaks at Northeastern

Rosa Parks, who ignited the Civil Rights movement by refusing to give up her seat on an Alabama bus in 1955, said that equality is still distant. Last Sunday, Parks told about 400 people at Northeastern University that civil rights activists should "carry on the struggle as long as we can until we don't have to."

The Ford Hall Forum sponsored the speech. The Forum gave Parks its annual First Amendment Award for her commitment to free expression. Mayor Raymond Flynn told the crowd that Parks is living proof that in America one person's dignified action can make a difference.

Parks, now 78 years old and living in Detroit, MI, is often referred to as the mother of the Civil Rights movement. The incident that made her famous occurred when she was riding the bus home from her job as a seamstress on Dec. 1, 1955. She was ordered by the driver to give her seat to a white passenger. Her refusal and subsequent arrest touched off a year-long boycott by blacks of the Montgomery Transit System that ended when the Supreme Court struck down the city's bus segregation system.

## World

### Cheney travels to Saudi Arabia

Defense Secretary Dick Cheney is traveling in Saudi Arabia. He predicted that he will get approval for a greater United States presence in the Persian Gulf.

Speaking aboard his plane, Cheney said President George Bush does not want to keep ground forces in the area permanently. However, he said regular US ground and air exercises — combined with US training of Arab forces — should help deter another crisis like Iraq's invasion of Kuwait.

He said the Bush administration wants to put a small headquarters unit in the region. It also wants to be able to hold occasional large-scale amphibious landing exercises and store military equipment and supplies in the area.

Cheney will visit six gulf nations over four days. This is his first visit to the region since the end of the Persian Gulf war.

### Winnie Mandela charged with assault and kidnapping

Prosecutors in South Africa wrapped up their case against Winnie Mandela, saying she lied about being out of town at the time four young men were kidnapped and beaten.

Mandela and two co-defendants have been charged with eight counts of assault and kidnapping. The state claims they abducted the four young men in 1988 and beat them at Mandela's home.

The chief prosecutor said Mandela took a leading role in the beating and that her "false evidence and alibi strengthens the state case." Mandela claimed she was 200 miles away at the time of the alleged assaults. She and her co-defendants have pleaded innocent. If convicted, they could face punishment ranging from jail terms to suspended sentences.

Winnie Mandela is the wife of African National Congress leader Nelson Mandela.

### Former Irani president claims proof of US-Iran arms deals

Former Iranian president Abolhassan Bani-Sadr said he can give Congress proof of illegal arms deals between the Ronald Reagan administration and Iran. Bani-Sadr was Iran's foreign minister and later president during the United States hostage crisis in Tehran. Bani-Sadr is currently in Washington to promote a book in which he accuses Reagan campaigners of deliberately trying to delay the hostages' release in order to hurt the re-election chances of then President Jimmy Carter.

### 10 million homeless in Bangladesh

The American Red Cross has painted a dire picture for Bangladeshi survivors of last week's typhoon. The director of the organization's international relief operations said 4 million people are imperiled by lack of food or clean water. The typhoon killed more than 125,000 people, and relief workers said more aid is desperately needed for the 10 million people left homeless.

## Weather

### Back to nice spring weather

The recent rainy weather was due to a fast-moving system which should leave our area Tuesday afternoon. Afterwards, a high pressure center will keep skies clear and sunny for the middle part of the week. Temperatures should be slightly above normal on Wednesday, with normal temperatures returning on Thursday.

**Tuesday:** Light rain and showers ending early, with clearing skies in the afternoon. Winds west 15-20 mph. High 71° F (22° C).

**Tuesday night:** Clear. Low 52° F (11° C). Winds west 10-15 mph.

**Wednesday:** Clear and sunny. High 70° F (21° C). Low 50° F (10° C).

**Thursday:** Clear and slightly cooler. High 65° F (18° C).

Forecast by Yeh-Kai Tung

Compiled by Alice N. Gilchrist

# opinion

## Vietnam: a firsthand view

Column by Robert E. Malchman

Before visiting Vietnam, it is vital to learn one key phrase of Vietnamese: "Kong phai Lien Xo," or "I am not a Soviet." Everywhere I went in Vietnam, children would point at me and shout "Lien Xo, Lien Xo," or literally, "Soviet Union, Soviet Union." Apparently, the only Caucasians the Vietnamese see regularly are Soviet advisers and technicians, who I am told have a bad reputation for being cheap and unfriendly.

After trying the key phrase with several intonations (Vietnamese, like many Asian languages, depends on inflections to convey meaning; depending on how you pronounce it, for example, "ga" can mean "chicken," "train station" and probably four other things), the listeners usually understood. The next step was to try to say, "Toi la nguoi Me," with the "Me" made to sound as if I were asking a question, to convey the fact that I was an American. Surprisingly to me, this assertion was never greeted with hostility.

One afternoon in Da Nang, I ditched my guide and decided to head for Non Nuoc, the site of the US R&R base at China Beach about 10 miles out of town. All traces of the base are gone, but there is a hotel sitting on the sand dunes of the long, pristine beach. I had been there a few days before, enjoying the big breakers as they rolled ashore, alone except for two Soviet tourist officials.

So I headed for the short-haul bus station — actually a dirt parking lot filled with covered pick-up trucks with a bench on each side of the flatbed. There is of course no schedule; the bus leaves when full. As I sat there for 45 minutes waiting for the departure, a crowd gathered, mostly of children. I used the key phrase and explained that I was American, generating excitement and curiosity. No one in the crowd spoke English, and the Vietnamese phrases in my *Lonely Planet* guidebook were not really helpful (e.g., "I would like a bowl of train station and noodle soup," at least the way I would have pronounced it).

Throughout the country, the uniform attitude I encountered was that the war had ended 16 years ago, and it was time to look forward, not backward.

The crowd did enjoy seeing the pictures of their country, Laos and Cambodia, and passed the book back and forth among themselves. The children, however, were fascinated with my legs: They had never seen any with hair on them. So one by one they would sidle up to me, casually rest a hand on my knee, and try a couple of nonchalant brushes. The next edition of the guidebook really should contain the phrase, "Please do not caress my shins." I suppose I could have discouraged them, but I was trying real hard to appear as easygoing and unaffected as they.

Robert E. Malchman '85 is a former editor in chief of The Tech.

Eventually I made it to the beach in the late afternoon, after a winding journey through the streets of Da Nang. At every stop the scene at the "bus station" repeated itself, and even while the truck was moving I could only hold on with one hand so I could wave at the people we passed who were waving at me.

What America cannot impose by force of arms we seem to be able to impose by force of Hot Wings.

Throughout the country, the uniform attitude I encountered was that the war had ended 16 years ago, and it was time to look forward, not backward. The effects of years of war, first against the Japanese, then the French, then the Americans, nonetheless dominate the consciousness of Vietnamese today. Everybody with whom I spoke had lost relatives at some point to the wars, on one side or the other.

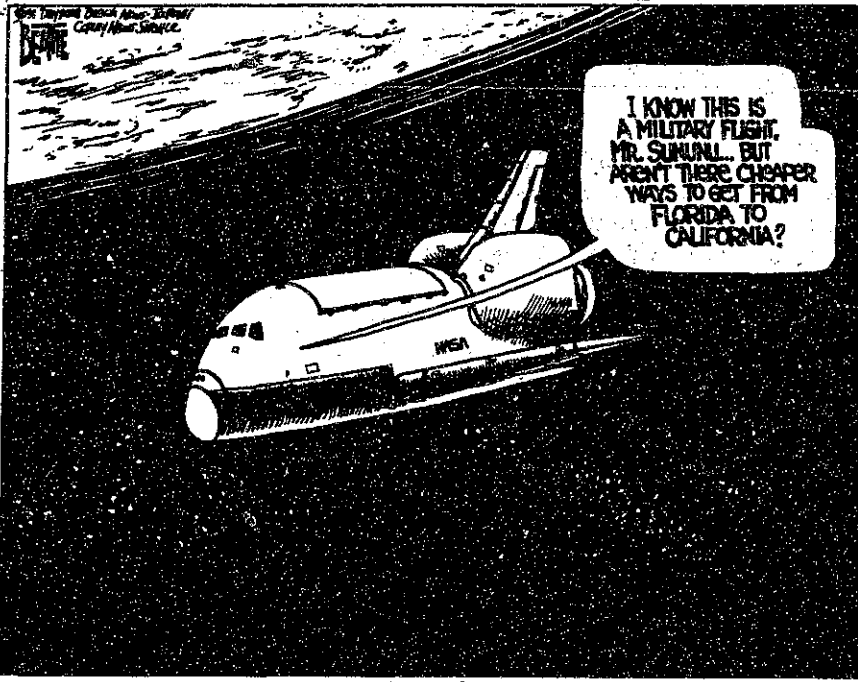
Travelling through the lush countryside of this mostly agrarian society, it is hard to imagine anyone making war in such a beautiful place, but before long the evidence pops into view, from the roadside pillbox, to the bullet creases in what is left of the royal palace in Hue (mostly destroyed in 1946 and in the 1968 Tet offensive), to the huge, weeded-over air base outside Da Nang.

Every city I visited — Ho Chi Minh, Da Nang, Hue and Hanoi — has an American War Crimes Museum. The somewhat jumbled presentations at these museums provide insight into Vietnamese perceptions. Along with exhibits on the My Lai massacre, for example, there are ones about the use of tear gas to break up pro-communist demonstrations, and in Ho Chi Minh there stands the guillotine used during French rule to execute "freedom fighters." My favorite exhibit was one on imported counterrevolutionary items seized by the government, including a case of heavy metal T-shirts. My guide broke out laughing when I explained that people like Tipper Gore and the Parents Music Resource Center probably think AC/DC and Poison are communists.

All the people I met, however, even the few I encountered out of the presence of my guides, said they wished more Americans would visit Vietnam (and bring American dollars, of course). The United States does not have diplomatic relations with Vietnam, but Hanoi and Washington are talking. The sticking points are Vietnamese involvement in Cambodia and the government's accounting for American MIAs.

America's boycott hits hard at the Vietnamese economy. I could not use my credit cards there, could not ship any Vietnamese goods into the United States, nor carry home more than \$100 worth. The Vietnamese are desperately poor. My guide in Ho Chi Minh told me he makes the equivalent of \$30 a month and his brother, a schoolteacher, makes only \$15, which even in Vietnam is very hard

(Please turn to page 5)



# The Tech

Volume 111, Number 25 Tuesday, May 7, 1991

**Chairman** ..... Lois E. Eaton '92  
**Editor in Chief** ..... Andrea Lamberti '91  
**Business Manager** ..... Mark E. Haseltine '92  
**Managing Editor** ..... David A. Maltz '93  
**Executive Editor** ..... Joanna E. Stone '92

**News Editors** ..... Reuven M. Lerner '92  
 Karen Kaplan '93  
 Brian Rosenberg '93  
 Katherine Shim '93

**Night Editor** ..... Daniel A. Sidney G  
**Opinion Editors** ..... Prabhat Mehta '91  
 Bill Jackson '93

**Arts Editor** ..... Deborah A. Levinson '91  
**Photography Editors** ..... Sean Dougherty '93  
 Douglas D. Keller '93

**Contributing Editors** ..... Peter Dunn G  
 Michael J. Franklin '88  
 Russell Wilcox '91  
 Dave Watt

**Advertising Manager** ..... Ben A. Tao '93  
**Production Manager** ..... Marie E. V. Coppola '90  
**Senior Editor** ..... Jonathan Richmond G

### NEWS STAFF

**Associate News Editors:** Alice N. Gilchrist '94, Jeremy Hylton '94, Joey Marquez '94; **Staff:** Lakshmana Rao G, Andrew L. Fish '89, Miguel Cantillo '91, Shannon Mohr '93, Sharon Price '94, Chris Schechter '94, Kai-Teh Tao '94; **Meteorologists:** Robert X. Black G, Robert J. Conzemius G, Michael C. Morgan G, Greg Bettinger '91, Yeh-Kai Tung '93, Marek Zebrowski.

### PRODUCTION STAFF

**Associate Night Editor:** Kristine J. Cordella '91; **Staff:** Josh Hartmann '92, Tzu-Jun Yen '92, Jonathon Weiss '93, Sasha K. Wood '93, Aaron M. Woolsey '93, Chris Council '94, Alex Dong '94, Jeff Galvin '94, Christopher Lee '94, Rebecca J. Soble; **TEN Director:** Andrew J. Kass '94.

### OPINION STAFF

**Associate Opinion Editor:** Matthew H. Hersch '94; **Staff:** Gregory T. Huang G, Pawan Sinha G, Jason Merkoski '94.

### SPORTS STAFF

Jordan J. Ditchek '91, Mohammed Eissa '91, Shawn Mastrian '91, David Rothstein '91, Jennifer M. Moore '94.

### ARTS STAFF

Mark Webster G, Manavendra K. Thakur '87, Christina Boyle '91, Emil Dabora '91, Robin Kullberg '91, Michelle P. Perry '91, Sande Chen '92, David Hogg '92, Rick Roos '92, Kevin Frisch '93, Nic Keiman '94, David Zapol '94, Chris Wanjek.

### PHOTOGRAPHY STAFF

**Associate Photography Editor:** Vipul Bhushan G; **Staff:** William Chu G, Morgan Conn G, Christian S. Marx G, Dan McCarthy G, Andy Silber G, Lisette W. M. Lambregts '90, Sarath Krishnaswamy '91, Mauricio Roman '91, Anne Sammis '91, Chip Buchanan '92, Jonathan Kossuth '92, Lerothodi-Lapula Leeuw '92, Chris Blanc '93, Paulo Corriea '93, Michelle Greene '93, Sang H. Park '93, Matthew Warren '93, Jeremy Yung '93, Hugh B. Morgenbesser '94, Lawrence S. Schwartz '94. **Darkroom Manager:** Kristine AuYeung '91.

### FEATURES STAFF

Taro Ohkawa '91, Jon Orwant '91, Mark Hurst '94.

### BUSINESS STAFF

**Associate Advertising Manager:** Shanwei Chen '92; **Accounts Manager:** Jadene Burgess '93; **Staff:** Haider Hamoudi '93.

### ADVISORY BOARD

V. Michael Bove '83, Harold A. Stern '87.

### PRODUCTION STAFF FOR THIS ISSUE

**Night Editors:** ..... Daniel A. Sidney G  
 Marie E. V. Coppola '90  
**Associate Night Editor:** ..... Deborah A. Levinson '91  
**Staff:** Peter Dunn G, Robert E. Malchman '85, Andrea Lamberti '91, Douglas D. Keller '93.

The Tech (ISSN 0148-9607) is published on Tuesdays and Fridays during the academic year (except during MIT vacations), Wednesdays during January, and monthly during the summer for \$20.00 per year Third Class by The Tech, Room W20-483, 84 Massachusetts Avenue, Cambridge, MA 02139-0901. Third Class postage paid at Boston, MA, Non-Profit Org. Permit No. 59720. POSTMASTER: Please send all address changes to our mailing address: The Tech, P.O. Box 29, MIT Branch, Cambridge, MA 02139-0901. Telephone: (617) 253-1541. FAX: (617) 258-8226. Advertising, subscription, and typesetting rates available. Entire contents © 1991 The Tech. The Tech is a member of the Associated Press. Printed by Charles River Publishing, Inc.



# opinion

## Vietnam is opening itself up for foreign investment

(Continued from page 4)

to live on. The guide in Hanoi explained that if a peasant family saves \$30 after a year of dawn-to-dusk labor in a rice paddy, they are considered wealthy.

The currency itself reflects the poverty. The largest denomination bill, the 5000 dong note, is worth around 70 US cents at the official exchange rate. When you change even \$20, you receive a fat stack of bills. A filling meal in a nice restaurant is available for 15,000 dong; beer is anywhere from 2000 to 5000 dong a can; buses in Hanoi cost 100 dong. Large portable radios, available at the newly legal private markets, run in the 100,000 to 150,000 dong range, which is still a lot if you are making 200,000 dong a month.

I actually caused a sensation my last day in Hanoi at the sad, gray government-run shopping center by buying a fairly large box of souvenirs, mostly painted wooden or ceramic knickknacks, for around \$15 or 110,000 dong. A crowd of other shoppers gathered around just to watch me buy things.

Travelling through the lush countryside of this mostly agrarian society, it is hard to imagine anyone making war in such a beautiful place.

The government store is not really useful for much more than souvenirs. The real shopping occurs at the private markets. Vietnam, with Soviet foreign-aid decreasing, has become desperate enough to engage in its own form of *perestroika*. Like the Chinese, however, the Vietnamese communists are trying to liberalize the economy without opening up politically.

The communist bureaucracy is still reputedly horrendous. I made the mistake of buying a package tour in Bangkok for

three times what I would have paid had I travelled on my own, but the government tourist bureau did handle all of my paperwork, including the all-important internal travel permits. If one goes on one's own to Vietnam, as I would recommend, buying day tours on an *ad hoc* basis, one must be prepared to spend a day here and there doing nothing but dealing with the bureaucracy.

According to my guides, things have been getting better, both for the tourists and for the people. They say the government has become much less oppressive. Given the nature of the sources and my lack of basis for comparison, I cannot tell one way or the other, but foreign investment and tourism are increasing, and there was an international trade fair in Hanoi to drum up capital for industrial projects two weeks after I left.

The negative effects of increased tourism are already apparent: Hotels in Ho Chi Minh have "massage rooms" there are supposedly 1000 licensed prostitutes in

Hanoi, and I was twice solicited in my room at Da Nang by a giggling door-to-door "masseuse." (I politely declined.) It would be tragic if any part of Vietnam turned into another Bangkok in this respect.

Club Med is planning to build along one of the beaches north of Da Nang at the foot of the coastal mountain pass to Hue. On the other side of the pass, a small fishing village will soon have a hotel and nightclub. Vietnam is also in danger of becoming China where, for example, across the street from Mao's tomb in Tiananmen Square sits a Kentucky Fried Chicken. What America cannot impose by force of arms we seem to be able to impose by force of Hot Wings.

The economic challenge for the Vietnamese will be to absorb new foreign investment, especially after the inevitable lifting of the US boycott in a couple of years, and not lose their identity. They are the friendliest people I have met in my travels around the world, and have one of the most beautiful countries. I wish them luck.

### LETTERS TO THE EDITOR

#### Please donate to cyclone relief

As most of us know, last week a devastating cyclone hit the southeast coast of Bangladesh. The cyclone and the consequential floods have killed more than 125,000 and have left another 10 million homeless. The death toll is expected to rise.

Many MIT student organizations and individual students are trying to raise funds to help the cyclone victims.

As part of this effort, piggy banks, donated by the MIT Coop, have been set up at the desks of all the major dormitories, the mosque in the basement of Ashdown House, and the 24-Hour Coffee House in the Julius A. Stratton '23 Student Center.

Friday afternoon, close to \$1000 was donated at the mosque. Zeeshan R. Khan '94, a

Bangladeshi student and the secretary of the Muslim Students' Association, has already sent the money to the Red Crescent of Bangladesh through Oxfam America.

The Udayan Club (association of Bangladeshi students) and a few members of the Hunger Action Group, the Muslim Students' Association and the Technology Community Association will be staffing a table in the Student Center on Monday and Tuesday to urge the MIT community to donate for this cause.

If you happen to pass by the Student Center or bump into any of the piggy banks, please donate whatever you can. Every dollar counts at a time like this.

Sasi K. Digavalli G

#### Baker Award is not a career killer

There is a myth that the Baker Foundation Teaching Award is the "kiss of death," that every professor who receives this award is denied tenure and has to leave MIT ["Do not take part in the Baker "kiss of death" teaching award," April 12].

However, this view is one-sided and incomplete. The Baker Award is the only award given solely through the input of MIT undergraduates. The faculty and administration have no connection whatsoever. You attribute too much power to us if you think this award has any bearing on the tenure process.

It may be interesting to note that professors who received the award as far back as 1966 are still being nominated by their present students. Past winners include: Professor Daniel S. Kemp of the chemistry department, Professor Theoharis C. Theoharis of the literature section of

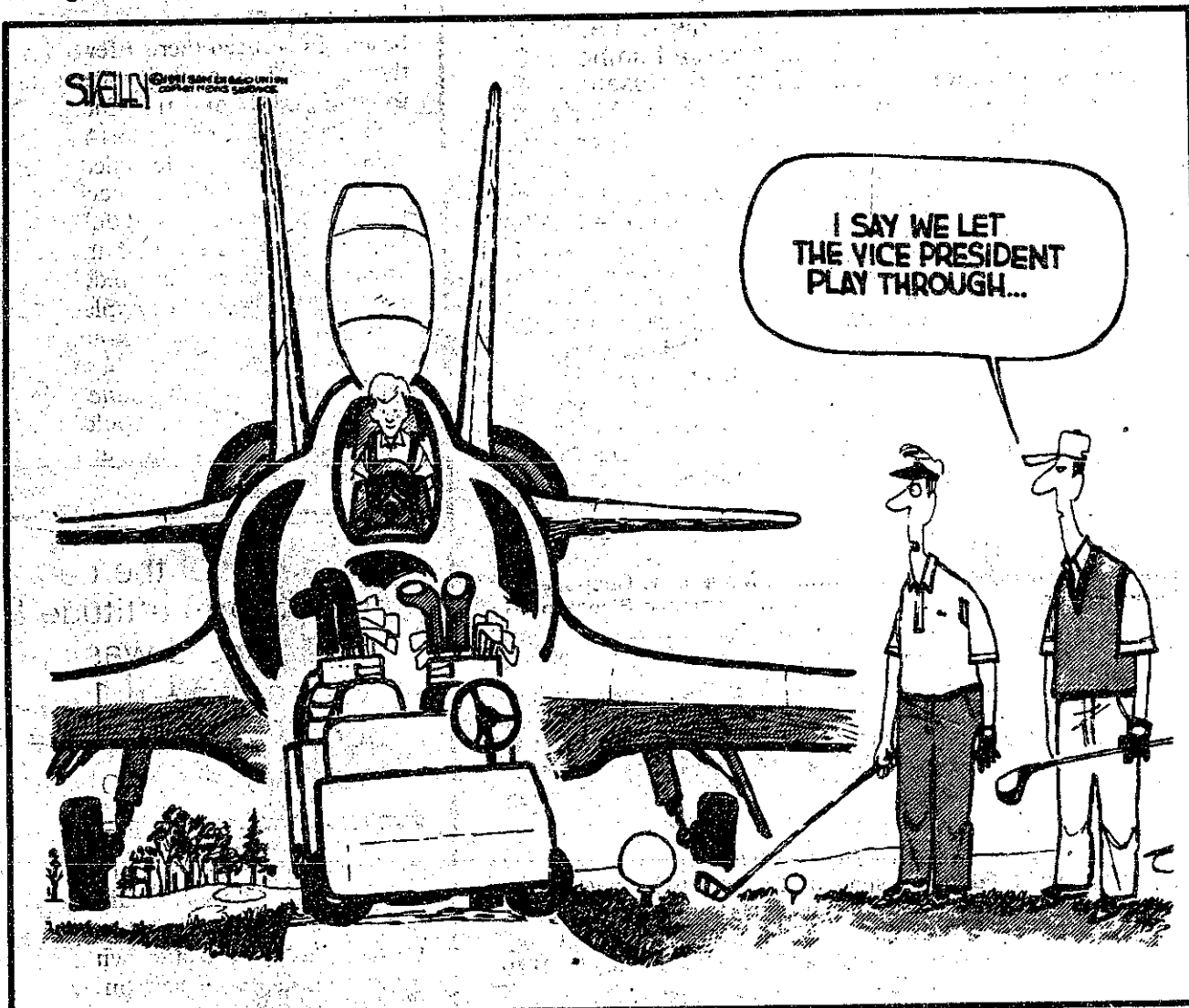
the humanities department, Professor Amar G. Bose '51 of the EECS department, and Professors Woodie C. Flowers SM '73 and James H. Williams Jr. '67 of the mechanical engineering department.

Considering the caliber of the previous winners, we believe that it would be unfair to call the award a mere "scam."

In the event that the administration fails to recognize the value of a certain professor, the Baker Award provides students a chance to show their appreciation for the faculty member in question.

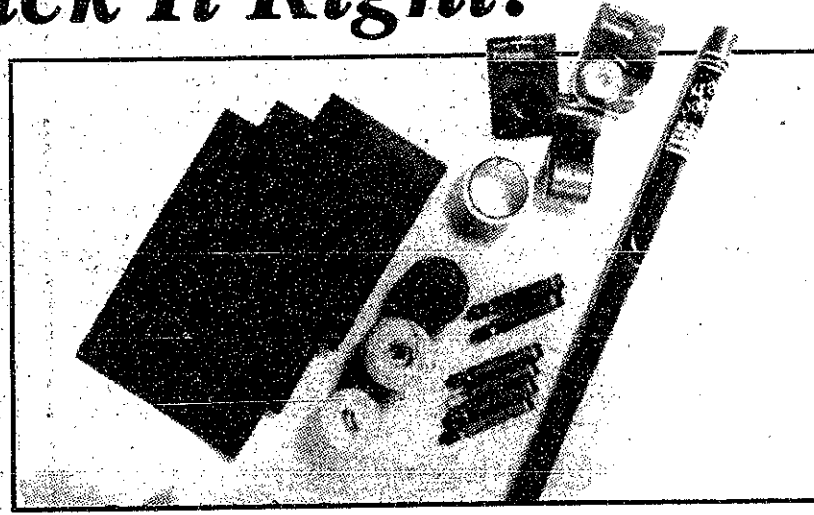
That is the sole responsibility, power and privilege of the award. We consider this award to be the only opportunity for students to reward good teaching.

Susan Hsu '91  
Kathleen Chein '92  
Kerry Beach '92  
Baker Foundation



## Pack It In! Pack it Up! Pack It Right!

Make The Coop your headquarters for all the packing supplies you need to stow things for summer storage, to ship home, or to send wherever you're going next.



### Check It Out! Our Packing Supplies Check List:

- Δ Corrugated Cartons: 21 1/2"X12 1/2"X12 1/2" \$1.00
- 14 1/2"X11 1/2"X7 1/2" .75
- Δ Packing Twine 1.59-4.00
- Δ Sanford Felt Tip Markers, assorted colors. 1.45
- Δ Jiffy™ Padded Mailers, Sizes 0 to 7. .25-.85
- Δ Kraft Paper 2 1/2"X50". 1.98
- Don't Forget These Great Scotch® Brand Tapes:
- Δ Scotch® Tapes: 1/2"X250" to 3/4"X1296". .95-7.00
- Δ High Tensile Filament Tape, 1/2"X60 Yds. to 2"X60 Yds. 2.00-7.00
- Δ Magic Tape, 1/2"X250" to 3/4"X650". .95-2.25
- Δ Masking Tape, 3/4"X300" to 1 1/2"X300". 1.25-2.25
- Save 50%
- Δ PVC Tape, 2"X55 Yds. Reg. \$2 ea. SALE 2/\$2.00
- Δ Black Marks-A-Lot® Broad Tip Markers. Reg. \$1.29 ea. SALE 2/\$1.29

MIT COOP AT KENDALL  
3 CAMBRIDGE CENTER  
M-FRI 9:15-7 THUR TIL 9:30  
SAT 9:15-6:45



STRATTON CENTER  
84 MASS AVE.  
M-F 9:15-8:30  
SAT 10-4

**Letters policy**  
Editorials, marked as such and printed in a distinctive format, are the official position of The Tech. They are written by the editorial board, which consists of the chairman, editor-in-chief, managing editor, associate editor, news editor, and opinion editor.  
Letters to the editor are accepted on the condition that they must be signed and dated, and that the author's name and address be given. Contributors may request that their names be withheld from publication.  
Letters are accepted on the condition that they must be signed and dated, and that the author's name and address be given. Contributors may request that their names be withheld from publication.

**CONTINENTAL**

**CALL 1-800-942-AMEX**

There's only one way to cover a lot of territory without spending a lot of money. And that's by getting the American Express® Card. It's the only card that offers an exciting new travel program exclusively for students—including three roundtrip certificates on Continental Airlines.

Just look at the map and pick the place you'd like to visit. If it's on your side of the Mississippi River, you can use a certificate to fly for only \$129 roundtrip. Or, you can cross the Mississippi for \$189 roundtrip.

You have your pick of more than 150 cities in the



Membership Has Its Privileges

48 contiguous states. And you can fly almost anytime—because there are no blackout dates. But you must make your reservations within 14 days of the day you leave. And the maximum stay is 7 days/6 nights and must include a Saturday night.

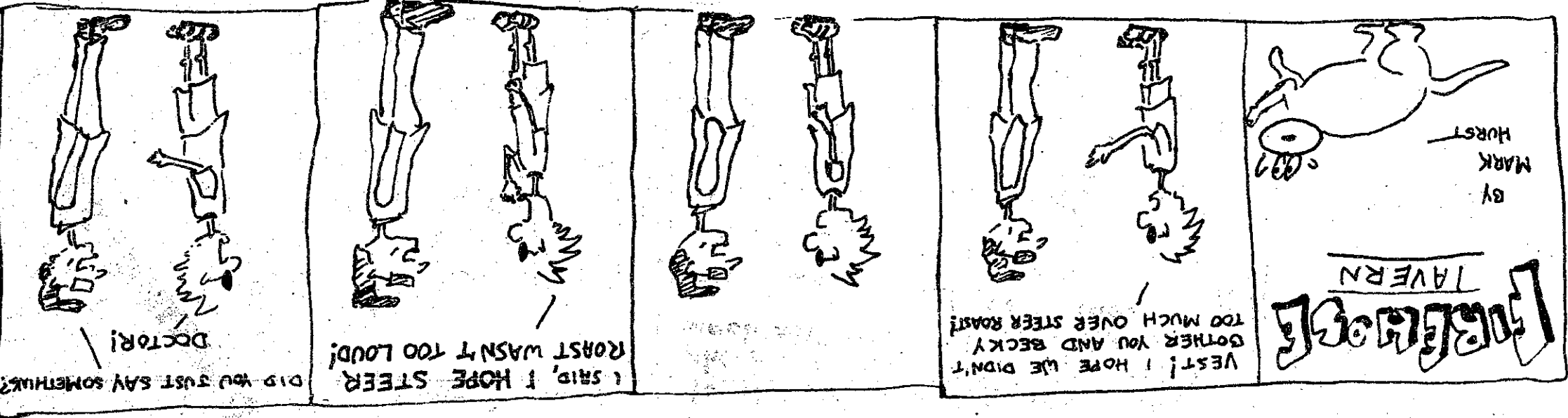
In addition to this great travel program, you'll also enjoy all the benefits of Cardmembership as well as other exclusive student privileges. They include a quarterly magazine filled with informative articles on summer jobs, careers, campus life. Plus valuable discounts from leading retailers.

But remember, there's only one way to get all this—and that's by getting the American Express Card. Just call us (have your bank address and account number on hand). What's more, with our special student offer, it's easier to get the Card now while you're still in school than it may ever be again.

So get the Card. And get ready to cover new territory on either side of our Great Continental Divide.

**Now students can get the Card and get 3 roundtrips on Continental Airlines, for only \$129 or \$189 each.**

**American Express Announces A Great New Travel Program.**



**COMICS**

# comics

**Jim's Journal**

Today I did some laundry.

I walked down to the basement where the washing machines are.

In the stairway I passed the guy who lives down the hall from me.

"Doin' some laundry?" he said.

I stopped by Tony's apartment today.

He asked me how everything was going and offered me a can of soda.

The soda company had an instant-win game on the can.

Tony said if my can turned out to be a winner, he'd get to claim the money because he bought the soda.

I stood and stared in the mirror today.

I got really close and looked at the tiny patterns in the iris part of my eye.

Mr. Peterson was walking around the sink, which is right under the mirror.

I lifted her up to show her herself in the mirror, but she didn't seem to be interested in it.

**by Jim**

## 4th ANNIVERSARY SALE & CELEBRATION

**Now Hear This! NEW RELEASES! SPECIALLY PRICED!**

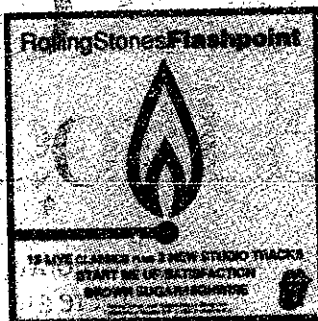
Come celebrate the 4th Anniversary of the M.I.T. Coop at Kendall with sound savings on the hottest new releases. Shown: just a few of the great new hits you'll find at The Coop. Prices already reflect Anniversary Sale savings.



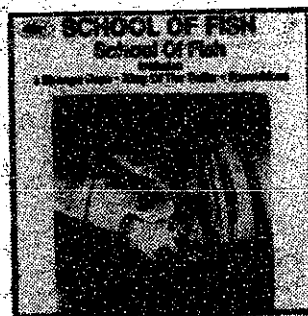
**Fishbone**  
The Reality of My Surroundings  
\$11.99 CD \$6.99 TP



**Michael Bolton**  
Time, Live & Tenderness  
\$11.99 CD \$6.99 TP



**Rolling Stones**  
Flashpoint  
\$11.99 CD \$7.99 TP



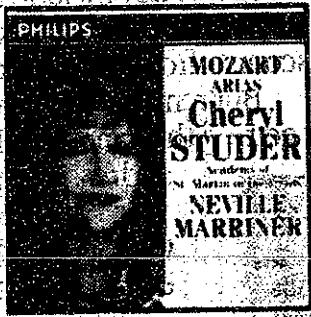
**School of Fish**  
\$11.99 CD \$6.99 TP



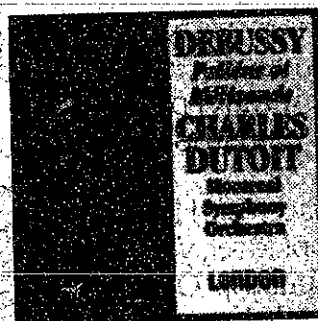
**Pat Benatar**  
True Love  
\$11.99 CD \$6.99



**The Harper Brothers**  
Artistry  
\$11.99 CD \$6.99 TP



**Cheryl Studer**  
Mozart Arias  
\$11.99 CD



**Charles Dutoit**  
Debussy/Pelleas et Melisande  
\$25.58 (2 CD Set)



**Nigel Kennedy**  
Brahms Violin Concerto  
\$11.99 CD

MIT COOP AT KENDALL  
3 CAMBRIDGE CENTER  
W-FRI 9-11:30 THUR TIL 2:30  
SAT 9-11:30-4:15



COOP CHARGE, MASTER CARD, VISA AND AMERICAN EXPRESS ARE WELCOME!  
FREE PARKING AT KENDALL: AFTER 5 WEEKDAYS AND ALL DAY SAT AT CAMBRIDGE CENTER GARAGE.  
\*WITH SALES RECEIPT SHOWING \$5 MIN. COOP PURCHASE: VALIDATE AT CASHIER'S DESK AT THE COOP.



# On The Town

Compiled by Peter Dunn

## Ongoing Theater

**Another Saturday Night**, Sheldon Goldberg, Victoria Howard, & Reginald Wright's musical about pop and R & B hits of the '70s & '80s, continues through May 17 at Club Nicole, Back Bay Hilton, 40 Dalton Street, Boston. Performances are Thursday at 8 pm and Sunday at 8 pm & 10 pm. Tickets: \$20. Telephone: 267-2582.

**The Diary of Anne Frank** continues through May 12 at the Wheelock Family Theatre, 180 The Riverway, Boston, near the Fenway T-stop on the green line. Performances are Friday & Saturday at 7:30 and Sunday at 3:00. Tickets: \$7.50 and \$8. Telephone: 734-4760.

**CRITICS' CHOICE**  
**The Education of an American Comic**, political humorist Jimmy Tingle's one-man show, continues through May 20 at the Charles Playhouse, 76 Warrenton Street, Boston. Performances are Friday at 10:30, Saturday at 11:30, and Sunday at 8:00. Tickets: \$12. Telephone: 423-4179.

**Fallen Angels**, Noel Coward's comedy, continues through May 26 at the Lyric Stage Theatre, 54 Charles Street, Beacon Hill, Boston. Performances are Wednesday-Friday at 8:00, Saturday at 5:00 & 8:30, and Sunday at 3:00. Tickets: \$13.50 to \$17.50. Telephone: 462-8703.

**Forbidden Broadway 1991 - The Farewell Edition**, parodist Gerard Allessandri's long-running commercial theater spoof, continues through May 31 at the Terrace Room, Boston Park Plaza Hotel, 64 Arlington Street, Boston. Performances are Tuesday-Friday at 8 p, Saturday at 7 pm & 10 pm, and Sunday at 3 pm & 6 pm. Tickets: \$16.50 to \$24.50. Telephone: 357-8384.

**The Gin Game**, D. L. Coburn's Pulitzer Prize winning comedy, continues through May 19 at the New Repertory Theatre, 54 Lincoln Street, Newton Highlands, near the Newton Highlands T-stop on the 'D' green line. Performances are Thursday & Friday at 8:00, Saturday at 5:00 & 8:30, and Sunday at 3:00 & 7:30. Tickets: \$12 to \$18. Tel: 332-1646.

**The Hawthorne Effect**, updating Nathaniel Hawthorne's *Young Goodman Brown* to a contemporary software company, continues through May 26 as a presentation of Common/Wealth Theater Collaborative at Suite 2200, Building 200, Office at One Kendall Square, Cambridge. Performances are Thursday-Saturday at 8 pm and Sunday at 7 pm. Tickets: \$12 general, \$8 seniors and students. Telephone: 864-0501.

**ImprovBoston**, Boston's longest-running improvisational comedy troupe, continues its late-night performances every Friday and Saturday indefinitely at 10:30 at the Back Alley Theater, 1253 Cambridge Street, Inman Square, Cambridge. Tickets: \$8 general, \$6 students. Telephone: 491-8166.

**Nonsense**, Dan Goggin's comedy about the Little Sisters of Hoboken who stage a talent show to raise money to bury four of their number, continues indefinitely at the Charles Playhouse, 74 Warrenton Street, Boston. Performances are Tuesday-Friday at 8 pm, Saturday at 6 pm & 9 pm, with matinees Thursday at 2 pm and Sunday at 3 pm. Tickets: \$15.50 to \$26.50 general, half-price for seniors and students or Thursday matinee. Telephone: 426-6912.

**Shear Madness**, the long-running comic murder mystery, continues indefinitely at the Charles Playhouse, 74 Warrenton Street, Boston. Performances are Tuesday-Friday at 8:00, Saturday at 6:30 & 9:30, and Sunday at 3:00 & 7:30. Tickets: \$18 and \$23. Telephone: 451-0195.

**Vanish Like a Summer Tantrum**, Lydia Sargent's feminist satire about eight women adventurers who take over an abandoned hotel by the sea, continues through May 18 at the Newbury Street Theatre, 565 Boylston Street, Boston. Performances are Thursday-Saturday at 8 pm. Tickets: \$5 and \$8. Telephone: 262-7779.

**The Wake of Jamey Foster**, Beth Henley's story about a southern small-town family in crisis, continues through May 11 at the Back Alley Theater, 1253 Cambridge Street, Cambridge. Performances are Thursday-Sunday at 8 pm. Tickets: \$15 general, \$10 seniors and students. Telephone: 576-1253.

## Ongoing Exhibits

**ON CAMPUS**  
**Mark Tansley: Art & Source**, four major paintings and more than 50 works on paper by the New York representational artist; **Tourisms: suitcase Studies**, an installation by the collaborative team of Elizabeth Diller & Ricardo Scodiffo exploring issues related to travel and tourism; and **Warren Neldich: Historical Intervention**, examining the contradiction of the American past and the ways in which the media distorts our perception of the present, all continue through June 30 at the List Visual Arts Center, MIT Wiesner Building E15. Gallery hours are weekdays 12-6 and weekends 1-5. No admission charge. Telephone: 253-4680.

**CRITICS' CHOICE**  
**Crazy After Calculus: Humor at MIT**, documenting the rich history of MIT wit and wizardry shown through hacks, continues through September 13 in the MIT Compton Gallery, between lobbies 10 and 13. No admission charge. Telephone: 253-4444.

**Affix! Affixes! Plakete! Posters!** Swiss Poster Art 1906-1990, 90 posters for consumer products, tourism, arts exhibitions, and public service by Swiss designers, continues through June 13; **Watercolors by Freddy Homburger**, landscapes — primarily of Mexico and Maine — by the physician/scientist/diplomat/artist, continues through September 12; and **Doc Edgerton: Stopping Time**, photographs and memorabilia documenting the invention and use of the strobe light,

continues indefinitely at the MIT Museum, 265 Massachusetts Avenue, Cambridge. Museum hours are Tuesday-Friday 9-5 and Saturday-Sunday 1-5. Admission: \$2 requested donation, free to MIT community. Telephone: 253-4444.

## OFF CAMPUS

**Rosemarie Trockel**, works by one of the important figures in the German contemporary art movement today, continues through May 12 at the Institute of Contemporary Art, 955 Boylston Street, Boston. Institute hours are Wednesday-Sunday 11-5 and Thursday-Saturday 11-8. Admission: \$4 general, \$3 students, \$1.50 seniors and children, \$1 with MIT ID. Telephone: 266-5152.

**Prints in Progress** continues through May 13 as a presentation of the Blacksmith House Printmakers at the Cambridge Center Gallery Space, 42 Brattle Street, Harvard Square, Cambridge. Telephone: 547-6789.

**CRITICS' CHOICE**  
**Science in Depth**, digitized, full-color, three-dimensional images (called "phycolograms") created by (Art) from scientific data, continues through May 15 at the Computer Museum, Museum Wharf, 300 Congress Street, Boston, with museum hours Tuesday-Sunday 10-5. Admission: \$6 general, \$5 seniors and students. Telephone: 423-6758.

**An Education of the Heart**, a juried exhibition concerning the theme of Animal Rights, continues through May 25 at the Boston Visual Artists Union, 33 Harrison Avenue, Boston. Tel: 695-1266.

**Contemporary African Artists: Changing Traditions**, 76 recent works by artists from six sub-Saharan African countries, continues through May 26 at the Museum of the National Center of Afro-American Artists, 300 Walnut Avenue, Boston. Telephone: 442-8614.

**Portraits, Flowers and Landscapes**, by Liliane Desloovere, continues through May 31 at the French Library in Boston, 53 Marlborough Street, Boston. Library hours are Tuesday-Saturday 10-8 and Wednesday & Thursday 10-8. No admission charge. Telephone: 266-4351.

**The Struggle for Self Image: The Polish Graphic Artist**, contemporary graphic prints and posters by 15 Polish artists, continues through June 8 at the Cyclorama, Boston Center for the Arts, 539 Tremont Street, Boston and Dodge Gallery & Richards Hall, Northeastern University, 360 Huntington Avenue, Boston. BCA hours are Tuesday-Saturday 1-5 and Northeastern hours are Monday-Friday 9-5 and Saturday & Sunday 1-5. Telephone: 426-5000 (BCA) or 437-2355 (Northeastern).

**Saints, Shrines, and Pilgrimages**, 30 works from Islamic nations exploring Islamic piety and religious history, continues through June 9 at the Arthur M. Sackler Museum, Harvard University, 485 Broadway, Cambridge. Museum hours are Tuesday-Sunday 10-5. Admission: \$4 general, \$2.50 seniors and students. Telephone: 495-9400.

**Selected Works from the Permanent Collection and Etruria in Wellesley: Selection from the Elizabeth Chellis Collection of Wedgwood** continue through June 10 at the Wellesley College Museum, Jewett Arts Center, Wellesley College, Wellesley. Museum hours are Monday-Saturday 10-5, Tuesday & Wednesday 10-9, and Sunday 2-5. No admission charge. Telephone: 235-0320 ext. 2051.

**Textiles from Around the World**, an exhibition of fiber works, continues through June 21 at the Federal Reserve Bank of Boston Gallery, 600 Atlantic Avenue, Boston, across from South Station. Gallery hours are Monday-Friday 10-4. No admission charge. Telephone: 973-3453.

**Adolph Menzel 1815-1905: Master Drawings from Berlin**, more than 70 drawings by one of the leading German artists of the 19th century, continues through June 23 at the Fogg Art Museum, Harvard University, Cambridge. Museum hours are Tuesday-Sunday 10-5. Admission: \$4 general, \$2.50 seniors and students. Telephone: 495-9400.

**Italian Renaissance Drawings, Medals, and Books**, featuring works by Michelangelo, Raphael, and others, continues through June 30 at the Isabella Stewart Gardner Museum, 280 The Fenway, Boston. Museum hours are Tuesday 1-6:30 and Wednesday-Sunday 12-5. Admission: \$6 general, \$3 seniors and students, free to children and on Wednesdays. Telephone: 566-1401.

**Connections: Briece Marden**, paintings by the abstract painter which echo Manet's *Execution of the Emperor Maximilian*, continues through July 21 in the Foster Gallery, Museum of Fine Arts, 465 Huntington Avenue, Boston. Museum hours are Tuesday-Sunday 10-5 and Wednesday 10-10. Admission: \$6 general, \$5 seniors and students, free with MIT ID. Telephone: 267-9300.

**Boston à la Mode: Fashionable Dress 1760s-1900s**, featuring 37 mannequins costumed in gowns worn by individuals from such notable families as Adams, Faneuil, Reveré, and Kennedy, continues through July 28 at the Museum of Fine Arts, 465 Huntington Avenue, Boston. Museum hours are Tuesday-Sunday 10-5 and Wednesday 10-10. Admission: \$6 general, \$5 seniors and students, free with MIT ID. Telephone: 267-9300.

**Witness to America's Past: Two Centuries of Collecting by the Massachusetts Historical Society**, approximately 160 works illustrating the vital episodes and personalities in American history, continues through August 4 at the Museum of Fine Arts, 465 Huntington Avenue, Boston. Museum hours are Tuesday-Sunday 10-5 and Wednesday 10-10. Admission: \$6 general, \$5 seniors and students, free with MIT ID. Telephone: 267-9300.

**Geo-Luminescence**, a sculptural installation by Ritsuko Taho, continues through October at the Carpenter Center for the Visual Arts, Harvard University, 24 Quincy Street, Cambridge. Telephone: 495-3251.

Sunday, May 12

## CONTEMPORARY MUSIC

**CRITICS' CHOICE**  
**Chris Isaak and Mari Jones** perform at 7:30 at the Orpheum Theatre, Hamilton Place, Boston. Tickets: \$19.50. Telephone: 482-0650.

**CRITICS' CHOICE**  
**The Bodeans and The Gear Daddies** perform at the Paradise, 967 Commonwealth Avenue, Boston. Telephone: 254-2052.

**Wildest Dreams** performs at the Western Front, 343 Western Avenue, Cambridge. Telephone: 492-7772.

**Doah** performs at 7:30 in Paine Hall, Harvard University, Cambridge. Tickets: \$10 advance/\$12 day of show. Telephone: 252-0905.

Tenor Carl Halvorson, violinist Lucy Stoltzman, cellist Laurence Lesser, and pianist Christopher Taylor perform works by Beethoven and Schoenberg at 1:30 at the Gardner Museum, 280 The Fenway, Boston. Admission: \$6 general, \$3 seniors and students. Tel: 566-1401.

## THEATER

**Bones and Boxes** (a modern Greek tragedy) at the Old Library, Leverett House, Harvard University. See May 9 listing.

## FILM & VIDEO

**CRITICS' CHOICE**  
**The MIT Lecture Series Committee** presents David Lynch's *Blue Velvet* at 7 pm & 10 pm in 10-250. Tickets: \$1.50. Telephone: 258-8881.

**CRITICS' CHOICE**  
**The Brattle Theatre** begins its series *Sunday Comics* with a Sir Alec Guinness double feature, *Kind Hearts and Coronets* (1949, Robert Hamer) at 3:55 & 7:45 and *The Lavender Hill Mob* (1951, Charles Crichton) at 2:15, 6:00, & 9:45, at 40 Brattle Street, Harvard Square, Cambridge. Tickets: \$5.50 general, \$3 seniors and children (good for the double feature). Telephone: 876-6837.

**The Umbrellas of Cherbourg** (1967, Jacques Demy) at the French Library in Boston. See May 10 listing.

## CLASSICAL MUSIC

**Emmanuel Music**, directed by Craig Smith, continues its series *Debussy and His Circle* with works by Debussy, Boulanger, Duparc, and Ravel at 4 pm in Emmanuel Church Library, 15 Newbury Street, Boston. Tickets: \$15 general, \$10 seniors and students. Tel: 536-3356.

**The Ying String Quartet** and pianist Louise Vosgerchian perform works by Mozart and others at 5:30 in the Fogg Art Museum, Harvard University, 32 Quincy Street, Cambridge. Tickets: \$5 general, \$4 seniors and students. Telephone: 495-4544.

**MUSIC**  
9:30 perform at Emerson Club, Boston. Ticket: \$13.50 advance/\$15 day of show. Tel: 951-2000.

**CRITICS' CHOICE**  
**Blackbeard and the Law**, a play by Thomas M. Wright, 9 pm at the Brattle Theatre, 17 Brattle Street, Boston. Tickets: \$15.50 advance/\$17.50 day of show. Telephone: 451-1905.

**The Band That Time Forgot** performs at Johnny D's, 17 Holland Street, Davis Square, Cambridge. Tel: 766-9687.

**Johnny Crane** performs at Ed Boies, 908 Huntington Avenue, Boston. Tel: 232-2191.

**Big Catholic Gull**, Moving Targets, Mercy Beat, and The Blue Avenue, All-Bronx, Tel: 544-9860.

**Jumpin' Blue**, Dances Party, featuring Western Front, 343 Western Avenue, Cambridge. Admission: \$2 with MIT ID. Telephone: 492-7772.

**The L'Yones** at the Western Front. See May 10 listing.

**JAZZ MUSIC**  
**The Blue Jay Quartet** at the Regent, Charles Hotel. See May 9 listing.

**CLASSICAL MUSIC**  
**The MIT Symphony Orchestra**, David Epstein conducting, performs works by Brahms, Copland, and Mozart at 8:00 at the MIT Music Auditorium. Tickets: \$1 at the door. Telephone: 252-9800.

**Plants Before Him** performs at 7:30 at the Berkeley Performance Place, 131 Massachusetts Avenue, Boston. Tickets: \$15. Telephone: 931-2000.

**CRITICS' CHOICE**  
**Murphy's Law**, Wreathing Crew, Sam Blackbeard, and The Law, 9 pm at the Cambridge Community Center, 222 Cambridge Avenue, Boston. Telephone: 254-2052.

**Tret Fure and Olan Starr** perform at 8 pm at Nightclub, 823 Main Street, Cambridge. Just north of MIT. Tickets: \$10. Telephone: 497-2300.

**Antisemitism**, Sleephead and Monk E. Wilson perform in an 18+ age show at 7:00 at the Bears, 10 Brookline Street, Cambridge. Telephone: 492-6082.

**Big Sheila** and seven League Bands perform in an 18+ age show at the Red Square, Boston. Telephone: 536-2150.

**Rare's Edge** and **The Jag** perform at The Edge, One Neco Place, near South Station in downtown Boston. Tickets: \$5. Telephone: 422-7144.

Orson Welles' *The Magnificent Ambersons* (1942) is presented at the Brattle Theatre on May 10 and 11

**FILM & VIDEO**  
**The MIT Lecture Series Committee** presents Orson Welles' *The Lady from Shanghai* (1948) at 7:30 in 10-250 and Franco Zeffirelli's *Hannibal* (1991) at 7:00 & 10:00 in 26-100. Tickets: \$1.50. Telephone: 258-8881.

**CRITICS' CHOICE**  
**The Brattle Theatre** begins its weekend *Orson Welles Retrospective* with *The Magnificent Ambersons* (1942) at 5:00 & 8:15 and *Journey Into Fear* (1943, Welles & Norman Foster) at 3:30, 6:45 & 10:00 at 40 Brattle Street, Harvard Square, Cambridge. Also presented May 11 with 1:45 matinees of *The Magnificent Ambersons*. Tickets: \$5.50 general, \$3 seniors and children (good for the double feature). Telephone: 876-6837.

**The Museum of Fine Arts** continues its series of *Contemporary African Cinema* with *Maganansia* (South Africa, 1988, Oliver Schmitz) at 6 pm and *Fanzan* (Mali, 1989, Cheick Oumar Sissoko) & *Silver and Gold* (Zimbabwe, 1989, Miriam Patenaude & Bekitamba Hove) at 8 pm in Remis Auditorium, 465 Huntington Avenue, Boston. Tickets: \$5 general, \$4.50 MFA members, seniors, and students. Telephone: 267-9100 ext. 306.

**The French Library** in Boston continues its *Hommage to Jacques Demy* 1931-90 with *The Umbrellas of Cherbourg* (1967) at 8 pm at 53 Marlborough Street, Boston. Also presented May 11 and 12. Tickets: \$4 general, \$3 Library members. Telephone: 266-4351.

**THEATER**  
**CRITICS' CHOICE**  
**King Lear**, by William Shakespeare, opens today at the American Repertory Theatre, 24th Street, Cambridge, at 7:00. **Bridge**, continues through July 13 with 8 performances, Tuesday-Sunday at 8 pm and matinees Saturday & Sunday at 2 pm. Tickets: \$17 to \$35. Telephone: 547-9300.

**From This Moment On**, a 100th birthday celebration of Cole Porter, opens today at the Boston Baked Theatre, 255 Elm Street, Davis Square, Somerville, just by the Davis Square T-stop on the red line. Continues through June 29 with performances Friday & Saturday at 8:15 (except Memorial weekend), May 12 & June 16 at 8:15, and June 9 at 7:15. Tickets: \$14.50 and \$16. Telephone: 628-9575.

**Are You Ready, My Sister?**, the popular version of the life of Harriet Tubman, the Quaker woman who led more than 300 fugitive slaves to freedom, is presented by the Underground Railway Theatre at 11 am & 8 pm at the Jorge Hernandez Cultural Arts Center, 405 Shawmut Avenue, Boston. Tickets: \$8 general, \$6 seniors and students. Telephone: 643-6916.

**Persephone and Hades** at Mobius. See May 9 listing.

**Bones and Boxes** (a modern Greek tragedy) at the Old Library, Leverett House, Harvard University. See May 9 listing.

**DANCE**  
**Ballet Theater of Boston** at Emerson Majestic Theater. See May 9 listing.

**CRITICS' CHOICE**  
**Orson Welles' The Magnificent Ambersons (1942) is presented at the Brattle Theatre on May 10 and 11**

**CRITICS' CHOICE**  
**Blackbeard and the Law**, a play by Thomas M. Wright, 9 pm at the Brattle Theatre, 17 Brattle Street, Boston. Tickets: \$15.50 advance/\$17.50 day of show. Telephone: 451-1905.

**Johnny Crane** performs at Ed Boies, 908 Huntington Avenue, Boston. Tel: 232-2191.

**Big Catholic Gull**, Moving Targets, Mercy Beat, and The Blue Avenue, All-Bronx, Tel: 544-9860.

**Jumpin' Blue**, Dances Party, featuring Western Front, 343 Western Avenue, Cambridge. Admission: \$2 with MIT ID. Telephone: 492-7772.

**The L'Yones** at the Western Front. See May 10 listing.

**JAZZ MUSIC**  
**The Blue Jay Quartet** at the Regent, Charles Hotel. See May 9 listing.

**CLASSICAL MUSIC**  
**The MIT Symphony Orchestra**, David Epstein conducting, performs works by Brahms, Copland, and Mozart at 8:00 at the MIT Music Auditorium. Tickets: \$1 at the door. Telephone: 252-9800.

**Plants Before Him** performs at 7:30 at the Berkeley Performance Place, 131 Massachusetts Avenue, Boston. Tickets: \$15. Telephone: 931-2000.

**CRITICS' CHOICE**  
**Murphy's Law**, Wreathing Crew, Sam Blackbeard, and The Law, 9 pm at the Cambridge Community Center, 222 Cambridge Avenue, Boston. Telephone: 254-2052.

**Tret Fure and Olan Starr** perform at 8 pm at Nightclub, 823 Main Street, Cambridge. Just north of MIT. Tickets: \$10. Telephone: 497-2300.

**Antisemitism**, Sleephead and Monk E. Wilson perform in an 18+ age show at 7:00 at the Bears, 10 Brookline Street, Cambridge. Telephone: 492-6082.

**Big Sheila** and seven League Bands perform in an 18+ age show at the Red Square, Boston. Telephone: 536-2150.

**Rare's Edge** and **The Jag** perform at The Edge, One Neco Place, near South Station in downtown Boston. Tickets: \$5. Telephone: 422-7144.



*The Wild Swans* is performed as part of Boston Ballet's *Tales of Hans Christian Andersen* at the Wang Center, May 9-19

ARTS

# On The Town

Compiled by Peter Dunn



Because of *The Tech's* publication schedule, *On The Town* will not appear every Tuesday through the summer. Today's *On The Town* is the last until Commencement.



May 13 to June 3

## CONTEMPORARY MUSIC

De La Soul performs on May 14 at Venus de Milo, Lansdowne Street, Boston. Tickets: \$12 advance/\$14 day of show. Telephone: 931-2000.

Livingston Taylor, Melanie, and Tom Paxton perform on May 18 in Sanders Theater, Harvard University, Quincy and Kirkland Streets, Cambridge. Telephone: 641-1010.

Slyx performs on May 26 at Great Woods, Routes 140 & 495, Mansfield. Tickets: \$7.50 & \$10 advance/\$10 and \$12 day of show. Tel: (508) 339-3333.

Simple Minds performs on May 29 at the Orpheum Theatre, Hamilton Place, Boston. Tickets: \$19.50. Tel: 482-0650.

At Citi Club: Dinosaur Jr. on May 18 (19+); Dece-Lite on May 19. Located at 15 Lansdowne Street, Boston, near Kenmore Square. Telephone: 931-2000.

At the Paradise: Screaming Trees and Nova Mob on May 14 (19+); Second Step, Chuck, and The Avengers on May 15 (19+); WBCN Rumble semi-finals on May 16 & 17; Daisy Chain on May 22; WBCN Rumble Finals on May 23; Bop Harvey and The Toasters on May 31. Located at 967 Commonwealth Avenue, Boston. Telephone: 254-2052.

At the Channel: Sin-a-men Gypsy on May 14 (18+); Boston Baked Blues Band and Heavy Metal Horns on May 15; Paul Burke on May 16 (18+); Think Tree on May 17; Buster Poindexter on May 18; Scott Henderson and Jon Finn Group on May 21; Motorhead on May 22; Rita Marley on May 23; The Stompers on May 24; The Machine on May 25; Nirvana Groove on May 28; Wrathchild America and Pantera on May 30 (18+). Located at 25 Necco Street, near South Station in downtown Boston. Telephone: 451-1905.

At Axis: Dirty Looks Sticks & Stones and Nirvana Groove on May 15 (19+); B.U.S.T. and Styfle on May 24; Titans, Slaves, and Fighting Cocks on May 31.

Located at 13 Lansdowne Street, Boston, near Kenmore Square. Tel: 262-2437.

At T.T. the Bears: The Neats on May 17; King Missile on May 18; School of Fish on May 24; Dumpster on May 25. Located at 10 Brookline Street, Cambridge, just north of MIT. Telephone: 492-0082.

At Nightstage: Full Circle on May 15; Joe Ely on May 16; Bonkman Eksperyaans on May 17; Mike Stern and Bob Berg on May 19; Mozamba on May 23; Heretix and B.U.S.T. on May 24; Bill Lee on May 30; Ronnie Earl on May 31. Located at 823 Main Street, Cambridge, just north of MIT. Telephone: 497-8200.

At The Edge: Tsunami Poets, Up, and Corin Ashley & The Big Sky on May 14; Ultra Blue and Strong Waters on May 18; Paper Squares, Perpetrators, and 3-Ball Band on May 21. Located at One Necco Place, near South Station in downtown Boston. Tickets: \$5. Telephone: 426-7744.

At Johnny D's: Robin Williamson & Linda Waterfall on May 14; Robert Jr. Lockwood & Friends on May 15; Dewey Ballfa, Steve Reilly & Friends on May 16; Lucky Seven on May 17; Color Blind James Experience on May 18; Didi Stewart on May 19; Matt Glaser and The Poodles on May 21; Acoustic Junction on May 22; Boiled in Lead on May 23; Commander Cody on May 24; Al Copley on May 25; Barrence Whitfield on May 26; Subduces on May 29; Champion Jack Dupree on May 30. Located at 17 Holland Street, Davis Square, Somerville, near the Davis Square T-stop on the red line. Telephone: 776-9667.

## JAZZ MUSIC

Small Jazz Ensembles and Longy Lab Jazz Band perform on May 20 in the Edward Pickman Concert Hall, Longy School of Music, 27 Garden Street, Cambridge. No admission charge. Telephone: 876-0956.

Longy Little Big Band performs on May 28 in the Edward Pickman Concert Hall, Longy School of Music, 27 Garden Street, Cambridge. No admission charge. Telephone: 876-0956.

At the Regattabar: The James Williams Trio on May 14; The Elvin Jones Jazz

Machine, May 15 to 19; Sonny Rollins on May 17. Located at Charles Hotel, Harvard Square, Cambridge. Telephone: 661-5000.

## CLASSICAL MUSIC

Cupid and Death, an English masque printed in 1653 with music by Gibbons and Locke, is presented on May 13 in the Edward Pickman Concert Hall, Longy School of Music, 27 Garden Street, Cambridge. No admission charge. Telephone: 876-0956.

The Griffin Music Ensemble, with the Hyperion Trio and guest conductor Gunther Schuller, performs works by Anthony Brandt, Donald Erb, Gunther Schuller, and Allen Anderson on May 14 in the Wang Center Grand Lobby, 270 Tremont Street, Boston. Tickets: \$10 general, \$5 students. Telephone: 482-9393.

Contralto Elaine Scio-Lazarov and pianist Tanya Schwartzman perform on May 16 in Spiegel Performance Center, Cambridge Center for Adult Education, 56 Brattle Street, Cambridge. Tickets: \$3.50. Telephone: 547-6789.

Violinist Janet Packer and pianist Haskell Small performs works by Ravel, Bach, Schubert, and Widor on May 16 at the Tsai Performance Center, Boston University, 685 Commonwealth Avenue, Boston. No admission charge. Telephone: 353-3345.

Violinist Letitia Hom '92 performs Beethoven's *Sonata No. 7 in C Minor* and Stravinsky's *Suite Italienne* in *Advanced Music Performance* concerts on May 17 in Killian Hall, MIT Hayden Memorial Library Building 14. No admission charge. Telephone: 253-9800.

The New England Philharmonic performs works by Richard Corneli, Arvo Part, and Luciano Berio on May 17 in Sanders Theater, Harvard University, Quincy and Kirkland Streets, Cambridge. Telephone: 868-1222.

The Egmont Trio performs works by Beethoven, Shostakovich, and Dvorak on May 18 at the Longy School of Music, One Follen Street, Cambridge. Tickets: \$7 general, \$5 seniors and students. Telephone: 876-0956.

## CRITICS' CHOICE

Pro Arte Chamber Orchestra, Jeffrey Kahane conducting, performs works by Mozart, Tison Street, and Mendelssohn on May 19 at Sanders Theater, Harvard University, Quincy and Kirkland Streets, Cambridge. Tickets: \$8, \$15, and \$22. Tel: 661-7067.

Emmanuel Music, directed by Craig Smith, continues its series *Debussy and His Circle* with works by Debussy, Webern, and Scriabin on May 19 in Emmanuel Church Library, 15 Newbury Street, Boston. Tickets: \$15 general, \$10 seniors and students. Tel: 536-3356.

Violinist Robert Mann and pianist Steven Hough perform sonatas of Johannes Brahms on May 19 at the Gardner Museum, 280 The Fenway, Boston. Admis-

sion: \$6 general; \$3 seniors and students. Telephone: 566-1401.

Banchetto Musicale performs Mozart's *The Marriage of Figaro* as part of the *Boston Early Music Festival & Exhibition* on June 1 and 3 in Jordan Hall, New England Conservatory, 30 Gainsborough Street at Huntington Avenue, Boston. Tickets: \$15, \$21, and \$26. Telephone: 864-5988.

Fortepianist John Gibbons performs Mozart sonatas on June 2 at the Museum of Fine Arts, 465 Huntington Avenue, Boston. Tickets: \$15 general; \$12 MFA members, seniors, and students. Telephone: 267-9300 ext. 306.

At Longy School of Music: Violinist Kirsi Peritall-Kehayias and pianist Jocelyna Lopatich on May 14; Roman de Fauvel on May 15; Longy Chamber Winds on May 16; Longy Early Music Student Ensembles on May 21; Longy Chamber Singer on May 23. Concerts in the Edward Pickman Concert Hall, 27 Garden Street, Cambridge. No admission charge. Telephone: 876-0956.

## THEATER

Playwrights in Performance, four student-written, one-act plays developed in playwrighting classes, is presented May 13 to 14 in MIT Kresge Rehearsal Room B. Telephone: 253-2877.

When the *Cold Wind* Burns, Frank A. Shefton's drama about the effect of rumors that the white manager of a lab group participated in a Ku Klux Klan killing, is presented May 17-19 and 23-25 in MIT's Kresge Little Theater. Telephone: 253-2530.

## CRITICS' CHOICE

Travesties; Tom Stoppard's Tony Award-winning farce about fabricated encounters between James Joyce, Tristan Tzara (a founder of the Dada movement), and Lenin, opens in previews on May 17 as a presentation of the Huntington Theatre Company at the Boston University Theater, 264 Huntington Avenue, Boston. Previews continue through May 21, regular performances May 22 to June 16, Tuesday-Saturday at 8 pm with matinees Wednesday, Saturday, and Sunday at 2 pm. Tickets: \$18 to \$32 general, half-price rush tickets two hours before performance, \$7.50 student rush tickets. Telephone: 266-0800.

Going Over; Stuart Browne's play about a World War I "military observer," elevated above the battlefield on a giant kite, is presented May 18 and 19 at the Cambridge Center for Adult Education, 56 Brattle Street, Harvard Square, Cambridge. Tickets: \$8. Telephone: 547-6789.

Power Failure; Larry Gelbart's black comedy, opens on May 24 as a presentation of the American Repertory Theatre at the Loeb Drama Center, 64 Brattle Street, Harvard Square, Cambridge. Continues through July 10 with performances Tuesday-Sunday at 8 pm and matinees Saturday & Sunday at 2 pm. Tickets: \$17 to \$35. Tel: 547-8300.

Romeo and Juliet, by William Shakespeare, opens May 29 at the Public Theatre, Inc., Christian A. Herter Park, Soldiers Field Road, Boston, near Harvard Square. Continues through June 23 with performances Wednesday-Sunday at 8 pm. Tickets: \$11, \$13, and \$15 general, \$2 discount to seniors and children. Telephone: 782-5425.

Moving Images, including *Rock Stars and Bundle* by Boston artists Sarah Hicker, Danica and Michele LeBrun, is presented May 31 and June 1 at the Performance Place, 277 Broadway, Somerville, near the Sullivan T-stop on the orange line. Tickets: \$12. Tel: 625-1300.

At Mobius: Da Da Da Da, by Dana Brayton and Tom Evans, on May 17 and 18; Untitled Mixed Bag, by T. W. Li on May 24 and 25; Quarantine of the Mind, by David MacLean, on May 31 and June 1. Located at 354 Congress Street, Boston, near South Station. Telephone: 542-7416.

## EXHIBITS

The Traveling Scholars Exhibition, selected works by award recipients of the Museum School Traveling Scholars Competition, opens May 15 in the Carter/C. Brown Gallery, Museum of Fine Arts, 465 Huntington Avenue, Boston. Continues through June 23 with museum hours are Tuesday-Sunday 10-5 and Wednesday 10-10. Admission: \$6 general, \$5 seniors and students, free with MIT ID. Telephone: 267-9300.

Graduating Student Exhibition, selected works by students graduating from the Museum School, opens May 17 in the Grossman Gallery, School of the Museum of Fine Arts, 230 The Fenway, Boston. Continues through May 24 with gallery hours Monday-Friday 10-5. Telephone: 267-6100 ext. 656.

Il Carnevale a Venezia, 16 color photographs taken during Carnival in Venice, Italy by Tamara Schulman '91, opens May 19 in the Wiesner Student Art Gallery, MIT Student Center. Continues through May 31. No admission charge. Telephone: 253-3913.

## DANCE

Paula Josa-Jones/Performance Works presents *Skin/Flesh* May 16 to 18 at C. Walsh Theatre, Suffolk University, 55 Temple Street, Boston. Tickets: \$12 general, \$9 seniors and student. Telephone: 720-3434.

## FILM & VIDEO

The Harvard-Epworth Church presents *Midnight* (1939, Mitchell Leisen) on May 19 at 1555 Massachusetts Avenue, Cambridge, just north of Harvard Square. Tickets: \$3 contribution. Tel: 354-0837.

At the Museum of Fine Arts: New England Film and Video Festival on May 16 and 17; *Rodrigo D.: No Future* (Colombia, 1990, Victor Manuel Gaviria) on May 23 and 24; *Tabu* (1931, F. W. Murnau) on May 30 and 31. Screenings in Remis Auditorium; MFA, 465 Huntington Avenue, Boston. Tickets: \$5 general, \$4.50 MFA members, seniors, and students. Telephone: 267-9300.

At the French Library in Boston: *Model Shop* (1969, Jacques Demy), May 17 to 19; *Viva Maria* (1965, Louis Malle), May 24 to 27; *Le Schpountz* (1938, Marcel Pagnol), May 31 to June 2. Located at 53 Marlborough Street, Boston. Tickets: \$4 general, \$3 Library members. Telephone: 266-4351.

Le Roman de F.A.U.V.E.L. is presented as part of the *Boston Early Music Festival & Exhibition*, on June 2 at "The Cube," MIT Wiesner Building E15 and June 4 to 6 at the French Library in Boston, 53 Marlborough Street, Boston. Telephone: 661-1812.

At the Brattle Theatre: *Twelve Angry Men* (1957, Sidney Lumet) and *Point of Order* (1964, Emile de Antonio) on May 13; *Armenia '67-'82* (Arthur Peleshian) on May 14; *Ride The High Country* (1962, Sam Peckinpah) & *Fistful of Dollars* (1964, Sergio Leone) on May 15; *The Bride Wore Black* (1967, Francois Truffaut) & *The Lovers* (1958, Louis Malle) on May 16; *Touch of Evil* (1958, Orson Welles) & *The Lady from Shanghai* (1948, Orson Welles) on May 17 & 18; *The Graduate* (1967, Mike Nichols), *Guess Who's Coming to Dinner* (1967, Stanley Kramer), & *Shampoo* (1975, Hal Ashby) on May 19; *Witness for the Prosecution* (1957, Billy Wilder) & *Anatomy of a Murder* (1959, Otto Preminger) on May 20; *Scenes from the Life of Andy Warhol* (1990, Jonas Mekas), *Vivyl* (1965, Andy Warhol), & *Beauty #2* (1965, Andy Warhol) on May 21; *Major Dundee* (1964, Sam Peckinpah) & *For a Few Dollars More* (1965, Sergio Leone) on May 22; *Mississippi Mermaid* (1969, Francois Truffaut) & *Tristana* (1970, Luis Bunuel) on May 23; *Mr. Arkadin* (1962, Orson Welles), *The Trial* (1963, Orson Welles), & *The Stranger* (1946, Orson Welles) on May 24 & 25; *Lolita* (1962, Stanley Kubrick) on May 26; *Rope* (1948, Alfred Hitchcock) & *Lifeboat* (1944, Alfred Hitchcock) on May 27; *Superstar* (1990, Chuck Workman) on May 28; *The Good, the Bad, and the Ugly* (1966, Sergio Leone) & *The Ballad of Cable Hogue* (1970, Sam Peckinpah) on May 29; *Contempt* (1963, Jean-Luc Godard) & *And God Created Woman* (1957, Roger Vadim) on May 30; *Orson Welles Karities* on May 31; *F For Fake* (1973, Orson Welles) & *Filming Othello* (1978, Orson Welles) on June 1; *The Man in the White Suit* (1951, Alexander Mackendrick) & *I'm All Right, Jack* (1960, John & Roy Boulting) on June 2; *Judgement at Nuremberg* (1961, Stanley Kramer) & *Inherit the Wind* (1960, Stanley Kramer) on June 3. Located at 40 Brattle Street, Harvard Square, Cambridge. Tickets: \$5.50 general, \$3 seniors and children (good for the double feature). Telephone: 876-6837.

At the Brattle Theatre: *Twelve Angry Men* (1957, Sidney Lumet) and *Point of Order* (1964, Emile de Antonio) on May 13; *Armenia '67-'82* (Arthur Peleshian) on May 14; *Ride The High Country* (1962, Sam Peckinpah) & *Fistful of Dollars* (1964, Sergio Leone) on May 15; *The Bride Wore Black* (1967, Francois Truffaut) & *The Lovers* (1958, Louis Malle) on May 16; *Touch of Evil* (1958, Orson Welles) & *The Lady from Shanghai* (1948, Orson Welles) on May 17 & 18; *The Graduate* (1967, Mike Nichols), *Guess Who's Coming to Dinner* (1967, Stanley Kramer), & *Shampoo* (1975, Hal Ashby) on May 19; *Witness for the Prosecution* (1957, Billy Wilder) & *Anatomy of a Murder* (1959, Otto Preminger) on May 20; *Scenes from the Life of Andy Warhol* (1990, Jonas Mekas), *Vivyl* (1965, Andy Warhol), & *Beauty #2* (1965, Andy Warhol) on May 21; *Major Dundee* (1964, Sam Peckinpah) & *For a Few Dollars More* (1965, Sergio Leone) on May 22; *Mississippi Mermaid* (1969, Francois Truffaut) & *Tristana* (1970, Luis Bunuel) on May 23; *Mr. Arkadin* (1962, Orson Welles), *The Trial* (1963, Orson Welles), & *The Stranger* (1946, Orson Welles) on May 24 & 25; *Lolita* (1962, Stanley Kubrick) on May 26; *Rope* (1948, Alfred Hitchcock) & *Lifeboat* (1944, Alfred Hitchcock) on May 27; *Superstar* (1990, Chuck Workman) on May 28; *The Good, the Bad, and the Ugly* (1966, Sergio Leone) & *The Ballad of Cable Hogue* (1970, Sam Peckinpah) on May 29; *Contempt* (1963, Jean-Luc Godard) & *And God Created Woman* (1957, Roger Vadim) on May 30; *Orson Welles Karities* on May 31; *F For Fake* (1973, Orson Welles) & *Filming Othello* (1978, Orson Welles) on June 1; *The Man in the White Suit* (1951, Alexander Mackendrick) & *I'm All Right, Jack* (1960, John & Roy Boulting) on June 2; *Judgement at Nuremberg* (1961, Stanley Kramer) & *Inherit the Wind* (1960, Stanley Kramer) on June 3. Located at 40 Brattle Street, Harvard Square, Cambridge. Tickets: \$5.50 general, \$3 seniors and children (good for the double feature). Telephone: 876-6837.

At the Brattle Theatre: *Twelve Angry Men* (1957, Sidney Lumet) and *Point of Order* (1964, Emile de Antonio) on May 13; *Armenia '67-'82* (Arthur Peleshian) on May 14; *Ride The High Country* (1962, Sam Peckinpah) & *Fistful of Dollars* (1964, Sergio Leone) on May 15; *The Bride Wore Black* (1967, Francois Truffaut) & *The Lovers* (1958, Louis Malle) on May 16; *Touch of Evil* (1958, Orson Welles) & *The Lady from Shanghai* (1948, Orson Welles) on May 17 & 18; *The Graduate* (1967, Mike Nichols), *Guess Who's Coming to Dinner* (1967, Stanley Kramer), & *Shampoo* (1975, Hal Ashby) on May 19; *Witness for the Prosecution* (1957, Billy Wilder) & *Anatomy of a Murder* (1959, Otto Preminger) on May 20; *Scenes from the Life of Andy Warhol* (1990, Jonas Mekas), *Vivyl* (1965, Andy Warhol), & *Beauty #2* (1965, Andy Warhol) on May 21; *Major Dundee* (1964, Sam Peckinpah) & *For a Few Dollars More* (1965, Sergio Leone) on May 22; *Mississippi Mermaid* (1969, Francois Truffaut) & *Tristana* (1970, Luis Bunuel) on May 23; *Mr. Arkadin* (1962, Orson Welles), *The Trial* (1963, Orson Welles), & *The Stranger* (1946, Orson Welles) on May 24 & 25; *Lolita* (1962, Stanley Kubrick) on May 26; *Rope* (1948, Alfred Hitchcock) & *Lifeboat* (1944, Alfred Hitchcock) on May 27; *Superstar* (1990, Chuck Workman) on May 28; *The Good, the Bad, and the Ugly* (1966, Sergio Leone) & *The Ballad of Cable Hogue* (1970, Sam Peckinpah) on May 29; *Contempt* (1963, Jean-Luc Godard) & *And God Created Woman* (1957, Roger Vadim) on May 30; *Orson Welles Karities* on May 31; *F For Fake* (1973, Orson Welles) & *Filming Othello* (1978, Orson Welles) on June 1; *The Man in the White Suit* (1951, Alexander Mackendrick) & *I'm All Right, Jack* (1960, John & Roy Boulting) on June 2; *Judgement at Nuremberg* (1961, Stanley Kramer) & *Inherit the Wind* (1960, Stanley Kramer) on June 3. Located at 40 Brattle Street, Harvard Square, Cambridge. Tickets: \$5.50 general, \$3 seniors and children (good for the double feature). Telephone: 876-6837.

At the Brattle Theatre: *Twelve Angry Men* (1957, Sidney Lumet) and *Point of Order* (1964, Emile de Antonio) on May 13; *Armenia '67-'82* (Arthur Peleshian) on May 14; *Ride The High Country* (1962, Sam Peckinpah) & *Fistful of Dollars* (1964, Sergio Leone) on May 15; *The Bride Wore Black* (1967, Francois Truffaut) & *The Lovers* (1958, Louis Malle) on May 16; *Touch of Evil* (1958, Orson Welles) & *The Lady from Shanghai* (1948, Orson Welles) on May 17 & 18; *The Graduate* (1967, Mike Nichols), *Guess Who's Coming to Dinner* (1967, Stanley Kramer), & *Shampoo* (1975, Hal Ashby) on May 19; *Witness for the Prosecution* (1957, Billy Wilder) & *Anatomy of a Murder* (1959, Otto Preminger) on May 20; *Scenes from the Life of Andy Warhol* (1990, Jonas Mekas), *Vivyl* (1965, Andy Warhol), & *Beauty #2* (1965, Andy Warhol) on May 21; *Major Dundee* (1964, Sam Peckinpah) & *For a Few Dollars More* (1965, Sergio Leone) on May 22; *Mississippi Mermaid* (1969, Francois Truffaut) & *Tristana* (1970, Luis Bunuel) on May 23; *Mr. Arkadin* (1962, Orson Welles), *The Trial* (1963, Orson Welles), & *The Stranger* (1946, Orson Welles) on May 24 & 25; *Lolita* (1962, Stanley Kubrick) on May 26; *Rope* (1948, Alfred Hitchcock) & *Lifeboat* (1944, Alfred Hitchcock) on May 27; *Superstar* (1990, Chuck Workman) on May 28; *The Good, the Bad, and the Ugly* (1966, Sergio Leone) & *The Ballad of Cable Hogue* (1970, Sam Peckinpah) on May 29; *Contempt* (1963, Jean-Luc Godard) & *And God Created Woman* (1957, Roger Vadim) on May 30; *Orson Welles Karities* on May 31; *F For Fake* (1973, Orson Welles) & *Filming Othello* (1978, Orson Welles) on June 1; *The Man in the White Suit* (1951, Alexander Mackendrick) & *I'm All Right, Jack* (1960, John & Roy Boulting) on June 2; *Judgement at Nuremberg* (1961, Stanley Kramer) & *Inherit the Wind* (1960, Stanley Kramer) on June 3. Located at 40 Brattle Street, Harvard Square, Cambridge. Tickets: \$5.50 general, \$3 seniors and children (good for the double feature). Telephone: 876-6837.

At the Brattle Theatre: *Twelve Angry Men* (1957, Sidney Lumet) and *Point of Order* (1964, Emile de Antonio) on May 13; *Armenia '67-'82* (Arthur Peleshian) on May 14; *Ride The High Country* (1962, Sam Peckinpah) & *Fistful of Dollars* (1964, Sergio Leone) on May 15; *The Bride Wore Black* (1967, Francois Truffaut) & *The Lovers* (1958, Louis Malle) on May 16; *Touch of Evil* (1958, Orson Welles) & *The Lady from Shanghai* (1948, Orson Welles) on May 17 & 18; *The Graduate* (1967, Mike Nichols), *Guess Who's Coming to Dinner* (1967, Stanley Kramer), & *Shampoo* (1975, Hal Ashby) on May 19; *Witness for the Prosecution* (1957, Billy Wilder) & *Anatomy of a Murder* (1959, Otto Preminger) on May 20; *Scenes from the Life of Andy Warhol* (1990, Jonas Mekas), *Vivyl* (1965, Andy Warhol), & *Beauty #2* (1965, Andy Warhol) on May 21; *Major Dundee* (1964, Sam Peckinpah) & *For a Few Dollars More* (1965, Sergio Leone) on May 22; *Mississippi Mermaid* (1969, Francois Truffaut) & *Tristana* (1970, Luis Bunuel) on May 23; *Mr. Arkadin* (1962, Orson Welles), *The Trial* (1963, Orson Welles), & *The Stranger* (1946, Orson Welles) on May 24 & 25; *Lolita* (1962, Stanley Kubrick) on May 26; *Rope* (1948, Alfred Hitchcock) & *Lifeboat* (1944, Alfred Hitchcock) on May 27; *Superstar* (1990, Chuck Workman) on May 28; *The Good, the Bad, and the Ugly* (1966, Sergio Leone) & *The Ballad of Cable Hogue* (1970, Sam Peckinpah) on May 29; *Contempt* (1963, Jean-Luc Godard) & *And God Created Woman* (1957, Roger Vadim) on May 30; *Orson Welles Karities* on May 31; *F For Fake* (1973, Orson Welles) & *Filming Othello* (1978, Orson Welles) on June 1; *The Man in the White Suit* (1951, Alexander Mackendrick) & *I'm All Right, Jack* (1960, John & Roy Boulting) on June 2; *Judgement at Nuremberg* (1961, Stanley Kramer) & *Inherit the Wind* (1960, Stanley Kramer) on June 3. Located at 40 Brattle Street, Harvard Square, Cambridge. Tickets: \$5.50 general, \$3 seniors and children (good for the double feature). Telephone: 876-6837.

At the Brattle Theatre: *Twelve Angry Men* (1957, Sidney Lumet) and *Point of Order* (1964, Emile de Antonio) on May 13; *Armenia '67-'82* (Arthur Peleshian) on May 14; *Ride The High Country* (1962, Sam Peckinpah) & *Fistful of Dollars* (1964, Sergio Leone) on May 15; *The Bride Wore Black* (1967, Francois Truffaut) & *The Lovers* (1958, Louis Malle) on May 16; *Touch of Evil* (1958, Orson Welles) & *The Lady from Shanghai* (1948, Orson Welles) on May 17 & 18; *The Graduate* (1967, Mike Nichols), *Guess Who's Coming to Dinner* (1967, Stanley Kramer), & *Shampoo* (1975, Hal Ashby) on May 19; *Witness for the Prosecution* (1957, Billy Wilder) & *Anatomy of a Murder* (1959, Otto Preminger) on May 20; *Scenes from the Life of Andy Warhol* (1990, Jonas Mekas), *Vivyl* (1965, Andy Warhol), & *Beauty #2* (1965, Andy Warhol) on May 21; *Major Dundee* (1964, Sam Peckinpah) & *For a Few Dollars More* (1965, Sergio Leone) on May 22; *Mississippi Mermaid* (1969, Francois Truffaut) & *Tristana* (1970, Luis Bunuel) on May 23; *Mr. Arkadin* (1962, Orson Welles), *The Trial* (1963, Orson Welles), & *The Stranger* (1946, Orson Welles) on May 24 & 25; *Lolita* (1962, Stanley Kubrick) on May 26; *Rope* (1948, Alfred Hitchcock) & *Lifeboat* (1944, Alfred Hitchcock) on May 27; *Superstar* (1990, Chuck Workman) on May 28; *The Good, the Bad, and the Ugly* (1966, Sergio Leone) & *The Ballad of Cable Hogue* (1970, Sam Peckinpah) on May 29; *Contempt* (1963, Jean-Luc Godard) & *And God Created Woman* (1957, Roger Vadim) on May 30; *Orson Welles Karities* on May 31; *F For Fake* (1973, Orson Welles) & *Filming Othello* (1978, Orson Welles) on June 1; *The Man in the White Suit* (1951, Alexander Mackendrick) & *I'm All Right, Jack* (1960, John & Roy Boulting) on June 2; *Judgement at Nuremberg* (1961, Stanley Kramer) & *Inherit the Wind* (1960, Stanley Kramer) on June 3. Located at 40 Brattle Street, Harvard Square, Cambridge. Tickets: \$5.50 general, \$3 seniors and children (good for the double feature). Telephone: 876-6837.

ARTS

# MIT musicians to celebrate Vest's inauguration

By SUSAN GLASS

**T**HIS WEEK'S CELEBRATION of the Inauguration of Charles M. Vest as MIT's 15th president will feature musical works composed by MIT students and faculty. These pieces include a specially commissioned musical piece composed by an MIT freshman and fanfares composed by MIT music and theater arts faculty.

"We wanted to organize the events so that the whole MIT community could participate," said Kathryn W. Lombardi, executive assistant to the president.

The Inaugural Concert this Thursday night in Kresge Auditorium will feature a song by Yumi Oshima '94, "Spring," based on William Blake's poem of the same name. "I really thought the last line of each stanza — 'Merrily merrily to welcome in the year' — was appropriate for the Inauguration," said Oshima, who added that her compositions usually deal with harsher themes.

The concert will also include three other student works composed for MIT music classes: "Before Life and After" by Alex-

ander P. Rigopoulos '92, "Quick. . ." by Charles W. Pokorny '91 and "How Sweet I Roamed from Field to Field" by Cynthia L. Harris '91.

Rigopoulos said of his musical piece, "The text was selected for my son Adriani, who was born last September."

Oshima attended the pre-college program at the Juilliard School of Music for 11 years. She already has had one of her orchestral pieces, "The Cave," performed at Lincoln Center, and another composition was presented at the Aspen Music Festival in Colorado.

Oshima started studying music composition at the age of 14, when an accident made it impossible for her to continue playing the violin, her major instrument. She has just recently resumed playing and is currently a member of the MIT Chamber Music Society.

Her pieces are greatly influenced by her hobbies and interests. For example, she said that her major non-musical interest is philosophy, and her orchestral piece, "The Cave," is based on Plato's *Republic*. Oshima said that the inaugural song, "Spring," was influenced by her interest in

ancient Japanese musical instruments — the opening is based on a pentatonic scale, used in ancient Japanese music.

Those who attend the Inaugural Ceremony Friday morning in Killian Court will hear four fanfares composed by faculty from the music and theater arts section of the Department of Humanities: "Vest-Pocket Fanfare" by John Harbison, "Fanfare" by Peter Child, "New from Old" by Edward Cohen and "Bossa Nova" by



Sarath Krishnaswamy/The Tech

"How Sweet I Roamed from Field to Field," a work by Cynthia L. Harris '91, will be performed as part of President Charles M. Vest's Inauguration.

Evan Ziporyn. Additionally, Professor of Literature Stephen Tapscott will read his original "Poem of Welcome" at the ceremony. Also performing will be the MIT Chamber Chorus, conducted by William C. Cutter, assistant conductor of the MIT Concert Choir. [See Inauguration schedule, page 2.]

Friday night, the Inauguration performances will continue with the MIT Concert Choir's performance of Mendelssohn's "Elijah" in Kresge Auditorium. Amy Kaiser, a noted free-lance conductor from New York, will lead the group. Cutter and Kaiser are replacing John S. Oliver, senior lecturer in music and theater arts. Oliver usually conducts the MIT Concert Choir and the MIT Chamber Chorus, but due to a broken foot he will be unable to do so this week.

Saturday night Professor of Music and Theater Arts David M. Epstein will conduct the MIT Symphony concert in Kresge Auditorium. The program will include "The Academic Festival Overture" by Brahms, Mozart's "Clarinet Concerto" and "Appalachian Spring" by Aaron Copland.

# Motorhead packs a vicious thrash-metal punch with 1916

1916  
Motorhead.  
Sony Music.

By J. DEVIN MACKENZIE

**A**FTER A PERIOD OF THIN releases, Motorhead is back with *1916*. *1916* recalls the spirit and energy of "Ace of Spades" with its invigorating display of Motorhead's hybrid of punk and heavy metal.

With an appreciation for the British punk attitude of the Sex Pistols as well as the throbbing power of Deep Purple's "Machine Head" and Black Sabbath's "Paranoid," Motorhead forged the thrash-

# motorhead

metal musical form into being. Since then, bands like Metallica, Megadeth and Testament have explored and refined thrash's raw, expressive power. These bands have produced some excellent material, but 10 years later, much of the original vigor of the thrash-metal genre has died out. Luckily, Motorhead has returned to the forefront with this shot of fresh, rejuvenating material.

On *1916*, the band is in top form. Crushing guitar riffs and meaty percussion power the Motorhead music machine behind Lemmy "Been Smoking Camels since I was 3" Kilminster's gritty howl. The high points of the album are the blistering opening track, "The One to Sing the Blues," the desperately textured "Love Me Forever," and the genuine, rocking tribute "Ramones."

"The One to Sing the Blues" showcases the tight, driving percussion of drummer Philthy Animal (son of Mr. and Mrs. Animal?) and the aggressive, twin-guitar attack of Phil Wizzo Campbell and Wurzel Burston. The song kicks in with a tumbling drum flurry and then breaks into an open highway jam. Fast time changes and abrupt pauses display the band's adroit, accurate musicianship and contribute to a fresh, live atmosphere.

Surprisingly, Motorhead effectively adapts their fast, raw sound to the slow,

melody-based "Love Me Forever." With the opening line "Love me forever, or not at all," Kilminster's lyrics set the stage for a pained, grinding plea for loyalty and honesty in a world of chaos and corruption. The dark mood of the song is tastefully accented with two soulful lead breaks from guitarist Campbell. With soaring dynamics and a tasteful treatment of tone and tempo, Campbell's solos complement and enrich the melancholy texture of the song.

"Ramones" begins with the infamous "one, two, three, four. . ." and jumps straight into an adrenaline-pumped celebration of that band. The lyrics and the song structure are both modeled after the Ramones' distinctive, playful format. This song suggests an interesting link between the Ramones and Motorhead. Motorhead has mixed punk and heavy metal in the same way that the Ramones blended punk and pop. Of course, the song lasts an entire one minute and 20 seconds.

Other interesting spots on *1916* include the hilarious "Angel City." Here, Kilminster mocks the Los Angeles glamour-rock superstars with passages like, "I wanna grow my hair, live in Bel Air, lose my head, keep a live snake in my bed, I wanna backstage pass, drink Bon Jovi's booze for free." The lyrics are backed up by a 12-bar, Chuck Berryish stomp

complete with snappy, blues-scale guitar doodling.

Unless the novelty of "Ramones" catches on in a big way, you may never hear *1916* on the radio. This is probably a good thing. Aside from the fact that air-play time is usually inversely proportional to substance, *1916* might finally put that first wrinkle in Dick Clark's eternally youthful face.

If the glitz-rock of MTV puppets like Poison and Slaughter have left you flat, the comic-strip ravings of thrashers like Anthrax have lost their charm, and you want something that absolutely will not be sampled for the next Tone Loc album, this is it.



**FLY AWAY**

round Trip from Boston	starting at:
London	388
Paris	538
Madrid	538
Brussels	490
Caracas	410
Tokyo	789
Sydney	1201

Student & Faculty Fares  
Taxes not included. Restrictions apply.  
Fares subject to change. One way available. Work/Study abroad programs. International Student & Teacher ID.  
**EURAIL PASSES ISSUED ON THE SPOT!**  
FREE Student Travel Catalog!

**Council Travel**  
Stratton Student Center  
MIT, W20-024, Cambridge  
617-425-2555

**McGOLF**

Driving Range & Mini-Putt

8am-11:00pm      9am - 10:30pm

Exit 16A off 128; 109 east 2 miles on right  
Off Rt. 1 (VFW pky), 109 west half mile on left

Dedham, Mass.      326-9616

# WOULD YOU LIKE TO HAVE A VOICE IN ISSUES SUCH AS:

- CAC Scheduling Policies
- Walker Memorial
- Student Center

Apply *NOW* for *membership* on the  
**Campus Activities Complex Advisory Board**

Applications may be picked up at:  
The Student Center Information Desk  
CAC Office W20-500

If you have any Questions contact:  
Ted Johnson (CAC) x3-3913  
Jim Martin (President) 266-2827  
Kate Mahoney (Secretary) x5-6630

Interviews will be: *Mon. 5/13 & Tues 5/14*  
**APPLICATION DEADLINE IS: 4pm FRIDAY MAY 10; CAC OFFICE**

**For undergraduates interested in MINOR programs  
in Humanities, Arts, and Social Sciences (HASS)  
contact the appropriate field office:**

<i>Anthropology/Archaeology</i> .....	20B-131 .....	3-3065
<i>Economics</i> .....	E52-380 .....	3-0951
<i>Film and Media Studies</i> .....	14N-414 .....	3-3599
<i>Foreign Languages</i> .....	14N-307 .....	3-4771
<i>French</i>		
<i>German</i>		
<i>Russian</i>		
<i>Spanish</i>		
<i>History</i> .....	E51-210 .....	3-4965
<i>History of Art and Architecture</i> .....	10-303 .....	3-5133
<i>Literature</i> .....	14N-409 .....	3-3581
<i>Music</i> .....	14N-207 .....	3-3210
<i>Philosophy</i> .....	20D-213 .....	3-4141
<i>Political Science</i> .....	E53-460 .....	3-3649
<i>Psychology</i> .....	E10-008 .....	3-0482
<i>Science, Technology, and Society</i> .....	E51-008 .....	3-0457
<i>Theater Arts</i> .....	W16-015 .....	3-2877
<i>Urban Studies and Planning</i> .....	7-338C .....	3-4409
<i>Women's Studies</i> .....	14E-316 .....	3-8844
<i>Writing</i> .....	14E-303 .....	3-7894

**For general information contact the HASS Information Office 14N-408,  
x3-4441.**

# Baltimore regrets defense

(Continued from page 1)

Investigations were subsequently undertaken by MIT, Tufts, the OSI and the Congressional Subcommittee on Oversight and Investigations chaired by Rep. John D. Dingell (D-MI).

In March, the OSI released a draft report which concluded that Imanishi-Kari had falsified her results. While the draft report did not accuse Baltimore of fraud, it said that Baltimore's persistent defense of the paper in the face of mounting criticism was "difficult to comprehend" and "deeply troubling."

## Apology to O'Toole

In his statement, Baltimore apologized to O'Toole, who had been the first to question the validity of the paper and whose reputation had been marred in the ensuing controversy.

"I commend Dr. O'Toole for her courage and her determination, and I regret and apologize to her for my failure to act vigorously enough in my investigation of her doubts," Baltimore said. "[I have] tremendous respect for Dr. O'Toole, personally and as a scientist," he added.

Responding in a statement, O'Toole accepted Baltimore's apology but added that he still has not addressed the issue of "his failure to act vigorously enough." O'Toole maintains that though Baltimore was aware that Imanishi-Kari could not back up her conclusions experimentally, he continued to support her.

"I appreciate Dr. Baltimore's words of praise for me, but his apology does not go to the heart of the question," O'Toole said. "During our meeting on June 16, 1986" after the paper had been published, "Dr. Imanishi-Kari candidly admitted that she had not obtained the results reported in the paper."

"She said that she had made mistakes by reporting data that had not been obtained," O'Toole continued. "Dr. Baltimore told me that 'this kind of thing' was not unusual and that he would take no corrective action. He told me that he personally would oppose any effort I made to get the paper corrected."

In response to Baltimore's claim that he relied too heavily on the reports of those investigating the matter, O'Toole said, "Dr. Baltimore's 1986 investigation was complete enough to discover that my objections were substantiated. However, he did not act on them."

Also in his statement Baltimore

asked that several accusations made against him by the OSI in its draft report be excluded from its final report. The OSI has "no basis for the strongly worded attack," he said.

The OSI criticized remarks made by Baltimore including a remark at a hearing of the NIH panel in which Baltimore said, "In my mind you can make up anything that you want in your notebooks, but you can't call it fraud if it wasn't published."

In his statement, Baltimore said that his comments were made "in the heat of the moment. . . . My remarks to OSI were not at all intended to condone fraud or to sanction the submission of misleading materials to NIH."

"In sum, I believe that OSI's findings regarding my conduct should be amended and that the final report should be tempered in light of these responses," he said.

## Extends olive-branch to Dingell

Also in his statement, Baltimore apologized for his criticisms of Dingell's Congressional investigations of the paper. In May 1988, Baltimore sent a "Dear colleague" letter to scientists across the country which said, "What we are undergoing is a harbinger of threats to scientific communication and scientific freedom. The halls of Congress are not the place to determine scientific truth or falsity."

In his apology Baltimore wrote, "I have learned from this experience that the accountability

to ensure the responsible use of public funds rests not only with each individual scientist but with the scientific and academic communities as a whole."

"For their work, scientists are entrusted with public funds. I have come to better appreciate the legitimate role of government as the public sponsor of scientific research and to respect its duty to protect the public interest and hold the scientific community accountable for its stewardship of public funds," he wrote.

Dingell responded in a statement, "I agree with Mr. Baltimore that we need a major clean-up of the way science handles these matters of fraud. I very much regret that reaching those conclusions has been so long and painful for some."

Imanishi-Kari still claims that she is innocent of all charges of misconduct. "The difficulty with Dr. Baltimore's statement is that what it doesn't emphasize is that this investigation has not been thorough or fair," according to Bruce Singal, Imanishi-Kari's lawyer.

"Yes, there has to be protection for whistleblowers, but where is the protection for the accused? There's no due process, no right to question witnesses, no right to see the evidence against the accused. It's like a 'Star Chamber' proceeding in which the accused has no rights," Singal added.

Statements from Baltimore, Imanishi-Kari, O'Toole and Dingell appeared in *The Boston Globe* and *The New York Times*.

The Tech News Hotline: 253-1541

POETRY AT THE MEDIA LAB

presents the 1991

## Student/Staff Poetry Reading

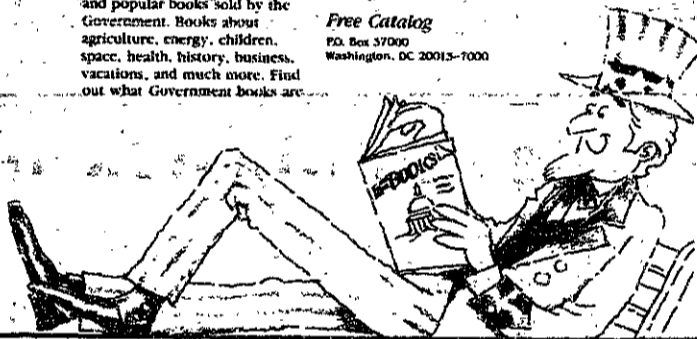
May 8, 1991 at 7:30p.m.  
Bartos Theatre  
MIT Media Lab, Lower Level

For information, call x3-0312

## FREE CATALOG OF GOVERNMENT BOOKS

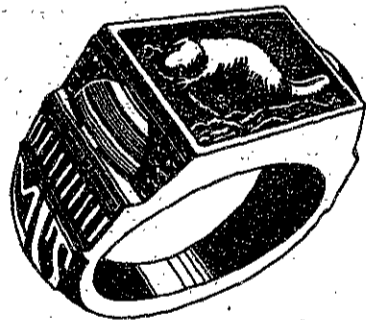
The U.S. Government Printing Office has a free catalog of new and popular books sold by the Government. Books about agriculture, energy, children, space, health, history, business, vacations, and much more. Find out what Government books are

all about. Send for your free catalog.  
Free Catalog  
12a Box 37000  
Washington, DC 20013-7000



This space donated by The Tech

## The MIT Ring Collection By



JOSTENS

Exclusively At

MIT COOP AT KENDALL  
3 CAMBRIDGE CENTER  
M-F 9:15-7 THUR-FRI 8:30  
SAT 9:15-6:45

the Coop

## IMMIGRATION

- H-1 Visas
- Labor Certification
- Employer Preference Petitions
- Immigration Planning

Law Office of  
Richard Iandoli & Associates

38 Melrose Street  
Boston, MA 02116  
(617) 482-1010

## Garber Sends M.I.T. All Over The World

Garber Travel is ready to take care of all your travel needs! We'll get you the lowest possible airfares, arrange for Amtrak tickets, Eurailpasses, low cost charters and much more! Plan your next trip with Garber.

**GARBER TRAVEL**

1105 Mass. Ave., Cambridge  
492-2300

## VOLUNTEER OPPORTUNITY!

## WHEN WOMEN'S HEALTH EDUCATION NETWORK

The MIT Medical Department's Health Education Service is looking for undergraduate women with an interest in women's health to join the Women's Health Education Network (WHEN). After training, members of the network offer information about women's health and health-related decision-making to interested students and small groups on campus.

If you want to become a member of WHEN or would like more information, contact Anne Gilligan at 253-1316. Interviews and training will be conducted in September.

## FREE! Airline Reservations & Ticketing Service

Heritage Travel

Thomas Cook

★ ★ ★ ★ ★  
RATED BEST!  
by Condé Nast  
Traveler Magazine

★ ★ ★ ★ ★

Badger Building • 1 Broadway • CAMBRIDGE

HERITAGE/THOMAS COOK is an official authorized agent for all airlines and there is NO EXTRA CHARGE when you pick up your tickets at HERITAGE/THOMAS COOK!

PURCHASE YOUR TICKETS NOW BEFORE ANOTHER FARE INCREASE

IF YOU'RE TRAVELING ON ANY OF THESE AIRLINES . . .

American, United, Continental, Pan Am, Delta, TWA, Northwest, USAir, British Air, Qantas, Air Canada, Iberia, Lufthansa, Swiss Air, Air India, El Al, Icelandair, Alitalia, Aer Lingus, Viasa, or even shuttle flights.

AVOID LONG LINES AT THE AIRPORT, MAKE YOUR RESERVATIONS AND PICK UP YOUR TICKETS AT

Heritage Travel

Thomas Cook

Badger Building • 1 Broadway • CAMBRIDGE

Open Mon.-Fri. 8:30 am-5:00 pm

**868-2666**



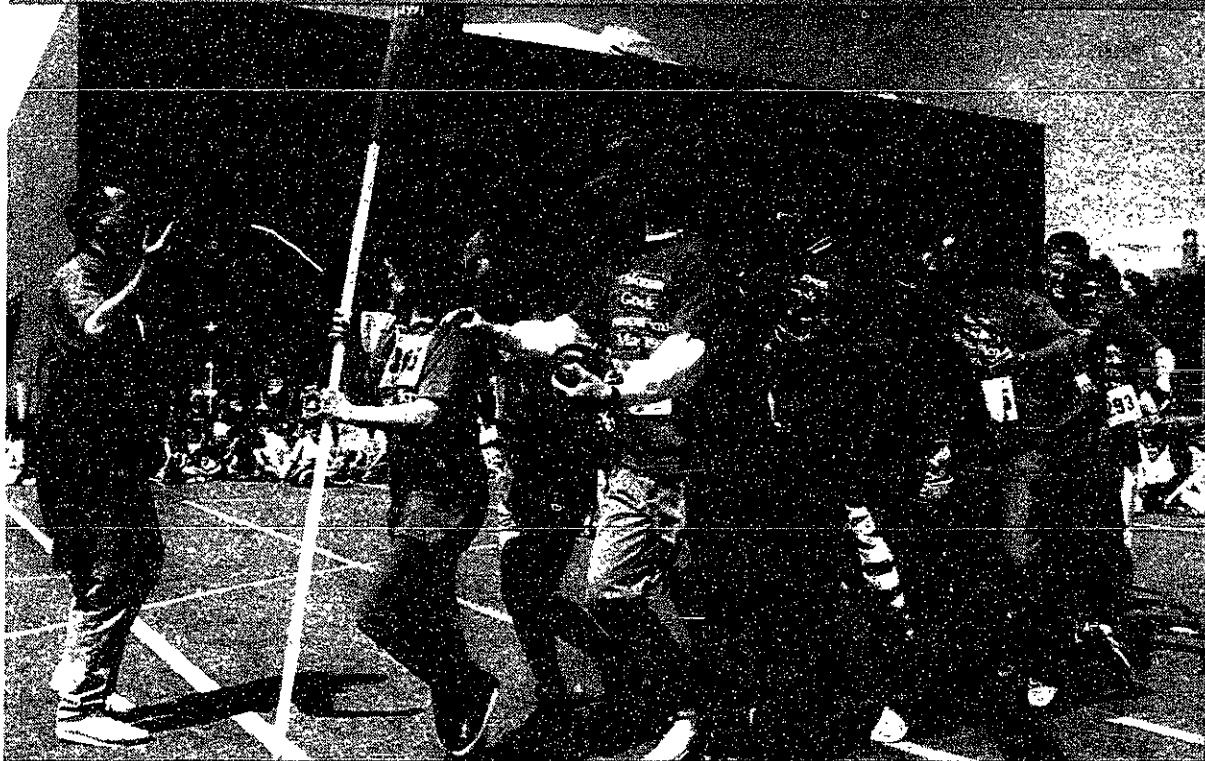
# Johnson



Vipul Bhattacharya

# Games

Saturday dawned bright and sunny as more than 60 teams gathered for the second occurrence of the Johnson Games. Teams participated in events such as "Howard Stern" (a parody of "Simon Says," upper left). The teams were composed of students, staff and faculty, such as Mechanical Engineering Professor Barry von Mises (SCD '67, upper right), who took a little break from his job in the Water Balloon Toss. Other events included a "Cheer" in which each team had to come up with their own cheer. Water balloons were not a prerequisite for participation. Faculty and staff also took advantage of the clear weather. The event included clowns like Chubby Cheeks and his friends, who kept the kids occupied during the competition.



**PSC**  
 MASSACHUSETTS INSTITUTE OF TECHNOLOGY  
 Public Service Center

**FOREIGN STUDENTS  
 INTERESTED IN REMAINING  
 IN THE US?**

Let us help get your green card  
 Call for Free Information on How  
 The New Immigration Law Can  
 Benefit You

354-1550  
**STEVEN A. CLARK, Attorney  
 FLYNN & CLARK**  
 675 Mass. Ave., Cambridge  
 10 Minute Walk From Campus

**No. 6  
 Summer Housing**

River Views Available  
 Double and Two-Room Doubles  
 \$480 - \$900 for the Summer  
 Washers and Dryers Available  
 5 minutes from Harvard Bus  
 10 minutes from Red Line  
 Kitchen Facilities Available.  
 Call Alex Kenton 494-8292  
 Annie Castern 494-9833  
 No. 6 Club DP  
 428 Memorial Dr.  
 Cambridge, MA 02139

**WHY TAKE  
 ALL YOUR  
 STUFF HOME  
 WITH YOU  
 THIS SUMMER?**

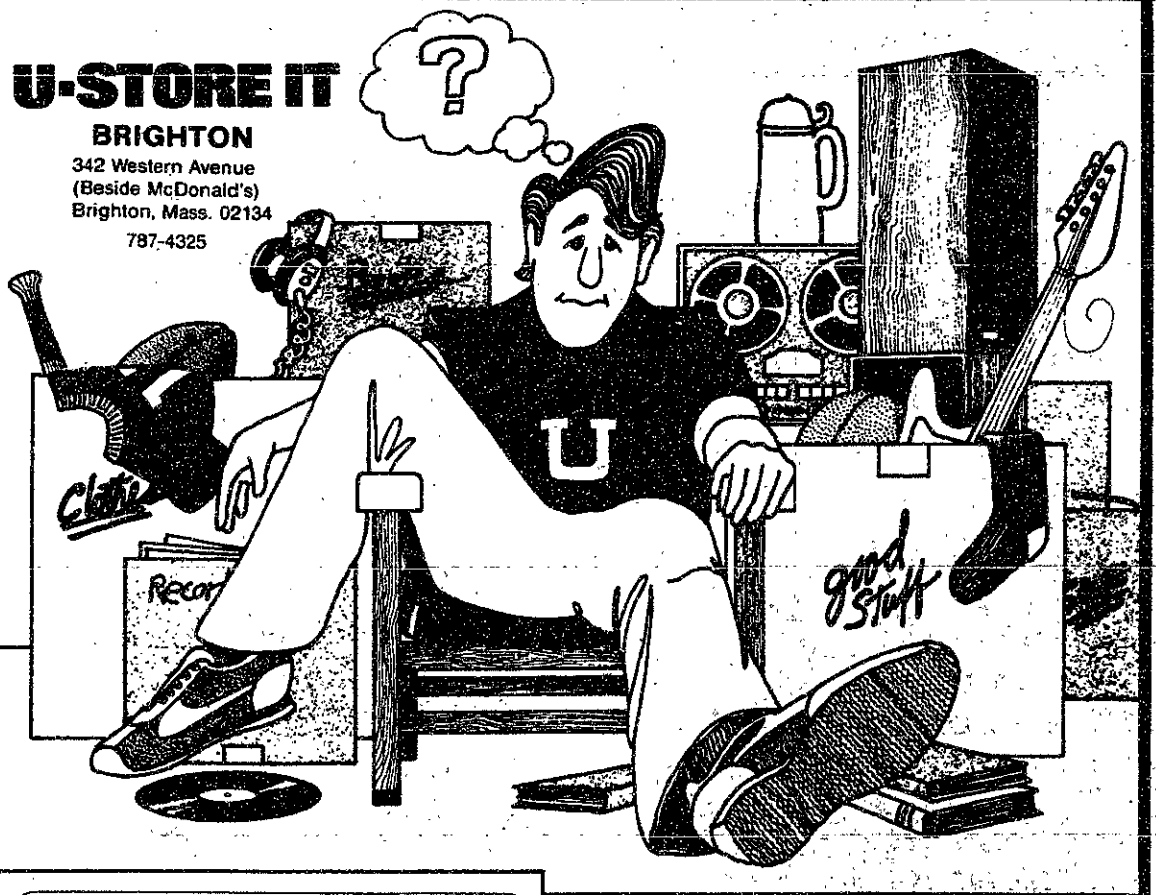
Store at U-Haul®  
 and everything will be  
 waiting for you when  
 you get back in the  
 fall! We're close to  
 campus, so call today  
 and reserve your space  
 now.



U-Haul Center Central Square • 844 Main St. • Cambridge, MA 02139  
 (617) 354-2058

**U-STORE IT**

**BRIGHTON**  
 342 Western Avenue  
 (Beside McDonald's)  
 Brighton, Mass. 02134  
 787-4325



**U-STORE IT**

LOCK IT • KEEP THE KEY

SELF SERVICE STORAGE

During breaks or any time you need safe,  
 secure, reasonable — and immediately available  
 — storage space, we've got the answer!

# Corporation will not divest

# classified advertising

(Continued from page 1)  
month that the CAA did not view the discussions as "a trade-off where they can either provide aid [for South African students] or divest." She added, "We think it's great that they're going to make some sort of effort for educational needs in South Africa, but that's not the problem. The problem is apartheid."

### "A small step"

In a May 6 letter to Vest, the coalition said the committee's "compliance with the most minor of the MIT community's demands represents a small step for which we thank the Executive Committee." The coalition cited an Undergraduate Association referendum in May 1990 and a petition campaign as evidence of their support from the MIT community for divestment.

"However, we feel that the primary demands of the community (the divestment of MIT from companies doing business in

South Africa) must be met," the letter continues.

The coalition also called on Vest to make a personal public statement in support of holding a binding referendum at MIT to decide "when MIT will divest."

The coalition said in the letter that divestment "maintains international pressures and incentives for constructive change." Divestment contributes to the erosion of the public image of companies doing business in South Africa and pressures them to encourage the South African government to speed the end of apartheid.

But Simonides said, "MIT decided to put its voice . . . directly on the question of supporting the continuance of the sanctions," rather than on divesting from companies with business connections to South Africa.

CAA member Ronald W. Francis PhD '90 would not comment on the coalition's plans now that the Executive Committee has an-

nounced its intentions publicly.

Simonides said that the level of community support did not really determine whether or not to divest from South Africa. "While [the committee members] are welcoming any and all opinions and advice, it isn't really a question of putting [the issue of divestment] to a vote. . . . The coalition is a very active group and has had a lot to say" on the issue, he added.

Simonides also said that the profitability of an investment portfolio without a connection to South Africa was "probably not a major reason" for the decision not to divest from companies with ties to South Africa.

He added, "There is a wide spectrum of opinion. The committee continues to have the position that [for] companies [that] continue to adhere to the [Statement of Principles] and continue to make progress . . . it would be appropriate for MIT to not divest."

MIT limits its investments to companies with business in South Africa to US companies which adhere to the Statement of Principles, a set of guidelines which call on US corporations with operations in South Africa to abolish racial discrimination in the workplace, to work for an end to apartheid and to improve the quality of life for their employees.

Simonides said the policy of investment governed by the Statement of Principles, "has been the policy since 1986 when the Executive Committee formulated it."

At that time, the committee said the policy would be reviewed periodically. "With recommendations from the coalition to have such a review, we did at the last two [Executive Committee] meetings — at the April and May meetings," Simonides said.

# Johnson Games lead Inauguration events

(Continued from page 1)  
demic department or office. Some of the competitors included the Fatigued Creeps from the materials science and engineering department, the Wrighton Stuff from the provost's office, and the first-place Stratton Stompers from the Campus Activities Complex.

Events ranged from such traditional activities as a balloon toss and volleyball to the more innovative *lambada* contest, a race in which team members danced together and supported blocks of foam using their bodies without using their hands. Peter K. Verprauskus '94, one of the student

referees who assisted the Safaris staff, said, "It was really fun — and I got to demonstrate the *lambada* four times."

The winning team, the Stratton Stompers, captured first place in the balloon toss, the "Celtic Gardens" and the "Howard Sez" contests. The Stratton Stompers team was designated the winner for accumulating the most overall points.

Assistant Director of Athletics and member of the Johnson Games Committee Jane Batts considered the event a huge success. "This is the largest number of teams Safaris has ever managed," she said.

## notices

### Listings

Student activities, administrative offices, academic departments and other groups — both on and off the MIT campus — can list meetings, activities, and other announcements in *The Tech's* "Notes" section. Send items of interest (typed and double spaced) via Institute mail to "News Notes, *The Tech*, room W20-483," or via US mail to "News Notes, *The Tech*, PO Box 29, MIT Branch, Cambridge, MA 02139." Notes run on a space-available basis only; priority is given to official Institute announcements and MIT student activities. *The Tech* reserves the right to edit all listings, and makes no endorsement of groups or activities listed.

### Meeting Times

The MIT Folk Dance Club sponsors two evenings of international dancing at MIT on Sunday nights in the Sala de Puerto Rico and Wednesday nights in Walker Gym, both at 7:30 pm. Beginners are welcome; no partner is needed. Call 253-3655 (FOLK) for more information.

The MIT Outing Club holds office hours every Monday and Thursday from 5:30-6:30 pm in W20-461. Stop by and help plan, lead or participate in trips ranging from one day outings to month long treks. The club is especially active in rock climbing, kayaking, canoeing, backpacking, hiking, and winter mountaineering. Beginners are more than welcome. The club rents a variety of equipment at low rates and has two cabins in NH available for rent. Contact Dave at 492-6983.

Men Against Sexual Assault: Monthly discussion group for concerned men on issues of rape and violence against women meets the first Wednesday of every month from 7:30-9 pm in room E51-218. The sessions are supported by the MIT Office of Student Affairs and sponsored by MIT students. Sessions will be devoted to such topics as discussions of rape, sexual violence, sexual harassment, pornography and rape, and other subjects. The discussion group is aimed at university students as well as the larger Boston/Cambridge area community. For further information, call Jeff at x3-2633.

### Announcements

**Project Contact:** Undergraduates who are interested in communicating with high school students (and guidance counselors) about what it is like to be an MIT student are encouraged to join Project Contact. For more information please contact the Educational Council Office, Room 4-240; x3-3354.

The Cambridge Dispute Settlement Center has announced that it is making its service of mediating disputes available to roommates in the Cambridge area. Those interested in using CDSC's service to resolve a roommate dispute or any other dispute should contact the mediation center at 876-5376.

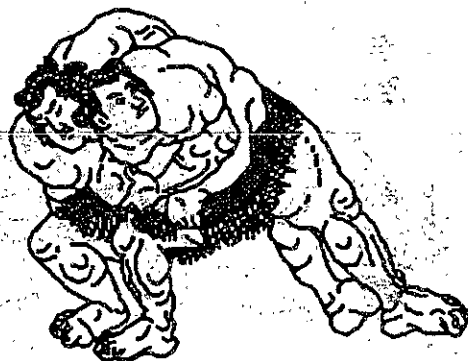
The Boston University Astronomy Department sponsors Open Observatory Night every Wednesday from 8:30-9:30 pm. For more information call 353-2360.

Harvard University Graduate School of Design is sponsoring lectures. For more information call 495-9340.

## WANTED: SOFTWARE ENGINEERS

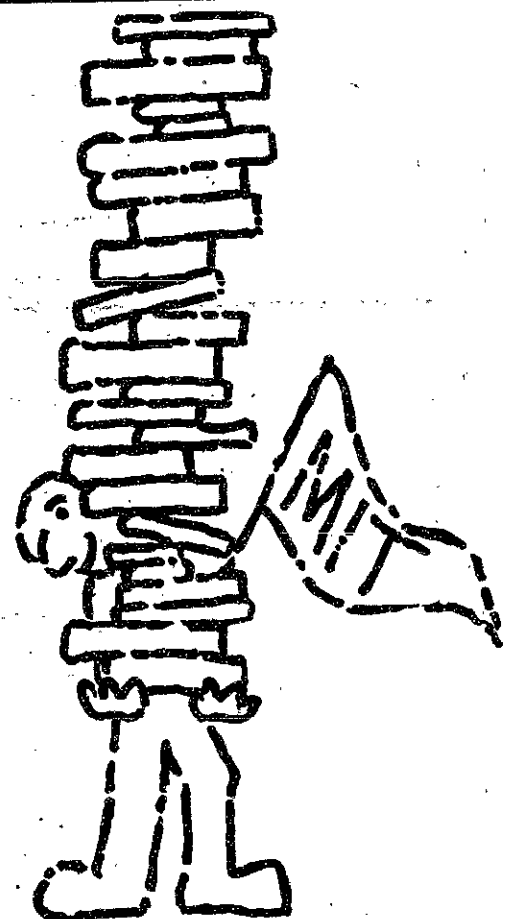
Active Voice is the best-selling manufacturer of Voice Processing systems that are hosted on PCs. We are based in Seattle and were founded by MIT graduates. We are seeking top thinkers/programmers in our Engineering and Quality Assurance departments. If you are interested, please call us at 1-800-765-8525 and make an appointment with Janice Evans for an interview on campus on Friday, May 10, 1991.

Go to JAPAN!  
A year of fun and excitement!!  
All expenses paid!!



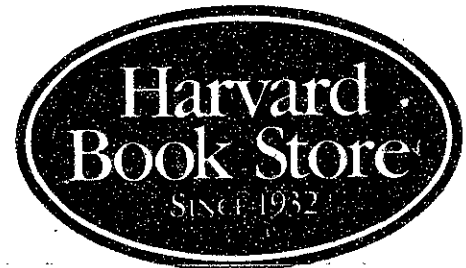
Orientation  
Wednesday, May 8, 5 pm, 20 Chimneys  
Japanese food and drink provided.  
For info, call 3-2839, MIT-Japan Program

**RESEARCH**  
Progenics Pharmaceuticals, Inc., a Westchester NY biotechnology company, seeks technicians and research associates. Research experience in molecular biology, protein chemistry, or cell biology preferred. Excellent salary and benefits. Send CV: P. O. Box 549 Tarrytown, NY 10591.



Cash in on your education right away

At Harvard Book Store, we pay top prices for used paperbacks and used textbooks. And we pay cash...immediately! See us today to cash in on your education right away!



1256 Mass. Ave., Cambridge (Harvard Square) • 661-1616  
Book Buying Hours  
9:30-5:30 Monday through Saturday

# sports

## MIT beats Babson, wins conference

By Adam Brook

On Thursday underdog MIT upset Babson 7-2 to win the Constitution Athletic Conference Baseball Championship Tournament. Consistent pitching by MIT ace Peter Hinteregger '93 and a complete loss of nerve by Babson in the seventh let MIT eliminate the league leaders.

This victory is the high point thus far in the Engineer's season, which has yielded a disappointing .250 win percentage in the Constitution league. Babson, with a .643 win percentage in the league, went into the game expecting an easy win over the MIT squad.

But Hinteregger kept the Babson bats cold with a low fastball and a sneaky changeup. The chilly wind and fine rain that threatened to delay the game didn't perturb Hinteregger at all.

"It was a fine day to pitch," said Hinteregger, claimed to be in his element on cloudy, dismal days. A tall, thin stick-figure on the mound, Hinteregger in his silver gray uniform blended in with the rain clouds that descended over Briggs Field.

And, Hinteregger acknowledged, having "timely hitting" can make any day nice. Hinteregger said, "The turning point in the game was MIT's five-run seventh inning."

Babson's star pitcher Mike Barra, who had a 1.84 ERA on the season and had allowed only seven earned runs all season long, kept the Engineers under control until the seventh, allowing just two runs in the fourth.

Sophomore Brooks Mendell opened the inning with a little single he hit just beyond Babson shortstop Ian Baxter's mitt. MIT captain Henry Dotterer '91 laid down a somewhat disappointing bunt right to Barra, who somehow seemed unable to pick the ball up. Mendell raced to second and Barra had to settle for throwing Dotterer out at first.

Facing freshman Jonathan Gass, Barra seemed to shake on the mound — perhaps from the cold wind that seemed to pick up as he started his windup. Gass lined the pitch straight back to Barra, but the ball bounced out of Barra's glove. Mendell reached third and Gass made it to first well ahead of shortstop Baxter's throw.

But Babson coach Paul Donato chose to keep his star pitcher in, even though Barra appeared to have lost his cool on the mound. Barra appeared to start his windup and then stop, turning his head to watch Gass leaving first, though no balk was called.

Barra then consecutively hit MIT batters Dan Paulsen '93 and John Mueller '94 — first loading the bases and then scoring Mendell, giving MIT a 3-2 lead. Still coach Donato kept Barra on the mound.

Scott Toussaint '91 laid down a nice bunt along the third base line as Dotterer ran home. Barra fielded the bunt and looked home but did not throw, as Dotterer was already there.

But Barra seemed transfixed, forgetting about Toussaint running towards first. By the time Barra's teammates could yell to Barra to throw to first, Toussaint was already there, safe.

But coach Donato kept Barra on the mound.

Dan Sabanosh '94 then hit a little bobbler that Babson shortstop Ian Baxter couldn't handle: Paulson ran home, and the bases

remained loaded for MIT freshman Ian Somerville.

"The guys, the middlefielders, were in. He hung a curve. I knocked it through my hands," Somerville said. He slapped the ball between shortstop and third base. "It was a cheesy hit actually."

Cheesy or not, it scored Mueller and Toussaint, and with the score now 7-2 put the Engineers well out of Babson's reach.

The high point of the game for Babson was a towering solo homer by freshman Dave DiGangi. "I just dinked it outta here," DiGangi said.

## Upcoming Home Events

### Tuesday, May 7

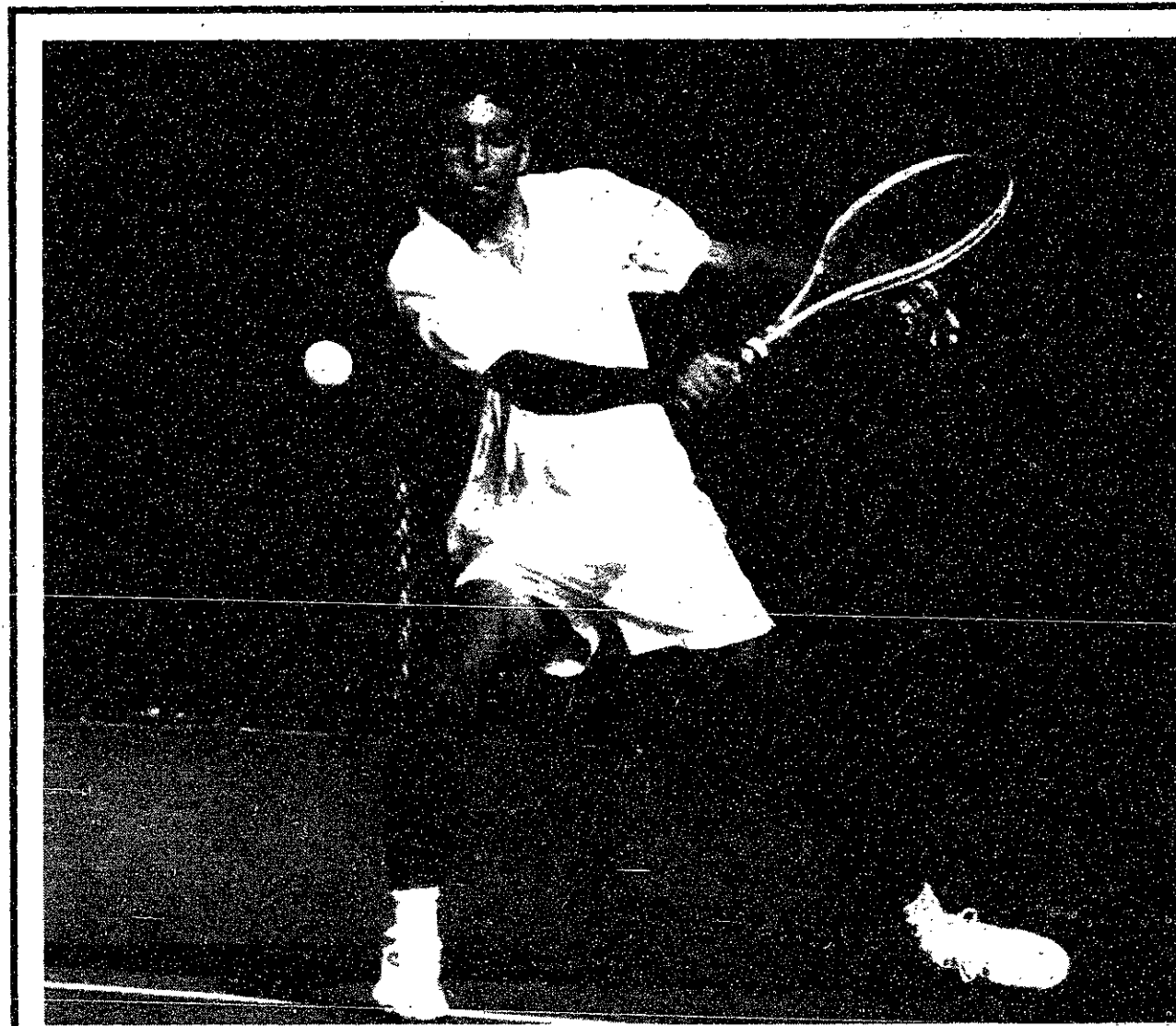
4:00 Baseball vs. University of Massachusetts, Boston

### Wednesday, May 8

4:00 Baseball vs. Harvard

### Friday, May 10

3:30 Lacrosse vs. Amherst



Number two singles player Manish H. Bhatia '93 has qualified for the individual championships in the NCAA Division III national championships, to be held next week in Los Angeles. For the first time, this year the men's tennis team qualified as a team for the championships.

## Engineers to go for NCAA championship

### Sports Update

#### Men's tennis team qualifies for nationals

The men's tennis team has qualified for the first time as a team for the NCAA Division III national championships which will be held May 13-19 in Los Angeles. The Engineers also qualified four athletes for the individual championships held in conjunction with the team event.

Top-ranked singles player Alexis Photiades '91 was the top seed from the New England region, while second single Manish Bhatia '93 also qualified. The number one doubles team of Ken Peng '92 and Alan Walpole '94 also qualified for the individual championship.

MIT captured the New England Division III championship last week with a 7-2 win over Amherst College. The two teams entered the match tied at the top of the New England rankings, with Amherst having won 24 consecutive matches over the past two years.

In the feature match Photiades defeated his opponent from Amherst in straight sets. Photiades, who is ranked 10th in the nation in Division III, upset Amherst's top singles player, who had been

sixth in the national rankings entering the match. The Engineers have raised their year long record to 15-5, with a 10-game winning streak.

#### Golfers end season with loss to Harvard

The golf team ended its spring season on Saturday with a loss to Harvard — a disappointing close to a tough season. The Engineers finished the season at 12-9, their 17th consecutive winning season.

"We were not scoring well. It has been kind of tough to get in a winning season," Coach Jack Barry said. "We were lucky enough that some of the other teams we played were not having up seasons."

MIT lost to Harvard on Saturday, 399-442. Bates finished third with 446.

Last Monday, the Engineers placed second behind Carnegie Mellon University at the Engineer's Cup. The medalist for the event was MIT captain Wataru Yamaguchi '92 who shot an 81.

The top three finishers were CMU 343, MIT 349 and Worcester Polytechnic Institute 369.

Barry hopes for a solid season next year, despite the loss of David Hailey '91 and T. J. Shea '91.

#### Women's novice crew team beats UConn

The women's novice crew team defended its crown for the fourth straight year last weekend at a meet in Worcester, MA.

The crew for the race was Anne Canaday, Megan Jasek '94, Tiina Hameenanttila '94, stroke Tracy Adams '94 and cox Candice Clug '94. The team finished first in the morning heats by 30 seconds, at 8:14. In the afternoon final the Engineers beat the University of Connecticut 8:12 to 8:17.

#### Robinson vaults to top

Freshman Matt Robinson was the only Engineer to come away from last weekend's New England Division III Championships with a first place finish. Robinson won the pole vault competition in the meet with a height of 14 feet, 3 inches. MIT placed second to Williams College in the overall competition.

#### Tomlinson ranked for scores, rebounds

The final NCAA Division III basketball statistics have recently been released, and senior Dave Tomlinson has earned a place on both the scoring and rebounding

## Outdoor Track at New England Div. III Championships

at Waterville, ME

100 meters - 1, Mann, Bridgewater St., 10.75; 2, Mark Dunzo, MIT, 10.82 (MIT record).

110 hurdles - 1, Burrell, Williams, 14.78.

200 meters - 1, Mann, Bridgewater St., 21.74; 4, Mark Dunzo, MIT, 21.97.

400 meters - 1, Smith, Williams, 49.0.

400 hurdles - 1, Guglielmo, Tufts, 54.58.

800 meters - 1, Wirth, Coast Guard, 1:55.21.

1500 meters - 1, Beitz, Williams, 3:56.89.

Steepchase - 1, Cullinane, Fitchburg St., 9:16.27.

5000 meters - 1, Beitz, Williams, 15:33.02.

10000 meters - 1, Thompson, Colby, 31:35.6.

400 relay - 1, Williams, 42.75; 6, MIT (Mark Dunzo, Dan Corcoran, Jay Chiang, Dan Rubenstein), 44.00.

1600 relay - 1; Tufts, 3:21.6; 3, MIT (James Kirtley, Dan Corcoran, Kevin Knoedler, Mark Dunzo), 3:23.5.

Discus - 1, Wheatley, Bates, 162'-4".

Hammer - 1, Lemol, RIC, 176'-6"; 2, John-Paul Clarke, MIT, 175'-2"; 6, Rob Flemming, MIT, 163'-9".

Javelin - 1, Malone, WPI, 180'-7".

High jump - 1, Johnson, Brandeis, 6'-7"; 3, James Kirtley, MIT, 6'-3"; 5, Tom Washington, MIT, 6'-3".

Shot put - 1, Thilbert, WPI, 50'-1"; 3, John-Paul Clarke, MIT, 48'-3".

Pole vault - 1, Matt Robinson, MIT, 14'-3".

Triple jump - 1, Mao, Bowdoin, 47'-2"; 2, John Tewksbury, MIT, 45'-10".

Long jump - 1, Mann, Bridgewater St., 23'-2 3/4"; 4, John Tewksbury, MIT, 21'-5 3/4".

Decathlon - 1, Neining, Coast Guard, 5969 points; 2, Garrett Moose, MIT, 5884.

1, Williams, 91; 2, MIT, 72; 3, Tufts, 67; 4, Coast Guard, 60; 5, WPI, 47; 6, Colby, 45; 7, Brandeis, 34; 8, Fitchburg St., 30; 9, Bridgewater St., 30; 10, Bates, 30.

## Erratum

An article on the awards for athletic excellence in last Friday's issue of *The Tech* contained an error ["Seven lauded for athletics"]. Mark Dunzo '91 won the 400 meters at last year's NCAA indoor Division III national championships, but he did not set an NCAA record in the event.

How Can You Help Prevent Birth Defects?

Support **March of Dimes** BIRTH DEFECTS FOUNDATION

This space donated by *The Tech*