

MIT likely to renew ARA

By Miguel Cantillo

Director of Housing and Food services Lawrence E. Maguire announced that MIT was likely to renew its contract with ARA Food Services. ARA has been with MIT since 1985.

According to Maguire, relations between MIT and ARA have improved steadily in recent months. Last October, there was considerable speculation as to whether MIT would continue its contract with ARA.

Maguire commended ARA's recent effort to act on student complaints on prices and food quality. "This effort shows the extent of ARA's commitment to MIT," Maguire said.

According to ARA Manager Alan Leo, ARA has responded to student complaints brought through the Undergraduate Association Ad Hoc Food Committee. This committee took a list of "necessary improvements" to

ARA last term.

UA President Paul L. Antico '91 claimed that students have expressed greater satisfaction with ARA since the UA met with them. Lines have shortened and the variety of foods has increased, he said. These improvements have been especially noticeable at Lobdell, Next House and McCormick, Antico added.

There remained some long term problems like the "excessive" minimum for the MIT house meal plan, and the feeling that the prices "are not in line with the quality of the food," added Antico.

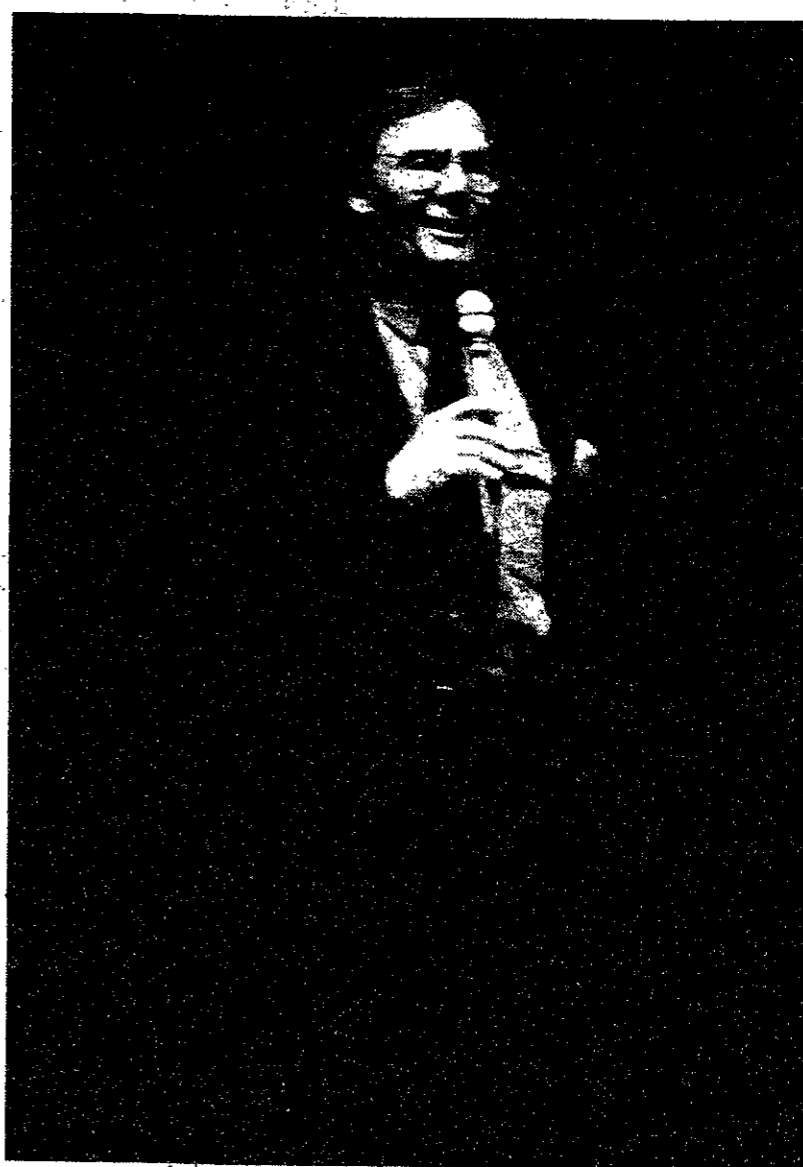
ARA took a student survey this fall, and, based on the results, decided to make available the nutritional information of certain foods. A follow-up survey is due this spring. Leo hoped that this interaction with students will improve ARA's standing in the MIT community.

Responding to student criticisms of ARA's high prices, Leo argued that although there had been pricing mistakes in the past, ARA was now very conscious of its pricing policy. He argued that the typical board charge for Boston area colleges was around \$2300 while MIT's board was only \$1400.

According to Leo, ARA prices are on a per item basis, unlike many programs in the area. Leo believed that ARA's prices were competitive, even below the average for most goods.

Leo favored the idea of expanding the "commons" system, so that Baker House would not be the only house on campus with such a system. (Under the commons system, students pay a fixed price for a meal, and receive an unlimited quantity of food.) However, Leo said he has not yet looked into the matter thoroughly.

Leo blamed some of ARA's pricing problems on the excess number of food facilities in Stratton Student Center. Some dormitory cafeterias and Walker Memorial have been particularly affected by the competition, he said.



Michelle Greene/The Tech
Adam West, the original Batman, at Kresge after a showing of his movie.

Thistle distribution hit by another attack

By Prabhat Mehta

Approximately 1300 copies of *The Thistle*, a publication of MIT's Alternative News Collective, were found destroyed early Tuesday morning, several hours after distribution in Lobby 7. Steven D. Penn G, a prominent member of *The Thistle*, said he found 500 copies thrown into the toilets and garbage cans of the room 7-107 men's bathroom near Lobby 7 and 800 hundred more in garbage cans nearby.

Jennifer Y. C. Huang '90, a member of the collective, said copies of *The Thistle's* "Science for the People" issue had been distributed at 5 pm Monday evening, with approximately 1600 copies going to Lobby 7. At approximately 1 am Tuesday, Andres Villarreal G, another member of the collective, passed by Lobby 7 and discovered that all of the issues were gone. He found some copies in the 7-107 bathroom, and proceeded to call Penn.

Penn and Villarreal found the rest of the issues, but only managed to salvage 300 from garbage cans. The issues in the bathroom garbage cans had been purposely soaked in water, Penn said.

(Please turn to page 13)



Kristine AuYeung/The Tech
Some of the 500 copies of *The Thistle* that were found in toilets and garbage cans of a men's bathroom near Lobby 7.

Corporation to meet today

By Reuven M. Lerner

The MIT Corporation is expected to spend much of today's quarterly meeting discussing their next step in the presidential search process.

When Biology Professor Phillip A. Sharp was nominated for the presidency on Feb. 14, many faculty and administration members agreed that he would most likely be approved by the Corporation. His withdrawal on Feb. 20 meant the Corporation had to choose between starting the

search from the beginning, or continuing from where they had left off. Walter L. Milne, an assistant to the Corporation chairman, said that "any option... that is reasonable within the parameters of the search" is a possibility.

The Executive Committee of the Corporation, which had originally recommended Sharp's nomination to the full Corporation, met yesterday to discuss the options available to them. Milne said the committee had discussed

the presidential search on the telephone, but added that yesterday was the first time they had met "around the table."

Milne acknowledged it was possible, although highly unlikely, that a member of the Corporation would nominate a candidate during today's meeting. "In theory," he said, "someone could nominate someone else for president at any meeting when the situation is as it is now."

The Corporation is also expected to extend the terms of President Paul E. Gray '54 and Corporation Chairman David S.

(Please turn to page 13)

Committee eases HASS-D constraints on languages

By Eun S. Shin

Level four language courses, previously grouped in the HASS-D category of Language, Thought and Value, have now been placed outside of the HASS-D structure. Under the new policy, students may petition to substitute level three or level four language courses to fulfill one of the three HASS-D requirements.

The new reform resolved an "intellectual conflict" within the HASS-D committee, according to Associate Dean of Humanities and Social Sciences Phillip S. Khoury. Some members of the committee had hoped to elevate level three language courses to HASS-D standing in an effort to encourage student participation.

"Although good arguments were proposed by some members," they were unable to convince the committee, "on intellectual grounds," that level three language courses deserve official recognition in the HASS-D system, Khoury said.

However, the committee gave students the option to substitute a language course for HASS-D credit by petition, as long as they did not fulfill the requirement with other language-related courses.

FLL seeks new head

More changes are expected in the Foreign Language and Literature section as the search for a new head continues, Khoury said. Dean of Humanities and Social Sciences Ann F. Friedlaender, acting FLL section chairperson, recently announced that she will step down from her post as dean on June 30. She will return to teaching and research in the Economics Department, she said.

According to Khoury, the new head is expected to come from outside MIT.



Tech file photo
David S. Saxon '41

inside

Nine months of construction will conclude in May, when an addition to Rotch Library is finished. **Page 2.**

* * * * *

The Coalition Against Apartheid plans to demonstrate today for MIT to divest from South Africa. **Page 2.**

* * * * *

Sophie Calle explores her native Paris in photographs on exhibit at the Institute for Contemporary Art. **Page 9.**

* * * * *

Sean Connery is a Soviet commander trying to defect to the United States in *The Hunt for Red October*. **Page 8.**

Addition to Rotch will provide necessary space

By Mauricio Román

After nine months of "fast-track" construction work, the addition to Rotch Architecture Library will be finished by the end of May, according to Director of MIT Libraries Jay K. Lucker. The addition is the backbone of a \$6.5 million project to enhance and renovate the library.

When the addition is finished, the renovation of the old library building will begin. The enhanced library will be ready for operation by the beginning of the fall semester, Lucker said.

Rotch Library, which now occupies two levels in Building 7, has been in desperate need of renovation for 15 years, Lucker said. More than one third of the library's book and art collection, which is regarded as one of the top two in the nation, is stored off campus. Many books in the library, which is not air conditioned, are deteriorating because of humidity.

and interior finishes remain to be done.

Library operations have been minimally disrupted, Rotch Librarian Margaret E. De Popolo said. Noisy drilling on the walls of the library has been done on weekends, De Popolo said.

In June, library facilities in the present building will be moved to the addition. When the renovation of the existing space is completed, facilities will be moved back and books currently in storage will be put in the addition.

Funding efforts continue

The "Rotch" name would no longer apply to the architecture library if a "naming donation" of at least \$2 million were obtained, Deborah J. Cohen, assistant dean for development in the School of Architecture and Planning, said. In any case, the "Rotch" name — in memory to the first contributor to the library — will be retained for the new

project and regarded it as an "academic priority of extraordinary importance," de Moncheaux said. "I am committed to raise as much money as I possibly can," he added, "[in order] to reduce the burden on MIT." There was no deadline for the fundraising efforts, but "it is MIT's experience that once a project is finished it is more difficult to raise funds," de Moncheaux said.

"It is hard to raise funds for libraries," Cohen said, "especially in MIT's case, where libraries are centralized and alumni feel more attachment to their departments than to the libraries," she added. The School of Architecture and Planning is mailing letters to all of its alumnae asking them for contributions to the project.

Besides the \$2 million required to name the library, there were other naming opportunities, Cohen said. For example, for \$450,000 a donor can name the limited access area; for \$50,000, a reading oasis; for \$1000, a BARTON workstation; and for \$500, a book truck.

Unusual structural design

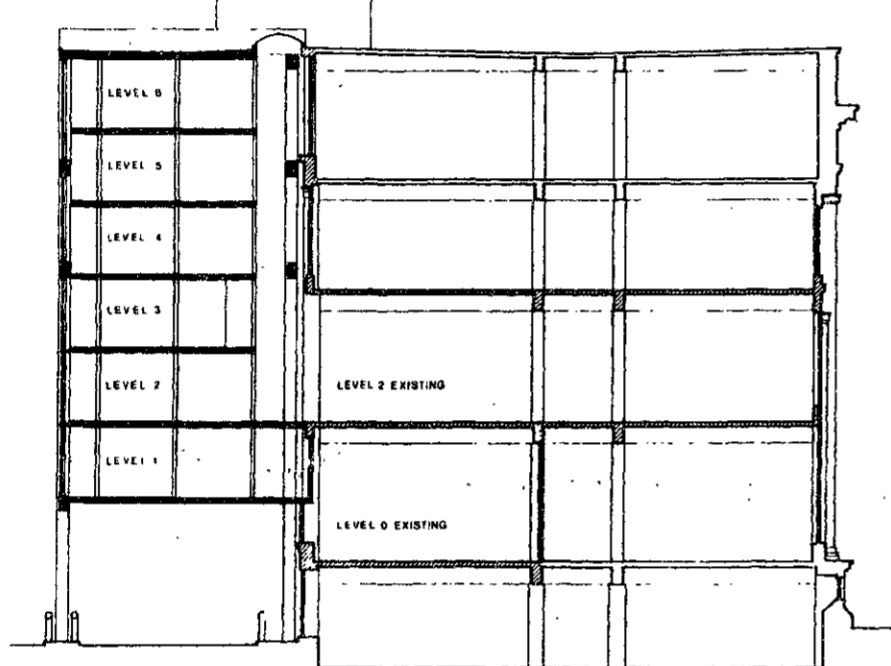
Due to site and dimensional constraints, the building's structural system is essentially inverted. The six floors are "hanging" from the top rather than being supported from the bottom. Perimeter columns hold enormous girders on the top of the structure. These girders support hangers, which in turn support the floor slabs.

Since the inner courtyard onto which the library is being expanded serves as truck access for deliveries, the bottom floor of the building had to be elevated 18 feet above the ground. An additional problem was created by the need to maximize area in a limited space. According to local building code the height of the addition cannot exceed that of the existing building.

The solution proposed by Simpson Gumpertz & Heger, the project's structural engineers, was to provide a column free interior by suspending the six floors from the roof. The hangers supporting the floor slabs do not consume valuable floor space as they fit between bookstacks.

Further complicating the project were the perimeter columns, which were placed 15 feet from each other and did not leave enough room for trucks to turn around. To accommodate the trucks, two of the columns were divided at the fourth level into an "A" shape.

(Please turn to page 13)



SECTION

The existing building will be connected to the addition through the second floor only. A glass-enclosed atrium joins the remaining levels. The only entrance to the library is through the second level.

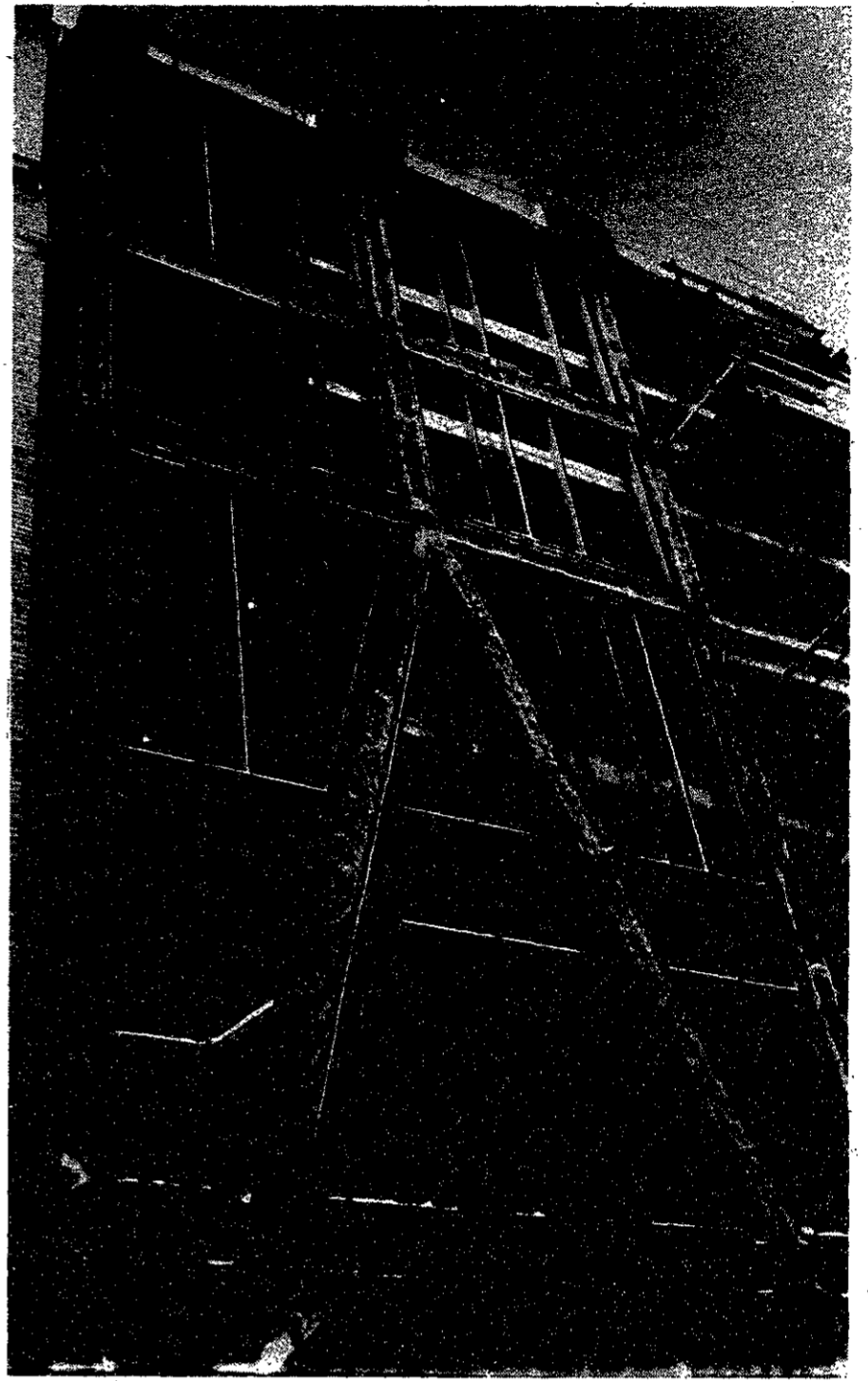
The project includes renovating the existing space, adding 22,000 net square feet by expanding into the adjacent courtyard, and improving the environmental conditions. This will result in a tripling of space in the library. The library's seating capacity will increase from 30 to more than 130 students.

Construction began in March 1989 but foundations were not poured until July, Lucker said. The steel structure was then erected, and the concrete slabs poured. Work is being done on the facade, but partition walls

library's reading room, Cohen added.

The School of Architecture and Planning and the MIT libraries are conducting a joint effort to raise funds for the project from external sources. According to Jean P. de Moncheaux, dean of the School of Architecture and Planning, a target of at least \$3 million has been set. So far, \$300,000 have been raised, mostly from two donors who wish to remain anonymous, Cohen said.

For the time being, MIT is financing the project in its entirety. The Institute was committed to



Mauricio Román/The Tech

The front facade of the Rotch Library addition

Anti-apartheid groups challenge Corporation

By Chitra K. Raman and Brian Rosenberg

The Coalition Against Apartheid plans to demonstrate against MIT's continued investment in companies doing business in South Africa during today's meeting of the MIT Corporation.

MIT pro-divestment groups had hoped to present their views to the trustees directly, but their request to speak at the meeting was refused.

"A lot of people would like to present their views directly. The logistics simply do not permit this," said Walter L. Milne, special assistant to the chairman of the Corporation.

CAA member Ron W. Francis G reacted angrily to the Corporation's stance. "To try to speak when your voice is already not really known and then to be told that you cannot come to the meeting is really appalling," he said.

Two weeks ago, the CAA, the Black Students Union and the African Students Union asked that the issue of South African divestment be put on the Corporation agenda. Both President Paul E. Gray '54 and Corporation Chairman David S. Saxon '41 refused to do so, according to a coalition press release.

Saxon said that the issue of divestment, will be addressed by the Corporation's executive committee this spring. An advisory committee, the Shareholder's Committee, is to completely review MIT's divestment policy. "The issue is one of pace," Saxon said. "We regard the pace as appropriate. They [the coalition] do not. It is on the agenda, but it's on our time scale."

Three CAA members presented skits on Wednesday and yesterday dramatizing their view of the current situation. The skits por-

trayed Gray as easily influenced by corporate dollars. "[The skits] tried to bring the situation to people's attention," Francis said.

According to Francis, the coalition collected 1300 signatures calling for MIT's complete divestment from South Africa-related firms during the CAA's recent petition drive. "With popular support like that, we shouldn't be shut out [of the meeting]," he said.

The coalition, the BSU, and the ASU plan to continue to press the Corporation to meet with them on matters of divestiture. "The administration just needs the same pressure [to divest] as Coca-Cola, Shell, and others," said BSU representative Jason P. Vickers '90.

"The pillars of apartheid are still in place, and by the very fact that the administration does not support divestiture," Francis said, "it is unable to support the cause of the black South African people."

Saxon believes divestment as such will not have any real consequences on events in South Africa. "Nobody has persuaded me that it has a contributing effect to ending apartheid in South Africa," he said.

Government sanctions, on the other hand, have had a significant role, according to Saxon, and he is in favor of the US government imposing them.

Francis asserted that many Corporation members oppose divestment because of their personal stakes in South African investments. "MIT's holdings in companies that do business in South Africa indicates approval of their policies. The Corporation's decision shows that they value economic relations more than the political value of pulling out," he said.



Lerothodi-Lapula Leeuw/The Tech

Members of the Coalition Against Apartheid Mark A. Smith G '92 (left) and Cinthia R. Evanko '92 (right) perform a skit in Lobby 7.

news roundup

from the associated press wire

World

Ortega says contras must disband

The contra rebels could hold the key to the pace of transition in Nicaragua: Nicaraguan President Daniel Ortega spelled out his demands for a smooth transition in a speech to a crowd of cheering supporters. Ortega, who lost Sunday's election to opposition leader Violeta Chamorro, has demanded that the US-backed contra rebels be disbanded.

Congressional leaders met with President George Bush Wednesday to chart a new strategy for dealing with Nicaragua, a nation that has long been considered a US adversary. Bush indicated change in US policy regarding Nicaragua would be dramatic and swift, according to Senator Alan Cranston (D-CA). However, the White House meeting came before Ortega's headline speech.

Not everyone in Central America is applauding the apparent demise of the Sandinistas at the ballot box. Salvadoran leftist guerilla leaders issued a statement Wednesday deploring what they called the adverse results of Nicaragua's election. The Salvadoran and US governments have long accused Nicaragua of supplying weapons to the Salvadoran rebels.

Nation

Grand jury indicts Exxon on five counts

A federal grand jury in Alaska handed a five-count indictment against Exxon and its shipping subsidiary in connection with last year's massive oil spill, Attorney General Dick Thornburgh said at a news conference Wednesday. The message was that environmental crimes will not be tolerated, Thornburgh explained. The indictment was presented by the grand jury after a proposed plea deal fell through, but Thornburgh said he was not ruling out the possibility of a deal in the future. If Exxon is convicted on all counts, criminal fines could total as much as \$1.6 million.

Assistant Attorney General Dick Stewart said the indictment accused Exxon and the subsidiary of two felonies and three misdemeanors. The company is charged with violating a regulation prohibiting any person from being engaged on a crew if that person is known to be physically or mentally incapable of performing his duties.

Joseph Hazelwood, captain of the tanker, faces criminal charges in a separate action in Alaska. He is accused of being drunk and letting his ship get away from him. Exxon also stands accused of violating the Clean Water Act, unlawfully discharging oil and violating the Migratory Bird Treaty Act.

Mandela visits Zambia

The African nation of Zambia Wednesday celebrated Nelson Mandela Day, a national holiday, as the black nationalist leader arrived in Lusaka to a hero's welcome. It is the first time Mandela has been outside South Africa in 28 years. During his six-day visit, he will meet with exiled members of his African National Congress, which is headquartered in the Zambian capital.

Local

Seabrook gains license

The Nuclear Regulatory Commission granted a full-power license yesterday to the Seabrook Nuclear Power Plant. The NRC approved the license by a 3-0 vote, but will delay issuing it until the expected appeals can be filed in federal court. Two of the five members of the NRC board abstained from the vote because of previous involvement in Seabrook.

Massachusetts Governor Michael S. Dukakis claimed the NRC placed nuclear industry interests above the safety of the people who live near the Seabrook plant. The Massachusetts border lies just two miles from the plant, which is located in New Hampshire. Dukakis said Massachusetts Attorney General James Shannon plans to challenge the licensing in federal appeals court.

Consumers in New England will now face utility rate hikes to pay for the \$6.5 million plant, Dukakis said. He also said that President George Bush's support for Seabrook during the 1988 presidential campaign and the subsequent actions of his administration helped the plant gain its license. Massachusetts Senator John F. Kerry (D) accused the NRC of being the "Nuclear Booster Commission" and vowed to continue to battle the plant.

Controversy brews over Indian election

The Bureau of Indian Affairs said it will not get involved in the recent Narragansett Indian tribal election, despite claims by the ousted Chief Sachem that there were "irregularities." A spokesman for the bureau said the matter was an internal one within the tribe and that the federal agency recognized the people who were elected as the new tribal government.

The so-called traditional faction, led by George Hopkins, defeated a council headed by Kenneth Babcock in a January election. Earlier this month, Babcock and members of the ousted council called William Ott, area BIA director, and asked him to intervene and investigate the manner in which the election results were handled.

Sports

NC State players accused of point-shaving

Four members of the North Carolina State basketball team, including star center Charles Shackleford, have conspired to fix the scores of up to four Wolfpack games, according to ABC television reports. The network said inside sources, including an unidentified teammate, have reported that a New Jersey gambler paid Shackleford and three other Wolfpack players as much as \$1000 dollars per game.

Robert Kramer, cited by ABC as the mastermind of the conspiracy, has denied any point shaving. And the agent for Shackleford, who now plays for the National Basketball League's New Jersey Nets, said his client did not shave points. NC State coach Jim Valvano has denied any knowledge of a conspiracy.

Weather

Spring for a day — again

Warm southwesterly winds will boost temperatures to well above normal today before the passage of a cold front. After the passage of the front, northwesterly winds will advect colder air through the region. The front will stall along the East Coast tomorrow morning as an upper level disturbance approaches from the west. A small cyclone will develop on the front and threaten eastern sections of southern New England with some rain and snow.

Friday afternoon: Increasing clouds and mild. High 48-54°F (9-12°C). Winds from the southwest at 10-25 mph.

Friday night: Cloudy with scattered showers. Wind shifting north then northwest at 15 mph. Low 35°F (2°C).

Saturday: Cloudy and colder with the chance of a period of rain, possibly mixed with snow. High 37°F (3°C). Low 25°F (-4°C). Wind north to northeast 10-20 mph. Precipitation ending late followed by some clearing.

Sunday: Mostly sunny and cold. High 34°F (1°C). Low 20°F (-6°C).

Forecast by Michael C. Morgan

Compiled by Linda D'Angelo and Brian Rosenberg

"...hair is holy"

Euripides

"Mystery is the essential element in every great work of art"

Luis Buñuel

Student Center Room 307 March 20 7 PM

FINE TUNE IT! You demand the savings—your bike deserves the best!

Visit our complete Service Dept. for a FREE bike inspection. Our mechanics are certified by Nashbar, USCF, Campagnolo, and the Barnett Institute. STOP IN FOR DETAILS!

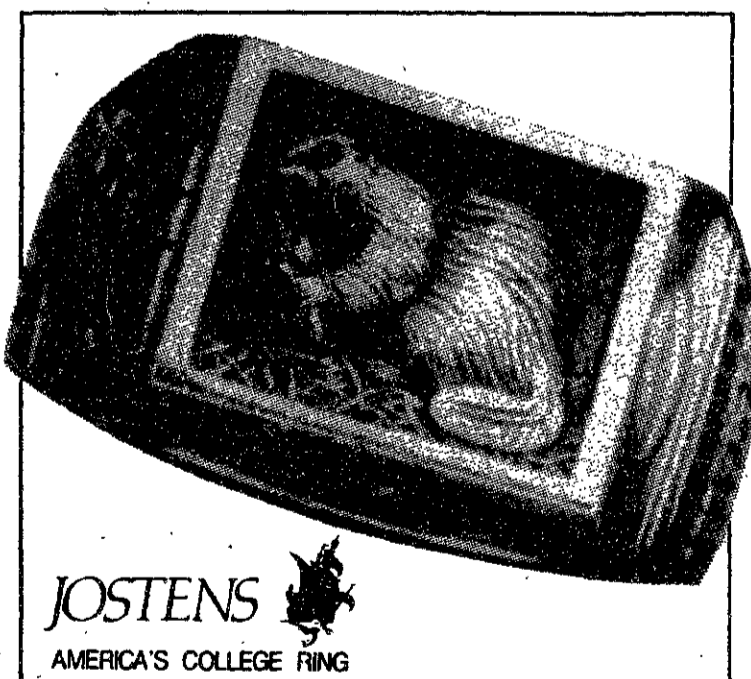
\$19.95 Basic Tune-Up
\$69.95 Major Tune-Up
\$119.00 Overhaul*
 *Prices reflect coupon offer.

444-6118 bike nashbar
 26 Wexford Street, Needham, MA
 MON-FRI 10am to 8pm • SAT 9am to 5pm

\$5.00 OFF ANY TUNE-UP OR OVERHAUL WHEN YOU BRING THIS AD IN.
 VALID IN-STORE ONLY WITH THIS AD. EXPIRES 3/31/90



The Savings Are As Good As Gold!



JOSTENS
 AMERICA'S COLLEGE RING

Jostens' Ring Days
 At The MIT
 Coop At Kendall
 March 7-9, 11AM-4PM

\$75 OFF 18K
\$50 OFF 14K
\$25 OFF 10K

Jostens Ring Days offer you a golden opportunity to enjoy truly substantial savings on your class ring. MIT rings are available for undergraduates, graduate students and alumni.

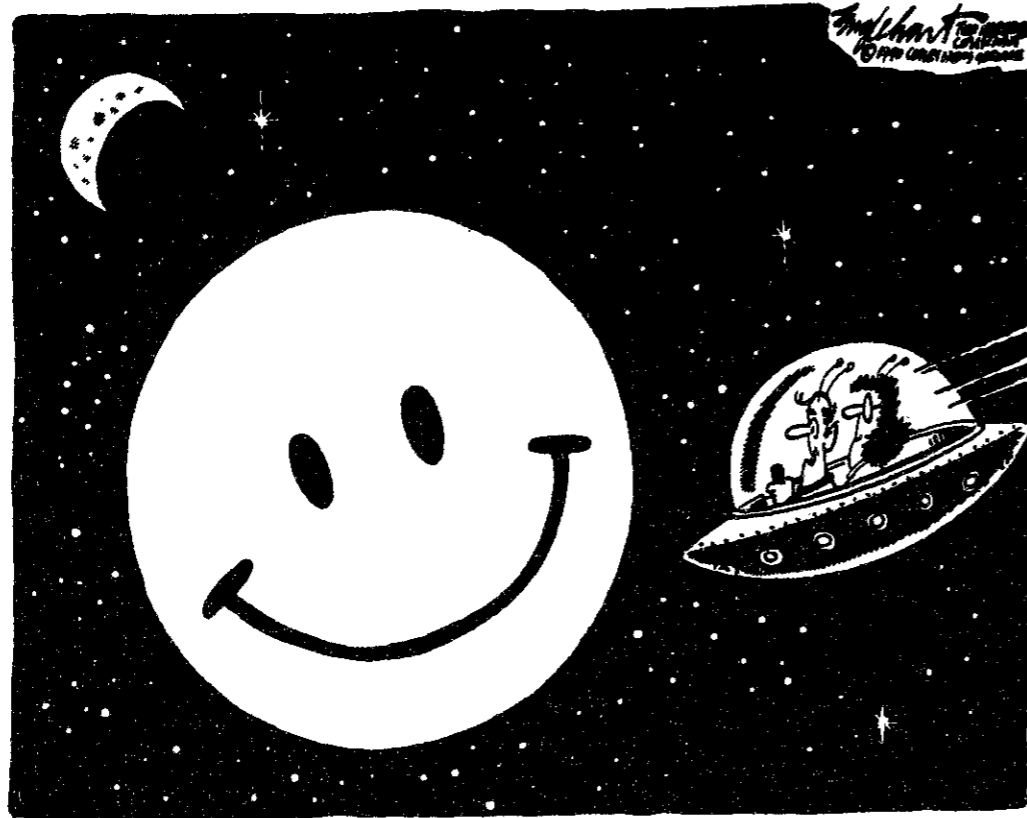
Lifetime Golden Warranty

- > Resize your ring at any time FREE
- > Replace or repair any defects in materials or workmanship in either a simulated stone or ring FREE
- > Change curriculum or graduation year FREE

MIT COOP
 3 CAMBRIDGE CENTER
 M-F 9:15-7 THUR 'TIL 8:30
 SAT 9:15-5:45

the Coop

opinion



"THE COLLAPSE OF COMMUNISM, THE REUNIFICATION OF GERMANY, PEACE BETWEEN THE U.S. AND RUSSIA... WHY, I HARDLY RECOGNIZE THE PLACE!"

BASEBALL OWNER CARDS



STATS
 NAME: HARLAND T. HANGBOTTOM
 PROFESSIONAL EXPERIENCE: SOLD
 100 HOOBS AT DODGERS GAMES 26-27
 TEAM STATS:
 STRIKES: 2
 LOCKOUTS: 6
 WALKOUTS: 14
 SALARY: \$40,000,000 PER YEAR
 BENEFITS: GOOD SEATS, CAN TAKE
 HOT DOGS WITHOUT ASKING.
 MOTTO: I'D BE NOTHING WITHOUT
 THE FANS!

The Tech

Volume 110, Number 9

Friday, March 2, 1990

Chairman Deborah A. Levinson '91
Editor in Chief Prabhat Mehta '91
Business Manager Russell Wilcox '91
Managing Editor Marie E. V. Coppola '90
Executive Editor Linda D'Angelo '90

News Editors Annabelle Boyd '90
 Andrea Lamberti '91
 Reuven M. Lerner '92
Night Editor Daniel A. Sidney G
Opinion Editor Michael J. Franklin '88
Sports Editor Shawn Mastrian '91
Arts Editor Peter E. Dunn G
Photography Editors Kristine AuYeung '91
 Lerothodi-Lapula Leeuw '92
Contributing Editors Jonathan Richmond G
 Niraj S. Desai '90
 Irene C. Kuo '90
 Lisette W. M. Lambregts '90
 Lois Eaton '92
Advertising Manager Mark E. Hasetline '92
Production Manager Ezra Peisach '89
Senior Editor Genevieve C. Sparagna '90

NEWS STAFF

Associate News Editors: Joanna Stone '92, Brian Rosenberg '93, Katherine Shim '93; **Staff:** Neil J. Ross G, Joan Abbott '90, Anita Hsiung '90, Miguel Cantillo '91, Seth Gordon '91, Adnan Lawai '91, Chitra K. Raman '91, Gaurav Rewari '91, Aileen Lee '92, Karen Kaplan '93, Michael Schlamp '93, Cliff Schmidt '93; **Meteorologists:** Robert X. Black G, Robert J. Conzemius G, Michael C. Morgan G, Greg Bettinger '91, Yeh-Kai Tung '93.

PRODUCTION STAFF

Associate Night Editors: Kristine J. Cordella '91, David Maltz '93; **Staff:** David E. Borison '91, Lawrence H. Kaye '91, Jonathon Weiss '93.

ARTS STAFF

Staff: Frank Gillett G, Mark Roberts G, Manavendra K. Thakur '87, Michelle P. Perry '89, Peter Parnassa '90, Paige Parsons '90, Paula Cuccurullo '91, David Stern '91, Alfred Armendariz '92, Sande Chen '92, Alejandro Solis '92.

PHOTOGRAPHY STAFF

Associate Photography Editor: Sean Dougherty '93; **Staff:** William Chu G, Frank Espinosa G, Andy Silber G, Ken Church '90, Mark D. Virtue '90, Sarath Krishnaswamy '91, Georgina A. Maldonado '91, David H. Oliver '91, Mauricio Roman '91, Marc Wisnudel '91, Jonathan Kossuth '92, Douglas D. Keller '93, Wey Lead '93, Matthew Warren '93, Jeremy Yung '93; **Darkroom Manager:** Ken Church '90.

FEATURES STAFF

Christopher R. Doerr G, David J. Kim '91, Taro Ohkawa '91, Chris M. Montgomery '93.

BUSINESS STAFF

Delinquent Accounts Manager: Jadene Burgess '93; **Advertising Accounts Manager:** Shanwei Chen '92; **Staff:** Ben Tao '93.

PRODUCTION STAFF FOR THIS ISSUE

Night Editors: Peter E. Dunn G
 Marie E. V. Coppola '90
Staff: Daniel A. Sidney G, Prabhat Mehta '91, Reuven M. Lerner '92, Brian Rosenberg '93.

The Tech (ISSN 0148-9607) is published on Tuesdays and Fridays during the academic year (except during MIT vacations), Wednesdays during January, and monthly during the summer for \$17.00 per year Third Class by The Tech, Room W20-483, 84 Massachusetts Avenue, Cambridge, MA 02139-0901. Third Class postage paid at Boston, MA. Non-Profit Org. Permit No. 59720. **POSTMASTER:** Please send all address changes to our mailing address: The Tech, PO Box 29, MIT Branch, Cambridge, MA 02139-0901. Telephone: (617) 253-1541. FAX: (617) 258-8226. Advertising, subscription, and typesetting rates available. Entire contents © 1990 The Tech. The Tech is a member of the Associated Press. Printed by Charles River Publishing, Inc.

LETTERS TO THE EDITOR

Attack on *Thistle* deserves condemnation

In the past year, we have clearly heard peoples' eloquent cry for freedom and democracy around the world. At such an inspiring historical moment, it is both depressing and outrageous to see some individuals curtail these very same freedoms in our own community. In an university committed to the ideal of greater enlightenment, everyone must cherish and respect the basic freedom of free speech. We are thus thoroughly disgusted by and totally condemn the recent assaults on the MIT newspaper *The Thistle*.

On numerous occasions over the past six months stacks of papers distributed in Lobby 7 have been attacked, often only hours after they were distributed. Bundles of *Thistles* have been removed and whole stacks of papers destroyed. In the latest assault on Monday, Feb. 26, a stack of 800 papers was thrown into a Lobby 7 garbage can. An-

other bundle of 500 papers was taken to the men's bathroom outside Lobby 7. One stack was jammed into the toilet and the remainder were soaked in water and thrown into the trash can.

That some people disagree with the views expressed in our newspaper affirms that there is a healthy plurality of opinions at MIT. That some individuals would deign actively and illegally to censor us and suppress our newspaper indicates that there is a dangerous level of intolerance at MIT.

The Thistle is a newspaper. We are a forum of ideas and information. What idea was so dangerous that it had to be answered through violent retribution rather than public discourse? Though in the past we have written on more emotionally-charged subjects, it is our latest issue, dedicated to the social implications of technology, that suffered the harshest

treatment.

Through these acts, a self-righteous few seek to determine what ideas are allowable for the entire community. They raise before us the specter of censorship which has haunted our society throughout history and against which the freedom movements of the past year have fought so steadfastly.

Abrogating the freedom of one press is not just an attack on a single newspaper, but an assault on the entire community's ability to access a wide range of opinion and fact. This act has no place in a community dedicated to the free exchange of ideas. We therefore call on the MIT community to join us in unreserved condemnation of those who would perpetrate such injustice.

Steven Penn G
and five others
*The Alternative
News Collective*

Vandalism undermines constructive discussion

This morning, while walking down the Infinite Corridor, I had the misfortune of coming across a miscreant in the process of vandalizing some posters. Many readers may have seen this person's work. The posters, which had been put up by MIT Students for Israel, asked why the Palestine Liberation Organization had not changed its charter if it was really interested in peace.

Our "friend's" addition to the poster was, "Israel is Apartheid," scribbled in bright red marker across the front of the poster, much in the manner of a "Today!" notice. When I asked the mad scribbler to please stop vandalizing the posters, he told me that he just wanted to let people know the truth. I reminded him that he could just as effectively let people know the truth by putting up his own posters; his response was that it was more cost-effective to convey his message on other people's posters. I tried to remind him that vandalism was wrong, but his response was that so was blowing up people's houses, and so was deporting people.

We are at MIT, not in Israel or the occupied territories. At MIT, the issues related to the Middle East are (believe it or not) more or less academic, not a matter of life and death, nor a matter on which our actions here will have a palpable impact. Thus, debates thereon should be fought cleanly

and legally, not with petty, stupid acts such as vandalism.

If we were in Israel, if we were in the occupied territories, if we were a family whose olive ground had been uprooted or whose factory had been confiscated, a case might be made for the necessity of illegal actions against the authorities for lack of effective alternatives. But we are not, and those who disagree with MITS are not in a life-and-death struggle with the authorities, and thus vandalism and other illegalities have no place.

If this argument about means stirs no understanding, let me address ends. What did our vandal think he was accomplishing by vandalizing the posters? Did he think that scribbling "Israel is Apartheid" would have any effect upon people's thinking about the issue?

Those who disagreed or agreed would continue to do so; the majority in the middle would be completely repulsed by our friend's tactics and would be inclined to be more receptive to the message of the MITS poster — that the untrustworthy PLO would stop at nothing to accomplish its goals.

Those with some understanding of the issue, including those who sympathize with the Palestinians' plight, would of course know that the slogan "Israel is Apartheid" contains little truth, as Israeli Arabs are voting citi-

zens of the State of Israel, as there are Arab members of the Israeli Parliament, and as Arabs consist of only about 10 percent of the total Israeli population. (Most people would agree, I think, that the most monstrous quality of apartheid is its disenfranchisement of 80 percent of the South African population.)

Of course, discrimination exists in Israel, is reprehensible, and should be eliminated, and one must agree that the situation in the occupied territories (which are NOT a part of Israel) is wretched and full of injustice; I am only saying that "apartheid" is not an appropriate term, and its use serves only to inflame the passions of interested parties. If our vandal disagrees with this, he has every right to do so. But if he is trying to win others over to his views, rather than isolate himself politically and socially, he has chosen the wrong tack.

I hope that the marking maniac will pause to consider some of the thoughts in this letter. His sense of the injustices that the Palestinians have suffered might actually do them some good, if it were properly channeled in a way that would win the respect and concurrence of others. Until he learns some of the basic lessons of civilized behavior, though, I am afraid that his anger will do no good either for the Palestinians or for himself.

Bob Grossman G

opinion

LETTERS TO THE EDITOR

Poster shredding opposes standards of free speech

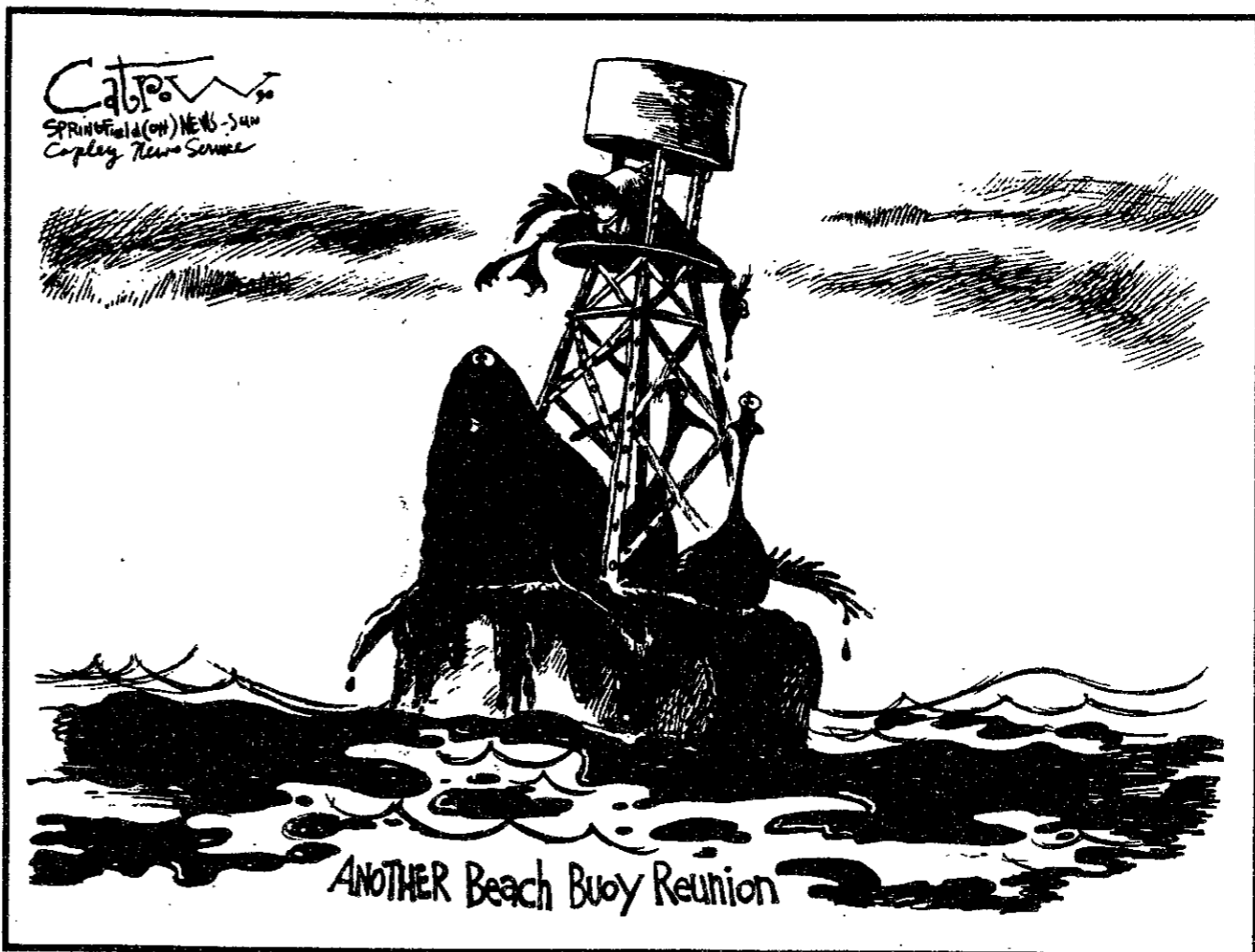
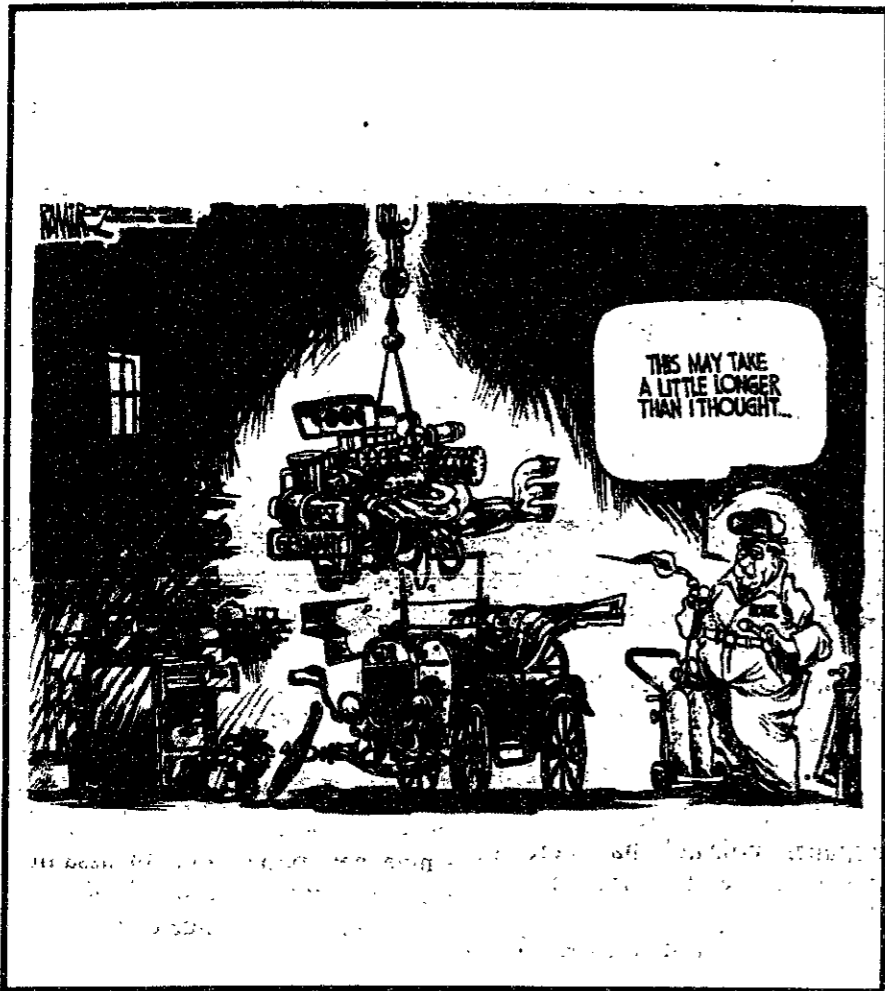
I was very distressed to discover that over the course of this week, an entire series of posters (600 of them, to be precise) were ripped down. These posters were advertising a lecture by Israel Shahak, speaking on human rights violations in the Occupied Territories.

What is most distressing is the malicious nature in which these posters were shredded to pieces. I find it offensive and frankly frightening to see how vicious the offenders were in disrupting the rights of others. One would hope

that in the superior intellectual atmosphere of an academic institution such as MIT's people would refrain from such immature acts and respect the existence of others.

I cannot think why the posters were so offensive to those who tore them down. It was merely announcing an event, a lecture on violations of human rights that would be of interest to the general MIT community. I am shocked and offended at what I have witnessed.

Rudayna Abdo '90



Nermal shows insensitivity to reality of apartheid

When reading *The Tech* comics section, one runs the necessary risk of having one's aesthetic sensibilities assaulted. Friday, I ran this risk and got the added bonus of having my intelligence insulted.

Apparently the author of *Nermal* gives as little thought to his political opinions as he gives the artwork. The Sullivan Principles (which he seems to know inside-out) and the principle of constructive engagement are lame rationalizations used to justify US corporate support for apartheid. No doubt Coca-Cola does

not mind being labeled "one of the most progressive companies in South Africa," [*Nermal*, Feb. 23] but could we stop and think about what that means? Doing business in South Africa means reaping the benefits of the barbaric social and economic segregation that exists there. If most of Coca-Cola's South African employees are black, what do you think they are being paid? Do you believe everything you read?

Sanctions work. Why were they appropriate for Nicaragua (to affect election results) and

Panama (to weaken resistance to a US invasion), but not for South Africa, where the human rights situation is far worse? To those who say that pulling out of South Africa would hurt black South Africans more than whites, the answer of the African National Congress and other reform groups has been "hurt us, please!" The only way to encourage reform in South Africa is to apply economic pressure through trade sanctions. The only way to make US corporations apply this pressure is to alter our consumption of their products.

Joel J. Gwynn '89

Abusive literature from MEM hides behind pseudo-shield of satire

(Editor's Note: The Tech received a copy of this letter addressed to Associate Dean for Student Affairs James R. Tewhey.)

Opposition to the reactionary group Women Exploited by Abortion is the stated purpose of the MIT student group known as Men Exploited by Masturbation, as taken from the *Strategies for Mass Resistance* National Conference publication, Dec. 2-3, 1989. This conference was sponsored by *Refuse and Resist*, the national group responsible for the December vandalism of St. Patrick's Cathedral in New York.

We, as MIT Pro-Life, are writing you this letter in protest to the continued recognition of MEM, a group whose stated purpose is to specifically oppose another campus group. Their persistent harassment of MIT Pro-Life is certainly unacceptable within the regulations of recognized MIT student groups.

This group has taken several pieces of the literature distributed by our group, distorted it, and placed it on display in the Infinite Corridor. When MEM first posted this distorted literature last fall, several members of MIT Pro-Life approached me asking if we were responsible!

Understandably, these individuals did not want to be involved in an organization which would create such an obscene exhibit. MEM's actions are not only an embarrassment to the members of MIT Pro-Life, but to the entire MIT community as well. Both Physical Plant and the Campus Activities Office were flooded with complaints and

phone calls when the MEM display first went up last fall.

Allow us to address the issue of what harassment really is, and the atrocious double standards which permit this offensive group's continued recognition. Last fall, an anonymous group calling themselves HAMIT publicly displayed an offensive and defamatory drop poster in Lobby 10 which ridiculed homosexuals. There was public outcry over this action, and the entire MIT community agreed that this constituted harassment. If this group had requested official recognition as an MIT student group with the purpose of ridiculing and opposing homosexuals, would they receive such recognition?

The purpose of MEM and the nature of their expression behind the Infinite Corridor panel is identical to that of the anti-homosexual group, except that this time the attack is directed at those who hold a pro-life stance rather than at homosexuals! There is absolutely no difference except that one group is anonymous and the other is granted all the privileges of an MIT student organization.

In a column protesting the anti-homosexual display ["Attacks threaten sense of community," Nov. 3, 1989], Rebecca D. Kaplan '92 pointed out that if HAMIT were to form an official student group, they would then be "constrained by the same regulations under which all groups who do not hide behind anonymity must work, [such as] regulations about what can be said on posters, and accountability." Is this in fact the case? Our observations indicate that MEM is not held account-

able for the content of the material placed on display in Lobby 10.

As additional confirmation of the true purpose of MEM, we cite an article in the Oct. 1989 issue of *The Thistle* written by a member of MEM. The writer states that the group "uses satire to expose both the logical fallacies and misogynistic world view of Pro-Life." The use of the word "satire" could seemingly be a legal loophole for any group which wants to be abusive.

Let us restate exactly what MIT defines as harassment, as quoted from the MIT guidelines: "Harassment of any kind is unacceptable at MIT and is in conflict with the policies and interests of the Institute. . . . Harassment is defined as verbal or physical conduct that has the intent or effect of unreasonably interfering with any individual's or group's educational and/or work performance at MIT or creating an intimidating, offensive, or hostile educational and work environment. Harassment on the basis of race, color, religion, sex, handicap, national origin, or sexual orientation includes harassment of an individual in terms of a stereotyped group characteristic or because of that person's identification with a particular group."

Simply by reading the panel display in the Infinite Corridor, one can clearly see how MEM's exhibition serves as harassment under this definition. This group consistently stereotypes members of the pro-life movement as prejudiced, religious, right-wing hypocrites. In their own *Refuse and Resist* literature they call us "Reaganites, racists," and "would-be Rambos." They liken

us to Nazis and televangelists.

Although our group is non-partisan, a large portion of our membership is Catholic. Many of these Catholics espouse the pro-life ethic as a matter of religious belief. One of MEM's captions reads as follows, "We at MEM eagerly await the day when the Catholic Church will intercede on behalf of all those poor little homunculi," a statement which would undoubtedly offend any Catholic.

What more blatant proof of harassment is necessary? Confronted with insults like this, some of our more volatile members might be provoked to take matters into their own hands. Although MIT Pro-Life would strongly oppose retaliation through any means other than official channels, we cannot be responsible for the actions of individual members acting on their own behalf.

Our paramount concern, however, is not only for our 150 members, but also for the group Women Exploited By Abortion. This group's only purpose is to act as a resource to women who have been physically or emotionally scared by abortion. WEBA came to the MIT campus and gave their time to speak to an overflow audience of both pro-life and pro-abortion supporters about their own personal traumas with abortion.

As stated, MEM was formed to oppose this organization, and they have repeatedly lashed out at these women through the "satire" exhibited in their insulting posters, many of which were posted around campus on the day of WEBA's visit to MIT. It is un-

fortunate that these women, already victimized by abortion, were forced to face this disgusting display of hostility, but it is also unfortunate that MIT women who may have had unpleasant abortions are forced to endure the insults of MEM on a regular basis.

Free speech is one concern, but defamation of character is another. Personal attacks on the women of WEBA occur every time MEM's "satire" appears. The very name "Men Exploited by Masturbation" is a direct parody of Women Exploited by Abortion. WEBA serves a very useful purpose, and we cannot stand by silently while their reputation is slandered. In the event that MIT does not take action against MEM, we will certainly encourage WEBA to take legal action against both MIT and the members of MEM on the grounds of libel.

Although our group has no objection to students expressing viewpoints which conflict with our own, we do object to harassment, personal attacks, and obscenity. Their display contains no factual discussion or any material which could be useful in understanding the abortion issue.

MIT Pro-Life would like MEM to cease to be recognized as an official student group. We recommend that the individuals of MEM be formally charged with harassment, and that the Institute administer the appropriate disciplinary actions. We request that this action be taken expeditiously, before any further damage is incurred.

Monnica Williams
President
MIT Pro-Life

Software Engineers



GCC KNOWS MACINTOSH

Apple Macintosh product design:

At GCC Technologies we design innovative products for the Apple Macintosh to complement its unique design and user interface. In 1985, we introduced the first high speed hard disk for the Macintosh. In 1987, we pushed the limits of QuickDraw imaging technology to create the first QuickDraw laser printer. In 1989 we introduced the first portable printer for the Macintosh, the WriteMove. Three months ago we introduced the PLP II, the lowest priced laser printer ever, and winner of MacUser's Editor's Choice Award for Best Laser Printer of 1989. At GCC, we will continue to achieve 'firsts' as we advance the state of Macintosh peripherals.

Terrific work environment:

- Relaxed atmosphere
- State-of-the-art development tools
- Macintosh and Sun workstations
- Flex-time schedule
- Performance-based incentive bonuses

Small and growing company:

- Approximately 100 employees
- An atmosphere that encourages and rewards individual contribution
- A voice in product development and planning
- Easy access to top management
- Founded in 1981 by three MIT graduates

Challenging work:

- Development in C and assembler
- Operating systems and utilities software development
- RISC processing
- Color graphics
- Entering the world of object oriented programming

Great Location:

- (Geologically stable) New England
- 15 minutes from Boston's night-life
- Located on 128 in Waltham

For more information about GCC Technologies see our Winter 1990 product catalog available at your campus career services office, or call (617) 684-8926.

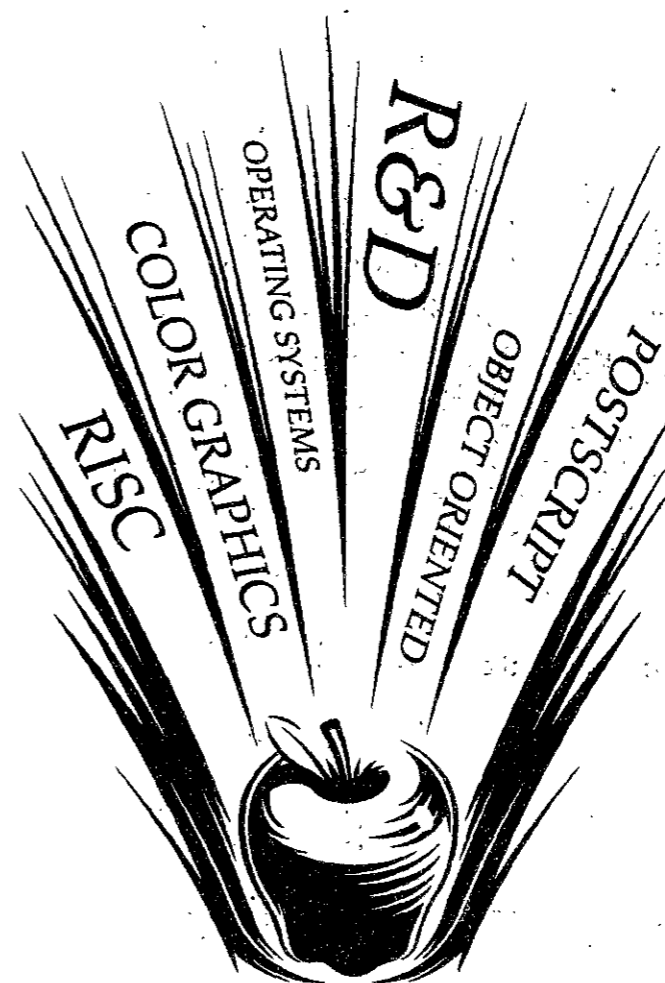
GCC Technologies (formerly General Computer) will be conducting on campus interviews at MIT on:

March 14 & 15 and April 5

SIGN UP AT THE OFFICE OF CAREER SERVICES (Rm. 12 - 170)

JUST DO IT!

If you miss us on campus, please send your resume to GCC Technologies, 580 Winter St., Waltham, MA 02154.



opinion

LETTERS TO THE EDITOR

Deutch favors industry over students

"In my mind, all of those comments are based on misinformation, and they're largely nonsense." — MIT Provost John M. Deutch '61

John Deutch, interviewed by *The Tech* on Feb. 16 ["An interview with MIT Provost John M. Deutch"], simply could not understand why anyone would ever question or react negatively to his reign as provost. When questioned, he instinctively blamed the students.

Referring to the Freshman Housing Committee report, Deutch scoffed, "I've noted — I haven't been surprised, but I've noted — the almost universal reluctance of the undergraduate student body to consider any change whatsoever."

When questioned by the national media about the exposé of his Pentagon and industry connections, Deutch's most explicit rebuttals were "[the students] are misinformed. . . . It's not a big deal" [*The Scientist*, Oct. 16, 1989] or "the students' allegations [are] foolish" [*Chronicle for Higher Education*, July 26, 1989].

While explaining his actions, Deutch avoided any notion that he bears responsibility for the many authoritarian decisions he has made over the past five years.

Is it any wonder why John Deutch has acquired a reputation for ignoring students? And was this behavior any different from the way he has treated the faculty?

The provost presented as his greatest accomplishment the re-examination of undergraduate education, including the "establishment of the Dean for Undergraduate Education . . . and the series of discussions and committees to review undergraduate education . . ." The reforms to which Deutch referred included educational reform, the proposal to gut pass/fail, the restructuring of Independent Activities Period, and the FHC report. None of these "reforms" have required representation or approval of the student body; all of them have been strongly opposed by the students in forums and petitions.

Deutch sidestepped the problems of the anti-democratic nature of these "discussions and committees" by characterizing student opposition as irrational reflex. Does he attribute this "reluctance to consider change" to our mental inferiority, to our emotional instability, or to our inability to accept that the administration obviously acts in our best interest?

These initiatives were viewed by Deutch as "a very necessary and productive rebalancing of the attention of MIT." What exactly does Deutch see as productive? The HASS reform has made the fulfilling of the new, narrower Humanities Distribution requirement unnecessarily difficult. The attempt to focus the humanities education has emphasized certain generalized courses, which have

then become crowded and lost depth. The Foreign Languages and Literatures section, which was severely restricted by the new distribution rules, lost students and faculty due to the reform [*The Thistle*, May 1989 and *The Faculty Newsletter*, March 1989].

The provost's stated views on educational reform are general and his end goals unclear. But his ideas are much more explicit in the reports of two committees: the Department of Defense-University Forum and the MIT Commission for Industrial Productivity. These reports advocate changes in university education to make it more responsive to the needs of the DOD and industry. Both reports characterize the university as a factory which manufactures a product (trained students) for a client (industry and/or the DOD) [*The Thistle*, May 1989]. In *Made in America*, the MIT Commission on Industrial Productivity refers to MIT's "product [students]," and states, "we could do more to cultivate closer relationships with our 'clients,' who hire our students, and our 'suppliers,' the secondary schools that provide them" [p. 165]. These reports reflect the worst impulses of the military-industrial complex to mold education to the needs of the economically powerful.

Deutch off-handedly dismissed the investigation into his corporate and military connections, but these reports, authored by members of the Science Action Coordinating Committee and the Alternative News Collective, are well-referenced and based on public documents, research articles, and personal interviews. Even when news reports appeared in *The Boston Globe*, *National Public Radio*, *The Chronicle for Higher Education*, *The Baltimore Sun*, *The Scientist*, and *Science*, Deutch continued to reject them. But neither he nor anyone else has substantively challenged our information.

In the *Tech* interview, Deutch tried to justify his views on mycotoxin (a biological weapon) and Star Wars research. According to Deutch, the mycotoxin research was valid campus research because it was non-classified, was sponsored by faculty, and had potential medical as well as weapons applications.

Deutch implied that he has not

actively encouraged mycotoxin research at MIT. However, he has served as chairman of the Defense Science Board Task Force on Biological Defense and Chemical Warfare, which proposed that the DOD increase funding on biological warfare research.

In order to promote SDI and other weapons related research on campus, the DOD-University Forum initiated changes in the DOD classification guidelines. The forum argued that the modest loss in security would be balanced out by the increased public credibility of this research if it was performed on university campuses.

The elimination of the Department of Applied Biological Sciences was described by Deutch as a matter "I wish I had accomplished differently." There was no acknowledgment of mistake or failure. His single regret was that now the faculty will be more cautious before accepting the restructuring of other departments or programs.

Deutch painted the ABS crisis as a "genie" with a mind of its own that escaped and was too large for the administration to "put . . . back in the bottle." However, the controversy was the result of the decision by Deutch, President Paul E. Gray '54, and Dean of Science Gene M. Brown to dissolve ABS before consulting anyone and before constructing any proposal about how the faculty, students, and staff of that department were to salvage their education, their research and their careers. Deutch did not even hold himself accountable for his decision.

Deutch currently receives in excess of \$205,150 annually from the corporations he directs, and he has served on several DOD policy boards. Deutch's directorship lends academic credibility to these industries. As an industrial director and a Pentagon advisor, Deutch learns how to reform MIT's "product" (students) to meet the needs of MIT's "clients" (industry and government). His actions as provost have not served the needs of students, or society in general. John Deutch's priorities carried him to the position of provost, and they would have elevated him to the presidency had the MIT community not soundly rejected these ideas.

Steven Penn G

Letters policy

The Tech welcomes letters from its readers. All letters are subject to editing and are published solely at the editors' discretion. Authors must sign their letters and include their phone number, and MIT affiliation, if any, for verification, and should type letters double-spaced for ease of reading. Letters should be kept under 500 words. *The Tech* publishes letters anonymously only in rare circumstances, at the editors' discretion. Bring letters to *The Tech's* office on the fourth floor of the MIT Student Center or send them to: Letters to the Editor, *The Tech*, P.O. Box 29, MIT Branch, Cambridge, MA 02139; or to Room W20-483 by interdepartmental mail. Electronic submissions may be mailed to tech@athena, and must contain the writer's full name, phone number, address and MIT affiliation (if any).

AXO is sponsoring the 2nd annual
LIP SYNC CONTEST
to raise \$\$ for Easter Seals / Cystic Fibrosis Foundation

March 16, 1990
9:00 pm, Lobdell

Registration for acts now in Lobby 10
or call Debbie at 225-9235.

Tickets \$2 in advance or \$3 at the door.
Booth this week, and again March 12-16.
For more information call Amy at 225-7194.

AT THIS SHOW, YOU'LL SEE CELEBRATED ARTISTS AS WELL AS SOME RECENT STUDENT WORK.



Ambiguity, ambiguity and mysticism are some of the themes Curtis Anderson has drawn on.

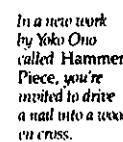


Chinese students used camcorders to capture the uprising in Tiananmen Square. Shu Lei Cheung shows how their tapes differ from official broadcasts.

Painter Deborah Orpello's subjects range from American portraits to tear chronicles.



In Bill Seaman's Watch Detail, you select a category of video images, then a laser disc combines them with music.



In a new work by Yoko Ono called Hammer Piece, you're invited to drive a nail into a wooden cross.



The latest installment of *Currents* encompasses a spectrum of subjects, media, and artists reaching from San Francisco to the streets of Peking. See *Currents* in i.c.a. the ICA Galleries through March 11. what do you see?

"CURRENTS"

THE INSTITUTE OF CONTEMPORARY ART
955 Boylston Street, Boston, 266-5152

Mount Snow

VERMONT

Presents

\$18 All day!

Sunday through Friday*

For a Whole lot of Skiing!!

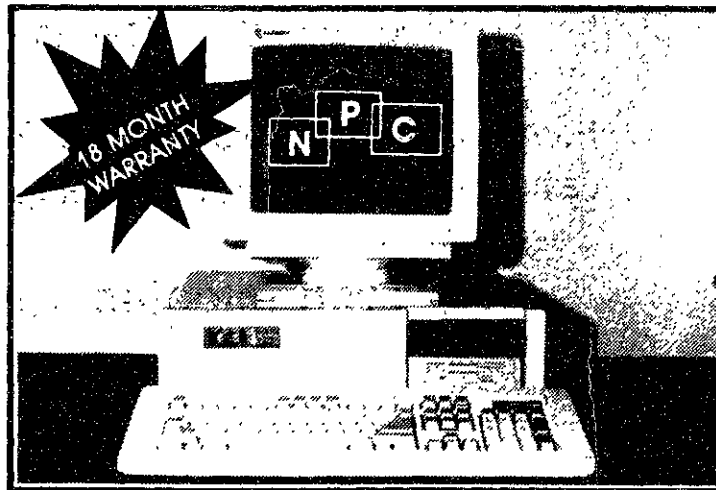
77 Trails - 17 Lifts

Present a valid college I.D. at the Main Ticket Booth.
*Not valid Saturdays or during week of 2/18 - 2/19. \$18 price is valid through the end of the 1989-90 Ski Season. For information call 802-464-8501.

IBM P.C. COMPATIBLES

- NPC 8088-12MHz 640K RAM \$529
- NPC 80286-12MHz 1MB RAM \$779
- NPC 80386SX-16MHz 1MB RAM \$1099
- NPC 80386-20MHz 1MB RAM \$1499

Ask for 80386-25 MHz and 80386-33 MHz systems



All systems include: 12" Mono-monitor w/graphic card, 101-Key keyboard, P/S/P/G ports, Clock/Calendar, expansion slots, Floppy Drive, Keylock, turbo and rest buttons, LED's and more...

Options and Upgrades: Color Monitors, Floppy/Hard drives, add-on memory, co-processors, modem, mouse, tower case, laser printer, plotter, digitizer, etc.

NPC Computer Corporation

15 Cypress St., Newton Centre, MA 02159
Exit 17 Mass Pike to Center St. to Newton Ctr.

1-800-649-XT.AT
(617) 965-8325

Mon-Fri 9 am-8 pm, Sat 9 am-5 pm



Sean Connery pilots the Red October to success

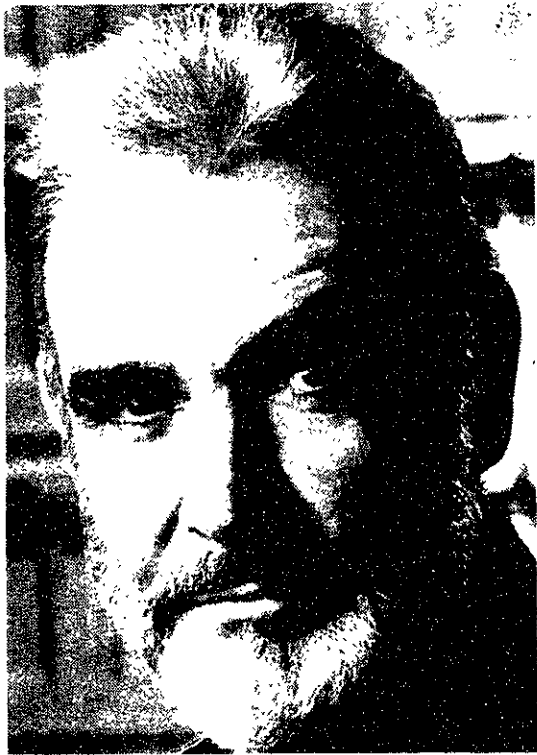
THE HUNT FOR RED OCTOBER

Directed by John McTiernan.
Starring Sean Connery, Alec Baldwin,
Scott Glenn, James Earl Jones and
Sam Neill.
Opens today at the Loews Cheri.

By MICHAEL FRANKLIN

SUBMARINE CAPTAIN MARKO RAMIUS takes advantage of the latest advances in Soviet technology to silently slip away from his country for the freedom of the United States. His escape takes him through narrow canyons, racing ahead of the Soviet fleet into the menacing presence of the American navy. *The Hunt for Red October*, directed by John McTiernan, traces the journey of Ramius, slowly yet methodically building suspense and action to finish with a high-stakes game of "chicken" involving submarines and torpedoes.

Readers of the novel by Tom Clancy, on



Sean Connery as a Soviet captain in *The Hunt for Red October*

which the film is based, will find that the film lacks much of the depth of the book. The death of Ramius's wife receives bare mention and little importance. The British are nearly nonexistent. No credit is given to CARDINAL, a Central Intelligence Agency agent deep within the Kremlin, who relayed the initial information on Ramius. Clancy extensively develops the credentials and abilities of CIA analyst Jack Ryan (played by Alec Baldwin). In the film, Ryan's conclusions seem to appear more from thin air than from a deep understanding of Ramius and the Russians.

Despite the omissions from the book, *The Hunt for Red October* stands by itself as a thoroughly enjoyable movie, set in a time before the rise of glasnost and perestroika under Mikhail Gorbachev. Much of the credit for this must go to Sean Connery, who stars as Captain Ramius, a respected Communist Party member and trusted submarine commander.

To defect, he must calm the fears of his officers — all hand-selected from his students and with no family in Russia — and hide the defection from the young crew. At the same time, he must avoid the entire Russian fleet — sent to destroy him — and the Americans who have been led to believe that he is a madman bent on starting World War III.

Connery succeeds as a forceful and wily commander willing to push his crew and his vessel beyond the limits of their endurance. Calm self-assurance during the head-on approach of a torpedo and in dealing with the enemy submarines emphasizes his lengthy experience as a seaman. But his discussions with executive officer Borodin on their hopes and dreams of life in America indicate that he is more than just a simple man of the military. He is a tragic hero who must leave his homeland to secure peace.

Until Ramius and his submarine appeared, Jack Ryan sedately compiled histories and profiles of Russian officials for



Jeffrey Jones (left) and James Earl Jones (right) at the US Naval Underwater Systems Lab in Patuxent, MD.

the CIA. The disappearance of the *Red October*, and the subsequent massive mobilization of the Russian fleet, thrust him into the maelstrom of CIA and Navy operations. Abstract theories give way to conflicts between his professional opinions and the prejudices and misinformation of members of the military.

Ryan's film transition from researcher to gun-toting intelligence agent *extraordinaire* lacks the smoothness and development of the process in the book. His preparation for a meeting with the secretary of defense is limited to a few scant moments in the film, while Clancy allows several hours of preparation for a meeting with the president.

Baldwin as Ryan tries to make the best of the situation. He boldly supports his often unpopular opinions against the judg-

ments of generals and submarine commanders. Indeed, it is primarily the strength of his reasoning that ties much of the movie together and helps to save Ramius from the US Navy.

Clancy wrote *The Hunt for Red October* just before the end of the Cold War when the Russians were still the "bad guys" and displays of military force against them was still in vogue. The anti-Soviet tensions have not entirely been eliminated from the film, however. Ramius is half Lithuanian, and this is a prime source of discontent among the higher echelons of Soviet bureaucracy. The plot has been modified to account for the recent calming of some international difficulties; nonetheless it maintains much of Clancy's suspenseful drama with remarkable action and superb directing.

ONE STOP FULL SERVICE COMPUTER STORE
AUTHORIZED SALES and SERVICE
IBM COMPATIBLES HEADSTART
intel Panasonic MON-FRI 9:AM-6:PM SAT. 9:AM-3:PM 492-2345
E.I.I. COMPUTERS inc.
YOUR HOME AND OFFICE COMPUTER STORE
139 HAMPSHIRE ST. CAMBRIDGE, MA. 02139

WATSON COME HERE!
I'M CALLING
THE S&S FOR
TAKEOUT.



What a marvelous invention! Now anyone can say hello to S&S Takeout. And say goodbye to dull food. Just imagine how good a Gourmet Boursin Burger would taste. Or Pasta Primavera. Be inspired by Scallops Provinciale, or our savory Baby Back Ribs. Indulge yourself with Baby Watson cheesecake. Whatever you wish. The entire S&S Menu is at your fingertips. In portions that made the S&S famous. And affordably priced. So whether for one or 21, call S&S Takeout and discover just how good takeout can be.

S&S

Take Out • Catering
A Great Find Since 1919.

Breakfast, Lunch, Dinner. Mon.-Sat. 7:00am-12:00mid, Sun. 8:00am-11:00PM
Inman Square, 1334 Cambridge St., Cambridge, 354-0777, FAX: 354-8924.

Do you write?

The R/O Committee 1990
is looking for

Short Fiction
dealing with Student Experiences

to be considered for
Freshman Book Night 1990



Submissions of 10,000 words or less due
March 23, 1990

For more information contact:
Bill Moliski (R/O Coordinator 1990)
x3-6786 or 267-1801, x144

Calle photographs obsessed with intimate lives

SOPHIE CALLE: A SURVEY

Photographs by Sophie Calle.
At the Institute of Contemporary Art,
through March 11.
Gallery hours are Wednesday & Sunday
11-5, Thursday-Saturday 11-8.

By PAUL GROH

AFTER SEVEN YEARS outside her native Paris, photographer Sophie Calle returned home and began following people around the streets in order to rediscover her city. In this effort, Calle soon learned how much she could ascertain about the lives and habits of her unknowing subjects. She became obsessed with the people she was following and especially the physical details of their existence. Eventually this obsession brought her to Venice where she tracked down and photographed a man she had previously met in Paris. She then published a collection of photographs and writings in her book: *Suite Venticinque*, *Please Follow Me*.

Here began Calle's obsession with attaining an intimacy with people while maintaining a cool distance. In her recent photography exhibit, "Sophie Calle: A Survey," Calle explores issues relating to intrusion into people's personal lives. Her format is documentary: black and white, police-like photography juxtaposed with descriptive texts. The result is not necessarily refined or composed, but is instead an intriguing look at Calle's obsessive relationship to her subjects. It is a relationship in which Calle knows her subjects not through their direct existence, but through traces they leave behind.

In *The Hotel*, Calle, working as a chambermaid in a Venetian hotel learns about the lives of the tenants by going through and photographing their belongings. Like a detective looking for the incriminating clue, Calle scrutinizes every object in the room. She meticulously searches through the tenants' baggage, diaries, and even the garbage to piece together their lives. She makes note of the smallest details such as "a dirty comb with broken teeth" or a "mind-boggling pair of shoes." From her scrutiny she pieces together where the people are from, what they are doing that day, what they like or dislike, and so on. In this work, Calle displays her photographs accompanied by texts describing her findings. In one text, Calle reveals the attachment she feels for the tenant. After he is gone, she writes, "He has left his orange peels in the wastebasket, three fresh eggs on the windowsill, and the remains of a croissant which I polish off. . . . I will try to forget him. . . . I shall miss him."

In another work, *L'Homme au Carnet*, Calle, after finding an address book, decides to approach the owner through his friends. She contacts the people in the book (over 400) and interviews them in order to piece together the owner's life. She finally ends up knowing as much or more about this man than some of his friends. The piece itself is an account of the weekly findings, both photography and text, which Calle published in the French newspaper *Libération*.

Through Calle's photography, we begin

to realize that people are not independent of their context; that is, people define and derive their identity through the places they live and visit, their friends, and their belongings. At the same time, we see that Calle is unable (or chooses not) to enter a relationship directly, but only through its context. She enshrouds herself in a world of safety where the only threat is that of getting caught. In Calle's world, places and belongings move beyond mere symbols of the person; for Calle, they are the person. From her cool distance, she feels she can control the relationship but, in reality, the person and her obsession with that person control her.

In some of Calle's later, more interesting work, she turns the camera not at other people, but at herself.

In *The Shadow*, Calle hires a private detective to follow and photograph her for a day. She first gets her hair done "to please him." She then takes him for an exhaustive chase through Paris in a type of flirtatious game. She wants to "show him" the places she loves, such as the park where she received her first kiss. Calle's colorful description of the day is sharply contrasted with the banal photographs and text of the detective. For Calle, the day was imbued with meaning; for the detective, the day was merely reporting the facts.

In one of Calle's most successful works, *Autobiographical Stories*, Calle again has the camera turned on herself, but this time she has the courage to do it herself. She photographs the things important to her: a white silk wedding dress she wore the first night together with a man she had silently admired since she was a child; a bathrobe her first lover wore that reminded her of her father. Here Calle abandons her documentary approach and instills her photographs with a self-consciously high degree of composure. The photographs are again accompanied by descriptive texts, but now the photographs are no longer literal. They are imbued with a supernatural character in accordance with their personal symbolic meaning. Calle is no longer dealing solely with the relationship between herself and the subject; she now challenges the nature of documentary photography and brings the photographs closer to the viewer.

In another of her more successful works, *The Blind*, Calle asks people blind from birth "what their image of beauty" is. The responses range from a painting in which the subject says, "I can feel the three masts and the main sail. I often touch it in the evening." to the chilling response "I don't need beautiful images in my brain . . . since I can't appreciate beauty, I've always run from it." In this work Calle juxtaposes unflattering black and white photographs, text, and color photographs of how she interprets their responses. She draws us into the world of the blind person and asks us how we identify with the response as well as her interpretation of that response.

In Calle's later works, one sees considerable maturity compared to her earlier ones. She moves from the realm of self-absorbed obsession to that of photography that includes and questions the viewer. Sophie Calle's best work is yet to come.



Autobiographical Stories (1988, gelatin silver print)

The Tech Performing Arts Series presents. . .

GUSTAV LEONHARDT

The renowned Dutch harpsichord master is among the most influential early music specialists in the world today. A Bank of Boston Celebrity Series event.
Jordan Hall, March 9 at 8 pm.
MIT price: \$6.

ALVIN AILEY AMERICAN DANCE THEATER

For 30 years, they have been the heart and soul of American dance. *The New York Times* says: "The most popular dance company on the international circuit . . . colorful and courageous." A Bank of Boston Celebrity Series event.
Wang Center, March 13, 14, and 15 at 8 pm.
MIT price: \$9.

JUILLIARD STRING QUARTET

Selections from the Beethoven cycle will include *Quartet in F Major*, *Quartet in B-flat Major*. A Bank of Boston Celebrity Series event.
Jordan Hall, March 16 at 8 pm.
MIT price: \$6.

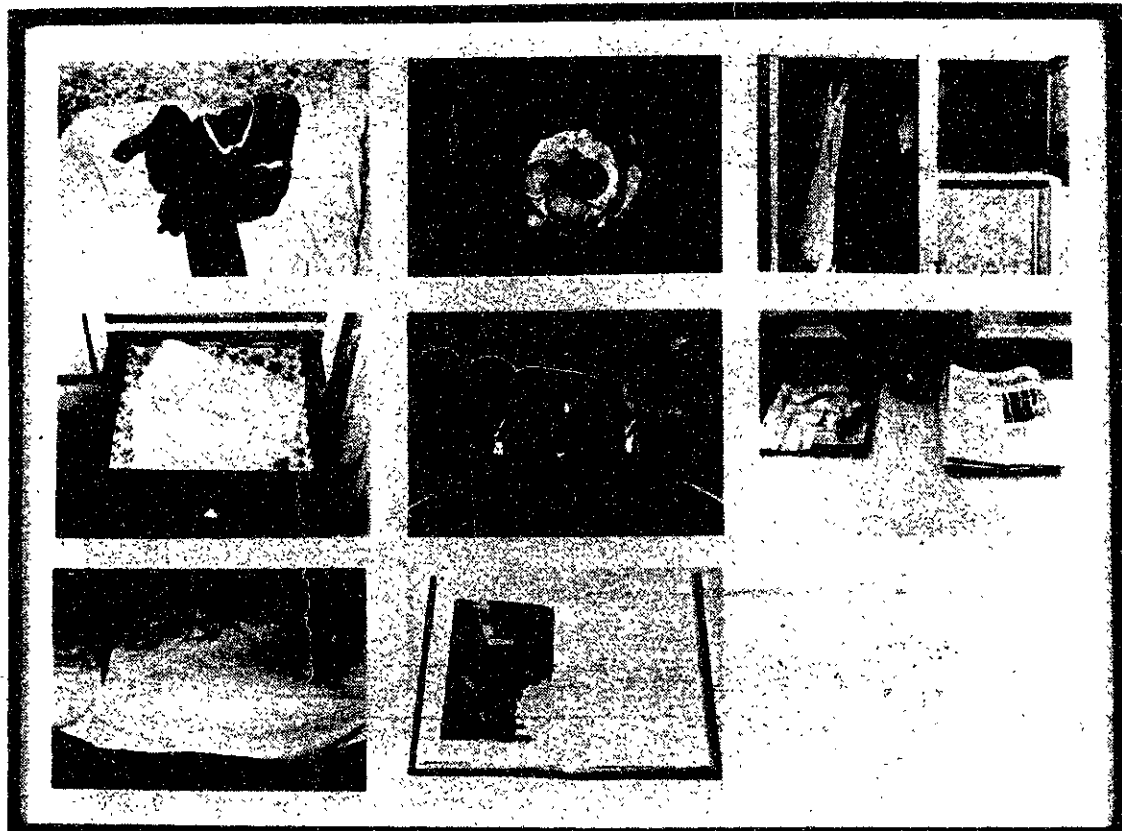
KRYSTIAN ZIMMERMAN

The pianist's rare American recitals are always filled with adventure, emotion, and pure musical delight. Program will include works by Liszt, Brahms, and Debussy. A Bank of Boston Celebrity Series event.
Symphony Hall, March 16 at 8 pm.
MIT price: \$6.

ORCHESTER DER BEETHOVENHALLE BONN

Dennis Russell Davies, conductor; Heinz Holliger, oboe; Ursula Holliger, harp. One of Europe's finest and most ambitious symphony orchestras. Program: Wagner, *Eine Faust—Overture*; Isang Yun, *Double Concerto for Oboe and Harp*; Brahms, *Symphony No. 2 in D Major*. A Bank of Boston Celebrity Series event.
Symphony Hall, March 19 at 8 pm.
MIT price: \$6.

Tickets are on sale at the Technology Community Association, W20-450 in the Student Center. Office hours posted on the door. Call x3-4885 for further information.



L'Hotel (1983)



American Red Cross
Blood Services - Northeast Region

This space donated by *The Tech*

Harvard-Epworth United Methodist Church

1555 Massachusetts Ave.
opposite Cambridge Common
Sunday Worship: 9 and 11am
Undergrad Forum: 5:30 PM

CONDUCT RESEARCH ABROAD THIS SUMMER

The Center for International Studies and The Political Science Department are co-sponsoring

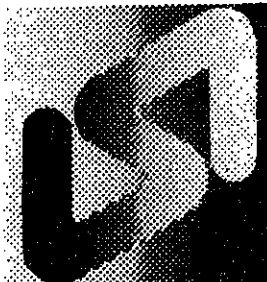
UNDERGRADUATE FELLOWSHIPS OR RESEARCH ABROAD

Several awards (maximum \$3,000 each) will be given to MIT undergraduates for study in international affairs or political research conducted outside the United States. (Preference given to students participating in projects outside their native countries.)

DEADLINE FOR SUBMISSION OF PROPOSALS IS MONDAY, April 2, 1990

Rules and guidelines are available from Tobie Weiner, E53-460, x3-3649.

Your foreign language ability is valuable!



Translations into your native language are needed for industrial literature. You will be well paid to prepare these translations on an occasional basis. Assignments are made according to your area of technical knowledge. We are currently seeking translators for:

- Arabic • Chinese • Danish • Dutch
- Farsi • French • German • Greek
- Italian • Japanese • Korean
- Norwegian • Polish • Portuguese
- Romanian • Spanish • Swedish and others.

Into-English translations from German and French. Many other languages also available.

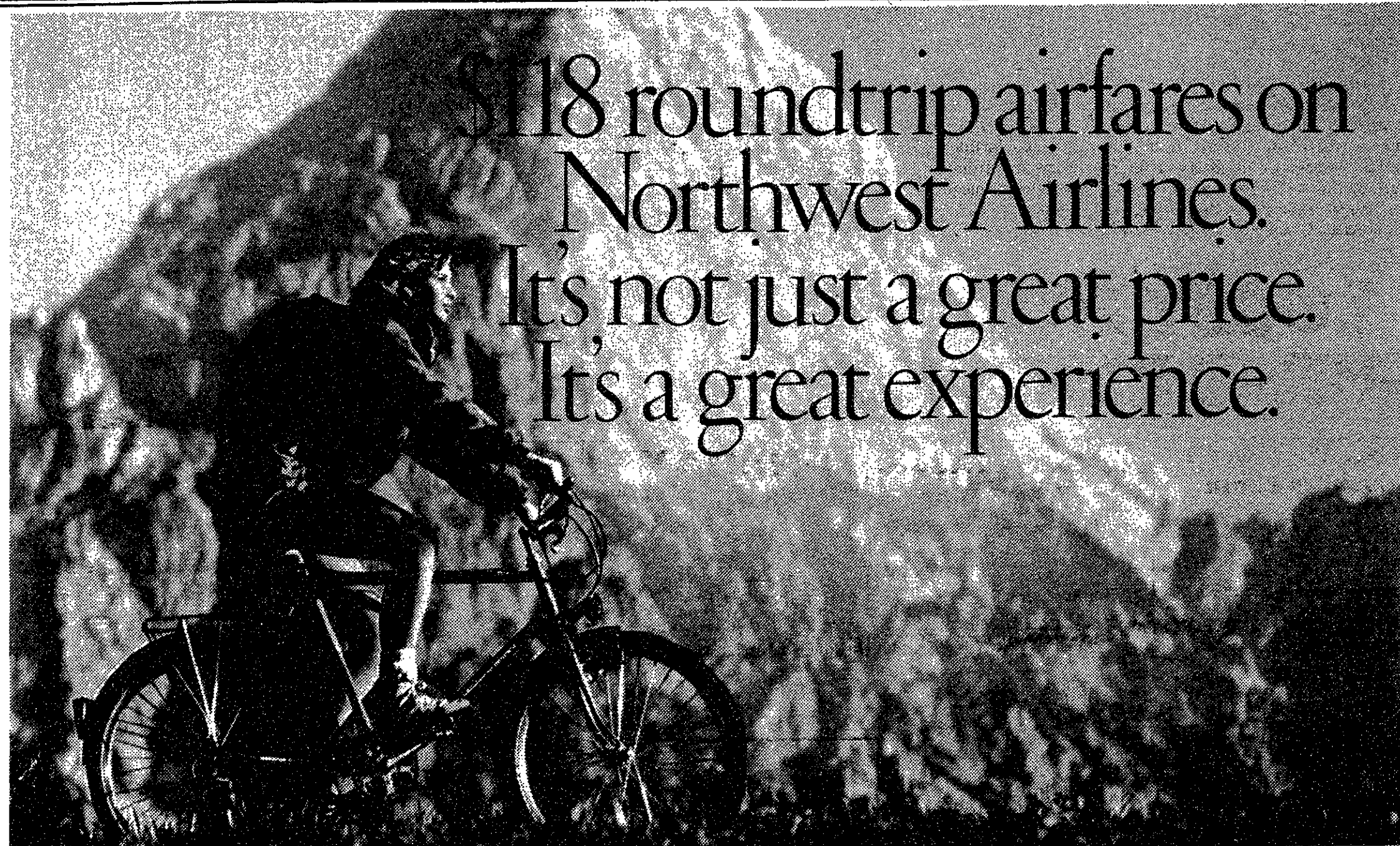
Foreign language typists also needed. All this work can be done in your home!

Linguistic Systems, Inc. is New England's largest translation agency, located a block north of the Central Sq. subway station.

For application and test translation call Ms. DePhillips

Linguistic Systems, Inc.
116 Bishop Allen Drive
Cambridge, MA 02139

864-3900



\$118 roundtrip airfares on Northwest Airlines.
It's not just a great price.
It's a great experience.

Only for student American Express® Cardmembers.

Apply for the American Express® Card. Then get ready to take off. In search of adventure, action—or just simply to escape.

American Express and Northwest Airlines have arranged these extraordinary travel privileges on Northwest—exclusively for student Cardmembers:

■ CERTIFICATES VALID FOR THE PURCHASE OF TWO \$118 ROUNDTRIP TICKETS—to many of the more than 180 cities in the 48 contiguous United States served by Northwest. Each certificate is good for a six-month period, and they will arrive within six weeks after you receive the Card. Current Cardmembers will automatically receive their \$118 certificates by March 15, 1990 provided they are still full time students.*

■ 10% OFF ANY NORTHWEST FLIGHT—with your own personalized discount card, valid through January 1991 on all Northwest and Northwest AirlinK flights. (This discount is not applicable to the \$118 student certificates and other certificates, promotional or special status airfares.)

■ 2,500 BONUS MILES TOWARDS FREE TRAVEL—when you enroll in Northwest's WorldPerks® Free Travel Program.

AND NOW BECOMING A CARDMEMBER IS AS EASY AS A TELEPHONE CALL. Just pick up the phone, call 1-800-942-AMEX, and talk to us. We'll take your application and begin to process it immediately. (If you have your banking information handy, like your account number and bank address, it will help

speed the process.)

Keep in mind that our Automatic Acceptance Program makes it easier for you to become a Cardmember now, as a student, than it will ever be again.

And remember that as a Cardmember you'll enjoy all the exceptional benefits and personal service you would expect from American Express.

So don't miss out on a world of great experiences. Pick up the phone. Apply for the Card. And start packing!



Membership Has Its Privileges®



APPLY TODAY
1-800-942-AMEX



*If you are already a student American Express Cardmember and have a question about this program, please send your written question, a copy of your student ID and class schedule to: American Express, P.O. Box 35029, Attn: Student Marketing, Greensboro, NC 27425. Fare is for roundtrip travel on Northwest Airlines. Tickets must be purchased within 24 hours after making reservations. Fares are nonrefundable and no itinerary changes may be made after purchase. Seats at this fare are limited and may not be available when you call. Travel must originate by certificate expiration date and be completed within 60 days of that date. Travel may not be available between cities to which Northwest does not have published routings. City fuel surcharges not included in fare from Boston (\$2.50), Chicago (\$5.00), Denver (\$2.00) and Florida cities (\$2.00). Certain blackout dates and other restrictions may apply. For complete offer details, call 1-800-942-AMEX. ©1990 American Express Travel Related Services Company, Inc.

THE AMERICAN EXPRESS® CARD. FOR STUDENTS MORE THAN EVER.

Roger Norrington lends freshness and discovery to bracing account of Mendelssohn's Symphony No. 4

BOSTON SYMPHONY ORCHESTRA

Conducted by Roger Norrington.
Program of works by Haydn,
Tippett and Mendelssohn.
Symphony Hall, March 1, 3 and 6
at 8 pm, and today at 2 pm.

By JONATHAN RICHMOND

LAST NIGHT ROGER NORRINGTON led the BSO in a bright and altogether bracing account of Mendelssohn's *Symphony No. 4*, "Italian." Norrington is known for his fast — and often controversial — tempi, but when he propelled the Boston players through this flighty work their hearts but not their feet left the ground, and the music came across magically.

The opening movement got the work off to a vigorous start. But the *Andante con moto* was yet more splendid, beautifully and seamlessly smooth, but also intensely evocative. Above all it was fresh, and there was a sense of discovery to every measure of this well-known work.

Tensions were nicely molded during the third movement, and there was some de-

lightful wind playing here. Norrington is known for his ability to allow his original instruments wind voices to maintain their separate identities, but combine to glorious effect, and he achieved the same with the modern instruments BSO.

The finale was more than exciting: alert but well controlled, details sharply defined and put in the foreground for the listener's enjoyment, it was exhilarating.

Haydn's *Symphony No. 83*, "The Hen," with which the program had begun, was not equally successful. The strings did not always sound sharp, and several passages came across ponderously. The *Andante* was flowing and graceful for at least a part of its length, but choppy in places. The third movement sounded thinnish at times and, while there were some measures of felicitous playing in the *Finale*, it didn't hold together adequately.

Tippett's *Fantasia concertante on a Theme of Corelli* worked better. It was played colorfully, and with fine solo work, especially from cellist Jules Eskin. The baroque elements at the core of the work shone through, but the richer style of Tippett was equally at home.

LOUSY PAY, GREAT BENEFITS

THE TECH

The Tech Performing Arts Series
proudly announces...

THE MAGIC FLUTE

Spectacular Offer!

\$50 opera tickets for \$10!

More tickets next Monday!

Following our sell-out sale last Tuesday, a few more \$50 seats for the March 8 (8 pm), 11 (3 pm) and 18 (2 pm) performances of Mozart's *The Magic Flute* (to be sung in English) by the Opera Company of Boston, Sarah Caldwell, conductor, will be available for \$10 at the

Technology Community Association, W20-450, starting Monday March 5. When all \$50 seats are sold, some seats normally priced at \$25 may also be available, also reduced to \$10. Sorry, but due to the restricted supply of tickets available at discount, this offer is open to

MIT students only. Valid MIT student ID required for purchase. Maximum purchase of two tickets per ID. Office hours posted on the door. No telephone reservations can be accepted, but please call x3-4885 for further information.

The Tech Performing Arts Series is a service of The Tech, MIT's student newspaper. This offer organized by The Tech in cooperation with the Technology Community Association — MIT's student community service organization — and The Opera Company of Boston.

This Weekend's Movies From



The MIT Lecture Series Committee
March 2-4, 1990

For movie descriptions, call the
LSC MOVIELINE 258-8881

FRIDAY CLASSIC GARY GRANT



7:30 in 10-250

FRIDAY



Woody Allen's
CRIMES AND MISDEMEANORS

7 & 10 in 26-100

SATURDAY



MICHAEL DOUGLAS KATHLEEN TURNER DANNY DEVITO
THE WAR OF THE ROSES

7 & 10 in 26-100

SUNDAY



THE EXORCIST

6:30 & 9:30 in 26-100

Coop Nominations

The Board of Directors of the Harvard Cooperative Society has 23 members - 11 students from MIT and Harvard, 11 members of the faculty and staff or alumni of MIT and Harvard and the President of the society. The Board oversees the operation of The Coop, a seven store college bookstore cooperative, and sets the policy for The Coop's operation. The Board meets monthly during the academic year. The following persons have been nominated by the stockholders of the society to serve as Student Directors during the 1990-1991 school year.

MIT Undergraduate Students

Paul Dans
John Kimbal

Harvard And Radcliffe College Students

Alex Edelstein
Beth Simone Noveck
Pawan G. Patil
Gina Raimondo

MIT Graduate Students

Alberto Moel Modiano
Pieter M. Pil

Harvard Graduate Students

Jed M. Arkin
Kevin Mohan
Sarah A. L. Tabler

Procedure for Additional Nominations for Student Directors.

Additional nominations for Student Directors may be made by the petition process. Petitions for Student Directors must be validly signed by at least 100 student members and filed with the Clerk of the Society (by returning the petition to the president's office in the Harvard Square store or to the cashier's office at any Coop) no later than 5pm, Friday, March 16, 1990.

Ballots will be distributed in April to all student members for the purpose of electing eleven directors from the whole list of nominees. If you are interested in becoming a petition nominee, you should promptly acquire petition forms and instructions from the Cashier's Office in any of the Coop stores between the hours of 9:30am and 5pm, Monday through Friday.

Remember that completed petitions cannot be accepted after 5pm, Friday, March 16, 1990.

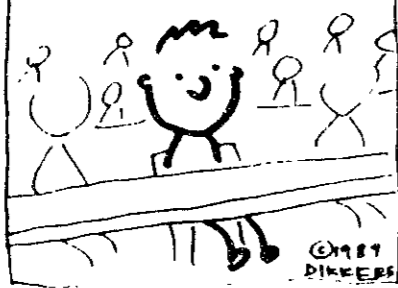
The Coop is America's oldest and largest college bookstore cooperative, serving the MIT and Harvard academic communities. Profits from the operation are returned to Coop members annually in the form of a patronage rebate.

the
Coop

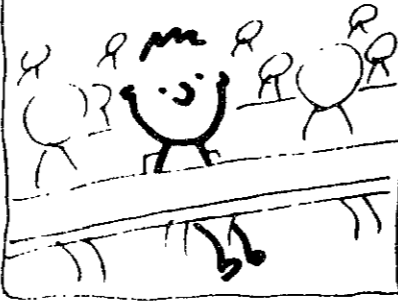
comics

Jim's Journal

I haven't been working very hard on my french homework lately.



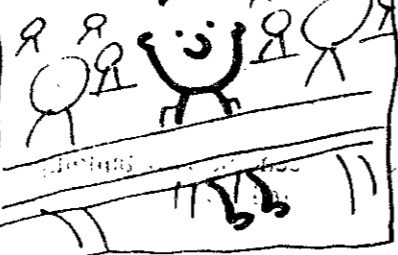
The professor's going at such a fast pace, it's hard to keep up.



He reminds me of a farm auctioneer when he points to people around the room asking questions really fast.



Once, he called on me and I froze—I couldn't speak. So he moved right along to somebody else.



by
Jim

Today Steve showed Tony and me the movie he made.



It was fun to see all the shots we filmed all put together. And he had music for it too—the Peter Gunn theme.



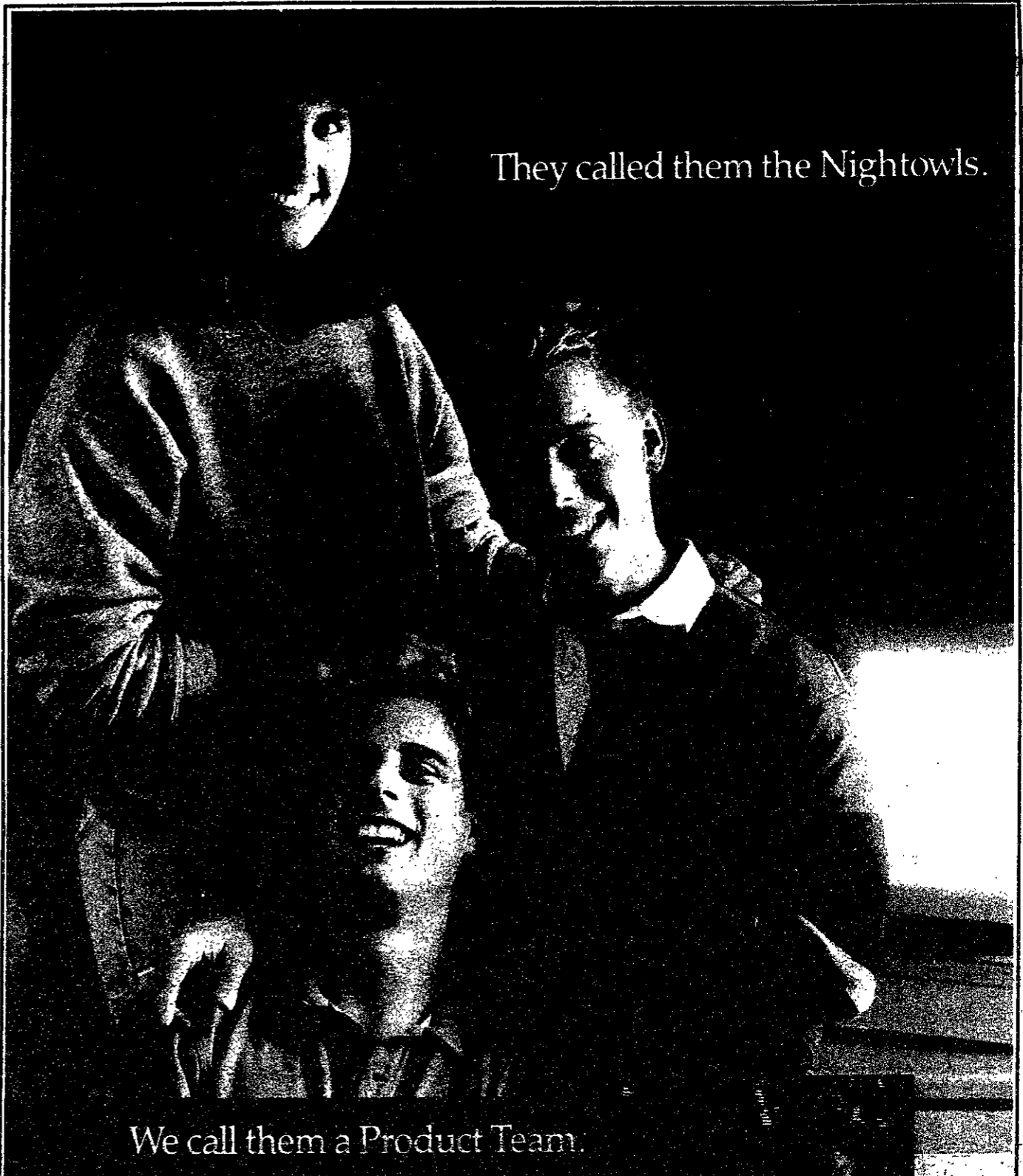
Tony kept saying, "This isn't bad, I'm a pretty good actor."



Steve told us he got a C and we couldn't believe it.



12-20



They called them the Nightowls.

We call them a Product Team.

Anne, Bill and Ken were known for their all-nighters: When they weren't poring over their books or hacking away on their latest project, they were throwing the most memorable parties on campus. Their commitment to perfection and vitality has made them a top Product Development Team at Oracle Corporation.



At Oracle, we feel that only when you enjoy your work, can your creativity and productivity reach their full potential. Working in an environment that stimulates creativity as well as achievement definitely has its advantages: we are the fastest growing company in the fastest growing industry in the world.

Simply put, we enjoy what we're doing.

On campus interviews

Oracle will be conducting on-campus interviews on March 7. Contact your placement office for details.

You can join a team of visionaries who still know what it means to have fun. We are currently recruiting top students who like to work hard and play hard. If that's you, talk to us before you make your career decision. For information consult your placement office, send us your resume, or call Jonathan Kraft at (415) 506-3087.

Oracle Corporation 500 Oracle Parkway, Redwood City, CA 94065

ORACLE
Make your vision tomorrow's technologySM

Vandals target *The Thistle*

(Continued from page 1)

The 1300 issues lost that night represented 17 percent of *The Thistle's* 7500-issue campus press run. Only part of the 7500 issues, however, were distributed around campus Monday evening.

The collective, a leftist group, denounced the destruction in a letter written to *The Tech*. "We are... thoroughly disgusted by and totally condemn the recent assaults on the MIT newspaper *The Thistle*," reads the letter.

"That some individuals would deign actively and illegally to censor us and suppress our newspaper indicates that there is a dangerous level of intolerance at MIT," continues the letter.

In an interview, Penn said, "I feel actions like this are antithetical to an educational institution like this."

The Campus Police were not notified of this incident, Penn said, although the administration was informed. The collective had no knowledge of anyone involved, Penn added.

Not the first time

This was not the first time copies of *The Thistle* had been destroyed, Penn said. *The Thistle* has continually had problems with issues being thrown away in the evenings, when the hallways are empty. During Residence/Orientation Week last fall, sorority members organized to destroy copies of *The Thistle's* rush edition, according to Penn. The rush edition contained at least two articles critical of fraternities on campus, Penn said.

Penn and several other collective members, suspecting that issues had been thrown away maliciously, held watch over Lobby 7 distribution during rush week. A group of women formed a circle near the door facing Massachusetts Avenue, he said, and one

would occasionally leave the circle, pick up a stack of *Thistles*, walk down the Infinite Corridor to the nearest garbage can, throw them away, and come rejoin the circle.

During the rush week distribution, Penn said members of the collective pulled approximately 1500 *Thistles* out of garbage cans and redistributed them.

The rush week attacks on *The Thistle* were the result of resentment on the part of the Inter-Fraternity Council, said Penn. He singled out former IFC President Anthony N. Gerber '90 and Alpha Chi Omega member Maria T. Arriola '90, whom Penn claimed was Gerber's girlfriend at the time. Arriola led the circle of women the day the collective caught them throwing away *Thistles*, according to Penn. "The IFC [president] was outraged and his girlfriend was leading a troop of women to get the paper," he said.

Penn said he confronted Arriola after she threw away a stack of *Thistles* herself and that she at first denied it but then defended her actions.

In an interview last night, Arriola denied having led anyone in an attack against *The Thistle*. But she did not deny involvement in throwing out copies. "It's a lie; I led no such band of women... I never instructed anyone to throw papers, never instructed or conspired with anyone," she said. "I may have thrown out a copy myself, but not hoards and hoards," she added.

Limited tolerance

Members of the collective felt that *The Thistle's* struggle to remain on the newsstands stemmed from an environment of limited tolerance on campus.

"Students are very intolerant about anything that criticizes the current system," Huang said.

"We didn't print anything that attacks anyone."

Penn claimed MIT was more insensitive to minority opinion than other schools. "The environment at MIT does not encourage a forum for a wide array of debate," he said.

Both Huang and Penn said they did not understand why the latest issue of *The Thistle* received such hostility. Both thought the subject of this week's issue — science for the people — was relatively uncontroversial in comparison to other subjects *The Thistle* has dealt with.

The collective has not decided whether it will change the way its issues are distributed or whether it should pursue this latest incident further.

Corporation will discuss search, tuition

(Continued from page 1)

Another candidate who may be reconsidered is Provost John M. Deutch '61, who announced on Jan. 23 that he would not be the next president of MIT. *The Tartan* reported earlier this week that Deutch was under consideration by CMU until late last year, when he pulled out because of his candidacy at MIT. In an interview with *The Tartan*, CMU President Richard M. Cyert encouraged the Corporation to bring Deutch back as a candidate, saying, "If I were [MIT], I'd go after Deutch and try to convince him to come back... he may no longer be willing to do that."

The Corporation will likely approve tuition increases for the upcoming year.

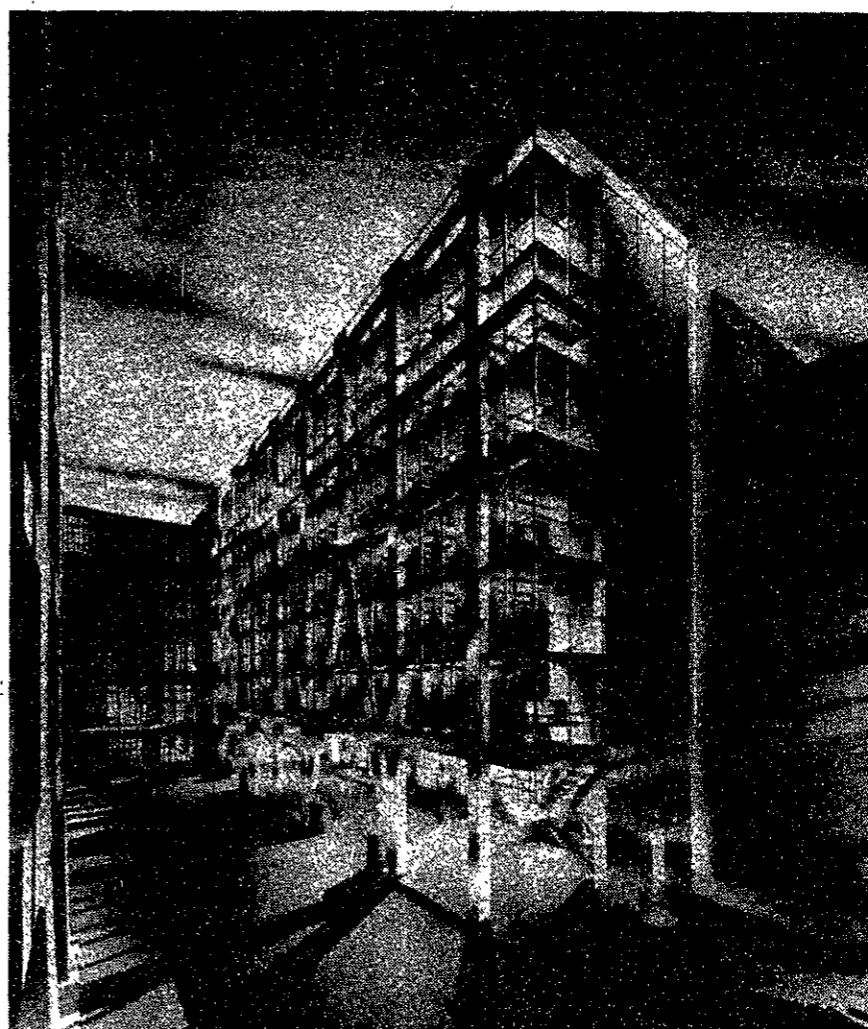


photo courtesy Margaret De Popolo

An artist's impression of the completed Rotch Library addition

Rotch improvements add extra space for collection

(Continued from page 1)

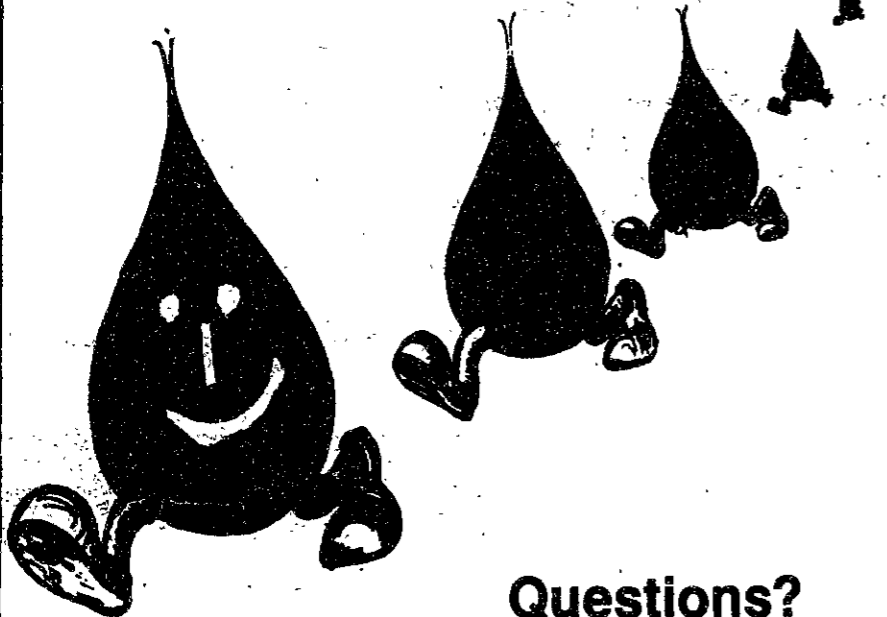
"Because the structural system of the addition is very different from that of the existing building, it was not connected to it," project manager Ruben Morrison explained to Modern Steel Construction. Instead, the six foot space between the two buildings was connected with a glass-enclosed atrium.

Initially, Professor of Architecture Imre Halasz's firm had been retained to study different design alternatives. The firm submitted a plan to expand the library into

the courtyard. This plan was reviewed and approved by the Institute in 1985. However, an administration policy change mandating that MIT not retain the services of faculty members for professional work prevented MIT from hiring Halasz's firm.

Schwartz/Silver Architects from Boston was then selected to do the redesign. "We really wanted to express the structure," project architect Ann W. Pitt said to Modern Steel Construction. She added that "the building is a celebration of the school's architecture collection."

TCA/RED CROSS BLOOD DRIVE



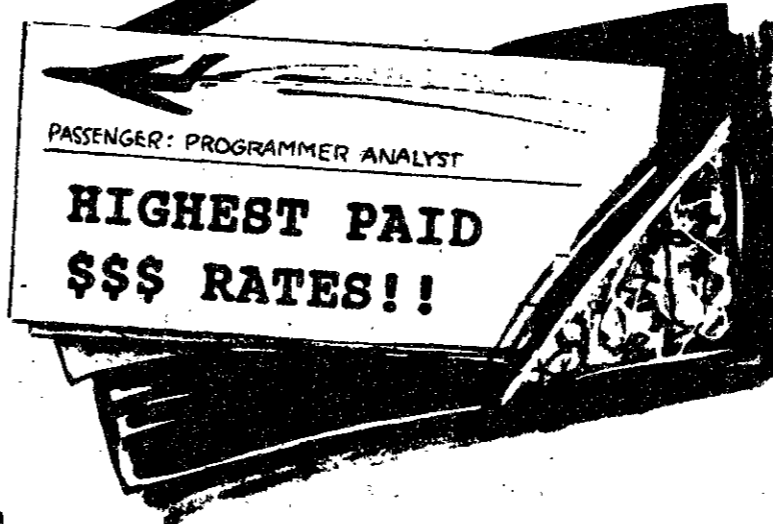
Questions?

Please call the TCA office at x3-7911 or x3-4885.

This space donated by The Tech

Programmers & Programmer Analysts

YOUR TICKET TO SUCCESS



Princeton Information offers an unbeatable combination: the security and unlimited career potential you're entitled to as a professional, along with a continuous and exciting variety of assignments and challenges. As one of America's fastest growing consulting firms, we supply the finest programming and data processing consultants to many industry leaders involved in research and development, as well as state-of-the-art high tech systems.

If you would like to be a Princeton Information consultant, we will provide you with the training you'll need, and offer you diversified career paths, enhanced earning potential, and an exceptional benefits program.

A Princeton Information Representative will be on your campus on **Monday, March 5**

Talk to us — it just could be the most important conversation you'll ever have.



NEW YORK • NEW JERSEY

PRINCETON INFORMATION

classified advertising

Classified Advertising in The Tech: \$5.00 per insertion for each 35 words or less. Must be prepaid, with complete name, address, and phone number. The Tech, W20-483; or PO Box 29, MIT Branch, Cambridge, MA 02139.

Attention: Easy work! Excellent pay! Assemble products at home. Call for information (504) 649-0670 Ext. 871 (open 7 days).

Attention - Hiring! Government jobs - your area. Many immediate openings without waiting list or test. \$17,840 - 69,485. Call 1-802-838-8885 Ext. R18450.

Great Summer Opportunity
Jewish summer residential camp seeks counselors and specialists. Capital Camps is located in the Catoctin Mountains one hour from Washington, D. C. If you are interested in the challenges and excitement of working with campers in grades 3 - 10, we want you on our team. Good salaries, great fun. Our director will be on campus the week of March 5th. For information and an appointment, call 1-800-783-1245!

Spring Break 1990! Party Jamaican style! One beautiful week starting at \$469.00!! Hot days and reggae nights!! Organize group and travel free!! Call Sun Splash Tours 1-800-426-7710.

SUMMER IN SPAIN
Academic program: 6 weeks. College credit. Reasonable cost. (206) 726-1498. Budget study abroad: 2626 E. Madison #7, Seattle, WA 98112.

Car for Sale
1981 Buick LeSabre 4-door sedan. Automatic windows, power steering, AM/FM cassette player. Owner travelling overseas. \$800 o. b. o. Call 527-0497.

Navigation Technologies Inc., a start-up robotics company, has positions available for engineering and computer science students interested in developing guidance and control software for autonomous vehicles. These are part-time positions, available immediately, with opportunities for fulltime employment during the summer.

To qualify, you must have knowledge of the C programming language. Familiarity with C++ and object-oriented programming is a definite plus. Ideally, you will have experience writing software for controlling mechanical systems. You must own or have access to an Apple Macintosh computer.

Please forward your resume to:
Personnel Director
Navigation Technologies, Inc.
31 Hunting Street
Cambridge, MA 02141
(617) 661-6652

IBM PC For Sale. Dual floppy includes HP desk jet professional laser printer, PC convertible monochrome display screen, Lotus, DOS, and Word Perfect manuals and disks. Excellent condition. \$1300 or best offer. Call (617) 494-5343.

Need Legal Assistance?

I am an attorney and MIT graduate who can provide effective legal assistance and representation in all areas. Conveniently located near Central Square. Sliding scale rates available. Call Isaiah Shalom '66, 864-8055.

Electronics company seeks entrepreneurial electrical engineer to design communications product. Will give percentage for services. Excellent opportunity in multi-billion dollar industry. Contact Craig at (714) 951-5193 or write to Zephyr Industries, Inc., 22382 Ripplingbrook, El Toro, CA 92630.

Call 800-541-2318

We Buy Macs

We buy & sell • One computer or a whole office • Talk to us before you buy!
Box 680, Waitsfield, VT 05673

Strictly Macintosh
Simply the Best

Maya

Computer

SKATE SHARPENIN'
your alternative to high prices
the bicycle workshop 876-6555
259 Mass. Ave.
Cambridge (near MIT)

\$1.50

exp 3-31-90
With This Coupon

Prep Plus For the MCAT: The Best Medical Insurance

No one can guarantee your acceptance to medical school. But we can guarantee that you'll score your highest on the MCAT. Our unique Test Your Best™ guarantee is your insurance policy. If you're not completely satisfied with your MCAT score, we'll let you repeat the entire course... at no charge!

We offer expert live instruction, innovative home study materials, unlimited review in our TEST-N-TAPE® labs and lots of personal attention. That's why Stanley H. Kaplan has prepared more test takers, and produced more top MCAT scores, than everyone else combined!

STANLEY H. KAPLAN
Take Kaplan Or Take Your Chances

Last class starts Monday, March 5, 1990.

Call NOW for details.

868-TEST

The Technology and Culture Seminar and the MIT Energy Lab
Present a Series on

Energy and the Environment RUNNING ON EMPTY:

THE POTENTIAL OF RENEWABLE ENERGY

SPEAKERS:

DAVID CARLSON, The Solarex Corporation
WILLIAM MOOMAW, Center for Environmental Management, Tufts University
BARBARA PYLE, Director of Environmental Programming, CNN News

TUESDAY, MARCH 6

4:00 PM

ROOM 9-150

Informal Supper and Discussion to Follow

Supported by MIT Student Pugwash

"The Job Hunt" The Employer's Perspective

An engineering recruiter will discuss:

- *Resumes: What do companies want to see?*
- *Interviews: What do companies need to learn about you?*
- *Selection Process: How do companies decide who to hire?*
- *Offers: How do you know which opportunity is best?*

The presentation will be tailored for
Electrical Engineering and Computer
Science students looking for permanent,
summer, and 6-A positions.

Time: Monday March 5, 1990
4 P.M. to 5 P.M.

Location: 37-212

Brought to you by:

Six Appeal

NCR

sports

Volleyball second in division

By Chris White
Although second in the Eastern Intercollegiate Volleyball Association, the men's volleyball team has not lived up to early expectations.

In its only mid-season tournament, MIT played at the New Jersey Institute of Technology last weekend in the EIVA Open. The Engineers lost to both teams in its pool: 3-1 to Vassar, 3-0 to NJIT. Outside its pool, MIT defeated South Hampton College, 3-0.

Coach Sean Tierney '87 said that despite their slow start at the tournament, the Engineers finished on a good note.

With the season half over, MIT has faced all its conference opponents. The Engineers have defeated Dartmouth twice, 3-0 and 3-1, in addition to beating Roger Williams, 3-2, and Harvard, 3-2.

In its most recent conference match, on Feb. 14, MIT suffered a disheartening 3-0 defeat to Springfield. The Engineers will

meet Roger Williams, Harvard and Springfield all again to finish their conference play. With a conference record of 4-1, MIT is second to undefeated Springfield.

Although the Engineers' record puts them in a pretty good position to make it to the playoffs at the end of the season, MIT has not been playing up to its potential. Without the help of senior outside hitter Rolando Rocafort, who suffered a serious ankle sprain at the beginning of the season, the Engineers have lost some of their firepower.

Even so, Coach Tierney still feels that the remainder of the team is not playing up to par. By beating Roger Williams, Harvard and Tufts in tight, five-game matches, and losing 3-0 to Springfield, this may be true.

The Engineers began the pre-season by winning a tournament at Boston University, defeating Northeastern in the finals. MIT struggled in its second pre-season tournament, the New England

Collegiate Volleyball League Open at MIT, losing to Northeastern in the semifinals.

The Engineers have hope for a strong team in the future, with five sophomores on the varsity squad, three of whom are currently in the starting rotation. Team captain Chris White '90 and fourth-year varsity seniors Rocafort and Alex Chen will be graduating in the spring and will leave positions open. Two juniors and a freshman round out the varsity squad. Tierney has hopes for a stronger team next year with so many returning players.

MIT does not have another game until March 6, so the team has time to recuperate. Rocafort will be returning soon and this should spark some enthusiasm in the Engineers as they prepare to finish their season. MIT's last home match will be March 15, when the Engineers host Harvard at 7 pm in DuPont Gymnasium.

(Chris White '90 is captain of the men's volleyball team.)



This is no way to bring up a child.

For Susan Cole, getting her daughter Melissa to their third floor apartment is almost as tough as Melissa's fight against Lupus. But she won't have to struggle anymore, now that the Roxbury Multi-Services Center found them a more accessible and affordable apartment.

For 25 years, RMSC has provided affordable housing, education and youth services, and counseling programs to the people of Roxbury. Take the first step toward supporting these services. Send your donation to RMSC, Box 157, 317 Blue Hill Ave., Dorchester, MA 02121. Or call (617) 427-4470 to find out how you or your business can help.

RMSC
25 years of keeping hope alive.

Interested in:

• Typography?

THE TECH

• Page Layout?

IT'S NOT TOO LATE...

New Undergraduate Seminar

WHAT ARE WE DOING TO OUR ENVIRONMENT?

Seminar 074, 6 units

Come and join us as we take a look at MIT's interaction with its physical environment. We want to know what comes in and what goes out. What do we consume? And how much do we waste? Participants will be responsible for gathering data and generating a database. The ultimate goal is to define and implement ways to promote effectiveness and efficiency in MIT's use of physical resources. Possible UROP opportunities may result.

Professor Lawrence Lidsky Sponsored by:
Mondays 3 — 4:30 Context Support Office
Rm. 36-144 20B-141 x3-7909

GENERAL INTRAMURAL MEETING

Wednesday, 3/7
7:30, Room 4-370

ENTRY DEADLINES ARE

Squash - 3/8 Water Polo - 3/8

Softball - 3/12 Frisbee - 3/12

Table Tennis - 3/12

ORCHESTRATING DESIGN SOLUTIONS

JAM SESSION

On-Campus Jam Session
March 14, 1990

On-Campus Interviews
March 15, 1990

In 1782, in the court of Emperor Joseph II, a brash young composer named Wolfgang Amadeus Mozart set the music world on its ear. A radical departure from the current fashion in music, he set a new standard for style and composition.

It has always been so. The old guard surpassed by a new wave. It's true today in the area of integrated Circuit Design Automation (ICDA)—software tools used in the design and development of ICs and electronic systems. Cadence broke with the conventional order to create the industry's only completely open and integrated ICDA software solution. Our high-performance tools are coordinated into one harmonious environment, allowing the user to arrange the entire IC design process from design entry to final verification.

Our approach to integrating the IC design has made Cadence the leader in ICDA software. And now we're building on our expertise in IC design and expanding our range to include a full line of products for the overall Electronic Design Automation (EDA) market, a much broader market than ICDA. We are a financially secure, fully resourced company, and we're growing at 80% a year—over three times as fast as the industry average. With the recent merger with Gateway Design Automation Corporation, now called our Advanced Computer-Aided Engineering (CAE) Division, we are able to challenge the top vendors in the systems design software market. And our new Advanced CAE Division will continue to market the Verilog logic simulation software

products, bringing new strength to our market penetration efforts in Europe and Japan:

The expertise we've acquired by orchestrating different elements and helping them to work in concert is reflected in our workplace. At Cadence all team members, veteran and recent grad alike, are involved in a creative process infused with intelligence, enthusiasm, and personal commitment. For you, this means unparalleled opportunity for achievement and a forum in which your ideas are listened to and valued.

When you begin your job search, consider Cadence. And if you are graduating in any of the following areas, don't miss our on-campus jam session and interviews.

EE, CS, Math, Physics
BS, MS, Ph.D., with CAD/CAE software experience a plus

Marketing
MBA only, with technical background preferred



Cadence Design Systems, Inc.
555 River Oaks Parkway
Job MIT/JC
San Jose, CA 95134

We are an equal opportunity employer.

