

## HASS minors increase Almost 200 sophomores declare this year

By Chris Schechter

Nearly 200 sophomores have declared minors in the School of Humanities and Social Science, according to Ruth Spear, coordinator of the Humanities, Arts and Social Sciences.

This is a substantial increase from the Class of 1989, when only 55 students chose HASS minors. Spear said she had expected this increase, and attributed it to tremendous promotion on the

part of HASS departments.

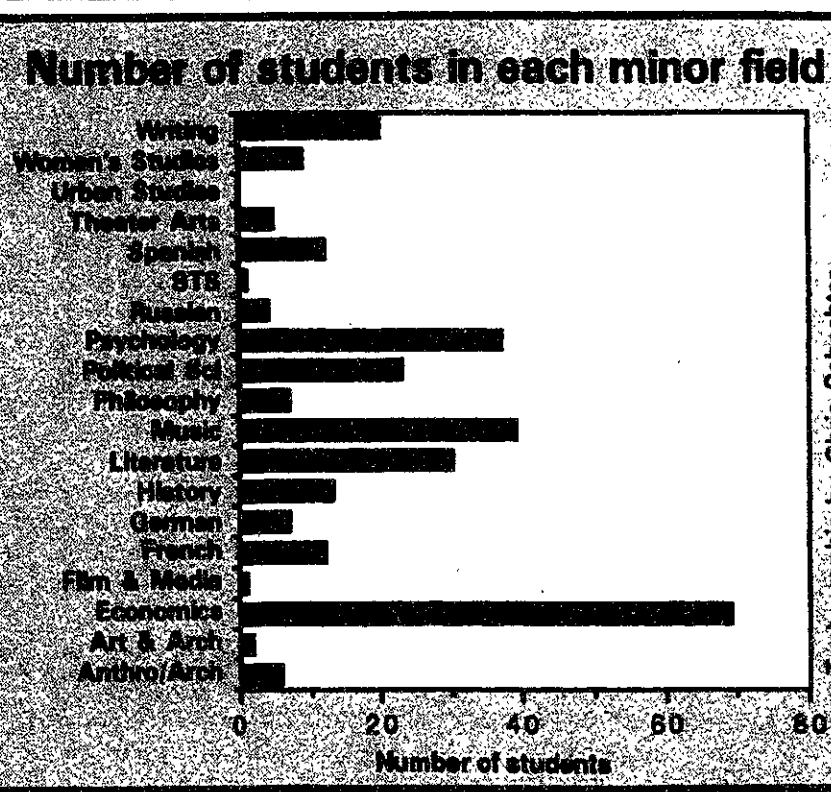
Spear added that she would be comfortable accommodating the 25 percent of the undergraduate population that is expected to participate in the minor program.

The HASS minor program, which began in the fall of 1988, typically requires that students complete six subjects in their field of study, as well as three other HASS or architecture subjects.

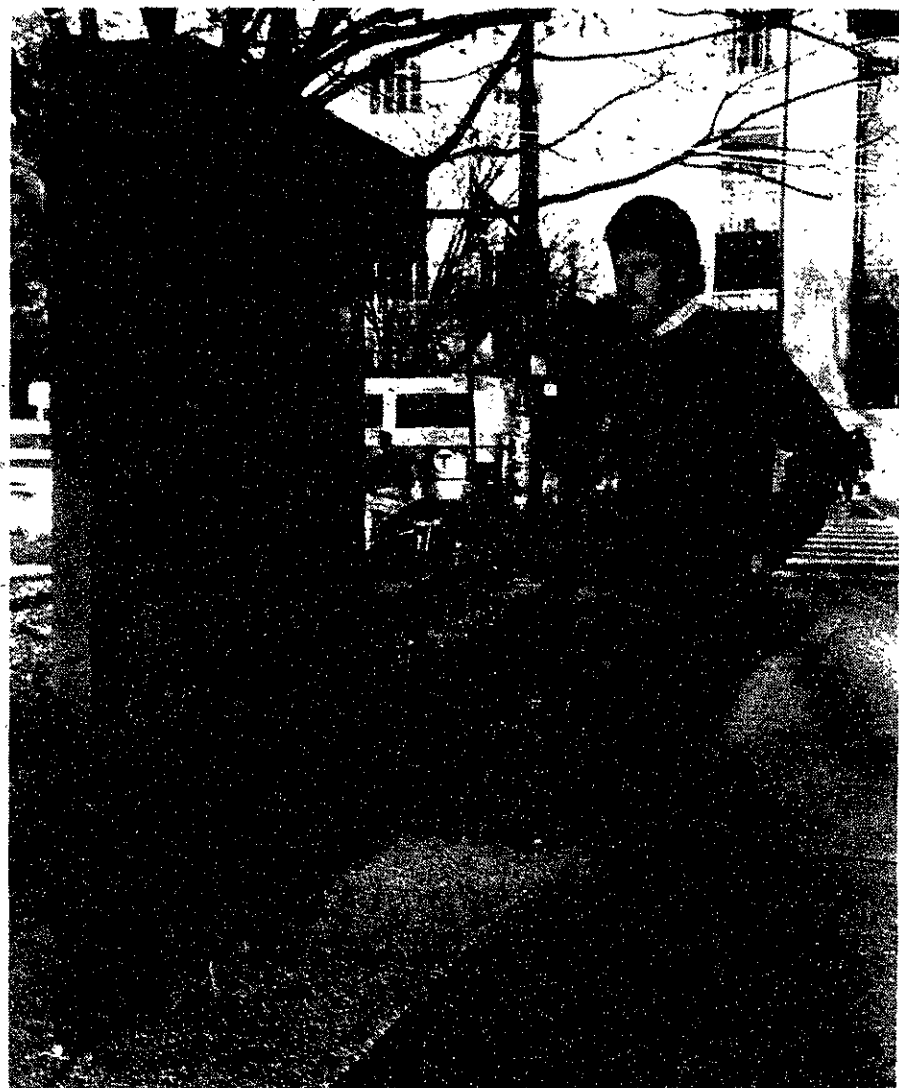
Spear said that economics is the most popular minor, with 69 students currently enrolled. Music and sociology attracted 39 and 37, respectively. Literature ranks fourth with a total of 30 students. Political science and writing are the fifth and sixth most popular fields, with 22 applicants each.

Course 6 has 39 students in minor programs, the most of any department. Course 2 is second, with 28 students enrolled in the program. With 23 students, Course 7 ranks third, preceding Course 15 and Course 18, which

(Please turn to page 2)



Tech graphic by Chris Schechter



Andrea Lamberti/The Tech

The new MIT Campus Information map in use.

## Campus map placed by Student Center

By Andrea Lamberti

In a boon for visitors to the MIT campus, the first of two MIT Campus Information maps has been placed between the Stratton Student Center and Massachusetts Avenue.

The map was the gift of the Class of 1987. The second one will be installed at the Massachusetts Bay Transportation Authority (MBTA) station in Kendall Square, according to Barbara A. Peterson, the Alumni Association's program director for students and parents.

The second sign is not part of the class gift, Peterson said. It will be "in something provided by the MBTA," she said.

The class gift sign lists MIT buildings by number and name, and the numbers are referenced on the color map. It includes street names, bus stops and parking lots. However, the map does not indicate its own location in a "you are here" manner.

The Planning Office did not have official information yesterday on the total cost of the maps, according to Ovadia R. Simha, director of planning.

The cost of the sign slightly exceeded the amount of money raised by the class, Peterson said, but MIT made up the difference. At the time of commencement in 1987, the class had officially raised \$4894.50. Peterson said additional funds came in after graduation, but he could not have exact figures.

The total funds raised for the gift came close to \$10,000 after the Class of 1937 gave an additional \$5000 to the gift.

The 50th reunion class — in 1987 it was the Class of '37 — usually puts forth an effort for a reunion gift, Peterson explained. The reunion class is asked to set aside funds for the graduating class' gift; in this case it was \$5000.

The gift was determined by members of the Class of '87 before they graduated, Peterson said. They collected money from 26 percent of the class during the spring term.

The Class of '87 gift coordinator, Sherman C. Luk '87, was unavailable for comment yesterday.

Although it has been over three years since the Class of '87 graduated, Peterson felt the time it took for the map to become a reality was not unusual in terms of a class gift. "The amount of time that it's taken has been probably about average," she said.

The map and its structure "had to meet a lot of people's needs," Peterson explained. Planning for the map was done internally at MIT, she said, before the plans to construct it were thrown into gear.

Because this type of gift requires several stages of planning and approvals, "[It's a] process that does take some time," she said.

The dedication ceremony will take place during Alumni Week in June.

## Vest discusses grad funding

By Lakshmana Rao

Speaking at Tuesday's full council meeting of the Graduate Student Council, President Charles M. Vest hinted at the use of a "multi-agency approach" to secure more funding to support graduate students at MIT.

"The National Science Foundation is working on the establishment of a traineeship program which will be supported by a number of [federal] agencies," Vest said.

He also said that the federal government must respond to the end of the Cold War by creating new ways to fund research. "We are trying to build on the end of [the] Cold War theme," he said.

About 10 years ago, the federal government established funds to back defense-related research, Vest said. "It is [now] time for the government to establish something like a National Competitiveness Education Act or the National Peace Education Act so as to channelize the funding for research in the next decade."

Vest said he is spending a considerable time lobbying senators and congressmen for support for these ideas.

Dean of the Graduate School Frank E. Perkins '55, who also attended the meeting, said he has been asked by former Provost John M. Deutch '61 to prepare a report on the "financial implications" of having graduate students who are writing their theses pay reduced tuition.

At present, all graduate students have to pay full tuition while writing their theses, even if they are not taking any classes.

Speaking on the issue of graduate housing, Vest said, "The Planning Office is working on formulating an institutional policy on real estate development in order to provide guidance on providing more housing for all members of the Institute, including students, post-doctoral fellows, faculty and staff. This report should be ready within six months."

### Other business

Also at the meeting, the GSC discussed a referendum it is considering for Registration Day of the spring term.

The referendum will poll graduate students before amending some sections of its constitution. One section under consideration is the option of giving a one-year tenure period for all its representatives.

According to the present rules, a GSC representative holds his position from the time of appointment until graduation.

Vest also responded to the

GSC and Undergraduate Association request that students have more control over how students are chosen for Institute committees. Currently, faculty committee members select students from a list of nominees drawn up by students.

The present rules of the Faculty Policy Committee, which determines how students are appointed to committees, are adequate and do not need to be changed, Vest felt.

He said there is no evidence that the present system of appointing students to Institute committees has failed. He added that he is inclined to maintain

and enhance student input into the committees.

Vest also commented on the Albany Street shelter for the homeless. He said he is negotiating with the city of Cambridge on the issue, and does not know when it will be resolved.

MIT has leased the land on which the three-trailer shelter stands rent-free to the Cambridge and Somerville Program for Alcohol Rehabilitation (CASPAR) since 1979. Last summer, the Institute turned down CASPAR's request for a long-term lease, which would have enabled CASPAR to build a permanent house for the shelter.

## Bone marrow donor found for Corcoran

By Andrea Lamberti

A bone marrow donor has been located for Christopher J. Corcoran, the son of East Campus house manager John P. Corcoran, who suffers from leukemia, according to his father.

Thanks to the donor, Christopher will most likely undergo a bone marrow transplant in January, the elder Corcoran said. A bone marrow transplant is crucial for the treatment of leukemia.

About two weeks ago, the Corcorans learned that the National Marrow Donor Program (NMDP) had located a person with the same tissue type who was willing to donate, Corcoran said. "It's wonderful," he added.

The Corcorans do not know the donor's identity or location. "All we know is that [the donor] is a female," Corcoran

said.

Right now Christopher, 24, is in remission. He is at Brigham and Women's Hospital in Boston to get "his immune system back in fairly decent shape so they can go ahead with the transplant," his father said. Christopher was diagnosed as having leukemia three and a half months ago.

The donor's information was in the marrow donor registry before the Corcorans held the first of two marrow drives this fall, Corcoran said. Each donor must go through several rounds of tests, Corcoran said, and at the time of the drives, his son's donor was not confirmed as a match.

The donor's name was "already in the computer, [but] was still a 'maybe' at time of drives." (Please turn to page 2)

## Sun-Jae Kim G

Sun-Jae Kim G, a student in the Department of Mechanical Engineering, died on the morning of Nov. 21 while driving to New York City to meet his mother. He was 23 years old.

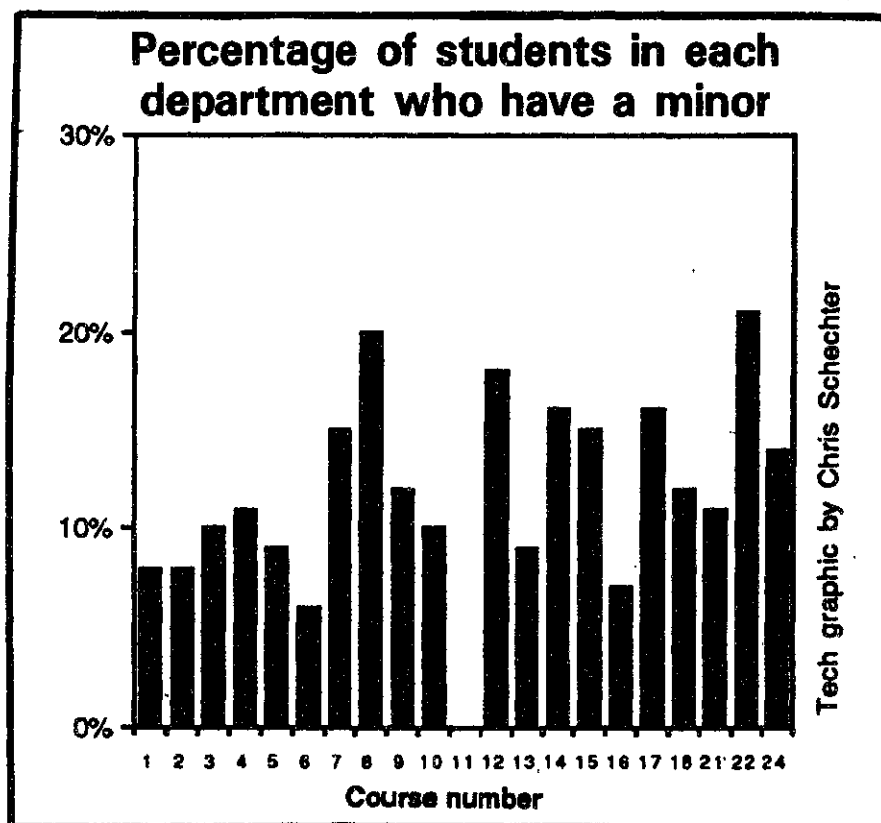
Kim was apparently killed instantly after his car hit a railing and flipped over several times. His brother, who was driving the car, was not hurt, most probably because of an airbag in the steering wheel.

Kim graduated from Seoul National University in Korea in 1989, after which he came to MIT. He worked with Mechanical Engineering Professor Nam Pyo Suh '59. Suh, who is attending a conference, was unavailable for comment.

Dae Eun Kim G, who shared an office with Sun-Jae, called his friend's death "a tragedy for everybody here," and described him as "a very outgoing guy, a friendly guy. . . . He had a very bright future." He added that Kim "used to crack a lot of jokes," and enjoyed playing tennis.

A funeral was held in New York over the weekend. Many members of Kim's research group attended.

Kim is survived by his father, Kim Woo Joong, chief executive officer of the Daewoo Corporation, a major Korean electronics manufacturer, his mother, an older sister, and two younger brothers.



## Number of HASS minors increases

(Continued from page 1)

each have 11 students in minor programs. Course 14 and 4 have nine HASS minors each.

Eileen P. Murray, senior secretary for the School of Humanities and Social Science, felt that interest in a subject and the desire to get a better job influence students' decisions to take a minor. Although there is no evidence that a minor provides any advantage on the job market, career considerations remain the main incentive, she felt.

However, Murray believed in minoring as an end in itself. "It broadens a student's knowledge in different areas, and prepares them better for the world," she said.

Two new minors, film and media studies and history of the arts

and literature, were added to the original list of 17 last year.

A minor in East Asian studies might also be added, depending on the success of Chinese language courses that may begin next fall, according to Professor Philip S. Khoury, acting dean of the School of Humanities and Social Science. "East Asian studies will be most probably be offered in two years," he said.

Besides East Asian studies, the possibility of any new minors in the near future appears to be slim. The impetus for new minors does not originate from students, but rather from the quality of the faculty, Khoury said.

"We target the department which has enough depth of knowledge to offer a first-class program in a certain field of study," he said.

## Bone marrow donor found for Christopher Corcoran

(Continued from page 1)

In the meantime, the person was further tested, and proved to be a positive match," he said.

The NMDP maintains a list of approximately 138,000 donors throughout the country. The list was established in 1987 to help patients searching for marrow donors.

Corcoran sponsored two bone marrow drives in September and November, according to Kathryn J. Comer '91, membership vice president of the Technology Community Association, which helped sponsor and publicize the events.

Even though a potential donor had already been located through the NMDP, Corcoran still went ahead with the drives. "We did the drive mainly to increase his chances [of finding a match]," he said. It also opened up the possibility that other people with leukemia could find matches.

The Sep. 30 drive, which drew over 1200 people, did result in a tissue match for another leukemia patient, Corcoran said. "[That] individual has already been contacted as a possible donor for someone else," he said. The names are kept confidential, he added.

Three hundred people were tested in the second drive on Nov. 11, Comer said. The drives were held largely through Corcoran's

private initiatives, she added. They drew people from Somerville, Harvard University and Wesleyan College, where Corcoran went to school, as well as the MIT community.

Corcoran began planning for the drives because his son could not find a tissue match within the family. The chances are about 30 percent that a person with leukemia will find a match with a family member, according to NMDP literature.

The tests involves taking small blood samples, which are then tested for the donor's tissue type. Each donor's tissue type is then entered into the NMDP registry as a potential donor.

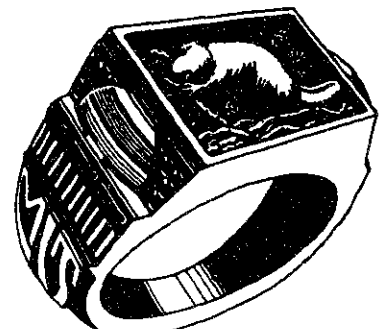
Corcoran commended the entire MIT community for its participation in the marrow drives. "The entire community has been spontaneous," he said. "[I] just can't say enough."

### Museum of Fine Arts

Offers opportunities to articulate individuals for telefund. Enthusiasm and good communication skills a must. Competitive wages! Afternoons and evenings.

Apply at Suite 303,  
295 Huntington Ave., or  
call 617-266-4224.

## The MIT Ring



## Collection By

JOSTENS

Exclusively At

MIT COOP AT KENDALL  
3 CAMBRIDGE CENTER  
#4 915-7 THUR TEL # 30  
SAT# 15-545

the  
Coop

The Students of AIDS Response at MIT (ARMIT)  
and The MIT ADHOC Committee for AIDS Awareness  
cordially invite you to participate in

## MIT's World AIDS Day Activities

Lecture Series Committee Presents:

'Longtime Companion'

November 27, 1990

8:00 pm

Kresge Auditorium

Winner of 1990 Audience Award - US Film Festival

## AIDS Information & Educational Resources

November 28 & 29, 1990

Stratton Student Center Lobby

'The Inner Circle'

November 29 & 30, December 1, 1990

8:30 pm

Killian Hall

A play performed by MIT Students

## World AIDS Day Observances

November 30, 1990

11:00 am - 2:00 pm

Lobby of Building 7

Pieces of NAMES Project Quilt on Display

Quilting Bee

Student Poster Contest Exhibit

AIDS Information and Educational Resources

Sponsored By

ARMIT and the other members of the MIT ADHOC Committee for AIDS Awareness:  
Campus Activities Complex, MIT Council for the Arts, Lecture Series Committee, MIT Medical Department's  
Health Education Service, MIT Museum, Office of the Dean for Student Affairs, Public Service Center,  
Residence and Campus Activities

# Research & Advanced Development

Motorola Codex is a leading worldwide supplier of data communications equipment for private networks, from transmission products through wide area networking solutions (STDM, X.25, T1), all under integrated network management. Codex is a recognized leader in bringing state-of-the-art technology to products.

We are building upon our expertise to provide advanced private networking solutions for the 1990's. Areas of activity include systems architecture and design of integrated switching nodes, software architecture, design and implementation of real-time distributed multiprocessor networking products, ISDN call processing and frame relaying, system and networking software.

Research and Advanced Development at Codex brings together research, advanced marketing and advanced development in a unique setting to focus innovative efforts in new communication technologies. The ideal Codex R&AD engineer is one who wants to see his/her ideas realized in commercial products; someone with outstanding technical ability and the desire to turn ideas into tangible output that meets real market needs.

If you are qualified by education and experience for positions in the following areas, we invite your inquiry.

### Software Design and Implementation for Networking Nodes

- Loading, Configuration and Initialization
- Fault Recovery and Management
- Network Management and Service Access
- Routing, Clock Synchronization and Distribution
- Call Processing Software

### Networking, Hardware & Firmware Design and Testing

- Network and Systems Architecture for LAN Interconnection
- Hardware Design for E2/T3 Processing and Interfaces
- State Machine Firmware Design for Communication Framing Formats
- System Integration, Testing, and Performance Measurement

Software engineers should be proficient in "C". Working knowledge of structured analysis and design techniques is desirable.

Codex, a subsidiary of Motorola, Inc., offers an excellent environment conducive to professional growth, competitive salaries and a comprehensive benefits package including profit-sharing, 401K and a generous pension plan.

Please send your resume to Advanced Sourcing Group, Codex Corporation, Dept. MIT, 20 Cabot Blvd., MS M4-70, Mansfield, MA 02048. An Equal Opportunity/Affirmative Action Employer, M/F/H/V.

**codex** | THE NETWORKING EDGE

MOTOROLA

# news roundup

from the associated press wire

## World

### Permanent Security Council members agree on use-of-force resolution

The five permanent members of the United Nations Security Council have agreed to a draft resolution allowing "all means necessary" to liberate Kuwait from Iraq's grip. The only Arab member of the council, Yemen, said the United Nations should not give up on the use of economic pressure to force Iraq out of Kuwait.

The Soviet Union and China fell in step yesterday, joining the United States, Britain and France in deciding to send Saddam Hussein an ultimatum in the form of a use-of-force resolution. They have agreed on a draft that authorizes military force to drive Iraq from Kuwait and restore its government. But the draft gives "Iraq one final opportunity, as a pause of goodwill," to leave the country it invaded Aug. 2.

The draft contains optional deadline dates, Jan. 1 or Jan. 15. Diplomats said the deadline in the final resolution will be decided in consultations among the 15 security council members.

Officials said the entire 15-member council will act on a final version of the resolution on Thursday.

### Trade tops agenda at Mexican summit

President George Bush, meeting with Mexican President Salinas de Gortari for two days in Monterrey, Mexico, said relations between the United States and Mexico have never been better. Both leaders want an agreement removing trade barriers in their countries as soon as possible, the White House said today.

A prospective free trade agreement, similar to one the United States negotiated with Canada, heads the agenda. After a round of meetings yesterday, Bush's spokesman said the two leaders discussed other topics besides trade, including the war against drugs and the current situation in El Salvador.

### State Department studies whether Lebanon is safe for diplomats

A State Department survey team is in Lebanon to determine if it is safe for American diplomats to return. The US embassy in Beirut has been closed for over one year. The United States has been reevaluating security there since Syrian forces last month crushed a rebellion there by General Michel Aoun.

### Polish elections will require runoff

In Poland's first popular presidential election, Solidarity leader Lech Walesa and an emigre businessman, Stanislaw Tyminski, will compete in a runoff election on Dec. 9. Walesa led the voting with a little more than 39 percent of the vote in Sunday's election.

Poland's prime minister, Tadeusz Mazowiecki, announced his resignation after finishing third in the race.

## Nation

### October deficit hits \$31.5 billion

The federal government opened fiscal year 1991 with a \$31.5 billion deficit in October, the first month of what is expected to be a record year for red ink. The Treasury Department reported that the budget gap was 21 percent higher than the deficit of October 1989. The increase reflects the buildup of American forces in the Persian Gulf and the escalation of the savings and loan bailout.

### Denver jet fuel tanks ablaze

A broken valve set a 400,000 gallon tank of jet fuel on fire Sunday morning at Stapleton Airport in Denver, CO. The heat from the blaze set three other tanks on fire, setting ablaze a total of more than two million gallons of jet fuel. Firefighters near the blaze had to be pulled back yesterday when the fire spread from two 400,000 gallon tanks to two 800,000 gallon tanks. Crews had been trying to cool the tanks all day Sunday.

The fire wreaked havoc on travelers returning home from the Thanksgiving holiday weekend. Stapleton is the nation's fourth busiest airport, and airlines were forced to delay, divert, or cancel many flights.

According to Richard Boulware, an airport spokesman, United Airlines was virtually put out of fuel by the fire. Boulware said the fire was too big for any metropolitan fire department, but posed no danger to the airport itself. He said firefighters will probably let the blaze burn itself out.

### Flooding hits Washington state

At least 2100 people in six rain-drenched counties in Washington state have fled their homes because of flooding and rivers overflowing their banks. The destruction includes a bridge between Seattle and Mercer Island that sank into Lake Washington. Disasters were declared in 17 counties. Record amounts of rain fell in Seattle, Tacoma, and Olympia.

## Local

### Jamaica Plain shooting raises controversy

Residents of Boston's Jamaica Plain section are calling for a formal probe into the weekend shootout that injured three police officers and killed a neighborhood resident. About 16 residents raised questions about police conduct in the case during a meeting with Mayor Raymond L. Flynn Sunday night. Several police officials also attended the meeting.

The shooting occurred at about 9:20 pm Saturday near Egleston Square. Police said two plainclothes officers were outside in their unmarked car when 19-year-old Hector Morales Jr. opened fire with a shotgun. One officer was struck on the head and the other on the hand. The two returned the fire, hitting Morales in the abdomen. A third officer was injured in a scuffle with another suspect, who remains at large. Two officers remain hospitalized, but authorities said their injuries are not life-threatening. Morales died about three hours after the shooting.

## Weather

### Near record warmth midweek

A high pressure center will continue moving east today allowing a warm front to push northward. Following the passage of the warm front, brisk southwest winds will boost temperatures into the 70s (21-26°C) in southern New England on Wednesday. The warmth will last into early Thursday, before a cold front, now in the Midwest, crosses the area.

**Tuesday afternoon:** Partly sunny and cool with light rain or drizzle developing late, especially to the north and west. High around 55°F (13°C). Winds south-southeast at 10 mph (16 kph).

**Tuesday night:** Precipitation ending with areas of fog developing. Low 52°F (11°C).

**Wednesday:** Becoming sunny, warm and breezy. High 68-75°F (20-24°C). Low 55°F (13°C).

**Thursday:** Chance of showers, high in the low to mid 60s (16-20°C).

Forecast by Michael C. Morgan

Compiled by Brian Rosenberg

## STUDENT & YOUTH AIRFARES

BOOK NOW  
FOR THE HOLIDAYS  
ROUND TRIPS

	From
Montreal .....	\$94
LAX/SFO/SEA .....	\$298
Colorado Springs .....	\$298
Chicago .....	\$238
London .....	\$435
Amsterdam .....	\$398
Brussels .....	\$398
Tokyo .....	\$749
Taipei .....	\$819
Bangkok .....	\$999
Sydney .....	\$1,209

- Fares subject to change
- ID cards issued on spot
- EURAIL & BRITRAIL passes issued on spot

THE STUDENT TRAVEL NETWORK

BOSTON 273 NEWBURY ST. 266-6014  
CAMBRIDGE 1228 MASS. AVE. #5 266-5579

Worldwide **STI**  
STA TRAVEL

## Diamonds! and Stars! Form in Modern Materials

Professor Edwin L. Thomas  
MIT Department of Materials Science and Engineering

### The 1990 Wulff Lecture for Freshmen and Undesignated Sophomores

Sponsored by the  
Department of Materials Science and Engineering

Wednesday, December 5, 1990 4:00 p.m.

(Refreshments at 3:15)

Room 6-120

## Volunteer Opportunities

### The Giving Tree

The MIT Public Service Center Giving Tree will be here again this year in the Student Center. Names of underprivileged children will be available to be picked up, Nov 26-30 from 11:30-1:30. All gifts requested are under \$10. Help make this Christmas special for Boston area children. Stop by the Student Center table, or the PSC Mon and Wed 3-5.

### Big Night on the Town

The Big Brother Association of Boston/Cambridge is holding its annual fundraiser at the Roxy from 6:00 to 9:30 on November 29. The party will include cocktails, reception, silent auction, and dancing to live Big Band music. Many celebrity items and more will be auctioned off. Tickets are \$10 in advance and \$12 at the door. For more information or tickets call 426-1237.

### Crafts at the Castle

Family Services of Greater Boston is sponsoring a show of over 100 crafts people from around the country, Nov 30-Dec 2. The show will include displays of furniture, ceramics, jewelry, leather and more. Free admission to volunteers who help set up with the crafts people on Nov. 29, from 8 a.m. to 2 p.m. Call Beth Tishler at 523-6400 ext. 560.

### Ultimate Holiday Celebration

The New England Home for Little Wanderers invites you to an exciting "night to remember" from 5:30-midnight on Dec 17. Buffet dinner and live entertainment will make for a splendid evening. All proceeds benefit the NEHLW. For more info call 232-8600.

### Christmas Day

Little Brothers-Friends of the Elderly needs volunteers to go to their office on Christmas Day, pick up a turkey dinner, a bottle of champagne, and a bouquet of flowers to take to the home of a lonely elderly person. A perfect opportunity to help out if you're spending the holiday in Boston. Call Michael Duffy at 536-2404 for more information.

### Help Build a House

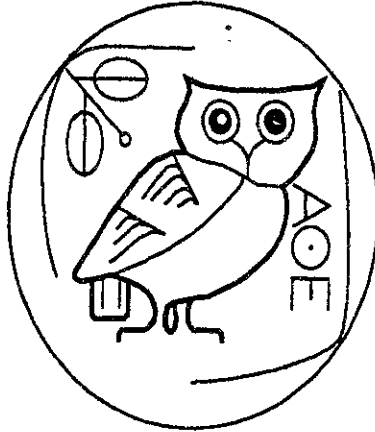
Habitat for Humanity is starting a new project. Volunteers needed to contact past donors for the fundraising drive. Help also needed in writing proposals and possibly lobbying for the project. For more info, contact Bob Badger at 455-9971 or 926-3317.

### Elementary School Tutoring

Graham and Parks Alternative elementary school of Cambridge is looking for volunteers to tutor fifth and sixth grade kids with learning disabilities. Help with general homework is needed from 2:45-3:45 on Wednesdays and Thursdays. Any ability to speak Spanish would be very helpful. For more info call Nelson Smith at 349-6612, or leave a message at 497-5172.

Compiled by the Public Service Center, rm. 3-123, ext. 3-0742

**PSC**  
MASSACHUSETTS INSTITUTE OF TECHNOLOGY  
Public Service Center



## ATHENA MINICOURSES Schedule and Index November Minicourses 1990 (One Week! -- Last Chance for Fall Term!)

	Mon	Tue	Wed	Thu
12 noon	26 Nov	EZ	27 Nov	Emacs
7 p.m.		Latex		Matlab
8 p.m.		Latex Thesis		EZ
				28 Nov
				Matlab
				29 Nov
				EZ

- Athena workstations (*computers*) are available for your use all over campus.
  - All minicourses are one hour each, and are taught in Room 3-343.
- PLEASE NOTE: No Pre-Registration or Reservations are Needed...**  
Just show up for class!

### Minicourse Descriptions

**Advanced Word Processing: Latex (Latex)** An introduction to Latex, a widely-used text formatter, used for converting a text file into an attractive, professional-looking document. It is a powerful and flexible program, with the capability to typeset many foreign characters and very complex mathematical text. *Pre-requisites: Basic WP*

**Advanced Word Processing: EZ (EZ)** Introduction to EZ, a combination text editor and formatter, with text-editing commands that are similar to Emacs. As a formatter, it is menu-driven and easy to learn, in the style of the "What You See Is (pretty much) What You Get" packages made popular by the Macintosh<sup>TM</sup>. *Pre-requisites: Basic WP*

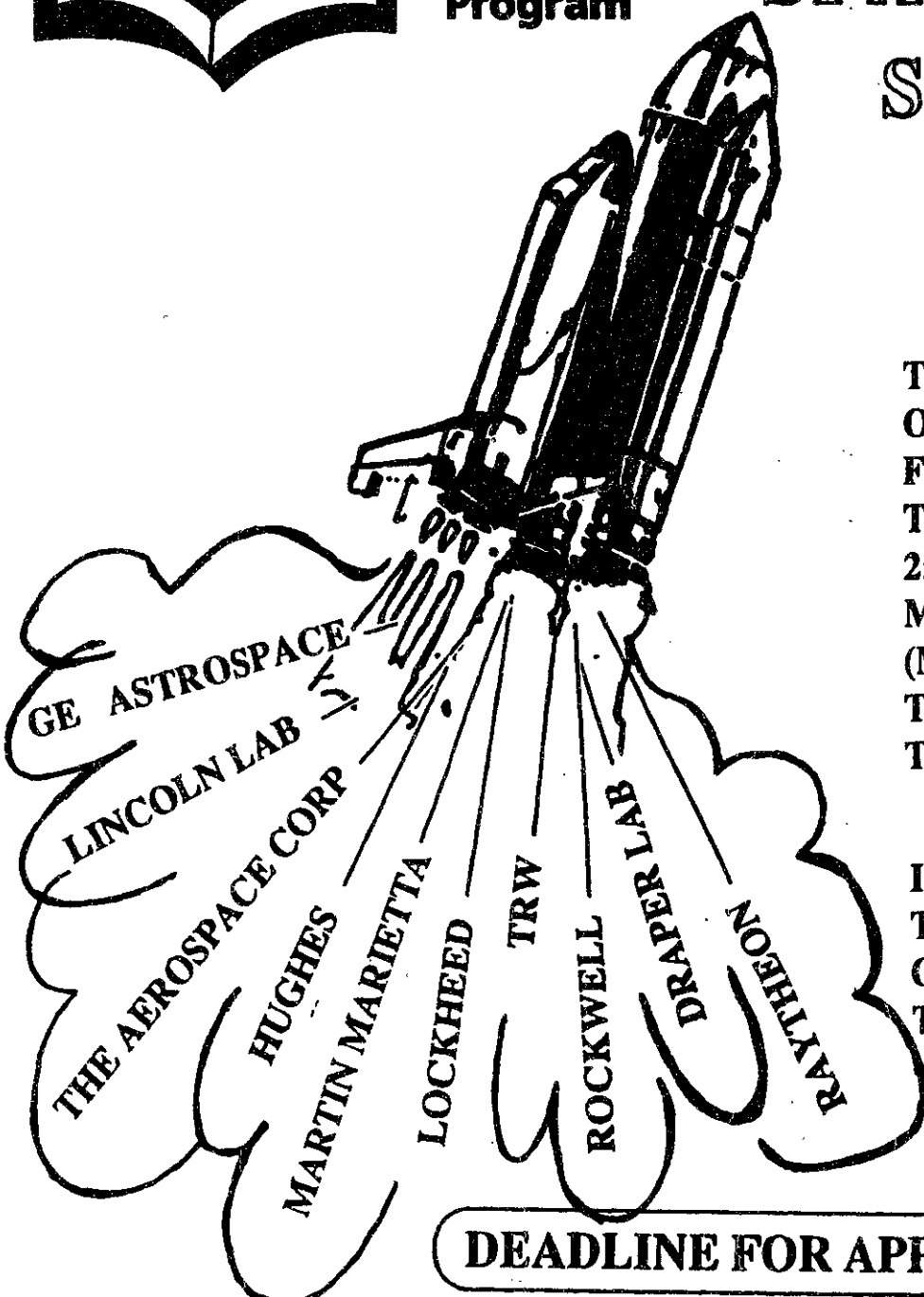
**Emacs** A more detailed look at the text editor introduced in Basic Word Processing. *Pre-requisites: Basic WP*

**Matlab** An interactive program and programming environment for scientific and engineering numeric calculation. Applications include: matrix manipulation, digital signal processing, and 3-dimensional graphics. *Pre-requisites: Basic WP*

**Latex Thesis (L. Thesis)** Using the Latex text formatter to produce a fully-featured thesis that meets all MIT format requirements. *Pre-requisites: AWP: Latex*



## SPACE GRANT PROGRAM SUMMER POSITIONS



THE SPACE GRANT PROGRAM IS NOW OFFERING AN OPPORTUNITY FOR A SUMMER POSITION IN THE FIELDS OF SPACE SCIENCE AND SPACE ENGINEERING. THERE WILL BE A MEETING ON NOVEMBER 14, 1:00-2:00pm IN 37-252 (MARLAR LOUNGE) AND ANOTHER MEETING ON NOVEMBER 30, FROM 3:00-4:00pm IN 37-252 (MARLAR LOUNGE). THIS MEETING WILL INTRODUCE THE PROGRAM AND WE WILL ALSO HAVE INFORMATION AVAILABLE ON THE PARTICIPATING COMPANIES.

IF YOU ARE INTERESTED IN A SUMMER POSITION, PLEASE SEE HELEN HALARIS, 37-441, X8-5546 OR LISA SASSER, 33-212, X3-4929 FOR AN APPLICATION OR FURTHER INFORMATION

**DEADLINE FOR APPLICATIONS: DECEMBER 3, 1990**

# opinion



## LETTERS TO THE EDITOR

### Courtney's message is harassing to those not sharing his beliefs

In his letter, Michael W. Courtney G accuses his "opposition" of trying to discredit his message of Jesus Christ by discrediting him ["Opposition distorts Courtney and message on sin," Nov. 16]. He is unfortunately not seeing the real issue.

question from the audience by saying, "You'll be spending *your* eternity with *your* god, and I'll spend *my* eternity with mine."

All I ask of you, Courtney, is that you practice what you preach, and leave me be.

Valerie J. Ohm '93

This is not a theological debate on whose god is the better. The point that Courtney is missing is that it is an issue of religious harassment, not who is and who is not going to hell.

Courtney claims that if he expressed his discontent with other religions in his own name, few would be offended. This is only half true. There is a fine line between expressing discontent and harassing.

I find that he is putting up a poor example of his religion by using it to hurt others. I do not mind people wanting to share their faiths, but he is using his to attack other faiths.

He put up posters declaring "witchcraft is wickedness" and calling Wiccans whores, using the Bible, a book that Wiccans do not acknowledge as truth, as his justification.

I, for one, was very hurt and offended by Courtney's unprovoked attack on what I hold sacred. As I recall, at his talk on Nov. 7, Courtney responded to a

## classified advertising

**Cambridge, Modern spacious 2 bed condo 1.5 bath.** Fully applianced kitchen, large outside private patio, garage parking, roof deck. Priced to sell. \$143,000. Near Kendall Sq. Call Michael 497-9322.

**Spring Break 1991**  
Individual or student organization needed to promote Spring Break Trip. Earn money, free trips and valuable work experience.  
**CALL NOW!!**  
Inter-Campus Programs:  
1-800-327-6013.

**Need Part-Time PC Support Person** to work during business hours at a consulting firm in Central Square. Some programming familiarity a plus. Good job for college students. Call John at 547-1200.

**Cambridge, Cambridgeport Commons.** Modern 2 bed 1.5 bath, nice layout. Very sunny. Private patio with spectacular views of Boston. Storage. Garage Parking. Off Mem. Drive. \$170,000. Call Michael 497-9322.

**Legal Problems?** I am an experienced attorney and a graduate of MIT who will work with you creatively to solve these problems, answer your legal questions and provide legal representation. My office is conveniently located in downtown Boston just minutes from MIT via MBTA. Call Attorney Esther Horwich, MIT '77 at 523-1150.

# MIT, IN REALITY

Today's Issues, Tomorrow's world

**Professor Jay Keyser**  
Linguistics and Philosophy

## "TECHNOLOGY, CULTURE, AND THE LITTLE RED HEN"

Tuesday, November 27, 1990  
4:00 pm (refreshments starting at 3:30)  
Room 6-120

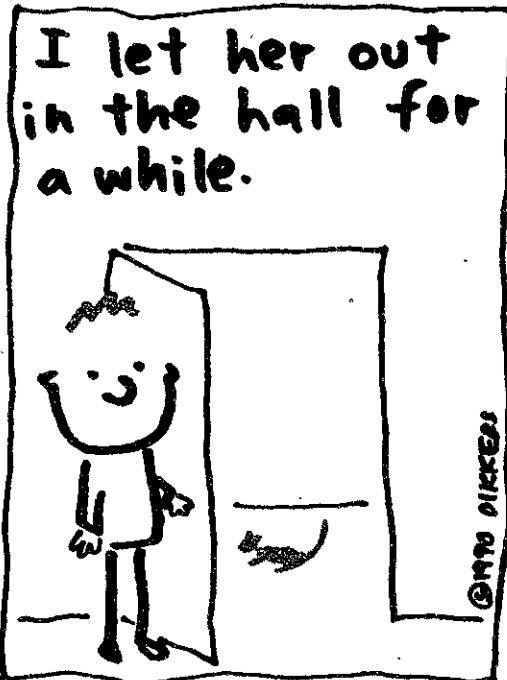
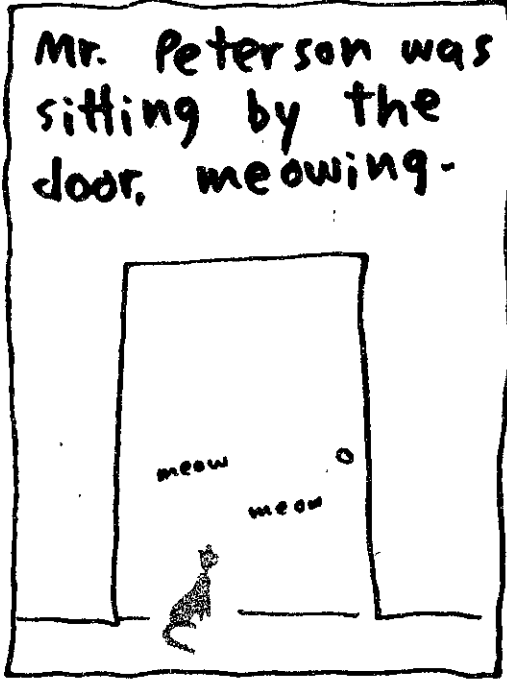
Office of the Dean for Undergraduate Education  
The Undergraduate Association

For more information:  
contact the Context Support Office, x3-7909

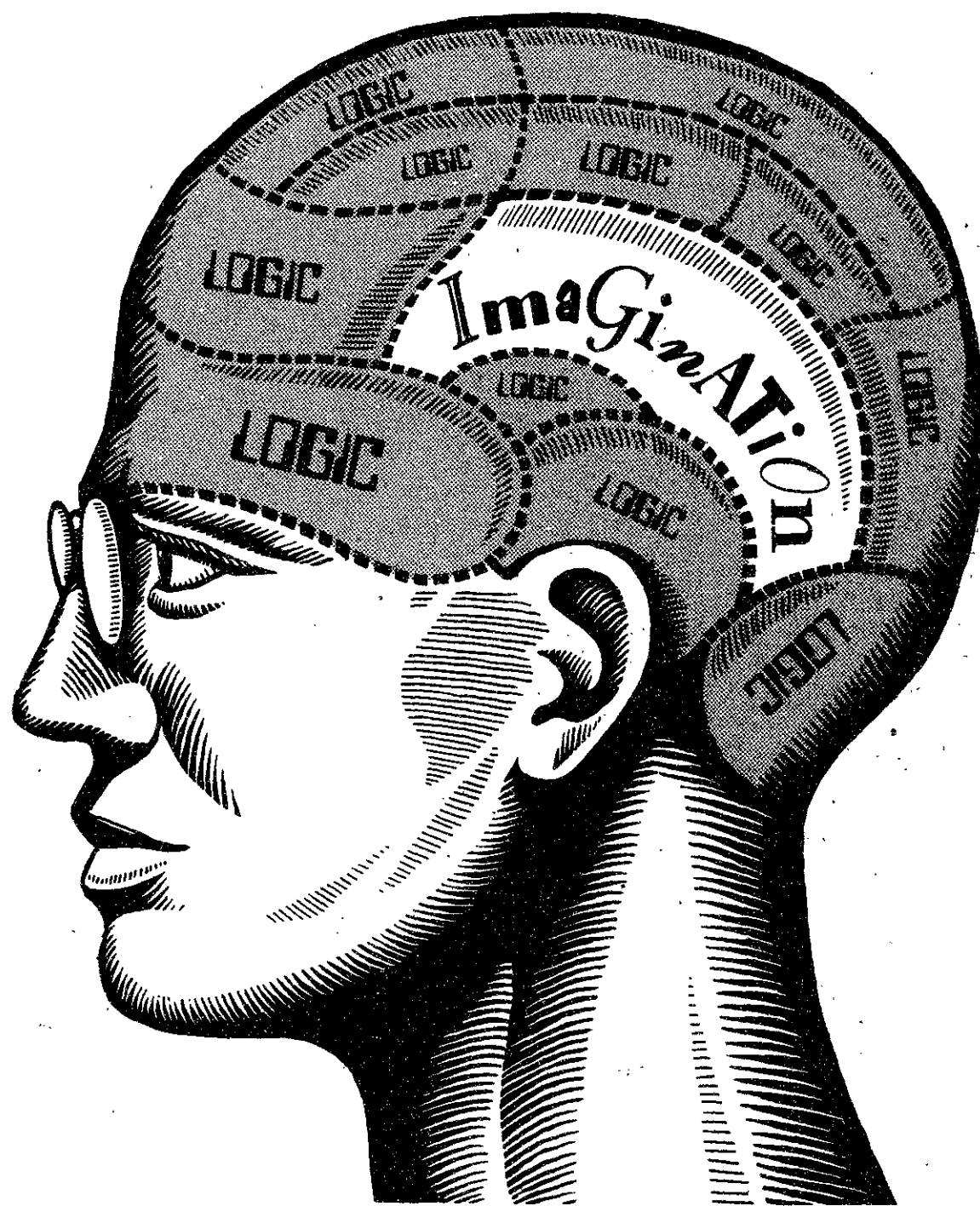


# comics

Jim's Journal



by Jim



## Why Morgan is looking for a special breed of genius.

Graduates who have analytic talent sparked by imagination should consider market analyst and research opportunities at J.P. Morgan.

J.P. Morgan provides sophisticated financial services to the world's leading corporations and governments. This business requires that we manage more than routine risks. Our position as a global financial power demands it.

One key is development of strong, proprietary analytic models. They're critical to Morgan's moment-to-moment trading activities around the world. The success of our actions—whether for funding, trading, or risk management—relies on those models. Each day, they must pass the test in one of the world's toughest proving grounds: the financial markets.

To assure that success, we seek exceptionally talented, team-oriented individuals who have strong mathematical and computer modeling skills. Demonstrated mastery of computer-based decision and simulation tools is important, as is a desire to work in an environment that fosters and rewards superior performance. Please plan to attend our upcoming information session.

Or contact Lynn A. Avitabile, J.P. Morgan & Co. Incorporated, 60 Wall Street, New York, NY 10260.

**Career Opportunities at Morgan**

©1990 J.P. Morgan & Co. Incorporated. J.P. Morgan identifies the worldwide business and services of J.P. Morgan & Co., Incorporated, Morgan Guaranty Trust Company, J.P. Morgan Securities Inc., and other J.P. Morgan subsidiaries.

# JPMorgan

# The Rhythm of St. Paul

THE RHYTHM OF THE SAINTS

Paul Simon.

Warner Brothers Records.

By DAVE WATT

**A**N OLD ROOMMATE OF MINE IN Berkeley, who graduated with honors in economics and sold psychedelic mushrooms in his spare time, once asked me what pop music I listened to. "Oh, the Beatles, Simon and Garfunkel, stuff like that," I mumbled. I feared my roommate. Once he came into the room at 2 am, woke me up, and blew pot smoke in my face. "I've seen your kind before," he said this time. "No others, are there? There is no 'stuff like that,' huh?"

He'd smoked me out. Fresh out of high-school band, where music was Serious Business, I'd chosen two groups whose undeniable appeal would leave my vast ignorance of pop music unchallenged. Five years later, my tastes have changed, but Paul Simon has grown along with them.

In *The Rhythm of the Saints*, Simon bases his songs on rhythms and sounds found in the drum music of Brazil. Most pop music relegates drummers to the role of expensive metronome; but in parts of Africa, for example, skilled drum playing is a language. Drum players are African bards, telling the "oral" history of their villages with their hands. People dance with the drums, which tell the story of their ancestors, their homes and their lives.

At first, I found this jarring. The long drum chorus which begins "The Obvious Child" still reminds me of marching band. But drums stir my blood, and the polyphonic drum sound is so rich and complex that it hypnotizes you. You can try to dissect and understand it, but it demands that you dance.

*The Rhythm of the Saints* gives the drums the spotlight. The drums set the mood; then Simon writes a song around them. This is most obvious in "The Cool, Cool River," where sudden transitions between pounding textured rhythms and a

lone acoustic guitar mirror a move from oppressive work-a-day city life to just drifting down the river, carefree. You don't need to know English to feel the mood change.

For "Spirit Voices," however, a bit of Portuguese might help. The spirits whom the brujo summons are native Brazilians. All of this may sound familiar to Simon fans. On his last album, the Grammy-award winning *Graceland*, the song "Homeless" is sung in English and Zulu. Its opening track, "The Boy in the Bubble," also begins with instruments unusual in rock: first an accordion, then BAM! enters a hand drum — BAM! — and finally a fretless bass mimicking a tuba starts, playing the role of lead guitar. Only then does Simon begin to sing. *Saints'* opening track, "The Obvious Child," begins with the loud snare drum chorus, then synthesizer playing octaves; Simon joins in after the instruments have their fun. The familiar meshes with the alien.

Simon's attempts to reinvent himself and his music with each new album have earned him a fanatical following. *The Rhythm of the Saints* sold over 173,000 copies last week in the United States alone. In an age when presidents read opinion polls to find out what to do next, Simon shows courage — he follows his muse, whatever the commercial risks. Pop artists, take heed: It makes him a rich man. And because he explores Brazil or South Africa, wherever music is magical, we learn and feel wonder right along with him.

So if you're looking for a pre-finals shot of adrenaline, I have a suggestion. Go to a record store. The competition between Tower Records and everybody else has lowered prices on compact discs everywhere. Buy this CD. Later, in your room, alone, turn on "The Obvious Child." Loud. Turn up the bass. Let the drums overpower you. Throw your arms around. Dance. The drums divide and subdivide the music. You will hear a danceable rhythm at any speed you listen. Hear the textures, absorb them all. They will envelop you.



## The Tech Performing Arts Series announces EMERSON STRING QUARTET

The young and vigorous Emerson String Quartet delivers exciting performances of both the classical repertoire and contemporary works. Program: Haydn, *Quartet in E-flat Major*; Mozart, *Quartet in A Major*; Bartok, *Quartet No. 1. A Bank of Boston Celebrity Series event.*

Symphony Hall, November 30 at 8 pm.

MIT price: \$6.

## AVO KUYUMJIAN

Avo Kuyumjian, the first prize winner of the Sixth International Beethoven Piano Competition of Vienna, brings his piano talents to Boston. Program: Haydn, *Variations in F minor*; Beethoven, *Sonata No. 18 "The Hunt"*; Schubert, *Two Impromptus*, Op. 142; Jelalian, *Prelude and Toccata*; Prokofiev, *Sonata No. 7*, Op. 83.

Jordan Hall, December 1 at 8 pm.

MIT price: \$4.

Tickets are on sale at the Technology Community Association, W20-450 in the Student Center. Office hours posted on the door.

# The anatomy of a shrewd shuttle flyer.

Spot the JetPak Commuter Book! Ten one-way tickets for a mere \$449. You'll save 35% — take the savings and watch 35% more naughty foreign films.

The Pan Am Shuttle's schedule gives the flexibility of the nimblest athlete. Flights depart every hour on the half hour. No reservations necessary...just show up and go. So, getting out of town is never a hurdle.

You always were quick on your feet! Pan Am WorldPass® The Richest Frequent Traveler Program in the World™ will really get 'em scurrying up the Matterhorn, stomping out a flamenco in sunny Spain, or dangling out of a hammock in Hawaii. Just dial 1-800-348-8000 and join Pan Am WorldPass today.



Congratulations! You're on the scent of the Pan Am Shuttle's low one-way student fare of \$69\*. But then you've always had a nose for a good deal.

Chew on this. Travelers with taste know that there's no better way to travel between Boston, New York, and Washington than the Pan Am Shuttle!

The Pan Am Shuttle low Youth Fares will leave you with more dough where it counts...in your hand.

Your finger is a wonderful digit! Use it to order your JetPak today by dialing these digits, 1-800-221-1111, or contacting your travel agent.

\*The \$69 Youth Fare is valid Monday-Friday 10:30 AM-2:30 PM and 7:30 PM-9:30 PM, and Sunday 3:30 PM-9:30 PM. A \$59 Youth Fare is available all day Saturday and until 2:30 PM on Sunday. Fares and schedule subject to change without notice. A \$1 surcharge applies for flights departing Boston. Youth fares are valid for passengers 12-24 years of age with proper ID.

FLIGHTS ON THE 1/2 HOUR BETWEEN BOSTON, NEW YORK AND WASHINGTON.

# PAN AM SHUTTLE

# THE CORPORATE JET

---

**The Cambridge office of the MAC Group,**

---

**an international general management**

---

**consulting firm, will be interviewing**

---

**candidates for Analyst positions at**

---

**MIT on February 5, 1991. Please submit**

---

**resume, transcript, and cover letter by**

---

**January 4 to Dan Pryor, the MAC Group,**

---

**Suite 600N, 124 Mt. Auburn St., Cambridge,**

---

**MA 02138.**

---

**The MAC Group**

**Barcelona**

**Cambridge**

**Chicago**

**Hong Kong**

**Lisbon**

**London**

**Madrid**

**Milan**

**Munich**

**Paris**

**Rome**

**San Francisco**

**Tokyo**

# KEVIN'S KITCHEN

By KEVIN FRISCH

WITH THE END OF THE TERM rapidly approaching (I can tell because of all the left-over turkey lying around), I want to print some of the recipes I've been e-mailed. It's a cook's fantasy to have people sending in recipes (just thought I'd mention that). So far I have tried a little over half the ones sent to me, and well, they all tasted pretty good (who says nerds don't know good food). I do intend to try the others, but haven't yet because there was at least one ingredient in each that I didn't have around.

So there I was, tooling away furiously at 3:30 am, and Trina Arnett '91 walks by and says, "How about some waffles for dinner?" Somehow, with much effort, I managed to pull myself away from the Physics II (8.022) problem set I had just started, and followed Arnett to the kitchen area on our hall.

Right from the start it was obvious that Trina took her waffle making quite seri-

ously. I mean, let's face it, on the rare occasions that I sift things, I do it once, but here she was sifting the flour *three* times — for some waffles! So I started making fun of her for all the excessive sifting, but that ground to a halt when she reminded me that my 8.022 would, no doubt, be happy to see me.

So the waffles were finally ready, and the bunch of us ate away. The waffles were very good. I had actually never been a big waffle fan before (I had always thought of them as a breakfast thing, and thus never had the time to make them), but it just goes to show what a good recipe can do. Anyway, after much hassling, Arnett finally gave me the recipe.

Now, this may come as a surprise, but you may have actually tried these very same waffles, without knowing it, if you were at an East Campus breakfast feed within the last three or four years.

Good luck and good eating.

*(Please write to kevinf@athena if you have any comments, suggestions, or a recipe that you would like to share. — KF)*

## Trina's Amazing Waffles-o-Doom

2 cups all-purpose flour  
2 tsp. baking powder  
½ tsp. salt  
3 eggs separated  
1 Tbls. sugar  
1¼ cup whole milk  
½ cup melted butter

Sift flour. Resift with baking powder and salt — three times. Personally, when I made these, I punted the sifting altogether, and the waffles tasted just fine. But I talked to Arnett, and she made very sinister growling noises when I told her about this apparently sacrilegious behavior, so . . . I'll leave it at that.

What makes these waffles so good is the separation of the eggs, so, even if you were too lazy to do the sifting, the "it all ends up in the same place anyway" attitude will lead to sub-optimal results.

Beat egg whites until stiff, add sugar, beat some more until the soft peak stage. In a separate bowl, beat yolks, add milk, stir, and pour into the flour mixture. Mix well. Fold in egg whites. Proper folding method is the key — I usually use one of those rubber spatulas, though a large spoon will do. If this is not done gently, all those yummy air bubbles that were beat into the egg whites will die.

Bake in waffle iron until golden brown. Makes four to eight.

When you make these, don't leave the mixture sitting around for more than a couple of minutes because all those little bubbles pop after a while — leaving you with dense waffle batter.



WE ARE AN AUTHORIZED DEALER FOR  
**SONY**  
Call for our low prices!

**547-2727**

FOR COMPETITIVE PRICING  
ON THE RIGHT EQUIPMENT

LUXMAN PS AUDIO  
STAX HAFLER  
PARADIGM CAMER  
APATURE GRADO  
SOTA PHILIPS  
HAD SONY

95 Vassar Street  
Cambridge, MA 02139

Corner of Mass. Ave and Vassar in the  
Metropolitan Storage Warehouse.

## INDOOR GOLF DRIVING RANGE

GOLF TOWN

421 Page Street  
Stoughton, MA 02072  
617-344-9551

Golf Lessons & Clinics Available  
DIRECTIONS TO GOLF TOWN  
Take the first exit off Route 24  
South to Route 139 West.  
Go one block, turn left on Page  
Street and #421 is on the  
left. . . one block from the  
corner of Route 139 and Page  
Street.

New!! Sand Traps  
Chipping Games



## 1991 Student Travel Catalog!

Everything you need to know about:

- Student Travel
- Air Fares
- Rail Passes
- Car Rental/Leasing
- Work Abroad
- Study Abroad
- Int'l Student & Teacher ID & MUCH MORE!!!

CALL for your FREE copy!

**Council Travel**

Stratton Student Center  
M.I.T., W20-024  
225-2555

# The Inner Circle

## A play about AIDS by Patricia Loughrey

Performances:  
Nov. 29, 30 & Dec. 1  
8:30pm  
Killian Hall

**FREE ADMISSION**

ARTS

# On The Town

Compiled by Peter Dunn



John Fleck's *Mi sangre para tu* at the Institute of Contemporary Art, Nov. 29 to Dec. 1.

Tuesday, Nov. 27

FILM & VIDEO

\*\*\* CRITICS' CHOICE \*\*\*  
The MIT Lecture Series Committee presents *Longtime Companion* as part of *AIDS Awareness at MIT* at 8 pm in Kresge. Telephone: 258-8881.

*Blue Planet*, a panoramic view of Earth from a vantage point of 200 miles up, and *To The Limit*, traveling inside the body to experience what happens when we push the limit of physical endurance, continue indefinitely at the Mugar Omni Theater, Museum of Science, Science Park, Boston, near the Science Park T-stop on the green line. Tickets: \$6 general, \$4 seniors and children. Telephone: 523-6664.

The Coolidge Corner Theatre presents *Fantasia* (1940, Walt Disney) at 5:00, 7:30, & 9:55, *Allegro non troppo* (Bruno Bozzetto) at 5:15 & 10:00, and *Mahabharata* (1990, Peter Brooks) at 7:00. Located at 290 Harvard Street, Brookline, at the Coolidge Corner T-stop on the "C" green line. *Allegro* and *Mahabharata* continue through November 29. Telephone: 734-2500.

The Regent Theater presents *Twilight of the Cuckoos* (1989, Hiroshi Yoshida, Japan) at 5:15 & 9:00 and *Metamorphosis* (1975, Ivo Dvorak) at 7:15 at 7 Medford Street, Arlington Center, Arlington, on the #77 bus line from the Harvard T-stop. Also presented November 28 and 29. Tickets: \$4.50 general, \$2.50 seniors and children (good for the double feature). Telephone: 643-1198.

The Harvard Film Archive continues its Tuesday series *Women Filmmakers* with *The Man Who Envied Women* (1985, Yvonne Rainer) at 5:30 & 8:00 at the Carpenter Center for the Visual Arts, Harvard University, 24 Quincy Street, Cambridge. Tickets: \$4 general, \$3 seniors and children. Telephone: 495-4700.

CONTEMPORARY MUSIC

Third World performs in an 18+ ages show at 9 pm at the Channel, 25 Necco Street, near South Station in downtown Boston. Tickets: \$14 advance/\$16 day of show. Telephone: 451-1905.

Jesus Lizard, Bless, and Breadwinner perform in an 18+ ages show at 9 pm at Man Ray, 21 Brookline Street, Cambridge. Telephone: 864-0406.

Powerglide, Revellers, The Scene, and Milo Jones perform in an 18+ ages show at T.T. the Bears, 10 Brookline Street, Cambridge, just north of MIT. Telephone: 492-0082.

Paul Geremia and Peter Keane perform at Johnny D's, 17 Holland Street, Davis Square, Somerville, near the Davis Square T-stop on the red line. Telephone: 776-9667.

No Man and The Stand perform at 9 pm at Necco Place, One Necco Place, near South Station in downtown Boston. Tickets: \$4.50. Telephone: 426-7744.

JAZZ MUSIC

\*\*\* CRITICS' CHOICE \*\*\*  
Jay Branford Septet, Mott Gordy Sextet, Either/Orchestra, Billy Skinner, and Double Jazz Quartet perform as part of *Jazzstage '90* at Nightstage, 823 Main Street, Cambridge, just north of MIT. Telephone: 497-8200.

The Olga Roman Group performs at 9 pm at the Regattabar, Charles Hotel, Harvard Square, Cambridge. Tickets: \$7. Telephone: 661-5000.

The Rami Bar David Quartet performs at the Western Front, 343 Western Avenue, Cambridge. Telephone: 492-7772.

The Susan Sifter Quartet performs at the Willow Jazz Club, 699 Broadway, Ball Square, Somerville. Telephone: 623-9874.

CLASSICAL MUSIC

The Boston Symphony Orchestra, Marek Janowski conducting, with violinist Christian Tetzlaff, performs Schumann's *Violin Concerto* and Bruckner's *Symphony No. 7* at 8 pm in Symphony Hall, corner of Huntington and Massachusetts Avenues, Boston. Tickets: \$18 to \$47.50. Telephone: 266-1492.

The Boston Conservatory Wind Ensemble, William McManus conducting, performs works by Beethoven, Holst, Weber, and Reed at 8 pm in Seully Hall, 8 The Fenway, Boston. No admission charge. Telephone: 536-6340.

The Carpe Diem Trombone Quartet performs works by Walter Ross, Gabrieli, Bozza, Brahms, and others at 8:30 in the Boston University Concert Hall, 855 Commonwealth Avenue, Boston. No admission charge. Telephone: 353-3345.

The Tufts University Early Music Ensemble performs at 8 pm in Goddard Chapel, Tufts University, Medford. No admission charge. Telephone: 381-3564.

THEATER

\*\*\* CRITICS' CHOICE \*\*\*  
*Sex, Drugs, Rock and Roll*, with Eric Bogosian, opens today at 8 pm at the Wilbur Theater, 246 Tremont Street, Boston. Continues through December 9 with performances Wednesday at 7 pm, Thursday & Friday at 8 pm, Saturday at 6 pm & 9 pm, and Sunday at 3 pm. Tickets: \$26.50 to \$36.50. Telephone: 423-4008.

\*\*\* CRITICS' CHOICE \*\*\*  
*Playboy of the Western World*, John Millington Synge's classic tragicomedy, opens today as a presentation of the Abbey National Theatre of Ireland at the Colonial Theatre, 106 Boylston Street, Boston. Continues through December 2 with performances Wednesday-Saturday at 8 pm, and matinees Thursday & Saturday at 2 pm and Sunday at 3 pm. Tickets: \$16 to \$38.50, half-price tickets available to seniors and students for Thursday matinee. Tel: 426-9366.

Queen of the Back Bay, with Robin Lane as art patron Isabella Stewart Gardner, is presented at 7:30 in Alumnae Hall, Simmons College, 321 Brookline Avenue, Boston. Tickets: \$2. Telephone: 738-3116.

Wednesday, Nov. 28

CLASSICAL MUSIC

The Boston Classical Orchestra, with violin soloist Amnon Levy, performs works by Mendelssohn and Haydn at 8 pm in Old South Meeting House, 310 Washington Street at Milk Street, Boston. Also presented November 30. Tickets: \$12 and \$18 general, \$8 seniors and students. Telephone: 426-2387.

The New England Conservatory Chorus, Wind Ensemble, Contemporary Ensemble, Marimolin, and others perform works by Gunther Schuller in a *Gunther Schuller 65th Birthday Celebration* concert at 8 pm in Jordan Hall, 30 Gainsborough Street at Huntington Avenue, Boston. No admission charge. Telephone: 262-1120.

The Boston Conservatory Chorale performs works by J. S. Bach, Vaughan-Williams, and Daniel Pinkham at 8 pm in Seully Hall, 8 The Fenway, Boston. No admission charge. Telephone: 536-6340.

Violinist Dana Pomerantz-Mazurkevich performs at 8:00 at the Tsai Performance Center, Boston University, 685 Commonwealth Avenue, Boston. Ein Liedabend, a recital by voice students, is presented at 8:30 in the Boston University Concert Hall, 855 Commonwealth Avenue, Boston. No admission charge. Telephone: 353-3345.

Pianist Gregory Slowik and tenor Paul Kirby perform works by Schumann, Britten, and Hahn in a *Longy Faculty Artists Series* concert at 8 pm in the Edward Pickman Concert Hall, Longy School of Music, 27 Garden Street, Cambridge. No admission charge. Telephone: 876-0956.

CONTEMPORARY MUSIC

Hawkwind and Architectural Metaphor perform in an 18+ ages show at 9 pm at the Channel, 25 Necco Street, near South Station in downtown Boston. Tickets: \$5.50 advance/\$6.50 day of show. Telephone: 451-1905.

Motherfollers, Big Hot Sun, Small Town No Airport, and The Barneys perform in an 18+ ages show at T.T. the Bears, 10 Brookline Street, Cambridge, just north of MIT. Telephone: 492-0082.

Hot Like Fire performs at the Western Front, 343 Western Avenue, Cambridge. Telephone: 492-7772.

Bim Skala Bim and Hypnotic Clambake perform at Johnny D's, 17 Holland Street, Davis Square, Somerville, near the Davis Square T-stop on the red line. Telephone: 776-9667.

Blues Jam is presented at 9 pm at Necco Place, One Necco Place, near South Station in downtown Boston. Tickets: \$2.50. Telephone: 426-7744.

FILM & VIDEO

\*\*\* CRITICS' CHOICE \*\*\*  
The Center for Language and Culture at Babson College presents *My Life as a Dog* (Lasse Hallstrom) at 6:30 in Trim Hall, Babson College, Babson Park, Wellesley. No admission charge. Telephone: 239-4506.

The Harvard Film Archive continues its Wednesday series *Evolution of Silent Cinema* with *The Seashell and the Clergyman* (1928, Germaine Dulac, France), *Un chien Andalou* (An *Andalusian Dog*, 1928, Luis Bunuel, France), and *The Little Match Girl* (1927, Jean Renoir, France) at 5:30 and *Italian Straw Hat* (1927, René Clair, France) at 8:00 at the Carpenter Center for the Visual Arts, Harvard University, 24 Quincy Street, Cambridge. Tickets: \$4 general, \$3 seniors and children, \$6/\$5 for the double feature. Telephone: 495-4700.

*Twilight of the Cuckoos* (1989, Hiroshi Yoshida, Japan) and *Metamorphosis* (1975, Ivo Dvorak) at the Regent Theater. See November 27 listing.

THEATER

\*\*\* CRITICS' CHOICE \*\*\*  
The King James version of *The Gospel According to Mark* is performed by Byron Tidwell in the style of an American storyteller at 7 pm in the Bartos Theater, MIT Westing Building E15. Telephone: 253-0108.

Sing Your Way Home, featuring the songs of George Gershwin and other showtunes & comedy highlights, is presented at 10:30 at the Theatre Lobby Cabaret, 216 Hanover Street, Boston. Tickets: \$10 (\$25 with dinner). Telephone: 227-9872.

*The Imaginary Invalid*, Moliere's satire of the paranoid hypochondriac who by his incessant demands makes his family suffer more than he does, is presented at 8 pm at the Spingold Theater, Brandeis University, Waltham. Also presented November 29, 30, December 1, 7, & 8 at 8 pm, December 2 at 7 pm, December 5 & 6 at 10 am, and December 9 at 3 pm. Telephone: 736-3400.



Chucklehead at the Paradise on Nov. 30.

JAZZ MUSIC

The Tom Harrell-Jerry Bergonzi-Joey Calderazzo-Ray Drummond-Klaus Suen-sari Quintet performs at 9 pm at the Regattabar, Charles Hotel, Harvard Square, Cambridge. Also presented November 29. Tickets: \$8. Tel: 661-5000.

Ari Khu performs at 9:30 at Ryles, 212 Hampshire Street, Inman Square, Cambridge. Telephone: 876-9330.

DANCE

\*\*\* CRITICS' CHOICE \*\*\*  
The Nutcracker continues through December 30 as a presentation of Boston Ballet at the Wang Center, 270 Tremont Street, Boston. Performances are Wednesday-Saturday at 7:30, Sunday at 6:30, with weekend matinees at 2:00. Tickets: \$16 to \$49. Telephone: 931-2000.

Thursday, Nov. 29

DANCE

Semaphore Dance Theater performs Janice Margolis' *Kill Me Again* to benefit AIDS service organizations at 8 pm at the Fogg Art Museum, Harvard University, 32 Quincy Street, Cambridge. Also presented December 1. Admission: \$9. Telephone: 495-4544.

JAZZ MUSIC

Mozamba, Joe Morris Sweatshop, Bruce Burtlett, and Heavy Metal Horus perform as part of *Jazzstage '90* at Nightstage, 823 Main Street, Cambridge, just north of MIT. Telephone: 497-8200.

Jonathan and Jennifer perform at 9:30 at Ryles, 212 Hampshire Street, Inman Square, Cambridge. Telephone: 876-9330.

The New England Conservatory Honors Jazz Ensemble performs at 12:30 in the Federal Reserve Bank of Boston's auditorium, 600 Atlantic Avenue, across from South Station in downtown Boston. No admission charge. Telephone: 973-3454 or 973-3368.

The Melissa Castle Quartet performs at the Willow Jazz Club, 699 Broadway, Ball Square, Somerville. Tel: 623-9874.

The New England Conservatory Jazz Big Band performs transcriptions and arrangements by Gunther Schuller in a *Gunther Schuller 65th Birthday Celebration* concert at 8 pm in Jordan Hall, 30 Gainsborough Street at Huntington Avenue, Boston. No admission charge. Telephone: 262-1120.

The Tom Harrell-Jerry Bergonzi-Joey Calderazzo-Ray Drummond-Klaus Suen-sari Quintet at the Regattabar. See November 28 listing.

CLASSICAL MUSIC

The Calumet Quintet performs Joseph Mayser's *Quintet No. 3 in D* as part of the *MIT Noon Chapel Series* at 12 noon in the MIT Chapel. No admission charge. Telephone: 253-2906.

The Longy Chamber Orchestra performs works by Wagner, Respighi, and Handel at 8 pm in the Edward Pickman Concert Hall, Longy School of Music, 27 Garden Street, Cambridge. Admission: \$5 suggested donation. Telephone: 876-0956.

POETRY

\*\*\* CRITICS' CHOICE \*\*\*  
*Poetry at the Media Lab* presents Martin Espada — author of *Rebellion is the Circle of a Lover's Hands*, *The Immigrant Icebody's Bolero*, and *Trumpets from the Island of Their Viccion* — at 7:30 in Bartos Theater, MIT Wiesner Building E15. No admission charge. Telephone: 253-0312.

FILM & VIDEO

The Museum of Fine Arts begins its series of *Painters on Film* with *The Feast of the Gods* (1989, David Sutherland) at 4:30, and also begins its series *American Independents: Personal Explorations with Intervals of Silence: Being Jewish in Germany* (1990, Deborah Leikowitz) at 6:00 and *Current Events* (1989, Ralph Arlyck) at 8:00 in Remis Auditorium, 465 Huntington Avenue, Boston. Tickets: \$5 general, \$4.50 MFA members, seniors, and students. Telephone: 267-9300 ext. 306.

*Twilight of the Cuckoos* (1989, Hiroshi Yoshida, Japan) and *Metamorphosis* (1975, Ivo Dvorak) at the Regent Theater. See November 27 listing.

THEATER

\*\*\* CRITICS' CHOICE \*\*\*  
*The Inner Circle*, Patricia M. Loughrey's drama exploring the effect of AIDS on an infected teenager and his closest friends, is presented as part of *AIDS Awareness at MIT* at 8:30 in Kilian Hall, MIT Hayden Memorial Library Building 14. Also presented November 30 and December 1. No admission charge. Tel: 536-6574.

*Whole Lotta Shakespeare Goin' On* — comedies, histories, and tragedies — is presented by the Shakespeare Ensemble at MIT at 8 pm in 66-110. Also presented November 30 and December 1. Telephone: 253-2903.

Hedda Gabler, by Henrik Ibsen, is presented at 8 pm in Jewett Rehearsal Room, Wellesley College, Wellesley. Also presented December 1 at 8 pm and December 2 at 2 pm. Tickets: \$3 general, free with MIT or Wellesley ID. Telephone: 239-2505.

*The Servant of Two Masters*, Carlo Goldoni's 16th century Italian comedy of mistaken identity, family honor, and mixed-up love, opens today at the New Ehrlich Theatre, 539 Tremont Street, Boston. Continues through December 31 with performances Thursday & Friday at 8:00, Saturday at 5:00 & 8:30, and Sunday at 2:00. Tickets: \$15. Telephone: 482-6316.

*Yeomen of the Guard*, Gilbert & Sullivan's tragically comic light opera centered on two lovestruck circus performers in London Tower Green in the mid-1500s, is presented at 8 pm by the Harvard Gilbert & Sullivan Players at the Agassiz Theatre, Radcliffe Yard, Cambridge. Also presented November 30, December 1, 6, & 7 at 8 pm, and December 1, 2, & 8 at 2 pm. Tickets: \$7 and \$9 evenings, \$5 and \$7 matinees, \$2 discount to students, \$15 and \$20 for Dec. 6 to benefit Shelter Inc. Telephone: 495-2663.

*A Flea in Her Ear*, George Feydeau's bedroom farce in which complications arise when the wife of a noble lord misinterprets a note, is presented at 8 pm at the Boston Conservatory Theater, 31 Hemenway Street, Boston. Also presented November 30 & December 1 at 8 pm, and December 1 & 2 at 3 pm. Tickets: \$5 general, \$3 seniors and students. Telephone: 536-6340.

\*\*\* CRITICS' CHOICE \*\*\*  
*Mi sangre para tu* (*My Blood for You*), a solo performance work by John Fleck, the silly and comedic California-based performance artist, is presented at 8 pm in the Institute of Contemporary Art Theater, 955 Boylston Street, Boston. Also presented November 30 and December 1. Tickets: \$10 general, \$8 ICA members, seniors, and students. Tel: 266-5152.

*The Imaginary Invalid* at the Spingold Theater, Brandeis University. See November 28 listing.

**ATTENTION!!**

**MIT SENIORS & GRADUATE STUDENTS**

*Do you enjoy working with people?  
Are you good at solving problems?*

**BECOME A**

**GRADUATE RESIDENT**

**IN AN UNDERGRADUATE LIVING GROUP**

**INFORMATION SESSIONS AT 6 PM, Room 4-159**

**TUESDAY, NOV. 27; WEDNESDAY, DEC. 5;**

**OR THURSDAY, DEC. 13**

You can also come to the Dean for Student Affairs Office, Room 7-133, x3-4051 or call W20-549, x3-6777 for more information and an application.

Application deadline is January 12, 1991.

The MIT

Dance Workshop

=====

**FALL CONCERT**

=====

performance dates:

Friday, November 30

Saturday, December 1

performance time:

8 o'clock p.m.

-----

Kresge Little Theater

-----

**!!! ADMISSION FREE !!!**

ARTS

CONTEMPORARY MUSIC

\*\*\* CRITICS' CHOICE \*\*\*  
The Phibes perform at 7:30 at the Orpheum Theatre, Hamilton Place, Boston. Tickets: \$20.50. Tel: 931-2000.

Battlefield Band performs at 7:30 at the Somerville Theatre, 55 Davis Square, Somerville, near the Davis Square T-stop on the red line. Tickets: \$13.50 advance, \$15 at the door. Telephone: 862-7837.

Living Proof performs in an 18+ ages show at the Paradise, 967 Commonwealth Avenue, Boston. Tel: 254-2052.

Johnny van Zant, Michelle Malone & Drag the River, and Nor'Easters perform at 9 pm at the Channel, 25 Necco Street, near South Station in downtown Boston. Tickets: \$9 advance/\$10 day of show. Telephone: 451-1905.

The Kimberly Bona Band, Elephant Hips, The Moist, and Damaged Goods perform in an 18+ ages show at T.T. the Bears, 10 Brookline Street, Cambridge, just north of MIT. Telephone: 492-0082.

Straight From The Hip performs at the Western Front, 343 Western Avenue, Cambridge. Telephone: 492-7772.

Green Magnet School, Nisi Period, Bug Juice, and Six Finger Satellite perform in an 18+ ages show at the Rat, 528 Commonwealth Avenue, Kenmore Square, Boston. Telephone: 247-8309.

Chuck, The Tribulations, and Bohemian Uprising perform at Johnny D's, 17 Holland Street, Davis Square, Somerville, near the Davis Square T-stop on the red line. Telephone: 776-9667.

The MIEs, Playhouse Republic, and The New Recruits perform at 9 pm at Necco Place, One Necco Place, near South Station in downtown Boston. Tickets: \$4.50. Telephone: 426-7744.

Black Water Junction and The Right People perform at Ed Burke's, 808 Huntington Avenue, Boston, on the 'E' green line. Telephone: 232-2191.

Friday, Nov. 30

THEATER

\*\*\* CRITICS' CHOICE \*\*\*  
Julius Hemphill's Long Tongue: A Saxophone Opera, a musical/theater treatment of the history of modern jazz and the concurrent social and cultural changes in the United States after World War II, is presented at 8 pm at the Strand Theatre, 543 Columbia Road, Dorchester, near the JFK/UMass/Columbia T-stop on the red line. Also presented December 1. Tickets: \$17 and \$20 general, \$10 students. Telephone: 282-8000.

The Paul Dresher Ensemble performs Pioneer, examining the mythology of the American frontier to see how the archetypes have evolved in contemporary culture, at 8 pm in Blackman Auditorium, Eli Building, Northeastern University, 360 Huntington Avenue, Boston, near the Northeastern T-stop on the 'E' green line or the Ruggles T-stop on the orange line. Also presented December 1. Tickets: \$12 and \$14.50. Tel: 437-2247.

The World Music Department at Longy presents a Performance of Chinese Music at 8 pm in the Edward Pickman Concert Hall, Longy School of Music, 27 Garden Street, Cambridge. Admission: \$5 suggested donation. Telephone: 876-0956.

Volcano Suns, Apunkalypse Now, Miranda Warning, and Slumgullion perform at the Rat, 528 Commonwealth Avenue, Kenmore Square, Boston. Telephone: 247-8309.

The Band That Time Forgot performs at Johnny D's, 17 Holland Street, Davis Square, Somerville, near the Davis Square T-stop on the red line. Telephone: 776-9667.

Big Blue Meanies, Honking Mallards, and Sky Blues perform at 9 pm at Necco Place, One Necco Place, near South Station in downtown Boston. Tickets: \$5. Telephone: 426-7744.

Walter "Wolfman" Washington and The Roadmasters perform at Ed Burke's, 808 Huntington Avenue, Boston, on the 'E' green line. Telephone: 232-2191.

Kinive (Tufts West African Drum Ensemble) performs at 8 pm in Hotung Cafe, Tufts University, Medford. No admission charge. Telephone: 381-3564.

The World Music Department at Longy presents a Performance of Chinese Music at 8 pm in the Edward Pickman Concert Hall, Longy School of Music, 27 Garden Street, Cambridge. Admission: \$5 suggested donation. Telephone: 876-0956.

Brattle Street, Cambridge. Performances are Tuesday-Friday at 8 pm, Saturday at 2 pm & 8 pm, and Sunday at 2 pm & 7 pm. Tickets: \$17 to \$35. Telephone: 547-8300.

\*\*\* CRITICS' CHOICE \*\*\*  
Harples Bizarrel, Lydia Sargent's comic satire looking at how women are enjoying the fruits of liberation, continues through December 15 at the Newbury Street Theatre, 565 Boylston Street, Boston. Performances are Thursday-Saturday at 8 pm. Tickets: \$5 to \$8. Telephone: 262-7779.

Julius Caesar, by William Shakespeare, continues through November 30 as a presentation of Visions Theater Company at the Leland Center, Boston Center for the Arts, 539 Tremont Street, Boston. Performances are Thursday-Saturday at 8 pm. Tickets: \$10 general, \$8 seniors and students. Telephone: 868-1750.

Nonsense, Dan Goggin's comedy about the Little Sisters of Hoboken who stage a talent show to raise money to bury four of their number, continues indefinitely at the Charles Playhouse, 74 Warrenton Street, Boston. Performances are Tuesday-Friday at 8 pm, Saturday at 6 pm & 9 pm, with matinees Thursday at 2 pm and Sunday at 3 pm. Tickets: \$15.50 to \$26.50 general, half-price for seniors and students on Thursday matinee. Telephone: 426-6912.

Orpheus Descending, Tennessee Williams' play about human frailty and forbidden love between a woman and the stranger in town to whom she gives a job, continues through December 8 at the Back Alley Theater, 1253 Cambridge Street, Inman Square, Cambridge. Performances are Thursday-Sunday at 8 pm. Tickets: \$15. Telephone: 491-8166.

The Seagull, Chekov's meditation on comic frustrations of life, continues through December 1 as a presentation of New Boston Theatre at The Performance Place, 277 Broadway, Somerville, near the Sullivan T-stop on the orange line. Performances are Thursday-Saturday at 8 pm. Tickets: \$12. Telephone: 625-1300.

Shear Madness, the long-running comic murder mystery, continues indefinitely at the Charles Playhouse, 74 Warrenton Street, Boston. Performances are Tuesday-Friday at 8 pm, Saturday at 6:30 & 9:30, and Sunday at 3:00 & 7:30. Tickets: \$18 and \$23. Telephone: 451-0195.

Woman in Mind, Alan Ayckbourn's humorous and disturbing play about a woman going mad, continues through December 2 at the Lyric Stage, 54 Charles Street, Boston. Performances are Wednesday-Friday at 8:00, Saturday at 5:00 & 8:30, and Sunday at 3:00. Tickets: \$13.50 to \$17.50. Tel: 742-8703.

\*\*\* CRITICS' CHOICE \*\*\*  
Groucho, A Life in Review, based on the life, loves, and laughs of Groucho Marx, continues indefinitely at the Theatre Lobby, 216 Hanover Street, Boston. Performances are Tuesday-Friday at 8 pm, Saturday at 6 pm & 9 pm, with matinees on Wednesday at 2 pm and Sunday at 3 pm. Tickets: \$15 to \$24. Telephone: 227-9872.

The Homecoming, Harold Pinter's provocative play of family passions, sexual jealousies, and explosive class tensions, continues through January 19 as a presentation of the American Repertory Theatre at the Loeb Drama Center, 64

The Inner Circle presented as part of AIDS Awareness at MIT in Killian Hall. See November 29 listing.

Whole Lotta Shakespeare Goin' On presented by The Shakespeare Ensemble at MIT in 66-110. See November 29 listing.

Yeomen of the Guard presented by the Harvard Gilbert & Sullivan Players at the Agassiz Theatre. See November 29 listing.

John Fleck's Mi saugez para tu (My Blood for You) at the Institute of Contemporary Art Theater. See November 29 listing.

A Flea in Her Ear at the Boston Conservatory Theater. See November 29 listing.

The Imaginary Invalid at the Spingold Theater, Brandeis University. See November 28 listing.

CONTEMPORARY MUSIC

\*\*\* CRITICS' CHOICE \*\*\*  
Hereth, Floating Boats, and Cruel Shoes perform in an Amnesty International Benefit Concert at 7 pm at Schneider Mainstage, Wellesley College, Wellesley. Admission: \$5. Telephone: 239-9947.

Chucklehead, Shockra, and Heavy Metal Horus perform in an 18+ ages show at the Paradise, 967 Commonwealth Avenue, Boston. Telephone: 254-2052.

Physical Graffiti and Hammersmyth perform at 9 pm at the Channel, 25 Necco Street, near South Station in downtown Boston. Tickets: \$7.50 advance/\$8.50 day of show. Telephone: 451-1905.

Talking to Animals, Scatterfield, The Great Outdoors, and Spam Paris perform in an 18+ ages show at T.T. the Bears, 10 Brookline Street, Cambridge, just north of MIT. Telephone: 492-0082.

Loose Caboose performs at the Western Front, 343 Western Avenue, Cambridge. Also presented December 1. Telephone: 492-7772.

Volcano Suns, Apunkalypse Now, Miranda Warning, and Slumgullion perform at the Rat, 528 Commonwealth Avenue, Kenmore Square, Boston. Telephone: 247-8309.

The Band That Time Forgot performs at Johnny D's, 17 Holland Street, Davis Square, Somerville, near the Davis Square T-stop on the red line. Telephone: 776-9667.

Big Blue Meanies, Honking Mallards, and Sky Blues perform at 9 pm at Necco Place, One Necco Place, near South Station in downtown Boston. Tickets: \$5. Telephone: 426-7744.

Walter "Wolfman" Washington and The Roadmasters perform at Ed Burke's, 808 Huntington Avenue, Boston, on the 'E' green line. Telephone: 232-2191.

Kinive (Tufts West African Drum Ensemble) performs at 8 pm in Hotung Cafe, Tufts University, Medford. No admission charge. Telephone: 381-3564.

The World Music Department at Longy presents a Performance of Chinese Music at 8 pm in the Edward Pickman Concert Hall, Longy School of Music, 27 Garden Street, Cambridge. Admission: \$5 suggested donation. Telephone: 876-0956.

Brattle Street, Cambridge. Performances are Tuesday-Friday at 8 pm, Saturday at 2 pm & 8 pm, and Sunday at 2 pm & 7 pm. Tickets: \$17 to \$35. Telephone: 547-8300.

\*\*\* CRITICS' CHOICE \*\*\*  
Harples Bizarrel, Lydia Sargent's comic satire looking at how women are enjoying the fruits of liberation, continues through December 15 at the Newbury Street Theatre, 565 Boylston Street, Boston. Performances are Thursday-Saturday at 8 pm. Tickets: \$5 to \$8. Telephone: 262-7779.

Julius Caesar, by William Shakespeare, continues through November 30 as a presentation of Visions Theater Company at the Leland Center, Boston Center for the Arts, 539 Tremont Street, Boston. Performances are Thursday-Saturday at 8 pm. Tickets: \$10 general, \$8 seniors and students. Telephone: 868-1750.

Nonsense, Dan Goggin's comedy about the Little Sisters of Hoboken who stage a talent show to raise money to bury four of their number, continues indefinitely at the Charles Playhouse, 74 Warrenton Street, Boston. Performances are Tuesday-Friday at 8 pm, Saturday at 6 pm & 9 pm, with matinees Thursday at 2 pm and Sunday at 3 pm. Tickets: \$15.50 to \$26.50 general, half-price for seniors and students on Thursday matinee. Telephone: 426-6912.

Orpheus Descending, Tennessee Williams' play about human frailty and forbidden love between a woman and the stranger in town to whom she gives a job, continues through December 8 at the Back Alley Theater, 1253 Cambridge Street, Inman Square, Cambridge. Performances are Thursday-Sunday at 8 pm. Tickets: \$15. Telephone: 491-8166.

The Seagull, Chekov's meditation on comic frustrations of life, continues through December 1 as a presentation of New Boston Theatre at The Performance Place, 277 Broadway, Somerville, near the Sullivan T-stop on the orange line. Performances are Thursday-Saturday at 8 pm. Tickets: \$12. Telephone: 625-1300.

Shear Madness, the long-running comic murder mystery, continues indefinitely at the Charles Playhouse, 74 Warrenton Street, Boston. Performances are Tuesday-Friday at 8 pm, Saturday at 6:30 & 9:30, and Sunday at 3:00 & 7:30. Tickets: \$18 and \$23. Telephone: 451-0195.

Woman in Mind, Alan Ayckbourn's humorous and disturbing play about a woman going mad, continues through December 2 at the Lyric Stage, 54 Charles Street, Boston. Performances are Wednesday-Friday at 8:00, Saturday at 5:00 & 8:30, and Sunday at 3:00. Tickets: \$13.50 to \$17.50. Tel: 742-8703.

\*\*\* CRITICS' CHOICE \*\*\*  
Groucho, A Life in Review, based on the life, loves, and laughs of Groucho Marx, continues indefinitely at the Theatre Lobby, 216 Hanover Street, Boston. Performances are Tuesday-Friday at 8 pm, Saturday at 6 pm & 9 pm, with matinees on Wednesday at 2 pm and Sunday at 3 pm. Tickets: \$15 to \$24. Telephone: 227-9872.

The Homecoming, Harold Pinter's provocative play of family passions, sexual jealousies, and explosive class tensions, continues through January 19 as a presentation of the American Repertory Theatre at the Loeb Drama Center, 64

JAZZ MUSIC

Jazz Harpist Deborah Henson-Conant performs at 8 pm & 10 pm at the Regatta, Charles Hotel, Harvard Square, Cambridge. Tickets: \$8. Tel: 661-5000.

The Jerry Bergonzi Quartet performs at the Willow Jazz Club, 699 Broadway, Ball Square, Somerville. Also presented December 1. Telephone: 623-9874.

FILM & VIDEO

The MIT Lecture Series Committee presents RoboCop II at 7 pm & 10 pm in 26-100. Admission: \$1.50. Telephone: 258-8881.

\*\*\* CRITICS' CHOICE \*\*\*  
The Coolidge Corner Theatre presents Interrogation (1990, Poland) at 290 Harvard Street, Brookline, at the Coolidge Corner T-stop on the 'C' green line. Continues indefinitely. Telephone: 734-2500.

The Regent Theater presents The Icicle Thief (1990, Maurizio Nichetti) at 5:30, 7:15, & 9:00 at 7 Medford Street, Arlington Center, Arlington, on the #77 bus line from the Harvard T-stop. Also presented December 1 to 6 with weekend matinees at 3:50. Tickets: \$4.50 general, \$2.50 seniors and children. Telephone: 643-1198.

The Museum of Fine Arts continues its series The Cartoon World of Bob Clampett, Plus Betty Boop and BABA, too with Award-Winning British Advertising Films of 1989 at 6:30 and The Cartoon World of Bob Clampett, Program 2 (1938-61) at 8:15 in Remis Auditorium, 465 Huntington Avenue, Boston. Tickets: \$5 general, \$4.50 MFA members, seniors, and students. Telephone: 267-9300 ext. 306.

The Cambridge Center for Adult Education continues its Friday series Chile and the Films of Raul Ruiz with On Top of the Whale (1982, France) at 7 pm & 9 pm at the Blacksmith House, 56 Brattle Street, Harvard Square, Cambridge. Tickets: \$3.50. Telephone: 547-6789.

The French Library in Boston begins its series of Films of Claude Chabrol with La rupture (The Break-up, 1970) at 8 pm at 53 Marlborough Street, Boston. Also presented December 1 and 2. Tickets: \$4 general, \$3 Library members. Telephone: 266-4351.

The Harvard Film Archive continues its weekend series of New Wave Films from Soviet Kazakhstan with Little Fish in Love (1989, Abai Karpirov) at 7 pm and Toro (1986, Talgat Temenov), Ya-Ha (1986, Rachid Nugmanov), and Bakhtit First Blood (1987, Bakhtit Kilihaev) at 9 pm at the Carpenter Center for the Visual Arts, Harvard University, 24 Quincy Street, Cambridge. Little Fish also presented December 1; Toro, Ya-Ha, and Bakhtit also presented December 2. Tickets: \$4 general, \$3 seniors and children, \$6/\$5 for the double feature. Telephone: 495-4700.

The Boston Film/Video Foundation presents DIs: Voices from the Street, a docudrama on homelessness, at 8:30 at 1126 Boylston Street, Boston. Tickets: \$5 general, \$4 BF/VF members. Telephone: 536-1540.

Lunatics I Have Met (1989, Vilma Gregoropoulos) and Letter to My Uncle (Deborah Lefkowitz) are presented at Emerson College, Zero Marlborough Street, Boston. Telephone: 578-8855.

Ongoing Exhibits

ON CAMPUS

Visual AIDS III, a poster collection reflecting the issues and cultural attitudes of diverse organizations and countries, continues through December 1; Awon Orisa: The Gods/Africanisms in the Americas, exploring the manifestations of Yoruba religious belief in the Americas, continues through December 16; Berenice Abbott, 47 cityscapes and eight portraits by the 92-year-old photographer who corroborated scientific laws through photographs, continues through December 30; and Doc Edgerton: Stopping Time, photographs and memorabilia documenting the invention and use of the strobe light, continues indefinitely at the MIT Museum, 265 Massachusetts Avenue, Cambridge. Museum hours are Tuesday-Friday 9-5 and Saturday-Sunday 1-5. Admission: \$2 requested donation, free to MIT community. Telephone: 253-4444.

Lawrence B. Anderson '30: Artist, Educator, Architect, an installation celebrating the distinguished career of the former dean of the MIT School of Architecture, continues through December 14 at the Compton Gallery, between Buildings 10 and 13. Gallery hours are weekdays 9-5. No admission charge. Tel: 253-4444.

OFF CAMPUS

Recent Paintings by Nos Hall continues through November 29 at the Truman Art Gallery, Main College Building, Simmons College, 300 The Fenway, Boston. Gallery hours are 10-4:30. Telephone: 738-2124.

New Territory: Art from East Germany, paintings, photographs, prints, and site-specific installations by 17 young, contemporary East German artists, continues through November 30 at the Grossman Gallery, School of the Museum of Fine Arts, 230 The Fenway, Boston. Telephone: 267-9300.

Art + Architecture, an exhibition of work by part-time faculty of the Department of Art and Architecture at Northeastern University, continues through November 30 at the Gallery-Dodge Library and Richards Hall Gallery, 360 Huntington Avenue, Boston. Gallery hours are Monday-Friday 9-5 and Saturday-Sunday 1-5. Telephone: 437-2355.

Posters Commemorating Charles de Gaulle continues through November 30 at the French Library in Boston, 53 Marlborough Street, Boston. Library hours are Tuesday-Saturday 10-5 and Wednesday-Thursday 10-8. No admission charge. Telephone: 266-4351.

Lacquer Art Works by Ikuhiko Akabari continues through November 30 at the Kaji Asto Studio, 40 St. Stephen Street, Boston. Gallery hours Monday-Saturday 1-5 and Tuesday 1-9. No admission charge. Telephone: 247-1719.

Linda Connor: Spiral Journey, 112 pho-

CLASSICAL MUSIC

Soprano Tova Regule and pianist Marti Epstein perform songs of Mozart, Chausson, and Barber in an MIT Staff Noon Series concert at 12 noon in Killian Hall, MIT Hayden Memorial Library Building 14. No admission charge. Telephone: 253-2906.

\*\*\* CRITICS' CHOICE \*\*\*  
The MIT Concert Choir, John Oliver conducting, with soprano Theresa Cincione, mezzo-soprano Gloria Raymond, tenor Rockland Osgood, and baritone Kenneth Goodson '89, performs Handel's Messiah at 8 pm in Kresge Auditorium. Tickets: \$5 general, free to MIT and Wellesley students. Telephone: 253-2906.

The Emerson String Quartet performs works by Mozart, Haydn, and Bartok at 8 pm in Jordan Hall, New England Conservatory, 30 Gainsborough Street at Huntington Avenue, Boston. Tickets: \$20 and \$23 (see also reduced-price tickets offered through the Tech Performing Arts Series). Telephone: 536-2412.

Soloists of ALEA III perform works by Aaron Copland, Otto Luening, Krzysztof Penderecki, Ernst Krenek, John Goodman, Robert Sirota, Kurt Weill, and Scott Wheeler at 8 pm in the Tsai Performance Center, Boston University, 685 Commonwealth Avenue, Boston. Tickets: \$6 general, \$3 seniors and students. Telephone: 353-3340.

The Boston University Choral Union and Chamber Choir performs works by Handel, Haydn, Palestrina, Manhattan Transfer, and Del Vecchio at 8 pm in Marsh Chapel, 735 Commonwealth Avenue, Boston. No admission charge. Telephone: 353-3345.

The Harvard-Radcliffe Collegium Musicum performs choral and vocal works of Claudio Monteverdi at 8 pm in Sanders Theatre, Quincy and Kirkland Streets, Cambridge. Tickets: \$8, \$10, and \$12 general, 50% discount for students. Telephone: 495-5730.

Organist Rosalind Mohsen performs at 12:15 in Trinity Church, Copley Square, Boston. No admission charge. Telephone: 536-0944.

Pianist Nina Meister performs at 8 pm at The Blacksmith House, Cambridge Center for Adult Education, 56 Brattle Street, Harvard Square, Cambridge. Tickets: \$3.50. Telephone: 547-6789.

The Boston Classical Orchestra, with violinist Amnon Levy, at Old South Meeting House. See November 28 listing.

DANCE

MIT Dance Workshop presents its Fall Student Dance Concert at 8 pm in Kresge Little Theater. Also presented December 1. No admission charge. Telephone: 253-5623.

Saturday, Dec. 1

CONTEMPORARY MUSIC

Christina Lavin, Patty Larkin, John Gorski, and David Wilcox perform at 5 pm & 9 pm at the Somerville Theatre, 55 Davis Square, Somerville, near the Somerville T-stop on the red line. Tickets: \$14.30 and \$17.50. Tel: 661-1252.

Photographs from the Museum of Contemporary Photography in Chicago spanning the years 1967 to 1990, continues through December 2 at the Photographic Resource Center, 602 Commonwealth Avenue, Boston. Hours are Tuesday-Sunday 12-5 and Thursday 12-8. Admission: \$2 general, \$1 seniors and students. Telephone: 353-0700.

Romanticism: Part I, History and Imagination continues through January 6; and Romanticism: Part II, Landscape works by Delacroix, Turner, Bayre, Constable, Bonington, and Gerault, continues through December 6 at the Fogg Art Museum, Harvard University, 32 Quincy Street, Cambridge. Museum hours are Tuesday-Sunday 10-5. Admission: \$4 general, \$2.50 seniors and students, under 18 free. Telephone: 495-9400.

Morris Louis, nine major canvases by one of the pioneers of stained painting, continues through December 9 in the Carter Gallery, Museum of Fine Arts, 465 Huntington Avenue, Boston. Museum hours are Tuesday-Sunday 10-5 and Wednesday 10-10. Admission: \$6 general, \$5 seniors and students, free with MIT ID. Telephone: 267-9300.

Multimedia Southwest, featuring ceramics by Janet Lever, Elaine Bolz, and David Hutchinson, furniture by Mark Erickson, wearable art by Susan Summa, turned wood by Robert Sterba, and jewelry by Margaret Davison, Anne Dankoff, and Deborah Conrad, continues through December 9 at Ten Arrow Gallery, 10 Arrow Street, Cambridge. Gallery hours are Monday-Saturday 10-6 and Sunday 1-5. Telephone: 876-1117.

The Levy-Franks Family Colonial Portraits, depicting prominent members of New York's Jewish community in the 1730s, continues through December 9 in the C. Brown Gallery, Museum of Fine Arts, 465 Huntington Avenue, Boston. Museum hours are Tuesday-Sunday 10-5 and Wednesday 10-10. Admission: \$6 general, \$5 seniors and students, free with MIT ID. Telephone: 267-9300.

The Annual Student Exhibition and Sale continues through December 12 in the George Sherman Union Gallery, Boston University, 775 Commonwealth Avenue, Boston. Gallery hours are weekdays 10-5 and Wednesday 10-8. Tel: 353-9425.

The Unique Print: 70s into 90s, 100 printed images documenting the surge of interest in the unique print in the last decade, continues through December 16 in the Torf Gallery, Museum of Fine Arts, 465 Huntington Avenue, Boston. Museum hours are Tuesday-Sunday 10-5 and Wednesday 10-10. Admission: \$6 general, \$5 seniors and students, free with MIT ID. Telephone: 267-9300.

Fort Point Arts Community: Into the Second Decade, featuring works by 52 artists from the largest concentration of artists in New England, continues through December 21 at the Federal Reserve Bank of Boston Gallery, 600 Atlan-

The Black Crows perform at 9 pm at the Channel, 25 Necco Street, near South Station in downtown Boston. Tickets: \$8.50 advance/\$9.50 day of show. Telephone: 451-1905.

\*\*\* CRITICS' CHOICE \*\*\*  
Poet and rock musician Jim Carroll performs in an 18+ ages show at 8 pm at Manray, 21 Brookline Street, Cambridge. Tickets: \$10. Telephone: 864-0406.

Shy Five and Big Train perform in an 18+ ages show at T.T. the Bears, 10 Brookline Street, Cambridge, just north of MIT. Telephone: 492-0082.

The Bags and Joe perform at the Rat, 528 Commonwealth Avenue, Kenmore Square, Boston. Telephone: 247-8309.

\*\*\* CRITICS' CHOICE \*\*\*  
Barrence Whitfield and the Savages perform at Johnny D's, 17 Holland Street, Davis Square, Somerville, near the Davis Square T-stop on the red line. Telephone: 776-9667.

Steve Smith & The Naked and Stub Junkman perform at Ed Burke's, 808 Huntington Avenue, Boston, on the 'E' green line. Telephone: 232-2191.

Jumpin' Blues Dance Party, featuring Roll With It, is presented at 4 pm at the Western Front, 343 Western Avenue, Cambridge. Admission: \$2 with MIT ID. Telephone: 492-7772.

Winning Sounds, winners of the International 1990 NEWCOMP Computer Music Competition, is presented at 8 pm at First Church Congregational, 11 Garden Street, Cambridge. Admission: \$7 general, \$5 seniors and students, \$3.50 NEWCOMP members. Telephone: 277-3474.

Loose Caboose at the Western Front. See November 30 listing.

CLASSICAL MUSIC

The MIT Concert Band performs at 8 pm in Kresge Auditorium. No admission charge. Telephone: 253-2906.



\*\*\* CRITICS' CHOICE \*\*\*  
Austrian-Armenian pianist Avo Aghajanyan performs works by Haydn, Beethoven, Schubert, Prokofiev, and Boghos Jelalian at 8 pm in Jordan Hall, New England Conservatory, 30 Gainsborough Street at Huntington Avenue, Boston. Tickets: \$10, \$15, & \$20 general, \$5 seniors and students (see also reduced-price tickets offered through the Tech Performing Arts Series). Telephone: 926-4977.

Pathways, a new light installation by environmental sculptor Beth Galston, continues through December 21 at the Huntington Gallery, Mass. College of Art, 623 Huntington Avenue, Boston. Gallery hours are weekdays 10-6 and Saturday 11-5. No admission charge. Telephone: 232-1555 ext. 550.

Like a One-Eyed Cat, combining well-known with previously unexhibited photographs by Lee Friedlander 1956-87, and Edgerton, Gohlke, Papageorge and Siskind: A Photographic Portfolio, continues through December 23 at the Wellesley College Museum, Jewett Arts Center, Wellesley. Museum hours are Monday-Saturday 10-5, Tuesday & Wednesday 10-9, and Sunday 2-5. No admission charge. Telephone: 235-0320 ext. 2051.

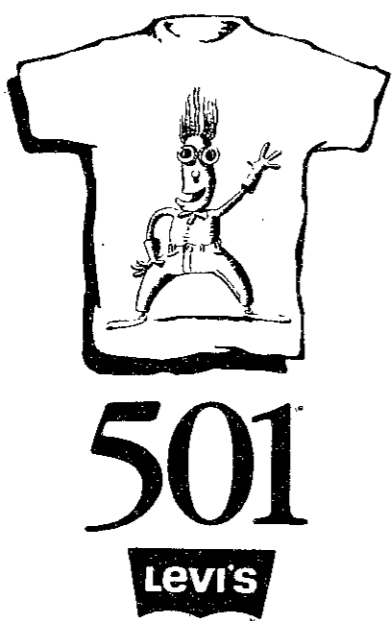
Founding Farms: Five Massachusetts Family Farms, 1638-Present, a photographic exhibit, continues through December 31 at the Commonwealth Museum, 220 Morrissey Boulevard, Dorchester, near the JFK/UMass/Columbia T-stop on the red line. Museum hours are Monday-Friday 9-5 and Saturday 9-3. No admission charge. Telephone: 727-9268.

What Makes Music?, examining the relationship between science and sound and exploring the latest in sound technology, continues through January 1 at the Museum of Science, Science Park, Boston, near the Science Park T-stop on the green line. Museum hours are Tuesday-Sunday 9-5, Friday 9-9. Admission: \$6 general, \$4 seniors and children, free with MIT ID. Telephone: 623-6664.

Black Achievers in Science, profiling 16 black men and women who are experts in their various fields, continues through January 6 at the Museum of Science, Science Park, Boston, near the Science Park T-stop on the green line. Museum hours are Tuesday-Sunday 9-5, Friday 9-9. Admission: \$6 general, \$4 seniors and children, free with MIT ID. Telephone: 623-6664.

Between Spring and Summer: Soviet Conceptual Art in the Era of Late Communism, a comprehensive look at the recent work of more than 20 Soviet artists and architects, continues through January 6 at the Institute of Contemporary Art, 955 Boylston Street, Boston. Institute hours are Wednesday-Sunday 11-5, Thursday-Saturday 11-8. Admission: \$4 general, \$3 students, \$1.50 seniors and children, \$1 MIT students. Telephone: 266-5152

DELIGHTED THAT THE FIT AND COMFORT OF HIS NEW LEVI'S® 501® BUTTON-FLY JEANS WAS BACKED BY A 30 DAY MONEY-BACK GUARANTEE, WILLIAM QUESTIONED THE NEED FOR A FREE GIFT. BUT NOT FOR LONG.



SEE YOUR NEAREST PARTICIPATING LEVI'S RETAILER FOR DETAILS (CALL 1-800-227-5600 FOR EXACT LOCATION). THE BUTTONS SHALL SET YOU FREE AND SO WILL THE GUARANTEE.

## ARTS

(Continued from page 13)

## CLASSICAL MUSIC

The Boston Chamber Music Society, with harpist Nancy Allen, performs works by Debussy, Beethoven, and Schönberg at 8 pm in Sanders Theatre, Harvard University, Quincy and Kirkland Streets, Cambridge. Also presented December 7 in Jordan Hall, New England Conservatory, 30 Gainsborough Street at Huntington Avenue, Boston. Tickets: \$8, \$14, & \$20 general, \$2 discount to seniors and students. Telephone: 241-5577.

Harpist John Gibbons performs J. S. Bach's *Goldberg Variations* at 3 pm in Remis Auditorium, Museum of Fine Arts, 465 Huntington Avenue, Boston. Tickets: \$15 general, \$12 MFA members, seniors, and students. Tel: 267-9300 ext. 306.

Emmanuel Music continues its *Debussy & His Circle* recital series with works by Debussy, Ravel, and Stravinsky at 4 pm in Emmanuel Church Library, 15 Newbury Street, Boston. Tickets: \$15 general, \$10 seniors and students. Telephone: 536-3356.

Violinist Nicholas Kitchen and pianist Curt Caeleto perform Beethoven sonatas at 5:30 in the Fogg Art Museum, 32 Quincy Street, Cambridge. Admission: \$5 general, \$4 seniors and students. Telephone: 495-4544.

Pianist Benjamin Fasternak performs at 1:30 at the Gardner Museum, 280 The Fenway, Boston. Admission: \$5 general, \$2.50 seniors and students. Telephone: 566-1401.

*L'Impériale*, music from the time of the Imperial Monarchy in France — works by Couperin, de la Guerre, Dornel, and Marais — is presented as part of the *Longy Historical Performance Series* at 3 pm in the Edward Pickman Concert Hall, Longy School of Music, 27 Garden Street, Cambridge. Admission: \$7 general, \$5 seniors and students. Telephone: 876-0956.

The Tufts University Symphonic Band performs at 8 pm in Cohen Auditorium, Tufts University, Medford. Telephone: 381-3564.

## FILM &amp; VIDEO

★★★ CRITICS' CHOICE ★★★  
The MIT Lecture Series Committee presents *It's a Wonderful Life* at 6:30 & 9:30 in 10-250. Admission: \$1.50. Telephone: 258-8881.

★★★ CRITICS' CHOICE ★★★  
The Harvard-Epworth Church presents Jean Renoir's *Le Crime de Monsieur Lange* (1936, France) at 8 pm at 1555 Massachusetts Avenue, Cambridge. Admission: \$3 contribution. Telephone: 354-0837.

The Harvard Film Archive continues its weekend series of *New Wave Films from Soviet Kazakhstan* with *Toro, Ya-Ha, and Bakhit: First Blood* (see November 30 listing) at 4 pm and *The Needle* (1988, Rachid Nugmanov) at 7 pm at the Carpenter Center for the Visual Arts, Harvard University, 24 Quincy Street, Cambridge. Tickets: \$4 general, \$3 seniors and children, \$6/\$5 double feature. Telephone: 495-4700.

The *Iceberg Thief* (1990, Maurizio Nichetti) at the Regent Theater. See November 30 listing.

*La rupture* (*The Break-up*, 1970, Claude Chabrol) at the French Library. See November 30 listing.

Monday, Dec. 3

## FILM &amp; VIDEO

The Harvard Film Archive continues its Monday series *Avant-Garde Influences in Narrative Film* with *I've Heard the Mermaids Singing* (1987, Patricia Rozema) at 5:30 & 8:00 at the Carpenter Center for the Visual Arts, Harvard University, 24 Quincy Street, Cambridge. Tickets: \$4 general, \$3 seniors and children. Telephone: 495-4700.

The *Iceberg Thief* (1990, Maurizio Nichetti) at the Regent Theater. See November 30 listing.

## CONTEMPORARY MUSIC

The John Deaver Christmas Concert is presented at 8 pm at the Wang Center, 270 Tremont Street, Boston. Tickets: \$25, \$35, and \$50. Telephone: 482-9393.

The *Darling Buds*, 9 Ways to Sunday, and *Lava Beat* perform at 9 pm at Nightstage, 823 Main Street, Cambridge, just north of MIT. Telephone: 497-8200.

## CLASSICAL MUSIC

The MIT Brass Ensemble, with Hungarian trombone soloist Gustav Gabor Hoessa, performs at 8 pm in Killian Hall, MIT Hayden Memorial Library Building 14. No admission charge. Telephone: 253-2906.

The Boston Conservatory Orchestra performs works by Copland, Martin, Haydn, and Pergolesi-Strauss at 8 pm in Scully Hall, 8 The Fenway, Boston. No admission charge. Telephone: 536-6340.

The Millennium Ensemble performs works by Ives, Schulhoff, Moody, Berio, Druckman, and Headrick at 8 pm in the Tsai Performance Center, Boston University, 685 Commonwealth Avenue, Boston. No admission charge. Telephone: 353-3340.

## LITERATURE

Michael Ryan, author of *God Hunger*, reads from his memoir, *Secret Life*, at 8:15 at The Blacksmith House, Cambridge Center for Adult Education, 56 Brattle Street, Harvard Square, Cambridge. Tickets: \$2. Telephone: 547-6789.

Tuesday, Dec. 4

## CONTEMPORARY MUSIC

*Kid Crash*, D.T. Boyz, X-plicit, Teased, and *Fatal Hesitation* perform in an 18+ ages show at 9 pm at the Channel, 25 Necco Street, near South Station in downtown Boston. Tickets: \$5. Telephone: 451-1905.

*Adventure Set* and *Mystery Jones* perform at 9 pm at Necco Place, One Necco Place, near South Station in downtown Boston. Tickets: \$4.50. Tel: 426-7744.

## FILM &amp; VIDEO

The Harvard Film Archive continues its Tuesday series *Women Filmmakers* with *Beyond Good and Evil* (1977, Liliana Cavani, Italy) at 5:30 & 8:00 at the Carpenter Center for the Visual Arts, Harvard University, 24 Quincy Street, Cambridge. Tickets: \$4 general, \$3 seniors and children. Telephone: 495-4700.

The *Iceberg Thief* (1990, Maurizio Nichetti) at the Regent Theater. See November 30 listing.

## EXHIBITS

Paintings by Henri Seigle, a member of the original Surrealist group, opens today at the French Library in Boston, 53 Marlborough Street, Boston. Continues through December 23 with Library hours Tuesday-Saturday 10-5 and Wednesday-Thursday 10-8. No admission charge. Telephone: 266-4351.

## JAZZ MUSIC

Billy Novick and Guy Van Duser perform at 9 pm at the Regattabar, Charles Hotel, Harvard Square, Cambridge. Tickets: \$5. Telephone: 661-5000.

## CLASSICAL MUSIC

The Longy Chamber Winds perform works by J. C. Bach, Krommer, Gordon Jacob, and Mozart at 8 pm in the Edward Pickman Concert Hall, Longy School of Music, 27 Garden Street, Cambridge. No admission charge. Telephone: 876-0956.

Violist Christof Huebner and pianist Bonnie Anderson perform works by Bach and Shostakovich at 12:30 in the Federal Reserve Bank of Boston's auditorium, 600 Atlantic Avenue, across from South Station in downtown Boston. No admission charge. Telephone: 973-3454 or 973-3368.

## Upcoming Events

Edie Brickell & New Bohemians at the Orpheum on December 5. *Living Colour* at the Orpheum on December 6. *Tribe at the Paradise* on December 7. *Indigo Girls* at the Orpheum on December 11 and 12. *Warren Zevon* at the Orpheum Theater on December 14. *The Ramones* at Citi on December 27 (18+) and 28 (21+). *Til Tuesday* at the Paradise on December 28. *Urban Blight* at the Paradise on New Year's Eve.

HARVARD UNIVERSITY  
GRADUATE SCHOOL OF DESIGN

## Open Houses for Prospective Students

Speak with faculty and current students about programs in architecture, landscape architecture, urban planning and design, design studies.

## Postprofessional Degree Programs

Thursday, November 29, 1990

5:00 - 8:30 PM

(March II, MLA II, MAUD, MLAUD, MDesS, DrDes)

## Professional Degree Programs

Friday, November 30, 1990

9:00 AM - 5:00 PM

(March I, MLA I)

Harvard University Graduate School of Design  
Admissions Office, Gund Hall  
48 Quincy Street, Cambridge, MA 02138

To RSVP or for more information  
please call: (617)495-5453

All majors welcome

ECONOMIC  
RECOVERY

Give yourself and your wallet a rest. The Somerville Holiday Inn may surprise you with all it has to offer your out-of-town travelers:

- Lowest MIT Preferred Rate of \$80\* (single or double)
- Complimentary scheduled shuttle service to/from MIT
- Walking distance to the  $\text{\textcircled{D}}$
- Two miles from MIT
- Free parking
- Indoor pool
- Holiday Inn Priority Club Points
- Number One Club offering recognition to frequent reservation makers
- Meeting and banquet facilities for up to 400

A full service hotel worth considering...

For further information and reservations,  
dial the Reservations Department directly  
at: 617-628-1000 or 617-628-1073.

**Holiday Inn**  
Boston/Somerville  
30 Washington Street  
Somerville, Massachusetts 02143

\*Rate subject to tax and availability.

We begin our education believing that the facts we learn and the technologies we master are the foundations for our careers.

But changes in careers are common and technologies become obsolete quickly. In fact, alumni records show that it is likely for many of us to work in multiple fields or to change fields entirely. We may also move from engineering and science into non-technical areas such as marketing or general management.

The ability to do excellent work in a range of fields and to meet diverse challenges with clear bold thinking and creative solutions is the hallmark of a good education.

However, to work effectively in fields that are new to us we cannot rely on facts and technologies that may have become obsolete or are not applicable; we must depend on fundamental thinking and problem solving skills that are effective in any discipline and in working on virtually any type of problem.

These skills are analogous to the basic skills, strength and coordination that a superb athlete will learn in preparation for a lifetime of competition, skills that will serve him in a variety of different sports.

For the scientist or engineer the heart of the learning process is finding and solving interesting problems. This is as true if the subject is quantum physics, as it is in managing a company. With proper mentoring, the mental struggle of dealing with a difficult and important problem results in the development of mental skills that cannot be learned in any other way and that are applicable to a wide range of new situations.

The skills we learn are an acute ability to observe all aspects of a problem, to integrate a wide range of knowledge, to analyze in depth, to obtain insight, to find creative solutions, and to rigorously test the solutions.

These problem solving skills are taught by a fine teacher no matter what the subject. For maximum benefit the student must realize the importance of these skills to his or her education and must consciously focus on developing them not only in every course in college but over a lifetime of learning.

Note: Each year the Bose foundation sponsors a one year fellowship for a first year graduate student in electrical engineering. Please see your faculty advisor for more information or write Rhonda Long, Bose Foundation, The Mountain, Framingham, MA 01701-9168.

**BOSE**

The second in a series.

The  
purpose of  
education.

# sports

## Basketball teams begin their seasons

### Sports Update

The men's and women's basketball teams recently began their seasons in tournaments. The women's team won their second tournament in the past two years by winning the Regis College Tournament, defeating the University of Massachusetts at Boston, and Regis en route to the win. Junior forward Tanio Pinilla was named the tournament MVP.

The men's team placed third in the State University of New York at Stony Brook Tournament, losing to the host school and defeating Trinity University (TX) in the consolation game.

Senior co-captains Chris Sonne and Dave Tomlinson were each named to the all-tournament team.

### Yet another award for football's Prather

Football linebacker Darcy Prather '91 has been named the winner of a National Football Foundation and Hall of Fame scholar-athlete award. Prather is one of only seven Division III football players in the nation to receive the award.

### Fencers compete in "The Big One"

The fencing team made a very strong showing in the recently completed "The Big One" competition at Fairfield University. The Engineers swept the top three places in the women's division.

Felice Swapp '92 won the competition, with Alice Chang G and

Kathryn Fricks '92 taking second and third, respectively.

On the men's side, Henrick Marlin '94 won the epee competition over 23 other fencers and Luis Maldonado '92 placed third of 35 foil competitors.

### Men's soccer players led CAC scoring

Men's team soccer players Marc Bailey '91 and Stephan Feldgoise '92 finished 1-2 in the scoring race of the initial Constitution Athletic Conference season. Bailey tallied five goals and five assists in five CAC games, while Feldgoise had five goals and one assist.

MIT finished in third place with a 3-2 CAC record.

### Sports Update

### Williams named to XC all-conference team

Cross-country team captain James Williams '91 has been named to the first Constitution Athletic Conference cross-country all-conference team, based on his seventh-place finish in the conference championship.

### Men's tennis ranked high in pre-season

Senior Alexis Photiades is ranked 23rd in the nation in the pre-season Division III tennis rankings by the Intercollegiate Tennis Coaches Association. The team rankings show MIT in 17th nationwide.

Compiled by David Rothstein and the Sports Information Office

## Upcoming Home Events

Saturday, November 24

2:00 Men's Basketball vs. Gordon

Monday, November 26

4:00 Squash vs. Trinity

**FOR \$20,  
WE'LL LET YOU  
HANG OUT  
IN THE QUAD.**

**\$20 MID-WEEK LIFT TICKET.\***

Why hang out between the student union and the library, when you can be letting it all hang out at Mount Snow, Vermont on any one of our 84 trails.

To hang-out even longer, join SnowBreak '91, Jan. 7-11 and 14-18—a week of parties, games, parties, parties and skiing!

For a taped ski report, call (802) 464-2151. For more information, call (802) 464-8501.

**Mount Snow**

**When It Comes To Big Mountain Skiing, No One Else Is Close.**

\*Offer good Monday through Friday, non-holiday with a current college ID. © Mount Snow Ltd. 1990

## Career Opportunities at Morgan

*for Massachusetts Institute of Technology students interested in*

**Corporate Finance  
Research  
Sales  
Trading**

*Please plan to attend our information presentation on  
Tuesday, December 4  
7:00 pm  
All majors welcome*

Confirm the time and location with your placement office  
J.P. Morgan is an equal opportunity employer

# JPMorgan

## ANNOUNCEMENT FOR JAPANESE STUDENTS FROM THE OFFICE OF CAREER SERVICES

### JAPAN

Citicorp Global Finance, Japan is interested in Japanese students pursuing Masters degree or higher in quantitatively oriented areas such as Math, Engineering, Physics, etc. This company is looking for Japanese nationals only, however, the career opportunities will not be limited in Japan. The following is a brief job description of the positions available in Global Finance, Japan:

- **Financial Analyst Associate, Financial Control** - accounting knowledge, analytical skills necessary
- **Operations/Technology Associate, Operations Management** - managerial experience, problem solving ability, analytical/quantitative skills
- **Relationship Banking Associate, Relationship Management** - analytical ability, problem solving ability, product knowledge
- **Corporate Finance Associate, Corporate Finance** - interpersonal skills, analytical/quantitative skills

Please send resume and cover letter to:

Peter C. Thorp  
Vice President  
Citicorp at One Court Square  
University Relations, 14/7  
Long Island City, NY 11120  
Tel: 718-248-3576  
FAX: 718-248-4280