

UA pushes for psych dept

By Dan Dunn

The Undergraduate Association Council unanimously passed a resolution at its meeting last Thursday calling for the creation of a psychology department in the School of Humanities and Social Sciences under the direction of Jeremy M. Wolfe PhD '81, an associate professor of psychology.

The UAC also passed a motion asking Provost Mark S. Wrighton to allow members of the Advisory Committee for the Selection of the Dean of Engineering to decide whether students should be allowed to serve on the committee, and voted to reorganize its own committee structure.

Wolfe presently works in the Department of Brain and Cognitive Sciences, which is in the Whitaker College of Health Sciences, Technology, and Management. Last spring, the Whitaker College denied him tenure.

According to UA Vice President Colleen M. Schwingel '92, who co-sponsored the psychology department resolution, the UA office received many phone calls from students "crying Wolfe" when the tenure decision became public. She described the resolution as a response to students' complaints.

Wolfe's popularity is backed up

further by the success of the class he teaches, Introduction to Psychology (9.00), the UAC resolution states. Last year, 423 students enrolled in the course, and rated him 6.4 on a scale of 1-7 in the *Course Evaluation Guide*.

But the resolution's sponsors, Schwingel and J. Paul Kirby '92, were quick to point out that Wolfe is not the only reason for the resolution. They fear that MIT would no longer have a psychology program if he were to leave.

According to Kirby, no one else in Course 9 is willing to take up Wolfe's work. "All of psychology at MIT, the HASS-D requirement, the minor, and the major is run by one man," Kirby said. "And he was just fired."

The resolution says that MIT is "in danger of being in the disgraceful position of being the only university among those of similar prestige without a substantive psychology department."

The resolution supports moving psychology from Whitaker College to the School of Humanities and Social Sciences, regardless of whether Wolfe is appointed as its head.

It is unclear where the idea of moving the department out of Whitaker College was born. Kirby would not comment, and

Schwingel would only say that "Because it is a sensitive issue and not yet official, I am not at liberty to say who is working on the idea."

Kirby mentioned the Ad Hoc Committee on Psychology, which was created by faculty from Courses 9 and 21, but would not reveal the names of its members.

New tactic for governance issue

In other business, the UAC passed a resolution requesting that Wrighton allow members of the Advisory Committee for the Selection of the Dean of Engineering to decide whether students should be members of the committee.

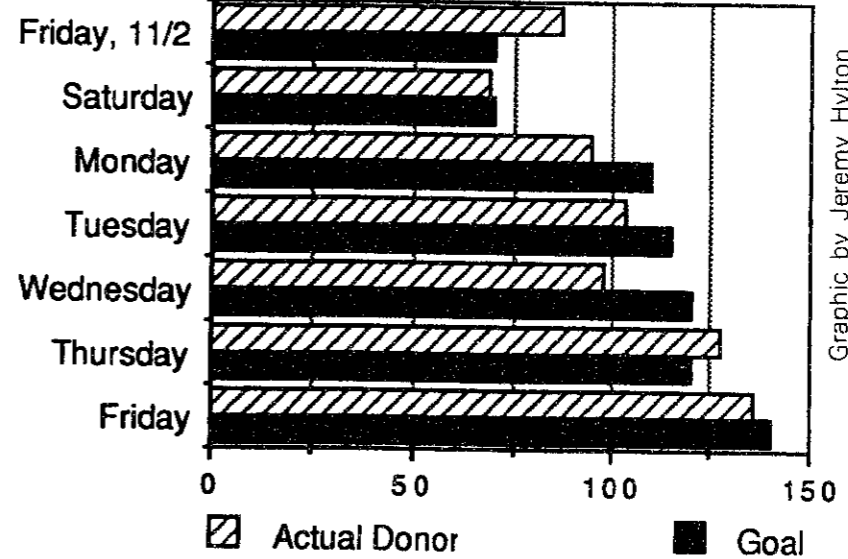
According to UA President Manish Bapna '91, the committee was chosen last week, but Wrighton has not released a list of its members.

Hans C. Godfrey '93, sponsor of the motion and chair of the UA Committee on Governance, said that Wrighton did not appoint students to the committee because he did not feel that they offered a significantly different viewpoint.

Bapna added that Wrighton was concerned with how frank faculty members in the committee would be about other faculty

(Please turn to page 2)

TCA Blood Drive



The Technology Community Association's most recent blood drive came 30 short of meeting its goal of 745 donors.

Graphic by Jeremy Hylton

IFC elects its first woman president

By Reuven M. Lerner

Holly L. Simpson '92, a resident of the Women's Independent Living Group, has become the first woman elected to the position of Interfraternity Council president. She, along with six other officers, were voted in during IFC elections last Wednesday.

The other six were: Vice President-elect Clifford B. Rotenberg '92, from Kappa Sigma; Secretary-elect Maria D. L. A. Palafos '92, from WILG; Judicial Committee Chairman-elect Helen D. Shaughnessy '92, from Alpha Phi; Community Relations Chairman-elect Erik R. Tavzel '93, from Sigma Phi Epsilon; Public Relations Chairman-elect Dhananjay R. Ragade '94, from Chi Phi; and Treasurer-elect James F. Miskel III, from Lambda Chi Alpha.

The officers will be formally installed on Dec. 5, but have already been speaking informally about many issues, Simpson said. "Basically, what we want to do is get an agenda for the next year — projects that officers will want to do, issues that need to be addressed."

Among these issues is an independent living group alcohol policy. Simpson said that "we're thinking about revising our party policy," but she was not sure what kinds of changes would be made. She admitted, however,

that "the new federal law and MIT changing their policy" will force a change.

Last year's freshman housing report is also on the new board's agenda. Simpson described an "IFC census," the results of which would be used "to dispel some of the myths about ILGs, and especially some of the assumptions that are made in the freshman housing committee report."

Simpson did not think it especially significant that she was the first woman to hold the post of IFC president. "It says something about fraternities at MIT... that the myths about being elitist, chauvinistic and all the typical things are not true — at least not here. It says something positive about our system."

Outgoing IFC President Miles

Congress to cut student loans

By Michelle Gueritey

MIT will not be affected by recent congressional legislation cutting federal loan money from schools with the highest student loan default rates.

The recently introduced federal budget package cuts off student loan funding for the next two years from institutions with default rates higher than 35 percent in fiscal year 1989. Beginning in 1993, the cutoff rate will decrease to 30 percent.

The programs affected will include the Perkins/National Student Loan Program and the Stafford/Guaranteed Student Loan Program. The latest data available from the Department of Education show that 330 institu-

tions had a default rate above 35 percent for loans due in 1988, and 600 institutions had a rate above 30 percent.

Bursar Shirley M. Picardi said that "MIT has very low default rates for these federal programs." She quoted figures that show MIT with a default rate of 1.2 percent for Perkins loans and 1.8 percent for Stafford loans in FY 1990. While national averages were not available for 1990, the previous year's figures showed a default rate of 6.8 percent for Perkins loans and 14.7 percent for Stafford loans.

"We have always been low, but we are definitely better than we were in the past," Picardi added.

According to Kate Wilson,

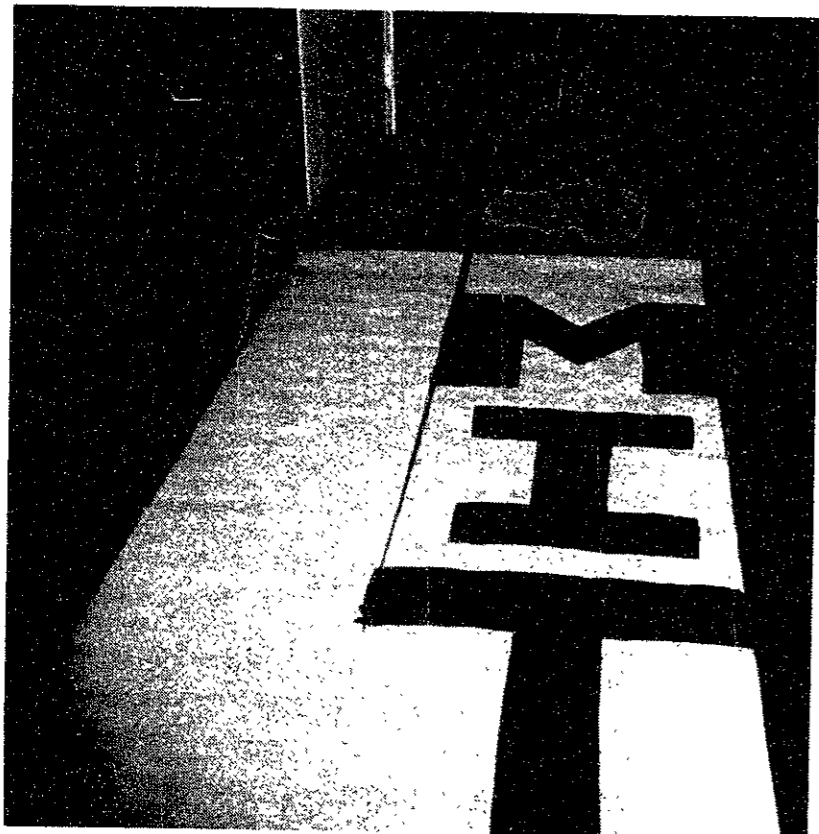
associate bursar for alumni services, the low default rate can be attributed in part to "a very good staff which has new standards and expectations."

In addition, MIT has changed the process by which loans are collected. "We now use an outside servicer which does a lot of the early collection work such as sending letters," Wilson said.

"We have very good borrowers who are very diligent," she added.

Picardi agreed, saying that "I think we do have very conscientious borrowers who really want to honor their obligations. This makes our job pretty easy."

(Please turn to page 2)



This banner was a part of the hack pulled off at Saturday's Harvard-Yale football game.

ZBT launches rocket at Harvard-Yale game

By Katherine Shim

With eight minutes and 56 seconds remaining in the third quarter of the traditional Harvard-Yale football game last Saturday, a rocket erupted from the sod at the zero-yard line, shooting over the goal post an 8½ by 3½ foot banner with the letters "MIT" on both sides.

Police spent several minutes tugging at the banner, trying to take it down from the goal posts.

Three members of Zeta Beta Tau, Praveen P. Tipirneni '91, Andrew M. Heafitz '91, and Christopher M. Mayer G, claimed responsibility for the hack.

"We put a mechanism in the ground at approximately the zero-yard line with a rocket engine that shoots a banner over the horizontal bar of the goal post," said Tipirneni. "The mechanism was activated by about 480 feet of wire that ran underneath the field and connected with two metal bleachers of the stadium."

The wires ran under the sleeves of Heafitz, who detonated the rocket at an "appropriate time" with the battery pack he carried in the inner pocket of his jacket. The rocket was set off just as Yale prepared to score a field goal, which sailed wide.

Design of the hack began in September, Tipirneni said. "The whole thing was tested at a local high school early in the fall, but because of the amount of work that goes into laying a wire into a hole

three feet deep and three inches wide in diameter, we decided to go right ahead and put everything in place at the Harvard stadium," he continued.

The group encountered a setback in mid-October, when either the Harvard Campus Police or the Harvard grounds crew discovered the wires and removed the entire apparatus from the ground. To better conceal the hole, the trio was forced to use butter knives when laying down the wire.

Harvard police guarded the stadium

The vigilant watch of the Harvard police made preparation for the hack extremely difficult, according to Tipirneni.

"Getting into the stadium itself was really hard," he said. "Especially in the weeks right before the game. The police were guarding the stadium all night."

"We had to get the timing just right between their shifts," Tipirneni explained. "Getting in basically involved one of us climbing over a fence with spikes, crawling through a hole in a fence, and running through the stadium, radioing to the others if the coast was clear."

"After the cops found the wires in the field, the stadium was kept open at one end, guarded by a row of police cars with their headlights on," he

(Please turn to page 2)

inside

Reviews of the newest from Bob Dylan and Van Morrison. Page 11.

Women's Fencing skewers Harvard. Page 15.

UAC pushes for psych dept

(Continued from page 1)

with students present. Godfrey felt that the committee members would appoint student members if given that opportunity, setting a precedent for future selection committees.

UAC discusses restructuring

The council discussed the UA Ad Hoc Committee on Restructuring's newly released *Report and Recommendations for the UA Council*, which describes the function of the UA, and includes

recommendations to improve its efficiency.

Bapna made a motion that, if approved at the next UAC meeting, would create 11 standing committees. He said that he plans to make the UA "less reactive and more proactive. . . . When an issue comes up, rather than spend three weeks making the committee, we will have a group of knowledgeable people ready to act."

The report made other recommendations that were not put into motions. Schwingel recom-

mended that class officers be separated from the UAC to let them devote more time to representing their classes.

UA Secretary General Stacy E. McGeever '93 suggested that a new, more representative means of choosing Interfraternity Council representatives be instituted.

She divided all of the independent living groups into 11 groups that would elect their own representatives. Currently, the IFC president appoints ILG representatives to the council.

The council's final action was to approve three amendments to the UA constitution concerning elections. Because they are constitutional amendments, they must be voted on a second time at the next meeting.

The first amendment would make the due date of election petitions variable. Because of the new Institute calendar, potential candidates for office have six fewer days than before in which to collect signatures on their petitions. If this passes, the UA Election Commission would have the power to extend the due date.

The next amendment would force the UA to pay for the campaign of candidates who cannot pay themselves. Under this plan, the UA Finance Board would determine financial need.

The final amendment would move the installation date of the new UAP and UAVP to the last meeting of the spring term, rather than the fifth meeting, as it is now.

Earlier in the meeting, President Charles M. Vest talked to UAC representatives and fielded questions. Vest asked for student reaction to last fall's housing report, which recommended that all freshmen be required to live in dormitories.



News Hotline: 253-1541

IFC holds elections

(Continued from page 1)

Arnone '91 also did not think of Simpson's election as an indication of any changes on campus. "It's not good; it's not bad; it just is," he said.

Arnone felt that the most important accomplishments of his term were the response to the freshman housing report, changes in Greek Week, and an increased exchange of information between ILGs.

He called the reorganization of the local chapter of Alpha Epsilon Pi "a big issue," and said that "it'll be a little while before they are accepted on equal footing with everyone else."

He did, however, expect AEPi to eventually return to the IFC. "They will get membership once . . . none of the students that were in the afflicting group are around," he said.

Arnone also called for a change in the alcohol policy, especially in some of the loopholes that currently exist. He said that according to current rules, "underage guests can't drink. . . . [But] there is no mention of underage members of an ILG being prohibited." Arnone also saw the second consecutive dry rush as a success, saying that "people saw they could rush without giving up on anything."

MIT hacks Harvard-Yale

(Continued from page 1)

added.

In the days before the game, the group took care to not leave any footprints on the field, and the entire apparatus was tested in a "particularly elegant" manner, Tipirneni said. "We turned the wires on, and placed a multimeter between the two metal bleachers, completing a circuit."

"Then we checked for the resistance between the two bleachers," Tipirneni continued. "If the multimeter read 3 ohms, we knew that we were okay. We never had to actually go onto the field in order to test the system."

Tipirneni estimated the costs of the entire hack to be about \$300 per person.

Similar hack attempted at Yale last year

ZBT attempted a similar hack at the Harvard-Yale game last year in New Haven. The hack would have involved four MIT banners erupting near a goal post via four rockets run by timers.

The hack fizzled, however, when one rocket detonated 12 hours too early, and campus police, startled by the explosion,

found two of the three remaining rockets. The one surviving rocket did detonate during the game, but did not attract much attention.

"Part of our failure last year had to do with the fact that too many people were involved in it," Tipirneni said. "Last year, it was an effort of the whole fraternity. People were telling other people about it. This year, the hack was basically kept a secret between the three of us."

The last successful hack of a Harvard-Yale game took place in 1982. The members of Delta Kappa Epsilon fraternity set up a large weather balloon that rose from the turf near the 46-yard line during a break following a touchdown in the first quarter. The balloon, which had "MIT" written all over it, inflated to six feet in diameter before bursting.

In 1978, the Yale grounds crew discovered a remote-control spray paint apparatus that would have painted the letters "MIT" onto the turf. Also, in 1948, a primer cord used to ignite dynamite was found beneath the turf of the Harvard football field. The cord would have burned a large "MIT" onto the ground.

Congress to cut loans

(Continued from page 1)

Interviews are now required

The government has also introduced legislation which requires all institutions to conduct a loan-counseling session or entrance interview with students who receive student loans. This legislation is aimed at decreasing the confusion some students have about their loan commitments.

"We are just starting [the entrance interviews] with freshmen this year," Wilson said. MIT has also developed a nine-minute video program that tells students about the obligations of their loans.

"MIT's total loans receivable — the total amount of money that is out there in some form of

loan — is about \$44 million," Picardi said. Of that total, \$22 million is in the Perkins loan program, \$3 million is in the Stafford loan program, and the rest is institutional money mostly in the form of loan funds.

She added that this amount is comparable per person to Ivy League schools. "About 51 percent of the student population receives some form of student loan," Picardi said.

Many institutions, especially for-profit trade schools, have much larger default rates. "A lot of the abuse comes from small schools that promise applicants certain types of jobs when they graduate, and then students graduate and cannot get the jobs they were promised and are alienated from the schools," Picardi said.

don't hide away in a hole all term . . .

... join The Tech.

news roundup

from the associated press wire

Nation

Space shuttle landing postponed until today due to high winds

The National Aeronautics and Space Administration scrubbed yesterday's scheduled landing of the *Atlantis* space shuttle because of high winds at Edwards Air Force Base in the California desert. Another attempt is expected today, although weather conditions are likely to be worse.

About an hour before the scheduled landing, the winds had abated and NASA gave the crew the go ahead to come home, but the winds suddenly shifted, resulting in excessive crosswinds which forced NASA to call off the landing. If today's weather appears bad enough to threaten the safety of a landing, NASA could decide to keep the shuttle in orbit for several more days.

Atlantis is coming home after deploying a satellite that reportedly will spy on Iraq.

Man dies from self-immolation in Washington protest at Capitol

Officials in Washington, DC, said a man died yesterday after setting himself on fire outside the Capitol. The incident happened on the West Front of the building, facing the Mall that stretches to the Lincoln Memorial. US Capitol police confirmed the death, but would not release any further information about the man who was burned beyond recognition. However, they believe the self-immolation was a form of political protest.

FDA accused of suppressing RU-486

Scientists said the Food and Drug Administration is imperiling promising medical research by making it difficult to obtain the French abortion drug RU-486. Researchers claimed the manufacturer is reluctant to supply the American scientists because of the abortion controversy. The drug has shown promise in treating cancer and other diseases. At a congressional hearing yesterday, scientists accused the FDA of making a "political decision" under pressure from the Right to Life movement.

Atlanta curfew may be challenged

Atlanta police said a curfew for teens under 17 that took effect last night is necessary to curb violence in the city, which has become the nation's crime capital. However, civil libertarians said it violates the First Amendment rights of Atlanta's youth, and they may fight the curfew in court. The curfew's goal is to keep youngsters from "hanging out" on the streets between midnight and 6 a.m.

Martinez likely to be next drug czar

The chairman of the House Select Committee on Narcotics did not sound happy about what could be the White House's choice for the next drug czar. An administration official said Florida Gov. Bob Martinez is the person most likely to succeed William Bennett in that position. The Republican governor recently lost his reelection bid. Rep. Charles B. Rangel (D-NY) said President George Bush should pick someone for his ability, not for his political resume.

Gunman released hostages unharmed

A gunman in Ashland, VA, held six or seven people hostage for four and a half hours in a grocery store yesterday, then released them unharmed. According to the hostages, the man told them he robbed a nearby restaurant because he needed money for an operation for his daughter. The gunman, armed with a semiautomatic handgun, took refuge in the grocery store after the robbery. A number of shots were fired, but no injuries were reported.

Milli Vanilli loses Grammy; class action suit pending

The National Academy of Recording Arts and Sciences is taking back the 1989 Grammy Award for "Best New Artist" to Milli Vanilli. President Michael Greene said the Academy's Board of Trustees voted overwhelmingly to rescind the award. The Academy said the action was taken "regretfully."

Last week, the producer for the dreadlocked duo revealed that Rob Pilatus and Fab Morvan did not do any of the singing on their debut album, *Girl You Know It's True*. Greene said he expected the academy to decide by the end of December whether to give the award to the runner-up or to not give it to anyone at all.

World

Iraq announces plan to release French and Swiss hostages

Iraq has added strings to its recently announced plan to release all foreign hostages between Christmas and March 15. The country's information minister has indicated a United Nations resolution authorizing military force could jeopardize the hostage release. The official also denounced the American description of the release as a ploy. "The rulers of Britain and the United States do not want peace in the region," he said.

However, following a meeting with Jean-Marie Le Pen, the leader of France's National Front, Saddam agreed to let an unspecified number of Europeans leave the country. He also announced that Swiss hostages would be allowed to leave "in appreciation" of a Swiss delegation's visit to Baghdad.

The Iraqis also released a statement that it plans to double its troop strength in Kuwait. The Iraqi news agency said 250,000 more soldiers will stream into the occupied country, and added that because of the deployment, the US-dominated force in the gulf would need at least one million troops if it were to attack. The Pentagon has not reacted to the statement, but another 26,000 Army and Marine Corps reserves were called up, mostly for combat roles, in support of operation "Desert Shield." Most of the Marines will go to the gulf.

Gorbachev opposes hasty use of military force in Iraq

Soviet leader Mikhail S. Gorbachev is not embracing a United Nations resolution authorizing military action against Iraq. Speaking yesterday in Paris during a 34-nation summit, he responded to a question about supporting military force by saying, "We all need patience."

However, President George Bush and Gorbachev have reached a "conceptual agreement" that force cannot be ruled out to break Iraq's grip on Kuwait. After two hours of discussion yesterday between the leaders, White House spokesman Marlin Fitzwater said the two explored the circumstances that could prompt a military strike, but no decisions were reached.

PLO will recognize Israel in the UN

Arab nations said they are abandoning their eight-year drive to oust Israel from the United Nations. But they refused to recognize Israel's sovereignty over Jerusalem or the occupied territories. The new statements were part of a change in tactics by the Palestine Liberation Organization. Lebanon's ambassador said the Arabs will accept Israel's credentials as long as the Jewish state does not represent the territories.

Illegal drug problem in the Soviet Union expected to worsen

A Soviet official announced that more than one and a half million Soviets use illegal drugs. That figure is almost five times higher than previous official estimates. The deputy interior minister predicted that the problem will worsen as his country increases contact with the West.

Local

FDA drug bust ruins largest New England PCP ring

Drug enforcement agents have broken up the ring responsible for supplying most of the PCP to New England for the past 10 years. They said the ring also sold the hallucinogen to the rest of the country, Canada and Australia. Drug Enforcement Agency Agent Vincent Furtado said agents have purchased or seized the materials for 1.5 million pills, with a street value of \$10 million, in the past few days. So far, four people have been arrested in Providence, RI, Woonsocket, RI, Lynn, MA, and Saugus, MA. Two other suspects are still being sought. Furtado said he believes the entire organization has been knocked out, as they have captured the manufacturers and distributors.

Weld appoints two committees

Governor-elect William F. Weld has appointed two committees to help when he takes over in January. One committee, chaired by Weld, will advise him on the budget and other fiscal matters. It includes business leaders, public officials, economists, legislators, bankers and financial experts. The other, chaired by Lt. Governor-elect Paul Cellucci, will help him with hiring.

Convicted felon allowed to serve as mayor in Providence, RI

The Rhode Island State Elections Board has upheld the certification of convicted felon "Buddy" Cianci as Providence's next mayor. The board said it is not qualified to rule on the state constitutional issues brought by the challengers, who claim Cianci's assault conviction in 1984 makes him ineligible to serve in any office until 1992. Cianci's lawyers said the 1986 constitutional amendment cannot be applied retroactively and that challenges should have been brought before the election. However, Elections Board members are hearing testimony because they expect to be defending themselves before the State Supreme Court.

Dukakis reports on construction projects

Gov. Michael S. Dukakis gave a status report on the commonwealth's construction projects yesterday. He said the \$3 billion program is ahead of schedule and should meet the goal of employing 12,000 construction workers by June 1991. The program was announced last June, and since then, Dukakis said more than \$1.3 billion worth of construction has been awarded, and more is planned.

Weather

Fair weather ahead

A weak cold front will pass through the area today, accompanied by only a few clouds. Following the frontal passage, a ridge of high pressure will build into New England providing sunny, seasonably mild days and clear, cool nights for the next few days. The next chance of measurable precipitation will occur late Thursday, as another cold front approaches the area. Cooler, wetter weather is anticipated for the week's end.

Tuesday afternoon: Partly cloudy and a bit warmer.

Winds northwest 10-15 mph (16-24 kph). High 48-51°F (9-11°C).

Tuesday night: Clearing and cool. Low around 30°F (-1°C).

Wednesday: Mostly sunny and mild. High 49-53°F (9-12°C). Low around 35°F (2°C).

Thursday: Increasing clouds with rain showers arriving late in the day. High 53°F (12°C). Low 40°F (4°C).

Forecast by Michael C. Morgan

Compiled by Karen Kaplan

WE ARE AN AUTHORIZED DEALER FOR

SONY

Call for our low prices!

547-2727

FOR COMPETITIVE PRICING ON THE RIGHT EQUIPMENT

LUXMAN STAX PARADISE APATURE SOTA NAD PS AUDIO HAFER CAMBER GRADO PHILIPS SONY

95 Vassar Street
Cambridge, MA 02139

Corner of Mass. Ave and Vassar in the Metropolitan Storage Warehouse.

Word Processing Services

- Reports, manuscripts, theses, dissertations, proposals, letters, and resumes from draft versions to final laser printed product.
- Graphic and scientific text capabilities. Modem transfers, scanning, and other computer services available.
- Fast service, morning pickup available upon request.
- Telephones answered 24 hours a day, 7 days a week.

Call: (617) 426-5088
DH ASSOCIATES
186 Lincoln Street, Boston, MA


WE'D LIKE TO BE YOUR TRAVEL AGENT.



Lowest Airfares Anywhere
All Travel Arrangements
Eurallpasses · Amtrak
Major Credit Cards Accepted

GARDNER TRAVEL


1105 Massachusetts Ave.
Cambridge
492-2300



130 Brookline St.
Camb., Mass. 02139

White Alps Auto Body

Collision Experts
Complete Body Wk & painting
Save 5% w/ your MJT JD



Phone 876-5002

opinion

Cost of renovations high

Column by Bill Jackson



The Tech

Volume 110, Number 52 Tuesday, November 20, 1990

Chairman Deborah A. Levinson '91
Editor in Chief Prabhat Mehta '91
Business Manager Russell Wilcox '91
Managing Editor Daniel A. Sidney G

News Editors Andrea Lamberti '91
 Reuven M. Lerner '92
 Joanna Stone '92
Opinion Editor Michael J. Franklin '88
 Peter E. Dunn G
Photography Editors Sean Dougherty '93
 Douglas D. Keller '93
Contributing Editors Jonathan Richmond G
 Marie E. V. Coppola '90
 Lois Eaton '92
Advertising Manager Mark E. Haseltine '92
Production Manager Ezra Peisach '89

NEWS STAFF

Associate News Editors: Dave Watt G, Karen Kaplan '93, Brian Rosenberg '93, Katherine Shim '93; **Staff:** Lakshmana Rao G, Andrew L. Fish '89, Miguel Cantillo '91, Adnan Lawai '91, Chitra K. Raman '91, Gaurav Rewari '91, Eun S. Shin '91, Aileen Lee '92, Adam Chen '93, Shannon Mohr '93, Chris Schechter '94, Joey Marquez '94; **Meteorologists:** Robert X. Black G, Robert J. Conzemius G, Michael C. Morgan G, Greg Bettinger '91, Yeh-Kai Tung '93, Marek Zebrowski.

PRODUCTION STAFF

Associate Night Editors: Kristine J. Cordella '91, David Maltz '93; **Staff:** Tzu-Jun Yen '92, Sunitha Gutta '93, Jonathon Weiss '93, Aaron M. Woolsey '93, Chris Council '94, Alex Dong '94, Jeff Galvin '94, Jeremy Hylton '94, Christopher Lee '94.

OPINION STAFF

Associate Opinion Editors: Bill Jackson '93, Matthew H. Hersch '94; **Staff:** Pawan Sinha G.

SPORTS STAFF

Jordan J. Ditchek '91, Mohammed Eissam '91, David Rothstein '91, Jennifer M. Moore '94.

ARTS STAFF

Mark Webster G, Manavendra K. Thakur '87, Michelle P. Perry '89, Emil Dabora '91, Sande Chen '92, Kevin Frisch '93, Nic Kelman '94.

PHOTOGRAPHY STAFF

Associate Photography Editor: Chip Buchanan '92; **Staff:** William Chu G, Morgan Conn G, Christian S. Marx G, Dan McCarthy G, Andy Silber G, Sarath Krishnaswamy '91, Mauricio Roman '91, Anne Sammis '91, Jonathan Kossuth '92, Lerothi-Lapula Leeuw '92, Chris Blanc '93, Paulo Corriea '93, Michelle Greene '93, Matthew Warren '93, Jeremy Yung '93, Lawrence S. Schwartz '94. **Darkroom Manager:** Kristine AuYeung '91.

FEATURES STAFF

John Thompson '90, Taro Ohkawa '91, Chris M. Montgomery '93.

BUSINESS STAFF

Delinquent Accounts Manager: Jadene Burgess '93; **Advertising Accounts Manager:** Shanwei Chen '92; **Staff:** Ben Tao '93.

PRODUCTION STAFF FOR THIS ISSUE

Night Editors: Daniel A. Sidney G
 Deborah A. Levinson '91
 David Maltz '93
Associate Night Editor: Jeremy A. Hylton '94
Staff: Peter E. Dunn G, Lois Eaton '92, Douglas D. Keller '93, Dan Dunn '94.

The Tech (ISSN 0148-9607) is published on Tuesdays and Fridays during the academic year (except during MIT vacations), Wednesdays during January, and monthly during the summer for \$18.00 per year Third Class by The Tech, Room W20-483, 84 Massachusetts Avenue, Cambridge, MA 02139-0901. Third Class postage paid at Boston, MA. Non-Profit Org. Permit No. 59720. POSTMASTER: Please send all address changes to our mailing address: The Tech, PO Box 29, MIT Branch, Cambridge, MA 02139-0901. Telephone: (617) 253-1541. FAX: (617) 258-8226. Advertising, subscription, and typesetting rates available. Entire contents © 1990 The Tech. The Tech is a member of the Associated Press. Printed by Charles River Publishing, Inc.

When I first heard about the renovations that were going to be needed in the Institute, I was outraged. I couldn't believe that the administration would allow such a huge amount of money to go toward a cosmetic renovation in the Institute.

I immediately went down to see my friend Dean Babble in the Office for the Perpetual Confusion of Students (OPCS). The dean was a little surprised to see me.

"Come in, Bill," he began cordially as I entered his office. "What can I do for you?"

"Well," I began, "I want to know more about the renovations which are being planned in the Institute's main buildings. Things are already so expensive here, I certainly hope that the changes aren't going to cost a lot of money."

The dean looked confused, so I tried to explain myself further. However, he still didn't seem to understand what I was talking about. "I don't recall any discussion about improvements in the main Institute buildings. Are you talking about maintenance work? You know, repainting walls and the like?"

I assured him I wasn't. "I mean major changes." "No," he replied, "I'm sure I would've heard about any large-scale facelifts in the Institute."

"But dean," I insisted, "It's been all over the papers every day! All the radio stations and TV stations have been talking about it."

"Of course they have," he answered gently as he

Finally, on the verge of insanity, I called Nightline. Nightline knows everything. I dialed with apprehension.

"Hello, Nightline," the voice said. "Would you like to speak to a male or female staffer?"

"It's a pretty androgynous question," I answered. "I just want to know about the renovations in the Institute."

"Renovations? What do you mean?"

That's it. If Nightline didn't know, I must be going insane. How could I explain what I meant? "Look," I said, "I'm going around in circles here. Haven't you heard about the face lift that's going to be required in Lobby 10?"

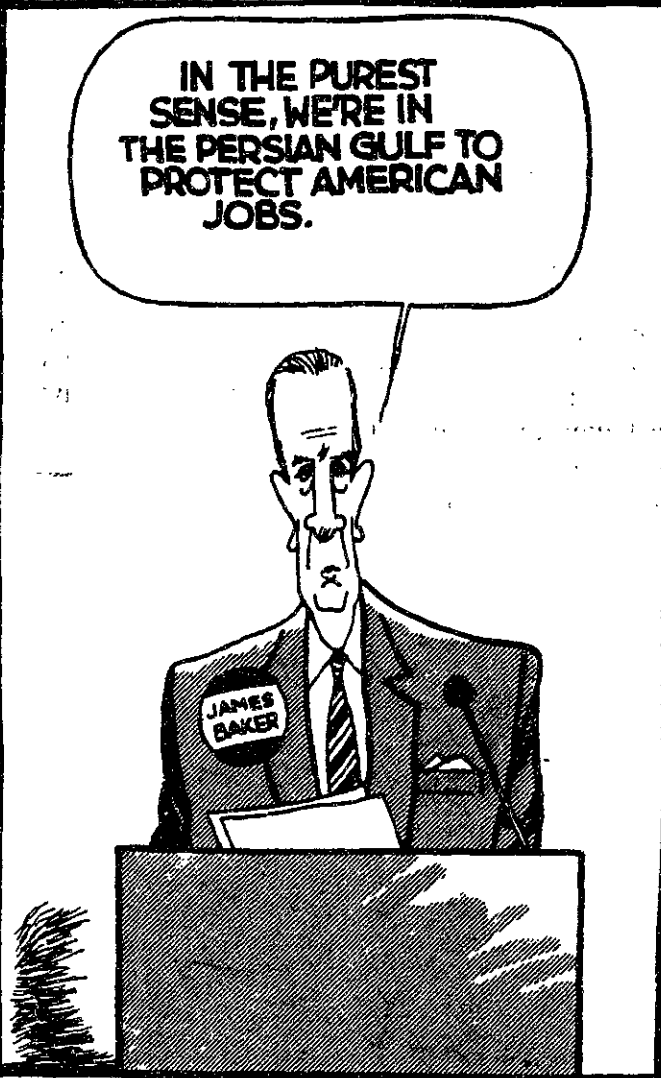
"Lobby 10? No, I'm sorry, I haven't heard anything about it. If you'd care to hold, I can look some things up for you."

"No thanks," I said, defeated. "I give up." I placed the receiver on the cradle.

I guess nobody sees that renovations are going to be necessary besides me. Readers? Do you see what I'm talking about? Do you know how much these renovations are going to cost us?

No, you probably don't. The renovations I'm talking about are going to be in Lobby 10. We're going to need to put up a new wall. We're going to need to list all the MIT people who are going to die in this Middle East war — the one into which the United States appears to be heading.

We already have one list for WWI, another for



reached soothingly for a phone to send for a medical team to restrain me. "I read every day in the major papers about building renovations in the Institute."

He quietly asked me to remain calm and seated while we waited for the men to come take me away, but I bolted from the office before he could tie me down.

I knew I wasn't crazy. I knew that I had seen that the Institute was going to need to undergo a facelift very soon. However, nobody seemed to understand what I was talking about.

I went to see Bert, my friendly graduate tutor. Bert is usually quite knowledgeable when it comes to matters of the Institute. "Bert," I said, "tell me what you think of the renovations in the Institute."

"Huh?" replied Bert.

"Well, didn't you hear? The Institute is going to spend lots and lots of money on a cosmetic change."

"No. Tell me what you've heard."

So I relayed to Bert everything I had heard about cosmetic changes in the Institute. I was a bit surprised that he hadn't heard anything about it. In fact, I was beginning to wonder if I was a little insane. If Bert didn't know about it, then who did?

I painstakingly explained to Bert how I had figured out about the necessary renovations to the Institute. I told him about the massive amounts of money that were going to be spent. I described for him the extensive cosmetic changes that current events were going to require.

Bert, who has been involved with Course 6 at MIT for almost nine years now, couldn't comprehend the reality of what I was saying and went back to his room to play with circuits or something.

Bill Jackson '93 writes stuff for the Tech.



WWII, a third for Korea, and a fourth for Vietnam. Can you imagine the cost of having to put up another such list for Iraq? I'm not talking about monetary cost.

If you walk through Lobby 10 today, look up. Read the lists you'll see. Count the names. Imagine that number of your friends. Now imagine them dead.

Maybe you haven't thought about it that way yet. Well, that's where things are going in the world, and by the time you have to think of it that way, it may be too late.

Damn. I hate it when things get serious.

Letters policy

The Tech welcomes letters from its readers. All letters are subject to editing and are published solely at the editors' discretion. Authors must sign their letters and include their phone number, and MIT affiliation, if any, for verification, and should type letters double-spaced for ease of reading. Letters should be kept under 300 words. The Tech publishes letters anonymously only in rare circumstances, at the editors' discretion. Bring letters to The Tech's office on the fourth floor of the MIT Student Center or send them to: Letters to the editor, The Tech, P.O. Box 29, MIT Branch, Cambridge, MA 02139; or to Room W20-483 by interdepartmental mail. Electronic submissions may be mailed to tech@mit.edu and must contain the writer's full name, phone number, address and MIT affiliation (if any).

opinion

LETTERS TO THE EDITOR

Abortion, insurance separate issues

(Editor's Note: The Tech received a copy of this letter addressed to Margaret F. Keady '93 and Juan A. Latasa '91.)

I received your very detailed letter concerning the wishes of the MIT Pro-Life group to obtain rebates for the abortion coverage portion of the Student Health Insurance plan ["Pro-Life requests partial insurance refund," Oct. 5].

My judgment is that you are dealing with two separate issues that you argue are one. Your concern about abortions is separate from the issue of financing health care through an insurance policy.

Health insurance is a mechanism for financing individual needs through a levy on many. It makes possible a payment capability for a wide range of expenses that would be a burden for one person. Depending on the policy there is blanket coverage for all or most health care expenses with selected mandated benefits and exclusions.

In the case of our student insurance plan, payment for abortion is covered. Most pregnancy terminations at MIT involve very personal factors in that decision, often with significant counseling

Who made Pelka the feminist pope?

Fred Pelka, a member of Men to End Sexual Assault, claims that "women have to be concerned about all men since all men could be potential rapists" ["AWS sponsors awareness week," Nov. 13].

Why is Pelka authorized to dictate what women have to be concerned about? Who elected him feminist pope?

Seth Gordon '91

as part of the process.

It would be audacious for any outsider to claim wisdom and judgment about abortion when this very personal issue is being considered. The decision is never trivial for that person or for those offering support, friendship or professional advice.

One might consider other conflicts in moral issues relating to health that involve values, responsibilities, human life and principles. These include effects of pollution, active and passive smoking exposures, irresponsible use of alcohol and other drugs, driving under the influence, or mental and physical abuse of minors and the elderly, to name a few.

If we agree to rebate a portion of your student premium, why shouldn't other groups make a similar request. Insurance programs cannot offer the lowest premiums possible for the many if exclusions are controlled by interest groups, however valid the cause may seem.

Your letter suggests that MIT's decision to make abortion coverage optional should rest on constitutional law. While our decision has not been based on such consideration, we have consulted with counsel.

You assert that the United States Supreme Court approved, in the *Abod* case, the withholding of union dues when members disagreed with the union's position in negotiating health care coverage that included abortions.

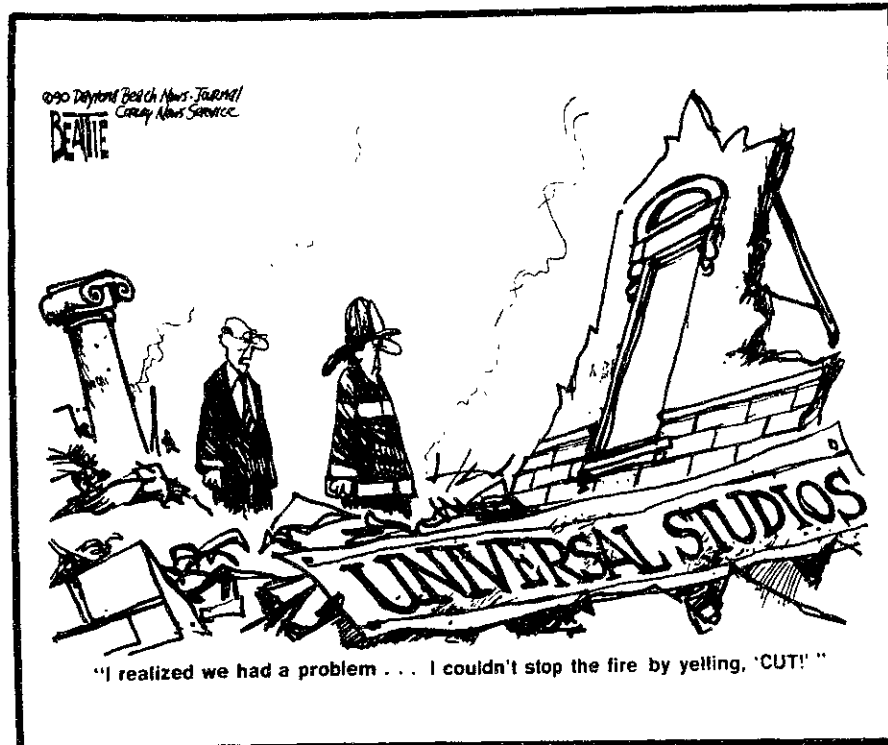
Counsel has informed us that the *Abod* decision, in fact, reached exactly the opposite result. The court indicated that withholding union dues for the purpose of objecting to abortion coverage would not be approved.

A more relevant case, we are advised, would be *National Education Association of Rhode Is-*

land vs. Garrahy. In that case the court struck down a state's attempt to require private health insurers to change coverage for abortions to optional availability and at no additional cost.

The court held that such a requirement would create an unconstitutional burden on a woman's right to choose abortion. If constitutional, applied to a private institution like MIT, the *NEA* case suggests that MIT could not make such coverage optional, as requested by your group.

Arnold N. Weinberg
Medical Director and Head
MIT Medical Department



End-of-year calendar detrimental to students

(Editor's Note: The Tech received a copy of this letter addressed to the members of the MIT faculty.)

As impossible as it may seem, the end of the term is already rapidly approaching, and along with the end of the term comes a high level of stress for students. We on the Undergraduate Association Student Committee on Educational Policy are particularly concerned about the demands put on students during the last week of classes. We feel that they are excessive.

MIT's reading period is meager and the workload in each class overwhelming. This term the reading period is only three days long. This is almost the equivalent of a weekend, which is

roughly the same time students have to prepare for a single test during the term. Unfortunately, students are often subject to three (sometimes four) final examinations.

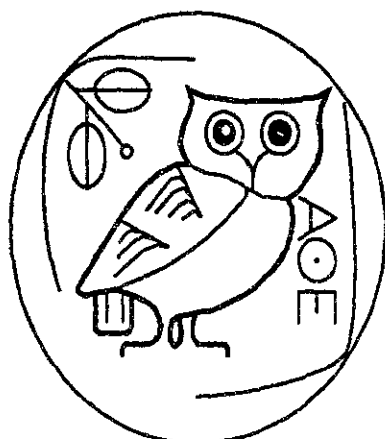
The faculty regulations concerning end-of-term examinations and assignments imply something very important about this final period of the term. It is meant to be used for a "capping up" of the term and not as a time to cover new material.

SCEP's concern is that many professors assign "optional" problem sets. These assignments are optional only in that they need not be turned in; the material in these assignments is inevitably covered on the "not-so-optional" final exam.

In fact "optional" problem sets are against faculty regulations. We ask you to use the last week of classes as a time to cohesively bring the material you taught during the term together; please consider the enormous benefits this would represent for your students.

We have one last request: Please push for major calendar reform. Major calendar reform could mean a more appropriate reading period and more time during the term to cover class material in more depth.

Alejandro Solis '92
Chair
Barbara Brady '93
Secretary
SCEP



ATHENA MINICOURSES

Schedule and Index

November Minicourses 1990

(One Week! -- Last Chance for Fall Term!)

	Mon	Tue	Wed	Thu
12 noon	26 Nov	EZ 27 Nov	Emacs 28 Nov	Matlab 29 Nov
7 p.m.		Latex	Matlab	Emacs
8 p.m.		Latex Thesis	EZ	Latex
				Latex Thesis

- Athena workstations (computers) are available for your use all over campus.
 - All minicourses are one hour each, and are taught in Room 3-343.
- PLEASE NOTE: No Pre-Registration or Reservations are Needed...**
Just show up for class!

Minicourse Descriptions

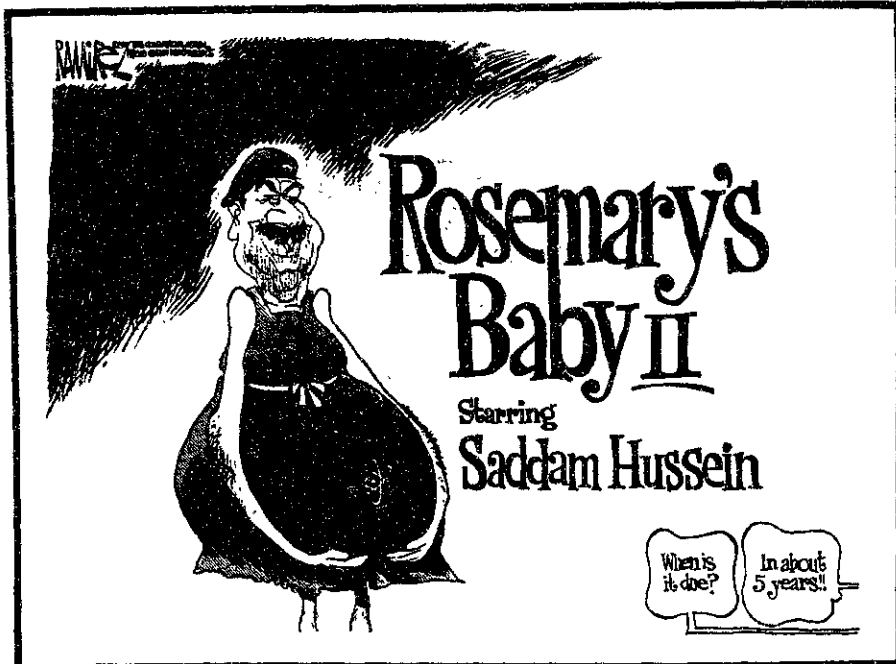
Advanced Word Processing: Latex (Latex) An introduction to Latex, a widely-used text formatter, used for converting a text file into an attractive, professional-looking document. It is a powerful and flexible program, with the capability to typeset many foreign characters and very complex mathematical text. *Pre-requisites: Basic WP*

Advanced Word Processing: EZ (EZ) Introduction to EZ, a combination text editor and formatter, with text-editing commands that are similar to Emacs. As a formatter, it is menu-driven and easy to learn, in the style of the "What You See Is (pretty much) What You Get" packages made popular by the Macintosh™. *Pre-requisites: Basic WP*

Emacs A more detailed look at the text editor introduced in Basic Word Processing. *Pre-requisites: Basic WP*

Matlab An interactive program and programming environment for scientific and engineering numeric calculation. Applications include: matrix manipulation, digital signal processing, and 3-dimensional graphics. *Pre-requisites: Basic WP*

Latex Thesis (L. Thesis) Using the Latex text formatter to produce a fully-featured thesis that meets all MIT format requirements. *Pre-requisites: AWP: Latex*



classified advertising

Classified Advertising in The Tech: \$5.00 per insertion for each 35 words or less. Must be prepaid, with complete name, address, and phone number. The Tech, W20-483; or PO Box 29, MIT Branch, Cambridge, MA 02139.

Ski Sugarbush Vermont Special Students Rates Example: 5 nights lodging, 5.5 days of skiing \$199 all inclusive
POWDERHOUND 800-548-4022

Spring Break 1991 Individual or student organization needed to promote Spring Break Trip. Earn money, free trips and valuable work experience. CALL NOW!! Inter-Campus Programs: 1-800-327-6013.

Need Part-Time PC Support Person to work during business hours at a consulting firm in Central Square. Some programming familiarity a plus. Good job for college students. Call John at 547-1200.

Legal Problems? I am an experienced attorney and a graduate of MIT who will work with you creatively to solve these problems, answer your legal questions and provide legal representation. My office is conveniently located in downtown Boston just minutes from MIT via MBTA. Call Attorney Esther Horwich, MIT '77 at 523-1150

DISSERTATION CONSULTANTS help you bring your dissertation into being and successful completion. We support you in working better, faster, overcoming blocks and avoiding pitfalls. For information 617-876-3234.

Free Spring Break Vacation in Cancun! College Tours, the nation's largest and most successful spring break tour operator needs enthusiastic campus representatives. Earn a free trip and cash. Nothing to buy — we provide everything you need. Call Bob at 1-800-395-4896.

DELIGHTED THAT THE FIT AND COMFORT OF HIS NEW LEVI'S® 501® BUTTON-FLY JEANS WAS BACKED BY A 30 DAY MONEY-BACK GUARANTEE, WILLIAM QUESTIONED THE NEED FOR A FREE GIFT. BUT NOT FOR LONG.



SEE YOUR NEAREST PARTICIPATING LEVI'S RETAILER FOR DETAILS (CALL 1-800-227-5600 FOR EXACT LOCATION). THE BUTTONS SHALL SET YOU FREE AND SO WILL THE GUARANTEE.

Orpheus Descending takes another shot at Boston

ORPHEUS DESCENDING

Written by Tennessee Williams.
Directed by Melissa Wentworth.
Starring Kate Bennis, Catherine Gibson,
Edward R. Sorrell, Lee Higgins, Bambi
Sears and Chip Cross.
At the Back Alley Theater.
Nov. 1 to Dec. 8.

By NIC KELMAN

WHEN THE ORIGINAL VERSION of *Orpheus Descending* — called *Battle of the Angels* — opened in Boston in 1940 it was far from successful, closing within a week. Thus, the fact that Tennessee Williams' rewritten play opened on the 50th anniversary of its first failure should highlight the bravery and irony of the Back Alley Theater's current production.

The plot of both *Battle* and *Orpheus* is, as Williams put it, that of "a wild-spirited boy [who] blows into a quiet southern town and causes about as much fuss as a fox in a chicken coop." The play is one of Williams' most metaphorical and is filled with Greek and Christian allusions. It was largely due to these references that *Battle* was forced to close in 1940, after protests from Judeo-Christian groups. However, Williams' rewrite was not influenced by these problems except in his new choice of title.

Williams spent 17 years in the reconstruction of *Battle of Angels* and claimed that in all that time it "never left the workbench." He stated after that time that he was finally saying what he had originally wanted to say in the first version. However, when *Orpheus Descending* opened in 1957 on Broadway, it once again flopped. Many critics complained that it appeared too much like a parody of a Williams play.

The reasoning behind this line of thought is obvious. The play is very weak for a Williams play and many scenes seem almost self-satirical (the fig tree speech,

for example, is ridiculous). Williams later admitted that perhaps he had "exaggerated the reactions." Character relationships often strain to produce the actions involved in perpetuating the plot, often failing to make motivation believable.

Likewise dialogues are frequently all too pregnant with their symbolism. They are far too blatant and childish for what people have come to expect from Williams through exposure to such masterpieces as *Cat on a Hot Tin Roof*, *A Streetcar Named Desire* and *The Glass Menagerie*.

However, even though the play still suffers from its usual (and unalterable) faults, the Back Alley Theater's production succeeds for two main reasons. First, even a second-rate Tennessee Williams play is more interesting than most of the other current offerings on Boston stages. Second, the company brought together for this production has managed to carry off this difficult play with remarkable skill.

It is usually possible, given a certain amount of talent, to perform a Williams play and make it a success simply because the material is powerful enough to support itself. In the case of *Orpheus*, however, this is far from true since the script lacks the usual animation. Here it is up to the company to make or break the play — this may be why the film version, *The Fugitive Kind*, succeeded where both stage versions failed — and, in the case of the Back Alley Theater, they have definitely managed to produce something which is indeed captivating.

The leading ladies, Kate Bennis as Carol Cutrere and Catherine Gibson as Lady, are so intense that they force you to become involved with them and breathe a sigh of relaxation whenever they exit. It is largely due to their performances that the play is so watchable. Jabe Torrence (Edward R. Sorrell) is positively magnetic and Beulah Binnings (Lee Higgins) and Eva Temple (Bambi Sears) also provide interesting watching as supporting characters.

The one flaw in the core cast is Chip Cross as Valentine Xavier, the leading man. While Cross is by no means bad — in fact, he is quite convincing — he lacks the intensity of the other actors and this failing is accentuated by the fact that Val Xavier should be nothing but intense. This problem further complicates the frequently unbelievable character interactions since many of the believable ones rely upon the intensity of Val's character to hold them up.

Despite this problem, the play is still extremely captivating. The direction is excellent, and the action moves very smoothly, never allowing you to relax when the main

characters are on stage. Furthermore, the pace is so fast that it is only in retrospect that you have time to recognize that the characters often act without motivation. In fact, the pace is the play's saving grace and causes you to grab hold and not let go. It also creates a sense of emotional draining at the climax of events.

Orpheus Descending is definitely worth seeing. If you are a fan of Tennessee Williams, Back Alley's production is a fine tribute to the play, of which he was most fond; and if you are not a fan, it still makes for an intense, emotionally torturous, and thought-provoking night out.

The Tech Performing Arts Series announces

KUIJKEN QUARTET

Elegance, vitality, spontaneity — these are the hallmarks of Belgium's Kujiken Quartet. Barthold (flute), Sigiswald (violin), and Wieland (viola da gamba) Kujiken will be joined by harpsichordist Robert Kohnen in a program featuring works by François Couperin, Johann Gottlieb Goldberg, and Jean-Philippe Rameau.

Sanders Theatre, November 25 at 3 pm.
MIT price: \$7.

EMERSON STRING QUARTET

The young and vigorous Emerson String Quartet delivers exciting performances of both the classical repertoire and contemporary works. Program: Haydn, *Quartet in E-flat Major*; Mozart, *Quartet in A Major*; Bartok, *Quartet No. 1*. A Bank of Boston Celebrity Series event.

Symphony Hall, November 30 at 8 pm.
MIT price: \$6.

AVO KUYUMJIAN

Avo Kuyumjian, the first prize winner of the Sixth International Beethoven Piano Competition of Vienna, brings his piano talents to Boston. Program: Haydn, *Variations in F minor*; Beethoven, *Sonata No. 18 "The Hunt"*; Schubert, *Two Impromptus*, Op. 142; Jelalian, *Prelude and Toccata*; Prokofiev, *Sonata No. 7*, Op. 83.

Jordan Hall, December 1 at 8 pm.
MIT price: \$4.

Tickets are on sale at the Technology Community Association, W20-450 in the Student Center. Office hours posted on the door. Call x3-4885 for further information.



AT THE WOODS HOLE OCEANOGRAPHIC INSTITUTION

UNDERGRADUATES!! RECENT GRADUATES!

INTERESTED IN OCEANOGRAPHY/
OCEANOGRAPHIC ENGINEERING?

WANT TO SPEND THE SUMMER AT THE CAPE
DOING EXCITING RESEARCH?

Apply for a Summer Student Fellowship at the Woods Hole Oceanographic Institution! Pursue an independent research project under the guidance of a Woods Hole Oceanographic Institution staff member. Topics include:

- Biology
- Chemistry
- Marine Geology
- Marine Geophysics
- Applied Ocean Physics
- Engineering
- Marine Policy
- Physical Oceanography

Fellowships carry a stipend of \$3,480 for the 12-week program, and the Institution will help you find reasonable housing. Call the Education Office, WHOI today at 188-2219 or visit the Joint Program Office, Room 54-911 for details. Deadline for applications: March 1.

THE EMILE BUSTANI MIDDLE EAST SEMINAR

Presents

Dr. Robert Mabro
St. Antony's College
Oxford University

"The Persian Gulf Crisis:
Implications for the World Economy"

Tuesday, November 20, 1990
4:30 - 6:30 PM
E51-332 (Schell Room)
70 Memorial Drive

OPEN TO THE PUBLIC

Sponsored by
The Center for International Studies

Tuesday, Nov. 20

CONTEMPORARY MUSIC Blues Traveler and Crash Vegas perform at 9 pm in an 18+ ages show at Nightstage, 823 Main Street, Cambridge, just north of MIT. Tickets: \$9 advance/\$10 day of show. Telephone: 497-8200.

Sender, Bay of Pigs, Legend, Villain, and Reizian perform in an 18+ ages show at 9 pm at the Channel, 25 Necco Street, near South Station in downtown Boston. Tickets: \$5. Telephone: 451-1905.

The Heartthrobs and The Railway Children perform in an 18+ ages show at the Paradise, 967 Commonwealth Avenue, Boston. Telephone: 254-2052.

Spider John Koerner and The Loiterers perform at Johnny D's, 17 Holland Street, Davis Square, Somerville, near the Davis Square T-stop on the red line. Telephone: 776-9667.

Miranda Warning and Plan 9 perform at 9 pm at Necco Place, One Necco Place, near South Station in downtown Boston. Tickets: \$4.50. Telephone: 426-7744.

JAZZ MUSIC

The John Payne Quartet and Saxophone Choir performs at 9 pm at the Regattabar, Charles Hotel, Harvard Square, Cambridge. Tickets: \$5. Tel: 661-5000.

Simon Templar performs at the Western Front, 343 Western Avenue, Cambridge. Telephone: 492-7772.

The Phil Person Quartet performs at the Willow Jazz Club, 699 Broadway, Ball Square, Somerville. Telephone: 623-9874.

CLASSICAL MUSIC

Pianist Frederick Moyer performs works by Haydn, Beethoven, Chopin, and Musorgsky in a Longy Faculty Artists Series concert at 8 pm in the Edward Pickman Concert Hall, Longy School of Music, 27 Garden Street, Cambridge. No admission charge. Telephone: 876-0956.

FILM & VIDEO

Blue Planet, a panoramic view of Earth from a vantage point of 200 miles up, and To The Limit, traveling inside the body to experience what happens when we push the limit of physical endurance, continue indefinitely at the Mugar Omni Theater, Museum of Science, Science Park, Boston, near the Science Park T-stop on the green line. Tickets: \$6 general, \$4 seniors and children. Telephone: 523-6664.

The Coolidge Corner Theatre presents Fantasia (1940, Walt Disney) at 2:30, 5:00, 7:30, & 9:55; Allegro non troppo (Bruno Bozzetti) at 2:55, 6:20, & 8:10; and Ariel (1988, Aki Kaurismaki) at 4:45 & 10:00. Located at 290 Harvard Street, Brookline, at the Coolidge Corner T-stop on the 'C' green line. Films continue indefinitely. Telephone: 734-2500.

The Regent Theater presents Raising Arizona (1987, Joel Coen) at 5:30 & 9:00 and Blood Simple (1984, Joel Coen) at 7:15 at 7 Medford Street, Arlington Center, Arlington, on the #77 bus line from the Harvard T-stop. Also presented November 21 and 22. Tickets: \$4.50 general, \$2.50 seniors and children (good for the double feature). Telephone: 643-1198 or 876-6837.

The Institute of Contemporary Art presents IMAGO Meret Oppenheim at 7 pm and Celia (Ann Turner) at 9 pm in the ICA Theater, 955 Boylston Street, Boston. Also presented November 21 and 23-25. Tickets: \$5 general, \$4 ICA members, seniors, and students. Telephone: 266-5152.

The Harvard Film Archive continues its Tuesday series Women Filmmakers with Naked Spaces: Living is Round (1985, Trinh T. Minh-ha) at 5:30 & 8:00 at the Carpenter Center for the Visual Arts, Harvard University, 24 Quincy Street, Cambridge. Tickets: \$4 general, \$3 seniors and children. Telephone: 495-4700.

EXHIBITS

CRITICS' CHOICE The Age of Sail: Ship Models and Marine Arts, models representing American and European warships dating from the late 17th to early 19th centuries, and merchant vessels of the 19th century, opens today at the Museum of Fine Arts, 465 Huntington Avenue, Boston. Continues through March 10 with museum hours Tuesday-Sunday 10-5 and Wednesday 10-10. Admission: \$6 general, \$5 seniors and students, free with MIT ID. Telephone: 267-9300.

Pathways, a new light installation by environmental sculptor Beth Galston, opens today at the Huntington Gallery, Mass. College of Art, 623 Huntington Avenue, Boston. Continues through December 21 with gallery hours weekdays 10-6 and Saturday 11-5. No admission charge. Telephone: 232-1555 ext. 550.



Ongoing Exhibits ON CAMPUS Visual Arts Department continues its series of diverse organizations and countries, continues through December 1; Awan Orisa: The Gods/Africanisms in the Americas, exploring the manifestations of Yoruba religious belief in the Americas, continues through December 16; Berenice Abbott, 47 diptychs and eight portraits by the 92-year-old photographer who corroborated scientific laws through photographs, continues through December 30; and Doc Edgerton: Stopping Time, photographs and memorabilia, continues through December 30. The strobe light continues indefinitely at the MIT Museum, 265 Massachusetts Avenue, Cambridge. Museum hours are Tuesday-Friday 9-5 and Saturday-Sunday 1-5. Admission: \$2 requested donation. Free to MIT community. Telephone: 233-4444.

Thursday, Nov. 22

CONTEMPORARY MUSIC The Rick Russell Band and friends perform at Johnny D's, 17 Holland Street, Davis Square, Somerville, near the Davis Square T-stop on the red line. Admission: \$3. Telephone: 776-9667.

CRITICS' CHOICE Barrence Whitfield and The Savages perform at 10 pm & 12 midnight at Ed Burke's, 808 Huntington Avenue, Boston, on the 'E' green line. Telephone: 232-2191.

FILM & VIDEO Raising Arizona (1987, Joel Coen) and Blood Simple (1984, Joel Coen) at the Regent Theater. See November 20 listing.

OFF CAMPUS CRITICS' CHOICE County Spinner: Twelve Centuries of Treasures from Japan, showing the unique role played by the samurai in elucidating the refined activities of the aristocracy, continues through November 25 at the Museum of Fine Arts, 465 Huntington Avenue, Boston. Museum hours are Tuesday-Sunday 10-5 and Wednesday-Sunday 10-10. Admission: \$6 general, \$5 seniors and students, free with MIT ID. Telephone: 267-9300.

Friday, Nov. 23

CONTEMPORARY MUSIC CRITICS' CHOICE Jane's Addiction performs at 7:30 at the Orpheum Theater, Hamilton Place, Boston. Tickets: \$20.50. Telephone: 482-0650.

Figures on a Beach, Savage Garden, Killjoy, and Chiffs of Dooneen perform at 9 pm at Axis, 13 Lansdowne Street, Boston, near Kenmore Square. Telephone: 262-2437.

The Tears, Diver Down, Catharsis, High Voltage, and Outta Bounds perform at 9 pm at the Channel, 25 Necco Street, near South Station in downtown Boston. Tickets: \$4.50 advance/\$5.50 day of show. Telephone: 451-1905.

Left Nut and Iron Sausage perform in an 18+ ages show at T.T. the Bears, 10 Brookline Street, Cambridge, just north of MIT. Telephone: 492-0082.

Errol Strength & The Conscious Band perform at the Western Front, 343 Western Avenue, Cambridge. Also presented November 24. Telephone: 492-7772.

Pinetop Perkins and Little Mike & The Tornados perform at Johnny D's, 17 Holland Street, Davis Square, Somerville, near the Davis Square T-stop on the red line. Telephone: 776-9667.

Hotbox, Mike Viola and Snap, Rockin' Bob, and S.T.P. perform at the Rat, 528 Commonwealth Avenue, Kenmore Square, Boston. Telephone: 247-8309.

Whoville, Brahmin Caste, and The Crossbees perform at 9 pm at Necco Place, One Necco Place, near South Station in downtown Boston. Tickets: \$5. Telephone: 426-7744.

JAZZ MUSIC

The New Black Eagle Jazz Band performs at 8 pm & 10 pm at the Regattabar, Charles Hotel, Harvard Square, Cambridge. Also presented November 24. Tickets: \$8 Friday, \$9 Saturday. Telephone: 661-5000.

The Little Big Band performs at the Willow Jazz Club, 699 Broadway, Ball Square, Somerville. Also presented November 24. Telephone: 623-9874.

CLASSICAL MUSIC

Organist George A. Sargeant performs works by Cook, J. S. Bach, Franck, and Dupre at 12:15 in Trinity Church, Copley Square, Boston. No admission charge. Telephone: 536-0944.

The Boston Symphony Orchestra, Marek Janowski conducting, with violinist Christian Tetzlaff, at Symphony Hall. See November 21 listing.

THEATER

The Homecoming, Harold Pinter's provocative play of family passions, sexual jealousies, and explosive class tensions, opens today in previews as a presentation of the American Repertory Theatre at the Loeb Drama Center, 64 Brattle Street, Cambridge. Previews continue through November 27, regular performances are November 28 to January 19, Tuesday-Friday at 8 pm, Saturday at 2 pm & 8 pm, and Sunday at 2 pm & 7 pm. Tickets: \$17 to \$35. Telephone: 547-8300.

The Shadow Box, Michael Cristofer's Tony- and Pulitzer-prize winning drama telling the interwoven stories of three guests at a hospice, is presented by the Brookline Community Theater at 8 pm at the First Presbyterian Church, 32 Harvard Street, Brookline. Also presented November 24 at 3 pm and 8 pm. Tickets: \$8 general, \$6 seniors and students. Telephone: 739-0274.

DANCE

CRITICS' CHOICE The Nutcracker opens today as a presentation of Boston Ballet at the Wang Center, 270 Tremont Street, Boston. Continues through December 30 with performances Wednesday-Saturday at 7:30, Sunday at 6:30, with weekend matinees at 2:00. Tickets: \$16 to \$49. Telephone: 931-2000.

FILM & VIDEO

The MIT Lecture Series Committee presents The Adventures of Milo and Otis at 8 pm in 26-100. Admission: \$1.50. Telephone: 258-8881.

CRITICS' CHOICE The Regent Theater presents On the Waterfront (1954, Elia Kazan) at 5:00 & 9:35 and West Side Story (1961, Robert Wise & Jerome Robbins) at 7:00 at 7 Medford Street, Arlington Center, Arlington, on the #77 bus line from the Harvard T-stop. Also presented November 24 and 25 with West Side Story matinees at 2:15. Tickets: \$4.50 general, \$2.50 seniors and children (good for the double feature). Telephone: 643-1198.

The Museum of Fine Arts begins its series The Cartoon World of Bob Clampett, Plus Betty Boop and BABA, too with Betty Boop Scandals (1920s-30s, Max Fleischer) at 6:30 and The Cartoon World of Bob Clampett (Program 1, 1938-61) at 8:15 in Remis Auditorium, 465 Huntington Avenue, Boston. Bob Clampett - Program 1 also presented November 25. Tickets: \$5 general, \$4.50 MFA members, seniors, and students. Telephone: 267-9300 ext. 306.

IMAGO Meret Oppenheim and Celia (Ann Turner) at the Institute of Contemporary Art Theater. See November 20 listing.

COMEDY

Paula Poundstone performs at 7 pm & 10 pm in 18+ ages shows at the Paradise, 967 Commonwealth Avenue, Boston. Telephone: 254-2052.

Two Tapes Pending, the latest in August Wilson's decade-by-decade exploration of the African-American experience, continues through November 25 at the Huntington Theatre, 264 Huntington Avenue, Boston. Performances are Tuesday-Saturday at 8 pm, with Wednesday, Saturday, & Sunday matinees at 2 pm. Tickets: \$16 to \$32, \$7.50 student rush. Telephone: 266-0800.

Women in Mind, Alan Ayckbourn's humorous and disturbing play about a woman going mad, continues through December 31 at the Lyric Theatre, 54 Chestnut Street, in the Lyric Market, 54 Chestnut Street, Boston. Performances are Wednesday-Friday at 8:00, Saturday at 3:00, and Sunday at 3:00. Tickets: \$13.50 to \$17.50. Tel: 742-8703.

CRITICS' CHOICE The Actors Workshop Studio Theatre, 40 Boylston Street, Boston. Performances are Thursday at 7:30 and Sunday at 3:00. Tickets: \$8.

The Seagull, Chekov's meditation on comic frustrations of life, continues through December 1 as a presentation of New Boston Theatre at The Performance Place, 277 Broadway, Somerville, near the Sullivan T-stop on the orange line. Performances are Thursday-Saturday at 8 pm. Tickets: \$12. Telephone: 625-1300.

Shear Madness, the long-running comic murder mystery, continues indefinitely at the Charles Playhouse, 74 Warren Street, Boston. Performances are Tuesday-Friday at 8:00, Saturday at 6:30 & 9:30, and Sunday at 3:00 & 7:30. Tickets: \$18 and \$3. Telephone: 451-0193.

CRITICS' CHOICE The Neighborhoods, Joe, Voodoo Dolls, Snack Tan Blues, and Mundo Mojo perform at 9 pm at the Channel, 25 Necco Street, near South Station in downtown Boston. Tickets: \$4.50 advance/\$5.50 day of show. Telephone: 451-1905.

Saturday, Nov. 24

CONTEMPORARY MUSIC

CRITICS' CHOICE The Neighbors, Joe, Voodoo Dolls, Snack Tan Blues, and Mundo Mojo perform at 9 pm at the Channel, 25 Necco Street, near South Station in downtown Boston. Tickets: \$4.50 advance/\$5.50 day of show. Telephone: 451-1905.

The Natives, Knots & Crosses, We Saw the Wolf, and Miles Death Muffin perform in an 18+ ages show at T.T. the Bears, 10 Brookline Street, Cambridge, just north of MIT. Telephone: 492-0082.

Mozamba performs at Johnny D's, 17 Holland Street, Davis Square, Somerville, near the Davis Square T-stop on the red line. Telephone: 776-9667.

The Zulus, Bulkhead, Childhood, and A Red Crescent Sect perform at the Rat, 528 Commonwealth Avenue, Kenmore Square, Boston. Telephone: 247-8309.

Johnny Barnes Band and The Gordons perform at 9 pm at Necco Place, One Necco Place, near South Station in downtown Boston. Tickets: \$5. Telephone: 426-7744.

The James Montgomery Band and Nine Below Zero perform at Ed Burke's, 808 Huntington Avenue, Boston, on the 'E' green line. Telephone: 232-2191.

Jumpin' Blues Dance Party, featuring Roll With It, is presented at 5 pm at the Western Front, 343 Western Avenue, Cambridge. Admission: \$2 with MIT ID. Telephone: 492-7772.

Errol Strength & The Conscious Band perform at the Western Front. See November 23 listing.

JAZZ MUSIC

The New Black Eagle Jazz Band at the Regattabar. See November 23 listing.

The Little Big Band at the Willow Jazz Club. See November 23 listing.

CLASSICAL MUSIC

The Boston Symphony Orchestra, Marek Janowski conducting, with violinist Christian Tetzlaff, at Symphony Hall. See November 21 listing.

THEATER

CRITICS' CHOICE Storytellers in Concert presents Doug Lipman in Hopping Freights: A Wild 688 Adventure at 8 pm at the First Church Congregational, 11 Garden Street, Cambridge. Tickets: \$10 general, \$7 seniors and students. Telephone: 391-3672.

The Shadow Box presented by the Brookline Community Theater at the First Presbyterian Church. See November 23 listing.

DANCE

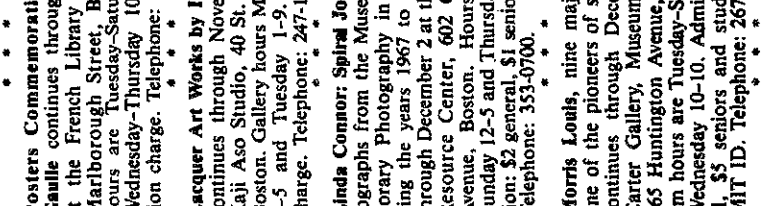
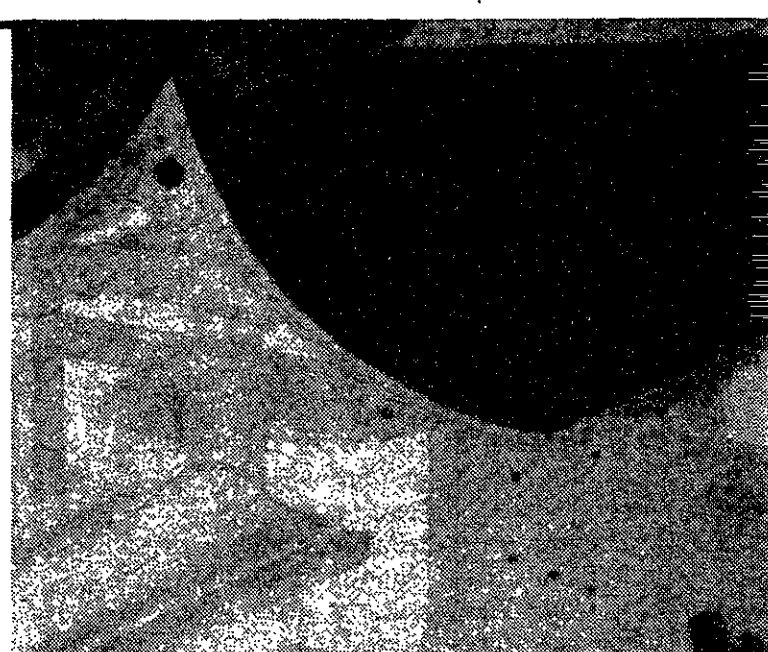
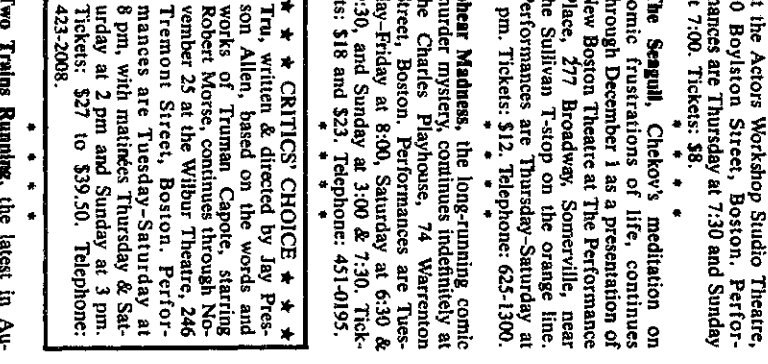
The Ova Theatre Troupe of Benin City, Nigeria performs Awua at 8 pm at the Strand Theatre, 543 Columbia Road, Dorchester, near the JFK/UMass/Columbia T-stop on the red line. Tickets: \$10 and \$15 general, \$8 seniors and children. Telephone: 282-8000.

FILM & VIDEO

The MIT Lecture Series Committee presents All Dogs Go to Heaven at 8 pm in 26-100. Admission: \$1.50. Telephone: 258-8881.

On the Waterfront (1954, Elia Kazan) and West Side Story (1961, Robert Wise & Jerome Robbins) at the Regent Theater. See November 23 listing.

IMAGO Meret Oppenheim and Celia (Ann Turner) at the Institute of Contemporary Art Theater. See November 20 listing.



Ongoing Exhibits ON CAMPUS Visual Arts Department continues its series of diverse organizations and countries, continues through December 1; Awan Orisa: The Gods/Africanisms in the Americas, exploring the manifestations of Yoruba religious belief in the Americas, continues through December 16; Berenice Abbott, 47 diptychs and eight portraits by the 92-year-old photographer who corroborated scientific laws through photographs, continues through December 30; and Doc Edgerton: Stopping Time, photographs and memorabilia, continues through December 30. The strobe light continues indefinitely at the MIT Museum, 265 Massachusetts Avenue, Cambridge. Museum hours are Tuesday-Friday 9-5 and Saturday-Sunday 1-5. Admission: \$2 requested donation. Free to MIT community. Telephone: 233-4444.

OFF CAMPUS CRITICS' CHOICE County Spinner: Twelve Centuries of Treasures from Japan, showing the unique role played by the samurai in elucidating the refined activities of the aristocracy, continues through November 25 at the Museum of Fine Arts, 465 Huntington Avenue, Boston. Museum hours are Tuesday-Sunday 10-5 and Wednesday-Sunday 10-10. Admission: \$6 general, \$5 seniors and students, free with MIT ID. Telephone: 267-9300.

Recent Paintings by Noa Hall continues through November 29 at the Trustman Art Gallery, Main College Building, Simmons College, 300 The Fenway, Boston. Gallery hours are 10-4:30. Telephone: 738-2124.

New Territory: Art from East Germany, paintings, photographs, prints, and site-specific installations by 17 young, contemporary East German artists, continues through November 25 at the Green Room, sponsored by the Massachusetts College of Art, 267-9300, Boston. Telephone: 267-9300.

Art + Architecture, an exhibition of work by part-time faculty of the Department of Art and Architecture at Northeastern University, continues through November 30 at the Gallery-Dodge Library and Richards Hall Gallery, 360 Huntington Avenue, Boston. Gallery hours are Monday-Friday 9-5 and Saturday-Sunday 1-5. Telephone: 457-4372/2355.

Posters Commemorating Charles de Gaulle continues through December 30 at the French Library, Boston. 55 Martin Luther King Jr. posters continues through December 2 at the Photographic Resource Center, 602 Commonwealth Avenue, Boston. Hours are Tuesday-Sunday 12-5 and Thursday 12-8. Admission: \$2 general, \$1 seniors and students. Telephone: 353-0700.

Morris Louis, nine major canvases by one of the pioneers of stained painting, continues through December 9 in the Carter Gallery, Museum of Fine Arts, 465 Huntington Avenue, Boston. Museum hours are Tuesday-Sunday 10-5 and Wednesday 10-10. Admission: \$6 general, \$5 seniors and students, free with MIT ID. Telephone: 267-9300.

FREE
1991 Student Travel Catalog!
 Everything you need to know about:

- Student Travel
- Air Fares
- Rail Passes
- Car Rental/Leasing
- Work Abroad
- Study Abroad
- Int'l Student & Teacher ID & MUCH MORE!!!

CALL for your FREE copy!
Council Travel
 Stratton Student Center
 M.I.T., W20-024
225-2555

SPORTS ETC.

1303 Massachusetts Ave, Arlington 646-1600



\$5.00 OFF
 OUR ALREADY LOW PRICES
 ON ANY
PAIR OF SKATES IN STOCK!
 With this ad. One coupon
 per person. Expires 11/24/90.

The MIT Ring Collection By



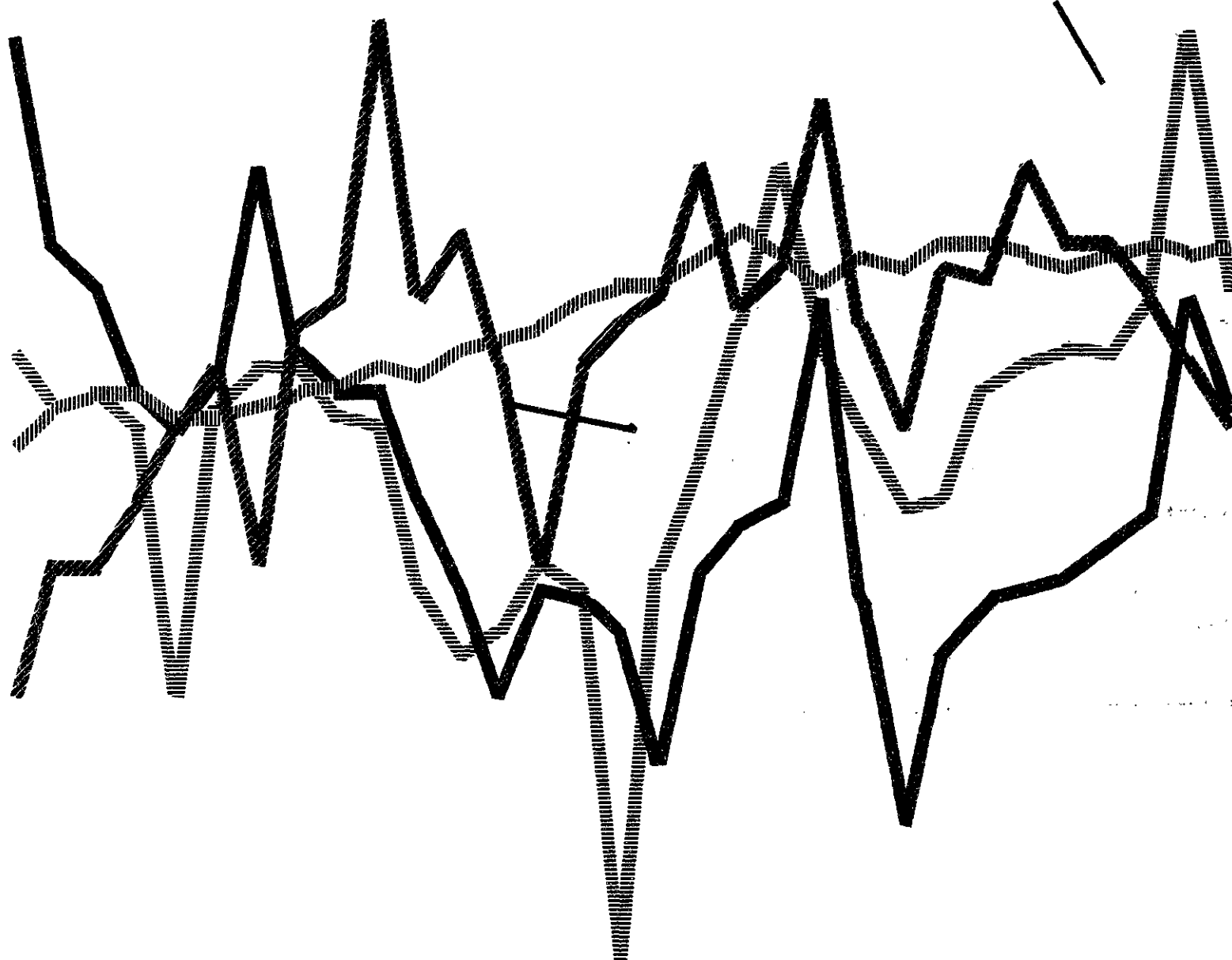
JOSTENS
 Exclusively At **the Coop**
 MIT COOP AT KENDALL
 7 CAMBRIDGE CENTER
 MON-FRI 10-7 THUR-FRI 8-30
 SAT 9-15-5:45

ATTENTION INTERNATIONAL STUDENTS

If you plan to travel outside of the United States, please remember to stop by the International Student Office, 5-106. You need to have your I-20 or IAP-66 signed on the back by one of the International Student Advisors and pickup the appropriate travel handouts. If your I-20 or IAP-66 has already been signed this semester, you do not need another signature.

Please keep in mind that most international students travel during the holidays. The International Student Office is generally flooded with requests at this time. Stop by early to ensure that your documents are in order, especially if you need to apply for a new visa!

Japanese ¥
 W. German DM
 Canadian \$
 U.S. 10-yr bond Ylds



Why Morgan hires sales and trading teams that see volatility as opportunity.

At J.P. Morgan, career opportunities beckon those who seek the challenges of risk-taking environment where profit and loss are measured at the end of each trading day.

We are looking for resilient and self-reliant risk-takers and institutional salespeople who are able to withstand the rigors posed by a market-driven environment. The reason: J.P. Morgan is a market maker.

As a leader in the world's major financial centers, our traders combine research-backed insight with the marketplace intuition required for split-second decision-making. Our sales teams understand each Morgan client's tolerance for risk and help structure appropriate investment solutions.

At Morgan, you join a sales and trading team that works

cohesively to advance the group's collective profitability and to help maintain an orderly market. The J.P. Morgan approach stresses teamwork.

We seek exceptionally talented graduates who desire to work in an environment that fosters and rewards superior performance.

Attend our upcoming information session. Watch for the

time and location on campus. Or contact Lynn A. Avitabile, J.P. Morgan & Co. Incorporated, 60 Wall Street, New York, NY 10260.

Career Opportunities at Morgan

©1990 J.P. Morgan & Co. Incorporated. J.P. Morgan identifies the worldwide business and services of J.P. Morgan & Co. Incorporated, Morgan Guaranty Trust Company, J.P. Morgan Securities Inc., and other J.P. Morgan subsidiaries.

JPMorgan

ARTS

Bob Dylan's Red Sky shows smoother sailing ahead

UNDER THE RED SKY

Bob Dylan.
CBS Records.

By CHRIS WANJEK

MAYBE IT WAS the Traveling Wilburys. Maybe it was producers Don and David Was of Was Not Was. Whatever it was, Bob Dylan is now making good albums again.

On the past two Wilburys albums, Dylan has shown a lighter side — writing fun, foot-tapping songs characteristic of his earlier career. And on last year's *Oh Mercy*, Dylan returned to his more self-revealing writing style, reminiscent of *Blood on the Tracks* from 1975. The new album, *Under the Red Sky*, is a combination of both styles. Dylan leans heavily on that Wilburys silliness, but also captures some more serious moments.

As a result, the story songs are back. "TV Talkin' Song" is a fast-paced rant about London's Hyde Park. An argument about the dangers of television leads to a riot. So Dylan leaves the scene and watches it later on the evening news.

The blues are back: "10,000 Men" and "Cat's in the Well" are two hard-hitting blues songs with Jimmie and Stevie Ray Vaughan trading Texas-style guitar solos.

The silly rhymes are back: "Wiggle, wiggle, wiggle, rattle and shake/Wiggle like a big fat snake," from the song "Wiggle, Wiggle," sounds like a drunken favorite from Dylan's 1967 *Basement Tapes*.

Dylan goes on in the song to boldly rhyme "blue" and "you," as well as "rear" and "here."

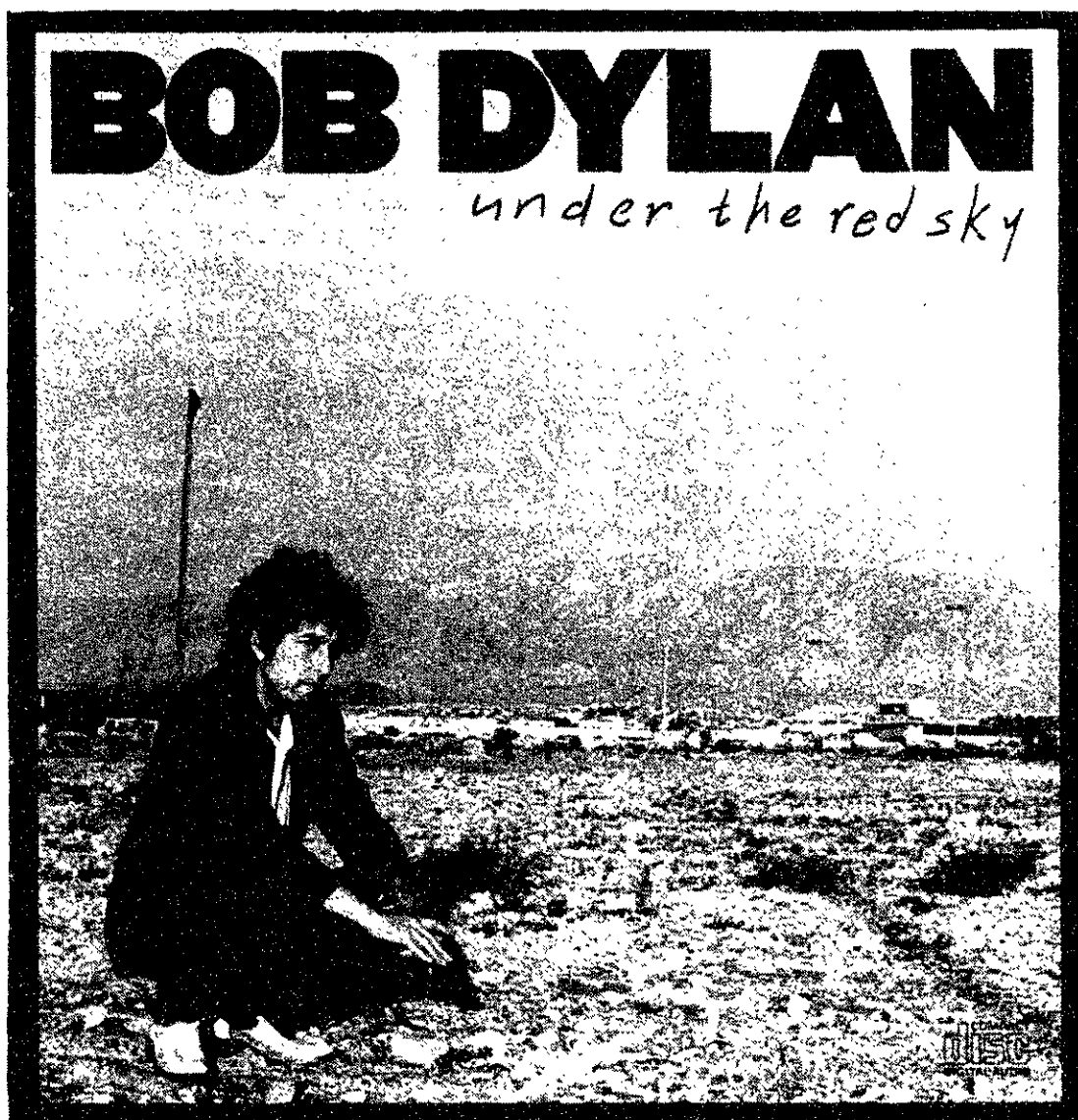
You won't get a good quote off of this album unless you like, "The cat's in the well and the horse is going bumpety bump/Back Alley Sally is doing the American jump."

But the album does have some deeper moments. "God Knows" is the high point of the album. The late Stevie Ray Vaughan's guitar intro — perhaps the last work he ever recorded — is a testimony of his genius. And Al Kooper returns from a two-decade absence to play on three tracks. Kooper's whirling organ became a component of many Dylan songs like "Ballad of the Thin Man" and "Like a Rolling Stone."

Other musicians on the album aren't as interesting. George Harrison has some fun on slide guitar, but Elton John, David Crosby, and Slash of Guns 'n Roses prove to be merely adequate.

Overall, the silliness of *Under the Red Sky* is the perfect complement to the much darker *Oh Mercy*. With all of the nursery-school rhymes and fairy-tale lyrics, you may think that Dylan has finally gone insane. But after yodeling on "All I Really Want to Do" in 1964, Dylan probably isn't concerned too much with sanity.

Like *Oh Mercy*, the new album is very short — only 35 minutes long. This truly is silly, and you may feel cheated. Dylan has made two solo albums and one Traveling Wilburys album in less than one year; he should have waited until he had more



material before he released this album.

But after a troublesome decade, the middle-aged Dylan has returned in 1989

and 1990 with the wit and creativity of his earlier career. It will be interesting indeed to see where Dylan goes from here.

Van Morrison's Enlightenment another sign of transition

ENLIGHTENMENT

Van Morrison.
Caledonia/Polygram Records.

By CHRIS WANJEK

IT'S HARD TO GAUGE any Van Morrison album because all of them are so good. Even the appropriately-named *Period of Transition* from 1977, arguably Morrison's worst venture, is still a good album — better than the best albums from many of today's musicians.

So to say that Morrison's new album, *Enlightenment*, is a disappointment is not saying that it is a bad album.

Enlightenment is a good album. The first half is absolutely wonderful — some of his finest work. Morrison even plays harmonica once again on several tracks. But side two can't keep that same intensity, and this is where the album fails.

Morrison charges into the album with "Real Real Gone," an upbeat sax and trombone number, complete with quotes

from James Brown and Wilson Pickett.

He then slows things down beautifully with a peaceful ending to "So Quiet in Here," reminiscent of "Listen to the Lion's" tranquil fade. Morrison begins the song with "Foghorns blowing in the night/Salt air in the morning breeze," and ends whispering, "Shhhhhh, so quiet in here" — proving that he still is the Celtic sultan.

"See Me Through" closes side one in a familiar way. Van is talking to his lover, whispering about earlier times in ancient days "When we we young . . . before before before rock 'n roll."

But then side two goes awry. It begins on a good note: "Youth of 1,000 Summers" is a celebration of the god of nature — a god of youth and renewal.

But "In the Days Before Rock 'n Roll" is seriously flawed. This song should have been the album's centerpiece; Morrison turned it into a "gag" song. Instead of singing, Morrison gets Paul Durcan to speak through most of the song in a mimicking and thoroughly annoying voice. Morrison was meant to sing "Telefunken, telefunken," as he tries to tune in old Eu-

ropean broadcasts on his primitive radio, "searching for Luxembourg, Luxembourg, Anthone, and AFM . . . for Fats, Sonny, Lightning, Muddy, and John Lee."

When he does finally sing, it's about "Ray Charles, the high priest," and it's wonderful. The whole song should be like this. "In the Days Before Rock 'n Roll" is a potentially brilliant song gone wrong — very frustrating.

The last three songs are uneventful after this let down. This is why the album is disappointing; it collapses after riding so strong.

Enlightenment is like a *Period of Transition II*. By the late 1970s, Morrison had moved away from songs like "Domino" and "Wild Night." His albums have become more and more spiritual since 1980. Songs like "The Master's Eyes" and "When Will I Ever Learn to Live in God" dug deeply into Christianity. Other songs like "Sense of Wonder" and "Dweller on the Threshold" were revelations of Morrison's own spirituality.

New songs from *Enlightenment*, like the title cut or "So Quiet in Here," follow in

this same tradition. But other new songs, like "Start All Over Again" and "She's My Baby," are grossly out of place. It is as if Morrison is changing his style halfway through the album.

Maybe he is changing his style. After all, Morrison hasn't opened an album on an upbeat note since 1979's *Into the Music*, which featured "Bright Side of the Road."

What are the other signs of a transition? Morrison personally compiled his latest "Best of" and then toured with his older material. He played songs during this year's concerts that he hasn't played in over a decade. And this summer, Morrison sang with Roger Waters in front of 300,000 people at the Berlin Wall — a very "non-Morrison" thing to do.

It's a shame that *Enlightenment* falls apart with only four songs to go. But let it. If it hadn't been for *A Period of Transition* (the first one), we wouldn't have heard albums like *Poetic Champions Compose* or *Common One*. It's exciting to think that Van Morrison may take us in another direction — perhaps further into the mystic.

Auditions + Tech

Sign-Ups for

The Birds

by Aristophanes

with Michael Duquette directing

NOVEMBER 26 + 27

7:30 in KRESSE little THEATER
call 253-2908 for information

ARISTOPHANES-
NOT JUST FOR
LIT CLASS
ANY MORE

DRAMASHOP
M.I.T.

ATTENTION!!

MIT SENIORS & GRADUATE STUDENTS

Do you enjoy working with people?
Are you good at solving problems?

BECOME A

GRADUATE RESIDENT
IN AN UNDERGRADUATE LIVING GROUP

INFORMATION SESSIONS AT 6 PM, Room 4-159
TUESDAY, NOV. 27; WEDNESDAY, DEC. 5;
OR THURSDAY, DEC. 13

You can also come to the Dean for Student Affairs Office, Room 7-133,
x3-4051 or call W20-549, x3-6777 for more information and an application.
Application deadline is January 12, 1991.

Stories & songs and songs & stories from Arlo Guthrie

ARLO GUTHRIE
At the Berklee Performance Center.
Friday, Nov. 16.

By CHRIS WANJEK

WITHOUT AN INTRODUCTION, or even a warning, Arlo Guthrie walked onto the stage of the Berklee Performance Center last Friday night, picked up a guitar, and began to play "Ukulele Lady."

But the song didn't last long.

Half way through, Arlo stopped playing — and the audience laughed in anticipation. "I don't know what got me playing these tropical paradise songs," he said. "I never lived near no water." This led into a hilarious story about Arlo planting palm trees on his Massachusetts farm, which he said will soon be beach-front property thanks to the greenhouse effect.

Stories led into songs and songs led into more stories. Woody Guthrie's "I Ain't Got No Home in This World" spawned another anecdote. "My father used to steal a lot of songs," Arlo said. "People used to call it plagiarism and stealin' and nasty words like that until Pete Seeger came around and renamed it 'the folk tradition.'"

Even "The Garden Song" turned into a sarcastic lecture about censorship. "There should be a warning label on this album," he said, "'cause who knows what these lyrics are really about. I should play it backwards to find out."

Arlo wasn't completely carefree during the show, although he'd probably admit that he was. He played a beautiful rendition of Dylan's "When the Ship Comes In," along with many of his own songs. He picked up his 12-string guitar for "Coming Into Los Angeles" and walked

over to his electric piano for "City of New Orleans," "In my Darkest Hour," and "Last to Leave."

Arlo also played two new songs. "Keep the Dream Alive" and the moving "When a Soldier Makes it Home" will be available soon on an upcoming album, his first since he left Warner Brothers several years ago.

Midway through the concert, Arlo was joined by blues guitarist Ed Gerhard. Ed played a magnificent solo blues medley and accompanied Arlo on many other songs. But Ed was unchallenged during most of the concert. It would have been nice to hear him play some Mississippi blues with Arlo on harmonica. But this never happened.

The show neared its end with "Massachusetts," a song which Arlo only plays in this state. He then played a biting harmonica intro to "Amazing Grace." As the music kept playing, Arlo told a moving story about John Newton, the composer of "Amazing Grace." John Newton was the captain of an English slave ship. On one particular trip, something happened to Newton as he looked around at the human captives. He turned the ship around, set the Africans free, and returned to England to write spirituals.

"It's never too late to turn around," Arlo said. "People try to change the world everyday." He thanked the audience and walked off stage only to return in about 15 seconds for an encore.

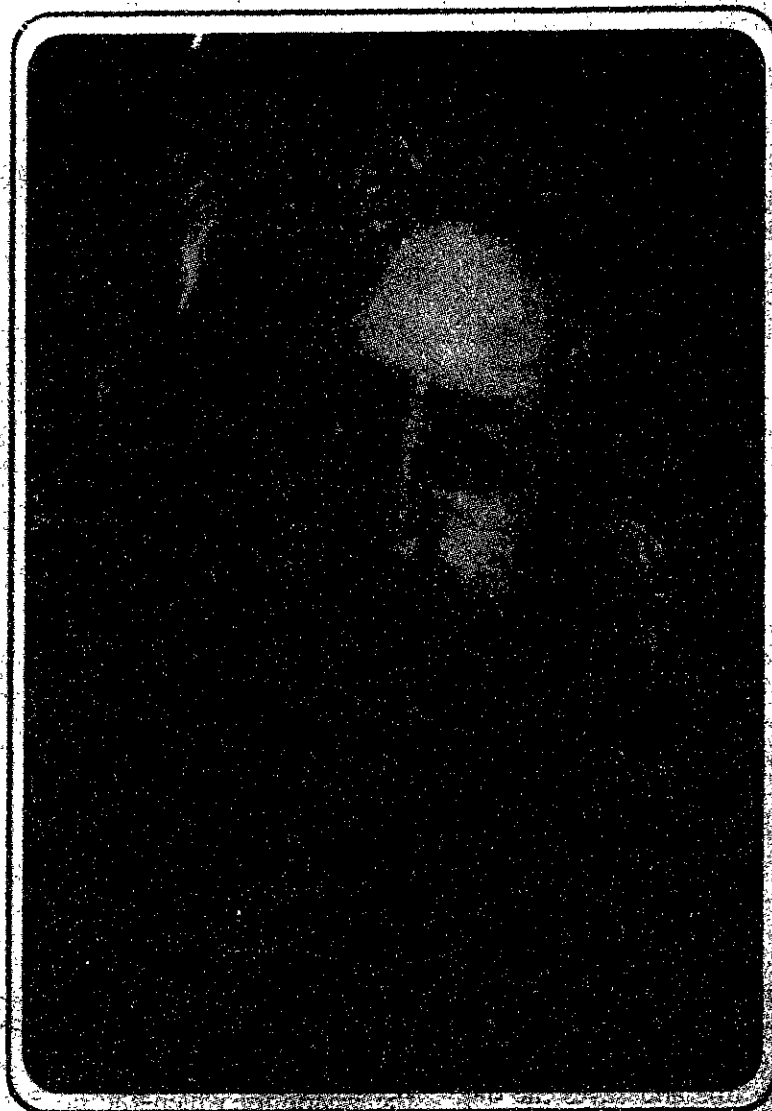
"Play 'Alice's Restaurant,'" someone yelled.

"That's why I put it on an album," Arlo answered. "We'll be here all night."

He played "Highway in the Wind" instead, and few were disappointed. Arlo then smiled, bowed to the standing ovation, and walked off stage as simply as he entered.

ARLO GUTHRIE

In Concert



INDOOR GOLF DRIVING RANGE

GOLF TOWN
421 Page Street
Stoughton, MA 02072
617-344-9551

Golf Lessons & Clinics Available

DIRECTIONS TO GOLF TOWN
Take the first exit off Route 24 South to Route 139 West.

Go one block, turn left on Page Street and #421 is on the left. . . one block from the corner of Route 139 and Page Street.

New!! Sand Traps
Chipping Games

DON'T BE A TEST TURKEY.

Want to knock the stuffing out of exams like the SAT, LSAT, GMAT, or GRE? Then call on the highest, the best test prep pros. Stanley H. Kaplan. And start gobbling up your competition.

KAPLAN
STANLEY H. KAPLAN EDUCATIONAL CENTER LTD.

Call Now To Get
A Score You'll
Be Thankful For!
868-TEST

Bolt Beranek and Newman Inc.

Beyond mainstream

For those who seek challenges that are clearly beyond the ordinary, Bolt Beranek and Newman Inc. (BBN) presents opportunities that are clearly extraordinary. Join us as we advance the state of the art by developing technologies and systems that integrate our knowledge of real-time computers, image generation, distributed simulations, and expert systems. Investigate our research and development efforts in one of the following areas: Intelligent systems, network technology, distributed operating systems development, educational technology, experimental psychology, speech and digital signal processing, structural dynamics, applied physics, architectural and underwater acoustics. If your interests are in product development, we also have opportunities designing and building communications networks, designing statistical data analysis software packages, and building time critical computer products.

We have over 2600 well-rounded and resourceful employees worldwide, most of them scientists and engineers. We continue to attract and challenge motivated people by offering opportunities for them to make their mark on revolutionary technologies. We provide most of the flexibility of a "start-up," yet we also enjoy the substantial resources of a \$260 million company. We offer private offices, libraries, extensive computer resources, exercise facilities, fitness

programs, and a generous compensation and benefits package that includes 3 weeks' vacation and tuition reimbursement.

This all adds up to a one of a kind company—for people who are looking for something that is beyond mainstream. If you are about to complete your degree in computer science, engineering, physics, applied math or statistics, we would like to hear from you.

To explore a promising future with BBN, see your placement office about our on-campus recruiting schedule, or send your resume to Scott Thomson, MS 6/6E, Bolt Beranek and Newman Inc., 10 Moulton St., Cambridge, MA 02138, or email sthomsom@bbn.com.

We are an equal opportunity employer.



WE LOOK FORWARD TO SEEING YOU
ON CAMPUS NOVEMBER 28th, 1990.



Predator 2 - Two thumbs up even without Arnie's muscles

PREDATOR 2

Directed by Stephen Hopkins.
Starring Danny Glover and Gary Busey.
Opens tomorrow.

By EMIL DABORA
and SHAWN MASTRIAN

PREDATOR 2 is a biting social allegory, deep with imagery and full of symbolism. The construction of this movie's Aristotelian plot was so scintillating that *The Tech* had to send its two best reviewers, Dabora and Mastrian, to review the picture. We now present *Emil and Shawn Searching for the Movies*.

Emil: The movie definitely gets a thumbs up. It provides a release for any potential pent-up emotional hostility. This sequel is in keeping with the violent nature of the original film, *Predator*. One complaint though: Danny Glover, the lead good guy, is no Arnold Schwarzenegger; he plays the role with depth of character, and authority, but he just does not command the respect of Arnie.

Shawn: I would fully agree with the thumbs up, and that Glover is no Schwarzenegger. Yet I would have to say that as the hero, Glover provides a more intelligent character, even if his muscles and one-liners are not Schwarzeneggerian.

E: The opening is slightly disappointing. It begins in 1997 in drug-infested Los Angeles. The Cuban drug lords are fighting the local police with rather sophisticated machinery. It seems slightly unrealistic that the bad guys have so much more heavy fire power than the ever-taxing authorities. Melodramatically, Detective-Lieutenant Mike Harrigan (Danny Glover) breaks through the enemy line and saves the day. But what he does not realize is that he is being watched.

S: At the end of this scene, we meet Federal Agent Peter Keyes (Gary Busey).

The producers want us to instantly hate him, so when he bites it later on, we don't get upset. As an *arschhoch*, Busey is excellent, yet his doomed fate is all too obvious. I think that the movie sort of stumbles forward for the first couple of minutes, but be patient — it gets better.

E: The Fed is like so many characters in this type of drama; he is the guy on the side of good that only gets in the way by underestimating the abilities of the protagonist. The audience cheers as Harrigan outwits him.

The monster (Kevin Peter Hall) at the start of the film is rather ambiguous in his choice of siding with good or evil. He begins by killing many of the drug dealers, but we soon find out his motive for doing so — to draw out Harrigan.

S: I don't think there is much ambiguity in the predator at all. Basically, he kills anything that he thinks is worth killing. This, coupled with Harrigan's moment of revelation in the taxidermist's window (where his face reflects among the hunted game), makes a statement about the human manipulation of the animal kingdom. Thankfully, this little bit of morality does not diminish the violent nature of the film.

E: I find the hunter-hunted issue of this film fascinating. We get the feeling that Mr. Predator could ice the detective-lieutenant at any time with his high technology weapons, but chooses not to. Instead, he wants to fight fairly, though he always maintains an advantage. This seems to be a contradiction in ideology — does he want a fair fight or not?

S: Of course he doesn't want it to be too fair; nevertheless, the code of honor is upheld in the end.

I think the strongest point of this film is the weaponry which the predator carries. Suffice it to say, never play frisbee with this boy.

E: Another asset to this film's all-star cast is the appearance of Morton Downey



Danny Glover (left) and Ruben Blades (right) do battle in *Predator 2*.

Jr. (in his motion-picture debut), who plays the role of Pope, an annoying trash-television character that seems indistinguishable from his talk show personality.

S: Mort is definitely studly. The abuse he takes from Harrigan and Jerry Lambert (Bill Paxton) provides good bits of comic relief. The relationship between Lambert and Leona Cantrell (Maria Conchita Alonzo) is one of the stronger points of

the movie.

E: The ending is very good, though I won't say any more than I liked it. I advise you make *Predator 2* part of your Thanksgiving celebration.

S: Definitely a solid movie. Go see it after the Survivor Series is over this Thanksgiving. After all, with the long weekend, we'll all have a few days to kill.



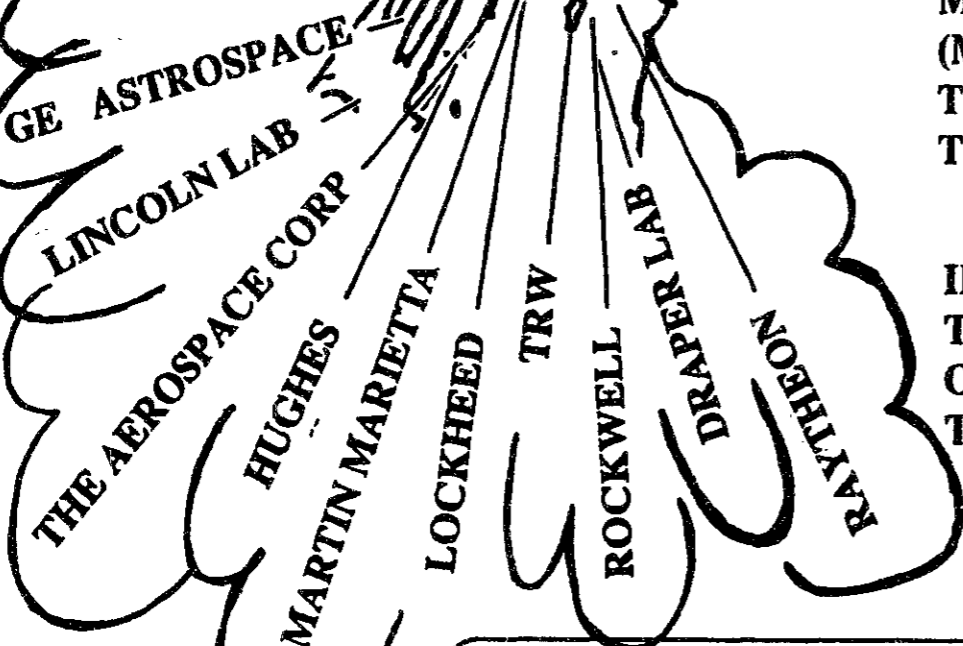
MIT
Space
Grant
Program

SPACE GRANT PROGRAM SUMMER POSITIONS

THE SPACE GRANT PROGRAM IS NOW OFFERING AN OPPORTUNITY FOR A SUMMER POSITION IN THE FIELDS OF SPACE SCIENCE AND SPACE ENGINEERING. THERE WILL BE A MEETING ON NOVEMBER 14, 1:00-2:00pm IN 37-252 (MARLAR LOUNGE) AND ANOTHER MEETING ON NOVEMBER 30, FROM 3:00-4:00pm IN 37-252 (MARLAR LOUNGE). THIS MEETING WILL INTRODUCE THE PROGRAM AND WE WILL ALSO HAVE INFORMATION AVAILABLE ON THE PARTICIPATING COMPANIES.

IF YOU ARE INTERESTED IN A SUMMER POSITION, PLEASE SEE HELEN HALARIS, 37-441, X8-5546 OR LISA SASSER, 33-212, X3-4929 FOR AN APPLICATION OR FURTHER INFORMATION

DEADLINE FOR APPLICATIONS: DECEMBER 3, 1990



comics

tumbleweed-garden

pawan sinha

PROBLEM SET 3

1. Describe the five basic flaws in the general theory of relativity.

2. Give a four step derivation of the unified field theory.

3. Prove the existence of at least 15 elements beyond the Actinide series

MAYBE WE SHOULDN'T HAVE TAKEN A GRADUATE LEVEL COURSE IN OUR VERY FIRST SEMESTER HERE!

SCRATCH! SCRATCH!
SCRIBBLE! SCRIBBLE!

PROF. ZETA, FOR PROBLEM 2, IS IT OKAY IF THE DERIVATION HAS FIVE STEPS?

NO TRIVIAL SOLUTIONS WILL BE ACCEPTED.

THAT'S THE GUY WHO COULDN'T DERIVE THE UFT IN 4 STEPS!

WONDER HOW HE GOT INTO MIT!

NO SHIRT, NO SHOES, NO 4 STEP UFT DERIVATION, NO SERVICE!

THE MUDDY CHARLES PUB

LEO, I DON'T WANT TO SEE YOU HANGING AROUND WITH THAT DUMB OAF ANY MORE! DO YOU UNDERSTAND?!

POOF!

CHOKE! HAAGH! GASP!

PEEP! PEEP! PEEP!

MOM, CAN I COME HOME FOR THANKSGIVING EVEN IF I'M UNABLE TO DERIVE THE UNIFIED FIELD THEORY IN FOUR STEPS?

PAWAN SINHA

Jim's Journal

by Jim

I saw Tony today and asked him how it was going.

He said, "Don't ask," and walked into his room.

9-25

I saw him later and he told me his job interview yesterday was a disaster.

©1990 OIKREES

"The guy didn't even take me seriously," he said.

sports

Rifle takes 2nd in four-way match

Coming off a resounding victory over Wentworth two weeks before, the MIT varsity rifle team encountered their toughest opposition of the season on Saturday, Nov. 10.

In a scheduled four-way match, the Beavers hosted Clarkson University, Brandeis, and the Royal Military College of Canada for a smallbore (.22 caliber) rifle and an air rifle match. When the smoke cleared, Clarkson was the overall winner, and MIT a close second.

The team results were as follows: (school; smallbore score; air rifle score.) Clarkson; 4461; 1480. MIT; 4223; 1430. Brandeis; — ; 970. RMC (Canada); 3917; —.

Team captain Sei Young Sohn '91 led the way for MIT, scoring 1077 in smallbore and 343 in air. Ann Perry '91 was high shooter in air with 365, and second in smallbore with 1072.

"Clarkson has a good, well coached team," commented MIT coach Richard Dyer, "and I tip my cap to them for their well-earned win. It's tough going up against a team with three 1100 shooters on their roster, but those

are the teams I like to shoot against — it brings out the best in my shooters, as evidenced by our final score of 4223.

"It's our highest score of the season," Dyer continued, "but in that our next two opponents are Army and Navy, I can guarantee you we'll shoot even higher scores."

The Royal Military College, although not a member of the Mid-Atlantic Rifle Conference, requested permission to participate in the match and made a good showing.

"They have a limited amount of collegiate competition in Canada," Dyer said, "and I was impressed with their self-discipline and the professional manner in which they conducted themselves. It was a pleasure having them at MIT."

The Beavers are now 4-2 in the conference, and 5-2 overall.

On Saturday, Dec. 1, MIT will host the Cadets of West Point in a full course smallbore plus air match at the range beneath the Rockwell Cage.

(Editor's note: This article was submitted by members of the varsity rifle team.)

Upcoming Home Events

Tuesday, November 20

6:00 Women's Basketball vs. Simmons

8:00 Men's Basketball vs. Babson

Lady fencers pound Harvard squad, 12-4

By Sara Ontiveros

While Yale pounded the Crimson on the football field, the MIT women's fencing team did some pounding of their own in the fencing room at Harvard's Malkin Gym Saturday.

Alice Chang G set the pace by defeating Harvard's number one in the first bout, 5-4. Captain Felice Swapp '92, Sara Ontiveros '93 and Kathryn Fricks '92 were quick to follow and by the third round the Lady Engineers had triumphed over the Crimson women, nine bouts to three.

The final score at the end of the fourth was 12-4, with Chang and Swapp each sweeping four, Lefty Ontiveros finishing 3-1, and Fricks ending up 1-2.

The junior varsity women fencers claimed a victory of their own over the Crimson JV with a final score of 9-7. In a tense final bout situation, with the score at 8-7, Fricks calmly captured the coveted ninth bout by a score of 5-0.

Ontiveros presided over the JV victory with four bouts, Fricks and Heather Klaubert '94 each contributed two, and Shing Kong '94 took one.

Meanwhile, the MIT men's team lost to Harvard in a hard fought meet by a final score of 18-9. The men's foil squad, after a tough start, claimed three victories. Luis Maldonado '92 was top scorer with two of the three wins and captain Freeland Abbott '92 followed with one.

The epee squad lost a squeaker, 4-5, with Henrick Martin '93 and Ed Chen '92 each capturing two victories. Sabre, the youngest of the squads, took two bouts, one by veteran Derek Rucker '92 and the other by freshman Mark Hurst '94.

"This is a young team with no seniors but with plenty of spirit," coach Eric Solleé said. "There's a lot of potential here, and we intend to develop it."

Last week's women's victories included Wellesley, 10-6, and Vassar, 12-4. The men slew Vassar 20-7, but lost to non-NCAA Tufts by a close margin, 13-14.

Look for the Fencing Engineers on Dec. 1, when they host the United States Air Force Academy, Brown, Brandeis, Baruch, and Worcester Polytechnic Institute in duPont Gymnasium.

(Sara Ontiveros '93 is the manager of the women's fencing team.)

PLAY YOUR PART

BE A RED CROSS VOLUNTEER

 American Red Cross

AGI
CONCI

This space donated by The Tech

Museum of Fine Arts

Offers opportunities to articulate individuals for telefund. Enthusiasm and good communication skills a must. Competitive wages! Afternoons and evenings.

Apply at Suite 303,
295 Huntington Ave., or
call 617-266-4224.

Career Opportunities at Morgan

for Massachusetts Institute of Technology students interested in

Corporate Finance
Research
Sales
Trading

Please plan to attend our information presentation on

Tuesday, December 4

7:00 pm

All majors welcome

Confirm the time and location with your placement office

J.P. Morgan is an equal opportunity employer

JPMorgan

The first in a series.

What is most important about your education often becomes evident only long after your formal schooling is over. By then, many critical opportunities to realize your potential may have irretrievably passed.

We've combined our perspective as educators and engineers to present a guide to thinking about the education you are seeking.

Our topics will include:

1. The purpose of education.
2. Your own responsibilities for your education.
3. Pressure, self esteem and confidence.
4. The foundations of creativity.
5. Understanding and communication.
6. What is college preparing you for?

These guides will appear over the next few months.

Note: Each year the Bose Foundation sponsors a one year fellowship for a first year graduate student in electrical engineering. Please see your faculty advisor for more information or write Rhonda Long, Bose Foundation, The Mountain, Framingham, MA 01701-9168.

BOSE®

Thinking
about your
education.

NOMINATIONS FOR FINAL YEAR STUDENTS AND RECENT GRADUATES (CLASSES 1989, '90, '91)

Note: PLEASE Use a Pen

Due by: December 15, 1990

★★★★ IMPORTANT: Write legibly and provide as much information as possible ★★★★★

NOMINEE INFORMATION:

Department:

Year:

Degree:

Address:

Phone:

Activities:

References (Try to include at least one MIT faculty or staff member):

Briefly state why you have chosen to nominate this individual.

NOMINATOR INFORMATION:

Your name:

MIT Affiliation:

Address and Phone:
(Where you may usually be reached)

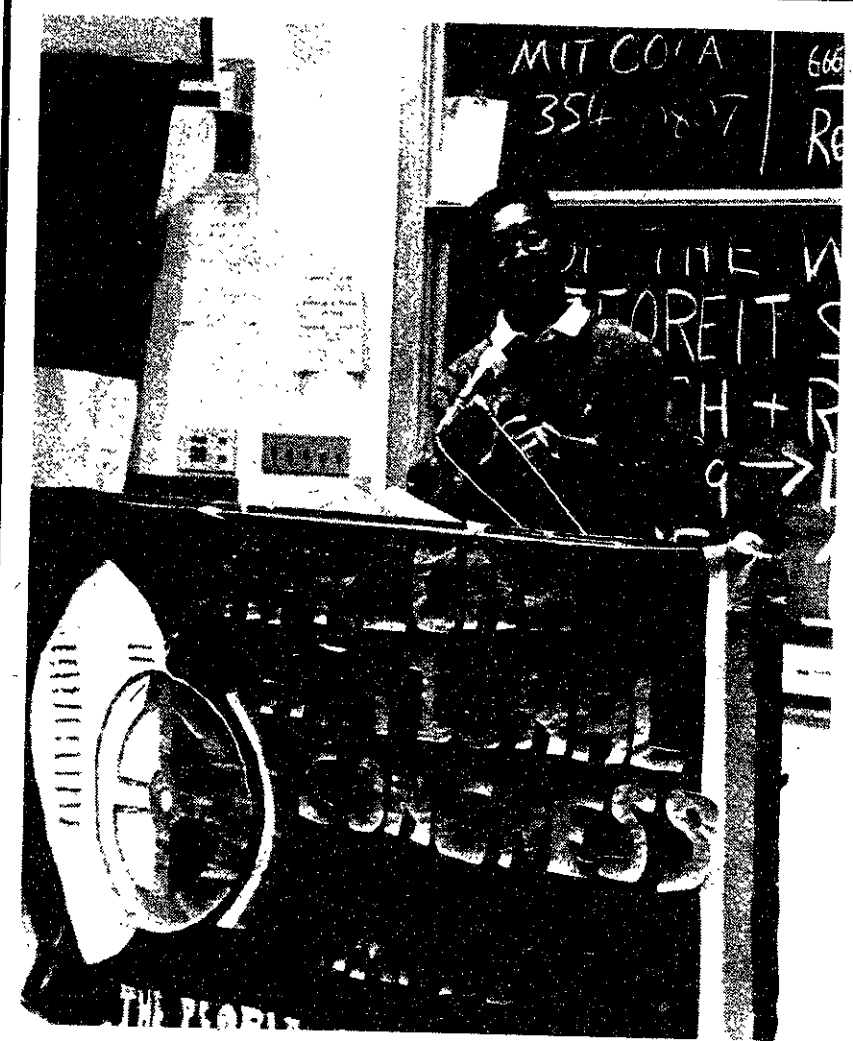
MIT Corporation Recent Alumni Nominations

The Recent Alumni Representative to the MIT Corporation to be elected in April/May 1991 will be chosen from graduates (any graduate or undergraduate degree) of the classes of 1989 - 1990 - 1991.

All members of the MIT Community are eligible to make nominations to be submitted by **December 15, 1990** to the Corporation Screening Committee. Send nominations to:

Dorothy G. Adler
Room 12-092
x3-8212





Andy Silber/The Tech
Brian Thami Hlongwa, a vice president of South African Youth Congress, says "there is no change" in the condition of South African blacks. See story on page 2.

1990 deficit was \$11M

By Brian Rosenberg

Operating expenses exceeded revenues by just over \$11 million during the 1990 fiscal year, according to the FY 1990 *Report of the Treasurer*. The 1990 fiscal year, which ended on June 30, marks the second year in a row the Institute's budget has run a deficit.

The 1990 operating budget was also the first to break the \$1 billion barrier, according to the report.

All of the Institute's \$7.5 million in unrestricted gifts and income was used to meet the shortfall, and an additional \$3.5 million came from reserves and accumulated investment income. None of the money used to balance the budget was taken from specific programs, noted Vice President for Financial Operations James J. Culliton.

According to Culliton, it is not unusual that all of the unrestricted gifts were used to balance the budget. "Generally, the unrestricted gifts are used to balance the budget, and any unused money then goes into the endowment," he said.

Culliton said he expects a similar shortfall for the current fiscal year (FY 1991), but added that deficit projections are complicated by many uncertainties, especially the price of oil. The shortfall "isn't significant, at least in terms of one or two years," Culliton said. "It becomes major [if MIT has] growing deficits. We can certainly afford a few years

of deficits [at the current level]," he added.

Several expenses went over their projected levels, but some sources of revenue also increased, Culliton said. Energy costs and MIT's matching contributions to employee pension plans both went up significantly.

Offsetting those increased costs
(Please turn to page 2)

Student falls head first off of PKS roof

By Jeremy Hylton

Stuart E. Nelsen '92 fell from the second floor of the Phi Kappa Sigma fraternity house on Saturday, Nov. 3. Nelsen, a brother at PKS, sustained serious damage to his face when he fell from the roof of a porch at about 3:30 am.

Nelsen fell while he and a group of friends were throwing pumpkins off the roof. He landed head first on the concrete below. The roof over the house's porch is not protected in anyway, according to PKS President Jack R. Scheuer '91. No one else was injured in the incident.

Nelsen was hospitalized for a week as a result of his injuries and underwent reconstructive surgery. Nelsen has since returned to PKS and is attending classes. "He's doing fine," Scheuer said.

PKS changed house policies as a result of the accident. People will no longer be allowed on the roof from which Nelsen fell. Scheuer refused to comment on any other action taken by the fraternity as a result of the accident.

MIT is investigating the circumstances of the accident, according to James R. Tewhey, associate dean for students affairs. "We're trying to find out the circumstances under which he fell," Tewhey said. He declined to com-

ment on the details of the investigation while it is underway.

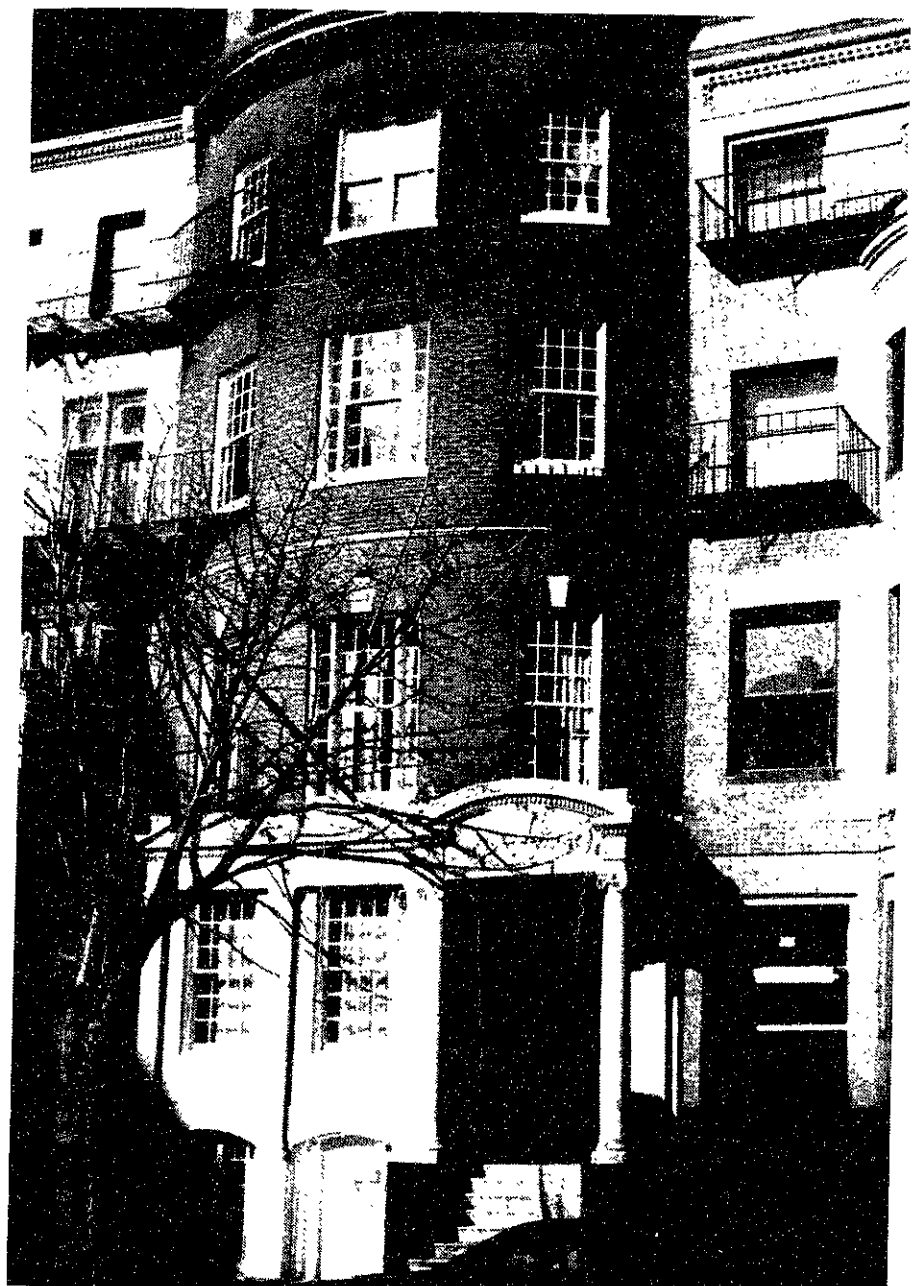
Scheuer is aware that investigation is being conducted, but has not been approached by Tewhey. "Nobody has spoken to me yet," he said.

As part of the investigation, Tewhey is looking into the allegation that Nelsen was drinking. He said he was not in a position to say whether Nelsen had been drinking. "We have some information on that; we have no idea how accurate or complete it is," Tewhey said. Nelsen is not yet 21, and therefore below the minimum legal drinking age.

Scheuer also declined comment on the possibility that alcohol was involved, but did claim that Nelsen was not drunk.

"We do not know if he was served alcohol by a fraternity or if he obtained it on his own," said Advisor to Fraternities and Independent Living Groups Neal H. Dorow, who is working on the investigation with Tewhey.

If a fraternity or other living group had served Nelsen alcohol, it would face the possibility of a lawsuit from Nelsen's family or insurance company. The insurance company could sue to recover the cost of Nelsen's medical bills. Tewhey said he had "no suggestion" that either party would sue.



Morgan Conn/The Tech
Stuart E. Nelsen '92 fell off of the roof of the entryway of the Phi Kappa Sigma fraternity while throwing pumpkins on Saturday, Nov. 3, at 3:30 am. He is reported to be in good condition.

Judge gives Huang continuance

By Andrea Lamberti

The charge against Jennifer Y. C. Huang '90 of assault and battery with a dangerous weapon was effectively dismissed on Tuesday when a district court judge granted her a continuance without a finding for one year, according to the assistant defense attorney, Jackie Church.

The new finding also postpones a verdict on the charge of disturbing the peace. In September, Huang was found guilty of both charges, which grew out of events during a pro-divestment rally last spring. She immediately filed for a new trial, this time before a jury, which was scheduled to take place last Tuesday.

But during a pre-trial conference, the judge rejected a plea of guilty, and "decided to go ahead with the continuance without a finding," according to the assistant district attorney, Lynn C. Rooney.

"The judge, not the commonwealth, decided to go ahead with the continuance," Rooney said.

The guilty plea was offered "as part of a compromise that was reached," Church said, in return for the continuance without a finding.

Under the new finding, Huang will be on probation for a period of one year, after which she will not have a criminal record. She may then seek to have the record

of the incident sealed.

However, if she is arrested during the one-year probation, the felony conviction will remain on her record and the original sentence — a suspended sentence of 10 days in a house of corrections — will be imposed.

"I am very happy about it," Huang said.

Campus Police Chief Anne P. Glavin, said she "wouldn't have



Douglas D. Keller/The Tech
Jennifer Y. C. Huang '90 been disappointed" if the case had gone to trial. "The judge has made her decision and we have to abide by it."

CAA shanty caused arrests

Huang was one of 26 people arrested during a Coalition

Against Apartheid demonstration April 6. Demonstrators had constructed a shanty next to the Stratton Student Center to symbolize the plight of blacks in South African shantytowns.

Within a few hours after the demonstrators erected the shanty, Senior Vice President William R. Dickson '56 told the demonstrators the structure was unauthorized, and ordered them to remove it. People who did not comply were removed from the shanty and arrested.

Everyone but Huang was charged with trespassing after notice and disturbing the peace; she was additionally charged with assault and battery with a dangerous weapon, a felony.

Campus Police officer Lucy M. Figueiredo charged that as she was placing Huang — the last person removed from the shanty — into the police van, Huang kicked her in the chest and bruised her. Due to the injuries, Figueiredo was off work for three and a half weeks under the care of a physician, according to Campus Police Lt. Edward D. McNulty.

Huang came up against these charges in a judge trial Sep. 21, and the judge found her guilty of disturbing the peace and assault and battery with a dangerous weapon, but not guilty of trespass after notice.

Committee to tackle alcohol policy

By Brian Rosenberg

Associate Dean for Student Affairs James R. Tewhey has directed an Undergraduate Association committee to examine alcohol use and related issues on campus. In a telephone interview, Tewhey said he would "put a great deal of weight" on the committee's recommendations when drafting revisions to MIT's alcohol policy.

In a letter to UA President Manish L. Bapna '91, Tewhey said he wanted the newly formed UA Standing Committee on Student Life to "forward recommendations to me for any changes [to the alcohol policy] that it might deem appropriate."

J. Paul Kirby '92, chairman of

the CSL, expressed confidence that the committee would produce definite results. He said that "it was understood" that the CSL's recommendations would be implemented.

Kirby said the CSL will "respond to the entire alcohol issue, not merely the current policy." It will look for possible connections between alcohol consumption and harassment, criminal activity, and future alcoholism, he added.

To aid in its examination of alcohol, the committee will use a large number of sources. "Experts such as Medical Department personnel will advise the committee," Kirby said. The CSL will also examine alcohol reports from other schools and conduct

random polling of MIT students.

Additionally, the CSL will study the issue of house taxes, which are charges added by a dormitory to a student's housing bill. The funds are generally used to support social activities within the dormitory, including parties where alcohol is served.

"Some non-drinkers feel they shouldn't have to pay a tax which is used to purchase alcohol," Kirby said. "There is also an issue of underage students paying such a tax when they can't legally be served alcohol," he added.

The CSL will be made up of between 10 and 12 graduate and undergraduate students and four or five faculty and administrative
(Please turn to page 2)

NOMINATIONS FOR FINAL YEAR STUDENTS AND RECENT GRADUATES (CLASSES 1989, '90, '91)

Note: PLEASE Use a Pen

Due by: December 15, 1990

★★★★ IMPORTANT: Write legibly and provide as much information as possible ★★★★★

NOMINEE INFORMATION:

Department:

Year:

Degree:

Address:

Phone:

Activities:

References (Try to include at least one MIT faculty or staff member):

Briefly state why you have chosen to nominate this individual.

NOMINATOR INFORMATION:

Your name:

MIT Affiliation:

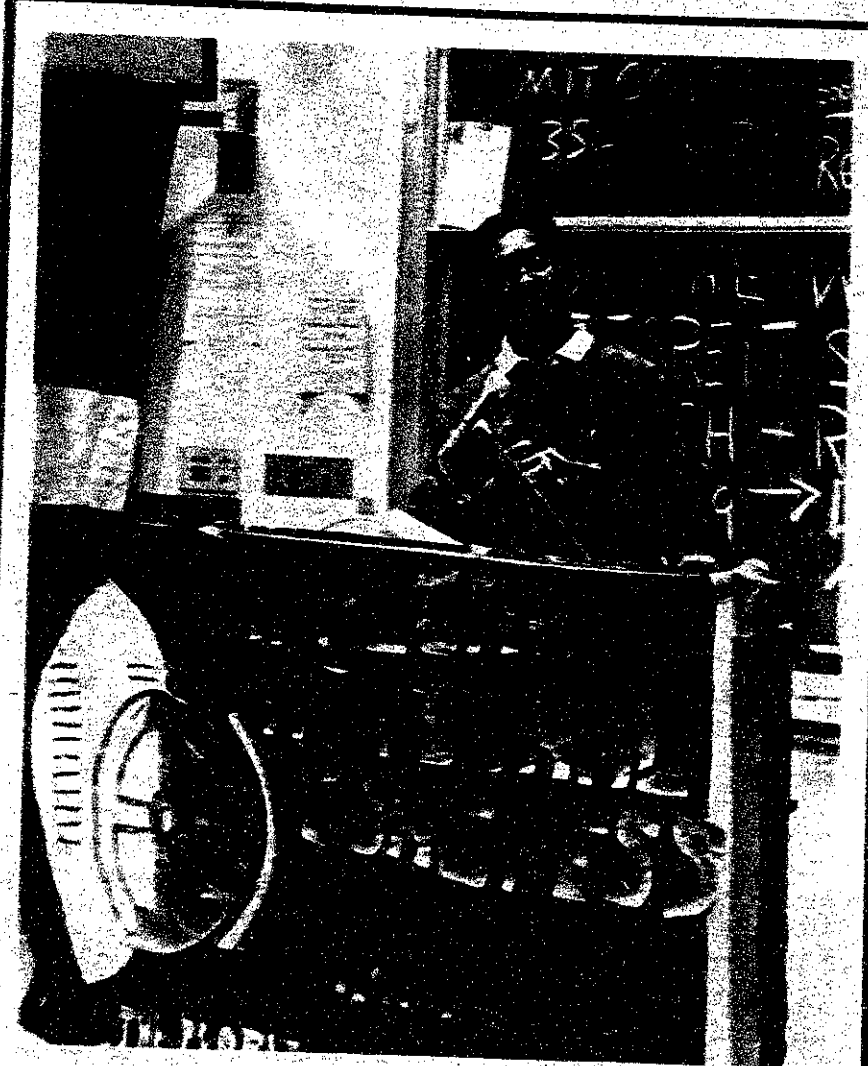
Address and Phone:
(Where you may usually be reached)

MIT Corporation Recent Alumni Nominations

The Recent Alumni Representative of the MIT Corporation to be elected in April/May, 1991 will be chosen from graduates (graduate or undergraduate degree) of the classes of 1989 - 1990 - 1991.

All members of the MIT Community are eligible to make nominations to be submitted by **December 15, 1990** to the Corporation Screening Committee. Send nominations to:

Dorothy G. Adler
Room 12-092
x3-8212



Andy Silber/The Tech
Brian Thami Hlongwa, a vice president of South African Youth Congress, says "there is no change" in the condition of South African blacks. See story on page 2.

1990 deficit was \$11M

By Brian Rosenberg
Operating expenses exceeded revenues by just over \$11 million during the 1990 fiscal year, according to the FY 1990 Report of the Treasurer. The 1990 fiscal year, which ended on June 30, marks the second year in a row the Institute's budget has run a deficit.

The 1990 operating budget was also the first to break the \$1 billion barrier, according to the report.

All of the Institute's \$7.5 million in unrestricted gifts and income was used to meet the shortfall, and an additional \$3.5 million came from reserves and accumulated investment income. None of the money used to balance the budget was taken from specific programs, noted Vice President for Financial Operations James J. Culliton.

According to Culliton, it is not unusual that all of the unrestricted gifts were used to balance the budget. "Generally, the unrestricted gifts are used to balance the budget, and any unused money then goes into the endowment," he said.

Culliton said he expects a similar shortfall for the current fiscal year (FY 1991), but added that deficit projections are complicated by many uncertainties, especially the price of oil. The shortfall "isn't significant, at least in terms of one or two years," Culliton said. "It becomes major [if MIT has] growing deficits. We can certainly afford a few years

of deficits [at the current level]," he added.

Several expenses went over their projected levels, but some sources of revenue also increased, Culliton said. Energy costs and MIT's matching contributions to employee pension plans both went up significantly.

Offsetting those increased costs
(Please turn to page 2)

Student falls head first off of PKS roof

By Jeremy Hylton

Stuart E. Nelsen '92 fell from the second floor of the Phi Kappa Sigma fraternity house on Saturday, Nov. 3. Nelsen, a brother at PKS, sustained serious damage to his face when he fell from the roof of a porch at about 3:30 am.

Nelsen fell while he and a group of friends were throwing pumpkins off the roof. He landed head first on the concrete below. The roof over the house's porch is not protected in anyway, according to PKS President Jack R. Scheuer '91. No one else was injured in the incident.

Nelsen was hospitalized for a week as a result of his injuries and underwent reconstructive surgery. Nelsen has since returned to PKS and is attending classes. "He's doing fine," Scheuer said.

PKS changed house policies as a result of the incident. The new policy states that no alcohol is to be served in the house. Scheuer said that he has no other information about the fraternity as a result of the accident.

MIT is investigating the circumstances of the accident, according to James R. Tewhey, associate dean for student affairs. "We're trying to find out the circumstances under which he fell," Tewhey said. He declined to com-

ment on the details of the investigation while it is underway.

Scheuer is aware that investigation is being conducted, but has not been approached by Tewhey. "Nobody has spoken to me yet," he said.

As part of the investigation, Tewhey is looking into the allegation that Nelsen was drinking. He said he was not in a position to say whether Nelsen had been drinking. "We have some information on that; we have no idea how accurate or complete it is," Tewhey said. Nelsen is not yet 21, and therefore below the minimum legal drinking age.

Scheuer also declined comment on the possibility that alcohol was involved, but did claim that Nelsen was not drunk.

"We do not know if he was served alcohol by a fraternity or if he obtained it on his own," said Advisor to Fraternities and

Interfraternity Council member

James R. Tewhey said that if any other fraternity had served Nelsen alcohol, it would face the possibility of a lawsuit from Nelsen's family or insurance company. The insurance company could sue to recover the cost of Nelsen's medical bills. Tewhey said he had "no suggestion" that either party would sue.

Judge gives Huang continuance

By Andrea Lambert

The charge against Jennifer Y. C. Huang '90 of assault and battery with a dangerous weapon was effectively dismissed on Tuesday when a district court judge granted her a continuance without a finding for one year, according to the assistant defense attorney, Jackie Church.

The new finding also postpones a verdict on the charge of disturbing the peace. In September, Huang was found guilty of both charges, which grew out of events during a pro-divestment rally last spring. She immediately filed for a new trial, this time before a jury, which was scheduled to take place last Tuesday.

But during a pre-trial conference, the judge rejected a plea of guilty, and "decided to go ahead with the continuance without a finding," according to the assistant district attorney Lynn C. Rooney.

"The judge, not the prosecutor, decided to go ahead with the continuance," Rooney said.

The guilty plea was offered "as part of a compromise that was reached," Church said, in return for the continuance without a finding.

Under the new finding, Huang will be arraigned in court in January 1991, when she will face the

of the incident sealed.

However, if she is arrested during the one-year probation, the felony conviction will remain on her record and the original sentence — a suspended sentence of 10 days in a house of corrections — will be imposed.

"I am very happy about it," Huang said.

Campus Police Chief Anne P. Glavin, said she "wouldn't have

Against Apartheid demonstration April 6. Demonstrators had constructed a shanty next to the Stratton Student Center to symbolize the plight of blacks in South African shantytowns.

Within a few hours after the demonstrators erected the shanty, Senior Vice President William J. Dickson '90 told the demonstrators the structure was unauthorized, and ordered them to remove it. People who did not comply were removed from the shanty and arrested.

Everyone but Huang was charged with trespassing after notice and disturbing the peace; she was additionally charged with assault and battery with a dangerous weapon, a felony.

Campus Police officer Lucy M. Figueiredo charged that as she was placing Huang — the last person removed from the shanty — into the police van, Huang kicked her in the chest and bit her. She then bit the officer's hand. Figueiredo said she did not know if there were any other injuries.



NOMINATIONS FOR FINAL YEAR STUDENTS AND RECENT GRADUATES (CLASSES 1989, '90, '91)

Note: PLEASE Use a Pen

Due by: December 15, 1990

★★★★ IMPORTANT: Write legibly and provide as much information as possible ★★★★★

NOMINEE INFORMATION:

Department:

Year:

Degree:

Address:

(You must include at least one MIT faculty or staff member):

(Name of person(s) who have chosen to nominate this individual.)

RECOMMENDATION

YOUR ADDRESS
Address and phone
(Where you may
usually be reached)

MIT Affiliation:

MIT Corporation Recent Alumni Nominations

Send your nomination to:
Alumni Relations
Corporation
Mail Room
submits by December
1990 to the
Secretary
for nominations

