



Ken Church/The Tech

A brilliant display of fireworks marks the end of the annual fourth of July Boston Pops Esplanade concert.

Student falls from balcony

By Reuven M. Lerner

David G. Moore '91, a mechanical engineering major from Blacksburg, VA, died at approximately 6:15 pm on July 4 after falling from a fifth-floor Senior House balcony.

Several sources said Moore apparently jumped off the balcony while under the influence of LSD. One individual said Moore "had a very bad reaction" to a dose of the drug, and others agreed that he probably jumped to stop the drug's effect.

The county coroner classified the death as an accident, and Associate Dean for Student Affairs Robert M. Randolph confirmed that it was not a suicide.

Randolph, as well as many other Institute officials, would not confirm or deny the extremely widespread reports that Moore jumped from the balcony after taking LSD. While Randolph admitted that there were "allegations of drug involvement," he said he was "not at liberty" to discuss them.

Deputy Campus Police Chief James F. Mahoney, Jr. would not comment until the medical examiner's report is released in several weeks. "The medical examiner will tell us what's in his body," he added.

Professor James T. Higgin-

botham, the Senior House housemaster, said that a nearby campus policeman called a paramedic immediately after Moore fell, but "there was nothing that could have been done." "He was pronounced dead before 7 pm at Mass. General [hospital]," Higginbotham said.

Moore was buried near his home last Wednesday. Approximately 12 of his friends from MIT, as well as Higginbotham, attended the funeral. Moore is survived by his father, John Moore SM '69, his mother, Joan G. Moore '64 and a half-brother, Stephen A. Kukulich '86.

"A real tragedy"

Moore was known as an exceptionally friendly, bright person who always tried to help others. He was elected house president during his sophomore year, and went on to become president of the Dormitory Council.

Moore's academic advisor, Professor Roger D. Kamm, described him as "the strong, very intelligent, silent type . . . it was very clear that there was a lot going on in his head." Kamm added that Moore "obviously did well in his coursework."

Higginbotham said that he and his wife "were great admirers of

(Please turn to page 11)

ARA defends dining cuts

By Dave Watt

MIT Food Services General Manager Alan Leo recently defended cuts in summer food services as a financial decision, calling them an attempt to balance the cost of providing extended hours and wider menu choices against student demand.

He said that as in summers past, MIT Food Services closed most of its facilities, and cut hours at Morss Hall (in Walker Memorial) and Lobdell in an effort to control costs.

Morss, Lobdell, and Networks are open for lunch on weekdays, and Lobdell and Networks are open for dinner. But Lobdell, including the grill, closes completely at 6:30 pm. On weekends, Lobdell offers no hot entrees, and Morss does not open.

Lobdell received complaints when it offered only one hot entree per night, as opposed to the typical two or three. Food Services had already decided to add more entrees before the complaints started, said Leo.

Students have also complained about the cafeteria prices. Leo said that his office is working to compare the cost of Institute food with nearby schools and fast-food restaurants, but not all of the data has been gathered yet.

Meal price increases do not affect ARA's bottom line, Leo explained. He said that MIT deter-

mines which dining areas will be open, what services will be provided, and what prices will be charged, based on ARA's recommendations.

Leo said that while he was sympathetic to student complaints, "it's hard to provide service to everybody at every time they want it, from a financial point of view . . . if this were a

free market, Walker would be closed now," he added.

Students unimpressed by Leo's response

Some students who complained about the service cuts were unimpressed with Leo's response. "He basically committed himself to acting in MIT's financial interest," said Michael C. McCarthy G, one of the signers of a recent letter to Lawrence E. Maguire, the director of housing and food services, which protested the cuts.

Food Services has also resumed using paper plates instead of china at Morss for the summer, allowing them to save money both on cleanup and the cost of replacing china. Leo said that 800 plates, worth \$5 apiece, had been lost since the beginning of the spring term.

Farhah F. Assaad G of Share a Vital Earth, a student organization working with ARA on a recycling program, was very sympathetic to ARA's problems with trying to use more china plates. "They have been extremely cooperative, extremely quick to do

(Please turn to page 11)



Alan Leo
Dave Watt/The Tech

Profile of freshmen remains unchanged

By Mary Pat Reeve

Statistics for the Class of 1994 are relatively unchanged from last year, according to data provided by the MIT Admissions Office.

The mean math score on the Scholastic Aptitude Test for the entering freshman class is 735, the same as it was for the Class of 1993. The verbal score rose from 621 to 625, following last year's upward trend. Performance on the American College Test remained stable with a mean math score of 33 and a verbal mean of 30.

A total of 1098 freshman have declared their intention to enter MIT in the Class of 1994. Some freshmen often decide during the summer not to enter MIT due to financial considerations, accepting offers from other universities, or personal reasons. Therefore, actual enrollment in September is expected to be about 1070, slightly higher than the 1050 new students that the admissions office had initially hoped would attend.

Of the 1098 freshman expected to enroll, 364 are women. This figure, which represents 33.2 per-

(Please turn to page 11)

Number of EECS majors rises sharply

By Marie E. V. Coppola

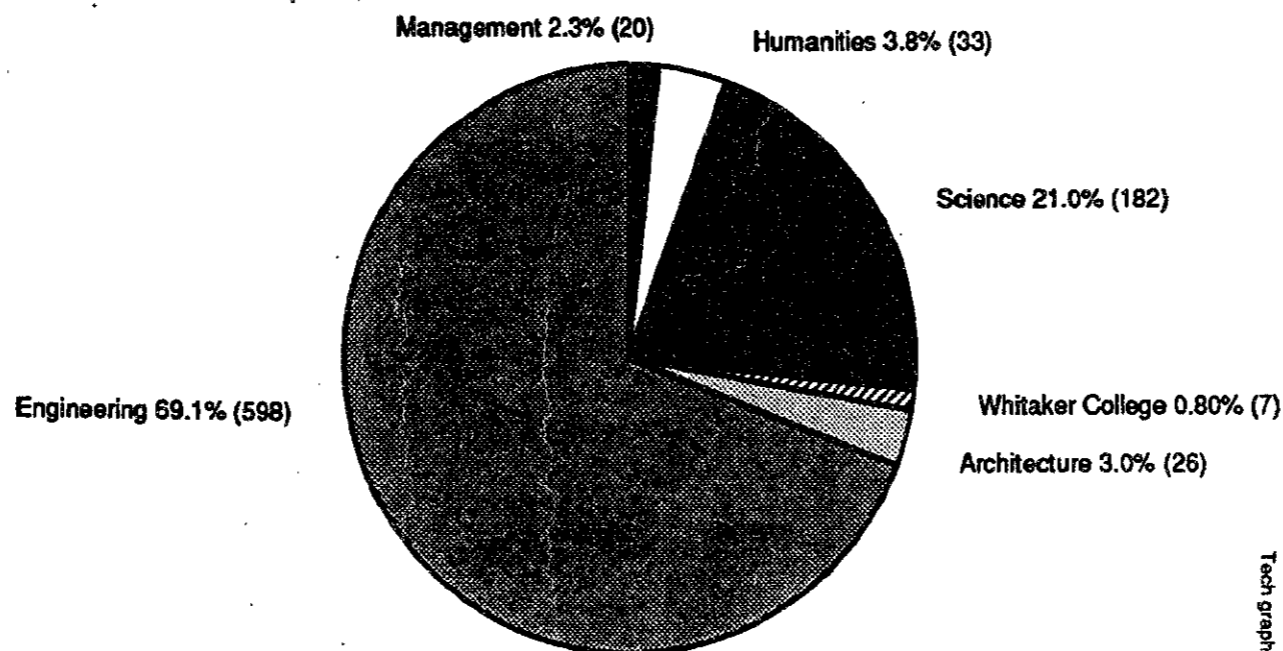
The percentage of students entering the Department of Electrical Engineering and Computer Science will rise significantly in the fall for the second consecutive year, according to the Registrar's current count of majors for the Class of 1993. The increase raises the possibility that the department may seek to limit future enrollment, possibly by reactivating its ban on transfer students.

Thirty-two percent (277) of the students who responded to the Registrar Offices survey last spring selected EECS, as compared to 27.3 percent last year. If the Class of 1993 continued to enroll in EECS at this rate, there will be 324 students in the department, not including the 21 transfer students who have also selected that department.

Several years ago, overenrollment in EECS was a major concern. The department said it

(Please turn to page 11)

Class of 1993 majors by school



Total number of returning students: 1014

Percentages are calculated based on the number of students who declared majors; 148 did not designate a major.

Tech graphic by Dave Watt

inside

Richard Stallman wins MacArthur foundation fellowship. Page 2.

Deutch appointed to President's foreign intelligence advisory board. Page 2.

Freshman book: *The Design of Everyday Things*, by Donald A. Norman '57. Page 2.

On the Town, July 18 - Aug. 31. Pages 6-7.

Stallman wins \$240,000 in MacArthur award

By Reuven M. Lerner

Richard M. Stallman, president of the League for Programming Freedom and a former employee of MIT's Artificial Intelligence Laboratory, has been awarded a \$240,000 fellowship by the John D. and Catherine T. MacArthur Foundation.

Although he has severed all official ties with MIT, Stallman still works in offices at the AI lab. He describes himself as a "squatter" on the MIT campus.

Stallman is best known at MIT for having written the Emacs word processor, but he is also gaining prominence as an outspoken critic of software patents and copyrights on user interfaces. He founded the LPF about one year ago as a "grass-roots political organization, to fight for the free-

dom of programmers to implement what the users want."

The LPF is a non-profit organization whose purpose is to warn the public about encroaching monopolies in the software industry, and to develop countermeasures against them, according to the LPF's corporate charter. The LPF's major activities at present involve lobbying against Lotus Development Corp., developers of 1-2-3, and Apple Computer Inc., because of the user-interface copyright infringement lawsuits they have filed against their competitors.

The MacArthur fellowships, known as "genius grants," are awarded annually to exceptionally talented and creative people. This year's recipients include artists, human rights activists,

mathematicians, and astronomers.

Prizes range from \$150,000 to \$375,000 in value, and include health insurance for the recipient. The grants have no strings attached and are disbursed over a five year period.

Lotus decision may spur activism

Stallman's activities concerning copyrights on software user interfaces will probably increase, in light of recent court decisions. Last month, Lotus Development Corporation won a suit for copyright infringement against Paperback Software. Paperback had marketed a program that mimicked the "look and feel" of 1-2-3, Lotus' best-selling spreadsheet. Software development will become increasingly difficult, Stall-

man said, if companies continue to enforce copyrights on the look and feel of their user interfaces. He often cites steering wheels and typewriter keyboards as examples of interfaces that succeeded only because everyone was allowed to copy and improve them.

Ironically, the Lotus victory might have helped the LPF grow in both size and strength. Stallman said that 40 of the 130 LPF members joined in the last month, quite possibly in response to the 1-2-3 lawsuit.

Free software for all who want it

Several years ago, Stallman started the Free Software Foundation, which he describes as a "charity for software development," to develop quality programs which can be distributed

free of charge. The FSF is currently working on a free replacement for the popular Unix operating system, called GNU (Gnu's Not Unix). The Emacs word processor, widely used throughout the Institute, is the best-known piece of the GNU project.

Stallman warns that copyrights and patents could spell the end for free software, since authors would have to pay royalties for programs which they were giving away. "It will make development of proprietary software much harder, and it will make development of free software effectively impossible," he said.

He is still unsure of how to spend the fellowship money. "The spirit of the thing is to do something that I would not have otherwise done," he explained. He does have some ideas in mind. Among them are a trip to the Soviet Union, a stereo system for the FSF office, and additional support for people who work for free software.

According to *The Boston Globe*, Stallman supports himself by working for two months a year as a \$260-an-hour computer consultant. He resigned from the AI Lab when he began work on the GNU project, so that MIT would never be able to lay claim to a copyright on his work. Stallman says that he has offered to pay rent for both his and the FSF office, but the AI Lab has simply let him stay there. "I offered to [pay rent], but they said it wasn't worth the effort of collecting it," he said.

Freshmen to learn design techniques

By Naomi Strubel

The incoming freshman class will be sent a copy of *The Design of Everyday Things*, by Donald A. Norman '57, in a continuation of the freshman book discussion project which began four years ago.

The book discussion was introduced into Residence/Orientation Week to "increase the interaction between faculty and new students, and also to introduce [students] to the intellectual side of life at MIT during R/O," said Moya Verzhbinsky, advisor to orientation in the Undergraduate Academic Support Office.

Another goal is to "balance the 'R' and 'O' of R/O," said Travis R. Merritt, associate dean for student affairs. The residence aspect tends to eclipse the academic orientation for many students, he added.

Faculty interest in the freshman book, especially from the School of Engineering, "has increased dramatically over previous years because it's a topic they feel comfortable with," added Verzhbinsky. The book, however, is intended to appeal to all freshmen, not only prospective engineers.

Cryptic showers and invisible doorknobs

The book examines design flaws in common articles and argues that when form takes precedence over function, artistic — but irritating or useless — products often result.

Norman uses real-life examples to illustrate his point. He describes the glass door to a posh hotel that is striking, but gives no clue as to how it opens. The book also suggests that showers should not need complicated instructions explaining how to use them. Understanding "the interface between product designer and user is important at MIT," because MIT produces so many designers, Verzhbinsky said.

Woodie C. Flowers SM '73, fa-

ther of the Introduction to Design (2.70) class and contest, will begin the program on Aug. 31 with a lecture on what makes a design good or bad. Afterward, armed with Polaroid cameras, paper, magic markers, and a campus map, freshmen will have three hours to locate something "ill designed, poorly planned, or left undone" on campus, Merritt said. Since freshmen will be new to campus, they will be more likely to notice flaws to which others have grown accustomed, he added.

They will return to a central location "with photo documentation, a tersely worded study of the difficulty or problem, and some suggestions as to how to fix it," Merritt said. There may be prizes for the most perceptive entry, or most feasible or silliest solutions.

Book night will be Sept. 6. Students will attend a discussion with the author, a popular professor at the University of California at San Diego, and then join discussions with their living groups. The program is supported by the faculty and administration, and will continue as long as there is sufficient funding.

Program began in 1987

The Class of 1991 was the first to participate in the book night program. During their R/O Week, students discussed *The Machine in the Garden*, by Professor Leo Marx. This initiated the freshman book discussion program with the theme of man's conflict with nature and technology. *Beloved*, by Toni Morrison, a Pulitzer Prize-winning work of fiction detailing the post-Civil War black experience, was discussed by the Class of 1992.

Last year freshmen received Jonathan Kozol's *Rachel and Her Children*, which examined the problem of homelessness in America. This was the first book sent to international students.

Deutch appointed to foreign intelligence advisory board

President George Bush announced on Monday the appointment of Provost John M. Deutch '61 to the President's Foreign Intelligence Advisory Board. According to the White House, the advisory board's mandate is to make an independent evaluation of the quality of foreign intelligence collected by agencies like the CIA. Most of the activities of the board are classified. The board reports directly to the president.

Former MIT President James K. Killian Jr. '26 was the first chairman of the FIAB, which was created in 1956 by President Dwight D. Eisenhower. Deutch said in an interview that he was "delighted" to have been asked to serve on the committee. The appointment lasts for two years.

Deutch attributed his appointment to having been "a member of the Defense Science Board for some time." He said that there was no connection between MIT and his new job, which will take "six or seven days a year."

DENZEL WASHINGTON • SPIKE LEE

TONIGHT

a spike lee joint

mo' better blues

OPENS IN THEATRES AUGUST 3

WEDNESDAY, JULY 25, 1990

8:00 PM

26-100

SPONSORED BY LSC

LIMITED SEATING
First Come, First Served

POLYMER STUDIES SEMINAR ANNOUNCEMENT

<p style="text-align: center;">WEDNESDAY, JULY 25th 1:30 pm</p> <p style="text-align: center;">ROOM 13-5095</p> <p style="text-align: center;">DR. H. G. BRAUN</p> <p style="text-align: center;">BASF CORPORATION WEST GERMANY</p> <p style="text-align: center;"><small>Will be presenting a lecture on</small></p> <p style="text-align: center;">"Morphology and Deformation of PP/EPR Blends"</p>	<p style="text-align: center;">FRIDAY, JULY 27th 1:30 PM</p> <p style="text-align: center;">ROOM 13-5095</p> <p style="text-align: center;">DR. T. BIRSHEIN</p> <p style="text-align: center;">USSR Academy of Sciences Moscow</p> <p style="text-align: center;"><small>Will be presenting a lecture on</small></p> <p style="text-align: center;">"THEORY OF BLOCK COPOLYMER"</p>
---	--

Edwin L. Thomas
Polymer Research Lab
Room 13-5095

news roundup

from the associated press wire

World

Philippine earthquake kills 108

Aftershocks are continuing in the Philippines in the wake of a major earthquake that jolted Manila and surrounding Luzon Island, killing at least 108 people. Civil defense officials say there's an additional report of about 80 people killed in a mountain resort, but that has not been confirmed.

An unrelated earthquake was also recorded off eastern Taiwan early Tuesday. Police say there were no immediate reports of injuries or damage.

Local

Court approves service tax

The State Supreme Court has issued a 4-3 advisory opinion that the broadening of the state sales tax to a wide variety of services is constitutional. Governor Michael Dukakis had sought the advisory opinion before signing a massive tax package aimed at helping to resolve the state's budget deficit.

Opponents of the tax plan pledged to continue their fight to repeal the tax on many of the services, if not all of them.

Business officials argue applying the sales tax to purchase such services as accounting, engineering and electricity could boost the operating costs of Massachusetts companies. They say it could further damage the state's weak economy and lead to layoffs and higher prices for consumers.

House Minority Leader Steven Pierce says the tax plan would be a serious economic blow to the state. The Republican candidate for Governor says it is not possible to jump start the economy with a dead battery.

House Speaker George Keeverian has indicated that the state will address some of those business concerns through special legislation from the Governor.

Specifically, the state is expected to create certain exemptions for small businesses and also address the tax on commercial use of energy.

The tax package provides other exemptions for businesses, such as for the first \$20,000 in bills for legal, architectural, accounting and engineering services.

Lawyers had been among the strongest opponents of the plan, saying it also would intrude on attorney-client privilege by turning lawyers into tax collectors.

The court's advisory opinion only answered the broad question of whether services could be taxed as commodities. This left the door open for challenges on other issues related to specific services.

Pro-choice activists urge vote on constitutional amendment

Pro-choice advocates urged Massachusetts state legislators today to take action on a constitutional amendment on abortion Tuesday. Associate Director Susan Newsom of the Planned Parenthood League of Massachusetts criticized lawmakers for taking procedural votes instead of addressing the amendment itself. She called the delaying tactics unprincipled and unethical. The House and Senate are scheduled to meet in a joint session tomorrow, which will also serve as a constitutional convention. Before the abortion measure can be placed on the ballot, it must first receive the support of 25 percent of two constitutional conventions. The earliest it could appear on the ballot is in 1992.

Nation

Judas Priest faces lawsuit in suicides

A judge in Reno, NV heard opening arguments Monday in the case of two families who are suing the heavy metal band Judas Priest and CBS Records. Relatives of two young men who shot themselves in 1985 say they were spurred on by subliminal messages on the group's *Stained Glass* album. Defense lawyers deny the presence of subliminal messages, and say it was the youths' troubled lives that contributed to the shootings. One youth died instantly; the other died three years later from complications.

Imported oil, cars add to trade deficit

The latest trade report exposes the nation's huge appetite for foreign oil and foreign cars. The commerce department says the trade deficit swelled to almost \$8 billion in May. A big surge in oil accounts for almost half of May's increase in imports. Cars and other manufactured goods account for the rest of the gain.

Isuzu and Ford cars perform poorly in federal crash tests

The Isuzu Trooper Two and the Ford Club Wagon received poor marks in federal crash test results. The Isuzu Amigo, the Chevrolet S-10 pickup, the BMW 325-I, and the Volkswagen Passat fared only slightly better. The National Highway Traffic Safety Administration rated the cars according to their potential for head injuries in an accident. Results indicate that drivers and front-seat passengers of Troopers and Club Wagons are also likely to suffer chest injuries in a collision.

Manhole Man terrorizes LA

They call him the Manhole Man. He has Los Angeles motorists dodging gaping holes in roadways — and is costing the city more than \$14,000. That is the price of replacing the 150 manhole covers lifted by the unknown culprit in the last week. One city official says the Manhole Man's motive is unclear, but the heister must be hefty because the hole covers weigh in at 100 pounds each.

Science

NASA hopes to launch two shuttles by October

The head of the space shuttle program says he hopes NASA will be able to launch two shuttles before October. William Lenoir says it will take some luck, and a lot depends on being able to fix fuel leaks on the shuttle Atlantis as it sits on the launch pad. Leaks in Atlantis and another shuttle forced the grounding of the shuttle program.

Common PMS treatment ineffective

The most widely prescribed treatment for pre-menstrual syndrome apparently does not do much good. A study by the University of Pennsylvania says that the use of progesterone did not significantly improve symptoms of the disorder in 168 women.

Senate passes cloture on civil rights bill

The US Senate has voted to impose a 30-hour limit on debate on a bill designed to combat discrimination in the workplace. It marks a major victory on Capitol Hill for civil rights advocates.

Senators voted 62-38 to limit debate and avert a filibuster by critics, who say the bill would result in the widespread use of hiring quotas by American companies.

Civil rights groups see the legislation co-sponsored by Senator Edward M. Kennedy (D-MA) as the remedy to five 1989 Supreme Court rulings they termed major setbacks to their cause.

Provisions of the legislation range from a ban on racial harassment in the workplace to punitive damages for victims of intentional discrimination.

Earth First activists will not be charged in explosion

Two members of the radical environmental action group Earth First will not be charged in connection with a pipe bomb explosion two months ago that injured them both. A defense lawyer says an Oakland, CA prosecutor told him that no charges would be filed. Earth First members Darryl Cherney and Judi Bari contend the explosion was in retaliation for their protests against the lumber industry.

Sports

LeMond now 2nd in Tour de France

Greg LeMond may be on the way to his third Tour de France victory. The two-time champ moved within five seconds of first place with his powerful ride over the mountainous 16th stage. LeMond says he "was not disappointed" with today's ride. And he says he feels well with five stages to go.

Weather

Hot, hazy, and humid . . .

A stagnant high pressure center located offshore will dominate our weather for the next few days. It will bring a southwesterly flow that will keep the air hot and humid. As most of the moisture will remain to our south, our only chance of precipitation will come in the form of thundershowers.

Wednesday: Hot, hazy, and humid. High 95°F (35°C). Light southwest wind 10-15 mph (16-24 kph).

Wednesday night: Warm and muggy. Low 74° (23°C).

Thursday: Continued hot, hazy, humid. High 93°F (34°C). Low 70°F (21°C).

Friday: More of the same. Hot, hazy, and humid. High 92°F (33°C).

Forecast by Yeh-Kai Tung

Compiled by Dave Watt and Lois Eaton

來利樓

Larry's Chinese Restaurant

302 Mass. Ave., Cambridge
(next to Father's Fore)

Luncheon Specials Orders to go or dining in
Served daily 11:30am - 5:00pm Delivery Service
Lunch special prices start \$2.95 Minimum Order \$10.00

10% Off Dinner
on every Saturday
Dining in only
(\$10 minimum)

Call: 492-3179 or 492-3170

Monday - Thursday 11:30am to 9:30pm

Friday - Saturday 11:30am to 10:00pm

Closed on Sunday

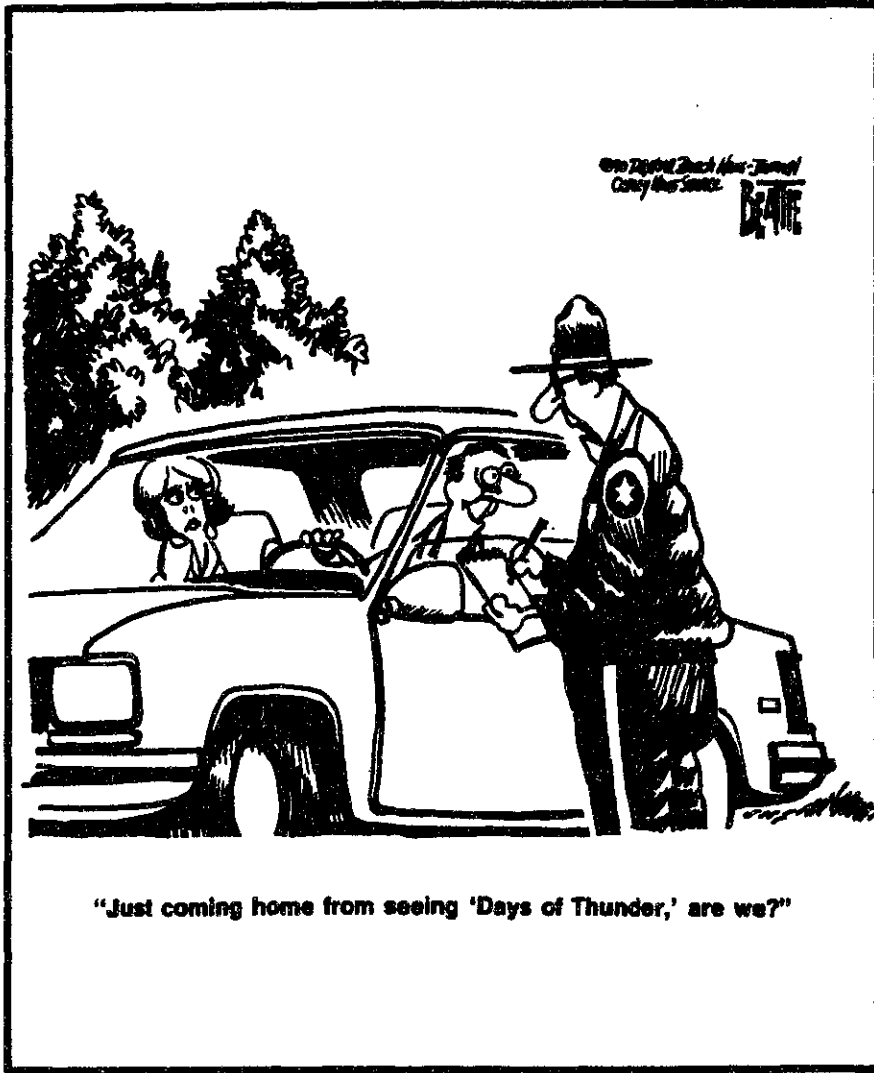
VOLUNTEER OPPORTUNITY!

WHEN WOMEN'S HEALTH EDUCATION NETWORK

The MIT Medical Department's Health Education Service is looking for undergraduate women with an interest in women's health to join the Women's Health Education Network (WHEN). After training, members of the network offer information about women's health and health-related decision-making to interested students and small groups on campus.

If you want to become a member of WHEN or would like more information, contact Anne Gilligan at 253-1316. Interviews and training will be conducted in September.

opinion



LETTERS TO THE EDITOR

Tech article misconstrues actions of Vest in Michigan

Anyone could guess that a guiding idea in journalistic writing is to present as many perspectives on a topic as possible. Sometimes this principle seems to set journalists scrounging for alternatives like grade-school children whose teacher has asked them to outline 10 of their own bad qualities. *The Tech's* citation of the Alternative News Collective ["Charles Vest next president," June 27] had the texture of just such a feeble clutch at an alternative. The only content of the last five paragraphs was activists at University of Michigan do not think Vest is a saint. The article gives a doubly-indirect quote: "People of color have had 'a lot of problems' with Vest." Now there's a slammer. Are people of color supposed to be immune from problems? Of course not; we are encouraged to

read into that that white people have fewer problems with Vest. But no evidence was given to support that claim. The sample problem given to support the first claim is, as presented, plain silly. Would you prescribe patriotic sensitivity training for a thief of a road-sign? Or gender sensi-

tivity training for a thief of a woman's Frisbee? No. Because scavenger-hunt vandalism is not treason or misogyny, and neither is it racism.

I'm disappointed to see activist trivia displace information in *Tech* articles.

Matthew Swift '91

No peaceful democracy in Colombia

I was very disappointed by the speech given by Colombian President Virgilio M. Barco '43 during Commencement on Monday, June 4.

First of all, he tried to compare very different political situations — the Philippines and Eastern Europe — with the peaceful transition voted on and accepted by the people of Chile in 1980. The so-called "no" vote is the same as any other democratic poll around

the world. It was made peacefully, without the extreme violence that exists in "democratic" Colombia.

Barco was right when he declared that his country is in a unique position. But it is unique because it is the only country in Latin America where organized crime murders presidential candidates, Supreme Court ministers, judges and journalists.

Fernando F. Mujica G

The Tech

Volume 110, Number 30 Wednesday, July 18, 1990

Chairman.....Deborah A. Levinson '91
Editor in Chief.....Prabhat Mehta '91
Business Manager.....Russell Wilcox '91
Managing Editor.....Marie E. V. Coppola '90

News Editors.....Andrea Lamberti '91
Reuven M. Lerner '92
Night Editor.....Daniel A. Sidney G
Opinion Editor.....Michael J. Franklin '88
Arts Editor.....Peter E. Dunn G
Photography Editor.....Kristine AuYeung '91
Contributing Editors.....Jonathan Richmond G
Irene C. Kuo '90
Lois Eaton '92

Advertising Manager.....Mark E. Haseltine '92
Production Manager.....Ezra Peisach '89

NEWS STAFF

Associate News Editors: Neil J. Ross G, Dave Watt G, Joanna Stone '92, Brian Rosenberg '93, Katherine Shim '93; Staff: Andrew L. Fish '89, Annabelle Boyd '90, Miguel Cantillo '91, Adnan Lawai '91, Chitra K. Raman '91, Gaurav Rewari '91, Eun S. Shin '91, Aileen Lee '92, Adam Chen '93, Karen Kaplan '93, Shannon Mohr '93, Michael Schlamp '93, Cliff Schmidt '93; Meteorologists: Robert X. Black G, Robert J. Conzemius G, Michael C. Morgan G, Greg Bettinger '91, Yeh-Kai Tung '93.

PRODUCTION STAFF

Associate Night Editors: Kristine J. Cordella '91, David Maltz '93; Staff: Sunitha Gutta '93, Jonathon Weiss '93, Aaron M. Woolsey '93.

OPINION STAFF

Pawan Sinha G, Bill Jackson '93.

SPORTS STAFF

Shawn J. Mastrian '91, David Rothstein '91.

ARTS STAFF

Staff: Frank Gillett G, Mark Roberts G, Manavendra K. Thakur '87, Michelle P. Perry '89, Jigna Desai '90, Elizabeth Williams '90, Paula Cuccurullo '91, David Stern '91, Alfred Armendariz '92, Sande Chen '92, Alejandro Solis '92, Kevin Frisch '93.

PHOTOGRAPHY STAFF

Associate Photography Editors: David H. Oliver '91, Chip Buchanan '92, Sean Dougherty '93, Douglas D. Keller '93; Staff: William Chu G, Andy Silber G, Ken Church '90, Mark D. Virtue '90, Sarath Krishnaswamy '91, Mauricio Roman '91, Marc Wisnudel '91, Jonathan Kossuth '92, Lerothodi-Lapula Leeuw '92, Paulo Corriea '93, Michelle Greene '93, Wey Lead '93, Matthew Warren '93, Jeremy Yung '93.

FEATURES STAFF

Taro Ohkawa '91, Chris M. Montgomery '93.

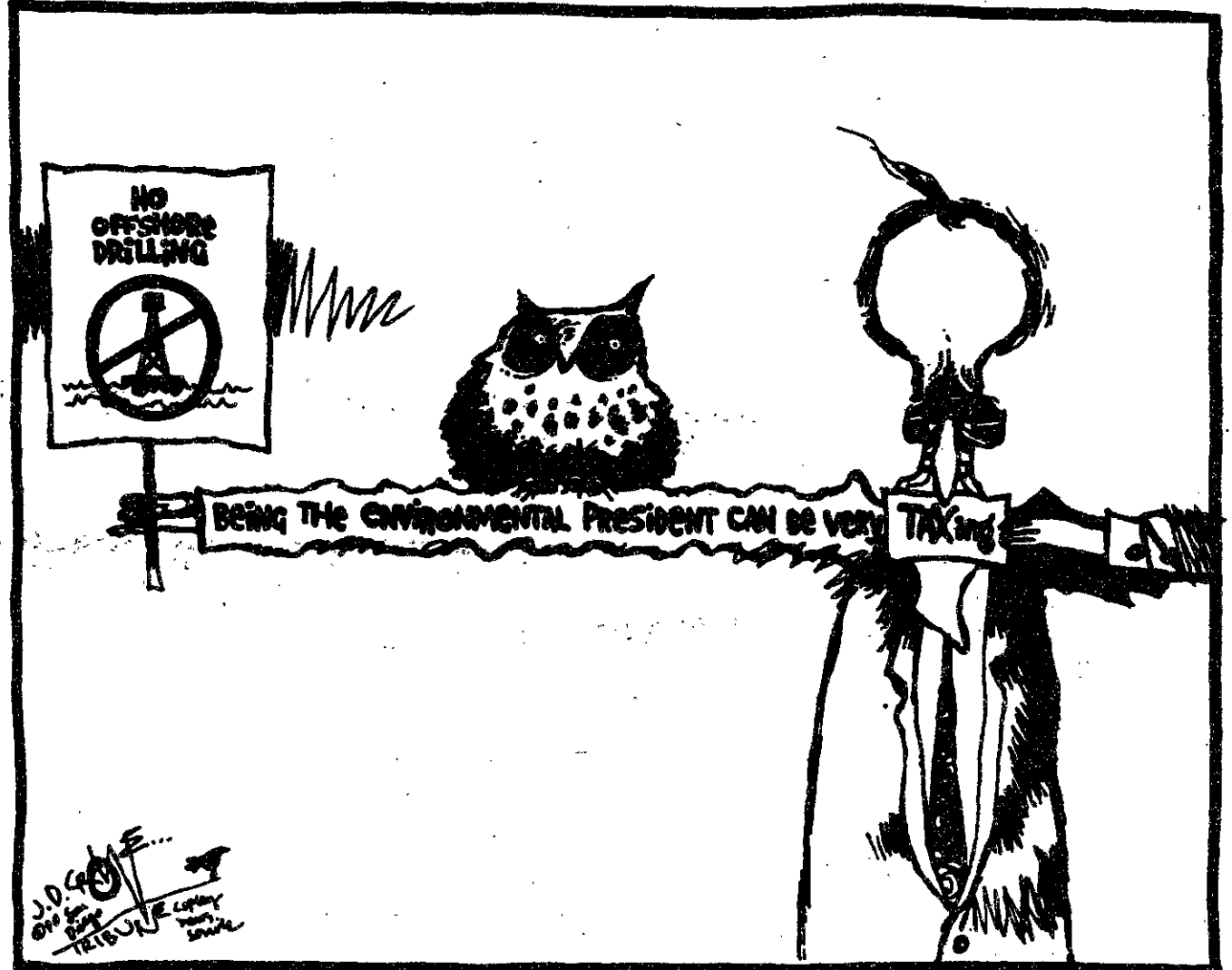
BUSINESS STAFF

Delinquent Accounts Manager: Jadene Burgess '93; Advertising Accounts Manager: Shanwei Chen '92; Staff: Ben Tao '93.

PRODUCTION STAFF FOR THIS ISSUE

Night Editor:.....Daniel A. Sidney G
Marie E. V. Coppola '90
Staff: Peter E. Dunn G, Michael J. Franklin '88, Linda Cordella '90, Reuven M. Lerner '92, Lois Eaton '92, Shanwei Chen '92, Kevin Frisch '93.

The Tech (ISSN 0148-9607) is published on Tuesdays and Fridays during the academic year (except during MIT vacations), Wednesdays during January, and monthly during the summer for \$17.00 per year Third Class by *The Tech*, Room W20-483, 84 Massachusetts Avenue, Cambridge, MA 02139-0901. Third Class postage paid at Boston, MA. Non-Profit Org. Permit No. 59720. POSTMASTER: Please send all address changes to our mailing address: *The Tech*, PO Box 29, MIT Branch, Cambridge, MA 02139-0901. Telephone: (617) 253-1541. FAX: (617) 258-8226. Advertising, subscription, and typesetting rates available. Entire contents © 1990 *The Tech*. *The Tech* is a member of the Associated Press. Printed by Charles River Publishing, Inc.



Editorials marked with an asterisk are written by *The Tech* Columnists and do not necessarily reflect the views of *The Tech* or MIT. Letters should be kept concise and to the point. Student Center or room 1000, Cambridge, MA 02139 or mailed to tech@tech.mit.edu

To write Free in the Fall...

CSB knows that you'll have all kinds of back to school expenses this Fall, so we'd like to give you something that's absolutely free.

A Free Checking Account.

There is no minimum balance required, no charge for basic checks, no per-check charge, and no service fees. All it takes to make it happen is a \$100 opening deposit.

More good news: your free checking comes with our X-Press 24[®] ATM Card and Overdraft Protection up to \$300. CSB ATMs are



part of the X-Press 24[®], CIRRUS[®], NYCE[®] and X-Press 24 CASH[®] networks, so your CSB ATM Card gives you access to cash at thousands of locations. Plus, you can use your card at participating Mobil Service Stations offering the point-of-sale system. And of course, when you use this card for transactions at CSB, ATM service is free* Applying for a CSB Free Checking Account is the right thing to do, so write now. When you return to school in the Fall, come to CSB to pick up your checks and CSB ATM Card.

*There is a minimal charge when you use your card at locations other than CSB.

Write now.

All right Cambridge Savings Bank, I want a Free Checking Account with ATM Card and Overdraft Protection. Please send me the information and application.

Name _____ Class Year _____

Permanent Home Address _____

City _____ State _____ Zip _____

Home Tel: () _____

Please Send To: Student Checking Accounts
Cambridge Savings Bank
1374 Massachusetts Avenue
Cambridge, MA 02138

CSB CAMBRIDGE SAVINGS BANK
Member FDIC/DIFM

Just right for you.

For information, call (617) 864-8700

Harvard Sq., Kendall Sq., Porter Sq. (Mass Ave.), Porter Sq. Shopping Center, Belmont Center

On The Town • On The Town • On The Town • On The Town • On The Town

Compiled by Peter Dunn

Wednesday, July 18

CONTEMPORARY MUSIC
Crosby, Stills & Nash perform at 7:30 at Great Woods, Routes 140 & 495, Mansfield. Tickets: \$19 and \$24. Also presented Wednesday, July 18. Telephone: (508) 339-3333.

Heavens Edge, Flesh, and Fracture perform in an 18+ ages show at 9 pm at Axis, 13 Lansdowne Street, Boston, near Kenmore Square. Telephone: 262-2437.

Clinic, Flying Nuns, The Peepers, and Scuf perform at T.T. the Bears, 10 Brookline Street, Cambridge, just north of MIT. Telephone: 492-0082.

One World performs at the Western Front, 343 Western Avenue, Cambridge. Telephone: 492-7772.

East of Eden and Vow of Silence perform at 9 pm at Nightstage, 823 Main Street, Cambridge, just north of MIT. Tickets: \$7. Telephone: 497-8200.

Screaming Coyotes perform at the Plough & Stars, 912 Massachusetts Avenue, Cambridge. Telephone: 492-9653.

Consolidated performs in an 18+ ages show at 10 pm at Man Ray, 21 Brookline Street, Cambridge. Telephone: 492-9545.

Scott "The Cat" Anderson, Ellie Marshall, Dave Barton, and Barrence Whitfield perform at Johnny D's, 17 Holland Street, Davis Square, Somerville, near the Davis Square T-stop on the red line. Telephone: 776-9667.

Martin Sexton, Jamie Schaler, Willard, and Al Peterson perform at 8 pm at Necco Place, One Necco Place, near South Station in downtown Boston. Tickets: \$3.50. Telephone: 426-7744.

THEATER



FILM & VIDEO

The Museum of Fine Arts begins its series *The Dawn of Sound* with Don Juan (1926, Alan Crosland) at 6:00 and its series *AIDS Activism on Film & Videotape* with *Common Threads: Stories from the Quilt* (1989, Robert Epstein & Jeffrey Friedman) at 8:15 in Remis Auditorium, 465 Huntington Avenue, Boston. Tickets: \$5 general, \$4.50 MFA members, seniors, and students. Telephone: 267-9300.

CRITICS' CHOICE
Race the Wind, a breathtaking encounter with sea, wind, and human ingenuity, and *The Last Emperor of China*, a 40-minute film epic on the founder of Imperial China, continue through October at the Harvard Omni Theatre, Museum of Science, Science Park, Boston, near the Science Park T-stop on the green line. *Race the Wind* runs Monday at 11:15, 1:20, 3:25, 5:30, 7:35, 9:40, and Tuesday at 11:15, 1:20, 3:25, 5:30, 7:35, 9:40. *The Last Emperor of China* runs Saturday every hour from 10:00 to 11:00 pm. Sunday, *The Last Emperor of China* runs at 10:00, 11:00, and 12:00 pm. Saturday at 10:00, Sunday at 9 pm. Tickets: \$6 general, \$4 seniors and children. Telephone: 623-6664.

The Harvard Film Archive continues its Monday/Wednesday series *Classics of American Cinema* with King Vidor's *Stella Dallas* (1937) and Josef von Sternberg's *Blonde Venus* (1932) at the Carpenter Center for the Visual Arts, Harvard University, 24 Quincy Street, Cambridge. Tickets: \$4 general, \$3 seniors and children, \$6/\$5 for the double feature. Telephone: 495-4700.

CRITICS' CHOICE
True performs at 9 pm at Nightstage, 823 Main Street, Cambridge, just north of MIT. Tickets: \$4.50. Telephone: 497-8200.

JAZZ MUSIC

The Winkler Swing Orchestra performs at 9 pm at the Regattabar, Charles Hotel, Harvard Square, Cambridge. Tickets: \$6. Telephone: 661-5000.



Tribe performs at Nightstage in Cambridge on Thursday, July 19.

Thursday, July 19

CONTEMPORARY MUSIC

John Mayall & The Blues Breakers, Eddie Kirkland & The Energy Band, Boston Baked Blues, and Arlo West Blues Band perform at the Channel, 25 Necco Street, near South Station in downtown Boston. Tickets: \$15. Telephone: 451-1905.

CRITICS' CHOICE
True performs at 9 pm at Nightstage, 823 Main Street, Cambridge, just north of MIT. Tickets: \$4.50. Telephone: 497-8200.

Ment Beat Manifesto and Bootsauce perform in an 18+ ages show at 9 pm at Axis, 13 Lansdowne Street, Boston, near Kenmore Square. Telephone: 262-2437.

Jamie Rubin and Kevin Connolly perform at 8 pm at Nouveau Club M-80, 969 Commonwealth Avenue, Boston. Telephone: 254-2054.

Widespread Panic, Shokra, and The Bardots perform at T.T. the Bears, 10 Brookline Street, Cambridge, just north of MIT. Telephone: 492-0082.

Shy Five performs at Johnny D's, 17 Holland Street, Davis Square, Somerville, near the Davis Square T-stop on the red line. Telephone: 776-9667.

Shelter, One Life, State of the Union, and Red Running perform at the Rat, 528 Commonwealth Avenue, Kenmore Square, Boston. Telephone: 247-8309.

Satta performs at the Western Front, 343 Western Avenue, Cambridge. Also presented July 20 and 21. Tel: 492-7772.

Madeline Hall & The Rhythm Hounds perform at the Plough & Stars, 912 Massachusetts Avenue, Cambridge. Telephone: 492-9653.

The Red Clay Ramblers perform as part of the Museum of Fine Arts' *Concerts in the Courtyard* series at 7:30 at the MFA, 465 Huntington Avenue, Boston. Tickets: \$10 general, \$8 MFA members, seniors, and students. Telephone: 267-9300 ext. 306.

Buzzsaw Frizbees, Ray Mason Band, Sean O'Connor, and And No Can Do perform at 8 pm at Necco Place, One Necco Place, near South Station in downtown Boston. Tickets: \$3.50. Telephone: 426-7744.

JAZZ MUSIC

Ahmad Jamal performs at 9 pm at the Regattabar, Charles Hotel, Harvard Square, Cambridge. Also presented July 20 to 22. Tickets: \$8 to \$12 depending on day. Telephone: 661-5000.

Monday, July 23

CONTEMPORARY MUSIC

Donna Summer performs at 7:30 at Great Woods, Routes 140 & 495, Mansfield. Tickets: \$18 and \$20. Telephone: (508) 339-3333.

CLASSICAL MUSIC
The Harvard Chamber Orchestra performs works by Handel, Schoenberg, and Beethoven at 8 pm in Sanders Theater, Harvard University, Quincy and Kirkland Streets, Cambridge. No admission charge. Telephone: 495-0311.

FILM & VIDEO

The Harvard Film Archive continues its Monday/Wednesday series *Classics of American Cinema* with *Now Voyager* (1941, Irving Rapper) at 6:00 and *Howard Hawks' Twentieth Century* (1934) at 8:30 at the Carpenter Center for the Visual Arts, Harvard University, 24 Quincy Street, Cambridge. Tickets: \$4 general, \$3 seniors and children, \$6/\$5 for the

Sunday, July 22

CONTEMPORARY MUSIC

2 Live Crew, Polson Clan, and TDS Mob perform at the Channel, 25 Necco Street, near South Station in downtown Boston. Tickets: \$12.50/\$13.50. Tel: 451-1905.

JAZZ MUSIC

CRITICS' CHOICE
True performs at 9 pm at Nightstage, 823 Main Street, Cambridge, just north of MIT. Tickets: \$4.50. Telephone: 497-8200.

CLASSICAL MUSIC

FILM & VIDEO
The Harvard Film Archive continues its weekend series *Homage to Anatole D...*

Friday, July 20

CONTEMPORARY MUSIC

Modern English, The Jack Rubies, Boo Radley, and The Regulars perform at the Channel, 25 Necco Street, near South Station in downtown Boston. Tickets: \$7.50/\$8.50. Telephone: 451-1905.

CRITICS' CHOICE
Poi Dog Pondering performs at 8 pm in an 18+ ages show and at 11 pm in a 21+ ages show at Nightstage, 823 Main Street, Cambridge, just north of MIT. Tickets: \$9.50. Tel: 497-8200.

CRITICS' CHOICE
Nine Inch Nails and Cxema perform in an 18+ ages show at 9 pm at Axis, 13 Lansdowne Street, Boston, near Kenmore Square. Telephone: 262-2437.

Ear Responsible, Killer Klowns, and Corner Stones perform in an 18+ ages show at the Paradise, 967 Commonwealth Avenue, Boston. Tel: 254-2052.

Dumptruck and The Lemmings perform at 8 pm at Nouveau Club M-80, 969 Commonwealth Avenue, Boston. Telephone: 254-2054.

Trip Shakespeare, The Hypnotics, and Tatoo Zic perform at T.T. the Bears, 10 Brookline Street, Cambridge, just north of MIT. Telephone: 492-0082.

High Function performs at Johnny D's, 17 Holland Street, Davis Square, Somerville, near the Davis Square T-stop on the red line. Telephone: 776-9667.

Joe, Big Wheel, Baldinos, and The Void perform at the Rat, 528 Commonwealth Avenue, Kenmore Square, Boston. Telephone: 247-8309.

The Kevin Connolly Band performs at the Plough & Stars, 912 Massachusetts Avenue, Cambridge. Telephone: 492-9653.

The Breakdown, Marydee Reynolds, and Honking Mallards perform at 8 pm at Necco Place, One Necco Place, near South Station in downtown Boston. Tickets: \$4.50. Telephone: 426-7744.

DANCE

The Harvard Summer Dance Center Performance Series presents *Beyond the Borders: A Concert of New Works* with Terry Creach/Stephen Koester, Bill Evans, Margaret Jenkins, and Rinde Eckert at 8 pm in Sanders Theater, Quincy and Kirkland Streets, Harvard Square, Cambridge. Also presented Saturday, July 21. Tickets: \$6, \$8, and \$12. Tel: 495-5535 or 495-5905.

JAZZ MUSIC

Ken Werner and His Trio perform at the Willow Jazz Club, 699 Broadway, Ball Square, Somerville. Also presented Saturday, July 21. Telephone: 623-9874.

CLASSICAL MUSIC

CRITICS' CHOICE
The Pittsburgh Symphony Orchestra, Leonard Slatkin conducting, performs works by Copland, Milhaud, and Ives at 8 pm at Great Woods, Routes 140 & 495, Mansfield. The Pittsburgh Symphony Orchestra also performs on July 21 (works by Weber, Barber, & Tchaikovsky) and July 22 (works by Ives, MacDowell, Barber, and Schumann). Tickets: \$5 to \$35. Telephone: (508) 339-3333.

FILM & VIDEO

The MIT Lecture Series Committee presents *Mad Max* at 7:00, *The Road Warrior* at 8:45, and *Beyond Thunderdome* at 10:30 in 10-250. Admission: \$1.50. Telephone: 258-8881.

CRITICS' CHOICE
The Wizard of Oz (1939) is presented at 8:30 at the Hatch Shell, Charles River Esplanade, Boston. No admission charge. Telephone: 727-9547.

The Museum of Fine Arts continues its series *Colombian Cinema: From Magic to Realism* with *The Spider Game* (1984, Leopoldo Pinzon) at 6:00 and *The Ambassador from India* (1986, Mario Ribero) & *Blue Lobster* (1954, Alvaro Cepeda Samudio) at 7:45 in Remis Auditorium, 465 Huntington Avenue, Boston. Tickets: \$5 general, \$4.50 MFA members, seniors, and students. Telephone: 267-9300.

CRITICS' CHOICE
The Regent Theater presents *Marcel Carné's Children of Paradise* (1944, France) at 7:30 at 7 Medford Street, Arlington Center, Arlington, on the #77 bus line from the Harvard T-stop. Also presented July 21 and 22 at 1:00, 4:30, & 8:00. Tickets: \$4. Telephone: 643-1198 or 876-6837.

The Harvard Film Archive continues its weekend series *Homage to Anatole D...* with Nagisa Oshima's *Empire of Passion* (1978, Japan/France) at 7 pm and *Le Coup de Grace* (1976, Volker Schlöndorff, Germany/France) at 9 pm at the Carpenter Center for the Visual Arts, Harvard University, 24 Quincy Street, Cambridge. Tickets: \$4 general, \$3 seniors and children, \$6/\$5 for the double feature. Telephone: 495-4700.

Saturday, July 21

CONTEMPORARY MUSIC

David Bowie performs at 7 pm at Foxboro Stadium, off Route 95. Also presented July 26. Tickets: \$27.50. Telephone: 720-3434.

CRITICS' CHOICE
Edgar Winter, Rick Derringer, Hearts On Fire, and The Response perform at the Channel, 25 Necco Street, near South Station in downtown Boston. Tickets: \$8.50/\$9.50. Telephone: 451-1905.

Blood Oranges, Uncle Tupelo, and The Waywards perform at T.T. the Bears, 10 Brookline Street, Cambridge, just north of MIT. Telephone: 492-0082.

The Tall Gators and The RPM's perform at Johnny D's, 17 Holland Street, Davis Square, Somerville, near the Davis Square T-stop on the red line. Telephone: 776-9667.

Dogzilla performs at the Rat, 528 Commonwealth Avenue, Kenmore Square, Boston. Telephone: 247-8309.

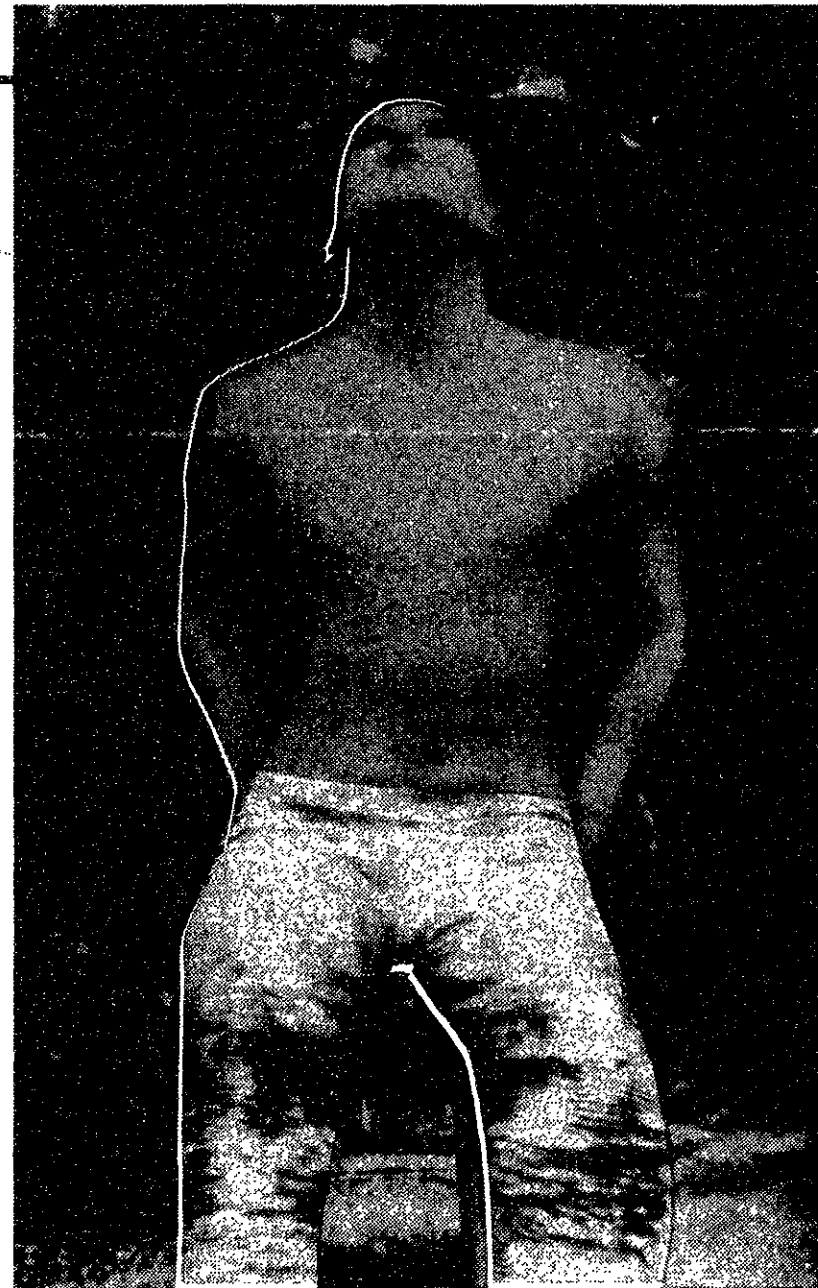
The Bristols perform at 8 pm at Necco Place, One Necco Place, near South Station in downtown Boston. Telephone: 426-7744.

FILM & VIDEO

The Harvard Film Archive continues its weekend series *Homage to Anatole D...* with *The Beautiful Captive* (1982, Alain Robbe-Grillet) at 7 pm and Nagisa Oshima's *Empire of Passion* (1978, Japan/France) at 9 pm at the Carpenter Center for the Visual Arts, Harvard University, 24 Quincy Street, Cambridge. Tickets: \$4 general, \$3 seniors and children, \$6/\$5 for the double feature. Telephone: 495-4700.

COMEDY

The MIT Lecture Series Committee presents *Comedy Sportz* at 8 pm in 10-250. No admission charge. Tel: 258-8881.



Nine Inch Nails performs at Axis in Kenmore Square on Friday, July 20.





Cats opens at the Shubert Theatre on July 31.

... with *The Beautiful Captive* (1982, Alain Robbe Grillet, France) at 7 pm and *Le Coup de Grace* (1976, Volker Schlöndorff, Germany/France) at 9 pm at the Carpenter Center for the Visual Arts, Harvard University, 24 Quincy Street, Cambridge. Tickets: \$4 general, \$3 seniors and children, \$6/\$5 for the double feature. Telephone: 495-4700.

... **CRITICS' CHOICE** ... The Regent Theater presents *That Obscure Object of Desire* (1977, Luis Buñuel, Spain) at 7:30 & 9:15 and *Women on the Verge of a Nervous Breakdown* (1988, Pedro Almodóvar, Spain) at 1:00 & 7:00 at the Regent Theater, Arlington Center, Arlington, on the 77 bus line from the Harvard T-stop. Also presented July 24 to 26. Tickets: \$4 (good for the double feature). Telephone: 643-1198 or 876-6837.

... **FILM & VIDEO** ... The Harvard Film Archive continues its Tuesday/Thursday series *Classics of European Cinema* with G. W. Pabst's *Three Penny Opera* (1931, Germany) at 6:00 & 8:30 at the Carpenter Center for the Visual Arts, Harvard University, 24 Quincy Street, Cambridge. Tickets: \$4 general, \$3 seniors and children. Telephone: 495-4700.



Baptiste (Jean-Louis Barrault) fawns over Garance (Arletty) in Marcel Carne's *Les Enfants du Paradis* (1945, France).

July 25 to August 31

CONTEMPORARY MUSIC
Figures On A Beach perform on July 27 at Nouveau Club M-80, 969 Commonwealth Avenue, Boston. Tel: 254-2054.

At Great Woods: *Bad Company* on July 25; *Fleetwood Mac* on July 26-28; *James Taylor* on August 2-4; *The Moody Blues* on August 5; *Tommy Page* on August 7; *Santana* on August 8; *Eric Clapton* on August 10 & 11; *Joan Armatrading* on August 12; *Bonnie Raitt* on August 13; *Sinéad O'Connor* on August 14 & 15; *Bob Weir & Rob Wasserman* on August 23; *Anita Baker* on August 24 & 25; *Soul II Soul* on August 26; *Van Morrison* on August 28; *Frank Sinatra* on August 29; *Kenny G.* on August 30; *Little Feat* on August 31. Located at Routes 140 & 495, Mansfield. Tickets: \$19 to \$36.50. Telephone: (508) 339-3333.

At Axis: *Sons of Angels* on July 25; *Hurricane* on August 1; *Slaughter Shack* on August 2; *Think Tree* on August 3; *Soundgarden Danzig* on August 15. Located at 13 Lansdowne Street, Boston, near Kenmore Square. Tel: 262-2437.

At Nightstage: *Tom Grant* on July 25; *Walter Beasley* on July 27; *Buddy Guy* on August 1; *Screamin' Jay Hawkins* on August 3; *Clarence "Gatemouth" Brown* on August 5; *John Gorka* on August 8; *Margaret Menezes* on August 9; *Danny O'Keefe* on August 11; *Ronnie Earl & The Broadcasters* on August 15; *Rebirth Jazz Band & The Wild Magnolias* on August 16; *David Bromberg Trio* on August 23; *Pieces of a Dream* on August 24; *Desert Hearts & M'iss Calzaretta* on August 29; *File & The Cowlicks* on August 30. Located at 823 Main Street, Cambridge, just north of MIT. Telephone: 497-8200.

At the Channel: *Pato Banton* on July 26; *Fahrenheit* on July 27; *Big Dipper* on July 28; *Wargasm* on July 29; *Burning Spear* on August 1; *Johnny Winter* on August 4. Located at 25 Necco Street, near South Station in downtown Boston. Telephone: 451-1905.

At the Paradise: *The Blue Nile* on July 25; *Poet* on July 27; *Heretic* on August 3; *Robert Fripp* on August 7; *Colin James* on August 8; *Max Creek* on August 27. Located at 967 Commonwealth Avenue, Boston. Telephone: 254-2052.

At T.T. the Bears: *The Zulus* on July 27; *Daisy Chain* on July 28; *Alex Clifton* on August 10. Located at 10 Brookline Street, Cambridge, just north of MIT. Telephone: 492-0082.

At Johnny D's: *Bim Skala Bim* on July 25; *Johnny Reno* on July 26; *Boogaloo Swamis* on July 27; *Defunkt* on July 28; *Junior Wells* on August 2; *Subdudes* on August 10; *Barence Whitfield and the Savages* on August 11; *Animal Train* on August 17. Located at 17 Holland Street, Davis Square, Somerville, near the Davis Square T-stop on the red line. Telephone: 776-9667.

At the Museum of Fine Arts: *The Klezmer Conservatory Band* on July 26; *Patty Larkin* on August 2; *Kristine Key* on August 9; *The Herb Pomeroy Big Band* on August 16. Located at 465 Huntington Avenue, Boston. Admission: \$10 general, \$8 MFA members, seniors, and students. Telephone: 267-9300 ext. 306.

FILM & VIDEO

The Gay and Lesbian Film and Video Festival from August 3 to August 31 at The Institute of Contemporary Art, 955 Boylston Street, Boston. Tickets: \$5 general, \$4 ICA members, seniors, and students. Telephone: 266-5152.

From the MIT Lecture Series Committee: *Romancing the Stone & Jewel of the Nile* on July 27; *Chinatown* on July 28; *Cocoon & Cocoon II* on August 3; *The Running Man* on August 4; *Rocky & Rocky II* on August 10; *Star Trek: The Series* on August 11; *Escape to Witch Mountain & Return from Witch Mountain* on August 17; *Harold and Maude* on August 18; *Weird Science* on August 24; *Silverado* on August 25. All screenings in 10-250. Admission: \$1.50. Telephone: 258-8881.

At the Regent Theater: *Raiders of the Lost Ark* (1981, Steven Spielberg) & *Blade Runner* (1982, Ridley Scott), July 27-29; *Wings of Desire* (1988, Wim Wenders, W. Germany), July 30 to August 2; *Streetcar Named Desire* (1951, Elia Kazan) & *Cat on a Hot Tin Roof* (1958, Richard Brooks), August 3-5; *The Seven Samurai* (1954, Akira Kurosawa, Japan), August 6-9; *8 1/2* (1963, Federico Fellini, Italy), August 15-16. Located at 7 Medford Street, Arlington Center, Arlington, on the #77 bus line from Harvard Square. Tickets: \$4 (good for double features). Telephone: 643-1198 or 876-6837.

At the Harvard Film Archive: *Mildred Pierce* (1945, Michael Curtiz) & *It Happened One Night* (1934, Frank Capra) on July 25; *La Grande Illusion* (1937, Jean Renoir, France) on July 26; *The Tin Drum* (1979, Volker Schlöndorff, W. Germany) & *Paris, Texas* (1984, Wim Wenders, France/W. Germany) on July 27; *The Sacrifice* (1987, Andrei Tarkovsky, Sweden/France) & *Wings of Desire* (1987, Wim Wenders, W. Germany/France) on July 28; *The Tin Drum* (1979, Volker Schlöndorff, W. Germany) & *Wings of Desire* (1987, Wim Wenders, W. Germany/France) on July 29; *The Philadelphia Story* (1940, George Cukor) on July 30; *Ivan the Terrible* (1944-46, Sergei Eisenstein) on July 31; *Vertigo* (1958, Alfred Hitchcock) & *Shadow of a Doubt* (1943, Alfred Hitchcock) on August 1; *Bicycle Thieves* (1949, Vittorio de Sica, Italy) on August 2; *Psycho* (1960, Alfred Hitchcock) & *The Lady from Shanghai* (1956, Orson Welles) on August 6; *Letter from an Unknown Woman* (1948, Max Ophüls) on August 8; *The French Connection* (1971, William Friedkin) & *Through a Glass Darkly* (1961, Ingmar Bergman, Sweden) on August 9; *The Dawn Patrol* (1930, Howard Hawks) on August 11 & 12; *On the Waterfront* (1954, Elia Kazan) on August 13; *North by Northwest* (1959, Alfred Hitchcock) on August 15; *That Obscure Object of Desire* (1977, Luis Buñuel, France/Spain) on August 16; *The Last Emperor* (1987, Bernardo Bertolucci) on August 17 & 18. Located at the Carpenter Center for the Visual Arts, Harvard University, 24 Quincy Street, Cambridge. Tickets: \$4 general, \$3 seniors and children, \$6/\$5 for a double feature. Tel: 495-4700.

At the Museum of Fine Arts: series *The Dawn of Sound*, Wednesdays at 6 pm through August 29; series *AIDS Activism on Film and Videotape*, Wednesdays at 8 pm through August 1; series *Action, Excitement: Thrills from Hong Kong*, Fridays from August 3 to 31; series *Unknown Soviet Cinema*, Wednesdays from August 8 to 29. Screenings in Remis Auditorium, 465 Huntington Avenue, Boston. Tickets: \$5 general, \$4.50 MFA members, seniors, and students. Telephone: 267-9300.



Miles Davis...

...and Harry Connick, Jr.

... perform in the Newport Jazz Festival on August 18 and 19.

EXHIBITS

Figuring the Body, examining the ways in which artists explore the body as the expression of various identities, is presented July 28 to October 28 at the Museum of Fine Arts, 465 Huntington Avenue, Boston. No admission charge with MIT ID. Telephone: 267-9300.

Contemporary Czechoslovak Posters, 63 posters from the 1960s to the 1980s, is presented July 31 to August 24 at the Art Institute of Boston, 700 Beacon Street, Boston. Gallery hours are Monday-Friday 9-4:40. No admission charge. Telephone: 262-1223.

The Emperor's New Clothes: Censorship, Sexuality, and the Body Politic, and installation by Richard Bolton, is presented July 31 to September 15 at the Photographic Resource Center, 602 Commonwealth Avenue, Boston. Telephone: 353-0700.

CRITICS' CHOICE ... *Robert Mapplethorpe: The Perfect Moment*, focusing on three traditional genres and his subject matter—the still life, the nude, and the portrait—is presented August 1 to October 4 at the Institute of Contemporary Art, 955 Boylston Street, Boston. Exhibit hours are Tuesday-Sunday 10-7 through August 7, and Tuesday-Sunday 10-9 through September 2 & October. Tickets: \$6 general, \$5 students, \$3 seniors. Tel: 266-5152.

JAZZ MUSIC

CRITICS' CHOICE ... The Newport Jazz Festival, featuring Harry Connick Jr., B. B. King, Miles Davis, Elvin Jones, and others, is presented August 18 and 19 at Fort Adams State Park, Newport, RI. Tickets: \$25 to \$30. Tel: (401) 847-3700.

CLASSICAL MUSIC

Mit Music at Noon: *Diane Grube Duo* on July 26; *Trombone Quartet* on July 31. Performances in front of the MIT Student Center. No admission charge. Telephone: 253-8773.

CRITICS' CHOICE ... The Boston Pops Esplanade Orchestra, with pianist Victor Borge, perform works by Wagner, Bernstein, Offenbach, Mason, May, Mendelssohn, Caméls-Borge, and Debussy on July 29 at Great Woods, Routes 140 & 495, Mansfield. The Boston Pops Esplanade Orchestra also performs on August 19 with pianist Michael Feinstein. Tickets: \$15 to \$27.50. Telephone: (508) 339-3333.

Composers in Red Sneakers presents works by Christopher Stowens, Jeffrey Fischer, Hermann Weiss, and Jean Hase at 8 pm in the Old Cambridge Baptist Church, 1151 Massachusetts Avenue, Harvard Square, Cambridge. Admission: \$5 general, free with red sneakers.

Ongoing Theater

Billy Bishop Goes to War, the musical about the Canadian WWI flying ace, continues through July 29 as a presentation by the Harvard-Radcliffe Summer Theater at the Loeb Experimental Theater, Loeb Drama Center, 64 Brattle Street, Cambridge. Performances are at 8:30 nightly. Tickets: \$8 general, \$5 seniors and students. Telephone: 495-4597.

The Fantasticks, starring Robert Goulet in the Tom Jones/Harvey Schmidt, world's longest-running musical, continues through July 28 at the Colonial Theatre, 106 Boylston Street, Boston. Performances are July 18-21 and 23-28 at 8 pm, July 18, 21, 25, & 28 at 2 pm, and July 22 at 3 pm. Tickets: \$27.50 to \$40. Telephone: 426-9366.

Forbidden Broadway 1990, the latest updated version of Gerard Alessandrini's musical comedy revue, continues indefinitely at the Terrace Room, Boston Park Plaza Hotel. Performances are Tuesday-Friday at 8 pm, Saturday at 7 pm & 10 pm, and Sunday at 3 pm & 6 pm. Tickets: \$17 to \$25 depending on performance. Telephone: 357-8384.

In the Boom Boom Room, David Rabe's

frightening look at the seedy underground of the big city, continues through July 28 as a presentation by the Harvard-Radcliffe Summer Theater at the Loeb Experimental Theater, Loeb Drama Center, 64 Brattle Street, Cambridge. Performances are at 8:30 nightly. Tickets: \$8 general, \$5 seniors and students. Telephone: 495-4597.

Iolanthe, by Gilbert and Sullivan, continues through July 29 at the Public Theatre, Christian A. Herter Park, Soldiers Field Road, Boston. Performances are Thursday-Sunday at 8 pm. Tickets: \$11 to \$15. Telephone: 720-1007.

The Kids Aren't Alright, a new version of Euripides' plays *Orestes* and *Iphigenia at Aulis*, written and directed by Bill Bryant '83, continues through August 4 at the Back Alley Theater, 1253 Cambridge Street, Inman Square, Cambridge. Performances are Thursday-Saturday at 8 pm and Sunday at 7 pm. Tickets: \$12 general, \$10 seniors and students. Telephone: 491-8166.

Marie and Bruce, Wally Shawn's down-and-dirty comedy about the horror and humor of getting through the day with the one you love, continues through July 29 at the New Ehrlich Theatre, 539 Tremont Street, Boston. Performances

are Thursday-Sunday at 8 pm. Tickets: \$15 general, \$10 seniors and student rush. Telephone: 482-6316.

Nonsense, Dan Goggin's comedy about the Little Sisters of Hoboken who stage a talent show to raise money to bury four of their number, continues indefinitely at the Charles Playhouse, 74 Warrenton Street, Boston. Performances are Tuesday-Friday at 8 pm, Saturday at 6 pm & 9 pm, with matinees Thursday at 2 pm and Sunday at 3 pm. Tickets: \$15.50 to \$26.50 general, half-price for seniors and students on Thursday matinee. Telephone: 426-6912.

Shear Madness, the long-running comic murder mystery, continues through July 28 at the Charles Playhouse, 74 Warrenton Street, Boston. Performances are Tuesday-Friday at 8:00, Saturday at 6:30 & 9:30 pm, and Sunday at 3:00 & 7:30 pm. Tickets: \$16 and \$19. Tel: 426-6912.

Wood Demon and All the Rest, a romantic farce based on Chekhov's *The Wood Demon*, continues through July 28 as a presentation of the Chekhov Theatre and Film Company at the Agassiz School Stage, 28 Sacramento Street, Cambridge. Performances are Friday and Saturday at 8 pm. Tickets: \$10 general, \$8 seniors and students. Telephone: 547-8688.

THEATER

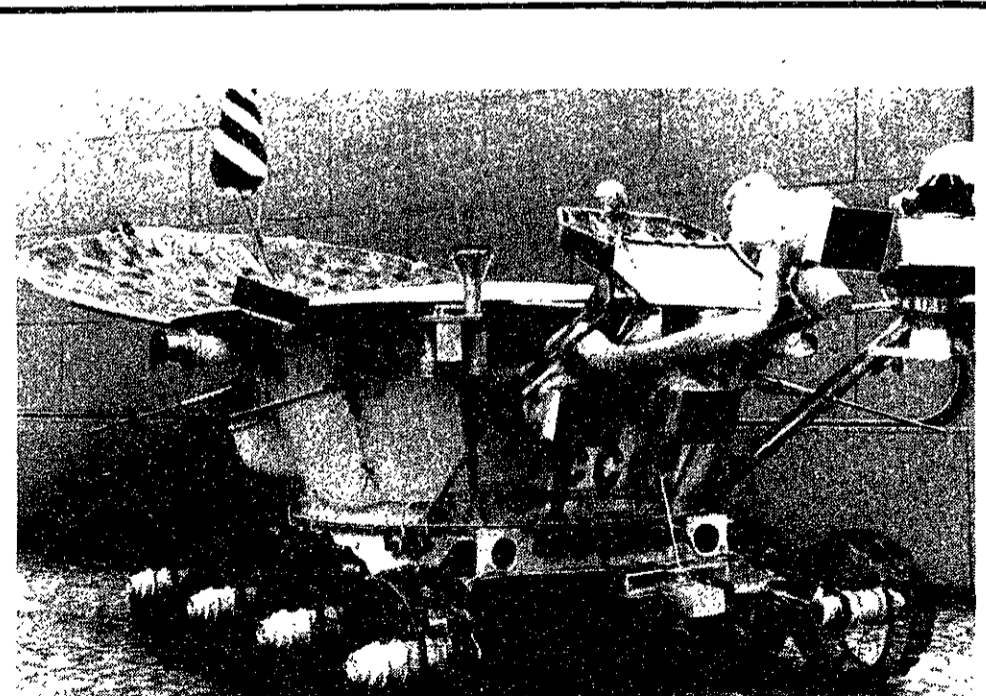
Photoplay, focusing on a young, depressed housewife who writes to a childhood friend in the army stationed in Vietnam, is presented on July 27 and 28 by No Theater at the Boston Film/Video Foundation, 1126 Boylston Street, Boston. Tickets: \$7 general, \$6 seniors and students. Telephone: 536-1540.

The Island of Anyplace, a theatrical parallel to Britten's *The Young Person's Guide to the Orchestra*, is presented July 29 to August 12 at the American Repertory Theatre, Loeb Drama Center, 64 Brattle Street, Cambridge. Performances are Saturday at 11:00, 2:00, & 7:30 and Sunday at 2:00. Tickets: \$15 general, children pay their age. Telephone: 547-8300.

Cats is presented July 31 to August 19 at the Shubert Theatre, 265 Tremont Street, Boston. Performances are Tuesday-Saturday at 8 pm with matinees on Saturday at 2 pm & Sunday at 3 pm. Tickets: \$25 to \$50. Tel: 1-800-233-3123.

DANCE

The Harvard Summer Dance Center Performance Series presents **To Dance Is to Live**, a collaboration between Julie Ince Thompson and Ruth Whitman, July 27 to 29 at the Freshman Union Studio Theater, Harvard University, 12 Quincy Street, Cambridge. Tickets: \$6. Telephone: 495-5535 or 495-5905.



Lunakhod 2, an automated Moon vehicle, is part of *Soviet Space*, at the Museum of Science through September 23.

Ongoing Exhibits

ON CAMPUS

Richard Bertman: Architect and Sculptor, works by the eminent Boston architect, continues through July 29 at the MIT Museum, 265 Massachusetts Avenue, Cambridge. Museum hours are Tuesday-Friday 9-5 and Saturday-Sunday 12-4. Admission: \$2 requested donation, free to MIT community. Telephone: 253-4440.

OFF CAMPUS

Visual Poetry: The Drawings of Joseph Stella, works by the American artist most identified with the dynamism, abstraction, and illusion of movement that characterized the work of the Italian futurists, continues through July 22 at the Museum of Fine Arts, 465 Huntington Avenue, Boston. No admission charge with MIT ID. Telephone: 267-9300.

Taliah Lempert, Felix McKinney—Recent works, representational and figurative paintings, continues through July 28 at Gallery Schmalley, 443 Albany Street, Suite #401, Boston. Gallery hours are Wednesday-Saturday 12-7. Telephone: 426-4188.

Pierre Bonnard: The Graphic Art, surveying the rich and prolific contributions from 1890 to 1930 of one of the masters of French post-Impressionism and a founder of the Nabis, continues through July 29 at the Torf Gallery, Museum of Fine Arts, 465 Huntington Avenue, Boston. No admission charge with MIT ID. Telephone: 267-9300.

Unlocking the Hidden Museum: Riches from the Storerooms, presenting nearly 200 works of art from the Museum of Fine Arts collections, many rarely seen by the public, continues through September 16 at the MFA, 465 Huntington Avenue, Boston. No admission charge with MIT ID. Telephone: 267-9300.

CRITICS' CHOICE ... **Soviet Space**, the world premiere of a new exhibition exploring the history of the Soviet Union's space program, assembled in Moscow in association with Glavkosmos, continues through September 23 at the Museum of Science, Science Park, Boston, near the Science Park T-stop on the green line. Exhibit hours are daily 9-5. Admission: \$6 adults, \$4 seniors and children, no admission charge with MIT ID. Telephone: 523-6664.

Upcoming Events

The Bolshoi Ballet at the Wang Center, September 6 to 13 (*Ivan the Terrible* on September 6 and 7, *Swan Lake* on September 8 and 9, *Bolshoi Highlights* on September 11, 12, & 13). M. Butterfly at the Colonial Theatre, September 25 to October 14.

Did you hear about your roommate?

AT&T ACUSSM Service at MIT!

Here's a roommate that'll save you money, keep you in touch with family and friends and won't borrow that favorite sweatshirt of yours.

AT&T offers campus residents quality and convenience at a cost savings with AT&T ACUS Service.

- **Free Sign-up,
No Deposits or Fees**
- **Personal Security
Codes (PSC)**
- **Individual Bills**
- **Credit Limits**

Campus residents: You will need to stop by the AT&T location on campus to pick up your account packet and PSC card between September 10 - 12. Look for specific locations when you arrive in the fall.

***Pick up your packet and start the semester
with savings that'll make the grade!***

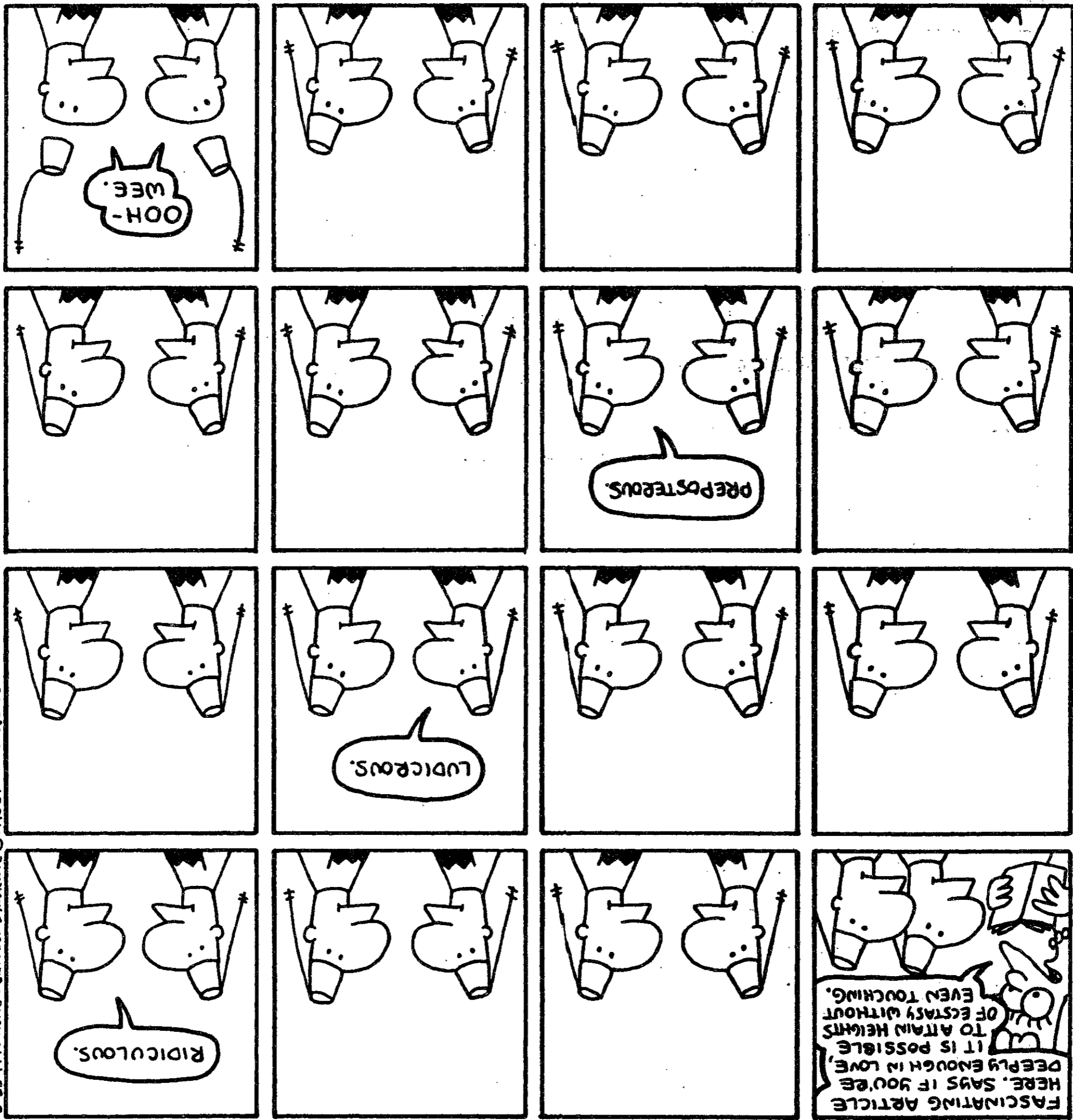
Please call
1 800 445-6063
for more information.



comics

©1990 BY
MATT
GREENING

LIFE IN
HELL



©1990 BY MATT GREENING

POWER UP!

NEW! Panasonic Notebook

Model D3

- 8 Mhz
- Weight is Only 6.2 lbs (without battery)
- Real-Time Built-In Clock
- 84 Key Keyboard with Embedded 10-Key Pad
- Charge/Low-Battery Indicator
- MS-DOS 3.3
- GW-Basic and Utilities

Model D3/SX

- 16 Mhz
- 1 MB RAM
- 1.44 Floppy Drive
- 640 x 400 resolution
- Includes Battery and AC adaptor
- Parallel, Serial, External, Floppy & Mouse Port

Model D3/MC

- VGA
- 16 Mhz
- DOS 3.3
- 1 MB RAM
- Single 1.44 MB Floppy
- VGA Video
- DOS 3.3
- 101 Keyboard
- Micro Channel Bus

Model D3/25

- 386 25 Mhz w/4 MB RAM
- 82386-25 Cache Controller
- 1 MB RAM
- VGA Video
- DOS 3.3
- 101 Keyboard
- 1.2 MB Floppy

A Month in the Life of
LSC

7/20 Mad Max (7:00)
Road Warrior (8:45)
Beyond Thunderdome (10:30)
7/21 Comedy Sportz (8:00)
FREE!!!
7/25 Mo' Better Blues (Free! 8:00 in 26-100)
7/27 Romancing the Stone (Free! 8:00 in 26-100)
7/28 Jewel of the Nile (9:00)
Chinatown (8:00 in 26-100)
8/3 Cocoon (7:00)
Cocoon II (9:15)

8/4 The Running Man (8:00)
8/8 Pump up the Volume (Free! 8:00 in 26-100)
8/10 Rocky (7:00)
8/11 Rocky II (9:15)
8/11 The Menagerie (7:00)
8/11 The Ultimate Computer (9:15)
8/17 Escape to Witch Mountain (7:00)
Return from Witch Mountain (9:00)
8/18 Harold and Maude (8:00)

290 MAIN ST. IN KENDALL SQ. UNDER REBECCA'S CAFE
M-F 8-6, SAT 10-4, 576-1133

FREE Microsoft Windows 3.0! With the purchase of any Leading Edge computer.

Volunteer Opportunities

Margaret Fuller House

This neighborhood house, off Main St. and behind Bertucci's, develops programs and services to improve the quality of life for community residents. Have fun with:

a) 11-14 year-olds. Field trips, swimming, etc., anytime from 9:00 to 3:30. Contact: Gloria Smith, Director, at 547-4680.

b) 12-15 year-olds. Swimming, camping, field trips, etc.. Anytime from 3:30 to 9:00 p.m. Contact: Gloria Smith, Director, at 547-4680 or Scott Ikeda at 354-6271.

Fair Foods

Fair Foods ensures that everyone has enough nutritious food to eat. Help of all kinds needed: plant trees, compost, etc. Contact: Nancy Jamison at 282-0728.

Cambridge YWCA

The YWCA is a non-profit organization that serves the community, especially women, with low-cost housing, programming and a homeless family shelter. Help is needed to prepare their building for remodeling. Contact: Pat Costello at 491-6050.

Food Not Bombs

Every Sunday, Food Not Bombs serves meals to the homeless on the Cambridge Common. People are needed to help cook and clean up from noon to 7:00 p.m. Contact: Nancy Jamison at 282-0728.

Rosie's Place

"Rosie's Place is a community seeking to empower, enable, and enhance the lives of poor and homeless women." Serve a meal to these women and their children. Contact: Emily Houh at 442-9322 or 225-7362.

Arnold's Bakery

Donate an hour of your time to help load bread onto trucks, 7:30-8:30 a.m. at the end of Windsor St. in Cambridge. Loaders are needed Monday, Thursday, and Saturday mornings. Contact: Nancy Jamison at 282-0728.

Cambridge Recycling Center

The Center needs people to work at two dropoff sites on the second Saturday of each month (next date: August 11). Contact: Recycling Hotline at 498-9078.

Tutoring Plus

This program, located in the Margaret Fuller House, provides one-on-one tutoring, Big Brother/Big Sister placements, adult tutoring, etc. Contact: Ann Budner at 547-7670.

Children's Hospital

Can you juggle, do magic tricks, play an instrument, sing, or put on a puppet show? Give a live performance to a rapt and appreciative audience at Children's Hospital. Contact: Barbara Feeney at 735-7885.

JFK Library Foundation

Thirty volunteers needed on September 22nd from 11-3 to help run a family-oriented all-day festival to benefit Ronald McDonald Children's Charities. Contact: Jennifer Cluncl at 436-9986.

Compiled by the MIT Public Service Center, rm. 3-123, x3-0742.

PSC
 MASSACHUSETTS INSTITUTE OF TECHNOLOGY
 Public Service Center

With the only Parametric feature-based, solid modeling CAD/CAM technology, PTC is growing at record speed.

Catch us while you can.

Pro/ENGINEER from Parametric Technology Corporation has become the driving force in the industry. A revolutionary software system that generates mechanical designs at lightning speeds, Pro/ENGINEER represents a fundamental breakthrough in CAD/CAM technology. And now you can become a part of the company that made it all happen. Our dynamic growth has currently created opportunities for the following professionals:

SOFTWARE ENGINEERS

The successful candidate will have a BS/MS, strong computer science background in applications programming, basic knowledge of vector algebra and analytic geometry. Mechanical engineering background a plus, but not required.

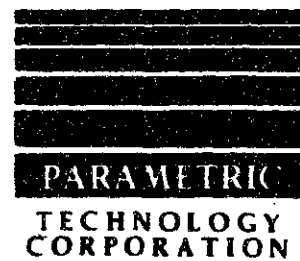
APPLICATION ENGINEER

The professional we seek will be responsible for application of our software products to customers' mechanical design products, post-sales support of the product, including presentation and demonstration of the product, both in-house and in the field. Duties will include software testing, mechanical application benchmarking, and providing the highest level of support and consultation to our strategic customers. The successful candidate must have a BSME (or higher), and 2 years of experience in CAD software and mechanical design.

TECHNICAL WRITER

Experienced technical writer to document rapidly developing products. Requires BS in ME or related field, 2-3 years experience in an engineering environment. Desktop publishing, Macintosh and Unix knowledge desirable.

Catch the momentum of a fast-growing company. PTC rewards its employees with a stimulating work environment, excellent salaries, and good benefits. If you're looking for a champion career, send your resume to Sonny Dunn, Personnel Manager, Parametric Technology Corporation, 128 Technology Drive, Waltham, MA 02154. PRINCIPALS.



Hey, do you want a beer?

Before answering, ask some more questions.

- Do I have enough money with me to take a taxi home tonight?
- When was the last time I ate?
- Do any of my friends know where I am?

These are the kind of questions that GAMMA wants you to be asking yourself everytime you drink.

GAMMA is a group of students who believe that MIT students can have fun and use alcohol responsibly. We want to make the use of alcohol at MIT a more positive experience by providing education and support in the following areas:

- Risk Management and Liability Issues (how to party safely)
- Social Options for Non-drinkers (how to have fun without being trashed)
- The Myths and Realities of Alcohol Use (how to drink responsibly)

If you would like to find out how you can help, or want to give us your suggestions please contact:

Sallie Israelit
 x5-8584

Anne Gilligan, advisor
 x3-1316, W20-547

GREEKS **A**DVOCATING **M**ATURE **M**ANAGEMENT OF **A**LCOHOL

Student dies after fall from balcony

(Continued from page 1)

David." "At the time he was chosen president . . . we had just arrived, and we didn't really know him at all. But as soon as we saw him in action, I was very impressed with him as a leader."

"He put considerable responsibility on his own shoulders for being a spokesman for the house," Higginbotham added.

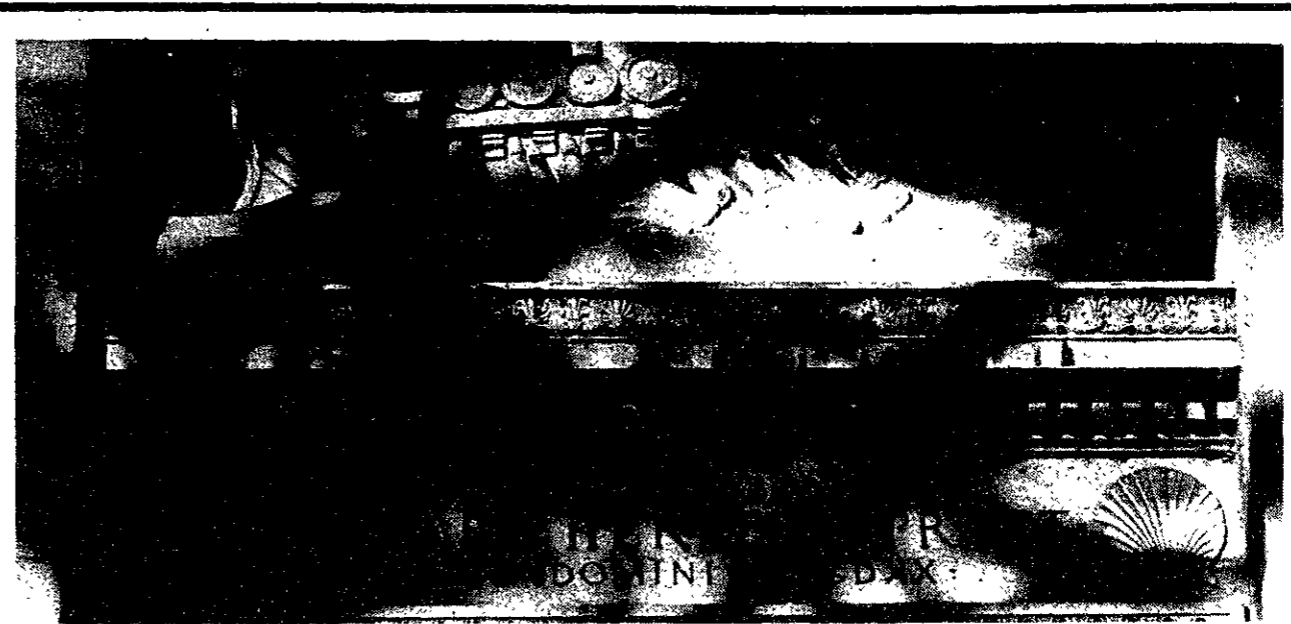
Fellow students were obviously shocked by his death. "Everyone in the dorm knew him," said Amie J. F. B. Strong '92.

"You can think of a couple of people [who are] reckless — Dave

was not one of them," said Nicole D. Delaney '92.

Libby Turowski, one of the graduate tutors in the entry where Moore lived, called his death "a real tragedy." "He was one of the students that dropped by, and brought other students by," she added.

Delaney said that "we would like to have a memorial service in the fall, so that his friends from other dorms can come." She suggested that students might place a memorial plaque in the courtyard, where Moore often relaxed on the swing.



Ken Church/The Tech

Sculpture of ancient galley plying the stone waves adorns doors above the model ship museum in Building 5 (Pratt School).

Engineering attracts majority

(Continued from page 1)

wanted an enrollment of about 270 students a year. To lower the demand, which peaked at 380 student in 1983, the department did not accept transfer students. Additionally, the Departments of Mathematics and Physics added degree programs to draw students away from EECS, and the Committee on Admissions and Financial Aid considered (but never implemented) a policy limiting the number of MIT freshmen who could chose the field.

Yet, as enrollment in EECS dropped in the late 1980s (169 members of the Class of 1990 were in the department), concern over overenrollment waned. Last year, the department began accepting transfer students to the department again. These new enrollment figures may change that policy.

The School of Engineering attracted 69.1 percent of those members of the Class of 1993 who declared majors. The figure represents a small increase from 1989 when 66.3 percent of declared majors were in engineering.

The number of freshmen who declared majors in EECS was almost 100 more than the combined total of the second and third place departments — mechanical engineering and aeronautics and astronautics. Mechanical engineering showed a small dip from last year, while aeronautics and astronautics ex-

perienced a slight rise in its share of the class, compared to the final numbers for the Class of 1992's majors released in October 1989.

Chemical engineering attracted 61 majors (6.3 percent), compared to 56 (6.5 percent) last year. Nuclear engineering and material science and engineering each experienced very slight decreases in their percentages of the outgoing freshman class. The percentage of sophomores choosing civil engineering increased from 2.8 percent to 3.5 percent of the class, after a substantial 40 percent drop from 1988 to 1989.

About 21 percent of the Class of 1993 (182 students) who selected departments chose to major in the School of Science — a moderate decrease from last year's 22.5 percent. This continues a downward trend from 1988, when 25.2 percent of the incoming students chose the School. The Departments of Mathematics and Biology were less popular; physics, chemistry, and earth, atmospheric and planetary sciences showed an increase in enrollment.

The School of Humanities and Social Science registered an increase in its percentage of majors — to 3.8 percent from last year's 3.2 percent. Economics showed a modest increase, while political science had a decline.

The number of students entering the School of Architecture and Planning increased to 30 from last year's 25. The Depart-

ment of Cognitive Science, which is in the Whitaker College of Health Sciences, Technology, and Management, has so far attracted 7 new students, a slight decrease from last year. The Sloan School of Management drew 20 majors, down from 31 last year.

One hundred forty-eight of the 1014 outgoing freshmen have yet to choose a department. Students are not required to designate majors until the end of the sophomore year.

Attention: Government homes from \$1 (U - repair). Delinquent tax property. Repossessions. Call (602) 838-8885 Ext. GH4058.

Lost in Central Sq., Cambridge July 4. Medium size white and golden brown dog, family pet for 13 years, named Joshua, hard of hearing, no tags or collar when lost. Last seen July 5 on M. I. T. campus. Please call 527-4949 / 332-6800.

Attention: Postal Jobs! Start \$11.41/hour! For application info call (602) 838-8885, Ext. M-4058, 6am - 10pm, 7 days.

Somerville: 3 bdrm., near sch. and trans., no util., no pets. Ref. \$400 per person, some furn. avail. (opt.) free use. Aft. 4:30 776-0009.

Attention: Government seized vehicles from \$100. Fords, Mercedes, Corvettes, Chevys. Surplus Buyers Guide. (602) 838-8885, Ext. A-4058.

House Share — Cambridge luxury condo. Seeking house-share; walk to Harvard & Inman Squares; sunny; wood floors; large LR/DR; A/C; laundry, all appliances; enclosed back yard; easy parking. \$500/month. Available August. Applicants over 25 preferred. 864-8316.

Frosh SATs up slightly

(Continued from page 1)

cent of the class, is a slight decrease from last year's 33.5 percent.

Fewer underrepresented minorities admitted

The percentage of underrepresented minorities declined from 14.5 percent last year to 13.8 percent this year. The 151 underrepresented minorities expected to enroll include seven Native Americans, 21 Puerto Ricans, 69 blacks, and 54 Mexican Americans. The rest of the class con-

sists of 19 other Hispanic Americans, 290 Asian Americans, 563 whites, and 75 international students.

Applications to MIT declined by five percent from last year. This drop followed a national pattern with most other colleges reporting a five to ten percent decrease in applicants, said Director of Admissions Michael C. Behnke. Stanford reports a 13 percent decline, and Harvard seven percent. Behnke attributed the decline to fewer high school graduates and students taking the SAT.

Advanced Machine Technology, Inc. is a small MIT startup company specializing in the design and manufacture of hardware and software for data acquisition and multi-axis servo control systems. We are looking for a self-motivated and independent Microsoft "C" programmer with practical experience in real-time servo control and user interfaces.

Candidates must have practical hands-on laboratory experience. A degree in ME or CS/EE is preferred. Commission/equity compensation is possible. Send resume to 545 Concord Ave, Cambridge, MA 02138.

ARA defends summer dining policies, hours

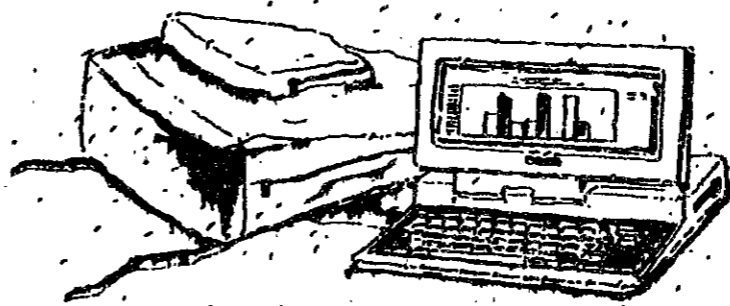
(Continued from page 1)

things, and they have not had cooperation in return," she said. "The only way this will work is if people stop treating china plates as plastic," she added.

She also praised ARA for moving so quickly to establish a long-term recycling plan. She noted that Leo "has been very responsive to our requests. We talked to them about a recycling program in January, they had a plan in place by March." By contrast, Physical Plant took nearly eighteen months to put together their own program, she added.

classified advertising

Insure your investment...invest in Toshiba



Toshiba takes the workload off of your back and puts the solution in your lap!



Call DSR, Inc. for details on your educational discount!
1-800-326-0037



CAMEX

75 KNEELAND STREET, BOSTON, MA 02111 • 617-426-3577

SYSTEMS ADMINISTRATOR

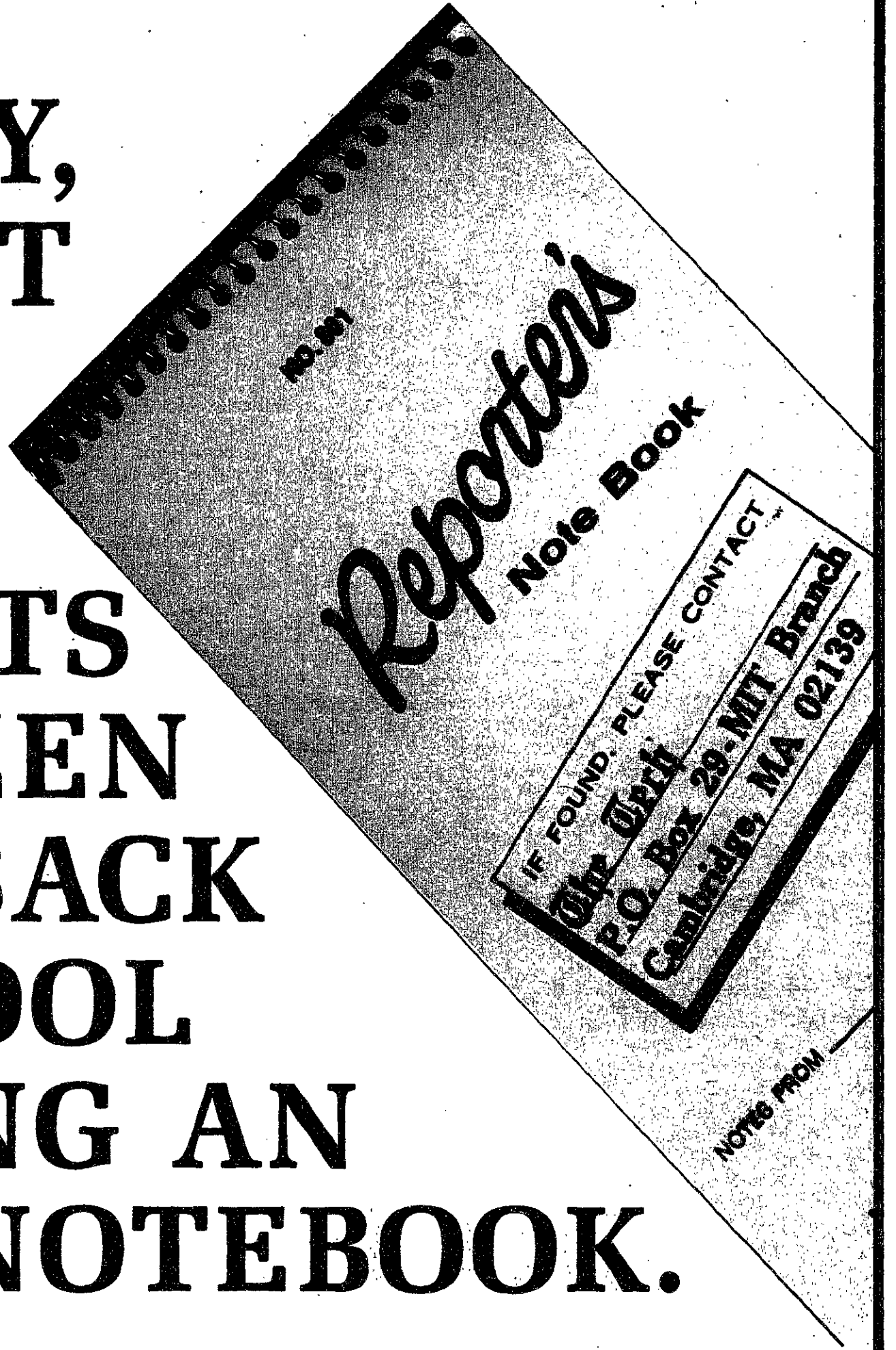
This systems administrator will be primarily responsible for maintenance and improvement of the performance and reliability of our SUN file servers. Will provide support for R & D in the areas of workstation system configuration and maintenance. Evaluate the needs of these workstations and file servers and make recommendations for software and hardware changes. Provide general UNIX systems support to Engineering Test and Company employees.

We require four years of systems administration experience with UNIX and a bachelor's degree in Computer Science. The successful candidate will be energetic, well-organized and adaptable to new technologies and challenges.

If you are interested in this opportunity, please mail your resume to:

Carolyn White-Krueger
Camex, Inc.
75 Kneeland Street
Boston, MA 02111

EVERY FALL FOR OVER A CENTURY, A SELECT GROUP OF MIT STUDENTS HAVE BEEN GOING BACK TO SCHOOL CARRYING AN EXTRA NOTEBOOK.



HERE'S HOW YOU CAN JOIN THEM.

We're **The Tech**, MIT's oldest and largest newspaper, and this fall we'll have openings for freshmen, upperclassmen, and graduate students in the following departments: **News, Sports, Arts, Opinion, Photography, Production, and Business.** Previous experience is welcome but not essential.

BUT WE'RE MORE THAN JUST A NEWSPAPER.

The Tech is also MIT's oldest student activity, and that means organized (and disorganized) events like Sunday night pizza, ice cream tastings, and softball games against other college papers, as well as a generally fun place to hang around.

SO WHY NOT STOP BY?

If you think you might be interested, or even if you just want to see what we do, visit our booth at the Activities Midway this September. Or watch for announcements of our fall Open House. Or drop by our offices on the fourth floor of the Student Center any Sunday, Monday, Wednesday, or Thursday night this fall. We're looking forward to meeting you!