



Jeremy Yung/The Tech
MIT students were treated to a Native American dance performance at the International Fair. See photo essay page 18.

AEPi plans to reorganize 3 students join national to recruit new people

By Linda D'Angelo

Three undergraduates, in conjunction with the national organization of Alpha Epsilon Pi, will hold an open recruitment meeting for a new MIT chapter of AEPi tonight. Robert A. Rich '90, David E. Borison '91 and Steven H. Baden '92 will be responsible for selecting members for the new chapter, Rich said.

Following a recommendation of the Interfraternity Council, MIT withdrew recognition of AEPi as an independent living group several weeks ago. The national discharged 45 of its 55 Mu Tau brothers earlier this term. Of the 10 members invited back by the national, Rich was the only one to remain.

Rich subsequently moved out of the house, after "specific incidents of verbal and physical" harassment. When he informed the house government about these incidents, no action was taken, he said.

M. Travis Stier '91, president of the chapter before the reorganization, had no comment on these allegations.

A Jewish fraternity

Fifteen undergraduates have since expressed interest in joining the new chapter, Rich said.

While the national is historically Jewish, "anybody can rush to

become a part of AEPi," Baden said. Both Baden and Borison dismissed the claims of discharged brothers that the reorganization was an attempt to make the MIT chapter more Jewish.

"We aren't going to rush only Jewish brothers," Borison said. "We are going to consider anyone who wants to join on an equal basis."

But Borison added that "the people interested in joining will be mostly, but not all, Jewish." Borison noted that all but one or two of the initial 15 interested in AEPi were Jewish.

"Just by the tone of their recruitment process," IFC President Miles Arnone '91 argued, the new chapter "is going to become a very self-selected group."

By encouraging only Jewish students to join, Rich, Borison and Baden "may never actually

have to reject any non-Jewish members," Arnone noted.

The posters publicizing today's recruitment meeting, offering prospective students "the opportunity to interact with other Jewish men," was indicative of the recruitment process, Arnone said.

Arnone was also concerned about a statement made by AEPi regional representative Andrew S. Borans, who tried to dismiss "valid charges of negligence under the poke of anti-Semitism."

According to the IFC chair, Borans "tried to dismiss charges being made about AEPi's poor conduct by saying . . . something to the effect that 'when we try to associate we face a lot of antagonism and anti-Semitism.'"

The national representative's efforts "to capitalize on a fear that many Jewish people hold that they are possibly the brunt of anti-Semitism" were "very insulting to me as a Jewish person," Arnone said.

Arnone encouraged all ILG residents "to attend tomorrow's meeting in their colors to show their support, or lack thereof, of this situation." Prospective AEPi members need to "know how their peers feel about the treatment of MIT students by AEPi" national, he added.

Baden and Borison contacted Rich after hearing of the chapter's reorganization, Baden said. Rich forwarded the names to the national organization, and within days, Borans contacted Borison.

After assessing the level of interest in AEPi among their
(Please turn to page 2)



Kristine AuYeung/The Tech
ILG advisor Neal H. Dorow

Students accept court offer

By Reuven M. Lerner

Twenty MIT students agreed at a pre-trial conference yesterday to perform community service instead of proceeding with their trials in Cambridge District Court.

The students were among 26 arrested on charges of trespass after notice and disturbing the peace on Friday, April 6. The arrests came during a protest, sponsored by the Coalition Against Apartheid, against MIT's investments in companies doing business in South Africa.

Five of the six other students arrested on that date accepted the court's initial offer of either \$200 or 50 hours of community service instead of going to trial. The case of Jennifer Y. C. Huang '90, who was charged with assault and bat-

tery on a police officer with shod foot, trespass after notice, and disturbing the peace, will be heard on May 31.

The 20 protesters rejected the original offer mainly because it would have forced them to accept "continuance," which CAA member Steven D. Penn G described as "an odd sort of probation." Penn, who was arrested on April 6, explained, "If you [do not] get arrested . . . then everything is wiped off of your record. If you do get arrested, then they have the right to merely sentence you as guilty for the previous charge."

Yesterday's offer reduced the fine imposed upon the protesters, which resulted in fewer hours of community service they are re-

quired to perform. It also eliminated the need for continuance.

Penn said that the entire group accepted the offer. He noted that "we wouldn't have accepted any deal which would have limited our ability to protest."

Protester and CAA member Joshua R. Freeze '92 said that the deal came as a surprise. "The district attorney said that he was ready to accept a dismissal with [a] \$100 fine for the people in question . . . this was a sudden change," he added.

Campus Police Chief Anne P. Glavin denied that there were any differences between the deal struck yesterday and that which the court had offered last month. "It's the exact same choice again,

(Please turn to page 2)

Students march on Washington for life

By Prabhat K. Mehta

Seventeen MIT students traveled to Washington, DC, over the weekend to join the hundreds of thousands of others who participated in Saturday's Rally for Life '90. Participants gathered at the Washington Monument to pressure the government to outlaw abortion.

"Abortion in America is a trag-

edy," said President George Bush in a telephone message to the crowd. "Your presence on the Mall today reminds all of us in government that Americans from all walks of life are committed to preserving the sanctity and dignity of human life."

Photo essay page 16

"Our mission must be to help more and more Americans make the right choice, the choice for life," he said.

"The pro-life movement is the humanitarian movement of our time," declared Vice President Dan Quayle, who addressed the crowd in person.

In a reference to the Supreme Court's 1973 *Roe vs. Wade* decision, which legalized abortion, Quayle said it "may have seemed the easy way out for a society reeling from the collapse of a moral consensus. Instead it turned out to be a way to shift onto women and children the burdens of the sexual revolution."

The US Park Police estimated the crowd to be 200,000, though organizers claimed the size was closer to 700,000.

The rally, in the planning for a year, came in response to last spring's pro-choice rally, which, by park police estimates, drew 300,000, almost 400 of whom were MIT students. "We feel that it is important that we show we are still strong and still power-

(Please turn to page 17)

Provost invites discussion on hair sculpture

By Brian Rosenberg

Associate Provost for the Arts Ellen T. Harris met with approximately 100 students last night to discuss the Student Center Sculpture Project. The proposed sculpture, a shaman's hat made of community members' hair, has been the subject of controversy for several months.

A committee made up of faculty and students chose Mags Harries, a well known Cambridge artist, to produce a work for the Student Center. Harries proposed the shaman's hat concept. Harris, who was not on the committee, said it was unusual that the committee picked an artist rather than a project, and added that "Mags submitted herself, while the other artists submitted projects."

Harris began yesterday's discussion with a short clarification of her part in the selection process. She emphasized that no decisions were final, and that no money had been spent. Harris said she had specifically asked Harries not to come to the meeting, so that people could comment more freely.

(Please turn to page 17)



Prabhat Mehta/The Tech
Why not a slide rule? This piece of art, built by MIT students and alumni, is displayed in the Student Center as an alternative to the proposed sculpture project. (Actually, it's just a hack.)

AEPi will hold recruitment meeting

(Continued from page 1)

friends, the two held a meeting with Borans, Arnone, and prospective members. This meeting was only publicized by "word of mouth," Baden said.

Arnone criticized the secretive nature of the meeting. In earlier meetings with the national following the reorganization an agreement was reached, according to Arnone, so that "when any contact with MIT students had begun," he would be "notified and involved."

However, the national did not "hold its end of the bargain," and the IFC chair "found out very surreptitiously" what was happening.

"I found out about the Tuesday meeting from Borison," Arnone explained, "who made me aware of it" independent of the national representative.

Pressure for ASA to derecognize

Since all fraternities belong to the Association for Student Activities, AEPi still has links to campus. But one of the discharged brothers spoke with ASA President Kathleen Mahoney '92 yesterday and "asked that AEPi national be derecognized."

The request will be brought before the ASA Executive Board at its next meeting, and the group "will probably vote on it at that meeting," Mahoney said, unless "it needs to be looked into more."

Neither the national organization nor the three undergraduates currently recruiting for the new chapter has contacted Mahoney

about ASA status for the fraternity.

The new chapter will first focus on "getting a core group by the end of this semester," Baden said. "Once that group is established, we will weigh the options of ASA recognition," he added.

Stier encouraged ASA to withdraw recognition of AEPi. "Most of the house feels AEPi has a right to exist, but we have had a bad experience with them," he said, "and on that grounds only, we recommend that MIT not recognize them as a useful student activity for a while."

If the ASA were to recognize AEPi national, Mahoney said, it would have to follow "the same regulations as any other student group: It has to be open to the entire student body, has to have a constitution, and must abide by ASA and [the Undergraduate Association Finance Board] regulations."

Mahoney doubted that the new AEPi chapter "would get recognized if they are exclusively Jewish."

Advisor to Fraternities and Independent Living Groups Neal H. Dorow hoped "that ASA takes into consideration what IFC and Dean's Office has considered in their decisions." He questioned "whether it is appropriate for ASA to recognize the group under the present circumstances."

AEPi also faces the possibility of having to immediately repay a \$90,000 loan provided by MIT's Independent Residence Development Fund. The fund, which comes from alumni donations, is used to support development of ILGs.

notices

Counseling

The Samaritans — someone to talk to and befriend you, are on call 24 hours a day, 7 days a week. The center, at 500 Commonwealth Avenue, Kenmore Square, is open from 8 am to 8 pm every day for people to come in and talk. Service is free and completely confidential. Call 247-0220.

The Beth Israel Hospital hosts a **Rape Crisis Group** on Tuesdays at 7:30 am for women who are experiencing disruption in their lives immediately following or up to six months after being raped. The long-term crisis group meets Thursdays at 6 pm. For more information, call (617) 735-4738.

Today, more than one million men and women are demonstrating by their personal example that alcoholism is an illness that can be arrested. If you have an alcohol related problem please get in touch with the **Alcoholics Anonymous** group nearest you — with complete assurance that your anonymity will be protected. Call 426-9444 or write: Alcoholics Anonymous, Box 459, Grand Central Station, NY 10163. You will receive free information in a plain envelope.

Counseling and HTLV-III blood screening services are available for individuals concerned about exposure to the virus associated with AIDS. For more information about this free confidential service sponsored by the Department of Public Health and Counseling Services, call 522-4090, weekdays from 9 am to 5 pm. Outside Boston call collect.

Parenting is a tough job. If you need help surviving the parenting experience, the **Family Support Network** and **Parents Anonymous** are co-sponsoring a support group for isolated or overwhelmed parents. Every Tuesday night from 6 pm to 8 pm at Roxbury Children's Service, 22 Elm Hill Ave., Dorchester.

The Family Support Network is also sponsoring a support group for teen parents, every Thursday night from 6 pm to 8 pm at Roxbury Children's Service.

Student Group Notices

The MIT Folk Dance Club sponsors two evenings of international dancing at MIT on Sunday nights in the Sala de Puerto Rico and Wednesday nights in Walker Gym, both at 7:30 pm. Beginners are welcome; no partner is needed. Call 253-3655 (FOLK) for more information.

Text of Towhey's letter to AEPi national

(Editor's note: Assistant Dean for Student Affairs James R. Towhey sent this letter to Sidney Dunn, executive director of Alpha Epsilon Pi's national organization, to notify him of the Institute's decision to withdraw recognition of the fraternity.)

This letter is to inform you that MIT has taken a decision not to recognize a reconstituted AEPi chapter on this campus for next year. We regret having to take this step but we feel your organization has given us no other option.

As a result, the buildings at 155 and 163 Bay State Road, Boston, MA, will no longer qualify as approved housing for MIT freshmen. MIT requires all its freshmen to live in Institute-approved housing. Neither will AEPi be allowed to participate in the Institute's formal rush/residence selection process that takes place during Residence/Orientation Week each fall. This action does not, however, in any way restrict the rights of upperclassmen to reside in these properties, nor does it prevent freshmen from accepting membership in your organization.

As you know, the house is carrying an Independent Residence Development Fund loan in the amount of \$90,000. We will be reviewing the status of that loan with the Treasurer's Office next week. We do not wish to be punitive in this matter but we have no option but to recall the loan under the present circumstances. We will recall the loan only if we are obligated to do so. I will be in contact with you as soon as possible to clarify this situation.

I want to make clear that we do not condone the actions of the students in this matter. Their behavior was inappropriate, very serious and warranted strong action. Neal H. Dorow made it very clear to you that we were very willing to assist your organization in any way to help resolve this situation. It seemed to me that this offer was and continues to be disregarded. Your decision to remove 45 members of the house from the fraternity and to deny them housing for next year was very severe, disruptive and inconsistent with the educational goals of this institution and appears to be inconsistent with stated objectives set down in your own literature. It is difficult for us to make a judgment on the appropriateness of this action as we were, to a large extent, excluded from the process. In addition, a number of alternative options put forward by the involved parties seem to have been ignored without full and careful consideration. This decision was a difficult one but it is one that has been reviewed by the IFC at MIT and Paul E. Gray '54, the president of MIT.

Court dismisses CAA protesters' charges

(Continued from page 1)

only the judge has lessened the court costs and community service," she said.

According to Freeze, the group suspected that they were offered an improved deal "because we had agreed to continue with the trial, even though it seemed it might go into the summer . . . This would have been a major embarrassment [for MIT]." The DA revised his offer when he "realized that we were all going to stick together," Freeze added.

Penn did not think that MIT had asked for the charges to be dropped. "There were no motions by MIT [and] . . . no formal statement that they were going to drop the charges," he said. The judge simply "decided it

wasn't worth the court's time" to continue with the trial, Penn said.

CAA member Ronald W. Francis G thought the protesters were given a better deal because the case against them was too weak. "The commonwealth, with MIT acting as a complainant, was not able to come up with enough evidence," he said.

The judge asked 17 of the protesters to pay a \$100 fine or perform 10 hours of community service in return for not going to trial. CAA member Ronald W. Francis G and Penn were asked for double that amount, while Freeze was told to work for 15 hours or pay \$150. The additional sums were based on the three students' previous arrest records.

The MIT Ring Collection By



JOSTENS

Exclusively At

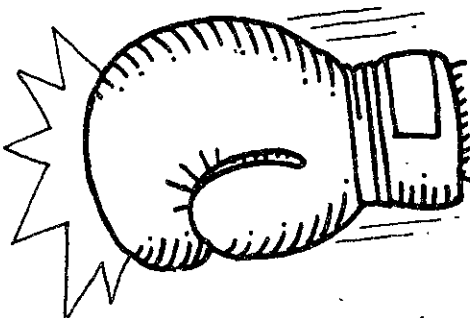
MIT COOP AT KENDALL
3 CAMBRIDGE CENTER
M-F 9-12.7 THURS TIL 9.30
SAT 9-12.5-5.45

the Coop

Join the Sporting life!

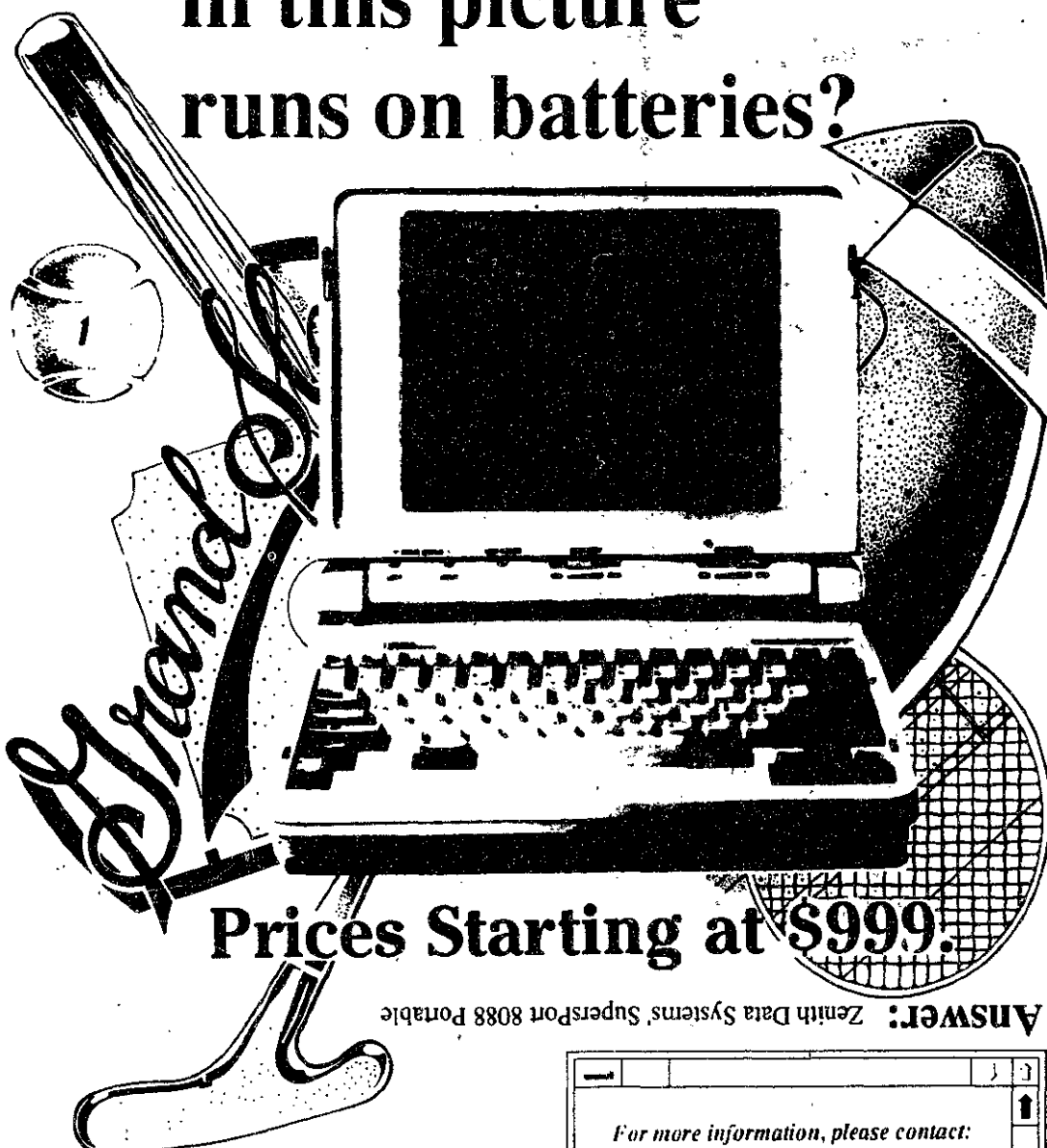
Sports

The Tech



No experience required.

Which college sPort in this picture runs on batteries?



Prices Starting at \$999.

ANSWER: Zenith Data Systems' SupersPort 8088 Portable

The Zenith SupersPort 8088 battery-powered portable.

The sPort that goes everywhere you do. Without any strings (or plug in cords) attached.

On the plane, in a boat, on the slopes, on the beach, at the library, on the golf course, at the cafe, on the train... you name it. Up to 5 hours of battery life on the dual drive model. Or snap off the battery and plug your computer into the wall.

Several portable models are available ranging in speed, hard drive capacity and price. Students, Faculty and Staff receive large discounts.

For more information, please contact:

CESS COMPUTERS
(617) 494-4772 or
Zenith Data Systems
(508) 250-1940

ZENITH data systems

Groupe Bull

The world's #1 selling PC compatibles. Get the best for less.

© 1989 Zenith Data Systems

news roundup

from the associated press wire

World

Martial law to end in Tibet

China's official news agency reported on Monday that the end of military rule in Tibet's capital, Lhasa, does not mean the end of the military there. The news agency said the martial law ended midnight Monday but added, "We absolutely cannot relax our vigilance." Martial law was imposed over a year ago after bloody anti-government rioting.

Israeli political problems continue

Israel's president, Chaim Herzog, who has been watching parliamentary leaders struggle through narrow, shaky governments, said Monday that his nation has to straighten out its politics. He did not specify what kind of electoral reform he wants, but he displayed his disapproval for politicians in showing "total contempt for the principles of democracy."

Vatican to renew relations with Romania

The Vatican plans to renew diplomatic relations with Romania possibly sometime in mid-May. The Vatican has been re-establishing ties with Eastern European nations as they emerge from Communist rule. Romania is the last of the group to be recognized.

Science

Woods Hole scientist discovers wreck

Robert Ballard, the Woods Hole oceanographer who discovered the *Titanic*, has found another underwater wreck. Ballard used a robot diving device to explore a vessel from the War of 1812 on the floor of Lake Ontario on Monday. The ship was a merchant schooner used by the British. Pictures from the robot were beamed to school children in the United States and Canada. The cannon, ship railings, and figurehead had all been preserved at the bottom of Lake Ontario.

The ship, along with its sister ship, sank during a storm in 1813, killing 53 soldiers. The two ships had taken part in several battles for the British against US forces that invaded Southern Canada during the war.

Local

Mass. citizens pay high health costs

A consumer group said on Monday that Massachusetts residents pay higher health costs than the average citizen in any other country. The group also said that some communities get worse care than third world nations. Cynthia Ward, executive director of Massachusetts Citizen Action, said the study shows that health care costs have skyrocketed in the nation as well as in the state. In 1987, per capita US health care spending was \$2050, nearly double the average of countries like Japan, West Germany, Great Britain, and Canada. The report estimated that Massachusetts costs are above \$2200. Ward claims that the quality of care has not kept pace.

Suffolk County had an infant mortality rate of 13.2 deaths per 1000 babies. That is worse than Jamaica or Singapore. Overall, however, the state's infant mortality rate was 7.2 percent, compared with a national rate of 10 percent.

Aetna sues state

Aetna Casualty and Surety Company filed suit against the state on Monday, claiming that Massachusetts laws which control withdrawal from the state's car insurance market are unconstitutional. A spokesman said that state law allows the insurance commissioner to set the prices, so price competition is nonexistent. A company that wants to pull out of auto insurance must pay what amounts to extortion, or lose all its licenses to sell insurance. A spokesman for the state insurance division said the agency has no comment until Commissioner Timothy Gailey can review the suit.

Harvard student confirmed dead

Essex County District Attorney Kevin Burke reported Monday that human remains found in Hamilton are those of Joan Webster. Stanley Schwartz, a state forensic specialist, used dental records to identify the remains. Pathologist Robert Beliveau identified the cause of death as a blunt trauma to the head, indicating a homicide.

Webster was a 25-year-old Harvard graduate student in architecture when she vanished from Logan International Airport after a Thanksgiving holiday visit to New Jersey in 1981. Her disappearance had been under investigation since then. The remains will be turned over to Webster's family after completion of the probe.

Nation

Bush pledges support to Panama

President George Bush said Panama can count on US support in its "leap to liberty." Bush met on Monday at the White House with Panamanian President Guillermo Endara and chastised Congress for only giving "halfhearted support" by not moving quicker to approve his \$420 million aid package for Panama.

Noriega's lawyers want out

Manuel Noriega's lawyers are concerned about compensation for their services to the deposed Panamanian leader. They are asking to be allowed to withdraw from the case because the government is freezing their client's bank accounts. Noriega is still being held in the United States, where he is facing charges of taking bribes and turning his nation into a haven for cocaine traffickers.

Dioxin danger overestimated

Environmental Protection Agency officials announced on Monday that the amount of dioxin that shows up in paper products like milk cartons and coffee filters is not dangerous. The deadly dioxin is a byproduct of the bleaching process. The EPA, however, is concerned about dioxin pollution near some paper mills.

To protest the EPA finding, two environmentalists climbed up the side of the Georgia-Pacific Company's headquarters in Atlanta and unfurled a banner reading, "Take the poison out of pulp."

HUD testimony continues

A former federal housing official said Monday that the housing department during the Reagan Administration was "the best domestic political machine" he has ever seen. Dubois Gilliam testified before a house panel investigating HUD dealings under Samuel Pierce. Gilliam, who is serving an 18-month prison sentence for fraud, said on at least one occasion the White House got directly involved in handing out housing money.

Mitsubishi cars to be recalled

More than 100,000 Mitsubishi cars from the 1986 model year are being recalled. The EPA says the problem with the Mitsubishi Mirages and Dodge and Plymouth Colts is that they do not meet federal emission standards.

House passes emergency spending bill

The Massachusetts House passed a \$50 million emergency spending bill on Monday, after minority Republicans succeeded in spelling out in detail where the money would go. It provides money for several state programs that will run out of dollars in early May. House Ways and Means Committee Vice Chairman Angelo Scaccia said \$32 million would pay increased health insurance costs for state workers. Other provisions include \$6 million for health care for general relief welfare recipients. Also included are emergency funds for the insurance program for the disabled, for other general relief, prisoner transportation, public health hospitals, and a health program for poor pregnant women.

The state currently has a deficit of at least \$793 million for the 1990 fiscal year, which ends June 30. The state is also short of money for the fiscal year that starts July 1. Lawmakers are expected to consider raising taxes or approving spending cuts, or both.

Silber may pass Murphy

A new poll shows that John Silber might pass Evelyn Murphy in the field of democratic candidates running for governor. The poll for the *Boston Herald* and WCVB-TV puts Silber in second place behind leading contender Frank Bellotti. Bellotti, the former state attorney general, leads the poll with 36 percent, followed by Silber with 24 percent and Murphy with 19 percent. The margin of error for the poll is plus or minus five percent, meaning it is not clear if Silber has pulled ahead of Murphy.

Welfare program effects overestimated

A study released on Monday said Massachusetts officials have overstated the impact of a program designed to help people get off welfare and find jobs. The report from the Pioneer Institute for Public Policy Research, a conservative think tank, said the state's employment and training choices program has cost taxpayers more than \$210 million. It has not saved money as officials have claimed. The report said that more credit should be given to 1981 changes in federal laws that made it harder for people to receive welfare while holding a job.

Second hostage freed

Frank Reed was freed by his captors in Lebanon on Monday. He had spent 43 months in captivity before being turned over to Syrian officials. He traveled to Damascus yesterday, and will continue onto West Germany today. Reed told Syrian journalists that he is "very happy to be free." Of his years in captivity, he said he was fed regularly but was alone and blindfolded most of the time. He thought of freedom often, and hopes freedom will come to the remaining hostages soon.

Reed's wife, Fifi, left for West Germany last night. She said she would not believe he was free until she saw a picture of him. Monday pictures from Syrian television gave life to the good news the State Department had relayed to her.

President George Bush said Reed's release is joyous, but stressed the fact that six other American hostages remain in Lebanon. Bush thanked both Syria and Iran for helping with the release. A State Department team headed to Wiesbaden, West Germany yesterday to meet Reed.

It is unclear who kidnapped Reed on Sept. 9, 1986. After the abduction, a caller to a Western news agency claimed Islamic Jihad was responsible, but the Shiite fundamentalist organization denied any involvement. Other groups claimed responsibility, including a previously unheard of group, the Arab Revolutionary Cells-Omar Mukhtar Brigade.

No organization ever made any demands for Reed's release, and there was no word about him until yesterday. Another previously unknown group, the Organization of Islamic Dawn, issued a statement on Sunday that Reed would be freed within two days. It is unclear whether the Arab Revolutionary Cells-Omar Mukhtar Brigade and the Organization of Islamic Dawn are the same organization.

An Iranian newspaper warned Monday that no more American hostages will be released if the United States does not make a goodwill gesture. The *Tehran Times* reported that Reed had been released "solely for humanitarian and Islamic causes" and called for "an extreme gesture of goodwill."

Report on elderly abuse released

A congressional panel estimates that 1.5 million elderly Americans are abused each year, often by their own children. The house panel said most cases go unreported because older people are ashamed to admit their families abuse them, or fear reprisals if they complain. The federal government has "virtually ignored" the problem, which the panel called "a national disgrace."

Sports

Chicago wins Norris Division

The Chicago Blackhawks defeated St. Louis to advance to the Campbell Conference finals against Edmonton. Boston will play Washington in the Wales Conference finals beginning on Thursday.

Weather

Seasonal temperatures return . . .

Last Saturday, Logan airport was reading 90°F (32°C) at 1 pm. By 5 pm, a strong sea-breeze cooled temperatures to 56°F (13°C). A low-centered system to the south of Boston this morning is weakening and moving east-northeast. Thus, the winds will shift to the southwest later today and warm temperatures to the low 60s.

The showers and drizzle should taper off by Wednesday morning, but a disturbance currently over the Four Corners will bring showers to the vicinity by Friday.

Tuesday afternoon: Mostly cloudy, with areas of fog and drizzle. Winds shifting to the southwest in the afternoon, gusting to 15 mph (24 kph). High near 63°F (17°C).

Tuesday night: Partly cloudy with a chance of drizzle. Low near 48°F (9°C).

Wednesday: Partly sunny. Winds becoming northwesterly. Highs near 63°F (17°C). Low 45°F (7°C).

Thursday: Partly sunny. High 62°F (17°C). Low 42°F (6°C).

Forecast by Greg Bettinger

Compiled by Joan Abbott

opinion

LETTERS TO THE EDITOR

Reason for arrests demanded

(Editor's note: The Tech received copies of the following two letters addressed to President Paul E. Gray '54 and to Chief of Police Anne P. Glavin. Delivered by Laura Sparks, these letters were signed by 126 students, faculty and staff from the Department of Urban Studies and Planning, the Department of Architecture, and the Coalition Against Apartheid.)

Letter to Gray:

We were participants in an anti-apartheid rally on Monday, April 9, 1990. The rally was called so that students and faculty could peacefully express their opposition to MIT's policy of continued investment in corporations which do business in South Africa. We are still trying to make sense of the actions and behavior of the MIT administration and police. We believe that the MIT police reacted with unprovoked violence and aggression towards students. Students felt that they were caught up in a series of confrontational police actions that they had not anticipated, did not instigate, and could not control or avoid.

As individuals and as a group, we believe the MIT police acted with disproportionate aggression. We are shocked and saddened that this angry and inappropriate behavior should be the behavior of the people who are supposed to protect our community: the MIT Campus Police.

The aggressive incidents by the police began in response to students who were walking down the sidewalk and carrying a large box with the words "free speech now" on it. Before the students who were carrying the cube could reach the lawn across from 77 Massachusetts Avenue, police pushed these students out into the street and into oncoming traffic. Students tried to move the box out of the street (where a bus was approaching) and onto the lawn. Having set the box down, they tried to get out of the way, but a crowd of police began shoving students.

Several students were grabbed in strangleholds and hurled by the neck. One graduate student was pushed by one police officer, fell onto another, whereupon the student was surrounded, struck and arrested for assault and battery. When officers dismantled the box, they began pushing at groups of disbelieving onlookers, yelling at people to get

back, and grabbing, pushing and striking them when they did not move fast enough. In a previous rally on Friday, a student had his shoulder dislocated. Almost all arrested students suffered minor injuries of some kind, although these injuries were not reported in the press.

What is so disturbing about the protest is that violence and aggression were wholly initiated by police. Police, ostensibly there for crowd control, acted as disturbers of the crowd. Students tried to calm things down or get out of the way while police seemed intent upon spawning a series of unprovoked, unnecessary battles against students. Students were hurt at this rally, and even more people could have been injured, perhaps seriously, given the police decision to push students into traffic as well as the violent lack of self control police displayed. It must be noted that students and faculty were not the only individuals objecting to police behavior. We heard some officers yelling at others to calm down, but the more quiescent officers were not able to restrain those who were pushing and striking students.

At last year's graduation, you wore an armband and spoke of being in solidarity with the students in Tiananmen square. Your words have a hollow ring to those of us who were at the divestment rally on Monday. In your words last spring, you tried to ally yourself with the student demonstrators in the Chinese pro-democracy movement. Through your actions several weeks ago, you have allied yourself with those who suppressed the Chinese movement. Like the leaders in China, you authorized random violence against a crowd of peaceful demonstrators. You used your position as a member of a powerful minority in an attempt to repress a group of students who expressed opinions of the less powerful majority.

Students at the MIT rally were frightened and disturbed by the level of irresponsible violence displayed by people in authority. We are shocked by the attempt to abridge our basic rights. One of the comments most repeated by students who attended the rally was "I have never seen anything like that before." What happened on Monday was not usual or appropriate police behavior, it was sudden, irrational and extreme.

The police actions were visible, immediate manifestations of

MIT's flawed and inadequate investment policies. The MIT administration resorted to violence and the abridgement of civil rights to protect an investment policy which sanctions violence and denies the extension of civil rights toward black South Africans. The MIT administration's hysterical and overblown response to the simple construction and siting of an eight foot by eight foot shanty contrasts ironically with the administration's inability to act on an issue of crucial and fundamental importance to millions of South Africans.

The students and faculty have heard the Corporation's arguments regarding the Statement of Principles. We continue to believe that divestment is financially feasible and morally imperative. As students, we contribute tuition money which is being misinvested in corporations that do business in South Africa. As faculty, we attract the additional research funds that provide MIT's financial base. It is within our rights to object to the misuse of this money. It is within our rights to protest against MIT's investment policies and it is within our rights to assemble to articulate our beliefs.

The majority of MIT students and faculty believe that MIT should divest. The minority leaders of MIT, the members of the Corporation disagree. The Corporation's unwillingness to thoughtfully consider the divestment alternative is undemocratic and small-minded. The MIT Corporation's response to calls for divestment has been rigid and unyielding. MIT's response on April 9 was disturbing, unnecessary and of questionable legality.

Those of us who witnessed the event are left with many questions: Why did the MIT police believe that it was within their job responsibilities to attack a calm group of peaceful demonstrators? Who in the MIT administration authorized or encouraged this misuse of power? What kind of steps are you going to take to ensure that the kind of police aggression which occurred on Monday never happens again on the MIT campus? Are you going to sanction the violation of students' basic civil rights? At this year's commencement exercise, will you again make speeches about values, democracy and moral action in the wider world while undermining democracy, ignoring values and suppressing moral action here at MIT?

the first two rumors are correct. We know only that the last is not. The crowd of students was an orderly one; the people who were engaged in disorderly behavior were the MIT police. Students are not interested in confrontations with the police. They are interested in expressing their opposition to MIT's investment policies.

There is no excuse for police physically attacking and arresting students who have gathered peacefully. There is no excuse for police initiating aggression against a peaceful group of students who have gathered to articulate their beliefs. As students who pay tuition to attend MIT, we are not trespassing when we come together on the green across 77 Massachusetts Avenue. As citizens who express our beliefs in a manner near a public street, we are fully within our rights. Even the "unauthorized structure" which the police set upon had not touched the ground

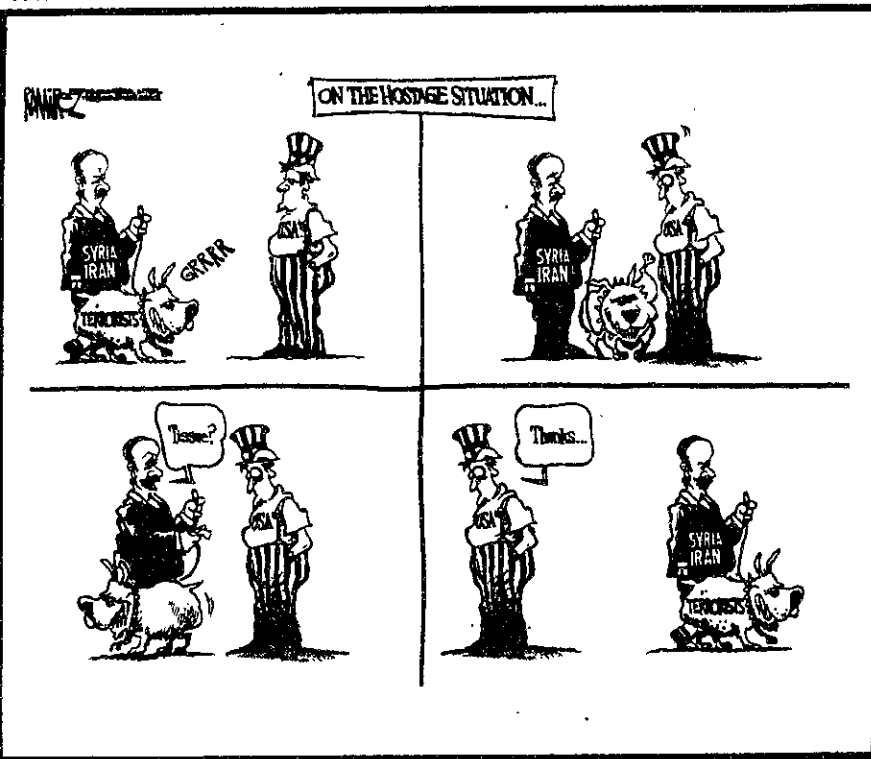
when police began destroying it and grabbing students who were carrying it. In purely legal terms, an object must touch the ground to be considered a structure. When the MIT police began attacking students, the object the students carried was merely a large box.

As chief of Campus Police, what explanation can you give for police-initiated violence? What steps are you going to take to ensure that the MIT police force's understanding of its responsibilities does not extend to violating students' civil liberties and injecting violence into a peaceful gathering? Students appear to have been singled out at random for arrest, and several of us noticed particularly aggressive behavior being directed towards students of color. We need to know that the MIT police received effective training in this sensitive matter. The events which occurred on April 9 must not be allowed to happen again.

Letter to Glavin:

You are quoted in the April 10 issue of *The Boston Globe* as saying that the police responded because unauthorized structures are not allowed on MIT property. The "unauthorized structure" was a fragile, box-like imitation of a "shanty." It was "on the [MIT] property" for not even a minute before the police destroyed it.

We have heard various rumored explanations of the police actions. Some say the police must have been under pressure from the MIT administration. Some say that the police, frustrated by a variety of job-related concerns, were eager to use the demonstration as an outlet for their generalized anger. Another rumor, which we have not heard but which is perhaps circulating among police is that students were verbally or physically harassing police. We do not know if



The Tech

Volume 110, Number 23

Tuesday, May 1, 1990

Chairman Deborah A. Levinson '91
Editor in Chief Prabhat Mehta '91
Business Manager Russell Wilcox '91
Managing Editor Marie E. V. Coppola '90
Executive Editor Linda D'Angelo '90

News Editors Annabelle Boyd '90
 Andrea Lamberti '91
 Reuven M. Lerner '92
Night Editor Daniel A. Sidney G
Opinion Editor Michael J. Franklin '88
Sports Editor Shawn Mastrian '91
Arts Editor Peter E. Dunn G
Photography Editor Kristine AuYeung '91
Contributing Editors Jonathan Richmond G
 Niraj S. Desai '90
 Irene C. Kuo '90
 Lisette W. M. Lambregts '90
 Lois Eaton '92
Advertising Manager Mark E. Hasetline '92
Production Manager Ezra Peisach '89
Senior Editor Genevieve C. Sparagna '90

NEWS STAFF

Associate News Editors: Neil J. Ross G, Joanna Stone '92, Brian Rosenberg '93, Katherine Shim '93; **Staff:** Dave Watt G, Joan Abbott '90, Anita Hsiung '90, Miguel Cantillo '91, Adnan Lawai '91, Chitra K. Raman '91, Gaurav Rewari '91, Eun S. Shin '91, Aileen Lee '92, Adam Chen '93, Karen Kaplan '93, Shannon Mohr '93, Michael Schlamp '93, Cliff Schmidt '93; **Meteorologists:** Robert X. Black G, Robert J. Conzemius G, Michael C. Morgan G, Greg Bettinger '91, Yeh-Kai Tung '93.

PRODUCTION STAFF

Associate Night Editors: Kristine J. Cordella '91, David Maltz '93; **Staff:** David E. Borison '91, Lawrence H. Kaye '91, Sunitha Gutta '93, Jonathon Weiss '93, Aaron M. Woolsey '93.

OPINION STAFF

Pawan Sinha G, Karl Dishaw '89, Andrew L. Fish '89, Dave Atkins '90, Michael Gojer '90, Adam Braff '91, Bill Jackson '93.

SPORTS STAFF

Michael J. Garrison G, Harold A. Stern '87, David Rothstein '91.

ARTS STAFF

Staff: Frank Gillett G, Mark Roberts G, Manavendra K. Thakur '87, Michelle P. Perry '89, Jigna Desai '90, Elizabeth Williams '90, Paula Cuccurullo '91, David Stern '91, Alfred Armendariz '92, Sande Chen '92, Alejandro Solis '92, Kevin Frisch '93.

PHOTOGRAPHY STAFF

Associate Photography Editors: David H. Oliver '91, Sean Dougherty '93, Douglas D. Keller '93; **Staff:** William Chu G, Frank Espinosa G, Andy Silber G, Ken Church '90, Mark D. Virtue '90, Sarath Krishnaswamy '91, Georgina A. Maldonado '91, Mauricio Roman '91, Marc Wisnudel '91, Chip Buchanan '92, Jonathan Kossuth '92, Lerothodi-Lapula Leeuw '92, Paulo Corriea '93, Michelle Greene '93, Wey Lead '93, Matthew Warren '93, Jeremy Yung '93; **Darkroom Manager:** Ken Church '90.

FEATURES STAFF

Christopher R. Doerr G, John Thompson '90, Taro Ohkawa '91, Chris M. Montgomery '93.

BUSINESS STAFF

Delinquent Accounts Manager: Jadene Burgess '93; **Advertising Accounts Manager:** Shanwei Chen '92; **Staff:** Ben Tao '93.

PRODUCTION STAFF FOR THIS ISSUE

Night Editors: Daniel A. Sidney G
 Marie E. V. Coppola '90
Associate Night Editor: Kristine J. Cordella '91
Staff: Peter E. Dunn G, Michael J. Franklin '88, Jigna Desai '90, Lisette W. M. Lambregts '90, Kristine AuYeung '91, Deborah A. Levinson '91, Jonathon Weiss '93.

The Tech (ISSN 0148-9607) is published on Tuesdays and Fridays during the academic year (except during MIT vacations), Wednesdays during January, and monthly during the summer for \$17.00 per year Third Class by The Tech, Room W20-483, 84 Massachusetts Avenue, Cambridge, MA 02139-0901. Third Class postage paid at Boston, MA. Non-Profit Org. Permit No. 59720. POSTMASTER: Please send all address changes to our mailing address: The Tech, PO Box 29, MIT Branch, Cambridge, MA 02139-0901. Telephone: (617) 253-1541. FAX: (617) 258-8226. Advertising, subscription, and typesetting rates available. Entire contents © 1990 The Tech. The Tech is a member of the Associated Press. Printed by Charles River Publishing, Inc.

opinion

LETTERS TO THE EDITOR

AEPi justifiably reorganized by national fraternity

As a member of the Alpha Epsilon Pi fraternity here at MIT, I feel an obligation to clarify some of the information presented in previous issues in *The Tech* concerning the reorganization of the fraternity's Mu Tau chapter. To properly assess the validity of the national organization's actions at MIT it is necessary to take a step back and look at the long and sordid history of the chapter's relationship with the AEPi national office.

Alpha Epsilon Pi has a particular identity — an identity distinct from other fraternities. The fraternity was founded in the early part of the century to provide a Greek organization in which Jewish students could feel comfortable. Other fraternities at the time were unwilling to grant equal opportunities to Jews. The stated purpose of AEPi is to raise the future generation of Jewish leaders. Students join AEPi in order to grow together, to work together and to support each other in their individual ways. Any student who wishes to be a part of the AEPi traditions and ideals is considered for membership without discrimination. Over 100 strong chapters exist in exactly this fashion all around the United States and Canada. The chapter at MIT, however, cast aside the veritable traditions of Alpha Epsilon Pi.

In the 1960s a vote was taken at a house meeting to hide the character of AEPi at MIT in order to attract more members. At

that time, many fraternities were suffering from declining memberships. The initiation ritual was drastically changed and several ritual items were either altered or removed altogether. During Rush Week, emphasis was placed exclusively upon the house, almost to the point of denying the chapter's membership in a larger organization. The rush books contained no mention of AEPi's Jewish identity. One student last year wasn't even told about the fraternity's nature until after pledging.

Aside from the AEPi name, the house was little more than a local fraternity. Most of the students joining had no inkling of what was expected of them as members of a national fraternity. The MIT chapter did not socialize with other AEPi chapters and became isolated from them. The difference was not in the ethnic composition of the house (one of the top AEPi chapters in Missouri contains a minority of Jewish members), but in the unwillingness of the members to espouse the ideals of AEPi and to be proud of the national identity.

I became a member of the house in 1987. I knew of AEPi's identity before joining and was eager to become a part of the fraternity. Members of the chapter at MIT quickly dispelled the notion that AEPi, as such, existed here. I joined, nevertheless, hoping that this chapter would return to the ideals of AEPi, an organization of which I could be proud.

Over the next few years, several issues arose that pitted the house against the fraternity. In addition to the continued use of an altered initiation ritual (an affront to the thousands of members and alumni of AEPi), the house voted to forbid a national representatives' presence during Rush Week. The reason for this decision was the fear that the representatives would hinder the chapter's ability to control the future of the house's character. The house did not care if the incoming students were interested in becoming AEPi brothers and living by the fraternity's ideals. In February of last year, a national representative showed up at initiation. He was shocked at the desecration of ritual items and the rewording of the ceremony. In most fraternities, this would have been just cause for revocation of the chapter's charter.

In spite of all this, he gave the membership another chance to bring its goals more into line with the rest of the fraternity. Unfortunately,

the chapter made some decisions that were impossible for the fraternity to overlook. The chapter's charter grants the membership a right to self government provided that they adhere to the guidelines set by the fraternity. Some of these guidelines help to protect the financial solvency of both the chapter and the AEPi's national treasury.

Most fraternities, including AEPi, have banded together to purchase liability insurance in a group known as the Fraternity Insurance Purchasing Group (FIPG). FIPG sets certain rules for the member fraternities in order to secure policies. These rules are concerned with alcohol abuse, hazing and other nonessential elements of a fraternity experience. Whenever a fraternity chapter violates the FIPG guidelines, they are not covered for any accident that might occur in conjunction with the violation. This would open up the possibility of a multimillion dollar lawsuit. The members of the MIT

chapter repeatedly violated the rules, and these violations were discovered on three separate occasions. The policy of AEPi is to give a warning for the first violation, to put the chapter on probation for the second and to reorganize it on the third. Having already been put on probation, the chapter knowingly voted to continue violating the FIPG guidelines. The blatant disregard for the policy by the MIT chapter left the national with no choice but to reorganize it.

In February of this year, three AEPi representatives came to the chapter house and addressed the entire group of residents. A plan for rebuilding the chapter at MIT was outlined. Interviews were to be conducted, and those with positive attitudes and open minds would be invited to remain. The questions asked of each brother were the same set asked at every reorganization that AEPi has been obligated to preside over. None of the questions addressed religious preference; they all addressed a person's desire to be in AEPi. In the words of the interviewer, Andy Borans, "The answers are not all that important. What I am really looking for is an attitude" towards AEPi. These people were advised to "forget everything you know" about the nature of AEPi, based on the MIT chapter, and to begin "with a clean blackboard." Most of the students invited to remain, unhappy with what had happened, chose to leave.

This mass exodus, coming at the same time as many other students presented uncooperative attitudes and were asked to leave, is not too surprising. The chapter at MIT was far from being an acceptable part of AEPi. It is unfortunate that many of the ex-brothers were drastically disillusioned. AEPi is not for everyone; you have to want it. These people did not want it. They continually rejected it. Now they criticize the fraternity for the chapter's mistakes and misdeeds. I ask that the administration and the Inter-Fraternity Council reconsider the suspension of AEPi. A new group of students dedicated to the ideals of AEPi is forming. We want to be granted the opportunity to show MIT what Alpha Epsilon Pi is really all about.

Robert Rich '90

Editorials, marked as such and printed in a distinctive format, are the official opinion of *The Tech*. They are written by the editorial board, which consists of the chairman, editor in chief, managing editor, executive editor, news editors, and opinion editor.

Columns and editorial cartoons are written by individuals and represent the opinion of the author, not necessarily that of the newspaper.

Letters to the editor are welcome. They should be typed double spaced and addressed to *The Tech*, PO Box 29, MIT Branch, Cambridge MA 02139, or by interdepartmental mail to Room W20-483. Electronic submissions may be mailed to tech@athena.

Letters and cartoons must bear the authors' signatures, addresses, and phone numbers. Unsigned letters will not be accepted. No letter or cartoon will be printed anonymously without express prior approval of *The Tech*.

Pro-life rally attracts diverse supporters

Hundreds of thousands of people swelled the Capitol on Saturday for one of the largest gatherings in the history of the abortion controversy. The crowd stretched from the Reflecting Pool to the Washington Memorial to the Lincoln Memorial and into the Mall. The Washington Memorial hill was transformed into a colorful sea of people. This event was Rally for Life '90.

The atmosphere pervading the event was one of infectious optimism. These were people who had fought great odds in their commitment to life and they knew that they represented the sentiment of the majority of Americans. This conviction was the source of the optimism which made the rally a true celebration of life, without a trace of bitterness or anger.

Every walk of life was represented at the rally. There were

students from colleges and universities across the country. From the Northeast alone, MIT, Harvard, Cornell, Smith, Wellesley, Mount Holyoke and dozens of other colleges sent pro-life contingents. Working people from every field, both blue and white collar, joined the crowd. There were people from all ethnic, minority and social groups. Thousands of young families were witnesses to the vitality of the right to life movement. A good showing by the elderly, who stand at the other end of life's spectrum, and by people with handicaps showed the concern of these two groups for the right to life. These people have a large stake in this movement, because whatever happens to the unborn happens to them next.

The political spectrum was as diverse as the people in attendance, comprising Democrats,

Republicans, Libertarians and progressives. Although there were a large number of men, the overwhelming majority of participants were women. Such women's groups as Feminists for Life, American Victims of Abortion, and Women Exploited by Abortion took center stage, putting to rest the myth that pro-abortion is pro-woman. Representatives from both Teens for Life and Black Americans for Life had a prominent place on the agenda. And despite the recent pro-abortion proposal of the AFL-CIO, a large number of union members banded together, calling themselves Hard-Hats for Life.

The array of speakers and entertainers mirrored the makeup of the crowd. Olivia Gans from AVA was the rally facilitator. The speakers she introduced enlightened everyone present about the issues related to right to life efforts. Carol Everett, former owner of five abortion clinics, reminded the crowd of something Planned Parenthood is particularly reluctant to admit: that the abortion issue is not about women's rights, but about money — the millions of dollars that abortionists make each year from the blood and grief of women. Rep. Henry J. Hyde (R-IL) stressed the contradiction in the pro-choice logic when he asked, "If a woman has the right to her own body, how can we abort an unborn woman?"

Comments from other speakers exemplified the basic pro-life attitude of young American women. Representatives of Teens for Life indicated that, when given the full facts about abortion, teenage women are inherently pro-life. Lisa Whelchel, former star of *Facts of Life*, in discussing her own pregnancy, asked, "How can you look at an ultrasound that shows little hands and little

feet and say it doesn't have the right to life?"

In response to accusations that pro-lifers do not act on their convictions, John Cardinal O'Connor, archbishop of New York, reiterated his offer that the diocese will provide full financial support for any woman facing a pregnancy crisis. The support is offered regardless of the woman's race, age or religion. If the woman chooses not to give the child up for adoption, such support can be continued until the child reaches the age of 18, if necessary. The cardinal originally made this offer on Oct. 15, 1984, and has not yet seen it mentioned.

(Please turn to page 7)

Fraternity and dormitory activity viewed unequally

The letter from 13 members of Alpha Tau Omega ["Double standard exists for fraternities," April 24] addresses a distressing problem in the MIT housing system. The double standard between dormitories and fraternities has taken on immense proportions. The "same high standards of conduct" that are demanded of fraternities are not expected of dormitories. This double standard was exemplified last year when a Burton third resident was chained to a keg for a number of days. This would have been a prosecutable instance of hazing, if Burton were a fraternity.

Unfortunately, the ATO letter compares ATO's "Heaven and Hell" T-shirt fiasco to Baker House's "Sex Goddess" competition and loses all credibility. Matt Groening, author of *Life in Hell* and creator of *The Simpsons*, defines a fraternity as a "reaction-

ary xenophobic enclave of superficial conformist little snobs." If you cross the page break in *The Tech* from the ATO letter to Albert W. Morton Jr. '92's column ["Baker Urchin Alert is dangerous," April 24] you can read about Baker's defense system. Baker residents, when confronted with the unknown, "bash [its] f---ing head in with a lead pipe." Nowhere exists a better example of reactionary xenophobia. Baker deserves its self proclaimed title of "the largest frat on campus."

The double standard between dormitories and fraternities must be addressed. If we are to share a common housing system, we must take steps to settle our differences and problems. However, categorizing Baker House as a dormitory is starting off on the wrong foot.

Kent Lundberg '92
East Campus Rush Committee



An Undergraduate Association Colloquium

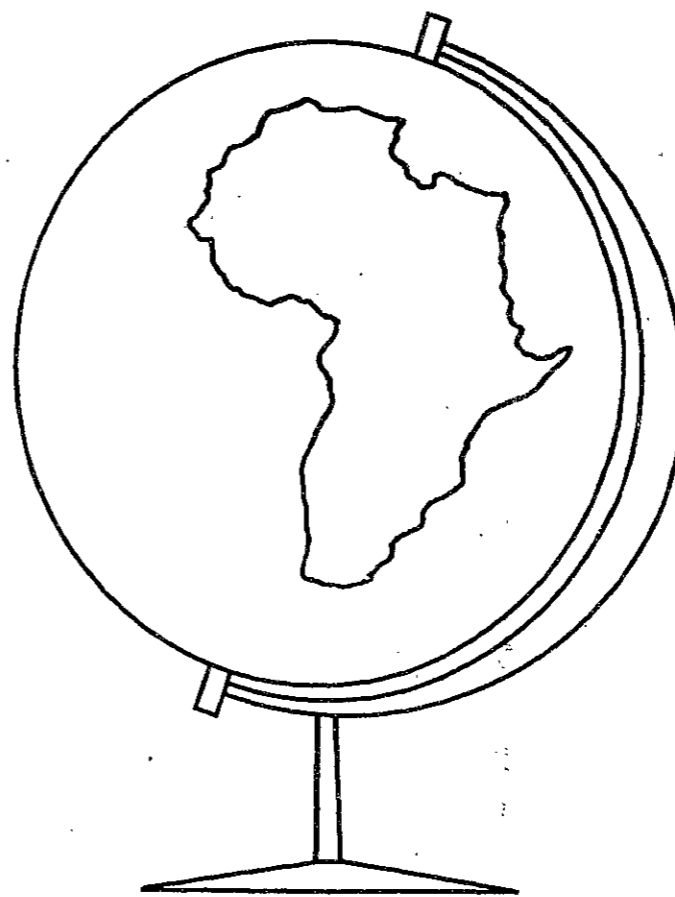
Should MIT Divest?

Come hear discussion by:

Paul E. Gray
MIT President and
Corporation Chairman-Elect

Lindiwe Mabuzza
Chief Representative of the ANC
in the United States

Question/Answer session
and reception to follow



Wednesday, May 2, 1990
Room 10-250
4:45 to 6pm

Sponsored by:
Undergraduate Association
Graduate Student Council

opinion

LETTERS TO THE EDITOR

Pro-life rally in Washington draws hundreds of thousands

(Continued from page 5)
in the secular media. A similar offer by Bernard Cardinal Law stands in the Archdiocese of Boston.

Even in the midst of this celebration of life, all present were forced to acknowledge the reality of media bias. One speaker commented, "I'm surprised at the number of TV cameras I see here. Now, I wonder what's going

to happen to the footage." The president of MIT Pro-Life witnessed a reporter concentrating solely on the fringe elements of the rally. When she asked him if he would care to hear from college students, his answer was simply "No."

Earlier that day, MIT Pro-Life joined other Massachusetts citizens for a prearranged meeting with the press, only to discover

that the press had come and gone an hour and a half before scheduled. Even the next morning's papers did the rally a grave injustice by reporting not the peak attendance but rather the 4 pm estimate which was taken as people were beginning to leave.

It is our sincere hope that this great showing of pro-life strength and support will be a source of encouragement to those who si-

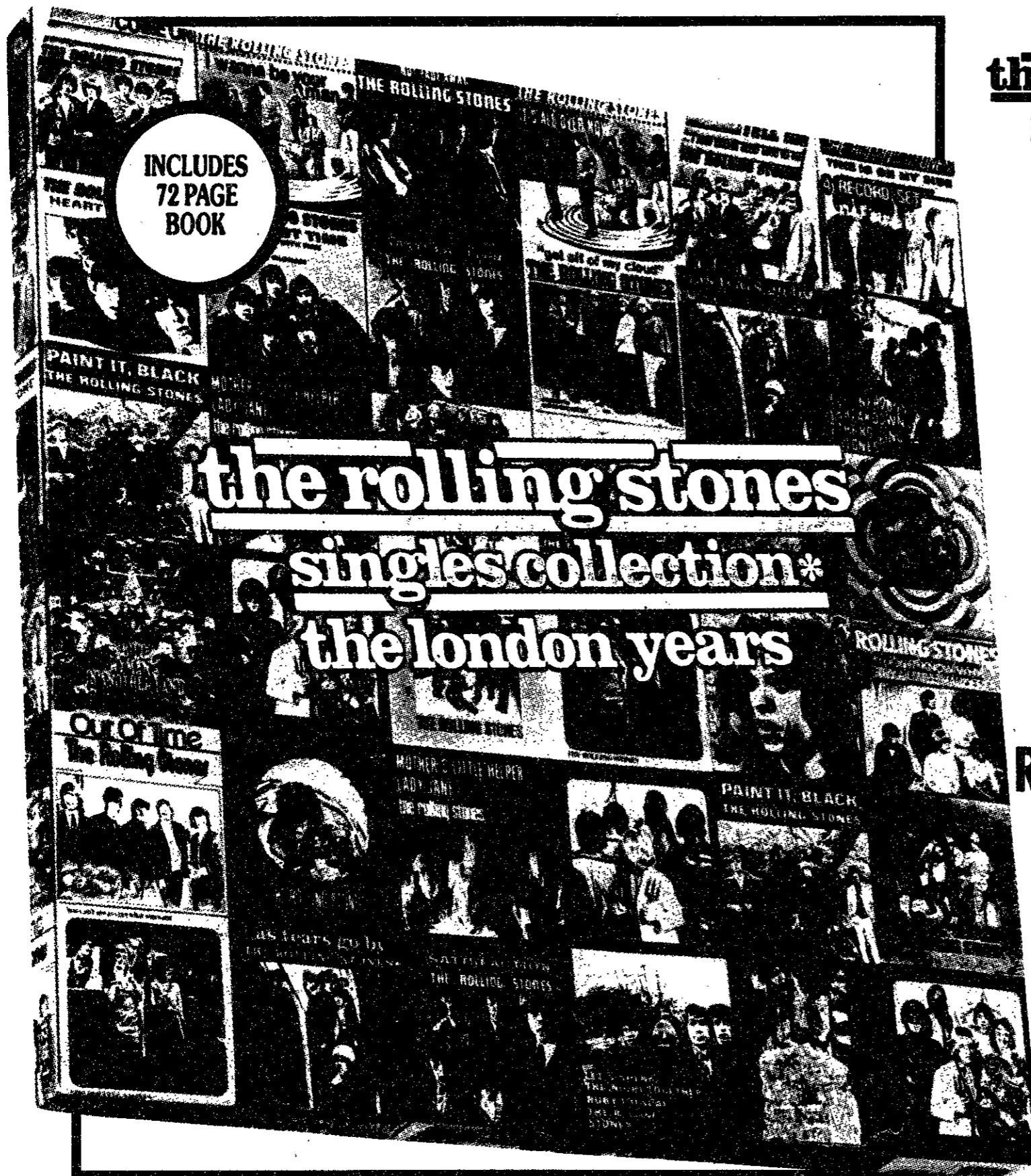
lently support the right to life and will inspire them to take a more vocal and active role in the pro-life movement. Members of the MIT community have a unique opportunity to join the largest campus pro-life group in the Boston area. In addition, a new group tentatively named "MIT Progressive Life Action Network" is currently forming. It will allow members to take a

more direct role in the movement. MITPLAN intends to provide services to women facing crisis pregnancies through fundraising, sidewalk counseling at abortion clinics, and referrals to established pregnancy help centers.

Ann Brach G
Margaret Keady '93
Monnica Williams '91
MIT Pro-Life

TOWER RECORDS | VIDEO

"some records are made to be broken..."



the rolling stones
singles collection*
the london years

3 CD SET
48.99

4 CASSETTES
34.99

ALL ABKCO
ROLLING STONES
CDS &
CASSETTES
ARE ON
SALE NOW!

Sale Ends May 8, 1990

...others are made and become a way of life."

- England's Newest Hit Makers • 12 X 5 • The Rolling Stones. Now! • Out Of Our Heads • December's Children (And Everybody's) • Big Hits (High Tide And Green Grass) • Aftermath • Between The Buttons • Flowers • Beggar's Banquet • Their Satanic Majesties Request • Through The Past, Darkly • Let It Bleed • 'Get Yer Ya-Ya's Out • Hot Rocks • Got Live If You Want It! • More Hot Rocks •

collection available on compact disc, chrome tape cassette & 100% virgin vinyl

OPEN 'TIL MIDNIGHT TO SERVE YOU!

Manufactured by
abkco RECORDS
1700 Broadway, New York, N.Y. 10019

We've got
your music
at the
world's
largest
record store!

TOWER RECORDS | VIDEO

BOSTON
Mass. Ave. At Newbury
In Back Bay

MUSIC VIDEOS
VIDEO SALES & RENTALS!

Above Auditorium (T) Stop on the Greenline

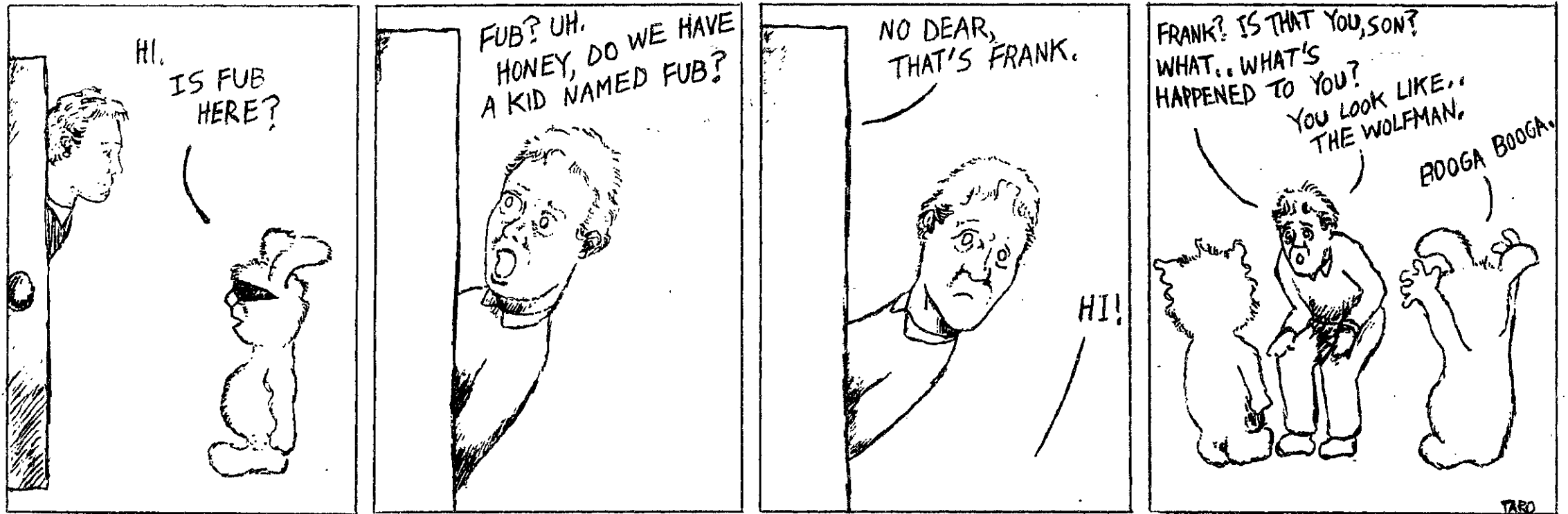
TICKETMASTER



comics

FUB

TARO OHKAWA



classified advertising

Classified Advertising in *The Tech*: \$5.00 per insertion for each 35 words or less. Must be prepaid, with complete name, address, and phone number. *The Tech*, W20-483; or PO Box 29, MIT Branch, Cambridge, MA 02139.

WANTED: 2 Sailing Instructors

- Renowned Jr. & Sr. Programs
- On Cape Cod
- Hard work, excellent benefits
- Call Dick Currier at:
H (617) 868-1937
W (617) 354-0800

Own an original! Osborne portable computer. 128 K, 2 disk drives, built-in monitor, lots of software (WP, games, database, etc.). Make an offer — no matter how ridiculous. 253-8318.

House for rent, Martha's Vineyard. Near town & beach, Oak Bluffs. Summer (June 1 — Labor Day). (301) 725-7377.

Easy work! Excellent Pay! Assemble products at home. Call for information. (504) 641-8003 Ext. 871.

The Tech Subscription Rates: \$17 one year 3rd class mail (\$32 two years); \$44 one year 1st class mail (\$86 two years); \$49 one year foreign; \$8 one year MIT Mail (2 years \$15). *The Tech*, W20-483; or PO Box 29, MIT Branch, Cambridge, MA 02139. Prepayment required.

GETAWAY WITH GARBER TRAVEL

Spend Your Summer in Europe

- Airline tickets on all major airlines
- Eurailpasses

With Low, Low Prices!

✦ LONDON	✦ \$299	✦
✦ PARIS	✦ \$329	✦
✦ ROME	✦ \$399	✦
✦ MADRID	✦ \$319	✦
✦ BRUSSELS	✦ \$329	✦

Per person, one way, based on round trip fare. Subject to availability. Some restrictions apply.

CALL GARBER TRAVEL

1105 Mass. Ave., Cambridge
492-2300

If You Want To Cut Your Student Loan Payments By Up To 40%, Start Cutting Here.

Consolidate your student loans with the SMART LOAN Account from Sallie Mae, and you could reduce your initial payments — by up to 40%. To qualify, you need to consolidate \$5,000 or more in eligible loans.* And with the SMART LOAN Account, you'll also get your choice of repayment plans, plus a low interest rate. If you like the sound of those numbers and want to find out more, call our number today at **1-800-524-9100** or mail the coupon.

SallieMae

*Stafford (GSL), Perkins, SLS and RPSL.

The SMART LOAN® Account

Send your coupon to: The SMART LOAN Account
1050 Thomas Jefferson St., NW, Washington, DC 20007

Yes, I'm interested in student loan consolidation. Tell me more about the SMART LOAN Account from Sallie Mae.

Name _____

Address _____

City _____

State _____ Zip _____

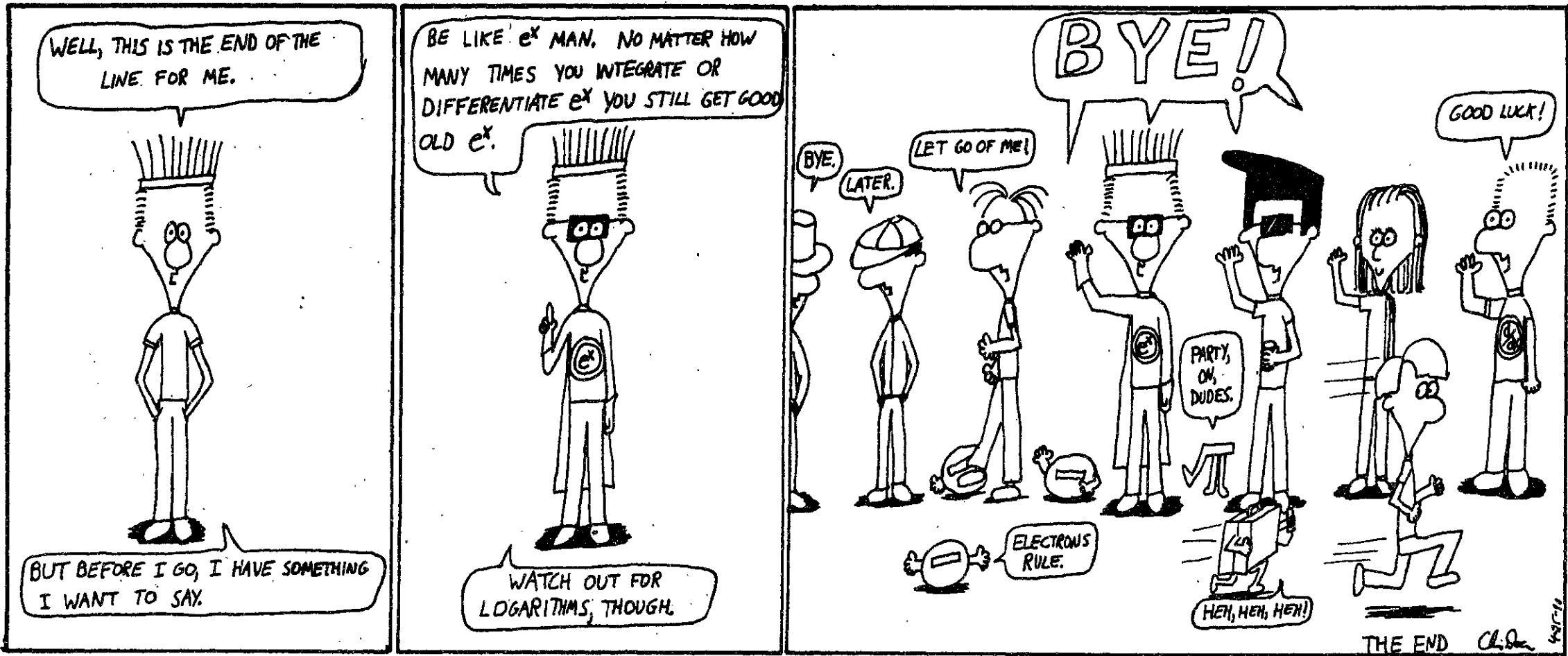
SMART LOAN® is a registered service mark of the Student Loan Marketing Association (Sallie Mae).

MIT-1

comics

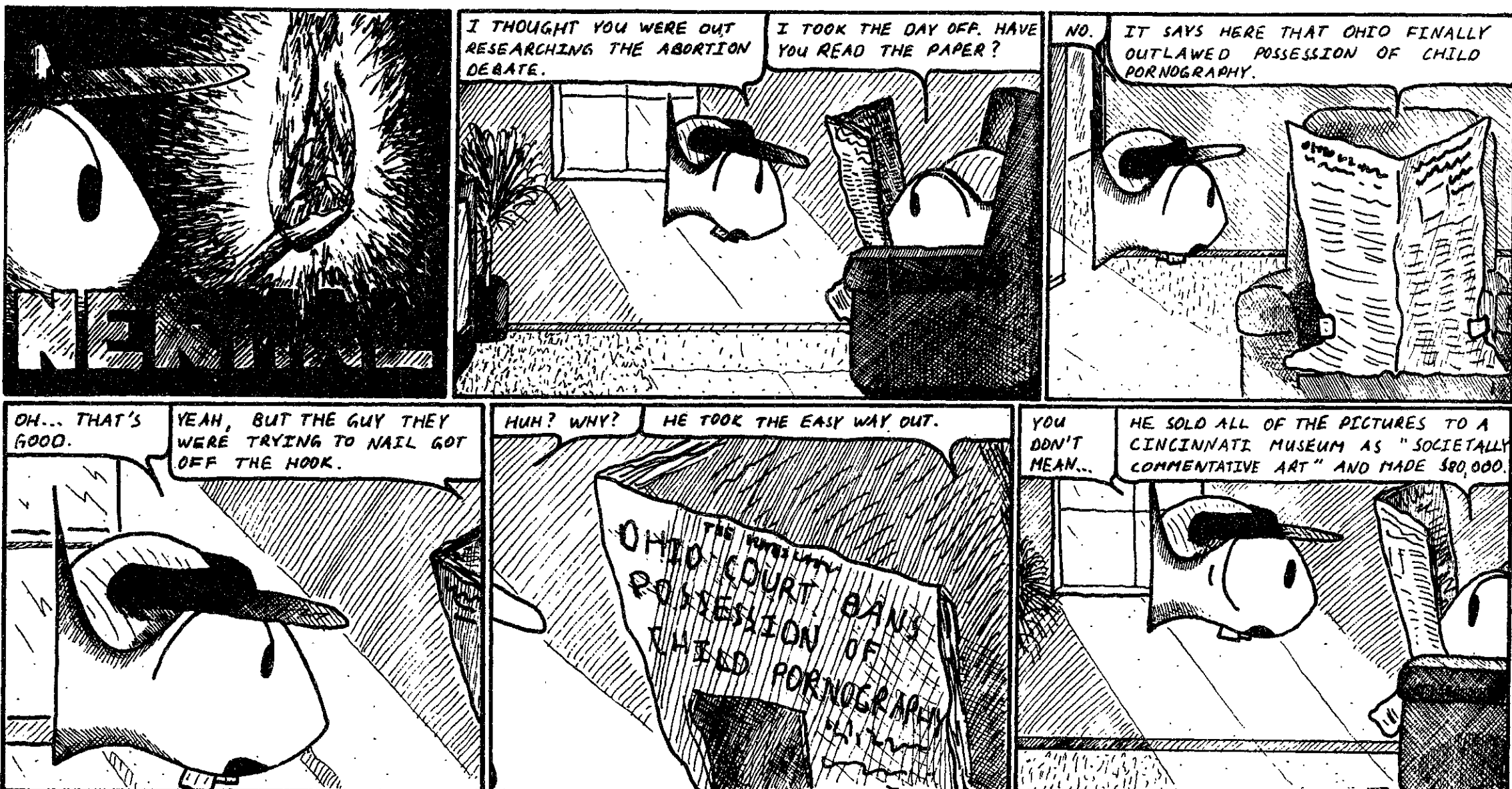
Nick

By Chris Doerr



Slurp's Journal

By John Thompson



C. M. Montgomery

B-Movie, The Play details strains of moviemaking

B-MOVIE — THE PLAY

Written by Tom Wood.
Directed by Bob Baker.
Starring Tom Wood, Larry Lachimec,
Corrine Coslo, and Dana Brooks.
At The Wilbur Theatre, through May 20.

By NEIL J. ROSS

B-MOVIE — THE PLAY, at the Wilbur Theatre, is wonderful. The US debut, which began on April 20 in Boston, looks as if it will continue the success of its Canadian opening in the mid-1980s.

Art, the main character, is a movie director working under a hilariously restrictive budget, and as the play begins we hear him recounting his life to his psychiatrist, who tells his secretary to send away all of his other patients for the day so that he can continue Art's session and hear "the good bits." His anxiousness to hear Art's story is well placed, as I'm sure the story

would have done the psychiatrist just as much good as it did Art.

He begins by describing his childhood as "Dr. Zhivago without the interiors," and we see some photographs of the young Art, even then with his big round glasses. However, it is Lottie, the frumpy girl with the charming naiveté of a 1950s B-movie character, who now wears the Woody Allen style glasses. Needless to say Art is unaware of her interest in him. There is a nice romantic conclusion to this at the very end — but with a clever twist.

Art's trouble, "movie damage," starts during the preparation for his latest movie, based on *Oedipus Rex*, which has to be hastily rewritten to entice the prospective leading lady, Gloria Hunt, into appearing. The producers are desperate for her to take the part. Gloria (Dana Brooks) asks, "Does anyone mind if I smoke?" to which Stan replies, "I don't mind if you burst into flames."



Tom Wood and Larry Yachimec in *B-Movie — The Play*

Art is full of the artistic, creative energy of a director at work during the filming scenes. "The script says a peck, not a tongue sandwich," he shouts during one take. The movie has awful lines like "If I'm not in bed by 10 o'clock, I'm going home."

Writer Tom Wood, playing Art, was stupendous, with terrific energy and marvelous facial expressions, especially when Art accidentally takes the valium-laced champagne and begins to hallucinate.

With the care of a mime artist, Larry Lachimec brought wonderful life to the farce. His character, Stan, drops continually into roles from movies, and he appears in drag in one scene of the movie they are filming. He also appears almost naked after falling out of the window of Art's apartment, but holding a lettuce from the Chinese grocery downstairs. This clown role would have been a joy for any actor.

Lottie, who has to act for the first time, was wonderfully portrayed by Corrine Koslo, who definitely was not acting for the first time. In plaid dress or pinafore dress she looked the part perfectly.

Brooks, as the glamorous soap opera

star Gloria Hunt, was appropriately bemused by the antics which are going on around her when Art, Stan, and Lottie are trying to persuade her to take the role, and her character is sufficiently rounded for Brooks to be able to impart some feeling of perceptivity.

As Dick Paulichuk, the exotic dancer who is hired as leading man, Eli Gabay brought the physique required by his role.

The acting energy was enhanced by cartoon boom, bonk, crash, and whiz sounds, which were just part of the technical effects that the \$500,000 production used. Probably least among the mechanical effects was Fluffy, the cat, who is of course credited in the titles at the beginning of the play as "Fluffy — as herself."

Movie references vary from Groucho Marx — "Why, you're one of the most beautiful women I've ever seen, and that's not saying much" — to *A Streetcar Named Desire*, as Stan and Art try to deal with the strains of movie-making. The set was framed in a 1950s-style border, nicely evoking the era of the B-movie.

The show was well worth the \$27.50-\$37.50 tickets, and with a student rate of \$15 it should not be missed.



Horst Govin

Greg Swearinga '92 and Elisa Duggan '93 perform in *into boheme*, by Sande Chen '92, as part of the MIT Music and Theatre Arts Section's *Playwrights' Workshop*. The workshop was presented last Thursday through Saturday, and also included *What Simply Wouldn't Do*, by Austin Sloat '92, and *Shiloh*, by Peter Parnassa '90.

On The Town

Compiled by Peter Dunn

Tuesday, May 1

CONTEMPORARY MUSIC

★★★ CRITICS' CHOICE ★★★
The Red Hot Chili Peppers and The Dead Milkmen perform at 7:30 at the Orpheum Theater, Hamilton Place, Boston. Also presented Wednesday, May 2. Tickets: \$20. Tel: 482-0650.

St. Cyr, The Jigsaws, Big Raw, and Elijah perform at T.T. the Bears, 10 Brookline Street, Cambridge, just north of MIT. Telephone: 492-0082.

Bag Boys perform at the Plough & Stars, 912 Massachusetts Avenue, Cambridge. Telephone: 492-9653.

Cornell McCarthy and Steve Fisher perform at Johnny D's, 17 Holland Street, Davis Square, Somerville, near the Davis Square T-stop on the red line. Telephone: 776-9667.

Big Clock and The Down Staircase perform at 8 pm at Necco Place, One Necco Place, near South Station in downtown Boston. Tickets: \$3.75. Tel: 426-7744.

FILM & VIDEO

The Coolidge Corner presents The XXII International Tournee of Animation at 5:30, 7:45, & 10:00 at 290 Harvard Street, Coolidge Corner, Brookline. Continues indefinitely with Saturday & Sunday matinees at 1:10 & 3:20. Telephone: 734-2500.

The Institute of Contemporary Art presents *Lonely Woman Seeks Life Companion* at 7 pm & 9 pm at 955 Boylston Street, Boston. Also presented Wednesday, May 2. Tickets: \$5 general, \$4 ICA members, seniors, and students. Telephone: 266-5152.

The Harvard Film Archive continues its Tuesday film series *The Transformation of Melodrama with Stella Dallas* (1937, King Vidor) at 5:30 & 8:00 at the Carpenter Center for the Visual Arts, 24 Quincy Street, Harvard Square, Cambridge. Admission: \$3 general, \$2 seniors and children. Telephone: 495-4700.

The Brattle Theatre continues its Tuesday film series *Painters and Other Artists with Dance of Hope* (1989, Deborah Shaffer) at 8:00 & 9:45 at 40 Brattle Street, Harvard Square, Cambridge. Tickets: \$10 for 8:00, \$5 for 9:45. Telephone: 876-6837.

JAZZ MUSIC

Carolina Brandes performs at the Western Front, 343 Western Avenue, Cambridge. Telephone: 492-7772.

Garrison Fewell performs at the Willow Jazz Club, 699 Broadway, Ball Square, Somerville. Telephone: 623-9874.

The Winker Swing Orchestra performs at 9 pm at the Regattabar, Charles Hotel, Harvard Square, Cambridge. Tickets: \$6. Telephone: 661-5000.

CLASSICAL MUSIC

The Boston Conservatory Wind Ensemble performs works by Robert Russell Bennett and others at 8 pm in Scully Hall, 8 The Fenway, Boston. No admission charge. Telephone: 536-6340.

PERFORMANCE

Gy-Nekula, a poetry/dance performance by environmental artist Panos Kouros and choreographer Mary Tsouti, is presented at 9 pm in the MIT Chapel and Center for Advanced Visual Studies. Also presented May 2 to 5. No admission charge (reservations required). Telephone: 227-4332.

Wednesday, May 2

JAZZ MUSIC

The Four Freshmen perform at 9 pm at the Regattabar, Charles Hotel, Harvard Square, Cambridge. Also presented May 3 to 5. Tickets: \$8 to \$12 depending on day. Telephone: 661-5000.

CONTEMPORARY MUSIC

The Lemonheads, Jones Very, and King Moon Razor perform in an 18+ ages show at 8 pm at the Paradise, 967 Commonwealth Avenue, Boston. Telephone: 254-2052.

M.S.G. and Black Crows perform in an 18+ ages show at 9 pm at Axis, 13 Lansdowne Street, Boston, near Kenmore Square. Telephone: 262-2437.

Easy Walkers, The Mies, George Leh & The Rocking Shoe, and Small Town, No Airport perform at T.T. the Bears, 10 Brookline Street, Cambridge, just north of MIT. Telephone: 492-0082.

The Tribulations Band performs at the Western Front, 343 Western Avenue, Cambridge. Telephone: 492-7772.

John Michaels, Raymond Gonzalez & Amy Malkoff, Taylor Notch, and Dana Westover perform at 8 pm at Necco Place, One Necco Place, near South Station in downtown Boston. Tickets: \$3.75/\$4.75. Telephone: 426-7744.

The Empire Brass performs at 8 pm in Marsh Chapel, Boston University, 735 Commonwealth Avenue, Boston. Tickets: \$10 general, \$5 seniors. Telephone: 353-3345.

★★★ CRITICS' CHOICE ★★★
Screaming Coyotes perform at the Plough & Stars, 912 Massachusetts Avenue, Cambridge. Tel: 492-9653.

The Walkers and The Moxie Men perform at Johnny D's, 17 Holland Street, Davis Square, Somerville, near the Davis Square T-stop on the red line. Telephone: 776-9667.

Hullabaloo and Hordes of Mungo perform in an 18+ ages show at Ground Zero, 512 Massachusetts Avenue, Cambridge. Telephone: 492-9545.

(Please turn to page 12)

The Tech Performing Arts Series presents...

JUILLIARD STRING QUARTET

The final program of the six-concert Beethoven cycle will include *Quartet in B-flat Major*, *Quartet in F minor*, "Serioso," and *Quartet in F Major*. A Bank of Boston Celebrity Series Event.

Jordan Hall, May 4 at 8 pm.

MIT price: \$6.

BOSTON PHILHARMONIC

Benjamin Zander conducts The Boston Philharmonic in Tchaikovsky's *Piano Concerto No. 1*, with soloist Christopher O'Riley, and Stravinsky's *The Rite of Spring*.

Sanders Theatre, May 6 at 4 pm.

MIT price: \$5.

MASTERWORKS CHORALE

The Masterworks Chorale, Allen Lannom, artistic director, will be presenting Handel's *Israel in Egypt*.

Sanders Theatre, May 12 at 8 pm.

MIT price: \$6.

The Juilliard String Quartet concert postponed from March 16 has been re-scheduled. The new concert date is May 9 at 8 pm. Tickets from March 16 will be honored at the May 9 concert, but may not be used for other Juilliard dates. If ticket-holders are unable to attend the concert on May 9, they should return their tickets to the TCA for a refund or exchange.

Tickets are on sale at the Technology Community Association, W20-450 in the Student Center. Office hours posted on the door. Call x3-4885 for further information.

The Tech Performing Arts Series, a service for the entire MIT community, from The Tech, MIT's student newspaper, in conjunction with the Technology Community Association, MIT's student community service organization.



Gosho's *Growing Up* (1955, Japan) at the Harvard Film Archive on May 5.

ARTS

SinfoNova's passionate performance may be its last

SINFONOVA

Conducted by Aram Gharabekian.

Vladimir Krainev, piano soloist.

Dennis Alves, trumpet soloist.

Jordan Hall, April 28.

Event in The Tech Performing Arts Series.

By JONATHAN RICHMOND

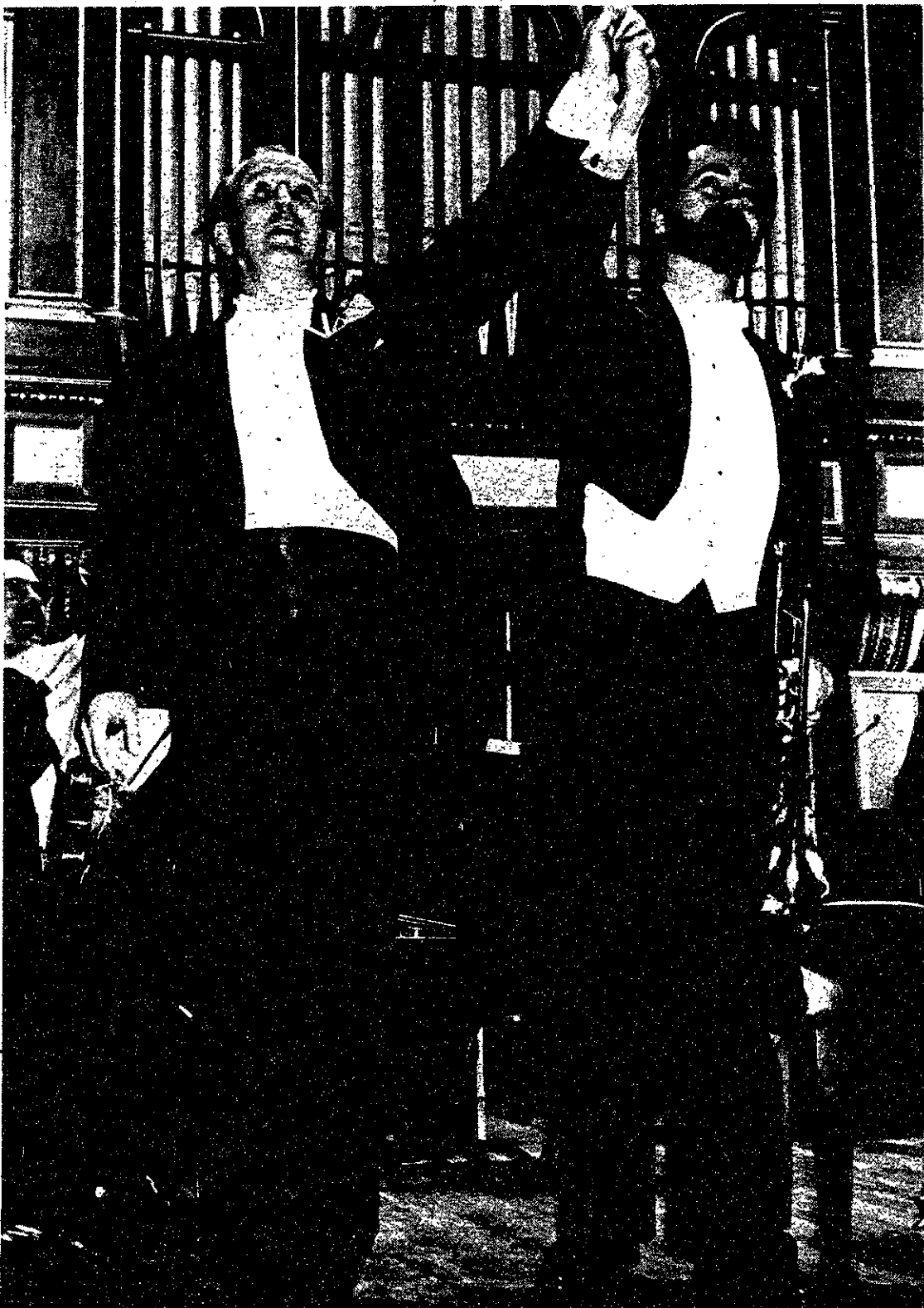
"THIS SEASON has been the highlight of my musical career, and I'm looking forward to continuing," said a SinfoNova musician to conductor Aram Gharabekian at the reception following last Saturday's concert. Spotting an over-busy reporter's notebook, the musician said that the quotation was not for attribution: "I play for the BSO and the Boston Pops. It's the absolute truth, but if this got back to anyone, I'd be in trouble."

The musician's pleasure at participation sums up SinfoNova, the orchestra with the special sound, the special identity and the massive financial problems which might make last Saturday's concert its last.

Saturday's audience was greeted with flowers in the SinfoNova color — yellow — Symphony chocolate bars, and pledge forms. But it was the music which counted, and the orchestra played with a passion that made this concert one of their best.

The evening began with *Four Armenian Folksongs and Dances* by the Armenian composer, Komitas, and SinfoNova inflected them with a heady, rhythmic pulse. SinfoNova's strings sounded rich and full of expression, never short on vigor as they propelled the festively folksy music through the air.

Soviet superstar pianist, Vladimir



Dennis Alves and Vladimir Krainev

Jonathan Richmond/The Tech

Kraiev, next joined the orchestra for a performance of Shostakovich's *Piano Concerto No. 1 in C minor for piano, trumpet and string orchestra*, Op. 35, molded of fire and song. Kraiev's touch was unbelievable: for the more adrenal passages his precision of attack transformed the Steinway into a perfectly-trained staccato machine, each note sounding out crystal clear as it hammered home its message with pungency.

Kraiev's sparkle showed up during lighter passages, too, gestures of playful humor generating sheer delight.

Dennis Alves contributed some notable solo work on trumpet, his sound bright, brilliant, and laced with good humor. SinfoNova's strings rounded out this remarkable showing with a smooth lyricism of dance-like eloquence; they were ever-alert to changing textures and tensions, and responsive to the elements of pathos in the music, too.

Kraiev returned after intermission to play the impossible: a piano concerto surely not intended for human hands. Schnittke's *Concerto for Piano and String Orchestra*, given its American premiere by SinfoNova on Saturday, is a work of impossible intensity, but Kraiev captured every thunderous note with a gossamer attack which allowed no mush, and enabled each tone to shine through.

SinfoNova's strings played trenchantly, a mass of tension, yet endowed with a clarity which exposed the work's complexities and allowed them to sing through. Were there hints of 1812? What agonies were hereby conveyed? And what spirituality? Schnittke's music asked many questions, the orchestra and soloist built up possible replies, and left the audience with much musical food for thought.

The evening ended with a stiff account of Dvorak's *Serenade for String Orchestra*

in E, Op. 22, and — as an encore — with Schoenberg's altogether humorless arrangement of Johann Strauss' waltz, *Roses from the South*. The rather tired-sounding strings gave it an altogether wooden treatment, as if it was not already staid enough. Soomi Lee's vibrant piano playing failed to rescue it. These concluding infelicities may, however, be forgiven, following as they did an evening of extraordinary music-making, which clearly demonstrated how much SinfoNova deserves to be a permanent fixture of the Boston arts scene.

Jonathan Richmond/The Tech
Aram Gharabekian, SinfoNova music director

ONE STOP FULL SERVICE COMPUTER STORE

AUTHORIZED SALES and SERVICE

IBM COMPATIBLES

EVEREX

HEADSTART

intel

Panasonic

MON-FRI: 9: AM-6: PM

SAT: 9: AM-3: PM

492-2345

E.L.I. COMPUTERS inc.

YOUR HOME AND OFFICE COMPUTER STORE

139 HAMPSHIRE ST. CAMBRIDGE, MA. 02139

LOOKING AHEAD TO COMMENCEMENT 1991

The Commencement Committee invites suggestions for speakers and/or topic areas from all members of the MIT Community for a Commencement speaker at MIT's Commencement Exercises on Monday 3 June 1991. The Commencement speaker should be one who will be able to address topics of relevance to MIT. Written suggestions and/or topic areas may be dropped off at the following locations.

Undergraduate Association Office, Room W20-401
Graduate Student Council Office, Room 60-222
Information Center, Rooms 7-121

The deadline for suggestions and/or topic areas is 16 May. In addition, suggestions and/or topic areas may be filed with the Michael D. Grossberg - 1990-1991 President of the Graduate Student Council, Dawn L. Mitzner - President of the Class of 1991, Mary L. Morrissey - Executive officer for Commencement, and Martin F. Schlecht - Chairman of the Commencement Committee. All suggestions and/or topic areas will be reviewed, and a list will be submitted to the President of the Institute for consideration. The list will not be rank ordered nor will it be made public. The responsibility and authority for selecting a Commencement speaker and issuing an invitation will rest with the President of the Institute.

Take That Special Someone
To That Special Someplace
At A Special Price



The Inn On Golden Pond

Route 3, Holderness, NH 603-968-7269

Imagine the romance of Golden Pond - priced for college students. Your first night is at our regular rate (\$85), your second night is priced by your graduating class. Ex: Class of 1990 = \$19.90. Our rates include a full breakfast.

Make plans now to experience first hand the unspoiled beauty, clear fresh waters and magnificent mountain scenery that millions have enjoyed through the classic film "On Golden Pond."

This special price is good through June 30, 1990.

ARTS

On The Town

Compiled by Peter Dunn

Thursday, May 3

DANCE

*** CRITICS' CHOICE ***
Eiko and Koma perform as a presentation of Dance Umbrella at 8 pm at the Emerson Majestic Theatre, 219 Tremont Street, Boston. Also presented May 4 and 5. Tickets: \$14. Telephone: 492-7578.

Boston Conservatory Dance Division presents *Student Choreographies* at 8 pm in the Conservatory Theater, 31 Hemenway Street, Boston. Also presented Friday, May 4. No admission charge. Telephone: 536-6340.

FILM & VIDEO

*** CRITICS' CHOICE ***
The Brattle Theatre continues its Thursday film series *Three Japanese Directors* with a Kenji Mizoguchi double feature, *Sansho the Bailiff* (1955, Japan) at 3:45 & 7:45 and *Princess Yang Kwei Fei* (1955, Japan) at 6:00 & 10:00, at 40 Brattle Street, Harvard Square, Cambridge. Tickets: \$5 general, \$3 seniors and children (good for the double feature). Telephone: 876-6837.

The Museum of Fine Arts continues its series of *Architects on Film* with *Deconstructivist Architects* (1989, Michael Blackwood) at 6:00 and begins its series *New Austrian Cinema* with *The Seventh Continent* (1989, Michael Haneke) at 7:30 in Remis Auditorium, MFA, 465 Huntington Avenue, Boston. Tickets: \$5 general, \$4.50 MFA members, seniors, and students. Telephone: 267-9300.

COMEDY

ComedySportz is presented at 9:30 at Rosies, 1667 Massachusetts Avenue, Cambridge. Tickets: \$5 general, \$4 students. Telephone: 738-1582.

CONTEMPORARY MUSIC

*** CRITICS' CHOICE ***
Sinéad O'Connor performs at 7:30 at the Orpheum Theater, Hamilton Place, Boston. Also presented Friday, May 4. Telephone: 482-0650.

Max Creek and Style perform in an 18+ ages show at 9 pm at Axis, 13 Lansdowne Street, Boston, near Kenmore Square. Telephone: 262-2437.

Voodoo Dolls, Mente, and Lipstick Traces perform at T.T. the Bears, 10 Brookline Street, Cambridge, just north of MIT. Telephone: 492-0082.

Madeline Hall & The Rhythm Hounds perform at the Plough & Stars, 912 Massachusetts Avenue, Cambridge. Telephone: 492-9653.

The Bag Boys perform at the Rat, 528 Commonwealth Avenue, Kenmore Square, Boston. Telephone: 247-8309.

Pankow and GRUMH... perform in an 18+ ages show at Ground Zero, 512 Massachusetts Avenue, Cambridge. Telephone: 492-9545.

Satta performs at the Western Front, 343 Western Avenue, Cambridge. Also presented May 4 and 5. Tel: 492-7772.

40 Thieves, The Threats, Myriah, Arcurus, and Tripwire perform in an 18+ ages show at the Channel, 25 Necco Street, near South Station in downtown Boston. Admission: \$3.75. Telephone: 451-1905.

Big Train, From Good Homes, and The Response perform at 8 pm at Necco Place, One Necco Place, near South Station in downtown Boston. Tickets: \$3.75. Telephone: 426-7744.

Folk singer/songwriter Doshie Powers performs at 8 pm at the Cambridge Center for Adult Education, Blacksmith House, 56 Brattle Street, Cambridge. Admission: \$3.50. Telephone: 547-6789.

The Secret Freaks and Morphine perform at Johnny D's, 17 Holland Street, Davis Square, Somerville, near the Davis Square T-stop on the red line. Telephone: 776-9667.

CLASSICAL MUSIC

The Chamber Brass of Boston performs as part of the MIT Noon Chapel Series at 12:05 in the MIT Chapel. No admission charge. Telephone: 253-2906.

The Boston University Symphony Orchestra, David Hoose conducting, performs works by John Harbison, Marjorie Merryman, and Shostakovich at 8 pm in Sanders Theatre, Harvard University, Quincy and Kirkland Streets, Cambridge. Tickets: \$8.50 general, \$6.50 seniors and students. Telephone: 353-3345.

*** CRITICS' CHOICE ***
Emmanuel Ax and Yo-Yo Ma perform works by Beethoven, Bolcom, and Rachmaninoff at 8 pm in Symphony Hall, corner of Huntington and Massachusetts Avenues, Boston. Tickets: \$25. Telephone: 266-1492.

The Opera Lab presents *An Evening with Kurt Weill and Bertolt Brecht: Der Jasager, Das Berliner Requiem, and The Flight of Lindberg* in C. Walsh Theatre, Suffolk University, 55 Temple Street, Boston. Telephone: 232-9277.

The New England Conservatory Honors Chamber Players perform Messiaen's *Quartet for the End of Time* at 12:30 in the Federal Reserve Bank of Boston's auditorium, 600 Atlantic Avenue, across from South Station in downtown Boston. No admission charge. Telephone: 973-3454 or 973-3368.

THEATER

Student-Written One-Act Plays, featuring *Dolphin Dancing* by Liz Stock '90, *The Horrible and the Miserable* by Glen Weinstein '92, and *Out of the Woods* by Jonathan Amsterdam G, are presented by MIT Dramashop at 8 pm in Kresge Little Theatre. Also presented May 4 and 5. No admission charge. Telephone: 253-2877.

Cyrano de Bergerac, Edmond Rostand's drama of the indomitable but self-conscious 17th century hero who woos the woman he loves on behalf of another man, is presented by the Harvard-Radcliffe Dramatic Club at 8 pm on the Loeb Mainstage, 64 Brattle Street, Cambridge. Also presented May 4 & 5 at 8 pm and May 5 at 2 pm. Tickets: \$5 general, \$4 students. Tel: 547-8300.

Friday, May 4

JAZZ MUSIC

*** CRITICS' CHOICE ***
The MIT Jazz Band Spring Concert is presented at 8:15 in Kresge Auditorium. Admission: \$1 at the door. Telephone: 253-2906.

The Phil Wilson Rainbow Band performs at the Willow Jazz Club, 699 Broadway, Ball Square, Somerville. Telephone: 623-9874.



Emanuel Ax and Yo-Yo Ma perform in Symphony Hall on Thursday, May 3.

classified advertising

Classified Advertising in The Tech: \$5.00 per insertion for each 35 words or less. Must be prepaid, with complete name, address, and phone number. The Tech, W20-483; or PO Box 29, MIT Branch, Cambridge, MA 02139.

Brown and Finnegan Moving Service. Local. Long Distance. Overseas. No job too small. Reasonable rates. Frequent Trips all NE, NY, NJ, DC, VA, PA 364-1972 or 361-8185. dpu 27229 icc 3328.

Alaska Summer Employment Fisheries. \$5,000+/month! Over 8,000 openings. Free transportation! Room & Board! No experience necessary. MALE or FEMALE. Send \$6.95 to M&L Research, Box 84008-DS, Seattle, WA 98124 - Satisfaction Guaranteed.

Attention: Easy work! Excellent pay! Assemble products at home. Details. (602) 838-8885 Ext. W-4058.

TYPING/WORD PROCESSING
Research papers, thesis, term papers, reports, resumes. Letter quality printing. Convenient location to MIT. Speedy, accurate, yet reasonable - only \$12/hr. Days, weekends and evenings.
(617) 267-9131.

CTB BUSINESS SERVICES

Futons and Frames coming to the campus activities complex on Wednesday, May 2. Our prices start from only \$158 complete! Frame and mattress plus choice of colors included! Metawampe furniture (413) 549-4787.

Brooklyn summer sublet. Furnished 1 bedroom, color TV. \$600/month May 15 - Sept. 1 (dates flexible). Good for one couple or two roommates. Well-equipped kitchen, skyline view, 20 minutes to Manhattan by subway. Lenny Cassuto (718) 398-6188.

NAD 3020A Amplifier, Alpine AL-51 deck, Celestion speakers, Realistic turntable, \$450; Canon AV-1 \$75; RCA videotex 300 bd data terminal \$50; Nishiki 12 spd, \$150; Vendex XT, 20 MB, 1200 bd modem, etc. \$1000, Epson LQ-500, \$250; 787-4767.

Low Cost Flights to Europe from \$129 June thru September, 1990. Each way based on round trip. 1-800-344-8360

Legal Problems? I am an experienced attorney and a graduate of MIT who will work with you creatively to solve these problems, answer your legal questions and provide legal representation. My office is conveniently located in downtown Boston just minutes from MIT via MBTA. Call Attorney Esther Horwich, MIT '77 at 523-1150.

MIT Microcomputer Center FAIR

**GAMES, COMPUTERS, PRIZES, BALLOONS, FUN
EVERYTHING UNDER THE SUN!**

Friday, May 4 10:00am to 4:00pm
MIT Student Center Lobby
Call 253-7686 for details!

IBM

Microsoft

NeXT

MIT Information Systems

Lotus

WordPerfect

Apple

3Com/Valinor

Cal-Abco

Tecmar

Bring this coupon and get free popcorn!

ARTS

CLASSICAL MUSIC

Violinist **Chung Pi Ma** '90 performs César Franck's *Sonata in A Major* in an MIT Advanced Music Performance Recital at 12:05 in Killian Hall, MIT Hayden Memorial Library Building 14. No admission charge. Telephone: 253-2906.

The **Wellesley Collegium** performs at 8 pm in Houghton Memorial Chapel, Wellesley College, Wellesley. No admission charge. Telephone: 235-0320 ext. 2028.

*** CRITICS' CHOICE ***
The **Juilliard String Quartet** continues its cycle of complete Beethoven string quartets with *Quartet in B-flat Major*, *Quartet in F minor*, and *Quartet in F Major* at 8 pm in Jordan Hall, New England Conservatory, 30 Gainsborough Street at Huntington Avenue, Boston. Tickets: \$22. Tel: 526-2412.

The **Handel and Haydn Society** performs *Acis and Galatea* at 3 pm in Symphony Hall, corner of Huntington and Massachusetts Avenue, Boston. Tickets: \$14 to \$35. Telephone: 720-3434.

The **Soldiers' Chorus of the United States Army Field Band** performs at 5:30 in Morse Auditorium, Boston University, 602 Commonwealth Avenue, Boston. No admission charge. Telephone: 353-4025.

FILM & VIDEO

The MIT Lecture Series Committee presents Alfred Hitchcock's *Psycho* at 7:30 in 10-250 and *Steel Magnolias* at 7:00 & 10:00 in 26-100. Admission: \$1.50. Telephone: 258-8881.

*** CRITICS' CHOICE ***
The **Brattle Theatre** continues its weekend series with an Audrey Hepburn double feature, *Roman Holiday* (1953, William Wyler) at 3:20 & 7:45 and *Sabrina* (1954, Billy Wilder) at 5:30 & 10:00, at 40 Brattle Street, Harvard Square, Cambridge. Tickets: \$5 general, \$3 seniors and children (good for the double feature). Telephone: 876-6837.

The **French Library** in Boston begins its film series *Focus on the Caribbean* with *The Spirit of the Islands* (1988, Alain d'Aix) at 8 pm at 53 Marlborough Street, Boston. Also presented with *Gouté-sel* (1989, Alain d'Aix) on May 5 and 6. Admission: \$4 general, \$3 Library members. Telephone: 266-4351.

*** CRITICS' CHOICE ***
The **Cambridge Center for Adult Education** continues its film series *Fantastic Journeys in Time and Space* with *The Brother from Another Planet* (1984, John Sayles) at 7 pm & 9 pm at 56 Brattle Street, Cambridge. Tickets: \$3.50. Telephone: 547-6789.

The **Museum of Fine Arts** continues its Friday film series *Dangerous Loves* with *I'm the One You're Looking For* (1988, Jaime Chavarrí, Spain) at 6 pm and *Fable of the Beautiful Pigeon Fancier* (1988, Ruy Guerra, Brazil) at 8 pm in Remis Auditorium, MFA, 465 Huntington Avenue, Boston. Tickets: \$5 general, \$4.50 MFA members, seniors, and students. Telephone: 267-9300.

The **Harvard Film Archive** continues its *Tribute to Heinosuke Gosho* with *Dispersing Clouds* (1951, Japan) at 7 pm and *An Inn at Osaka* (1954, Japan) at 9 pm at the Carpenter Center for the Visual Arts, 24 Quincy Street, Harvard Square, Cambridge. Admission: \$3 general, \$2 seniors and students. Telephone: 495-4700.

DANCE

*** CRITICS' CHOICE ***
The **MIT Dance Workshop's Spring Concert** is presented at 8 pm in the Sala de Puerto Rico, MIT Student Center. Also presented Saturday, May 5. No admission charge. Telephone: 253-2877.

CONTEMPORARY MUSIC

The **Psychedelic Furs** are presented as part of *MIT Spring Weekend* at 8 pm in the Johnson Athletic Center.

Timmy Hughes & Little Brother perform at the Plough & Stars, 912 Massachusetts Avenue, Cambridge. Telephone: 492-9653.

Widespread Panic, Joe, We Saw the Wolf, and Ugly Rumors perform at the Rat, 528 Commonwealth Avenue, Kenmore Square, Boston. Tel: 247-8309.

The Silos, The Great Outdoors, and Knots & Crosses perform at T.T. the Bears, 10 Brookline Street, Cambridge, just north of MIT. Telephone: 492-0082.

*** CRITICS' CHOICE ***
Cowboy Junkies perform at 7 pm at the Berklee Performance Center, 136 Massachusetts Avenue, Boston. Tickets: \$18.50. Telephone: 931-2000.

*** CRITICS' CHOICE ***
The **Cramps and Flat Duo Jets** perform at the Channel, 25 Necco Street, near South Station in downtown Boston. Admission: \$10/\$12.50. Telephone: 451-1905.

Dresden Dance, Work Force, and Ragamuffin Soldier perform at 9 pm at Axis, 13 Lansdowne Street, Boston, near Kenmore Square. Telephone: 262-2437.

Animal Train performs at Johnny D's, 17 Holland Street, Davis Square, Somerville, near the Davis Square T-stop on the red line. Telephone: 776-9667.

The **Jesus Lizard and Hollow Heyday** perform in an 18+ ages show at Ground Zero, 512 Massachusetts Avenue, Cambridge. Telephone: 492-9545.

The **Ocean Blue, Daisy Chain, and Life In Between** perform at 8 pm at the Paradise, 967 Commonwealth Avenue, Boston. Telephone: 254-2052.

Young Neal & The Vipers and Kelly Riley perform at 8 pm at Necco Place, One Necco Place, near South Station in downtown Boston. Tickets: \$5.75/\$6.75. Telephone: 426-7744.

An **Electronic Music Concert** is presented at 8 pm in the Tsai Performance Center, Boston University, 685 Commonwealth Avenue, Boston. Also presented Saturday, May 5. Telephone: 353-3345.

EXHIBITS

In **Turn**, works by Paté Poste's interns, opens today at the a.k.a. Skylight Gallery, 43 Charles Street, Boston. Continues through May 31 with gallery hours Monday-Friday 9-6. Telephone: 720-2855.

Saturday, May 5

JAZZ MUSIC

The **David Friesen Trio** performs at the Willow Jazz Club, 699 Broadway, Ball Square, Somerville. Telephone: 623-9874.

FILM & VIDEO

The MIT Lecture Series Committee presents *Dirty Dancing* at 7:00 & 9:30 in 26-100. Admission: \$1.50. Telephone: 258-8881.

*** CRITICS' CHOICE ***
The **Brattle Theatre** continues its weekend series with an Audrey Hepburn double feature, *Roman Holiday* (1953, William Wyler) at 1:00, 5:25, & 10:00 and *Breakfast at Tiffany's* (1961, Blake Edwards) at 3:15 & 7:45, at 40 Brattle Street, Harvard Square, Cambridge. Tickets: \$5 general, \$3 seniors and children (good for the double feature). Telephone: 876-6837.

*** CRITICS' CHOICE ***
The **Harvard Film Archive** continues its *Tribute to Heinosuke Gosho* with *Growing Up* (1955, Japan) at 7 pm and *Mother, Get Married* (1962, Japan) at 9 pm at the Carpenter Center for the Visual Arts, 24 Quincy Street, Harvard Square, Cambridge. Admission: \$3 general, \$2 seniors and students, \$5/\$4 for the double feature. Telephone: 495-4700.

CONTEMPORARY MUSIC

The **MIT Concert Band**, John Corley conducting, performs works by Brett Wanderaan, Karel Husa, George Rochberg, Beversdorf, and H. Owen Reed at 8 pm in Kresge Auditorium. No admission charge. Telephone: 253-2906.

*** CRITICS' CHOICE ***
Michelle Shocked & the Captain Swing Band, Poi Dog Pondering, and John Wesley Harding perform at 8 pm at the Opera House, 539 Washington Street, Boston. Tickets: \$16.50 and \$18.50. Telephone: 720-3434.

Laurie Sargent, Wisniaks, and Surrender Dorothy perform at T.T. the Bears, 10 Brookline Street, Cambridge, just north of MIT. Telephone: 492-0082.

The **Kevin Connolly Band** perform at the Plough & Stars, 912 Massachusetts Avenue, Cambridge. Telephone: 492-9653.

Mozamba performs at Johnny D's, 17 Holland Street, Davis Square, Somerville, near the Davis Square T-stop on the red line. Telephone: 776-9667.

Afghan Whigs and Scrawl perform at the Rat, 528 Commonwealth Avenue, Kenmore Square, Boston. Tel: 247-8309.

The **SubTerraneans and Big Town** perform at 11 pm at Necco Place, One Necco Place, near South Station in downtown Boston. Telephone: 426-7744.

CLASSICAL MUSIC

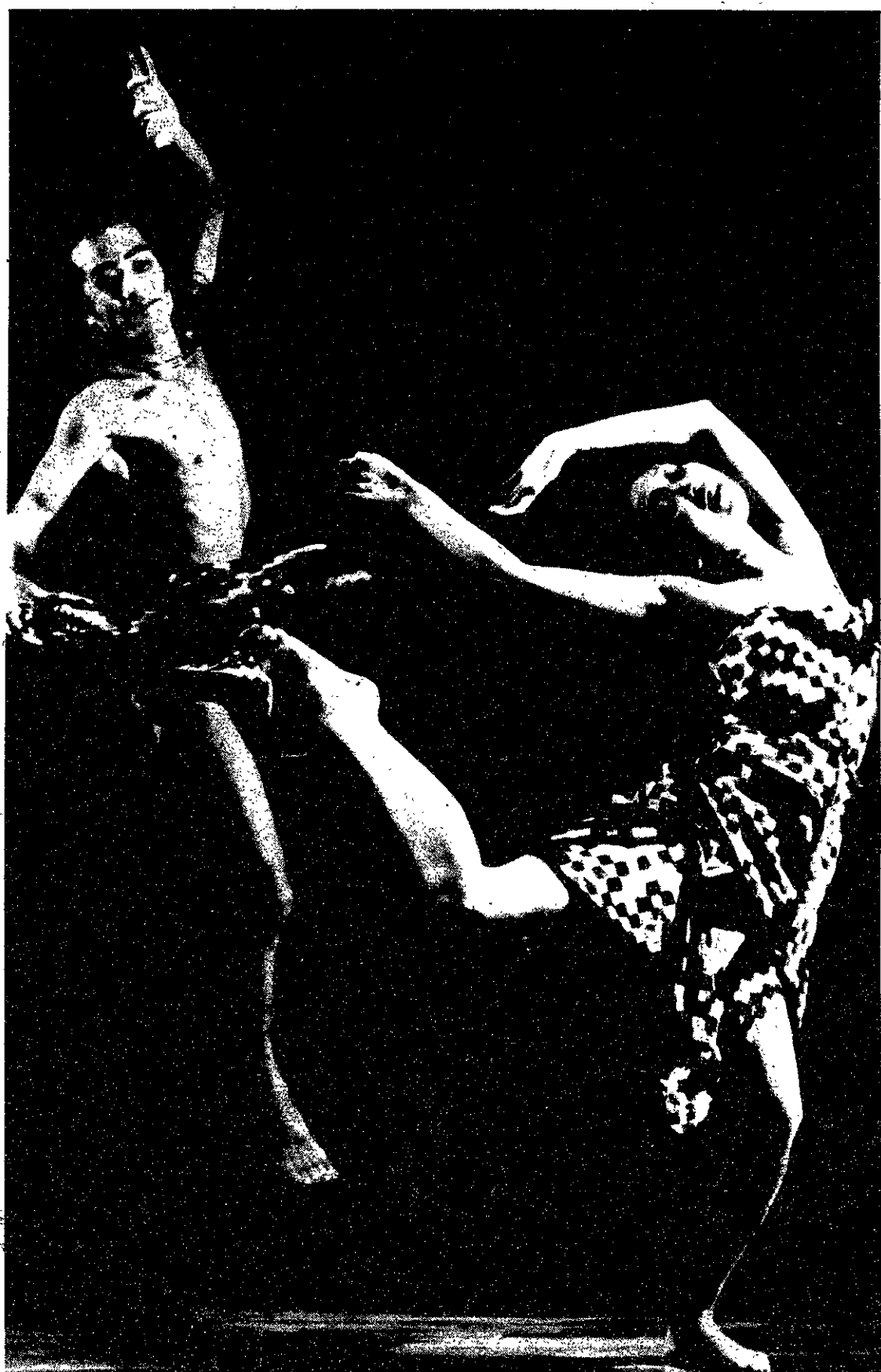
*** CRITICS' CHOICE ***
The **Bulgarian State Female Vocal Choir**, with guest artists the **Kronos Quartet**, performs *Le Mystère des Voix Bulgares* at 8 pm in Symphony Hall, corner of Huntington and Massachusetts Avenues, Boston. Tickets: \$20, \$22, and \$24. Tel: 266-1492.

*** CRITICS' CHOICE ***
The **Amadeus Winds** perform works by Mozart and Beethoven as part of the *Boston Early Music Festival and Exhibition* at 8 pm in Memorial Church, Harvard University, Cambridge. Tickets: \$13, \$17, and \$20. Telephone: 661-1812.

*** CRITICS' CHOICE ***
The **Boston Philharmonic**, Benjamin Zander conducting, performs Tchaikovsky's *Piano Concerto No. 1* and Stravinsky's *Le Sacre du printemps* at 8 pm in Jordan Hall, New England Conservatory, 30 Gainsborough Street at Huntington Avenue, Boston. Also presented Sunday, May 6 in Sanders Theatre, Harvard University, Quincy and Kirkland Streets, Cambridge. Tickets: \$8, \$15, and \$20 (see also reduced-price tickets offered through *The Tech* Performing Arts Series for May 6 performance). Tel: 536-4001.

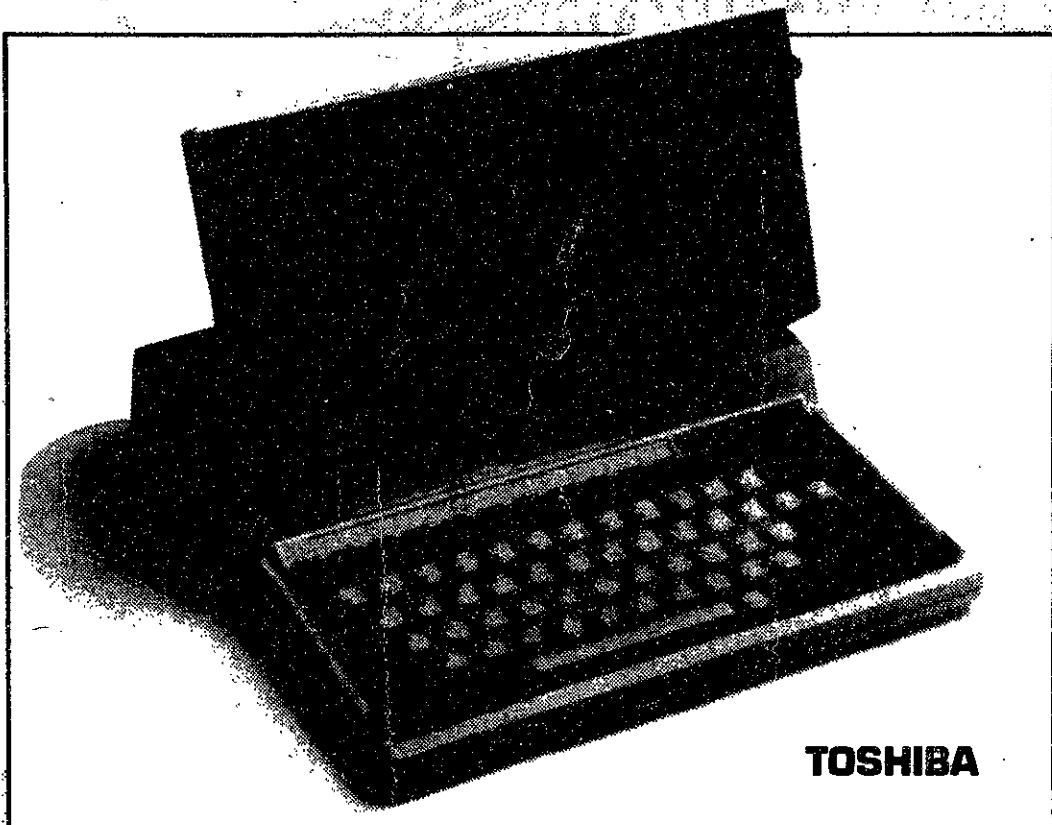
Pianist **Claude Frank** performs "Song of Love," about the life of Robert Schumann, at 8 pm in the Edward Pickman Concert Hall, Longy School of Music, 27 Garden Street, Cambridge. Tickets: \$12 general, \$9 seniors and students. Telephone: 876-0956.

The **Boston University Concert Band** performs works by Shostakovich, Granger, and Vaughan Williams at 2 pm at the Hatch Memorial Shell, Boston Esplanade. No admission charge. Telephone: 353-3358.



Eiko and Koma perform at the Emerson Majestic Theatre, May 3 to 5.

The Last Word In Personal Computers From Toshiba!



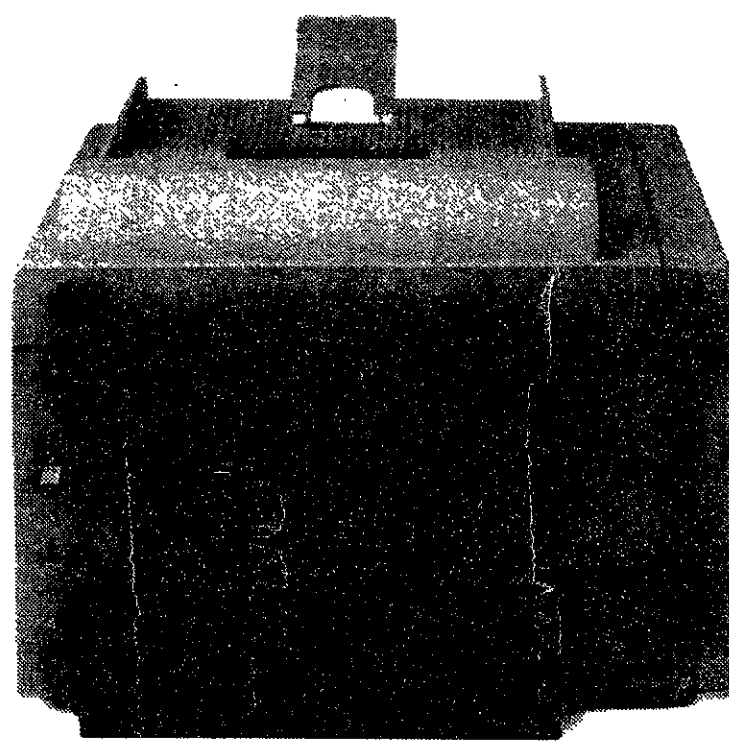
TOSHIBA

Toshiba T1200 HB Portable Personal Computer.

This lightweight and portable Toshiba PC is perfect for students or business people who need to travel around a lot on their various assignments. And this versatile battery powered PC now includes MS-DOS 3.3. It also features 1MB memory, one built-in 20MB hard disk and one 720KB 3 1/2" diskette drive and backlit Supertwist LCD and parallel and serial ports. It runs on a removable, rechargeable battery pack. \$1899

University ID required for Toshiba purchase.

Print It Better And Save With IBM!



IBM Business Partner
Authorized Advanced Products Dealer

IBM Desktop LaserPrinter "E"

Suddenly nothing else measures up to this compact and affordable non-impact desktop page printer. It's perfect for any business or office because it provides top-quality, high-resolution text and graphics. It prints up to 5 pages per minute. And this IBM LaserPrinter comes with Hewlett Packard® LaserJet II and Hewlett Packard Graphics Language (HPGL) plotter capability, 10 resident fonts - 5 portrait/5 landscape, downloadable font capability, parallel interface, 200 sheet input tray and 512K memory. **Coop Low Price \$999**

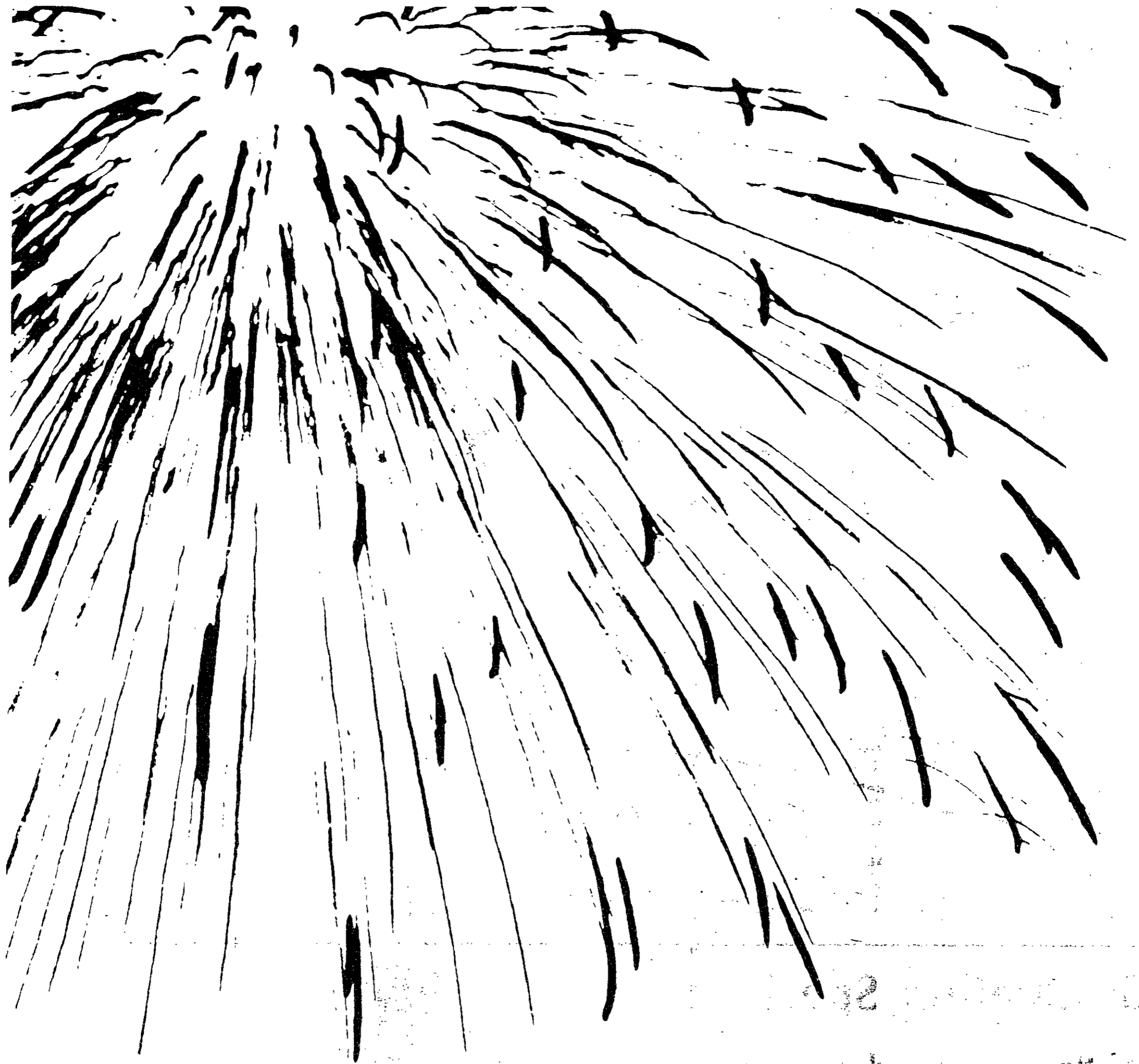
IBM is a registered trademark of International Business Machines Corporation. Hewlett Packard is a registered trademark of Hewlett Packard Corporation. IBM at Harvard only. No mail or phone orders. For more information, call (617) 482-1000 Ext. 338

HARVARD SQUARE
CAMBRIDGE
M-SAT 9:20-5:45
THUR *TIL 8:30

MIT COOP AT KENDALL
3 CAMBRIDGE CENTER
M-F 9:15-7 THUR *TIL 8:30
SAT 9:15-5:45

THE COOP

COOP AT LONGWOOD
333 LONGWOOD AVE
M-F 9:15-7 THUR *TIL 8:30
SAT 9:15-5:45



Awards Convocation

MONDAY, MAY 14, 1990

AT 3:30 P.M.

HUNTINGTON HALL 10-250

RECEPTION IMMEDIATELY FOLLOWING

VANNEVAR BUSH ROOM 10-105

REFRESHMENTS

ARTS

DANCE

Boston Conservatory Dance Division presents *Dance in 3-D*, choreographies by the senior class, at 8 pm in the Conservatory Theater, 31 Hemenway Street, Boston. Also presented Sunday, May 6 at 3 pm. No admission charge. Telephone: 536-6340.

Sunday, May 6

CONTEMPORARY MUSIC

WBCN Rock 'n' Roll Rumble, Day 1 features *Gingerbread Men*, *The Nor'easters*, *Daisy Chain*, and *Who Be Dat?* at the Paradise, 967 Commonwealth Avenue, Boston. Telephone: 254-2052.

New Generation performs at the Western Front, 343 Western Avenue, Cambridge. Telephone: 492-7772.

Gothic Slam, Temporary Insanity, Toxic Narcotic, Warhead, and Atomkust perform in an 18+ ages show at 4 pm at the Channel, 25 Necco Street, near South Station in downtown Boston. Admission: \$6. Telephone: 451-1905.

CLASSICAL MUSIC

Soprano Anne Law '90 performs in a *Senior Recital* at 4 pm in Killian Hall, MIT Hayden Memorial Library Building 14. No admission charge. Tel: 253-2906.

*** CRITICS' CHOICE ***
The New Jersey Chamber Music Society performs works by John Harbison, Mozart, and Brahms at 8 pm in Kresge Auditorium. No admission charge. Telephone: 253-2906.

The Wellesley Chamber Music Society performs at 8 pm in Jewett Auditorium, Wellesley College, Wellesley. No admission charge. Telephone: 235-0320 ext. 2028.

The Longwood Symphony Orchestra performs works by Bernstein, Gershwin, and Copland at 8 pm in Jordan Hall, New England Conservatory, 30 Gainsborough Street at Huntington Avenue, Boston. Tickets: \$7 and \$10. Telephone: 734-7512.

Pianist Joa Kilbonoff performs works by Beethoven, Allen Gimbél, Tchaikovsky, and Prokofiev at 3 pm in Jordan Hall, New England Conservatory, 30 Gainsborough Street at Huntington Avenue, Boston. Tickets: \$5 and \$7.50. Telephone: 536-2412.

Emmanuel Music presents Concert 9 of *The Complete Lieder of Robert Schumann in 10 Recitals*, with Op. 48, 142, 127, & 87 at 4 pm at Emmanuel Church Library, 15 Newbury Street, Boston. Tickets: \$15 general, \$13 seniors. Telephone: 536-3356.

Emmanuel Music, Craig Smith conducting, presents Concert 18 in its *Bach Cantata Series* with *Cantata No. 146* at 12 noon at Emmanuel Church, 15 Newbury Street, Boston. No admission charge. Telephone: 536-3356.

Mélisande Trio and mezzo-soprano D'Anna Fortunato perform works by Walter Piston, Vincent Persichetti, Daniel Pinkham, and William Schuman at 3 pm in Remis Auditorium, Museum of Fine Arts, 465 Huntington Avenue, Boston. Tickets: \$12 general, \$10 MFA members, seniors, and students. Telephone: 267-9300 ext. 306.

The Greater Boston Youth Symphony Orchestra performs at 4 pm in the Boston University Concert Hall, 855 Commonwealth Avenue, Boston. No admission charge. Telephone: 353-3345.

The Sixth Annual Thelma E. Goldberg Concert, featuring works of Harvard student composers, is presented at 8 pm in Paine Hall, Music Building, Harvard University, Cambridge. No admission charge. Telephone: 495-0583.

Gerald Itzkoff, violin, Lois Shapiro, piano, and Rhonda Rider, cello, perform works by Brahms and Beethoven at 5:30 in Fogg Art Museum, 32 Quincy Street, Cambridge. Tickets: \$5 general, \$4 seniors and students. Telephone: 495-4544.

FILM & VIDEO

The MIT Lecture Series Committee presents *Time Bandits* at 6:30 & 9:30 in 26-100. Admission: \$1.50. Telephone: 258-8881.

The Brattle Theatre continues its Sunday film series *Jack Nicholson Mania* with *The Witches of Eastwick* (1987, George Miller) at 1:00, 5:30, & 10:00 and *Batman* (1989, Tim Burton) at 3:10 & 7:45 at 40 Brattle Street, Harvard Square, Cambridge. Tickets: \$5 general, \$3 seniors and children (good for the double feature). Telephone: 876-6837.

The Harvard Film Archive continues its *Tribute to Heinosuke Gosho* with *An Innocent Witch* (1965, Japan) at 4 pm and *Rebellion of Japan* (1967, Japan) at the Carpenter Center for the Visual Arts, 24 Quincy Street, Harvard Square, Cambridge. Admission: \$3 general, \$2 seniors and students, \$5/\$4 for the double feature. Telephone: 495-4700.

*** CRITICS' CHOICE ***
The Harvard-Epworth Church presents John Ford's *Seven Women* (1966) at 8 pm at 1555 Massachusetts Avenue, just north of Harvard Square, Cambridge. Admission: \$3 contribution. Telephone: 354-0837.

Monday, May 7

CONTEMPORARY MUSIC
WBCN Rock 'n' Roll Rumble, Day 2 features *Drumming On Glass*, *Vow of Silence*, *Ex-Girlfriends*, and *Slaughter Shack* at the Paradise, 967 Commonwealth Avenue, Boston. Tel: 254-2052.

CLASSICAL MUSIC

Pianist Eun Shin '91 performs in a *Student Recital* at 12:05 in Killian Hall, MIT Hayden Memorial Library Building 14. No admission charge. Telephone: 253-2906.

*** CRITICS' CHOICE ***
MIT Chamber Music Society Concerts, by students of MIT faculty members, begins today at 5:15 in Killian Hall, MIT Hayden Memorial Library Building 14. Continues through May 11. No admission charge. Telephone: 253-2906.

The Boston Conservatory Festival Chorus and Orchestra performs Haydn's *Mass in D minor*, "Lord Nelson," and Norman Dello Joio's *Years of the Modern* at 8 pm in St. Cecilia's Church, St. Cecilia and Belvidere Streets, Boston. No admission charge. Tel: 536-6340.

FILM & VIDEO

The Wang Center continues its *Classic Film Series* with Alfred Hitchcock's *North by Northwest* at 7:30 at 270 Tremont Street, Boston. Tickets: \$5. Telephone: 482-9393.

The Brattle Theatre continues its Monday series of *Film Noir* with *Baby Face* (1933, Alfred Green) at 3:35, 6:30, & 9:35 and *Night Nurse* (1931, William Wellman) at 5:00 & 8:00 at 40 Brattle Street, Harvard Square, Cambridge. Tickets: \$5 general, \$3 seniors and children (good for the double feature). Telephone: 876-6837.

Ongoing Theater

Charlotte's Web, the dramatization of E. B. White's story of the unwavering friendship between a spider and a pig, continues through May 13 at the Wheelock Family Theatre, 180 The Riverway, Boston, near the Fenway T-stop on the green line. Performances are Friday at 7:30 and Saturday & Sunday at 3:00. Tickets: \$7. Telephone: 734-5203.

Educating Rita, Willy Russell's tender love story of an English tutor and a working-class girl, continues through May 20 at the New Repertory Theatre, 54 Lincoln Street, Newton Highlands, near the Highlands T-stop on the "D" green line. Performances are Thursday & Friday at 8:00, Saturday at 5:00 & 8:30, and Sunday at 3:00 & 7:30. Tickets: \$12 to \$17. Telephone: 332-1646.

*** CRITICS' CHOICE ***
Les Misérables, the musical adaptation of the Victor Hugo epic, continues through June 30 at the Shubert Theatre, 265 Tremont Street, Boston. Performances are Friday-Sunday at 8 pm and a matinee Sunday at 2 pm. Tickets: \$25 to \$50 general, \$16 students. Telephone: 426-4520.

*** CRITICS' CHOICE ***
B-Movie, The Play, Tom Wood's comedy about a struggling movie director completing a retelling of Oedipus Rex called *Joanna and Eddy*, continues through May 20 at the Wilbur Theatre, 246 Tremont Street, Boston (see review this issue). Performances are Tuesday-Saturday at 8 pm and matinees Thursday & Saturday at 2 pm and Sunday at 3 pm. Tickets: \$27.50 to \$37.50. Telephone: 423-4008.

Road to Nirvana, Arthur Kopit's funny fable of two luckless producers searching for the Golden Calf, continues through May 19 as a presentation of the American Repertory Theatre's *New Stage Series* at the Hasty Pudding Theatre, 12 Holyoke Street, Harvard Square, Cambridge. Performances are Wednesday-Saturday at 8 pm. Tickets: \$16 to \$29. Telephone: 547-8300.

The Second Street Hotel, Lydia Sargent's feminist adventure about nine women who take over an abandoned hotel, continues through May 19 at the Newbury Street Theater, 565 Boylston Street, Boston. Performances are Thursday-Saturday at 8 pm. Tickets: \$8. Telephone: 262-7779.

*** CRITICS' CHOICE ***
Taking Steps, Alan Ayckbourn's farcical look at a group of off-beat characters in a Victorian house that was once a brothel, continues through May 27 at the Lyric Stage Theatre, 54 Charles Street, Beacon Hill, Boston. Performances are Wednesday-Friday at 8:00, Saturday at 5:00 & 8:30, and Sunday at 3:00. Tickets: \$13.50 to \$17. Telephone: 742-8703.

Ongoing Exhibits

ON CAMPUS

From the Ecole to Tech: *Désiré Despresdelle, His Colleagues and Students* continues through June 10 at the MIT Museum, 265 Huntington Avenue, Boston. Museum hours are Tuesday-Friday 9-5 and Saturday-Sunday 10-4. Admission: \$2 requested donation, free to MIT community. Telephone: 253-4444.

Richard Bertman: *Architect and Sculptor*, works by the eminent Boston architect, continues through July 29 at the MIT Museum, 265 Massachusetts Avenue, Cambridge. Museum hours are Tuesday-Friday 9-5 and Saturday-Sunday 12-4. Admission: \$2 requested donation, free to MIT community. Telephone: 253-4440.

OFF CAMPUS

Animal Fabrications, a fanciful soft sculpture menagerie of animal furniture by Lynn DiNino, continues through May 6 at Ten Arrow Gallery, 10 Arrow Street, Cambridge. Gallery hours are Monday-Saturday 10-6, Thursday 10-9, and Sunday 1-5. Telephone: 876-1117.

Shaker Spirit Drawings from Hancock Shaker Village, 27 "gift" drawings exhibited in celebration of the 200th anniversary of the Pittsfield, Mass. village, continues through May 9 at the Museum of Fine Arts, 465 Huntington Avenue, Boston. No admission charge with MIT ID. Telephone: 267-9300.

Michael Phillips: *Recent Works*, continuing his expanding inquiry of fusing the inner space of existentialism with the image bearing values of humanism, continues through May 11 at the Gallery Schmallery, 443 Albany Street Suite #401, Boston. Gallery hours are Tuesday-Friday 12-7. Telephone: 426-4188.

Raul Ruiz: *The Expulsion of the Moors*, exploring the Christian/Moorish roots of Spanish culture, and *Mary Hellmann: A Survey*, paintings having cool abstract form with deep emotional content, continue through May 20 at the Institute of Contemporary Art, 955 Boylston Street, Boston. Institute hours are Thursday-Saturday 11-8 and Wednesday & Sunday 11-5. Admission: \$4 general, \$3 students, \$1.50 seniors and children, free to ICA members and MIT students. Telephone: 266-5152.

Mira Cantor: *Running Freeze*, an installation of sculpture and drawings, continues through May 31 at the Northeastern University Art Gallery, Second Floor, Dodge Library, 360 Huntington Avenue, Boston. Gallery hours are Monday-Friday 9-5 and Saturday-Sunday 1-5. Telephone: 437-2355.

The Wellesley Method, work by collaborative artists Kate Ericson and Mel Zeigler using eye glasses as the central image; *Arcadia in America: Mount Washington from the Valley of Conway* by John Frederick Kensett; and *Recent Acquisitions and Alumnae Gifts* continue through June 11 at the Wellesley College Museum, Jewett Arts Center, Wellesley College, Wellesley. Museum hours are Monday-Saturday 10-5, Tuesday & Wednesday 10-9, and Sunday 2-5. No admission charge. Telephone: 235-0320 ext. 2051.

Imperial Taste: *Chinese Ceramics from the Percival David Foundation* continues through June 24 at the Museum of Fine Arts, 465 Huntington Avenue, Boston. Telephone: 267-9300.

Connections: *Martin Puryear*, works by the abstract sculptor inspired by a Moghul painting of a falcon, continues through July 8 at the Museum of Fine Arts, 465 Huntington Avenue, Boston. No admission charge with MIT ID. Telephone: 267-9300.

Upcoming Events

They Might Be Giants at the Orpheum Theatre on May 18. *Art Blakey at Nightstage* on May 18. *Tasnia Tiharam* at the Paradise on May 20. *Robin Trower* at the Paradise on May 25. *Robert Mapplethorpe: The Perfect Moment* at the Institute of Contemporary Art, August 1 to September 30.



The Bulgarian State Female Vocal Choir, with guests the Kronos Quartet, performs *Le Mystere des Voix Bulgares* in Symphony Hall on May 5.

Graduation Special

Thistle & Shamrock Caterers
Call 492-2522

Free bottle of champagne with purchase



BE WISE!

MIT UNDERGRADUATES

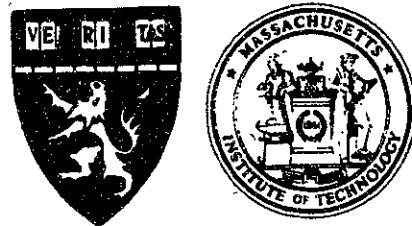
FREE
ON-LINE SEARCHING

Bibliographies and Citations on Your
Research Topic

Contact The Reference Desk at the Following Libraries:

Aero/Astro Library 33-316
Barker Library 10-500
Dewey Library E53-100
Humanities Library 14S-200

Lindgren Library 54-200
Rotch Library 7-238
Science Library 14S-100
Schering-Plough E25-131



Harvard-MIT Division of Health Sciences and Technology

LECTURE SERIES ON
BIOMEDICAL RESEARCH

Human Interleukin-1 Beta:
Structure-Function Relationships

DR. LEE GEHRKE

Lawrence J. Henderson Associate Professor
of Health Sciences and Technology

Harvard-MIT Division of Health Sciences and Technology

Associate Professor of Anatomy and Cellular Biology

Harvard Medical School

May 2 (Wednesday)

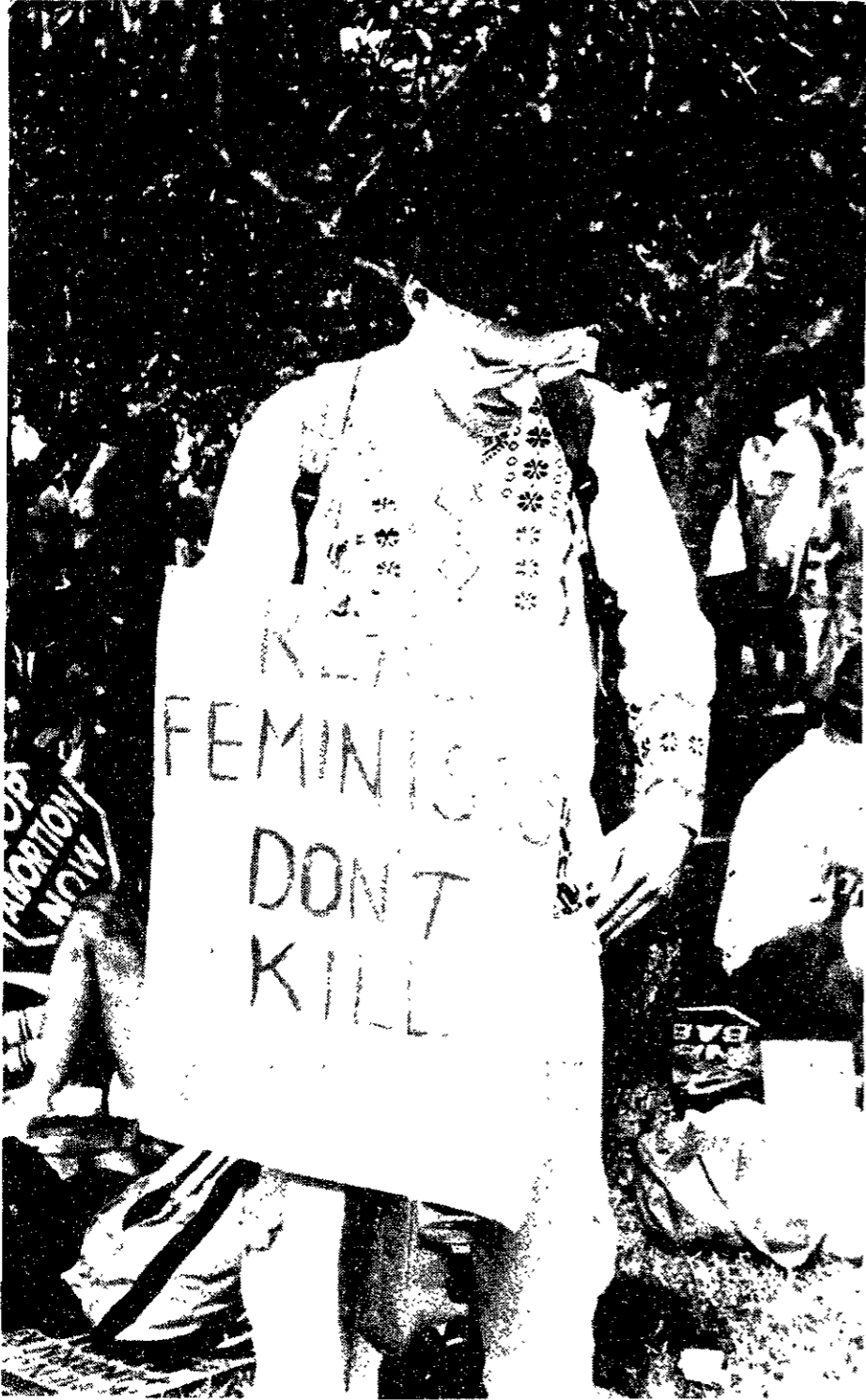
4:15 pm, MIT E25-111

Refreshments will be served.

Rally for Life '90

Saturday, April 28, 1990

Washington, DC



Photos courtesy Monnica Williams '91, Juan Latasa '91 and Chris Papineau '90

Students attend Rally for Life

(Continued from page 1)

ful," said John C. Willke, president of the National Right to Life Committee.

Pro-life advocates traditionally hold a demonstration on the Jan. 22 anniversary of the Roe decision. But the cold weather, coupled with the fact that the anniversary is often on a weekday, usually leads to crowds of only 70,000.

This rally, like last spring's pro-choice march, was intended to draw large numbers by taking place over the weekend on a warm spring day.

Unlike the pro-choice rally, which brought Hollywood stars and took an aggressive tone to preserve abortion rights, the pro-life demonstration proved more sedate, with parents and their children creating an atmosphere of religious optimism.

"You see families here, parents and children, senior citizens and students. Everyone is happy and excited," said Ann M. Brach G of MIT Pro-Life. "The pro-abortion march carried a lot of animosity, anger and defensiveness."

"This is just the beginning," said Margaret F. Keady '93, who was recently elected president of MIT Pro-Life. Keady served as MIT coordinator for the rally.

The optimism came despite recent setbacks for the pro-life camp. Nationwide, many pro-life

politicians have been forced to modify their position in order to appeal to a general public which seems to marginally support abortion rights.

In response to fears that the increasingly conservative Supreme Court might allow states to further tighten abortion laws, the Connecticut state legislature last weekend made that state the first to provide assurances that abortion would remain legal regardless of the High Court's position.

The events at the Washington Monument officially began at 2 pm and lasted approximately two hours.

Pro-lifers have recently criticized the media for what they claim to be biasedly pro-choice coverage of the abortion debate. They argue, for instance, that rally figures have been purposely underestimated.

MIT students have joined in this criticism. According to Keady, approximately 15 students joined other area pro-life supporters on April 21 in a protest of *The Boston Globe* sponsored by MIT Pro-Life.

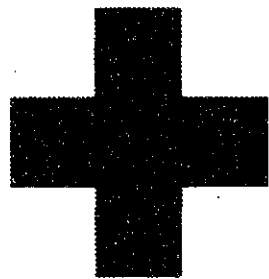
At the Washington rally, Cardinal John O'Connor said, "I'm surprised at the number of television cameras here." But, in a cynical reflection, he added, "I wonder what will happen to all of the footage."

O'Connor also claimed that though he has "extended an invi-

itation to all pregnant women in New York . . . to come to the archdiocese to receive full medical care . . . and help with child care or adoption," the media refuses to acknowledge it.

The MIT students were transported in two chartered buses provided by MIT Pro-Life. The buses left Friday evening, carrying a total of 93 Boston-area students.

(Editor's note: Henri Fuhrmann contributed to the reporting of this story.)



American Red Cross

Call for your appointment today.

© The American Red Cross 1979

This space donated by *The Tech*

Arts provost listens to sculpture critics

(Continued from page 1)

The majority of students at the discussion were opposed to the current proposal, which one participant demonstrated by asking for a show of hands. Another student said that over half of the roughly 1100 people asked to sign a petition to cancel the project had done so.

The discussion focused on just a few topics, including the process involved in choosing a sculpture, the issue of what students want the project to be, and objections to the proposal itself.

Several students at the meeting expressed dissatisfaction with the level of student input in the selection of a project. Seth A. Gordon '91 said he thought "the final decision should reflect the general will of the community."

But Stephen D. Immerman, director of special services and a member of the committee that selected Harries, said "too many people [choosing the project] leads to art that is homogeneous."

Harris echoed this idea, saying, "Majority rule will get you art that is insipid." She added, however, that she would support a "more open process."

Another key issue that emerged is what students want from the project. Many who attended the meeting felt that they were "challenged enough in lecture hall" and that they wanted something "decorative, brightly colored, [and] open." Many felt that the atrium had been designed to be open and that putting a "dark, dense" sculpture in it would ruin that effect. Other students argued that art must be thought-provoking, and not necessarily aesthetically pleasing.

Students object to hair as a medium

Students made several objections to the proposal itself, most notably about the use of hair. One student said it seemed to be a "ritual hair shearing" and that it seemed as if students would be "giving up [their] humanness for technology." Another student agreed, saying, "an Institute-wide

hair collection seems to be a kind of sacrifice."

Another common objection was that the hair conjured up images of the Holocaust. Andrew M. Greene '91 was "reminded of a violin with strings of human hair that I saw in Yad Vashem [a Holocaust memorial in Jerusalem]."

In response, Harris said that "all the images of hair [Harries] presented to us were violent, [and] the sculpture gains power from that."

Another objection was that the proposal was inappropriate for the Student Center. Edward McCluney, director of the Student Art Association and a member of the selection committee, said he thought the proposed work was "in the wrong place, and is the wrong size."

One student added that "a hat won't look natural," while a third called the sculpture "art on a pedestal" and suggested that a work more conducive to "discovery" would be preferable. Supporters of the sculpture emphasized that the work would not dominate the atrium and that the entire frame would not be covered with hair.

Harris said that she would not "walk out of [the meeting] knowing what will happen" to the sculpture. She added that if the current proposal is rejected, she will "feel bound to go to Mags to ask her to rethink another project. I have a sense of obligation to the process that has already taken place."

Other points brought up at the discussion included what many attendees saw as a discriminatory attitude towards MIT. "People say 'You go to MIT, you don't know anything about art' and that's insulting," said one student.

Hacks on the sculpture were also discussed. "People will hack this," said one student. Harris said her favorite was the "Road Runner Hack," which involved a pile of bird seed placed under a model of the sculpture to lure the Road Runner under the cage-like structure.

CLASSIC COPY & PRINTING

RÉSUMÉS \$20

From one-page typed or clearly written original

also:

- Self service Mac & IBM
 - Full-service offset printing and xeroxing
- Central Square, Cambridge
MBTA: Red Line
617/868-4140

LIBON
NEW ENGLAND'S LARGEST V.W. DEALER



VOLKSWAGEN
UNMATCHED SERVICE

COLLEGE GRADUATE FINANCE PLAN BY LIBON

NO DOWN PAYMENT! LOW BANK RATES!

SPECIAL CREDIT AVAILABILITY

A special program to make credit available for you to purchase or lease a brand new Volkswagen of your choice; provided you meet the qualified criteria listed.

TO QUALIFY FOR OUR PLAN, YOU:

- Must take delivery of a vehicle no later than Dec. 31, 1990.
- Must have completed one of the following:
 - Two-year accredited college (e.g., junior or community college)
 - Four-year accredited college or university
 - Masters or Doctorate program; or
 - Registered Nursing program.
- Must be permanently employed or have verifiable commitment for employment.
- May not have any derogatory credit.
- Must provide three (3) personal references who can be contacted directly.
- Must be buying or leasing a vehicle for which the proposed payment will not exceed 25% of your gross monthly income.

*TO QUALIFY FOR NO DOWN PAYMENT, DELIVERY MUST BE TAKEN BY JUNE 30, 1990. OTHERWISE A 5% DOWN PAYMENT WILL BE REQUIRED.

168 Western Ave. ATINIA, MA 783-1300
AROUND THE CORNER FROM HARVARD STADIUM

Ushers are needed for the Commencement and the President's Reception to be held on Monday, June 4, 1990. MIT students who are interested should pick up an application from Donna Kendall, 5-119. There is no pay for the time involved, but ushers will be allowed to remain in campus housing through Commencement.

STUDENT & YOUTH AIRFARES

SPRING ROUNDTRIPS

	from
LONDON	\$ 369
AMSTERDAM	\$ 398
BERLIN	\$ 419
MADRID/LISBON	\$ 459
TOKYO	\$ 789
KATHMANDU	\$1299
SYDNEY	\$1589
RIO	\$ 769
COSTA RICA	\$ 389
PARIS	\$ 449

- SOVIET UNION TOURS AVAILABLE
- FARES MAY CHANGE
- I.D. CARDS
- EURAIL PASSES

THE STUDENT TRAVEL NETWORK

CAMBRIDGE

576-4623

1208 MASS AVE
CAMBRIDGE, MA 02138

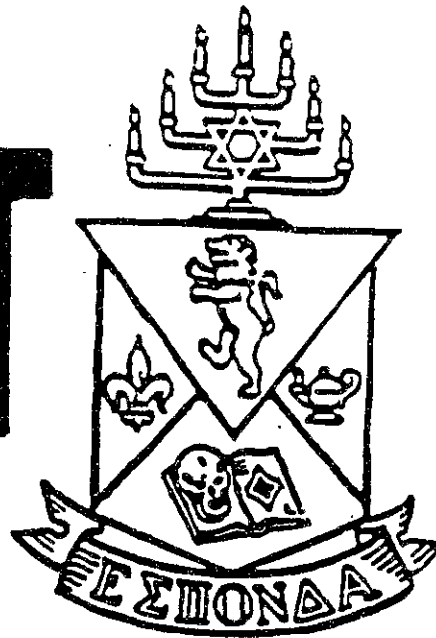
BOSTON

266-6014

273 NEWBURY ST
BOSTON, MA 02116



AETI



WHAT AEPi IS:

- THE CHANCE TO DEVELOP YOUR LEADERSHIP SKILLS WHILE SHAPING A NEW FRATERNITY
- THE OPPORTUNITY TO INTERACT WITH OTHER JEWISH MEN, ON A SOCIAL BASIS, WITHOUT GIVING UP YOUR CURRENT LIVING GROUP
- THE 18TH LARGEST NATIONAL FRATERNITY WITH OVER 100 CHAPTERS FROM COAST TO COAST

INFORMATION/RUSH MEETING
BURTON CONNOR CONFERENCE ROOM
TUESDAY, MAY 1st
8:00 P.M.

For More Information Call:

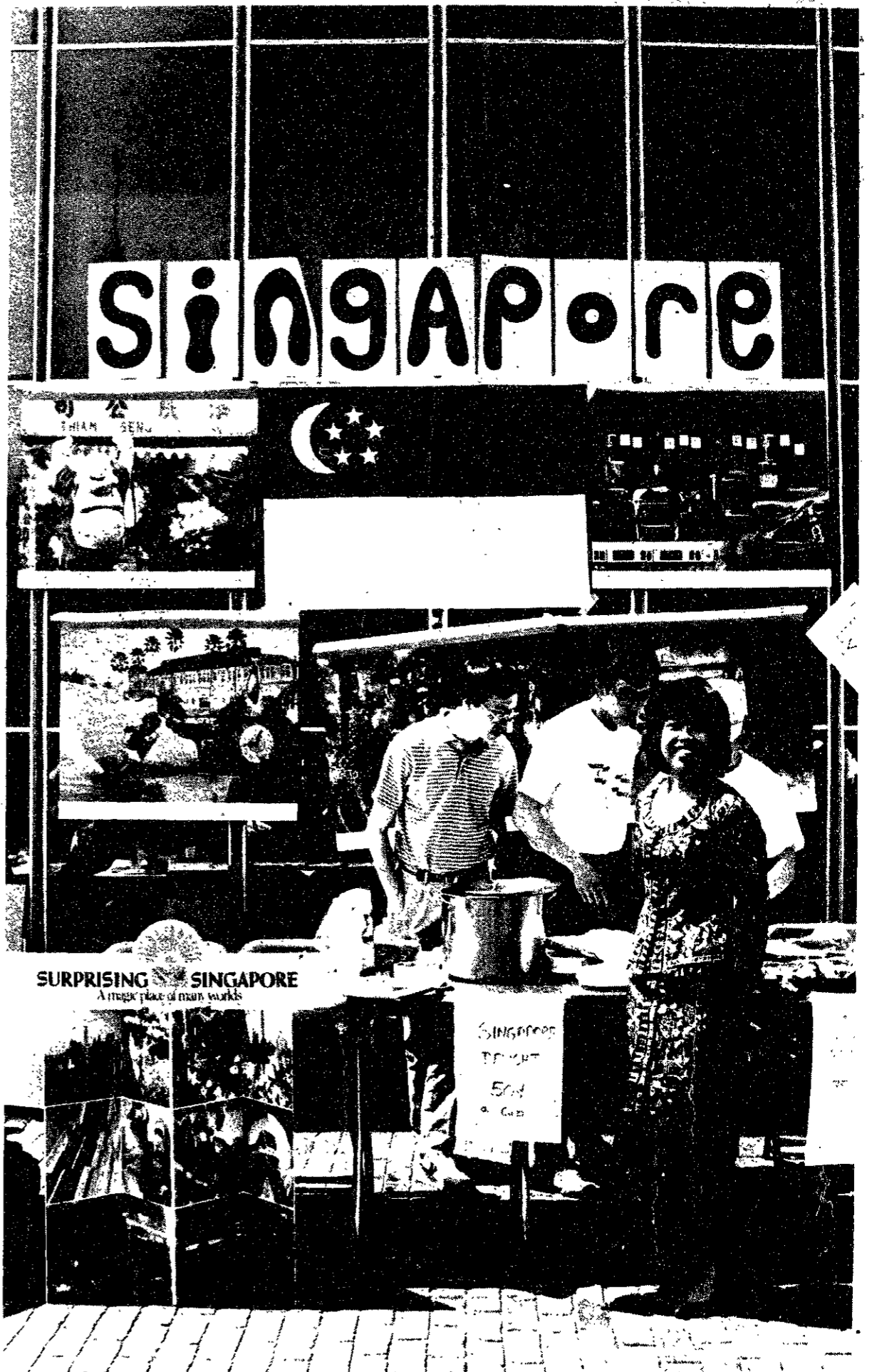
Dave 225-8256
Steve 225-8258



International Fair

April 27, 1990

Photos by: Jeremy Yung



notices

Listings

Student activities, administrative offices, academic departments and other groups — both on and off the MIT campus — can list meetings, activities, and other announcements in *The Tech's* "Notes" section. Send items of interest (typed and double spaced) via Institute mail to "News Notes, *The Tech*, Room W20-483," or via US mail to "News Notes, *The Tech*, PO Box 29, MIT Branch, Cambridge, MA 02139." Notes run on a space-available basis only; priority is given to official Institute announcements and MIT student activities. *The Tech* reserves the right to edit all listings, and makes no endorsement of groups or activities listed.

May 1, 1990

Professor Paul Goldberg of Hebrew University in Jerusalem and Harvard University will discuss **Microscopic Approaches to Archaeological Sites** at 5:30 pm in room 504, 725 Commonwealth Avenue. For more information call 353-3415.

May 2, 1990

The Aga Khan Program for Islamic Architecture at MIT and Harvard presents a talk by Ismail Serageldin on **Modernity and Sedition in the Muslim World: Architecture as an Intellectual Statement** at 7:30 pm in room 6-321. For more information call 253-1400.

May 3, 1990

The Telecommunications policy of the Bush Administration from 4-6 pm in E15, the Bartos Theater for the Moving Image.

Black Rose Lecture by Jon Parker, National Aids Brigade **Breaking the Law to Save Lives** in Room 34-101 at 8 pm.

Psychology as if the whole earth mattered: a panel discussion at 8 pm; 1493 Cambridge Street, Cambridge. For more information call 497-1553.

The Department of Electrical Engineering and Computer Science has scheduled a meeting for **Course VI Juniors** to discuss admission to Graduate School, Graduate financial aid, and employment prospects. This counseling meeting is planned at 3 pm in room 34-101. Call 253-4603 for more information.

Study Help

The professional tutor staff of the MIT Writing and Communication Center (14N-317) will be glad to consult with you on any writing or oral presentation project (papers, theses, letters, etc.) from 10 am-6 pm Monday through Friday. You may either phone for an appointment (x3-3090) or just drop in. In addition, workshops for those for whom English is a second language are held in the Center on Wednesdays from 6:15-7:15 pm. All services are free.

Rubes By Leigh Rubin

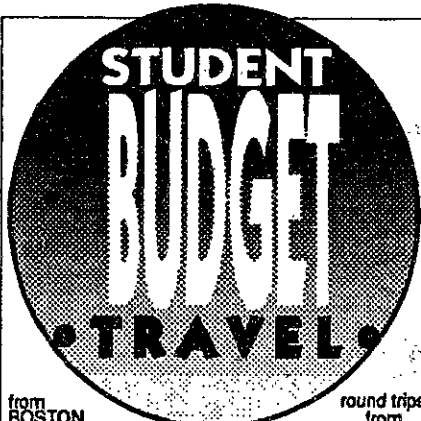


Gaucha Marx

Announcements

The sports medicine division of the MIT Athletic Department sponsors a **fitness training program** for all interested students and employees of the Institute who hold valid athletic cards. Individuals over the age of 35 must obtain medical clearance from a personal physician before being allowed to participate in the program. The tests consist of a submaximal aerobic ergometer test, flexibility exercises, body fat percentage, and muscular strength and endurance measurements, and takes about 40 minutes to complete. For further information call x3-4908, 2:30-6:00 pm, Monday-Thursday. The tests are free of charge.

The Boston University Astronomy Department sponsors **Open Observatory Night** every Wednesday from 8:30-9:30 pm. For more information call 353-2360.



from BOSTON	round trips from
AMSTERDAM	438
LONDON	390
PARIS	458
VIENNA	470
TOME	530
TOKYO	809
CARACAS	350

Taxes not included. Restrictions apply. One way available. Work/Study abroad programs. Int'l Student ID. EURAIL PASSES ISSUED ON THE SPOT! FREE Student Travel Catalog

Council Travel
Stratton Student Center
M.I.T., W20-024
225-2555

M.I.T. Community Summer Softball 1990

Organizational Meeting Wed May 2
Umpire Meeting Wed May 9

5:30pm

Student Center
Twenty Chimneys

For more information, contact:
Marino D. Tavarez, MITCSS Commissioner
MIT Rm. 20B-131, Messages: 625-4368 (h) 262-9032 (w)

Assume Major Design Responsibility Right Now

In addition, we are also hiring for co-ops and summer employment.

If you're a 1990 BSCS/BSEE graduate with co-op experience, FasFax has the career opportunity of your life. It's a ground-floor opportunity for you to participate in the design of distributed architecture systems way ahead of their time.

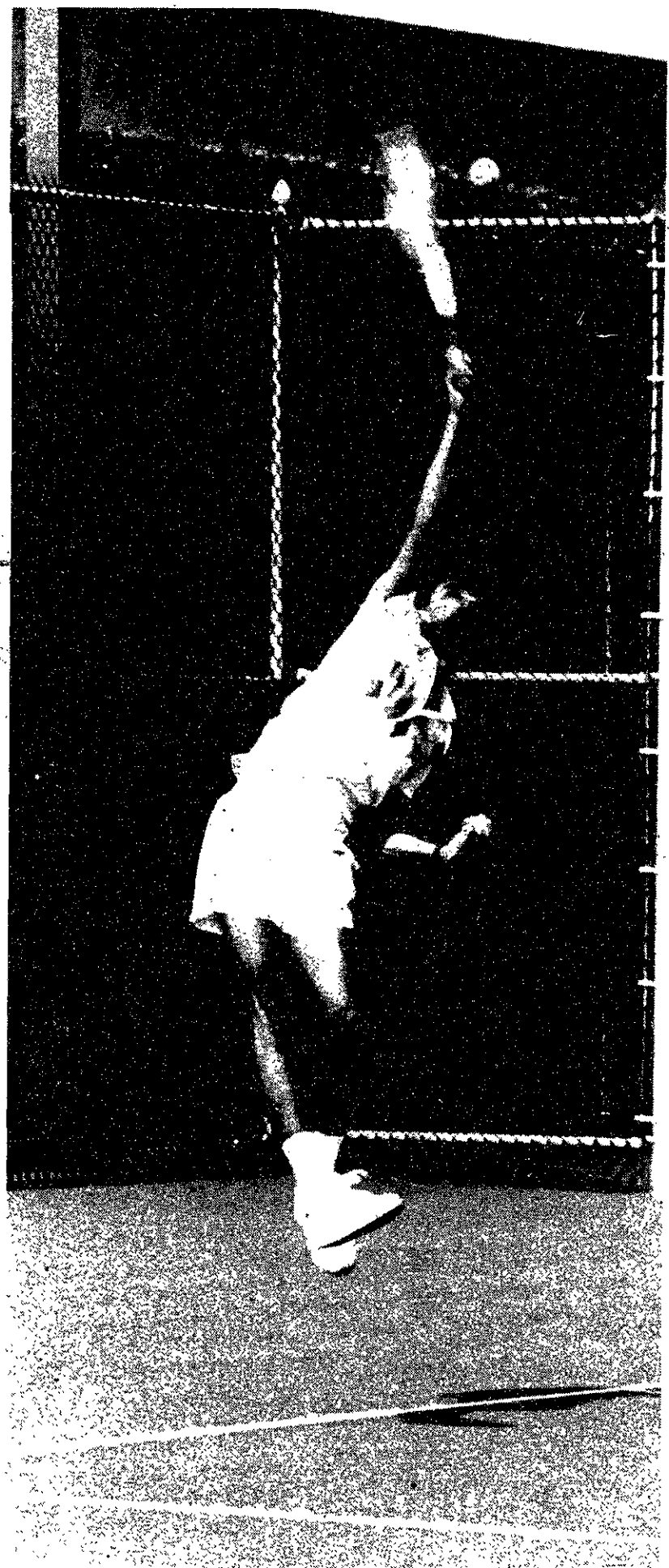
We utilize object-oriented programming techniques and sophisticated CASE tools. You'll work within a dedicated technical team environment, have serious input and make major contributions. Put your name on this astounding technology, and bring it to market.

FasFax is a stable, successful, 20-year-old company with an entrepreneurial flair. If you're a bright, energetic, self-motivated individual, FasFax can put your career in gear — right out of the starting gate.

To be considered for these excellent growth opportunities, mail or fax your resume with cover letter to Paul Graffmuller, FasFax, Box H, Simon & Ledge Streets, Nashua, NH 03060, (603) 889-5152, FAX (603) 889-3683.

An Equal Opportunity Employer

FasFax



Jonathan Kossuth/The Tech
Manish Bhatia '93, MIT's top freshman, serves against his Skidmore opponent. He won his singles match, helping MIT to defeat Skidmore 7-2.

FUTONS AND FRAMES

Campus Activities Complex

Wednesday, May 2



Great Savings On Your Favorite Sony Discman®

SAVE \$70

A. Sony Discman.

This compact disc player comes with 8 times oversampling, 22 track programming, graphic equalizer and many more features Reg. \$499.99 SALE \$429.99

SAVE \$40

B. Sony Discman With Megabass™.

In addition to its Megabass sound system, this Sony comes with digital filter and automatic music sensor. It uses 4 AA batteries or supplied AC adapter. Reg. \$229.99 SALE \$189.99

SAVE \$30

C. Sony Ultra Compact Discman.

It features the Megabass™ sound system, 22 track programming, shuffle play, backlit LCD display and rechargeable battery. Reg. \$249.99 SALE \$219.99

HARVARD SQUARE
CAMBRIDGE
SAT 9:30-5:45
THUR 9:30

MIT COOP AT KENDALL
3 CAMBRIDGE CENTER
MF 9:15-7 THUR 9:30
SAT 9:15-5:45

THE COOP

COOP AT LONGWOOD
233 LONGWOOD AVE
MF 9:15-7 THUR 9:30
SAT 9:15-5:45

DOWNTOWN COOP
1 FEDERAL ST
MF 9:15-5:20

sports

Track team third in Boston

By David Rothstein

The track and field team placed third at Sunday's Greater Boston Championships, scoring 65 points behind double winners Bill Singhose '90 and Boniface Makatiani '90. The showing was MIT's best-ever at this competition, held at Northeastern's Solomon Track in Dedham.

Singhose placed first in the pole vault, with an outdoor school record mark of 15 feet, 7 inches, and ran to an easy 55.0-second win in the 400-meter intermediate hurdles. He also placed second in the long jump, with a 22'-8" leap.

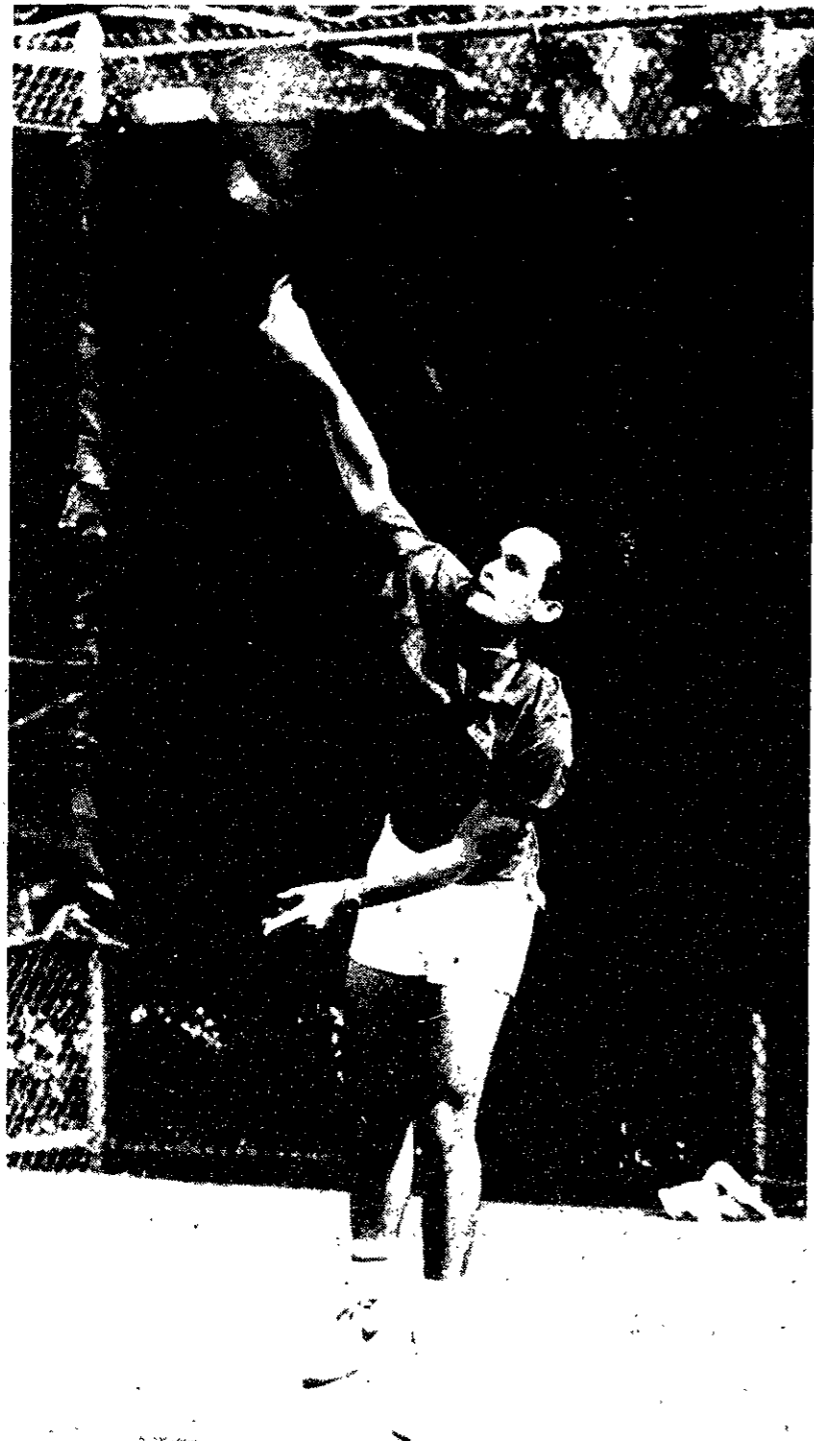
Makatiani, meanwhile, upset Northeastern University's Bruno Joline to win the 200 meters by 0.01 seconds in 22.54, and won the 400 meters in 48.3.

Other MIT scorers included sophomore Kelly Davis, who took seconds in the triple jump (46'-8½") and the 110-meter high hurdles (15.80), Mark Dunzo '91, third in the 400 meters (49.25), and John-Paul Clarke, third in the shot put (44'-8½").

Dunzo also ran both relays, joining Singhose, Kevin Scannell '92 and Makatiani for a second-place finish in the 400-meter relay (42.52) and Steve Cooke '91, Scannell and Makatiani for a win in the 1600-meter relay.

Northeastern University won the championships, scoring 99 points, with Harvard second (80), MIT third, Boston College fourth (35), and Boston University fifth (17).

MIT heads to Worcester Polytechnic Institute next weekend to defend its title in the New England Division III Championships.



Jonathan Kossuth/The Tech
Alexis Photiades '91 won his singles match against Skidmore. Photiades is ranked third in New England and 33rd nationally in Division III. MIT defeated Skidmore in Friday's meet 7-2.

Outdoor Track at the Greater Boston Championships

Solomon Track, Dedham
April 29, 1990

- Hammer** - 1, Halvorsen, NU, 186'-8"; 2, Rooney, NU, 180'-1"; 3, Kortick, NU, 180'-1".
High jump - 1, Martin, NU, 6'-6"; 2, Rios, Harvard, 6'-5"; 3, Muse, NU, 6'-3".
Pole vault - 1, Singhose, MIT, 15'-7"*.
Discus - 1, Nichols, BC, 156'-9"; 2, Brzecoski, Harvard, 150'-3"; 3, Hayward, 144'-5".
Javelin - 1, Allen, NU, 201'-7"; 2, Clarks, NU, 172'-3"; 3, Buda, Harvard, 170'-10".
Long jump - 1, Horner, Harvard, 22'-9¼"; 2, Singhose, MIT, 22'-8"; 3, Pitt, NU, 22'-6½".
Triple jump - 1, Alleyne, BU, 47'-6¼"; 2, Davis, MIT, 46'-8½"; 3, Muse, NU, 46'-5".
Shot put - 1, Davies, NU, 49'-10"; 2, Rice, NU, 47'-3"; 3, Clarke, MIT, 44'-8½".
100 meters - 1, Joline, NU, 11.17; 2, Grant, NU, 11.18; 3, Velez, Harvard, 11.30.
110 meter high hurdles - 1, McCrea, NU, 15.55; 2, Davis, MIT, 15.80; 3, Machowicz, Harvard, 15.82.
200 meters - 1, Makatiani, MIT, 22.54; 2, Joline, NU, 22.55; 3, Neves, Harvard, 22.60.
400 meters - 1, Makatiani, MIT, 48.1; 2, Spence, NU, 48.3; 3, Dunzo, MIT, 49.25.
400 meter intermediate hurdles - 1, Singhose, MIT, 55.0; 2, Andrews, Harvard, 56.0; 3, Machowicz, Harvard, 56.25.
800 meters - 1, Ford, Brandeis, 1:52.2; 2, Ragem, Harvard, 1:52.8; 3, Gomes, NU, 1:53.3.
1500 meters - 1, Murphy, BC, 3:52.9; 2, Arena, Harvard, 3:53.6; 3, Prince, BC, 3:54.4.
5000 meters - 1, Yuen, 14:31.21; 2, Benjamin, Harvard, 14:32.10; 3, Welles, Harvard, 14:36.04.
10000 meters - 1, Tenney, Harvard, 30:51.41; 2, Lewis, Harvard, 30:55.29; 3, Langen, Harvard, 31:21.03.
Steeplechase - 1, Vose, BU, 9:24.66; 2, Chisom, Brandeis, 9:33.17; 3, Falla, Harvard, 9:49.77.
400 meter relay - 1, NU, 42.07; 2, MIT (Dunzo, Scannell, Singhose, Makatiani), 42.52; 3, BC, 44.26.
1600 meter relay - 1, MIT (Dunzo, Scannell, Cooke, Makatiani).
 * MIT record

1, Northeastern, 99; 2, Harvard, 80; 3, MIT, 65; 4, BC, 35; 5, BU, 17; 6, Brandeis, 13; 7, Tufts, 2.

If you've worked hard on it, make it show!



Your term paper or
resumé deserves high
quality laser printing.

The Graphic Arts Copy Center in W20-028 provides a full graphics-oriented Macintosh II Workstation with color monitor, laser printer, and scanner. For IBM users, there is an IBM XT clone with a Xerox 4045 laser printer. Rent use of a system for 15-minute intervals—reserve time or use on a first-come, first-served basis.

Also in Copy Center:

- Self-service copying 24 hours per day,
- Full service copying by our operator from 8 am to 5 pm, including GBC and Velo-binding.
- FAX Service—we can send or receive material anywhere in the world.

Graphic Arts Copy Center

Location: Stratton Student Center in Room W20-028.
Phone: 258-7375 or 258-7376.