

## 2011 admitted to Class of '94

By Katherine Shim

The mean standardized test scores of 2011 students admitted to the Class of 1994 were comparable to those of last year, according to Associate Director of Admissions Elizabeth H. Johnson.

The admissions reflect changes that were instituted last year in the system used to rate applicants. The changes resulted in significantly higher test scores in the Class of 1993 compared with those of previous years.

The average math score on the Scholastic Aptitude Test was 739, while the average score in verbal was 639. Average American College Test scores were 33 on the math section and 30 on the verbal section. These do not vary significantly with last year, when the SAT math mean was 741 and the verbal mean was 640.

On Achievement Tests, the average score of the incoming class was 749 on the ACH-math, 649 on the ACH-science, and 641 on the ACH-English, comparable to the Class of 1993.

The number of students with SAT math scores in the highest bracket (between 750 and 800) was 1049, compared with 972 students the previous year. These students comprised 52 percent of the accepted pool, compared with 51 percent last year.

"Two things were emphasized by the admissions committee," Johnson stated. "Firstly, the student must possess the scores and grades to do well academically at MIT. Secondly, the student must have something to contribute to MIT as well as be able to get something out of it. . . . This process was very similar in type to last year."

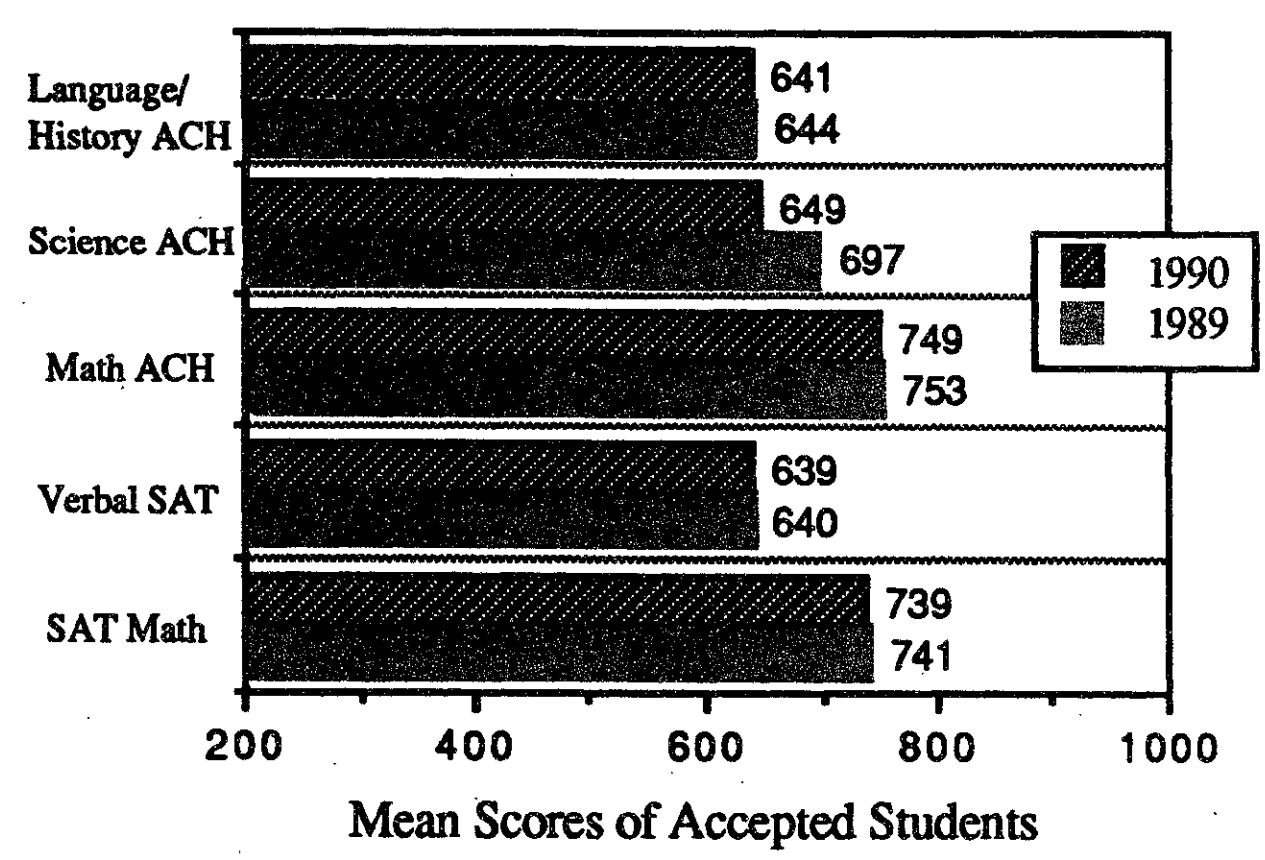
Also like last year, the Admissions Committee is expecting an enrolling class of about 1050. The figure of 2011 admitted students does not include students who will be offered places from the wait list, Johnson said. MIT accepted 2018 people last year.

The major change in this year's admissions process was that more faculty members were involved. Last year, eight faculty members, all from science and engineering departments, read applications. This year, 39 faculty members from all departments of the Institute contributed to the decision-making process.

Applications to MIT declined by five percent from last year. This drop followed a national pattern this year, with most other colleges reporting five- to ten-percent decreases in applicants, said Director of Admissions Michael C. Behnke in a letter addressed to the admissions staff, the Committee on Undergraduate Admissions and Financial Aid, and the Committee on Undergraduate Admissions.

(Please turn to page 2)

### Class of '94 Standardized Exam Scores



Tech graphic by Reuven M. Lerner

## Committee alters ring design

By Niraj S. Desai

The Class of 1992 Ring Committee has voted to alter the design of the class ring in response to concerns raised by Native American students.

The original design, released a month ago, commemorated the 500th anniversary of Columbus' voyage by dressing the scholar figure on the MIT seal in a costume of the Columbus era. Many students complained that the al-

lusion to Columbus ignored the exploitation of Native Americans and did not deserve to be commemorated.

In the new design, the clothing of the scholar has been revised so that he no longer appears to be in a Columbus costume, but in more traditional garb.

The vote to change the ring design came after a March 21 meeting between the ring committee, the Native American Student Association (NASA), and the American Indian Science and Engineering Society (AISES).

The ring committee's decision was motivated by a belief that the concerns of Native American students were legitimate and needed to be recognized, said committee chair Cynthia R. Evanko '92.

NASA President Stefanie L. Lawson '92 said she was pleased with the change but wished that another part of the seal, a globe showing the North American

continent, would also be changed.

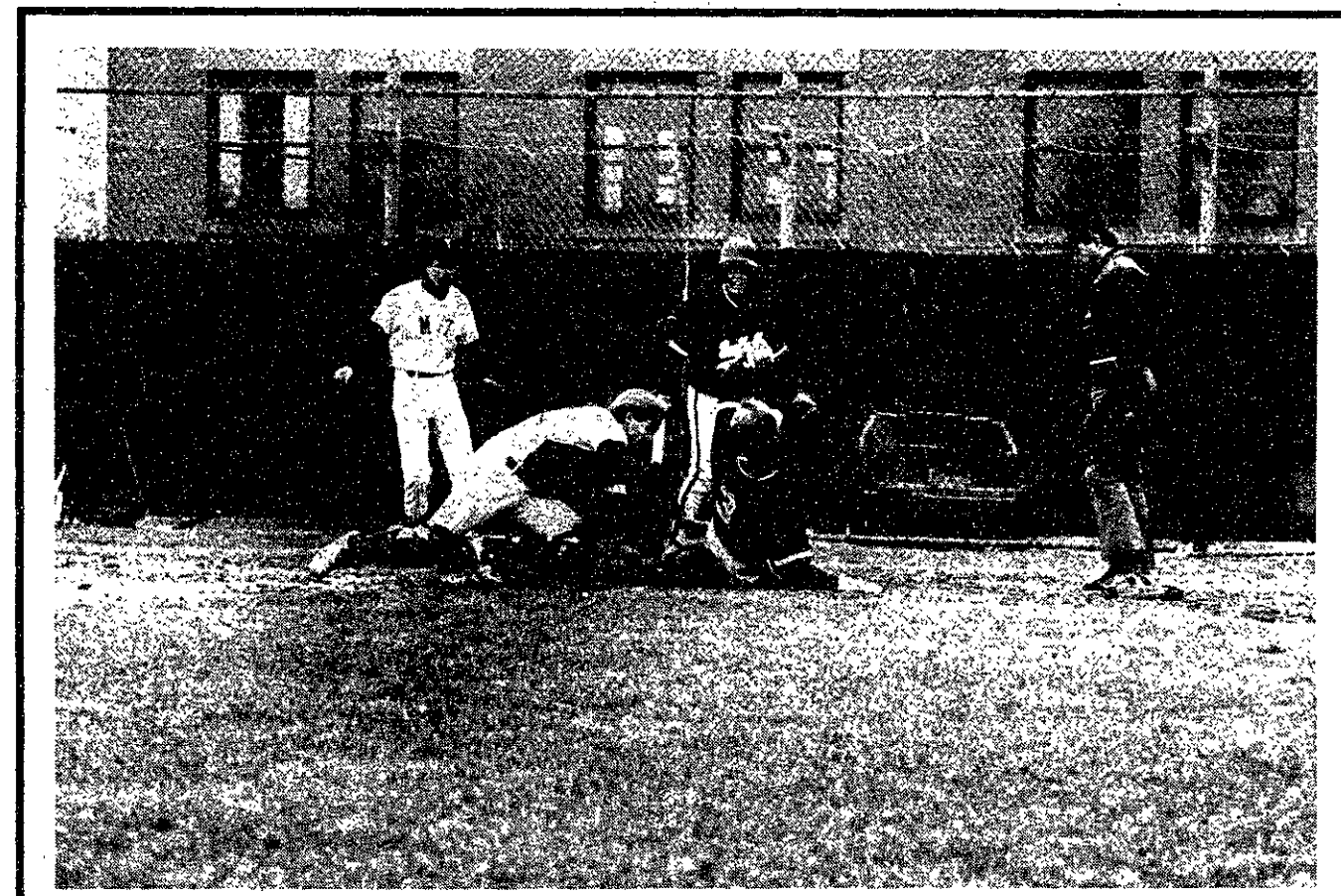
### Ring sparks complaints

Native American students and others complained soon after its premiere that the original ring design was offensive to Native Americans in that it celebrated Columbus' "discovery" of America.

Columbus did not discover America, the students pointed out, since millions of people were living in the Western Hemisphere at the time of his voyage. Moreover, Columbus' arrival "began a holocaust that drove Native American tribes to the edge of extinction and beyond," they argued.

One critic, in a letter to *The Tech*, charged that the ring committee would have been more sensitive to these concerns if Native Americans were more numerous on campus.

(Please turn to page 16)



Dan Paulsen '93 tags out the runner at the plate in the fifth inning. MIT lost the Sunday game 13-10 in nine innings to Suffolk University. Jonathan Kossuth/The Tech

## Group suggests changes in academic computing

By Andrea Lamberti

A discussion paper on the future of academic computation at MIT was released last week by the Committee on Academic Computing for the 1990s and Beyond. The draft paper was released in order to foster discussion for a final report which will be presented to Provost John M. Deutch '61 in late May.

The draft includes many possible recommended courses of action for improving academic computing at the Institute. Input from the MIT community in the coming weeks will further narrow the field of possibilities, and will be a major factor in the final report.

The purpose of the committee is to assess the past role of Project Athena and other academic computing at MIT, and to make recommendations for the future.

Committee members collected data for the study by reviewing materials on Project Athena and other computers, interviewing various individuals, surveying students and faculty, consulting with the schools and the MIT Libraries, and appraising academic computing at several other universities, the paper stated. They finished collecting data in late January.

"The committee's view is that this is an accurate capturing of where the committee is in its thinking now," said Gregory A. Jackson '70, director of the study and special assistant to Dean for Undergraduate Education Margaret L. A. MacVicar '65, who chairs the committee.



Lerothodi-Lapula Leeuw/The Tech Virginia M. Sorenson

## PSC awards students public service fellowships

### Feature

By Neil J. Ross

The MIT Public Service Center will offer students up to \$4000 this summer in order to encourage participation in community service projects.

Assistant to the Dean of Student Affairs Virginia M. Sorenson, who works at the PSC, explained that the grant is intended to allow public service projects to compete with summer jobs that students might otherwise take. The fellowships are made possible by a grant from the Charles Hapgood trust fund of the Boston Foundation.

Cynthia R. Estrella '90, who received a similar scholarship this spring, organized a tutoring program in which 30 undergraduates tutored students from the David A. Ellis Elementary School in Roxbury.

Another recipient, Jennifer Y. C. Huang '90, used her time to help at the Boston Area Rape

Crisis Center, where she helped in their community education program, wrote for their newsletter, and trained for their hotline.

Denis Mustafa, a post-doctoral associate in the Laboratory for Information and Decision Systems, plans to bicycle across the United States to raise money for two charities. Running in the Boston Marathon is but one of the ways in which he is training for his seven-week, 3300-mile journey.

Mustafa noted that one of the charities is Cambridge-based Tutoring Plus, which helps Cambridge high school students, in part because of over 25 years of strong connections with MIT. He added that after the trip he

would be "taking a real vacation."

## inside

Donald Sur's *Slavery Documents* completes a brilliant trilogy from the Cantata Singers. Page 11.

# An open letter on South Africa and investments

(Editor's note: The following statement from President Paul E. Gray '54 was released by the MIT News Office yesterday.)

In recent weeks questions have arisen about the Institute's investments and South Africa. Several years have passed since there was extensive and broad discussion of these issues here, and many members of the community are thus unaware of the Institute's policies, the basis for them, and the facts about our investments.

## Corporate Involvement with South Africa

The questions at hand center on the involvement of publicly owned US corporations in South Africa. Involvement takes a variety of forms:

- **Operations in South Africa.** This means that corporations own facilities in South Africa, have business operations there, and have South African employees. In other words, they have an equity investment there.
- **Non-equity links with South Africa.** Such links do not provide ownership or operations in South Africa, but may include licensing of products, distribution arrangements, franchise agreements, or trademark or technology agreements.
- **Bank loans.** This includes banks that have made loans either to the South African government or to South African corporations.

## MIT's Policy

In general, MIT's investment decisions are made on the basis of what makes most sense for the long-term financial security of the Institute. A strong endowment, for example, helps MIT provide adequate salaries for faculty, meet the financial aid needs of our students, support first-rate teaching programs, and provide the

support services necessary for this academic community.

We apply an additional criterion to our investment policy with US companies that have operations in South Africa. MIT policy opposes new loans, but does not prohibit investment in companies with non-equity links. Our policy with respect to companies in South Africa is predicated on the belief that:

- those companies in which MIT invests should foster equal opportunity in the conduct of their business in South Africa and that they should work to eliminate the laws and customs that impede social and political justice in that country, and
- those companies that are making demonstrable progress towards these goals represent a positive force in that nation.

Accordingly, MIT's policy is to invest only in corporations that are signatories to the Statement of Principles as put forth by the Reverend Leon Sullivan more than a decade ago, and that are making significant progress in the implementation of those principles. This policy was most recently reviewed by the Executive Committee of the MIT Corporation in May of 1989.

The Statement of Principles, which applies to US corporations with operations in South Africa, requires the following positive actions in that country:

1. Nonsegregation of the Races in All Eating, Comfort, Locker Rooms, and Work Facilities
2. Equal and Fair Employment Practices for All Employees
3. Equal Pay for All Employees Doing Equal or Comparable Work for the Same Period of Time
4. Initiation and Development of Training Programs That Will Prepare Blacks, Coloureds, and Asians in Substantial Numbers for Supervisory, Administrative, Clerical, and Technical Jobs
5. Increasing the Number of Blacks, Coloureds, and Asians in

6. Improving the Quality of Employees' Lives Outside the Work Environment in Such Areas as Housing, Transportation, Schooling, Recreation, and Health Facilities
7. Working to Eliminate Laws and Customs that Impede Social, Economic, and Political Justice.

Citing South Africa's lack of progress toward ending apartheid, Reverend Sullivan repudiated this strategy in 1987, and urged the prompt departure of companies with operations there. Nonetheless, some 123 US companies operate in South Africa, with 59 of them being signatories to be monitored, with 42 ranked in Category I (Making Good Progress), and 10 ranked in category IIA (Making Progress and Filing Detailed Reports).

US corporations that practice these principles have set examples that cannot be ignored by South African corporations. They have provided leadership in the move toward economic and political justice in that country, and it is not at all clear that their departure would either benefit the majority of the population or hasten the end of apartheid. In the light of recent changes in South Africa, this is not the time to take a vote of no confidence in those very companies that can help support the fragile infrastructure of economic and political equity in this African nation.

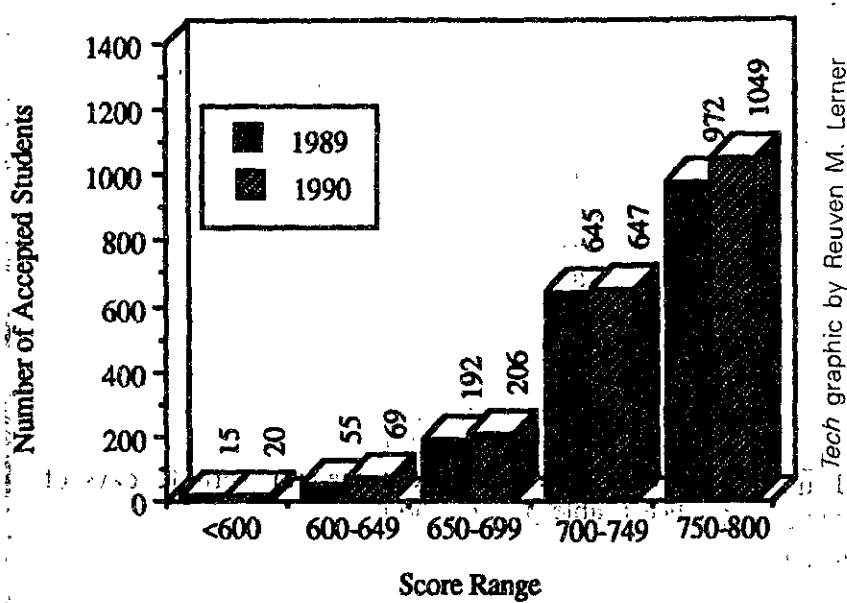
## Divestment as a Strategy for Change

Aside from the question of whether divesting in companies that follow the Statement of Principles is giving the right signal, there is the question of whether divestment (that is, the simple selling of shares for which there will always be a buyer) is an effective means to press for change.

(Please turn to page 19)

# Fewer apply for Class of 1994

Class of 1994 SAT Math Scores



(Continued from page 1)  
Harvard reported a seven percent decrease, and Stanford announced a 13 percent decline. Behnke attributed the decline to fewer high school graduates and students taking the SAT.

The Admissions Committee, however, did not expect a 15 percent decline in the number of applications from black students, Behnke said.

"This is especially disturbing because it appears to be a problem not limited to MIT," stated Behnke. "Harvard is down 16 percent and Stanford is down 30 percent. It is too early to sort out reasons, but we do know that the most well-known traditionally black colleges have reported a large increase in highly qualified applicants."

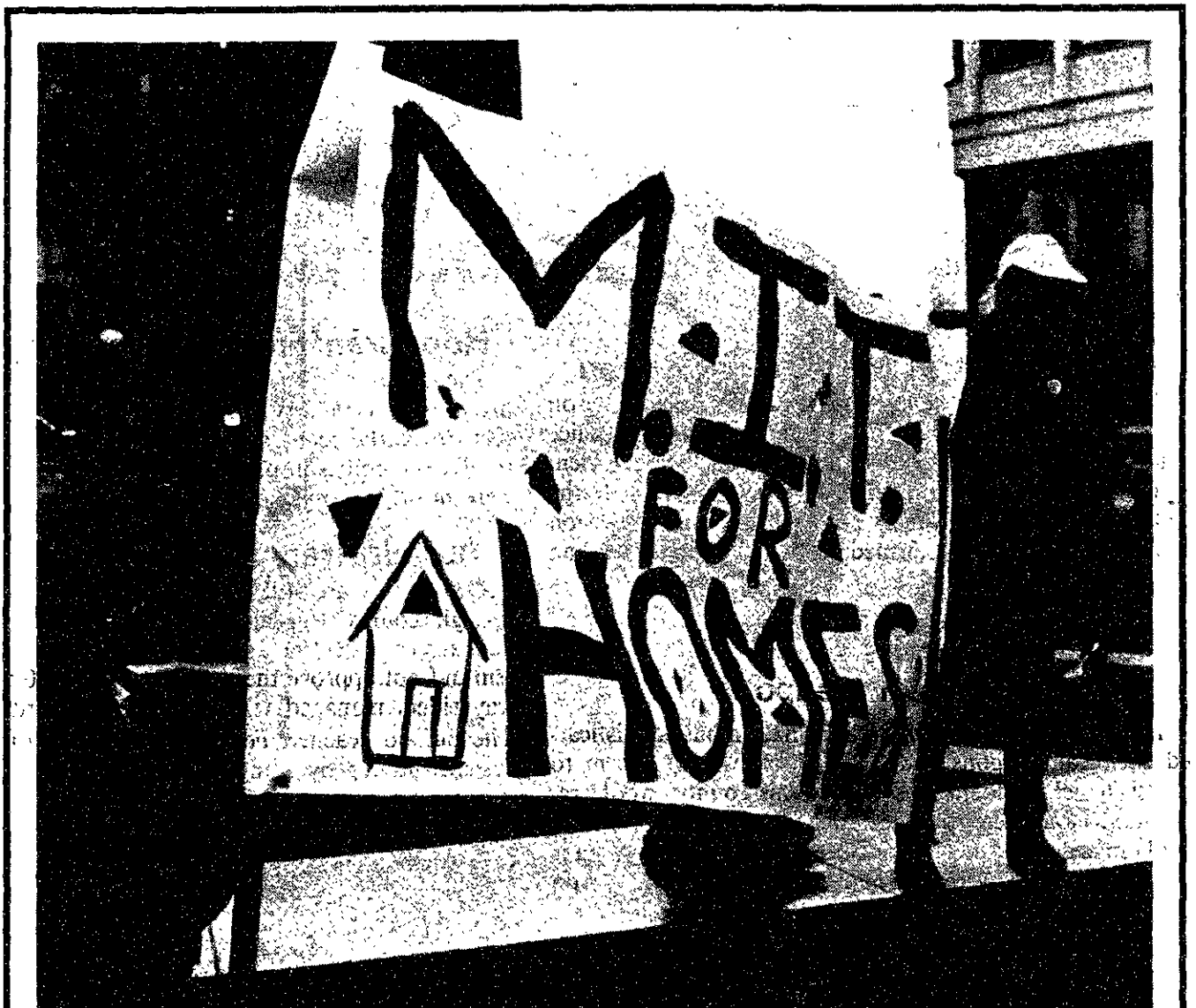
For the third year in a row, approximately thirty-five percent of the admitted class is female. The number of female applicants, however, decreased slightly, according to Behnke.

Fourteen percent of the students accepted belong to under-represented minority groups, up one percentage point from the previous year's figure. At the same time the number of Asian-American applicants increased.

Eighty-eight percent of the stu-

dents accepted this year were in the top five percent of their high school class; last year's figure was 89 percent. Forty percent of class will graduate at the top of their high school class, up from 39 percent in the previous year.

Twenty percent of the students admitted to the Class of '94 said electrical engineering or computer science was their first choice of academic major, according to Johnson.



MIT students from the Homeless Initiative participated in a rally at Government Center on March 22 in support of legislation to raise the federal housing budget by \$25 billion. Chip Buchanan

## Erratum

An article which appeared in the last issue of *The Tech* ["Campus Police union settlement 'working,'" March 23] may have falsely implied that a settlement had been reached or would be reached concerning the "4-2" work schedule. It was the MIT Police Association's request for amendments to the overtime system which had been settled.

## We'd Like To Be Your Travel Agent.

Lowest Airfares Anywhere  
All Travel Arrangements  
Eurail Passes · Amtrak  
Major Credit Cards Accepted

## GARDNER TRAVEL

1105 Mass. Ave.  
Cambridge  
492-2300

## THE WORLD FOR SALE

from BOSTON	round trips from
LONDON	\$338
BERLIN	438
BRUSSELS	398
VIENNA	438
TOKYO	749
CARACAS	350
RIO	778

Taxes not included. Restrictions apply. One way available. Work/Study abroad programs. Int'l Student ID. EURAIL PASSES ISSUED ON THE SPOT! FREE Student Travel Catalog!

**Council Travel**  
MIT Student Center W20-024  
Cambridge  
225-2555

# Graduate In Style!



Reserve Your Cap & Gown By April 14th

Don't wait another minute, reserve your cap and gown now. Rentals may be paid for in cash, by check or with your Coop Charge Card. Make your reservation in the Men's Department of the MIT Coop at Kendall.

Cap & Gown:  
Bachelors \$15  
Masters \$16  
Doctors \$17

MIT COOP AT KENDALL  
3 CAMBRIDGE CENTER

M-F 9:15-7 THUR. 'TIL 8:30  
SAT. 9:15-5:15

# THE COOP

# news roundup

from the associated press wire

## World

### Lithuania stands firm on independence

Lithuania has not renounced its declaration of independence, despite demands from Soviet President Mikhail S. Gorbachev and the presence of Soviet military vehicles rumbling through the capital of Vilnius. Lithuania's deputy prime minister said his government is ready to discuss anything except its declaration of independence. Gorbachev warned that attitude will result in "grave consequences" for the Baltic republic. Lithuanian president Vytautas Landsbergis said he is sending negotiators to Moscow.

Western correspondents have left Lithuania on orders from the Soviet government, adding to the fears among Lithuanians of a Soviet military crackdown.

### Demonstrations continue in Britain

Demonstrations against England's new poll tax continued into a second day, but on a much lesser scale. About one hundred chanting protesters clashed with police in London on Sunday. Hundreds of people were arrested and hundreds of others injured last Saturday, when a protest by about 40,000 people turned violent.

Prime Minister Margaret Thatcher blamed extremist groups for turning the anti-tax protest into one of the worst-ever London riots.

### Inmates riot in Manchester prison

Over 700 inmates at an overcrowded Victorian prison rioted Sunday, smashing windows and setting fires, police said. Fifty were injured in the violence. The government said prison officers regained control of one wing of the jail and about 400 prisoners have surrendered. Television newscasts carried unconfirmed reports that witnesses had seen up to 12 bodies in the prison.

### Iraq admits to having chemical weapons

Iraq's president has admitted his nation has sophisticated chemical weapons and, if need be, will use them to attack Israel. Saddam Hussein says his country would retaliate if Israel were to attack Iraq. An Israeli government spokesman says Israel has no hostile intent against Iraq.

Several Iraqis were arrested last week in Britain on charges of trying to obtain nuclear weapon parts. Hussein denied that his country has nuclear weapons.

### Israeli-Palestinian confrontations on the decline, analysts say

Statistics reflect a decline in violent confrontations between Palestinians and the Israeli army, analysts said. The figures, from an Israeli human-rights group, show more Palestinians have been killed by fellow Arabs than by Israeli soldiers so far this year. An army spokesman said the new numbers reflect new stricter rules for opening fire on Palestinian demonstrators. A leading Palestinian activist said the army is trying to reduce casualties because it found that the high death toll was bad for its image.

Also, Israeli Prime Minister Yitzhak Shamir has set in motion plans to start five more Jewish settlements in the occupied territories, a Shamir aide said. The move could fuel tensions with the Bush administration, which has warned that the settlements are an obstacle to peace.

## Nation

### US is world's leading exporter

The United States is once again the world's leading exporter. The International Monetary Fund said US foreign sales were worth \$364 billion for 1989. West Germany showed up in second place, with Japan third. West Germany had toppled the United States from the number-one trade spot in 1986.

### Jurors must forget Reagan's policies

The judge in the Iran-contra trial of former National Security Adviser John M. Poindexter has told jurors to ignore their thoughts about former President Ronald Reagan's policies toward Iran and Nicaragua. The jurors yesterday began considering charges that Poindexter withheld information on the arms sales to Iran and some secret help for the Nicaraguan contras.

### Trailways bus driver victim of drive-by shooting

A Southeastern Trailways bus driver was shot in the arm Saturday in Nashville, TN, and doctors said his mangled arm may have to be amputated. A man in a pickup truck pulled up alongside the bus, which was taking a Greyhound route through Tennessee, and opened fire, officials said. Strike-plagued Greyhound called it "an open and shut case of terrorism."

### Honduran fire victims return home

The bodies of 48 Hondurans who died in a social club fire in New York City have been returned home. Grieving relatives gathered at an airport in Honduras Sunday to receive the bodies in plain wooden coffins. The 87 victims were mostly young, poor immigrants.

### Buffalo transit system shut down

Commuters are still on their own in Buffalo, NY. Although county legislators slapped together a financial package to rescue the area's transit system, the transit system did not approve the plan. Over 120,000 bus and subway riders managed without service yesterday morning. The Buffalo Teachers Federation said it will try to get the system running by going to court and claiming the shutdown cripples a court-ordered school desegregation program.

## Sports

### UNLV wins NCAA championship

The University of Nevada-Las Vegas has won its first NCAA basketball championship. The Rebels blew out Duke University 103-73 in the most lopsided men's Division I game in history.

Guard Anderson Hunt's 29 points led the UNLV scoring. Phil Henderson had 21 for Duke.

Vegas pulled out to a 47-35 halftime lead by forcing the Blue Devils into 14 turnovers — ten of them on steals. The Rebels then broke the game wide open by running off 18 straight points early in the second half to give them a 75-47 lead with 13 minutes remaining.

The worst blowout in a title game before yesterday's result was North Carolina's 23-point loss to UCLA in 1968. The 103 points scored by Vegas was also a championship game record, breaking the 98-point mark set by UCLA against Duke in 1964.

UNLV capped its 1989-90 season with a 35-5 record. Duke closed the year at 29-9.

## Local

### Disappointing tax revenues increase deficit

Governor Michael S. Dukakis is renewing his call for a tax increase to erase the state's budget deficit. The governor's call comes in the wake of the latest gloomy news on the state's tax collections. State Revenue Commissioner Stephen Kidder reported that tax collections had fallen \$83 million below estimates in March. Kidder says the poor performance was due mainly to various business taxes.

Dukakis said previous estimates had placed the state budget deficit at \$710 million dollars, and that yesterday's report added another \$80 million. But Dukakis declined to also lower his projections for tax growth for fiscal 1991, which has been pegged at 3.9 percent.

## Weather

### Ed Nelson's April almanac

The threatening weather disturbances of April find their root on the battleground of the retreating cold air mass which had been entrenched for the winter, and the warm moist air mass advancing from the Gulf of Mexico. As these air masses meet, violent thunderstorms are set off, often accompanied by hail and an occasional tornado. The severe weather occurrences start early in the spring along the Gulf of Mexico, and slowly but steadily advance northward as the weeks progress.

The full moon occurs on the 9th, and a new moon appears on the 24th.

The average high temperature for the month is 56°F (13°C), the average low is 41°F (5°C), giving a monthly mean of 49°F (9°C). Normal precipitation is 3.77 inches (9.58 centimeters), with 12 days of measurable precipitation.

### Wet

An intensifying cyclone will move slowly northward from the mid-Atlantic coast over the next few days. Strong easterly winds and occasionally heavy rain will be experienced with this system. Temperatures will remain below normal for the next few days.

**Tuesday afternoon:** Cloudy and breezy with rain showers. High near 45°F (7°C). Winds east 10-20 mph (16-32 kph).

**Tuesday night:** Cloudy with rain becoming heavier and steadier. Low of 38°F (3°C). Winds east-northeast 15-25 mph (24-40 kph).

**Wednesday:** Cloudy with rain tapering to showers. Chance of rain or snow showers and thundershowers with gusty winds during the evening. Turning colder. High 43°F (6°C). Low 32°F (0°C).

**Thursday:** Variably cloudy and windy, with an early snow shower possible. High of 40-45°F (4-7°C). Low of 28°F (-2°C).

Forecast by Michael C. Morgan  
Almanac prepared by Ed Nelson

Compiled by Brian Rosenberg  
and Andrea Lamberti

# 來利樓

## Larry's Chinese Restaurant

302 Mass. Ave., Cambridge  
(next to Father's Fore)

Luncheon Specials Served daily 11:30 am-5:00 pm  
Orders to go or dining in  
Delivery Service  
Lunch special prices start \$2.95 Minimum Order \$10.00

**10% Off Dinner**  
on every Saturday  
Dining in only  
(\$10 minimum)

Call: 492-3179 or 492-3170

Monday — Thursday 11:30 am to 9:30 pm  
Friday — Saturday 11:30 am to 10:00 pm  
Closed on Sunday

## The MIT Ballroom Dance Club

presents

# A Spring Semi-Formal Dance

Saturday, 7 April 1990 8 p.m. — midnight

MIT Student Center, 84 Massachusetts Avenue, Cambridge

Ballroom music (International tempos) provided by

*The David Lindsey Orchestra*

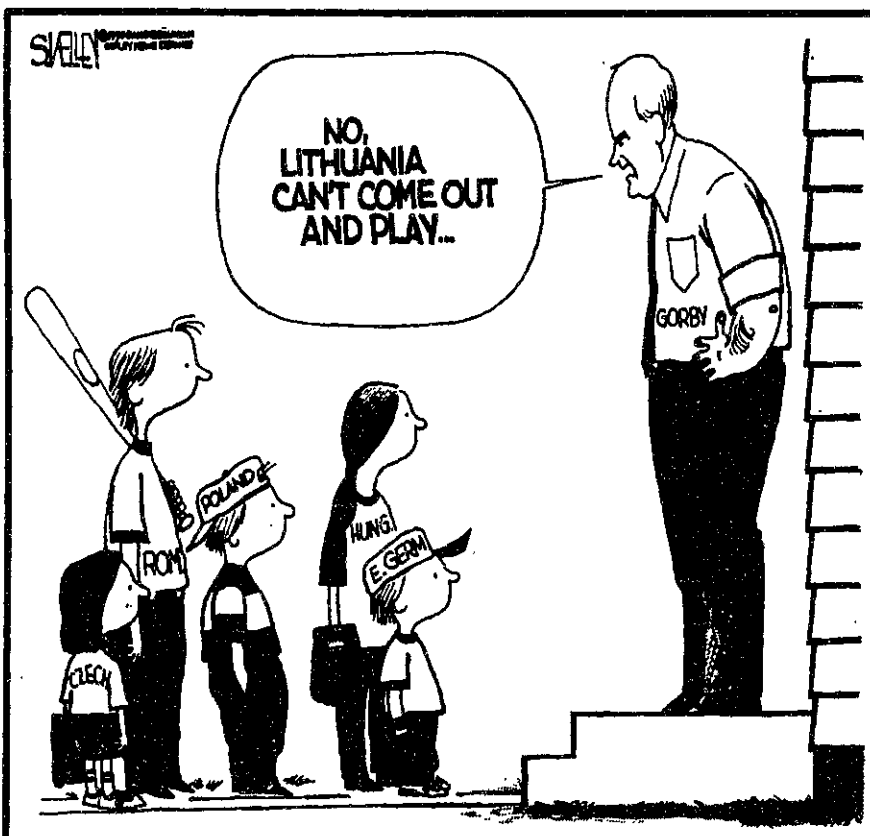
Refreshments!

Free Parking!

Tickets: \$6 in advance, \$8 at the door

Advance Tickets will be sold in the Student Center from  
April 2 — April 6 everyday between 11:00 am — 2:00 pm

# opinion



## The Tech

Volume 110, Number 16 Tuesday, April 3, 1990

**Chairman** ..... Deborah A. Levinson '91  
**Editor in Chief** ..... Prabhat Mehta '91  
**Business Manager** ..... Russell Wilcox '91  
**Managing Editor** ..... Marie E. V. Coppola '90  
**Executive Editor** ..... Linda D'Angelo '90

**News Editors** ..... Annabelle Boyd '90  
 ..... Andrea Lamberti '91  
 ..... Reuven M. Lerner '92

**Night Editor** ..... Daniel A. Sidney '92  
**Opinion Editor** ..... Michael J. Franklin '88  
**Sports Editor** ..... Shawn Mastrian '91  
**Arts Editor** ..... Peter E. Dunn G  
**Photography Editors** ..... Kristine AuYeung '91  
 ..... Lerothodi-Lapula Leeuw '92

**Contributing Editors** ..... Jonathan Richmond G  
 ..... Niraj S. Desai '90  
 ..... Irene C. Kuø '90  
 ..... Lisette W. M. Lambregts '90  
 ..... Lois Eaton '92  
**Advertising Manager** ..... Mark E. Haseltine '92  
**Production Manager** ..... Ezra Peisach '89  
**Senior Editor** ..... Genevieve C. Sparagna '90

### NEWS STAFF

**Associate News Editors:** Neil J. Ross G, Joanna Stone '92, Brian Rosenberg '93, Katherine Shim '93; **Staff:** Joan Abbott '90, Anita Hsiung '90, Miguel Cantillo '91, Seth Gordon '91, Adnan Lawai '91, Chitra K. Raman '91, Gaurav Rewari '91, Eun S. Shin '91, Aileen Lee '92, Karen Kaplan '93, Michael Schlamp '93, Cliff Schmidt '93; **Meteorologists:** Robert X. Black G, Robert J. Conzemius G, Michael C. Morgan G, Greg Bettinger '91, Yeh-Kai Tung '93.

### PRODUCTION STAFF

**Associate Night Editors:** Kristine J. Cordella '91, David Maltz '93; **Staff:** David E. Borison '91, Lawrence H. Kaye '91, Sunitha Gutta '93, Jonathon Weiss '93, Aaron M. Woolsey '93.

### OPINION STAFF

Pawan Sinha G, Karl Dishaw '89, Michael Gojer '90, Adam Braff '91, Bill Jackson '93.

### SPORTS STAFF

Michael J. Garrison G, Harold A. Stern '87, David Rothstein '91.

### ARTS STAFF

**Staff:** Frank Gillett G, Mark Roberts G, Manavendra K. Thakur '87, Michelle P. Perry '89, Jigna Desai '90, Peter Parnassa '90, Paige Parsons '90, Paula Cuccurullo '91, David Stern '91, Alfred Armendariz '92, Sande Chen '92, Alejandro Solis '92, Kevin Frisch '93.

### PHOTOGRAPHY STAFF

**Associate Photography Editor:** David H. Oliver '91, Sean Dougherty '93, Douglas D. Keller '93; **Staff:** William Chu G, Frank Espinosa G, Andy Silber G, Ken Church '90, Mark D. Virtue '90, Sarath Krishnaswamy '91, Georgina A. Maldonado '91, Mauricio Roman '91, Marc Wisnudel '91, Jonathan Kossuth '92, Paulo Corriea '93, Michelle Greene '93, Wey Lead '93, Matthew Warren '93, Jeremy Yung '93; **Darkroom Manager:** Ken Church '90.

### FEATURES STAFF

Christopher R. Doerr G, John Thompson '90, Taro Ohkawa '91, Chris M. Montgomery '93.

### BUSINESS STAFF

**Delinquent Accounts Manager:** Jadene Burgess '93; **Advertising Accounts Manager:** Shanwei Chen '92; **Staff:** Ben Tao '93.

### PRODUCTION STAFF FOR THIS ISSUE

**Night Editor:** ..... Marie E. V. Coppola '90  
**Associate Night Editor:** ..... David Maltz '93  
**Staff:** Daniel A. Sidney G, Douglas D. Keller '93.

The Tech (ISSN 0148-9607) is published on Tuesdays and Fridays during the academic year (except during MIT vacations), Wednesdays during January, and monthly during the summer for \$17.00 per year Third Class by The Tech, Room W20-483, 84 Massachusetts Avenue, Cambridge, MA 02139-0901. Third Class postage paid at Boston, MA. Non-Profit Org. Permit No. 59720. **POSTMASTER:** Please send all address changes to our mailing address: The Tech, PO Box 29, MIT Branch, Cambridge, MA 02139-0901. Telephone: (617) 253-1541. FAX: (617) 258-8226. Advertising, subscription, and typesetting rates available. Entire contents © 1990 The Tech. The Tech is a member of the Associated Press. Printed by Charles River Publishing, Inc.

## LETTERS TO THE EDITOR

### Proposed calendar changes would harm students

(Editor's note: The Tech received a copy of this letter addressed to Professor Henry D. Jacoby, faculty chairperson.)

We, the members of the Student Committee on Educational Policy, are writing this letter in regard to the recent discussion involving the academic calendar changes. Although we recognize the need to restructure the reading period and final exam period, we feel the proposed changes are inadequate and possibly detrimental to the student body.

The proposed changes would shorten and eliminate some of the holidays currently observed. Because of the intensity of the work done by MIT students, frequent and lengthy holidays are necessary. Professors often assign as much work over a holiday break as during a regular week. Shortening holidays would encourage more professors to give out assignments which are the same length as usual — despite the holiday weekend — which gives students no time to relax or to catch up in difficult classes.

It is the consensus of SCEP that a one day holiday is pointless, as it would go unnoticed by students. In addition, under the proposed calendar changes, the two day vacation between IAP and the new term would be eliminated. Students who take intensive classes over IAP would be tossed from finals to a new term with no break at all.

Our main criticism of the proposed revision is not the shortening and elimination of some holidays, but rather the motivation behind these changes. Professor William M. Siebert '46 notes that some professors find "they must give exams more than once to accommodate students who have conflicting exams." The new plan is inherently flawed because it was modeled to best serve the faculty rather than the student body.

It is our observation that students are not allowed adequate

### Discriminatory policies prevalent within Institute

It has come to my attention that the comments I made at the Defeat Discrimination at MIT-sponsored talk on March 14 may have been misinterpreted by some members of the audience. I would like to take this opportunity to clarify my statements.

First of all, let me say that although I am a member of the Air Force Reserve Officers' Training Corps, my views are mine only and not necessarily the same as those of AFROTC, the US Air Force, or Department of Defense.

I said at the talk that I felt all discrimination at MIT should be stopped. I meant that. I went on to draw an analogy between the discriminatory practices of the DOD and those of the National Association for the Advancement of Colored People.

By singling out the NAACP as a discriminatory scholarship sponsor, I did not mean to single out any one organization or to make any racist overtones. I apologize to any and all who misunderstood my remark or were offended by it. I simply wanted to point out that every part of the MIT non-discrimination policy is violated by at least one scholarship program at the school. Two wrongs certainly do not make a right, just a doubly bad situation.

Marc S. Block '90

preparation time for finals. Siebert rightfully observes that students "have little breathing space between finals, having to take exams one immediately after the other." The current "reading period" is woefully short, forcing students to cram study time in between exams. Students must often pull consecutive all-nighters if they have many finals.

Most high-caliber, high-pressure schools give students at least a week to prepare for finals. MIT only gives two days and a weekend. The length of the final exam period would be irrelevant if students were given enough time in advance to prepare. This can only be accomplished by the installation of a proper reading period.

If the faculty proposal were enacted our reading period would be shortened even further, and final exam period stretched out. The increased finals period would encourage more professors to give exams. Not only would this force students to pull even more all-nighters, but it would discourage professors from finding more innovative ways of grading students such as with projects or term papers. It is SCEP's observation that in "the real world" there are no final exams.

Perhaps it would behoove the faculty to consider the cause of increased number of finals. The current program requires all HASS-D subjects administer a final examination. This policy im-

plies that better classes — those worthy enough of a HASS-D rating — certainly have finals. SCEP sees no basis for this assumption.

In fact, many humanities professors resent this policy so they administer pointless exams, which are worth one percent of the final grade or for which the answers have been distributed. The question as to whether or not a class needs a final examination should be left to the professor; the question as to whether or not a class should be considered a humanities distribution subject should be determined by the relevance of the subject matter and by the amount of work done by the students.

We request that the faculty consider a proposal from SCEP regarding more beneficial calendar changes. SCEP will submit this proposal to the faculty committee for evaluation at its next meeting. Our proposal will take into consideration the final exam period, student input and the academic calendar structure at other universities, and seeks community suggestions. In the future, we request that the faculty treat the student body with more openness when considering such major adjustments to the academic program.

Monnica Williams '92  
 Vice President  
 Student Committee on  
 Educational Policy



G. P. CARTOON TESTS HIS "BROCCOLI IS KEYPTONITE" THEORY

### MIT's focus on education lacks compatibility with aims of ROTC

Almost as troubling as the Navy's vindictive attitude towards Robb L. Bettiker '90 and Joe Steffan is Dean for Undergraduate Education Margaret L. A. MacVicar's incredible statement on the Reserve Officers' Training Corps.

If, as MacVicar assures us, MIT encourages students "to consider careers committed to serving the public good," how can the Institute be a part of channeling undergraduates into the Defense Department via ROTC?

Is the public good really served by turning universities into filling stations for the needs of the military? Did former Lieutenant-Colonel Oliver L. North, United States Marine Corps, serve the public good of any nation by

shipping arms to Khomeini? Was the public good served by the US invasion of Grenada or the destruction of the homes of the poor in Panama City?

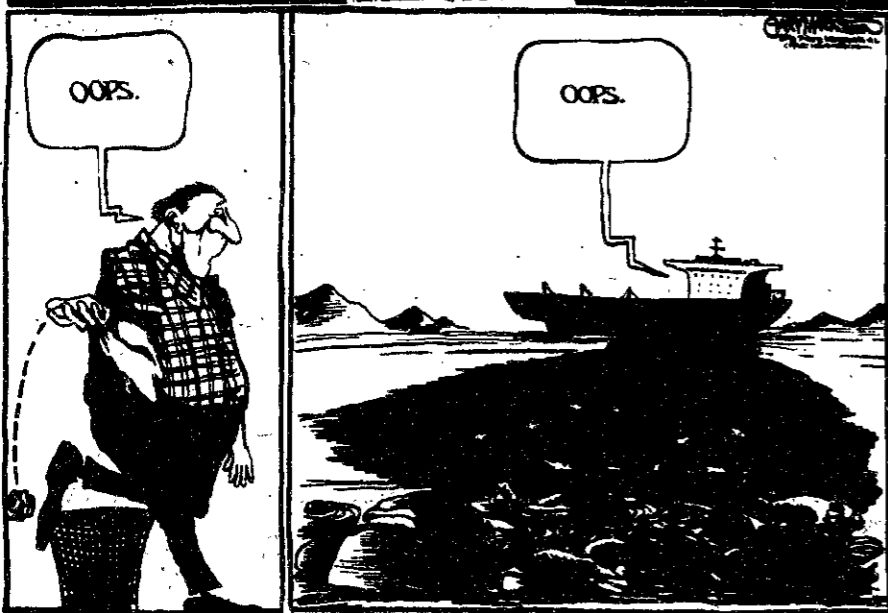
MacVicar writes of a "special compatibility" between MIT and the Defense Department. It is difficult to see any compatibility whatsoever between humane learning and the goals of the US military, which specializes in destroying human life.

The salient reason for ending the disgraceful "MIT-ROTC partnership" is to be found in the US government's record of repeated aggression against Vietnam, Grenada, Nicaragua, El Salvador and Panama.

Craig Abernathy  
 Senior Secretary  
 Chemical Engineering

# opinion

MISDEMEANORS



## LETTERS TO THE EDITOR

### Society morally responsible for care of unwanted children

A month ago, I happened to be standing in front of the MIT Pro-Life information booth in Lobby 10. It happened that both those behind the booth at the time as well as myself were white males.

This is generally a situation we try to avoid since the pro-abortion people like to portray us as a kind of white male conspiracy to suppress women. Sure enough, we were approached by a woman dressed in black who challenged us by asking our ages and then inquiring whether any of the four of us had ever been pregnant, as if pregnancy were a disease only women could get. I guess her point was that we, being male, could not take a position on the abortion issue since we were biologically incapable of getting pregnant and hence ineligible for an abortion. I let my friends, better speakers than myself, handle the situation.

Among the things asked by this woman was what we as an organization proposed to do about child care, meaning, I suppose, the care of children who would otherwise be aborted. This question was in fact a thinly disguised insinuation that the pro-life movement was socially irresponsible for not thinking to provide for the millions of new children, mostly unwanted, who would be alive were it not for abortion.

I don't recall that her "question" was ever directly answered. The debate was broken off by a companion of this woman. Well, to the woman in black, whoever you are, the following is for you:

I know of a woman, a woman who is quite ordinary, except for one thing. By herself she takes care of 16 children, none of whom are her own. Her husband divorced her many years ago, and her own three children have grown up and moved away. These 16 children are of an unusual variety, but if they have one thing in common, it is that they would all have been likely candidates for an abortion, given today's reasons for having one.

One of these is a two-year-old blind boy named Jack. He was born three months premature, and his parents didn't want him. This woman nursed him to health several times when he was on the brink of death. Another, an eight-year-old named Brandon, has Downs' Syndrome — he's not a bad kid, just stubborn sometimes. Another is a beautiful 12 year-old girl who is severely retarded; her name is Carrie, and she personifies innocence itself. Her mother was a teenager.

Yet another is a severely retarded 12 year-old boy named George, a master of the art of trying to annoy people. Nobody

else wants him. Were it not for this woman, he would be confined to some nameless institution.

This woman also has a boy of six named Tony. His was a case of neglect — and of autism — but with loving attention and many playmates he was drawn from this condition. She has another boy of 11, a pretty bright kid actually, but he took some violent abuse when he was a baby, and so his vision is impaired. Next is a family of two boys and a girl — Kenny, Anthony and Angel. They're average kids, but were left to fend for themselves. The list goes on. . . .

But this isn't all. This is only the current scenario. At least 50 other children called this woman "Mom" at one time or another. These include blacks, whites, Mexicans, and the whole gamut from the sexually exploited to the physically abused. Neglected kids, rebellious teenagers, violent kids, incorrigible thieves, loudmouths, etc., name your kind — she's tucked him or her into bed at least once.

Now what is my point in saying this? As one who believes that abortion — as an absolute — is morally wrong, I submit to you on the strength of the example of this woman that it is the responsibility of the rest of society to assist in the care of their fellow humans. Of course, the responsibility is first and foremost that of the parents, but in the frequent cases where they choose irresponsibility, it is our collective social and moral duty to assume this burden. This alternative is a better one than killing, isn't it? And by the way, I am in a position to say these things. The woman I've described is my own mother.

Humans like to flatter themselves as creatures in whom reason, as opposed to emotion or baser animal instincts, rules. If this is in fact true, then humans — who can understand their actions, foresee their consequences, and control their own behavior — at least by their own arguments can either choose not to engage in sex or to take responsibility for their actions. Abortion is an attempt to circumvent reason.

I probably would not have written this letter were it not for the fact that I called my mother the other day and heard unmistakably the weariness in her voice. The saddening thing is not that she was tired but that no one else in the world seems to recognize the diamond that every child is — even the blind, the deformed, the retarded, the unborn.

Jim Donahue '91

## TECH CATHOLIC COMMUNITY

### HOLY WEEK SERVICES



PALM SUNDAY  
SATURDAY APRIL 7  
5 PM

HOLY THURSDAY  
APRIL 12  
7 PM

SUNDAY APRIL 8  
10:00 AM 5:00 PM



GOOD FRIDAY  
APRIL 13  
3 PM



EASTER VIGIL  
SATURDAY APRIL 14  
8 PM

EASTER SUNDAY  
APRIL 15  
10:00 AM 12:00 NOON



Communal Penance Service Monday April 9 -- 7 PM

**Last Chance!**

**Scribe Thesis (Thesis)**  
How to produce a document that meets all the formatting requirements for an MIT Thesis.  
Prerequisite: Advanced Word Processing

Minicourse Slide-set

## Why use Scribe Thesis?

- Produces a thesis that conforms to all MIT requirements
- Makes revisions much easier
- Automatically provides:
  - Title and Abstract pages
  - Table of contents
  - Lists of figures, tables
  - Numbering of chapters, section pages, figures, and tables
  - Appendices
  - Bibliography
- Assists in format
  - Footnotes
  - Quotations
  - Citations
  - Cross-referencing of text and figures
- AND Produces a thesis that conforms to all MIT requirements!

All minicourses are one hour each, and are taught in Room 3-343. For more information, or to schedule additional minicourses for 10 or more people, contact Gary L. Dryfoos at dryfoos@athena or x3-0184.

**PLEASE NOTE: No pre-registration or reservations are needed... Just show up for class!**

Hey! Look at this!

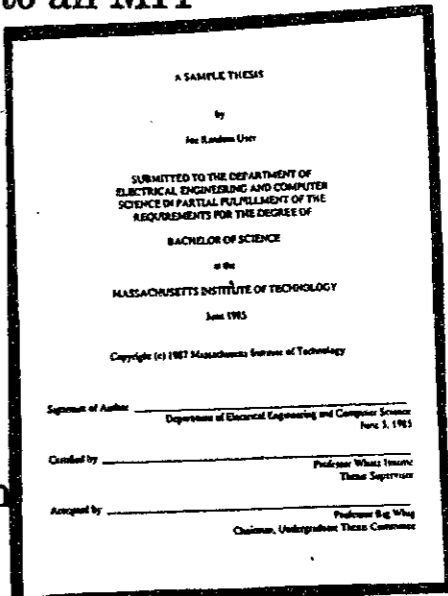
**Last Minicourses 'til next Fall!**

**Scribe Thesis (Thesis)**  
How to produce a document that meets all the formatting requirements for an MIT Thesis.  
Prerequisite: Advanced Word Processing

Minicourse Slide-set

## Why use Scribe Thesis?

- Produces a thesis that conforms to all MIT requirements
- Makes revisions much easier
- Automatically provides:
  - Title and Abstract pages
  - Table of contents
  - Lists of figures, tables
  - Numbering of chapters, section pages, figures, and tables
  - Appendices
  - Bibliography
- Assists in format
  - Footnotes
  - Quotations
  - Citations
  - Cross-referencing of text and figures
- AND Produces a thesis that conforms to all MIT requirements!



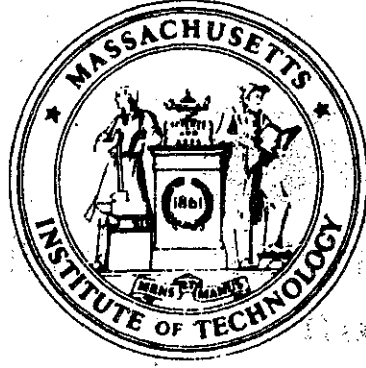
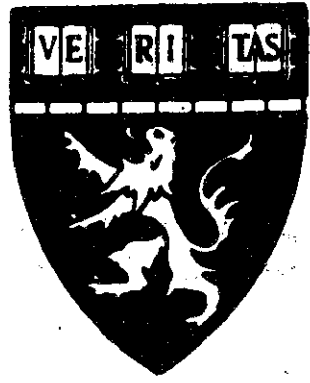
		Minicourse Schedule				post-Spring Break 1990	
		Mon	Tue	Wed	Thu		
7 p.m.	Scribe Thesis	2 Apr	Scribe Report	3 Apr	Scribe Math	4 Apr	Matlab
	Scribe Math		Matlab	Scribe Thesis		Scribe Report	
8 p.m.	Scribe Report	9 Apr	Scribe Math	10 Apr	Matlab	11 Apr	Scribe Thesis
	Matlab		Scribe Thesis	Scribe Report		Scribe Math	

All minicourses are one hour each, and are taught in Room 3-343. For more information, or to schedule additional minicourses for 10 or more people, contact Gary L. Dryfoos at dryfoos@athena or x3-0184.

**PLEASE NOTE: No pre-registration or reservations are needed... Just show up for class!**

Hey! Look at this!

**Last Minicourses 'til next Fall!**



**Harvard-MIT Division of Health Sciences and Technology**

# **LECTURE SERIES ON BIOMEDICAL RESEARCH**

## **In Vivo and In Vitro Synovial Joint Biomechanics**

### **DR. ROBERT W. MANN**

**Whitaker Professor of Biomedical Engineering**

**Department of Mechanical Engineering**

**Massachusetts Institute of Technology**

**April 4 (Wednesday)**

**4:15 pm, MIT E25-117**

**Refreshments will be served.**

**Students interested in Medicine and/or Biomedical  
Engineering are specially encouraged to attend.**

**For further information contact:**

**Marcelo F. Fogaca**

**225-9561 / 253-5419**

# opinion

## LETTERS TO THE EDITOR

### Original Andy's Place proprietor has relocated to East Boston

I am writing in response to a misleading photo caption in the March 20 issue of *The Tech*. The photograph is of a food truck with the name "Andy's Place" painted on the side, and the caption reads, "Andy's is back! Some of the world's smartest people can again eat at Andy's Place."

I object to this misinformation. In the first place, Andy's is not back. Not the Andy's that we knew and loved for so many years. There is only one Andy Anderson, who fed our stomachs and our spirits with great food and our laughter, and he left MIT more than a year ago. The truck in the photo has been leased. As good as the food may be, it's not Andy's food, and whoever the guy is, he sure isn't Andy Anderson.

When Charlie the Tech Tailor

left MIT in December, there was a two page spread in *Tech Talk* honoring him. When Andy and his truck left the Institute, he received a miniscule mention in the paper that he was leaving because of health problems. What an insult! This is the man who was always ready with a smile and a joke, and made the best chili in the world. And in return for his caring, he was slowly forced out of business by the ARA cafe in Lobby 13.

Andy deserves better. Fortunately, he's not gone, simply relocated. He's got a combination market/butcher shop/deli in East Boston, and is once again dispensing his unique brand of sustenance. It's worth the trip.

Eve Diana  
Administrative Secretary  
Department of Chemistry

Columns and editorial cartoons are written by individuals and represent the opinion of the author, not necessarily that of the newspaper.

Letters to the Editor are welcome. They must be typed double spaced and addressed to *The Tech*, PO Box 29, MIT Branch, Cambridge, MA 02139, or by interdepartmental mail to Room W20-483. Electronic submissions may be mailed to tech@athena.

### Innovative hair sculpture should inspire lively and informed debate

I have no doubt that Norman M. Weryly G expresses the concerns of many members of the MIT community in stating his objections to a proposed sculpture by Mags Harries for the Stratton Student Center ("Bizarre hair sculpture should not be placed in MIT Student Center" March 20]. However, I think he unfairly misrepresents the Institute when he states that goal of MIT is "to describe phenomena in a rational and logical manner," using this premise to object to the proposed work's complex, multivalent qualities.

Innovative thinking can only flourish in an environment of open-minded exploration and creativity. This implies a willingness to give careful consideration to ideas that might initially seem unlikely, and to then make an educated decision based on this

inquiry.

To summarily dismiss this project as a "gargantuan hair ball" is to disavow these principles. Ellen T. Harris, associate provost for the arts, has provided a wonderful and unique opportunity for members of MIT community to view models of the proposed sculpture, to meet with the artist, and to participate in the decision-making process in a knowledgeable way, before the sculpture is created or installed.

As with innovative thinking of any kind, debate is inevitable, and informed debate is welcome. Regardless of whether or not Harries' challenging sculpture becomes a reality, the dialogue generated in the decision-making process is sure to be illuminating.

Susannah Wolfson  
Office of Foundation Relations

## ARAB-JEWISH COEXISTENCE IN ISRAEL

With Zeidan Atashi

Wednesday, April 4, 1990  
7:00 p.m.  
MIT Student Center West Lounge  
84 Mass Ave, Cambridge

Zeidan Atashi is a leading figure in the Israeli Druze community, a former member of the Israeli Knesset, and was the first non-Jewish Israeli to hold a diplomatic post serving in the New York Consulate of Israel and later as a member of Israel's permanent mission to the United Nations.

The 1990 Charles & Frieda Sparrow Memorial Lecture  
Sponsored by MIT Hill & MIT Students for Israel  
For information call 253-2082

## IS CIVIL ENGINEERING FOR YOU?

FIND OUT ABOUT OUR DEGREE PROGRAMS IN

CIVIL ENGINEERING

ENGINEERING SYSTEMS AND COMPUTATION

ENVIRONMENTAL ENGINEERING AND SCIENCE

COME TO THE

### CIVIL ENGINEERING OPEN HOUSE

THURSDAY, APRIL 5  
1:30 - 4:30

IN THE

BUSH ROOM  
10 - 105

REFRESHMENTS PROVIDED

Last Chance!

Last Minicourses 'til next Fall!

NAME	PARTS	SYMPTOMS	FATAL?
Azalea	All parts	Nausea, vomiting, depression, breathing difficulty, coma	Fatal
Bellad	How can I do TABLES in Scribe?	twitching muscles	Fatal
Castorbean		convulsions	Fatal
Daffodil			May be fatal
Dieffenbachia	All parts	How can I do TABLES in Scribe?	May be fatal
English holly	Berries		
Horse chestnut	All parts	Nausea, some	
Jimson weed	All parts	Abnormal thirst, delirium, incoherence, coma	No
Marijuana	Leaves, flowers	Disorientation, hunger, mild hallucinations, mental effects	No
Morning glory	All parts	Large amounts cause severe mental disturbances	Fatal



### Scribe Reports

The Scribe techniques needed to produce a fully-formatted report, including: chapter numbering, footnotes, tables, cross-references, and table of contents.  
Prerequisite: Advanced Word Processing

Project Athena	Minicourse Schedule				post-Spring Break 1990
	Mon	Tue	Wed	Thu	
	2 Apr	3 Apr	4 Apr	5 Apr	
7 p.m.	Scribe Thesis	Scribe Report	Scribe Math	Matlab	
8 p.m.	Scribe Math	Matlab	Scribe Thesis	Scribe Report	
	9 Apr	10 Apr	11 Apr	12 Apr	
7 p.m.	Scribe Report	Scribe Math	Matlab	Scribe Thesis	
8 p.m.	Matlab	Scribe Thesis	Scribe Report	Scribe Math	

Men's Shoe Sizes

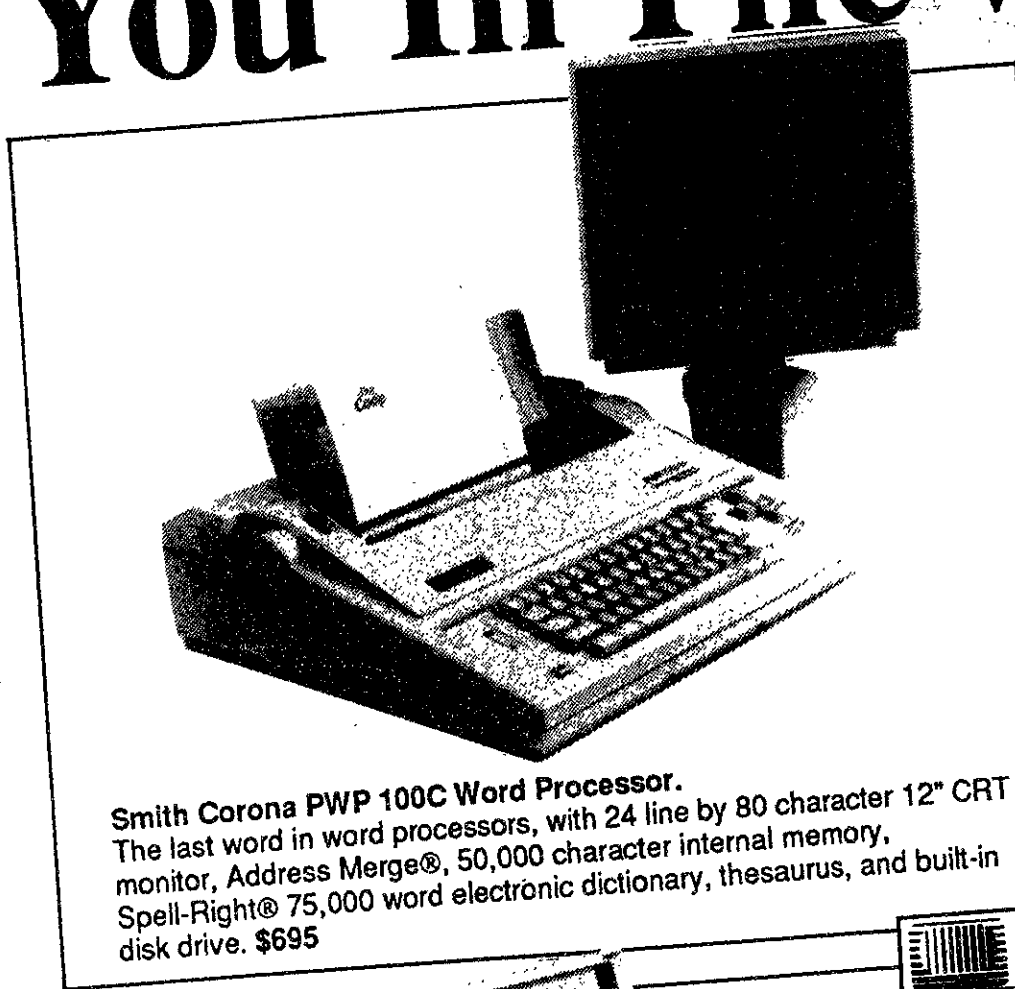
U.S. 7 7.5 8 8.5 9 9.5 10 10.5  
British 6.5 7 7.5 8 8.5 9 9.5 10  
Continental 39 40 41 42 43 44 45

Name	(mi.)	(M mi.)	Year	Day
Mercury	3,100	36	88 days	59 (days)
Venus	7,700	67	225 days	244 (days)
Earth	7,920	93	365 days	24 (hours)
Mars	4,200	141	687 days	24:24 (hrs:mins)
Jupiter	88,640	483	11 yrs	9:50 (hrs:mins)
Saturn	74,500	886	10 yrs	10:39 (hrs:mins)
Uranus	32,000	1,919	84 yrs	23 (hrs)
Nepthue	31,000	2,707	165 yrs	
Pluto	1,500	3,670	248 yrs	
Mickey	7,800	5,230	391 yrs	
Goofy	2,650	7,865	527 yrs	

Last Minicourses 'til next Fall!

All minicourses are one hour each, and are taught in Room 3-343.  
For more information, or to schedule additional minicourses for 10 or more people, contact Gary L. Dryfoos at dryfoos@athena or x3-0184.  
PLEASE NOTE: No pre-registration or reservations are needed... Just show up for class!

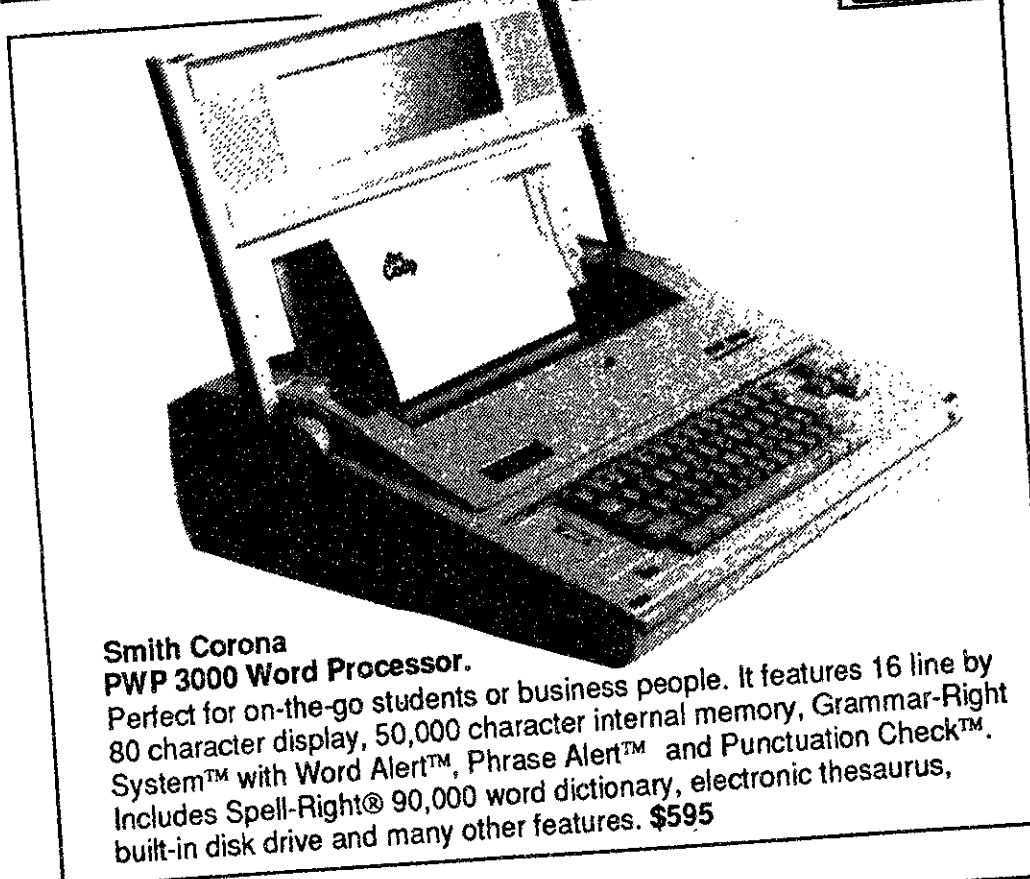
# Smith Corona Puts You In The Write Mood!



**Smith Corona PWP 100C Word Processor.**  
The last word in word processors, with 24 line by 80 character 12" CRT monitor, Address Merge®, 50,000 character internal memory, Spell-Right® 75,000 word electronic dictionary, thesaurus, and built-in disk drive. \$695



**Smith Corona PWP 7000 LT Laptop Personal Word Processor.**  
Write it right, wherever you happen to be. This word processor comes with 16 line by 80 character display and efficient Grammar-Right System™ with Word Alert™, Phrase Alert™ and Punctuation Check™. It also has a 50,000 character internal memory, built-in disk drive, Spell-Right® 90,000 word dictionary, built-in Thesaurus and many other features. \$719.95 Optional Rechargeable Battery Pack. \$69.95

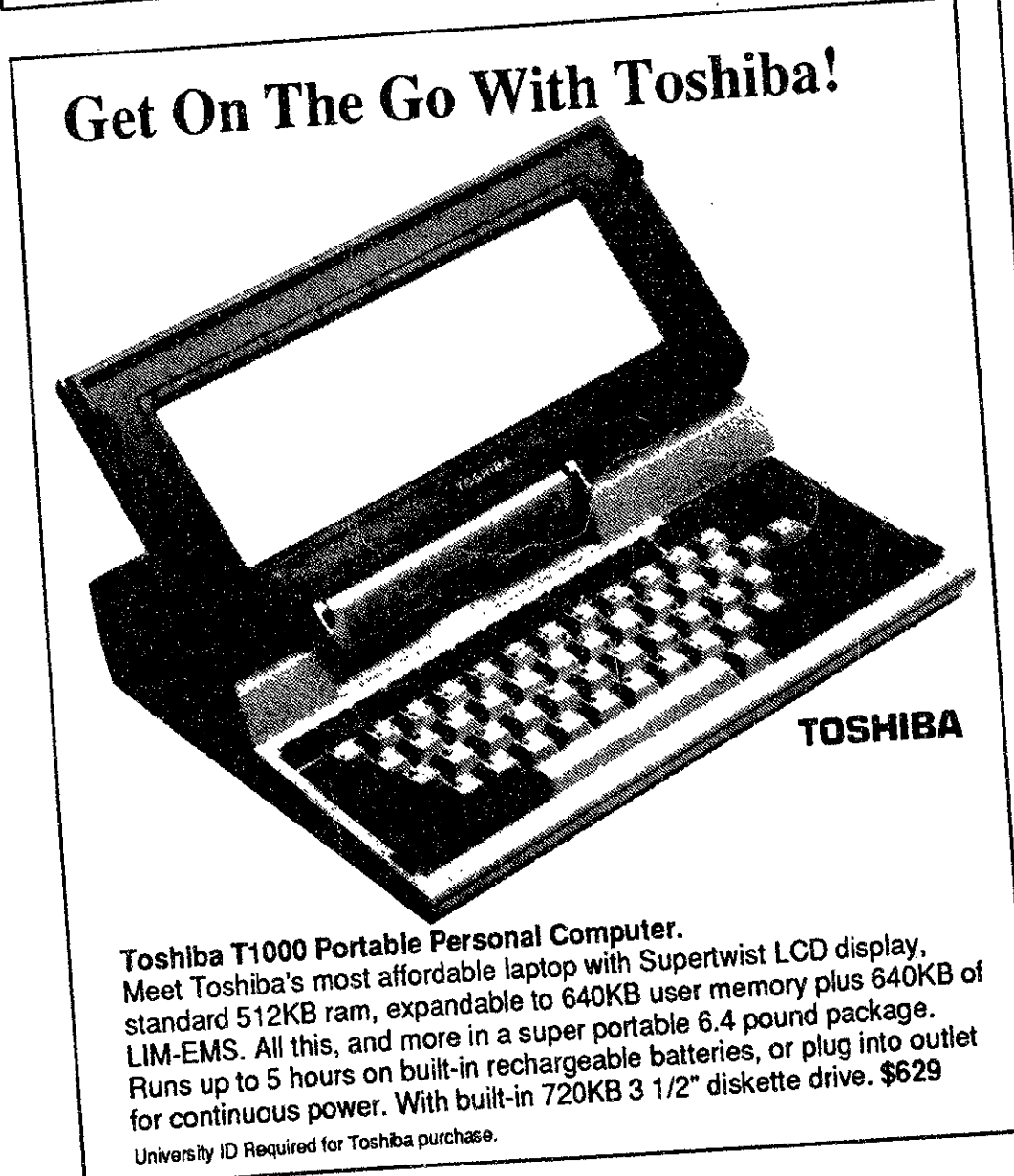



**Smith Corona PWP 3000 Word Processor.**  
Perfect for on-the-go students or business people. It features 16 line by 80 character display, 50,000 character internal memory, Grammar-Right System™ with Word Alert™, Phrase Alert™ and Punctuation Check™. Includes Spell-Right® 90,000 word dictionary, electronic thesaurus, built-in disk drive and many other features. \$595



**Smith Corona PWP 2000 Word Processor.**  
This portable word processor really comes in handy. With 8 line by 80 character display, 42,000 character internal memory, Spell-Right® 50,000 word Word Right® AutoSpell®, Address Merge®, built-in 100K disk drive, and more. \$449.95

## Get On The Go With Toshiba!



**Toshiba T1000 Portable Personal Computer.**  
Meet Toshiba's most affordable laptop with Supertwist LCD display. Perfect for on-the-go students or business people. It features 16 line by 80 character display, 50,000 character internal memory, Grammar-Right System™ with Word Alert™, Phrase Alert™ and Punctuation Check™. Includes Spell-Right® 90,000 word dictionary, electronic thesaurus, built-in disk drive and many other features. \$629

University ID Required for Toshiba purchase.

## Make Your Work Fly With Wingz for Macintosh!



The Wonder of Wingz™. Unleash all of the power and potential built into the Apple® Macintosh®. The Wingz toolbox contains everything needed to create spectacular worksheets, reports and presentations, and lots more. \$99

University ID required for Wingz purchase. Not available Downtown. The Coop is an authorized dealer for Apple Sales and Service. ©1990 Apple Computer, Inc. Apple and Macintosh are registered trademarks of Apple Computer, Inc. and Wingz is a trademark of Informix Software, Inc.

**HARVARD SQUARE**  
CAMBRIDGE  
M-SAT. 9:20-5:45  
THUR. 'TIL 8:30

**MIT COOP AT KENDALL**  
3 CAMBRIDGE CENTER  
M-F 9:15-7 THUR. 'TIL 8:30  
SAT. 9:15-5:45

**COOP AT LONGWOOD**  
333 LONGWOOD AVE.  
M-F 9:15-7 THURS. 'TIL 8:30  
SAT. 9:15-5:45

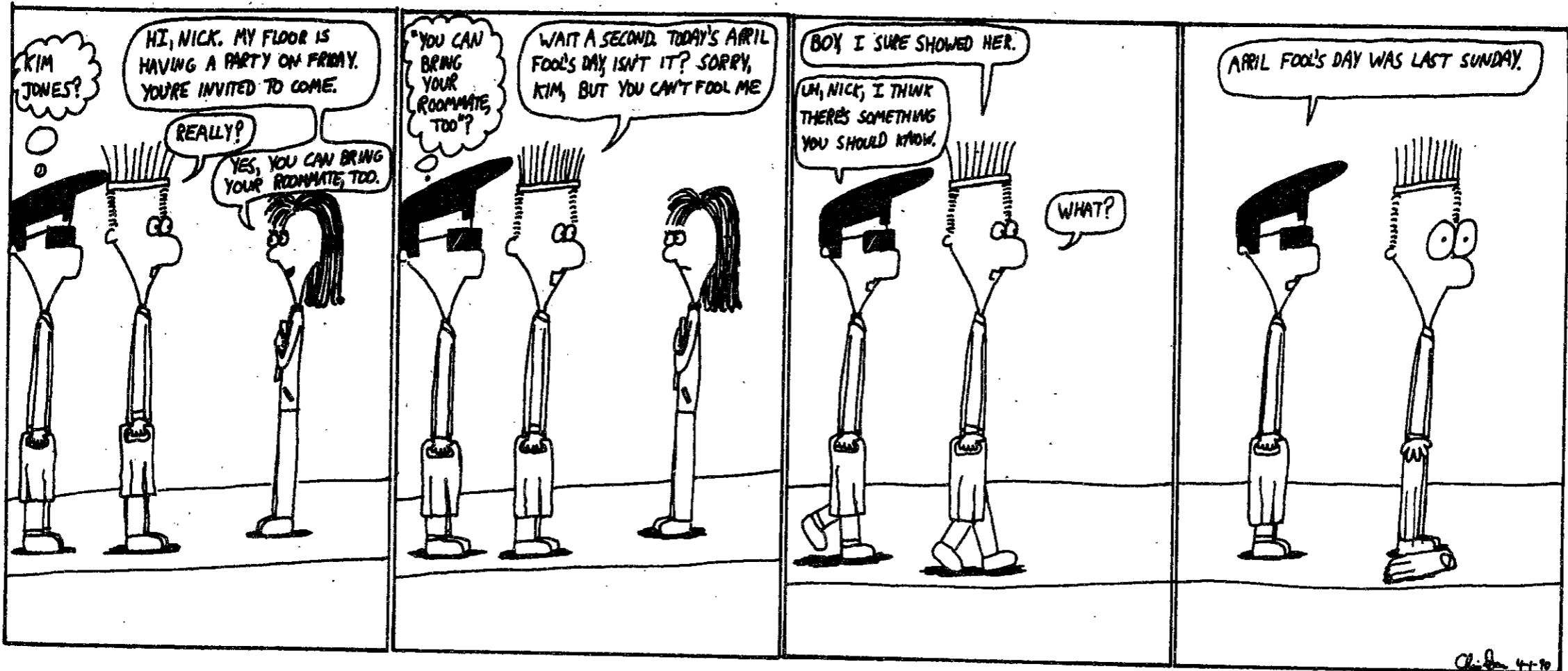
COOP CHARGE MASTERCARD VISA AND AMERICAN EXPRESS ARE WELCOME!  
FREE PARKING AT HARVARD- 1 HR CHURCH ST LOT OR 2 HRS UNIVERSITY PL OR CHARLES SQ GARAGES. \$1 PARKING AT LONGWOOD: BEHIND THE COOP AFTER 5 AND ALL DAY SAT. WITH SALES RECEIPT SHOWING \$3 MIN. COOP PURCHASE. VALIDATE AT CASHIER'S DESK AT THE COOP.  
FREE PARKING AT KENDALL: AFTER 3 WEEKDAYS AND ALL DAY SAT AT CAMBRIDGE CENTER GARAGE.

# THE COOP

# comics

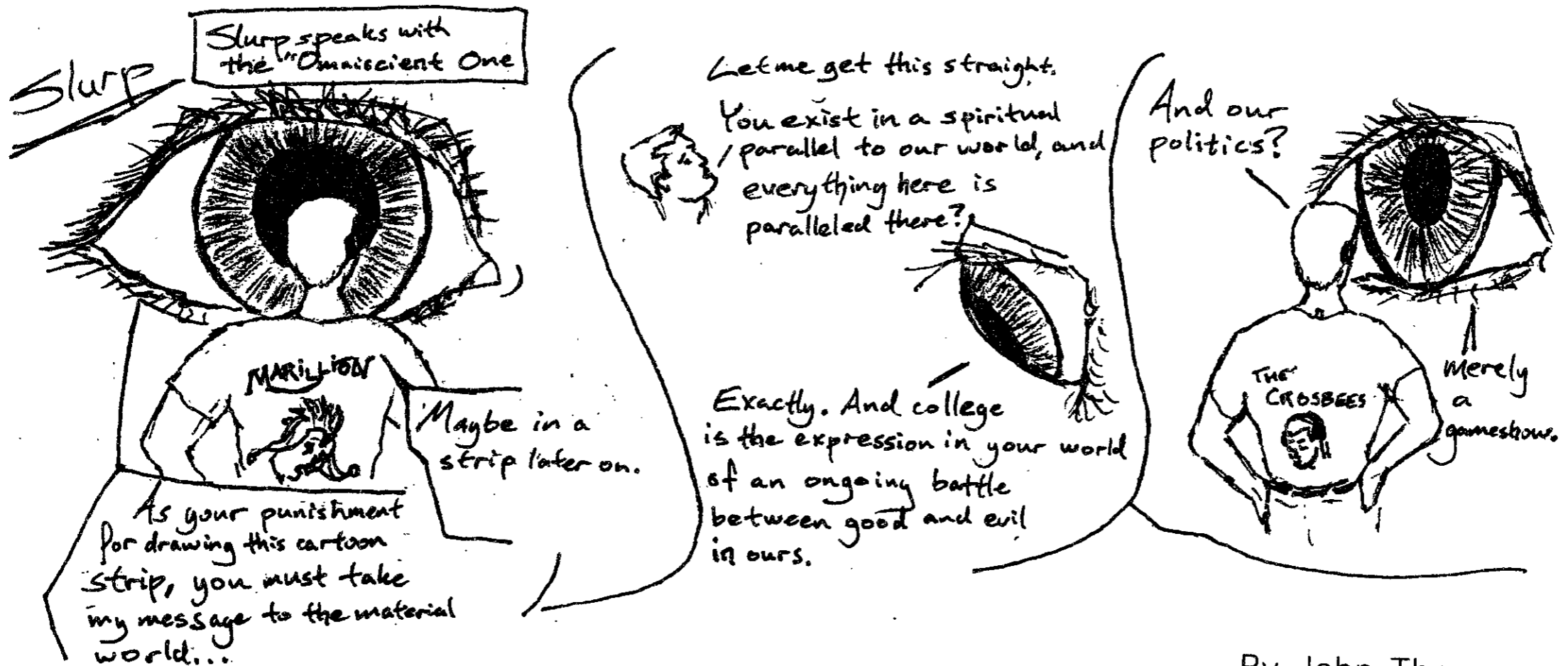
Nick

By Chris Doerr



# RUB

TARO OHKAWA



By John Thompson

# Pinnock plays Bach with skill and sensitivity

Arts Arts Arts Arts



Trevor Pinnock

**TREVOR PINNOCK**  
All-Bach harpsichord recital.  
Jordan Hall, March 24.

By JONATHAN RICHMOND

**T**REVOR PINNOCK MARKS HIMSELF out not so much by his technical mastery of the harpsichord as by his ability to use his instrument to bring out the human side of the composers whose music he plays.

During several short talks in between works performed in his Jordan Hall recital, Pinnock spoke of the greatness of Bach, stressing the many facets of the composer's art. In Pinnock's music-making, the different levels upon which Bach's music operates were each illuminated: Yes, Pinnock showed us the great formal patterns which Bach weaves, but he played with such wit and feeling as to leave no doubt that there is far more in Bach than might be suggested by his reputation as the ultimate musical mathematician.

The all-Bach concert began with the *Chromatic Fantasy and Fugue*, BWV 903. Pinnock's nimble playing and bright sound quickly grabbed the attention, but his

ability to sensitively accent each and every nuance was what took us deep into the complex and intense elements of the work.

The *English Suite in G minor* came across with a wondrous sense of natural flow, yet no detail was overlooked. Before continuing — with the *Prelude and Fugue in C*, BWV 846 from *The Well Tempered Clavier*, Book 1, No. 1 — Pinnock talked of the technical devices used in Bach's compositions, but warned the audience that "you may miss the real substance of the music by seeing the devices. The devices are the property of the composer, not the audience."

He then played the prelude with a simplicity which exposed its spirituality, and the fugue with a fervor which took us onto a quite elevated, unworldly plane.

The second half of the program was equally joyous, the amazing virtuosity of the *Allegro of the Concerto in the Italian Style*, BWV 971 only eclipsed by the beauty of the ensuing *Andante*, which transcended the underlying technical prowess of Pinnock's playing.

Pinnock ended with an encore, Couperin's *Les Baricades Mysterieuses*. It was deftly played, and with magnetic personality.

♦♦♦♦♦ ARTS ARTS ARTS ARTS ARTS ARTS ARTS ARTS ♦♦♦♦♦

## classified advertising

**CAMBRIDGE/Cambridgeport**  
420 sq. ft. office @ \$13.50/sq. ft. (incl. all util.) in renovated building w/software co./designers/architects. Access to copier and FAX. Less than 1/2 mi. from MIT campus. Call Brian, 451-9149.

**Habitat for Humanity**  
Help build affordable housing for those in need. Work days April 17 and 28. Organizing meeting April 5, noon, in 1-350. Contact Bob Sherer x3-2991 or Mike Toole x3-9736.

**Easy work! Excellent pay!** Assemble products at home. Call for information. (504) 641-8003 Ext. 871.

**AUSTRALIA STUDY ABROAD**  
Apply now for summer or fall 1990. 1 or 2 semesters: classes or internships. 4 week summer program to the Great Barrier Reef. For info on the best study abroad program in the world call Curtin University (617) 239-5244.

## STUDENT & YOUTH AIRFARES

### SPRING ROUNDTRIPS

	from
LONDON _____	\$ 369
AMSTERDAM _____	\$ 398
BERLIN _____	\$ 419
MADRID/LISBON _____	\$ 459
TOKYO _____	\$ 789
KATHMANDU _____	\$1299
SYDNEY _____	\$1589
RIO _____	\$ 769
COSTA RICA _____	\$ 389
PARIS _____	\$ 449

- SOVIET UNION TOURS AVAILABLE
- FARES MAY CHANGE
- I.D. CARDS
- EURAIL PASSES

THE STUDENT TRAVEL NETWORK

**CAMBRIDGE**  
576-4623  
1206 MASS. AVE.  
CAMBRIDGE, MA 02138

**BOSTON**  
266-6014  
273 NEWBURY ST.  
BOSTON, MA 02116

**ST/**  
STA TRAVEL

## The Everett Moore Baker Memorial Foundation is now accepting nominations for

### The Everett Moore Baker Memorial Award for Excellence in Undergraduate Teaching

The Everett Moore Baker Memorial Award for Excellence in Undergraduate Teaching was first presented twenty-five years ago, to recognize and encourage exceptional interest and ability in the instruction of undergraduates. The award is given to faculty members who have demonstrated that they are truly interested in undergraduates, both in and out of the classroom. Past winners of the award include Frank Morgan, Alan J. Lazarus, Amar G. Bose, Daniel S. Kemp, Woodie C. Flowers, Theoharis C. Theoharis, Jeremy M. Wolfe, and Sylvia T. Ceyer. This year's award, consisting of a \$1000 honorarium and a bronze medal, will be presented during the awards convocation scheduled for May.

**MIT faculty members teaching undergraduates during this fall semester are eligible to receive the award. All MIT students are invited to submit letters of nomination to the Baker Foundation Committee, Room W20-401.**

*Recommendation forms are available in the UA Office.  
Letters of recommendation must be received by April 4, 1989.*

If you have any questions or have an interest in the Foundation, please call 253-2696.

# Slavery Documents completes brilliant trilogy

## SLAVERY DOCUMENTS

World premiere of a new work

by Donald Sur.

The Cantata Singers & Ensemble,  
David Hoose, Music Director.  
Symphony Hall, March 23.

By JONATHAN RICHMOND

**D**ONALD SUR'S *Slavery Documents* is as profound as it is disturbing, and it was given a powerful premiere on March 23 by the Cantata Singers. It is the third of three works commissioned by the Cantata Singers, all dealing with social issues. John Harbison's *The Flight Into Egypt*, the first commission, reflects on the plight of the homeless; Peter Child's *Estrella: The Assassination of Augusto César Sandino*, commissioned subsequently, on political strife in Central America.

The completion of the trilogy with Sur's new work cements the Cantata Singers as a force of international importance in creating new works that shine not only on a musical level, but which live for their audiences, delivering messages to make them think, make them weep, and send them away renewed.

Sur's libretto juxtaposes Cotton Mather's "The Negro Christianized"—a eulogy on the joys of the slave who has found Jesus—with advertisements for the return of escaped slaves and other texts which uncover the realities of slavery and the mentality which held it in place.

*And Christian slaves may challenge  
as their own,  
The blessings claimed in fabled  
states alone —  
The cabin home, not comfortless,  
though rude,  
Light daily labour, and abundant  
food,  
The sturdy health that temperate  
habits yield,  
The cheerful song that rings in  
every field.*

Sur's music plays the role of truth-teller, hitting like the real lashes the texts describe, but delivering a feeling of numbing hollowness to accompany Mather's self-deceiving—if not downright dishonest—lines. Taking his audience on an epic

roller-coaster ride, Sur plunges his listeners into darkness, lifts them to a false image of light, and submerges them in obscurity once more. As his work progresses, it becomes clear that the roller coaster's world is one of pure evil, a system of unquestioned assumptions about human life which allows slavery to persist.

For *Slavery Documents*, the Cantata Singers augmented both their chorus and orchestra, producing strong well-directed showings from both. The five soloists contributed rich performances, too. The piece opened with sounds of massive turbulence for the questioning of "Who is that Great GOD whom you and all men are to serve," trenchant irony introduced with the choral refrain: "and there is no God but he." A banjo enters, describing the lot of the supposedly contented slave; a radiant harp melody focuses attention, its beauty serving to underline evil. The harp also later describes the "Warm social joys [which] surround the Negro's cot," its unworldly serenity conveying falsehood.

During an account of a South Carolina statute, a flute sweetly seeps through the thick authoritarian textures which surround and seek to drown it. But a description of lashes descends percussively, tenor Rockland Osgood vocally sounding the pain.

A quotation from *Ephesians* instructing servants to "be obedient to them that are your masters according to the flesh with fear and trembling, in singleness of your heart, as unto Christ" came across with almost unbearable heaviness. There was an extraordinary climax on the word "Christ," the strings continuing mercilessly after the voices stop. The New Testament text continues "not in the way of eye-service, as men-pleasers, but as servants of Christ," but this is not included in Sur's libretto. Sur includes only the false biblical interpretation which allowed slavery to be legitimized.

The accounts of the descriptions of runaway slaves conveyed particular horror, but none more than the finale, "Runaway, a negro woman and two children; a few days before she went off, I burnt her with a hot iron on the left side of her face, I tried to make the letter M."

The score contains many fugal elements

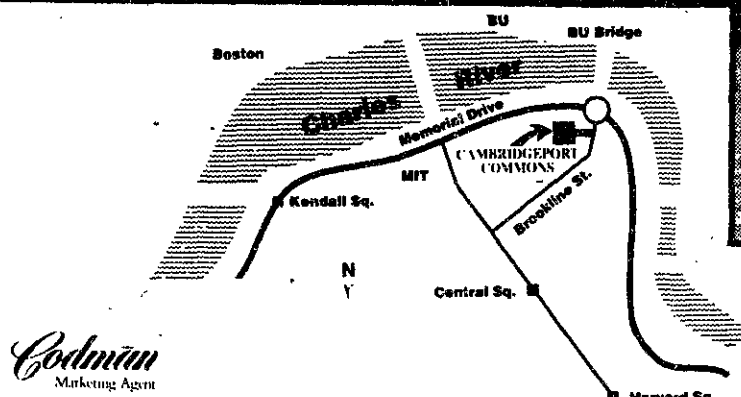
looking back to Bach; Sur also follows on from a Mozartean tradition of allowing his music to speak truth while the words to which it is set pour forth lies. But his message is original and, in the end, our ability to freely listen to it and to be exposed to its ultimate truth, is life-affirming.

The large audience stayed longer than usual after the concert ended, discussing the work in the lobby and looking at the drawings and texts by children displayed there. "We all are together as one, so let's act that way," said one child's voice. Donald Sur's work provides the prospect that we might do so.



## THE SMARTEST MOVE IN CAMBRIDGE IS SIMPLY ACADEMIC

50%  
SOLD



DIRECTIONS: MEMORIAL DRIVE TO B.U. BRIDGE ROTARY. FOLLOW SIGNS TO CAMBRIDGEPORT/CENTRAL SQUARE.  
FIRST RIGHT ONTO HENRY STREET TO CAMBRIDGEPORT COMMONS

TOWNHOMES STARTING AT \$198,000

TWO BEDROOMS FROM \$179,000

STUDIOS AT \$119,000

CAMBRIDGEPORT COMMONS HAS AN IDEAL LOCATION, HANDSOME ARCHITECTURAL DETAILING, UNDERGROUND PARKING, GAS RANGES, HARDWOOD FLOORS, PEACE AND QUIET, AND A PERFECT PRICE.

CALL TO ARRANGE YOUR PERSONAL TOUR TODAY.

- CONVENIENT TO BOSTON AND CAMBRIDGE CAMPUSES
- CLOSE TO BOTH RED & GREEN LINES
- CONCIERGE
- LANDSCAPED COURTYARDS
- TV SECURITY
- TWO CAR GARAGE WITH EACH TOWNHOME
- AND MUCH MORE!

**CAMBRIDGEPORT**

**COMMONS**

20 CHESTNUT STREET #503  
CAMBRIDGEPORT, MASSACHUSETTS 02139  
(617) 225-2012

SALES OFFICE OPEN DAILY 11-5 OR BY APPOINTMENT

# On The Town

Compiled by Peter Dunn

Tuesday, April 3

**CONTEMPORARY MUSIC**  
Nut Haus, Crush Kill, Thaedrus, and So What perform at T.T. the Bears, 10 Brookline Street, Cambridge, just north of MIT. Telephone: 492-0082.

Peter Ostroushko performs at Johnny D's, 17 Holland Street, Davis Square, Somerville, near the Davis Square T-stop on the red line. Telephone: 776-9667.

Joe and Chloroform Kate perform at 8 pm at Necco Place, One Necco Place, near South Station in downtown Boston. Tickets: \$3.75. Telephone: 666-7744.

**JAZZ MUSIC**  
The Tony Penis Group performs at the Western Front, 343 Western Avenue, Cambridge. Telephone: 492-7772.

The Garrison Fellw Quintet performs at the Willow Jazz Club, 699 Broadway, Ball Square, Somerville. Tel: 623-9874.

**CLASSICAL MUSIC**  
The Boston Symphony Orchestra, Bernard Haitink conducting, with Women of the New England Conservatory Chorus, performs works by Stravinsky, Brahms, and Debussy at 8 pm in Symphony Hall, corner of Huntington and Massachusetts Avenues, Boston. Tickets: \$17 to \$45. Telephone: 266-1492.

Pianist Tong-Il Han and tenor Paul Sperry perform works by Schubert, Wolf, Tchaikovsky, and Hindley in a Boston University Faculty Recital at 8 pm in the Tsai Performance Center, 685 Commonwealth Avenue, Boston. No admission charge. Telephone: 353-3345.

Pianist Chris Chalfant performs various improvisations and compositions in a Longy Faculty Artists Series concert at 8 pm in the Edward Pickman Concert Hall, Longy School of Music, 27 Garden Street, Cambridge. No admission charge. Telephone: 876-0956.

**FILM & VIDEO**  
The Coolidge Corner Theatre Foundation presents *Camille Claudel* (1989) starring Isabelle Adjani and Gérard Philipe, at 5:15 & 8:00 at 290 Harvard Street, Coolidge Corner, Brookline. Continues indefinitely with weekend screenings Saturday at 12:45, 3:35, 6:25, & 9:15 and Sunday at 2:30, 5:15, & 8:00. Telephone: 734-2500.

Boston University's *World Fair '90* presents *Rockers* at 3:30 and *Blow-Up* (Michelangelo Antonioni) at 7:30 in the George Sherman Union, Boston University, 775 Commonwealth Avenue, Boston. Admission: \$3 general, \$2 students. Telephone: 353-3565

**EXHIBITS**  
*Observations*, an exhibition of photographs by Christopher B. Moore '90 and Anastassios E. Petropoulos '91 opens today in the Wiesner Gallery, MIT Student Center. Continues through April 14. No admission charge.

Wednesday, April 4

**CONTEMPORARY MUSIC**  
Stratocats, Wow Am I Tired, Duck & Cover, and Claude Thomas perform at T.T. the Bears, 10 Brookline Street, Cambridge, just north of MIT. Telephone: 492-0082.

Electric Angels, Catharsis, Livewire, and Strait Jacket perform in an 18+ ages show at 9 pm at Axis, 13 Lansdowne Street, Boston, near Kenmore Square. Telephone: 262-2437.

Gun performs in an 18+ ages show at 8 pm at the Paradise, 967 Commonwealth Avenue, Boston. Tel: 254-2052.

Anastasia Screamed and Storm Window performs in an 18+ ages show at Ground Zero, 512 Massachusetts Avenue, Cambridge. Telephone: 492-9545.

Angel Train and Darrell Scott perform at Johnny D's, 17 Holland Street, Davis Square, Somerville, near the Davis Square T-stop on the red line. Telephone: 776-9667.

Loudon Wainwright and Robin Lane perform at 9 pm at Nightstage, 823 Main Street, Cambridge, just north of MIT. Telephone: 497-8200.

Ragamuffin Soldier performs at the Western Front, 343 Western Avenue, Cambridge. Telephone: 492-7772.

Kim Wallace and Compass Rose perform at 8 pm at Necco Place, One Necco Place, near South Station in downtown Boston. Tickets: \$4.50/\$5.50. Telephone: 426-7744.

Israeli singer, David Broza, performs as part of *The Boston University World Fair '90* at 9 pm in Jacob Sleeper Auditorium, 871 Commonwealth Avenue, Boston. Admission: \$7 general, \$6 students. Telephone: 353-3565.

Jennifer Trynan performs at 9 pm at the Cambridge Brewing Company, One Kendall Square, Cambridge. Admission: \$3. Telephone: 494-1994.

**JAZZ MUSIC**  
The George Shearing Duo performs at 9 pm at the Regattabar, Charles Hotel, Harvard Square, Cambridge. Also presented April 5 to 7. Tickets: \$10 to \$14 depending on day. Telephone: 661-5000.

**THEATER**  
*Mirandolina*, Goldoni's tale of lust, greed, and love among the wealthy guests at an Italian Inn, is presented by the American Repertory Theater Institute for Advanced Theatre Training at Harvard University at 8 pm in The Cabot House Underground Theatre, 100 Walker Street, Cambridge. Also presented April 5 & 6 at 8 pm and April 7 at 7 pm. Tickets: \$5 general, \$3.50 students. Telephone: 547-8300.

\*\*\* CRITICS' CHOICE \*\*\*  
*Coyote Builds North America*, an innovative collaboration based on the Coyote legends of Native American tribes, is performed by Perseverance Theatre at 8 pm at the Strand Theatre, 543 Columbia Road, Dorchester, near the JFK/UMass/Columbia T-stop on the red line. Tickets: \$12 general, \$6 seniors and students. Telephone: 282-8000.

**FILM & VIDEO**  
The Brattle Theatre continues its Wednesday film series *The British New Wave* with *A Taste of Honey* (1961, Tony Richardson) at 3:45 & 8:00 and *This Sporting Life* (1963, Lindsay Anderson) at 5:35 & 9:55 at 40 Brattle Street, Harvard Square, Cambridge. Tickets: \$5 general, \$3 seniors and children (good for the double feature). Tel: 876-6837.

The Harvard Film Archive continues its Wednesday series *East European Cinema: Politics and Art* with *End of August at the Hotel Ozone* (1966, Jan Schmidt, Czechoslovakia) at 5:30 & 8:00 at the Carpenter Center for the Visual Arts, 24 Quincy Street, Harvard Square, Cambridge. Admission: \$3 general, \$2 seniors and children. Telephone: 495-4700.

Thursday, April 5

**CONTEMPORARY MUSIC**  
\*\*\* CRITICS' CHOICE \*\*\*  
The Neighborhoods, The Titans, Dogzilla, and One Horse Opera perform at the Channel, 25 Necco Street, near South Station in downtown Boston. Admission: \$7.50. Telephone: 451-1905.

The Persuasions and The Honking Malards perform at Johnny D's, 17 Holland Street, Davis Square, Somerville, near the Davis Square T-stop on the red line. Telephone: 776-9667.

Agitprop, Mallethead, Smaek Tan Blue, and Bilt Speer perform at the Rat, 528 Commonwealth Avenue, Kenmore Square, Boston. Telephone: 247-8309.

The Rick Berlin Band and Big Big Noise perform in an 18+ ages show at 8 pm at the Paradise, 967 Commonwealth Avenue, Boston. Telephone: 254-2052.

Red Lorry/Yellow Lorry, Whoville, Kill Joy, and Savage Garden perform in an 18+ ages show at 9 pm at Axis, 13 Lansdowne Street, Boston, near Kenmore Square. Telephone: 262-2437.

Third Estate, Shoot That Dog, and Hot Like Fire perform at T.T. the Bears, 10 Brookline Street, Cambridge, just north of MIT. Telephone: 492-0082.

Uprising performs at the Western Front, 343 Western Avenue, Cambridge. Also presented April 6 and 7. Tel: 492-7772.

T. H. & The Wreckage, Garr Lang & The Big Rig, and Siamese Triplets perform at 9 pm at Nightstage, 823 Main Street, Cambridge, just north of MIT. Telephone: 497-8200.

The New York University Contemporary Players perform Romanian chamber music as part of *The Boston University World Fair '90* at 8 pm in the Tsai Performance Center, 685 Commonwealth Avenue, Boston. Tickets: \$20. Telephone: 353-3565.

**JAZZ MUSIC**  
The Bruce Gertz Trio performs at the Willow Jazz Club, 699 Broadway, Ball Square, Somerville. Telephone: 623-9874.

The Paul Barringer Quartet performs at 8 pm in the Blacksmith House, Cambridge Center for Adult Education, 56 Brattle Street, Cambridge. Admission: \$3.50. Telephone: 547-6789.

**CLASSICAL MUSIC**  
The Mannheim Quartet performs works by Bach, Haydn, Mozart, and Viotti as part of the *MIT Noon Chapel Series* at 12:05 in the MIT Chapel. No admission charge. Telephone: 253-2906.

The Boston Symphony Orchestra, Genady Rozhdestvensky conducting, performs Schnittke's *Viola Concerto* and Berlioz's *Te Deum* at 8 pm in Symphony Hall, corner of Huntington and Massachusetts Avenues, Boston. Also presented April 6 at 2 pm and April 7 & 10 at 8 pm. Tickets: \$17 to \$45. Telephone: 266-1492.

Violinist Donald Weilerstein and pianist Vivian Weilerstein perform works by Janacek, Bloch, and Dvorak in a *Longy Celebrated Artists Series* concert at 8 pm in the Edward Pickman Concert Hall, Longy School of Music, 27 Garden Street, Cambridge. Admission: \$12 general, \$9 seniors and students. Telephone: 876-0956.

The Boston University Chamber Chorus and members of the Chamber Orchestra perform Purcell's *"Dido and Aeneas"* and Bach's *Orchestral Suite No. 2 in B minor* at 8:30 in the Marsh Chapel, 735 Commonwealth Avenue, Boston. No admission charge. Telephone: 353-3345.

Violinist Elizabeth Monacelli and pianist Naomi Takagi perform Brahms' *Sonata in G Major* and Mozart's *Adagio in E* at 12:30 in the Federal Reserve Bank of Boston's auditorium, 600 Atlantic Avenue, across from South Station in downtown Boston. No admission charge. Telephone: 973-3454 or 973-3368.

**THEATER**  
Ruddigore, or *The Witch's Curse*, the delightful, farcical twist on the Victorian melodrama, is presented by the Harvard Gilbert & Sullivan Players at 8 pm at the Agassiz Theatre, Radcliffe Yard, Cambridge. Also presented April 6-7 & 12-14 at 8 pm and April 7, 8, & 14 at 2 pm. Tickets: \$5 to \$9 general, \$2 discount to students. Telephone: 495-2663.

*A Monster Has Stolen the Sun*, Karen Malpede's story of a king who challenges a pregnant goddess to a wrestling match, and loses, is presented by the Harvard-Radcliffe Dramatic Club at 8 pm at the Loeb Drama Center Mainstage, 64 Brattle Street, Cambridge. Also presented April 6-7 & 12-14 at 8 pm and April 8 & 14 at 2 pm. Tickets: \$5. Tel: 547-8300.

*Fun House Mirror*, Dori Appel's comedy of two sisters in their 30s faced with distorted perceptions of childhood and each other, opens today in previews at the Back Alley Theater, 1253 Cambridge Street, Inman Square, Cambridge. Preview also on April 6, regular performances are April 7 to 29, Thursday-Sunday at 8 pm. Tickets: \$12. Telephone: 491-8166.

*The Lost Boys*, by Allan Knee, opens today as a presentation of the American Repertory Theater *New Stage Series* at the Hasty Pudding Theater, 12 Holyoke Street, Cambridge. Performances are April 5-8, 13-15, 18-19, 22, & 25 at 8 pm. Tickets: \$16 to \$29. Telephone: 547-8300.

*The Country Wife*, by William Wycherly, is presented by the Senior Class Acting Project at the Studio Theater, Boston Conservatory, 8 The Fenway, Boston. Also presented April 6 and 7. No admission charge. Telephone: 536-6340.

**PERFORMANCE ART**  
\*\*\* CRITICS' CHOICE \*\*\*  
*Black Dirt*, by Robert Whitman, is presented at 8 pm at The Cube, MIT Wiesner Building E15. Also presented April 6-7 and 12-14. Tickets: \$8 general, \$6 MIT and student IDs. Telephone: 253-4680.

**DANCE**  
Robert Davidson's *Airborne: Meister Eckhart* is presented by Dance Umbrella at 8 pm at the Boston Center for the Arts, Cyclorama Building, 539 Tremont Street, Boston. Also presented April 6 and 7. Tickets: \$14. Telephone: 720-3434.

**FILM & VIDEO**  
\*\*\* CRITICS' CHOICE \*\*\*  
The Brattle Theatre continues its Thursday film series *Three Japanese Directors* with a Shohei Imamura double feature, *Pigs and Battleships* (1961) at 3:30 & 8:00 and *The Pornographers* (1966) at 5:30 & 10:00 at 40 Brattle Street, Harvard Square, Cambridge. Tickets: \$5 general, \$3 seniors and children (good for the double feature). Telephone: 876-6837.



Shohei Imamura's *Pigs and Battleships* (1961) is presented at The Brattle Theatre on April 5.

## classified advertising

Attention: Earn money reading books! \$32,000/year income potential. Details: 1-602-838-8885 Ext. Bk4058.

3 Keg Perlick Cooler for sale. Runs like a charm. Good for fraternity parties. For info contact Mike Wallace at 573-8320. \$200.00 or B. O.

**Trading Research Analyst**  
Moore Capital Management, a leading money management firm in Greenwich, CT, is seeking an analyst for its expanding computer systems commodities trading operation. We seek an individual with an exceptional quantitative background for intensive research on trading strategies. Candidates must be competent in programming (C or QuickBasic), spreadsheets (EXCEL or LOTUS 1-2-3), and statistics. The candidate will have an engineering, physical science, or mathematics background. No Wall Street experience necessary. Attractive compensation program. No Summer applicants, please. Send resumes to:  
Moore Capital Management  
2 Greenwich Plaza, Suite 100  
Greenwich, CT 06830

Win a Hawaiian Vacation or big screen TV plus raise up to \$1,400 in just 10 days!  
Objective: Fundraiser  
Commitment: Minimal  
Money: Raise \$1,400  
Cost: Zero Investment  
Campus organization, clubs, frats, sororities call OCMC: 1-800-932-0528 or 1-800-950-8472, ext. 10.

**Legal Problems?** I am an experienced attorney and a graduate of MIT who will work with you creatively to provide legal representation. My office is conveniently located in downtown Boston just minutes from MIT via MBTA. Call Attorney Esther Horwich, MIT '77 at 523-1150.

# Spectacular! Summer at Northeastern University.

This summer let  
Northeastern University  
spark your imagination  
with:

- \* 70 part-time undergraduate degree programs
- \* Nearly 700 courses in Business Administration, Health Professions and Sciences, Liberal Arts, Criminal Justice and Security, and Engineering Technology
- \* Seven convenient locations including Main Boston, Liberty Square, Burlington, Dedham, Framingham, Marshfield, and Weymouth
- \* Courses offered on 10-week, 5-week, and 4-week schedules starting June 18

Yes, I want to spark my imagination this summer!

NAME \_\_\_\_\_

ADDRESS \_\_\_\_\_

CITY \_\_\_\_\_ STATE \_\_\_\_\_ ZIP \_\_\_\_\_

Send this coupon to Northeastern University, University College, P.O. Box 154, Boston, MA 02117-0154, or call 617-437-2400.

Northeastern University

Part-time Undergraduate Programs

An equal opportunity affirmative action university

## Mountains of the Moon reaches into the past — and misses

### MOUNTAINS OF THE MOON

Directed by Bob Rafelson.

Based on the novel Burton and Speke by William Harrison, and original journals by Richard Burton and John Hanning Speke.

Starring Patrick Bergin and Iain Glen.

Now playing at the Harvard Square and Charles theaters.

By MANAVENDRA K. THAKUR

IT USED TO BE THAT the impending release of a Bob Rafelson film was awaited with breathless anticipation. Sad to say, that hasn't been the case in recent years, and his newest film, *Mountains of the Moon*, does nothing to reverse that trend. It's a fairly pallid film, both uninspired and uninspiring.

The film is a historical drama about the efforts of two British explorers, Richard Burton (Patrick Bergin) and John Hanning Speke (Iain Glen), to find the source of the Nile River during the 1850s.

This immediately causes Rafelson to run into problems which he fails to solve very well. For example, the topic isn't exactly new. The search for the head of the Nile has been told in various books, films, and television shows. None of those previous efforts would have mattered much if Rafelson had been able to provide fresh perspectives on the story. While he does come up with some new ideas, they are insufficient to make the story dramatically compelling.

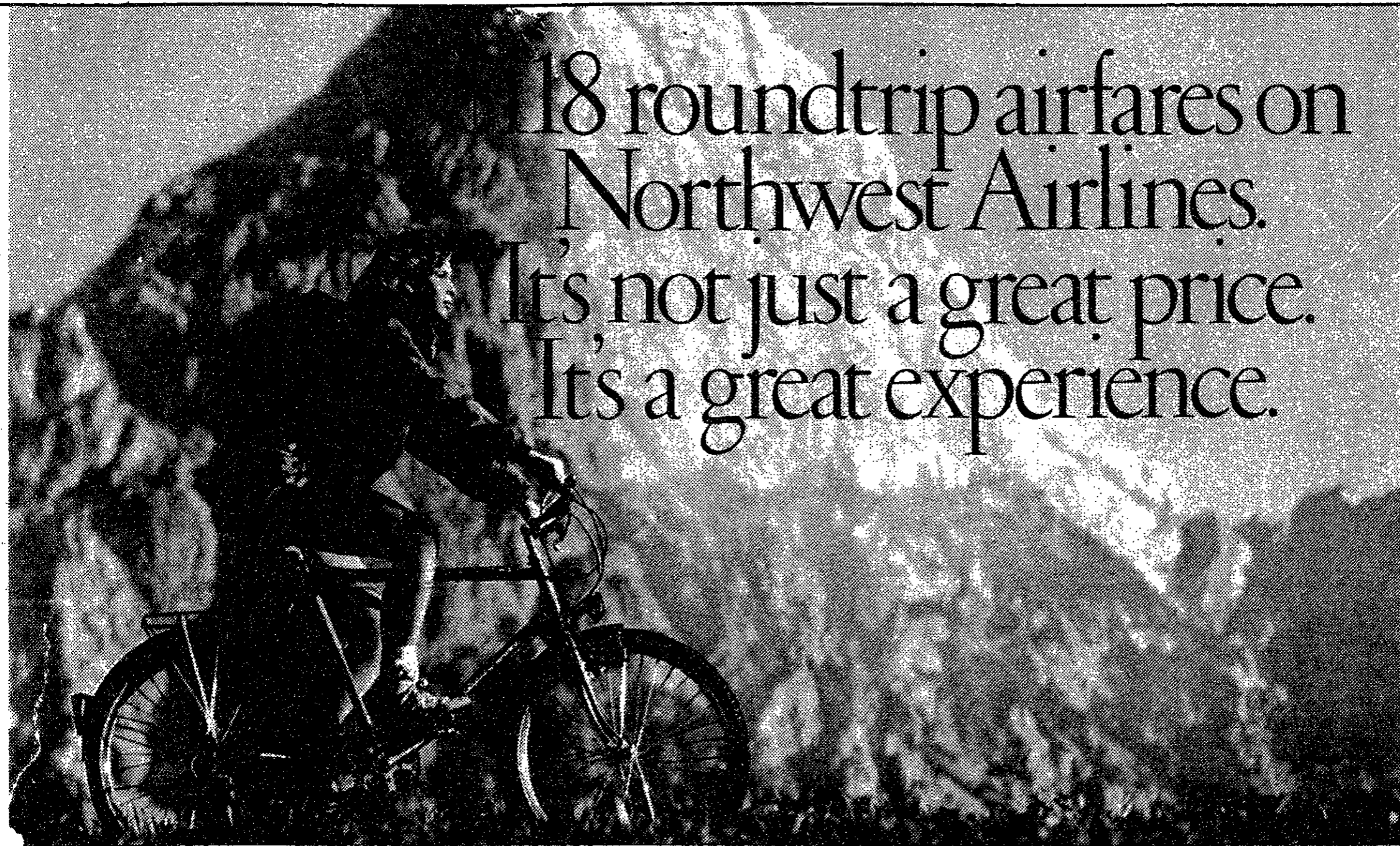
As an artist, it is Rafelson's duty to present the story in ways that re-create and

re-present an appropriate sense of adventure and accomplishment. And that is where Rafelson falters: The majestic scenery, sweeping camera shots, exotic natives, and heroic struggles are not enough to allow the viewer to share in the explorers' excitement.

To give Rafelson some credit, he does seem to be aware of these issues and he does try to address them. In particular, the director's interpretation resurrects Burton's contributions to the search for the Nile from near historical oblivion, and Rafelson also makes him a much more sympathetic character to modern, post-colonial audiences. For example, Burton wants to observe and learn from native cultures rather than conquer them, and he points out the inherent absurdity of Europeans

claiming to "discover" something that the natives have known about for thousands of years.

All of this does help the film, but these tidbits do not manage to lift the film out of its general doldrums. In fact, the film actually does not begin to engage its audience until two-thirds of the film is over. It is only when a controversy erupts between Burton and Speke after they return to England for the second time that the film begins to stand on firm ground. As a result, Rafelson's film is certainly more successful than, say, *Out of Africa*. But when one thinks of the other films this director has under his belt — like *Five Easy Pieces*, *The King of Marvin Gardens*, and the 1981 remake of *The Postman Always Rings Twice* — one can't help but cringe at the general mediocrity of his newest film.



18 roundtrip airfares on  
Northwest Airlines.  
It's not just a great price.  
It's a great experience.

## Only for student American Express® Cardmembers.

Apply for the American Express® Card. Then get ready to take off. In search of adventure, action—or just simply to escape.

American Express and Northwest Airlines have arranged these extraordinary travel privileges on Northwest—exclusively for student Cardmembers:

■ CERTIFICATES VALID FOR THE PURCHASE OF TWO \$118 ROUNDTRIP TICKETS—to many of the more than 180 cities in the 48 contiguous United States served by Northwest. Each certificate is good for a six-month period, and they will arrive within six weeks after you receive the Card. Current Cardmembers will automatically receive their \$118 certificates by March 15, 1990 provided they are still full time students.\*

■ 10% OFF ANY NORTHWEST FLIGHT—with your own personalized discount card, valid through January 1991 on all Northwest and Northwest AirlinK flights. (This discount is not applicable to the \$118 student certificates and other certificates, promotional or special status airfares.)

■ 2,500 BONUS MILES TOWARDS FREE TRAVEL—when you enroll in Northwest's WorldPerks® Free Travel Program.

AND NOW BECOMING A CARDMEMBER IS AS EASY AS A TELEPHONE CALL. Just pick up the phone, call 1-800-942-AMEX, and talk to us. We'll take your application and begin to process it immediately. (If you have your banking information handy, like your account number and bank address, it will help

speed the process.)

Keep in mind that our Automatic Acceptance Program makes it easier for you to become a Cardmember now, as a student, than it will ever be again.

And remember that as a Cardmember you'll enjoy all the exceptional benefits and personal service you would expect from American Express.

So don't miss out on a world of great experiences. Pick up the phone. Apply for the Card. And start packing!



Membership Has Its Privileges®



APPLY TODAY  
1-800-942-AMEX



\*If you are already a student American Express Cardmember and have a question about this program, please send your written question, a copy of your student ID and class schedule to: American Express, P.O. Box 35029, Attn: Student Marketing, Greensboro, NC 27425. Fare is for roundtrip travel on Northwest Airlines. Tickets must be purchased within 24 hours after making reservations. Fares are nonrefundable and no itinerary changes may be made after purchase. Seats at this fare are limited and may not be available when you call. Travel must originate by certificate expiration date and be completed within 60 days of that date. Travel may not be available between cities to which Northwest does not have published routings. City fuel surcharges not included in fare from Boston (\$2.50), Chicago (\$5.00), Denver (\$2.00) and Florida cities (\$2.00). Certain blackout dates and other restrictions may apply. For complete offer details, call 1-800-942-AMEX. ©1990 American Express Travel Related Services Company, Inc.

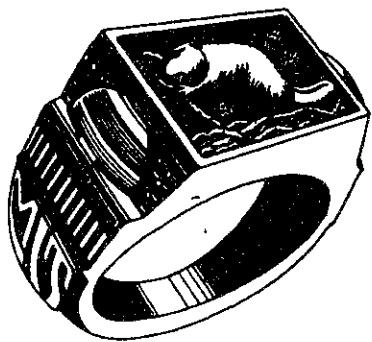
THE AMERICAN EXPRESS® CARD. FOR STUDENTS MORE THAN EVER.

**Going on Sabbatical?**

Univ. of Cal. prof. wants to rent your 4+ bedroom Cambridge-area house Aug. 90-June 91. Call 408-459-2005.

**Clipper/Dbase developer needed to work part time for consulting firm in Central Square. Other programming experience helpful. Hours flexible. Call 547-1200.**

**The MIT Ring**



**Collection By**

JOSTENS

Exclusively At

MIT COOP AT KENDALL  
3 CAMBRIDGE CENTER  
M-F 9:15-7 THUR TEL 8:30  
SAT 9:15-5:45



**ENJOY THE REWARDS OF RESEARCH:**

If you plan to start a research career upon graduation, start your job search at Tufts University, Boston Campus. Tufts' Boston Campus is comprised of the Medical, Dental, and Veterinary Schools, the Sackler School of Biomedical Sciences, and the U.S.D.A. Human Nutrition Research Center on Aging. We have an ongoing need for science graduates in a variety of exciting medical science research areas including: Biochemistry, Pathology, Anatomy and Cellular Biology, Molecular Biology, Physiology, and Neuroscience.

Tufts offers an excellent salary and benefits package including tuition assistance. For details, call or write to Tufts University, Ilene Granstein, 200 Harrison Avenue, Boston, MA 02111, (617) 956-6600. An Affirmative Action/Equal Opportunity Employer.



**TUFTS UNIVERSITY**

**WATSON COME HERE! I'M CALLING THE S&S FOR TAKEOUT.**



What a marvelous invention! Now anyone can say hello to S&S Takeout. And say good-bye to dull food. Just imagine how good a Gourmet Boursin Burger would taste. Or Pasta Primavera. Be inspired by Scallops Provinciale, or our savory Baby Back Ribs. Indulge yourself with Baby Watson cheesecake. Whatever you wish. The entire S&S Menu is at your fingertips. In portions that made the S&S famous. And affordably priced. So whether for one or 21, call S&S Takeout and discover just how good takeout can be.



Take Out • Catering  
A Great Find Since 1919.

Breakfast, Lunch, Dinner. Mon.-Sat. 7:00am-12:00mid, Sun. 8:00am-11:00PM  
Inman Square, 1334 Cambridge St., Cambridge, 354-0777, FAX: 354-8924.

**THE MIT SPACE GRANT PROGRAM**

presents a public lecture

**"An Exploration of Space Science & Space Engineering"**

(The 1990's and Beyond)

featuring

**Dr. William Lenoir**

NASA Associate Administrator for Space Flight and former Space Shuttle Astronaut

Monday, April 9, 1990  
2:00 PM  
Massachusetts Institute of Technology  
Building 10, Room 250



MIT Space Grant Program

77 Massachusetts Avenue  
Room 37-441  
Cambridge, Massachusetts 02139  
(617) 253-0906  
FAX 617-258-7566

Last Chance!

Last Minicourses 'til next Fall!



**Scribe Math Minicourse**

If you are using Scribe to prepare a report or thesis, and you need to include mathematical equations and expressions, you need this course!

You can do all this:

$$x = \frac{-b \pm \sqrt{b^2 - 4ac}}{2a}$$

$$\int_0^{2\pi} g \sin \theta d\theta$$

$$d_i S \geq 0, dS = d_e S + d_i S, \int \delta q / T = 0$$

$$\lim_{\delta \rightarrow 0} \frac{\delta y}{\delta x} = \frac{dy}{dx}$$

$$\sum_{n=1}^{\infty} \frac{1}{n^2}$$

$$\sqrt{5} = 1 + \frac{4}{2 + \frac{4}{2 + \frac{4}{2 + \dots}}}$$

and much more. Here's the schedule:

Project Athena	Minicourse Schedule				post-Spring Break 1990
	Room 3-343				
	Mon	Tue	Wed	Thu	
	2 Apr	3 Apr	4 Apr	5 Apr	
7 p.m.	Scribe Thesis	Scribe Report	Scribe Math	Matlab	
8 p.m.	Scribe Math	Matlab	Scribe Thesis	Scribe Report	
	9 Apr	10 Apr	11 Apr	12 Apr	
7 p.m.	Scribe Report	Scribe Math	Matlab	Scribe Thesis	
8 p.m.	Matlab	Scribe Thesis	Scribe Report	Scribe Math	

All minicourses are one hour each, and are taught in Room 3-343.

For more information, or to schedule additional minicourses for 10 or more people, contact Gary L. Dryfoos at [dryfoo@athena](mailto:dryfoo@athena) or x3-0184.

**PLEASE NOTE: No pre-registration or reservations are needed... Just show up for class!**

Last Minicourses 'til next Fall

Last Chance!



ARTS

Thursday, April 5

The Harvard Film Archive begins its Thursday series *Animation and Ideology* with a series of animated films by **Piotr Dumala** at 7:30 at the Carpenter Center for the Visual Arts, 24 Quincy Street, Harvard Square, Cambridge. Admission: \$3 general, \$2 seniors and children. Telephone: 495-4700.

The Museum of Fine Arts begins its series of *Three by Emile de Antonio* with **Mr. Hoover and I** (1989) at 6:00 & 7:45 in Remis Auditorium, MFA, 465 Huntington Avenue, Boston. Tickets: \$5 general, \$4.50 MFA members, seniors, and students. Telephone: 267-9300.

POETRY & LECTURES

A poetry reading by **John Ashberry** is presented by the MIT Writing Program at 8 pm in room 6-120. No admission charge. Telephone: 253-7894.

\*\*\* CRITICS' CHOICE \*\*\* Actor **Avery Brooks** (*Spenser For Hire, A Man Called Hawk, X: The Life and Times of Malcolm X*) is presented in the *Abramowitz Memorial Lecture* at 8 pm in Kresge Auditorium. No admission charge. Telephone: 253-4892.

Writer/performance artist **Jessica Hagedorn** reads from *Dogeaters* at 8 pm at the Institute of Contemporary Art Theater, 955 Boylston Street, Boston. Tickets: \$2 general, \$1 ICA members and MIT students. Telephone: 266-5152.

Friday, April 6

**CONTEMPORARY MUSIC** **John Caffery & The Beaver Band**, **Messias**, **El Caminos**, and **Wise Guys** perform at the Channel, 25 Necco Street, near South Station in downtown Boston. Admission: \$6.75/\$7.75. Telephone: 451-1905.

\*\*\* CRITICS' CHOICE \*\*\* **Tybe and Delusions of Grandeur** perform in an 18+ ages show at 8 pm at the Paradise, 967 Commonwealth Avenue, Boston. Telephone: 254-2052.

**Severed Heads** perform in an 18+ ages show at 9 pm at Axis, 13 Lansdowne Street, Boston, near Kenmore Square. Telephone: 262-2437.

**Shy Five**, **Chuck**, and **The Many** perform at T.T. the Bears, 10 Brookline Street, Cambridge, just north of MIT. Telephone: 492-0082.

**Osar & The Howlers** and **The Heart Attacks** perform at Johnny D's, 17 Holland Street, Davis Square, Somerville, near the Davis Square T-stop on the red line. Telephone: 776-9667.

**The Dave Mason Band** performs at 8 pm & 11 pm at Nightstage, 823 Main Street, Cambridge, just north of MIT. Telephone: 497-8200.

JAZZ MUSIC

**Makoto Takenaka** and his **Jazz Combo** perform "Japanese Spring in MIT" as a presentation of the MIT Japan Program at 8 pm in Kresge Auditorium. No admission charge. Telephone: 253-2839.

The **Dave Santoro Quartet** performs at the Willow Jazz Club, 699 Broadway, Ball Square, Somerville. Also presented Saturday, April 7. Telephone: 623-9874.

CLASSICAL MUSIC

Pianist **Jee-Hoon Yip** '90 performs Liszt's *Sonata in B minor* and Schumann's "Fantasie" in an *MIT Advanced Music Performance Concert* at 12:05 in Killian Hall, MIT Hayden Memorial Library Building 14. No admission charge. Telephone: 253-2906.

The **Brandenburg Ensemble** performs works by Bach, Mozart, and Beethoven at 8 pm in Symphony Hall, corner of Huntington and Massachusetts Avenues, Boston. Tickets: \$20 and \$22 [see also reduced-price tickets offered through *The Tech Performing Arts Series*]. Telephone: 266-1492.

The **Turtle Island String Quartet** and **The Really Eclectic String Quartet** perform at 8 pm at the Berkeley Performance Center, 136 Massachusetts Avenue, Boston. Tickets: \$15 and \$17. Telephone: 931-2000.

The **Boston Chamber Music Society** performs works by Mozart, Fauré, and Brahms at 8 pm in Jordan Hall, New England Conservatory, 30 Gainsborough Street at Huntington Avenue, Boston. Also presented Sunday, April 8 in Sanders Theatre, Quincy and Kirkland Streets, Cambridge. Tickets: \$8, \$13, and \$20 general; \$2 discount to seniors and students. Telephone: 536-6868.

The **Boston Conservatory Opera Studio** presents Ned Rorem's "Fables" and Haydn's "La Cantarina" at 8 pm in the Conservatory Theater, 31 Hemenway Street, Boston. Also presented Saturday, April 7. Tickets: \$4. Telephone: 536-6340.

Pianist **Sung-Mi Im**, winner of the 1989 Anne & Aaron Richmond Piano Competition, performs at 8 pm in the Tsai Performance Center, 685 Commonwealth Avenue, Boston. No admission charge. Telephone: 353-3345.

PERFORMANCE ART

**The Future of Meste: and Beyond**, by **Danny Mydack**, is presented at 8 pm in Tower Auditorium, Massachusetts College of Art, 621 Huntington Avenue, Boston. Tickets: \$8. Telephone: 731-2040.

DANCE

**Ariel**, A Dance Theatre performs at 8 pm at the Joy of Movement Studio Theatre, 536 Massachusetts Avenue, Cambridge. Also presented April 7 at 8 pm and April 8 at 4 pm. Tickets: \$10 general, \$8 seniors and students. Telephone: 628-3114.

FILM & VIDEO

\*\*\* CRITICS' CHOICE \*\*\* The Coolidge Corner presents **The XXII International Tournee of Animation** at 290 Harvard Street, Coolidge Corner, Brookline. Continues indefinitely. Telephone: 734-2500.

The Institute of Contemporary Art begins its *Dorothy Arzner Film Schedule* with **Picking Tribes** (Saundra Sharp) & **How Wonderful to See You Alive** (Lucia Murat) at 8 pm and **Prayer Flags** (Marie-France Alderman) & **Ori** (Rachel Gerber) at 10 pm at the ICA Theater, 955 Boylston Street, Boston. Tickets: \$5 general, \$4 ICA members, seniors, and students. Telephone: 266-5152.

\*\*\* CRITICS' CHOICE \*\*\* The Cambridge Center for Adult Education begins its series *Fantastic Journeys in Time and Space* with **Ingmar Bergman's The Seventh Seal** (1957) at 7 pm & 9 pm at 56 Brattle Street, Cambridge. Tickets: \$3.50. Telephone: 547-6789.

The Museum of Fine Arts begins its film series *Ingrid Bergman in Sweden* with **Swedenhielms** (1935, Gustaf Molander) at 6:00 and **Walpurgis Night** (1935, Gustaf Edgren) at 7:45 in Remis Auditorium, MFA, 465 Huntington Avenue, Boston. Tickets: \$5 general, \$4.50 MFA members, seniors, and students. Telephone: 267-9300.

The French Library in Boston begins its series of *Forms of the Feminine in Contemporary French Film* with **Aurelia Steiner** (1980, Marguerite Duras) at 8 pm at 53 Marlborough Street, Boston. Admission: \$4 general, \$3 Library members. Telephone: 266-4351.

The Harvard Film Archive begins its weekend series *Netherlandscapes: 85 Years of Dutch Filmmaking* with **The Adventures of a French Gentleman Without his Trousers** (1905, Albert Feres and Albert & Willy Mullens), **Two Girls from Zeehand** (1913, Louis Christijn), and **Found Agais** (1914, Louis Christijn) at 7 pm and **Eisenstein's Visit to Holland** (1930, Hispano Film Production), **The Luxembourg Gardens** (1929, Mannus Franken), **The Seine Meets Paris** (1957, Joris Ivens), and **To Valparaiso** (1963, Joris Ivens) at 9 pm at the Carpenter Center for the Visual Arts, 24 Quincy Street, Harvard Square, Cambridge. *French Gentleman, Two Girls, and Found Agais* also presented Saturday, April 7 at 9 pm. *Eisenstein, Luxembourg, Seine, and Valparaiso* also presented Sunday, April 8 at 4 pm. Admission: \$3 general, \$2 seniors and children, \$5/\$4 for the double feature. Tel: 495-4700.

EXHIBITS

**The Wellesley Method**, work by collaborative artists **Kate Ericson** and **Mel Zeigler** using eye glasses as the central image; **Arcadia in America: Mount Washington from the Valley of Conway** by **John Frederick Kensett**; and **Recent Acquisitions and Alumnae Gifts** open today at the Wellesley College Museum, Jewett Arts Center, Wellesley College, Wellesley. All exhibits continue through June 11 with museum hours Monday-Saturday 10-5, Tuesday & Wednesday 10-9, and Sunday 2-5. No admission charge. Telephone: 235-0320 ext. 2051.

On The Town

Compiled by Peter Dunn

Saturday, April 7

**CONTEMPORARY MUSIC** **Testament**, **Savotage**, and **Nuclear Assault** perform at 7:30 at the Orpheum Theatre, Hamilton Place, Boston. Tickets: \$19. Telephone: 931-2000.

**Pieces, The Tears, Sticks & Stones, Zalls**, and **40 Thieves** perform at the Channel, 25 Necco Street, near South Station in downtown Boston. Admission: \$4.75/\$5.75. Telephone: 451-1905.

**Pajama Slave Dancers, Blues Traveler**, and **Tanki Flip** perform at T.T. the Bears, 10 Brookline Street, Cambridge, just north of MIT. Telephone: 492-0082.

The **DeMoulias Family** performs as part of *Eventworks* at 8 pm in the Longwood Theater, Massachusetts College of Art, 364 Brookline Avenue, Boston. No admission-charge. Telephone: 731-2040.

JAZZ MUSIC

**Boston University Third Annual Collegiate Jazz Festival**, with **Randy Brecker**, is presented from 9:00 to 5:00 and at 7:30 in the Tsai Performance Center, 685 Commonwealth Avenue, Boston. Tickets: \$8 general, \$6 seniors. Telephone: 353-3345.

CLASSICAL MUSIC

The **Coull String Quartet** performs works by Mozart, Shostakovich, and Beethoven in an *MIT Guest Artist Series* concert at 8 pm in Kresge Auditorium. No admission charge. Tel: 253-2906.

FILM & VIDEO

The French Library in Boston continues its series of *Forms of the Feminine in Contemporary French Film* with **India Song** (1975, Marguerite Duras) at 8 pm at 53 Marlborough Street, Boston. Also presented Sunday, April 8. Admission: \$4 general, \$3 Library members. Telephone: 266-4351.

EXHIBITS

**Imperial Taste: Chinese Ceramics** from the **Percival David Foundation** opens today at the Museum of Fine Arts, 465 Huntington Avenue, Boston. Continues through June 24. Telephone: 267-9300.

Sunday, April 8

**CONTEMPORARY MUSIC** **Birdsongs of the Mesozoic**, **Doctor Nerve**, and **Forever Einstein** perform at 8 pm at Nightstage, 823 Main Street, Cambridge, just north of MIT. Telephone: 497-8200.

JAZZ MUSIC

The **Preservation Hall Jazz Band** performs at 8 pm in Symphony Hall, corner of Huntington and Massachusetts Avenues, Boston. Tickets: \$20, \$22, and \$24 [see also reduced-price tickets offered through *The Tech Performing Arts Series*]. Telephone: 266-1492.

CLASSICAL MUSIC

The **Wellesley College Choir**, with the **Cornell University Glee Club**, performs **Mozart's Mass in C minor** in the Dober Memorial Chapel, Wellesley College, Wellesley. No admission charge. Telephone: 235-0320 ext. 2028.

Pianist **Annie Fischer** performs works by Beethoven and Schumann at 3 pm in Symphony Hall, corner of Huntington and Massachusetts Avenues, Boston. Tickets: \$20, \$22, and \$24 [see also reduced-price tickets offered through *The Tech Performing Arts Series*]. Telephone: 266-1492.

**John Gibbons**, fortepiano, performs works by Haydn, Clementi, and Beethoven at 3 pm in Remis Auditorium, Museum of Fine Arts, 465 Huntington Avenue, Boston. Tickets: \$12 general, \$10 MFA members, seniors, and students. Telephone: 267-9300 ext. 306.

FILM & VIDEO

\*\*\* CRITICS' CHOICE \*\*\* The Harvard-Epworth Church presents **Pier Paolo Pasolini's The Gospel According to Matthew** (1964, Italy) at 8 pm at 1555 Massachusetts Avenue, just north of Harvard Square, Cambridge. Admission: \$3 contribution. Telephone: 354-0837.

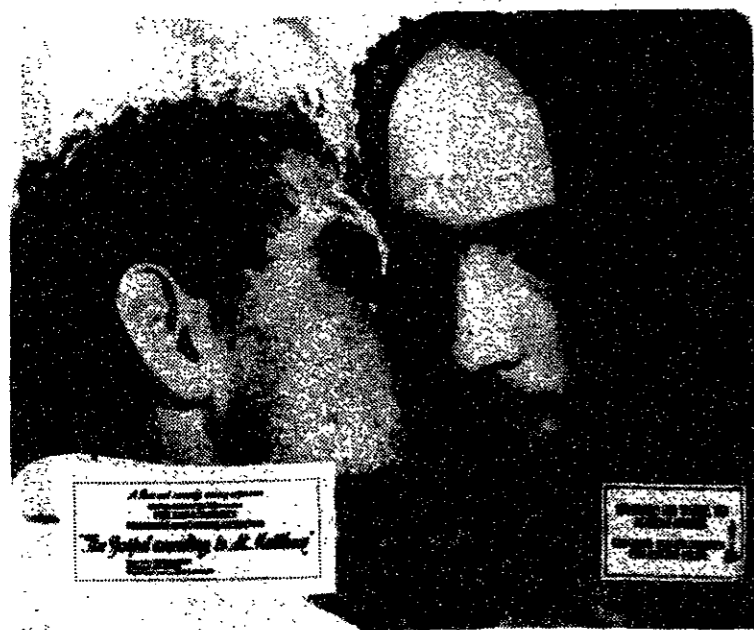
Monday, April 9

CONTEMPORARY MUSIC

\*\*\* CRITICS' CHOICE \*\*\* **Eric Clapton** performs at 7:30 at the Worcester Centrum, 50 Foster Street, Worcester. Also presented April 10. Tickets: \$22.50. Telephone: 931-2000.

FILM & VIDEO

\*\*\* CRITICS' CHOICE \*\*\* The Harvard Film Archive continues its Monday series *Three French Directors* with **Jean-Luc Godard's A Bout de souffle** (*Breathless*, 1959) at 5:30 & 8:00 at the Carpenter Center for the Visual Arts, 24 Quincy Street, Harvard Square, Cambridge. Admission: \$3 general, \$2 seniors and children. Telephone: 495-4700.



Pier Pasolini's *The Gospel According to Matthew* (1964) at the Harvard-Epworth Church on April 8.

Laboratory for Computer Science UROP Summer Studies Program, 1990.

This summer program is intended for undergraduate students who are interested in participating in research projects in the Laboratory for Computer Science. Although no prior experience is necessary, pay under this UROP Summer Studies Program is commensurate with experience, and the program is open to all undergraduates not currently or formally associated with the Laboratory. Students are expected to continue work in the Fall semester (either for credit or for pay). We hope to identify creative and energetic undergraduate students interested in computer science and to encourage their development. An information meeting will be held: **Wednesday, April 18, 1990, NE43-512a, 4:00 pm**. Please register by contacting **Leora Wenger** (x3-2006 or leora@hq.lcs.mit.edu).

UROP SUMMER FUNDING

UROP introduces DEADLINES for Summer Funding:

**Monday, APRIL 23, 1990**

is the **PRIMARY** deadline.

Since summer UROPs are continuations, we will **EXPECT MOST PROPOSALS BY APRIL 23.**

HOWEVER:

We also have a second deadline:

**Monday, MAY 21, 1990**

at which time a small amount of funds will be available for the **UNUSUAL** and the **UNEXPECTED.**

Funding criteria remain the same: faculty enthusiasm for the UROPer, UROP students who are relatively new, projects for which there is no other support, and, when possible, a faculty contribution of 60% of total funds. Proposals for overhead waiver are welcome as late as June.

Questions: call the Undergraduate Education Office at x3-7909, 20B-141

A JOHN WATERS FILM

# JOHNNY DEPP

He's a doll.  
He's a dreamboat.  
He's a delinquent.

**Cry-Baby**

IMAGINE ENTERTAINMENT PRESENTS  
"CRY-BABY" AMY LOCANE - SUSAN TYRRELL  
ICCY POP - RICKI LAKE - TRACI LORNS  
POLLY BERGEN - BERRY MANCINI  
TIM SEXTON - PATRICK WILLIAMS  
JIM ABRAHAM - BRIAN CRAZER - RACHEL TALALAY  
HOSCHKE PRODUCTIONS A FILM BY JOHN WATERS

OPENS IN THEATRES APRIL 6th

**SPECIAL FREE SCREENING**  
Thursday, April 5  
8:00 PM  
26-100  
Sponsored by: MIT Lecture Series Committee  
Limited Seating - First Come, First Served

# Sophomores change design on class ring

(Continued from page 1)

Evanko said the ring committee had not realized that the original design would offend Native American students. After hearing the objections, the committee understood it had made a mistake and wanted to rectify it, she added.

The focus of the March 21 meeting was on finding a way to change the ring so as to address the Native American concerns.

The Native American groups asked not only that the garb of the scholar figure on the MIT seal be changed, but that a globe that appears on the seal also be changed.

The scholar is standing on the globe, which is oriented so that it shows North America. In a brochure describing the ring, the presence of the globe is connected to the commemoration of Columbus' voyage.

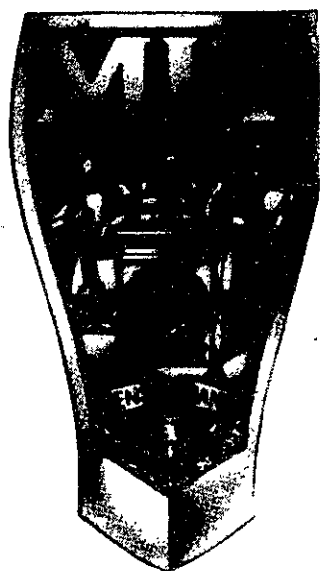
Evanko said the ring committee, while wishing to change the design, was concerned about making alterations that would delay delivery of the rings.

Balfour, the ring's manufacturer, told the committee that it could alter the scholar's clothing without a delay, but that altering the globe would mean that class rings would not be delivered until the fall, Evanko said.

The committee decided to change the clothing, but not the globe.

According to Evanko, the globe was put on the seal to signify that MIT is a school with many international students. The globe shows North America because MIT is in North America, she said.

Lawson said that, whatever the ring committee's intent, the globe has been represented to symbolize Columbus and it would be better if the North American continent were removed from it. But she said she understood that "there are other members of the class to please" and why the



Students sympathetic to the plight of Native Americans criticized the celebration of Christopher Columbus' voyage to America on the Seal side of the Class of 1992 ring.

committee chose to leave the globe intact.

Lawson suggested that the committee issue another brochure explaining that the globe symbolizes MIT's internationalism and not Columbus' journey.

NASA has been "surprised and pleased with all the support we have received," Lawson said. She said she had not expected the ring design would be changed when the first complaints were aired.

But everyone — students, faculty, administrators, and the ring committee — reacted sympathetically to the Native American concerns, Lawson said. "Just making the effort to change it" is important, she said.

Evanko also believed that the fact that the complaints resulted in action was important symbolically. "I think it is going to be a really good thing . . . that someone recognized [the Native American] cause," she said.

Evanko hoped that, with the design changes, sophomores would feel more positive about their class ring.

## classified advertising

### PLANNER

F/T & Summer Opportunity in Downtown Los Angeles environmental planning firm. Flexible, hardworker w/experience in land use & economic analysis. Degree in planning or related fields. Strong analytic, writing & computer skills. Salary DOE. Minorities & women encouraged to apply. Principal will be interviewing in Cambridge April 13, 1990. Send cover & resume by 4/2/90 to: Myra L. Frank & Associates, 403 W. 8th St. #801, Los Angeles, CA 90014. EO/AAE

Attention: Hiring! Cruise Ship, Casino, Hotel jobs! Free Travel Benefits! Details. 1-602-838-8885 Ext. Y-18450.

WANTED — Van Morrison ticket(s) for concert on 4/19 or 4/20. Please leave a message at 225-6781 if you have any you want to sell.

1980 Honda Prelude with Alpine radio for sale. Mechanically very good. Best offer over \$1,000. 258-7394 (MIT) or 782-9012.

Technical Typing/Word Processing Theses, Reports, Resumes. Fax in your term papers or resumes for quick turnaround. Professional, accurate work delivered at reasonable rates. Free pick-up and delivery. Call BSS at 625-2118 (FAX) 625-2016.

Navigation Technologies Inc. has positions available for engineering students interested in developing software for autonomous vehicles. These are part-time positions, available immediately, with opportunities for full-time employment during the summer.

To qualify, you must have experience with C, C++, object-oriented programming, or the Macintosh Toolbox. Experience writing software for controlling mechanical systems would be ideal.

Please forward your resume to:  
Personnel Director  
Navigation Technologies, Inc.  
31 Hunting Street  
Cambridge, MA 02141  
(617) 492-4037

Attention — Hiring! Government jobs — your area. Many immediate openings without waiting list or test. \$17,840 — \$69,485. Call 1-602-838-8885. Ext R18450.

Attention — Government seized vehicles from \$100. Fords, Mercedes, Corvettes, Chevys. Surplus Buyers Guide. (602) 838-8885 Ext. A4058.

# \$1.00 OFF

ANY PURCHASE OF \$10.00 OR MORE!  
COMPACT DISCS, POSTERS, T-SHIRTS!



(No Double Discounts. Sale Items Excluded. Expires 4/6/90.)

M.I.T.: Student Center 225-2872

BOSTON: 332 Newbury St. 236-4930

HARVARD SQ.: 36 J.F.K. ST. The Garage 491-0337

## MIT Symphony Orchestra

Richard Cornell, conductor

Openings:

Bassoon  
Cello  
Percussion

Rehearsals:

Tuesdays and Thursdays  
7:30-10pm

Performance:

May 12, 1990  
8:30 pm, Saturday  
Kresge Auditorium

Program:

Gershwin, Rhapsody in Blue  
Hartke, Pacific Rim  
Tchaikovsky, Symphony No. 5

Call 253-6962 or 253-2906 to schedule an audition.



THE

## BOSTON OPTOMETRIC CENTER

THE PATIENT CARE FACILITY OF THE  
NEW ENGLAND COLLEGE OF OPTOMETRY

OFFERS AREA COLLEGE STUDENTS

# FREE CONTACT LENSES

THE FIRST 100 STUDENTS WITH A VALID STUDENT I.D. WHO PAY \$40  
FOR A COMPREHENSIVE EYE EXAMINATION, CONTACT LENS FITTING, &  
THREE MONTHS OF FOLLOW-UP CARE  
WILL RECEIVE:

FREE CONTACT LENSES\*  
FREE SOLUTION STARTER KIT

CALL 262-2020 FOR YOUR APPOINTMENT

THE BOSTON OPTOMETRIC CENTER  
1255 BOYLSTON STREET, BOSTON

(located behind Fenway Park)

\*Lenses are limited to standard clear soft lenses and gas permeable hard lenses. Lenses and materials are subsidized by educational grants. This offer cannot be combined with any other discount or coupon and is limited to first time contact lens wearers.

# Computing group lists possibilities for change

(Continued from page 1)

## The educational focus of academic computing

Possible recommendations the committee will make to the provost later this spring "fall along two complementary dimensions," according to the paper. These are "extending and deepening the educational focus for MIT academic computation, and . . . expanding the role of academic computation in the MIT intellectual community through shared resources and user support."

In order to achieve the first aspect of the recommendations, the committee made possible recommendations on the organizational structure of academic computing within the MIT community. Each school would "develop computer-based educational strategies" to support the educational goals of the school and allow students to reach "an appropriate level of professional computing competency upon graduation."

The educational focus of academic computation would also be expanded at the Institute-wide level. The paper gives the example of the "relevant interdepartmental organizations" promoting "the basic computational fluency of all students." The committee also placed emphasis on computing in the freshman year.

Institute efforts for computing beyond the freshman year could be incorporated into General Institute Requirements, the paper stated, such as required HASS-D subjects, Science Distribution subjects, or subjects that cross disciplinary lines such as statistical analysis, mathematical simulation, or access to databases.

"Academic computation at MIT will need to incorporate changes as they occur, and our recommendations . . . aim to facilitate this," the paper states.

The committee found six key areas to focus on for academic computing. One of these, *knowledge databases*, would exist on large network systems, and could include "curriculum materials for courses, including references to background material" and communication among faculty, students and TAs; "digital libraries with subject indexes and databases that could include mathematical theorems, gene sequences and historical events; on-line support; . . . and on-line magazines," the paper stated.

Another of these areas, *intelligent agents*, could "work" for users in a myriad of ways, such as search databases that could answer some questions automatically and [route] other questions to different people; find messages, bulletin board items, and news stories for users; sort mail

and other information; manage projects; and keep calendars and perform some scheduling tasks.

## Communication and common resources

According to the paper, many people still use computers today "quite primitively," without extensive communication with other users. One of the visions of Project Athena was to create "a richly interconnected network of individual workstations and powerful servers for storing, printing, and processing information," the paper said.

In the early years of Project Athena, the system did not realize this vision or succeed in advancing learning in a "collaborative sense. . . . Only recently have interaction and collaboration become important objectives

in their own right," according to the paper.

Developments in communications networks have decreased the costs, both physical and financial, of data communication, and community members can now "transfer documents and data files among their computers," the paper states.

These developments have contributed to an evolution toward "pluralism" in academic computing, the paper continues. This evolution will eventually require the coherent interaction of hardware, operating system, and applications software.

Coherent interaction is desirable for a community of users, because it facilitates communication among users in a variety of environments. According to the discussion paper, an environment consists of hardware, the connections to networks or shared peripherals, the operating system and application programs.

The paper cites one shortcoming of Project Athena as its "inability to support most commercial software." Project Athena uses the Unix operating system, which does not support many well-known commercial applications.

"The desire to access commercially available programs and the desire to intercommunicate suggest a new level of coherence built around a *minimal* set of desirable *common* services — Community Computation Resources — that advance our academic computation objectives. Individuals would use commercially available software in the hardware and operating system of their choice," the paper states.

"The essential point to [the] recommendation is not that Community Computational Resources should be available, but that *they should be available within individuals' preferred operating systems, within reason.* Coherence thus need not imply a single hardware or operating-system platform for centrally supported academic computation at MIT."

In another possible recommendation, the committee suggested a standing Institute policy committee to review academic computing at two-year intervals. It also suggested that over the next five years, schools and departments within MIT develop and implement their own plans for academic computation.

## Five implementation packages suggested

In a discussion of cost and implementation of these possible recommendations, the committee offered five different cost options.

"The first three packages implement our Community Computational Resources recommendations, with varying levels of equipment, user support, and ancillary expenditures." The total costs of these packages range from \$15.5 million to \$22 million in annual expenditures.

A fourth option would maintain the current level of activity, at a cost of about \$12 million per year. The final, pared-down option would cost about \$2.7 million annually.

"MIT [must] maintain the current number of workstations, recognizing that in future, as at present, some Departments may use these more than others," the paper states. However, the committee feels that educational applications or user support should not be sacrificed to maintain workstation numbers.



Mags Harries works on a model for her proposed sculpture in the Stratton Student Center before spring break.

Lerothodi-Lapula Leeuw/The Tech

## Save Money With The IRS\*



At such a taxing time of year, isn't it nice to know that The Coop is ready and set to save you money.

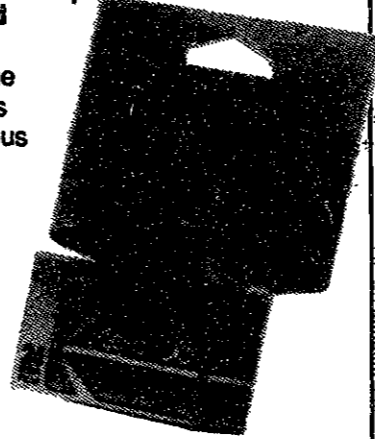
### SAVE \$30

Phonemate Telephone With Answering Machine.

The perfect phone and answering machine for home or office. It comes with one-touch operation, personal memo, call screening, toll saver, autodialer, hold and much more. Reg. \$109.99 SALE \$79.99

### SAVE 50¢

Kodacolor Gold 100 ASA Color Print Film. It's the choice of serious and not-so-serious photographers for unsurpassed color accuracy. It produces pleasing pictures in full, rich colors. 24 exposures. Reg. \$3.79 SALE \$3.29

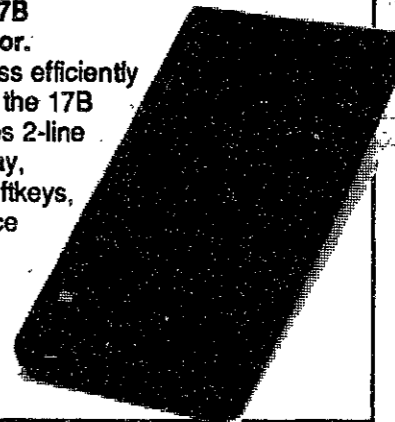


### SAVE \$30

SPECIAL PURCHASE

Hewlett Packard 17B Business Calculator.

Get down to business efficiently and accurately with the 17B calculator. It features 2-line alphanumeric display, menu labels and softkeys, business and finance functions, and lots more. Clearance, quantities limited. Orig. \$99.99 NOW \$69.99



\*Inventory Reduction Sale At The Coop!

HARVARD SQUARE  
CAMBRIDGE  
M-SAT. 9:20-5:45  
THUR. 9:30-5:30

MIT COOP AT KENDALL  
3 CAMBRIDGE CENTER  
M-F 9:15-7 THUR. 9:30-5:30  
SAT. 9:15-5:45

COOP AT LONGWOOD  
330 LONGWOOD AVE.  
M-F 9:15-7 THURS. 9:30-5:30  
SAT. 9:15-5:45

DOWNTOWN COOP  
1 FEDERAL ST.  
M-F 9:15-5:20  
OPEN SAT. MAR. 24, 9:15-5:30

THE  
COOP

## How To Provide Rational Energy Policies For The 90's

From 3 Of The Most Renowned Scholars At MIT.

### Energy Aftermath

How We Can Learn From The Blunders Of The Past To Create A Hopeful Energy Future

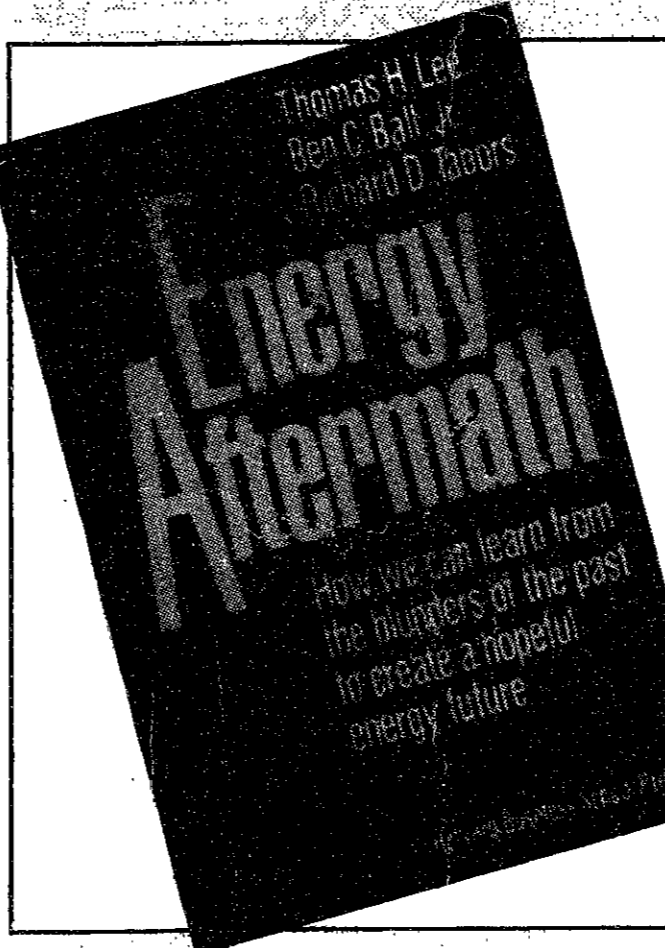
By Thomas H. Lee  
Ben C. Ball, Jr.  
Richard D. Tabors

"This book is not about greed or duplicity; it contains no villains. Instead, *Energy Aftermath* is about the flawed decision-making process in large technical systems, about human lapses in judgement and how they can be avoided. It deals with the decisions and history of the ways in which the United States tried to manage energy shortfalls and it also contains the authors' analysis of an essential energy program for the future."

Thomas H. Lee is Professor Emeritus of Electrical Engineering at MIT. Ben C. Ball is the Director of MIT's Integrated Energy Systems Project. And Richard D. Tabors is Assistant Director of MIT's Laboratory for Electromagnetic and Electronic Systems.

\$24.95

Published by Harvard Business School Press  
A Division of McGraw-Hill



MIT COOP AT KENDALL  
3 CAMBRIDGE CENTER

M-F 9:15-7 THUR. 9:30-5:30  
SAT. 9:15-5:45

THE  
COOP

The Tech Hotline

253-1541

Close to Excitement of Cambridge/Boston

Liberal Arts  
Physical Sciences  
Computer Science  
Theatre Arts

Summer at Brandeis University

Chamber Music Workshop  
June 11-June 30  
German Study in Augsburg  
May 14-July 31  
Hebrew Study in Israel  
May 21-June 13

Small Classes taught by Brandeis Faculty

New Eastern and Judaic Studies  
Foreign Languages  
Legal Studies  
Internship

Session I - June 4 to July 6  
Session II - July 9 to August 10

Information, catalog and application:  
**Brandeis University Summer School**  
P.O. Box 9110 Waltham, MA 02254-9110  
(617) 736-3424

## 2 WAYS TO FIND AN APARTMENT IN NEW YORK CITY...

1. Stay at your cousin's friends' sister's studio in Brooklyn while studying the classifieds in search of the perfect place. Take a couple of hour long subway rides to places like Hell's Kitchen & the Bronx to view tiny, scary little places that you've seen in bad "B" movies about New York. Finally, after about 6 weeks, & just at the point where your cousin's friends' sister starts looking at you strangely every time she picks up a kitchen knife, you grab the next place you can find that doesn't smell like a sewer, is only nineteen subway stops away from your job, & costs only \$640 more per month than you've got in your budget.

### 2. CALL:

**AMBASSADOR REAL ESTATE**



**AMBASSADOR REAL ESTATE**  
SPECIALIZING IN MANHATTAN RENTALS

We represent Fortune 500 companies, as well as foreign missions in helping to relocate their employees.

We feature all sizes, all prices, all areas...  
We can help you choose the right place at the right price.

**CLIP THIS COUPON & SAVE 10% (212) 769-3380**

The Arthur Miller Lecture on Science and Ethics  
The Context Support Office  
The Program in Science, Technology, and Society

# Error, Fraud and Misconduct in Science

Saturday, April 7, 1990  
Bowen Room  
(E51-329, 70 Memorial Drive)

10:00a.m - 12:30p.m.  
2:00p.m. - 4:30p.m.

Massachusetts Institute of Technology



# Come to the Apple Engineering and Science Day

April 11, 1990 • 10am to 4pm • Bush Room (10-105)

Here's your chance to see the latest in Engineering and Science applications for the Macintosh. Talk with vendors about their products. Attend the seminars and learn how faculty and researchers are using this exciting technology on campus today. And be sure to enter our raffle - we'll be giving away software and prizes throughout the day.\*

For more information, call the Microcomputer Center at x3-7686. Sponsored by MIT Information Systems and Apple Computer, Inc.

## Exhibitors

- CAD/CAM/FEA** Amiable Technologies  
Ashlar  
Automatix  
Gibbs and Associates  
LAPCAD Engineering  
MCAE-Inertia
- Chemistry** Cambridge Scientific Computing  
Tripos Associates, Inc.
- Data Acquisition** GW Instruments  
National Instruments  
Remote Measurement Systems  
Spectral Innovations  
World Precision Instruments
- Development and Utilities** Bowers Development Corp.  
Edutech  
High Performance  
Technosis
- EE** Momentum Data Systems  
Nedrud Data Systems  
Vamp, Inc.
- Mathematics** Wolfram Research, Inc.

## Seminars

- 11:00 am  
Gus Witt  
Professor, Materials  
Science & Engineering  
Agonies of a faculty member who is ignorant about computers but determined to use them as a teaching tool.
- 11:15 am  
Michael Wargo  
Research Associate,  
Materials Processing Center  
Tales of a computer expert trying to assist an ignorant faculty member who's using computers as a teaching tool.
- 12 noon  
John Sterman  
Associate Professor of  
Management, Sloan School  
John Sterman will demonstrate how to use the Macintosh to simulate corporate strategies (People's Express Management Simulation).
- 1:00 pm  
David Gordon Wilson  
Professor, Mechanical  
Engineering  
David Gordon Wilson and Douglas Marsden will demonstrate EDICS, the engineering design instructional computer set.
- 2:00 pm  
Janet Murray  
Principal Research  
Scientist, Writing Program  
Janet Murray will give a demonstration of the award-winning interactive video program "A la Rencontre de Philippe" produced by the Athena Language Learning Project.
- 3:00 pm  
Tim Johnson  
Principal Research  
Associate, Architecture  
Tim Johnson will discuss the current state of computer-aided design and how it relates to MIT.

MIT Information Systems

\* Prizewinners must present a valid MIT ID.  
All product names are trademarks of their manufacturers.

# Gray clarifies MIT investment policy

(Continued from page 2)

I would argue that consumer boycotts and purchase restrictions are far more influential in persuading companies to disinvest — that is, to cease operations in South Africa. And even in those cases where companies have ceased operations, the South African economy has not been greatly affected. Either South African organizations have purchased the companies and have continued operations, or non-US operators and suppliers have filled the gaps, and in many cases US companies have developed non-equity links to South Africa.

As can be seen in the table below (based on reports by the Investor Responsibility Research Center), many US corporations have ceased operations in South Africa in recent years — some by liquidating their assets there, others by selling their assets to South African (or non-US) entities — and there has been a simultaneous increase in companies with non-equity links.

	Dec. 1984	May 1985	Oct. 1987	Jan. 1989	Jan. 1990
Operations in South Africa	284	267	168	138	123†
Non-equity links to South Africa	24	63	108	149	175
Reporting banks with loans to South Africa*	23	20	N/A	11	11

† Includes 39 privately owned corporations.  
\* A similar number of reporting banks did not divulge loan information.

Source: IRRIC, U.S. (and Canadian) Business in South Africa, Foreign Investment in South Africa.

### MIT Investments in Companies with Operations in South Africa

As of March 23, 1990, MIT held investments in 13 US companies with operations in South Africa, six of which are pharmaceutical companies. Eleven of these companies are rated in Category I, and two are in Category IIA. One company had 1.2 percent of its total sales attributable to South African activity, the other twelve had less than one percent of their worldwide sales in South Africa.

Over the years, using a consistent definition, the Institute's investments in companies with operations in South Africa have steadily decreased, primarily as a result of companies' ceasing operations there. The securities of the 13 companies presently held by MIT have a value of \$84 million, which is 5.4 percent of the total market value of the general investments as of March 23, 1990. Just over four years ago, on December 1, 1985, the corresponding figure was \$168 million, or 18 percent of the general investments.

The assertion by the Coalition Against Apartheid that MIT's investments in companies doing business in South Africa has grown is based on a broader definition of "doing business." That definition includes 52 companies that have any of these involvements with South Africa: employees, licenses, distribution agreements, franchises, or outstanding loans. Even using the Coalition's own calculations and their broad definition, MIT's investments declined in the past year from \$322 million to \$289 million.

### Implications for other Programs and Policies

The Coalition's call for divestment of companies involved in South Africa raises other questions affecting the Institute. Divestment by an institutional investor is a public act of disapproval of the policies and practices of the affected corporations. If MIT were to disapprove of the practices of these 52 companies because of their involvement in South Africa to such a degree that we were to refuse to own their securities, then logically, we should refuse gifts from these companies. Along these lines, we should also refuse to continue other relationships with them, such as recruiting access to our graduates, participation in work-study and internship programs, research sponsorship, and membership in the Industrial Liaison Program. Our relations with these companies directly contribute to and strengthen the Institute's programs, and weakening these relationships would not, in my view, be in MIT's interests.

### Consideration by the executive committee

The Advisory Committee on Shareholder Responsibility (ACSR) will hold an open meeting to give members of this community an opportunity to express their views and concerns about these issues. These views will be communicated to the Executive Committee of the Corporation, which is responsible for policy on the issue of investments and South Africa, and will be considered by that committee at a meeting this spring. Members of the executive committee will act on the basis of their best judgment, exercising their individual and collective responsibility as trustees concerning what is best for this university.

Paul E. Gray '54  
March 1990

1990-91 Academic Year

## GLOBAL ECONOMY Integrating Nature and Society

Itinerary: England, India, Malaysia, Philippines, New Zealand, Mexico, USA (Santa Fe, Washington D.C., Boston)

- Live with families in each country — form life-long contacts
- Travel and study with exceptional faculty led by Edward Goldsmith, Dr. Brian Goodwin, Dr. Mae-Won Ho and resident experts
- Visit centers of environmental research and activism
- Small group of 30 students
- 32 credit hours/transcript issued by Bard College
- IHP founded in 1958

Catalog and application now available from:

The International Honors Program  
19 Braddock Park  
Boston, MA 02116  
(617) 267-8612

# RESEARCH TECHNICIAN

We are seeking a Research Technician for photographic work in our MIT Biology Laboratory to assist in the printing and analysis of electron micrographs. These micrographs are being used to determine mechanisms responsible for the development and behavior of the nematode *Caenorhabditis elegans*.

Requires BS degree. Some interest in Biology preferred. Should enjoy photography and photo-processing and should appreciate the beauty of biological materials. Additional duties will include the preparation of specimens for electron microscopy and possibly the operation of an electron microscope; these skills will be taught in the job. This position will involve participation in a variety of active and exciting research projects.

We offer excellent salary and benefits. Please send resume to: Dr. H. Robert Horvitz, Biology Dept. 56-629, MIT, Cambridge, MA 02139. We are an Equal Opportunity Employer.

# HOWARD HUGHES MEDICAL INSTITUTE

Last Chance!  
Last Minicourses 'til next Fall!

## Matlab Minicourse

MATLAB is an interactive program for scientific and engineering numeric calculation. Applications include:

- matrix manipulation
- digital signal processing
- 3-dimensional graphing

Here's the schedule:

Project Athena		Minicourse Schedule Room 3-343				post-Spring Break 1990
		Mon	Tue	Wed	Thu	
	2 Apr					5 Apr
7 p.m.	Scribe Thesis		Scribe Report	Scribe Math	Matlab	
8 p.m.	Scribe Math		Matlab	Scribe Thesis	Scribe Report	
	9 Apr					12 Apr
7 p.m.	Scribe Report		Scribe Math	Matlab	Scribe Thesis	
8 p.m.	Matlab		Scribe Thesis	Scribe Report	Scribe Math	

The image shows a MATLAB command window with the following text:
 

```

    R =
    0.3029    0.6223    0.1544
    0.3544    0.6378    0.5160
    0.9673    0.3466    0.5655

    >> inv(R)
    ans =
    1.3001   -1.7978    1.2856
    1.7999    0.1319   -0.6119
    -3.3271    2.9945   -0.0535

    >> R * inv(R)
    ans =
    1.0000    0.0000   -0.0000
    -0.0000    1.0000   -0.0000
    -0.0000    0.0000    1.0000

    >> [v,d]=eig(R)
    v =
    0.4129    0.1261 + 0.4816i    0.1261 - 0.4816i
    0.6208   -0.4183 + 0.0176i   -0.4183 - 0.0176i
    0.6664    0.4359 - 0.6221i    0.4359 + 0.6221i

    d =
    1.4876         0         0
         0    0.0393 + 0.3317i         0
         0         0    0.0393 - 0.3317i

    >> std(R)
    ans =
    0.3696    0.1849    0.2244
    
```

 Below the text are several plots: a 2D contour plot, a 3D surface plot, and a 2D line graph showing a signal waveform.

All minicourses are one hour each, and are taught in Room 3-343.  
For more information, or to schedule additional minicourses for 10 or more people, contact Gary L. Dryfoos at [dryfoo@athena](mailto:dryfoo@athena) or x3-0184.  
PLEASE NOTE: No pre-registration or reservations are needed... Just show up for class!  
Last Chance!  
Last Minicourses 'til next Fall!

# sports

## Lightweight crew edges by in season's opener

By Stephen Celuzza

The varsity lightweight crew team narrowly defeated four other boats in a race on the Charles River on March 24. This traditional season-opener saw MIT hosting crews from the University of Rhode Island, Connecticut College, and the State University of New York at Albany. URI had two entries in the varsity race: a lightweight boat and a heavy-weight boat.

There was a moderate headwind blowing down the 2000 meter racecourse, and the air temperature was chilly at around 40°F. The MIT crew, consisting of Melissa Norcross '91 (coxswain), Paul Tempest '92 (stroke), Jeff Nielsen '92, Jeff Kuehn '92, Francisco Galletti '90, Scott Jacobsmeyer '92, Harald Quintus-Bosz '90, Stephen Celuzza '90, and Craig Griffen '92 (bow), had an excellent start, winding up about one boat-length ahead of all the other crews after the first 30 strokes. They maintained that lead, dominating the first half of the race.

As the crews passed under the Harvard Bridge, the halfway point in the race, Coach Peter Holland was worried that Connecticut College would make a move on MIT. Connecticut was rowing with slower, more relaxed strokes, and it seemed that they might be able to power up to MIT, as they had done one year ago. However, MIT kept their lead up to the MIT boathouse with 500 meters to go.

At the boathouse, both URI crews started to move up on MIT. Norcross ordered the stroke beat rating up, and urged her crew to keep their lead for the last part of the race, but the URI crews kept gaining. Just before the finish line, she called, "We're three seats down!" indicating that URI had taken the lead by about three meters.

After the finish, the URI crews were rejoicing in their apparent victory, while MIT sat silently, recovering. The jubilation switched from URI to MIT, though, when

the officials announced the results. MIT had won, with a time of six minutes, 57.5 seconds, followed by the URI lightweights, 6:58.0, URI heavyweights, 7:00.9, Connecticut College, 7:02.0, and Albany, 7:23.1.

Since the finish line was not perpendicular to the riverbank, what seemed like a URI victory was in fact an MIT victory, although a close one. While the official times reflected a half-second difference between first and second place, the actual margin was more like a tenth of a second, according to Coach Holland, who thought the timer was not able to move his thumb on the stopwatch button fast enough. Reviewing the videotape of the finish, it was verified that MIT did indeed win, by about one foot.

In the junior varsity race, which pitted the URI and Albany second boats against MIT's, URI emerged victorious in 6:08.3, ahead of Albany (6:11.7) and MIT (6:23.1). The fast times were due to the fact that the race was restarted after about 350 meters, after a URI oarsman caught an over-the-head crab.

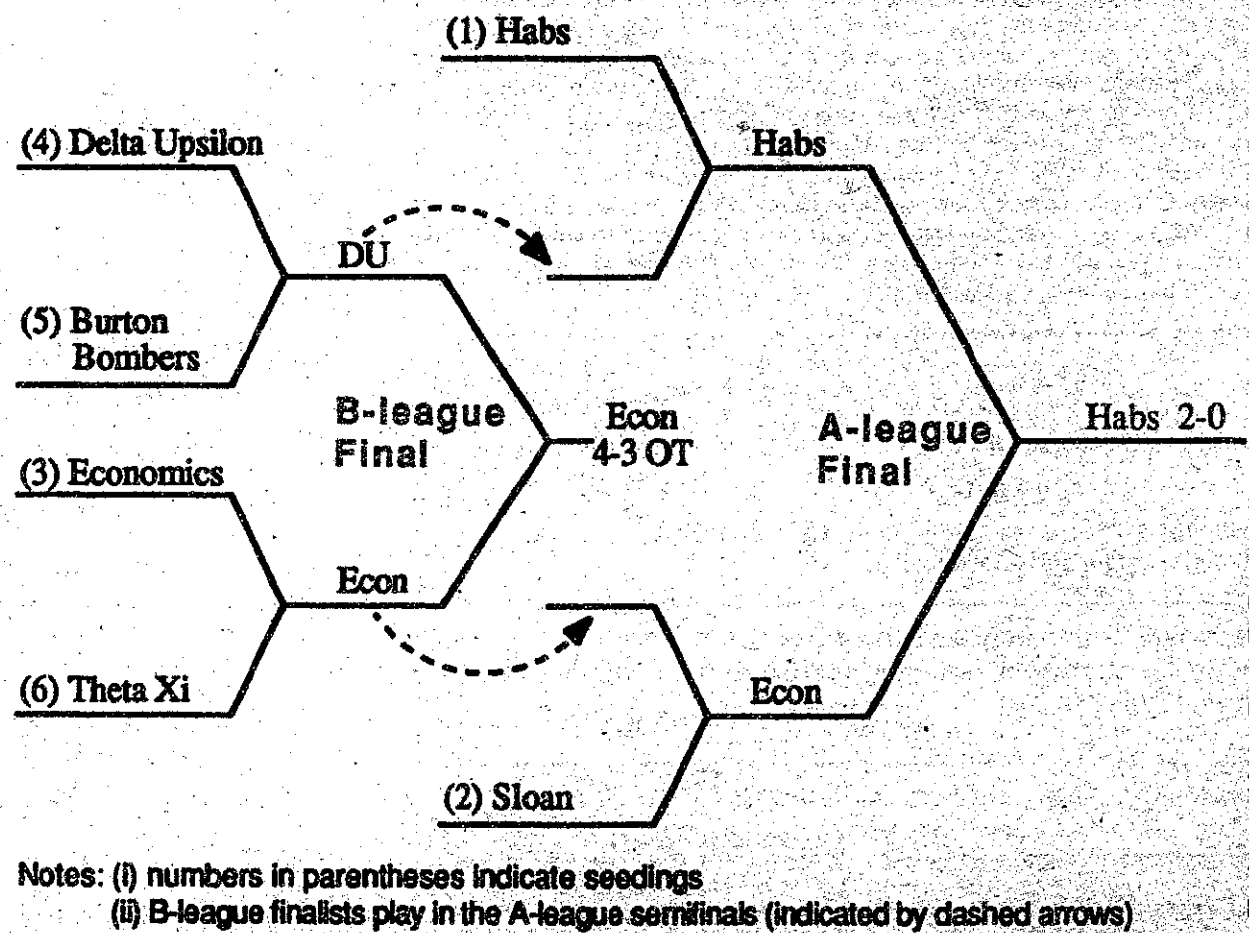
In the freshman race, MIT came in second, in 7:54, behind Connecticut (7:44), and ahead of URI (8:01) and Albany (9:11).

MIT's second and third freshman boats raced Connecticut College's second freshman boat. With 700 meters to go, Connecticut was ahead, followed by the second and third MIT boats, in that order.

But then the two-man in the MIT second freshman boat broke his oarlock, rendering him useless for the final third of the race. Due to this mishap, the third boat came from behind to beat the second boat, while Connecticut rowed to victory. According to Holland, it looked like Connecticut would have won the race even if the MIT second boat had had all eight oarsmen rowing.

(Stephen Celuzza '90 is a member of the men's lightweight crew team.)

## Intramural Hockey A-league and B-league Playoffs



Tech graphic by Peter E. Durn

## Sailing team takes Owen Trophy

By Drew Freides

During the first weekend of spring break, the MIT varsity sailing team continued its streak of solid performances by winning the Owen Trophy on the Charles River at the Harvard Sailing Pavilion. The MIT team totally dominated the 13-school regatta from start to finish, winning by 29 points over the second place team, the Coast Guard Academy.

Dale Hinman '92 and Rukiye Devres '93 sailed impressively in A Division with the aid of Warren Wu '90 when it got windy, winning their division by two points with a last race victory.

In B Division, Drew Freides '90 sailed with Rema Woo '93 and Mike Leary '91 on Saturday, and Miki Morizono '93 and Mike again on Sunday. By sailing consistently and avoiding catastrophe, Drew, Rema, and Miki were able to sail away with B Division, winning by 15 points.

This was the first intersectional regatta — involving schools from other districts, such as Navy and

Princeton — that the team has won in recent years.

MIT was the site for what is probably the biggest regatta of the spring aside from the National Championships during the second weekend of spring break. The event was the Boston Dinghy Cup, one of the oldest college regattas. Just about every top 20-ranked school in the country sailed in the regatta, as well as a team from Moscow State University.

MIT welcomed the 19 visiting teams by getting off to a strong start, and spending most of Saturday in the lead. The team then faced a streak of bad luck, positioning themselves on the wrong side of some major windshifts.

They soon found themselves in sixth place at the end of Saturday's racing, with Navy coming on strong to take the lead.

After Saturday's racing, the team got together and regrouped with the coaching of Skip Whyte, and Sunday morning they came out with a vengeance. Slowly, they began to make up the lost ground and at lunchtime found themselves in fourth place, trailing only Navy, University of California, Irvine, and Brown.

In the afternoon, the team moved into a solid third, and finished just three points out of second. MIT's strong performances served as a notice that the team is becoming a force, and should rocket up in the national rankings.

# ADP

**If you want to play the numbers game, then come to number one.**

The Brokerage Information Services Group of ADP. Take a look at our numbers. Last year, we processed approximately 25% of all Wall Street trades. We support approximately 55,000 stock quote terminals for the brokerage and financial community. And now, we're in better shape than ever to meet the 90's head on.

We have many highly competitive new and upgraded front and back office products, along with the capability to effectively handle significant volume increases. There's no limit on how much more we'll grow or on how much you can grow with us. Be part of our great tradition. Learn to perform critical and valuable functions when you enter our Data Processing Internship Training Program.

## Data Processing Internship Program

As a qualified candidate, you'll enroll in a seven month training program that covers such technically diverse areas as Programming, Data Communications, Operations, Technical Support and Client Services. You'll understand how we provide total front office/back office integration, and realize why many of the country's top investment firms can't function without us.

Upon completion of seven months of training, you will be placed in the area having the greatest need for your skills. It's a chance for anyone interested in the technical side of the brokerage industry to gain valuable skills and establish a rewarding career all at once.

To qualify for our program, we prefer a Bachelor's degree with a GPA of 3.0 or better and a proven interest in Computer Programming. Students graduating with majors other than Computer Science will be considered if they fulfill the above requirements.

For immediate consideration, please send your resume to: **Program Coordinator, Human Resources Department, Automatic Data Processing, Inc., BISG, Two Journal Square Plaza, Jersey City, NJ 07306.** An equal opportunity employer.

Mmmm...  
Matza Ball  
Soup!!!



## PASSOVER IS COMING

**FIRST SEDER -- MONDAY, APRIL 9**

Walker Hall Blue Room, 7:30 p.m. Led by Rabbi Dan Shevitz  
Seder reservations due by Thurs, Apr 5. Contact the  
Kosher Kitchen, Walker Rm 50-007, #253-2987.

**SECOND SEDER -- TUESDAY, APRIL 10**

Student-led seders on campus & Home hospitality available.  
Contact MIT Hillel for information, #253-2982

**PASSOVER MEALS -- APRIL 10-17**

Kosher for Passover lunches and dinners are available at the  
Kosher Kitchen, Walker 50-007. Most meals must be reserved  
& prepaid. Contact the K.K. for information, #253-2987. The  
K.K. is under the supervision of the Va'ad Harabonim of Mass.

Visit the Passover Booth in Lobby 10 on April 2-4 to  
reserve seder & meals, and to sell chametz.