



Kristen Domingo '90 (#10) passes the ball to Cecilia Linnell '92 (#22) in Saturday's 2-0 loss to Clark.

William Chu/The Tech

Plan gives first-year grads priority

By Prabhat Mehta

A new plan which will eventually guarantee places in Institute housing to half of all incoming graduate students will likely take effect this January with the opening of a new graduate dormitory on 143 Albany Street, according to information provided by the Office of Housing and Food Service.

The goal of the new housing policy is to maximize the number of first-year graduate students who are able to live on campus, OHFS Director Lawrence E. Maguire said in a press release.

"We are proposing this plan because of the increasing difficulty incoming students face in finding appropriate housing," Maguire said. "Many grad students are new to MIT and to the area and they face a heavy investment of personal time, not to mention money, in seeking housing," he noted.

Under the new plan, two separate lotteries — one for new graduate students and another one for returning graduate students — will take place every year, and each group will get half

the total number of places available. Students chosen in the first-year lottery will be offered one-year leases, while those in the continuing students lottery will get renewable contracts. Those who get first-year housing will have the option to reenter as continuing students for subsequent years.

Current graduate students living in MIT housing will be unaffected by this plan, which will be



Sarath Krishnaswamy/The Tech
Housing Director Lawrence E. Maguire

implemented over the next several years. Maguire said that by the end of three years, about 50 percent of the incoming graduate students will be in MIT houses.

MIT will rent out the nearly 200 beds in the new Albany Street dormitory under the guidelines of the new policy. Occupation of that dormitory may begin as early as January 1990. The policy will be used for new students in all other dormitories beginning in September of the same year.

Those who enter the Albany Street dormitory as "new" students (Please turn to page 2)

Wellesley exchange still thrives in third decade

Feature

By William Singhose

As the Wellesley-MIT Exchange Program enters its third decade, it continues to give students academic and social variety.

Although the number of students participating in the exchange is down from peak years, the program still receives high marks from students and administrators.

Exact figures are not available on the number of students cross-registering between Wellesley and MIT this term, but preliminary lists show that approximately 50 MIT students will travel Route 16 to the Wellesley campus, while about 120 Wellesley students will take courses at MIT. Another 50 students have registered for Wellesley courses taught on the MIT campus, according to MIT's Exchange Office.

A variety of reasons for cross registration

MIT students give a variety of reasons for their decision to cross register. Some male students ad-

mit that they register at Wellesley to meet women, but they seem to be in the minority. Many just wanted to get away from Cambridge for a while or take an interesting class not offered at MIT.

In an informal survey of students in the exchange program, most MIT students said they viewed Wellesley as a refreshing change from their workload at the Institute. Classes at Wellesley are generally smaller than those at MIT, giving students a better chance to participate.

"It's a pretty friendly environment," says Greg Richardson, an MIT junior studying Chinese at Wellesley, "and you can talk directly with the professor."

Small classes are not the only advantage to taking courses at Wellesley.

Paul Tempest '92, who is taking an English class, says he enjoys his Wellesley course because the class discussion brings out the feminist viewpoint on the reading. While Tempest sees this as an academic advantage, he adds: "It's kind of scary. If you say one

(Please turn to page 2)

Bridge work well ahead of schedule

By Cliff Schmidt

The construction on the Harvard Bridge may be completed much sooner than its original deadline of November 1990. Modern Continental, the contractor for the project, predicts that work on the bridge may be completed by the end of this year.

Last year's mild winter was the main reason for the unexpected rapid pace of construction on the bridge, said Scott Pickard of the Massachusetts Department of Public Works. A fierce winter can slow down the process enormously, making concrete laying and paving practically impossible, he noted.

According to Pickard, the switch to construction of the downstream side of the bridge, which had originally been expected to occur around Labor Day, took place on July 5. Pickard



Wey Lead/The Tech

With the completion of the new half of the bridge, the opposite side has been demolished.

now predicts that the project will be completed in the spring or early summer of 1990.

MDPW awarded the contract to the Modern Continental construction company in June 1988, and construction began within a month.

Pickard commended Modern Continental for its rapid pro-

gress, and thanked the public for putting up with the inconvenience of two-lane traffic.

Modern Continental predicts an even earlier reopening of all four lanes on Harvard Bridge. David Reder, project manager for Modern Continental, claimed

(Please turn to page 2)

Tech Square faces space problems

By Sujata Madan

Technology Square — the nerve center of artificial intelligence and computer science activities in Cambridge — is crowding up, though the lack of space hasn't yet affected the activities of the Laboratory for Computer Science and the Artificial Intelligence Laboratory.

"We're okay — crowded but okay," says LCS Associate Director Albert Vezza. "Recently MIT acquired another floor in the building, which has decreased the crowding. But over the next few years, with research increasing — we will feel the pinch again."

Laurel A. Simmons, AI Lab facilities manager, adds, "We're crowded but it is all right. There is no crisis of space. We're not doing research in the hallways!"

Tech Square was originally owned by MIT. In 1962, because of increasing community pressure against MIT's expansion policies, MIT sold the building but rented most parts of it. Today, MIT rents the entire building (except the cafeteria which belongs to Polaroid) from Prudential Insurance.

Apparently, the condition of Tech Square is far from satisfactory. "The building has a number of problems. It is old, the heating and ventilating systems give [us] trouble. The air-conditioning unit installed here was an experimental design which does not work," Vezza said.

He added: "The labs ought to move out of this building. Next year there will be problems —

just like one year ago, when we spent a lot of money trying to do something with the interior space. We could use the basement more effectively, but that would be very, very expensive because the basement, as it stands today, is not suitable for habitation. If we had a building on campus, we would be much better off."

There is a plan to construct a computer science complex where Building 20 and the garage stand today, according to Simmons.

When asked about what was being done by MIT, Vezza said, "I've heard a lot of plans but none of them are on the floors. It has to be the inhabitants of the building who decide what to do. For as it stands today, space is a more important resource than money."

Campus Police arrest 4 after shooting incident

By Prabhat Mehta

MIT Campus Police arrested four men early Saturday morning after a shooting incident in the campus parking lot behind Kresge Auditorium.

Witnesses said that a Boston man, 18-year-old Dana Elam, pulled a revolver on Laroy Harding of Cambridge, and that when Harding tried to push the gun away from his face, one shot was discharged. No one was injured, and no MIT students were involved.

The incident occurred after Elam and Harding, who were part of a group of about six to eight people, were turned away from a dance being held at the Student Center. The Campus Police reported that none of the group's members had proper college identification and that they were asked to leave campus at approximately 12:15 am Saturday.

The shooting was apparently the result of a fight between Elam and Harding over a girl to whom Harding had spoken. Harding told police that after he talked to the girl, Elam, who was in his car, got out and pulled a gun from his waist.

After the shot was fired, Harding and a companion, Nathan Betts of Cambridge, fled. Elam and his brother Terrance, 21, pursued them. An MIT police officer went after the group, and the four were arrested after they were stopped by a group of policemen two blocks away, at the

corner of Massachusetts Avenue and Vassar Street. A .38 caliber revolver was found in the bushes nearby.

Elam has been charged with intent to murder, firing a gun, carrying an unlicensed gun, and trespassing on MIT grounds. He is being held on \$10,000 bail by Cambridge police. The other three people involved have been charged with trespassing. They were released after posting a \$20 cash bail.

The four were arraigned yesterday in Middlesex District Court; all four cases were continued until Nov. 2.

Organizers of dance not blamed

The sorority Delta Sigma Theta sponsored the Friday night dance. Although DST has members from MIT, it is not an MIT sorority. Its members are black women students who attend predominantly white colleges, and has no house on any particular campus.

Campus Police Chief Anne P. Glavin said that DST had run the dance properly and felt that the sorority was not to blame for the shooting. "The sorority had acted quite well," she said. Glavin noted that the event took place after the group was turned away from the party and that no alcohol was served. "It wasn't a question of lack of control," she added.

Glavin, however, felt that organizers (Please turn to page 2)



Henry Chung '90

The women's soccer team defeated Simmons 2-1 Thursday.

Bridge construction ahead of schedule

(Continued from page 1)

that most of the work will be completed by this December. If the entire job is not finished this year, the remaining jobs — such as landscaping and other miscellaneous tasks — will be completed no later than this spring, he said.

The determining factor is this year's winter, Reder said. "Once the temperature gets below 50 degrees, precautions have to be taken, which slows down the whole process," he explained. Reder said that Modern Continental is doing everything it can to avoid

the extra time and costs that would be necessary to work through a second winter.

Currently, there are almost 80 men on the job every work day, which is the maximum number of people that will ever work at one time, according to Reder. Depending on the type of work for a particular day, the number can shrink to as few as 20, Reder said. The construction crew works eight hours a day, five to six days a week.

In addition to the basic reconstruction of the road, a new,

gently sloping pedestrian ramp will connect the bridge with the esplanade below. The main purpose of this ramp will be to serve the handicapped by creating a much easier slope for a wheelchair to climb, but it is very likely that many student bicyclists will also find the new ramp helpful.

Wellesley exchange still thrives in third decade

(Continued from page 1)

wrong thing about feminism, they might maim you."

Some MIT students feel awkward during their first few weeks at Wellesley. Steve Derezinski '90 took Introduction to Religion last spring. "It was strange at first," says Derezinski, "but after a while they learned to ignore me."

A few students are taking classes in Wellesley's education program so that they can become certified teachers. One electrical engineering student is taking courses at Wellesley to complete a double major in English.

A broadening experience

Administrators at both MIT and Wellesley see the program as beneficial because it broadens the students' educational experience.

Mary Z. Enterline, the MIT coordinator of the exchange program, says, "They can see and participate in another type of education without going abroad [or transferring]."

The Wellesley coordinator, Dawn Monmouth, believes there are many advantages for Wellesley students who register at MIT. "It gives the experience of a large co-ed institution," she says, "... and it gives the advantages of Boston."

The variety of courses that MIT students take at Wellesley is as great as the reasons they give for cross registering, but there are a few topics that perennially attract students. Religion, foreign languages, art history, philosophy, and psychology top the list.

On the other hand, Wellesley students who register at MIT

usually take classes in architecture, cognitive science, management, and the humanities. MIT's architecture courses are popular because they can be used to satisfy requirements for an architecture degree at Wellesley.

Man fires shot outside Student Center party

(Continued from page 1)

nizers of such inter-collegiate events should look more carefully into how and where they advertise. "Obviously we're getting an element that we shouldn't [at these events]," she said, referring to Saturday's incident and a similar one in February 1987, in which a Roxbury man stabbed and killed a Northeastern University freshman at an Alpha Phi Alpha fraternity party in the Student Center.

Erratum

The article "Antico seeks student input" [Sept. 26] contained two errors regarding Undergraduate Association meetings. Manuel Rodriguez '89 was the last UA president to hold meetings in different living groups, not the first. And attendance at UA meetings last year never fell below quorum.

Plan favors new students

(Continued from page 1)

dents next term will have leases which extend to September 1991, in order to avoid cutting their leases to less than one year, said Julia J. Vail G, chair of the Housing and Community Affairs Committee of the Graduate Student Council.

GSC poll influences working group

The new plan was developed by a working group comprised of representatives from GSC, other graduate students, and several Housing Office officials.

One of the reasons for assembling this group — which first met in June — was to consider the implications of a GSC housing poll taken in February. The survey indicated that 82 percent of the over 1500 people (about a third of all graduate students) who responded favored giving new graduate students priority in on-campus housing; and 69.9 percent said that they would have preferred living on campus their first year, Vail said.

In a typical year, less than 25 percent of first-year students live on campus, according to the GSC's Robert D. Kiss G.

Vail explained that on-campus housing in the first-year is especially important to graduate students for two reasons: the inconvenience and expense of having to search for off-campus housing

over the summer; and the importance of being a part of the campus atmosphere throughout the adjustment phase of the first year.

With regard to the former, she emphasized the problems faced by those who live far away from the Boston area. "People coming from from another country... or [from] California have to take time out to find housing, and that's expensive," she said. "Being here for a year," she explained, "gives them a chance to look around... [to] find out where [and] who to live with."

The second reason stems from less tangible concerns. "Being a graduate student can be a very isolating existence," Vail said. A first year in on-campus housing, she asserted, allows people to develop contacts and sense of community.

Vail expressed confidence in the new plan, but acknowledged that its outcome is far from predictable. With a turnover in graduate dormitories averaging about 50 percent a year, Vail predicted that the new plan would not displace a large number of continuing graduate students reapplying for housing.

Still, she said that special concerns — such as those of married students with children — will not be ignored, and that any good suggestions will be considered.

JEWISH INTRODUCTIONS

We announce for you:



- An unpressured, student-designed service to introduce you to other Jewish graduate and undergraduate students in Boston.
- We feature a brief informal interview* and we will match students from all of the Boston area schools. Interviews will be conducted at your campus beginning late October and at regular intervals throughout the academic year. Matches will be made between November and May.
- You and your potential friend will each receive a confidential letter, so that you can arrange to meet each other at your mutual convenience. Whenever possible, participants will receive more than one match upon completion of a follow-up questionnaire. All inquiries and information will be held in strict confidence.
- There is a non-refundable eighteen dollar fee for students and a forty dollar fee for non-students. Payments are due at the time of the interview.
- Call 266-4275 between 9 a.m. and 2 p.m., Monday through Friday for interview appointments and information.

*Cancellations must be made 24 hours in advance.

A project of the Metropolitan Outreach Program of the B'nai B'rith Hillel Council of Greater Boston.
233 Bay State Road, Boston, MA 02215 • Beneficiary of Combined Jewish Philanthropies.

• Rochelle Steinberg, Director of Jewish Introductions.

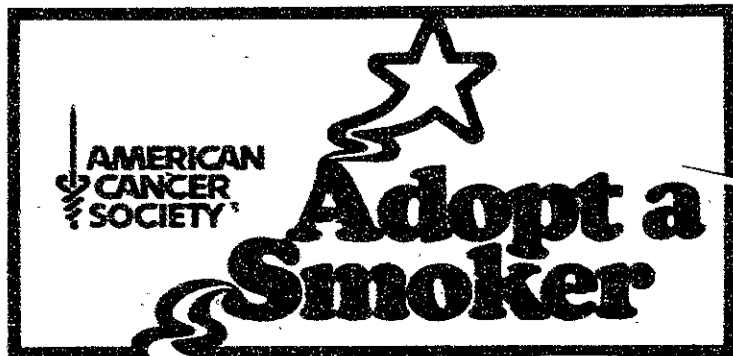
WANTED:

GRADUATE STUDENT COUNCIL REPRESENTATIVES

The Graduate Student Council needs members to serve as representatives from the following departments:

- Civil Engineering
- Mechanical Engineering
- Chemistry
- Electrical Engineering and Computer Science
- Biology
- Physics
- Chemical Engineering
- Urban Studies and Planning
- Ocean Engineering
- Sloan School of Management
- Aeronautics and Astronautics
- Political Science
- Linguistics and Philosophy
- Science, Technology, and Society

If you are interested in serving, or want more information about the Graduate Student Council, please stop by room 50-222 in Walker Memorial or give us a call at 253-2195. Our next full council meeting is at 5:30 in 50-222 on Tuesday October 17. Please stop by and join us for free pizza and beverages.



This space donated by The Tech

news roundup

from the associated press wire

World

Soviets ease restrictions on emigration to US

Now that the Soviet Union has eased its restrictions on emigration to the United States, many Soviets are angry at the United States. The reason: the 30,500 visa applications that US Embassy in Moscow handed out were not enough to meet demand, and many Soviets were turned away empty-handed. One man said, "The United States Embassy should be ashamed of the way they are treating us."

Consular officials said they hope to have another 70,000 applications by the end of the week, and another 300,000 later. The boom in emigration applications came with the new Soviet regulations that went into effect Sunday.

Israel seeks loans to settle Soviet emigrants

Israel says it wants \$400 million in US loan guarantees to help settle an expected increase of Jewish emigrés from the Soviet Union. Israel has said some of the new dwellings likely will be in the West Bank. But the White House says it will not back any plan to aid in resettlement of immigrants in the occupied lands.

Mubarak sees possible Middle East breakthrough

Egyptian President Hosni Mubarak said he and President Bush have pledged to work together to seize what Mubarak says is a "golden opportunity" to achieve peace in the Middle East. Mubarak met with Bush and Secretary of State James A. Baker yesterday. Baker voiced approval of Mubarak's plan for Israeli-Palestinian talks prior to elections in the Israeli-occupied territories.

Aides for Israeli Prime Minister Yitzhak Shamir say he is determined not to buckle under to US pressure to make changes in his Palestinian elections proposal. Israeli officials said President Bush phoned Shamir yesterday to offer to arrange a summit between the Israeli leader and Mubarak. A spokesman said Shamir would be glad to meet with Mubarak, but sees no reason to change his plan. Shamir wants to hold Palestinian elections before opening talks with the Palestinians.

East German exodus continues

Thirteen-hundred refugees at the West German Embassy in Prague — and up to 200 at the embassy in Warsaw — are the latest East Germans to seek safe passage to the West. Seven thousand of their fellow citizens were allowed to leave over the weekend after waiting weeks at the embassies. But East Germany is demanding that new refugees be expelled from the embassies immediately.

The state news agency is denouncing the would-be emigrants as anti-social and accuses them of trampling on moral values.

Local

Search for escaped sex crime inmates widens

Officials have spread a search for three inmates who escaped from a treatment center for sexually dangerous persons. The three disappeared Sunday night from the Bridgewater Correctional Institution. The Department of Corrections identifies them as 23-year-old Christopher Rambert of Boston, 27-year-old John McCabe of Somerville, and 28-year-old James LeBlanc of Natick. A department spokesman said all three were convicted of sex crimes. She said guards and police made an exhaustive search of the Bridgewater area and are expanding it outside the town.

Tsongas calls for state education summit

The chairman of the state Board of Regents yesterday called for an education summit of business and education leaders. Paul Tsongas said the public schools need help through the state's fiscal crisis. Meanwhile, state college and university officials announced plans to declare a fiscal crisis. That is the first step toward layoffs. Tsongas said he had called leading businessmen about participating. He said the summit is to determine the importance business leaders place on higher education. The cuts are public high education's share of the five percent reduction ordered for all state agencies. The state must cope with an estimated \$340 million budget deficit.

Nation

DEA destroys captured cocaine

The Drug Enforcement Administration said its agents have begun destroying the 20 tons of cocaine seized in the world's biggest drug bust. Agents said they were surprised to find that large amounts of the drug found in last week's raid at a Los Angeles warehouse came from rival Colombian cartels. They said the rival gangs may have started working together to try to weather the Colombian government's crackdown.

Texas court voids school funding plan

The Texas Supreme Court has found "glaring disparities" and has declared the funding arrangement for the state's public schools unconstitutional. The Court said funding varies as much as \$17,000 per pupil per year from rich district to poor district.

Both sides rest in Bakker trial

Television preacher Jim Bakker told his fraud trial that he and his wife, Tammy, accepted more than \$3 million in bonuses while the PTL ministry's finances floundered. Both sides rested their cases after Bakker's testimony yesterday. Bakker testified that he raised more than \$425 million for his PTL ministry from 1984 to 1987. When Bakker was asked by his lawyer what he did with the money, he replied, "I put it to the work of Jesus Christ."

Court opens new session

The Supreme Court opened its new session yesterday by accepting a case involving the constitutionality of sobriety checkpoints. It also agreed to decide an Illinois case on whether public employers may be forced to put aside political partisanship when dealing with employees. And it refused an appeal from an evangelical Christian group asking that it not have to return more than \$5 million donated by a wealthy ex-member.

Drug said to fight colon cancer

The National Cancer Institute has made what it calls an important advance. Officials said a drug used to deworm farm animals combined with a common anti-cancer drug saves the lives of some colon-cancer patients. Doctors say they might be able to reduce the colon-cancer death rate by one-third.

Navy studies procedures used on USS Iowa

Pentagon sources say a Navy commander has flown to the Mediterranean to conduct a disciplinary inquiry aboard the USS Iowa. The inquiry will determine if the captain and others should be punished for alleged lax procedures uncovered during the investigation of the fatal gun-turret explosion aboard the ship. The Navy has blamed the explosion on one of the 47 sailors who died in the blast.

Stricter emission controls backed

A House panel has voted unanimously to extend California's strict auto emission controls to the entire nation. The vote breaks a deadlock between a California Democrat and a Michigan Democrat whose district includes several auto plants. The auto industry has opposed extending the California emission regulations.

Sports

Notre Dame tops football poll

All but three of the 60 voters in the Associated Press college football poll went with Notre Dame, which retained the number one position ahead of Miami. The Hurricanes earned the balance of the first-place ballots.

Colorado moved up from fifth to third — the Buffaloes' highest ranking since 1977. Nebraska, Michigan, Tennessee, Arkansas and Pitt complete the first eight, while West Virginia and Southern California shared the ninth spot.

Ryan to go for 300th win

Nolan Ryan will shoot for his 300th career victory with the Texas Rangers next season. So says the 42-year-old strikeout king, who needs 11 more wins to become the 20th 300-game winner in baseball history. Ryan — with 5076 strikeouts — credits the Rangers' treatment of his family with helping him decide to return for 1990. Beyond that, he is not sure.

Eight chosen in NHL waiver draft

NHL clubs picked eight veterans yesterday in the waiver draft, although veteran Marcel Dionne was not one of them. The teams passed on Dionne, who skated for the New York Rangers last season. Dionne has more than 700 career goals. Quebec — selecting first — chose winger Greg C. Adams off the Vancouver roster. Teams protected 18 skaters and a pair of goaltenders. The eight-man waiver draft was the shortest since 1982.

Compiled by Niraj S. Desai

Interested in weather?

The Tech is looking for someone to compile the weather for this page. If you are interested, one of our present meteorologists will train you. Please contact Michael Morgan at 225-8212 or call The Tech at 253-1541.



ATTENTION ALL GRADUATE STUDENTS

MIT is seeking the participation of graduate students in the following institute committees;

Comm. on Assessment of Biohazards
Athletic Board (a female student is needed)
Commencement Comm.
Community Service Fund Board
Comm. on Discipline
Medical Advisory Board
Prelaw Advisory Council
Committee on Safety

Serving on an institute committee offers an excellent opportunity for you to get involved in the administrative decision making process at MIT. If you want more information or are interested in serving on any of these committees, please pick up a description of the committee and application form at the Graduate Student Council office (50-222) during the hours of 1:30 to 5:00 pm., Mon - Fri. Interviews will be conducted on Wednesday, October 18 starting at 5:30. If you have any questions, please call the GSC office at 253-2195.

opinion

LETTERS TO THE EDITOR

Pro-Life literature mistakenly trivializes rape

Recently, the MIT Pro-Life group posted a bulletin board in the Infinite Corridor which included a flyer beginning, "Except for homicide, rape is the most serious violation of a person's body..." On the eve of Rape Awareness Week (October 2-6), we were glad to see another campus group making a positive response in publicizing the seriousness of rape.

We were less happy, however, when it became clear that Pro-Life was offering "helpful suggestions" that seemed to confuse the issue. To say, as Pro-Life does, that "few pregnancies result from rape" trivializes rape's trauma.

We realize that Pro-Life is trying to defend its anti-abortion stance by lessening the issue of pregnancies resulting from rape, but to follow its statement that the "victim's ego and sense of self are penetrated as well as her body" with the pat "pregnancies have rarely resulted from forcible rape" seems ludicrous. Is this "helpful suggestion" meant to relieve the rape victim's pain in some way? Is it meant as a comfort to her shattered "ego and sense of self"? — Oh, don't worry, it could be worse, at least you aren't pregnant?!

Finally, we must address the

truth of the statement "few pregnancies result from rape." True, men can also be raped or sexually assaulted (a fact not mentioned in Pro-Life's definition) and this does not lead to pregnancy. However, Pro-Life came to their conclusion based on data only from reported rapes. Police acknowledge that many rapes go unreported, making it difficult to prove assumptions based only on those rapes which are reported. Pro-Life includes several citations meant to prove their point, but amongst these is a reference to a "morning after pill" as a means to avoid pregnancy after rape. This "morning after pill" sounds

a great deal like the "abortion pill" (RU486) now on the market in France but which is illegal in the United States and has been violently denounced by Pro-Life itself.

Such Pro-Life policy contradictions are not the point of this letter. We simply want to reiterate that rape is a violent crime whose trauma cannot be lessened by glib statements on the likelihood of pregnancy as its result. We encourage the MIT community to take part in Rape Awareness Week.

Anne Conron '90
Erica Wickstrom '90
Howard Ro '90

Editorials, marked and printed in a distinctive format, are the official opinion of *The Tech*. They are written by *The Tech's* editorial board.

Columns and editorial cartoons are written by individuals and represent the opinion of the author, not necessarily that of the newspaper.

The Tech welcomes letters from its readers. All letters are subject to editing and are published solely at the editors' discretion. Authors must sign their letters and include their phone number, and MIT affiliation, if any, for verification, and should type letters double-spaced for ease of reading. Letters should be kept under 500 words. *The Tech* publishes letters anonymously only in rare circumstances, at the editors' discretion. Bring letters to *The Tech's* office on the fourth floor of the MIT Student Center or send them to: Letters to the Editor, *The Tech*, P.O. Box 29, MIT Branch, Cambridge MA 02139; or to Room W20-483 by interdepartmental mail.



The Tech

Volume 109, Number 40 Tuesday, October 3, 1989

Chairman Marie E. V. Coppola '90
Editor in Chief Niraj S. Desai '90
Business Manager Genevieve C. Sparagna '90
Managing Editor Peter E. Dunn G

News Editors Annabelle Boyd '90
Linda D'Angelo '90
Irene C. Kuo '90
Prabhat Mehta '91
Opinion Editor Michael Gojer '90
Sports Editor Shawn Mastrian '91
Arts Editor Debby Levinson '91
Photography Editors Lisette W. M. Lambregts '90
Kristine AuYeung '91
Contributing Editors Jonathan Richmond G
Michael Franklin '88
Ezra Peisach '89
Advertising Manager Lois Eaton '92

NEWS STAFF

Associate News Editors: Gaurav Rewari '91, Reuven M. Lerner '92; **Staff:** Neil J. Ross G, Anita Hsiung '90, Miguel Cantillo '91, Seth Gordon '91, Andrea Lamberti '91, Adnan Lawai '91, David Rothstein '91, Aileen Lee '92, Dawn Nolt '92, Amy J. Ravin '92, Joanna Stone '92, Paula Maute; **Meteorologists:** Robert X. Black G, Robert J. Conzemius G, Michael C. Morgan G.

SPORTS STAFF

Michael J. Garrison G, Harold A. Stern '87, Anh Thu Vo '89, Manish Bapna '91, Adam Braff '91, Emil Dabora '91, Kevin T. Hwang '91.

OPINION STAFF

Pawan Sinha G, Kai F. Chiang '92.

FEATURES STAFF

Christopher R. Doerr '89, Jeff Ford '90, W. Owen Harrod '90, Allan T. Duffin '91, Taro Ohkawa '91, Katherine M. Hamill '92.

ARTS STAFF

Associate Arts Editor: David Stern '91; **Staff:** Mark Roberts G, Julian West G, V. Michael Bove '83, Mark Roman '87, Manavendra K. Thakur '87, Michelle P. Perry '89, Rob Martello '90, Peter Parnassa '90, Paige Parsons '90, Alfred Armendariz '92.

PHOTOGRAPHY STAFF

Staff: Michael D. Grossberg G, Andy Silber G, Ken Church '90, Mike Niles '90, Mark D. Virtue '90, Sarath Krishnaswamy '91, Georgina A. Maldonado '91, Ognen J. Nastov '91, Ray Powell '91, Mauricio Roman '91, Marc Wisnudel '91, Lerothodi-Lapula Leeuw '92, Matthew Warren '93, Jeremy Yung '93, Jacqueline D. Glener; **Darkroom Manager:** Ken Church '90.

BUSINESS STAFF

Associate Advertising Manager: Mark E. Haseltine '92; **Delinquent Accounts Manager:** Russell Wilcox '91; **Staff:** Shanwei Chen '92, Heidi Goo '92, Ellen Hornbeck '92, Jadene Burgess '93.

PRODUCTION STAFF

Associate Night Editors: Bhavik R. Bakshi G, Daniel A. Sidney G; **Staff:** David E. Borison '91, Bianca D. Hernandez '91, Lawrence H. Kaye '91, David J. Chen '92, Peggy C. Hsieh '92, Lesley C. Johnson '92, Sheeyun Park '92, Jonathon Weiss '93.

PRODUCTION STAFF FOR THIS ISSUE

Night Editor: Peter E. Dunn G
Staff: Michael Franklin '88, Halvard K. Birkeland '89, Ezra Peisach '89, Lisette W. M. Lambregts '90, David Maltz '93.

The Tech (ISSN 0148-8607) is published on Tuesdays and Fridays during the academic year (except during MIT vacations), Wednesdays during January, and monthly during the summer for \$17.00 per year Third Class by *The Tech*, Room W20-483, 84 Massachusetts Avenue, Cambridge, MA 02139-0901. Third Class postage paid at Boston, MA. Non-Profit Org. Permit No. 59720. **POSTMASTER:** Please send all address changes to our mailing address: *The Tech*, PO Box 29, MIT Branch, Cambridge, MA 02139-0901. Telephone: (617) 253-1541. FAX: (617) 253-8225. Advertising, subscription, and typesetting rates available. Entire contents © 1989 *The Tech*. *The Tech* is a member of the Associated Press. Printed by Charles River Publishing, Inc.

Freer markets do help bring democratic reforms

This letter is in response to criticisms by Robert Stainton ["Columnist ignores desires of Third World citizenry," Sept. 29] and Steven J. Fromm and Patrick McDonald ["Free markets do not insure political freedom," Sept. 29] of my column ["Third World countries edging towards freer markets," Sept. 22].

Stainton expressed his fright at my presumed lack of concern for Third World citizens. In fact, my column was motivated entirely by the frustration and misery Third World citizens feel every day at the hands of politicians and bureaucrats who claim to rule in their name. The opinions expressed in my column were not just one Third World citizen's; instead, the likes of it are vented every day in crowded buses, smokey tea shops, miserable dwellings, and offices all over the Third World. Common folk are actually smarter than "disgruntled intellectuals" who claim to speak in the name of citizens but who have only managed to trap them with red tape and corruption. These common folk have now begun to openly express their frustration with the bureaucratic controls put in by politicians and justified by leftist intellectuals. Here are some real examples: hundreds of millions

of Chinese peasants have been clamoring for freer markets for many years now, tens of millions of Brazilians have voiced support for a novice presidential candidate who is running on a platform to hack down the bureaucratic system, and tens of thousands of East Germans are fleeing the choking economic system in their country.

As regarding benefits of freer markets to Third World citizens, Stainton has misread my column. The debt negotiations actually resulted in Mexico's winning concessions from its creditors, and not the other way around. Similarly, the over 400 million citizens of Africa are likely to win major concessions — perhaps a complete forgiveness of their loans — by implementing market-oriented policies in their countries. How about that for benefits to Third World citizens? Fear not, Mr. Stainton, I do care for Third World citizens. After all, I am one of them.

Fromm and McDonald somehow managed to construe my column as an apology for covert Central Intelligence Agency operations in the 1950s and 1970s. A second reading of my column would show that no such apology was intended. Regarding their assertion of the lack of connection

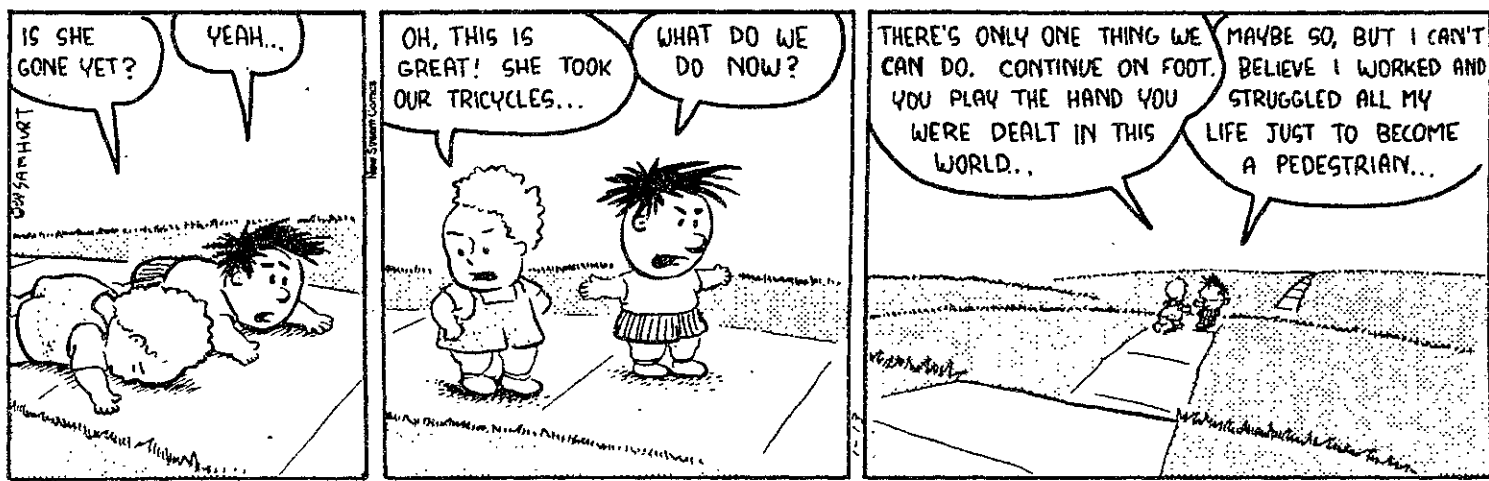
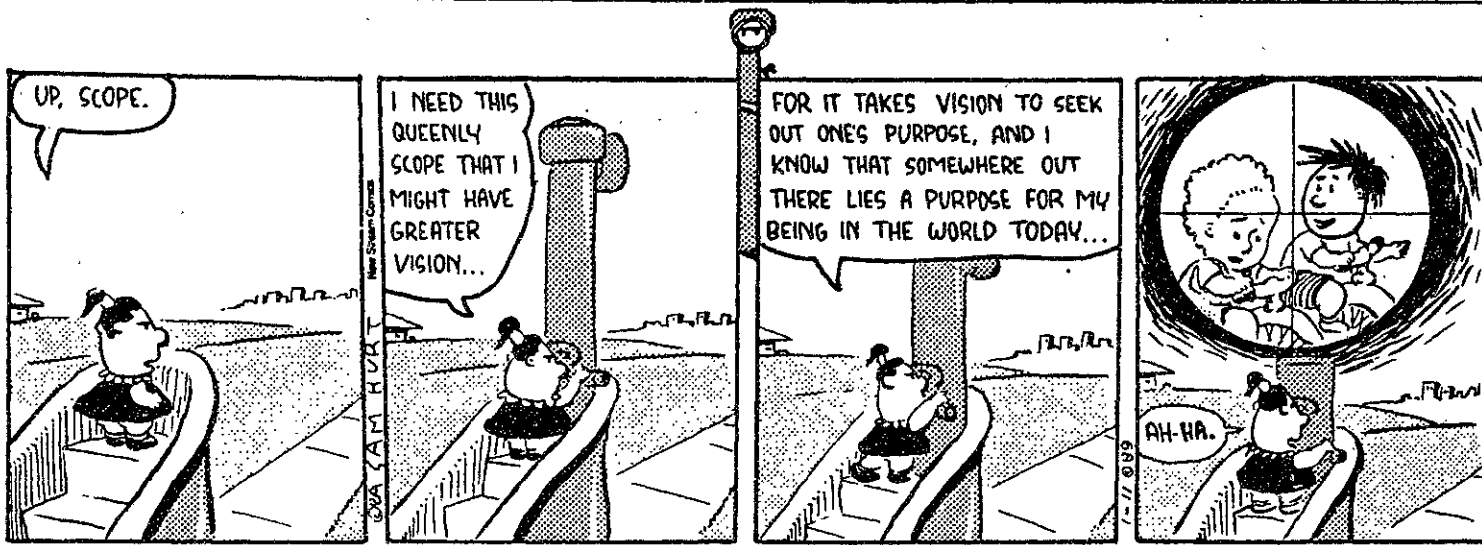
between free markets and political freedom, I would agree that the former does not necessarily guarantee the later. But recent events around the world show that free markets are as good a tool as any for furthering political freedom. That is so because economic participation of the masses in free enterprise spurs their desire for political freedom in those countries where such political freedom does not exist. Case in point: China, where economic liberalization also led to demands for democratic reforms. An interview with Shen Tong, a student organization of the Tiananmen rally, in the *Christian Science Monitor* [Sept. 29] documents such an intertwining of economic and political demands. The Soviet Union is going through similar circumstances and President Gorbachev seems committed not to repeat the Chinese leaders' mistakes. Similarly, the economic miracles of South Korea and Taiwan have whetted the citizens' appetite for political freedom which they are gradually beginning to win from the establishment. Free markets do not necessarily insure political freedom, but they certainly seem to be doing better in bringing about democratic reforms.

Pankaj Vaish G



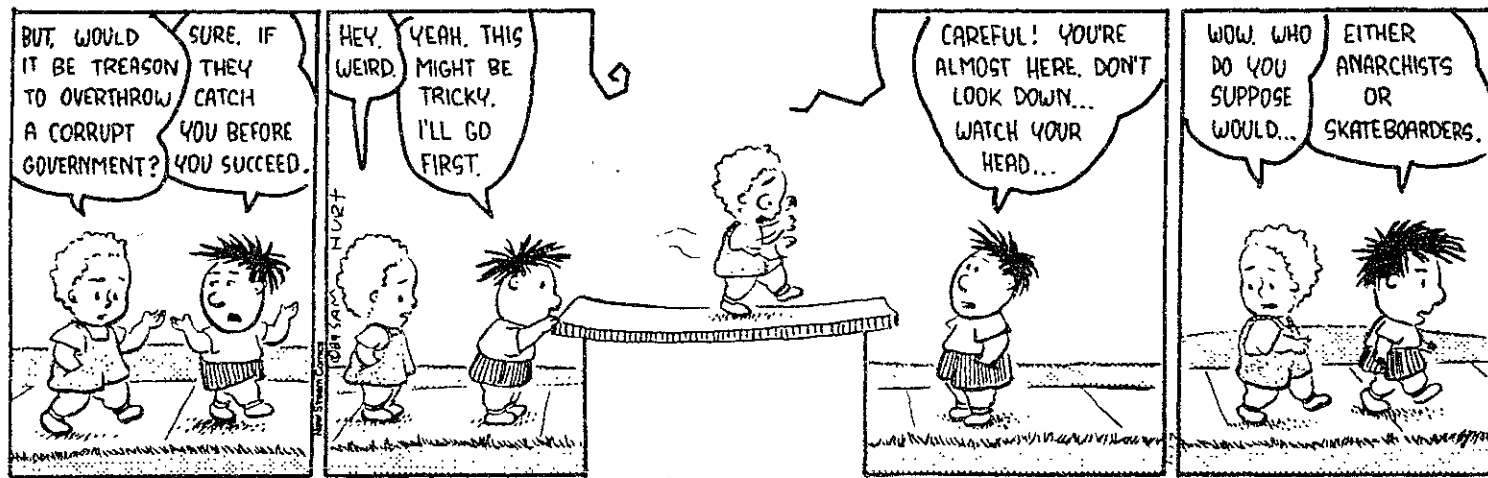
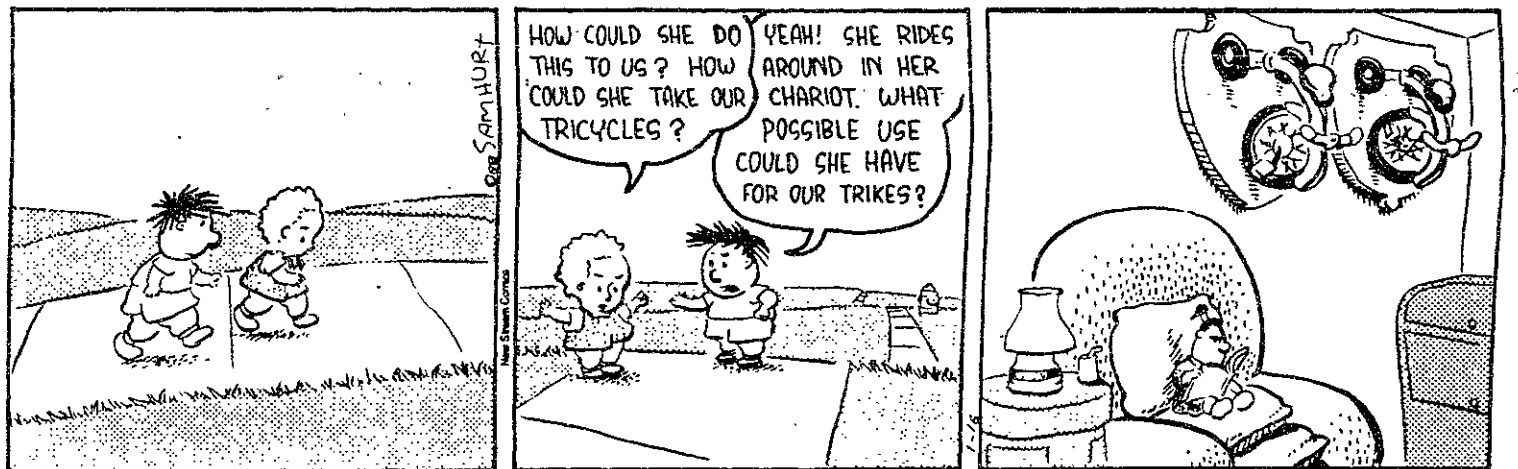
NEWS ITEM: HEART EXPERTS CALL "CHOLESTEROL SCARE" A SALES TACTIC.

comics

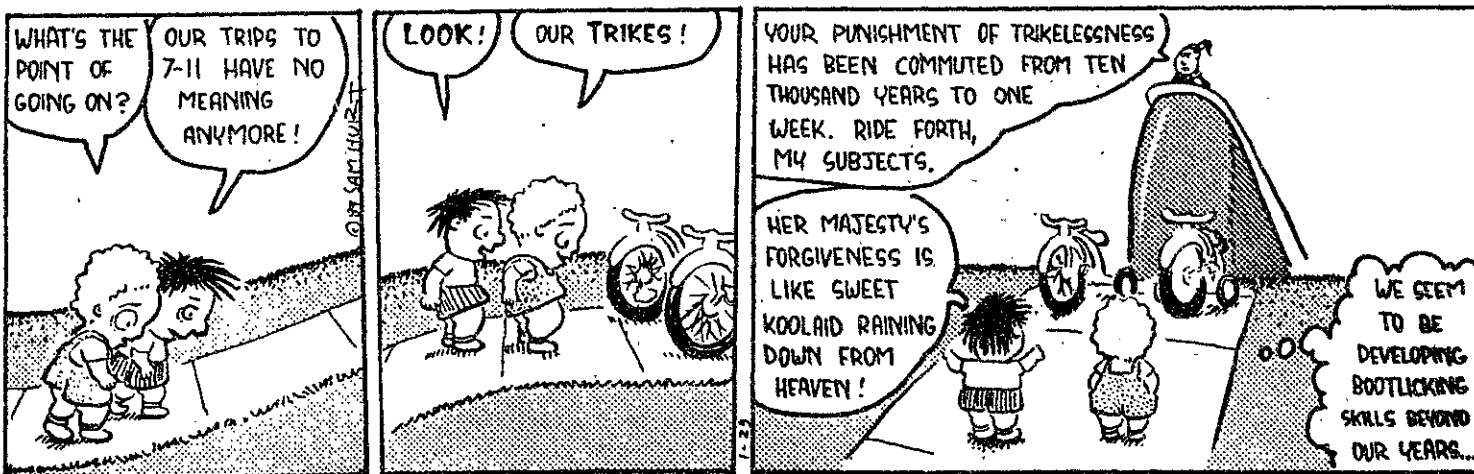


EYE

BEAM



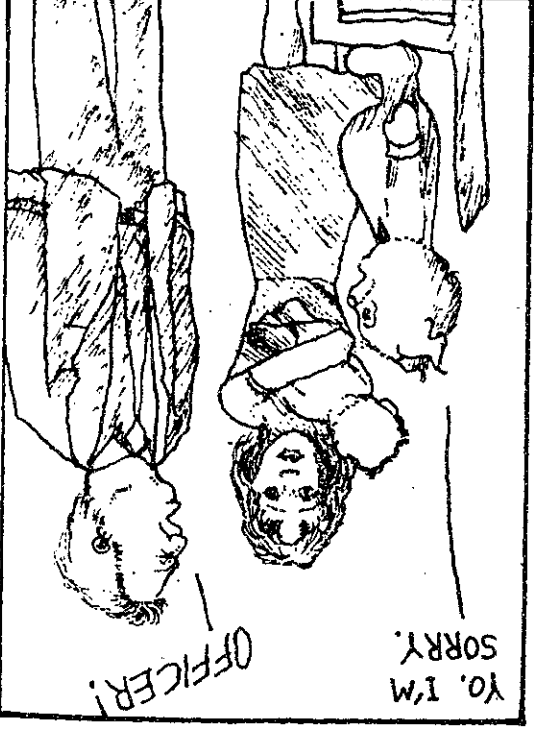
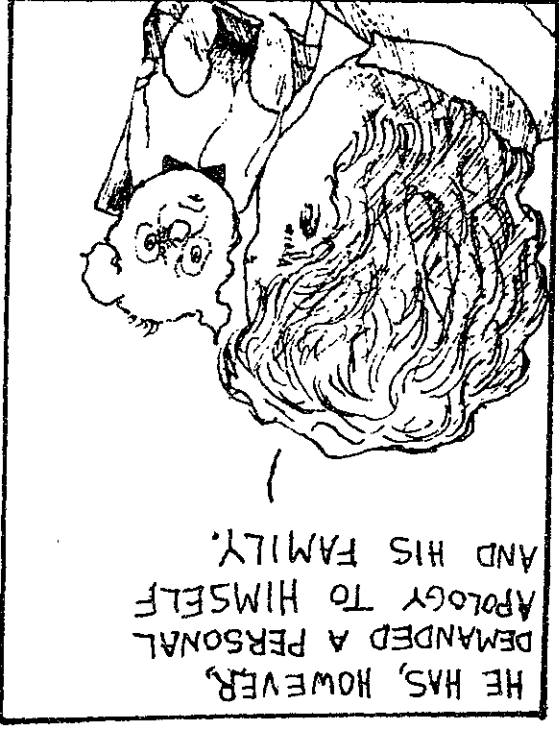
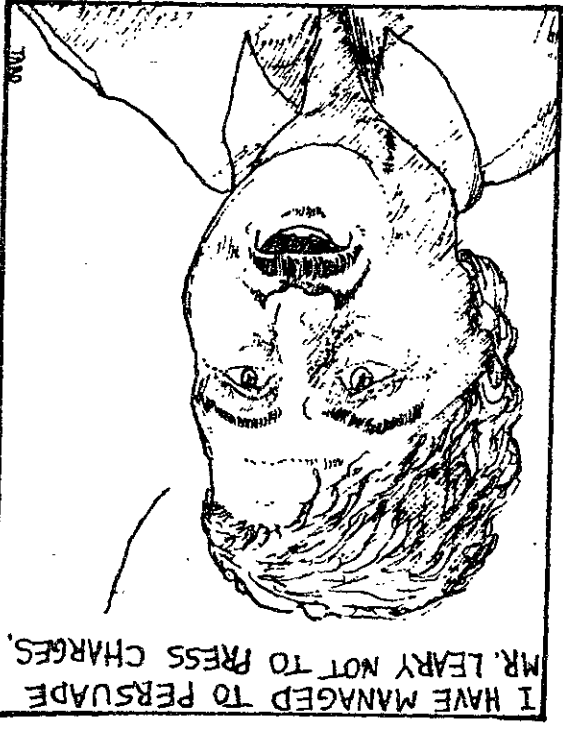
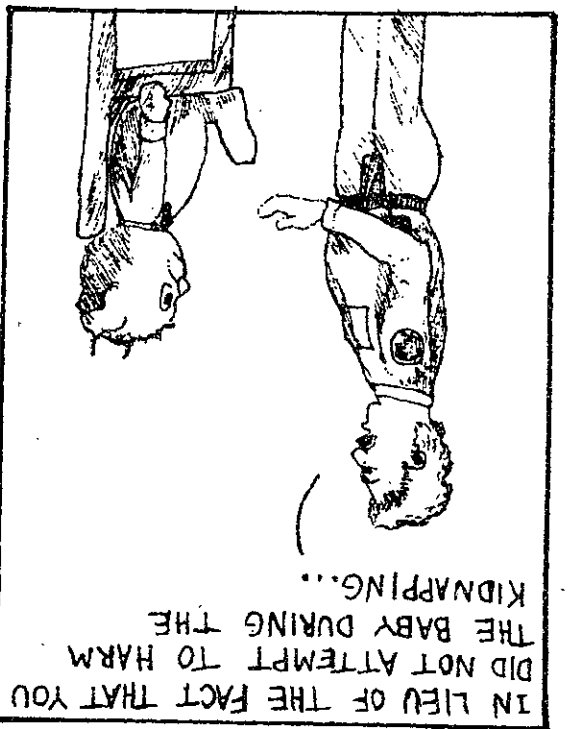
by Sam Hurt



COMICS

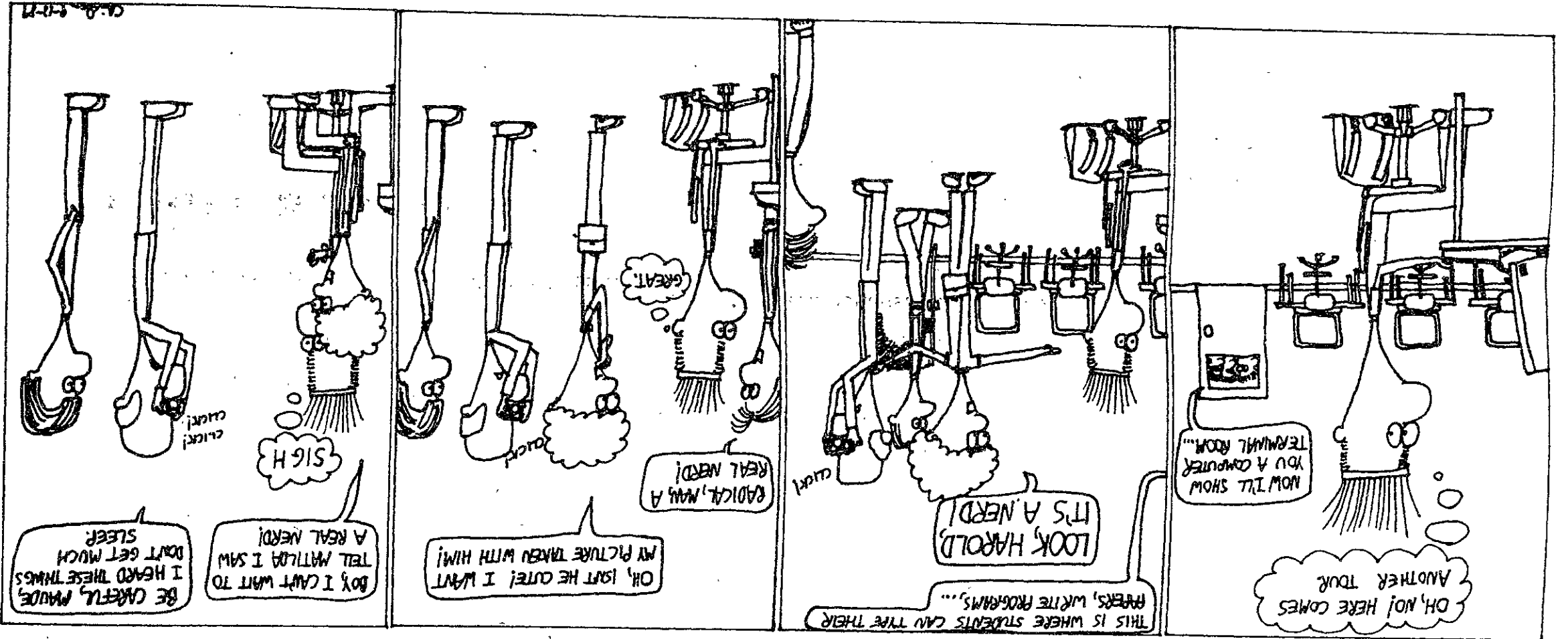
FUB

TARO OKAWA



Nick

By Chris Doerr

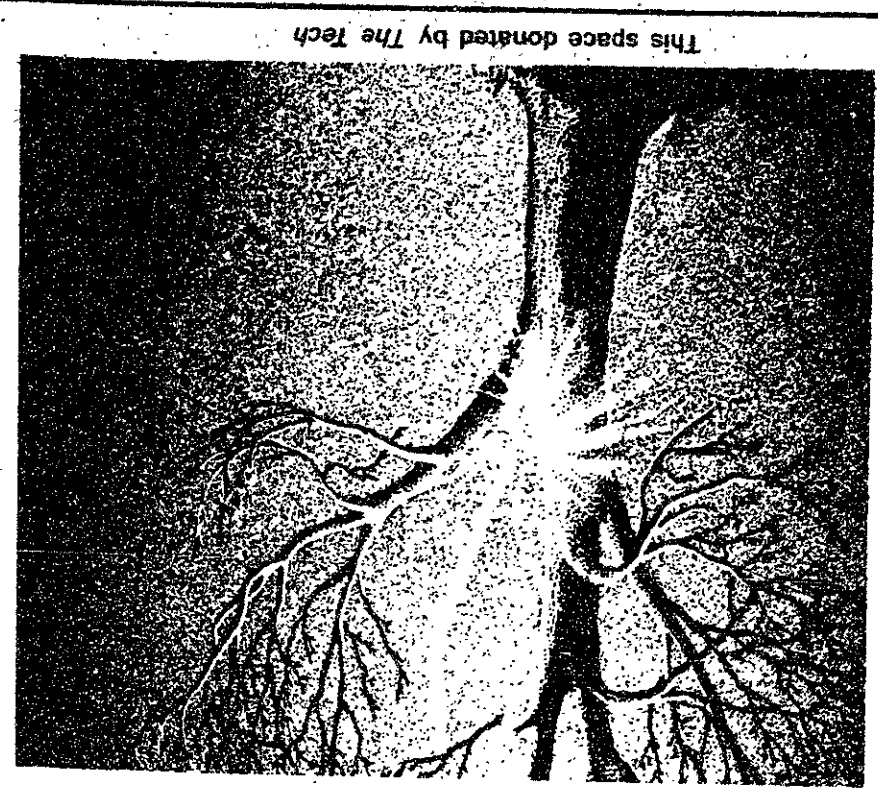


KAPLAN PUTS YOU IN SCORING POSITION.

Want a touchdown on the SAT? SAT GMAT GRE or other admissions exams? Then call the team with the best scoring record in the league — Stanley H. Kaplan.

KAPLAN
STANLEY H. KAPLAN EDUCATIONAL CENTER LTD.

Our Cambridge classes are enrolling now! Call: (617) 868-TEST ask about our speed-reading course



This space donated by The Tech

Disaster Awareness Week

Hurricane Hugo has caused more than \$1 billion in losses in Puerto Rico alone. Join the US Senate, the Association of Puerto Rican Students, and the American Red Cross in relieving some of the pain. Look for our booth in Lobby 7 and in other locations on campus. Your donation, large or small, really can make a difference. Don't forget. Join us this week in Lobby 7. For more information or donations call Alfredo at 225-9387 or Jose at 225-8336.

The CAMBRIDGE SYSTEMS CENTER of MCKINSEY & COMPANY, INC. cordially invites candidates for degrees in Computer Science and Electrical Engineering and those who have experience building complex computer systems to attend a presentation and discussion of SYSTEMS CONSULTING OPPORTUNITIES

Wednesday, October 11, 1989
7-9 pm
Room 4-153

Mckinsey & Company, Inc. is an international consulting firm which specializes in problem solving for a broad range of prestigious corporate and non-military government institutions. Working at the top management level, we help our clients improve their performance, both by resolving internal problems and by identifying and responding to external threats and opportunities.

Founded in 1926, Mckinsey & Company, Inc. now has 42 offices in 21 countries.

Mckinsey & Company, Inc. is an Equal Opportunity Employer

ARTS

Pat Metheny Group gives exuberant Boston performance

THE PAT METHENY GROUP

At the Orpheum Theatre.
Thursday, September 28.

By PETER PARNASSA

AT THE HALFWAY POINT OF A six-month world tour, the Pat Metheny Group returned to their hometown of Boston for a delightful concert on Thursday night. The crowd at the Orpheum was treated to a two and one-half hour performance which included old favorites such as "Phase Dance" as well as hits from Metheny's latest effort, *Letter from Home*.

In concert, the Metheny Group plays with a spontaneity which is impossible to capture on record. At the Orpheum show, the group loosened up their arrangements and even played an untitled song which they had recently written. These measures enabled the band to maintain their freshness and intensity after three months on the road.

While all the musicians were exceptional, the standout, of course, was guitarist-songwriter Pat Metheny. A legend in the jazz guitar community for 13 years, Metheny has always pushed himself for the benefit of his music. Although Metheny's technical skills are awesome, he understands that they must be used for, not as, music. This is particularly refreshing in an age when many guitarists play flashy scales simply to show off their abilities. In fact, on songs like "Last Train Home" and "Spring Ain't Here" (the latter he dedicated to Wes Montgomery and Stanley Turrentine), Metheny showed the power that simple melodic phrases can carry. On more aggressive numbers, such as "Have You Heard," Metheny played imaginatively, never repeating the same run twice.

The other band members, particularly keyboardist Lyle Mays, provided Metheny with excellent accompaniment. Mays has been a member of the Metheny Group since its inception in 1978 and plays a prominent role in many of the arrange-

ments. Metheny and Mays are undoubtedly one of the most effective pairings in music today and this was evidenced in concert by their beautiful duet on "Letter from Home."

Another strength of the Metheny-Mays pairing is their use of synthesizers in music. In recent years, there has been a debate in the music community as to the appropriateness of synthesizers in concert, irrespective of the good intentions of the musicians. Metheny's horn-like synth-guitar solo on a new untitled track was an example of this. It was stimulating to hear Metheny play in the style of one of his idols, Ornette Coleman, using Coleman's distinctive sound. There was nothing remotely inappropriate about this performance.

An impressive aspect of this concert was the song selection. The band was able to change back and forth easily between styles as diverse as Brazilian samba, Ornette Coleman-style free jazz, and jazz-rock. The samba numbers, which included "Beat 70" from the new album, were highlighted by the rhythm work of drummer Paul Wertico and percussionists Armando Marcal and Pedro Aznar. Aznar's role in the band seemed to be the most confusing aspect of the concert. On some numbers he provided wordless vocals which matched Metheny's melodic lines (similar to the style of pop-jazz star George Benson). This arrangement seemed like an overused gimmick on an acoustic guitar, but Aznar was almost inaudible in the mix.

Pat Metheny live in concert or at home on record is an experience worth having. On Thursday night, he was enjoying himself thoroughly and his exuberance could not help but rub off on his bandmates and the audience. At one point in the concert, when he was announcing that the band would play a new untitled song, an audience member screamed out "it's great." In his soft-spoken voice, Metheny answered, "No, it's nothing special. We just like playing it." That anecdote, without a doubt, is the Pat Metheny success story.

For years, Metheny has been working hard to play the music he loves. It's great to see

him finally achieve some success with a larger audience.



Jazz guitarist Pat Metheny

EMILE BUSTANI MIDDLE EAST SEMINAR

Fall 1989

Chair, Professor Philip S. Khoury

Tuesdays, 4:30-6:30pm

MIT E51-332

Open to the public

- OCT. 3 Ambassador **Richard Murphy**
Assistant Secretary of State for
Near Eastern Affairs in the
Reagan Administration
"The Search for Middle East
Peace: Prospects and Perspectives"
- OCT. 24 Dr. **Malise Ruthven**
British Broadcasting Corporation
Dartmouth College
"Islamic Movements in the
Contemporary Middle East: Their
Successes, Failures, Prospects"
- NOV. 7 Prof. **Nikki Keddie**
U.C.L.A.
"The Iranian Revolution and its
Implications Ten Years After"
- NOV. 28 Dr. **Sara Roy**
Fellow, Center for International
Studies, MIT
Author, *The Gaza Strip Survey*
"The Gaza Strip: Critical Effects of
the Israeli Occupation and the
Palestinian Uprising"

Sponsored by
The Center for International Studies at MIT



PROCTER & GAMBLE ESTA EN BUSCA DE TU TALENTO



Procter & Gamble - División de Puerto Rico/Latino América
con

- * Más de 40 productos de consumo en Latino América como Pampers, Ariel, Crest, Head & Shoulders, y Vicks
- * Índices de crecimiento muy altos en países como Puerto Rico, México, Colombia, Venezuela, Brasil, Perú, Chile, etc
- * Oportunidades de desarrollar una carrera profesional en "Marketing", Finanzas, Ventas, Sistemas, etc

Buscamos individuos con Talento, Empuje, Liderazgo, y continuo afán de superación para posiciones permanentes o internados de verano.

Que debes hacer?

Envía tu RESUME tan pronto como sea posible al "Placement Office" antes de la segunda semana de octubre.

Es muy importante que envíes tu RESUME pronto ya que estaremos visitando el área de Boston el 26 de octubre de 1989

EN PROCTER & GAMBLE QUEREMOS QUE SEAS PARTE DE NUESTRO EQUIPO

**The Tech Performing Arts Series announces. . .
AMAZING CONCERT SUBSCRIPTION OFFER!
SINFONOVA CHAMBER ORCHESTRA
\$48 SUBSCRIPTIONS FOR ONLY \$12!**

The Tech Performing Arts Series invites the MIT community to subscribe to the exciting new SinfoNova season at a 75% discount.

The season kicks off October 27 with Steven Lubin joining the orchestra for a performance of Beethoven's *Piano Concerto No. 3*. Lubin's recent recordings of the complete Beethoven piano concertos with the Academy of Ancient Music, conducted by Christopher Hogwood are spellbinding. The Penguin CD guide has rated his recordings first choice above several famous name pianists.

Subscribers are invited to meet the pianist and conductor at a post-concert reception (location to be announced).

January's program is highlighted by a performance of the Haydn *Cello Concerto* by Soviet cellist Souren Bagradouni, who made a big impact during the Soviet-US Exchange Festival held in Boston last year. His tone is fabulous, his interpretation subtle. In April another Soviet virtuoso — Vladimir Krainev — will be in town to play works by Shostakovich and Schnittke.

SinfoNova won two awards last season; we hope you'll subscribe for a new season which will be at least equally enthralling.

The MIT subscription price is only \$12 for a subscription normally priced at \$48. For orders of 10 subscriptions or more on

one form, the price is \$11 per subscription — ideal for living groups.

Please send your subscription form and check made payable to "SinfoNova" for \$12 per subscription. (\$11 each for 10 or more subscriptions) to Jonathan Richmond at MIT Room 1-090, indicating your MIT affiliation (undergraduate student, graduate student, faculty or staff).

Subscription forms are available at The Tech and Technology Community Association and the first floor information desk in the Student Center, in the Music Library, and from the Wiesner Building, Room E15-205.

classified advertising

Classified Advertising in The Tech: \$5.00 per insertion for each 35 words or less. Must be prepaid, with complete name, address, and phone number. The Tech, W20-483; or PO Box 29, MIT Branch, Cambridge, MA 02139.

SINGERS! New Barbershop Chorus (All-male). Organizational meeting/first rehearsal — Wed., 10/4, MIT, Rm. 9-150 (105 Mass. Ave.), 7:00. For info call 825-9864 or x8-7296, leave message. Any performing experience a plus.

Car for Sale

Chevy Malibu '76, automatic transmission, power steering, a/c. 125K miles, recently passed inspection. Selling for \$450. Call 547-2245 and leave message.

Is It True You Can Buy jeeps for \$44 through the US Government? Get the facts today! Call 1-312-742-1142. Ext. 5890.

Government Homes from \$1.00. U Repair. Also tax delinquent properties. Call 805-644-9533 Ext 160 for current repo list.

Sexually Transmitted Disease
Confidential testing and treatment of STD's and AIDS. Also general medical care. Private office. Robert Taylor, M.D., 1755 Beacon Street, Brookline, 232-1459.

Travel Sales — Sell Spring Break package tours to Jamaica and Margarita Island. Earn free travel and extra cash. Great sales experience and flexible hours. Call Sun Splash Tours 1-800-426-7710.

Legal Problems? I am an experienced attorney and a graduate of MIT who will work with you creatively to solve these problems, answer your legal questions and provide legal representation. My office is conveniently located in downtown Boston just minutes from MIT via MBTA. Call Attorney Esther Horwich, MIT '77 at 523-1150.

The Tech Subscription Rates: \$17 one year 3rd class mail (\$32 two years); \$44 one year 1st class mail (\$86 two years); \$49 one year foreign; \$8 one year MIT Mail (2 years \$15). The Tech, W20-483; or PO Box 29, MIT Branch, Cambridge, MA 02139. Prepayment required.

The Intel Influence

**MIT ENGINEERS...
GET THE
INSIDE STORY.**

Visit our Preinterview Reception and learn about the exciting career opportunities Intel has to offer.

Continued growth and challenges. Leading edge technology. Innovation and success. Top notch management. Open team environment. Excellent benefits. A chance to be a valid contributor.

Join us, there's no better way to get the Intel inside story.

**Preinterview Reception
Tuesday, October 10
5:00 - 7:00 PM
Room 4-153**

Interviews are being scheduled through the Career Placement Center for October 11, 12 and 13.

If you are unable to attend, please send your resume to: Intel College Recruiting, 5000 W. Chandler Blvd., Chandler, AZ 85226. An EEO employer, actively seeking m/f/v/h candidates.



**Make
Your First
Career Move
A Walk Across
Campus.**

The National Security Agency will be on campus October 19th interviewing seniors majoring in electrical engineering, computer science, and mathematics. Summer positions are also available for juniors. See your placement office for more details.



**National
Security
Agency**

The Opportunities of a Lifetime.

An equal opportunity employer. U.S. citizenship required for applicant and immediate family members.

ARTS

Break of Dawn a serious treatment of problems of Hispanics**BREAK OF DAWN**

Directed by Isaac Arstenstein.
Starring Oscar Chavez, Maria Rojo,
Tony Plana, and Pepe Serna.
At the Museum of Fine Arts,
October 5 at 8 pm.

By ELIF SÖZEN

BREAK OF DAWN is an independent film by writer-director Isaac Arstenstein about the conditions in which Hispanics in the United States live and the choices they are forced to make. Set in Los Angeles of 1920s and 1930s, the film is the true story of Pedro J. Gonzales, the first Spanish-language radio and recording star in the United States, who was sent to San Quentin prison in 1934 on trumped-up charges.

A former telegraph operator for Pancho Villa, Gonzales comes with his wife to the United States to escape the political turmoil and economic hardships of life in Mexico. He manages to get a job reading commercials in Spanish on radio station KMPC, after convincing the manager that broadcasting in Spanish (a feat never before attempted) would not be catastrophic. After a while, Gonzales starts his own radio program, "Los Madrogadores," which is broadcast from 4-6 am daily. Gonzales' ballads become widely popular since they reach the Hispanic working class before they go to work each day.

It is not long before the corrupt district attorney, in his bid for re-election, buys radio time on Gonzales show. The Spanish advertisements, read by the now-famous Gonzales, turn out to be instrumental in mobilizing the Hispanic vote and ensuring the re-election of the district attorney. However, as the depression sinks in, the Hispanic community becomes an easy scapegoat for the right wing. Over half a million Hispanic workers, whose presence had been crucial in building the Californian economy, are deported. Gonzales starts attending rallies and using his radio show to protest the treatment of Hispanics. Suddenly, he is viewed as a threat by the establishment, which decides to silence him. Finally, he is framed on a phony rape charge through the contrivance of the DA and the Los Angeles police chief.

Break of Dawn is in many ways a binational film. The cast is led by Mexico's

popular actor and singer Oscar Chavez (Pedro J. Gonzalez) and Maria Rojo (Pedro's wife Maria). The script is bilingual, and the dialogue for the Spanish actors flows in and out of both languages fluidly while Spanish words appear comically in the speeches of the English-speaking actors. (It is interesting to note that Oscar Chavez, whose presence brings a quiet dignity to the film, learned his English dialogue phonetically.) Director Arstenstein and producer Jude Eberhard take a substantial risk in dividing their movie between English and Spanish, but the foreign language lends a ring of authenticity to the story.

So does the historical footage deftly threaded throughout the movie. Considering that the film was made on a budget of less than a million dollars (extremely low by Hollywood standards) and that sections of San Diego had to be converted to Los Angeles of 1930s, requiring period pieces such as cars and costumes, the film is a remarkable achievement.

Oscar Chavez' acting is subtle and dignified. Rather than portraying Gonzalez simply as a heroic character in the traditional fashion, the script makes allowances for his fallacies, including his fling with an attractive tango singer. The audience forgives Gonzalez' mistakes since he is sincere

in his repentance and is an honest man. Oscar Chavez wisely chooses not to overplay his part. Chavez' beautiful, deep voice and the songs chosen, a couple of which were written by Gonzalez himself, are some of the strongest assets of the film.

Maria Rojo is convincing as the devoted wife. Tony Plana is excellent as Gene Rodriguez, the right-hand man of the district attorney, who does not hesitate to persecute his fellow Hispanics in his quest to become politically powerful. *Break of Dawn* is interesting in its calm and direct presentation of problems associated with racism. Despite its technical limitations, this film deserves to be seen.



A Los Angeles deportation raid in the 1930s is depicted in the new film *Break of Dawn*.

Get Organized And Save At The Coop!

The Coop is calculator headquarters! You'll find all kinds of great calculators for all kinds of uses in our extensive collection. Shown are 3 of our most popular models.

**SAVE \$15****A. Hewlett Packard HP 17B Business Calculator.**

It's the only calculator in its class that offers more than 250 built-in functions. Best of all, it comes with a FREE backpack. Pick up mail-back coupon from Hewlett Packard at The Coop. Reg. \$99.99 SALE \$84.99

**SAVE \$50****B. Sharp Wizard Electronic Organizer.**

It contains seven major functions in one, including phone/address, calendar, schedule, calculator, memo pad, calculation and world clock. Reg. \$299.99 SALE \$249.99

**SAVE \$20****C. Casio Business Organizer B.O.S.S.**

This versatile scheduling system features memo telephone, business card and optional PC link-up. Reg. \$239.99 SALE \$219.99

HARVARD SQUARE
CAMBRIDGE
M-SAT 9:20-5:45
THUR 'TIL 8:30

MIT COOP AT KENDALL
3 CAMBRIDGE CENTER
M-F 9:15-7 THUR 'TIL 8:30
SAT 9:15-5:45

COOP AT LONGWOOD
333 LONGWOOD AVE
M-F 9:15-7 THUR 'TIL 8:30
SAT 9:15-5:45

DOWNTOWN COOP
1 FEDERAL ST
M-F 9:15-5:30

TO ORDER BY PHONE, CALL:
1-800-792-5170
DURING REGULAR STORE HOURS

the Coop

ARTS

On The Town

Compiled by Peter Dunn



Eric Bogosian in *More Sex, Drugs, Rock & Roll* at the Loeb Drama Center, October 4 to 7.

Tuesday, Oct. 3

CONTEMPORARY MUSIC
Chris Smither and Fred Kollar perform at Johny D's, 17 Holland Street, Davis Square, Somerville, near the Davis Square T-stop on the red line. Telephone: 776-9667.

Navy Blue Nun, The Like, and Boy On Fire perform at T.T. the Bears, 10 Brookline Street, Cambridge, just north of MIT. Telephone: 492-0082.

Robi & John and Barb Schloff perform at 7:30 at Necco Place, One Necco Place, near South Station in downtown Boston. Admission: \$2.50. Telephone: 426-7744.

The Boogaloo Swamis perform at the Rat, 528 Commonwealth Avenue, Kenmore Square, Boston. Tel: 247-8309.

Billy Childs performs at 9 pm at Nightstage, 823 Main Street, Cambridge, just north of MIT. Telephone: 497-8200.

CLASSICAL MUSIC
Pianist Andrew Rangell performs *The Goldberg Variations* by J. S. Bach at 6 pm at the Gardner Museum, 280 The Fenway, Boston. Admission: \$5 general, \$2.50 seniors and students. Telephone: 566-1401.

FILM & VIDEO
The Harvard Film Archive continues its Tuesday series *Images of Women on Film* with *Flesh and the Devil* (1927, Clarence Brown), starring Greta Garbo and John Gilbert, at 5:30 & 8:00. Screenings at the Carpenter Center for the Visual Arts, Harvard University, 24 Quincy Street, Harvard Square, Cambridge. Admission: \$3 general, \$2 seniors and children. Telephone: 495-4700.

The Somerville Theatre presents *Carnival of Souls* (1962) at 5:45, 7:45, & 9:45. Also presented Wednesday, October 4. Located at 55 Davis Square, Somerville, just by the Davis Square T-stop on the red line. Admission: \$5 general, \$3 seniors and children. Telephone: 625-1081.

The Brattle Theatre continues its Tuesday series *Showcasing Independent Film-making* with *The Stupid Years* (1988, Alyson Mead) at 8:00 & 9:45. Located at 40 Brattle Street, Harvard Square, Cambridge. Admission: \$5 general, \$3 seniors and children. Telephone: 876-6837.

CRITIC'S CHOICE
The Wizard of Speed and Time, written, directed, and starring Mike Jittlov, continues daily at 12:30, 2:45, 5:15, 7:30, & 10:00 at the Nickelodeon Theatre, 34 Cummington, Boston, near Kenmore Square.

THEATER
CRITIC'S CHOICE
Fiddler on the Roof, the 25th anniversary production with acclaimed actor Topol, opens today at the Wang Center, 270 Tremont Street, Boston. Continues through October 8 with performances at 8 pm and matinees on Thursday, Saturday, and Sunday at 2 pm. Tickets: \$18 to \$33. Telephone: 482-9393.

Steel Magnolias, Robert Harling's off-Broadway play about the lives of six women in a small Louisiana town, opens today at the Wilbur Theatre, 246 Tremont Street, Boston. Continues through October 22 with performances Tuesday-Saturday at 8 pm with matinees on Thursday & Saturday at 2 pm and Sunday at 3 pm. Tickets: \$25 to \$37.50. Telephone: 426-9366.

Our Town, Thornton Wilder's beloved American classic about the lives in a small New England town, opens today at the Laurie Theater, Brandeis University, Waltham. Continues through October 7 with performances at 8 pm and a Saturday matinee at 2 pm. Tel: 736-3400.

Wednesday, Oct. 4

THEATER
CRITIC'S CHOICE
More Sex, Drugs, Rock & Roll, written and performed by Eric Bogosian, is presented at 7:00 at the Loeb Drama Center, 64 Brattle Street, Cambridge. Also presented October 5 and 6 at 8:00 and October 7 at 7:00 & 9:30. Tickets: \$14 to \$28. Telephone: 547-8300.

FILM & VIDEO
CRITIC'S CHOICE
The Brattle Theatre continues its Wednesday series *Film In The Cities* with Michelangelo Antonioni's *Blow Up* (1966) at 4:00 & 7:50 and Alfred Hitchcock's *The 39 Steps* (1935) at 6:10 & 9:55. Located at 40 Brattle Street, Harvard Square, Cambridge. Admission: \$5 general, \$3 seniors and children (good for the double feature). Telephone: 876-6837.

The Harvard Film Archive continues its Wednesday series of *East European Cinema* with *Barrier* (1966, Jerzy Skolimowski, Poland) at 5:30 & 8:00. Screenings at the Carpenter Center for the Visual Arts, Harvard University, 24 Quincy Street, Harvard Square, Cambridge. Admission: \$3 general, \$2 seniors and children. Telephone: 495-4700.

The Museum of Fine Arts presents an *American Independents* series with *Talking to Strangers* (1988, Rob Tregenza) at 6:30 and *Break of Dawn* (1988, Isaac Arntstein) at 8:15. Screenings in Remis Auditorium, MFA, 465 Huntington Avenue, Boston. Tickets: \$4 general, \$3.50 MFA members, seniors, and students, \$7/\$6 for the double feature. Telephone: 267-9300 ext. 306.

CLASSICAL MUSIC
The Boston Symphony Orchestra, Seiji Ozawa conducting, performs Mahler's *Symphony No. 9* in an open rehearsal at 7:30 at Symphony Hall, corner of Huntington and Massachusetts Avenues, Boston. Performances are October 5, 10, and 13 at 8 pm. Tickets: \$17, \$22, \$31, and \$45 general, \$9.50 open rehearsal. Telephone: 266-1492.

The Aequalls Ensemble performs works by Rand Steiger, Marjorie Merryman, Miriam Gideon, Karlheinz Stockhausen, and Chinary Ung at 8 pm in Jordan Hall, New England Conservatory, 30 Gainsborough Street at Huntington Avenue, Boston. Tickets: \$8 general, \$5 seniors and students. Telephone: 421-9455.

The Boston Classical Orchestra performs works by Mozart, C. P. E. Bach, Handel, and Mendelssohn at 8 pm in Faneuil Hall, Boston. Also presented on Friday, October 6. Tickets: \$12 and \$18 general, \$8 seniors and students. Tel: 426-2387.

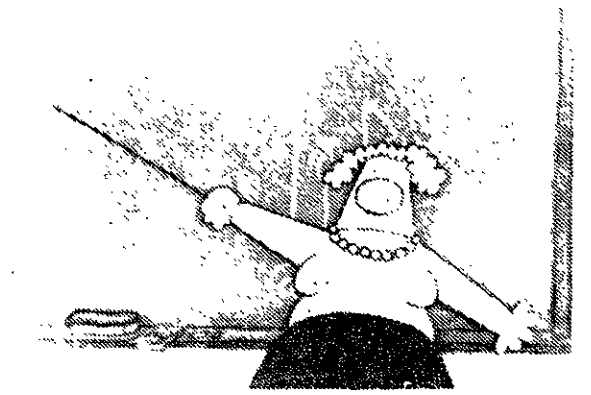
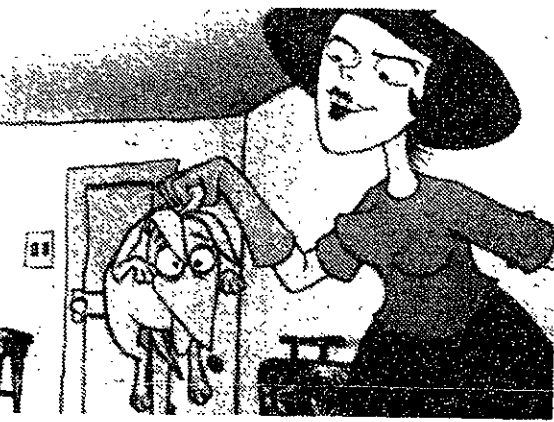
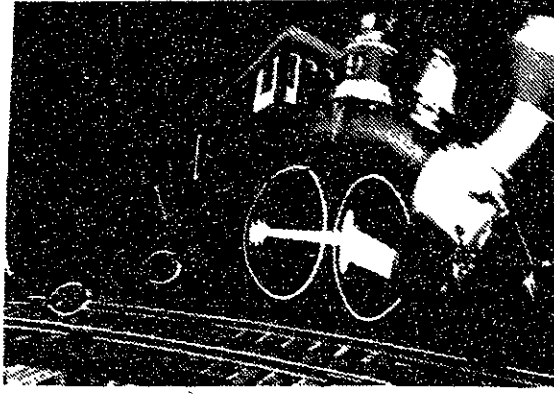
CONTEMPORARY MUSIC
Music by R.D.Q. Bach, as performed by Professor Peter Schikole and the Semi-Pro Musica Antiqua, is presented by the MIT Lecture Series Committee at 8 pm in Kresge Auditorium. Tickets: \$10 and \$12. Telephone: 258-8881.

The Allman Brothers perform at 7:30 at the Orpheum Theatre, Hamilton Place, Boston. Also presented October 5 and 6. Tickets: \$19. Telephone: 787-8000.

CRITIC'S CHOICE
Think Tree performs at 10 pm in an 18+ ages show at Axis, 13 Lansdowne Street, Boston, near Kenmore Square. Telephone: 262-2437.

The Incredible Casuals, Parade, The Many, and Zuzu's Petals perform at the Channel, 25 Necco Street, near South Station in downtown Boston. Admission: \$1.01. Telephone: 451-1905.

Shoe City Blues Band, The Popes, and Judge Mental perform at T.T. the Bears, 10 Brookline Street, Cambridge, just north of MIT. Telephone: 492-0082.



Festival of Animation '90 at the Somerville Theatre, beginning October 13.

Because of the Columbus Day Holiday, 'On The Town' will not appear on Tuesday, October 10. Instead, a longer version appears today and a shorter, weekend version will appear in the Friday, October 13 issue of *The Tech*. 'On The Town' returns to its regular Tuesday schedule on October 17.

CLASS OF 1991 RING DAYS

Thursday and Friday, October 5 & 6

10 am - 3 pm

Lobby 10

Ring adjustments and ordering

ECONOMIC RECOVERY

Give yourself and your wallet a rest. The Somerville Holiday Inn may surprise you with all it has to offer your out-of-town travelers:

- Lowest MIT Preferred Rate of \$80* (single or double)
- Complimentary scheduled shuttle service to/from MIT
- Walking distance to the T
- Two miles from MIT
- Free parking
- Indoor pool
- Holiday Inn Priority Club Points
- Number One Club offering recognition to frequent reservation makers
- Meeting and banquet facilities for up to 400

A full service hotel worth considering...

For further information and reservations, dial the Reservations Department directly at: 617-628-1000 or 617-628-1073.

Holiday Inn

Boston/Somerville
30 Washington Street
Somerville, Massachusetts 02143
*Rate subject to tax and availability.

JOSTENS
AMERICA'S COLLEGE RING

ARTS

The Dudes, Blue Chowder, Sara Laughs, and Carnal Carnival perform at the Rat, 528 Commonwealth Avenue, Kenmore Square, Boston. Telephone: 247-8309.

The Down Staircase, Ultramaroons, and Bachelors of Art perform at 7:30 at Necco Place, One Necco Place, near South Station in downtown Boston. Admission: \$3.50. Telephone: 426-7744.

JAZZ MUSIC

Orange Then Blue and Howard Johnson perform at Johnny D's, 17 Holland Street, Davis Square, Somerville, near the Davis Square T-stop on the red line. Telephone: 776-9667.

The Jazz Passengers perform at 9 pm & 11 pm at The Western Front, 343 Western Avenue, Cambridge. Tel: 492-7772.

Thursday, Oct. 5

CLASSICAL MUSIC

*** CRITIC'S CHOICE ***
No Dogs Allowed performs works by François Devienne, Peter Schickele, François Poulenc, and Swan Hennessy as part of the MIT *Thursday Noon Chapel Series* at 12:05 in the MIT Chapel. No admission charge. Telephone: 253-2906.

Pianist **Edith Picht-Axenfeld** performs works by Mozart, Beethoven, Webern, and Brahms at 8 pm in the Edward Pickman Concert Hall, Longy School of Music, Follen and Garden Streets, Cambridge. Admission: \$5. Tel: 876-0956.

THEATER

Jesus Christ, Superstar is presented by the SOMERfest on the Plaza Players at 8 pm at the Somerville Theatre, 55 Davis Square, Somerville, just by the Davis Square T-stop on the red line. Admission: \$10 general, \$25 reserved seating. Telephone: 625-1080.

Oh Moscow, Lindsay Cooper's "sequence of songs about the cold war," is presented at 8 pm at the Institute of Contemporary Art, 955 Boylston Street, Boston. Tickets: \$10 general, \$8 ICA members, seniors, and students. Tel: 266-5152.

FILM & VIDEO

The Brattle Theatre continues its Thursday film series *Early Godard* with *Masculin Feminin* (1966) at 4:00 & 7:55 and *La Chinoise* (1967) at 6:00 & 9:55. Located at 40 Brattle Street, Harvard Square, Cambridge. Admission: \$5 general, \$3 seniors and children (good for the double feature). Tel: 876-6837.

The Museum of Fine Arts continues its retrospective of *Anna Magnani films* with *Down With Wealth!* (1947, Gennaro Righelli, Italy) at 6 pm and *Teresa Venerdì* (1941, Vittorio De Sica, Italy) at 8 pm. Screenings in Remis Auditorium, MFA, 465 Huntington Avenue, Boston. Admission: \$4 general, \$3.50 MFA members, seniors, and students. Telephone: 267-9300.

CONTEMPORARY MUSIC

Joe Cocker performs at 8 pm at Lowell Memorial Auditorium, 50 East Merrimack Street, Lowell. Tickets: \$17.50 and \$19.50. Telephone: 1-800-382-8080.

*** CRITIC'S CHOICE ***
King Sunny Adé and Tabu Ley Rochereau perform at the Channel, 25 Necco Street, near South Station in downtown Boston. Admission: \$15 advance/\$16.50 at the door. Telephone: 451-1905.

The Fleshtones and Big Clock perform at 10 pm at Axis, 13 Lansdowne Street, Boston, near Kenmore Square. Telephone: 262-2437.

Killjoy, Legendary Lunch, and Menfolk perform at T.T. the Bears, 10 Brookline Street, Cambridge, just north of MIT. Telephone: 492-0082.

Mr. Big and Enuff-Z-Enuff perform at 8 pm at the Paradise, 967 Commonwealth Avenue, Boston. Tel: 254-2052.

Big Twist & the Mellow Fellows and The Honking Mallards perform at Johnny D's, 17 Holland Street, Davis Square, Somerville, near the Davis Square T-stop on the red line. Telephone: 776-9667.

Coffin Break, Drumming On Glass, Laughing Academy, and Sob Story perform at the Rat, 528 Commonwealth Avenue, Kenmore Square, Boston. Telephone: 247-8309.

Robin Lane & The Chartbusters and Judy's Tiny Head perform at 9 pm at Nightstage, 823 Main Street, Cambridge, just north of MIT. Telephone: 497-8200.

Singer/songwriter **Max Pokrivchak** performs a folk concert at 8 pm at the Cambridge Center for Adult Education, 56 Brattle Street, Cambridge. Tickets: \$3.50. Telephone: 547-6789.

Friday, Oct. 6

CLASSICAL MUSIC

*** CRITIC'S CHOICE ***
The Handel & Haydn Society, Christopher Hogwood conducting, performs Haydn's *The Creation* at 8 pm in Symphony Hall, corner of Huntington and Massachusetts Avenues, Boston. Also presented Sunday, October 8 at 3 pm. Tickets: \$14 to \$35. Telephone: 720-3434.

Pianist **Maria Clodes-Jaguaribe** performs at 8 pm in the Tsai Performance Center, Boston University, 685 Commonwealth Avenue, Boston. No admission charge. Telephone: 353-3345.

Violinist **Kirsi Peittali-Kehayias** and pianist **Alice Wilkinson** perform works by Grieg, J. S. Bach, Kokkonen, and Prokofiev as part of the *Long Faculty Artist Series* at 8 pm in the Edward Pickman Concert Hall, Longy School of Music, Follen and Garden Streets, Cambridge. No admission charge. Tel: 876-0956.

CONTEMPORARY MUSIC

Bim Skala Bim, Bop Harvey, Public Service, Gangster Fun, and Freedom of Expression perform at the Channel, 25 Necco Street, near South Station in downtown Boston. Admission: \$5.50 advance/\$6.50 at the door. Telephone: 451-1905.

Duke Robillard performs at Johnny D's, 17 Holland Street, Davis Square, Somerville, near the Davis Square T-stop on the red line. Telephone: 776-9667.

Phish performs in an 18+ ages show at 8 pm at the Paradise, 967 Commonwealth Avenue, Boston. Tel: 254-2052.

*** CRITIC'S CHOICE ***
Birdsongs of the Mesozoic and Roger Miller perform at 7:30 at Necco Place, One Necco Place, near South Station in downtown Boston. Admission: \$4.50/\$5.50. Tel: 426-7744.

Miracle Legion, Brahmin Caste, and Border Patrol perform at T.T. the Bears, 10 Brookline Street, Cambridge, just north of MIT. Telephone: 492-0082.

Common Ailments of Maturity, Vasco da Gamma, and Estranhos Hebitos perform at the Rat, 528 Commonwealth Avenue, Kenmore Square, Boston. Telephone: 247-8309.

Moloney, O'Connell, & Keane and Cherish the Ladies perform at 8 pm at the Somerville Theatre, 55 Davis Square, Somerville, just by the Davis Square T-stop on the red line. Tickets: \$13.50 and \$15.50 advance, \$2 more day of show. Telephone: 625-1081.

Son Seals and Nine Below Zero perform at 8 pm & 11 pm at Nightstage, 823 Main Street, Cambridge, just north of MIT. Telephone: 497-8200.

JAZZ MUSIC

*** CRITIC'S CHOICE ***
Michel Camino and His Trio perform at 8 pm in MIT's Kresge Auditorium. No admission charge. Tel: 253-9800 or 253-2906.

DANCE

Ralph Lemon Company and Bebe Miller & Company perform at 8 pm at Emerson Majestic Theatre, 217 Tremont Street, Boston. Also presented Saturday, October 7. Tickets: \$12 and \$15 general, 15% discount to students and seniors on the day of performance. Tel: 492-7578.

PERFORMANCE ART

Mountain of Moves, performed by Marjorie Morgan and Anna Korteweg, is presented at 8 pm at Mobius, 354 Congress Street, Boston. Also presented Saturday, October 7. Tickets: \$5 and \$7. Telephone: 542-7416.

EXHIBITS

Trouble In Paradise, New England artists addressing topical political and social issues through a variety of mediums, opens today at the List Visual Arts Center, MIT Wiesner Building E15. Continues through November 19 with gallery hours weekdays 12-6 and weekends 1-5. No admission charge. Tel: 253-4680.



King Sunny Ade and Tabu Ley Rochereau at the Channel on Thursday, Oct. 5.



Saturday, Oct. 7

CLASSICAL MUSIC

*** CRITIC'S CHOICE ***
Pro Arte Chamber Orchestra, Leon Botstein conducting, performs works by Bruch, Richard Wernick, Jay A. Gach, and Beethoven at 8 pm in Sanders Theater, Quincy and Kirkland Streets, Cambridge. Tickets: \$7, \$14, and \$20. Telephone: 661-7067.

The New England Bach Festival, The Orchestra of Saint Luke's, and The Blanche Moysse Chorale perform an all J. S. Bach program at 8 pm in Jordan Hall, New England Conservatory, 30 Gainsborough Street at Huntington Avenue, Boston. Tickets: \$12, \$15, and \$18. Telephone: 876-0956.

The Muir String Quartet performs at 8 pm in the Tsai Performance Center, Boston University, 685 Commonwealth Avenue, Boston. Tickets: \$5 general, \$3 seniors and students, free to BU community. Telephone: 353-3345.

FILM & VIDEO

The MIT Lecture Series Committee presents *The Man Who Came To Dinner* (William Keighley) at 7:30 in 10-250 and *New York Stories* (Woody Allen, Francis Ford Coppola, & Martin Scorsese) at 7:00 & 10:00 in 26-100. Admission: \$1.50. Telephone: 258-8881.

The Brattle Theatre presents *Jan Svankmajer: Alchemist of the Surreal*, a premiere package of short animated works, at 4 pm, 6 pm, 8 pm, & 10 pm. Also presented Saturday, October 7. Located at 40 Brattle Street, Harvard Square, Cambridge. Admission: \$5 general, \$3 seniors and children. Tel: 876-6837.

The Cambridge Center for Adult Education continues its series *Family Matters: Films of the 1980's* with *Beau Pire* (1981, Bertrand Blier, France) at 6:45 & 9:00. Located at 56 Brattle Street, Cambridge. Admission: \$3.50. Telephone: 547-6789.

The French Library in Boston presents Eric Rohmer's *Pauline at the Beach* at 8 pm. Also presented October 7 and 8. Located at 53 Marlborough Street, Boston. Admission: \$4. Tel: 266-4351.

The Harvard Film Archive continues its series *The Films of John Cassavetes* with *Mike and Nicky* (1976, Elaine May) at 7:00 and *Gloria* (1980, Cassavetes) at 9:15. Screenings at the Carpenter Center for the Visual Arts, Harvard University, 24 Quincy Street, Harvard Square, Cambridge. Admission: \$3 general, \$2 seniors and children, \$5/\$4 for the double feature. Telephone: 495-4700.

The Museum of Fine Arts continues its retrospective of *Anna Magnani films* with *Deputy Angelina* (1947, Luigi Zampa, Italy) at 6 pm and *The Bandit* (1946, Alberto Lattuada, Italy) at 8 pm. Screenings in Remis Auditorium, MFA, 465 Huntington Avenue, Boston. Admission: \$4 general, \$3.50 MFA members, seniors, and students. Tel: 267-9300.

The Boston Film/Video Foundation continues its film series *Subjective Objectivity: The Changing Nature of the Documentary* with *The Emperor's Naked Army Marches On* (Kazuo Hara) at 8 pm. Located at 1126 Boylston Street, Boston. Admission: \$5 general, \$4 BF/VF members, seniors, and students. Telephone: 536-1540.

Pictures

by Daniel I. Applebaum and Belinda

October 2 - October 21, 1989

Wiesner Gallery
M.I.T. Student Center
84 Massachusetts Avenue, Cambridge

The coffee is 75¢, but the information is priceless.

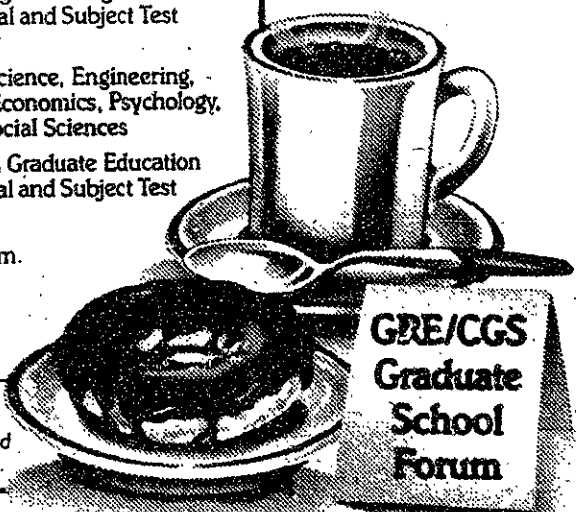
Come to the GRE Forum for the information you need to make a wise decision about graduate school. Meet deans and other key representatives from 88 top graduate schools. Find out about their programs, financial aid and the GRE tests. All for the \$3.00 admission and the price of a cup of coffee.

Workshop Schedule

- 8:30-10:00 Admissions and Financial Aid
- 10:15-11:15 Biological, Health and Physical Sciences • Education and Humanities
- 11:45-12:45 Issues Facing Returning Students • GRE General and Subject Test Preparation
- 1:15-2:15 Computer Science, Engineering, and Math • Economics, Psychology, and other Social Sciences
- 2:45-3:45 Minorities in Graduate Education • GRE General and Subject Test Preparation

Registration begins at 8:00 a.m. October 7
Boston
Hyatt Regency Cambridge
575 Memorial Drive

For more information call GRE Inquiry: 609-771-7670.
Sponsored by the GRE Board and the Council of Graduate Schools.



NETWORKS Seafood Restaurant
FIRST FLOOR STUDENT CENTER

Casual dining and fresh seafood at its best.

Nightly student specials make this a favorite spot.

Tuesday Night Student Night

Full meal deal-get a complete meal including beverage for \$9.95

Wednesday Night Pasta Night

Choice of pastas and sauces plus garlic bread and Italian ice for \$5.95

Friday Night T.G.I.F

Order any three appetizers, get the fourth free from 3pm 'til 11 pm

Dine in or enjoy Indian Summer on the outdoor patio. Choose from a wide selection of appetizers, salads, and special Student Selections each evening.

Service Hours
11:30-9:00 Mon-Thurs
11:30-11:00 Fri
4:30-11:00 Sat

ARTS

On The Town

Compiled by Peter Dunn

CONTEMPORARY MUSIC

*** CRITIC'S CHOICE ***
Public Image Limited and Flesh For Lulu perform at 7:30 at the Orpheum Theatre, Hamilton Place, Boston. Tickets: \$18. Telephone: 787-8000.

Barrence Whitfield and the Savages perform at the Channel, 25 Necco Place, near South Station in downtown Boston. Admission: \$4.50 advance/\$5.50 at the door. Telephone: 451-1905.

The Zulus, Gigolo Aunts, and Condo Pygmies perform at T.T. the Bears, 10 Brookline Street, Cambridge, just north of MIT. Telephone: 492-0082.

The Neats perform at the Rat, 528 Commonwealth Avenue, Kenmore Square, Boston. Telephone: 247-8309.

Boys of Summer perform at 7:30 at Necco Place, One Necco Place, near South Station in downtown Boston. Admission: \$5.50/\$6.50. Tel: 426-7744.

The Band That Time Forgot performs at Johnny D's, 17 Holland Street, Davis Square, Somerville, near the Davis Square T-stop on the red line. Telephone: 776-9667.

THEATER

Playwright's Platform presents a Fall Festival of One-Acts, including Rosanna Yamagiwa Alfaro's *Going To Seed*, Gerilyn Horton's *What Kind of a Life Is That?*, and Max Burbank's *Library* at 8 pm at the Cambridge Center for Adult Education, 56 Brattle Street, Cambridge. Tickets: \$6 general, \$3 seniors and children. Telephone: 547-6789.

Project, about Chicago's Cabrini-Green high-rise public housing project which pigeonholed 13,500 residents into one square mile, is presented by Free Street Theater at 8 pm in Blackman Auditorium, Eli Building, Northeastern University, 360 Huntington Avenue, Boston. Tickets: \$10 and \$12.50. Tel: 437-2247.

FILM & VIDEO

The MIT Lecture Series Committee presents *The Land Before Time* at 7:00 & 9:30 in 26-100. Admission: \$1.50. Telephone: 258-8881.

The Somerville Theatre presents *Attack of the Killer B's*, a 24-hour shock and horror film marathon, beginning at noon. Located at 55 Davis Square, Somerville, just by the Davis Square T-stop on the red line. Admission: \$14.50 advance/\$16 day of show. Tel: 625-1081.

The Harvard Film Archive continues its series *The Films of John Cassavetes* with *Opening Night* (1978) at 7:00 & 9:30. Screenings at the Carpenter Center for the Visual Arts, Harvard University, 24 Quincy Street, Harvard Square, Cambridge. Admission: \$3 general, \$2 seniors and children. Telephone: 495-4700.

The Boston Film/Video Foundation continues its film series *Subjective Objectivity: The Changing Nature of the Documentary* with Werner Herzog's *Land of Silence and Darkness* at 8 pm. Located at 1126 Boylston Street, Boston. Admission: \$5 general, \$4 BF/VF members, seniors, and students. Tel: 536-1540.

EXHIBITS

Capturing and Image: Collecting 150 Years of Photography, containing nearly 150 outstanding photographs offering a selective overview of the history of expressive photography, opens today at the Museum of Fine Arts, 465 Huntington Avenue, Boston. Continues through December 17. Telephone: 267-9300.

Sunday, Oct. 8

CONTEMPORARY MUSIC

Ultra Blue performs at Johnny D's, 17 Holland Street, Davis Square, Somerville, near the Davis Square T-stop on the red line. Telephone: 776-9667.

Lenny Kravitz and Vow of Silence perform at 9 pm at Nightstage, 823 Main Street, Cambridge, just north of MIT. Telephone: 497-8200.

THEATER

Playwright's Platform presents a Fall Festival of One-Acts, including Irving Smolker's *Bury Me Not*, Dean O'Donnell's *Legwork*, and Clint Collins's *Jet Lag* at 6 pm at the Cambridge Center for Adult Education, 56 Brattle Street, Cambridge. Tickets: \$6 general, \$3 seniors and children. Telephone: 547-6789.

CLASSICAL MUSIC

The 15th Anniversary of The Greene Aggregation features *An Evening of Gospel Music* at 8 pm in Jordan Hall, New England Conservatory, 30 Gainsborough Street at Huntington Avenue, Boston. Tickets: \$15 general, \$5 children. Telephone: 899-7351.

Pianists Henry and Lucy Ingram perform works by Mozart, Schubert, Fauré, and Poulenc at 5:30 at the Fogg Art Museum, 32 Quincy Street, Cambridge. Admission: \$5 general, \$4 seniors and students. Telephone: 495-4544.

FILM & VIDEO

The MIT Lecture Series Committee presents E.T. (Steven Spielberg) at 7 pm & 10 pm in 26-100. Admission: \$1.50. Telephone: 258-8881.

The Brattle Theatre continues its Sunday film series *A Tribute to Laurence Olivier* with *Sleuth* (1972, Joseph L. Mankiewicz) at 3:00 & 7:35 and *Bunny Lake Is Missing* (1965, Otto Preminger) at 1:00, 5:30, & 10:00. Located at 40 Brattle Street, Harvard Square, Cambridge. Admission: \$5 general, \$3 seniors and children (good for the double feature). Telephone: 876-6837.

The Somerville Theatre presents *A Salute to Rocky and Bullwinkle* at 7:30 & 9:30. Also presented October 9 and 10 with Sunday matinees at 1:30, 3:30, & 5:30. Located at 55 Davis Square, Somerville, just by the Davis Square T-stop on the red line. Admission: \$5 general, \$3 seniors and children. Telephone: 625-1081.

The Harvard Film Archive continues its series *The Films of John Cassavetes* with *Love Streams* (1984) at 4 pm & 7 pm. The HFA also continues its *Non-Fiction* film series with *Night Mail* (1936, Basil Wright & Harry Watt), *A Diary for Timothy* (1945, Humphrey Jennings), *Song of Ceylon* (1934, Basil Wright) at 5 pm in Room B-04. Screenings at the Carpenter Center for the Visual Arts, Harvard University, 24 Quincy Street, Harvard Square, Cambridge. Admission: \$3 general, \$2 seniors and children. Telephone: 495-4700.

COMEDY

ImprovBoston performs at 7:30 at Play it Again Sam's, 1314 Commonwealth Avenue, Brighton, on the Boston College green line. Performances continue every Sunday night. Tickets: \$6. Telephone: 576-2306.

Monday, Oct. 9

FILM & VIDEO

The Brattle Theatre continues its Monday film series *Femmes Fatales* with a Rita Hayworth double feature, *Gilda* (1946, Charles Vidor) at 4:00 & 7:50 and *The Lady From Shanghai* (1948, Orson Welles) at 2:15, 6:05, & 9:55. Located at 40 Brattle Street, Harvard Square, Cambridge. Admission: \$5 general, \$3 seniors and children (good for the double feature). Telephone: 876-6837.

Tuesday, Oct. 10

CLASSICAL MUSIC

The Longy Artists Ensemble performs works by Copland, Rachmaninoff, and Schubert at 8 pm in the Edward Pickman Concert Hall, Longy School of Music, Follen and Garden Streets, Cambridge. Admission: \$5 suggested donation. Telephone: 876-9956.

The Peabody Trio performs new American compositions at 6 pm at the Gardner Museum, 280 The Fenway, Boston. Admission: \$5 general, \$2.50 seniors and students. Telephone: 566-1401.

THEATER

*** CRITIC'S CHOICE ***
Into The Woods opens today at the Colonial Theatre, 106 Boylston Street, Boston. Continues through October 22. Telephone: 720-3480.

The Night of the Iguana, Tennessee Williams's raucous collision of the unlikely trio of a defrocked minister, a tough widow, and a maiden lady playwright, opens today at the Springhold Theater, Brandeis University, Waltham. Continues through October 22 with performances October 11-14 & 20-21 at 8 pm, October 15 at 7 pm, October 18 & 19 at 10 am, and October 22 at 3 pm. Telephone: 736-3400.

FILM & VIDEO

The Harvard Film Archive continues its Tuesday series *Images of Women on Film* with *Queen Christina* (1931, Ruben Mamoulian), starring Greta Garbo and John Gilbert, at 5:30 and *A Woman's Face* (1941, George Cukor), starring Joan Crawford, at 8:00. Screenings at the Carpenter Center for the Visual Arts, Harvard University, 24 Quincy Street, Harvard Square, Cambridge. Admission: \$3 general, \$2 seniors and children, \$5/\$4 for the double feature. Tel: 495-4700.

CONTEMPORARY MUSIC

Cheballe and David Goldfinger perform at 7:30 at Necco Place, One Necco Place, near South Station in downtown Boston. Admission: \$2.50. Telephone: 426-7744.

Boiled In Lead performs at Johnny D's, 17 Holland Street, Davis Square, Somerville, near the Davis Square T-stop on the red line. Telephone: 776-9667.

*** CRITIC'S CHOICE ***
The Brattle Theatre presents *The Ensemble of Crafty Guitarists* at 7:30 & 9:30. Located at 40 Brattle Street, Harvard Square, Cambridge. Tickets: \$8. Telephone: 876-6837.

Wednesday, Oct. 11

CLASSICAL MUSIC

The Boston University Chamber Players perform works by Beethoven and Messiaen at 8 pm in the Tsai Performance Center, 685 Commonwealth Avenue, Boston. Tickets: \$5 general, \$3 seniors and students, free to BU community. Telephone: 353-3345.

FILM & VIDEO

*** CRITIC'S CHOICE ***
The Brattle Theatre continues its Wednesday series *Film In The Cities* with *Black Orpheus* (1958, Marcel Camus) at 3:30 & 7:55 and *Pixote* (1981, Hector Babenco) at 5:30 & 9:55. Located at 40 Brattle Street, Harvard Square, Cambridge. Admission: \$5 general, \$3 seniors and children (good for the double feature). Telephone: 876-6837.

The Somerville Theatre presents *Hollywood Shuffle* (Robert Townsend) at 6:00 & 9:30 and *I'm Gonna Get You Sucka* at 7:45. Also presented Thursday, October 12. Located at 55 Davis Square, Somerville, just by the Davis Square T-stop on the red line. Admission: \$5 general, \$3 seniors and children. Telephone: 625-1081.

The Harvard Film Archive continues its Wednesday series of *East European Cinema* with *Pearl in The Crown* (1971/77, Kazimierz Kutz, Poland) at 5:30 & 8:00. Screenings at the Carpenter Center for the Visual Arts, Harvard University, 24 Quincy Street, Harvard Square, Cambridge. Admission: \$3 general, \$2 seniors and children. Telephone: 495-4700.

CONTEMPORARY MUSIC

King Swamp and See No Evil perform at 10 pm in an 18+ ages show at Axis, 13 Lansdowne Street, Boston, near Kenmore Square. Telephone: 262-2437.

Bad English performs at 7 pm at the Paradise, 967 Commonwealth Avenue, Boston. Telephone: 254-2052.

Evie Ardy & The Swinging Steaks, Mind Over Matter, and The Bloodhounds perform at 7:30 at Necco Place, One Necco Place, near South Station in downtown Boston. Admission: \$3.50. Telephone: 426-7744.

Bob Harvey performs at Johnny D's, 17 Holland Street, Davis Square, Somerville, near the Davis Square T-stop on the red line. Telephone: 776-9667.

Thursday, Oct. 12

CONTEMPORARY MUSIC

Johanny Van Zant, from Lynyrd Skynyrd, performs at the Channel, 25 Necco Place, near South Station in downtown Boston. Telephone: 451-1905.

*** CRITIC'S CHOICE ***
Bob Mould and Big Dipper performs at 10 pm at Axis, 13 Lansdowne Street, Boston, near Kenmore Square. Telephone: 262-2437.

Texas performs at 9 pm at Nightstage, 823 Main Street, Cambridge, just north of MIT. Telephone: 497-8200.

Contemporary folksinger/songwriter Stephen Mayone performs at 8 pm at the Cambridge Center for Adult Education, 56 Brattle Street, Cambridge. Tickets: \$3.50. Telephone: 547-6789.

JAZZ MUSIC

Jazz pianist Ben Schwendener and the Longy Summer Lab Jazz Band perform at 8 pm in the Edward Pickman Concert Hall, Longy School of Music, Follen and Garden Streets, Cambridge. No admission charge. Telephone: 876-0956.

DANCE

*** CRITIC'S CHOICE ***
Boston Ballet performs *Romeo and Juliet* at the Wang Center, 270 Tremont Street, Boston. Continues through October 22. Tickets: \$10.50 to \$36.50. Telephone: 787-8000.

The Tech Performing Arts Series presents. . .

PRO ARTE CHAMBER ORCHESTRA

Guest conductor Leon Botstein will open the new season for the Pro Arte Chamber Orchestra with performances of Bruch's *Romanze in F Major*, Wernick's *Concerto for Viola and Orchestra*, and Beethoven's *Symphony No. 7*. Also featured will be a world premiere of *Il Pontentino*, by Jay A. Gach. Sanders Theater at Harvard University, October 7 at 8 pm.

MIT price: \$5 (reduced from \$14).

Tickets are on sale at the Technology Community Association, W20-450 in the Student Center. Office hours posted on the door. Call x3-4885 for further information.

The Tech Performing Arts Series, a service for the entire MIT community, from The Tech, MIT's student newspaper, in conjunction with the Technology Community Association, MIT's student community service organization.

YOU'D HAVE TO GO
A LONG WAY
TO FIND A BETTER VALUE
THAN THE S&S.



It's true. A deli in LA did get a teeny bit higher rating than us in a recent national survey. Still, the S&S being named one of the nation's 100 Top Value Restaurants by the renowned Zagat Restaurant Survey is quite an honor. Besides, the S&S isn't just a great deli. We have meal-sized appetizers like spicy Buffalo Wings. Unforgettable entrees including sauteed swordfish with sun-dried tomatoes and Chicken Monterey.

Generous drinks. And no tofu or waiters calling you dude. So why not fly over to the S&S and enjoy one of the country's best restaurant values. You'll save hundreds on airfare alone.



Restaurant
A Great Find Since 1919.

Breakfast, Lunch, Dinner. Mon.-Sat. 7:00am-12:00am. Sun. 8:00am-12:00am.
Inman Square, 1334 Cambridge St., Cambridge, 354-0777.

Jazz Pianist MICHEL CAMILO

AND HIS TRIO

... "a joyful, technically dazzling virtuoso who incorporates Caribbean roots with Beebop."
USA TODAY

... "has set the jazz world abuzz with his virtuosity."
PEOPLE MAGAZINE

FREE CONCERT!

8 p.m., Friday
October 6, 1989
Kresge Auditorium, MIT



ARTS

CLASSICAL MUSIC

The Charles River Chamber Players perform works by Fauré, Takemitsu, Miyagi, and Pinkham as part of the MIT Thursday Noon Chapel Series at 12:05 in the MIT Chapel. No admission charge. Telephone: 253-2906.

Pianist John O'Connor performs Beethoven Piano Sonatas at 12:15 at the Gardner Museum, 280 The Fenway, Boston. Admission: \$5 general, \$2.50 seniors and students. Telephone: 566-1401.

Pianist Michael Lewin performs the Boston premiere of Joel Hoffman's *Hands Down* and works by Beethoven, Scriabin, and Balakirev at 8 pm in Scully Hall, 8 The Fenway, Boston. No admission charge. Telephone: 536-6340.

Composers in Red Sneakers present a concert of new music at 8 pm at Old Cambridge Baptist Church, 1151 Massachusetts Avenue, Harvard Square, Cambridge. Admission: \$5 general, free to anyone in red sneakers.

FILM & VIDEO

*** CRITIC'S CHOICE ***
The Brattle Theatre continues its Thursday film series *Early Godard* with *Weekend* (1967) at 4:00 & 7:45 and *Two or Three Things I Know About Her* (1966) at 6:00 & 9:45. Located at 40 Brattle Street, Harvard Square, Cambridge. Admission: \$5 general, \$3 seniors and children (good for the double feature). Telephone: 876-6837.

The Harvard Film Archive presents *Three Sad Tigers* (1968, Raul Ruiz, Chile), with the director present, at 7:30. Screenings at the Carpenter Center for the Visual Arts, Harvard University, 24 Quincy Street, Harvard Square, Cambridge. Admission: \$3 general, \$2 seniors and children. Telephone: 495-4700.

The Museum of Fine Arts continues its retrospective of *Anna Magnani* films with *Many Dreams Along the Way* (1949, Mario Camerini, Italy) at 6 pm and *L'Amour: The Human Voice & L'Amour: The Miracle* (1948, Roberto Rossellini, Italy) at 8 pm. Screenings in Remis Auditorium, MFA, 465 Huntington Avenue, Boston. Admission: \$4 general, \$3.50 MFA members, seniors, and students. Telephone: 267-9300.

Friday, Oct. 13

CONTEMPORARY MUSIC

Meatloaf performs at the Channel, 25 Necco Street, near South Station in downtown Boston. Telephone: 451-1905.

Crazy Head performs at 7 pm in an all ages show at Axis, 13 Lansdowne Street, Boston, near Kenmore Square. Telephone: 262-2437.

Treat Her Right and Blue Rodeo perform in an 18+ ages show at 8 pm and a 21+ ages show at 11 pm at Nightstage, 823 Main Street, Cambridge, just north of MIT. Telephone: 497-8200.

The Motor City Rhythm Kings perform at Johnny D's, 17 Holland Street, Davis Square, Somerville, near the Davis Square T-stop on the red line. Telephone: 776-9667.

Winter Hours. Full Fathom Five, and Hiding In Public perform at 8 pm at the Paradise, 967 Commonwealth Avenue, Boston. Telephone: 254-2052.

Royal Crescent Mob performs at T.T. the Bears, 10 Brookline Street, Cambridge, just north of MIT. Telephone: 492-0082.

CLASSICAL MUSIC

Mezzo-soprano Jocelyn Kalajian and pianist Larissa Sokoloff perform works by Ravel, Mahler, Brahms, and Vaughn Williams as part of the *Voices at Noon* series at 12:05 in Killian Hall, MIT Hayden Memorial Library Building. No admission charge. Telephone: 253-2906.

Trevor Pinnock and the English Concert perform works by Handel, J.S. Bach, and Telemann at 8 pm in Jordan Hall, New England Conservatory, 30 Gainsborough Street at Huntington Avenue, Boston. Telephone: 536-2412.

THEATER

Hal Holbrook in "Mark Twain Tonight!" is presented at 8 pm at the Opera House, 539 Washington Street, Boston. Also presented Saturday, October 14. Tickets: \$15, \$22, and \$28. Telephone: 482-2595.

JAZZ MUSIC

*** CRITIC'S CHOICE ***
The Dave Brubeck Quartet performs at 8 pm at Durgin Hall, University of Lowell Center for the Arts, near Routes 3 and I-95. Tickets: \$11 to \$15 general, \$5.50 to \$7.50 students. Telephone: 508-934-4444.

Stéphane Grappelli performs at 7:30 & 9:30 in the Charles Ballroom of the Charles Hotel, Harvard Square, Cambridge. Tickets: \$17.50. Tel: 876-7777.

DANCE

The Semaphore Dance Theatre perform *Evening in Lans* and *The Drowning of Dr. Schreiber* at 8 pm in Anderson Auditorium, School of the Museum of Fine Arts, 230 The Fenway, Boston. Also presented October 14 and 15. Telephone: 267-6100 ext. 655.

FILM & VIDEO

The MIT Lecture Series Committee presents Akira Kurosawa's *Rashomon*, starring Toshiro Mifune, at 7:30 in 10-250 and *Mississippi Burning* (Alan Parker) at 7:00 & 10:00 in 26-100. Admission: \$1.50. Telephone: 258-8881.

The Brattle Theatre presents *Present Memory* (1989, Richard Broadman) at 7:30 & 9:15. Also presented October 14 and 15 at 1:00, 2:45, 4:30, 6:15, 8:00, & 9:45. Located at 40 Brattle Street, Harvard Square, Cambridge. Admission: \$5 general, \$3 seniors and children. Telephone: 876-6837.

*** CRITIC'S CHOICE ***

The Somerville Theatre presents *Festival of Animation '90* at 7:00 & 9:30. Continues through October 26 with screenings Monday-Wednesday at 7:30, Thursday-Friday at 7:00 & 9:30, Saturday at 4:00, 7:00, & 9:30, and Sunday at 4:00 & 7:00. Located at 55 Davis Square, Somerville, just by the Davis Square T-stop on the red line. Admission: \$5 general, \$3 seniors and children. Telephone: 625-1081.

The Cambridge Center for Adult Education continues its series *Family Matters: Films of the 1980's* with *Three Brothers* (1982, Francesco Rosi, Italy) at 7 pm & 9 pm. Located at 56 Brattle Street, Cambridge. Admission: \$3.50. Telephone: 547-6789.

The Harvard Film Archive continues its series of *Films of Raul Ruiz* with *Treasure Island* (1985, France) at 7 pm and *Snakes and Ladders* (1980, France) & *The Hypothesis of the Stolen Painting* (1978, France) at 9 pm. Screenings at the Carpenter Center for the Visual Arts, Harvard University, 24 Quincy Street, Harvard Square, Cambridge. Admission: \$3 general, \$2 seniors and children, \$5/\$4 for the double feature. Telephone: 495-4700.

The Museum of Fine Arts continues its retrospective of *Anna Magnani* films with *Volcano* (1950, William Dieterle, Italy) at 6 pm and *Bellissima* (1952, Luciano Visconti, Italy) at 8 pm. Screenings in Remis Auditorium, MFA, 465 Huntington Avenue, Boston. Admission: \$4 general, \$3.50 MFA members, seniors, and students. Telephone: 267-9300.

The Boston Film/Video Foundation continues its film series *Subjective Objectivity: The Changing Nature of the Documentary* with *Far From Poland* (Jill Goldmillow) at 8 pm. Located at 1126 Boylston Street, Boston. Admission: \$5 general, \$4 BF/VF members, seniors, and students. Telephone: 536-1540.

EXHIBITS

Richard Ross: *Museology Triptychs*, photographs taken with a child's plastic camera to capture details of old master paintings from museums around the world, opens today at the List Visual Arts Center, MIT Wiesner Building E15. Continues through November 19 with gallery hours weekdays 12-6 and weekends 1-5. No admission charge. Telephone: 253-4680.

Ongoing Theater

Agnes of God, John Pielmeier's religious mystery drama, continues through October 15 as a presentation of The Actors' Equity Members' Project at the Leland Center, Boston Center for the Arts, 539 Tremont Street, Boston. Performances are Thursday-Saturday at 8 pm, Sunday matinee at 2 pm. Tickets: \$8. Telephone: 720-3434.

Antigone, Sophocles's 2400-year-old drama of conscience, updated to the moral dilemma of the crisis in the Middle East,

continues through October 14 as a presentation of the New Boston Theatre at The Performance Place, 277 Broadway, Somerville. Performances are Thursday-Saturday at 8 pm. Tickets: \$10 general, \$8 students. Telephone: 623-5510.

Bedroom Farce, Alayn Ayckbourn's award-winning comedy of marital discord, continues through October 22 at the Lyric Stage, 54 Charles Street, Boston. Performances are Wednesday-Thursday at 8:00, Saturday at 5:00 & 8:30, and Sunday at 3:00. Tickets: \$13.50 to \$17. Telephone: 742-8703.

Grand Hotel, The Musical continues through October 7 at the Colonial Theatre, 106 Boylston Street, Boston. Performances are Thursday-Saturday at 8 pm with a 2 pm matinee on Saturday. Tickets: \$20 to \$45. Tel: 426-9366.

Hyde Park, James Shirley's comedy of courtship, continues through October 22 as a presentation of the Huntington Theatre Company at the Boston University Theatre, 264 Huntington Avenue, Boston. Tickets: \$14 to \$29. Tel: 266-3913.

Tennessee Williams's *A Streetcar Named Desire* continues through October 19 at the New Ehrlich Theatre, 539 Tremont Street, Boston. Performances are Thursday & Friday at 8:00, Saturday at 5:00 & 8:30, and Sunday at 2:00. Tickets: \$10 and \$15. Telephone: 482-6316.

Tennessee Williams's *Sweet Bird of Youth* continues through November 5 at the Back Alley Theatre, 1253 Cambridge Street, Cambridge. Performances are Thursday-Sunday at 8 pm. Tickets: \$12 general, \$10 seniors and students. Telephone: 491-8166.

*** CRITIC'S CHOICE ***

Tru, Jay Presson Allen's poignant, roller-coaster comedy with Robert Morse as Truman Capote, continues through October 14 as a presentation of the American Repertory Theatre, 12 Holyoke Street, Harvard Square, Cambridge. Performances are Tuesday-Saturday at 8 pm and Sunday at 2 pm & 7 pm. Tickets: \$14 to \$28. Telephone: 547-8300.

Ongoing Exhibits

ON CAMPUS

*** CRITIC'S CHOICE ***
Image and Imagination: 150 Years of Photography, an exploration of the evolution of the technology of photography, continues through December 31 at the MIT Museum Building, 265 Massachusetts Avenue, Cambridge. Museum hours are Tuesday-Friday 9-5 and Saturday-Sunday 12-4. Admission: \$2 requested donation, free to MIT community. Telephone: 253-4444.

Lahore: The City Within, an exploration of the cultural, artistic, and architectural center of Pakistan, continues through December 17 at the MIT Museum, 265 Massachusetts Avenue, Cambridge. Museum hours are Tuesday-Friday 9-5 and weekends 12-4. Admission: \$2 requested donation, free to MIT community. Telephone: 253-4444.

Remo Campopiano: In Residence, featuring a room-size installation including a coffee-table landscape inhabited by a colony of live ants, continues through November 19 at the List Visual Arts Center, MIT Wiesner Building E15. Gallery hours are weekdays 12-6 and weekends 1-5. No admission charge. Telephone: 253-4680.

Still Performance: Rimma and Valery Gerlovin, collaborative photographs by the Soviet émigré artists, continues through October 8 at the List Visual Arts Center, MIT Wiesner Building E15. Gallery hours are weekdays 12-6 and weekends 1-5. No admission charge. Telephone: 253-4680.

Upcoming Events

The *Waterboys* at the Orpheum Theatre on October 22 and 23. *Bob Dylan* at the Opera House on October 23, 24, and 25. *David Byrne* at the Orpheum Theatre on October 26 and 27. *Martha Graham Dance Company* at the Wang Center, October 27 to 29. *The Eurythmics* at the Worcester Centrum on November 7. *Stevie Ray Vaughan & Double Trouble* and *Jeff Beck* at the Worcester Centrum on November 8.

Students Interested in Medicine

We would like to inform students interested in medicine of the following three events:

A meeting on "How to Prepare for the Medical School Interview" will be held for students applying to medical school this year:

Wednesday
October 18, 1989
10:00 AM
Room 4-231

Gould Memorial Lecture in memory of Prof. Bernard Gould:

"Looking After Your Health"
Dr. Alexander Leaf
Ridley Woods Prof. of Preventive Medicine
at
Harvard Medical School

Wednesday
October 11, 1989
5:30 PM
Room E25-117

Dartmouth Medical School Visit: Beth Bailey, Assistant Director of Admissions will be on campus to give presentations of Dartmouth Medical School:

Friday
October 6, 1989
1:00, 1:30, 2:00, and 2:30 PM
Room 4-231

For further information call x4737 or stop by the Office of Career Services in 12-185.

YOM KIPPUR SERVICES 5750/1989

REFORM (MIT Chapel)

Sunday, October 8, 7:00 pm
Monday, October 9, 10:00 am & 4:00 pm

CONSERVATIVE (Kresge Little Theatre)

Sunday, October 8, 5:45 pm
Monday, October 9, 8:30 am & 5:30 pm

Tickets are required for all Sunday Kol Nidre services. Tickets are available for all students. For students who are not Hillel members a \$15. donation is suggested. Non-student tickets are available for \$50. Tickets can be obtained at MIT Hillel through Oct. 6 and in Lobby 10 on Sept. 18 & 25 and Oct. 3.

A pre-fast meal will be served in the Kosher Kitchen (Walker Hall Room 50-007) on Sunday, Oct. 8 from 4:30 pm until 6:00 pm. Payment can be made with validine or cash.

A break-fast will be held following Ne-ilah services in the Kresge Auditorium Lobby.

SPONSORED BY MIT HILLEL, 312 MEMORIAL DRIVE, 253-2982

We're having technical difficulties.

Don't stand by.

If you're getting ready to graduate with a BS/MS in Computer Science or Engineering (IE, ME, EE), come to our presentation. See how your degree translates into opportunities in Product Support, Manufacturing, and R & D. We'll also explore Sales, Marketing, and Engineering positions with Apple Pacific. So don't just stand by. Stop by.

Thursday
October 12, 1989
7:00 - 9:00 p.m.
Building 4, Room 270

To contact us about summer internships, work-study programs and entry-level positions, send your resume to: Apple Computer, Inc., College Relations, MS 39ACR, 20525 Mariani Ave., Cupertino, CA 95014.

Apple Computer has a corporate commitment to the principle of diversity. In that spirit, we welcome applications from all individuals including women, minorities, veterans and disabled individuals.

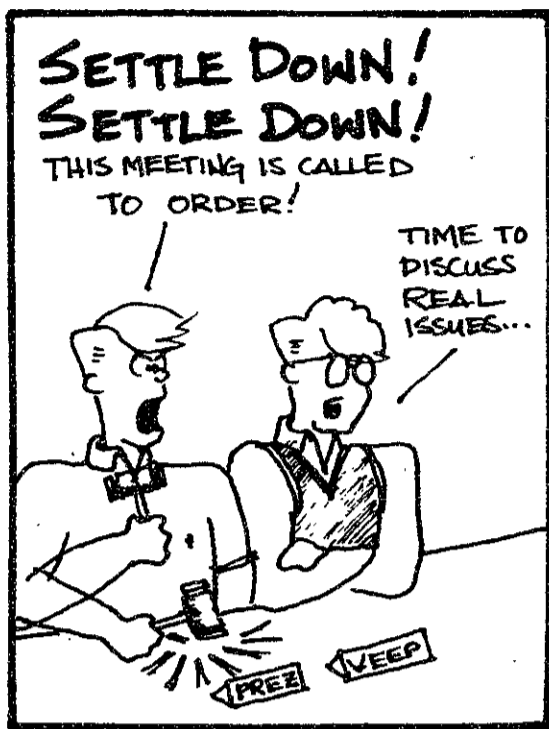


The power to be your best.™

comics

House

By David J. Kim



EAT RIGHT, LIVE LONG AND PROSPER.

EATING RIGHT IS HIGHLY LOGICAL.

Recommendations:
Eat high-fiber foods, such as fruits, vegetables, and whole grain products. Eat fewer high-fat foods. Maintain normal body weight. And live long and prosper.

CALL THE AMERICAN CANCER SOCIETY AT 1-800-ACS-2345 FOR FREE NUTRITION INFORMATION.

AMERICAN CANCER SOCIETY

STAR TREK® & © 1989
PARAMOUNT PICTURES CORPORATION
ALL RIGHTS RESERVED.
THE AMERICAN CANCER SOCIETY AUTHORIZED USER.

This space donated by *The Tech*

Telemarketing Position

Want to earn some extra money before Christmas? We are looking for MIT students to telephone alumni/ae from the ten youngest classes seeking contributions to the Alumni/ae Fund.

There are 10 positions available, paying \$7/hour, working 3 or 4 nights a week for 4 hours/night, starting October 23, and ending November 22. Interested? Call Gail Johnson at 253-8184.

We'd Like To Be Your Travel Agent.

Lowest Airfares Anywhere
All Travel Arrangements
Eurail Passes · Amtrak
Major Credit Cards Accepted

GARDNER TRAVEL

1105 Mass. Ave.
Cambridge
492-2300

日本モトローラ

For the career-oriented,
we're offering a career
in the Orient.

**技術でリードする日本モトローラと共に
力強いスタートを切ってみよう。**

If you're seeking a successful future with a leading electronics company, Nippon Motorola Ltd. headquartered in Tokyo, Japan is offering you a world of opportunity. As an industry leader in information systems, communications and semiconductor technologies, we have a variety of openings immediately available for technical and non-technical graduates. Working in our Tokyo, Sendai or Aizu Wakamatsu facilities, you'll have the chance to advance your career with one of Japan's most accomplished and respected American high-tech companies. Summer internships are also available in Japan and the U.S.

Career-minded individuals with Japanese speaking and writing fluency and a desire to live and work in Japan are encouraged to find out more about openings in the areas of:

DESIGN — Systems Design Engineer - RF Design Engineer - Circuit Design Engineer - Hardware/Software Development Engineer

MANUFACTURING — Assembly Engineer - Final Test Engineer - Quality Control Engineer - Production Control Engineer

WAFER PROCESSING — Process Engineer - Device Engineer

FACILITIES — Equipment Engineer - Facilities Engineer - Safety Engineer

MIS — Programmer Analyst - Systems Analyst

ACCOUNTING and FINANCE — Financial Analyst - Cost Accounting - Property Accounting

SUPPORT — Material Traffic - Shipping/Receiving - Production Scheduling - Personnel

SUMMER INTERNSHIP PROGRAM — Accounting/Finance - MIS - Design Engineering - Manufacturing

For more information, see us on campus.

We'll be here

Oct. 17

If unable to attend, see your Placement Office or International Student Office. Or write to: Chikara Okabe, Nippon Motorola Ltd., 725 S. Madison, Tempe, AZ 85281. Or call us collect at (602) 994-6394. Equal Opportunity/Affirmative Action Employer.

sports

Women's cross country takes 2nd in invitational

By Theresa Fuentes

The women's cross country team performed well at the Connecticut College Cross-Country Invitational this past weekend, finishing second among the 13 teams competing. Southeastern Massachusetts University was the only team which managed to get by the Engineers, scoring 50 points to the Engineers' 54.

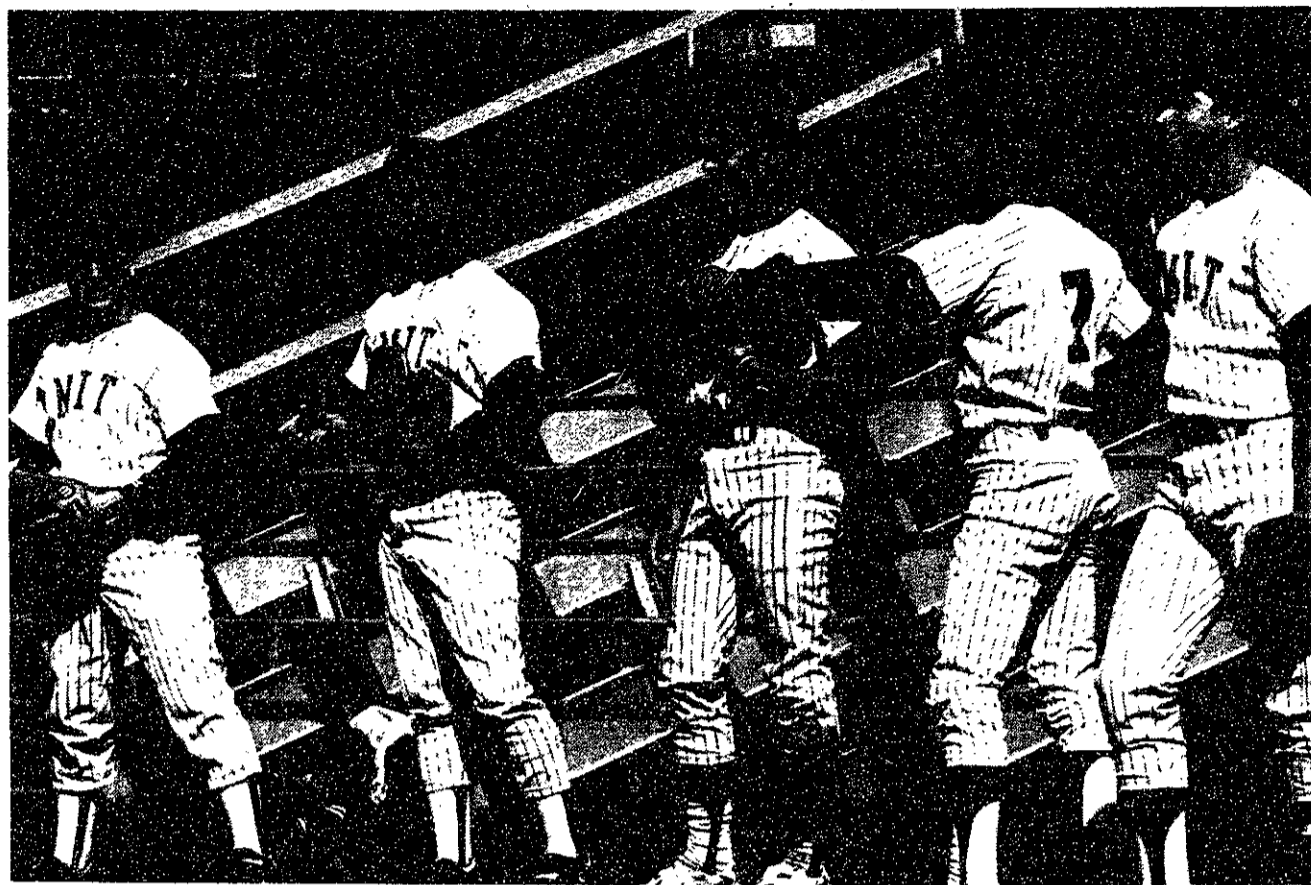
The meet scoring was very close, with MIT placing its seven best runners in the top 28 finishers. Although the Engineers ran a tight race, with their top two finishers placing before SMU's first, it wasn't quite enough to catch SMU. The Corsairs also managed to get by MIT at last week's SMU Invitational Meet, where the Engineers finished ninth in a

17 team field.

Coach Chris Lane was quick to praise individual performances on the hilly course. Leading the team was captain Theresa Fuentes '91, finishing fourth overall in 20:36, followed closely by Chris Goh '92 in sixth place at 20:40. The varsity scorers were rounded out by Gabrielle Rocap '92 in 15th, Kristin Nummerdor '93 in 16th, and Amy Rovelstad '92 in 20th place. The remaining team members all posted improvements from last weekend.

The women will be defending their title from last year at the Wellesley College Invitational this Friday.

(Theresa Fuentes '91 is the captain of the women's cross-country team.)



William Chu/The Tech

Maybe that's them over there? Without any opposing team, the scheduled Saturday baseball game never took place. UMass-Boston forfeited the game due to scheduling conflicts.

Upcoming Home Events

Tuesday, October 3

- 3:00 Men's Tennis v. Babson
- 3:00 Baseball v. Brandeis
- 4:00 Field Hockey v. Simmons
- 7:00 Volleyball v. Brandeis

Wednesday, October 4

- 3:30 Men's Tennis v. Harvard

Thursday, October 5

- 3:30 Women's Soccer v. Curry
- 3:30 Women's Tennis v. Babson
- 4:00 Field Hockey v. Pine Manor

Sailing delivers solid performances

By Drew Freides and Kyle Welch

The MIT varsity sailing team is off to a strong start for the fall season, performing well in the past two weekends.

The major regatta of the weekend of Sept. 23-24 was the Hood Trophy, held at Tufts University. On the first day, the team of Dale Hinman '93, Brian Lie '93, and Mike Leary '91 competed in A division, while Warren Wu '90 and Kyle Welch '90 sailed in B division. After the first day, the Engineers were in third place out of 16 schools, many of which were ranked in the top 20 in the country.

The team slipped to sixth place, however, after the second day's racing. Helping out on the second day were Drew Freides '90 in A division and Michael Bowers '92 in B division. Conditions ranged from "survival conditions," in which huge puffs of wind sent boats crashing in all di-

rections (seven boats were capsized simultaneously by one particularly rough blast), to extremely shifty and variable winds.

In other action from that week, MIT's sloop team qualified for the New England Championships, to be held next week. Their third place finish in the New England Sloop Qualifiers makes them a strong contender for the championships, and the team is high on their prospects for this event.

Sailing last weekend were Freides, Scott Davies '91, and Andreas Lewin '91, who nailed down third place out of eight teams in the gusty remnants of Hurricane Hugo. Wipeouts were common, and often the team who could remain vertical the longest ended up the victor. At one point, Lewin was nearly washed overboard as Freides attempted to full layout barrel roll at one of the mark roundings,

while at another point, Davies had to duck for cover below decks during a particularly large gust.

Sailing on the Charles that Sunday, MIT sailed to a second place finish in the MIT Invitational behind the strong sailing of Lewin and Mike Binnard '92, who finished second in A division, and Davies and Teresa Woo '92, who came in first in B division.

Last weekend, the team continued to perform well at two minor regattas. On Saturday at Harvard, the team finished third in the Northern Series II, and on Sunday, the team traveled to the University of Rhode Island to take the invitational there. Sailing in A division were William Hall '91 and Shaun Kaneshiro '91, and in B division were Lewin and Bernard.

(Drew Freides '90 and Kyle Welch '90 are members of the MIT sailing team.)

CLASS TRANSIT City/Mountain Bikes from \$199
Cruisers from \$169

BICYCLE BILLS



Largest selection of Mountain Bikes in New England

CITY-MOUNTAIN-RACING-TOURING
also: XC Ski Sales/Rentals
Fitness Equipment/Trainers

BICYCLE BILL'S "The Wheels of the Hub"

253 North Harvard Street, Allston, MA (a 1.6 min. walk from Harvard Sq.)
HOURS: M 1-6, T-F 10-6:30, Sat. 10-5 783-5636

20% Off the price of a helmet with the purchase of a new bike! No double discounts.

CATHOLIC STUDENTS

SUPPORT GROUP:

Students whose parents are separated/divorced or live in a blended family situation.

WHERE: St. Anthony Shrine
100 Arch Street, Boston, MA

WHEN: 2nd & 4th Sunday Nights of each month
Beginning Sunday October 8, 1989

TIME: 8:30 to 10:00 pm.

Contact Person:

Fr. Donan McGovern, OFM
Tel. 617-542-6440

YOU DON'T HAVE TO GO IT ALONE



Careers at Advanced Micro Devices

AMD is a billion-dollar, high-technology semiconductor company that refuses to stand still. We're committing our resources, flexibility, and vision to the submicron technologies of the future.

After twenty years in high tech, we've never been more successful or experienced more growth—in California and Texas—than right now.

BRILLIANT OPPORTUNITIES

We're looking for graduates with BS, MS or PhD degrees for the following opportunities:

- Design Engineering
- Product Engineering
- Applications Engineering
- Process Engineering
- Technical Sales/Marketing

To find out more how to put your talents into action at AMD, sign up in your Placement Office to meet with an AMD representative and be sure to ask for your free "Warm Weather Survival Kit." Or send your resume directly to University Recruiting, Advanced Micro Devices, MS-935, P.O. Box 3453, Dept. CN, Sunnyvale, CA 94088. For further details, call TOLL FREE (800) 538-8450 ext. 88491 (California) or (800) 531-5202 ext. 55448 (Texas). An equal opportunity employer.

On Campus Interviews
October 17th and 18th

**Advanced
Micro
Devices**

sports

MIT holds off WNEC Golden Bears in 39-34 victory

By Shawn Mastrian

Both MIT and Western New England College were ranked among the top 20 teams in the Eastern Collegiate Athletic Conference Division III before Saturday's game, so a hard-fought, down-to-the-wire football game was expected. The Beavers and the Golden Bears did not disappoint, as the contest was not decided until the final minutes, when an interception by Brian Teeple '91 knifed WNEC's last-gasp drive and sealed a 39-34 victory for MIT.

The game started out with both the Bears and the Beavers failing to produce on their initial drives. WNEC drew first blood on their next drive, however. Running back Tom Presnal led the way as he broke out on 10, 30, and 20 yard runs on the drive. The last run got him into the end zone, and WNEC had a 7-0 lead.

MIT then started to move the ball on their next drive. A catch by Tony Lapes '90 got the Beavers their first first-down of the day, and a penalty got them another (and into Bear territory). Mental mistakes stalled the drive, however, as one penalty pushed them into a third-and-13 situation and another negated a 15 yard gain. A 15 yard gain on a fake punt, a questionable call at best on fourth-and-21, was not enough to cover the damage, and WNEC took over.

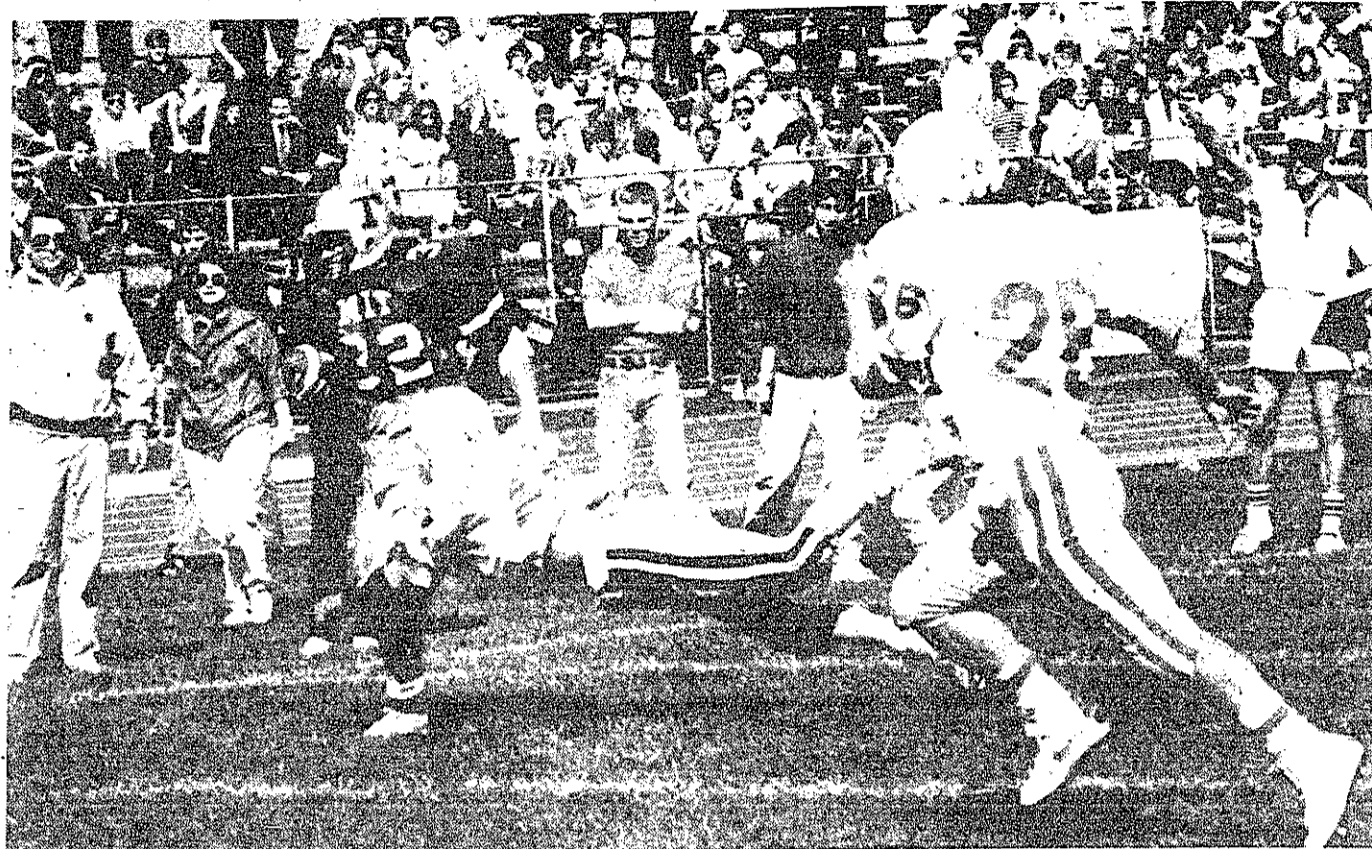
The Bears did not have control for long, however. After a no-gain run, a WNEC back proceeded to cough up the ball, which Rodrigo Rubiano '92 recovered

to give possession back to the Beavers. Tim Day '89 was able to capitalize on this blunder and, in turn, extend his school record for career touchdown passes to 15, as he hit a wide-open Lapes for a 15-yard scoring strike. The extra-point was blocked, however, and MIT was down 7-6.

The defense held tight on the next Bear possession, allowing WNEC only six plays before the Bears had to punt. But Teeple muffed this punt, with WNEC recovering on the MIT 18 yard line. Presnal then pounded the ball across the goal line six plays later, and the Bears had a 13-6 lead (MIT returned the favor by blocking this extra point).

It was now the Beavers' turn to score. Day ran for 13 and six yards, and then threw for 30 more to Lapes. Lapes fumbled the ball after being hit, but recovered his mistake after a long scuffle for the ball. Shane LaHousse '90 and Day then moved MIT down to the one on two runs by LaHousse and one by Day. The Beavers then rammed it in as Day dove through a gaping hole carved out by his line. The Bears once again were able to block the extra-point, though, and WNEC was still up, 13-12.

Art Wang '91 then broke up the monotony of the game as he intercepted WNEC quarterback Doug Diano's pass on the first play of the next Bear drive. LaHousse then ran the ball down to the one inch line on two plays, and Day once again drove it home. This time, a two-point conversion failed to produce, but MIT was ahead to stay, 18-13.



Jeremy Yung/The Tech

The Engineers won Saturday's hard fought game, 39-34.

The first half ended with this score. A last-gasp Bear drive proved for naught as the defense stiffened and didn't allow WNEC a chance to score.

The Beaver offense wasted no time in making its presence felt in the second half, taking the kickoff and marching the ball all the way down the field to score. Lapes and LaHousse made the key plays as Lapes gained a large chunk of yardage on a pretty diving catch and LaHousse busted out on a long run moving the ball to the 10 yard line. LaHousse then carried it in as he scored unmolested on a five yard sweep.

The PAT split the uprights, and MIT was in command.

But not for long. The defense came out shining in the second half, as they stopped the Bears on a three play, five yard drive. When the Beavers took over after a punt, however, they fumbled the ball away. Diano then led his team home as he converted two key fourth downs, helping WNEC score. The extra-point made it 25-20, MIT.

Not surprisingly, MIT came right back to score on its next drive. Garret Moose '91 led the attack as he caught a 22 yard pass, and carried at least seven Bear defenders for another nine. After several more plays, LaHousse scored his second touchdown of the day as he rolled out on a sweep left and burned past everyone to score. The PAT again gave MIT a 12 point lead.

WNEC took over and marched the ball down the field, fueled by a 50-yard pass play. But, with their backs to a wall, the Beaver defense held tough. Presnal tried to convert on a fourth-and-three, but tackle Mike Ahrens '90 stopped him cold, giving MIT back the ball. WNEC got the ball right back, however, as Day and LaHousse could not connect on a pitch, a questionable play to call at best on one's own five yard line. One play later and the MIT lead was only five again.

The Beavers responded with a 10-play drive for their final touchdown. The key play was a Lapes reception off a second-and-25, which went for 28 yards. LaHousse ran it in from 10 yards

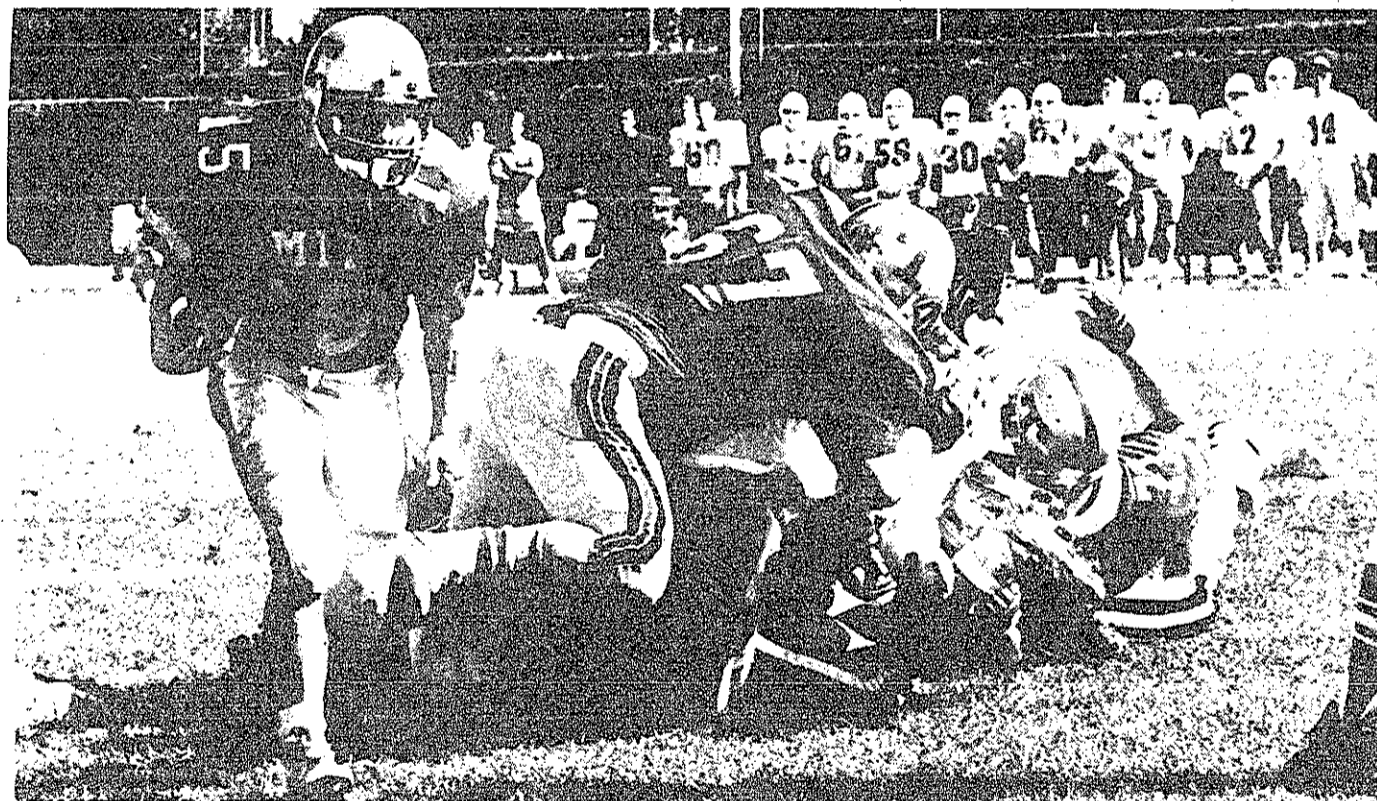
'out as he danced through the Bear defense to score his third score of the day.

On the ensuing kickoff, Moose was ejected from the game as he retaliated for a cheap shot given by one of the WNEC players (who, of course, was unpenalized). These 15 yards helped propel the Bears down the field to a first-and-goal situation on the MIT two. Rick Bullesbach '90 then apparently intercepted a Diano pass and ran it back 50 yards, but the entire Beaver defensive line lined up offside, nullifying the interception. On the next play, WNEC pulled to within 39-34.

An on-side kick gave WNEC back the ball, if only momentarily. Diano apparently forgot that his MIT application was met by laughter and threw a strike to Doug Smith '93, giving the Beavers the ball once again. Conservative play-calling designed to run time off the clock resulted in a punt; giving the Bears one last shot at pulling out the game. But when Teeple leaped high in the air to nab Diano's last pass of the day, the game was locked.

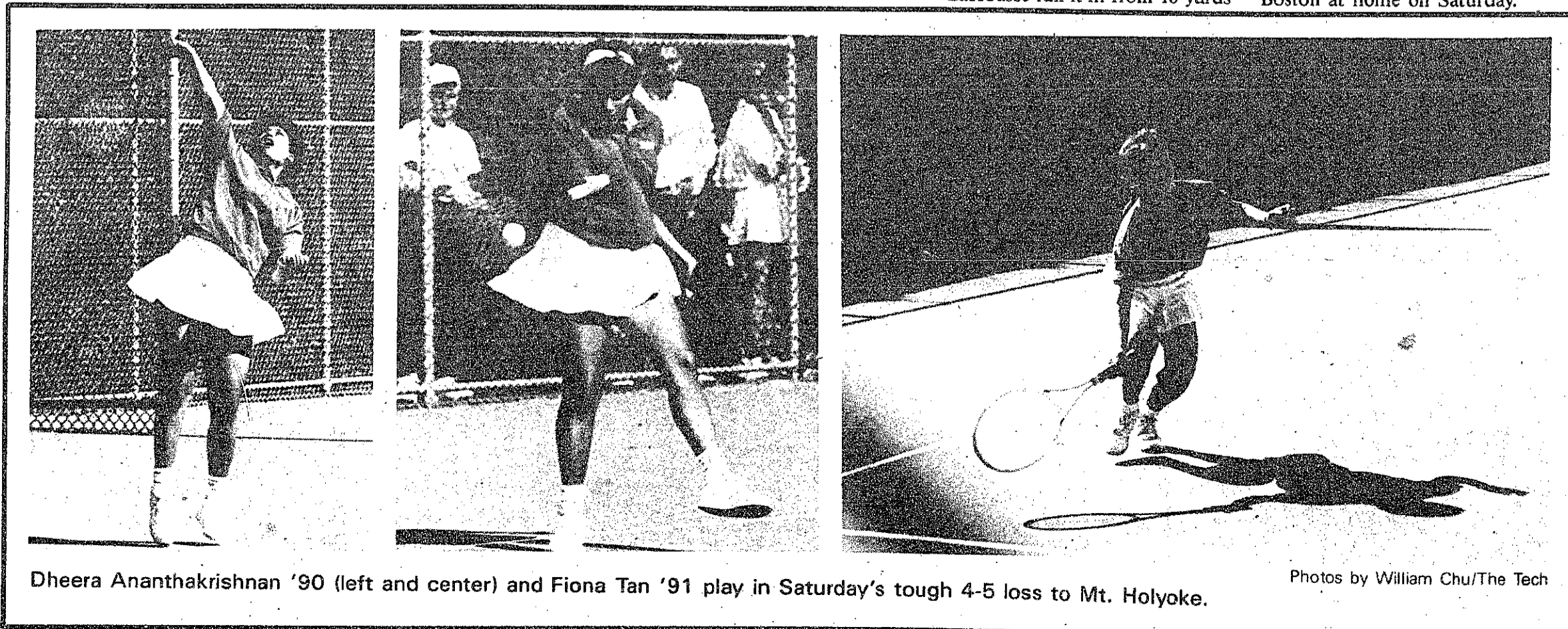
The victory pushes MIT's record to 2-0. The fast start and the high powered offensive attack (they scored 45 last week) are good signs and possibly foretell greener pastures ahead. The win over WNEC was important in that the Bears are a tough team, and it showed that the Beavers have character in pulling out a close game.

MIT will play cross-town rival University of Massachusetts-Boston at home on Saturday.



Jeremy Yung/The Tech

Tim Day '90 avoids danger, takes the ball and runs.



Dheera Ananthkrishnan '90 (left and center) and Fiona Tan '91 play in Saturday's tough 4-5 loss to Mt. Holyoke.

Photos by William Chu/The Tech