

## Report labels Athena plans too optimistic

By Darrel Tarasewicz

Early expectations that a student would have no obstacle, individual access to Project Athena were too optimistic, according to Gregory A. Jackson, a visiting scholar in the Provost's office, and an associate professor of education at Harvard. Jackson has conducted a study to determine the feasibility of installing workstation clusters in each un-

dergraduate living group and perhaps in each student's room.

Jackson's study concluded that living group clusters were unacceptable due to the bureaucracy involved, but were currently the only method of bringing Athena and students closer together.

The report was critical of Athena's implementation of the living-group clusters, saying that in some cases "decisive management was absent."

As part of its study, Athena installed workstation clusters in five living groups last year on an experimental basis. Athena had invited 500 Memorial Drive, Delta Upsilon, Theta Delta Chi, Zeta Beta Tau, and Pi Kappa Alpha to participate in the study by December of 1985. Due to numerous delays, the last of these installations was not completed until May of 1987, eight months behind schedule.

Both Jackson and Joseph Harrington '88, computer chairperson at Pi Kappa Alpha, agreed that once the clusters were operational, many benefits resulted. "These places were not solely used by people playing games. Often people who had to write papers worked together and really enriched the flow of ideas," Harrington said.

But Jackson warned that Athena did not invent the concept of people working together on homework and really has not had the impact that some people have perceived. "There is no doubt," however, "that the clusters have added an academic element to living groups which in another setting might have been objected to," Jackson said.

Jackson was uncertain how Athena would be implemented in living groups in the future. (Please turn to page 13)

## MIT's self-help level called burdensome



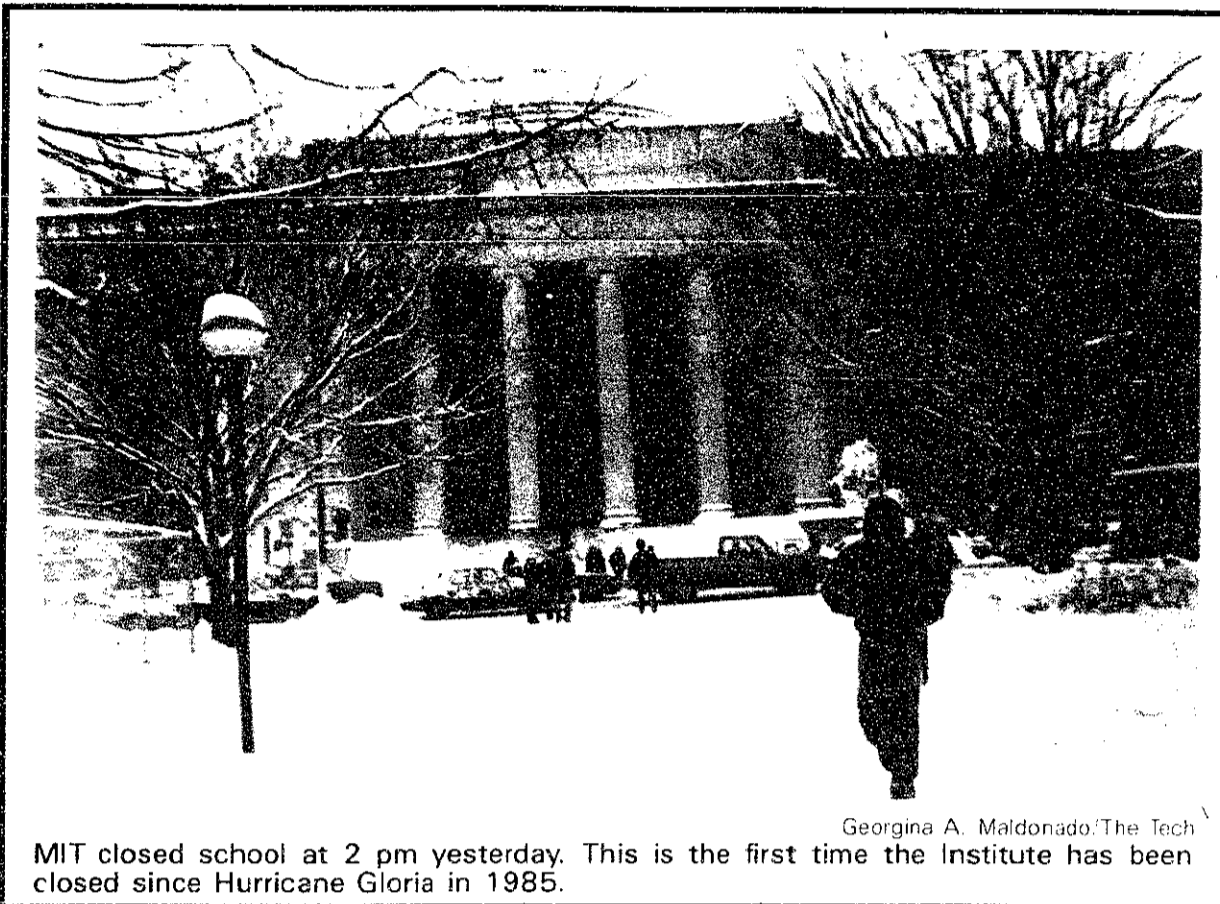
Kyle G. Peitonen/The Tech  
Jeff A. Meredith

By Michael Gojer

Concerned that many graduate students — a significant number of whom do not want to work on projects funded by the military — might not know where the funding for their appointments comes from, the Graduate Student Council passed a resolution on Jan. 21 asking "that graduate student appointment forms be modified to include a written identification of the grant and funding sources from which the student is funded."

Frank E. Perkins '55, dean of

(Please turn to page 2)



MIT closed school at 2 pm yesterday. This is the first time the Institute has been closed since Hurricane Gloria in 1985.  
Georgina A. Maldonado/The Tech

## MIT faculty react to contra aid vote

By Niraj S. Desai

The refusal of the House of Representatives to provide new aid to the *contra* rebels "is a necessary, but not sufficient step for bringing peace to the region," according to Jonathan A. Fox PhD '85, assistant professor of political science.

Fox's cautious appraisal of the impact of Wednesday night's vote was shared by several MIT professors.

"If given the choice between voting for [the aid] or voting against it, then one should vote against it," said Institute Professor Noam A. Chomsky. "But one should not have any illusions."

The United States is presently conducting an "illegal war" against the Sandinistas, accord-

ing to Chomsky, and it will maintain the attack in spite of the House vote. The Iran-*contra* affair of last summer should disabuse people of the notion that the Reagan Administration can be deterred by the illegality of its actions, Chomsky said.

Fox also believed that US military aid to the *contras* would continue in some form. The United States provides intelligence information to the rebels from the flights of its spy planes over Nicaragua, Fox said. No one has addressed the question of what should happen to the overflight information. The sharing of this information significantly benefits the rebels and is in violation of the Central American peace plan, Fox claimed.

But Professor of Political Science Lincoln P. Bloomfield believed government military aid to the rebels would be ended by the vote. Now all that can be done is to wait and see whether ending the aid will have an effect on the Sandinistas, he said.

The professors generally credited the desire to give the peace plan, named for Costa Rican

(Please turn to page 15)

## GSC wants identification of funding

By Susan Seung-Eun Lee

MIT's self-help level of \$4900 is "simply too burdensome" for some potential applicants, according to a brochure for the Institute's Campaign for the Future. The brochure claims that MIT's endowment drive is in part geared to lowering the self-help level. MIT has the highest self-help level among prestigious universities. It is about 20 percent higher than the self-help level at such universities as Harvard, Yale, and Princeton.

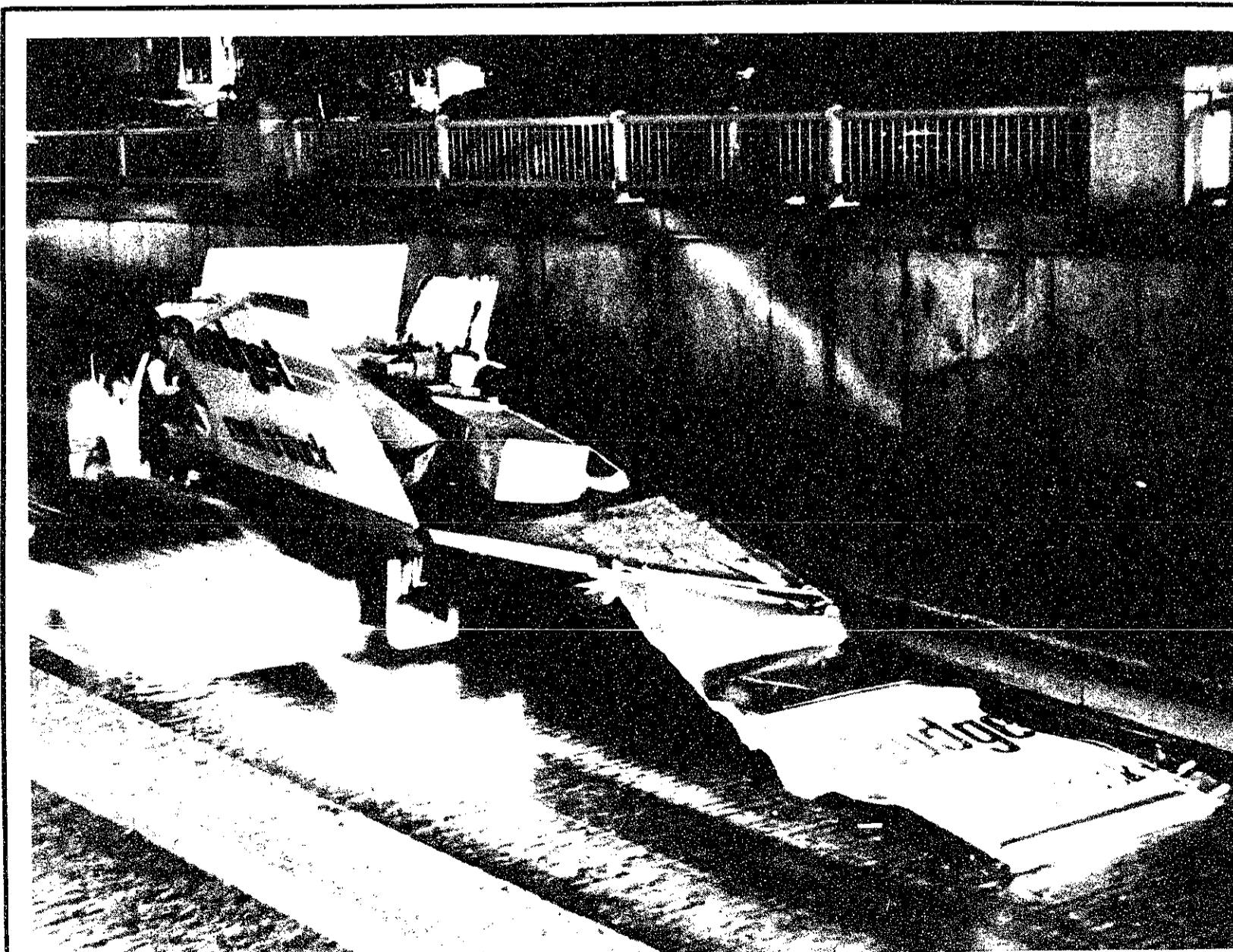
In an effort to increase the endowment, MIT launched a five-year plan in October of 1987 called "Campaign for the Future" — with a goal of at least \$550 million in mind, of which \$50 million is targeted for undergraduate student aid. The Campaign seeks another \$60 million for graduate student aid.

Financial Aid Director Leonard V. Gallagher '54 said that MIT's self-help level is high because MIT's endowment for scholarship is not among the top. The main reason for this, he said, is that MIT is a relatively young school compared to other prestigious universities, and therefore has fewer alumni to solicit from.

He also explained that the In-

## Erratum

The last paragraph in Tuesday's story "Memo says Athena was mismanaged" should have stated that the six employees were laid off, not fired.



Watch that overpass! A truck on Memorial Drive attempted to pass under Massachusetts Avenue Wednesday night. The driver appeared to be shaken but unhurt.  
Kyle G. Peitonen/The Tech

## GSC wants information on students' funding sources

(Continued from page 1)

the graduate school, expressed surprise yesterday after hearing of the resolution. Perkins said he thought most graduate students already knew of their funding sources, and that in any case the information could be easily obtained.

Moreover, Perkins said that his "knee-jerk" reaction was not to add to existing bureaucracy. "I'm not particularly enthusiastic about having to put more information on the appointment forms," he said, though in theory it could be done.

Perkins could not comment yesterday on what action would be taken on the resolution, he said, since he had not yet had a chance to discuss it with the GSC.

Graduate fellowship awards already bear a list of account numbers funding the appointment, according to Jeff Meredith G, president of the GSC, although appointments to research and teaching assistantships do not. Meredith said he thought all appointment forms should bear the funding source information — and name the sources in writing, rather than just giving account numbers.

The written information "ought not to be necessary . . . if there's the right kind of relationship between the students and the faculty," Perkins said. In the four years he has been dean, Perkins said, no student has ever complained of not being able to learn of the funding sources for their project.

The GSC resolution, however, suggests that "some advisors are unwilling to discuss their sources of funding."

Meredith did concede, though, that the resolution would probably affect only a small number of people. But those whom it would affect "are very concerned," according to Meredith. "There are a lot of people who aren't completely sure . . . because of this accounting system," he said. Both Meredith and Perkins agreed that when projects have multiple funding sources, the situation becomes confused.

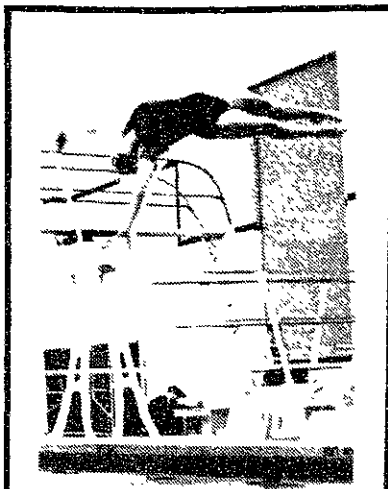
If a student is unhappy with his appointment, for funding reasons or otherwise, his options are either to ask his advisor to transfer him to another project or to switch advisors, Meredith said. Paying tuition or finding an independent source of funding are also possible options, but are less plausible, he indicated.

The students do have the freedom to change advisors, Meredith said, though "it's not something they encourage." But "most advisors would understand grad-

uate students' convictions not to work under certain types of sponsorship."

Perkins said that, if for any reason a student wants out of an appointment, he can shop around. "But no one can guarantee the student . . . that there is alternate funding available." There usually are no empty research projects waiting to be filled, he said.

Perkins said that "generally speaking, departments make good matches" between the interests of their professors and their graduate students, though it was not unusual in his experience for people to switch projects.



Alice P. Lei/The Tech  
Rachael Harmon '91  
dives during Tuesday's  
meet at Wellesley,  
which MIT won.

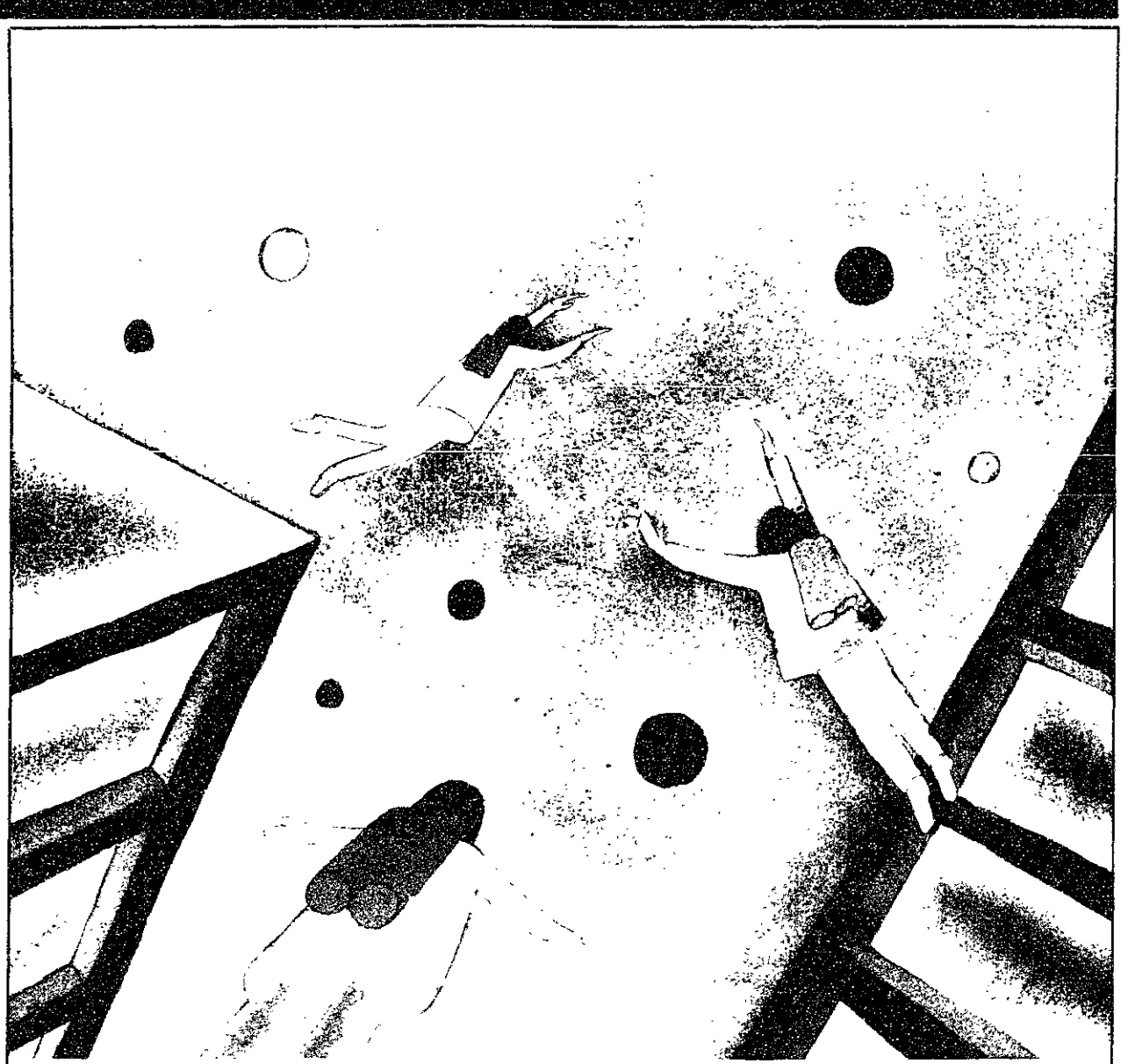
**Give a hoot.  
Don't pollute.**

Forest Service, This space  
donated by  
U.S.D.A. The Tech

**Harvard-Epworth  
United Methodist  
Church**

1555 Massachusetts Ave.  
opposite Cambridge Common

Sunday Worship: 9 and 11 am



**TEST THE LIMITS OF YOUR IMAGINATION  
WIN \$3000**

**Enter the 6th Annual  
HONEYWELL FUTURIST  
Award Competition**

Vision. Imagination. Technology. The world 25 years from now.

Today's dreams become tomorrow's reality. Write your vision of the world in 2013 and enter Honeywell's 1988 Futurist Award Competition.

If you're a full-time student at an accredited U.S. college or university, we invite you to use your imagination and knowledge of technology to write a 1,500 word essay on the advances you foresee in one of several topics—electronics, industrial automation, aerospace, semiconductors, or

automation in homes and buildings—AND their social impact on the world of tomorrow.

If your ideas are among the most imaginative and technically feasible, you may be among the 10 winners awarded \$3,000.

For Futurist Contest rules, entry form and a free 17 x 22 color poster of the Jean-Michel Folon print pictured above, call this toll-free number:

**1 (800) 328-5111 Ext. 1581**

**Don't delay.** You must request your entry form by March 4, 1988 and mail your entry by March 18, 1988.

**Honeywell**

**a unique opportunity  
for  
Math/Science  
(Majors/Minors/Aptitudes)**



For you and for the world. Peace Corps will combine your education with training to prepare you for a volunteer position in: • Education • Fisheries • Health • Agriculture • Forestry or other areas. You'll meet new people, learn a new language, experience a new culture and gain a whole new outlook. And while you're building your future, you'll be helping people in developing countries learn the basics of technological advancement.

**Recruiters at M.I.T.**

- \* Wednesday, Feb. 17: Film/Information Session in classroom 8-105 at 4:00 pm. Information booth from 10:00 - 2:00 pm in Lobby 13
- \* Tuesday, Feb. 23: Interviews - Sign up in the Office of Career Services

The toughest job  
you'll ever love

**PEACE CORPS**

**COUNCIL  
TRAVEL**

| From BOSTON | Round Trips Starting at |
|-------------|-------------------------|
| LONDON      | 369                     |
| LUXEMBURG   | 348                     |
| BRUSSELS    | 378                     |
| ST. THOMAS  | 300                     |
| CARACAS     | 360                     |

Taxes not included  
ALSO Work Study Abroad  
Language Courses Int'l Student ID  
Youth Hostel Passes EURAIL Passes  
Issued on the spot!

Call for the FREE CITE Student  
Travel Catalog!



Boston 617-266-1926  
Cambridge 617-497-1497

# news roundup

from the associated press wire

## World

### Philippines military moves against communists

The Philippine military says it has dealt a serious blow to the 19-year-old communist insurgency. Troops reportedly captured 20 top members of the Communist Party. The military claims those raids also disrupted the rebels' communication system and turned up a coded list of the party's financial supporters both in the Philippines and abroad.

### Violence continues on West Bank

Israeli Prime Minister Yitzhak Shamir toured two Palestinian refugee camps in the occupied Gaza strip yesterday — and promised to improve living conditions. But the violence continued in the occupied West Bank, where Israeli troops wounded an Arab protester at a refugee camp.

The Israeli army also says two soldiers and a Palestinian guerrilla died in fighting yesterday after guerrillas slipped across the border from Lebanon. The Palestine Liberation Organization's main faction, Fatah, claims responsibility for the raid. Israel claims the guerrillas had planned to take hostages and demand that Israeli forces get out of the occupied territories.

## Nation

### Contra aid package fails in House

The White House says President Reagan is "deeply disappointed" about the failure of his *contra* aid package in Congress Wednesday night. Reagan's proposal was for more than \$36 million in aid. With a tenth of it in military supplies to be awarded if Reagan felt the Nicaraguans hadn't made enough progress toward reform.

Sandinista leader Daniel Ortega said the vote will strengthen peace efforts — but he added it doesn't make the war disappear because the conflict is promoted and organized by the Reagan administration.

House speaker Jim Wright says despite the defeat of the *contra* aid package, the House won't leave those fighting in Nicaragua "high and dry." The Democrats are working on a different assistance package for the rebels — but this one will be strictly humanitarian aid, with no funds set aside for weapons.

Meanwhile, *contra* supporters are looking for other ways to get money to the Nicaraguan rebels. A businessman who heads a pro-*contra* group says he'll do everything that's legal to raise money.

### Noriega said to be indicted

Panama's military leader is reported to be under indictment in the United States. Sources say a federal grand jury in Miami has charged General Manuel Antonio Noriega with aiding international cocaine traffickers. The indictment was sealed, but a news conference is scheduled today where a US Attorney is expected to publicly announce the action against Noriega.

### Divestiture law stricken

A three-judge Michigan Court of Appeals panel has dealt a blow to efforts to get colleges to dump their South African investments. The judges overturned the nation's first law forcing colleges to divest, ruling that it violated the school's constitutional autonomy. The case involved the University of Michigan, which objected to being ordered to sell off stock in South African firms.

## Weather

### Bundle up!

The low pressure center that brought the moderate snowfall to New England yesterday will now allow some of the cold air that resided in the middle of the country to move into our area. The strong cyclonic circulation associated with the low will also contribute to rather low wind chill temperatures.

**Today:** Partly cloudy, breezy and cold. Winds west-northwest 15-25 mph. High 24°F (-4°C).

**Tonight:** Clearing and much colder. Low 5°F (-15°C).

**Saturday:** Partly cloudy and continued cold. High 20°F (-7°C) / Low 10°F (-12°C).

**Sunday:** Partly cloudy and cooler. Highs 50-55°F (10-13°C).

Forecast by Michael C. Morgan

Compiled by Michael Z. Gojer

## Local

### Two companies in running to replace Garden

Mayor Raymond Flynn said yesterday that both development parties interested in building a complex to replace the aging Boston Garden remain in the running. John Connolly, a development advisor negotiating the arena deal for Flynn, denied a published report that the process had been limited to Delaware North, the Buffalo, NY, based firm that owns the Garden. The report, which appeared Wednesday in the *Patriot-Ledger* of Quincy, said Flynn wanted more information before publically backing Delaware North for the project in the city's North End area. The project would have a 17,000 seat sports arena and a \$650 million office, hotel, and condominium complex. H. N. Gorin and Associates has also submitted a proposal, which is said to be more extensive.



**TEKTRONIX**  
The Creation of Excellence

At Tektronix we have a reputation for providing products, services and solutions representing state-of-the-art technology that is sought throughout the world. We're a \$1.4 billion company located in the spectacular Pacific Northwest with the resources and environment that earned us a place in "The 100 Best Companies To Work For In America."

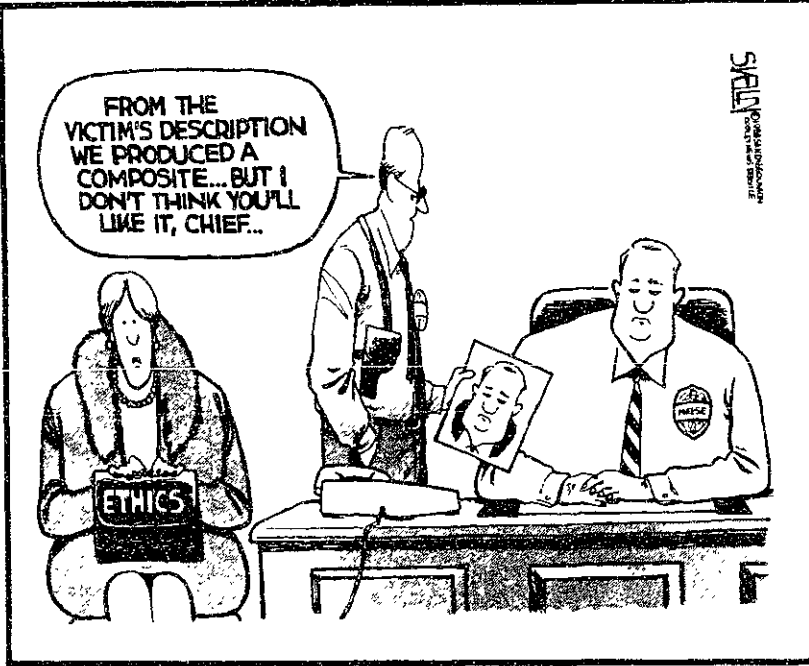
If you're majoring in or graduating with a degree in Electrical Engineering, Computer Sciences or any of the Physical Sciences, plan to attend our on-campus Open House and bring your resume so we can get to know you better. We'll have a "hands-on" demonstration of our latest electronic control, display and instrumentation systems as well as some of our best engineers present to answer your questions.

**Open House/Product Demonstration**  
Room 4-149  
Tuesday, February 9, 1988 7-9pm  
**Campus Interviews (Graduating Students)**  
February 10 and 11, 1988  
**Internship Interviews**  
February 12, 1988

We are an equal opportunity employer, m/f/h/v.

**Tektronix**  
COMMITTED TO EXCELLENCE

# opinion



**Q: ARE GOVERNOR MECHAM'S DAYS NUMBERED?**



## The Tech

Volume 108, Number 2 Friday, February 5, 1988

**Chairman** ..... Peter E. Dunn '89  
**Editor in Chief** ..... Andrew L. Fish '89  
**Business Manager** ..... Mark Kantrowitz '89  
**Managing Editor** ..... David B. Plass '90  
**Executive Editor** ..... Thomas T. Huang '89

**News Editors** ..... Darrel Tarasewicz '89  
 Niraj Desai '90  
 Michael Gojer '90  
**Night Editors** ..... Ezra Peisach '89  
 Marie E. V. Coppola '90  
**Opinion Editor** ..... Michael J. Garrison '88  
**Arts Editors** ..... Jonathan Richmond '89  
 Julian West '89  
**Photography Editors** ..... Kyle G. Peltonen '89  
 Mark D. Virtue '90  
**Contributing Editors** ..... V. Michael Bove '89  
 Akbar A. Merchant '89  
**Senior Editors** ..... Mathews M. Cherian '88  
 Ben Z. Stanger '88  
 David M. Watson '88

**NEWS STAFF**

**Associate News Editor:** Robert Adams '90; **Senior Writers:** Katherine T. Schwarz '86, Earl C. Yen '88, Anuradha Vedantham '89; **Staff:** Daniel J. Glenn '88, Joel H. Friedman '88, Salman Akhtar '89, Mary Condello '89, Marcia Smith '89, Sally Vanerian '89, Anh Thu Vo '89, Ahmed Biyabani '90, Eric L. Chang '90, Sarita Gandhi '90, Seth Gordon '90, Anita Hsiung '90, Jai Young Kim '90, Irene Kuo '90, Priyamvada Natarajan '90, Kenyon D. Potter '90, Robert E. Potter II '90, Raymie Stata '90, Susan Seung-Eun Lee '91, Christina Liu '91, Prabhat Mehta '91, Morlie L. Wang '91, Wayne W. Wu '91, Paula Maute; **Meteorologists:** Robert X. Black '88, Christopher A. Davis '88, Michael C. Morgan '88.

**PHOTOGRAPHY STAFF**

Rich R. Fletcher '88, Tom Coppeto '89, Victor Liu '89, Joyce Ma '89, Ken Church '90, Lisette W. Lambregts '90, Mike Niles '90, Kristine AuYeung '91, Sarath Krishnaswamy '91, Georgina A. Maldonado '91, Mauricio Roman '91, Alice P. Lei; **Darkroom Manager:** Mark D. Virtue '90.

**PRODUCTION STAFF**

**Associate Night Editor:** Halvard K. Birkeland '89; **Staff:** Illy King '89, Ajay G. Advani '91, Jabin T. Bell '91, Scott R. Ikeda '91; **Supplies Manager:** Ezra Peisach '89; **TEN Director:** Halvard K. Birkeland '89.

**PRODUCTION STAFF FOR THIS ISSUE**

**Night Editor:** ..... Halvard K. Birkeland '89  
**Staff:** Harold A. Stern '89, Andy L. Fish '89, Ezra Peisach '89, Kyle G. Peltonen '89, Marie E. V. Coppola '90, David B. Plass '90, Mark D. Virtue '90.

The Tech (ISSN 0148-9607) is published Tuesdays and Fridays during the academic year (except during MIT vacations), Wednesdays during January, and monthly during the summer for \$15.00 per year. Third Class by The Tech, 84 Massachusetts Ave. Room W20 483, Cambridge, MA 02139-0901. Third Class postage paid at Boston, MA. Non-Profit Org. Permit No. 59720. **POSTMASTER:** Please send all address changes to our mailing address: The Tech, PO Box 29, MIT Branch, Cambridge, MA 02139-0901. Telephone: (617) 253-1541. Advertising, subscription, and typesetting rates available. Entire contents - 1988 The Tech. The Tech is a member of the Associated Press. Printed by Charles River Publishing, Inc.

Column/Ravi Desai

## Every year should become pass/fail

MIT is in the middle of an engaging and frequently irritating debate about pass/fail grading. Many faculty members support the abolition of second term freshman pass/fail, but many students support its continuation. This is an opportune moment for students, faculty, and the administration to question grades in particular and their philosophies of education in general. While evaluation has a place in education, four year pass/fail would be an important reform of MIT's educational policy.

Grades are supposed to be a means of identifying the better, more dedicated students in a class and marking them as such. But do grades really do this? Perhaps grades merely indicate which members of a class have learned the material more competently, or mark those with greater natural intelligence.

A professor who uses grades is implicitly interpreting the letters in the context of what he expects from his students. We've got professors of widely disparate fields, personalities, and yes, competence. When they provide society with a single symbolic measure of a person's performance, they are very frequently inviting misinterpretation, rendering their personal evaluation process useless.

Once a person moves on from

a course, he uses only a small percentage of the technical knowledge he acquired in the course. Instead he retains the processes of thought that an MIT education has trained him in. Testing at MIT is more frequently an exercise in the memorization of formulas and in the use of mathematical arcana than in questioning a student's intellectual capabilities. Thus grades do not accurately measure a student's ability to "perform" after graduation.

Of course, even though grades have little real meaning after MIT, in the much maligned "real world" they are taken to mean much more. Some companies and graduate schools care about academic records to the exclusion of much else.

The primary motive in taking a class should be a desire to learn the material that interests you and to develop the intellectual capabilities that courses here can develop. When grades exist, however, the drive to get the best grades possible can be strong. Frequently, it is too easy to take the courses that let this happen. When the motivation behind being at college changes from education to grades, something is wrong.

One of the reasons behind freshman pass/fail is that fresh-

to experiment. This would still be valid for upperclassmen, even though they have more requirements to meet in their major. Pass/fail grading would let them take courses they would ordinarily not attempt and would reduce the stress of their required courses. As things stand now, stress is encouraged by the philosophy that satisfactory is not good enough, that you have to be better than others.

It is important that competent people are employed. Nevertheless it's as important to remember that this is MIT, with a 125 year tradition of quality. Employers and graduate schools will come here, grades or not, especially if they have additional sources of information.

Thus a grade of "Pass" or "Fail" should be supplemented by a compulsory written evaluation from the professor, which would go on a student's permanent record. This would give professors the opportunity to say more than just "P" or "F" about their students, and would still prevent the students from being competitively pigeonholed. And contrary to popular belief at MIT, words and thought say a lot more about people than symbols do.

Ravi Desai, a freshman, is a contributor to the opinion pages of The Tech.

Column/David P. Hamilton

## Babbitt is the best choice for Democrats

Next Monday, the Iowa caucuses will officially begin the 1988 presidential election. For seven Democratic hopefuls, the stakes are high. Any candidate that can show an advantage, whether by achieving a distinct win or by significantly improving dismal poll standings, will have broken out of the previously undistinguished pack and taken the first steps toward the nomination.

Let's take a close look at the seven Democrats and their positions on the crucial issues and see how they measure up:

The Rev. Jesse Jackson has called for reimposition of the 38 percent income tax bracket and a return to 1980-level corporate taxes, raising about \$30 billion to deal with the budget deficit.

However, Jackson would also fund huge federal welfare programs, such as comprehensive national health insurance and government housing, slashing the defense budget to pay for them. Jackson's cuts in weapons systems such as the B-1 bomber, the MX missile, and SDI would hardly yield enough money to pay for his social programs, much less touch the deficit, since

the costs of these programs are spread over several years.

Also of concern is Jackson's foreign policy, which alleges that multinational corporations impoverish the Third World and take away American jobs by locating facilities in poorer nations for the cheap labor. While his charges have some truth, it's hard to see exactly what action he'd take without upsetting the international trade picture further — announcing that "the playing field should be evened" is unsatisfyingly vague.

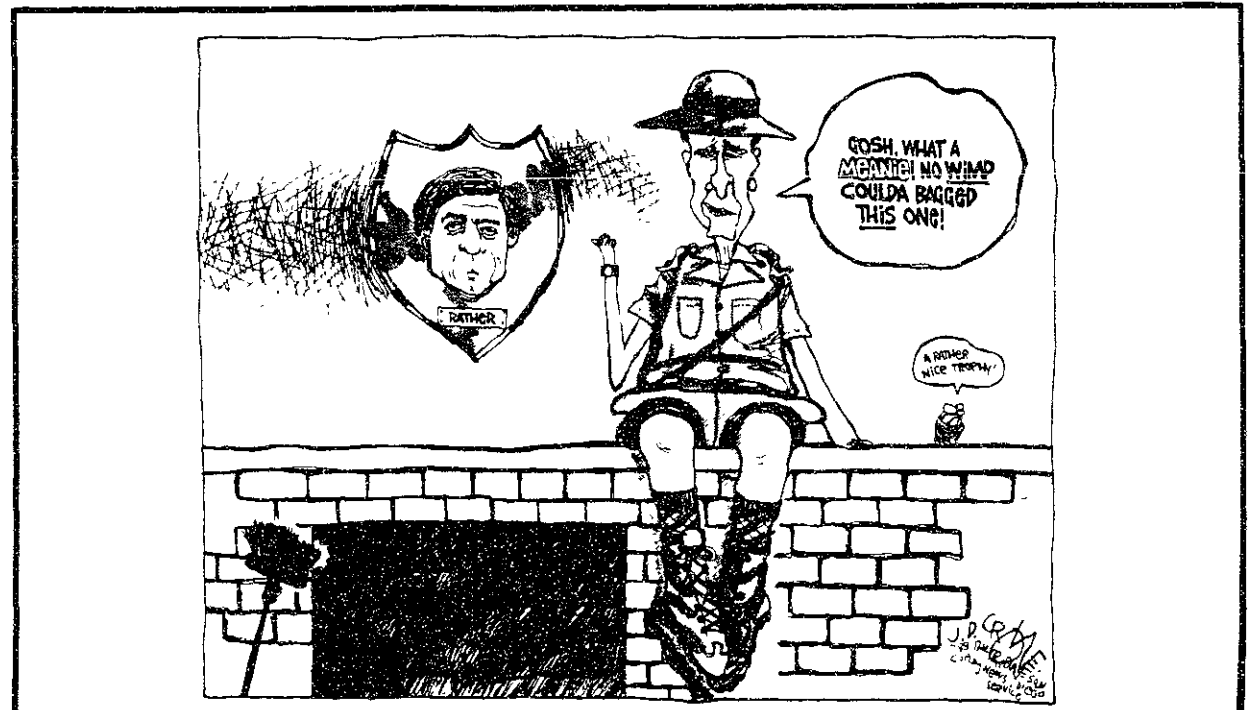
Massachusetts Gov. Michael Dukakis is running on his reputation as a tough manager and a herald of economic growth, promising to bring fiscal responsibility to the White House. The centerpiece of his budget plan is his proposal to offer a one-time tax amnesty and to stiffen IRS enforcement power in order to collect \$110 billion in annual unpaid taxes. Unfortunately, the enforcement game is one that Congress plays every year in order to cut, on paper, a few billion dollars more from the deficit, and most experts believe that an amnesty will only encourage tax

cheating in the long run. To his credit, Dukakis does say that "no responsible candidate can rule out new taxes," but he's not eager to rule them in, either.

Sen. Albert Gore (D-TN) is perhaps the most articulate of the candidates, but his views stubbornly refuse to resolve themselves into a coherent national vision. Another "last resort" on new taxes, Gore has proposed measures which might raise about \$16 billion — small potatoes in the face of \$200 billion budget deficits.

Gore also talks vaguely about the need for Americans to "stand up forcefully" for their interests in the world, and supports American action in Grenada and the Persian Gulf. But so far he's failed to explain what circumstances might justify the use of American military force, and the incoherence of his foreign policy lead many to fear that it may evolve on arbitrary decisions.

Exactly the opposite problem plagues former Colorado Sen. Gary Hart, who has set forth seven strict criteria for the use of (Please turn to page 7)



# THE NCR \$300,000 STAKEHOLDER ESSAY COMPETITION FOR STUDENTS

## THE MISSION

## THE CHALLENGE

## THE RULES



### TO CREATE VALUE

At NCR, we've found that in order to create value, we must first satisfy the legitimate expectations of every person with a stake in our company. We call these people our stakeholders, and we attempt to satisfy their expectations by promoting partnerships in which everyone is a winner.

- *We believe in building mutually beneficial and enduring relationships with all of our stakeholders, based on conducting business activities with integrity and respect.*
- *We take customer satisfaction personally: we are committed to providing superior value in our products and services on a continuing basis.*
- *We respect the individuality of each employee and foster an environment in which employees' creativity and productivity are encouraged, recognized, valued and rewarded.*
- *We think of our suppliers as partners who share our goal of achieving the highest quality standards and the most consistent level of service.*
- *We are committed to being caring and supportive corporate citizens within the worldwide communities in which we operate.*
- *We are dedicated to creating value for our shareholders and financial communities by performing in a manner that will enhance the return on their investments.*

### TO WIN

We're so committed to our mission that we're encouraging the next generation of leaders to re-examine America's business values. We're doing this by holding the NCR Stakeholder Essay Competition which all full-time undergraduate and graduate college or university students may enter. Entries should explore the topic: "Creating Value for All Stakeholders in Corporations and/or Not-for-Profit Organizations."

The student chosen as the first place winner will be awarded \$50,000 cash. Plus, the entrant's school will receive \$100,000 in NCR data processing equipment. The second place winner will receive \$15,000 cash and the entrant's school will receive \$35,000 in equipment. One hundred \$1,000 awards of merit will be given to chosen participants. In addition, selected award-winning entrants will be invited to attend the first NCR International Symposium on Stakeholders to be held June 9 & 10, 1988, in Dayton, Ohio.

- 1) The NCR Stakeholder Essay Competition is open to any full-time undergraduate or graduate student attending an accredited college or university in the United States or its territories.
- 2) Entries must be original, unpublished work on the topic: "Creating Value for All Stakeholders in Corporations and/or Not-for-Profit Organizations." Essays must not exceed 3,000 words. Areas of discussion may include, but are not limited to: Ethics, Corporate Governance, Strategic Management, Social Responsibility, or Managing Change as these topics relate to managing for stakeholders.
- 3) Entries must be typed, double-spaced on 8½" x 11" bond paper, one side only. A separate cover sheet should list the entrant's name, school, home address and title of the essay. Subsequent pages should be numbered sequentially and include the essay title in the upper right margin. Winners will be required to produce proof of current full-time college or university enrollment.
- 4) All entries must be postmarked by March 31, 1988, and received by April 15, 1988 to be eligible for consideration. Submit entries to: NCR Stakeholder Essay Competition, NCR Corporation, Stakeholder Relations Division, Dayton, Ohio 45479. NCR is not responsible for, and will not consider, late, lost or misdirected entries.
- 5) In the event any prize winner is a minor, the cash award will be made to his/her parent or guardian.
- 6) Awards to individuals will be reported as income on IRS Form 1099. All taxes are the responsibility of the recipients.
- 7) Award winners will be required to sign publicity releases and affidavits of eligibility and compliance with all rules governing the competition. Failure to return executed affidavits and releases within 15 days of receipt will cause the award to be null and void.
- 8) All entries become the property of NCR and will not be returned.
- 9) By participating in this competition entrants agree to these rules and the decisions of the judges which shall be final in all respects, and further agree to the use of their names, likenesses and entries for NCR advertising and publicity purposes without any further compensation.

State and territorial judges will consist of panels that include NCR stakeholders. Final selections will be made from state and territory winners by a national panel of judges.

If clarification is necessary, call (513) 445-1667, 8am-5pm EST.

Award winners will be notified on or about May 16, 1988. To obtain a list of finalists, send a self-addressed, stamped envelope to:

NCR Stakeholder Essay Competition  
NCR Corporation  
Stakeholder Relations Division  
1700 South Patterson Boulevard  
Dayton, Ohio 45479

NCR's Mission: Create Value for Our Stakeholders

Interviewing  
Thursday, February 18

# The Ultimate Internships

Many internships are merely opportunities to make photocopies or "gofer" coffee. But Microsoft offers the Ultimate Internships for MBAs, upper-level undergraduates, or students pursuing a degree in Computer Science, Applied Math, Applied Physics, or related disciplines.

We have two Ultimate Internship opportunities:

## Product Manager

As a Product Manager Intern, you'll work directly with a Microsoft Product Manager helping market one of our best-selling systems, applications, or languages software. You will have a hand in defining business, product and marketing strategies; developing marketing communications, training, and analysis; and you will participate in forecasting, profitability analyses, and manufacturing.

## Program Manager

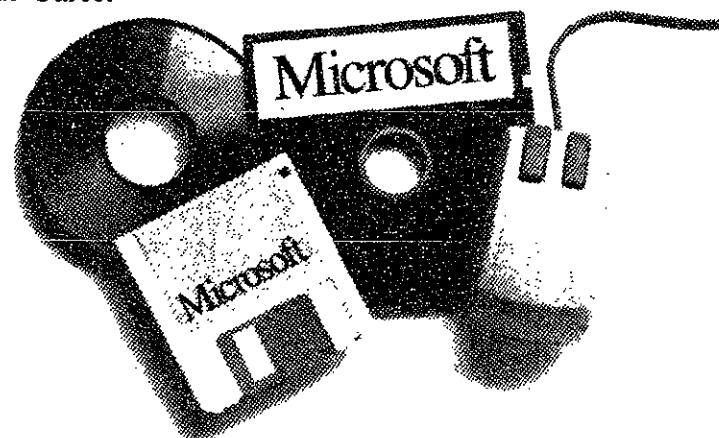
As a Program Manager Intern, you will work with one of our Program Managers to coordinate all aspects of microcomputer software development, from programming and documentation to testing. You'll have a hand in setting design goals; reviewing product specs for consistency, researching product categories, new technologies, and competitive products.

This is an invaluable opportunity to gain hands-on experience, plus these very tangible benefits:

- Paid internship
- Paid relocation
- Paid health insurance premiums\*
- Health club membership\*

The Ultimate Internship lasts between June and September, according to your schedule. To find out more, begin by attending our on-campus interviews on Thursday, February 18. Contact your Career Placement Office to sign up. We are an equal opportunity employer.

Note: \*For the duration of your internship only.



**Microsoft**

# opinion

## Babbitt should be the choice in caucuses

(Continued from page 4) American forces abroad which include public support, a "test of simplicity," achievability, and a clear definition of objectives. No military action of the past seven years meet all of Hart's principles, including the bombing of Libya. The trouble with these explicitly strict guidelines, of course, is that a foreign power might be tempted to test Hart's resolve to stick to his principles when deliberately provoked.

In addition to his engagement guidelines, Hart is selling some not-so-new ideas, military reform and "strategic investment." In reforming the armed forces Hart would opt for cheaper and more effective weapons, such as attack submarines over aircraft carriers, as well as an eventual withdrawal of tactical nuclear weapons from the European theater. Strategic investment is Hart's term for re-

directing American savings into manufacturing industries and government spending into public infrastructure. In themselves, these aren't bad ideas, but Hart gives little idea of how he might accomplish them.

Sen. Paul Simon (D-IL) seeks to recapture the traditional liberal appeal of massive government social programs with an \$8 billion WPA-style federal jobs program, simultaneously proposing a constitutional balanced-budget amendment. Can he do both? It's doubtful, particularly since Simon would raise taxes only on the richest one percent of the population, again "in the last resort." He also bases his expectations of reduced deficits on formulas dependent on reductions in interest and unemployment rates over which no president has direct control.

Rep. Richard Gephardt (D-

MO) has made the most mileage out of the issue of international trade, most notably because of his sponsorship of the Gephardt Amendment to the House version of the 1986 Omnibus Trade Act. The amendment has been widely, if somewhat unfairly, condemned as protectionist. While the amendment's actual text is fairly mild, the thinking behind it is not. Gephardt's recent Iowa TV commercials hint that the United States should adopt retaliatory tariffs for Korean barriers that make K-cars cost \$48,000 in Seoul.

That leaves former Arizona Gov. Bruce Babbitt, who has proposed the most coherent and wide-reaching domestic platform of any candidate. Babbitt advocates "needs-testing" of federal programs in order to make certain that programs are not only needed but are targeted to those who

need them. Concrete results of such policies include taxing of Social Security benefits for the wealthy, elimination of second-home mortgage deductions, and targeting of farm subsidies to "family farm units" defined by major crop yields rather than agribusiness.

Reducing the deficit is another of Babbitt's priorities: to do so, he would impose a national sales tax of 2.5 percent the first year and 5 percent thereafter in order to dampen consumption and stimulate savings and investment. In order to reduce the regressive effects of the tax, poor families could obtain income tax rebates and food, medicine, and certain types of clothing would be exempt.

On foreign policy Babbitt still sounds somewhat naive, exclaiming that "Marxism is dead" and that the goal of the United States

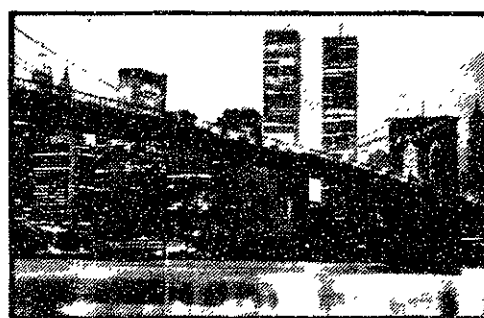
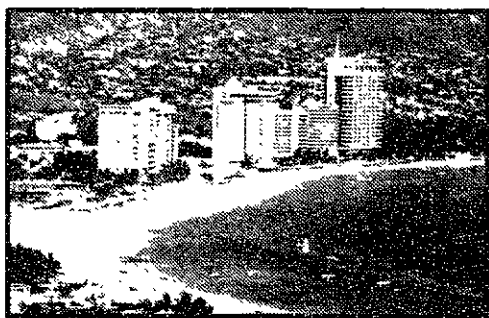
is to respond to the Soviet challenge for economic reform and arms control. This reasoning is partially true, but it neglects the fact that no Soviet reforms have demonstrated any fundamental changes in their totalitarian system. Such changes are probably necessary before we can wholeheartedly embrace the Soviet challenge as Babbitt would have us do.

Yet among all the candidates, Babbitt has been the most straightforward and clearheaded in his proposals. His grasp of the issues and the honesty with which he presents his own ideas makes him the most qualified choice for the Democratic nomination and, indeed, for the Presidency.

*David Hamilton, a senior in the department of electrical engineering and computer science, is a former news editor of The Tech.*



### HOLIDAY ADVENTURES AND PENTHOUSE MAGAZINE PRESENT **FREE HOTEL ROOMS FOR TWO!**



There's never been a magazine offer like this one—free double occupancy accommodations for two at any of our numerous member resorts throughout Europe, North America, and the Caribbean! And it's all a part of a spectacular arrangement between Holiday Adventures and PENTHOUSE magazine.

To qualify for this unbeatable deal, simply subscribe to PENTHOUSE at the full newsstand price of \$49.50, and you and your guest will be our guests for three thrilling evenings of fun. There's no contest to enter, no sweepstakes to win. Just agree to meet the minimum daily expenditure per person for meals and non-alcoholic beverages from the hotel in which you will be staying—and you can be in with the inn crowd.

If you'd rather turn your vacation into one full week—seven glorious days for you and your guest—simply subscribe to PENTHOUSE for two years at the rate of just \$99.00 or order two one-year subscriptions and give one as a gift. Either way, the value of the gift far out-

weighs the cost of the subscription—often by as much as 600%! Order immediately, and PENTHOUSE will send you the complete directory of hotels and resorts together with their descriptions and locations—and your Holiday Adventures hotel voucher(s).

So take your pick! One year or two. Three nights or a week. The U.S. or Europe, Canada or the Caribbean. And remember—this is an exclusive subscription offer available only through the PENTHOUSE family of magazines. No other publisher, clearinghouse, or media group can even begin to match it.

PENTHOUSE. The international magazine for men is now your passport to international travel. So don't delay. Fill out the coupon... and pack your bags!

**HOLIDAY ADVENTURES**  
P.O. Box 3021, Harlan, IA 51593

**PENTHOUSE**

YES! Send me my subscription for two years of PENTHOUSE and receive week accommodations for just \$99.00!

YES! Send me my subscription for one year of PENTHOUSE and receive three nights accommodations for just \$49.50!

Name \_\_\_\_\_

Address \_\_\_\_\_

City \_\_\_\_\_ State \_\_\_\_\_ Zip \_\_\_\_\_

Phone (\_\_\_\_) \_\_\_\_\_

Married and I'll mark # \_\_\_\_\_

Account # \_\_\_\_\_ Magazine subscription \_\_\_\_\_

Exp. Date \_\_\_\_\_

CONDITIONS: Offer ends 3/31/88. Subscriptions must be paid in advance. Accommodations subject to availability and must be made directly with hotels. If you stay for less than the full advertised balance of another, full-rate, double reservation, no transfer at all. Prepayment may be required. This promotion not included. If any portion of this package is to be used as a gift, please include recipient(s) name, address, city, state, and zip.

NAAU4

Larry Lynn  
Oracle Corporation  
20 Davis Drive  
Belmont, California 94002  
415 / 598 / 8183 or 8124

We are recruiting for positions in Marketing, Consulting, Development, Finance, International and other areas within Oracle. If you are interested in opportunities at Oracle, please call or write:

If you are accustomed to success with an uncommon insistence on doing everything well, you can become part of this growth. We are recruiting now to staff our expansion of service and product offerings around the world. Join Oracle's team and help us continue our record of success.

**THE FUTURE**

A 1987 Software News survey ranks Oracle as the ONLY top-five supplier of software for mainframes, minicomputers and personal computers. ORACLE, our SQL-based, relational database management system, and our family of application development tools and decision support products are emerging as industry standards for every class of computer.

**THE PRESENT**

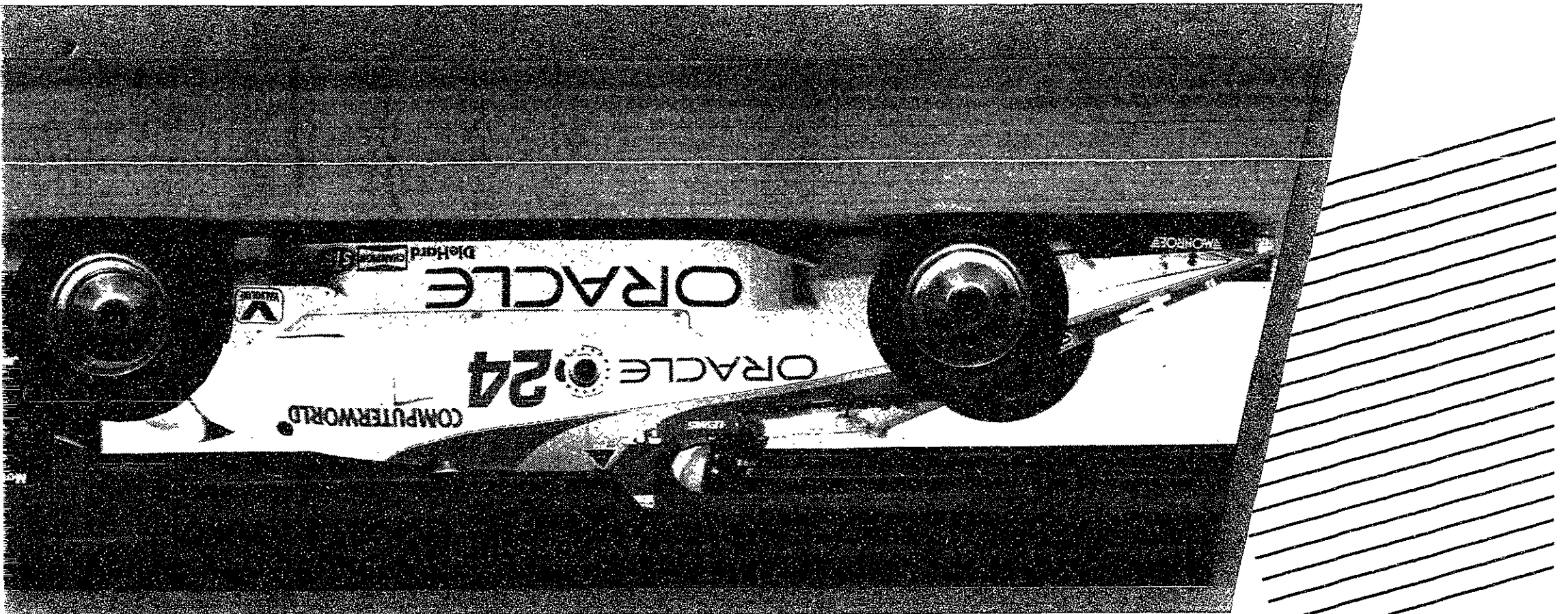
Oracle Corporation's revenues have more than doubled in nine of our ten fiscal years (the other year we grew 91%). This unprecedented growth is the direct result of the focused efforts of our unparalleled, company-wide team of super-achievers.

**THE PAST**

**The world's fastest growing software company and largest vendor of database management software and services**

**ORACLE®**

**THE FAST LANE IS FOR WINNERS**



## ARTS

# Exercise in filmed surrealism all style, no substance

## JULIA AND JULIA

Directed by Peter Del Monte.  
Starring Kathleen Turner,  
Gabriel Byrne, and Sting.  
Opening today at the Nickelodeon.

By PETER DUNN

WHO HAS NEVER WOKEN FROM a dream, perhaps clutching and clawing at the air, and thought to oneself, "It was so real — it must have happened"? Who has never wondered awake, "Is this reality, or am I dreaming at this very moment, only to awake in some other reality"? The line between reality and dream can at times seem very thin.

Because film reproduces reality so faithfully, it is the medium most suitable to dissolving altogether the line between reality and dream. The idea of intermingling the two is not new — look at Resnais (*L'Année dernière à Marienbad*, *Providence*) and Fellini — but its surreal possibilities have most often been explored by the Europeans. *Julia and Julia*, though it stars Kathleen Turner, has a distinctly European cast and crew, and a very Italian-surrealist mood.

The film begins with the wedding day of Paolo (Gabriel Byrne) and Julia (Kathleen Turner). Or does it? Already the mind doubts the reality of what the eyes see: the sky is a little too overcast, the wind a little too strong, the grass a little too green, the

setting a little too perfect, the moment a little too quiet. The camera lingers too long on the scenery, panning ever so slowly to the characters as if they were extraneous to the unreal setting. When Julia's veil is tossed by the wind to drape itself upon a sculpture, the stranger who picks it up (Sting) appears as all characters do in dreams — out of nowhere but never seeming out of place.

Julia is widowed on the way to her honeymoon due to a tragic car accident, and the film rejoins her six years later, a lonely travel agent in Trieste, Italy. But reality soon crumbles as she finds herself in an altogether different world: Paolo is alive and well, he and Julia have a son, nobody recognizes her at the travel agency, and she is having an affair with Daniel, the stranger at her wedding.

Director Peter Del Monte deftly swings from one world to the other as Julia never seems to find herself in one reality for more than a day at a time. Neither world is given more weight than the other, always leaving the audience in doubt as to which is real, if one can be sure that either one is real to begin with.

Subtle symbolism dominates both worlds: Daniel photographs sculptures as if infatuated with them since first finding Julia's veil on one, each switch between worlds is punctuated with the passage of a truck, the seaside is never far from the background, and so on.

The dream quality is further enhanced



by lighting (permanently overcast), camera angle (low and high camera angles constantly reminding the audience of the unreal quality of the film medium), dissolves onto the same scene, and repetition of scenes with slight variation (as when one experiences *déjà vu* from a dream).

But if the film's execution is fluid, its content is less than satisfactory. The idea is a novel one, and the film never gives in by revealing which world is real (or even if either world is real — they might just both be a figment of Julia's mind), but Del Monte never gains enough steam to make the story interesting. *Julia and Julia* is a well wrought exercise in style and mood, but it never rises above exercise to the level of a story.

While Gabriel Byrne is convincing as Julia's loving but sometimes indifferent

husband, and Sting handily slips between gentle seducer in one world and obsessed lover in the other.

Kathleen Turner, however, is poorly cast as Julia. She displays too much confidence to portray a woman confused and distraught by the disorienting changes she experiences. But what *Julia and Julia* lacks most is pace: the film builds too slowly — with too many extraneous scenes inserted simply for mood — to develop any of the nightmarish quality it hopes to achieve by its end.

*Julia and Julia* might have made an excellent film and might have, like *Blue Velvet*, brought surrealism more to the mainstream in America, had it paid as much attention to its content as it did to its mood. Instead, the film stops short as a simple study of style over substance.

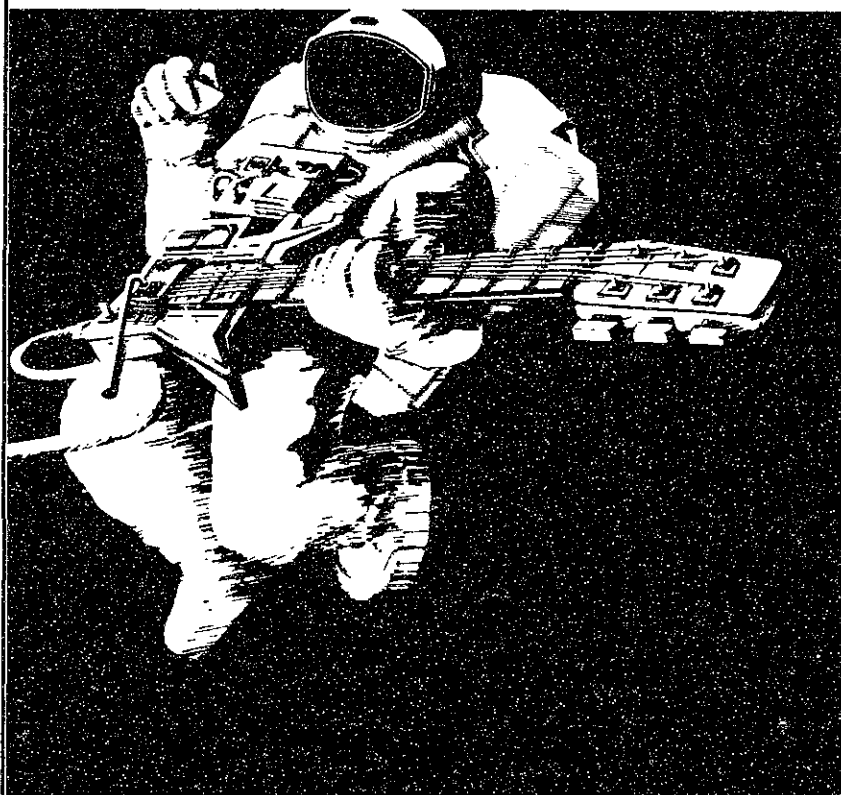


Hush little baby  
don't you cry.  
If someone doesn't  
do something,  
you'll just die.

Be a Peace Corps  
volunteer

Peace  
Corps

This space donated by The Tech



## Rock 'n Roll Conquers the Final Frontier.

Outer space will never be the same.

Laserium presents *Moonrock*—a show of 3-D laser graphics, computer animation and outrageous color set to some great classic rock 'n roll. Like Led Zeppelin, The Doors, Bowie, Styx, and The Stones. Among others.

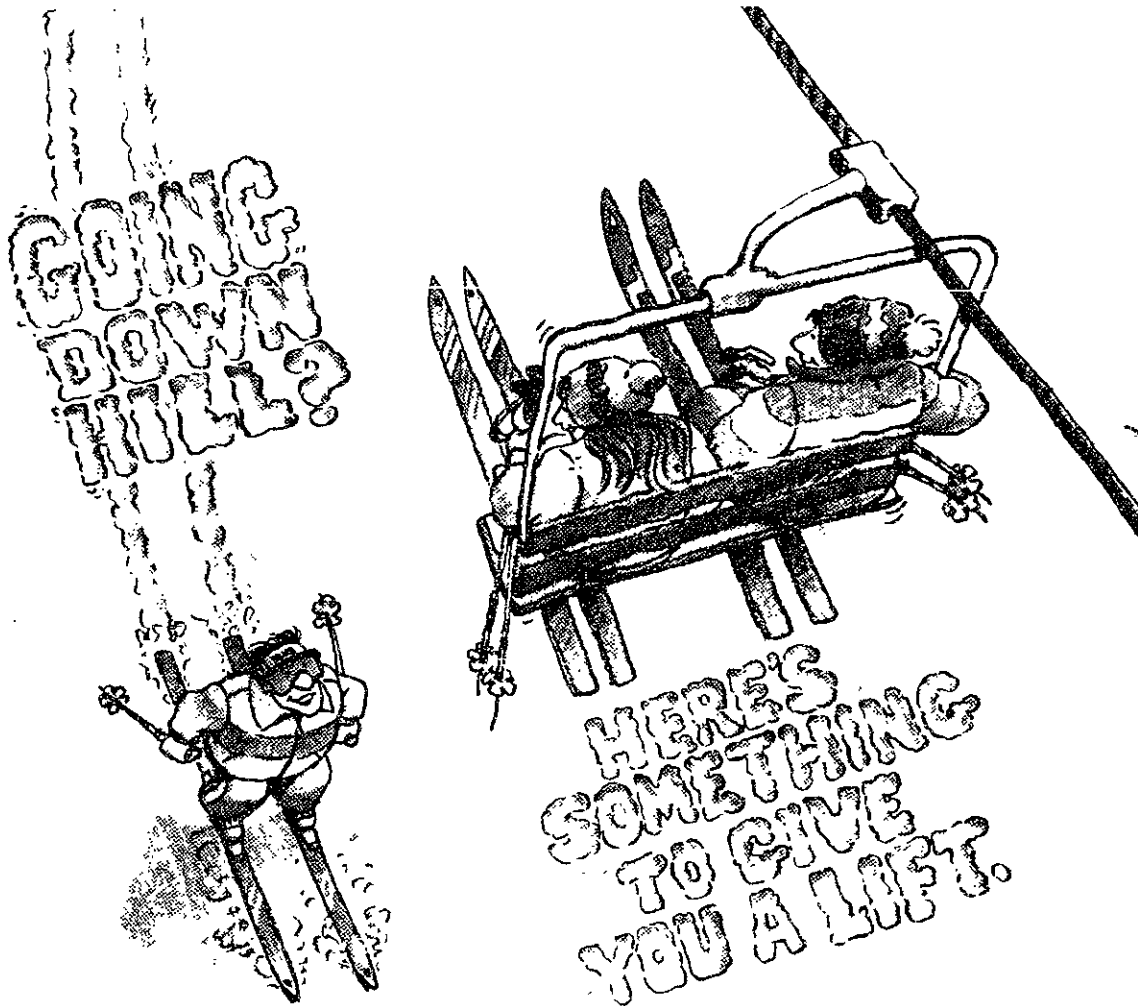
*Moonrock* premieres at the Museum of Science Planetarium November 12th. Shows are Thursday and Sunday at 8:30 PM, Friday and Saturday at 8:30 and 10 PM.

Don't miss *Moonrock*, it's a giant step for rock and roll.

Hayden  
Planetarium

at The Museum of Science

Also showing, *Rainbow Cadenza*, a laser fantasy featuring classical music. Showings: Thursday, Friday, Saturday 5:30 PM. Advance tickets available at the box office (cash only) or by calling 523-6664 with credit card only (MasterCard or Visa). Reservations cannot be made over the phone on the day of the show. Don't miss *Chronos* also showing evenings at the Omni Theater.

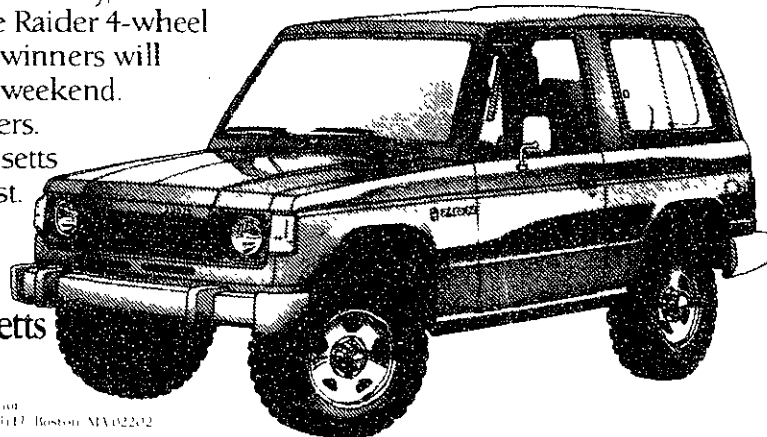


## This season, ski 2-FOR-1 in Massachusetts

Just stop by a Massachusetts Dodge dealer, a Ski Market store or a Mass Pike toll booth and ask for a free "Ski Easy" Brochure. In it, you'll find a 2-FOR-1 coupon good for lift tickets, trail passes or lessons at 27 participating Massachusetts ski areas. The brochure is also packed with information that makes skiing Massachusetts even easier and more affordable.

... and win a 1988 Dodge Raider 4x4 or a ski weekend for two.

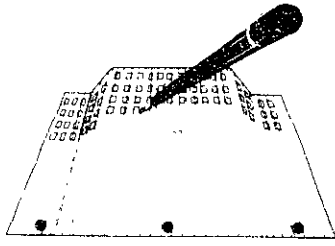
When you stop by a Massachusetts Dodge dealer, you can enter the "Ski Easy Sweepstakes". It's simple, there's no purchase necessary, and the Grand prize is a free 1988 Dodge Raider 4-wheel drive vehicle. Two second prize winners will receive a free Massachusetts ski weekend. Details at your local Dodge dealers. With offers like these, Massachusetts makes "skiing easy" hard to resist.



The spirit of Massachusetts  
is the spirit of America.

1988 © Commonwealth of Massachusetts, Michael S. Dukakis, Governor  
Massachusetts Office of Travel and Tourism, 100 Cambridge St., 4th Fl., Boston, MA 02202

**THE SHIDLER AWARD**  
A Real Estate Essay Competition



It's your chance to win up to \$10,000, gain entree to top real estate professionals and become published in prestigious national real estate publications.

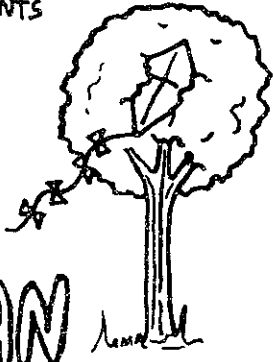
Pick up a brochure and entry form at your school's Financial Aid Office or call 1-800-222-0899.

But hurry. Deadline for essays is March 26.

**THE SHIDLER GROUP**  
PRINCIPALS IN REAL ESTATE

THE TECH RANDOM MUSIC ENSEMBLE  
PRESENTS

"YOU'RE  
A  
GOOD MAN  
CHARLIE BROWN"



A MUSICAL ENTERTAINMENT  
BASED ON THE COMIC STRIP "PEANUTS"  
BY CHARLES M. SCHULZ

FEBRUARY 5<sup>TH</sup>, 6<sup>TH</sup>, 7<sup>TH</sup>, 11<sup>TH</sup> & 12<sup>TH</sup> 8 PM  
SPECIAL MATINEE SUNDAY FEB 7<sup>TH</sup>, 3 PM

ALL PERFORMANCES IN ROOM 34-101 (MUS)  
ADMISSION \$3.00

**Freshmen!**  
**Join ISP!**

It's Not Too Late!

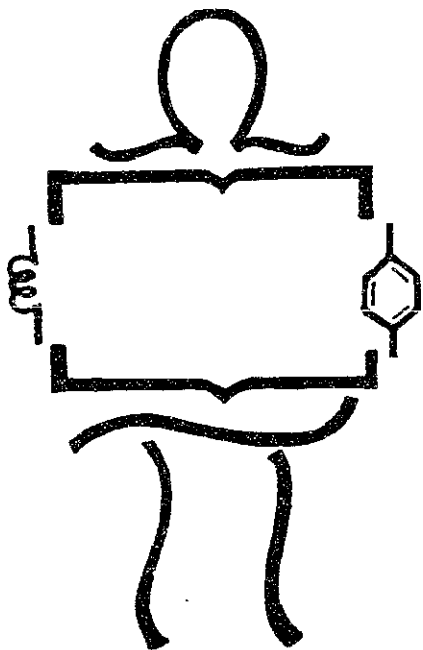
- Attend lectures in mainstream
- Attend recitations in ISP for 8.02 and/or 18.02
- We offer:  
Special seminars, guest speakers, research group site visits, small group atmosphere, excellent instructors

call Anne Armitage at 3-4074,  
or visit 20C-117 soon!

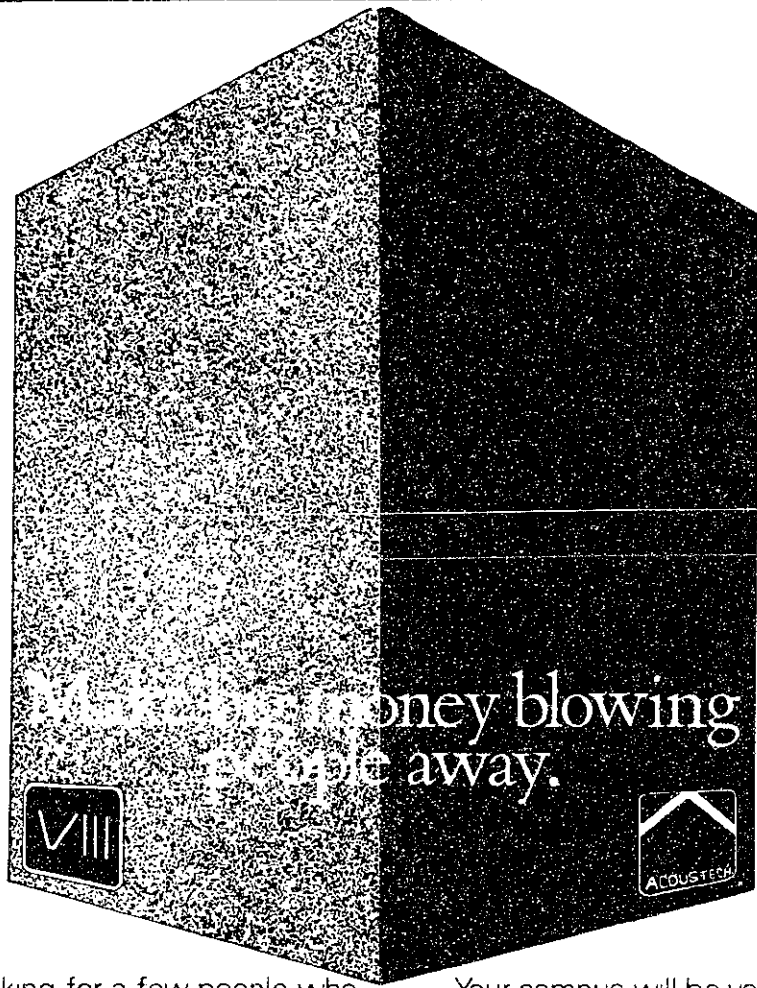
I

S

P



...We make connections!



We're looking for a few people who can sell a high quality product at an affordable price.

Room to room. Ear to ear.

Acoustech speakers are the uniquely designed speakers with incredible sound at half the price of our competitors. And if you know anything at all about hi-fi (and we hope you do), you know we're talking about a great deal.

You'll work on straight commission.

Your campus will be your territory.

And your potential to make some big bucks will be limited only by your commitment.

So if you've got some sales experience, an interest in hi-fi, and an entrepreneurial spirit, give Chris a call at 236-1900. This is one sales opportunity that will blow you away.



**JET PROPULSION LABORATORY**

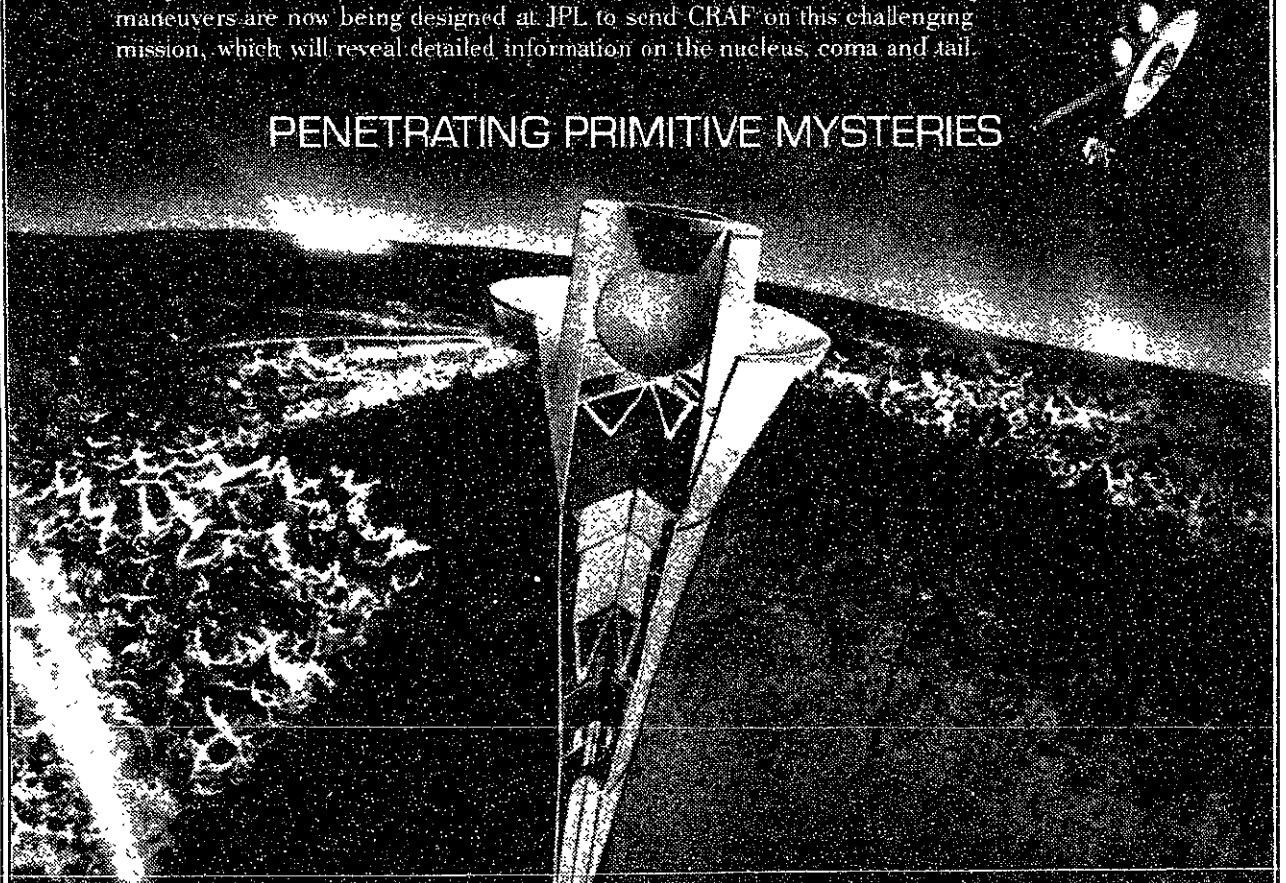
**On Campus Visit, February 11 & 12.**

Jet Propulsion Laboratory is intent on unraveling the mysteries of the solar system.

The Comet Rendezvous Asteroid Flyby (CRAF) is planned for launch in 1993. It will initiate JPL and NASA's new generation of advanced planetary spacecraft - The Mariner Mark II.

This rendezvous with Comet Tempel 2 will yield critical data for more than three years. Unlike previous comet missions, CRAF will not just fly past Tempel 2, but will actually travel alongside the comet and send a penetrator/lander to its surface. Untried propulsion maneuvers are now being designed at JPL to send CRAF on this challenging mission, which will reveal detailed information on the nucleus, coma and tail.

**PENETRATING PRIMITIVE MYSTERIES**



For graduating EEs, JPL offers a vast variety of specializations, such as VLSI, Communications, Attitude Control and Research and Development. State-of-the-art instrumentation includes Multispectral Imaging, Synthetic Aperture Radar, Visual Imaging System and Particle Detector.

If you can't meet with us for an interview, send your resume to: Jet Propulsion Laboratory, Professional Staffing, Dept. X31, 4800 Oak Grove Drive, Pasadena, CA 91109. An Equal Opportunity Employer M/F.

"There's only one."

**JPL**

Jet Propulsion Laboratory  
California Institute of Technology

ARTS

## Dark and mysterious Bunnymen live out fantasies for audience

**ECHO AND THE BUNNYMEN**  
In concert at the Wang Centre.

By PAIGE PARSONS  
and JULIE POKORNY

**E**CHO AND THE BUNNYMEN have been around for some years now, nine to be exact. Their first album, *Crocodiles*, was critically acclaimed in England, but only recently have they received some well deserved notoriety in the States. Their sixth and latest album, *Echo and the Bunnymen*, is their biggest seller ever in North America, but the success of their show Tuesday night was, ironically, due to fresh versions of older material.

The baroque Wang centre proved an appropriate venue — when the lights dimmed, the air filled with clouds of dry ice, and strains of Gregorian chants filled the theatre. Suddenly the stage was aglow with purple, and the silhouettes of the Liverpool quintet emerged through the fog — which would accompany them through their set of more than twenty songs.

Old fans screamed with delight as they started off the night with "Going Up," a song off their first album. Much to everyone's delight, the band's classic material dominated the show. Oldies such as "All I Want" were given renewed vigor as croon-

ing lead singer Ian McCulloch twisted the lyrics at will, indulging a passion for inserting steamy sexually explicit phrases.

Their mystic quality was especially apparent in "The Killing Moon." Will Sergeant stole the stage with a searing solo on an exotic twelve string guitar. During an outdoor concert in Chicago this summer, the song was enhanced when the sky filled with lightning and thunder cracked along with Pete DeFreitas' drums. The Bunnymen tried to recapture the quasi-religious moment, this time with small strobes intertwined in the backdrop of nets and branches.

"Thorn of Crowns" was the climax of the evening. McCulloch belted out cries and moans as if he were living through his wildest fantasies. The girls screamed louder as he sexily teetered on the edge of the stage.

The band returned for three appreciated encores, including their own version of a song by another Liverpool group: "Twist and Shout." Bassist Les Pattinson got his turn in the limelight as he screamed out the infamous "Aaahhh's." The number was surprisingly cheery for the normally dark and mysterious Bunnymen.

They returned to more familiar territory to end the show with another cover, "Paint It Black." Once again the Bunnymen showed their fans that they are not a band to be taken lightly.



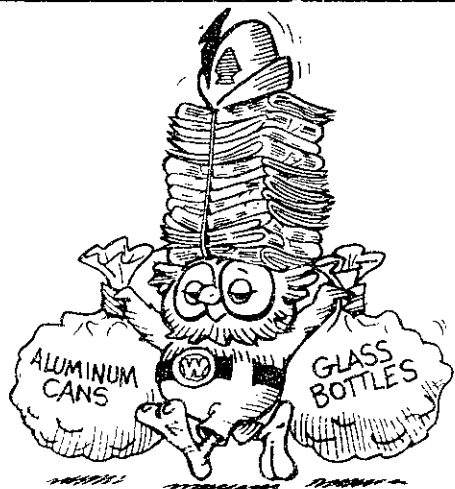
Georgina A. Maldonado/The Tech  
The Tech Random Music Ensemble presents *You're a Good Man Charlie Brown*, a musical entertainment based on the comic strip "Peanuts." Opens tonight, and continues Feb. 6, 7, 11 and 12, with a Sunday matinee Feb. 7 at 3 pm. Evening performances at 8 pm. In 34-101.

**Wellesley-MIT Exchange**

GOOD IDEA #228

**Bilingualism: An Exploration of Language, Mind and Culture**

There are 372 more good ideas among the subjects offered at Wellesley this spring. For information contact the Wellesley-MIT Exchange Office, 7-103, x3-1668.



Use your head.  
Smart people recycle aluminum,  
paper and glass.

This space donated  
by The Tech

**Special Student and Youth Fares to EUROPE & SCANDINAVIA from New York on Scheduled Airlines!**

| DESTINATIONS  | OW    | RT    |
|---------------|-------|-------|
| LONDON        | \$185 | \$370 |
| PARIS         | 206   | 412   |
| FRANKFURT     | 220   | 440   |
| ROME/MILAN    | 238   | 476   |
| VIENNA        | 245   | 490   |
| ZURICH/GENEVA | 225   | 450   |

| From New York | OW    | RT    |
|---------------|-------|-------|
| Copenhagen    | \$230 | \$525 |
| Oslo          | 230   | 525   |
| Stockholm     | 230   | 525   |
| Helsinki      | 270   | 605   |

| From Chicago         | OW    | RT    |
|----------------------|-------|-------|
| Copenhagen/Oslo      | \$235 | \$425 |
| Stockholm/Gothenburg | 245   | 450   |
| Helsinki             | 305   | 565   |

Above fares also apply from Washington, D.C. to London, Paris and Frankfurt on non-stop service. Some fare restrictions may apply.

**CALL OR WRITE FOR OUR SPECIAL FARES TO THE SOUTH PACIFIC AND AUSTRALIA.**

Applications available for Eurail Youth Pass and International Student I.D. Card. For Reservations and Information Call:

**WHOLE WORLD TRAVEL**  
Part of the worldwide STA Travel Network  
17 E. 45th St., Suite 805, New York, NY 10017  
(212) 986-9470

A JOHN HUGHES FILM



Man.  
Woman.  
Life.  
Death.  
Infinity.

Tuna casserole

One movie dares to tell it all.

KEVIN BACON ELIZABETH MCGOVERN

**SHE'S HAVING A BABY**



A New Comedy About The Labor Of Life.

PARAMOUNT PICTURES PRESENTS A JOHN HUGHES FILM SHE'S HAVING A BABY KEVIN BACON ELIZABETH MCGOVERN

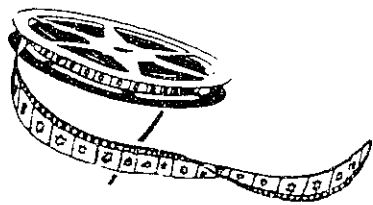
Executive Producer RONALD COLBY. Written Produced and Directed by JOHN HUGHES



**COMING  
FEBRUARY 5TH  
TO A THEATRE  
NEAR YOU**



# SALLAH



The warm and funny story of an Oriental Jew's successful campaign against the bureaucracy of twentieth-century civilization as he adjusts to life in modern Israel. Made in 1965, directed by Ephraim Kishon, starring Hyam Topol.

Tuesday, February 9, 8:00 p.m. Room 4-153  
Admission \$1

Presented by MIT Hillel as part of the Israel Film Festival series.

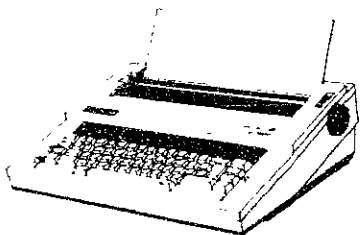
## UNIVERSITY TYPEWRITER CO. INC.

SALES • REPAIRS • RENTALS • SUPPLIES

**WORD PROCESSORS**  
Magnavox Videowriter™  
Smith Corona PWP 6  
Smith Corona PWP 14  
Brother WP 500

### YOUR RIBBON HEADQUARTERS

**TYPEWRITERS**  
Smith-Corona  
Panasonic  
Swintec  
Brother



90 Mt. Auburn Street  
547-2720

Harvard Square  
547-1298

## CRIMSON TRAVEL

WHEN YOU **Absolutely Positively** WANT THE **LOWEST AIRFARE!**

**CRIMSON** is the only agency in Harvard Square with 3 major airlines' computers on-premise.

American Airlines' SABRE, TWA's PARS & United's APOLLO reservations systems assure you of up-to-the-minute availability and the lowest air fares possible.

**CRIMSON** has its own computerized "cheap-fare search program."

**CRIMSON** is an official authorized agent for all airlines and there is **NO EXTRA CHARGE** when you pick up your tickets at **CRIMSON!**

Make your reservations and pick up tickets at

**CRIMSON TRAVEL**

39 John F. Kennedy St. (Harvard Sq.)  
Call 868-2600  
phones attended 7 days a week

Don't Miss the Fun



# at the Student Telethon

Free Dinner

February

9-11, 16-18, 23-25

Glasses

Tuesdays, Wednesdays, & Thursdays

6:00 to 10:00 p.m.

\$100 to top Dorm Group

prizes

in the Bush Room (10-105)

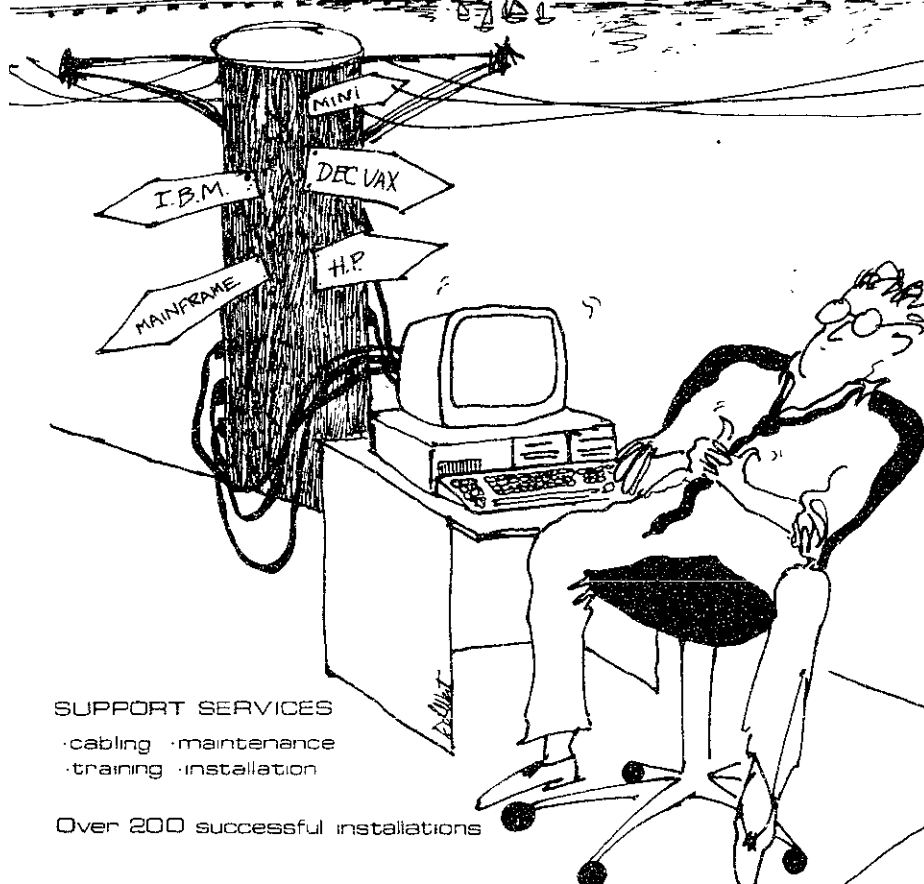
\$100 to top living group

Come One, Come all, Individually or with your group.

To reserve your phone, contact

Barbara Peterson

(ext. 3-5489, room 10-140)



LAN/WAN  
PRODUCT  
SELECTION:



SUPPORT SERVICES  
cabling maintenance  
training installation

Over 200 successful installations

Brown & Associates, Inc

115 Watertown Street • Watertown • MA 02172 • (617) 926-2526  
505 Willard Ave., Bldg. 3C • Newington • CT 06111 • (203) 666-7055

There's more in the box than just network hardware.

# Athena management irks living groups

(Continued from page 1)

"There has been talk that individual machines would not be put into the dorm room, but rather Athena would just install a plug and it would be the responsibility of the student to buy a machine," he said.

## Delays, slow management frustrate living groups

Originally, the five living groups in the study were to have operational clusters by the beginning of Residence/Orientation week in 1986. However, according to Jackson's report, DU and

pika received clusters in mid-December 1986 and Next House, ZBT and TDC were not operational until May 1987.

The report stated that MIT's Telecommunications Office was very slow and indecisive in determining how the clusters would be connected to the main Athena network. Much unnecessary tension and delay was caused by a dispute over whether Telecommunications or living groups would control this interface, according to the report.

These technical delays became so frequent, the report said, that in mid-fall 1986, one living group representative sent a scathing semi-public letter to Athena director Steven R. Lerman criticizing Athena for neither managing the installation well nor being honest with its dealings with living groups.

Soon thereafter two living

groups seriously discussed ending their participation in the experiment, according to the report. In response, the report said, Lerman sent a letter to all living groups "...disavowing all previous installation dates and promising no further unmet promises."

According to Joe Harrington '88, the computer chairperson at pika, delays resulted from technically unqualified individuals running the experiment at Athena. "The woman who managed the project had the computer literacy of your average user. There is no way that she could have foreseen the numerous problems that came out in the field," Harrington said.

Hooking up a remote cluster was not a new idea, Harrington noted. "A year ago ESG [the Experimental Study Group] was hooked up with similar technol-

ogy. The problem with the living group project was just slow management."

However, Jackson warned, the problems faced in implementation probably would not be repeated.

Living groups were also very concerned about who would be responsible for maintaining the clusters once Athena's external funding ran out. The report mentioned that the current cost to maintain a cluster was about \$25,000 each year, a sum much too great for one living group to absorb.

It is uncertain whether clusters will spread to new living groups. Jackson said. "Athena is going through hard times now, and the success of clusters will really depend on a number of factors including whether [Athena] will get [its] three year extension."

## classified advertising

**Spring Break Nassau/Paradise Island** from \$279. Package includes: round-trip air, transfers, 7 nights hotel, beach parties, free lunch, cruise, free admission to nightclubs, taxes, and more!! Cancun packages also available! Organize a small group, earn a free trip! Call American Travel Services 1-800-231-0113 or (203) 967-3330.

Business, communication, and postal service center seeks college students for counter and courier positions. Morning and afternoon hours. Mail boxes etc. 304 Newbury St. Boston. 437-9303.

**STOP US WAR IN CENTRAL AMERICA!** Fundraise for political change by phone! 3-4 evenings/wk. \$7.15/hr., sales/political experience helpful. Call NECAN at 491-4205!

**Hiring! Federal government jobs** in your area and overseas. Many immediate openings without waiting list or test. \$15-68,000. Phone call refundable. (602) 838-8885. Ext. 4058.

## Students face bizarre bills

Many students opened their billing statements Wednesday to discover some confusing entries regarding spring term meal plans. The bills showed a \$250 refund for meal plans followed by charges for meal plans, often for \$250.

The Meal Plan Office explained that all students with meal plans were charged for the \$250 plan on their December statements. In January, students were credited the \$250 and then billed for the plan they had in the fall.

Nevertheless, the bills still contained oddities. Students on plans larger than \$250 were charged in multiple entries of \$250 and an odd figure. For instance, a \$605 plan deserved two \$250 charges and a \$105 charge.

## classified advertising

**Telephone Interviewers.** Charles River Field Service is currently hiring part time telephone interviewers to conduct public opinion polls from our Cambridge office. No sales. Flexible hours. On the Red Line. Call 491-8215 Mon. - Fri. 10-5

Arlington, Modern duplex apartment, 6rms, 3 bed, 1 1/2 bath, electric heat, hw floors, 2 car parking, conv to \$1,000 mo. Linda 489-2932.

**Boston Area Patent Firm** desires to meet students with a strong technical background interested in pursuing careers in patent law. Candidates should have a physics, electronics, computer science background, or a chemical background, preferably in chemical engineering or biotechnology. Will consider full-time or part-time working arrangements while candidates attend law school. If interested, please send resume to James M. Smith, Esq., Hamilton, Brook, Smith & Reynolds, Two Militia Drive, Lexington, MA 02173.

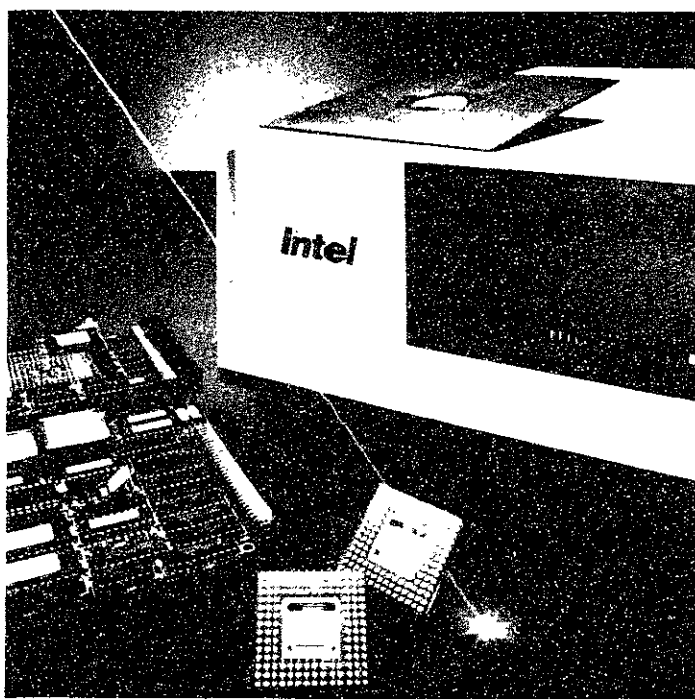
**SUB-LET WANTED** for April 1988 (pref. 28 March to 7 May) and/or May-August 1989. Academic family (2 adults, 1 child) wish to rent modest accommodation in Greater Boston. Also, could exchange - or rent/let separately - small London garden apartment. Leave message at (617) 358-7238 (evenings). Or write directly to Herb Blumberg, 71 Harvest Rd., London NW6 6EX, England (tel. 1-44-1-969-0017, includes answering machine).

**Word Processing Service Reports,** Theses, etc. Document Input, Grammatical Analysis, Proofreading, Revisions. Graphics. Laser Printer. Superior quality work, rapid turnaround, competitive rates. Located in Arlington. 641-3537.

**Work in Japan.** Individuals with a degree and/or experience in electronics & electrical engineering, TESOL, linguistics, pharmacy, securities/finance, business management, real estate, engineering, advertising, telecommunications, education, elementary education, and the travel industry interested in teaching English for one year in Japan to employees of major corporations/government ministries should write to: International Education Services, Shin Taiso Bldg., 10-7, Dogenzaka 2-chome, Shibuya-ku, Tokyo 150, Japan. Information on the position will be sent after receiving a detailed resume and photograph. Interviews will be held in the spring.

# The Intel Influence

We're everywhere.  
In microelectronic systems.  
Components. And Business.  
And we can help you  
launch a great career  
at a company  
that sets the standards.  
For ourselves and virtually  
everyone else.



Intel. A name that stands for excitement and technological innovation. Let us be your springboard to the future.

At Intel, we've created one microelectronic "first" after another. In order to further our leadership role, we seek high achieving college graduates, like you, about to take that all-important first step.

Over the past two decades, our standards have influenced the way our industry thinks and performs. So if you enjoy challenge and have the desire to excel, come to Intel. A company where your efforts will make a big difference.

If you are graduating with a degree in Electrical Engineering, Computer Science, Material Science or Chemical Engineering, join us.

## Open House

February 18  
4:30 - 6:30 PM  
Room 8.105

## Interviews

February 19

See us on campus or send your resume to:  
Intel Corporation, Corporate College Relations,  
5000 W. Chandler Blvd., Chandler, AZ 85226.

Equal Opportunity Employer M/F/H

# intel®

Women's track practice  
everyday  
4 p.m. at DuPont.  
Everyone welcome



Share the  
health  
GIVE BLOOD

1985 ARC

Wellesley-MIT Exchange

GOOD IDEA #118

Youth, Culture, and Student Activism  
in 20th-century America

There are 372 more good ideas among the subjects offered at Wellesley this spring. For information contact the Wellesley-MIT Exchange Office, 7-103, x3-1668.

THE DRAMASHOP



THE REAL THING

by Tom Stoppard  
Directed by Robert N. Seunjin

FEBRUARY  
4, 5, 6 & 11, 12, 13  
at 8pm

KRESGE LITTLE THEATRE

TICKETS \$6  
(\$5 student/senior)

INFORMATION 253 2877  
RESERVATIONS 253 4720

### Attention Seniors!

Consider being an  
MIT Admissions Counselor

The Office of Admissions is now accepting applications for the position of Admissions Counselor. This is a one year full-time position starting in July, 1988 (some flexibility is possible). Duties will include:

- Conducting information sessions for visitors
- Interviewing prospective students
- Recruitment travel around the U.S.
- Coordinating MIT student involvement in the Admissions Office
- Evaluating applications
- Participating in admissions committee decisions

The position is open to students graduating in January or June, 1988. Applications are available from Jane Alexander in the Admissions office (3-108) and should be returned not later than February 29, 1988.

# MIT AND HARVARD TO MERGE!

# 2 FOR 1 NIGHT.

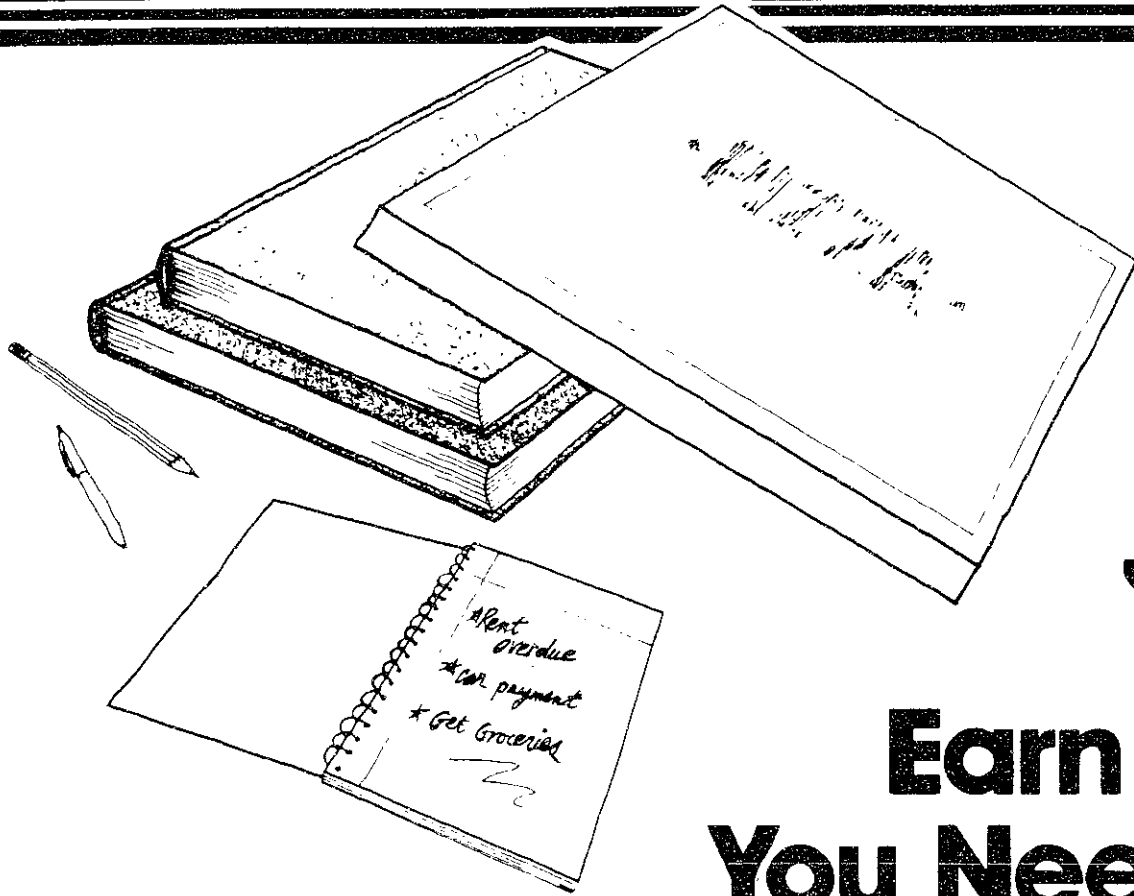
The merger takes place every Monday and Tuesday night at the S&S. Because that's when students can order any two appetizers. (In portions the Boston Globe called "humungous.") And just by showing their college ID, receive the lower priced one free. Choose from S&S wings, buffalo wings, zucchini sticks, shrimp cocktail, knishes, potato skins, and much more. And this is just for starters. So come to the S&S. Another great Cambridge institution.



Restaurant

A Great Find Since 1919.

Breakfast, Lunch, Dinner Mon.-Sat. 7:00am-12:00pm, Sun. 8:00am-12:00pm, Inman Square, 1334 Cambridge St., Cambridge, 354-0777



## COLLEGE STUDENTS:

## Earn the Money You Need to Succeed.

College costs are high and are always going up but now you can start earning the money you need.

It's incredible. . . UPS pays up to **\$9 dollars an hour** for steady part time **Package Handlers** and you can choose from a variety of shifts: 5:30pm-9:30pm, 10:30pm-2:30am, and 4am-8am (shifts vary from 3-5 hours). Along with great pay, we offer fantastic benefits including paid vacations, profit sharing, and holidays, medical, prescription, vision and dental coverage plans. UPS also offers outstanding career opportunities for people who are interested in moving ahead in our growing company. For more information please contact your Career Placement Office.

**Come apply at UPS today and start earning the money you need to succeed!**

**MONDAY, 9AM-5PM  
15 Arlington Street  
WATERTOWN**



**UNITED PARCEL  
SERVICE**

An Equal Opportunity Employer

## MIT faculty react to vote on contras

(Continued from page 1)

President Oscar Arias Sanchez, a chance with defeating the Reagan plan. Any kind of aid to the rebels is specifically prohibited by the Arias plan, according to Professor of Anthropology Martin Diskin.

Diskin accused the Reagan Administration of attempting to undermine the plan, saying the Administration has shown a disregard for the opinions of Central American leaders and has not really been seeking peace in the region.

Following the defeat of the Reagan measure, Professor Willard R. Johnson believed the political climate on the issue had changed. Not even a Bush Administration would attempt to deal with the situation in the same way the Reagan Administration had, he said.

House Democratic leaders have said they will offer an alternative package of humanitarian aid to the rebels within the next two weeks. Humanitarian aid is defined as aid given by a neutral source to civilians, Chomsky said. Used in conjunction with the contras, the term is "self-contradictory."

But Diskin, who strongly opposed military aid, believed that the United States — "which has harbored and nurtured the contras" — has a responsibility to the rebels. Perhaps some of them could be granted political asylum in the United States, Diskin suggested.

Bloomfield supported humanitarian aid for the rebels.

**Private aid may be illegal**

Rep. Jack F. Kemp (R-NY), a

Republican presidential candidate, told reporters after the House vote that he would encourage efforts to fund the rebels privately.

Such an action would be blatantly illegal, Fox said. The Neutrality Act prohibits US citizens from supporting efforts to overthrow a foreign government with which the United States is not at war, he said.

Diskin also believed private support for the contras would be illegal, but he was not sure that the present administration would properly enforce the law. More than 50 agents of the Federal Bureau of Investigation have spent the last five years investigating groups that opposed the Reagan position on Nicaragua, Diskin said. The administration may disregard the law when it comes to those who support its position, he said.

Bloomfield believed private efforts would be irrelevant. What the US government does in the region is most important, he said.

Bloomfield was unsure of the House vote's effect on peace in the region. The Sandinistas have not shown any willingness to compromise except when under pressure, he said. With the removal of such pressure, Bloomfield worried the Sandinistas would not have any incentive to increase political freedom in the country.

Overall, Bloomfield did not know what would be the best American policy for the region. "The closeness of the vote [219-211] shows how hard it is to decide on this issue."

Until now, the Reagan Admin-

istration has succeeded in convincing the public that, among the signatories of the Arias treaty, only the Nicaraguan government had to comply with the terms of the peace plan, according to Diskin. Nicaragua has done more to meet the terms of the plan, and increase freedom, than either El Salvador or Guatemala, he said.

With the contra aid defeated, Diskin hoped that the debate would refocus on what the other Central American nations can do to stabilize the region. If that happens, perhaps "peace might break out."

But Chomsky was not so optimistic, believing the United States would ultimately succeed in crushing Nicaragua. "When a terrorist superpower and a tiny Central American country clash, the result is just a matter of time."

## "BUFFALO WINGS THAT WOULD SATISFY A BUFFALO."

Boston Globe Review

The Globe also said, "the tradition of eating and eating—and eating—is an honorable one at the S&S." So come to the S&S and enjoy what all the talk is about.



Restaurant

A Great Find Since 1919.

Breakfast, Lunch, Dinner, Mon-Sat 7:00am-12:00pm, Sun. 8:00am-12:00pm  
Inman Square, 1334 Cambridge St., Cambridge, 354-0777

## MIT's high self-help level inflicts pressure on students

(Continued from page 1)

stitute tries to help all needy students in full, instead of picking and choosing only some students as do some universities. MIT admits students regardless of their financial status, said Gallagher.

Gallagher said that he would like to see the self-help level decrease, but he also said he has not seen any concrete evidence that the high self-help level poses problems. He noted that the number of MIT students who default on loans is lower than at most schools.

But the high self-help level has some negative effects, according to Eduardo Grado, associate director of admissions and coordinator of minority recruitment. There are many students who choose to go to other schools because MIT's self-help level is so high, said Grado.

Even more importantly, Grado fears that the high self-help level affects the MIT undergraduate's education by pressuring the student to graduate earlier. And, of course, some students

In recognizing that the self-help level may be too high for some students, MIT will start to award the MIT Opportunity Awards beginning with the class of 1992. The MIT Opportunity Awards of \$1500, \$2000, or \$2500 will be given to about 125 students who fall in the lowest income category. The awards will be used to reduce the self-help level. This award does not apply to classes before the class of 1992.

And just this December, the financial aid office proposed to the Committee on Undergraduate Admissions and Financial Aid behind closed doors that MIT alter a current policy in which MIT reduces dollar-for-dollar its grant commitment to a student who obtains an outside scholarship. Some other schools have less rigorous adjustment policies in which the student ends up with

more scholarship, Gallagher said.

Before 1969, MIT operated on a different system. MIT gave out merit scholarships and tried to compete with other prestigious colleges in financial aid packages. However, there was no change in the number of enrolling students.

The purpose at MIT is not to encourage or woo the best students but to make it possible for all qualified students to attend, said Gallagher.

MIT's self-help level has been constant for the last couple of years; before, there had been a steady increase. At the same time other universities' self-help levels have increased, lowering the difference between MIT and other schools.

## UNITECH New England's #1 Computer Discount Center

INCREDIBLE SAVINGS!

|                                     |        |
|-------------------------------------|--------|
| MINI-AT MOTHERBOARD reg. \$399..... | \$349  |
| 20 MEG HARD DRIVE reg. \$333.....   | \$299  |
| 40 MEG HARD DRIVE reg. \$419.....   | \$369  |
| 1200 BAUD MODEM.....                | \$ 79  |
| 2400 BAUD MODEM.....                | \$188  |
| PARALLEL PRINTER PORT.....          | \$2488 |
| SERIAL PORT.....                    | \$2888 |
| MOUSE & GAME PORT.....              | \$2488 |

### 5 1/4" DISKS

For PC/XT  
DD/DS Pack of  
100, with this  
ad,  
reg 39c

For Apple &  
Commodore  
SS DD Pack of  
25, with this ad,  
reg 39c

33¢ 19¢

FREE!  
\$0.00

Over 900 FREE  
PROGRAMS FOR THE  
PC/XT/AT!  
Games, business, education,  
wordprocessors, databases,  
utilities, communications, and  
more!

IBM-PC/XT/AT Compatibles!

\$599

\$1099

High Speed 10 MHz XT-Turbo

- High resolution TTL monochrome monitor
- Monochrome monitor card with parallel printer port
- Mini-AT style case
- 150 watt fan-cooled power supply
- 8 slot turbo mainboard, operating at 10MHz
- Twin Floppy disk drive controller card
- 256K of high speed RAM (120ns) expandable to 640K
- One Floppy disk drive (360K)
- XT/AT compatible 84-key keyboard

Highest Speed 10 MHz "AT"

- High resolution TTL monochrome monitor
- Monochrome monitor card with parallel printer port
- AT case with reset button, turbo button, tonlight key-lock
- 200 watt fan-cooled power supply
- 8 or 10 MHz (5-w/patch) AT mainboard
- Extra waite stati
- Twin Floppy disk drive controller card
- 512K of high speed RAM (100ns) expandable to 1 megabyte
- High density 1.2 megabyte floppy drive
- XT/AT compatible 84 key keyboard
- Serial Port Card (COM1 or COM2)

UNITECH  
Computer Discount  
Center

CAMBRIDGE

(617) UNITECH  
24 Thorndike Street  
Mon thru Sat 10am-5pm  
Open Late til 7pm on Thurs-Fri

NATICK

(617)651-2725  
Route 9, Sherwood Plaza  
Mon thru Sat 10am-8pm  
Sunday 12pm-5pm

## The World of Science Is Right Next Door

At the AAAS Annual Meeting  
11-15 February ★ Boston

Come to the nation's largest general science forum and choose from 120+ symposia and workshops. 12 major lectures by world-renowned scientists, 40 of the year's best science films, and an exhibition of new products and services. You'll learn about the latest research, meet the scientific community, expand your mind, and broaden your intellectual horizons. (For a full program, see the 4 December 1987 issue of *Science*.)

Bring this ad and save \$5.00 off the student registration fees. On-site registration begins at 8:00am, 11 February, in the Hynes Convention Center (Plaza Foyer), 900 Boylston Street, Boston. *Special rates for full-time students:* \$15 for one day (\$10 with this ad), \$35 for all five days (\$30 with this ad).

American Association for the Advancement of Science

# sports

## Women's gymnastics defeats Rhode Island

By Catherine Rocchio

The MIT women's gymnastics team performed strongly last week, but was only able to come up with one win. On Jan. 27, the team gained an unexpected victory over Rhode Island College 125.80 to 119.40. Three days later, the MIT women scored a record high 126.25, but were beaten by more-experienced teams from the University of Vermont and Connecticut College. UVM won the meet with a score of 154.5; Connecticut was second with 140.5.

Wednesday's night meet against Rhode Island provided an excellent opportunity to show MIT's strength on all four events. MIT quickly stole the lead by sweeping the vaulting event.

This lead was further strengthened as the team moved on to the uneven bars where MIT again controlled the event.

The outcome of the meet was decided when Arnold racked up another first place for MIT on the balance beam, executing a routine that included an aerial forward somersault and a 1 1/2 twisting dismount for a score of 7.3. McCarthy claimed third place with a routine that included two backhandsprings and a side aerial.

The final event of the night was the floor exercise. MIT rounded out its victory with McCarthy taking second place with a powerful tumbling routine for a score of 8.15, and Rocchio claiming third with a 7.1. MIT's talent shone through as Arnold took the highest place overall with a final all-around score of 29.2.

\* \* \* \*

On Saturday, MIT began the meet on vaulting with all six competitors executing difficult vaults. Notable performances were McCarthy's full twisting handspring vault and Arnold's 1 1/2 twisting vault for respective scores of 8.05 and 7.65.

The meet ended on the floor exercise with all eyes on McCarthy, who executed the most difficult routine of the afternoon, including two full-twisting tumbling passes and earning a score of 7.6. McCarthy and Arnold continued to show the talent of the MIT team as they claimed third and fourth place overall with all-around scores of 29.85 and 28.45 respectively.

The MIT women continue their season on Saturday when they travel to Albany to meet Salem State and the State University of Albany.

(Editor's note: Catherine Rocchio '89 is co-captain of the women's gymnastics team.)



Dalcomp, Inc. is a young, dynamic software and telecommunications company providing custom applications to virtually every firm on Wall Street and to financial institutions nationwide. We're looking for bright, imaginative people with both systems and business skills, who are looking for immediate and extensive responsibility. Dalcomp is a growing company offering an informal working environment and salaries well above industry norms.

A Dalcomp representative will be on campus Monday, February 8, and interview slots are still available. Sign up at the Office of Career Services for an opportunity to discuss the challenges and benefits of working at Dalcomp.

# The Tech



Stop by at our open house on Sunday, between 5 and 6 pm, in our office, room 483 in the Student Center.

Toscanini's Ice Cream will be served!

Where you can:

(check where appropriate)

- Hard-hitting news!
- Insightful commentary!
- Exciting photography!
- In-depth reviews!
- Eye-catching layout!
- Join us!

## The Tech

