

The Year in Review

February 3, 1987



Steve Kishi/The Tech

Campus Police arrest Stephen P. Fernandez '86 at the demolition of the shanties, March 15.

Shanties and divestment

By Andrew L. Fish

The MIT divestment movement truly emerged in 1986 with the erection of a symbolic shantytown on Kresge Oval on March 2 and the subsequent arrest of eight protesters 12 days later. It was the first time in 14 years that such student arrests had occurred on campus.

About 80 students erected five shanties on the oval to protest MIT's investment in companies doing business in South Africa. While MIT did offer the protesters a permit for the use of the oval, members of the MIT Coalition Against Apartheid would not agree to the terms of the permit, which stipulated that the shanties would have to be removed by March 13. "The coalition won't let MIT direct the protest," said Alex B. Rosen '88, a member of the CAA steering committee.

Nevertheless, about 20 physical plant workers, under Institute orders, tore down the shanties at about 6:40 am March 14. The MIT Campus Police arrested seven students and one former stu-

dent who allegedly resisted the shantytown's demolition.

Six of the protesters had their cases continued without a finding. One, Lawrence K. Kolodney G, was found innocent. Another, Arnold Contreras '87, was found guilty of trespass after notice. Contreras is appealing the decision.

The unannounced demolition of the shanties was criticized in many quarters. "Once again communication has been replaced by paddy wagons and police," declared Senior Lecturer of Political Science Louis Menand III at a March faculty meeting.

The early morning demolition was "a knock on the door in the middle of the night," said Professor Louis D. Smullin '39.

The Undergraduate Association and the Graduate Student Council condemned the arrests. They, along with the faculty, asked that charges be dropped and court costs be reimbursed to the students.

But MIT Vice President Constantine B. Simonedes did not want charges dropped. "In the

real world, citizens accept responsibility for their actions," he said. "If you do something such as press charges, then undo it, legally this makes no sense."

MIT President Paul E. Gray '54 did ask the courts to drop the charges. But he refused to reimburse court costs, and main-

(Please turn to page 3)

The racial climate at MIT

By Robert Adams and Earl C. Yen

President Paul E. Gray '54 in October released a report citing the need to improve the racial climate for blacks at MIT. The report was written by the Minority Student Issues Group, a group of administrators and faculty chaired by Dean for Student Affairs Shirley M. McBay.

Based chiefly on a 1985 survey of black alumni, the report drew widespread attention from the national media. The survey asked black alumni about their interactions with faculty, their living group experiences, and their

preparation for the MIT environment.

Fifty-five percent of the black respondents to the survey held "generally negative perceptions" of the academic and personal support they received from the MIT faculty. Around 53 percent of the respondents perceived themselves as "less well prepared" for the MIT environment compared to other students.

The MSIG did not compare results of the survey with those of a control group of non-black alumni.

More than 75 percent of the respondents who lived in predominantly white living groups described their experiences in "generally negative or mixed terms." In contrast, those who lived in predominantly black living groups were unanimously positive about their living groups experiences.

"We believe the situation at MIT is similar to that faced in predominantly white institutions," McBay said. "We feel that MIT should show leadership in racial matters, as well as in

education and research."

Though the national publicity received by the report may hurt MIT's minority recruiting in the short-run, releasing the report is a necessary step in improving MIT's racial situation, McBay said.

In order to eliminate racist attitudes, the MSIG urged MIT to:

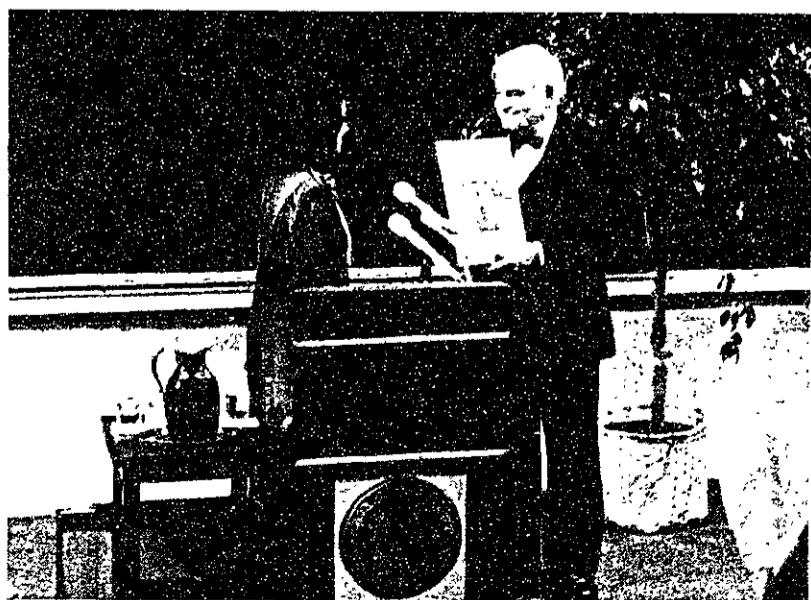
- create a visiting committee devoted to minority issues,
- formulate new policies on disciplinary responses to racist incidents, and
- add more courses in ethnic studies to the curriculum.

Students respond to report

Approximately 50 students attended a forum in November that focused on ways of improving relations between racial groups at MIT.

Many students at the forum felt that minority students tend to form their own groups, resulting in "self-segregation." One black student commented, "Because of the pressures of our society, if you don't join a group,

(Please turn to page 12)



Salma Saeed/The Tech

Cheryl McNair presents the "T" her husband carried aboard Challenger to President Paul E. Gray '54 during the dedication of the McNair Building, December 5.

In honor of its alumnus, the Institute named Building 37 the Ronald E. McNair Building in a day-long ceremony on Dec. 5. Building 37 houses part of the aeronautics and astronautics department as well as the Center for Space Research.

McNair came to MIT as a doctoral student in 1971 after graduating *magna cum laude* from North Carolina Agricultural and Technical University. McNair became an expert in molecular laser physics.

McNair worked for Hughes Research Laboratories after receiving his doctorate from MIT, and in 1978 he was selected for NASA's mission specialist program. In February 1984, McNair became the second black American in space.

President Paul E. Gray '54 said, "Ron's life was one of stellar achievement, bright promise, and clear vision."

Michael S. Feld '63, McNair's thesis supervisor and director of the Spectroscopy Laboratory, said McNair's qualities — scientific ability, social awareness, and

(Please turn to page 3)

Introduction

"I know no way of judging of the future but by the past." - Patrick Henry

Today's issue marks the beginning of the 107th year of publication of *The Tech*. As we begin the new volume, we have also recounted 1986's major news stories at MIT in a second-annual *Year In Review* supplement.

1986 may be remembered as a year in which many events at MIT reflected happenings in the outside world.

- Growing political unrest in South Africa over the country's apartheid policies continued to hold worldwide attention. Student protesters at MIT expressed their call for the divestiture of MIT's South African-related holdings by constructing a "shantytown" on Kresge Oval in March.

The community found itself divided over the role of social protest when the MIT administration dismantled the "shantytown" and arrested student protesters who stood in its way.

- While divestiture aimed to end racism abroad, a report released in October by President Gray drew attention to racial problems at MIT. The nationally publicized report stressed the need to improve MIT's racial climate for black students.

- MIT shared a special sorrow with the nation when Ronald E. McNair PhD '76 died aboard the tragic *Challenger* space shuttle launch in January.

The past year also witnessed changes in the composition of the MIT community. Many administrators resigned from posts in the Office of the Dean for Student Affairs while MIT admitted a freshman class with the largest percentage of women in history.

Educational reform committees began — slowly and carefully — to recommend changes in the MIT curriculum. Physical changes in the MIT campus were announced: construction of a new graduate dormitory, renovation of the Student Center, and the Coop's move to Kendall Square.

We include some of the most significant news stories of 1986, along with arts reviews and photo essays. This special section is dedicated to the past year. By examining our past, we can better understand ourselves and our future.

Earl C. Yen

News	Arts
Introduction..... 1	Movies in Review..... 6
Shantytown..... 1	Records in Review..... 7
Racial Climate at MIT... 1	MIT Events in Review... 7
Challenger Disaster..... 1	
Education Reform..... 2	
ODSA..... 2	
Student Center/Coop... 2	
ARA Food Services..... 2	
Photography	
The Year in Pictures..... 4-5	
The Year in Sports..... 10-11	

Revising MIT's curricular focus

By Akbar Merchant

The educational reform committees proposed major revisions in the undergraduate program this year, ranging from reorganizing the humanities, arts, and social sciences requirement to forming a College of the New Liberal Arts. While not all proposals will be adopted, they will likely change undergraduate education in the years to come.

The Committee on the HASS Requirements, chaired by Professor of History Pauline R. Maier, recommended reducing the number of subjects that fulfill the humanities distribution requirement in a report released in August. Only five HUM-D courses would be offered each term in each of four areas: contemporary society and culture, history, literature, and the arts.

Under the proposal, students would take a HUM-D course in each of the four areas. The present HUM-D requirement consisting of three courses in different departments does not ensure breadth of exposure because students can take courses in the similar areas of different departments, the report asserted.

The HASS Committee also proposed a new Institute Requirement of a subject or group of subjects on "human contexts that shape and are shaped by work in

science and technology" that would be taught cooperatively by faculty from different schools.

The Commission on Engineering Undergraduate Education, chaired by Associate Dean of Engineering Jack L. Kerrebrock, noted that such "Context of Science and Technology" courses should teach the benefits of technology to society in addition to abuses and problems posed for society. In a progress report released last September, the commission suggested topics of current interest for the context course such as "Chernobyl, the Soviet Hierarchy and Whistle Blowing" and "Hazardous Chemicals."

The HASS Committee also called for retention of the concentration requirement, under which students take three or four subjects in a single HASS field. The report, however, criticized economics as being too "mathematical" to be a HASS concentration and said that elementary foreign language courses are "skill" subjects rather than humanities subjects.

But engineering and science faculty and alumni stressed the need for engineers and scientists to acquire "tools" that will help them in the business world and in dealing with social and political

(Please turn to page 12)



Tech file photo

Robert A. Sherwood and Holliday C. Heine '67 left the Office of the Dean for Student Affairs in 1986.



Ronald E. Becker/The Tech

Changes in the ODSA staff

By Ben Z. Stanger

The Office of the Dean for Student Affairs faced a mass exodus of key personnel this past year.

Seven members of the Residence and Campus Activities section of the ODSA left including its head, Robert A. Sherwood. Former section head of the Undergraduate Academic Support Office, Holliday C. Heine '67, also left the ODSA.

Undergraduate Association President Bryan R. Moser '87 was "very disturbed" by Sherwood's departure this summer after eight years, calling him the "most committed" person in the dean's office.

The high turnover will put a

strain on student relationships with the ODSA, Moser said. "It's going to take a long time for new people to make those ties," he said.

Sherwood said that his main goal as assistant dean had been to increase the level of student self-governance. At the time of his departure he felt that students were playing a more active role in decisions about student life. Sherwood is now head dean at Boston College.

Associate Dean for Student Affairs James R. Tewhey, Sherwood's replacement, came to MIT after serving as the supervisor of Smith College's housing system for five and one half years.

Tewhey recognizes that the growing number of women at MIT will force the Institute to solve several housing problems.

MIT must devise strategies for housing the additional women and continue its efforts to find houses for MIT's two sororities, Alpha Phi and Alpha Chi Omega, Sherwood said before

leaving.

Fraternities must deal with the reduced number of men they will be able to rush in this and coming years.

Reasons for leaving

Most people in the ODSA have felt that the large turnover was due mainly to external forces and personal objectives.

People relocate for a "variety of reasons," Tewhey said, adding that he did not anticipate remaining in his new position for a long time. "A lot has to do with timing," he added.

Dean for Student Affairs Shirley M. McBay believes that most people who left the ODSA "have gone on to positions that represent promotions." For instance, Sherwood said that his new position at Boston College, dean for student development, was "an opportunity that one does not turn down."

Residence and Campus Activities Executive Officer Andrew M. Eisenmann '75, who replaced Ju-

(Please turn to page 3)

Student Center renovations

By Michael Gojer

Major changes are in store for the Julius A. Stratton '24 Student Center, including the relocation this spring of the MIT branch of the Harvard Cooperative Society (The Coop) to a new and enlarged Kendall Square location.

New types of stores and eating places will fill the vacated Student Center space, and general renovations this summer are planned to improve the usability and atmosphere of the building.

Among new facilities planned are automatic bank tellers, a pharmacy, a convenience grocery store, an office supply store and a student travel agency, according to West Plaza Director of Operations Stephen D. Immerman. Specialty shops such as a hair salon, florist or record store may fill other slots, he added.

Some suggested renovations of the physical building include new spaces for eating and studying in groups, better elevators, better loading facilities, and improved lighting, Immerman noted. Renovations are aimed mostly at the basement and the first and second floors, he said.

Coop moves to Kendall

The MIT Coop's new Kendall Square store will be similar in size and product selection to the Harvard Square Coop. The location on the first and lower levels of a new six-story building will provide 50 percent more space than the old Student Center store, according to James A. Argeros, president of the Coop.

The new store will have a larger book section and will carry a wider selection of all goods, Argeros said. Textbooks for MIT courses will still be sold. The Coop may provide shuttle buses from West Campus to ease textbook sales during peak shopping weeks, according to Manuel Rodriguez '89, member of the Coop Board of Directors.

Low growth potential, low visibility and low yield were the primary reasons for the decision to move, according to Argeros. Profits from the MIT Coop have been lower than those of other branches.

Kendall Square has the advantage of a T-stop, so the new

Coop should attract business from commuters. The new branch should "enhance the overall gain and thus benefit the members," Argeros said.

The Coop may still maintain a small-scale store in the Student Center, but would sell only insignia and daily convenience items.

Bowling/Games Area Closed

MIT shut down the Student Center bowling/games area at the end of June. Immerman said the area had consistently lost money since it opened twenty years ago, and staffing reductions had failed to limit the loss. The whole area will be renovated this year when the Coop leaves.

The Undergraduate Association, the Graduate Student

Council, and other student groups helped to define the new role of the Student Center. MIT also hired a marketing firm to analyze the needs of the MIT community, and the firm conducted a survey of the student body.

Immerman noted that the operating costs for the Student Center come almost entirely from tuition, and that it was hoped that load could be reduced. Money for the renovations will be borrowed from a special MIT fund. Immerman said he hopes "we achieve this renovation at no capital cost to MIT, and at the same time improve services available and thereby reduce the operating cost."



Tech file photo

The Tech Coop will move to Kendall Square this summer as part of the Student Center renovation.

ARA dining services: goals and expectations

By Jai Young Kim

ARA Services became the new manager of MIT food service operations in July. Prior to this summer, MIT had managed its own cafeterias.

After signing a five-year contract with MIT, ARA in the summer planned an "ambitious" fall-term program which has enjoyed "about 75 percent" success, according to John Ledwick, ARA district manager in charge of MIT operations.

The company's most immediate goal was the renovation of the Lobdell and Morss dining halls for the fall, Ledwick said. In August, Lobdell dining hall underwent minor renovations in lighting, appearance and traffic flow. ARA introduced food carts that served outdoors during warm weather and served the Building 12 — Infinite Corridor junction during December.

ARA is also establishing pizza stores at Walker Memorial and 500 Memorial Drive. At 500 Memorial Drive, a pizza restaurant and delivery service began operation in January, though ovens had already been installed there in early September.

In addition, ARA added a salad bar to Twenty Chimneys in the Student Center, gave weekly graduate dinners at Ashdown House, and worked with the Undergraduate Association to establish Cafe 13 during IAP. ARA has also tried to change the workers' service attitude through "human resource" training efforts, Ledwick said.

Although ARA manages the cafeterias and provides the MIT Housing and Food Services Office with marketing recommendations, MIT is ultimately responsible for policy decisions and all

subsequent profits or losses, said H. Eugene Brammer, director of Housing and Food Services.

Under ARA management, some items have increased in price while others have dropped.

Unaccomplished goals

ARA accomplished many of its initial goals, though many projects were completed much later than anticipated, said Ledwick. Others have not been carried out yet, the most important of which is the complete renovations of the Student Center and Walker Memorial, scheduled for the upcoming summer.

After these two renovations are finished, ARA will install convenience stores in some dormitories and dining halls, add a bakery area to Lobdell and Morss, and add a "greenhouse" on the western side of Morss.

ARA is also planning to expand the present Validine meal card system for the 85 percent of the 18,000 MIT community members without meal cards. The company will evaluate the effects of expansion this semester. ARA will also review mandatory meal plans and present dining menus.

"We haven't been bored for a day, that's for sure," Ledwick said. "Things have been very busy, incredibly fast-paced . . . [but] it's been a good experience so far."

All of the companies that bid for the contract said that MIT has a customer market which it must develop, Brammer said.

Lawrence E. Maguire, associate director of Housing and Food Services, said that the companies estimated a potential of up to \$12 million in annual sales versus the \$7 million MIT has yielded under its own management.

Divestment protests and shantytown

(Continued from page 1)

tained that the arrests were justified. The students' court costs were later reimbursed by private donations.

Judge Arthur Sherman refused Gray's request to drop charges, saying "the credibility of the criminal process would be damaged."

Senior Vice President William R. Dickson '56 defended the shanty removal, arguing that the shanties had served their purpose and that the oval should now be made available to others. Dickson also claimed that the shantytown was destroyed to avoid a student confrontation. Several threats had been against the shanties, Dickson said.

Although the protesters were not informed exactly when the shanties would be removed, they knew the time-frame for removal, Dickson claimed. He cited the March 13 date on the permit offered by MIT.

Simonides noted that the CAA never requested an extension beyond March 13 for use of the oval. But the CAA never agreed to any terms set forth by the administration, and had made it clear that the March 13 deadline would be ignored.

The decision to remove the

shanties was made by Dickson, Simonides, Associate Provost S. Jay Keyser and Campus Police Chief James Olivieri. Gray was in Japan and was informed of the decision by telephone, as was Dean for Student Affairs Shirley M. McBay. The faculty was not consulted or informed of the decision.

This decision-making process was attacked by several faculty members. "For months we have encouraged discussion of this international issue," said Professor Robert W. Mann '50. He asked why the decision had been made in such "an abrupt manner."

Coalition confronts Corporation

The MIT Corporation was meeting in Gray's house while the shanties were standing. Over 100 anti-apartheid demonstrators confronted Gray outside his residence as the meeting ended. Gray told the protesters that there was little MIT could do to affect South Africa. "MIT is not in the business of making foreign policy," he added.

While Gray spoke with the protesters, Corporation members walked to the Faculty Club on the sixth floor of the Sloan Building. Several members of the CAA attempted to force their way in to

speaking to the Corporation, but they were repelled by three Campus Police officers who blocked the stairwell door.

The students then gathered on the first floor of the building, where several Corporation members did eventually talk to them.

Members of the CAA also meet with twelve Corporation members at the October Corporation meeting. Corporation members attempted to explain their investment policy, while CAA continued to press for total divestment.

Several Corporation members cited their fiduciary responsibility to MIT as a reason not to divest. CAA members took exception to these arguments. "When I see people getting their heads bashed in, I find it repulsive to talk about money," said Marie Gilles-Gonzales-G.

At this meeting the CAA asked that the Corporation make a public accounting of their investment logic. "It is incorrect to assume a single logic" is used by the Corporation, said Chairman David S. Saxon '41. The Corporation is a "collection of individuals" and their policy represents "the center of gravity," Saxon said.

But Professor John E. Parsons saw value in the Corporation "presenting the various arguments and various logics used to make these decisions."

MIT partially divests

While the protests did not succeed in persuading the MIT Corporation to divest of all its holdings in companies doing business in South Africa, the Corporation did announce plans to sell stock of companies which did not comply with the Sullivan Principles. The Sullivan Principles are a set of behavioral guidelines for multi-national firms doing business in South Africa.

The Corporation announced it would divest of stocks of companies in Category III of the Sullivan ratings. Category III companies are those which "need to become more active" in complying with the Sullivan Principles. These stocks represented four percent of MIT's South African holdings.



Steve Kishi/The Tech

Protester struggles with Campus Police at shanty dismantling.

of the country of South Africa."

Students favor divestment

Almost 58 percent of undergraduates who expressed an opinion in a UA referendum favored total divestment by MIT. Of the 1647 ballots, 895 favored divestment and 652 opposed it. There were 100 ballots which expressed no opinion on the divestment question.

The GSC held a similar referendum, with 209 students voting for divestment and 57 voting against it.

Divestment fund created

This fall a group of MIT alumni announced the creation of the MIT Endowment for Divestiture, a trust fund designed to pressure MIT to divest. The fund will accept contributions, but will withhold them from MIT until either MIT divests or apartheid is dismantled. If neither condition is met by 1994, the funds will be given to Amnesty International and the United Negro College Fund. Parsons called the fund "one small step toward reducing the economic and military might

CJAC reactivated

UA President Bryan R. Moser '87 and former GSC President Janine M. Nell G discussed MIT's South African investment policy with the Corporation Executive Committee in April. They recommended that the Corporation reconvene the Corporation Joint Advisory Committee on Institute-wide Affairs. The Executive Committee agreed, and CJAC began meeting in the spring. CJAC is co-sponsoring this week's colloquium on apartheid.

While the MIT divestment movement was very strong last spring, it has lost some steam this past term. The CAA had been demanding a meeting with the Corporation; once the meeting took place in October, the coalition seemed to have little more to say on the divestment issue.

As one CAA member put it, the movement had "hit a wall" and was now spreading into other issues — particularly racism and the future of the Simplex property.

Graduate dormitories planned

MIT announced plans to look into possible sites for a new graduate dormitory. Though the final site has not yet been announced, the new facility is expected to be ready by 1990 and will cost \$20-24 million.

Last spring, the Graduate Student Council circulated a petition demanding that MIT make graduate student housing a priority in its recent funding drive. MIT can presently house 26 percent of all graduate students, though 46 percent of the students would like to be housed on campus.

The situation has been compounded by the increasing number of graduate students and the decreasing availability of off-campus housing. The problem is especially severe for foreign students, who may be forced to search for housing at the same time they are adjusting to new languages and customs.

A survey by the Admissions Office indicated that the housing situation was a serious concern among graduate applicants who turned down MIT's offer of admission.

The Institute's decision last year to pursue the new dormitory represented a turnaround from 1985, when the MIT administration did not perceive graduate housing as a major priority.

MIT has adopted a GSC proposal that would set aside 400 graduate spaces exclusively for entering students on a one-year lease basis.

New programs in the ODSA

(Continued from page 2)

dith M. Douglis when she moved to Boston College, felt that people who work with student services must examine their professional objectives.

Former UASO head Holly Heine left out of a desire to do something different, she said. Heine wants to find a new job outside of the busy atmosphere and re-enter science education. Associate Dean David S. Wiley '61, formerly of the President's office, took over as Heine's replacement this summer.

ODSA implements new pornography policy

The ODSA revised its policy statement on sexually explicit films last year. The revisions followed heated controversy in 1985 concerning the screening of a sexually explicit film without prior review by an ODSA screening committee. The new policy statement gives exemption from review to faculty members who are showing such a film "within the contextual framework of a class" or an "educational context."

A forum to discuss the pro-

posed revisions attracted only ten students. Interest in showing sexually explicit films has disappeared, according to John Hildebidle, former chairman of the *ad hoc* Committee on Pornography. This change reflects "a sign of more intelligence on campus," he continued.

New freshman programs tested

The ODSA and UASO experimented with some changes in freshman advising this fall. UASO chief Holly Heine said the plan would encourage faculty members to take their advising duties more seriously. The new programs included:

- freshman seminars taught by advisors limited to their advisees;
- "advisor teams" of two or more professors who met students in larger groups; and,
- pairing of associate advisors with freshmen in the same living group.

Freshmen in the Class of 1990 saw several changes in Residence/Orientation Week, including an earlier campus arrival date and a rush which began three hours after the freshman picnic.

These changes resulted in part from recommendations by a committee that was headed by Associate Provost S. Jay Keyser and included members of the ODSA. The committee's goal was to reduce the adverse effects of competing for a place to live, Keyser said.

Military influence at MIT

Several groups examined the military influence on the MIT campus during the past year.

The *ad hoc* Committee on the Military Presence at MIT recommended that the faculty consider whether current policies regarding research will continue to work, noting that successful policies require open publication and opportunities to participate, regardless of citizenship.

The committee also expressed concern about the relationship between the researcher and sponsor in Strategic Defense Initiative work. A new committee appointed by President Paul E. Gray '54 has begun to examine these issues.

Also, the Lincoln Laboratory Review Committee questioned MIT's relationship with the military lab. The committee noted that Lincoln has not balanced its research program or expanded its educational opportunities significantly since 1969. It also noted that the laboratory does not actively bring its information to the public.

The committee recommended that MIT continue to "seriously review the nature and direction of its future relationship with Lincoln Laboratory." The faculty committee also recommended that it should be involved in the review.



Ronald E. Becker/The Tech

Associate Dean for Student Affairs James R. Tewhey.

McNair dedication

(Continued from page 1)

personal drive — are those that MIT hopes to instill in others.

McNair believed in trying to outperform his own expectations, or, as he called it, "hanging it over the edge."

The McNair family established a national scholarship foundation in his name to aid students from low-income backgrounds in attending college.

Challenger investigation delays research at MIT

Eugene E. Covert '58, head of

the aeronautics and astronautics department, was appointed to the presidential commission investigating the explosion.

The Challenger tragedy arrested NASA's space shuttle program. NASA curtailed funds to MIT for both long-term research projects and for projects related to upcoming missions. Gordon H. Pettengill '48, director of the Center for Space Research, said that the center's research will be delayed from six months to two years.

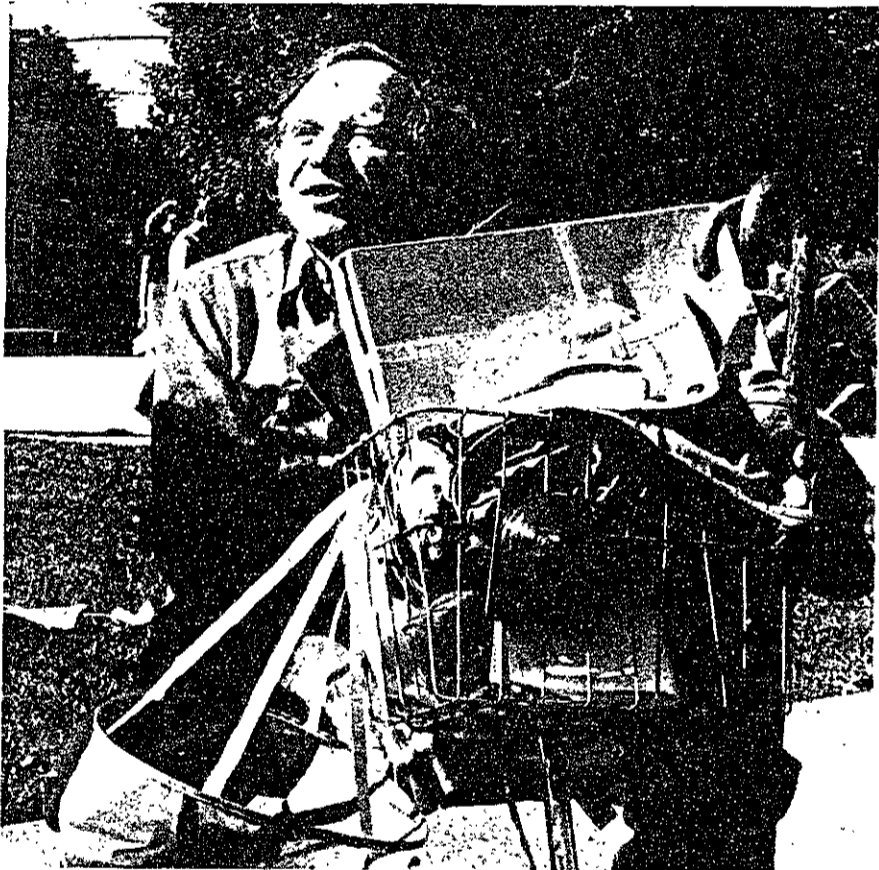


Rush

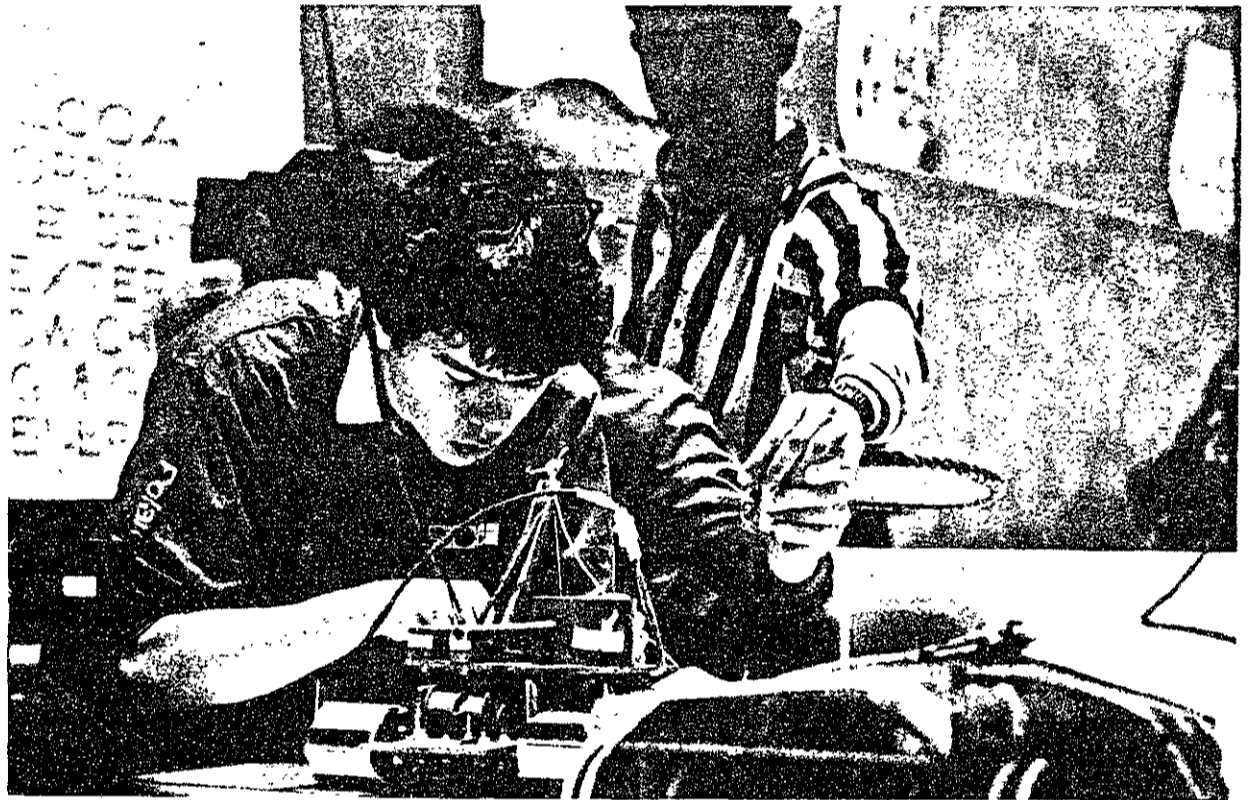


Anti-apartheid Shantytown

The Year in Pictures



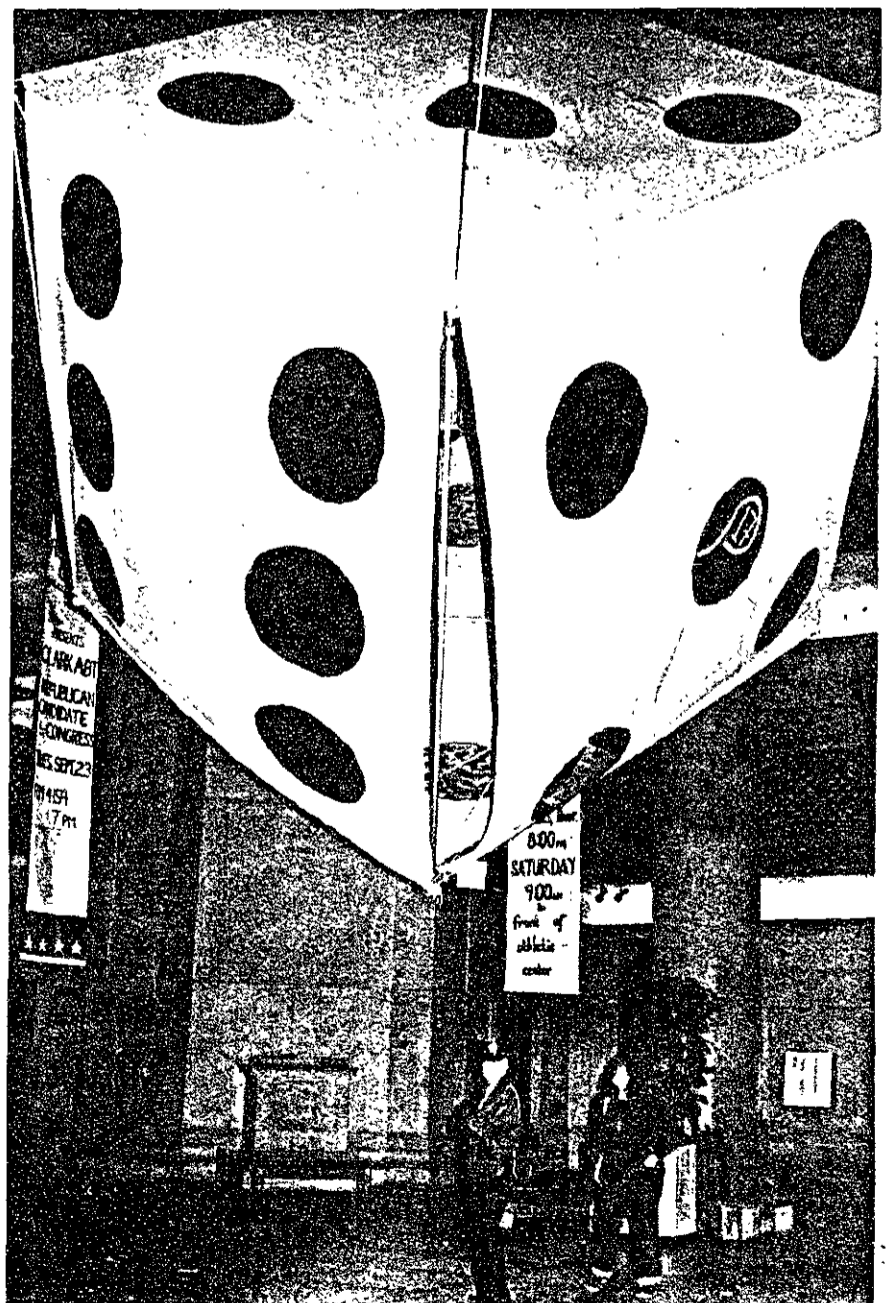
Philip Morrison Celebration



2.70 Contest



Divestment Protest



Lobby 7 Hack



Mattuck's Big Screw



Election '86



Nicaragua's Sergio Ramirez



Frank Morgan



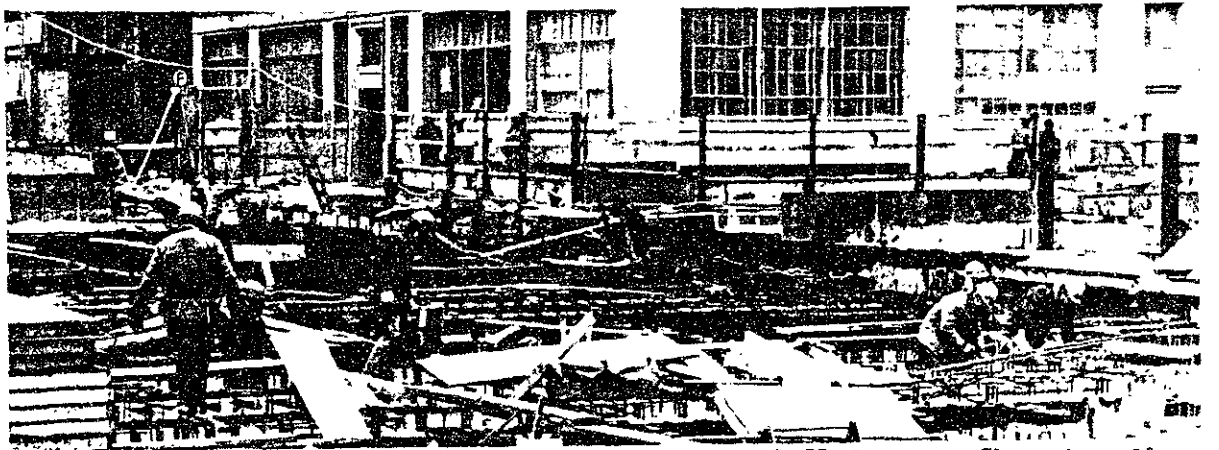
Challenger

Photos by Tech Staff

Design & Layout by

Kyle G. Peltonen

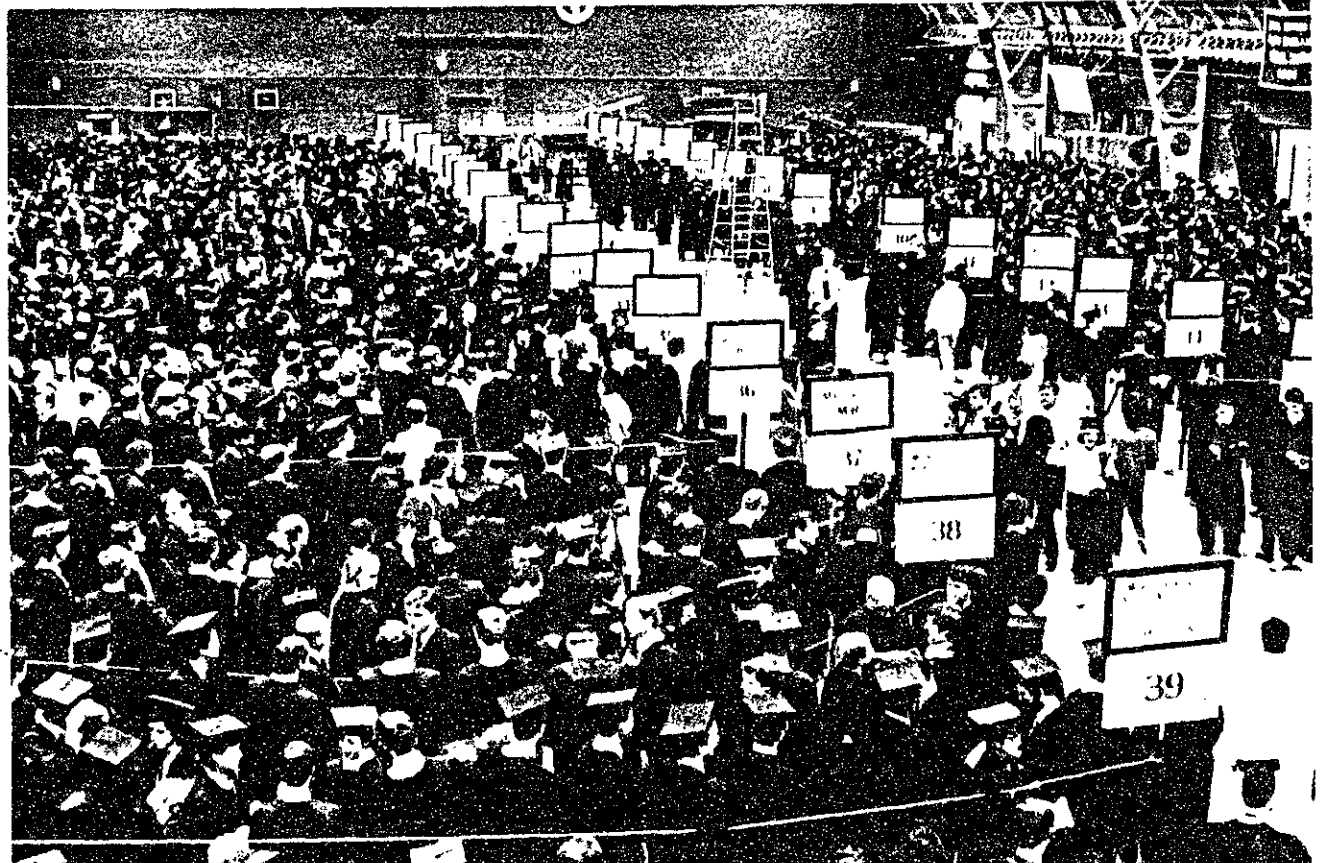
David M. Watson



Kendall Square Construction



Campus Preview



Commencement

T Films P of the Year N

By contrast with last year, English-language films make up the bulk of this year's top ten list. By consensus of our two critics, ten superior films, in no particular order, were:

● **A Room With a View (UK)** Outstanding adaptation of the Forster novel about a young woman taken on holiday to that favorite Victorian fairyland, Firenze. She meets an English youth travelling with his father, which ought to be safe, but this family has an Italian streak. Helena Bonham Carter is simply superb as the woman, the photography is attractive and the supporting cast excellent.

● **My Beautiful Laundrette (UK)** A film by and about Pakistani immigrants in

London, with a lot to say about all aspects of contemporary life in Britain, "this dear country-which we hate and love." Gordon Warnecke is very good as a young entrepreneur who wants to do things his way. Daniel Day Lewis (who also appeared in "A Room with a View") provides strong support as his friend, partner, and lover.

● **Le Declin de l'Empire Americain (Canada)** A couple of guys sitting around talking about sex. A couple of gals sitting around talking about sex. Then they all get together in a country house outside Montreal, for some interpersonal complications. The thesis is that the decadent complacency of North American society is exemplified by its sexual behaviour. Lots

of fun, with a serious side.

● **The Color of Money (US)** Put together Paul Newman and Tom Cruise and you cannot fail at the box office, but this sequel to "The Hustler" was also an excellent film in its own right. Newman plays Fast Eddie Felson, 25 years older and wiser, who finds corruption and finally redemption through his relationship with pool shark Cruise. The film is stunningly photographed in jarringly fluid style by Martin Scorsese.

● **Hannah and Her Sisters (US)** Woody Allen's latest view of life in the upscale Manhattan microcosm is also one of his best. As the eponymous sisters, Mia Farrow, Dianne Wiest, and Barbara Hershey lead an all-star cast which also includes Allen, Carrie Fisher and Max von Sydow.

● **Stand by Me (US)** A better film than you would believe could be made from a Stephen King story, "Stand by Me" captures the feeling of being twelve and having your life before you. Four kids test the strength of their male bonds on an expedition to see a dead body. The film, set in 1959 Oregon, also tests the limits of marketable soundtracks. River Phoenix gives a fine performance as the ringleader, but potential James Deans be warned: learn to smoke now.

● **Sid and Nancy (UK)** A somewhat more, well, contemporary soundtrack provides the heavy backdrop for a film which examines the punk subculture in turn-of-the-eighties London and New York. Based on the real life mutually destructive love story of Sex Pistol Sid Vicious and his groupie lover Nancy Spungen, and not a little on Romeo and Juliet as well, the film makes us care about two people who might not otherwise earn a second thought.

● **Round Midnight (US)** Back to the fifties, another musical subculture with a transatlantic following, and also another



Marlee Matlin as a deaf pupil in "Children of a Lesser God."

loose adaptation of historical events. Set in New York and Paris, Round Midnight tells about the friendship between a brilliant US jazz musician (Dexter Gordon) falling from the heights and hitting the bottle, and a French admirer (Francois Cluzet) who helps him go straight. Wonderful jazz music.

● **The Mission (UK)** The first British Palme d'Or winner for some years was not quite as good as the Cannes critics claimed, but was nevertheless a beautiful and moving experience. Excellent work by Jeremy Irons as a seventeenth-century missionary, by Robert de Niro as a reformed mercenary, and by a band of South American natives as the natives of a vanishing Eden, the unspoiled rain forest above the falls.

● **Blue Velvet (US)** David Lynch wrote and directed this surrealistic story of a college freshman (Kyle MacLachlan) who dis-

(Please turn to page 9)



Barbara Hershey as Lee, the sister-in-law whom Elliot (Michael Caine) lusts after in Woody Allen's "Hannah and Her Sisters."

REGISTRATION CORRECTION CARD
PRINT—USE INK

Name: J. Tecque
(Name—Family, First, Middle Initial)

Course: _____
Year: 1 2 3 4 5 6
(Circle one)

Print: Student Center Room 483
(Advisor's Name and M.I.T. Room Number)

TERM: First Second Summer

Ident. Number: 617 253 1541

IMPORTANT—Indicate L for Listener or P for Pass/Fail
*A-Approved; G-Other Accepted; N-Not Accepted for Grad. credit

ADD	SUBJECT NUMBERS	UNITS	A G or N	L P	CANCEL	SUBJECT NUMBERS	UNITS	A G or N	L P	EFFECTIVE DATE OF CANCELLATION OF CANCELLED SUBJECTS
	The Tech	9				6.001	15			2/8/87 month day year
										month day year
										month day year
										month day year

APPROVAL OF STAFF MEMBER IN CHARGE: Paul Sanchez

FOR REGISTRAR'S USE ONLY

DATE RECEIVED: _____ DATE COMPLETED: _____ INITIALS OF CLERK: _____

FRESHMAN ADVISOR'S, FACULTY COUNSELORS, OR REGISTRATION OFFICER'S APPROVAL: Mike Davin

DATE APPROVED BY ABOVE: 2/8/87
month day year

ADVISOR'S COPY - FOR INSTRUCTIONS SEE REVERSE SIDE

Confused over your spring schedule? Consider The Tech. You can learn about writing, photography, production, and business with over 100 other students. Unlike some of your courses, The Tech has no prerequisites except a little enthusiasm.

Our Spring Term Open House is scheduled for Sunday, February 8 at 5pm in Room 483 of the Student Center. Make sure you stop by in order to help us devour a few gallons of ice cream, jimmies, and other toppings.

The Tech

Pop Records of the Year

In a year in which a lot of the dross rose to the top of the music charts, there were nevertheless enough gems for me to compile another personal top 10. Not necessarily highbrow, or to everyone's taste, but each with something going for them, the albums which gave me a few thrills in 1986 were:

● **King of America, Elvis Costello.** In a trio of sold-out concerts, Boston was treated to each of the three faces of Elvis. My favorite alterElvis is Declan Patrick Aloysius Macmanus . . . an introvert whose soul-searching generated this outstanding piece of vinyl. Another, the band-leader of the Attractions, dished up Blood and Chocolate, giving us a double treat in 1986.

● **True Stories, Talking Heads.** What else is there to say about this *tour de force* which runs through a wide range of music without ever abandoning true Heads style? Perhaps it wasn't really enough to put David Byrne on TIME magazine, but enough surely to lock up top spot in the college charts. Also takes the laurels for best album of the year beginning with "True," beating out efforts by Madonna Ciccone (**True Blue**), Cyndi Lauper (**True Colors**), and Bananarama (**True Confessions**).

● **Graceland, Paul Simon.** Rhymin' Simon leaves NYC, homeward bound on a personal voyage to rediscover the African roots of his music. The resulting fusion of South African rhythms and North American folk music is a long overdue shakeup which sounds as good on tape as it does in theory.

● **So, Peter Gabriel.** Another person doing a lot for the image of African music, not to mention international understanding, is Peter Gabriel. Perhaps not Gabriel's finest album, but the one with which he proves it possible to assault the pinnacle of stardom without compromising one's art. Now if he can only give a few pointers to Kate Bush, who appears on her second Gabriel album in the soft little duet "Don't Give Up."

● **Get Close, Chrissy Hynde.** Well, actually released in the name of a group of Pretenders to the mantle of another, defunct band, which once backed Chrissy. They are gone, but the rhythms are still here, together with Hynde's inimitable voice, and a more explicit message than we have yet heard from a woman who still has plenty to say. This product was made without cruelty to animals.

● **Different Light, Bangles.** Back in LA, my friends and I adored this up-and-coming all-girl band while the rest of the country was still fawning over the Go-Gos. Surely the most seductive voices to top the charts since Annie Lennox sang Sweet Dreams in '83. Once past the lighter-than-air fluff of "Manic Monday," one finds



such treats as If "She Knew What She Wants" and "Walk Like an Egyptian," which establishes this as the most danceable record of the year without "True" in the title.

● **Hand to Mouth, General Public.** Back in LA, we worshipped General Public even before they had recorded anything. What more did we need than the surviving nucleus of The Beat (AKA The English Beat), Ranking Roger and Dave Wakeling, together with veterans of the Clash and Dexys? After a few disappointing albums, the band that loves to play Boston cut an album in town and finally put it together for us.

● **Picture Book, Simply Red.** All due honour to Mick (Red) Hucknell as sex object of the year, but just listen to his voice. This man could make a profitable career as an a capella singer, but happens to have a fine band to back him up.

● **True Blue, Madonna.** I can't help it, I just like this collection of unabashed dance tunes and retropop which landed three singles on the year-end charts. If Madonna Ciccone appeals to the lowest common denominator, at least she does so more appealingly than Whitney Houston. Besides, I had to mention another member of the vegetarian mafia after Peter, Chrissy, and Roger.

● **Les Misérables, (original soundtrack).** Now firmly established as a West

End hit, the outstanding musical of the year is set to open in New York this month. As faithful an adaptation of Hugo's novel as can be squeezed into a three-hour stage extravaganza, "Les Miz" puts the opera back into pop operas. The record contains the high points of the RSC production. Colm Wilkinson (as Valjean) has his unusual vowels under control, and his singing is matched by Alun Armstrong's (as Javert). Frances Ruffelle (Eponine) delivers her arias with a breathy but full voice that is a delight to hear.

A few other data points on the chart of the year:

The Here We Come-back of the Year award goes to three-quarters of the original Monkees who came, were seen, and conquered a new generation of supporters, then came back to half-sell out Sullivan Stadium, and for all anyone knows are still touring.

Worst Sequel to the Best Comeback of the Year can only be awarded to the forthcoming TV series *The New Monkees*. I thought synthetic bands were decades out of style.

However, we have an obvious recipient of Worst Comeback of the Year in its own right: the resurgence of a would be band which should be banned, in Boston. Yes, **Boston is Back!** years later, and they sound just as though they had never left. Worse luck.

(Please turn to page 9)



Bangle Susanna Hoffs.

MIT Drama

MIT'S various resident theatre companies produced their usual crop of memorable performances during 1986. Even if you didn't see them all, you probably have some favourite which remains with you. To help jog your memory, we list the shows seen on campus last year:

IAP

The Musical Theatre Guild performed "Babes in Arms," a Rogers and Hart musical short on plot but long on dancing. How many costume changes can we manage in a Sala production?

February

Dramashop started off the year with their IAP major, "The Cavern" by Jean Anouilh. An upstairs/downstairs examination of the dark interior of a French household, "The Cavern" tackles several levels at once by introducing a character called the Author who directs the action and rewrites the play even as it progresses. The MIT Community Players produced the old standby "Arsenic and Old Lace."

March

The Chorallaries annual concert in bad taste, as much a theatrical event as a musical one, featured topical references to the Challenger accident and the tenure debate. The Logarithms performed the next week.

The Dramashop evening of student scripts was a success, particularly the brainstormed collaboration "Movin' In," after David Mamet, and a selection from "Death in the Family," a black comedy by Andrew Borthwick-Leslie '86.

April

MTG's annual Tech Show was "Diamonds in the Rough" by Julio Friedmann '88. Not the best original show ever seen on campus, but amusing at times, the plot revolved around policemen disguised as a polar bear in rural New England.

May

Dramashop pulled off a major coup in having Italian playwright and comic Dario Fo conduct a workshop at MIT as one of

his first stops on his first US tour. Fo had been banned from entering the US for political reasons. To coincide with the event, they staged "We Won't Pay! We Won't Pay!" a hilarious farce about men and women on strike.

The Community Players stuck to established hits with Beckett's "Endgame," producing a respectfully traditional staging.

Summer

Dramashop's summer production was Sam Shepard's "Curse of the Starving Class," a hard-edged drama about the tribulations of a farming family in the Southwestern US.

September

MTG put on "Man of La Mancha." Allowing the cast to run amok while the audience was still entering was a nice touch.

October

Dramashop's first set of one-act plays, showcased new talent. The standout was Mamet's "Sexual Perversity in Chicago," which helped pack them into the Little Theatre.

The Community players stooped to detective stories to bring us the above-average thriller "Dial M for Murder."

November

The middle weekend of November was simultaneously a theatrical delight and a logistical nightmare, as three shows opened withing 24 hours.

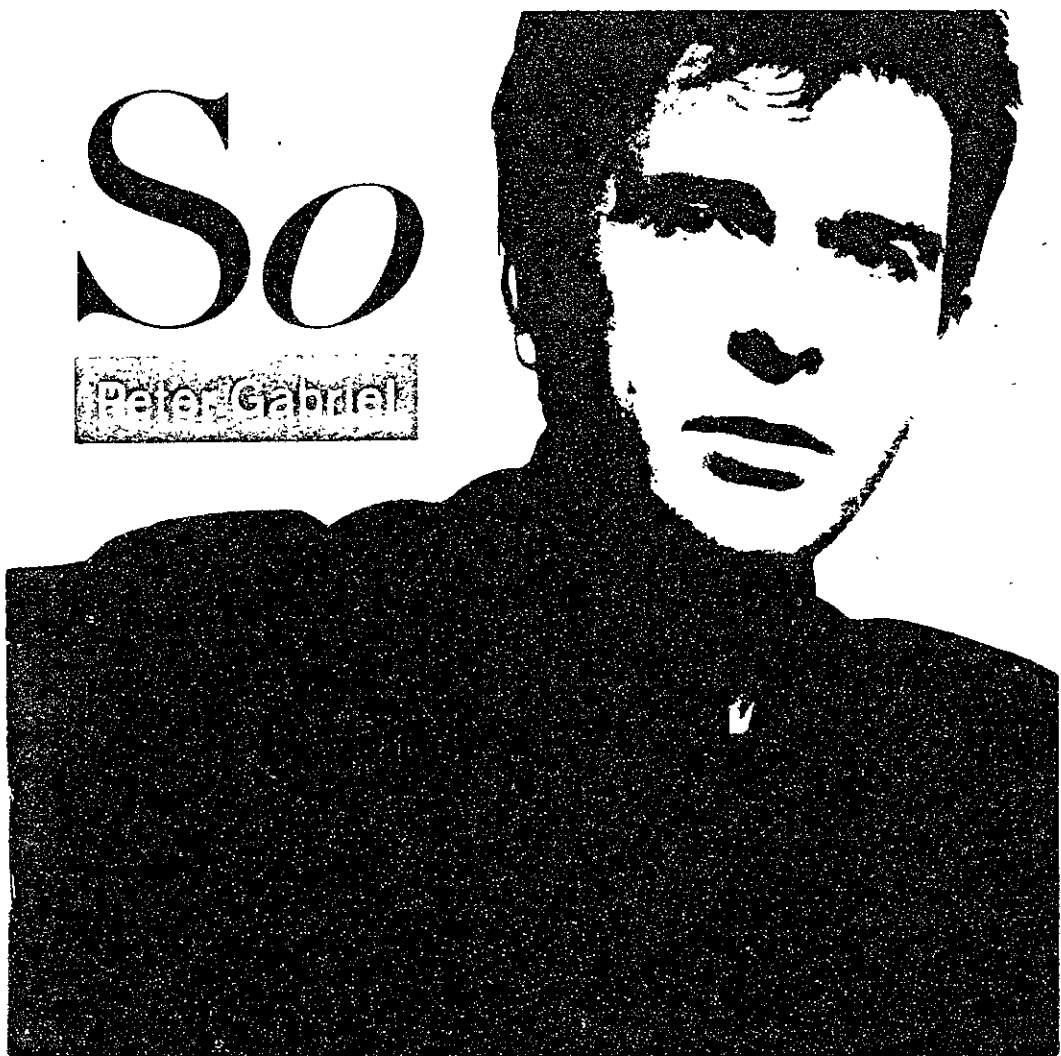
Dramashop's second set of one-acts featured more Mamet and two very good plays. The first was "The Loveliest Afternoon of the Year," a comic sketch. The weightier "Canadian Gothic" told the history of one Saskatchewan family in the thirties and forties.

The same night Shakespeare Ensemble brought an imaginative and airy "Midsummer Night's Dream" to the Sala. The show was judged among the best collegiate productions in New England.

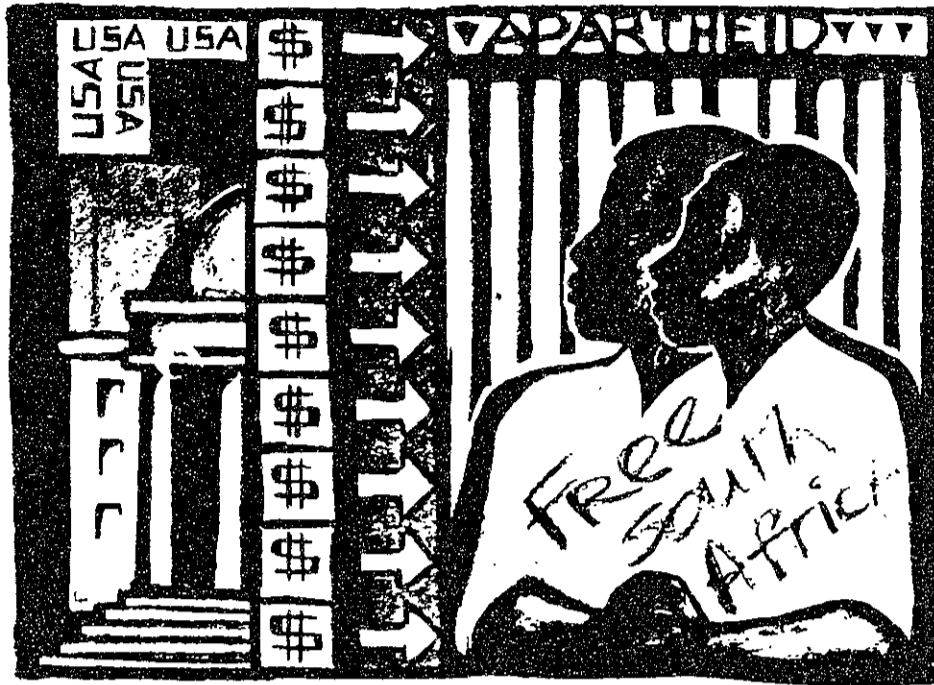
Last up was MTG with "West Side Story," an entertaining performance but a little lost in the vastness of Kresge.

So

Peter Gabriel



AN MIT COLLOQUIUM



ENDING APARTHEID: ACTIONS FOR AFRICA, AMERICA AND MIT WEDNESDAY, FEBRUARY 4, 1987

ADDRESSES

SOUTH AFRICA IN TRANSITION

NEO MNUMZANA, CHIEF AFRICAN
NATIONAL CONGRESS
REPRESENTATIVE TO THE
UNITED NATIONS

KRESGE AUDITORIUM 1 PM

SOUTH AFRICA: THE CORPORATE ETHICAL DILEMMA

DAVID R. CLARE '45, PRESIDENT OF
JOHNSON AND JOHNSON,
MEMBER OF THE
MIT CORPORATION

KRESGE AUDITORIUM 2 PM

PANEL WORKSHOPS

THE POLITICS OF OPPOSITION TO APARTHEID IN SOUTH AFRICA AND THE NEIGHBORING STATES

NEO MNUMZANA, CHIEF AFRICAN
NATIONAL CONGRESS REPRESENTATIVE
TO THE UNITED NATIONS

ROBERT ROTBERG, PROFESSOR OF
HISTORY AND POLITICAL SCIENCE, MIT

SATHS COOPER, PRESIDENT OF THE
UNION OF SOUTH AFRICAN STUDENTS IN
THE UNITED STATES

FERNANDO LIMA, DIRECTOR OF THE
INFORMATION AGENCY OF MOZAMBIQUE

MEZZANINE LOUNGE,
STUDENT CENTER 3:30-5:30 PM

OPTIONS FOR AMERICAN INSTITUTIONAL RESPONSE TO APARTHEID

DAVID R. CLARE '45, PRESIDENT OF
JOHNSON AND JOHNSON

PAUL E. GRAY '54, PRESIDENT OF MIT

MARIE GILLES-GONZALEZ, G, COALITION
AGAINST APARTHEID

GRETCHEN KALONJI '80, ASSOCIATE
PROFESSOR OF MATERIALS SCIENCE, MIT

SALA DE PUERTO RICO
STUDENT CENTER 3:30-5:30 PM

INFORMAL DISCUSSION

DESSERT AND INFORMAL DISCUSSION IN LIVING GROUPS 7 PM

EAST CAMPUS (with SENIOR HOUSE)
BAKER HOUSE
No. 6 CLUB

GERMAN HOUSE (in NEW HOUSE)
NEXT HOUSE
McCORMICK

DTD
DKE
ATO

Films

(Continued from page 6)

covers a severed ear in a deserted lot. His curiosity leads him into a topsy-turvy world which has at its center a emotionally tortured night-club singer (Isabella Rossellini). The characters of this sexually violent movie become more and more unnerving as we are drawn deeper into the film's webbing. In the end, we are forced to decide whether the darkness lies in Lynch's world or our own.

Best actors.

Two performers we would hate to see passed up in the honours lists, who appeared in second-best movies, include:

Harrison Ford in "The Mosquito Coast," who doubtless gives the best performance of his career in a good, but not great, ad-



Harrison Ford gives a great performance in "The Mosquito Coast."

aptation of the Paul Theroux novel. As an eccentric inventor who lapses toward insanity and tyranny, Ford gets good support from River Phoenix, who plays his son.

Marlee Matlin as the defiant deaf woman in "Children of a Lesser God." Matlin, who is herself deaf, is stunning opposite her real-life lover William Hurt. But will we get to see more of her in the future?

Best directors.

And a few directors of note this year were **Spike Lee** and **Andrei Tarkovsky**. Lee's first film, the grainy, earthy, and entertaining "She's Gotta Have It" was appreciated by both critics and audiences alike, and suddenly Lee was a favorite black spokesman and feminist exponent. "The Sacrifice" by Soviet émigré Tarkovsky, was a film full of images both physical and metaphysical which dealt in the most realistic way with nuclear destruction, through fantasy.

The odd ones.

Odd film of the year number one (US category) was **True Stories**, the centerpiece of David Byrne's multimedia assault on the pinnacle of pop stardom. He plays a character who seems to be a cross between Carl Sagan and Fred Rogers, but who turns out on inspection to be David Byrne after all.

And odd film of the year number two (UK category) is the just-out **A Zed and Two Noughts**, Peter Greenaway's capsule examination of life and death. Building nonsequentially on the images of a mute swan, a legless woman, a plate of decaying prawns, a pair of obsessed twins, a colorblind man who hates black and white animals, and a mad doctor mad about Vermeer, Greenaway probes a clutch of themes in a way which sets audiences talking.

So all in all, an interesting year for moviegoers. It was a little disappointing that foreign-language productions such as the French **Betty Blue** and German **Men...** did not quite live up to expectations, and few foreign films from outside Europe even made it to Boston in 1986.

Julian West
Peter Dunn

Pop

(Continued from page 6)

Best Group to play MIT. Sorry, Spring Weekend organizers, it was **The Fountainhead** by far. From the land of blarney and U2, this appealing pop duo hit Walker just before achieving some sort of North American critical acclaim.

Best video clip of the year, if you watch the dammed things, was the universally acclaimed **Sledgehammer** - a tour de force of stopmotion animation with which Ga-

briel made the Big Time. I'd also like to mention **Life's What You Make It** - Talk Talk's lush celebration of life. Also, for sheer elegance and effectiveness, **All Fall Down**, by Ultravox and the Chieftains (try being more Celtic than that) in which many ordinary people are nuked in black and white slow motion.

At the end of the year, at the top of the charts in Europe was a band with the original name, **Europe**. They seem cute and harmless enough. We already had bands called America and Asia (oh, I take back what I said about synthetic bands), so does this mean that Australia is next?

Julian West



Graceland produced a fusion of American and African rhythms.

The Student Center Committee presents

THE MIT

BATTLE OF THE BANDS

STARTS FEBRUARY 12

Entry forms available at the SCC Coffeehouse
(Due by Friday, February 6)



- ☆ Must be 50% MIT students
- ☆ Original and cover bands
- ☆ PRIZES!!!

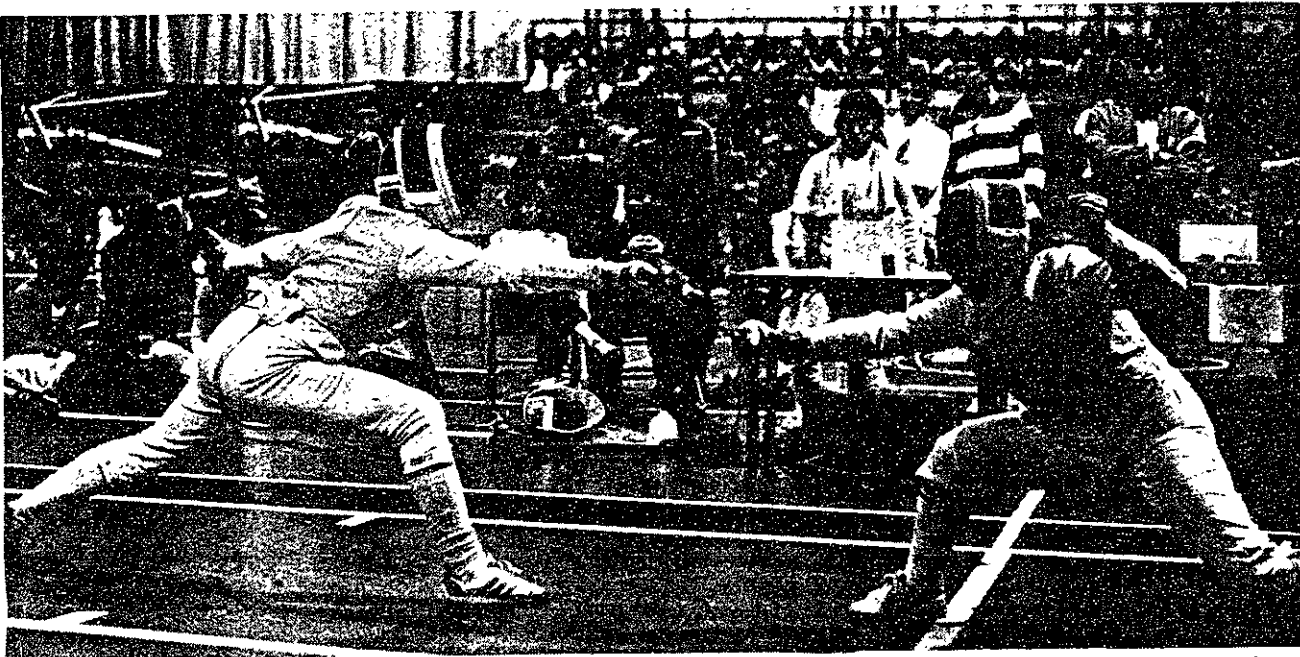


Rugby



Soccer

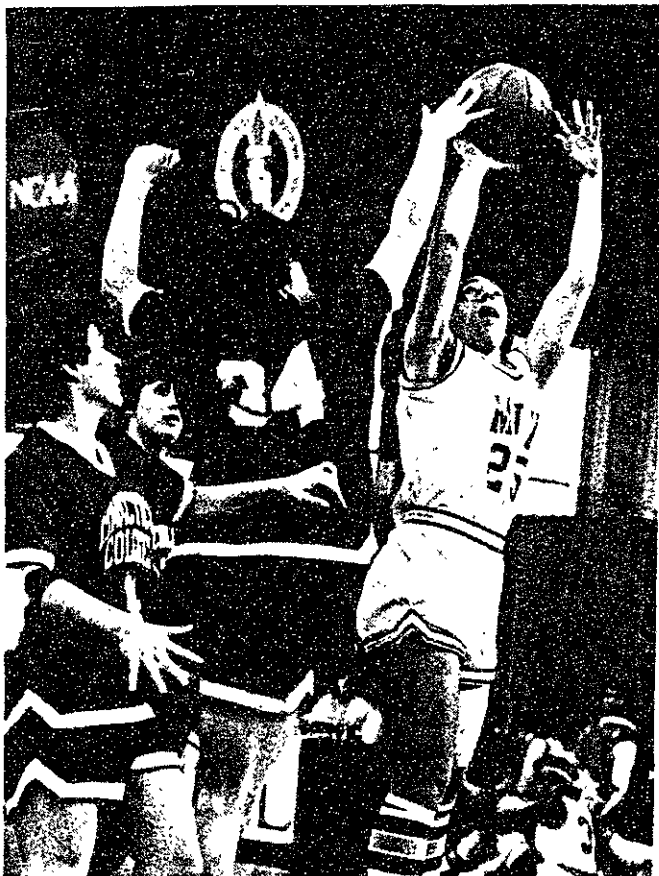
The Year in Sports



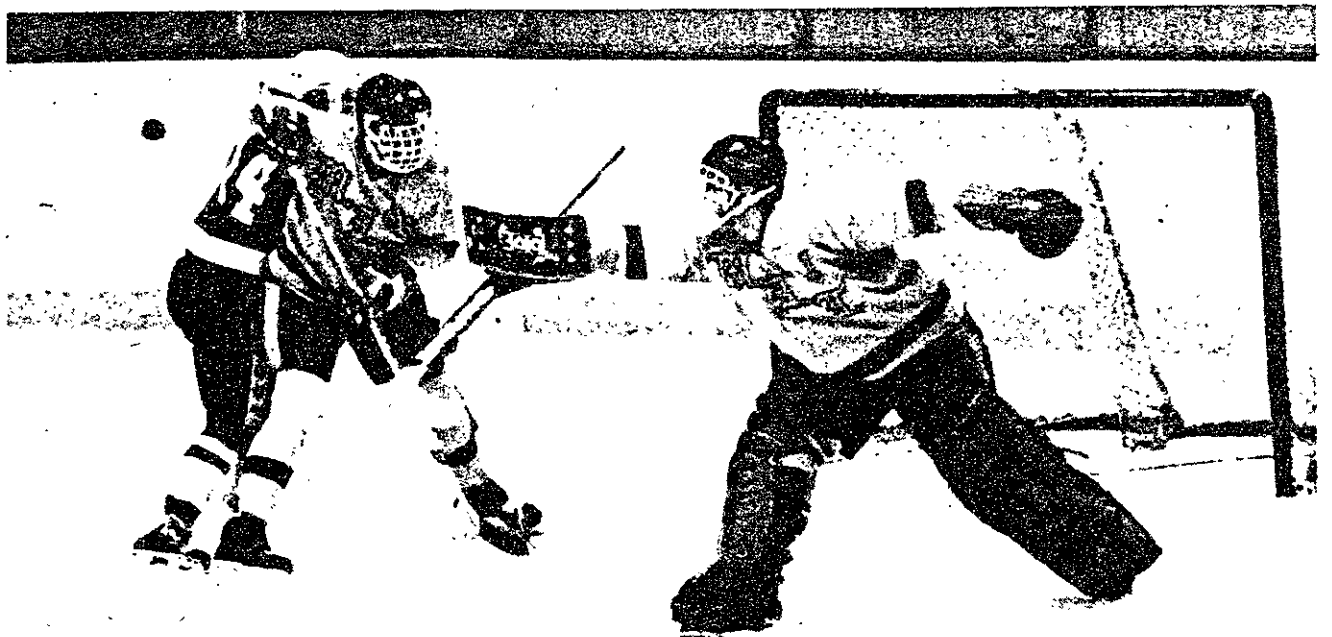
Fencing



Football



Basketball



Hockey



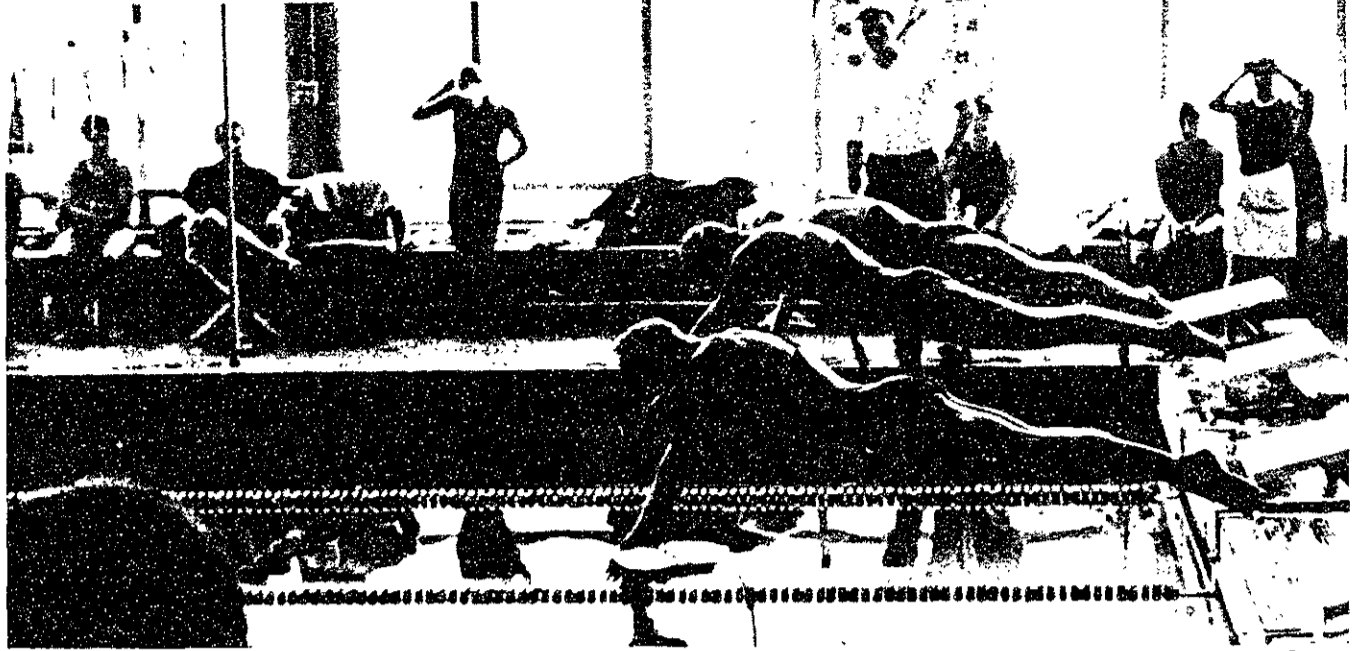
Crew



Lacrosse



Volleyball



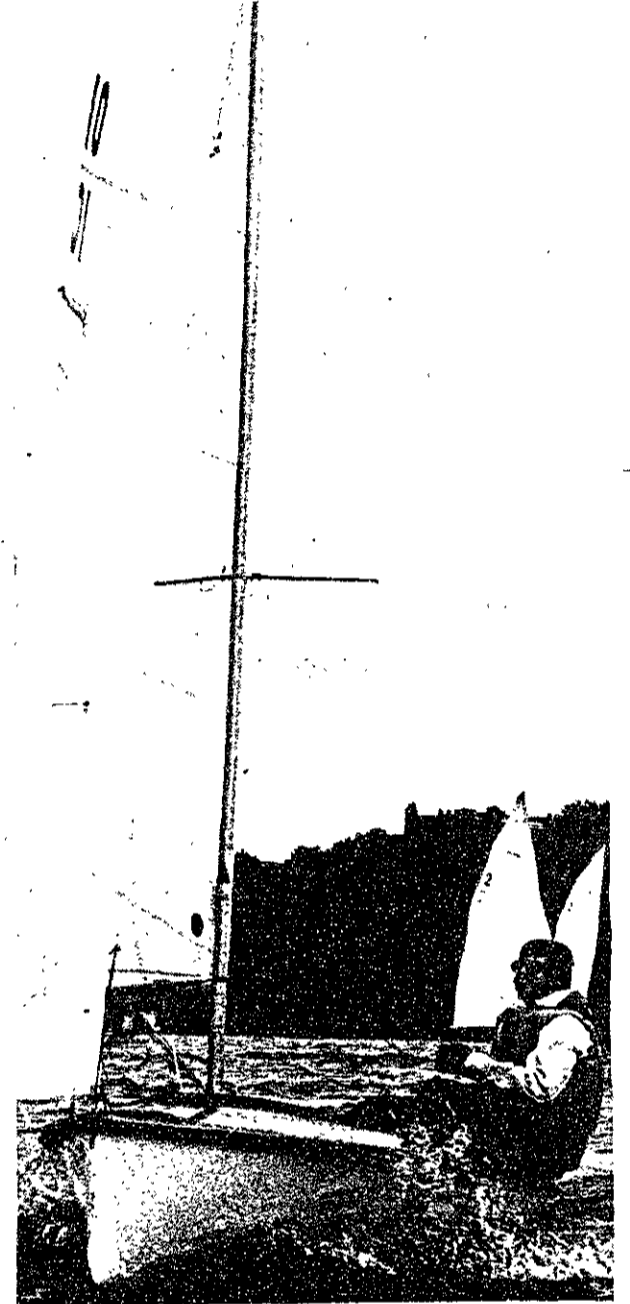
Swimming



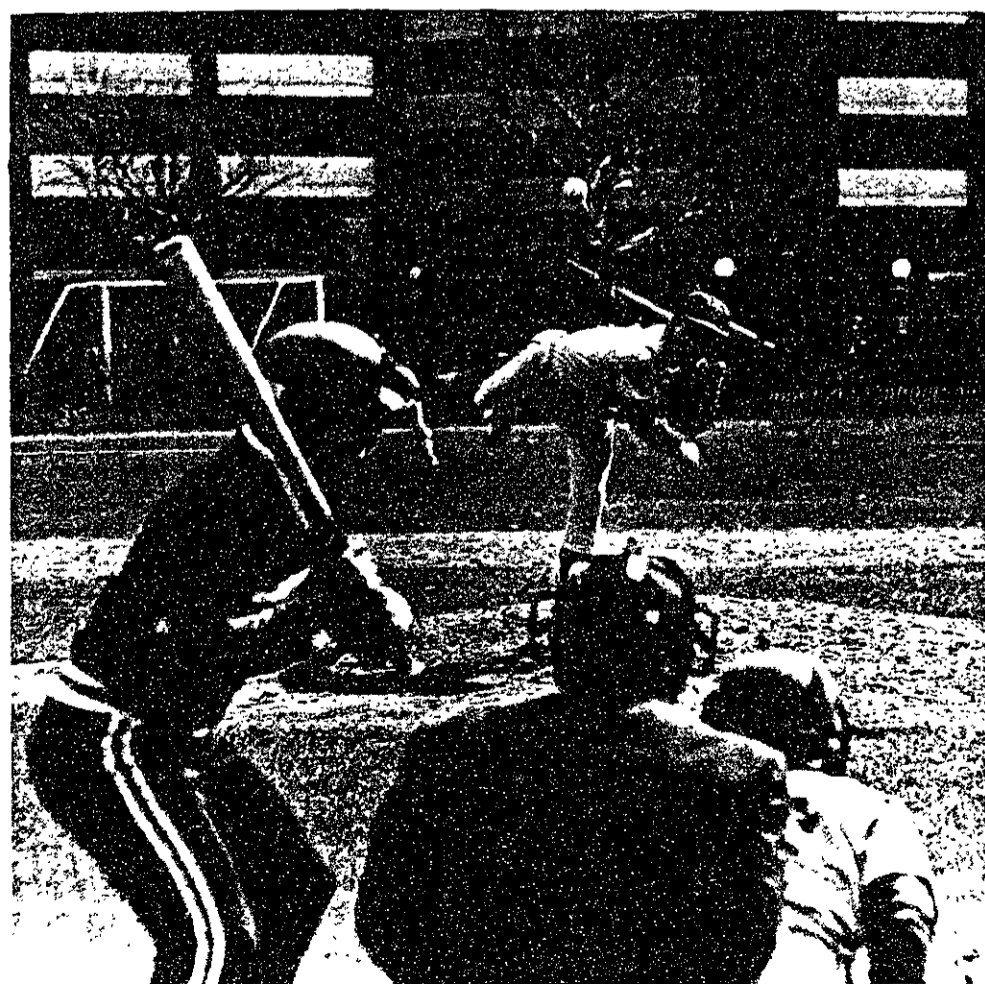
Tennis



Gymnastics



Sailing



Baseball



Track

Photos by Tech Staff

Design & Layout by

David M. Watson

Kyle G. Peltonen

Educational reform committee reports

(Continued from page 2)

issues. Such education would involve more exposure to economics, politics, and organizational and behavioral science.

Students criticize environment

Compared to the HASS committee, students have not been as critical of the structure of the HASS requirement or breadth of exposure in the curriculum. The most commonly voiced complaints at student discussions concern the educational environment and workload at MIT.

Professor of Electrical Engineering Hermann A. Haus '54

agreed that a problem with the present curriculum is that excessive material has to be covered. There have been no concrete proposals regarding the workload at MIT. As far as environment is concerned, the Kerrebrock commission recommended increased publicity and expanded support for Institute Colloquia in its progress report.

The science core

The Science Education Committee has proposed replacing the current list of science distribution courses with a new set of courses "aimed at giving some sort of general science exposure," said

Arthur P. Mattuck, head of the mathematics department and a member of the committee.

The revised list would contain up to 15 courses in the School of Science. The present science distribution requirement was designed to allow departments to tailor exposure to science subjects to the needs of the departmental program and to provide broad exposure in science. "Since many of these subjects are highly specialized and oriented towards specific departmental programs, the second aim of the requirement has been obscured," the committee's report stated.

All undergraduates are presently required to take three science distribution courses, but most departments incorporate some distribution courses into their degree programs. As a result, many students never take general science courses outside their degree requirements.

The Science Committee was generally satisfied with the freshman science courses in physics and calculus. Some committee members opposed the use of Introduction to Solid-State Chemistry (3.091) to fulfill the Institute Requirement in chemistry. The committee stated that Principles of Chemical Science (5.11) "provides a broad introduction to modern chemistry," while 3.091 "is a narrower view of chemical science dealing mainly with solids and defects in solids."

The Kerrebrock Commission proposed an "Introduction to Engineering" subject for freshmen and non-engineering majors, which would examine the general approach to engineering as op-



Calvin Campbell/MIT News Office Associate Dean of Engineering Jack L. Kerrebrock.

posed to discrete disciplines such as thermodynamics and fluid mechanics.

Last summer the Department of Electrical Engineering and Computer Science proposed offering an intensive version of Structure and Interpretation of Computer Programs (6.001) during the Independent Activities Period instead of spring term. The department later withdrew the proposal. The proposal, which may be resubmitted for January 1988, raised concerns about "extending the frenzied pace of [MIT] through January," said David G. Wilson, chairman of the IAP committee and professor of mechanical engineering.

and engineering and one in HASS. Establishing an independent college is a major step, requiring large amounts of money, planning, and faculty support, Kenniston said. Integrated studies in liberal arts is part of a broader review of MIT undergraduate education and should not be expected to take place all at once, he added.

Improving teaching quality

"A doctorate and excellence in research, though clearly essential, are not sufficient for optimal achievement in teaching," the Kerrebrock Commission's report stated. "There are some excellent teachers at MIT, and even some who understand the art of teaching and can express this understanding to others, but there is at present no organized effort to spread this valuable information within the faculty." The commission called for a School-wide working group examine the problem and develop tutorials and seminars for the faculty.

The commission also considered the perception that research and publication record is much more important in tenure decisions than excellence in undergraduate teaching. "Even though the accuracy of this perception is questionable, it is important to offset such perceptions by positive actions," the report stated.

The Kerrebrock Commission proposed establishing "Teaching Chairs" for faculty members whose ability in the classroom is exemplary. The chairs would be awarded to newly-tenured faculty in recognition of uncommon achievements in teaching identified during tenure review. These faculty members would devote a major portion of their time to teaching duties.

More women entering MIT

A record number of women entered MIT in 1986 and it appeared that this trend would continue, according to admission's office statistics on early admissions for next year's freshman class.

An all-time high of 380 women entered the Class of 1990, accounting for 38 percent of the class. The number of women was a 27 percent increase over the 300 women in the Class of 1989. A record of 1364 women applied to last year's entering class.

The number of women who applied and the number who were accepted early to the Class of 1991 broke all previous records. MIT admitted 20 percent more women early action to this class than in the previous year.

The increase in the number of women has caused a decrease in the number of potential all-male fraternity pledges. This in turn forced fraternities to launch more competitive rush efforts this year.

"Everyone got out there and rushed a little harder," said Timothy R. Lash '87, rush chairman of the Interfraternity Conference.

Rush officers at several houses said that this year it took some houses longer to reach their target number of pledges. Other rush chairmen said there was an increase in "cross-rushing," in which more than one living group extends a bid to the same person.

Kennedy wins 8th CD

Cambridge has a new representative on Capitol Hill for the first time since 1952. Joseph P. Kennedy II was elected to the House of Representatives from the Massachusetts 8th Congressional District, replacing retiring Speaker of the House Thomas P. O'Neill Jr.

Kennedy defeated Republican candidate Clark C. Abt '51 in the Nov. 4 election, garnering 72 percent of the vote.

The election campaign, which set records for spending, grabbed local and national headlines. In addition to Kennedy, who has never before held elected office, the hotly contested race for the Democratic nomination featured a score of famous names.

The best showings were made by State Sen. George Bachrach, considered a liberal leader on Beacon Hill, and Melvin H. King, a former state representative and unsuccessful candidate for mayor of Boston in 1983.

Several important referenda were also on the state ballot. Massachusetts voters rejected an anti-abortion proposition, narrowly approved tax capping, favored a hazardous waste control measure, and repealed mandatory seat belts. Voters also called for a national health program and for controls on acid rain pollution.



Stephen P. Berczuk/The Tech Joseph P. Kennedy II

The report on MIT racism

(Continued from page 1)

some people fear getting swallowed up."

"It might be a natural tendency to live with familiar people, but self-segregation tends to cause segregation at MIT," a graduate student said. "I've been at MIT for six years, and I've lived in six different living groups. Only this year have I had the opportunity to get to know a black person."

Most students agreed that someone will have to take the initiative in order for interracial relations to improve. "The only way to combat racism is through personal contact," one student claimed.

Some students at the forum suggested that MIT introduce an ethnic studies course into the curriculum, while others rejected the idea.

But many students agreed that

more discussion of minority issues on campus would improve MIT's racial climate. "I wouldn't mind someone from BSU [Black

Student Union] coming over to our living group, and we would be willing to go to them," a student commented.

The UA posted a "flame sheet" in Lobby 7 in November for students to voice their opinions on the racial climate at MIT.

One student pointed out that many minority students at MIT feel isolated. He posed the question: "Have you ever been the only white person among a bunch of minority students who have never seen or spoken to a white person before?"

Another student stated: "The first thing we can do about racism is to learn to recognize it in all its many forms. Overt racism represents only a minute fraction of the problem. In a broad sense, anytime we make assumptions about another person on the basis of his ancestry or similar arbitrary factors, we are, in fact, practicing racists."

Students question tenure process

MIT students called for a review of the faculty tenure process. They protests was sparked by the denial of tenure to Frank E. Morgan '74, associate professor of mathematics. Morgan was well-known for his ability to teach and administer large freshman calculus courses.

The Undergraduate Association asked the MIT community to review the importance of teaching ability in the faculty's tenure-granting process.

"MIT should have a healthy dose of both teaching and research," said UA President Bryan R. Moser '87. "[But] teaching ability isn't even being considered."

In early March, nearly 100 students and faculty members rallied to protest MIT's tenure policy.

Protesters proposed that MIT reward departments for tenuring junior faculty who have been recognized by students as outstanding teachers.

Proposal to establish College of Liberal Arts abandoned

The Committee to Design an Integrative Curriculum in the Liberal Arts, chaired by Leo Marx, professor in the science, technology, and society program, proposed that MIT establish a College of the New Liberal Arts in the committee's interim report released March 1986.

The Marx Committee was discharged and the Committee on the Implementation of an Integrative Curriculum in the Liberal Arts is now charged with examining its report. This committee is unlikely to recommend sweeping changes such as a new college, according to Chairman Kenneth Keniston, professor in the STS program. The Kenniston Committee is studying ways to integrate study of humanities and social sciences into the Institute's traditional science and engineering curriculum.

Under the Marx proposal, students desiring "dual competence" would enroll in the college and select two majors, one in science

The Year in Review

A supplement to *The Tech*

Tuesday, February 3, 1987

Editor in Chief.....	Earl C. Yen '88
News Editor.....	Andrew L. Fish '89
Arts Editor.....	Julian West G
Photography Editors.....	David M. Watson '88
	Kyle G. Peltonen '89
Production and design.....	Ben Z. Stanger '88
	Halvard K. Birkeland '89
	Mark Kantrowitz '89
	Ezra Peisach '89

Staff: V. Michael Bove G, Barbara A. Masi G, Ronald E. Becker '87, Akbar A. Merchant '89, Robert Adams '90, Marie E. Coppola '90, Michael Gojer '90, Jai Young Kim '90, Robert E. Potter II '90.

TheTech