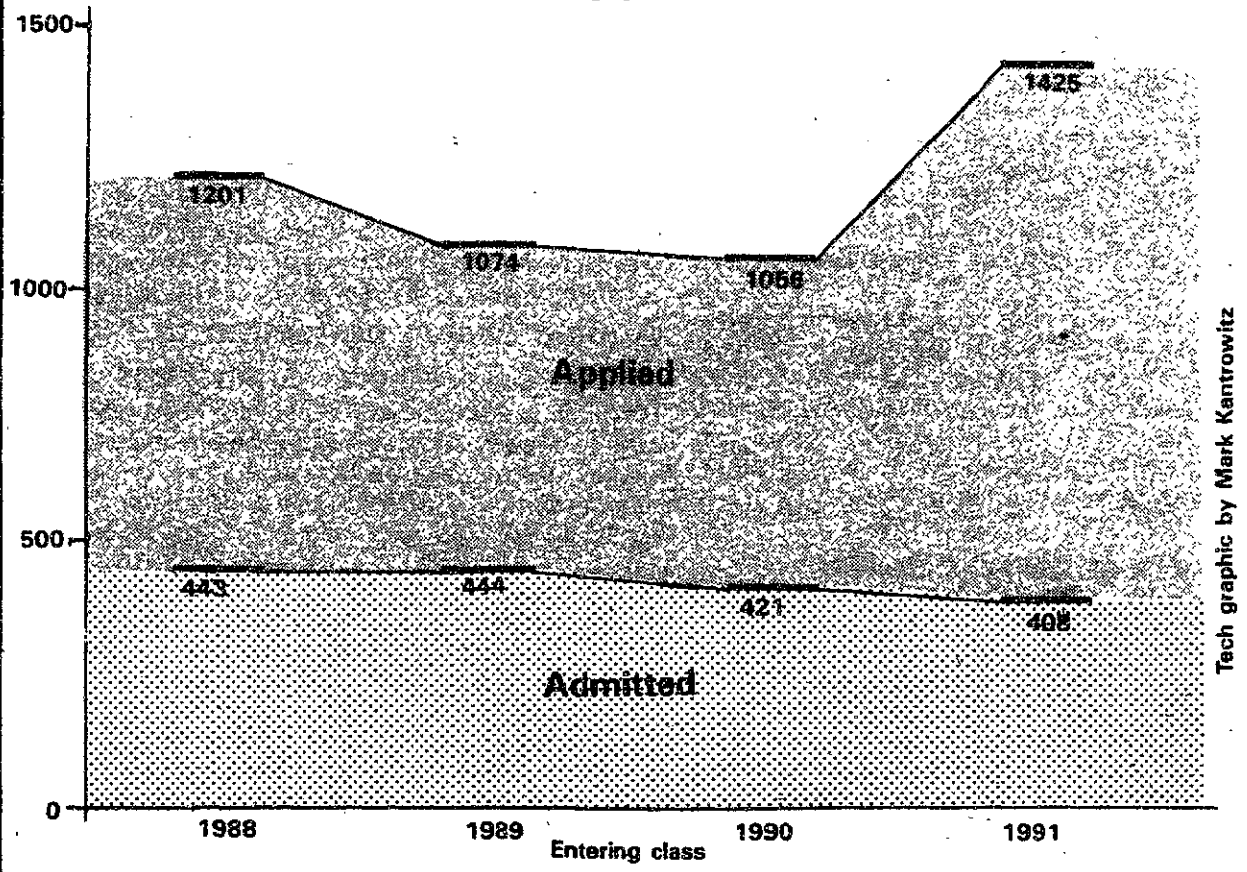


Early Admission Applicants 1984-1987



Tech graphic by Mark Kantrowitz

Record number vie for early admission

By Ben Z. Stanger

Early action applicants to MIT this year broke records for the number of applications received and the number of women and minorities admitted early.

The number of students who applied for regular admission to the class of 1991 also hit an all time high.

This year's 1425 early action applications represents a 35 percent increase over last year. In addition, fewer candidates were accepted early this year — a total of 408 — causing a more competitive selection, according to Director of Admissions Michael C. Behnke.

"It was an exciting early action group," Behnke said. He said that other institutions had an increase in the number of early applicants but MIT's was the largest he knew of.

Approximately 70 percent of those admitted early are expected to enroll, he said. MIT has deferred decisions on those students not admitted early.

Women and minority early acceptances set record mark

MIT has met its goals of admitting more women and under-represented minorities in its early selection, Behnke said. MIT accepted 134 women early action, 23 more than last year, according to figures released by the office of admissions.

Fifty-four minority students were admitted early, more than doubling last year's 23 early admissions.

In addition, the number of minority students who have applied for regular admission increased to about 450, up by over 100 from last year, according to Behnke.

An "extraordinarily strong group of minority applicants" for early action accounted for the increases, Behnke said. He attributed the strong pool to greater recruitment attempts by the admissions office.

These efforts included a second full-time minority recruitment officer, more visits to high schools by MIT representatives, Behnke said. MITES — a summertime minority education program sponsored by MIT — was also very strong this year, he added.

More overall applicants; fewer want Course VI

Approximately 7100 students have applied for regular admission to the Class of 1991, a 14 percent increase over 6200 for the Class of 1990. Applications for the Class of 1990 were up 8 percent from the previous year, Behnke said, but this did not include a corresponding increase in the number of minority applicants.

The number of students admitted early is also up 11 percent from last year. (Please turn to page 11)

Alumni discuss curriculum reform

By Akbar Merchant

It's impossible to provide a complete professional education in four years, said Raymond S. Stata '57, Chairman of the Board and President of Analog Devices Inc., at an alumni panel discussion about undergraduate curriculum reform held Jan. 22. "If doctors, lawyers and Indian chiefs need a graduate degree to practice their profession, why not engineers," he said.

A problem with the existing curriculum is that excessive material has to be covered, admitted Herman A. Haus '54, professor of electrical engineering. However, MIT alone cannot expand engineering to a five or six year program, Haus said. Students concerned about education costs would favor schools with four year programs over MIT, he explained. When engineering students attend graduate school, however, they are likely to receive support, Haus noted.

Several panelists stressed the importance of a broad undergraduate program. "A perspective must be offered without adding

to course hours and damaging the fundamentals," said Joseph G. Gavin, Jr. '41, president of the Alumni Association. "An undergraduate in engineering must at least be aware that is such a thing as products liability," he illustrated.

Technological innovation cannot happen in the future because of complicated reasons such as political and social forces, unless scientists and engineers have the background to deal with them, according to Associate Provost Samuel J. Keyser. He cited the Cambridge City Council's concerns about recombinant DNA and nuclear research facilities at MIT.

Stata assessed the value of his MIT education. First, it gave him in depth knowledge in his specific field, electronics. "My education in Humanities was at least as valuable," he said. Stata recommended a core humanities program for freshmen and sophomores. "It's not enough to learn about Western civilization [any more] but about Eastern civilization also," he noted.

There should be a course such as "Leadership for Non-managers," which would present aspects of organizational and behavioral science, Stata continued. About one in four engineers goes back to school for a two-year MBA program, which is too high a price for the few tools one may need, he commented.

(Please turn to page 11)

Studies reveal unusual election year

By Robert Adams

"This was the most uncompetitive Congressional race since 1830," said Professor of Political Science Walter Dean Burnham at yesterday's "Election of 1986" forum. Historically, the number of Congressional Districts versus percentage vote closely fits a normal distribution curve, but in recent years this has changed, Burnham explained.

The Republicans gained nine governorships and lost only two races to Democrat incumbents, Burnham said. Races for governorships produced some of the most lopsided election results; for example, New York Governor

Mario Cuomo won by a two-to-one margin.

"But you find zero movement in the state legislatures," Burnham said. "This shows the smallest coattail effect of all time. What you end up with is a divided government," in which governors face legislatures run by the opposition, he added.

8th District Race was "issueless"

Peter Lemieux PhD '77, political science lecturer, analyzed Massachusetts' 8th Congressional District Democratic primary between Joe Kennedy, George Bachrach, Mel King, and Jim Roosevelt.

The 8th Congressional District "is one of the more interesting gerrymanders in Congress because it was designed to keep Tip O'Neill as Speaker of the House," Lemieux commented. Kennedy, who won the election,

relied mainly on the older Democratic ethnic parts of the district, he said. Mel King relied mostly on black and liberal voters, and Roosevelt did not have any perceptible power base, Lemieux added.

"This was pretty much an issueless campaign," Lemieux said.

One of the more surprising results of the district race was that a third of the voters claimed to have met either Kennedy or Bachrach, and a fourth claimed to have met both, Lemieux reported. These are substantial fractions because the electorate is composed of approximately 300,000 people, he said.

Senate results provide useful data

The 1986 Congressional elections were interesting because the patterns that they represent are useful to study, said Charles Kennedy. (Please turn to page 11)

Integration Bee champion crowned

Feature

By Niraj Desai and Ben Z. Stanger

Eric M. Gibber '87 won the title of Grand Integrator of MIT at Monday night's Integration Bee, solving the integral:

$$\int \frac{e^x - 1}{e^x + 1}$$

The IAP event, sponsored by the Department of Mathematics, drew about thirty contestants in all, ranging from freshmen to senior math majors and graduate students.

The point of the contest was to

challenge participants' abilities to perform symbolic integration within a specified time limit. While some of the integrals were quite complex, all were meant to be easy enough to be solved by someone with only a knowledge of 18.01. The emphasis was on speed as opposed to difficulty.

The contest began two weeks ago with a preliminary round to narrow the field to ten. Participants were given a written integration test and high scorers were invited to return for the final round on Monday. The final round was held in Room 26-100 with finalists taking turns at the chalkboard. Each contestant was

given an integral to solve while the others waited outside. A crowd of about fifty witnessed the spectacle.

The time limit for each integral was two and a half minutes. If a finalist could not solve a problem and one of the two people after him could, he was eliminated. If three consecutive finalists failed to do an integral, the problem was discarded.

Integrals became progressively harder throughout the contest. Only one of the ten finalists was eliminated in the first round of questions. Participants performed rather well; it took over three hours to eliminate everyone but the eventual winner.

Jordan A. Drachman '89 placed second to Gibber. Third place was determined by a runoff between Joseph A. Alfano '88 and David L. Waggoner G. The two were placed side by side and given the same integral. The rules specified that first one to solve the problem would win. If both were unable to do the integral, they would have to try again with another problem. Neither was



Ronald E. Becker/The Tech

Eric M. Gibber '87, right, wins the title of Grand Integrator of MIT in Monday night's annual Integration Bee.

inside

New Ehrlich's "Starving Class" is cursed. Page 12.

Movie reviews of Greenaway's "Zed and Two Noughts" and of Beineix's "Betty Blue." Page 13.

Mr. T — recording artist? See music review, page 13.

news roundup

from the associated press wire

World

Pell says military action may be justified against kidnapers

If there is clear evidence that Iran is behind the recent kidnapping of three Americans in Beirut, then the President should consider military action against Iran, said Sen. Califorme Pell (D-RI) on Sunday. The United States would be justified in using military force against foreign kidnapers under certain conditions, Pell commented. Pell, who is the chairman of the Senate Foreign Relations Committee, made his comments on ABC's "This Week with David Brinkley." (AP)

Tambo calls for intervention

Oliver Tambo, leader of the African National Congress, South Africa's outlawed Marxist group, called on the Reagan administration to sever ties with the white-minority regime. Tambo charges that US policy has served the purposes of apartheid. Tambo is in Washington today for a meeting with United States Secretary of State George Shultz PhD '49. (AP)

Waite continues hostage discussions

Archbishop of Canterbury Robert Runcie said yesterday that he is "greatly concerned" about the safety of Anglican Church envoy Terry Waite. But there is no evidence that Waite is being held against his will in Lebanon, Runcie told reporters in London. Waite is being detained by the terrorists with whom he is meeting, according to Kuwait's news agency. Although there has been no direct contact with Waite, there have been "regular and encouraging messages" from sources in Beirut, Runcie said. Waite has not been seen since last Tuesday. (AP)

Iran-Iraq war rages

Iranian forces have pushed closer to Iraq's southern city of Basra, Iran claimed on Monday. Iraq launched a counteroffensive, but that attack was defeated, according to Iran. Iraq said that Iran has not advanced "even a single inch," and that the Iranian forces are retreating. As usual, none of this can be independently confirmed. (AP)

Japan announces export limit, sets economic growth target

Japan will again limit its car exports to the United States to 2.3 million vehicles in fiscal 1987. The Japanese Minister for International Trade and Industry told a news conference that the Tokyo government decided to continue the restrictions in light of rising protectionism in the US Congress that might worsen Japan's trade relations with Washington. Japan began limiting its car exports to the United States in fiscal 1981 under strong pressure from Washington and the slumping American auto industry.

The Japanese government has set an economic growth target for fiscal 1987 at 3.5 percent, up slightly from the 3 percent growth rate expected in the current fiscal year. Originally, the government had predicted a 4 percent growth rate for fiscal 1986, but the yen's rise against the US dollar has slowed exports, squeezed profits, and led to declines in production and investment. (AP)

Shultz testifies for Senate on Iran arms sales

All direct contacts between the United States and Iran have stopped, said Secretary of State George Shultz PhD '49 yesterday to the Senate Foreign Relations Committee. He authorized two American representatives to meet with Iranians last month and tell them the United States would no longer sell weapons to the Iranian government, Shultz testified. (AP)

West Germany hit by wave of terror

West Germany continues to cope with its own Lebanon hostage crisis. At least two of its citizens are being held captive. Lebanese President Amin Gemayel has promised to try to help free the hostages, according to the West German newspaper *Die Welt*. But Gemayel asserted that governments should not negotiate with kidnapers. West German officials believe that Rudolf Cordes and Alfred Schmidt are in the hands of Shiite Moslem extremists trying to win the release of suspected TWA hijacker Mohammed Ali Hamadi. Hamadi is now in West German custody, and the United States wants him extradited to face trial. (AP)

White House urges Americans to leave Lebanon

"There is a limit to what the government can do for Americans in a chaotic situation such as in Lebanon today," said White House spokesman Larry Speakes on Monday. President Reagan is "outraged" at the kidnapping of three American professors in West Beirut over the weekend, Speakes said. The administration is still refusing to make concessions to terrorists holding US citizens in Lebanon and urges Americans to leave Lebanon, Speakes continued. The options for responding to the recent wave of kidnappings in Beirut range from "public statements" to "military steps," Speakes added. (AP)

Aquino allows protestors to march; Marcos predicts Aquino will fall

Philippine farmers built roadblocks of burning tires north of Manila on Monday, and approximately 15,000 marched on the Presidential palace. The demonstration was in protest to a clash between marines and protestors that left 12 dead last week. The police were placed on red alert.

In allowing the leftist demonstrators to march, Aquino acted against the advice of the military, which had warned that it could not guarantee her safety with the demonstration so close to the palace. Last week's demonstration was the bloodiest yet during Aquino's rule, but Monday's demonstration was not marked by violence.

In Hawaii, deposed President Ferdinand Marcos called the recent violence in the Philippines unbearable, and he predicted that the Aquino government will not last much longer.

The Reagan administration reiterated its support for the Aquino government, saying it offers "the best opportunity for the reform of the political structure" in the Philippines. The attempted takeover was the most serious effort by rebels to grab power since Aquino became President nearly a year ago. (AP)

Conservatives win in West Germany

West German Chancellor Helmut Kohl's conservative coalition won another four years in office in Sunday's national elections. Kohl's victory came despite low voter turnout and his party's worst showing since 1949. (AP)

MIT
Course
Evaluation
Guide

THANKS YOU

for helping produce the Fall '86 Course Guide.

- the faculty for their permission to evaluate their courses.
- the administrators for their assistance and support.
- the students for filling out our forms.
- our IAP workers:

Achal Aggarwal	Niraj Dube	Joe Kaliszewski	James McNulty	Mark Rubin	Jill-Beth Sweeney
Leo Almeida	Doug Golding	Brian Kellner	David Miller	Brinda Sankaranarayanan	Jocelyn Troxel
David Atkins	Andrew Good	Michael Kelley	Dan Mittleman	Zubin Sarkari	Grace Tseng
Sid Banerjee	Sabrina Goodman	Kyung Kim	Mark Moormans	Madhav Setty	Stella Tsoi
Kevin Bártus	Joel Gwynn	Ben Kowling	William Nelson	Kris Sheahan	Dharanija Vasudevan
Debika Bhattacharya	Liane Hancock	Suniti Kumar	Nicholas Newman	David Shupe	Takashi Watanabe
Roy Brewer	Lindsay Haughland	Joseph Lichy	James Park	Sanjivan Sivapiragasami	Jill Wilkens
James Casamento	David Horrigan	Keith MacKay	Jeffrey Parker	Barbara Smith	Susanne Willert
Michael Chandross	Heidi Howkins	Stephen Malinak	Dwight Peterson	John Smolin	Katherine Williams
Jay Cofan	Saadia Husain	Vandita Malviya	Chad Raymond	Jesse Solomon	Suzanne Wurster
TJ Cradick	Bill Jarrold	Elliot Marx	Eric Reifschneider	Joanne Spetz	Donald Yee
Desmond Davis	Constance Jeffrey	Tim McHenry	Maureen Reiling	Supatra Sritulanondha	Carolyn Zehner

- our staff for their many hours of unpaid work.

Allie Bereny	Dean Dellinger	Tim Hysland	Sonia Leon	Peter Linde	Bill McGrath
Nuran Conlar	Harry Hochheiser	John Kuenzig	Ephraim Lin	Teresa Lyons	Genevieve Sparagna
					Tim Steele

- anyone else who helped

WITHOUT ALL OF YOU, COURSE EVALUATION GUIDE
WOULD NOT HAVE BEEN POSSIBLE.

Interested in joining CEG? Call us at x3-2696 or drop by Student Center Rm. 401

news roundup

from the associated press wire

Nation

Penner cites budget target for government

\$61 billion in deficit reductions will be necessary in order to meet the Gramm-Rudman-Hollings deficit target of \$108 billion dollars in fiscal 1988, according to Congressional Budget Office Director Rudolph Penner. And for fiscal years 1980 to 1991, baseline federal deficits average about \$100 billion over the Gramm-Rudman-Hollings ceilings, Penner said. (AP)

Carson owns "Here's Johnny" rights

Only talk show host Johnny Carson can use the phrase "Here's Johnny" for publicity purposes, according to a ruling by a federal appeals court yesterday. The decision strikes a blow against the "Here's Johnny Portable Toilets" Company of Utica, MI. It had used the phrase to promote its product, but Carson successfully contested the firm's use of his "Tonight Show" introduction. (AP)

Government may ban ATVs

A ban on all-terrain vehicles for children could be in the works. The Consumer Product Safety Commission has asked the Justice Department to look into whether legal action should be used in connection with small ATVs. The agency considers the vehicles unsafe, and it will ask dealers to take back ATVs sold for use by children less than or equal to 16 years old. (AP)

Dwyer is buried

Former Pennsylvania State Treasurer R. Budd Dwyer, who killed himself at a news conference last week in Harrisburg, was buried on Monday. Dwyer had been convicted in connection with a bribery scheme. He denounced the criminal justice system as unfair and committed suicide the day before he was to be sentenced. (AP)

White supremacists in Forsythe County may use political power

Frank Shirley, a white supremacist in Forsythe County, GA, was quoted on Monday as saying that his followers will put their own candidates into office. Shirley is upset with politicians who welcomed 25,000 civil rights marchers to the all-white county on Saturday, according to the *Forsythe County News*. The rally was in response to a march the week before that had been violently interrupted by elements of the Ku Klux Klan. (AP)

Starting with the first issue of volume 107 (the first issue of the term), the news roundup will return to the three column format of volume 105.

LaRouche announces Presidential candidacy

Perennial Presidential candidate Lyndon LaRouche announced his candidacy for the Democratic Party's Presidential nomination on Monday in New Hampshire. LaRouche is accelerating his campaign because of President Reagan's troubles with the Iran-*contra* arms scandal, LaRouche said in a prepared statement.

In his statement, LaRouche called himself the only qualified candidate "tough enough to turn this country back to a healthy condition."

LaRouche could not attend the news conference in Concord because he is in Europe, according to his supporters. Also, LaRouche fears for his safety in New Hampshire, the supporters said. LaRouche has claimed to be targeted for assassination by people ranging from the Queen of England to the Mayor of Keene.

LaRouche is a four-time candidate for the Democrat Presidential nomination. He is a native of Rochester, but he now lives in a fortified estate in Virginia. (AP)

Challenger to be remembered

There will be tributes today — the first anniversary of the space shuttle *Challenger* disaster — in honor of the seven astronauts who died. Another wreath will be placed in the lobby of NASA's headquarters. And NASA workers will observe 73 seconds of silence at 11:38 AM — the shuttle's liftoff time. *Challenger* exploded 73 seconds into its last flight. (AP)

Liberace suffers anemia from excessive watermelon consumption

Liberace's watermelon-only diet triggered the anemia that landed him in a California hospital, according to Seymour Heller, Liberace's manager. A report that the pianist has AIDS is based on "gossip and false information," Heller added. Liberace started the diet to lose a few pounds "but then it didn't stop," Heller said. (AP)

Reagan meets with panel to discuss Iran arms deal

President Reagan met on Monday with the panel he appointed to investigate the National Security Council's role in Iran arms sales and other policies. Reagan answered questions about how the Iran policy developed, his role in the arms deals, and about the US foreign policy process in general, the White House reported. The President invited the panel to meet again, a statement said. (AP)

IRS hopes to simplify W-4 tax form

The Internal Revenue Service hopes to have an announcement as early as this week on simplifying the much-criticized W-4 tax-withholding form. A spokesman for the IRS did not elaborate on how the form or its instructions might be made simpler. Several members of Congress and tax accountants have complained that the new four-page package is much too complicated. The form is used by workers to determine how much income tax should be withheld from their paychecks. (AP)

Local

State Supreme Court rules on freedom of speech

The Massachusetts Supreme Court ruled on Monday that any conversation between a patient and a psychoanalyst is legally confidential and cannot be disclosed without the patient's consent. The high court said prosecutors could not introduce evidence of a psychiatric evaluation in the case of a young mother charged with manslaughter in the death of her 11-month-old infant. (AP)

Woman claims shower scalded her

The Massachusetts State Department of Mental Health has begun looking into a client's claim that she was scalded in a Northampton motel shower last week. A local investigator is expected to file a report in 30 days. 25-year-old Joanne Alexander is still in critical condition at Baystate Medical Center in Springfield more than a week after the scalding. The former mental patient said she was burned by hot water in the Towne House Motor Lodge. The motel manager was cited for having the water 30 degrees over the legal limit. (AP)

New Hampshire battles defective food product

New Hampshire is among 12 states where a recall of canned green beans is underway. The State Public Health Division says seam defects have been discovered in several institutional-sized cans made by a New York company and preliminary tests show botulin toxin in at least one sample.

The beans were sold under at least 21 brand labels, and were produced since August by Seneca Foods Corporation of Marion, NY. The firm is recalling the beans voluntarily.

Retail food outlets, schools, restaurants, hospitals, and nursing homes are being urged to check for six-pound, number-10 size cans of green beans. The cans have a two-line code stamped on the top or bottom. If the second line has 330B, the can is suspect and authorities should be called to see if the first line matches the batch being recalled. (AP)

School experiences chemical hazard

The New Searles Elementary School in Nashua, NH has been closed since last Wednesday because of mold. The school was closed when some students and teachers became ill, possibly because of chemicals used to clean up problem mold.

A moist summer is the probable cause of the mold, officials said. (AP)

Cabbage Patch Kids vs. Garbage Pail Kids

It is the "Cabbage Patch Kids" versus the "Garbage Pail Kids" since the two sides in a copyright and trademark dispute went to federal court yesterday in Atlanta. Cabbage Patch Kids are those adorable dolls that took the world by storm in 1983. Garbage Pail Kids, on the other hand, are intentionally gross characters who appear on chewing gum cards, clothing, and lunch boxes. The creator of the Cabbage Patch Kids says the Garbage Pail Kids are a violation of copyright and trademark. The creator of Garbage Pail Kids says all's fair in satire and parody. Millions of dollars are at stake in the trial. (AP)

IBM announces new computer

International Business Machines announced on Monday its most powerful computer ever — a box containing six processors that IBM claims has up to 60 percent more power than its previous top-of-the-line. The new computer is the 3090 model 600E. The company also introduced the model 300, a somewhat smaller mainframe containing three processors, along with enhanced versions of the four current members of its 3090 mainframe family. (AP)

Sports

Superbowl XXI scores points with European viewers

Superbowl XXI appears to have been a hit in Europe. Despite an 8-hour time difference from Pasadena, CA to Britain, scores of American-football fans stayed up until the conclusion of the game at 3:30 AM local time. It was the fifth straight year that the Superbowl has been seen live in Britain on Channel 4.

In Paris, 30 television sets were tuned to the NFL title game at the Chicago Pizza Pie Factory. Some 400 fans were in attendance.

In West Germany, Armed Forces Network aired the Superbowl live. It's believed that a majority of the 250,000 American soldiers stationed in the country tuned in along with their families. (AP)

NBA prepares for All-Star game

The Western Conference coaches of the NBA have completed the selection of the roster for the Feb. 8 All-Star game. Those added are Kareem Abdul-Jabbar of the Lakers, Eric "Sleepy" Floyd and Joe Carroll of the Warriors, Mark Aguirre and Rolando Blackman of the Mavericks, Alex English of the Nuggets, and Walter Davis of the Suns. (AP)

Weather

Snow: MORE IN STORE?

As the upper air pattern across the country changes, New England will receive a respite from the stormy weather of the past weeks. However, this break in the weather will likely come to an end Friday morning. A Pacific storm crossing the coasts of Washington and Oregon will drive into the Plain states today and continue east-southeastward through the Midwest on Thursday. By Friday morning, "energy" from this storm will ignite a powerful coastal storm along the North Carolina coast. As a result, at least a moderate snowfall is anticipated for Friday.

Wednesday: Mostly sunny and cold. High 24°.

Wednesday night: Clear and cold. Low 8°.

Thursday: Partly cloudy with a flurry possible. High 30°.

Friday: Clouding up with snow by afternoon with increasing northeast winds. High 28°.

Forecast by Michael C. Morgan



opinion

Column/Thomas T. Huang

Rocketman, where are you?

Rocketman, where are you now?

Perhaps death has freed you at last from the gravity that drags man down and shackles him to this earth. In your life, the forces of society sought to burden you, yet you overcame them. I can imagine you are travelling to the distant stars with your comrades, the astral ambassadors.

From your vantage point in the vacuum of space, you could see the good in this earth, this oasis. In the same way, you could see the potential in us and our children. We just need to step beyond our complacency to enter the realm of chances and challenges.

The cynics, on the other hand, point to the hatred and greed that is splitting us into a country of have's and have-not's, regardless of anybody's potential. If I were to talk to you now, you would probably grin at me and say, "Hey, buddy, don't be so grim. If you don't recognize the good, then you are giving up right from the start." If I could just talk to you . . .

Newsman, why are you so interested in me now? Hey, don't get me wrong. I'm not bitter, just a bit amused. You could have talked to me while I was alive. Why all the attention now? You would have gotten to know me as I was. Don't make me some martyr.

Why does it take a death, seven deaths, a tragedy, to bring into focus issues of race and the human condition? These issues should be discussed day-in and day-out.

Hell, Rocketman, you were so damned optimistic, so damned courageous. How could we not admire you? How could we not place you on a pedestal? How could we not sense the loss?

A couple of years ago, I had a nightmare that the shuttle crashed. In my dream, there were screams and a thunderous explosion overhead. I awoke with a start. In reality, your deaths were silent on my television screen, and it took so long for the debris to fall to the sea, lacing the sky with cobwebs of smoke. I

couldn't avert my eyes.

Newsman, don't make our deaths into something Christ-like. There's nothing to be gained or learned from the explosion. Rather, there's something to be remembered, and that's our lives, what we did with our lives.

I do want people to remember your life. I want them to remember things that you have said. But you are like vapor, and I don't know how long you will last in our memories. We've dedicated a building in your name, but it won't be very long before the number overcomes the man.

You died just one year ago.

Editorials, marked as such and printed in a distinctive format, are the official opinion of The Tech. They are written by the editorial board, which consists of the chairman, editor in chief, managing editor, executive editor, news editors and opinion editors.

Dissents, marked as such and printed in a distinctive format, are the opinions of the undersigned members of the editorial board choosing to publish their disagreement with the editorial.

Columns and editorial cartoons are written by individuals and represent the opinion of the author, not necessarily that of the newspaper.

Letters to the Editor are welcome. They should be typed double spaced and addressed to The Tech, PO Box 29, MIT Branch, Cambridge MA 02139, or by interdepartmental mail to Room W20-483.

Letters and cartoons must bear the authors' signatures, addresses, and phone numbers. Unsigned letters will not be accepted. No letter or cartoon will be printed anonymously without express prior approval of The Tech. The Tech reserves the right to edit or condense letters. We regret we cannot publish all of the letters we receive.

The Tech

Volume 106, Number 61 Wednesday, January 28, 1987

Chairman Ronald E. Becker '87
 Editor in Chief Harold A. Stern '87
 Managing Editor Mark Kantrowitz '89
 Business Manager Michael J. Garrison '88

News Editors Earl C. Yen '88
 Andrew L. Fish '89
 Opinion Editor Edward E. Whang '87
 Night Editors Halvard K. Birkeland '89
 Ezra Peisach '89

Arts Editor Michiel Bos G
 Photography Editor Stephen P. Berczuk '87
 Contributing Editors V. Michael Bove G
 Bill Coderre G
 Julian West G
 Carl A. LaCombe '86
 Steven Wheatman '86
 Sidhu Banerjee '87
 Simson L. Garfinkel '87
 Andrew S. Gerber '87
 Ben Z. Stanger '88

Senior Editor Jonathan Richmond G
 Indexing Project Representative Sharalee M. Field '89

NEWS STAFF

Associate News Editor: Akbar A. Merchant '89; Staff: Joseph J. Kilian G, Katherine T. Schwarz '86, Donald Yee '87, Joel H. Friedman '88, Robie Silbergleit '88, Salman Akhtar '89, Derek T. Chiou '89, Mary Condello '89, Jeffrey C. Gealow '89, Irene E. Skricki '89, Marcia Smith '89, Sally Vanerian '89, Anuradha Vedantham '89, Robert Adams '90, Christopher P. Colby '90, Desmond Davis '90, Niraj Desai '90, Sarita Gandhi '90, Michael Gojer '90, Jai Young Kim '90, Kenneth D. Leiter '90, Kenyon D. Potter '90, Robert E. Potter II '90, Paula Maute. Meteorologists: Robert X. Black G, Christopher A. Davis G, Michael C. Morgan '88.

ARTS STAFF

Associate Arts Editor: Peter E. Dunn G; Staff: Allison J. Druin G, James F. Kirk G, Barbara A. Masi G, Joseph L. Shipman '82, Corrado Giambalvo '86, Scott Lichtman '88, Julie Chang '89, Betty J. McLaughlin '89.

PHOTOGRAPHY STAFF

Associate Photo Editors: David M. Watson '88, Kyle G. Peltonen '89; Staff: Jerry Broda '87, Rich R. Fletcher '88, Michael W. Halle '88, Kim A. Kellogg '88, Mark S. Abinante '89, Susan K. Fatur '89, Tom Coppeto '89, Terry P. Higgins '89, Steven Y. Kishi '89, Salma I. Saeed '89, Isaac L. Chuang '90, Lisette W. Lambregts '90, Mike Niles '90, Mark Virtue '90; Darkroom Manager: Steven Y. Kishi '89.

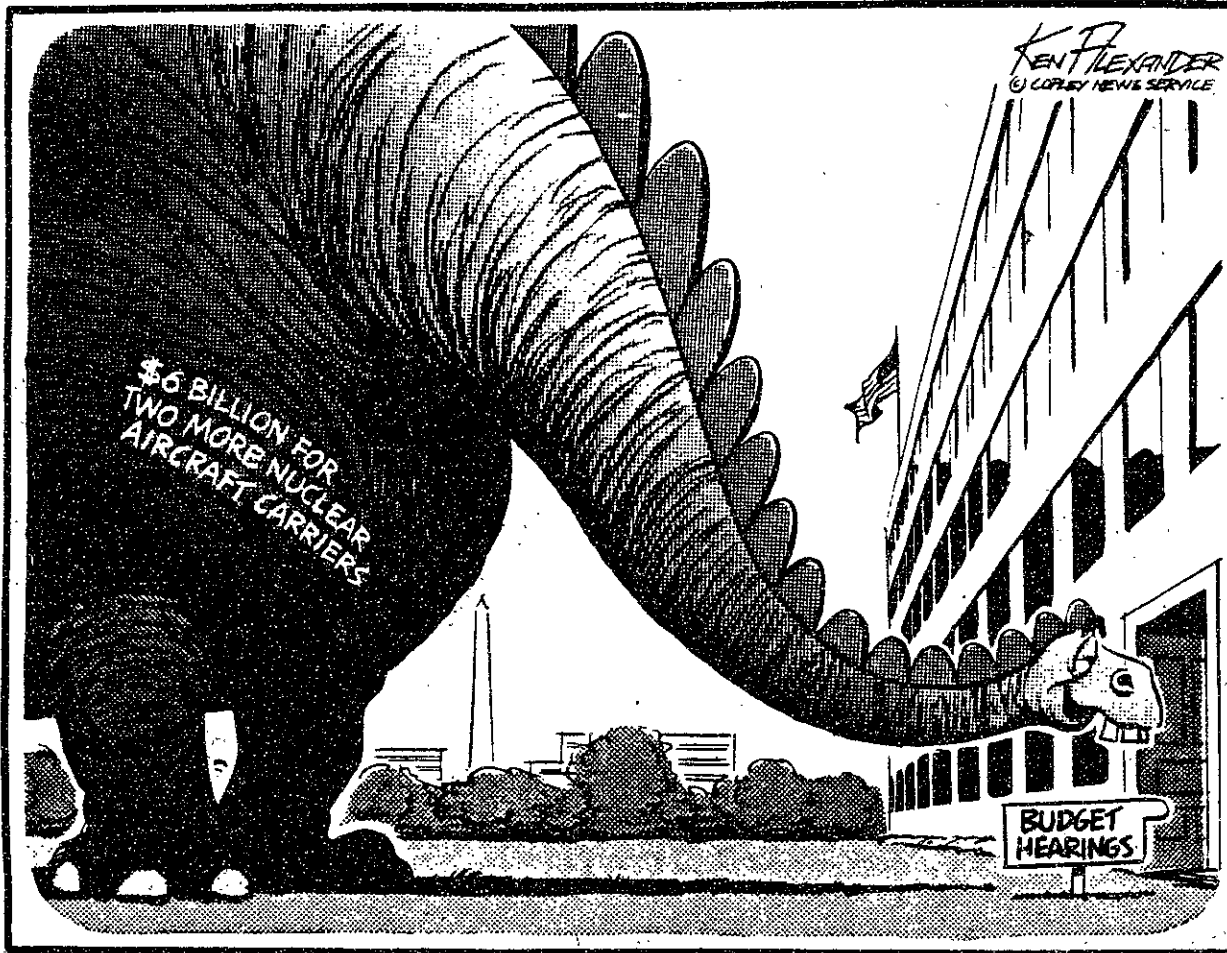
PRODUCTION STAFF

Staff: Amy S. Gorin '84, Shari A. Berkenblit '88, Illy King '89, Joyce Ma '89, Marie E. V. Coppola '90, Jigna Desai '90, Julia Drewry '90, Jeeyoon Lim '90, Daniel Peisach '90, David B. Plass '90, Stacy A. Segal '90; TEN Director: Ezra Peisach '89; Supplies Manager: Andrew S. Gerber '87.

PRODUCTION STAFF FOR THIS ISSUE

Night Editors: Halvard K. Birkeland '89
 Mark Kantrowitz '89
 Staff: V. Michael Bove G, Peter E. Dunn G, Ronald E. Becker '87,
 Sidhu Banerjee '87, Mike Gojer '90, Mark Virtue '90.

The Tech (ISSN 0148-9607) is published Tuesdays and Fridays during the academic year (except during MIT vacations), Wednesdays during January, and monthly during the summer for \$14.00 per year Third Class by The Tech, 84 Massachusetts Ave. Room W20-483, Cambridge, MA 02139-0901. Third Class postage paid at Boston, MA. Non-Profit Org. Permit No. 59720. POSTMASTER: Please send all address changes to our mailing address: The Tech, PO Box 29, MIT Branch, Cambridge, MA 02139-0901. Telephone: (617) 253-1541. Advertising, subscription, and typesetting rates available. Entire contents © 1987 The Tech. The Tech is a member of the Associated Press. Printed by Charles River Publishing, Inc.



"HI THERE! I'LL BET YOU THOUGHT I WAS EXTINCT"



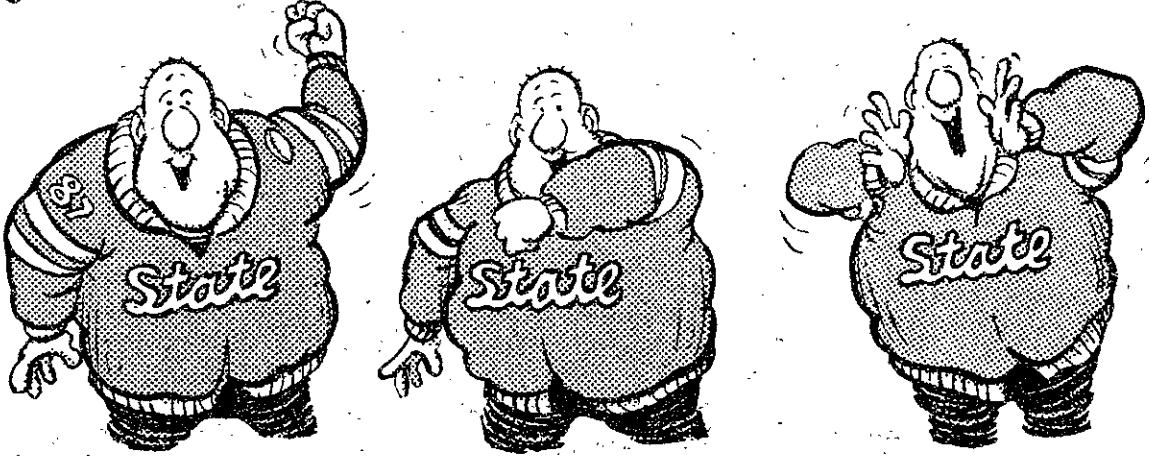
"Your desktop B-1 model finally arrived, General."



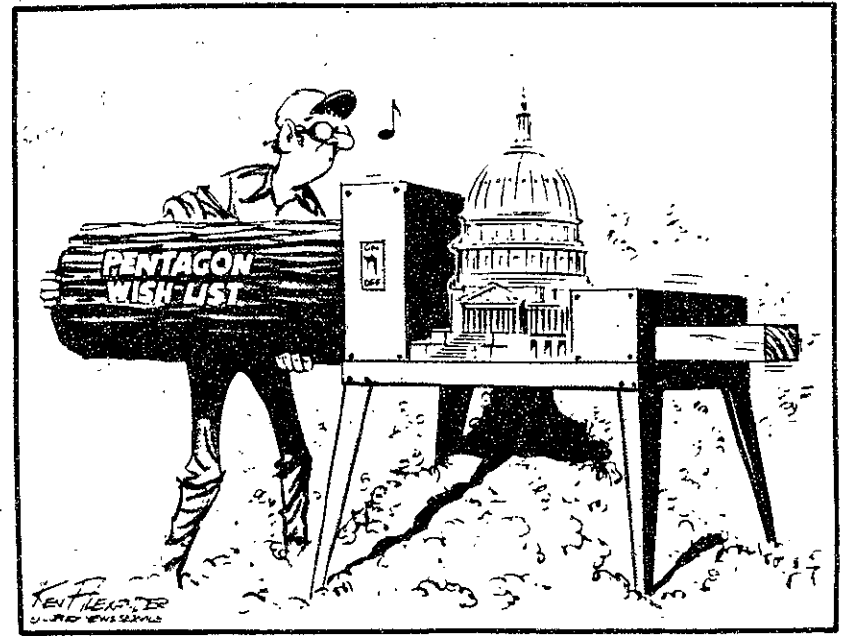
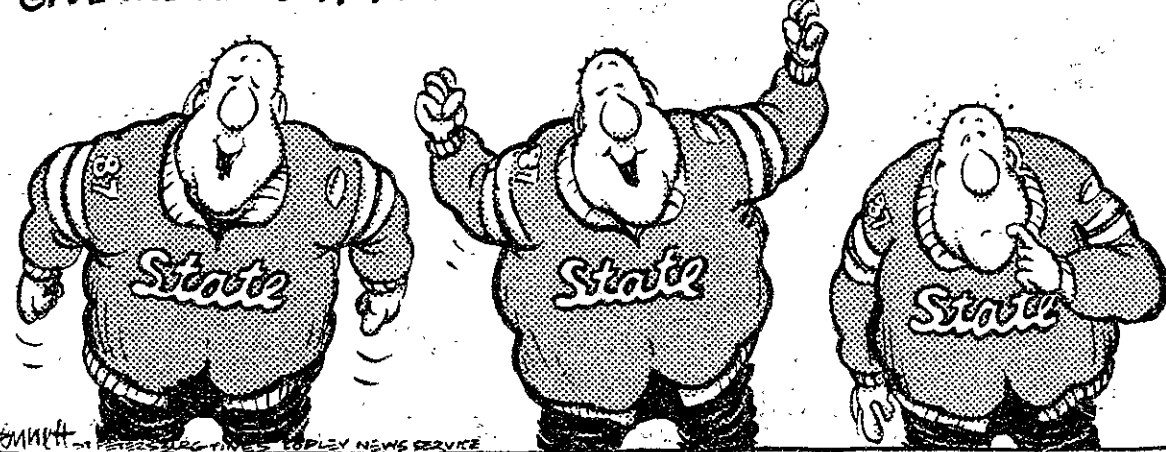
"NOT ONLY A NATIONAL HERO, OLLIE, BUT YOU'VE WON A UNANIMOUS DECISION FOR BEST ACTOR"

opinion

GIVE ME A 'V'... GIVE ME AN 'I'... GIVE ME A 'C'... GIVE ME A 'T'...



GIVE ME AN 'O-R-Y'... WHAT'S IT SPELL?



AEROSPACE ENGINEERING GEORGIA INSTITUTE OF TECHNOLOGY

Major areas of graduate study and research (M.S. & Ph.D):

- | | |
|-----------------------|--------------------------|
| Aerodynamics | Controls, Flight |
| Aeroelasticity | Mechanics & Optimization |
| Combustion | Propulsion |
| Computational Fluid | Structural Dynamics |
| Dynamics | Structures — Composites |
| Computer-Aided Design | |

Individual tuition & fees are \$1,691 per calendar year.

Total financial aid per calendar year:

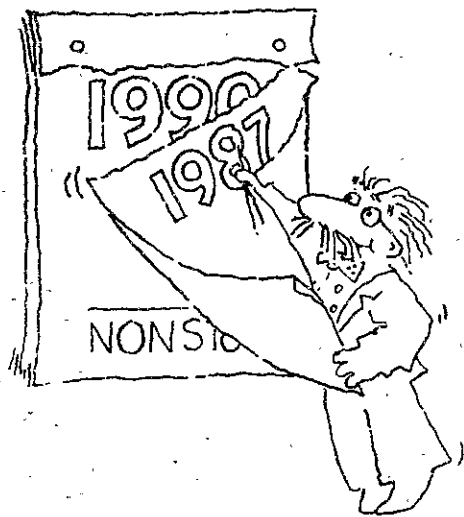
\$13,000 + tuition & fees	Selected Research
\$9000/\$13,5000	Fellowships
	Research Assistantships

All graduate students will participate in research.

For further information contact:

Dr. C.V. Smith, Graduate Coordinator
School of Aerospace Engineering
Georgia Institute of Technology
Atlanta, Georgia 3033
(404) 894-3011
Office hours: M-W 2-4:30

BIRTH of the 1990s



There's a new decade coming, sooner than you think. It will be an exciting era, when on-line international transaction processing is effortless and multi-vendor compatibility is the norm. And it's developing fastest at Tandem.

With the new technologies comes the new work environment. "Creativity comes from sharing ideas," we believe, and we promote that philosophy through worldwide teleconferencing, people-oriented management, and an interactive approach to product development.

TANDEM COMES TO CAMPUS

Hardware Engineering majors—come see what Tandem is all about. Over refreshments you'll meet informally with Tandem employees and discuss professional opportunities in your field.

INFORMATION SESSION:

Thursday, February 5, 1987
6:00 to 8:00 p.m.
at Bldg. 1-135

ON-CAMPUS INTERVIEWS:

Friday, February 6, 1987

For more information contact your Placement Center. Or, send your resume to E. Lipuma, Tandem Computers, Inc., 19333 Vallico Parkway, Cupertino, CA 95014. We are an equal opportunity employer.

TANDEM COMPUTERS
Known for the Company We Keep

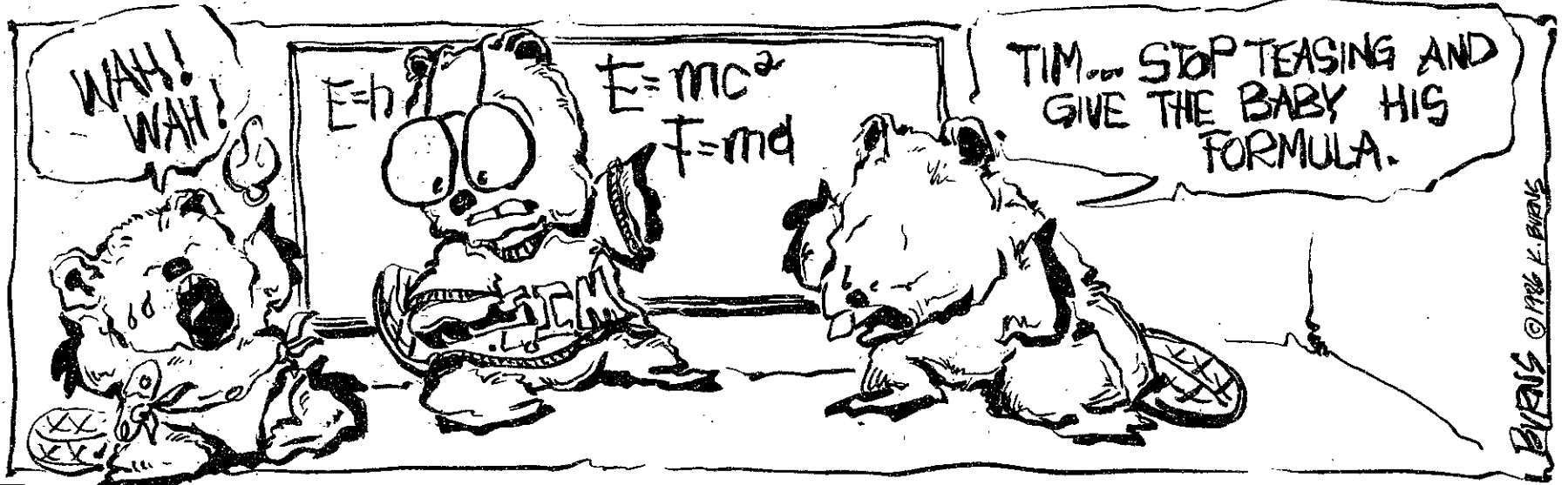
THE RIGHT PLACE AT THE RIGHT TIME

Prudential-Bache Capital Funding, a subsidiary of the Investment Banking Division of Prudential-Bache Securities Inc. will be interviewing for Analyst positions in Corporate Finance. Interviews will be held in the Office of Career Services on Friday, February 6th from 9:00am to 5:00pm. Please sign up at the Office of Career Services.

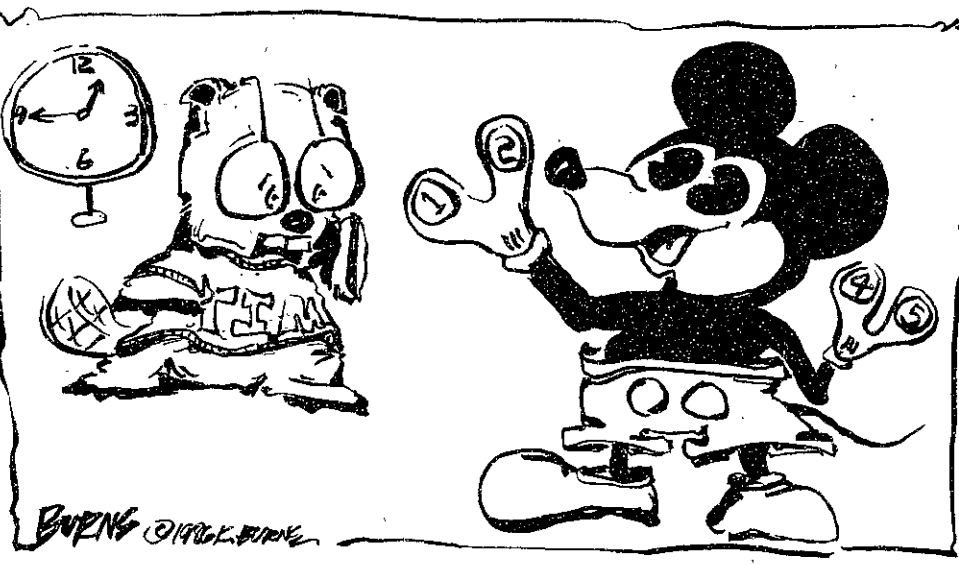
Prudential-Bache Capital Funding 

comics

T.I.M Beaver



BY T.I.M BEAVER



By Kevin Burns

MICROSOFT®

RECRUITING PRESENTATION
WEDNESDAY
FEBRUARY 11, 1987
4:00 to 6:00 PM
ROOM: 2-146

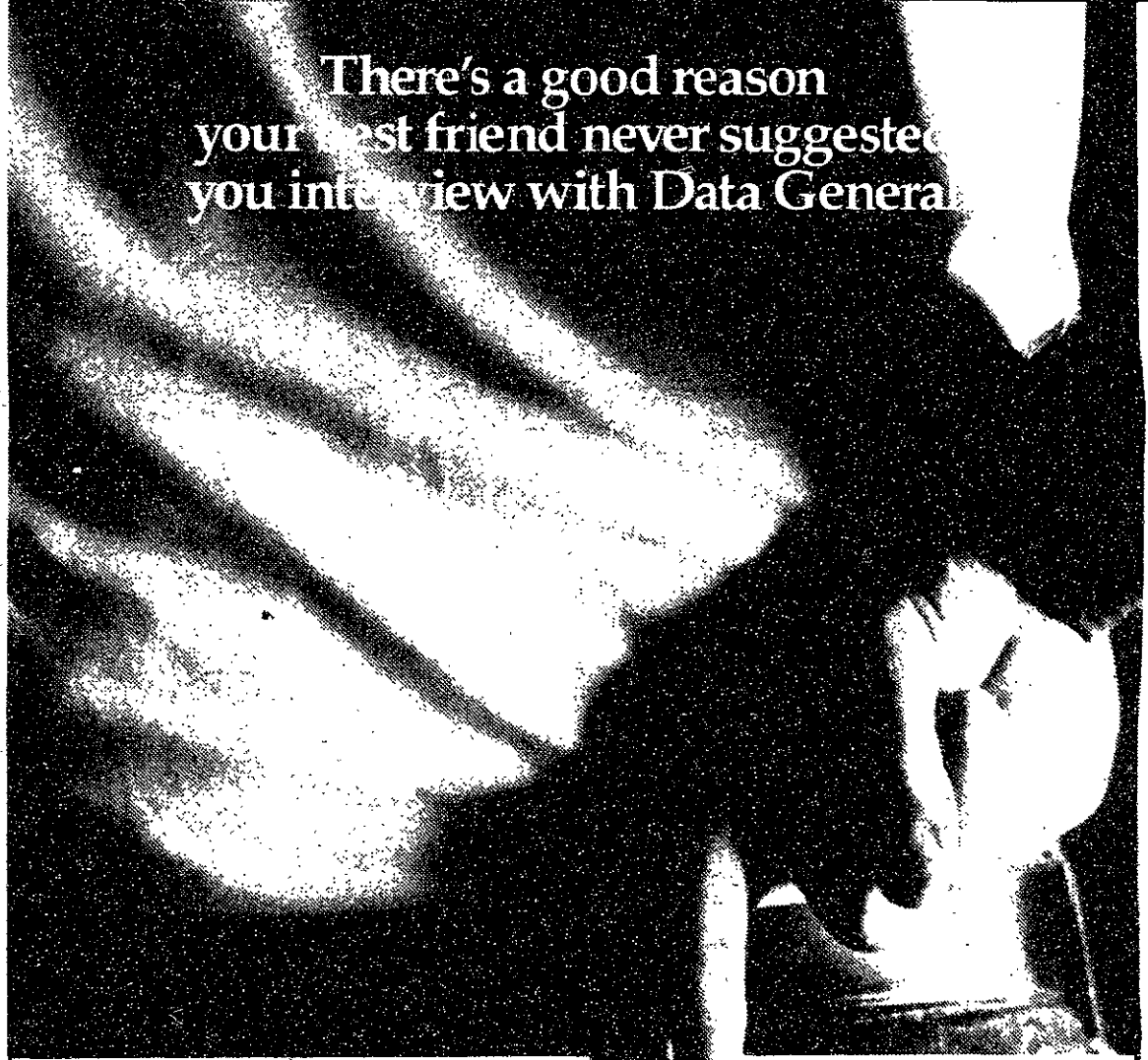
If you're interested in Applications, Systems or Languages software, we want to talk with you.

Representatives from our development staff will be in attendance to present employment opportunities at Microsoft and to answer questions from interested students.

Come find out what Microsoft has to offer.

MICROSOFT®
 An Equal Opportunity Employer

There's a good reason your best friend never suggested you interview with Data General.



Your best friend wanted the job.

Don't blame your friend for wanting the best. We do too, at Data General.

In systems design, manufacturing, finance, sales and marketing, we hire people who have what it takes to see a project through to completion. Idea people with a good sense of follow-through tend to make it at Data General.

If that sounds like you, and you have the talent to succeed, talk to Data General before you talk to your best friend.

Send resumes to: Data General Corporation, College Relations Department, MS A237, 4400 Computer Drive, Westboro, Massachusetts 01580. Investing in people to make equal opportunity a reality.

On Campus Interviews February 11, 1987
 See Your Placement Office for Details.

Data General
 Careers a Generation ahead.

TERADYNE

INFORMATION MEETING

A Very Large Scale Invitation *from a Technology Leader, to meet with some* **Very Interesting People**

Today, they are some of the talented professionals who put Teradyne at the top of the Very Large Scale Integration (VLSI) test market. Not too long ago, they were MIT students. And on Tuesday, February 10th, they're "coming home" to share their experience and expertise with you.

Date: Tuesday, February 10th
Time: 7:00 p.m. to 9:00 p.m.
Place: Room 4-153

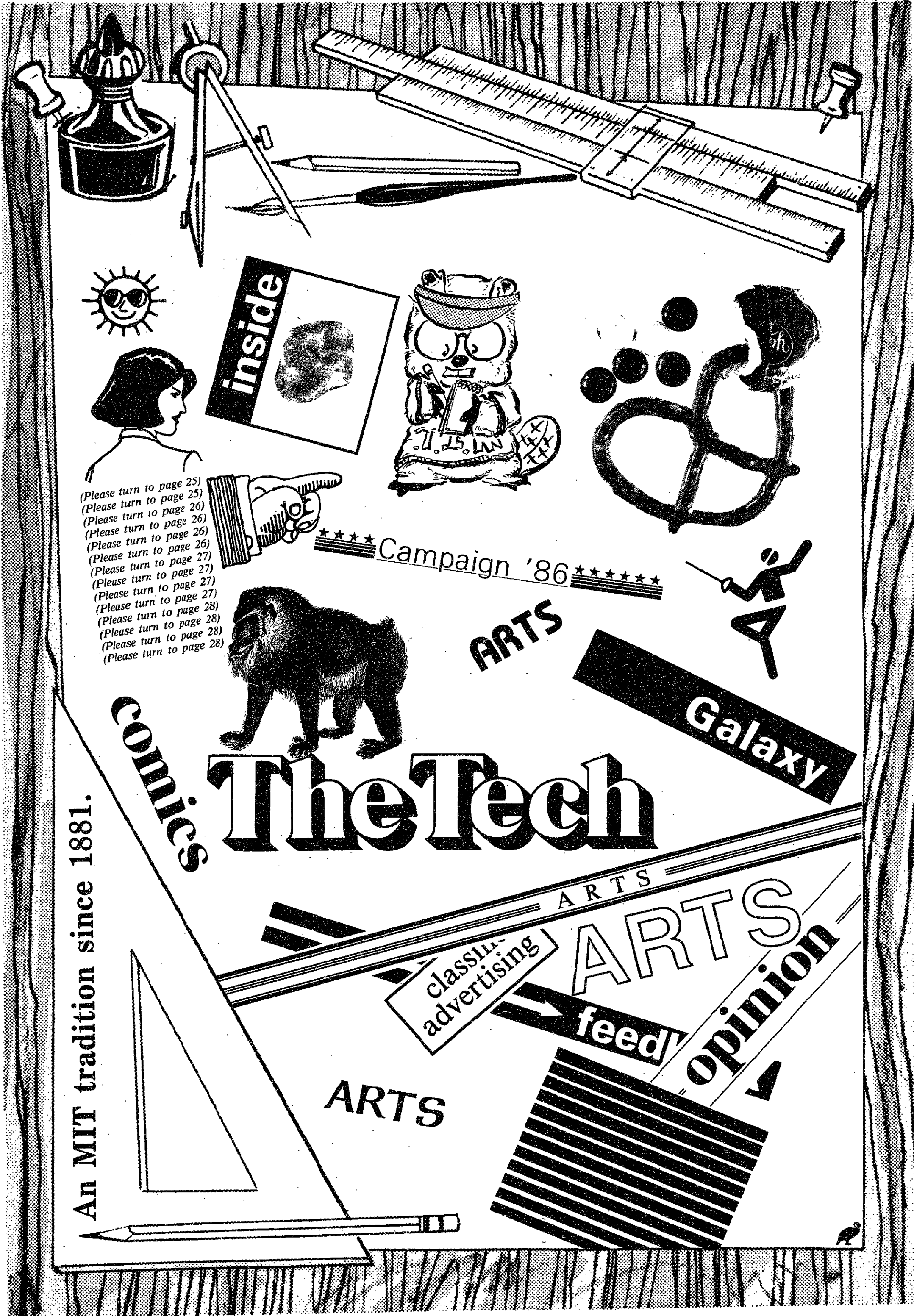
Refreshments will be served.

Teradyne is the world's largest independent producer of Automatic Test Equipment (ATE) for the electronics industry. The company's products also include computer-operated laser trim systems, test services and software, telecommunications test systems and backplane connection systems. Teradyne offers fast paced careers in hardware and software design, applications and customer support, mechanical design and sales.

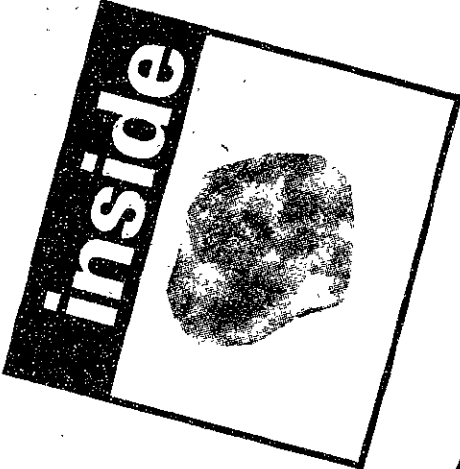
So be there, February 10th, and keep your calendar clear Monday, February 23rd, too. That's when Teradyne will be holding on-campus interviews. Details to follow.

SHARE IN OUR SUCCESS

TERADYNE



(Please turn to page 25)
(Please turn to page 25)
(Please turn to page 26)
(Please turn to page 26)
(Please turn to page 26)
(Please turn to page 27)
(Please turn to page 27)
(Please turn to page 27)
(Please turn to page 27)
(Please turn to page 28)
(Please turn to page 28)
(Please turn to page 28)



***** Campaign '86 *****

ARTS



Galaxy

comics

The Tech

An MIT tradition since 1881.

classical advertising

ARTS

feed

OPINION

ARTS



notices

Ongoing

The **Science and Humanities Libraries** (Hayden Building Libraries) are now open from noon Sunday to 8 pm Friday — 24 hours a day — and from 8 am to 8 pm on Saturday. From midnight to 8 am access to the libraries is limited to members of the MIT community. Circulation and reference services are not available during restricted hours.

The Athletic Department has begun its **Fitness Testing Program**. The test takes approximately 40 minutes, and is available to all holders of an athletic card. Those desiring the test, and those desiring physical clearance forms should call 253-4908 between 3 pm and 6 pm Monday through Friday.

Value cards for photocopiers are being installed in the Barker Engineering, Dewey, and Hayden Libraries. The new copiers should be available Sept. 30. Magnetic-strip cards can be purchased at the Microreproduction Lab, Room 14-0551, or can be ordered by mail and picked up at the Hayden Circulation Desk.

The final report of the **Institute Committee on the Humanities, Arts, and Social Sciences Requirements**, the first report of the **School of Science Education Committee**, and the first report of the **Commission on Engineering Undergraduate Education** are being distributed by the Committee on the Undergraduate Program. Members of the MIT community can find copies at the following locations: the Information Office, 7-121; the Student Center Library; the Reserve Book Room, Hayden Library; Dewey Library; Barker Engineering Library; the Rotch Library of Architecture and Planning.

Do you have questions about **Distribution subjects and fields, Concentration requirements** or procedures, what are **HASS Elective subjects**? Come to the Humanities, Arts, and Social Sciences Office, 14N-409 for help with anything to do with the HASS Requirement. We are open 9-5. Stop by or call us at x3-4441.

The **Off-Campus Housing Service** welcomes any member of the community who either has available housing or who is searching for housing to contact our office in Room E18-301, ext. 3-1493.

The professional tutor staff of the **MIT Writing and Communication Center** (14N-317) will be glad to consult with you on any writing or oral presentation project (papers, theses, letters, etc.) from 10-4 Monday thru Friday. You may either phone for an appointment (x3-3090) or just drop in. In addition, workshops for those for whom English is a second language are held in the Center on Thursdays from 4:15-5:15. All services are free.

The MIT Museum has many ongoing exhibits. The Museum is located at 265 Massachusetts Ave., and is open Monday through Friday, 9-5, Saturday 10-4. Admission is free.

The **Student Conservation Association** (SCA) is providing opportunities for about 150 students to obtain expense-paid volunteer positions in conservation and resource management. Volunteers this winter and spring will serve in such areas as: the Virgin Islands, San Francisco, Florida, Arizona, Idaho, and Hawaii. Telephone the SCA at (603) 826-5206/5741 or send a postcard to: Student Conservation Association, PO Box 550C, Charlestown, NH 03603.

Today, more than one million men and women are demonstrating by their personal example that alcoholism is an illness that can be arrested. These recovered problem drinkers are members of the unique fellowship of alcoholics — better known simply as **Alcoholics Anonymous**. If you have an alcohol related problem please get in touch with the AA group nearest you — with complete assurance that your anonymity

Harvard-Epworth United Methodist Church
1555 Massachusetts Ave.
(opposite Cambridge Common)
Sunday Worship: 9 and 11 am

will be protected. Call 426-9444 or write: Alcoholics Anonymous, Box 459, Grand Central Station, New York 10163. You will receive free information in a plain envelope.

The **National Space Club** will award a \$7,500 Dr. Robert H. Goddard Scholarship for the academic year 1987-88. The award is given to stimulate the interest of talented students in the opportunity to advance scientific knowledge through space research and exploration. For more information contact: National Space Club/Goddard Scholarship, 655 15th St. NW, Suite 300, Washington DC. 20005.

Teach an adult to read — If you have two hours a week to spare, you can help one of Boston's 100,000 illiterate adults to read. The Adult Literacy Resource Institute is offering free tutor training. No prior experience is required — just a high school diploma and a desire to help. Contact Beth Sauerhaft, Volunteer Tutor Coordinator at 232-4695 or 734-1960 ext. 112 for more details.

CONCERT SERIES
Coors
IN BOSTON AT THE BERKLEE PERFORMANCE CENTER
136 Massachusetts Ave., Boston, MA
JAZZ EXPLOSION '87



FRI. JAN. 30 7:30 & 10:30
\$13.50 & \$16.50
ANGELA BOFILL, STANLEY CLARKE, DAVE VALENTIN
PIECES OF A DREAM

TICKETS AVAILABLE AT:
ALL TICKETRON OUTLETS.
TELETRON 1-800-382-8080
BERKLEE BOX OFFICE (617) 266-7455

Volunteering in the Boston or Cambridge Public Schools offers an opportunity to learn about urban education and multi-cultural environments. Volunteers work with elementary, middle or high school students during or after the school day, for long or short-term assignments.

The **Peace Corps** is offering skill-training for programs utilizing the backgrounds of college graduates with mathematics and science minors. Peace Corps volunteers serve for two years. During their service they receive a generous living allowance, paid travel, training and health care.

The "Statement of Registration Status" is still required of all male students who are expected to register for the draft, if they desire to receive federal financial aid.

The following students do not have to file statements: women, underage students and those who have completed the statement in previous years.

MIT requires male students who have completed the statement by indicating they are "underage" to submit the statement annually until they have registered.

SPRING BREAK '87

8 DAYS / 7 NIGHTS

Special Student Rates!

BAHAMAS

FREEPORT VIA JET AIR TRANSPORTATION **\$349** PER PERSON QUAD OCCUPANCY

NASSAU VIA JET AIR TRANSPORTATION **\$369** PER PERSON QUAD OCCUPANCY

MEXICO

ACAPULCO **\$459** PER PERSON QUAD OCCUPANCY

CANCUN **\$439** PER PERSON QUAD OCCUPANCY

FLORIDA

DAYTONA BEACH OCEANFRONT ACCOMODATIONS **\$124*** PER PERSON QUAD OCCUPANCY

FT. LAUDERDALE OCEANFRONT AVAILABLE - ADD \$50. **\$144*** PER PERSON QUAD OCCUPANCY

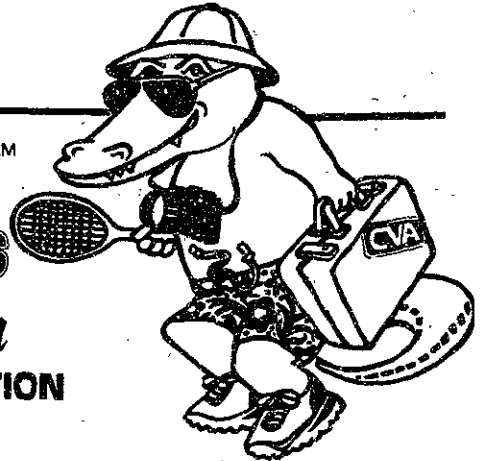
* ROUNDTRIP TRANSPORTATION FROM: MOTORCOACH \$109 AIRFARE \$178
Includes all taxes, gratuities, and service charge.

TO RESERVE NOW ... CONTACT

John
262-6072

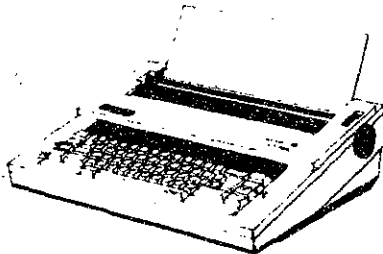
A UNITED STATES STUDENT ASSOCIATION SPONSORED PROGRAM

Campus Vacation ASSOCIATION



UNIVERSITY TYPEWRITER CO. INC.

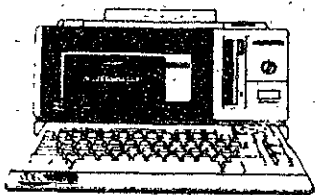
Choose from the largest variety of typewriters in the Harvard Square Area.



Smith-Corona Canon
Swintec Brother Panasonic
and more

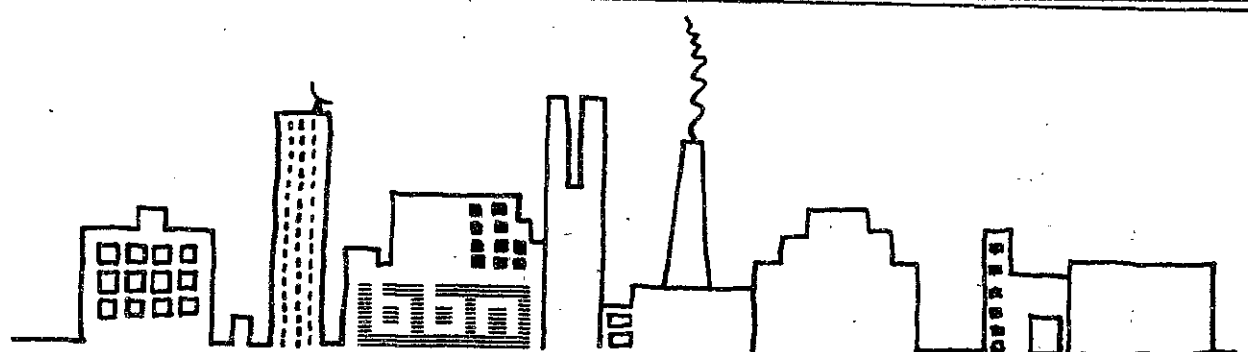
NOW, THE LATEST IN WORD PROCESSING

We feature the **Magnavox Videowriter** and the **Smith-Corona PWP**



90 Mt. Auburn Street at Harvard Square
547-2720 **547-1298**

RENTALS • SALES • REPAIRS • SUPPLIES



NEXT SCHOOL?

Think about the time and energy spent educating yourself. Now you itch to apply your new skills and continue to learn. BBN has plenty of fascinating projects to challenge you, not only scratch the surface of your technical knowledge. And, we surround you with people who love to stretch the limits of

your creativity. We provide a stimulating experience, collegueship, and liberal tuition assistance too. Come contribute to and learn from what we do here.

We are interviewing at MIT February 4.

Bolt Beranek and Newman Inc.

10 Fawcett Street, Cambridge, MA 02238
We are an equal opportunity employer m/f/v/h

Panel supports broader education

(Continued from page 1)

Keyser discussed other commonly voiced reasons for MIT to reform the curriculum. The productivity of our community is declining and manufacturing is moving abroad. MIT should not produce technical people in a country where manufacturing is declining unless these people also have the background needed to reverse the trend, he said.

Science and engineering stu-

dents also need a background that will enable them to close the "huge gap between what the public thinks of science and technology and what scientists think of science and technology," Keyser said. "People think the last great contribution scientists made was the Atom bomb."

Curriculum reform is taking place all over America and is not specific to MIT, according to Pauline R. Maier, professor of

history. Colleges are realizing that the loosening of curricula begun in the 60's has left them at a point where educational objectives are not being met; therefore, they are favoring more structure, coherence and definition, Maier said.

What is specific to MIT is that the process was initiated by looking into criticisms of the Humanities, Arts, and Social Sciences requirement, Maier noted.

1986 election statistics discussed

(Continued from page 1)

Stewart III, assistant professor of political science. Political scientists know little about Senate elections because there have been relatively so few of them in American history, Stewart ex-

Integrators and trivia buffs enter IAP contests

(Continued from page 1)

able to do the first six integrals in the time specified. Finally, Alfano solved

$$\int e^{x^4}$$

to beat Wagger, a student in chemical engineering. Gibber, Drachman, and Alfano are all mathematics majors.

Although the pace slackened occasionally during the three-hour event, most of the crowd stuck it out to the end. And the final integral provided a measure of excitement as Gibber desperately raced the clock with a problem which three people, including his opponent, had already failed to solve. Alfano had completed it during the run-off for third place, but had a sign error.

As time ran short, Gibber noticed that he had omitted one term of a sum, and hastily added it. Then, with seconds left, he spotted a crucial sign error, not declaring himself done until the last second. But the answer, while correct, was perhaps still not as polished as Gibber would have liked. When one audience member later asked whether the quantity he had written as x to the two fourths was the same as the two fourth square root of x , Gibber grinningly confessed that it was.

Early admission of minorities, women rises sharply this year

(Continued from page 1)

mitted early action who said they would major in the Department of Electrical Engineering and Computer Science (Course VI) has decreased.

Last year, 113 students ad-

plained.

In 1986, roughly one half of the Senate elections were won by 53 percent of the vote or less. When the Democrats took control of the Senate, 22 Republicans and 12 Democrats were up

Integrators and trivia

buffs enter IAP contests

Among the other finalists were: Gavin A. Dutchin '90, Nathan E. Glasser G, Ajit V. Gokhale '89, Daniel A. Klain '90, Andrew M. Rappe G, and Rahul Sarpeshkar '90.

Graduate team wins College Bowl

A team of mathematics graduate students won last Friday's IAP College Bowl, a miniature version of the trivia "quiz show." The victors — Art Duval G, Mike Lauer G, Monty McGovern G and Julian West G — defeated five other teams for the title. The six teams represented a "low turnout" compared to double that number last year, West said.

The next step for MIT's representative College Bowl team is the New England regional tournament at Boston University in late February. But because of the requirements of the Association of College Unions—International, the group which runs the intercollegiate tournament, each representative team must contain at least two undergraduates. Thus, only two of the winning team members may compete in the regional tournament.

Last year MIT placed fifth out of 16 at the regionals. Only the top four teams go on to the next stage of the competition.

mitted early chose Course VI as their major. This year the number is 83. The administration has been concerned about the limited resources of Course VI.

The target class size of 1000 is unchanged from last year.

High Technology MIT spin-off Engineering company seeks self-motivated, versatile, detail-orientated individual to function as Office Manager/Secretary in a small company atmosphere. Functions include word processing input and editing of letters, technical proposals, reports and maintenance of complete accounting records and internal cost controls. Cambridge based near Kendall Square. Confidential resumes solicited.

Technology Corporation
P.O. Box 387
Cambridge, Mass. 02142

BAUER

FIGURE SKATE
NOW \$25.95



645-1100
SPORTS ETC.
1371 Mass Ave
Arlington

**EYEGLASS
& World**

Complete
Optical
Shop

We have the new plastic scratch resistant lenses

Fashion frames
at reasonable prices

Instant eye exams

• Prescriptions filled

• Fashion tints and photo changeables

• Contact Lenses
60 Day Trial

• Large Selection of Ray
Ban Sunglasses

• Sport Frame Available



Exclusively from

Marchon
OPTICAL

Central Square, 495 Massachusetts Avenue, Cambridge
Mass. 02139 Tel: 661-2520

Discuss Your Future With General Electric

Who?

BS and MS candidates in electrical engineering, computer science, mechanical engineering, chemical engineering, aeronautical engineering, and nuclear engineering.

What?

The General Electric Technical Recruiting Team will be conducting campus interviews at the MIT Student Center for challenging career opportunities within one of the most diversified companies in the world. Contact your placement office to schedule an interview with one of our technical managers. Various entry level alternatives are available, such as:

- Edison Engineering Program
- Manufacturing Management Program
- Chemical-Metallurgical Management Program
- Software Technology Program
- Individualized Direct Placement

Opportunities exist in such fields as:

- Artificial Intelligence
- Expert Systems
- VLSI
- Robotics
- CAD/CAE/CAM
- Computer Graphics
- Plastics
- Metallurgy
- Ceramics
- Software Engineering
- Signal Processing
- Controls

For more information on these programs and the major business areas available, refer to the General Electric file located in your placement office.

When and Where?

Tuesday, February 10th and Wednesday, February 11th at the MIT Student Center.

What else?

Sign-ups will commence Tuesday, January 27th.

**The future is working
at General Electric**



An equal opportunity employer

Free Bracelet!



Free gold tone bracelet with \$5.00 Valentine purchase. Only at Hallmark.

Kendall Drugs

Your MIT Community Drugstore

Kendall Square
492-7790

One per customer.
While supply lasts.

Hallmark

© 1986 Hallmark Cards, Inc.

New Ehrlich overdoes set and underdoes Shepard's characters

CURSE OF THE STARVING CLASS

Written by Sam Shepard.
At the New Ehrlich Theater through February 7.

By BARBARA A. MASI

THE ACT OF SACRIFICE of a lamb evokes powerful Biblical symbolism. It is an act of faith, of hope, and of contrition. Sam Shepard, in his work "Curse of the Starving Class," places this symbol at an ironic point in the play's action, when the characters no longer have faith or hope. "Curse," which opened January 14 at The New Ehrlich Theatre, is a play of symbols. Shepard intertwines traditional and modern images — drawn from religion, family life, and patriotism — with the story of the disintegration of an American family. In the context of the plot, the symbols — sheep, father as breadwinner, the Wild West,



Plum and Goodson have each other

refrigerators, gangsters, pure, agricultural living — take on bizarre, grotesque significance.

The Southwestern farming family in "Curse" are poor and starving though they apparently live in an agriculturally abundant area and own a large farm. The father (Michael Goodson) has not worked the farm for years, living in a constant state of drunkenness at local bars, coming home only to sleep. To survive, the mother and two teenage children have become dehumanized, no longer caring about or for one another, but still living together in the disintegrating, filthy farmhouse. The son (John Sharian) urinates on his sister's (Paula Plum) 4-H Club contest posters while the mother (Susanna Burney) eats the chicken that her daughter planned to enter into the contest. When the father finally comes home, the others scatter in fear that he will be in a violent mood. A quirky, dark humor predominates in "Curse." The family members are so detached from what goes on around them and what they themselves are doing that the violence of one toward the other ends up being funny.

The action is filled with eating scenes and talk of eating. Each character is constantly driven to look into the refrigerator though they know it is empty. Their physical hunger symbolizes their personal and spiritual hunger; when not talking of food, they go off into passionate dream monologues. In lovely, poetic language, in contrast to the rough language of the main dialogue, the characters reveal an innocent hope that they can create a better life for themselves — the American Dream.

The characters are extremes of type who live inside their dreams. The daughter plans to run off to be a car mechanic so she can help stranded people, then steal their engines when they are not looking. The son dreams of saving the farm and his family. In fact he still works around the farm, though he has no money for seed, fertilizer, and only a few maggot-ridden sheep are left. The mother is fulfilling her dream to run off by secretly setting up a

deal to sell the farm to a con man and run away with him to Europe. The father, in debt to gangsters, wants to forget he owns the farm and run across the border to Mexico.

It is worth noting that Beckett's "Waiting for Godot" was one of Shepard's inspirations. Shepard's characters are driven by similar spiritual pain, wasting their lives in unrealistic fantasy. Whereas Beckett's characters are universal voices, Shepard has taken these voices and placed them in the American Southwest. Hence "Curse" contains elements of both a serious tragedy happening to an innocent American family and of an absurd, surrealistic Beckett farce. The play can be pushed to either extreme depending on the director. But as "straight" serious drama, the interpretation chosen by New Ehrlich director Gary Mitchell, the character's self-destructive actions lost their absurdity. The play became a ridiculous and disconnected series of plot twists.

The play took a long time to begin. Susanna Burney and John Sharian chose a tired, detached monotone — a tone carried through the entire first act. In overstated contrast, Paula Plum as the daughter chose a biting, whining tone. Since the characters in such pointed ways were not listening to one another, it was difficult for the audience to listen either. Sharian's poetic, moving monologue came from somewhere inside his character that we did not know was present. It made little sense coming from Sharian's flat characterization.

The result was characters with whom the audience could not sympathize. Furthermore, the director focused on the winding plot, not on the characters. But Shepard's plays center on his characters and their dreams — characters motivated to action by an inner world of wild fantasies and crazed longings. Their lives provide no constructive, creative outlets so they destroy themselves. Shepard enters their lives just when they are ready to explode. The plot, then, follows from their self-destruction. It is not a separate entity

which senselessly happens to them.

The New Ehrlich actors rarely achieved the inner intensity necessary for the audience to understand from whence their irrational actions arose. Not until the third and final act did the actors and director find the unrestrained energy to make the play work. The last act of "Curse" is emotionally wrenching. The act begins with the father, "happy and sober, making breakfast, doing farm chores, ready to give up drinking and take care of his family. Like a rebirth, he had bathed and walked naked around his land. Goodsen's transition from angry drunk to responsible farmer was quite effective. Due to drunken memory loss, the father did not remember that he had sold his farm for almost nothing to pay a debt to the "murderous creditors." He did not know that it was too late to be reborn. He did not know that his daughter had shot up the bar of the man who had swindled the farm from him and that she was in prison. The son's murder of the lamb in the last act, in an ironic like-father-like-son twist, was the son's attempt at rebirth. But the son knows it is too late. He reenters wearing his father's old drunkard's clothes. Like his first act monologue, Sharian played the scene nobly, with resignation. He gives up his dreams for the farm and family and becomes his father.

The dirty, disintegrating, farmhouse kitchen set was strictly realistic right down to a working stove and sink. We could smell the bacon as it cooked. A bit overdone, the corners of the room were crowded with piles of wood, rusting pipes, and garbage. I would have hoped for a less literal interpretation.

The New Ehrlich's "Curse of the Starving Class" is an honest interpretation by director and actors. They do not allow the play's tendency toward self-indulgence to drag on the play. The play's symbolisms are carefully highlighted. I can understand why the director would choose to tone down the play's beginning since the violence escalates as the play progresses, but the effect was too civilized.

UA NEWS

The 1987 UA Elections are coming March 11!

The Following Positions will be open to all Qualified Candidates

Undergraduate Association President/Vice-President — must run as a team

Senior Class - Class of 1987 - Permanent Class Officers (5 year terms)

- President
- Vice-President
- Secretary
- Treasurer
- (2) Members-at-Large
- Class Agent

Classes of 1988, 1989, 1990 - Senior, Junior, and Sophomore Officers, respectively (1 year terms)

- President
- Vice-President
- Secretary
- Treasurer
- Publicity/Newsletter Coordinator
- Social Chairperson(s) - 2 students may run as a team for this position

Candidate Election Packets, Election Rules, and Description of all offices will be available in the UA Office (Bldg. W20-401), Tuesday, February 3 starting at 12 noon. (First Day of Classes.)

For Information, Contact Joe Babiec, Election Commission Chairman. (W20-401 x3-2696)

Sunday Night International Dancing

Beginners' Night — February 8

Beginners' Night Review — February 15

Come learn to dance & enjoy a variety of international folk music!

Everybody welcome — Bring a friend!

7-11pm ● Sala de Puerto Rico ● Mit Student Center

25¢ donation requested

The Undergraduate Association
Student Government at MIT

W20-401

x3-2696

ARTS

Death recapitulates life in Greenaway's search for symmetry

A ZED AND TWO NOUGHTS

Written & directed by Peter Greenaway.
Starring Andrea Ferreol, Brian Deacon,
Eric Deacon, and Frances Barber.
At the Nickelodeon.

By JULIAN WEST

ONTOGENY. PHYLOGENY. Ontology. Epistemology. Bilateral symmetry.

If you are not quite certain about any of these words, go and look them up now. Then come back and read this review. Then get a big, illustrated book of Vermeer out of the library and look at it for an hour. Then — and only then — go see "A Zed and Two Noughts," the new film by quirky director Peter Greenaway.

You should by now have some idea what you are up against with this movie. If you have seen Greenaway's previous outing, the low-budget marvel "The Draughtsman's Contract," you are well prepared for the shock.

"A Zed and Two Noughts" is a very different sort of film — although it does have a sequential plot, it is largely episodic in nature. The story is told by the weight of events which repeat themselves in increasingly complex and serious ways.

Two independently wealthy and eccentric brothers (played by Brian and Eric Deacon) working at the Regent's Park Zoo are struck one day by a multiple catastrophe. A car collides with a mute swan on a zebra crossing outside the zoo, killing both their wives and injuring the driver of the car, who loses a leg. The woman driver (played by Andrea Ferreol) is called Bewick (which sounds like a car) and was driving a Mercury (a messenger of death) down Swann's Way (into a swan). The coincidence is too much for the brothers, who take a swan dive off the deep end.

The brothers' mournings turn onto bizarre but parallel courses, only one of many examples of symmetry in the film. One contents himself with poring over videotapes of "Life on Earth" while the other creates elaborate timelapse films of the decay of progressively higher forms of life. Struck by the imperfection of a mute harbinger of death and the coincidences of a senseless tragedy, they try to find sense in it all. They attempt, each independently at first, to forge a theory of death which will be as complete and succinct as the theory of birth: that ontogeny recapitulates phylogeny.

Along the way, each becomes the lover of the woman who drove their wives to their deaths. A case of the spontaneous breaking of the symmetry of higher life forms, Alba Bewick has two arms but only one leg. Does she, therefore, represent the key to the entire mystery? Some of the most careful photography is lavished on her asymmetric state which is accentuated by placing her in an unnaturally symmetric room. She languishes in a bed between two picture windows, between two house plants, and eventually between two lovers.

One theme of the film is a search for logical solutions in a world in which they do not come easily. This internal logic de-

mands that the woman's asymmetry be corrected. An attempt to fashion an artificial limb for her is deemed unsatisfactory, so other solutions are sought.

This same imperative pushes the two brothers to solve the problem posed by their solitude. As they progress toward death, the two grow closer together, retreating towards the surprising symmetry they shared in the womb and which has been suppressed in an attempt to forge two individuals.

Thus one possible answer to the question of death is that the individual reverses the process of creation in an elaborate pattern of destruction. If so it is a truth which the brothers discover through ontology, never through epistemology. At the end they are no longer examining their en-

vironment for data but are trapped in an experiment in a world beyond their control.

And then there is Vermeer. Aficionados of "The Draughtsman's Contract" will remember that an unexplained presence wandered through that film, periodically posing as a statuesque symbol of adultery. In "A Zed and Two Noughts" the visual references are to Vermeer. The mad doctor taking care of Alba, like everyone else in this film, confuses art and life and is convinced that he is a forger of Vermeer's. The references are another of Greenaway's many visual delights. As to why the references to Vermeer, that is another question.

The snappy title, "A Zed and Two Noughts," deserves a little treatment. As any cryptic crossword solver will immedi-

ately observe, writing out a zed and two noughts nets you the word ZOO. But there is far more to it than that. As the final letter of the alphabet, zed is a potent symbol of death and endings. Nought is a symbol of decay into emptiness. The symmetry of the letter O is apparent, as is the symmetry of the pair of letters, but we also have a balance between letters and numbers, between the verbal and the visual representations of ZOO, and ultimately between art and science.

If you are not prepared to read that much into the title, you are perhaps not ready for a Greenaway film. But if you have followed all of this, you are prepared to, and likely to, enjoy "A Zed and Two Noughts."

Mr. T tackles some Sacred Cows

EVERYBODY'S ENTITLED TO THEIR OWN OPINION

The Mr. T Experience
on Disorder Records.

By V. MICHAEL BOVE

ABOUT THREE YEARS AGO a surf/punk/garage band out of Senior House called the Sacred Cows was a staple of SCC and Walker parties. The Cows' trademark song, and the "hit" of their cassette-only release (which was sold at Andy's Chili, among other places) was a powermowerish tune called "Surfin' Cows," done in the genre of "Wipe Out." Recently, astute listeners to WMBR were surprised to hear a new version of "Surfin' Cows." Who

would want to cover the Sacred Cows?

As it turns out, former Cow guitarist (and former Managing Editor of a well known campus newspaper) Jon von Zelowitz '82, now in San Francisco, has been spending his leisure hours rhythm guitaring with three other Berkeley musicians. That this isn't just another thrash band is demonstrated by "Surfin' Mozart," arguably as faithful a version of *Eine Kleine Nachtmusik* as can be played on two guitars, a bass, and drums. Equally fun is "Just Your Way of Saying No," which lyrically parodies the worst sixties garagejunk, and features one of the most masochistic protagonists on vinyl:

*I ask am I you' man
You hit me with a pan*



*I ask do you love me
You hit me with a tree
And then I realize
You see with different eyes
And then I realize
It's just your way of saying no*

The Mr. T's openly acknowledge that they are a product of television driven mass culture. "The Empty Experience," sort of an anthem for the band, is a lament in a minor key over the inability of TV to deliver on its promises. The band further bemoans their betrayal by false cultural icons in "Danny Bonaduce," the true story of the drug bust of the seemingly clean-cut actor who as a youth played Danny Partridge. My personal faves, though, are "I'm in Love with Paula Pierce," a catchy tribute to the Pandoras' blonde vocalist, and the brooding "Scientific," which the little media blurb that comes with this disc calls "Velvets-like." It's not Velvets-like, but then it's not like anything else either.

Everybody's Entitled to Their Own Opinion isn't over-profound (nor does it pretend to be), but it's a fun album and features some fine guitar, bass and drum work. The entire album was recorded and mixed in only fifteen-and-a-half hours, a fact which probably accounts for the freshness and raw energy of the work. For extra laughs, check out the newspaper/collage lyric sheet and what's engraved on the vinyl past the lead-out groove.

This record may be purchased at Newbury Comics, or if you prefer, ordered directly (\$5, plus \$1 P&H) from Disorder Records, 1850 Union St. Room 488, San Francisco CA 94123.



Beineix brings out the beauty and the beast in his "Betty Blue"

BETTY BLUE

Directed by Jean-Jacques Beineix.
Starring Béatrice Dalle and Jean-Hughes Angladé.
At the Nickelodeon

By SIDHU BANERJEE

"BETTY BLUE" is a searing tale of obsessive love and tormented anguish, told with a style and charm that breaks the boundaries of conventional love stories.

Zorg (Jean-Hughes Angladé), a young but tired man, is content to waste his days in the south of France painting summer houses for an overbearing landlord. As the movie begins Zorg makes love with a passionate young woman he has just met. Betty (Béatrice Dalle) is young, fresh, dynamic — almost manic in her excitement for life.

She falls for Zorg but is disgusted that he is so happy to remain staid and subservient. In one of her tantrums, while thrashing around his house tossing his belongings, she discovers a huge book that Zorg has written and declares it a master-

piece. She decides that they must escape the insular, repressive climate of his present existence and try to get his work published.

Zorg and Betty complement each other and their desire becomes an almost addictive need. Her youthful exuberance excites and satiates Zorg's desires and dreams, and as the two grow closer they begin to lose themselves in their desire for one other. Their love and happiness is soured by Betty's increasingly petulant behavior, and as they spiral towards an inevitable tragedy they fail to see that their love has clouded their thinking so much they cannot see that things are very wrong.

Jean-Jacques Beineix, who also directed "Diva," starts with top calibre elements in "Betty Blue." Betty and Zorg both perform with ease and purpose. The supporting cast, including Consuelo de Haviland and Gérard Darmon as lovers who put the pair up during their quest for publication, is also strong. Like Betty, the movie swings between raucous comedy and unexpected gravity thanks to convincing acting over a range of emotions.

Most apparent in the direction is the way Beineix frames scenes to complement

Betty's character. A tableau of beautiful pictures and sordid camera angles reflects beautiful and sordid Betty. This movie revolves around and is completely dominated by her moods; when she becomes confused the movie jumps to a stance that reflects her confusion. When the movie begins, Betty is visually compared with sunsets on the beach, and the images mesh and reinforce each other; later when Betty comes to believe that "la vie n'est pas juste" the movie frames an evil world with blood and deception.

Once Betty and Zorg fall in love a constant tension develops reflecting both the idyllic love and the changes that force them apart. In bed their passion and sensual beauty becomes a false security. Betty cannot be happy, for reasons that Zorg can not and will not understand. Out of bed we see a Betty who screams, hates, and scares her friends, but immediately afterwards she is tender, apologetic, and beautiful. Zorg becomes blinded by the flame that burns inside Betty, destroying her, and each scene become more and more tragic.

Positive images dominate the first half of the movie, but Beineix, though master-

ful at conveying these images, is not happy to simply allow this love story to continue this way. Gradually the serenity and beauty is replaced by more depressing and desperate images, and when the movie returns to a more serene tone the audience and characters are shaken so much the placidity betrays an irony and unsettling confusion that permeates all.

As a love story, the movie is strong and involving. Through the stylistic manipulation of scenes and actions around the unpredictable Betty, the audience sees a beautiful, pathetic, and engaging character. As Zorg, Angladé counters Betty's frenzied mood changes, often keeping scenes from getting carried away. But the movie is made of extremes, and by the end of the rollercoaster experience, we are both exhausted and moved.

While the film drags at times, the feeling of impending change is ever-present, and makes the lags bearable. As a gallery of beautiful and striking images the movie is a masterpiece. Whether of a sunset, sweltering, passionate sex, or the smoke from a cigarette rising from an ashtray, each scene is a beautiful picture worth watching in itself.

ON
CAMPUS
JAN. 29

MICROSOFT®

COLLEGE--WITHOUT THE EXAMS

We're Microsoft. We're doing great stuff. We're your company---college without the exams. We've got private offices, flexible hours, a health club membership, and exciting work to do. We're into everything:

- operating systems design for the 386 microprocessor
- virtual machine environments
- distributed pc networks
- state-of-the-art windowing environments
- integrated language processors to run on the newest processors, often before they are publicly introduced
- sophisticated applications involving graphical user interfaces, complex data structures, and clever algorithms---relational databases, wysiwyg word processors, business graphics, and world-class spreadsheets
- multitasking file and print servers
- CD-ROM technology

We want extraordinary people with top skills, top grades, superior achievements and demonstrated talents for software design and marketing. We will be on campus interviewing for our Systems, Applications and Languages groups for the following positions:

SOFTWARE DESIGN ENGINEERS

Networking ... sophisticated graphics ... compilers ... productivity software ... CD-ROM technology ... and more. If you have a degree in computer science with experience in micros, C, 8086, UNIX/XENIX or MS-DOS, we want to talk with you.

PROGRAM MANAGERS

- direct and coordinate all aspects of product development, including programming, documentation and testing
- set design goals and review product specifications to ensure consistency
- research and understand the product category, competitive products and relevant technologies
- You should have a strong understanding of systems, applications or languages software in a microcomputer environment; B.S. degree in computer science or related discipline. Project management experience preferred.

PRODUCT MANAGERS

- define business, product and marketing strategies
- direct all marketing communications, analysis, and training
- provide general business management---forecasting, manufacturing, and profitability review
- You should have a strong understanding of systems, applications or languages software in a microcomputer environment and experience in line marketing or pre-sales role directly related to microcomputer software product marketing. MBA with B.S. in computer science preferred.

Our location in the Pacific Northwest, near Seattle, is one of the most diverse in the country---an area where quality of life is high and exciting. Mountains for skiing, hiking and climbing are close enough for day-tripping. Two spectacular national parks are within easy reach. The beautiful San Juan Islands are yours to explore by sailboat or ferry, car or bike. Fishing? Only if you like salmon and steelhead. And we'll take care of you with generous benefits and relocation packages.

Check with your career office for interview sign-ups and further details about Microsoft.

Also, feel free to send a cover letter and resume to: Microsoft Corporation, Human Resources Dept. MB, 16011 N.E. 36th. Way, Box 97017, Redmond, Washington 98073-9717.

MICROSOFT®

An Equal Opportunity Employer

ARTS

On the Town

Ongoing

"**Quartermaine's Terms**," by Simon Gray, is a play about the joys, jealousies, triumphs, and defeats affecting the faculty of a small school for foreign students. At the Lyric Stage, 54 Charles Street, Boston, until Feb. 1. Call 742-8703 for times of performances, ticket prices, and reservations or ConcertCharge 497-1118.

"**Mensch Meier**," by Franz Xaver Kroetz, is a play which dramatizes the explosive disintegration and renewal of a family in the face of economic strife. Presented by Theaterworks at the Suffolk University Theater, 55 Temple Street, Beacon Hill, Wed-Sat nights until Feb. 14. Tickets: \$8 on Thursdays, \$10 on Fridays, and \$12 on Saturdays. Telephone: 720-1988.

"**Tonight We Improvise**," by Luigi Pirandello, is a production which involves actors, audiences, and even the director himself in a series of improvisations that lead to an explosive conclusion. At the American Repertory Theater, 64 Brattle Street, Cambridge, at 8 pm, continuing until Feb. 1. Tickets: \$12-\$15. Telephone: 547-8300.

"**End of the World with Symposium to Follow**," by Arthur Kopit, is a darkly funny play about how our nuclear strategy can thrill us to death — a comedy of annihilation where show business contemplates the Big Sleep. At the American Repertory Theater, 64 Brattle Street, Cambridge, until March 15. Tickets: \$12-\$15. Call 547-8300 for times of performances and reservations.

"**Curse of the Starving Class**," by Sam Shepard, is a contemporary drama chronicling the life and death of an American family [see review this issue]. At the New Ehrlich Theater, 539 Tremont Street, Boston, until Feb. 7. Call 482-6316 for times of performances, ticket prices, and reservations.

"**Miss Julie**," by August Strindberg, is a classic psychological study of the conflicts that are inherent between the sexes. Presented Thur-Sun at 8 pm by the Stage Company of Boston at the Paramount Penthouse Theater, 58 Berkeley Street, South End, until Feb. 8. Tickets: \$10. Telephone: 387-4474.

An exhibit of delightful and amusing portraits of the British by Neal Slavin, entitled "**Britons**," is presented at the Clarence Kennedy Gallery. A collaboration of the Polaroid Corporation, the *London Times*, and the National Museum of Photography, Film, and Television of England. Through Feb. 21 at 770 Main Street, Cambridge. No admission charge. Telephone: 577-5177.

The **Bauhaus** exhibition, a collection of buildings, paintings, tables, teapots, weavings, sculptures, metal work, graphics, and advertisements envisioned and created by a small group of students in the famous workshop/school in pre-Hitler Germany, continues at MIT Museum until Feb. 28. No admission charge. Telephone: 253-4444.

Stoltenberg: Prints & Paintings, an exhibit of brilliantly colored Twentieth Century industrial marine paintings and collagraph prints, continues at the MIT Nautical Galleries until Jan. 31. No admission charge. Telephone: 253-4444.

Power & Gold: Jewelry from Indonesia, Malaysia, and the Philippines, an exhibition of jewelry from Southeast Asia presented in the context of village cultures where ritual jewelry embodied a deeper cultural significance, continues at the Museum of Fine Arts until March 22.

The **Magna Carta** is on display at the Boston Public Library until February 10 and

can be viewed in the Abbey Room of the downtown Boston branch during normal library hours. Special presentations accompany the exhibition of the **Magna Carta** including a ten-minute film adjacent to the document entitled "**Liberty: Legacy of the Magna Carta**" and also, in the Puvvis de Chavannes Gallery, other documents showing the effects of the Magna Carta.

70s into 80s: Printmaking Now, an exhibit emphasizing certain dominant themes of the last decade of printmaking, continues at the Museum of Fine Arts until Feb. 8.

Boston Collects: Contemporary Paintings & Sculpture, a provocative group of 95 works of art borrowed from private collection in the Boston area, continues at the Museum of Fine Arts until Feb. 1.

Krzysztof Wodiczko: Counter-Monuments, a presentation of large photographic documentation of projected slides on buildings; continues at the Hayden Gallery at the List Visual Arts Center, 20 Ames St., until April 12. Telephone: 253-4400.

Out of Eastern Europe: Private Photography, a selection of "semi-official" contemporary photography by independent artists from East Germany, Czechoslovakia, Hungary, and Poland, continues at the Reference Gallery at the List Visual Arts Center, 20 Ames Street, until April 12. Telephone: 253-4680.

Tony Smith: The Shape of Space, an exhibition celebrating the monumental painted steel sculpture "For Marjorie," continues at the Bakalar Sculpture Gallery at the List Visual Arts Center, 20 Ames Street, until April 5. Telephone: 253-4400.

Images for Survival, a poster exhibition commemorating the 40th anniversary of the dropping of the atomic bomb on Hiro-

shima, continues at Compton Gallery until March 20. No admission charge. Telephone: 253-4444.

An exhibit of **Light Sculptures** by Bill Parker, MIT '74 continues at the MIT Museum Building, 265 Mass. Ave. No admission charge.

Wednesday, Jan. 28

The **Boston Museum Trio** with Jeffrey Gall, countertenor, present the music of Buxtehude and J.S. Bach at the Museum of Fine Arts at 8 pm. The program is also repeated Feb. 1. Tickets: \$8 for MFA members, \$10 general admission. Information: 267-9300, ext. 306. Ticket availability: 267-2973.

A Monty Python double bill as the Somerville Theater shows "**Life of Brian**" at 8 pm and "**And Now For Something Completely Different**" at 6:15 & 9:45. Also showing Jan. 29 & 30. At 55 Davis Square just by the Davis redline T-stop. Telephone: 625-1081.

Thursday, Jan. 29

Student string recital with Yuri Mazurkevich, coordinator is presented at 8 pm at the B.U. School of Music Concert Hall. No admission charge. Telephone: 353-3345.

The **Boston Symphony Orchestra** with Michael Tilson Thomas present works by Mozart, Berg, and Strauss at Symphony Hall at 8 pm. The program is repeated Jan. 30, 31, and Feb. 3. Tickets: \$14.50-\$38. Telephone: 266-1492.

MusicFest presents the **Michael Lampert Trio** at 2 pm at the Star of David Convalescent Home in West Roxbury.

T.T. The Bears presents SST recording artists **The Leaving Trains** and **Das Damen**. Location: 10 Brookline St., Central Square. Telephone: 492-0082.

(Please turn to page 17)

EXCEPTIONAL TECHNOLOGIES

The Best of Tomorrow Today

Engelhard helps make many of the products we use everyday even though the company name doesn't appear on most of them. Engelhard products and technologies help make the cars we drive, clothing we wear, food we eat, homes and offices and plants where we live and work, telephones and computers that make us efficient, magazines and books we read, pharmaceuticals and vitamins that keep us healthy. The company's materials perform vital functions in a customer's manufacturing process or serve critical purposes providing reliability, or giving a certain characteristic to the customer's finished product. That's why Engelhard is known as a Performance Products company. And why technology is so important in enabling the company to continue advancing the leading edge in quality to give us an advantage over competition by meeting the needs of customers in our markets. Engelhard is organized into two major operating divisions—Specialty Chemicals and Specialty Metals.

ENGELHARD IS COMING TO MIT!

All Engineering Graduate Assistants & PHD candidates, together with their faculty and staff, are invited to a reception from 4-6 P.M. February 5th on the MIT campus, Building #1, Room #150 corner of Massachusetts Ave. and Memorial Dr.

Recruiting Interviews
February 6th, 1987
8:30 A.M. - 5:00 P.M.
(Contact Your Placement Office)

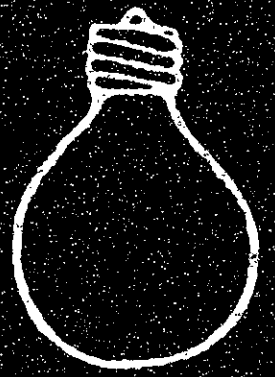
Engelhard is a Fortune 200 company offering employment opportunities that are unparalleled. Our 18-month Graduate Development Program provides new graduates with an excellent balance of process/project orientation and hands-on experiences. At Engelhard, you'll gain valuable exposure to a rotation of operations process, maintenance, R & D, and developmental assignments. Plus, you will enjoy an environment that is conducive to your professional growth. To learn more about the career opportunities available, plan to meet with our representatives on campus. We'll show you how Engelhard's "exceptional technologies" can bring you the best of tomorrow... today!

ENGELHARD

An Equal Opportunity Employer

Do it *in the* **DARK!**

Be a Tech photographer!



PeoplePower²

ON-CAMPUS INTERVIEWS are now being scheduled for February 4th and 5th, 1987. If you're earning a graduate or undergraduate degree in computer science, bring your resume and talk one-on-one with our recruitment director. But first, contact your placement office for an appointment.

The merger of Sperry and Burroughs has produced a powerful force in the world of information technologies. This new force is Unisys. A \$10 billion company of more than 100,000 dedicated employees in more than 100 countries. Together, Unisys and Unisys people have the power to change the future.

Unisys people are free thinkers, innovators, designers, and software/hardware systems experts. It's the power of our people, their talent and intelligence, strengthened by the power of our management, that has made us one of the largest information technologies and services companies in the world.

If you want to work with an internationally respected company that's on the leading edge of major developments in hardware, software and applications for mini-, micro-, mainframe and supercomputers for the commercial, military and private sectors; take on the challenge of working side-by-side with people who have the vision to turn problems into solutions; and reap excellent benefits and opportunities for career advancement, then Unisys has a unique opportunity for you.

If you're earning a graduate or undergraduate degree in computer science, we'll give you the opportunity to explore your talents, and our support in developing them.

Interviews for McLean, VA Research Center will be conducted on Wednesday, February 4th.

The McLean Research Center (MRC), located in the suburbs of Washington, DC, comprises a technical staff of twenty plus personnel and performs R&D relevant to future needs of DoD and other government agencies in command, control, communication and intelligence. The MRC seeks recent graduates with in-depth background in the principles of computer operating systems, system and application software development, and data base management for on-the-job training and subsequent growth and contributions in the following fields:

**Information Security (INFOSEC)
Computer Security (COMPUSEC)
Distributed Systems including DBMS and OS
Data Networks and Architectures
Data Network Protocol Development/Testing**

Interviews for Paoli, PA Research Center will be conducted on Thursday, February 5th

The Paoli Research Center, located in suburban Philadelphia, leads the Unisys effort in Artificial Intelligence and supporting technologies. We are seeking candidates for the following:

**Natural Language Processing with extensions into Speech Understanding.
Parallel Processing Architecture responsive to the needs of advanced AI applications.
Knowledge Based System Development tools and applications including integration with data base.
Software Development Environment supporting fourth generation languages and AI applications.**

Put your powers to work at Unisys. Make an appointment to meet with us during our on-campus interviews. If you're unable to do so, send your resume to: Ms. Nancy Sullivan, Unisys, 7925 Jones Branch Drive, McLean, VA 22102. Or Mr. Stephen Kaplan, Unisys, Route 252 & Central Avenue, Paoli, PA 19301.

UNISYS

The power of ²

U.S. Citizenship is required.
We are an Equal Opportunity Employer.

ARTS

On the Town

Thursday, Jan. 29

(Continued from page 15)

The MIT Musical Theatre Guild presents "Joseph and the Amazing Technicolor Dreamcoat" at 8 pm in the Sala de Puerto Rico. The show continues through Feb. 1. Tickets: MIT students \$3, students \$4, faculty & staff \$5, community \$6. Telephone: 253-6294.

The opening night of the Museum of Fine Arts' film festival, *Comedy, Italian Style*, begins with a lecture by Stephen Harvey, assistant curator of film at the Museum of Modern Art. The lecture is followed by "Il segno di Venere" ("The Sign of Venus," Dino Risi, 1955) with Alberto Sordi, Vittorio De Sica, and Sophia Loren. Time: 7 pm. Tickets: \$3 members, \$3.50 general admission. Telephone: 267-9300, ext. 306. Ticket availability: 267-2973.

The Brattle once again opens its doors for vintage films beginning a series of movies under the heading *Mad Love*. Tonight at 5:30 and 7:30, the suspenseful thriller "Sudden Fear" (David Miller, 1952) is showing with Joan Crawford, Jack Palance, and Gloria Grahame. Also, for opening night only, live performances at 10 pm by Boston area comic and offbeat performance artists. At 40 Brattle St. in Harvard Square. Tickets: \$4.75 for the film, \$7.50 for the performance, \$10 for the double bill. "Sudden Fear" continues through Feb. 1 with matinees on Sat. & Sun. Telephone: 876-6837.

Friday, Jan. 30

The B.U. School of Music presents a faculty recital by Michael Webster, clarinet, and Barry Snyder, piano, at 8 pm at the Concert Hall. No admission charge. Telephone: 353-3345.

phone: 353-3345.

The *Flestones* perform tonight and tomorrow night at the Rat, 528 Comm. Ave. in Kenmore Square. Call 536-9438 for times of performance and ticket prices.

The New England Conservatory Piano Department presents a *Beethoven Sonata Festival* at 8 pm at Williams Hall. No admission charge. Telephone: 262-1120.

Trombonist Peter Zummo brings his concert for ensemble of four to the ICA Theater at 8 pm. The performance uniquely combines minimalism with jazz, pop, and ethnic influences. Tickets: \$8 general, \$6 ICA members. Telephone: 266-5152.

The movies "Domenica d'agosto" (Luciano Emmer, 1950) with Marcello Mastroianni in his first film and "Guardie e Ladri" (Mario Monicelli & Steno, 1951) continue the Italian Comedy series at the Museum of Fine Arts. Times: 5:30 pm & 8 pm respectively. Tickets: \$3 members, \$3.50 general admission. Telephone: 267-9300, ext. 306. Ticket availability: 267-2973.

The film "L'Atalante" (1934), by the great French director Jean Vigo, continues the *Masters of Surrealism* series at 8 pm at the French Library, 53 Marlborough St., on the corner of Berkeley. The film is also being shown Jan. 31. Tickets: \$2.50 members, \$3.50 general admission. Telephone: 266-4351.

Saturday, Jan. 31

The "Installation Project at Mobius," with work by Polish emigre Ewa Kuryluk and Bart Uchida of Boston, continues through Feb. 21. The Mobius gallery at 354 Congress St., Boston, is open Wed-Sat, 12-5 pm or by appointment. Telephone: 542-7416.

Sunday, Feb. 1

The B.U. School of Music presents the *Greater Boston Youth Symphony Orchestra* at 7 pm at the Concert Hall. Program includes works by Beethoven, Mozart, and Smetana. No admission charge. Telephone: 353-3345.

The *Boston Chamber Music Society* will present works by Haydn, Bartok, and Faure at 8 pm at Sanders Theater (Harvard), Cambridge. Telephone: 536-6868.

Pianist Russell Sherman will perform works by Schumann, Chopin, Ravel, and Beethoven at 3 pm at Jordan Hall as part of the *Wang Celebrity Series*. Tickets: \$16.50, \$17.50, & \$19.50. Telephone: 497-1118.

The *Prague String Quartet* from Czechoslovakia will present works by Dvorak, Haydn, and Janacek at 8 pm at Kresge Auditorium. No admission charge. Telephone: 253-2906 or 253-ARTS.

"Sophie Makes Good," by Rae Edelson, is a play about a young "grande dame" of

the old world and a thoroughly modern girl finding themselves under the same roof amidst an entourage of admiring young men. Opens today at 8 pm at the New Ehrlich Theater, 539 Tremont St., and continues through Feb. 3. Telephone: 482-6316

The Somerville Theater shows "Atomic Cafe" at 8 pm and "Desert Bloom" at 6:00 & 9:45. Also showing Feb. 2 & 3. At 55 Davis Square just by the Davis redline T-stop. Telephone: 625-1081.

Monday, Feb. 2

The New England Conservatory presents "First Monday at Jordan Hall," a chamber music series including works by Brahms, Ravel, and Mozart. At 8 pm at Jordan Hall. No admission charge. Telephone: 262-1120.

Guy Urban performs classical pieces by Beethoven, Mozart, Rzewski, and Schumann on piano at Wellesley College Jewett Auditorium at 8 pm. No admission charge. Telephone: 235-0320, ext. 2028.

The Brattle continues its series on the manipulations and perils of desire with "Mad Love" (Karl Freund, 1935) at 5:10 & 8:20, and "The Bride of Frankenstein" (James Whale, 1935) at 3:30, 6:45, & 9:55. 40 Brattle St. in Harvard Square. Tickets: \$4.75 for double feature. Telephone: 876-6837.

Tuesday, Feb. 3

The New England Conservatory Piano Department presents a *Beethoven Sonata Festival* at 8 pm at Williams Hall. No admission charge. Telephone: 262-1120.

(Please turn to page 19)

DRAMASHOP
PRESENTS THE AMERICAN PREMIERE OF

NORTHERN STAR
by Stewart Parker
directed by Ian McElhinney

FEBRUARY 5, 6, 7
& 12, 13, 14 at 8pm
FEBRUARY 8 at 2pm
KRESGE LITTLE THEATRE

INFORMATION: 253-8877
RESERVATIONS: 253-4720
TICKETS \$5 (\$4 student/senior)

◀リクルートからの
メッセージ

求ム
日本語話
ス
新国際人

1960年創業以来、株式会社リクルートは常に独創的な情報関連ビジネスを展開してまいりました。今年、日米間を結ぶ国際RCSも開始します。日本で、アメリカで、リクルート流の、そしてあなた流のビジネスを試す時がきています。株式会社リクルートは今、新国際人を求めています。

Date: February 3, 1987
Sign up at your
Place: Career Placement Office today!

Recruit Co., Ltd., Campus Interview for Bilingual (English/Japanese) Students

お問い合わせは
◀ RECRUIT U.S.A., INC. 担当: 上野
700 S. Flower St., Suite 3210
Los Angeles, CA 90017
Tel. (213) 683-1081
TOLL FREE
California (800) 423-3387
Other (800) 325-9759

It takes a certain talent to create the kind of performances that have made history. CODEX has that talent. And we're looking for more.

For 25 years we've played the leading role in data communications and networking management. Giving command performances to data communications managers, worldwide, everyday...with innovative products, technical consultations and networking solutions. Our encore? We're developing the integrated communications networks of the future. Right now.

The best performers make history.

Acclaimed nationwide as "The Complete Networking Company" CODEX offers you one of the most exciting high-tech environments available.

Our entrepreneurial spirit, excellent benefits and greater Boston location... close to some of the finest cultural, educational and recreational resources, make CODEX the perfect setting for you to perform your best.

If you're a CS major interested in software development, take center stage with CODEX.

Information Session: See your placement office for details.
On Campus Interviews: February 18

An Equal Opportunity/Affirmative Action Employer. M/F/V/H



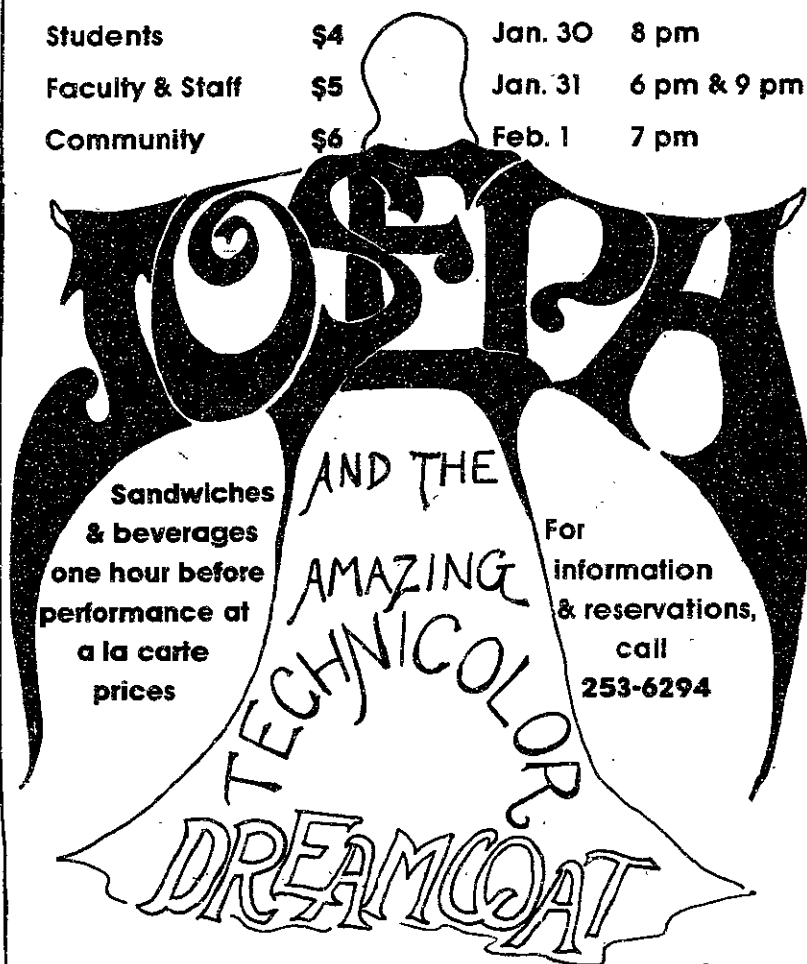
CONTROLS ENGINEER

MIT spin-off in East Cambridge seeks ME, EE or AE background candidate with MS or higher degree. Interest in Electro-Mechanical/Electromagnetic controls desirable with good analytical and modeling experience. An opportunity to work with a high-tech, innovative firm in magnetic suspension, magnetic bearings and related technologies. Please send confidential resume to:

Technology Corporation
P.O. Box 387
Cambridge, Mass. 02142

MIT Musical Theatre Guild proudly presents

Tickets:		Performances:	
MIT Students	\$3	Jan. 29	8 pm
Students	\$4	Jan. 30	8 pm
Faculty & Staff	\$5	Jan. 31	6 pm & 9 pm
Community	\$6	Feb. 1	7 pm



Sala de Puerto Rico — MIT Student Center
84 Massachusetts Avenue. Cambridge, Mass.

**Any Friday in January,
When the Moon's in the Sky
Like a Big Pizza Pie,
You Can Deduct \$1.00**

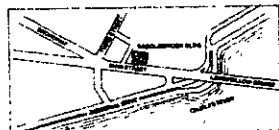


\$1.00 OFF
Our Pizza Entrée with
Cup of Soup or Garden Salad

Milk Street Cafe

101 Main Street, Kendall Square, Saddlebrook Bldg.
Open 7 AM-3 PM Mon.-Fri. 491-8286
Offer expires January 31, 1987

If you're still among those who haven't tried our deliciously unique variation on an old Italian theme, here's an economical way to remedy the situation. Come see us while the moon is still full! Don't Forget: Pizza served Fridays only.



Milk Street Cafe

101 Main Street, Kendall Square, Saddlebrook Bldg.
Cambridge, MA • 491-8286
• Ask us about our comprehensive catering services •
Complimentary 2 hour parking available in the building.

SIEMENS

Graduating Engineers

Meet with Siemens representatives on your campus Friday, February 6, 1987

Talk to a world leader in medical electronics.

As the healthcare industry continues its rapid growth, the need for sophisticated diagnostic systems increases accordingly. Siemens holds a leadership position in this field with developments in such areas as CAT scanners, medical and dental x-ray equipment, patient monitoring systems, and magnetic resonance imaging (MRI).

Here, graduating engineers will find excellent opportunities to become experts in advanced medical systems. Our year-long development

program, both in the classroom and side-by-side with our best people on rotating assignments, will give you a full view of the field, and show us both where you'd fit in best.

Your options include technical sales, service or product support and (for those with advanced degrees) R&D. Prerequisites include a BS or MS in Biomedical or Electrical Engineering

To explore the possibilities of a Siemens future, see your Placement Office to schedule an interview. If you are unable to arrange an interview, forward your resume to:

Lauren Mason

Siemens Medical Systems, Inc.

186 Wood Avenue South
Iselin, NJ 08830

An equal opportunity employer, m/f/h

Does your car or light truck need brakes or mufflers?

FIND OUT FREE!

FREE Brake and Muffler Inspection

- | | |
|---|---|
| 1. Pull all 4 wheels | 5. If any repairs are necessary we will give you a written estimate. You decide if you want the repairs made. |
| 2. Inspect drums, brake shoes and cylinders | |
| 3. Inspect disc pads, rotors and callipers | |
| 4. Muffler Inspection | |

PLEASE CALL FOR APPOINTMENT

Brake Shoes, Pads, and Mufflers guaranteed for as long as you own your car

Disc Brake Overhaul

\$69.00

Includes new front brake pads, new grease seals, wheel bearings repacked, front rotors resurfaced, master cylinder and hydraulic system checked. Also check rear brakes and road test car. For imported and U.S. cars with conventional rear-wheel drive. Prices will vary for front-wheel drive, depending on vehicle model. Drum brakes slightly lower.

Sunoco Brake Kings
808 Memorial Drive
Cambridge, Mass.

864-1111

SERVICE SPECIALS

Muffler Installed

\$10.00 off
with this ad

American & Foreign

Cooling System Flush

We will back flush your cooling system, install up to 2 gallons of anti-freeze, check all belts, hoses, and clamps. Additional parts & labor extra.

Most American & Foreign cars and light trucks.

\$19.99

Lube, oil change, and filter

\$24.95

- Change oil 10-40
- Change filter
- Complete chassis lube
- Lube door & hood hinges
- Check and fill: automatic transmission fluid, battery, power steering fluid, brake fluid, rear end fluid, washer fluid

Tune Motor

\$36.95

- 1. Clean and adjust carburetor
- 2. Replace spark plugs
- 3. Labor included

4-Cylinder slightly lower
8-Cylinder slightly higher

OFFICIAL MASS. INSPECTION STATION 2563

ARTS

Movies

★★ **Blue Velvet** — David Lynch's weird tale of sexual perversity is interesting in its presentation of the seedier side of life, but the humor flaws the film in its incongruity with the serious subject matter. At the Nickelodeon.

★★★★ **Children of a Lesser God** — A beautiful, moving love story between deaf pupil (Marlee Matlin) and teacher (William Hurt) with fabulous acting performances by the principals. At Assembly Square & Copley Place.

★★ **Crocodile Dundee** — Paul Hogan is likeable as the Australian from the Northern Territories who is invited by a beautiful female reporter to visit the big city. The scenes in the outback are gorgeous but the story bogs down once it moves to New York. At Beacon Hill and Assembly Square.

★★★★ **Le Déclin de l'Empire Américain** (The Decline of the American Empire) — A superb French-Canadian film which humorously dissects the hypocracies of sexual and loving relationships in modern society. At the Nickelodeon and Harvard Square. (In French with subtitles)

★★★ **Little Shop of Horrors** — Rick Moranis stars in this remake of the cult classic, B-grade musical about an insatiable plant that requires human blood to grow. With appearances by Jim Belushi, John Candy, Bill Murray, and Steve Martin. At the Charles and Assembly Square.

★★★★ **The Mission** — Jeremy Irons and Robert De Niro star in this film about the transfer of South American land between Spain and Portugal and its affect on a Jesuit mission above the Iguazú waterfalls. Splendid location photography and excellent character acting. At Copley Place and Harvard Square.

★★★ **Peggy Sue Got Married** — Kathleen Turner and Nicolas Cage star in a Francis Ford Coppola film about what a woman wishes she had done when she was eighteen. Not unlike "Back to the Future" but with less humor and more feeling. At Copley Place.

★★★★ **A Room With a View** — Outstanding adaptation of E.M. Forster's novel, with a sterling performance by Helena Bonham Carter as a youth on the brink of womanhood in Victorian England. Strong support from Daniel Day Lewis and Denholm Elliott. At Copley Place.

★★★★ **Round Midnight** — Great bebop jazz in Paris during the late 50's is the theme of this wonderful film, an uplifting story of a jazz saxophonist's rise from secluded, lonely greatness to eventual fulfillment. At Harvard Square.

★★★ **Sid & Nancy** — About the life and times of Sid Vicious, bass player for the Sex Pistols, and his groupie girlfriend, Nancy Spungen, this film manages to rise above the standard "docudrama" genre in presenting an emotional account of an unusual romance born of the destructive punk culture. At the Charles.

★★ **Something Wild** — Melanie Griffith is the hot vixen decked out in black

and Jeff Daniels the square, boring vice-president of a tax consultancy waiting for the rebel within him to emerge. The two make for a fun-filled weekend but the film drags when it tries to get serious and violent. At Copley Place.

★★★ **Star Trek IV: The Voyage Home** — All your favorite space voyagers return, all with gray hairs, quite a few more pounds around the waist, and many years the wiser. Not all of the magic of the television series is there but, unlike the three previous movies, this film takes a much lighter approach to the subject matter. At Cinema 57 and Assembly Square.

★★★★ **True Stories** — David Byrne's funny and absurd vision of life culls unlikely stories from a weekly tabloid to deposit them in the town of Virgil, Texas. The black and white characters from these stories are molded into real, likeable people. At Harvard Square.

Compiled by Peter Dunn from Tech reviews



Demi Moore robs banks for right with Emilio Estevez in "Wisdom"



Elizabeth McGovern in "The Bedroom Window," a Hitchcock-style thriller

On the Town

Tuesday, Feb. 3

(Continued from page 17)

The "Mad Love" film series continues at the Brattle with "Gun Crazy" (Joseph H. Lewis, 1949) at 4:00 & 7:30, and "You Only Live Once" (Fritz Lang, 1937) at 5:45 & 9:15. At 40 Brattle St. in Harvard Square. Tickets: \$4.75 for double feature. Telephone: 876-6837.

Wednesday, Feb. 4

Tommy Flanagan, piano, and George Mraz, bass, give a jazz concert at 8 pm at Wellesley College Jewett Auditorium. No admission charge. Telephone: 235-0320, ext. 2028.

"Candida," by George Bernard Shaw, is a comedy about a very wise and desirable woman surrounded by her husband and a very brash young man infatuated with her. Opens today at the Lyric Stage, 54 Charles St., Boston, and continues through March 8. Call 742-8703 for performance times, ticket prices, and reservations.

The Museum of Fine Arts begins its lecture series "In Celebration: Four Great Painters," on the works of Fitz Hugh Lane, Winslow Homer, Picasso, and Rembrandt, today at 8 pm at Remis Auditorium. The series continues Feb. 18, 25 and Mar. 4 and tickets can only be bought for the series as a whole. Tickets for the lecture series: \$30 members, \$35 general admission. Telephone: 267-9300, ext. 306. Ticket availability: 267-2973.

The Brattle goes foreign with its "Mad Love" film series as it shows "Oedipus Rex" (Pier Pasolini, 1967) at 4:00 & 7:50, and "Orphée" (Jean Cocteau, 1949) at 6:00 & 9:55. At 40 Brattle St. in Harvard Square. Tickets: \$4.75 for double feature. Telephone: 876-6837.

Compiled by Peter Dunn

TUTORS WANTED

The Office of Minority Education is currently seeking applications from upperclassmen and graduate students for *Tutoring Positions* in the B.S.U.-T.P. Tutors are needed in the following subject areas; Courses 2,3,5,6,7,8, 15,16,18 and Freshmen Core courses. References required. If you are interested in a tutoring position, please contact Anthony Canchola-Flores, Office of Minority Education, 7-143, ext. 3-5010 as soon as possible.



Modern Dance
Classes for credit or enjoyment!
Taught by choreographer Beth Soll.

First Meetings:
Improvisation/Composition: Tuesday, February 3 at 3 p.m. in the T-Club Lounge of the Dupont Center. All levels.

Intermediate Technique: Tuesday, February 3 at 5:30 p.m. in Walker 201.

Beginning Technique: Wednesday, February 4 at 3 p.m. in the T-Club Lounge of the Dupont Center.

For information, call 253-2877.

ATTENTION SENIORS
POSITION AVAILABLE IN THE
ADMISSIONS OFFICE AS AN
ADMISSIONS COUNSELOR

The Office of Admissions is now accepting applications for the position of Admissions Counselor. This is a one year full-time position beginning in July, 1987 (some flexibility is possible). Duties will include:

- conducting question and answer sessions
- interviewing prospective applicants
- visiting secondary schools
- coordinating MIT student involvement in admissions
- reading applications
- participating in admissions committee decisions

Applications for this position are available from Tracy Pierick in the Admissions Office (3-108) and should be returned no later than Feb. 23, 1987.

Note — This is for 1987 (Jan. or Jun.) MIT graduates.

FOREIGN STUDENTS

Do you know companies in your country that want to export to the United States?

We are an import/export management company with 23 experience that can assist in U.S. market penetration.

Possibility exists for internship or full time employment. Offering management exposure after successful connections.

Director of Business Developments

The Mayflower Group
90 Montvale Ave.
Stoneham, Mass. 02180
(617) 438-7900



2nd Annual
CITICORP
INVESTMENT
BANK
Business
School
Ice
Hockey
Tournament

Thompson
Arena
The
Amos
Tuck
School
of
Business
Administration
Dartmouth
College

Friday
January 30
4:15 p.m. - Midnight

Saturday
January 31
9 a.m. - 1 p.m.
5 p.m. - Midnight

Sunday
February 1
Finals 10 a.m. - 2 p.m.

Tuck
Harvard
Wharton
Johnson
Sloan
Columbia
Yale

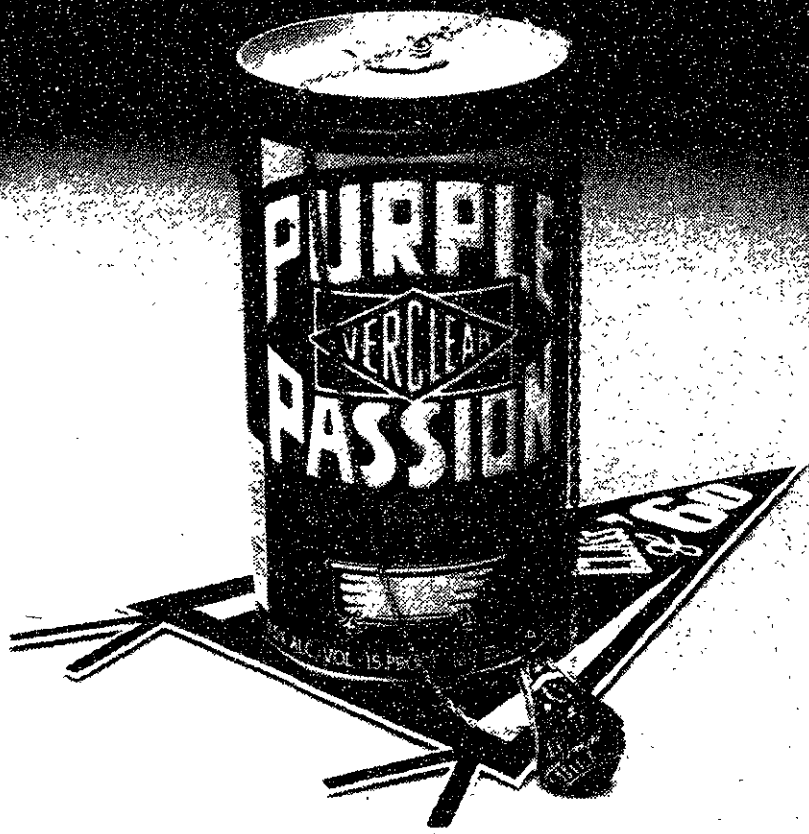


STUDY IN EUROPE

The University of Louvain (est. 1425), Leuven, Belgium offers Complete programmes in Philosophy for the degrees of B.A., M.A., and Ph.D plus a junior year abroad programme. All courses are in English. Tuition is 14,500 Belgium Franks (± \$250). Write to: Secretary English Programmes, Kardinaal Mercierplein 2, B-3000 Leuven, Belgium. **K.U. Leuven**



If You've Never Heard Of It, Ask Your Folks.



If They Won't Tell You About It, Then You Know It Must Be Great.

Purple Passion. Out of the bathtub, into the can, and onto the shelves of your favorite store. Discover it for yourself.

Bottled for World Wide Distilled Products Company, By Beverage Concepts, St. Louis, Mo. 63108 15 Proof

Join the Leaders in Real-Time Expert Systems

Gensym is a startup company developing real-time expert systems in Common LISP for on-line intelligent monitoring and control of large, complex systems. The founders are a team of professionals with extensive experience in LISP, AI user-interface and process control. We are seeking talented people to assist us in advancing this technology and exploiting this emerging market. Our modern offices are conveniently located near the Alewife T station in Cambridge, and our computing facilities are state of the art. Gensym provides a unique opportunity for challenging, creative, exciting work as well as for sharing in the growth of a startup.

Full-time Employment Opportunities

Software Development: Strong LISP and AI background required. Engineering background, experience in C and experience with real-time operating systems is helpful.

Documentation: Strong technical documentation experience is required. A computer science degree is highly desirable. Candidates must be capable of writing impeccable English without supervision. This is a position for a major contributor.

Marketing: Experience in high-technology promotion and publicity, as well as a working knowledge of expert systems and excellent written and verbal communication skills are required.

Customer Support: Knowledge of expert systems and LISP required. Candidates must have good interpersonal skills and strong process control background to help customers develop state-of-the-art expert systems for process control.

Contact: Laurie L. Landry
Gensym Corporation
125 CambridgePark Drive
Cambridge, MA 02140
(617) 547-9606



Gensym

M.I.T.

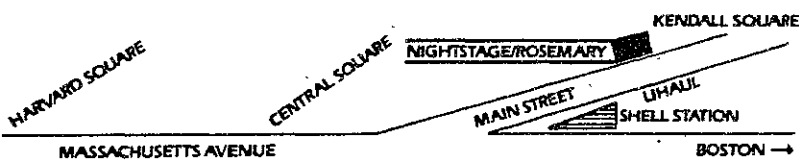
MULTIPLE CHOICE TEST

When does 2=1?

- a. At ROSEMARY
Lunch Mon.-Fri. 11:30-3:00
Dinner Tues.-Thurs. 5:00-11:00
- b. With an M.I.T. I.D.
Student Faculty Employee
- c. Buy first entree
higher price. Get second free
equal or lower price.
- d. All of the above.



823 Main Street, Cambridge, MA 02139 497-7200



This offer good through Feb. 15, 1987. M.I.T.

15% gratuity will be added to checks before discount.

Merrill Lynch Capital Markets

Investment Banking Corporate Finance Group

invites

MIT Seniors

interested in the

Financial Analyst Position

to send resumes to

George Leach

Merrill Lynch

Analyst Recruiting 43rd Floor

One Liberty Plaza

New York, NY 10080

By February 12, 1987

Interviews will take place February 23 on Campus.



Merrill Lynch

sports

Men's gymnastics lifts season record to 4-0

(Continued from page 24)
 wheel onto the horse followed by a straight-leg back flip to the ground). Norman Chen '88, in his first year of competition, had his best meet of the season. He dismounted both rings and high bar with double back flips for scores of 6.35 and 6.1 and scored 8.15 on vault. Eric Reifschneider '89 came back from a slow start to receive season-high scores of 7.2 on parallel bars and 8.25 on vault. Jason Kipnis '87 and Carl Weiner '87 got the team off to a good start on several events with clean, solid routines.

score of 47.8, just short of the school record of 48.1 he set January 17 versus Yale. Vermont's Mitchell and Acosta finished second and third with scores of 46.05 and 38.55, respectively. Reifschneider was fourth with 38.25, and Coast Guard's Foley was fifth with 35.5.

Coach Fran Molesso was pleased with the victory, which he attributed to a good team effort. He thinks the meet this Saturday, a rematch at Vermont, will be an even bigger challenge for the team.

(Editor's note: Reifschneider is a member of the men's gymnastics team.)

Hirano won the individual competition with an all-around

MIT loses tournament to faster-skating Tufts

(Continued from page 24)
 out. This turning point made the Tufts win inevitable — the MIT balloon had been deflated. As the period progressed, the Jumbos scored five goals while the Beavers only managed one powerplay goal from Brian Balut '87. There was no way MIT could recover from four goals behind.

ready determined. MIT had more shots on goal for the third period than the Jumbos, proof of their resolve to get back into the game. This persistence resulted in two goals, one from Jackson, the other from Brian Fabes G as he took no time putting in a slapshot when the Beavers won a faceoff in the Tufts zone. Unfortunately Tufts also scored twice, both ugly displays of poor defense under pressure as MIT players put the puck right onto Tufts sticks for open net goals.

The same style of play from the first period continued. But while Tufts stymied MIT's strategy, the Beavers could not slow down the Tufts forwards. The Jumbos continued dumping and chasing and continued to outskate the Beavers to the puck. MIT's faithfully hard checking seemed to have disappeared and Tufts took advantage of its own speed to outmaneuver the Beavers.

With a slashing penalty assessed with just over two minutes left in the game, the final minutes were agony as MIT, now short-handed, could not even put on one last desperate attempt. But despite the final score of 9-5, the game was not a blowout. MIT and Tufts were evenly matched during the first and third periods — it was only during the second period that the Beavers let the game get away.

In the Tufts zone MIT continued to check deep but this strategy, which had worked well in the beginning of the first period, worked to the Beavers's detriment. Instead of keeping the puck in the Tufts zone, MIT's defense — often trying to stop the Jumbos at the Tufts blue line — was more often than not caught too far up the ice, creating too many two-on-one and three-on-two situations.

This loss to Tufts was more a display of a good game strategy poorly executed. MIT needed to check more to slow down the faster Jumbos, which they did during the first part of the first period but failed to do later. The Beavers also needed to keep from being caught too far up the ice, something which they did not do until the third period. Assuming the Beavers continue to show the perseverance they show every game, they are guaranteed to take the championship trophy next year.

The third period began well for the Beavers as they put on the pressure deep in the Tufts zone while the MIT defensemen were wary not to get caught too far up. Desperate to even the score, MIT players chased after every puck, putting on a good show of determination. Coming out of their own zone the Beavers stick-handled more; therefore, fewer of their passes were intercepted. But despite these good strategies, four goals behind, the fate of the game seemed to have been al-

Hockey loses

(Continued from page 23)
 extraordinary saves on shots from close in, and then Russell finally lifted the puck over the goaltender sprawling on the ice.

Part-time position available for student with excellent "C" coding skills. Sun Microsystems & IBM/PC Environment. 237-1523

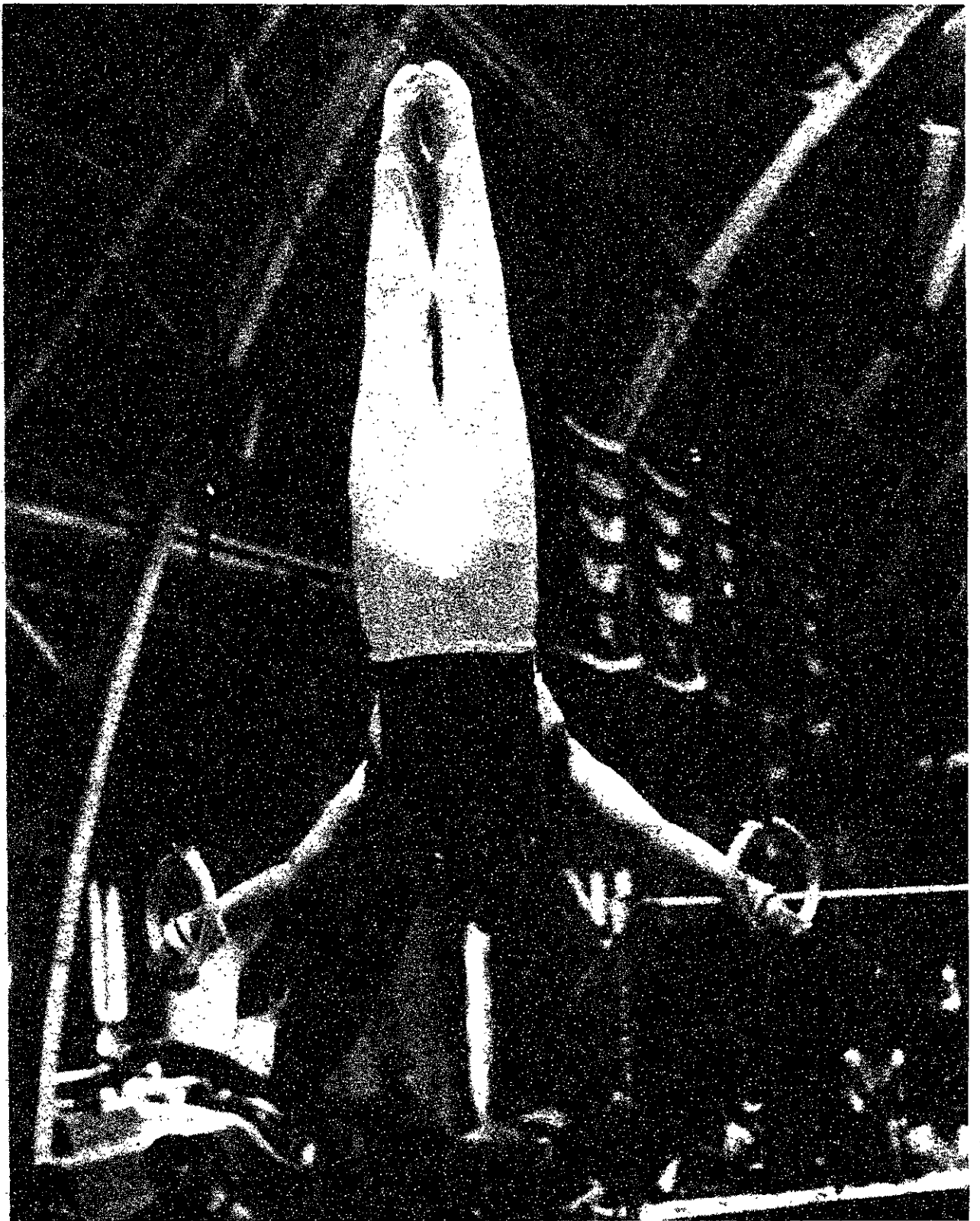
Despite this good play and a game more in MIT's style, the rough-house play got too far out of hand to be much of an advantage for MIT. The tougher play was to the Beavers's advantage but the large number of fights and penalties left both teams with men short and thus made it difficult for MIT to score.

Registration Day Worship Service

Sponsored by : The MIT Christian Fellowships
 Speaker : Peter Brown
 Time : Monday, Feb. 2 at 7:00pm
 Place : MIT Chapel

The final goal of the game came as another breakaway caught the Beavers too far up the ice.

March of Dimes
 BIRTH DEFECTS FOUNDATION
SAVES BABIES
 HELP FIGHT BIRTH DEFECTS
 This space donated by The Tech



• DRAMA • MARTIAL ARTS • SCIENCE FICTION • MUSIC •
 HORROR • FOREIGN FILM • ACTION • THRILLERS • SHORT STORIES • WRESTLING • WESTERNS • COMEDY • ANIMATION • ADULT FILMS

New In Central Square

Celebrate the Opening of

ACTION VIDEO

Membership Special
 reg. \$25 **\$18.95**

Includes: - 6 free rentals
 - One time member express deposit
 - \$2/day rental fee (\$2.50 non-members)

OVER 3,000 MOVIES AVAILABLE

Action Video
 576 Mass Ave
 Cambridge
 354-ACTION
 2 2 8 4

Hours
 M-Th 8-10
 F 8-11
 Sa 9-11
 Su 12-10

Largest Selection of Video Tapes In Area

NOW HIRING — PART-TIME HELP

• DRAMA • SUSPENSE • SPORTS • CULT • CLASSICS •

sports

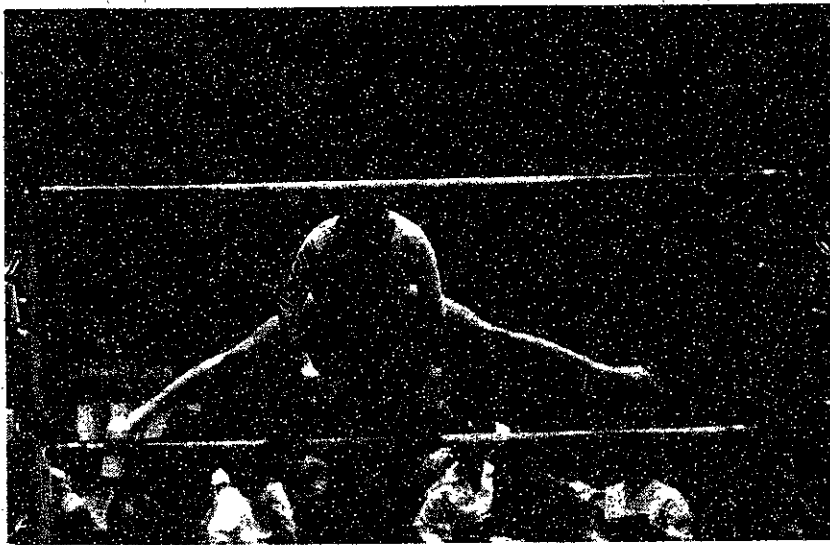
Women gymnasts take middle spot

By Allison Arnold

The MIT women's gymnastics team made its 1987 season debut in front of a supporting home crowd on Saturday, placing second in a tri-meet with the University of Vermont and the Coast Guard Academy. This meet was a milestone for several MIT gymnasts. Four of the seven athletes faced collegiate competition for the first time, and team captain Catherine Rocchio '89, who has not competed since seriously injuring her knee last year, staged a courageous comeback by competing on all four events. Despite the team's youth, MIT performed well with a score of 120.15 behind Vermont's 146.55. Coast Guard finished third with a score of 81.4.

Experienced freshmen Rosemary Rocchio '90 and Allison Arnold '90 both competed all-around (all four events) and led MIT in scoring. Rocchio executed a beautiful handspring with a full twist on vault to score 8.0. Her floor routine, worth a 7.4, included an Arabian (half-twisting) front flip and a layout back flip. Arnold's best scores included an 8.35 for a half-twisting on, full-twisting off handspring vault and a 7.8 on the balance beam, a routine highlighted by a back walkover-back handspring series.

MIT's returning all-arounders, Catherine Rocchio '89 and Olga Kuhn '88, utilized experience from previous years to provide



Mark S. Abinante/The Tech

Olga Kuhn '88 performs on the uneven bars Jan 24.

strong leadership. Rocchio demonstrated artistic dance moves on the floor exercise while Kuhn earned the respect of some of the visiting gymnasts with her unique uneven bars dismount — a back flip from a sitting position on the high bar known as a "spanky back."

Several other gymnasts made significant contributions to the team. Debbie Shnek '89 competed on three events and landed a well-executed handspring vault for a 7.6 on that event. Andi Pease '88, who also competed on three events, received her best score for an energetic floor routine choreographed to "The Entertainer." Charlene Grant '90 completed fine routines on both

vault and floor exercise.

Now that the season is underway, the team will be busy preparing for next week's meet at Rhode Island College. They will return to familiar Dupont gymnasium the following week, Feb. 7, to host Albany State and Salem State at 1 pm.

(Editor's note: Arnold is a member of the women's gymnastics team.)

Track extends streak and now guns for title

By Kenyon D. Potter

The MIT indoor track team defeated both Tufts and Williams at a meet held here last Friday, claiming first place in all but four events. Tufts and Williams followed far behind MIT's 93 points with scores of 44 and 33, respectively. MIT now stands undefeated with a 7-0 record.

Through the opening field events, competition remained close. Tufts exhibited its strength in both the weight throw and shot put. But MIT overcame this obstacle, with a magnificent come-back effort by Scott Deering '89 who threw for an amazing 52' 11" and put for an equally impressive 41' 8" to win both events.

Tufts responded in turn by taking both first and second place in the long jump and nearly evened the score. But MIT widened its lead and refused to relinquish it. The team soon achieved wins — Glenn Hopkins '87 leaped to a height of 6'4", Jacob Kim '87 triple-jumped for a distance of 45' 11", and Bobb White '87 vaulted to a pole at 13'6" to emerge victorious.

Later track performances demonstrated MIT's superior breadth as a competitive team. Sean Gar-

rett '88, Boniface Makatiani '90, Charles Parrott '87, Brian Callagan '87 and Sean Kelly '87 all placed first in their events and continued gaining points for MIT.

In addition, MIT claimed 17 other places in various events. As a finale, the team topped off its already winning score with firsts in both the 1600 and 3200 meter relays.

"The team has passed its toughest dual-meet," Coach Gordon V. Kelly said, cautiously enthusiastic after this latest win. He added that the team was "gunning for" the NCAA Northeast Division III championship, which it won last year.

If promising comparisons with the previous season's records hold, then MIT may indeed retain the Division III title.

Friday's win extended MIT's winning streak to thirteen meets against nineteen opponents. Earlier victories this season included an overwhelming 100-35 over the Coast Guard Academy.

The MIT team must successfully face Andover at Brown Feb. 11 and a UMass/Boston at home on Feb. 13 on the way to the Greater Boston Championship at Harvard and the Division III finals.

classified advertising

Spring Break Jamaica Project Manager needed. FREE vacation plus \$\$\$ 1-800-237-2061.

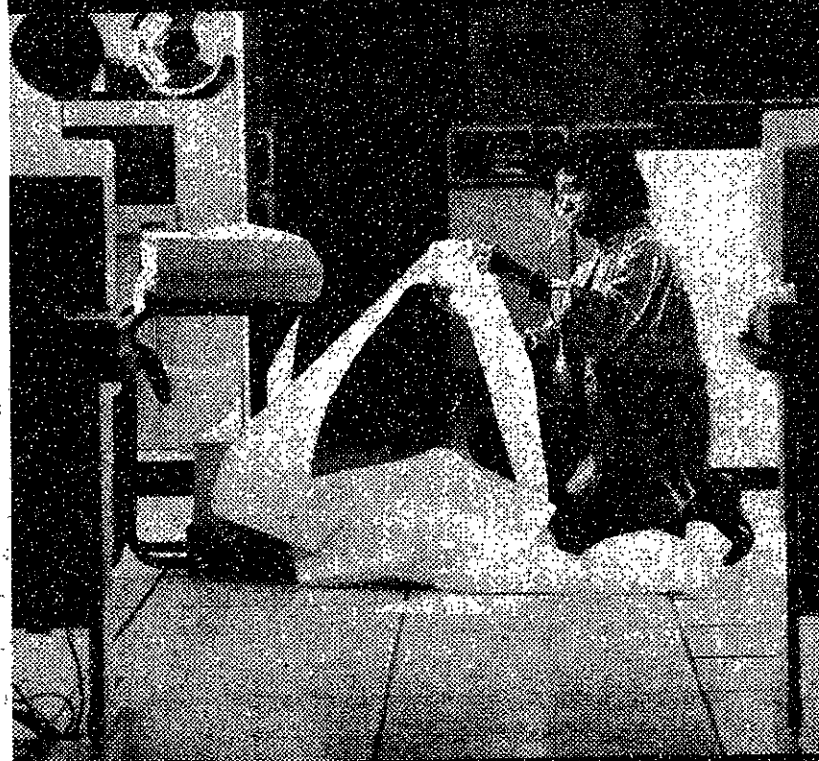
1979 Toyota Corolla, grey 2 doors Sedan, 4 speed, AM/FM, 80K miles, \$1450, new battery alternator, water pump. Runs well. Must sell. Call Siu-Ling 253-6048, or 868-6282.

Software Specialists. Spring Graduates? Engineering, Business and Systems Programmers and Analysts. Send resume. Professional Software Placement; 171 Stanton Ave; Newton MA 02166. No fees

COMPUTER SCIENTISTS/PROGRAMMERS

If you are experienced with IBM PC's, graphics, and database management; have uncompromising high standards and a record of excellence, contact us immediately about an exceptional part-time opportunity. We are a Cambridge investment management company. We need you to configure an IBM PC AT system, organize and maintain a large financial database, and write programs for historical analysis and real time trading in the commodity and stock markets. Call 497-2240 or write: INVESTMENTS, P.O. Box 446, Cambridge, MA 02238

You're bright enough to master C and Scheme



And you're still smoking?

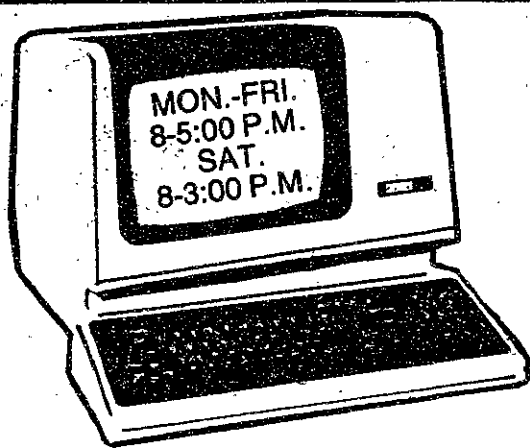
This space donated by The Tech U.S. Department of Health & Human Services

HACKER'S DELIGHT...

P.C. BOARDS (POPULATED)
TERMINALS
DISK DRIVES
COMPONENTS

- CAPACITORS
- SWITCHES
- RELAYS
- SOCKETS and many more

VISIT US AT OUR SPACIOUS SHOWROOM



ELI HEFFRON & Sons inc.

139 HAMPSHIRE STREET
CAMBRIDGE, MA. 02139

(617) 547-4005

Honda Owners

- NOW SPECIALIZING IN HONDA CARS ONLY
- ALL WORK GUARANTEED
- HONDA FACTORY TRAINED MECHANICS
- HOURLY RATE: \$6.00 BELOW DEALER

CARL'S SUNOCO

HONDA HOUSE

209 Broadway, Camb., MA 547-1950
(NEAR KENDALL SQUARE AND MBTA)

5% Off All Labor

On any Honda with this coupon

GET IT DONE RIGHT THE FIRST TIME AND PAY LESS!!

Automatic and standard transmission repairs
and internal engine repairs are our specialties

sports

Hockey loses second in a row, beaten by Stonehill

By Peter Dunn

The fans of the MIT men's hockey team are a fickle bunch. Either that or they were all at home last Saturday watching the pre-pre-game shows for the Super Bowl while the Beavers were facing Stonehill College. After last Wednesday's game against Tufts when the stands were filled to maximum capacity, it was a little depressing to see only 20 or 30 diehards in the audience, some of whom were no doubt Stonehill supporters. Are MIT fans so fairweather that they refuse to come to a game after only one loss?

Not to worry — if you missed the game (hockey not Super Bowl) then you didn't miss much. The Beavers lost the game 7-2 to Stonehill in what can only be described as an extended exercise in frustration. True, the Beavers were missing Alex Jessiman '88, their star defenseman, but MIT has shown that they can win games without Jessiman's aid (e.g. 6-1 win against Gordon College at Wenham, Mass.). Let us only hope that this second loss is not the beginning of a downward slide for the Beavers.

The first period of the game against Stonehill buried the Beavers for good. Stonehill put four unanswered goals into the net while MIT could not even score on three powerplay opportunities.

The first three minutes of the game were dominated by MIT as Stonehill could not get the puck out of their own zone. However, even though the puck remained in the Stonehill zone, the Beavers could still not manage to put many shots on goal, instead mostly playing against the boards. Then, three minutes into the period, an interference penalty against MIT resulted in a power-play goal for Stonehill and the Beavers lost all composure.

MIT's loss of confidence was so great that their usually powerful power-play unit fell totally apart (some might attribute this to the absence of Jessiman who plays center on one power-play line). During the first MIT power play Stonehill scored short-handed while the Beavers did not even get one shot on goal. More scoring opportunities arose during MIT's second power play as Rick Russell G took several shots from

the point. However, the MIT forwards failed to screen the Stonehill goaltender during these opportunities and he had no problem seeing and stopping Russell's shots.

After an initial burst of good playing, the Beavers had plenty of trouble getting the puck out of their own zone. In addition they failed to clear opponents out of the slot so that two goals were scored as the MIT goaltender, Doug Shukert G, was screened. The other two Stonehill goals were scored as speedy Stonehill forwards outskated Beaver defensemen and in both cases beat Shukert with backhanded shots.

Down 4-0, their power-play unit unproductive, Coach Joe Quinn had a very long talk with his team during the first intermission — so long that one of the officials had to come and get the team from the locker room. The stands had by now filled up to about 150 spectators — still a small crowd but not quite so depressingly small as earlier — and Peter Gasparini '88 led several whoops and cheers as the team filed onto the ice.

The Beavers came out during

the second period passing better and skating harder but again, during a power play early in the period, could not produce a goal. It was becoming increasingly clear that Stonehill's penalty killing squad was far superior to MIT's power-play unit.

As the roles reversed three minutes later when the Beavers were assessed a holding penalty, Gasparini, who had replaced Shukert in goal, showed the stuff of which goaltenders are made of when he made several amazing saves. This sparked some pressure from the MIT offense but despite good scoring opportunities, the Stonehill goaltender also made some amazing saves, keeping the Beavers scoreless.

The period was fast paced, perhaps too fast for the slower MIT players. The Beavers had problems passing out of their own zone and were continually stopped at the Stonehill blueline as they attempted to stickhandle into the zone. It might have been better to reverse strategy, stickhandling out of their own zone and passing more in the neutral zone to break into the Stonehill zone.

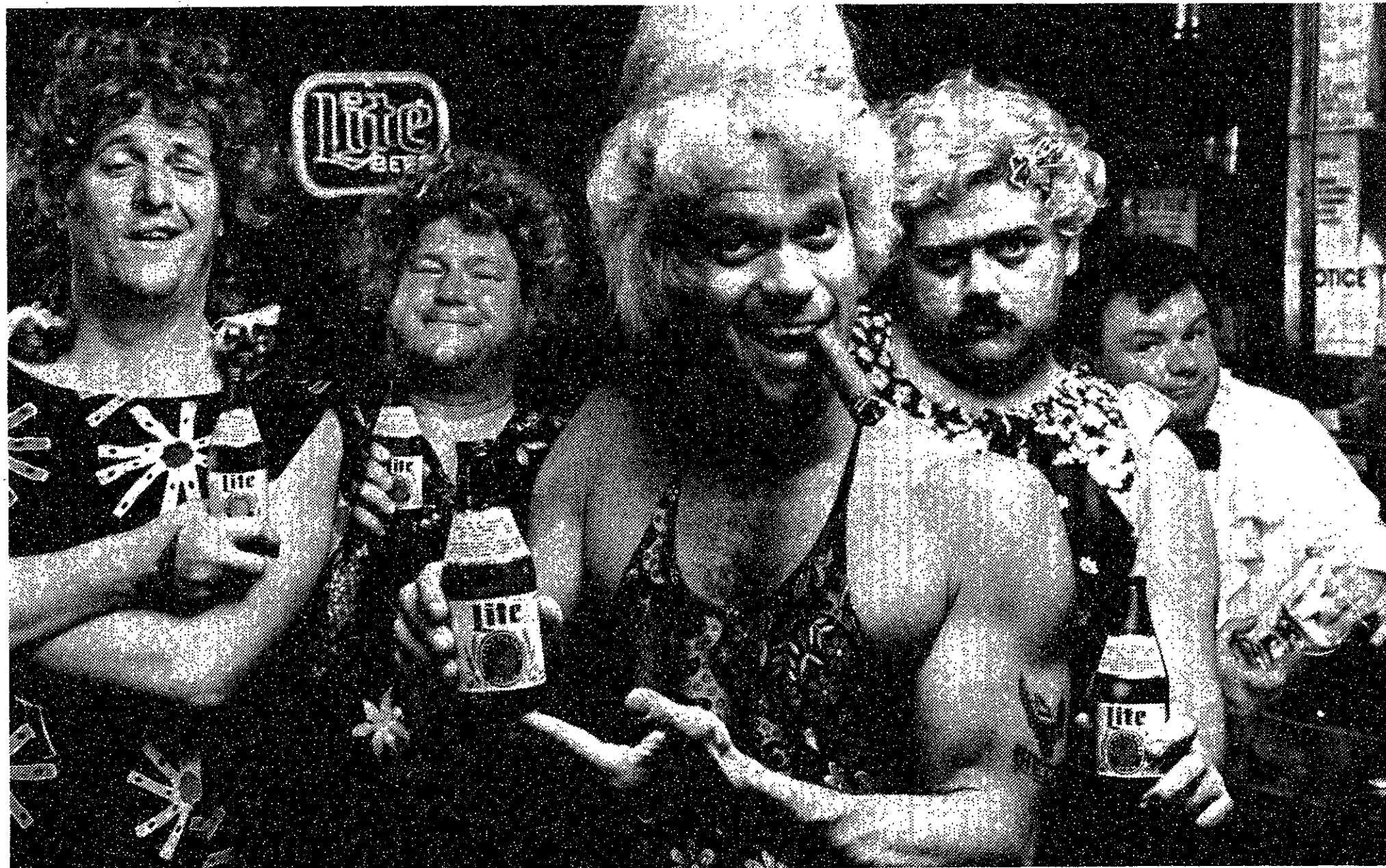
Despite the better play in the second period, Stonehill still put two more goals on the scoreboard while keeping their shutout secure. The first goal came as a Stonehill forward pushed his way past three MIT players, each of whom got a check in but did not manage to knock the forward off the puck. The second goal came as the MIT defense was again caught too far up the ice and a long pass by Stonehill resulted in a breakaway.

The third period started getting out of hand as several fights broke out while the officials seemed to turn a blind eye. The game was more aggressive which was more to MIT's advantage since they play a slower, harder hitting game. The Beavers, now playing their game instead of Stonehill's, outscored Stonehill 2-1 for the period.

The first MIT goal came as Eric Brown '87 put the puck through the Stonehill goaltender's legs on a two-on-one breakaway. Later, the MIT power-play unit finally scored a goal when Russell took the puck rink long, the Stonehill goaltender made several

(Please turn to page 21)

WHY "HELGA" PISCOPO EX-EAST GERMAN SWIMMER DRINKS MILLER LITE



© 1986 Miller Brewing Co., Milwaukee, WI

"TO KEEP
THE GIRLISH
FIGURE"

THERE'S
ONLY ONE
LITE BEER



sports

MIT hockey loses to Jumbos, 7-5

By Peter Dunn

Last week it appeared that the MIT hockey could do no wrong, and that it would almost certainly take the championship trophy at the Ben Martin Hockey Tournament. The Beavers, however, failed to deliver on these expectations as they lost 9-5 to the Tufts Jumbos in an exciting championship game last Wednesday.

The game began promisingly enough. The crowd at the MIT Athletic Center was huge, filling the entire stands, although a large (and vocal) part of the audience was comprised of Tufts supporters who had come for the game. The beginning of the first period seemed to indicate a blowout for the Beavers as they quickly put two goals on the scoreboard, coming from Marshall Jackson '87 and from Rick Russell G. These two goals in the first three minutes of play got the crowd excited, and they clamored for more.

The period was hard hitting and very fast paced but the Beavers managed to keep pace with the faster skating Jumbos. The MIT checking deep in the Tufts zone seemed to intimidate the Jumbos, while at the other end of the rink goaltender Peter Gasparini '88 made several good saves to keep the lead.

After the initial burst of goals however, the mood of the game seemed to shift. A penalty to Alex Jessiman '88 resulted in a powerplay goal for Tufts and soon the Beavers were no longer in control of the game. Tufts began putting all the shots on net

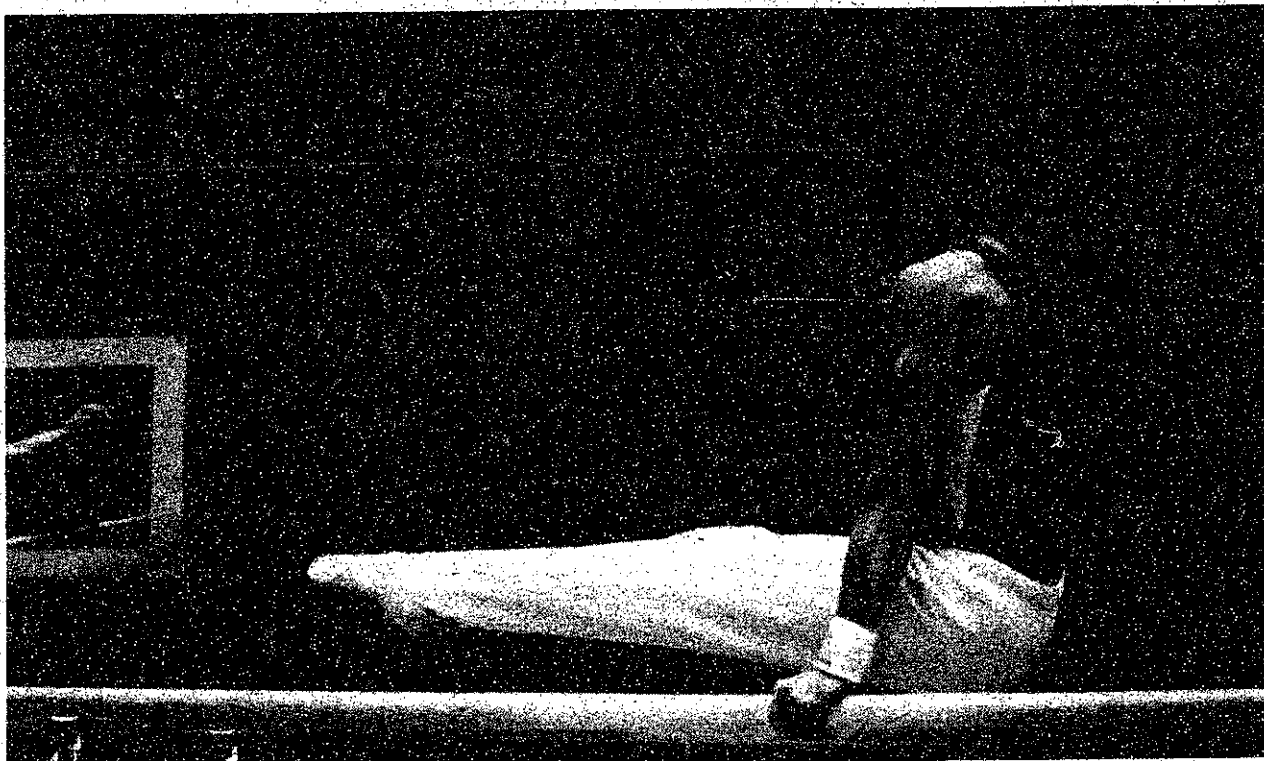
while MIT could not respond.

The Beavers were having their passes intercepted as they came out of their own zone, and the Jumbos were dumping the puck back into the MIT zone, relying on their faster forwards to beat the Beavers to the puck. This strategy seemed to work well and Tufts put in a second goal at the 13:09 mark when a Jumbo forward beat the MIT defense and put the puck in from a difficult angle.

The period ended a 2-2 tie with the momentum in Tufts' favor. However, MIT is known for breaking a game wide open after opening with only a slim lead in the first period, so the crowd was not totally displeased. The Beavers needed only to begin the second period well to turn the game in their favor.

As with other second periods in other games before, a large part of the crowd began spelling out M-I-T in typical cheering style. The crowd began its cheer — the Beavers were on a powerplay from a penalty against the Jumbos late in the previous period — and a Tufts forward broke up the left wing and put in a short-handed goal past a frozen Gasparini just 15 seconds after the faceoff. Gasparini could do nothing but stare at the puck as it zipped past him. The crowd, immersed in its own self adulation, continued the cheer as if it were the Beavers who had just scored. Finally, the cheer died to a whisper before the last letters of "Technology" could be spelled

(Please turn to page 21)



Mark S. Abinante/The Tech

Jason Kipnis '87 does an L-seat on the parallel bars last Saturday.

Men's gymnastics wins tri-meet

By Eric M. Reifschneider

The MIT men's gymnastics team kept its undefeated record intact Saturday with a victory over the University of Vermont and Coast Guard in Dupont Gymnasium. The final score was MIT 194.7, Vermont 187.55, and Coast Guard 157.25. MIT's season record now stands at 4-0.

The meet was MIT's first real challenge of the season after easy wins over Dartmouth and Yale, and the team came through despite losing co-captain Matt Kaplan '87 during warmups. Kaplan

was warming up on floor when he landed a back flip off balance and fractured a bone in his foot. He will probably miss the rest of the season.

Vermont jumped out to an early lead of 2.75 on floor despite strong routines by co-captain Brian Hirano '87 and Mark Malonson '89. Hirano received an 8.2 for a sharp routine including a solid double back flip and a straddle one and one quarter front flip, and Malonson did a front flip immediate front flip for a 7.1.

MIT turned the meet around by outscoring Vermont by more than six points on pommel horse. The best scores were a 6.45 by Alan Nash '89 and a career-high 7.2 by Hirano. Nash performed exciting flair circles in his routine, and Hirano dismounted by pressing through a handstand.

MIT never relinquished this lead as several gymnasts hit their routines in the clutch. Hirano scored 8.75 on rings, 8.05 on parallel bars and a meet-high 9.0 for his piked Tsukahara vault (a cart-
(Please turn to page 21)

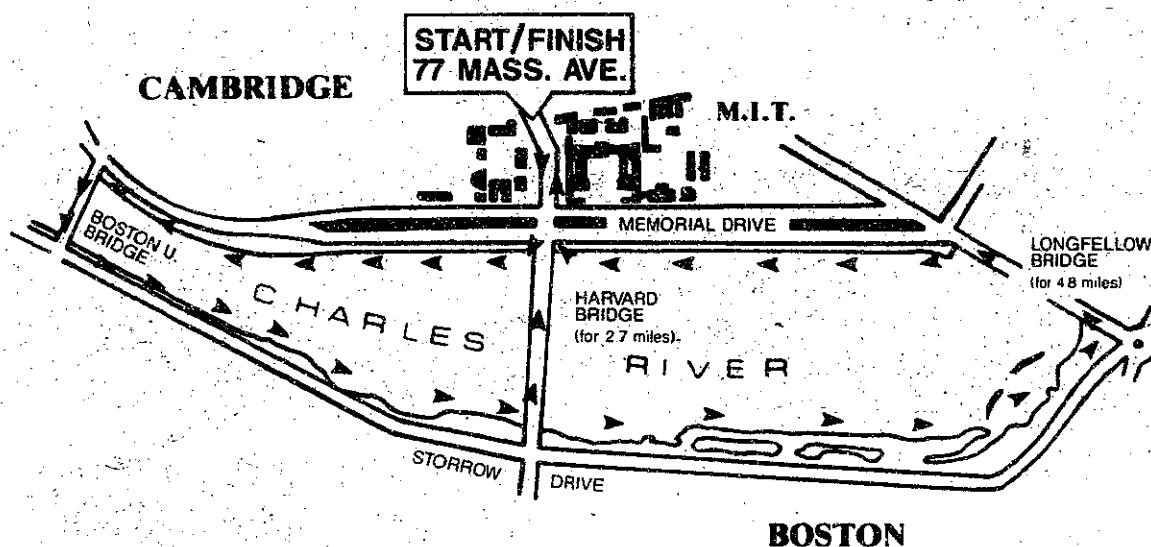
Join us for an afternoon jog

On Tuesday, February 10th and Wednesday, February 11th, representatives of General Electric will be interviewing at the Student Center on your campus. Please contact your placement office for schedule information.



If you're interested in meeting our people in a completely informal setting . . . to find out more about the General Electric Company . . . put your track shoes on and join us and pick up an MIT/GE runner's shirt in the process. If for some reason you can't make it . . . just remember your interview with General Electric on Tuesday or Wednesday.

Our Technical Recruiters would like you to join them for an afternoon jog on Monday, February 9th. We'll begin at 77 Massachusetts Avenue at 5:30 p.m., jog down Memorial Drive to the Boston U. Bridge, cross over to Storrow Drive and head down to the Longfellow Bridge, cross back over to Memorial Drive and finish up our 4.8 mile jog back at 77 Massachusetts Avenue. Some of our managers will turn back up Massachusetts Avenue at the Harvard Bridge for a 2.7 mile run.



GENERAL  ELECTRIC