

Happy Passover

Continuous
News Service
Since 1881

Volume 106, Number 21

The Tech

MIT
Cambridge
Massachusetts

Friday, April 25, 1986



A view of MIT from the Esplanade.

MIT to limit size of faculty in future

By Katie Schwarz

Faced with increasing competition for decreasing federal research funds, MIT plans to constrain the size of its faculty over the next decade.

No significant reduction is possible in the next five years without unduly restricting new appointments, but a five or ten percent decrease could be achieved over ten years, according to the *Long-Range Plan*, issued last year by the Institute Planning Group.

The report foresees no change in the fraction of junior faculty members who receive tenure, but recommends hiring fewer new professors per year.

This direction is one of the clearest signs that MIT has ended a 25-year period of expansion when decisions about growth and change were often decentralized.

MIT intends to monitor future growth through Institute-wide discussions, said Provost John M. Deutch '61.

The research grants that financed MIT's development during the 1950s, 1960s and 1970s have become scarcer under the Reagan administration, explained former Provost Francis E. Low, who chaired the Planning Group. Other schools are competing

more strongly for the remaining funds, he pointed out — and their larger endowment income often allows them to charge less for a research package than MIT.

The difficulty of finding grants puts too much pressure on professors, the *Long-Range Plan* states, and MIT's practice of expecting faculty to pay some of their own salaries through research grants worsens it.

One way MIT can improve the average level of support it gives to professors is to distribute it among fewer of them, the *Long-Range Plan* continues. It thus recommends diminishing the faculty size slightly until new endowment for faculty support becomes available.

Pressure on the faculty

"[The] extra obligation placed on faculty members to find external support, not only for their normal research expenses, but for part of their salary, contributes to their sense of pressure and threatens their full commitment to teaching and scholarship at MIT. This is particularly true of junior faculty members who in addition have the tenure decision ahead of them," states the *Long-Range Plan*.

(Please turn to page 20)

Behnke describes new ratings

By Derek Chiou

The Committee on Undergraduate Admissions and Financial Aid (CUAFA) began testing a new applicant ranking system yesterday for the Class of 1991. The system is designed to make rankings more consistent with an applicant's subjective qualities, such as intellectual curiosity and leadership.

The student body will not be substantially changed if the office implements the new system, according to Michael C. Behnke, director of admissions. The student ratings will conform to an applicant's total record and par-

ticular strengths and weaknesses, making the rating broader and more accurate, Behnke said.

There is "no science" in evaluating applications, he added. Rather, the main objective of the

new system is to make the admissions committee more comfortable in evaluating applications.

The Admissions Office has been de-emphasizing small differ-

(Please turn to page 21)

MIT to get dining service proposals

By Ben Z. Stanger

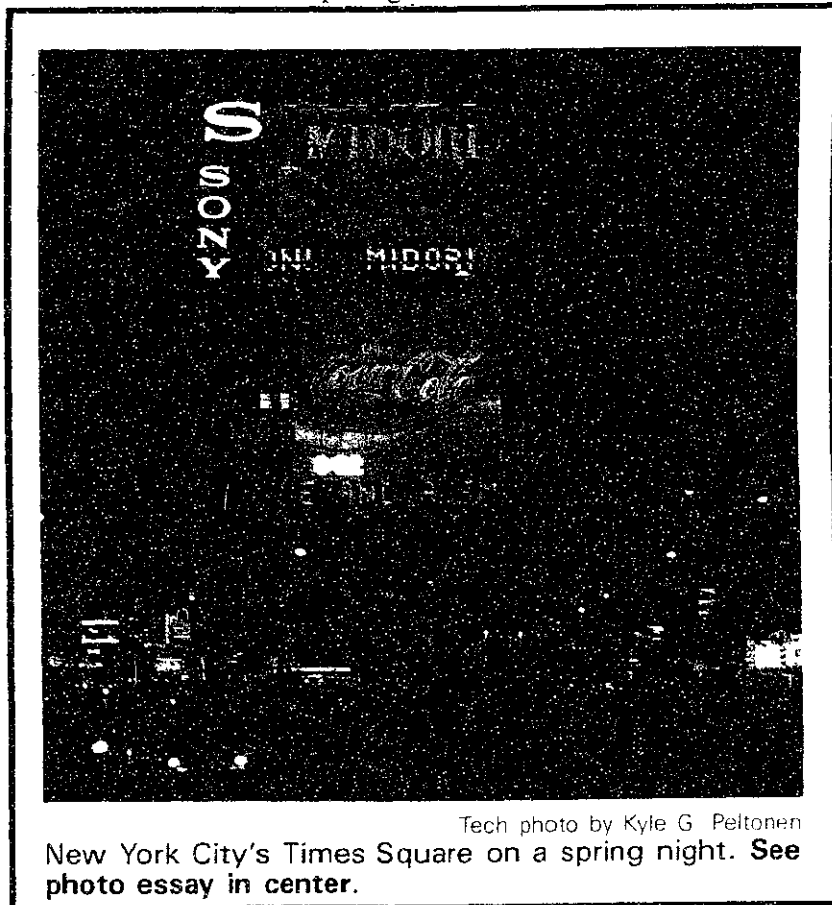
MIT will have received proposals from seven food service management companies to operate MIT's dining facilities by next Thursday, according to Director

of Housing and Food Services Gene Brammer. Brammer, who is head of the search committee for a new service company, said the committee held a "bidder's conference" for interested services on Mar. 12.

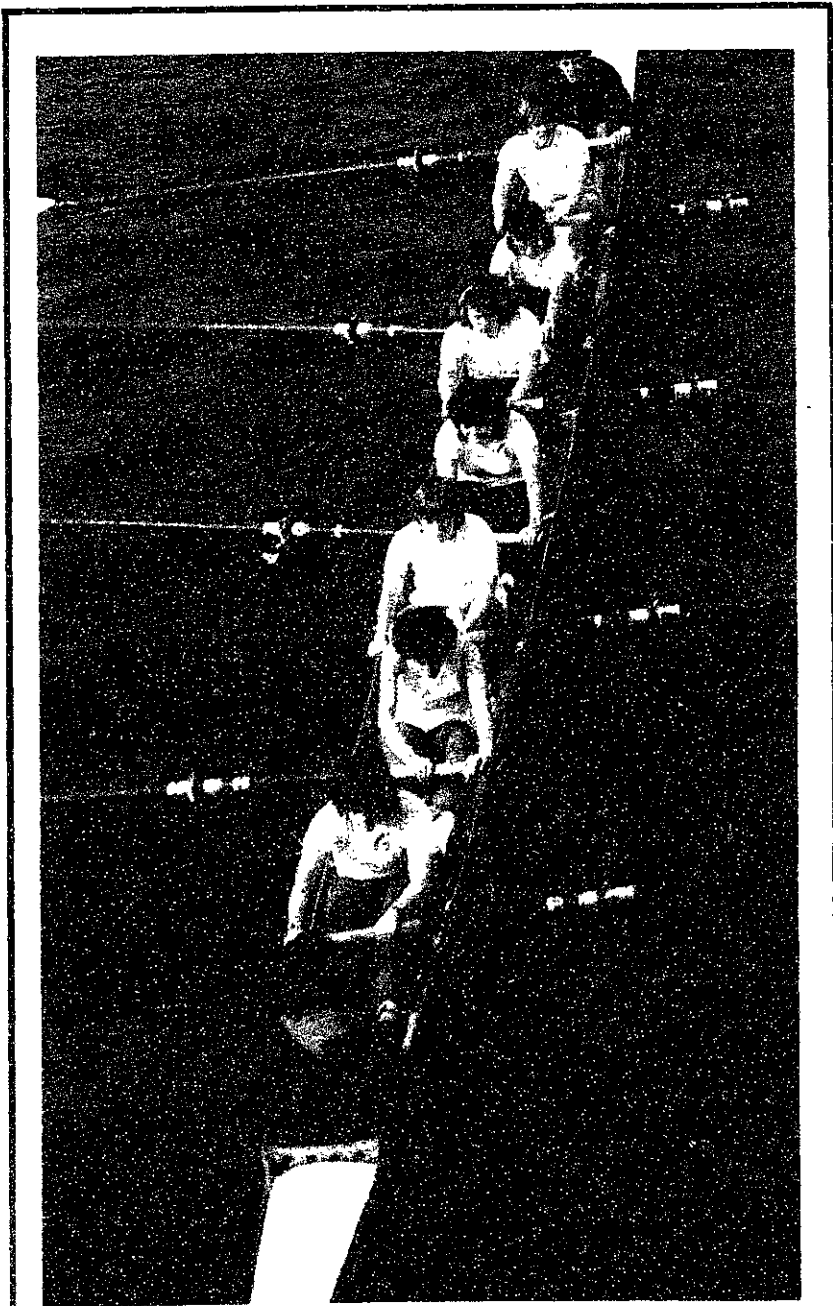
MIT first decided to explore the possibility of hiring outside food management operations in February. Brammer explained that these companies are better able to survey their customers needs than MIT food services.

Eight management companies attended the conference, which Brammer said was "more of an announcement than anything else." Management companies in attendance received a Request for Proposal (RFP) brochure, which describes the MIT dining facilities and the needs of the community.

One of the companies dropped (Please turn to page 18)



Tech photo by Kyle G. Peltonen
New York City's Times Square on a spring night. See photo essay in center.



Tech photo by Mark S. Abinante

The MIT women's crew team at practice.

Shanties erected at Harvard

By Earl C. Yen

Anti-apartheid demonstrators at Harvard University built five shanties and an 18-foot high "ivory tower" in Harvard Yard on April 15 in protest of the school's investments in US companies operating in South Africa.

The divestment campaign, which is organized by the Southern Africa Solidarity Committee (SASC), aims for full and immediate divestiture of Harvard's \$416 million in South African related stocks, according to SASC spokesperson Jonathan Martin.

More than thirty protesters erected a tall white structure and surrounded it with shanties in the early morning on April 15, Martin explained. Around 20 demonstrators have been sleeping in the

shanties every night since then.

The Harvard administration did not grant the protesters permission to build the shanties, according to Margery Heffron, associate director of the Harvard News and Public Affairs office. But Harvard has no immediate plans to remove the structures, which it views as "a legitimate expression of protest," she added.

Daniel Steiner, vice-president and general counsel explained, "Unless there is a problem of health, safety, violation of state or local law, or interference with the rights of others, the university now has no plans to do anything about the system."

Martin explained that SASC is planning to engage in "further

civil disobedience" if the Harvard administration refuses to respond to the protesters' demands.

Heffron said the administration has given no indication that (Please turn to page 20)

inside

Interview with James Roosevelt Jr. Page 2.

GSC president elected. Page 19.

MIT historian wins prize. Page 19.

Jim Roosevelt: Candidate for 8th CD

★★★ Campaign '86 ★★★

Interview

By Julian West
Sixth in a series.

James Roosevelt Jr. is a lawyer and one of a dozen Congressional candidates for the Massachusetts 8th district. He is a Democrat by inclination as well as birth: his father, James Sr., was a six-term Congressman, and his paternal grandfather was President Franklin D. Roosevelt. James Jr. graduated cum laude from Harvard in 1968 and received his J.D. degree from Harvard Law School in 1971.

Q: You say you've been a lawyer for a firm representing MIT. How do you feel about switching from law to politics?

A: I've always been involved with both, actually. I've been legal counsel for the state Democratic party for almost nine years, and I have used my legal education since graduating from Harvard Law School in 1971 in representing tenants for Cambridge and Somerville legal services. The majority of my work has been in health care law, but I've been a community activist in health care as well. It's a question of which one I'm doing full time: a little bit of law and politics full-time, whereas before I just did some politics and law full-time.

Q: You have been outspoken in your criticism of political action committees, yet the Democratic state committee, for which you work, does take PAC money.

A: I think it's very different. The Democratic state committee conducts all its activities out in the open. It runs open caucuses, it holds conventions that are open to the public, things like that. It doesn't vote on issues, or draft legislation or anything like that. There's nobody at the state house or in Congress walking around beholden to a special interest group if the Democratic state committee takes political action committee money.

Q: So you feel the candidates shouldn't because they would be beholden?

A: Right. I think that's the great danger: that they would be beholden or at least that Political Action Committees would have better access to them.

I think there's a great need for somebody in Congress who understands what's necessary to provide quality health care, what's necessary to see that there's equal access to care at all economic levels.

Q: You also mentioned that you worked with health care. What insight does that give you into the federal health care system?

A: I work directly with the federal health care system as a lawyer and as an activist. This past summer I was one of the 8 lead negotiators on the Massachusetts health care coalition, trying to design a way to allow Massachusetts to continue to emphasize quality of care and access for poor in the hospitals, even though we were this past summer forced into the federal system for the way Medicare pays for hospitalization. I think that the steps that are being taken by the federal government to contain costs are forcing old people out of hospitals quicker; at the same time, the federal government is cutting back on home health care so that we're sending people out sicker, yet refusing to pay for their care at home. I think there's a great need for somebody in Congress who understands what's necessary to provide quality health care, what's necessary to see that there's equal access to care at all economic levels.

Q: But this is going to cost money.

A: It's going to cost money, but it's not necessarily going to cost any more money than the federal system. We had a system for two years here in Massachusetts as an experimental waiver from the federal system that saved as much or more money than the federal system does. It reduced health care cost inflation in Massachusetts from 18 percent to less than 6 percent in 2 years. Yet instead of doing what the federal system does, which is set these artificial standards — where if you are on Medicare and you go into the hospital for a gall bladder operation, the hospital gets paid the same amount if you go for two days or if you go for two weeks. So obviously, what's the incentive? They'll shove you off quick. Under the Massachusetts system, there was an overall budget goal set for every hospital, but it was up to the hospital and their medical staff how to meet that goal, and if they ran over, they only got paid for half the overrun. If they ran under, they got to keep all the savings. But that preserves judgement and discretion on the local level of the hospital administrators and the medical staff. And I don't think it costs any more. I think it costs less.

Q: But speaking of costing money, as a legislator you have to deal with the Federal Budget. What do you feel about the present budget deficit and what would you do about it?

A: I think it is necessary to attack the federal budget deficit, because over the long term I think we are having a serious effect on the debt that we run up and the debt service that has to be paid every year. Over the short term there are also some bad effects, particularly on foreign trade, but it's not a short term problem that has to be cured overnight. Nonetheless, I think we do need to attack it. We need to attack it through some easy choices but a lot of hard choices — not though Gramm-Rudman, which removes all the choices. Gramm-Rudman affects programs that have been cut to the bone just as heavily as

it affects programs in which there's lots of waste. It's nonsensical, it's spineless, and it's also very damaging to some very important programs ranging from child nutrition to student loans.

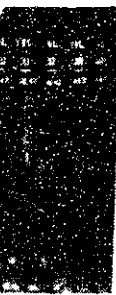
The easy choices that I think we have to make to cut the budget deficit have to do with Pentagon spending and unnecessary weapons systems, procurement policies that allow short term contracts so you end up putting all the overhead into toilet seats, driving the costs up to six or eight hundred dollars a toilet seat. The hard choices have to do with programs that once had a rationale, ones that we would like to be able to do but that we can't afford any more or have lost the need for.

Q: How much would you scrap from the defense budget?

A: I would scrap, in the calculation I have come out with, \$54 billion.

Q: Can you tell us briefly how you made that calculation?

A: That consists of a combination of particular weapons programs I would not continue. Examples are the MX, the B-1 bomber, the Trident II. Secondly, it involves changing procurement policies, so there is a much stronger emphasis on competitive bidding rather than sole source suppliers. And an emphasis on longer term contracts to spread the costs out. Thirdly, I'd do it by eliminating the minor differences in weapons systems between the various services. So it's a combination of those strategies.



Tech photo by Jerry Broda

Q: Tom Valley had billed himself as "the other guy," in reference to Joe Kennedy. You've also been rather critical of Kennedy. Are you the "other guy" now?

A: I would certainly not deign to use that slogan. The slogan my radio ads use is to simply point out that Joe and I are the main contenders to succeed Tip O'Neill. I have not been critical of Joe personally. I have tried to identify specific issues on which he and I differ, and that's hard because he hasn't spoken specifically on very many issues.

But so far, we've found that we differ very strongly on campaign financing: I favor limiting total campaign spending and public financing. We differ specifically on taxes: I'm opposed to any personal tax increase. I favor a minimum corporate tax to reach the 44 most profitable companies in the nation that haven't paid any taxes in the last four years. Joe favors a tax increase as a last resort. He said, "You could say a personal tax increase," and I said "Which taxes do you favor raising as a last resort?" and he said he hadn't thought about that yet.

I differ with him on how to deal with Central America. Joe has a simplistic plan for Nicaragua which involves making a deal with Ortega not to do business with the Soviets anymore. I think we've got to look at the history and the realities of that region and work regionally with the other countries, in particular Honduras, and provide humanitarian aid, emphasize non-intervention, self-determination, economic development, and thereby attempt to persuade the people to make their own self-determination for democracy and human rights.

I think that every responsible country has a duty to be part of solving the problem of international terrorism.

Q: You don't have the name recognition of several of the other candidates. Four or five of them have already been elected and are known to the voters of this district. What makes you a "contender"?

A: I think we are the main contenders because I've been involved in the life of the district on a daily basis for over twenty years, and have been active politically through the state and national democratic parties throughout the district. I think that I have the potential to attract a broad base of support in a way that none of the other candidates do. If you look at particularly those who held state legislative office, they all do this early in an election very well in the district that they've represented. George [Bachrach] does very well in the State Senate district, but that's only a third of the district.

Q: You said that you'd like to stop leaning on Nicaragua militarily, but to lean on them economically.

A: I'm not saying we should impose sanctions. We should offer them humanitarian aid. We should offer assistance at first unconditionally, but then with conditions, so that there's an incentive for them to respect human rights and permit real democracy. Just as I think we should not give aid to repressive right-wing regimes, I don't think we should give aid to repressive left-wing regimes, like the Sandinistas.

Peace has to be our goal every time we make a foreign policy or a military decision.

Q: You have taken a fairly tough stand on international terrorism. How far does the American jurisdiction extend?

A: I think the US involvement has two bases. First of all, our people and our installations are often at risk, whether it be American aircraft carriers, or embassies, or military bases. Secondly, I think that every responsible country has a duty to be part of solving the problem of international terrorism. So I don't think it's interfering in any other

country's affairs to try to work out an international system for dealing with terrorism. I think we have to undertake diplomacy in advance so that other countries will agree to prosecute these criminals, and secondly that they'll agree to ostracize any country that won't prosecute them.

Q: What do you think the United States should be doing in regard to South Africa, and what about divestment?

A: I favor divestment. For a long time I hoped that the Sullivan principles would be effective. I have been convinced that they are not effective and divestment is the only way that American industry can pressure the South African government to begin respecting human rights. I also would ban the sale of South African gold and diamonds in the United States. Only strong measures show that we will not participate in that kind of political oppression.

I don't think SDI should be anything like the foundation of our defense strategy.

Q: You have said that the Soviet Union shouldn't be the only focus of American foreign policy, and yet it's something that has to be dealt with. Do you have any specific arms control proposals?

A: I think the goal of arms control has to be the fundamental precept of every decision that we make in the defense area. Peace has to be our goal every time we make a foreign policy or a military decision. I favor a mutual and verifiable nuclear freeze. I favor responding meaningfully to Gorbachev's initiative on nuclear disarmament. Freeze, meaningful dialogue, implementing SALT II — I can't say that I have any unique proposals in the area.

I have no way of knowing whether the Soviets are sincere. I think we always have to go into it with our eyes open. Rather than dismissing those proposals out of hand however, we should come in and make reasonable, and potentially acceptable, proposals for verification and mutuality and try to carry that process forward.

Q: Could you comment on the Strategic Defense Initiative?

A: My views on that are formed by the unique opportunities we have in this district for collecting information [at MIT, Draper labs, the Kennedy School]. We need to do the basic research for SDI, I think most of it is research that has to be done anyway, perhaps in a less directed fashion. I don't think SDI should be anything like the foundation of our defense strategy. I think it's far from certain that it will ever be technically feasible. It is also totally unclear from what Reagan is saying whether it's truly nonnuclear.

news roundup

from the associated press wire

World

European Community expels Libyans; Libya expels journalists

In a Luxembourg meeting on Monday, the foreign ministers from all 12 Common Market nations voted unanimously to restrict the activities of Libyan missions. Following this, West Germany, Denmark, Belgium, the Netherlands, and Luxembourg said they would proceed with plans to expel Libyan residents and diplomats. France has already done so. Britain announced Tuesday that it planned to expel 21 Libyan students for suspected involvement in organizing Libyan student activities to support the Khadafy government. Italian authorities announced the arrest in Rome of one former Libyan diplomat and issued an arrest warrant for another on suspicion of plotting to kill the US ambassador to Italy, as well as the Saudi Arabian and Egyptian ambassadors.

In Libya, a confusing order was issued asking US and European reporters to leave while reporters from the East Bloc, Canada and Japan were told they could stay. Later that day, Libya's information minister told reporters that they're not being expelled, but that their "mission is over." (AP)

French weekly claims US planes flew over Europe

French military sources say the US F-111s that bombed Libya last week flew over the Pyrenees mountain range, rather than around France and Spain through the Straits of Gibraltar, as Washington has maintained. The sources were quoted today by *Le Canard Enchaîné*, the Paris investigative weekly. The newspaper says that the French Defense Ministry denies the story but that it admits that French military sources have been spreading it. The sources say that the jet bombers used automatic pilots, allowing them to fly at an altitude of 100 metres and so escape radar detection. (*The Boston Globe*)

Sports

Kristiansen wins women's marathon; De Castella barely misses world mark

Australian Rob de Castella ran the third fastest marathon on record to run away with the 90th Boston Marathon on Monday. He led almost from the start, to leave runners-up Art Boileau of Canada and Orlando Pizzoloto of Italy well behind. It was the fourth straight year that there was a runaway victory in the men's category. De Castella's time of 2:07:51 is third by under a minute to a 2:07:12 run by Carlos Lopez, and one a second slower by Steve Jones.

In the women's field, Ingrid Kristiansen of Norway led from start to finish, clocking in at 2:24:55. She was followed two and a half minutes later by Carla Beurskens of the Netherlands, and Lizanne Bussieres of Canada took third.

The top wheelchair finisher was Andre Viger of Edmonton, Alberta, who set a world mark of 1:43:45. Other impressive feats included that of John Kelley, who won the marathon in 1935 and 1945. At age 78, Kelley ran the Boston Marathon for the 55th time, finishing in under 5 hours. Kelley's son, 55, won in 1957, and finished in just over 3 hours Monday. Randy Winn clocked in at 2:59:19, for his third sub-three-hour marathon in as many days. Winn also ran in Lawrence, Kansas on Saturday, and London, England on Sunday. (*The Boston Globe*)

Weather

Clearing up...

As the storm system that dropped 30 cm of snow in northern New Jersey moves out to sea, our weather will brighten considerably. The weekend weather should be fair except for a few showers late Saturday and slightly cooler weather on Sunday as a cold front moves through the area.

Friday: Clearing. Highs about 15°C, coolest along the coast. Winds light out of the north. Clear and cool at night, lows around 5°C.

Saturday: Mostly sunny with some afternoon clouds. A shower is possible late in the day. High 18°C.

Sunday: Partly cloudy and cool. High 15°C.

Forecast Wednesday by Michael C. Morgan

Compiled by Barbara Masi

British writer "executed" in Lebanon

The Revolutionary Organization of Socialist Moslems has released a videotape showing a man dangling from a scaffold that it says was kidnapped British journalist Alec Collett. The tape was given to the Beirut newspaper *Al-Nahar* with a letter saying that Collett was "executed" in retaliation for Britain's support of the US raid on Libya. The kidnapers reportedly urged other groups holding Western hostages to execute them also. (AP)

Hungarian parliament clashes briefly with government

The Hungarian parliament threw out two provisions of a draft tax bill, delivering the first parliamentary defeat ever suffered by a government in the Soviet bloc. A Budapest deputy proposed an amendment to the draft tax bill which would have exempted weekend cottages built by low-income people for personal use. The finance minister, Hetenyi Istvan, opposed the measure, but Parliament adopted it by 193 votes to 90. Political observers judge that the Hungarian parliament has become more lively since June elections which offered voters a choice of several candidates in most districts. (*The Economist*)

PEI elects Liberal government

Prince Edward Island became the third Canadian province to oust a Progressive Conservative government since the Tories gained power in Ottawa in 1984. The Liberals gained over 50 percent of the vote and 21 of the 32 seats in the provincial legislature. The new Liberal premier is to be Joe Ghiz, a 41-year-old lawyer. Ghiz, who is of Lebanese extraction, will become the first non-European premier in Canadian history. The Conservatives, who had been in power in PEI for 7 years, saw their 18 seats reduced to 11, and Premier James Lee suffered the embarrassment in losing his own constituency. There was a high turnout, as 80 percent of the 86,000 eligible voters cast ballots. Two other Canadian provinces installed Liberal governments last year: The election in Ontario brought to an end 40 years of Tory rule, and the separatist Parti Québécois was thrown out of office in Québec. (*The New York Times*)

Local

Kennedy criticized for check gaffe

Joseph P. Kennedy 2d's rejection of a personal contribution to his 8th Congressional District campaign from a prominent Arab-American sparked charges of racism. The \$100 contribution from former US senator James Abourezk, a liberal Democrat from South Dakota, was rejected last week by Kennedy staff members reviewing political contributions. (*The Boston Globe*)

Massachusetts ruling issued over 1982 World Airways plane crash

Federal judge Robert Keeton, regarding the plane crash at Logan Airport, ruled that World Airways was 50 percent responsible, Massachusetts Port Authority 30 percent, and the Federal Aviation Administration 20 percent. A second trial will be held in the Fall to determine damages in the case. World Airways is seeking \$80 million in aircraft damages and passenger claims. (AP)

Keep in touch with the 'Tute...

The Tech's been keeping in touch with the Institute for over a century — covering issues both on and off campus that affect MIT students. From the future of student loans to the future of pass/fail grading, from fun on the football field to fun in and around Boston and Cambridge. *The Tech* has kept its readers informed and entertained since 1881. There's no better way for parents (and aunts and uncles and brothers and sisters and goldfish) to keep in touch with what's going on at the Institute. Subscribe to *The Tech* — join 12,000 readers who keep in touch...

with **The Tech.**

Send me home.

US Mail Subscription Rates

1st Class: 2 years \$65 1 year \$35
3rd Class: 2 years \$24 1 year \$13

Foreign Subscription Rates

Canada/Mexico (air mail): 1 year \$38
Overseas (surface mail): 1 year \$38
Prepayment Required New Renewal

Name: _____

Address: _____

The Tech

P.O. Box 29
MIT Branch
Cambridge, MA 02139

opinion



Column/Alan Szarawarski

Libya bombing was a mistake

When the Disarmament Study Group was in Washington on Thursday, we questioned Senator Kennedy about the bombing of Libya. His only response to substantive criticisms of the bombing was a frustrated, "We had to do something." His response echoes the feelings of many Americans. Americans always support the President during military actions because they get caught up in a siege mentality that seems to demand dramatic action. Only after the crisis has passed do people reflect on the long term consequences of an action like the bombing of Libya. Expect a growing realization in the coming weeks that the administration's

actions were counter-productive and immoral.

The net effect of the Libya bombing will be an increase in terrorism. The tightening of security at American embassies and bases suggests that even the Reagan administration recognizes this fact.

There are college age Palestinians who have spent their entire lives in refugee camps. To them, Khadafy is a hero for standing up to the United States. Bombing Libya only strengthens Khadafy's position and makes it easier for him to use the United States as a scapegoat.

The administration was wrong when it claimed that the bombing "struck at the heart of Khadafy's ability to conduct terrorist activity." Terrorists do not need large facilities. Most terrorist attacks are carried out by just a few people using small, hand-held weapons. Even if the United States completely expelled terrorists from Libya, they could easily go elsewhere, such as Iran or Syria.

The most ludicrous claim by an administration official was George Shultz's remark that the United States hoped to encourage the overthrow of Khadafy. While Khadafy does have ties to the Soviets, he is hardly a stable ally! There are a number of anti-Khadafy factions in Libya, some of them solidly pro-Soviet. Does Shultz really believe that a pro-American faction would have a chance of taking power after an American attack?

The bombing of Libya was immoral, as well as counter-productive. An old saying warns, "Choose your enemies carefully because you become like them." The United States rightfully condemns the killing of innocent people. But over a dozen people who had nothing to do with Khadafy or terrorism were killed by American bombs. Senator Hatfield wrote that the bombing "represented the narrowing of the moral gulf that separates Colonel Khadafy and the United States."

To write of morality in these matters is neither soft-hearted nor naive. Moral standards are what legitimize our actions and enable us to appeal to other nations for support. If we embrace a might-makes-right philosophy

(Please turn to page 7)

(Please turn to page 11)

Guest Column/James Leas

IBM policies aid Apartheid regime

International Business Machines "can do business [in South Africa] in a way that provides a model for a society in which black, white, Asian and colored might someday enjoy peace and freedom. It may be an impossible dream. But I'm not ready to give up on it," IBM President John Akers said in a *New York Times* article a year ago.

As an example of this "model," he pointed to IBM's equal-opportunity employment practices and grants for black education. He also said that IBM had a strong business interest in ending Apartheid and had committed itself to "actively work for change." He described IBM's mission in South Africa as a moral and not an economic one, saying, "IBM could not depart with very little financial sacrifice. . . . But we believe the right thing to do is to remain and redouble our efforts to advance social equality."

As an engineer at IBM, I agree with Akers that the company can be more of a force for change by staying in South Africa. But facts about the actual business operations there indicate that IBM is more a "model" for the status quo and that its sales strategies strengthen white rule.

Selling computers in South Africa means doing business almost exclusively with whites. IBM omits this fact in arguing that it is a model for equality. "IBM has no black customers, even for typewriters or personal computers," according to a corporate manager responsible for the company's equal-opportunity policy in South Africa. The one exception is sales to black government officials in the "homelands."

It's not that IBM would not be delighted to sell computers to blacks if they had the need for computers and the money to buy them. But the inferior and segregated education, housing and health care, the poverty and government repression mean that blacks have more urgent needs.

Some of these needs are addressed by IBM. The company provides about \$4 million a year for black education to schools, job-training programs and a number of other organizations. Still, this is only one percent of the roughly \$400 million that IBM earns annually by doing business with white South Africans. By comparison, even IBM's tax payments to the Apartheid government far exceed its contributions to the black community.

TheTech

Volume 106, Number 21 Friday, April 25, 1986

Chairman Ronald E. Becker '87
Editor in Chief Harold A. Stern '87
Managing Editor Eric N. Starkman '87
Business Manager Michael J. Kardos '86
Executive Editor Thomas T. Huang '86

News Editors Katie Schwarz '86
 David P. Hamilton '88
 Ben Z. Stanger '88
 Earl C. Yen '88

Opinion Editors Edward E. Whang '87
 Mathews M. Cherian '88

Night Editors Robert E. Malchman '85
 Mark Kantrowitz '88

Arts Editor Jonathan Richmond G
Photography Editor Stephen P. Berczuk '87
Advertising Manager Craig Jungwirth '88

Contributing Editors V. Michael Bove G
 Bill Coderre '85
 Simson L. Garfinkel '86
 Carl A. LaCombe '86
 Sidhu Banerjee '87
 Andrew S. Gerber '87
 Michael J. Garrison '88

Senior Editors Ellen L. Spero G
 Steven Wheatman '86

Indexing Project Representative Carl A. LaCombe '86

NEWS STAFF

Associate News Editor: Andrew L. Fish '89; **Staff:** Joseph J. Kilian G, Donald Yee '87, Charles R. Jankowski '88, Robie Silbergleit '88, Salman Akhtar '89, Derek T. Chiou '89, Mary Condello '89, Jeffrey C. Gealow '89, David C. Jedlinsky '89, Stephen S. Pao '89, Irene E. Skricki '89, Sally Vanerian '89, Donald Varona '89, Anuradha Vedantham '89, Anh Thu Vo '89, Suzanne J. Sandor W '88. **Meteorologists:** Robert X. Black G, Michael C. Morgan '88.

OPINION STAFF

Columnists: Scott Saleska '86, Mark McDowell '88, Daniel W. Pugh '88, Alan Szarawarski '88, Elliot Marx '89.

SPORTS STAFF

Staff: William Hou G, Paul Paternoster '88, Jerome G. Braunstein '89, Alison C. Morgan '89.

ARTS STAFF

Associate Arts Editors: Michiel Bos G, Allison J. Druin G, Betty J. McLaughlin '89; **Staff:** James F. Kirk G, Barbara A. Masi G, Julian West G, Joseph L. Shipman '82, Stephen Huntley '85, David G. Shaw '85, Corrado Giambalvo '86, Jacqueline Gottlieb '86, Scott Lichtman '88, Julie Chang '89.

PRODUCTION STAFF

Associate Night Editors: Halvard K. Birkeland '89, Ezra Peisach '89; **Supplies Manager:** Andrew S. Gerber '87; **Typesetting Director:** Robert E. Malchman '85; **TEN Director:** Mark Kantrowitz '88; **Staff:** Amy S. Gorin '84, Sharalee M. Field '89, Illy King '89, Joyce Ma '89, Jane F. Huber W '87, A. Katrin Powell W '88.

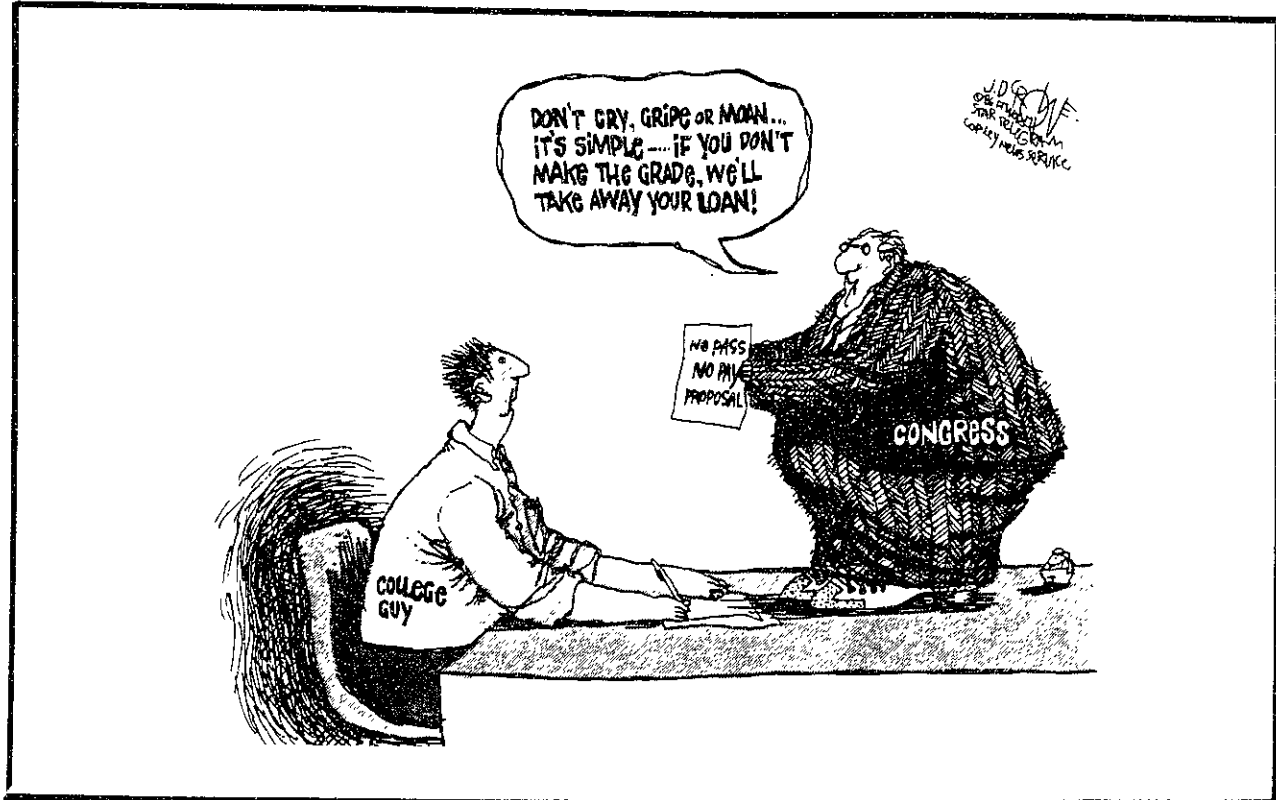
PRODUCTION STAFF FOR THIS ISSUE

Night Editor: Robert E. Malchman '85
Associate Night Editor: Carl A. LaCombe '86
Staff: V. Michael Bove G, Katie Schwarz '86, Sidhu Banerjee '87, Ronald E. Becker '87, Stephen P. Berczuk '87, Eric N. Starkman '87, Becky Thomas '87, Mark Kantrowitz '88, Sharalee M. Field '89, Ezra Peisach '89.

The Tech (ISSN 0148-9607) is published Tuesdays and Fridays during the academic year (except during MIT vacations), Wednesdays during January, and monthly during the summer for \$13.00 per year. Third Class by The Tech, 84 Massachusetts Ave. Room W20-483, Cambridge, MA 02139. Third Class postage paid at Boston, MA. Non-Profit Org. Permit No. 59720. **POSTMASTER:** Please send all address changes to our mailing address: The Tech, PO Box 29, MIT Branch, Cambridge, MA 02139. Telephone: (617) 253-1541. Advertising, subscription, and typesetting rates available. Entire contents © 1986 The Tech. The Tech is a member of the Associated Press. Printed by Charles River Publishing, Inc.



opinion



feedback

BGSA urges full divestment

(Editor's note: The following is an open letter to President Paul E. Gray '54 and the MIT Corporation.)

Dear President Gray and Members of the MIT Corporation:

We, the members of the MIT Black Graduate Students Association, ask that the MIT Corporation divest fully of its holdings in corporations which do business in South Africa.

We understand that South Africans are now fighting for the same basic human rights for which we fought only recently, and which all of us, as Americans, cherish. We feel that MIT must fully commit itself to upholding human rights, in our country and throughout the world. We observe that MIT policies with regard to South Africa are tantamount to support of the South African government's current policies, or at best, indifference toward most of South Africa's blacks.

The present situation, best dramatized by the daily funerals, at

which increasing numbers of people meet with violent deaths, is intolerable. The presence of American and other foreign corporations in South Africa helps to maintain the existing situation. South African national laws, which disregard the rights of black people, make it impossible for a corporation to guarantee that its black employees will receive equal treatment in other aspects of life. In effect, the foreign corporations in South Africa lend a respectability to an untenable governmental policy.

We have seen a legislative entrenchment of Apartheid over the past ten years, rendering partial divestment insufficient. We know

that several states, cities and universities have fully divested of their holdings, with no ill effects. We understand that the Sullivan Principles are irrelevant to the lives of most South Africans. Respecting the wishes of the South African people, who, even though threatened with imprisonment, have called for divestment, we demand that the MIT Corporation affirm its support for human rights by divesting fully and quickly of its holdings in corporations which deal with South Africa.

Melissa Kirven G
Edmund Moore G
Co-Chairpersons,
Black Graduate
Students Association

Study abroad is worth the effort

To the Editor:

I realized recently that I have become a wise old senior. I find myself offering advice to underclassmen as if I have mastered the MIT jungle and can clearly point the right way through. Looking back, I certainly have not taken a path that was without pitfalls and dead ends. There was one clearing along the way through that I recommend everyone at least glance at — a term or two of studying abroad.

One attitude I encountered among students while I was planning to spend a term in Great Britain was, "This is MIT; the best and brightest of everything is here. Why go elsewhere?" My first impulse is to respond with clichés about "broadening one's horizons" and "gaining new perspectives." I will spare the clichés and just say that there are few opportunities in most people's lives to be in another country as more than a tourist.

Studying abroad can be a unique chance to learn a language and to study a culture. More specifically, one can gain exposure to radically different systems of education and to varying perspectives in one's own field. Generally, people who enjoy meeting people, trying different things in different places, and who are disposed to finding and taking advantage of the strengths of the system they are in, have everything to gain.

One of the first surprises awaiting someone who looks into spending a term or year abroad is the small amount of bureaucracy involved. With the help of the MIT aura abroad and a very encouraging administration at home, the process is basically

hassle-free.

Studying abroad is not as financially difficult as one might think. First of all, when a student is registered for foreign study, MIT tuition is waived. Not surprisingly, tuition elsewhere is a good bit cheaper than MIT's. Outside scholarships used at MIT can frequently be applied to terms spent abroad. Also one can save money if one contacts a foreign university directly, rather than working through an American middleman.

About the academic side of it, I can't tell you much beyond, "Plan ahead." I was lucky, since as a chemistry major, it has been possible for me to complete my departmental requirements in six terms. I am convinced that, with enough motivation, anyone can go abroad. The catch is, the less flexible one's academic schedule

feedback

Military funding is spreading at MIT

To the Editor:

Two years ago, the Departments of Biology, Applied Biology, Chemistry, and Chemical Engineering decided to set up a common training program in biotechnology. It seemed appropriate that MIT become involved in this important and fast-growing research area. The departments appointed a committee to search for funding, preferably from industry. Meanwhile, the Office of Naval Research (ONR) announced a request for grant applications in biotechnology. The MIT administration passed the request along to the search committee. The search committee decided to apply, not having found any industrial funding.

This move precipitated a serious examination of the important issue of military sponsorship within the Biology Department. It was a closer realization of what professional life at MIT should be like than we normally see.

Biology Department first declines...

On Feb. 24 of this year, the biology faculty voted two-to-one to stop any further participation in the program. The faculty felt that the military should not be the only source of money for the project.

The faculty's objections were different, however, than those that are often raised about SDI-funded projects. The departments had first put together their program and then looked for

funding, rather than fitting their application to meet military specifications. The ONR also has a good history of not attempting to put controls on its grants.

But the department wanted to avoid the potential for military control of its work. Unforeseen events, such as classification of research results, can develop. Some faculty raised a strong argument against the accompanying unavoidable change in research purpose. Historically, biological understanding has been used more to help alleviate human suffering with such problems as cancer and malaria. DOD's interest can only be in increasing our country's military might, partly through research in biological warfare and anti-fouling agents for ships. The other departments decided to proceed with the program, even though the absence of the biology department would be felt acutely.

...then goes ahead

However, only one-third of the biology faculty had taken part in the vote. The MIT administration raised the possibility of limiting other forms of financial support for the department if it refused to apply for the DOD funds. Other biology faculty, surprised at the outcome of the vote, called for a second meeting. A different and larger faculty group attended the meeting of March 25th. This time the vote went roughly two-to-one in favor of ONR funding.

The dominant feeling was that biotechnology was too important an area for the department not to be involved in and that the funding should not be refused for political reasons. The department was divided, with feelings running deep. Some precautions were considered.

The ONR funding level will hopefully stay low enough that the department could survive the financial loss if it ever pulled out. ONR will support 20 biology graduate students. The program will try to use the DOD money as seed money only and will continue to look for other funding.

Strong pressures to apply

DOD's funding share of biology is increasing. Between 1980 and 1984 total federal funding of university research in the life sciences decreased by one percent, while DOD support increased by 50 percent. Biology, traditionally the science furthest removed from military applications, is now one more academic field be-

(Please turn to page 9)

Editorials, marked as such and printed in a distinctive format, are the official opinion of **The Tech**. They are written by the Editorial Board, which consists of the chairman, editor in chief, managing editor, executive editor, news editors and opinion editors.

Dissents, marked as such and printed in a distinctive format, are the opinions of the undersigned members of the editorial board choosing to publish their disagreement with the editorial.

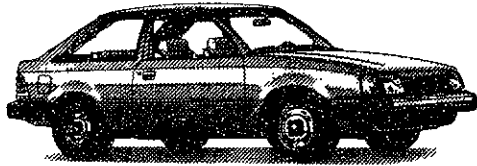
Columns and editorial cartoons are written by individuals and represent the opinion of the author, not necessarily that of the newspaper.

Letters to the Editor are welcome. They should be addressed to **The Tech**, PO Box 29, MIT Branch, Cambridge MA 02139, or by interdepartmental mail to Room W20-483. Letters should be typed and bear the authors' signatures, addresses, and phone numbers. Unsigned letters will not be accepted. **The Tech** reserves the right to edit or condense letters. We regret we cannot publish all of the letters we receive.

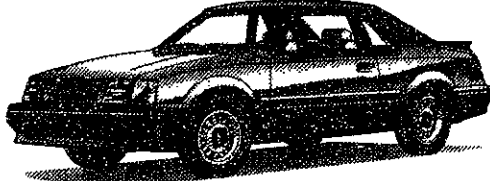


TO MAKE IT TODAY YOU NEED A COLLEGE DIPLOMA, A GOOD SUIT AND PLENTY OF DRIVE.

If you've received your bachelor's degree from a 4-year college, or a RN or graduate degree from an accredited institution between October 1, 1985 and September 30, 1986, you can qualify for Ford's Graduate Assistance Program. We can give you pre-approved credit and \$400 cash back on your new Ford. Only if you buy one of the new Ford cars or trucks listed below and only if you take delivery by August 31, 1986. For more information, call this toll-free number: 1-800-321-1536. Or see your local New England Ford Dealer today.



\$400 cash back on a new Escort.



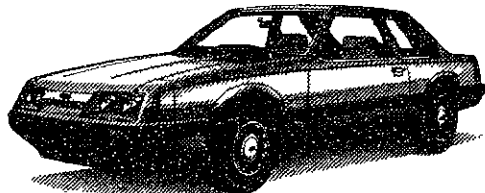
\$400 cash back on a new Escort EXP.



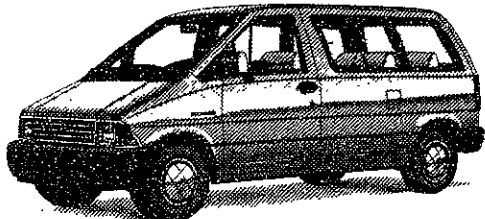
\$400 cash back on a new Tempo.



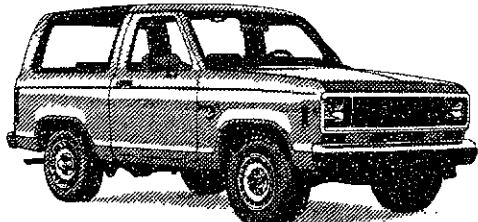
\$400 cash back on a new Thunderbird.



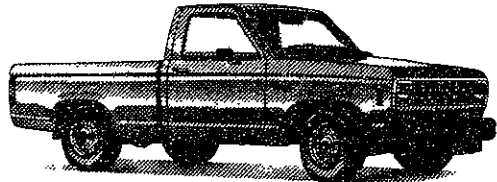
\$400 cash back on a new Mustang.



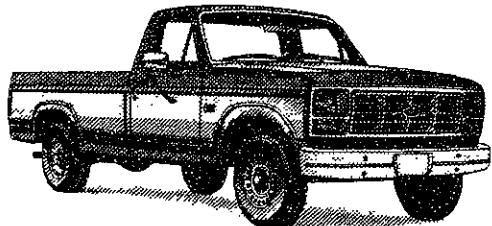
\$400 cash back on a new Aerostar.



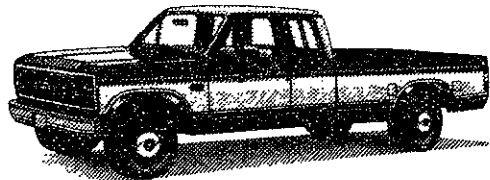
\$400 cash back on a new Bronco II.



\$400 cash back on a new Ranger pick-up.



\$400 cash back on a new F-150 truck.

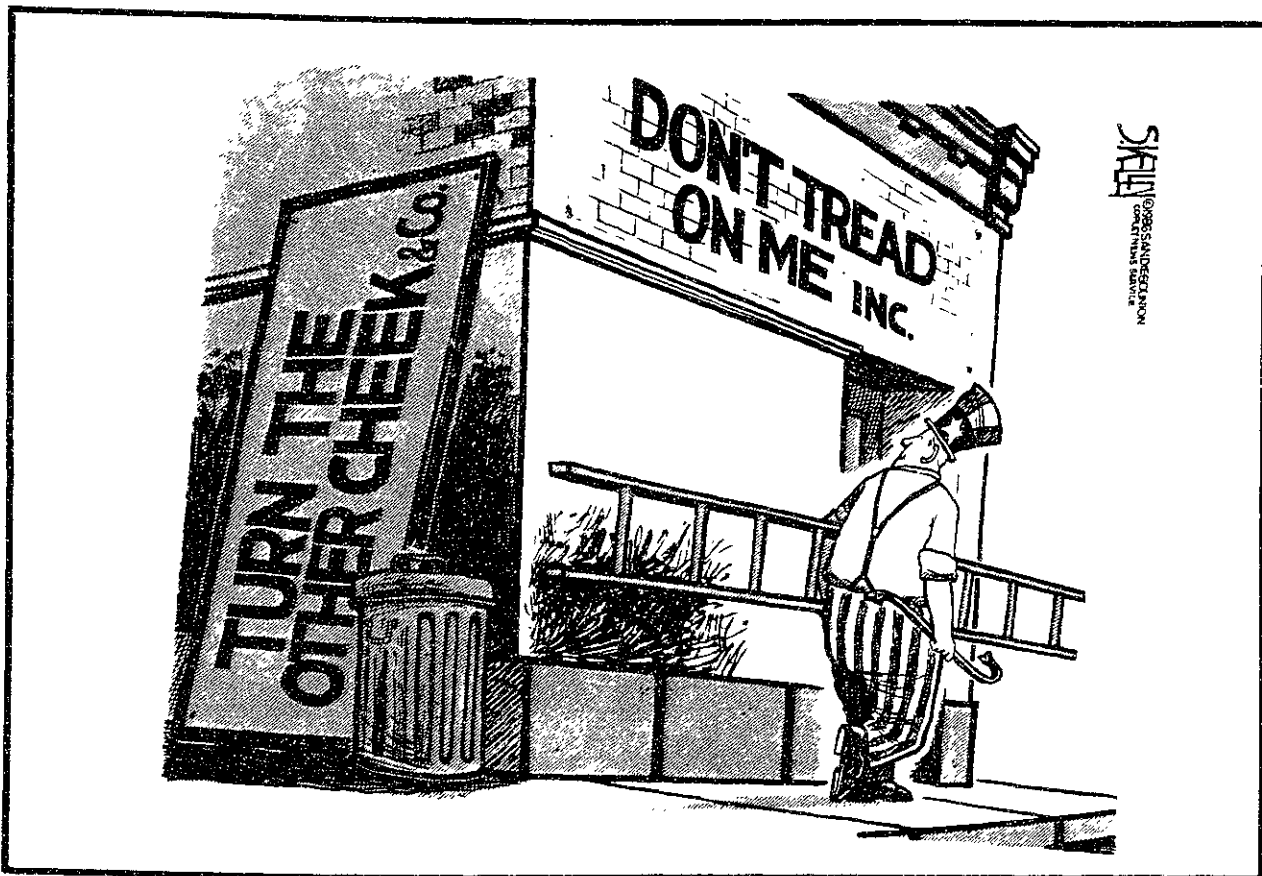


\$400 cash back on a new F-250 truck.



NEW ENGLAND FORD DEALERS
NOBODY GOES
FURTHER.

opinion



IBM policies unfair to Blacks

(Continued from page 4)

Of the 2000 South African IBM employees, 286 are black. The black employees do enjoy equal opportunity consistent with the company's adherence to the employment principles set forth by the Reverend Leon Sullivan. But almost all the employees' time is devoted to serving the needs of whites. IBM's equal-opportunity policy manager said that 14 employees, less than one percent of the work force, work on programs that directly benefit blacks. Yet four of every five South Africans are black.

In other countries IBM need not consider the racial composition of its customers. But in South Africa racism is the law, and the white minority uses its power to deny blacks basic human rights. Since IBM certainly does not want to collaborate with the Apartheid regime, it must consider the relative extent of its service to each racial group.

It also should assess the effect of that service on political power. In practical terms, sales to whites are IBM's biggest effect on South Africa, and such business dealings directly support white rule. This is especially true because of the nature of IBM's product: computers are high-leverage tools that provide capability far be-

half the employees to business activity aimed at blacks — especially health, housing and education needs; increase the number of black IBM employees; reduce sales to whites; support protest activities against race discrimination as General Motors Corporation has begun to do; and help multiracial organizations fighting apartheid, such as the United Democratic Front and the African National Congress.

Reports from South Africa suggest that incentive for change has come from black protests and boycotts, economic stagnation, the refusal of international banks to roll over loans and the possibility that foreign companies might simply leave the country. IBM can tailor its activities to build on these incentives.

Without fundamental changes in IBM's South African business policies, the company will continue to support an oppressive system, in conflict with Aker's specifications. And IBM's business practices will continue to reflect the whites-only model of the apartheid regime.

Editor's note: The column written by James Leas '68, an electronics engineer at an IBM production facility in the Washington area, originally appeared in The Los Angeles Times.

A true "model" for change would expand black education and training programs; assign

Your foreign language ability is valuable!

Translations into your native language are needed for industrial literature. You will be well paid to prepare these translations on an occasional basis. Assignments are made according to your area of technical knowledge.

We are currently seeking translators for:

- Arabic • Chinese • Danish • Dutch
- Farsi • French • German • Greek
- Italian • Japanese • Korean
- Norwegian • Polish • Portuguese
- Romanian • Spanish • Swedish and others.

Into-English translations from Russian, East European languages and many others also available.

Foreign language typists also needed.

All this work can be done in your home!

Linguistic Systems, Inc. is New England's largest translation agency, located a block north of the Central Sq. subway station.

For application and test translation call Ms. Desormeaux

864-3900

Linguistic Systems, Inc.
116 Bishop Allen Drive
Cambridge, MA 02139

Summer or Immediate Internship at Mattel Toys

Require analog/digital hacker with interest in robotics to help design "Fifth Generation" toys. Must be Senior or recent graduate in Electrical Engineering or Computer Science. Must have excellent prototyping skills. Other positions available.

Please send resume or contact:

Shahram Naghshineh
Mattel Toys
Mail Stop 24-333-000
5150 Rosecrans Avenue
Hawthorne, CA 90250
(213) 978-6543

Elias Hair Care

319 Mass Ave

497-1590

(2 blocks from the center of MIT)

MON-TUE-WED:

\$5.00 Discount with this ad

\$2.00 Discount anytime with MIT ID.

Summer Fall Spring WASHINGTON OR LONDON INTERNSHIPS

OXFORD SUMMER 1986

Full Academic Years In

- Oxford University
- L.S.E.
- St. Andrews, Scotland

U.S. credits will be transferred through Hampden-Sydney College, founded in Virginia by James Madison in 1776.

Graduate work is an option. The Director of Studies for the Center for Quality Education Abroad (in Britain) is the Rt. Hon. The Lord Beloff, D.Litt. (Oxon.), Fellow of the British Academy, Professor Emeritus of Government and Fellow of All Souls, Oxford.

INQUIRIES TO:

JANET KOLLEK, J.D.,
Admissions Director CQEA/
WISC, Rm 53, 158 W. 81 St.,
NY, NY, 10024.
(212-724-0804/724-0136).

(EO/AA)

CONGRATULATIONS MIT CLASS OF '86

SHERATON COMMANDER HOTEL
(617)-547-4800

MEETING/ORGANIZATION TITLE

SINGLE OCCUPANCY \$72.00 DOUBLE OCCUPANCY \$72.00
EXECUTIVE SUITE \$200.00 LUXURY SUITE \$325.00-\$450.00

All rooms are subject to 9.7% Mass. Tax

ARRIVAL DATE _____ () GTD' () 4PM

DEPARTURE DATE _____

NAME _____

ADDRESS _____

CITY, STATE & ZIP CODE _____

CREDIT CARD NUMBER _____ EXP DATE _____

ALL RESERVATION CARDS MUST BE RECEIVED BY _____

*ROOMS WILL NOT BE HELD AFTER 4:00PM UNLESS PAYMENT IS GUARANTEED

(CREDIT CARD OR ADVANCED DEPOSIT)

FOR DELUXE ACCOMODATIONS JUST MINUTES FROM THE MIT CAMPUS, IN THE HEART OF HARVARD SQUARE, MAIL THIS RESERVATION FORM TO: THE SHERATON COMMANDER HOTEL

16 GARDEN ST.
CAMBRIDGE, MA 02238



Sheraton-Commander Hotel
SHERATON HOTELS & MOTOR INNS. A WORLDWIDE SERVICE OF IIT
16 GARDEN STREET, HARVARD SQUARE, CAMBRIDGE, MASSACHUSETTS 617/547-4800

LOOKING FOR A GREAT PART-TIME JOB?

Earn up to \$5 per hour plus a very generous weekly bonus in our telemarketing program. Good telephone skills required. No sales involved - Experience is not necessary. Full Time/Part Time. Convenient location on bus line.

Call today for an interview.
ARCTIC 387-3510



UNITED TECHNOLOGIES IS LOOKING FOR ANOTHER WHITNEY.

Eli Whitney's cotton gin revolutionized the economy of the south. He also pioneered the concepts of standardization of parts and division of labor, opening the way for modern manufacturing. These were such "obvious" ideas, someone was sure to dream them up eventually. But Whitney always seemed to get there first.

United Technologies needs people who can start with a bright idea and follow it through with persistence and imagination. And maybe change the world.

We are a worldwide group of companies where 12,000 engineers work — creating better jet engines, spacesuits, air conditioners and helicopters; and looking for ways to produce them more efficiently.

There's room on our team for people with your training. And for people with Whitney's knack of getting there first, there's room to move up.

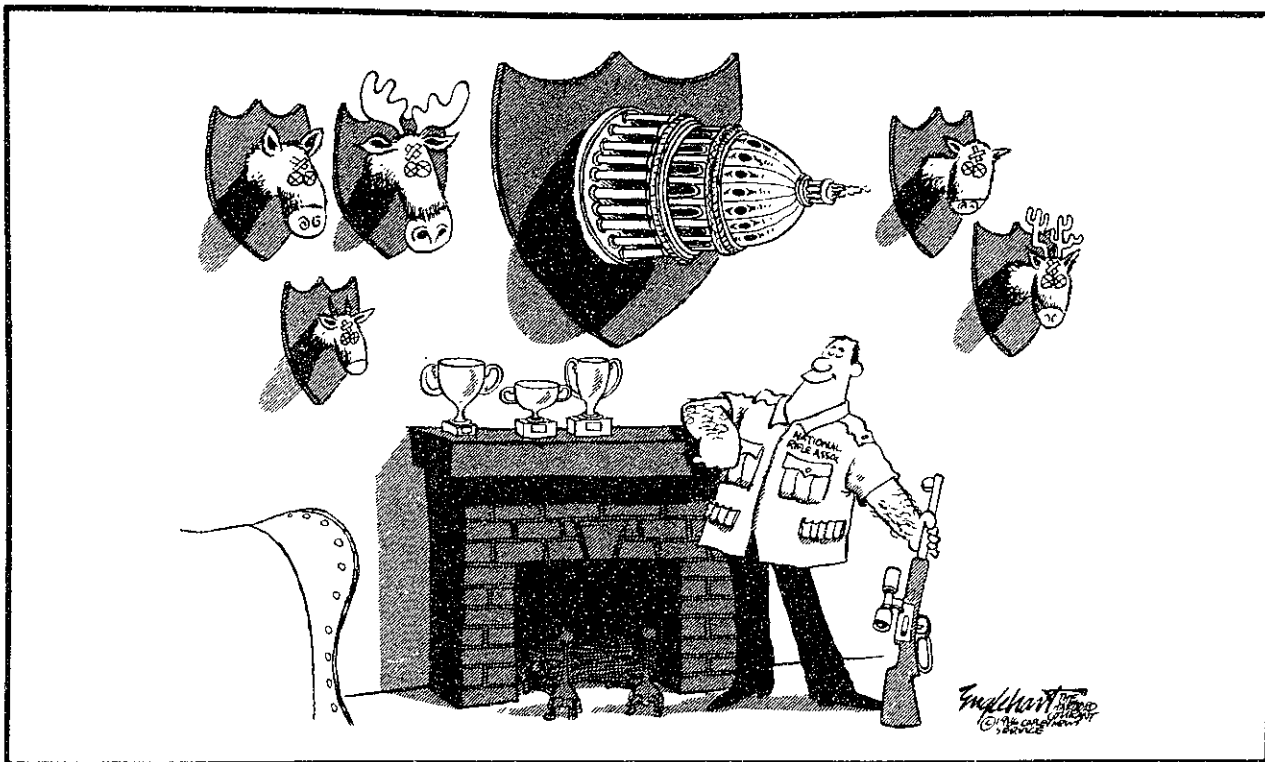
To get started, head for the campus placement office. Or write United Technologies Corporation, P.O. Box 1379, Hartford, CT 06143.

United Technologies means Pratt & Whitney, Hamilton Standard, Ots. Carrier, Automotive Group, United Technologies Microelectronics Center, Norden, Chemical Systems, Essex, Sikorsky and United Technologies Research Center.

An equal opportunity employer.

 **UNITED
TECHNOLOGIES**

opinion



Military funding degrades everyone

(Continued from page 5)

coming ever more tempted by and dependent on military sponsorship.

The biology department wanted to both uphold its excellence in research and maintain its intellectual and political integrity. It became trapped when the military, an unwelcome source of money, was the only interested sponsor. Either the department could insure its academic independence by staying outside of important research or, as it decided to do, it could participate, courting the possible consequence of losing control over its work.

The MIT administration clearly made no attempt whatsoever to help the department with its dilemma. President Paul E. Gray '54, in a [Jan. 8] *Tech* guest column titled "School should not act politically on research," upheld the right of individuals to refuse funding from a particular source and supported open expression, academic freedom and institutional neutrality. If that's true, it's up to the administration to provide some form of assistance in cases where those values are threatened.

Yet in the case of the Department of Biology, the administration did not provide, seek or even consider alternative sources of funding. Instead, the administration threatened to withhold its own financial support of the department if need be, knowing full well the attendant risks of military funding.

Students are severely affected by the administration's conduct. Presently, students can become rather pleasantly co-opted into doing military work. That many do is borne out by MIT Placement Office statistics: between three and five percent of MIT graduates in science and engineering go to work at federally-funded labs such as Draper, Lincoln, Los Alamos, and Lawrence Livermore, while about 25 percent end up at private firms working primarily on government contracts.

Once involved, a set of rationalizations exists that allows them to easily escape critical examination of the implications of their work. Every time the administration remains quiet on or justifies its own military involvement, as it did with the biology department, it encourages students to do likewise.

MIT states in its "Policies and Procedures" these educational objectives: "... that each student acquire a respect for moral values ... a sense of the duties of citizenship and the basic human understanding and knowledge required for leadership ... to provide a breadth of learning and of character to deal con-

structively with the issues and opportunities of our time." In a time when it is popular for some to talk about curriculum reform, the very least the Institute could do is to publicize the preceding story. The ensuing discussion

would provide important education on a complex issue many scientists and engineers will face.

Once again, military money wins its way into MIT, ultimately leaving us all losers.

Paquita Zuidema G

MRIAB presents
10th Cambridge Antiquarian Bookfair
 at the field house of
 Cambridge Rindge & Latin High School
 459 Broadway
 Cambridge, MA
 Saturday, April 26 12-6
 Sunday, April 27 12-4
 Admission 1 day \$2.00 Both days \$3.00
 For information:
 Call (617)-749-1455
 or write: MRIAB, P.O. Box 299, Hingham, MA 02043
All coats and cases must be checked

日本語いつでもどこでも
 あなたのパートナーです。

**Nippon Express
 USA, Inc.**



Air - Ocean
 Household Goods

米 国 日 本 通 運

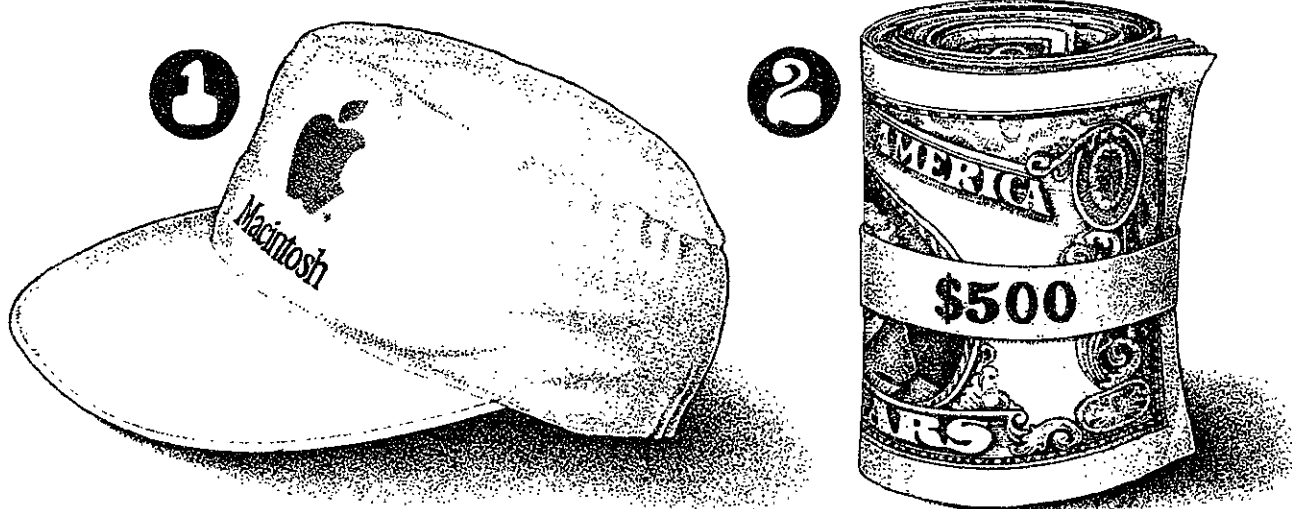
Going Home?

Why not let Nippon Express Boston handle your personal effects.

- Door-to-door service to most major points in the United States and the world.
- Both air and ocean modes.
- Our own truck will pick up your shipment.

King Interest Building
 Logan International Airport
 East Boston, MA 02128 (617) 569-7770

Apple puts the fun back into student demonstrations.



All you have to do is march yourself down to your campus microcomputer center before May 15th and spend five fun-packed minutes letting us demonstrate how a Macintosh™ computer can make life much more pleasant for you.

In return, we'll enter your name into a drawing where one very lucky person on campus will win the grand prize of five hundred dollars.

That's \$500. Cash. American. To

spend on your education, or something really worthwhile.

And, for those of you with the average amount of luck, there are free Apple® painter's caps for everyone who comes in and learns how a Macintosh can help you work better, faster, and smarter.

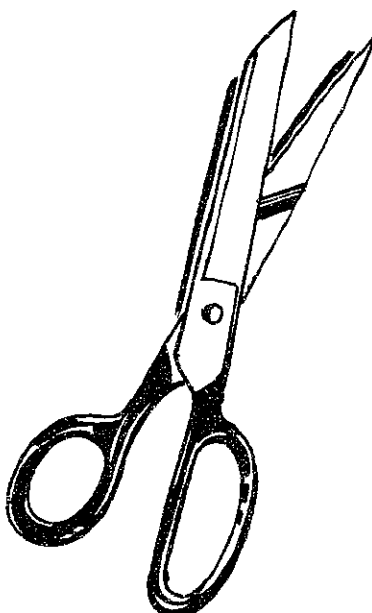
It's one demonstration that could change your life.



No purchase necessary. To become eligible for prizes, each participant must fill out the entry form provided at participating microcomputer centers. Winners need not be present to win. Odds depend on the number of entries at each location, all prizes will be awarded. List of prize winners obtained by sending self-addressed envelope to Gary M. Reynolds & Associates, Inc., 16535 W. Bluemound Road, Brookfield, WI 53005 © 1986 Apple Computer, Inc. Apple and the Apple logo are registered trademarks of Apple Computer, Inc. Macintosh is a trademark of McIntosh Laboratory, Inc. and is being used with its express permission. More details available at your campus microcomputer center.

COOP-ON

The Harvard Coop's got special coupon savings just for you! Bring these coupons in today and save on the brand of your choice - your favorite shampoo or conditioner; the paperback you've been dying to read all winter; a CD by your favorite artist. It's up to you! Just bring in these coupons. **OFFER GOOD NOW THROUGH MAY 3RD, 1986.**



30% OFF
any shampoo or conditioner

Date	Dept.	Item	Quan.	Orig. Price
Dept. Manager				
Coupon Valid 4/25/86 thru 5/3/86.				

HARVARD COOPERATIVE SOCIETY **the Coop**

20% OFF
Hanes hosiery

Date	Dept.	Item	Quan.	Orig. Price
Dept. Manager				
Coupon Valid 4/25/86 thru 5/3/86.				

HARVARD COOPERATIVE SOCIETY **the Coop**

\$1 OFF
all paperbacks except text, reference and children's

Date	Dept.	Item	Quan.	Orig. Price
Dept. Manager				
Coupon Valid 4/25/86 thru 5/3/86.				

HARVARD COOPERATIVE SOCIETY **the Coop**

20% OFF
all regularly priced travel alarm clocks

Date	Dept.	Item	Quan.	Orig. Price
Dept. Manager				
Coupon Valid 4/25/86 thru 5/3/86.				

HARVARD COOPERATIVE SOCIETY **the Coop**

20% OFF
any single purchase regularly priced Misses or Junior clothing, accessories or jewelry

Date	Dept.	Item	Quan.	Orig. Price
Dept. Manager				
Coupon Valid 4/25/86 thru 5/3/86.				

HARVARD COOPERATIVE SOCIETY **the Coop**

20% OFF
any regularly priced C.D. or record

Date	Dept.	Item	Quan.	Orig. Price
Dept. Manager				
Coupon Valid 4/25/86 thru 5/3/86.				

HARVARD COOPERATIVE SOCIETY **the Coop**

25% OFF
any regularly priced dress, sport or knit shirt for men

Date	Dept.	Item	Quan.	Orig. Price
Dept. Manager				
Coupon Valid 4/25/86 thru 5/3/86.				

HARVARD COOPERATIVE SOCIETY **the Coop**

25% OFF
any regularly priced jeans, dress or casual slacks for men

Date	Dept.	Item	Quan.	Orig. Price
Dept. Manager				
Coupon Valid 4/25/86 thru 5/3/86.				

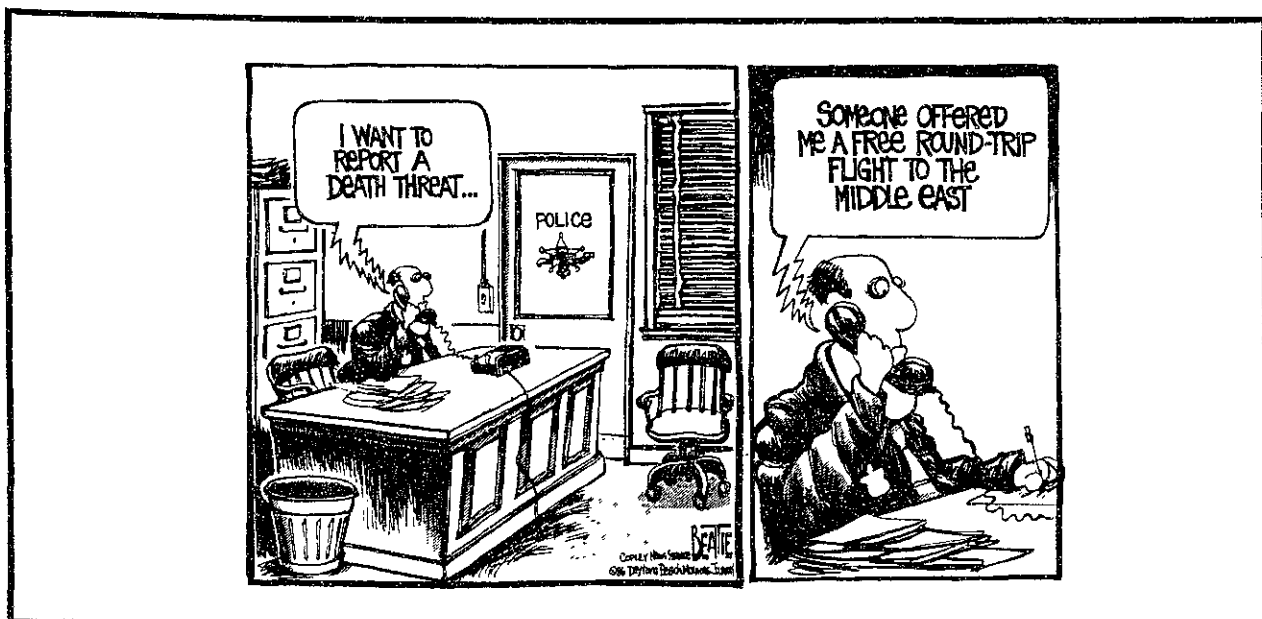
HARVARD COOPERATIVE SOCIETY **the Coop**

Please note: Photo reproductions of the coupons are not acceptable. No substitutions, mail or phone orders permitted. Coupons must be presented at MIT Student Center or Harvard Square store only.

HARVARD SQUARE
1400 Mass. Ave.
Cambridge
M-Sat 9:20-5:45pm, Thurs til 8:30

MIT STUDENT CTR.
84 Mass. Ave.
Cambridge
M-Sat 9:15-5:30pm

opinion



Libya air strike was a mistake

(Continued from page 4)

we have no grounds on which to oppose terrorism.

The killing of civilians in Libya is particularly deplorable because the bombing of Libya was not part of a coherent anti-terrorist policy. Violence should be a last resort. The Reagan administration failed to work with our Western European allies, and the bombing of Libya has caused the biggest split in the Western alliance since the gas pipeline controversy of 1981.

Of course it is always easy to criticize someone else's policies. Senator Kennedy was right. We did have to do something. But what should we have done?

In the future, we must recognize that we live in a complex world and stop pretending that there is a quick military solution to every problem. To most non-Americans, the bombing of Libya was itself a terrorist act. People sometimes tell me diplomacy never works. But how often has violence solved a problem?

We must work with our allies in putting pressure on terrorists. In Libya, economic sanctions would have been very effective if the United States had worked in conjunction with the nations of Western Europe. Other measures, such as restricting the movements of Libyan "diplomats" could also be effective.

We must pass the Comprehensive Test Ban Treaty and support the Non-proliferation Treaty to prevent nations like Libya from getting nuclear weapons.

MIT COMEDY SHOW

Produced and Hosted by

Elaine Gold

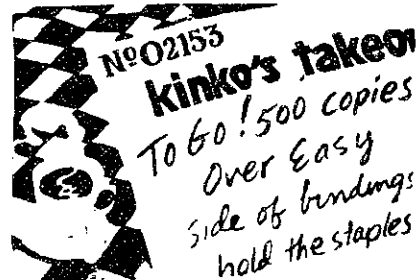
Thirsty Ear Pub

Friday 4-25 9:15pm

Ashdown House

Free with MIT ID

COPIES TO GO.



NO 02153
kinko's takes on
To Go! 500 copies
Over Easy
Side of bindings
hold the staples

Copies, collating, binding, cutting, folding. Good things are cooking at Kinko's. Ask about our free pickup and delivery service.

kinko's

Open early. Open late. Open weekends.
497-4111

497-0125 491-2859

Teach in Japan

Persons with a degree and job-experience in such fields as advertising, publishing, engineering, business administration, pharmacology, linguistics and languages wishing to teach English to Japanese adults for one or two years in Tokyo and other parts of Japan should write to:

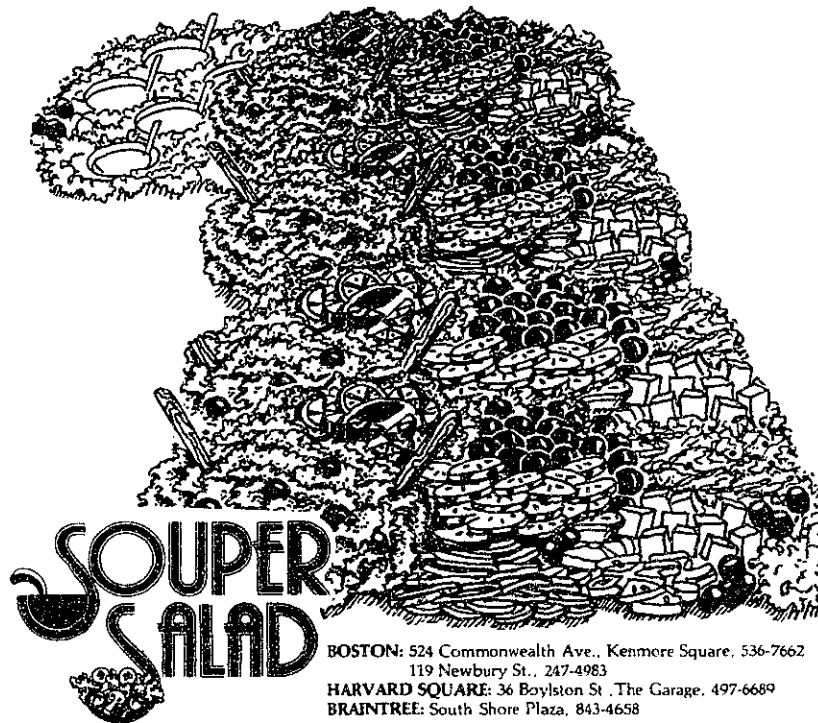
Personnel Manager
International Education Services
Shin Taiso Bldg.
10-7, Dogenzaka 2-chome, Shibuya-ku
Tokyo, Japan 150

We are tentatively scheduling interviews in Seattle, San Francisco, Chicago and Boston in May, June and July 1986.

Further information on the position, qualifications, salary, benefits, transportation and housing can be obtained by mailing a detailed resume with a recent photograph to I.E.S.

Boston's First Salad Bar is Still Boston's First Salad Bar

First. Number 1. In ten short years, Souper Salad has become the first place to go for the greatest selection of fresh vegetables, prepared salads, homemade salad dressings, bread, and assorted delicious touches. Add hearty hand-stuffed sandwiches; steaming, flavorful soups; mesquite grilled entrees; appetizers; premium beers; juicy burgers; devastating deserts and values that give you the most for your money. Souper Salad - the first that will last - always.

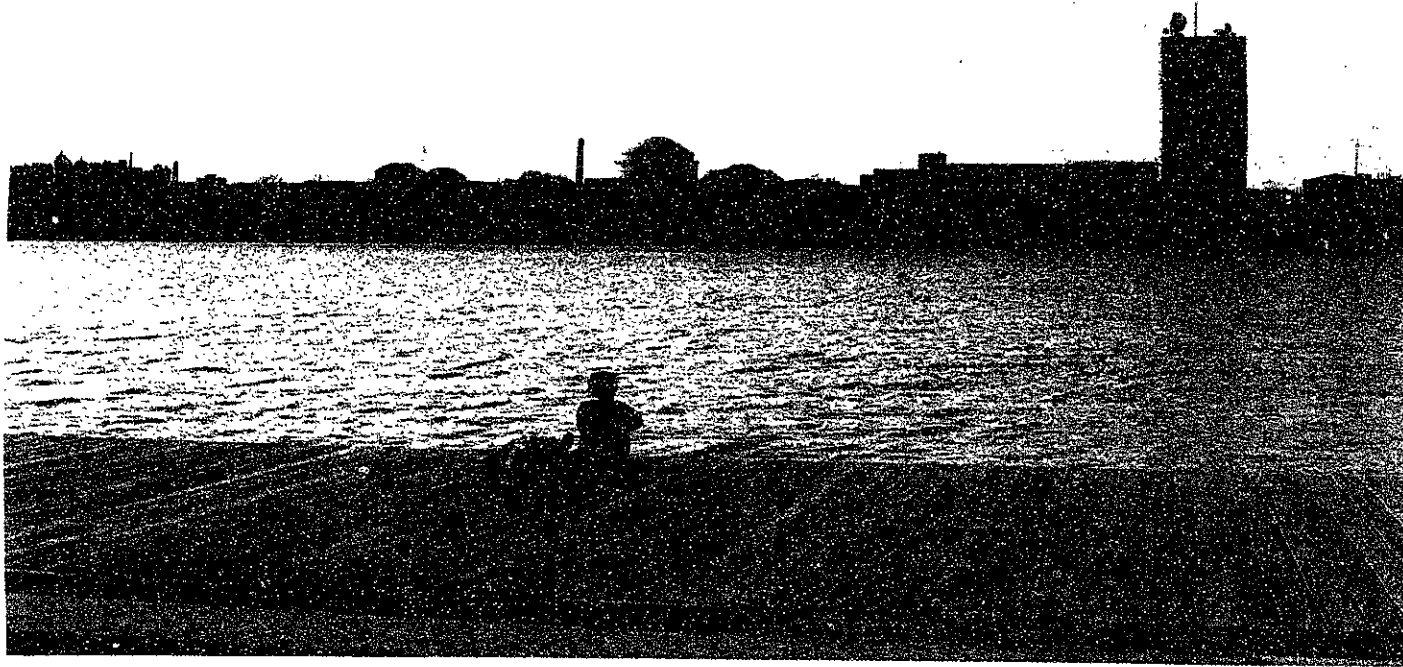
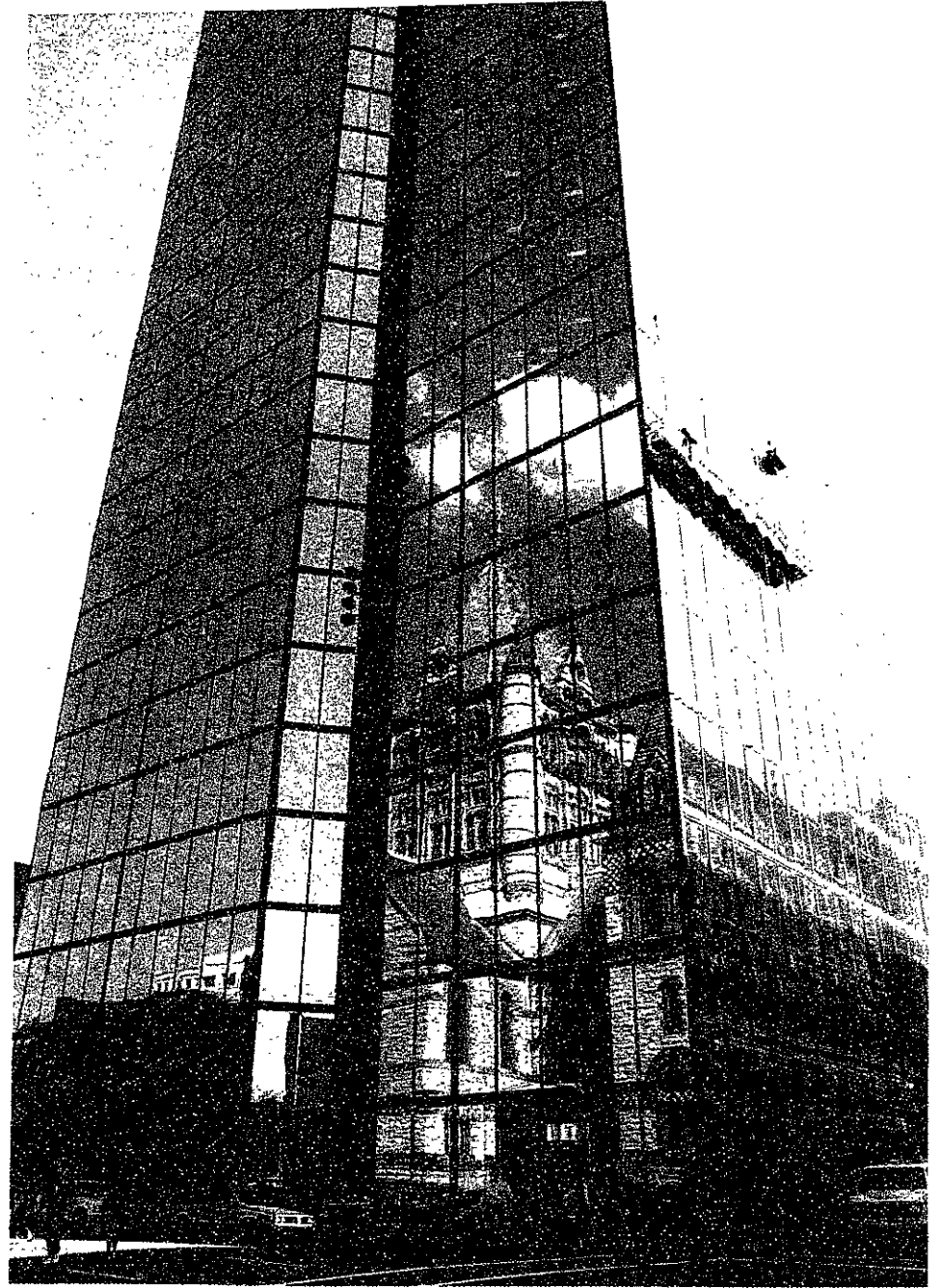


BOSTON: 524 Commonwealth Ave., Kenmore Square, 536-7662
119 Newbury St., 247-4983
HARVARD SQUARE: 36 Boylston St., The Garage, 497-6689
BRAintree: South Shore Plaza, 843-4658

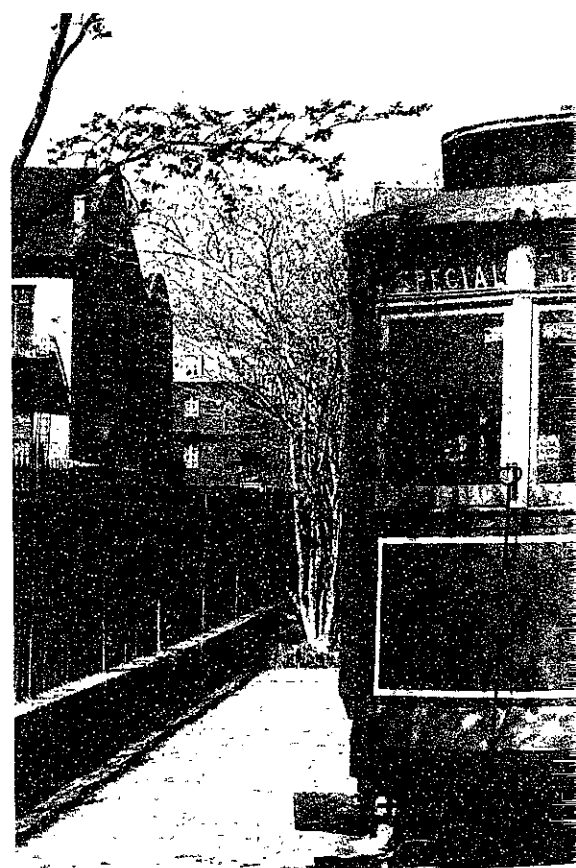
HEAVY METAL



THIS BUD'S FOR YOU.™



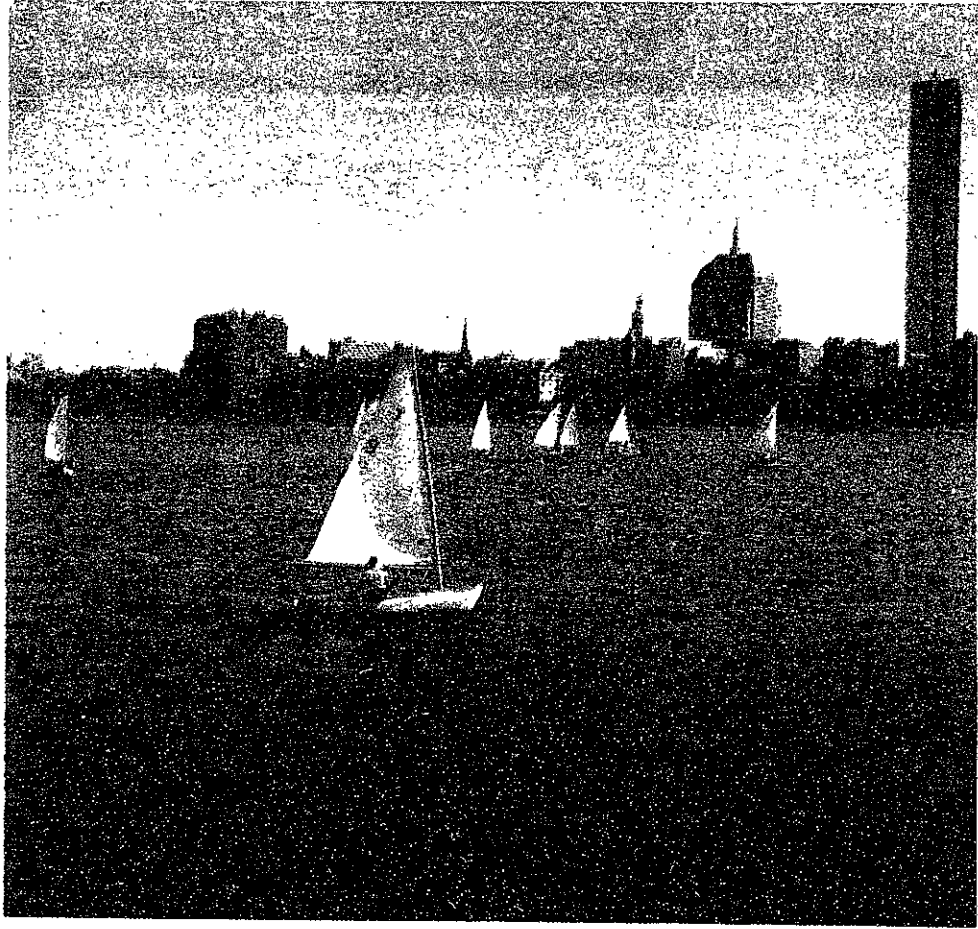
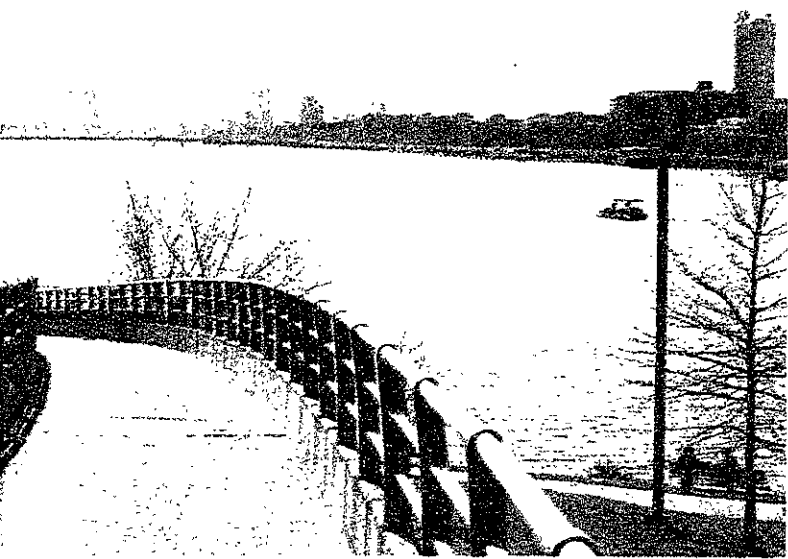
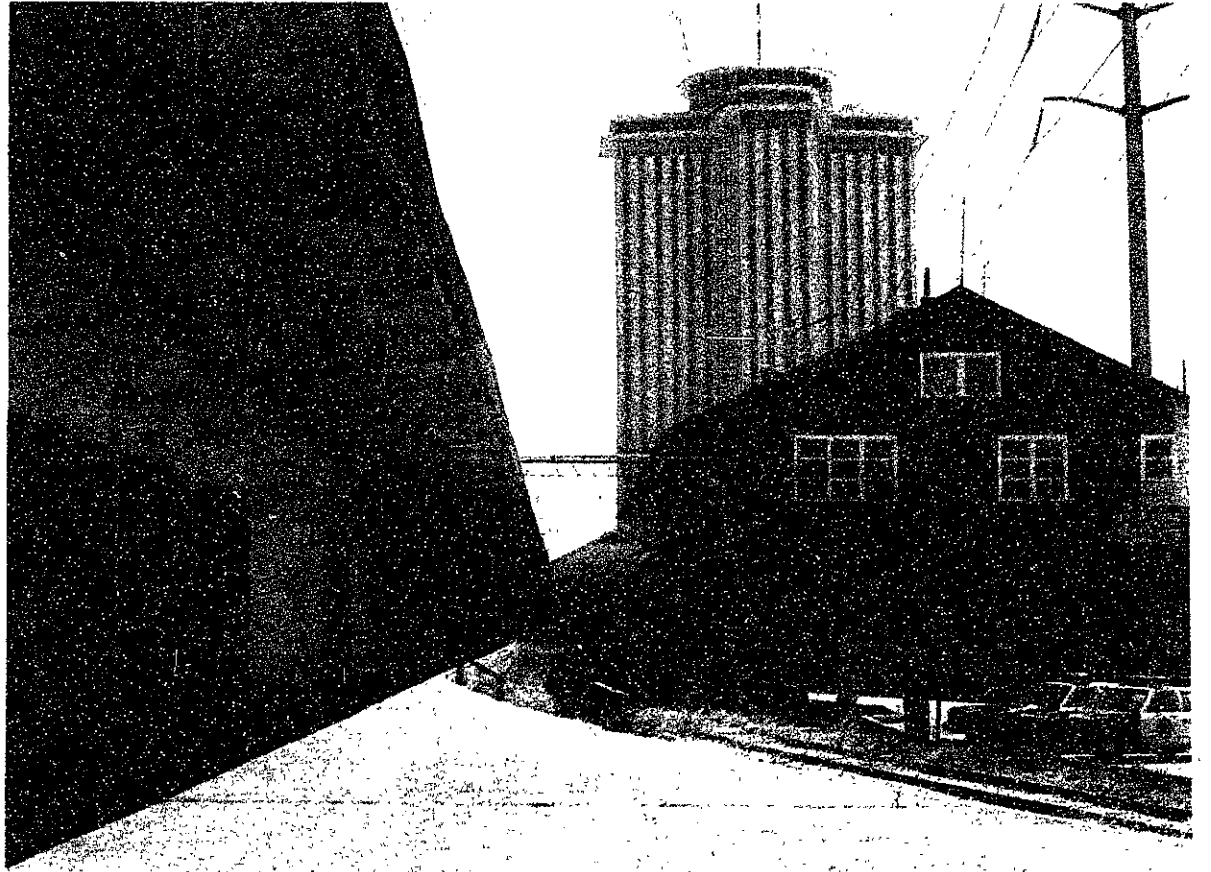
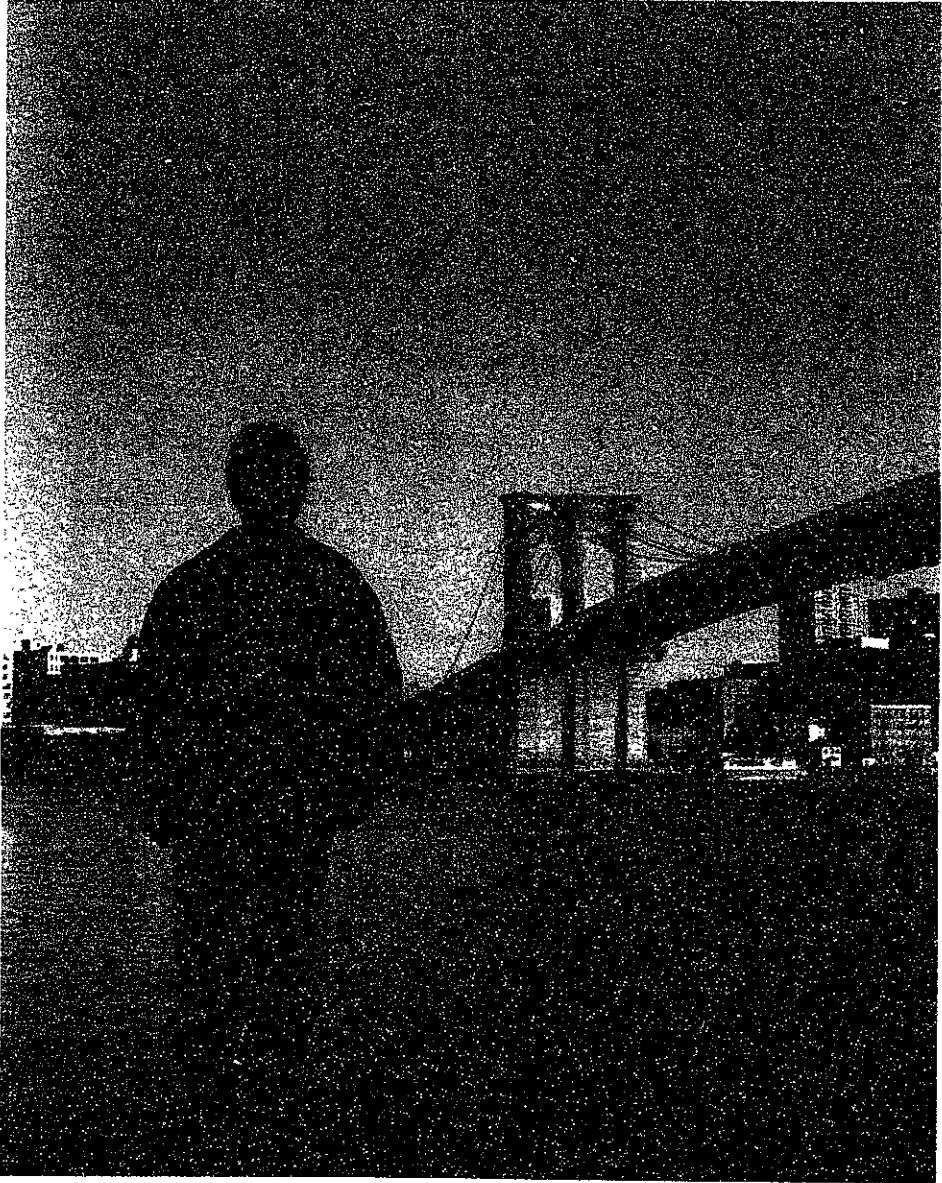
*Photos by:
Mark S. Abinante
Ronald E. Becker
Kyle G. Peltonen*



Layout by Sidhu Banerjee

URBAN LANDSCAPES...

A Photo Essay



Harbison's music gives rise to thought; Arts rare Schubert opera provides charming evening's entertainment.

JOHN HARBISON
 Conducted the world premiere of his new work, *Music for Eighteen Winds* and other works in this year's William Abramowitz Memorial Concert. Kresge Auditorium, April 18.

SCHUBERT OPERA
 Roland Vazquez compiled and conducted performances of excerpts from rarely heard Schubert opera together with a singspiel, complete. Kresge Auditorium, April 19.

By JONATHAN RICHMOND

JOHN HARBISON, one of our age's most creative composers, conducted an intriguing concert last Friday in Kresge Auditorium. It was a "Composer's Choice" concert in which a new work of Harbison's was placed "in a musical context that would suggest the composer's own affinities, inheritances and secret passions." And revealing it was.

The overwhelming impression of Harbison's spellbinding evening of Stravinsky, Mozart, Rossini and himself was of the composer's close personal relationship with the music. There was an intimacy to all the works he conducted, a deep concen-

tration that reached below the surface to probe harmony and texture, form and fantasy, psyche and soul.

Stravinsky's *Octet for Wind Instruments* projected a cool, refreshing lyricism, its rich mix of sounds characterized by individuality and cleanliness in coloration. Rhythms were carefully studied, and made of the disparate parts a unified whole, a family of varied voice but united spirit.

Mozart's *Serenade No 11 in E flat*, K. 375 was given a gentle opening and subtle development that made it into more than a mere serenade. Statements passing between winds left reflective traces; the soft interchange in the *adagio*, amidst evocatively changing shades of color, was breathtakingly beautiful. The *menuetto* danced playfully, and the *allegro* brought the piece to an uplifting finale. How like Mozart to rise out of the valley of introspection to leave the listener elated by work's end. How like John Harbison to dwell on the more profound moments, then provide for their digestion them with equally Mozartian simple, childlike joy.

We heard next an arrangement of the *Overture to Rossini's The Barber of Seville*, played with wit and verve. And then to the Harbison.



Photo courtesy David Z. Graham/Technique

John Harbison

Harbison's *Music for Eighteen Winds* began with a Stravinsky-like opening, penetrating in focus and clear of form. The work pushed forward with driving, adrenal pace, with exciting use of brass. Woodwinds strayed from crisp composure to abstract imagery, not symbolic of anything in particular (Harbison notes that there are no intended extramusical associations), but like all true symbols giving rise to thought.

It was this quality of woodwinds that endowed Harbison's music with a Mozartean touch, developed nonetheless in a wholly original way.

elements of gossamer and depth. The *Romanze* from *Die Verschworenen* was most striking. The mood set by a beautiful oboe melody playing against velveteen strings, Soranno's singing took on especial profundity, demonstrating flexibility and maturity.

James Broussard performed with Soranno in a duet from *Alfonso und Estrella*, his characterful voice further illuminated by fine playing in the string sections. The duet from *Fierabras* Broussard performed with Kevin Brau was spritely and entertaining.

After the intermission, *Die Zwillingbruder* — a *Singspiel* in one act — was presented, complete. The music was, in general, less notable than in the excerpts heard earlier on, but the work was charmingly performed.

William Cotten — in the role of the lover, Anton — provided the best singing, making his part as lyrically enticing as a whole string of Schubertian *lied*. Musically, he overshadowed the other performers, who nonetheless did a competent — and amusing — job. Vazquez's orchestra performed to a high standard, and Associate Provost S. Jay Keyser provided a crusty narrative to sew the piece together.



Roland Vazquez

Tech photo by Stephen P. Berczuk

SCHUBERT'S OPERA is rarely performed but, as Roland Vazquez proved on Saturday night, it contains much wonderful music. The first part of the program contained individual numbers from various works. After a slightly ponderous start with the *Overture to Alfonso and Estrella*, the series of arias and duets which followed were brought off with much style.

Kathleen Allen sang two arias with sweet voice. The second, from *Des Teufels Lustschloss* came across particularly expressively. Anna Soranno appeared four times, in fine Schubertian style combining

DECISION TIME

Not all employers are created equal!"

HOW TO PICK AN EMPLOYER

a handbook which will lead you through the intricacies of comparing and considerations before commitment to an employer. Interview prospective employers — you will never again have a chance to evaluate so many companies simultaneously!" **REMEMBER:** Your personal life promises to be much more satisfying if you are happy with your work.

HOW TO PICK AN EMPLOYER

a handbook you will want to keep by your side. Questions to ask yourself, your family, and most importantly a prospective employer. What you should know, but the recruiters don't tell.

MAKE YOUR FIRST CHOICE THE RIGHT ONE
 Send \$5 to:
 How To Pick An Employer
 Box 367 Upper Walnut St., Putnam, CT 06260

from Boston round trip from

BRUSSELS 395
AMSTERDAM 418

CARACAS 368
NAIROBI 999
TOKYO 845

HONGKONG 763
HONOLULU NYC 500

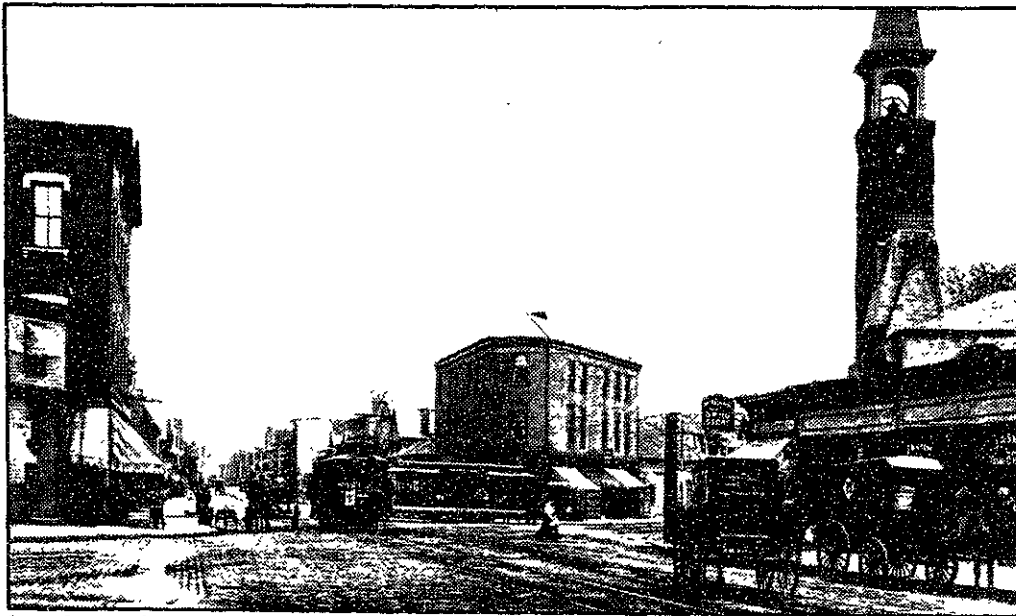
SYDNEY/LAX 839
TAHITI/LAX 589

CALL 876-4825
497-1497

COUNCIL
 Council Travel Services

1384 Mass Ave
 Cambridge, Ma 02138

PRICELESS.



Inman Sq. circa 1906

PRICED LESS.

In 1919 the S&S opened its doors serving great food at an affordable price. Over the years, their reputation grew. But their prices didn't. Today's S&S is twice as large and a lot more fun, with an expanded menu that includes everything from Cajun shrimp and duckling in raspberry sauce, to traditional deli and sandwich favorites. And it offers a full bar featuring 36 imported and domestic beers. But at the S&S, great food and great food value is still the order of the day. So come to the S&S and discover a great find since 1919.



A Great Find Since 1919.

Breakfast, Lunch, Dinner. Mon.-Sat. 7:00am-12:00pm, Sun. 8:00am-12:00pm. Inman Square, 1334 Cambridge St., Cambridge, 354-0777.

Granny says "Go to Rubin's!"

RUBIN'S KOSHER DELICATESSEN
500 Harvard Street, Brookline.
Green line (B branch) to Comm. Ave and
Harvard St. (by "Marty's Liquors").
But note that the restaurant will be closed
throughout Passover.
Rubin's is certified kosher by
Vaad Harabonim of Boston.

By MARK KANTROWITZ

HOMESICK for your grandmother's cooking? Rubin's will leave you satisfied, satiated, and stuffed. Simply put, Rubin's waitresses wish to avoid the Jewish grandmother's nightmare: that you might leave without having had enough to eat. You consume inordinate amounts of food, and it's so yummy that you are unaware that feeding time at the zoo is nothing by comparison.

The most spectacularly successful appetizer was *latkes* (potato pancakes), served with apple sauce. Incredibly delicious and quite fresh, they were such a hit that some members of our party suggested ordering two helpings of them instead of a meal.

The other appetizers were similarly beyond belief. The kishka, fried in traditional style, tasted crisp and wonderful. Straight from the barrel, the New York-style, half-sour pickles had just the right

amount of spices — two extra orders of them attested to their quality.

A superb wheat and barley soup is available. Be forewarned: even the cup size is extremely filling. You could make a gratifying meal out of it alone!

But the big disappointment at Rubin's is the absence of *Kneidalach* (matzo ball) soup, an essential victual in any Jewish household.

Just when you thought you were sated, the waitress returns with the main course.

The Roast Brisket dinner was absolutely delicious. As with all dinners, the lean brisket comes with a choice of two entrées from a selection of noodle kugel, tzimas, baked potato/french fries, and salad. The baked potato was a bit dry and hard, and there was a substantial variance among the potatoes in our group. The noodle kugel was not bad, but it was a bit lacking in flavor — it really missed the grandmother's touch.

Not much can be said for the stuffed broiler chicken; it was filling and somewhat plain tasting. Nevertheless, the tzimas on the side (carrots and sweet potatoes that taste like nectar) made it a gourmand's — if not a gourmet's — delight.

The broiled half-chicken was an excellent dish. The crispy, lightly-salted skin enclosed tender flesh. Each bite was an ex-

perience worth remembering. Delicate, yet elegantly prepared, it relished of homemade food. The tossed salad came with a choice of Russian and Italian dressing, and accompanied the main entree quite harmoniously.

Rubin's also offers a full line of hot and cold sandwiches. The pastrami was quite good, and the customer has a choice of either Roumanian or regular. The thin-sliced salami was unquestionably without equal in texture and flavor. It was most certainly among the best in the deli's repertoire.

One member of our party tested Rubin's improvisational talents. "I want a combination sandwich that isn't on the menu," she said. No sooner said than done.

The cold tip of tongue and hot pastrami served on pumpernickel was indeed a treat. The meat was lean, and the bread (choice of light rye, seedless pumpernickel, and bulkie rolls) was fresh, albeit "store-bought."

Midway through the meal, our party needed a reminder to save room for dessert. Only after partaking of such chocolate heaven can one claim to be fulfilled. The rich chocolate layer cake can only be described as orgasmic. Each bite produces pure sensory pleasure. Taste a piece from the edge, and you know what paradise is like.

Ambrosia in the form of Bavarian

chocolate cake? Not quite, but chocolate icing sprinkled with sliced almonds, enclosing an overpowering chocolate cake and a sweet creamy center comes close! You definitely will not go away hungry.

But Rubin's does just as well with the classic American dessert — apple pie. Fresh and rich, the apple pie was a sweet finale to an evening of tasty delights.

Of course, to help wash down ones meal, Rubin's offers a varied selection of juices and soft drinks, including Dr. Brown's soda. For the uninitiated, Dr. Brown's is a soda company in New York which offers such choices such as black cherry, the archetypal cream soda, and cel-ray. (Yes, cel-ray is celery soda, which some of the party found quite tasty. Others muttered things which you should have your mouth washed out for saying should your grandmother hear you.)

Prices were not unreasonable. You can spend anywhere from \$5 for a juicy sandwich and drink to more than \$15 for a complete dinner with an appetizer and a dessert that would put your grandmother to shame. The service is efficient, and the waitresses are very helpful and courteous.

Note: Shari A. Berkenblit, Ezra "Kosher!" Peisach, Jonathan Richmond, Eric N. Starkman, and Earl C. Yen also contributed to this review.

Arts

Undergraduate Association News

Bryan Moser and Becky Thomas are interviewing students for the position of **UA Secretary-General**. In addition to keeping records and taking minutes for the UA Council, the Secretary-General works closely with the UAP and UAVP on all matters concerning undergraduate student government. If you are interested, please contact Bryan or Becky at the UA office (Room 401 in the Student Center, x3-2696).

The Student Center Committee is proud to present "MINISTRY" and "FACE TO FACE" for the Spring Weekend Concert on Friday, May 2. Ministry's new hit single is "Over The Shoulder," from their recently released album "TWITCH." Older hits include "Everyday is Halloween," "Effigy," and "Work for Love." Top Face to Face singles include "10-9-8," and "Under the Gun." Ticket prices are \$5 for the MIT and Wellesley community, and \$7 for students with a college ID. Tickets go on sale Monday, April 14, in Lobby 10, and are available on a first-come basis. The concert will be co-sponsored by Phi Kappa and Theta Xi.

ACTIVITIES MIDWAY '86

Activities!- Check your mailbox for information and forms for the Activities Midway. These forms must be sent in by **MAY 2**. Any questions contact the ASA at x3-2696.

What's Happening at Strat's Rat Pub:

This Thursday, April 24, the SCC presents Scruffy the Cat live at the Strat's Rat Pub in Lobdell. Come on over for some good music and a cool one. Show time is 9:30, and admission is free.

Do You Want VISA & MasterCard Credit Cards?



Now you can have two of the most recognized and accepted credit cards in the world...Visa® and MasterCard® credit cards... "In your name." EVEN IF YOU ARE NEW IN CREDIT or HAVE BEEN TURNED DOWN BEFORE!

VISA® and MasterCard® the credit cards you deserve and need for— ID—BOOKS—DEPARTMENT STORES—TUITION—ENTERTAINMENT—EMERGENCY CASH—TICKETS—RESTAURANTS—HOTELS—MOTELS—GAS—CAR RENTALS—REPAIRS—AND TO BUILD YOUR CREDIT RATING!

This is the credit card information kit students have been reading about in publications from coast to coast and includes SPECIAL STUDENT APPLICATIONS for MasterCard® and Visa® as well as other national charge cards. Approval absolutely guaranteed so

MAIL THIS NO RISK COUPON TODAY

A.G., 301 W. COLLEGE AVE., TALLAHASSEE, FL 32301

YES! I want VISA®/MASTERCARD® Credit Cards. Enclosed find \$15 which is 100% refundable if not approved immediately.

NAME _____
ADDRESS _____
CITY _____ STATE _____ ZIP _____
PHONE _____ S.S.# _____
SIGNATURE _____

NOTE: MasterCard is a registered trademark of MasterCard International, Inc. Visa is a registered trademark of VISA U.S.A., Inc. and VISA International Services Association. The above referral agent is not affiliated with MasterCard International, Inc. or VISA U.S.A., Inc.

The Tech Performing Arts Series presents...

BOSTON MUSEUM TRIO

Music from the French Baroque

The Museum of Fine Arts' resident trio, the Boston Museum Trio — Daniel Stepper, baroque violin, John Gibbons, harpsichord, and Laura Jeppesen, viola da gamba — present a program of music from the French baroque with tenor Frank Kelly. Museum of Fine Arts, Remis Auditorium. May 4 at 3pm. MIT price: \$6.

METROPOLITAN OPERA

Tosca

Starring Grace Bumbry as Tosca, with Lando Bartolini as Cavaradossi and Cornell MacNeil as Scarpia. Conducted by Christian Badaea. Wang Center, May 5 at 8pm. MIT price: \$8.

L'Italiana in Algeri

The cast for Rossini's comedy will include Gail Dubinbaum, Betsy Norden and Douglas Ahlstedt. William Vendice will conduct. Wang Center, May 7 at 8pm. MIT price: \$8.

Roméo et Juliette

Gounod's Roméo et Juliette will close the Met season in Boston. Conducted by John Mauceri, the cast includes Gail Robinson, Hilda Harris, Denés Gulyás and Paul Plishka. Wang Center, May 10 at 8pm. MIT price: \$8

Tickets will be sold by the Technology Community Association, W20-450 in the Student Center. As opening hours are currently a bit sporadic, please call before you come. If nobody is in, please leave your order and your phone number on the TCA answering machine at 253-4885. You will be called back as soon as possible. Reservations will be held until three days before each performance.

notices

Ongoing

The MIT Museum has many ongoing exhibits. The Museum is located at 265 Massachusetts Ave., and is open Monday through Friday, 9 am - 5 pm, Saturday 10 am - 4 pm. Admission is free.

through July 31: Ansel Adams: Photographs. Approximately 60 prints by the early 20th-century photographer. Calvin Campbell: A Photographic Perspective of MIT.

through July 26: Sculpture by Beverly Benson Seamans. Garden sculptures include birds, animals, and children.

through June 14: Nithonga: Contemporary Japanese Paintings in the Traditional Style. Representative works by 48 contemporary Japanese artists.

ongoing: Light Sculptures by Bill Parker. Changeable, touchable plasma sculptures.

ongoing: Gjon Mili: A Tribute. World-famous photographer Gjon Mili '27 pioneered the use of electronic flash and multiple-exposure photographs.

ongoing: Math in 3D: Geometric Sculptures by Morton C. Bradley, Jr. Wonderful revolving sculptures based on mathematical formulae.

ongoing: A Bunch of Electricals: An MIT Electrical Engineering Retrospective. Included are the Bush Differential Analyzer and the Edison Dynamo given to the Insitute by Thomas A. Edison in 1887.

ongoing: Currier and Ives Prints from the Hart Nautical Collections. Colored lithographs of sailboats, steamboats, clipper ships, and whalers.

ongoing: George Owen: Yacht Designer. Line drawings and half-models designed by one of the early professors of naval architecture at MIT.

ongoing: Ship Models. Historical view of the design and construction of ships.

ongoing: MIT Seagrant. A review of MIT ocean research.

The Photographic Resource Center at Boston University presents WAR, an exhibition of images of conflict in Northern Ireland, Central America and the Middle East by photojournalists and mixed-media artists who use photography, through May 16. Hours are Monday through Friday 11 am to 6 pm, Saturday noon to 5 pm, at 602 Commonwealth Avenue. Admission is free. Call 353-0700 for more information.

USE FIRE CAREFULLY

PREVENT FOREST FIRES

This space donated by The Tech

FINDING AN APARTMENT IN MANHATTAN TAKES THE RIGHT EDUCATION

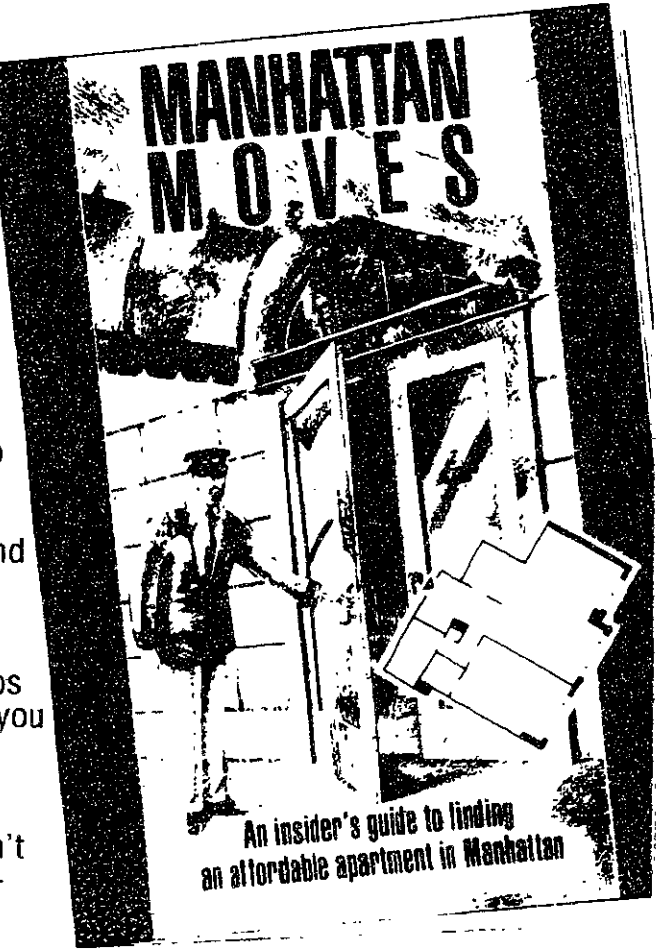
Get a free copy of "Manhattan Moves" — the insider's guide to finding an affordable apartment in Manhattan.

To welcome potential new residents to the city, and dispel some myths about housing in New York, we have published a book called "Manhattan Moves". It's the ultimate insider's guide to apartment hunting in the Big Apple.

"Manhattan Moves" helps you set your sights on the right type of apartment and location. It takes you on a tour of the city's neighborhoods, introduces you to the available housing, gives you vital facts about transportation, housing laws, renting, sharing, and much more.

The book gives you inside advice on actually finding the apartment you've targeted. It helps you find the hottest listings, tells you how to canvas, and how to select a broker.

Send for a free copy of "Manhattan Moves" today. It won't guarantee you a Manhattan apartment, but it will definitely get you "moving" in the right direction.



ICELANDAIR TO EUROPE. EVERYTHING THAT ISN'T A BARGAIN IS FREE.

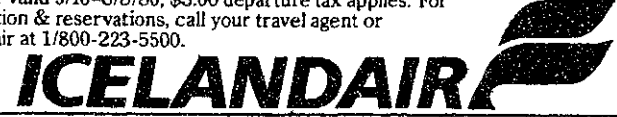
To Luxembourg: Roundtrip Fare

New York	\$458*	\$499†
Chicago	\$518*	\$559†
Balt./Wash.	\$488*	\$529†
Detroit	\$508*	\$549†
Orlando	\$518*	\$559†

Get in on our lowest fare to Europe in years. And with it, get a lot more than just the trip over. Because, when you fly Icelandair, you get everything you expect from a full-service airline, with no charge for meals or baggage. Every fare includes free wine with your in-flight dinner and free cognac after.

Icelandair Values Continue After You Land: Free deluxe, round-trip motorcoach between Luxembourg and select cities in Germany, Belgium and Holland. Special \$15 train fares to Switzerland or France. Super Saver Kemwel car rentals at just \$59 per week in Luxembourg. And, if you choose, a day or two stopover in Europe's most beautifully kept secret, Iceland.

*Super Bargain Fare, 6-30 day stay. †Super Grouper Fare, 1-365 day stay. Valid 5/16-6/8/86, \$3.00 departure tax applies. For information & reservations, call your travel agent or Icelandair at 1/800-223-5500.



TO: MANHATTAN MOVES MILFORD MANAGEMENT, 1271 AVENUE OF THE AMERICAS, NEW YORK, N.Y. 10020

Send me a copy of "Manhattan Moves", The Insider's Guide to finding an Apartment in Manhattan—free without cost or obligation.

Your Name _____

School _____

Address _____

City _____ State _____ Zip _____

Home Address _____

City _____ State _____ Zip _____

Phone No. _____ Or Call Toll Free 1 (800) 247-4041

notices

Listings

Student activities, administrative offices, academic departments and other groups — both on and off the MIT campus — can list meetings, activities, and other announcements in *The Tech's* "Notes" section. Send items of interest (typed and double spaced) via Institute mail to "News Notes, *The Tech*, room W20-483," or via US mail to "News Notes, *The Tech*, PO Box 29, MIT Branch, Cambridge, MA 02139." Notes run on a space-available basis only; priority is given to official Institute announcements and MIT student activities. *The Tech* reserves the right to edit all listings, and makes no endorsement of groups or activities listed.

Friday, Apr. 25

Five MIT students — Yu Hasegawa '88 (Japan), Brenda Golienu '85 (Canada), Kwame Efah '87 (Ghana), Nicolas Cauchy '88 (France), and Hugo Ayala '89 (Mexico) — will speak on **Changing Cross Cultural Perspectives: Students' Personal Experiences Abroad** at 3:10 pm in Room 10-250. The program is co-sponsored by International Students' Office and Women's Studies Program and is open to the public.

Saturday, Apr. 26

A **Walk-a-thon for Laboratory Animals** will take place at noon. The 10-mile walk will begin on the front steps of English High School, 77 Avenue Louis Pasteur (near Harvard Medical School). For further details, please call ei-

ther Troy Soos (628-6317 or 253-5929) or Nancy Perry (239-2643) or leave a message with CEASE at 427-6799.

Sunday, Apr. 27

There will be a **Chorale Concert** at the Hilles Library, Radcliffe College, on Shepard and Garden Street at 3 pm.

Come and join the **March of Dimes WalkAmerica**. Registration is at 8:00 am, and the walk begins at 9:00 regardless of weather. WalkAmerica '86 features two locations, at Boston City Hall Plaza, Boston, and Quincy Voc-Tech High School, Quincy.

There will be 8 checkpoints along the route, each with a variety of refreshments and entertainment. Everyone who participates is eligible for a fabulous prize.

Humphrey, the Benson's Animal Park baby camel, will attempt the 30-kilometer WalkAmerica route. Area citizens may pledge their support for Humphrey's walk at any 7-Eleven Food Store. Pledges of \$10 or more will receive one free admission to Benson's Animal Park.

Registration cards and sponsor sheets are available at Zayre's, 7-Eleven, Citgo Quick Marts, Brigham's, Arby's, Good Vibrations and many other convenient stores. Money raised through WalkAmerica funds research into the prevention of birth defects. For more information or to make a pledge call the March of Dimes at 329-1360, or listen for details on POWER 103-WHTT-FM.

New Directions for the Democrats: Growth with Equity is the topic of a public talk by Professor S.M. Miller of Boston University and journalist Robert Kuttner of *The New Republic*. Sponsored by the Institute for Democratic Socialism. Admission is free. 7:30 pm at the Workmen's Circle, 1762 Beacon St., Brookline. For more information, call 426-9026.

Monday, Apr. 28

Informal reception for discussion with artists **Linda Hartinian** and **Ruth Maleczek**, sponsored by the **Mabou Mines** residency. The reception will be held from 4-6 pm in the Reference Gallery of the List Visual Arts Center on the first floor of the Wiesner Building, 20 Ames St., Cambridge. For more information, call Dana Friss-Hansen at 253-4400.

Noted musicologist and biographer Karl Geiringer will lecture on **Young Brahms and the Schumanns**, sponsored by Northeastern University. The lecture is at noon in room 312 E11 Building, 360 Huntington Ave., Boston, and is free and open to the public. Call 437-2440 for more information.

Wednesday, Apr. 30

All students interested in medicine: **HST (Health Sciences and Technology) Informational Meeting** will be held at 3 pm in Room 3-370. Dr. Roger Mark, HST Co-Director, will speak about MD, MEMP, and MD/PhD programs, including application procedures and financial aid. All are wel-

come. For more information, call Preprofessional Advising, Ann x4737.

John Maxtone-Graham will bring us back to the night of **The Sinking of the Titanic**, 7:30 pm at the MIT Museum. He will provide a history of the ship, its passengers, and the 74-year search for its remains. The lecture is free and open to the public.

Margaret Miles, Professor of Historical Theology, Harvard Divinity School, will examine **Image as Insight** at 8 pm, at Cambridge Forum, 3 Church St., Harvard Square. Admission is free.

Thursday, May 1

A seminar entitled **Industry Structures and Standardization** sponsored by the MIT Communications Forum will be held from 4-6 pm in the Bartos Theater of the Wiesner Building. The speakers will be Marvin Sirbu of Carnegie-Mellon University and Joseph Farrell of GTE Laboratories. Open to the public.

On May 1 and 2 Roxbury Community College is sponsoring a two-day conference entitled **The Caribbean: Frontline not Backyard. Cultural Political and Economic Independence**. Speakers will include major political leaders from Jamaica, Haiti, Puerto Rico, Dominican Republic and other Caribbean countries. Included in the program will be workshops, films and cultural events. For more information call Professor Tom Reeves or Professor Ken Tangvik at Roxbury Community College at 734-1960

ext. 270,370,286.

As part of the conference there will be a forum entitled **Haiti After Duvalier: The Future of Democracy** starting at 7:30 May 1 at the Mass. College of Art auditorium, 625 Huntington Ave. in Boston. Speakers include Evans Paul, spokesperson for the group that led the protests against Duvalier, and Fr. Gerard Jean Juste, director of the Haitian Refugee Center in Miami.

Sunday, May 4

The 17th Annual Greater Boston **Walk for Hunger** will be held today. You may walk, sponsor a walker, or just give a contribution. Please help us feed the hungry. Call Mary Kelley at 547-1774 (daytime) or 776-7071 (evening).

Monday, May 5

A free lecture-discussion entitled **The Ex-spouse Relationship: How to Reduce Conflict and Strengthen the Remarriage** will be held at 8 pm at the Institute for Remarriage and Stepfamilies, 259 Walnut St., Newtonville, Room 14. This lecture is sponsored by Riverside Family Institute, a non-profit organization. Questions and answers and discussion will follow. For more information, please call 964-6933.

Tuesday, May 6

Prof. Elaine Hagopian of the Department of Sociology at Simmons will speak on **A Day in the Life of an American Living in Beirut** at 7 pm in Huntington Hall (10-250). Sponsored by MIT Lebanese Club.

THE SOLUTION

The problems we face today, both at the societal and individual levels, are truly awesome. At the national and international levels, the issues include human rights, nuclear escalation and poverty. At the individual level, people are searching for identity, self-worth, acceptance and love. We believe all of these problems are the result of man's sinful nature which separates him from God. We believe the solution to man's sinful nature is Jesus Christ. And we are available to talk to students and colleagues about The Solution.

Samuel Amponsah
chemical engineering

Chae An
electrical engineering and computer science

John Arrison
curator, Hart Nautical Collection

Mark Baker
physics

Brad Binder
electrical engineering and computer science

Eric Birgbauer
biology

Peter Brown
assistant dean for student affairs

Jim Bruce
director, Information Systems;
professor, electrical engineering

Ralph Burgess
research engineer, mechanical engineering

Brent Chambers
materials science and engineering

Mark Chan
civil engineering

Pyung Chang
electrical engineering and computer science

Chi-Fang Chen
ocean engineering

Luke Cheng
civil engineering

Jarvis Cheung
chemical engineering

Wayne Cottrell
civil engineering

Darius Crenshaw
electrical engineering and computer science

Mike Cronk
electrical engineering and computer science

John Erickson
chemical engineering

Ronald Fergle
architecture

Michele Fichtl
mechanical engineering

Dan Frost
electrical engineering and computer science

Daru Gaskin
economics

Rick Gibson
earth, atmospheric and planetary sciences

Evangelos Gogolides
chemical engineering

Gordon & Gayle Hall
management

Andy Hamlin
management

Daniel Hastings
assistant professor, aeronautics and astronautics

Roger Howe
assistant professor, electrical engineering
and computer science

David Hsu
biology

Bill Huang
electrical engineering and computer science

Rebecca Hung
chemistry

John Ivan
civil engineering

David Jansson
lecturer, mechanical engineering;
director, Innovation Center

Susan Jarvis
chemistry

Burt Kaliski
electrical engineering and computer science

Lisa Lam
mechanical engineering

Rick LaMaire
electrical engineering and computer science

Byeong-Cheol Lee
management

Chonghwan Lee
electrical engineering and computer science

Norman Lee
aeronautics and astronautics

Reta Lee
staff accountant, Office of the Dean for Student Affairs

Tony Lee
civil engineering

Thin-Yin Leong
management

Dilys Liu
nuclear engineering

Bill Long
research associate, Laboratory for Computer Science

Pam Mabrouk
chemistry

Majo Male
civil engineering

Roger Mark
associate professor, electrical engineering in medicine

Mark Matson
electrical engineering and computer science

Paul May
architecture

Ray McDowell
electrical engineering and computer science

John Moody
physics

Georgia Nagle
administrative assistant, mechanical engineering

Vinnie Natoli
aeronautics and astronautics

Kevin O'Donnell
aeronautics and astronautics

Phil Owen
aeronautics and astronautics

Scott Parrish
management

Tertia Perkins
administrative assistant, urban studies and planning

Bill Peters
principal research engineer, Energy Laboratory

Simone Peterson
materials science and engineering

Tom Piccone
materials science and engineering

A. Tim Royappa
chemistry

Earl Ruley
assistant professor, biology

Pete Schunemann
materials science and engineering

Craig Smith
aeronautics and astronautics

John Smith
staff, Inter-Varsity Christian Fellowship

Phil Soo
mechanical engineering

Joanne Sorrentino
senior secretary, Sloan School of Management

Yew-Hoe Tan
architecture

Tom Varberg
chemistry

Clayton Whittaker
mail worker, Physical Plant

Tyrone Williams
urban studies and planning

Sing Charn Wong
architecture

Andrew Woo
aeronautics and astronautics

Dan Yap
electrical engineering and computer science

Stan Zygmunt
materials science and engineering

For more information, contact the MIT Graduate Christian Fellowship, room W20-441. Weekly meetings Wednesdays at noon in Twenty Chimneys.

MIT considers new food management options

(Continued from page 1)

out of the competition for the management contract because they were overextended and "couldn't do justice" to the job, Brammer said. Between 50 and 60 representatives from the remaining companies spent the last two weeks of March examining the facilities on campus, he added.

The RFP form states several goals of the MIT dining services. "We have underdeveloped space at MIT that can be used to respond to the strong demand from faculty, graduate students, and staff for food services," the document says.

"Ashdown House and Burton-Conner dining rooms are ready examples. The existing store spaces at Westgate and Eastgate could be developed. There is space for private dining room development at Walker Memorial on the second and third floors. . . .

"Catering is big business at MIT, but can be bigger. We lose an estimated \$300,000 to \$500,000 annually to commercial catering operations in the area. . . ."

Stephen D. Immerman, director of operations for campus activities, and Brammer stressed that the food services department is only looking at options, and

will not know what new plans may be implemented until after May 1.

Brammer said that the decision to ensure dining service workers of their jobs would pose no problem to a potential company. Keeping current staff is not "uncommon" to management companies. Brammer announced last month that MIT would keep the workers.

Domenic Bozzotto, president of Local 26, the AFL-CIO branch representing the food workers, stressed that the company should realize it is "dealing with long term employees and not disrupt that."

The 12-member committee is expected to reach a decision on a new company by mid-June.

classified advertising

Classified Advertising in The Tech: \$5.00 per insertion for each 35 words or less. Must be prepaid, with complete name, address, and phone number. The Tech, W20-483; or PO Box 29, MIT Branch, Cambridge, MA 02139.

Meet someone special from another school. Provide: Name, address, phone, school, major, details, \$16.50. College Romance, P.O. Box 662, Brookline, MA 02146.

Brown & Finnegan Moving Service. Local - Long Distance - Overseas - No Job too small. Reasonable Rates, Frequent Trips. ALL NE NY NJ DC VA PA 364-1927 or 361-8185. M/C & VISA Accepted. DPU 1498 ICC 1931

CRT TERMINALS

Tektronix 4023: 80 X 24 w/composite video output, serial I/O 110-9600 Baud, guaranteed 30 days, w/manual. . . \$140. Datapoint 3000 Terminal. . . \$100. Sycor 340 B Communications Terminal, Doc. and spares. . . \$350. Stuart Cody, Cambridge 661-4540

Term Papers, resumes professionally edited and typed on IBM/HP Laser jet equipment. 24 hour turn-around. 10% student discount. Person to Person Assured Documents. 226 Lincoln St., Allston 254-4036.

Exec. Asst./Researcher: Support CEO and other mgmt. folks in new medical services venture. Also be responsible for some administrative and financial tasks. Required: college degree, one to two years of relevant work experience, computational skills on Macintosh, as well as desire to work in challenging and changing environment. Available immediately. Write to: R.J. Epstein, CEO, In Vitro Care, Inc., P.O. Box 267, Cambridge, Mass. 02238.

Moving! Don't call Uhaul! In expensive local moves or reserve your space on our truck going to the NYC area, Connecticut, Rhode Island, New Hampshire, and Maine. Jack 723-5028.

For Sale: HP-41CV Calculator with card reader, math and financial modules, numerous programs and manuals. Must sell. Best offer. Call 876-8078.

The MIT Equipment Exchange offers surplus equipment and used typewriters to students and staff at reasonable prices. Located in Building NW30, 224 Albany Street. Open Tues., Thurs. 11 am - 3 pm.

Leave a clean trail.

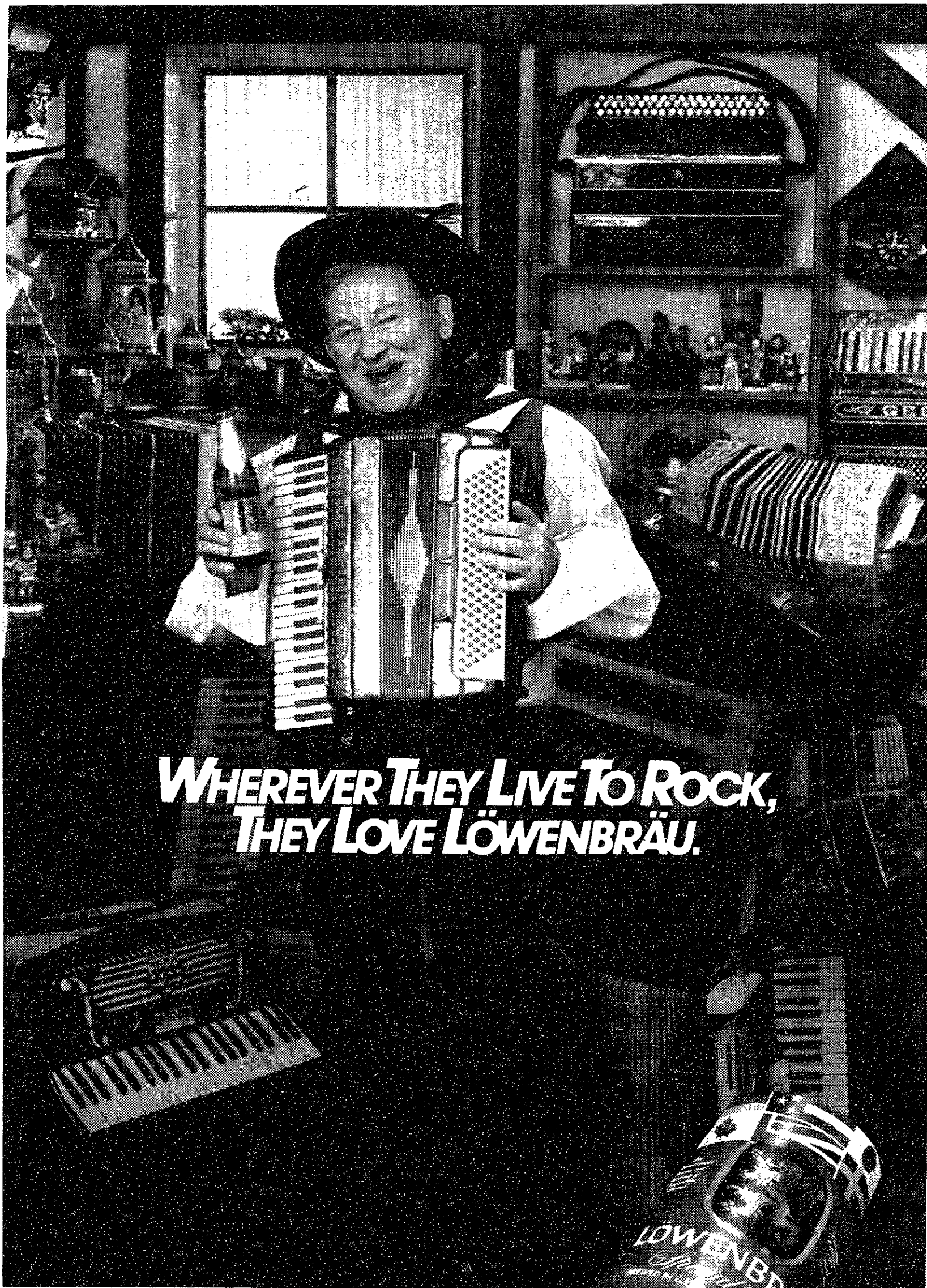
THE ROCK IS BACK
At 94.5 FM

Huey Lewis
 Bruce Springsteen
 ZZ Top
 Bob Seger
 The Cars
 The Rolling Stones

The Who
 David Bowie
 Heart
 Bryan Adams
 John Cougar Mellencamp
 Journey

BOSTON'S BEST ROCK
Zoo
 WZOU 94.5 FM

... The station that plays Boston's Best Rock



The great beers of the world go by one name: Löwenbräu. Brewed in Munich, in England, Sweden, Canada, Japan and here in America for a distinctive world class taste.

THIS WORLD CALLS FOR LÖWENBRÄU

GSC selects new president

By Earl C. Yen

The Graduate Student Council (GSC) elected Norman M. Wereley president for its 1986-7 academic year on Apr. 17. Wereley, who defeated Mansoor A. Khan for the position, replaces Janine M. Nell.

Wereley said his most important goal will be to continue the graduate students' drive for more housing.

Senior Vice President William R. Dickson '86 announced earlier this month that MIT is looking at a number of potential sites for a graduate dormitory to be built by 1989.

"If we don't keep up the pressure on the administration, they'll just say it wasn't a sustained effort, that we really didn't mean it," Wereley explained.

Wereley stressed two important angles to the housing crunch. First, off-campus housing costs in the Boston area are very high. Second, stipends aren't sufficient for students to live off-campus. Graduate students should expect to spend 27 to 35 percent of their funds on housing. But for MIT students, that figure is closer to 40 percent," he said.

Wereley said MIT ought to consider an increase in graduate stipends so that the stipends are consistent with the cost of Boston-area housing.

Some departments find it particularly difficult to provide adequate funding for their graduate students, he noted.

Wereley said he will try to generate more student interest in the

GSC. "There's a certain amount of apathy among the graduates," he said. "Graduate students tend to identify more with their laboratory or their research group. What graduate students need is a representative of graduate student views."

"The administration in general would be responsive to graduate student concerns if they had some more graduate students to talk to," he said. "The administration needs our feedback."

Undergraduate students often have a stronger voice in Institute decisions compared to graduate students, Wereley said. "Undergrads have a stronger voice at MIT because they've made a stronger effort to have a voice," he indicated.

"Undergraduates feel like they belong to their graduating class, and they have an extensive dormitory system," Wereley said.

Wereley said he encourages graduate students to explore the possibility of establishing a Graduate Student Center to serve as a focal point for graduate students' social lives.

"I'm interested in all quality-of-life issues," Wereley said.

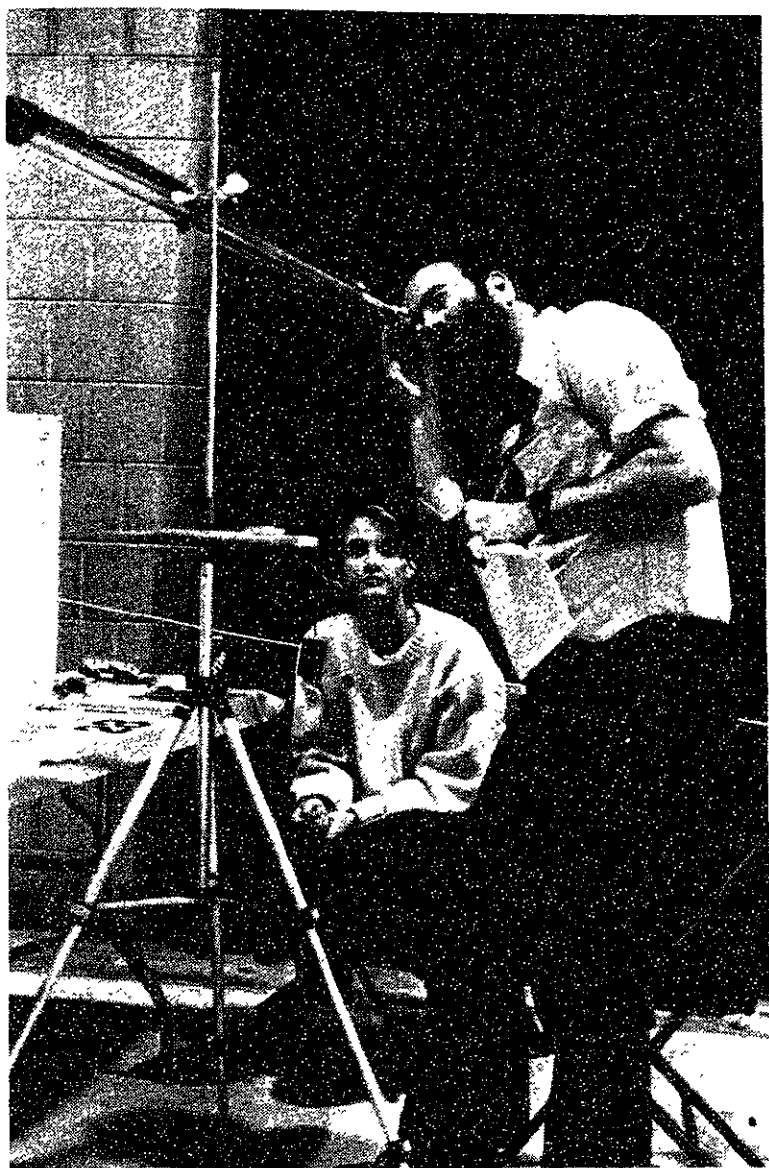
Wereley does not believe the GSC should become involved in political issues such as divestment or Strategic Defense Initiative research.

"We're supposed to be a service organization for graduate students and to promote faculty awareness of graduate student concerns," he explained.

"Graduate students are very active in political issues," Wereley observed. "That's not necessarily the GSC's purpose. The GSC is here to represent graduate students. But that may change. There's always room for evolution."

The GSC also elected Carey Rappaport, vice president; Jeffrey Meredith, treasurer; Charles Siletti, secretary; and Steve Semkin, Muddy Charles Pub treasurer.

In other business, the GSC approved a \$42,500 budget for the 1986-7 academic year. The budget represents an 8 percent increase over this year's \$40,000 budget.



Tech photo by Jerry Broda

Tracey A. Geran from Newton, MA looks on while a judge examines her entry for the 37th annual state science fair held last weekend in the New Athletic Center. Over 200 students from 76 Massachusetts schools participated.

Professor wins Toynbee Prize

By Anu Vedantham

Dr. Bruce Mazlish, MIT professor of history, has won the 1986-87 Toynbee Prize for his contributions to the social sciences.

The Awards Committee mentioned Mazlish's "major contributions to deepening public understanding of the relationship between psychology and history, and the importance of personality in determining policy" in their announcement of the award.

The Toynbee Prize is awarded once every two years on the basis of a scholar's complete contributions. Past winners have included French writer Jean-Paul Sartre, Indian President Radhakrishnan and Pope Paul VI of Italy.

"Distinguished social scientists and academicians... from different parts of the world" make up the Awards Committee, according to Ralph Buultgens, chairman for the 1986-87 committee.

Mazlish was nominated by representatives from several countries including India, China and the United States. The committee narrowed the list to six finalists, including two Nobel Prize winners, before choosing Mazlish, according to Buultgens.

As part of the award, Mazlish becomes the chairperson of the Awards Committee which will select the 1988-89 Toynbee Prize winner by the spring of 1988 at the latest, Buultgens said.

In December 1986, Mazlish will deliver the formal Toynbee Lecture and receive his award. He plans to "talk about world history. This gives me the opportunity to stand back and ask 'What can we say about mankind?'... For me the psychological is just one element of all the aspects you have to look at."

"Normally, the ceremony is held in the country of the recipient," Buultgens explained. "It is a public affair with many international dignitaries in attendance."

Mazlish has been a member of the MIT faculty since 1955, and had taught here for 3 years before that date. "I have found MIT to be a very flexible place," he said. "You can pursue projects across lines... in a very exciting atmosphere." He has also served

as a fellow or visiting professor at Harvard University and the Institute for Advanced Study at Princeton University.

Mazlish also has the distinction of teaching "the first course on history and psychoanalysis ever given, to my knowledge, by a historian."

Publishing accomplishments

Mazlish has authored several books, including biographies of Richard Nixon, Henry Kissinger and Jimmy Carter, and is the author of over two hundred papers and articles, according to the Toynbee citation.

"My first book was *The Western Intellectual Tradition* (1960), a collaboration with Jacob Bronowski," Mazlish recounted. "Twenty-six years later, and it is still successful as a paperback... I am very fond of that book."

Mazlish realized that the philosophy of history could be attacked by two different methods. Speculative theories such as those advanced by Voltaire, Kant and Toynbee "attempt to explain all of history in some grand philosophical manner," Mazlish said. Critical analysis looks at the actual language and methodology of past historians to find out "what is a fact, what is a cause, what is a scientific view of history," he added.

In *The Riddle of History* (1966), Mazlish "tried to combine the two ways of looking at the philosophy of history... One of the figures I treated was Sigmund Freud, who is not commonly thought of as a great historian," Mazlish said.

When the National Aeronautics and Space Administration (NASA) asked the American

Academy of Arts and Sciences to discover "what the secondary and tertiary effects of the space program would be on US society... [The Academy] asked me to undertake a study in historical analogy," Mazlish said.

"I put together a team and selected as my analogy the railroad in the 19th century," he added. In this study, he considered "the space program as a social invention."

In Search of Nixon (1972) came "before Watergate, operating only from public materials... Watergate gave me notoriety, alas," Mazlish said. His biography on Kissinger, on the other hand involved extensive interviews with almost all of Kissinger's top assistants.

Later he authored *James and John Stuart Mill* (1975) using "the two of them as a case study in father-son relationships in the 19th century." Mazlish explained that "up until the early 19th century, sons simply replaced fathers. But under the French revolution and the industrial revolution, suddenly sons were displacing fathers."

Mazlish is now looking at the end of the 18th century when society "felt a tremendous sense of breakdowns in connections — between man and God, man and nature, man and man... I am examining the break but mainly I am looking at the lamenters — mainly literary people... I am making the argument that this kind of lamentation was the basis of sociology." Mazlish has just finished a draft of a new book on this subject titled *Connections: or The Cash Nexus*.



Tech photo by Thomas J. Coppeto

Toynbee Prize winner Prof. Bruce Mazlish.

Thomas T. Huang

5:58

Boston Marathon

Good job, Chief

This space donated by *The Tech*

THE TECHNOLOGY AND
CULTURE SEMINAR
AT MIT

will sponsor a public forum on

GENE THERAPY:
WHERE DO WE
DRAW THE LINE?

Fourth Meeting in a Series on
TECHNOLOGY, HEALTH CARE AND SOCIETY

DR. W. FRENCH ANDERSON:

National Heart, Lung and Blood Institute;
National Institutes of Health; Bethesda, Maryland

MONDAY, APRIL 28
4:30 PM

MEZZANINE LOUNGE,
STUDENT CENTER

Informal Supper and Discussion to Follow

MIT to create faculty ceiling

(Continued from page 1)

Professors are reaching a point of "diminishing returns," said Professor Mary C. Potter, chairman of the faculty. They must work so hard pursuing grants that their time to do the research itself may be curtailed, she explained.

"We would like to see our faculty devoting more time to teaching and collegiality," Deutch agreed.

Recognition of the problem

Many years ago there was a consensus in the Institute that "it would be good to expand, increase activities . . . and to do it by using external support," Low said.

With this external support, MIT "leveraged itself into becoming a large community," Potter said. "It was easy to increase our faculty size, especially in the good days of the sixties."

But the national climate has now changed, she continued, leaving the Institute "out on a leveraged limb."

In addition, Low said, MIT is no longer a "single light in engineering," as schools like Stanford contend more vigorously for a smaller federal pie.

The likelihood of drastic federal budget cuts — whether or not the Gramm-Rudman Deficit Reduction Act is declared unconstitutional — "brings to a head" the need to act on the problem, Potter said.

Faculty dissatisfaction with the need to raise part of their salary from grants has "always been latent," Potter said. "They could always live with it . . . but never were delighted." Many faculty members raised the issue of outside salary support when they were asked to suggest priorities for MIT's upcoming endowment drive, she added.

Low recognized that the difficulty of finding grants was increasing when he heard faculty complaints during his term as provost from 1980 to 1985. "The consequences were getting harder and harder," he said.

Low, while provost, began to suggest that the Institute limit the size of the faculty. He reversed the increasing trend in the percentage of salary paid by research sponsors.

Possible solutions

MIT would have a "better-balanced structure" if it had either twice its present endowment or a somewhat smaller faculty, Low

said. A major fund drive will address the need for endowment, but until it is completed the faculty must be reduced a little, he continued.

Potter described MIT's intention restrict the size of the faculty as a "pruning effort," which would allow for growth in the most promising fields while taking advantage of attrition in outdated or less promising ones. Cutbacks would take place "here and there, not in any particular sector," she emphasized.

Deutch explained that areas, not schools, would be selected for growth or shrinkage to achieve a goal of "average reduction." It is important to "preserve opportunity for certain key areas," such as the new Department of Brain Science, he said.

MIT sometimes makes extra faculty appointments to hire more women and minorities. This practice "will go on without question" despite limits on appointments, Deutch said.

Potter and Deutch said they felt a modest reduction in faculty size could only help MIT in the long run. The aim is to "make the path smooth" for the best people, Potter said, so that MIT is not a "hardship post."

Students protest at Harvard

(Continued from page 1)

it is reconsidering its investment policies in South Africa.

Harvard's present policy allows the university to invest in US companies which do less than half of their business in South Africa and which abide by the Sullivan principles, a set of racial integration guidelines for companies doing business in South Africa, Heffron said. In the past two years, Harvard has sold stocks of four companies, totaling \$12.8 million, that were not following the Sullivan principles.

"Harvard condemns the racist apartheid system," Heffron said. "But [Harvard president] Mr. Bok and the Corporation do not believe in subscribing to complete divestiture. We believe we can effect a change in South Africa by encouraging companies to practice racial integration and by voting responsibly in our proxies."

The protesters have no plans to take down the shanties and are

considering the possibility of letting them stand through the commencement exercises in June. Heffron refused to say how long the administration will allow the shanties to remain.

Conservatives respond

The Harvard Conservative Club on April 21 built a shack representing a Soviet prison or "gulag" in Harvard Yard.

"The purpose of the gulag is to draw attention to the very serious issue of Soviet oppression of human rights all over the world," said Saied Kashani, president of the Conservative Club. "The gulag symbolizes the more than 30 nations from Afghanistan to Democratic Yemen that are under Soviet oppression, not including the Soviet Union itself."



Tech photo by Jerry Broda
Karen M. Krans '88 waits for a pitch during Tuesday's women's softball game vs. Southeastern Massachusetts University. MIT lost 2-0.

SUMMER SOFTBALL LEAGUE

Interested in umpiring or entering a team?
Contact Peter Vedder, 37-618, x7405
(messages 494-0308) and come to the organizational meeting, Thursday, May 8th, 5:30 pm, West Lounge, Student Center.

Mmmm. . . .
Matza Ball
Soup !!



EAT PASSOVER MEALS AT THE KOSHER KITCHEN

Lunch schedule: 1:00 pm on April 24, 25, 26, 30, and May 1.

12:30-1:30 on April 27, 28, 29.

Dinner schedule: 6:45 pm on April 25, 29, 30.

5:30-7:00 pm on April 26, 27, 28.

- * The Kosher Kitchen is in Walker Hall, Room 007.
- * Supervision by the Va'ad Harabonim of Mass.
- * Payment in cash or validine (prepay for Shabbat and holidays).
- * Meals served from April 23 through lunch May 1.
- * For information call 225-6750 or 253-2982.
- * Sponsored by M.I.T. Hillel.

TEACHING AND TUTORING WHILE AT MIT:

How to Get Involved in Education as a Career or a Volunteer Activity

A Panel Discussion

TEACHER TRAINING AND CERTIFICATION

Barbara Beatty
Assistant Professor of Education, Wellesley College

VOLUNTEER PROGRAMS

Gina Ferron-Muccio
Educational Coordinator
MIT-Wellesley Upward Bound Program

Alan Brickman
Cambridge School Volunteers

Pamela Loprest
Urban Action Program

WEDNESDAY, APRIL 30, 3-5 PM
WEST LOUNGE, STUDENT CENTER

Many thanks to everyone. . .

drivers hosts
greeters planners
escorts

who participated in the
Campus Preview and
Minority Spring
Weekend.

These events were our most
successful ever because of
your help.

The Campus Preview -
Minority Spring Weekend
Planning Committees

COMPAQ COMPUTER SALE

COMPAQ DESKPRO 286

- 30 meg
- 640K
- Compaq Amber Display

\$4195.00

☆☆☆☆☆☆

COMPAQ DESKPRO

- 20 meg
- 640K
- Compaq Amber Display

\$2550.00

☆☆☆☆☆☆

Call for other low prices on IBM, Compaq & Apple
Micros Unlimited 964-0202
Newton, Mass.

* all equipment delivered and set up at no extra cost

SUMMER JOB?

TRY TEMP!

- Clerks
- Accountants
- Word Processors
- Typists
- Secretaries
- Data Entry

Long or short-term jobs
Friday PAY • NO Fee
TOP RATES

BOSTON 357-8300
120 Tremont St
BROOKLINE 734-7199
1330 Beacon St
COPLEY 266-2929
1 Exeter Plaza
CAMBRIDGE 354-7215
1430 Massachusetts Ave

Office
Specialists

Quality Car Rentals at Affordable Rates

• Daily - Weekly - Monthly • Weekend Specials



Logan Airport 125 Bremen St 569-6500
Harvard Square 1201 Mass Ave 876-8900
Brookline 143 Harvard St 739-2244
Downtown Boston Mid-Town Hotel 220 Huntington Ave 267-6633
Lewis Wharf 28 Atlantic Ave 367-6777
Arlington Mirak Chevrolet Service Center 1125 Rear Mass Ave 646-8600

Plus 2 other locations See Yellow Pages



Admissions to try new ratings

(Continued from page 1)

ences in applicants' class ranks, grade point averages and standardized test scores, which are often irrelevant to a student's performance at MIT, Behnke said.

The Admissions Office presently assigns each applicant a rating which is based on an applicant's academic and personal characteristics.

The academic rating is currently based factors such as the Scholastic Aptitude Test (SAT), Achievement Tests, the percentage of the high school graduating class going to college, class rank, and math and science grades.

The new system will split both the academic and personal ratings into two parts: accomplishments and quality. Accomplishment ratings will measure objective factors such as grades, standardized tests, and extracurricular activities.

The quality scale in the academic rating will try to weigh important — but more subjective — areas, such as intellectual curiosity. In the past, the admissions formula did not account for the winning of math or science awards, even major ones, nor did it look at a candidate's record of scientific research.

The present academic rating also does not directly look at grades outside of math and science courses, nor does it account for weighted grades, such as Advanced Placement classes, according to Chris G. Saito '88, a member of CUAF. The new system will incorporate these factors, Saito added.

The personal quality rating will

focus on such factors as the candidate's ability to overcome obstacles, his leadership capabilities, and the impact he made on his school and community.

System expected to make applicant evaluation efficient

The new ranking system was written because faculty and staff were uncomfortable with the old method's inaccurate rating of applicants, Behnke said. The Admissions Office proposed the new system to eliminate discrepancies between the rankings the office assigns to applicants and eventual offers of admission, he indicated.

The new system is expected to improve the initial screening of applicants and will ease the Admissions Office's workload when making its final decisions, Behnke said.

CUAFA will test the system by selecting students admitted to the Class of 1990 and studying how they would fare under the new ranking measures.

The Admissions Office has already run smaller tests. The admissions staff will decide before the end of the summer whether the system will be adopted. CUAF's assessment will greatly influence the Admissions Office's decision, Behnke said.

Behnke explains present admissions process

The first step in the admissions process is to generate the candidate's academic rating. Two readers from the staff or faculty rate the candidate's personal qualities and summarize their impressions. If the two have different opinions, a third reader looks at the application.

The readers and admissions staff then meet to decide on the fate of each applicant. Each applicant is admitted, rejected, or reviewed based upon his or her summary sheet. Most applications fall into the third category.

If anyone in the admissions group is uncomfortable about anything in the summary sheet, which includes the academic and personal rankings, a reader re-evaluates the entire folder.

Koby Antupit

PHOTOGRAPHERS

Creative Portraits
Instant Color Passports
Resume & Publicity
Restorations

Harvard Square
8 John F. Kennedy St.
Cambridge
547-7552

NEW 星星
HSING HSING
RESTAURANT
Mandarin & Szechuan Taste
COCKTAILS

TAKE OUT SERVICE

20% off DINNERS \$5.00 or more
except Friday and Saturday
Served from 5 pm to 10pm
Luncheon Special starting at \$2.25
served from 11:30 am to 5 pm

546 Mass. Ave. Cambridge, Mass. (617) 547-2299

ARABIC	FRENCH	NORWEGIAN
DANISH	GERMAN	PORTUGUESE
DUTCH	ITALIAN	RUSSIAN
FINNISH	JAPANESE	SPANISH
CHINESE	KOREAN	SWEDISH

Qualified part-time TRANSLATORS and/or TUTORS in these and other languages needed. Technical or computers background important. Reasonable pay, flexible hours, year round or summer work. Send background information to Mr. Manuel at 30 Mount Auburn St., Cambridge, MA 02138.

Ongoing

Alan Dyson, director of MIT's **Secondary Technical Education Project** (a project that pairs the Institute with Mario Umana High School of Science and Technology in Boston), is seeking people willing to discuss one of the following issues with high school students: US policy with respect to Central America, Middle East, South Africa and Immigration. Stereotypical responses to: "Who Gets Involved in Peace Movements?" - "Women's Work" - "Youth and the Law, Who Goes to Jail?" The high school students will have read and viewed material beforehand.

Transportation provided; total time spent at school will be one and a half hours. Time frame, April through June, 1986. Call Alan Dyson at x7063.

* * * *

Counseling and HTLV-III blood screening services for individuals concerned about exposure to the virus associated with AIDS. For more information about this free confidential service sponsored by the Department of Public Health and Counseling Services, call 522-4090. Weekdays 9 am to 5 pm. Outside Boston call collect. For more information call James Varnum at 542-5188, Monday through Friday, 10 am to 4 pm.

ATTENTION STUDENT MUSICIANS

Music lessons, credit and non-credit, full and partial scholarships.

Register for competitive audition at MIT Music Section, 14N-434, before May 1, 1986.

Presto-Chango!



Cash back! Up to 50% for coursebooks from any college or university

That's right. From April 27 to May 17, the B.U. Bookstore will buy back your spring semester coursebooks. No matter where you went to college. You'll get cash on the spot. And depending on condition and demand, you could get up to 50% off the new edition price.

And if that's not enough magic, we'll show you a card trick!

Your valid college I.D. Card is good for special discounts during our textbook buy back:

- | | |
|------------------------------------------------------------------------------------------------------------------------------------|------------------------------------------------------------------------------------------------|
| 15% off any general book purchase over \$5.00. Excluding textbooks, special orders, magazines, & already discounted titles. | 20% off all women's jeans while supplies last (Girbaud, Guess?, Edwin). |
| 20% off computer supplies and software. | 20% off our Spring collection of Henry Grethel shortsleeve shirts, while supplies last. |

Make some magic at the B.U. textbook buy-back bargain days.

Buy-Back Time and Sale Period: April 17 to May 17.
Hours: Monday thru Saturday 9:30 a.m. to 6:00 p.m.; Sunday noon to 5:00 p.m.
On the Fourth level Textbook Department.



B.U. Bookstore

There's something more to New England's largest bookstore.

Kenmore Sq. (617) 267-8484. Toll free 1-800-553-3550. Hrs: Mon.-Sat. 9:30 AM-7 PM; Sun. 12-5 PM. Major credit cards. Free parking on Deerfield St. Green Line to Kenmore. Two-hour limit.

sports

Crews lose to Ivy Leaguers

By Anh Thu Vo

The MIT women's varsity, JV and novice crew teams traveled to Princeton last Saturday and competed against crews from Princeton and Yale universities. Princeton took the varsity race, and Yale swept the rest.

The women's varsity and JV teams faced two of the top three crews from the Northeast and possibly two of the top five crews from the country, said Varsity Coach Mayrene T. Earle.

The MIT varsity started off the line at 39 strokes per minute and settled to 34 strokes per minute for the rest of the race. A Princeton rower mistimed a stroke right off the starting line, causing her oar to snag underwater and slow down the Princeton boat. But the Tigers quickly recovered and pulled away from both the Bulldogs and the Engineers at the 1000-meter mark.

The MIT eight then made a move on the Yale boat at 1200 meters. As the MIT boat pulled

bow to stern of the Yale boat, the Bulldogs responded by widening the gap between the two boats.

Princeton won the race in 7:18.0 while Yale placed second in 7:23.18. The Engineers brought the rating up to 35 strokes per minute in the final sprint of the 2000 meters but still finished third with a time of 7:36.0.

The Junior Varsity fared no better against its opponents. The JV rowers got off to a bad start and were soon left behind. Both Yale and Princeton eights were fighting for the lead after leaving the MIT eight far behind after 500 meters. From then on, the JV boat was continually waked by the officiating launch following the other two boats.

"Once you lose contact (with your opponents), it is like rowing in a vacuum," Earle said. "It would have been nice to have a boat behind to push us. It is very difficult to row against yourself."

The JV finished last in 8:38.95, a full 54 seconds behind the second-placed Princeton JV squad (7:44.75). Yale's JV team won that race in 7:43.75, just squeaking by Princeton.

Earle said the varsity and JV rowed well despite the results and that they were outclassed in size and strength. Both teams are looking forward to this weekend's rematch against Northeastern crew on the Charles, she added.

The Novices

Like the women's varsity, the two novices' eights came into this race facing stiff competition. Princeton and Yale both recruited and fielded outstanding crews this year. And unlike their competitors, most of the MIT novices had not rowed before entering college.

Novice coach Mary Ellen Finney had said before the races that neither of the MIT novice boats was expected to pull any upsets in this race.

Despite their lack of experience, the MIT novices have shown a definite improvement since the fall season. They went from losing to winning against Simmons College, Worcester Polytechnic Institute, University of Rhode Island, Connecticut College and Columbia University.

After trying unsuccessfully to move on the Princeton first nov-

ice team at the 1000-meter mark, MIT's first novice team was quickly left behind to row its own race against time. But the bow rower caught a crab around the 1100 meter mark, and the boat slowed down considerably.

The Engineers first novices finished a distant third place with a time of 8:35.4, behind the Yale first team, 7:40.37. Princeton placed second in 7:55.7.

Unlike the first eight, the second novice eight rowed an impressive race: they finished in 8:23.2, beating the MIT first novice eight by 12 seconds and the MIT JV boat by 14 seconds.

Due to a failure of the cox box — an instrument for the coxswain to communicate with the rowers and to take ratings and time — the second eight's starting rating as well as subsequent ratings were not recorded. Coxswain Pauline Perez '89 said the start and the final sprint were well done with an estimated rating of 34 and 32 strokes per minute respectively.

The MIT second team beat Princeton's third novice eight (8:34.5) and lost to Princeton's second novice eight by an estimated one boat length. Princeton's second eight placed second in 8:14.2 while Yale's second eight won the race in 7:58.95.

The second novice eight rowed their race with their heart in it, according to Finney. During the last two weeks, they have really pulled together as a boat and gained a mental edge, she added.

Debbie Falcone '89, who rowed in the first eight, noted that the first novice eight has to learn to pull harder together and regain the winning attitude they had earlier this season. Finney announced she may "seat race" to change the line-up for the first eight, giving the second boat's rowers a chance at the first boat.

"Seat racing" is a form of racing to determine the line up for two boats. The two boats first race for 1000 meters while the coach notes down which boat is faster. She then changes two rowers of the same seat in the two boats and races the boats again. The margin created by the two changed rowers determines which rower will row in the first boat.

(Editor's note: Anh Thu Vo '89 is a member of the women's novice crew team.)

Baseball slides past BU and Bates

(Continued from page 24)

day. MIT tied the game in the third. With one out, center fielder Kip Fern '87 singled, took second on an error, and scored on a single by catcher Tim Day '89. Third baseman Tom Hoffman '87 followed with a double to right center, putting runners on second and third. After an infield out failed to advance the runners, Poole delivered his key hit to tie the score.

The Engineers then took the lead for good in the fourth when BU's starting pitcher also had problems with his control. Hoffman and right fielder Ken Switzer '86 drew bases loaded walks to force in the winning runs. Soltys pitched out of trouble in the third, fifth, and seventh innings to wrap up the victory for MIT.

Saturday's game at Bates was a

slugfest as the teams combined for 20 runs and 25 hits.

MIT broke on top in the second when Poole and first baseman Henry Hoeh '86 led off with back-to-back home runs. Poole drove an 0-2 pitch deep into right center, and Hoeh hit the next one over the left field fence. The Engineers went on to score three more runs that inning for an early 5-0 lead.

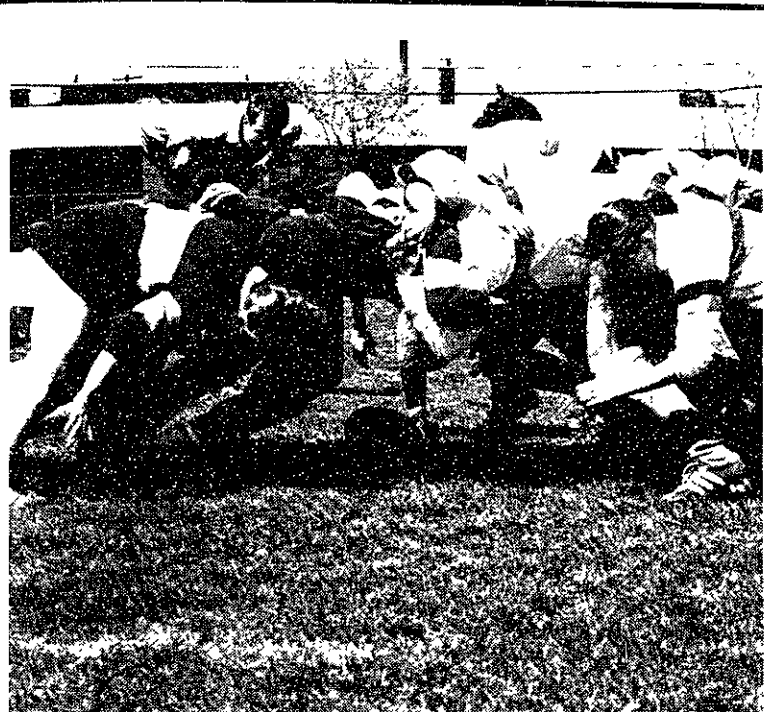
The lead was far from safe, however, as Bates rallied for three runs in the second, one in the third, and three in the fourth to forge ahead 7-5. MIT tied the game 7-7 in the sixth; left fielder Joe Derosa '87 scored the second run by stealing home. The saw-saw affair continued as the lead changed hands three times in the next two innings. Bates scored once for an 8-7 lead in the bottom of the sixth, MIT scored twice to lead 8-7 in the top of the

eighth, and Bates tied the game for the last time with a single run in the bottom of the eighth.

At the top of the ninth inning, the score stood fast at 9-9. With one out, Hoffman and Switzer singled. One out later, second baseman Scott MacFarland '87, who had entered the game as a pinch-runner in the eighth, drove in the winning run with a single. Derosa provided an insurance run with another single, and winning pitcher Mike Griffin '89 stranded the potential tying runs by striking out the side in the bottom of the ninth.

The Engineers play at Clark College today and will host Worcester Polytechnic Institute for a double-header tomorrow at Briggs Field. The first game is scheduled to begin at 1 pm.

(Editor's note: Eric M. Reifschneider '89 is a member of the men's baseball team.)



Tech photo by Stephen P. Berczuk

The MIT women's Rugby team engaged in a scrum against Williams College Saturday afternoon. MIT won the match 16-0. The rugby club is composed of women undergraduates, graduates, and community members. According to co-captain Rachel Berman '87, this is the first season in a number of years that the club has had enough members to field a full team for inter-collegiate play. Their next game is Saturday at Yale.

Men's V-ball seizes championship

(Continued from page 24)

They lost in the second round to East Stroudsborg, but Sunday they were winners in every sense of the word. They played together, kept calm, and won.

MIT beat Bryant 15-7 in both games in the first match of the round robin tournament. This was due to good blocks and hits by Daly, Paul Stuopis '87, and substitute Mike Ressler '86. The passing was off, but Han and Kyung Kim '87 covered well.

UMass-Amherst made the second match a little closer than the Engineers would have liked, but as Ressler said, "Semifinals are at 4:30, and we [the Engineers] are going to be there." Poor communication, passing, and blocking allowed MIT to win the first game only 15-13. Every came together in the second game, including the blow-out, 15-6.

Spikes by Daly and Hernandez gave MIT the third game of the

third match against Brown, 15-11. Substitutes Bruce Kristal '86, Edwin Marin '89, Ressler, Frederick Ryan '87, and Sean Tierney '87 with back-up setter Kyung won the second game 15-12 with good passing that set up for many, many spikes.

UNH was the next team to experience the Engineers' superlative playing. With only one substitution, MIT won the first game of the fourth match easily, 15-4 and clinched top-ranking in its pool. Coach Velazquez decided to give her starters a rest before the semi-finals, but UNH had a point to prove and the MIT substitutes dropped MIT's only loss, 15-6.

Well, it was 6 pm, but MIT was playing Springfield College, the second-ranked team from the other pool, in the semifinals. Han made several great sets in the two games to set-up some even more

incredible spikes by Daly, Ha, and Hernandez, 15-7 and 15-6.

Northeastern and UMass played in the other semifinal match. Both teams split in regular season against MIT. Northeastern finally won 15-10, 15-17, 19-17. The Engineers had plenty of time to rest and to retape their war injuries from the season. They were all tired. They all wanted to go home and take a warm bath, but they had one more match to win to make the season worth it.

Great passing, setting, blocking, and hitting gave MIT the first game of the final match, 15-7. MIT took a quick lead of the second game, 9-3. But Northeastern battled back to lead 12-10. But this was MIT's home territory and with the crowd cheering, MIT hit, and hit hard, to win the game, match, and NECVL Championship, 18-16.

Baseball loses to ENC in downpour

(Continued from page 24)

sulted from MIT mistakes. In the first inning, MacLeod lost control of a pitch and hit the Crusaders' leadoff batter. He came in to score, after stealing second base, when the number two batter singled to center.

Later in the inning, the game's first unusual play occurred. With one out and men on first and second, MacLeod struck out the Crusaders' fifth man. Catcher Craig Poole '86 caught the runner on first out of position, and fired the ball to first baseman Henry Hoeh '86. The route the Crusader took in getting back to the bag was indirect. In fact it was so indirect that it appeared as if he were taking a trip to Harvard. Hoeh tried to tag him, but in doing so dropped the ball. The umpires didn't see how far out of the base path the player was, and instead of being out of the inning, the runners remained on first and second and Hoeh was charged with an error.

The next batter blooped an opposite field double to left, driving in Eastern Nazarene's second run. MacLeod struck out the seventh man to end the inning. The pitcher from Lexington, Kentucky struck out five batters during his stretch, while walking three. He had problems with consistency. Rarely did he throw less than five pitches to a batter. His most impressive inning was the third in which he struck out two Crusaders to end the inning. His worst inning was the fifth, when

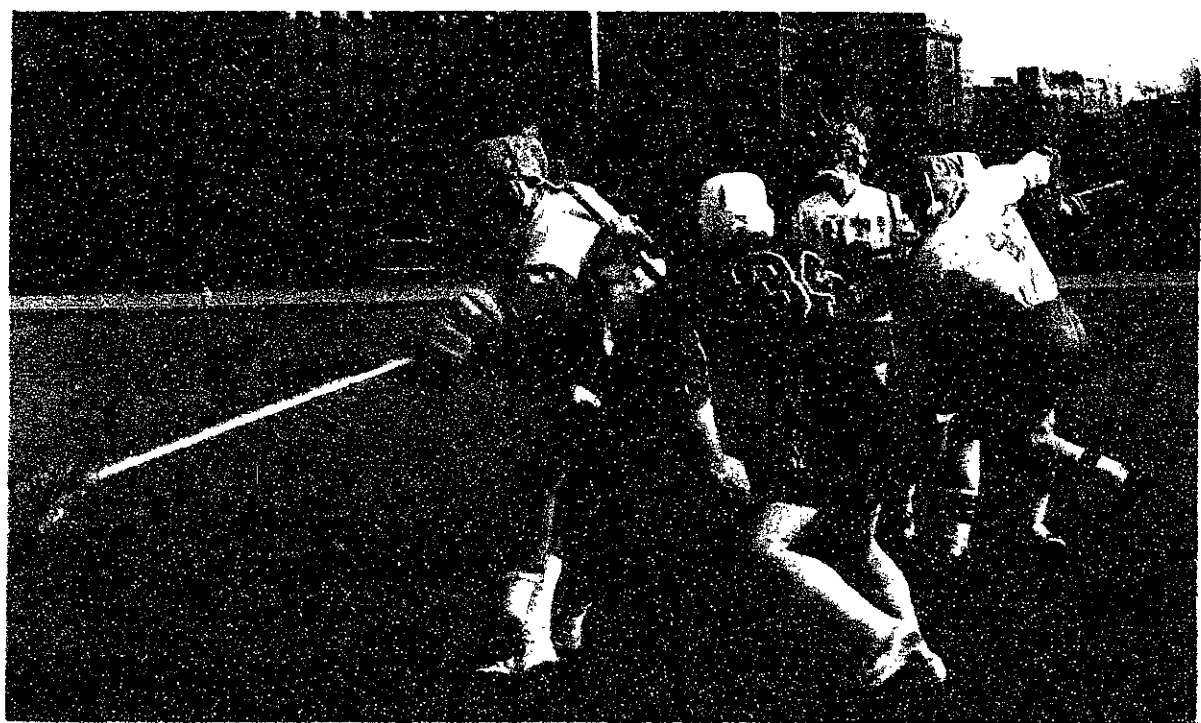
he allowed a walk and three consecutive singles (2 runs) before being pulled by Coach Fran O'Brien.

The third inning brought on another strange play. With no outs and a man on first, the Crusaders' batter hit a sharp ground ball to Rich Zermani '87. He made the toss to second baseman Scott McFarland '88 who was set to make the throw to first for the double play. In the meantime the runner decided that the distance from first to second was 85 feet, and not the standard 90. In making his slide the runner ended up 5 feet short of the bag, disrupting McFarland's pivot. The umpires did not call interference, and there was no double play.

MIT's offense was sparked by the top half of the lineup. In the first, DH Tim Day '89 walked, stole second, advanced to third on a wild pitch, and scored on a sacrifice fly by Tom Hoffman '87. In the third, leadoff batter Kip Fern '87 singled up the middle. He later reached third after an errant pickoff attempt and a fielder's choice. Ken Switzer '86 brought him home with a single to right. McFarland doubled home Zermani in the fourth for the Engineers' third run.

The seventh inning was the high point for MIT. Trailing 6-3, the Engineers led off with two walks to Day and Hoffman. With one out, Hoeh doubled home Day. With the tying runs on second and third, Poole came to the plate. He hit a chopper to the

sports



MIT players vie with Nichols for control of the ball.

Tech photo by Sidhu Banerjee

Men's baseball makes 2-1 split over weekend

By Eric Reifschneider

The MIT baseball team enjoyed a successful Patriot's Day weekend by winning two of its three games. The Engineers beat Boston University (BU) 5-3 last Friday, following up their victory by defeating Bates 11-9 on Saturday.

Paul Soltys '86 and Craig Poole '86 were the key factors in the win over BU. Soltys pitched a complete game while allowing only three runs on five hits, and Poole contributed a clutch two-out, two-run single.

BU took an early lead in the top of the second after Soltys temporarily lost his control and walked three straight batters. A single and a passed ball gave BU the only runs it would score all

(Please turn to page 23)

By Paul Paternoster

Old adages take on a literal meaning once in a while. For instance, in describing Monday's baseball contest between MIT and Eastern Nazarene College, the saying "When it rains, it pours" comes to mind.

Not that the final score was lopsided. MIT lost 6-5. However, the game provided the spectator with some unusual situations. Standing in a torrential down-pour for half an hour was just the beginning. In one of their wisest decisions of the day, the umpires decided to delay the game in the top of the first inning due to rain.

Starting pitcher Doug MacLeod '86 allowed six runs in 4 1/2 innings. Three of these runs re-

(Please turn to page 23)

Spikers coast to NECVL volleyball championship

By Jerome G. Braunstein

The mighty Engineers won the New England Collegian Volleyball League (NECVL) Championship Tournament Sunday here in front of a very enthusiastic home crowd. MIT won the crown by shutting out Bryant, UMass-Amherst, Brown University, Springfield College, and Northeastern University and splitting games against UNH.

Starters middle hitter Eric Daly '87, setter Sang Hoon Han '86, outside hitter Armando Hernandez '86, and outside hitter Captain Young Soo Ha G were all named to the twelve-man NECVL all-star team at the presentation ceremony. Han was also named the league's Most Valuable Player.

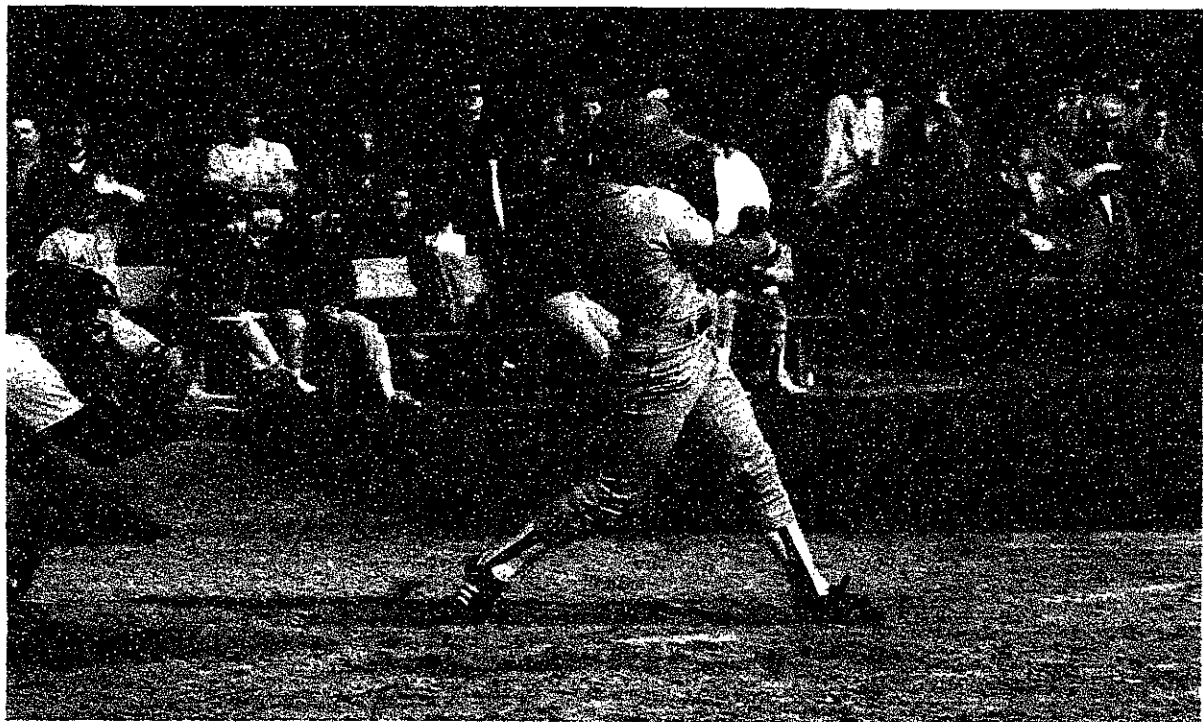
Han earned all the praise he could get. He kept the team to-

gether during the longest twelve hours of volleyball the Engineers ever played. "Tired" was a word all the players felt, but none admitted it. Han was simply all over the court, and his sets were near-perfect on Sunday. But one still heard him call, "My fault!" if a hitter missed a spike.

All the players were like that Sunday. Outstanding plays like Ha's jump-serves, Han's quickspikes, and right-handed Hernandez's bandaged left-handed spikes were unforgettable.

First-year Coach Karyn Altman-Velazquez definitely brought this first-year varsity team a long way. Last week the Engineers beat Concordia in the first round of the National Collegiate Athletic Association (NCAA) Division I playoffs.

(Please turn to page 23)

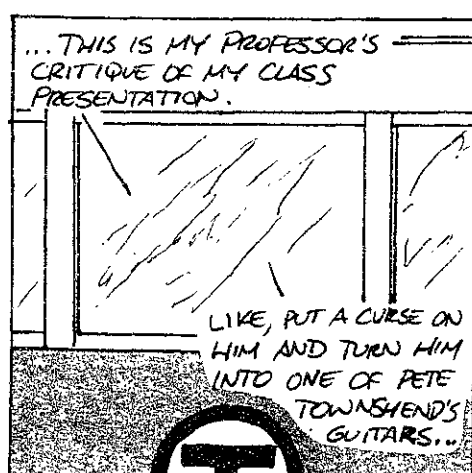
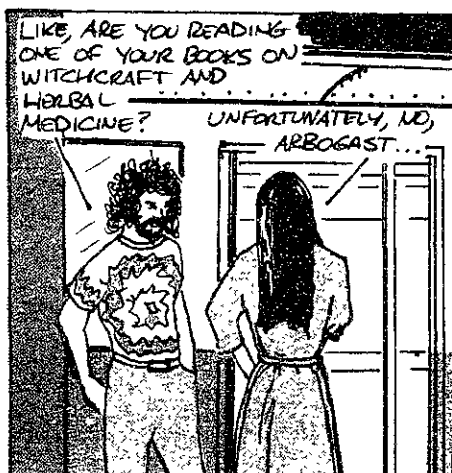
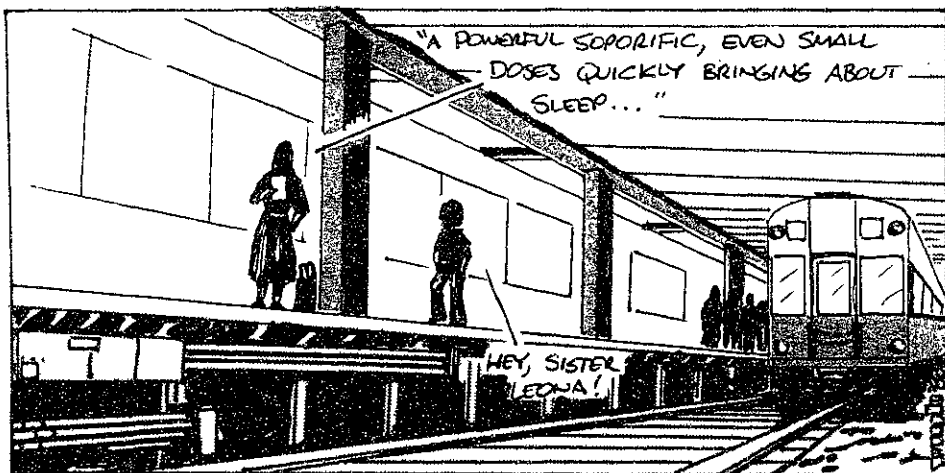


Joe DeRosa '89 connects during a game against Dartmouth.

Tech photo by Sidhu Banerjee

COMICS

Outside Looking In
By V. Michael Bove



T.I.M Beaver
By Kevin Burns

