

Alcohol Committee intends to establish policy on parties

By Craig Jungwirth

The *Ad Hoc* Committee on Alcohol has proposed "adoption of clearer and more current guidelines for parties held on campus," according to Dean for Student Affairs Shirley M. McBay.

"Essentially the [*Ad Hoc* Committee on Alcohol] had several options, one of which is becoming more popular [nationally]: an entirely dry campus," said Robert A. Sherwood, associate dean for student affairs. He said that the committee "overwhelmingly" disapproved of that policy.

Several universities in Massachusetts have lost their insurance policies or have experienced increases in insurance premiums because of liabilities associated with alcohol, Sherwood said. The proposed guidelines are only "step one for the alcohol committee," he continued.

The committee's proposals will

probably be policies "which . . . reiterate the law . . . [and] guidelines for parties during the [academic] year," said committee member Stephanie Scheidler '85.

Sherwood cited two incidents related to the consumption of alcohol on campus. One admitted woman student attending MIT's Campus Preview consumed an "excessive" amount of alcohol in a dormitory and became seriously ill. She was probably 17, Sherwood said.

An 18-year old Simmons woman was placed in the protective custody of a local law enforcement agency after drinking to excess at a public party recently held in an MIT facility. She was totally out of control, Sherwood said, and was "locked up for her own protection."

1 am closing time

The committee's proposal also addressed closing times of dormi-

tory and general parties. "The 1 am closing time was never an issue until this year," Sherwood said.

He was not sure whether students' increased awareness of closing time policies came as a result of the Campus Police's (CP) enforcement of a ". . . Massachusetts State law which says alcohol should go away at 1 am" at parties which are licensed to serve alcohol.

Carey Rappaport G, a member of the Committee on Student Affairs (CSA) and a Graduate Resident at East Campus, said he was "very annoyed" by the 1 am closing time, which he addressed "in November at a CSA Meeting."

"The CPs said and continue to say that there is no difference between [closing time] policies this year and previous years," Rappaport said. He said that "students (Please turn to page 2)

MIT's corporate aid increasing

By Brian Hou

The corporate support of MIT is growing steadily, according to Vincent De Baun, director of the Office of Foundation and Corporations.

MIT received \$63 million last year in gifts from nongovernmental sources. Corporate gifts totaled \$28 million of this amount, De Baun said.

Membership fees for the Industrial Liaison Program accounted for one-fourth of corporate gifts. Companies participating in this program pay to have access to MIT know-how, according to De Baun.

"For example, if a high-tech company develops a sophisticated product, they can consult faculty from the Sloan School [of Management] to study its marketability before it is mass-produced," he explained.

De Baun attributed the steady growth of corporate gifts to three factors:

- "First, MIT has worked very hard to get corporate support," De Baun said. "The process includes many visits by MIT senior members to high-level offi-

cers of various corporations. Usually, the higher the level of contacts, the more the grant."

- In past years, many corporations have found it very rewarding to financially sponsor MIT, especially for research relating to their businesses, he continued.

- "Many corporations have enjoyed prosperity in the last few years, so they have more financial resources to give away," De Baun added.

Despite the strong corporate support, MIT still faces a shortfall in financial aid. For instance, MIT spent \$25 million last year to meet the financial needs of both graduate and undergraduate students, but the total resources reserved for financial aid were only \$17 million, he said.

"Somehow MIT had to squeeze out \$8 million from other sources, and this was very difficult," De Baun explained.

Part of the reason for the deficit is that most of the corporate grants go to graduate research or fellowships. MIT would like to get more unrestricted grants or grants designated to financial aid

from the corporations, according to De Baun.

"Also, MIT is trying to get more alumni to set up permanent endowments, so MIT can use the money generated from them to meet its need, especially financial aid," he continued.

Currently, endowed undergrad- (Please turn to page 2)

MIT to begin a fundraising drive in order to increase endowment level

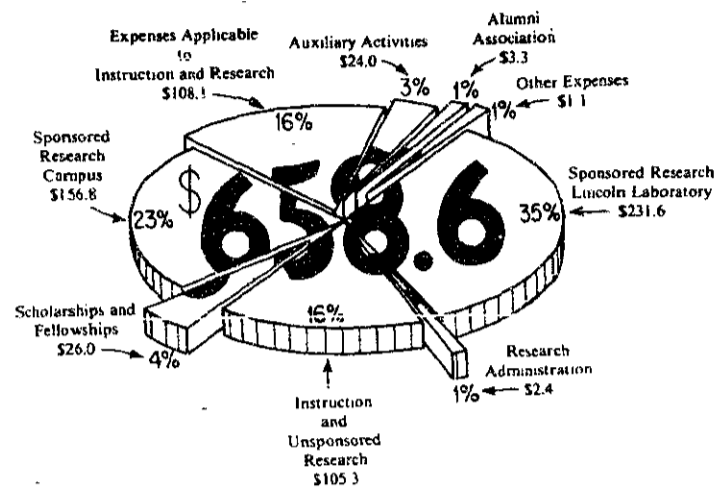
By Mathews M. Cheria
Second in a series on the budget and endowment at MIT.

MIT plans to embark on a major capital fund-raising campaign to increase its endowment. The Institute will try to double the flow of annual gifts from approximately \$50 million to \$100 million, according to President Paul E. Gray '54.

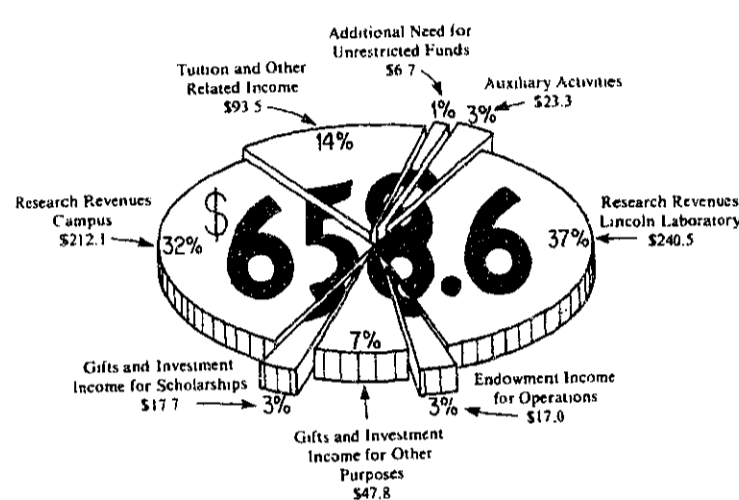
In an interview with *The Tech* [Feb. 15], Gray had said, "If you compare us with the other institutions we regard as our peers, the ones we compete with for students, compete with for faculty, or compete with for research support, then per student or per fac-

Current Operations 1984 (in millions)

EXPENDITURES \$658.6



REVENUES AND FUNDS USED \$658.6



Graphic courtesy MIT Treasurer's Office

ulty member, per unit operating budget, we are lower than all those institutions in the size of the endowment."

The ratio of the endowment to faculty and the endowment to student is "way below what it ought to be," said MIT Treasurer Glenn P. Strehle '58.

"MIT has grown so fast over the decades that growth of the endowment has lagged behind the growth of the institution," Strehle explained. Our peers "have not grown as fast, and they have a much older alumni body," both of which contribute to a larger endowment.

Alumni donations play a large part "The endowment depends heavily on individuals," Strehle added. Joseph S. Collins, director of the Alumni Fund, agreed: MIT's fund-raising efforts are centered on individual volunteer efforts.

"The principle purpose of a [capital] campaign is to get a larger group [of alumni] sensitized to your needs and committed to giving in a generous way," Gray said.

Nearly 28,000 alumni currently donate though the Alumni Association, according to Collins. Only 20,000 contributed in 1979.

Last year, 51 percent of those with MIT undergraduate degrees contributed to the fund, Collins said. About 33 percent of alumni with graduate degrees from MIT who did undergraduate work at another school added to the fund. "Both of these measures are very strong in comparison to other universities," he said.

The median gift for alumni is \$50, twice the 1979 median, Collins said. A total of \$9.4 million was donated last year. The Alumni Fund has reached a new "million dollar plateau" four out of the last five years.

In the previous two capital campaigns, MIT has managed to double the annual donation rate. The Second Century Fund, the fund-raising campaign of the early 1960s, increased the level of annual support from approximately \$10 million to \$20 million. The most recent effort, the Leadership campaign, which ran (Please turn to page 2)



Tech photo by H. Todd Fujinaka

As Nate and Collie Cook look on, MacGregor House President Mark Neumann '86 unveils a plaque naming the recreation room in their honor. The ceremony took place during a surprise party Saturday evening held in their honor. The Cooks are leaving MacGregor in June after serving as housemasters for 15 years.

inside

Metropolitan Opera comes to town, performs Wagner. See Arts, Pages 8 & 9.

Boston Symphony Orchestra, Choral Music Society end seasons. Arts.

The Tech's Wild Turkeys cross bats with the Harvard Crimson Crimson softball team. Thousands turn out to watch. See Sports, Page 10.

International Fair held on Kresge Oval. See Photo Essay, Page 7.

Group proposes party guidelines

(Continued from page 1)
[who have] signed liquor licenses that expire at 1 am" seem to understand the closing time policy. "I really don't know why" closing time has become an issue this year, he added. "Things seems to be calming down, as far as I can see."

Rappaport added that the CSA is currently formulating a policy statement on the *Ad Hoc* Committee on Alcohol's new proposals.

Open Parties

Non-MIT people have "almost exclusively been the problems

that have existed," at public parties held at MIT, Sherwood said. "That is the main [reason] why advertisement is an issue." The committee is "not trying to legislate MIT social life," he added.

There has been an inability to come to a consensus between living groups, CP and the Office of the Dean for Student Affairs about public versus private parties, according to Sherwood. "The CPs have not been able to define clearly enough . . . when a party is private, [and is] not to be concerned about and when a party is public, [and is] to be concerned about."

"A lot of resentment, which is justified" has occurred between CPs and students when CPs have intervened in private parties in MIT dormitories, Sherwood said.

Despite increase in corporate gifts, MIT lacks funds for aid

(Continued from page 1)
uate scholarship funds from corporations are very small, said Financial Aid Director Leonard V. Gallagher '54.

"The grand total of undergraduate scholarship funds from non-governmental sources in 1983 amounted to \$1.5 million, but corporations contributed only \$725,000," Gallagher said.

"Ninety-five percent of the gifts come from alumni and friends, who either have relatives studying at MIT or they just want to show their personal gratitude towards MIT," he continued.

Gallagher noted that many of the individual donors are themselves presidents or high executives of large corporations. As a result, it is sometimes difficult to distinguish personal gifts from corporate gifts.

"Corporate giving for undergraduate scholarship will not increase much even if the federal financial aid cut is made. The gap between the available financial aid resources and the financial aid MIT has to take up will take a long time to fill. MIT will have to go out to all possible sources," Gallagher said.

Institute plans to solicit donations from alumni

(Continued from page 1)
from 1975 to 1980, almost doubled the value of annual gifts from \$25-30 million to \$50-55 million.

The current value of MIT's endowment is approximately \$725 million, according to Strehle. Annual return on the endowment is 12-13 percent. Eight percent of the endowment is reinvested to keep the endowment growing with inflation. The Institute spends the remaining five to six percent.

Gray stressed the need to reinvest and keep the endowment growing with inflation even if the Institute could use extra money at the present.

He said MIT would benefit from the increased revenues of a

larger endowment.

"The cost per student over the last 40 years has been twice tuition," Gray said. The difference has been "made up by earnings on endowment and expendable gifts." A larger endowment could help "to moderate tuition," he said.

MIT would also be able to provide more financial aid, Gray added. "Student aid is a very important priority," Strehle said. "The growth of student aid has lagged tuition." A larger endowment would allow MIT to bring financial aid more in line with tuition.

With a larger endowment, Gray hopes to increase faculty salaries and faculty research.

Quality Car Rentals at Affordable Rates

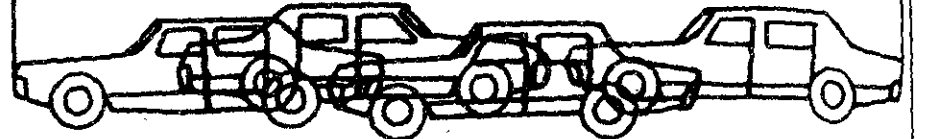
- Daily - Weekly - Monthly • Weekend Specials
- Unlimited Free Mileage



Harvard Square
1201 Mass. Ave.
876-8900

Lewis Wharf
28 Atlantic Ave.
367-6777

Plus 8 other locations. See Yellow Pages.



CENTRAL WAR SURPLUS

433 MASS. AVE.
Central Square
Cambridge

Headquarters
for

LEVI'S

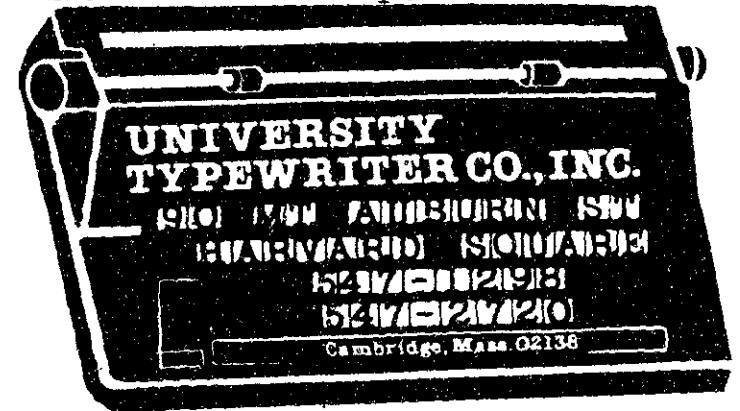
CHINO'S

BACK PACKS

ATHLETIC SHOES

UNIVERSITY TYPEWRITER CO., INC.


Repairs • Sales • Rentals
Electronic, Electric, and Manual Typewriters
New and Used • Quality Ribbons




547-2720
547-1298

90 Mt. Auburn St.
At Harvard Square
Cambridge, MA 02138

Free Summer Storage w/cleaning and repair
in cases only




PIZZA




PIZZA



PIZZA PIE




Real Italian
PIZZA
ORDERS TO TAKE OUT




Come To
YOUR
PIZZA
IS THE
BEST

Join The Tech



SWAN PRIZES WEEKEND



Wednesday
May 1

Thursday
May 2

Friday
May 3

Saturday
May 4

Sunday
May 5

Freshman/Sophomore Ice Cream Orgy
8pm - 11pm Lobdell

Junior/Senior Pub, Mr. MIT Contest
8:30pm - 1am Lobdell

Sigma Chi Tank 3pm - 6pm Kresge Oval

DU Steakfry 5pm - 8pm BBQ Pits

SCC R.E.M. Concert
8pm - midnight New Athletic Center

CSF Road Race 9:30am - 11:30am Memorial Drive

IFC Olympiad 9am - 1pm Briggs Field

Carnival and Picnic
12pm - 4pm Kresge Oval


SCC All Tech Sing
4pm - 6pm Sala de Puerto Rico

Fiji Island Party
9pm - 1am Mystery Location

Senior House Steer Roast with the band "Slickee Boys"
8pm - 1am Senior House

IFC Olympiad
10am - 3pm Briggs Field

Award Ceremony and SCC Picnic
1pm - 4pm Kresge Oval



Spring
Weekend
15

Pop
corn

news roundup

World

Ortega goes to Moscow — President Daniel Ortega of Nicaragua arrived in Moscow yesterday. He is expected to request an additional \$200 million in economic assistance. The Soviet news agency *Tass* stated that Ortega will also be stopping in Cuba, Yugoslavia, East Germany, Bulgaria, Czechoslovakia, Hungary, Romania and Poland.

House majority asks Kohl to cancel Bitburg visit — 257 members of the House of Representatives signed a letter urging German Chancellor Helmut Kohl to withdraw his invitation, to President Reagan, to visit a German military cemetery in Bitburg. 49 SS soldiers are buried among the 2000 at the cemetery. White House officials said that the decision is entirely Kohl's. Kohl, in an address to Parliament, praised Reagan for his planned visit.

Christian forces routed from southern Lebanon — Waves of Moslem and Druze militiamen stormed the coastal strongpoints of Lebanese Christians Sunday. At least 42 were killed and 30 reported wounded by the attack, which was spearheaded by Syrian-supplied tanks. For the first time in the 10 year civil war, the Moslems now control the major coastal highway running from Beirut to Sidon.

Nation

House panel questions \$109.7 million billed by Pentagon contractors — The House Armed Services Committee said yesterday that auditors had found inexcusable bills in audits of one-year billing periods by seven large defense contractors. The billings included \$10,713 to cover operating losses of an executive barbar shop, and \$959 for a golf outing.

Natural gas explosion in Kentucky kills five — A natural gas line explosion in the small community of Beaumont killed five and seriously injured three. The explosion ignited fires visible for 20 miles and left a crater 100 feet long, 30 feet wide, and 20 feet deep.

Challenger starts seven-day scientific mission — The space shuttle Challenger and its seven man crew were launched on a new mission today, only nine days after the shuttle Discovery ended its seven-day mission. Shuttle activities are going well, despite traditional toilet troubles and protests by animal rights groups over the fate of 24 rats that are to be killed, and autopsies performed, after the flight.

Local

Rain twists BU plans — BU's Lambda Chi Alpha fraternity sponsored an attempt to break the record for the world's largest twister game. That record, set at the University of California at Galeta, is 1290 participants. Rain was the reason BU fell short, as 1182 students competed for 2½ hours on the slick plastic.

Massachusetts to have \$171.8 million surplus — Five months ago the Dukakis administration estimated a surplus of \$29 million by July. The forecast has since been raised three times. What will be done with the money, as well as just how much there is, is expected to be a subject of debate when the House begins to consider the 1986 budget next week.

Sports

Yankees fire Yogi Berra; Billy Martin back — Here we go again. . . George Steinbrenner fired Yogi Berra after the Yankees lost, 4-3, to the Chicago White Sox. With the loss the club's record reached 10 losses in 16 games. Back for the third time in the not-so-secure job is Billy Martin.

Flyers defeat Islanders — The Islanders beat the Flyers over the weekend after falling behind three games, something that is as common as a blue moon. But yesterday Philadelphia won their fourth game of the seven game NHL playoff series, 1-0.


Mets defeat Pirates — On Sunday the New York Mets, in their longest game since 1980, beat the Pittsburgh Pirates in the 18th inning, 5-4. The win brings their record to 11-6. Darryl Strawberry contributed with a grand slam in the first inning.

Celtics defeat Pistons — The Boston Celtics destroyed the Detroit Pistons, 133-99, Sunday. Robert Parish led all scorers with 27 points and 16 rebounds. The teams will meet again Tuesday for the second game of the Eastern Conference semifinals.

Weather

A nice day in the making — Today will be sunny with highs near 70-74. Temperatures will drop to 46-50 tonight, but it should remain clear and dry through the end of the week. Tomorrow's highs will be even higher than today's: 76-80.

Sam Osofsky



Manseur's
your IMAGE is our career
Hair & Skin Care Salon

"THE BEST CUTS IN BOSTON"

Appt. & Walk-in

231 Newbury Street 536-1605

\$9.00 SPECIAL (with ad or 15% Disc.)

9am-12noon Mon-Thurs.

Your foreign language ability is valuable!

Translations into your native language are needed for industrial literature. You will be well paid to prepare these translations on an occasional basis. Assignments are made according to your area of technical knowledge.

We are currently seeking translators for:

- Arabic • Chinese • Danish • Dutch
- Farsi • French • German • Greek
- Italian • Japanese • Korean
- Norwegian • Polish • Portuguese
- Romanian • Spanish • Swedish

and others.

Into-English translations from Russian, East European languages and many others also available.

Foreign language typists also needed.

All this work can be done in your home!

Linguistic Systems, Inc. is New England's largest translation agency, located a block north of the Central Sq. subway station.

For application and test translation call Ms. Desormeaux

Linguistic Systems, Inc.
116 Bishop Allen Drive
Cambridge, MA 02139

864-3900

日通はいつでもどこでも、あなたのパートナーです。

Nippon Express USA, Inc.

Air - Ocean

Household Goods

米 国 日 本 通 運

Going Home?

Why not let Nippon Express Boston handle your personal effects.

- Door-to-door service to most major points in the United States and the world.
- Both air and ocean modes.
- Our own truck will pick up your shipment.

Hill Associates Cargo Building
Logan International Airport
East Boston, MA 02128 (617) 569-7770

BUDGET TRAVEL CENTER

EUROPE From Boston round trip from:

- AMSTERDAM \$408
- PARIS \$448
- BRUSSELS \$498

ASIA From Boston round trip from:

- HONG KONG \$790
- TOKYO \$845

SOUTH From NY round trip:

- CARACAS \$290
- BOGOTA \$435
- RIO \$673

and many more destinations!

CALL 266-1926

Also travel, Int'l student ID, AP's and much more!


COUNCIL
Council Travel Services

729 Boylston St.
Suite 201
Boston, MA 02116
Mon-Fri 9:30a-5:30p
Ask for a FREE catalog!!!

ATTENTION PSYCH MAJORS: OUR LOANS WILL BLOW YOUR MIND.

We believe the last thing that should keep someone from going to college is money. So call 1-800-SHAWMUT or come in and see us about our comprehensive education loan program.

Because when it comes to helping students, our heads are in the right place.

 **Shawmut Banks**
Look to us for direction.

Members FDIC. Equal Housing Lenders.

opinion

Guest Column/Jonathan Feldman

Militant efforts worked

On Friday, April 26, students at Tufts University ended a three day occupation of Ballou Hall, the central administration building on campus.

The students had presented the following demands to college president Jean Mayer:

- 1) Totally divest from all 33 corporations operating in South Africa that Tufts has investments in.
- 2) Direct an additional \$5 million in university resources toward scholarships and grants for minority and low-income students.
- 3) Hire an additional full-time recruiter specifically for minority recruitment.
- 4) Incorporate a freshman workshop on race awareness into the freshmen orientation program or make one a requirement for all freshmen.

The number of black students at Tufts has fallen from a high of 96 in the entering freshman class of 1974 to only 38 last year. The university has about \$9.5 million invested in 33 companies with South African links. Students at Tufts have pointed out that money divested from corporations tied to apartheid could be used to provide aid to minority students.

The result of the occupation? The students gained: a meeting with the trustees' investment committee; promises of increased financial aid for minority and low-income students; and a commitment to a racial awareness course.

The Tufts action represents a new stage in the student movement. It shows the serious tasks before MIT students seeking to pressure our university to divest its \$60 to \$100 million in companies known to do business in South Africa.

Tufts' recent concessions came after several years of student organizing. In 1979, after two years of student protest, the administration agreed to divest Tufts' South African-linked investments. But it was only after the recent occupation that divestment activists saw any concrete action by the administration.

The Tufts action raises the question of why student activists are increasingly moving toward tactics of confrontation. During protests this year, students tried to make citizens' arrests of CIA recruiters at Tufts, the University of Iowa, Brown and other colleges. Recently, students at Cornell University blocked police vans seeking to arrest student

protesters. Student protests have followed increasing militancy by youth unaffiliated with academia. More people were arrested in conflicts with police at the 1984 Democratic convention at San Francisco than were arrested at the Chicago convention in 1968.

One reason for this increased militancy is the inspiration students have taken from liberation movements in Central America and South Africa. Another reason is students' growing frustration with the country's political direction under Reagan. The wave of campus occupations at Cornell, Berkeley, Rutgers and University of California at Santa Cruz have followed increased cutbacks in student financial aid, the mining of Nicaraguan harbors by the CIA, increased talk of a draft and continued US government support for apartheid.

The wave of building occupations and other direct actions by students has come as students have increasingly realized the effectiveness of this tactic. The history of administration failures in responding to student demands at Tufts shows that direct action is the best vehicle for gaining concessions.

As in the 1960s, students are pushed to more militant tactics as they are met with repression from college administrators and police. At the University of Wisconsin, students have been maced. At other demonstrations, students have been clubbed and beaten by police. This April 3rd, police motorcycles charged at student demonstrators on the Harvard Bridge.

The cycle of protest and violence will continue. As students fight effectively against their universities' ties to apartheid, they often face the same kind of violence that faces South Africa's blacks. This should come as no surprise given the harmony of interests between the university establishment and apartheid's multinational allies.

The Tufts students have recognized the shadow of apartheid in the university's board rooms and hallways. They have also taught us that direct action may be the only means of leveraging divestment from intransigent university administrators. Given the growing polarization in South Africa and in US campuses, the Tufts action is a warning of things to come.

(Editor's note: Feldman is a graduate student in Urban Studies and Planning.)



Guest Column/Keith L. Daly and Michael J. Kardos

A dry rush will deceive freshmen

"Let the Rush begin!"

Our hearts skipped a beat. Red carpets rolled out from every direction. We were two of 1000 bewildered freshmen who had been advised to "just have fun, be yourself and call your mother." At that time we had no idea what impact the next three days would have on the rest of our lives.

Rush Week is for the freshmen. Within predetermined guidelines, living groups use every possible scheme to figure out which freshmen will best complement them. For years, MIT has been able to say with few exceptions: "No matter where you end up, you'll be happy." If Rush goes dry, this may no longer be true.

In an article of the Friday, April 26, issue of *The Tech*, Dean for Student Affairs Robert

A. Sherwood made a good point: "We need to do what is best for the freshman." But his solution is inadequate. He believes that, "by enforcing a policy that would not make alcohol so readily available, we can alleviate the concerns of parents, reduce the chance of becoming involved in liability suits, and most importantly, protect the safety of our students."

But these are false hopes. This policy would satisfy the concerns of the administration for only a short time. After Rush is over, will the freshmen still be happy when he or she finds out what the living group is really like? Is what we've done been best for the freshmen?

Whenever a decision about Rush is made, the freshmen should be most highly considered. Most freshmen arrive with

certain preconceptions about college, especially its social life. Alcohol has a big effect on how people socialize, and certain living groups drink more than others. The freshmen have a right to know what they are getting into. We cannot deceive them by having a dry Rush.

Dean Sherwood said, "Having successfully drunk freshmen during Rush Week does not facilitate choosing a living group." He would imply that the object of a wet Rush is to get the freshmen "successfully drunk."

This is not true. The living group's object is to present an accurate picture of themselves and to provide a relaxed atmosphere in which they can get acquainted with the freshmen. It would be counterproductive for anyone, freshmen or otherwise, to get so drunk that he or she could not communicate intelligently. Furthermore, throughout Rush's history, living groups and freshmen have been extremely responsible about the use of alcohol.

Traditionally, Rush at MIT has been very successful. We do in three days what takes other schools six months. Eliminating alcohol would change the face of Rush substantially. As the system stands, it works and works well.

Rush is for the freshmen. For them it is confusing enough. Deceiving them about alcohol on campus would be a gross injustice.

The Tech

Volume 105, Number 21

Tuesday, April 30, 1985

Chairman Ellen L. Spero '86
 Editor in Chief Thomas T. Huang '86
 Managing Editor Andrew S. Gerber '87
 Business Manager Robert W. O'Rourke '85
 Executive Editor Martin Dickau '85

News Editors Harold A. Stern '87
 Craig A. Jungwirth '88

Night Editors Carl A. LaCombe '86
 Eric N. Starkman '87
 Mark W. Eichin '88

Photography Editors Steven Wheatman '86
 Sidhu Banerjee '87

Arts Editor Jonathan E. D. Richmond '86

Advertising Manager Michael J. Kardos '86

Contributing Editors Scott I. Chase '85
 Simson L. Garfinkel '85
 Robert E. Malchman '85
 P. Paul Hsu '86
 Andrew Bein '87

Senior Editors V. Michael Bove '87

..... Diana ben-Aaron '85
 Paul G. Gabuzda '85
 Matthew W. Giamporcaro '85

..... Ronald E. Becker '87

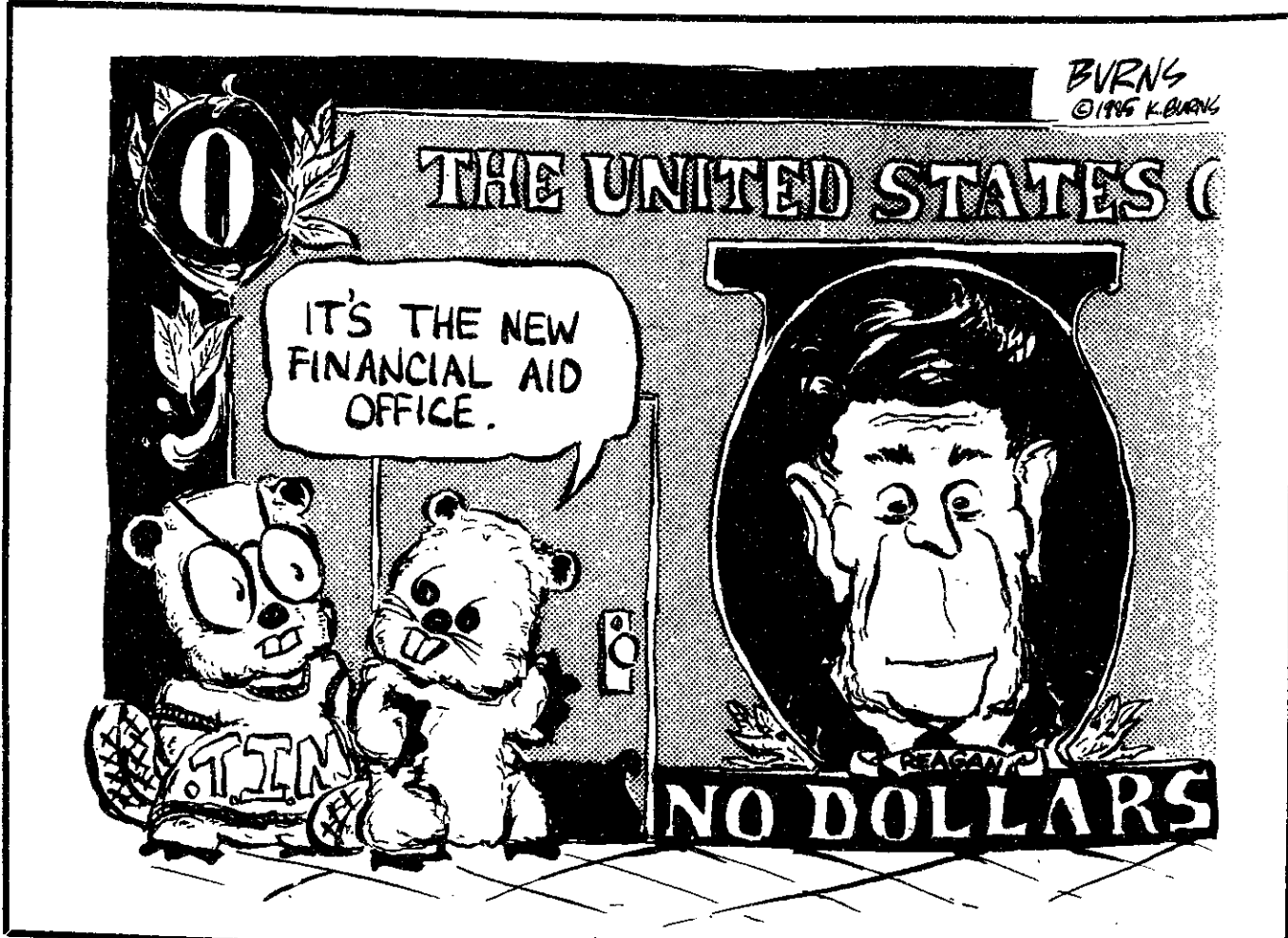
Production Manager Scott I. Chase '85

Indexing Project Representative A. David Boccuti '79

PRODUCTION STAFF FOR THIS ISSUE

Night Editor: Carl A. LaCombe '86
 Associate Night Editor: Ronald E. Becker '87
 Staff: Bill Coderre '85, Daniel J. Crean '85, Marty Dickau '85,
 Carl A. LaCombe '86, Hisashi T. Fujinaka '86, Simson L. Garfinkel
 '86, Katie Schwarz '86, Steve Wheatman '86, Eric N. Starkman
 '87, Peter Gordon '88.

The Tech (ISSN 0148-9607) is published Tuesdays and Fridays during the academic year (except during MIT vacations), Wednesdays during January, and alternate Tuesdays during the summer for \$13.00 per year Third Class by *The Tech*, 84 Massachusetts Ave. Room W20-483, Cambridge, MA 02139. Third Class postage paid at Boston, MA. Non-Profit Org. Permit No. 59720. POSTMASTER: Please send all address changes to our mailing address: *The Tech*, PO Box 29, MIT Branch, Cambridge, MA 02139. Telephone: (617) 253-1541. Advertising, subscription, and typesetting rates available. Entire contents © 1985 *The Tech*. Printed by Charles River Publishing, Inc.



opinion



→ feedback

Students rally against apartheid

To the Editor:

According to Simson Garfinkel's article on student politics, and, it seems, to *The Tech's* own priorities for news coverage, the only students who are political at MIT are revolutionary radicals. I profoundly disagree.

Wednesday afternoon, after only two days advance notice, between 200 and 250 people (we counted several times, by groups of five, and this was our figure, not 100 as *The Tech* had said) came to the anti-apartheid rally at the Student Center. Organization for that rally began Sunday night after I received a phone call from a friend involved in anti-apartheid work at Berkeley.

He told me about the plans for a national day of protest for divestment on April 24. By noon Monday, when the MIT Coalition Against Apartheid held its first meeting, there were 40 people involved in the effort here. The way we got people to this meeting was by calling members of Pugwash, the Disarmament Study Group, The Hunger Action Group, the Political Science Committee on Central America, the *Student*, Profemina, and the Urban Studies affinity groups on Central America. Every group was represented.

There was a feeling, among those of us who attended that first meeting, and at the rally two days later, that people at MIT had been waiting for this to happen. Around the country people have begun to talk and think about American support of South Africa's apartheid system. The brutality of apartheid has the sort of deep moral impact that

touches everyone. Not just urbanites, but farmers (I was in Iowa a month ago, where farmers expressed their disagreement with Reagan's constructive engagement policy), and not just student radicals, but *all* students with a moral conscience.

Perhaps the people in the Urban Studies Department and the Political Science Department see the importance of the apartheid issue more quickly, because we deal with social issues every day in our academic work. But this does not exclude students involved with technical issues from taking a moral stance. Clearly, students on this campus care about social issues. From blood drives to other charitable efforts such as the Ugly Man contest, that sense of caring is there.

Seven years ago, in the middle of the "apathetic '70's," the last anti-apartheid drive happened on this campus and over 1000 students signed petitions calling for divestment. By talking with each other, we can educate the other members of our community, and then act in whatever socially responsible ways we feel are necessary to address the apartheid issue.

The Tech's mischaracterization of those involved in anti-apartheid work on campus is disturbing both because it belies the hard work of so many of us, but more importantly, because it prevents concerned students from becoming involved. Friday's front page makes no mention of the larger rally from which 50 chose to go to Gray's office. Worse, in the article on the rally, your reporter completely neglected to

talk to any of the organizers, nor did he discuss the MIT Coalition Against Apartheid, and its future plans to address the apartheid issue. If you complain that the only politically concerned students at MIT are sensational radicals, then you have a certain obligation not to be sensationalist in your own coverage of campus events, and to give full attention to the broader efforts of conscientious students to address social issues on this campus.

The MIT Coalition Against Apartheid is open to all. For information concerning our next meeting, check in the Common Room of the Urban Studies Dept., or call me at 253-4037.

Gretchen Ritter G

Column/Joseph L. Shipman

Having problems with an incompetent MBTA

I recently encountered a stunning example of bureaucratic incompetence. It made me realize MIT is well-run compared to some other institutions. The incident, the latest of a series of offenses, got me mad enough to write this column. My candidate for the worst bureaucracy in Massachusetts? The MBTA. Let me tell you why...

Last week I boarded the Boston & Maine 2:05 train to Porter Square at the Brandeis/Roberts stop, which is a three minute walk from my apartment. When I gave the conductor my usual fare, \$1.50, he told me that I needed another quarter.

"What, the price went up?"

"No," he replied. "It's a penalty for not having purchased your ticket before boarding the train."

"But you can't buy tickets here, there's just a platform!"

"Yes you can. Look..." replied my tormentor.

The conductor handed me a new timetable, "effective April 20, 1985," and pointed out the list of places at which tickets could be bought. Sure enough, tickets were on sale at the Brandeis student center. And there was a 25¢ penalty for buying a ticket on the train while that ticket office was open.

"The Brandeis student center is more than half a mile away, up a steep hill! How can you expect people to buy tickets there? This station may be named 'Brandeis/Roberts' but it's not part of Brandeis!"

"Sorry, but that's regulations. You will have to pay me an extra quarter," he maintained.

"You're extorting 25¢ from me!"

"I don't set the fares, I just collect them."

"I can't believe this."

Alas, it was all too true. A call to the MBTA after I had arrived in Cambridge confirmed the new rule. It took five minutes to explain the situation to the distinctly unintelligent person who answered the phone. She didn't seem to understand how I could get from Brandeis/Roberts to Porter Square in the first place. (All she knew was that Porter Square was a Red Line stop and Roberts was the name of a bus route).

At this point I decided that the people who set the fares were merely stupid. I was shortly to discover that they were actually gibbering morons.

The next day, I happened to be at Brandeis. (I am a grad student there; most of the commuters who use the train stop have no connection with Brandeis). I decided to stop at the student center and stock up on tickets, to avoid the penalty fares.

"Do you have train tickets?" I innocently asked.

"Oh, we don't sell those anymore," said the woman behind the counter.

"Excuse me?"

"The MBTA wouldn't sell us any more tickets, so we don't have them anymore."

"Did you know that starting this week they are requiring people to buy tickets here or pay a 25¢ penalty?"

"Really? I don't know anything about that."

"I don't believe this."

Actually, I did believe it. I had encountered the T's incompetence (Please turn to page 6)

Spacefair included military

To the Editor:

The Tech's coverage of Spacefair '85 was quite misleading. *The Tech* stated that "the Spacefair featured many different career opportunities relating to the peaceful development of space." Completely ignored in the coverage was the portion on military "opportunities." These were primarily in the areas of command, communications, control and intelligence (C³I) and in Star Wars.

The fact that military applications was not a minor part of the message to MIT students is readily apparent from the list of sponsors: General Dynamics, Draper Labs, Hughes Aircraft, G.E., etc. These are major contractors for the research, development, and production of offensive weaponry, including Star Wars development.

Ignored by *The Tech* was the fact that a group of MIT students and other concerned individuals found this display of militarism at MIT repulsive enough to stage a demonstration and die-in, shutting down the most blatantly offensive part of the fair.

Freedom of research choices have to be balanced by a sense of social responsibility. That sense was alarmingly lacking in this program.

Steve Schlipf G



MONEY

PRIZES

FAME

THE WRITING PROGRAM

1984-1985 PRIZES FOR WRITING

Six competitions for eight categories

Fiction, short story, poetry, essay, drama, engineering writing, scientific writing, science writing for the public.

ENTRIES CLOSE MAY 3, 1985

Details in The Writing Program Office, 14E-310

FAME

PRIZES

MONEY

opinion

Massachusetts buses, trains and subways are run without concern for the commuters

(Continued from page 5) before, but this set a new record. Enough people must have complained, because when I entered the train on Friday the conductor accepted my \$1.50 without protest (I was hoping he would ask for more, so that I could make a scene and refuse to pay). The blunder is immortalized in the printed timetable, though, so they can't pretend it never happened.

MBTA employees are often hostile and petty as well as incompetent. A few months ago, I was coming out of Purity Supreme in Central Square, heavily laden with groceries. I noticed my bus leaving (two minutes early). I ran and caught the bus, which had stopped at a corner waiting to make a right, before it had gone thirty feet. Although I pounded on the door, the driver ignored me.

I ran after the bus for two hundred yards, with my grocery bag ripping open, and caught it again at the next bus stop. When I complained about being ignored, the driver yelled that he didn't have to open the door to anyone, except at an official bus stop. He launched into a lengthy tirade, concluding that I'd better not give him any more lip.

Disgusted, I sat down and repacked my groceries. A couple of minutes later, I remarked to the person in the next seat, who had been following the proceedings, that courtesy consisted of occasionally doing more than one is legally required to. The driver overheard this, and started yelling that he'd told me he didn't

want any more lip and if I continued he'd throw me off the bus!

Other bus drivers, while less belligerent, have consistently refused to enforce the no-smoking rule, and several have violated it themselves. One driver told me there was nothing she could do to get some people in a crowded bus to stop smoking, and yet on every occasion I've seen a driver ask people to put out their cigarettes they have. If they had re-

fused and she had stopped the bus, pressure from the other passengers would have done the job.

Why is the MBTA so bad, even for a bureaucracy? Because they've got us where they want us. Most people take the T because they have to, so there is no danger of anything like a boycott. Only political pressure will make them take notice.

Are you listening, Governor?

feedback

We are the World parody is disgusting, racist and insulting

To the Editor:

Regarding the cartoon published in Friday, April 19th's issue: The cartoon, which is a parody on "We are the Children," is a disgusting, racist and insulting cartoon.

First of all, it is an insult to the many performers, both black and white, who sang this song to raise money to help bring food to the millions of African people who are suffering and dying from hunger brought on by a 10 year drought. The cartoon was vigorously condemned by the readership of the very newspaper in which it first appeared. The cartoonist was, I believe, suspended from the paper for his cynical and racist drawing.

Secondly, it is an insult to the thousands of students, teachers

and workers who come to MIT from all over the world. To call the Iranian, Irish, Arabic and Central American people "weird" and "ones who use the bombs and guns so you stop living" when they are struggling and have been for many years to free themselves from oppression, exploitation and colonialism is an insult to them and only lends support to the Reagan administration's policies which led to much of this suffering in the first place.

I fail to understand why *The Tech* published this cartoon, which is an obvious racist slur and insults so many people struggling to survive all over the world.

Susan H. Franzblau

feedback

Troubled by committee

To the Editor:

I am deeply troubled by the continuing story of Prof. Kistia-kowsky's proposed committee concerning the impact of the military at MIT. The MIT administration is just not the party to take action on this issue.

Chairman of the Faculty Arthur C. Smith claims in the April 12 issue of *The Tech* that the committee would "find the facts," not make policy. However, since almost all of us recognize the large influence of the military at MIT, the only "productive" contribution of the committee would be the proposal of policy changes.

The Institute should not enact any restrictions on military research or ROTC because this would supersede the rights of the two truly important parties. The federal government, through elected representatives, is the only group to decide how this na-

tion should conduct military research to protect itself. Equally important, it is solely the choice of the individual to become a part of military research or ROTC.

If MIT refused to conduct military research, other possibly less able groups would be found. Is it in any way MIT's right to thus thwart the wishes of American Democracy? And even if others joined me in my personal choice not to work for military interest, higher wages would be offered and researchers found.

Concerned faculty and students at MIT need to take this issue outside our campus. I was heartened to see that a group of MIT students recently went to Washington, and I'll bet those people were listened to. All of us who are a part of the Institute have clout, and we should more often correctly exercise the accompanying responsibility.

Kenneth Goodwill '88

Erratum

The Tech inadvertently omitted a sentence in Nicole Sage Cor-men's letter [*Famine can be directly alleviated*, April 9]. The published letter stated: "One significant difference between nuclear destruction and famine is that the latter can be directly alleviated, to a certain extent, with money; it primarily requires political action." It should have stated: "One significant difference between nuclear destruction and famine is that the latter can be directly alleviated, to a certain extent, with money. By contrast, the nuclear problem cannot be solved with money; it requires political action."

heart and sole



Walk for Hunger!

sunday may 5

walking papers available in 24 hour coffeehouse

Sponsored by MIT Hunger Action Group

photo essay



world on

Around the

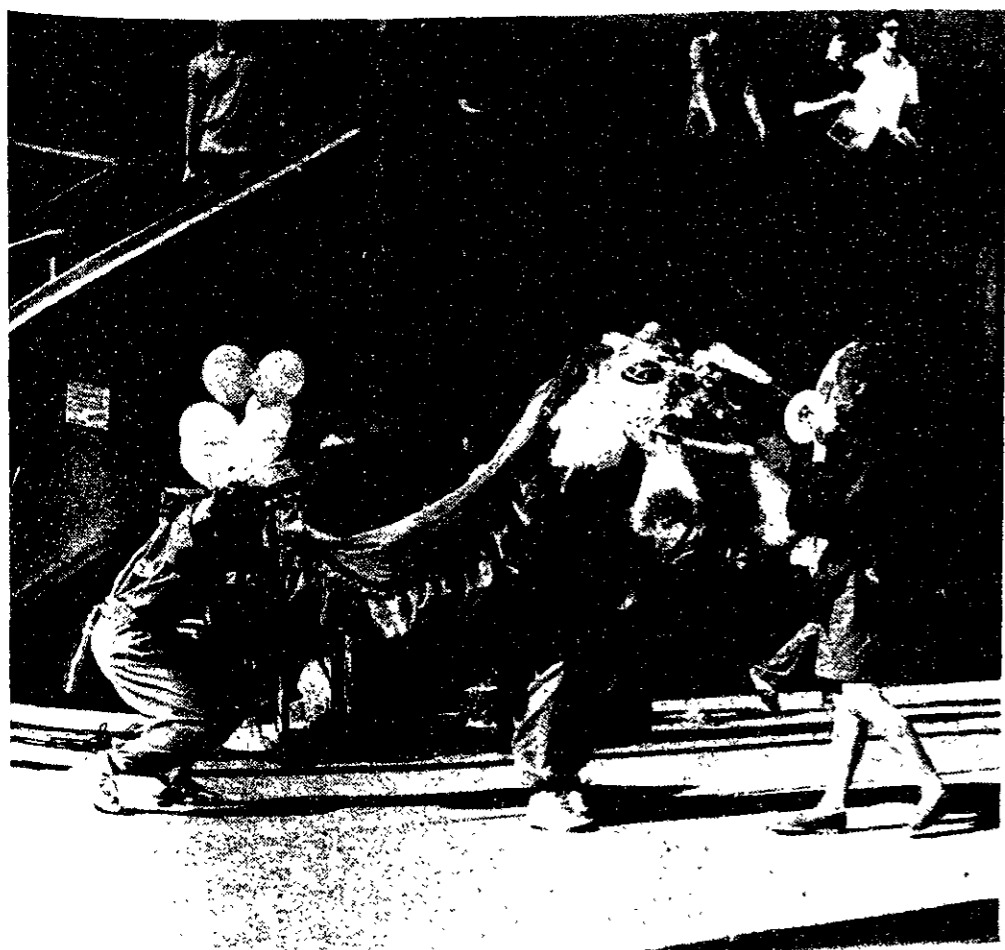


the Oval

International Fair !!!



Tech photos by Shari Jackson
& H. Todd Fujinaka



TSARTSARTSARTSARTSARTSARTSARTSARTSARTSARTSARTS

Lohengrin steam-rollers the audience

The angles of the floor and sides were tilted for an extreme perspective effect. Dozens of chorus singers crammed the stage, making it a source of interest to see if anyone would stumble on the angled floor and plummet into the orchestra pit. Everyone retained his footing, however, and the routine of armored nobles, pikemen, ladies in waiting, as well as the blond, Aryan couple of Elsa and Lohengrin created a first act finale of stirring Teutonic splendor.

The strain began to tell in the second act, however, on both the audience and the singers. Lohengrin's voice couldn't make it to heroic proportions and was sometimes drowned out by the chorus singers. The drawn-out musical dialogues in the second and third acts, between villain and villainess, villainess and heroine, hero and heroine, etc., demonstrated that while the singers were certainly sturdy and competent, they didn't have the fire necessary to set Wagner's music alight.

The orchestra was in top form the whole night, but not having superior voices to play off, it couldn't shine to its fullest extent except in the preludes, each of which (especially the first) was a jewel.

Certain elements of the staging were either careless or clumsy, or both. Does the Met not bother to take trouble to mount a full production when on the road? The image of the swan was very important to Wagner when writing the opera, yet no swan appears in this production. Lohengrin arrives and disembarks from his boat offstage, and we have to imagine the swan somewhere in the wings. Thus Lohengrin is forced to sing one of his most stirring arias (a farewell to the swan) with his back to the audience.

And in the climactic duel between Lohengrin and Telramund, the two never actually came to blows. Telramund was instead repulsed by some sort of super-holy force field or other. I can't imagine a Wagnerian hero unwilling to prove himself by force of arms, as opposed to letting things degenerate into a wrath-of-God powered staring contest.

But Boston opera fans are hungry for opera — any opera this season, since the Opera Company of Boston is out of production this year. The Met has provided a good, if not inspiring production of Lohengrin, and to do better than that with Wagner is difficult under the best conditions. Such chances to acquaint oneself with Wagner's music should not be missed.

Steve Huntley

Wagner was arguably the greatest musical genius of the 19th century. His musical career was extraordinary, considering that he never had a music lesson nor was able to play any instrument. His interest in music was purely aesthetic and philosophical.

Cantankerous, anti-Semitic and misogynistic, Wagner saw himself as a God-like spiritual reformer.

Wagner worked almost exclusively in opera, because he believed that it was the perfect synthesis of all the arts: literature, music, drama, etc., all wrapped into one.

He started working on Lohengrin in 1845, drawing his inspiration from an anonymous German epic poem. It relates the story of Parsifal's son Lohengrin, sent by God in a swan-drawn boat to champion a young maiden accused of killing her brother. Lohengrin clears her name in combat with her accuser and wins her love, betrothing himself to her on the condition that she never ask his name or origin.

The maid, Elsa, agrees enthusiastically, but her mind is soon poisoned by doubts through the scheming of the witch Ortrud, who desires Elsa's inherited lands for her husband Telramund. Elsa does at last ask the fateful question, and Lohengrin satisfies her, revealing that he is a knight of the Round Table and resides on the lonely Montsalvat, guarding the Holy Grail with his knightly brethren. But the price of the knowledge is high: Lohengrin's faithful swan returns, and he must go with it to resume his vigil, prohibited from staying with a wife who has broken faith with him.

Wagner was enchanted with Lohengrin's tale, seeing himself in an analogous situation — lonely guardian of his genius, able to live only with those who would accept him.

Wagner's operas are always tests of physical stamina, on the part of both performers and audience. With intermissions, I was in the Wang Center from 7 pm until almost midnight. But a well-done production can be a singularly rewarding experience if you are prepared for the physical trauma.

The orchestra, under the baton of Jeffrey Tate, eased the audience into the drama with a marvelously fluid rendering of the prelude.

The staging of the first act helped keep up visual interest for its hour's duration.

Playing with marital pursuit

Company, written by Stephen Sondheim. At the Spingold Theater, Brandeis University, through May 4, at 8pm. Tickets \$7.50.

Brandeis University's production of "Company," the Stephen Sondheim play, attains a happy medium between polished Broadway production and homespun MIT offerings.

It's not that I have anything against MIT's dramas and shows — I recently had the pleasure of accompanying one musically. Constant exposure to these somewhat unrefined (albeit enjoyable) offerings, however, leaves one forgetful of plays replete with sharp sets, production design-

ers, and practicing actors. This is exactly what Brandeis' "Company" proffers.

"Company" follows the marital pursuit of Robert (played by Ray Wills), the main character of the story. Robert's life and the play's plot transcend the typical "unhappy man finds a gorgeous woman, woos her with some difficulty, and lives happily ever after." This middle-aged man doesn't know who or what he is looking for, except for a "complete" life, presumably including spouse and children.

The five couples that are his closest friends make things particularly difficult, by alternately displaying the wonders and pitfalls of marriage, divorce and getting old(er). Particularly bewildering to Robert are Peter and Susan who finally find happiness by getting divorced and raising their children together, and the lovey-dovey argumentative Harry and Sarah, disagreeing as to who has the better karate throws.

The comparative polish and excellent selection of the cast does much to realize this situation. Ray Wills, a graduate student in acting at Brandeis, represents the perfect 1970's, middle-aged bachelor-next-door. Hair always in place, well-worn smile and sweater-vest always present, Mr. Wills manages to put up with an array of peculiar dates and mediate a host of marital squabbles.

Like Robert, Marta, April and Kathy (his short-term companions) are real people with personal problems. April argues that she is dumb, while Kathy marries to find a life, not to find a love. None of the women are quite "good enough" for Robert's befriending couples. Yet the couples are not quite sure what is good enough for themselves, or why they bothered to marry, or how they wound up with *that person*.

The main set, innovative for its time, epitomizes the coldness of the 1970s with steel tubes and sparse furniture creating New York City apartments. Most inspiring though, is the music of Stephen Sondheim, in one of his most acclaimed productions. The entire score has been popularized through various forms, and includes "Side by Side by Side" and "The Ladies who Lunch."

The plot reaches its climax as Robert ex-



Roberta Peters as Gilda in "Rigoletto"

claims his desire for "someone to hurt me too deep; someone who'll force me to share; and like it or not, a little, a lot, and help me survive," in "Being Alive."

This particular version of "Company" has its imperfections, including an occasionally faltering orchestra, out-of-synch choreography, and several weak voices.

And because the production aspires to the quality of an Off-Broadway show, these problems may be all the more noticeable. But it certainly merits a trip to our Massachusetts neighbor for a "refined" cultural event, and perhaps a few pointers on life.

Scott Lichtman

Boston Symphony ends 104th season

Boston Symphony Orchestra, April 27.

The Boston Symphony Orchestra closed their 1984-85 season this weekend with a generally superb performance. But Stravinsky's "Three Madrigals," performed by a small portion of the ensemble, was no better than ordinary: Seiji Ozawa seemed to have an unexplainable affinity for the horns; their emphasis was unnerving. Poor connectivity between the pieces made it difficult to determine where one piece ended and the next began.

For the Prokofiev *Piano Concerto No. 3 in C, Opus 26*, the number of performers grew to about two-thirds of the company. The piano soloist was Alexander Toradze.

In the *Andante - Allegro*, one could see the effort and energy expended by the pianist: This breezy work lit up the hall. The movement ended with a roar, causing the audience to respond in a very uncultured manner, with applauding between movements.

The *Andantino* presented the theme and variations of this typically Russian work. Unlike the *Allegro*, where the full effect was obtained by watching the pianist (do his thing), in this movement the surprise factor gave the horns prominence. During this movement the pianist went off on tangents that lasted for a seeming eternity.

During the *Allegro ma non troppo* the orchestra played with forcefulness, and gave an uplifting rendition of this section. But I was disappointed that Toradze did not play the optional solos. The rest of the audience did not appear to share my opinion as they really seemed to enjoy the performance, and indicated as much with a standing ovation.

Following intermission, the featured performance was the second ever by the BSO of Danish composer Carl Nielsen's *Symphony No. 3, Opus 27, Sinfonia espansiva*.

For this final symphony of the season, the entire company, (at least there wasn't room for many more on stage) got together for a magnificent performance. Electricity filled the air as Ozawa got really

psychod for the opening. The strings, horns and winds blended together beautifully.

For a work of the magnitude of Nielsen's you need an orchestra with the greatness of the BSO. Seeing so many people flowing together while creating such beautiful tunes was a moving experience.

The *Sinfonia espansiva* is cast in the traditional four movements.

The *Allegro espansivo* rightly deserves its title: it is an expressive movement. The forceful strengths of the strings and brass make the listener sit up and take notice of the greatness to which he is a witness. The woodwinds enter in a contrasting key, presenting a danceable melody which threads its way through the rest of the first movement. Once the theme is set, the rest of the *allegro* seems to be a search for a home key, which was not found in this movement.

The second movement, the *Andante pastorale* opened slowly, but with a continuation of the dance themes of the *allegro*. The biggest surprise of this symphony, is the sudden emergence of two human voices. At the performance the surprise is not as great, because in addition to their lister in the program, the attentive concert goer will notice the soloists as they stand up and are cued by Mr. Ozawa. The use of singers as instruments gives the piece a feeling of informality. How often have you wanted to hum along with a symphony? Well here is your chance.

The third movement, the *allegretto un poco* was announced like the arrival of a freight train with horns blaring. During this movement one may wonder if Nielsen considered the physical structure of the orchestra: the right side and the left side played games with each other during this movement. Finally, at the end of the movement, the home key of the symphony was achieved in the key of A.

The *Finale: Allegro* is a rehash of the ballad type themes of the *andante*. The movement grows gradually but steadily to a climactic conclusion. You never quite knew when the piece was going to end, and people began clapping before the piece was over.

Steve Wheatman

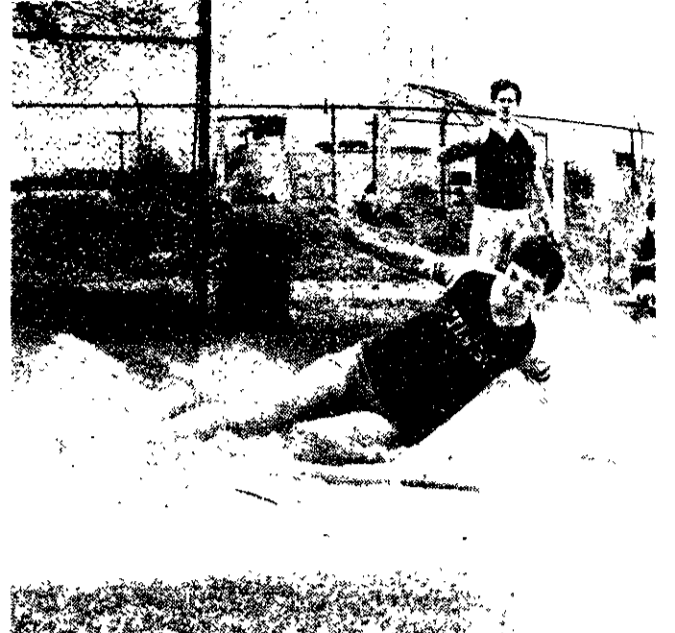
sports



Jane Huber consoles pitcher Martin Dickkau.



Tech photo by Bruce Kluckhohn. Bruce Kluckhohn courtesy The Crimson



Victor Diniak scores half the Turkey runs.

Feathers fly in

Special to *The Tech*

The *Tech* Wild Turkeys opened their softball season Sunday with a moral victory over the host *Harvard Crimson* Crimson. The score was 23-2. Reports are still coming in on who won.

The *Tech* staff met in the newsroom for the rout. Everyone was on time except for Martin "the dreaded Spaz" Dickau '85, who had forgotten to set his clock ahead for Daylight Savings Time.

*There was fear in Ellen's manner as she stepped into her place,
There was terror in Ellen's bearing, and a scowl on Ellen's face,
And when, responding to the cheers, she hid behind her hat,
No stranger in the crowd could doubt 'twas Ellen at the bat.*

The mighty Wild Turkeys finally reached the *Crimson* newsroom and found it to be a distant second to the *Tech's* in the categories of: interior decorating, paper cups, odor, beer-battered fish, top-siders, *Wall Street Journals* and cost for a Coke.

The *Crimson*, disconcerted by the impressive flood of matching *Tech* T-shirts, suffered a severe defensive lapse in the top of the first inning. Pitcher Bruce Kluckhohn and his team gave up three base hits and half the *Tech's* runs.

Centerfielder Steven "Casanova" Wheatman '85 tripled and scored. He said: "I'm better at softball than at parties."



Harvard sophomore Bruce Kluckhohn cools the Turkeys.



Ellen Spero hits 18 consecutive fouls in the 7th inning.

Turkey shoot

Turkey pitcher-manager Robert "Fat Kid" Malchman '85 took the mound in the bottom of the first and gave up the *Crimson's* first collection of runs, thanks largely to a once-in-a-lifetime fielding performance by first baseman Dickkau.

"I figured if we gave up a few runs early," Malchman said after the game, "we could get [the *Crimson*] to start drinking all that beer we brought. I never thought they would try to win."

Dickkau took over on the mound, and after some

*Oh! somewhere in this favored land the sun is shining bright;
The band is playing somewhere, and somewhere hearts are light;
And somewhere men are laughing and somewhere children shout,
But there is no joy in W20-483 — mighty Ellen has struck out.*

early wildness, settled into form after Beer Manager Jane Huber W '85 supplied replenishment.

Freebaseman Drew Blakeman '91 harassed the opposition by brushing them back with his hands and feet. The harassment escalated as both benches erupted and everyone had to find other places to sit.

Stephen Berczuk, Ronald Becker and Ed Whang were involved in a scuffle with the *Crimson* over a can of Diet Coke. "They were going to damage their brains," Becker said. "We had to stop them." "Huh?" responded one *Crimson* player.

(Please turn to page 11)

ONE VERY SMALL REASON FOR TAKING AMTRAK TO NEW YORK.

\$19

ONE WAY COACH FARE, FRI - SUN.

Take Amtrak to New York and you may be surprised at how much you get for so little.

Our spacious, reclining seats, for example.

And where else can you find aisles wide enough for a leisurely stroll?

Not to mention our Amcafe, where you can get a snack, hot or cold sandwich or beverage, whenever you like.

All this for only \$19, coach, Friday to Sunday; \$25, Monday to Thursday. And when you bring the kids along, you'll save even more—children under 12 go for half price.

Oh, there's one more thing. On Amtrak, you can go from downtown Boston or the Route 128 Station to midtown Manhattan, Newark, or suburban Amtrak Stations.

So the next time you're headed for New York, call your travel agent or call Amtrak at 1-800-USA-RAIL. There's no reason not to.

Certain holiday restrictions may apply. AMTRAK TICKET OFFICE LOCATION: Boston City Ticket Office, The Statler Building, 20 Park Plaza

ALL ABOARD AMTRAK

sports

Crimson pluck Turkeys

(Continued from page 10)

In the middle of the third inning, spiritual leader Thomas Huang called for a rabble-rousing nine-way high-five to rally the team. He left after the game for the University of Miami, where he is now its mascot, Mr. Maniac.

In what became a tenacious, defensive game, Michael "Mr. Mischief" Garrison '88 emerged as a steady left-fielder with five snatches of the glove. "He catches 'em," said one bystander. "He just looks like he can't."

Vic Diniak '86 won the Babe Ruth award for running the most bases ever in a collegiate newspaper game. Harold "Howard" Stern '87 won the Gerald R. Ford award for running into the most players in a collegiate newspaper game.

Ben "Sting" Stanger '88 and V. Michael Bove G played gallantly at their positions, but *The Tech* ran out of awards appropriate for their level of play.

The game's outcome renewed debate over whether Malchman would be replaced by Billy Martin.

Baseball splits twinbill

(Continued from page 12)

Baseball wins pair, drops another pair

The baseball team had trouble generating consistent offensive power last week, taking two of its four games.

The Engineers dropped a scoring duel to Curry, 12-9, Wednesday afternoon but rebounded Friday to pummel Clark, 13-4.

Saturday MIT faced the rival Engineers from WPI. MIT dropped the opener, 7-4, but

both the offense and defense came alive in the nightcap as the Cambridge Engineers put together an 11-0 rout.

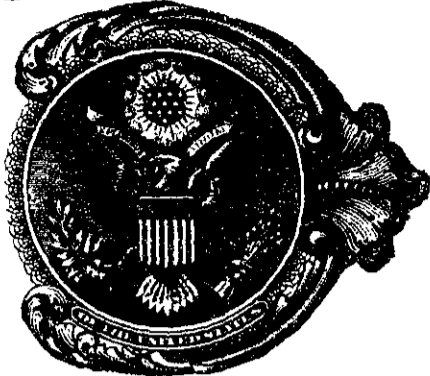
Crew finishes third in Smith Cup

The women's crew team finished third in the Smith Cup regatta held Saturday on the Charles River. Northeastern won the event, and Boston University placed second.

Martin Dickau

Quiz: Which of these birds best represents a good time?

A:



B:



C:



Answer: C. The Tech turkey. If you answered A then you were understandably confused, but if you answered B then you should come down to fourth floor and check things out.

SUMMER JOB OPENINGS

Top Maine Boys' camp has counselor openings in Adventure, Baseball, Canoeing, Computer Science, Drama, Kayaking, Photography, Pioneering and Tripping, Racquet Ball, Radio, Rifery, SCUBA, Swimming (WSI), Tennis, Track, Water Skiing, Wind Surfing and Wrestling. Excellent staff fellowship, fine salaries and travel allowance. June 21st to August 24th. WRITE: Kamp Kohut, Malcolm J. Itkin, 451 Buckminster Drive, Norwood, MA 02062.

Summer Work???

TRY TEMP!

- Clerks
- Word Processors
- Secretaries
- Accountants
- Typists
- Data Entry

Long or short-term jobs
Friday PAY • NO Fee

TOP RATES

BOSTON 357-8300
120 Tremont St.
BROOKLINE 734-7199
1330 Beacon St.
CAMBRIDGE 354-7215
1430 Mass. Ave.

Office Specialists®

LET'S WORK TOGETHER TO PROTECT THE UNBORN AND THE NEWBORN

MARCH OF DIMES
THIS SPACE CONTRIBUTED BY THE PUBLISHER

juniors

(class of '86)

avoid the hassle
take your yearbook photo NOW
sign up at **technique** W20-451
call x3-2980



photo dates: april 29-may 3
may 6-may 10
9-noon and 1-5

technique

BOSTON UNIVERSITY WASHINGTON INTERNSHIP ON COMMUNITY AND POLITY SPRING SEMESTER 1986

First-hand experience working with issues of pluralistic democracy, minority voice in government, & rights of religious and ethnic groups in Washington, D.C.

*Full academic credit through courses and full-time work in non-profit agencies or special interest groups.

*Professional training in advocacy, legislative and political processes and lobbying.

*Placements available in a variety of organizations for serious, career oriented graduate and undergraduate students.

Inquiries to: The Washington Internship on Community and Polity, 745 Comm. Ave., Room 615, Boston, MA 02215, 617/353-4428.

Non-Discriminatory (EO/AA)



Why stand in line in the store when we'll deliver Steve's to your door.

Now your favorite fresh, homemade Steve's ice cream, ice cream pies, The Mixin and more are as close as your phone. Steve's home delivery. Just one more reason not to wear shoes.



Free delivery from 5:00 p.m. midnite
7 days a week

95 Mass. Avenue, Boston — #262-5262

sports

Ultimate frisbee captures sectional tournament

The ultimate frisbee team captured its sectional tournament at Dartmouth Saturday to move on to the regional championships at UMass-Amherst next weekend.

MIT, the top seed in the tournament, had a bye in the first round and went on to defeat Brown, 13-1, and Dartmouth, 13-9, for the double-elimination victory.

Three teams from next weekend's regional tournament will advance to the national collegiate championships at Stanford later next month.

Debater best in Northeast Region

Debate team captain Darrell Mavis '88, competing against more than 100 debaters, became the first freshman to finish as the top debater in the Northeast. Mavis was named the top debater based on his overall performance during the season.

Mavis and teammate Tim Kalvaitis '88 finished 33rd among the 157 teams at the national championships hosted by the University of Nevada earlier this month. The finish earned MIT the top newcomer award for the first-year team with the best showing.

Tennis team third at New Englands

Will Sauer '85 defeated Rhode Island College's Charles Armbrust in the #3 singles match, 6-2, 6-3, Sunday to lead the men's tennis team to a tie for third place at the New England Men's Tennis Championships, University Division.

Sauer was joined by Ramy Rizk '86, who lost the #4 singles match to the Rich Green of the University of Vermont, 6-2, 6-2, and by Rob Swiston '87, who dropped the #6 singles match to Vermont's John Reum, 5-7, 6-0, 6-1.

UVM took the team title with 33 points, followed by the University of Hartford with 28. The Engineers and the Brandeis Judges tied for the third spot with 27 points, and Central Connecticut State University rounded out the top five with 21½.

The women's tennis team, meanwhile, got back on the winning track with a 5-4 victory over Brandeis Friday afternoon.

Sailors compete for New England titles

The men's and women's sailing teams went up against rival teams from across New England last weekend at each team's regional championship.

The men's team opened this season's round of New England championships Saturday on the Charles River. MIT finished third in the event with a 4-2 record. Boston University led the field at 6-0, and Tufts was second at 5-1.

The women had less success at their championships on the Thames River in New London, Conn., Sunday, finishing ninth with a score of 193. Tufts' 66 points gave it first place, followed by BU with 76. Yale and Brown each scored 81 to tie for third place.

Track fifth at Greater Bostons

Co-captain Ron Smith '85 cleared the 400-meter hurdle course in 53.6 seconds, finishing second in the event and leading MIT to a fifth-place finish at the Greater Boston Track Championships Sunday.

Northeastern won the event, followed by Boston University, Harvard, and Boston College, as the Division I schools dominated the meet.

Turan Erdogan '87 was the only other Engineer to finish in the top three, taking third place in the 3000-meter steeplechase in 9:21.8.

Greg Procopio '85 (discus), Bill Mallet '86 (10,000 meters), Gordon Holterman '87 (1500 meters), Ross Dreyer '86 (pole vault), and Jacob Kim '87 (triple jump) all had fourth-place finishes in their events.

Procopio added a fifth-place finish in the shot put with a distance of 43'-3", and the 400-meter relay team also finished fifth to round out the scoring for MIT.

Men's lacrosse team gets 1st win

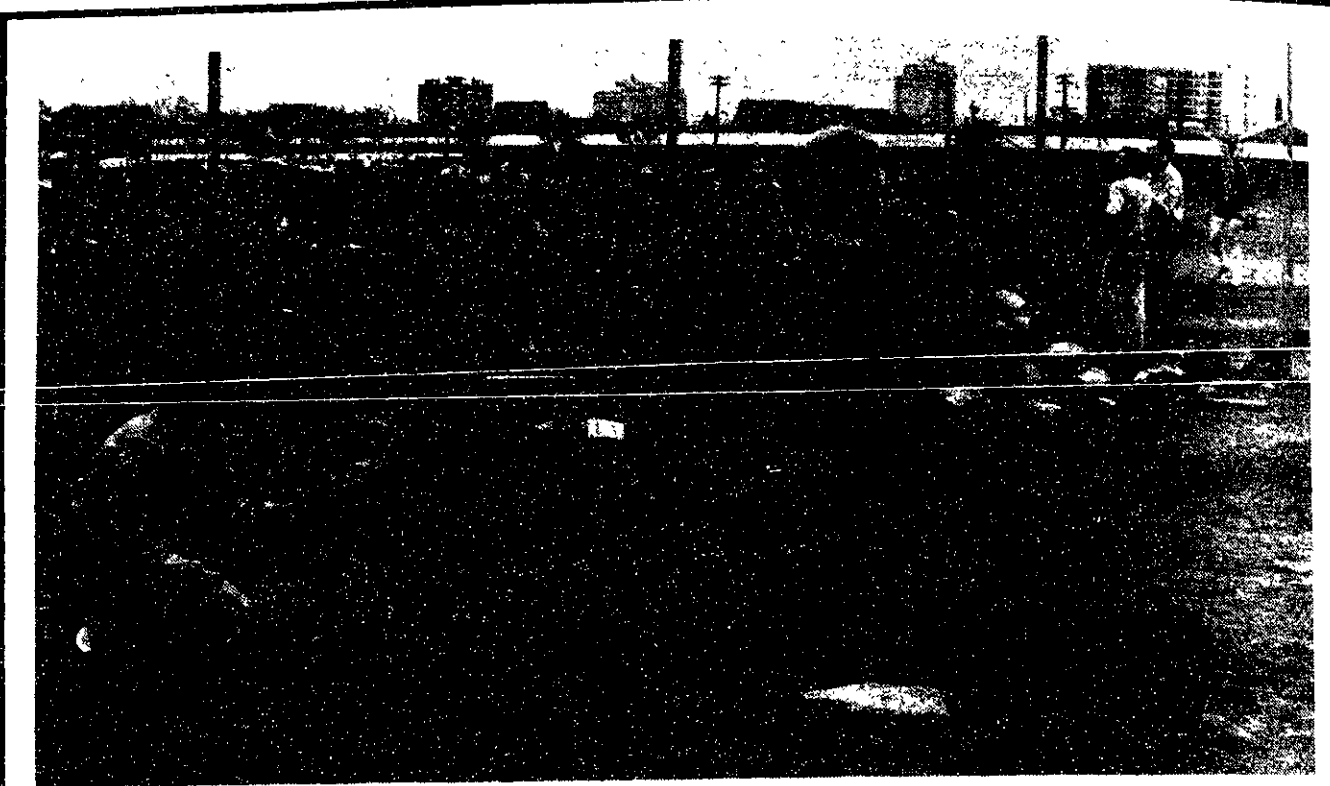
The men's lacrosse team broke a seven-game losing streak Wednesday afternoon with a 12-5 romp over the Massachusetts Maritime Academy. The victory was the Engineers first of the season.

The team's winning streak was short-lived, however, as MIT dropped a 14-5 decision to visiting Bates College Saturday. Mike Foley '87 provided most of the MIT offensive punch with three goals and Tim Mattox '88 and Tom Dorf '88 added a goal apiece.

Softball squeaks past Suffolk Rams

The softball team added another victim to its second-half-of-the-season resurgence Thursday, using a narrow one-run edge to defeat the visiting Suffolk University Rams, 4-3.

(Please turn to page 11)



Tech photo by Marty Dickau

MacGregor F-Entry Vigilantes' Scott Martin '87 bats in a B-league IM softball game Sunday. The Vigilantes beat Baker, 15-10.

MIT, HAVE A HAPPY AND SAFE SPRING WEEKEND



FRIENDS DON'T LET FRIENDS DRIVE DRUNK.

Brought to you by your
Miller Campus Representative



Brian Raiston MIT
CAMPUS REPRESENTATIVE

526 Beacon St.
Boston, MA 02115

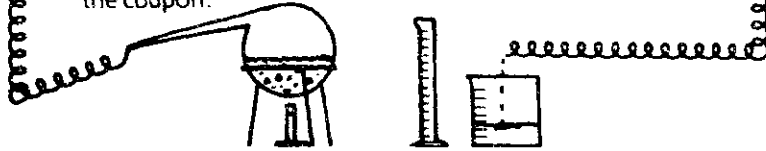
Call Anytime
536-3931
266-7791

Call me anytime to discover the various services, equipment, ideas, and fine products Miller has to help make your promotion, event, or party a success.

CHEM AND GO THIS SUMMER.

PART-TIME UNDERGRADUATE LAB COURSES

When it comes to taking lab courses in the summer, more and more people are going to Northeastern University. For Chemistry, Biology, Physics. In four-, five-, and 10-week sessions. On nearby campuses in Boston, Burlington, Dedham, Framingham, and Weymouth. For more information, call 437-2400 or our 24-hour line, 461-0461. Or send in the coupon.



It's a whole new day...

Northeastern at night

Northeastern University, University College/Lincoln College
P.O. Box 154, 360 Huntington Avenue, Boston, MA 02117

Please send me information on:

- Engineering and Technology Business Administration Liberal Arts
 Health Professions and Sciences Law Enforcement

Registration is week of May 28th.



NAME _____
ADDRESS _____
CITY _____ STATE _____ ZIP _____

Northeastern University

An equal opportunity/affirmative action university.

MIT-4/30