

Dean of Science Deutch named Institute provost

By Harold A. Stern

John M. Deutch '61, dean of the School of Science, has been appointed provost effective July 1, according to an announcement made by President Paul E. Gray '54 yesterday.

Deutch will succeed Francis E. Low, who has held the position since 1980. Low plans to retire June 30 in order to return to teaching and research.

As provost, Deutch will have the power to approve or reject proposals for research projects and grants. He will also be the principal deputy to Gray and serve as the university's chief academic officer.

Deutch said he will be "responsible for managing . . . intellectual enterprises, consisting of all aspects of both education and research."

"Professor Deutch's background," Gray said, "in a broad range of intellectual fields, his experience in academic administration, his participation in national science policy, and his dedication to excellence in teaching and research are qualities that will serve MIT well."

Deutch hopes "to direct [his] main energies to issues which affect the quality of life" as provost. He would like to see a greater emphasis placed on undergraduate education and the role of the humanities in education and scholarship.

Improving the interaction between the schools of science and engineering is another of Deutch's goals as provost. He gave as an example, the Biotechnology Processing Center, which has been proposed to the National Science Foundation. "This facility will involve faculty from both the schools, and it appears that it is going to be granted," he added.

As dean of science, Deutch

said he made "substantial efforts to improve the record of the school in regard to our hiring practices [concerning] minority faculty."

"It is important that the record of MIT on attracting and retaining outstanding women and minorities actually compares not unfavorably with other universities," Deutch said. "In general it is my view that universities lag behind other parts of society — medicine, law, and journalism — for example."

Deutch believes that "it is essential for MIT and other American universities to have a better representation of women and minorities on the faculty."

Hiring minority faculty is difficult because there is "a limited pool for which we have to compete," he said.

Deutch will also be responsible for assigning space in MIT facilities as provost. His view of the use of these facilities for showing sexually explicit films is that "MIT is a great university . . . but issues come up, and I think that it takes too much attention from our main purposes," he said.

He plans to abide by the existing policies concerning the screening of pornographic movies. "My general inclination would be to support" any decision made by Dean for Student Affairs Shirley M. McBay as to the use of facilities, he said.

A potential obstacle to naming Deutch provost was his candidacy for the presidency of Rice University. "The Chairman of the Board [of Rice] was my boss as the Secretary of Energy, and is a good friend of mine," he said.

"Norman Hackerman, [Rice's current] president, is also a friend. It was not surprising that they would come talk to me about Rice's needs," he contin-

ued. He decided that "both my professional life and personal life would be happier for me here in Boston." Deutch explained that "A formal offer was neither made nor expected."

"I think [MIT] is a great place, and I am personally very pleased that I have been given the opportunity to be provost. I hope to make it a better place for all," he said.

Deutch has been a member of the MIT faculty since 1970. He served as head of the Chemistry department from 1976 to 1977, and then left to join the Department of Energy. He was appointed undersecretary in 1979.

Deutch served on President Jimmy Carter's Nuclear Safety Oversight Committee the following year. He returned to MIT in 1980 and was named the Arthur C. Cope Professor of Chemistry.

He currently serves on the Commission on Strategic Forces at the request of President Ronald Reagan in 1983.

The search for a successor to Deutch's position as dean of science has not yet begun, he said. "We are just now discussing how to go through an appropriate search."



Photo courtesy MIT News Office/Calvin Cambell

Dean of Science John M. Deutch '61 has been named MIT provost effective July 1, 1985.

ODSA knew of planned explicit movie screening

By Joe Kilian

The Office of the Dean for Student Affairs knew months in advance about an Independent Activities Period project that culminated in the presentation of a sexually explicit film, according to Ruth Perry, director of the Women's Studies Program.

The Dean's Office did not,

however, require the group to show the film to the *Ad Hoc* Pornography Screening Committee.

The Women's Studies Office sponsored a screening of *Not a Love Story*, a sexually explicit film about pornography, as part of a Jan. 29 Independent Activities Period activity, "Pornography in Film and Advertising: *Killing Us Softly* and *Not a Love Story*."

The MIT policy statement on sexually explicit films declares that "no x-rated or unrated sexually explicit film should be shown without prior review by [the screening committee]."

Dean for Student Affairs Shirley M. McBay could not be reached for comment.

Perry said that the Dean's Office "has known about this IAP project for months — a study group culminating in the showing and discussing of this film and *Killing Us Softly*."

Perry said, "the Dean's Office showed this film two years ago . . . if that doesn't constitute approval, I don't know what does."

The Lecture Series Committee (LSC) showed *The Opening of Misty Beethoven*, a sexually ex-

plicit film, on Registration Day in the fall of 1981. McBay forbade another screening planned first for Dec. 14, 1984, and then for last Friday, on the grounds that the screening committee had not reviewed the film.

Perry responded to a protest letter from Gordon E. Strong '85, an LSC representative on the Screening Committee. Strong had written to screening committee Chairman John Hildebidle to protest the showing of *Not a Love Story*.

Strong stated that the activity's sponsors did not notify the committee of their intent to show the film six weeks before the screening, as required by the MIT policy.

The timing of Strong's protest of the showing of *Not a Love Story* "makes it seem like retaliatory harassment directed at the young women who are already upset and threatened by the showing of pornography films on campus," Perry wrote.

She also stated that *Not a Love Story* is unrated, contrary to Strong's statement that it was x-rated.

(Please turn to page 2)

428 register for 6.001, raising space concerns

By Charles R. Jankowski

The Office of the Registrar reports that 428 students have preregistered for Structure and Interpretation of Computer Programs (6.001).

But the Department of Electrical Engineering and Computer Science (EECS) is not sure if it will need to reduce the number of students enrolled in that class, according to department head Joel Moses PhD '67.

Assistant Professor William E. L. Grimson PhD '80, co-lecturer

for 6.001 this spring, said he has "no way of judging" whether more students would attend the first lecture than had preregistered. He added he was "a little concerned it might be true."

Approximately 600 students attended the first 6.001 lecture in the spring term of 1983, but only 450 had preregistered. EECS had to cut 141 freshmen from the class as a result.

Professor Gerald J. Sussman '68, fall 6.001 lecturer, said the (Please turn to page 2)

Bridge repair is considered

By Tony Zamparutti

MIT will host a federally mandated hearing sponsored by the Massachusetts Department of Public Works (DPW) on Feb. 19 on the plans for reconstruction of the Harvard Bridge.

DPW officials and consultants will discuss the use of the bridge during construction at the meeting scheduled for 7:30 pm in Room 1-190.

The hearing will provide an opportunity for members of the MIT community to voice their concerns about the bridge reconstruction, said Robert A. Sherwood, associate dean for student affairs. He suggested that those with serious comments present them in writing for the public record.

About 1000 MIT students — most of whom live in independent living groups in Boston — must cross the bridge to get to MIT. In addition, many MIT faculty and staff members living in Boston use the bridge.

"We will have a presentation to give" at the hearing, said Bill Maimone '85, chairman of the InterFraternity Conference.

Work on the bridge is scheduled to begin in the spring of 1986 and will last about two years, according to Bill Litant of the DPW's Public Relations Office. The project is in "very early stages," he said, and plans are not yet definite.

Paul F. Barrett, Director of Physical Plant, Nigel Wilson PhD '70, professor of Civil Engineering, O. Robert Simha MCP '57, director of Planning, and Sherwood met with DPW officials on Jan. 23 "to hear what the status of the project was," Simha said.

"The DPW is proposing to close the bridge to automobiles" during construction, said Litant, but "it has decided . . . to try to allow pedestrian traffic." Keeping the bridge open to vehicles would impose "prohibitive" costs, Litant explained.

Sherwood said that it was his impression from the meeting that "their preference would be to close the bridge entirely" during construction. Nonetheless, they expected this would not be possible, he said.

The officials said, however, the bridge might have to be closed completely for periods of two to three months, Sherwood added.

MIT does not want to see the bridge closed to pedestrians, he said. If the bridge were to be closed, even briefly, in August or September, "it could have a tremendous negative impact on rush for the fraternities and crowding in the dormitories," Sherwood explained.

At least six state and federal agencies must review the plans for the bridge, Simha said. The

operation of the bridge during construction will probably not be decided immediately after the meeting, he added.

The MIT and DPW representatives at the Jan. 23 meeting also discussed the possibility of installing a conduit across the new bridge to carry cables for MIT's Athena computer system to independent living groups in Boston, the high speed of cars crossing the bridge into Cambridge, and pedestrian walks on the new bridge.

Inspectors for the Metropolitan District Commission (MDC), which administers the bridge, discovered a number of structural problems in the summer of 1983, including cracks in the joints from which certain sections of roadway hang. The MDC closed the bridge's two outer traffic lanes and banned trucks and buses from the bridge.

The planned construction will replace the bridge's entire superstructure, but will use the existing piers. Underwater testing done last fall indicates that the piers and the pilings on which they rest should be strong enough to hold the new superstructure, according to Litant.

The Harvard Bridge is a state landmark, Litant said, and the rebuilt bridge will look very similar to the present structure.

Minority numbers lead to feelings of isolation

By Michael J. Garrison
Second in a series examining minority issues at MIT.

The small percentage of minority students and professors at MIT creates an atmosphere which makes many minority students feel isolated, according to Lynda M. Jordan G, chairman of the Black Graduate Student Association.

"If a minority student has to go in to a department where there are no minority faculty members, [the student will probably] have a much more difficult time trying to adjust," explained Clarence G. Williams, special assistant to the president and assistant equal opportunity officer.

"You walk into a classroom and you are the only black person there," Jordan said. "Not only are you dealing with culture shock but also . . . the pressure of being an MIT student."

"It's hard to be accepted . . . into study groups . . . until you either prove yourself very good academically or they can get to know you as a person," she added.

Prospective minority students are often frightened away by MIT's financial aid package, according to Nelson Armstrong, associate director of admissions. "It is initially perceived as not being competitive; the self-help package looks very large."

MIT's public image presents another major barrier to minority recruitment, Armstrong said. "When the black faculty members . . . [comprise] less than two percent [of the MIT faculty], it is very easy to see MIT as being 'lily white.'"

"We're not doing as well as we would like to" attracting minority professors, Williams said. "The problem goes way beyond MIT; the numbers [of minority PhD graduates in the country] are so small."

"Who does the American Indian see to make him feel that he is not the very first to go [to MIT]?" Armstrong asked. "It's always nice to see somebody like you — to not feel alone."

MIT's long-term plans should be based on the production of

more minorities who are qualified to be professors both "here and at other institutions," Williams said. He added that the younger professors who are here now seem to be "frustrated; . . . they lose their vitality and don't tend to stay."

Some departments have done better than others, Williams explained. He noted that the Physics Department has been particularly open to minorities. Others, however, "are still saying the same things they said fifteen years ago" about why they have few minority professors, he said.

"This year has seen a concerted effort with the ODSA and other groups trying to address the problem," Jordan noted. The Office of the Dean for Student Affairs held a series of public meetings on the quality of life at MIT last term. One of them focused on minority and women issues.

"I don't know if the meetings are a sign of things getting better or . . . [whether the Institute is] at least recognizing the fact [that problems exist]," Jordan added.

Maximum enrollment in 6.001 is set at approximately 450 students

(Continued from page 1)

number of students who actually attend the first lecture Tuesday "could be 600 for all we know, but also could be 428."

Last term "we had fewer students than expected," Sussman noted.

The EECS department has not decided how students will be cut if enrollment is too high, Grimson said. The department will "have to figure out the fairest way." His goals, he said, are to "try to avoid randomness."

"You don't want to do anything that would hurt somebody," Sussman said. Students cut would probably be selected at random from freshmen in the class, he noted.

Three limits to class size

Grimson described three factors limiting class size. The first is the physical size of the planned lecture hall, 10-250.

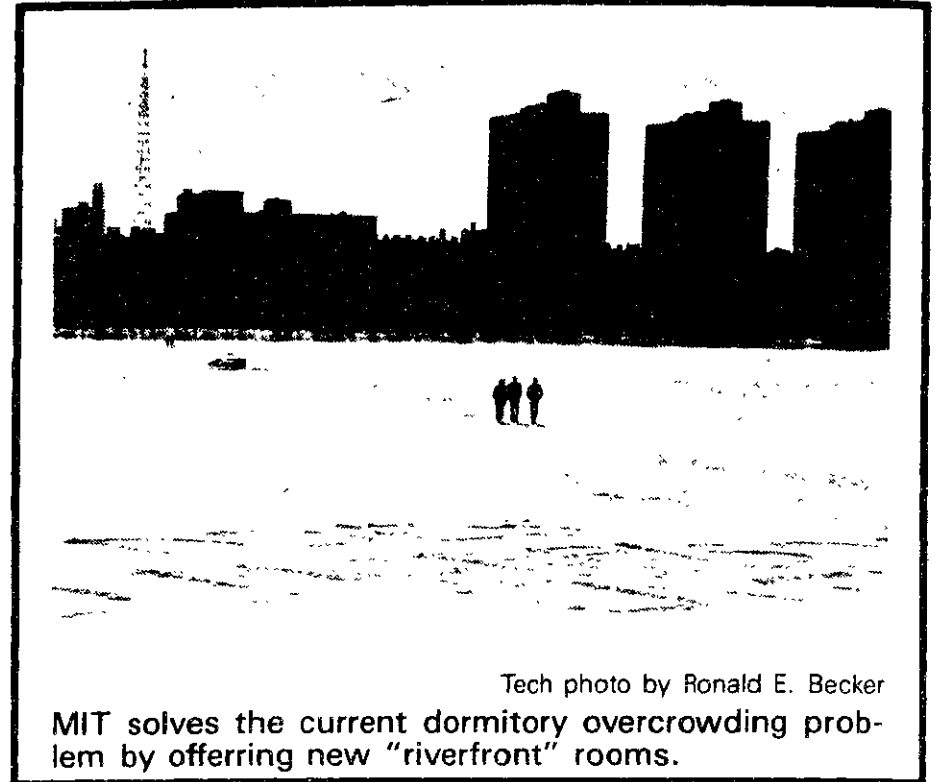
The department is also concerned with the number of recitation instructors and the size of the recitations. "20 to 25 [students in a recitation] will still probably keep the dynamics of the teaching at a reasonable level, but more than thirty is pushing it," he said.

The EECS department is "trying to set up fifteen [recitation] sections of about thirty students each," Moses said. This would bring the upper limit of the class to 450.

The final limitation on 6.001,

according to Grimson, is the number of computers available to the students for the required laboratory. The class has 48 personal computers.

"I'm not certain whether one cuts a good limit there," Grimson said. "We want to give the students reasonable access, and hopefully not require that students have to go in at three in the morning to do their project."



Tech photo by Ronald E. Becker
 MIT solves the current dormitory overcrowding problem by offering new "riverfront" rooms.

Committee not asked to review explicit film

(Continued from page 1)

LSC Chairman Rim Cothren G disagreed. "Whether the film is x-rated or unrated is beside the point in this case. . . . It is an explicit film."

The screening committee will not take any direct action on Strong's letter, Hildebidle said.

The protest "should have been addressed to" McBay, he said. The Dean's Office is "overseeing the whole process in which we are just one part," he continued. "We are, in fact, an advisory committee to the dean."

Hildebidle would not speculate whether *Not a Love Story* should have been presented to his committee for review. "It's hard for me to make a judgment because I haven't seen the movie," he said.

Perry and Cothren disagreed on the interpretation of the phrase "sexually explicit." She noted that the first paragraph in the guidelines contains the phrase

"sexually explicit or pornographic."

Perry stated that the condition of being pornographic is included "parenthetically" wherever the term "sexually explicit" is used.

"*Not a Love Story* is not pornographic. It is about pornography," Perry said.

Cothren said, "I think as long as you start reading things into the policy that [are] not explicitly stated, you run into trouble. We ran into that last year."

Hildebidle said LSC has been the only group to contact him about screening films. He attributed it to the large number of movies LSC shows compared to other groups. "I don't think the procedures are inherently aimed at LSC," he said.

LSC has no immediate action planned concerning the incident. "We are kind of waiting to see if the Dean's Office will do anything," Cothren said.

The MIT Musical Theatre Guild
announces
AUDITIONS
for
Tech Show '85
an original musical comedy

Tuesday, Wednesday, and Thursday February 12, 13, 14
 Student Center, Second Floor 7-9 pm
 Bring a prepared song Questions? Call 253-6294

WHY PAY MORE?

THRIFTY RENT-A-CAR

HARVARD SQUARE 876-8900 BOSTON 367-6777
 CENTRAL SQUARE 492-3000
 Plus 7 other suburban locations to serve you!

UNLIMITED FREE MILEAGE
 Confirmed reservation required.
 Full Line of 1985 Chevrolets
 "Never a Mileage Charge"

SCC

BATTLE OF THE BANDS

The Student Center Committee is sponsoring the 3rd annual competition to determine MIT's best band.

The competition will take place during spring term. Any amateur band consisting of at least 50% MIT students is eligible to compete.

Prizes will be given to the winners

Interested? Obtain an application form at the SCC office (rm 347 of the student center.) or call x3-3926.

ENTER EARLY!!!

DEADLINE: Feb. 8, 1985

news roundup

World

OPEC votes to cut oil prices — Nine out of thirteen oil ministers in the Organization of Petroleum Exporting Countries (OPEC) voted to lower the price of crude oil Thursday. The price cut to \$28.65 per barrel was still higher than the free market value. Iran, Algeria, and Libya dissented in the vote and Gabon abstained. OPEC apparently did not achieve the ideal of stabilizing world oil prices because its member countries lacked unity.

US arms sale to the Middle East delayed — The Reagan administration has decided to halt new arms sales to Middle Eastern countries, including Saudi Arabia. The administration, wary of current debates in Congress concerning the federal budget and US defense policies, chose not to anger Congressmen who opposed the arms sale. Possible instability in the already tense region was also cited as a reason to suspend the arms sales.

Economy in Europe is recovering well — The fast economic recovery in Europe, from Scandinavia to the Mediterranean has surprised analysts. The chief reason for the spur is the strength of the United States dollar. The strong dollar enables the European countries to sell more to the United States. Other factors are moderate increases in domestic demand and more industrial investment than the analysts had predicted. However, Europe's 1985 2.5 percent economic growth rate, according to the latest forecast by the Organization for Economic Cooperation and Development, will still fall behind that of the United States and Japan, each with a 3% and 5% growth rate, respectively.

Shultz and Weinberger urge caution — Secretary of State George P. Shultz PhD '49 and Defense Secretary Caspar Weinberger warned the US government that cutting the defense buildup would weaken US strength in the upcoming arms reduction talks with the Soviet Union. Shultz made his first public statement since his January meeting with Soviet Foreign Minister Andrei Gromyko in Geneva, Switzerland. Shultz also mentioned that the momentum of world affairs is in favor of the United States in his 37-page report to the US Foreign Relations Committee. "America has recovered its strength and self-confidence" under the Reagan administration, Shultz reported. The Soviets, however, are facing "profound structural economic difficulties, a continuing succession problem, and restless allies. . . ."

Japanese VCR technology stirs the movie industry — Sharp Electronics Corp. of Japan has angered the movie industry by introducing a new video cassette recorder which contains two tape ports that makes tape duplication easy. The VCR is not currently compatible with American television sets, but Sharp is working on the necessary conversions. US vendors have not yet decided whether or not to market the VCR. Jack Valenti, president of the Motion Pictures Association, said that the machine would severely damage the successful pre-recorded cassette sale and rental business.

Nation

1986 budget a bane — President Ronald Reagan has taken the offensive to win public support for his fiscal year 1986 budget. The budget has a projected deficit of \$180 billion. Tax increases further cuts in military spending social security benefits and tax increases have not been included in the budget proposal. Reagan will instead cut domestic spending. He called his proposal the "most exhaustive effort ever made to reign in government's chronic overspending." The budget shows the lowest growth rate in Federal spending since 1965. But it would show a deficit of \$144 billion in 1988, \$40 billion more than the president's initial target.

The superwoman will quit — Jeane J. Kirkpatrick, chief US delegate to the United Nations, told President Reagan Wednesday that she would resign her post effective March 1, or as soon as a successor was appointed. Kirkpatrick's statement ended speculation that began last November that she would leave the world organization. She will resume teaching at Georgetown University.

Huge deficit in the Big Brother year — The United States set a record \$123.3 billion trade deficit in 1984, according to the Commerce Department. This figure dwarfed last year's record figure of \$69.4 billion. Commerce Secretary Malcolm Baldrige predicted still another record trade deficit for 1985.

Focus on drinking age issue — The Coalition of Northeastern Governors pledged last week to raise the legal drinking age in their states to 21 by June 1. Massachusetts, Connecticut, New Hampshire, New Jersey, New York and Pennsylvania were included in the Coalition's decision.

Sports

Edberg of Sweden wins the gold — Stefan Edberg captured the US Indoor Tennis title by defeating Yannick Noah, 6-1, 6-0. This 19-year-old Swede collected \$45,000 of the \$315,000 purse, while having the best game of his life. He made only three unforced errors and had five aces. This game lasted only 54 minutes. Edberg also beat Jimmy Connors in a semifinal game.

Cheers for Chin — Tiffany Chin won the gold in the US Figure Skating Championships in Kansas City, Mo. Chin showed improvement over last year, when she placed the fourth in the same event. Chin placed fourth in the 1984 Sarajevo Winter Olympics.

Weather

Say a temporary goodbye to sunshine — It will turn cloudy today after a brief sunshine in the morning. Snow will develop this evening and continue into Wednesday with several inches of accumulation. High today will be 24 to 28. It will be very cold tonight, falling to 10. On Wednesday, the snow will change to sleet and rain, with high 30 to 34.

Brian Hou

The
M.I.T. Alumni Association
cordially invites the members of the
Class of 1985
to join us for dinner at the
President's House

RSVP 3-8222

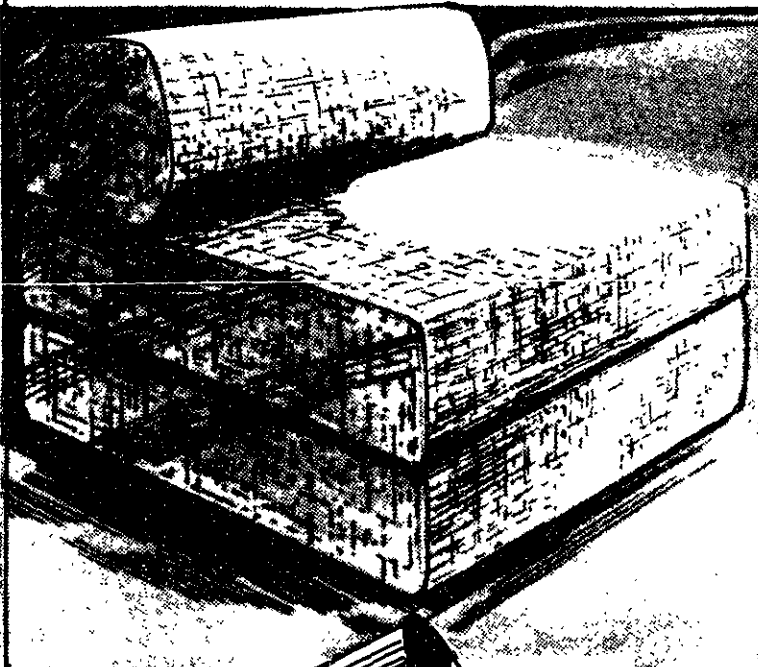
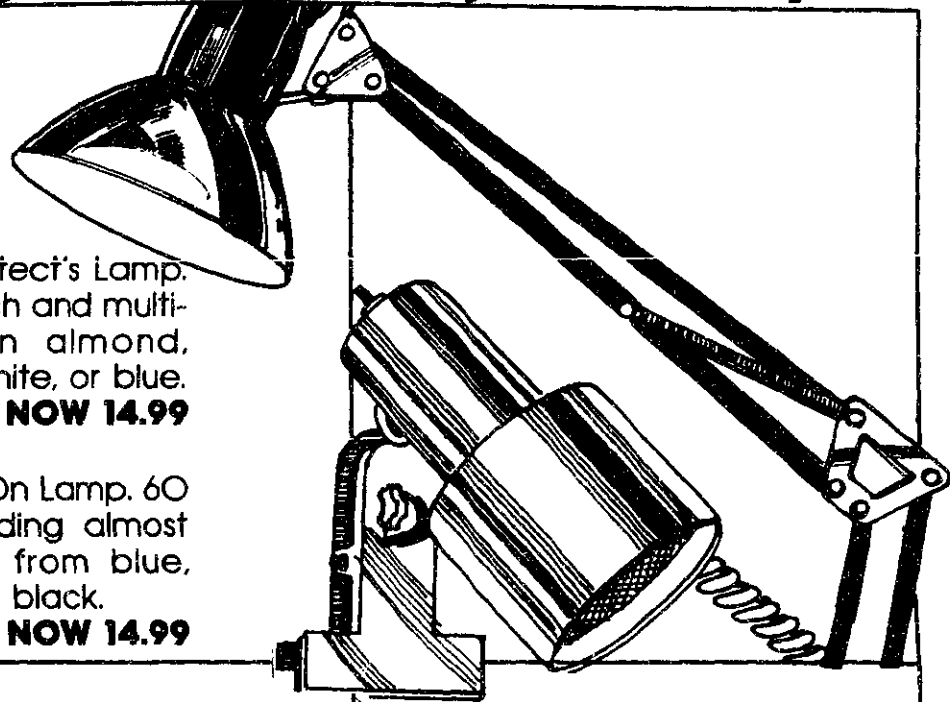
Dinner Dates (still open)

February 14, 19, 20, 21, 25, 26

Savings to improve your lifestyle

Save \$3 Dana Architect's Lamp. 360 swivel, 32" stretch and multi-position clamp. In almond, brown, red, black, white, or blue. After Sale 17.99 **NOW 14.99**

Save \$3 Dana Clip-On Lamp. 60 watt rating for reading almost anywhere. Choose from blue, red, white, brown, or black. After Sale 17.99 **NOW 14.99**

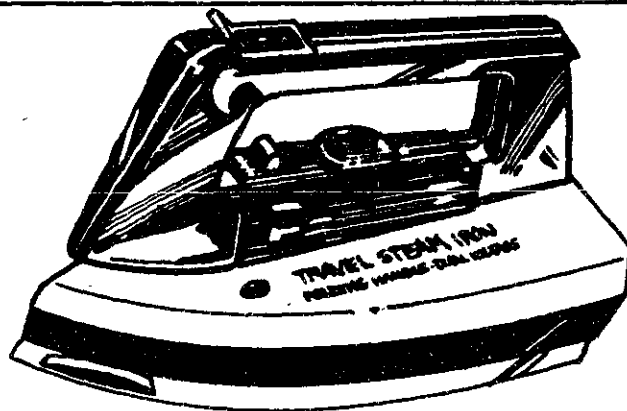


Save \$20 Convertible Flip-foam Furniture Single chair or double sofa size both fold-out for extra sleeping space in small areas. Available in navy or walnut tweed. Single, Reg. \$68 **NOW \$48**
Double, Reg. \$149 **NOW \$129**

Save 20% on all Lee Rowan Clothes Hangers.



Save \$5 GE Pro-40 Hairdryer. Both compact and lightweight with 1200 watts of power for a "Fast Finish." Choice of settings, angled handle.



Save \$4 GE F-50 Travel Iron. This compact steam iron with a folding handle comes complete with travel bag and power adapter for overseas use. Reg. 26.99 **NOW 22.99**

Save 30-53% Dorm Sheets by Martex. Easy-care blend of 50% cotton/50% polyester. Assorted colors for technicolor dreams.

	If. Perf.	SALE
Twin Flat	\$11	6.99
Twin Fitted, X-Long	\$15	6.99
Pr. Std. Cases	\$10	6.99

Available at Harvard Square, M.I.T. Student Center, Children's Medical Center and One Federal St., Boston. Coop Charge, Mastercard, Visa and American Express welcome.

HARVARD
COOPERATIVE
SOCIETY

the
Coop

opinion

Editorial

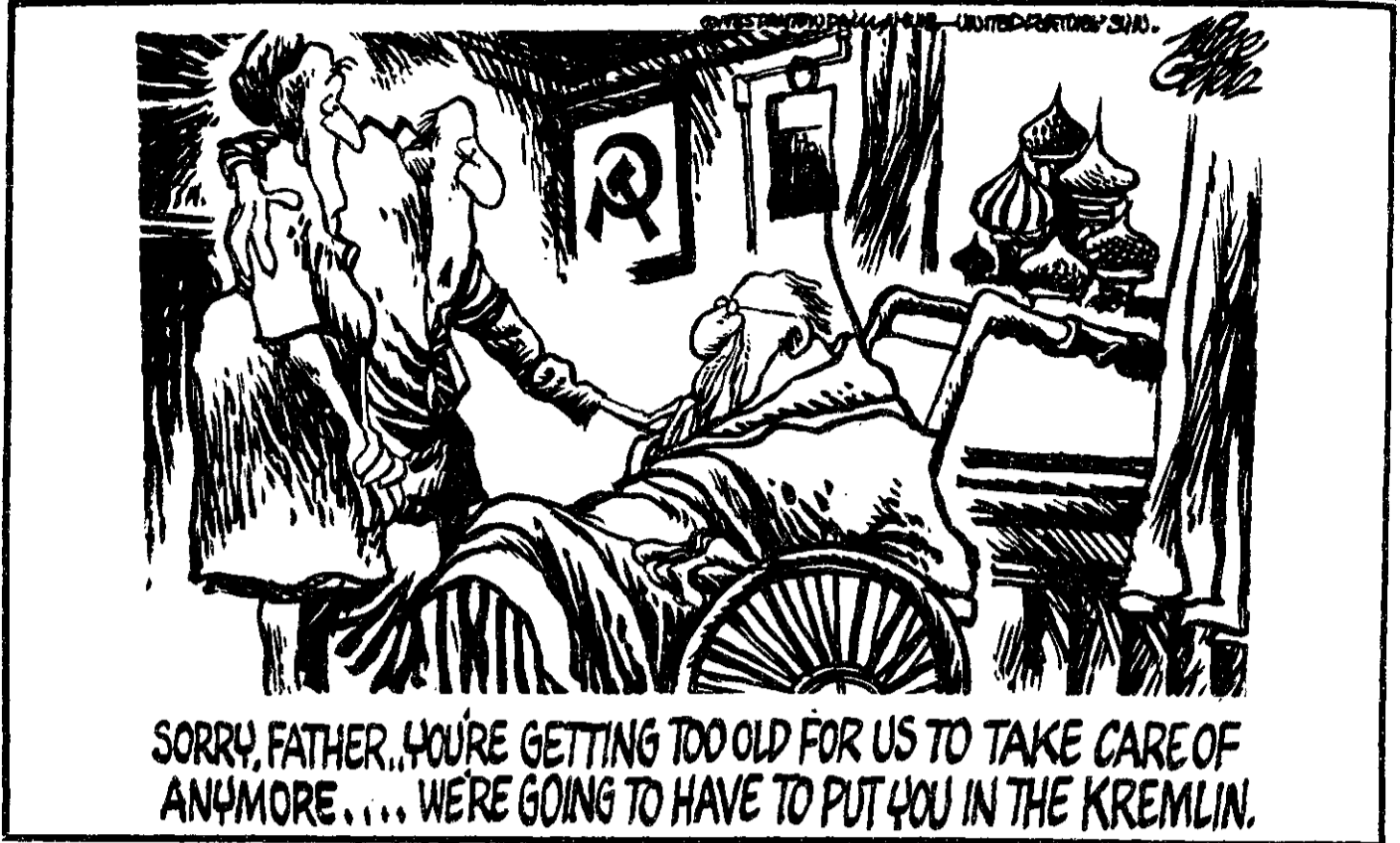
A path lies ahead

Those responsible for previous volumes of *The Tech* set out on a path they felt would lead to a better newspaper. We who follow in their footsteps are aware of where they stumbled, and with the pitfalls in mind, we embark on Volume 105.

The Tech plans to build on the foundation established by previous volumes, with wider coverage and more in-depth evaluation of campus issues and events, and coverage of local, state, and national events affecting the MIT community. The task will not be an easy one. We must report in an unbiased, accurate, and ethical fashion.

Our opinion pages provide an open forum for the MIT community. To achieve a more balanced presentation of the ideas expressed, we welcome all viewpoints. Meaningful debate can only occur when all sides are represented. In our editorials we seek to maintain our ideals without fear of the consequences.

We are a student activity. We are committed to teaching our student staff the precepts of good journalism: writing, editing, production and business. We encourage the contributions of students. Only with your help can we achieve our goals.



Column/Thomas T. Huang

Where is *The Tech* heading?

Where is The Tech heading?
Listen: *The Tech* is a mediocre college newspaper. On good days, we cover the Course VI overcrowding problem and the appointment of the new provost. On bad days, we smear the front page with six reporting errors and five stories on sexually explicit films. Our opinion pages are often one-sided.

Hit and miss.
But we have a heart. Is it a good heart or an evil heart? Many people complain. I hear this: "Those guys are incompetent. Those guys look for controversy."

No. Our heart is neither good nor evil. This heart wants to tell graduate and undergraduate students what is happening on campus. Peter Richardson retires from an illustrious career. The Office of the Dean for Student Affairs discusses the "quality of life" with students. Project Athena is finally underway.

But sometimes events hurt us. Students die, and we must describe their lives in black and white. Mary Hope and William McLaurin are dismissed. The Dean's Office places Alpha Delta Phi on probation. We feel it is important to report these stories, even if they are controversial. Questions are asked. Lessons are learned.

Imagine that: we must write stories which we know will make people hate us.

Where is The Tech heading? I hear that *InFoCus* predicts it will soon overtake *The Tech* as MIT's primary newspaper. I can't scoff

at this. That publication is improving. But I think there is a difference between the two of us. *InFoCus* has not written painful stories.

In May, James H. Williams, Jr., professor of mechanical engineering, wrote: "I want to thank *The Tech* for saving me 65¢ last Friday, May 11. With front page stories entitled "Class of '83 President Charged in Theft," "Tubes Concert Theft was called 'Inside Job,'" and "LSC Will Show Adult Movie" and with the editorial entitled "Alcohol Problems Need Personal Solutions," who needs the *National Enquirer*?"

Yes. That is what we are. We often look like a circus newspaper. How do we stop this circus act?

First, *The Tech* owes its readers interesting stories which aren't necessarily controversial. We are beginning to write in-depth series on minorities, women, and Project Athena. We don't have the staff to cover national and international news. We have to focus on campus issues. If we help students understand the issues that concern minorities and women, maybe there will be less controversy in those areas in the future.

Second, we must continue to speak out on these issues. We will only speak out when we have done enough investigation into a story. We will not shirk if we meet controversy. At best, our editorials can spark debate in the MIT community.

The Tech should be a public forum. This forum has often

been one-sided. Simson Garfinkel once wrote a column with some radical ideas about the Office for Minority Education. Everyone has a right to his own views. But we failed to run a column alongside it with opposing views.

We welcomed letters in response, but maybe that isn't enough. I won't let it happen again.

Third, even though we must be objective in our reporting, this does not mean we should be cold-blooded reporters. We are normal people. We should show reason and compassion.

We printed a story not long ago about Undergraduate Association members who sent *The Tech's* editorial board an obscene letter. The story was unreasonable. It was not important. We looked for dirt.

Instead, we should write about people because we care about what happens to them. Other times, we should refrain.

An MIT professor's daughter was brutally murdered not long ago. I saw the huge headlines in the *Boston Herald*. Is this where we are heading? I will not condone sensationalism at the expense of human beings. *Just leave them in peace.*

We should respect the people in our stories: it is what keeps them from being words on a page.

Where is The Tech heading? The term lies before us. Maybe we can regain some respect. Maybe not. We shall see.

Hey: let's go.

The Tech

Volume 105, Number 1 Tuesday, February 5, 1985

Chairman Ellen L. Spero '86
Editor in Chief Thomas T. Huang '86
Managing Editor Gregory D. Troxel '87
Business Manager Robert W. O'Rourke '85
Executive Editor Martin Dickau '85

Night Editor Carl A. LaCombe '86
Photography Editors Steven H. Wheatman '86
..... Sidhu Banerjee '87
Arts Editor Jonathan E. D. Richmond G
Advertising Manager Michael J. Kardos '86
Contributing Editors Scott I. Chase '85
..... Simson L. Garfinkel '85
..... Robert E. Malchman '85
..... P. Paul Hsu '86
..... Andrew Bein '87
..... Andrew Gerber '87
..... V. Michael Bove G

Senior Editors Diana ben-Aaron '85
..... Paul G. Gabuzda '85
..... Matthew W. Giamporcaro '85
..... Ronald E. Becker '87
Production Manager Andrew S. Gerber '87
Indexing Project Representative A. David Boccuti '79

NEWS STAFF

Associate News Editors: Harold A. Stern '87, Mathews M. Cherian '88, Michael J. Garrison '88, David P. Hamilton '88, Craig A. Jungwirth '88, Ben Stanger '88; **Staff:** Joseph J. Kilian '85, Ronald W. Norman '86, John B. Searles '86, Kevin D. Hurst '87, Charles R. Jankowski '88, Becca Munroe '88, Earl C. Yen '88.

OPINION STAFF

Columnists: Joseph L. Shipman '82, Scott Saleska '86, Eric Berman '88, Adam B. Rosen '88, Kimberly B. Sklar '88, Ken Meltner G, Joseph J. Romm G.

PHOTOGRAPHY STAFF

Associate Photo Editor: Sherry K. Lee '87; **Staff:** Jim Butler '85, Dan Dobryn '85, Touissant L. Myricks '85, Dennis Cuy '86, Elliott F. Williams '86, Henry M. Wu '86, Stephen P. Berczuk '87, Maurice Seko '87, Bill Flowers '88, Mike Frey '88, Michael W. Halle '88, Shari Jackson '88, Bill Johnson '88, Frank Modica '88, Stephen A. Brobst G, Ricky Marshall G, Robert Winters G; **Darkroom Manager:** Sidhu Banerjee '87.

SPORTS STAFF

Associate Sports Editor: Paul Paternoster '88; **Staff:** Chris Kelley '85, Christopher Y. Kim '85, Arthur Lee '85, Victor J. Diniak '86, Janice Marchiafava '88.

ARTS STAFF

Associate Arts Editors: Corrado Giambalvo '85, Michiel Bos G; **Staff:** Richard Gotlib '86, Thomas L. McKendree '86, Lisa Bishop '88, Scott Lichtman '88, James F. Kirk G.

FEATURES STAFF

Cartoonists: Geoff Baskir '78, Jim Brett '82, Carol Yao '85, V. Michael Bove G.

BUSINESS STAFF

Advertising Accounts Manager: David H. Hamahi '86; **Production Accounts Manager:** Thomas R. Ricciardelli '85; **Associate Advertising Manager:** Andrew W. Gengos '86; **Circulation Manager:** Jeff Tabor '87; **Distribution Manager:** Matt Garrity '85.

PRODUCTION STAFF

Associate Night Editors: Mark W. Eichin '88, Eric N. Starkman '88; **TEN Director:** Andrew S. Gerber '87; **Staff:** Kathleen M. O'Connell '87, Elsa Chen '88.

PRODUCTION STAFF FOR THIS ISSUE

Night Editor: Gregory D. Troxel '87
Associate Night Editors: Mark W. Eichin '88
..... Eric N. Starkman '88
Staff: Ronald E. Becker '87, Maurice B. Seko '87, Shari L. Jackson '88, Michael F. Tuchman '88.

The Tech (ISSN 0148-9607) is published Tuesdays and Fridays during the academic year (except during MIT vacations); Wednesdays during January, and alternate Tuesdays during the summer for \$12.00 per year Third Class by The Tech, 84 Massachusetts Ave. Room W20-483, Cambridge, MA 02139. Third Class postage paid at Boston, MA. Non-Profit Org. Permit No. 59720. POSTMASTER: Please send all address changes to our mailing address: The Tech, PO Box 29, MIT Branch, Cambridge, MA 02139. Telephone: (617) 253-1541. Advertising, subscription, and typesetting rates available. Entire contents © 1985 The Tech. Printed by Charles River Publishing, Inc.

feedback

No offense was intended in Rockwell recruiting poster

To the Editor:

Recently, two employees from Rockwell Defense Electronics of Southern California displayed a poster that upset a number of women at MIT. A copy of the poster appeared on the front page of *The Tech* on Jan. 23, 1985.

The poster was a mistake; we did not intend to offend anyone, but we did so in effect. In a civilized world, no one intentionally offends another. However, someone can offend another due to ignorance.

The concept for the recruiting trip and the poster were mine. The artist portrayed the concept more flagrantly than I had originally envisioned. I disapproved of the poster for religious reasons: the dress on the woman in the

poster didn't meet my church's dress standards, and I didn't like the lusty look that was portrayed on my face.

I tolerated the poster, and forwarded it because I know I'm in a minority that has conservative religious beliefs. I failed to realize that the poster is also offensive to women. I apologize for the poster, and for being ignorant of what offends women.

I personally regret the incident — this letter is not a reflex apology. In order to believe that I really do regret this incident, one must understand that I'm very religious — in three weeks, I'll start a year-and-a-half sabbatical (from work) to do volunteer work for my church.

A beloved leader in my church, George Q. Cannon, lived by this

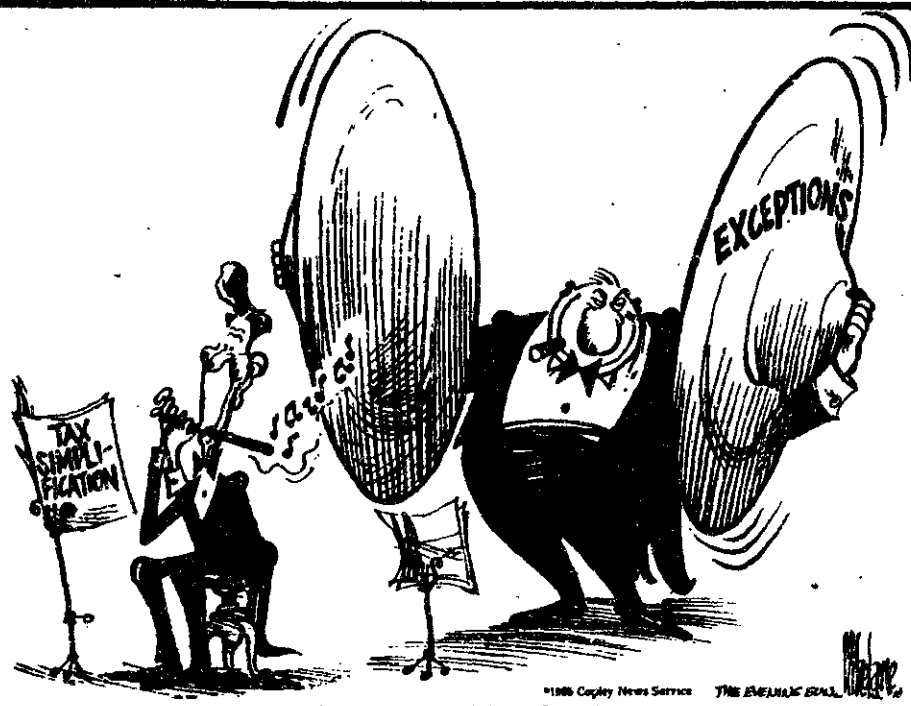
creed: "I live in mortal terror of ever offending anyone." I live by that same creed. I managed to offend a lot of women this time — I'm disappointed with myself. I'm sorry — very sorry.

That poster does not reflect the working atmosphere at Rockwell Defense Electronics. At work, women are peers. The company has an affirmative action program for recruiting professional women. The number of women professionals and managers exceeds the industry average. I regret that the poster misrepresented a company that treats me very well.

This letter is not the result of a bargain with an administrator. It's an effort to heal the wounds that I created.

Mitch Ring '82

opinion



Column/Daniel Crean

Cambridge streets from another view

Cambridge is "the most cosmopolitan city in North America" if you believe the city Chamber of Commerce.

terly American, who could seriously find fault with the majority of law-abiding motorists?

It's true there is a lot of diversity in Cambridge. There are rich people, poor people, and middle-class people. There are Arthur D. Little and Red Star Books, Legal Seafoods and McDonald's. Harvard Square and Central Square. Harvard and MIT.

It must just be Cambridge, I figured. This city turns drivers into heartless wild animals out to make life miserable for innocent pedestrians.

This is a lot of diversity for one town, really, but there's one thing in which all Cantabrigians are seemingly the same: pedestrian-driver relations.

But this IAP I did a lot of driving around Cambridge and my outlook changed. Motoring all around town, I found that pedestrians were totally disrespectful of traffic laws.

Boston-area drivers are notoriously disrespectful of both the law and pedestrian safety. Anyone who has walked extensively around town knows the perils that go along with merely being a pedestrian. Cars don't always stop for red lights and stop signs, never mind people in the street.

They darted out into the street between cars and crossed even when the sign said "Don't Walk." They maneuvered as if they expected drivers to read their minds. They seemed to dare cars to hit them. They acted as if they owned the roads.

Drivers take corners while hardly slowing down, leaving those attempting to cross the street in a state of shock. Walking is like playing a game with one's life. In the winter the snow and ice compound the problem.

I got pretty mad at those pedestrians, but then I realized that most of the time I was one of them. I was one of those obnoxious people who ran out in front of cars, who expected cars to move around me. I was as guilty as they were.

I imagine the problem is even worse for bicycle riders.

So I guess I was wrong about the pedestrian-driver conflict being one-sided. Sure, drivers are pretty reckless around town, but pedestrians are reckless, too. It's a two-way street, so to speak, and anybody traveling on the roads and sidewalks has to play the game, has to cooperate.

It's enough to make anyone without a car develop a loathing for automobiles. It's funny, really, because whenever I go home on vacations I really enjoy driving. It wasn't until I came to college and was confined to city life that I realized how much fun totally pointless consumption of gasoline was.

Maybe the Cambridge traffic situation is awful for walkers, but part of the fault lies with those walkers. If you don't agree, try renting a car for a couple weeks and driving around. It's all in your point of view.

Driving is so satisfying, so ut-

Column/Eric A. Sohn

Search for personal legacy

One of my favorite songs, albeit a bit dated, is the Tubes' "What Do You Want From Life?"

thing you did; anything from artwork to an inventive approach to a problem you will do. Are you sure it wasn't derivative of something you had seen elsewhere or something you'd done previously?

It's a good question: ask yourself what you want to accomplish during your lifetime. Better yet, imagine what you think other people want from life... say like President Reagan or Donald Trump. The usual things spring to mind, like wealth or success; maybe even happiness. Not for me.

Think hard. Did you have trouble answering these questions?

I'd like that elusive luxury known as a legacy. Not necessarily something with my name on it (like Sohn Hall or a grant to the Smithsonian), but something I can look back at or point to with a feeling of ownership and pride.

Legacy, in some respects, is a more permanent version of professional respect. Like all good things, respect begins at home — learn to be proud of your creations. It's good to be able to step back from your work when you're done, wipe your hands off, and say "I did a damn good job on that."

The ability to transform your surroundings, to make your mark on some part of the world, is much more satisfying than seeing your name on a high school basketball trophy.

Give it a once-over. Check for faults and room for improvement. Be at least as hard on your work as you are on others'. Admire your handiwork — you'll do it even better next time. Don't worry about patting yourself on the back — for many things you do, yours may be the only reinforcement you get.

How do you grab something and make it your own? I can only guess: effort and creativity. MIT makes very good technicians, but it doesn't give you the spark that places you at the front of the pack.

Carried out over time, professional respect becomes a reputation, which can be the stuff of legacy. Your methods get subtly enshrined; it is taken for granted

Try to think of the last original

that your way is the right way to accomplish the task.

Imagine being the guy who invented the Day-Timer management system. If you're not familiar, a Day-Timer consists of a set of wirebound monthly planning books, with sections for today's appointments, expense record, and a record of what you accomplished, including the time it took to do the tasks.

Do you have any concept of how many people use these things? Imagine lying back in your bed on a sunny Sunday morning and realizing that millions of people are carrying around your creation and applying your principles of time management to their daily lives. What a thrill!

Mind you, I still like the creature comforts. I'm not going to trade in money, a fire-engine red sports car, or real estate (none of which I really have) for my legacy. I'm no fool. But someday I'd like to look down from the heavens or up from the depths and discern my stamp on the face of mankind, no matter how small. As long as it's there, I can be happy.

feedback

An attack on pornography should be directed toward the merchants

To the Editor:
Eric Berman's column ["Viewer's rights," Jan. 30] totally missed the point of the pornography debate. Most of his argument centers on the impossibility of weeding out "sick people" and preventing "a potential rapist" from viewing a pornographic film.

life-affirming.
I believe the best objection to pornography the feminists have raised is this: what sort of outcry do you think would ensue if blacks or Jews or Orientals were the specific targets of pornography? How long do you think someone could peddle "entertainment" supporting the ideology that members of a particular human subgroup are inherently masochistic, made to give pleasure, and wholly definable in terms of their physical appearance and performance in the bedroom?

A potential rapist doesn't need any lessons in how attack and degrade; all he needs is the hint that it might not be all that bad because "other people do it." I am not terribly concerned about sick people. It is pornography's effect on the rest of us, whom society and the law accept as normal, that worries me.

I'm not terribly flattered by the contrasting one-dimensionality of males in pornography, either.
Such a merchant would be subject to denunciation, refutation, and perhaps even a lawsuit. Yet porn merchants are able to thrive to the tune of billions a year because their product is perceived as still within the bounds of normality, if not good taste.

Pornography is a noxious substance which, like cigarette smoke or caffeine, is hazardous to the quality of life. Since its effect is mental (or spiritual) rather than measurably physical, the extent of the damage is harder to show.

Mr. Berman is concerned about "invasion of innocent people's privacy." What he must understand is that when we pay to see a pornographic film we support an industry which survives partly through sexual inequality.

Think of *Mein Kampf*, the novels of Harold Robbins, or *The Thunderbolt*, Georgia's white supremacist newspaper. After viewing such material you are diminished, less of a person than you were before. At the very least you have wasted your time on a fantasy that is, unlike *Ikiru* or *The Magus* or *King Lear*, not

ring" in a porn film is not too different from wage slavery. I submit that fewer women would opt for the easy money in porn acting if they had access to secure and fulfilling employment.

I'm not for censoring anything. I don't see this as a First Amendment or civil rights issue. What we need to kill is the market, not the supply. If the money supply dried up, the merchants would move to other profitable ventures, like dealing drugs or shipping guns.

I would like people to choose freely not to patronize porno films. The way to attack pornography is to keep making noise about how stupid, pointless, and boring it is. My little brother thinks people should be required to watch pornographic films, which would destroy the mystery and titillation so we could get on with the business of living.

In a society which still does not extend equal economic opportunity and reward to women, "star-

In the meantime, ask yourself why MIT students would wish to screen or see such a film. Curiosity? Go to the West End Pussycat Theater. The thrill of forbidden pleasure? Grow up. As for the sponsors of the film, they're out to make a buck on our weakness, insecurity, and lack of knowledge. Why give them the satisfaction?

David J. Loftus

IS FOOD A PROBLEM FOR YOU?
Eating is a problem when food becomes an obsession. And obsessive eating is a growing problem.

Are You Out of Control?
Eating disorders are frightening. Anorexia and bulimia are life-threatening. They can make you feel ashamed. They can damage your health. They can even be fatal.

NEED Can Help
I see more people who are suffering from eating disorders than ever before. I can help you. I can help you get control of your eating. I can help you get control of your life.

CALL NEED
NEED is a program that can help you get control of your eating. It's a program that's been developed by Dr. Mark V. Bellugi, a leading expert on eating disorders. It's a program that's been used by thousands of people who have struggled with eating disorders. It's a program that's been proven to be effective. It's a program that's been used by people who have struggled with eating disorders. It's a program that's been proven to be effective. It's a program that's been used by people who have struggled with eating disorders. It's a program that's been proven to be effective.

TO GET HELP
Call NEED at 527-4670. We'll help you get control of your eating. We'll help you get control of your life.

Job opportunities!

WANTED:

Interested candidates for student government offices.

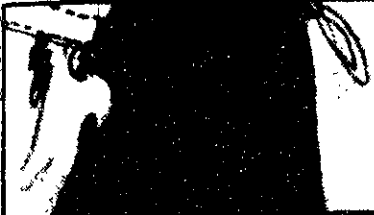
1985-86 UNDERGRADUATE ASSOCIATION ELECTIONS

Candidate Petitions are available in the UA Office (Bldg. W20-401) starting at NOON, February 5, 1985 for the following offices:

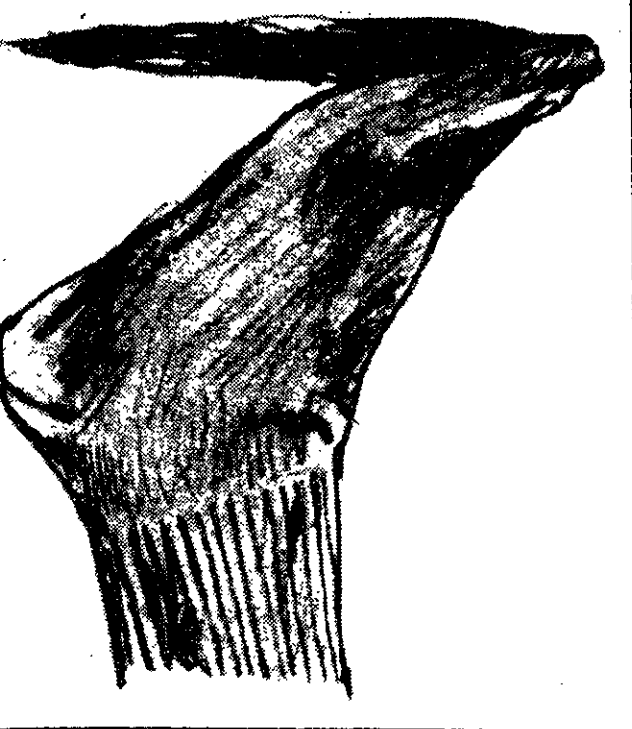
1. UA President/Vice-President
2. Permanent Class Officers (5 year term) Class of 1985
3. Undergraduate Class Officers (1 year term) Class of 1986 Class of 1987 Class of 1988

UA ELECTIONS

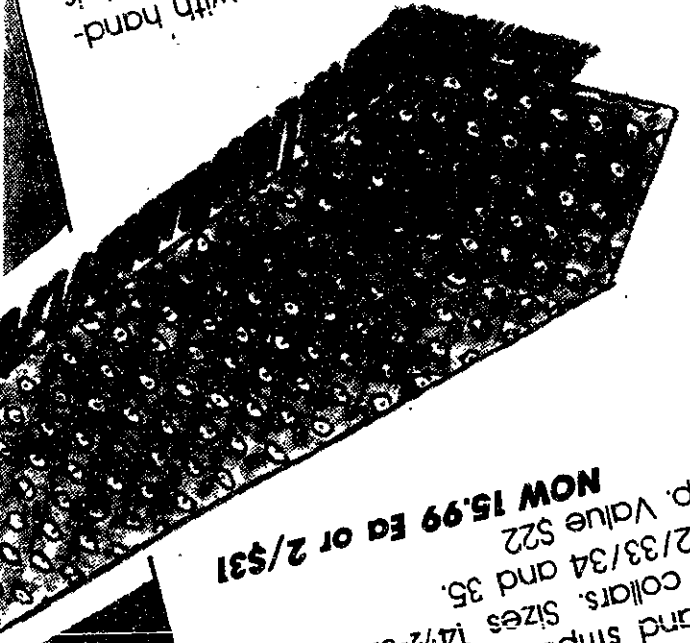
Available at Harvard Square, MIT, Student Center, Children's Medical Center and One Federal St. Boston. Harvard Square store open Mon.-Sat. 9:00 to 5:45, Thurs. till 8:30pm. Coop Charge, Mastercard, Visa and American Express welcome.



Crewknit Sock in a comfortable easy-care nylon/orlon blend Choose from navy, black, white and shades of greys or browns
Reg. 2.50 Ea. **NOW 1.99 or 3/5.50**



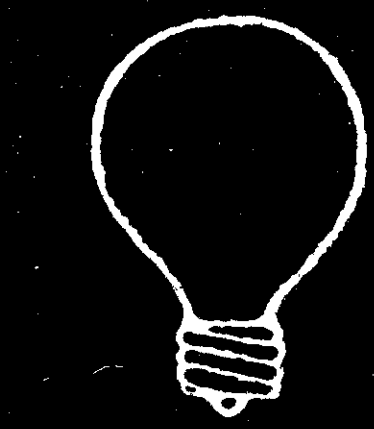
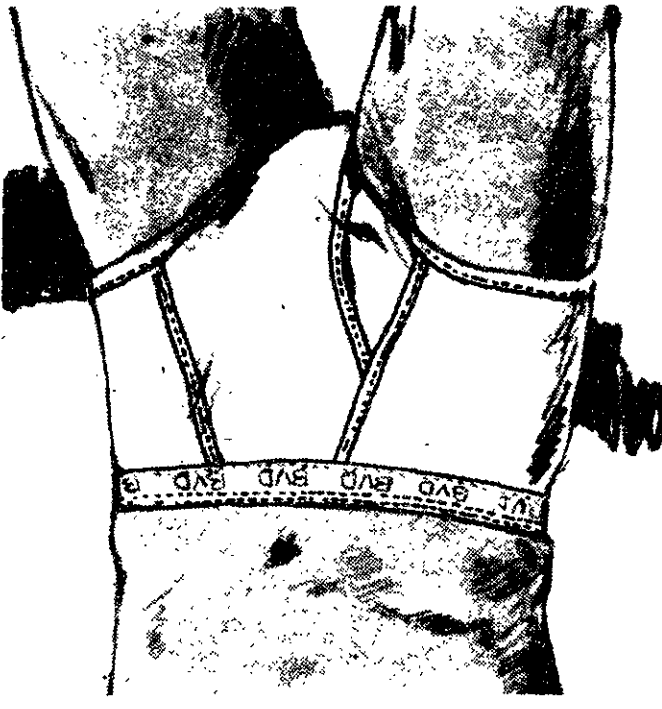
100% Silk. Ties from Italy with hand-printed stripes and patterns. Each is fully lined with a double bar tack. A Coop exclusive.
Reg. 16.50 **NOW 10.99 Ea or 2/\$21**



The fitted oxford-cloth dress shirt is an easy-care blend of 60% cotton/40% polyester and made exclusively for the Coop. Choose from white, blue, assorted fashion solids and stripes, all with button-down collars. Sizes 14 1/2-32/33, 15-16 1/2-32/33/34 and 35.
Comp. Value \$22 **NOW 15.99 Ea or 2/\$31**

usual comfort with what you see and what you shouldn't

Save 25% Entire Stock BVD Briefs, Boxer Shorts, Crewneck and V-neck T-shirts. Pre-shrunk for a comfortable fit time after time. Sizes S to XL.
Reg. 8.25-10.75 **NOW 6.18-8.06**



Do it in the DARK! Be a 'Real' photographer!

CAMPUS
FEBRUARY 4, 10

Life Sciences
Conceptual video and live footage includes film, TV science and New York (with real love) 60 min.

Cartoons
Kare cartoons from as early as 1911 to include the work of Windsor Kelly one of the founding fathers of animation. 30 min.

Special Savings 70%
1977: Red Sox Political Recommendation Begins
Diagonal Energy in New York City
Form 30 min.

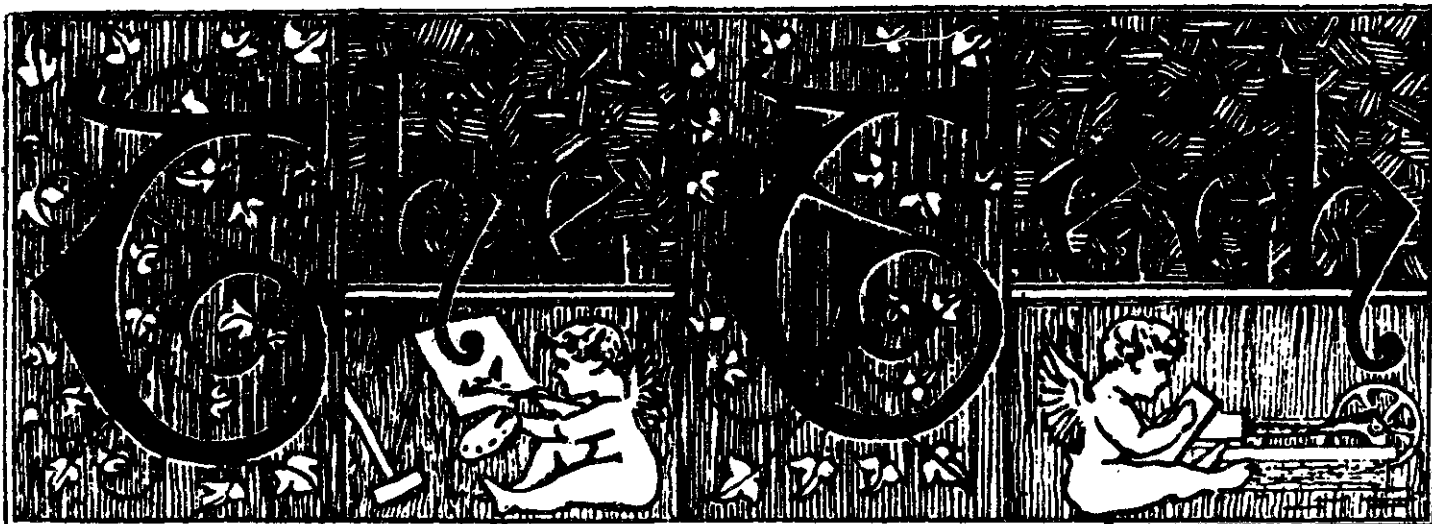
With Friends
Progressive new music and special guests 60 min.

THE BEANS
Funnies surveys hold up in front of fun of Texas/Austin. 30 min.

THE SHADOW OF A DREAM
Fritz Becker moving back of being her own master 30 min.
Special: a woman who lived through her own murder 30 min.

A FAR AWAY PLACE IS NEAR YOU

Zoological Society
442-2002



AN INVITATION TO ALL STUDENTS

The MIT Corporation's Visiting Committee on Student Affairs will be here February 10-12, 1985. Please join us Monday, February 11, at 9:00 am in the Mezzanine lounge relating to the quality of student life at MIT. Agendas for the entire meeting are available in the Office of the Dean for Students Affairs, 5-106

We extend a special invitation to you to attend the evening session Monday which will be an open meeting/reception with students from 7:30-9:00 pm in the Mezzanine Lounge of the Student Center.

For more information call 3-6776

The Office of the Dean for Student Affairs

BUSINESS GRADUATES



INVEST IN YOUR FUTURE... INTEL MAKES IT A REALITY

Intel. The microelectronics leader. A billion dollar company whose excellence in both technology and progressive management has made its impact on the electronics industry. Intel offers you both the challenge and the elements for a winning career. You've invested too much time and too much hard work to settle for anything less than the best. You want Intel. An Intel opportunity means professional latitude, top resources and a dynamic environment of teamwork and recognition. If you're looking for projects that call for leadership, invest your future in Intel. And make your success a reality.

If you are unable to meet with us, please contact Intel College Relations at the location of your choice.

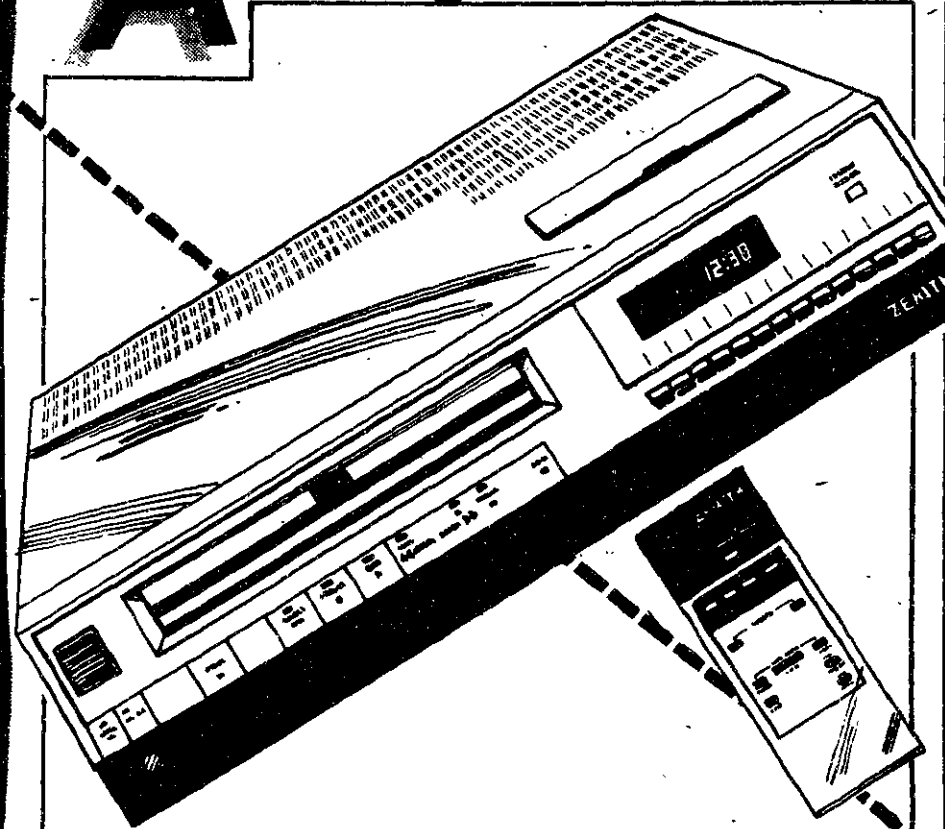
Arizona: 5000 West Williams Field Road, Chandler, AZ 85224
 Santa Clara, California: P.O. Box 3747, Santa Clara, CA 95051
 Sacramento: Folsom, California: 151 Ravine Road, Folsom, CA 95630
 New Mexico: 4100 Sara Road, Rio Rancho, NM 87124
 Oregon: 5200 N.E. Elam Young Parkway, Hillsboro, OR 97124.

An Equal Opportunity Employer M-F-H



CAMPUS INTERVIEWS
 February 15, 1985

A VCR with more than savings built in



Save \$50 Panasonic VCR with built-in 2-week/1-program electronic digital clock/timer, 4 hr. 1-touch recording, 12-position tuner, remote control, auto-stop and more.
 Reg. 449.95 **NOW 399.95**

Save \$100 Zenith programmable 14-day/1-event VCR with 14 position tuner, full 8hr. VHS performance, auto-timer, rewind and instant record. Includes wireless remote control.
 Reg. 599.95 **NOW 499.95**

Available at Harvard Square, M.I.T. Student Center, Children's Medical Center and One Federal St., Boston. Coop Charge, Mastercard, Visa and American Express welcome.



opinion

feedback

Year's changes are only regression

To the Editor:

I have recently returned from a year and a half in Japan and, of course, have found that quite a few things have changed over that period of time. Some of these changes I think are good changes ("progress" perhaps), but what is distressing to see is some of the changes that in my mind represent only regression.

Perhaps I can begin with an example.

Frankly, I was a little surprised upon my return to find the subject of pornographic in such heated discussion. Apparently, over the past year and a half, quite a fuss has been raised about the Lecture Series Committee's traditional practice of showing sexually explicit films one or two times during the semester.

I found this interesting because I personally find absolutely nothing good and almost everything that I don't believe in wrapped up in pornography. Could we have made some progress in this area at last? Could it be that the student body had finally scrutinized their own feelings about the issue, found that pornography usually only leads to a very artificial substitute for those relationships, and decided to do away with the stuff?

Probably not.

And sure enough I've found that it seems to be that the fuss stems from a few people and administrators who wave their banners high.

I certainly can understand their concern; to me the degrading influences of pornography are something I will not tolerate in my own life, but the key elements here are "to me" and "my own life."

The decision must be made on a personal level. What really surprises me is the notion (apparently even somewhat supported by the administration) of banning these options in the lives of others as a solution to some kind of problem.

As I hear most contentions of those who would ban these films, I've noticed that the primary arguments seem to be centered around the debasing nature of such a practice. I can certainly understand this concern but I really don't feel that a couple of movies a term are really contributors to this moral consciousness but more of a reflection of a con-

Intelligence, compassion can be found on both sides

To the Editor:

In her letter opposing the showing of pornographic films at MIT, ["Point of view," Jan. 30] Donna Giesman writes, "As a man, . . . he could no more assess or empathize with the sexual harassment of women than could a primitive."

It has been my experience that intelligent and compassionate people of both sexes can be found on all sides of MIT's pornography controversy.

To insinuate that people who believe that LSC has a right to show pornographic films do not care about sexual harassment is as wrong as it is unfair. Furthermore, declaring that men are incapable of empathizing with the victims of injustice is an outrageous sexist slur as offensive as any racial, religious, or ethnic epithet.

Alan Szarawski '88

sciousness that already exists.

In other words, the sad truth is that if these movies were not met with such popularity, I'm sure they would not be shown. Hence the real question, for someone genuinely interested in improving this situation, is how to bring about a change so that the films lose popularity and naturally are not shown anymore.

One possible solution might be a "moral screening" process before admission to MIT. Questions concerning one's background (especially matters pornographic) and moral convictions could be analyzed and candidates accepted on a basis that ensured only the most virtuous and morally upright became students. Perhaps an affidavit similar to one signed by dormitory residents, which says they will comply with the Basic Regulations, could be required before final acceptance.

My point is simply that an institutionalized policy will either be foolish (like the preceding pornography) or sidestep the real problem (as would banning flicks).

Unfortunately, the above is only one isolated case of the many I've noticed since my return. I use it only as an example of a growing tendency I see to deprive the individual of something most fundamental, his his need to be able to choose freely.

We seem to be losing hold of one of the most cherished values in either democracy, religion, or philosophy, namely the virtue of individual choice. In denying people the right to think and choose, we also deprive them of the even more basic important chance for growth.

So finally, to those who would wave their banners of truth, justice, and virtue in support of one cause or another, I would pose one question. Isn't it about time that we begin to really deal with these issues by directing our lives to helping others direct theirs; by example, kindness, love, and a few of the other ideals that we probably embrace? Won't this result in actually changing what we are, instead of simply what we say we are?

Jay L. Verkler '87

Our first line of defense



Volunteers are the front line in the battle against birth defects, our nation's major child health problem. In schools, offices, homes, factories, and civic organizations, it's people power that makes the difference.

Volunteer



Discuss Your Future With General Electric

Who?

Engineers:
Electrical
Mechanical
Chemical
Nuclear
Aeronautical
Computer

Scientists:
Computer Science
Mathematics
Physics
Chemistry

What?

Technical Managers will provide information on career opportunities within the General Electric Company in such fields as:

- Artificial Intelligence
- Expert Systems
- VLSI
- Robotics
- CAD/CAE/CAM
- Computer Graphics
- Semiconductors & Microelectronics
- Plastics
- Metallurgy
- Ceramics
- Software Engineering
- Signal Processing
- Controls/Automation
- Aerospace Systems
- Medical Diagnostic Imaging Systems

Various career entry paths from MIT to GE will be discussed. These include Development Programs as the:

- Edison Engineering Program
- Manufacturing Management Program
- Chemical-Metallurgical Management Program
- Software Technology Program
- Information Systems Management Program
- Research Technology Program

When and Where?

Monday, February 11 (12 noon-6 p.m.)
Lobby 13
Building 13

What else?

Light refreshments and handouts.

The future is working at General Electric



An equal opportunity employer

More than just the news

“Continuous news service since 1881” means more than just reporting the news; *The Tech* has been covering the MIT sports scene for over a century.

The nation's biggest collegiate sports program deserves the nation's best collegiate sportswriters.

Join us.

The Tech

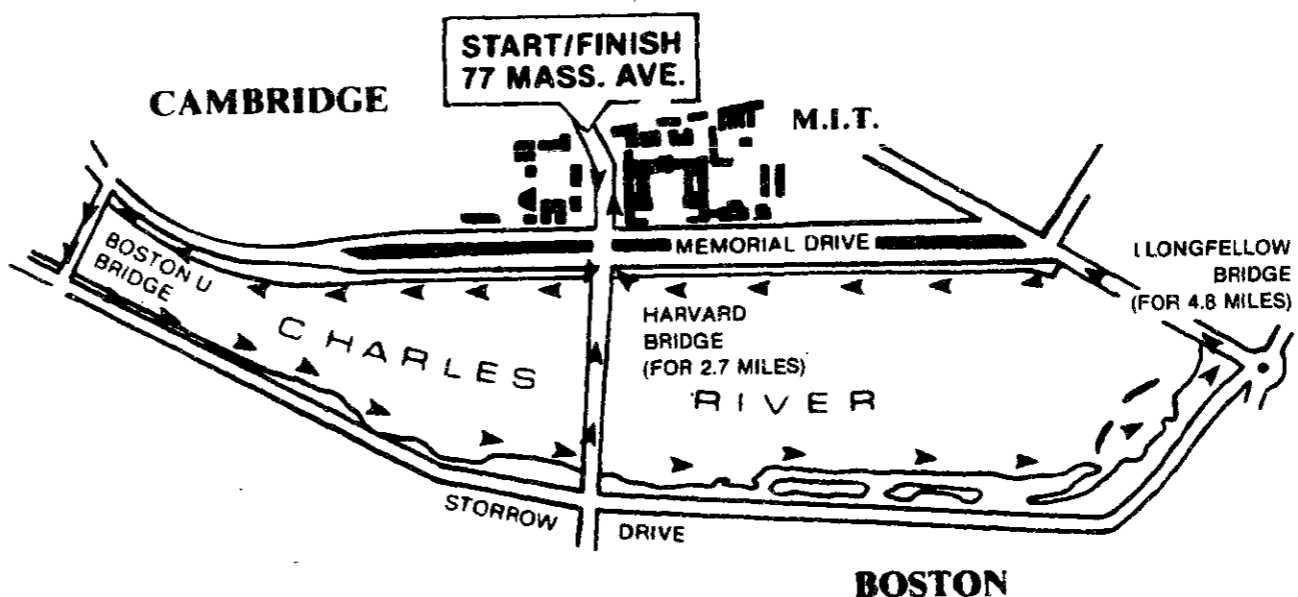
Continuous news service since 1881

Join us for an afternoon jog

On Tuesday, February 12th and Wednesday, February 13th, representatives of General Electric will be interviewing on your campus. Please contact your placement office for schedule information.



Our Technical Recruiters would like you to join them for an afternoon jog on Tuesday, February 12th. We'll begin at 77 Massachusetts Avenue at 5:30 p.m., jog down Memorial Drive to the Boston U. Bridge, cross over to Storrow Drive and head down to the Longfellow Bridge, cross back over to Memorial Drive and finish up our 4.8 mile jog back at 77 Massachusetts Avenue. Some of our managers will turn back up Massachusetts Avenue at the Harvard Bridge for a 2.7 mile run.



If you're interested in meeting our people in a completely informal setting . . . to find out more about the General Electric Company . . . it's technical work and career opportunities . . . put your track shoes on and join us and pick up an MIT/GE runner's shirt in the process. If for some reason you can't make it . . . just remember your interview with General Electric on Tuesday or Wednesday.

GENERAL  **ELECTRIC**

TERADYNE

From TERADYNE
A Very Large Scale Invitation
to Meet With Some Very Interesting People

Today, they're some of the talented professionals who put Teradyne at the top of the Very Large Scale Integration (VLSI) test market. Not too long ago, they were MIT students. And on Tuesday, February 19th, they're "coming home" to share their experience and expertise with you. To tell you about their career choice and status. About our backplane connection systems, and to give you a demonstration of the Teradyne software that's eating up the competition in the ATE industry. And to answer your questions about how Teradyne might help you achieve your professional goals.

From Boston

- Marc Levine '79
- Joe Wrinn '75

From Nashua, NH

- Terry Sutton '83

Tuesday, February 19th
From 7-9PM
Come to Building 5, Room 134
Refreshments
will be served.

In any division, it's people like these who have put Teradyne at the top of telephone system testing, backplane connection systems and state-of-the-art circuit board technology for VLSI packaging requirements, and more. It's people like you we're counting on to keep us there.

So be there, February 19th.
And keep your calendar clear
Monday and Wednesday, Feb-
ruary 25th and 27th too.
That's when Teradyne will be
holding on-campus inter-
views. Details to follow.

We are an equal opportunity employer
m/f.

SHARE
IN OUR
SUCCESS

TERADYNE

notices

Listings

Student activities, administrative offices, academic departments, and other groups — both on and off the MIT campus — can list meetings, activities, and other announcements in *The Tech's* "Notes" section. Send items of interest (typed and double spaced) via Institute mail to News Notes, *The Tech*, room 20-483, or via US mail to News Notes, *The Tech*, PO Box 9, MIT Branch, Cambridge, MA 02139. Notes run on a space-available basis only; priority is given to official Institute announcements and MIT student activities. *The Tech* reserves the right to edit all listings, and makes no endorsement of groups or activities listed.

Announcements

June 10, the 1985 edition of the *Journal of Literature and Art at MIT*, would like your submission of prose, poetry, and art/photography. Please mail or deliver all submissions to Rune 14E-310 by February 10, 1985.

The Grolier Poetry Prize for 1985 is now accepting manuscripts until March 15, 1985. Open to all poets who do not have a chapbook, small press, trade, or vanity publication to their credit. Please send a S.A.S.E. to the Grolier Book Shop, 6 Plympton

Street, Cambridge, MA 02138 or call 547-4648 for official rules and information.

The Kathlyn Langford Wolfe Awards, two \$1000 prizes, are to be awarded, one to an undergraduate student and one to a graduate student, upon completion of an imaginative and significant project combining research in materials and humanities or in materials and the arts. The project may take the form of laboratory research, a research paper, an exhibition, or a work of art. The deadline is February 4, 1985 for the preliminary project proposal and April 22, 1985 for the final submission. For more information please contact Prof. L. Hobbs, Room 13-4066, x3-6835 and Prof. A. Kaledin, Room 14N-322, x3-4144.

The American Institute of Steel Construction has announced that eight graduate fellowships of \$5000 each will be awarded in 1985 by The AISC Education Foundation. The grants will be awarded to graduate civil or architectural engineering students proposing a course of study toward an advanced degree related to fabricated structural steel. Applicants must be U.S. citizens. Deadline for receiving applications is March 1, 1985. To obtain applications, write AISC Education Foundation, 400 N. Michigan Ave., Chicago, IL 60611, or call 312-670-2400.

Help Woodsy spread the word!

In the city...
or in the woods,
Help keep America
looking good!



Give a hoot! Don't pollute!

JEWISH INTRODUCTIONS

We announce for you:



- An unpressured, student designed service to meet other Jewish graduate and undergraduate students in Boston.
- We feature a brief informal interview with a counselor who will meet and match students from all of the Boston area schools.
- You and your potential friend will each receive a confidential letter, giving you the option to follow through. Whenever possible, participants will receive more than one match. All inquiries and information will be held in strict confidence.
- Interviews will be conducted at your campus during the month of February. All matches will be made by March 15th. There is a ten dollar fee plus a deposit which will be returned upon completion of a follow-up questionnaire.
- All interviews must be scheduled by Friday, February 15th. Call 266-3882 for appointments and information.

A project of the Metropolitan Outreach Program of the B'nai B'rith Hillel Council of Greater Boston, 233 Bay State Road, Boston, MA 02215

Discuss Your Future With General Electric

Who?

BS and MS candidates in electrical engineering, computer science, mechanical engineering, chemical engineering, aeronautical engineering and nuclear engineering.

What?

The General Electric Technical Recruiting Team will be conducting campus interviews for challenging career opportunities within one of the most diversified companies in the world. Contact your placement office to schedule an interview with one of our technical managers. Various entry level alternatives are available such as:

- Edison Engineering Program
- Manufacturing Management Program
- Chemical-Metallurgical Management Program
- Software Technology Program
- Individualized Direct Placement

Opportunities exist in such fields as:

- Artificial Intelligence
- Expert Systems
- VLSI
- Robotics
- CAD/CAE/CAM
- Computer Graphics
- Plastics
- Metallurgy
- Ceramics
- Software Engineering
- Signal Processing
- Controls

For more information on these programs and the major business areas available refer to the General Electric file located in your placement office.

When and Where?

Tuesday, February 12th and Wednesday, February 13th in your placement office

What else?

Sign-ups will commence Monday, January 21st

The future is working at General Electric

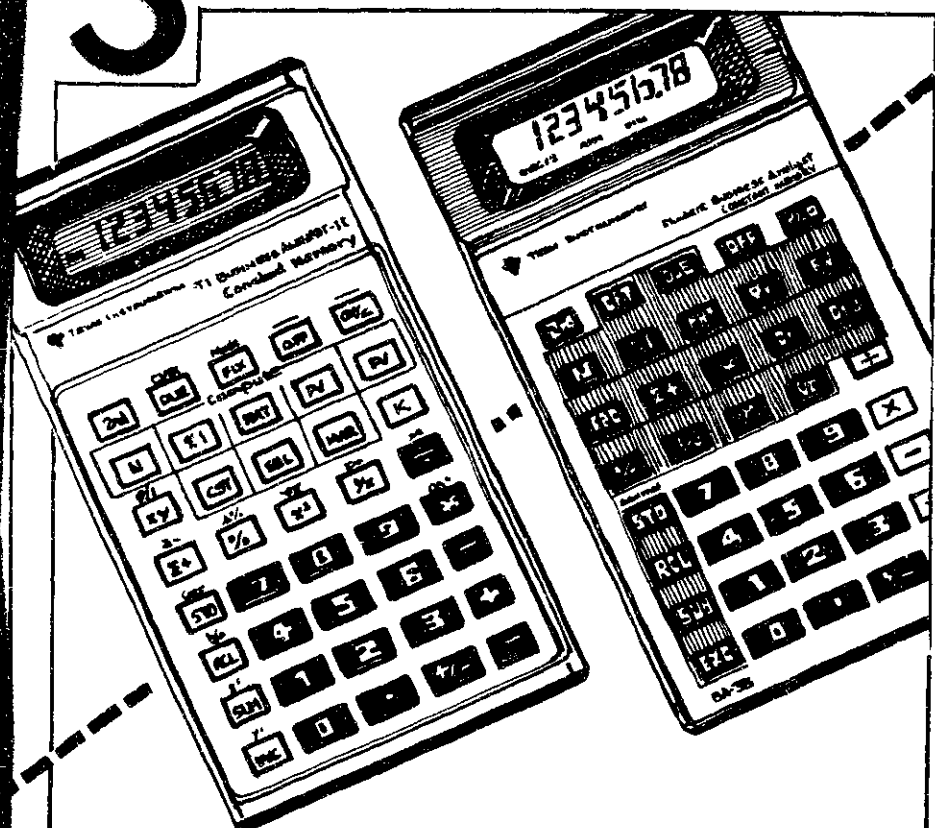


An equal opportunity employer

The Tech

☆ **PRODUCTION.** We have one of the best production facilities of any college newspaper in the world, so if you're interested in graphic arts, design, or typography, stop by and check out our state-of-the-art computer typesetting facilities.

Simplify the complex



TI Business Analyst II. With lease/buy options, amortizations, sales and earnings forecasts, profit margin analysis, constant memory and 8 digit display.
Reg. 39.95 NOW 34.95

TI Business Analyst - BA-35. Preprogrammed functions include time/value-of-money, amortization, balance and interest, statistical mean and standard deviation.
Reg. 18.95 NOW 16.95

TI-BA-55. Advanced programmable financial and statistical.
Reg. 54.95 NOW 49.95

Available at Harvard Square, M.I.T. Student Center, Children's Medical Center and One Federal St., Boston. Coop Charge, Mastercard, Visa, and American Express welcome.

HARVARD COOPERATIVE SOCIETY





Your pregnancy should be a safe and happy journey.

Call your March of Dimes chapter for a free booklet about good prenatal care.



support...



SIEMENS

Graduating Engineers

Meet with Siemens representatives on your campus **Monday, February 11th**

Talk to a world leader in medical electronics.

As the healthcare industry continues its rapid growth, its need for sophisticated diagnostic systems increases accordingly. Siemens holds a leadership position in this field with developments in such areas as CAT scanners, medical and dental x-ray equipment, patient monitoring systems, and is in the forefront of magnetic resonance imaging (MRI).

Here, graduating engineers will find excellent opportunities to become fully qualified experts in advanced medical systems. Our year-long development program, not in a classroom, but side by side with our best people on rotating assignments will give you a full view of the field and show us both where you'd fit in best.

Your options include technical sales, service or product support and (for those with advanced degrees) R&D. Prerequisites include a BS or MS in Biomedical or Electrical Engineering.

To explore the possibilities of a Siemens future, see your Placement Office to schedule an interview. If you are unable to arrange an interview, forward your resume to:

Lauren Mason

Siemens Medical Systems, Inc.

186 Wood Avenue South
Iselin, NJ 08830

An equal opportunity employer, m/f/h

ON THE FRONT LINE...



Dr. Margaret Hostetter
Pediatrician
University of Minnesota

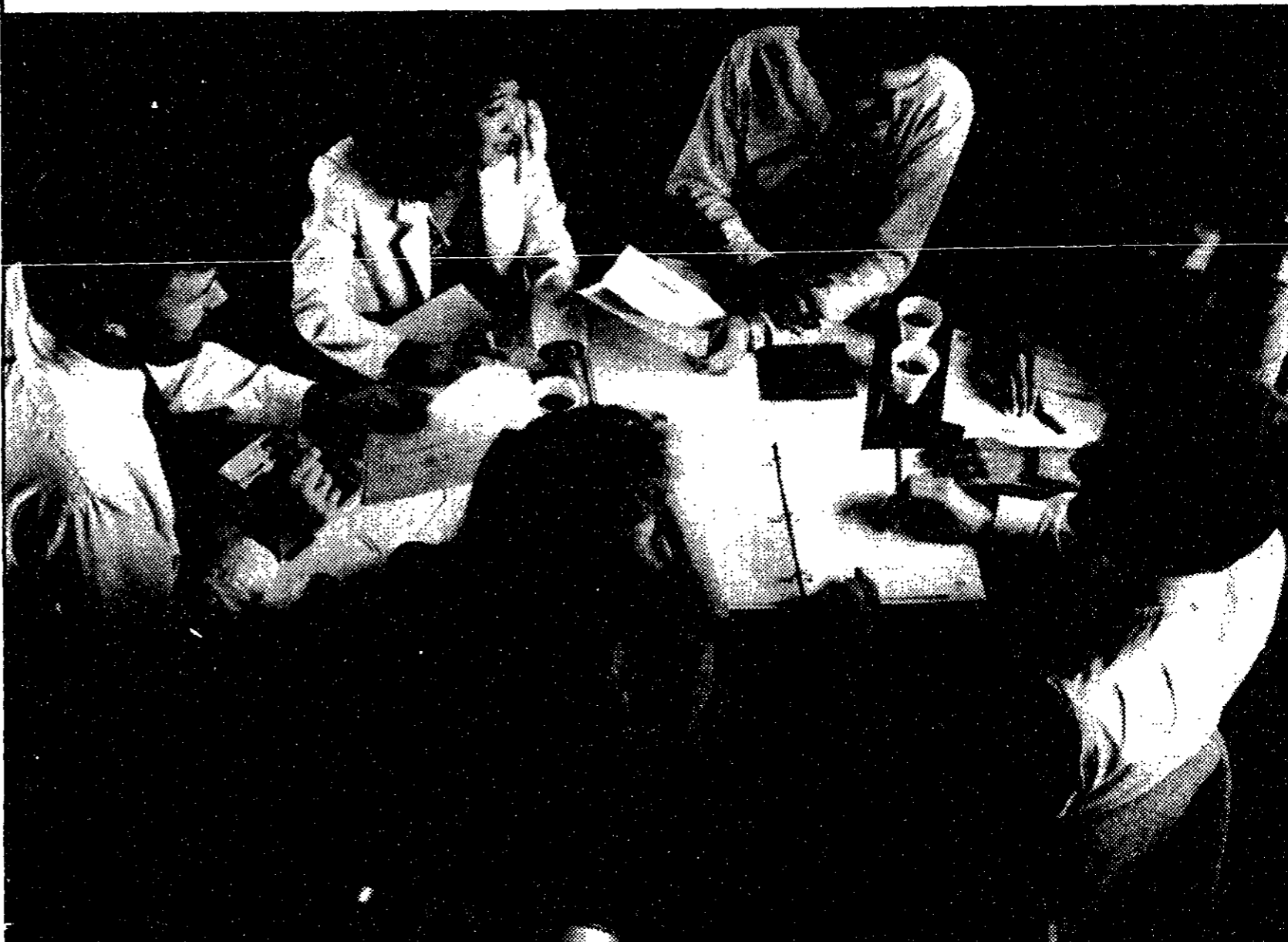
A March of Dimes research grantee, Dr. Hostetter wants to know how the human body defends itself against common bacteria.

She will use this knowledge to stimulate a baby's own immune system to fight off infection—all part of the March of Dimes on-going fight against birth defects.



This space donated by The Tech

THE HARDEST TEST COMES AFTER FINALS.



Northrop Corporation On Campus Interviews

Friday, February 8th, 1985

When your exams are over, the challenges just begin.

At Northrop recent MIT graduates are working on some of the most sophisticated aerospace/electronics projects in the world.

You can be a part of our team of highly trained professionals.

If your field of study is engineering, (technical or manufacturing); computer science; math; physics; or business, arrange a Northrop interview through your placement office.

Northrop representatives will be on your campus February 8th to meet with students ready for the challenges that face them after finals are over.

Proof of U.S. Citizenship Required. Northrop is an Equal Opportunity Employer M/F/H/V.

We're within your reach.

NORTHROP

Making advanced technology work

ARTS ARTS ARTS ARTS



The Boston Premiere Ensemble believes in promoting the unusual. On Saturday, at Church of the Advent, Boston, the music of Graupner will be pitted against that of Telemann and Bach. Now whom, you might ask, is Graupner? Well, in 1721 there were six applicants for the post of Kantor of the Leipzig Thomaskirche, and they included Bach, Telemann and Christoph Graupner. Telemann was the preferred candidate, but other obligations prevented him from taking up the post. It then fell to a choice between the two remaining finalists, Bach and Graupner. The wise judges heard works of both composers and decided they liked Graupner better. But Graupner withdrew and the city fathers were forced to settle for Bach. The Premiere Ensemble will give you the chance of deciding whether you prefer Graupner to Bach. . . Call 782-2582 for information.

Jonathan Richmond

Powerful Passage to India

A Passage to India, directed by David Lean, with Victor Banerjee, Peggy Ashcroft, and Alec Guinness; Sack Copley Place and Harvard Square Theater. *Stranger Than Paradise*, Nickelodeon Theater.

They don't make many movies like *A Passage to India* anymore. Reminiscent of epics like *Lawrence of Arabia*, *A Passage to India* is about a clash of cultures set against the background of 1920s India.

Don't go expecting a complex, intellectually challenging storyline. The plot is very simple. Two Englishwomen, one old and charming and the other young and enigmatic, travel to India at a time when the British rule the subcontinent as a colonial state. The women are disgusted by the strained relationship between the snobbish ruling English and the pandering native Indians. They are also disappointed by the lack of adventure. Everything in India seems so British, as if the British had artificially recreated their home there. The women want to see the "real India" and are determined to meet Indians who can bridge the gap between the East and West.

They make the acquaintance of an Indian physician well-enough versed in Western culture to be their guide. Although the younger Englishwoman is initially enthusiastic about finding the real India, her foray is unsuccessful. Her first taste of the East shocks her. She recoils to her home culture. The result is a scandal that threatens to tear India along ethnic and cultural lines. Miss Quested, the younger of the women, once opposed to the split between East and West, eventually finds herself to be a major cause of the split.

The acting is powerful and understated. Victor Banerjee brilliantly portrays a complex physician — ambitious and anxious

to please his British friends, but striving to maintain dignity despite his status as a second-class citizen. Alec Guinness demonstrates his acting range in the rather surprising role of a Hindu professor.

David Lean's direction is wonderful. Half the reason to see this movie is the simple but powerful images on the screen. *A Passage to India* can tell more in a few minutes of pictures than many movies can in two hours of dialogue. The recreation of the time and place is evocative; 1920s India is an exotic and exciting location. It holds our attention through the entire movie. *A Passage to India* is one of the best movies of the past few months. It is well worth seeing.

* * * *

Stranger Than Paradise is a very strange movie indeed. It was shot in black and white, probably on a very low budget. The film strikes the viewer with well-crafted design, rather than Hollywood-style flamboyance.

This movie tries for a mood, rather than a gripping story, and it succeeds. In an unusual narrative style, each scene is separate and distinct, isolated by short periods of nothing but a black screen. It's almost like one of those photovellas where there are few but well-selected pictures.

The story, such as it is, concerns a woman from Eastern Europe who immigrates to America. On the way to live with her aunt in Cleveland, she visits her cousin in New York for a week and a half. A year later, the cousin and his friend decide to take a vacation to Cleveland where they pick up the woman and travel to Florida. It's a mellow trip to nowhere, congruous to the experience of the film itself. Don't see *Stranger Than Paradise* for excitement or enthrallment; that's not what it's trying for.

Dan Crean

Voyage of discovery at Museum of Fine Arts

Boston Museum Trio and Aulos Ensemble, February 3 at the Museum of Fine Arts

The MFA's resident chamber ensemble, the Boston Museum Trio, joined forces with the Aulos Ensemble to provide a voyage of discovery through the uncharted territories of early music.

The concert started with Couperin's *La Sultane*, which came across somewhat roughly in the early measures, though gaining in cohesiveness toward its conclusion. The Aulos Ensemble then gave Handel's *Sonata da camera in G* a light and airy performance. The baroque oboe playing of Marc Schachman was outstanding; there was much pleasure to be had in witnessing the interplay between oboe and violin in the opening *allegro*. In the second movement, especially, the oboe's dance-like capriciousness combined with the harmonies of Linda Quan's baroque violin and supported by colorful continuo to create delight. A majestic *passacaille* led to a spirited *gigue* and an elegant *menuet* to conclude.

The Boston Museum Trio followed with Rameau's *Première Concert in C* from "Pièces de clavecin en concert." Daniel Stepner — who had experienced uncharacteristic difficulties in the Couperin — established a fine melodic line in the second movement, "La Livri;" but it was in the third movement, "Le Vézinet," that the most brilliant dynamics were achieved. Gibbons weaved intricate patterns on harpsichord in an energetic performance, the clarity of which served to pinpoint every detail and which, in conspiracy with gamba and violin, brought out the catching humor with which the piece ends.

Anne Briggs played many charming passages on flauto traverso in Telemann's *Sonata in G for flute, two violas da gamba and basso continuo*. The continuo, in this piece, though, was not always as full as it might have been. Amends were quickly made, however, in Vivaldi's *Concerto in C*, oboe and flute floating on a rich texture of supporting strings. The flute solo at the opening movement was especially pleasing,

while the vibrant mood of the closing *allegro assai* brought the piece to a triumphant finale.

The concert ended with Muffat's *Sonata No. 5 in G*. Aulos violinist Linda Quan and Boston Trio violinist Daniel Stepner

Jonathan Richmond

Paris, Texas deservedly wins Cannes

Paris, Texas, directed by Wim Wenders, at Harvard Square and Copley Place.

Paris, Texas, winner of the Golden Palm at the 1984 Cannes Film Festival, is a psychological drama. When the relationship between a middle-aged man and a much younger woman collapses, they entrust their infant son to the care of the man's brother and sister-in-law. Contact is lost.

In the movie, we follow the man in his quest for reunion. The film begins at the moment he pops out of the blue somewhere in the Texan desert.

The psychological implications of this scheme are well-developed in the course of the movie. The puzzling disorientation which the man exhibits at the onset is gradually explained and transformed into a nervous determination to find his wife and son.

When he tries to recover his son, his brother and sister-in-law are faced with the realization of their adopted child. The boy is forced to choose between two fathers. The woman (played by Nastassja Kinski) remains a mystery until the end, when we finally discover her actual situation and feelings.

As the movie approaches its climax, all lines seem to converge toward a resolution of conflicts. But, at the last moment, Wenders opts for an open horizon. I found it hard to accommodate this within the logic of the storyline, in particular of its second half. Perhaps Wenders judged a completely happy ending simply too straightforward. But it doesn't detract from the main line; it even produces a formal symmetry: by leaving again at the end, our hero retraces his initial steps.

With a plot like this, a film could easily turn into a tear-jerker or a game of chess

balanced each other with virtuoso displays, while exploration of sonorities by the other players gave freshness to a work which might otherwise have rested in obscurity.

This is due to the judicious balance between what is clearly stated and what is left implicit (again with the possible exception of the very last part). Of equal importance is the movie's subtle rhythm, stressed by occasional guitar music (Ry Cooder). It corresponds to a gentle, yet determined pace.

The whole unfolds in a continuous sequence of outstanding shots. In a symbolic interplay between actors and surroundings, the background of the scenes reflects their emotional content, whether it be the vast, vague space of rural Texas or the restless confinement of a Californian suburb haunted by the noise of a nearby airport.

The film has a distinctively international flavor, although it is set in Texas and California with a predominantly American cast. A German-French co-production, it hints at its origins in the figures of the French sister-in-law, and a Texas country doctor whose accent is reminiscent of the Rhine rather than the Rio Grande. Most importantly, the director, Wim Wenders, a protagonist of contemporary German cinema, pervades the movie with his own personal style.

Paris, Texas is the best new film I have seen in a long time; and those who wouldn't agree with me in this respect might still judge it well worth its time and price.

The Goethe Institute (170 Beacon Street, Boston) currently shows Wenders movies on Friday nights. Look in newspapers for information on the schedule.

Michiel Bos





I used to be disgusted ...
Now I try to be amused ...
by taking pictures for

The Tech



ON THE FRONT LINE...



Dr. Everett Anderson
Professor of Anatomy
Harvard Medical School

A March of Dimes research grantee, Dr. Anderson studies the very beginnings of life before birth when so many things can go wrong. His work reflects the deep concern of the March of Dimes in its fight against birth defects. This kind of basic research is top priority, and points the way to the day when good health at birth will be the right of every child.

Support the
March of Dimes
BIRTH DEFECTS FOUNDATION

IS THE FUTURE IN YOUR MIND?



If you're looking at your future, you'll want to look into Monolithic Memories, where our continued leadership will come from the foresight of talented engineers like you. And those who are willing to go against convention to develop great ideas with us will reap the rewards of a bright future.

It was people like you whose aggressive foresight aided in developing the Programmable Array Logic (PAL®) circuit. (This year alone we're developing some 20 new PAL® products.) We also developed the industry's fastest 32K Bipolar PROM and the first Diagnostic PROM, the frontrunner of an entirely new product family. As for our innovation of CMOS, you can look for even more firsts from MMI.

MMI supports this tradition of innovation with sophisticated and highly advanced resources. For instance, we've just broken ground for a new, \$100 million wafer fab facility in Albuquerque, New Mexico. Two state-of-the-art fab areas — one for Bipolar and one for CMOS — will be ready for production by late 1985.

This past year, our sales increased 84% to over \$190 million, with a greater increase projected for the coming year. So, as one of the companies with the largest investment in R&D, MMI can

give you access to the finest resources which, in turn, projects the brightest growth for your career.

At Monolithic Memories, you may be hired directly into your particular area of expertise. Or, you could qualify for our Graduate Training Program, providing the opportunity to spend a year working on a variety of hands-on projects with some of our industry's leading creative minds.

In either case, you'll find MMI provides you with the environment — and the encouragement — to draw out the future in your mind. To generate new breakthroughs in semiconductor products... and in careers.

Campus Interviews February 8, 1985

Monolithic Memories can offer a rewarding career opportunity in an environment geared to growth. If you miss our campus interviews, send your resume directly to **Tom Blanda, Monolithic Memories, Inc., 2151 Mission College Blvd., Santa Clara, CA 95054.** We are an equal opportunity employer.

Monolithic  **Memories**



Tech photo by Sidhu Banerjee

Well folks, it's that time of year again. Just think, right now you are caught up in all of your classes. Will you be able to say that next month?

**ARTS
ARTS
ARTS**

Mozartean Rapturer

★ **ATTENTION !!!** ★
MIT SENIORS & GRADUATE STUDENTS !!!

Do you enjoy working with people?
Are you good at solving problems?

Become a
GRADUATE RESIDENT
in an
UNDERGRADUATE LIVING GROUP !!!

Come to the Dean for Student Affairs Office,
Room 7-133 for more information and an application.

Application deadline is March 8, 1985

Why Choose Hewlett-Packard?

Let's talk about it . . .

**open
house**

to be held on
February 5, 1985 from 5:30—7:30 p.m.
in Room 9-150

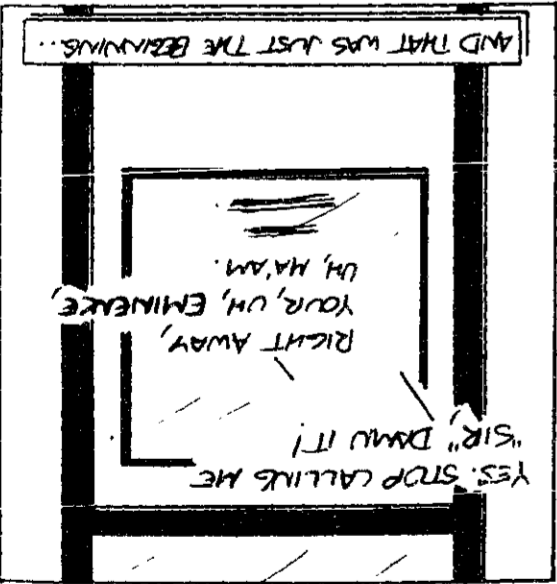
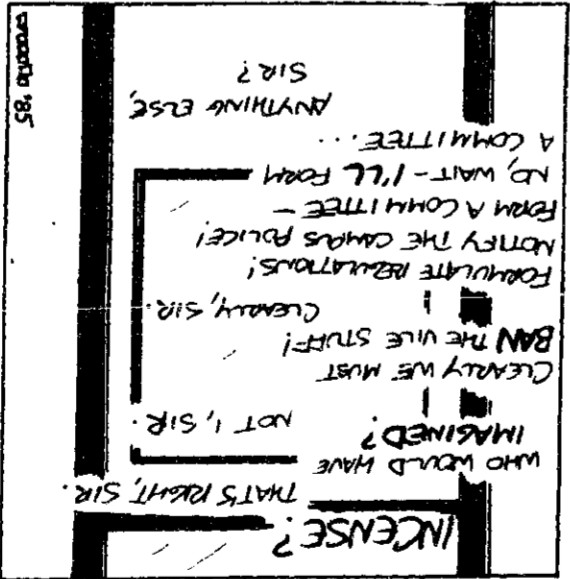
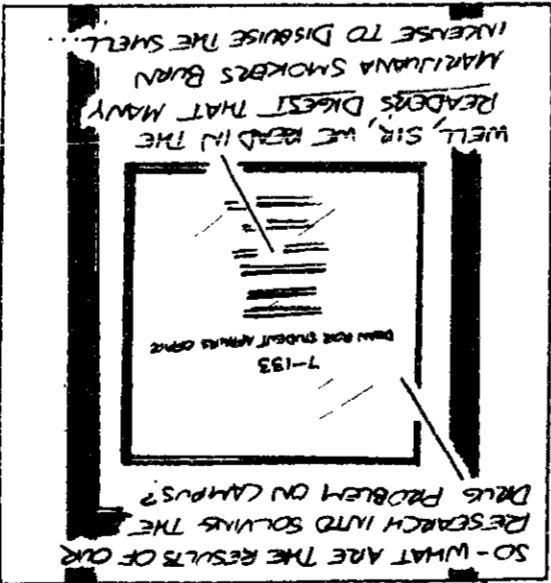
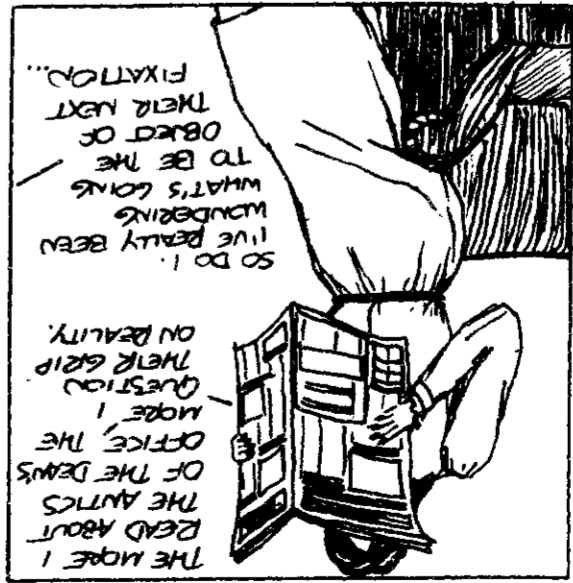
- SLIDE SHOW
- REFRESHMENTS

Campus Interviews February 6, 7, 8, 1985
Placement Office

HEWLETT  **PACKARD**

comics

Outside Looking In



By V. Michael Bove

"THE FILM OF THE YEAR?"

Alexander Walker, The London Standard

"INSPIRED... Conveyed on the screen with chilling conviction Richard Burton's final performance is one of his very best. Hurt is perfectly cast as Winston Smith" - Kevin Thomas, Los Angeles Times

"A VISUAL MARVEL!" - Susan King, Los Angeles Herald-Examiner

"HURT GIVES AN EXTRAORDINARY PERFORMANCE!" - Edward Behr, Newsweek

"Richard Burton's last performance is all silky corruption, perfumed malice in every beautifully measured phrase. John Hurt is compelling" - Richard Schickel, Time Magazine



John Hurt, Richard Burton
 in Michael Radford's film of George Orwell's NINETEEN EIGHTY FOUR
 with SUZANNA HAMILTON, CYRIL CUSACK
 A Virgin Film/Umbeilo-Rosebud Film Production. Director of Photography: ROGER DEAKINS
 Executive Producer: ALAN CAMERON. Music by EURYTHMICS & DOMINIC MILDOWNY
 Editor: TOM PRESTLEY. Production Designer: ALAN CAMERON. Costume Designer: GINA HIRSCH ROSENBLUM
 Executive Producer: MARTIN J. ROSEBUM and GINA HIRSCH ROSENBLUM
 Producers: AL CLARK & ROBERT DEVEREAUX. Produced by SIMON PERRY
 Written and Directed by MICHAEL RADFORD. From ATLANTIC TELEVISION CORP.
 The Theme Score - 1984 performed by EURYTHMICS.
 R
 Digital Soundtrack on RCA Records and Cassette

Starts Friday, Feb. 1st

NICKELDEON
 424-1500
 808 COMM. AVE. BOSTON

ORSON WELLES
 CINEPLEX
 1001 MASS. AVE.
 CAMBRIDGE
 868-3600

GESTNUT HILL
 277-2500
 RTE. 9 AT HAMMOND ST.

Schlumberger, the world leader in Electronic Well Logging has immediate career opportunities OVERSEAS for the individual with a degree in GEOLOGY, GEOPHYSICS, GEOLOGICAL ENGINEERING, RESERVOIR ENGINEERING or PETROLEUM ENGINEERING. Outstanding scholastic record, 0-3 years work experience. December graduates and already graduated. If you want to be involved in the search for tomorrow's energy this JOB IS FOR YOU!

OPENINGS FOR PERMANENT OVERSEAS

For confidential consideration, please send resume to the attention of:

Recruiting Coordinator
 SCHLUMBERGER INTERNATIONAL
 2707 NORTH LOOP WEST, SUITE 1090
 HOUSTON, TEXAS 77008
 TEL: (713) 863-7488

An Equal Opportunity Employer M/F

Schlumberger
ENGINEERS OVERSEAS

- THIS JOB IS NOT FOR EVERYONE - BUT IT COULD BE IDEAL FOR YOU!**
- Don't wear suits and ties
 - Don't shuffle papers and answer phones
 - Do live in foreign countries
 - Do work outdoors
 - Do take charge
 - Do make decisions
 - Do face many challenges
 - Do bear heavy responsibilities
 - Do operate sophisticated electronic equipment
 - Do record information on oil and gas wells
 - Do interpret this information
 - Are their own bosses
 - Are searching for tomorrow's energy
 - Are not afraid of long hours

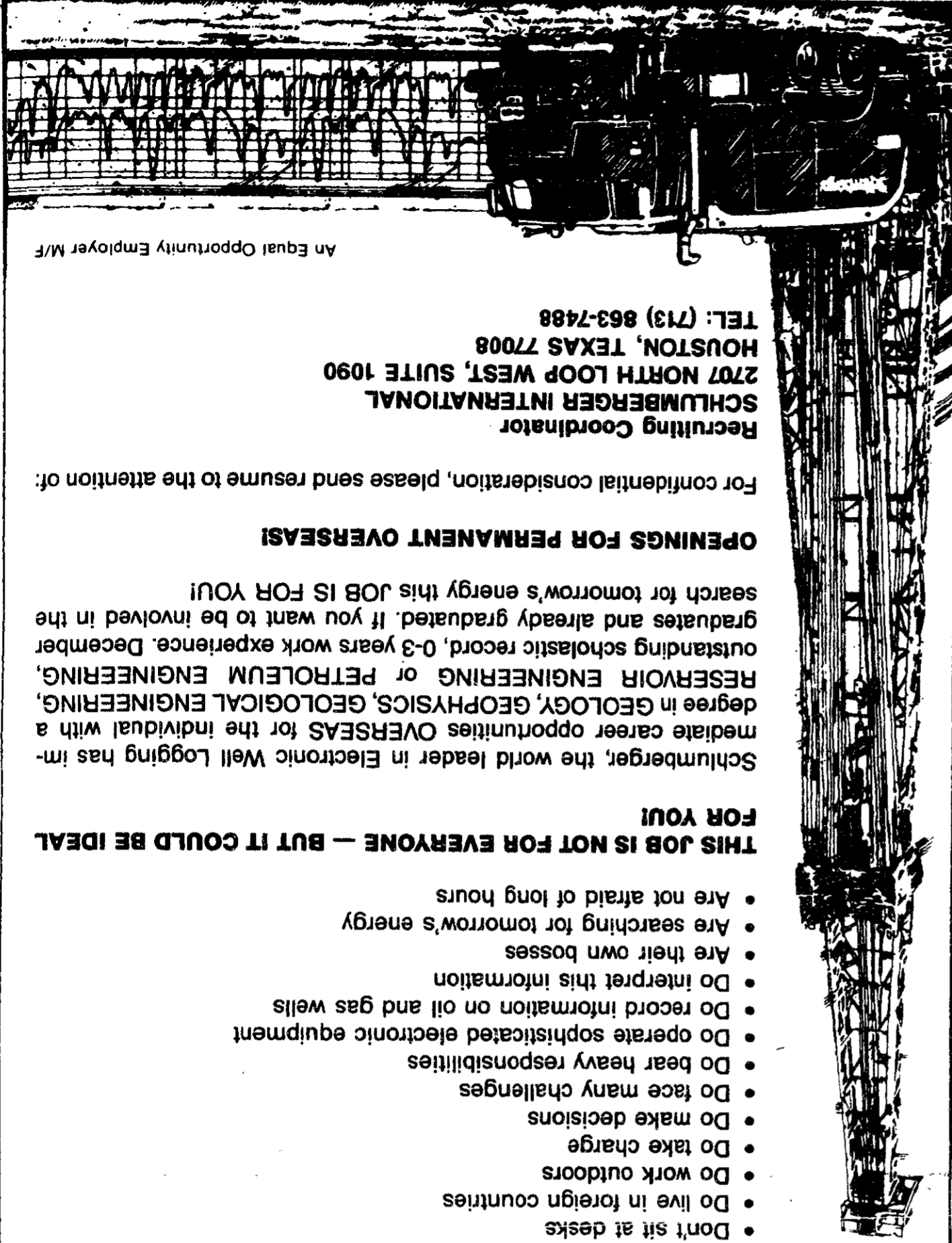
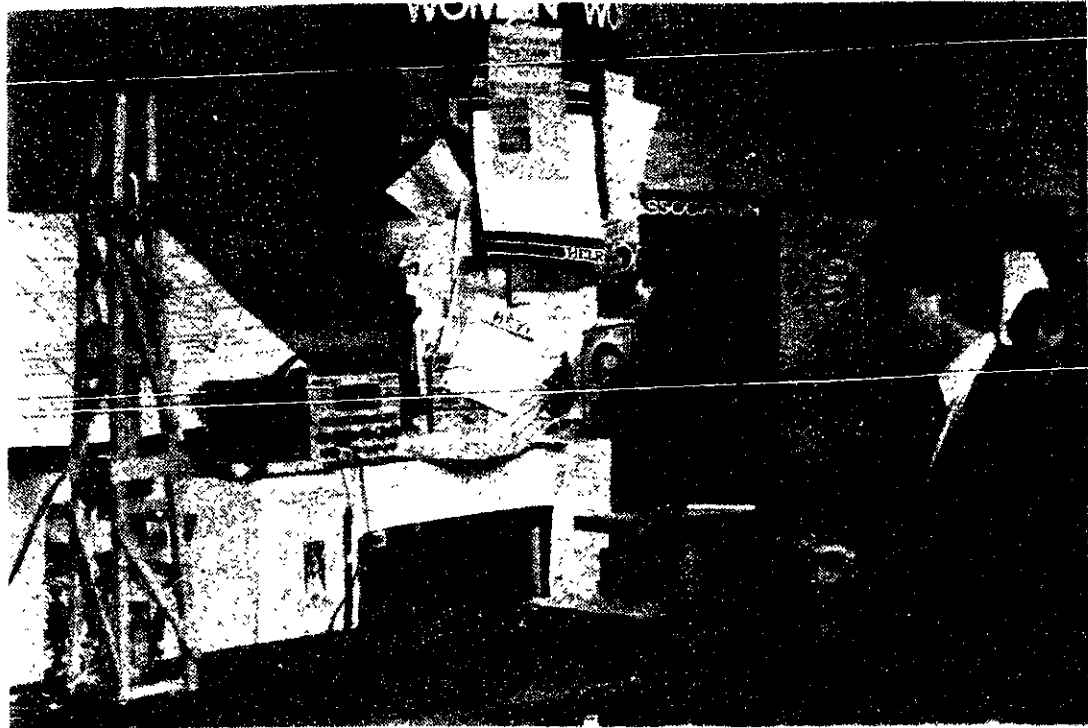


photo essay

IAP



Professor John Slater monitors force applied on a tower last Wednesday as part of the IAP contest "Dueling Towers" sponsored by the Department of Civil Engineering.



Daniel Grunberg G and Douglas Chin G, both students in Course VI, were the winners of the IAP Contest "Dueling Towers." Their Tower was able to withstand a downward force of 2000 lbs., the maximum possible by the testing machinery. A number of towers were able to sustain this load, but the pair's entry was determined the winner because it was the lightest and had the fewest number of joints.

By

Ronald E. Becker

classified advertising

VENEREAL DISEASE — Testing and treatment. Private medical doctor's office. Confidential. Beacon Street, Brookline. 232-1459.

The MIT Equipment Exchange will revise its schedule to serve you better and make it convenient for students, faculty, and administrative staff to take advantage of the Institute's excess/surplus property. Excess equipment, furniture, typewriters and materials are available for transfer to departments and research projects. Surplus (that property, which is no longer needed at the Institute) is available for sale to students, faculty, staff and the public. Please come and inspect our excess/surplus property on Tuesdays and Thursdays from 11 am to 3 pm beginning January 7, 1985.

SCOLARSHIPS, LOANS, OR GRANTS. We guarantee to locate 5-25 sources of financial aid for higher education regardless of family income or your money back. Educational Resource Center, 10 Carter Drive, Framingham, MA 01701, 877-9007.

1980 Buick Skylark, Excellent Condition, \$3000. 890-2080, work, 891-3010, home. Chris Bohrsen.

YAMAHA SK-15 synthesizer with custom hard case. Has organ, strings, and synthesizer voices with chorus/tremolo effects. Brand new, only \$800.00 or best offer. 67-5451, David.

Do you need to talk to an attorney? Consultations for personal injury, business law, real estate, medical malpractice, divorce, wills, litigation and other legal matters. Call Attorney Esther J. Horwich, MIT '77, at 523-1150.

For Sale: **1980 Honda Accord 4 dr** sedan 5 speed; excellent condition; low mileage; one owner; AM/FM cassette. 735-9070. Leave message.

Child care person need for 2½ and 3½ year old girls in my Harvard Square home. Harvard alumni seek a loving person for this position. M-F 8:30 - 4:30 call: 868-4034.

Council Travel/CIEE For Int'l Student ID, Low cost flights USA and worldwide, Work and Study abroad and More! FREE Student Travel Catalog! Call 66-196 or drop by at 79 Bolyston St. 2nd fl., Boston, Ma 02116

The Sanders



*Opportunities
at Every Wave Length.*

*Sign up immediately
at the Office of Career Services
On-campus Interviews Will Be Held
Monday, February 11, 1985*

We're Sanders Associates, one of the world's leading producers of advanced defense electronics and computer graphics systems. Our broad spectrum of involvement offers you the opportunity to apply your knowledge to areas that include countermeasures, signal processing, ocean surveillance, air defense, training and simulation, automatic testing, systems management, and air traffic control.

Throughout our expanding organization, our people are working on important projects applying advanced hardware and software capabilities to the development of state-of-the-art systems and products that meet and anticipate the world's changing needs.

If you are graduating this year with a concentration in Electrical Engineering or Physics, plan to talk to Sanders about how the challenge and diversity of our work can be applied to your career.

Located on the northern sector of Boston's high technology belt, Sanders offers technical graduates the opportunity to live and work in a unique environment. Find your place in our engineering community. Contact your Placement Office or send your resume to: Coordinator of College Relations, Sanders Associates, Inc., CS 2029, Nashua, NH 03061-2029.

SANDERS

An Equal Opportunity/Affirmative Action Employer
U.S. citizenship required.

"State of the art. . ."



THE TECH

P. O. Box 29
MIT Branch
Cambridge, Mass 02139

Computer science and engineering grads

**MIT gave you the opportunity to learn.
SSD gives you the opportunity to contribute.**

Small System Design designs and develops high performance processing engines for graphics, communications, and control applications. Being small, we offer a combination of challenge, involvement, and responsibility you're not likely to find anywhere else. If you have an entrepreneurial bent and want to mature quickly in the industry, let's talk. Our representative will be on campus Tuesday, November 27 and on Thursday, February 28, 1985. Make an appointment with the Office of Career Services (Room 12-170, 253-4733). If that's inconvenient, drop off your resume or send it to us at the address below.

small system design, inc.
225A Lowell Road • Hudson, New Hampshire 03051 • 603-880-1322
Taking Ideas from Conception to Production

**WE'LL PAY YOU TO GET INTO
SHAPE THIS SUMMER.**



If you have at least two years of college left, you can spend six weeks at our Army ROTC Basic Camp this summer and earn approximately \$600.

And if you qualify, you can enter the ROTC 2-Year Program this fall and receive up to \$1,000 a year.

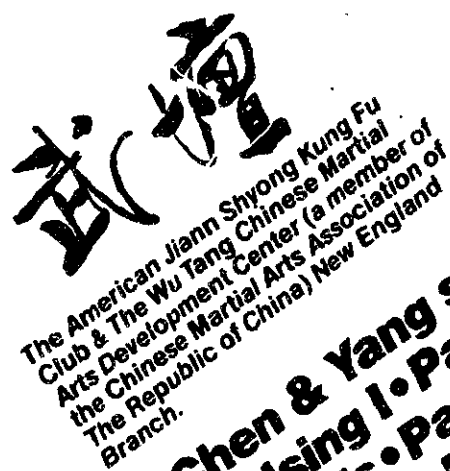
But the big payoff happens on graduation day. That's when you receive an officer's commission.

So get your body in shape (not to mention your bank account).

Enroll in Army ROTC. For more information, contact your Professor of Military Science.

**ARMY ROTC.
BE ALL YOU CAN BE.**

For more information
call Sergeant
Andy Blanchard
253-4471

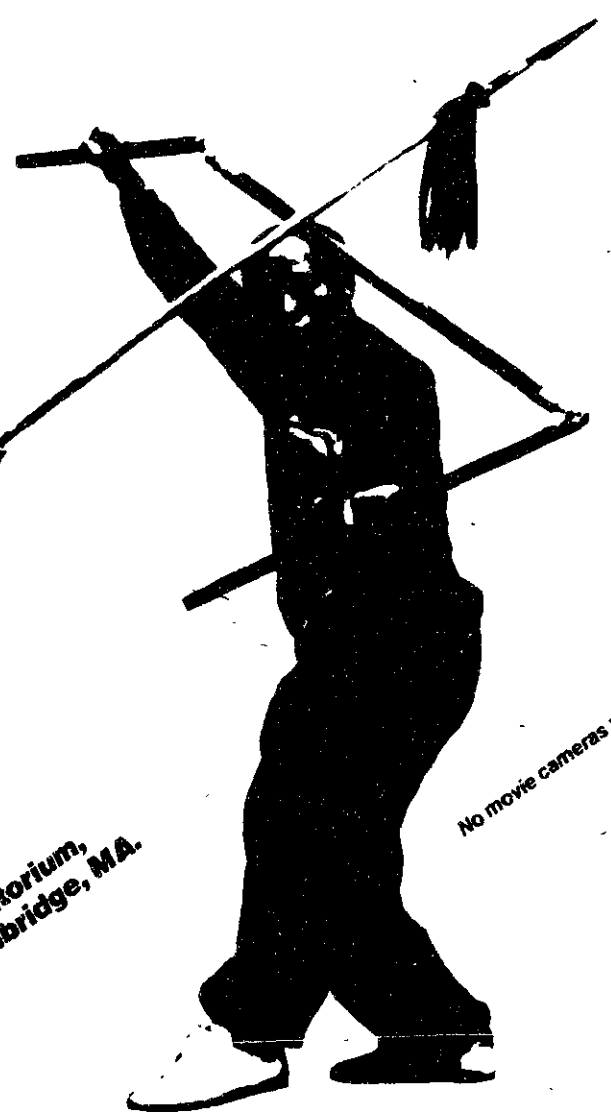
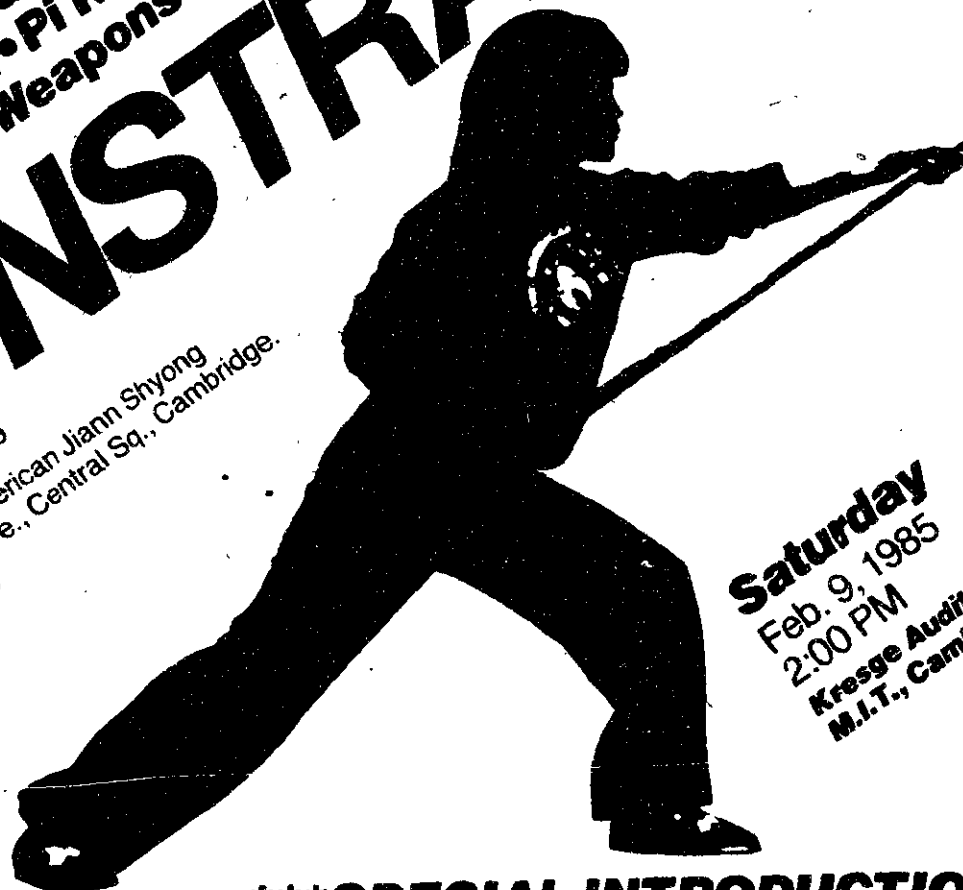


The American Jiann Shiyong Kung Fu Club & The Wu Tang Chinese Martial Arts Development Center (a member of the Chinese Martial Arts Association of the Republic of China) New England Branch.

Tai Chi (Chen & Yang styles)
Shao Lin • Hsing I • Pa Kua
Praying Mantis • Pa Chi • Pi Kua
Mi Chung I • Chin Na • Weapons

DEMONSTRATION

ADMISSION \$5.00, M.I.T. STUDENTS \$3.00
Tickets available at the door, or at the American Jiann Shiyong Kung Fu Club, Room 301, 595 Mass. Ave., Central Sq., Cambridge.
FOR INFORMATION CALL 497-4459



No movie cameras allowed

Saturday
Feb. 9, 1985
2:00 PM
Kresge Auditorium,
M.I.T., Cambridge, MA.

Presented by Instructors
Master Harn Lin-Lin &
Dr. Leung Kay-Chi (He is the Head Disciple of Grandmaster Liu Yuen-Chiao, the founder of the Wu Tang School of Chinese Martial Arts, and is the only authorized representative & instructor in the New England Area.)

Classes in M.I.T. of Boston Wu Tang Chinese Martial Arts center taught by Dr. Leung Kay-Chi & Master Harn Lin-Lin will be held on Mondays (Bldg13Lobby) & Thursdays (T-Club Lounge) from 8:00-10:00 p.m. starting Feb.14 (Thursday). Beginners welcome.

*****SPECIAL INTRODUCTION SEMINARS:***
(HELD AT 595 MASS. AVE. RM. 301, CAMBRIDGE,
AFTER DEMONSTRATION) (\$5.00, M.I.T. Students \$3.00
for each Seminar.)**

Saturday, Feb. 9

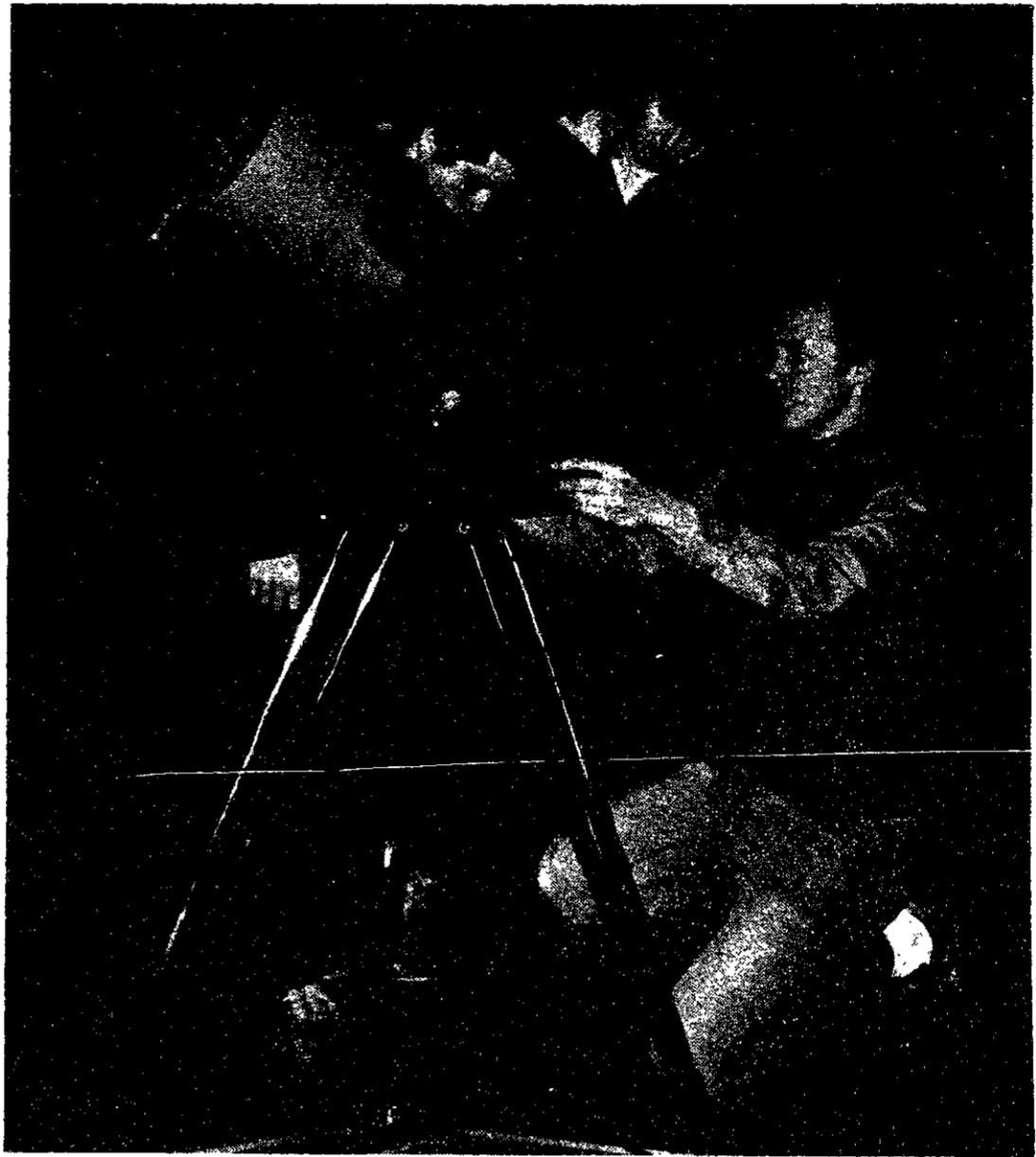
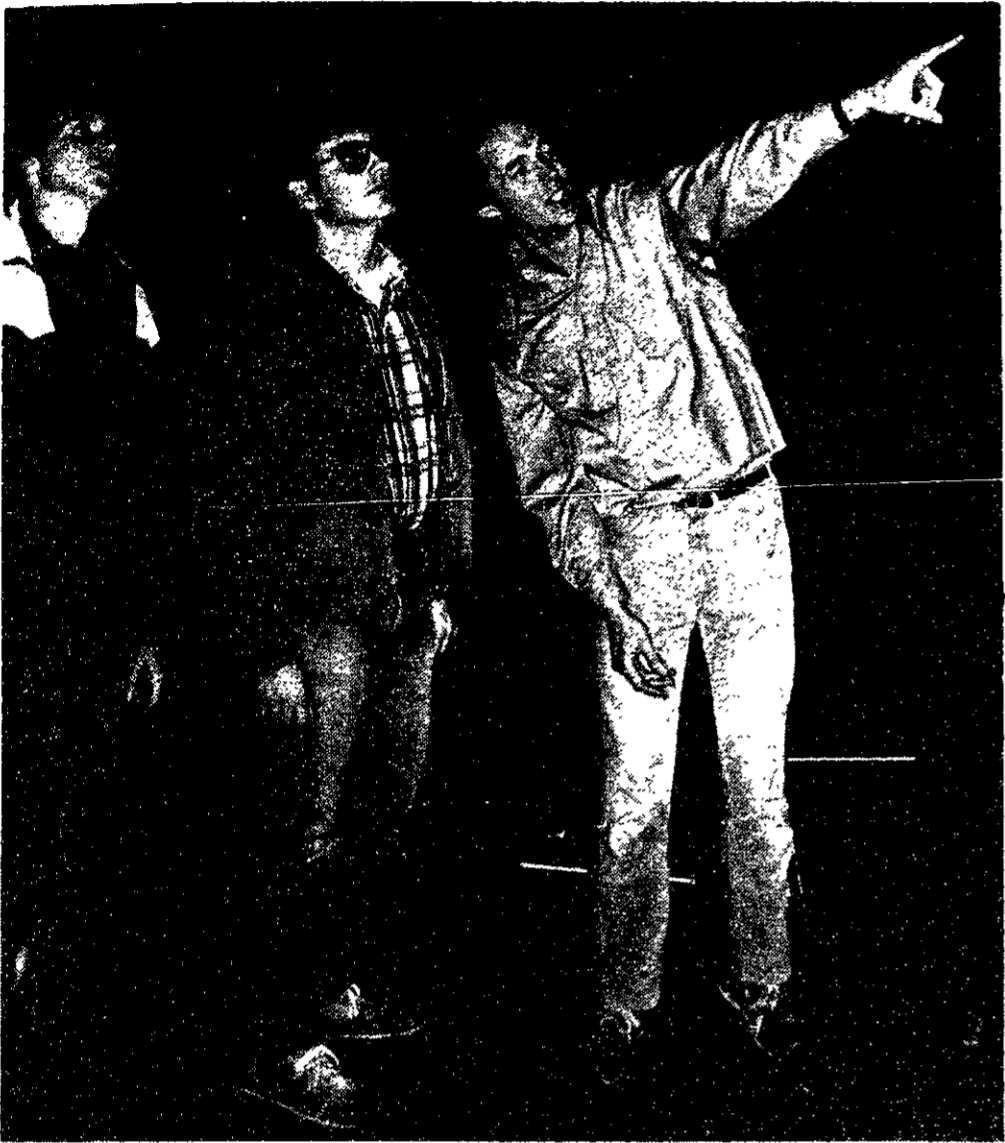
Northern Shao Lin & Praying Mantis
4:00 - 5:00 P.M.
Chin-Na (Catch & Hold Techniques)
5:15 - 6:15 P.M.

Sunday, Feb. 10

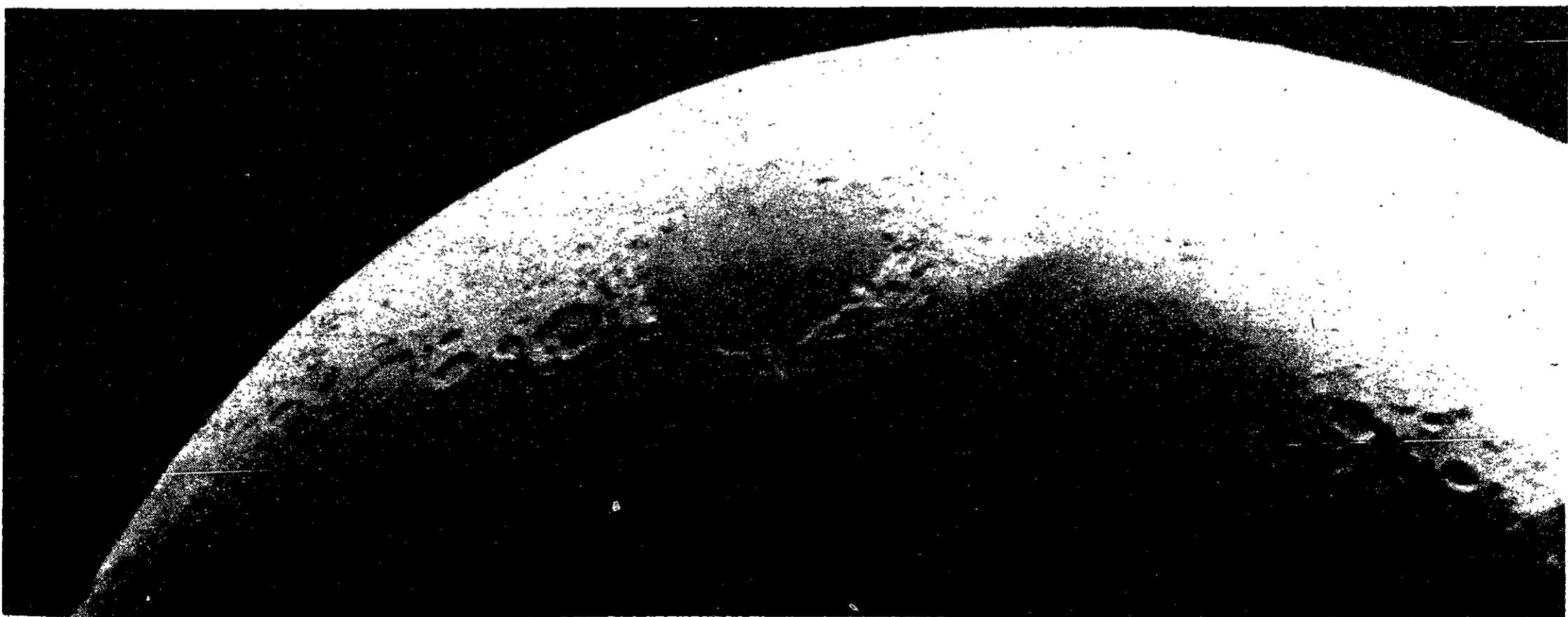
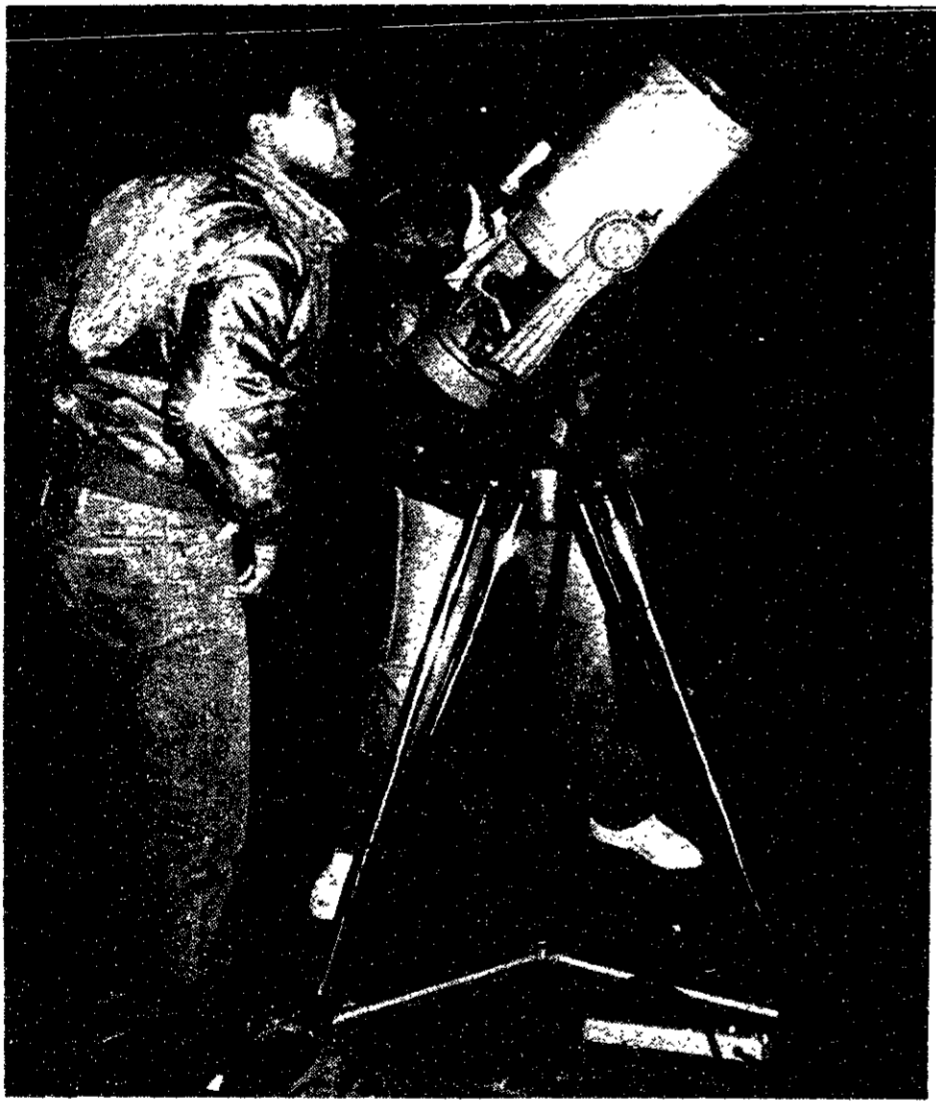
Hsing I & Pa Kua
10:00 - 11:00 A.M.
Chen & Yang Style Tai Chi & Push Hands
11:15 A.M. - 12:15 P.M.

photo essay

12S23: Observing and Photographing the Stars and Planets



By Shari Jackson and Jim Klavetter



**In just
one day you
can become
a life-saving
expert.**

Call Red Cross
today about learning CPR-
cardiopulmonary resuscitation.



**Your
foreign
language
ability
is
valuable!**

Translations into your native language are needed for industrial literature. You will be well paid to prepare these translations on an occasional basis. Assignments are made according to your area of technical knowledge.

We are currently seeking translators for:

- Arabic • Chinese • Danish • Dutch
- Farsi • French • German • Greek
- Italian • Japanese • Korean
- Norwegian • Polish • Portuguese
- Romanian • Spanish • Swedish
- and others.

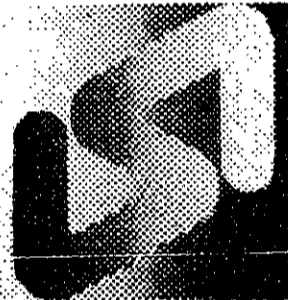
Irito-English translations from Russian, East European languages and many others also available.

Foreign language typists also needed.

All this work can be done in your home!

Linguistic Systems, Inc. is New England's largest translation agency, located a block north of the Central Sq. subway station.

For application and test translation call Ms. Desormeaux



Linguistic Systems, Inc.
116 Bishop Allen Drive
Cambridge, MA 02139

864-3900

**OUR TWO WEEK SPECIALS
ENDING FEBRUARY 16th**

**VALENTINE'S DAY SPECIALS
Cosmetic Sets
JEAN NATE • ENJOLI • SENCHEL
25% Off**

**DEXATRIM
Caffeine Free
Capsules**

10's **\$1.98**

**NYQUIL
Nighttime Medicine**

6 oz. **\$3.30**

**CUTEX
Polish Remover**

4 oz. **\$.89**

**BALLO
Thermometer**

Oral **\$.99**

Q-TIPS

375's **\$1.89**

**MIRROR
Regular
&
3X Magnifying**

2-sided **\$3.60**

KENDALL DRUGS

492-7790
238 Main Street

Kendall Square
Cambridge, MA

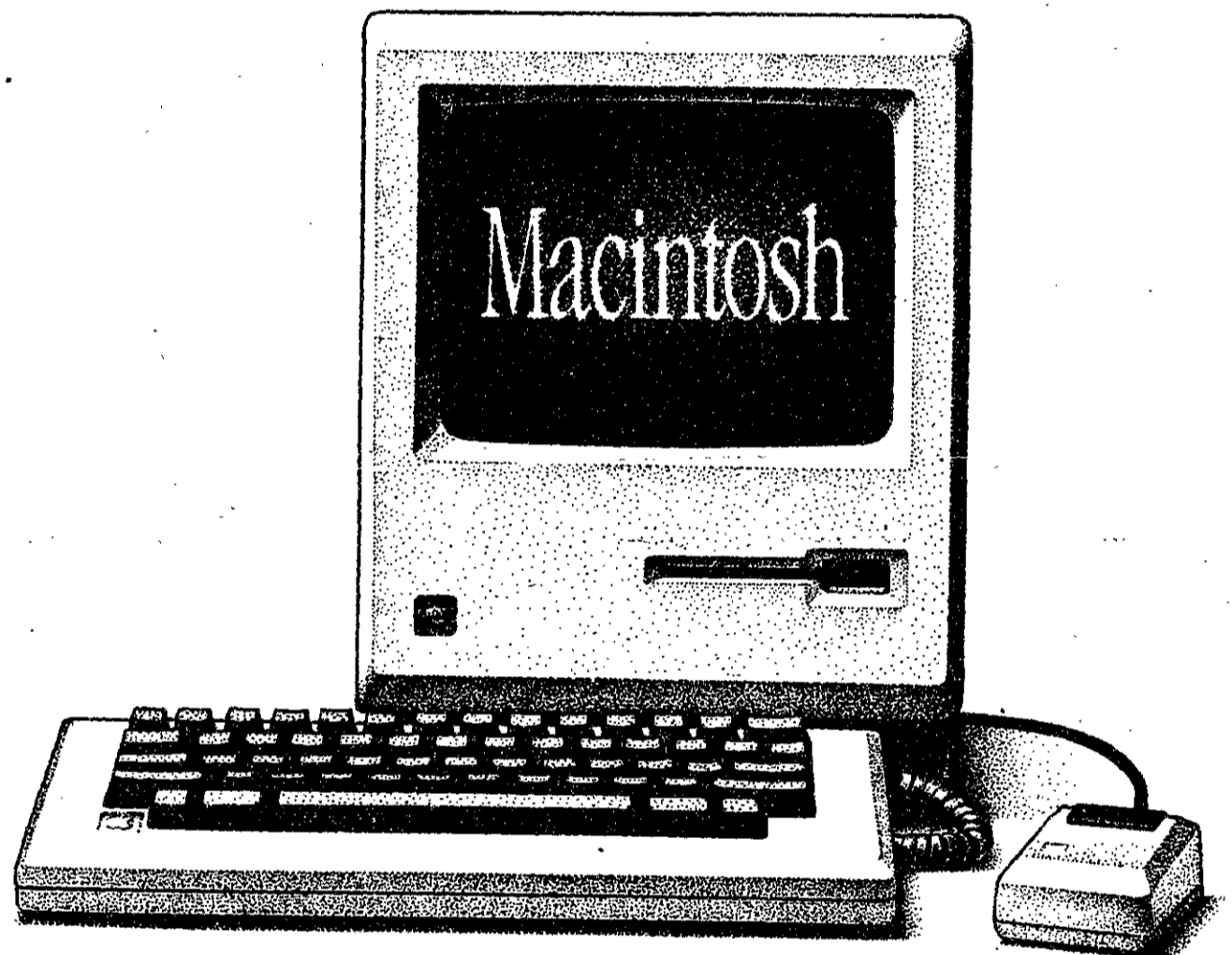
February 5, 1985

Financial Analysts

We are recruiting 1985 graduates for financial analyst positions in our Corporate Finance Department. No experience is required and degree candidates for any major are welcome to apply. A description of the financial analyst position is on file at the placement office.

Applicants should send a resume and a cover letter by February 15, 1985 to Ross Little, Corporate Finance Department, Salomon Brothers Inc, One New York Plaza, New York, New York 10004 (212) 747-7982.

Salomon Brothers Inc



High technology. Without high anxiety.

Of the 235 million people in this country, only a fraction know how to use a computer.

Which is why Apple invented Macintosh™, the computer for the rest of us.

No more time wasted pouring through manuals. No more complicated commands. Macintosh is so advanced, you can be doing meaningful work in a matter of hours.

Because if you can point, you already know how to use it.

Our professional sales staff will answer all your questions and, of course, provide service and support.

So come in today for a hands-on demonstration.

Without sweaty palms.



Apple Computer

MIT Microcomputer Center
Room 11-209

11:00 am to 3:00 pm daily

512K now \$1788

128K \$1348

"MIT's center for microcomputing"

Macintosh is a trademark licensed to Apple Computer Inc. © 1984 Apple Computer Inc. MCL283Y
Apple and the Apple logo are registered trademarks of Apple Computer Inc.

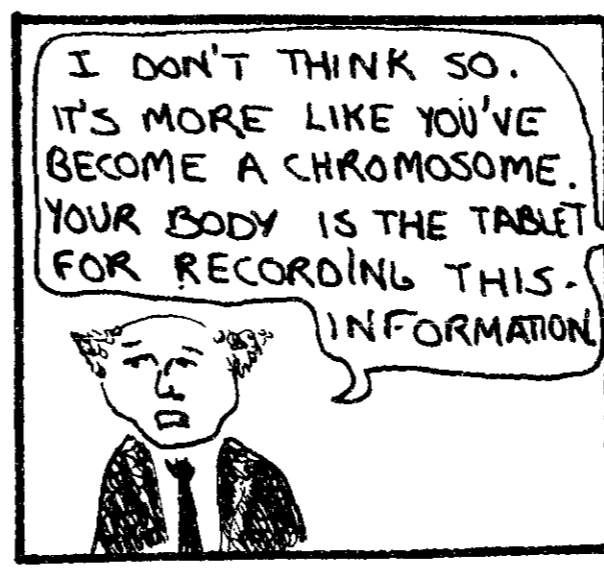
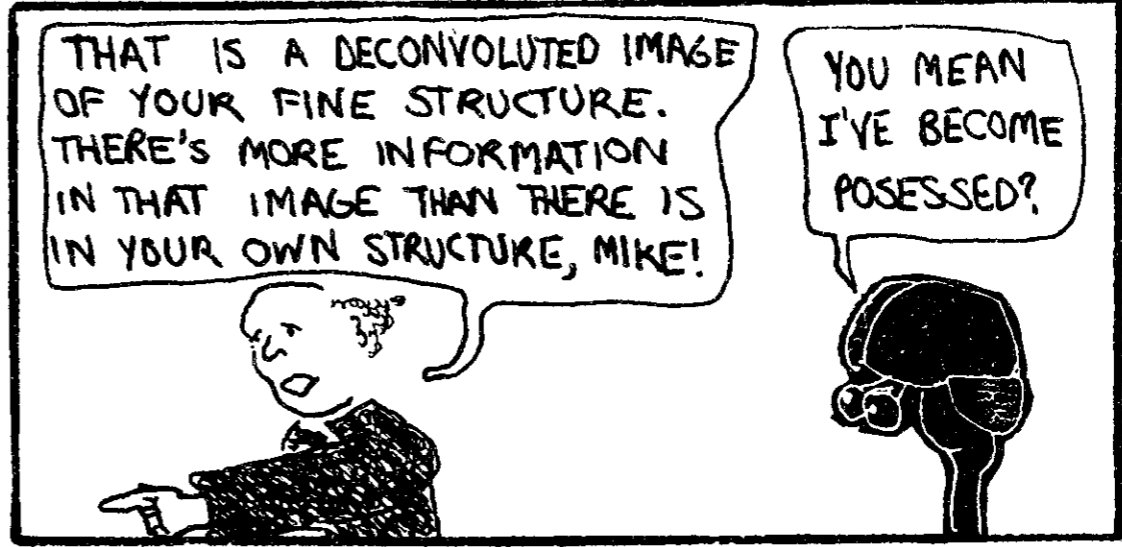
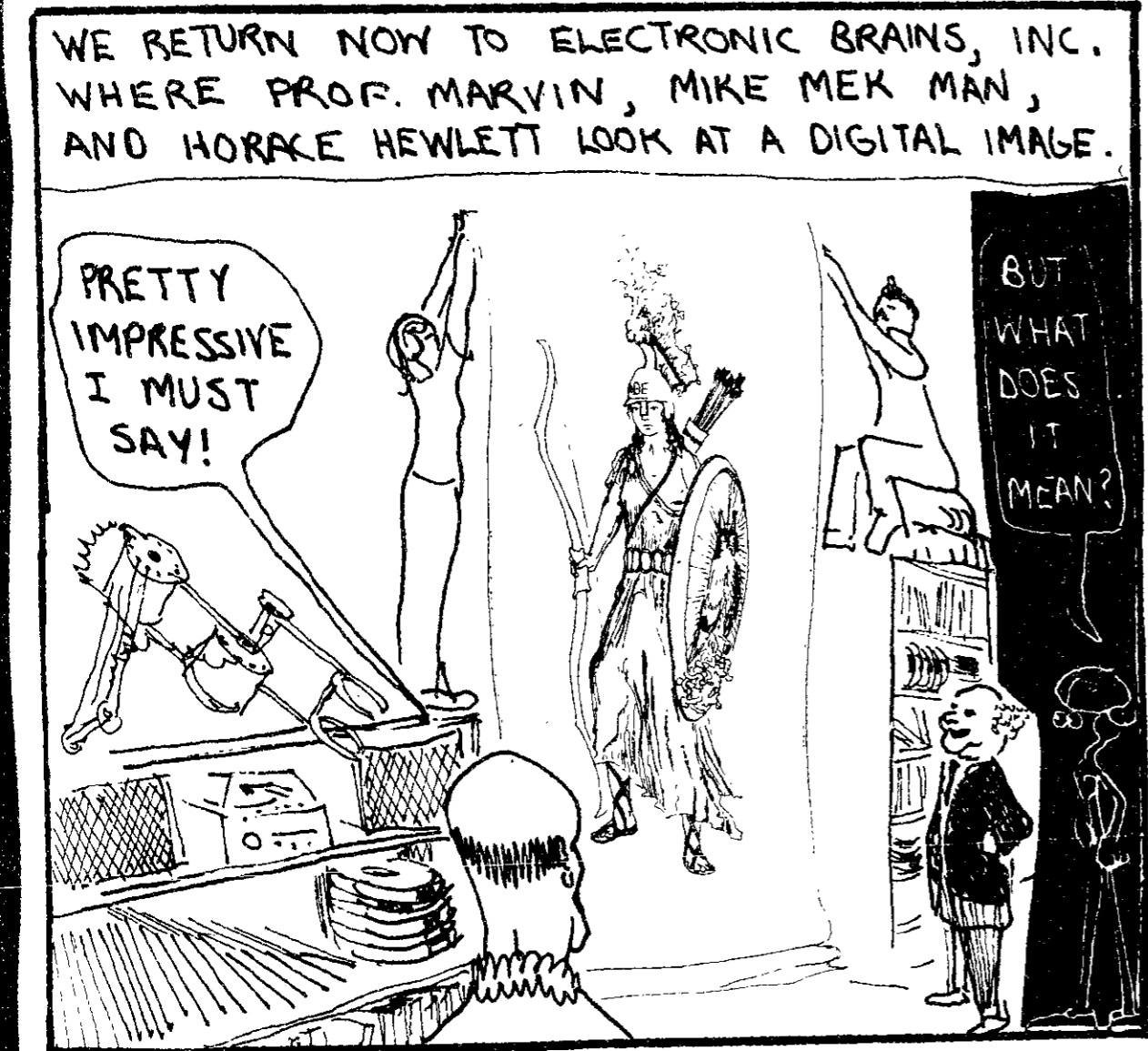
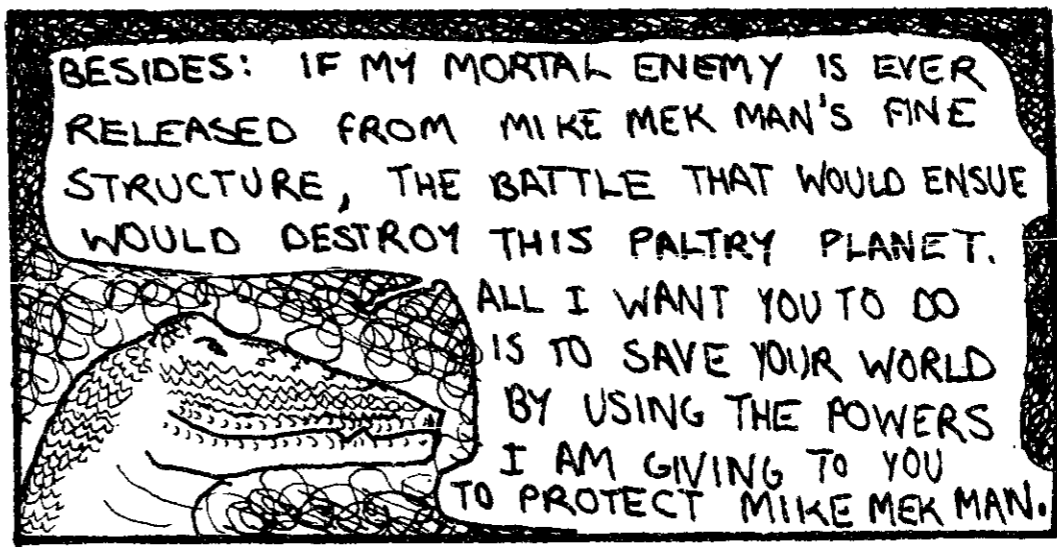
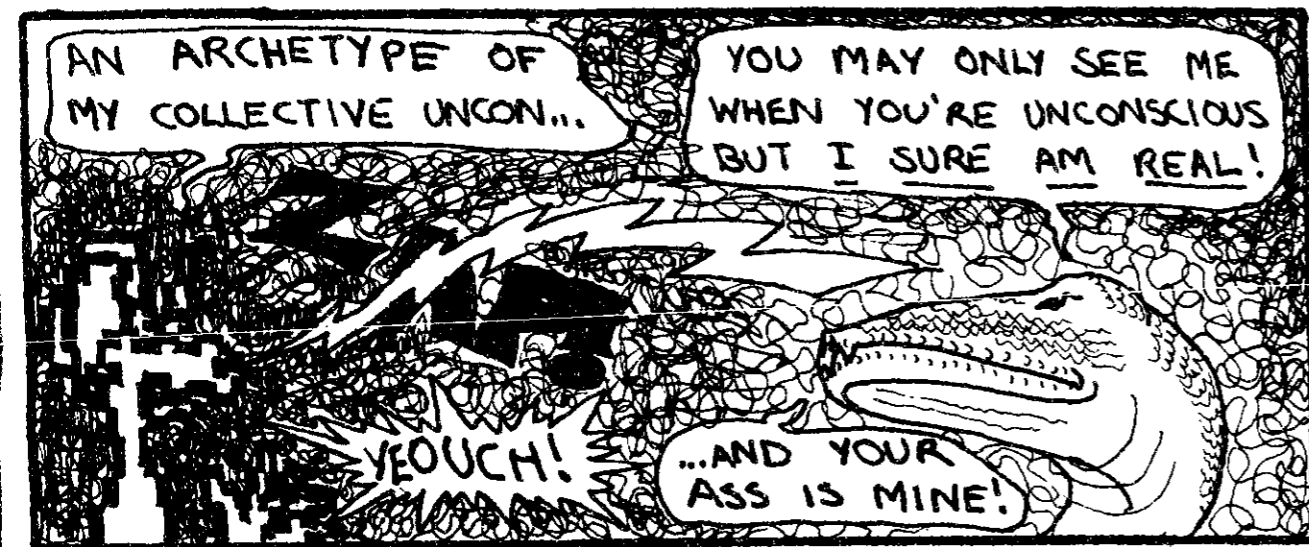
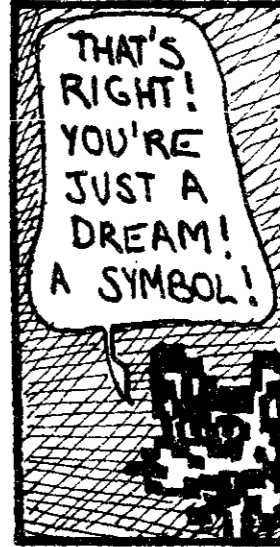
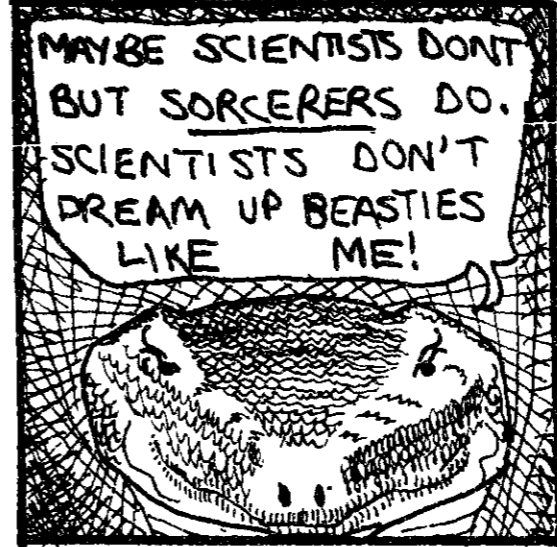
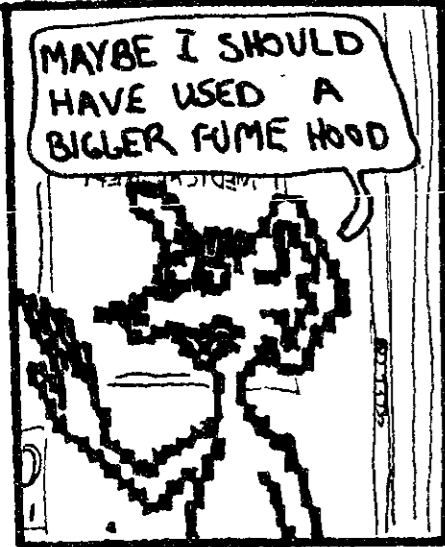
comics

The Legend of Fred

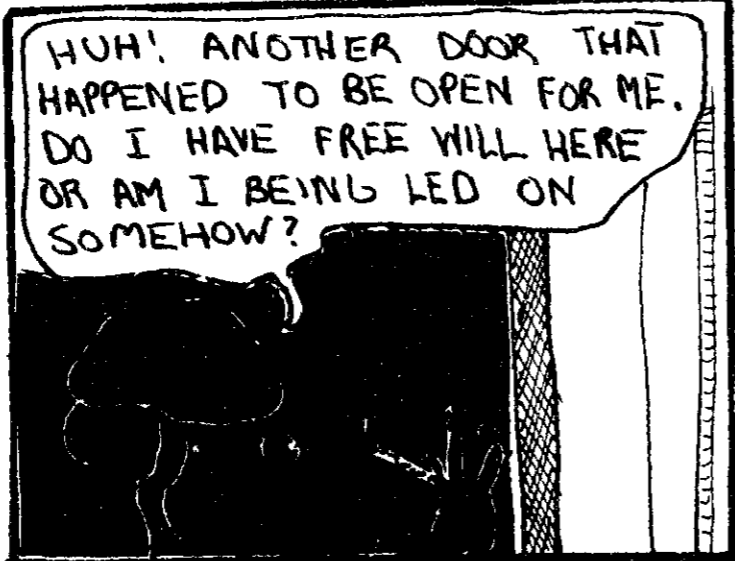
By Jim Bredt

IT'S THE LEGEND OF FRED

JOE THE RAT HAS BEGUN TO NOTICE THAT HE IS LOSING HIS RESOLUTION; THAT HE IS BECOMING MORE UNCERTAIN ABOUT WHERE HE IS



MIKE MEK MAN STARTS TO HAVE EXTREMELY GOOD FORTUNE. IF HE NEEDS ANYTHING, IT APPEARS FOR HIM. HE BEGINS TO GET SUSPICIOUS.



NEVERTHELESS MIKE MEK MAN GETS INTO THE HABIT OF STEPPING INTO WAITING ELEVATORS NOT KNOWING WHERE THEY LEAD HE WAS UNPREPARED WHEN...



The
Management Information Systems Department
of

MORGAN STANLEY

*invites Bachelor's & Master's candidates of all majors,
with superior academic records,
to a presentation of our
M.I.S. Management Training Program*

**Thursday, February 7, 1985
Building 4, Room 149
7:00-9:00 P.M.**

*We are actively seeking JUNE GRADUATES and RECENT ALUMNI
for Summer start dates.*

OUR PROGRAM OFFERS:

- *A means of establishing high growth careers at one of Wall Street's leading investment banking firms.*
- *The opportunity to work with exceptionally talented securities professionals.*
- *Guaranteed and rapid career progression in a challenging, fast-paced environment.*
- *An outstanding compensation program.*

MORGAN STANLEY & CO.
Incorporated

*MIS College Recruiting
1633 Broadway
New York, New York 10019*

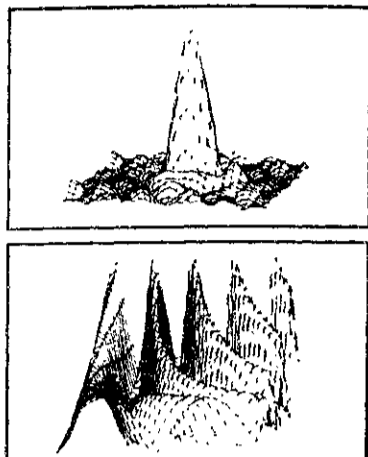
Contact the Career Placement Office for additional information.

Morgan Stanley is an Equal Opportunity Employer.

Refreshments will be served.

GET A NEW PERSPECTIVE ON YOUR PC

FOURIER PERSPECTIVE™
Transform & Graphics Package



- One-Dimensional FFT to 8192 Points
- Two-Dimensional FFT to 128x128
- Inverse Transforms
- Hidden Line Plots
- No Programming or Compiling Necessary
- Help Screens

FOURIER PERSPECTIVE is a software package for IBM*PC's and compatibles. Fourier Transforms are fully optimized for speed. Menu driven FFT's and graphics allow immediate visualization for research and educational problems.

FOURIER PERSPECTIVE requires 256K and 2 disk drives. All graphics can be printed with dot matrix printers. The IBM Color Card, Hercules Graphics Card and 8087 are supported.

*IBM is a trademark of International Business Corp

Box 271505
Houston, TX 77277
(713) 665-3855

List Price: \$89.00
Texas Residents add 6%.

Call or write for brochure.



The MIT Graduate Student Council

invites you to a

Valentine's Day Party

When: Friday, February 8
9 pm — 1 am

Free Admission Where: MIT Faculty Club
50 Memorial Dr.

VI-A Orientation Lecture

All Course VI and Undesignated sophomores interested in joining the VI-A Program are invited to attend an Orientation Lecture scheduled as follows:

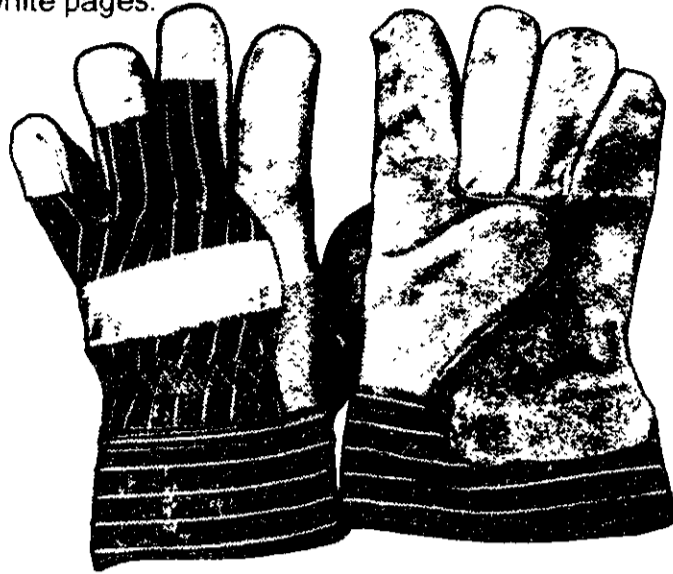
February 6, 1985
3:00 p.m.
Room 34-101

Applications and other material available at this Lecture

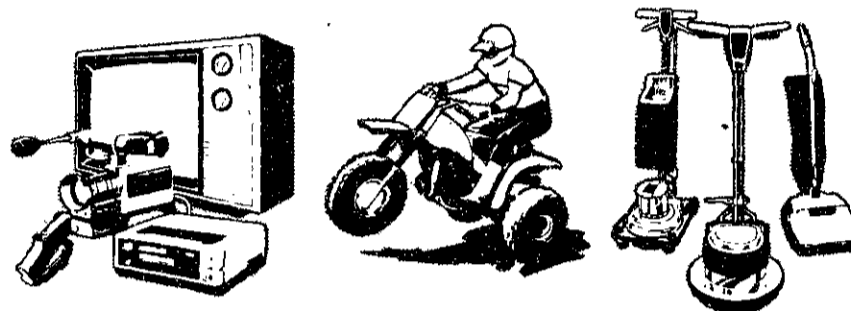
FREE GLOVES

NO PURCHASE NECESSARY

Bring in this ad for a free pair of leather-faced work gloves (\$3.00 retail value) when you join our Rental Club (no membership fee). Rental Club card entitles you to 10% discounts on all rentals at your U-Haul Center. Find us in the white pages.



SPECIAL OFFER TO INTRODUCE YOU TO RENT N' SAVE™ EQUIPMENT



More for your money

at your **U-HAUL** Center

AP2

Attention Technical Graduates

Job Fair
February 5

Who: Texas Instruments: Corporate Research - Dallas, TX
Data Systems - Austin, TX
Data Systems - Houston, TX
Equipment Group - Dallas, TX
Industrial Systems - Johnson City, TN
Materials & Controls - Attleboro, MA

Where: MIT Bush Building, Lobby 13

When: February 5, 1985 from 9:00 a.m. to 4:00 p.m.

What: You are invited to attend Texas Instruments' Mini Job Fair coordinated by the MIT Special Events Office. Our technical managers will be on campus to talk with technical graduates about career opportunities with the company that's at the forefront of high technology.

Don't Miss It: We'll be back on campus at the MIT Career Placement Office in Room 12-170 on February 13 and 14, 1985. Our Corporate Research Group will be on campus March 7, 1985 to interview Ph.D.'s.

If you cannot attend our Job Fair, please send your resume to: Tamira Griffin/Texas Instruments/P.O. Box 660246/M.S. 3186/Dallas, Texas 75266.

An Equal Opportunity Employer M/F



TEXAS INSTRUMENTS

sports

Men's hoop edges Amherst

Jeff Bornstein '85 made two free throws with 12 seconds left in overtime, as the Engineers edged out the Lord Jeffs of Amherst College Saturday, 63-62, in one of MIT's biggest wins.

The Engineers had not beaten the Lord Jeffs, one of New England's top teams, since 1971. Three MIT players finished in double digits, led by Craig Poole '85 with 16 points. Guard Randy Nelson '86 scored 15, and Mike McElroy '87 finished with 12.

McElroy was named last week to the weekly ECAC Division III all-star team for his performance against Curry and Nichols Colleges. He scored a total of 49 points and had 15 rebounds over the two games.

Wrestling finishes season with win

The basketball team was not the only MIT squad to take advantage of Amherst. The wrestlers capped their fifth consecutive winning season with a 26-16 victory over the host Lord Jeffs.

Wrestling finishes at 10-4.

Co-captain Tim Skelton '86 was named the Outstanding

Wrestler Jan. 27 after winning the 126-pound weight class at the Massachusetts Collegiate Championship held at Boston University. He was the only Division III wrestler to win an event in that tournament.

Women's basketball pounds Nichols

The women's basketball team chalked up its third win in four games, destroying host Nichols College, 56-39, Saturday afternoon. The victory upped the squad's record to 9-7.

The Engineers will begin a three-game homestand tonight, when they host Wellesley College at 7:30 pm.

Men's gymnastics' streak snapped;

The men's gymnastic team had its three-meet winning streak snapped when the University of Vermont squeezed out the Engineers in Burlington Saturday, 188.25-184.25.

Women gymnasts finish second

The women's gymnastics team moved its record to 2-2, finishing second in a triangular meet with

UMaine-Farmington and Rhode Island College. The Engineers defeated UMaine, but fell to Rhode Island in that meet.

Women swimmers stretch streak

The women's swimming team chalked up its second and third straight victories Saturday afternoon, dropping Bridgewater State, 71-59, and Salem State, 72-52. Both Bridgewater and Salem State are members of the Massachusetts State Conference.

Track fifth; Parris third in hammer

MIT co-captain Pat Parris '85 threw the 35-pound weight 59' 2 1/2" at the Greater Boston Championships at Harvard last weekend, giving him third place in the event.

The Engineers had two other individual places: Dave Richards '86 finished third in the 600-yard run with a time of 1:13.42 seconds; Ross Dreyer '86 jumped to fourth in the pole vault at 13' 6".

The Engineers tied for fifth in the seven-team event, which included Division I schools such as Harvard University and Boston College.

Andrew Bein

Production at

The Tech



Interested in:

- Graphic Design
- Typography ?
- Page Layout ?

Drop by our state-of-the-art Production Shop on the fourth floor of the Student Center Sunday through Thursday evenings.

MATHEMATICAL GAMES

Do you have a natural aptitude for solving mathematical puzzles? We have a stimulating and challenging part-time position for you. We are an International consulting firm solving a special class of intricate scheduling problems for industrial clients world wide. Experience with computer graphics helpful, but not essential. Write Mr. Benjamin, P.O. Box 150, Wellesley Hills, MA 02181 for further details or call 235-7964.

Activities Development Board (ADB)

The Activities Development Board is a group of students, faculty and administrative members who meet to allocate money for capital expenditures in the range of \$200 to \$2,000.

Recent Allocations:

Kiln Wheel — Student Arts Association
Clocks — Chess Club
Lighting & Sound Boards — Shakespeare Ensemble, Musical Theatre Guild

The ADB Seldom Funds:

Operating expenses
Office equipment
Physical plant renovations
Equipment to be used by a few members
Items not secure from theft
Items for groups which are mostly non-student

To Qualify

Must be ASA/GSC recognized
Submit a proposal by Feb 28, 1985

We especially encourage applications for funding from new recognized groups and groups who have not applied before.

For Information:

Contact Steve Immerman or Sandy Nett at x3-7974, or visit us at W20-345

Discuss Your Future With General Electric

Who?

BS and MS candidates in electrical engineering, computer science, mechanical engineering, chemical engineering, aeronautical engineering and nuclear engineering.

What?

Informational meeting on career opportunities within the General Electric Company. Recent MIT grads will provide their views on the transition from MIT to GE via various entry level alternatives:

- Edison Engineering Program
- Manufacturing Management Program
- Chemical-Metallurgical Management Program
- Software Technology Program
- Individualized Direct Placement

Opportunities exist in such fields as:

- Artificial Intelligence
- Expert Systems
- VLSI
- Robotics
- CAD/CAE/CAM
- Computer Graphics
- Plastics
- Metallurgy
- Ceramics
- Software Engineering
- Signal Processing
- Controls

For more information on these programs and the major business areas available refer to the General Electric file located in your placement office.

When and Where?

Monday, February 11, 5:00 — 6:00 p.m.
Bldg. 16, Rm. 310

What else?

Informal mixer with various GE technical recruiters. Refreshments served.

When and Where?

Immediately following recent MIT graduate's presentations 6:00 — 7:00 p.m. Same location.

The future is working at General Electric



An equal opportunity employer