

Continuous
News Service
Since 1881

Volume 104, Number 36

The Tech

MIT
Cambridge
Massachusetts

Tuesday, September 11, 1984

Resident admits he set fire

By Michael J. Garrison

Stephen P. Fernandez '86 admitted at a house meeting Sunday to setting the fire that swept through the Runkle entry of Senior House last Tuesday night.

Fernandez said he "found a lit cigarette and thought it would be funny to put some cigarette holes in the banner," according to Stephen T. Lentz '86, Senior House president.

Robert A. Sherwood, associate dean for student affairs, said Fernandez did not "maliciously" set out to burn down the house or endanger the residents. He will,

however, have to "pay full financial restitution," Sherwood said.

Fernandez has also been declared *persona non grata* in the residence system, which means he may not live in or visit any of the dormitories on campus, Sherwood added.

No charges have been filed against Fernandez because he had turned himself in to the arson squad, according to Inspector Philip Paris, a member of the Cambridge Fire Department arson squad.

Although Paris noted that this case has been turned over to

MIT, he cautioned that "any and all [future] incidents will be investigated by this office. Just because someone comes in and admits to starting a fire, that does not mean that he will not be prosecuted."

The MIT Housing Office has filed charges with the Committee on Discipline because of the life-threatening nature of the incident, according to Gene Brammer, director of housing and food service. "[The housing office is] not making any specific recommendations" to the committee on the disciplinary action against Fernandez, he said.

The contractors completed the repairs late Friday night, but have not sent MIT a bill. They repainted the walls, replaced a damaged carpeting, and repaired a burnt bannister. The Housing Office originally estimated repair costs at \$5000.

Senior House has set up new circles of communication with the Office of the Dean for Student Affairs, including the invitation of deans to the house meetings, Lentz emphasized. "It is important that Senior House is not seen as a place where this type of thing goes on [because of this incident]," he remarked.

Committee seeks admissions head

By Amy S. Gorin

An advisory committee which has been established to screen applicants for the position of director of admissions has begun conducting interviews with likely candidates.

The committee, which is made up of five faculty members and two undergraduates, was established in early May by Institute Vice President Constantine B. Simonides when former director Peter H. Richardson '48 announced his retirement plans.

Richardson officially retired September 1. Interviews with prospective applicants will continue until mid-October, according to Professor Sheila E. Widnall '60, chairman of the committee.

Because of the importance of the position, Simonides says he is willing to wait if the preferred candidate is unable to start immediately. He has asked Senior Associate Director of Admissions Julia C. McLellan to continue in her position as acting director until a new director is installed. McLellan had previously planned to retire this summer after a 39 year tenure.

McLellan, who describes herself as "holding down the fort," does not expect the admissions office to have any problem per-

forming its functions.

"We of course miss Peter" she said, but the office staff "is a group of professionals" who are performing their jobs and will continue to do so.

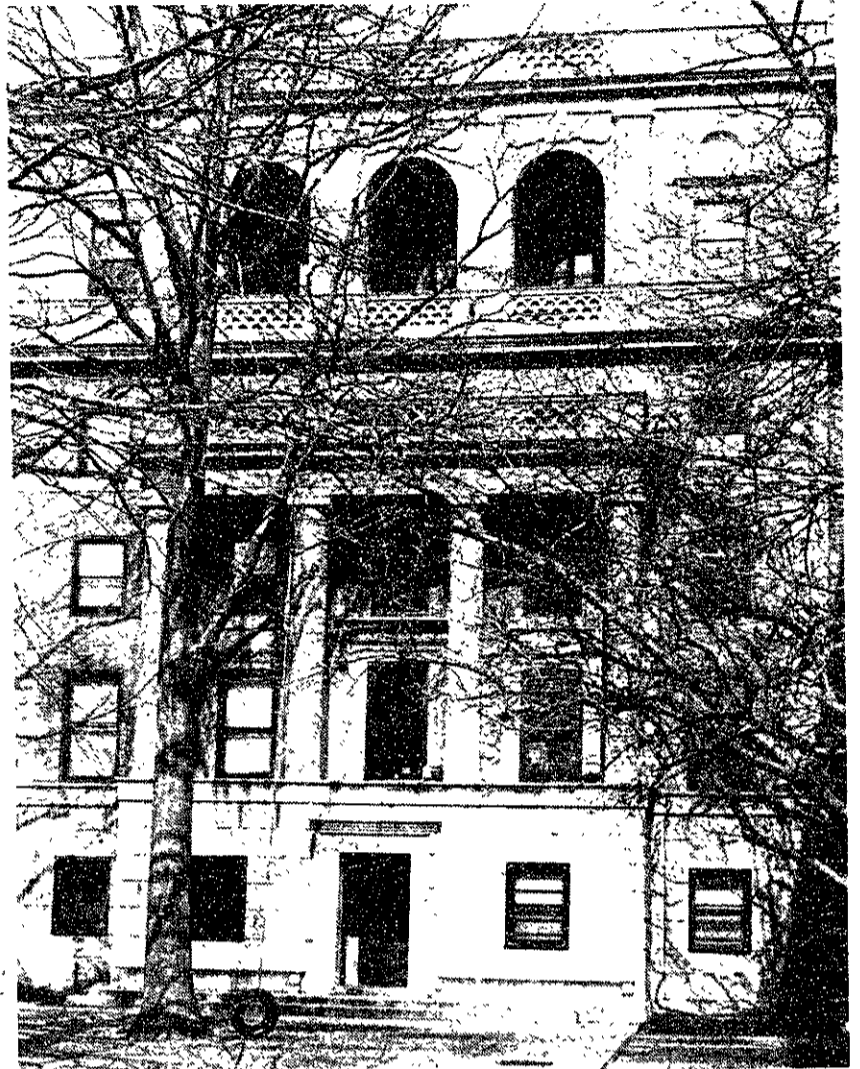
"We have a really superior class coming in and we hope to do it again," said McLellan.

The Office of Admissions is presently sending out final applications to prospective members of the Class of 1989. The admissions office staff will begin traveling to meet prospective applicants shortly. Early action applications are due November first.

An advertisement which has been placed in *The New York Times*, *The Chronicle of Higher Education*, and other national publications describes the qualifications for the position as "established professional stature; academic orientation and commitment to a broad, science-based education; demonstrated ability to seek out students with diverse backgrounds, interests, and points of view; leadership; superior communications skills; and a good sense of humor."

Simonides described the job of director as "tough, very pressured, visible, and extremely rewarding." The directorship is

(Please turn to page 2)



Tech photo by V. Michael Bove
Tuesday's fire took place here in Senior House's Runkle entry

MIT will finish Alley changes late

By Diana ben-Aaron

MIT will complete its construction and landscaping work on Amherst Alley by the end of November, three months late, Campus Architect Harry P. Portnoy said yesterday. The original plan called for the alley construction to be finished by the beginning of Residence/Orientation week.

"We got into some difficulties underground that slowed [the construction] down," Portnoy explained. Because the design and budget were finished later than expected, construction began in mid-June rather than before commencement as initially scheduled. The new budget will not be finalized until the project is completed, he said.

The design calls for new ramps

and service driveways to the living groups along Amherst Alley, new sidewalks and plantings, and "four or five-foot high" fences between the fraternities along that section of the alley, Portnoy explained.

The reactions of the fraternities along Amherst Alley to the

changes were mixed. Kenneth L. Moll of Kappa Sigma said, "Some guys are for it and some guys are against it. We'll probably have a meeting and vote and submit a formal complaint or approval... by the end of this week."

(Please turn to page 11)

Libraries to implement new computer system

By Simson L. Garfinkel

The MIT Libraries have chosen to install an "automated circulation system, not an online catalogue," said Director of Libraries Jay K. Lucker last month. The system will be used starting this fall.

The system, a product of Geac Ltd., a Canadian company, will store administrative data, rather than the synopses that an online catalogue would. It will run all aspects of the library circulation including borrowing and returning of books, mailing out of overdue notices, fine management, and registration of new books.

Only books acquired since 1973 will be on the database initially. Books acquired by the libraries before 1973 will be entered as they are borrowed. The Geac system can hold a total of six million records, Lucker explained.

To use the system, students will have to place bar-code stickers on the backs of their MIT identification cards. No student will be able to check out a book without his bar-code sticker, Lucker said. The code on the stickers will correspond to MIT ID numbers; the libraries will instead assign a special number to each student, Lucker explained.

If a student loses his identification card, it will be possible to place a "stop" on it so it cannot be used by any other student, he

continued.

"[The system] will be heavily protected by passwords," said Lauren Kerrigan, project manager of the MIT Libraries Automated Circulation System.

"Initially, [terminals] are not going to be put in public places," but they will be available at the libraries' circulation desks, Lucker continued. "We're hoping when [the terminals] are not in use by staff they'll do queries for students," he added.

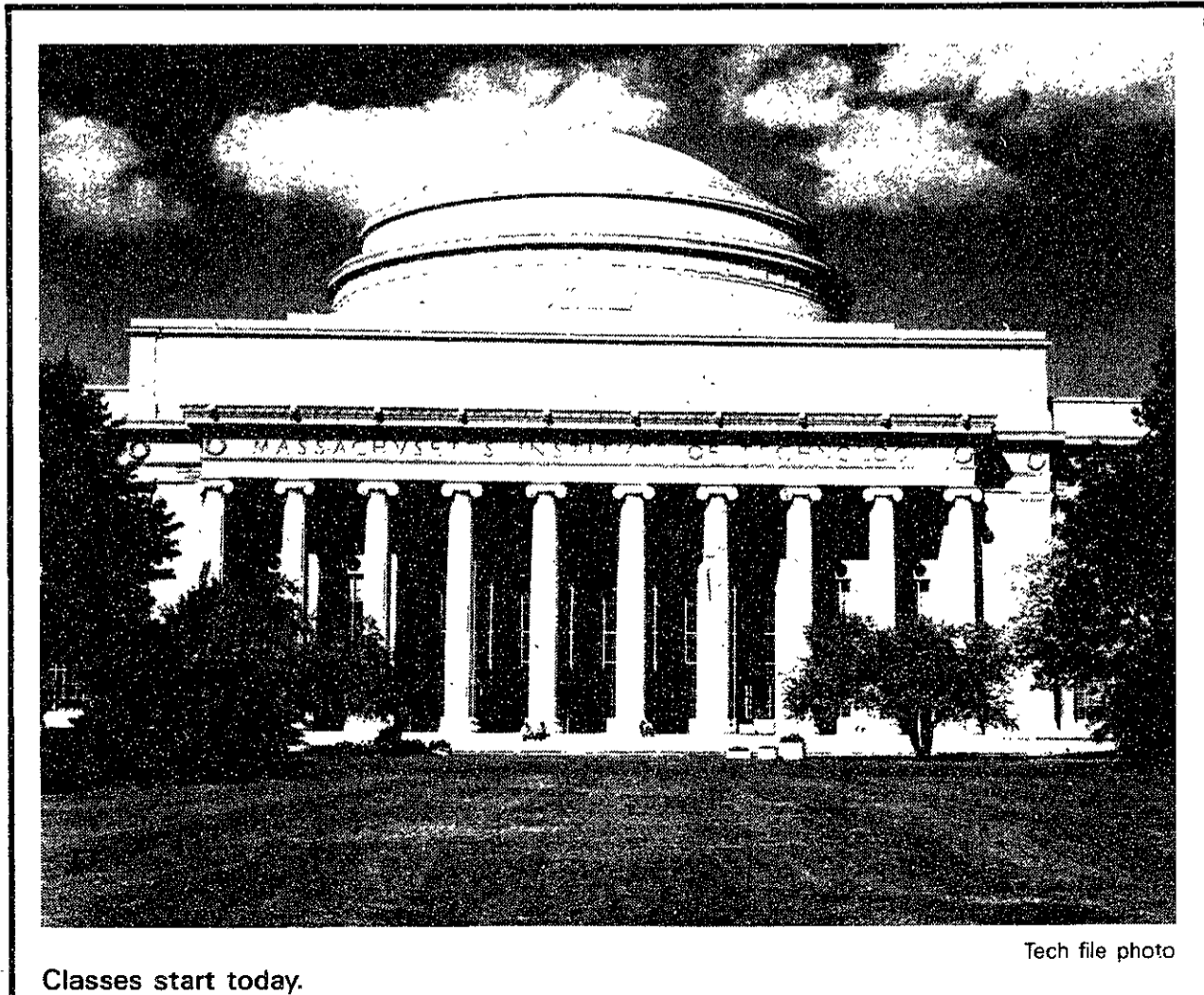
Most library system terminals will connect to the computer in the basement of the Hayden Memorial Library over special telephone lines.

Brian C. McCarroll

Brian C. McCarroll '87 died Aug. 24 in an auto accident in his home town of Fairfield, Connecticut. A resident of Zeta Psi, he would have been a sophomore in electrical engineering and computer science this fall.

McCarroll was active in the MIT Musical Theatre Guild. Last fall, he played Nathan Detroit in the Guild's production of *Guys and Dolls*.

Funeral services for McCarroll were held Aug. 27 in Fairfield. He is survived by his parents, Bruce and Sandra McCarroll, and his maternal grandfather, Max Yost, of Boise, Idaho.



Classes start today.

Tech file photo

Committee seeks new admissions director

(Continued from page 1)

an "extremely important job because of the effect it has in shaping the freshman class," said Widnall. "MIT is only now beginning to realize how fortunate it has been [to have Richardson in the position]" she added.

One function of the director is to attract high school students who might otherwise not consider MIT as a viable college choice. Because of this and the Institute's commitment to consider under-represented members of the community there is "no question that [the committee is] involved in actively seeking minority and women applicants," Simonides noted. The final decision will of course be based upon ability, he added.

Prospective candidates have been asked to submit a written application. The committee is now interviewing a small number of candidates. It will present a smaller list to Simonides, who will make the final choice.

Institute President Paul E. Gray '54 and members of the admissions office staff will also be involved in the decision, according to Simonides.

The committee is still accepting applications and is considering both MIT and non-MIT candidates for the position.

Have you seen a good movie lately?

If you are interested in reviewing anything from Mozart to Mick Jagger or from cookbooks to AI textbooks, then *The Tech's Arts Staff* is the place you want to be. We're not just punk (or anything else for that matter). Review what you enjoy reviewing. Of course, if you enjoy punk music we're interested in hearing from you, too.

For more information call The Tech at 253-1541 and ask to speak to an Arts Editor.

Babies Don't Thrive in Smoke-filled Wombs

When You're Pregnant, Don't Smoke!

This space donated by The Tech

EYEGLASS & World

Complete Optical Shop

We have the new plastic scratch resistant lenses

Fashion frames at reasonable prices

Instant eye exams

• Prescriptions filled

• Fashion tints and photo changeables

• Contact Lenses 60 Day Trial

• Large Selection of Ray Ban Sunglasses

• Sport Frame Available



Central Square, 495 Massachusetts Avenue, Cambridge Mass. 02139 Tel: 661-2520

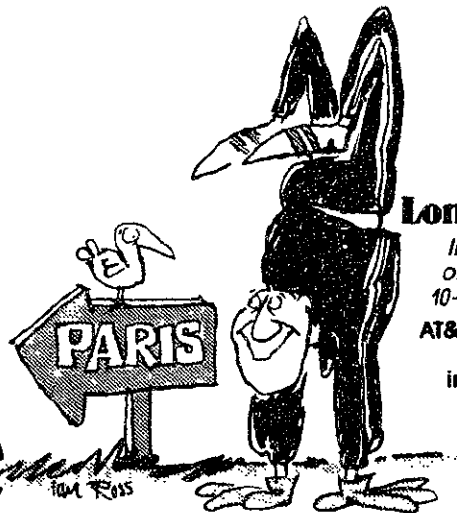


Your Choice 14.99

A. Swing Arm Architects Lamp. The classic with a 360 swivel, 32 stretch and adjustable metal shade. Assorted colors. Horizontal or vertical clamp included. Reg. 17.99

B. Clip-On Lamp. A fully adjustable, universal swivel with a tangle-free matching color cord. Assorted colors. After Sale 17.99

C. Gooseneck Desk Lamp. High-tech design with aluminum reflector and stable base. Assorted colors. After Sale 17.99



Longest Walking-On-Hands

In 1900, Johann Hurlinger of Austria walked on his hands from Vienna to Paris in 55 daily 10-hour stints, covering a distance of 871 miles.

AT&T long distance wins hands down when it comes to immediate credit for incomplete calls and wrong numbers.

The long distance winners.

Longest Bicycle Race

The longest one-day "massed start" race is the 551-620 km (342-385 miles) Bordeaux-Paris event. In 1981, Herman van Springel averaged 47.186 km/hr (29.32 mph) covering 584.5 km (362.4 miles) in 13 hr. 35 min. 18 sec.

AT&T long distance lets the good times roll for you, too—with discounts of up to 60% every day.



Nobody can match AT&T for savings and service:

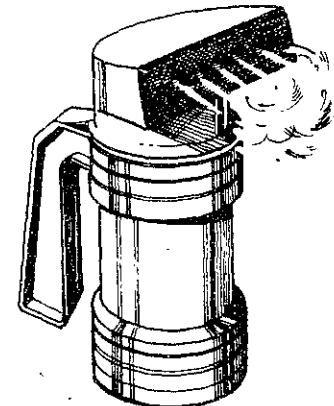
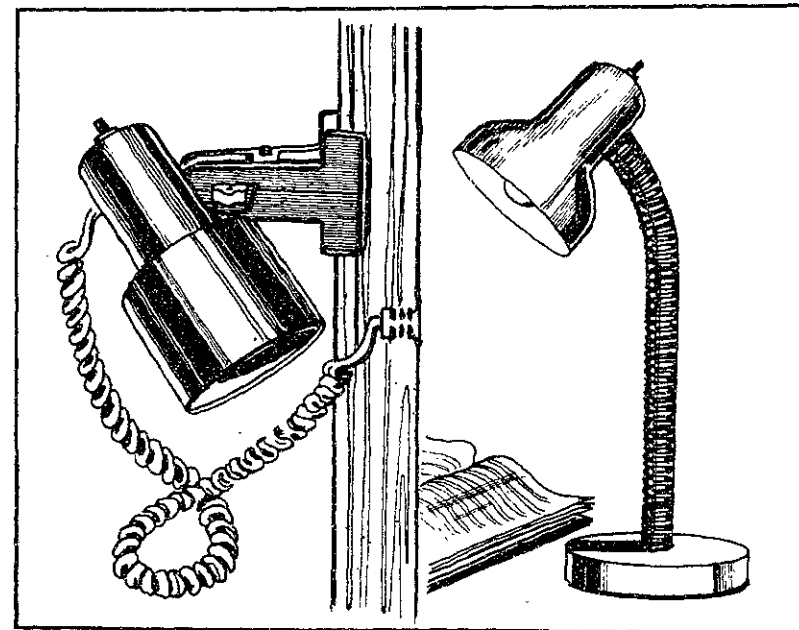
- 40% discounts evenings, 60% discounts nights and weekends.
 - Immediate credit for incomplete calls and wrong numbers.
 - Calls from anywhere to anywhere, anytime.
 - 24-hour operator assistance.
 - Quality that sounds as close as next door.
- It's a winning combination. Why settle for less?

For details on exciting new plans—ideal for students—visit the display in the M.I.T. Coop.

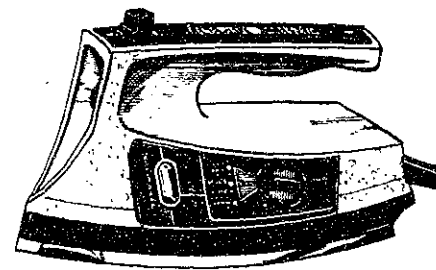


The more you hear the better we sound.™

FREE T-SHIRT
Bring this coupon to the campus bookstore for your free T-shirt—while supply lasts.



GE Light 'N Easy Iron. A compact and lightweight steam and dry iron with a convenient water window and four heat settings. #F203. Reg. 17.99 SALE 14.99



Franzus Winkles Away. Lightweight, hand-held electric clothes steamer. Never scorches, never burns and uses only tap water. Ideal for travel. Reg. 24.99 SALE 19.99

Available at Harvard Square, M.I.T. Student Center and Children's Medical Center. Harvard Square store open Mon-Sat. 9:20 to 5:45, Thurs. till 8:30 pm. Coop Charge, Mastercard, Visa and American Express welcome.

HARVARD COOPERATIVE SOCIETY

the Coop

news roundup

World

Salvadoran soldiers charged with slayings — El Salvadoran government troops hunted down and killed dozens of unarmed civilians in a mid-July sweep through the Cabanas Province, according to villagers and eyewitnesses. Reporters in the area counted 42 victims, including 18 under the age of 13.

Nation

Largest recorded drop in US crime rate reported — Serious crime in the United States fell a record seven percent in 1983, the FBI reported. This drop marks the first time in 24 years of record-keeping that crime has declined two years in a row.

US willing to talk on joint space moratorium — Secretary of State George P. Shultz '49 announced yesterday that the United States was prepared to negotiate a joint moratorium on tests of new space weapons with the Soviet Union. He ruled out a Soviet proposal for a freeze of such tests before any actual negotiations.

Sports

McEnroe and Navratilova take Open — John McEnroe easily defeated Ivan Lendl, 6-3, 6-4, 6-1 in his fourth US Open victory. Martina Navratilova defeated Chris Evert Lloyd, 4-6, 6-4, 6-4 to earn her sixth consecutive Grand Slam title and her 55th straight match victory.

Weather

Fall is not here yet! — Today and tomorrow will be cloudy, partly sunny, and rather humid, with a possibility of showers. Highs will be between 76 and 80 degrees.

Mathews M. Cherian

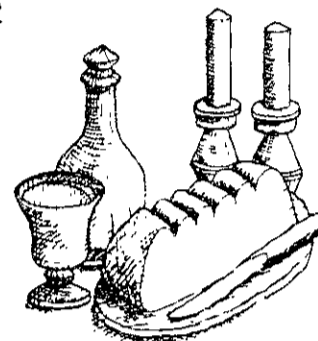
"JEWISH TALES OF MYSTERY & DELIGHT"



With Storyteller
Don Fuderman
Friday, Sept. 14
9:30 p.m.
Ashdown House,
Dining Room

ALL-HILLEL SHABBAT DINNER

Friday, Sept. 14, 7:30 p.m.
Ashdown House Dining Room
Paid reservations due September 12
\$6.25 with valdine or cash
MIT Hillel, 312 Memorial Drive, #253-2982



Conservative/Reform Services at 5:30 p.m.
Hillel, 312 Memorial Drive
Orthodox Services at 6:30 p.m.
Walker Hall, Room 010

notices

Announcements

An organizational meeting for women interested in playing women's basketball will be held at 6:15 pm Thursday, Sept. 13 in the du Pont Athletic Center conference room W31-117. Another meeting for those interested in playing women's softball will begin at 7 pm in the conference room. For further information, please contact Coach Jean Heiney at 253-5006.

IM Council Meeting will be held Wednesday, Sept. 12 at 7:30 pm in Room 4-370. Manager elections for Cross Country, Rugby Sevens, Wrestling, and Weightlifting will be held.

IM Sports: Football, Soccer, Badminton, Tennis, Cycling, X-Country. Entry deadlines posted in du Pont. Stop by IM Office, W32-121, for information.

The MIT Medical Department Pharmacy is extending its hours of operation. As of Tuesday, September 4, the Pharmacy will be open from 8:30 am to 5:30 pm. To take full advantage of these earlier hours, prescriptions may be called in a day in advance and can then be picked up the following morning.

Interested in children? Teenagers? Innovative education? The Cambridge School Volunteers needs you as a tutor, classroom aide, big brother or big sister, or a mini-course teacher. Work with any age student in any subject. Credit may be available. For more information, call 498-9218.

EARN \$10.00/HR.

The Sierra Club needs educated, articulate individuals to contact members. Pay varies with hours, part-time evenings. Convenient Cambridge location.

Call 576-6100, M-F, 9-6, Sun., 2-5.



Students! Work Smart. Work Simply...With Hewlett-Packard.

Take a good look at your class schedule.

If you're in Science or Engineering, chances are your classes include Calculus, Physics, or Chemistry. Engineering Statics, or Dynamics. You're running up against some tough calculations, with statistics problems, hyperbolics, and logs. The HP-11C calculator helps you breeze through those problems with a few simple keystrokes.

Need to simplify problems that are even more complex? The HP-41CV gives you 128 built-in functions—and the HP-41CX over 200—to simplify your long homework assignments. Use up to 6,437 bytes of memory to save the programs and formulas you use often. And there are thousands of software programs, so you don't have to start from scratch next term.

If you're in Business or Finance, you're probably taking Accounting, Statistical Methods, Finance, and Investment Analysis. Classes loaded with tedious calculations. End the pencil-and-paper drudgery with the HP-12C. The most powerful decision-maker on the market! Dedicated keys make time value of money calculations, amortization, Net Present Value (NPV), Internal Rate of Return (IRR), and statistics solutions as simple as a single keystroke. And it's easy to change values or correct mistakes without reentering your entire problem.

Hewlett-Packard calculators. They help you work smart this term. And next term. And even later on the job. Get your HP today from your local HP dealer.

For the location of the dealer nearest you, call TOLL FREE 1-800-FOR-HPPC.



opinion

Editorial

ODSA should not restrict freedoms

While most of the students were away from MIT this summer, the Office of the Dean for Student Affairs (ODSA) released a policy for campus films. On July 12, Dean for Student Affairs Shirley M. McBay convened a group to establish restrictions on the right of the Lecture Series Committee (LSC) and other campus groups to show sexually explicit films.

The policy says the Institute will "not categorically deny space to an MIT-recognized group for the showing of sexually explicit or pornographic films. The Institute will, however, make decisions regarding the time, circumstances, and location of the showing of such films. . ."

The Dean's Office will appoint an *ad hoc* committee of approximately 12 people who are to be a representative cross-section of the MIT community to "develop and adopt criteria for those sexually explicit films that may be shown on campus" and to judge whether individual films meet those criteria.

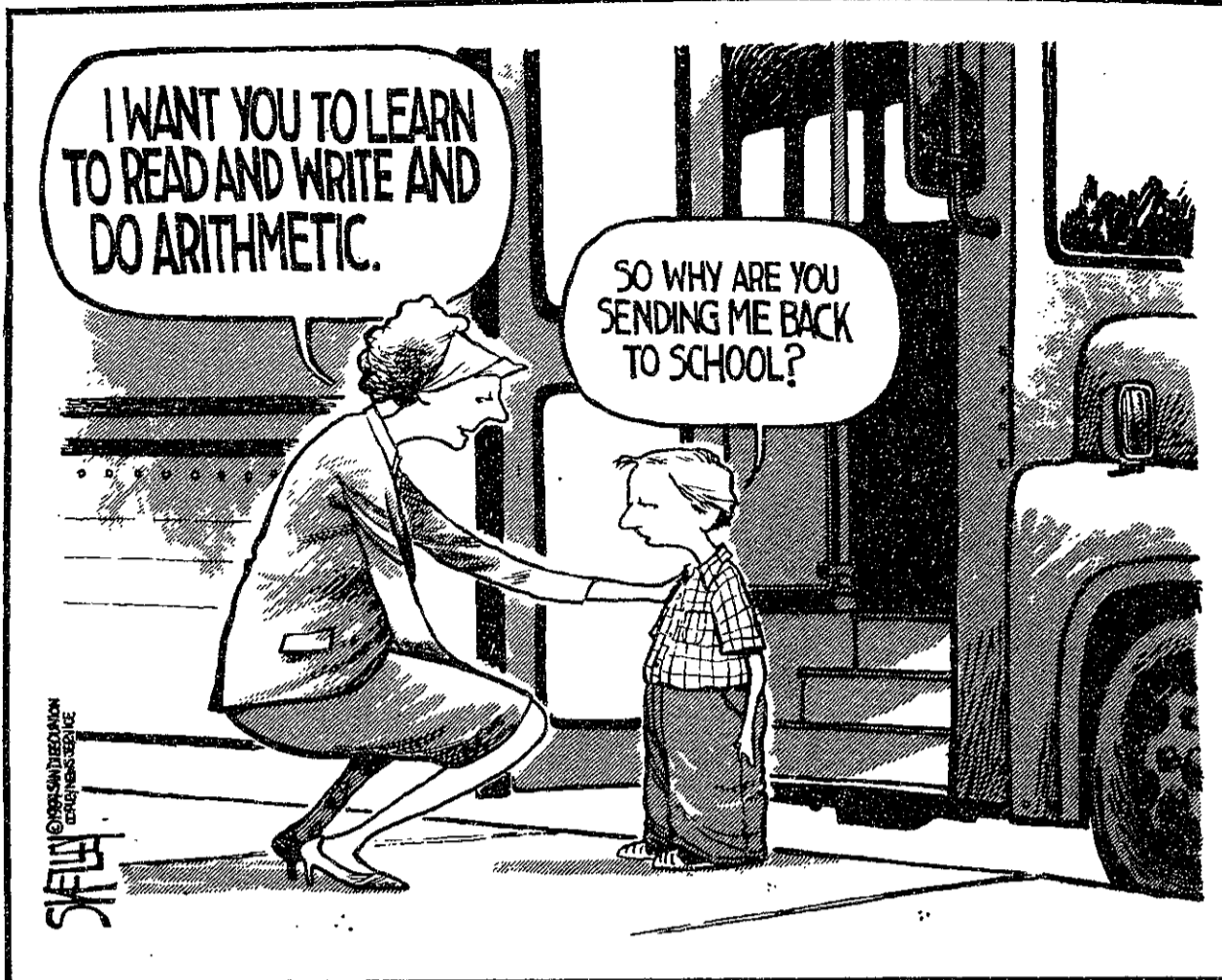
The supposed cross-section will consist of three LSC members, three faculty members, three staff members, and three other students nominated by the Undergraduate Association Nominations Committee. Under the veil of representing everyone affected by campus films, the Dean's Office will create an arbitrary group which will impose its tastes and standards on the entire MIT community.

The committee will review all X-rated or unrated sexually explicit films. If a film does not meet the committee's criteria, it cannot be shown on Registration Day of either term or during the R/O period and it cannot be shown in Kresge Auditorium. A group wishing to show an unsatisfactory film must give six weeks prior notice in order to allow other groups to plan alternate activities.

The group that established these restrictions consisted of seventeen MIT employees, eleven of them from the ODSA or the Office of the President, and five students. None of these people were involved in screening movies on campus. The draft policy that emerged from this collection of "faculty, staff, and students. . . from around the Institute" was presented to representatives of LSC at the group's second meeting, and the draft that came out of that meeting was very close to the policy that is now going into effect. "We did have some input into the guidelines, but not all of it was accepted," Timothy L. Huckelbery '84, chairman of LSC, said last week.

The Dean's Office should not permit its distorted idea of a "representative cross-section" to rule on any community issue. The Office now has assumed the authority to convene "representative cross-sections" of the MIT community to determine what may be said on bulletin boards, on R/O tours, in student publications or even in classrooms by professors.

We question the validity of policies arrived at by an administration-dominated group meeting for a total of six and a half hours in midsummer. But more than this, we question this abridgement of our freedoms. Censorship should be abhorrent to all members of the MIT community, including Dean McBay. What investment can the Dean's Office possibly have in restricting the freedoms of student groups, as well as the student body? The MIT community deserves an honest answer.



Guest Column/Alex B. Rosen

Good news from a fortune cookie

I have never taken fortune cookie sayings very seriously, but as I left Joyce Chen's to walk back to Senior House Friday night, I was struck by how meaningful the message in my cookie had been. It read: "It is fortune, not wisdom, that rules man's life."

I am a freshman who went through double involuntary limbo. Those few days without a home were very rough. While everyone around me was moving into their new residences, I could only wander aimlessly and wonder why this was happening to me. Finally, I was assigned to an Institute house, but once again did not have the luck of the draw and wound up in my fifth choice: Senior House.

I had never visited Senior House prior to that Thursday afternoon. As I walked there to check in my emotions were completely twisted by the joy of having a place to live and the fear of all of the things I had heard about the place. I was laughing as strains of the Talking Heads' song "Burning Down the House" drifted through my mind. (If you haven't already heard, there was a fire in Senior House last Tuesday night.) The news of the fire combined with the stories about completely freaked-out Senior House residents (an almost accu-

rate description) kept me far away from the dorm during rush.

Soon after I arrived, I realized how terribly prejudiced my conceptions of Senior House had been. I had wandered in on a house meeting at which the residents were discussing the fire. The flames were all long gone but the pain lingered on.

I was amazed at how intelligently these long-haired sixties-type people with holes in their jeans were discussing how they could live together safely and happily. I actually got goosebumps witnessing the meeting. I realized how stupid I was to accept other freshmen's judgements of Senior House without investigating for myself.

The Senior House residents demonstrated how much they cared for each other, their house, and the traditions of the house (no rules except for Jon Von's famous 10). (Editor's note — see sidebar on page five) I realized that, although my wisdom had failed me, I had been saved by fortune. I was not stuck in an "Institute house"; I had found a home.

I find it very sad that among some of the world's "best and brightest" such severe prejudice still exists. Apparently the majority of the freshmen at MIT are not capable of accepting social

deviation. This attitude is dangerous and should not be tolerated. We must strive to open our minds to different points of view and break down barriers that our particular life experiences have created. If we freshmen graduate with the same prejudices we now have, we cannot say that we have truly learned at MIT.

Senior House has a definite image problem. I think most of the problem is caused by the prejudiced eye of most visitors.

Below the surface Senior House residents are great people. They create an exciting environment. Our house could never be mistaken for a cold and sterile hotel. Physically, although it is old, it is very attractive. The rooms are great; I especially enjoy my single with a skylight (Ha! Ha! all you crowded double people). It is just like home. It has its own personality and belongs at MIT as much as any dorm. Most of you freshmen have unfairly judged Senior House and I urge you to reconsider these ill-conceived notions. I have, and I am extremely happy.

Senior House gives me an ideal atmosphere in which to learn and grow. I am sorry that some freshmen will discard this type of social learning because they believe it is useless.

The Tech

Volume 104, Number 36 Tuesday, September 11, 1984

Chairman Martin Dickau '85
 Editor in Chief Diana ben-Aaron '85
 Managing Editor Scott I. Chase '85
 Business Manager Paul G. Gabuzda '85

FEATURES STAFF

Cartoonists: Geoff Baskir '78, Carol Yao '85, V. Michael Bove G, Jim Bredt.

BUSINESS STAFF

Advertising Accounts Manager: Dave Ramahi '86; Production Accounts Manager: Mark Brine '85; Distribution Manager: Matt Garrity '85; Associate Advertising Manager: Michael Kardos '86.

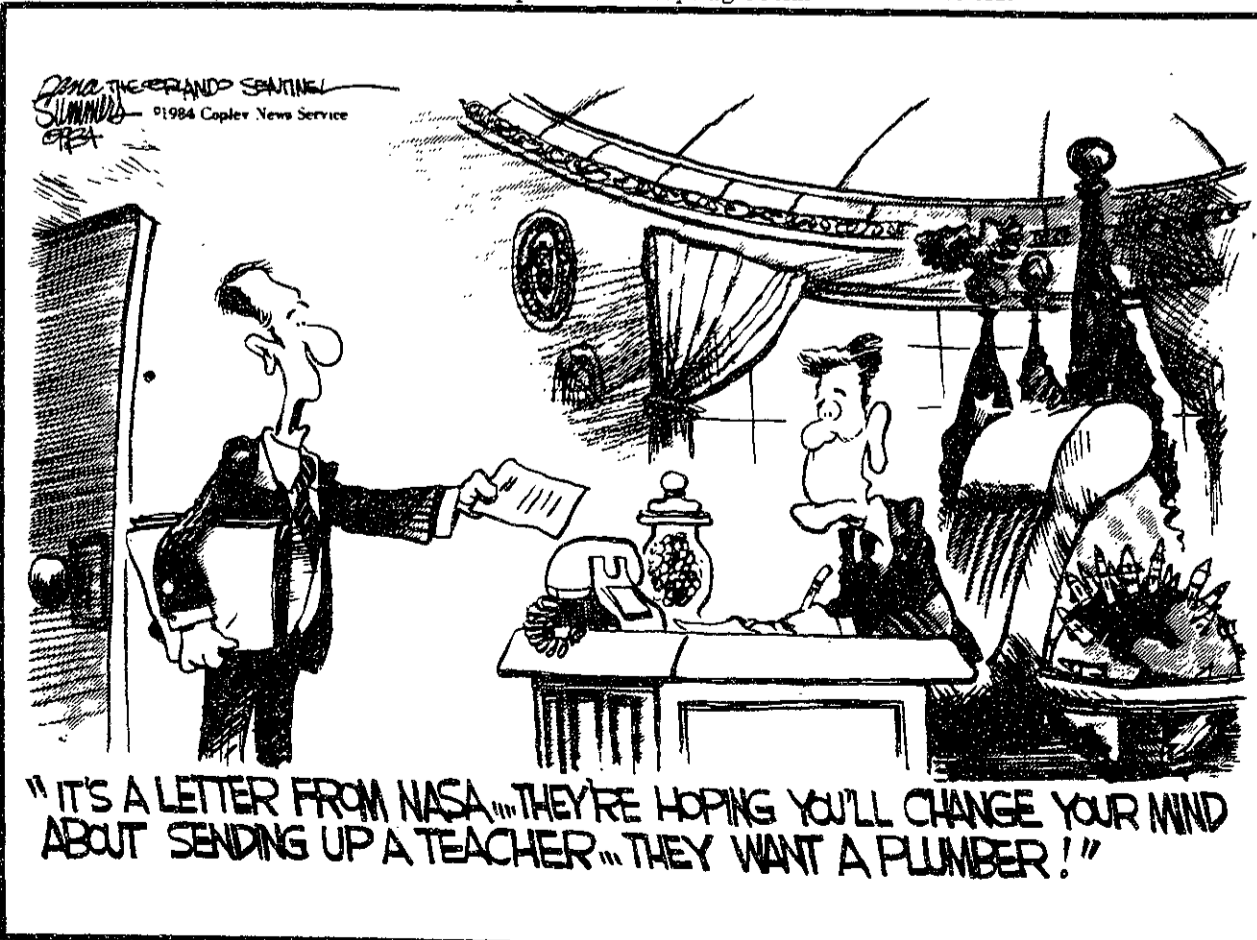
PRODUCTION STAFF

Associate Night Editor: Ronald E. Becker '87; TEN Director: Andrew S. Gerber '87; Staff: Ron Bloom '86, Mary C. Ystuenta '86, Kathleen M. O'Connell '87, Elsa Chen '88, Mark W. Eichin '88; Typist: Virginia K. Chang '85.

PRODUCTION STAFF FOR THIS ISSUE

Night Editor: Andrew S. Gerber '87
 Staff: Scott I. Chase '85, Carl Lacombe '86, Ronald Becker '87, Gregory Troxel '87, Elsa Chen '88, Phil Chu '88, Mark Eichin '88, Emi Ishida '88, Alan Meyer '88, Dimitry Rtsisheher '88, Eric Starkman '88, V. Michael Bove G.

The Tech (ISSN 0148-9607) is published Tuesdays and Fridays during the academic year (except during MIT vacations), Wednesdays during January, and alternate Tuesdays during the summer for \$12.00 per year Third Class by The Tech, 84 Massachusetts Ave. Room W20-483, Cambridge, MA 02139. Third Class postage paid at Boston, MA. Non-Profit Org. Permit No. 59720. POSTMASTER: Please send all address changes to our mailing address: The Tech, PO Box 29, MIT Branch, Cambridge, MA 02139. Telephone: (617) 253-1541. Advertising, subscription, and typesetting rates available. Entire contents © 1984 The Tech. Printed by Charles River Publishing, Inc.



Column/Jon vonZelowitz

Jon Von's Rules of Life:

(See column on page 4)

1. Watch for cops.
2. Don't ask how old she is.
3. Don't annoy the driver.
4. There is no rule number four.
(Yelena's Rule)
5. Never harass a wasted person.
(Namir's Rule)
6. Add soy sauce.
7. The engineer is always right.
(Jonvon's Rule)
8. Dress cool. (Courtesy of Dometico)
9. When in Rome, do as the Romans.
10. Do drugs to live; live to do drugs.
11. You can't tell a crazy person he's crazy.* (Sheena's Rule)
12. Don't give a dog too much to eat. (Le Chatelier's Rule)
13. Entropy, symmetry, consistency.
14. The mountain does not come to Mohammed.

* (Rules 11-14 are a recent, unofficial addition)

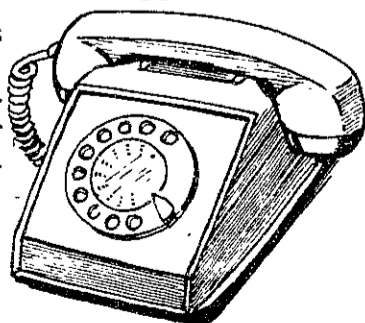
**TALK IT UP
BEFORE THE PRICES
GO UP!**



SAVE \$10 Teleconcepts Thinfone. Contemporary two-piece design for wall or desk. Features tone/pulse switchable dialing keyset with illuminated dial, mute button for privacy, volume control and redial memory.

NOW 39.95 After sale 49.95

SAVE 5.95 Teleconcepts Basic. A rotary dial phone that eliminates the need for leasing or rental fees. Features an adjustable ringer and anti-skid base.



NOW \$21 After sale 26.95

Available at Harvard Square, M.I.T. Student Center, Children's Medical Center and One Federal St., Boston. Harvard Square store open Mon.-Sat. 9:20 to 5:45, Thurs. till 8:30 pm. Coop Charge, Mastercard, Visa and American Express welcome.

HARVARD COOPERATIVE SOCIETY



**IT'S
ACADEMIC.**

guaranteed
+ lowest air fares
unbeatable service

The Only Intelligent Choice

Topaz Travel

MIT 3-3004

1105 Massachusetts Avenue, Cambridge

An MIT Authorized Travel Agency

ASK ABOUT OUR SPECIAL STUDENT FARES TOO!
TOPAZ TRAVEL USES AMERICAN AIRLINES SABRE



**OUR SCHOLARSHIP
HELPS YOU BEGIN YOUR CAREER
AS A LEADING ENGINEER.**

An engineering degree will take you far in today's high-tech Army. And with an Army ROTC scholarship, earning that degree can be both less expensive and more valuable.

The scholarship not only pays your entire tuition, regardless of the amount, but also required fees, an amount for books and supplies, and up to \$1,000 each school year for living expenses.

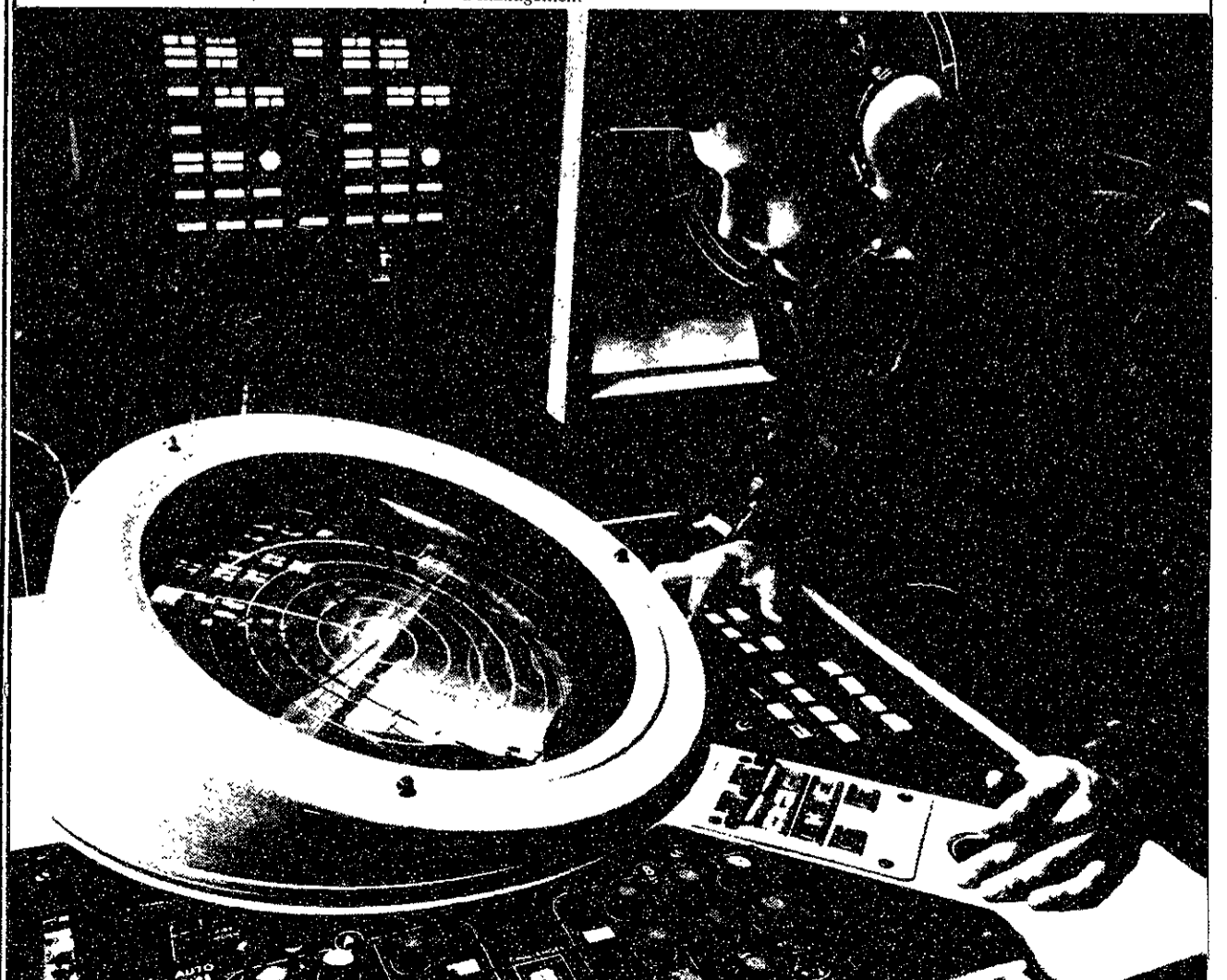
It's an excellent scholarship. And it gets you a lot more than an engineering degree. Along with your regular courses, you'll take Army ROTC classes and learn about motivating people, analyzing situations, making confident, informed decisions, and reaching defined goals. In short, you'll learn leadership and management

skills that can't help but enhance your opportunities in the future.

And you'll put your skills to work right away, because you're commissioned in the Army as a second lieutenant when you graduate.

If you'd like an education in leadership and management to go along with your engineering degree, find out more about Army ROTC. Call Major Bill Miller or Master Sergeant Andy Blanchard, 253-4471.

**ARMY ROTC.
BE ALL YOU CAN BE.**



notices

Listings

Student activities, administrative offices, academic departments, and other groups — both on and off the MIT campus — can list meetings, activities, and other announcements in *The Tech's* "Notes" section. Send items of interest (typed and double spaced) via Institute mail to "News Notes, *The Tech*, room W20-483," or via US mail to "News Notes, *The Tech*, PO Box 29, MIT Branch, Cambridge, MA 02139." Notes run on a space-available basis only; priority is given to official Institute announcements and MIT student activities. *The Tech* reserves the right to edit all listings, and makes no endorsement of groups or activities listed.

Tuesday, Sept. 11

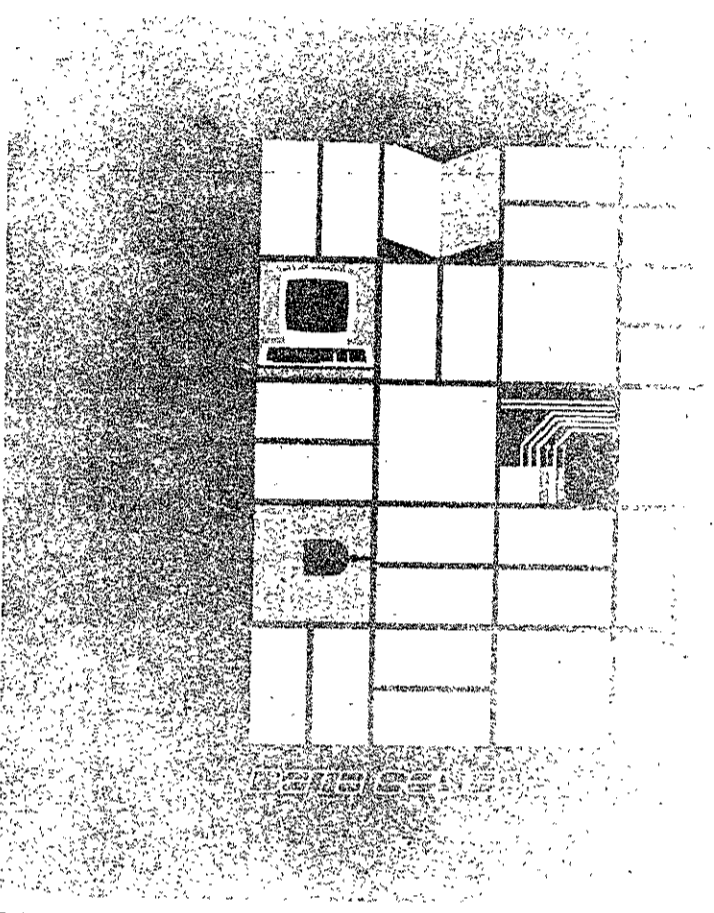
Auditions for the 1984 Festival of Light and Song will be held at the Blacksmith House Bakery at the Cambridge Center for Adult Education on Sept. 11 and 13. We are seeking: **PRINCIPALS**, women who sing with good strong chest voices and actresses who sing for speaking roles; **CHORUS**, men and women who sing; and **TECHNICAL PEOPLE** with experience in lighting, stage managing and set decoration. The festival is a multi-cultural event and is seeking people from a variety of ethnic backgrounds. Call 861-0649 for further information.

ATTENTION CS AND EE STUDENTS!

Data General Books are now on sale at Boston University Bookstore.

Data General products span the range of computing technologies, from microprocessors to superminis. And so do Data General Books. We invite you to learn more about the technologies behind our price/performance leadership.

Ask for a FREE catalog at the 5th floor desk!



INTERESTED IN ART?

You can still register for classes: PHOTOGRAPHY * CERAMICS * DRAWING * SKETCHING * ETCHING * SILKSCREEN * PAINTING * STAINING GLASS * MIXED MEDIA * CALLIGRAPHY * STUDIO USE * CHINESE BRUSH PAINTING AND MORE!

Open to all!

Come on by

STUDENT * ART * ASSOCIATION
STUDENT CENTER, ROOM 429 x3-7019

ON THURSDAY, SEPTEMBER 13, WANG WILL MEET YOU IN A FAMILIAR SETTING.

M.I.T. and Wang, in cooperation, present a unique opportunity for you to confidentially discuss your career.

On September 13, 1984, Wang's Research and Development Managers will be in the Office of Career Services on the M.I.T. campus to speak with you about Hardware and Software opportunities at all levels in the following technologies:

- Small Systems Development • Distributed Information Systems
- Software Quality Assurance • Performance Analysis • Diagnostics
- Network Operating Systems • Voice Engineering
- Database/Applications Development • Graphics • Network Communication Systems
- Languages & Tools • Operating Systems • Voice/Telephone Software Applications
- Storage & Retrieval Design • High Speed Data Communications
- VLSI Design • TEMPEST Engineering

Whether you are actively seeking a new challenge or just interested in exploring new technologies, we invite you to come and speak with our Research and Development team. Find out why so many M.I.T. alumni have chosen to join us at Wang.

To assure your candidacy receives our proper consideration, we encourage you to forward a resume indicating your area(s) of interest to:

Phyllis Jackson, Associate Director for Recruiting
Office of Career Services
M.I.T., Room 12-170
Cambridge, MA 02139

We are an affirmative action employer.



The Office Automation Computer People.

Integrated Studies Program

Room E51-017 x4074

ISP OFFERS:

- all freshman core courses, including options for students who have advanced placement
- flexible scheduling of core courses
- related humanities courses and seminars to help you explore the historical and philosophical underpinnings of scientific disciplines
- the advantage of experiencing both large group lectures with other freshmen and small-group interactions in classes, seminars and tutorials designed specifically for ISP students
- enthusiastic faculty and student tutors

If you are interested in an alternative program for your first year at MIT, please visit us — we look forward to talking to you.

JEWISH INTRODUCTIONS

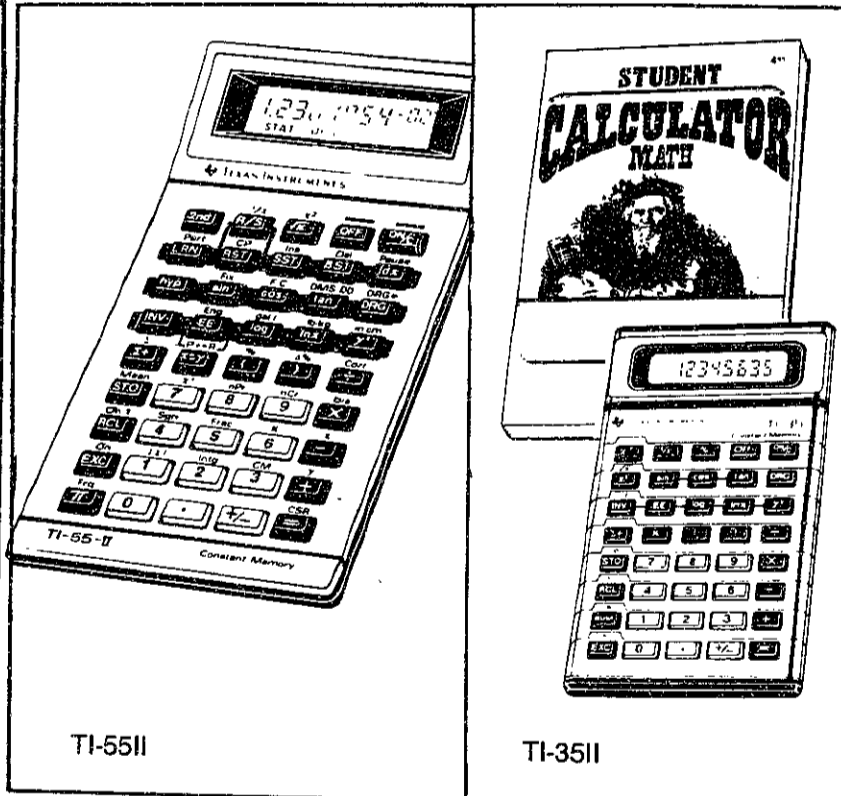


We announce for you:

- An unpressured, student designed service to meet other Jewish graduate and undergraduate students in Boston.
- We feature a brief informal interview with a counselor who will meet and match students at twelve area schools.
- You and your potential friend will each receive a confidential letter, giving you the option to follow through. Whenever possible, participants will receive more than one match. All inquiries and information will be held in strict confidence.
- Interviews will be conducted at your campus beginning the week of September 16th. All matches will be made by November 1st. There is a ten dollar fee plus a deposit which will be returned upon completion of a short follow-up questionnaire.
- All interviews must be scheduled by Friday, September 14. Call 266-3882 for appointments and information.

A project of the Metropolitan Outreach Program of the B'nai B'rith Hillel Council of Greater Boston, 233 Bay State Road, Boston, MA 02215.

TEXAS INSTRUMENTS INCORPORATED



BACK-TO-SCHOOL WITH TEXAS INSTRUMENTS

For Scientific work to financial analysis, Texas Instruments has a calculator designed to make your work easier.

- A. TI-55-II ADVANCED LCD SLIDE RULE.** 112 powerful functions for complex engineering, math and science problems. Easy keyboard programming, integration, statistics and function evaluation all built-in to save when you need it most. Reg. 39.95 **NOW 32.95**
- B. TI-35-II STUDENT MATH KIT.** 54 function calculator with built-in statistics including mean and standard deviation. Vinyl carrying case and Student Calculator Math Book also included. Reg. 18.95 **NOW 16.95**
- C. TI-BA-55 PROFESSIONAL BUSINESS ANALYST** Reg. 54.95 **NOW 46.95**
- D. TI-BA-35 STUDENT BUSINESS ANALYST** Reg. 18.95 **NOW 16.95**

Available at Harvard Square, M.I.T. Student Center, Children's Medical Center and One Federal St., Boston. Harvard Square store open Mon.-Sat. 9:20 to 5:45, Thurs. till 8:30 pm. Coop Charge, Mastercard, Visa and American Express welcome.



I D E A S

F A L L 1 9 8 4

DINING IDEAS

PAGE 2

SIGHTSEEING IDEAS

PAGE 3

CHARLES RIVER MAP

PAGE 4

SHOPPING IDEAS

MALL

FEASANCE

The good, the bad, and the ugly

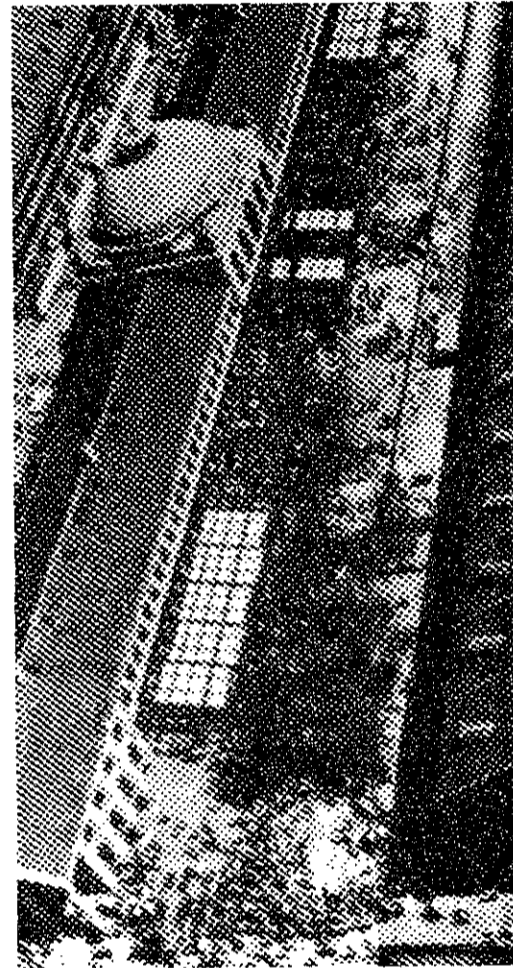
As shopping areas go, Central Square ranks with the worst. Harvard Square is the usual alternative for MIT students, but it's far from the only possibility. Whether you're looking for a particular item or for a place to spend a few hours, there are a number of other options open to you, two of which can be the "excuse" for pleasant bicycle rides.

Arsenal Marketplace. Watertown's old arsenal, which manufactured arms for two world wars, is the latest entry in the historical conversion sweepstakes, sword-into-plowshares division. The cute and trendy run a little thick here, including lots of neon rainbows, purple steel roof trusses, and little carts selling "gourmet" chocolate chip cookies. The stores are of the typical suburban shopping mall variety, and most have silly names. Upstairs, a food arcade features everything from a Burger King to a place that sells only variously prepared potatoes, and is packed with Watertown high school kids every night of the week. Ann & Hope, the mall's main store, is an attempt to combine K-mart's merchandising practices with Filene's product line. It's unbelievably huge. Whatever you need, they probably have it, and it was probably on sale last week. Marshall's, the Marketplace's other large store, sells discounted brand-name men's, women's, and children's clothing and is worth a shopping

trip in its own right. Incidentally, the old Watertown Mall (with its Bradlees) is just across the street, and it's probably a better bet if you're interested in buying something in particular and not just browsing around. MBTA: #70 or #523 bus from Central Square. Bicycle: Memorial Drive upriver to Arsenal Street; bike racks located alongside Ann & Hope's garden shop.

Chestnut Hill Mall. This attractive, somewhat pricey, suburban mall is walking distance from Pine Manor and a short drive from Wellesley, and the merchants apparently recognize this fact. The main store is Bloomingdale's, divided into two different buildings — clothing and home furnishings. You can even eat at Legal Seafood if you get homesick for Kendall Square. Overall, this is a pleasant place to browse on a rainy Saturday afternoon, if you don't mind crowds of preppy college girls. There's a picturesque pond just behind the mall; the builders unfortunately extended the asphalt right up to its edge. MBTA: Green Line Riverside (D) to Chestnut Hill, or #60 bus from Kenmore Square. Bicycle: Boylston Street all the way, or better, Beacon Street to Chestnut Hill Reservoir, left onto Chestnut Hill Avenue, then right onto Boylston.

Copley Place. "The interior . . . seem[s] designed for a latter-day Marie Antoinette," wrote design critic Wolf von Eckardt. The brass and salmon-colored marble transcend trendy and edge perilously close to tacky. Externally fortress-like, Copley Place was intended to keep Back Bay and Beacon Hill residents from going to Chestnut Hill. So far it hasn't worked, and it seems as though nearly all the customers come from the surrounding hotels. There are nine Sack movie theaters here, as well as Williams-Sonoma for overpriced gourmet cookware, and seemingly every second store for overpriced gourmet chocolate. Marie would have had a fine time at Tiffany's and Neiman-Marcus. MBTA: Green Line to Copley.



Downtown Crossing. In a two-block stretch of Washington Street closed to autos, you can find nearly anything you need, and often for less than in the 'burbs. Filene's and Jordan Marsh's main stores are here, as well as the world's largest Woolworth's (which isn't nearly as junky as one might expect, and is great for kitchen gadgets and the like). Filene's and Jordan Marsh's bargain basements are justifiably famous;

Filene's is more crowded and occasionally more violent, but the merchandise unceremoniously dumped in the wooden bins is typically brand-name, while at Jordan Marsh the basement is more like a lower-priced section of the upstairs store. An underground shopping concourse connects the basements with Washington and Park Street stations, but in an effort to curb shoplifting the two stores have closed their underground exits, and one can only enter from the subway. The resulting reduction in underground traffic has closed most of the stores in the concourse. Washington Street boasts a very high concentration of jewelers ranging from discount to high-class, many of them on upper floors of buildings. Various fast-food-type restaurants line this area, and a whole bunch of them are crammed into a hyperactive little mall called The Corner just across from Filene's. Lafayette Place, a mall/condo/hotel complex along the lines of Copley Place, opens up next to Jordan Marsh this fall. MBTA: Red Line to Washington.

Faneuil Hall Marketplace. This was America's first great renovation of existing historical buildings (in this case meat markets and warehouses) into a shopping area, and it's still the best at what it does. During the summer Faneuil Hall Marketplace is awash in a sea of tourists, but tucked in between the post cards and jelly beans are several good restaurants with lively bars, not all full of yuppies. Assembling an eclectic meal by going from food stand to food stand can be fun, but it can also be expensive. It's ridiculous to shop for clothes here, but this isn't such a bad place to look for gifts; thus it's a real zoo evenings between Thanksgiving and Christmas. You can tell a local retailer has "arrived" when he opens up a branch in here; the high rents cause an amazingly rapid turnover. MBTA: Green Line to Government Center.

— V. Michael Bove

OFF THE

BEATEN RACK

Out-of-style clothing never goes out of style

Massachusetts Avenue between Central and Porter Squares is home to used clothing stores ranging from the staid to the insane. These stores see most of their business when local students are trying to assemble Halloween costumes, but pre-owned clothing can also be a great moneysaver, especially for expensive-when-new items like heavy outerwear. Used formalwear is cheap enough that there's no reason not to have white tie and tails to wear to your next final exam. Finally, many of these shops stock jewelry, antiques, and accessories and are fun places to browse.

C & S Talking Machine Company, 864 Mass Ave., is a crowded, charming little shop with an interesting collection of mostly 30's/40's/50's clothing and antiques of various sorts.

Many vintage clothing stores play up nostalgia, but not **Hubba Hubba** (960). Very few people ever wore the kind of stuff which comprises most of this store's stock, which might be called retro-punk. This is a wonderfully outrageous place to get new wave accessories of the sado-maso sort.

Oona's Experienced Clothing (1210) boasts a great collection of buttons and other rock accessories as well as used clothing. This is probably your best bet if you're interested in recreating (or continuing) the 60's. Pricing is uneven, with about as many overpriced junky items as great bargains; unfortunately, the latter are typically grabbed right away by the large number of regulars who haunt this store. Vendors often hawk unusual handmade jewelry, scarves, ties, and the like in the adjoining courtyard.

The high-class version of a used-clothing store is **Atalanta** (1700), specializing in vin-

tage wedding dresses and evening gowns. Prices are correspondingly higher than for similar merchandise in funkier surroundings, but everything is absolutely perfect.

Reddog (1737) sells lots of 30's and 40's clothes and art deco furniture in which to sit while wearing them. Men's and women's hats and an impressive array of jewelry help complete the look. This store is also deservedly widely-known as the place to go for fatigues and dyed jeans.

Fans of the macabre will enjoy the sinisterly Victorian **Arsenic and Old Lace** (1743). In addition to clothing that wouldn't look out-of-place in an Edward Gorey drawing, they feature dead bats and spiders, incredibly grotesque old postcards, coffins, skeletons human and otherwise, assorted occult supplies, and all manner of hideous trinkets. There is an extensive collection of movie stills on hand for reference purposes so that customers can get a costume exactly right. The proprietors aren't above displaying a hundred-year-old wedding dress in the window surrounded by empty embalming fluid bottles. At the same address, just down the stairs with the skull at the top of the railing, is **Trappings**, which is a well-stocked, friendly, antique clothing store and seems positively tame after one has poked around upstairs.

Vintage, Etc., (1796) which has moved a few blocks south during the past summer, specializes in "30's chic, 40's padding, and 50's coooool," and is, like Arsenic and Old Lace, a madhouse in the weeks preceding Halloween.



Finally, though it's not on Mass. Ave., **Keezer's**, 221 Concord Ave., is a must visit if you're in this part of Cambridge looking for used men's clothing. It's been in operation since before the turn of the century, and is without question the best place to

find used formalwear and accessories, and "traditionally" styled clothes made of natural fibers. Keezer's also sells antique tableware, used (and inexpensive) ice skates, and a thousand other indescribable old items. Everything is incredibly cheap, and for \$100 one can easily buy a wool suit, a spare pair of slacks, an overcoat, and a tuxedo. They rely heavily on a Harvard clientele, as evidenced by many ancient crimson pennants on the walls and signs saying things like, "As long as there is a

Harvard man, there'll be a Keezer's." They have quite a selection of new neckties, too, ranging from very conservative silk repp stripes to sequins and leather. The merchandise turns over rapidly, so if they don't have what you're looking for one week they may very well have it the next. Keezer's stocks strictly men's clothing, though many women shop there for things like overcoats. This stag policy extends to the dressing rooms, so be forewarned.

— V. Michael Bove

SUBTERRANEAN

SUCCESS

How to shop Filene's bargain basement

I bought these clothes, when I bought clothes at all — for you must remember that, like you, I was poor, which accounts for at least some of our desperation, in Filene's Basement, where good quality clothes that had failed to sell at the more genteel levels were disposed of at slashed prices.

— Margaret Atwood, "Hair Jewellery."

Filene's Basement, 426 Washington Street; open 9:30-7 Monday through Saturday, 12-6 Sunday. If Filene's basement were any more no-frills, you'd have to bring your own bag. There are no dressing rooms, no sales help except cashiers, no orderly system of categories. Instead, clothes (and linen, and housewares, and luggage, and books, and carpets) are deposited in racks and bins in the order they come in, and it's up to the customers to sort through them.

All price tags are dated and have four prices on them. The first is the price for the first week. If the item survives a week without being sold, the price drops to 75 percent of the original. After two weeks, the price is 50 percent of the first price; after three weeks, 25 percent. After four weeks, the

clothes are given to charity. It's not worth your while to wait for the price to come down, because most clothes are bought during the first week. Also, it is unlikely you would be able to find anything again once you lost track of it the first time. Most of the clothes are "good quality," though some are so terrible they won't even sell in the Basement. The original prices are very reasonable by present standards, averaging between \$10 and \$20 for a blouse, skirt, or sweater, and \$20 to \$30 for pants, jackets, and dresses.

Since there are no dressing rooms, the amount of fitting you can do is limited. Try an item on over your clothes if you can — everyone else is doing the same — and at a minimum, check for topological abnormalities before you leave the store.

If an item has no tag, you (yes, you) have to cross the floor to the pricing desk and get it tagged. Showing the clerk a tag on an identical item is not good enough because the two garments might have come in at different times and so be in different stages of mark-down. The new tag you get put on the untagged item will start from the top, but that is never anywhere near as much as you'd pay in the store upstairs.

If you buy something and when you get it home and look at it under a strong light you find it has three sleeves or it doesn't fit or you don't like it, you can return it. You must bring it back within two weeks, with the cash register receipt and sales tags, so don't throw away these papers with the bag. Take everything to the returns desk in the sub-basement and wait in line for a credit slip. Then exchange the credit slip for cash at a teller window in the upper basement. You are now ready to play Shopping the Basement again. MBTA: Red Line to Washington.

— Diana ben-Aaron

DINING IDEAS

SUNDAY, SUNDAY

Searching for the ideal brunch

The ideal Sunday brunch should be reasonably inexpensive and low-key. This rules out the overpriced Hyatt spread and the hysteria of Chinatown on a Sunday morning, though both the hotel brunch and dim sum have their place. Herewith, some favorites:

The Allston Depot, Harvard St. & Cambridge St., Allston, noon to 4 pm. This converted 19th-century railroad depot features good morning-after ambience and typical brunch fare (mostly eggs) for \$4-\$6. Brunch orders include unlimited champagne which isn't bad for free. Several appetizers are available, also, as is a good selection of beers and ales. MBTA: Green Line B to Harvard St.

B. E. Blakely's, 1249 Commonwealth Ave., Boston, 11 am to 4 pm (Saturdays, too). Blakely's features nothing fancy, but this old standby is cheap (\$3.95), and you can eat at the bar if you like. Any of the half-dozen dishes and a Bloody Mary or a cold mug of beer will send you home full and happy. MBTA: Green Line B.

Guadalupe Harry's, 20 Clinton St. (ground floor of parking garage), Boston, 11 am to 3 pm. With the demise of Chi-Chi's late great \$2.95 champagne brunch, those who think they really must have corporate-tasting Mexican food first thing on a Sunday now have to head all the way to Quincy Market. For \$6.25 you can have a choice of drinks (tequila sunrise, mimosa, or an orange-juice-gin-and-cream concoction called a ramos fizz), bunuelos, fruit salad, and one of about a dozen entrees, mostly omelettes. The surroundings are typical trendy-Mexican-restaurant, with the requisite white stucco and potted plants. MBTA: Green or Blue lines to Government Center, or Green or Orange Lines to Haymarket.

Pentimento, 344 Huron Ave., Cambridge, 10 am to 2 pm. Sandwiched between two mosaic studios, attracting students, artists, leftover hippies, and just plain working folks, Pentimento is North Cambridge in microcosm. The tables and chairs (as well as the tableware) are mismatched antiques, and the walls are covered with local artwork, snapshots taken by the staff, and shelves full of curios. Most brunch entrees are in the \$3-\$4.50 range; the omelettes and the French toast (made, appropriately enough, with French bread) are excellent. Arrive either fairly early or after noon, or else you'll probably spend some time standing out front, as there really isn't any place to wait indoors. As jammed as this tiny restaurant gets, brunch is still very relaxed and the staff friendly; it's like eating in a friend's kitchen. MBTA: Red Line or #1 bus to Harvard, #72 bus to Huron Ave.

The Plough & Stars, 912 Mass. Ave., Cambridge, Noon to 4 pm. On a quiet Sunday morning, it's easy to forget the number of pints of Guinness that were quaffed at this Irish bar the preceding evening. The morning after brings in the same eclectic mix of bohos, collegiates, and proletarians that characterizes the evening clientele, substantially more subdued. \$6.05 buys a choice of huevos rancheros, baked ham, or Cajun-style chicken, along with bread and salad, and a drink. MBTA: #1 bus.

33 Dunster Street, 33 Dunster St., Cambridge, 10 am to 3 pm. Some of the items offered in the \$10 unlimited buffet brunch are only marginally better than their Harvard-dining-hall counterparts that most of the customers come here to avoid. The menu changes from week to week, but there are always eggs, potatoes, sausage, roast beef, a salad bar, and various desserts. Quantity, not quality is emphasized, and it may be necessary to eat several brunches here in order to find out which items are really worth having. This restaurant is huge, but it's still best avoided on fall weekends when Harvard has a home game. MBTA: #1 bus or Red Line to Harvard.

Incidentally, several Chinese restaurants in Central Square feature a reasonably good dim sum (steamed or fried pastries with various ingredients) brunch on Sundays, without the crowds and traffic for which Chinatown is famous.

— V. Michael Bove

LATE-NIGHT CUISINE

So it's 3 am, and you simply must have hot pastrami...

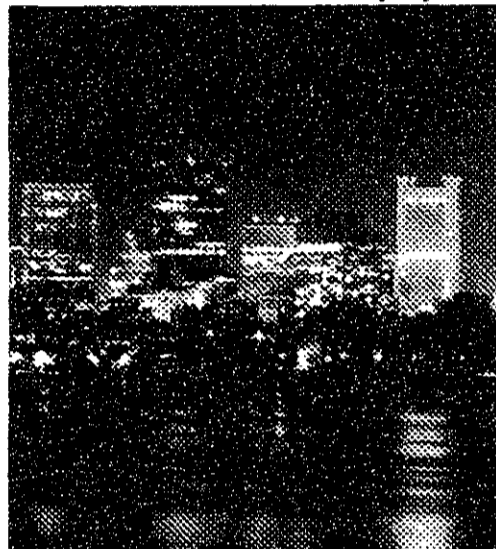
Staying up late is a fact of MIT life which has yet to be recognized by on-campus dining facilities. It remains then for the hungry night owl to foray forth in search of nourishment. While the Boston area has yet to produce a safe, well defined late-night district, it nevertheless has a few establishments which offer decent food, are close to campus, and are open past midnight. These are some of my favorites:

The Aegean Fare, 539 Comm. Ave., Boston (Kenmore Square). Open until 4 am. The Aegean Fare offers a variety of sandwiches, salads, omelettes, and Greek specialties. The Fare's fare is reasonably priced (hamburgers \$1.85, dinner for two around \$15) and attractively presented, though many dips and fillings bear the mark of an overzealous food processor. Devotees of tiny, dimly lit restaurants offering authentic Greek cuisine will be disappointed. This is not the place for an intimate, well-spiced dinner. It is the place to go at 2 am if you crave retsina with your hamburger.

Bos Deli, 493 Beacon St., Boston (right off Mass. Ave., across the Harvard Bridge). Open until 2 am, 3 am Fri. and Sat. Bos Deli offers a variety of submarine sandwiches (around \$3), soda, and fruit juice. That is all. However, the food is usually fresh and ample, and a wide selection of

add-ons are available (tomatoes, lettuce, peppers, mustard, pickles, onions, etc.). If you prefer warm food, the man behind the counter will gladly pop your order in the microwave (the only cooking appliance on the premises). All subs are also available as salad plates or in pita bread.

Buzzy's, 327 Cambridge St., Boston (right across the Longfellow Bridge). Open until 4 am. Buzzy's has always had a somewhat seedy reputation at the Institute. And true, it does have the atmosphere of a fallen Dairy Queen. But Buzzy's is a five minute walk from the east side of campus, cheap (hamburgers 99¢), and the food (sandwiches, fries, soda, fountain) is edible. I suggest the pastromi [sic] or the "fabulous roast beef." [all sandwiches around \$3]. Avoid the fried foods. Also avoid antagonizing the other patrons, though refusing to "lend me some spare change?" is acceptable. Buzzy's is take-out only, but you didn't want to stick around anyway.



Charlie's Cafeteria and Deli, 500 Comm. Ave., Boston (Kenmore Sq.) Open until 4 am. Any place that advertises itself as "clean, fast, good and plenty" can't be all bad. Charlie's offers typical cafeteria food in a typical cafeteria setting (most entrees \$2-6),

soft drinks, fountain items, and sandwiches. The food is of acceptable quality though not what mother used to make (unless mother worked at Lobdell). The opportunities for people watching are endless.

Chuck's Sandwich Shop, Cambridge St., Boston, across from the Holiday Inn. Open until 3 am. Chuck's is a classic example of just how much can be done with a broom closet. The shop is tiny; the subs (around \$3) are excellent. Chuck's offers hot and cold submarine sandwiches, snacks, and canned soda or juice. Many of the sub fillings are homemade, including the lobster salad and the meatballs (which I recommend). Strictly take-out, of course.

Deli Haus, 475 Comm. Ave. Boston (Kenmore Sq.). Open until 2 am, 3 am Fri. and Sat. Deli Haus offers huge quantities of fair quality cold cuts at reasonable prices. The (eight page) menu also features beer, herbal tea, snacks, breakfasts, salads, and fountain specialties, but this is a restaurant designed for carnivores. Two of them could eat well here for around \$15. The atmosphere is smokey but not uninviting, and the service is cheerful and prompt, provided one is taking notes.

The European, 218 Hanover St., Boston (in the North End). Open until 12:30 pm. Most pizzerias do not have a wine list and a tuxedoed maitre d'. Most fine Italian restaurants do not have a jukebox. The European has both. So much for atmosphere. The quality of the food varies. I recommend the eggplant parmigiana and most of the veal dishes. A large meal for two should cost around \$20 (without wine). Do not be surprised if the waitress chides you for not finishing your dinner.

Be sure to visit Bova's bakery (corner of Prince and Cambridge Streets) after dinner for the best cannoli to be had in Boston.

Friends and Co., 199 State St., Boston (near Faneuil Hall). Open until 2 am, kitchen closes at 1. Friends is a somewhat overpriced bar with lots of private nooks and crannies in which a restaurant has been hidden. Besides their "gourmet

CONTINUED, PAGE 4

CHINA IN CANTABRIGIA

Central Square picks and pans

One of the biggest advantages of attending MIT is its proximity to a large Chinese restaurant colony extending along Massachusetts Avenue in the vicinity of Central Square. Newcomers sometimes become confused by the variety of foods available under the generic title "Chinese." Hence the article you are now reading: a divine revelation of the truth about Central Square Chinese restaurants.

Those who have grown up on the bland, heavily Americanized stuff that passes for Chinese food in many areas of the country, be warned that much of the best food around here is Szechuan, meaning quite hot. Those items are printed in red or starred on most menus. Though delicious, these foods can be painful if you're not used to them. The best strategy is to order rice, which soothes the burning better than water. Also remember that many of these dishes have delayed reactions, and that you should never eat the thin red things — they're hot peppers.

Important note: most of these restaurants are closed Mondays, except Mary Chung and Joyce Chen Small Eating Place, which are closed Tuesdays.

And now, more or less in order of preference, the Central Square Chinese restaurant capsule reviews:

Mary Chung, 447 Mass. Ave. (past Bioran). Mary's serves terrific food, and everybody knows it. What that means is lines. Long lines. Long, long lines on Fridays and Saturdays. When you go, go on a weeknight, go early, and prepare to wait with lots of yuppies.

Don't expect ambience, because there isn't any. The tables are formica, the restaurant is crowded, and there's often elevator music in the background. Don't expect good service, either: the waitresses can be incredibly slow. Make sure you ask for a pitcher of water, especially if you're ordering hot food, because otherwise you'll be left gasping.

But once you start eating, you'll be oblivious to all of the above. The food is wonderful. Mary's specializes in Szechuan cuisine, so the hot dishes are the best, but even the mellow dishes are pretty good. Try the Suan La Chow Show (\$2.25) as an interesting, hot alternative to Peking ravioli; it's listed under soup, but it isn't one. Also particularly good are the Dry Cooked Sliced

Beef (\$7.25), Kung Pao Chi Ding (\$5.75), and Dun Dun Noodle with Shredded Chicken (\$3.25).

If you're interested in more temperate fare, the Mongolian Beef (\$7.50) is very tasty, as are the Moo Shi and Lo Mein dishes.

You can expect to get away from Mary's for about \$8-12, and it's worth every penny.

Jade Terrace, 460-464 Mass. Ave. (opposite Mary Chung). This brand-new restaurant appears second only because Mary has length of residence on her side. In any real sense of the word, the two are not competing: Jade Terrace stands apart from the Szechuan crowd, serving interesting, varied, and beautifully-prepared Cantonese food.

Although in general easy on the palate, this Cantonese cuisine is still the opposite of the low-class Americanized food I mentioned earlier. There are only one or two highly-spiced dishes, but it is in no sense boring or bland. The wonton soup (\$1.50) is the best I've had in the area. Try the Hong Kong Steak (\$7.25) and, if you're in the mood for spice, the Salt Baked Spare Ribs (\$6.50). Again, the price range is \$8-12.



The food here is attractively presented, and little touches, such as pineapple served with the fortune cookies, reveal a concern for the customer often lacking at Mary's. The service is excellent right now, but there's no guarantee it will remain so once the restaurant starts attracting the large numbers of customers it deserves. I doubt it will ever match Mary's for sheer sluggishness, though. If the lines across the street are too long some night, try the Jade Terrace; you won't be disappointed.

Mandarin, 334 Mass. Ave. (roughly across from ADP). The Mandarin serves good, satisfying Mandarin and Szechuan food.

While it is hardly a gourmet experience, a meal here can be pleasant, and you can get well-filled for \$6-10. Jewel Purse Chicken (\$5.95), filled with ham and vegetables, is worth a try.

The best reason to visit the Mandarin, though, is its buffet, available Tuesday through Thursday from 6:30 to 8 pm. For \$7.25, you get all you can eat of 11 or 12 dishes, plus a bowl of soup. The available appetizers include excellent Peking Ravioli. The entrees vary from day to day, but always include a fine variety of ingredients and degrees of spiciness. I highly recommend the buffet any midweek evening you find yourself very hungry.

Hsing Hsing, 546 Mass. Ave. (about a block after Burger King). So many things just aren't what they used to be. This restaurant used to be quite good, but has gone downhill during the past year. It has more atmosphere than the other local restaurants, and will please those who don't like to be able to see their food.

If you go to Hsing Hsing, be prepared to be disappointed, and don't try the ravs; they sometimes have an odd, unpleasant taste. On occasion, though, the chef comes through. If you feel like taking a chance some evening and don't mind risking \$7-11, give it a try. You might be pleasantly surprised.

Joyce Chen Small Eating Place, 302 Mass. Ave. (next to Father's Fore). Don't confuse this greasy spoon with Joyce Chen Restaurant, which is in Fresh Pond and serves real food. The main advantage of the Small Eating Place is that it is very cheap. You can get an acceptable, filling meal for \$3-6. Stick to the noodle dishes and you really can't go wrong.

Avoid anything complicated, and also avoid the wonton soup, which consists of a wonton and a few limp greens in a bowl of hot water. Joyce Chen's also has cheap lunch specials, but they're not much cheaper than those at other restaurants, and not nearly as good. The place has, if possible, less atmosphere than Mary Chung. For an inexpensive change from Commons, though, this is the place to go.

Hunan, 700 Mass. Ave. (past Ken's Pub). This is another restaurant that used to be good but now only manages to be mediocre. Their buffet is not worth the effort. You can get an acceptable meal here, but for the same price you can eat better at the Mandarin, so why bother?

Peking Duck, 485 Mass. Ave. (past McDonald's). This restaurant serves acceptable food, but there are serious questions about its cleanliness. You should probably avoid it.

MIT is a great place to discover Chinese food or to expand your knowledge of Chinese cuisines. New restaurants open regularly and are usually worth trying. You will probably also want to try some of the fine restaurants in Chinatown, but that is another review.

— Janice Eisen

IDEAS: FALL 1984

A supplement to The Tech, September 11, 1984

Contributors:

Amy S. Gorin '84, Diana ben-Aaron '85, Janice Eisen '85, V. Michael Bove G, Ken Meltsner G

Design:

V. Michael Bove G

Entire contents ©1984 The Tech. Very special thanks to Hermann Zapf.

SIGHTSEEING IDEAS

SWEATERS

BY STARLIGHT

Getting to L. L. Bean can be half the fun

L. L. Bean, the world's most famous supplier of outdoor clothing and equipment, has a retail store in Freeport, Maine, which is open 24 hours a day, 365 days most years and 366 this one. Bean's is known for the quality of its merchandise; their sweaters, boots, parkas, and chamois shirts are rugged and justly famous.

Why drive to Bean's at midnight? Because it's there. Certainly not because the *Preppy Handbook* described it as "a preppy rite of passage." And probably not to save money, though bargains can sometimes be found in the "factory outlet" on the first floor, particularly in the tourist off-season. Admittedly, it's more peaceful shopping here at night; during the day busload after busload disembarks in the front parking lot, and trying to find an unoccupied salesperson can be a challenge.

Actually, Bean's being open all night is just a superficial excuse for what can be a completely demented spur-of-the-moment sightseeing trip, and a great escape from MIT. Leaving Cambridge at midnight should get you to Freeport between 3 and 4 am, depending on how many stops you make and how fast you're willing to drive on US 1 (I-95 would be a whole lot faster, but it bypasses virtually everything along the way, and in the dark resembles any other Interstate). Pack some sandwiches, fruit, and cold drinks, as the opportunities to buy food along the trip will be very limited. Also bring an extra jacket or sweater, as coastal Maine can be ten or twenty degrees colder than Boston, especially at night. Assuming you're leaving from MIT, cross

over the Longfellow Bridge into Boston. Sometime (not now, as it's too dark and you're in an inconvenient spot for it) look over the side from the sidewalk or up from a boat at the stone ship's prows on the side of this bridge. Make a sharp left at the intersection, and pick up US 1 going north. Note the remarkably tacky (and at this hour more surrealistic than usual) strip of motels, restaurants, and used-car dealers outside Saugus. Note especially the giant fiberglass cattle and cacti outside Hilltop Steak House, which is even bigger than it looks from the outside. Like Durgin-Park, Hilltop deserves at least one visit during your stay at MIT.

At Newburyport, cross over the Merrimack River, whose origins lie in the White Mountains. Four miles later, cross into New Hampshire at Seabrook. The brightly-lit cranes and scaffolding on your right mark the infamous Seabrook Nuclear Power Station. There is a late-night sandwich shop nearby which is often full of laid-off-rehired-and-laid-off-again construction workers. Don't tell them you're an MIT student driving to Bean's if you make a stop there. Route 1 will take you right through



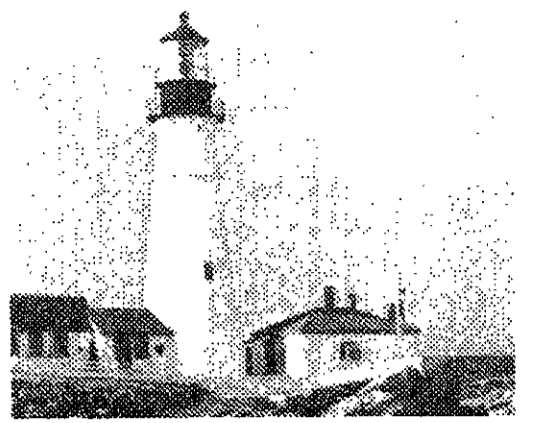
Portsmouth's attractive, and for once (if you're lucky) traffic-free downtown, but you should really make a detour (follow the signs) along the waterfront to the historic Strawberry Banke region of Portsmouth. Here a group of 17th- and 18th-century buildings (including Daniel Webster's law office) were saved from urban renewal in the 1950's, and have undergone restoration. Challenge: can you find Route 1 from here? Good. When you can see it, are you on the same level and is the street between one-way the right direction? Then go for it. Otherwise, swing back around and try

again.

Having rejoined the highway, cross to Maine over the Piscataqua River, whose name is Native American and not Latinate (but any speakers of Spanish or Italian in the car who want to think up puns to amuse themselves are quite welcome). Outside Kittery is the first of many Dexter Shoe Factory Outlets you will be passing. They make Dunham in Central Square look wimpy. Plan a stop on the return trip if anyone will be needing footwear in the near future. Likewise, there's an A&W Root Beer Stand you may want to remember on the return trip, too.

The road starts becoming touristy outside York, takes a decided upscale swing at Ogunquit, and mellows out again somewhere between Moody and Wells. If you're interested in seeing an operating lighthouse, look for Nubble Road on the right-hand side outside York. Nubble Light is a red beacon located on a rock connected to shore only by a cable car. The parking area facing it is a good place to get out, stretch, and eat those sandwiches you're probably wishing you'd packed. Don't climb down on the rocks if they're wet, and try not to disturb the local kids necking in the old Chevrolets. In Ogunquit proper is the Marginal Way, a spectacular walk which skirts ocean cliffs and ends up in a boutique-infested area known as Perkins Cove. You'd best wait for the return trip and daylight to take this walk; if it's a weekend or a very early morning you can park in the municipal lot behind the fire station, but otherwise you're on your own.

If you found navigating Portsmouth a challenge, you should really love Portland, where Route 1 seems to disappear entirely, and which isn't nearly as fun a place in which to get lost. If after three tries you don't have it, go south a couple of miles on Maine 77 to Cape Elizabeth and Two Lights, one of Edward Hopper's favorite places in which to paint. Ready to try again? After you finally find your way out of Portland, L. L. Bean's is just ahead. You've probably seen the signs already. So now you're there. Sweaters are upstairs, and trout flies just inside and to the left. Load everyone's purchases into the car. There are Hathaway Shirts and Dansk outlets across the street which aren't open at this



hour. Don't feel badly — you're not missing much.

Now it's probably still only four in the morning — too early to head back. So continue north on 1 to Brunswick, home of Bowdoin College. Whatever night of the week it is, there's probably still a drinking party somewhere on campus you can bluff your way into. Look around Brunswick, and imagine being stuck there all winter. Now you know why.

Continuing on 1 takes you past even bigger cranes than those at Seabrook. This is the Bath Iron Works (a Congoleum company), where they make ships, though things haven't been nearly as lively there since we went and won World War II. Now begins the serious business of finding a place from which to watch the sunrise. At North Edgcomb, you can take Maine 27 south to Boothbay Harbor, or you can continue on 1 to Damariscotta, south from which are the picturesque Christmas Cove (on Maine 129) and the archaeological site at Pemaquid Point (on 130). Or strike out on your own — any road going south from 1 around here stops at the ocean and any road north from the ocean eventually hits Route 1.

Once the sun's up, you can start going back south on 1, and look for breakfast. You'll probably find it at an inn somewhere around Ogunquit. Afterwards, check out all those places you noted on the way up. When it's all over and you're back to MIT, take off your new ragg sweater and Maine Hunting Shoes, and have a long rest. You deserve it.

— V. Michael Bove

MUSEUM PIECES

Checking out local treasures

When the everyday gets you down, it's time to escape into the past. Or the future. Or the extraordinary. And museums offer some of the best, cheapest, and most convenient escapes around.

This list makes no attempt to cover any but the largest museums; you will find many more in your travels, including ethnic museums, historic homes and seats of government, small contemporary galleries, a natural history museum, a children's museum, zoos and aquaria, a museum of transportation, and a computer museum (opening this fall). Now that you are in the Athens of America, there is no excuse for not viewing her treasures.

BOSTON MUSEUMS

Museum of Science, Science Park on the Charles River Dam; 742-6088; MBTA: Green Line to Science Park; open 9-4 Tuesday through Thursday, 9-10 Friday, 9-5 Saturday, 10-5 Sunday. Free admission to MIT students with ID; regular admission \$4.50 adults, \$2.75 children and students. Since you have to walk halfway there just to get to Kendall station (if you live on campus), forget about taking the T and walk the whole way. The Science Museum is the brick complex with two white domes and a white tower with a spike on top of it. One of those domes is the Hayden Planetarium (two shows daily, 50c admission to the Planetarium for everybody); the other houses a brace of million-volt Van de Graaf generators.

Although the Science Museum is justly famous for its clear explanations and specializes in hands-on exhibits, it's not just pitched at the ten year-olds; some concepts can be appreciated at many levels, and others are so complex you really do need a college background to understand them. For instance, the "Mathematica" hall illustrates everything from simple arithmetic to weird analytic curves encountered only in the stratospheric reaches of the math department.

And don't miss: the new Theater of Electricity, which includes tests of your nervous system as well as physics demos; the Transparent Woman, whose organs light

up at appropriate places in a recorded talk; the chicken incubator (shaped like a giant egg); the telecommunications and computers arcade. The rocks ringing the entrance are exhibits too — they include a section of Egyptian sarcophagus, a piece of the Rock of Gibraltar, and a chunk of Icelandic lava.

Where to eat there: There is a Friendly's and a members' restaurant, both unappetizing and smelling faintly of refuse. Have a Coke and watch the sailboats, but don't plan on a meal.

Special programs: The Science Museum offers lecture series (last spring's was Views of the Universe: a physicist's view, an artist's view, etc.), courses, and free science fiction movies; call for schedule. There is a small library from which members can borrow books.

Museum of Fine Arts, 465 Huntington Ave., by the Fenway; 267-9377 (ANS-WERS) or 267-9300; MBTA: Green Line Arborway (E); open 10-5 Tuesday, 10-10 Wednesday, 10-5 Thursday through Sunday, closed Monday. Free to MIT students with ID; regular admission \$4. This is a traditional art museum, and one of the best. It has huge collections of Impressionists, Dutch Old Masters, Egyptian mummies and related artifacts, American paintings, and Greek and Roman sculpture. The Far Eastern galleries, with everything from wall-sized screens to tiny netsuke, are the largest in America. The Fine Arts also has furnished rooms, including a medieval chapel and several 18th-century salons; examples of Paul Revere silverwork and other decorative-yet-utilitarian arts; and a large collection of musical instruments. In addition to its permanent collections, the MFA hosts about four major traveling exhibitions a year in the skylighted Gund Gallery and small shows of twentieth-century art in the Foster Gallery, both in the new West Wing, designed by I.M. Pei '40.

Where to eat there: The West Wing also houses (in increasing order of gentility) a cafeteria, a cafe, and a restaurant. At least one of these is open at any time from an hour after the museum opens to two hours before it closes.

Special resources: The Museum presents film series, art lectures, and concerts in the Remis Auditorium in the West Wing. There is a library in the main museum, open to the public in the afternoons; and a slide library, where slides of objects in the collection can be borrowed or bought.

The Isabella Stewart Gardner Museum, 280 The Fenway, 566-1401; MBTA: Green Line Arborway (E); open 12-9 Tuesday, 12-5 Wednesday through Sunday. \$2 per person donation requested. Once the private home of Mrs. Jack Gardner, this four-story palazzo contains almost 2500 objects, many of which the neighboring Museum of

Fine Arts would kill to own. The 32 galleries have been maintained exactly as they were arranged by Mrs. Gardner at the turn of the century. She chose a theme for each room but didn't always stick to it; you'll see Chinese ornaments under the Rembrandts and Vermeer in the Dutch Room and a John Singer Sargent portrait of Mrs. Gardner behind the tapestries in the Gothic Room. No space is wasted; sketches by artists from Michelangelo to Degas line the walls between larger works, and display cases house handwritten books and letters.

It's hard to believe the house was designed and constructed in the twentieth century. A small Gothic chapel, a Roman mosaic, and other fragments of Europe are literally built into it, and fanciful stone animals from throughout the Mediterranean are embedded in the vaulted corridors around the central courtyard. The courtyard, lit by a skylight four stories above, is a pleasant place to spend a few hours reading or watching the flowers grow — they're in bloom all year round.



Mrs. Gardner lived on the fourth floor, which is closed to visitors. Henry James wrote about her as part of the "fine old disinterested tradition of Boston," but the guards explain her eccentricity by saying, "She was from New York, you know."

Where to eat: There is a small cafe on the ground floor, serving drinks and light meals. You can eat outdoors if the weather is nice.

Special programs: There are free concerts every Tuesday at 6, Thursday at 12:15, and Sunday at 3 in the Tapestry Room during the year. Among the performers are pianists, chamber music orchestras and small groups, and the MIT Shakespeare Ensemble.

HARVARD MUSEUMS

Harvard University Museum, 24 Oxford St. and 11 Divinity Ave.; 495-2248 or 2-186-2248

from dormline or 186-2248 from Centrex; open 9-4:30 Monday through Saturday, 1-4:30 Sunday. Admission \$1.50 students, \$2 others. The Harvard University Museum complex reflects a passion for categorization; the entire animal, plant, and mineral kingdoms are exhibited, labeled, and diagrammed here. The admission charge admits you to all four museums in the building; there is no longer a separate charge to see the unique Glass Flowers. This fragile garden of 2100 flowering and non-flowering plants makes up the bulk of the public exhibits in the Botanical Museum.

Animals from the mastodon to the dormouse are shown life-size in fossil, skeleton, and taxidermy in the Museum of Comparative Zoology. There's even a two-story high stuffed giraffe and a beaver to compare to the one on the Rat. The MCZ also has explanatory exhibits on subjects from hidden birds' nests to DNA, and a great many examples of adaptation and evolution. The newest exhibit is of scientific illustrations by Whitney Powell, one of which is a hack.

The Mineralogical and Geological Museums have examples of natural and artificial gemstones and an exhibit of the crystal classes as well as the predictable samples of New England granite. Take a look at the huge faceted prism of Iceland spar and you'll wonder why anyone bothers with diamonds.

The Peabody Museum of Archaeology and Ethnology specializes in the native culture of the Western Hemisphere. You can see boats, baskets, and a slice of a ziggurat, but much of the section is closed for renovation at the moment. Try again next year.

Fogg Museum, 32 Quincy St.; 495-2387 or 2-186-2248 from dormline or 186-2248 from Centrex; open 9-5 Monday through Friday and 10-5 Sunday. Admission \$1 students, \$2 others. The Fogg is like an iceberg: nine-tenths hidden. Its famed Renaissance and Impressionist paintings are on permanent display, as are exhibits of classical and Chinese art and colonial silver belonging to early Harvard administrators. The rest of the collection is shown on a rotating basis. The Fogg also hosts traveling show and borrows works from other museums to assemble its own major exhibitions.

MIT MUSEUMS

Not all art at MIT is in museums. For an exhaustive analysis of your surroundings, almost all of which can be counted as art, read *Art and Architecture at MIT: A Walking Tour of the Campus*, published by the Committee on the Visual Arts (7-145, x3-4400). Meanwhile, here are some of the organized collections. Admission to all MIT museums is free.

CONTINUED, PAGE 4

MUSEUM, CONTINUED

MIT Museum, 265 Mass. Ave., second floor; open 9-5 weekdays, 10-4 Saturdays. The MIT Museum is the most eclectic museum north of the Smithsonian. It has fragments of MIT's past, notably scientific instruments and portraits of professors from the nineteenth century, the original Brass Ring, and a computer quiz on MIT history. It also has photographs of flowers, an exhibit of MIT student activities and hacks (including parodies of *The Tech* by *The Daily Reamer*), and the only two Old Masters at MIT: a pair of still lifes featuring dead wildfowl. You can also find some Compton Gallery exhibits here after they close in Building 10.

Compton Gallery, Building 10, behind Lobby 10; open 9-5 weekdays, 10-4 Saturday. Shows exhibits related to science and technology. Over the last few years, it has housed astronomical instruments, drawings of MIT, and complex polyhedral sculptures colored according to mathematical schemes by Morton Bradley, all of which are now semi-permanent exhibits at the MIT Museum. The current show, of handmade and factory-made banjos, runs through September 29.

Hayden Gallery, Building 14, first floor, opposite the Science Library (moving to E-15, Arts & Media Technology Building, this winter); open 10-4 weekdays, 1-5 weekends, closed for random intervals between shows. The Hayden gallery displays mostly enigmatic and avant-garde art, similar to the campus sculpture collection. This art is often called "installations" to distinguish it from easily categorizable and therefore banal forms like painting and sculpture.

The first exhibit of the fall is always a collection of (mostly pop art) posters and prints, with the special attraction that individual students and living groups can borrow the art for the rest of the year after the exhibit. Just fill out a form to enter the poster loan lottery. The material freaks out from there; by the end of the year, you should have seen things ranging from a huge blank gray canvas that turns out to be a window ("Batten," 1983) to a display of common objects from the 1930's and 1980's showing how ideas of "streamlining" and "modernism" have changed. The turnover in the Hayden Gallery is much faster than almost anywhere else, so go early, go often.

— Diana ben-Aaron

LATE-NIGHT, CONTINUED

hamburgers" (\$4-\$6). Friends offers complete diners (\$5-\$10), soups, salads, omelettes, wonderful potato skins, desserts, and, of course, alcohol (mixed drinks \$2.50-\$4, beer \$1.35 and up). There is also a small but well-chosen wine list. The atmosphere is odd but not uncomfortable, and the service is friendly.

The Tasty, 2a JFK St., Cambridge (Harvard square). Open all night. The Tasty is a mild-mannered, unpretentious little lunch counter in the middle of Harvard Square. It offers sandwiches, breakfast foods, hot dogs and hamburgers, and fountain specialties at very reasonable prices (sandwiches usually \$1.50-\$3.50). The food is very good and the man behind the counter can be a pleasant companion during a 5 am breakfast.

T.T. the Bear's Place, 10 Brookline St., Cambridge (right off Mass. Ave.). Open til 1 am, kitchen closes at midnight, bar at 12:30. T.T. the Bear's doesn't serve food past midnight, but its other attributes make it a worthy addition to this list. The food is good. The atmosphere is quiet and comfortable. And T.T.'s is a five minute walk from MIT.

Do not be put off by the bar. Besides alcohol, T.T. the Bear's offers dinners (mostly seafood and Italian, \$4.25-\$10), sandwiches, salads, pizza, snacks, and deserts (most items under \$5). While the kitchen is sometimes lax in the use of its colanders (leaving salad greens and pasta swimming), the food is delightfully fresh and I have yet to encounter an item (including the spinach pasta and the salad dressings) which was not home made. A good selection of beer and mid-quality wine is also available.

If you can no longer bear the pandemonium of the Institute, or just want a few stieff drinks, T.T.'s is a gund place to go. Please note:

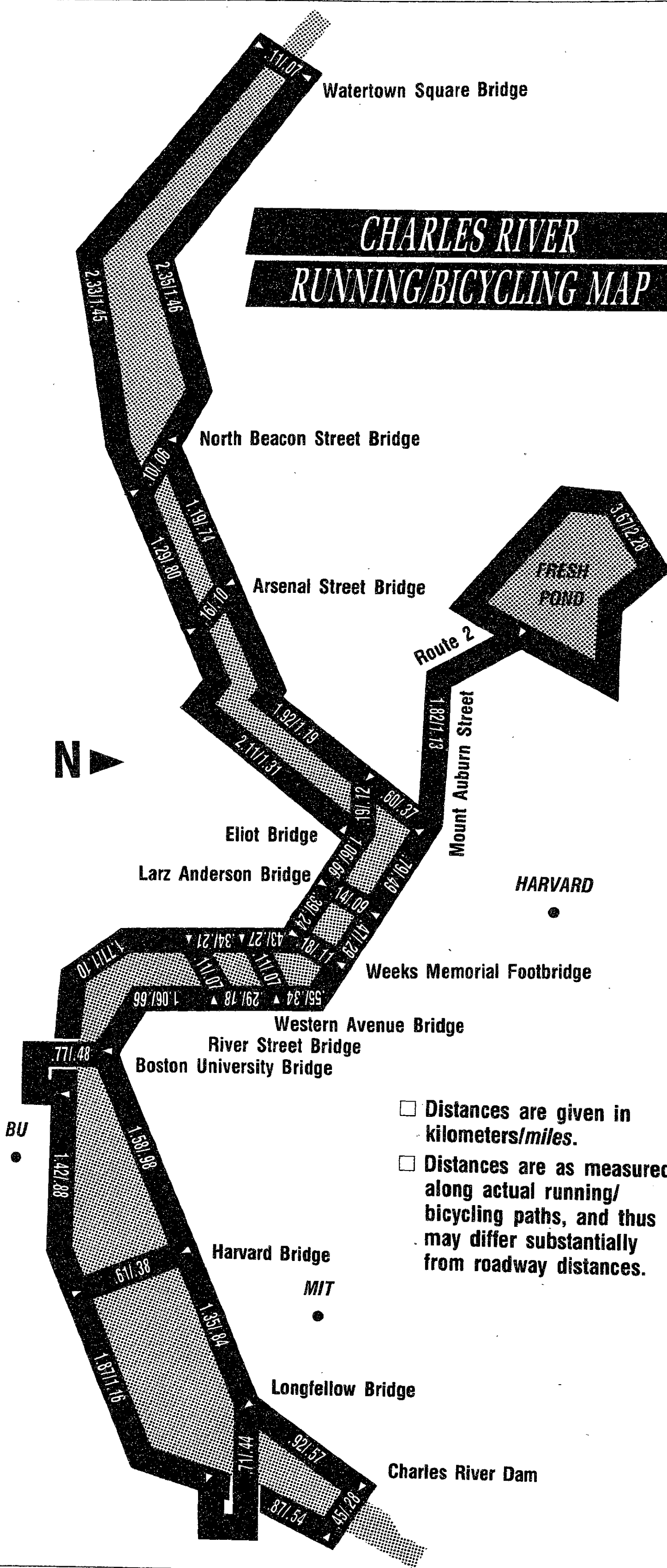
1) I have avoided those restaurants which are in very bad areas or which are far from main roads, but Boston is a city and the Harvard and Longfellow bridges have been the site of more than one mugging. I hate to eat alone. So should you.

2) These are not the only places to find food. They are merely, in my opinion, the best. Also-rans include The Empire Deli, Pizza Pad, Nemo's, Hunter's 885, Bon Bon Donuts, a dozen all night groceries, and a 24-hour felafel truck out by Harvard Medical School. I had lots of fun finding all of them; you will have as much finding your own.

3) Many restaurants in Chinatown are open past midnight and serve wonderful food. But that's another column.

— Amy Gorin

CHARLES RIVER RUNNING/BICYCLING MAP



notices

Wednesday, Sept. 12

The monthly meeting of the Boston chapter of **Computer Professionals for Social Responsibility (CPSR)** will be held at 7:30 pm at 545 Technology Square, Room 800, MIT. A film will be shown entitled "The Ball's Eye War", an analysis of how precision-guided weapons have altered conventional warfare and defense spending. Discussion will follow. Public is welcome. For further information contact Steve Berlin, x3-6018.

Pianist Fredericka Dolores King, will appear in concert at the **French Library in Boston** at 5:45 pm. The program will include works of Chopin, Debussy, and Schumann. Admission is \$3; French Library members, students, and senior citizens, \$2. For further information and reservations, call 266-4351.

Dr. John Drebing of **Hughes Aircraft Company** will be visiting the **Engineering Internship Office** Sept. 12 from 1-4 pm and Sept. 13 from 9-11 am. Please confirm with the Internship Office personnel the time and day that is most suitable for you to meet with him, x3-8052.

Saturday, Sept. 15

A **Fitness Fair** will be held at the **Cambridge YWCA**, 7 Temple St., in Central Sq. Included are lecture/demonstrations of *Dance for Aerobics* and a fitness test to find out how you rate physically with other people of same age and sex across the country. \$3/members, \$3.50/others. For more information, call 491-6050.

The **Central School**, a non-profit organization for pre-school children in Cambridge's Central Square announces its 2nd bi-annual **Rummage Sale** at 43 Essex Street, Cambridge from 10 am to 3 pm. Rain date is Sunday, September 16.

Sunday, Sept. 16

The **Opera Workshop** of the New England Conservatory Extension Division will hold **auditions for the fall semester** on September 16 and 17, 6-9 pm at the New England Conservatory, Boston. For additional information and an audition time, please call 327-6555 or 359-6243.

Monday, Sept. 17

Stepfamily Couples Group, a support group focusing on the major issues facing remarried couples, will meet from 8 to 9:30 pm at the Riverside Family Institute, 259 Walnut Street, Room 14, Newtonville. The group will meet weekly for twelve weeks. For more information, contact Pat Williams at 964-6933.

JOHN'S BARBER SHOP

16 Prospect Street
Central Square
492-2962

HAIRCUTS
any style

Open 7:30AM — 6:00PM
Closed Wednesdays
and Sundays

Student Sale
Swivel Chair, File Cabinets, Folding Tables (New and Used)

Swing-arm Lamps Starting at \$15.99

Executive Swivel Chair
Reg. \$118.50
Sale \$69.00

Reg. \$37.99
Sale \$22.50

Reg. \$98.50
Sale \$59.00

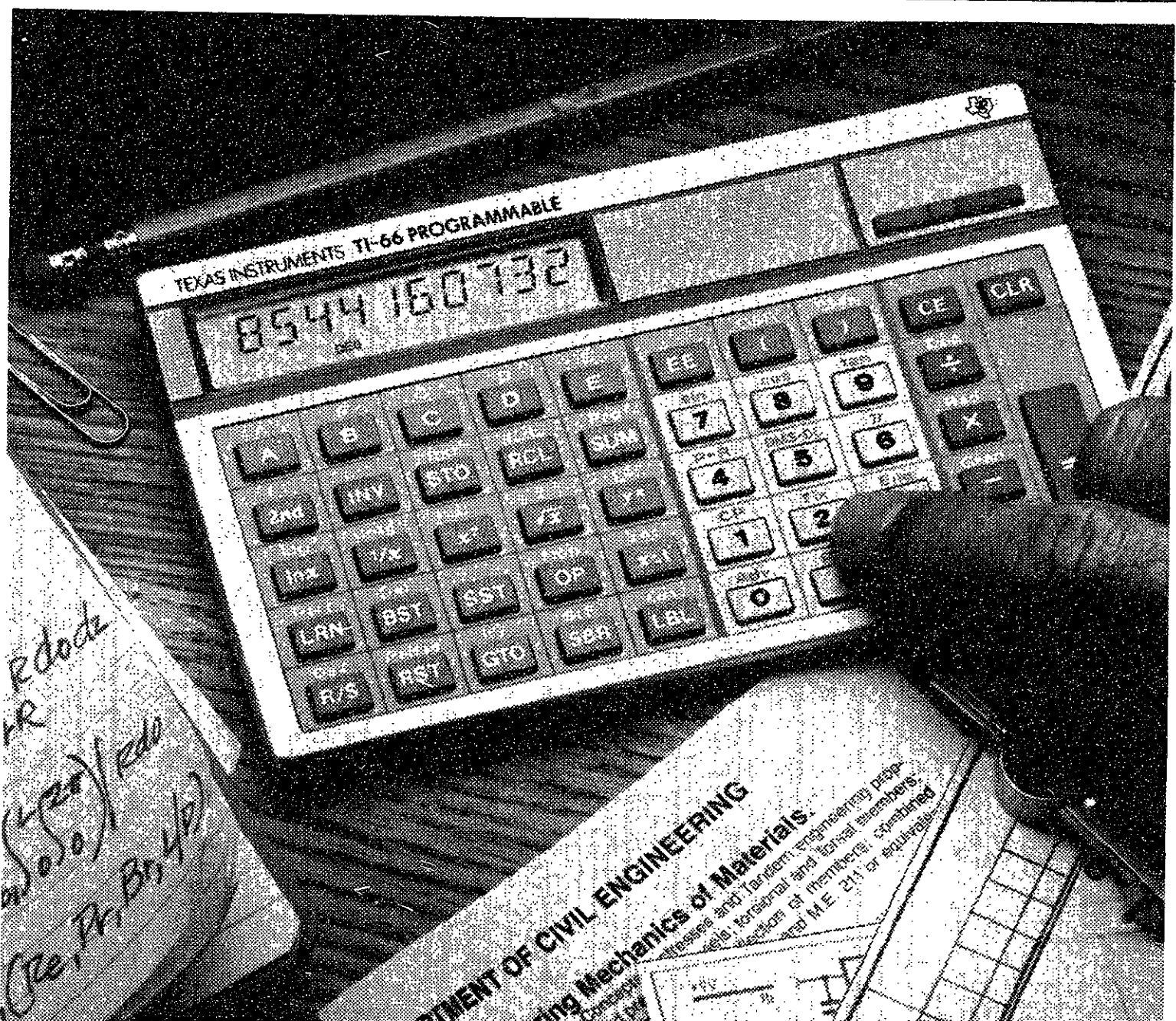
List \$101.70 Sale \$64.00
List \$125.30 Sale \$76.00
Formica Tops (Available in 3 colors) \$35.00

Used Student Desks \$85 and up

CAMBRIDGE OFFICE FURNITURE (617) 876-6790
113 Richdale Ave. Cambridge, Ma 02140 - Open Mon - Fri 8-5

Save:
25% on used textbooks
50% on used paperbacks

Harvard Book Stores
We pay top prices for used paperbacks, textbooks and law books.
1256 Mass Ave. • Cambridge
OPEN EVENINGS



Is your calculator in the same class you are?

Move up to the TI-66. The easy 512 step programmable.

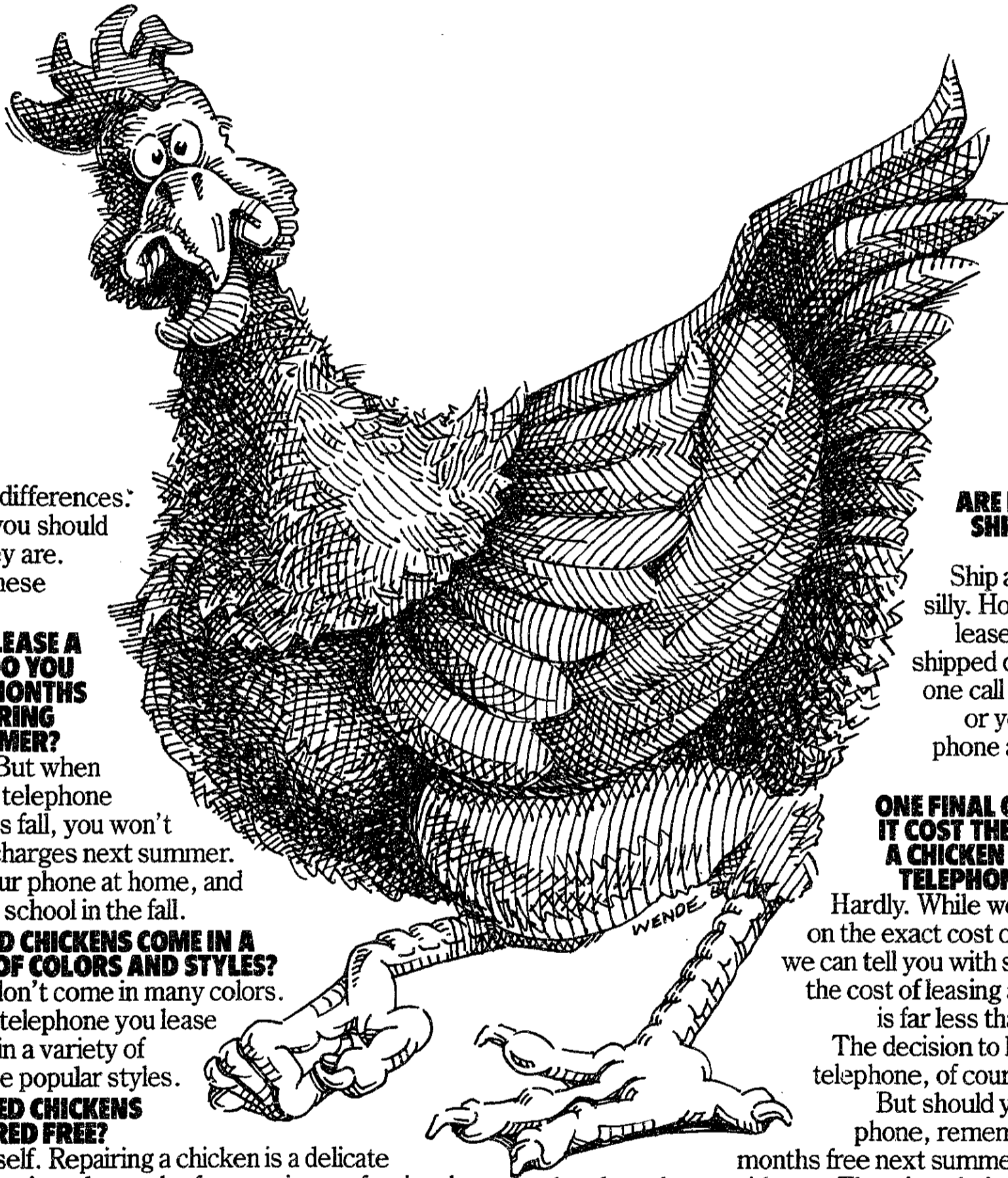
You're into higher math and your old calculator helped get you there. But now it's time for something more. The TI-66 from Texas Instruments. The TI-66 offers full programming power and flexibility so you can solve complex and repetitive math problems quickly, easily and with fewer keystrokes than you thought possible. Its 512 merged program steps and over 170 built-in scientific, engineering and statistical functions make for powerful program-

ming. And the sleek, streamlined design makes for easy use. Its Algebraic Operating System makes it easy on your brain by allowing you to key in problems as they are written, left to right. And a 10-digit angled Liquid Crystal Display not only makes it easy on your eyes but provides alphanumeric notation of your program steps so you can make easy modifications as you go along. There are large, readable keys for your fingers, and an easy-to-follow

guidebook so you shouldn't get confused. And last, but certainly not least, at a suggested retail of \$69.95, there's a price that's easy on your pocketbook. All in all, if we made the TI-66 programmable calculator any easier to use, it would deserve its own degree.

TEXAS INSTRUMENTS
Creating useful products and services for you.

WHAT EVERY STUDENT SHOULD KNOW ABOUT THE DIFFERENCES BETWEEN LEASING A TELEPHONE AND LEASING A CHICKEN.



Yes, there are differences. And we think you should know what they are. Ask yourself these questions.

WHEN YOU LEASE A CHICKEN, DO YOU GET THREE MONTHS FREE DURING THE SUMMER?

Probably not. But when you lease your telephone from AT&T this fall, you won't pay any lease charges next summer. You can use your phone at home, and bring it back to school in the fall.

DO LEASED CHICKENS COME IN A SELECTION OF COLORS AND STYLES?

No. Chickens don't come in many colors. But the AT&T telephone you lease this fall comes in a variety of colors and three popular styles.

ARE LEASED CHICKENS REPAIRED FREE?

Don't kid yourself. Repairing a chicken is a delicate process that requires the work of expensive professionals. However, in the off chance your AT&T leased telephone

ARE LEASED CHICKENS SHIPPED DIRECTLY TO YOU?

Ship a chicken? Don't be silly. However, your AT&T leased telephone will be shipped directly to you after one call to 1-800-555-8111, or you can pick up your phone at any of our AT&T Phone Centers.

ONE FINAL QUESTION: DOES IT COST THE SAME TO LEASE A CHICKEN AS TO LEASE A TELEPHONE THIS FALL?

Hardly. While we have no hard data on the exact cost of leasing a chicken, we can tell you with some certainty that the cost of leasing a telephone this fall is far less than you might think.

The decision to lease a chicken or a telephone, of course, rests with you.

But should you opt for the telephone, remember: you get three months free next summer, and you can take the phone home with you. There's a choice of colors and styles, free repair, and we'll ship you the phone or you can pick it up at any of our AT&T Phone Centers.

It doesn't cost much either. And that's something to crow about.

AT&T Consumer Sales and Service. To order your telephone, call 1-800-555-8111 for delivery right to your door or for information concerning AT&T Phone Center locations.



needs repairs, we'll fix it absolutely free when you visit any of our AT&T Phone Centers.



Cambridge
45 Prospect Street

Valid with the following restrictions: 1. You must be registered for 12 accredited hours for the 1984 fall term. 2. Valid only to students billed by AT&T Consumer Sales and Service. 3. Delinquent accounts are void from offer. 4. Limit two telephones per account. 5. Offer expires 72 months from lease initiation date. 6. This offer is not valid for permanent year-round resident students. 7. The three free months will not begin until you have paid for the first nine months of your lease. 8. All telephones are FCC registered. We provide repair service for all telephones sold at AT&T Phone Centers. Only telephones equipped with Touchtone dialing can access certain long distance services and networks. © Copyright. AT&T Consumer Sales and Service 1984.

notices

Wednesday, Sept. 19

William Langer Ury, Director of the Harvard Nuclear Negotiation Project, will speak on "Can we control a nuclear crisis?" at Cambridge Forum, 3 Church Street, Harvard Square at 8 pm. Free.

Thursday, Sept. 20

A seminar on financial planning and management will be held at the Cambridge YWCA, 7 Temple St., from 7 to 8:30 pm. Includes determining investment objectives, tax saving strategies, and planning for retirement. Cost: \$5. For more information, call 491-6050.

A seminar on National Media Policymaking, with speakers Jeremy Tunstall from City University of London and Jack Lyle from Boston University, will be held in the Marlborough Lounge, E37-252, 70 Vassar St., MIT. For further information, please call 253-3144.

Friday, Sept. 21

MIT European Club is holding a Welcoming Party in the Mezzanine Lounge, MIT Student Center at 7:30 pm. Food and refreshments will be provided. Open to everyone. For more information, call Guillemette x3-6483 (days) or Sharon 396-7250 (nights).

Saturday, Sept. 22

"Sexual Harassment: What Women Need to Know", a workshop dealing with myths and stereotypes of sexual harassment in the workplace, will be held at the Cambridge YWCA, 7 Temple St., from 10 am to 2 pm. Cost: \$15. For more information, call 491-6050.

Monday, Sept. 24

"The 3 E's: Eating, Emotions and Exercise", a lecture on how emotional conflicts with food disrupt physical and emotional well being, will be held at the Cambridge YWCA, 7 Temple St., at 7 pm. \$4/members, \$5/others. For more information, call 491-6050.

Tuesday, Sept. 25

Learn about Premenstrual Syndrome (PMS): what it is; what you can do about it; non-medical intervention techniques; and resources in the area. A PMS workshop will be held at the Cambridge YWCA, 7 Temple St., from 10 am to 2 pm. \$10/members, \$13/others. For more information, call 491-6050.

Wednesday, Sept. 26

Cambridge Forum: "Can we end hunger in Africa?" featuring Djibril Diallo of the U.N. Development Program; Jay Levy, the F.A.O.; and Laurence Simon, Oxfam America. The Forum will be held at 8 pm at 3 Church Street, Harvard Square. Free.

MIT Shotokan Karate Club



announcing an **Introductory Class for New Members:**
6:00 pm, Thursday, September 13th, T-Club Lounge (DuPont Gym)

Our club is open to all members of the MIT community and we have a special training program for beginners. We invite you to come work out with us.

This semester, led by chief instructors Sensei Kazumi Tabata, 6th Dan (6th degree black belt), and Joe Couto, 2nd Dan, our practice schedule will be:

Tuesdays	6:00-8:00pm	T-Club Lounge
Thursdays	6:00-8:00pm	T-Club Lounge
Saturdays	1:00-3:00pm	T-Club Lounge

For more information, please contact:

Mike Owu 225-6588
253-6788

CARPET SPECIALS

BROADLOOM RUGS
9 x 12 (ALL BOUNDS) \$69.⁹⁵ & UP
6 x 9 (ALL BOUNDS) \$39.⁹⁵ & UP

ALSO LARGE SELECTION OF REMNANTS AND ROLL ENDS IN STOCK AT DISCOUNT PRICES.

CAMBRIDGE RUG CO
1157 CAMBRIDGE ST.
CAMBRIDGE, MASS.
(near Inman Square)
354-0740

OPEN
MONDAY-FRIDAY:
9 am to 5:30 pm
SATURDAY:
9 am to 4 pm

Save 10% off the dinner menu with this ad.

PEKING DUCK RESTAURANT

MANDARIN - SHANGHAI



MONDAY thru FRIDAY 11:30-2:30

ALL YOU CAN EAT \$3.⁵⁰

CHINESE PASTRIES

SATURDAY & SUNDAY 11:30-2:30

Banquet Room

485 Mass. Ave.
Central Sq. — Cambridge
491-6725-6726

FREE DELIVERY 5:30-9:00, \$10 minimum

Municipal Parking in Rear

SOFTWARE DEVELOPMENT OPPORTUNITIES AT MICROSOFT

MICROSOFT CORPORATION is seeking EXCEPTIONAL SYSTEMS DESIGN PROGRAMMERS to work on multitasking operating systems, networking, advanced compilers, interactive systems, graphics, productivity applications and more. You'll be working with hardware such as the Macintosh and other 16- and 32-bit micros (286, 8086, 68000), so new some of it hasn't been publically introduced. You'll work with an extraordinary development system, top minicomputers and mainframes such as DEC-20, PDP 11, VAX, and SUN 68000 machines. Come to Microsoft and go to work on projects to propel the whole microcomputer industry forward. At Microsoft, we make things happen. Here you'll be part of the development effort to bring state-of-the-art technology to the "real" world.

Microsoft took the lead at the beginning of the microcomputer software industry. Our first product, Microsoft BASIC became the most widely-used software in the world...And it still is. We have set the standards in research, design, development, and marketing ever since. We work on projects that come to fruition today. And our people are influencing the way software will look tomorrow. We want programmers who will create Microsoft High Performance Software.

To make a good thing better, Microsoft is pleasantly located in Bellevue, center of a scenic playground and just across the lake from Seattle.

Microsoft seeks exceptional systems programmers with top skills, top grades and achievements; who have demonstrated talent in software development and systems programming through relevant experience such as summer employment, work at a campus computer center, graduate research and/or other professional work experience, possessing a sound base of technical knowledge and showing an eagerness to learn and grow. If you meet these qualifications, you deserve to work with the best! Microsoft offers an excellent compensation package. Explore the possibilities by sending a letter or resume in confidence to: Jo Ann Rahal, Technical Recruiter, MICROSOFT CORPORATION, 10700 Northup Way, Box 97200, Bellevue, Washington 98009. We are an equal opportunity employer.

MICROSOFT

High Performance Software

CENTRAL WAR SURPLUS

433 MASS. AVE.
Central Square
Cambridge

Headquarters
for

LEVI'S

CHINO'S

BACK PACKS

ATHLETIC SHOES

Alley reconstruction will end in November

(Continued from page 1)

Chief of Campus Police James M. Olivieri said, "We have asked the planner to install emergency phones all down the alley and improved lighting all down the alley, and we will be watching closely to see that those changes take place."

Portnoy said, however, that there will be no changes in the lighting. Such improvements were "thought about and talked about, but were not part of the final plans for the project. We may do something, but it is not part of the design," he said. The alley will be reconstructed only from Green Hall to Burton-Conner.

MIT will confine garbage from the living groups to two central outdoor trash compactors, Portnoysaid. "This will go a long way toward cleaning up the environment," he commented.

Lawrence S. Ward '85, president of Theta Delta Chi, said there is no problem from that fraternity's point of view. The Campus Architect's Office "talked to us all along. We have a wall here now, and if they landscape it [according to their original plans], we have no problem with it," Ward said.



GAMIT
gays at mit

MIT, Room 50-306, Cambridge, MA 02139 (617) 253-5440

- Where can I meet other gay people?
- Does coming out of the closet mean I have to tell everyone in my living group?
- How can I help my friends understand?
- I'm bisexual — where do I fit in?

Discuss questions like these with other students at our new persons' meeting. Come to the GAMIT lounge on the third floor of Walker (50-306) on Wednesday, September 12, at 7:30 pm. For more information call 253-5440.

notices

Ongoing

The following exhibits are being held at the MIT Museum: **A Bunch of Electricals: An MIT Electrical Engineering Retrospective**, a celebration of the centenary of the Electrical Engineering Dept. Included are the Bush Differential Analyzer and the Edison Dynamo given to the Institute by Thomas A. Edison in 1887. **Math in 3D: Geometric Sculptures** by Morton C. Bradley, Jr., sixteen sculptures based on mathematical formulae. Form and color relation give these works a unique visual appeal. **Images of Change**, fifty color photographs by Clinton Andrews. A subjective view of the issues and technologies bringing changing to northern areas of Pakistan and India. 265 Massachusetts Ave. Monday-Friday 9 am to 5 pm. Free.

The following exhibits are ongoing at the Hart Nautical Galleries: **MIT Sea Grant**, a review of MIT Ocean research; **Ship Models**, a historical view of the design and construction of ships; and **The Engineering Wizard of Bristol: Nathanael G. Herreshoff**, plans, half-models, equipment, and photographs documenting the renowned yacht designer's application of engineering skills to ship design. Building 5, 1st floor. Monday through Friday 9 am to 5 pm. Free.

SAVE AT ELEK-TEK

TEXAS INSTRUMENTS

BA-2	\$33	TI-55-2	\$33
TI-MBA	25	TI-57	22
BA-55	43	TI-LCD-PROG	50
		TI-66	52
EL 5100T	\$43	PC 1250A	\$80
EL 5500T	70	CE 125	119
CE 125P	55	PC 1500A	160
EL 512T	28	CE 150	165

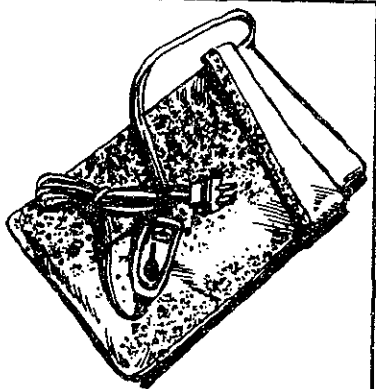
HEWLETT-PACKARD

LCD PROBLEM SOLVERS

HP-11C Scientific	\$56
HP-15C Scientific	90
HP-12C Financial	90
HP-16C Programmer	90
HP-41CV	\$168
HP-41CX	245
Optical Wand	95
Card Reader	145
Printer (62143A)	263
HP-11 ACCESSORIES	
HP-11 Module	595
HP-11 Printer/Plotter	335
Acoustic Modem	395
Dig. Cassette Drive	335
ThinkJet Printer	375
D/S/D/D. Disk Drive	600

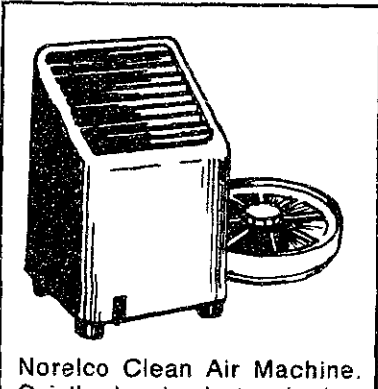
Back-To-School SALE

YOUR CHOICE
9.99



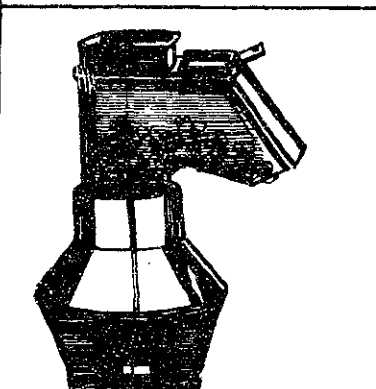
Oster Deluxe Heating Pad. 11 1/2 x 14" with 3 heat settings and washable cloth cover. Reg. 16.99 **NOW 9.99**

YOUR CHOICE
11.99



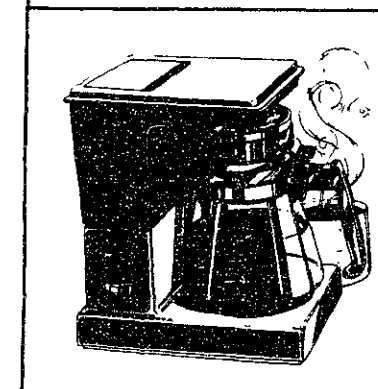
Norelco Clean Air Machine. Quietly absorbs dust and odors with an electrostatic filter for up to 3 months. Reg. 17.99 **NOW 14.99** Plus Mfr's \$3 Rebate **Final Cost 11.99**

YOUR CHOICE
14.99



Weavever Popcorn Popper. Hot air pops kernels larger and faster than ordinary methods with fewer calories too. Orig. 24.99 **NOW 14.99**

YOUR CHOICE
19.99



GE DCM9 Coffeemate II. Automatic drip coffeemaker for 2-10 cups at once. Space-saving design with supply of paper filters. Reg. 29.99 **NOW 24.99** Plus Mfr's \$5 Rebate **Final Cost 19.99**

GE "Fast Finish" 1200 Watt Hair Dryer. Compact with 3 position settings. Ideal for travel. Reg. 16.99 **NOW 14.99** plus Mfr's \$5 Rebate **Final Cost 9.99**

Osrow Steamstress. Upright steamer to use without a board. Light and compact. Ideal for travel. Reg. 14.99 **NOW 11.99**

Munsey Single Burner Hot Plate. An 1100 watt electric hotplate great for campers, dorms or office. Orig. 17.99 **NOW 14.99**

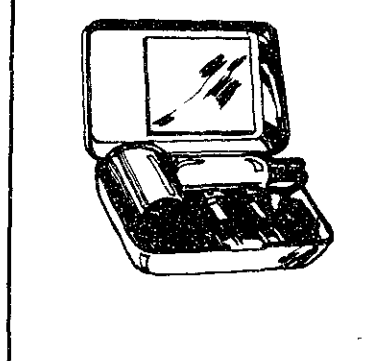
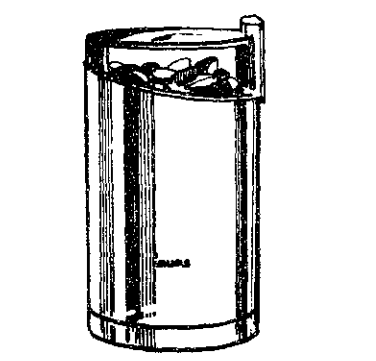
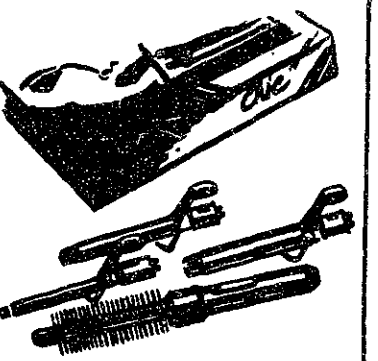
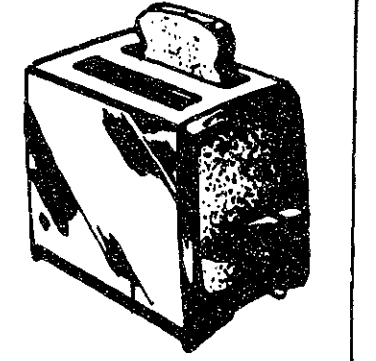
Braun Travelair Hair Dryer. 1400 watts of power, 2 heat controls and dual voltage setting with concentrator, case, and adaptor. Reg. \$30 **NOW 19.99**

Proctor-Silex 2-Slice Toaster. Toasts even frozen breads with heat/moisture/timer control. Reg. 15.99 **NOW 9.99**

Norelco Travel Combo. Deluxe 4 attachment Curling wand/brush by Chic. Chrome barrel with stand and swivel cord. After Sale 16.99 **NOW 11.99**

Krups Fast Touch Coffee Mill. Grinds enough for 15 cups. Stainless steel blades grind coarse to fine in seconds. Reg. 17.99 **NOW 14.99**

Krups #415 Hair Dryer. Turbo system with 2 heat settings, 2 adaptors and dual voltage with case. Reg. 24.99 **NOW 19.99**



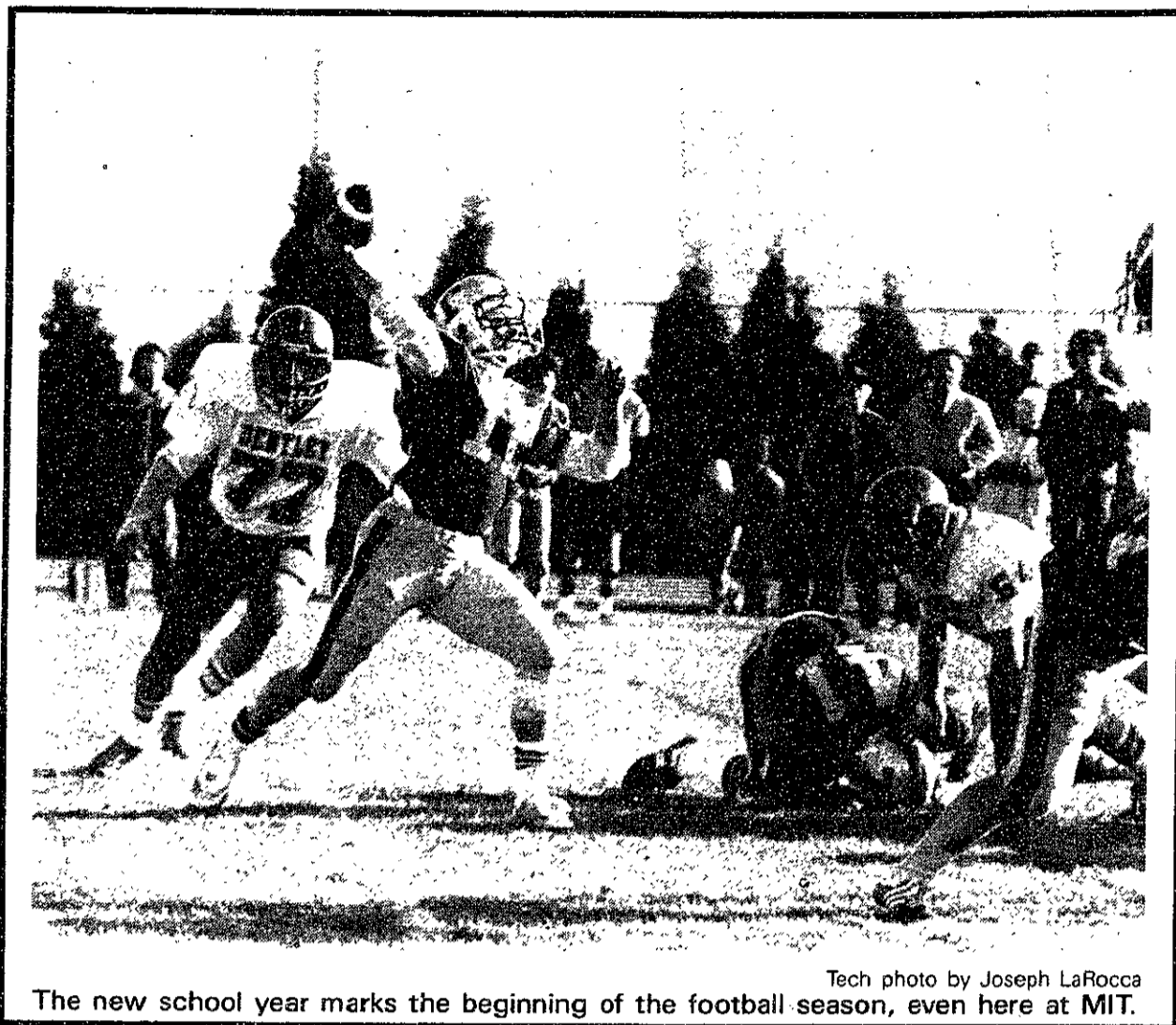
TOLL FREE ORDER LINE
800-621-1269
EXCEPT Illinois, Alaska, Hawaii

Accessories discounted too. Masterized or Visa by mail or phone. Mail Orders: Check, Money Ord., Pers. Check (2 wks to liv) \$erv. no O.D.'s. Add \$4.95 for items \$1.00 or add'l ship & handle. Ship. to address add 7% for post. why to charge. WRITE (no calls) for free catalog. 30-day return policy for defective merchandise only. ALL ELEK-TEK MERCHANDISE IS BRAND NEW, 1ST QUALITY AND COMPLETE.

ELEK-TEK, Inc.
4557 N. Lincoln Ave., Chicago, IL 60645
(800) 621-1269 (312) 677-7660

Available at Harvard Square, M.I.T. Student Center and Children's Medical Center. Harvard Square store open Mon.-Sat. 9:20 to 5:45, Thurs. till 8:30 pm. Tech Coop open Monday 9/10 through Wednesday 9/12 until 7pm. Coop Charge, Mastercard, Visa and American Express welcome.





Tech photo by Joseph LaRocca

The new school year marks the beginning of the football season, even here at MIT.

You don't have to be Jewish to enjoy great home cooking.....



THE KOSHER KITCHEN

* WALKER HALL ROOM 007 *
 * Serving dinners Monday through Friday, 5:30 - 6:30 pm *
 * Validine or cash - Walk-in service *
 * For information call 253 2982 or 225 6750 *

Montgomery Frost Lloyd's Inc.
 Prescription Opticians
 Quality Eyewear Since 1870

Prescriptions Filled Quickly and Accurately
 Ray-Ban, Vuarnet,
 and Porsche Carrera Sunglasses

20% Off On All Prescription Eyewear
 With M.I.T. I.D.

Offer not valid with other promotions
 Cambridge store only

5 Brattle St. (Harvard Sq.), Cambridge
 876-0851

classified advertising

Just bring your clothes! Back Bay, beautiful 100% furnished 1 BR, individual heat & a/c, laundry, roof-deck, walk-in closet, parking. Walk to MIT. Flexible lease, perfect for visiting faculty. \$1100, no fee. 1-480-0800 x263 or 262-3189, all hours.

Wanted: Knowledgeable, humanistic article on artificial intelligence. SASE. Paradigm Press, POB 4727, Berkely, CA 94704

CUB FANS! - Now that the Cubs are winning we should get together and form the MIT Chicago Cubs fan club. I know there are a lot of die-hard Cub fans out there just waiting for this club to form. If interested, call Dan x3-1541.

Is it true you can buy jeeps for \$44 through the U.S. government? Get the facts today! Call 1-312-742-1142 Ext. 5890.

WORK FOR PEACE - SANE the largest and most rapidly growing disarmament group is now hiring. Part-time and permanent staff. Work to stop Reagan's arms build-up. WorkStudy and Internships available. \$160 - \$225 /week. Interview: 354-2169.

Just bring your clothes! Back Bay, beautiful 100% furnished 1 BR, individual heat & a/c, laundry, roof-deck, walk-in closet, parking. Walk to MIT. Flexible lease, perfect for visiting faculty. \$1100, no fee. 1-480-0800 x263 or 262-3189, all hours.

PART-TIME TEACHERS
 Graduate students who excel in verbal, math, and reasoning skills wanted to teach classes in preparation for the GMAT + GRE. Excellent salary. Evening, weekend classes. July through October. Carrie Mitchell 661-6955.

Undergraduate or graduate students to teach basic math to retail class; one day per week 10am-1pm, September through December. Karen Quigley, 267-8781

Child care needed for my 2 and 3 year old girls in our Harvard Square home. M-F. 8:30AM-4:30PM. Call 868-4034.

SUPERTYPIST-Technical and standard. Thesis Quality. Reasonable rates. Call Regina at 253-3386 (9-5), 491-1349 (6pm-10pm).

BEACH HOUSE FOR RENT
 Paradise by the Sea! Furnished four bedroom house fireplace Living Room, full Kitchen, Dining Room, Washer, dryer, 2 1/2 baths. Acre of land, Private beach, Spectacular view of Boston sunsets. Accessible by public transportation - Available Sept. 15 to June 15, 1985. \$800 month + utilities - 1st + last + security - A quiet beautiful retreat. The Real Thing! Sandy or Nancy 1-745-7770

PUT US TO THE TEST

Put Fairchild Linear & Hybrid Division to the career test.

True False

- A company should offer prospective employees a diversity of technologies (Filter and CODEC, dual poly/dual metal linear CMOS, voltage regulators and advanced telecommunications SLIC's).
- A company should give employees a chance to grow.
- A company should encourage you to do your best work.
- You would hate working in a place that has a mild climate and terrific recreational, cultural and educational opportunities.

If your answers match ours, you should check with your Placement Center to find out when Fairchild Linear & Hybrid Division will be on campus. We'll be happy to go into more detail on how we pass your career test for technical challenge, career support and growth potential, salary and benefits, climate and lifestyle.

Fairchild Linear & Hybrid Division
 313 Fairchild Drive
 Mountain View, California 94039

We'll be hosting a special technical presentation on Wednesday evening, October 10th. Refreshments will be served. Join us.

If you can't schedule an interview when we visit your campus, feel free to send your resumé to the attention of the Employment Manager/ College Relations at the address above.

FAIRCHILD

A Schlumberger Company

LINEAR & HYBRID DIVISION