



Tech photo by P. Paul Hsu  
The Women's Ice Hockey Club in icy action last Thursday.

## MIT offers 1684 applicants admission to Class of 1988

By Andrew S. Gerber

MIT will send 1684 letters of acceptance to applicants to the Class of 1988 tomorrow — the lowest number of acceptances in eight years. The Admissions Office accepted 28 percent of the record 6002 applications received.

Director of Admissions Peter H. Richardson '48 estimated an entering class of 1025. "The class size is smaller to help alleviate dormitory crowding next fall," he said.

Over 30 percent of the admitted students are women, a record for MIT, according to Richardson. To help attract these women to MIT, each admitted female will be sent an MIT T-shirt, and be invited to MIT during the

weekend of April 6-8.

"We hope to get a high percentage of the 509 women that we accepted to matriculate at MIT," he said. "I'm hoping for over 300. I don't expect to see a 50-50 ratio men to women in my lifetime, but I foresee in the next 5-10 years the issue of the male/female ratio will disappear."

Richardson said MIT is not admitting women over men to get a better male/female ratio in the incoming classes. "MIT admissions are sex blind. We must end up with a group of freshmen where the men and the women are academically equal."

Names are included on each application, however, Richardson said, the "human factor" might always be involved. "If the application readers know that MIT needs more women, they might unconsciously favor a female's application," Richardson added. "It is very hard to say if any particular woman applicant is better than any particular male appli-

cant, because of the "complex principles" involved.

Richardson added that although not much progress has been made in attracting more minority students to MIT, the shrinkage in the number of minority students that has been seen at other schools has not occurred at MIT. He also expected that financial problems would not limit the percentage of admitted applicants who decide to matriculate.

There are 422 students on the waiting list, an increase of 53 from last year. "We didn't use last year's waiting list at all," Richardson said. "Around May 10th this year we'll decide if we will need to use this year's list."

The list of students who have been accepted will be on display at the Admissions Office and copies will be available to representatives of living groups on Thursday, March 22, at noon. Richardson hopes many students will contact students from their home towns over Spring Break.

## 139 apply for Hope position

By Harold A. Stern

The committee to find a replacement for Assistant Dean for Student Affairs Mary O. Hope will make its final recommendation to Dean of Student Affairs Shirley M. McBay by the beginning of this week, according to Robert M. Randolph, associate dean for student affairs.

McBay will make her decision within a few days, Randolph said.

A search committee of eight people received 139 applications for the position and interviewed four of the applicants. They had hoped to make a decision by the end of February, but the process took longer than expected.

Randolph said there is more than one possible choice for the position. The committee has to consider "a whole range of factors," he said.

"I am looking for someone who can be of support to the minority student community," Randolph said, "someone who is a person accessible to students."

The replacement must also be an innovator, he said. Hope's replacement must be "interested in developing new programs that will benefit students." The new assistant dean must be a "team player," able to work along with other members of the staff.

The committee wants "someone who will be a part of our team in office, and who will keep this office aware of ways we can be of support to the minority community," Randolph said.

"This person must also be someone who relates well to all students, minority and non-minority alike," he added.

David M. Libby '85 and Stephanie L. Scheidler '85, UA president and vice president-elect respectively, plan to meet with McBay, "to discuss with the dean what specifically went on [concerning Hope's November dismissal], and its effects on the future," Libby said.

Libby expressed concern that the student body was not allowed enough input into McBay's decision to dismiss Hope. He said he believes that, with regard to positions which involve close contact with the students, "students should have some say into the employment of this person."

He said he would like the opportunity to speak with the student members of the search committee; however, their names have not yet been released.

The four students, Randolph

said, have as much of a say into the decision of the committee as any of the other members. "It is a committee of equals," he said. "There is no sense of hierarchy at all."

McBay, however, will make the

final decision — the committee can only make a recommendation to her.

Janie Ward, a doctoral candidate at the Harvard University Graduate School of Education, (Please turn to page 10)

## ESG director sought

By Amy Gorin

The Experimental Study Group (ESG) may be shut down if a faculty member is not found to be its new director, according to Associate Dean for Student Affairs Robert L. Halfman '44. Halfman, who has been director of the group for the last ten years, will retire in June.

ESG provides alternative instruction in the core subjects for about 45 freshmen and 25 sophomores each year. It was established in 1969 and was granted permanent status in 1979 under the administrative auspices of the School of Science.

Professor Alan Davison, chairman of the ESG faculty advisory committee, has been charged with finding a replacement for Halfman. Davison emphasized Friday the Institute's wish to have the program continue.

However, Davison added, next year's students could not be asked to commit themselves to a program with an uncertain future. Although Davison referred to his deadline as "flexible," other sources said John M. Deutch '61, Dean of the School of Science, has given ESG until early April to complete its search. Deutch was not available for comment.

Halfman and Davison described the ideal director as a tenured professor with an interest in innovation in learning, who is willing to donate time and ideas, and who has some knowledge of the core courses.

MIT prefers a tenured professor for the position of director because of the amount of time the job would require, according to Davison. The time required will make it difficult for the director to spend a large amount of time in research. A major factor in attaining tenure is research experience.

The MIT administration — represented by the Dean of the School of Science, the Dean of the School of Humanities, the Provost, and the Associate Provost — must approve the chosen candidate.

One candidate, Professor Ste-

phen L. Chorover, has been considered, but was judged by the administration to be unsuitable. Chorover, in an interview last Thursday, said he is "personally disappointed," but hopes "that the administration will do whatever has to be done to insure the survival — and prosperity — of ESG."

According to Halfman, the decision not to accept Chorover "was not arbitrary."

## Simplex opponents get elected

By Peter R. Vogeli

All but one of the 15 members of the Group 1 slate, supported by the Simplex Steering Committee, were victorious in the March 13 elections for the Cambridge Ward 5 Democratic Committee. The Simplex Steering Committee opposes MIT's plans for the development of the Simplex property.

Only one member of the Group 2 slate, most of whose members are more sympathetic toward MIT's development plans, was re-elected. Group 2 had controlled the Ward 5 committee for 16 years.

The Ward 5 Democratic Com-

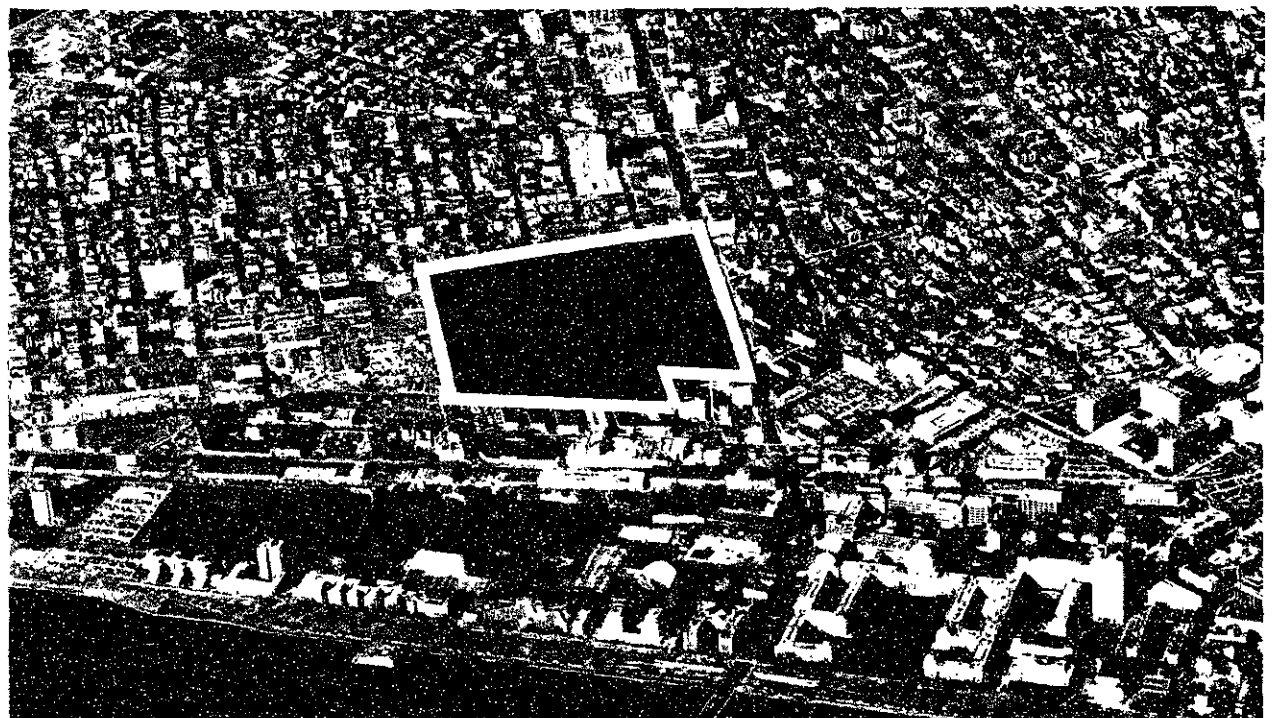
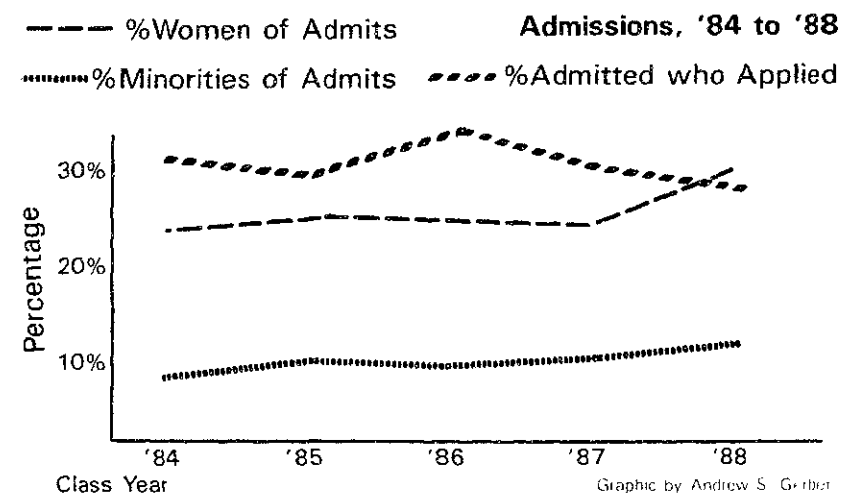
mittee has no legal power, but, according to members of both slates, the committee is influential in Cambridge politics. William Cavellini, a winner from Group 1, said, before the election, several members of the Cambridge City Council would wait until after the Ward 5 committee elections to decide the positions they will take on the Simplex development.

Marty Foster of the Group 2 slate said, before the election, members of Group 2 viewed the election as a referendum on the Simplex development. Foster was not re-elected to the Ward 5 com-

mittee.

Janet Murray of the Group 1 slate, and the leading vote-getter in the election, said although her group had not viewed the election as a referendum on the Simplex development, the result "was a statement in favor of the principles and policies of the Simplex Steering Committee."

She said the Group 1 slate was not "monolithic" in their position on the Simplex issue. It had "found concern" about the proposed development plans for the site and support for the steering committee during its canvassing for votes.



Marked area indicates Simplex Development Area.

## Technology Review rejects purchase offer

By Paul Duchnowski

The Alumni Association's board of directors rejected an offer from *The Economist* to buy *Technology Review* in a special meeting March 3, according to William J. Hecht '61, executive vice president of the association and publisher of *Technology Review*. The offer was turned down by a vote of 6-1.

Hecht said, "Negotiations have been going on and off for over a year" and became serious in the last five months. The final proposal was "a several-pages-long letter of intent" which involved "some money up front as well as a long-term relationship with 'The Economist.'"

The Alumni Association rejected the proposal for several reasons. "The economics [of the offer] were not compelling," Hecht said.

"There was a strong desire on the part of the board [of directors of the Alumni Association] and the alumni to continue to publish what they believe is a first rate magazine," he said. "The board felt strongly . . . about the need to communicate with the alumni."

"It is highly unlikely that there will be any further communication with *The Economist*," Hecht said.

*Technology Review* is currently losing money, said Managing Editor Peter Gwynne. The amount of money needed to finance the magazine "went very high lately and the MIT administration had some doubts" about the present way of running the operation, he said. MIT conducted the talks with *The Economist* because of the increase in costs.

The board of directors decided to keep publishing the magazine in its present national format, but with a reduced budget, Gwynne said.

John I. Mattill, editor in chief of *Technology Review*, said *The Economist* "would [have acquired] *Technology Review* and published it, providing MIT subscriptions to a number of alumni at an agreed upon price."

Alumni who contribute at least \$15 to the Institute each year currently receive the magazine free. Hecht said this would not have changed under the agreement.

The version of the new maga-

zine sent to the alumni would include the pages on MIT that currently appear as the middle section of the magazine, Gwynne said.

"The net cost to MIT of *Technology Review* under the new arrangements [would be] high," Mattill said.

The board was also concerned that MIT would have little control over the quality of the magazine, even though the readers might still associate the magazine with the Institute, he said.

One person from MIT would have participated on the editorial board of the new magazine, and MIT would be allowed to "submit one article per issue for consideration" according to Gwynne. There was no guarantee, however, that the article would be included, he said.

The line "Founded at MIT" would have been placed on the cover of the new *Technology Review*, he added.

"To aim for the business community," Hecht explained, *The Economist* intended to make "significant changes" in the content of the magazine.

They would have attempted "to build a circulation of 150,000 to 200,000," he continued. The current circulation is about 75,000, split almost evenly between paying subscribers and those receiving it free.

They "would cooperate with the National Academy of Engineering in Washington," Gwynne said.

*The Economist* was going to work out "similar arrangements" with other engineering schools, including the California Institute of Technology, Georgia Institute of Technology, Rochester Polytechnic Institute, and the Cornell School of Engineering, Mattill said. "I don't know whether any talks [with those schools] were held," he added.

## Dormitory theft rate up

By Andrew Bein

Dormitory theft increased to almost \$23,000 from last year's ten year low of less than \$8000, and the number of serious crimes against persons increased to 25 from last year's 23, according to the 1983 Annual Report of the MIT Campus Police Department.

James Olivieri, chief of Campus Police said crimes against persons is "the one we pay the most attention to. Maintaining that stability is the key to our operation."

The "highly visible foot patrols . . . absent from most cities and towns . . . give people a feeling of comfort," and attribute to the low number of major crimes, Olivieri said.

The increase in losses from residence theft last year is a higher "increase than we can live with," he said.

"We will be doing some work in the dorms," Olivieri added. The Campus Police will distribute "special fliers and posters."

Ashdown House faced a "huge increase" in theft, so "we have started a system of locking the doors," Olivieri said. "The trouble [on campus] stems from lax conditions — unlocked doors — opportunities because people don't think of precautions," he explained.

"We consider very little of this as internal," Olivieri said; people from outside the living groups are involved in the thefts. "After a very large party in the dorm, like clockwork you'll hear about somebody losing a pocketbook or coat."

Institute property loss went up to \$43,947, an increase of over \$12,000. "We are operating with a very unusual system of access 24 hours a day" to most buildings on campus, he said. "There's a tradeoff for that freedom" — the resulting high Institute property loss. Over the last five years the Institute property loss has been in decline.

The Campus Police report states, "Campus buildings are never really closed because of the ongoing research which involves many members of the community

around the clock . . . The hallways sometimes seem more like street extensions than university corridors."

Personal property loss from nonresidences "popped back up again, after a couple of years of decrease," said Olivieri. Almost \$25,000, up from last year's \$18,536, worth of property was stolen last year.

A crime prevention bag which was distributed to students at the beginning of the fall term was so successful that other schools, including Rutgers University, have adapted the idea themselves.

Olivieri also stressed the special support service of the campus police for when "somebody is in a disturbed condition." Their work is done "behind the scenes, quietly and helpfully," he said.

### WHY PAY MORE?

## THRIFTY RENT-A-CAR

**HARVARD SQUARE**  
876-8900

**BOSTON**  
367-6777

**CENTRAL SQUARE**  
492-3000

Plus 7 other suburban locations to serve you!

# \$18.95

Per day for Chevrolet Chevette  
UNLIMITED FREE MILEAGE  
Confirmed reservation required.

Full Line of 1983 Chevrolets

**"Never a  
Mileage Charge"**

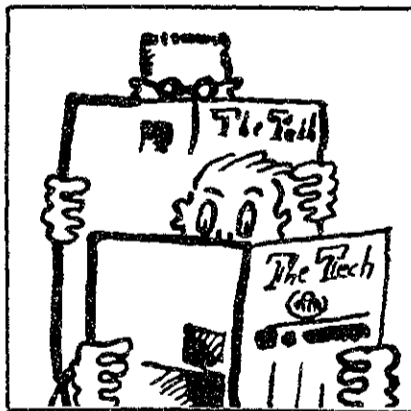


### "My body is expecting."

An unwanted pregnancy can make you feel that you have no say over what your body is doing. But you do have a say. And a Preterm counselor will help you figure out what you want to do about it. Call today. Because some things are too important to be left to your body. Preterm. 738-6210.

## preterm

The most experienced reproductive health care center in the Northeast.  
1842 Beacon Street  
Brookline, MA 02146  
A licensed non-profit health care facility.  
Teen Counseling Se Habla Español



## EYEGLASS & World

Complete Optical Shop

We have the new plastic scratch resistant lenses

- Fashion frames at reasonable prices
- Instant eye exams
- Prescriptions filled
- Fashion tints and photo changeables
- Contact Lenses 60 Day Trial
- Large Selection of Ray Ban Sunglasses
- Sport Frame Available

Central Square, 495 Massachusetts Avenue, Cambridge  
Mass. 02139 Tel: 661-2520

# \* OCEAN \* ENGINEERING \*

# open house

THURSDAY, MARCH 22, 1984

BUSH ROOM  
10-105  
2 to 4 P.M.

# news roundup

## World

**Einstein's conjecture proven** — Dr. Jeffery M. Cohen of the University of Pennsylvania and colleagues have solved a system of ten equations postulated by Albert Einstein as necessary for his theory of relativity to work. Einstein suggested that rotating hollow spheres generate both centrifugal and coriolis forces. "Einstein felt that if the conjecture were false, he did not succeed. If it was true, he did," Cohen said. "Einstein's theory is testing out very nicely." Cohen spent 22 years on solving the equations.

## Nation

**Mondale wins over weekend** — Former Vice President Walter F. Mondale won Democratic presidential caucuses in Michigan, Mississippi, Arkansas and Puerto Rico this weekend. The victories increased Mondale's lead in delegates. According to United Press International, Mondale has 525 delegates committed to him; Sen. Gary W. Hart of Colorado, 317; the Rev. Jesse L. Jackson, 62; with 239 delegates uncommitted. Today's Illinois primary has 171 delegates at stake.

**Meese under fire** — Attorney General-designate Edwin W. Meese III requested Sunday that the Senate Judiciary Committee suspend his confirmation hearings while the Justice Department conducts a probe of his finances. Meese has been accused of failing to disclose, as required by federal law, a \$15,000 interest-free loan received by his wife from a friend later appointed to be Meese's assistant at the White House.

**Defense begins arguments in Klan-Nazi trial** — Defense testimony began yesterday in the Federal trial of six Ku Klux Klansmen and three American Nazi Party members charged with violating the civil rights of five Communist Worker Party members killed in a 1979 gun battle in Greensboro, N.C. The defendants face prison terms of five years to life if convicted. The government, which rested its case Thursday, must prove the defendants were motivated by racial rather than political feelings.

## Local

**Pair convicted of New Bedford rape** — An eight-man, four-woman jury deliberated for 5½ hours Saturday in Fall River, Mass., before convicting Daniel Silva and Joseph Vieira of aggravated rape. Four other defendants are still on trial in a separate case for assaulting and raping a 22-year-old woman on the pool table of Big Dan's barroom on March 6, 1983. Sentencing is expected Friday. Silva and Vieira face a maximum sentence of life imprisonment.

## Weather

**Fun slush** — Gusty winds and scattered drizzle this morning, the first day of spring. Overcast this afternoon with a high around 42-46. Tonight, continued cloudy with a low near 40. Tomorrow, rain returning with a high near 50, lows in the high 30s.

Robert E. Malchman  
Drew Blakeman



**BRODIE AUTO RENTALS INC.**  
NOW AT KENDALL SQUARE

**WE RENT:**  
DODGE COLTS—OMNIS  
RABBITS—CITATIONS  
STATION WAGONS

**AUTOMATIC & STICK SHIFT**  
•WE FURNISH GAS WITH ALL CARS EXCEPT WAGONS•

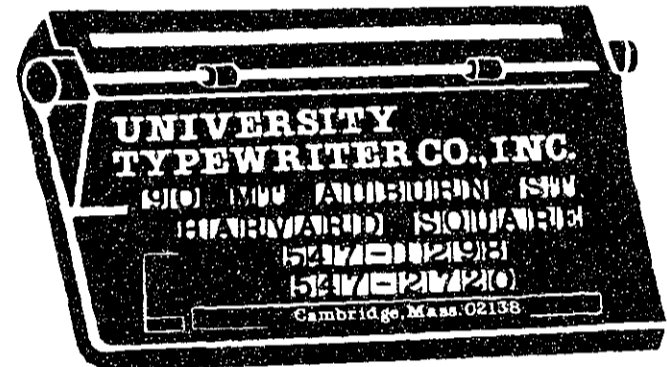
**HARVARD SQ.**      **KENDALL SQ.**  
NEAREST TO THE B-SCHOOL    NEXT TO LEGAL SEAFOOD  
90 MT AUBURN STREET      5 CAMBRIDGE CENTER

**491-7600**      **876-7600**

MASTERCARD      VISA      AM EXPRESS

## UNIVERSITY TYPEWRITER CO., INC.

Repairs • Sales • Rentals  
Electronic, Electric, and Manual Typewriters  
New and Used • Quality Ribbons



**547-2720**      90 Mt. Auburn St.  
**547-1298**      At Harvard Square  
Cambridge, MA 02138

### STUDY IN EUROPE

The University of Louvain (est. 1425)  
Leuven, Belgium  
offers

COMPLETE PROGRAMMES IN PHILOSOPHY  
FOR THE DEGREES OF B.A., M.A., AND Ph.D.  
plus A JUNIOR YEAR ABROAD PROGRAMME

All Courses Are In English

Tuition is 11,500 Belgium Franks (+ \$250)

Write To: Secretary English Programmes  
Kardinaal Mercierplein 2  
B-3000 Leuven, Belgium



**KULeuven**

### CLEMI-VISION & 3M CANADA

OFFERING: PART TIME AND FULL TIME SUMMER EMPLOYMENT.  
NEEDED: INDEPENDENT DISTRIBUTORS AND SALES PERSONS

- Are you looking for a good part time job leading to full time summer employment?
- Are you looking to develop and evaluate your entrepreneurial abilities?
- Do you desire proof for future employment that YOU CAN WORK ON YOUR OWN?

Clemi-Vision's product is a very simple glare reflector for CRT's. It is easily installed and demonstrated. Excellent sales have resulted since 3M of Canada has accepted the sole distributorship for Canada.

Clemi-Vision is now expanding into all of the U.S.A. through student distributorships.

To attend a local demonstration and information seminar scheduled for early April, contact by March 23, 1984:

#### U.S. Students

Mr. Chris Furlong, CLEM-VISION representative, (617) 267-0189, after 4 P.M.

#### Canadian Students

3M CANADA, (519) 451-2500, between 9 A.M. and 4:30 P.M. Ask for Mr. Tom Hepburn.

## PROGRAMMERS ECONOMISTS POLITICAL SCIENTISTS

The Central Intelligence Agency offers individuals the unique opportunity to contribute to our nation while advancing their careers. We will be on campus Wednesday, April 4th to interview individuals with the following backgrounds:

- \* Econometricians and quantitative economists interested in macroeconomics, energy, or analysis of non-market economies.
- \* Statisticians interested in applications to unusual problems.
- \* Computer Systems Analysts and Software Engineers interested in working on applications on the newest generation of IBM main frames.
- \* Knowledge Engineers interested in AI applications.
- \* Quantitative Political Scientists interested in applications to policy analysis.

We are looking for individuals at any degree level BS through PhD. Students expecting to graduate in June 1985 are especially encouraged to apply. Sign up in the Placement Office now.



### CENTRAL INTELLIGENCE AGENCY

The CIA is an Equal Opportunity Employer. US Citizenship required.

# opinion

## Editorial

### Faculty has got to Make a solid move

The faculty will vote tomorrow on a watered-down proposal to "change" MIT's admission policy. The original proposal represented an important change in the admissions process; the modified proposal, however, is simply an exercise in semantics, and its passage is irrelevant since it would have no impact on the admissions process.

At last month's faculty meeting, the Committee on Educational Policy submitted a proposal to modify the freshman admissions requirement. It would have changed the high school science requirement from one class each in physics and chemistry to two classes from either physics, chemistry or biology.

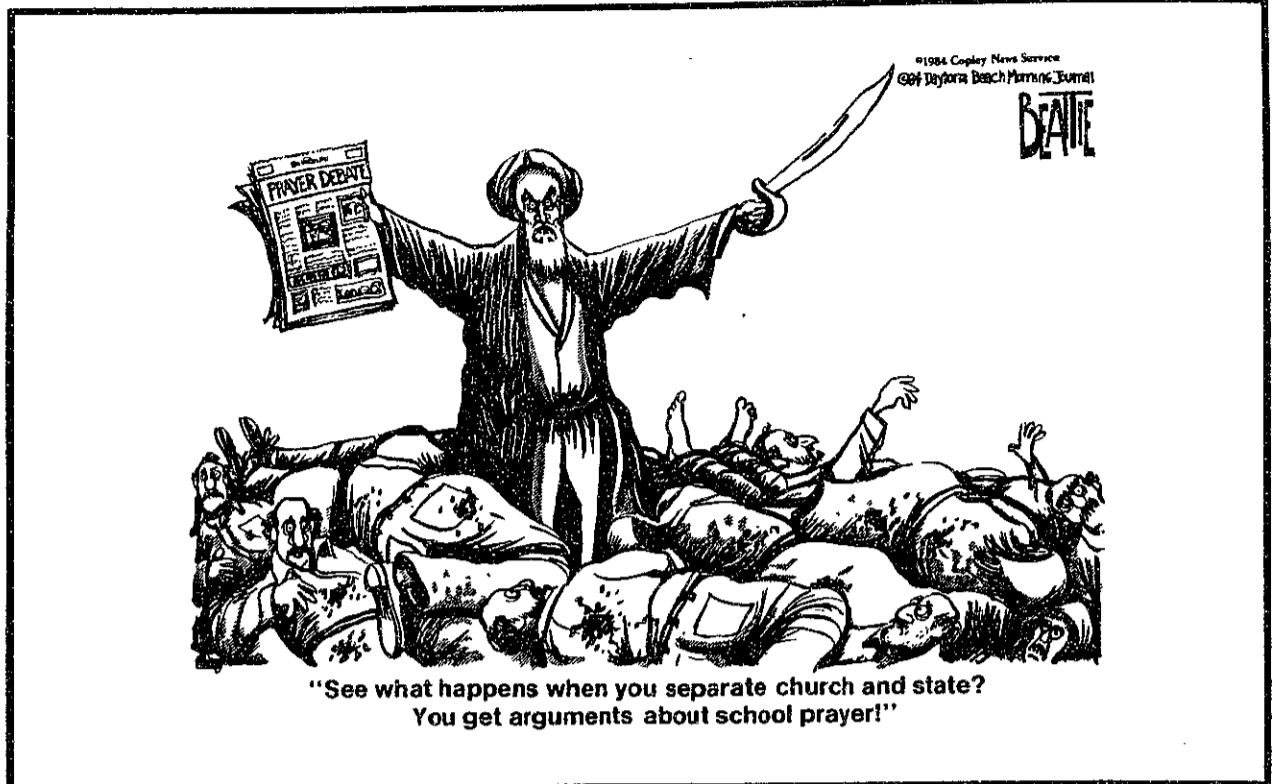
The CEP proposal was withdrawn because of strong objections by several faculty members and it was replaced with another proposal which would have simply changed the wording of the current policy. Under this new proposal, which the faculty will consider tomorrow, physics would still be required, but the policy would state that the admissions office should consider making exceptions for well qualified candidates lacking high school physics.

The motive behind the proposal — to broaden the applicant pool — is admirable, but the action itself is meaningless. If the faculty really wants to do something constructive about the admissions situation, it should have adopted the stronger changes in the original CEP proposal.

The faculty's failure to enact constructive changes is an alarming sign of its weakness. If the faculty can not take action to increase the applicant pool with a minor change in admission requirements, how will they be able to address bigger, broader questions concerning the nature of the MIT student body and changing patterns of departmental enrollment?

Modification of the admissions requirement is a minor issue when compared to the problem of obtaining a more balanced student body. Massive overenrollment in the Department of Electrical Engineering and Computer Science demonstrates the homogeneity of the current student body and the narrow atmosphere students face when they get to MIT. The faculty must directly confront overenrollment in Course VI. If the faculty can not act on a small issue like modifying admission requirements, how will they ever be able to decisively solve the bigger problem of overenrollment?

The faculty, more than any agent, is responsible for defining what MIT is and what it should be. The faculty must shed its inaction and define MIT's role and purpose. Recent events seem to indicate the faculty is reluctant to move in any direction. A stagnant faculty leads to a stagnated institute.



Column/Joseph J. Romm

### Go XV or XIV for big bucks

By now you must be saying "Who the hell is this guy, what does he know, and why does he keep putting words into my mouth?" And I say to you that I am a columnist for *The Tech*, and you are not, and my story will be told, so there!

Today's column will explain to you the mysteries of Course XIV — Economics — and Course XV — Management, two courses that are as different as night and dusk. Today we will tackle that age old question, if the rich get richer, and the poor get poorer, are the middle class in an unstable equilibrium?

You will doubtless be indifferent to learn that these are probably the last two courses I am going to crassly bunch to-

gether. Let me begin with Course XIV. All right, don't let me begin with Course XIV. See if I care. Actually, I wanted to start with Course XV all along because of its new SB program in Management Science.

The Management Science program has an Information Systems option, many of whose requirements can be satisfied by Course VI subjects, such as the infamous Structure and Interpretation of Computer Programs (6.001). The key Course XV subjects in this option emphasize the use of computers for aiding management in the "Information Age." The Course XV Information Systems option is for potential Course VI-3 majors who want to make a huge amount of

money working with computers and who have the foresight to realize that no matter how much they are interested in computers, they are likely to end up in management within five years of taking any computer-related job.

Perhaps this new option will have the beneficial side-effect of bringing more mainstream MIT students into Course XV so that the Sloan School of Management will lose its somewhat preppie image. Perhaps it will not. Perhaps I will get some letters from angry non-preppie Course XV majors. Nah.

"X" is particularly interested in the theory of management. He has a favorite non-sexist joke he tells. A French person, a Japanese person, and an American person are about to be shot by a firing squad and are granted a final request. The French person says, "I'd like to hear *La Marseillaise* one last time"; the Japanese person says, "I'd like to hear one more lecture on the art of Japanese management"; and the American person says, "I'd like to be shot first. I couldn't stand to hear another lecture about Japanese management."

MIT happens to have one of the finest economics departments in the entire country. And Course XIV at MIT is a great major: There are not many other MIT courses in which you can simultaneously satisfy your departmental requirements and your humanities concentration requirement. Even better, since no two economists ever agree on anything, if you major in economics, no one will ever know if you are a bold thinker or an incompetent boob. The supply-side theorists of the Reagan Administration are a prime example.

"Y" went into economics because she was very interested in personal finance. She said that all the women in Course XIV kept their money in high-yield money-market accounts because "girls just want to have funds."

Ms. Y is particularly concerned with the personal finances of those Americans below the poverty line. Needless to say she was not too pleased when Reagan became President. She once told me that the Reagan Administration had based its economic program on the idea that "two can starve as cheaply as one."

Ms. Y is the source of this column's Least Insignificant Bit of Education Learned (LIBEL). Here is the LIBEL of Ms. Y in Course XIV: After attending a seminar on Reagan's cutbacks in social welfare programs, Ms. Y said to me, "Did you know that

### feedback Supreme Court wrong in Christmas decision

To the Editor:

As reported in *The Tech* on March 5, the Supreme Court of the United States recently ruled in a 5-4 decision that "Christmas is a secular holiday as well as a religious one, and can be supported with public funds." Specifically the court ruled that the city of Pawtucket, Rhode Island had not acted in violation of the First Amendment separation of church and state when it financed a nativity scene on public land. I strongly disagree with the court's finding and would appreciate the opportunity to share my views with the MIT community.

In my opinion Christmas, celebrated by Christians around the world in commemoration of the birth of Jesus Christ, is most undeniably a religious observance. It may be argued that, while the holiday itself is nonsecular, there is nothing inherently "religious" about a tree, or a wreath, or pretty lights, or even a party. It would therefore follow that there is no conflict between church and state when the federal government erects a "National Christmas Tree." Thus, we have more or less kept quiet about this issue. Note, however, that the court's ruling has the effect of saying that a nativity scene is not a religious symbol. It is self-evident that this is an absurd statement. What symbol could possibly have more religious significance to a Christian than the depiction of the series of events which gave birth to Christianity, and indeed define it as a religion?

I suggest that Christians

should take offense at the court's attempt to belittle the significance of one of the most fundamental doctrines of their faith. What about people of other faiths, or people who deny the existence of a Supreme Being? I suggest that these people should see the court's ruling for what it is — a serious encroachment on their First Amendment rights. Why should a municipality, or a state, or the federal government be able to tax Joe Q. Jew or Joe Q. Moslem or Joe Q. American Indian — and then use his money to erect a nativity scene in the park across the street from his house?

For the record, I am a Jew. My grandparents came to this country, as did the founding fathers, to seek refuge from religious persecution. America was a land of opportunity and, more importantly, a land of freedom. I am proud of my American heritage, just as I am proud of my Jewish heritage. I believe in the lofty ideals which have served as the basis for our society. However, I view the recent decision of the Supreme Court as a fundamental attack on civil liberties. Indeed the ruling may be seen as part of a larger trend which has taken place at the hands of the Reagan administration.

I urge you to write to your congressman and senators. History, and indeed this particular case, proves that the nine members of the Supreme Court are not immune to the pressures of politics.

Neal G. Kavesh '84

(Please turn to page 5)

## The Tech

Volume 104, Number 11 Tuesday, March 20, 1984

Chairman ..... Martin Dickau '85  
 Editor in Chief..... Charles P. Brown '84  
 Managing Editor..... Scott I. Chase '85  
 Business Manager..... Paul G. Gabuzda '85

News Editors .....Janice M. Eisen '85  
 Thomas T. Huang '86  
 Ronald W. Norman '86  
 Ellen L. Spero '86

Night Editors .....Andrew S. Gerber '87  
 Gregory D. Troxel '87

Opinion Editor ..... Daniel J. Crean '85  
 Features Editor ..... Diana ben-Aaron '85  
 Photography Editors ..... P. Paul Hsu '86  
 Henry Wu '86

Advertising Manager ..... Robert W. O'Rourke '85  
 Contributing Editors ..... Burt S. Kaliski '84  
 John J. Ying '84  
 Drew Blakeman '85  
 Simson L. Garfinkel '85  
 Matthew W. Giamporcaro '85  
 Omar S. Valerio '85  
 V. Michael Bove G

Senior Editors ..... Keith I. Tognoni '84  
 Tony Zamparutti '84

Production Manager ..... Amy Gorin '84  
 Indexing Project Representative ..... A. David Boccuti '79  
 Advisor ..... Edwin Diamond

#### PRODUCTION STAFF FOR THIS ISSUE

Night Editor: ..... V. Michael Bove G  
 Staff: Kenneth J. Snow '82, Scott I. Chase '85, Simson L. Garfinkel '85, Carl A. LaCombe '86, Ronald E. Becker '87, Hal Cohen '87, Kathleen M. O'Connell '87, Gregory D. Troxel '87.

The Tech (ISSN 0148-5607) is published twice weekly during the academic year (except during MIT vacations), weekly during January, and tri-weekly during the summer for \$12.00 per year Third Class by The Tech, 84 Massachusetts Ave., Room W20-483, Cambridge, MA 02139. Third Class postage paid at Boston, MA. Non-Profit Org. Per. No. 59720. POSTMASTER: Please send all address changes to our mailing address: The Tech, PO Box 29, MIT Branch, Cambridge, MA 02139. Telephone: (617) 253-1541. Advertising, subscription, and typesetting rates available. Entire contents © 1984 The Tech. Printed by Charles River Publishing, Inc.

# opinion

## Money is the root of all evil

(Continued from page 4)  
the Reagan Administration is now claiming that dead people are really sick people trying to get extra benefits?"

Ms. Y was a nice person, except for one small problem. She was always giving people unsolicited advice on how they could improve themselves. She felt very

strongly about giving free advice, mumbling something about how the only way she could guarantee that advice would always be free was by making sure there was an infinite supply.

Courses XIV and XV are for learning macroeconomics and microeconomics, statistics and econometrics, management, busi-

ness, information systems, learning why the love of money is the root of all evil, why the best things in life are two-for-one, and why, if you lined up all the economists in the world, they still wouldn't reach a conclusion.

Stay turned for Course XVI and why the defense budget is so large.

## feedback

### One afternoon at the Dean's office

To the Editor:  
*Food for thought*

2:00 . . . I'm actually on time for my appointment with Dean Randolph. Have to talk about getting myself back into MIT this fall to finish up my degree after a year long required vacation. Most important thing in my life right now . . .

There is a middle aged couple in the waiting area. Dean Randolph comes in. After telling me he'd see me in a minute, he shows the couple into his office. I guess he's running late. No biggie. I'm always psyched for a good excuse to relax in the middle of a busy day.

2:04 . . . Pick Up Time. Start reading about Ronnie Raygun and his deficit. A little bit remote, but it's still pretty important to me . . . I'm definitely voting Democratic this year!

2:15 . . . Who is this couple I'm waiting for? Probably the parents of a student who doesn't like to study. They do remind me of

my parents in that respect. They seemed concerned — worried maybe? — I read that much in their faces, when I came in . . .

2:17 . . . Back to the deficit . . . \$180 billion is it? I can't believe Ronnie won't give in on his defense expenditures! He cuts back on what I feel is important and runs up this deficit! I guess I'm running up a deficit myself, but what is more important, the phone bill or the stomach? . . .

2:20 . . . Actually, they are not quite like my parents. I always dealt with my Dean-related problems myself. Must be that I'm more independent than some. Haven't done so well at it in the past, maybe . . .

2:22 . . . I should have finished the job I was doing in the machine shop! It's pretty important to me that the machinist doesn't get bummed at me for leaving a mess . . .

2:25 . . . Finally, it's my turn! The parents still have that emotion on their faces when they

come out. I can feel for those parents — they are a lot like mine, after all. Real down-to-earth. The husband tells me to go in. Seems like a nice enough guy. Just like my father . . . God, what I've put my parents through!

2:26 . . . It's all crystal clear, now. I was wrong about a few things. That student was, in fact, a good student and those parents are exactly like mine — two loving human beings.

Dean Randolph apologizes and thanks me for waiting. He explains that it was their son who died recently in the nitrous oxide incident.

2:30 . . . My business is finished quickly. The parents are still in the waiting area. I was wrong about another thing. The most important thing in life is life itself. I read that much on their faces when I went out.

Michael J. Kohlbrenner '85

# MIDNITE MOVIES ARE BACK

- Conan the Barbarian .....Mar. 24 (Sala)
- The Shining (Jack Nicholson)....Mar. 31 (Lobdell)
- A Clockwork Orange .....Apr. 14 (Sala)
- Enter the Dragon (Bruce Lee)...Apr. 28 (Lobdell)
- Educating Rita (Michael Cain) ...May 12 (Lobdell)

**Saturdays, Midnight**  
**Second floor of the Student Center**  
**bring a blanket and sit on the floor**  
**MIT/Wellesley ID required**

**Free Admission!**  
**PRESENTED BY SCC AND GSC**

## FOCUS ON YOUR FUTURE



### Electromagnetics Research at Northeastern

#### Probing the Outer Limits of the Universe

Satellites are exploring the far reaches of the solar system—photographing the moons of Jupiter, measuring the rings of Saturn, and searching for traces of extraterrestrial life.

Scientists in electromagnetics research not only interpret these discoveries but also assist in developing the instrumentation that makes these discoveries possible.

Outer space is only one of the areas in which electromagnetic effects play an important role. Other examples include: oil exploration, underwater and optical communication, and integrated-circuit fabrication.

#### Electromagnetics Research—the Career of the Twenty-first Century

Today there is a shortage of electromagnetics engineers—a trend that will continue until the end of the century.

If you are an undergraduate electrical engineering, mechanical engineering, physics, or mathematics major, you have a chance to be ahead of your time. A career in electromagnetics will put you in a position to be on the leading edge of the profession.

#### Center for Electromagnetics Research at Northeastern University

Northeastern University plans to open a Center for Electromagnetics Research in September—the first of its kind at a university. Students may enroll in advanced degree programs in the electrical or mechanical engineering departments. Fellowship funding is available to qualified applicants.

#### Advantages of University—Industry Collaboration

The Center represents a collaboration between the University and industry on research areas of common interest. As a graduate student in the program, you will participate in the basic research projects of the Center. You may also receive hands-on, industry-relevant, paid work experience in the labs of affiliated firms. The program provides opportunity for a career either in teaching and research, or to move right into an entry or advanced-level position in industry.

THE MAJOR RESEARCH OF THE CENTER IS IN THE FOLLOWING FOUR GENERAL AREAS:

- Radio-Frequency Phenomena and Systems
- Electro-optics
- Electrical Discharge Phenomena
- Computational Analysis for E-M Applications

COURSES IN SUPPORT OF THESE AREAS INCLUDE:

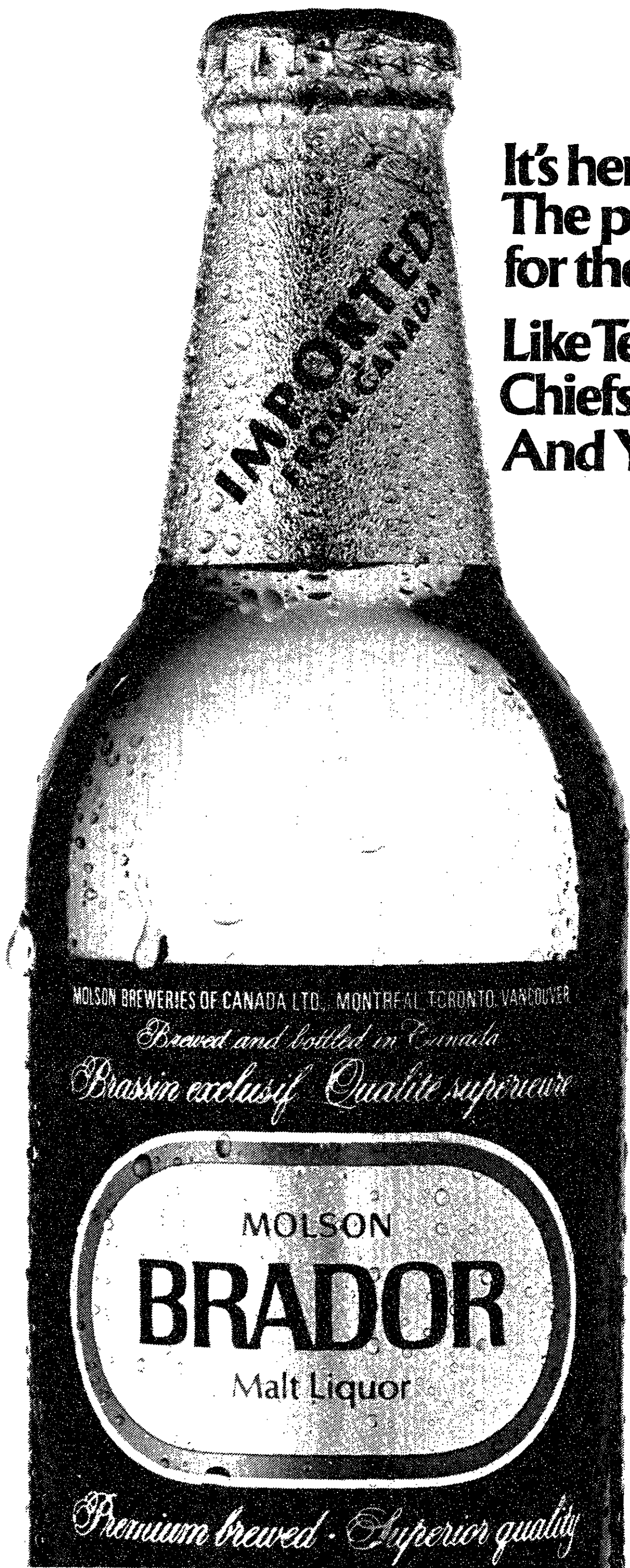
- Plasma Theory and Engineering
- Lasers
- Acoustics
- Solid-state Devices
- Radar and Communications Systems
- Microwave Engineering
- Remote Sensing
- Antenna Theory and Design
- Optical Properties of Matter
- Electro-optics Theory and Devices

FOR FURTHER INFORMATION, CALL 617-437-5110, OR FILL OUT THE COUPON.

Name \_\_\_\_\_ State \_\_\_\_\_  
Address \_\_\_\_\_ City \_\_\_\_\_  
ZIP Code \_\_\_\_\_

Return this coupon to:  
Professor Michael B. Silevitch  
Director, Center for Electromagnetics Research  
Department of Electrical and Computer Engineering  
Northeastern University  
Boston, MA 02115

Northeastern University is an equal opportunity/affirmative action educational institution and employer. N.U.P. 1.25 4a



**It's here:  
The premium taste  
for the premium species.**

**Like Terriers, Huskies, Eagles,  
Chiefs, Jumbos, Beavers.  
And Yard Varieties.**

**Brador.  
Everything you've  
heard about it  
is true.**

# opinion

Column/Ron Bloom

## School prayer amendment a bad move

There has been considerable action and debate in Congress this past week on a proposed constitutional amendment allowing prayer in public schools. Such an amendment stands a better chance of passing now than it has at any time in the past decade.

Ever since a series of Supreme Court decisions in 1962 and 1963 prohibited organized religious activities in public schools there have been attempts to circumvent those decisions. The most recent attempt is this proposed constitutional amendment which is loudly supported by President Ronald W. Reagan, various evangelical groups, and a large number of congressional conservatives.

Some of these congressmen are responding to polls which consistently show about 75 percent of the American public support voluntary school prayer. However, the use of the word "voluntary" is deceptive. No amendment for "voluntary" prayer is needed because true voluntary school prayer already exists.

The Supreme Court has specifically allowed students to pray or meditate in school, as long as the worship is not organized. Right now, students are free to pray whenever they want — before lunch, at the end of the day, or before a math test. This is true voluntary prayer. The label of "voluntary" on recent school prayer laws and amendments does not disguise the measures from what they are — officially sanctioned attempts to force religion into the schools at the expense of religious minorities.

Even if 99 percent of the American people favored some type of school prayer, the Constitution should protect the other one percent against that type of pressure. As much as the United States is a country of rule by majority, it is also a country with strong constitutional protection for the minorities against the transient whims of that majority.

The complete text of the compromise constitutional amendment proposed by Senate Majority

Leader Howard Baker reads:

*Nothing in this Constitution shall be construed to prohibit individual group, vocal or silent prayer in public schools or other public institutions. No person shall be required by the United States or by any state to participate in prayer. Neither the United States nor any state shall compose or mandate the words of any prayer to be said in public schools.*

If Congress passes the amendment and the states add their approval, the specifics of implementing school prayer will be left to individual schools. This does not protect the concept of school prayer from problems. In fact, the implementation itself is rife with problems.

If 29 out of 30 in the classroom are Lutherans, one can expect prayers in the room to be Lutheran prayers at least 29 out of 30 times. Is this fair to the lone Jew, Muslim, or even Congregationalist? That he can excuse himself is little consolation. Every child is entitled to attend public school without any pressure because of his or her religious faith or lack thereof.

The overall effect could be harmful. What better way to highlight differences and divide relatively prejudice-free schoolchildren along religious lines than by instituting "voluntary" school prayer?

As insidious as the potential for sectarian divisions is, the possibility of discrimination or derision based on those divisions is even worse. Children excusing themselves from prayer could be exposed to questions, taunts, and ridicule. Peer pressure is very strong among school children. Minorities might become outcasts or be forced to pray to the tune of another religion.

Ironically, it has been the leaders of some religious groups who have been at the forefront of the fight against school prayer. They realize the importance of separa-

tion of church and state and the protection of religious diversity. They also point out that any prayers designed to be non-denominational would necessarily be so general as to be trivial. Such prayers would be worse than no prayers at all.

The conclusion is obvious: children should not be taught to pray in school. The place for learning about religion is the

church or the home, not a public institution.

The government should not be in the position of sanctioning school prayer, even indirectly. It should instead stick to the practice of protecting minority rights, in this case the rights of the minority Jew, Buddhist, atheist, or Christian. One only need look around the world to see conflicts between groups divided along re-

ligious lines. The peaceful coexistence of many diverse religions in the United States has made our country the envy of the world.

Because "voluntary" school prayer would highlight religious differences and expose students to pressure because of their faith, the proposed amendment replacing individual voluntary school prayer with group "voluntary" prayer should be rejected.

## Applications For Today. Research For The Future.

SRI International is a non-profit research, development and consulting organization located on the San Francisco Peninsula. The Engineering Research Group at SRI is engaged in significant work that includes creating new technologies as well as the application of existing state-of-the-art in unique situations. Our approach to research is highly interactive utilizing teams and individual contributions of excellence to produce original results. Projects range from research studies to developmental engineering design, fabrication, field test and systems analysis programs.

- Analog and Digital Development
- Artificial Intelligence • Bioengineering Instrumentation • C/I
- Telecommunications Systems Engineering • Electromagnetics
- Electro-Optical System Design
- ESM, ECM, ECCM • Laser and Passive Remote Sensing • Packet Switched Networks • Radar Systems
- Signal Processing • Systems Programming • Systems Analysis
- Systems Engineering • Test Range Instrumentation • UNIX\*
- System Development • Computer Graphics • Speech Recognition Systems • Foreign Technology Assessment • Machine Vision Systems • Software Engineering.

SRI will conduct ON CAMPUS INTERVIEWS, Monday, APRIL 2. To be included on our schedule, please sign up at the MIT Office of Career Services & Pre-Professional Advising, Room 12-170.

If you miss us on campus, please send resume to Michael Patrick, Professional Staffing, Dept. 4/2, Room EL 102, SRI INTERNATIONAL, 333 Ravenswood Ave., Menlo Park, CA 94025. An equal opportunity employer. U.S. CITIZENSHIP REQUIRED.

\*UNIX is a trademark of AT&T Bell Laboratories.



**Editorials**, marked as such and printed in a distinctive format, represent the official opinion of *The Tech*. They are written by the Editorial Board, which consists of the chairman, editor in chief, managing editor, executive editor, and news editors.

**Columns** are usually written by members of *The Tech* staff and represent the opinion of the author, and not necessarily that of the newspaper.

**Letters to the Editor** are written by members of the MIT community and represent the opinion of the writer.

## AWARDS NOMINATIONS

### Stewart Awards

The William L. Stewart Awards are given to students in recognition of a single, outstanding contribution to a particular activity or event.

### Laya Wiesner Award

The Laya W. Wiesner Award is presented to an undergraduate woman student who has most enhanced MIT community life.

### Compton Prizes

The Karl Taylor Compton Awards are the highest awards given to students by the Institute community and reflect the belief that real excellence and devotion to the welfare of the MIT community in any area, with emphasis on lasting or sustained contributions to the MIT community, as a whole, should be recognized.

### Irwin Sizer Award

The Irwin Sizer Award is presented to any member or group in the Institute community to honor significant innovations and improvements to MIT education.

### Albert G. Hill Prize

The Albert G. Hill Prize is awarded to minority students who have demonstrated high academic achievement and made continued contributions to the quality of life for minorities at MIT.

### Murphy Award

The James N. Murphy Award is given to an institute employee whose spirit and loyalty exemplify inspired and dedicated service, especially with regard to students.

### Edward L. Horton Award

The Edward L. Horton Fellowship Award will be presented to any student group that fosters fellowship within the graduate community.

Send nominations to the Awards Committee, Room 7-133

Deadline Date: April 6

You've  
chosen  
MIT - the  
best engineering  
school

Learn to fly  
at Patriot...  
the best flight  
school



Arthur Teager, President  
Patriot Aviation

# PATRIOT AVIATION

The FASTEST Growing Flight School in the Rugged Northeast

## PATRIOT AVIATION GUARANTEED PILOT COURSE

Hi...I'm Art Teager...

MIT Class of '48 and '49



**Come and enjoy the fun of flying with us**  
**Enjoy a new kind of freedom**

Experience the thrill and excitement of soaring with the eagles. Join the Patriot Family of safe, confident pilots. As a Patriot pilot, you will be part of a special group of people who have gained a new perspective, soared to new heights and gained new friends.

You'll join the Patriot Fraternity of safe, confident pilots and see the world through different eyes. We can help you conquer your fear, so that you too can enjoy this wondrous world of beauty.

Join our Patriot Family and earn your Patriot Wings. Come and enjoy the *Fun of Flying* with us. Flying is really a lot of fun. We help conquer your fear by using only the *BEST NEW PLANES, BEST FLIGHT INSTRUCTORS, BEST CESSNA (F.A.A. APPROVED) PROGRAM* with *UNLIMITED FLIGHT HOURS* and *UNLIMITED GROUND SCHOOL* under our unique 2-3-2 program, all at a *GUARANTEED PRICE (NO SHORT CUTS)*.

We train only in NEW Cessna 152 aircraft, the world's most forgiving trainer. You'll train at safe Hanscom Field with a control tower and long, wide runways. You'll receive the full ground course as part of the "Patriot Guaranteed" one-on-one program. You'll receive everything needed to earn your private pilot's license and Patriot Flying Wings.

PATRIOT AVIATION is the only flight school in this area to offer an all-inclusive flight training program using new equipment at a guaranteed price. In just 14 short weeks, you can join our Patriot Family of safe, confident pilots. Patriot is open 7 days a week with hours to fit your schedule. PATRIOT AVIATION IS SIMPLY THE SAFEST AND THE BEST.

### TAKE 5 EASY STEPS AND BECOME A PATRIOT PILOT

- |   |  |  |  |                         |
|---|--|--|--|-------------------------|
| <b>1</b> PHONE 274-6500<br>FOR APPOINTMENT<br>FREE 1/2 HOUR TOUR<br>(NO OBLIGATION) | <b>2</b> COME SEE<br>OUR SCHOOL<br>& EQUIPMENT | <b>3</b> SIGN-UP<br>GET YOUR FREE<br>FLYING-RED-CASE<br>COMPLETE WITH LOGBOOK<br>(AND EVERYTHING NEEDED) | <b>4</b> START FLYING<br>UNLIMITED HOURS | <b>5</b> GET YOUR WINGS |
|---|--|--|--|-------------------------|

Come Join The Patriot Family. . .

**BEST** flight instructors  
**BEST** new planes, and  
**BEST** program. All at a  
**GUARANTEED PRICE\*** with  
**UNLIMITED** flight hours and  
**UNLIMITED** ground school  
under our unique 2-3-2 program.

- ONLY PATRIOT**
- uses new aircraft.
  - has all individual one on one instruction.
  - is open 7 days a week.
  - has flexible hours to fly your schedule.
  - offers a guaranteed program and price.
  - has the best instructors-all full time-all C.F.I.I.'s.
  - has a full time FAA examiner on the staff.

\* You'll learn everything needed

**We Care About Our  
Patriot Family**

NOW IS  
THE BEST  
TIME TO LEARN  
TO FLY



HANSCOM  
FIELD'S  
ONLY



FACTORY AUTHORIZED  
CESSNA MOONEY DEALER  
FLIGHT SCHOOL PARTS SERVICE  
FAA APPROVED COURSES  
FAA LICENSE A&P MECHANIC

Call Us at **274-6500**

**PATRIOT AVIATION CORP.**  
3RD FLOOR, CIVIL AIR BUILDING, HANSCOM FIELD,  
(ROUTE 128 & 2A), BEDFORD, MASSACHUSETTS 01730

**feedback**

**Kampf "flaunted ignorance"**

To the Editor:

It is always embarrassing for me when a member of the MIT faculty insists on flaunting his ignorance in a letter to *The Tech*. Such was the case with Professor Louis Kampf's letter in the March 13 edition, which was purportedly an attempt to clarify a misunderstanding about his use of the Yiddish word "schvartze."

Kampf, and others who claim to be seeking a peaceful solution to the Middle East conflict by supporting "even-handedness," bear the burden of demonstrating that their intentions actually are peaceful. The reason is as follows: There can be no solution to the conflict that does not resolve the status of the Palestinian refugees. The Palestine Liberation Organization and every Arab state denounce as treasonous any suggestion that they be permanently resettled in the countries where they currently reside. They

similarly reject the possibility that the refugees might be settled on the West Bank or in Gaza by claiming that those areas could not support the hundred thousand or so Jews the Likud government want to settle there. If those territories cannot support a hundred thousand Jews, how could they possibly support the three million Palestinians who claim to be displaced? If the refugees are not to be settled in other Arab countries and cannot be settled on the West Bank or in Gaza, is there some serious alternative other than that they are to displace the Jews in pre-1967 Israel? Since the PLO continues to be committed to exactly that solution, despite the pleas of the United States for some token of flexibility, and relies on that promise to retain the loyalty of its fighters and the donations of the Arab states, individuals who are sincerely interested in a peaceful solution ought to be pressing the Arab side for a fundamental change in its position on the resolution of the refugee issue. Yet the "peace" events that Kampf claims the Zionist Alliance harasses usually denounce resettlement

of the refugees, preferring instead to demand ever more concessions from Israel. The people who take part in these events, often sponsored by Arab governments or the oil companies, go to great lengths to vilify Egyptian President Anwar Sadat, the one Arab leader who has recognized that the principal problem in the Middle East has always been Arab unwillingness to acknowledge that Jews have rights.

That brings me to Jesse Jackson and the reaction among Jews to his candidacy for President. If Jackson understands his own position on the Middle East, then he must know that he is endorsing an Arab plan for the piecemeal destruction of Israel. No one who believes that Jews should have individual and collective civil and political rights could take such a position, while those who think Jews should not have the rights claimed by other peoples are simply racist. If Jackson does not understand what he is saying, clearly he should not be president. In either case, strong opposition from Jews and others opposed to racism is appropriate.

Yale M. Zussman G

**Hope absent in "shut up"**

To the Editor:

Most people will accept that a problem perceived is a problem in fact. That problem may need to be defined. It may never be mutually understood, but defined or not, understood or not, it is a problem if some one perceives it as one.

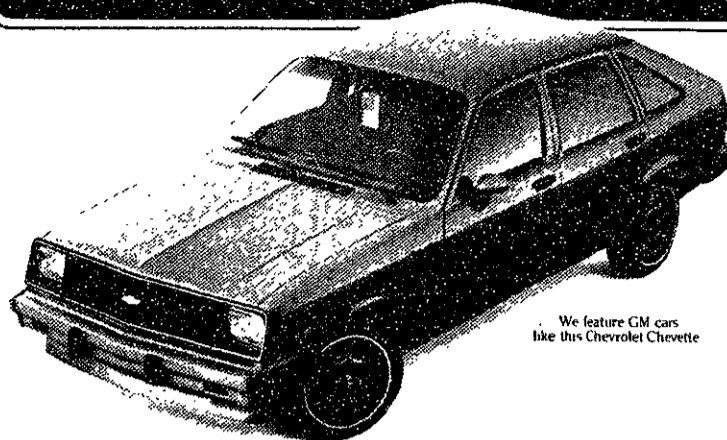
A piece on the subject of oversensitivity [Column/Charles P. Brown, *The Tech*, March 13] is fine. But using that topic to express a point of view on specific sets of circumstances and then labelling as stupid those who see problems is discouraging to reasoned discussion. I am reminded of the father, answering an intricate question put to him by his young son: "Shut up," he explained.

The dehumanization of black people is an historical fact and its spectre lives. The brutalization of women is undeniable and its linkage to pornography is a well-developed theory. Both are problems for me. I am neither black nor female. I care about people and do not believe every issue need be instantly reduced to the question of who has what rights. What about responsibility? Black people, female people, and other people should be able to get a sensitive response and protection, if needed, on a university campus.

"Pornography dispute is foolish and unwanted" reads your headline. But identifying problems publicly and publicly discussing them is really pretty much what newspapers are about. Newspapers are powerful institutions. I think the powerful should reserve judgement, should take the side of the subdominant as issues are weighed. There are voices in our community and around the world needing amplification to be heard. I think those voices may express hope for us all.

There is no hope in "shut up."  
Daniel T. Langdale  
Associate Director of Admissions

**National Car Rental**



We feature GM cars like this Chevrolet Chevette

**SPRING BREAK RATE**

**\$159<sup>00</sup>**  
**PER WEEK**

UNLIMITED FREE MILEAGE

Make your break for less. If you're 18 or older, your current student I.D., valid driver's license and cash deposit are all you need to rent from us. Call or stop by to complete a qualification form. We also accept most major credit cards. You pay for gas and return the car to the renting location.

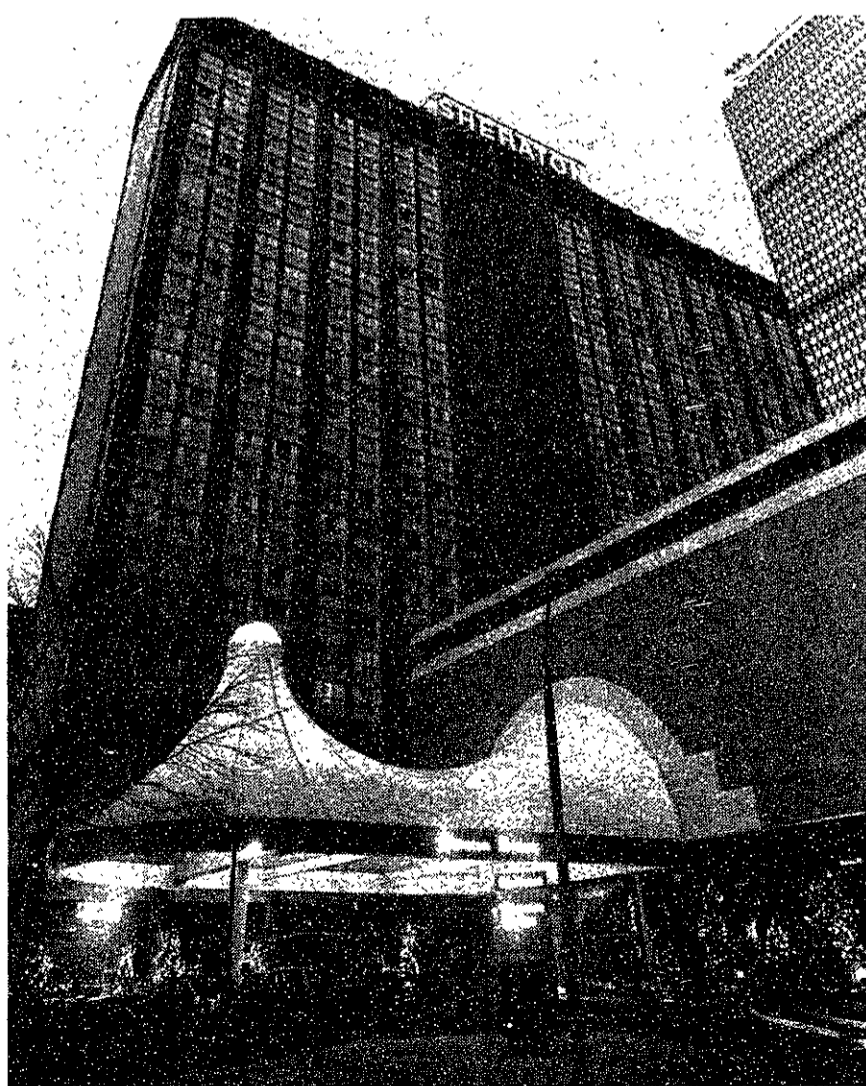
Non-discriminatory rate applies to this or similar size car and is subject to change without notice. Specific cars subject to availability.

183 Dartmouth St.-Boston 426-6830  
1663 Massachusetts Ave.-Cambridge 661-8747  
936 Main St.-Woburn 935-1806

**SHERATON-BOSTON HOTEL WELCOMES FAMILIES AND FRIENDS OF M.I.T.'S CLASS OF '84 DURING COMMENCEMENT.**

**FOR M.I.T. WEEKEND RATE OF \$69.90  
CALL 617-236-2020  
FOR AVAILABILITY AND RESERVATIONS.\***

*\* rate applies to nights of June 1, 2, & 3, 1984 for up to 4 persons in a room. Special group rate of \$86.00 for additional nights.*



**FACILITIES INCLUDE:**

- Boston's only indoor/outdoor pool
- Ideal location - proximity to M.I.T. and downtown Boston
- Excellent accommodations
- 8 restaurants and lounges including renowned 4-star Apley's Restaurant.



**Sheraton Boston Hotel & Towers**

SHERATON HOTELS, INNS & RESORTS WORLDWIDE  
PRUDENTIAL CENTER, BOSTON, MASSACHUSETTS 02199 • (617) 236-2000

**NEW**  
**Pocket Drafter**  
COMPREHENSIVE DRAWING TEMPLATES  
Designed especially for technical drafting and engineering students.  
Available at MIT Coop only.  
MIT COOP

# IFC elects chairman

By Mark Caylor

The Interfraternity Conference elected William T. Maimone '84 as its chairman Thursday at a meeting held at Delta Upsilon.

Maimone defeated Joseph H. Solano '84 in a secret ballot and will succeed John F. Piotti '83.

"There are a lot of good officers this year," Maimone said. One of the conference's most positive aspects is its enthusiasm, he added. "Many people want to get involved."

The conference is well-represented by a wide variety of houses this year, Maimone said. He noted representatives from 19 houses were nominated for offices, and of the eleven officers elected, only two are from the same house.

There are no major problems which the conference cannot deal with easily, according to Maimone. Maimone would not elaborate on the problems the IFC faces.

The conference's effectiveness

is due to "the perception among the members that there are real things to be done," he said. The conference does not have to "look for things to do."

### Schmitter new rush chairman

The conference elected Thomas A. Schmitter '86 as rush chairman. He said the group effectively "serves its purpose as a representative of independent living groups to the administration and the community."

The Neighborhood Association of the Back Bay allows a conference representative to serve as a voting member in its organization. A national fraternal association named the MIT's Interfraternity Conference as the best in the Northeast, he said.

Community relations and the problems surrounding the closing of the Harvard Bridge are the major issues facing the conference this year, Schmitter said.

Other officers elected at the meeting were: Lynn F. Harth '85, vice chairman; James M. Prusko

'86, secretary; Tinley Anderson '87, treasurer; David Kravitz '85, Judicial Committee chairman; Michael E. Flanagan '85, purchasing manager; Daniel E. Schmauch '86, community relations chairman; Brook R. Sullivan '85, financial manager; Felicia A. Duran '85, program chairman; and Kevin A. Przybocki '86, alumni chairman.

Maimone said the conference will hold more elections next week to determine the members of the Judicial Committee.



**Birth defects are forever. Unless you help. March of Dimes**

This space donated by The Tech

## notices

### Tuesday, March 20

Program for women in political and governmental careers, open house, Boston College Law School Campus, Barat House, 885 Centre St., Newton. 7:30 pm. Wine and cheese, and slide presentation. For more info, call 552-4435.

### Wed., March 21

Preston Williams, Professor of Theology at Harvard Divinity School, will speak on "Will Black Unions Transform South Africa?" at the Cambridge Forum, at 8 pm. 3 Church St., Harvard Square. Free

Mel King will be speaking on the recently delivered "Kissinger Commission Report on Central America." The lecture will take place at the George Sherman Student Union Small Ballroom, 775 Commonwealth Avenue, on the second floor at 7:30n pm.

### Thursday, March 22

Guided group tour of outstanding photographic exhibit "In the Land of Light: Israel, a Portrait

of its People" by Rodney Smith, at Pucker Safray Gallery, 171 Newbury St. Meet at Gallery at 1:45. Free. Call 267-3600 for reservations and details.

A lecture on The Effect of Reproduction Technologies on Intellectual Property to be held in the Marlbar Lounge, Building 37-252, MIT, 70 Vassar St., Cambridge, at 4-6 pm.

### Saturday, March 24

A benefit contra dance for the jobs with peace campaign and the disarmament/peace conversion program of the American Friends Service Committee to be held at 7:30 pm. 7 Temple St., Cambridge. \$4 donation. For more info or to arrange for child care, call 451-3389.

### Sunday, March 25

The Zionist Federation's Young Leadership group is sponsoring a Post-Purim Israeli Cabaret featuring Rita Falbel and Moshe Ma'oz at Stitches, 969 Commonwealth Avenue, Brighton. Call its office 267-2235 or Steve Lewis 527-2456, for more info. Volunteers needed.

## Libby and Scheidler plan to discuss Hope

(Continued from page 1)

has been working as Hope's temporary replacement since November.

She said the staff members have helped her cope with the pressures she has encountered. "They are wonderful. There is a lot of pressure here — it's a very high stress environment — [but] there is an atmosphere of genuine concern," she continued.

Ward said she has not seen resentment toward her as Hope's temporary replacement. "The students have been extremely helpful, and have assisted in every way that I have asked," she said.

Ward said she will be sorry to leave MIT when a permanent replacement is found. "Although I did not come here with any expectations that have not been realized, it is so hard to find a

working environment like this. It has really been such a positive experience."

Her replacement, said Ward, "should understand the many things pulling on students here, and that often the counselling deans can help just by being there. The dean must be able to and willing to listen to students, and able to work with others. There is a lot to learn — such as financial aid and admissions — but if you ask questions here, they will be answered."

She said she hopes that her replacement will be accepted in the same way she was. "I hope that the MIT students will be as warm in their welcome of the new dean as they were with me, and I hope that some of the obviously intense feelings felt for the past dean will be shown for the new one."

### GRADUATING SOON?

## You're Needed All Over the World.

Ask Peace Corps volunteers why their ingenuity and flexibility are as vital as their degrees. They'll tell you they are helping the world's poorest peoples attain self sufficiency in the areas of food production, energy conservation, education, economic development and health services. And they'll tell you about the rewards of hands on career experience overseas. They'll tell you it's the roughest job you'll ever love.

## PEACE CORPS

INTERVIEWS WILL BE CONDUCTED MARCH 22, FROM 9:00 TO 4:00 IN BUILDING 12, Room 170, STUDENT CAREER SERVICES.

CALL 253-4733 for info.

## CELEBRATE SPRING BREAK '84

in Ft. Lauderdale at



10 am to 6 pm POOLSIDE PARTIES

LIVE D.J. EMCEEING POOLSIDE CONTESTS • FREE BEER CHUG RELAYS  
FREE T-SHIRT RELAYS • THE BELLIFLOP CONTEST • COPPERTONE  
LIMBO CONTEST AND CLIMAX THE DAY WITH ... THE WETTEST.  
WET T-SHIRT CONTEST FEATURED IN PLAYBOY MAGAZINE  
CASH PRIZES • FREE T-SHIRTS • AND OTHER GIVEAWAYS

7 pm to 8 pm COLLEGE HAPPY HOUR  
**M.I.T. March 28, 1984**

FREE ADMISSION FOR ABOVE COLLEGE STUDENTS ON THIS DATE  
BETWEEN 7 O'CLOCK AND 8 O'CLOCK WITH PROPER COLLEGE I.D.

ALL BAR DRINKS AND DRAFT BEER - 50¢  
COMPETE IN THE BEER CHUGGING CONTEST FOR TROPHIES, PRIZES

### EVENINGS

SUMMERS on the beach presents...

FT. LAUDERDALE'S FINEST ROCK 'N ROLL BAND NIGHTLY PLUS OUR  
INTERNATIONALLY ACCLAIMED D.J. SPINNING THE BEST DANCE  
MUSIC AND ALL DAY, ALL NIGHT MUSIC VIDEO.

CLIP AND SAVE M.I.T. March 28, 1984

### NIGHTLY EVENTS

MONDAY: Dance Contest Prizes and giveaways

TUESDAY and FRIDAY: "Best Buns on the Beach" Contest Hosted by Playboy Magazine \$175.00 Cash Prizes

WEDNESDAY: Special Events Night Check Weekly Calendar

SATURDAY: Come and Party till 3 AM!

THURSDAY: Look for National Concert Acts

SUNDAY: Video Music Night Dance to our wide screen video and special effects light show between band sets.

ONE FREE BAR DRINK OR DRAFT GOOD FROM 7-8 PM NIGHTLY (Limit one per customer)

SUMMERS on the beach • 218 S. Atlantic Blvd., Ft. Lauderdale, Florida 33316 • (305) 462-8978 (Located one-half block North of Las Olas Blvd. on A1A)

## SPRING BREAK '84

## ENJOY SPRING BREAK BUT... REMEMBER MONDAY, APRIL 2nd.

Reserve your cap and gown on Monday, April 2nd. Simply bring a refundable \$5 cash or check deposit to the General Cashier's Office, Tech Coop location.

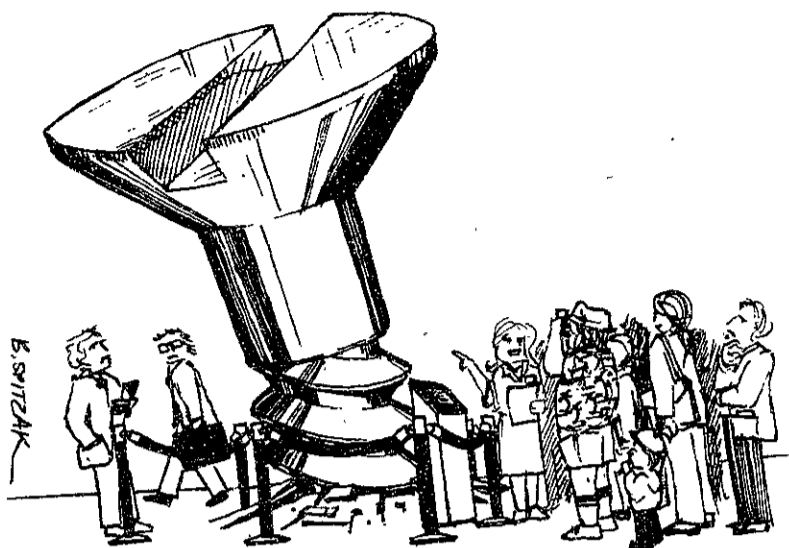
Bachelor Cap and Gown  
Master's Cap and Gown  
Doctoral Cap and Gown

Fee \$13  
Fee \$14  
Fee \$15

HARVARD COOPERATIVE SOCIETY **the Coop**

Feature

# Big Screw started at MIT in 1967



**By Diana ben-Aaron**  
The Big Screw contest began in 1967, when MIT's Alpha Chi chapter of the Alpha Phi Omega National Service Fraternity decided to "go out on a limb" and replace their Spring Carnival Queen Contest with one "to award a four-foot long, left-handed wood screw to the most deserving faculty member."

After the members of the APO chapter approved the idea, they met with one of their advisors, President Howard Johnson. "He thought the idea was great as long as it was kept tongue-in-cheek," according to the Alpha Phi Omega records.

"We are not a vicious organization," said Laura Daly '86, chairman of Big Screw 1984; she plans to preserve the tongue-in-cheek spirit of the contest. "If there is too much backbiting, it becomes difficult for us to justify running it," Daly said.

50,000 votes were cast for over 100 men and women in the first contest, including over 15,000 for the 61 instructors in the Department of Mathematics, over 10,000 for the 88 physics instructors, and over 5000, mostly from women, for the Dean of Women Students.

"From everywhere on campus, people will converge on Rockwell Cage for a Lunar Excursion, a night of fun, and the amusement as some lucky professor attempts to explain a 4-foot, left-handed wood screw to his wife," *The Tech* wrote before the first Big Screw awards ceremony.

The "lucky professor" was Professor Arthur P. Mattuck, who used his screw as a pointer in lecturing freshman mathemat-

ics and still keeps it on his desk.

In 1975, Alpha Phi Omega began circulating a single screw from one year's winner to the next instead of giving out individual awards. The present screw is a 2½ foot long left-handed aluminum helix with the names of winners from 1975 to 1983 engraved on it.

Money may be donated to Big Screw in the names of individual Institute employees, groups, and departments. All proceeds from the contest go to a charity selected by the winner.

Last year's winner, Professor Gerald J. Sussman '68, said at the awards ceremony at the All-Tech Sing that he had planned to donate the funds collected in his name to the Harvard Computer Science Department, but changed his mind and earmarked the money for a Boston adult literacy program.

*the more things change . . .*

**From *The Tech*, Thursday, March 19, 1914:**

A notable instance of lack of system comes from the Freshman Class, which seems to have several mutually exclusive committees for each piece of work. One vetoes the actions of the other, which immediately takes great pains to reciprocate. Something of this nature took place with regard to the baseball manager-ship, and now a similar situation seems to exist in the announcements concerning the "Prom" or "Glee" (according to which committee is speaking) which the class is planning. They take turns

contradicting each other's statements and blaming *The Tech* for having printed them. We request hereafter all information given us for publication be accompanied by sworn statements from all the class officers.

**From *The Tech*, Tuesday, March 17, 1959:**

East Campusites fled before the ferocious onslaught of two members of the Stratton and Rule households in a pitched battle last week.

Misses Mary Rule, 13, and Laurie Stratton, 12, found the MIT men inviting targets to their

plentiful supply of ammunition. According to Mary Rule, daughter of Dean J. T. Rule, "We waited till some boys came along to throw at us, and then we threw back."

Asked if the Dean of Students' Office planned to take its usual disciplinary measures, Dean Rule replied, "I'm sure that they were having a good time," adding that no official action would be taken."

(Note: Julius Adams Stratton '23 was then President of MIT and living in the President's House.)

## notices

### Announcements

Registration for Physical Education classes for the Fourth Quarter will be held Monday, April 2, from 7:00 pm-9:00 pm in the Du Pont Gymnasium. Swim testing- April 2, 1-3 pm at the Alumni Swimming Pool.

\* \* \* \*

Note to Freshmen: A Performance Evaluation Form should be given to each of your instructors by Friday, March 23. Instructors should send them on to your advisor by Monday, April 2. Need extra copies? Stop by the UASO, room 7-104

\* \* \* \*

The Department of Chemical Engineering will be conducting an Open House for Freshmen on Thursday, April 5 from 3-5 pm in room 66-110.

## Montgomery Frost Lloyd's Inc. Prescription Opticians Quality Eyewear Since 1870

Prescriptions Filled Quickly and Accurately  
Ray-Ban, Vuarnet,  
and Porsche Carrera Sunglasses

**20% Off** On All Prescription Eyewear  
With M.I.T. I.D.

Offer not valid with other promotions  
Cambridge store only

5 Brattle St. (Harvard Sq.), Cambridge  
876-0851

## "MIX'N MATCH" FLIGHTS WITH Jet vacations CHARTERS

FROM NEW YORK TO:		
<b>PARIS</b>		
FROM \$200 TO \$265 EACH WAY* VIA AIR CHARTER INTERNATIONAL B-747** (A SUBSIDIARY OF AIR FRANCE) FREQUENT DEPARTURES, MAY 26 - OCTOBER 13		
<b>LONDON</b> FROM \$180 TO \$230 EACH WAY* VIA TRANSAMERICA B-747. WEEKLY DEPARTURES, MAY 4 - OCTOBER 26	<b>GENEVA</b> \$270 EACH WAY* VIA TRANSAMERICA DS73. WEEKLY DEPARTURES, JUNE 25 - SEPTEMBER 3	<b>ZURICH</b> FROM \$215 TO \$280 EACH WAY* VIA TRANSAMERICA B-747. WEEKLY DEPARTURES, MAY 12 - OCTOBER 27

OPTIONAL LAND ARRANGEMENTS AND SPECIAL  
FARES TO NEW YORK AVAILABLE

\*Fares based on round trip travel to and from any of the above destinations.  
Add \$3 U.S. Departure Tax. \*\*Also available on Transamerica

For complete charter conditions and more information concerning the operator-participant agreement, contact your Travel Agent or Jet Vacations, Inc., 1350 Ave. of the Americas, New York, N.Y. 10019. In New York City: 247-0999. In New York State: (800) 442-7918. Elsewhere in the U.S.: (800) 223-5450.

# The haircut you want is the haircut you get. We guarantee it.

At Supercuts, we've been trained to cut hair perfectly. So no matter how you like your hair cut, you're going to get the cut you like. Every time. We guarantee it, or your money back. That statement of confidence

has helped make us America's most popular haircutters. Which only goes to prove that when you give people exactly what they want, they just keep coming back for more. And a Supercut is always \$8.

# supercuts®

We're changing the way America cuts its hair.

Twin City Shopping Center  
264 Monsignor O'Brien Hwy.  
Cambridge  
666-1640

2150 Massachusetts Ave.  
Cambridge  
492-0067

Hours: Mon.-Fri. 9-9 Sat. 9-7

\*Shampoo and blow dry available at additional cost

©1983 EMFA CORPORATION

### OUR TWO-WEEK SPECIALS ENDING MARCH 31

<b>VIDAL SASSOON Shampoo</b> 8 oz. \$1.59	<b>Q-TIPS</b> 300's \$1.49
<b>DIAL SOAP Special</b> 4's \$1.49	<b>TRAC-II Blades</b> 11's \$3.75
<b>LAVORIS</b> 6 oz. \$1.13	<b>ORNEX Capsules</b> 24's \$2.85
<b>MURINE Eye Drops</b> ½ oz. \$1.49	<b>COLGATE Tooth Paste</b> 3 oz. \$1.00

## KENDALL DRUGS

Your MIT Community Drugstore

492-7790  
Kendall Square

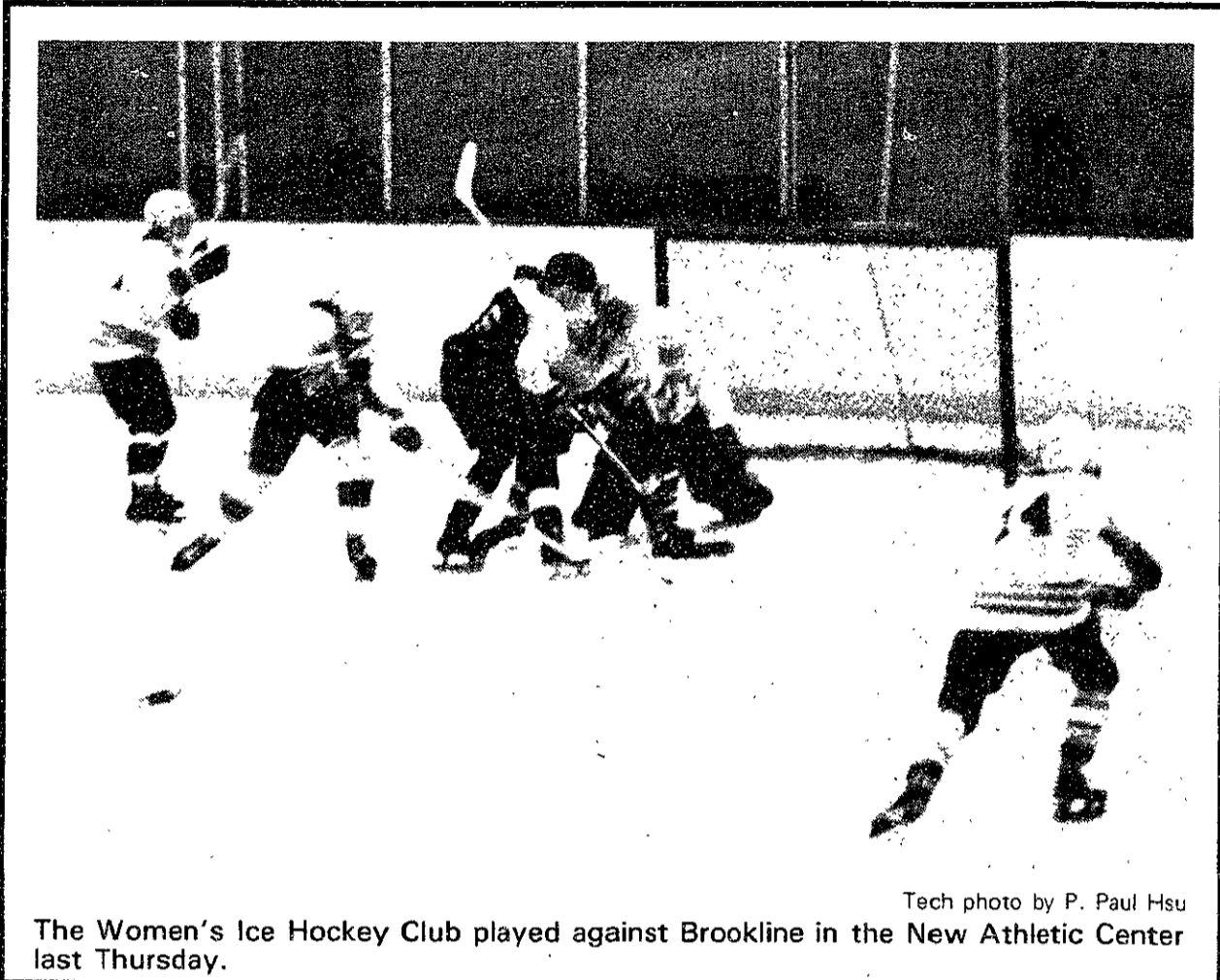
238 Main Street  
Cambridge, Mass

## Camping and Backpacking Equipment at the Lowest Prices

- Fatigue Pants \$11.95
- Levi's
- Lee's
- White and Blue Painter's Pants \$13.95

**Central War Surplus**  
433 Mass Ave  
Central Square  
Cambridge

# sports



The Women's Ice Hockey Club played against Brookline in the New Athletic Center last Thursday.  
Tech photo by P. Paul Hsu

## classified advertising

**Classified Advertising in The Tech:** \$5.00 per insertion for each 35 words or less. Must be prepaid, with complete name, address, and phone number. *The Tech*, W20-483; or PO Box 29, MIT Branch, Cambridge, MA 02139.

**CHEAP LONG-DISTANCE PHONE SERVICE.** SBS-Skyline. **FREE CALL FROM PAY PHONES.** Simple rates, call anywhere in the U.S. from major cities and the NY City metropolitan area. **NO STARTUP CHARGE,** \$15/month minimum calls, very high quality voice transmission. Wnds: 14¢/min to any state, 10¢/min to Mass. and states touching Mass. For info call Andy G., 225-9259 before 10:30AM, after 10PM, or leave message at 253-1541.

If you are a member of **Gamma Phi Beta**, please call (617) 628-6971 for information on Gamma Phi's activities in the Boston area. Ask for Kathie.

For sale: **DEC Robin.** Includes Z80-based VT180, 4 floppy drives, LA34 printer, CPM, BASIC, MULTIPLAN, and SELECT word processing software, plus much more. \$3K. Call (603) 881-2136 or (603) 888-1388. If no answer, try 494-0322.

**COUNCIL TRAVEL / CIEE**  
For Int'l Student ID, Budget Air Fares, USA flights, Europe Charters, Youth Hostel Membership, Eurail pass, Work and Study abroad, and much more! **FREE CATALOG** - CALL 266-1926 or drop by our new office 729 Boylston St., 2nd Fl., Boston, MA 02116.

**LEGAL SERVICES**  
Available in the fields of personal injury, negligence, business, real estate, contract, criminal, landlord-tenant, and divorce law. Reasonable rates. Call Attorney Esther J. Horwich, MIT '77, at 523-1150.

**TYPESET RESUMES** say you are professional. We can help you design a personal format - only \$25 (\$10 each additional page). Turnaround time is just two working days. Monday-Saturday. Contact RUDRA PRESS today at 576-3394.

**STUDENT I.D. SPECIAL 5 DAYS SKIING-\$195.** Includes lifts, lodging, meals, mini-bus transport to Mad River Glen in Vermont. Organize a group of 12 and ski free this spring vacation. -Ski Express-491-0433

**WANTED: TRADER/BROKER** For CBOE or P.Coast. Minimum Salary \$30,000 + Share of trading/brokerage. Must be analytical & familiar w Black scholes. Send Resume to Sun Options Corp., 2 Rector St., 3rd floor, NY, NY 10006

Is It True you can buy surplus jeeps for \$44? Get the facts today! Hurry! Call 312-742-1142 Ext. 5890

The **MIT Equipment Exchange** offers surplus equipment and used typewriters to students and staff at reasonable prices. Located in Building NW30, 224 Albany Street. Open Mon., Weds., Fri., 10 am - 1pm.

## Support the March of Dimes BIRTH DEFECTS FOUNDATION

This space donated by *The Tech*



*Manseur's*  
your IMAGE is our career  
Hair & Skin Care Salon

**"THE BEST CUTS IN BOSTON"**

Appt. & Walk-in

231 Newbury Street 536-1605

\$9.00 SPECIAL w/this add. or 15% Disc. thru 3/28/84

9am-12noon Mon-Thurs.

## Travel Trivia

What and where is the world's longest rail tunnel?

ANSWER:  
Dai-shimizu, Japan is 13 miles, 1,384 yards long.



\*We can arrange Amtrak tickets and Eurail Passes.

**RAYMOND & WHITCOMB CO.**  
21 School Street, Boston, MA 02108 617-227-3000  
First in Travel Since 1879

Approved MIT Travel Agency. MIT Ext #'s 3-4438 & 3-4439

## Announcing TWO Freshman OPEN HOUSES to Introduce the NEW Course XV MANAGEMENT SCIENCE

- Find out about the option in
- INFORMATION SYSTEMS
  - and other options, including
  - OPERATIONS RESEARCH
  - MARKETING RESEARCH
  - BEHAVIORAL SCIENCE

Tuesday AND Wednesday  
March 20 March 21

3 - 5 pm in the Schell Room, E51-332

## birthday sale

1 · 8 · 8 · 2 1 · 9 · 8 · 4

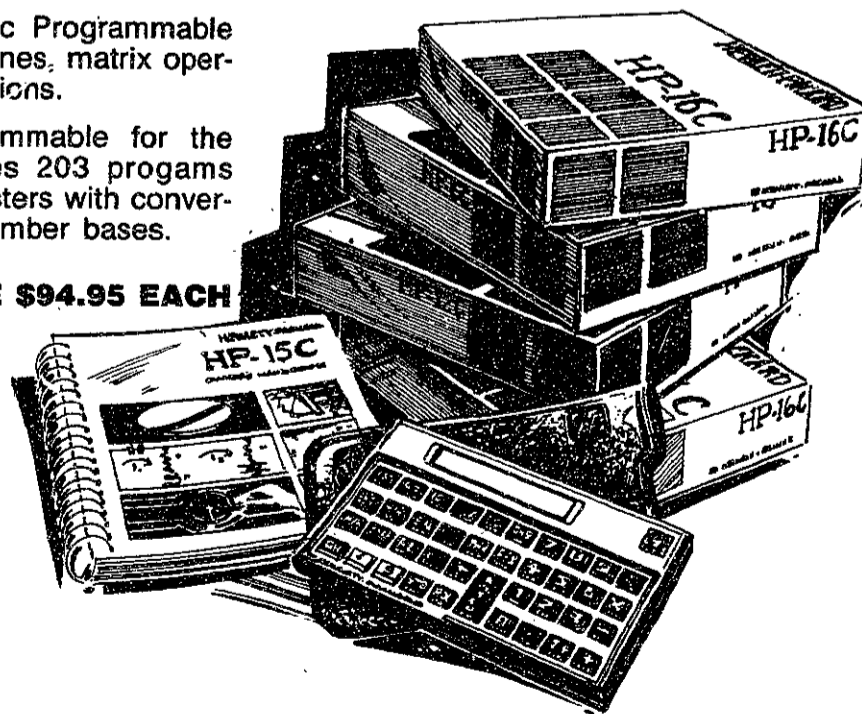
**SAVE \$15 HEWLETT-PACKARD PROFESSIONAL SLIMLINE CALCULATORS**

**HP 12C:** Professional, Programmable, Financial Calculator with 99 program steps, owner's handbook and solution guide.

**HP 15C:** Advanced Scientific Programmable Calculator with 448 program lines, matrix operations and other special functions.

**HP 16C:** Advanced Programmable for the Computer Scientist. Includes 203 programs lines or 101 - 16 bit data registers with conversions to and from different number bases.

Reg. \$109.95 EACH **SALE \$94.95 EACH**



**MARCH 15-25 SPECIAL BIRTHDAY SALE HOURS: HARVARD SQUARE OPEN SUNDAY 3/18 AND 3/25 NOON TO 5:45 DOWNTOWN LOCATION OPEN SATURDAY 3/17 AND 3/24 9:15 TO 5:30**  
Available at Harvard Square, M.I.T. Student Center, Children's Medical Center and One Federal St., Boston. Harvard Square open Mon.-Sat. 9:20 to 5:45, except Thurs. till 8:30 pm. Downtown location open Mon.-Fri. 9:15 to 5:30 PLUS additional hours listed above. Coop Charge, Mastercard, Visa and American Express welcome.

HARVARD COOPERATIVE SOCIETY

