

Institute not attracting black faculty

By Kevin D. Hurst

First of a two-part series.

Ten years of affirmative action programs at MIT have shown no improvement in the small percentage of black faculty members, according to Patricia Bell-Scott, assistant equal opportunity officer for the Institute.

There are currently 16 black professors on MIT's faculty of 1045, she said.

"I firmly believe that we have reached a critical point," said Bell-Scott. "The number of blacks cannot drop below 16, which is where we started in the mid-60s. We should not settle for that."

Blacks constitute about 1.5 percent of the MIT faculty — one-third the national average, according to the National Urban League. The number of black professors at MIT peaked at 23 in 1975.

"There is a general resistance within the Institute to being aggressive in reaching out for more minorities," Bell-Scott said.

Responsibility for the inequity lies with many individuals, in positions from sub-departmental levels to higher level administrators, Bell-Scott continued. "The

issue is involved with many complex factors and should not be taken lightly."

Provost Francis E. Low agreed the Institute is "not doing very well" in hiring black faculty members. "We are trying to improve the situation," he said, "but I guess we haven't been trying hard enough."

One reason often cited for the low number of blacks in academia is that high-paying industrial positions attract many candidates with doctoral degrees away from universities.

"There is a very limited pool of qualified blacks available to us," Low said. "Many departments look at only one or two candidates of the highest qualifications throughout the United States."

Financial constraints have limited progress in recent years, Bell-Scott said. Although none of the incentive programs set up a decade ago to attract minorities have been eliminated, she added, they have been cut back.

"There is nothing to compel departments to hire more minorities," said William McLaurin, director of the Office of Minority Education, "and in a certain sense, it is only natural to seek

out your own kind of people. It's the 'birds of a feather' idea."

The primary method of selecting new faculty is still the "old boy network," McLaurin explained. This means that an applicant with connections to someone in a department has an advantage over other applicants.

Low said he agreed in a sense with McLaurin, explaining, "There is indeed a network of the best schools that is used to aid the process [of recruiting new faculty members]. The best PhD's generally graduate from the best schools. The people we want are not hidden from us."

Bell-Scott said she "cannot emphasize enough the need for departments to be aggressive in searching for minorities . . . particularly in forming ties with minority networks."

"Not making these contacts results in leaving the search without uncovering some well-qualified blacks that are out there," she said.

More comprehensive searches are not the answer to the problem, according to Low. "It's not how you dig for them, it's how you grow them. That is the real issue. We need to work like hell

to get minorities into our graduate school," he said.

Another key factor is the low retention rate of black junior professors, Bell-Scott said. "It is not enough to get people here. Once they are here we must make a continuing commitment to help them succeed."

Kenneth R. Manning, associate professor of Science, Technology and Society, said "There have been instances in the past of serious problems resulting from tensions when black faculty arrived in a department."

Such situations may have contributed to the number of minorities who have left the Institute in the past seven years, Manning said.

"A newly selected candidate will be very uncomfortable if he is forced on a department," McLaurin said. "I believe in the ideals of affirmative action, but I would hope that departments could see for themselves the importance of having minorities around."

"We want people to want this," he said, "because it's the right thing to do."



Tech file photo

William McLaurin, director of MIT's Office of Minority Education.

Analysis

Student Art Association: Student activity or Dean's Office venture?

By John J. Ying

Part of the controversy surrounding the status and control of the Student Art Association and studio facilities in the Student Center stems from the unresolved definition of a student activity.

The MIT Corporation's Visiting Committee on Student Affairs implicitly defines student activities as groups managed by and providing services to students.

That committee's report last year recognized: "To some, it is antithetical by definition for an administrative office [the Office of the Dean for Student Affairs] to exercise any role in student activities."

Others claim the Dean's Office can manage a student activity which serves students. Former Associate Dean for Student Affairs Robert J. Holden, commenting on the Student Art Association, said "The important thing

is, the people who want the art association and take courses there are students or student spouses. . . . Not every student activity's emphasis is on management."

The Visiting Committee, on the other hand, said it believes the value of student activities is in the managerial opportunities for students. Its report states ". . . participation in activities contributes to personal growth in leadership and management beyond the intrinsic rewards of the activity. . . ."

"The value placed on participation, . . . problem solving, communications ability, interpersonal relations and goal setting must be emphasized."

Also contributing to the current dispute is the unclear history of the Student Art Association.

equity, or self-help, threshold of \$4300.

Grants provide \$13.8 million, or 56 percent, of the total of
(Please turn to page 2)

(Please turn to page 16)

About 58 percent of undergraduates get aid

By Drew Blakeman

The majority of undergraduates are receiving financial aid to help alleviate the \$15,150 estimated annual cost of an MIT education, according to statistics compiled by the Student Financial Aid Office.

The Institute this year awarded an average of \$9450 of aid to 2600 undergraduates, or about 58 percent of the undergraduate population. MIT's stated policy is to provide sufficient aid to all students judged unable to meet their educational expenses.

The figures for the current academic year are not complete, said Leonard V. Gallagher '54, director of student financial aid. Information compiled to date is "about where we think it will be" when all data is finally available, he said.

Financial aid provides 36 percent, or \$24.5 million, of total annual costs for undergraduates, Gallagher said. Students and their families pick up the remaining \$43.5 million.

The average aid package covers 62 percent — about \$9400 — of yearly costs, he said, and the average student and his family provide the remaining \$5700. MIT includes grant funds in aid packages totaling more than the

Whitehead Institute rises in Kendall Square

By Wei-Chung Hu

The Whitehead Institute, an MIT-affiliated independent biological research center, "is clearly going to lead to an expansion of biological and cancer research at MIT," said Associate Director John Pratt.

Construction of the Whitehead Institute building, located at 9 Cambridge Center — the intersection of Main Street and Vassar Street — is on schedule and should be complete June 1984, he said.

The building's top floor will house boilers and air conditioners, and four floors will contain

laboratories, Pratt said.

The first floor will include administrative offices, "an auditorium and cafeteria, as well as facilities for building and supplies," he said. The second floor will have computer facilities, a reading room, and a library.

The faculty of the Whitehead Institute includes Prof. David Baltimore '61, director of the Whitehead Institute, Harvey Lodish, professor of biology, Robert A. Weinberg '64, associate professor of biology, and Dr. Rudolph Jaemish from Germany.

The building, a gift from Edwin C. Whitehead, will cost between \$22 and \$23 million. It is designed by the architectural firm of Goody, Clancy and Associates, and is under construction by the Turner Construction Company.



Tech photo by Dennis Cuy

Construction continues on the new Whitehead Institute building in Cambridge Center.

A brief history of the Whitehead Institute:

• Sept. 1981: Faculty debates Whitehead proposal. Some warn of losing research independence; others hail opportunities for biology research.

• Nov. 1981: Whitehead proposal is approved at regular faculty meeting.

• Dec. 1981: MIT Corporation gives its approval to institute.

• March 1982: City Council complains Whitehead Institute, to be built on tax-free land, will not provide jobs for residents.

• Jan. 1983: Construction begins.

Burt S. Kaliski

Most undergraduates get financial aid

(Continued from page 1)

\$24.5 million in aid this year, Gallagher said. Loans provide \$8 million, or 33 percent, and term-time employment amounts to \$2.5 million, or 9 percent. Outside sources contribute the remaining 1 percent.

Unrestricted Institute funds provide the largest proportion of the grant funds — \$6 million — up from \$4 million last year, Gallagher said.

Designated grants — those contributed specifically as student financial aid — total \$4.9 million, according to Gallagher. The MIT endowment provides \$3.2 million, annual gifts to the Institute \$400,000, and student scholarship programs \$1.33 million.

Student scholarship programs include National Merit Scholarships, state scholarship grants, benefits for children of faculty members, and other privately funded scholarships students receive, he explained.

Federal financial aid programs contribute \$2.8 million, Gallagher said. Pell Grants supply \$740,000, the Supplementary Educational Opportunity Grants \$1.3 million, and Reserve Officers Training Corps scholarships \$800,000.

Pell Grant funds are diminish-

ing, Gallagher said, because the federal government is in the process of eliminating the program.

Student loans account for an average of \$3080 per student receiving financial aid. Guaranteed Student Loans total \$4.5 million, or 56 percent of all loans, and National Direct Student Loans supply another \$1.8 million, or 23 percent.

National Direct Student Loans provide the first \$1000 of a student's determined need and are part of the expected equity level.

The Technology Loan Fund, of which "not too many people are

aware," Gallagher said, provides \$1.6 million — 21 percent — of total loans.

Technology loans, unlike federally-subsidized loans, begin to accrue interest charges upon issuance, although repayment can be deferred.

Term-time employment provides an average \$960 per year to each aid recipient and is approximately equally divided between the federal work-study program and private companies, including MIT campus jobs.

MIT-sponsored jobs pay a minimum of \$5.25 per hour,

more than 50 percent higher than the federal minimum wage. The number of job openings listed at the Institute is higher than in the recent past, Gallagher said. "There are enough jobs to go around for anybody who wants one."

The federal government will contribute about the same amount of financial aid — about \$10.4 million — next year, Gallagher said, but after that "who knows what we'll see." He said he does not expect major changes in federal aid programs, which must be renewed in fiscal year 1986.

Researcher protests article

By Janice Eisen

Kosta Tspis, principal research scientist in physics, and Matthew G. Bunn '84 complained to *The Boston Globe* that a recent article covering their report on the vulnerability of US missile silos was "sloppy" and "distorted."

Tspis claimed a Sept. 22 article, headlined "MIT report questions Soviet lead in missiles," is misleading. His study, published by the Department of Physics' Program in Science and Technology, has nothing to do with a Soviet missile lead, he said.

The report, titled "Ballistic Missile Guidance and Technical Uncertainties of Countersilo Attacks," says the outcome of a Soviet attack on US missile silos is "essentially impossible to predict."

The report says there are several reasons for the uncertainty of a successful attack: the limitations of peaceful testing of strategic weapons, the unpredictability of actual missile silo hardness, the unknown precise effects of "fratricide," and the possibility of systematic biases due to gravitational variation.

The Globe printed a correction Sept. 23 in response to the complaints from the researchers. "The correction which they printed was about as clarifying as throwing mud into water," Bunn said. "It didn't address a single one of our concerns."

Tspis added that the correction "made it worse, if anything." The *Globe* article was widely distributed and even appeared in Europe, the researchers noted. They said they fear their colleagues may now dismiss the report, which took 2½ years to prepare, as "nonsense."

"If *The Globe* had reported it correctly," Tspis said, "it wouldn't have been picked up" by other newspapers and wire services. Bunn said the study could not have said what the article reported, because the researchers did not have access to classified information.

Dr. William Perry, former undersecretary of defense, was quoted in the *Globe* article as saying the "issues raised by Tspis are not convincing." Tspis and Bunn countered Perry's criticism in a Sept. 25 letter to *The Globe*, claiming Perry was re-

sponding to the article's description of the report.

Their report made no policy recommendations and is not very important to real-world analysis, Bunn said, but *Globe* staff reporter Robert Cooke "seemed to be wanting us to say that everything Reagan ever said was nonsense."

notes

Announcements

An informational meeting for students interested in medicine will be offered on Mon., Oct. 3, at 4 pm, in room 12-182. Topics include: pre-med requirements, clinical experience, pre-med advisor selection, and more. Contact Jeannette Gerzon in the Office of Career Services, x3-4737.

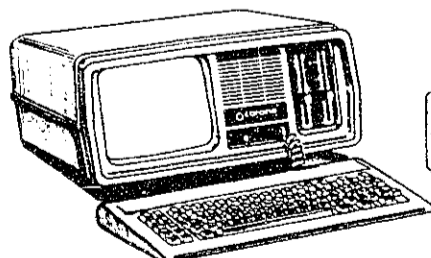
* * * *

Students should be aware of a new procedure for fulfilling the humanities distribution requirement. While the requirement itself is the same, students must now complete a proposal during the sophomore year, and have a completion form signed by a field advisor when the requirement is completed. Completion forms are available from department or program headquarters; in particular, juniors and seniors are urged to attend to this procedure. Contact the Humanities Undergraduate Office for more information, x3-4447.

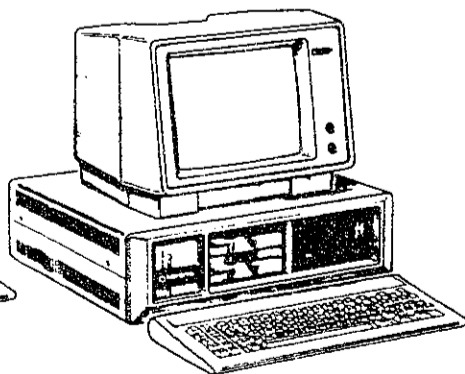


THE CORONA PC'S.™

TWO WAYS TO GET MORE FOR YOUR MONEY.



Portable



Desktop

- Powerful, low-cost desktop and portable computers.
- 16-bit, fully compatible with IBM PC standard.
- Crisper, cleaner displays and higher resolution graphics (640 x 325).
- 128 kbyte memory (room for 512 kbytes on main board).
- Fast-access 320 kbyte floppy, communication and printer ports and 4 expansion slots included in the low, low price.
- RAM disk software.
- Includes MS-DOS™, GW-BASIC™, MultiMate™ professional word processing system and PC Tutor™.
- Optional hard disk.

Cambridge Business Systems, Inc.
 Note Our New Address
 1208 Mass. Ave. Cambridge, MA 02138
 (617) 354-3435

ELECTRICAL ENGINEERS MECHANICAL ENGINEERS CHEMICAL ENGINEERS PHYSICISTS

Judge the patentability of scientific and engineering discoveries made by R & D engineers, inventors and scientists world-wide as a

PATENT EXAMINER

in Washington, D.C.

The Patent and Trademark Office has unique career opportunities offering

- Challenge and responsibility
- Career growth
- Outstanding career Federal Government service benefits

For more information about your career as a Patent Examiner contact:

Manager, College Relations
 Office of Personnel
 Patent and Trademark Office
 Washington, D.C. 20231

Call toll-free 800-368-3064
 (703) 557-3631 (Collect in VA)



An Equal Opportunity Employer m/f
 U.S. Citizenship Required



MBA

The Fuqua School of Business at Duke University offers one of the finest available opportunities for unsurpassed professional management training. We are interested in men and women who have proven academic, leadership, and social abilities.

Jane D. Novick
 Associate Director
 of Admissions and Financial Aid

of the Fuqua School
 will be on campus

Wednesday, October 12

Appointment information may be obtained
 by contacting:

Office of Career Planning
 and Placement

FRANCIS FORD COPPOLA
 PRESENTS
 KOYAANISQATSI "is an avant-garde film... a tantalizing marriage of sight and sound... a trip movie for the 80's... slick and seductive... a celebration... it wouldn't surprise me if this irresistible little bauble found itself a niche in film history."
 Owen Gleiberman
 Boston Phoenix
KOYAANISQATSI
 LIFE OUT OF BALANCE
 Produced and Directed by GODFREY REGGIO
 Music by PHILIP GLASS
 Cinematography by RON FRICKE
 DOLBY STEREO
 DOLBY
 1:00-2:45-4:30
 6:15-8:00-9:45
 SACK
 CHARLES 1-2-3
 1750 CAMBRIDGE ST.
 NEWTON, MASS. 02459
 HARVARD SQ.
 THEATRE
 10 CHURCH ST.
 CAMBRIDGE 02138
 12:30-2:15-4:00
 5:45-7:45-9:40

news roundup

World

Andropov blasts Reagan on arms control — Soviet President Yuri V. Andropov sharply criticized President Reagan's arms control policies Wednesday, calling the planned American missile deployment in Europe "a step against peace." Andropov also referred to the recent shooting-down of a Korean airliner as "a sophisticated provocation, masterminded by US special services."

Gandhi asks for aid for poor countries — Indian prime minister Indira Gandhi made a plea at the United Nations for aid to third world countries. Wealthy countries that aid the development of poor countries would help their own countries and ease international tensions, she suggested. Gandhi, speaking for the unaligned nations of the world, decried bickering between the East and West and said more attention should be paid to divisions between North and South Asia.

Reagan may change Philippines travel plans — President Reagan may reschedule his planned November trip to the Philippines and, instead, visit the troubled country next year as part of his visit to China. Reagan had planned to visit the Philippines with representatives of South Korea and Japan. Defense Secretary Casper Weinberger announced Wednesday that Reagan and Chinese prime minister Zhao Ziyang may exchange visits sometime next year.

Nation

House approves War Powers Act — The House of Representatives approved 270-161 a resolution, Wednesday, authorizing deployment of US Marines in Lebanon. The resolution, billed as a compromise between President Reagan and Congress, will allow the Marines to stay for another 18 months. Although supported by both party leaderships, the resolution faced opposition from both Democrats and Republicans.

Court stops sale of federal coal reserves — A federal district judge blocked the Interior Department from selling 140 million tons of federal coal reserves in South Dakota. Judge Louis Oberdorfer, ruling on a suit brought by environmentalists, issued an emergency order stopping the sale, but the ruling may not be constitutional. President Reagan, meanwhile, said he considers the recent controversy involving remarks made by Interior Secretary James G. Watt to be over, and said he does not anticipate Watt's resignation.

Local

Massachusetts unable to stop drunk drivers — Massachusetts' strict drunk-driving laws are not being enforced due to "paper paralysis," according to the Governor's Anti-Crime Council. Processing time often causes long delays in license revocation of drunk driving convicts, and the non-enforcement of the laws allows people with multiple convictions to continue to drive, the council claims.

Daniel J. Crean

Weather

Sunny days, cool nights — Sunshine and a cool breeze today and tomorrow with a high around 72 degrees. Nights may be as cool as 45 degrees. The only effect of tropical storm Dean, now off the coast of New England, should be a northeasterly wind.

Burt S. Kaliski



HELP YOURSELF TELETHON

- *Help Yourself to Pizza
- *Help Yourself to Prizes
- *Help Yourself to A Night of Fun!

Raise Money for Student Financial Aid October 3-5
6-10 P.M.
Bush Rm. 10-105

Call Lauren x3-8282



BRODIE AUTO RENTALS INC.
NOW AT KENDALL SQUARE

WE RENT: **DODGE COLTS—OMNIS**
RABBITS—CITATIONS
STATION WAGONS

AUTOMATIC & STICK SHIFT

•WE FURNISH GAS WITH ALL CARS EXCEPT WAGONS•

HARVARD SQ. KENDALL SQ.
NEAREST TO THE B-SCHOOL NEXT TO LEGAL SEAFOOD
90 MT AUBURN STREET 5 CAMBRIDGE CENTER

491-7600

MASTERCARD

876-7600

VISA

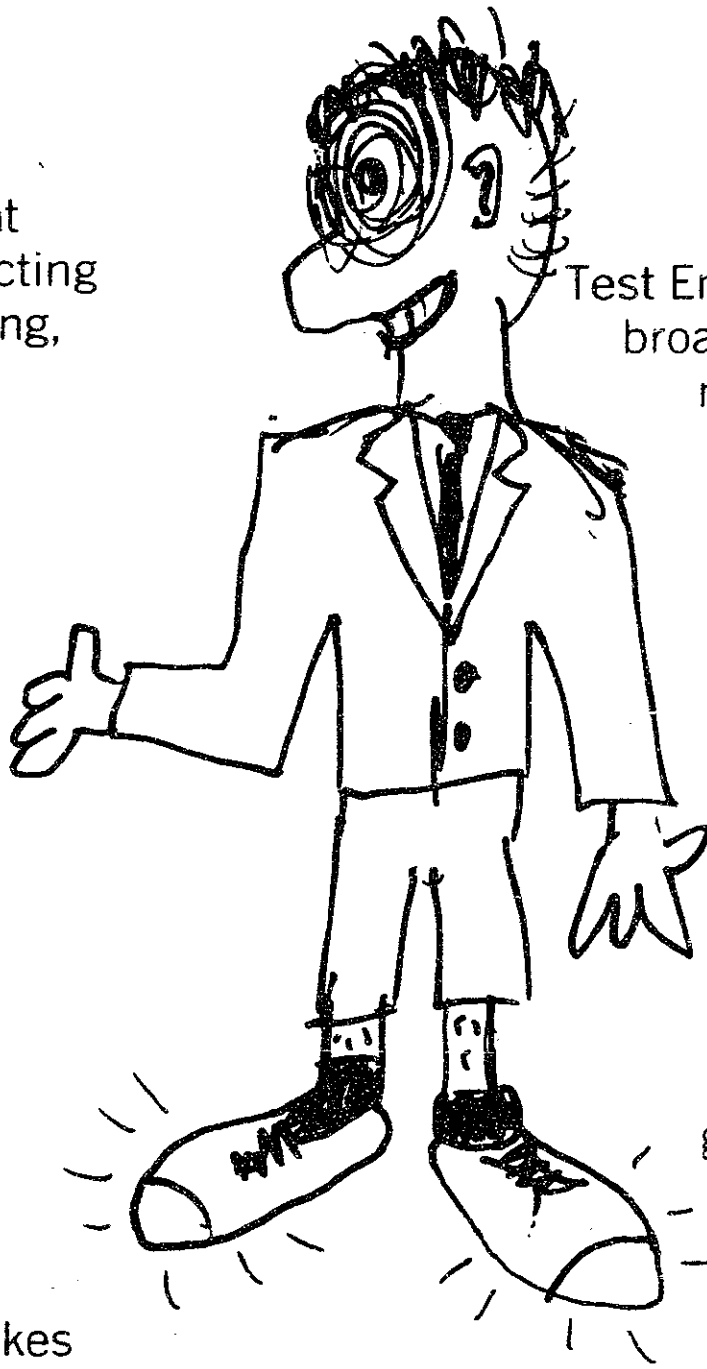
AM EXPRESS

White Shoes and the Successful Engineer

Three-martini lunches, slick phrases, fat expense accounts. UGH! No self-respecting engineer wants anything to do with selling, right? Well consider this: recent research shows that the most successful, innovative high tech companies have a strong orientation to the customer. And Megatest has an on-the-job training program for engineers who want a career path toward leadership in innovation.

The Death of a Salesman...

We call it Test Engineering. It's not sales, but rather working with sales engineers to directly serve our customers' technical application needs. Short of being a test pilot, it's about the most exciting, fast-paced job you can get: the front line of high-tech business competition, in a world-wide arena. It takes intelligence, expertise and a full deck of cards.



The Birth of a Career...

Test Engineering is an excellent way to gain a broad perspective on a growing world-wide market. You'll learn incredibly sophisticated automated test equipment for state-of-the-art VLSI components from the user's end. It's an outstanding springboard toward challenges in research and development, product marketing, sales engineering, or... some of our best engineers stay hooked on Test Engineering.

Mega who?

We're the fastest growing innovator in Automatic Test Equipment. We're very good at a lot of things, including having a good time. If you're a smart EE and would like to hear more we'll be on campus — Friday October 21 and Monday October 24, at the Career Planning and Placement Center.

Opinion

Barry S. Surman

Meeting apathy: a letter's lesson

Something unusual accompanied the agenda mailed for last week's faculty meeting. A two-page letter, signed by Prof. Arthur C. Smith, chairman of the faculty, asked his colleagues "to attend some faculty meetings this year."

That might not seem like an unreasonable request, but, as Smith acknowledged, many faculty members "place faculty meetings low in [their] list of priorities." Indeed, with slightly more than a thousand members, the MIT faculty often just makes its quorum of 30.

Smith cited four factors contributing to the faculty's apparent apathy: a perception that most faculty decisions constitute only formal approval of work done by committees; a history of meetings "devoted largely to routine reports"; a lack of discipline and experience as an assembly, such that "the length of the discussion often seems to be inversely proportional to the importance of the issue"; and a feeling among many faculty members that "institutional governance" is an unimportant part of their responsibilities.

This year, Smith told his colleagues, substantive discussions will be "more prevalent" and written reports will be used "when the need is simply to convey information."

"While I do not want to promise that every faculty meeting will be filled with important and interesting discussions," he wrote, "I do intend to try to shift the balance in that direction."

Besides, "occasional boredom or irritation may be a small price to pay for the benefits of broad faculty participation."

Smith's rhetoric alone is unlikely to motivate his errant flock to attend its monthly convocation. The faculty has repeatedly demonstrated, however, that it will turn out for meaningful, substantive discussions of significant issues.

The ongoing implementation of Project Athena and the continuing review of the undergraduate program should, as Smith's letter noted, provoke such deliberation. There is certainly no paucity of pertinent issues for faculty consideration. Smith's challenge, as chairman, is to identify and introduce those issues.

The lesson here is that interest, motivation and their immediate product, attendance, cannot be generated from mere air. Perhaps the leaders of another local study in organizational nonchalance, the Undergraduate Association, will observe Arthur Smith and the faculty and learn from their example.

But I doubt it.



THE ORLANDO SENTINEL
©1983 Copley News Service
Dana Summers '83

Column/Mark Templer

Step back and give thanks

In the hustle and bustle of our lives as MIT students, we often forget the people that make our world work. Every once in a while, we should take a step back from our self-centered lives to thank the people that make the difference.

We should start with our families. They make it possible for us to be here. We can always turn to them when things get tough. And though they sometimes may not show it, they are very glad we are going to a school as good as MIT. A parent's love is really pretty hard to beat.

Up here at school, we all have our second families, our homes away from home. We work so hard here that we sometimes forget how important our friends are. So many times they are there when we need them: after a girlfriend dumps us, after that first 22 percent on a test, during the frantic all-nighters spent finishing a term project. Many of us will never again have friendships as close as the ones we made during these college years. Long after the 6.111 and Unified projects are over, we will still cherish the friends we made at MIT.

We at MIT are also lucky to

have another thing: a student community that cares. Many students put a lot of effort into the extras that make life at MIT more bearable. The people in LSC, APO, house government, and even at *The Tech* make this a neat place to go to school. Our sports teams and intramurals give us a welcome diversion from our incessant tool-a-thons. And our campus' religious groups give us a chance to find God; I probably would have never found Christ had I not come to MIT.

There is a whole other group of people that make things work at MIT: the non-students. Our housemasters and tutors and the administrative personnel here give their all to make things comfortable for us. Those people are the ones who make a dormitory like Baker House a great place to live. The patience and kindness of the staff and technicians of the undergraduate Physics office never ceases to amaze me. There are a lot of people at MIT who quietly perform their jobs day in and day out and get a lot of flak but very little praise from us students. But whether we admit it or not, these people make more of a difference for us than MIT's fancy labs and Nobel laureates.

And we should not forget our professors, either. Although we sometimes joke that we would like more of our classes taught in English, we really are blessed with an excellent faculty here at MIT. Many professors take a lot of time and effort to work with their students and get to know them. It must take a great deal of patience to explain the Poisson distribution for the 189th time to a new class of confused students, but that patience and kindness pays off in real learning. We students should be glad that some of our professors care enough to share with us so much of their knowledge and time.

Finally, we really ought to remember that all we enjoy here is possible because we live in America. The government helps many of us pay our way through school, and it pays for much of the research done at MIT. It also gives us the freedom to worship, speak, and live as we want — freedoms that a growing number of people on earth will never enjoy.

So before we go back to our theses and UROPs and 5.41 problem sets, let's be thankful for all we have. We are truly lucky to be where we are.

The Tech

Volume 103, Number 39 Friday, September 30, 1983

Chairman..... V. Michael Bove '84
Editor in Chief..... Barry S. Surman '84
Managing Editor..... Matthew W. Giamporcaro '85
Business Manager..... Keith Tognoni '84
Executive Editor..... Robert E. Malchman '85

News Editors..... John J. Ying '84
 Burt S. Kaliski '85
Night Editors..... Charles P. Brown '84
 Scott I. Chase '85
Photo Editors..... Grant M. Johnson '84
 Omar S. Valerio '85
Sports Editor..... Martin Dickau '85
Arts Editor..... Jonathan Dippert '83
Advertising Manager..... Paul G. Gabuzda '84
Contributing Editors..... David G. Shaw '82
 Jon von Zelowitz '82
 Max Halperin '85
 Daniel J. Weidman '85
Senior Editors..... Eric R. Fleming '83
 Ivan K. Fong '83
 Jerri-Lynn Scofield '83
 Tony Zamparutti '84
Indexing Project Representative..... A. David Boccuti '79
Advisor..... Edwin Diamond

NEWS STAFF

Associate News Editors: Sam Cable '85, Daniel Crean '85, Thomas Huang '86, Ron Norman '86; Staff: Arnold Contreras '83, David W. Bower '84, Roderick A. Dick '84, Will Doherty '84, Wei-Chung Hu '84, Ben T. Tien '84, Diana ben-Aaron '85, Gene Deune '85, Gary J. Drik '85, Janice M. Eisen '85, James F. List '85, Andrea Marra '85, Steve Pang '85, Jake Tinio '85, Joel Gluck '86, James J. Reisert '86, Paul Sheng '86, Ellen L. Spero '86, Al Yen '86, L. S. Wiener G.

COLUMNISTS

Mark Templer '84, Simson L. Garfinkel '87, Joseph J. Romm G.

PHOTOGRAPHY STAFF

Michael Reese '84, Andrew Wold '84, Bill Coderre '85, Rohan St. D. Khaleel '85, Winston I. Smith '85, P. Paul Hsu '86, Henry Wu '86, Robert Winters G, Fransesco Floris; **Darkroom Manager:** Omar S. Valerio '85; **Photographic Consultant:** David Tenenbaum '75.

SPORTS STAFF

Arthur Lee '85, Jean Fitzmaurice '86.

PRODUCTION STAFF FOR THIS ISSUE

Night Editor..... V. Michael Bove G.
Associate Night Editor..... Robert E. Malchman '85.
Staff: David G. Shaw '83, Charles P. Brown '84, Amy S. Gorin '84, Barry S. Surman '84, Daniel J. Weidman '85, Simson L. Garfinkel '87, Andrew S. Gerber '87, Kirk Reeves '87.

The Tech (ISSN 0148-9607) is published twice weekly during the academic year (except during MIT vacations), weekly during January, and tri-weekly during the summer for \$10.00 per year Third Class by The Tech, 84 Massachusetts Ave., Room W20-483, Cambridge, MA 02139 Third Class postage paid at Boston, MA Non-Profit Org. Permit No. 59720. POSTMASTER: Please send all address changes to our mailing address: The Tech, PO Box 29, MIT Branch, Cambridge, MA 02139. Telephone: (617) 253-1541. Advertising, subscription, and typesetting rates available. Entire contents © 1983 The Tech. Printed by Charles River Publishing, Inc.



Mark Templer
©1983 Copley News Service

Opinion

Guest Column/Peter Merkle

Porsches, hot tubs, chablis and brie

Mellow. Images of hot tubs, chablis and brie, Porsche 910's cruising at 140. Bronzed athletic people with designer shades in orthopedically correct footwear. Yea, verily, this is the stuff of which mellow was made.

Mellow enjoyed a brief period of notoriety a few years ago. Spaces were found in which to get one's head together. The entire nation faced toward Southern California and kicked back in unison.

Alas, the nihilist anarchists triumphed in the end. Millions of Americans east of the Mississippi were agog; the first ripple of the Mellow wavefront was just beginning to propagate across the vacuum of Midwestern culture while the very Source of Mellowness Itself lay bruised and bleeding beneath the hobnailed boots of L.A. punks on the nightly news.

It seemed as if all was lost. Isolated pockets of Mellow remained, which to this day persist unsullied, but no longer could the would-be Disciples of Mellow make their pilgrimage to the West unafraid. The road has darkened and the way obscured. Left to their own devices, neophyte Mellowphiles in the East have cultivated the mind-set and refined its space. The siege mentality has given way to infinite variations on the Mellow Theme.

For all of us who might wish to adopt the Mellow Mentality, a bit of relaxed research is in order. Lacking a definitive text, we must speculate and extrapolate from the living examples of our own community.

Consider the Male Closet Mel-

low. This is the guy who, to the casual observer, appears hyper-motivated, dressed for success and on the fast track. A glance behind the facade will reveal the MIT Mellow prerequisites: Ocean Pacific watchbands, organic hair shampoo, broken calculator, three Incompletes from 1981, a high alcohol tolerance, and a tendency to forget thesis deadlines.

At the opposite end of the Mellow spectrum are the Truly Mellow of MIT, albeit in a mutated East Coast/Late Sixties manifestation. Almost without exception these lucky souls were members of the Experimental Study Group. They tend to live in Bexley Hall and Senior House, or behind Central Square, although the most overbearing jock/prep frats may contain the token representative.

Such gentle folk may be recognized by their total disregard for the cold. It is as if the Mellow rays of the Malibu sun keep them barefoot and shirtless until March, when they don a parachute jacket to be worn until October. Tofu, ultimate frisbee, granola and veiled conversational references to secret Mellow rituals will alert the uninitiated to the presence of these Mellow Fellows.

The Mellow Masters, like their Zen counterparts, are so laid-back as to evade detection. They will never be caught in the act of Mellowing-out, for they perpetually reside upon the Mellow plane, and descend to impart their Mellow Karma only in clutch situations.

This is the guru who builds your 2.70 project the night before and wins. This is the savior who finds the only copy of your thesis which you left on the subway in South Station. This marvelous being will just happen to be driving through downtown Newark at 4 a.m. and spot you as you are about to be mugged. He leaps from his Alpha Romeo and repels your assailants with Tai Chi, and whisks you off to Fire Island for Tequila Sunrises. If you are blessed with such an acquaintance, give thanks.

The quest for Mellow will never end. There will always be those for whom going with the flow is easier than sleeping through a fluid mechanics film. Their cool example will forever turn us to the West in remembrance, or at least give the answer to every un-Mellow question: It just doesn't matter.



→ feedback

Jumps on layout practice

To the Editor:

I am writing concerning a problem I have with an unfortunate side effect of one of your layout practices, namely the continuation of stories from one page to the next. I know this is perfectly ordinary in the newspaper business, but there is an aspect of the matter that is unique to a campus paper: Some of your readers would like to read your

paper during lecture, but hesitate because turning the pages is an eye-catching, noisy, and generally obtrusive process.

Your Sept. 23 issue is especially bad, with all four front-page articles and both back-page articles continued inside the paper, presenting the potential lecture-hall reader with the choice of flipping pages back and forth repeatedly or carrying six incomplete stories

around in his or her head.

While I realize that you can't create a newspaper that can be read without turning the pages, it would be nice to have at least one story per issue placed entirely on the outside of the paper, in case of emergencies, like long incomprehensible questions concerning the lack of rigor in the lecturer's derivations.

Robert G. van der Heide G



Columns are usually written by members of *The Tech* staff and represent the opinion of the author, and not necessarily that of the newspaper.

Letters to the Editor are written by members of the MIT community and represent the opinion of the writer.

All submissions should be typed, double spaced, on a 57-character line and bear the authors' signatures. Unsigned letters will not be printed, but authors' names may be withheld upon request. *The Tech* reserves the right to edit or condense all letters.

WHY PAY MORE?

THRIFTY RENT-A-CAR

HARVARD SQUARE
876-8900

BOSTON
367-6777

CENTRAL SQUARE
492-3000

Plus 7 other suburban locations to serve you!

\$20.95

Per day for Chevrolet Chevette
UNLIMITED FREE MILEAGE
Confirmed reservation required.

Full Line of 1983 Chevrolets

"Never a
Mileage Charge"



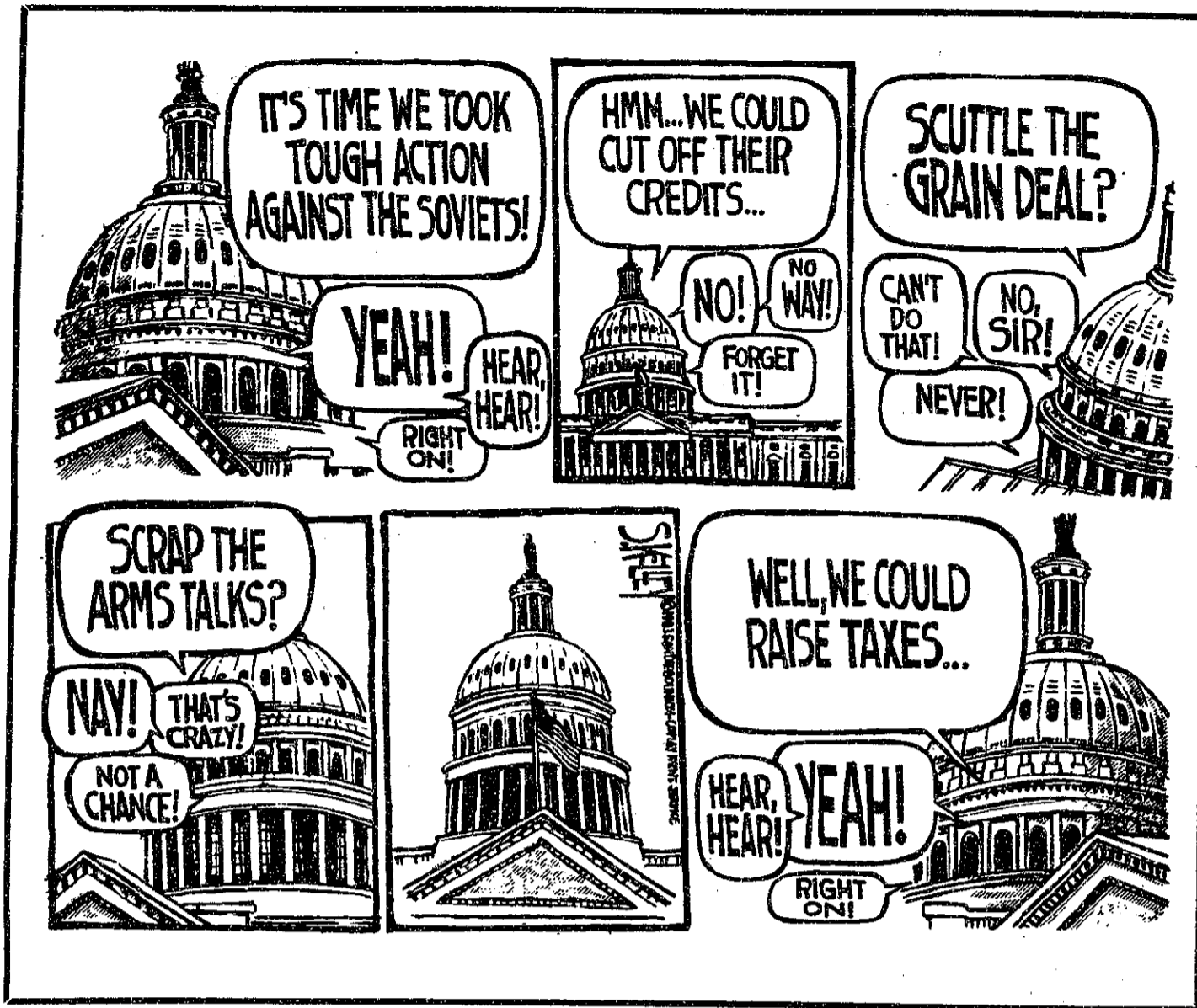
JEWISH INTRODUCTIONS

We announce for you:

- An unpressured, student designed service to meet other Jewish graduate and undergraduate students in Boston.
- We feature a brief informal interview with a counselor who will meet and match students at twelve area schools.
- You and your potential friend will each receive a confidential letter, giving you the option to follow through. All inquiries and information will be held in strict confidence.
- Interviews will be conducted at your campus during October. All letters will be mailed in early November. Three dollars of the eight dollar fee will be returned upon completion of a follow-up questionnaire.
- All interviews must be scheduled by Friday, October 14. Call 266-3882 for appointments and information.

A project of the Metropolitan Outreach Program of the B'nai B'rith Hillel Council of Greater Boston, 233 Bay State Road, Boston, MA 02215.

opinion



paprielle...
a cafe & catering co. 492-6855

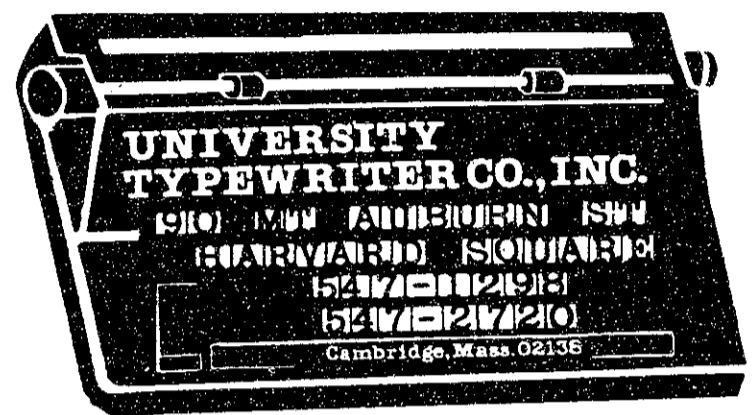
Roast Beef Sandwiches, Crabmeat Salad, Quiche, Homemade Soups, Salads, Pocket Sandwiches, Desserts etc.

11:30-8:00 Mon-Thurs
11:30-6:00 Fri

901 main street, right next to Toscanini's ice cream

UNIVERSITY TYPEWRITER CO., INC.

Repairs • Sales • Rentals
Electronic, Electric, and Manual Typewriters
New and Used • Quality Ribbons



547-2720 90 Mt. Auburn St.
547-1298 At Harvard Square
Cambridge, MA 02138



classified advertising

CLASSIFIED ADVERTISING in The Tech: \$5.00 per insertion for each 35 words or less. Must be prepaid, with complete name, address, and phone number. The Tech, W20-483; or P.O. Box 29-MIT Branch, Cambridge, MA 02139.

WORD PROCESSING: Resume's from \$10.00 Multiple Letters \$1.00 with envelope, manuscripts. IBM word processing equipment. Low cost, quick turn around, pick-up and delivery arranged. Convenient location 1124 Massachusetts Avenue Cambridge 497-0130

JAPANESE TRANSLATORS: Native Japanese speakers wanted for occasional technical translation work. Advanced knowledge in technical field (pharmaceuticals, electronics, etc.) and good writing skills in Japanese required. Excellent pay. Friendly supervision, including dictionaries. Call Bill 491-0530.

We will find any book in or out of print. Write: Cornerstone Books, P.O. Box 1536, 10 Milk St., Boston, MA 02108.

'82 Honda V45 Magna. Only 6K. Maroon, running, have no place to keep it and am desperate to sell, BO over \$1600. Call 262-0609 early mornings.

For Sale — 2 broken Tandberg reel to reel tape recorders. Price — best offer. Call Ellen at 495-2581 Monday thru Friday 9-5.

Piano Lessons and Music Theory. Experienced teacher — playing, composing since 1954, performing since 1957, graduate of Harvard in Music 1968, student of Vladimir Sokoloff of Curtis Institute in Philadelphia, teaching since 1964. near M.I.T. 492-8343.

Yamaha Super Mac 3-101. One owner, original warranty still valid. Very good condition. \$180 or best offer. Paul, 253-7155.

Babysitter needed for 2 toddler girls in my Harvard Square home near MIT. Mon-Fri 8:30-4:30 call 868-4034

The MIT Equipment Exchange offers surplus equipment and used typewriters to students and staff at reasonable prices. Located in Building NW30, 224 Albany St. Open Mon., Wed., Fri. 10am-1pm.

Imagine a machine that records sights...sounds...sensations, thoughts...feelings...emotions, even your dreams and nightmares.

Then, at the touch of a button, transfers these personal experiences from one mind to another.

Any person.
Any experience.
Anything you can imagine.

BRAINSTORM

...The Ultimate Experience

METRO-GOLDWYN-MAYER presents
A J.F. PRODUCTION A DOUGLAS TRUMBULL FILM "BRAINSTORM"
CHRISTOPHER WALKEN NATALIE WOOD LOUISE FLETCHER CLIFF ROBERTSON
Screenplay by ROBERT STITZEL and PHILIP FRANK MESSINA. Story by BRUCE JOEL RUBIN
Music by JAMES HORNER Director of Photography RICHARD YURICICH, A.S.C.
Executive in Charge of Production JACK GROSSBERG
Executive Producer JOEL L. FREEDMAN Produced and Directed by DOUGLAS TRUMBULL

PG PARENTAL GUIDANCE SUGGESTED
ORIGINAL MOTION PICTURE SCORE ALBUM AVAILABLE ON VARIOUS SARBAND RECORDS
Filmed in Super Panavision
© 1983 MGM/UA Entertainment Co.
DOLBY STEREO
MGM/UA
IN SELECTED THEATRES

World Premiere September 30th 70MM DOLBY STEREO

Opinion

feedback

Non-registrant explains decision to take leave: Cannot afford to attend

To the Editor:

The following is the full text of the letter which was presented at the MIT faculty meeting last Wednesday, Sept. 21:

To the Administration and Faculty of MIT:

I am writing this letter to explain my reasons for taking a leave of absence from MIT this fall, and to contemplate the regrettable circumstances that have made such a course of action necessary. As a non-registrant for the military draft, I am denied federal financial aid under a new law known as the Solomon Amendment. I am therefore not financially able to attend MIT this term.

The decision to remain a non-registrant in the face of this new law is a difficult one for me. Although my conscience clearly requires that I be opposed to war, I continue to grapple with the question of whether not registering is the appropriate way for me to stand up for that belief. Nevertheless, after much consideration, I feel that I must continue to hold that stance. But I shall maintain an open mind that continues to struggle with the ambiguities of that position.

Likewise, my decision to leave school is not one that I undertake lightly. I am fully aware of the value of a university education. To be truly educated, I believe, is to possess much more than merely the technical skills required for a challenging, well-paying job; it is to have the intellectual and spiritual resources to pursue a flourishing life. "Education," Emerson once wrote,

should be as broad as man
... The great object of
education should be com-

mensurate with the object of life. It should be a moral one; to teach self-trust: to inspire man with an interest in himself; with a curiosity touching his own nature; to acquaint himself with the resources of his own mind, ... and to inflame him with a piety towards the Grand Mind in which he lives.

Many of the abilities included in such a noble ideal cannot be explicitly taught, and depend upon less tangible dimensions of human experience. The ability to create, to see connections, to make metaphor — all contribute to the ability to grapple with issues that rarely have clear-cut answers. It is therefore imperative that institutions of education provide an atmosphere that nurtures and encourages those abilities to develop. This is why universities have traditionally been places of free and open discourse, places where even unpopular opinions and ideas are allowed full expression.

Because I so value these principles, I am deeply troubled by the Solomon Amendment. Indeed, anyone who is concerned about maintaining a free academic environment should be troubled as well, regardless of his opinions on draft registration, for the Solomon Amendment is a law that requires institutions of learning to violate the principles upon which they are founded. It is a law that strikes out at and discourages some of the very students who would doubt, who would think, who would question and struggle with difficult moral dilemmas. It is a law that unfairly encourages many, on the basis

of economic class, to disregard their consciences, to go against their better judgment, and to follow a course of action that they consider morally questionable. It is sad irony that an institution of education should be made party to such a law.

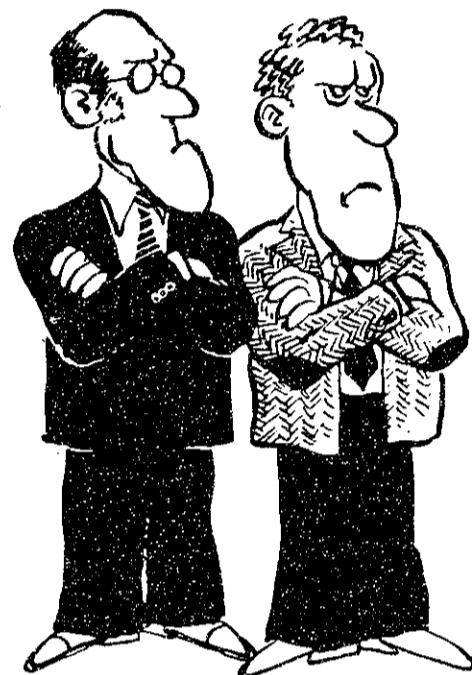
Although I am disappointed in MIT's reaction in so readily complying with Solomon, I recognize that MIT also is in a predicament and is trying to steer a practical course of action. The fact remains, however, that I will be unable to attend school this fall because of a law that MIT, as an institution of higher education, should be vigorously opposing with all the means at its disposal. I shall continue to be open to those who would educate me further regarding MIT's position; I welcome advice and counseling from those who sympathize with my stand as well as from those who are critical of it. I especially call on those members of the administration, faculty, and student body who share my concerns about academic freedom to join me in voicing their protest against the Solomon Amendment.

Regardless of my non-student status this fall, I intend to continue my education. I shall have a position as teaching assistant for the Concourse STS-200 class, and I shall continue to have a job as a computer programmer for the Psychology Department. I have enjoyed and greatly benefitted from my time as a student at MIT. I look forward to returning and finishing my physics degree if it is possible for me either to resolve my dilemma in a way that will allow my return, or to find alternative financial resources.

Scott R. Saleska '85



A BLACK
A WOMAN



TWO JEWS
AND
A CRIPPLE



Engelhart THE HARTFORD COURANT
©1983 COPLEY NEWS SERVICE

IRIKAI

MARKET



Boston's most complete
Oriental Food and Gift Store

Offering Chinese, Japanese, Vietnamese and Korean groceries and fresh produce plus prepared food for take out and fresh meat and fish cut to order.

本店為君提供中國、日本、越南、韓國等
遠東各國鮮干食品 並備有精美可
攜食物 鮮嫩肉類魚類 歡迎外賣

Open daily 10:00-9:00 p.m. Sun. 12:00-7:00 p.m.
361 Newbury St. Boston 236-4354

M.I.T. DAY

at

T.T. the Bear's Place

Tuesday Oct. 4 at 2:30 PM 'till Closing

50¢ Draft Beer - \$1⁰⁰ Cocktails

50¢ Hot Dogs - \$1⁰⁰ Snacks

8 oz. Hamburg w/ Fries \$2⁹⁵



Video Game Contest - Prizes - Trophy

Dart Tournament - Trophies - Prizes

House, Fraternity & Organization Teams & Individual Competition



t.t. the bear's place
ten brookline st
central square, cambridge, ma
492-0082

Montgomery Frost Lloyd's Inc.
 Prescription Opticians
 Quality Eyeware Since 1870

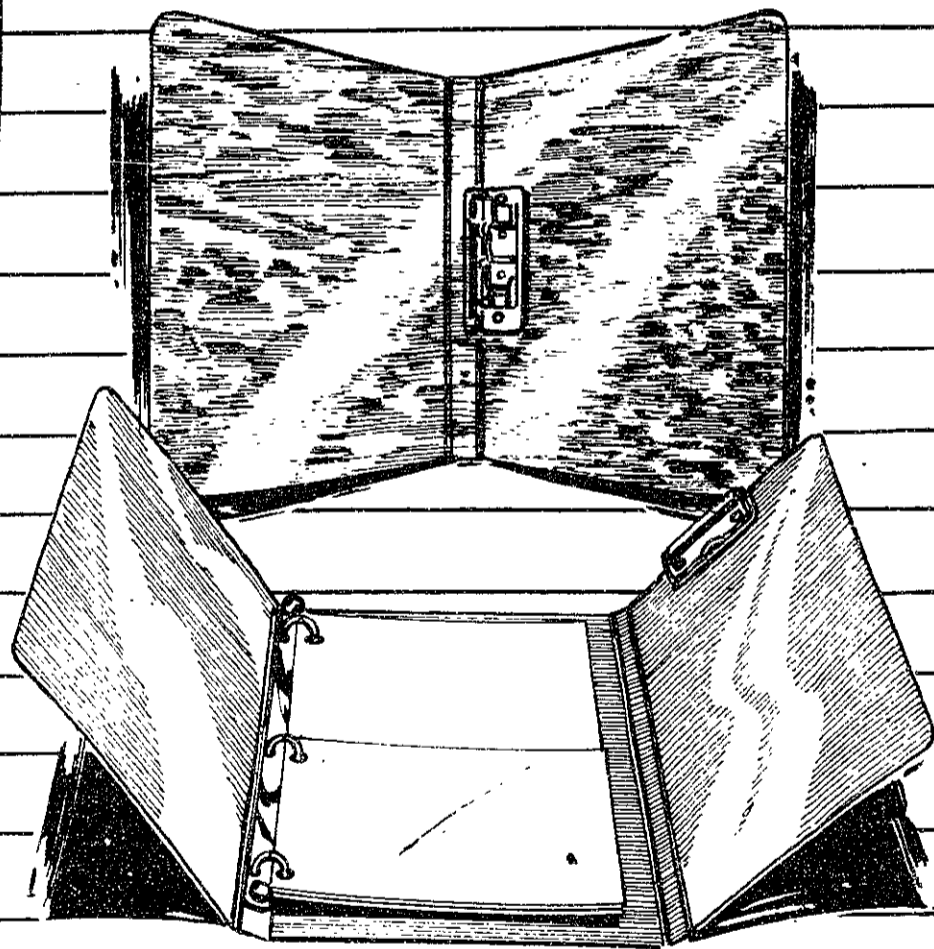
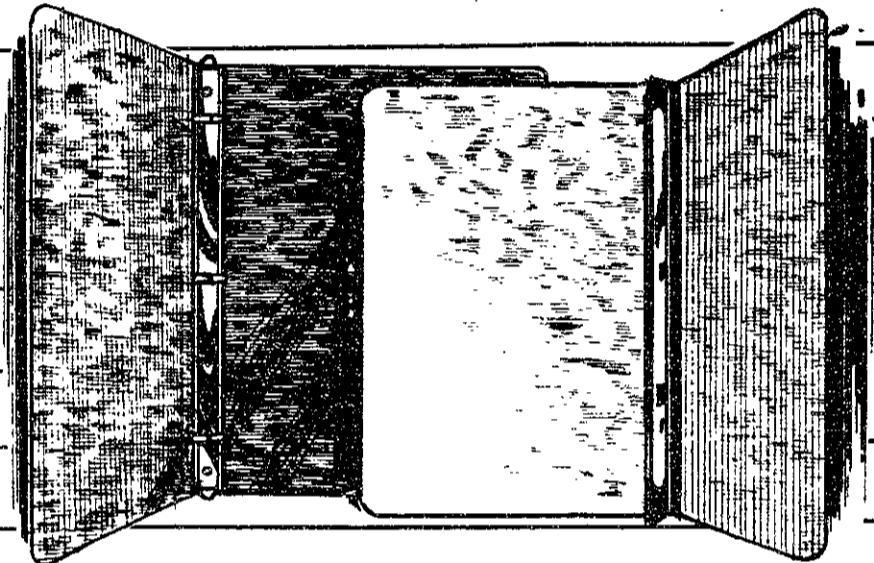
Prescriptions Filled Quickly and Accurately
 Ray-Ban, Vuarnet,
 and Porsche Carrera Sunglasses

20% Off On All Prescription Eyeware
 With M.I.T. I.D.

Offer not valid with other promotions
 Cambridge store only

5 Brattle St. (Harvard Sq.), Cambridge
 876-0851

Back-to-School



Essentials

Acco Binders Put Everything In Place
 And at the Coop you'll find an extensive line of
 these top quality organizers. Including Acco Press-
 board, Accohide, Acco Grip and report covers.
 Available in varying sizes and a pleasing assort-
 ment of colors.

Available at Harvard Square, MIT Student Center, Children's
 Medical Center, Business School, Law School.

HARVARD
 COOPERATIVE
 SOCIETY



**COLOR
 YOURSELF
 INTO THE
 FUTURE**



**A UNIQUE METHOD FOR UNLOCKING
 THE MYSTERIES OF SCIENCE**

THE NEW TECHNOLOGY COLORING BOOK is a
 simple color-by-number system with explanatory
 text. It will take you on a revealing journey through the
 mysteries of science and the universe toward a new
 understanding of the technological revolution.

There's never been anything like it. Peer inside the
 molecules of the body, discover the power of lasers,
 tour the wonders of recombinant DNA, or be at the
 controls of the space shuttle.

ALL YOU NEED ARE A FEW CRAYONS,
 FELT TIP MARKERS, OR COLORED
 PENCILS TO GET YOU STARTED
 35 TOPICS IN ALL!

- THE BODY • THE UNIVERSE
 LASERS • COMPUTERS • GENETICS
 EXTRATERRESTRIAL COMMUNICATIONS
 NEUROTRANSMITTERS • CAT SCANS
 ULTRASONOGRAPHY • MICROBIOLOGY
 SPACE • ACID RAIN • INFRARED SENSING
 BLACK HOLES • SOLAR ASTRONOMY
 NUCLEAR REACTOR • TOPOLOGY
 CONSCIOUSNESS TECHNOLOGY...
 AND MUCH MORE!**

**FREE! BOX OF CRAYONS
 IF YOU TELL US WHAT IS ON PAGE 24!**

Send cash register receipt and this coupon and receive a FREE BOX
 OF CRAYONS--just for fun!

BANTAM BOOKS, INC. Dept. SS 666 Fifth Avenue, New York 10103

NAME _____

COLLEGE/UNIVERSITY _____

ADDRESS _____

CITY _____ STATE _____ ZIP _____

THE ANSWER TO WHAT IS ON PAGE 24 _____

 A Bantam Trade Book (fill in)

Building 34 to be dedicated

By Ron Norman

MIT will dedicate the Edgerton Germeshausen and Grier (EG&G) Education Center (Building 34), Oct. 7, named in honor of the three families who contributed about \$5 million for the building, Vincent A. Fulmer '53, secretary of the Institute said.

The Department of Electrical Engineering and Computer Science (EECS) will hold a reception for the MIT community in the new building on Oct. 4, Fulmer said.

Between 450 and 500 people are expected to attend the cere-

mony, Fulmer said. The building will be dedicated to Esther M. and Institute Professor Emeritus Harold E. "Doc" Edgerton '27, Pauline S. and Kenneth J. Germeshausen '31 and Dorothy J. and Herbert E. Grier '33. "The individuals donated the vast majority of the money," for the building, along with a donation from EE&G, Inc., an electronics firm started by them in the 1930's, Fulmer continued.

The five-story building is designed for teaching, laboratory and conference purposes. The first and second floors contain a lecture hall with 11 tiers of seats

and a rear projection screen. The third floor has four classrooms and the fourth floor a conference room/lounge. The fifth floor is a computer laboratory, now being used by the EECS for Structure and Interpretation of Computer Programs (6.001).

"The [building's] emphasis is on improved teaching," Fulmer noted.

The \$5 million grant covered construction of the building and sustains a maintenance fund. The Hewlett-Packard Company donated the computer equipment for the building. Fulmer said Tektronix, Inc. is expected to give more equipment.

David S. Saxon '41, chairman of the MIT corporation will preside at the ceremony. President Paul E. Gray '54, Dean of the School of Engineering Gerald L. Wilson '61, and Head of the Department of Electrical Engineering and Computer Science Joel Moses '67 will speak at the dedication. Prof. and Mrs. Edgerton, Mr. and Mrs. Germeshausen and Mr. and Mrs. Grier will also make remarks.

The architects of the building were Skidmore, Owings & Merrill in Chicago, the same firm that designed Buildings 36 and 38. The center was built by the Barkon Construction Co.

notes

Listings

Student activities, administrative offices, academic departments, and other groups — both on and off the MIT campus — can list meetings, activities, and other announcements in *The Tech's* "Notes" section. Send items of interest (typed and double spaced) via Institute mail to "News Notes, *The Tech*, room W20-483," or via US mail to "News Notes, *The Tech*, PO Box 29, MIT Branch, Cambridge, MA 02139." Notes run on a space-available basis only; priority is given to official Institute announcements and MIT student activities. *The Tech* reserves the right to edit all listings, and makes no endorsement of groups or activities listed.

Activities

On October 6 and 7, the Kineti-company choreographers will bring their fast paced, high energy dance to MIT's McDermott Court. Performances are at 12:15 both days, and are free.

Opening Oct. 18 and running through Nov. 18, at the MIT Museum, 265 Mass. Ave., will be an exhibition of the mixed media works/landscapes of artist Rose Ventling. Call x3-4444 for more information.

Lectures

The Cambridge Forum will sponsor a lecture by Robert Kegan on "Love and Limit Setting" on Wed., October 5 at 8 pm. Lec-

tures are free and open to the public, and are held in the First Parish in Cambridge, 3 Church Street, Harvard Square.

The Greater Boston Physicians for Social Responsibility will hold a film and panel discussion, Wed., Oct. 19 at 7:30 pm, on *The Psychological Effects of Growing Up in a Nuclear Age*. The event will take place at the Sanborn School, 835 Marlboro Road, Concord. For more information, call Gail Epstein, Chapter Director, at 497-7440.

COMING SOON

EC: THE EXTRACURRICULAR

A U.A. LEADERSHIP CONFERENCE

produced and directed by the undergraduate association and odsa

"THE BEST PRODUCTION YET" - GUMBY

MYSTERIES REVEALED:

- FINDING TIME TO DO IT ALL!
- RECRUITMENT & MOTIVATION OF STUDENTS!
- WHAT DO STUDENT ACTIVITIES HAVE TO DO WITH AN MIT EDUCATION?
- & MORE ON KEEPING ALIVE STUDENT ACTIVITIES

sat, oct 1, 1983
E51-329
9am registration

all students welcome — it's free!

INTER-CONTINENTAL STUDY

30 college/university students drawn from across the United States, will live and study in NAIROBI, CAIRO, JERUSALEM, and LONDON from Jan. 8 to May 9, 1984.

Accompanied by internationally known senior professors, the selected students will live with local families and carry a full course load as they explore how societies represent and interpret themselves to themselves and outsiders.

The International Honors Program seeks mature, motivated candidates who are prepared for a fulfilling academic experience. For further information and an application, please call, collect, Marshall Strauss at 617-491-3120.

INTERNATIONAL HONORS PROGRAM

Suite 307-96

1430 Massachusetts Avenue
Cambridge MA 02138



"No thanks, I'd rather have an apple."

American Cancer Society

This space donated by *The Tech*

Back-to-School



Essentials

Ours Exclusively

M.I.T. Efficiency® Wiremaster Research Notebook
Heavy red pressboard cover encloses 75 numbered double pages — 2nd of which acts as a copy, with perforation for easy removal. Carbon pages included.

Coop Efficiency® Computation Book
Heavy red pressboard cover encloses 152 numbered grid pages (11 3/4 x 9 3/8). 4 squares to the inch. Heavy headline and margin.

Also Available
M.I.T. Insignia notebooks from Ampad. Choose from an ample assortment of sizes, divisions, rulings — some with perforation — and prices.

Ampad Filler Paper. 200 and 500 count in narrow rule.

HARVARD
COOPERATIVE
SOCIETY

the
Coop

"Rohmer's brilliant erotic comedy"

—David Denby,
New York Magazine



ERIC ROHMER'S

R

Pauline
of the beach
NOW PLAYING

NICKELODEON

406 Comm Ave. Boston 424-1500

2:35, 4:30, 6:30, 8:25, 10:15

Sat., Sun. Mat: 12:50

Off the Beaten Groove

ARTS
ARTS

Revenge of the synth people

Strangers in the Night, Baumann on Portrait Records.

Sweet Dreams are Made of This, Eurhythmics on RCA Records.

You and Me Both, Yaz on Sire Records.

You Gotta Say Yes to Another Excess, Yello on Elektra Records.

The requisite technology may be American and Japanese, but the electropop genre has remained the sole province of the British. They do not control the monopoly on electronic creativity; instead, the British bands have tried their hand at instant success, grabbing a keyboard the way American youths reached for an electric guitar.

It was Elvis who said: "Anyone with a guitar can make rock 'n' roll," but the United Kingdom cannot claim a similar antecedent for its recent boom in plugged-in pop. Unlike the American rock system and its near-mandatory slog through the dues-paying circuit, British pop is a history of one-hit wonders where few bands survive the sophomore slump. Electropop in particular suffers a miserable failure rate: Does anyone remember Lori and the Chameleons, whose single "Touch" spawned the genre?

What we learn from the history of electropop is that mastery of technology is not enough: Anybody can operate a set-and-forget synthesizer or rhythm machine. The human element is needed, and is present in the bands that have displayed any kind of longevity: the Human League, the Heaven 17, OMD, and even newcomers ABC, Culture Club, and the Thompson Twins.

What these new bands share is an ability to infuse new music with elements drawn from proven — and primarily American — genres like soul, gospel, and rhythm and blues, plus touches of the Third World as found in Culture Club's reggae/calypso underpinnings and the Thompson Twins' polyrhythmic pastiche.

Music from the next generation of electropoppers made its way to our shores this summer. Among the latest contestants are two British duos, the Eurhythmics and



Yaz, and two Continental entries, Switzerland's Yello and Germany's Baumann. Even the most cursory listening supports the initial thesis: Britannia may no longer rule the waves, but she most certainly controls the currents.

Peter Baumann is considered a grand old man of the synthesizer by virtue of his membership in Tangerine Dream, the pioneering German trance/synth ensemble. At the height of the group's success, Baumann was bitten by the Eurodisco bug, and departed to pursue a solo career. His first album, *Repeat, Repeat*, a major success on the Continent, made a small dent in the New York disco charts — enough of a dent to make him relocate there to build a recording studio and assemble a new band.

Strangers in the Night, Baumann's latest offering, shows him still in the sway of Teutonic precision. This is a carefully crafted record with not a note out of place, but it fails not only to swing, but also to rock. From the title cut — a cover that could prompt Ol' Blue Eyes to pick up a pair of shades — to the closing "Welcome," the music bounces and clicks under icy-cold, dispassionate vocals, not unlike Devo without the humor.

Some of these songs — especially "Cash" and "Metro Man" — would positively sparkle in the hands of certified crazies like Devo; in Baumann's hands they merely fizzle.

One might expect electropop from the nation that gave us cuckoo clocks and cheese with holes to be slightly eccentric. Yello does not dispel the notion.

Its music is heavily influenced by cinematic techniques, each tune a self-contained vignette narrated by vocalist/lyricist (and former conceptual artist) Dieter Meier, who imposes his madness over composer Boris Blank's fusion of electronics and industrial noise.

Even the most original concepts can fail on vinyl, however, and on *You Gotta Say Yes to Another Excess*, Meier is the chief obstacle, reveling in his lyrical excesses.



His half-spoken, half-sung vocals conjure a cross between David Niven and Vincent Price — the *basso profundo* narrative accompanying bad horror flicks — ultimately trivial, but unignorable.

Every clever idea Blank can muster, from crazed jungle rhythms in "Salut Mayoumba" to big-band brashness in "Swing," is crushed by Meier's irritating wit. This record supports the time-worn adage: "Beware conceptual artists bearing synths."

Debut albums can be jubilant affairs, introductions to unproven talent that may one day define — or redefine — a genre. Breakup albums, on the other hand, are frequently studies in no-holds-barred, wretched excess; rarely are they poignant last looks at bands forced apart for non-musical reasons.

Yaz's debut *Upstairs at Eric's* was certainly jubilant: The phenomenal success of "Situation" and "Don't Go" had many critics touting Yaz as electropop's great white hope. Synth wizard Vince Clarke (formerly with Depeche Mode) and singer Alison "Alf" Moyet, had hit upon a winning combination of crisp, dance-oriented music and husky, bloozy singing.

You and Me Both proves the combination was more than a fluke. Clarke's flamboyant riffs were pared to the fewest notes necessary to convey a melody, and Moyet supplanted shouts with a smokier, mellow approach. Together they developed a genuine song cycle dealing with love and its discontents, sung from various perspectives to, for and about each other — at times reminiscent of Richard and Linda Thompson's bitter parting, *Shoot Out the Lights*.

In spite of — or perhaps because of — the quiet despair that suffuses much of the disc, Vince and Alf still manage to have a bit of fun with the Supremes-ish "Walk Away from Love," "State Farm's" jumpin' and hollerin', and the funky grind of "Knocking for a Good Time."

Few bands mature so quickly by their second album; Yaz matured so quickly it



realized it could never better its second effort.

The gap left by Yaz may already be filled by another male/female duo — the Eurhythmics: singer Annie Lennox and synthesist Dave Stewart, both formerly of the Tourists. Their debut, *Sweet Dreams Are Made of This*, has become a runaway hit thanks to the overwhelming success of the title tune, but a listen to the whole disc reveals an overabundance of talent pervading every cut.

Lennox and Stewart, like Clarke and Moyet, have written an album about love and relationships (Could this be the simple key to successful electropop, writing songs about people?), but unlike Yaz's underlying despair, the Eurhythmics suffuse each song with an undercurrent of edgy dread.

Like Moyet, Lennox draws her vocal inspiration from soul singers, a debt she acknowledges with a cover of the Isaac Hayes/David Porter classic "Wrap it Up." Stewart's treatment of this song turns a soul swinger into a scaring stomp.

Elsewhere, Stewart displays his willingness to experiment, boldly going where no synth has gone before, providing the wash of buzzing bass that propels "I Could Give You a Mirror," adding "trumpets" to "The Walk" and "This is the House" and "flutes" to "I've Got an Angel."

Lennox compliments Stewart's inventions with a diverse range of vocal effects: A soft purr in "Jennifer," a rudimentary Spanish lesson in "This is the House," and a wicked snarl in "Somebody Told Me" all demonstrate directions she can take with her extraordinary voice.

Sweet Dreams subtly subverts the listener, grabbing immediately with the title track — nearly impossible to forget — later ensnaring with the intricacies of "The Walk" and "Love is a Stranger." Were this a just world, each song from this incomparable debut would be a number one hit. Even the most hardened listener will concede that the Eurhythmics may well make good electropop's sweet dreams.

David Shaw

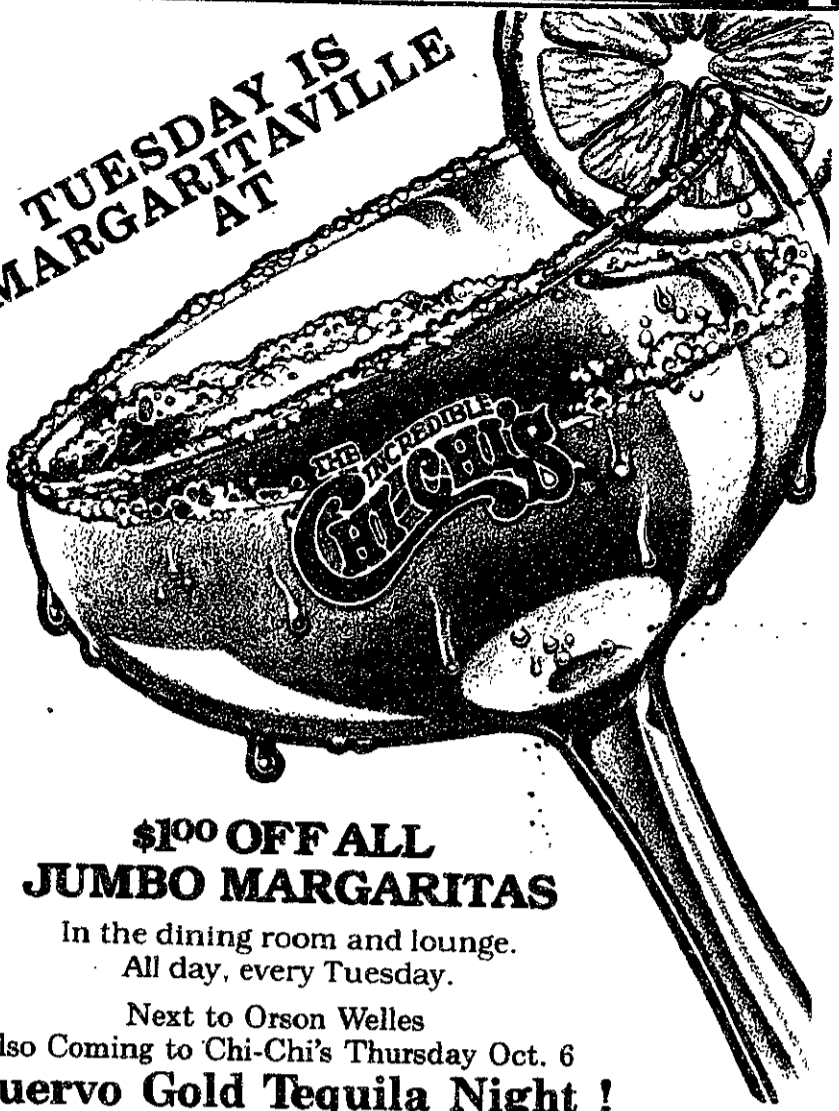




**It's here:
 The premium taste
 for the premium species.
 Like Terriers, Huskies, Eagles,
 Chiefs, Jumbos, Beavers.
 And Yard Varieties.**

**Brador.
 Everything you've
 heard about it
 is true.**

**TUESDAY IS
MARGARITAVILLE
AT**



**\$100 OFF ALL
JUMBO MARGARITAS**

In the dining room and lounge.
All day, every Tuesday.

Next to Orson Welles

Also Coming to Chi-Chi's Thursday Oct. 6

! Cuervo Gold Tequila Night !

(1001 Mass Ave. — 491-2040)

Honda Owners

- NOW SPECIALIZING IN HONDA CARS ONLY
- ALL WORK GUARANTEED
- HONDA FACTORY TRAINED MECHANICS
- HOURLY RATE: \$6.00 BELOW DEALER

CARLS SUNOCO

209 Broadway, Camb., MA 547-1950

(NEAR KENDALL SQ. AND MBTA)

10% Off All Labor

On any Honda with this coupon

GET IT DONE RIGHT THE FIRST TIME AND PAY LESS!!



**IS
THIS
WHAT
YOUR
KISSES
TASTE
LIKE?**

If you smoke
cigarettes, you
taste like one.

Your clothes
and hair can
smell stale and
unpleasant, too.

You don't
notice it, but
people close to
you do.

Especially if
they don't
smoke.

And non-
smokers are the
best people to
love. They live
longer.

**AMERICAN
CANCER
SOCIETY**

This space donated by The Tech

HUGHES

THE JOURNEY HAS BEGUN

If you'd like to be part of an electronics
story that's still unfolding, come to the
Hughes Career Opportunity Presentation.

Hughes representatives will be on campus to meet
EE, ME, Computer Science, Physics and
Engineering Systems majors:

**Thursday, October 6, 4-6pm
Room 212, Bldg. 37**

(refreshments will be served)

SPACE & COMMUNICATIONS GROUP

Creating a new world with electronics

HUGHES

HUGHES AIRCRAFT COMPANY

U.S. Citizenship Required for Employment
Equal Opportunity Employer

UTRECHT SAVING SYSTEM

Serving: ARTISTS • DESIGNERS • ARCHITECTS • DRAFTSMEN • SCHOOLS

• No further quantity discounts on Utrecht products • Our Utrecht Branch Stores carry thousands of other items at Impressive Savings

UTRECHT Art & Drafting Supply Center of BOSTON:

333 Massachusetts Avenue (Corner of Huntington, opposite Symphony Hall) • Boston, Massachusetts 02115

Telephone: (617) 262-4948 • Hours: 9:30 a.m. - 6:00 p.m. - Monday through Saturday, All Year.

UTRECHT Prepared Tracing Paper



UTRECHT VELLUM-TECH HEAVYWEIGHT — 19.5 Lb. PREPARED TRACING PAPER 100% Rag Content

— For Pencil, Pen & Film Pencil

Now... The Chemistry and Technology of the 80's Has Made It Possible for Utrecht to Have DEVELOPED a Modern Superior Engineering Surface.

This new chemistry has produced a workable surface that:

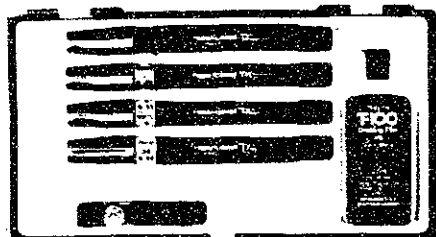
- Withstand Repeated Ghost-Free Erasures
- Has Extreme High Transparency
- Has Great Strength
- Has Permanence and Non-Yellowing Characteristics

COMPARE: UTRECHT'S VELLUM-TECH against any Vellum you are currently using regardless of price.

• IN 20 YARD & 5 YARD ROLLS

- 12" x 20 Yds \$ 4.50
- 18" x 20 Yds 6.60
- 24" x 20 Yds 8.75
- 36" x 20 Yds 12.75
- 36" x 5 Yds 3.65

TG 4 Pen Set 65% Off

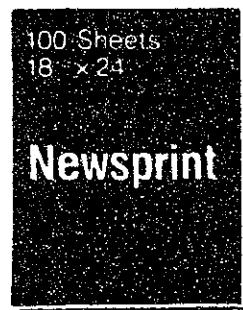


No. S1564: NEW IMPROVED CASTELL TG PROFESSIONAL FOUR PEN SET

— With Stainless Steel Points

List Price: \$42.00
Utrecht Price 65% Off: \$16.80

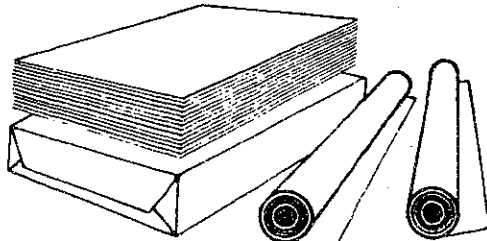
Smooth Newsprint 50% Off



No. 506S: BIENFANG NEWSPRINT PADS 100 Sheet Pads — Smooth Surface

Item Number	Sheet Size	List Price per Pad	50% Off per Pad	50% Off per Ctn.
• Packed: 12 Pads per Carton				
331221	9" x 12"	\$ 2.15	\$1.08	\$12.90
331236	12" x 18"	3.70	1.85	22.20
331242	14" x 17"	4.20	2.10	25.20
331257	18" x 24"	6.70	3.35	40.20
• Packed: 6 Pads per Carton				
331280	24" x 36"	13.35	6.68	40.05

Hoechst Static-Free Drafting Film



HOECHST Static-Free PROFESSIONAL DRAFTING FILM — in Sheets & Rolls: .004 Mil Double Matte (TOTAL THICKNESS)

- PERMANENT
- EXCELLENT INK & PENCIL TAKE
- GHOST-FREE ERASURES
- REPRODUCTION FIDELITY

Note: The .004 Mil Double Matte Film has a base thickness (before coating) of .003 Mil. After the coating has been applied it has a total thickness of .004 Mil.

• IN 20 YARD ROLLS:

- .004 Mil — Double Matte:
- 36" x 20 Yard Roll: \$38.50
- 42" x 20 Yard Roll: \$44.95

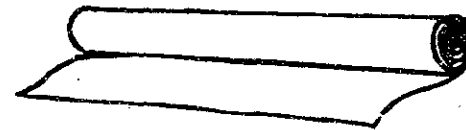


• IN SHEETS:

.004 mil — Double Matte:

Sheet Size	25 Sheet Packages	100 Sheet Packages
8 1/2" x 11"	—	\$ 14.95
11" x 17"	—	29.95
17" x 22"	\$16.25	59.50
22" x 34"	29.95	116.30
24" x 36"	34.95	133.90
30" x 42"	50.85	191.80

Canary & White Sketching Paper



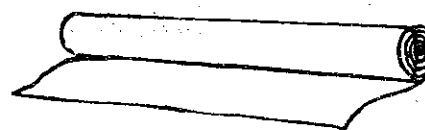
No. 260 & 261: UTRECHT LIGHTWEIGHT SKETCHING PAPER — 50 Yards Per Roll • In Canary & White

UTRECHT'S lightweight yellow and white sketching paper is good for idea sketching, layout, preliminary detail drawings, etc. Each has good transparency and erasability. Ideal for architects, designers and engineers.

— Packed 12 Rolls per Carton

Item Number	Roll Width	Utrecht Super Per Roll	Saver Price Per Carton
• No. 260: CANARY Paper - 7.5 lbs.			
260-12	12"	\$2.25	\$23.40
260-14	14"	2.60	27.50
260-18	18"	3.30	34.20
260-24	24"	3.90	40.68
260-36	36"	5.70	61.20
• No. 261: WHITE Paper - 8.0 lbs.			
261-12	12"	\$2.25	\$23.40
261-14	14"	2.60	27.50
261-18	18"	3.30	34.20
261-24	24"	3.90	40.68
261-36	36"	5.70	61.20

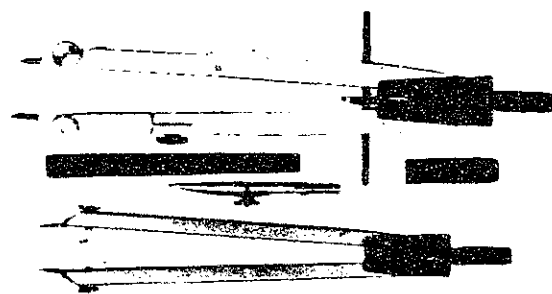
Parchment Paper In Rolls



UTRECHT PARCHTRACE TRACING PAPER — in 20 Yard Rolls

- Standard Weight — 25 lb. 36" x 20 Yard Roll: \$3.65

UTRECHT Drafting Supplies



No. 15M-60 UTRECHT Pen & Pencil Set

Contains: No. 4M-90 Large Pen and Pencil Compass • No. 2M-15 Friction Divider • Plus one Ruling Pen Holder and a Box of Leads.

Utrecht Super-Saver Price: \$7.95

UTRECHT TRIANGULAR SCALES — Architect, Engineer and Mechanical Draftsman

A 12" solid white plastic scale that has accurate gradations.

- **Architect:** Divided 1/8, 1/4, 1/2, 1, 3/8, 1 1/2, 3, 3/32, 3/16 inches to the foot. 16 parts to the inch.
- **Engineer:** Divided 10, 20, 30, 40, 50, 60 parts to the inch.
- **Mechanical Draftsman:** Divided 1/8, 1/4, 1/2, 1 inches to the foot. 1/4, 1/2, 3/8, 3/4 inches to the inch; 50th, 16th inch to the inch

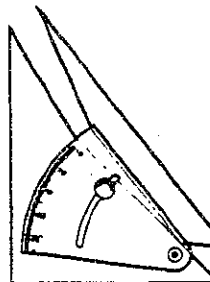
Utrecht Super-Saver Price Each: \$1.59

UTRECHT TRIANGLES — 30°/60° and 45°/90° With Inking Edge

Utrecht Super-Saver Price per Each	Utrecht Super-Saver Price per Each
Size 30°/60°	Size 45°/90°
6" \$.90	6" \$.90
8" 1.15	8" 1.15
10" 1.65	10" 1.65
12" 2.05	12" 2.05

UTRECHT PROFESSIONAL ADJUSTABLE TRIANGLES

Made of high quality acrylic with beveled machine-cut edges. The precision protractor section in graduated 1/2 degree increments from 0° to 90°.



Item No.	Size	Utrecht Super-Saver Price Each
9045-8	8"	\$ 9.50
9045-10	10"	10.25

Fome-Cor 40% — 50% Off



No. 327 Monsanto FOME-COR — Laminated Foam Board — In Standard Weights

Board Size	List Price per Board	40% Off Each	Boards per Carton	50% Off per Ctn.
• 3/16" THICK:				
- No. 710-291	30" x 40"	\$ 5.15	50 Boards	\$128.75
- No. 710-292	32" x 40"	5.45	50 Boards	136.25
- No. 710-397	40" x 60"	10.35	25 Boards	129.38
- No. 710-498	48" x 96"	19.55	25 Boards	244.38
• 1/8" THICK:				
- No. 710-100	32" x 40"	5.45	25 Boards	68.13

Venus Leads 30% Off

VENUS FINEST DRAWING LEADS — Accurately Graded in 17 Degrees:

6B, 5B, 4B, 3B, 2B, B, HB, F, H, 2H, 3H, 4H, 5H, 6H, 7H, 8H and 9H.
List Price per Dozen: \$4.00
Utrecht Price 30% Off Per Dozen: \$2.80

Lead Holder 30% Off

No. 5611-C: KOHINNOOR "TECHNIGRAPH" LEAD HOLDER

Lightweight all metal lead holder with "Adapto-Clutch" and pocket clip.

List Price each: \$3.60
Utrecht Price 30% Off each: \$2.52

Erasers 30% — 40% Off



No. 562-50: MARS WHITE VINYL PLASTIC—Large Size

List Price per Dozen: \$6.00
Utrecht Price 30% Off per Dozen: \$4.20

No. 1224 KNEADED RUBBER Medium Size

List Price per Dozen: \$5.58
Utrecht Price 30% Off per Dozen: \$3.91



No. 101: PINK PEARL — Large Size

List Price per Dozen: \$5.88
Utrecht Price 30% Off per Dozen: \$4.12

PELIKAN PT-20 — Ink Eraser

List Price per Dozen: \$12.00
Utrecht Price 40% Off per Dozen: \$7.20

• Utrecht's discounts on other manufacturers' products are based upon their suggested list prices; this a practice that can be found in the art and drafting supply field today. However, the discount may not determine your exact savings compared to other sources of supply. There are suppliers who sell materials at the manufacturer's

suggested list price, while others do not. Utrecht welcomes you to compare our selling prices of our entire inventory with others to determine the real savings.

PRICES SUBJECT TO CHANGE

notes

Announcements

The Council for the Arts at MIT is pleased to announce free MIT student membership to The Boston Museum of Fine Arts (MFA) for the entire academic year 1983-84, entitling all students to full membership privileges upon presentation of a current student ID. Benefits of membership include free admission, and discounts on lectures, concerts, and in the Museumshop.

The Bursar's Office has announced that the hours for student services on loans will be 9am to 4pm, Monday through Friday. The Student Accounts Office hours will continue to be 9am to 4pm, Monday through Friday.

Fees for student transcripts will no longer be accepted at the Bursar's Office. All transcript fees must be paid at the Cashier's Office, 10-180.

The MIT U.H.F. Repeater Association offers radio communications assistance to any MIT event free of charge. If you or your group are interested, contact Richard D. Thomas, room W20-401, or call 354-8262 for details.

The 23rd edition of Serials in the MIT Libraries is now available. This microfiche listing (published semiannually) of approximately 20,000 titles includes information on holdings, dates, call numbers,

and title changes. The 23rd edition contains 675 new titles (840 alterations). Prepayment is required. The price is \$10.00; for MIT staff and students, \$3.00. To order send check payable to Massachusetts Institute of Technology, to: Office of the Director, Room 14S-216, MIT Libraries, Cambridge, MA 02139.

Lectures

Rabbi Dan Shevitz, Hillel director and Jewish chaplain at MIT, will be teaching a course on "Th Talmudic Roots of Jewish Mysticism" as part of the Continuing Education Program at Hebrew College in Brookline. English texts will be used, and the course will be given Monday evenings from 7:30 to 9:30 pm beginning Oct. 3 and running for 10 weeks through Dec. 5. All courses cost \$70 each. For further information contact Hebrew College at 232-8710.

Want to lose weight using hypnosis and relaxation techniques? Beth Israel Hospital is running a 10-session hypnosis and weight loss group program beginning Monday, September 19. Call 735-4195 for details.

Pregnancy Help is a pro-life emergency pregnancy service offering sound, positive alternatives to abortion. This organization of-

fers practical assistance, personal support, and volunteer friendship counseling. For more information, call 782-5151.

Are you bothered by stuttering when you speak? Beth Israel Hospital's speech pathologist evaluates and treats communication disorders affecting speech, voice, or articulation. Call 735-2073 for more information.

Those with the time and inclination to do volunteer work are encouraged to join the Network of Goodwill. To receive information as to what opportunities may be available in your area of interest, please call Althea, 491-8158, or Mary, 323-0888 mornings or 522-0800 9-noon Tuesdays.

The Beth Israel Hospital Back Pain School teaches back pain sufferers simple techniques and exercises to help manage and soothe the discomforts of back pain. Held four consecutive Mondays, 4:30-5:30pm. New groups begin monthly. Cost for four sessions: \$80. Call 735-3940 for details.

Two films from China will be presented in Building 10-250 on Oct. 9, at 1 pm. "The Cradle" and "Brother Echo" are both subtitled in English. The films are presented by the US-China Peoples Friendship Association.

The Riverside Family Institute is sponsoring a six week class in Hatha Yoga — designed to stretch, tone, and strengthen the body — beginning Sat., Oct. 8, 10:30 am to noon. No previous experience is required, and course fees are \$45. For more information, call 964-6933.

JOHN'S BARBER SHOP

16 Prospect Street
Central Square
492-2962

HAIRCUTS \$4.75
any style

Open 7:30AM — 6:00PM
Closed Wednesdays
and Sundays

BOX OFFICE NOW OPEN OCT. 9 - OCT. 30

Doonesbury

A New Musical



CHARGIT: 1-(800)-223-0120

Group Sales Call: (617) 426-6444 Ticketron
WILBUR THEATRE
246 Tremont Street Boston, Mass. 02116 • 423-4008

New

Introducing the "SporTach" digital Sport Tachometer



Measures the distance walked or run at any pace. Clips securely to belt or waistband; light and unobtrusive. A twist of the right-hand dial sets the stride from 1 1/2 - 6 feet. A twist of the left-hand dial converts to either walking or running. Sliding the button on the front of the SporTach instantly resets it to zero. Registers accurately up to 99.9 miles. One year Warranty against manufacturer's defects. \$20

Available at Harvard Square, MIT Student Center. Coop Charge. Mastercard, Visa and American Express welcome.

HARVARD COOPERATIVE SOCIETY



CUSTOM POLYESTER RADIAL

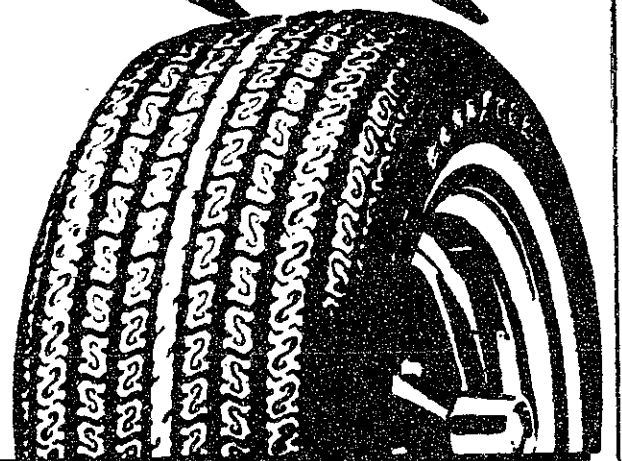
SALE!

STEEL BELTED RADIALS!

GOOD YEAR

CUSTOM POLYSTEEL RADIAL

- The tire that keeps it's feet even in the rain
- Gas-saving radial ply construction
 - Sure-footed wet traction tread
 - Penetration resistance of steel cord belts
 - Smooth ride of resilient polyester cord
 - Steel and polyester . . . POLYSTEEL give you both!
 - Rib count and sidewall styling vary with size; not all tires look exactly like tire shown.



SIZE	BK SALE PRICE	PLUS F.E.T.	SIZE	BK SALE PRICE	PLUS F.E.T.
P205/75R14	61.00	2.34	P155/80R13	42.00	1.50
P215/75R14	64.00	2.49	P175/80R13	50.00	1.83
P225/75R14	67.00	2.67	P185/80R13	51.00	1.90
P205/75R15	65.00	2.44	P175/75R14	51.00	1.87
P215/75R15	66.00	2.59	P185/75R14	54.00	2.00
P225/75R15	69.00	2.74	P195/75R14	59.00	2.13
P235/75R15	73.00	3.01			

BRAKE KINGS

808 Memorial Dr.
Cambridge
864-1111

BRAKE AND FRONT END CENTERS
Save 10.00 OFF ANY REPAIR OVER \$100.00 — OR — \$5.00 OFF ANY REPAIR UNDER \$100.00

AMERICAN AND FOREIGN CAR SPECIALISTS
FREE WRITTEN ESTIMATES
NOT NEGOTIABLE FOR GASOLINE PURCHASES

FREE BRAKE CHECK
LIFETIME GUARANTEE



CUSTOMER NAME _____ PHONE _____
STREET _____
CITY _____ STATE _____ ZIP _____

VSST BRAKE KINGS: THE KING OF BRAKES
25.00 Minimum Purchase — No Double Discounts

Status of art association hinges on definitions, history

(Continued from page 1)

Space was allocated during the construction of the Student Center in 1964-65 for art studios and a silk-screening facility.

Due to growing interest in the facilities, the Dean's Office provided seed money, hired a director — Mimi Luft — and officially started the Student Art Association in fall 1967.

A paid director has always processed the group's paperwork, hired instructors, bought supplies, and scheduled classes.

As more people took the group's classes, fees accounted for a higher percentage of the group's budget.

Over the years, students have taken classes and have suggested new areas of instruction, but have never managed the association. Advertisements and flyers for the classes, including this fall's distributions, have, however, carried the name Student Art Association.

The Student Art Association "has never been a student activity in the sense [the Lecture Series Committee] is," said Andrew M. Eisenmann '75, acting director of the Student Art Association and staff assistant in the Dean's Office. "It was never solely or wholly run by students."

The Student Art Association was "envisioned" as a student activity at its creation, he said. The group is a member of the Association of Student Activities, has a constitution, has student officers, and should hold meetings.

But during "the past ten years, it has never been an activity as such," Eisenmann said, "and I'm not sure it ever was."

"I don't think the [Student Art Association] is ever going to be running the art studios," Eisenmann said, "but only is to assist and advise the director."

The Association of Student Ac-

tivities will choose, through either inaction or action, to consider the Student Art Association a student activity — although no students are actively involved in its management — or to view the Student Center art studios as a student-oriented Institute facility like the Hobby Shop.

The Hobby Shop, Eisenmann said, is not recognized by the Association of Student Activities, has a paid staff member, is supported by the Dean's Office, and provides services to students.

A similar arrangement for the art studios, however, would leave

unresolved the issue of scarcity of space for recognized student activities.

Since the Association of Student Activities holds the authority to distribute activity-space on the fourth floor of the Student Center among its members, it might be obligated to remove the art studios or to reduce their allotted space.

If the Dean's Office supersedes that authority, there may be little justification for the continued existence of the Association of Student Activities.

HOPE began in 1958 when Dr. William B. Walsh initiated a project aimed at international goodwill and understanding and submitted a plan for the world's first peacetime hospital ship. The S.S. HOPE has since been retired, but the work and activities of Project HOPE have continued worldwide.

Give to:



This space donated by The Tech

DEC. 3 LSAT

EARLY BIRD CLASSES STARTING IN OCTOBER



Stanley H. KAPLAN
Educational Center

TEST PREPARATION
SPECIALISTS SINCE 1938
For Information About Other Centers
In More Than 105 Major US Cities & Abroad

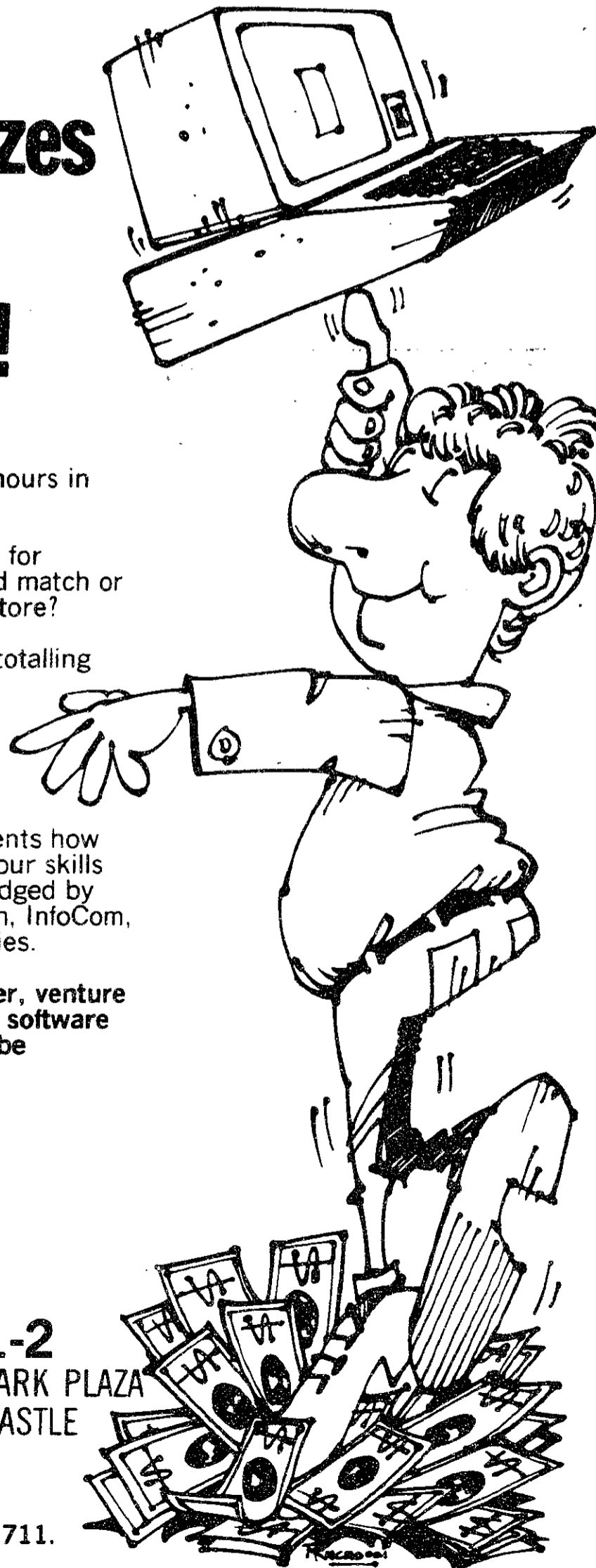
Call Days Evenings & Weekends

CAMBRIDGE 661-6955
BOSTON 482-7420
NEWTON CENTRE 244-2202

Visit our Center
at 727 Mass. Ave.,
Cambridge!

CALL TOLL FREE: 800-223-1782

\$30,000 in Prizes for Computerists!



Do you spend the majority of your waking hours in front of a computer?

Do you have half finished software or ideas for programs in your bottom drawer that would match or beat the stuff sold at your local computer store?

Then read on because there are 21 prizes totalling \$30,000 waiting for people like you.

And you can meet leading publishers, manufacturers, distributors, agents and venture capitalists in the industry at the same time you compete for prizes. You'll learn from leading marketers and agents how to tune your software for the market, sell your skills and negotiate contracts. Software will be judged by top developers for Atari, Spinnaker, Penguin, InfoCom, MicroLab, Sierra On-line and other companies.

If you're looking for money, a job, a publisher, venture capital or just a very interesting view of the software industry — come on by! Software need not be complete to enter. You retain all rights.

THE GREAT AMERICAN SOFTWARE CONTEST

NOV 1-2
BOSTON PARK PLAZA & PLAZA CASTLE

For more information contact
Master Plans Conference Mgmt., (312) 944-1711.

TALMIS / InfoWorld

TEST YOUR E.Q.

(Economics Quotient)

True False

(1.) Less than four per cent of the U.S. labor force are agricultural workers.

(2.) Today, the U.S. ranks third in international trade.

A special booklet on our American Economic System can help you improve your E.Q.

For your free copy, write "Economics," Pueblo, Colorado 81009.

ANSWERS: (1) F (2) T

The American Economic System.

We should all learn more about it.

A public service message of The Newspaper & The Advertising Council & US Department of Commerce

This space donated by The Tech

STUDENTS INTERESTED IN MEDICINE

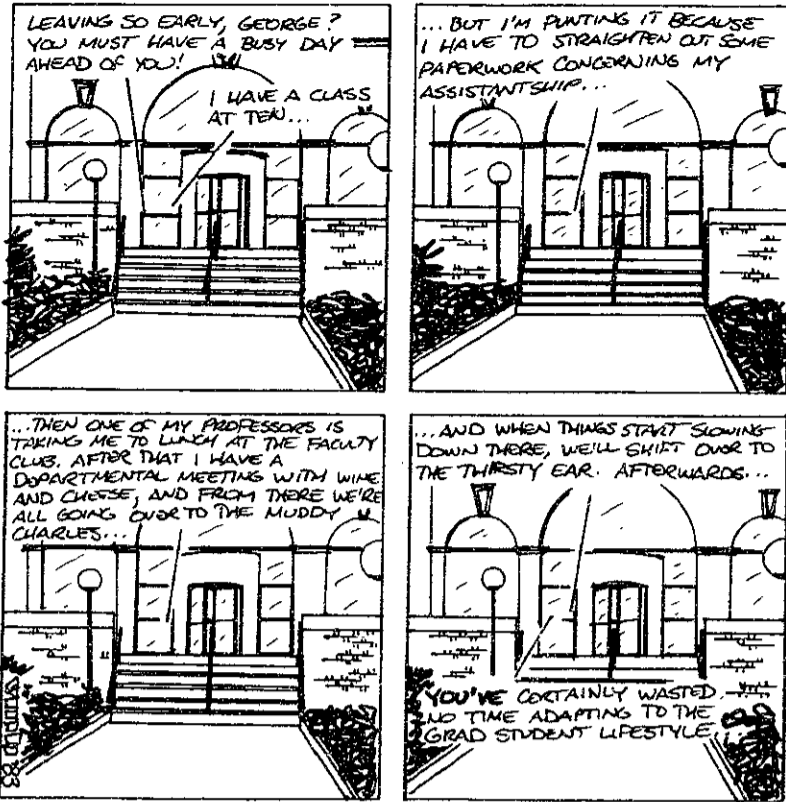
INFORMATIONAL MEETING

MONDAY OCTOBER 3, 1983
4:00 PM
ROOM 12-182

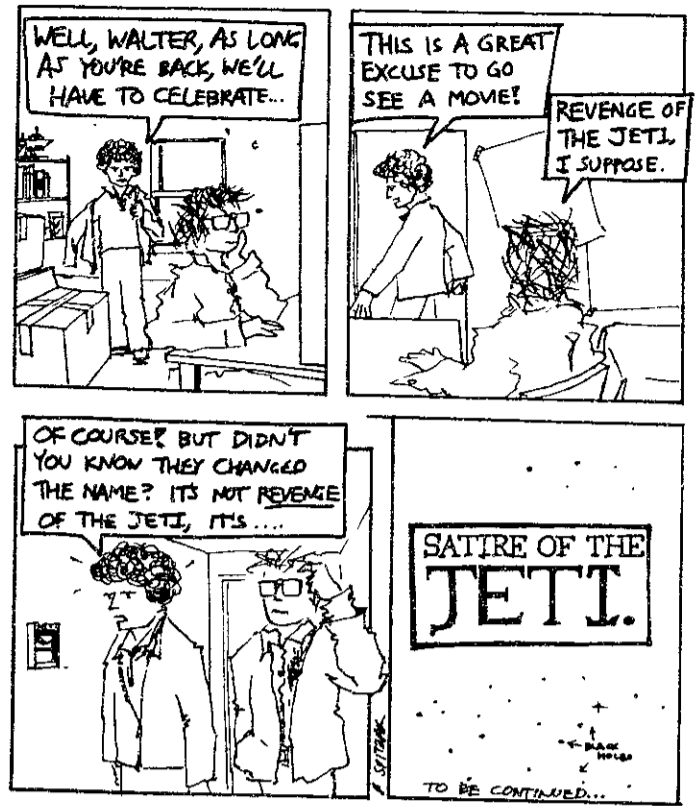
TOPICS TO INCLUDE:
PRE-MEDICAL REQUIREMENTS
OFFICE PROCEDURES
PRE-MEDICAL ADVISOR
OFFICE OF CAREER SERVICES AND PREPROFESSIONAL ADVISING
Room 12-170 253-4737

comics

Outside Looking In
By V. Michael Bove



Space Epic
By Bill Spitzak



Dolpha
By Joe Cerami



Stickles
By Geoff Baskir



open house

HEWLETT **hp** PACKARD

Career Opportunities



Slide Show



Refreshments

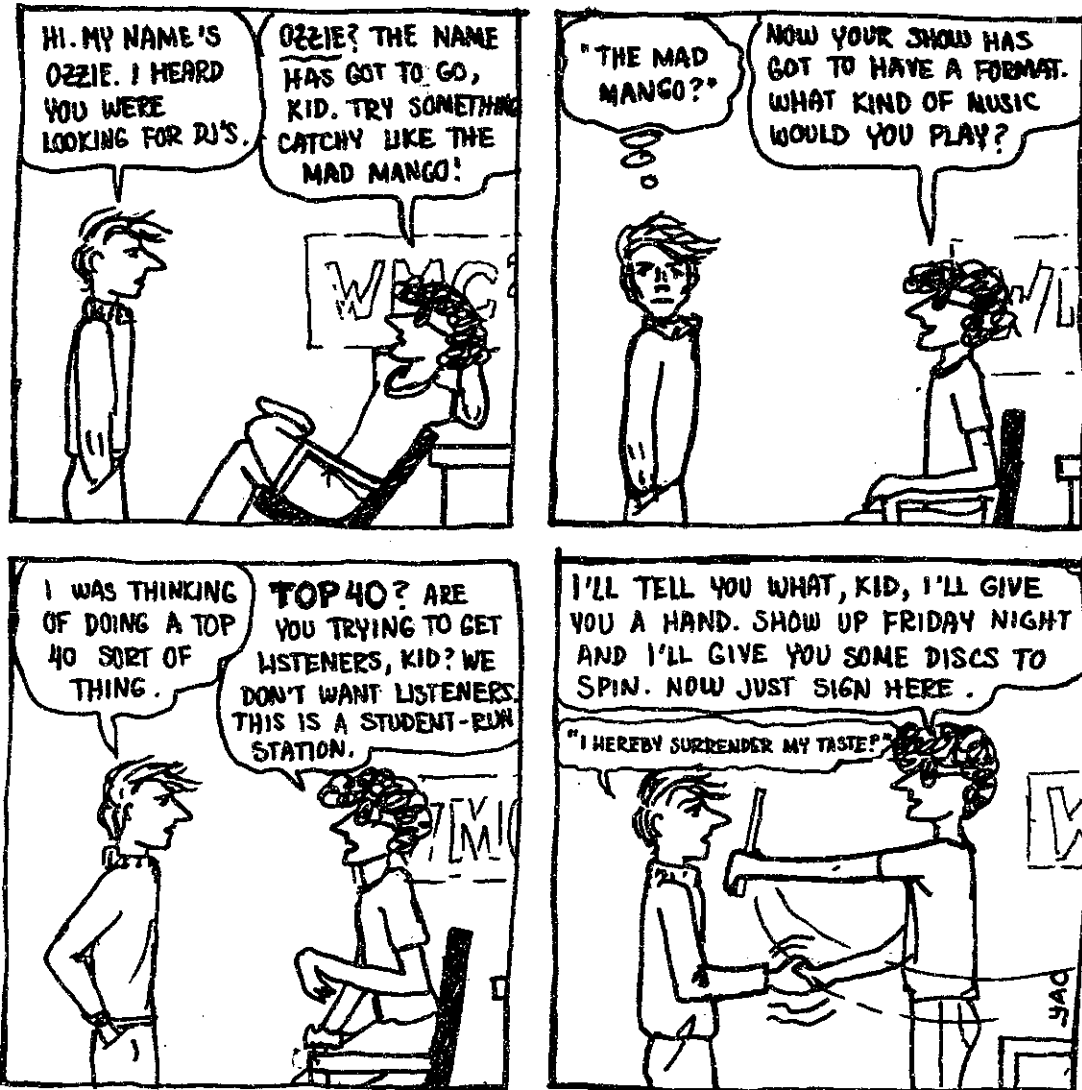
October 12, 1983 5-7 pm Room 3-370

CAMPUS INTERVIEWS

Oct. 12, 13, 14 1983

Placement Office

comics



Room 001
By Carol Yao

GRADE A. GRADO!

Q Audio gives its highest marks to the Grado GCE+1 cartridge, an outstanding sonic value at \$45. An even greater value at \$25 with the trade-in of your old cartridge. Just be sure to bring in this coupon to qualify.

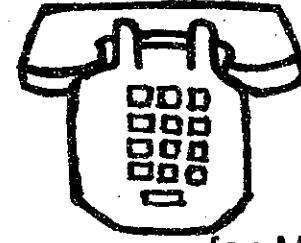
Select from the finest quality new equipment by

ACOUSTAT	KYOCERA	THORENS	SPENDOR
KRELL	GRADO	GRACE	KISEKI
SOTA SAPPHIRE	DBX	EUPHONIC AUDIO	KLYNE
HAFNER	DAVID BERNING	INNOTECH	JENSEN
PS AUDIO	DB SYSTEMS	SUPEX	SONY/BETA HIFI
SONY/DIGITAL	SOUTHER	DAHLQUIST	SYRINK
PYRAMID	DYNAVECTOR	DENNESEN	SEQUERRA FMI

Q AUDIO

95 VASSAR ST.
CAMBRIDGE, MA 02139
617-547-2727

Mon-Fri 10-7 Sat 10-5



Volunteer
Peer Contacts
Needed

for MIT lesbian/gay male
contact line

Forms available at Associate Dean Steve Immerman's office W20-345 or Associate Dean Linda Vaughn's office 7-106. For more information call GAMIT x3-5440

REWARD

An electronic device is needed by our firm. We call it a "CONCENSUS TAKER" ... and it hasn't been invented yet.

We will pay up to \$1,000 for a working model and we guarantee the inventor considerable publicity. For details, write David Isaacson, Life Associates, One State St. Boston, Ma. 02109.

The Company

Megatest builds the finest LSI testers in the world. Our systems test more microprocessors, EPROMs and Bubble Memories than anybody else's. They have broken all industry records for reliability. They have altered the way people think about device testing.

We've attained this standing in the industry while remaining a small, friendly, employee-owned company. How? By creating an environment that rewards creativity, effort and results, not politicking, rank or tradition. And by emphasizing neat ideas more than neat desks and neat dress.

The Job

We are now designing new test systems which will handle the "super-chips" of the future. These systems will require astoundingly powerful computers and near-perfect analog support circuitry. They will be specified in terms of picoseconds, nanoamps and gigabits.

We need people with as much potential as our new systems in the following areas:

Computer Scientists (language processors, interactive development tools)

Analog and Digital Engineers (high-speed ECL gate arrays and hybrids)

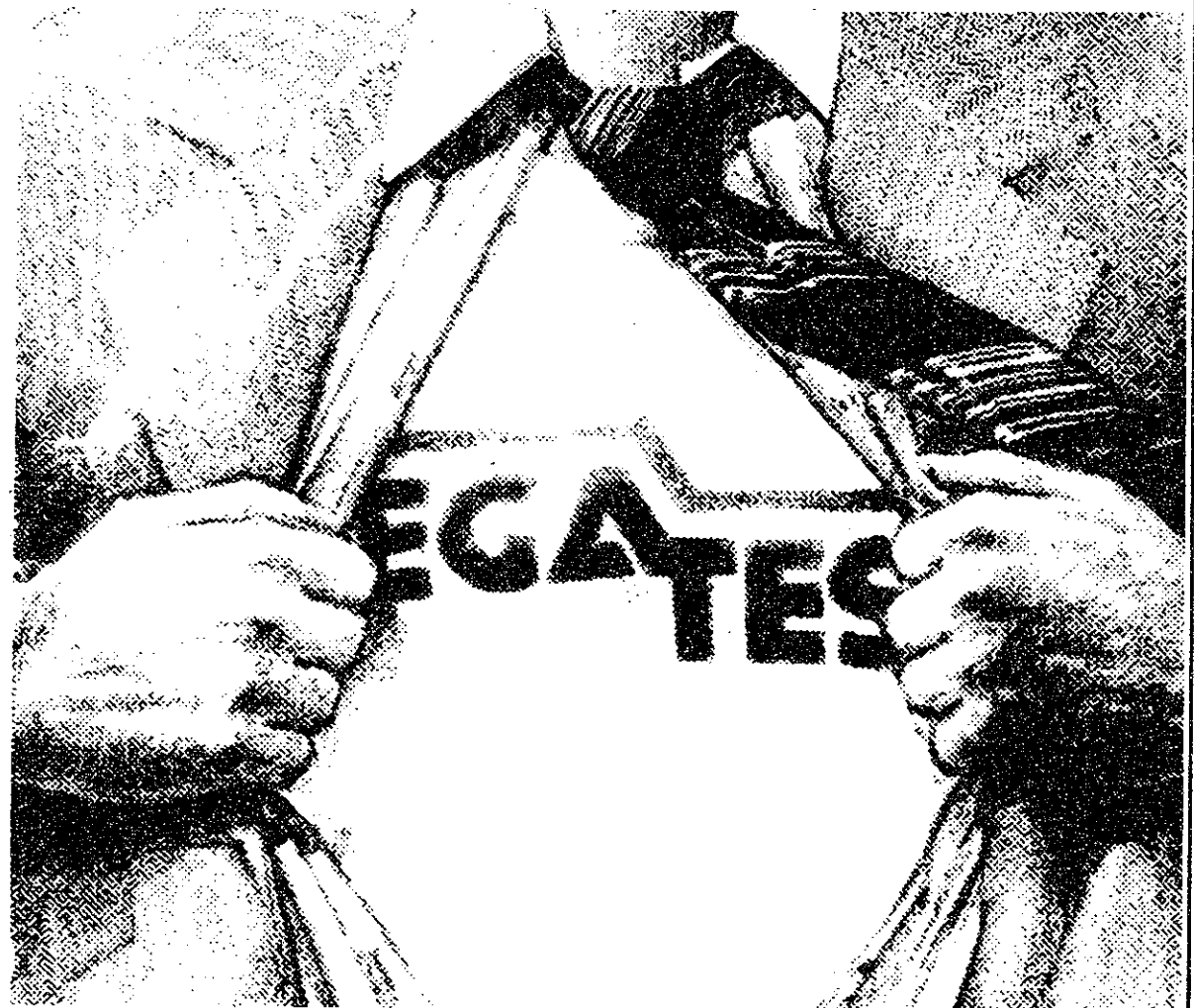
Marketing Engineers (combines technical and marketing skills)

The Potential

The range of professional opportunities at Megatest is almost unlimited and we've perfected a management style that makes it possible to move freely among them. You follow your instincts and ambitions. If you've got potential you can unleash it at Megatest.

Drop by. We'll be on campus — Friday October 21 and Monday October 24, at the Career Planning and Placement Center.

POTENTIAL IN ELECTRONICS IS MORE THAN JUST VOLTS



UNLEASH YOURS AT MEGATEST.

sports

New England Collegiate Football Conference Team Standings

	W	L	T	PF	PA
Bentley	2	0	0	33	14
Worcester State	2	0	0	93	0
Fitchburg State	2	0	0	45	6
Assumption	1	1	0	49	13
Providence	1	1	0	21	22
Roger Williams	1	1	0	13	17
Stonehill	1	1	0	27	27
Hartford	0	2	0	3	79
MIT	0	2	0	19	34
UMass-Boston	0	2	0	0	91

Last Week's Results

Assumption 42, UMass-Boston 0
Bentley 20, Stonehill 7
Fitchburg State 10, Roger Williams 3
Providence 14, MIT 12
Worcester State 44, Hartford 0

weekend preview

Today the baseball team will take on Brandeis in the opening game of the first annual MIT Fall Baseball Classic. Bentley and Northeastern will be the other two teams competing in the three-day event. All games will be on Briggs Field. The following is the tournament schedule:

Clark. The team is presently 3-1-1 on the season. The varsity sailors will host the Single-Handed team race at 9:30am. Women's tennis will take to the courts at 1pm against Endicott, and the water polo team will be hosting the MIT Invitational all day in the Alumni Pool.

Today —

Game 1 — Brandeis vs. MIT, 1:30pm.
Game 2 — Bentley vs. Northeastern, 3:30pm.

Tomorrow —

Game 3 — loser Game 1 vs. loser Game 2, 10:30am.
Game 4 — winner Game 1 vs. winner Game 2, 12:30pm.
Game 5 — winner Game 3 vs. loser Game 4, 2:30pm.

Sunday —

Game 6 — loser Game 3 vs. loser Game 5 (third place), 10:30am.
Game 7 — winner Game 4 vs. winner Game 5, 12:30pm.

In other home action tomorrow, men's cross country will host Lowell at 1pm, the field hockey team will be in Steinbrenner Stadium for a 1pm game against

MIT No. 1 in Div. III poll in East

(Continued from page 20)

keeping serves in, passing, and keeping sets off the net."

The Eagles came out of the time-out to increase their lead to 9-2, but then the Engineers took control. Munro and Michelle Henge '84 each served four points, and Kodaka got one more, giving MIT an 11-9 edge. Wesslund served the final four points, and Kauth provided the finishing spike to put the game and match away.

Altman praised the Eagles, commenting that they "hustle more, set better, and are larger than last year." Their size makes them "very hard to hit around," she noted. The first-year coach also praised the serving of Kauth, who had six aces, Wesslund, and Munro.

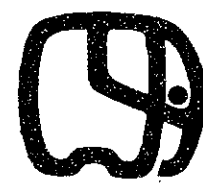
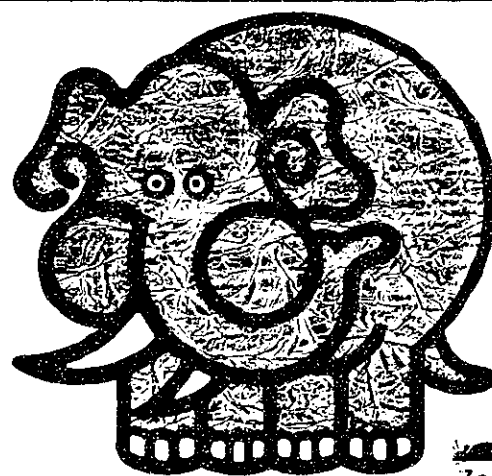
The Engineers are the top team in the East, currently ranked sixth in the NCAA Division III poll. Eastern Connecticut State University is second in the East, ranked 12th in the poll. MIT has defeated Eastern Connecticut this year.

Tomorrow the team will head south for the Rhode Island College Tournament. The squad returns home Thursday, when it hosts Eastern Nazarene and Mount Holyoke beginning at 6pm.

LOOK US Up

Boston
Zoological
Society

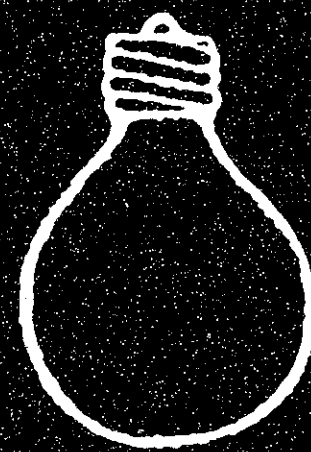
442-2002



This space donated by The Tech

Zoomobile
Franklin Park Zoo
Walter D. Stone Memorial Zoo

Do it in the DARK!



Be a **Tech** photographer!

The Museum of Fine Arts

cordially invites

College and University Students

to the

"EVENING EVENT"

Wednesday, October 5, 1983

6:30-9:30 p.m.

- ★ Tours of galleries
- ★ Curators' Comments
- ★ Live Music
- ★ Museum School performances and gallery exhibition

★ **FREE ADMISSION** ★
with valid full-time college i.d.

The Museum of Fine Arts is located at
465 Huntington Avenue—use West Wing entrance.

For further information, call 267-9300 ext. 395.



sports

Volleyball spikes Division I Eagles, 3-0

By Victor J. Diniak

The women's volleyball team sent visiting Boston College back to Chestnut Hill in defeat Wednesday night, sweeping the NCAA Division I Eagles 3-0. The Engineers raised their record to 9-0.

The Engineers, coming off their victory in the Salem State Invitational Tournament last weekend, jumped to a quick 6-2 lead, with Lori Cantu '85 showing a strong net game against the wall created by the Boston College front line. The Eagles matched MIT's next four points, bringing the score to 10-6. Janette Kauth '85 then brought the game home, serving five straight points with the help of some booming spikes by Anella Munro '85, and the Engineers won, 15-6.

MIT dominated game two, holding its opponents to just three points. While the taller Boston College front line managed to stop many of the Engineers' spikes, many penetrated, leaving the Eagles' back line to handle the rocket shots of Munro and

tri-captain Barbara Wesslund '84.

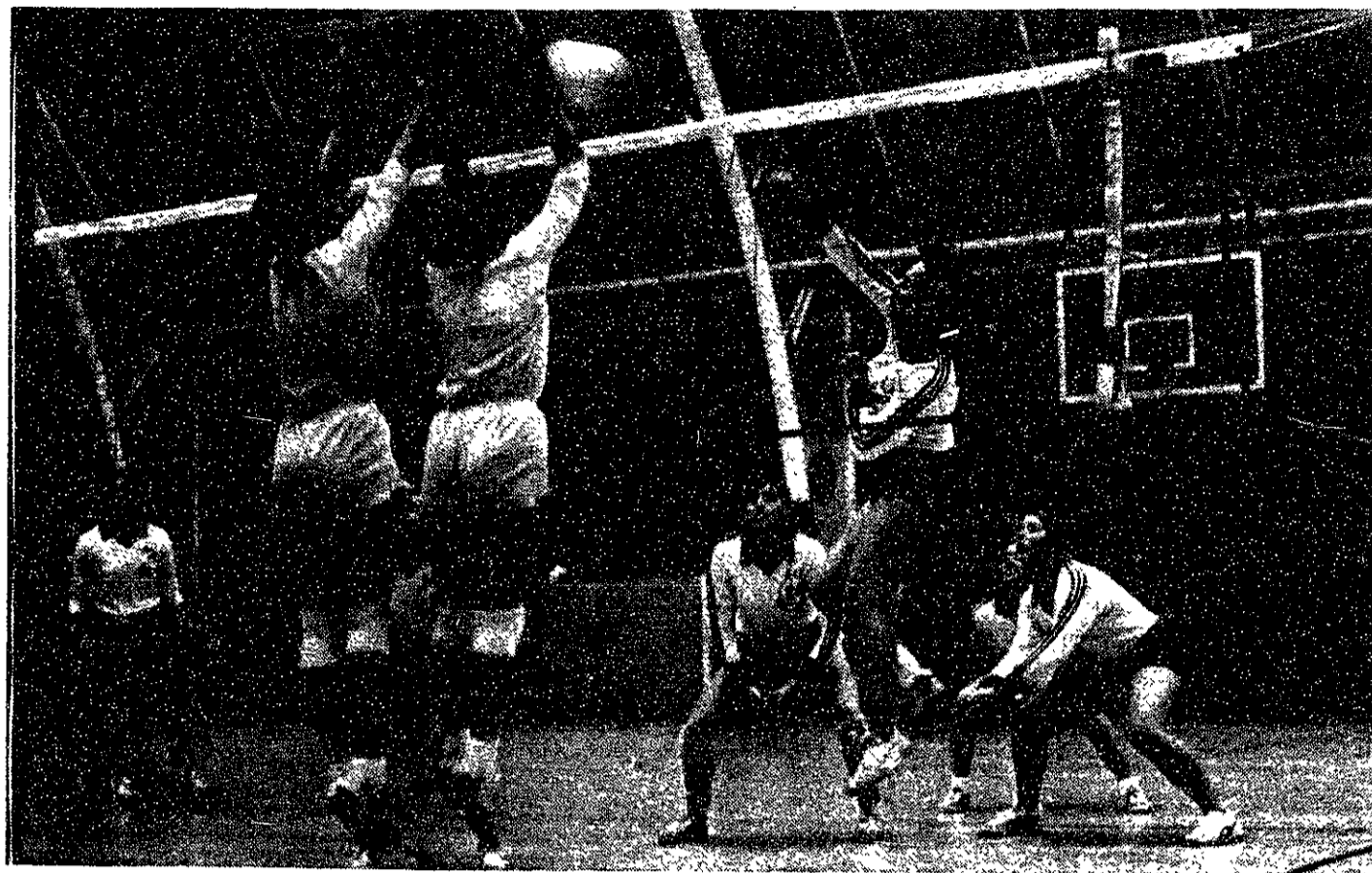
With the score at a commanding 9-3, Akiko Kodaka '85 came on to serve six straight points, one an ace, to win the game 15-3.

The third game of the best-of-five match started off slowly with the Eagles handling strong hits by Wesslund and Cantu. Boston College then jumped out to a 7-2 lead, prompting MIT head coach Karen Altman '78 to call a time-out.

Altman attributed the slow start to "a combination of lost concentration and the anticipation of finishing the match." The Engineers' "game was a little out of focus, and the girls were a little tense," she continued. The results were lost serves, sets too close to the net, and blocks by the menacing Boston College trio of Cathy Dougherty, Michelle Hanson, and Cathy Rieder.

Altman said she told her team to "calm down and go back to the basic plan: concentrating on

(Please turn to page 19)



Janette Kauth '85 spikes against Boston College during Wednesday's game in duPont Gymnasium.

Tech photo by Omar S. Valerio

sports update

Field Hockey — The field hockey team upped its record to 3-1-1 with a 3-0 shutout of Endicott Wednesday afternoon.

Golf — The golf team finished 23rd of 43 teams at the New England Championships earlier this week.

Sailing — The varsity sailing team placed fifth of seven at Saturday's Stonehill Invitational. On Sunday the squad was third in the ten-team field going after the Boston University Trophy.

Soccer — Goalie Mike Schoen '87 posted his second shutout of the season as the Engineers battled host Babson, one of the area's Division III soccer powers; to a scoreless tie Wednesday.

Tennis — The women's tennis team upped its record to 4-2 with a 6-3 win over host Emmanuel Wednesday. The men, meanwhile, dropped to 1-3 with a 7-2 loss to Boston University.

Water Polo — The water polo team faced some stiff competition at the Eastern Water Polo Tournament held at Brown last weekend, losing all five of its matches.

The largest selection
of hard aluminum
MEASURING TOOLS
in the country!

FAIRGATE

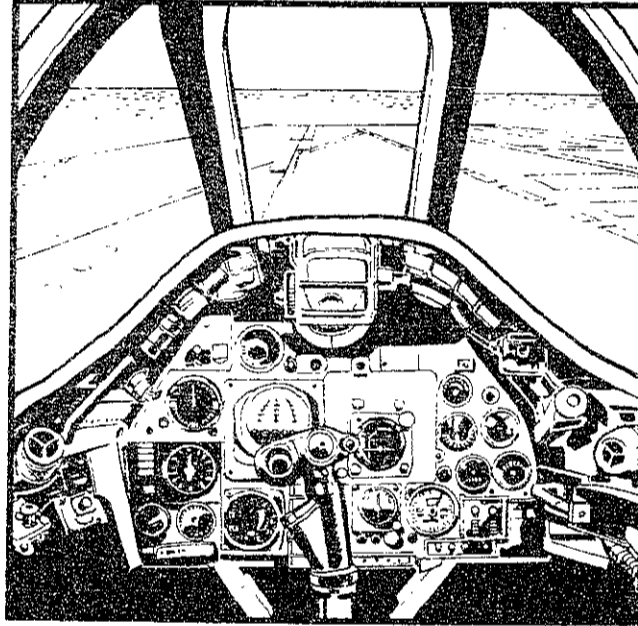
STRAIGHT EDGES/T-SQUARES
METRIC RULES/L-SQUARES
CENTERING RULES
TRIANGLES/CURVE STICKS
INKING RULES
and many others...

SEE THEM AT YOUR BOOKSTORE
or SEND FOR CATALOG

**FAIRGATE
RULE CO., INC.**

22 Adams Ave.
P.O. Box 278
COLD SPRING, N.Y.
U.S.A. 10516

This Desk Can Reach Mach 2.



Some desk jobs are more exciting than others.

As a Navy pilot or flight officer, your desk can be a sophisticated combination of supersonic jet aircraft and advanced electronic equipment. But you can handle it. Because Navy flight training gives you the navigation, aerodynamics and other technical know-how you need.

In return, Navy aviation demands something of you as an officer: Leadership.

Your path to leadership starts with officer training that's among the most demanding in the military. It's intensive leadership and professional schooling combined with rigorous Navy flight training. And it's all geared to prepare you and other college graduates for the unique challenge of Navy aviation. The program is tough but rewarding.

One important reward for Navy officers is decision-

making authority. In the air, and on the ground, you have management responsibility from the beginning. And your responsibility grows as you gain experience.

No company can give you this kind of leadership responsibility this fast. And nothing beats the sheer excitement of Navy flying.

The salary is exciting, too. Right away, you'll earn about \$18,300 a year. That's better than the average corporation will pay you just out of college. And with regular Navy promotions and other pay increases, your annual salary will soar to \$31,100 after four years. That's on top of a full package of benefits and privileges.

Before you settle down to an earth-bound desk job, reach for the sky. Reach for the coupon. Find out what it takes to be part of the Naval Aviation Team. You could have a desk that flies at twice the speed of sound.

NAVY OPPORTUNITY INFORMATION CENTER W 343
P.O. Box 5000, Clifton, NJ 07015

Please send me more information about becoming a member of the Naval Aviation Team. (OA)

Name _____
First (Please Print) Last

Address _____ Apt. # _____

City _____ State _____ Zip _____

Age _____ College/University _____

Year in College _____ GPA _____

Major/Minor _____

Phone Number _____ (Area Code) Best Time to Call _____

This is for general recruitment information. You do not have to furnish any of the information requested. Of course, the more we know, the more we can help to determine the kinds of Navy positions for which you qualify.

Navy Officers Get Responsibility Fast.