



Some students got a real rush out of R/O week...

Tech photo by Omar S. Valerio

IFC pleased by pledge count

By Diana ben-Aaron

As of 10pm last night 254 new students had pledged independent living groups, according to Associate Dean for Student Affairs Robert A. Sherwood.

"We had about the same number this time last year," said Bill Maimone '84, IFC rush chairman, noting that the fraternities set an unofficial pledge goal of 365 to 380 students. The final number will depend on how crowded the fraternities choose to be, he added.

Maimone credited the Deans' Office orientation seminars introduced this year and the good weather with the fraternities' success. "93% of this year's freshmen have visited at least one fraternity," he said.

Interfraternity Council Rush

ODSA disturbed by SCC nonchalance after theft

By Charles P. Brown

The theft of \$6,500 in concert receipts from the Student Center Committee's safe this past spring has had little impact on the committee itself, but has sparked increased concern within the Office of the Dean for Student Affairs (ODSA) with the business activities of SCC and other student organizations, according to Assistant Dean for Student Affairs Stephen D. Immerman and leaders of the committee.

Chairman John Piotti '83 added that there have been no rush violations this year. "Unless something happened in the last two minutes, it would have already come to my attention," he said.

"Everything I've seen indicates that things have been going extremely smoothly," said Associate Dean for Student Affairs Robert A. Sherwood. The number of pledges so far is "excellent," he said.

"It's going really well. We've got some real good guys coming through," said Tim Huston '84, Phi Kappa Sigma rush chairman. "I think we might have to rush a little longer than normal — we usually finish pretty quickly — but we'll get the number we're going for. I don't think we'll

John S. Kowtko '83, SCC chairman at the time of the theft, said he believes the theft had little effect on SCC's members. The members "fail to see the importance of [the theft]. They were more annoyed that the Dean's Office intervened than at the loss of the money. The way the committee has budgeted money has always created a buffer, so the loss doesn't matter. We can spend \$15,000 a year on parties or

(Please turn to page 3)

crowd."

"It's been the best year since I've been here. The numbers seem to be down but the quality is definitely up. There is a chance we'll crowd," said Nu Delta's Tony Zamparutti '84.

86% get first choice 139 still in limbo

By Diana ben-Aaron

The Office of the Dean for Student Affairs (ODSA) assigned 86 percent of new students to their first-choice dormitories in last night's first-round housing lottery, but 139 others were placed in limbo, according to Associate Dean for Student Affairs Robert A. Sherwood.

The Dean's Office gave total of 691 freshmen permanent housing assignments, Sherwood said. This figure includes 96 freshmen crowded over the houses' capacities. "We had predicted 97 crowds, so we were really close on that," Sherwood said.

Of the men, 71% received their first choice dormitory, while 97% of the women obtained their preferred house, according to ODSA figures.

The Dean's Office will hold additional lotteries daily for students in limbo until the last round on Thursday. Students in limbo include both those who voluntarily re-enter the room lottery as well as those whom the Dean's Office could not assign to any of their choices. The number and location of spaces available will change as upperclassmen cancel their fall room assign-

ments and freshmen pledge fraternities and re-enter the lottery, Sherwood said.

Women were not allowed to designate multiple first choices this year as they have been in the past, Sherwood noted. He also emphasized that one of ODSA's top priorities in the housing process was keeping the percentage of women in each coeducational house or area at or above 25%.

By 10pm last night, 1167 students, including 1080 freshmen and 87 transfer students, had checked into the Rush/Orientation center; 23 more new students are expected. "We'll be calling them soon to find out whether they plan to show up at all," Sherwood said.

Last year, 84 percent of freshmen received their first-choice house, while 104 students were crowded. Thirty new students failed to appear for Rush/Orientation week. "They decided to attend other colleges, but just never told us about it," Sherwood noted.

East Campus had the highest number of crowded students, 23. All thirty women who requested East Campus as first choice were

(Please turn to page 3)

FIRST-ROUND FRESHMAN HOUSING ASSIGNMENTS

house	first choices		total assigned		beyond capacity
	m	f	m	f	
Baker	80	19	63	19	8
Bexley	11	1	27	3	
Burton	131	60	67	43	20
East Campus	103	30	49	40	23
MacGregor	90		96		
McCormick		72		60	11
New	25	6	45	15	13
Next	84	38	24	38	18
Random	14	3	17	3	
Senior	19	5	40	11	
French	3	3	4	4	
German	6	3	2	2	
Russian	3		3		
Spanish	10	4	5	4	1

Remaining in limbo: 139

US response to Soviets mild

By Robert E. Malchman

The United States will employ only minor sanctions against the Soviet Union in response to the Soviets' alleged destruction of a Korean Air Lines passenger plane, said President Ronald W. Reagan in a nationally televised speech from the Oval Office last night.

Despite characterizing the attack as a "crime against humanity which must never be forgotten," Reagan said the United States would only refuse to renew a bilateral transportation cooperation agreement and would seek international sanctions against Aeroflot, the Soviet commercial air line. The United States will also suspend certain bilateral negotiations for a time, though not arms control talks, the president continued.

The United States will demand from the Soviet Union a full apology for and a complete accounting of their actions, permission for the United States to search in Soviet waters for bodies

and wreckage, a promise that such an attack will never occur again, and monetary compensation for the families of the victims, according to Reagan.

"Vengeance is not the proper course of action," Reagan said, despite the "act of barbarism" in which 269 people, including 61 Americans, lost their lives.

Moscow has so far only said its pilot fired tracer bullets in front of the plane to warn the 747 that it was in Soviet airspace.

A tape of the pilot who shot down the aircraft belies the Soviet contention, Reagan countered. The president played a static recording of a man's voice speaking Russian. The tape proves the pilot deliberately fired his missile at the Korean plane, even after he saw the plane's strobe light and for 2½ hours observed it flying in a straight line at constant altitude — the way only a passenger flight would, Reagan said.

An American RC-135 recon-
(Please turn to page 3)



Photo by Clara K. Chung '85

...while others got more than they expected!

INSIDE

Images of the Freshman Picnic, all that food, all those freshmen. Get 'em while their hot.
— Page 6.

MTG, Natchez Trace, Lime Jello, and "The Robber Bridegroom." Find out what it all means.
— Page 5.

news roundup

World

Israel continues partial pullout from Lebanon. — The Israeli army has withdrawn from its positions in the Shuf Mountains overlooking Beirut, apparently abandoning its attempt to make Syrian and PLO forces to leave Lebanon. Heavy fighting between Christians and Druse erupted in the capital yesterday as both sides scrambled for positions evacuated hours earlier by Israeli troops.

Amy S. Gorin

Sports

How do the Patriots fumble; let us count the ways. — The New England Patriots fumbled four times and missed two field goals, enroute to a 29-23 opening day loss to the Baltimore Colts, who have consistently lost to everyone but the Patsies since November 1980.

Robert E. Malchman

Weather

Orientation, no sweat; the weather, well . . . — The hazy, hot and humid weather continues today, with a high approaching the record of 92 degrees set in 1980. A sticky night follows, with temperatures in the low to middle 70s. Cloudy tomorrow, with a chance of afternoon thundershowers, but a high still around 90.

Barry S. Surman

notes

Announcements

Undergraduates interested in showing prospective freshman applicants MIT "as you see it" please come to the Orientation Party Monday, September 12 from 2-4pm in the Bush Room. Refreshments will be served. If unable to attend, contact Stacey Van Alstyne, Admissions Office, 3-108, x3-4791.

Off-Campus

Students with visual problems are invited to an exhibition sponsored by the Massachusetts Association for the Blind on September 20 from noon to 7pm to learn about services and equipment that make life easier for people who are visually impaired. There is no admission charge. Talking clocks and computers, paperless braille, talking books and large screen computers are a few pieces of equipment being displayed. Representatives from agencies providing services — job training, recreation, transportation, recordings, volunteers, information, and everything else one needs to know — will be able to talk about their programs. Braille watches can be repaired. The exhibition will be in the Dorothy Quincy Suite, John Hancock, corner of Stuart and Berkeley Streets, Boston — two blocks from the Arlington Street stop on the Green Line. For more information call Pat Pearson at 738-5110.

SINGLES WITH ADVANCED DEGREES

In Professional Academic or Research Careers (S.P.A.R.C.)

- Sunday September 11, wine and cheese party with live chamber music, 4:30-7 pm at One Longfellow Place, Boston. Travel film at 6:45. Admission \$8-11.
- TGIF Parties every Friday at Charles River Park Tennis Club Lounge, 35 Lomasney Way, 6-8:30 pm. Admission \$3-6.

Write: S.P.A.R.C. Box 8354 Boston, 02114 or call 367-0810 (leave address)

Lutheran - Episcopal Mid-week Service

Eucharist at 5:10 pm

Basement of Chaplaincy Building
312 Memorial Drive
Supper follows

Wednesday, Sept. 7 5:10 pm

MIT STUDENT ART ASSOCIATION

New for fall:

- Student fees have been lowered
- All students can attend
- any first class meeting free
- All students can have free unlimited
- Access to Drawing Studio for Art-related activities

So Register Now for:

- Ceramics ■ Photography ■ Drawing ■ etching ■ Chinese Brush Painting ■ Print-making ■ painting ■ stained glass ■ silkscreen ■ watercolor studio use

Classes start the week of Sept. 19
Student Center, Rm.429

MIT x3-7019

Graduate Student Council ORIENTATION DANCE

Friday, September 9, 1983

9:00pm

Faculty Lounge

All Graduate

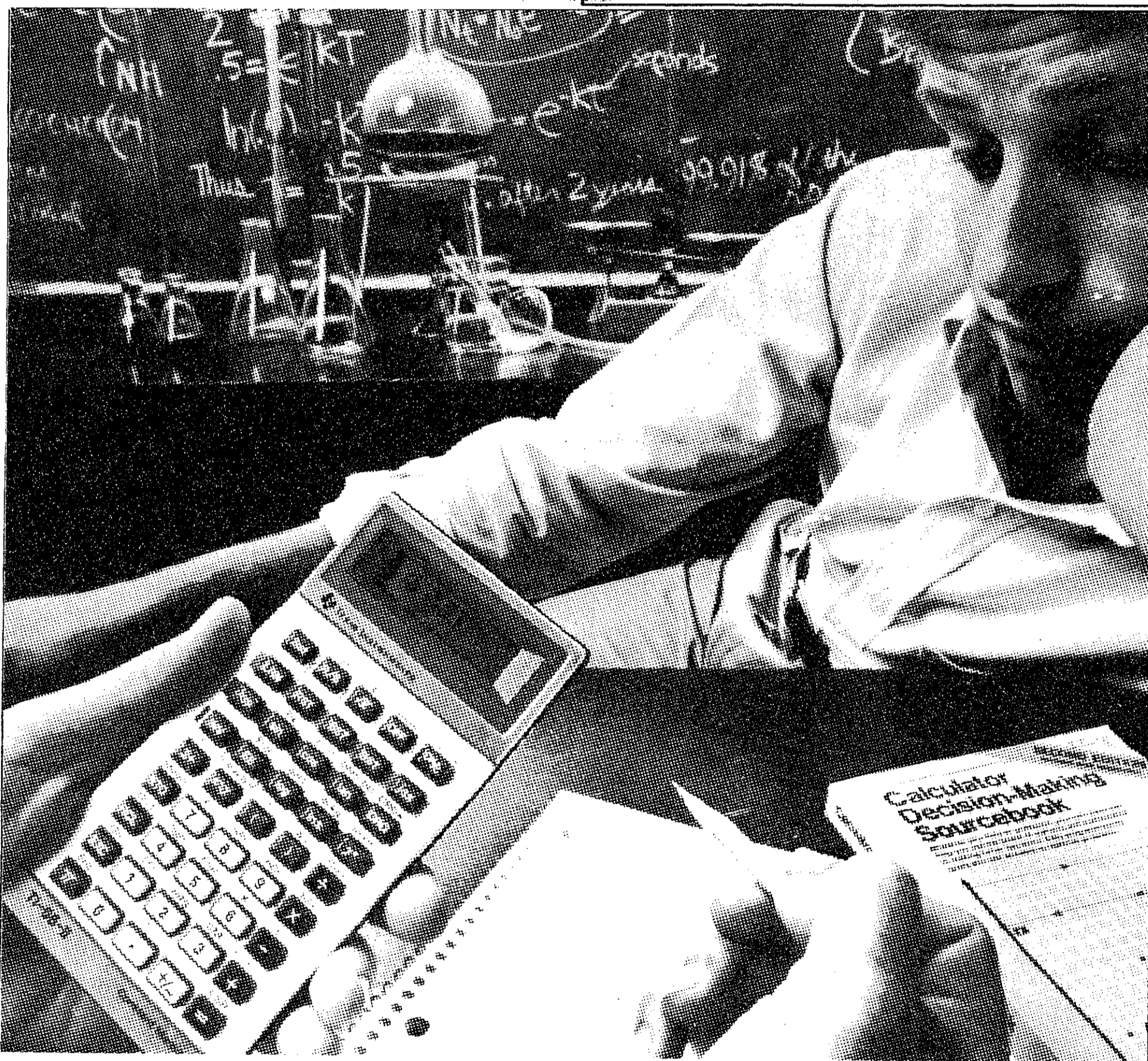
Sloan School

Students

50 Memorial Dr.

Welcome

E52 6th Floor



Get to the answers faster. With the TI-55-II.

What you need to tackle the higher mathematics of a science or engineering curriculum are more functions — more functions than a simple slide-rule calculator has.

Enter the TI-55-II, with 112 powerful functions. You can work faster and more accurately with the TI-55-II, because it's preprogrammed

to perform complex calculations — like definite integrals, linear regression and hyperbolics — at the touch of a button. And it can also be programmed to do repetitive problems without re-entering the entire formula.

Included is the *Calculator Decision-Making Sourcebook*. It makes the process of using

the TI-55-II even simpler, and shows you how to use all the power of the calculator.

Get to the answers faster. Let a TI-55-II show you how.



TEXAS INSTRUMENTS

Creating useful products and services for you.

ODSA concerned by SCC

(Continued from page 1)
\$50,000."

The theft "takes away events we could have done, but we are still a viable organization," said Mark John Johnston '84, the SCC summer chairman. Johnston added that the money's disappearance also brought to the surface problems that SCC has with bookkeeping, money-handling, and security.

Several SCC members said they believe the major effect of the theft will be the implementation of a more formalized bookkeeping procedure by the committee, and that the members will have "more concern" for the handling of money.

Immerman echoed Kowtko's sentiments, saying he was "a little disturbed" by the lack of concern and responsibility on the part of SCC. SCC's reaction seems to be, "Well, so we lost \$6,500; we have another \$10,000 coming in this month from pinball," Immerman said.

The theft also affected how the ODSA relates to student activities, Immerman continued. "It

shifted our priorities. It brought them into focus — on the one hand helping to meet the need of the Institute to have the business activity of student organizations appropriately accounted for and reported, and on the other hand trying to devise ways that we can be helpful in supporting student organizations around the same set of business issues."

In a way it is "unfair" that SCC has come under closer scrutiny than other student organizations as a result of the theft, Immerman said. The theft under-

scores potential problems with the financial activities of all student groups, not just SCC.

Immerman believes the theft will have one major result. "I don't think they will ever hold their receipts from a concert again," he said.

"MIT is more aware of what is going on with money in MIT organizations," said Mark J. Brine '85, the current SCC treasurer. "But other than that [the new security measures have only] made it a real pain . . . to get in the office."

QUALITY DENTISTRY... JUST DOWN THE STREET

Malcolm L. Dana, D.D.S.
Richard M. Dana, D.D.S.
Suzanne H. Robotham, D.D.S.

Telephone
(617) 876-8734

634 Massachusetts Ave.
Central Square
Cambridge, MA 02139

BACK TO SCHOOL SPECIAL

Typewriters cleaned & Lubricated
Ribbon changed \$40.00
Free Estimate for any Repairs

Call: **Regional Business Equipment, Inc.**
919 Washington St., Dorchester
825-2008

* includes FREE pickup & delivery *

CARPET SPECIALS

BROADLOOM RUGS | **ORIENTAL DESIGN RUGS**
9 x 12 (ALL BOUND) \$59.95 & UP | APPROX 9 x 12 - \$139.95
6 x 9 (ALL BOUND) \$29.95 & UP | APPROX 6 x 8 - \$69.95

ALSO LARGE SELECTION OF REMNANTS
AND ROLL ENDS IN STOCK AT DISCOUNT PRICES.

CAMBRIDGE RUG CO.
1157 CAMBRIDGE ST.
CAMBRIDGE, MASS.
(near Inman Square)
354-0740

OPEN
MONDAY - FRIDAY:
9 am to 5:30 pm
SATURDAY:
9 am to 4 pm

Freshmen assigned

(Continued from page 1)

assigned there, as well as 49 men who had chosen East Campus first and ten women who had designated East Campus as second or lower choice.

Burton-Conner House was the most popular dormitory among new students. 191 students, 131 men and 60 women, chose Burton; but only 110, 43 male and 67 female, were assigned there.

New House, Bexley, and Senior House were each designated as first choices by fewer than half the number of students for whom they had spaces, while French House, Russian House, Random Hall, and McGregor were slightly undersubscribed. All other houses had more first-choice freshmen than spaces, although the policy of 25% women in coed areas caused some readjustment in the number of first-choice freshmen actually assigned to each house, according to Sherwood.

Admit role: US to USSR

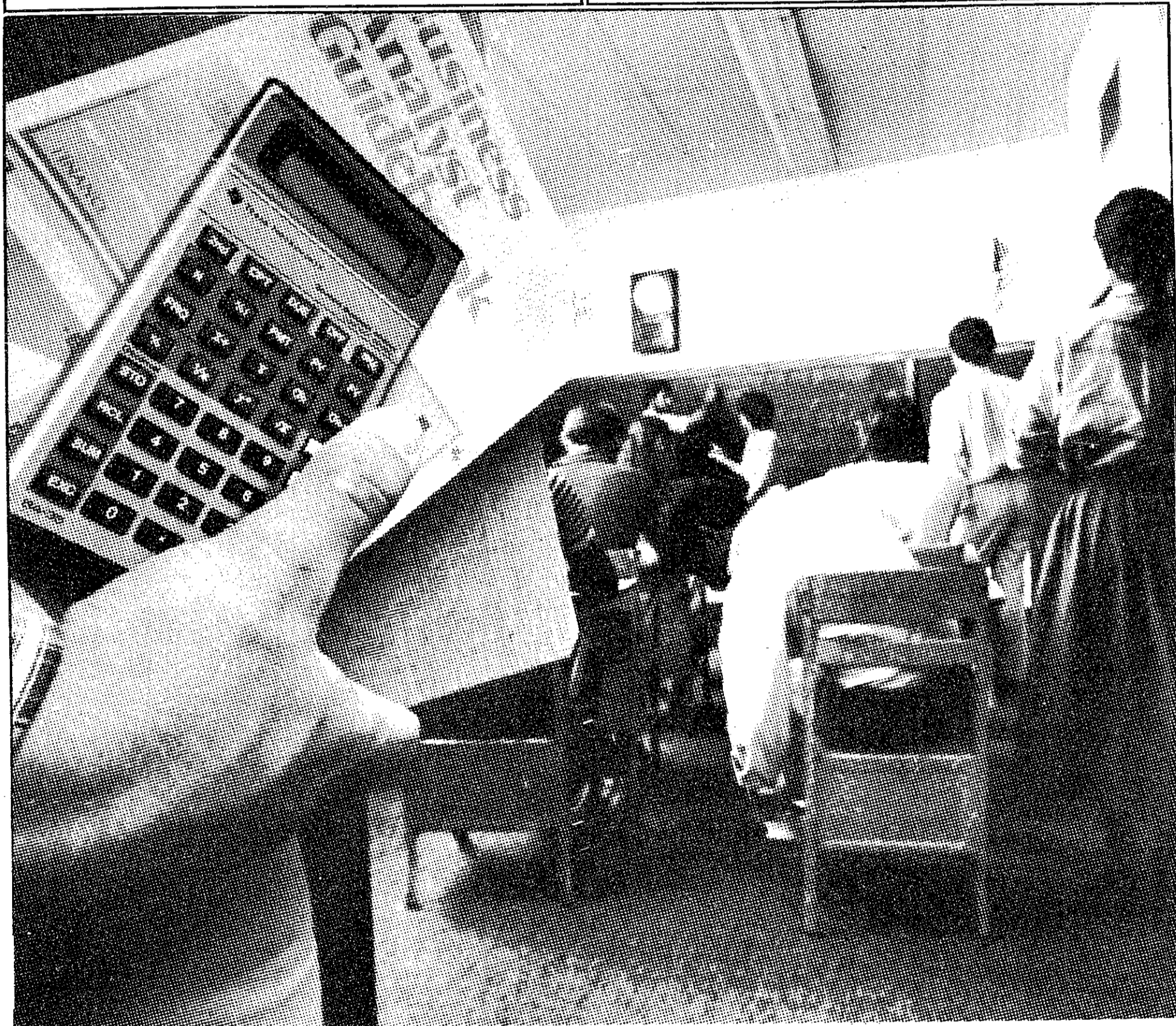
(Continued from page 1)

naissance plane passed close to the Korean plane, but at no time entered Soviet airspace, and was on the ground in Alaska when the Korean 747 went down, Reagan said. An RC-135 is significantly smaller than a 747 and lacks the latter's distinctive cockpit outline.

The attack was not out of character for the Soviet Union, a nation which rules its citizens by force, subdues revolts in Czechoslovakia, and makes gas attacks against cities in Afghanistan, Reagan said.

The president applauded Canada's decision yesterday to ban Aeroflot planes from Canadian facilities for 60. The United States will continue its ban, begun as a response to the Soviets' invasion of Afghanistan.

Secretary of State Charles P. Schultz will present the United States' demands to Soviet Foreign Minister Andrei A. Gromyko on Thursday at a previously scheduled meeting, the president said. The Administration is not certain, however, that the meeting will still take place.



Get down to business faster. With the BA-35.

If there's one thing business students have always needed, this is it: an affordable, business-oriented calculator. The Texas Instruments BA-35, the Student Business Analyst.

Its built-in business formulas let you perform complicated finance, accounting and statistical functions — the ones that usually require a lot of time and a stack of reference books, like present and future value

calculations, amortizations and balloon payments.

The BA-35 means you spend less time calculating, and more time learning. One keystroke takes the place of many.

The calculator is just part of the package. You also get a book that follows most business courses: the *Business Analyst Guidebook*. Business professors helped us write it, to help you get the most out of calculator and classroom.

A powerful combination. Think business. With the BA-35 Student Business Analyst.



TEXAS INSTRUMENTS
Creating useful products and services for you.

Opinion

Editorial

UA must oversee Student Activities

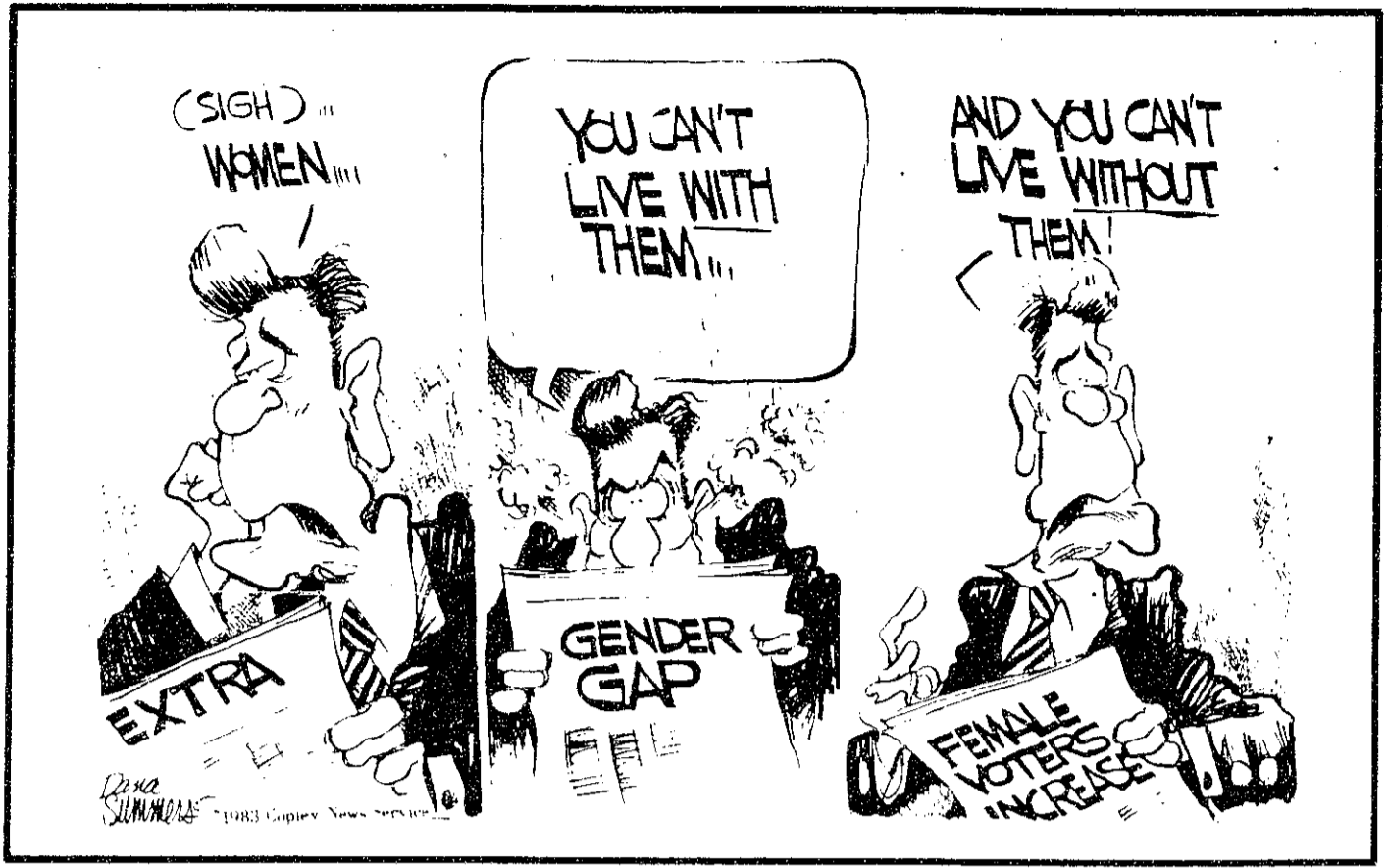
The current investigation into the loss of \$6500 in concert receipts from a safe in the offices of the Student Center Committee points to basic flaws in the administration of student affairs at MIT.

The Office of the Dean for Student Affairs has taken proper action in investigating the incident and mandating reform in the committee's financial procedures. The Student Center Committee has been irresponsible; this was not the first instance of pilfering from the committee's safe, only the largest. Outside intervention was not merely prudent, but necessary.

Control and guidance of the errant committee should originate with the student government, rather than the Dean's Office, but the Undergraduate Association seems to have little interest in the Student Center Committee. Undergraduate Association President Mike Witt promised "a total revamping" of student government when he was installed in March. He has delivered none. Instead, he has allowed quasi-independent committees, like the Student Center Committee, to drift farther from the student body's control.

The General Assembly, the only semblance of representative democracy in the convoluted structure of student government at MIT, is not scheduled to meet until Oct. 6, after the various living groups have chosen their representatives. If the Undergraduate Association and Witt's presidency are to enjoy any credibility, Witt must, at that first meeting, call for a new student government constitution, invite proposals, and schedule a timely referendum.

Without an effective, representative student government, student activities, with their long tradition of student control, will necessarily come more directly under the purview of the Dean's Office. The time for change is now.



Robert E. Malchman

Welcome freshmeat

Welcome, kindered glooms!
Congenial horrors, hail!

— James Thomson

I am just a new boy,
Stranger in this town.

Where are all the good times?

Whose gonna show this stranger
around?

— Roger Waters

Once again the Editors of this of this publication have asked me to impart part of my collected wisdom and knowledge, at least 18 inches worth, to you, the freshmen. Tradition holds that this take the form of Q's and A's, caveats and dicta, prefaced, preferably, by a long and rambling preface.

I got up here late on Thursday, so I did not have the chance to tell you where you should live. I assume you did so satisfactorily. Even if you did not, do not worry about it too much. Whatever negative characteristics your living group suffers under will become so deeply a part of your existence by Thanksgiving that you will no longer notice them. Indeed, when you return home you will miss them, much to the chagrin of your parents upon whom you will inflict them. So cheer up.

I do not even know why they want me to write a column; H. Stuart did such a nice job with his. At least this year they had the decency to wait until I arrived at the Institute before making their obseant entreaties.

"Write it," Surman hissed, "or we won't let you go out to cover shenanigans at Wellesley any-

more."
"Hah," I replied, "snap on you. I'm living at Wellesley this year."

"Write it," Surman hissed, "or I'll resign and make you editor in chief. And I don't hiss."

I saw his point immediately. I suppose that even if you were able to find a place to live by yourself, you will probably need more help. Heretowith, then, are some common questions and their answers:

Q: How do I get laid?

A: The best way is for you to go to places populated primarily by members of your own sex to increase the likelihood that someone of the opposite sex will find you. After all, people do not go to a desert for water. Thus, women, especially beautiful ones, should go to Wellesley. I am told that the second floor of Tower Court West is an excellent place to meet articulate, interesting, attractive men. On the other hand, men should congregate in the MacGregor dining hall as frequently as possible.

Q: What kind of classes should I take?

A: Surprisingly enough, it depends on your gender. For men it really does not matter much at all. Classes are all more or less the same, you sleep through the first one, skip the second one for lunch, and catch the last one if you decide not to go back to sleep. For women, though, especially the beautiful ones, it can be shown statistically that they will receive both more interesting, in-

formative educations and better grades if they take 2.70, 15.301, 21.770, Wellesley Phil 106 (the afternoon, not the morning one), and Poli Sci 323.

Q: What activities should I join?

A: The Tech. We'll take anybody, but if you're pompous enough to want to see your name in print, you've probably joined already.

Q: Will people stop being friendly after R/O Week?

A: Only if you do not join The Tech.

Q: What happened to all the frosh who tried to take 6.001 last spring?

A: Only H. Stuart Cobb and EECs know for sure.

Q: How do I get to Wellesley?

A: Practice.

Q: How do I get to Harvard?

A: Don't.

Q: What should I do to be happy here?

A: In all honesty, now, take the time to enjoy yourself. Have a few laughs. MIT is too funny and too pressurized for you not to. If you open your eyes to see what is around you and stop to appreciate it, you will be happy. It is not easy by any stretch of the imagination. It took me a whole semester to find my way to The Tech, where I have been getting most of my jollies since, so do not worry if in one week your life has not changed significantly for the better. And remember, if all else fails, you can always graduate.

The Tech

Volume 103, Number 32 Tuesday, September 6, 1983

Chairman..... V. Michael Bove '84
Editor in Chief..... Barry S. Surman '84
Managing Editor..... Matthew W. Giamporcaro '85
Business Manager..... Keith Tognoni '84
Executive Editor..... Robert E. Malchman '85

News Editors..... John J. Ying '84
..... Burt S. Kaliski '85
Night Editors..... Bill Spitzak '83
..... Charles P. Brown '84
Photo Editors..... Laurie S. Goldman '84
..... Omar S. Valerio '85
Sports Editor..... Martin Dickau '85
Arts Editor..... Jonathan Dippert '83
Advertising Manager..... Paul G. Gabuzda '84
Contributing Editors..... David G. Shaw '82
..... Jon von Zelowitz '82
..... Max Hailperin '85
..... Daniel J. Weidman '85
Senior Editors..... Eric R. Fleming '83
..... Ivan K. Fong '83
..... Jerri-Lynn Scofield '83
..... Tony Zamparutti '84
Indexing Project Representative..... A. David Boccuti '79
Advisor..... Edwin Diamond

NEWS STAFF

Associate News Editors: Sam Cable '85, Daniel Crean '85, Thomas Huang '86, Ron Norman '86; Staff: Arnold Contreras '83, David W. Bower '84, Roderick A. Dick '84, Will Doherty '84, Wei-Chung Hu '84, Ben T. Tien '84, Diana ben-Aaron '85, Gene Deune '85, Gary J. Drik '85, James F. List '85, Andrea Marra '85, Steve Pang '85, Jake Tinio '85, Joel Gluck '86, James J. Reisert '86, Paul Sheng '86, Ellen L. Spero '86, Al Yen '86, L. S. Wiener G.

COLUMNISTS

Duncan Borland '83, Jack Link '83, Mark Templer '84, Joseph J. Romm G.

PHOTOGRAPHY STAFF

Grant W. Johnson '84, Michael Reese '84, Andrew Wold '84, Bill Coderre '85, Ken Hughes '85, Rohan St. D. Khaleel '85, Vince Light '85, Winston I. Smith '85, P. Paul Hsu '86, Henry Wu '86, Jim Vleck G, Robert Winters G, Francesco Floris; Darkroom Manager: David G. Shaw '83; Photographic Consultant: David Tenenbaum '75.

SPORTS STAFF

Arthur Lee '85, Jean Fitzmaurice '86.

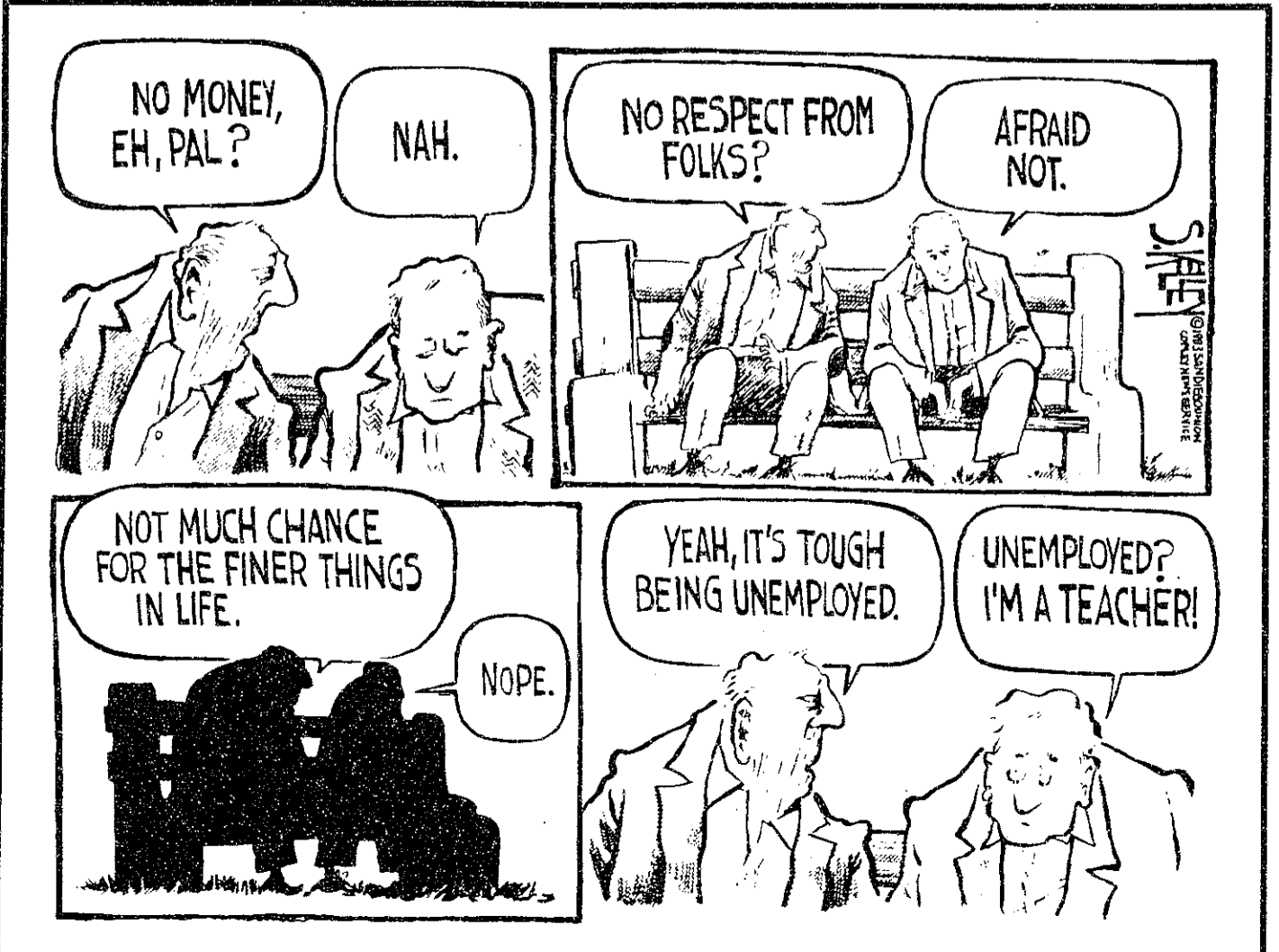
CARTOONISTS

Geoff Baskir '78, Bill Spitzak '83, Carol Yao '85, Joe Cerami '86, V. Michael Bove G.

PRODUCTION STAFF FOR THIS ISSUE

Night Editor..... Scott I. Chase '85
Staff: Tim Mc Nerney '83, Charles P. Brown '84, Amy S. Gorin '84, Omar S. Valerio '85, V. Michael Bove G

The Tech (ISSN 0148-9607) is published twice weekly during the academic year (except during MIT vacations), weekly during January, and tri-weekly during the summer for \$10.00 per year. Third Class by The Tech, 84 Massachusetts Ave. Room W20-483, Cambridge, MA 02139. Third Class postage paid at Boston, MA. Non-Profit Org. Permit No. 59720. POSTMASTER: Please send all address changes to our mailing address: The Tech, PO Box 29, MIT Branch, Cambridge, MA 02139. Telephone (617) 253-1541. Advertising, subscription, and typesetting rates available. Entire contents © 1983 The Tech. Printed by Charles River Publishing, Inc.



Lime jello will get you everywhere

ARTS

The Robber Bridegroom, book and lyrics by Alfred Uhry, music by Robert Waldman. Presented by the MIT Musical Theatre Guild, Kresge Little Theatre, September 4.

What would you say if you were sitting calmly in the fifth row watching a theatre production when suddenly, in the middle of a song, one of the performers comes down and asks if she can sit in your lap? What do you do when she starts running her hands through your beard and complimenting you on its appearance? What if she tells you that, once the performance is over, nay, right now, you should run out and get two cans of Hershey's syrup, some whipped cream, and 47 boxes of lime Jello and meet her in her dressing room, you know, the one with the big gold star on the door? What if she suddenly notices the rest of the audience and says, "There are all kinds of people around here. Maybe we shouldn't do this now. But don't forget." and then turns to the musicians and says, "Hit it," and picks up right where she left off?

I was hard-pressed to find anything to say, but I loved it. And not just because I'm into lime Jello.

From start to finish the entire production of *The Robber Bridegroom* was entertaining, interesting, innovative, and incurably insane. The convoluted themes of mistaken identity and the quest for wealth are well worn devices, but in *Bridegroom* they are presented with such vigor and enthusiasm it is difficult not to become wrapped up in the telling of the story. We follow the path of Jamie Lockhart — a.k.a. the Bandit of the Woods (played by Steve O'Donnell) — as it crosses many times and in many ways with that of the Musgrove family, while the rest of the cast provides witty asides and banter with the audience. If you don't enjoy audience par-

ticipation then this probably isn't the show for you, but this byplay is a large part of *The Robber Bridegroom's* appeal.

The Kresge Little Theatre is the perfect performance space for this type of production because it allows intimate interaction. The audience and the performers are in the same room with a clear view of the

props, costumes and other stage trappings, which furthers the idea that this is just a bunch of plain folks sittin' around tellin' tall tales.

The musicians are right up on stage where you can see them — they even get to participate in some of the action. They are not so obtrusive, however, that their

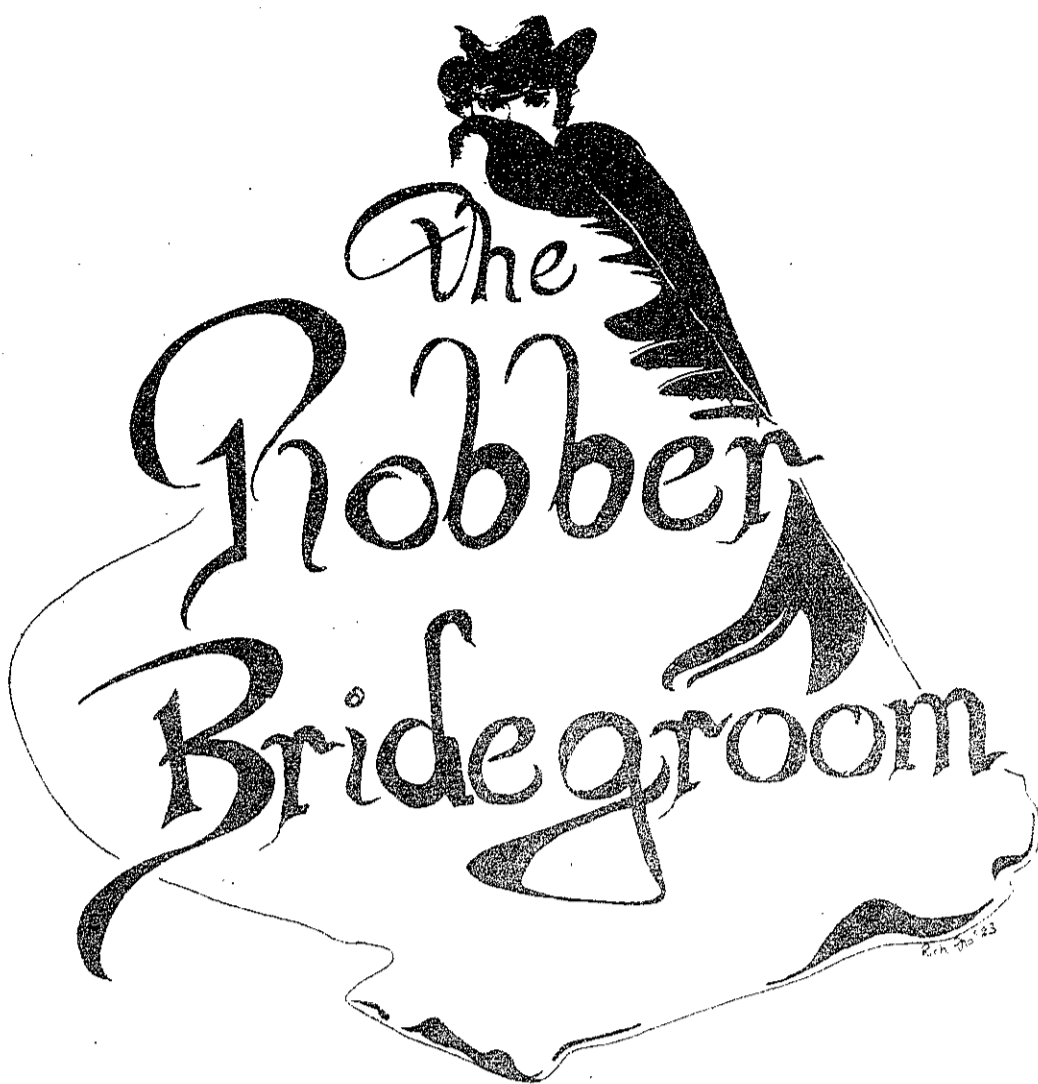
music clashes with the setting — I can't imagine chugging down the Mighty Mississippi on a riverboat bound for New Orleans to the accompaniment of cello and harpsichord. Piano, fiddle, and banjo are far more appropriate, and that's what *The Robber Bridegroom* gives you.

The cast does an amazing job of working together, considering the diverse character representations. Frank Ridley is Clement Musgrove, the kindly (and rich) plantation owner, who loves his daughter Rosamund (Lauren Hoffman Cochran). Rosamund finds her life uneventful and wants desperately to fall in love with a tall, dark stranger. Bonnie Derman '84 portrays Rosamund's shrewish step-mother who has desires of her own, most notably money and handsome young men.

Don Baillargeon and Joseph Bowen are Big and Little Harp, respectively. The most interesting thing about this bumbling pair of highway robbers is that Big Harp is a disembodied head — it seems that anything at all can happen in these tales. Gamalia Pharms is the wise, old plantation mistress with an inexhaustible collection of stories and legends. Phoebe Green, Gregory R. Brown, and Julie M. Tiao '83 are the members of the "Goat" family, poor farmers who can't seem to muster 25 brain cells between them and, therefore, are drawn unwittingly into the schemes of others. And in perhaps the most creative, if less talkative, role Irina Rakin plays The Raven, dressed all in black silk and brocade.

Whether or not you've ever traveled the Natchez Trace and heard those long, tall tales of the Bandit of the Woods you'll be singing, clapping, and laughing with delight at *The Robber Bridegroom*.

Bill Giuffre



Ars Gratia Artis

If you have never seen the portraits of George and Martha Washington, if you are unable to differentiate between a Monet and a Manet, or if you cannot translate the headline of this article, then a trip to the Boston Museum of Fine Arts (MFA) will remedy at least two of these three deficiencies. A joint program with the MFA and the Council for the Arts at MIT makes it possible for all MIT students to enjoy the MFA Membership Program for free — all you need do is show your student identification.

Benefits of membership include the free admission, discounts on special events such as lectures, concerts and special exhibitions, and discounts in the MFA Museum Shop — you need no longer rely on the Coop for your art prints. In order to acquaint student members with the museum and its programs, the MFA will be hosting an open house on Wednesday, October 5, from 7-9 pm; introductory tours and music will be provided.

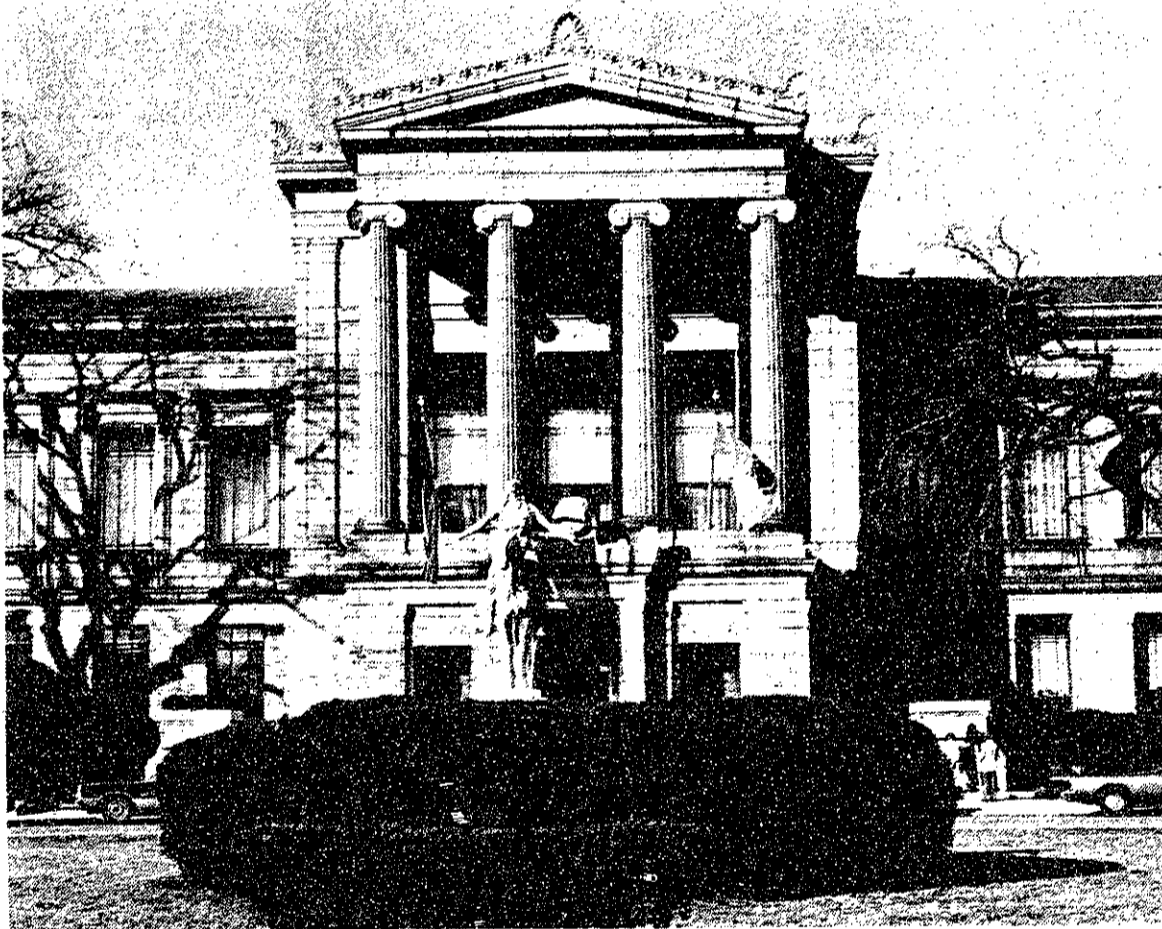
Freshmen wishing to impress their par-

ents may wish to make use of a special program made available this year by the museum. On Freshmen Parents Weekend, September 10 and 11, all MIT freshmen may take, as their guests, two adults to the MFA for free upon presentation of a temporary identification. Take advantage of the program — show your folks you won't be spending all your free time in a library.

Lest you forget, the Museum of Science will be continuing its own free admission program. The museum is well worth investigating — it still holds a few surprises for even the most jaded engineering student.

The Museum of Fine Arts is located on Huntington Avenue in Boston, on the Green Line near Northeastern University. For recorded information on hours and exhibitions, call 267-9377; for other information call 267-9300.

The Boston Museum of Science is located in Boston, on the Green Line Science Park stop, but it's easier to walk there — it's at the end of Memorial Drive, heading east. For information call 742-6088.



On the town

Superstar drummer **Bill Bruford** and ace keyboardist **Patrick Moraz** will perform *An Evening of Music by Piano and Drums* at the Paradise on Thursday, September 8 at 8:30 pm. For ticket information call 254-2052.

The MIT Musical Theatre Guild presents *The Robber Bridegroom*, with performances on Fri. & Sat., Sept. 9, 10, 15, 16, 17 at 8:00 pm, and Sun., Sept. 10 at 3:30 pm, in the Kresge Little Theatre. Tickets are \$5/\$3 with MIT ID. For reservations call 253-6294.

Off the Wall Cinema presents *The Revenge of Squaresville, U.S.A.*, starring James Dean, Alfred Hitchcock, Superman, Crusader Rabbit and John Farbotnik! Showing nightly at 7:55 and 10 pm, plus Sat.-Sun. matinees at 2:30 and 4:35. For information call 354-5678.

Don't forget to take a chance to have a legitimate work of art for your very own room! Enter the **Student Art Lottery** at the Hayden Gallery on Tuesday, September 6!

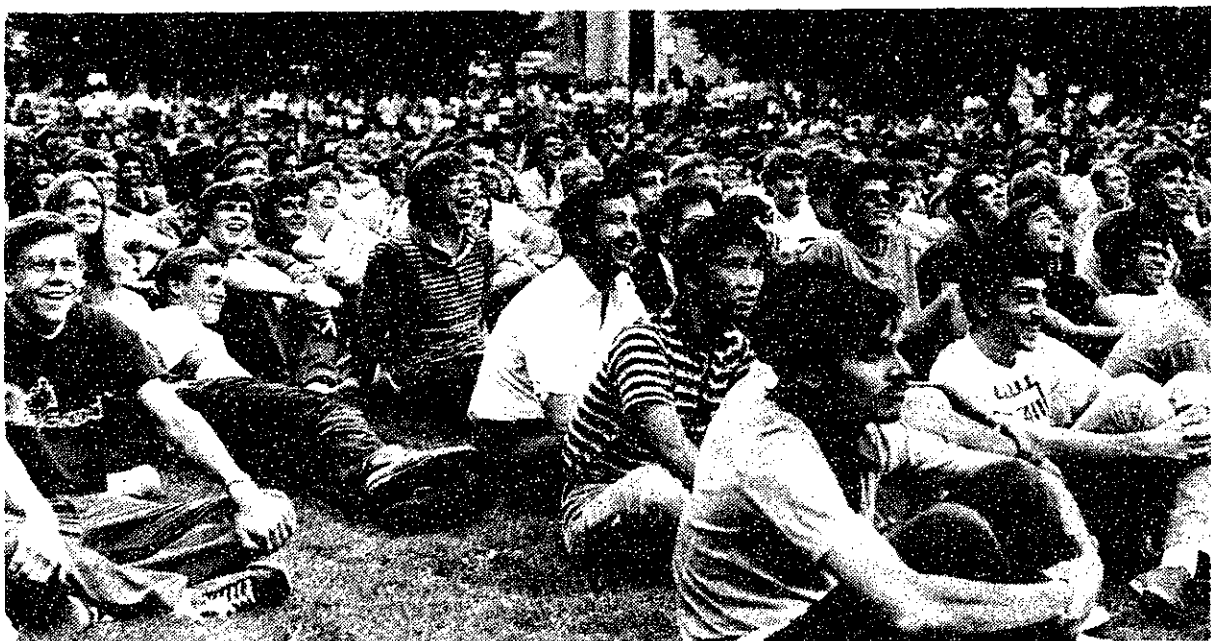
The Harvard Square Cinema continues its **The Genius of Woody Allen** series with a pair of double features: *Love and Death* and *Sleeper*, showing Tue.-Wed., Sept. 6 & 7; and *Interiors* and *The Front*, showing Thu., Sept. 8. For times and ticket prices call 864-4580.

The Harvard Square Cinema also continues its **International Director's Festival** with a pair of double features: Francois Truffaut's *The Last Metro* and *The Woman Next Door* on Tue., Sept. 6; and Federico Fellini's *8½* and Louis Bunel's *L'Age D'Or* on Wed.-Thu., Sept. 7-8. For information call 864-4580.

New Riders of the Purple Sage at Jonathan Swift's on Wednesday, September 7 at 9 & 11 pm. For information call 661-9887.

photo

Grant



Omar

classified advertising

CASH FOR COLLEGE. Over \$3 billion in financial assistance available annually... Many go unused because students are unaware of them. At **Nationwide Students Services**, we use high-speed computers to tap into information available on these scholarships. Call 617-232-9349.

LEGAL SERVICES Available in the fields of personal injury, negligence, business, real estate, contract, criminal, landlord-tenant, and divorce law. Reasonable rates. Call Attorney Esther J. Horwich, MIT '77, at 523-5271.

Wanted- Apartment for fall term for my last undergraduate term at MIT. Looking in Boston, But open to anywhere. Call Art at 267-0908.

Apartment for rent. Near MIT. \$700/month. Available 9/15. Two floors of three floor building in Inman Square. Completely renovated. Large new bathroom has sculptured marble tub, tile floor and walls, and an onyx-topped vanity. Large modernized eat-in kitchen has new cabinet, newly tiled floor, and two pantries. Two huge upstairs bedrooms, large parlor, and one small bedroom. I'll help find roommates if requested. Call Fred 876-5585.

For Sale: H89A Computer with 64K RAM, hard and soft sector controller boards, internal 40 track, external 40 and 80 track drives, Epson MX80FT with GraphTrax plus printer. Software includes: CPM80, HDOS, SC, WordStar, FORTRAN, and much more. If interested call 566-3444.

The MIT Equipment Exchange offers surplus equipment and used typewriters to students and staff at reasonable prices. Located in Building NW30, 224 Albany St. Open Mon., Wed., Fri. 10am-1pm.

CLASSIFIED ADVERTISING in The Tech: \$5.00 per insertion for each 35 words or less. Must be prepaid, with complete name, address, and phone number. The Tech, W20-483; or P.O. Box 29-MIT Branch, Cambridge, MA 02139.

Cotton Turtleneck Jerseys

— \$7.95 31 colors

Levi's, Lee's Fatigue Pants

— \$11.95

Central War Surplus

433 Mass. Ave.
Central Square
Cambridge



Party tonight at AEPi
With Midnight Traveler
155 Bay State Rd.
Time: 9:00 pm
Rides & Info: 536-3723

MIDNIGHT TRAVELER

ROSH HASHANA SERVICES

5744/1983

Sponsored by MIT Hillel, 312 Memorial Drive, 253-2982

REFORM (Chapel)
Wednesday, September 7, 8:00pm
Thursday, September 8, 10:00am

CONSERVATIVE (Kresge Little Theatre)
Wednesday, September 7, 6:30pm
Thursday, September 8, 8:30am & 7:00pm
Friday, September 9, 8:30am & 6:00pm *

ORTHODOX (Student Center, Room 473)
Wednesday, September 7, 6:30pm
Thursday, September 8, 8:30am & 7:00pm
Friday, September 9, 8:30am & 7:00pm

* The 6:00pm service will be held in the Chapel and led by the Hillel Conservative/Reform Minyan.

ROSH HASHANA MEALS



Join us for delicious holiday meals at MIT's Kosher Kitchen — chicken soup, baked chicken, kugel and more . . .

Wednesday, September 7
Dinner (first seating) 6:00pm
Dinner (second seating) 7:45pm

Thursday, September 8
Lunch 1:30pm
Dinner 7:45pm

Friday, September 9
Lunch 1:30pm
Dinner 7:45pm

Dinners are \$6.25 and lunches are \$5.00. Holiday meals must be prepaid. Payment can be by validine or cash at the Kosher Kitchen, Walker Hall, Room 005, Monday and Tuesday, 1pm-6pm. For information call at 225-6750 or 253-2982.

comics

Stickles
By Geoff Baskir



Bored Stiff?



Then float on over to **The Tech** and work it loose.

Elias hair care

319 Massachusetts Avenue
Cambridge, Massachusetts
497-1590/1591

five dollar discount introductory offer with this coupon - until October 14, 1983.

name: _____ address: _____

Graduate Students

Interviews for seats on Institute Committees will be held on Tuesday and Wednesday, September 13 and 14 from 5:30 pm to 8:00 pm on Tuesday, and from 5:00 pm to 7:00 pm on Wednesday, in the GSC office, Room 50-222. Interviews will be held for graduate students interested in seats on the following committees:

Standing Committees of the Faculty:

- Committee on Educational Policy
- Committee on School Policy

Special Committee Appointed by the Corporation:

- Corporation Joint Advisory Committee on Institute-Wide Affairs

Committees appointed by the President:

- | | |
|--|--|
| Committee on Assessment of Biohazards | Medical Advisory Board |
| Athletic Board | Prelaw Advisory Board |
| Community Service Fund Board | Committee on Privacy |
| Dining Advisory Board | Committee on Radiation Protection |
| Advisory Committee to Educational Video Resources | Committee on Safety |
| Equal Opportunity Committee | Student Activities Development Board |
| Committee on Foreign Scholarships | Committee on Toxic Chemicals |
| Committee on International Institutional Commitments | Committee on the Visual Arts |
| | Women's Advisory Board |
| | Advisory Committee for Women's Students' Interests |

Ad Hoc Committees:

- Advisor Committee on Shareholder Responsibility

For a application and interview appointment, please contact the Graduate Student Council at 3-2195 afternoons, or stop by Room 50-222

The Musical Theatre Guild Announces

The Robber Bridegroom

September 2,3,9,10,15,16,17 at 8:00 pm
September 4 & 10 at 3:30 pm
Tickets: \$5/\$3 with MIT Student ID or Senior Citizen ID

Kresge Little Theater
84 Massachusetts Ave., Cambridge

Information & Reservations: 253-6294

\$1 off admission on all matinees with this ad

FRESHMEN! COME UP TO ESG Room 24-612 AND EXPLORE THE POSSIBILITY OF LEARNING YOUR SUBJECTS THROUGH:

- one-to-one instruction
- self-paced study
- small, interactive classes
- a community of supportive students and faculty.

Interviews with prospective students will be held all week. Call x3-7786 for more information.

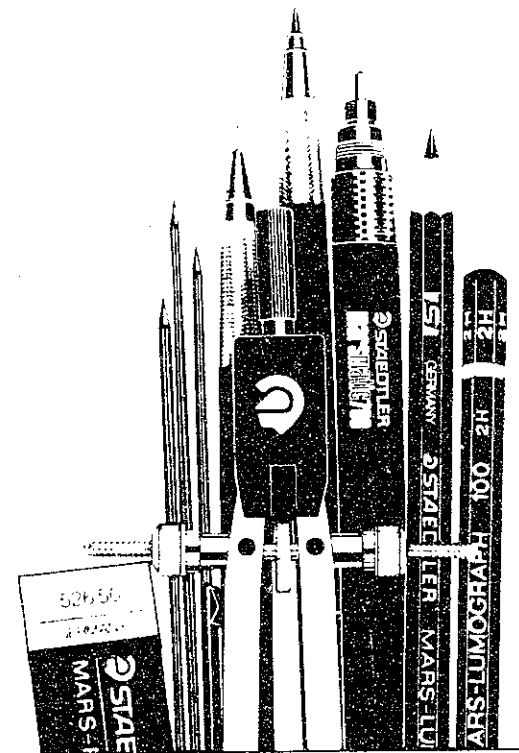
STAEDTLER | MARS

- Drawing Pencils & Leads • Lead Holders
- Lead Pointers • Erasers
- Technical Pens • Inks & Pen Cleaners
- Fine Line Pencils & Leads
- Pencil Sharpeners •

SPECIAL
POLO .5mm Mechanical Pencil
89¢

10% Discount

on



School, office, & computer supplies

UNIVERSITY STATIONERY CO.
311 Mass. Ave., Cambridge
3 blocks from MIT

sports

on deck

September Home Events

<p>September 10 Men's Sailing, Windsurfer Invitational, 9:30am.</p> <p>September 11 Men's and Women's Sailing, MIT Invitational, 9:30am. Men's Sailing, Windsurfer Invitational, 9:30am.</p> <p>September 14 Men's Soccer vs. Harvard, 3pm. Men's Tennis vs. Clark, 3pm. Women's Tennis vs. WPI, 3:30pm.</p> <p>September 16 Women's Tennis vs. Assumption, 3:30pm.</p> <p>September 17 Women's and Men's Cross Country, Engineer's Cup, 1pm. Football vs. Stonehill, 1:30pm. Water Polo, MIT Open, 8am. Women's Sailing, Man-Labs Trophy, 9:30am.</p> <p>September 18 Women's Sailing, Man-Labs Trophy, 9:30am.</p> <p>September 19 Field Hockey vs. Pine Manor, 4pm.</p>	<p>September 20 Soccer vs. WPI, 3pm. Men's Tennis vs. BC, 3pm.</p> <p>September 21 Baseball vs. Northeastern, 3pm.</p> <p>September 22 Baseball vs. Suffolk, 3:30pm.</p> <p>September 24 Baseball vs. Bentley (2), 12pm. Golf vs. Bowdoin, 1pm. Women's Sailing, Single-Handed Championships, 9:30am. Men's Soccer vs. Trinity, 2pm. Men's Tennis vs. Maine, 11am. Women's Tennis vs. Bates, 11am.</p> <p>September 25 Women's Sailing, Single-Handed Championships, 9:30am.</p> <p>September 28 Field Hockey vs. Endicott, 3:30pm. Men's Tennis vs. BU, 3pm. Women's Volleyball vs. BC, 7pm.</p> <p>September 30 Baseball, Opening round of MIT Fall Baseball Classic, vs. Brandeis, 1:30pm.</p>
---	--



Tech photo by Omar S. Valerio

MIT was the site of the Volleyball Tournament for the Bay State Games

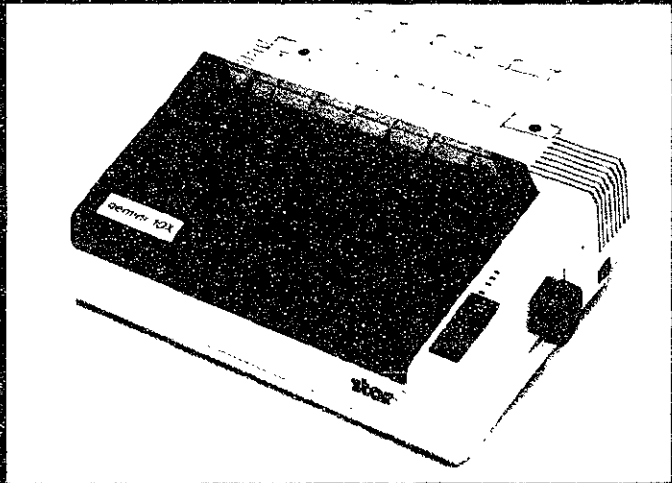
SERVISTAR.
Back Bay's Friendliest
Hardware Store

Your full line hardware store in the Back Bay. Featuring keys, housewares, small appliances, tools, paint, electrical supplies, plumbing supplies, sewing notions & much more!

Students show your college ID
and get a 5% discount on all purchases
thru Sept. 30, 1983

**BACK BAY
HARDWARE INC.**
829 Boylston Street
(opp. the Pru)
262-4020

**THE GEMINI - 10 X
FOR PRINTER
VALUE THAT'S OUT
OF THIS WORLD**



FROM **stair**
MICRONICS INC.

E.L.I. COMPUTERS, INC.
139 HAMPSHIRE STREET
CAMBRIDGE, MA 02139
(617) 492-2345

**First there was Hardware.
Then there was Software.
Now there is ...**

KNOWARE INC.
THE KNOWLEDGE COMPANY

**Explore excellent full time opportunities
in microcomputer software**

Knoware, Inc. is a rapidly expanding new company comprised primarily of MIT graduates. We are about to introduce our first of many educational software products into the microcomputer market.

Knoware offers the exciting challenges of a start-up venture in an informal work environment. We are aggressive, well-financed, and determined to assume the leadership position in the development of educational microcomputer software.

We seek programmers with experience in C, but experience in other structured languages is acceptable.

Knoware is conveniently located adjacent to the MIT campus at 301 Vassar St. in Cambridge. Arrange to visit our new offices by calling Jim Donohue at 576-3821.