

## Dean hires staff associate Sara Berman to aid women, activities for one year

By Will Doherty

Nine months after the resignation of Emily Weidman, Coordinator of Women Students' Interests, the Office of the Dean for Student Affairs (ODSA) has hired a staff associate to work for one year in both student activities and women's interests.

Margaret Coleman '50, president of the Association of MIT Alumnae (AMITA), said the Dean's Office needs "at least an assistant dean for women students' affairs." The hiring of Staff Associate Sara Mae Berman is "a step in the right direction, but what is needed is someone with rank, not just an administrative assistant," Coleman said.

The Institute cut ODSA operating expenses by five percent this year, McBay said, and budget constraints will not allow an administrative position oriented specifically toward women students.

McBay said she is "very excited about" Berman's arrival, but stressed her job will end after a year.

After Weidman resigned, representatives from AMITA, the Association of Women Students, and the Women's Center Committee asked the Dean's Office to hire a replacement.

McBay announced in a memorandum August 19 her intention to hire a new staff associate. She also instructed a staff team, led by Assistant Dean Linda Vaughan, to "meet on a regular basis to specifically address/review issues of concern to women students."

Vaughan said last week that although the committee was formed more than three months ago, it has not yet convened. She attributed the delay to the lack of a new staff associate.

Vaughan and Assistant Dean Stephen Immerman screened over forty applicants for the new position, and recommended three to a panel of students and ODSA staff. The panel first met on September 28 and unanimously recommended one applicant on October 31.

McBay rejected the applicant

after an interview because, she said, she felt the woman did not have enough experience in counseling and coordinating student activities. This decision was not reported to the panel until after McBay posted a new notice for the position and requested the panel provide a new recommendation.

After Associate Dean Robert M. Randolph and Administrative Assistant Katherine R. Cochran screened the second set of applicants, the interviewing panel, without some of the original members, submitted a second recommendation — Berman — to Dean McBay last month. McBay hired Berman a few days later.

"I think she delayed in hiring this person," Coleman said.

Although about one quarter of the students at MIT are women, only nine percent of the faculty is female, according to Coleman. "Women are lacking a visible support system within the Institute," she said.

(Please turn to page 2)

## ODSA, IFC look at rush week

By Jake Tinio

The Interfraternity Conference (IFC) and the Office of the Dean for Student Affairs are continuing discussions on long-standing suggestions to make fraternity rush less hectic for incoming MIT freshmen.

Essays written for the freshman writing evaluation in early September challenged a traditional belief that freshmen generally approve of rush week, according to Peggy Richardson, executive officer of the Undergraduate Academic Support Office.

One of the three topics on which freshmen could have written was a description of their rush experiences. A large number of freshmen complained about the excessively fast pace of rush week, Richardson said.

The present R/O schedule be-

gins with the freshman picnic, usually held at 4:30pm on the last Friday in August. Fraternity rush begins after the picnic. Fraternities can offer freshmen bids to live in their houses beginning the following Sunday morning, and freshmen can accept those bids the next day.

One possible change would require freshmen to arrive at MIT on Thursday, rather than Friday afternoon, for Residence/Orientation (R/O) Week, according to Assistant Dean for Student Affairs Stephen D. Immerman. This change would give freshmen more time for orientation before the residence selection process begins, he said.

Other proposed changes in rush, Immerman noted, include starting the freshman picnic at noon, not allowing fraternities to

conduct outings until Saturday afternoon of rush week, and extending the period between the offering and acceptance of fraternity bids.

These modifications would enable freshmen to visit more of the fraternities during rush, Immerman remarked.

The IFC met November 17 to

(Please turn to page 2)

## Debt stalls shuttle bus

By Tony Zamparutti

The MIT Shuttle Bus did not resume operation as planned yesterday, because the William S. Carroll Co. refuses to run the bus until its organizers pay their debt to the bus company.

The MIT Shuttle Bus Project owes Carroll about \$4100, according to Michael Lopez '83, founder of the shuttle project. The group has about \$2100 in its MIT account, Lopez said, and thus needs to borrow about \$2000 before it can resume operation.

The shuttle bus costs \$1400 a week to operate; organizers had hoped to run the bus for two weeks, from yesterday until Friday, December 10.

"We're hoping for a [Finance Board] loan," Lopez said, or "maybe some money out of the [Undergraduate Association President's] discretionary funds."

"The Finance Board right now does not have a lot of money," said Charles P. Brown '84, chairman of the Undergraduate Association (UA) Finance Board. "We can't make a loan that won't be paid back before the end of the year." Brown said he doubted the Shuttle Bus Project could pay back such a loan.

The Finance Board could lend money from its invested reserves, Brown noted, but such a loan would have to be approved by the Activities Development Board (ADB). The board approved a \$8720 loan for the project in September, but ADB has yet to vote on it. That loan is now "dead," Brown said, since it would fall



Tech photo by Laurie Goldman

Dean Harold J. Hanham of the School of Humanities and Social Sciences.

## Fewer sophs choose Courses III and VIII

By Daniel Crean

Sophomore enrollments have declined from last year in the Departments of Physics and Materials Science and Engineering, but have increased in the Department of Electrical Engineering and the School of Humanities and Social Science, according to a report made by the Registrar's Office.

Sophomore enrollments in all schools except Humanities and Social Science are down this year, mainly because this year's sophomore class has sixty-one fewer

students than last year.

"I hope it's just a statistical fluctuation," said Professor Anthony P. French, academic officer of the Department of Physics. French said the percentage of undergraduates in the School of Science has slowly declined over the past ten years.

"A lot of it has to do with student employment," he said. The decrease in the number of science students started at the "beginning of the period of economic decline in the mid-1970's," French explained.

French predicted enrollments in the School of Science will stabilize. "I doubt we'll ever get to a point where MIT is 95 percent engineering," he said. "I don't think anybody wants or expects that."

Most engineering departments had approximately the same number of sophomores enroll this year as last. Enrollments in the Department of Materials Science and Engineering (Course III), however, dropped by 60 percent.

Kimberley Elcess '83 of the Student Materials Society said the drop in Course III enrollment is primarily a statistical abnormality. "Last year was anomalously high and this year is anomalously low."

"We're trying a little harder for new freshmen this year," she said. Part of the decline, Elcess added, may have been due to a perception that Course III graduates

(Please turn to page 2)

## Endowment jumps \$80M

By John J. Ying

MIT's endowment fund has increased in value by \$80 million since the middle of the summer because of increases in stock prices, but Director of Financial Operations John A. Currie '57 doesn't foresee "any major change in our income."

As of October 31, the total value of the endowment fund held in general investment was over \$530 million, according to Treasurer Glenn P. Strehle '58.

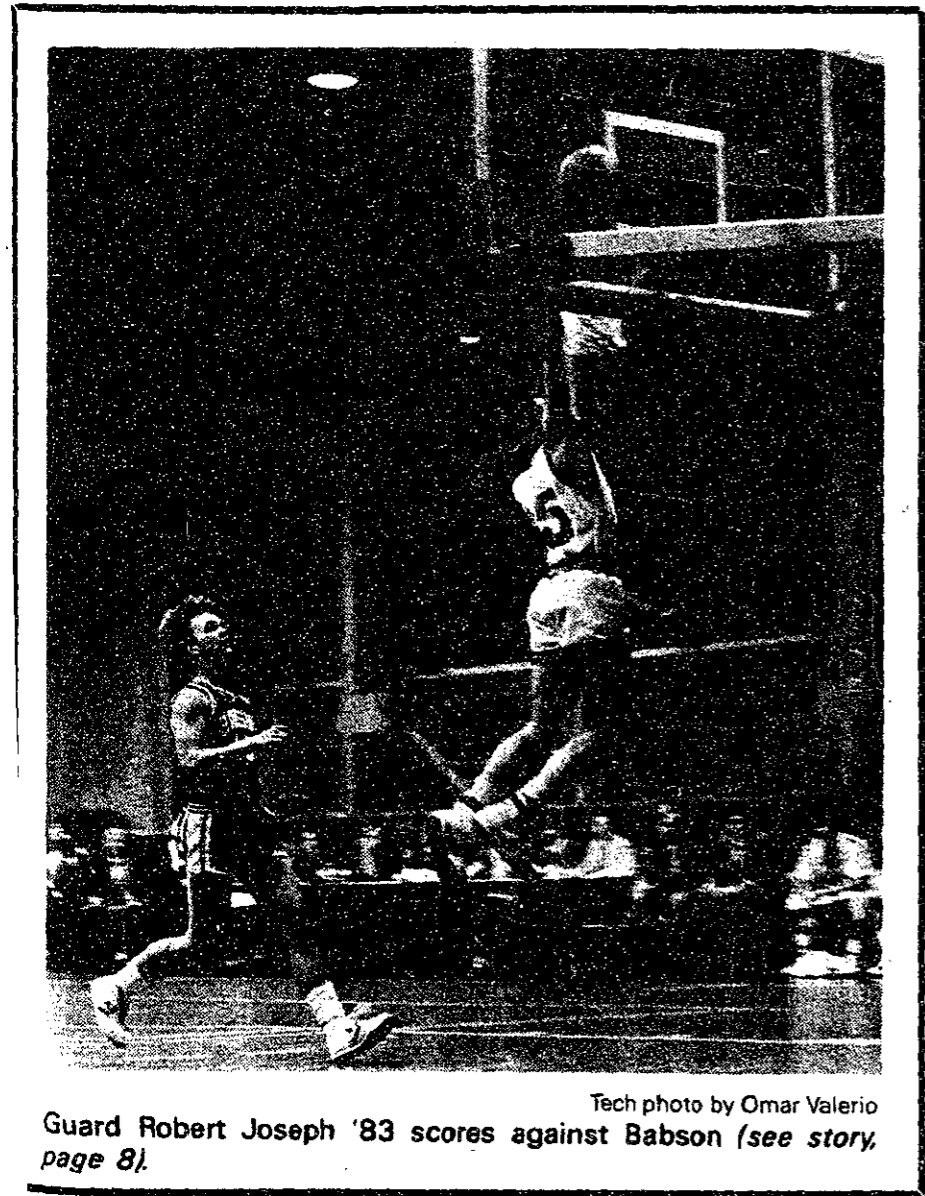
While noting the Dow Jones Industrial Average has not changed much during November, Strehle pointed out that the

Dow's autumn increase represents an appreciation of over 20 percent, or \$80 million, in the endowment, excluding real estate, since June 30, the end of MIT's fiscal year.

"We won't see a change in the income until companies like [General Motors] start to make money and then raise their dividends," Currie said. "The net worth of the endowment is tied to the Dow Jones, but its increase does not necessarily provide more cash for operations."

"The change in market value is viewed by most observers as a re-

(Please turn to page 3)



Tech photo by Omar Valerio

Guard Robert Joseph '83 scores against Babson (see story, page 8).

# Staff associate not enough, says AMITA

(Continued from page 1)

"We obviously still need to have support services for women students," McBay said, "but it's not always possible to do what you'd like to have done." Next year's budget cuts in the Dean's Office will have to come from personnel, McBay said, and management carefully reviews positions of employees who leave the Dean's Office to determine where budget cuts will be made.

Betsy Salkind '85, co-chairman of the Women's Center Committee, said Berman's job description should be altered. "As the position exists now, it's not what we wanted," she noted. A one-year position, half-time for women, and without a mention of women in the title, "leads us to question how much support for women really exists in the Dean's office," Salkind declared.

The Women's Center Committee, which includes about 40 students, faculty and staff members, would like a full-time staff person and a Women's Center to provide for women student's needs at MIT.

McBay said she is looking forward to upcoming IAP luncheons sponsored by the Corporation Visiting Committee on Student Affairs to discuss student groups and their activities next month. Women students will be invited to one of these luncheons to discuss their activities, as well as their hopes and plans for the future of women at MIT.

As the new staff associate, Berman hopes to help students "have fun and gain practical experience." Only a few days on the job, she is already "seeking out women staff members and students."

# Rush schedule examined

(Continued from page 1)

discuss the suggested modifications, said IFC Chairman Arthur Vasen '83. Dormitory representatives at the meeting said freshmen would have less time to visit the dormitories if the picnic were held at noon, Vasen noted.

Fraternity representatives said an extended period between bids and acceptances could create problems for fraternities, who would not know how many of their first set of bids would be accepted until later in the week, leaving them unable to gauge the number of additional bids to extend, according to Vasen.

Reactions were mixed on suggestions to start rushing on Thursday and to make fraternities wait until Saturday afternoon to hold outings, Vasen said.

The proposal to have freshmen join fraternities only after the first semester is impractical, Vasen said, since fraternities would

# More students enroll in School of Humanities

(Continued from page 1)

cannot find jobs.

"There is an effort in the department to educate companies and students as to what the department does," she said.

Sophomore enrollment in the School of Humanities and Social Sciences doubled between this year and last according to the Registrar's report. "In terms of statistics that doesn't mean much," said Harold J. Hanham, Dean of the School.

"We haven't quite got a trend," Hanham said, although he expects long-term enrollment to rise over a few years.

The job market has a large effect on student selection of majors, Hanham noted. Current undergraduates are "extremely job conscious," he added.

"Humanities majors do get jobs," he said, but "people feel safer, and their parents feel safer, in engineering."

The majority of undergraduates in the School usually transfer from the Schools of Engineering and Science, Hanham said.

lose money from vacancies in that term.

Holding fraternity rush over a term rather than during R/O week would be academically detrimental to the MIT community and would stereotype fraternity houses as "extracurricular activities" rather than living groups, Vasen said.

The MIT Press

# Holiday Book Sale

Come early—some titles in limited supply

Come often—new bargains daily

Up to 90% off hundreds of titles

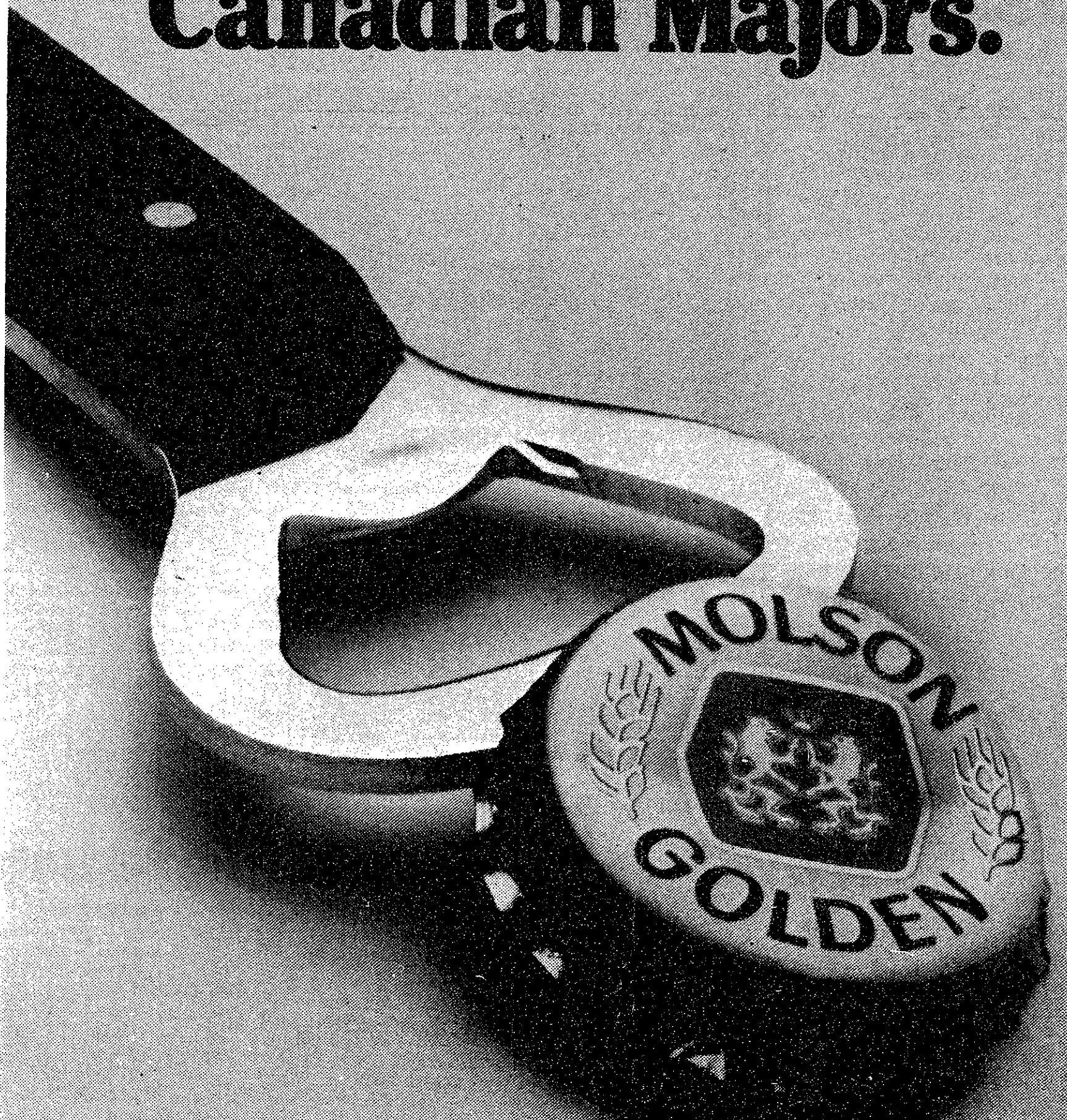
Thursday, December 2  
10am-9pm

Saturday, December 4  
10am-4pm

Friday, December 3  
10am-9pm

Main Floor  
MIT Student Center  
84 Massachusetts Avenue  
Cambridge, MA

# Prerequisite for Canadian Majors.



Molson Golden. That's Canadian for great taste.

The finest ale brewed and bottled in Canada. Imported by Martlet Importing Co., Inc., Great Neck, N.Y. © 1982.

51 NEW ENGLAND YRS TRADITION

COWBOY JEANS  
BUTTON FLY  
Levi's

2150

501's Guaranteed to  
• FADE • SHRINK  
• OUTLAST 'M ALL

Walker's

Riding Apparel, 292 Boylston St., Boston

# news roundup

## World

**Pope to visit Central America** — Pope John Paul II will visit El Salvador early next year, according to an announcement Sunday by a Roman Catholic Church official in San Salvador. The trip, the Pope's first to the region, will also include other Central American countries and Haiti. The visit comes at a time when the Church finds itself under pressure from political forces in this traditionally Catholic region and from the recent growth of the evangelical Protestant movement.

**Lebanese army seizes hospital's drugs** — Soldiers of the Lebanese army seized at least \$250,000 in drugs from the Palestinian-run Gaza hospital in Beirut on Sunday, according to the hospital's director, Dr. Amir Hamowr. A spokesman for the Lebanese Army said he knew of the incidents, but would not comment on them. "They took all our anesthetics in today's raid," said Dr. Hamowr. "Yesterday they got all our antibiotics." **Joel Gluck**

## Weather

**More of the same** — Skies will turn overcast by late this afternoon, but southwesterly winds will bring mild weather for the next several days. High temperatures this week will remain in the low to middle 50's, while nighttime temperatures can be expected to dip into the lower 40's. **Buzz Moschetti**

## Stock market rise won't boost Institute's income

(Continued from page 1)

sult of the lowering of the interest rate, resulting in favorable stock and bond prices," Strehle explained. "Because of lower corporate profits, dividends are not being increased. As a result, the rise in market value doesn't translate into higher income."

"Although income hasn't increased because of the market," Strehle noted, "if the lower rate of inflation continues into the future, the income in the future will have more purchasing power than investors thought six months ago."

"It is important to note that the country is still in a recession and [there is] little sign of [it]

picking up," Strehle continued. "We are hopeful of a modest economic recovery in 1983 with an increase in corporate earnings and a resumption of dividend increases."

Although the value of all Institute investments, including some temporary income, exceeded \$600 million during the rally, Strehle said MIT made no effort to alter its ratio of cash to securities.

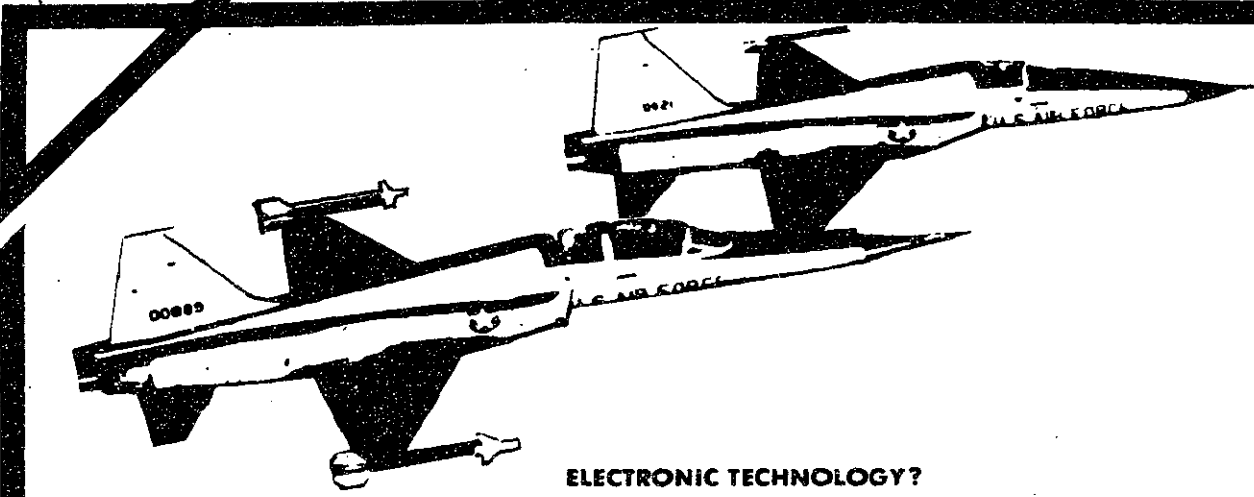
The Institute holds 70 percent of its investments in equities, consisting of common stock and convertible bonds, 22 percent in bonds and short term securities, and the remaining 8 percent in real estate, according to Strehle.

# Garbage: that doesn't need your contribution.

environmental  
action  
foundation

724 Dupont Circle Building  
Washington, D.C. 20036

This space donated by The Tech



**ELECTRONIC TECHNOLOGY?  
THE WORK WE DO TODAY  
IS THE STATE-OF-THE-ART  
TOMORROW!**

## SCIENTIFIC & ENGINEERING

## CAREER OPPORTUNITIES

Rome Air Development Center — the largest Air Force laboratory devoted to electronics research and development.

The 485th Engineering and Installation Group — engineering communications and electronic systems throughout the world.

Griffiss AFB recruiters will be on campus Dec 7th. Interviews will be for civilian opportunities as electronics engineers and computer scientists.

## ROME AIR DEVELOPMENT CENTER & 485th ENGINEERING & INSTALLATION GROUP

Griffiss Air Force Base, New York



# HELP!

The MIT Musical Theatre Guild is looking for a production staff

Interviews will be held for **Director, Music Director, & Choreographer** for **Tech Show '83** on 11/30 and 12/1; and the **IAP show, Jaques Brel is Alive and Well and Living in Paris** on 12/2. For appointments: Call 253-6294 or step by our office (Student Center room 453).

## To All Seniors

You're invited to attend a

## Reception

to Discuss

## Investment Banking

Lehman Brothers Kuhn Loeb  
Incorporated  
55 Water Street—43rd Floor  
New York, New York 10041

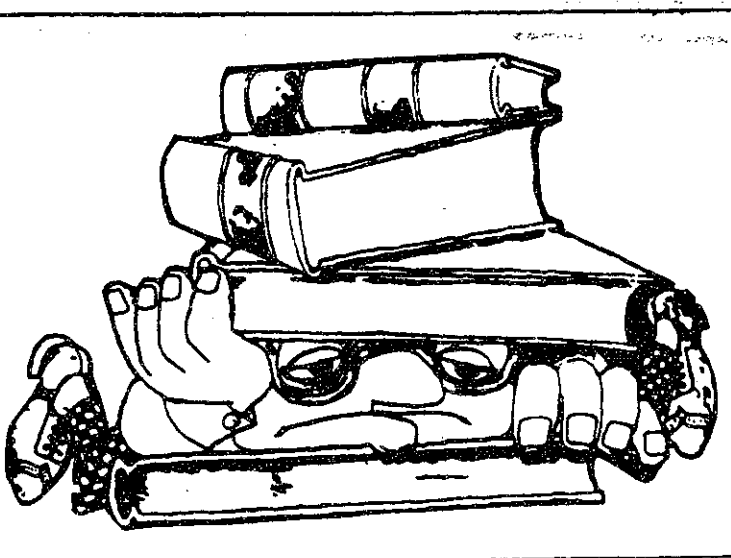
December 21, 1982 • 5:00 P.M.

RSVP to the Placement Office, Room 12-170

(Due to limited space, only the first respondents will be accommodated)

Lehman Brothers Kuhn Loeb

NEW YORK ATLANTA BOSTON CHICAGO DALLAS  
HOUSTON LOS ANGELES SAN FRANCISCO LONDON TOKYO



## Too Much Reading Getting You Down?

Well, maybe it should. Today, our knowledge is exploding so fast that people who want to keep ahead are actually falling behind. There's simply too much to read. Too much homework. Too many books. Too many reports and memos.

What's the solution? Learn how to read faster and better.

You can do it, too. So far over 1,000,000 other people have done it. People with different jobs, different IQ's, different interests, different educations. Students, businessmen, housewives.

These people have all taken a course developed by Evelyn Wood, a prominent educator. They have at least tripled their reading speed with equal or better comprehension. Most have increased it even more. Some increased it 10, even 20 times.

Think for a moment what that means.

Our average graduate can read the typical novel in less than two hours. They can read this ad in 20 seconds. They can read an entire issue of *Time* in 35 minutes.

They don't skip or skim either. They read every single word. Nor do they use machines. Instead, they let the material they're reading determine how fast they read.

And mark this well - they actually understand more and remember more and enjoy more than when they read like you. That's right. They understand more. They remember more. They enjoy more.

This is the same course three Presidents have had taught to their staffs. The same one Senators and Congressmen have taken, and the same course successfully completed by thousands of persons in Boston and New England over the past 20 years.

It's six weeks long, 3 hours a week, with classes held regularly in Boston, and suburbs.

The IAP classes are tailored to fit the January period. The classes will meet twice weekly for 3 weeks, 3 hours each meeting.

At a greatly reduced rate, you will receive the regular Reading Dynamics course and the nationwide return privileges.

Special class for  
**INDEPENDENT ACTIVITIES PERIOD**  
Classes at 380/402 Massachusetts Avenue  
(3 minute walk from Student Center)  
**Outstanding Student and Faculty Group Rates**  
for information call 536-6380

**Evelyn Wood READING DYNAMICS INSTITUTE**  
A U.S. Company  
17 ARLINGTON STREET • BOSTON MASSACHUSETTS

# Opinion

## Editorial

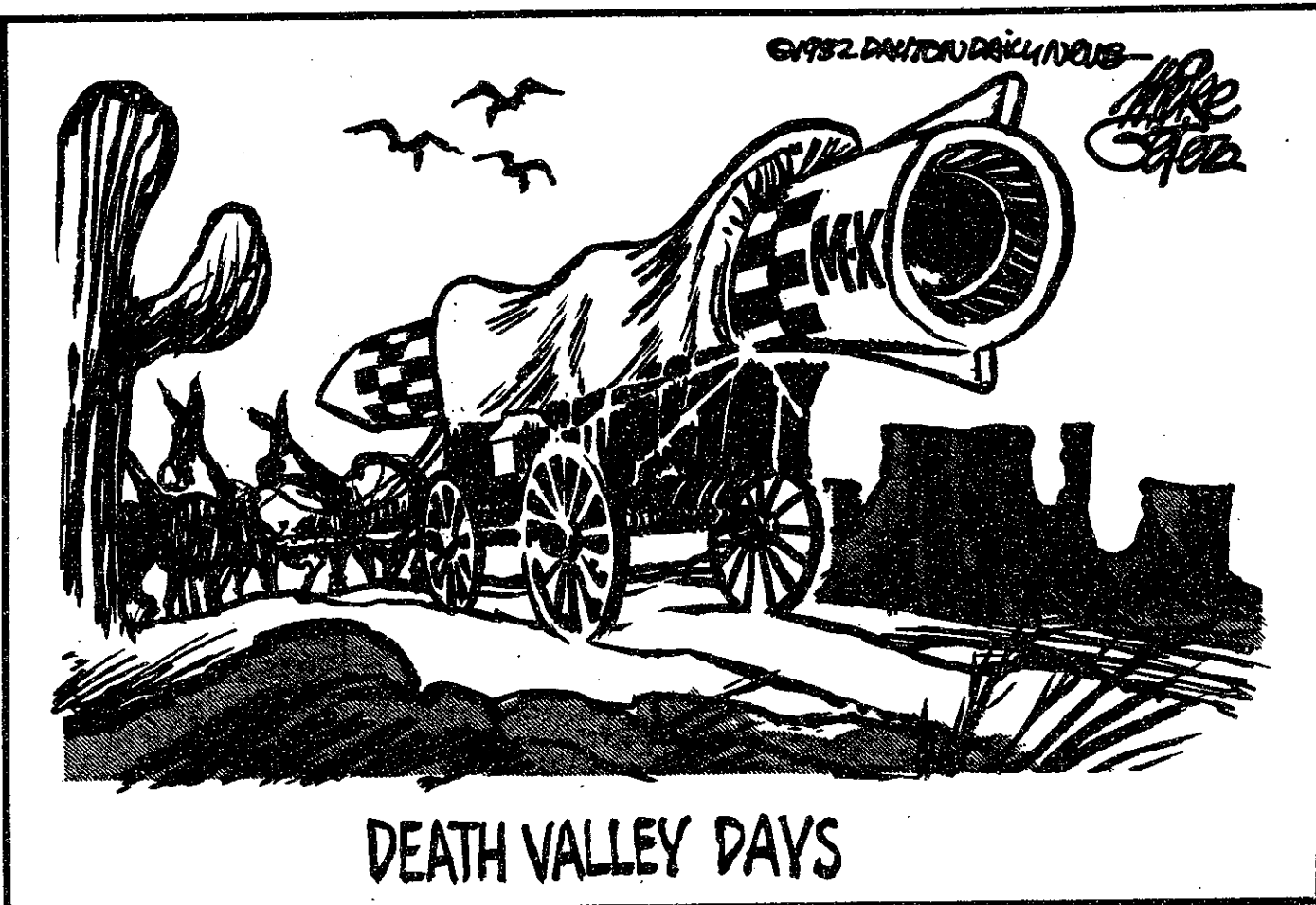
### Women's question raises larger issue

The Dean for Student Affairs has finally taken action on the long-vacant position of Coordinator of Women Students' Interests, replacing it with a "Staff Associate" charged with the broader support of student activities and organizations and women's programs. The new staff associate will be employed for only one year.

There is no question MIT, with its imbalanced male to female student ratio and the academic and social situations characteristic of a scientifically and technically oriented university, should be responsible for supporting women's interests. The Institute must provide support services specific to women's needs and encourage an atmosphere in which women can learn and contribute to their full potential. Similar reasoning provides the rationale for Institute support services for minority, international, and handicapped students. The Dean's Office acknowledges the need for such a service, but, in the face of five percent budget cuts this year and next, regards the position as lacking priority.

"What is needed is someone with rank, not just an administrative assistant," argues the president of the Association of MIT Alumnae. An assistant dean, active in the women's community at MIT and familiar with the resources and activities of the broader MIT community, could better serve the interests of women students than could a part-time staff associate. Employing a staff associate for but one year reflects only a marginal commitment to student needs.

The women students' support issue points to a larger problem. Arguments both for and against having an assistant dean for women students' affairs may seem compelling given present constraints, but the larger issue is whether budget cuts should so drastically affect the ability of the Office of the Dean for Student Affairs to provide essential services. The Institute should move the Dean's Office from its classification as an administrative support service to one of an academic program, thus ensuring its sustained support. Were the Dean's Office less constrained by budgetary considerations, the issue of students' interests, as exemplified by those of women students, could be handled more realistically.



Column/David C. Lingelbach

## What Andropov will see

Yuri Andropov, as interim General Secretary of the Central Committee of the Communist Party of the Soviet Union, will face for the next decade a world situation that both greatly simplifies Soviet strategy and makes vastly more complex the correct choice of tactics to achieve that strategy. A combination of demographic — although by no means natural — phenomena and the disintegration of Western and Third World political and economic institutions has incalculably reduced the military threat to the Soviet Union over the past five years. These developments are likely to continue for the duration of Andropov's period in office.

In the area of foreign policy, Andropov will likely design policies that will subtly exploit the regionalization inherent in both Western European and North American contemporary politics, without seeking open diplomatic or military conflict with the NATO alliance. The specter of Scottish, Welsh, and Cornish separatism in Great Britain, the Irish question, the decline of a leftist politics in France capable of addressing structural economic flaws, the radicalization of some West German political parties (the West German government has predicted, as an aside, that 40 percent of the population of the Federal Republic will be Moslem by the year 2000), and the centrifugal forces of Southern and Western regionalism and immigration in the United States have placed opportunities before the Soviet leadership that they have never had before. What might make some elements of the Soviet hierarchy more optimistic is that these same fundamental problems, which are less a function of individual acts of poor public policy than they are of long-standing misinformation, are of the same sort that the Western nations have sought to exploit in greater Russia since 1917.

Other macropolitical developments make Andropov's job of seeking consensus on a Soviet foreign policy easier. Imprudent lending practices on the part of American, Japanese, and European banks have placed into jeopardy the international financial system. In ignoring their primary fiduciary responsibility to depositors, banks have contributed

more as a group to the depth of the current world recession, the dance of death on the New York Stock Exchange, and the absence of cooperation between the advanced industrialized countries on the current economic difficulties than any government or governments could. The presence of huge outstanding debts in Poland, Rumania, Argentina, Brazil, Mexico, and the multinational corporations in the United States, Canada, and West Germany has given Andropov a welcome lever with which a more compliant NATO strategy can be extracted.

The successor generation (the millions of people from the age of 25 down) and its increasingly decadent behavior has also created opportunities which Russia has sought to exploit through the instrument of the peace movements in Europe and the United States. The incentive to assume positions of leadership, of contrariness, and of devil's advocacy is fast diminishing in many Western countries, because of the worsening social conditions. Andropov, as a former President of the KGB, is well aware of this hidden problem, and the Soviet leadership realizes in general that the hard times through which all industrial nations are now passing are more favorable for the

grooming of a new Soviet elite than it is for creating a generation of leaders in the United States.

As far as Soviet internal policy goes, Andropov understands, perhaps better than anyone else, that all of the Soviet Union's seemingly intractable agricultural, demographic, and political enigmas, which could probably not be solved by democratic means, are not as threatening to stability if viewed in the historical Russian context. The peoples governed by Moscow have grown accustomed to government by cattle prod, in which the threat of swift retribution is combined with the possibility of success as defined by the Communist party. As Erich Fromm demonstrated in his book *The Fear of Freedom*, there are powerful psychological reasons for humans to seek the sort of security offered by the Soviet system. It is unlikely that the Soviet Union will repose upon the trashheap of history, as the Reagan Administration would have us think, for the foreseeable future. If our political system does not soon rediscover the power, resiliency, and practicality of democratic rule, whether republican in form or otherwise, we, however, may discover how compelling the sickness of despotism really is.

## The Tech

Ivan K. Fong '83 — Chairman  
 Jerri-Lynn Scofield '83 — Editor-in-Chief  
 V. Michael Bove '83 — Managing Editor  
 William L. Giuffre '84 — Business Manager  
 Volume 102, Number 56  
 Tuesday, November 30, 1982

### NEWS DEPARTMENT

**News Editors:** Barry S. Surman '84, Tony Zamparutti '84; **Associate News Editors:** John J. Ying '84, Burt Kaliski '85; **Staff:** Laura Farhie '83, Andrew Robbins '83, Sam Cable '85, Gene Chang '85, Dan Crean '85, Moris Dovek '85, Joe Killian '85, Andrea Marra '85, Jake Tinio '85, Joel Gluck '86, Tom Huang '86, Richard Mlynarik '86, Buzz Moschetti '86, Ron Norman '86, Leo Hourwitz G.

### CARTOONISTS

Geoff Baskir '78, Glenn Ackerman '82, V. Michael Bove '83, Bill Spitzak '83, Carol Yao '85, Joe Cerami '86, Oruç Çakmakli G.

### PHOTOGRAPHY DEPARTMENT

**Photo Editor:** Laurie Goldman '84; **Darkroom Manager:** David G. Shaw '82; **Staff:** Jesse Castillo '82, Jonathan Cohen '82, Jim Vlcak '82, Linda Custer '83, Grant M. Johnson '84, Bob Lake '84, Rod Wester '84, Andrew Wold '84, Eve Durra '85, Ken Hughes '85, Vince Light '85, Winston I. Smith '85; **Photographic Consultant:** David Tenenbaum '75.

### SPORTS DEPARTMENT

**Sports Editor:** Martin Dickau '85; **Staff:** Arthur Lee '85, Robert E. Malchman '85.

### ARTS DEPARTMENT

**Arts Editor:** Stuart Gitlow '84; **Staff:** Tom Grycewicz '82, Howard Ostar '82, Joseph Romin '82, Peter Thompson '82, Jonathan Dippert '83, Bill Detlefs '84, David Bondelevitch '85, Stephen Huntley '85, Mark Tunick '85, Mimi Yenari '85, Tom Anderson G.

### BUSINESS DEPARTMENT

**Advertising Manager:** Keith Tognoni '84; **Advertising Accounts Manager:** Dave Ramahi '86; **Circulation Manager:** Jari Georgia.

### PRODUCTION STAFF FOR THIS ISSUE

**Night Editor:** V. Michael Bove '83; **Staff:** Tim McNerney '83, Bill Spitzak '83, Charlie Brown '84, Barry S. Surman '84, Bill Coderre '85, Max Hailperin '85, Joel Gluck '86.

*The Tech* (ISSN 0148-9607) is published twice a week during the academic year (except during MIT vacations), weekly during January, and once during the last week in July for \$10.00 per year Third Class by *The Tech*, 84 Massachusetts Ave. Room W20-483, Cambridge, MA 02139. Third Class postage paid at Boston, MA. Non-Profit Org. Permit No. 59720. **POSTMASTER:** Please send all address changes to our mailing address: *The Tech*, PO Box 29, MIT Branch, Cambridge, MA 02139. Telephone: (617) 253-1541. Advertising, subscription, and typesetting rates available. © 1982 *The Tech*. Printed by Charles River Publishing, Inc.

## feedback

## Opinion disputed

### To the Editor:

Jerri-Lynn Scofield's column of Friday, November 19, on the CEP freshman year proposal gives the reader an incorrect impression of Professor A. C. Smith's attitude towards education here at MIT. By quoting him out of context, Scofield's words imply that Prof. Smith is more concerned with saving MIT money than he is about the quality of education here. Nothing could be farther from the truth.

Professor Smith has been deeply involved in matters of educational policy both in his department and Institute-wide. As a member of the CEP, CAP, and as a graduate officer for Course VI, he devotes a great deal of time and energy to improving MIT's educational experience. His con-

cern for education also manifests itself in the classroom. As many will attest, Professor Smith takes a personal interest in the education of his students and is sensitive to their concerns. Frequent feedback on his teaching performance by students is an integral part of his courses. In light of his sincere concern for students here, it is particularly unfortunate that Professor Smith was misrepresented in a student publication. MIT's academic excellence is due in large part to the efforts of faculty members such as he.

Gregg Burgess '84  
 Chairman, Aero-Astro Student Advisory Committee  
 Jim Taylor '84  
 Member, Committee on Educational Policy

# comics

# sports

## Hoop starts up, falls to Babson and to Harvard

(Continued from page 8)

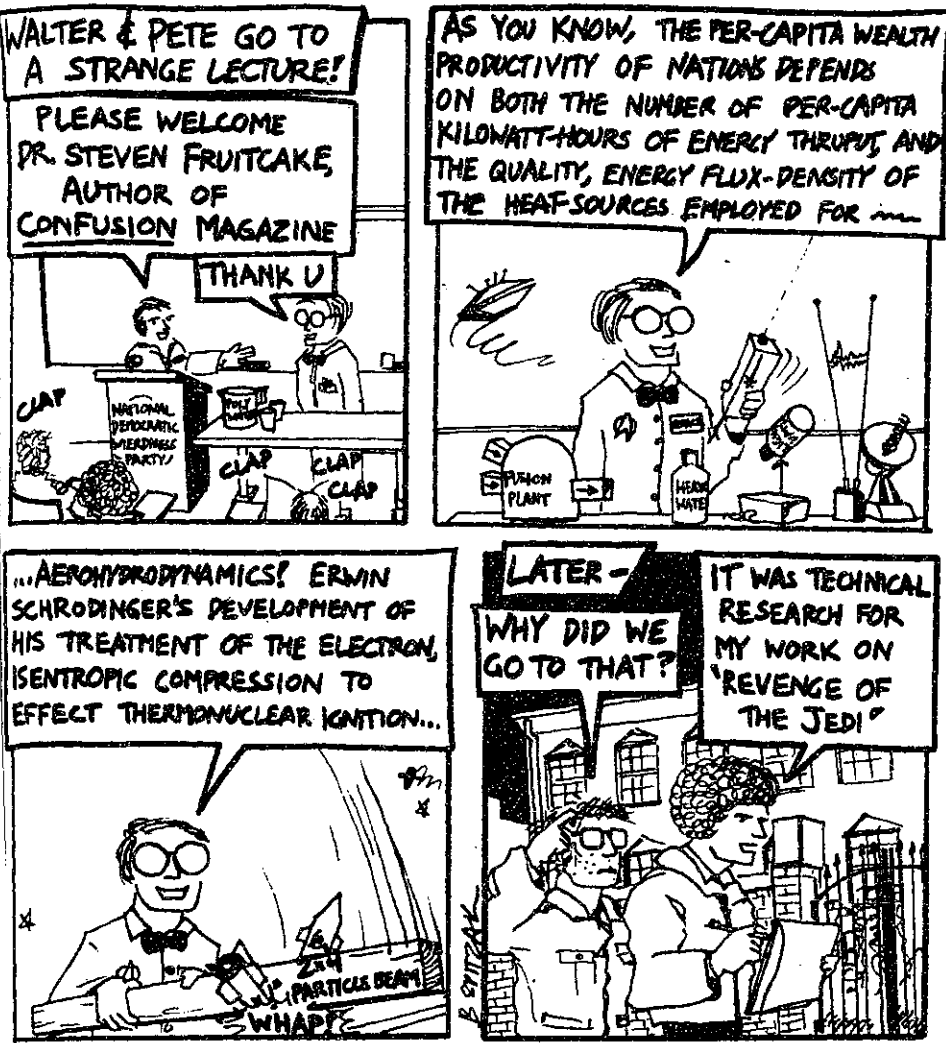
an aggressive game on defense by taking several charging fouls) led a 16-9 run to pull Tech within seven at 23-16, but Harvard's size and strength eventually prevailed at both ends of the floor. The first half ended with the home team up by 12, 43-31.

The second half was much the same as the first. Though MIT came up with a number of good plays, especially on defense, it wasn't enough to handle Harvard, who on the strength of 58 percent shooting from the field, outscored MIT 40-27 in the final 20 minutes.

Frosh Greg Wildes led the hosts with 20 points, including 12 in the first half, while sophomore Bob Ferry chipped in with 16, most of which came from the perimeter. Branch, MIT's sixth all-time leading scorer, led both teams with 27, including 11-for-12 from the line. Joseph played another fine all-around game, with 14 points and four steals. Other encouraging notes included a 26-for-32 performance from the charity stripe (following a 13-for-27 game against Babson), and 11 steals versus nine for Harvard. Turnovers, however, continued to be a source of worry, as MIT gave up the ball 26 times, for a two-game total of 58.

The schedule for the balance of December isn't exactly an easy one. Tomorrow MIT faces Tufts (rated in some polls as the best in New England Division III) in Medford before winging to Chicago to participate in the Illinois Tech Tournament Friday and Saturday.

## Space Epic By Bill Spitzak



## Stickles By Geoff Baskir



**SAMUEL C. FLORMAN**  
Author of  
"The Existential Pleasures of Engineering"  
will talk on  
**THE ENGINEER-WRITER AND OTHER MYTHICAL CREATURES**  
Thursday, December 2  
4:30pm  
Room 9-150  
(Paid Advertisement)

**\$5 HAIR CUT**

**THE GRAND STRAND HAIR DESIGN**

STYLISTS: KEVIN JENSEN, formerly of Doralis; STEVE ARDUINI, formerly of John Dolevics; BRADDA, formerly of Monte Carlo; ROBIN, formerly of Central Preference.  
(in front of the Joy and Movement Center, Central sq.)

OFFICE: 277-9088  
BEEPER: 732-8593

**MARILYN P. GRIFFIN, M.D.**  
INTERNAL MEDICINE

OFFICE HOURS BY APPOINTMENT

1152 BEACON ST.  
BROOKLINE, MA 02148

**NEW & USED HIFI.**  
BEST PRICES.

JANIS QUAD APT/HOLMAN NAD  
ACOUSTAT NAKAMICHI HAFLER DYNACO  
GRACE DYNAVECTOR REGA McINTOSH

BUY SELL TRADE CONSIGN RENT

**Q AUDIO.** 95 Vassar St. Cambridge, MA 547-2727.  
Monday-Saturday 10-6 Mastercharge & Visa Welcome

Wondering how to do what you want and still make a living?

**Careers, Turning Points, and Social Responsibility:**  
*How Political, Economic and Social Events Will Change Your Plans*

**EYEGLASS & World**  
Complete Optical Shop

We have the new plastic scratch resistant lenses

Fashion frames at reasonable prices

Instant eye exams

Prescriptions filled

Fashion tints and photo changeables

Contact Lenses  
60 Day Trial

Large Selection of Ray Ban Sunglasses

Sport Frame Available

Central Square, 495 Massachusetts Avenue, Cambridge  
Mass. 02139 Tel: 661-2520

A panel discussion featuring David Burmaster, Steve Gallant, Jim Hester and Larry Linden  
Wednesday, December 1  
3:00, Room 9-150

Come hear four guys talk about some really *different* careers. All four earned traditional degrees from MIT, but work in untraditional fields — funky stuff like Energy, Health Care, the Environment, Politics, Technology Assessment. Getting from Course 2 to the White House staff, or from Course 16 to hospital administration means taking risks and surviving bad breaks, but it can be done. Come talk with the folks who did it.

What's your dream?

Eta Kappa Nu

# What's wrong with the MX Missile?

1. **It's unsafe for us**

The latest plans for basing it ("dense pack") don't secure it against enemy attack. In fact, they make such an attack more tempting.

2. **It's provocative to the Soviets**

The MX is a "first strike," not a "deterrent" weapon. It therefore tempts the Soviets to launch a pre-emptive strike of their own and knock the MX out of business.

3. **It escalates the arms race**

Air Force spokesman General Fornell says the latest MX basing plan will "start exhausting [the enemy's] resources and drive him to development of new warheads larger in yield." Exactly. Each new weapon drives the arms spiral a few notches higher.

4. **It's recklessly expensive**

The 100 MX missiles proposed would cost **thirty billion** dollars over the next few years. We can make better use of our taxes, even for defense.

5. **We don't need it anyway**

Our submarine missiles alone are more than adequate to deter an attack for many years to come. They're powerful, undetectable, in place, and already paid for.

**Call or write your three representatives in Congress  
to vote against the MX. Sign the MIT letter to Congress.  
There's no time to lose.**

For the MIT Faculty Disarmament Study Group:

Aron Bernstein, Professor of Physics, Chairman  
Bernard Feld, Professor of Physics, Editor of *The Bulletin of the Atomic Scientists*  
Langley Keyes, Professor of Urban Studies and Planning  
Leo Marx, Professor of Science, Technology, and Society  
Philip Morrison, Institute Professor, Professor of Physics  
Scott Paradise, Episcopal Chaplain  
Lisa Peattie, Professor of Urban Studies and Planning  
Edward Robbins, Assistant Professor of Anthropology and Architecture

For the MIT Student Disarmament Study Group:

Peter Desnoyers '86  
Thomas Drennen '83  
Jerry Frost '86  
Andrew D. Gavrin '82  
Tricia Kellison '84  
Allan Matthews '83  
Mark Skinner '83  
Michael Thomas '86

# sports

## Fencing impales Brown, faces Harvard tomorrow

By Martin Dickau

MIT head coach Eric Sollee expected easy wins, and he was not disappointed, as both the men's and women's fencing teams rolled over Brown last Tuesday night, successfully opening the 1982-83 season.

The men's match saw host MIT dominate competition in all three weapons — sabre, epee, and foil. By the time the match was over, the Engineers had won 19 of the 27 bouts.

Brown's women were hindered by the lack of a fourth fencer, forcing a forfeit of one bout in every four. It turned out that the MIT team did not need the free victories, as the Engineers experienced no difficulties in trouncing their opponents 12-4.

Both squads will be in action again tomorrow night at 7pm in a match hosted by Harvard. The Engineers' Sollee feels that the Crimson should prove a much sterner test for his maturing fencers. He is, however, hopeful of the outcome.

### classified advertising

**SUBLET WANTED FOR JANUARY**  
1-2 bdrms in Cambridge. Will housesit; call Grey 237-2475.

#### ATTORNEY AT LAW

Available in the fields of personal injury, malpractice, automobile law, real estate, contracts, criminal, landlord-tenant, wills and more. Reasonable rates. Call Esther J. Horwich, MIT '77, at 523-5271. Gov't Center.

The MIT Equipment Exchange offers surplus equipment and used typewriters to students and staff at reasonable prices. Located in Building NW30, 224 Albany St. Open Mon., Wed., Fri. 10am-1pm.

**Pontiac Catalina '74** runs great. New brakes and fuel pump. \$400. Call Matt 253-2424, 498-4200, 547-6029.

#### RESUMES

##### Career Counseling

Give yourself an edge — get that important job interview by having an effective resume and job-search plan.

Joy Winer

BA (Wellesley), MA (BU), in English. 7 years a Personnel Manager in industry, 3 years an Executive Recruiter. Call (617) 449-4436 (Needham)

#### ENTROPY BOOKS

ENTROPY MINIMAX SOURCEBOOK 7-volume series by R. Christensen. TECH COOP or write Entropy Publications, Dept. 27, South Great Road, Lincoln, MA 01773.

**BAHAMAS Spring Break** from \$299. includes 8 days/7 nights, accommodations, roundtrip jet, transfers, free rum swizzle parties, cruise and more in this island paradise. Contact Marc 267-6997.

**BERMUDA Spring Break** from \$369. includes scheduled jet, 8 days/7 nights, accommodations, transfers, beach parties with free lunches and more. Contact Marc 267-6997.

**SKI VACATION IN NEW ENGLAND AND COLORADO** from \$125. It includes 5 nights lodging, 5 days lift tickets, all taxes. Contact Marc 267-6997

**DAYTONA/FT. LAUDERDALE Spring Break** from \$125.00. 8 days/7 nights, accommodations, welcome party with complimentary beer and more. Optional bus from campus, air flights available. Contact Marc 267-6997.

NEW ENGLAND 51 YRS TRADITION

Starting at \$12. **COWBOY HATS**

Hats by STETSON & other Famous makers!

**Walker's**

Riding Apparel, 292 Boylston St., Boston

**Café**  
472 Mass. Ave., Cambridge

\$ .99 falafel sandwich for MIT students

Light lunches & dinners

Exotic pastries baked on premises!

Try our Sunday brunch!

Open 7 days

**Middle East RESTAURANT-CAFE**  
Proudly Presents

**SUNRISE** at the

Mon.-Sat. 8-11 a.m.

**TRY OUR:**

- Cappuccino • Espresso
- Fresh Squeezed Juices and much more!

Freshly Baked, Freshly Ground, Freshly Squeezed, Whole grain BREAKFAST!

Stop in for a FREE BREAKFAST DRINK before or after class w/this ad!

**Restaurant**  
4 Brookline St. Cambridge

**AUTHENTIC ARABIC FOOD!**

**LIVE MIDDLE EASTERN MUSIC & DANCING**

THRU-SAT. 9 PM-until 11 AM-2 AM



# \$18.95

Per Day

with MIT Student or Faculty ID

For Chevrolet Chevette  
**UNLIMITED FREE MILEAGE**  
Confirmed Reservation Required

**CHECK OUR WEEKEND SPECIALS!**

2 Convenient Locations in Cambridge

**CENTRAL SQUARE**  
905 Main Street  
492-3000

**HARVARD SQUARE**  
1201 Mass. Ave.  
876-8900

NEW ENGLAND 51 YRS TRADITION

Starting at \$12. **COWBOY HATS**

Hats by STETSON & other Famous makers!

**Walker's**

Riding Apparel, 292 Boylston St., Boston

**SPECIAL STUDENT Discounts**  
Friday Dec. 3, 11-30am student performance, only \$4. Other performances \$8.00 (except previews and Fri. and Sat. night)  
Bring I.D. to Box Office. No phone charges accepted.

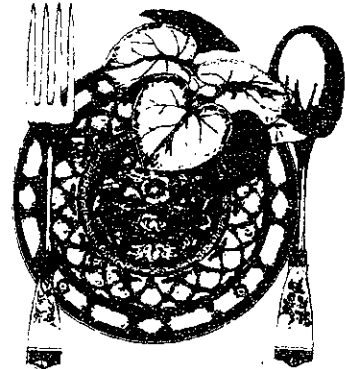
Peter Altman, Producing Director  
Zelda Fichandler, Artistic Advisor



3 WEEKS ONLY!  
November 27-December 19

## The Dining Room

by A.R. Gurney, Jr.  
DIRECTED BY THOMAS GRUENEWALD



**CHARGE BY PHONE:**  
617/266-3913

**JUBILEE GROUP SALES:** 617/482-3424

Performance Schedule: Opening Wed. at 7:30 p.m., Tues.-Sat. eves. at 8 p.m., Sun. eve. at 7 p.m. (except Dec. 12 & 19), Wed., Sat., Sun. mat. at 2 p.m. (except Dec. 1 & 4). Ticket Prices: \$10-\$17 (depending on performance day and time). Preview Prices: (Nov. 27, 28, 30 only) \$7.50 and \$9.

**Boston University Theatre,**  
264 Huntington Avenue,  
Boston, MA 02115

## Booz·Allen & Hamilton is seeking 1983 graduates to work as Research Associates.

Booz·Allen & Hamilton, Inc. is a leading international management consulting firm working with companies on issues of strategy, marketing, systems technology, and other areas of concern to top management.

The Research Associate position is for a two year period and preferably for graduates who will have deferred admittance to a top MBA program. Candidates should have outstanding records of academic achievement and prior exposure to the business environment.

This position offers an opportunity to gain meaningful experience in a demanding business environment. It provides a solid and well regarded background for graduate business education and future career growth.

Position Locations: New York, Atlanta, Chicago, Cleveland, Dallas, Houston.

Interested candidates should send resume, undergraduate transcript, list of business schools applied to, and GMAT scores by January 28 to:

Luise Greiner  
**BOOZ·ALLEN & HAMILTON**  
101 Park Avenue  
New York, New York 10178

## BOOZ·ALLEN & HAMILTON INC.

We are an equal opportunity employer M/F.

# sports

## Hoop drops pair to Babson, Crimson

By Eric R. Fleming

Although it wasn't the kind of opening that one would tell one's friends about, the men's basketball team did have some reason to smile after the beginning of its 75th season.

Last Tuesday night, a much-improved Babson team stormed into Rockwell Cage, fresh off the heels of two easy wins in its own invitational tourney the weekend before. The rivalry between the two schools has been a good one in recent years, with the last three meetings having been decided by a total of nine points, the locals winning two.

The 1982 chapter started out the same way, as neither the visiting Beavers nor the host Beavers could get a big advantage. Babson relied on the outside shooting of guards Bill Allard and Jack Saniuk, while MIT countered with junior Mark Johnson on the inside, the recipient of good lob passes from Robert Joseph '83.

The turning point came with three minutes left in the first half, when Babson applied half-court pressure. MIT could not penetrate, and as a result could muster just one free throw in the last 2:54. A 27-27 tie became a 35-27 Babson lead as the first twenty minutes ended. Significant in the numbers were MIT's poor free throw shooting (43 percent), and 18 turnovers, a problem which had plagued the squad in the pre-season.

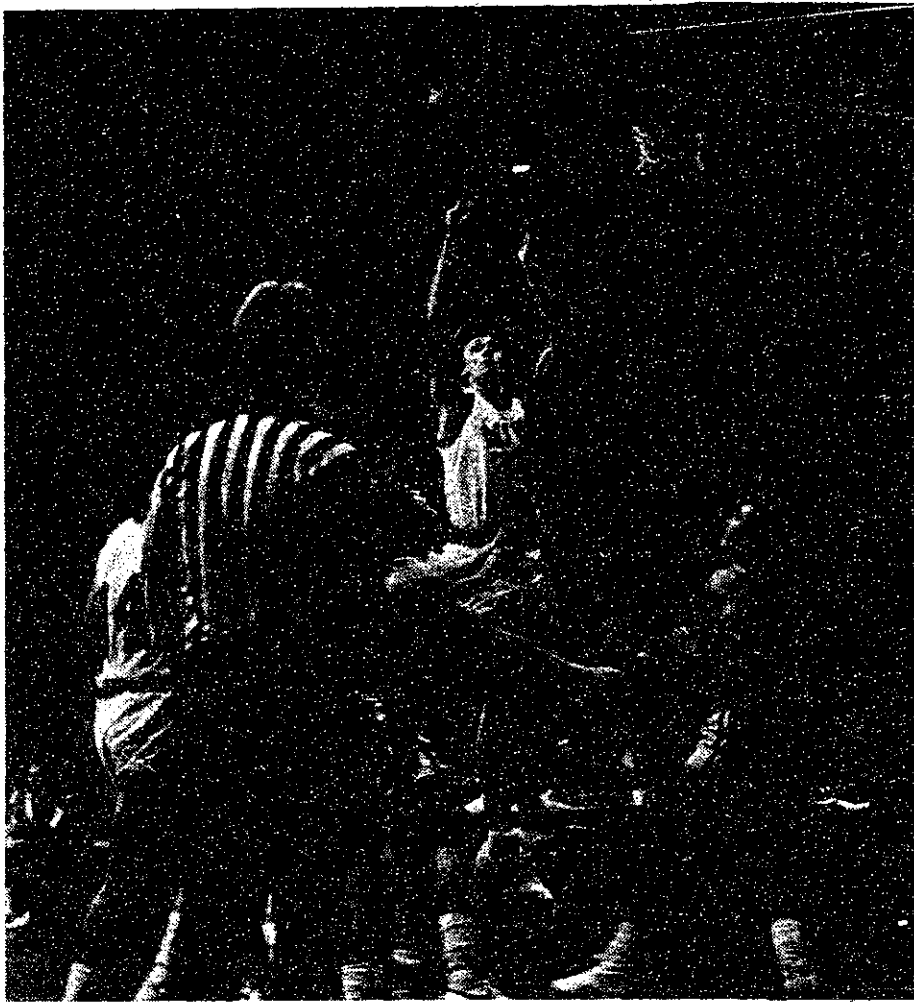
The Engineers still had problems with the press at the beginning of the second half, as Bab-

son slowly extended its margin, which grew as large as 16 before the final buzzer sounded. MIT also had to deal with foul trouble when both Johnson and senior guard Mark Branch picked up their fourth fouls early in the half. The hosts narrowed the deficit to as little as eleven (59-48 at 5:16), but could not get any closer as the visiting Beavers went to 3-0 with a 72-59 victory.

Saturday, MIT made history of sorts, being the first American team to play in Harvard's new Briggs Cage, which finally opened after a year's delay. Unfortunately, the Engineers could not spoil the official Harvard opener and lost 83-58.

The host Crimson jumped out of the blocks early, taking 6-0 (at 18:18 of the first half) and 14-4 (14:03) leads before MIT could get untracked. Branch and center Bud Taddiken '85 (who though only scoring eight points, played

(Please turn to page 5)



Center Mark Johnson '84 scores one of the 11 he made against Babson. Tech photo by Omar Valerio

51 NEW ENGLAND YRS TRADITION

Men's & Ladies COWBOY BOOTS

TONY LAMA ACME  
JUSTIN DINGO  
DAN POST TEXAS  
TEXAS DURANGO  
FRYE

Starting at \$59.50

Walker's

Riding Apparel, 292 Boylston St., Boston

Headquarters

- \* BOOTS
- \* PARKAS
- \* PEACOATS

CENTRAL WAR SURPLUS

433 Mass Ave. Central Square Cambridge

## E-Systems continues the tradition of the world's great problem solvers.

Developing the analytical theory known by his name, Joseph Fourier gave the world a basic tool for engineering analysis and system design.

Today, E-Systems engineers are carrying on his tradition. They're using Fourier's mathematical accomplishments to solve some of the world's toughest electronics problems

via computer-designed circuitry.

E-Systems designs and produces communications systems, data systems, antenna systems, intelligence and reconnaissance systems that are often the first-of-a-kind in the world.

For a reprint of the Fourier illustration and information on career op-

portunities with E-Systems in Texas, Florida, Indiana, Utah or Virginia, write: Lloyd K. Lauderdale, V.P. Research and Engineering, E-Systems, Corporate Headquarters, P.O. Box 226030, Dallas, TX 75266.



An equal opportunity employer M.F. H. V.

**UA News Personals**

**ADVNTRS STDNTS WNTD**  
If U R intrstd in doing gd thngs 4 MIT, come to MC Cormick (location TBA) 4 GA meeting. 7:30pm Thurs. Rfrshmnts wll B svrd.

**INDIGESTION SPECIAL!**  
HUNAN dnrs sck!

**MAKE BIG MONEY**  
IF U cn rd ths UA Nws, u cn mk bg \$\$\$\$ as UA Nws Ed. Cntct Ken Segel, w20-401, x3-2696 4 appntmnt. NO LSC or MGBs nd apply.

**BECOME FAMOUS**  
Snd itms to UA Nws Ed, w20-401. B creatv!  
(Pd ad)

Jean Baptiste Joseph Fourier 1768 - 1830

