

Faculty approves frosh hidden grade plan

By Tony Zamparutti

The faculty adopted Wednesday — by a unanimous voice vote — the Committee on Educational Policy's (CEP) plan to change freshman year grading, which will give freshmen formal hidden grades this spring term.

About 50 faculty members attended the debate on the CEP motion.

The CEP proposal took effect immediately upon passage. The committee's plan will replace freshman evaluation forms at the end of the spring term with hidden grades reported to the Registrar by the instructors. The Undergraduate Academic Support Office (UASO) has already carried out part of the CEP plan, changing fall term evaluation forms to include a set of "checkboxes" for instructors to evaluate freshman performance.

Instructors will be required to complete written evaluations of any freshman earning a grade of D or F in the spring term.

Chairman of the Faculty Felix M. H. Villars opened the faculty discussion, noting the issue of freshman year pass/fail "has been on the CEP agenda for two years and it is time we came to a conclusion."

The system of freshman evaluation forms "works very poorly ... at the end of the spring term freshman year," Villars said.

Since many of the evaluation forms which instructors do complete contain only a hidden grade, Villars claimed, "at best, students get either a letter grade or nothing" for evaluation at the end of spring term.

There is "no intent by the CEP to back off from the pass/fail system," Villars said. He noted

"many colleagues have criticisms" of freshman pass/fail.

"The whole issue of grades," Villars noted, "is one to which students are hypersensitive."

The immediate change in grading systems would not be a breach of contract with this year's freshman class, Villars said. "The contract with students is that MIT has a pass/fail system in the freshman year," he contended; there is "no statement

about the internal handling of information."

The use of hidden grades will mean "losing an inducement for the faculty to know the students in more depth," said Michael Lipsky, Professor of Political Science. "I wondered if your committee considered that."

"We deal here with something embedded in the structure of MIT," Villars replied. "One cannot legislate instructors know

their students better ... They don't have the time." He also cited the low freshman attendance in core course recitation sections as a barrier between students and instructors.

"I'd like to disagree strongly with you, Felix," said Associate Professor of Physics Margaret L. A. MacVicar '65. She noted the free movement of students among recitation sections as one barrier
(Please turn to page 2)

Finboard to debate shuttle bus tonight

By Barry S. Surman

The Undergraduate Association (UA) Finance Board will meet tonight to decide the fate of the MIT Shuttle Bus Project.

The project's organizers have asked the board to reaccept financial liability for the shuttle bus, following the board's suspension of UA responsibility October 29.

The Finance Board began consideration of the project's proposal Tuesday, but postponed its decision because of the length of that meeting, according to Finance Board Vice Chairman Raymond E. Samuel '84.

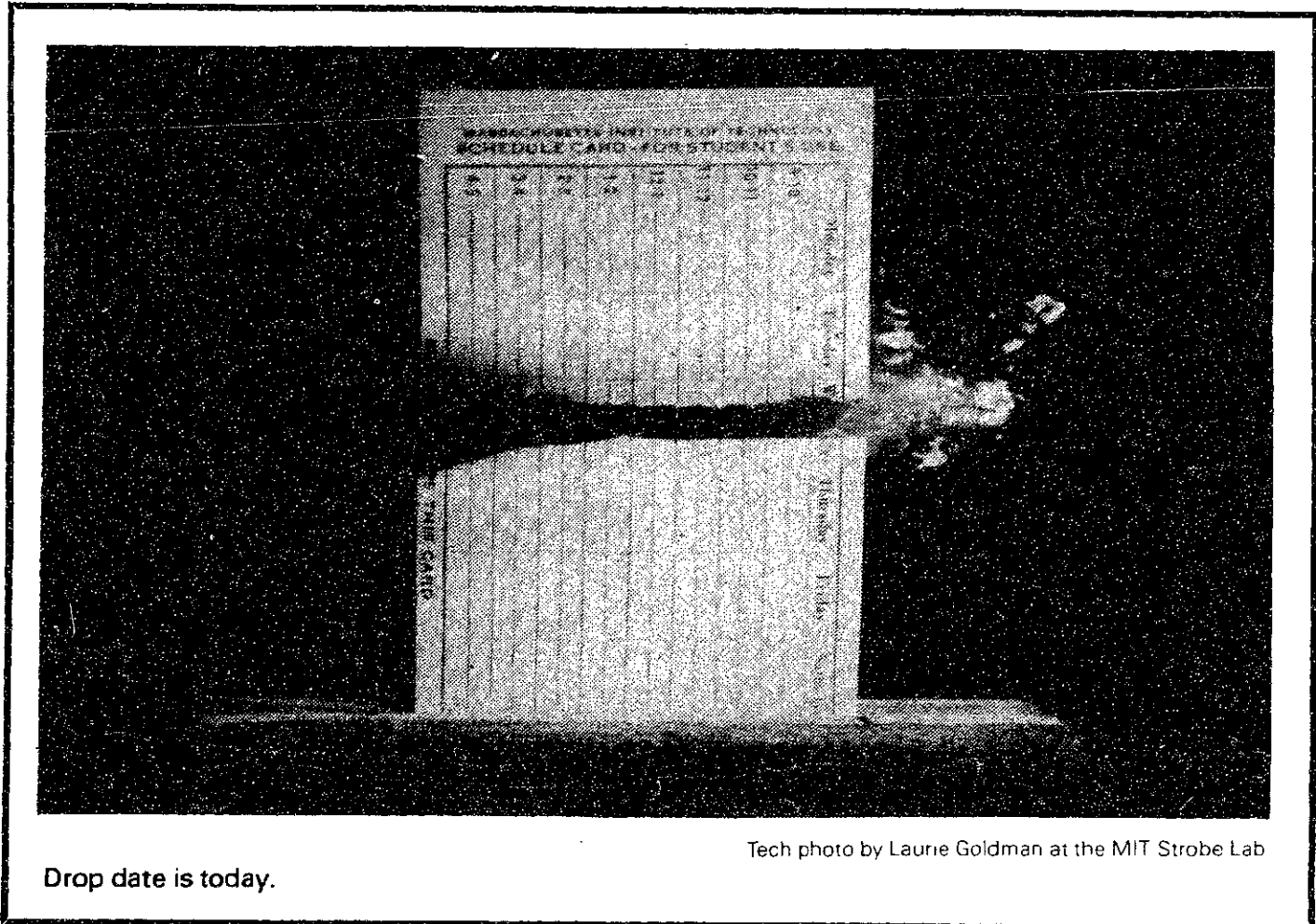
"I don't think it was ever our intention to stop the project," he said, but poor promotion and excessive costs prompted the board to withdraw the UA's liability.

The Finance Board will vote to back the project, Samuel predicted, but will likely require the bus to be reorganized before allowing the bus to resume operation. "They're not ready to even think about coming close to breaking even," Samuel said. The project organizers plan to ask even in their first semester operation was "unrealistic," he said.

Were the bus project to discontinue service permanently, the board would assume about \$2500 in costs, Samuel said.

The shuttle continued operating for seven days after the UA relinquished liability, increasing its indebtedness by \$1920, he said. Shuttle Bus Project Chairman Noelle Merritt '85 and Treasurer Diane Hess '85 may be personally responsible for that debt, Samuel noted.

In other business, the Finance Board will meet tonight to decide the fate of the MIT Shuttle Bus Project.
(Please turn to page 3)



Tech photo by Laurie Goldman at the MIT Strobe Lab

Drop date is today.

Brown disputes ODSA hiring policies

By Daniel Crean

Undergraduate Association (UA) Finance Board Chairman Charles P. Brown '84 disagrees with the Office of the Dean for Student Affairs (ODSA) over hiring and evaluation policies for Undergraduate Association employees.

UA accountant Margaret Gibson will retire December 31. While both the ODSA and Finance Board are involved in the search for a new accountant, the final hiring will be done solely by the Dean's Office, according to Brown.

"In the past, the hiring of Undergraduate Association employees was done by the UA with little or no interference from the ODSA," said Brown. The Finance Board chairman hired all

UA employees in the mid-1950's, he said, and the UA's present part-time secretary "a few years back."

"The Dean's Office has changed its position," Brown said, adopting "an uncompromising stand" on employee relations. "Because it's an Institute employee, financed through the

Dean's Office, the Dean has the ultimate authority," said Assistant Dean for Student Affairs Stephen D. Immerman. "That authority cannot be delegated to anyone else."

The precedents Brown cited have no bearing on current issues, he said.

"When you say that the ODSA

has the ultimate authority in hiring, you imply that it also has the ultimate authority in firing," Brown said. "That places any employee in an inherently unfair position."

A situation could arise when an employee's student supervisor and his Dean's Office supervisor
(Please turn to page 3)

Graduates face poor job prospects

By Thomas Huang

"1983 will probably be the worst [year] in engineering employment since the early '70s," according to Robert K. Weatherall, Director of the Office of Career Planning and Placement. "A report by the College Placement Council indicates that companies will be making less job offers," Weatherall said. Companies plan to hire 12 percent fewer engineering students than last year.

Many companies will freeze their salaries, according to Weatherall.

"The companies recruiting now are hoping that there will be more job openings by June," Weatherall said. "They hope the country will have come out of the recession by then." The prospect of economic recovery by June is at best uncertain, he added.

About 400 corporations will hold interviews at MIT this academic year, compared to the 450 last year, Weatherall predicted. "That's not a bad number," he continued. "The thing is that they will not be looking for as many students — they don't want

to make offers they can't abide by."

Firms like IBM and General Electric will be the strongest recruiters because they know they will have vacancies, according to Weatherall.

"Obviously, students are getting very anxious about this. Just look at all the students here in this office," Weatherall said. Last year, 1556 students and graduates had 10,004 job interviews.

The fields of electrical engineering and computer science will be the least hurt, Weatherall said, because many people have started their own small computer companies and need recent graduates in these fields. "Also, it seems everything is becoming automated, computerized, increasing the need for these graduates," Weatherall said.

The 1982-83 academic year saw the start of the job market decline. "Last year was a real shock for chemical engineers," Weatherall explained. "The oil industry was very eager about offering jobs before the Christmas of 1981. Then came the surplus and fall in price of oil. The companies

hardly hired anybody after Christmas."

This year, Exxon will make one-sixth the job offers it made last year, according to Weatherall. Texaco will make one-half the job offers it made last year.

"As for mechanical engineering, there are not so many jobs in the heavy machinery and automobile industry," Weatherall added.

"Students would do well to look more broadly at various opportunities and companies," said Weatherall.

The situation for MIT graduates is actually not as bad as it is nationwide, according to Weatherall. "First of all, the majority of MIT students are in electrical engineering. Secondly, there are many opportunities in Massachusetts, with all the companies on Routes 128 and 495."

"A recruiter cited MIT, the University of Illinois, and the California Institute of Technology as the best places to look for good students," Weatherall noted.

Despite the current recession, the future of engineering jobs is still very bright, said Weatherall.

inside

the return on your dollar
from MIT sometimes doesn't
seem right. Page 4.

Robert Malchman is
aggrieved by coffee, and Ftorek
is boozing. Page 4.

Netty pussy picture
publication. Page 5

If your name is Floyd or
Irwin, please do not read
Page 5.

The return of the building
that time forgot. Page 7

The varsity wrestling
team is looking forward to
opening a strong season
this weekend. Page 8.

Faculty OK's CEP's plan

(Continued from Page 1)

between students and instructors. "It's not a matter of time or business," MacVicar said.

Although the Registrar's Office will collect the spring term freshman grades, "The Registrar is supposed to do nothing with that information" except erase it from its memory files, Villars said.

"I would have to argue there is some value to us as an institution" to compile data on freshman performance, such as the hidden grades, noted Peter H. Richardson '88, Director of Admissions.

Both the Undergraduate Association General Assembly (GA) and the Student Committee on Education Policy (SCEP) voted to oppose the CEP plan. The GA proposed the check-box system extend to the spring term, rather than adding hidden grades, and recommended any changes take effect next fall, rather than immediately upon passage. Less than ten students attended the faculty meeting.

In other business, the faculty approved a master's program in Political Science and Public Policy, which will meet an increased interest in public policy, competition in the field from rival institutions, and "a high degree of employability for its graduates," according to Professor Robert I. Rothberg.

Professor Herbert Holloman, Director of the Center for Policy Alternatives, contended the degree program "lacks an educational center." He complained it was similar to the Technology and Policy Program and similar programs. "I am really distressed by . . . the proliferation of related master's programs."

The faculty approved an experimental doctoral program in health policy and management, the first degree program exclusively from the Whitaker College of Health Sciences, Technology, and Management. No more than ten students will be admitted into the program each year, and they will be supported by the Henry J. Kaiser Foundation, according to Professor Edward B. Roberts.

The faculty also passed a resolution in memory of and in tribute to former Institute Professor Emeritus Roman Jakobson, who died last summer.

Café
472 Mass. Ave.
Cambridge
\$.99 felafel sandwich for MIT students
Light lunches & dinners
Exotic pastries baked on premises!
Try our Sunday brunch!
Open 7 days

Middle East RESTAURANT-CAFE

Proudly Presents

Freshly Baked, Freshly Ground, Freshly Squeezed, Whole grain BREAKFAST!

Stop in for a FREE BREAKFAST DRINK before or after class w/this ad!
Mon.-Sat. 8-11 a.m.
TRY OUR:
• Cappuccino • Espresso
• Fresh Squeezed Juices and much more!

Restaurant
4 Brookline St.
Cambridge
AUTHENTIC ARABIC FOOD!
LIVE MIDDLE EASTERN MUSIC & DANCING
THRU-SAT. 9 PM-until 11 AM-2 AM

NEW & USED HIFI. BEST PRICES.

JANIS QUAD APT/HOLMAN NAD
ACOUSTAT NAKAMICHI HAFLER DYNACO
GRACE DYNAVECTOR REGA MCINTOSH
BUY SELL TRADE CONSIGN RENT

Q AUDIO. 95 Vassar St. Cambridge, MA 547-2727.
Monday-Saturday 10-6 Mastercharge & Visa Welcome

In concert

THE FABRANGEN FIDDLERS



MIT Kresge Auditorium
Cambridge

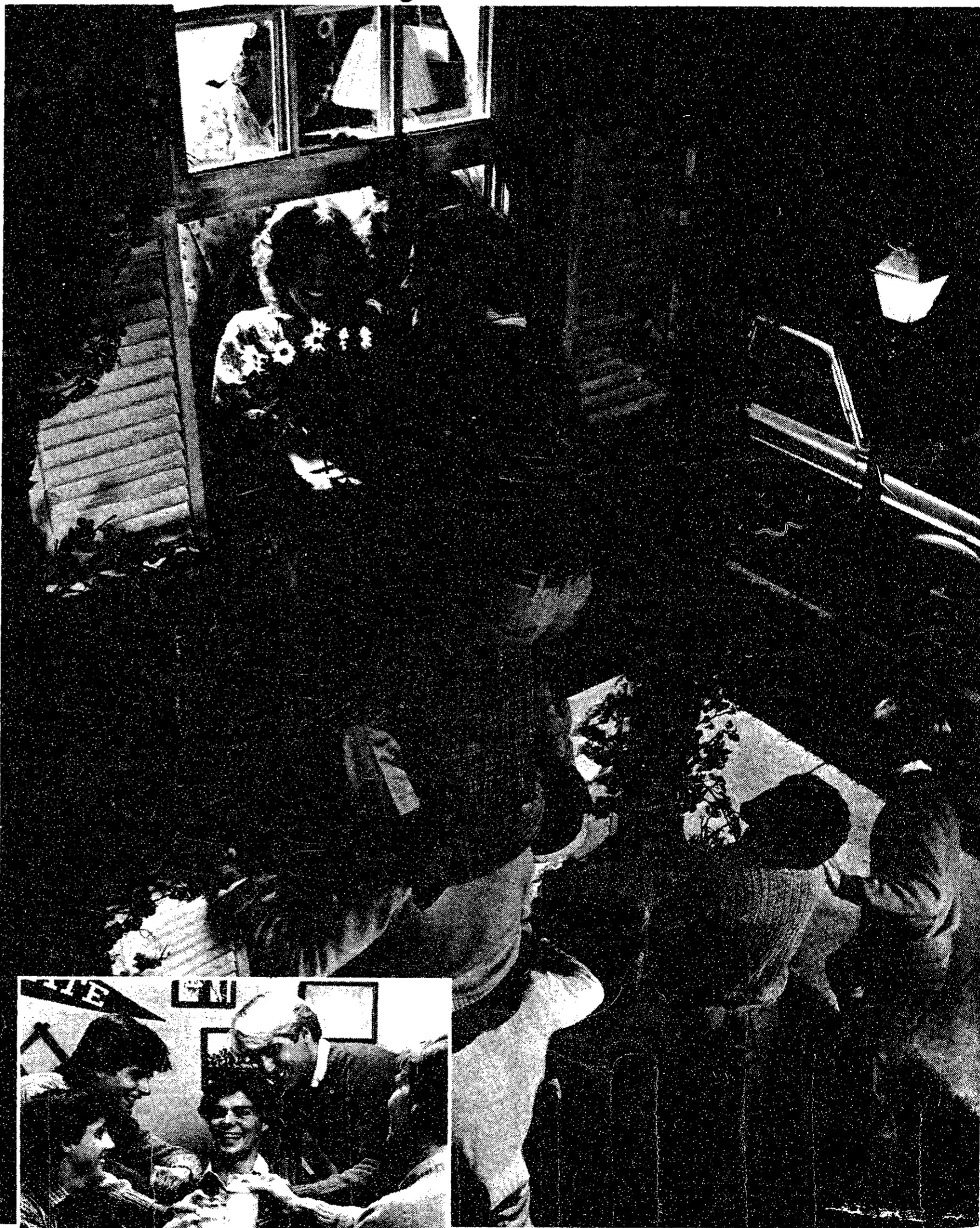
Saturday, November 20, 1982 8:00 p.m.

Tickets \$6, \$7, \$8

Available at: MIT Hillel, 312 Memorial Dr. Cambridge, MA 02139
For further information and group sales call: (617) 253-2982

Sponsored by: MIT Hillel

Good friends stand up for you when you need them.



TECHNICAL TRANSLATORS

Transtek Associates, where quality is of the highest concern, is recruiting free lance translators to join in on our continued growth and expansion.

ALL LANGUAGES NEEDED

Must hold minimum of BA/BS in field of expertise (MA/MS or Ph.D. preferred).

All fields: computer, electronics, telecommunications, chemical, nuclear, mechanical & civil engineering, medicine, law, finance, etc.

Competitive fees

CALL OR WRITE:

TRANSTEK ASSOCIATES, INC.

P.O. Box 450
Reading, Massachusetts 01867
(617) 944-8488

BEING PREGNANT ISN'T ALWAYS A BLESSING.

That's why when you come to Preterm, you'll meet with a counselor who can answer any questions you may have. So if you choose an abortion, you'll be making the choice that's right for you. Call 738-6210. Preterm. The most experienced reproductive health care center in the Northeast.

preterm

A licensed non-profit health care facility.
1842 Beacon Street, Brookline, MA 021

Phone calls got you nowhere, but this should get her attention. A mission requiring split-second timing, perfect planning and most importantly, some surefooted, stand-up guys.

When you come down to earth, spring for something special.

Tonight, let it be Löwenbräu.



Löwenbräu. Here's to good friends.

© 1982 Beer Brewed by Miller Brewing Co., Milwaukee, Wis.

news roundup

World

Haddad denies role in massacre — Testifying before the Israeli panel investigating the September massacres in the Shatila and Sabra refugee camps, Lebanese Christian militia leader Major Saad Haddad denied the many reports that his men took part in the massacre. "People in panic, they believe anything," Haddad told the three-member tribunal. "Some of them said, 'We see Major Haddad himself inside the camp.' What kind of story? That's imagination."

Weather

Nothing great — Today and tomorrow will be cloudy, with occasional drizzle, highs of about 50 degrees, and a steady easterly breeze.

Tony Zamparutti

Finance Board chairman disputes hiring policy

(Continued from page 1)

have conflicting views. Brown said, placing the employee "between a rock and a hard place."

"We would hope that everyone would be reasonable," should such a situation arise, Immerman said.

Students should participate in ODSA's evaluations of UA employees, Brown believes. "We're the best qualified to judge," he said.

The "position will be evaluated the same way as any other ODSA employee," Immerman said. UA employees are MIT employees and are subject to all the benefits and evaluations of any other MIT employee, he added.

"The main thing the ODSA wants is to ensure that the Institute's funds can be used effectively," Immerman said. Salaries for UA employees are included in the budget the UA receives from the Dean's Office.

ODSA employee selection involves students, Immerman claimed. "Everybody in the Dean's Office with the exception of support staff was hired with student input."

The current plan for hiring a new UA accountant calls for a field of about five applicants to

be chosen jointly by the Finance Board and the ODSA, according to Brown. The final choice will then be made by the Dean for Student Affairs Shirley M. McBay, said Immerman.

"We would like the final hiring to be a unanimous decision of the ODSA, Finance Board, and the UAP," Brown said.

FinBoard meets

(Continued from page 1)

Board Tuesday appropriated \$1062 to the Archery Club for equipment, awarded \$445 to the Russian club, RUKU, for IAP activities, tabled funding for Icarus, a new publication, pending receipt of more information on production costs, voted to guarantee any losses the Black Student Union incurs for its upcoming theatrical presentation, and approved distribution of funds to the Students for the Exploration and Development of Space for an upcoming lecture.

"Our budget is running really tight now," Samuel commented. "The money is running out faster than people think."

Xenergy Interview on Campus November 30, 1982

- Energy auditing (industrial process and space conditioning)
- Software design and development
- Energy policy studies
- Energy management systems design
- Resource management

If your degree is in Mech. Engineering, EE, Architecture or Computer Science with a strong interest in energy, we'd like to talk to you. For further details please contact your placement office.

Xenergy Inc., 60 Mall Rd. Burlington MA, 01803

University Typewriter Co., Inc.

Repairs • Sales • Rentals

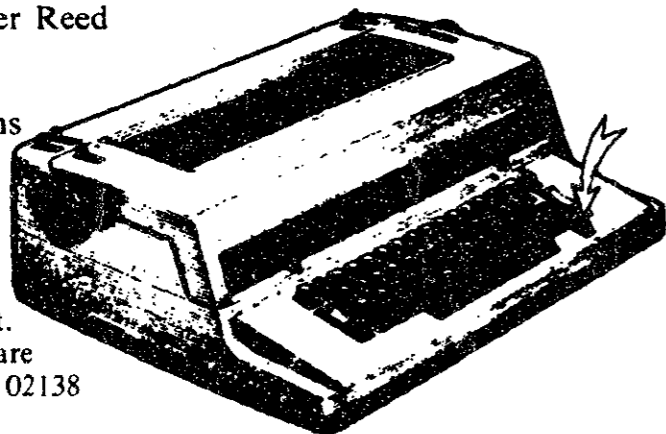
Electronic, Electric, and Manual Typewriters

Olivetti • Brother • Hermes
Olympia • Silver Reed
Smith Corona

Quality Ribbons

547-2720
547-1298

10 Mt. Auburn St.
At Harvard Square
Cambridge, MA 02138



The Bulldog Edition... Join The Tech



\$18.95

Per Day
with MIT Student or
Faculty ID

For Chevrolet Chevette
UNLIMITED FREE MILEAGE
Confirmed Reservation Required

CHECK OUR WEEKEND SPECIALS!

2 Convenient Locations in Cambridge

CENTRAL SQUARE
905 Main Street
492-3000

HARVARD SQUARE
1201 Mass. Ave.
876-8900

THE BEST DEAL IN TOWN

THE FRANKLIN ACE1000



It's here! The sensational Franklin ACE 1000 professional personal computer. It is hardware- and software-compatible with the Apple® II— and it includes bonus features like 64K of RAM, upper and lower case, a numeric pad and VisiCalc® keys.

Come in today for a demonstration. As your local authorized Franklin dealer, we can offer you hardware, software, service—and the best deal in town.

Franklin ACE is a trademark of Franklin Computer Corporation. Apple is a registered trademark of Apple Computer Inc. VisiCalc is a registered trademark of Visi Corp.



We deliver an extra special selection of software, magazines and books. Ask about our library policy and weekly manager's specials on all our lines of computers and software. Rentals and leasing, from one month to two years.

HARVEST COMPUTER STORE

118 Magazine Street • Cambridge, MA 02138 • (617) 547-3289

opinion

Jerri-Lynn Scofield

Is MIT worth it?

"We deal here with something embedded in the structure of MIT ... One cannot legislate instructors know their students better ... They don't have the time." Professor Felix Villars, Chairman of the MIT Faculty, at Wednesday's monthly meeting.

This past Wednesday faculty members present at their monthly meeting voted overwhelmingly to endorse the Committee on Educational Policy's (CEP) recommendations to alter grading policy for the freshman year significantly. Although I strongly disagree with both the CEP's suggestions and the faculty's endorsement of them, the faculty did have several legitimate concerns about the old system's operations. What is most disturbing about Wednesday's meeting, however, is that only two members of the MIT faculty, Professor of Political Science Michael Lipsky and Associate Professor of Physics Margaret L. A. MacVicar '65 bothered to make statements disagreeing with Villars' assertion.

No one has to tell me about the fast pace of MIT life; I've been a student at the Institute for almost four years. And while life for professors here is certainly difficult, life for a student is no picnic either. I have never questioned my decision to attend MIT; I wanted a challenging undergraduate education, and my expectations have been realized. But there is something seriously wrong with the MIT environment if the Chairman of the Faculty can make such a statement and not be challenged by more than two of his faculty colleagues.

Throughout this entire CEP debate over the pass/fail issue, I have been concerned that the CEP seemed to focus on what was more efficient — read "easier for its faculty members" — than what is in the best educational interests of its students. Since this is MIT, one expects to hear arguments made on cost/benefit grounds, complete with pseudo-mathematical justifications. Strangely enough, the debate surrounding the pass/fail issue was remarkably devoid of substantive justifications for the decisions that were made. I still can't believe the faculty radically overhauled its policies for evaluating freshmen performance without conducting any studies to confirm that such action was warranted and would address their valid concerns. Instead, a group of twenty-odd faculty members and a few students sat around some office somewhere and concocted a plan that would ostensibly help us all. As discussion over pass/fail intensified, economic and efficiency arguments surfaced and became more important, precisely because no one had bothered to produce hard facts documenting any of the putative educational gains of the CEP "experiment."

Even in these times of fiscal restraint at the Institute, money should not be a primary determining factor for resolving issues that affect student life. After all, even as MIT continues to tighten its belt, the Corporation still raises my tuition bill every year. As long as MIT remains the highest priced university in the country, I expect to receive an education roughly commensurate with its cost. The students of this august institution deserve more than to hear professors justify their decisions on the basis of what costs less or takes less time. At a forum the Student Committee on Educational Policy held last month, Professor Arthur C. Smith argued against the student plan to incorporate a check-box evaluation system into the CEP's plans and delete their hidden grade recommendations. His reason? He claimed the student plan was too cumbersome and costly. Smith noted, "I just don't think it's worth it."

As MIT's tuition rises year after year, at a rate consistently exceeding inflation, I wonder if the Institute's educational benefits increase nearly as quickly. I greatly fear, as someone who has profound respect for the outstanding education MIT can offer, that unless this university begins to consider educational issues with the same fervor it devotes to tuition increases, potential students will look at MIT's high price, its unremitting pace, and the faculty's often *laissez-faire* attitude to students, and decide, like Professor Smith, that MIT just isn't worth the sacrifice.



Column/Robert E. Malchman

Cheers & Booing in New York

"When I sit there and hear them boo my teammates, it makes me feel like we're playing for ourselves — the 20 guys, the coaches, the trainers — and that's it."

New York Ranger Robbie Ftorek
New York Daily News, 11/15/82

The headline for the *News* article, "Booing fans draw tirade from Ftorek," gaged me worse than the free "coffee" at Eastern Airlines' Shuttle terminal in New York where I read it.

Ftorek is unhappy because the Rangers are getting razed from the cheap seats at the Garden. Isn't that a pity. Ftorek is being paid n-hundred K a year. He has played in only half the games this season. He has more penalty minutes than points. In the game which so aroused Ftorek's ire, the Edmonton Oilers beat the Rangers 7-2.

Now for those of you to whom hockey talk makes as much sense as Sanskrit, this all means both Ftorek and the Rangers are playing very badly. Coupled with the fact that the team has not won a

championship in Ftorek's lifetime, I am not surprised the cheap seats boo. I'd expect all the seats to boo.

Ftorek and his cohorts should expect to be booed. They should be relieved that vicious catcalls are the worst to which they are subjected. I recall the bad old days of the Garden in the mid-seventies. People used to throw beer and other comestibles upon the ice.

Further, Ftorek should be happy that there are fans at all, hissing or otherwise. Last year the basketball Knicks played before half-empty houses. There wasn't anyone there to boo them.

It seems there is always some slumping player who whines to the newspapers about how, gee whiz, the fans are being so darn unfair by making reference to his mother's predilection for government issue footwear.

There are even people not confined in McLean Hospital who argue we shouldn't vilify professional sportsmen. After all, they

say, would you boo the chairman of the board of Chrysler merely because his company loses a hundred million trillion dollars a year?

No, but Lee Iacocca isn't being paid to catch fly balls. Reggie Jackson is. Jackson has two contracts to Iacocca's one. There is the legal contract with the California Angels which requires him to catch balls, but pays him even if he doesn't, and the social contract with me which permits me to boo the daylights out of him when he drops them.

Sports provides an important and necessary outlet of the petty frustrations of life. One can go out to the ballpark and root, root, root for the home team and boo the daylights out of Reggie Jackson, Robbie Ftorek, *et al.* The high-priced athletes should be able to take some criticism. It's good for the fans, and prevents the players from getting too high and mighty. If they want cheers, let them work, and win, for them.

The Tech

Ivan K. Fong '83 — Chairman
Jerri-Lynn Scofield '83 — Editor-in-Chief
V. Michael Bove '83 — Managing Editor
William L. Giuffre '84 — Business Manager
Volume 102, Number 54
Friday, November 19, 1982

PRODUCTION STAFF FOR THIS ISSUE

Night Editor: Jon von Zelowitz '82; Staff: David G. Shaw '82, Tim McNerney '83, Bill Spitzak '83, Bill Giuffre '84, Tony Zamparutti '84, Stewart Cobb '85, Bill Coderre '85, Max Halperin '85, Buzz Moschetti '86.

CARTOONISTS

Geoff Baskir '78, Glenn Ackerman '82, V. Michael Bove '83, Bill Spitzak '83, Carol Yao '85, Joe Cerami '86, Oruç Çakmakli G.

SPORTS DEPARTMENT

Sports Editor: Martin Dickau '85; Staff: Arthur Lee '85, Robert E. Malchman '85.

CONTRIBUTING EDITORS

David G. Shaw '82, Jon von Zelowitz '83, Robert E. Malchman '85; Indexing Project Representative: A. David Boccuti '79; Faculty Advisor: Edwin Diamond.

SENIOR EDITOR

Eric R. Fleming '83

The Tech (ISSN 0148-9607) is published twice a week during the academic year (except during MIT vacations), weekly during January, and once during the last week in July for \$10.00 per year Third Class by The Tech, 84 Massachusetts Ave. Room W20-483, Cambridge, MA 02139. Third Class postage paid at Boston, MA. Non-Profit Org. Permit No. 59720. POSTMASTER: Please send all address changes to our mailing address: The Tech, PO Box 29, MIT Branch, Cambridge, MA 02139. Telephone: (617) 253-1541. Advertising, subscription, and typesetting rates available. © 1982 The Tech. Printed by Charles River Publishing, Inc.

→ feedback

ASA officer disputes assertions

To the Editor:

I would like to congratulate *The Tech* for providing what was probably their most valuable service to the MIT student community so far this term: in the Tuesday, November 9, issue, they published, free of charge, a complete list of all the currently recognized ASA activities! I urge everyone to clip this handy list and save it for future reference. But I digress.

The editorial of the November 9, issue regarding ASA's actions made several false accusations which require a rebuttal. First of all, we did not, as *The Tech* claimed, give activities only one day's notice of our intentions. We sent a written notice to each activity listed in our files no less than three weeks before Wednesday's General Committee meeting. Most activities received this notice and responded accordingly. Those groups which did not receive our notice either did not

pick up their mail for three weeks or had failed to supply us with a current mailing address. For the benefit of *The Tech's* editorial board, may I point out that the ASA Constitution requires each ASA activity to have on file with us by October 1, of each year a current list of officers, including a correct mailing address.

The Tech also alleged that the ASA has no authority over groups which predate it. I fail to see the logic in this argument; nevertheless, this irrationality could have been overlooked, had the editorial not gone on to state that we intended to "abscond" with these activities' assets. We have no intention of seizing the instruments of the Concert Band to hang on our walls. We simply proposed to handle the dissolution of the assets, as well as the liabilities, of any activity found to be inactive.

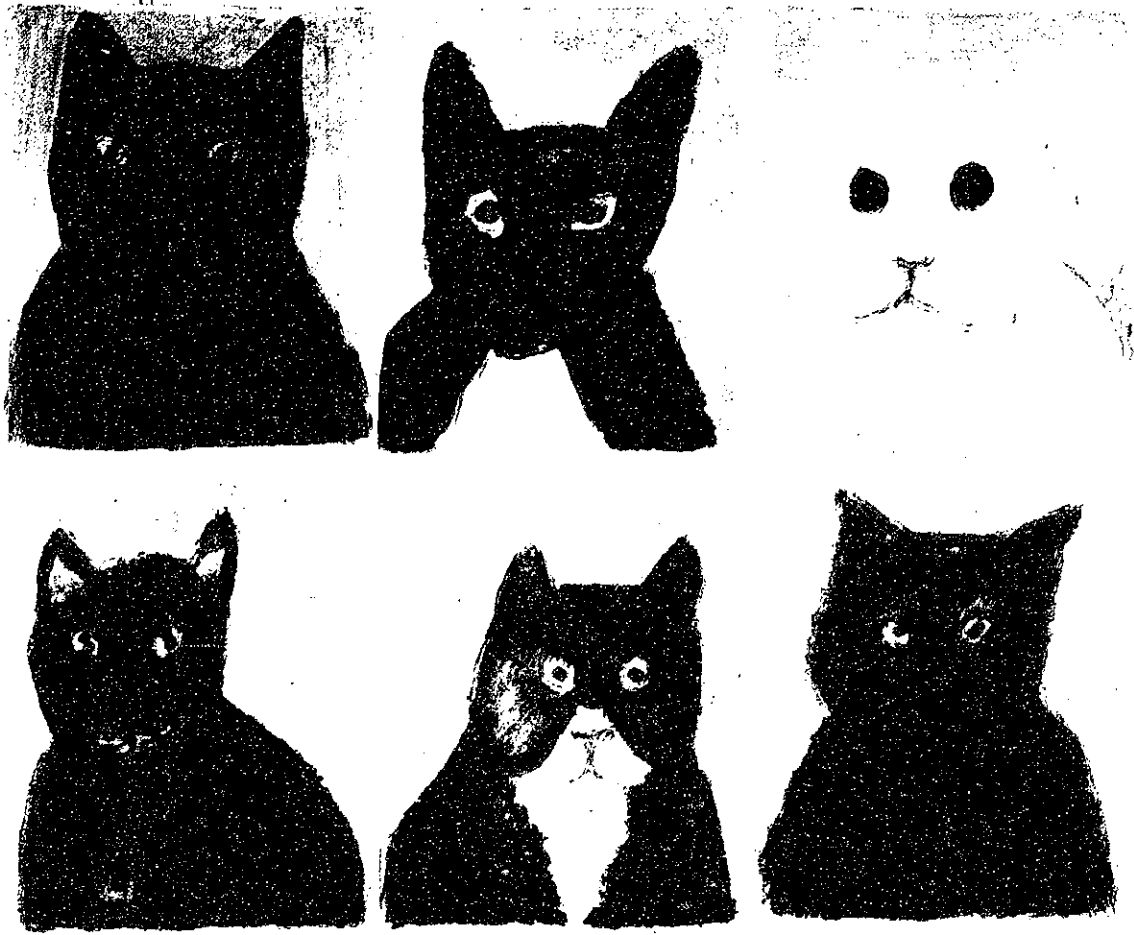
The Tech also stated that "the Objectivist Study Group lists its

address on the masthead of *Ergo*." I searched Wednesday's issue of *Ergo* top to bottom, front to back, but nowhere did I find a single mention of the Objectivist Study Group.

Finally, the libelous and generally sensational nature of Tuesday's editorial is definitely not in keeping with the higher standards of journalism, to which the editorial board of *The Tech* so vehemently claims to adhere. While *The Tech* probably harbors no malicious intent, its methods are inexcusably slipshod. The fact that the vote to remove ASA recognition of the twenty-one activities still on our list at the time of the meeting passed with a vote of 28 in favor and I opposed should settle any question as to whether the ASA activities sense any dire need to "protect themselves and their fellows."

Jonathan Miller '84
ASA Secretary

Cat fancies



Raffler's Cats, by Max Raffler; Published by Random House, \$9.95.

Nearly eighty years ago, Max Raffler began to paint during the time between working in the stables of his father's farm and attending church at noon on Sunday. Since that time, Max Raffler, a Sunday painter in the truest sense of the word, has produced more than a thousand paintings and drawings. His paintings, currently on display in the Bavarian National Museum and other major European galleries, often include cats as a focal point.

Raffler's Cats is a collection of the best of Raffler's paintings commemorating the feline world. These 43 primitive paintings, a few of which are illustrated here, are introduced by German poet Michael Kru-

ger: "At the end of the long and laborious effort to seal the breach between cat and man stands Max Raffler, the farmer-painter of Ammersee. In his inimitable way he has raised the issue afresh and, as a result, has been empowered by the Imperial Council of Cats to portray its populace."

The book itself is beautifully printed, with the bright colors of each painting standing out in exquisite form. Both the history of cats and the affectations of cats are presented from the cats sitting by Adam and Eve through the cats sitting on Raffler's own desk in a self-portrait. Witty throughout, Raffler has captured the beauty and elegance of *Felis domestica* within this collection.

Stuart Gitlow

What's in a name?

The Name Book: How Your Name Affects Your Life, by Pierre Le Rouzic, Bantam Books, \$4.95.

"Are you 'an intriguing seductress' or a 'first crusader'? Do you avoid taking risks, or do you throw yourself into the fray on a whim? Do you confuse sexuality with love, or is it hard for you to move beyond friendship? Are you an emotional and sexual charmer, or do you have an all-or-nothing approach to your love life?" So starts *The Name Book*, a study of the meaning of names.

Called "Your key to understanding your personality," the book lists personality characteristics associated with names. Although many people will think it is another strange gimmick, this is serious business for the author. He believes that the repetition of the same syllables of a name will eventually influence the mind of the person who owns it.

The author's name, for instance, explains him as "...effervescent as a fine champagne and scintillating as a diamond, with natural exuberance and a sense of humor that are delights to your friends and associates." It continues, "...it would not be surprising to find you in a little shop telling fortunes or reading the stars. You put your incredibly spontaneous perceptions to clever and effective use; and they are part of your alluring, sometimes entrancing charm."

If not always credible, the descriptions are at least amusing. Each name is associated with a plant, an animal, a resonance, a color, and a zodiac sign. They are described by will, emotivity, activity, reac-

tions, intuition, intelligence, affections, morality, health and vitality, sensuality, energy, and sociability.

To make up for any errors between the characteristics associated with a person's name and the person's true personality, the author explains how a person can be misnamed, probably because his name's "resonance doesn't harmonize with that of the deep vibrations of his being."

Besides giving characteristics for 7,396 names divided into 79 personality categories, the book explains the author's views on topics ranging from astrological conception to relationships among people based on the resonances of their names. Many of these views are given without reasonable qualification and are rather unbelievable.

The responsibility of naming a child is a big one, according to the book. The name, Le Rouzic believes, is suggested to the mother through the means of inner vibrations from the fetus. "The mother should experiment with the names she is considering until she discovers that fundamental harmony which, for her, will stand the test of the name," he says. Comparing the process of naming a child to the research given to naming a product, he adds, "Shouldn't we consider the destiny of a child as being as important as the success of the latest 'washday miracle'?"

Although many parts of it are strange and at times even kooky, the book is enjoyable. Whether one's description seems to fit or if it is way off, the book and the idea of a relationship between name and personality are interesting.

Suzanne L. Horine

On the town

This weekend's LSC movies:
Dragonslayer, Friday, 7 & 10, 26-100.
Sabotage, (Classic) Friday, 7:30, 10-250.
Kramer vs. Kramer, Saturday, 7 & 9:30, 26-100.
The Four Musketeers, Sunday, 6:30 & 9, 26-100.

The New England Computer Music Association presents a concert of *Computer Music & Poetry* at Boston Film & Video Foundation, 1126 Boylston St., Boston, on Friday, Nov. 19, at 8pm. Admission \$6, students & senior citizens \$4. For ticket information call 536-7128. For other information call 449-0781.

Off the Wall Cinema presents:
Citizen Kane, Friday, 8pm; Sat. & Sun., 4:15pm & 8pm
Journey into Fear, Friday, 6:35 & 10:15; Sat. & Sun., 2:50, 6:35, & 10:15.
Misunderstood Mansters & the Golden Fish, Sat. & Sun., 12:30.
Student Center Cinema Midnight Movie:
Casino Royale starring Woody Allen, Saturday in the Student Center.

The M.I.T. Choral Society will be performing Beethoven's *Mass in C*, *Christ on the Mount of Olives*. John Oliver, conductor, 8pm at the Sacred Heart Church, 6th St., Cambridge. Free for M.I.T. students. For further information call 253-2906.

arts arts

GARBAGE: one cause that doesn't need your contribution.

Last year, Americans threw away 150 million tons of materials—enough to fill garbage trucks lined three abreast from New York to California. Our throwaways cost us more than \$4 billion each year. This collection and disposal of trash is now the second largest item in most city budgets, surpassed only by public schools.

The problem is more than litter along the highway. It is the waste of our nation's resources—resources which are becoming more scarce and expensive.

We need to conserve materials now more than ever. And you can help—by not making a contribution. For example, by repairing worn items, you can save yourself money, reduce energy waste and conserve materials.

For a free booklet packed with ideas about how to reduce waste, write to:

environmental action foundation

YES, I am interested in learning how I can reduce waste. Please send your free booklet, "The Case for Materials Conservation" to:

Name _____
 Address _____
 City _____
 State _____ Zip _____
MAIL TO: Environmental Action Foundation
 724 Dupont Circle Building
 Washington, D.C. 20036

This space donated by The Tech

Ordinary pizza places can't measure up.

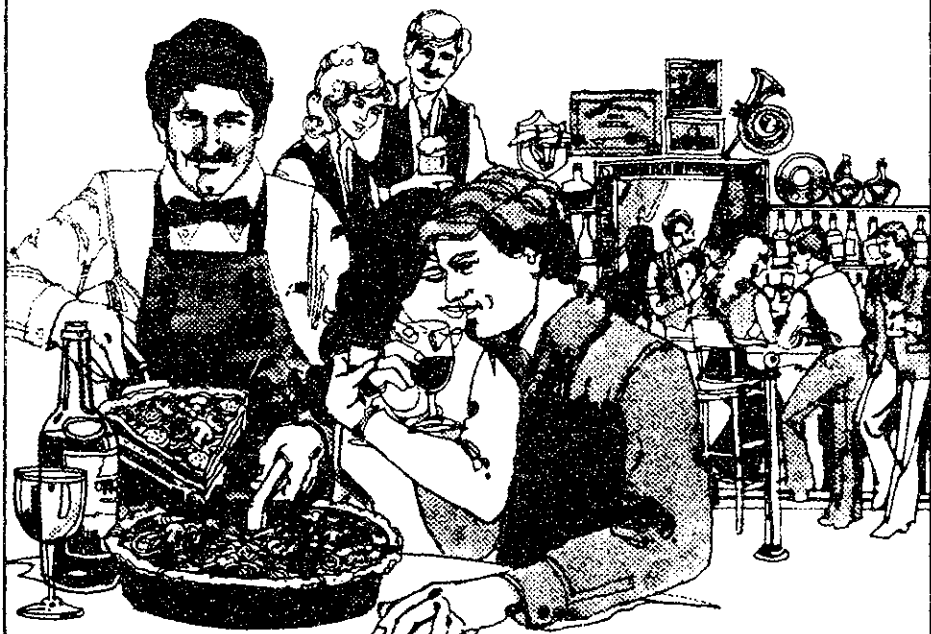
One visit with friends or family and you'll fall in love with the original Uno Restaurant and Bar.

First, because we're an honest-to-goodness great restaurant with bright, friendly hosts, waiters, waitresses and bartenders who'll serve you in a delightful attractive but casual atmosphere.

And then, because you're in for a gourmet surprise when you taste the original deep dish pizzas that made us world famous.

Choose from Pizza ingredients and combinations that you never thought possible along with a marvelous soup, salad, sandwich and beverage selection.

Visit the pizza restaurant that's a slice above all the rest: Uno. You'll need a big appetite and a small pocketbook.

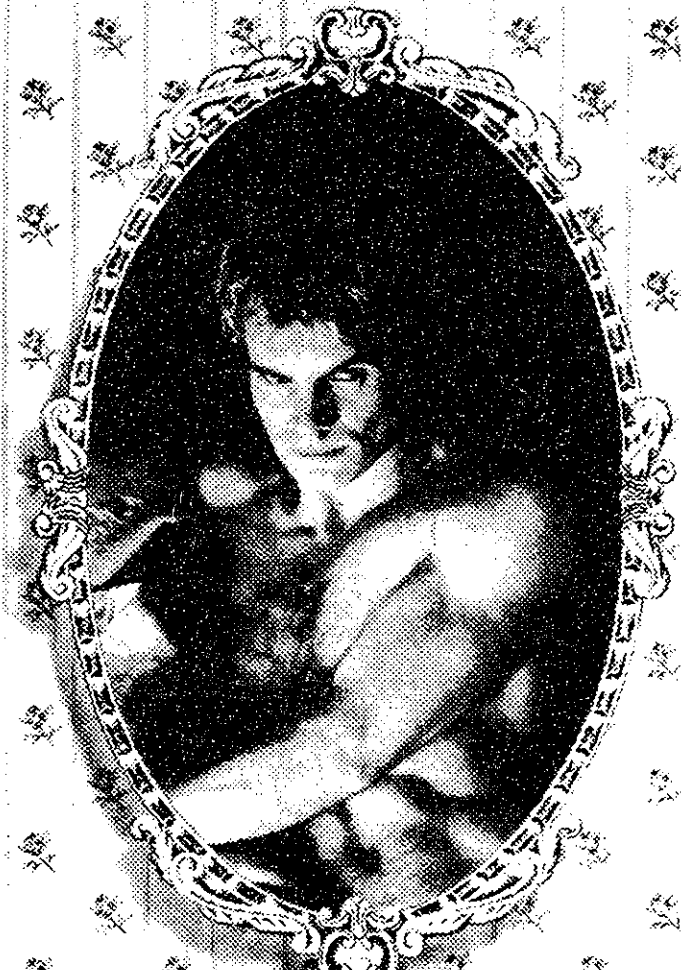


731 Boylston St. Boston
 22 John F. Kennedy St.
 Harvard Sq.
 Rt. 9, Framingham

PIZZERIA
UNO
 restaurant and bar

Daily 11-1 AM*
 *Boston and Harvard Sq.
 open 'til 2 AM
 on weekends.

Mirror, mirror
 on the wall
 who wreaks havoc
 on us all?



BRIMSTONE & TREACLE

SHERWOOD PRODUCTIONS and ALAN I. SAUER in Association with HERBERT I. SOLOW Present A P.F.H. FILM
 BRIMSTONE & TREACLE
 Starring SING, DENHOLM ELLIOTT, JOHN ROXBOROUGH and SUZANNA HAMILTON
 Music by THE POLICE, SING, THE GO-GOS. Screenplay by DENNIS POTTER
 Executive Producer NAIM ATTALAH. Produced by KENNETH TRODD. Directed by RICHARD DONKRAINE
 Original Soundtrack Album Featuring THE POLICE Available on A&M Records and Tapes. Read the Quarter Paperback
 Color by TECHNICOLOR

Exclusive Engagement
 Starts Friday,
 November 19

CHARLES 1-2-3
 Camb. St. near Gov. Ctr. 227-1330

feedback

Student disagrees with professor

To the Editor:

The article that appeared on page one of the November 9, issue of *The Tech* can be summarized in one word: bullshit! Attributed to Professor Elias are several statements that are questionable at best. First: "Overcrowding has not affected the grade distribution of the subject," he claimed, "which are generally B-centered." I ask if anyone currently enrolled at MIT can remember when 6.002 or 6.003 or any of a number of other obnox-

ious courses required by the department vaguely had a B average.

Second: "Elias took exception, however, to the relatively low grading distribution of 6.002 last spring term. He felt the distribution was due more to subnormal student performance than to difficult exams." What are the chances that a class the size of 6.002 will have significantly less prepared students? Why do the Admissions Office tests show that last year's MIT students are no

less prepared? What percentage of the class in 6.002 has failed each term in the last three years? What percentage of students pass 6.002 the first time they try it? And if all this is working why did course six have to create the famous (or should I say infamous) D=F for majors policy? Is it approximately accurate to say the average grade in 6.002 courses over the past five semesters was a C-/D?

Third: "It has not been our intent to make the courses harder," Elias said. How much extra material is there in 6.032 or 6.170 this term compared to last term? How many more drop cards are being submitted with course six core (including the common core) courses on them this term than in recent terms?

Perhaps these questions have reasonable answers. If they do, I am sure many people would love to hear them!

Russell L. Brand '84

FIGHT CANCER

American Cancer Society

This space donated by The Tech

\$5 HAIR CUT

THE GRAND STRAND HAIR DESIGN

STYLISTS: KEVIN JENSEN, formerly of Dunster St.; ARTHUR ADRETTI, formerly of John Daleria; BRANDA, formerly of Monte Carlo; ROBIN, formerly of Command Preference.

30% off

Ciao backpack

Super tough; water resistant nylon. Made in USA.

	reg.	Sale
Backpack	\$25	\$16.99

Available at M.I.T., Harvard Square

FOSSIL ENERGY R & D POSITIONS
U.S. DEPARTMENT OF ENERGY
MORGANTOWN, WEST VIRGINIA

The Morgantown Energy Technology Center is seeking entry-level baccalaureate and graduate degreeed:

- CHEMICAL ENGINEERS
- MECHANICAL ENGINEERS
- ELECTRONICS ENGINEERS
- CHEMISTS
- PHYSICISTS

to participate in the advancement of fossil energy technology. Research and development opportunities are available in the program areas of:

Coal Gasification • Components • Fluid-Bed Combustion
Unconventional Gas Recovery • Instrumentation & Control
Fuel Cells • Gas Stream Cleanup • Heat Engines

The Morgantown Energy Technology Center is responsible for researching and developing technologies to extract, convert, and utilize energy sources in an environmentally acceptable manner. The R & D goal is to develop long-term, high-risk, high-payoff research to advance fossil energy concepts.

We will be interviewing on campus December 1.
Contact your college placement office for interview scheduling.

An equal opportunity employer
U.S. Citizenship required

NOBODY BEATS US!

WE CHALLENGE YOU... TO FIND A BETTER DEAL ON ANY—
BRAND NAME HI-FI VIDEO OR CAR STEREO

<p>HI-FI</p> <p>Technics</p> <p>SA-104 20 watt receiver \$99 SA-206 Digital receiver \$127 SL-810 New P-Mount T-Table \$57 RSM-205 Dolby Tape Deck \$78 RSM-224 Dolby B&C Deck \$110 RSM-228X DBX tape deck \$169 SL-5 Linear Tracking T-Table \$126 SA-828 100 watt digital \$499</p> <p>SONY</p> <p>TC-K555 3-head, Dolby B&C \$329 STR-VX22 Direct access recr. \$189 PS-LX2 Direct Drive T-Table \$89</p> <p>PIONEER</p> <p>SX-5 30 watt receiver digital \$159 SX-6 45 watt digital RCVR \$199 SX-8 100 watt digital RCVR \$499 CT-4 Dolby tape deck \$99 CT-6 Dolby, auto. reverse deck \$175</p>	<p>JENSEN CAR STEREO</p> <p>COMBO SPECIAL</p> <p>T-415, HIGH END DECK EQA-3000 AMP / EQUALIZER Dolby, Pushbutton, 34 Watts & More List \$440</p> <p>Both for \$249</p> <p>Panasonic</p> <p>PV 5500 Their best portable 14 day timer, wireless remote. \$799</p> <p>PHONE CENTER</p> <p>• MURA Cardless 600 ft. range \$159 \$99 • Push button replacement \$40 \$19 • PANASONIC KXT1505 Answering machine \$150 \$99</p>	<p>VIDEO TV</p> <p>Hitachi 19" remote \$439 Panasonic 19" color \$299 Sony 12" color \$299 Sony 19" color \$448 Sony 19" remote \$548 Sony 26" console \$699 Sharp 19" color \$289 Sharp 19" remote \$379 Toshiba 13" color \$259 Toshiba 19" color \$299 RCA 25" console \$479</p> <p>VIDEO RECORDERS</p> <p>Sonyo Deck 2-way scan \$369 JVC 7650 Stereo, Dolby \$879 Panasonic 1780 Stereo, Dolby \$898 Panasonic PV-1265 2-way search \$429 JVC 2650 Portable, Stereo, Dolby \$995 Sony SL 200 Beta port. \$695</p>
<p>TAPE SPECIALS</p> <p>AUDIO</p> <p>maxell \$1.99</p> <p>TDK or SONY. Your Choice 99¢</p> <p>VIDEO</p> <p>FUJI T-120 Sale \$10.95 Rebate 2.00 \$8.95</p> <p>MEMOREX T-120 w/plastic case \$8.95</p> <p>maxell T-120, high grade \$12.95</p> <p>SALE ITEMS, CASH ONLY</p>	<p>CAR STEREO</p> <p>PIONEER</p> <p>UKP-5200 push button, mini \$119 KE-5100 Digital in-dash \$199 TS-160 6 1/2" Spkr. \$10 TS-695 6x9 Triax Spkr. \$45</p> <p>JENSEN</p> <p>R200 Mini, in-dash \$99 R508 Digital in-dash \$239 6x9 Coax II; 100 watt \$45 4" door speaker \$15</p> <p>SONY</p> <p>XR-35 Dolby in-dash \$189 XME7 Amp/Equalizer \$149 XS-2115 5 1/4" flush mt. spkr. \$78</p>	<p>PORTABLE VALUES</p> <p>SANYO</p> <p>3 pc. portable Dolby & equalizer List \$400 \$199</p> <p>AIWA</p> <p>AM/FM cassette \$200 \$99</p> <p>SONY</p> <p>FM Walkman \$90 \$49</p> <p>SONY</p> <p>Walkman II Demos \$150 \$69</p> <p>DEALER INQUIRIES WELCOME</p>

AUDIO VIDEO UNLIMITED

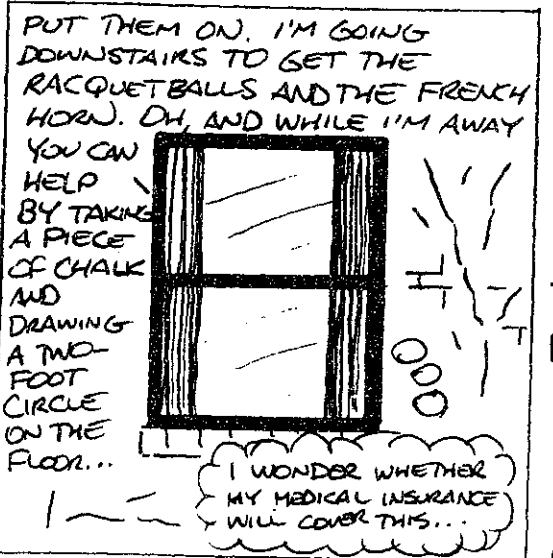
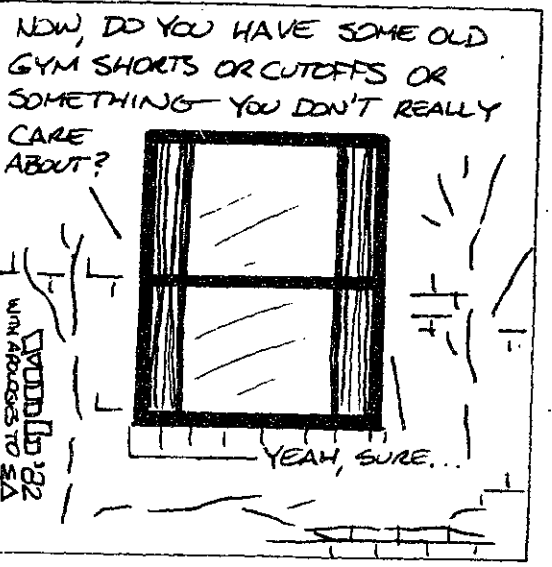
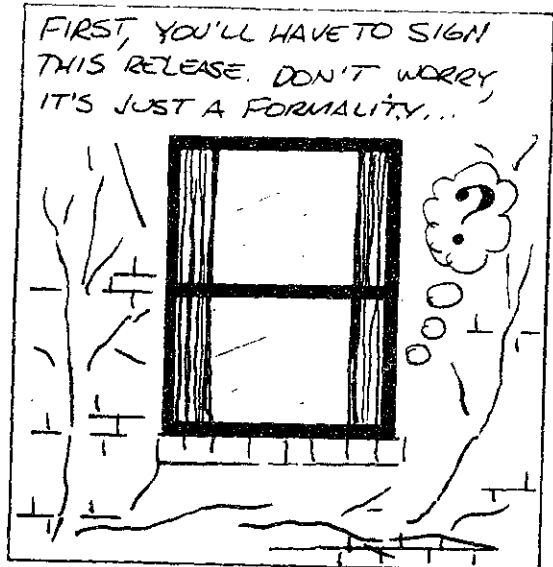
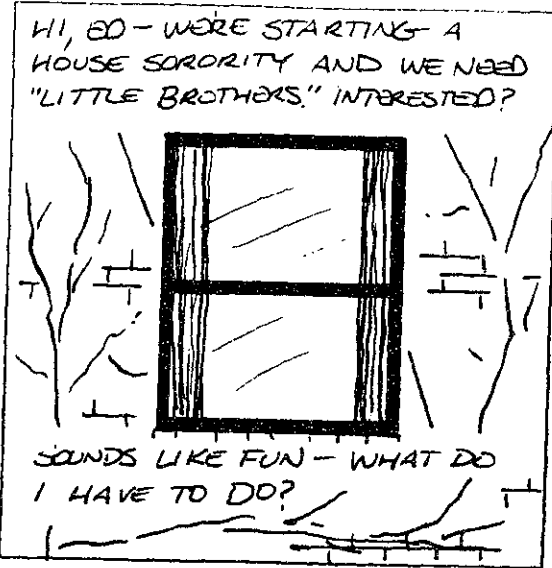
25 REVERE BEACH PKWY. MEDFORD ON RTE. 16 AT WELLINGTON CIRCLE • 395-3367

MON. THRU FRI. 11AM TO 9PM • SAT. 10AM TO 8PM NOT RESPONSIBLE FOR TYPOGRAPHICAL ERRORS

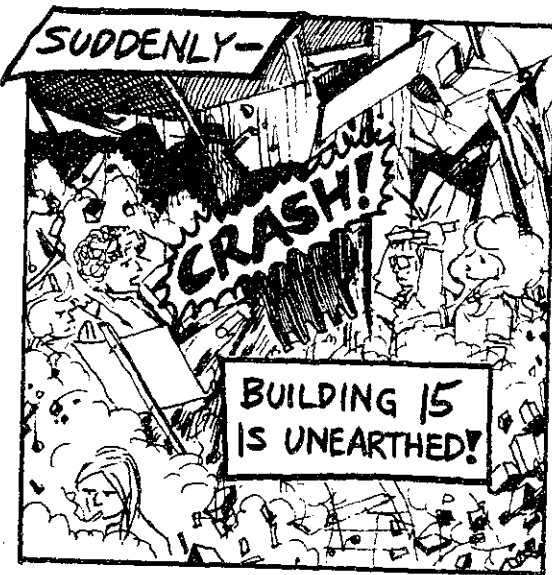
HARVARD COOPERATIVE SOCIETY

comics

Outside Looking In By V. Michael Bove



Space Epic By Bill Spitzak



classified advertising

WORD PROCESSING. SPECIAL TYPING SERVICE
Theses. Reports. Manuscripts. Manuals. Mailings. Statistical work. Professional, reliable service with quick turnaround. Low Rates. 938-9033 Decision Enterprises

Bargain Land
Stoughton
22 certified title lots, sizes 60'x120', 60'x135', and 100'x100' in an excellent area with beautiful homes. Price: \$50,000. Also 1 separate lot 60'x120'. Price: \$6000.

Stoughton
General business zoned land, 66,268' with 382' frontage on Rte. 138 near Canton line. Cleared and graded. Price: \$150,000

Canton - Rte. 138
163 acres wooded, pine & oak trees. Located about 2 1/2 miles south of Rte. 128. About 30 acres zoned limited industrial & the balance residential. All utilities available. Also contains gravel and sand hills. Price: \$1,600,000. Will finance
Call preferably weekends & evenings.
(617) 344-3886

Hair models required for demonstrations and new training techniques. All work will be carried out by qualified hair stylists and supervised by European trained educators. There will be no charge for the styling. Both male and female models required. The place is Command Performance, Fresh Pond Mall, Cambridge, 411-6211. The dates are Nov. 29th and 30th. Please call soon to make an appointment.

'77 Dodge Colt. Auto. AM-FM, Air. 36,000 mi. excellent mech. condition. \$1800 or b/o. Also camera - Mamiya/Sekor 1000TL \$75. 864-7266, leave message.

YOU CAN SAVE MONEY ON YOUR TYPING NEEDS BY USING WORD PROCESSING

Resumes. Reports
Theses. Manuscripts

WORD POWER
646-4114

MIT Skiers! Winterbreak ski trip to Killington or Smugglers Notch ski resorts in Vermont: 5 days skiing, 5 nights lodging in slope-side condos with kitchens, and nightly parties from \$156. Call (800) 368-2006 TOLLFREE ASK FOR NANCY. Go with friends or organize a small group and ski for FREE.

There's reason for **HOPE**
Give to: **PROJECT HOPE**
Department A, Washington, D. C. 20007
This space donated by The Tech

It's not what you see.

It's how you see it.

Kodak film 35mm

Kodak

sports

Wrestling takes to mats

By Robert E. Malchman

Coming off a strong 14-5 year, the varsity wrestling team opens its season tomorrow against Plymouth State.

Despite retaining 11 lettermen out of 24 wrestlers, third-year coach Tim Walsh is not more than cautiously optimistic about the team's future.

"We've had a couple of off-season injuries," he said. "Our 134-pounder has asthma. He's been so sick he hasn't been able to practice. Our 158-pounder injured his leg playing IM football and won't be back until January. Our 177-pounder also injured himself playing IM football, separating his shoulder."

Adding to the team's woes, the Engineers' lost to graduation Tom Fawcett '82, who placed fourth in the New England NCAA Division III championships last year, and their freshman 118-pounder transferred to a Japanese university three weeks into the term.

The outlook is not wholly

bleak, however. Among the returning lettermen is co-captain and New England Division III 142-pound champion Ken Schull '84. Schull has not lost a dual meet in his two years at the Institute.

Walsh also looks to strong performances from returnees Tim Skelton '85 at 126 pounds, "a good, proven wrestler," according to the coach; Steve Ikeda '85 at 150 pounds, who is "coming off a really good season of 18-5-1;" Frank Montenegro '85 at 158 pounds, who finished third in the New England last year; and co-captain Steve Leibiger '83 at 177 pounds, who placed sixth in that tournament.

"We're hoping some of our new people are good, too," Walsh said. The freshmen to watch are Steve Fernandez at 118 pounds, Jim Masucci at 150, Jim Rolle at 190, and big Dave Bailey, the team's lone Heavyweight.

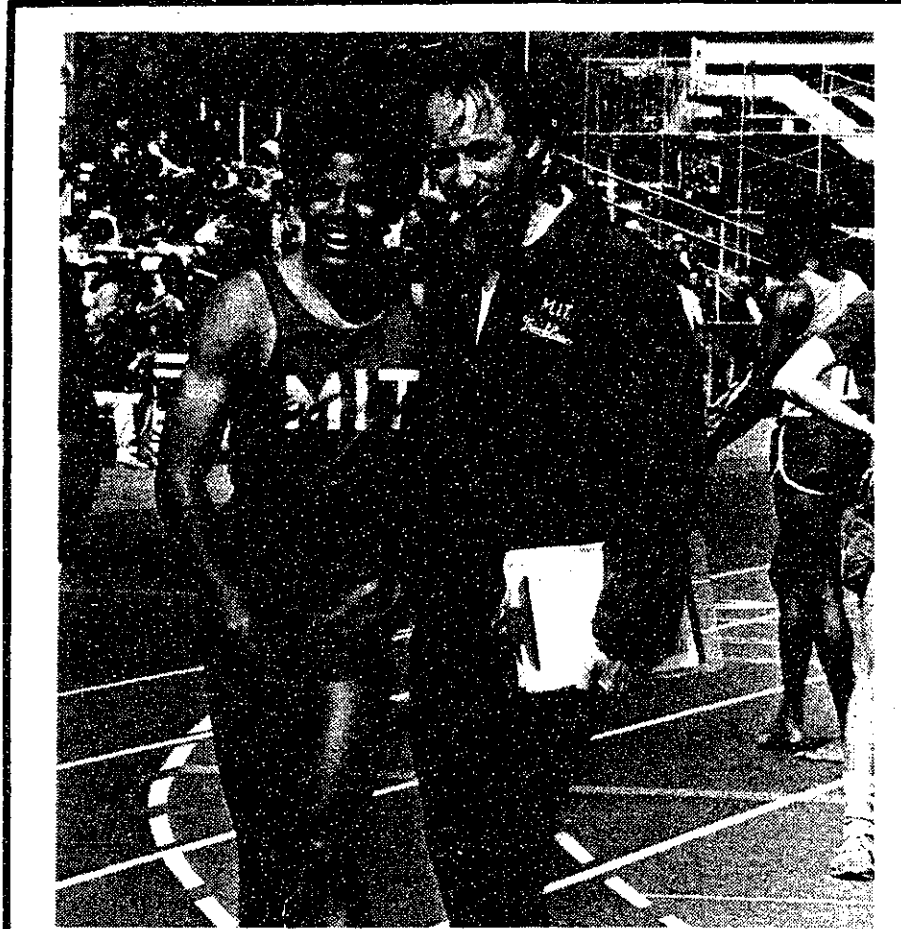
Upperclassmen coming out for

the first time are 158-pounder Tom Tiller '83 and 167-pounder Brian Mannion '84.

Walsh looks ahead to the New England championships in February, saying the team's goal this year is to finish higher than last season's seventh place. "That's the most important part of the season," he said. "All of the dual meets and tournaments prior to that are just build-ups to the New England."

Tomorrow's opener against Plymouth State gives the team the chance to start the season by breaking two-year dual meet jinx against the south-state rivals. "We haven't beaten them in a dual meet while I've been here," said Walsh. "Although we did beat them at their own Northern New England Tournament last year."

The season begins at noon, tomorrow, and MIT wrestles at home for the first time a week later.



Men's Cross Country Coach Chris Lane and team captain Paul Neves '83.

weekend preview

Tonight MIT will host the opening round of the NCAA Division III women's volleyball championships. The Engineers will be taking on Albany State in a best-of-five series, with the winner going on to face Western Maryland the first weekend in December.

After tonight's contest, both teams will participate in the EAIAW Northeast Division III championships at Rhode Island College on Saturday.

Meanwhile, the men's harriers will be in Fredonia, New York Saturday for the NCAA Division III cross country championships. This will be the fourth straight year that MIT has been represented at the finals. The team is looking to improve upon last year's 13th-place finish.

The rifle team will be hosting the league invitational, also on Saturday. The match is scheduled to begin at 8am at the range.

sports update

Men's Rugby — The rugby football club's "A" team blanked Worcester State 6-0 Saturday, while, in the battle of the "B" squads, Worcester State edged MIT 7-6.

Women's Cross Country — Slogging through heavy rain and mud, the women's cross country team finished twelfth in the NCAA Division III regionals at Franklin Park Saturday. Sarah de Leon '85 paced the Engineers with a time of 20:15 to come in thirty-ninth overall.

Football — Defensive back Doug Gouchoe '83 was named to the New England Collegiate Football Conference's all-star first team. Scott Berecli '85, John Einhorn '84, and Jon Opalski '84 were all named to the second team.

American Cancer Society

This space donated by The Tech

Take Charge At 22.



In most jobs, at 22 you're near the bottom of the ladder.

In the Navy, at 22 you can be a leader. After just 16 weeks of leadership training, you're an officer. You'll have the kind of job

your education and training prepared you for, and the decision-making authority you need to make the most of it.

As a college graduate and officer candidate, your Navy training is geared to making you a leader. There is no boot camp. Instead, you receive professional training to help you build the technical and management skills you'll need as a Navy officer.

This training is designed to instill confidence by first-hand experience. You learn by doing. On your first sea tour, you're responsible for managing the work of up to 30 men and the

care of sophisticated equipment worth millions of dollars.

It's a bigger challenge and a lot more responsibility than most corporations give you at 22. The rewards are bigger, too. There's

a comprehensive package of benefits, including special duty pay. The starting salary is \$16,400—more than most companies would pay you right out of college. After four years, with regular promotions and pay increases, your salary will have increased to as much as \$29,800.

As a Navy officer, you grow, through new challenges, new tests of your skills,

and new opportunities to advance your education, including the possibility of attending graduate school while you're in the Navy.

Don't just take a job. Become a Navy officer, and take charge. Even at 22.

NAVY OPPORTUNITY INFORMATION CENTER W 200
 P.O. Box 5000, Clifton, NJ 07015

I'm ready to take charge. Tell me more about the Navy's officer programs. (OG)

Name _____
 First (Please Print) Last
 Address _____ Apt. # _____
 City _____ State _____ Zip _____
 Age _____ College/University _____
 †Year in College _____ †GPA _____
 †Major/Minor _____

Phone Number _____ (Area Code) _____ Best Time to Call _____

This is for general recruitment information. You do not have to furnish any of the information requested. Of course, the more we know, the more we can help to determine the kinds of Navy positions for which you qualify.

Navy Officers Get Responsibility Fast.