

## MIT researchers find cancer link

By Barry S. Surman

A gene that can transform cells into a cancer-like state differs from a normal human gene by only one chemical sub-unit, according to a report made by an MIT researcher last week.

Dr. Francois G. Dautry, a postdoctoral fellow at the Center for Cancer Research, reported on the analysis of cells taken from a human bladder tumor to a medical symposium sponsored by the

American Cancer Society at the Roswell Park Memorial Institute in Buffalo, NY, Thursday.

The discovery, made by a team of scientists from the Center for Cancer Research, the National Cancer Institute and Merck Laboratories, shows that the change of but one nucleotide — one of the roughly six billion "letters" in a human cell's genetic code — may cause a normal cell to become cancerous.

(Please turn to page 2)

## MIT labs adjust to Federal budget cuts

By Leo Hourvitz

MIT's research centers and laboratories are surviving in the face of changing Federal budget priorities and continuing uncertainties about government funding levels.

Professor Peter A. Wolff, director of the Bitter National Magnet Laboratory, said, "We went through a big crunch here last year. We had a lot of pain ... In spite of this, we're surviving ... We're managing to do the things we have to do."

The laboratory is searching for new funding sources, including a proposed equipment grant program through the Department of Defense, Wolff noted.

The effect of Federal budget restrictions on MIT laboratories varies widely. Although the last academic year marked the first time in many years that sponsored research at MIT's laboratories declined, in real dollars, the directors of many independent research laboratories said their programs were being maintained.

"Overall, I would say, yes, [the budget cuts] have negative effects, but we have managed to maintain at least the core of the program intact," said Professor Chrysostomos Chrysostomidis '70, Director of the MIT Sea Grant College Program. "We are missing new opportunities we feel might have been beneficial to the Institute."

Federal budget pressures on MIT research laboratories have caused some to search for alternate sources of funding.

Director of the Center for Transportation Studies, Professor Daniel Roos '61, noted, "We have been impacted quite significantly ... About three years ago the center was about 90 percent federally supported, and this coming year, for the first time in history, we're getting less than 50

percent of our support from the federal government."

The center has been able to find private funding sources, so "the mix of the research has

(Please turn to page 2)



Tech photo by Laurie Goldman

The 11th Hour Blues Band performed in front of the student center yesterday afternoon.

## Non-engineers find few jobs

By Jake Tinio

This year's employment outlook represented both the best of times and the worst of times for

MIT's graduating class of 1982.

"This was our best recruiting year ever," said Alumni Association Executive Vice President William Hecht '61, but a number of seniors, particularly those majoring in architecture, geology, political science, and urban studies, could not find jobs by graduation.

Civil engineers specializing in water resources also had difficulty finding jobs, according to a report by Robert Weatherall, Director of the Career Planning and Placement Office, on job placement for the Class of 1982.

The 1981-82 job market was "as full of contradiction as the economy as a whole," Weatherall said. Despite the recession, 450 employers — the most ever — came to the Placement Office to recruit new graduates, according to Weatherall's report.

Women generally received more job offers and slightly higher starting salaries than men, according to Weatherall. Members of minority groups received comparable offers to whites.

Corporations actively recruited most engineering graduates. Mechanical engineering graduates fared extremely well despite struggling automobile and machinery industries, according to the report.

Oil company demand for chemical engineering graduates varied wildly during the year due to fluctuations in oil prices, Weatherall said. As a result,

chemical engineers not applying early in the year had difficulty finding employment.

Last December, oil companies were eager to hire engineers needed to launch massive projects, according to the report. Lower oil prices and high interest rates, however, soon deflated their desire.

"The dislocation in the oil industry," Weatherall noted, "is a particularly vivid example of the sort of dislocation which has haunted many well-organized projections of the need for scientists and engineers. A student's training in a technical discipline is a perishable commodity, and students have reason to shy from fields in which they may not be able to employ their expertise immediately, however promising the long term demand may be."

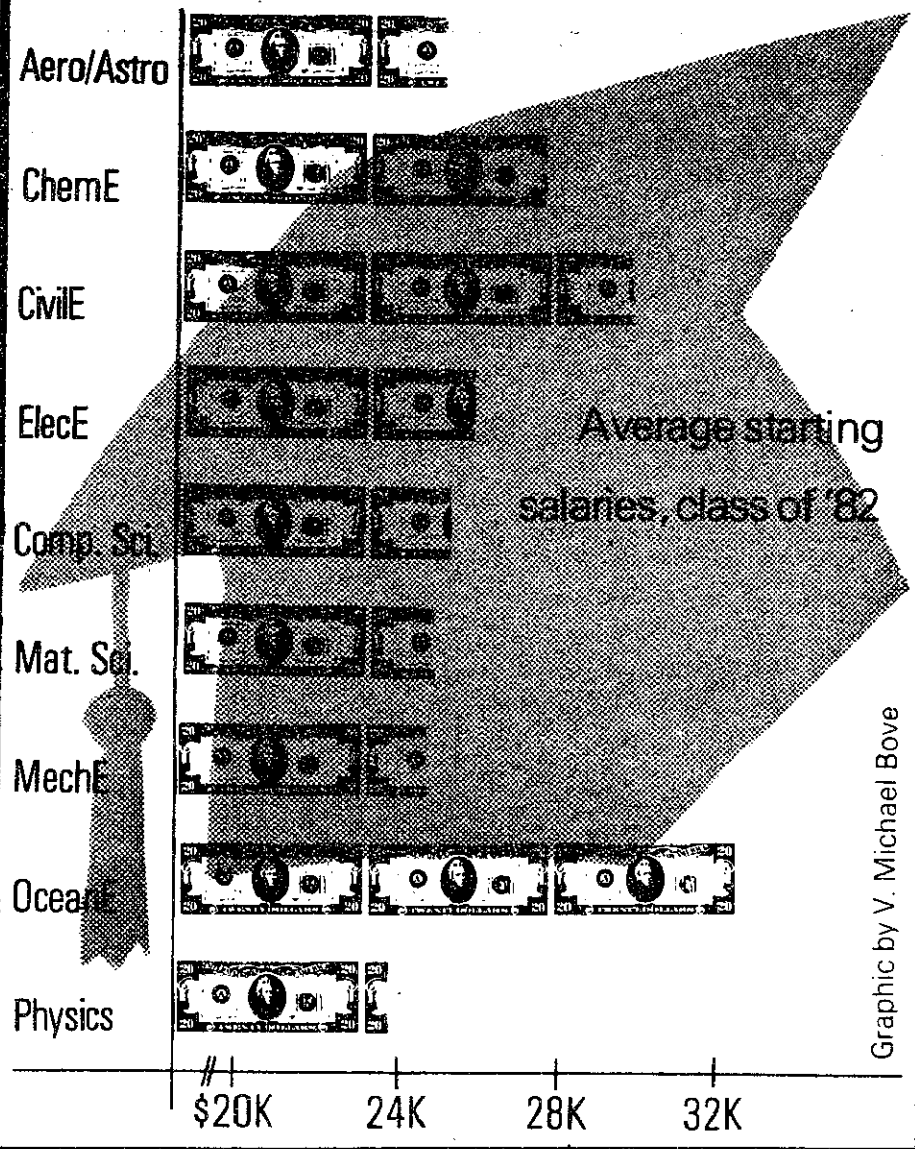
Weatherall said he will give special attention this year to seniors in non-engineering courses in which graduates had problems finding jobs last year.

With increasing numbers of MIT students choosing immediate employment over graduate school, Hecht and Weatherall both view the coming job market with a modicum of caution. "Students think the academic life is unattractive," offered Weatherall.

Weatherall was unsure about the coming year's job market. "We don't know yet how eagerly companies will be looking for students," explained Weatherall.

(Please turn to page 9)

### What an MIT BS can get you...



Graphic by V. Michael Bove

## Most freshmen take new writing exam

By Tony Zamparutti

Nearly the entire freshman class appeared last Friday to take a writing test to evaluate

their language skills, according to Peggy Richardson, Executive Officer of the Undergraduate Academic Support Office.

Neither Richardson nor Associate Professor Kenneth R. Manning, Chairman of the faculty Committee on the Writing Requirement, could give an accurate count of freshmen who participated.

Beginning with the Class of 1987 — next year's freshmen — all graduating seniors will be required to demonstrate a minimum level of writing proficiency. The MIT faculty approved the new writing requirement last April 21. Manning's committee will implement the new

requirement.

Last Friday's writing samples will provide freshmen with an indication of weaknesses in their writing ability and will assist the committee in evaluating the writing needs of incoming students, according to Manning.

The writing evaluation asked freshmen to either describe a scientific experiment or to discuss their Residence/Orientation week experiences. Freshmen had one hour to write their sample.

"We have yet to decide what to do with students who missed the writing sample last Friday", said Associate Professor Kenneth R. Manning, chairman of the faculty Committee on the Writing Re-

quirement. A number of freshmen called to ask if there would be a second opportunity to take the writing sample, he added.

Manning refused to comment on details of the writing requirement: "We're still working on that. I don't want to say in any precise way what will be done next year."

The Committee on Education Policy (CEP) declared in a report released in December, 1981: "A substantial number of MIT students do not achieve a level of writing proficiency adequate for either their course work at MIT or their professional careers later on."

(Please turn to page 2)

### inside

King Crimson. Gang of Four. Talking Heads. The Clash. The Go-Go's. Arts looks at all of them. Pages 6-7.

Central or Kendall to play with the BayBanks machines. Page 9

Comics return to *The Tech*. Page 11.

You'll still have to go to

# Institute labs look for new funding sources

(Continued from page 1)  
 changed, but the quantity has remained," according to Roos.

At the Artificial Intelligence Laboratory, "we haven't felt any crunch at all," said fiscal officer Gordon Oro. "In fact, we've seen an increase in interest in what we're doing."

"In addition to the government interest, we've had non-government interest in our programs," he noted.

Direct costs of MIT's sponsored research grew by four percent during the just-completed

fiscal year, but when adjusted for inflation, this translates to a reduction in constant-dollar research monies.

Except for last year's decline, Institute sponsored research costs have grown two to three percent a year faster than inflation over the past ten years.

MIT's unsponsored research and instruction costs grew about four percent faster than inflation last year, as they have for the past decade.

Congressional action is still pending on next year's Federal budget. A large majority of MIT

sponsored research funds comes from the Federal government.

Even those research units not directly affected by cuts in federal money have felt some pressure. Professor Eugene Skolnikoff '49 of the Center for International Studies said the center has not been affected "in the direct sense, partly because two-thirds of our funding is from private founda-

tions, but the pressure on these foundations has increased."

"Available support for students and individual research projects, especially in the social sciences, have been cut," he added.

Professor Samuel J. Keyser, director of the Center for Cognitive Science, said the center has not been affected "because we have been one of the fortunate few

who have been able to find funding from the private sector. Had we not been so lucky, the level of activity we have now could not be maintained."

Walter Milne, Special Assistant to the President, commented, "Most of them [research labs] have been sustained pretty well... but there are problems everywhere."

## MIT-led researchers discover cancer clue

(Continued from page 1)

The research on the recently-discovered "transforming genes" was done by scientists under Professor Robert A. Weinberg '64. "One understands a bit now about the mechanism by which a cell becomes cancerous," Weinberg said.

Deoxyribonucleic acid (DNA), the molecule incorporating the genetic code, is comprised of many triplets combining four bases, labelled C, G, A, and T. One such triplet found in the bladder cancer cells — G-G-C in the normal gene — was transformed to G-T-C in the cancer-producing gene, Dautry reported.

### Most frosh took new writing exam

(Continued from page 1)

The report noted, "The [MIT] curriculum as a whole does not reflect the importance of this skill."

The CEP recommended undergraduates fulfill a two-stage writing requirement before graduation. In the first stage students must demonstrate basic writing skills, and in the second engage in "the more specialized forms of writing that are necessary within their professional disciplines," according to the CEP report.

## MIT retains low-income frosh

By John J. Ying

Although a national survey reported a 39 percent drop in the enrollment of lower-income students at private colleges and universities between 1979-80 and 1981-82, "there has been no significant change at MIT in the number of lower-income freshmen from last year," said Peter H. Richardson '48, Director of Admissions.

Researchers for the National Institute of Independent Colleges and Universities (NIICU) found a 39 percent decrease in the enrollment of students from families with incomes between \$6000 and \$24,000 at 122 private colleges and universities.

Julianne Still Thrift, NIICU executive director, said the decrease in enrollment was caused by "continuing increases in col-

lege costs that coincide with decreased dollars available from Federal aid programs."

MIT has not been affected by cuts in Federal student aid as severely as other private universities "because we continue to have a strong financial aid program," said Leonard V. Gallagher '54, Director of Student Financial Aid.

The Federal government cut financial aid to MIT students by \$16 million this year, according to Gallagher. MIT raised its self-help level to \$4000, and covered the remainder of the loss with Institute funds.

The Federal student aid cuts were "not as severe as originally

thought to be," Gallagher said.

Although "there is a lot of uncertainty around" about enrollment from poorer students, Richardson said, the same number of lower-income students applied to the Institute last year as in previous years.

"At MIT, a higher percentage of students will be on financial aid this year," Richardson added. Slightly more than 50 percent of MIT undergraduate students receive financial aid.

The Institute will not cover the losses of any students it decides are not in need of financial aid. Some of these students may be affected by cuts in the Guaranteed Student Loan Program.

The DNA code tells the cell which amino acids to use in building a protein. The altered triplet tells a cell to use the amino acid valine, instead of glycine.

The function of the protein produced using the transformed DNA code is not known. The next step in his research, Weinberg said, is to find how the altered protein "is able to induce the cell to behave abnormally."

Weinberg's findings will be published within the next few months, he said.

## HOW HIGH IS YOUR E.Q.?

(Economics Quotient)

### CAN YOU ANSWER THESE BASIC ECONOMIC QUESTIONS?

- True False
- (1.) One out of five American workers belongs to a labor union.
  - (2.) Producers of goods outnumber producers of services in our economy.
  - (3.) In 1975, the investment in equipment and facilities averaged almost \$41,000 for each production worker in American industry.

If you found these questions tough, your Economics Quotient, your E.Q., could

probably stand some improvement.

A special booklet has been prepared to help you learn more about what makes our American Economic System tick. It's fact-filled, easy reading and free. It's also an easy way to raise your E.Q..

For your copy, write: "Economics," Pueblo, Colorado 81009.

ANSWERS: T F F T T T

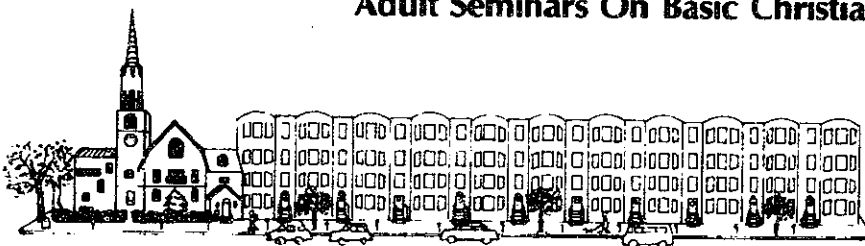
### The American Economic System.

We should all learn more about it.

A public service message of The Newspaper & The Advertising Council & US Department of Commerce

### RUGGLES BAPTIST CHURCH

Sunday School — 9:15 a.m.  
 Sunday Worship — 10:30 a.m.  
 Bible Studies Throughout The Week  
 Adult Seminars On Basic Christianity



874 Beacon Street, Boston, Massachusetts, 02215, Telephone (617) 266-3633

## SHARE THE COST OF LIVING.

GIVE TO THE AMERICAN CANCER SOCIETY.

This space donated by The Tech

### FOAM MATTRESSES and CUSHIONS

Cut To Order At No Extra Charge

- All Sizes
- All Qualities
- Lowest Prices
- Zip On Covers

### Platform Beds

FROM \$89.95



### FOAM RUBBER DISCOUNT CENTER

165 Brighton Ave., Allston  
 254-4819

## BARTENDERS WANTED:

There are several openings for bartenders in the Muddy Charles Pub, located in Walker Memorial. Any interested person must be an MIT student, preferably a graduate student, and at least 20 years of age. Bartenders serve beer and wine. There are two shifts: morning shift is from 11:30 A.M. to 2:30 A.M. and the evening shift is from 4:00 P.M. to 9:00 P.M. Contact Ed in the Muddy Charles Pub (Walker Memorial, first floor, riverside) or at x3-2086.

## Elias hair care

319 Massachusetts Avenue  
 Cambridge, Massachusetts 02139  
 497-1590/1591

two dollar discount and free consultation with this ad

### Join us in the SON

Campus Crusade for Christ at M.I.T.



FREE!!!

FRIDAY NIGHT DINNER: 6:00 p.m., Marlur Lounge, Bldg. 37-252  
 FAMILY TIME: 7:15 p.m., Friday evenings: Bldg. 37-252, Marlur Lounge. Come for fellowship, scripture teaching, prayer, singing, skits, refreshments, and just plain fun!!  
 TUESDAY PRAYER TIME: 7:30-9:00 a.m. in W20-441 (Student Center)

For more info. call:  
 H. Grey 225-8552  
 Allan & Tricia Beeber 254-4009

## ROSH HASHANA SERVICES

5743/1982

Sponsored by MIT Hillel, 312 Memorial Drive, 253-2982  
 \* Tickets are required for all services. Students can pick up free tickets at Hillel office before September 16. Faculty & staff call for ticket information.

### REFORM (Chapel)

Friday, September 17, 8:00pm  
 Saturday, September 18, 10:00am

### CONSERVATIVE (Student Center, Sala de Puerto Rico)

Friday, September 17, 6:15pm  
 Saturday, September 18, 8:30am & 7:00pm  
 Sunday, September 19, 8:30am & 7:00pm

### ORTHODOX (Student Center, Mezzanine Lounge)

Friday, September 17, 6:15pm  
 Saturday, September 18, 8:30am & 7:00pm  
 Sunday, September 19, 8:30am & 7:00pm

# news roundup

## World

**Israel approves three settlements on West Bank** — The Israeli Cabinet approved the establishment of three new settlements in the West Bank, in a direct challenge to President Ronald W. Reagan's call for a freeze on new settlements. The Cabinet also gave its official blessing to an existing Gaza Strip settlement and approved a "development program" for the Hebron region of the West Bank. In a letter to Reagan, Israeli Prime Minister Menachem Begin vowed the occupied territory will never again be a part of Jordan and "the government of Israel will stand by its decision with total dedication."

**International Monetary Fund chief urges quick aid** — The managing director of the International Monetary Fund (IMF), Jacques de Larosière, welcomed a decision Monday by IMF's leading industrial members to help alleviate the severe debts of many countries, and urged the aid be provided quickly to "assure the stability of the international financial system." Larosière also called on commercial banks to continue their financial support of developing nations. It is estimated that contributions of IMF member nations will increase by more than 50 percent, bringing the total resources of the fund from its present \$67 billion to about \$100 billion.

**PLO discussed at Arab League talks** — The Arab League began meetings in Morocco Monday, expected to focus on the plight of the Palestinians after their military defeat in Lebanon. Also on the agenda are President Ronald W. Reagan's new peace plan and the Iraqi-Iranian war. The group may resume discussion of the peace plan offered by Saudi Arabian King Fahd at the Arab League's last meeting in November. Among those attending the meetings are Moroccan King Hassan II and Palestine Liberation Organization Chairman Yasir Arafat.

**Polish embassy seized in Switzerland** — Armed men claiming to belong to a Polish resistance group seized the Polish embassy in Bern, Switzerland, Monday and threatened to blow it up if the Warsaw Government does not lift martial law. A man claiming to be the group's leader made the threat and declared that 12 hostages had been taken among Polish diplomats and members of the embassy staff. Spokesmen for both the Swiss government and the independent trade union Solidarity condemned the attack. The attack occurred in the wake of violent demonstrations in Poland last week that left five people dead.

## Nation

**Janet Gaynor and Mary Martin hurt in crash** — Two well-known actresses, Mary Martin and Janet Gaynor, were seriously injured when a speeding van collided with their taxicab in San Francisco, Monday, knocking it into a tree. Ben Washer, Miss Martin's manager and longtime personal friend, was killed in the crash. Also hurt was Paul Gregory, Miss Gaynor's husband. Miss Gaynor, 77, suffered six broken ribs on the left side, five on the right, a right collarbone fracture, multiple pelvic fractures, a ruptured bladder and bleeding around the right kidney. "In a lady of her age, the magnitude of the injuries is very critical," said a hospital spokesman. Miss Martin is in stable but serious condition.

**Labor increases political donations** — In a move to increase political influence, organized labor has increased its contributions to candidates for the US Senate and House of Representatives by approximately 21 percent in the first six months of 1982, according to reports to the Federal Election Commission by 17 of the largest union-related political action committees. In contrast, donations from corporations have increased by only five percent.

**Desegregation support dropped** — The Federal Government has severely reduced its financial support of the desegregation of public schools in many large cities this year. Local officials are worried about the cuts, saying they would ruin recent progress in school desegregation. New York City will feel one of the largest cuts, from \$10 million in the 1980-81 school year and \$6.2 million in 1981-82 to \$9,000 for this school year.

**Chemical produces anxiety in monkeys** — Scientists at the National Institute of Mental Health (NIMH) have synthesized a drug, beta-CCE, that can produce the effects of intense anxiety in monkeys, including increased heart rate, blood pressure, and pulse, and increased levels of stress hormones such as epinephrine. The animals tested displayed severe agitation, their hair rose, and they squirmed and showed other signs of alarm. NIMH scientists were surprised at the ability of a single drug to almost instantly create such a perfect state of anxiety. "For the first time, we may have a reasonable understanding of the biochemistry of anxiety," said Dr. Steven M. Paul of NIMH. The drug has also been tested successfully on human beings.

**Idaho farm gives away beavers** — The owners of the bankrupt Rupert Beaver Ranches, in Heyburn, Idaho, say they can no longer care for their 750 beavers and will give away as many as possible before slaughtering the remainder on Sunday. Teresa Kloos, trustee for the bankrupt beaver farm, says beaver recipients "have to be people with farms and land with good running water."

## Weather

Mostly cloudy today with the high in the upper 60's. Skies will clear tomorrow, as temperatures rise, bringing fair skies and highs in the 70's and lows in the 50's through Saturday.

Joel Gluck

## STUDENT ART ASSOCIATION FALL CLASSES

Register now thru Sept. 20 for classes or studio use in:  
 Photography                      Ceramics  
 Drawing                              Etching  
 Silkscreen                           Watercolor  
 Stained Glass                      Papermaking  
 Chinese Brush Painting

Student Center, Rm 429

MIT x3-7019

## Graduate Student Council

# ORIENTATION DANCE

Friday, September 10, 1982  
9:00pm

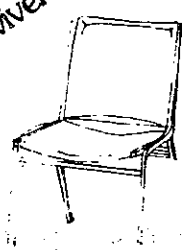
Faculty Lounge  
Sloan School  
50 Memorial Drive  
E52 6th Floor

**Student Sale**

Swivel Chair, File Cabinets, Folding Tables  
(New and Used)



Swing-arm Lamps  
Starting at  
\$15.99

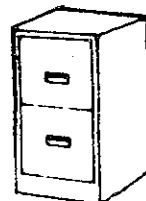


Reg. \$37.99  
Sale \$22.50

Executive Swivel Chair  
Reg. \$110  
\$59.99



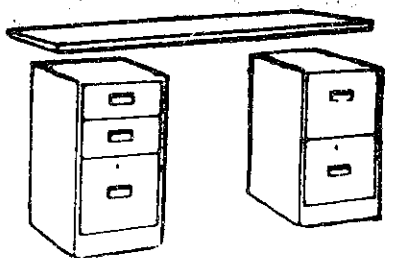
Reg. \$85.00  
\$49.99



List \$75.95  
Sale \$57.99

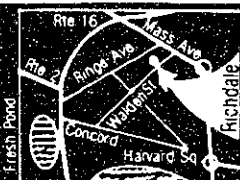


List \$90.95  
Sale \$69.99



Formica Tops  
(Available in 3 colors)  
\$32.00

Used Student Desks \$50 and up



DIVISION OF W.A. PELRINE, INC.  
**CAMBRIDGE OFFICE FURNITURE** (617) 876-6790  
113 Richdale Ave. Cambridge, Ma. 02140 Open Mon-Fri 8-5

Help Prevent Birth Defects —  
The Nation's Number One  
Child Health Problem.



Support the  
**March of Dimes**  
BIRTH DEFECTS FOUNDATION

**AUDITIONS**  
for the MIT MUSICAL THEATRE GUILD  
production of

# KISS ME KATE

Wednesday, September 8  
in Kresge Little Theatre at 7pm  
and Thursday, September 9  
on the 4th floor of the Student Center

For more information: 253-6294  
Bring a prepared song.

**We think your pictures are too important to be ground out at the rate of 10,000 an hour! Don't you?**



When you bring your roll of color print film into a drugstore or camera store, it will probably be printed on a high-speed "automatic" printer that operates at speeds of up to 14,000 prints an hour! That's good for the film lab, but not so good for your pictures.

At PHOTOQUICK/CAMBRIDGE, we know that a machine simply cannot do as good a job printing your pictures as a well-trained person who takes pride in his work. That's why here at Photoquick, we inspect each and every negative before it's printed, and we make corrections for color balance and density... corrections that probably won't be made by high-speed automatic equipment.

Bring in your next roll of color print film to PHOTOQUICK/CAMBRIDGE by 10 AM. You'll get your pictures back the same day, and they'll look their very best!

**PHOTO QUICK** Cambridge/Central Square  
FILM LABS  
564 Mass. Ave. • 491-9191

Another QUALITY/QUICK™ Service from PHOTOQUICK.

**FREE!**  
A fresh roll of Kodak color print film when you bring in a roll for processing with the \$2.00 limit one per customer. Offer expires Oct. 31, 1982.

# Opinion

## Editorials

### Take pride in MIT's laboratory success

Freshmen and parents do not need to be told about MIT's world-wide reputation. Upperclassmen, however, who spend most of their time during the term worrying about how best to remain sane despite being two weeks behind in their classes, often do. It is refreshing to learn that professors do not spend their spare time devising further methods to inflict needless pain on their students, but are intimately involved in some important breakthroughs.

For example, a team of MIT scientists, together with researchers from the National Cancer Institute and Merck Laboratories, has made an important discovery concerning the genetic differences between a cancer cell and a normal cell.

MIT's reputation rests, to a large extent, on its research prowess. Research priorities should never be an excuse for shoddy teaching, but, paradoxically, a dynamic research environment helps fulfill MIT's primary mission of educating its students. While students often complain with good reason that professors ignore them in favor of test tubes, reading about one's alma mater in *The New York Times* does invoke a certain amount of something largely missing at MIT: school pride.

### SCC report makes several valid points

In its report to the Corporation Visiting Committee on Student Affairs, the Student Center Committee claims the MIT Student Center suffers from a lack of lounge space, outdated and poorly-utilized facilities, and excessive use by non-student functions. The Student Center Committee (SCC) is right. The Julius Adams Stratton Building was conceived and built as a center for student life, as well as student activities, but it currently fails to provide an environment encouraging to student use of its facilities.

There is almost no lounge space in the Student Center. A pair of sofas and a pair of chairs in the fourth floor lobby, for example, do not a lounge make. Neither the Lobdell Dining Room nor Twenty Chimneys provides a friendly atmosphere for social interaction, and the SCC's own 24 Hour Coffeehouse — perhaps the only inviting lounge space in the building — is often overcrowded. SCC should use its financial resources to furnish, redecorate, and otherwise improve potential lounge space on the second, third, and fourth floors of the Student Center.

It is time to reassess the utility of facilities use in the building's basement, as well. If the barber, optician, and tailor shops and recreation room can be removed without significant loss to the student community, then the space should be made available for more beneficial uses. SCC should, however, be careful to include a broad range of student opinion in making any such determinations or recommendations to the administration.

Events like Industrial Liason Program luncheons and the Conference on Issues Facing Black Administrators at Predominantly White Colleges and Universities, while they are beneficial to the MIT community and may not always conflict directly with the need for facilities by student groups, do, indeed, influence the atmosphere of the Student Center. The SCC and the Office of the Dean for Student Affairs should clarify and, if necessary, revise, the policies for use of Student Center facilities to ensure the building can become a center for student life.



V. Michael Bove

### Last advice before classes

*"Life isn't all beer and skittles; but beer and skittles, or something better of the same sort, must form a good part of every Englishman's education."*

— Thomas Hughes (1822-1896)

*"Sport death. In other words, when in doubt, go for it."*

— Anonymous Senior House resident

Now that virtually everyone else has offered the fruits of his experience to the Class of '86, allow me to be among the last to add to this seemingly endless repository of wisdom before classes start and it's too late:

I was rather upset when a fairly-well-respected central Pennsylvania newspaper (no names; I have friends on the staff) ran an editorial praising incoming college students for being more career-oriented than their counterparts of previous years, and for not going to college "just to find themselves." What unmitigated balderdash! This may well be the last big chance you're going to get to find yourselves — don't be scared to change direction, or even to take time away from MIT if this will help you decide whether where you are headed is really where you want to end up.

Don't grimace when saying "humanities". Better yet, don't say it at all: say, "I'm taking Intro to Truth and Beauty," or Assyrian Lit., or whatever. And put as much effort into them as into your major. Or more. If you're going into engineering you'll probably be doing it for the rest of your life, so learn a little

about other subjects while you have the opportunity. Cross-register at Wellesley or Harvard — they have things to teach you that can't be learned on this campus.

Taking substantially more than 51 units a semester is just plain stupid. I refuse to say any more about it.

You stand to learn about a thousand times as much out of class as in, and the real-life lessons are more universally applicable. Visit New Hampshire, Vermont, and Maine. Dine out as often as finances allow. Go to the Museum of Fine Arts, Symphony Hall, Celtics games, The Rat, or what you will, but *get away*, damn it. MIT isn't the whole world, and distancing yourself from it on occasion will help you remember this.

Conversely, the whole world isn't MIT. You won't (I hope) be here forever, and you will find it useful to be able to communicate with "real people". Learn to converse intelligently on subjects other than operating systems or x-ray diffraction patterns, and if you already know how don't lose the skill.

Don't be scared to try new things.

If you came here with religious beliefs, don't put them on hold or abandon them entirely just because it seems fashionable. For that matter, peer pressure is a pretty crummy reason for doing anything.

Dance.

Join *The Tech*, or SCC, or LSC, or shut the heck up about how each does its respective

thing. Seriously, it's nice giving up a little of your time in order to do something for the other bozos on this bus — I'll bet you could even find some activity you'd enjoy, if you looked hard enough.

Don't become nearly as much of a cynic as I am.

And as a TA friend of mine used to say: if MIT's campus depresses you, spend an afternoon walking around BU, and then drop by Northeastern for a cup of coffee.

**Editorials**, marked as such and printed in a distinctive format, represent the official opinion of *The Tech*. They are written by the Editorial Board, which consists of the chairman, editor-in-chief, managing editor, and news editors.

**Columns** are usually written by members of *The Tech* staff and represent the opinion of the author, and not necessarily that of the rest of the staff.

**Letters to the Editor** are written by members of the MIT community and represent the opinion of the writer.

*The Tech* attempts to publish all letters received, and will consider columns or stories. All submissions should be typed, triple spaced, on a 57-character line. Unsigned letters will not be printed, but authors' names will be withheld upon request.

## The Tech

Ivan K. Fong '83 — Chairman  
 Jerri-Lynn Scofield '83 — Editor-in-Chief  
 V. Michael Bove '83 — Managing Editor  
 Mia Paget '84 — Business Manager  
 Volume 102, Number 34  
 Wednesday, September 8, 1982

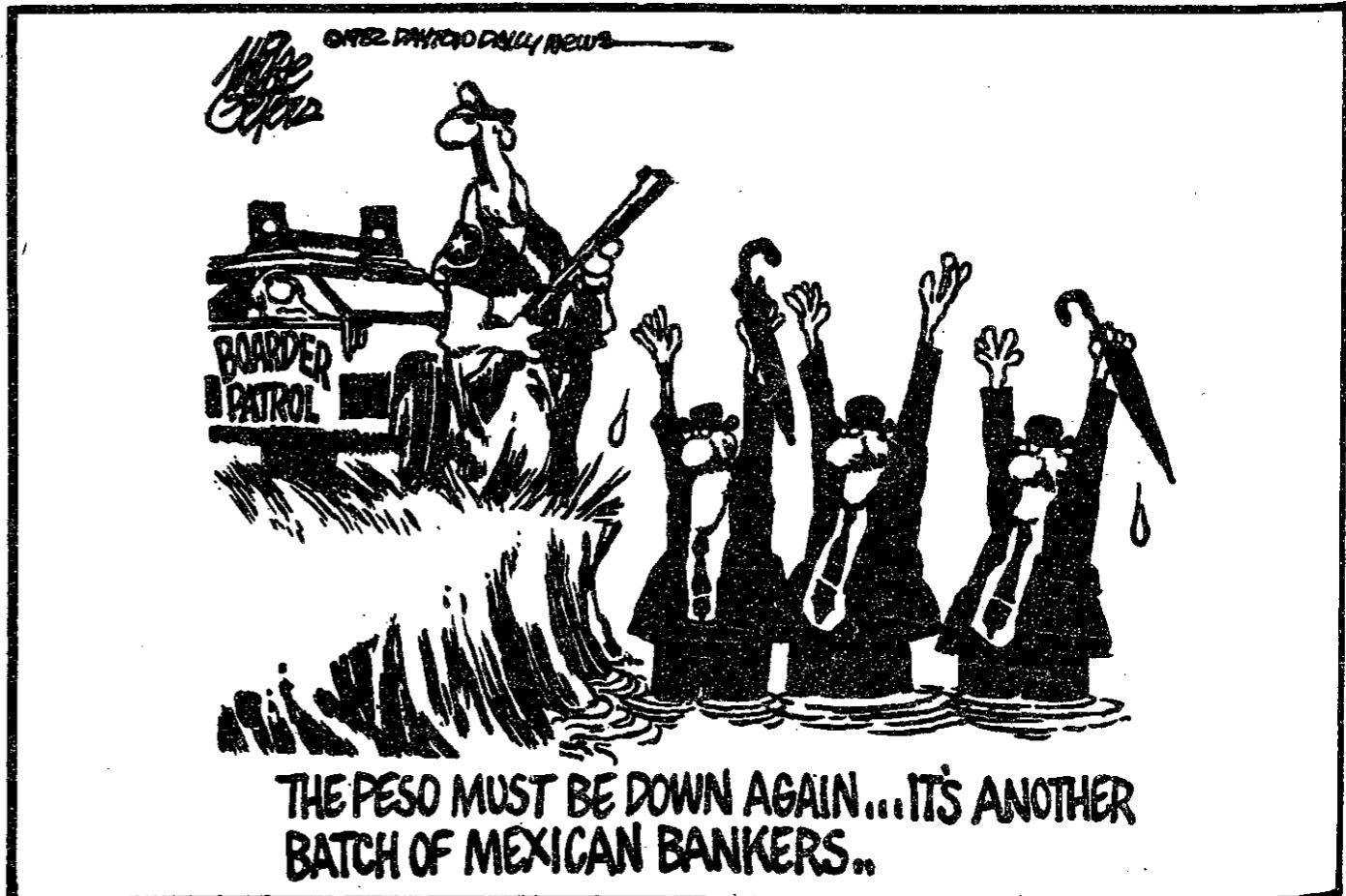
#### BUSINESS DEPARTMENT

Advertising Manager: Keith Tognoni '84; Circulation Manager: Jari Georgia.

#### PRODUCTION STAFF FOR THIS ISSUE

Night Editor: V. Michael Bove '83; Staff: David G. Shaw '82, Bill Spitzak '83, Bill Giuffre '84, Amy S. Gorin '84, Tony Zamparutti '84, Danny Wiedman '85, Katrina Ling '86, Linda Webb '86.

*The Tech* (ISSN 0148-9607) is published twice a week during the academic year (except during MIT vacations), weekly during January, and once during the last week in July for \$10.00 per year Third Class by *The Tech*, 84 Massachusetts Ave. Room W20-483, Cambridge, MA 02139. Third Class postage paid at Boston, MA. Non-Profit Org. Permit No. 59720. POSTMASTER: Please send all address changes to our mailing address: *The Tech*, PO Box 29, MIT Branch, Cambridge, MA 02139. Telephone: (617) 253-1541. Advertising, subscription, and typesetting rates available. © 1982 *The Tech*. Printed by Charles River Publishing, Inc.



# Opinion

## feedback

### Polish not sole sufferers

**To the Editor:**  
 Often times, we Americans are susceptible to the ways of the media; that is, to elaborate one issue at the expense of another. On **Lobdell's bowls same size as the cups!**

**To the Editor:**  
 In this age of rampant unemployment and spiraling inflation, it's always useful to know about little ways to save money. A few weeks ago, a friend revealed a secret to me, and I thought I'd share it with the freshman class and anyone else who chooses to partake of Lobdell's sumptuous cuisine. He told me that a cup of soup, while costing between 10 cents and 25 cents less than a bowl of soup, still contained the same amount of liquid. I was skeptical, but a simple experiment showed him to be correct; both vessels hold about 6 fluid ounces. When I asked an employee about this anomaly, he replied that Lobdell's prices were based on 8-ounce soup bowls, of which they had none. He congratulated my friend and me on our detective work, saying "probably less than 10 percent of the people who buy soup know about that fact."

I hope that this small hint will make life a little easier on all of Lobdell's patrons.

Mark Plotnick G

December 13, 1981, martial law was imposed in Poland, virtually enslaving the people of that country. For several months following, the MIT student was swamped with flyers and letters asking for support of the plight of the Polish people. I am one to support the causes of all oppressed people and that is why I am writing to supplement Mark Templer's column.

Even today, the media fail to cover the plights of many people and therefore there is no attention given to the distressing situations of the oppressed people of South Africa. Nor do we hear much about the trials of the Haitians both in this country and in their own. And what about the other oppressed peoples of this country. Two million Americans slipped below the poverty line in 1981, and many of the 31.8 million poor people in this country have no way out of their situation. I must mention that the

black-white family income differential is approximately 1.65 to 1. These issues, in addition to the consequences of Communistic imposition in free countries, must be addressed.

I am not discouraging the requests for national (and international) support for the plights of the oppressed in Poland, but I am encouraging all to open your eyes to help correct the oppression of other people who may have been in their present awful situations years before martial law in Poland was imposed. Sometimes we live blissfully reaping the benefits of liberty that many of us Americans feel we have. We must all become aware that we are weeds of oppression growing in and around our garden of freedom, and if we destroy one weed in a garden of many, no significant advance toward the emancipation of all peoples could be felt.

Karl W. Reid '84

Come Write for Us!



The Tech

Information & reservations: 253-0294  
 Stephen Sondheims  
 Kresge Little Theatre  
 84 Massachusetts Avenue,  
 Cambridge  
 Tickets: \$5 / \$3 MIT students  
 August 29 & September 4  
 at 3:30pm  
 August 27, 28, September 3, 4, 9, 10 & 11  
 at 8pm  
 An MIT Musical Theatre Guild production

## THE HONEYWELL FUTURIST AWARDS COMPETITION



### GRAB 2000 BUCKS IF YOU CAN ACE THIS EXAM!

Twenty years ago, who'd have thought you could carry a roomful of computers in your pocket? Make music with numbers? Or push pictures through a glass thread?

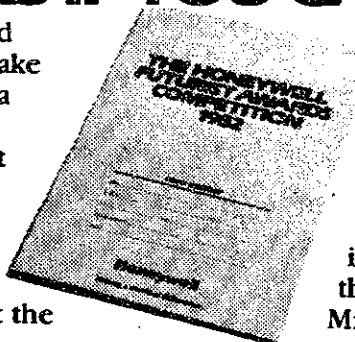
Yet today, it's just as difficult to predict what another 20 years will bring. So we're leaving it up to some pretty well qualified individuals. People like you.

We invite you to participate in the Honeywell Futurist Awards Competition. Predict the most significant technological developments in the year 2000 and how they'll affect our environment, economy and social structure. A panel of expert judges will select the ten winners, and Honeywell will give each of those talented students \$2000!

And there's a bonus! Those winners with a declared major in electrical engineering, computer engineering, mechanical engineering or computer science will be offered Honeywell Summer Internships— with salary grants!

**HOW TO ENTER**

Mail us the completed request form for your Honeywell Futurist Awards Competition Blue Book and entry



instructions. Predict the changes that will occur by the year 2000 in Computers, Energy, Aerospace, Marine Systems, Biomedical Technology, and Electronic Communications, and how these changes will reshape the World.

The ten winners will be notified by mail, and invited to the Honeywell Futurist Awards Dinner with the Futurist Panel of Judges, February 15, 1983 in Minneapolis.

**ELIGIBILITY**

1. You must be currently enrolled at an accredited U.S. college or university as a full time undergraduate or graduate student. (Full time faculty members and Honeywell employees and their immediate families are not eligible.)
2. Send in the coupon or write to: Honeywell Futurist Awards Competition, P.O. Box 9017, St. Paul, MN 55190 for your official Futurist Blue Book, competition rules and information.
3. Deadline for receiving requests for contest materials is December 1, 1982. Contest closes December 31, 1982.

**OFFICIAL ENTRY BLANK**

Print your name and address and mail to Honeywell Futurist Awards Competition, P.O. Box 9017, St. Paul, MN 55190.

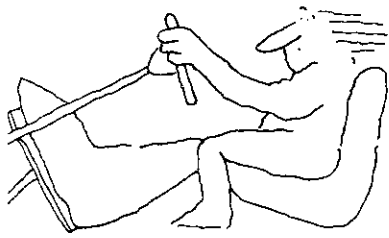
Yes, I am interested in participating in the Competition. Please send me an Official Futurist Blue Book.

NAME \_\_\_\_\_  
 ADDRESS \_\_\_\_\_  
 CITY \_\_\_\_\_ STATE \_\_\_\_\_ ZIP \_\_\_\_\_  
 COLLEGE OR UNIVERSITY \_\_\_\_\_

**Honeywell**

Making a world of difference.

**NOT SO FAST**



ENERGY. We can't afford to waste it.

**COTTON TURTLENECK JERSEYS**

**\$7.95**

**31 COLORS**

**LEVI'S, LEE'S**

**FATIGUE PANTS**

**\$10.95**

**CENTRAL WAR SURPLUS**

433 Mass Ave.  
 Central Square  
 Cambridge

This space donated by The Tech

# Discipline can't be beat

Beat. King Crimson on EG/Warner Brothers Records.

Those who were amazed by last year's resurrection of the venerable art-rock ensemble King Crimson will be even more amazed by the appearance of their second album in less than a year, an unheard-of event in the Crimson saga. That this album features that same personnel as *Discipline*, the previous release, will seem impossible to those who know that no two albums by K.C. ever maintained a consistent lineup. The same disbelievers will no doubt fall into a swoon when they hear *Beat* and realize that it may well be Crimson's most commercial effort to date. Yet, despite the potential shocks that may befall the staunch art-rockers, all of these assertions are true.

The renewed energy of the once-dead band is largely due to the manic presence of guitarist/vocalist Adrian Belew. At last, Crimson has a front man that is both musically accomplished and an excellent singer as well. All the credit must not go to Belew, however, because this is still Robert Fripp's band. His hiatus from performing and his solo experiments provided a rare opportunity to try out his ideas on his own before integrating them into the context of a performing ensemble. The contributions Fripp makes to *Beat* are subtle; the Frippertronics chord changes in the bridge of "Sartori in Tangier" are the best example of a practical application of his experiments. Lest the fanatics be disap-



pointed, Fripp does offer the latest in his series of sonic sandpaper solos in the album's final cut, "Requiem," a workout for guitar and guitar synthesizer.

As for the commerciality of this venture, one of the tunes, "Heartbeat," seems destined for airplay (but with the increase of conservative radio programming this prob-

ably won't come to pass). Against chorded accompaniment, Belew's plaintive vocal about the things one does when on the road—this song, along with "Two Hands" and "Waiting Man," uses the sentiment of *Discipline's* "Kudasai." While not as compelling as "Neal and Jack and Me" is the cut on the disc, spinning a tale out of Kerouac's *On the Road* over a guitar figure derived from "Indiscipline" is a phantasmic Talk.

This observation is the key: Is *Beat* merely a rehash of *Discipline* or does it indeed fresh material? The answer lies somewhere in between. Yes, one hears echoes of the earlier album in the later "In Tangier" recalls "The Shell Game" and "Neurotica" is reminiscent of "Hun Ginjeet"), but the creativity lies in the ability to recombine existing sources into new music. The situation is not without historical precedent: When King Crimson released *In the Wake of Poseidon*, Fripp claimed it was derivative of *In the Company of Man* by the same band. The servant realized that *Poseidon* was probably the way Fripp *Really* wanted to turn out. And so it goes with *Beat*: previous album was an introduction to a new record is how it's supposed to be. Fripp has commented in interviews: "You think King Crimson is a good band now, wait until you hear us in a live setting. You don't know about anyone else, do you?"

# Clashing with the Gang of Four

Combat Rock. The Clash on Epic Records and Songs of the Free. Gang of Four on Warner Brothers Records.

How long can you say the same things and get away with it? Well, here's two different answers to that question.

*Combat Rock* is the Clash's sixth release of politrock, and suffers from a real lack of fresh ideas. This album is rife with anti-establishment rhetoric, but this time it either lacks direction or is going over old ground. This year's worst song, by a mile, has got to be "Know Your Rights." It's got absolutely nothing going for it: the melody has little structure other than a mid-speed rocker tempo, and Joe Strummer sounds like his larynx went through a meat grinder. You and I have heard this theme before, too ("Guns of Brixton" and "Julie's in the Drug Squad," for example). It's not even agreeable to the ears; the operative word here is *drek*.

This disc is very much like every other Clash album, only worse. There are the obligatory songs which are, respectively, anti-corporation ("Car Jamming"), anti-war ("Inoculated City") and anti-social stratification ("Ghetto Delendant"). Awful, awful, awful lyrics.

If there is one bright spot, it's that the musical quality of these efforts is still very good. If you can disregard what the band is trying to say, "Car Jamming," "Inoculated City," "Rock the Casbah" and "Overpowered by Funk" are decent singles.

On the other hand, we have Gang of Four. After *Solid Gold's* critical bankrupt-

cy, there were serious questions as to Go4's future. *Songs of the Free*, the latest release, is a dramatic change in direction, both lyrically and musically.

The one most prominent obstacle between Go4 and Success has always been the stridency of its guitar charge. The rhythm was intended to bang dogma into your head and make you believe. Now, I don't know whether it was the personnel change (ex-League of Gentlemen bassist Sara Lee replaced Dave Allen) or not, but the whole feel of this album is different. Backing vocals help some, as do a steadier background of strings which tend towards the legato. Lyrically, the difference here is that between a sermon berating you to believe and a manifesto of strongly held views. A fine line, perhaps, but it makes all the difference.

There's nothing particularly flashy here, but the record exudes the solidness of a well-made car (circa 1955). If you prefer a harder edge, you'd like "Call Me Up," "Muscle for Brains," and "It is Not Enough." The latter is my personal fave, featuring a vocal straining to go hoarse and lyrics depicting a restless man, always seeking change because "Nostalgia, it's no good." On the other end of the spectrum is the current "hit," "I Love a Man in Uniform." The simplistic guitar rhythmic base and Lee's backing vocals mask the lyrics, which demystifies the romanticization of the military (as in, *Dulce et decorum pro patria mori est*). It would be very easy to appreciate this tune if it had nothing to say; the words just add much-appreciated content to form.



I guess when you really come down to it, there's one fundamental difference between these two albums. *Gang of Four* makes music with a message, while the Clash accompanies its message with music. And that is why *Songs of the Free* wins

and *Combat Rock* doesn't.

Eric A. Sohn  
(Editor's Note: Mr. Sohn (Class of '82+n) is currently living in exile somewhere in Long Island. Whenever he can smuggle out correspondence we will print it; it's vital for his sanity.)

# Permanent vacation

Vacation. Go-Go's on IRS Records.

I approached this album with a lot of trepidation. The odds were good that the Go-Go's, intoxicated by the heady success of *Beauty and the Beat*, would travel down that old tried-and-true route to AOR (Album-Oriented Rock) superstardom. It is a rare band that sticks to its artistic guns rather than producing that which sells.

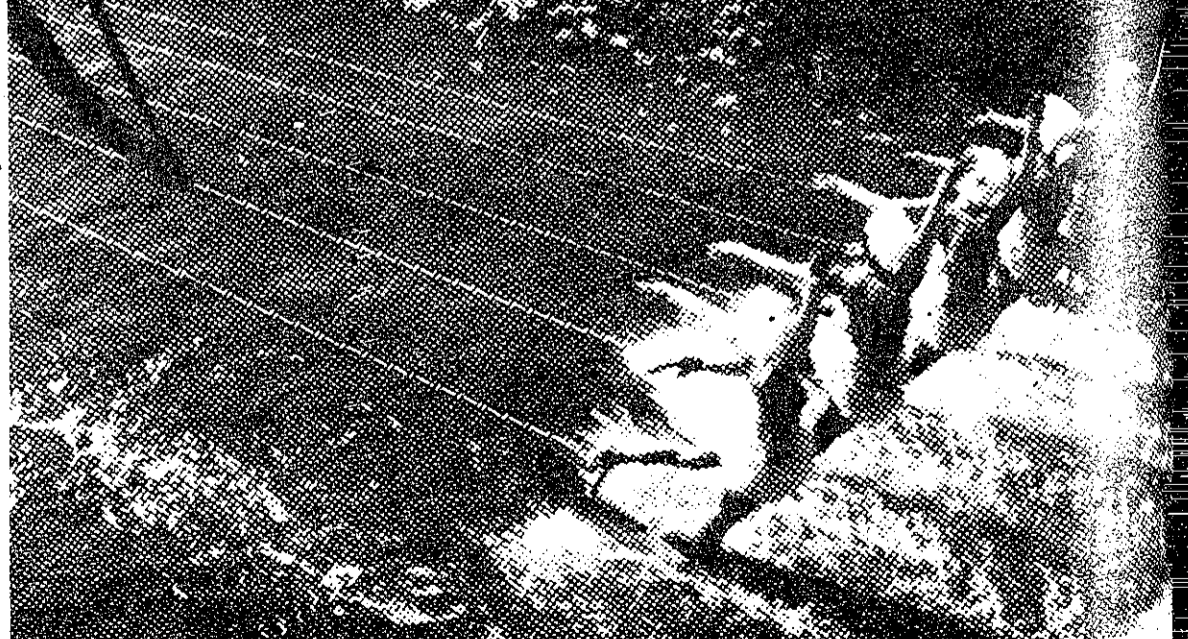
On this score, at least, *Vacation* wins. The girls have produced another slab-of-wax of songs about love, both in the past and present tenses, with some stabs at progressing musically. On the whole, however, this album is uneven.

Some of the best tunes are those which adhere best to the Go-Go's girl-group ancestry. In particular, "This Old Feeling" and the title track are well-crafted pop tunes, with the harmonies on "Vacation" softening Belinda Carlisle's somewhat

grating voice. "Girl of 100 Lists" is a very whimsical tune about classifying and keeping a tally of every aspect of life, and features an excellent bridge (Charlotte Caffey is actually a very decent guitarist).

But, if you only listen to one song on this album, pick up on "Beatnick Beach." It's the ultimate in camp, from the lyrics on down. There's a neat little bass power-dive, but what gets me the most are the backing vocals, which consists of manic *yeah-yeahs* during the chorus.

I said this album was uneven. Well, the lyrics work only occasionally. Most of the attempts at seriousness and heavy emotion fall flat on their faces. Personally, I would not shed a tear if Jane Weidlin (author of "It's Everything But Partytime") never wrote another song. "I Think It's Me" is a nice tune, but yearns for something that the lyric drive it's been handed. Oh yes, the cover of "Cool Jerk" is *Godawful*. Car-



lisle wouldn't know a growl if it hit her and her attempts at being soulful are pitiful. It was so much better in concert last time I saw them (even better than Human Sexual Response's cover); it's a pity it doesn't translate well to vinyl.

Not bad, but not great is how the report card on *Vacation* reads. The group has potential to become pretty good within the confines of their niche, so stay tuned.

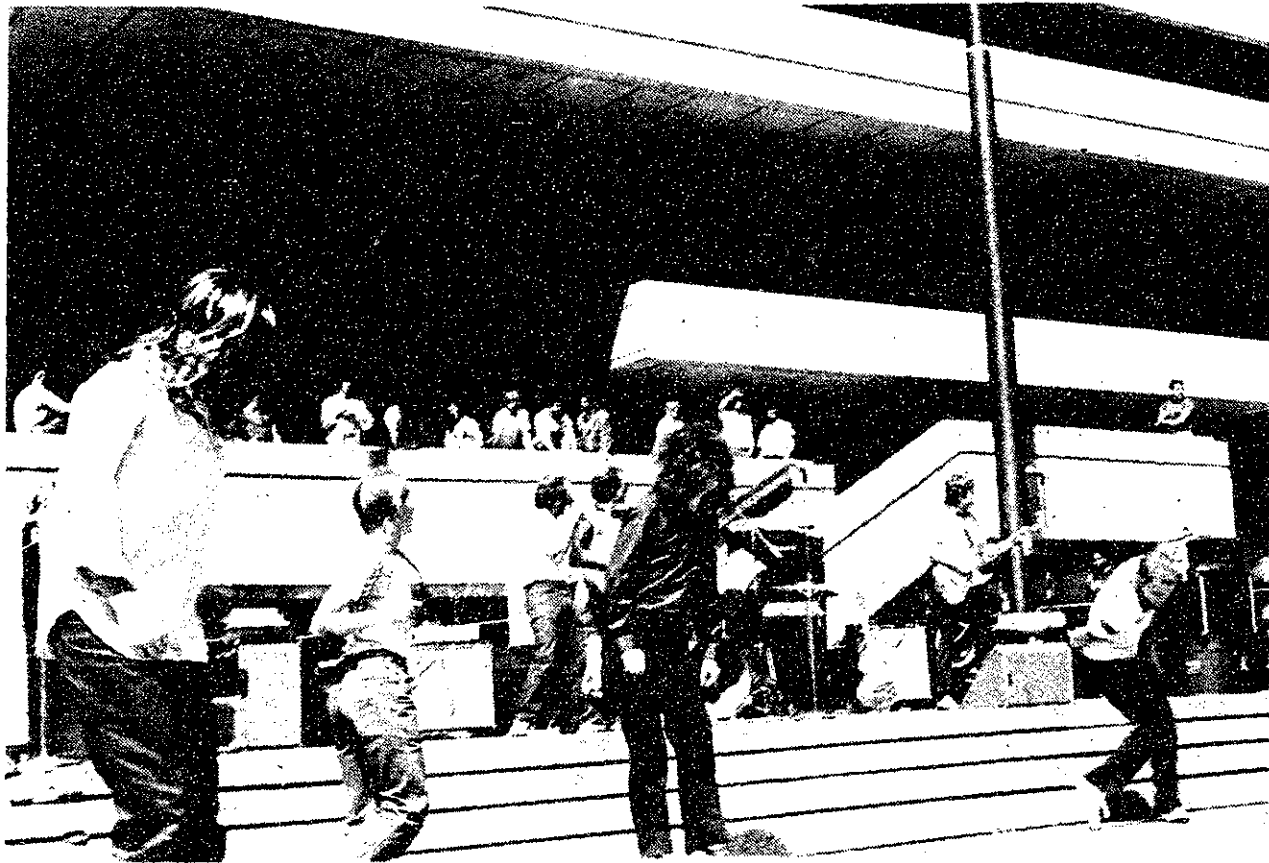
Eric A. Sohn



# photo

# FIELD DAY

Laurie Goldman  
Bill Coderre



### classified advertising

'81 LTD. 50kmi, \$500, call 494-0289 after 7pm.

**PIANO, THEORY, and COMPOSITION INSTRUCTION**  
Award-winning pupil of Nadia Boulanger with B.M. and M.M from Boston University and M.F.A. and A.B.D. from Harvard. Christopher Yavelow, Harvard Square Studio. 497-0275.

Will trade Potter LP3008E line printer for two cases of Heineken beer. All documentation, ribbons included. Call *The Tech*, x3-1541.

**THREE BEDROOM**  
BACK BAY corner Newbury, Gloucester. No fee on this top floor, sunny, corner apartment; elevator, laundry, hardwood floors; track, recessed, and regular lighting; live-in superintendent. \$890 includes heat, hot water. No fee. 267-2276.

**FOR SALE**  
Assorted household goods and other miscellaneous items. All new, reasonable prices. Call anytime, 322-8503.

**EXTRA MONEY**  
National Health & Nutrition Company. Expanding in the area need campus reps to meet our tremendous growth. EARN \$200.00 - 500.00 per week part time. Choose your hours. Call Frank or Craig, 938-1680.

**Save:**  
**25% on used textbooks**  
**50% on used paperbacks**

**Harvard Book Stores Inc.**

We pay top prices for used paperbacks, textbooks and law books.

1256 Mass Ave. • Cambridge  
**OPEN EVENINGS**

# MIT rejects ATM's for Student Center

By Laura Farhie

MIT has decided not to allow BayBank Harvard Trust Company to install automated teller machines (ATM's) in the basement of the Student Center because of security problems, according to MIT Vice President for Operations William R. Dickson '56.

The Student Center basement is a "lousy location" for the machines because it is isolated and has a low level of nighttime activity, according to Dickson.

Another problem with the Student Center location is the possibility of the public coming on MIT property to use the machines, Dickson noted.

The MIT Campus Police have received reports of MIT students being robbed of money at the BayBank ATM's in Kendall Square, he said.

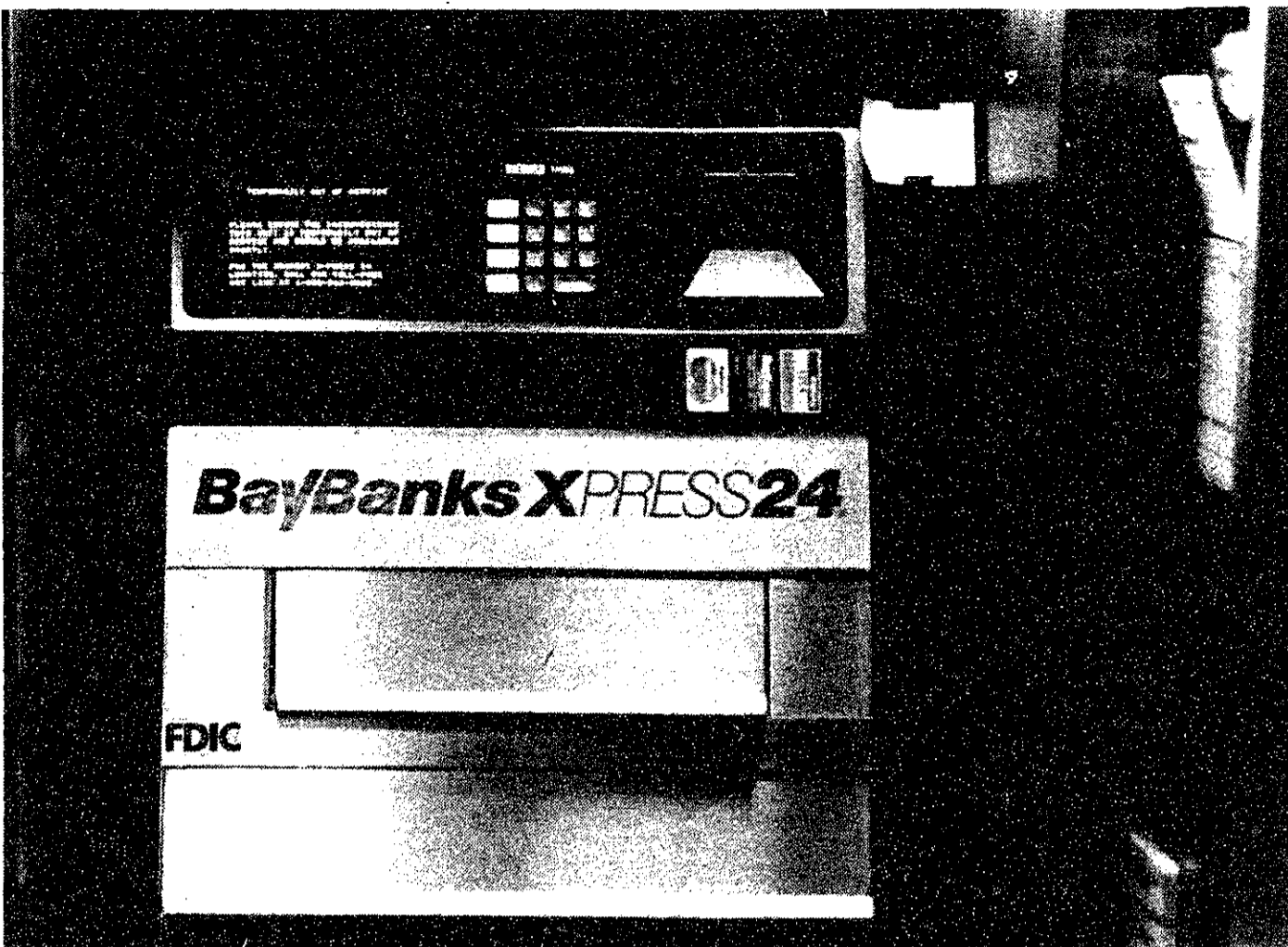
"It is quite possible that some-

where else on campus we might install machines," Dickson said. The Cashier's Office in Lobby 10 is a possible location for the ATM's, he said.

In January, Harvard Cooperative Society General Manager James Argeros approved the placement of two or three ATM's adjacent to the Tech Coop Barber Shop.

If ATM's are installed at the Institute, operation hours may be restricted and security provided, according to Dickson. "Realistically, if we put machines in the area of the Cashier's Office, not many people [from outside the Institute] will come into MIT to them," he said.

Since MIT is a non-profit entity, it cannot operate a commercial venture such as a bank's cash machine, Argeros noted last January. This problem could be circumvented if MIT provided BayBank with the floor space and the company supplied the ATM's, according to Dickson.



Machines like this one will not be appearing in the Student Center in the near future.

Tech photo by Gerard Weatherby

## Engineers recruited heavily last year; others find few jobs

(Continued from page 1)

"May ended with blood on the floor; the summer was the interlude between two plays. We are starting in the dark, but we will dig deep to give students good ideas."

"There are serious structural difficulties in the economy," said Hecht, "which require the skills of the engineer and scientist . . . A hell of a lot depends on whether society sucks up its socks and makes some tough decisions."

### sporting notices

New office hours for intramurals (W32-121) are 2:30-6pm, Monday through Friday. The telephone number is x3-7947.

Anyone interested in reserving areas on Briggs Field or du Pont tennis courts should contact Sandy Houston at x3-4916, or stop by W32-109 in the Athletic Center.

Intramural soccer and football entries are due Monday, September 13 in the Intramural Office (W32-121) by 3pm. New office hours are Monday through Friday, 2-5:30pm. The phone number is x3-7947.

The MIT football team is looking for statisticians. Anyone interested in working at both home and away games should contact MIT sports information director Ken Cerino at x3-7946 or stop by W32-129.

**Thank Q.**  
How do we Thank Q? Let us count the ways:  
Thank Q for:

- BEST PRICES**
- BEST EQUIPMENT**
- JET-FAST SERVICE**
- on the street
- NEW & USED HIFI**
- in the vault, like:
- HAFLER GRACE BESSA SOUTHWORTH THOMSON CLAUDIO PIZANNO APPI/HOLMAN RAO DYNACO JAMES DEBESSON MICRO ACOUSTICS CANTALON DISCHAMBER STAN HELL VAHREBE MIT LAST AUDIO TECHNICA DE DEK PROBABLY RESEARCH FIBRO LIVE WIRE COOK KLYNE HATTY GRITTY GRASSO SCHREIBER KUMARABOY TANGORING SERVICE SHALL DISTRIBUTOR MONSTER SOUND CONCEPTS & MUCH MORE.
- Thank Q because We
- BUY SELL TRADE**
- CONSIGN BROKER**

Thank Q for QUEST, the private eye for Hifi. Looking for a particular piece of equipment? New, used or collectible, as likely that our vast network of sources will enable us to track it down. Here's how. Call QUEST.

We'd like to Thank You, our valued customers, who have helped us become one of the world's finest sources for new and used audio.

**WORLDWIDE SHIPPING**

**Q Audio.**  
There is no cooperation.  
95 Vassar St. Cambridge, MA 02139  
617-547-2727

Send \$2 for our NEW, expanded Catalog.

# BE A BIG WHEEL ON CAMPUS!

## Join The Revlon FLEX-RAMPAGE RALLY!

### WIN ONE OF 50 DODGE RAMPAGES.

Rolling!  
September 18th is the last day to enter!

# The Revlon Flex Rampage-Rally \$750,000 in prizes!

Now Flex...the fabulous Instant Conditioner and Shampoo...invites you to be a big wheel on campus! Enter the Flex-Rampage Rally Sweepstakes! It's easy...and you may win a 1983 Rampage Sport, Dodge's personal size pickup. The rally is a Sports Car Club of America Solo II Skill Rally. If you win you'll be at the wheel of your own Rampage. Or win one of hundreds of other prizes.

Go to your participating Flex retailer and pick up an entry blank. Just fill it out and take it to your participating Dodge dealer.

If your name is drawn you'll get \$50 cash, a new Rampage on loan to drive to the Flex-Rampage Rally in your area and a year's supply of Flex Shampoo and Conditioner.

	<b>50</b> Schneider Stereo Component Systems		<b>50</b> Mitsubishi AM-FM Car Stereo and Philips Car Speakers
	<b>50</b> Konica EF-3 Cameras		<b>100</b> REVLON Implement Sets for Men and Women

See your participating Flex Retail outlets for official rules and details. No purchase necessary. Void where prohibited. Licensed drivers only. Sweepstakes expires September 18, 1982.

# REVLON

© 1982 Revlon Inc.

# EVEN STRAIGHT A'S CAN'T HELP IF YOU FLUNK TUITION.

Today, the toughest thing about going to college is finding the money to pay for it.

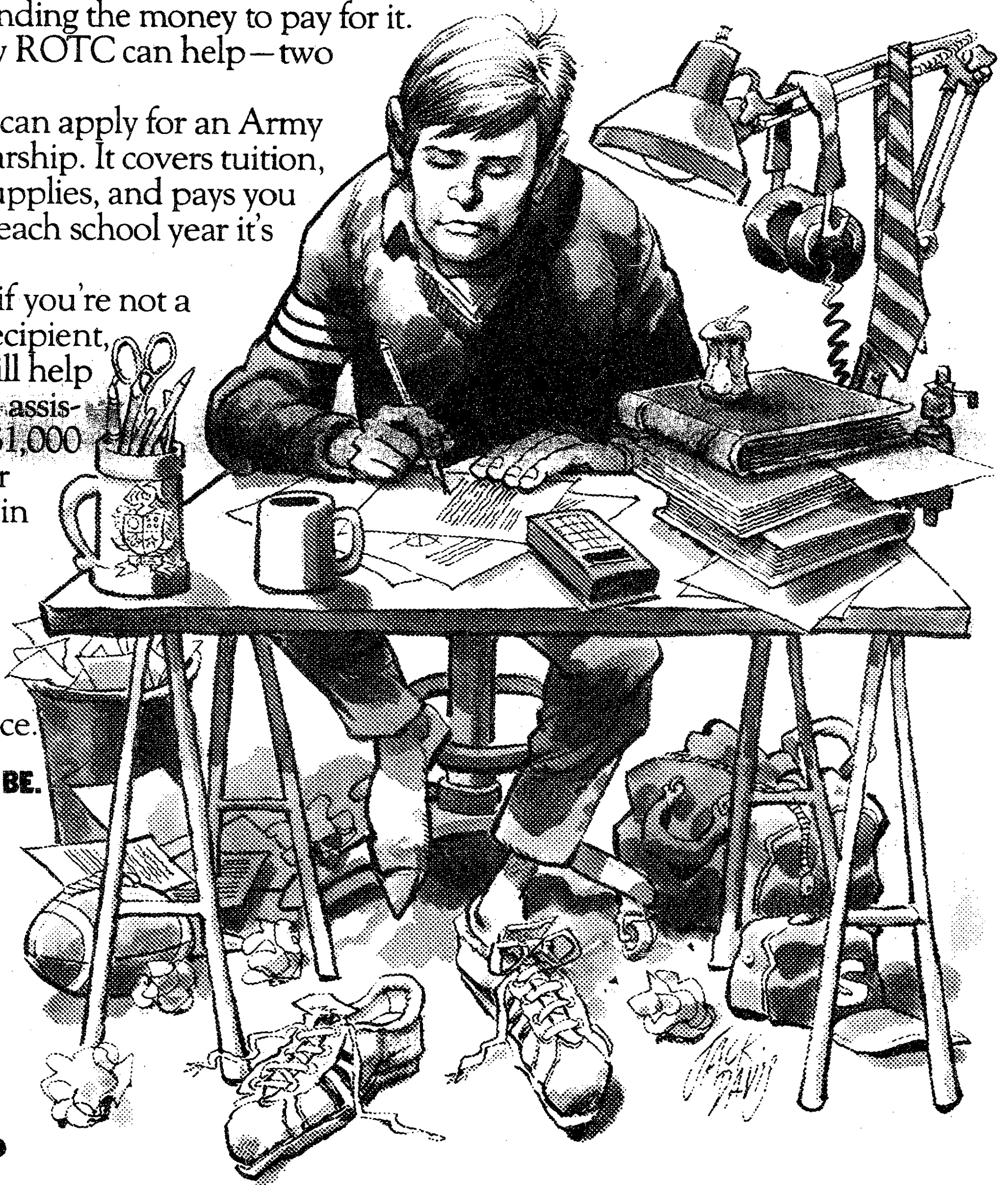
But Army ROTC can help—two ways!

First, you can apply for an Army ROTC scholarship. It covers tuition, books, and supplies, and pays you up to \$1,000 each school year it's in effect.

But even if you're not a scholarship recipient, ROTC can still help with financial assistance—up to \$1,000 a year for your last two years in the program.

For more information, contact your Professor of Military Science.

**ARMY ROTC.  
BE ALL YOU CAN BE.**

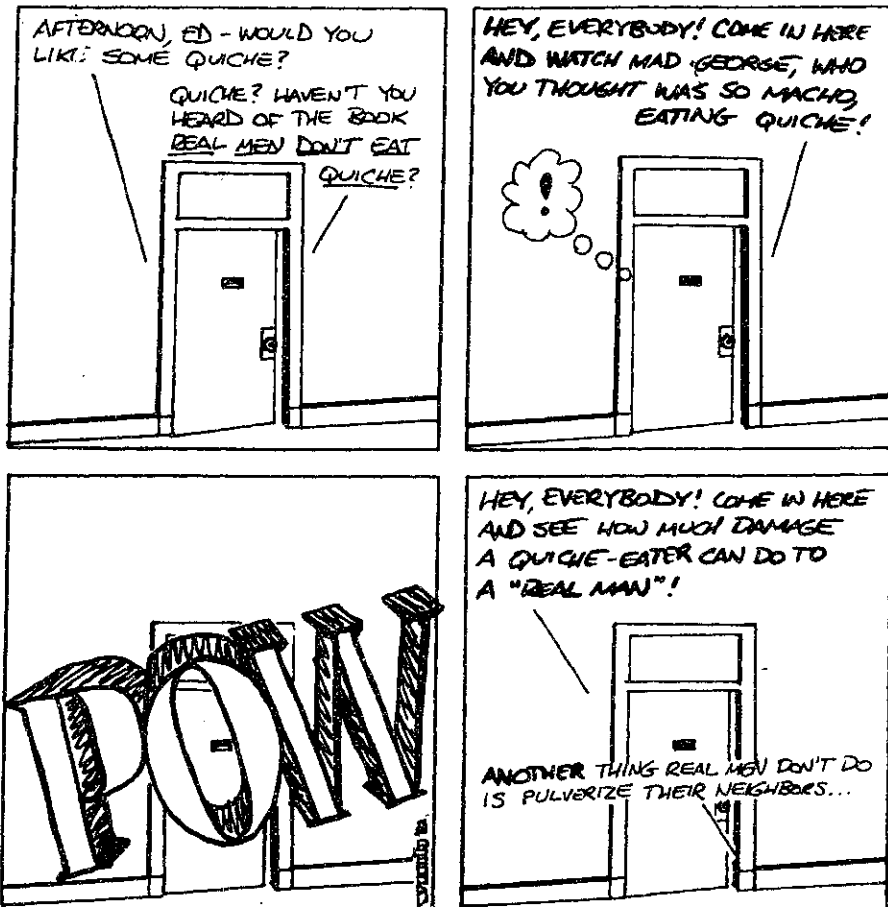


**Stop by:  
20E-126**

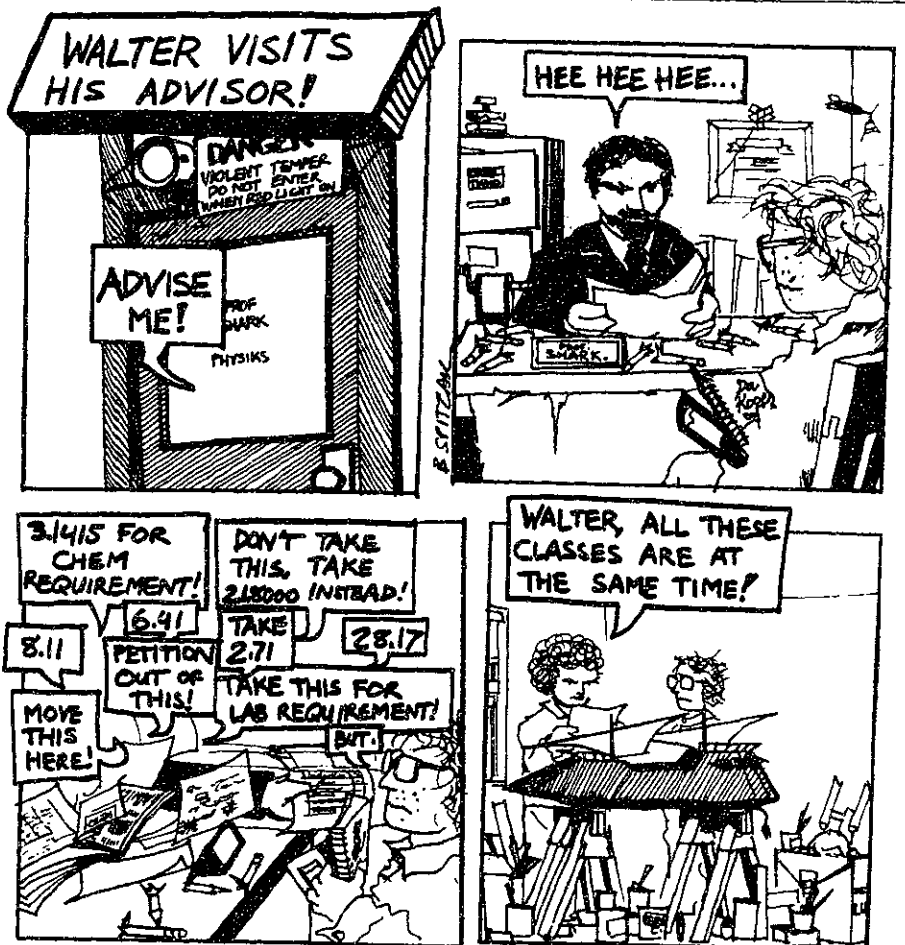
**Or Call: Cpt. Tom Bortner 253-4471**

# comics

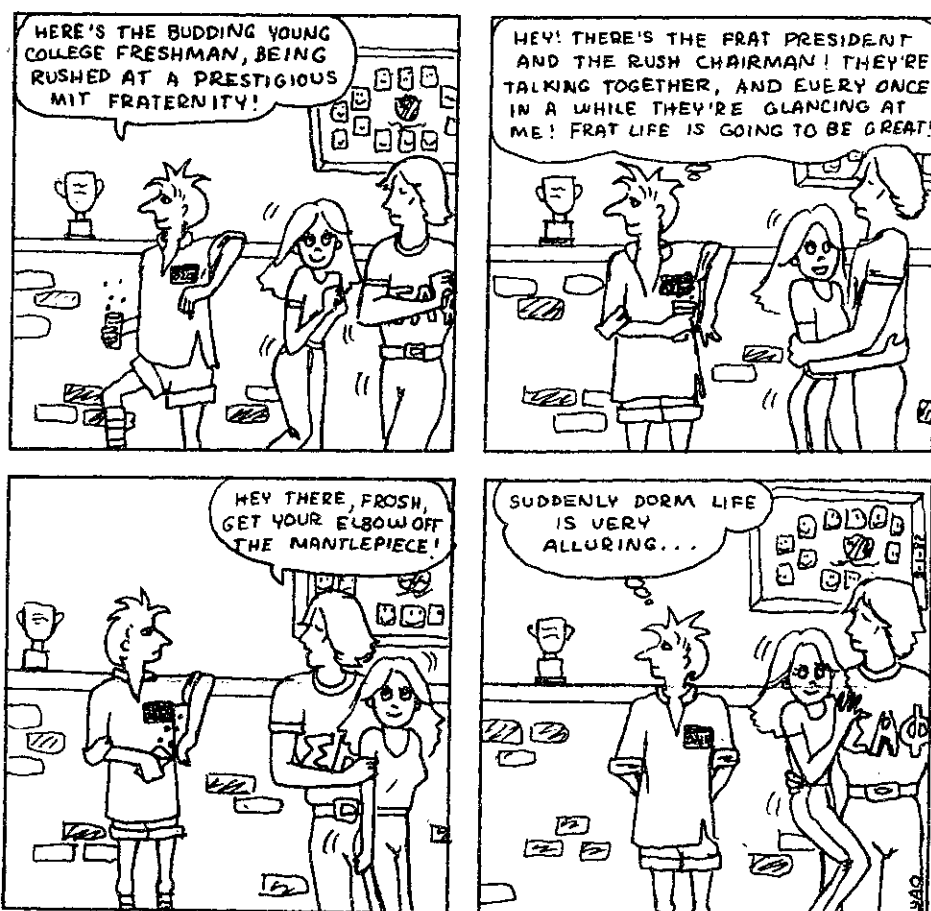
Outside Looking In  
By V. Michael Bove



Space Epic  
By Bill Spitzak



Room 001  
By Carol Yao



The Beaver  
By Glenn Ackerman



**YANG'S MARTIAL ARTS ACADEMY**  
**Tai Chi & Shaolin**  
**Jwing-Ming (Jimmy) Yang**  
 Author of: 1. Shaolin Chin Na  
 2. Shaolin Long Fist Kung Fu  
 3. Yang's Tai Chi Chuan  
 4. Introduction to Chinese Weapons  
 295 Huntington Ave. Rm 202  
 Information 354-3923  
 or Jimmy Yang 1-851-5743

Your foreign language ability is valuable!

Translations into your native language are needed for industrial literature. You will be well paid to prepare these translations on an occasional basis. Assignments are made according to your area of technical knowledge.

We are currently seeking translators for:  
 • Arabic • Chinese • Danish • Dutch  
 • Farsi • French • German • Greek  
 • Italian • Japanese • Korean  
 • Norwegian • Polish • Portuguese  
 • Romanian • Spanish • Swedish  
 and others.

Into-English translations from Russian, East European languages and many others also available.

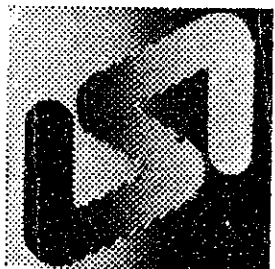
Foreign language typists also needed.

All this work can be done in your home!

Linguistic Systems, Inc. is New England's largest translation agency, located a block north of the Central Sq. subway station.

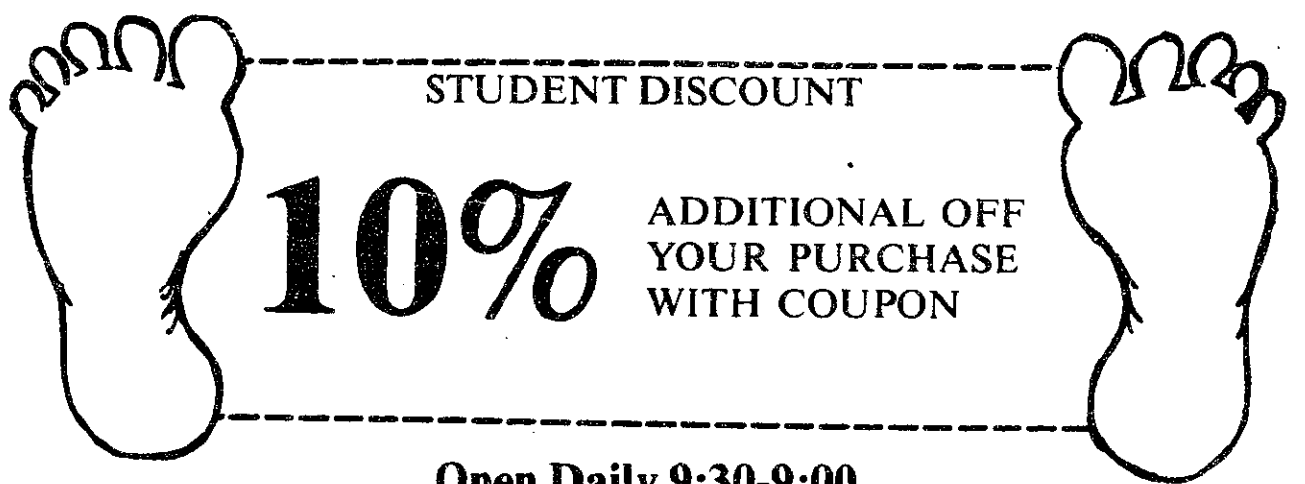
For application and test translation call Ms. Erebia

**864-3900**



Linguistic Systems, Inc.  
 116 Bishop Allen Drive  
 Cambridge, MA 02139

Don't Get Cold Feet



STUDENT DISCOUNT

**10%**

ADDITIONAL OFF YOUR PURCHASE WITH COUPON

Open Daily 9:30-9:00  
 Saturday 9-6

**Lechmere Rug Company**

(Not to be confused with Lechmere Sales Co.)  
 Large Selection of Remnant Carpets & Area Rugs Perfect for Your Dorm Room  
 Remnants Normally 40-60 percent Off  
 Students Present Coupon for Additional 10 percent Discount

VISIT US AT OUR NEW LOCATION:  
 200 MSGR. O'BRIEN HIGHWAY  
 876-9700

# sports

## Bikers return home

By Martin Dickau

A forty-nine-day test of determination and endurance came to an end Sunday afternoon as Cliff Lansil '83 and Greg Kern '84 rode into Killian Court, completing the last leg of their 4,200-mile bike ride across the United States.

A group of about twenty-five people was on hand to welcome the travellers home from their trip which started in Winchester Bay, Oregon and covered thirteen states, including Idaho, Montana, Wyoming, Colorado, Kansas, Missouri, Illinois, Indiana, Ohio, Pennsylvania, and New York.

The two cyclists experienced some difficulties early in their trek, managing only five miles the first day and fifty-five the second due to flat tires. They had planned on doing a hundred miles each day. However, as time wore on, mechanical problems took second place to mental outlook. "We rode for a week in Wyoming," commented Kern. "That takes patience."

Kansas, the site of twenty-mph headwinds for two days, was named the most difficult stage of the trip. There the riders would have ended their journey and taken a bus home but for one small

problem, according to Lansil: "There were no busses in Kansas."

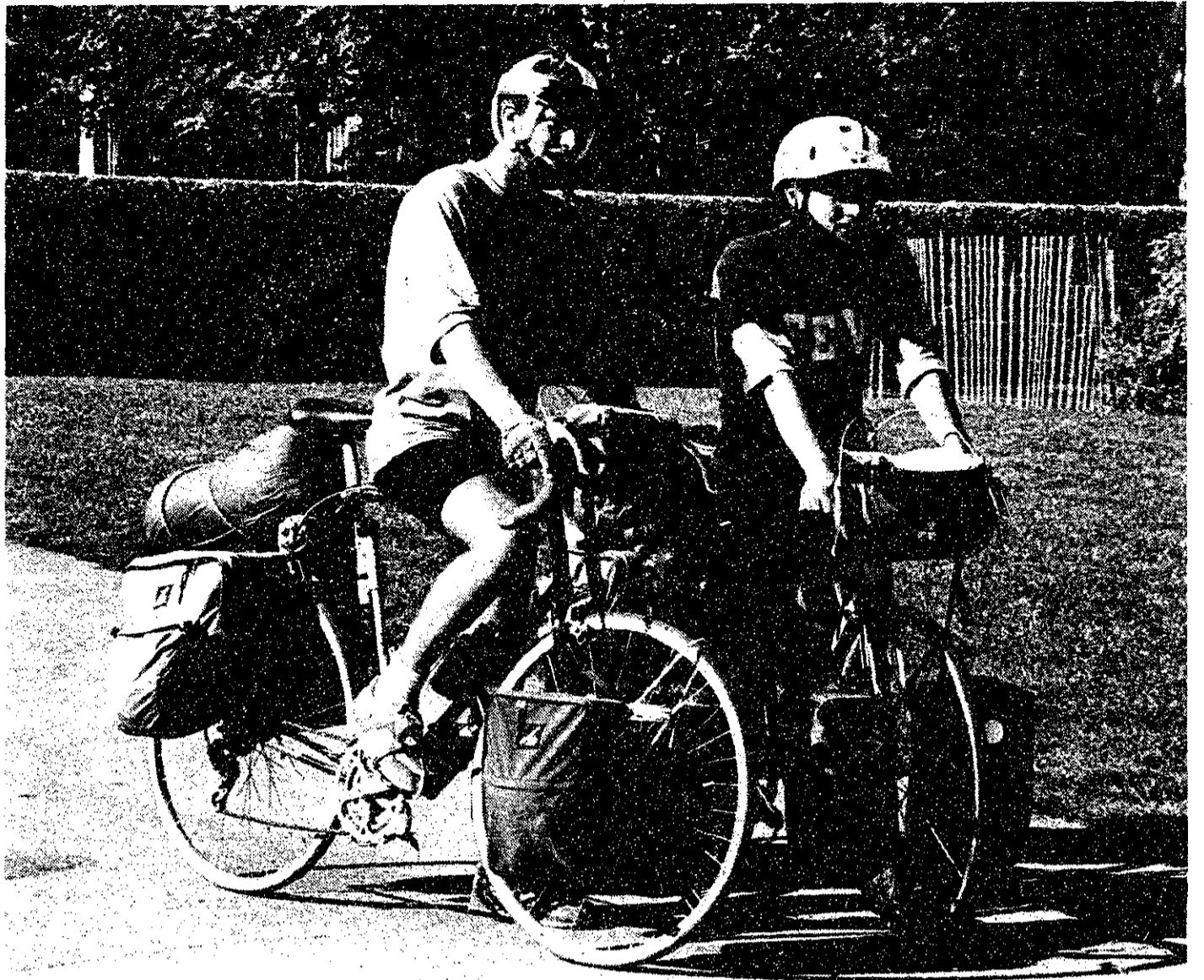
The two men have no immediate plans to do any more long distance riding. When asked whether she would discourage her son from another undertaking of the sort, Lansil's mother replied with a laugh, "I don't think I'd have to."

## Swimmer receives NCAA scholarship

By Martin Dickau

Karen Marie Klinecicz G, an all-American swimmer, recently received a \$2,000 scholarship from the National Collegiate Athletic Association (NCAA). Last year Klinecicz earned all-America honors in five events at the AIAW Division III championships and was given the Betsy Schumacker Award as MIT's top female athlete.

One of the outstanding athletes in the school's history, Klinecicz holds eleven individual MIT women's swimming records and participated on five record-setting relay teams. She is the first MIT woman to receive a graduate scholarship from the NCAA.



Greg Kern (left) and Cliff Lansil stop for conversation and photos at Killian Court after completing their cross-country trek.

Tech photo by Gerard Weatherby

# THE

# TECH

proudly announces an

## Open Staff Meeting

## Sunday, September 12

## Student Center

## Room 483

## New staffers—4pm

## Full staff meeting—5pm

# Karate!

## MIT SHOTOKAN

## KARATE CLUB

SENSEI KAZUMI TABATA,  
6th DAN INSTRUCTOR

### Introductory Meeting

Thursday Sept. 9 7pm

T-Club Lounge—DuPont Gym

*"Not just physical exercise  
but also spiritual discipline."*

BEGINNERS WELCOMED

FOR MORE INFO: CHUNKA dl6230

## ATTENTION MOVIE LOVERS!



Be part of the best college film group  
in the country!

THE MIT LECTURE SERIES COMMITTEE

New member sign-up, Thursday, September 9  
8PM in the West Lounge of the Student Center