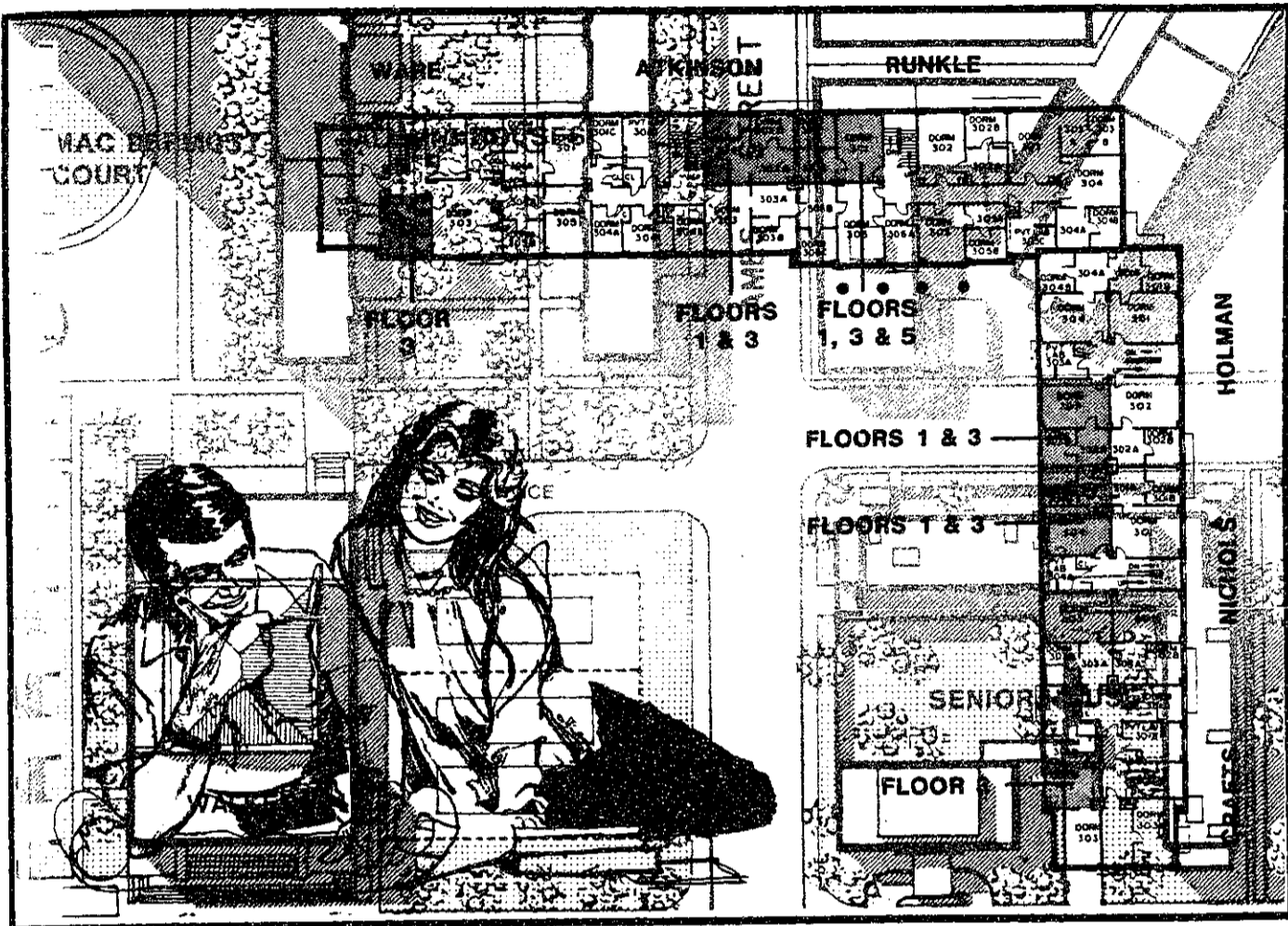


East campus to get new kitchens



Forced commons to end for Senior House, E.C.

By Jay Glass

The MIT Corporation's Executive Committee approved a proposal Friday to spend up to \$1 million to install kitchens in East Campus and Senior House.

Funds for the kitchens will be borrowed either from endowment or from commercial sources, according to Vice President for Operations William R. Dickson '56. The loan's principal will be paid back over a long period of time, probably ten years, he said. Rent in the two dormitories is expected to rise to pay for the kitchens, but Dickson does not foresee an increase in rent for 1982-83.

The Institute has not yet set either timetable or firm architectural plans, but the final plan is expected to incorporate elements of studies done by outside consultants and by a committee of east

campus students. Completion of the renovations is expected in 12-15 months. "I can see no reason not to be finished a year from next September," said Dickson.

To minimize room loss, kitchen locations are expected to include present basement storage space in Senior House and unneeded stairwells in East Campus. While some rooms are still expected to be lost to kitchen conversion, particularly in Senior House, no net loss of student spaces is expected. "Our charge is to do this [kitchen installation] without losing beds in the overall housing system... not necessarily within each dormitory. In East Campus, over time, many singles have been used as doubles — the arrangements will be up to Housing and the resident," Dickson said. The beds lost will be probably made up throughout the housing system, he added, rather than by severely overcrowding both east campus dormitories.

The addition of kitchens will allow some or all of the residents of East Campus and Senior House to be taken off mandatory commons, as construction progresses. "Most likely, next year's plan would be to have just the freshmen on commons, and that requirement would be removed the year after," said Dickson. The Office of the Dean for Student Affairs and the Housing Office will decide next week which, if any, students will be kept on mandatory commons next year, he said.

Despite the possible loss of meal plan revenues, Dickson does not expect Dining Service to suffer. "We don't expect any adverse effect; some people will still

(Please turn to page 2)

Five Simplex land plans presented

By Tony Zamparutti

Five real estate developers have submitted preliminary proposals to MIT for the development of the Simplex property, a 27-acre parcel west of Massachusetts Avenue between MIT and Central Square. MIT owns 23½ acres of the area.

MIT has sought to develop the land since it purchased the major lot, 18¾ acres, from the Simplex Wire and Cable Company in July, 1969.

"I was expecting more" developers to submit proposals, said Phillip A. Trussell '56, MIT Real Estate Officer. In particular, several large Canadian development firms did not submit proposals as expected, Trussell reported.

MIT sent information packets, prepared by a consulting firm, to over 20 national development firms asking for first-stage proposals by May 7. About a dozen firms toured the Simplex site, said Trussell.

It might still be possible for developers to submit Simplex proposals, suggested Walter Milne, Special Assistant to the President: "The cutoff was technically last Friday, but I don't think it is hard and fast."

According to MIT's planned schedule for choosing a developer, the Institute will ask for more detailed proposals from selected developers July 1. The developer for the Simplex land will be chosen on October 1.

Planning and construction on the land could take 15 to 20 years, suggested Trussell. "We're looking for someone who can stay with the development for a long time," he said. MIT plans to lease the land to the chosen developer for a fixed rate plus a percentage of development revenues, according to a booklet MIT gave to all potential developers.

The future of the Simplex land, now mostly empty lots, has been a center of contention in Cambridge and Cambridgeport, the neighborhood surrounding

the property. The Simplex Steering Committee, a Cambridgeport group, has continually opposed MIT's efforts to develop the Simplex land.

Any development must aim "to balance the need for tax development with the need to protect the environment and the neighborhood," declared Bill Cavallini of the Simplex Steering Committee.

In 1981, both the Cambridge Planning Board and the Simplex Steering Committee submitted to the Cambridge city council to change the zoning regulations for the Simplex Property. The council did not approve either proposal. Last fall, MIT submitted a zoning proposal similar to the Planning Board's, and the Simplex Steering Committee resubmitted its proposal. The council again took no positive action on either proposal. MIT's decision to proceed on its own and look for developers followed the deadlock on zoning regulations.

Most of the Simplex property is now zoned Industrial B, which imposes few constraints on construction, although no housing may be built. Housing may be built on the Massachusetts Avenue and Brookline Street edges of the property.

City Councilor David E. Sullivan '74 suggested MIT would like to change the Simplex zoning to a more stringent code to ensure there will not be future changes and to receive "official consent to do what it wants to do."

The Institute is only now taking an initiative on developing the land because "MIT hasn't known what it wanted to do until recently," Sullivan speculated.

MIT has not taken any action until now because previous plans were unsuccessful, said Milne. During the 1½-year planning board study "MIT felt constrained not to seek new development," he noted. Before the study, MIT had discussed for about two years selling the land to Polaroid Corporation. "That

came up a dry well" because of Polaroid's financial troubles, Milne reported. The Institute had previously discussed selling the land to Stone & Webster, but the company decided instead to develop a lot near South Station in Boston.

The real conflict between MIT and the Simplex Steering Committee is over eventual use of the land, said Cavallini, whether the property is used for office buildings and expensive housing or for low-income housing and light industry.

Development of the Simplex property should provide "annual income for the Institute, new net tax revenue for the City of

Cambridge, and diverse local employment opportunities," stated MIT's developer kit. The booklet said the site should be developed "in a manner sensitive to existing conditions in the surrounding area... [and] provide opportunities for a fully mixed-use development, including housing where permitted."

Cavallini suggested "the city council will vote for a rezoning plan... closer to our plan" than MIT's.

MIT development could drive up property rates in Cambridgeport and drive out older industries from the neighborhood, Sullivan indicated

MIT alumnus sues MBTA for driver's negligence in beating

By Tony Zamparutti

Daniel A. Radler '79 is suing the Massachusetts Bay Transportation Authority (MBTA) for \$20,000, claiming a driver on the Harvard-Dudley bus was negligent for not assisting him when assaulted by a man and a woman on July 31, 1978.

Radler had asked the woman to extinguish her cigarette: the plaintiffs in the trial against the MBTA are "asking for a court order that would require a crackdown, particularly on smoking by their [MBTA] employees," and also asking for enforcement of the rules against smoking by passengers, said Ed Sweda, Radler's lawyer.

The trial opened yesterday in Dedham District Court. Professor David G. Wilson, faculty advisor to the Group Against Smoking Pollution (GASP), testified yesterday on MBTA employee abuses of the no-smoking rules.

GASP petitioned to be one of the plaintiffs in the case, but the judge ruled they could not be because the group was unincorporated.

The case was filed in September 1978, but is only now reaching court, "civil cases usually take longer than criminal" to reach trial, explained Sweda; "It's not an exceptional waste of time."

Radler asked a woman on the bus to extinguish her cigarette and then asked the driver to stop her from smoking, he claimed in a statement to Wilson. The woman and a man then assaulted Radler for about two minutes, stated

Radler.

"During the whole time that this incident took place... the bus driver did absolutely nothing," Radler contended. "He had not stopped the woman from smoking. He had not stopped her attack on me which not only harmed me, but other passengers as well... Until the event was almost over, the driver had not opened the door to let me or anyone else escape."

inside

Arts reviews the Jam's latest.
Page 9.

Parting shots for Spring
1982.
Page 10.

An interview with James D.
Burnham, Special Assistant
to the Chairman of the Council
of Economic Advisors.
Page 11.

A baseball season and an
era — both come to a close.
Page 16.

GSC drops campaign for ad in *New York Times*

By Tony Zamparutti

The Graduate Student Council (GSC) has given up its nationwide campaign to raise money from college and university student governments for a full-page advertisement in *The New York Times* decrying the Reagan Administration's proposed cuts in Federal student financial aid.

The GSC has received only \$7000 so far, while a full-page advertisement in *The Times* would cost \$22,000. The campaign's organizers, Stephen Anderson G and Gregory Nowell G, decided they would not receive sufficient funds to purchase the advertisement before the crucial votes in Congress on Federal student financial aid they expect will

occur around May 15.

The GSC coordinators, using telephone lines donated by the Alumni Association, called 135 colleges and universities soliciting funds for the advertisement, according to Anderson. They wrote to another hundred schools.

Student governments at seventeen schools, not counting MIT, sent money to support the campaign. About forty colleges pledged money, although some were later unable to appropriate the funds, said Anderson.

"I think it was the time-constraint," Anderson said, explaining the failure of the campaign. "We didn't have enough."

Nevertheless, Congress should restore Reagan's proposed finan-

cial aid cuts, predicted Anderson. "A lot of effort was being put into getting students to mobilize," he added.

Ronald Reagan spent most of his radio broadcast statement from Barbados two weeks ago defending his financial aid cuts rather than talking about his Caribbean aid program as planned, Anderson noted. "We got to him if nobody else."

The GSC coordinators considered purchasing a smaller advertisement, or advertising in a different newspaper, but decided these methods would not adequately advocate student views.

The GSC is now trying to return the \$7000 it has received in contributions for the advertisement, reported Anderson.

MIT to spend up to \$1M on Sr. House, E. Campus kitchens

(Continued from page 1)

voluntarily purchase a plan." If business at Walker declines, "we may have to close it [Morss Hall] in the evening, eventually," he added.

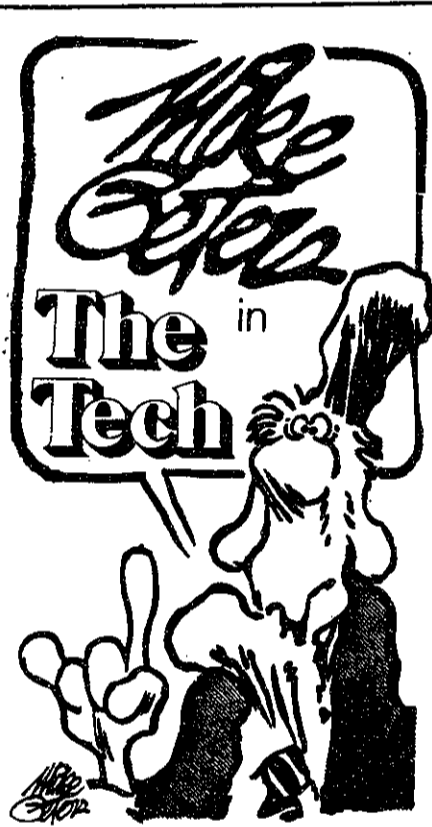
The outside consultants' review of east campus dining options was originally intended to study possible renovations to Walker Memorial. The kitchen decision was "totally independent of Walker — we would find it hard to do anything significant there in our current financial condition. This doesn't mean we are abandoning Walker renovation plans

— the aging facilities there have to be replaced," Dickson said.

Students and administration officials praised each other's cooperation in creating the kitchen plan. Dean for Student Affairs Shirley M. McBay cited the students' initiative. "We weren't looking for ways to spend money ... all of this was generated by student concern. I'm pleased they took the time," said McBay.

"I think the biggest thing this shows is that students and the administration can work together for the benefit of both," said

Diane Johannesen '83, leader of the Senior House Freedom in Dining Committee. "I hope it doesn't stop now."



Wellesley bus hits MIT grad. student

By Barry S. Surman

An MIT graduate student was injured Friday when he was hit by the Wellesley exchange bus in the intersection of Massachusetts Avenue and Vassar Street Friday.

Richard Q. Williams G, a student in Electrical Engineering and Computer Science, suffered a head laceration and a sprained finger in the accident. He was treated and released by the Cambridge City Hospital following transport by the Cambridge Rescue Squad.

Williams was crossing Vassar

Street with a large carton when he was struck by the Suburban Bus Lines coach driven by Robert Rogan.

Doug Stephan, owner of the bus company, claimed witnesses said Williams "walked out into the bus" on Vassar Street.

Rogan has driven for Suburban Bus Lines for three years with no previous accidents, Stephan said. He declined further comment pending release of a police report on the incident.

Williams could not be reached for comment.

Announcements

Faculty and staff members are still needed to serve as **freshman advisors** for next year. Contact the Undergraduate Academic Support Office, 7-103, x3-6771 if interested.

* * * *

Want to meet new students, make new friends? How about calling some incoming freshmen in your area to give them a personal welcome to the Institute, answer questions, or just chat? If you'd like to volunteer for the **Summer Contact Program** sign up in the Undergraduate Academic Support Office, 7-103.

* * * *

Freshman evaluation forms are available at living groups. Give one to each instructor by Wednesday, May 12. Instructors should send them to advisors by Friday, May 21.

Lectures

How many human beings could survive an all-out nuclear war? Would medical care be available for those who do survive? For some answers come to hear **Dr. Alexander Leaf** of Harvard Medical School speak about "Health Aspects of Nuclear War." Cambridge Forum, 3 Church Street, Harvard Square, on Wednesday, May 12 at 8pm. Free and open to the public.

* * * *

"American and Third World Population Issues" will be discussed by **David Bell**, Chairman of the Center for Population Sciences, Harvard School of Public Health, on Wednesday, May 19 at 8pm at Cambridge Forum, 3 Church Street, Harvard Square. Free.

The Incredible Convertibles

by Eagle Creek



This multifunction gear is handsome, durable soft luggage and also converts into an internal frame backpack. Concealed behind the zip away panel is an adjustable shoulder strap system and contour hip belt for maximum support and comfort. Looks great in the airport, works great on the trail. The ultimate way to travel.

\$49⁰⁰ to 115⁰⁰

THE **OUTBACK** SHOP

10 Mt. Auburn Street Cambridge

491-4173

SUMMER JOB OPENINGS APPLICATIONS ENGINEERING IN ATE

PSC is an engineering consulting company specializing in the field of Automatic Test Equipment. We provide programming services to major electronic manufacturers in the US and Canada.

We specialize in the development of software tests for complex digital printed circuit boards. Although our product is software, the problems we deal with demand thorough hardware analysis. Software modeling of digital circuits and complex LSI devices is used extensively in this process.

We are looking for EE/CS students, who have a solid engineering background. Familiarity with digital hardware is essential. Software experience is not required but would be helpful. We are willing to train people with no prior experience who are interested and highly motivated.

PSC offers opportunities not found in larger organizations. You will be given responsibility immediately. You will see your projects from beginning to end. Your contribution will be both direct and highly visible.



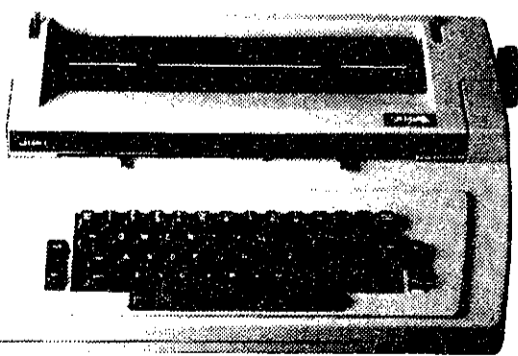
Please contact Allen Yung at (617) 891-8460

223 Crescent Street Waltham, MA 02154

OFFICE ELECTRIC TYPEWRITER

NEW

SIERRA 3300



- Technical Breakthrough!
- IBM style keyboard
 - Stick shift correction
 - Snap-out cartridge
 - Stationary 13" carriage
 - Typing balls interchange with IBM

Reg. \$495⁰⁰

\$399⁰⁰

Special Price

BROOKLINE OFFICE EQUIPMENT CO. Inc.

1431 Beacon St. Brookline MA 566-6403

MON. - FRI. SAT. 8:30-5:00 9:00-4:00

MASTERCARD & VISA ACCEPTED

news roundup

World

Reverend Graham evangelizes in Moscow — Billy Graham gave an evangelical lecture to a small, heavily guarded Baptist church in Moscow this Sunday. The talk was similar to the one he gave at MIT on April 28, stressing nuclear disarmament and Christial rebirth, but Graham was careful not to mention issues that might be offensive to Soviet authorities, such as religious freedom (the USSR is an officially atheist nation). At one point in his sermon, he said Jesus gave man "the power to be a better worker, a loyal citizen."

Falklands negotiations continue despite British attack — British warships and helicopters attacked two Argentine military posts in the Falklands Sunday, and sank a fishing boat suspected of spying. The attack followed a four-day lull in the fighting. Meanwhile, cease-fire negotiations at the UN continued with both sides scaling down their demands for a settlement of the crisis.

Reagan proposes arms control plan — President Reagan has written a letter to Leonid I. Brezhnev asking that the US and USSR begin formal arms control negotiations by the end of June. Reagan made public Sunday a proposal which asks the Soviet Union to reduce their ballistic missile stockpile by a third, in exchange for the US curtailing research and production in areas in which it has technical superiority, such as missile-carrying submarines, bombers, and cruise missiles.

Local

Harvard CP's nab party theft suspect — Police arrested a man found stealing clothing from a Harvard dorm Tuesday, following a fifteen-minute chase through the Harvard grounds. The suspect, Michael Kirtredge of Boston, fit the description of a 25-year-old white male who has been stealing women's laundry and underwear from several Harvard residence halls.

Charles D. Rubin

Weather

Some coastal cloudiness this morning should give way to partly to mostly sunny skies later in the day. Winds will be out of the north and northeast keeping temperatures cool. Highs will be near 60. Clear and cool tonight with lows in the mid 40's. For Wednesday, expect sunny skies with easterly sea-breezes. Highs will be in the low 60's.

James Franklin

Top Prices Paid!

For Used Paperbacks And Used Textbooks

Harvard Book Stores
1256 Mass. Ave., Cambridge (Harvard Square)

SCC & 24-Hour Coffeehouse
announce the

**SEMI-ANNUAL
CAFFEINE SALE**
Coffee & Tea **Only 10¢**
All finals week
7pm to 7am

Mecanorma Transfer Card Demonstration

The Mecanorma Transfer Card is the most exciting new product in the transfer letters & symbols market today! Each sheet is bonded around the edges to a rigid cardboard frame for protection and easy handling. When not in use, the cards can be filed away easily. When you need top quality letters or symbols but don't have the storage space, think again. The Mecanorma Transfer Card. They'll save you money, too!

Look for our table right in front of the MIT Coop.

May 11
10 am-12 pm and
1:30 pm - 3:30 pm



Sponsored by Martin/Mecanorma USA
and the MIT Coop.

Attention

Sophomores:

**Class of '84 rings can be
picked up in Lobby 10
on May 13 and 14
from 10am to 4pm.**

**Orders will also be taken
at this time.**

Editorial

**MIT takes first step,
many more needed**

The MIT Corporation Executive Committee's decision to approve the installation of kitchens in East Campus and Senior House is a wise one. It will benefit MIT, which will save millions of dollars by not having to renovate Walker Memorial at this time. Reducing crowds will benefit those people who will continue to eat at Walker. Most of all, it will benefit the residents of the two dormitories, who will again be able to eat what they want when they please.

This successful proposal demonstrates the positive results that may be achieved when the MIT Administration adopts an open-minded, cooperative attitude toward student suggestions. Students identified a problem, proposed a solution, and presented it effectively. Fortunately, their ideas were carefully considered rather than being summarily rejected. Students were welcomed as allies, rather than being treated as naive adversaries with nothing to contribute.

Approval of the east campus dining proposal is MIT's first step toward admitting it made a grievous, costly mistake when it foisted mandatory commons on the hapless class of 1984. The MIT Administration should acknowledge its error and abolish mandatory commons.

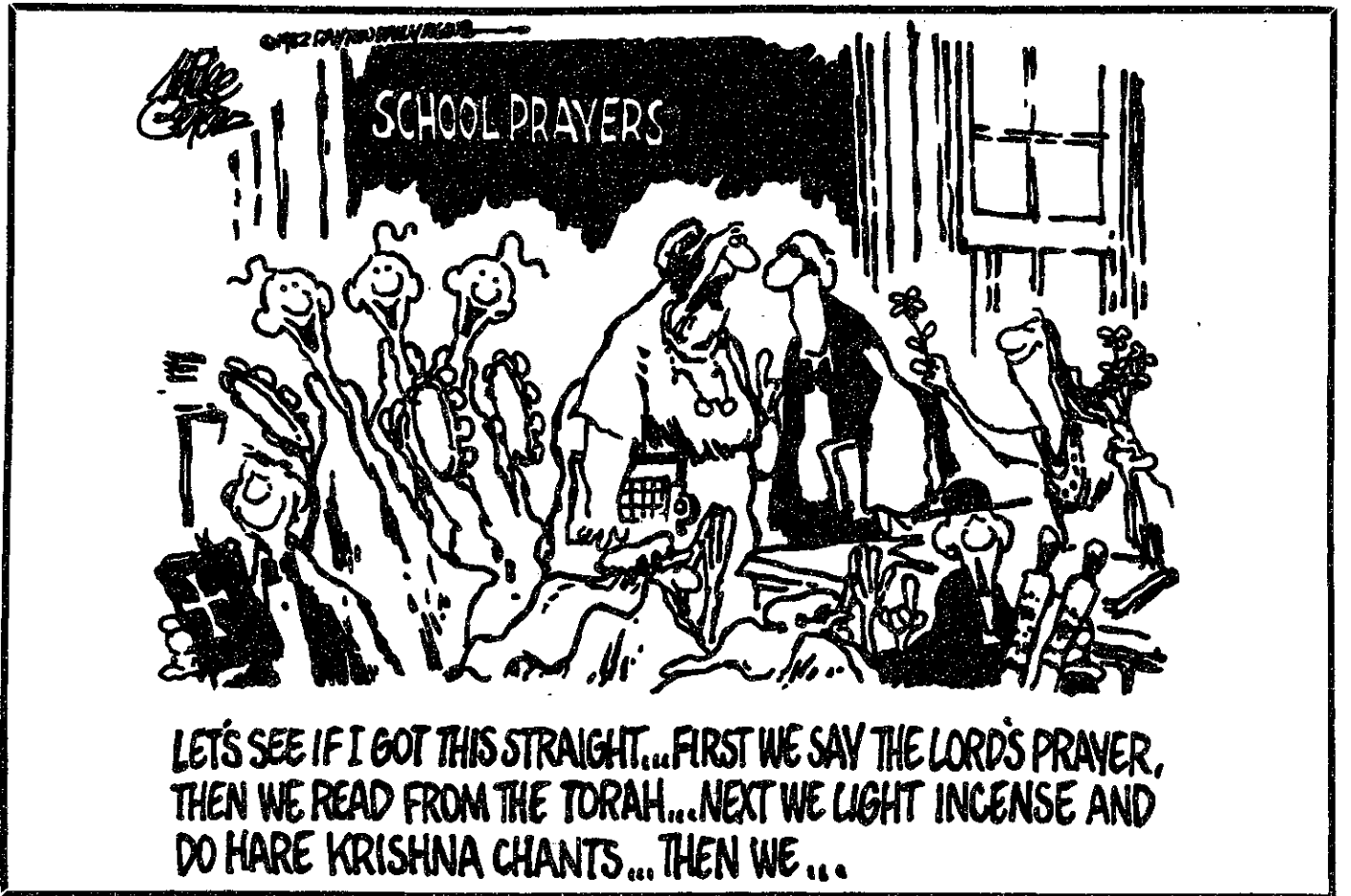
It is unfortunate that the only time the MIT Administration will accept a student proposal is when it will save MIT more than a million dollars. Many of the promises MIT made to its students when mandatory commons was first instituted have not been met — food quality has not improved, menu choices remain bland and uninspired, costs have steadily increased, and everyone seems to have forgotten the food cooperative proposal.

The acceptance of the east campus kitchen proposal also belies the Administration's contention that the institution of mandatory commons would promote socialization among undergraduates. Upperclassmen, after one, two, three, or more years at MIT have, presumably, met and made friends. If they have not, lamb curry will not do it for them. Freshmen, who do not yet know anyone, may benefit from eating together. Freshmen, however, have other social crutches, such as 8.01 lectures and 18.01 problem sets, to bring them together. In fact, mandatory commons may be socially harmful, as it prevents freshmen on commons from socializing with those who are not, or with upperclassmen who arrived at MIT before commons was required. While a crowd of diverse people, some on commons, some not, may choose to patronize a Central Square fast food place voluntarily, no one eats Walker turkey tetrazzini without being coerced. Telling adults what to eat, and when, is not a position MIT should take.

The actual, rarely mentioned reason for mandatory commons was to prevent dining services from raising prices to even more exorbitant levels or going bankrupt. Since Food Services is an inside operation, MIT would not like to admit this may happen. Nevertheless, MIT must be forced to compete for students' food dollars, rather than relying on a captive clientele. If MIT cannot provide quality food at a reasonable price, it should get out of the food business, and award an MIT Dining contract to an outside source.

Abolishing mandatory commons would empty some dining halls. MIT should close them then, as they are currently considering closing Walker in the evenings. Savings could be passed along to remaining diners in the form of better quality and lower prices.

The east campus kitchen proposal was a good first step. It should not be the last.



Guest Column/Michael Katz

Nuke threat must be ended

Editor's Note: This is the second part of a two part column examining the nuclear freeze movement.

The proposal that the US abandon its standing policy of threatening a nuclear first strike in response to hypothetical Soviet aggression in Europe, was put forward in a newly-published *Foreign Affairs* article by George Kennan, Robert McNamara, McGeorge Bundy and Gerard Smith. These men are no outsiders to US nuclear policy — all four are former high-level officials; three are pioneering Cold Warriors, architects of strategic policy, and veteran "brinksmen." They describe US first-strike threats as looking increasingly like "either a bluff or a suicide pact."

Many were perhaps amazed to hear that the US has in the first place such a standing policy of threatening a first strike — "surely that's something only the Russians would do!" Yet the United States has threatened or actively considered using nuclear weapons in response to conventional provocation at least 20 times since it demonstrated its capability to do just that at Hiroshima and Nagasaki. Six of these documented incidents were in Europe. The Soviets, by comparison, have repeatedly proposed a bilateral no-first-use treaty.

Haig said on April 6th that a no-first-use policy would "make Europe safe for conventional (non-nuclear) aggression." He remarked disdainfully that no-first-use advocates "seldom go on

to propose that the United States reintroduce the draft, triple the size of its armed forces and put its economy on a wartime footing."

What is the apparent conventional military balance in Europe? According to London's International Institute for Strategic Studies, The Warsaw Pact has about 1.2 million troops on the European front, and NATO about 1.1 million — with this difference somewhat offset by the questionable loyalty of several of the Eastern Europe divisions. This essential equivalence belies Gen. Haig's hysterical assertion that the US need "triple the size of its armed forces" by reintroducing the draft.

The Warsaw Pact is, however, estimated to be significantly ahead in most categories of hardware — by as much as 2-to-1 margins in some categories — although this advantage is mitigated by a presumed greater quality, accuracy and reliability of Western equipment.

In the absence of US first-strike threats, this imbalance would have to be remedied in one of two ways. The first, which Gen. Haig alluded to, is a large-scale buildup in NATO European arsenals. But if this route were to be taken, who should pay for it? The combined Gross Domestic Products of the West European NATO countries surpass that of the US and also that of the Warsaw Pact combined, yet almost all of these countries spend a significantly smaller percentage of their GDP on armed forces than does the US at

nearly 6 percent and rising. Western Europe is perfectly capable of paying for its own defense. What Haig, who is already presiding over the largest peacetime arms buildup in American history, had in mind by "putting our economy on a wartime footing" is not clear, but certainly the greatest burden of a hypothetical NATO arsenal expansion could and should be shouldered by the Europeans.

A more rational and appealing way to address the European arms imbalance, however, would be to negotiate joint reductions in conventional as well as nuclear forces. This would free personnel and economic resources for productive activities and unmet human needs, a particular imperative and attraction for the Warsaw Pact countries. But such negotiations would be possible *only* if the US were to first remove the threat of unprovoked use of nuclear weapons in Europe.

Additionally, something must be said about the very likelihood of unprovoked Soviet aggression towards Western Europe. The Soviets lost a tenth of their population in World War II, and virtually every Soviet family has intimate and bitter experience of the costs of a European war. Thus the Soviet Union is probably far less inclined to initiate such a conflict than the United States, which has not experienced the anguish of a war on its own territory in over a century. It is a distressing thought that the United States' first-strike

(Please turn to page 5)

**The
Tech**

Ivan K. Fong '83 — Chairman
Jeri-Lynn Scofield '83 — Editor-in-Chief
V. Michael Bove '83 — Managing Editor
Mia Paget '84 — Business Manager

Volume 102, Number 25
Tuesday, May 11, 1982

PRODUCTION STAFF FOR THIS ISSUE

Night Editor: V. Michael Bove '83; **Staff:** Ken Snow '82, Bill Spitzak '83, Charlie Brown '84, Bill Giuffre '84, Barry S. Surman '84, Tony Zamparutti '84, Bill Coderre '85, Paul Gabuzda '85, Matt Giamporcaro '85, Max Hailperin '85, Robert E. Malchman '85.

NEWS DEPARTMENT

News Editors: Barry S. Surman '84, Tony Zamparutti '84; **Staff:** Heather Preston '82, Michael Shimazu '82, Laura Farhie '83, Andrew Robbins '83, John J. Ying '84, Sam Cable '85, Gene Chang '85, Morris Dovek '85, Burt Kaliski '85, Joe Kilian '85, Charles D. Rubin '85, Susan Hagadorn G; **Cartoonists:** Geoff Baskir '78, Glen Apseloff '81, Glenn Ackerman '82, V. Michael Bove '83, Bill Spitzak '83, Carol Yao '85; **Meteorologist:** James Franklin G.

The Tech (ISSN 0148-9607) is published twice a week during the academic year (except during MIT vacations), weekly during January, and once during the last week in July for \$10.00 per year Third Class by *The Tech*, 84 Massachusetts Ave. Room W20-483, Cambridge, MA 02139. Third Class postage paid at Boston, MA. Non-Profit Org. Permit No. 59720. **POSTMASTER:** Please send all address changes to our mailing address: *The Tech*, PO Box 29, MIT Branch, Cambridge, MA 02139. Telephone: (617) 253-1541. Advertising, subscription, and typesetting rates available. © 1982 *The Tech*. Printed by Charles River Publishing, Inc.



opinion

Freeze reasons explained

(Continued from page 4)

policy is less a deterrent to Soviet conventional aggression than a potential cover for Western adventurism.

Another chilling thought is that while the US continues to threaten a nuclear response to any Soviet military action in Europe, the Soviets have virtually no incentive not to themselves launch a first nuclear strike, in the event that a conflict is under way.

Finally, however, the essential argument for US renunciation of its first-strike threat is a moral one. How can the nation with the world's largest nuclear arsenals appear responsible in the eyes of the world, while threatening to use those arsenals without nuclear provocation?

A US-Soviet nuclear freeze, and US adoption of a no-first-use policy, are good ideas — but given the web of entrenched interests

favoring perpetuation of the arms race, and especially the hawkish leanings of the Reagan Administration, they will require an enormous amount of determined effort for their realization. And where each of us can contribute — by expressing our firm support for these measures to Congressional representatives and to the President, as a first step; and by working for disarmament with groups like the Cambridge Council for a Nuclear Freeze, High Technology Professionals for Peace, the Coalition for a New Foreign and Military Policy, Physicians for Social Responsibility, or any of several others. Whatever our other priorities may be, surely our first priority must be to reduce and ultimately eliminate the growing nuclear threat which looms over us, so that those other priorities may flourish.

**When you're wanted for a murder you didn't commit,
Chased for secrets you didn't steal,
And running from people who want to kill you,
The worst mistake you can make is falling in love...**



Meet Michael Jordan. And his mistake.

**Gene Wilder Gilda Radner
IN
Hanky Panky**

SOMETHING FUNNY'S GOING ON HERE

COLUMBIA PICTURES Presents A MARTIN RANSHOFF Production
GENE WILDER - GILDA RADNER IN "HANKY PANKY" Starring KATHLEEN QUINLAN and RICHARD WIDMANN as HENRY - Director of Photography ARTHUR BRITZ - Music by TOM SCOTT
Executive Producer MELVILLE TUCKER - Written by HENRY ROSENBAUM & DAVID TAYLOR
Produced by MARTIN RANSHOFF - Directed by SIDNEY POITIER

PG PARENTAL GUIDANCE SUGGESTED
SOME MATERIAL MAY NOT BE SUITABLE FOR CHILDREN



©1982 COLUMBIA PICTURES INDUSTRIES, INC.

**Opens Everywhere
June 4**



\$18.95

Per Day

For Chevrolet Chevette
UNLIMITED FREE MILEAGE
Confirmed Reservation Required

CHECK OUR WEEKEND SPECIALS!

2 Convenient Locations in Cambridge

CENTRAL SQUARE
905 Main Street
492-3000

HARVARD SQUARE
1201 Mass. Ave.
876-8900

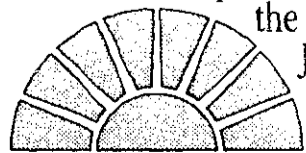
**AT
BISUTEKI
THE STEAK
STEALS
THE SHOW.**



At Bisuteki, native Japanese chefs prepare your meal before your eyes. It's an incredible experience, filled with flashing knives, exotic aromas, course after delicious course, and the smiles of new friends.

But Bisuteki is more than a show. It's steak that's out of this world. Tender. Succulent. Sliced into delicate strips and served sizzling, its taste makes other steak seem dull.

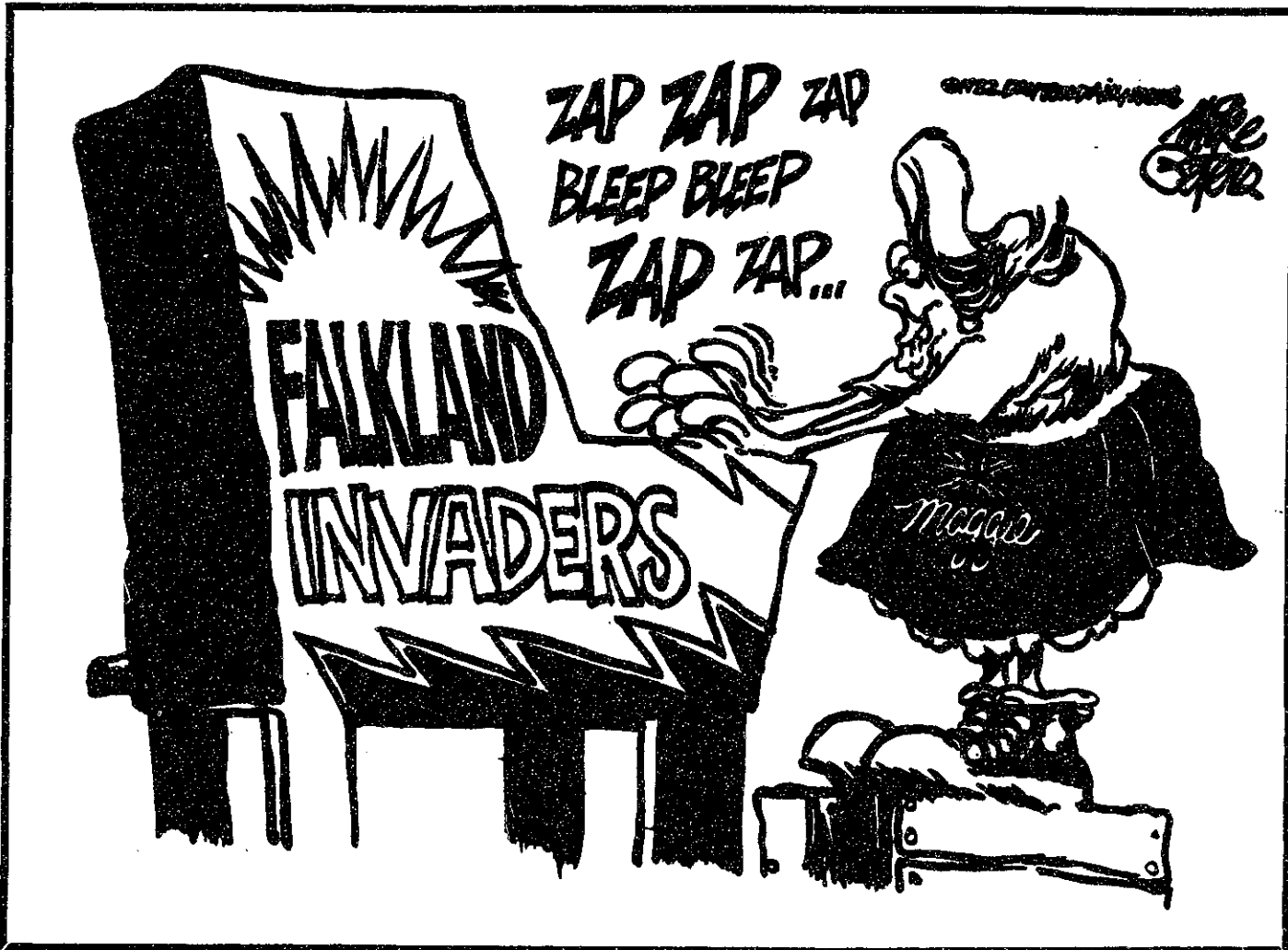
Experience Bisuteki. You'll love the show. But you'll come back for the steak. Conveniently located with free parking at the Howard Johnson's Motor Lodges at 777 Memorial Drive, Cambridge (492-7777) and 407 Squire Road, Revere (284-7200).



BISUTEKI
JAPANESE STEAK HOUSES

WHERE THE STEAK STEALS THE SHOW

opinion



GOLDEN HORN CHARTER, Inc.
PRESENTS
STUDENT TRAVEL TO SUNNY & HISTORICAL TURKEY
FOR 2 WEEKS (Double Occupancy)
\$799.00 (Incl. Charter Airfare)

DEPARTURES: June 15 - June 29 - July 13
July 27 - Aug. 17 - Aug. 31

TOUR INCLUDES: 1 Week accommodations in ISTANBUL - with Breakfast
1 Week accommodations in KUSADASI (Ephesus) - Half Board
Transfer with public buses Istanbul - Kusadasi - Istanbul (Single Supplement - \$100.00)

For further information and reservation call
GOLDEN HORN CHARTER, INC.
New York (212) 581-1412/3
Boston (617) 969-3315
Other States (800) 223-6778

June degree candidates who have student loans administered by MIT will be receiving notices to schedule an Exit Interview with the Bursar's Office, Student Loan Department E19-225, phone 3-4088 (4087). These interviews are mandated by the US Office of Education and are required by the Institute to maintain your good standing on the degree list. The notice also serves to activate the repayment status and terms of the loans.

Paid Advertisement

→ feed-back

Photos showed subconscious sexist bias

To the editor:

While enjoying the Spring Weekend photos in a recent edition of *The Tech* we noticed a peculiar phenomenon: every photo containing a woman was labeled with an "S" (meaning "sex"). Furthermore, with the exception of the humorously labeled picture of the tug-of-war, no other pictures were so labeled. In addition we found it particularly strange that none of the pictures of The Ramones, several of which seem far more overtly sexual than the pictures of women drinking beer or dancing, were labeled with an "S".

We believe that you have fallen into the common trap of recognizing women solely for their sexual qualities, regardless of the particular situation, or the particular women's intent.

We thought we should bring this to your attention, because while it is a somewhat subtle example, it is indicative of pervasive attitudes damaging to both women and men.

Grégor Kiczales '82
Debbie Tatar
Patrick Sobalvarro

CHECK OUT OUR NEW LONG DISTANCE RATES.



No matter how hard you look, you won't find a better way to jet coast to coast. Roomy wide-body jets. Good meals. Great service. Daily flights.

See your travel agent or call World Airways at 1-(800) 526-8340 or (617) 357-9080. Ask about our new children's fare for family travel.

From Logan International Airport

LOS ANGELES One Way **\$139**

SAN FRANCISCO/OAKLAND One Way **\$139**

Fares and schedules subject to change without notice. Seats are limited.



We save you money on the long runs.

Thank Q.

How do we Thank Q? Let us count the ways. Thank Q for:

BEST PRICES
BEST EQUIPMENT
JET-FAST SERVICE
on the finest

NEW & USED HIFI
in the world, like

HAPLER GRACE REGA MCINTOSH
THORENS QUAD PYRAMID
APT/HOLMAN NAD DYNACO
JANIS DENNISEN MICRO ACOUSTICS
CARTALONI DISCHASHER STAX XRELL
VAMPIRE MIT LAST AUDIO TECHNICA
DB DBX FIDELITY RESEARCH FRIED
LIVE WIRE CZEK KULTIVE NIFTY GRITTY
GRADO SORER HARABACHI
TANBERG REVON SVELL DYNAVECTOR
MONSTER SOUND CONCEPTS & MUCH MORE...

Thank Q Because We

BUY SELL TRADE
CONSIGN BROKER

Thank Q for QUEST, the private eye for hifi. Looking for a particular piece of equipment? New, used or obsolete, its likely that our vast network of sources will enable us to track it down. Hire the best. Call QUEST.

We'd like to Thank You, our valued customers, who have helped us become one of the world's finest sources for new and used audio.

WORLDWIDE SHIPPING

Q Audio.

There is no comparison.
95 Vassar St. Cambridge, MA 02139
617-547-2727

Send \$2 for our NEW, expanded Catalog.

Students, let Eastern's Air-Freight take a load off your mind.



Now you can ship 250 pounds for as little as \$18 with an Eastern Campus Costcutter™ Container.*

Bring on your textbooks, stereo, clothing, sports gear and other personal items.

Eastern will ship them to your destination — quickly, carefully, inexpensively — to any of the cities shown here.

Eastern's Campus Costcutter Containers are a generous nine cu. ft. (35" x 21" x 21") and can hold up to 250 lbs. They cost \$3.95 each plus air-freight shipping costs (see below). Other-sized containers are also available at additional cost.

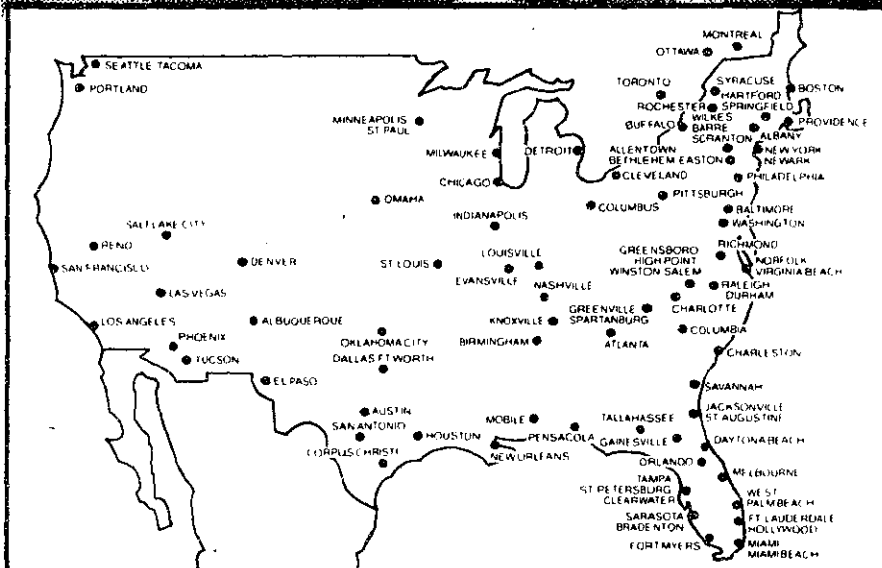
To take a load off your mind this summer break, just contact your local Eastern Airlines Campus Representative.

M.I.T.
Kathleen Harragan 494-1559

or call Eastern's Going Away Desk at 262-3700 ext 7707

Boxes available at the Coop

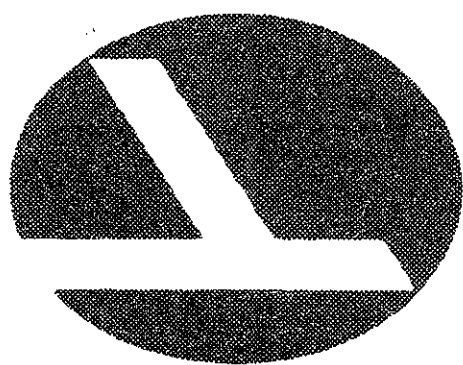
©1982 Eastern Air Lines, Inc.



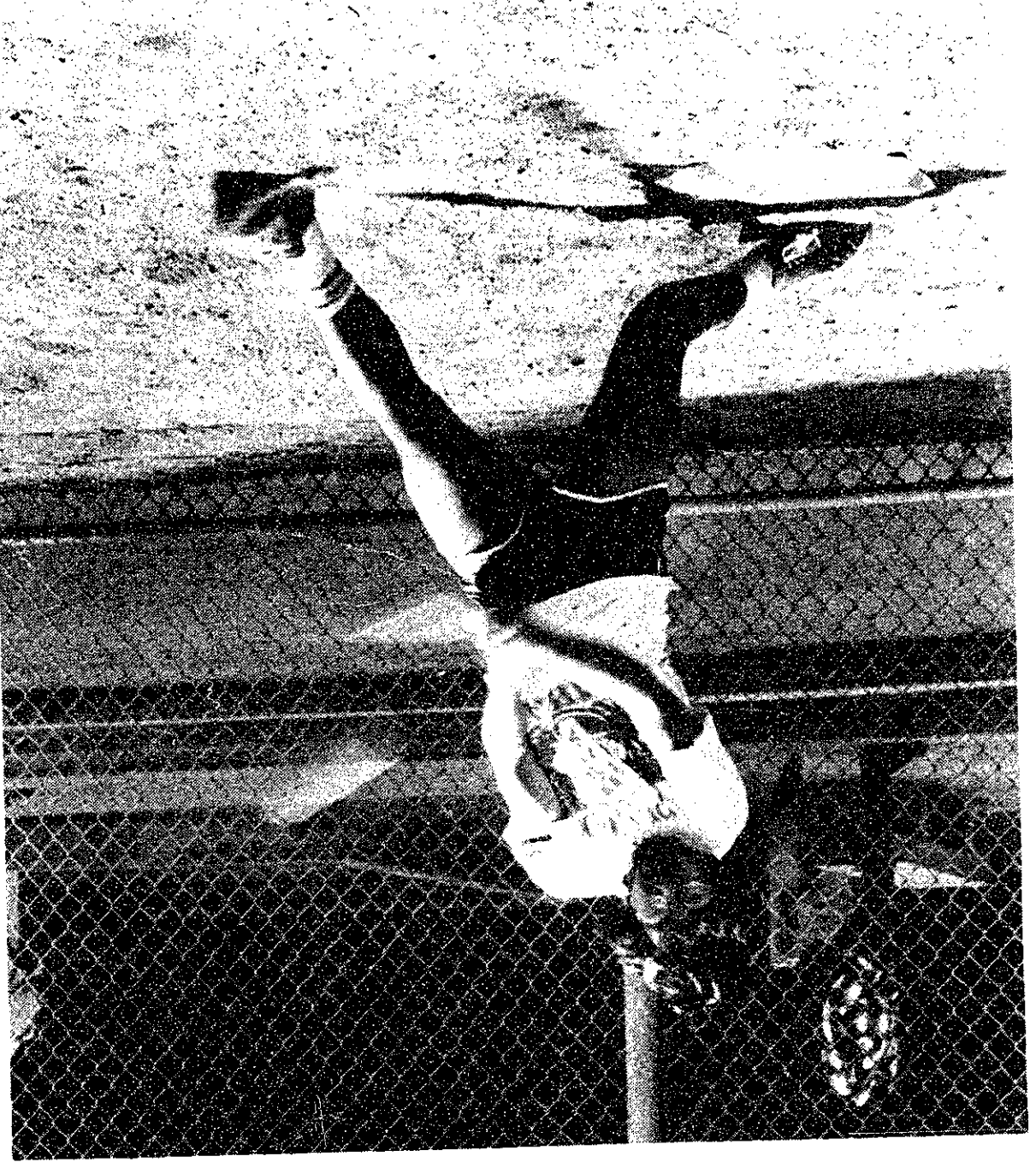
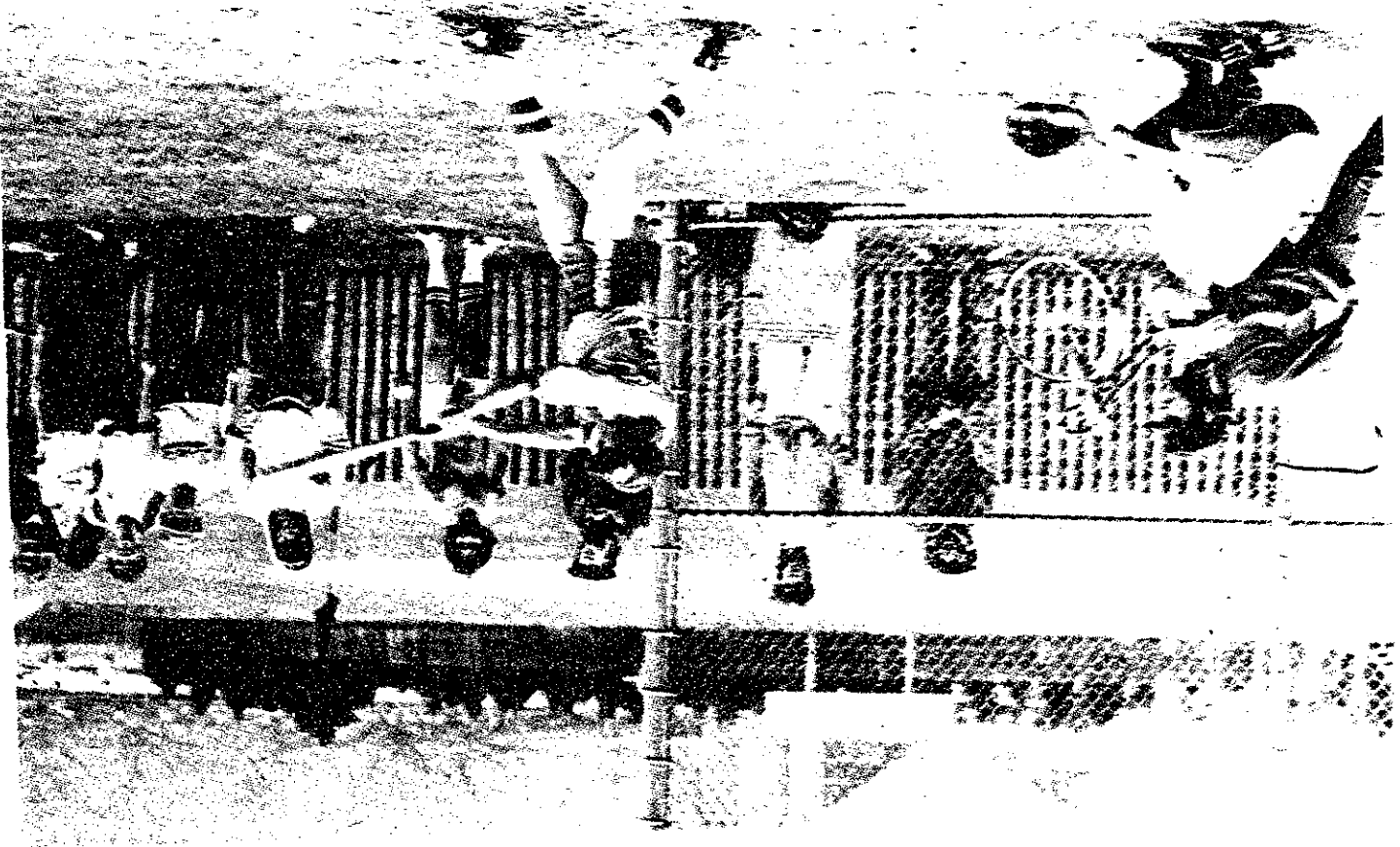
Typical Costcutter rates*

Boston to N.Y.	\$18
Boston to Atlanta.	\$27
Boston to Houston	\$34
Boston to Los Angeles or Seattle	\$39
Boston to Albuquerque	\$49

*Plus \$3.95 for standard Costcutter container. No perishables.



EASTERN
Air-Freight



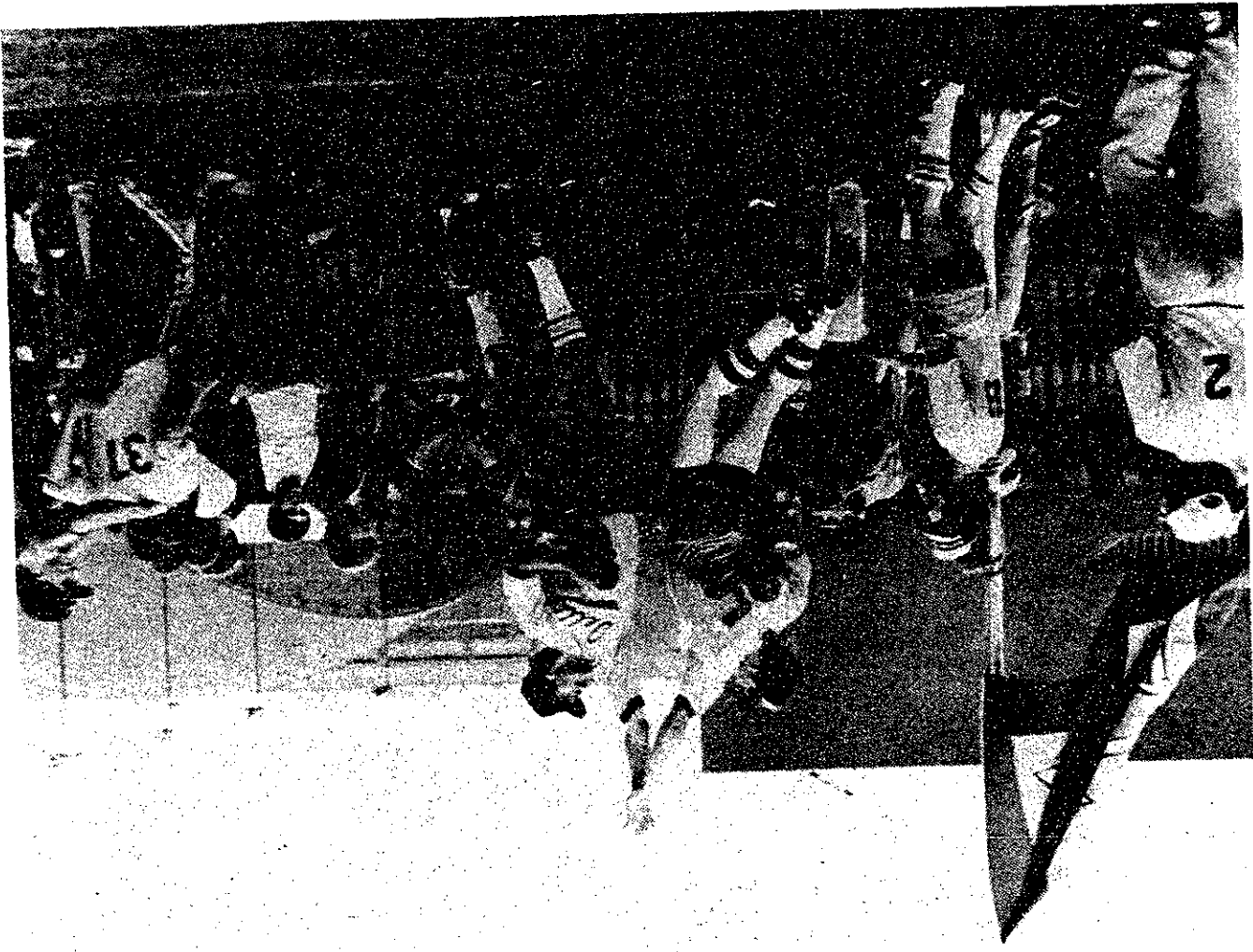
IM Softball

photos by

Rabbit

KWS

AHW



ARTS. . . The Jam. . . The Gift. . .

The Gift — The Jam on Polydor Records

It's sometimes hard for Americans to realize just how popular the Jam really are in England. They've had single after single in the top slot on British radio. Their albums are standards of contemporary rock music. Both the group and the individual members consistently win readers' polls and critics' awards. On this side of the Atlantic, the Jam have a small but devoted following who willingly shell out lots of money for all the great Jam singles that never get released over here.

The reason the Jam have never really caught on in the US is due to more than the conservative nature of American radio and record companies. After all, Polydor has stuck with them for all six albums, and has certainly spent a good deal of promotional moeny on them as well. To put it simply, the Jam are defiantly British, refusing to tailor either their voices or their lyrics to colonial sensibilities. *The Gift* finds the Jam stretching in a direction which may bring them increased recognition in the United States, but that doesn't appear to be their motivation.

For lack of a better adjective, this is being referred to as the Jam's "soul" album. The categorization has some merit. Horns and saxophones play a major role in the instrumentation. Bruce Foxton turns in some amazing disco/funk bass lines, and there are certainly some strong Latin and Motown soul influences. At first glance, it might seem that the Jam have simply imitated Elvis Costello and the Talking Heads in their attempts to meld new wave and old soul.

From their earliest days, however, the Jam have drawn heavily from soul influences. Much as reggae influenced the development of the Clash, the Motown sound has played an important part in the music of the Jam. One of their first singles featured a live B-side with rousing versions of "Sweet Soul Music" and "Back in my Arms Again." One of the numerous comparisons made between the Jam and the early Who is the tendency of both groups to include soul covers, most notably "Heat Wave," among the originals on their albums.

Given this background, it's not surprising that the Jam would eventually try bringing in some horns and incorporating

elements of a musical genre they obviously respect.

The results are mixed. Their first attempt at their new sound, the single "Absolute Beginners," is not included on *The Gift*. The followup, "Town Called Malice," does make it onto the album. Both are first-rate Jam singles, and the choice of which to include is appropriate. "Beginners" is much more upbeat than anything on the album, with horns framing the lyrics in a manner reminiscent of the original "Sweet Soul Music." The horns on "Malice" are more in keeping with the rest of the songs on *The Gift*, serving primarily as musical hooks and transitions between verses.

There are several other lyrical and musical standouts. "Just Who is the 5 O'Clock Hero?" is another in a long line of Jam songs about British working-class life. Like most of their songs in this vein, it doesn't say anything very original. It is, however, more blunt than most — "Hello Darlin' I'm home again/covered in shit and aches and pains." It's also one of the most musically arresting numbers on the album, with a great march-influenced beat and some catchy swinging brass lines.

"The Planners Dream Goes Wrong" also bemoans the current state of everyday life, but places the blame for the problem more directly — "The piss stench hallways and broken lifts/Say the planners dream went wrong." It also contains the noteworthy line, "Coitus interruptus 'cause of next doors rows," which is certainly a unique way to characterize life in the modern world.

The Gift is one of the Jam's most positive albums, in spite of the political songs. "Happy Together," "Ghosts" and the title cut are all exhortations not to let life get you down. Who would've imagined Paul Weller singing "Think of the future and make it grow/Why don't you move together and make your heart feel better?" Yet in spite of these positive attitudes mixed with classic political Jam, there are a few real problems with this album.

A couple of promising songs falter for one reason or another. "Trans-Global Express" appears to be some sort of focal point for the album. It calls for a mass effort to end international tension and war, a noble enough plea. Unfortunately, the lyrics are totally buried in the left channel

and would be unintelligible without the lyric sheet. As always, the Jam sometimes overdo things a bit with their political commentary. It may well be true that "We're the next generation of the emotionally crippled," but there must be a less heavy-handed way of saying this. "Carnation" uses some effective imagery, including crushing a fresh carnation, but it turns out that it's all to symbolize "... the Greed and Fear/And every ounce of Hate" in mankind. Again, a little much.

The most controversial song on the album, "Precious," is already well-known as the flip side of "Town Called Malice." It's controversial not because of its lyrics but because it's a Latin- and disco-influenced number unlike anything the Jam has done before. At first listen it sounds like a dance-rock sellout, but it actually sounds more original and inventive with repeated listenings.

The biggest problem with *The Gift* is its lack of hooks in the structure of the songs. For all their political bent and experimentation with musical styles, the Jam are still a pop band. In the past they've relied on strong choruses and Paul Weller's crashing guitar to hold the songs together. What few choruses are found on *The Gift* blend in with the verses and fail to stand out. For the most part, horns instead of Weller's guitar are used to provide the riffs tying the parts of songs together. Sometimes, as on "5 O'Clock Hero," they are used for good effect. In other places they seem more grafted on than an integral part of the instrumentation.

Although the Jam have experimented with other musical genres in earlier songs, this is the first time they have released an entire album which differs markedly from their established sound. As such, it's the sound of a band stretching, trying to fuse the music it loves best with the music it plays best. The result may or may not be a great Jam album. It always takes a while and a lot of listens to determine that. *The Gift* is certainly a first-rate record and with any luck is a harbinger of continued growth and maturity. At the very least, it should alleviate any concerns that the Jam no longer matter. They do matter, horns and all.

Tom Anderson



classified advertising

Local & Long Distance Moving

Regular trips to all NE, NY, DC, NJ, NJ, PA, VA. No job too small. Reasonable rates. 361-8185, MDPU #1498.

Want to start/expand your own business? Don't think about — act!! Experienced (10 yrs.) U. of Chicago MBA can help with: raising capital; business planning; designing/implementing market strategies; making acquisitions; improving cash flows & productivity. Edward D. David, President — David Associates, 22 Nassau Road, Upper Montclair, NJ 07043, (201)783-9654.

Word Processing - Typing Photocopies

Full-time professional typist with business computer does theses, research reports, faculty manuscripts. Rush service or pick up from Braintree available. Call 843-2060 anytime. Formerly MIT administrative secretary. Also tape transcription; binding; collating.

House for Sale

Cambridge, off Broadway, about 1500 sq interior space on 2 floors, partly renovated, yard, off street parking, \$70's. Dudley & Borland Realtors, May White, 876-2440.

Free Publications

on disarmament. Investigate verification and national defense considerations. Also, information on chemical warfare. Brochures, posters, research by major think-tank. Quantities available — get extra copies for friends! 413 East Capitol, Washington 20003.

Back Bay Comm Ave. Summer Sublet, 2 bedroom, large living room, \$250 each, available 6/1 to 8/31, entire floor, roof deck. Call 266-1718 or 353-7556.

Housesitters

Non-smoking, married attorney and PhD student seek summer housesitting position. Pet and plant care included. References available. (202) 265-4636 or leave a message at 729-0700 (local).

Responsible, mature person wanted to care for infant. 8:30 - 5:30, Mon-Fri. Beacon Hill area, 720-1699.

PIZZA KENS WAY

NEW!

TRY OUR NEW DEEP DISH PIZZA!

Made from a special recipe, our unique pizza dough is fresh-baked daily by our pastry chef.

Add your choice of toppings, or try one of KENS "House Special" Pizzas — fresh vegetables, lox & onions, or Mexican. Have hot delicious pizza Kens way... a slice above the rest!

KENS

KENS AT COPLEY — 549 Boylston St., Copley Square

Dunham Great footwear for the great outdoors®

Seasonal features.

May 9—May 15

Sugg. Retail \$30

NOW \$19.99



All leather boat shoe in boy's and girl's sizes.

Sugg. Retail \$19.99

NOW \$9.99

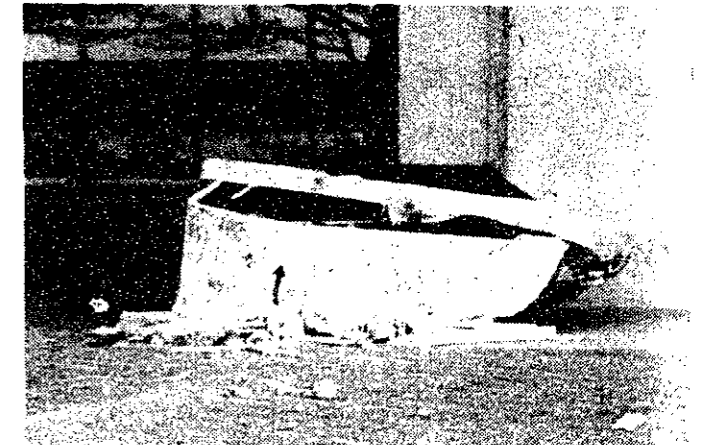
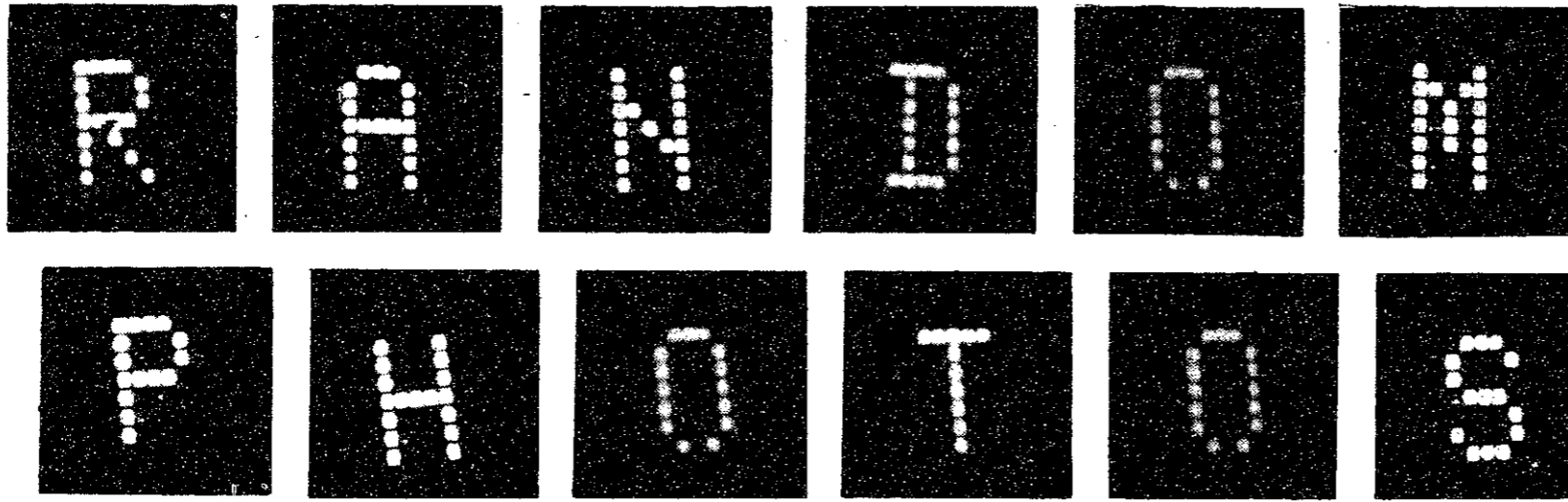


Women's leather sandal. Imported by Dunham. Many styles.

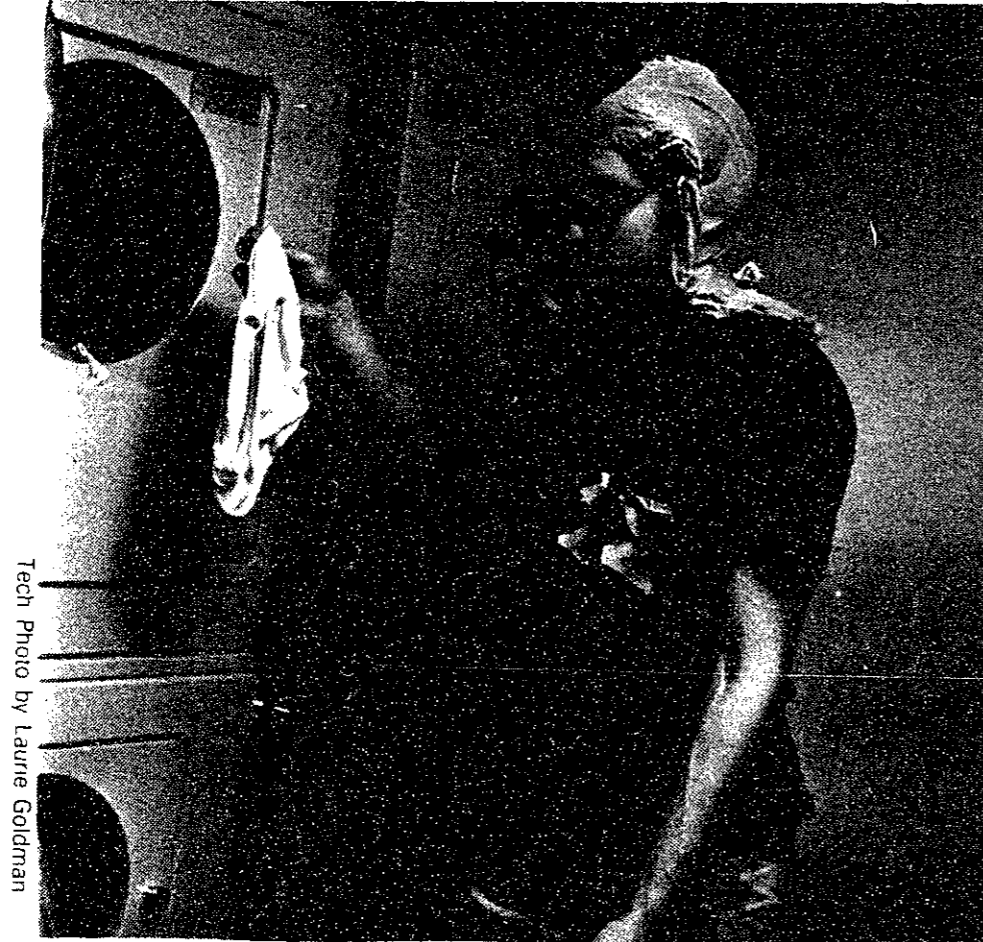
Dunham FOOTWEAR OUTLET

CAMBRIDGE, MA. 328 Mass. Ave.

ALL STORES OPEN SUNDAY (except Mass.)



Reminiscent of monks setting themselves on fire to protest the Vietnam war, a refrigerator heaved itself off the Green Building this weekend to protest the plan to put kitchens into east campus dormitories.



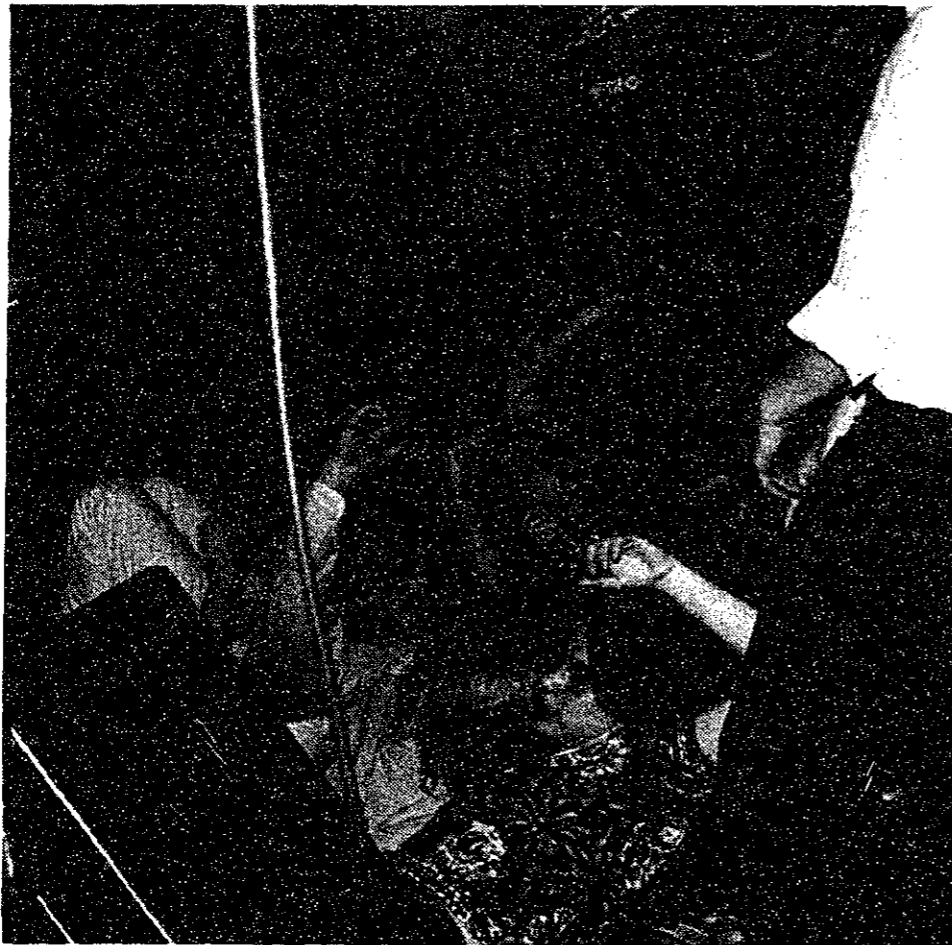
Tech Photo by Laurie Goldman

This not a photograph of Ken Segel '83 wearing a pair of women's pantyhose on his head while playing with a pair of dirty panties. He had not been elected at the time this photograph of someone else was taken.



Tech photo by Linda Custer

This is a photograph of Ken Segel who is *not* the person in the photograph to the left. He is wearing beanie on his head, *not* women's underwear.

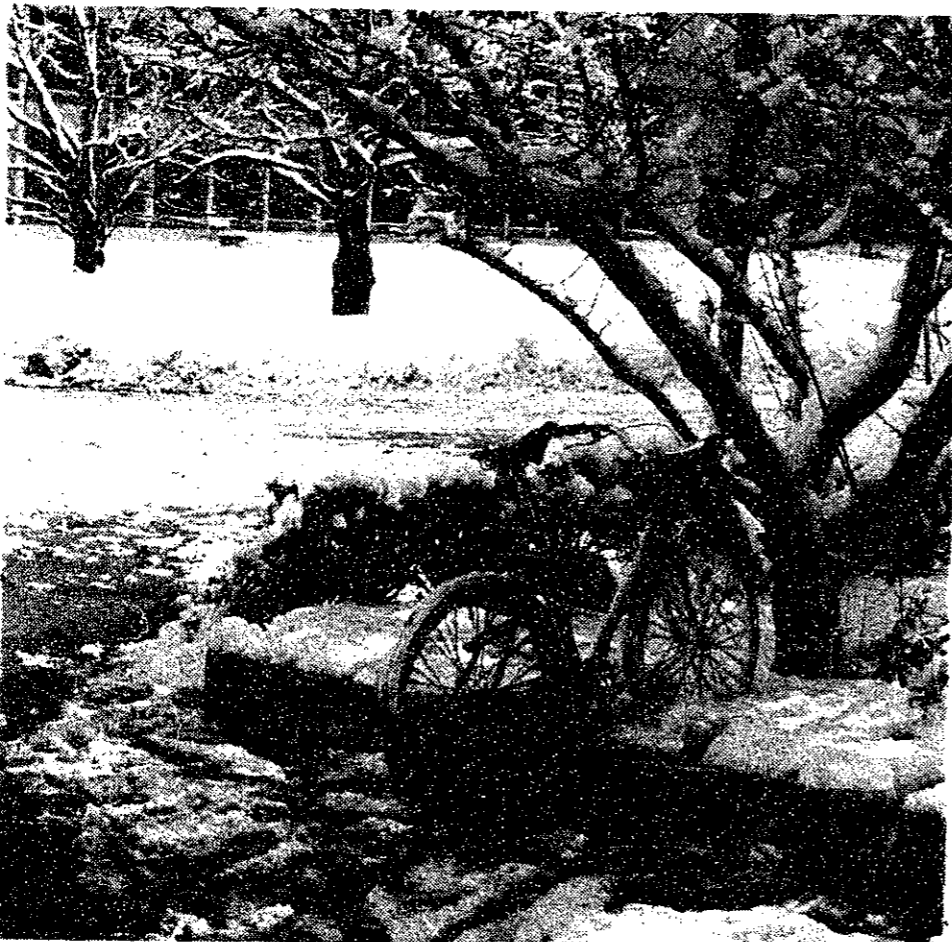


In a tragic accident yesterday, Lobdell served Chicken Currie for lunch



Tech photo by Robert Winters

... One person had heard rumors.



Tech photo by Laurie Goldman

One week before December finals.



Tech photo by Laurie Goldman

One week before May finals.

Reagan economist discusses budget, taxes

By Jerri-Lynn Scofield

James D. Burnham is Special Assistant to the Chairman of the Council of Economic Advisors. He is staff director for the council. Burnham was an undergraduate at Princeton University, and received his doctorate in economics from Washington University, where he studied briefly under Murray Weidenbaum, now chairman of the Council of Economic Advisors.

Burnham was on the staff of the Federal Reserve Board in Washington in the early 1970's, and then joined the Mellon Bank.

Q: Dr. Murray Weidenbaum, Chairman of the Council of Economic Advisors, has indicated projected Federal Budget deficits are too large for the economy to bear. What is the Administration trying to do now to reduce the size of the projected deficit?

A: Well, I think in the first place, the fundamental problem behind the deficit is spending. The Administration continues to push ahead on all areas where we think we can reduce spending. The President established a task force of the top CEOs [Corporate Chief Executive Officers] in the country with Peter Grace, of W. R. Grace and Co., setting up the whole effort, to look at the question of inefficiencies of spending in the various departments. The Defense Department is very prominent on that list.

Even here, say, in the Council of Economic Advisors in the Executive Office of the President, we have taken a sixteen percent cut in our budget for fiscal 1983. Indeed, in every possible ongoing area we are looking at the spending area. We've got a budget that starts with very substantial

ministrations justify its cuts for spending in education, realizing that it needs scientific manpower?

A: There is an attempt to apply cuts on an across the board basis, as equitably as possible. We have the same social arguments that come from, say, from those firms, individuals that are associated with the export-import bank. We get tremendous resistance to cuts that affect many of the nutrition programs, housing programs, where the chief beneficiaries are lower income groups. You know, it is clear that in many cases, the chief beneficiaries of the student loan programs have been middle class groups in the past. The people that program served was expanded a number of years ago. The program was very consciously expanded to go up the income scale. None of these programs are being eliminated, especially in the student, educational areas. They are being refocused on those who are most deprived, who need these programs the most. There is simply not enough to go around to take care of everybody the way we did in the past. My own view is that it is clear—and I've got two children who are approaching college age—I've got to do some hard thinking about my children's working and saving behavior over the next several years, and my own lifestyle, as such. I think in these times there are fundamental attitudinal changes that are going to have an impact, that have to have an impact if people want to continue going through the higher education process. You know, I think it is clear, we recognize that they will have an impact on these people.

Every other program we're cutting back is going to have an impact on people. You can't just say, "This area's im-

portations could make to report for tax purposes. I am not familiar with specific measures that have been taken since then. Of course, he did also mention the tax credit for R&D tax credit for R & D. There was an increase made in the maximum amount that a corporation could make for charitable purposes. I think it went from five to ten percent.

Q: The Administration has discussed various ways to improve worker productivity, to reduce regulatory burdens, and to reformulate tax policy to encourage investment in R & D. Is the Administration functioning under the assumption that it would like to return to the productivity levels that this nation experienced in the period between 1940 and the early 1970's? There are some economists who say that rather than lower productivity rates of the last few years being an aberration, the high productivity rates were an anomaly. Has the Administration addressed that issue at all?

A: I think we view, as our economic report and the President's message laid out, it as quite achievable to go back to the higher rates of productivity growth that we experienced in most of the post-war period. We think it's a desirable thing to do. I'm not familiar with some of the arguments about which is the aberration and which isn't. There are many industries, where productivity rates could certainly, profitability be improved through additional investment in plant equipment, in research and development for that matter. We would view one of the criteria for success of a program as moving toward those higher rates of productivity growth that we experienced back in most of the post-war period.

Q: If the hypothesis that 1940 to the mid 1970's, was the aberration and it becomes impossible to reach those levels of productivity upon which the plan for economic recovery depends in part, would the Administration, consider revising policy? Also, is policy generally directed toward reducing inflation at the expense of unemployment in the country?

A: The policy's directed toward constructing a stable, consistent framework for economic activity on the part of the private sector. That's why we have a three-year tax cut. That's why you have certain objections with respect to federal government spending as a percentage of GNP. That's why you have a regulatory reform program. That's why you have a stable, gradual reduction in the rate of growth of the money supply. Given that stable framework, we leave it to the private sector and to the marketplace to determine what the actual outcome is. We think we know what that outcome is going to be in broad, accurate, macroeconomic terms. But what the actual opposition of output and what industries are going to do better than others and such, we don't have specific sectional or regional policies to refine what that ultimate output looks like.

Q: In the AAAS speech last summer, Dr. Weidenbaum indicated that R & D policy was based on the assumption that economic conditions would improve. Economic conditions under the Reagan plan have not improved in the last few months as much as they were supposed to improve. Are any plans being made to change policy to adjust to a still unhealthy economy, as opposed to continuing to assume the healthy economy is just around the corner?

A: No, we think that the policies that are in place—contrary to the views of some—are quite likely to result in a moderately strong economic recovery as we go through the rest of the year. Signs are gathering that we are close to a turning point in overall economic activities, even though some weak sectors remain as they typically do. I think the view is that we can get above average economic growth for

"There is an attempt to apply cuts on an across the board basis, as equitably as possible... The chief beneficiaries of the student loan programs have been middle class groups...."

continual cuts. You have to start with a fundamental view as to what the Administration's position about the role of the Federal Government is. And once the President has that view, the Administration has that view and therefore you push for reductions in all those areas that we don't believe are Federal functions. I'm not saying eliminate all these programs at this point—it's simply a question of cutting them back very substantially.

Now there have been a lot of proposals that have been discussed on the Hill, with other additional areas to take cuts from—out of Defense, out of entitlements, or what have you. I think the Administration has made clear its willingness to listen to any comprehensive action that is presented by the leadership of the Congress. Once you get that, you sit down and go from there. In terms of approaches to the deficit, that's the main point at this time.

Q: One Congressional committee has already held hearings on increasing corporate taxes. Another way to reduce the budget deficit is to increase income taxes. What is the Administration's current policy toward increasing taxes as a way of lessening the deficit?

A: Well, first of all, the Administration has sent to Capitol Hill revenue proposals involving changes in the existing tax legislation that amounts to about \$34 billion over the next three years. Some things have to do with contracting payments. There are proposals that deal with revenue bonds. So we have some tax measures up on the Hill. Now they're encountering some degree of hostility, there's no question about that. But at this point those are the only revenue type measures that we are negotiating with the Congress on. Let me make it clear that the President ruled out any change in the third year tax cut. There has been no support from the Administration to alter the third year tax cut, including among the Council of Economic Advisors. There was a headline in the *New York Times* which gave a slightly misleading impression of where the Chairman [Weidenbaum] stood on that.

Q: The opponents of the Reagan cuts have said that the cuts are ideological, that they're not across the board, that they're targeted to specific areas. One specific area cited is the NSF budget, particularly the social sciences. How do you respond to that charge, particularly since the NSF social science budget was reduced last year from \$40 million to \$10 million?

A: I'm not sure that I can remember the details. Well, I think again there are two things. One is, what is the fundamental Federal government role in education? Secondly, it's my understanding that with the NSF budgeting process, there was general policy pointing out that many NSF grants in the social sciences area are relatively small ones, where the ability to pick up funding from other areas, from private foundations, was probably greater than if you're talking about a million or \$10 million project in the hard sciences area, where the amount of money needed for a project is much greater. I think there was some rough principle that worked there. And, as I said, the fundamental question was the reorientation of the Federal government's role in education.

Q: Dr. Weidenbaum addressed the American Association for the Advancement of Science last summer on the subject of research and development [R & D]. In order to continue to encourage investment in R & D, which I understand is a vital part of the economic recovery program, one needs qualified individuals to pursue such research. The Administration has scheduled cutting funding of student education significantly, as the cost of private education at a university such as MIT is going to exceed \$13,000 next year. How does the Ad-

portant and we'll leave it untouched." Then somebody else will come to you, "Well my area is just as important, leave that untouched." And a third group will then come—you make it extremely difficult once you start making major exceptions.

Q: Does the Administration expect that middle class students will be able to continue to go to private institutions? Does it expect that these will, as some college administrators have claimed, decimate colleges? You mentioned different income levels. When costs at MIT are rapidly approaching \$14,000 a year, I don't think just lower class people can't afford to go there. I think most middle class and upper middle class students can't afford MIT. When students can't afford MIT, they miss the benefits of an MIT education. The government and society then lose the benefit of their skills.

A: Well, that's the classic public goods argument in favor of subsidizing education. We have to get back to the fundamental point here—we're dealing here with a pie that is not infinitely large. People, individuals, institutions are going have to make hard choices about allocating scarce resources, and it affects the government, it affects institutions and it affects individuals. It's a fundamental problem with making difficult choices.

In a sense, what the Federal government has said is that we can not continue to subsidize these programs in the future as we have in the past. Not to say we don't recognize that there will be adjustment problems as we go forward.

"Nobody likes big deficits... But we've looked at the problem and we've developed one answer to it. If we get a second answer out of the Congress then that's the basis for going ahead and talking some more about it."

but you know, I think I noticed there was a program announced by Princeton—I think, don't hold me to this but you might want to call them up because it's an interesting example—I think it was a \$100,000,000 grant designed for the brightest graduate students who were potentially interested in teaching over the next decade or so. It was a private foundation that made this grant. The reason they made it was they recognized—given the employment prospects for young teachers in the university system over the next several decades, which is mainly caused by demographi factors—there were some requirements for a program like this. I think the American system is extraordinary. We have wealthy individuals or wealthy foundations that develop these programs, designed for very narrowly targeted but extremely important functions. You know, that's the kind of environment that we want to continue to see. This program is designed to encourage the private sector to take these kinds of initiatives.

Q: In Dr. Weidenbaum's address to the American Association for the Advancement of Science [AAAS] last summer, he mentioned various policies that could be adopted to encourage private industry to invest in R & D, and to contribute to university research. Has the Administration made any attempts to institute tax incentives for businesses to contribute to universities? R & D?

A: Well, I think the tax law did change the maximum allowable contribution as a percentage of earnings that cor-

the second half of this year. That looks like the outcome.

Q: In recent months, particularly after the deficit for the fiscal year '83 budget became apparent, the Wall Street community has criticized the President's budgetary plans more than it had in the past. Has the Administration changed its policy at all to address criticism from that community?

A: Nobody likes big deficits. Wall Street doesn't like big deficits, Congress doesn't like big deficits, the Administration doesn't like big deficits. The questions is what do you do about them? We aren't going to print our way out of it—print the money to pay for it. The question involves, how do you take it out of peoples' pockets? Do you take it out by taxing it away, or do you take it out by coaxing it out of their pockets with government bonds? I think everybody would like to see less of that dilemma. But we've looked at the problem and we've developed one answer to it. If we get a comprehensive, integrated second answer out of the Congress that is supported by the Congressional leadership then that's the basis for going ahead and talking some more about it. You know—Wall Street—nobody likes the prospect of financing large amounts of government bonds. Even though, and this is important to recognize, even though in the past we have run deficits as a percentage of GNP that are larger than the deficits we are projecting.

(Please turn to page 12)

Economist considers US deficits, tax cuts

(Continued from page 11)

Q: When Reagan was campaigning, he was very antagonistic to the idea of deficits. One of his campaign promises was to reduce the federal deficit and in fact move toward a balanced budget. What has changed to make deficits palatable?

A: Nothing has changed, except that the President ran for a program that called for reducing taxes and for strengthening defense, and for reducing inflationary finance through reduced domestic spending. Now you've got four very desirable objectives, and the essence of leadership is saying, "Well, I've got very desirable objectives, how do I rank them? Which are the most impor-

tant?" And rather than flip-flopping back and forth—this is important today and this is important tomorrow and this is important the third day—I think the one thing you've seen that should be encouraging is a consistent set of priorities from the Administration.

Q: Are you saying that those four priorities may be in part contradictory, that you can't achieve all four — ?

A: You can't achieve all four simultaneously. That's what the budget says, that's what the budget document says.

Q: Isn't that the criticism that was levied at Reagan by his detractors during the campaign?

A: I wasn't part of the campaign. I don't know quite how they were all packaged up and presented.

Q: At what point in the future will we have a balanced budget? I think the latest estimates are now fiscal year 1986.

A: Well it isn't—our projection, we actually don't show a balanced budget in our five-year projections, which I think is probably the first really honest set of projections that have been sent up to Capitol Hill in terms of realities of the situation and the process. I think the Administration clearly remains committed to the goal of a balanced budget. The question is how and when can you get there. I think in this respect it is interesting to note the great interest, by the Congress as well as by the Administration, in the Constitutional Amendments that basically will call for moving toward a balanced budget

SPECIAL PURCHASE



Scotch®
Dynarange®

C-90 Cassettes

A \$12.57 value
for only \$7.38

Buy two Cassettes
get one free!

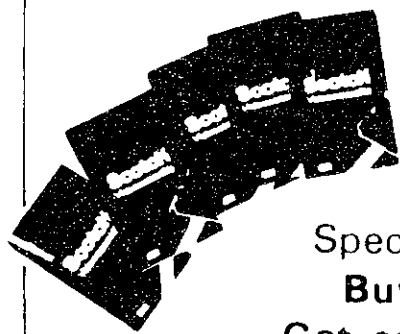
Available at Harvard Square Business, Medical & MIT

Scotch® Videocassettes

Sale \$13.99

Reg. 16.99

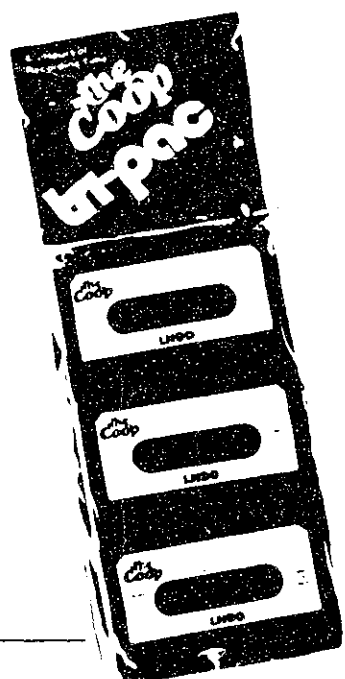
Choose an L-750
or T-120



Special Offer
Buy 5 —
Get one FREE!

Free by mail when you buy a total of 5 Scotch Videocassettes or 4 Scotch Videocassettes and one Scotch Head Cleaning Videocassette, in any combination, between now and October 2, 1982

Harvard Square only



The Coop's Tape
3— 90 minute
cassettes

super price \$1.99

Excellent for voice recordings

HARVARD
COOPERATIVE SOCIETY
MIT Student Center

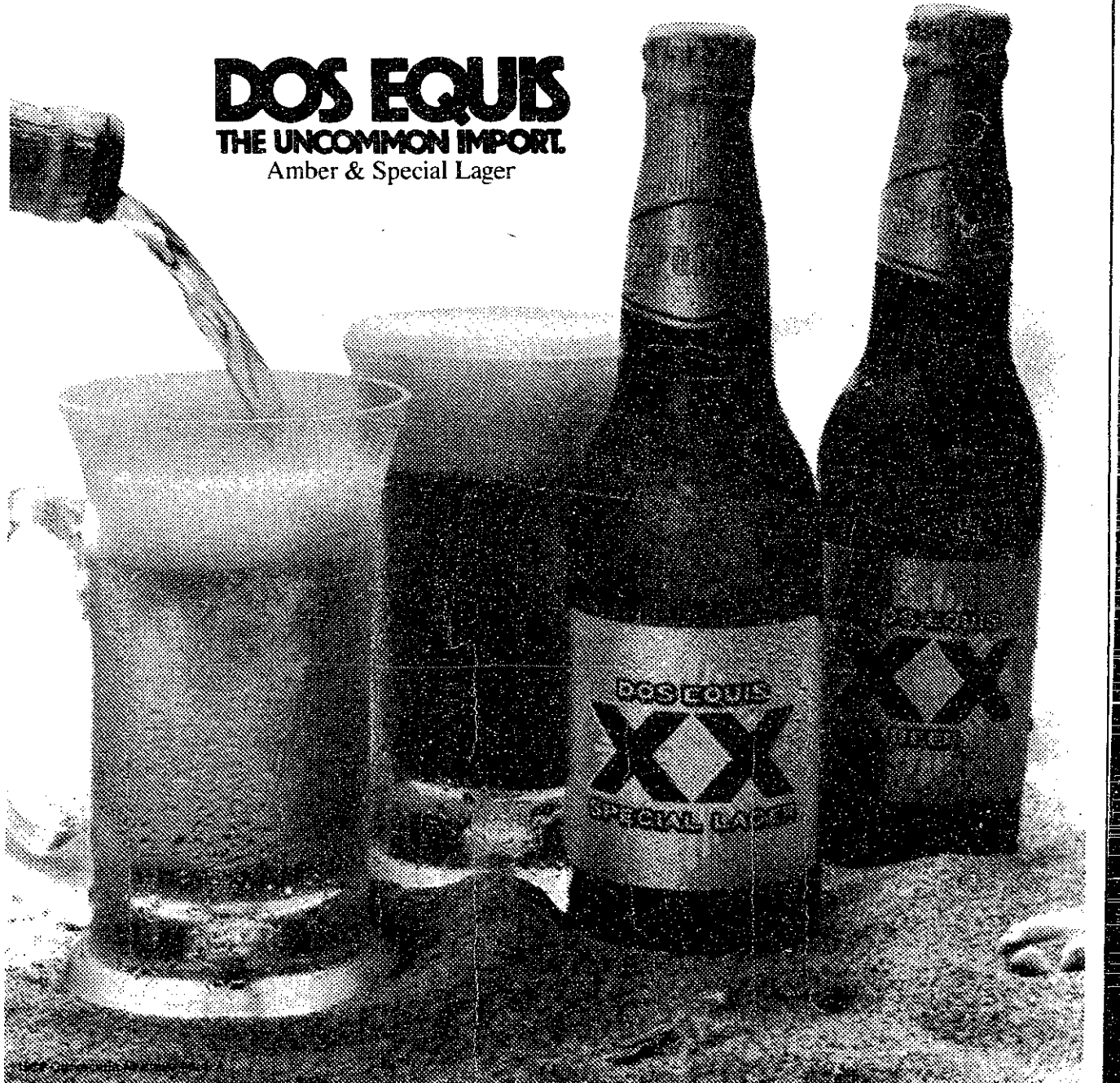


POUR ON THE GOOD TIMES WITH DOS EQUIS.

Whatever you do, pour it on. Build up a burning thirst, then cool it with ice, cold Dos Equis imported beer. Dos Equis. Uncommon from its rich, amber color to a big, bold taste no other beer can match.

So why settle for ordinary when you can have extraordinary: amber Dos Equis or golden Dos Equis Special Lager.

DOS EQUIS
THE UNCOMMON IMPORT.
Amber & Special Lager



The Beaver By Glenn Ackerman

WE GOT TROUBLE, BOSS! THE SLIME II TOXIN IS NOT BEING ABSORBED INTO THE STUDENTS' BLOODSTREAMS!

SLAM!

SLAM!

SLAM!

Space Epic By Bill Spitzak

PETE, ARE YOU LEAVING?

YEA, AREN'T YOU?

NEAR, THIS SHOULD KEEP PEOPLE FROM CUTTING US OFF ON THE HIGHWAY!

NO, I HAVE A PHYSICS EXAM, EMILY IS GOING TO HELP ME MAKE CRIB NOTES FOR IT!

Stickles By Geoff Baskir

SO HOW LONG HAS THAT CARTON OF ORANGE JUICE BEEN SITTING IN YOUR REFRIGERATOR, EVAN?

OH, ABOUT TWO MONTHS...

ER, WHAT DOES IT TASTE LIKE?

INSTANT SCREWDRIVER!

Call us
Leaving Campus?

2 Sixth Rd
Woburn, MA 01810

Dataterm, Inc.
Call Televideo
Telex Sales
Leasing TI

Also many other terminals

on call service TTY

We haul cheaper than U-haul
492-8678
Licensed and Insured

Your foreign language ability is valuable!

Translations into your native language are needed for industrial literature. You will be well paid to prepare these translations on an occasional basis. Assignments are made according to your area of technical knowledge.

We are currently seeking translators for:

- Arabic • Chinese • Danish • Dutch
- Farsi • French • German • Greek
- Italian • Japanese • Korean
- Norwegian • Polish • Portuguese
- Romanian • Spanish • Swedish

and others.

Into-English translations from Russian, East European languages and many others also available.

Foreign language typists also needed.

All this work can be done in your home!

Linguistic Systems, Inc. is New England's largest translation agency, located a block north of the Central Sq. subway station.

For application and test translation call Ms. Erelia

864-3900

Linguistic Systems, Inc.
116 Bishop Allen Drive
Cambridge, MA 02139

Glasses: You don't always get what the doctor ordered

LECHMERE \$51.70
OPTICAL SHOPPE \$55.00
JORDAN MARSH \$52.95
THE OPTIQUE \$44.00
MADSEN OPTICAL \$58.00
VISION CENTER OF SOUTH BOSTON \$47.00
COMMUNITY OPTICIANS \$54.50

By SUSAN V. HANDS

Getting the right eyeglasses isn't as simple as many consumers think. Eyeglass manufacturing is imprecise, but you don't have to suffer for less than the perfect pair.

The Herald American took a doctor's prescription for nearsightedness and astigmatism and ordered identical glasses from eight Boston-area opticians. When the doctor, George Garcia of the Massachusetts Eye and Ear Infirmary, checked the glasses he found:

- No two pairs were the same.
- Only one pair matched the prescription perfectly, although four others fell within acceptable tolerances.
- One pair was flagrant: two others were wrong enough to affect vision slightly. In the Herald American's sample of eight pairs, five were acceptable to Dr. Garcia, although only one matched the prescription perfectly. The two pairs that were slightly wrong had no discernible effect on the wearer's vision. The same was true for the rejected glasses, although Garcia said these would hamper the vision eventually.

The cheapest glasses, made by opticians at The Optique, were also the furthest off. Yet the second-cheapest pair, made by technicians in the central lab of the Community Opticians chain, were the only perfect match.

Community Opticians
534 Mass. Ave.
Central Square Cambridge
354-6535

sports

sports update

Track — The dynasty continues: MIT's superb track team has done it again, winning the New England Division III outdoor track title for the second straight year. Saturday's win at Westfield State also gives MIT its fourth New England title in the last two years, and ends what is undoubtedly MIT's finest track season in history.

Paul Neves '83, completing another stellar season, led the Tech charge with wins in the 800 meters (the third consecutive year) and the 1500, and anchored the mile relay squad, which set a school record of 3:18.4 en route to winning the event. Senior Dave Diedo chipped in with an effort of 180 feet, ten inches to win the hammer throw, while Colin Kerwin '82 ran his way to a pair of third place efforts in the 1500 and 5000, the latter coming when the Engineers needed points. Kerwin's finish in the 5000 put MIT one point behind Fitchburg State, 73-72 when the mile relay team of Lance Parker '83, Dave McMullenn '84, Ron Smith '84, and Neves came up with their record-setting performance to pull out the victory. MIT won the meet with 82 points, Fitchburg took second with 74, while host Westfield State garnered 71½ points to finish third.

Hoping to follow in the footsteps of cross-country, the

MIT Women's Track Club held its inaugural meet Wednesday at home against Regis College. The Tech squad came away with a 78-28 triumph, despite only having eight participants. The team has been working out since March and is hoping that more women will come out to run in 1983.

Golf — Coach Jack Barry's group finished 1982 with a record of 15-6-1, its ninth consecutive winning season, and one of its best in recent years. Highlights of the season were a third in the New England Division III cham-

pionships, and an eighth in the New England, which include schools from all three divisions. Co-captain Scott Nyberg '82 finished ninth in the Division III tourney, with score of 160. The team looks forward to next year, as four freshmen return to see action.

Softball — MIT concluded its finest season even in softball Saturday by beating Nichols, 4-3 on Briggs Field. The Engineers finished the spring at 11-4, highlighted by winning the Massachusetts AIAW Class C title.

EYEOLASS & World

Complete Optical Shop

We have the new plastic scratch resistant lenses

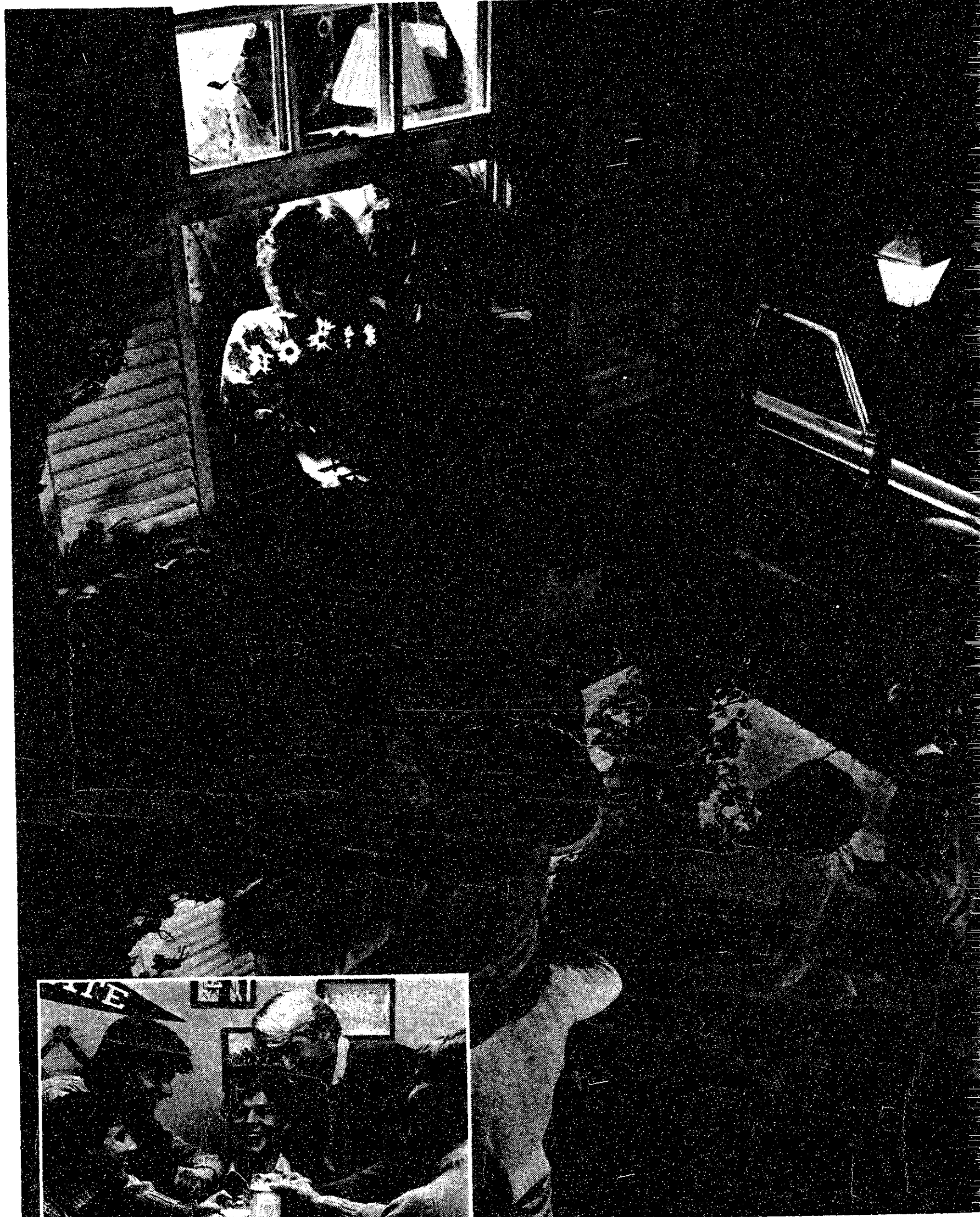


Fashion frames at reasonable prices

- Instant eye exams
- Prescriptions filled
- Fashion tints and photo changeables
- Contact Lenses 60 Day Trial
- Large Selection of Ray Ban Sunglasses
- Sport Frame Available

Central Square, 495 Massachusetts Avenue, Cambridge Mass. 02139 Tel: 661-2520

Good friends stand up for you when you need them.



Phone calls got you nowhere, but this should get her attention. A mission requiring split-second timing, perfect planning and most importantly, some surefooted, stand-up guys.

When you come down to earth, spring for something special.

Tonight, let it be Löwenbräu.



Löwenbräu. Here's to good friends.

©1982 Beer Brewed by Miller Brewing Co., Milwaukee, Wis.

ANY U.S. BOOK IN PRINT

ORDERED BY TELEPHONE
DELIVERED DIRECTLY TO YOUR HOME OR OFFICE
ALL MAJOR CREDIT CARDS ACCEPTED
OUR 10TH YEAR WORLD WIDE
944-8060/7 DAY - 24 HOUR SERVICE
COOPERATIVE BOOK SERVICE OF AMERICA, INTERNATIONAL
Reading, Massachusetts 01867 U.S.A.

TECH NIGHT AT THE POPS

The Boston Pops
Public Welcome
Thursday, June 5
8:00pm



Tickets: \$14.00, \$12.00, \$8.00
\$6.00 and \$4.00 at
Building 10 Lobby
May 10 — May 21
10am — 3pm

Central War Surplus
433 MASS. AVE.
Central Square
Cambridge

GOING CAMPING?

SAVE ON:

- Sleeping Bags
- Tents & Air Mattresses
- Backpacks & Knapsacks
- Ponchos
- Coleman & Gas Stoves

sports

Fleming farewell

(Continued from page 16)

things, etc. I guess it's called being set in one's ways. Being set in one's ways manifests itself in

Baseball drops two, but wins home finale

(Continued from page 16)

MIT again knotted the score in the fifth when with one out Martinelli was hit by a pitch. Fordiani singled to right, taking second when the play on Martinelli at third was not in time. One out later Huffman brought them both in with a single into center field.

MIT took the lead in the eighth when Williams singled and Chuck Souter '82 drove him in one out later with a double. Souter, though, was thrown out trying to stretch the hit into a triple. Wilcox got on base on a shortstop error and advanced to second on a passed ball. Dale Rothman '84 then singled him home.

The lead was short lived, however, as in the top of the ninth, DiChristina walked the lead-off hitter. Huskie Bates then powered his second home run of the day to the same spot, tying the game at six. Ferguson relieved and got the side out without incident.

In the bottom of the ninth with two outs, substitute left fielder John Tantillo '85 singled. Williams then stroked the ball deep into center field, scoring Tantillo, and winning the game.

Straight T award results

Once again, athletes who had outstanding performances in intercollegiate competition, both regional and national, have been recognized with the Straight T award. This year, thirty-one MIT athletes were so honored:

Men's Fencing:

Eric DeBeus '82
Oscar Estell '83

Men's Gymnastics:

Jack McCrae '84
Dave Roberts '85

Pistol:

John Blascovich '82
Duncan Hughes '83
Joseph Mayo '83
Spencer Webb '83
Jon Williams '83
Larry Deschaine '84
David Martin '84
Roberto Landrau '85

Rifle:

Cliff Eskey '85

Men's Swimming:

John Schmitz '83
Bob Schoenlein '84

Women's Swimming:

Karen Klinecwiez '82

Indoor Track:

Paul Neves '83

Women's Volleyball:

Linda Plano '82
Irance Reddix '82
Margaret Kniffin '83
Akiko Kodaka '84
Amy Smith '84
Damaris Ayuso '84
Barbara Wesslund '84
Stephanie Stein '85
Anella Munro '85
Julie Koster '85
Janette Kauth '85
Mary Petrofsky '85

Water Polo:

John Friedman '83

Wrestling:

Ken Shull '84

many forms. The same writing style, the humorous columns that Jack humor, the same mistakes—they all mean it's time to go.

I'll still be around. I have too much of an ego not to see "Eric R. Fleming" grace some part of the back page. I'll write some columns, maybe a feature or two, and cover the basketball team and Athletic Department as manager and Varsity Club President (yup, folks, that story a while back was on myself).

In summary, I have not regretted my years here. I've enjoyed covering what I feel is the best athletic program in the country, and enjoyed getting to know the people involved with it. I love meeting people, and I can think of no better way to do it than doing something else I love—being a spectator. It's been fun, gang, but now I must say good-bye.

You got the best camera. You got the best film. Why didn't you get the best pictures?

A good film lab can make all the difference between good pictures and disappointing ones.

Here at PhotoQuick, we do just that by custom printing your film. That means we inspect each and every negative by hand before it's printed. And make corrections for color balance and density—corrections that most likely wouldn't be made by a large processing lab with automatic equipment.

Try PhotoQuick for your next roll of film. We think you'll be pleasantly surprised to find that we're not only better, we're faster!

*C41 Process



CAMBRIDGE LAB
Central Square
MASS. AVE. and PEARL ST., 491-9191

PHOTO QUICK
FILM LABS
A free roll of color print film when you bring in a roll of processing with this ad. Limit one per customer. Offer expires 5/31/82.
FREE!
Can Not Be Combined With Any Other Offer.
MIT

Boston, you've got the Pops, the Sox, the Celts and the Bruins.
Now, all you need is a really great imported beer.

Now, Grolsch is here. From Holland to the Hub.



A unique bottle.

Our 16 oz. wire-top bottle holds the beer that's been impressing beer drinkers for over 300 years.



A superb taste.

Beer-lovers are calling Grolsch® the best tasting imported beer on the market today.



A distinctive 12 oz. six-pack.

So you can share the great taste of Grolsch with your friends.



A 16 oz. two-pack.

Our one-of-a-kind 16 oz. wire-top bottle is available in a one-of-a-kind two-pack waiting for you.

Grolsch

LAGER BEER
A real masterpiece from Holland.™

Imported by Grolsch Importers, Inc.
Atlanta, GA 30339 ©1982

sports

Eric R. Fleming

A thin kid hangs up his pen

It's all over. An era in MIT sports history has ended, as well as an era in the annals of this newspaper. I, Eric R. Fleming, *Tech* sports editor, have decided to cover up my typewriter and call it quits after three years of mostly faithful service.

Do not shed a tear, sports fans. The time has come. All of us must move aside and make way for the new blood that must come in and refresh the body. And if there was a body that needed refreshing, it is our sports department.

Don't get me wrong. I'm proud of what we've done here over the last year. I still remember the issue of February 23, 1982, when my buddies and I kicked five solid pages of news and views from MIT athletics. We had it all —

track (complete with controversy), wrestling, swimming, hockey, basketball, etc. Every time I look at that issue, I think about what we can do if we get our act in gear.

I also remember the lean times Sports has had. I remember doing issues by myself due to lack of writers, and my laziness in assigning the ones we had. I recall almost giving it up, but being persuaded to come back.

I'm glad I did. The new crop of frosh that came in was enthusiastic, willing to work, and knew how to write. Guys like Marty Dickau, Robert Malchman, Brian Schultz, and Arthur Lee were always looking for stories, and going out and doing a damn good job getting

them. I hope they learned something from me, 'cause I definitely learned from them.

I must thank Marty, who reminds me a lot of myself two years ago. He never complains, looks for things to do, and complements me well. I just hope he doesn't "burn out" like I did last year.

Why am I moving on? Well, I feel I can no longer make significant contributions to the sports department. Sure, with my knowledge of the Athletic Department (which I feel I know better than almost any student on campus), I can give "dope" on things doing on in duPont, but that's about all. My ideas are old, I'm kind of hesitant to try new

(Please turn to page 15)

Baseball finishes at 10-11

By Robert E. Malchman

After dropping a doubleheader at Tufts 9-5 and 9-2 on Saturday, MIT concluded its spring baseball season successfully Monday, upsetting Northeastern in a bottom-of-the-ninth 7-6 victory. The win gave MIT a final record of 10-11, just one game shy of Coach Fran O'Brien's pre-season projection of a .500 year.

Tufts opened up in the bottom of the second in the first game. After an error by third baseman Steve Lubiak '83 to begin the frame, starter and loser Al Fordiani '82 (2-3) yielded first a walk, and then a triple to successive batters. A sacrifice fly brought in the third run of the inning, as Tufts batted around.

The Jumbos continued their

rampage in the bottom of the third with five runs. Two walks, a single and another walk brought Mike DiChristina '85 (1-4) to the mound, who surrendered two more hits and a walk while retiring Tufts.

MIT struck back in the fourth. Todd Huffman '83 walked, Steve Williams '82 singled and Steve Kosowsky '83 doubled them in. Kosowsky advanced to third on Wilcox's ground out, and scored on a wild pitch. The Beavers, however, could not rally further to catch Tufts.

The second game was a nightmare, as the Jumbos reached Dan Ferguson '85 (4-3) for ten hits and eight runs in two-plus innings. Dow Hardy '85 (1-0) pitched well in relief, giving up just one run

and four hits in three innings.

Monday's contest against Division I Northeastern was a tense nail biter from start to finish. DiChristina gave up a walk and a single to open the game. He retired the next two batters, but two consecutive singles brought in two runs.

MIT evened the score in the third when Fordiani singled with the bases loaded to drive in one run, and DiChristina helped himself with a sacrifice fly.

DiChristina retired seven in a row before walking the lead-off hitter in the fourth. With one out Huskie left fielder Paul Bates slammed a home run over the right center-field fence to put Northeastern up 4-2.

(Please turn to page 15)

Feast your eyes on Boston.



From every one of our contemporary and distinctively appointed guest rooms, you'll enjoy a positively magnificent view of the Boston skyline. And while you're visiting MIT you can treat yourself to a Boston tradition — a superb dinner in our Rib Room. Superior service

and convenience of location complete the picture: the Hotel Sonesta, on the banks of the Charles River, is only two minutes from nearby MIT with plenty of free parking. Courtesy transportation is provided to major historic, educational and financial centers in Boston.

Hotel Sonesta, Cambridge

Five Cambridge Parkway, Cambridge, MA 02142 (617) 491-3600
Call a travel agent or Sonesta at 800-343-7170 (In Mass. 800-952-7466)
Sonesta Hotels in: Hartford, Key Biscayne (Florida), New Orleans, Amsterdam, Bermuda, Herzlia (Israel)

Portable Precision

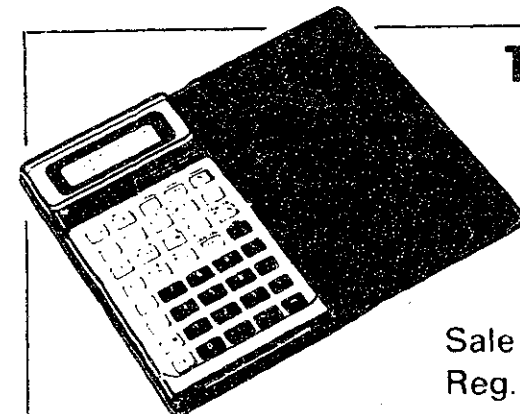


SILVER-REED

850 Electric Typewriter

Sale \$219.95 Reg. \$239.95

A marvelous portable machine with full fledged Correction key. 12" carriage; 10 position electric tabulator; vertical half-space, plus much more — all fabulously functional features in a handsome carrying case.



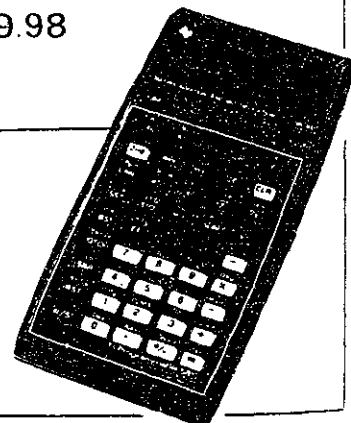
Texas Instruments

TI Investment Analyst

Sale \$29.98
Reg. 49.98



TI 58 C
Sale \$84.95
Reg. 94.95



HARVARD COOPERATIVE SOCIETY

MIT Student Center

the Coop

IMPACT

SCIENCE and ENVIRONMENTAL REPORTING PROGRAM

Scientific and technological advancements are having a profound impact on society and have created an urgent need for knowledgeable, skilled science, medical, and environmental affairs communicators to inform the public about these developments and their consequences.

The Science and Environmental Reporting Program, given under the auspices of New York University's Department of Journalism and Mass Communication, has as its goal the training of communicators for the news media, industry, government, and public interest groups. Degree candidates take 48 points in three regular semesters and part of a summer and, upon successful completion of the program, are awarded an M.A. in Journalism and a Certificate in Science and Environmental Reporting. Course work includes a year-long Science Survey course team-taught by several scientists and a journalist; Basic and Advanced News Writing; science and medical reporting; Press Ethics; Science, the Press, and the Public; The History of Science; and an internship. There are also frequent field trips to scientific and medical facilities and special seminars conducted by experts in several areas. For application material, write to: William E. Burrows, Director, SCIENCE AND ENVIRONMENTAL REPORTING PROGRAM, Meyer Hall of Physics, New York University, New York, NY 10003; telephone (212) 598-7761, 7762.

NEW YORK UNIVERSITY

a private university in the public service
New York University is an affirmative action/equal opportunity institution

