

Cambridge to vote: services or lower tax

By Barry S. Surman

Cambridge residents are voting today on two proposals to mitigate the tax cuts mandated by Proposition 2½, the property tax reduction passed by Massachusetts voters in November, 1980.

Under Proposition 2½, Massachusetts cities and towns are required to cut their property tax revenues by 15 percent annually, until property is taxed at the rate of 2½ percent of "full and fair market value."

Dean, UA discuss new fee proposal

By Tony Zamparutti

Vice President Constantine B. Simonides, Dean for Student Affairs Shirley McBay, and student government and activity representatives discussed at a dinner last night the possibility of funding the Undergraduate Association (UA) by a direct activities fee charged all undergraduates.

The Association of Student Activities (ASA) Executive Committee approved at their last meeting a proposal to transfer the funding for the UA budget from the Office of the Dean for Student Affairs (ODSA) to a student activities fee set by the UA. Under the proposal, tuition charges would be decreased to accommodate the transfer.

Ken Meltsner '83, UA Vice President, said he and UA President Ken Segel '83 are opposed to the activities fee. Many students would be adverse to such a fee and might call for the UA budget to be reduced rather than increased, he noted. The General Assembly might even decide to eliminate the tax, leaving the UA without any budget, he suggested.

"If we as students do not trust ourselves to run government efficiently," then voting down the UA budget is justified, contended Samuel Austin III '82, ASA President. He and Arnold Contreras '83, ASA Treasurer, contended the activities fee would give the UA control over the size of its budget.

Professor Jeffrey Meldman '65, Chairman of the Activities Development Board, suggested that if the UA leaders want a larger budget they ask the administration to boost tuition by a small amount to provide additional activities funding.

The General Assembly will consider at its next meeting a resolution requesting the UA activities and government budget be

(Please turn to page 5)

Question One on the city ballot asks voters to authorize Cambridge to cut property taxes by only 7½ percent in fiscal year 1983. A majority vote is required to pass the question.

Question Two, if approved by two-thirds of those voting, would allow the city to keep property taxes at their present level for one year. If both measures pass, taxes will remain at current levels next year.

Two-thirds of the \$120 million Cambridge city budget is raised through property taxes, according to Councilor David Sullivan '74. Revenue losses for the fiscal year beginning July 1, 1981, when Proposition 2½ took effect, forced the cutting of 400 employees from the city payroll, he said, and if voters reject today's referenda, 500 more layoffs — including 54 firefighters and 55 police officers — will be necessary for the coming fiscal year.

Although most students would not be affected by changes in the property tax rate, Sullivan added, "a lot of these [cuts] have a fairly direct effect on students" because of personnel cuts in the Police, Fire, and Rent Control departments.



Photos courtesy MIT Lecture Series Committee
Karen DeCrow (left) and Phyllis Schlafly (right) appeared in a debate in Kresge Auditorium last night.

DeCrow, Schlafly debate ERA at MIT

By Joe Kilian

Phyllis Schlafly, founder and national chairman of STOP ERA, debated the Equal Rights Amendment (ERA) before a packed audience in Kresge Auditorium yesterday evening.

"The only thing [ERA] will do," Schlafly maintained, "is to make every law at Federal and

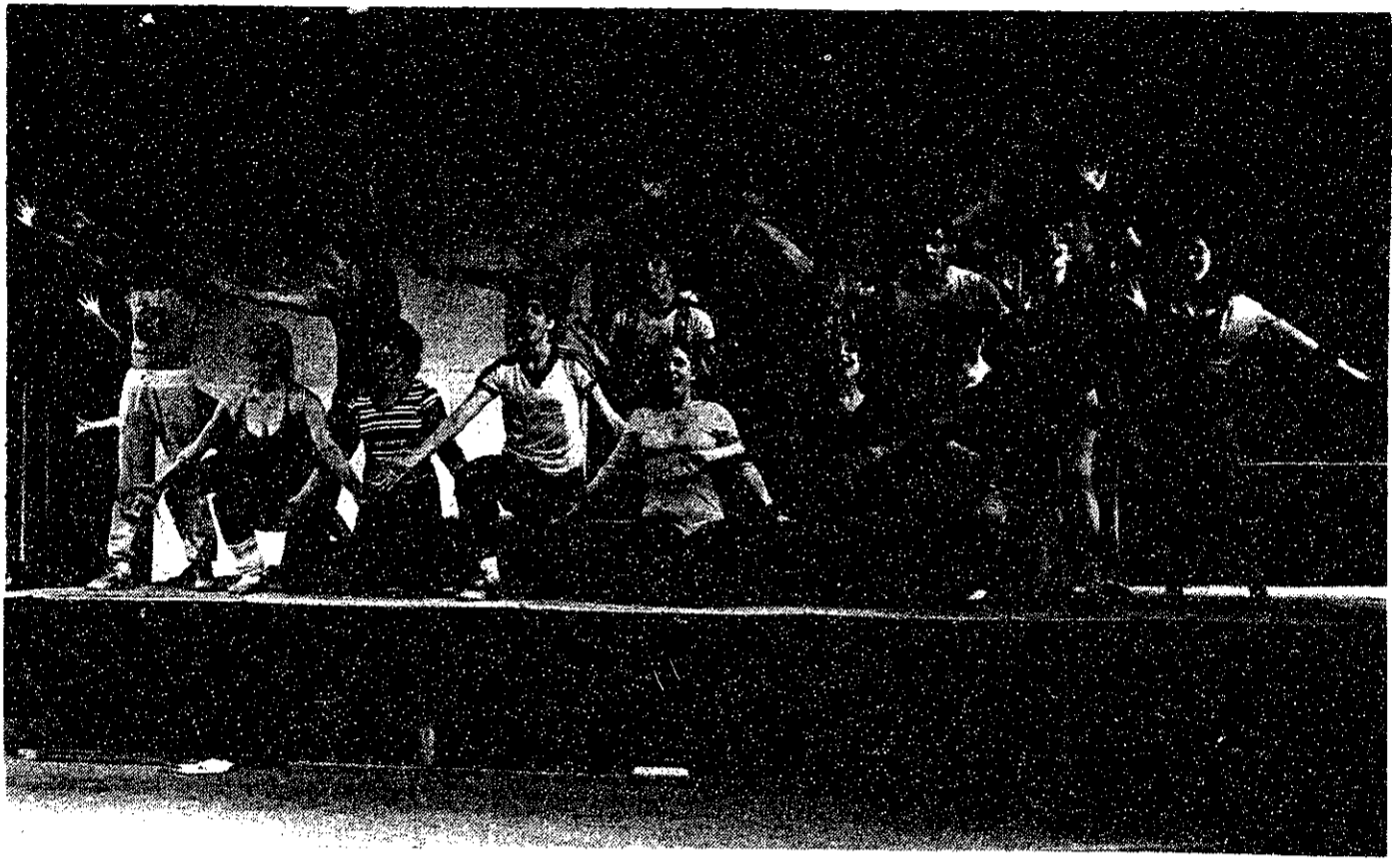
state levels completely neutral, and will give the total voice of power to the Federal government."

DeCrow contended, "The ERA amendment is needed more today than when it was first introduced to Congress in 1923 and finally passed in 1972 ... There is no sound reason, legal or social, not to ratify the ERA." Eight hundred sections of Federal law are sexually discriminatory, she claimed.

ERA lacks popular support, Schlafly claimed. "The ERA, with ten years, millions of dollars, and the support of all the top politicians in the country, couldn't make it because it was rejected by the American people," she declared.

DeCrow disagreed, contending

(Please turn to page 2)



This year's Tech Show has increased the Musical Theatre Guild's debt.

Tech photo by Gerard Weatherby

Tech Show loses money MIT Musical Theatre Guild is in debt to Institute

By Laura Farhie

The MIT Musical Theatre Guild (MTG) lost between \$3,500 and \$4,000 on its presentation of Tech Show '82 this month, according to MTG Treasurer Kenneth D. Cornett '84. The losses

from *Big Show* will push the Guild's debt to MIT over \$8,000.

Before Tech Show, MTG owed MIT approximately \$6,500, Cornett said. MTG now owes the Institute about \$8,000, he continued, and this debt will increase because "all the bills are not in yet."

MTG has a checking account with a balance of about \$6,000, Cornett said, but the Guild needs about \$3,000 in the account to "maintain an operating budget."

"I don't think we will go bankrupt," commented MTG President Linda A. Schaffir '82. She and Cornett said the figures are rough and are only preliminary.

MTG, like many student ac-

tivities, pays its bills through MIT. The Institute issues checks for activities and deducts the amount from the group's account balance. Unlike a bank, however, MIT sometimes allows accounts to hold negative balances.

"We just can't afford to lose money on the next couple of shows," Cornett said. "The debt will be paid over the course of making money on our next shows."

Cornett claimed MTG has broken even on its shows over the past few years. The guild will try to make money on future productions by "budgeting things differently," he said.

MTG may ask the

(Please turn to page 2)

Amherst Street fire damages laboratory

By Robert E. Malchman

A one-alarm fire broke out Sunday evening at the Research Institute for Medicine and Chemistry at 49 Amherst Street, across the street from the new Whittaker College of Health, Science and Technology.

The Research Institute is not associated with MIT. There were no injuries, though a couple of the firemen received mild electrical shocks when they first engaged their hoses.

Donald Howard, a laboratory technician who lives nearby, noticed smoke emanating from a third floor window. No one was in the building. Howard called the Cambridge Fire Department at 6:15pm. The fire department responded and had the fire under control within half an hour, according to Deputy Chief Ernest Gelinias.

The fire burned a hole three

(Please turn to page 2)



Tech photo by Robert Malchman

A one-alarm fire broke out Sunday night in an Amherst Street building.

inside

And the winner is...
Big Screw Results are in
News Roundup.
Page 3.

Blake Edwards and William
Shakespeare — together at
last.
Page 6.

"Gonna get me a guitar —
uh, synthesizer — and start
me a band."
Page 7.

Two MIT students win
\$20,000 scholarships.
Page 8.

Theatre guild loses money

(Continued from page 1)

Undergraduate Association Finance Board (FinBoard) for financial assistance. "We may ask FinBoard outright for a grant," said Cornett. "I can also see us asking FinBoard for a cash flow loan."

The Guild also might pay some of its debt with money in its checking account, according to Cornett.

Previous treasurers left extra money in the MTG checking account, rather than paying the Institute, Cornett explained. "When

I get a better feel for the position we are in, I will pay off some of the debt in the Institute account," he said. Cornett was elected MTG treasurer last term.

This year's Tech Show was unsuccessful partly because "the playwrights took the script too seriously," Schaffir said.

"The way it looks now, the Guild does better financially with standard shows than Tech Show," Schaffir asserted. MTG productions of *Fiddler on the Roof*, *Cabaret*, and *Pippin* made money because people are

familiar with these shows, she noted. By the same token, people feel they are taking a risk with original shows written by MIT students, Schaffir added.

Last year in the United States, an estimated one million children suffered from abuse and neglect, and at least 2,000 of them died of it. That's 2,000 children each year whose promise will never be shared with us. *This space donated by The Tech.*

Research lab burns

(Continued from page 1)

feet by ten feet in the floor between the second and third floors. The water used to extinguish the blaze caused most of the building damage, according to Howard. The firemen had difficulty locating the sprinkler shut-off valve, once the power was shut off.

The cause of the fire is undetermined. "It might have been

chemical or electrical," said Galinas. "I can't be positive, so I'm turning the matter over to the State Fire Marshall for investigation. The fire itself is not suspicious."

Galinas and Howard guessed the damage to be in the neighborhood of \$25,000. The owner of the building could not be reached for comment.

ERA need argued

(Continued from page 1)

state legislators are preventing its passage. She cited polls showing 80 percent of Iowa voters and two-thirds of Utah voters support the ERA. Neither state has approved the amendment.

ERA has been defeated in many state referendums, Schlafly countered.

Existing employment, tax and social security laws are sex-neutral, claimed Schlafly. Fraternities, sororities, and single-sex dormitories are protected under Title IX, she added; these would be jeopardized by the passage of the Equal Rights Amendment. ERA would subject women to the same draft laws as men, she said.

Present legal protections for women are being eroded by the Reagan Administration, contended DeCrow.

An organization calling itself

"Ladies Against Women" held a demonstration outside Kresge Auditorium. Protesters carried placards proclaiming, "Sperm are people too," "My home is his castle," and "Repeal the law of evolution." Members of the groups heckled Schlafly during the debate, but were chastised by the rest of the audience.

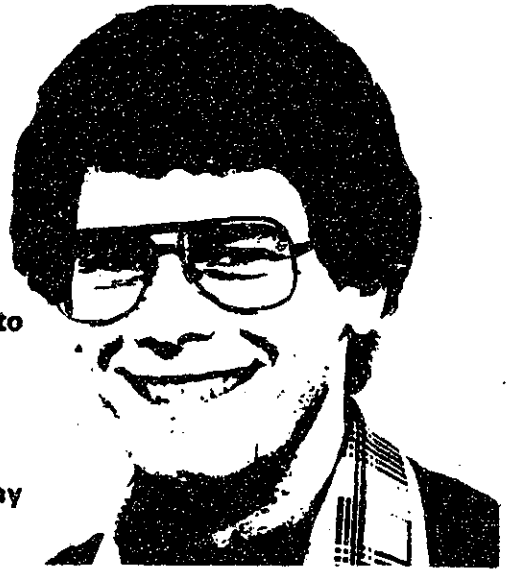
Enrich your life.

The Tech

EYEGLASS & World

Complete Optical Shop

We have the new plastic scratch resistant lenses



Fashion frames at reasonable prices

Instant eye exams

Prescriptions filled

Fashion tints and photo changeables

Contact Lenses 60 Day Trial

Large Selection of Ray Ban Sunglasses

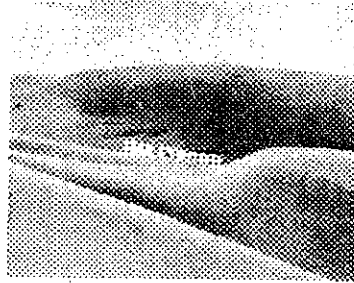
Sport Frame Available

Central Square, 495 Massachusetts Avenue, Cambridge, Mass. 02139 Tel: 661-2520

AMERICAN REPERTORY THEATRE

STUDENT RUSH \$5

1/2 hour before curtain



TRUE WEST

by Sam Shepard

The latest play by the Pulitzer Prize-winning playwright takes place on the fringes of Hollywood, and follows a drifter and his screenwriter brother. You'll find poetic insight in the vistas of the American "True West"



RUNDOWN

by Robert Auletta

Set in the unstable mind of a Vietnam veteran, RUNDOWN deals with the effects of the war on this man, his former friend, and the woman they both once loved, all seeking a resolution to an experience which has transfigured their lives and the life of their country.

IN REPERTORY APRIL 3 - MAY 9

Performed at the Hasty Pudding Theatre 12 Holyoke Street, Cambridge

547-8300

Dunham Great footwear for the great outdoors®

Seasonal features.

There's nearly a century of quality craftsmanship in the Dunham footwear you buy. And you'll like our factory-direct prices. Major credit cards accepted.

Sugg. Retail \$40.00

NOW \$24.99



Men's all leather sport shoe. Genuine plantation crepe sole. Imported by Dunham.

Dunham FOOTWEAR OUTLET

CAMBRIDGE, MA. 328 Mass. Ave.

PIZZA KENS WAY

NEW!

TRY OUR NEW DEEP DISH PIZZA!

Made from a special recipe, our unique pizza dough is fresh-baked daily by our pastry chef.

Add your choice of toppings or try one of Kens' House Special Pizzas — fresh vegetables, lox & onions, or Mexican. Have hot delicious pizza Kens way — a slice above the rest!

KENS

KENS AT COPLEY — 549 Boylston St., Copley Square

Appliances For Export anywhere in the world!

We feature all appliances—from refrigerators to video cassette recorders and transformers by most manufacturers including GE, Kelvinator, Westinghouse, Sony, Sansui, etc. Our 22 years experience makes us experts in voltage, cycles, and all of the details of overseas shipments. And our prices are much below overseas prices.

For literature, advice and price information, write or call:

Appliances Overseas, Inc.

330 Fifth Avenue, New York, NY 10001 (212) 736-7860

news roundup

World

Gunman sets off rioting in East Jerusalem — Alan Harry Goodman, an American-born Jew wearing the uniform of the Israeli Army, killed two and injured at least 25 when he opened fire with an automatic rifle at Jerusalem's Dome of the Rock Mosque. The shooting touched off riots throughout the city; at least 150 persons were injured in the rioting. Israeli police used tear gas to disperse the crowds.

British blockade begins, Falklands quiet — The British naval blockade of the Falkland Islands went into effect late Sunday night, following the Argentine invasion of the islands over a week ago. Argentina placed its armed forces on alert, but withdrew its fleet to port when the blockade took effect at 11 pm EST Sunday. British Foreign Secretary Francis Pym said any Argentine ship violating the 200-mile radius around the islands will be sunk.

Nation

Supreme Court appeals to Supreme Court — The US Solicitor General filed an appeal to the Supreme Court last week on behalf of the Supreme Court Marshal and Police Chief. The appeal asks the high court to reverse a lower court ruling which overturned a law prohibiting protesting and distributing leaflets on the Supreme Court's grounds. Although the justices are not parties to the appeal, the Marshal and Police Chief are subordinate to Chief Justice Warren Burger.

Former Defense Secretary rejects Haig claim — Robert McNamara, Secretary of Defense under Presidents John F. Kennedy and Lyndon B. Johnson, said this weekend he no longer advocates using the threat of a nuclear attack to deter a non-nuclear offensive by the Soviet Union. He rejected a claim by present Defense Secretary Alexander Haig that the US would have to triple its armed forces and reinstitute the draft to adequately protect the NATO alliance.

Campus

Brister nabs Screw — Fran Brister, Administrative Assistant in the Chemistry Department, edged out Chemistry Lecturer Dagmar Ponzi by \$3.25 to take this year's Big Screw award, sponsored by Alpha Phi Omega. The \$706.58 raised by the contest will be donated to Boston's St. John the Evangelist Outreach Program, at Brister's request. Last year's contest netted over \$1000. A well-known student campus publication topped the list of unofficial candidates with over \$71. This year's official results:

Fran Brister	\$149.67	Bernard Feld	23.83
Dagmar Ponzi	146.42	Ken Sloan	21.93
James Roberge	42.77	David Epstein	15.00
Robert Holden	29.81	Others	277.15

Sports

Bruins to face tonight's winner in second round — Following a convincing victory over the Buffalo Sabres Sunday night, the Boston Bruins are awaiting the results of tonight's deciding game between the Montreal Canadiens and the Quebec Nordiques in the first round of the National Hockey League's Stanley Cup Playoffs. In addition to the Bruins, the New York Rangers, the Vancouver Canucks, the Chicago Black Hawks, and the St. Louis Blues have already taken their first-round series.

Barry S. Surman

Weather

Cloudy with the possibility of occasional light rain this morning with temperatures in the upper 40's to near 50. Late in the day skies may clear a bit and temperatures could zoom into the 60's. Ahead of a cold front this evening there will be a few scattered showers or thundershowers, and by morning temperatures will be near 40. For tomorrow, expect mostly sunny skies with moderate winds and highs in the middle 50's.

James Franklin

Whatever became of the apple-cheeked lad (or lass) who got their ham license before their driver's license — who was so tickled by electronics that they couldn't help but make it their career???

At Kernco we understand the care and feeding of such a career. In a small company environment we can support individual initiative, and provide access to the high technology community and academic community.

We are looking for an engineer and a design technician to help us in our development — both in our R&D Program for satellite-borne Frequency Standards and in our effort to develop related commercial products. Please call: Eric Blomberg N1BF, Chief Engineer, (617) 777-1956.

KERNCO
28 Harbor Street
Danvers, MA 01923

for MIT Community

GET READY FOR
YOUR SPRING
SAFETY INSPECTION

And Save
10%, Too!



WE'RE DEDICATED TO:

SAVING YOU MONEY: All our prices are consistently the lowest in this entire area, and we give you more for your money. This is why thousands of companies in the Greater Boston Area have made our program a basic part of their employee benefit package. Use the coupon below for an additional 10% off.

SERVING YOU: You will receive honest and reliable service from our professional mechanics - none better in New England. They use gauges, micrometers and electronic analyzers - not guess work. For every service requested, you get a free, written estimate, before the work is done. And if additional parts are necessary, we always get your O.K.

YOUR COMPLETE UNDERSTANDING: We feel an informed consumer is a wise consumer. We will always try to answer your questions in plain, simple language. We can help you understand the Uniform Tire Grade Labeling, what tire's best for your car and driving needs, why that brake job might or might not be necessary, and any other questions you might have about the complex business of taking care of your car.

PROVIDING CUSTOMER SATISFACTION: Here you will receive your invoice in a folder outlining our strong, three-way assurance of complete satisfaction: by the no-hassle warranties of Cambridge Tire; by the high standards of AAA; and by our endorsement of the Better Business Bureau's binding arbitration program.

MAKING YOU COMFORTABLE: At each of our stores you will find: a cup of fresh coffee, tea, hot chocolate and donuts; a color television, current newspapers and magazines; a clean rest room; and a smooth-functioning organization.

CAMBRIDGE TIRE COMPANY sells exclusively to dealers and to: the staff, faculty and students of local schools; unions; federal, state and municipal employees; members of AAA; and to participants in our benefit program. Please show proof of your affiliation when purchasing.

ALL TIRES MOUNTED FREE - NO TRADE-IN REQUIRED.

GOOD YEAR POWER STREAK '78' POLYESTER BLACKWALL		
SIZE	PRICE	F.E.T.
A78-13	\$28.95	\$1.42
B78-13	\$31.73	\$1.53
C78-14	\$34.94	\$1.68
D78-14	\$35.97	\$1.70
E78-14	\$36.87	\$1.80
F78-14	\$38.84	\$2.12
G78-14	\$40.33	\$2.26
H78-14	\$42.29	\$2.49
G78-15	\$41.66	\$2.35
H78-15	\$43.51	\$2.54

IMPORTED ALLIANCE AND AURORA STEEL RADIAL TIRES FOR FOREIGN AND SPORTS CARS BLACKWALL		
SIZE	PRICE	F.E.T.
155-12	\$37.39	\$1.57
155-13	\$38.88	\$1.59
165-13	\$41.74	\$1.78
175-14	\$51.69	\$1.98
165-15	\$49.69	\$1.93
175/70-13	\$48.94	\$1.70
185/70-13	\$51.82	\$1.98
185/70-14	\$56.93	\$1.98

DELTA RANGER DOUBLE BELTED WHITEWALL		
SIZE	PRICE	F.E.T.
A78-13	\$35.94	\$1.50
C78-13	\$38.68	\$1.69
C78-14	\$39.77	\$1.79
E78-14	\$42.57	\$1.95
F78-14	\$44.96	\$2.07
G78-14	\$45.90	\$2.20
H78-14	\$48.57	\$2.35
G78-15	\$46.88	\$2.34
H78-15	\$48.47	\$2.46
L78-15	\$53.23	\$2.65

DELTA VISTA STEEL RADIAL ALL-SEASON TIRE WHITEWALL		
SIZE	PRICE	F.E.T.
P155/80R-13	\$48.92	\$1.52
P165/80R-13	\$55.27	\$1.67
P185/80R-13	\$59.74	\$1.91
P195/75R-14	\$62.89	\$2.22
P205/75R-14	\$64.93	\$2.42
P215/75R-14	\$68.80	\$2.54
P205/75R-15	\$65.77	\$2.52
P215/75R-15	\$69.91	\$2.66
P225/75R-15	\$74.29	\$2.83
P235/75R-15	\$81.96	\$3.05

SAVE ON MICHELIN, TOO!

DELTA '48" BATTERIES \$45.00

24-4 With Exchange
Equal to or stronger than original equipment

DELTA DURASTEEL RADIAL DOUBLE BELTED WHITEWALL			
SIZE	ALSO FITS	PRICE	F.E.T.
BR78-13	P175/75R13 or P185/70R13	\$50.72	\$1.91
ER78-14	P195/75R14	\$57.69	\$2.19
FR78-14	P205/75R14 or P205/70R14	\$60.74	\$2.35
GR78-14	P215/75R14 or P215/70R14	\$62.49	\$2.48
HR78-14	P225/75R14 or P225/70R14	\$67.93	\$2.70
GR78-15	P205/75R15 or P215/70R15	\$65.88	\$2.57
HR78-15	P215/75R15 or P225/70R15	\$67.97	\$2.71
LR78-15	P235/75R15 or P235/70R15	\$74.70	\$2.98

AT OUR CAMBRIDGE STORE ONLY. "PIT-STOP QUICK" LUBE/OIL/FILTER Most American and popular foreign cars. \$14.50

CAMBRIDGE TIRE COMPANY

BRAINTREE: 230 WOOD ROAD, 848-6660, At Exit 68 on Route 128
 BURLINGTON: 84 MIDDLESEX TURNPIKE, 272-8230, Opposite Burlington Mall
 CAMBRIDGE: 290 ALBANY STREET, 864-7575, Off Mass. Ave. near MIT
 DEDHAM: 765 PROVIDENCE HIGHWAY, 329-3100, At Dedham Plaza
 NATICK: 339 SPEEN STREET, 655-6500, Next to Trailways Bus Depot
 REVERE: 600 REVERE BEACH PARKWAY, 288-5800, Near Bell Circle

MEMBER: GREATER BOSTON, CAMBRIDGE, QUINCY/SOUTH SHORE, & SO. MIDDLESEX AREA CHAMBERS OF COMMERCE
 BULLETIN NO. 70 - MAR.-MAY - COPYRIGHT © 1982 - C.T.C. ALL RIGHTS RESERVED

YOUR SAFETY IS OUR BUSINESS AND SAVING YOU MONEY IS OUR BUSINESS, TOO!

DELTA TIRES FOR CAMPERS VANS AND RECREATIONAL VEHICLES

SIZE	PRICE	F.E.T.
G78-15 6 ply	\$64.58	\$3.10
H78-15 6 ply	\$69.72	\$3.39
7.50-16 8 ply	\$67.83	\$3.54
8.00-16.5 8 ply	\$69.97	\$3.34
8.75-16.5 8 ply	\$76.86	\$3.78
9.50-16.5 8 ply	\$84.95	\$4.21

RETREADS BLACKWALL F.E.T. from .30¢ to .51¢ Whitewalls add \$2.00			
SIZE	PRICE	SIZE	PRICE
A78-13	\$22.92	H78-14	\$32.92
B78-13	\$25.92	560-15	\$25.92
D78-14	\$25.92	G78-15	\$33.92
E78-14	\$27.92	H78-15	\$34.92
F78-14	\$31.92	L78-15	\$36.92
G78-14	\$32.92		

RADIAL ALL-SEASON RETREADS WHITEWALL F.E.T. from .35¢ to .60¢			
SIZE	PRICE	SIZE	PRICE
155-13	\$31.97	GR78-14	\$39.49
BR78-13	\$33.97	HR78-14	\$39.49
DR78-14	\$33.95	GR78-15	\$43.98
ER78-14	\$33.98	HR78-15	\$43.98
FR78-14	\$33.98	LR78-15	\$44.38

ROAD HAZARD COVERAGE

Major tire makers have discontinued road hazard adjustments on tire failures due to cuts, bruises, punctures or blow-outs. However, we offer a road hazard certificate at \$2.50 per tire on new Delta and selected imported tires, as well as Cambridge retreads.

FRONT END ALIGNMENT

Most American and imported cars **\$1350**
 Most vans, campers and light trucks \$17.50
 New-Ford "Twin I Beam" alignment \$28.50

COMPU-SCOPE™ ELECTRONIC TUNE-UP

Most American and popular foreign cars.
 4 and 6 cyl **\$3900**
 8 cyl - \$43.00

DRUM BRAKE PACKAGE

4 wheels **\$8100**
 Most American Cars
 • Install premium heavy duty brake linings on all four wheels
 • Install new return and hold-down springs
 • Reface and true all four drums
 • Install new front grease seals
 • Clean and repack front wheel bearings
 • Inspect hydraulic system
 • Road test vehicle

DISC BRAKE PACKAGE

2 wheels **\$6550**
 Most American Cars

COMBINATION BRAKE PACKAGE

2 FRONT DISC BRAKES AND 2 REAR DRUM BRAKES **\$9700**
 Most American Cars

LIFETIME MUFFLERS - INSTALLED

Before you Midasize see us. **\$3450**
 Most American Cars

LIFETIME SHOCKS - INSTALLED

PREMIUM HEAVY DUTY \$1650 EACH INSTALLED

PREMIUM RADIAL HEAVY DUTY \$2250 EACH INSTALLED

MacPHERSON STRUT CARTRIDGES \$10950 PER PAIR (Datsun Z-cars — \$129.50) INSTALLED

COMPLETE STRUT ASSEMBLIES \$13950

WHEEL BALANCING COMPUTERIZED \$4.50
 STATIC \$2.75
VALVE STEMS \$.95

LOOK

PRESENT THIS COUPON TO YOUR SALESPERSON AND WE WILL GIVE YOU

10% OFF
 YOUR TOTAL BILL FOR ANY PRODUCTS OR SERVICES LISTED HERE.

CAMBRIDGE TIRE COMPANY
 Valid thru May 15, 1982
 not to be used with any other coupon in effect at time of purchase.

Editorials

Make sure student voices are heard

The Undergraduate Association's Nominations Committee (NomComm) showed great insensitivity by scheduling their hearings for seats on Institute committees last Saturday, April 12, just before Easter and in the midst of Passover. NomComm's decision ignored those students who chose to spend those holidays with their families. NomComm compounded its mistake by failing to publicize the hearings adequately, preventing qualified students from seeking committee positions.

NomComm will hold another set of hearings for seats on some committees this Thursday, April 15. In selecting students for such committees, NomComm should look for persons who will express student viewpoints. Those chosen are viewed by faculty members and administrators alike as representatives of students; committee members should see themselves in the same way. Student delegates should voice the concerns of their peers, and not act as tokens granted seats to legitimize the decisions of administrators and faculty members.

Committee members can guarantee student representation in MIT affairs. They should not, however, act as a rubber stamp for faculty decisions. They should not be unduly intimidated by the faculty members and administrators with whom they sit on committees. They should not view committee membership as a quest for resume entries or graduate school recommendations, but as an opportunity to address student concerns, to voice student objections, and to make student opinions heard.

Memorial wise gift

The memorial in Lobby 10 is a reminder of those MIT alumni and students who lost their lives in the first and second World Wars; yet the names of those who died in Korea and Vietnam have not been so honored. Although the later wars were far less popular, additions to the memorial are long overdue.

The class of 1982's plan to complete the war memorial is a wise choice; the class officers should be commended for their decision.

The gift will not and should not glorify either of these controversial conflicts, but it will honor those who died in their nation's service.

The Tech

Ivan K. Fong '83 — **Chairman**
 Jerri-Lynn Scofield '83 — **Editor-in-Chief**
 V. Michael Bove '83 — **Managing Editor**
 Mia Paget '84 — **Business Manager**

Volume 101, Number 18
 Tuesday, April 13, 1982

News Editors: Laura Farhie '83, Stuart Gitlow '84, Barry S. Surman '84, Tony Zamparutti '84

Night Editors: Judy Passman '83, Matt Giamporcaro '85, David Krikorian '85

Photo Editors: Gerard Weatherby '82, Ray Henry '85

Sports Editors: Eric R. Fleming '83, Martin Dickau '85

Arts Editor: David Rho '85

Advertising Manager: Keith Tognoni '84

Production Manager: Jon von Zelowitz '82

Contributing Editors: Brian Jay Glass '82, David Shaw '82, Kenneth Snow '82, Jon von Zelowitz '82, Richard W. Epstein '83

Indexing Project Representative: A. David Boccuti '79

Senior Editors: Stephanie Pollack '82, Michael Shimazu '82

NEWS DEPARTMENT

News Editors: Laura Farhie '83, Stuart Gitlow '84, Barry S. Surman '84, Tony Zamparutti '84; **Staff:** Heather Preston '82, Michael Shimazu '82, Julie Tiao '83, Thomas Loreda '84, Sam Cable '85, Gene Chang '85, Moris Dovek '85, Burt Kaliski '85, Dan Lerner '85, Howard D. Trachtman '85, John J. Ying '85, Susan Hagadorn G.; **Cartoonists:** Geoff Baskir '78, Glen Apseloff '81, Glenn Ackerman '82, V. Michael Bove '83, Jean-Joseph Coté '83, Bill Spitzak '83, Carol Yao '85; **Meteorologist:** James Franklin G.

ARTS DEPARTMENT

Arts Editor: David Rho '85; **Staff:** Tom Grycewicz '82, Howard Ostar '82, Joseph Romm '82, Peter Thompson '82, Jonathan Dippert '83, Bill Detlefs '84, David Bondelevitch '85, Stephen Huntley '85, Mark Tunick '85, Mimi Yenari '85, Tom Anderson G.

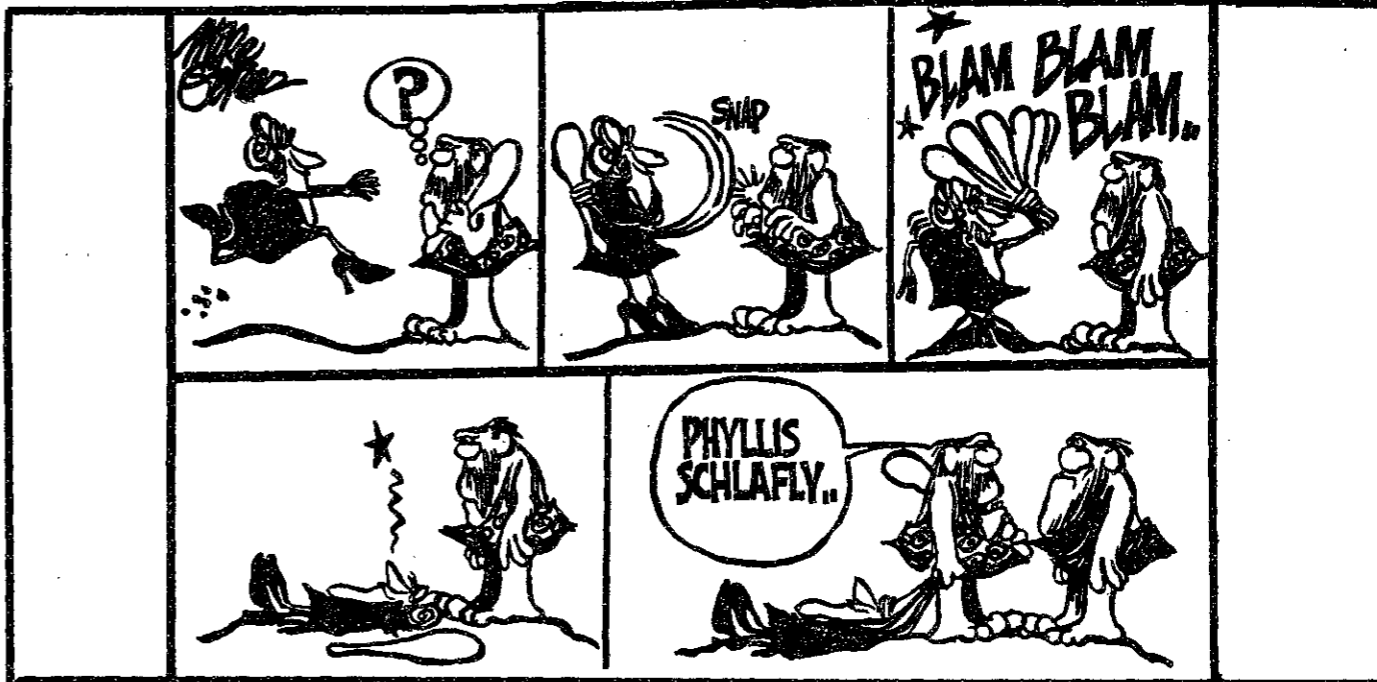
SPORTS DEPARTMENT

Sports Editors: Eric R. Fleming '83, Martin Dickau '85; **Staff:** Rich Auchus '82, Brian Schultz '84, Arthur Lee '85, Robert E. Malchman '85

PRODUCTION STAFF FOR THIS ISSUE

Night Editor: V. Michael Bove '83; **Staff:** Ken Snow '82, Bill Spitzak '83, Stuart Gitlow '84, Bill Giuffre '84, Barry S. Surman '84, Paul Gabuzda '85.

The Tech (ISSN 0148-9607) is published twice a week during the academic year (except during MIT vacations), weekly during January, and once during the last week in July for \$10.00 per year Third Class by *The Tech*, 84 Massachusetts Ave. Room W20-483, Cambridge, MA 02139. Third Class postage paid at Boston, MA. Non-Profit Org. Permit No. 59720. **POSTMASTER:** Please send all address changes to our mailing address: *The Tech*, PO Box 29, MIT Branch, Cambridge, MA 02139. Telephone: (617) 253-1541. Advertising, subscription, and typesetting rates available. © 1982 *The Tech*. Printed by Charles River Publishing, Inc.

→ **feedback****ASA issues not addressed***To the Editor:*

I am writing in response to the article headlined "ASA Proposals Raise Ire", which appeared in last Friday's issue of *The Tech*. You succeed only in bombarding your readers with a series of meaningless quotes; meaningless because you fail to provide the background information necessary to understand your story.

You also fail to define and analyze the relevant issues, such as: Should the Lecture Series Committee (LSC) be the only organization allowed to show movies at MIT and charge admission? If not, then how do we solve the problem of too many activities showing too many movies to too few paying customers? If we limit the number of movies to be shown, should there be a movie license fee? If so, should the proceeds be allocated by the Association of Student Activities

(ASA), which represents over 100 different student groups?

Rather than discussing these issues, why do I get the feeling that your story was instead a shallow attempt to start a serious conflict between ASA, Finance Board, and LSC, all of which are well-run organizations? Is *The Tech* really so incredibly desperate for news that it needs to start a war between different sections of student government?

Under the outstanding leadership of Sam Austin, the ASA has been very responsive to student wishes; more so than at any time in recent ASA history. Your article only briefly mentioned that the ASA was going to hold a forum. It should also have mentioned that the ASA forum is open to the entire MIT community, and will be held tonight starting at 7:30 in Room 491 of the Student Center.

Finance Board Vice Chairman Jason Weller is quoted as opposing the idea of having another committee collect and disburse funds. The ASA points out that the Student Center Committee (SCC) already collects and disburses over \$200,000 per year without being accountable to Finance Board. ASA wonders why it should be different, given that ASA and SCC are legally equivalent committees of the Undergraduate Association.

A compromise proposal may be taking shape, where all student government functions, including ASA and SCC, would have their funds allocated by Finance Board. I would strongly support such a solution, especially since Finance Board is responsible to student wishes through the General Assembly.

Jonathan Hakala '81
 1979-80 Undergraduate student body president

Saturday night at the infirmary*To the Editor:*

I recall that the Medical Center and the Infirmary recently, and with much fanfare, moved to the east side of campus. The Infirmary, I was mistakenly led to believe, would be open 24 hours. Last Saturday night, during a routine drinking spree, found myself foolishly walking around barefoot when one of my colleagues ineptly dropped (or threw) and broke his drinking utensil (glass). Not previously aware of this, I made the unfortunate mistake of stepping on the aforementioned glass. Being risk averse, and not particularly fond of the idea of glass in my foot or foot infection, I decided to journey to the Infirmary. The fun was about to begin.

There is a buzzer in front of one of the doors to press if one wishes service. After pressing it and waiting for ten to fifteen minutes. Not really believing that the Infirmary could be that busy at 4:45am Sunday morning, I decided to take the matter into my own hands, so to speak. Without a tremendous effort, the locked door suddenly opened. After looking around and seeing nothing, I walked around to the other side of the building thinking that maybe I was at the wrong place. I tugged gently on that door, and BINGO! that door opened as well. I felt like superman. Not knowing that the Infirmary was on the fourth floor, I walked around to the second floor and looked around. There was a lot of neat stuff lying around all over the place, but no people. I subsequently walked through an alarmed door, and a piercing alarm went off. At this point, I expected to be surrounded by a SWAT team or arrested by the FBI. No such luck:

only in Blues Brothers' movies, I guess. I then proceeded to Building E-18, where I finally found a living being. Physical Plant never sleeps! Someone there called Campus Police for me, and an officer kindly drove me to the Infirmary, a robust 30 second walk if there ever was one. When I got there, I was met by three additional living beings, all of them friendly neighborhood Campus Policemen. Campus Police foils attempt to break into the 24-hour Infirmary!

After some discussion, I was allowed to have my foot attended to. While the nurse was washing the cut out with alcohol, she told me to tell her whenever the cuts hurts. I guess she was trying to see if I could tell what happens when one combines alcohol with a fresh cut.

It seems that the reason I received no service after pressing the buzzer was because they turned the buzzer off. This led me to wonder, What are they there for? The least they could have done was to put a sign on the front door saying, "We're asleep, come back Monday." And of the SWAT team that failed to show up when I passed through the alarmed door? Drinking coffee somewhere, I suppose. After one of the nurses reluctantly put a band-aid on my foot, I went downstairs to fill out the requisite forms and to answer the customary questions.

The Campus Police were more concerned with the fact that I broke two of their doors, and that I had neglected to call them in the first place. But the fact remains that if someone had been seriously injured or sick, and hadn't had my superhuman strength (or lack of ethics) with which to enter the building, they could have been in

serious trouble, with the on-duty nurses off-duty.

One officer was rather disbelieving that I had only consumed beer that night because "You must have had more than beer to break two doors!" OK, so I did combine the beer with tequila. And maybe I was guilty of eating the worm in the bottom of the bottle. But I also should have had more intelligence than to go to the Infirmary in the first place.

An officer was concerned that if I had cut my foot, I ought to have been wearing socks. First of all, I never wear socks. Second, I saw no meaningful purpose of getting dye from socks in my cuts introducing the possibility of infection. And finally, perhaps the Campus Police should be more concerned with apprehending criminals than with supervising my clothing habits. At about 6am, I was released and allowed to go home.

What is the point of all this? First, if the Infirmary is supposed to be open 24 hours, then it should be. After all, if all I needed was a band-aid, I could have just as easily gone to Store 24. If the Infirmary is not meant to be open 24 hours, that's fine, but just let people know. Second, if they don't want people to "break in", they should make the locks sturdy. Third, I think a 24-hour Infirmary could come in handy.

What are my suggestions? First, don't get sick or hurt on weekends. If you must, don't go to the Infirmary. If you must, call Campus Police; they apparently resent it when you don't. Also, don't break doors. People will want you to know what drug you consumed gave you the strength to do it. Finally, don't drink tequila. If you must, skip the worm.

Richard Segal '84

Activities fee plan discussed

(Continued from page 1)
separated from the ODSA budget, which faces a cut of 20 percent over several years, according to the resolution.

"I see absolutely no use whatsoever in having the student activities budget" separated from the ODSA, said Simonides. Jurisdiction over the budget is

one function of the Dean's Office, he said.

McBay noted the ASA proposal represented the views of the four officers, not of all student activities. "Sam, don't you think you should have taken your own advice and consulted student activities leaders," she asked Austin.

notes

Announcements

Registration material for the 1982 summer session will be available Friday, April 16 at the Registrar's Office, E19-335. The Registration forms must be filled and returned to the registrar's office by Friday, April 30, 1982.

* * * *

Drop Date is April 23 — the Registrar's Office would like to remind students that correction cards will not be accepted without all of the necessary signatures. If your advisor is unavailable, contact your undergraduate office or department headquarters. Freshmen should go to the Undergraduate Academic Support Office, Room 7-103.

* * * *

Undergraduates in Course VII, VII-A, and VII-B, are eligible for the John Asinari Award for Undergraduate Research in the Life Sciences. For information see Tom Lynch in Room 56-524, Ext. 3-4711. The deadline for nominations is April 23, 1982.

* * * *

Nominations are now being sought for the Irwin Sizer Award for the most significant improvement to MIT education. The \$200 award may be given to any person, group or organization. Nominations may be made by letter and should include reference and/or supporting material. Submit nominations by Friday, April 16th to the Sizer Awards Committee, Graduate Student Council, Room 50-222 Walker Bldg.

An information session on the Wellesley-MIT Residence Exchange will be held Thursday April 15, at 4pm in Room 7-106. David Herring and Robert Spinner, MIT juniors currently living at Wellesley, will be on hand to answer questions. Information and application forms are available from the Wellesley-MIT Exchange Office, 7-108. Applications are due Friday, April 23.

Lectures

On Tuesday, April 13, 1982, the Harvard Law School Forum will present Betty Friedan, founder of the National Organization for Women (NOW) and author of the best-selling book *The Feminine Mystique* and the recently published book *the Second Stage*. Ms. Friedan's address will be entitled "The Second Stage: Living Equality and the Law." The lecture will take place at 8:00pm in Langdell Hall (North Middle), which is located on the Law School campus. Admission will be \$2.00. For further information, please call the Forum office at 495-4417 or 868-1989.

* * * *

A two-day public seminar, "Racism and Resistance in the Community and the Courtroom," will be held April 16th and 17th at Harvard Law School, 1595 Massachusetts Avenue, Cambridge. For more information contact Cynthia Boyce at 617-497-9342 or Jennifer Wriggins at 617-491-2528. All events are at Pound Hall, and open to the public.

Program in Science, Technology, and Society

STS

OPEN HOUSE

For prospective majors, concentrators,
and all other interested undergraduates.

Wednesday, APRIL 14th 4-6pm Bldg. E51-004

HOW CAN WE AVOID NUCLEAR WAR?
HOW DO COMPUTERS AFFECT PEOPLE'S LIVES?
SHOULD GENETIC ENGINEERING BE RESTRICTED?
WHEN DOES LIFE BEGIN AND WHAT ARE THE
LEGAL & POLITICAL RAMIFICATIONS OF THE ANSWER?
HOW HAS SCIENCE SHAPED WESTERN CULTURE?

If questions such as these interest you,
then come meet members of the STS program!

— Refreshments Provided —

For further information call Rosalie Gerut x3-4084



\$18.95 Per Day
For Chevrolet Chevette
UNLIMITED FREE MILEAGE
Confirmed Reservation Required

CHECK OUR WEEKEND SPECIALS!

2 Convenient Locations in Cambridge

CENTRAL SQUARE
905 Main Street
492-3000

HARVARD SQUARE
1201 Mass. Ave.
876-8900



**AT
BISUTEKI
THE STEAK
STEALS
THE SHOW.**

At Bisuteki, native Japanese chefs prepare your meal before your eyes. It's an incredible experience, filled with flashing knives, exotic aromas, course after delicious course, and the smiles of new friends.

But Bisuteki is more than a show. It's steak that's out of this world. Tender. Succulent. Sliced into delicate strips and served sizzling, its taste makes other steak seem dull.

Experience Bisuteki. You'll love the show. But you'll come back for the steak. Conveniently located with free parking at the Howard Johnson's Motor Lodges at 777 Memorial Drive, Cambridge (492-7777) and 407 Squire Road, Revere (284-7200).



WHERE THE STEAK STEALS THE SHOW.



← ← Shakespeare and the screen

Victor/Victoria, starring Julie Andrews and James Garner; produced, written and directed by Blake Edwards; music by Henry Mancini; an MGM release, now playing at the Sack Cheri.

As You Like It, presented by the MIT Shakespeare Ensemble, April 15-20, 8pm in the Sala de Puerto Rico; for information call 253-2903.

Imagine a tale, if you will, concerning a woman, cleverly masquerading as a man, who shamelessly pretends to be a woman. Rather a sordid-sounding affair, to be sure, but not so preposterous in this era of rampant moral debauchery and sexual ambiguity. In fact, this scenario forms a basis for writer-director Blake Edwards' latest cinematic socio-comedy, *Victor/Victoria*, a delightfully disturbing romp through the gray never-never land of sexual identification.

Featuring Edwards' well-preserved wife, Julie Andrews (formerly with the Trapp Family singers but lately of *S.O.B.* ex-

posure), *Victor/Victoria* chronicles the bizarre fortunes of a destitute coloratura soprano in Paris (Gay Paree) circa 1934. Motivated by starvation and abetted by a particularly gay Parisian named Toddy (Robert Preston), Victoria (Andrews) becomes embroiled in a preverse scheme to market her prodigious but as yet unappreciated musical talent. She is induced by Toddy to masquerade publicly as a mysterious Polish Count (Victor), who then performs in night clubs as a female impersonator. Owing to Victor's uncannily accurate impersonation of womanhood ("Just a spoonful of sugar . . ."), he/she immediately becomes the rage of Parisian nightlife. Smitten with her newly found freedom and success as a man, Victoria resolves to continue the charade indefinitely but infortuitously falls for a homophobic American *mensch* (James Garner). What follows is a scathingly satirical look at love and the social implications of sexual permutation.

Edwards' exquisite treatment of such elusive affairs is made possible through the curious theatrical device of a double gender reversal. One is tempted to ascribe such novel and audacious contrivance to the decadence of recent times, but surprisingly *Victor/Victoria* derives its plot from Reinhold Schuenzel's 1933 film *Viktor und Viktoria*. What is more disconcerting, however, is that the underlying double switch first crept its way onto the stage 38 years ago in Shakespeare's comedy *As You Like It*.

In Shakespeare's 'version' Andrews' role is surveyed by Rosalind, a young pitiable dukette, who is unjustly banished from court by her nasty uncle. So that she may travel safely, Rosalind disguises herself as a man (Ganymede) and heads for the great outdoors. She encounters the young, pitiable Orlando, who, having fallen desperately in love with Rosalind during her more feminine days, seems content to wander about and bemoan his wretched existence. Relishing the possibilities offered by her disguise as Ganymede, cunning Rosalind uses her masculine/feminine wiles to convince the innocent Orlando that wooing practice is in order — then insists on pretending to be Rosalind. Well, heartsick is heartsick and poor Orlando sets about wooing Rosalind, masquerading as Ganymede, pretending to be Rosalind; the whole situation is marvelously embellished by some of Shakespeare's most provocative characters: Touchstone, the not-so-foolish fool, who lucidly quips,

Sweetest nut hath courest rind,

Such a nut is Rosalind.

and the melancholy Jacques, who perhaps more lucidly observes that

All the world's a stage, and all the men and women merely players . . .

Loosely, what Shakespeare delivers admits this enthralling confusion is a devastatingly witty look at love and the pure joy of sexual switch-hitting (four centuries before General Hospital).

After through enjoying *Victor/Victoria* and learning of the imminent production of *As You Like It* by the MIT Shakespeare Ensemble, it seemed appropriate to point out an opportunity not to be missed. See them both. The similarities in underlying structure between the two productions are forceful enough that their simultaneous appearance on our entertainment horizon simply reeks of orchestration. Nevertheless, the agents responsible deserve congratulation for supplying us with a rare chance to do a little relaxed philosphizing within these hallowed halls of technocracy.

Mark DeCew

Mike McC

Sledge → → hammer → → rock → → → →

Johnny and the Distractions A&M Records

If a band is established and has already produced a healthy amount of original material, a review of their new release would focus on the album. If the band is relatively unknown, however, a review might try and describe the band, placing their new sound in the context of the current music scene. *Let it Rock* is ideal for this purpose. Though not particularly exciting as an album, it serves as a good introduction to an up and coming band with promise.

Johnny and the Distractions are the first national act since Paul Revere and the Raiders to hail from Portland, Oregon. This is significant. Their sound could start a new branch of popular music called "Red-neck rock." The boys were seasoned on a club circuit where a sour note might elicit the toss of a beer bottle. Their audience wanted hard and fast songs about cars, bars, and broads.

Traces of Bruce "Boss" Springstein are evident but not dominant. Their overall



sound is not particularly distinctive, different or exciting, but not unpleasant either. I'll bet these guys are a lot of fun in concert. Unlike many bands, they truly seem to enjoy making music. Heart is an important factor in the continuing development of any band.

The album cover has a sledge hammer striking sparks on a stone. It is a good metaphor for the contents: each song is like a chip from a block. The edges are different but it's all from the same rock.

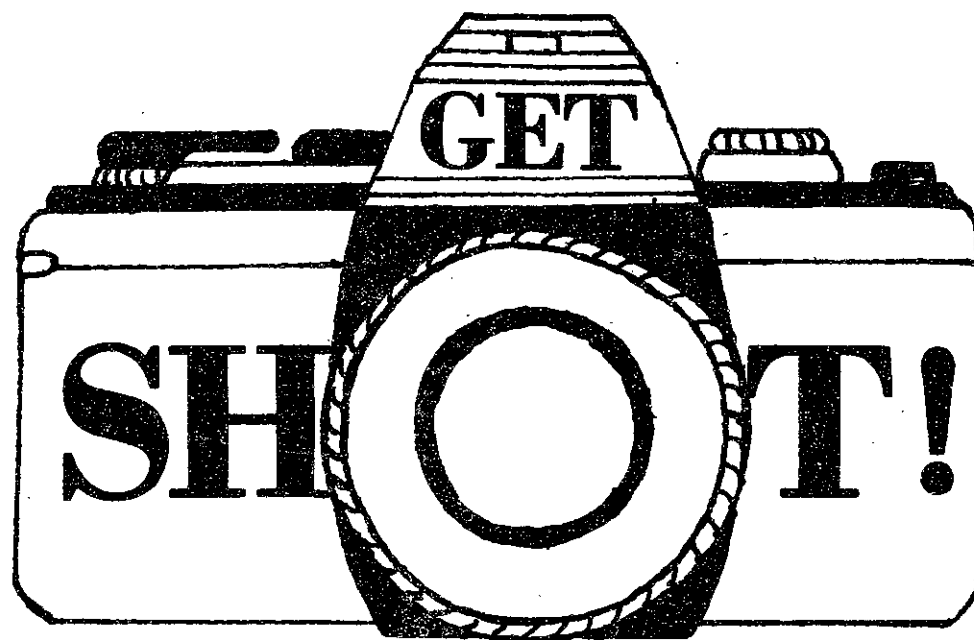
The opening cut "Shoulder of the Road" has received plenty of air play and is easily the best song on the album. A nice jumpy beat perfect for a party, the rest of the first side is more of the same. An opening organ riff on "In the Street" raises an eyebrow that is quickly lowered by further redundancy. The second side starts slower with "My Desire" but is soon back to the norm with "Guys Like Me." "City of Angels" and "Break These Clouds" are different but lack direction and "Let it Rock" is a disappointing conclusion for a title cut. It

seems like the band had a few good songs but still needed to fill out a whole album, so they jammed out a few more.

As singer, guitarist, songwriter, and leader, Johnny Koonce will be the obvious force shaping his band. His guitarwork is interesting but I don't think he can play and sing simultaneously. His rough voice is not very pleasant either and he likes to scream a lot. Still, he's a hard worker and determined to make the most with what he has.

Johnny and the Distractions are sloppy, but have a style that will mature with age. It takes a while for hometown boys to understand the world of professional Rock and Roll. I wasn't that impressed by *Let it Rock* but I wasn't turned off. It's a good disc to throw on at a party for background. Keep your eye on them for the next few years and try and catch them warming up for an established act. There's no guarantee they'll make it big but they can always hope.

JUNIORS,



TECHNIQUE, MIT'S YEARBOOK,

is now scheduling Senior Portrait Sitzings for the weekdays between Apr. 12 & Apr. 22

CALL TODAY 253-2980

SENIORS WHO HAD POOR QUALITY PICTURES TAKEN LAST FALL MAY BE RE-SHOT AT NO CHARGE

Soft head / Hard sell

Non-Stop Erotic Cabaret, Soft Cell on Sire Records.

Architecture and Morality, Orchestral Manoeuvres in the Dark on Virgin/Epic Records.

Dare, the Human League on A&M Records.

Mother got him a synthesizer

Brought the Human League in to advise her

Now he's making lots of noise

Playing around with the art school boys

The Undertones, "My Perfect Cousin"

The synthesizer is rapidly replacing the electric guitar as the instrument every youngster wants to own. "Gonna get me a guitar and start a band" has become "Gonna get me a synthesizer and make a record," and no one has pursued this new ideal with more fervor than the British.

The pioneering electropop singles appeared in Britain in the late seventies, drawing influences from the Eurodisco sound. Among these singles were Telex's "Moskow Diskow," Lori and the Chameleons' "Touch" and OMD's "Electricity." Although the first two are clearly mutated disco, the OMD single defined a new synthesis of pop sensibilities and electronic technology. Apparently the number of English bands currently making this kind of music has reached a critical density, because now electropop is spilling over to our American shores.

The first synthesizer band to be heard on Top 40 radio was Soft Cell, whose single "Tainted Love/Where Did Our Love Go?" has been receiving extensive airplay. Their splicing together of an old British soul song with a Supremes hit was inspired, but their choice of instrumentation leaves much to be desired. One instrumentalist (David Ball on keyboards) playing one simple riff wears on the nerves after a while, and adding taped beeps and clicks makes matters worse—you can always tell when "Tainted Love" is on the radio, just listen for the sound effects.

Soft Cell's album, *Non-Stop Erotic Cabaret*, displays the band's weaknesses, and overworks the few strong points. Vocalist Marc Almond's voice, which sounded so soulful and plaintive on "Tainted" turns out to be flat and expressionless. *Non-Stop* is meant to be an exploration of the X-rated side of life (How

do titles like "Sex Dwarf" and "Seedy Films" grab you?), but it succeeds only on delivering clichés. What's worse, "Tainted" appears in an edited form, eliminating any need to own this album—go out and buy the EP instead.

Orchestral Manoeuvres in the Dark (OMD) began as a multi-media event performed by Paul Humphreys and Andy McCluskey. The success of their first single, "Electricity," ensured their recording career; the single was followed by a competent debut album and a brilliant second record, *Organization*, which gave the band a second hit, "Enola Gay." OMD's first American release, *Architecture and Morality*, marks a return to the band's art school days—the snap and bounce of their

earlier work has been replaced by the taped effects and *musique concrete* sounds of their original performances. The additional sounds do not always improve the pop quality of the tunes, but they do show that OMD is willing to experiment, and some of these experiments turn out rather well.

"Souvenir," the current single, is one of the weaker cuts which illustrates the major flaw with the record: the tunes often crawl along at a snail's pace. A faster tempo (just turn the knob on the rhythm machine, boys) and a crisper recording would make these tunes as bouncy as any from *Organization*. As it stands, however, *Architecture and Morality* is not without its captivating moments, especially "The New Stone Age" and the paired "Joan of Arc" and "Joan of

Arc (Maid of Orleans)."

With the exception of the overlong "Sealand," OMD's current release is an experiment that works. It's still pop, albeit mutated pop, but the pioneers of the genre can hardly be expected to remain static. *Architecture and Morality* is another step in redefining the sounds of the eighties.

The genuine success story is that of the Human League, whose album *Dare* has been dominating the British charts for four months. After recording two excellent albums (*Reproduction* and *Travelogue*) the league split into two groups: one kept the original name, the other became the Heaven Seventeen (whose "We Don't Need That Fascist Groove Thang" was last summer's dance hall smash). Unlike the other electronic groups, the original League combined a talent for creating unique instrumental textures with witty lyrical commentary in tunes like "The Black Hit of Space" and "Life Kills."

The new Human League (which consists of original members Philip Oakey and Philip Adrian Wright, two female singers and two additional synthesizer players) utilizes only half of the original formula, the instrumental half. Although *Dare* is probably more hit-laden than previous group efforts, the album suffers from overuse of Oakey's seductive vocals and a "go out and have fun" philosophy that belies all the group's previous social commentary. Half of the tunes follow a simple formula with Oakey singing verses and Oakey plus girls delivering the sing-song choruses.

The tunes that do stand out are definite big hits that have already crept onto every FM playlist in the country, especially "Don't You Want Me," a clever comment on sexism, and "Love Action (I Believe In Love)," an ode to the joys of love for sex's sake. Yet, despite the irresistible hooks and cute vocals, *Dare* epitomizes the shallowness of the "me generation" and the current pop scene. Listening to the album is not unlike drinking a glass of water—it's very soothing going down, but has no nutritional benefit. If you like your pop without the deep thought, *Dare* might be just what the doctor ordered.

David Shaw



Upper Left: Human League • Upper Right: OMD • Lower right: Soft Cell

The Interfraternity Conference Sponsors

the CENTENNIAL BALL



black tie optional

Celebrating 100 Years of Fraternity at MIT

to be held on Saturday, April 17, 1982

nine-thirty pm. to one-thirty am.

at the Sheraton Grand Ballroom

Live music provided by "Fandy Berman's Swing Stars"

featuring Phil Wilson

\$5 per person

Two MIT students win Truman prizes

By Tony Zamparutti

Two MIT sophomores, Mark Templer and James T. Taylor have been selected as recipients of Harry S. Truman Scholarships.

The national scholarships are awarded to students with outstanding potential and desire to pursue a career in public service. The scholarship carries a maximum financial award of five thousand dollars annually, which may be used for a student's junior and senior year and for two years of graduate study, for a total grant of up to twenty thousand dollars.

"It's designed for persons with a demonstrated interest in public service," commented Dr. Louis Menand 3d, Special Assistant to the Provost and MIT coordinator for the Truman Program. "I think it's remarkable that MIT students have been perceived nationally as having met the standards for high commitment to public service," Menand continued.

Templer, a physics major, also hopes to earn a political science master's degree by June of 1984. "I feel very fortunate to have been selected," Templer intends to enter the field of public policy after graduation. He will intern in Senator Paul Tsongas' office this summer, sponsored by the MIT Public Policy Program.

Taylor, an aeronautics and astronautics major intends to include philosophy, Japanese, political science, and management in his undergraduate curriculum. After graduation, he claims he will continue to study political science or management. Taylor, who is also in the Air Force Reserve Officers' Training Corps plans to work on "development of space."

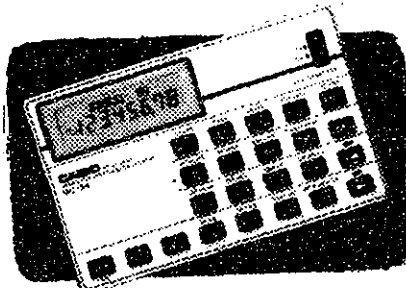
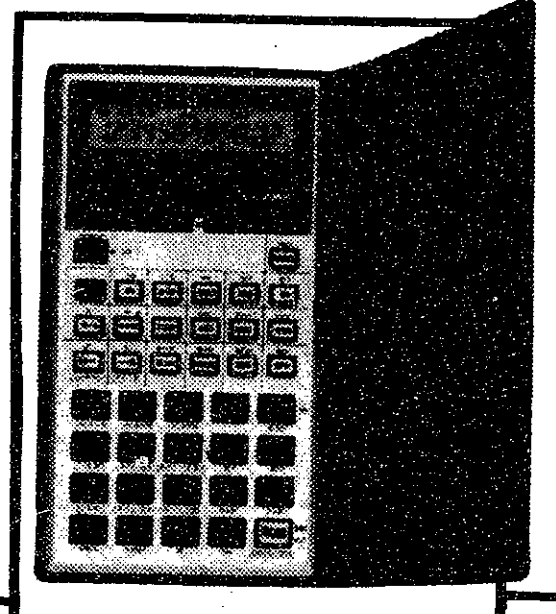


Savings — Solar, Metric, Scientific

Casio Scientific Calculator

- Programmable
- 61 Functions with Integrals
- One-touch regression analysis

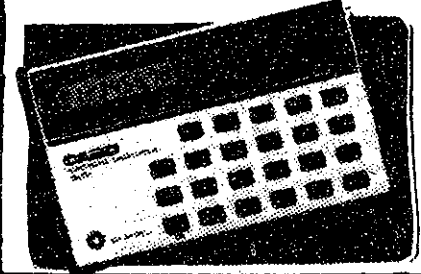
Reg. \$39.95 Sale \$34.95



Casio Metric Converter

- 17 metric and reversible functions
- 8-digit calculator
- Auto power-off function

Reg. \$16.95 Sale \$13.95

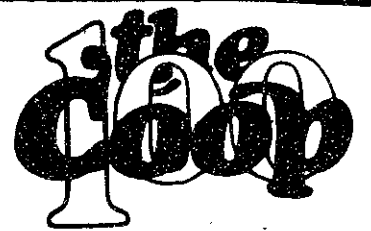


Casio Solar Calculator

- Free Power ...
- just show it the light
- Full function with memory

Reg. \$16.95 Sale \$13.95

HARVARD COOPERATIVE SOCIETY
MIT Student Center



E-Systems continues the tradition of the world's great problem solvers.

Even given the benefit of historical perspective, it is difficult to fully comprehend the enormous contributions to man's knowledge made by Sir Isaac Newton. His *Philosophiae Naturalis Principia Mathematica* is termed by many authorities to be one of the most important single works in the history of modern science. His studies of light are the foundation of physical optics and his laws of motion provided a quantitative description of all principal phenomena in our solar system.

Today, scientists and engineers at E-Systems employ Newtonian principles to develop products and systems for satellite communications, exploring

space and the development of solar energy, systems which are the first-of-a-kind.

E-Systems engineers are recognized worldwide for their ability to solve problems in the areas of antennas, communications, data acquisition, processing, storage and retrieval systems and other systems applications for intelligence and reconnaissance.

For a reprint of the Newton illustration and information on career opportunities with E-Systems in Texas, Florida, Indiana, Utah

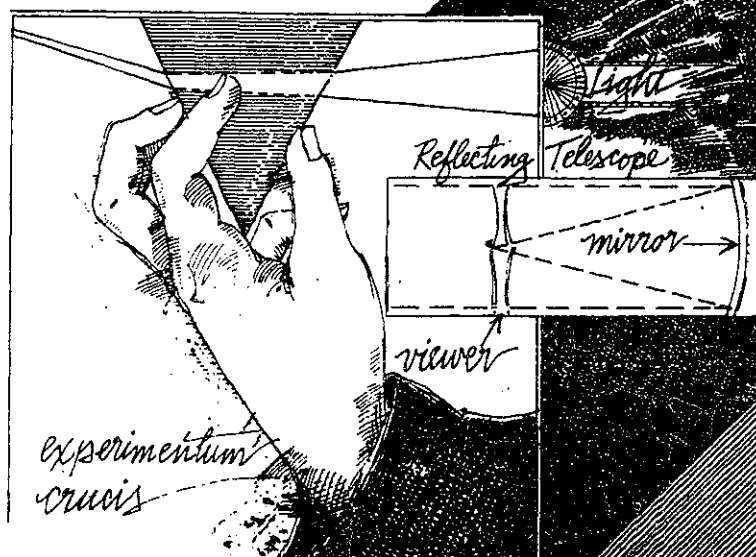
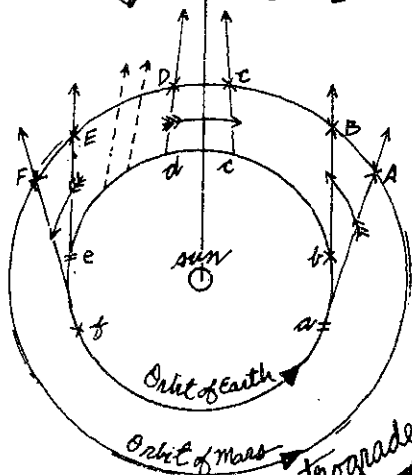
and Virginia, write: Dr. Lloyd K. Lauderdale, Vice President Research and Engineering, E-Systems, Inc., Corporate Headquarters, P. O. Box 226030, Dallas, Texas 75266.

E-SYSTEMS
The problem solvers.

An equal opportunity employer, M/F/H/V

Sir Isaac Newton
1642-1727

Sir Isaac Newton



classified advertising

Surplus Jeeps \$65, Cars \$89, Trucks \$100

Similar bargains available. Call for your directory on how to purchase. 602-998-0575 Ext. 6533. Call refundable.

Help Wanted

Steve's Ice Cream "Boston Store," 95 Mass. Ave. Contact Joe, 262-5262.

ANY U.S. BOOK IN PRINT

ORDERED BY TELEPHONE
DELIVERED DIRECTLY TO YOUR HOME OR OFFICE

ALL MAJOR CREDIT CARDS ACCEPTED
OUR 10TH YEAR WORLD WIDE

944-8060/7 DAY-24 HOUR SERVICE

COOPERATIVE BOOK SERVICE OF AMERICA, INTERNATIONAL
Reading, Massachusetts 01867 U.S.A.

COTTON TURTLENECK JERSEYS —

6.95
31 COLORS

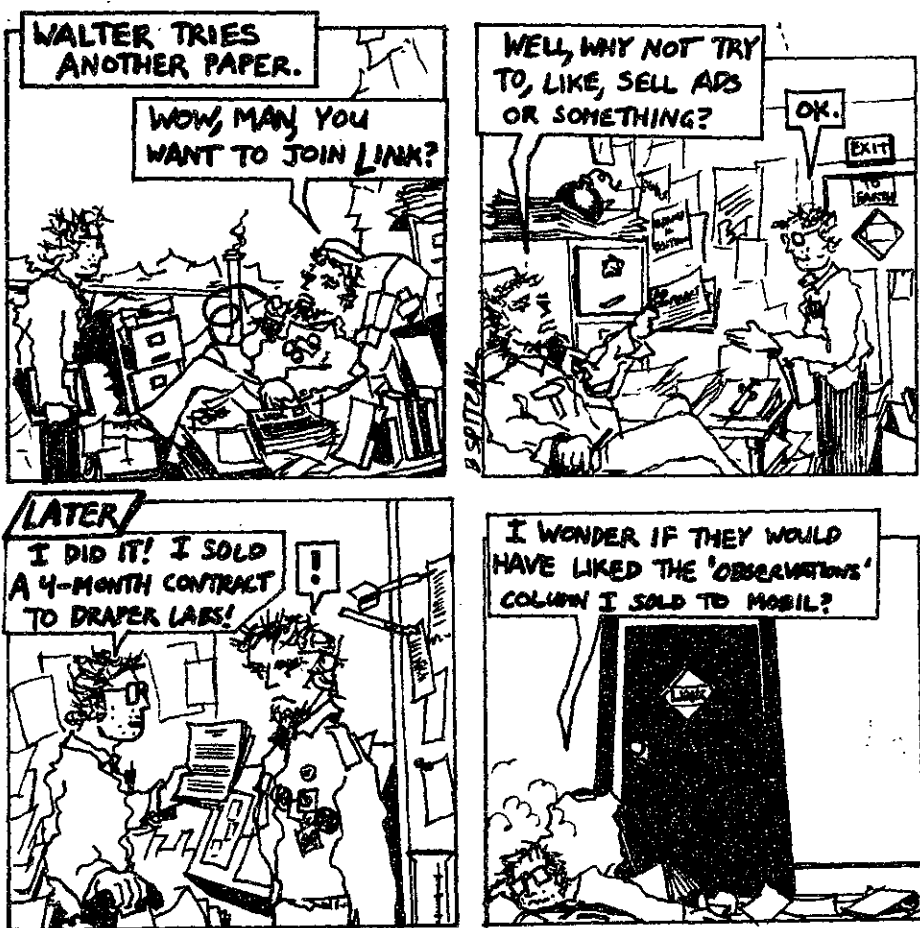
LEVI'S LEE'S FATIGUE PANTS —

10.95

CENTRAL WAR SURPLUS

433 MASS AVE.
Central Square
Cambridge

comics

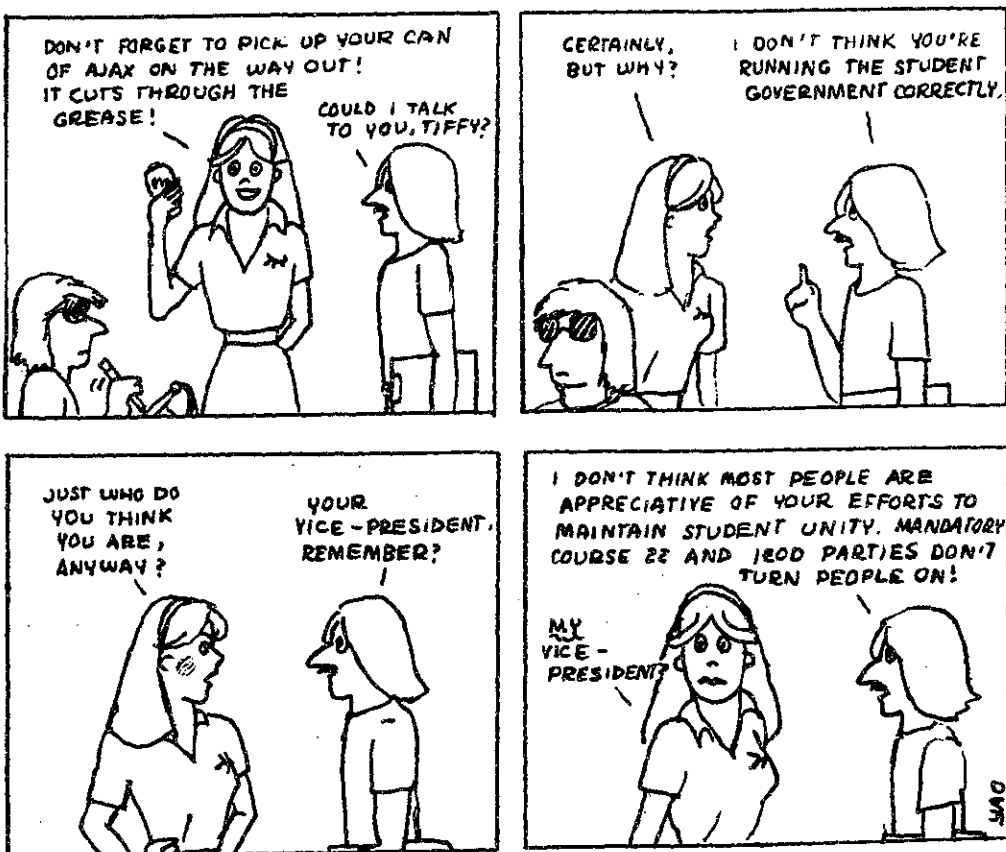


Space Epic
By Bill Spitzak

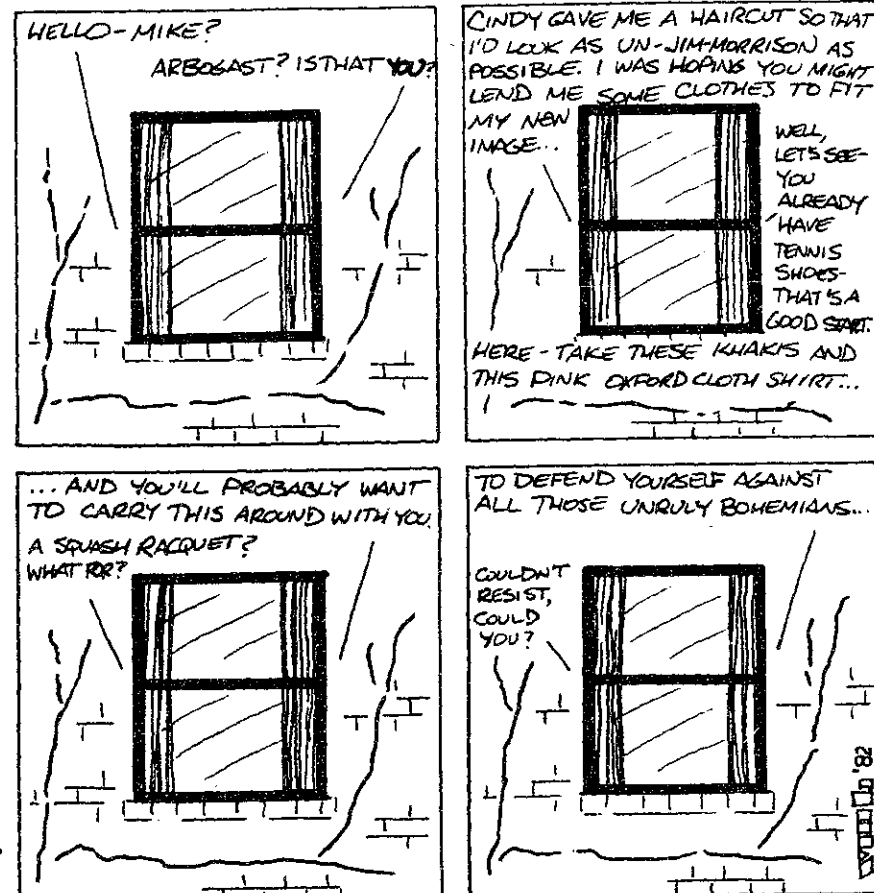
THE BEAVER'S ENTRY IN THIS YEAR'S "ALL TECH SING:"



The Beaver
By Glenn Ackerman



Room 001
By Carol Yao



Outside Looking In
By V. Michael Bove

UA News

Fraternity Centennial Ball

The IFC will host the Centennial Ball on the 100th anniversary of the fraternity. The ball will be held at the Sheraton Hotel in Boston on Saturday, June 12, 1982. Tickets are available for \$100 and \$200. For more information, contact the IFC at 350 State Street, Boston, MA 02109.

Class of '84 Hasn't Figured Out How to Submit UA News Items

Due to a screw-up on the part of both the editorial UA News staff and the class of '84 publicity block, the 15th issue was issued as happening last week. However, this is being corrected. The 16th issue will be on sale Tuesday through Thursday in Lobby 10. They are just \$4.00 and come in an awe-inspiring array of colors.

There will also be the first class of '84 meeting this month in Room 400 of the Student Center. If you are on the '84 class list, please show up at 7:00 pm. BYOV and refreshments will be served.

Feedback is not just an Engineering Term

We're really happy you and staff have taken about the new course that we've gotten from you people. It's been a great help to us and we really appreciate the input and we really appreciate the input that you could read the entire UA News without one mention of our Open Source Policy. Write a test, improve it, and we'll come back to you. We're really happy to hear that you can either call or write us. Write us: Walt and

Want to Take Over Harvard?

We are still looking for a good Provincial Governor to run Harvard. Appointments will be announced at the next UA meeting in President Gray's House, 7:30 pm, Thursday, the 15th. If you don't want to be Governor, you should still attend the meeting and vote for a FA Rep.

Now, Who Sucks?

The ASAT for Coings will have a public hearing tonight, 7:30 pm, W-20-494 on the proposed day of student activities which show profits and campus crime to the blood.

'84 Group Sex with Whipped Cream

The Classes of '84 and '85 will be holding an Ice Cream Orgy next Wednesday around 10pm in Lobby 10. If you're silly enough to want to help, call Mark Radlager, 267-0908. If not, you should show up with 25c and an empty stomach.

Politics Rears Its Ugly Head

Yes, at the 38th Fine School Auditorium, 11:30-1:00 pm, Massachusetts Representative Frank Caputo will speak via Reagan's Underhill 85. The speech will emphasize the harm being done to students in the current budget proposal. It's at 4pm, April 14. Bring all your friends.

The IFC Wants You

Nominations for the IFC Jud Comm are still open. Three alternatives and six representatives will be elected at the April IFC Meeting. Don't be shy and nominate yourself by putting your name on the list in the Dean's or Student Affairs Office (7-133) or by calling Brad Hunscholder, 536-1300.

UA News is designed by... designer UA News

The Computer Show of the Year Comes to Boston.

**SMALL BUSINESS SYSTEMS
SOFTWARE
WORD PROCESSORS
GRAPHICS
PERSONAL COMPUTERS
PERIPHERALS
FINANCIAL SYSTEMS
COMMUNICATIONS
PROFESSIONAL SYSTEMS**

**COMPUTER
SHOWCASE
EXPO**

**YOU CAN
WIN A
FREE
SMALL
BUSINESS
COMPUTER**

**3 DAYS ONLY
APRIL 15-16-17
COMMONWEALTH PIER**

THURSDAY, FRIDAY: 11 AM - 9 PM, SATURDAY: 10 AM - 6 PM

**Admission \$7.50, \$5.00 with discount tickets
available at your local computer supplier.**

sports

Athletic program recruits

(Continued from page 12)

"Several of the ballplayers live at SAE and they put me up. They were very helpful." John Tantillo '85 concurred. "I spoke to Steve Lubiak ['83], and he told me it was possible to play sports here. If I hadn't spoken to him, I might have had second thoughts about playing baseball." Both said their primary reason for

coming to MIT was the academics.

4) Getting the athlete to come out for the team. "We just try to talk to them and convince them that the time is available," said O'Brien, smiling. "There are lots of fears about MIT's workload," but the coaches try to put them to rest.

"There is some room for improvement in communication," Richardson reflected. "it should begin to show up in 11th grade.

"The relationship between the athletic and admissions departments has both sufficient closeness and distance. Twenty years ago, no coach would have come near this office," though today, of course, athletics does not dictate admission, as it does at some schools.

"I'm satisfied with the program," Richardson concluded.

sports update

IM Rugby — The Burton Third Bombers defeated the Psychopathic Samoans (representing Draper Lab) 8-0 to win the 1982 IM Rugby tournament held Sunday, March 4 on Briggs Field. Both teams had perfect 4-0 records going into the day-long tourney's final match. Tourney organizers said that despite the day's cold blustery winds, the teams (mostly composed of first-time ruggers) played hard and enjoyed the camaraderie of the sport.

Columbia and Temple University of Philadelphia in both the varsity and junior varsity races.

On the women's side, Radcliffe and Northeastern outraced MIT in action on the Charles Saturday. Tech's varsity eight finished the 1700-meter course in 7:46.5 while the novice eights rowed the shorter course in 7:22.9.

Golf — Senior co-captains Scott Nyberg and Neal Nordstrom each fired 78's to lead the golf team to a pair of victories over Suffolk and Clark under adverse conditions last Monday in Stow, Massachusetts. MIT won the match with a score of 412, while Clark shot 420 and Suffolk managed 442. All three teams suffered through 40-degree temperatures, laced with cold winds and a soggy course. MIT, now 6-2, faces Harvard, Colby, and Northeastern today.

Sailing — Both sailing teams were in action over the weekend for MIT, although neither did that well. The men finished thirteenth in a field of fifteen Sunday at the Friis Trophy hosted by Tufts at Mystic Lake in Medford, while the women finished tenth out of ten in the Sloop Shrew Trophy on the Charles. That competition was hosted by Radcliffe.

Both teams are rather young and are looking for improved performances later in the season. The team captains are Bruce Klein '83 for the men and Melissa Miller '83 and Dominique Gray '84 for the women.

Crew — MIT's lightweight men dropped two of three races to a tough Yale squad Saturday on the Charles River. The Elis' varsity won by four seconds while the junior varsity rolled to an 18-second win. MIT's freshmen, however, came through to register a 14-second triumph.

Columbia, handily won the Alumni Cup Regatta for men's heavyweights in New York Saturday. MIT finished third behind

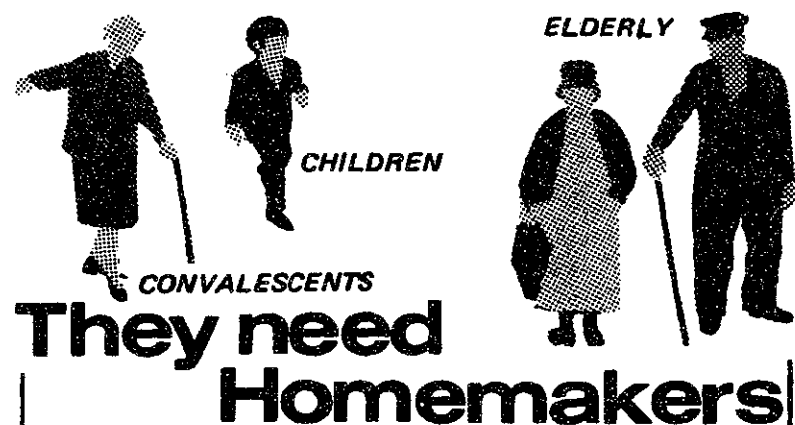
EXPERT THESIS TYPIST

Reasonable
Near Harvard Square
492-4262
Anytime

As You Like It

the MIT Shakespeare Ensemble

April 15-20, 8pm
Sala de Puerto Rico, MIT Student Center
Tickets \$4.50, students \$3
Group Rates, Information 253-2903



They need Homemakers

Do you need extra money?
Do you have a few extra hours?
We have jobs in your community.
We offer flexible hours.
We give Home Health Aide training.

INTERCITY HOMEMAKER SERVICE, INC.
Equal Employment Opportunity/Affirmative Action Employer
321-6300 or 623-5210
Interviews in Your Area

Your foreign language ability is valuable!

Translations into your native language are needed for industrial literature. You will be well paid to prepare these translations on an occasional basis. Assignments are made according to your area of technical knowledge.

We are currently seeking translators for:

- Arabic • Chinese • Danish • Dutch
- Farsi • French • German • Greek
- Italian • Japanese • Korean
- Norwegian • Polish • Portuguese
- Romanian • Spanish • Swedish and others.

Into-English translations from Russian, East European languages and many others also available.

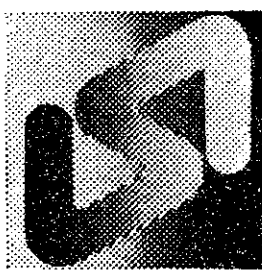
Foreign language typists also needed.

All this work can be done in your home!

Linguistic Systems, Inc. is New England's largest translation agency, located a block north of the Central Sq. subway station.

For application and test translation call Ms. Erebia

864-3900



Linguistic Systems, Inc.
116 Bishop Allen Drive
Cambridge, MA 02139

Come now, let us reason together

Isaiah 1:18



On Wednesday, April 28 at 7pm Billy Graham will speak on

Peace in the Nuclear Age

The lecture will be in Kresge Auditorium and is open, free of charge, to the MIT community. If you have any questions about tickets call 225-9153.

Sponsored by:

Campus Crusade for Christ
Chinese Bible Study
MIT Seekers
United Christian Fellowship

REPRINTED FROM THE HERALD

By SUSAN V. HANDS

Staff Writer

Getting the right eyeglasses isn't as simple as many consumers think. Eyeglass manufacturing is imprecise, but you don't have to settle for less than the perfect pair.

The Herald American took a doctor's prescription for nearsightedness and astigmatism and ordered identical glasses from eight Boston-area opticians. When the doctor, George Garcia of the Massachusetts Eye and Ear Infirmary, checked the glasses he found:

- No two pairs were the same.
- Only one pair matched the prescription perfectly, although four others fell within acceptable tolerances.

• One pair was flagrantly wrong; two others were wrong enough to affect vision slightly.

In the Herald American's sample of eight pairs, five were acceptable to Dr. Garcia, although only one matched the prescription perfectly. The two pairs that were slightly wrong had no discernible effect on the wearer's vision. The same was true for the rejected glasses, although Garcia said these would hamper the vision eventually.

The cheapest glasses, made by apprentices at The Optique, were also the furthest off. Yet the second-cheapest pair, made by technicians in the central lab of the Community Opticians chain, were the only perfect match.

Community Opticians

534 Mass. Ave.
Central Square Cambridge
354-6535

Glasses: You don't always get what the doctor ordered

LECHMERE
FIRST ST. CAMBRIDGE
acceptable power
perfect axis
\$51.70

OPTICAL SHOPPE
NEWBURY ST. BOSTON
marginal power
marginal axis
wrong-axis frames
\$55.00

JORDAN MARSH
WASHINGTON ST. BOSTON
acceptable power
perfect axis
\$52.95

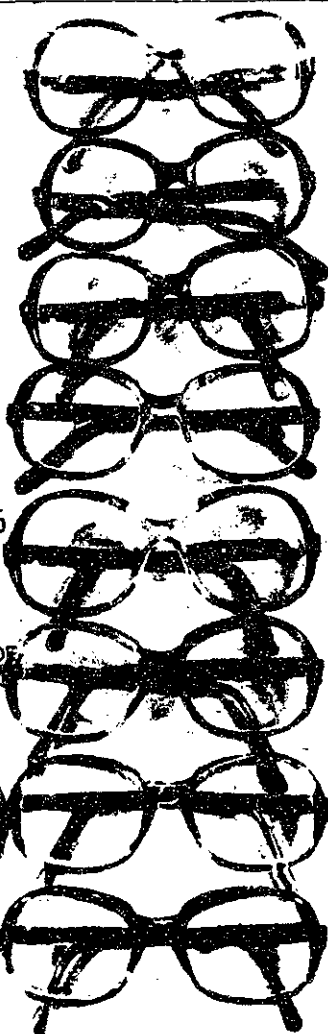
THE OPTIQUE
HARVARD ST. ALLSTON
acceptable power
uncorrectable axis
\$44.00

MALDEN OPTICAL
AND HEARING AID
CENTER,
MAIN ST. MALDEN
acceptable power
perfect axis
\$58.00

VISION CENTER OF
SOUTH BOSTON,
17 BROADWAY
acceptable power
marginal axis
\$52.00

COMMUNITY
OPTICIANS
MASS AVE. CAMBRIDGE
acceptable power
perfect axis
\$47.00

MONTGOMERY-
FROST-LLOYD
BRATTLE ST. CAMBRIDGE
acceptable power
perfect axis
\$54.50



sports

MIT athletic recruitment limited

By Robert E. Malchman

MIT does not award scholarships. As an NCAA Division III school, it has severe limitations imposed on recruitment procedures.

"We can't contact them," said Fran O'Brien, head coach of the men's basketball and baseball teams. "We have to wait for them to contact us."

"We don't have recruited athletes," echoed Director of Admissions Peter H. Richardson '48. "For one thing, there's no budget for it. Some [Division I] schools have athletic department budgets as large as their admissions department's."

"It's all student initiated," said O'Brien. "There's a card included in the application which asks the student to identify which sports he's interested in."

O'Brien outlined four basic steps necessary before an athlete runs out onto a field in an MIT uniform:

1) Getting the person to apply. "Our biggest task is to let people know we have a good program," said Richardson. "Our policy is one of information because generally people just don't know about this part of MIT." The policy is affected through the booklet *MIT Today* sent to prospective applicants, and the athletic card in the application.

Once the card is sent in, then the coaches can begin to contact the applicants. The contact usually takes the form of letters to the student and his high school coaches.

2) The second step is admission. "When the athletic card comes in," said Richardson, "we send it off to the coach of that sport and ask, 'So tell us, who's good?'"

"We do try to communicate with the admissions office," said O'Brien. "MIT looks for more than just a good athlete. MIT is sensitive to well-roundedness. We want people who will be leaders,

outstanding among the ones already here."

The commitment and dedication itself is important, agreed Richardson. "It's important input into the picture of the individual." MIT will not, however, admit anyone who is not completely qualified academically, a point which O'Brien stresses in his contacts with applicants.

3) Once accepted, getting the student to attend.

Gregory Abowd is a senior and a basketball and track star from Farmington Hills, Michigan. He was offered a place in the class of '86. "Coach O'Brien's letter introduced me to the school. He said that the concentration there is on academics."

Eric Fleming '83 is the manager of the men's basketball team. His home is near Abowd's, and he visited the prospective Engineer.

"It was very informal," said Fleming. "He asked questions about basketball and classes. I talked to his coach also. He wondered how we had time to make a commitment to both sports and academics. I told him it could be done; that many people did it."

"Eric talked about Coach O'Brien's philosophy," said Abowd. "He said there were no cuts, and that while MIT is Division III and usually an underdog, that they have a good program and a good time." Abowd was impressed by MIT's program from as much as he saw of it, but said he'd have to wait until he visited to be sure.

"We try to give the personal touches," said John Benedick, coach of the swimming and water polo teams. "We telephone and write like crazy once they are admitted. We try to give them a place to stay with a team member, arrange interviews if they're interested in a particular department. Even if they don't attend,

we want them to come away saying good things about the program." Division I schools are permitted to fly students twice to their campuses. MIT may not provide transportation, only room and board, which hinders someone who lives across the country.

Mike Dichristina '85 plays baseball and basketball. "When I visited last year, I talked with Mr. O'Brien," he said. "He told me that sports here strives for respectability, but that you come to the Institute for academics."

(Please turn to page 11)

Spring Semester in Sweden 83

Swedish Architecture and Urban Planning
Scandinavian Art History
Communications Arts in Sweden
Education in Scandinavia
International Politics
Sweden's Economy Past and Present
Social Welfare Policy in Sweden
Women and the Family in Sweden
Energy, Environment, and Society
Swedish Language



The Spring Semester in Sweden is a semester-long program at Lund University
International Swedish University Programs at Lund University
Lund University, S-222 22, Lund, Sweden
Tel. 040 1177 20

UA NomComm

will hear (again) for
Spring Committee Seats on

- Committee on Academic Performance
- Committee on Discipline
- Committee on Student Affairs
- Commencement Committee
- Dining Advisory Board
- IAP Policy Committee
- Advisory Committee for Women's Students Interests

Thursday, April 15, 5pm
Student Center, Room 400

We Transcribe Tapes of Conferences, Seminars, Interviews

Don't wait weeks or months! Do type it while it is happening!

Whether you have taped a 30-minute field interview or a 50-hour conference, no service in New England can type it faster than we can. We will save you time, anxiety and money.

129 TREMONT ST. BOSTON 423-2966
1278 MASS AVE. HARVARD SQ
THE SKILL BUREAU

COURSE 11 OPEN HOUSE

Tues., April 13, 4-6 pm
in 7-331

Come learn about Urban Studies & Planning including Concentrations, HUM-D, joint programs. Pizza and munchies. Rescheduled from the blizzard.

The Technology and Culture Seminar at MIT will sponsor a public forum on

The Government and the University-Industrial Connection

Congressman Albert S. Gore, Jr.

Chairman of the Sub-Committee on Investigations and Oversight of the House Committee on Science and Technology

Thursday, April 15

4:30pm

Mexxine Lounge, Student Center

Informal supper and Discussion to follow

In Q We Trust.

Our international clientele depends on us because we have:

**GREAT PRICES
NEW & USED
BEST EQUIPMENT
FASTEST SERVICE
TRADE INS
CONSIGNMENT
BROKERAGE**

on brands like:

HAFNER PYRAMID
REGA DYNAVECTOR
GRACE THORENS
McINTOSH APT/HOLMAN
LEVINSON DYNACO
QUAD AUDIO RESEARCH
More Coming...Call!

SALES & SHIPPING WORLDWIDE
Mastercard & Visa Welcome

Q Audio.

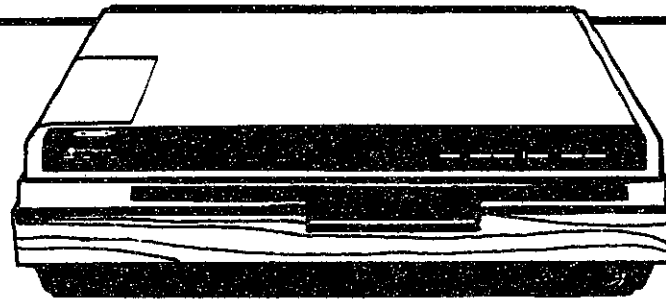
There is no comparison.

95 Vassar Street
Cambridge, Massachusetts 02139
617 547-2727
SEND \$1.00 FOR CATALOG!

High Voltage



HITACHI Values



Video Disk Player

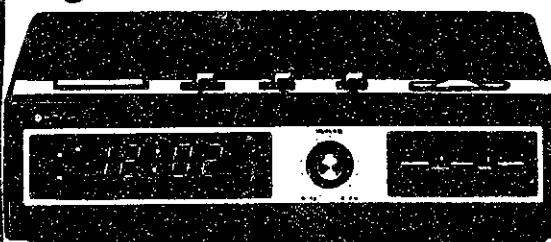
- CED System (RCA)
- Fully Automatic Operation
- Optional Remote Control
- Visual Search Forward and Reverse
- Pause Feature

Reg. \$399.95 Sale \$299.95

Hitachi Clock Radio

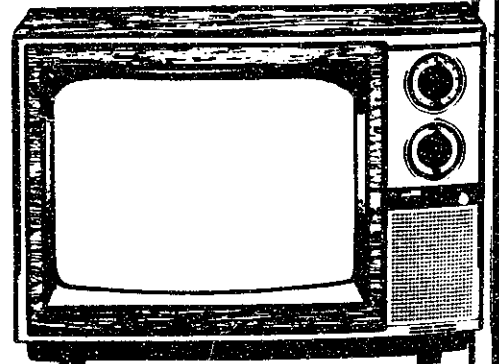
- Digital LED time display
- Blackout indicator
- Snooze control
- 59-minute "sleep" timer
- 24-hour time set

Reg. \$29.95 Sale \$25.95



13" Color TV

Reg. \$399.95
Sale \$319.95



- 100% Solid State Polar Chrome™ video system
- Private Listening Earphone
- Quick-Start System
- Color-Lok™ system

HARVARD COOPERATIVE SOCIETY
MIT Student Center

