



Panelists at SCEP's forum Wednesday night included (left to right) Associate Professor Margery Resnick, Lesley Saunders, Professor Felix Villars, and Professor Merton Flemings. (Photo by Jesse Castillo)

## SCEP debates curriculum

By Sam Cable

At a meeting held Wednesday night, the Student Committee on Educational Policy discussed the recommendations of the Pace and Program Subcommittee to the Committee on Educational Policy regarding changes in freshman pass/fail, assignment of credit units, and departmental requirements.

The subcommittee has proposed three major changes to the structure of education at MIT: restricting departmental requirements to 14 or 15 subjects, replacing the current method of assigning units with a system

which would contain only "subjects" and "half-subjects," and limiting the freshman course load to four and a half subjects. Freshman classes would be graded on a pass/fail basis but with the added element of internal grades, allowing freshmen to gauge their progress and enabling their advisors to assess them more clearly.

These changes have been suggested as a means of alleviating problems of freshman overloading, sophomore and freshman overloading in departmental subjects, inaccuracy

in determining "preparation hours" to be included in credit units, and perceptions that the many nine-unit Humanities, Arts and Social Sciences courses are "second-class" in comparison with the twelve-unit science courses.

Representing the subcommittee at the meeting were Merton Flemings, chairman, and Associate Professor Margery Resnick, Professor Felix Villars, Chairman of the Faculty and the Committee on Educational Policy, was also present.

(please turn to page 3)

## Dormline to add 4 new tie lines

By Jon D. Morrow

Heavy usage of MIT's dormitory telephone (dormline) system and the addition of 276 new extensions at 500 Memorial Drive have resulted in the planned installation of four new tie lines connecting dormline telephones to those on the Institute Centrex system, according to MIT Telecommunications Technical Manager Dennis Barron.

"We are planning on putting in additional circuits," reported Barron. "The way things are going," he continued, "we would probably put them in for the beginning of IAP [Independent Activities Period], which begins on January 4, 1982. "As soon as we get some information we need from the [New England Telephone Company], we'll place the order with them," he indicated.

There are 2,925 telephones in the dormline system and 10 lines are currently available for reaching a Centrex (253 exchange) telephone from a dormline (225 exchange) and vice versa, according to Barron. If all

10 lines are in use, a caller attempting to dial from one system to the other will receive a fast busy signal, and the call will not be completed, noted Barron.

The addition of the 10 new tie lines will necessitate "digging up the streets and everything else to lay down the cables," according to New England Telephone Company Service Representative Lisa Kelly. "Each cable is designed to hold a limited amount of calls and the problem is that [MIT's] cables are already full to capacity," Kelly explained.

Nothing is being planned to alleviate crowded outgoing circuits, however, according to Barron. Dormline users share eight outside lines, which may all be in use at times, especially after 11pm and on weekends when long-distance rates are lowest. "As far as I know, the last time we did a study on it, there was no need for any more [outside lines]," declared Barron. "We will be doing a new study sometime during this year to determine how many circuits are needed, and that will tell us if and how many we need to add."

## Faculty votes to table WI motion

By Tony Zamparutti

The faculty, in a special meeting Wednesday afternoon, ended a two-hour debate on the Whitehead Institute after tabling a motion to express approval of MIT's conduct of negotiations thus far.

Robert Mann, Professor of Biomedical Engineering, said, "We [the faculty] would like to be informed, provide some input, raise some questions, work out some [objections]." He noted, "We are not talking about a relationship between the biology department and MIT, we are talking about a relationship between MIT and the Whitehead Institute." Gray observed that relevant academic parts of the agreement with WI will be presented to the faculty.

Robert I. Hulsizer Jr., Professor of Physics, noted, "In the past, the faculty has not either wanted nor been asked to run the Institute." He then moved to table the motion, which would have amounted to tacit endorsement of MIT's conduct of negotiations thus far, to allow for further discussion among the faculty.

Gray opened the faculty meeting by saying, "Detailed discussion of this proposal has not proceeded far enough along for the Executive Committee of the MIT Corporation to act on this."

Gray observed that the Corporation will consider the issue of the Whitehead Institute at its meeting today, but no final action will be taken.

The Whitehead Institute, Gray said at the beginning of the meeting, is "not a matter which will be brought to the faculty for an up or down vote." Later in the meeting, however, Gray asked the faculty if they wished to vote on the matter.

David Baltimore, Institute Professor and Director-Designate of the Whitehead Institute, outlined to the faculty the presentation he will give at today's Corporation meeting. "MIT will be in the forefront" of recombinant DNA research regardless of the fate of the Whitehead Institute, said Baltimore. MIT has, however, a limited ability to provide for new faculty and facilities for such research, declared Baltimore.

WI will be a "life sciences institute," said Baltimore, which will be "wholly divorced from commercial activities."

Sheldon Penman, Professor of Biology, raised several objections to the Whitehead Institute. "I think the imposition of 20 odd faculty members is a significant imposition on our department. . . I do not see why our department should be saddled with an appen-

(please turn to page 5)



Eric Gold '82 was able to speak with President Paul E. Gray '54 during open office hours held by Gray for the second time last Tuesday afternoon. The next set of open office hours is scheduled for Tuesday October 13 from 4-6pm. (Photo by Robert Lake)

## MIT to get homecoming queen

By Laura Farhie

A homecoming queen elected by MIT students will be an addition to this year's Homecoming Weekend, October 23-25.

The only criterion for the homecoming queen is that she be an MIT student, according to Jim Olivo '82, coordinator of the homecoming semi-formal. Nominations for the homecoming queen will be held next week, and on the following Wednesday,

MIT students will vote in Lobby Ten for seven women to be in the "homecoming court."

The MIT homecoming queen will actually be elected at the Pep Rally on Friday, October 23. The other six women will be presented as the "ladies in court," together with the homecoming queen throughout the weekend's events, said Olivo.

The MIT Social Council decided to have a homecoming

queen because "it is an event that virtually every campus with a homecoming uses," explained Olivo. He added, "We are trying to make this homecoming [a] more traditional [one]."

MIT students are invited to express their opinions about the prospect of a homecoming queen at a forum held by the MIT Social Council this Tuesday at 5pm in Room 10-250.

## inside

Cuts made in the Guaranteed Student Loan program to date may not save the Federal government any money. **Page 3.**

MIT has settled with the Research, Development and

Technical Employees Union, completing negotiations for the next two years. **Page 3.**

The Tech's art critics examine old kings and new princes on **Page 6.**

# news roundup

## World

**1988 Olympics Sites Chosen** — The International Olympic Committee chose Seoul, South Korea as the host for the Summer Olympics of 1988 and Calgary, Alberta as the site for the Winter Games. Three cities were competing for the Winter Games, the other two in Italy and Sweden. Two rounds of balloting were required until Canada emerged victorious. There was some surprise that Canada was chosen as it was one of the countries supporting the boycott of the Moscow Olympics of 1980; both Italy and Sweden had sent athletes to those Games.

## Nation

**Kansas City Hyatt Hotel to Reopen** — After \$500,000 of renovation expenses, the Hyatt Hotel in Kansas City opened last night. The hotel had been closed since July 17 when two walkways collapsed into a crowded lobby, killing 113.

**First-Class Basic Rate to Rise to 20 cents** — By a unanimous vote of the USPS Board of Governors, the Postal Service has overruled the Postal Rate Commission for the first time. The new 20 cent/17 cent rate will go into effect on November 1, just before the busy holiday season. A brown "C" stamp has already been printed to replace the familiar purple "B" stamp currently in use. James Hoban, the designer of the White House, will be featured on the first 20 cent definitive.

**New Fiscal Year Begins** — The new economic and social policies of the Washington Administration went into effect yesterday. These changes include a five percent reduction in personal income taxes, new standards for student loan eligibility, rent increases for subsidized and public housing, Amtrak schedule cutbacks, decreasing Medicaid and Welfare payments, and a reduction of unemployment benefits.

## Local

**Court of Appeals upholds T statute** — The US Court of Appeals ruled Wednesday that a 1980 MBTA management rights statute was constitutional, overturning a lower court ruling. The statute, passed in the wake of the T's fiscal crisis, restricts union work rules and gives the transit authority power to implement other cost-cutting measures.

Stu Gitlow

## Weather

Rain this morning ahead of a cold front will give way to strong northwesterly winds and a few showers this afternoon. Temperatures during the day will be only in the 50's and will fall off rapidly during the afternoon. Windy and cold tonight with the threat of showers. Lows will be near 43. Mostly cloudy, windy and cold Saturday with highs near 54. Becoming mostly sunny by Sunday but still breezy and cool with highs near 60.

James Franklin

## Go Ahead... Talk to Draper

Located in the Technology Square complex in Cambridge, Massachusetts, Draper Laboratory is a world-renowned research center with a volume of over \$100 million a year and nearly 2,000 employees.

We're a hands-on laboratory involved in solving problems of pressing national interest.

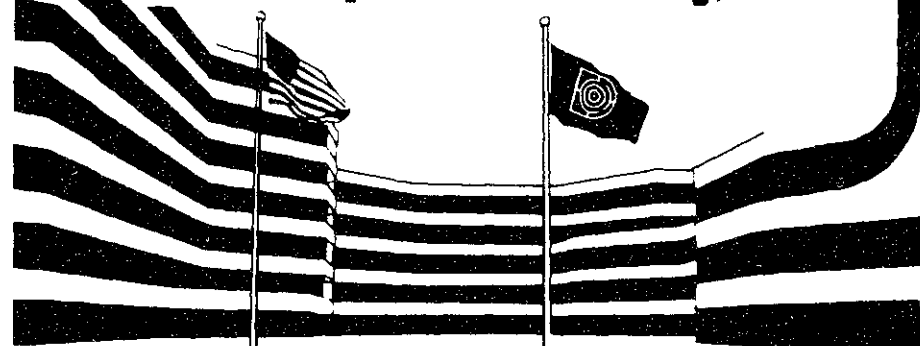
We do fascinating and rewarding work, attracting some of the nation's most imaginative, inventive people. If you're one of them, graduating with a degree in Electrical Engineering, Aerospace Engineering, Mechanical Engineering, or Computer Science, arrange for a Draper interview.

**The Charles Stark  
Draper Laboratory, Inc.  
will be at  
M.I.T.**

**on  
October 6, 1981**

See your Placement Office to arrange for an on-campus interview, or send your resume to: Dr. Daniel E. Gladkowski, Dept. C, The Charles Stark Draper Laboratory, Inc., 555 Technology Square, Cambridge, MA 02139.

 **The Charles Stark  
Draper Laboratory, Inc.**



We are an equal opportunity/affirmative action employer, M/F

# ENGINEERS

**ATEX is a fast-growing company founded to apply technology to solve special problems in the graphic arts and publishing industry. In eight years, our PDP 11/34 systems have become benchmarks in the newspaper, magazine and in-plant printing markets. This success is a result of a team effort by people who are the best in their professions. We are looking for people who will become major contributors in the development of our future products. We seek individuals who want an opportunity to grow and develop in a technical environment that rewards demonstrated ability and offers continuing challenges.**

**If you are graduating in Electrical Engineering or Computer Science, we have growth opportunities in both Hardware and Software Development.**

**Current Hardware projects involve state-of-the-art Winchester disk technology, micro-sequencer technology, micro-processor applications, and graphic display technology.**

**Current Software development is in the areas of remote processing and distributed processing applications, interactive graphics, communications processing and microprocessor based interfaces. Programming is in both assembly and higher level languages.**

**We are located in Bedford, MA, close to Route 128. Compensation at ATEX is considered above average in the area, and the benefits package includes company-paid health/dental insurance, life insurance, long-term disability coverage and pension plan.**

**If you are a junior student and seek summer employment for 1982, ATEX is the place to be. The above description applies, and we will interview students for our internship program during our visits.**

**Please explore these opportunities with us on  
October 9, 1981**

**atex**

**15 Wiggins Avenue, Bedford, MA 01730**  
*An Equal Opportunity Employer M/F/H*

## Advanced R&D Careers

The atmosphere at Fairchild's Advanced Research and Development Laboratory in Palo Alto, California, is charged with new ideas, new developments and new expansions. The Advanced R&D Laboratory is the force that will push Fairchild into worldwide technical leadership. The opportunity for you to play an important role in that push is very real.

Nearly half of all our new technical staff will be MS and PhD graduates like you from major universities throughout the world.

**On-Campus Interviews  
Oct. 15 & 16**

Fairchild is committed to taking over the leadership position on the frontiers of electronics technology. As a member of our Advanced Research team, you can make it happen. Make an appointment to meet with Fairchild's R&D representative at your Career Planning and Placement Center. Or write to:

**Fairchild  
Advanced Research Laboratory  
4001 Miranda Avenue, Dept. A  
Palo Alto, CA 94304**

As an affirmative action employer, we encourage women, members of minority groups and the handicapped to apply.

**FAIRCHILD**

**A Schlumberger Company**

# GSL program faces cuts

By Jerri-Lynn Scofield

Despite the Reagan Administration's announced intention to save considerable Federal funds by modifying eligibility requirements for Guaranteed Student Loans (GSL's), "Most of us think that if it [the program] stays the way it is, no money will be saved," commented Director of Student Financial Aid Leonard V. Gallagher '54.

The alterations were "designed to save continuing amounts as subsequent fiscal years unfold," Gallagher noted. "The savings [under the modified requirements] are expected to be substantial," he continued.

According to Assistant Director of Financial Aid J. Samuel Jones, "The second shoe is about to be dropped. The [Reagan] Administration realizes that its budget cutting wasn't good enough."

Jones emphasized that changes made to the GSL program do not apply to most loans for the current academic year. He estimated that 90 percent of these loans had already been disbursed.

Jones observed that the eligibility requirements for GSL's next year would not affect all students. Students whose parents' adjusted gross income exceeds \$30,000 annually will have to undergo an analysis of need to qualify for a GSL.

Gallagher noted that a quadruple standard now applies to all GSL applicants. Students fall into one of four categories. The first, those whose parents earn less than \$30,000 annually, "breeze right through the system," commented Gallagher.

The second, whose parents earn more than \$30,000 and who receive other Federal financial aid, will be the largest group having trouble, indicated Jones. In the past, he noted, these students have been able to borrow a GSL as a substitute for part of their parents' contribution or summer earnings. This practice will no longer be possible, as Federal aid recipients will not be able to have aid awards that total more than financial need.

The third category of students,

those whose parents earn less than \$30,000 and who receive aid from MIT, might still be eligible for aid, as well as those in the fourth category, who receive no MIT aid. Jones indicated that for a family with one student attending MIT, parent's earnings could be as high as \$110,000 before the student would be prohibited from borrowing under the auspices of the GSL program.

Both Gallagher and Jones indicated that MIT would probably change the form of its student financial aid announcements so as to not preclude student GSL eligibility. Gallagher explained that under the new guidelines for GSL disbursement, money designed by an institution as anticipated work study earnings would be considered part of a student's resources, and would reduce his GSL eligibility. According to Gallagher, "It's almost imperative for us not to call that [program] work-study award anymore. . . Before, it was confusing, now it is downright damaging. . . That's a simple change we will make."

## Frosh class limit, units discussed

(continued from page 1)

Both Villars and Flemings said that the decision to adopt or reject the proposal will be ultimately decided by a faculty vote, but only after extensive discussion with other members of the MIT community. Neither is sure what the outcome will be, but both are hopeful that the proposal will be accepted by next spring.

Among the questions raised

was how the new limit on freshman course loads would affect freshmen wishing to use existing extra units to explore new areas. Resnick replied that the vast majority of freshmen use these units to overload, rather than diversify, and that the new proposal would also allow unlimited subjects that could be taken on listener status. However, she did not know how the

proposed system would affect the minority of freshmen who do actually wish to use their extra units to diversify their freshman course load.

Another concern expressed was that since many departmental eight-unit courses would be recognized as "full subjects," along with the twelve-unit courses, the work-load in them might increase. The increased work-load would result in the same problem of sophomore overloading in departmental subjects in an effort to get them out of the way.

Villars commented that he did not see this as a problem because, in his experience, the workload in a class is determined by the amount of material to be learned, which is determined by the number of lecture hours involved. Therefore, he concluded, an eight unit course with three lecture hours a week would not appreciably increase in work load.

Another issue that was raised was the possible difficulty of transition from one system to the other. Villars said that the difficulties have not been considered yet. Flemings indicated that MIT has a "great history" of allowing individuals to complete their programs on a "grandfather clause," which allows students to complete their degree on the system in which they started.

time employees' rights," and make recommendations to the Institute and the RDTEU, according to Fandel. Other terms of the contract are identical to those agreed upon by physical plant and dining service workers in recent weeks, including 10 percent annual pay increases for two years and improved vacation, health, retirement, and funeral leave benefits.

The RDTEU represents 850 Institute employees in academic and administration offices, including the Francis Bitter National Magnet Laboratory, the Haystack Observatory, the Research Laboratory for Electronics, and the Laboratory for Nuclear Science, explained Fandel. Fandel characterized its members as "technicians in support of both teaching and research."

## Last union settles

By Barry S. Surman

Negotiators for MIT and the Research, Development and Technical Employees Union (RDTEU) came to an agreement on a new contract Tuesday afternoon, according to James J. Fandel, Manager of Labor Relations for MIT.

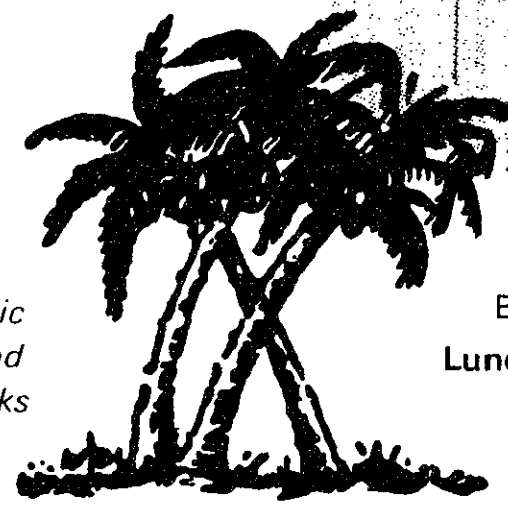
"They [the RDTEU negotiators] said 'drop the wage structure change'" said Fandel. "[The Institute] chose to accept their counter-proposal." The final offer proposed by MIT last Thursday included changes in wage classifications which the union claimed would make it harder for employees to advance to top scales, while reducing pay increases for promotions, and excluding entry-level employees from pay increases.

The agreement also calls for "a neutral party [to] investigate part-

## Caribbean Cuisine

Restaurant

212 Western Ave.  
Cambridge



Exotic  
Island  
Drinks

Breakfast  
Lunch & Dinner

Reasonably  
Priced

(Show MIT ID for Discount)

## Understand God and Be Healed

A free Christian Science Lecture,  
"Understand God and Be Healed", will be given  
by Hogarth W. Eastman, C.S., of Australia  
(Mr. Eastman is a member of the Christian Science  
Board of Lectureship)

in First Church of Christ, Scientist,  
Waterhouse St. at Massachusetts Ave, Cambridge,  
on Monday, October 5 at 8 P.M.

You and your friends are invited.

Childcare and free parking will be available.

## A Place To Achieve.

A semiconductor company measures much of its worth by the technological accomplishments of its people. At Signetics, our Good People have an enviable record of advances. It would take literally pages to list all of them.

Measure us by our achievements, and you'll see why a career with Signetics is head and shoulders above many other places.

We offer challenging careers in all phases of engineering—product, design, test, process, reliability/quality assurance, and failure analysis.

If you have a Bachelor's or advanced degree in electrical, chemical or mechanical engineering; material science; computer science; physics; metallurgy; electronics or industrial technology, we want to talk to you.

We'll Be On Campus  
Tuesday, October 6.

Take a look at the Signetics Recruitment Binder at your Placement Center. It will tell you about opportunities with us in California, Utah and New Mexico. Or, write Signetics College Relations, Opportunity CC-82, 811 East Arques Avenue, Sunnyvale, CA 94086. We are an equal opportunity employer.

The Good People Company



a subsidiary of U.S. Philips Corporation



### Los grupos mas pequeños en la ciudad.

The smallest groups in town,  
in Spanish and many other  
languages.

Academia offers the smallest conversational language classes in Boston — only 3 to 6 people per class. That means more contact with your instructor. Private instruction is available for intensive language training. Traveling with a friend? Ask about the "two for the price of one" private instruction. Call 354-6110

**ACADEMIA**  
Call 354-6110

## UNIVERSITY OF CHICAGO GRADUATE SCHOOL OF BUSINESS M.B.A.

### Students of All Majors and Fields Invited

Come to our meetings to hear about our MBA and PhD Programs and to ask any questions about the curriculum, admission, financial aid, and career opportunities available in the following fields of management:

Finance	Health Administration
Economics	Public and NonProfit
Marketing	Human Resources
Accounting	Management Science
General Management	Policy

Friday, October 9, 1981

Contact Career Planning and Placement for sign ups.

Stephanie Pollack

## Applying to school

Typewriters are humming across the Institute as seniors begin the tedious process of applying to graduate schools. MIT students will expend large quantities of time, money, and Correctype applying to a wide range of graduate programs in science, engineering, law, business, and medicine.

At the same time, all over the United States and the world, high school seniors who may one day become MIT seniors are performing a similar ritual. Reading lists are compiled, essays written, and recommendations collected. The procrastination which now marks the effort will turn to frenzy by the winter and evolve into abject nervousness shortly before April 15.

The two categories of students currently attempting to reduce their life histories to fit onto one side of an 8 1/2 by 11 inch page face completely different prospects and dilemmas, however. Graduate school is undoubtedly an important phase of a person's life, a sort of finishing program before breaking into the real world of work. While graduate school focuses primarily on professional development, however, undergraduate education significantly affects personal development.

By the time they enter graduate school next fall or sometime thereafter, MIT's current crop of seniors will have adopted most of their personal and political philosophy. They will have a fairly sound idea of who they are, what they care about, and where they would like to be going. While there are undoubtedly numerous exceptions to so broad a statement, the outlook of the average college senior is frequently better developed than that of the typical high school senior.

This degree of development is the result of four years of personal growth during the undergraduate career. For many people, the four years spent at an undergraduate institution coincide with the most important period of personal growth. The combination of separation from home, exposure to new ideas and people, and expansion of career and life options usually serves to promote an unprecedented and irreplaceable opportunity for personality evolution.

Most high school seniors sense the importance of going to college, but few understand the true value of a university education. High school students tend to be concerned with the type and range of degree programs offered or similar characteristics related more to forecasting success after graduation than during matriculation. They do not realize that the success of an undergraduate program is best measured by assessing who you are when you finish, not what job you can get or how much you will be paid.

If high school seniors understood the true importance of the next four years, they would be even more nervous than they are. Any student whose personality remains wholly unchanged after four years at MIT or elsewhere either was extraordinarily mature upon arrival or will remain hopelessly immature for years after departure. High schoolers must select a place in which to grow as a person in addition to one in which to evolve as a scholar.

Freshmen are barely beginning to fathom the implications of their decision to attend MIT. Most will be content with the outcome—a few will excel, a few will fail. The path upon which these freshman have just embarked is a far more difficult and important one than that which now extends before seniors applying to graduate schools. Now is the time for seniors to relax, and freshman to brace for the changes to come.



Column/Aaron P. Rapoport

## Lack of common purpose elevates individual goals

The holidays of Rosh Hashanah and Yom Kippur are traditionally occasions for Jews to "take stock" of themselves — to reflect on what they have done in the past year, and through "tephilot" (prayer), "teshuvah" (repentance), and "zedakah" (charitable works) to embark upon a course of self-improvement. As anyone attending holiday services will find, however, the holiday season provides more than just an opportunity for introspection; it provides an opportunity for Jews to congregate, to chant familiar prayers, to re-establish friendships, and to re-dedicate themselves en masse to the principles and practices of the Jewish faith. The sense of cohesion and common purpose which these holidays restore has several pragmatic ends.

Most important among these ends is a reminder to each Jew that he belongs to a company of individuals who share common values and ideals and who will, in time of need, offer spiritual support and moral guidance. There is no better illustration of the latter point than the Yizkor Service — or Service of Remembrance — held during Yom Kippur, in which both mourners and non-mourners participate.

Yet this sense of cohesion and common purpose which is felt by Jews during this holiday season seems to be lacking in the secular

world, at least among the generation of American youth now entering adulthood. It is not hard to speculate on why this might be the case. Historically, unified and purposeful activity has centered around focal pressures and crises. The Vietnam War and its mis-handling by the federal government certainly provided the nucleation point around which the drive for social change, mounted by the American youth of the 1960's, crystallized.

Today, however, we live and work in an era of relative peace, comfort, and prosperity. Indeed, the US seems relatively powerless to do anything about events abroad, none of which — save for the Iranian hostage affair — has affected the United States with any urgency. Furthermore, the US public has shown tremendous resiliency in dealing with a barrage of foreign and domestic economic traumas.

One of the consequences of this diminished sense of camaraderie and common purpose has been that individual goals and concerns have supplanted social and civic ones. Among college students today, one rarely hears debate on issues of widespread social concern such as Middle East policy, rising divorce rate, or rising cost of health care. With diminished awareness about important public issues and problems, intelligent debate and discussion about them

will no longer occur, leaving problems to go unattended.

The emergence of self-fulfillment and self-indulgence as major elements of human activity has probably taken its toll in the workplace already. Declining productivity is a current threat to the growth and stability of the US economy and its persistence may well be related to the increased channeling of effort toward personal fulfillment by workers in their jobs. Less effort is expended in promoting corporate and institutional goals and priorities. Indeed, management and leadership corps tend to be highly fluid, with members of each moving readily from firm to firm and institution to institution.

If a relevant lesson can be learned from biologist Lewis Thomas' recognition of the widespread natural phenomenon of "synergistic interdependence" — at both the sub-cellular and organismal levels, it is this: individuals working together in a close and meaningful way are more productive and effective than individuals working together as individuals.

The means for dealing with this worrisome trend in our society are not manifest yet. But as Flora Lewis, who recently wrote on a related subject, concludes, "recognizing the problem is the first step."

# The Tech

Brian J. Glass '82 — Chairman  
Stephanie L. Pollack '82 — Editor-in-Chief  
Jon von Zelowitz '82 — Managing Editor  
Richard W. Epstein '83 — Business Manager  
Volume 101, Number 38  
Friday, October 2, 1981

### NEWS DEPARTMENT

**News Editors:** Ivan K. Fong '83, Jerri-Lynn Scofield '83; **Associate News Editors:** Stuart Gitlow '84, Frank Hrach '84, Thomas Loreda '84, Tony Zamparutti '84; **Staff:** Michael Shimazu '82, Timothy M. Kneale '84, Barry S. Surman '84, Jon Morrow '85; **Cartoonist:** V. Michaeli Bove; **Meteorologist:** James Franklin G.

### PHOTOGRAPHY DEPARTMENT

**Associate Photo Editor:** James Mihori '83; **Darkroom Manager:** Timothy Hilby '82; **Staff:** Jesse Castillo '82, Jonathan Cohen '82, Jim Vlcek '82, Gerard Weatherby '82, Bill Coderre '85, Ray Henry '85; **Photographic Consultant:** David Tenenbaum '75.

### SPORTS DEPARTMENT

**Sports Editor:** Eric R. Fleming '83; **Staff:** Rich Auchus '82, Brian Schultz '84, Martin Dickau '85, Mary Petrofsky '85.

### ARTS DEPARTMENT

**Arts Editors:** Lisa Buchholz '81, David Shaw '82; **Associate Arts Editor:** Mark DeCew '84; **Staff:** Howard Ostar '82, Joseph Romm '82, Eric Sohn '82, Peter Thompson '82, David Rho '85, Calvin Gabriel G.

### BUSINESS DEPARTMENT

**Advertising Manager:** Allen Frechter '83

### CONTRIBUTING EDITORS

Kevin G. Osborn '82, Kenneth Snow '82, Laura Farhie '83; **Indexing Project Representative:** A. David Boccuti '79

### PRODUCTION STAFF FOR THIS ISSUE

**Night Editor:** Judy Passman '83; **Staff:** David Shaw '82, Robert W. Leishman '83, Bill Spitzak '83, Sheena '84, Matt Giamporcaro '85, David Krikorian '85.

*The Tech* (ISSN 0148-9607) is published twice a week during the academic year (except during MIT vacations), weekly during January, and once during the last week in July for \$10.00 per year Third Class by *The Tech*, 84 Massachusetts Ave Room W20-483, Cambridge, MA 02139. Third Class postage paid at Boston, MA. Non-Profit Org Permit No. 59720 **POSTMASTER:** Please send all address changes to our mailing address: *The Tech*, PO Box 29, MIT Branch, Cambridge, MA 02139. Telephone: (617) 253-1541. Advertising, subscription, and typesetting rates available. © 1981 *The Tech*. Printed by Charles River Publishing, Inc.



# Faculty debates WI proposal

(continued from page 1)

dage where the tail very much wags the dog," said Penman.

The Biology Department may lose three major professors to WI: David Baltimore, Robert Weinberg, and Harvey Lodish, whose replacements will be hard to find, claimed Penman.

Penman added, "Many of us think the use of recombinant DNA is a fad."

Provost Francis Low said that the "opportunity for MIT is in the life sciences." WI will "give a flavor to MIT which we have not had before... [It will] bring undergraduates into that area [and] depolarize the pull of engineering," declare Low.

Jerome Lettvin, Professor of Biology, raised the question of WI patents. "I think on the whole it is a most salutary program," Lettvin said of WI, but added, "I feel that any institution that has an alliance with MIT owes its patents to MIT."

David Baltimore said in response that the Whitehead Institute will receive all royalty from patents, as it will receive stipends and graduate student tuition. "The kinds of patents to come from it won't be worth much," added Baltimore.

Baltimore asked rhetorically. "Is this [WI] a good thing for MIT or not? ... Decreasing levels

of federal support... will force us to look at [other] ways of maintaining research strength."

Anthony French, Professor of Physics, expressed concern that Whitehead Institute professors may become "privileged members of the faculty" who would not have to hunt for funds, would have a separate research facility, and would "not [be] in the mainstream of MIT life."

Boris Magasanik, Professor of Biology, said that although he had initial doubts about the Whitehead Institute, he now supports the arrangement. Magasanik added that in the past "any new proposal [in the Biology department] was opposed by Mr. Penman... I would have

been very worried if Mr. Penman had been in favor of the Whitehead Institute."

Gene Brown, Chairman of the Biology Department, said he did "not want to tell everybody that there were no concerns" about WI in the Biology Department. There is a "spectrum of opinions" in the department, said Brown. "The fact is, only three people have said they are opposed" to the Whitehead Institute, claimed Brown.

Penman replied "it is untrue we are the only three" opposing WI. He also took exception to Magasanik's comment about his claimed opposition to all progressive measures considered by the biology department in the past.

## notes

Applications for **advanced degrees** in February 1982 must be returned to the Registrar's Office, E:19-335, by October 2, 1981. \$20 fee after this date.

\* \* \* \*

**Add date** if Friday, October 16, and the Registrar's Office would like to remind students that correction cards will not be accepted without all the necessary

signatures. Students are urged to obtain all signatures well before deadlines in order to avoid having to petition the Committee on Academic Performance to make a late change. If an advisor is unavailable, contact the undergraduate office or department headquarters. Freshmen should go to the Undergraduate Academic Support Office, Room 7-103.

## FREE TAPE.

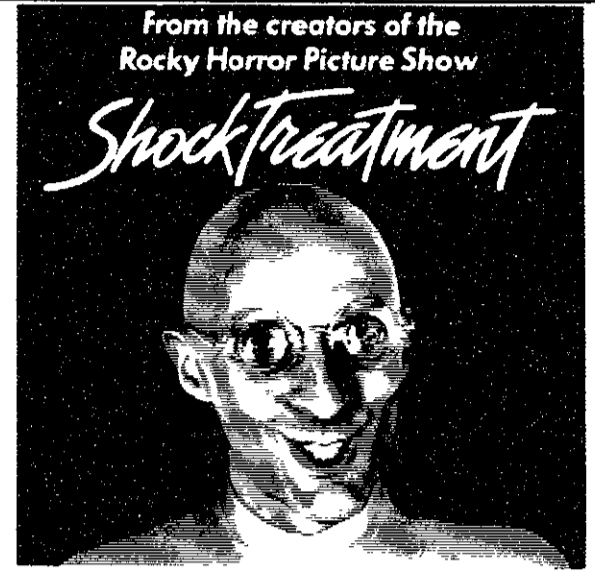


Just come in and pick it up. A free cassette tape. No strings attached. Expand your sonic horizons. Visit Q Audio. New England's smallest hifi store with the largest inventory of quality used stereo components. **Used Audio...Exclusively.**

Products to fit all budgets.  
Priced from \$39 to \$3,500 and beyond.  
95 Vassar St. Cambridge, MA. Near MIT



547-2727



PG

EXCLUSIVE ENGAGEMENT

**CINEMA 37** 1-2

200 Stuart near Park Sq. 482-1222

FRIDAY, OCTOBER 2 AND SATURDAY, OCTOBER 3

CINEMA 1 - 11:45 PM CINEMA 2 - 1:15 AM

Special Late Shows Every Friday & Saturday Night Plus Holiday Even

## Spring Semester in Sweden 82

Swedish Architecture and Urban Planning  
Scandinavian Art History  
Communications Arts in Sweden  
Education in Scandinavia  
International Politics  
Sweden's Economy Past and Present  
Social Welfare Policy in Sweden  
Women and the Family in Sweden  
Energy, Environment, and Society  
Swedish Language



For further information write to ISU, or contact our representative at the US International Swedish University Programs at Lund University Skomakergatan 8 Mrs. Joanne Wallin 8-223 50 Lund SWEDEN Tel 046-11 77 20 Idaho Falls, Idaho 83401 Tel (208) 523-1039

## PUBLISHING SECRETARY

Rapidly growing publishing company specializing in medical and pharmaceutical sales training requires assistant to the president. Primary responsibility for operating and managing WANG OIS 125 to support sales and course production. Immediate opening for experienced professional. Send resume to:

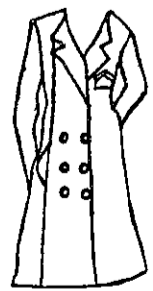
Dr. Charles Atkinson  
Competence Assurance Systems  
Box 81  
Cambridge 02138

## Factory Direct Prices!

Save 50-60% on

## Top Fashion Coats

for misses, Petites and Junior sizes. (5-15, 6-18)



A variety of styles, including full length wool coats, pea coats, solid and tweed blazers.

Assorted Colors.

Come visit our showroom at:  
75 Kneeland St.  
Room 202 (second floor)  
Boston.

(Located between Tufts Medical center and South Station, Boston.)

HOURS: Saturday: 8-12am.  
Wed.-Thu.-Fri.: 1-5p.m.

"Monday to Friday I'm a computer programmer. Weekends, I bust loose with my friends & Cuervo."

**BUST LOOSE!**  
**CUERVO & ROSE'S LIME JUICE**

CUERVO ESPECIAL TEQUILA. 80 PROOF  
IMPORTED AND BOTTLED BY © 1981 HEUBLEIN, INC., HARTFORD, CONN.



## Old Kings

Yul Brynner captivates audiences as he plays the King of Siam in the Mitch Leigh Company version of *The King and I*, playing at the Metropolitan Center. It is a role he created for himself when the Rodgers and Hammerstein musical first opened on Broadway in 1951. Though perhaps a bit quieter of voice now, he still overpowers the stage with his presence. He uses bold gestures to express emotions strongly, and for the most part, convincingly. At times this much power seems a bit more than the part calls for. When he is frustrated with the world, it is an experience that brings him to his knees shouting. Contrasting this loudness in manner, in the last scene he passes away so quietly that his death remains unnoticed until his first wife rushes to his side.

Unlike Brynner, who dominates the stage in this manner, Kate Hunter Brown, playing the part of Anna, holds the audience with the beauty of her voice. She plays the part well, though some of her mannerisms seem a bit childish. Surely at that time no school teacher would let herself be found sitting on the floor, her hoopskirts arrayed about herself with students sitting on the fringes. These antics seem to add to the performance, joining with the music to twist the plot slightly away from reality and the problems it confronts. Together, Anna and the King work a kind of magic on the stage. They seem almost as two children battling with responsibility in an adult world, and always just missing their goals.

The show opens with Anna, a prim and proper young schoolteacher from Wales, being escorted to the palace where she is to instruct the royal children. She soon becomes involved in helping the king as he tries to prove to the western world that he is a modern and scientific ruler and not a barbarian. Through the clash of eastern and western values, Anna and the king find themselves constantly frustrated with each other, and at the same time falling in love. The play ends with the king dying, some months after Anna had broken his spirit by undermining too many of the values he had grown up with. He leaves behind a son who, through the teachings of Anna, will bring many aspects of western culture to the rule of Siam, thus accomplishing what his father would have wanted to do, but found himself unable.

Although set against a background of song and dance, the characters maintain a sense of reality, and express a powerful amount of emotion, especially during the songs. With the exception of Justin Freiman, a ten year old playing the part of Anna's son, all of the singing is superb. It is a pity that the sound system used, coupled with the acoustics of the theater, is not able to do the singers justice. This is most noticeable on long, drawn out notes, which give rise to some distortion. It was also annoying when Brynner accidentally stepped on one of the stage mikes. The set was fairly simple, but through well handled lighting, it became the final ingredient for a very well presented play.



Tom Grycewicz and



## New Princes

*Prince of the City*. Screenplay by Jay Presson Allen and Sidney Lumet, directed by Sidney Lumet, starring Treat Williams; at the Sack Cinema 57.

This film is sure to draw adjectives like "compelling", "powerful" and "important" — euphemisms for "It's not very entertaining." However, it is very realistic; in fact, it's true. Unlike most true stories, however, this one needs no dramatic tampering to make it commercially viable.

In the early Seventies federal prosecutors for the Knapp Commission engaged in a concentrated campaign to ferret out corruption in the New York City Police Department. The big money was in narcotics. Unable to uncover any high level conspirators, they instead pursued street detectives with a legal arsenal that included wiretaps, entrapment and the ignoble practice of pitting well-intentioned cops against their peers.

*Prince of the city* is the story of one cop who tried to walk the tightrope between cooperation with the prosecutors and loyalty to his partners. The resulting moral quagmire is explored with a realism that is far more satisfying than Lumet's earlier treatment of the same topic in *Serpico*.

Unlike that black and white analysis, this film offers no martyred heroes, hypocritical barristers or evil cops; just a melange of real people in real situations. Everybody has something to hide. Lumet

deliberately sends us searching for a noble character to cling to but each one that pops up has a coating of slime.

There's not a lot of violence except of the mental variety. Mostly, the director relies on naked realism which is the only outstanding aspect of the story. The camera is exasperatingly frank as it sits patiently through painful conversations until we wish that it would break away. But it remains focused, refusing to let us off so easily.

Treat Williams, who lip-synched his way through *Hair* as the head hippie, does a complete turnabout playing the clean-cut Detective Bob Leuci, youngest squad leader in New York's history. He's a model of efficiency but he'd like to be a model of integrity. Torn by self-doubt and conflicting motives, he runs the gamut of emotional exertions. It's an exhausting display of acting.

All of this realism may result in a film of high artistic merit but it won't necessarily fill the theaters. People, we're told, go to the movies to escape reality, not to get an overdose. Here, as the plot pounds us relentlessly with three hours of anxiety, we begin to hope for a simplistic exit from this moral labyrinth. But all of the questions are left unanswered. This film puts us under a bright light, beats us with a rubber hose, then says, "Okay, you're free to go."

Peter Thompson

**SAI Computer Scientists and Electrical Engineers**  
Career Opportunities with a Difference

Dr. K. Jordan  
Science Applications, Inc.  
803 West Broad Street  
Falls Church, Virginia 22046  
(703) 241-7900

**The Company** Major \$200 Million Dollar Research Oriented Firm  
Comprehensive Benefits Including Profit Sharing  
Dedicated to Technical Excellence & National Contribution  
4100 Employees Nationwide

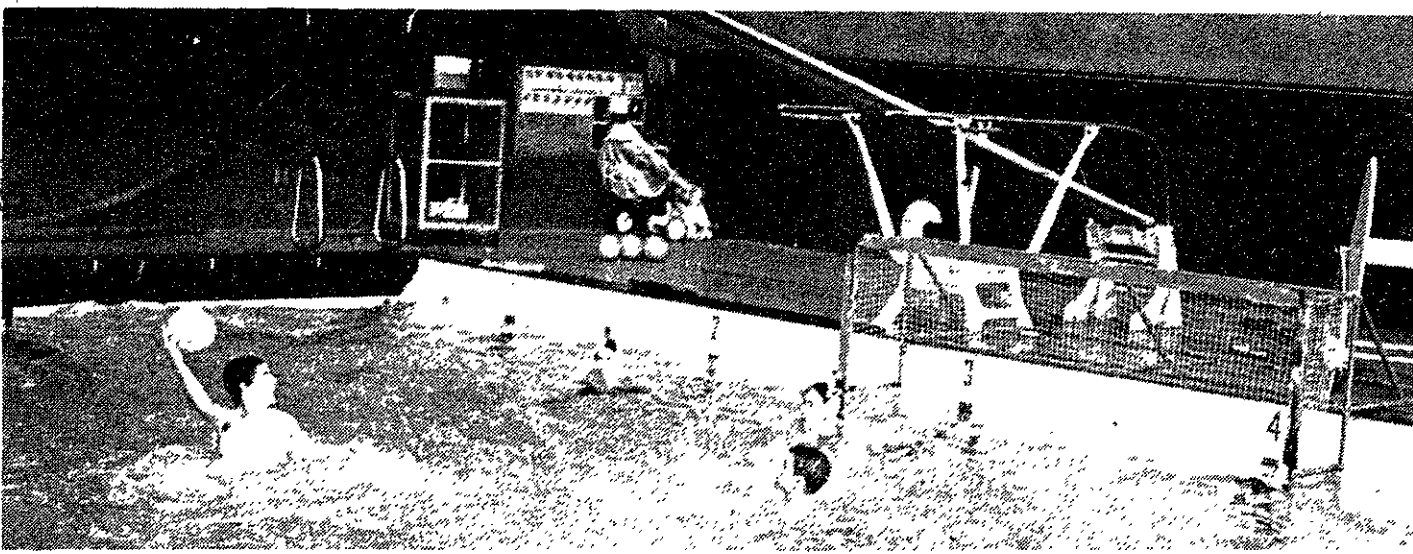
<b>The Projects</b>	Computer Architecture & Microprocessing	Remote Sensor Systems Design & Engineering	Digital Signal & Image Processing
	Software Engineering	Communications & Information Theory	Operating Systems
	Data Base Systems	Simulation and Modeling	Interactive Graphics
	Operations Research	Human Factors	C3I

**The Person** MS/Ph.D in EE or IE or CS  
Innovative, flexible, and articulate  
Strong desire for professional growth and challenge  
U.S. citizenship required

**The Research Facilities** VAX-11 and PDP-11  
Relational Data Base  
2-D and 3-D Color Graphics  
SIMSCRIPT Software Tools

**The Difference** Unique opportunity to work in rapidly expanding technical areas with new projects, facilities, and equipment  
Recognition of the value of individual accomplishment  
Growth potential based on the individual  
Initial assignments tailored to interests and experience

Campus Interview Date  
October 9, 1981



The MIT water polo team will be hosting the MIT Invitational Water Polo Tournament today and tomorrow (Photo by Jim Vlcek)

<p><b>EL-AZAR</b> 1755 Mass. Ave. Cambridge, MA Between Harvard Sq. &amp; Porter Sq. "Lebanese Home-style Cooking" Daily Specials \$3.99 Fine Food — Moderate Prices 492-7448</p>	<p><b>Freeze it in Massachusetts</b>  Toscanini's Ice Cream 899 Main Street Corner of Mass Ave &amp; Main Street Central Square, Cambridge</p>
---	--

**APPLY FOR THE DOCTORATE  
THAT BUILDS A CAREER**

**Boston University's Doctoral Program  
in Management is unique!**

We prepare men and women for challenging careers in the rapidly expanding fields of applied research and management consulting. Specializations include management of information systems, financial analysis, strategic planning, marketing research, and organizational development. Admission is selective, open to those with undergraduate degrees in any research oriented discipline.

**We're interviewing on the MIT campus  
October 6 at 1 pm.**

Contact the Career Planning and Placement Office for more details or write to

Doctoral Program  
Boston University Graduate School of Management  
621 Commonwealth Avenue  
Boston, MA 02215

**weekend preview**

**By Rich Auchus**  
The MIT water polo team will host some of the finest competition on the east coast today and tomorrow in the MIT Invitational Water Polo Tournament at the Alumni Pool. MIT, Brown, Harvard, Princeton, U. Mass, and Yale will play a total of 14 games in essentially a round-robin tournament. The teams will play one abbreviated game every hour between 5pm and 7pm on Friday

and 8am to 8pm Saturday. Coach John Benedick identified Brown — the defending New England champions — and Harvard as the teams to beat. With only two returning players, captain John Friedman '83 and goalie Brett Hildebrand '84, Benedick relies on rookies like John Belzer '84, George Jaquette '85, Peter Kalish '83, John Roberts '83, Bob Schoenlein '84, and goalie David Trempel '85.

Many of his "aggressive, hard-working" players had never played water polo before coming to MIT. At 2-5, they are building a new team to replace the seniors lost to graduation.

\* \* \* \* \*

Beginning at 9am tomorrow, MIT will host the Greater Boston Conference Women's Tennis Tournament on the duPont tennis courts. Sue Strausman '83, Margaret Rakas '83, Kris Dinsmore '85, Lisa Goldfarb '85, Jennifer Shandling '84, and Janet Schnee '84 will be among those representing MIT. They will challenge players from area colleges in a contest that was moved from Harvard to MIT to accommodate scheduling conflicts at Harvard.

**classified  
advertising**

Cambridge Avon Hill. 1880 11 rm, 2 bath single. Corner double lot. Large fenced garden, fruit trees. Off-street parking, detached storage building. R-3. \$225,000. Principals, owner. 354-2615

**Oxfam America's Third World Study Tour.** Two weeks in Jamaica and Cuba in January 1982. Learn about the countries' strategies for national development. Excellent, balanced itinerary. Invaluable experience. Cost \$1,380/person including round trip airfare from Miami, lodging, meals, taxes. Academic credit available. Contact Haleh Wunder, Oxfam America, 115 Broadway, Boston, MA 02116 (617)482-1211

**STUDENTS — "JOIN THE CLUB THAT REALLY COUNTS!"**  
The Save Money Club of New England: a yearly membership entitles you to a master card and/or VISA card. Plus, through your membership you will save hundreds of dollars on stereo, cars, furniture, diamonds and get the absolute guaranteed lowest price or the difference 20% of the difference back to you. Hundreds of members are now saving and beating inflation. You can too! For more information A. P. & Associates 494-5200

**SURPLUS JEEPS, CARS, TRUCKS**  
Car-inv. value \$2143 sold for \$100. For information on purchasing similar bargains, Call 602-941-8014 Ext. 6533. Phone Call Refundable.

**WANTED: TECHNICAL TRANSLATORS.** Native speakers of SPANISH, FRENCH, ITALIAN, GERMAN in areas of engineering, computers, law, economics, etc. Part-time, free-lance. Also, foreign-native language teachers, especially Italian. Call 354-6111.

**MEDICAL SCHOOL INTERVIEW:** Prepare-simulated interview with former member admissions committee. Paid campus rep. needed, Dr Glass COM-MSTRAT, 2611 Beechwood Blvd., Pittsburgh, PA 15217, (412) 421-3231.

**Carpet Remnants**  
Save 50% to 85% on Carpet Remnants from famous mills. Excellent for bedrooms and student rooms. All fibers, all colors, hundreds to choose from. Frank Duffy Carpet Center, 965 Mass. Ave., Arlington, MA 02174. Phone 646-4444.

**SPEAKERS**

World's Best  
Polydax Dalesford Bextrene  
Peerless Polypropelene  
Foster J.V.C. Ribbons

Many more names, cross-overs and accessories

**Low Prices**

Write: KING SYSTEMS  
34 Harvard St.  
Arlington, MA 02174  
Call 643-3934  
evenings only

**GOLDEN OLDIES**  
FROM  
**MOLSON GOLDEN**

*I can't believe it. I trusted you... and you drank the last Molson.*

BREWED AND BOTTLED IN CANADA; imported by Martlet Importing Co., Inc., Great Neck, N.Y.

## sports update

By Brian Schultz

**Cross Country** — Last Saturday, the men's cross country team dropped a tough decision to Coast Guard at MIT's home course. The team lost 30-27 despite a first place finish by Paul Neves '83, who crossed the line in 25:11. Other strong performances were turned in by Jeff Lukas '82 (4th place), Colin Kerwin '82 (5th place), and Bob Collins '83 (8th place). The JV team won 23-26.

The women harriers meanwhile competed in a meet against Brandeis, Emmanuel, Simmons, Fitchburg, and Northeastern. MIT finished 4th, with a score of 94, to edge out Simmons. The meet was won by Northeastern, who dominated the race.

This weekend, the men's team hosts Lowell University, while the female harriers travel to Franklin Park to compete in a multi-team race with Tufts, Brandeis, and University of Bridgeport.

**Golf** — Last Friday, the golf team hosted a match against Assumption at Brae Burn Country Club in Newton. Strong shooting by MIT gave them the victory by the score of 421-436. On Monday and Tuesday, the team competed in the New England Tournament at Williamstown, MA, and did very well, finishing in a tie for 9th place. A total of 42 schools were

in the tournament. This ends a fine season for the golf team, which finishes with a record of 4 wins and 2 losses.

**Sailing** — This past weekend, the men's and women's sailing teams were busy in several competitions. On Saturday, the men's teams sailed for the Boston University Trophy and came in 8th out of 9 teams. On Sunday, the men sailors finished 4th out of 7 teams in the Greater Boston Championships for the Oberg Trophy at Tufts.

The women sent a team composed mainly of freshmen to the Marchiando Trophy at Radcliffe on Saturday and Sunday. The women put in a fine showing and tied for 3rd place.

Competitions on tap for this weekend include the Tufts Invitational on Saturday, the Danmark Trophy on Saturday and Sunday, and the MIT Invitational at 9:30am on Sunday. Also on Sunday, the women will compete in the Dartmouth Invitational.

**Field Hockey** — After a disastrous weekend, the field hockey team hosted Endicott Junior College at Steinbrenner Stadium on Wednesday. Although the team had much better defense in this game than they did in last weekend's losses, they still couldn't muster any offense and

were shut out for the third time in a row, 1-0. With a record of 2-3, the team hosts a match against Clark tomorrow at 11am.

**Tennis** — The men's tennis team faced a tough opponent last Wednesday when they met Boston University, a Division I school. The final result was a 7-2 loss at the hands of BU. This ends the fall season for the men, who overall performed well under acting head coach James Taylor.

Women's tennis has fared somewhat better than the men, exemplified by a 9-0 whitewash of Endicott Junior College last Wednesday. New coach Candace Royer has done an excellent job with the team thus far. This weekend is important for them as they will be competing in the Greater Boston Championships at Harvard.



Julie Koster '85 goes up against a University of Massachusetts spike as Anella Munro stands ready. MIT won over Boston College 15-2, 15-2 and over UMass 15-12, 15-13. (Photo by Gerard Weatherby)

Column/Eric R. Fleming

## Play IMs but don't abuse the referees

With the new intramural season well under way, the time has again come to speak out on a major problem that perpetually confronts the program: referee abuse. Although Mike Colucci, Chairman of the Intramural Council, addressed this subject in an open letter to *The Tech* last term, the situation is serious enough to warrant further discussion.

The purpose of intramurals at MIT is to allow the community to participate in competitive athletics regardless of skill or ability. Given the academic—and at times, social—pressures most students face, IMs offer a release. This outlet should not be abused, however, by taking out ones' frustrations on the referees of a particular sport.

Let's look at these refs for a moment. They are employed in the larger IM sports, such as football and softball, at pay ranging from \$4 to \$5.50 an hour,

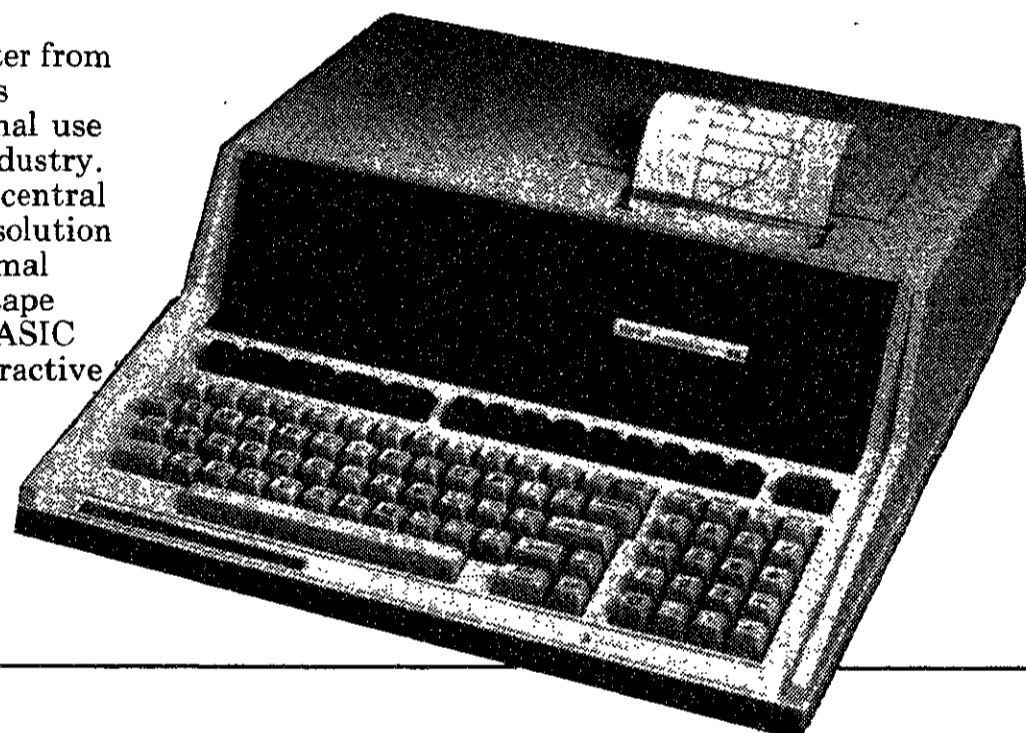
depending on experience. Each sport has a referee evaluator who judges each official's performance, and determines the rate at which they are paid. The system has worked reasonably well, especially in the upper leagues.

Those who officiate IMs are not perfect, nevertheless; neither are the referees in professional sports, who have considerably more training than IM refs. Sure, mistakes will be made, but is it necessary to give the person a hard time? Those with complaints should take them to the evaluator or manager of that sport. Getting upset does no one any good.

To date, I've only heard of a couple of problems from refs in my dorm. I also saw two "yellow cards" during a B-league soccer match—a smart move, as tempers were getting hot in a very physical game. Fortunately, nothing serious has happened yet. Let's hope things stay that way.

## Personal Computing for professionals.

The HP-85 computer from Hewlett-Packard is designed for personal use in business and industry. Features powerful central processor, High resolution CRT display, thermal printer, cartridge tape drive, enhanced BASIC language, and interactive graphics in a fully integrated system. Reg. \$3250.



**\$2999**

HARVARD COOPERATIVE SOCIETY  
HARVARD SQUARE. MIT



## LECHMERE AUTO WASH CENTERS

### N. CAMBRIDGE

Deluxe Exterior Wash  
Featuring All New  
Brushless Car Wash System  
SHINES YOUR CAR  
AS IT WASHES  
Open Till 8 PM  
Also 3 Self Service Car &  
Truck Wash Bays  
Open 24 Hours  
2013 Mass Ave  
Porter Square

### E. CAMBRIDGE

Deluxe Exterior Wash  
Featuring All New  
Brushless Car Wash System  
SHINES YOUR CAR  
AS IT WASHES  
Open Till 7 PM  
Also 2 Self Service Car &  
Truck Wash Bays  
Open 24 Hours  
262 Msgr O'Brien Hwy  
Lechmere Square

### WAKEFIELD

Deluxe Exterior Wash  
Open Till 7 PM  
Gasoline Open Till 11 PM  
Also 4 Self Service Car &  
Truck Wash Bays  
Open 24 Hours  
590 Main St  
Corner of North Ave &  
Main St

### E. SOMERVILLE

4 Self Service Car &  
Truck Wash Bays  
Open 24 Hours  
31 Washington St  
Across from Holiday Inn

### N. SOMERVILLE

Deluxe Exterior Wash  
Open Till 9 PM  
680 Somerville Ave  
Corner of Elm St &  
Somerville Ave

EXTERIOR WASH  
TURTLE WAX  
AND  
UNDERCARRIAGE

Regular \$7.25

Now  
**\$ 4.25**

SAVE \$3.00



\*With This Coupon  
\*No Double Discounts  
Offer Good to Nov. 3, 1981  
MIT

EXTERIOR WASH  
HOT WAX AND  
UNDERCARRIAGE

Regular \$5.50

Now  
**\$ 3.50**

SAVE \$2.00



\*With This Coupon  
\*No Double Discounts  
Offer Good to Nov. 3, 1981  
MIT

EXTERIOR  
CAR WAX

Regular \$3.00

Now  
**\$ 2.00**

SAVE \$1.00



\*With This Coupon  
\*No Double Discounts  
Offer Good to Nov. 3, 1981  
MIT

Self Service Vacuums Available At All Locations  
Member, New England and International Car Wash Assoc.

### PARTY 251

Friday October 2  
black robes optional  
call for details

Scot, Kevin,  
FLT, LSC,  
DanO, & Spike

### Village Laundry Land

Self Service  
Coin-Op Laundromat

Grand Opening  
266 Brookline St.  
Cambridge

Between Central Square  
and B.U. Bridge  
Daily 8am to 10pm

Physicians for Social Responsibility  
Boston Chapter  
presents

**Randall Forsberg**  
Director of the Institute

for Defense and Disarmament Studies

**A Projection of US - Soviet  
Nuclear Weapons: 1981-1990**

Mon., Oct. 5  
Phillips Brooks House

7:30pm  
Harvard Yard