

Dining workers vote to accept new contract

No need for strike plans

By Barry S. Surman
MIT Dining Service employees accepted the Institute's final contract offer by better than a three-to-one margin Wednesday night.

Members of Local 26 of the Hotel, Restaurant, Institutional Employees, and Bartenders Union, AFL-CIO, approved the two-year contract by a vote of 58 to 16, with one abstention.

"That's good news," commented Gene Brammer, Director of Housing and Food Services. "We've always had a very good relationship with our union people and we expect to continue it," he added.

Domenic Bozzotto, President and Business Manager of Local 26, felt that the settlement between MIT and Local 254 of the Service Employees International Union (SEIU), reached September 1, influenced the outcome of the vote. "There's an underlying fear among the membership," he said, "that the other unions, especially SEIU, will not back them... We think it's the best contract for now; if SEIU didn't go short on us it could have been a better contract... It's the [SEIU] leadership's fault."

Local 26 Financial Secretary and Treasurer Danny Clifford agreed with Bozzotto, "It's definitely the best we could get. If nobody had signed, we could have negotiated a better contract." He commented that the

change from the expired three-year contract, which provided seven percent annual pay increases, to the new two-year contract calling for ten percent annually, "is a big step."

Bozzotto also noted that his membership felt that the SEIU would not support a dining strike: "We know their leadership would have told them to cross the picket lines."

The new contract, which covers employees at the six dining halls and the Faculty Club, calls for ten percent pay hikes effective June 29, 1981 and July 5, 1982. The agreement also specifies improvements in pension benefits, medical coverage, vacation benefits, educational assistance, funeral leave, sick leave, a safety shoe allowance, and an Institute concession on the issue of substitution.

The new contract states, "An employee temporarily assigned for one hour or more to a higher rated job shall receive the higher rate of pay from the time the assignment begins." The substitution rule in the previous contract required an employee to work eight hours before receiving the higher rate of pay.

Under the new contract, employees may retire with full benefits after 25 years of service, once they reach age 55. Minimum pension benefits have been increased by 11.76 percent, and past

(please turn to page 2)



Domenic Bozzotto ponders Hotel, Institutional & Restaurant Employees Union Local 26's ill-fated bus ride to Washington, D.C. on Solidarity Day. (Photo by Jim Vlcek)

The way it might have been . . .

By Barry S. Surman

MIT's contingency plans for a dining strike would have left Walker Memorial the only open dining facility on campus, according to Gene Brammer, Director of Housing and Food Services.

"Our plans are to open Walker," he said before the contract ratification vote Wednesday night. "If they go out Thursday or Friday, we'll open up on Monday."

The facility would have been operated by supervisory personnel, who would "only service those students that are on a meal plan," explained Brammer. Walker would have "almost run continuous feeding," maintaining extended hours, if necessary, he added. The plans called for serving of three meals every day, Monday through Friday, with no weekend service.

Also planned was a refund center at Lobdell Dining Room in the Student Center, to "provide, in ten dollar increments, up to forty dollars per week, or up to the meal plan balance, in cash... for those that want to make other dining plans," Brammer said.

Minimum commons requirements would have been reduced by a pro-rated amount at the end of the strike, he also noted.

To help feed those unable to use the Walker facility, Brammer said, "The vending contractor said he [would] keep the machines filled as long as he can."

Effects of Reagan felt

By Kenneth Snow

Commenting on the country's new economic situation, Director of the Undergraduate Research Opportunities Program Margaret MacVicar noted that "when you tell someone things are great

when they are not getting worse, it tells you something about the times."

MacVicar explained that there has been a greater demand for funding so far this year compared to last year, however, "as far as the resources of the funds that UROP has, they are unaffected." MacVicar mentioned that the increased demand for funding this year is not necessarily a result of Reagan's new economic policies. In the past, there have been years when the demand for UROP funding has been just as high. This year's increase could be due to many factors, such as a general increase in the appeal of the UROP program not related to the economic situation.

"We are aware of every nook and cranny where resources are available," said MacVicar. "The faculty has been outstanding from my point of view in their support." MacVicar added, "Some of it [fear of lost funding] might be psychological and this turns into a real pressure that we feel."

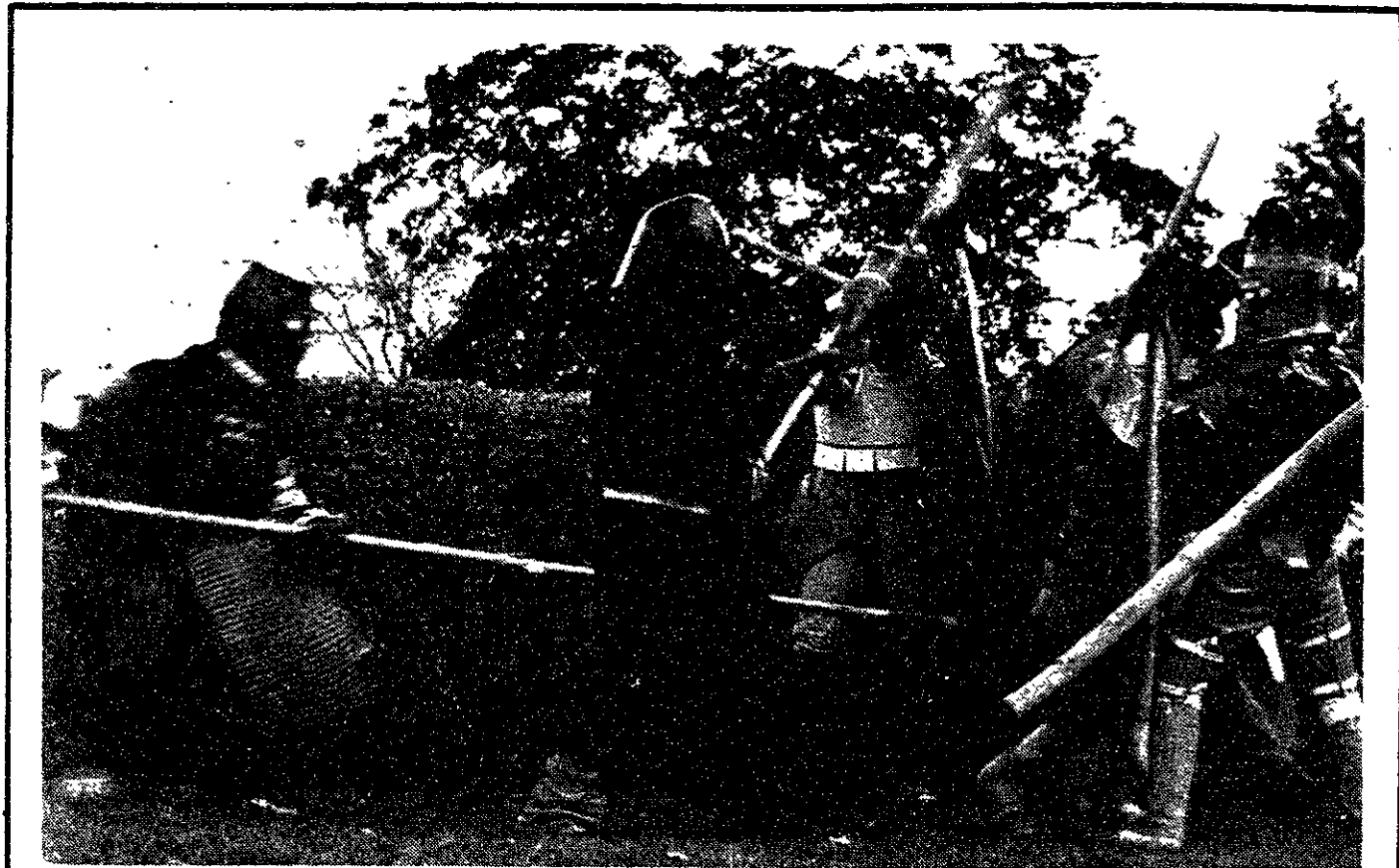
Leonard V. Gallagher '54, Director of Student Financial Aid, noted that students at MIT did not have to worry as much as

students at some other schools. Gallagher observed that many schools depend solely on Federal support for financial aid funds, while MIT uses its own resources, as well as Federal aid.

Gallagher explained that MIT did have two areas of concern. The first of these developed this summer, when funds were cut for Federal student loan programs. The second, and more pressing, problem is the continued high inflation rate.

"So far, MIT has been able to keep pace with inflation," commented Gallagher. "The equity level has gone up at about the same rate as inflation." The equity level is the minimum amount of money that students are expected to contribute to their educational costs.

Gallagher said, "We must get more money into the scholarship program and we need to develop more, presumably private, sources [of money]. Gallagher did note that the maximum National Direct Student Loan MIT offers to eligible students dropped from \$1200 last year to \$900 this year. "We have a level of commitment to students. However, that commitment involves the parents."



The Society for Creative Anachronism enacts a mock battle in Killian Court last Sunday. (Phot by Bill Coderre)

ROTC enrollment rises at MIT

By Burton Kaliski

Reserve Officers' Training Corps (ROTC) enrollment is on the rise nationwide and at MIT, according to Captain Tom Bortner of MIT's Army ROTC program. Bortner said that some of the reasons for the rising number of cadets are a change in national attitudes toward the military and increased Federal support of the program.

At MIT, the number of ROTC scholarships, which include full tuition, has been on the rise for several years. The Army awarded 83 scholarships last year, 71 two

years ago, and just 43 in 1974. The Navy and Air Force have had similar increases, and almost all of their students are on four-year scholarships, according to a 1980 report compiled for Herbert S. Hoffman, Civilian Aide to the Secretary of the Army from the Commonwealth of Massachusetts.

According to information in the report, enrollment in the three ROTC programs at MIT in 1980 was 541 (12 percent of the undergraduate population). Two years ago, 485 students par-

ticipated (10 percent), while only 143 (3 percent) were enrolled in 1974. Nationally, there were 106,810 cadets last year, 92,172 the previous year, and 63,266 in 1974.

The Army will award 8,500 scholarships this year, an increase of 2,000 over the awards in 1980. Congress had previously lifted the ceiling on the number of Army ROTC scholarships available, raising it to 12,000. A bill proposed by the Senate Armed Services Committee passed in the Senate last week, raising Navy

(please turn to page 8)

inside

Soon you'll be able to watch them watching you. **Page 6**

500 Memorial Drive has been plagued by 8 false fire alarms since opening for occupancy. **Page 10**

Participation, diversity, and "the personal touch" are emphasized in MIT athletics. **Page 11**

Walker discussed

By Laura Farhie

About eight different proposals for the renovation of Walker Memorial were discussed among architects Joan Goody and Lee Schaefer and MIT administrators last Tuesday, according to President of Walker Commons Committee Lou Konopelski '82.

Discussion of renovation of the Walker kitchen and reallocation of floor space raised questions such as whether to separate commons dining and a la carte ser-

(please turn to page 2)

New contract benefits greater

(continued from page 1)

service benefits by seven percent. In addition, spouse's death benefits were extended to include employees at least 50 years old with 10 years of service.

Medical insurance through Blue Cross-Blue Shield will continue with a 13.7 percent

employee contribution to the cost of the Master Medical Plan. Also included in the package is an increase in mental illness coverage from \$500 to \$1000.

Bozzotto was disappointed that dental benefits were not included in the pact. "We recommend that all our members go out and use

their psychiatric benefits. They can go and ask the psychiatrist 'Why won't MIT give us dental coverage? It's driving me crazy.'"

A vacation bonus for senior employees is contained in the agreement. "In addition to existing vacation allowances, employees with fifteen or more years of full-time service on or before July 1, 1981, or any succeeding July 1, may take an extra week of vacation once during each five-year period beginning at fifteen years of service..." said James J. Culliton, Assistant to the Vice President and Director of Personnel.

Tuition Assistance Plan maximum benefits have been increased by ten percent under the new contract, and funeral leave for a death in the employee's immediate family was extended from two days to three days, with pay. A twenty-five dollar MIT contribution to the cost of safety shoes has also been added.

A clause in the old contract which allowed the Institute to disallow up to five days of sick leave for any one illness is deleted in the new pact.

Culliton commented on the settlement, "I'm really pleased... I think that we can look forward to almost two years of good employee relations."

MEET JOHN IRVING

MON., SEPT. 28, 12:30 - 1:30 PM



AT
THE COOP
HARVARD SQUARE



Come to the Coop and meet the renowned author of **The World According to Garp** and the newly-released novel **The Hotel New Hampshire**. Buy a copy, get an autograph, and chat!

HARVARD COOPERATIVE SOCIETY
HARVARD SQUARE



Hotel, Restaurant, Institutional Employees and Bartenders' Union July '81 - June '83 Wage Schedule at 10%/year

Classification	6/30/80	6/29/81	7/5/82
2nd Cook	\$7.65	\$8.42 (.77)	\$9.26 (.84)
General Cook	\$6.97	\$7.67 (.70)	\$8.44 (.77)
Fry Cook/Salad	\$6.32	\$6.95 (.63)	\$7.65 (.70)
Veg. Cook/Salad	\$5.55	\$6.11 (.56)	\$6.72 (.61)
Cooks Helper	\$5.55	\$6.11 (.56)	\$6.72 (.61)
Kitchen/Potwasher	\$4.95	\$5.45 (.50)	\$6.00 (.55)
Counter	\$4.74	\$5.21 (.47)	\$5.73 (.52)
Dish Oper./Gen'l Serv.	\$4.74	\$5.21 (.47)	\$5.73 (.52)
Head Counter	\$5.82	\$6.40 (.58)	\$7.04 (.64)
Ass't Head Counter	\$5.82	\$5.81 (.53)	\$6.39 (.58)

McCormick to alter list

By Julie Tiao

"The idea of the guest list is not to make McCormick an exclusive club," declared Debbie Goldfarb '83, desk captain at the only all-female dormitory on campus. "Unlike other dorms," Goldfarb continued, "McCormick does not issue front door keys. Having a guest list is the only method we have of providing security for the dorm."

Goldfarb is responsible, in part, for instituting the new guest list policy at McCormick. To provide more stringent security, the guest list has been limited to eight guests per resident, and positive identification is required. Previously, only the guest's and hostess' name were necessary, and each resident could have an unlimited number of guests on file.

"The way the old guest list worked, the security just was not very good," explained Goldfarb. "People were using other people's names, and desk workers were letting in a lot of people who weren't"

(please turn to page 3)

Proposals abound

(continued from page 1)

vice, and whether to separate East Campus and Senior House dining, reported Coordinator of Dining and Residence Programs Anita Walton. Specific ideas were "adding on one side to the building," and "using the basement or areas upstairs in a different way," said Walton.

"Morss Hall will not be changed," claimed Walton. She assured students, "The character of Morss will be the same."

"At this particular meeting it was not appropriate to have students," said Walton. Konopelski explained, "The administrators not have narrowed down what they want to propose."

The plans are "not formally on paper," declared Walton. Walton predicted that they will be written down "by the end of October."

"The proposals will be discussed among the students in October," said Walton. "I suspect that they will bring the plans before the student governments of East Campus and Senior House," said Konopelski.

GOLDEN OLDIES
FROM
MOLSON GOLDEN

Wait, you guys, the Molson party is tomorrow night.

news roundup

World

US-Soviet talks opened — Secretary of State Alexander M. Haig Jr. and Soviet Foreign Minister Andrei A. Gromyko met in New York Tuesday to discuss issues on which the two nations disagree. Although neither of the two diplomats spoke with reporters after the conference, a spokesman for the State Department confirmed that one of the topics discussed at the meeting was the resumption of arms talks between the United States and the Soviet Union. Details of the agreements made Tuesday are scheduled to be released today.

Study shows Soviet nuclear superiority in Europe — The Soviet Union has an underlying nuclear edge over the United States in Europe, according to the International Institute for Strategic Studies. Christopher Bertram, director of the private London-based group, attributed the Russian edge to a "modernization of nuclear forces on the Soviet side" in Europe. The group noted a world-wide strategic balance between the two superpowers, however, observing that both countries were observing the provisions of SALT II, even though the treaty was never approved by the United States.

Nation

Reagan addresses nation, announces new cuts — In his fifth nation-wide speech, President Ronald W. Reagan promised last night to "stand fast and hold firm" in his fiscal program. Reagan revealed his second round of budget cuts, which include a 12 percent across-the-board decrease in the Federal budget. Also in the program are the closings of the Department of Education and the Department of Energy, as well as the layoff of 75,000 Federal workers. Reagan also announced a reduction in Federal loan guarantees and a cut in Federal social programs.

O'Connor confirmed as Supreme Court Justice — By a vote of 99 to 0 with 1 recorded absent, the Senate confirmed the appointment of Sandra Day O'Connor to the Supreme Court. Justice O'Connor, the first female to be chosen to sit on the High Court, will take the oath of office today and will begin her tenure when the Court reconvenes on the first Monday in October.

Shuttle liftoff delayed — Nitric acid spilled down the side of the space shuttle Wednesday morning, loosening dozens of the vehicle's protective tiles. The second launch of *Columbia*, scheduled for October 5, will have to be postponed for at least five days while the tiles are reattached. The delay could be several weeks, however, if the vehicle needs to be removed from the launch pad to reattach the damaged tiles, in which case the shuttle would be returned to the hangar. No one was injured in the mishap.

Local

Delays reported in shuttle flights — Air traffic in the heavily-travelled Northeast Corridor, which links Boston, Washington, and New York, as well as the cities in between, is said to be worsening in the wake of inclement weather and the Air Traffic Controllers' strike. The traffic is causing massive delays in flights including the Eastern Air-Shuttle, the most popular service in the Corridor, sometimes causing delays of up to one hour along affected routes.

Alice doesn't serve here anymore — Alice's Restaurant of movie and song fame has been offered for sale at a price of \$222,500. The restaurant, made famous in the mid-1960's by Arlo Guthrie, went out of business two years ago.

Jon D. Morrow

Weather

Any clouds this morning will give way to sunny skies this afternoon. Northerly winds will be diminishing during the day and highs will be near 68. Becoming partly cloudy overnight with light winds. Lows will be near 48. Skies on Saturday will be partly to mostly cloudy with the threat of afternoon showers and highs will be near 72. Partly sunny and warm with a few showers possible on Sunday with highs near 75.

James Franklin

Annual election of Representatives to the General Assembly of the Undergraduate Association are taking place throughout the month of September.

Election Notice

All undergraduates are eligible to run. For more information, contact the president of your living group or the UA office.

VOTE!

Rosh HaShana Services

Sponsored by MIT Hillel, 312 Memorial Drive, 253-2982

REFORM (Chapel)

Monday, September 28, 7:00 pm
Tuesday, September 29, 9:00 am

CONSERVATIVE (Student Center, Sala de Puerto Rico)

Monday, September 28, 6:00 pm
Tuesday, September 29, 8:30 am & 6:00 pm
Wednesday, September 30, 8:00 am & 6:00 pm

ORTHODOX (Student Center, Mezzanine Lounge)

Monday, September 28, 6:00 pm
Tuesday, September 29, 8:30 am & 6:00 pm
Wednesday, September 30, 8:30 am & 6:00 pm

"Join Us for a Sweet Year with Apples and Honey following the Morning Services!"

McCormick limit changed to 8 guests

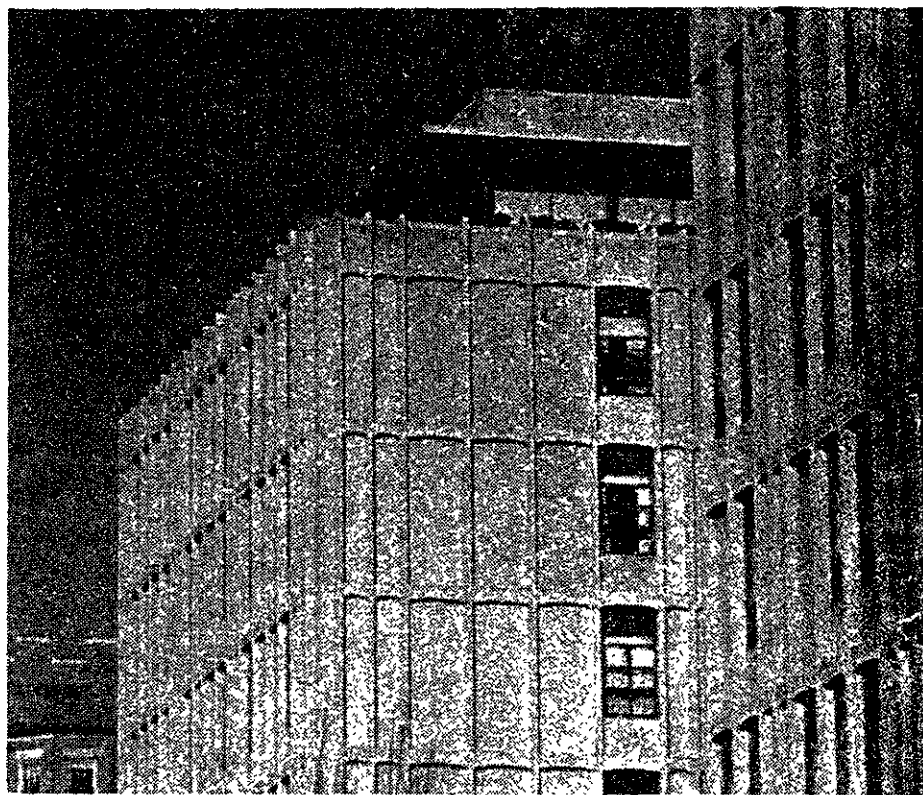
(continued from page 2)

on the guest list." Positive identification can either be provided by filing an identification picture of the guest with the hostess' and guest names, or by presenting a picture identification at the desk.

Goldfarb stressed that limiting the guest list to eight guests per resident is by no means limiting the number of visitors a girl can receive. "Any number of people can enter the dorm as long as they are escorted by a McCormick resident." In addition, a resident may petition McCormick's Judicial Committee (JudComm) if she feels compelled to place more than eight guests on the list. "Having the girls talk to JudComm is mostly just to make them realize what their responsibilities are," remarked Goldfarb. McCormick residents are responsible for the actions of their guests within the dorm.

Making it difficult to put more than eight guests on the guest list has the additional effect of relieving some of the overcrowding in McCormick's dining hall. Goldfarb explained that prior to the new policy, the dining hall was becoming so popular that McCormick residents were unable to eat in it. "We're on forced commons here," she asserted, "and so the dining hall should be for McCormick people first, and then for others."

The new guest list policy does not appear to be generating any serious problems. Goldfarb commented, "Everything seems to be working out all right."



McCormick has instituted a new guest policy to help upgrade security in the dorm. (Tech file photo)

ELIAS HAIR CARE

A Salon Serving the MIT Community.

319 Mass. Ave.

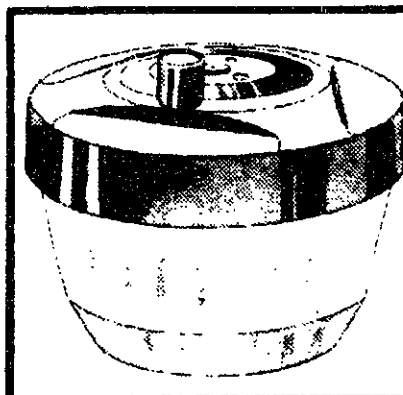
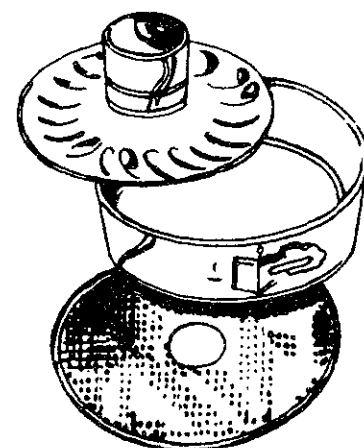
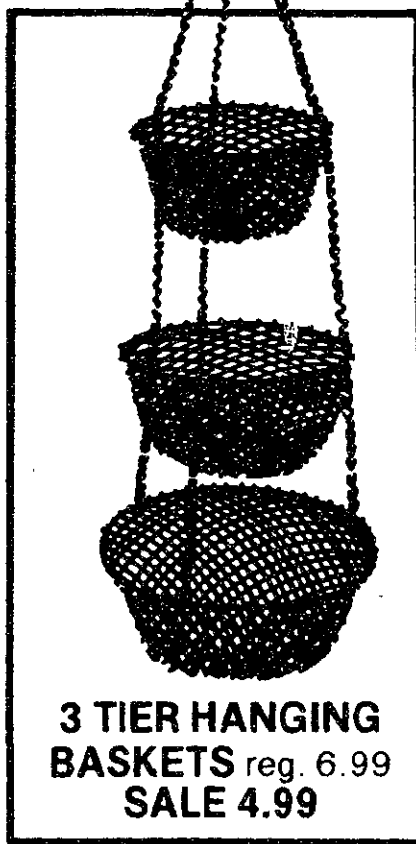
2 blocks from MIT

Call for an Appointment.

497-1590

2 Dollar Discount to all Students, Faculty and Staff with MIT ID.

Little things make cooking easier



HARVARD COOPERATIVE SOCIETY
HARVARD SQUARE

the
Coop

Stephanie Pollack

Is anybody there?

The semester is only two weeks old, but many students now find themselves three weeks behind in their work. Such is the magic of MIT. Undergraduates are beginning to remember — or learning for the first time — how easy it is to get completely lost in classes and labs.

I will not follow this observation with a plea for participation in student activities. While I firmly believe in the value of extracurricular activities, I realize that few students share this viewpoint and that no amount of florid prose can change this unfortunate situation.

The need to study — and eat, sleep, and party — should not, however, preclude the student's responsibility to remain in touch with the outside world. While the average MIT student would rather focus on calculus than Reaganomics, the latter is more likely to affect the student sooner and more directly. Decision-making on foreign and domestic policy does not cease, even during finals week.

At any given time, a dozen issues being covered by the national press directly affect MIT students. While Reagan decimates the Guaranteed Student Loan program, the National Institutes of Health decimate guidelines for recombinant DNA research. Taxes are cut, and Department of Defense funding for basic research is increased. Massachusetts changes the rules for getting drivers' licenses, and Cambridge publishes a unique civil defense plan.

Last spring, the level of student interest in a wide range of national and international issues seemed to have risen noticeably. These pages were filled with letters on topics including the draft, El Salvador, affirmative action programs, and homosexuality. The dialogue was not confined to one or two students or even to *The Tech*. Dinner table conversations and late night discussions would often touch on such matters. The interest was not unanimous, but neither was it confined to the traditionally small group of vocal activists.

The pace of the dialogue between the MIT community and *The Tech* has slowed only slightly, but the subject matter has changed appreciably. Letters are almost uniformly focused on MIT-related problems ranging from the condition of the East Campus tennis courts to the noise level at LSC movies. While such issues are clearly of interest to large segments of the MIT community, the radical change in topics raises some questions.

President Ronald Reagan spent the summer attempting to focus the attention of the American public solely on economic issues. Consideration of foreign policy issues such as El Salvador and social issues such as affirmative action was postponed in the name of reviving the economy. Congress clearly accepted the President's direction, and apparently MIT students did the same.

Despite continuing problems with the economy, social, and foreign policy issues are now moving to the fore. The next few months will see Congressional and nationwide debate on Mideast policy, military spending levels, abortion, desegregation, and a variety of equally hot issues. These discussions will, also, I hope, resume within the MIT community.

Any student who believes that none of these issues is immediately important is kidding himself. It is impossible to avoid these topics after leaving MIT for the real world, and equally difficult to disregard their impact while at the Institute. Most students, even upon becoming informed on the issues, will not feel compelled to join protest marches. Nevertheless, a working knowledge of these issues is necessary if students are to be truly educated while going to college.

We knew him as
a glamorous
movie star...
but there was a
side of him we
never knew...

Mike
Cohen

→ feedback

Homecoming to be best ever

To the Editor:

Why does MIT need a Homecoming Weekend? We on the MIT Social Council feel that the people in the MIT community do not have a focal point around which they can rally to express their school spirit. The Social Council is now planning Homecoming '81, a wild, three-day extravaganza in which everyone at the Institute can get involved. MIT's school spirit is constantly being denigrated by sceptics and critics from every cubbyhole at the Institute. Here's your chance to show some enthusiasm and pride in MIT — and to party. Let's make this Homecoming weekend the best ever!!

In the next few weeks, representatives of the Homecoming Committee will be visiting every living group, academic department, and MIT organization to spread the word. This is your chance to have some input. We want everyone to be involved — undergraduates, grad students, faculty, and alumni. In particular, if you want to be a part of the planning and preparation for Homecoming '81, there's still plenty of work to be done. Contact one of the following people:

Tom Ransohoff	Homecoming Coordinator	536-3931
Jim Olivo	Semi-formal Coordinator	267-5270
Eric Grald	Publicity Coordinator	247-7775
Jerry Rau	Ticket Sales Coordinator	225-8309
Gary Oliverio	Band Blast Coordinator	266-7791
Skip Butler	Social Council Chairman	267-6091
Angie Liao	Cheerleading	225-8381

Only you can make Homecoming happen — get involved!

Tom Ransohoff '84
Jim Olivo '82

East Campus tennis courts are in sad shape

To the Editor:

The East Campus tennis courts are in ridiculously sad condition. Massive fault lines criss-cross the crater-plagued terrain, sending helpless tennis balls bouncing in innovative directions. Here and there, scraggly life pushes upward, prompting pioneering individuals to occasionally mow the concrete. Spanning the desolation are four limp and battered nets which, owing to innumerable holes and rips, perform virtually no function whatsoever. Surrounding fences allow balls to skitter through, under, and

around, while preventing players from getting to Courts 3 and 4. And of course, these courts were all precision-engineered to assure maximum annoyance from sun and shadows.

And who deserves the credit for all of this? Whose responsibility is this? I mean, are those really even tennis courts? I dunno. Nobody knows. All I know is people keep returning day after day to test their reflexes and tempers.

Yes, MIT is truly a challenging place.

James D. Boyd '83

The Tech

Brian J. Glass '82 — Chairman
Stephanie L. Pollack '82 — Editor-in-Chief
Jon von Zelowitz '82 — Managing Editor
Richard W. Epstein '83 — Business Manager
Volume 101, Number 36
Friday, September 26, 1981

PRODUCTION STAFF FOR THIS ISSUE

Night Editor: Bill Giuffre '84; Staff: Sheena '81, Robert W. Leishman '82, David G. Shaw '82, Jon von Zelowitz '82, Charlie Brown '84, Barry S. Surman '84, David Kirkorian '85, Jon D. Morrow '85, Eric Olson '85.

PHOTOGRAPHY DEPARTMENT

Associate Photo Editor: James Mihori '83; Darkroom Manager: Timothy Hilby '82; Staff: Jesse Castillo '82, Jonathan Cohen '82, Jim Vlcek '82, Gerard Weatherby '82, Bill Coderre '85, Ray Henry '85; Photographic Consultant: David Tenenbaum '75.

SPORTS DEPARTMENT

Sports Editor: Eric R. Fleming '83; Staff: Rich Auchus '82, Brian Schultz '84, Martin Dickau '85, Mary Petrofsky '85.

ARTS DEPARTMENT

Arts Editor: Lisa Buchholz '81, David Shaw '82; Associate Arts Editors: Mark DeCew '84; Staff: Howard Ostar '82, Joseph Romm '82, Eric Sohn '82, Peter Thompson '82, David Rho '85, Calvin Gabriel G.

PRODUCTION DEPARTMENT

Night Editors: V. Michael Bove '83, Judy Passman '83, Bill Giuffre '84; Production Manager: Richard Salz '82; Staff: Charlie Brown '84, David Krikorian '85, Eric Olson '85.

CONTRIBUTING EDITORS

Kevin G. Osborn '82, Kenneth Snow '82, Laura Farhie '83; Indexing Project Representative: A. David Boccuti '79.

The Tech (ISSN 0148-9607) is published twice a week during the academic year (except during MIT vacations), weekly during January, and once during the last week in July for \$10.00 per year Third Class by *The Tech*, 84 Massachusetts Ave. Room W20-483, Cambridge, MA 02139. Third Class postage paid at Boston, MA. Non-Profit Org. Permit No. 59720. POSTMASTER: Please send all address changes to our mailing address: *The Tech*, PO Box 29, MIT Branch, Cambridge, MA 02139. Telephone: (617) 253-1541. Advertising, subscription, and typesetting rates available. © 1981 The Tech. Printed by Charles River Publishing, Inc.



Opinion

Guest Column/Allen Lee

The language of bureaucracy

Four years ago, upon entering MIT, I moved into Tang Hall, and the physical dilapidation of my apartment shocked me. I dutifully specified all the damage on the appropriate form. I handed it to the Tang Hall manager and expected him to share my outrage at the previous tenants. He took the form, read it, looked up at me, and said: "Thank you."

Now, on the brink of finishing my doctoral dissertation, I am seeking information on post doc programs so that I may publish my dissertation in the form of articles, or perhaps a book. Harvard, I am told, has two post doc programs I might be interested in.

At the office, I knock at the door. The door opens. A woman appears. "There's no one here," she says.

"I would like some information on your post doc program," I say. "The secretary is out."

"When I called yesterday, I was told to come in today."

"There's no one here," she says.

Eventually a friend at Harvard obtains the information for me.

At the office of the other post doc program, I encounter a receptionist.

"Is anyone here?" I ask.

"Who do you think I am?" she snarls.

"I would like some information on your post doc program."

"We have no post doc

program."

"Are you sure?"

"As sure as I'm sitting here." Eventually, one of my professors obtains the information for me.

MIT is not to be outdone by Harvard. Bracing myself, I say to the faceless person sitting behind the desk, "I would like some information on your post doc program."

Actually she is friendly. "Hmm," she says, "the post oc program. I'm not familiar with the post oc program. Let me go find out from someone."

As she rises from the desk and walks away, I stop her and implore: "No, no! Post doc, not post oc. Post doc, as in post doctoral! I would like some information on your post doctoral program."

"Of course," she says, smiling and disappearing into the next room.

Soon I am speaking to her clone.

"I understand you want some information on the UROP program."

"I would like some information on your post doc program."

"Post doc program? I don't know what you mean."

"A post doc program is for recent recipients of the Ph.D. It provides financial support and—"

"I know that," she snarls.

"I would like some information on your post doc program."

"We have no post doc program."

The next day I have lunch with a friend who is in that post doc program. "I'll get you the information," he assures me.

I hear that Yale has a post doc program I should be interested in. I call them up and the voice at the other end says: "There's no one here."

It is a recording.

But at the sound of the beep, I know exactly what to say:

"I would like some information on your post oc program."

CODENOLL TECHNOLOGY CORP.

High technology company seeking Elec. Eng., Mech Eng., Com. Sci., Mat. Sci. and Physics majors with BS, MS, or PhD for the design, development and production of

Semiconductors & Microelectronics
Communications & Information
Processing Equipment

1086 North Broadway, Yonkers, NY 10701

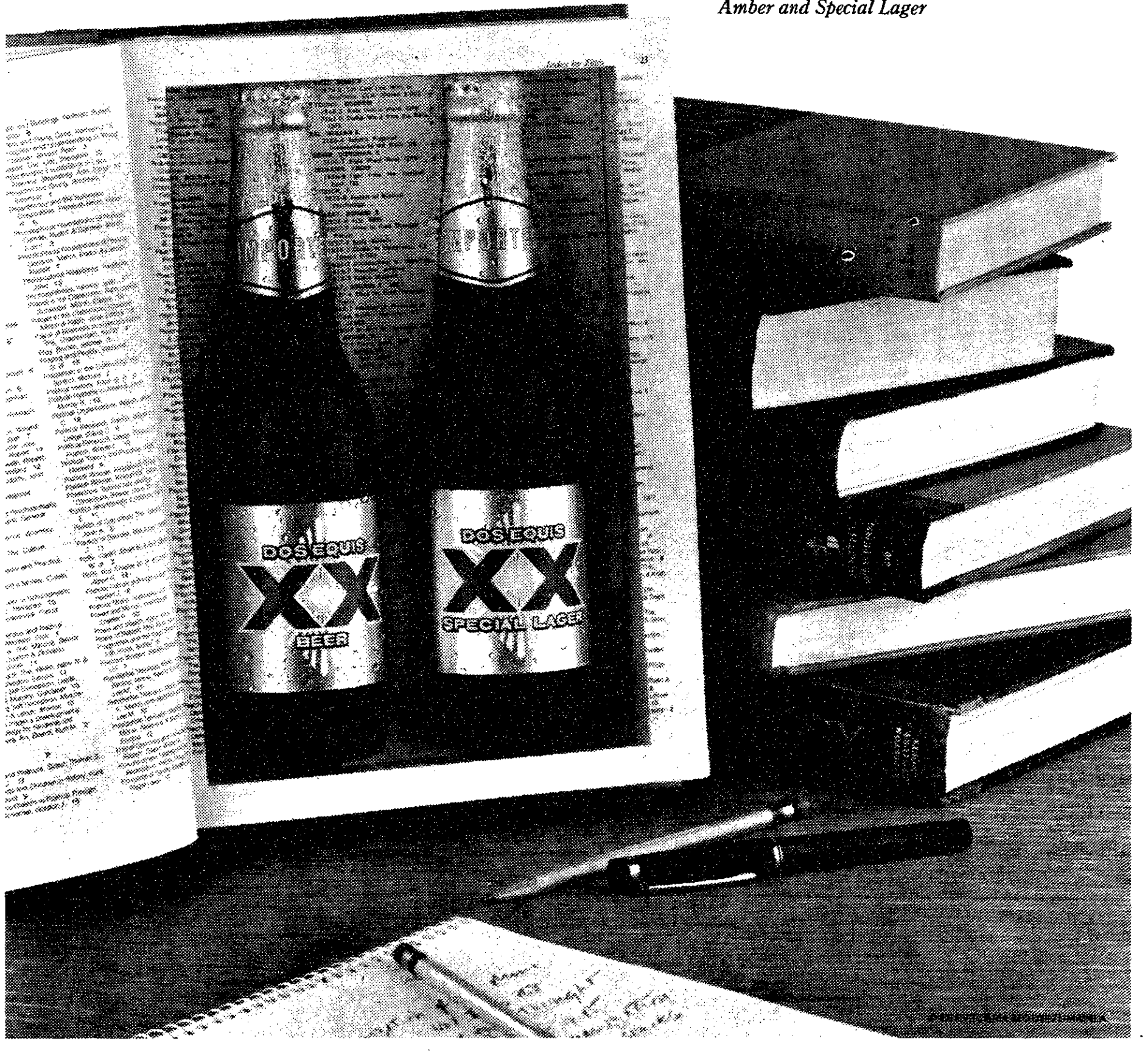
Interviewing on campus
October 9, 1981
or call for interview
(914) 965-6300

REFRESHER COURSE.

You've burned the midnight oil and cracked more books than you care to remember. The work is done. The papers are in. So now you take a refresher course. The subject: ice cold Dos Equis beer. The Uncommon Import. Study a frosty glass. You'll learn it has a

rich, amber color unlike any beer. Now test that big, bold flavor. You've got to admit, Dos Equis is in a class all by itself.

DOS EQUIS
THE UNCOMMON IMPORT
Amber and Special Lager



classified advertising

The Tech
will give away our old Coke machine (needs a new compressor but otherwise sound) to any student activity. Call x3-1541.

Piano Lessons
by concert pianist (B.A. Mannes College of Music; M.A. University of Denver.) Accepting advanced students and a limited number of beginners and intermediates. Dorothy Fine Siegert 666-4582, Somerville.

SURPLUS JEEPS, CARS, TRUCKS Car-mv. value \$2143 sold for purchasing similar bargains. Call 602-941-8014. Ext. 6533. Phone call refundable.

Backgammon Players!
Send for free copy of premier issue of *Backgammon Times*, exciting and intelligent reading. Write: 575 Madison Ave., NYC, 10022, Rm. 1006.

Carpet Remnants
Save 50% to 85% on Carpet Remnants from famous mills. Excellent for bedrooms and student rooms. All fibers, all colors, hundreds to choose from. Frank Duffy Carpet Center, 965 Mass. Ave., Arlington, MA 02174. Phone 646-4444.



New Nova

Generally, television's sole function is— as far as I can tell— to make Wheatena out of your cerebral matter. Of course, there are exceptions, and one of the most stunning must be the award-winning science documentary, *NOVA*, which is produced in Boston by WGBH and distributed nationally.

Through its use of science writers noted for their ability to bridge the gap between public understanding and scientific abstruseness, *NOVA* succeeds in entertaining as well as literate programming (you know, science writing that "doesn't talk about "how we can access this information.)

The first program of the series, which airs this Sunday at 8pm, "Computers, Spies, and Private Lives," addresses the personal information problem and the clandestine manner in which computers are

used to violate individual privacy. Computer banks across the country whirr around the clock accumulating lists, addresses, buying habits, financial records, and sharing this knowledge with perfect strangers who can then use it to their own ends. New Right Leader Richard Viguerie explains, in this edition of *NOVA* that the information of 25 million Americans stored on computer tapes to which he has access provided the basis for his phenomenal (and successful) mailing campaign and his subsequent efforts to solidify a "conservative revival" in the US.

This information — recorded when we make a purchase, check into a hospital, subscribe to a magazine, mail order clothing — is accumulated and distributed without legal hindrance. *NOVA* examines the technological advances that threaten to extend this unknown empire. As

governmental, financial, and security institutions become increasingly dependent on computerized communications, new ethical and legal problems must be considered. The inherent difficulties in applying any unmonitored technology are at the root of this investigation — technology's implications are always much vaster than first application or analysis reveals.

"Why America Burns," scheduled for October 4, is the second program in the series and an inquiry into why more fire deaths occur in the US than in any industrial country. *NOVA* probes the inadequacy of existing civil fire prevention in light of new architectural methods and new materials used in construction. Again, there is a gap between technology and its understanding by those who must use it or live with it.

Also scheduled for this season are programs about new art forms dependent on modern technology (computer graphics, holograms, etc.); a report on the rapidly expanding area of x-ray astronomy; the challenge being offered by biologists, geologists, and Creationists to traditional theories of evolution; and a program with award-winning biologist and author Lewis Thomas about his conceptions of "individuality in nature."

NOVA is currently PBS's highest-rated series, and deservedly so: the programs combine literacy, good journalism, and solid research. In an era where the gap between science and society is growing, and public censorship or disapproval of many scientific activities is becoming more specific, *NOVA* provides some linkages and some basis for understanding on both sides.

Sheena REGD. J.M.

Veteran of the SONIC Wars

Foghat and Blue Oyster Cult, September 19 at the Boston Garden

Concert Energy was really flowing in Boston. First there were rumors, promises, hopes, and disappointment as a Rolling Stones free concert failed to materialize despite the best efforts of the city fathers and local radio stations. Then there were the ripples of excitement emanating from NYC as Simon and Garfunkel made a landmark reunion appearance on the great lawn of Central Park. Those of us who remained in Boston this past Saturday were not left out, however, as two of heavy metal's cornerstone groups shook the walls of the Garden in a concert I will rank high among fulfilling rock music experiences.

Foghat opened with their new traditional "Stone Blue," a song that sums up the band's musical style: a clean mesh of rock and down home blues. "Lonesome Dave" Peverett on rhythm guitar and lead vocals led the crowd in claps and cheers as they rolled through a set of familiar favorites; among these "Fool For the City," "Honey Hush," and "Slow Ride" plus a general sampling from their new lp *Girls to Chat, Boys to Bounce*.

Peverett has been Foghat's frontman all along and his command of the show was evident. Taking center stage with a blue spot and a grand piano, Dave soloed through the mellow "Love Of My Life" and with every unfamiliar tune gave a short verbal introduction.

A giant, multi-colored "Foghat" logo illuminated for their encore, a hard-driving run-through "I Just Wanna Make Love To You." Bassist Craig MacGregor donned a Bruin jersey and spots panned the crowd as Peverett squeezed out one more ear-piercing solo to wind up the set. Foghat proved that three upfront guitars and a thick drum can be as good a show as any amount of flashpowder and lights.

The second half of the bill marked my fourth Blue Oyster Cult show and though there was less flash, the set was among the very best I have ever heard them do. With nine banks of high-intensity spots trained on the crowd, the Cult cut loose with "Doctor Music," the only song played from their lp "Mirrors". With ten albums to their credit, there is a lot of material to fit into any one performance and the boys did a fine job of cutting out the garbage.

Moving quickly through old standbys "E.H.F." "Hot Rails to Hell," and "Cities on Flame," they satiated pangs their early

album fans. Lead guitarist Buck Dharma, clad all in gold, produced waves of feedback on his axe while lead singer Eric Bloom, in black, assisted Albert Bouchard on the drum kit. It's hard to say who plays what in the band since they were constantly swapping instruments between songs and at one point even had four guitars going at once.

Being relatively unfamiliar with their recent material, I was pleasantly surprised when they went into a triplet of songs from their new album, *Fire of Unknown Origin*. Each was familiar through airplay, and the three chosen were definitely the best on the album. Green spots rained on the stage as an eerie dry ice fog billowed from the amplifiers during "Joan Crawford," a morbid tribute to mommie dearest. Guitars continued to sizzle through the hit single "Burnin' for You" and a pair of white robed monks provided snare drum accompaniment for "Veterans of the Psychic Wars," the BOC contribution to the phenomenal *Heavy Metal* soundtrack.

For "ME 262," Bloom produced his custom made guitar carved in the shape of the Cult's question mark like logo. The crowd pleasing hit "Godzilla" included a strobe lit drum solo with Bouchard donning a full head mask of the famous Japanese lizard. Brother Joe thumped through a quick bass solo before Bloom roared on stage with a motorcycle for the classic "Born To Be Wild."

The boys kicked out the jams on this closing number, with thick fog, dancing spots, and rapid-fire strobe lights. Bloom and Dharma produced high level squealing by rubbing their guitar necks together and flashed the crowd by bouncing spots off mirrors affixed to their instruments.

No Cult show would be complete without an encore of "Don't Fear the Reaper," and they were not to dissappoint us. This was quickly followed by a Doors medley centered on "Roadhouse Blues". The number nicely framed the two performances by having the first and last songs with a "blue" theme. The pairing of Blue Oyster Cult and Foghat proved a perfect matching of two heavy metal greats, with neither hand outplaying or upstaging the other. One can only hope promoters use this experience to bring together more groups like them for future tours.

Mark DeCew

Editor's note: Mr. DeCew is still The Tech's heavy metal music junkie.

The Theatre Works, located at 250 Stuart Street in Park Square, presents *Tongues*, by Sam Shepard and Joe Chaikin. *Tongues*, which runs only September 24 through October 3 (Thursday and Friday evenings at 8pm and Saturday at 7 and 9pm), is a collaborative play fusing music, movement and words, concerning the "humor and frailty of life and love."

Enter the Dragon, Fri., 7:30 & 10pm. Kresge Little Theatre (moved from the Sala), presented by the MIT Shotokan Karate Club.

The Nucleo Eclettico Theatre has extended its run of Wendy Wasserstein's "Uncommon Women and Others" due to overwhelmingly positive response. "Uncommon Women" is a critically acclaimed look at contemporary women and the choices they face, a play that is humorous as well as provocative. Beginning September 23, the play will run Wednesday, Thursday, and Friday evenings at 8pm, with additional performances on Saturday at 5:30 and 8:30pm. For ticket information, call 367-8056.

The *Rimers of Eldritch* is a play chosen to open the New Ehrlish Theatre's first season. The Ehrlish Theatre is located at 539 Tremont Street in Boston. This play is the tale of violent crime in a small midwestern town, told by award-winning playwright, Lanford Wilson. The run is September 17 to October 24, Thursday through Saturday evenings at 8pm, and reservations can be made by calling 482-6316.

The *Eiger Sanction*, the MidNite Movie. Saturday, Sept. 23, second floor of the Student Center.

This weekend's LSC lineup:
Iriku (Classic), Fri., 7:30, 10-250.
Tess, Fri., 6:30 & 10, Kresge.
The Elephant Man, 7 & 10, Kresge.
The Mouse that Roared, Sun., 6:30 & 9:30, 26-100.

Cartoon addicts, take note: Beginning today (Sept. 25), Off the Wall Cinema starts its mammoth 13-week series, **75 years of Animation**. Part one, running through Thursday, Oct. 1, is titled *In the Beginning (1906-1941)*, and will include some of the first works by Walt Disney and Max & Dave Fleischer. Also included will be the very first animated cartoon, and two classics — Emile Cohl's *Automatic Moving Co.* and Frank Moser's *Krazy Kat*. There are showings daily at 5:50, 7:55 & 10pm, plus 3:50pm Sat.-Sun. For more info call 547-5255. Don't miss this show! Collect the whole series!

ARTS

ON

THE

TOWN

♪ ♪
when is he
picking you up??
♯

Live Wire, Singing Fish, & Huremic Baboons

The term begins, the work starts pouring in, and once again I find myself searching for a good reason not to do anything about it. Just in the nick of time my friends (and they could be your friends, too) at Rough Trade Records send me a whole shipment of new releases. Here's what I listened to instead of doing my genetics problem set — you might consider using this list as music for punting:



WIRE DOCUMENT AND EYEWITNESS, Electric

Document and Eyewitness, Wire on Rough Trade Records.

Once upon a time, there was a band called Wire. They were one of the best punk groups in England, but they aspired to higher things — they wanted to be arty. During the course of their career they recorded three albums, starting with *Pink Flag* (the perfect punk album — 1,000,000 songs, no waiting) and ending with *154*, a perfect art-rock album — Wire had finally realized their goal.

The sceptics among you may wonder if this "perfect" band ever made mistakes, or what they sounded like live. *Document and Eyewitness* answers both questions to satisfaction. There are two discs in this set — an LP recorded prior to the *154* recording sessions, and an EP recorded at Notre Dame Hall after the sessions. Did Wire make mistakes? Yes — just listen to the LP, it's fraught with serious compositional blunders that should never have been committed to vinyl. Only the lovely "Eastern Standard" saves the collection from total mediocrity.

The EP is the product of a more accomplished group, both instrumentally and compositionally. A comparison between the two (LP and EP) versions of "Underwater Experiences" shows that Wire had managed to overcome some of their earlier difficulties, compressing the tune to a manageable length and tightening the overall sound. The picks to click, however, are "Our Swimmer" with its irresistible one-to-the-beat bounce and the frenetic "Witness to the Fact," marked by vocalist Colin Newman shouting "change" to introduce the chorus and verse. Also of note in the version of *154*'s "Two People in a Room" — a closer, more monochromatic variation on the original.

Wire must be given credit for their willingness to experiment rather than remain stationary. Their use of synthesizers and sax in an art/punk context predates similar work by Blurt and John Hassel. What becomes very evident from the production on these recordings is how much of a contribution producer Mike Thorne made to Wire's sound. It was Thorne that helped Wire achieve their artistic goals, and his presence is missed on this set. The album also provides some insight into the divergent stylistic differences that eventually split Wire into two factions — Colin Newman's pop/punk approach and the Graham Lewis/B.C. Gilbert art axis.

Document and Eyewitness is the definite set of "must have" tunes for the diehard fan, and a reasonable introduction for the curious — definitely worth the price, especially if you weren't in London at the time.



MENT AND EYEWITNESS, Notre Dame Hall 12 45



Provisionally Entitled the Singing Fish, Colin Newman on 4AD Records.

Wire disbanded two years ago, but the members have been incredibly busy since. Colin Newman, vocalist extraordinaire, released an amazing album — *A-Z* — his collection of excellent (but slightly warped) pop songs in a Wire-ish vein. Not content to progress linearly, Newman continued to experiment, with the results collected on *Provisionally Entitled the Singing Fish* (love that title!). The disc consists of twelve pieces, titled "Fish 1" through "Fish 12," all composed, performed, and produced by Newman. Although he contributes no vocals, he makes mouth noises that prove to be as effective as words. It's rather difficult to describe these pieces since they are closer to sonic textures or experimental riffs than they are to songs, but they do fall into some general categories: ambient experiments, piano drones, some promising rock 'n' roll riffs, and pieces that could pass for Wire outtakes. My favorites are "Fish 1," a bouncy synthesizer vamp with Newman's "ah" sounds floating over it, "Fish 7," an Eastern drone/chant, and "Fish 9," a percussive punk riff. I think there is probably something (or a piece of something, at any rate) on this disc for everyone, but I recommend it only to the very curious.

Huremics — Four Pieces, Dif Juz on 4AD Records.

More sonic textures, this time from an unknown guitar combo with the unlikely name Dif Juz. Again, no song titles as such, instead, each piece has a two letter designation: Hu, Re, Mi, Cs, get it? — I don't.

Don't worry about it, listen to the music instead — some of the most innovative guitar work I've heard in a long time. The band tries four different styles and succeeds each time, varying from slamming riffs to dub/funk with amazing ease. This disc is on my current top ten, why don't you add it to yours?

David Shaw

The Return of the Art Brigade

Join The Tech Arts Staff!

Speedy phone-in service x3-1541!

GOT THE MUNCHIES ???

Then head for KENS at Copley Square in Boston. Choose from a menu of over 100 items. Besides delicious steak, fish and chicken dinners, we have hefty deli sandwiches, "anything goes" omelettes, sumptuous salads, and irresistible homebaked pastries. Whatever. And whenever. We're open from 7:AM to 3:AM.

KENS... the place to meet a friend, brunch on the weekend, munch out late at night or just buy a chocolate chip cookie.

KENS... a tradition in Boston for 25 years.

KENS

KENS AT COPLEY
549 Boylston St., Copley Square

Graduate Students

Interviews for seats on Institute Committees will be held
October 5th and 6th.

Openings presently exist on the following Committees:

Presidential Committees

- Committee on Biohazards
- Community Service Fund Board
- Advisory Committee on Educational Video Resources
- Equal Opportunity Committee
- IAP Policy Committee
- Committee on International Institutional Commitments
- Prelaw Advisory Board
- Committee on the Use of Humans as Experimental Subjects
- Committee on the Visual Arts
- Women's Advisory Board
- Advisory Committee on Shareholder Responsibility
- Advisory Committee for Women Student Interests

Faculty Committees

- Committee on Discipline
- Committee on Educational Policy
- Committee on Graduate School Policy
- Committee on Student Affairs

Corporate Committees

- Corporation Joint Advisory Committee



For an application form, please contact the **Graduate Student Council** by calling x3-2195, or stop by Room 50-250 (Walker Memorial, riverside, above Muddy Charles Pub).

Value of scholarships rise

(continued from page 1)

ROTC scholarships from \$6,500 to \$8,000 and Air Force scholarships from \$6,500 to \$9,500.

Society's attitude toward ROTC and the military is a major factor for the rise in enrollment. Bortner commented, "Army is a product of society at the time. During Vietnam, young people were against the war because of the draft, but by 1974 Vietnam was becoming a past issue and now there is a new surge of patriotism in the country. Service to the country as an officer is no longer considered unpopular.

Career opportunities are another reason for the increase, especially in the Air Force where the space program is gaining popularity. Dave Martin '84, a four-year Air Force cadet, is interested in ROTC, "because of the space program. If I can become involved with it, I'll stay in the Air Force as a career." Sargent Paul Scheideberg of Army ROTC confirmed that "training from ROTC is useful in industry and business, and military opportunities are numerous.

Additional effort by the Armed Forces to acquire and retain cadets is another factor involved in the increase. Bortner is working on following up potential Army ROTC students that have not yet been in touch with him. "The [Boston area] enrollment for this year will be approximately the same as last year's," he explained, "but our figures are inexact because Harvard just started and there are several prospects that have not contacted us yet."

Although the number of students enrolled in MIT's Navy ROTC is decreasing, "we're retaining a higher percentage," said Chief Yeoman Philip Zeman of the MIT Navy ROTC program. "Almost all of our

New patent rule unclear

By Julian Joseph

Congress has passed a bill that grants the ownership of a patent to a university, rather than to the government, in the case of Federally funded research. The new law, which went into effect on July 1, 1981, has drawn praise from universities and researchers. One particular clause is being resisted strongly by MIT and more than a dozen leading research institutions.

The alternative clause states that a Federal agency may delay the publication of a researcher's findings by three months, and that public announcement of research results can be prohibited for three months at Federal government request. The Office of Management and Budget, the Federal agency that administers the regulations, claims that in many foreign countries public announcement or submission of a paper is regarded as public disclosure of an invention. A researcher who publishes his data and later decides not to patent his work may find that a foreign company has marketed the invention while neither the researcher, university, or the US government may receive any royalties for it. The three month review period gives the government a chance to decide if it will patent the idea if the university chooses not to do so.

Arthur Smith, General Counsel of the MIT Patent Office, says that the required waiting period is an unnecessary delay that will hinder the process of scientific communication and will be hard with which to live. He also indicated that a small amount of foreign filing has occurred in the past. He believes that patent attorneys think that the government's argument is a very weak one.

cadets are on scholarship." A similar situation is present in the Air Force, according to Bortner.

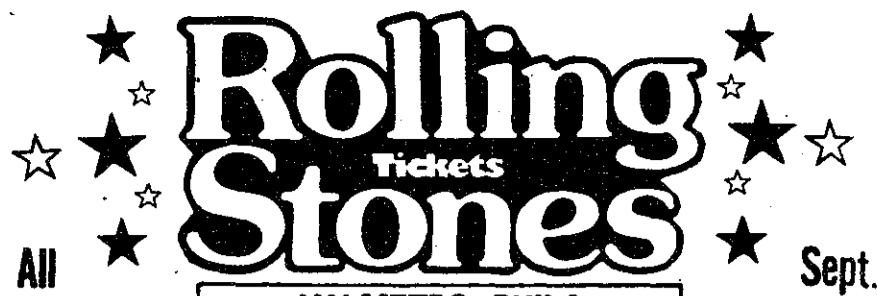
Sargent Scheideberg explained, "the Army is being built up and needs more officers. 75 to 80 percent of our officers come from the ROTC, we need more recruitment. Scholarship in-

creases are one of the incentives, but the percentage of Army ROTC students on scholarship will not change because the total enrollment will go up also."

Bortner concluded, "A combination of many effects present in today's society is what has led to the increases in ROTC."

ROTC enrollments vs. MIT undergraduate population								
Year	74	75	76	77	78	79	80	
Army	52	59	91	101	115	132	154	
Navy	52	85	129	151	170	142	146	
A.F.	39	58	67	146	194	211	241	
Total	143	202	287	398	479	485	541	
MIT Undergraduates	4136	4433	4468	4547	4594	4517	4577	
Percent	3	5	6	9	10	10	12	

Graphic by Bill Giuffre



Rolling Stones
Tickets

All Area Shows

N.Y. METRO • PHILA. BALT. • WASH. • CONN.


Sept. thru Dec.

BLUE OYSTER CULT	THE WHO	BOB SEGER
KINKS	ROD STEWART	BILLY JOEL
ELO	DAVID BOWIE	GENESIS
PRETENDERS	MOODY BLUES	NEIL YOUNG
JOURNEY	BARRY MANILOW	RUSH
FOREIGNER	AC/DC	CARS
GRATEFUL DEAD	PINK FLOYD	REO SPEEDWAGON

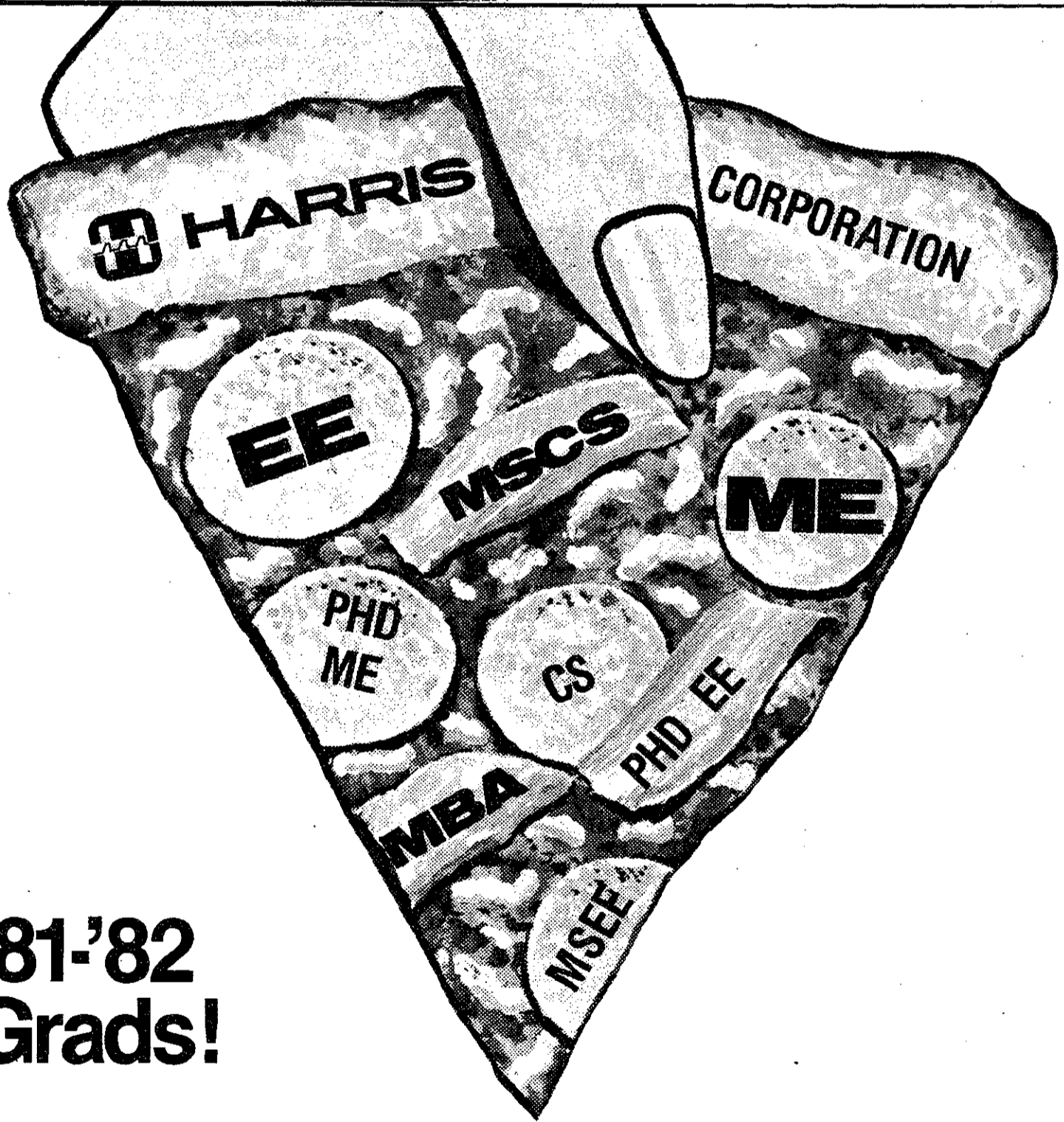
Deposits are now being accepted on the following concerts through 1981-82 Some Dates & Locations are not available at present. All concerts & locations are subject to changes or cancellation without notice. ALL DEPOSITS FULLY REFUNDABLE.

Call or Write for Concert Dates & Locations **201-461-5650**

Cut above this ticket & mail your name & address to get on the HOT LINE Concert Mailing List.



P.O. Box 791, Fort Lee, New Jersey 07024



'81-'82
Grads!

Get Yourself a piece of the pie!

OPEN HOUSE FOR STUDENTS AND FACULTY

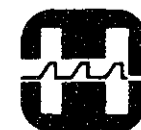
DATE Oct. 1st Thursday TIME 7PM-9PM PLACE Bldg 4, Room 153

All Electrical and Mechanical Engineering and Computer Science students and faculty are cordially invited to attend. Displays and literature about the high technology, state-of-the-art programs and products of the Fortune 500 Harris Corporation will be available. Engineers and technical managers from Harris divisions will be pres-

ent to answer any questions and discuss career opportunities with graduating seniors and advanced degree candidates.

Refreshments will be served. Join us. On campus interviews:

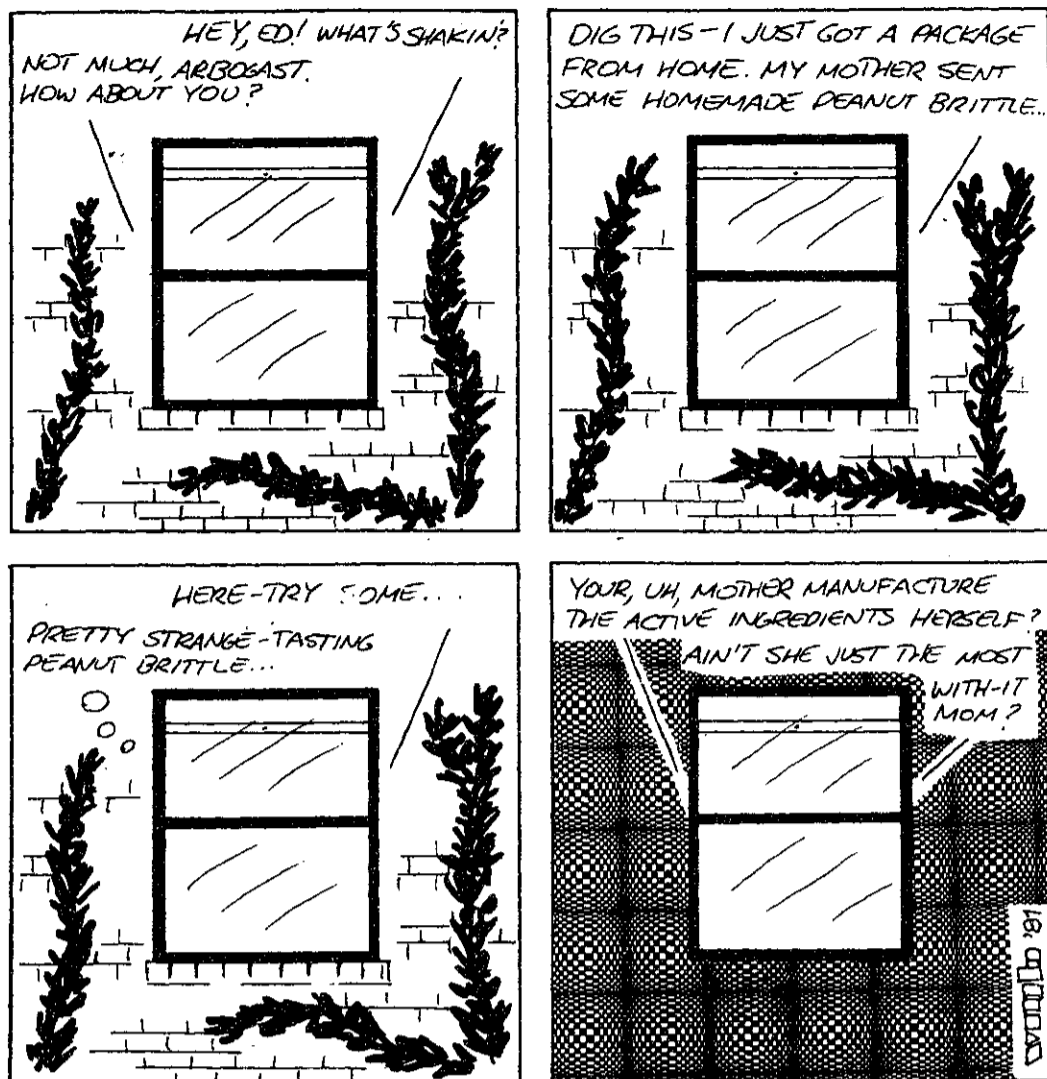
will be conducted Friday, Oct. 2nd



HARRIS
An Equal Opportunity Employer M/F/V/H

comics

Outside Looking In
By V. Michael Bove



Stickles
By Geoff Baskir



The Tech Centennial Lecture Series

in cooperation with LSC

presents

"Reagan and the Press: How the Watchdog Lost Its Bite" a lecture by Ed Diamond

Senior Lecturer, Department of Political Science
author of *Good News, Bad News*, and *The Tin Kazoo:
Television, Politics, and the News*

September 30

7:30pm

Room 10-250

Admission Free

Other Lectures in the Series:

October 28: Mike Peters

November 3: Lesley Stahl

False alarms plague new dorm

By Stuart Gitlow

Yesterday morning at 4:30, fire alarms sounded throughout 500 Memorial Drive, forcing all residents of the building outside in 40 degree weather for 30 minutes.

George Hosker, House Manager, said, "There have been about eight false alarms since the dorm opened for occupancy." Hosker added that this figure includes smoke detector malfunctions, alarm testing, and one phone line failure which caused fire trucks to arrive when there had been no alarm.

H. Eugene Brammer, Director of Housing and Food Services, reported that yesterday's alarm was due to a malfunction of a smoke detector in one of the stairwells. "During the shakedown of new buildings," he added, "smoke detectors take a little while to be debugged. These false alarms happen in nearly all new buildings."

"Only one false alarm that I know of was caused by a resident pulling the handle of a fire alarm box," said John Fresina, Director of the Safety Office.

A myth exists on campus that the Institute is charged by the Fire Department for each false alarm. According to Fresina, "At the present time, there is no direct charge for response by the Cambridge Fire Department. Because of Proposition 2 1/2, Cambridge has a bill pending, which, if it passes, would require the property owner to pay for false alarms. There would, of course, be no charge for real fires or for a legitimate alarm system malfunction. This charge would consist of the cost of running the Fire Department divided by the number of false alarms."

Fresina continued, "MIT does, however, indirectly pay for these alarms: I believe MIT is the second largest taxpayer in Cambridge. Part of these taxes go toward the operation of the Fire Department."

Fresina stressed that simply because MIT doesn't pay for each false alarm, students should not pull the alarm handle for an effect. There are uncountable deaths each year due to false alarms, either because of real fires occurring at the same time or accidents involving Department vehicles.

MIT does have to pay one or two electricians four hours overtime to reset the alarm system after it is triggered. This fee alone can run as high as \$120.

According to Fresina, some universities leave a reset key with

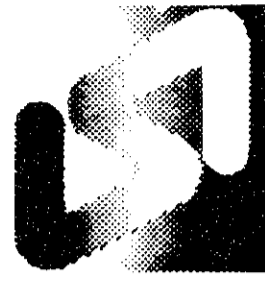
housemasters of the dormitories. "At the University of Maine, there are 10 or 11 false alarms per week and the housemaster simply resets the system," Fresina said. Unfortunately, it is difficult to keep an alarm system properly maintained when it is used this way. MIT decided not to leave keys to the alarm boxes with anyone inside the dormitory system, on the assumption that it would be too easy for students to obtain copies of such keys.

500 Memorial Drive will hold fire drills within the next few weeks. At that time, the Institute will request that students who can not hear the alarms in their rooms report this to the house manager. Apparently, in yesterday's alarm, there were a number of people who reported upon hearing of the

alarm that they had slept through it. Brammer said that tests will be run on all the alarms. "We'll go through all the rooms to see if there is any spot where they can't be heard," said Brammer. Fresina added, "The time on the alarms in 500 Memorial Drive was to have been set between seven and ten minutes. Apparently, it is set for less than that figure."

Fresina mentioned that the new dormitory is fully set up with sprinklers and has fire hoses situated throughout the area. Dry powder extinguishers may soon replace water extinguishers in those dormitories which have them. Last year, a watchman slipped on ice which was formed when a water fire extinguisher was drained outside in sub-freezing weather.

Your
foreign
language
ability
is
valuable!



Linguistic Systems, Inc.
116 Bishop Allen Drive
Cambridge, MA 02139

Translations into your native language are needed for industrial literature. You will be well paid to prepare these translations on an occasional basis. Assignments are made according to your area of technical knowledge.

We are currently seeking translators for:

- Arabic • Chinese • Danish • Dutch
- Farsi • French • German • Greek
- Italian • Japanese • Korean
- Norwegian • Polish • Portuguese
- Romanian • Spanish • Swedish

and others.

Into-English translations from Russian, East European languages and many others also available.

Foreign language typists also needed.

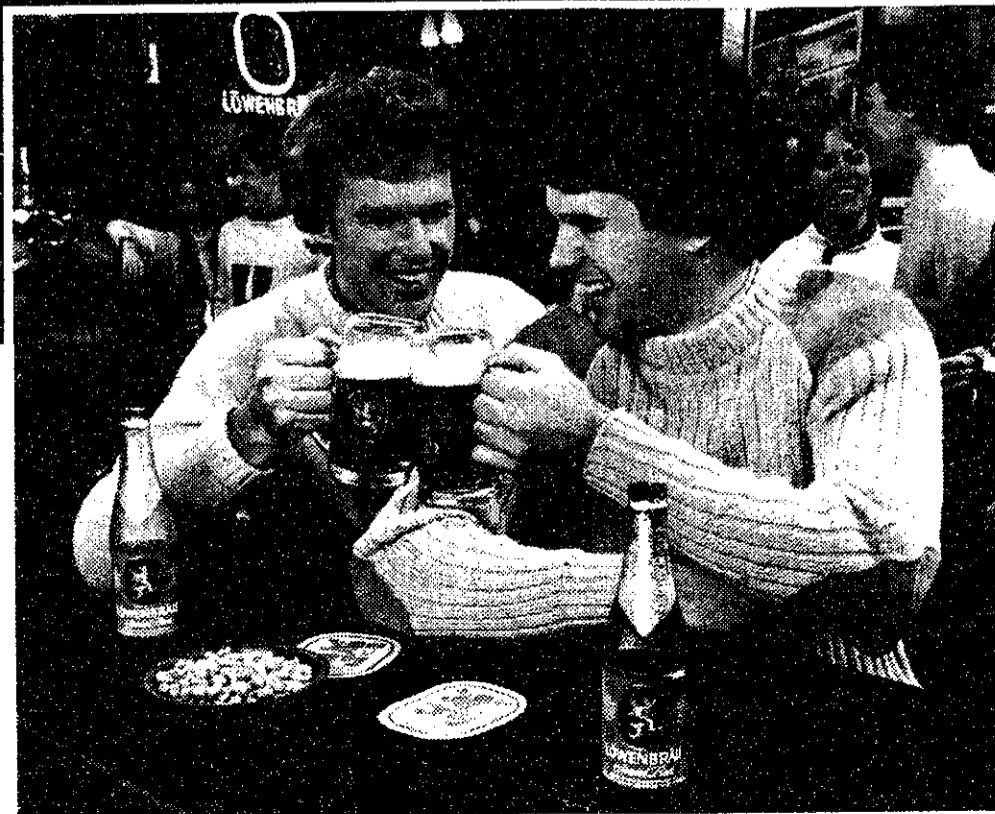
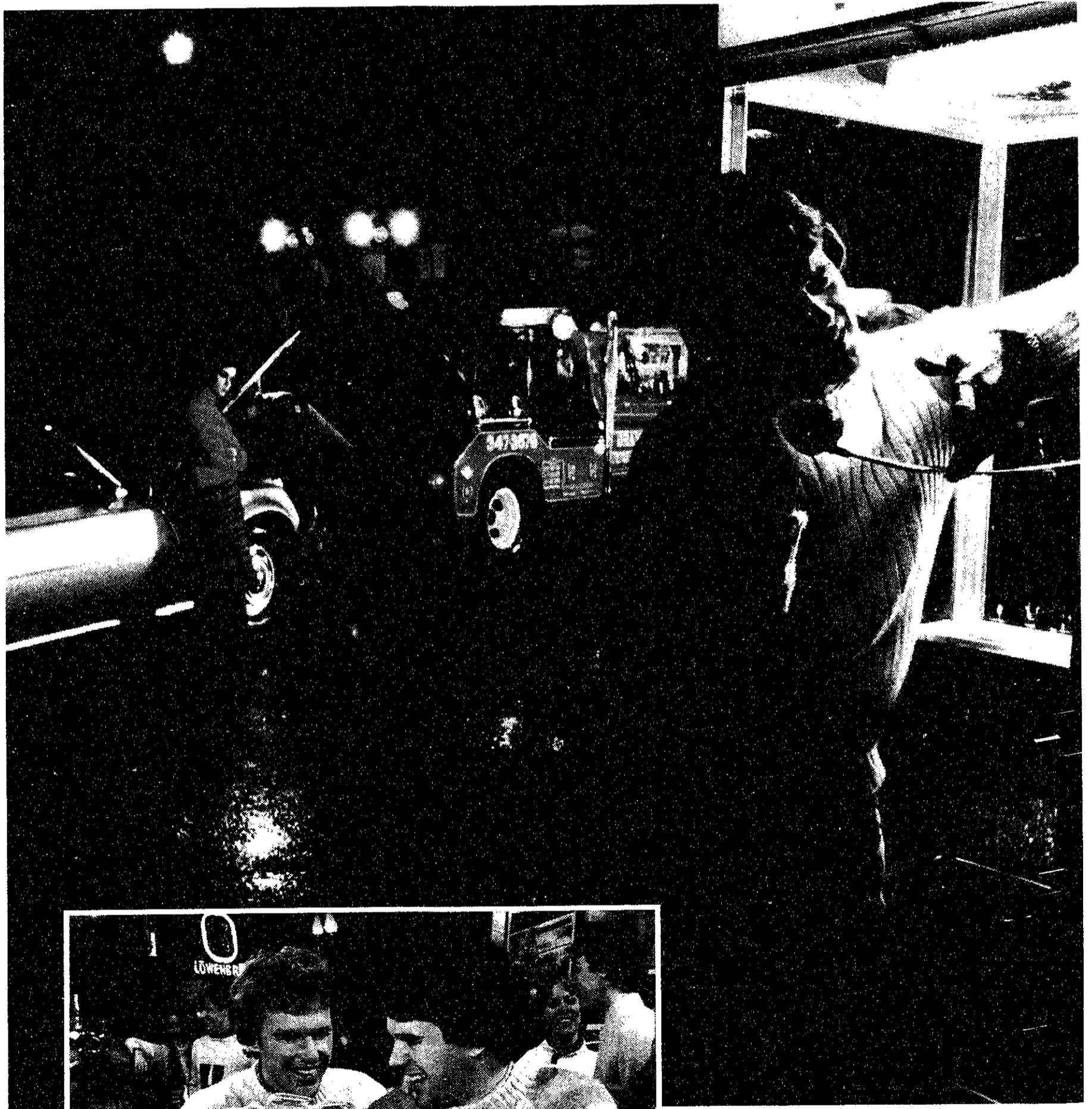
All this work can be done in your home!

Linguistic Systems, Inc. is New England's largest translation agency, located a block north of the Central Sq. subway station.

For application and test translation call Ms. Tabarié

864-3900

When you need \$65 fast, you find out who your friends are.



It's the middle of the night and everyone has an excuse. Then, finally, you get the one person who, even though he's not very happy about it, will come through. And you think, "I knew it. Why didn't I just call him in the first place?"

So when the crisis is over, he's going to deserve something a little special. Tonight, let it be Löwenbräu.



Löwenbräu. Here's to good friends.

© 1981 Beer brewed in U.S.A. by Miller Brewing Company, Milwaukee, Wisconsin

EL-AZAR

1755 Mass. Ave.
Cambridge, MA
Between Harvard Sq.
& Porter Sq.

"Lebanese Home-style Cooking"

Daily Specials \$3.99
Fine Food — Moderate Prices
492-7448

SPEAKERS

World's Best
Polydax Dalesford Bextrene
Peerless Polypropelene
Foster J.V.C. Ribbons

Many more names,
cross-overs and
accessories

Low Prices

Write: KING SYSTEMS
34 Harvard St.
Arlington, MA 02174

Call 643-3934
evenings only

sports



Dale Rothman '84 drives in the tying and winning runs in MIT's rain-soaked victory over Mass Bay on Wednesday. (Photo by Ray Henry)

Eric Fleming

Athletics stress participation

Behind MIT's academic reputation lies a vast and top-notch athletic program. Not top-notch in the sense of producing pro superstars or "Number-one" ranked teams, but in a more important sense — service to the community. Here, the emphasis is on participation, diversity, and what may be called "the personal touch."

Participation. The numbers tell the story. Statistics from the Athletic Department's Annual Report to the President for the 1980-81 academic year show that 17 percent of enrolled undergraduate men, and over a quarter of enrolled undergraduate women, took part in intercollegiate sports during the past year (there are 21 varsity sports for men and 11 for women, with cross country added this year). The 25 club programs, which allow both undergraduate and graduate students to participate in highly competitive athletics on a non-varsity level, boasted 589 participants, up over 25 percent from

'79-80. Most impressive is the 28-sport intramural program, which registered 12,067 cumulative student participations among two-thirds of the undergraduate population, as well as a large number of graduate students. Add in over 6,000 physical education registrations, and it is obvious that the MIT athletic program is one of the largest in the nation.

Participation is not limited to just the MIT community. Groups from throughout Greater Boston use our facilities year-round, ranging from fencing to soccer to lacrosse. Rarely a day goes by when a non-Institute organization is not using one or more of our facilities.

Diversity. If you are looking to play a particular sport, chances are MIT has it in one form or another, on all levels of intensity and skill. With such a range of activities, a true sports fan can gain an appreciation of sports that he may have seen before. Also, it is easy to try out a new sport. Many varsity athletes are introduced to their sport upon arrival at MIT.

George Gonzalez-Rivas '80 had never picked up a sword before arriving here five years ago. But with the training of Coach Eric Sollee, he became an All-American, and led Tech to a third-place finish in the NCAA fencing championships his senior year.

"*The Personal Touch.*" What I find best about the program is the degree of interaction among both athletes, coaches, and the general student body. At many schools, athletes live in a special dorm, take classes together, and are generally kept away from mainstream campus life. Not so here. The guy (or gal) who hit the winning hoop last night could be your lab partner, or a suite mate. Coaches are easily accessible, and understand the student-athlete's problems in dealing with life at MIT. Being able to talk and interact with members of a program the size of MIT's is probably the best reason to get involved with the program, in *any capacity*. To sit on the sidelines is to pass up a rare opportunity.

sports update

By Brian Schultz

Baseball — A strong pitching performance by freshman Mike DiChristina and generally strong team play resulted in 5-3 victory over Massachusetts Bay Community College last Wednesday at MIT. DiChristina turned in a complete game victory to pace the Engineers' victory. The victory gives MIT a 3-0 record, their finest start in recent history. The game, called because of rain after 4½ innings, was marked by excellent play by the infield, which had been reconstructed in Tuesday's practice due to injuries to both co-captains.

The season is shaping up quite well for the team, and optimism is running high. Coach Fran O'Brian said that the team "has to be pleased with its performance." He cited the reserves' strong play and overall good team play as the keys to the fast start. The team appears to be ready for the Waltham Collegiate Tournament this weekend.

Football — MIT Football Club's Doug Gouchoe '83 was named the Defensive Player of the Week for the New England Conference

of the National Collegiate Club Football Association based on his performance in last Saturday's game against Roger Williams. Gouchoe had two interceptions and eight tackles in the 7-0 MIT win.

Golf — The MIT golf team participated in a match against Boston College and Bentley at Bentley last Tuesday. At the choice of the home team, the match was played as match play as opposed to tournament play. MIT defeated Boston College, but lost to Bentley. In the victory over Boston College, Scott Nyberg '82, Neal Nordstrom '82, and Pat Faller '85 each won their matches. The final tally was three wins, two losses, and two ties for a final score of 4-3.

Field Hockey — The women's field hockey team started off its season with a pair of road victories. They defeated Pine Manor 3-0 and edged Nichols College 2-1. Off to a strong start, the team returns for a pair of home games this weekend. Today, they take on Colby at 4pm. On Saturday, they meet Bates at 12:30pm.

MIT NIGHT

is September 29 at 8PM

Buy One Ticket -

Get One Free

when you show your college ID at the Box Office



MAN OF CRETE

A WORLD PREMIERE!

A unique multi-media theater experience based on the extraordinary, provocative, terrifying and humorous life & times of NIKOS KAZANTZAKIS, author of "ZORBA THE GREEK"

THE CHARLES PLAYHOUSE
76 WARRENTON ST. BOSTON 02116

PHONE RES. NOW!
426-6912

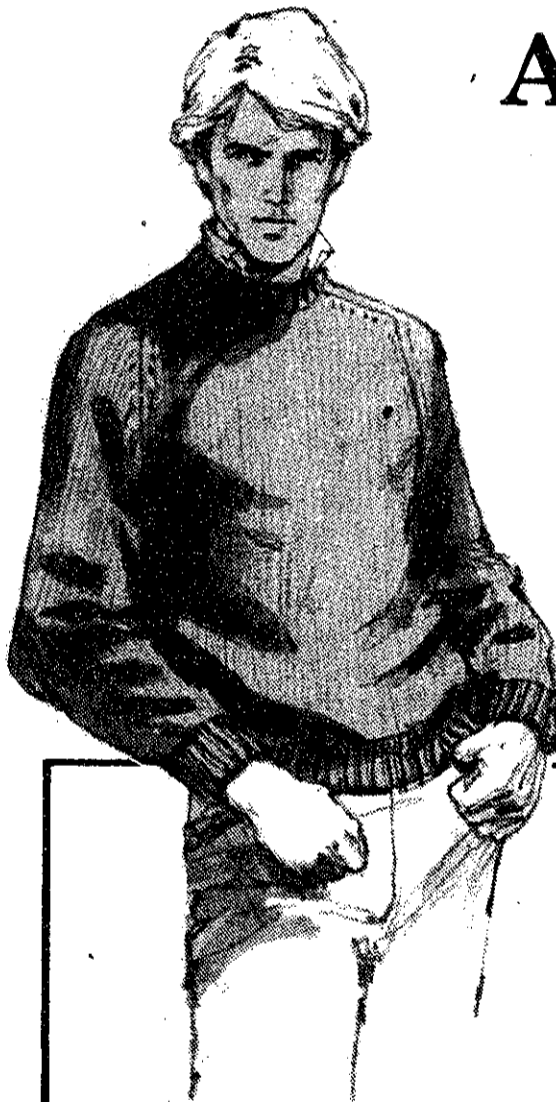
A Team for Fall

Coop Shetland Sweater

Men's pure shetland wool sweaters are perfect for fall's chilly days. These crewnecks carry the Coop label and come in tan, grey, navy, and light blue.

S, M, L, XL. Reg. \$24.

18.99



Coop Tri-Blend Dress Slacks

Men's Flannel dress slacks in a polyester, rayon, and orlon blend are easy-care and need no ironing. Choose from grey, charcoal, brown, and blue. Waists 28-38; lengths 32, 34, 36.

Reg. \$24.

18.99



HARVARD COOPERATIVE SOCIETY
MIT Student Center

the Coop

MIT, WPI soccer deadlock at two

By Martin Dickau

Two overtimes capped an extremely hard-played soccer game in which the MIT Engineers battled the visiting the WPI Engineers to a 2-2 tie.

MIT built up an early lead within the first twenty minutes of the game only to see WPI's offense regroup and tie the score early in the second half.

With only five minutes gone in the game, MIT mounted its first real offensive threat with a flurry of activity in front of the WPI goal. John English '83 took a pass from Malcolm Duke '83 and put the ball in the net on MIT's first shot-on-goal.

Fifteen minutes later Duke and Ali Borhan '83 put together a rush which saw Borhan make a perfect pass from the corner to Duke in front of the WPI goal. Duke did not hesitate to put the ball by WPI's John Petrone, who had almost no chance at making a save.

Meanwhile, MIT goalie Sohn Hahn had stopped everything WPI had thrown at him. Only two minutes after MIT's first goal, WPI had a free kick which flew right past the wall of MIT defenders. Hahn was forced to make a diving save and then faced three more shots before MIT could clear the ball.

WPI finally got to Hahn on a two-on-one break with Ken Lendberg and Angelo Caccitore going against a lone MIT defender. Caccitore took the ball down one side and, when he had drawn Hahn out of position, passed the ball over to Lindberg, who put it in.

WPI's other goal came early in the second half when a throw-in by Mickey Nallen went all the way to Amaro Conclaves in front of the MIT goal. Conclaves booted it in to tie the score at 2-2.

MIT had a chance to get the go-ahead goal late in the half when four players were jamming at the ball in front of the WPI goal. Three shots in a row were stopped by the WPI goalie. The pressure was finally ended when one MIT shot went over the top of the goal.

Although MIT was outshot by WPI 23-8, MIT made its shots count. WPI was unable to keep pressure on MIT to make good scoring opportunities for themselves. This inability combined with Hahn's stellar goal keeping for MIT — 12 saves — to nearly give MIT the victory.

The soccer team's next game will be at home tomorrow at 3pm at Steinbrenner Stadium. The Engineers will be hosting a team from Trinity College in Hartford, CT. Last year MIT lost to Trinity 3-2.



John Ralston '82 hard at work in Tuesday's match versus WPI. (Photo by Ray Henry)

Get a \$20 rebate on the TI-59 Programmable.

Even without the \$20 rebate, the TI-59 is special—it's our most powerful programmable, and we've never offered it at a lower price.

The TI-59 gives you up to 960 program steps, or up to 100 memories, plus magnetic card read/write capability. You can also slip in one of TI's Solid State Software™ modules and successfully attack complex engineering, business, statistical and scientific problems. And by adding the optional PC-100C printer, you can record your calculations.

So if you like the idea of having real programmable power, take us up on our rebate offer. Buy a TI-59 now, and fill out the coupon below. The offer ends Dec. 31, 1981.

Another good deal!"



on deck

September 25
Field Hockey vs. Colby ... 4pm
Golf vs. Assumption ... 1:30pm
Women's Tennis vs. Bowdoin ... 3pm

September 26
Men's Cross Country vs. Coast Guard ... 1pm
Women's Cross Country at Franklin Park ... 1pm
Field Hockey vs. Bates ... 1pm
Men's Sailing - BU Trophy ... 9:30am
Men's Sailing at Coast Guard ... 9:30am
Soccer vs. Trinity ... 3pm
Women's Tennis vs. Bates Ham Volleyball - Salem State Tournament

September 26 & 27
Women's Sailing - Marchiando Trophy ... 9:30am

September 26, 27 & 28
Baseball - Waltham Collegiate Tournament

Village Laundry Land

Self Service
Coin-Op Laundromat

Grand Opening
266 Brookline St.
Cambridge

Between Central Square
and B.U. Bridge
Daily 8am to 10pm

©1981 Texas Instruments Incorporated

I bought my TI-59 Programmable at (store name): _____ and have attached the dated sales receipt and completed customer information card (packed in box). My TI-59 Serial No. is _____ (from back of calculator). Please send my \$20 rebate check to:

NAME _____

ADDRESS _____

CITY _____ STATE _____ ZIP _____

Send to: Texas Instruments TI-59 Rebate Offer, P.O. Box 725 Dept. 59, Lubbock, Texas 79491.

NOTE: Proof of purchase must be dated between August 1, 1981 and December 31, 1981. Offer void where prohibited. Offer good only in U.S.A. Rebate applies to purchases of TI-59 Programmable only. Items must be postmarked by January 15, 1982. Allow 30 days for delivery. Limit one per person/address.

TEXAS INSTRUMENTS
INCORPORATED