

## Dorms uncrowded, most fraternities OK

### 375 pledge fraternities by Wed. pm

By Jerri-Lynn Scofield

Despite troubles with the Clearinghouse computer system which have made it difficult to determine exactly how many freshmen have pledged fraternities, Robert A. Sherwood, Associate Dean for Student Affairs, estimated that 375 freshmen had pledged to join fraternities by 4:30pm yesterday.

At that time, four fraternities were known to be short of their expressed pledge goals by five or more freshmen, twenty fraternities had between one and four vacancies, five houses had met their pledge goals exactly, and three houses had surpassed their pledge goals.

"The one-minus or two-minuses don't represent any real trouble," in most cases, noted Mark Goldberg '82, InterFraternity Council (IFC) Rush Chairman. However, Goldberg continued, "The three- or four-minuses may or may not be a problem."

The 375 freshmen known to have joined fraternities exceed the IFC's declared goal for this year's (please turn to page 8)

DORM	WOMEN	MEN	TOTAL
Baker	32	45	77
Bexley	2	3	5
Burton	30	33	63
East Campus	17	39	56
French House	2	4	6
German House	1	3	4
MacGregor	0	70	70
McCormick	55	0	55
New House	5	49	54
Random Hall	10	25	35
Russian House	0	3	3
Senior House	12	18	30
Spanish House	3	2	5
Next House	62	176	238
N.R.S.A.	0	1	1
Limbo	0	0	0
<b>Total</b>	<b>231</b>	<b>471</b>	<b>702</b>

Graphic by Bill Giuffre

### 62 dorm spots open

By Jerri-Lynn Scofield

Transfer and readmitted students who are on a waiting list for Institute housing may be admitted to MIT's dormitory system as a result of a lower-than-predicted level of crowding in undergraduate dormitories this term, according to Associate Dean for Student Affairs Robert A. Sherwood.

Sherwood last week estimated the fall crowding level at 65 persons; currently, only 45 freshmen are in crowded rooms while 62 dormitory spaces are empty. Last year, the Dean's Office reported a record of 232 overcrowded freshmen.

At present, capacity exists within the housing system to assign all freshmen to uncrowded rooms, but Sherwood indicated that this would probably not occur since several freshmen voluntarily requested crowding in order to live in the dormitories of their choice.

Sherwood attributed the lack of crowding in the dormitory system to three factors. The first factor is, he noted, the relatively low freshman class size this year. According to Peter H. Richardson '87, Director of Admissions, the Class of 1985 currently has 1034 members. Sherwood indicated that he expects the class size to stabilize around 1030 persons.

The second factor contributing to the undercrowding is that only 63 transfer students accepted the Dean's Office's offer of on-campus housing, rather than the 90 which Sherwood said had been expected.

The third factor contributing to (please turn to page 8)

## Graduate school growth explored

By Stephanie Pollack

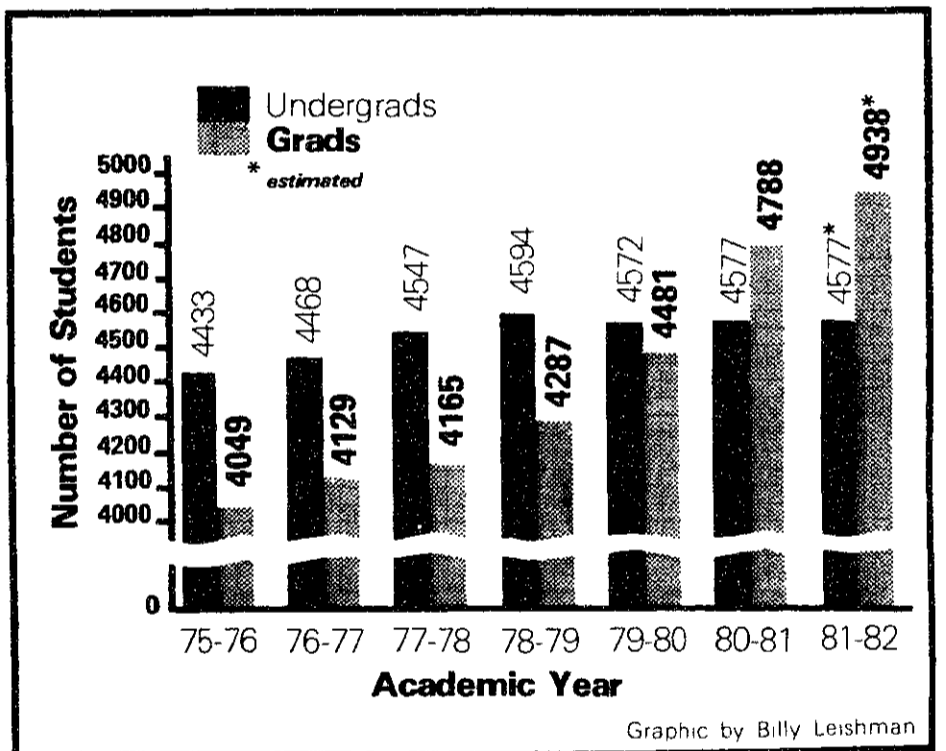
A draft of a study examining the dynamics of the last ten years of growth in the graduate school will be released to members of the Academic Council this week, according to Dean of the Graduate School Kenneth R. Wadleigh '43.

The study consists primarily of charts and statistics on growth trends in the graduate school and

constitutes a "significant expansion of the ongoing record," according to Wadleigh. The study is designed to aid the Academic Council in deciding whether it should control the growth of the graduate school, Wadleigh said. He noted that "there are currently no controls on graduate admissions and no Institute-wide policy on how fast" the school should grow.

Wadleigh estimated that graduate school enrollment would increase by approximately 150 persons over last year's figure. In 1980-81, according to the Registrar's Office, there were 4788 graduate students and 4577 undergraduates. A member of the Registrar's Office staff estimated that this year's undergraduate enrollment will be approximately equal to last year's.

Students are admitted to the graduate school through the individual departments; the current estimate was made earlier this summer by compiling lists from the departments. The official count of graduate students is traditionally made during the



Graphic by Billy Leishman

fifth week of the term, according to Wadleigh.

"It has always been a concern of the senior MIT administration that MIT not become a graduate school," commented Wadleigh. He noted that the question of restricting admissions to the

graduate school is raised "every five or seven years." In the past, Wadleigh said, departments used a target system to control admissions, with targets based on constraints such as available physical space and financial support.

(please turn to page 2)

## Student wages rise to \$4.40/hr.

By Laura Farhie

The minimum wage for students employed by MIT will be raised to \$4.40 per hour beginning September 9, according to Director of Student Employment Lucy Dinin.

Dinin reported that an obstacle to setting the wage at \$4.40 an hour was that the Institute's original budget did not account for this increase. "Given the number of hours the students worked last year, there will probably be budget overruns," Dinin predicted. The responsibility for these overruns, she added, is "up to President Gray."

The new minimum wage repre-

sents a six percent increase over the current minimum wage of \$4.15 per hour and a 17.3 percent increase over last year's minimum wage of \$3.75 per hour.

The wage increase, set by the Student Employment Office this summer, is "a rededication to the belief that students' minimum wages should keep parity with the increase in student costs," said Dinin.

"Any good manager is concerned about how much his department will spend," said Dinin. "And people were saying, 'As a manager, please don't increase the student wage.'" (please turn to page 2)

## MIT, physical plant employees agree

By Barry S. Surman

A new two-year contract between MIT and Local 254 of the Service Employees International Union (SEIU) was approved by better than a two-to-one margin by the union Tuesday night.

Negotiations are continuing between the Institute and two other unions, the Research, Development and Technical Employees Union (RDTEU) and Local 14 of the Plant Employees Protection Union. At the same time, the stalemate in talks with Local 26 of the Hotel, Restaurant, Institutional Employees and Bartenders Union, representing 85 MIT Dining Service employees, entered its seventh week.

Local 26 President and Business Manager Domenic Bozzotto declined to comment on what action might be taken against MIT by the union if negotiations are not resumed by

next Tuesday's strike deadline. He indicated that a decision on a possible job action might be made today following last night's meeting between leaders of Local 26, Local 14, and the RDTEU.

The SEIU contract was approved by a vote of 321-142 according to an MIT Assistant Manager of Labor Relations Michael J. Parr. On-campus employees favored the agreement by a 241-123 margin, while Lincoln Laboratory employees supported the pact 80-19.

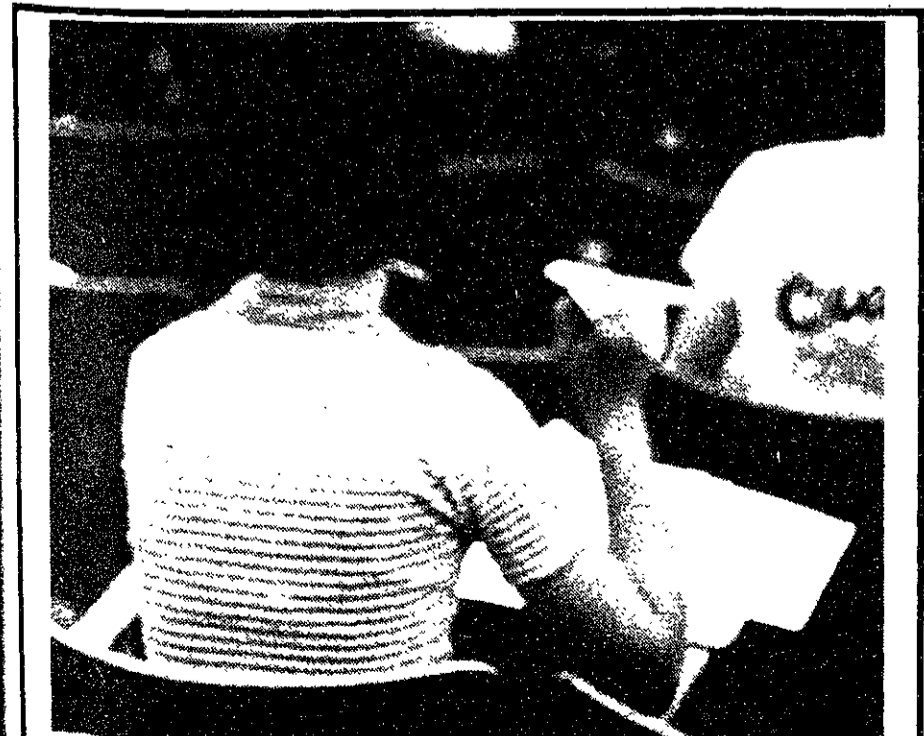
Details of the pact with the SEIU, which represents Physical Plant Employees at MIT, were outlined by James J. Culliton, Assistant to the Vice President and Director of Personnel for MIT. The two-year contract calls for a ten percent pay increase retroactive to June 29, 1981, and another ten percent increase effective July 5, 1982.

Vacation benefits for senior employees have been increased

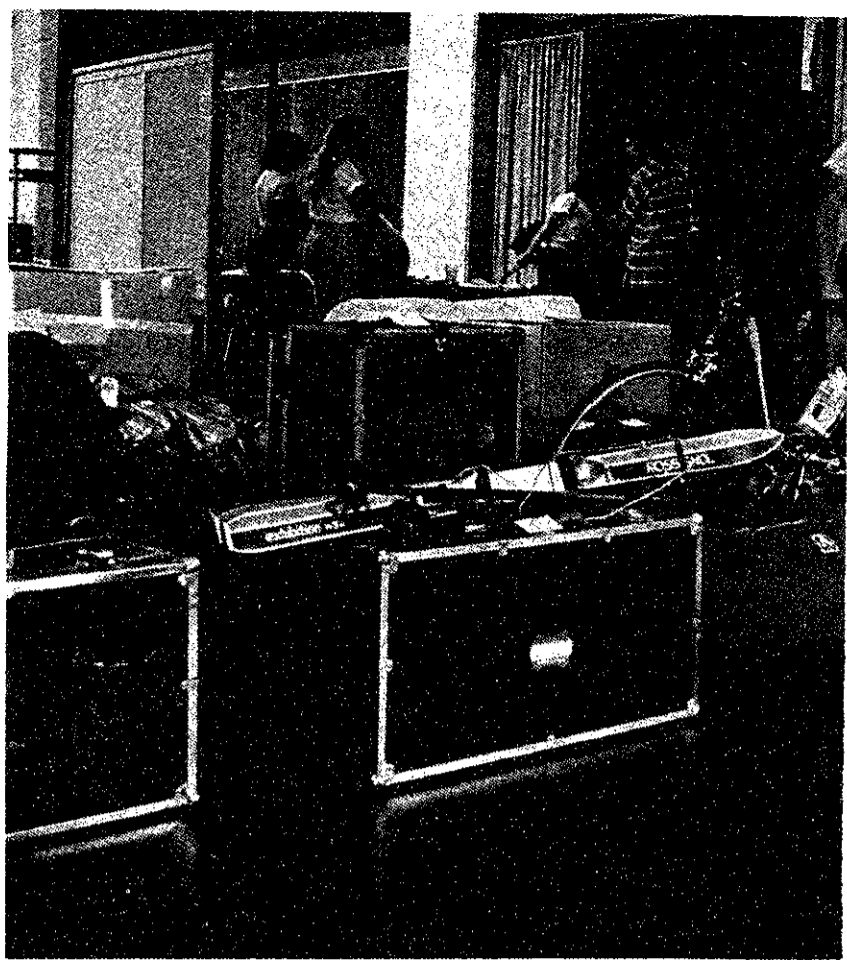
under the agreement. After fifteen years of service, an employee is granted one extra week of paid vacation to be used over the next five years. An additional week is granted every five years thereafter.

The minimum monthly pension benefit to employees was increased from \$8.50 for each year of service to \$9.50, and pension benefits accrued to date were boosted by seven percent across the board. The age for early retirement was lowered from 62 to 55. Benefits for surviving spouses of employees with ten years service who were at least 50 years of age at the time of their deaths were added to the package.

Other changes from the previous contract include a \$10 increase in the annual safety shoe allowance, improved funeral leave provisions, and an increase in mental illness insurance coverage from \$500 to \$1000 annually.



After cogitating intensely on a question from the Freshperson Quiz this budding genius makes the appropriate response. (Photo by Jon Cohen)



After a busy R/O week, the freshpeople are finally moving into their fall housing assignments. (The Tech file photo)

## Enrollment in grad school increasing

(continued from page 1)

Wadleigh cited one reason for MIT's emphasis on undergraduates: "the remarkable input and energy of very young people." He added that "it may seem corny, but this place is convinced that it's got to have a strong undergraduate program. Departments that are not attracting undergraduates, such as those in the School of Science, are worried, Wadleigh noted.

One of the most difficult questions addressed by the study is whether the quality of graduate applicants is decreasing, according to Wadleigh. Preliminary

examinations indicate that slippage in quality may be a problem in some departments but "that judgement is pretty subjective—we need more details," Wadleigh noted. He added that "the motivating drive of every department is to maintain quality."

The number of women graduate students has been increasing, according to Associate Dean of the Graduate School Jeanne Richard. She noted that "there hasn't been any really active recruitment of women—the numbers have gone up as the number of women in non-traditional fields has increased."

## New GSL standards unknown

By Jerri-Lynn Scofield

Despite recent publicity to the contrary, the Department of Education has not yet determined the precise guidelines which will govern student eligibility for Guaranteed Student Loans (GSL's) for the 1982-83 academic year.

For the most part, student loan eligibility for the current academic year remains unaffected, with all full-time college students eligible for the program. There is one exception: any current year loan which was not disbursed by the lender to the borrower before August 23 will be subject to an origination fee of five percent of the balance of the loan, to be paid to the Federal government, according to information supplied by Douglas Stormeroff of the Department of Education.

According to Skee Smith, an information specialist with the Department of Education's Office of Public Affairs, the department referred draft GSL eligibility guidelines to Congress in accordance with a statutory restriction. When asked if the department had received final approval of the guidelines, Smith replied, "No, we still don't have a response from the Hill." A receptionist for the Senate Labor and Human Resources Committee indicated that all staff members of the Committee's Education Subcommittee, the Senate subcommittee which will review the guidelines, are on vacation until September 8.

"Nobody has any idea of what the real schedule is for parent's contributions [and their effect on eligibility] for student loans," commented Leonard V. Gal-

lagher '54, Director of Student Financial Aid. Gallagher predicted, "Most of the students will still be eligible for GSL's."

Gallagher indicated, however, that any student who is receiving aid from another Federal source will be constrained by guidelines which apply to all financial aid awards and will not be eligible for GSL's even under the GSL restrictions, which are expected to be liberal.

Gallagher speculated that any concern over GSL eligibility is "probably one of those areas of needless worry," but also indicated "I don't want to be unpleasantly surprised on this issue... I want to be careful that we do it right."

In accordance with this premise, Gallagher acknowledged that MIT may be forced to change the format in which it announces its aid awards, to prevent almost all MIT students from being ineligible for GSL's. Under the revised Federal criteria for determining student need, expected earnings under the college work-study program may be considered as a part of a student's total accessible financial resources. In the past, MIT has designated a portion of a student's award as work-study eligibility, an amount which any student may elect to earn at a term-time job or borrow in the form of a student loan. Gallagher commented, in reference to the possibility that the form of the aid announcement may affect GSL eligibility, "It's very clear that the intent is not to let that happen. I'm guessing that it's almost imperative that we abandon this work-study slogan."

Referring to the National

## Study of graduate student academics concluded

By Stephanie Pollack

A task force of women faculty members, graduate students, and staff has just released a study on the graduate student academic environment at MIT.

The report was designed to serve as "a guide to departments concerning how they should deal with graduate students," according to Emily Weidman, Coordinator for Women Students' Interests. The study is divided into three sections covering orientation and financial support; advising, evaluating and career counseling; and considerations of specific concern to women.

Despite the section on women's issues, the study "is really for all graduate students—it isn't only

for women," according to Associate Dean of the Graduate School Jeanne Richard. The report is more useful for continuing graduate students and "won't mean too much to entering graduate students," Richard added.

The report contains 26 recommendations for improving the graduate student academic environment. Most of the recommendations, according to the study, "are based on procedures that have been found effective in several departments at MIT." The recommendations range from "offers of financial support to incoming students should be made in writing" to "MIT must continue its search for qualified

women faculty."

Weidman said that she hoped the study would lead to "some discussion on the departmental level, and maybe some change will take place." Richard noted that the recommendations would have to be implemented voluntarily at the departmental level. "It isn't anything we plan to monitor," she added.

The report was spurred by a presentation made to a meeting of the women faculty in February, 1980. A group of women students expressed concern that "graduate students are not really aware of departmental policies and procedures for successful completion of their graduate degree program," according to the study.

## Wages rise 6 per cent

(continued from page 1)

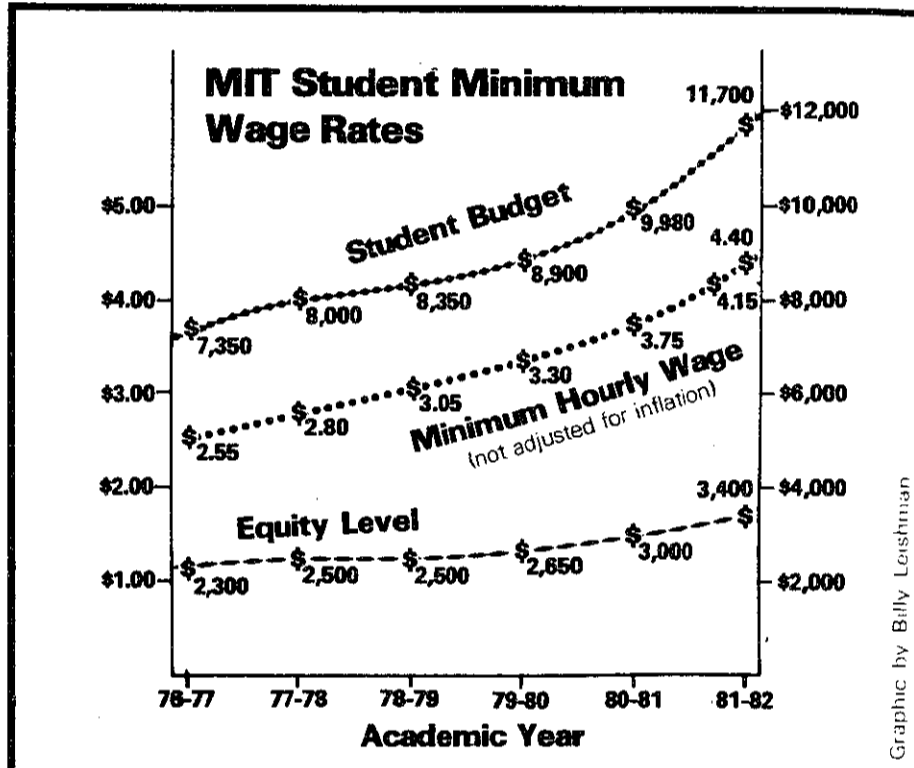
Dinin claimed that MIT students are among the highest paid in the country. "The majority of colleges use federal minimum wage requirements for student jobs... and many can go as low as 85 percent of the federal minimum wage," she reported. Dinin said that she would not want MIT students to "work an outrageous number of hours in order to maintain a certain percentage of their budget."

Although Dinin is in favor of a student voice in helping to determine the minimum wage, she said that "for this summer it was decided that we would not have a student representative."

The Student Employment Office decided not to set a formula to determine the minimum wage for the future. "There is no way to make a formula that's as cut and dried as the word 'formula' implies," Dinin explained.

Others involved in the decision last summer to raise the student wage were Vice President of Operations Howard Miller, Director of Student Financial Aid Leonard Gallagher '54, Associate

Director of Housing John Rutledge, Assistant Director of Administrative and Personnel of Libraries Thomas Wilding, and Personnel Officer Richard Cerato.



Graphic by Billy Loshman

### Village Laundry Land

Self Service

Coin-Op Laundromat

Grand Opening

266 Brookline St.

Cambridge

Between Central Square and B.U. Bridge

Daily 8am to 10pm

### The MIT MUSICAL THEATRE GUILD presents

**ONCE UPON A MATTRESS**

Aug 28,29 Sept 4,5,10,11,12, 8 PM

Aug 30 Sept 5, 3:30 PM

Kresge Little Theater 84 Massachusetts Ave

Tickets: \$4.50 / 2.50 MIT Students

Information & Reservations: 253-6294

### Headquarters

- BOOTS
- PARKAS
- PEACOATS

### CENTRAL WAR SURPLUS

433 Mass. Ave.  
Central Square  
Cambridge

# news roundup

## World

**Angola threatens to call for intervention by allies** — Following an invasion of Angola by South African forces, the Marxist government of Angola threatened to call on its allies, which include the Soviet Union and Cuba, to help remove the South African troops. Angola condemned the United States' veto of a United Nations Security Council resolution demanding withdrawal of the invading forces.

**Terrorist organization claims responsibility for air base bombing** — The West German press agency Deutsche Presse-Agentur reported receiving a letter from the Red Army Faction claiming responsibility for the explosion at the United States Air Base at Ramstein, West Germany which injured twenty people Monday. The letter claimed that the attack was part of the group's "war against imperialist war." The federal prosecutor's office, which is investigating the case, did not comment on the authenticity of the letter, but a spokesman indicated that the bomb concealed in a Volkswagen on the base was "very professionally rigged." The Ramstein Air Base is the headquarters of the US Air Force in Central Europe.

**Soviet dissident tried** — Anatoly Marchenko, dissident author of *My Testimony*, an expose of conditions in Soviet prison camps, went on trial yesterday for anti-Soviet agitation, according to the Soviet news agency Tass. Marchenko has spent fifteen of his forty-three years in exile and in prison camps.

**New Iranian cabinet chosen** — Interior Minister Mohammed Riza Mahdavi-Kani, named provisional Prime Minister of Iran Wednesday, announced the formation of his cabinet yesterday. The new cabinet is virtually identical to that of his predecessor, Mohammed Javad Bahonar, who was killed by a bomb last Sunday. In an interview broadcast by Teheran radio, Ayatollah Mahdavi-Kani promised to restore internal security and hold prompt elections for a successor to President Mohammed Ali Rajai, who was also killed by the explosion Sunday.

## Nation

**Balanced budget in 1984 unlikely** — Forecasts of sluggish economic growth for the next two years have prompted some administration officials to admit privately that it is unlikely that the Federal budget will be balanced by 1984, as President Reagan had promised. Administration spokesmen have shifted emphasis from a balanced budget to reduced deficits in coming years. Paul Craig Roberts, Assistant Treasury Secretary for Economic Policy, said, "Politically, all that you need to show is that the deficit is not rising but is diminishing through time."

**Armed inmates take hostages in Iowa** — Five prisoners armed with homemade knives and sawed-off shotguns took fifteen hostages at the Iowa State Penitentiary in Fort Madison, Iowa, Wednesday. Five hostages, including three women, were released unharmed, but the inmates threatened to kill the remaining hostages. The prisoners' primary demand is that a television crew be admitted to the prison to film conditions there.

**Ford, Bush, Haig attend funeral of Lowell Thomas** — Former President Gerald Ford, Vice-President George Bush, and Secretary of State Alexander Haig attended the funeral of respected journalist and newscaster Lowell Thomas Wednesday. Rev. Dr. Norman Vincent Peale concluded his eulogy for Thomas with: "We shall miss you here. Until we meet you over there it is not goodbye, but in your own words, 'So long until tomorrow.'" Thomas died Saturday at his estate in Pawling, New York, at age 89.

**Stanford announces terms of licensing agreement for gene splicing techniques** — Terms of the licensing agreement for recombinant DNA research techniques developed in 1973 by Herbert W. Boyer of the University of California at San Francisco and Stanley N. Cohen of Stanford University were announced last month. The contract is designed to discourage legal challenges by making licensing less expensive than contesting the patent. Commercial users of the gene splicing techniques will pay an initial fee of \$10,000, and royalties from 1/2 to 1 percent of net sales. Stanford expects to receive close to 200 applications for the non-exclusive license.

## Local

**King may appoint ousted employee to powerful commission** — *The Boston Globe* reported yesterday that Massachusetts Governor Edward J. King is likely to appoint David S. Telgan to the Rate Setting Commission, a three-member semi-autonomous body which regulates funding of hospitals, nursing homes, clinics, and health centers. Telgan was asked to resign his position as an employee of the Commission last spring. In a letter to King, Commission Chairman Peter Hiam stated, "Telgan's appointment . . . in these circumstances would be embarrassing to everyone."

## Sports

**US Open underway at Flushing Meadow** — First round winners in the United States Open Tennis Championships at Flushing Meadow, New York, include Bjorn Borg, Guillermo Vilas, Gene Mayer and Vitas Gerulaitis. In women's play, Virginia Wade, Chris Evert-Lloyd, Sue Barker, Andrea Jaeger, and Martina Navratilova took their opening round matches.

**US, Canada lead Canada Cup hockey tournament after first round** — Following opening round victories over Sweden and Finland, respectively, the United States and Canada led the Canada Cup hockey tournament. Czechoslovakia and the USSR battled to a 1-1 tie in their opening game of the round robin competition.

Barry S. Surman

## Weather

The forecast is tentative due to tropical storm Emily stationary 500 miles southeast of Boston last night, but we can expect cloudy and cool conditions with showers to continue through Sunday. Daytime highs around 60, nighttime lows near 60 with winds increasing out of the northeast through the period. Residents along the US coast north of Virginia are advised to keep in touch with the progress of Emily.

James Franklin

## classified advertising

**Back Bay-Fenway Condos**  
Newly renovated 1 & 2 bd condos at Museum of Fine Arts. Oak floors, new kitchens w quarry tile, storage bin, etc. Owner financing at only 14% interest. Prices 38K to 45K. Will consider renting at \$600 per month. 289-0253.

**Piano Lessons**  
Concert Pianist, recently moved to Somerville accepting advanced pupils and a limited number of serious beginning and intermediate students. Dorothy Siebert 666-4582.

**FOR SALE** — 1977 Toyota Corolla, 5 spd, good exterior (yellow) and interior (tan), new brakes, just tuned, no mechanical trouble. Call Mike Brower, 247-8691 or 225-6484 (leave message if not there).

**CLASSIC**  
1967 JEFFERSON AIRPLANE poster (wooden Airplane with flowers), 28x38, Fillmore Auditorium, Thick stock, original, full color, \$6 post-paid. Other San Francisco concert posters from 60's: incl. Hendrix, Doors, Stones, Dead, Who. Send \$3 for color cat. (140 posters) refundable w/order. AIRPLANE, PO Box 27394, SF, CA 94127.

**Wanted: SALESPERSON**  
Full or Part Time to sell radiant heating panels for home or office. Good commission, experience helpful. 426-5468.

**Getting bored?**  
If you can write, take photographs, cut a straight line, or if you would like to learn, come by *The Tech* office, W20-483. Sunday, Monday, Wednesday, or Thursday night. Try us, you'll like us.

### FOAM MATTRESSES and CUSHIONS

Cut To Order At No Extra Charge

- All Sizes
- All Qualities
- Lowest Prices
- Zip On Covers

**Platform Beds**  
FROM \$79.95 

### FOAM RUBBER DISCOUNT CENTER

165 Brighton Ave., Allston  
254-4819

### FRESHMAN QUIZ #2

**Q.** Where can you get the absolutely best deals on used high fidelity equipment?

**A.** Why Q-Audio of course!

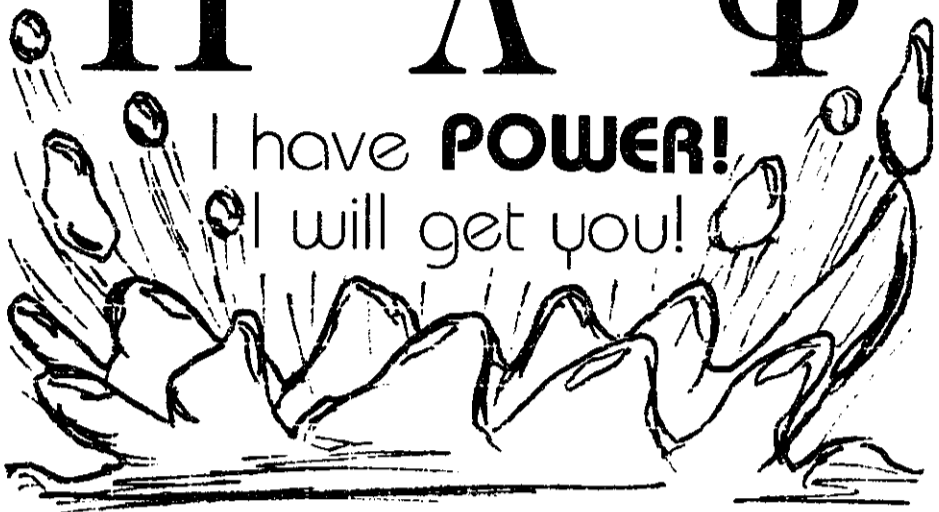
America's foremost dealer in high end used audio is located at the intersection of Mass Ave. & Vassar. For those of you who flunked this quiz...**Get Smart!** Visit Q-Audio today and take our crash course!

**MASTERCARD & VISA WELCOME**  
95 Vassar St. Cambridge, MA. 02139 (617)547-2727




To the Brothers and Pledges of

Π Λ Φ



### SPECIAL PURCHASE OF PROGRAMMABLE CALCULATORS

	<b>HP-33E</b> <b>\$49</b> Mfr. Sugg. List \$90		<b>TI-57</b> <b>\$29</b> Mfr. Sugg. List \$60
---	--	---	---

### OTHER GREAT CALCULATOR VALUES

HP-41C.....\$188	TI 59.....\$175
HP-41C V.....248	TI 58C.....80
(Please allow 4-8 week delivery)	TI PC100C.....155
Optical Wand.....95	TI PROG.....47
Card Reader.....165	TI 55.....26
Printer.....285	TI 55-II.....37
Quad R.A.M. (for HP-41C).....75	TI 57.....29
Memory Module (for HP-41C).....23	TI MBA.....50
HP-87.....575	TI BA2.....39
HP-87.....285	TI Bus Anal I.....15
HP-36C.....115	TI 35 SP.....18
HP-37E.....58	TI Inv. Anal.....42
HP-34C.....115	
HP-33C.....88	
HP-33E.....49	
HP-32E.....43	
HP-85 Comp.....2600	

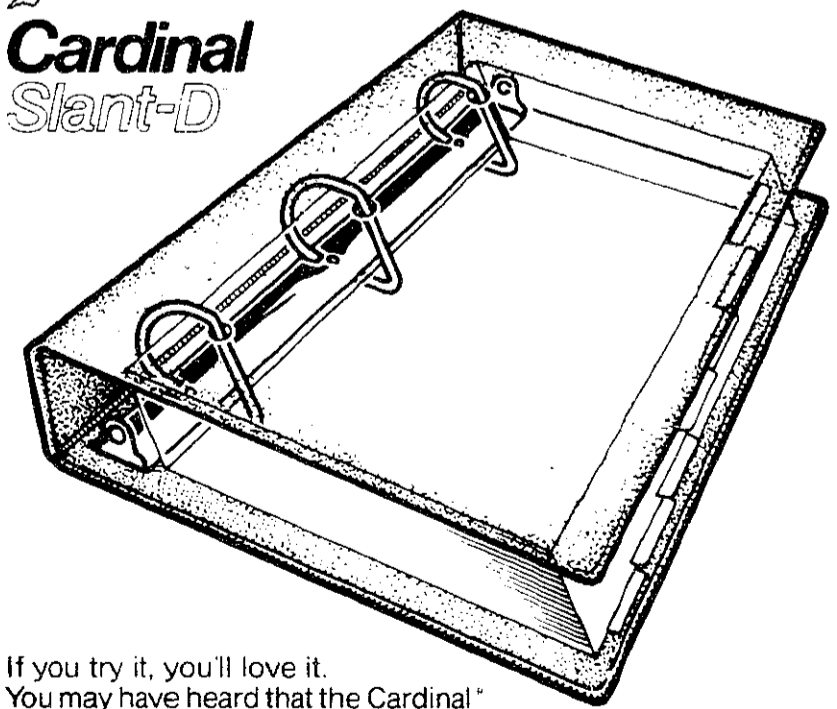
CALL TOLL FREE 800-621-1269  
(EXCEPT Illinois, Alaska, Hawaii)  
Mastercharge or Visa by mail or phone. Mail Cash Ck. Mon. Ord. Pers. Ck. (2 wks to clear) Add \$4.00 1st item, \$1.00 ea. add'l ship & handl. Shipments to IL address add 6% tax. Prices subject to change. ALL ELEK-TEK MERCHANDISE IS BRAND NEW, FIRST QUALITY AND COMPLETE.

**ELEK-TEK, inc.**  
5344 West Devon Avenue, Chicago IL 60646  
(800) 621-1269 (312) 631-7800

If you try it, you'll love it.



**Cardinal Slant-D**



If you try it, you'll love it. You may have heard that the Cardinal® Slant-D® works better than any other ring binder. A friend may have mentioned how long his Slant-D lasted. You may even think Slant-D is handsome—for a ring binder. Well? Go ahead. Try it, you'll like it.

HARVARD COOPERATIVE SOCIETY  
M.I.T. STUDENT CENTER



Stephanie Pollack

## What a Rush

It started with a bang and ended with a splash, and in between Rush Week 1981 proved to be an exhilarating but exhausting experience for an upperclass dormitory resident who naively volunteered to help rush at one of the Boston fraternities.

I had no idea what would eventually happen when I walked across the bridge at 3pm Friday afternoon for a final pre-picnic strategy session. The house was in the last throes of work week, mostly clean and shiny but still filled with mops, buckets, and grungy brothers in cut-offs and T-shirts. Rush is actually the culmination of months of planning, leading to a week of intense cleaning and renovation, and only then to the Freshman Picnic.

I felt awkward as the brothers formed a circle and sang their fraternity song, not knowing the words or what to do. One brother assured me that I would memorize the song quickly enough. He was right — four days and fifteen pledges later I had the tune down perfectly.

Critics of Residence/Orientation Week often complain that it is unfair to make freshmen choose among forty or so living groups in only three days. Most freshmen, however, can narrow down the field, and actually examine only four or five places seriously. Each independent living group, on the other hand, must examine each of the more than one hundred freshmen that typically visit during the weekend, because each is potentially a future brother.

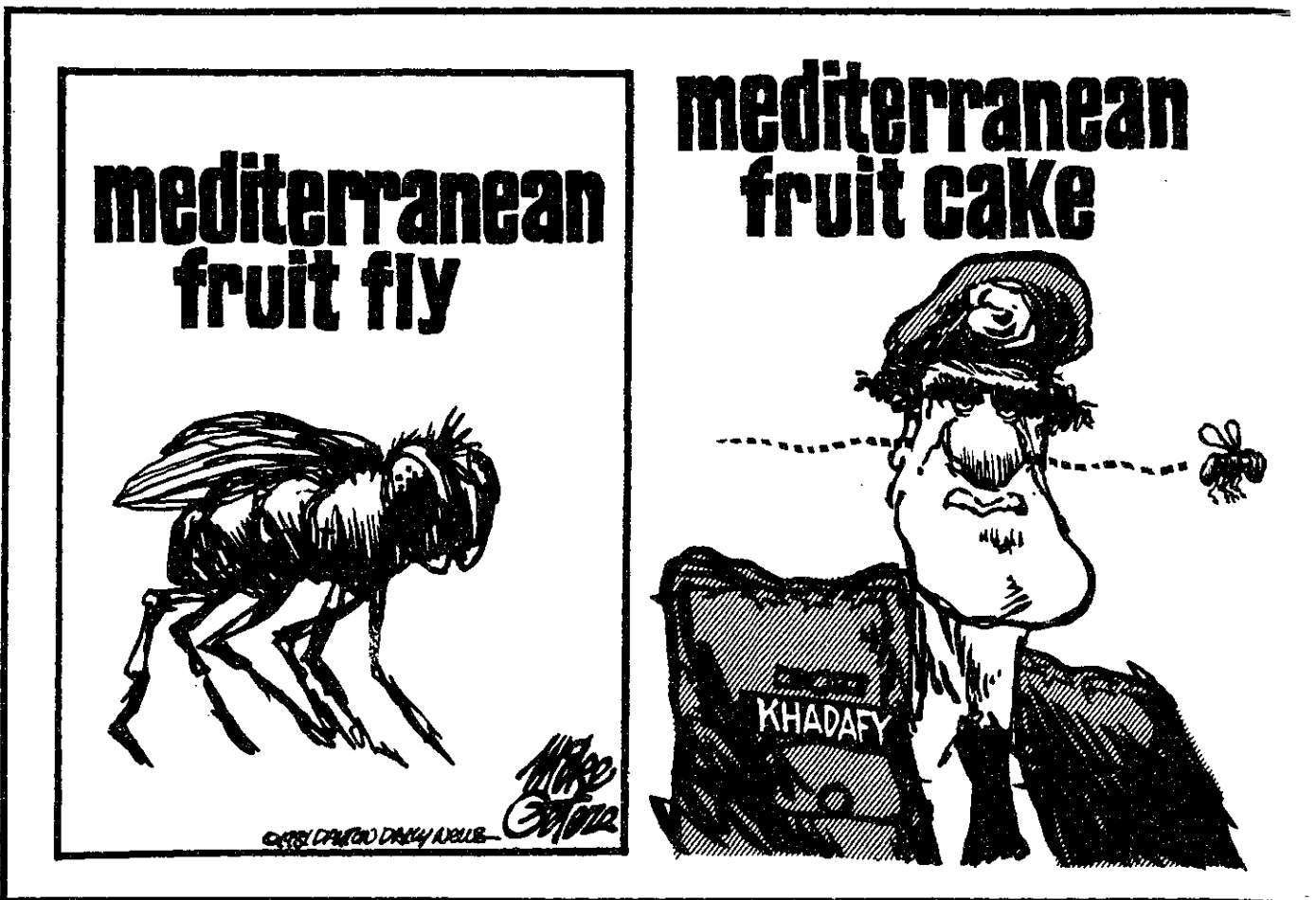
So, like a lot of activities at MIT, Rush is a lot of work as well as a lot of fun. Tired after sixty near-sleepless hours, I contemplated this dilemma. A freshman came up to me as I lay collapsed in a chair, my back aching from dozing on the floor, and hit me with a philosophical thought that nicely summed up my experience to that point. "You know," he said, "No one ever realizes that they're enjoying themselves during Rush. People always say they've had such a great time, never that they're having such a great time." I appreciated the reminder that I was having a good time, as I was too tired to notice.

No fatigue was noticeable Friday at the picnic, however. Hundreds of upperclassmen milled around, mistaking other upperclassmen for freshmen. The Mr. Whippies were good, the speeches were dull, the banners were jumbled: nothing had changed in a year. I was worried about grabbing freshmen after rush had officially begun, and a loud explosion didn't help to calm my nerves. I eventually snagged a lone freshman and led him to the van. I never saw him again — he signed out of the house an hour after he arrived.

It didn't take long to figure out that the freshmen were constantly going to be asked the same questions during Friday evening. One freshman wrote his home town on his name tag to foil one of the standard questions. Asking the same three or four questions repeatedly is just as boring as listening to the same answers — MIT is going to have a lot of electrical engineers next year — so I switched subjects early in the evening.

Music seemed to be a great topic for conversation, and it turned out that the house acquired a remarkably musical pledge class. Sightseeing, food, and family were also more interesting subjects than home town, major, and temporary housing assignment. During the course of the evening I met a surfer from New York, a guy who was president of a computer company, and an Englishman from Virginia.

Whether chatting in the Chapter Room Friday night or gambling at the party Saturday, there was work to be done. No conversation was idle — as many brothers as possible had to meet each freshman. Somewhere, comments were collected and sorted, telephone calls were made, and freshmen were selected for overnight invitations. Meanwhile, we smiled a lot, drank a little, and whispered instructions to each other about who should be talking to whom.



At first, I was offended at the idea of Rush being a para-military operation. I relaxed, however, as I realized that the freshmen had no idea as to what was going on behind the scenes and were honestly enjoying themselves. Actually, despite the discipline, the brothers were enjoying themselves too.

All was not joy and gladness after Sunday morning, however. It is difficult to maintain a cover of unassailable friendship when chatting with someone you know will not get a bid. It is disappointing when a freshman you like is not given a bid. And it is heartbreaking when a freshman everyone likes decides not to pledge. I had not yet learned the first rule of Rush as later explained to me by the Rush Chairman of the house — don't get too attached.

Any disappointment was more than overshadowed by the elation everyone felt when freshmen began pledging Monday morning. With a handshake from each of the brothers and a kiss from each of the women, freshmen ceased to be visitors and became pledges and potential brothers. A group of half-asleep people would instantly come alive at the ringing of a bell, with others joining in the fun from various corners of the house, including showers.

Freshmen began playing can-you-top-this in deciding how to pledge. One sang his pledge while playing the piano, confusing the Rush Chairman

and many of the brothers. Another hung upside down from a tree. The last pledge dragged a houseful of very tired people into the middle of the Harvard Bridge, but no one cared. The house was closed.

Rush wasn't quite over, however. Various traditions remained to be fulfilled, including the riving of the Rush Chairman. Lame, insincere attempts made by the brothers to dissuade the pledges were destined to be unsuccessful, and the uncoordinated crew bounced the unfortunate brother off the dock and into the river.

I guessed too late that I was also slated for a swim in the Charles. After eight future engineers had struggled for several minutes trying to figure out how to take my watch off my wrist, I stopped struggling, took it off, and allowed myself to be dunked. It seemed the only appropriate way for the adventure to end.

Dormitories do rush freshmen, but under wholly different circumstances — the Institute guaranteed that every dormitory will somehow be filled with freshmen. Fraternities rush freshmen to survive, a situation which leads to a Rush which is at the same time more urgent and more exhilarating than any conducted by a dormitory. Despite the fatigue and the strange rash that appeared on my leg after being rivered, I wouldn't want it any other way.

## feedback

### Keep an eye out for FDC

To the Editor:

I fail to see how Ms. Scofield, in gathering her information for her article on the Freshman Picnic (Sept. 1 issue), did not notice that there were in fact three banners on the great dome. The third banner (which appeared in the photograph on page 6) read "FDC Defend Yourself."

After the picnic I found out from some upperclassmen that FDC stands for the Freshman Defense Corps, an organization dedicated to protecting the

interests of freshmen. I'm told that in past years they have circulated to prevent mandatory commons and to prevent the elimination of freshman pass fail. Last year they helped organize the freshmen to defend themselves on freshman shower night. They have assured that similar organization will be attempted this year, so interested freshmen should keep an eye out for future announcements.

Anne LaVin '83

## The Tech

Brian J. Glass '82 — Chairman  
 Stephanie L. Pollack '82 — Editor-in-Chief  
 Jon von Zelowitz '82 — Managing Editor  
 Richard W. Epstein '83 — Business Manager  
 Volume 101, Number 30  
 Friday, September 4, 1981

### NEWS DEPARTMENT

**News Editors:** Ivan K. Fong '83, Jerri-Lynn Scofield '83; **Associate News Editors:** Stuart Gitlow '84, Frank Hrach '84, Thomas Loreda '84, Tony Zamparutti '84; **Staff:** Michael J. Potter '82, Michael Shimazu '82, Kenneth Snow '82, Sarah Bingman '83, David Lingelbach '83, Timothy M. Kneale '84, Selina Lin '84, Barry S. Surman '84, Alain d'Heurle G.; **Cartoonists:** V. Michael Bove '83, Bill Spitzak '83, Glen Apseloff '84; **Meteorologist:** James Franklin G.

### PHOTOGRAPHY DEPARTMENT

**Photo Editor:** Steve Cohen '84; **Associate Photo Editor:** James Mihori '83; **Darkroom Manager:** Timothy Hilby '82; **Staff:** Jim Oker '81, Jonathan Cohen '82, John Moses '83, Eric Shrader '83, Al O'Conner G.; **Photographic Consultant:** David Tenenbaum '75.

### SPORTS DEPARTMENT

**Sports Editor:** Eric R. Fleming '83; **Staff:** Steve Kim '83, Eric Brandt '84, Nick Rowe '84.

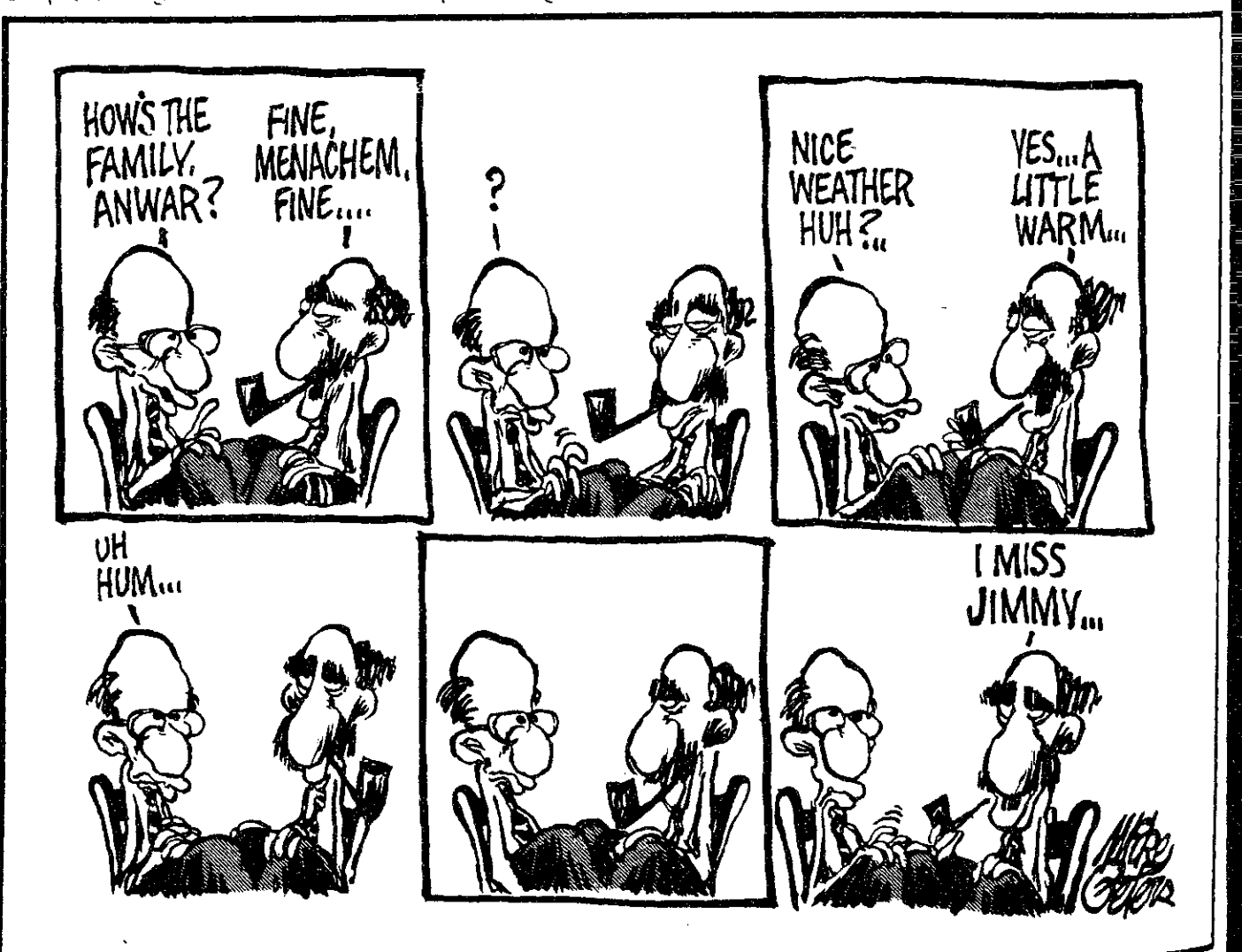
### BUSINESS DEPARTMENT

**Advertising Manager:** Allen Frechter '83.

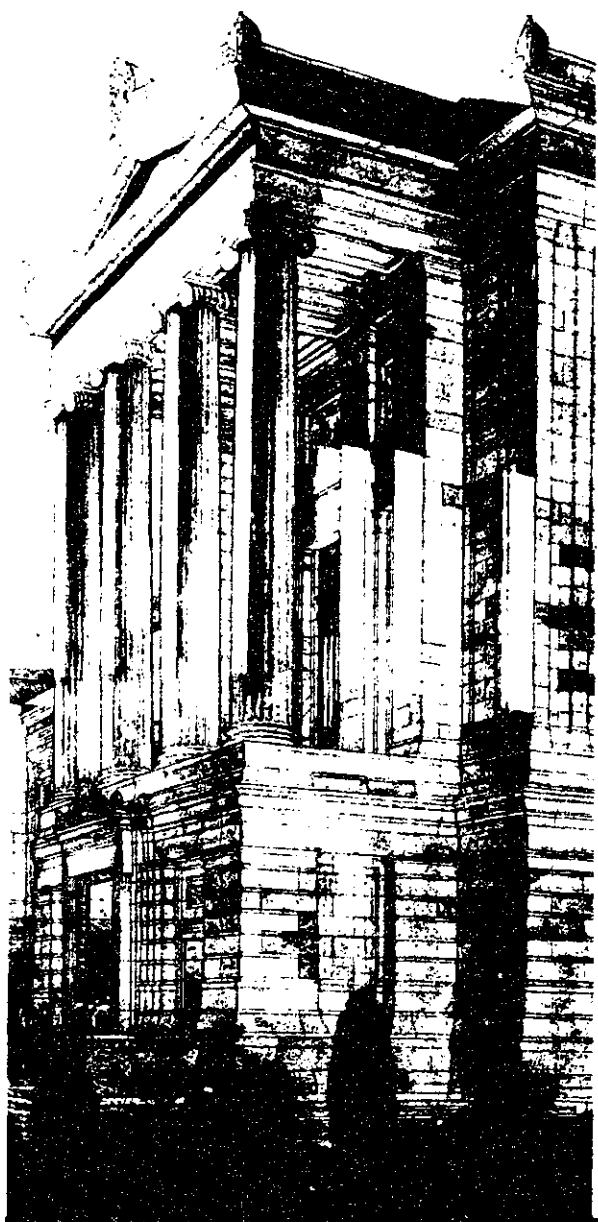
### PRODUCTION STAFF FOR THIS ISSUE

**Night Editor:** Judy Passman '83; **Staff:** Robert W. Leishman '82, Kevin Osborn '82, David G. Shaw '82, Ken Snow '82, Bill Giuffre '84, Oren Levine '84, Barry S. Surman '84, Bill Coderre '85

The Tech (ISSN 0148-9607) is published twice a week during the academic year (except during MIT vacations), weekly during January, and once during the last week in July for \$10.00 per year Third Class by The Tech, 84 Massachusetts Ave. Room W20-483, Cambridge, MA 02139 Third Class postage paid at Boston, MA. Non-Profit Org. Permit No. 59720. **POSTMASTER:** Please send all address changes to our mailing address: The Tech, PO Box 29, MIT Branch, Cambridge, MA 02139. Telephone: (617) 253-1541. Advertising, subscription, and typesetting rates available. © 1981 The Tech. Printed by Charles River Publishing, Inc.



# Art for Art's Sake



For those of you who've forgotten and for those of you who haven't yet been informed, the MFA membership program begun in January 1981 and sponsored by the Council for the Arts of MIT, the Undergraduate Association, five Schools at MIT, and an anonymous donor, will continue for the upcoming academic year.

The scoop: your MIT student ID (and this includes temporary frosh ID) entitles you to membership privileges at the Boston Museum of Fine Arts. Since last time I went over there they slurped \$3.00 off of me (3 packs of cigarettes, sugar . . .), this offer is not to be disdained. Membership in the MFA includes free admission, and such fringe benefits as use of the Member's Lounge, reduced admission to all films and lectures, a discount at the Gift Shop, and special admission privileges to major exhibits. An R/O week plus is free admission to all parents accompanied by a student this weekend.

This is a good time to introduce yourself to the Museum, since the recently completed West Wing (designed by MIT's I. M. Pei) has just opened, vastly expanding the MFA's space and facilities: the opening exhibit (reviewed earlier in these pages) is a spectacular collection from the People's Republic of China, drawn from the Great Bronze Age of China, and including much ceremonial bronzework of great beauty as well as some astounding ceramic tomb statuary.

Scheduled to open September 16 is an exhibition of the prints of Helen Frankenthaler, documenting some 20 years of her career, and on October 27 the acclaimed "Search for Alexander" exhibit, one of the largest collections of Greek antiquities ever sent abroad by the Greek government (3rd and 4th centuries B.C.)—sculpture, jewelry, armor, and silver and bronze vessels from Northern Greece principally—arrives in Boston at the MFA as part of its national tour.

The MFA is open 10am to 5pm Tuesday through Sunday and 10am to 10pm on Wednesdays; the West Wing remains open until 10pm on Thursdays and Fridays, too.

For information on programs and upcoming exhibits, lectures, and performing arts events, students should call 267-9377.

Sheena

## ARTS

# Everything You Always Wanted To Know

## About Sacks\*

Movies are very popular at MIT. The Lecture Series Committee has attendances of approximately 3,000 at four movies each weekend and the Sala de Puerto Rico is full every Saturday at midnight for the Student Center Committee film. The Boston area has over three hundred theatres that play everything from the new Bond film to pornography. This is the first of a four-part series on movie-going in Boston and MIT. It focuses on theatres where you would expect to see films like *Raiders* when they first came out. We hope a greater awareness of the film scene in Boston will encourage readers to get up and GO TO THE MOVIES!

In order to help understand some of the terminology concerning movie houses, we have included this handy vocabulary guide:

**First-run Film** — Any film in its first cycle off distribution to theatres.

**Dolby** — Special film sound system that can show a film with a superior stereo soundtrack and enhanced noise reduction. Only certain films are released with an encoded Dolby soundtrack and only theatres with the proper equipment can reproduce this sound. For this reason, any film that is in Dolby and will be shown that way usually will advertise to this effect.

**70mm** — The standard film size for first-run theatres is 35mm celluloid. However, new equipment has become available to project film that is 70mm wide. The advantage is that with twice the size of reproducible image on film, the projected image has twice the resolution of the normal, hence, a clearer and sharper picture.

**Multiplex** — A recent trend in suburban movie complexes of dividing existing theatres into smaller auditoriums, there-

by increasing the number of different films they can show simultaneously and attracting more patrons. The disadvantage of multiplexes is the tiny number of seats per theatre and small screens.

\* \* \* \*

**SACK** means "movie" in Boston. Virtually every first-run film that makes it here will be seen on one of their fifteen screens at one of their seven downtown theatres. The auditoriums are clean and nicely furnished and their projection facilities border the state-of-the-art. Several houses are equipped for Dolby stereo and their three largest theatres, the Charles I. Cinema 57, and Cheri have facilities for 70mm. If a film is playing in one of these special formats it is indicated in the newspaper ads.

Sack also operates 39 suburban screens at eight multiplexes. The recently opened Somerville 8 (628-7000) is easily accessible off Rt. 93 with plenty of parking and a wide choice of films.

Descriptions of current films are printed in the Sack movie guide, distributed free at every theatre. Ticket prices are \$3.50 and \$4.50 with a \$2 matinee. Up to date movie information for the entire chain can be had by dialing 542-SACK.

\* \* \* \*

**GENERAL CINEMA** has a relative monopoly on shopping mall movies. With seven anchor complexes at major suburban malls, each theatre has an average of four different films. Their bargain matinees are for all shows before 6pm Monday-Saturday and the first show on Sundays and holidays. Of special note, however, are their four double houses with a discount ticket price of \$1.50 at all times. The Fresh Pond Cinema in Cambridge (547-8800) is in this group.

\* \* \* \*

**SHOWCASE CINEMAS** operate multiplexes in Cleveland Circle, Lawrence, Woburn, and Dedham with three, four, six, and eight screens respectively. The first

# Disenfranchisement

**Dark Continent.** *Wall of Voodoo on IRS Records.*

Consider the phrase "aural nightmare." Consider the name "Wall of Voodoo." There is clearly something interesting about this band, but it should probably be observed from a safe distance.

From a safe distance (the floor of the Ritz, NYC) Wall of Voodoo looks and sounds just as unconventional as their name. Lead singer and keyboard player Stanard Ridgway hides on the side of the stage (where it's dark) and spits out vocals. Joe Nanini bashes away on found percussion and attends to Ace, the rhythm machine. The others, Chas Gray (keyboards), Bruce Moreland (bass and

keyboards), and Marc Moreland (guitar) all seem very intent on their playing. No one looks at the audience, but the audience doesn't seem to care — they're all mesmerized by the music.

Insecurity on the job, inability to relate, the harsh reality of machine-age — these are Wall of Voodoo's obsessions. The music is propelled by a heavy electronic pulse, embellished with odd percussion and a healthy dose of twangy spaghetti-western-style guitar. (The group loves Clint Eastwood movies — they even play "Hang 'em High" in concert.) This formula for aural nightmares was tested on an EP released last year (now a "valuable collector's item") that met with critical acclaim.



Just when you thought it was safe to use your stereo again, Wall of Voodoo returns, this time with a full-fledged album. *Dark Continent*. Drop the needle onto the opening groove and the fun begins. Set against a bouncy rhythm, Ridgway sings:

*There's a price for my vice*

*And I want it in cash*

*in a plain brown bag*

*You can put it out by the trash*

The record abounds with cynical wit, with no subject escaping the band's jaundiced view. "Me and My Dad" has innocuous, sentimental lyrics, but when delivered in a monotone over a minor keyed background, the phrase "Me and my dad, we got a good thing going" makes you

wonder about your own father.

All this talk of cynicism and nightmares shouldn't deter you from listening to the record. The music is first-rate, extremely danceable, and rather catchy. The cut "Back in the Flesh" comes to mind (not surprising, I've been whistling all day) — the call-and-response vocals and the final impassioned chorus will guarantee this tune for major airplay. On the other hand, "Animal Day" is pretty good, too, but so is "Tse Tse Fly" and . . .

Rather than fill this page with further unsubstantiated rumors and possibly erroneous information, it is suggested that *Dark Continent* be played in its entirety at least twice. This should be sufficient.

David Shaw

show daily is a bargain matinee (\$2) and their four Drive-Ins cost \$5 a carload.



**THE EXETER STREET THEATRE** (536-7067) near Copley Square is a beautifully renovated vaudeville stage that

\* **But Never Bothered To Ask**

picks up some of the new films overlooked by Sack. They too have early shows at \$2 but their unique contribution to the Boston film scene is showing *The Rocky Horror Picture Show* every weekend.

\* \* \* \*

The suburbs surrounding Boston are dotted with theatres of all shapes and sizes that play first-run films. Sack and other chains tend to circulate their films as attendances fluctuate so it is somewhat necessary to the hop on the "T" to catch flicks you've procrastinated on seeing (or wait till LSC gets them). The newspapers carry fairly complete listings and a phone call is always a good idea to confirm time and prices. I had hoped to be able to rate the popcorn for each of the Boston area theatres, but unfortunately, it sticks to my braces. Any volunteers?

Mark DeCew

Next: *Second-run and revival houses.*

# ON THE TOWN

The MIT Musical Theatre Guild presents **Once Upon A Mattress**, with performances on September 5 at 3:30pm, and on September 4, 5, 10, 11, 12 at 8pm. Tickets are \$4.50, or \$2.50 with MIT ID, and are available in Lobby 10 or at the MTG office. For information and reservations, call x3-6294.

*This weekend's LSC lineup:*  
**Everything You Always Wanted to Know About Sex\***, Fri., 7 & 9:30, Kresge. *Free for freshmen!*

**The Graduate**, Sat., 7 & 9:30, 26-100.

**Dr. Strangelove**, Sun., 7 & 9:30, 26-100.

**Dark Star**, Mon., 7 & 9:30, 26-100.

This is hard to imagine, but the Nucleo Eclettico Theatre, 216 Hanover Street, presents **Wanda and Her Dog**, a play about how a couple's marital problems affect their dog . . . September 3-19, 8pm, Thursday, Friday, and Saturday only. May require drugs.



**WE'LL FIND A WAY.**

- Porter Sq.** 49 White St., Cambridge, Open 8a.m. to Midnight, Mon. - Sat.
- Chestnut Hill** Rte. 9, Chestnut Hill, Open 8a.m. to Midnight, Mon. - Sat.
- Mt. Auburn** 609 Mt. Auburn St. Camb., Open 8a.m. to Midnight, Mon. - Sat.
- Brookline** 1717 Beacon St., Brookline, Open 8a.m. to Midnight, Mon. - Sat.
- Brighton** 385 Western Av., Brighton, Open 9a.m. to 10p.m., Mon. - Sat.
- Prudential** 800 Boylston St., Boston, Open 8a.m. Mon., 'til Midnight, Sat.
- Beacon St.** 277 Beacon St., Somerville, Open 8a.m. to Midnight, Mon. - Sat.
- Fenway** 33 Kilmarnock St., Boston, Open 8a.m. Mon., 'til Midnight, Sat.

"Welcome to good old Boston. Home of the Bean and the Cod" ...where both are available at Star!



**For two weeks!**

This coupon good Mon., Aug. 31 thru Sat., Sept. 12 for a...

**FREE\***  
**Yogurt Columbo**  
 Strawberry comes in a divine shade of pink.  
 8-oz., any flavor  
 \*with a \$10 purchase

Coupon good at Porter Sq., Chestnut Hill, Mt. Auburn, Brookline, Brighton, Prudential, Beacon St. and Fenway Star Market. Limit one per customer. 679

**For two weeks!**

This coupon good Mon., Aug. 31 thru Sat., Sept. 12, 1981 for a...

**FREE\***  
**Dove Soap**  
 3 3/4-oz. bar, white  
 \*with a \$10 purchase

Coupon good at Porter Sq., Chestnut Hill, Mt. Auburn, Brookline, Brighton, Prudential, Beacon St. and Fenway Star Market. Limit one per customer. 678

**This week only!**

This coupon good Mon., Aug. 31 thru Sat., Sept. 5, 1981 for

**20¢ off\***  
**Valencia Oranges** 4-lb. bag  
 \*with a \$10 purchase

Coupon good at Porter Sq., Chestnut Hill, Mt. Auburn, Brookline, Brighton, Prudential, Beacon St. and Fenway Star Markets. Limit one per customer. 673

**For two weeks!**

This coupon good Mon., Aug. 31 thru Sat., Sept. 12, 1981 for

**50¢ off\***  
**Steak-Umm Sandwich Steaks**  
 2-lb. pkg. frozen  
 \*with \$10 purchase

Coupon good at Porter Sq., Chestnut Hill, Mt. Auburn, Brookline, Brighton, Prudential, Beacon St. and Fenway Star Markets. Limit one per customer. 675

**For two weeks!**

This coupon good Mon., Aug. 31 thru Sat., Sept. 12, 1981 for

**25¢ off\***  
**Weavers Chicken Rondelets**  
 14-oz. pkg. frozen  
 \*with \$10 purchase

Coupon good at Porter Sq., Chestnut Hill, Mt. Auburn, Brookline, Brighton, Prudential, Beacon St. and Fenway Star Markets. Limit one per customer. 676

You can't beat Star's Deli for tailgate goodies!



**For two weeks!**

This coupon good Mon., Aug. 31 thru Sat., Sept. 12, 1981 for

**39¢\***  
 Old World **Syrian Bread** 10-oz.  
 \*with a \$10 purchase

Coupon good at Porter Sq., Chestnut Hill, Mt. Auburn, Brookline, Brighton, Prudential, Beacon St. and Fenway Star Markets. Limit one per customer. 677

**For two weeks!**

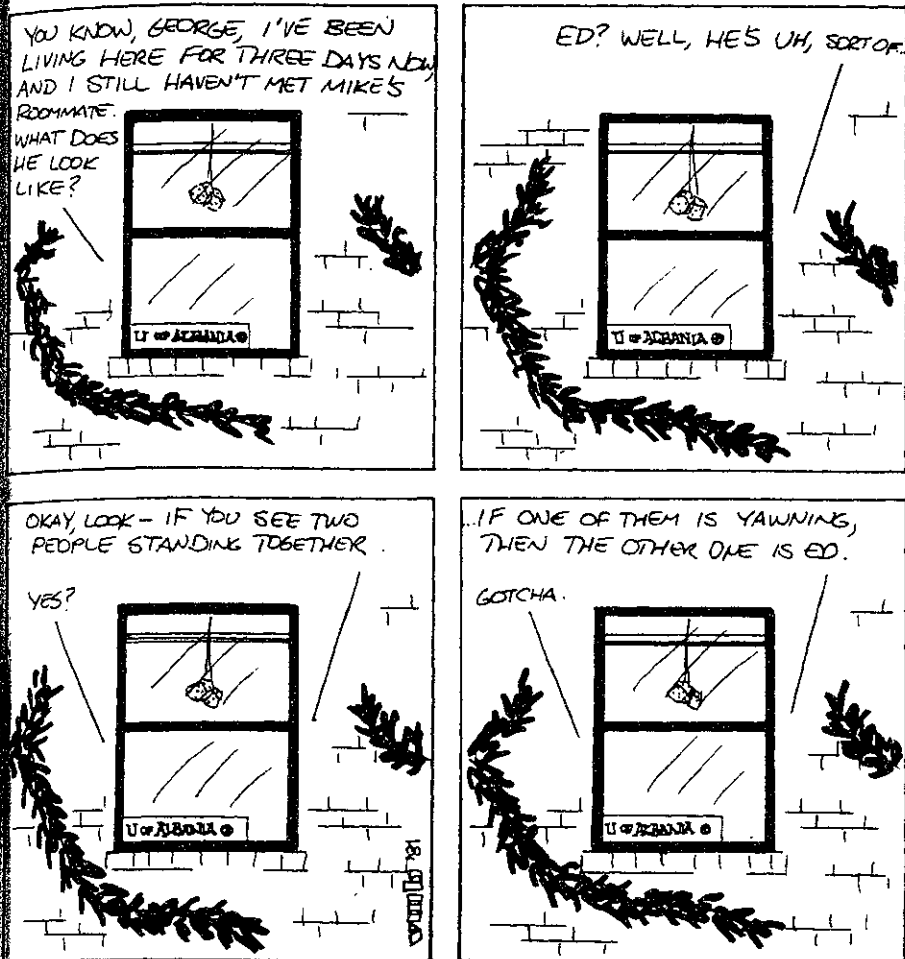
This coupon good Mon., Aug. 31 thru Sat., Sept. 12, 1981 for

**30¢ off\***  
**Stuffed Clams** 11-oz. 4-pack  
 \*with a \$10 purchase

Coupon good at Porter Sq., Chestnut Hill, Mt. Auburn, Brookline, Brighton, Prudential, Beacon St. and Fenway Star Markets. Limit one per customer. 674

# comics

Outside Looking 'In  
By V. Michael Bove



Stickles  
By Geoff Baskir



Join us  
in the  
**SON**  
Campus  
Crusade  
for Christ  
at M.I.T.

**FRIDAY NIGHT DINNER:** 6:00 p.m., Marlar Lounge, Bldg. 37-252  
**FAMILY TIME:** 7:15 p.m., Friday evenings; Bldg. 37-252, Marlar Lounge. Come for fellowship, scrip, teaching, prayer, singing, skits, refreshments, and just plain fun!!  
**TUESDAY PRAYER TIME:** 7:30-9:00 a.m. in W20-441 (Stud. Center)

For more info. call:  
H. Grey 225-8552  
Allan & Tricia Beeber 254-4009

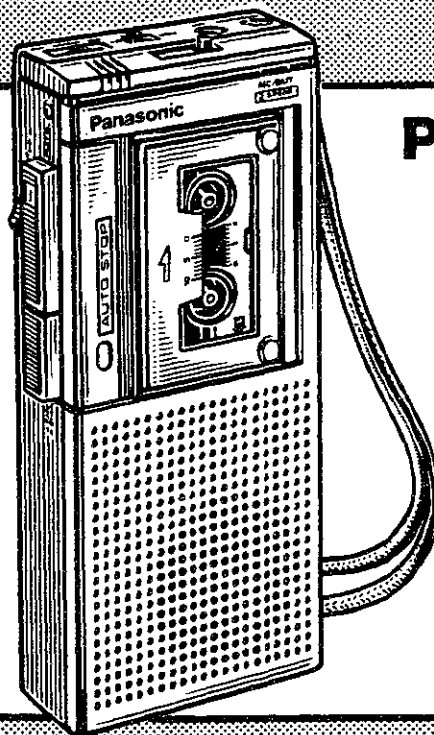
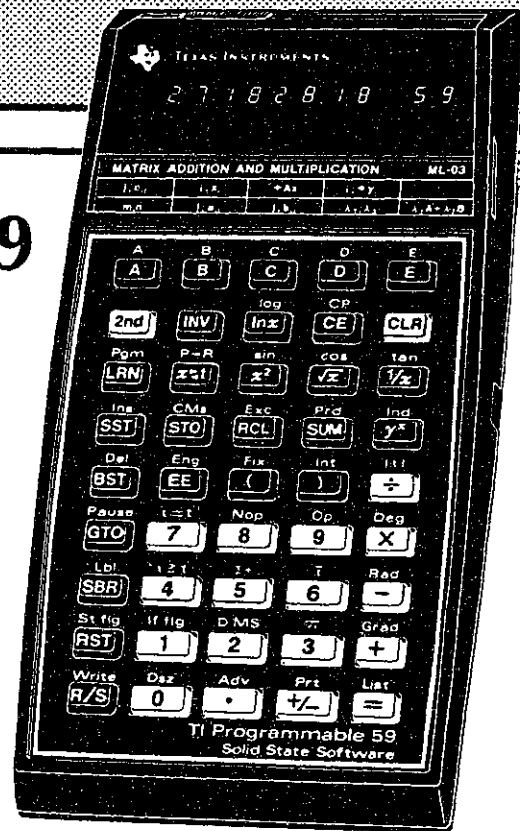
# Electronic Headquarters



The TI-59 has computer-like capabilities perfect for professionals in business, science, or engineering. Complete program editing and up to 960 program steps.

Comp. value 199.00  
**SALE 179.99**  
Mfg. Rebate 20.00

**Your Cost 159.99**



## Panasonic RN-001D Microcassette Recorder

Choose standard or long-play recording speed with this recorder equipped with a full range of functions like digital tape counter, cue review, and edit.

**84.99**

## HP-41CV



Solve problems with power, versatility, and straightforward logic. This amazing system has a memory able to retain up to 2000 lines.

reg. 299.99 **SALE 279.99**  
**Card reader 189.99 Printer 349.99**



**HARVARD COOPERATIVE SOCIETY**  
MIT Student Center

the  
**Coop**



The current infirmary on Memorial Drive may soon house graduate students (The Tech file photo)

## Infirmery to house grads

By Kenneth Snow

Plans are being made to convert the present Infirmery into graduate housing by the fall of 1982. The Infirmery will be moving to the new Health Services Building on Carleton Street.

The new dormitory is designed to house between 50 and 64 students; the final number will be decided upon later, according to Peter Brown, Assistant Dean for Residence Programs. The actual number will depend upon the final design plans.

Brown noted that the dormitory may be used as an all-women house. The building may become co-ed, however, if the number of graduate women requesting housing is not sufficient to fill the number of open spaces.

Brown explained, "in order for the building to be completed in time for the 1982 opening, construction would have to begin before the beginning of the new year and possibly by December 1." The final decision will be made during this term.

"The main issue is money," said Brown. "Because of the small number of residents, the building will not be self-sufficient." The need for financial backing is forcing the Institute to investigate the possibility of Federal loans, private donations, or other sources of income. Presently, the exact source of income has not been decided upon and and this final decision will influence the date at which construction can begin.

# MIT housing available for readmitted, transfer students

(continued from page 1)

the current housing situation is the lower number of readmitted students who had accepted offers to live in the dormitory system. The Dean's Office had estimated this figure to be 80; to date, Sherwood indicated, only "15 to 20" students had accepted this offer.

Sherwood also indicated that, for the first time in his memory, the Dean's Office is looking for undergraduates to fill housing spaces, and will consider requests from all current undergraduate students for spots in the dormitory system. Sherwood said he wished to "encourage people to come in and request housing."

Referring to the Dean's Office policy of only allowing transfer and readmitted students into the housing system on an annual basis, Sherwood commented, "my preference would be to allow them [these students] to do so [remain in the dormitory system for more than one year]" He noted that he would like to see these students accorded the "full rights and privileges of entering freshmen as far as housing is concerned." He explained that it is "not particularly fair to treat them as second class citizens." Practically, though, Sherwood acknowledged that a more lenient policy toward transfer and readmitted students in the housing system would result in a situation in which MIT would be "back to 200 [crowded freshmen] within a year, if we let them [the upperclassmen] stay in the housing system."

The figures released yesterday were the final results of the 1981 dormitory assignments lottery. Sherwood indicated that because of a "preventive maintenance

program" performed by the electrical engineering department on the computer used to run the Clearinghouse system, the administrators of R/O week were not able to determine just how many persons had pledged to live in fraternities, resulting in vacancies in the dormitories. Sherwood indicated that adjustments may be made in assignments on a strictly individual basis, commenting, "There were additional people who have pledged fraternities that have resulted in spaces in all houses."

According to Sherwood, the number of students who opted to live in 500 Memorial Drive was in part responsible for the slightly unusual distribution of freshmen among various dormitories. Another factor which contributed to change is "the much higher level of intense cross-rushing between dorm to dorm than there was in the past." Sherwood acknowledged that cross-rushing is fairly prevalent in the fraternity rush system, but it had not been very visible in the dormitory selection process in the past.

## DSA pledges aid for unfilled frats

(continued from page 1)

fraternity rush by approximately 25 freshmen. The IFC had repeatedly estimated a goal of 350 freshmen. According to figures obtained from Clearinghouse, the goal for fraternity rush was set at 429 freshmen; Goldberg explained that this figure represented the sum of every fraternity's maximum capacity. He described this figure as "the maximum number that they could squeeze in if they could find an infinite source of excellent people."

"From my perspective," commented Sherwood, "380 was more of a reasonable target than either the 350 or the 429, based upon historical statistics."

Goldberg noted, "More people entered the fraternity system this year than went away from it last year. Our goal takes this into account."

IFC President Jim Murray '82 explained the differences in the released goal figures by noting that most fraternities set a very high goal for their Rush Week activities, while realizing that each house, in reality, "budgets for less." He described the 429 goal as for "internal record-keeping purposes only."

Goldberg confirmed this opinion. "It's [429] just not even a realistic goal. It's for internal use only."

Sherwood commented that the Dean's Office intended "to support those houses in some way" which had experienced a poor rush. "There are some [fraternities] that have done the same thing year after year. ... [but] just had a bad rush."

The Dean's Office was willing to assist fraternities who had had a poor rush so as not to have "houses going down the tubes," indicated Sherwood. He suggested that the Dean's Office would refer freshmen still interested in fraternities to those houses still desiring pledges. He also indicated that, for those houses that may have difficulty in repaying loans made for mortgages or house improvement, it might be possible to "reconsider the payment schedule on those loans." This would prevent soaring house bills for these fraternities.

Murray noted that the Independent Residence Development Fund (IRDF) is responsible for assisting MIT fraternities financially. He commented, "If your group is having real trouble, this group will have some sympathy."

Both Murray and Goldberg suggested the possibility of a term-time or January rush to allow unfilled fraternities to meet pledge goals.

## notes

Registration for the fall term will be held Wednesday, September 9, in duPont Gymnasium from 9:00 am until 5:00 pm. Freshmen should register before 11:00 am so as to allow time for adequate resolution of potential conflicts.

Registration for physical education classes will be held Thursday, September 10, from 8:00am until 11:00 am, in duPont Gymnasium.

\* \* \* \*

Fall term classes will begin on Thursday, September 10.

Interviews are currently being held for enrollment in the Experimental Studies Group (ESG), a self-paced study program for freshmen. Call x3-7786 for further information.

Are You Interested in Visiting a Fraternity in a Non-Rush Atmosphere?

Come Visit

Φ K Θ

PHI KAPPA THETA

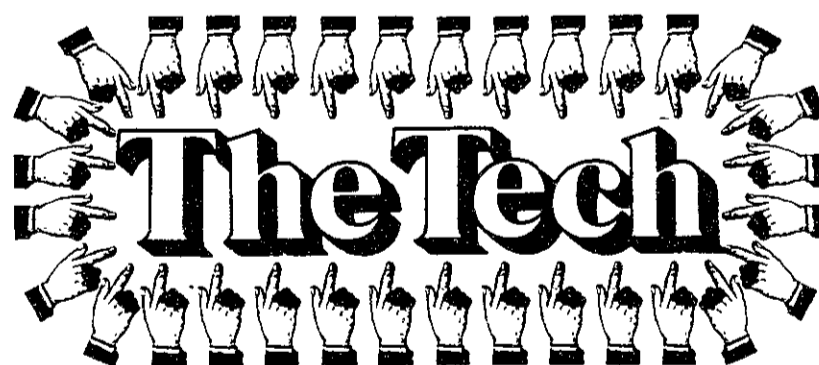
We Still Have Spots Open.

For Details, Call Us at

247-9364

or Come to

229 Commonwealth Ave for Refreshments and Talk.



invites you to see how we put together a newspaper

Student Activities Open House

Tuesday September 8, 5-7pm

Open Staff Meeting

Sunday September 13, 4pm



Writing



Photography



Production



Advertising sales

Student Center Room 483