

R/O 1981: residence selection going well

No frosh in limbo, few crowded

By Jerri-Lynn Scofield

The opening of the new dormitory at 500 Memorial Drive has drastically affected the traditional distribution of incoming freshmen among dormitories, as indicated in the results of the first housing lottery, held last night.

As of last evening, all freshmen requesting Institute housing had been assigned to dormitories; none had been assigned to limbo. Freshmen may elect to place themselves in limbo if they are dissatisfied with their dormitory assignments.

"This has been the smoothest dormitory assignments meeting in the four years since I've been here," commented Associate Dean for Student Affairs Robert A. Sherwood. He continued, "It's been a delightful experience."

"The only real surprise is the effect the opening of 500 Memorial Drive has had on the largest dormitories," noted Sherwood. As of last evening, 200 freshmen has designated 500



The fraternities mingled with the freshmen at Friday's picnic shortly after the call "Let the Rush begin!" went out. (photo by Billy Leishman)

Memorial Drive as their first-choice dormitory, while 243 students had been assigned to the new house. Sherwood indicated, "500 Memorial Drive is incredibly attractive."

According to Dean's Office figures, 77 percent of the freshmen who entered the dormitory assignments lottery were granted admittance to their first choice dormitory. Approximately

78 percent of the women were granted their first choice, while the figure for men was slightly lower at 76 percent.

In contrast to last year, the dor-
(please turn to page 5)

260 pledge fraternities by midnight

By Jerri-Lynn Scofield
and Kenneth Snow

As of midnight last night approximately 260 freshmen had pledged to live in fraternities, according to Gerald Fitzgerald '82. Fitzgerald is coordinator of Clearinghouse, the computer system used to track freshmen during R/O Week.

Mark A. Goldberg '82, InterFraternity Conference (IFC) Rush Chairman, noted that as of early last evening fraternity pledging "is ahead of last year."

Goldberg said that this year's IFC rush goal is about 350 freshmen. According to Fitzgerald, the fraternities usually have about 220 or 230 pledges by this time.

Robert A. Sherwood, Associate Dean for Student Affairs, commented, "Rush, by all indications is going fairly well. I think they [the fraternities] are satisfied."

"This rush has been outstanding in terms of cooperation

(please turn to page 5)

Picknickers plied with food, advice

By Jerri-Lynn Scofield

Students from 47 states and 31 foreign countries gathered in Killian Court Friday in their first incarnation as the MIT Class of 1985 to feast on roast beef, corn on the cob, watermelon, ice cream, and conversation with their newfound peers.

The picnic began at 4:30pm and was attended by most of the freshmen, many members of the faculty, and several upperclassmen. Following the food, the freshmen were addressed by members of the administration and representatives from student government.

MIT President Paul E. Gray '54 imparted several pieces of advice to his audience, while warning them to "be appropriately critical of that advice."

Gray emphasized several points, "First of all, don't get overcommitted to academic pur-

suits." He advised, "Take the initiative to take opportunities that are appropriate to your own circumstances."

Gray also announced his intent to hold office hours every Thursday, beginning on September 15, from 4:00 to 6:00pm, which will be open to all students.

Dean for Student Affairs Shirley M. McBay followed Gray to the podium. McBay informed students that MIT and in particular, the Office for the Dean for Student Affairs "don't think of people as winners and losers. She challenged her audience to "write, direct, and star in your own play . . . determine your own theme . . . set your own cast of characters."

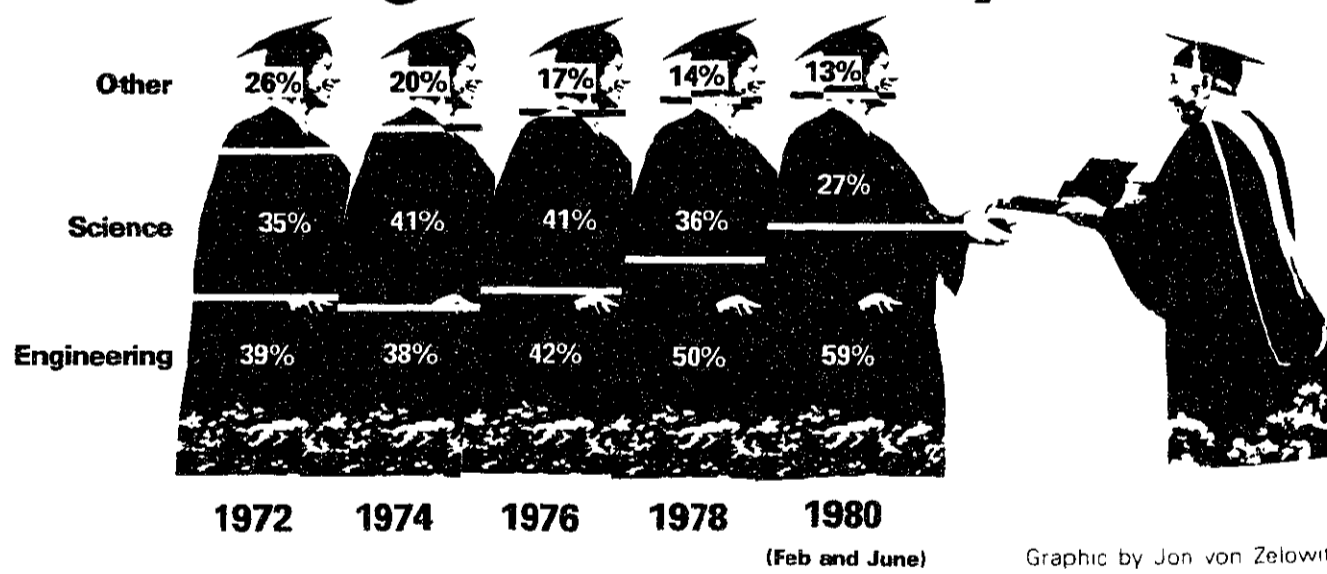
Rhonda E. Peck '82, R/O Coordinator, began her speech by asking, "Are you feeling nervous? Do you wonder why the people

(please turn to page 3)



President Paul E. Gray '54 (HEAD HONCHO) and his wife Priscilla talked with the crowd at the Freshman Picnic Friday afternoon in Killian Court. (photo by Ken Snow)

Degrees Awarded by School



Frosh more conservative despite admissions policies

By Stephanie Pollack

Entering freshmen have become more conservative and career-oriented in recent years despite MIT policy of giving relatively more emphasis to personal factors than academic considerations in the admissions process, according to Director of Admissions Peter H. Richardson '48

"The world has changed and getting that job is more important to the freshmen than it was six or seven years ago," Richardson noted. "Just as the nation has moved radically to the right, so have the kids."

Associate Director of Admissions Daniel Langdale cited the increasing number of students who choose to major in engineering rather than science as one indication of the career orientation of MIT students. Fifty-nine percent of the bachelor's degrees awarded by MIT last year were granted to students in the School

of Engineering, with 27 percent being graduated from the School of Science. In 1974, 41 percent of MIT bachelor's degrees went to scientists, while only 38 percent went to engineers. Langdale also noted that the percentage of graduates from the School of Humanities and Social Science has dropped drastically. In 1972, that school awarded 12 percent of all bachelor's degrees, but the total had dropped to 5 percent by last year.

Richardson asserted that the conservative trend among incoming freshmen is a reflection of a similar national trend. He noted that "while MIT may be more

conservative than it was three years ago, it's not more conservative than the world at large."

The policy of the Admissions Office has been in opposition to the trend toward career orientation among the incoming freshmen. "Twenty years ago the 800 [on the SATs] might have been enough" to gain admission to MIT, Langdale noted. "Over the period of the last 20 years there's been more of a tendency to look hard at other things," Richardson continued.

Richardson acknowledged that the Admissions Office has "become less compulsive about

(please turn to page 8)

inside

Freshman Picnic photo essay.
Page 6

Flash! Sensible arts page —
thousands homeless, bored.
Page 7

THE HIGH COST OF A COLLEGE EDUCATION JUST WENT DOWN A FEW DEGREES.

ANNOUNCING THREE NEW ARMY NATIONAL GUARD PROGRAMS THAT CAN HELP YOU PAY FOR COLLEGE.

If you're like many college students, the closer you get to your degree, the deeper you get into debt. But, you don't have to get in over your head. Not when you join the Army National Guard.

Because now, the Guard has three new programs to help you pay for college: the College Loan Repayment Program; the Educational

Assistance Program, and the Enlistment Bonus Program. And you don't have to wait for graduation to take advantage of them. You could join the Guard right now.

You see, the Army National Guard is part-time. After your initial training, it takes just two days a month and two weeks of annual training a year to serve. So there's plenty of time left for your studies. And you get paid for every hour you put into the Guard, so you'll have extra cash for books, lab fees, and all those other little expenses that come up.

Of course, there's more to the Guard than money. It's a chance to do something good for your country, as well as for people right in your own com-

munity. The Guard can give you more options in your life—and more control over your financial future.

If that sounds like where you want to be, see your financial aid officer, contact your local Army National Guard recruiter, or use the toll-free number below for complete details on how the Guard can help you pay for college. And help in a lot of other ways, too. But hurry! These special programs for college students are available for a limited time only.

**The Guard is
America at its best.**



Call toll-free: 800-638-7600.

In Hawaii: 737-5255; Puerto Rico: 723-4550; Virgin Islands (St. Croix): 773-6438; Maryland: 728-3388; in Alaska, consult your local phone directory.

Program terms, payment amounts and eligibility requirements subject to change. All programs not available in all states.

news roundup

World

Iran's president and prime minister killed by explosion — Five persons were killed and fifteen injured when an explosion ripped through the prime minister's office Sunday, Teheran Radio announced Monday. Mohammed Ali Rajai, president, and Javar Bahonar, prime minister, were both killed by the blast.

The Speaker of the Iranian Parliament, Hashemi Rafsanjani, placed responsibility for the deaths on "American hirelings."

Vienna police arrest six — Officers apprehended six suspects while investigating a terrorist attack on a synagogue last Sunday that killed two persons. Two other suspects had already been arrested at the scene of the attack.

Austrian radio dispatches asserted that there were "some Palestinians" among the six suspects arrested, but police refused to confirm or deny that report.

Libyan diplomat predicts invasion — Ahmed Shahati, a Libyan diplomat, explained that his country was seeking Soviet bloc assistance to counter an alleged impending invasion by Israel and Egypt backed by American support. Shahati, secretary general of Libya's Mediterranean Progressive Socialist Organization, commented, "What we expect is an Israeli-Egyptian attack with American help over Libyan land."

Paris hotel shattered by blast — Eighteen people were hurt when a bomb exploded in the Inter-Continental Hotel. Police alleged that they had a description of a suspect in the case, but they were at a loss to explain the assailant's possible motive for the attack.

Nation

Nancy Reagan adds new item to her wardrobe — Nancy Reagan has added a bulletproof vest to her wardrobe, it was reported yesterday. Reagan has supposedly been wearing the garment at selected public appearances since the attempt was made on her husband's life last March 30. Earlier reports had indicated that Reagan was now wearing a bulletproof slip, yet industry sources indicated that the standard protective article of clothing for both men and women was the vest.

AWACS to be modified for Saudi sale — Five Airborne Warning and Control System planes, which the Reagan Administration proposes selling to Saudi Arabia, will be modified and will not be equipped with certain technological features available on US Air Force models, according to a Defense Department document. Slated for elimination from the Saudi planes are systems which resist enemy jamming of communications equipment and radar.

College expenses reach all-time high — College expenses are expected to soar again this year, following an approximately 13 percent increase which has pushed costs at several elite eastern universities above the \$11,000 mark. According to the results of an annual survey just released by the College Scholarship Service of the College Board, costs at MIT, estimated at \$11,845 this year, are third in the nation, trailing Bennington College at \$12,030 and Harvard University at \$11,950.

Navy officers accused of misusing navy crafts — The Navy is investigating allegations that three officers used Navy planes and ships for personal purposes. Accused of misconduct are Captain Marvin D. Reynolds, Captain John E. Wasloski, and Rear Admiral Bryan W. Compton. Captain Reynolds has been accused of, among other things, flying Navy planes from Jacksonville, Florida, to Andros Island in the Bahamas to pick up spiny lobsters. Captain Wasloski has been charged with using Navy yachts for private parties and Admiral Compton stands accused of ordering Navy planes to fly him from Jacksonville to Key West to go skin-diving.

Chase Manhattan announces curtailment of 40 percent interest bonuses — The Chase Manhattan Bank announced that it was dropping its much celebrated 40 percent interest bonuses for investors who have signed up early for the "All Savers" certificates before October 1, following a warning by the Internal Revenue Service that it had substantial doubt as to the tax status of the new certificates.

Child dropped over Niagara Falls — A 28 year-old woman, Dunia Sayegh, suffered a dizzy spell and accidentally dropped her 2-month old son over the railing at the head of Canadian Horse Shoe Falls Saturday. The son, Hesham, was swept over the 162-foot falls into the swirling Niagara River. The infant was presumed dead, even though the child's body has not yet been found. Police estimate that the child's body will be recovered within the next few days.

New business organization formed — Over 100 persons who had resigned from the US Jaycees because of that organization's refusal to admit women met in Pittsburgh this weekend to establish a new organization. Delegates chose to call their new organization Vector International. Kathleen A. Murray is its newly elected president.

Jerri-Lynn Scofield

Sports

Coe sets newer mile record — Sebastian Coe broke fellow Briton Steve Ovett's mile record Friday by more than a second, turning in a time of 3:47.33. Coe had broken Ovett's 1980 record of 3:48.80 on August 19 with a 3:48.53, only to have Ovett turn in 3:48.40 on the 26th.

Michigan top rated college team for 1981 — Polls by *The Sporting News* and *Sports Illustrated* pick Michigan as the #1 team in college football this year. Other highly ranked teams include USC, Notre Dame, Oklahoma, Texas, Nebraska, and Penn State. MIT was not mentioned in either poll.

Weather

Partly cloudy today with highs in the 70's and a small chance of showers. Lows tonight in the 60's. Increasing clouds and chance of showers Wednesday and Thursday with highs in the high 70's and lows in the low 60's.

Robert W. Leishman

Advice for R/O: "not to sweat"

(continued from page 1)

around you are so calm?" Then she answered her own questions, "They're faking it." Peck advised freshmen to remember "The most important things about MIT are not academic . . . Keep us [student activities] in the back of your mind until September 3. Then come to the Activities Midway on Thursday."

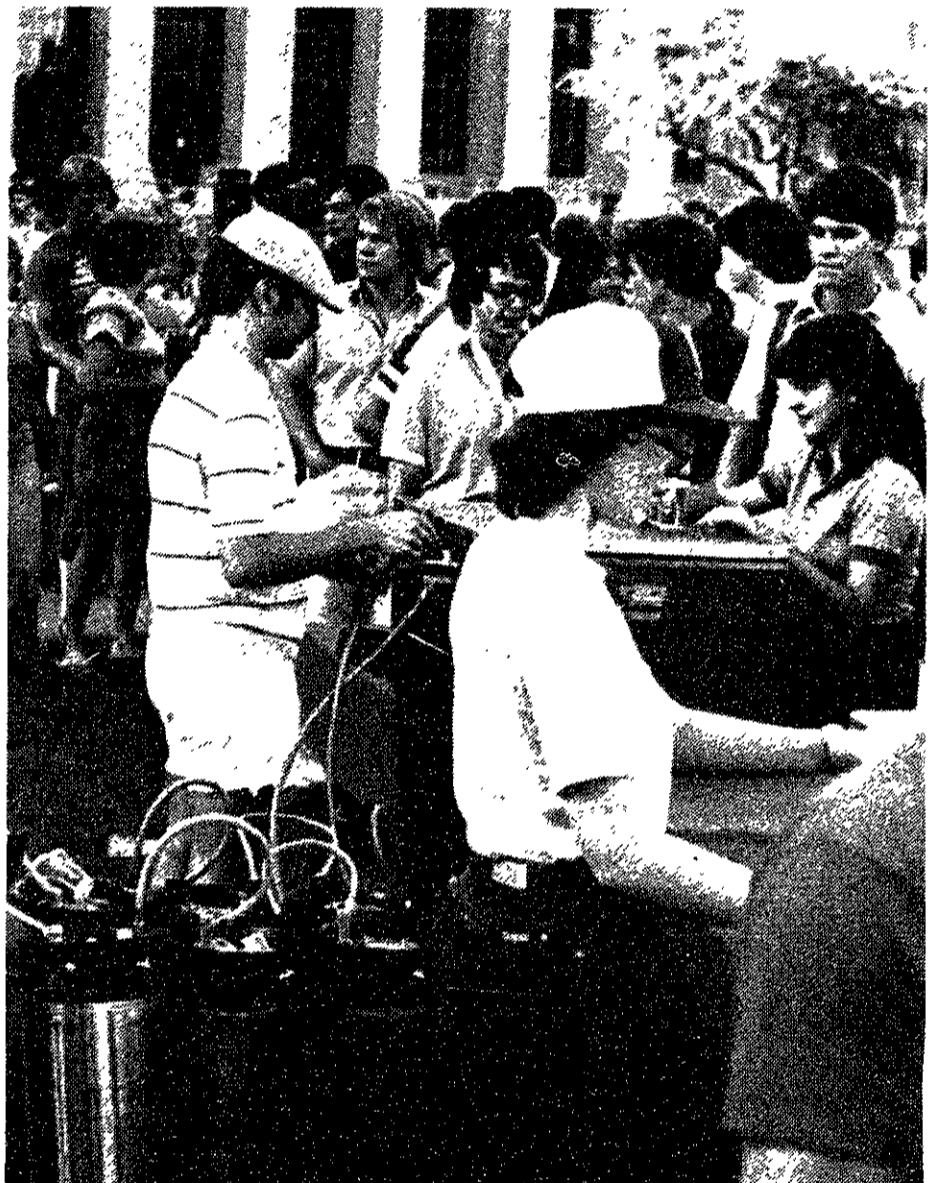
Dormitory Council Chairman David J. Scrimshaw '83 counseled students "not to sweat" about their impending choices of living groups. Scrimshaw emphasized, "I don't want to make the choice you're about to make seem trivial — it's not," while noting, "Every single student seems to think he's in the best possible living group at MIT."

Undergraduate Association President John DeRubeis '83 also

spoke. The picnic concluded when InterFraternity Council President James A. Murray '82 declared, "Let the Rush begin!" and members of the Class of 1985 were whisked away by representatives of various living groups to sample some of the many R/O Week activities.

During the picnic, true to tradition, several posters were unveiled on the roof of Building 10, which is surmounted by the Great Dome. One of the posters read "GAMIT [Gay at MIT] Welcomes the Class of 1985."

Another display was supposed to read "This is MIT. Collect and third number calls will not be accepted at this number," but due to certain unknown technical problems, the full representation was never seen.



Dining service provided refreshments at the Freshman Picnic Friday. (photo by Ken Snow)

Student Sale

Swivel Chair, File Cabinets, Folding Tables
(New and Used)



Swivel Chair
Reg. \$37.99
Sale \$19.99



Executive Swivel Chair
Reg. \$110
\$59.99



Swing-arm Lamps
Starting at \$15.99



Office Chair
Reg. \$85.00
\$49.99



List \$75.95
Sale \$51.99



List \$90.95
Sale \$62.99



Formica Tops
(Available in 3 colors)
\$32.00

Used Student Desks \$35 and up



FOAM RUBBER

AND WIDEST SELECTION POLYFOAM FOR CUSHIONS - MATTRESS - BOLSTERS CUT TO ANY SIZE & SHAPE AT NO EXTRA CHARGE

DISCOUNT PRICES

— PLATFORM BEDS —

DANISH DESIGN FURNITURE
Zip-on Covers
Made to Order
Vinyls & Upholstery Fabrics

FOAM RUBBER DISCOUNT CENTER

254-4819 165 Brighton Ave., Allston

CAMBRIDGE OFFICE FURNITURE

(617) 876-6790

113 Richdale Ave. Cambridge, Ma. 02140 Open Mon - Fri. 8-5

classified advertising

JEEPS, CARS, TRUCKS

available thru government agencies in your area. Many sell for under \$200.00. Call 602-941-8014 Ext. 6533 for your directory on how to purchase.

Piano Lessons

Concert Pianist, recently moved to Somerville accepting advanced pupils and a limited number of serious beginning and intermediate students. Dorothy Siebert 666-4582.

Back Bay-Fenway Condos
Newly renovated 1 & 2 bd condos at Museum of Fine Arts. Oak floors, new kitchens w quarry tile, storage bin, etc. Owner financing at only 14% interest. Prices 38K to 45K. Will consider renting at \$600 per month. 289-0253.

FOR SALE — 1977 Toyota Corolla, 5 spd, good exterior (yellow) and interior (tan), new brakes, just tuned, no mechanical trouble. Call Mike Brower, 247-8691 or 225-6484 (leave message if not there).

Getting bored?

If you can write, take photographs, cut a straight line, or if you would like to learn, come by *The Tech* office, W20-483. Sunday, Monday, Wednesday, or Thursday night. Try us, you'll like us.

FOR SALE — one IDS 120 CPS Dot Matrix Printer \$300, one Dabyte S-100 Bus Logic Analyzer \$300, one S-100 Chassis & Power Supply. 232-4505 evenings

Stephanie Pollack

Change, tradition and R/O Week

The primary challenge facing MIT as a purveyor of technical education is the need to balance teaching constantly changing state-of-the-art methods and theories with teaching classical principles and techniques upon which science and engineering are based.

The primary challenge facing MIT as a purveyor of living environments for over 4000 undergraduates is the need to balance changing economic and social needs and priorities of its students with traditional practices and principles upon which MIT's current living group structure is based.

MIT's divergent resolutions of these twin challenges are well illustrated by the Residence/Orientation Week activities now underway. Later this week, freshmen will decide how best to fulfill MIT's core requirements in those subjects which MIT feels are essential to a basic understanding of traditional science and technology. Freshmen will also have an opportunity to explore one of MIT's approaches to the teaching of state-of-the-art subject matter — freshmen seminars.

While these two types of courses do not exhaust MIT's catalogue of educational opportunities, they are illustrative of MIT's mix-and-match philosophy of technical education. Traditional subjects are separated from subjects covering newer, changing material. During freshman year the former are represented by the core requirements and the latter by the seminars; within the academic departments the former become departmental requirements and the latter restricted electives. Little or no attempt is made to blend the two types of subject matter together. Historical perspective and chronological development of scientific theories have no place in a typical MIT science or engineering course.

Institute living groups take the opposite approach in their R/O activities. Tradition is the context within which each year's Rush activities are set. No artificial attempt is made to separate the traditional character of the living group from the changes which will undoubtedly be wrought by the influx of freshmen. Living groups and their R/O activities evolve, and past and future are equally important stages in the evolution.

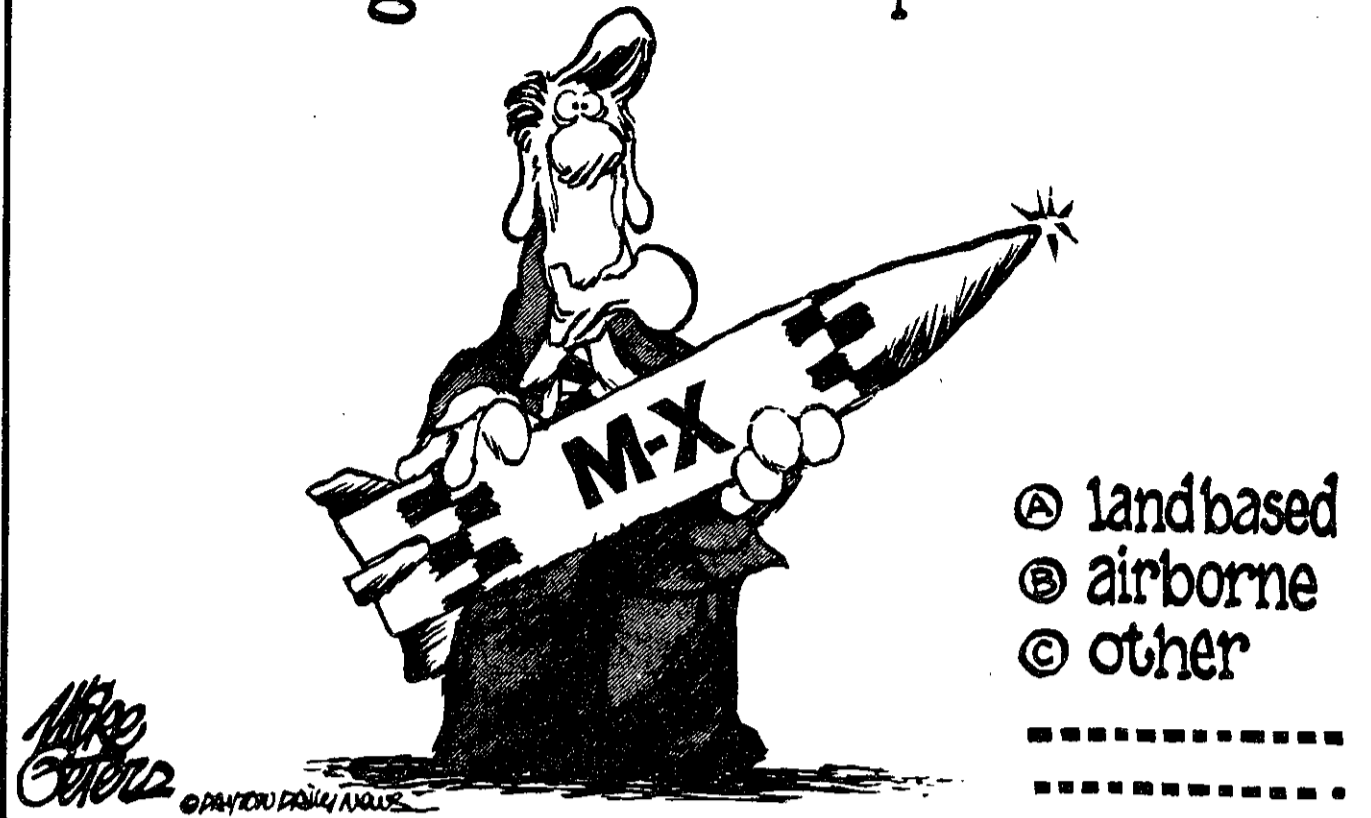
Many freshmen are concerned that R/O activities are insincere: living groups putting on a show for freshmen do not necessarily reveal their true character. The traditional nature of most R/O activities insures that no cover-ups can occur. R/O activities have developed over the years in concert with the character of the living group and so represent its true nature. Big, boisterous living groups sponsor big, boisterous activities, while more mellow living groups have a more mellow rush.

While relying on tradition for both R/O activities and procedures, living groups must be flexible enough to accommodate the changing needs of freshmen. No single living group can dictate the proper content of R/O activities — as the Institute dictates the content of core courses — and so each must change if it is to be successful in attracting changing groups of freshmen.

The most important aspect of the blend of tradition and change found in R/O living group activities is its constant success. Every year over 1000 freshmen are distributed among more than forty living groups in about one week, and the vast majority are satisfied with the outcome. No equally high level of satisfaction would be found if students were polled about MIT's curriculum.

R/O living group activities seem to have found the right combination of rigidity and flexibility. Such balancing is successful primarily because it was performed by students, who are sensitive to the truly important priorities. Perhaps the students' success in defining a system of R/O living group activities in terms of both tradition and change can serve as an example for the Institute in its attempts to strike a similar balance in its curriculum.

Tell Mr. Reagan where he can put his missile...



Guest Column/Mitch Trachtenberg

Avoiding moral injuries on the technological playground

Welcome and congratulations. You've just arrived at the world's number one technological playground. For a smart student interested in science and engineering, MIT is an irresistible place, and over the next few weeks the Institute will undoubtedly seduce you.

You will be meeting more smart people than you ever realized existed. You will explore the Institute's nooks and crannies, uncovering 21st century gadgets practically everywhere you look. You will be engrossed and challenged by your new courses — courses that actually move at your pace, or even a bit faster. You will start your initiation into the technological elite.

Our society has big plans for your brains. MIT has goals for you. Your parents have goals for you. Each of your professors have goals for you. For the next four years, these goals will be communicated to you through your courses, your advisors, letters from home, and even in news stories and advertising.

You are going to find yourself very busy very soon, so if you want to think about your goals for your life, your desires . . . now is the time.

MIT can help you achieve many of your goals. Among other things, you probably want to understand the way things work. Fine. You want a well-paid job that commands respect. Fine. You want to be at the frontiers of technology. Fine. You want to use science and engineering to help others. Not so fine. Just which others might that be?

You will be told — again and again, but not always out loud — that your job is to make the American way work: to help America become more efficient, more productive, and stronger. Making the system work, you will be told, is your way of helping others.

Be careful to ask who will benefit from your

developments. Question assumptions, particularly those assumptions which those around you don't question. It's amazingly easy to find yourself seduced into a job which increases the power of the powerful and the wealth of the wealthy. It is, sadly, difficult to search out a job which helps those who truly need help.

Many students arrive here with a strong concern for social justice. Overwhelmed by the excitement and allure of MIT's high-tech life, some of those sign an unwritten bargain with America's upper-crust establishment: in exchange for four years of training in an exciting, high-tech field, followed by a respectable, high salaried job, these students agree not to question the uses to which their minds are put.

They design automation systems which increase productivity and efficiency by throwing people out of jobs, but they don't ask what happens to the newly unemployed. Instead, they recite without thinking: "the jobs I eliminated were dull and repetitive."

They go on to work at Draper Labs on missile guidance systems or at Lawrence Livermore Labs on nuclear bomb triggers not out of patriotism but because the work is intriguing and well paid. When asked the value of their work, they smile and, without thinking at all, recite the incantation "deterrence."

Some of these students — not all — become morally blind. They are adored by the rich and powerful as convenient tools. The poor, the weak, and those who still feel their consciences cry out simply look upon them as opportunities lost.

To be a tool of someone else's will — even a high paid, well acclaimed, high-tech jet set tool — is an incredible waste of intelligence and humanity. So, think through what is really important to you. And think with your heart, as well as with your mind.

The Tech

Brian J. Glass '82 — Chairman
Stephanie L. Pollack '82 — Editor-in-Chief
Jon von Zelowitz '82 — Managing Editor
Richard W. Epstein '83 — Business Manager

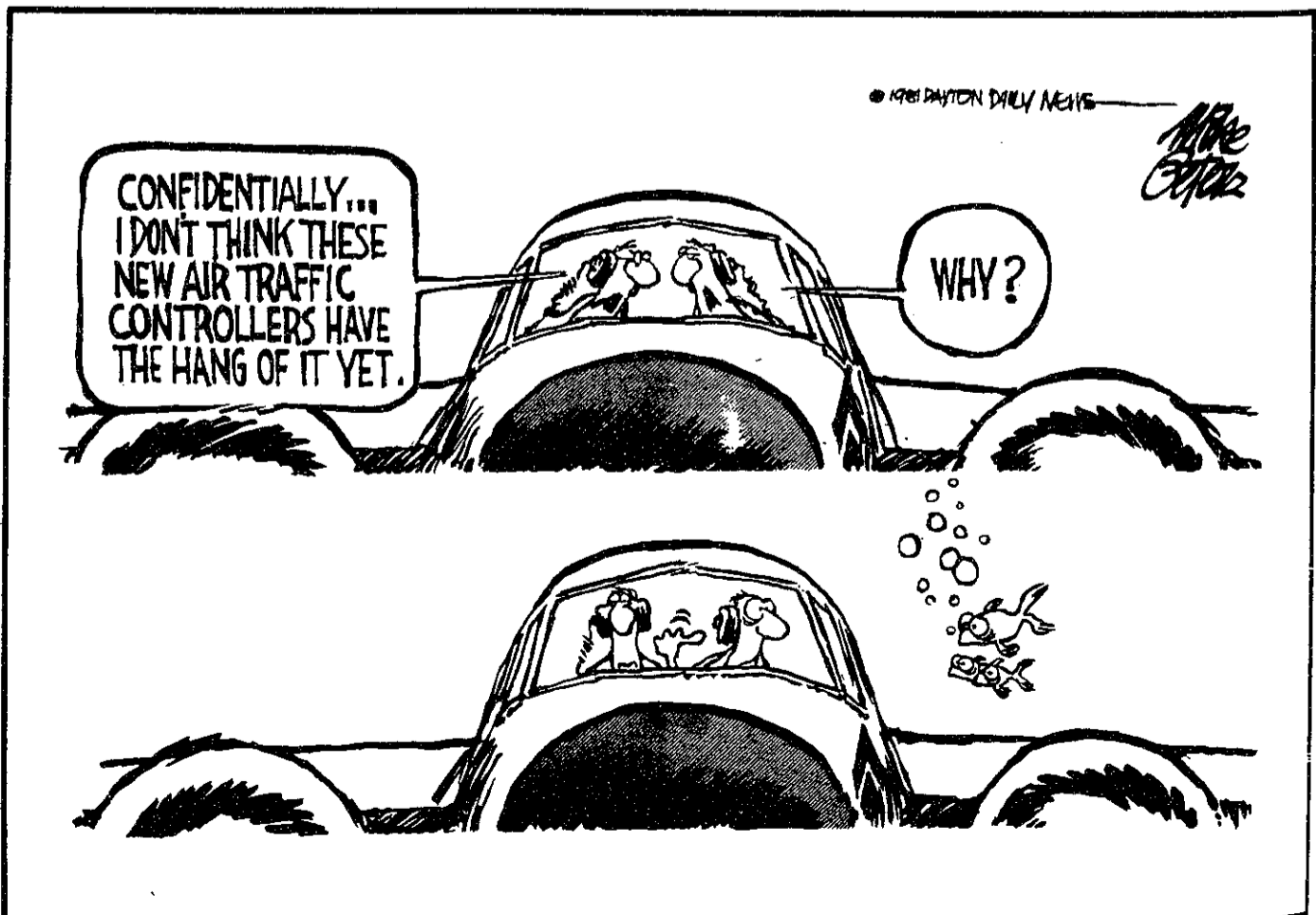
Volume 101, Number 29
Tuesday, September 1, 1981

News Editors: Ivan K. Fong '83, Jerri-Lynn Scofield '83
Night Editors: V. Michael Bove '83, Judy Passman '83, Bill Giuffre '84
Photo Editor: Steve Cohen '84
Sports Editor: Eric R. Fleming '83
Arts Editor: Lisa Buchholz '81
Advertising Manager: Allen Frechter '83
Production Manager: Richard Salz '82
Contributing Editors: Kevin G. Osborn '82, Linda A. Schaffir '82, David G. Shaw '82, Laura Farhie '83, Jack Link '83
Indexing Project Representative: A. David Boccuti '79
Senior Editors: Steven L. Solnick '81, Robert W. Leishman '82, Gordon Hunter G

PRODUCTION STAFF FOR THIS ISSUE

Night Editor: Robert W. Leishman; **Staff:** Jonathan Cohen '82, David G. Shaw '82, Sheena '82, Ken Snow '82, Jon von Zelowitz '82, V. Michael Bove '83, Bill Giuffre '84

The Tech (ISSN 0148-9607) is published twice a week during the academic year (except during MIT vacations), weekly during January, and once during the last week in July for \$1000 per year Third Class by The Tech, 84 Massachusetts Ave. Room W20-483, Cambridge, MA 02139. Third Class postage paid at Boston, MA Non-Profit Org. Permit No. 59720
POSTMASTER: Please send all address changes to our mailing address The Tech, PO Box 29, MIT Branch, Cambridge, MA 02139 Telephone: (617) 253-1541. Advertising, subscription, and typesetting rates available. © 1981 The Tech. Printed by Charles River Publishing, Inc.



Dormitory crowding lower than last year

(continued from page 1)

itory system will probably not be severely crowded, according to Sherwood. Last week, Sherwood had predicted that between 65 and 70 freshmen would be crowded. As of last evening that number stood at 62.

McCormick Hall, the only exclusively female dormitory on campus, was once again highly oversubscribed, with 83 women designating McCormick their first choice. Only 54 spots were available for freshmen in McCormick.

Fraternities pleased with rush

(continued from page 1)

between fraternities and other fraternities and between fraternities and dormitories," remarked Goldberg. "I have never seen a more cordial rush since I've been here."

Goldberg continued, "I think the cooperation was apparent in the rush meetings." Goldberg noted that he and other fraternity representatives had met several times in recent months to discuss rush activities.

Goldberg also indicated "We're sitting pretty right now." He added, "All of the Rush Chairmen said that the quality of the people they met this weekend was really quite high."

IFC President James Murray '82 corroborated Goldberg's statement, "People were saying that they had met some excellent people."

For the first time, all of the dormitories participated in the Clearinghouse system. Goldberg said, "The dormitories calling in worked out very well," and concluded by noting, "I'd say I feel good about everything."

Murray added, "We're happy." In summarizing fraternity rush so far, Murray also expressed his satisfaction with the operation of this year's freshman shuttle system. He indicated that approximately 150 shuttle trips were held, transporting about 400 freshmen and their belongings from the airport.

Fitzgerald noted that a typical freshman makes about ten visits to four different fraternities.

COTTON TURTLENECK JERSEYS — 6.95 31 COLORS

LEVI'S LEE'S

FATIGUE PANTS — 10.95

CENTRAL WAR SURPLUS



433 MASS AVE. Central Square Cambridge

The opening of 500 Memorial Drive seemed to have the greatest effect on Baker House, MacGregor House, and East Campus, but did not seem to affect Burton House severely. Burton was oversubscribed by almost a three to one margin. MacGregor House was significantly undersubscribed.

In the first round of the housing lottery, 795 freshmen were assigned to fill 804 available spots. According to Sherwood, the precise number of housing spaces to open for transfer and readmitted students from earlier years will not be known until later in the week.

Two more dormitory assignments lotteries will be held, on Wednesday and Thursday. By Thursday afternoon at 2pm, final dormitory assignments will be available in the R/O Center.

Random Hall did relatively well in the assignments process this year. While only 26 freshmen designated Random Hall as their first choice, all available spaces were filled on the second round.

First Round Housing Assignments R/O 1981

DORMITORY	Space (+ crowds)	First Choice	Total Assigned
Baker	74 (+ 8)	19W/100M	33W/49M
Bexley	14 (+ 0)	2W/2M	2W/12M
Burton	49 (+ 14)	50W/102M	30W/34M
East Campus	45 (+ 15)	14W/55M	20W/48M
MacGregor	106 (+ 2)	47M	115M
McCormick	46 (+ 8)	83W	54W
New	70 (+ 2)	4W/37M	5W/66M
Random	41 (+ 0)	6W/20M	12W/29M
Senior	40 (+ 3)	10W/16M	11W/29M
French	5 (+ 1)	3W/6M	2W/4M
German	4 (+ 0)	1W/6M	1W/3M
Russian	8 (+ 0)	0W/3M	0W/3M
Spanish	6 (+ 1)	3W/2M	3W/2M
500 MemDr	249 (+ 8)	41W/159M	64W/164M
Total	757 (+ 62)		237W/558M

Graphic by Robert W. Leishman and V. Michael Bove

Get a \$20 rebate on the TI-59 Programmable.

Even without the \$20 rebate, the TI-59 is special—it's our most powerful programmable, and we've never offered it at a lower price.

The TI-59 gives you up to 960 program steps, or up to 100 memories, plus magnetic card read/write capability. You can also slip in one of TI's Solid State Software™ modules and successfully attack complex engineering, business, statistical and scientific problems. And by adding the optional PC-100C printer, you can record your calculations.

So if you like the idea of having real programmable power, take us up on our rebate offer. Buy a TI-59 now, and fill out the coupon below. The offer ends Dec. 31, 1981.

Another good deal!"



©1981 Texas Instruments Incorporated

I bought my TI-59 Programmable at (store name): _____ and have attached the dated sales receipt and completed customer information card (packed in box). My TI-59 Serial No. is _____ (from back of calculator). Please send my \$20 rebate check to:

NAME _____

ADDRESS _____

CITY _____ STATE _____ ZIP _____

Send to: Texas Instruments TI-59 Rebate Offer, P.O. Box 725 Dept. 59, Lubbock, Texas 79491.

NOTE: Proof of purchase must be dated between August 1, 1981 and December 31, 1981. Offer void where prohibited. Offer good only in U.S.A. Rebate applies to purchases of TI-59 Programmable only. Items must be postmarked by January 15, 1982. Allow 30 days for delivery. Limit one per person/address.

TEXAS INSTRUMENTS INCORPORATED

J. Letvin Lounge, 20C-221

CONCOURSE

- Small class size
- Co-operative learning
- Come by and see!

Friendly People

- Well known and well qualified
- Specialists from linguistics to orthopaedics
- Always available to help

Excellent Faculty

- All freshman requirements
- Theme of "Mind, Machine and Meaning"
- Multidisciplinary approach

Interesting Courses

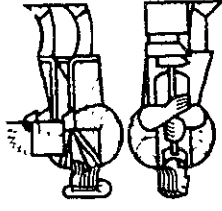
Tuesday September 1 3-9pm

CONCOURSE

Announcing Interviews for



TOGETHER
PUT THIS ISSUE
WHO HELPED TO
THE PEOPLE
MEET
AND
DROP BY



A HUNDRED YEARS OF TRADITION



Newspaper, 1881

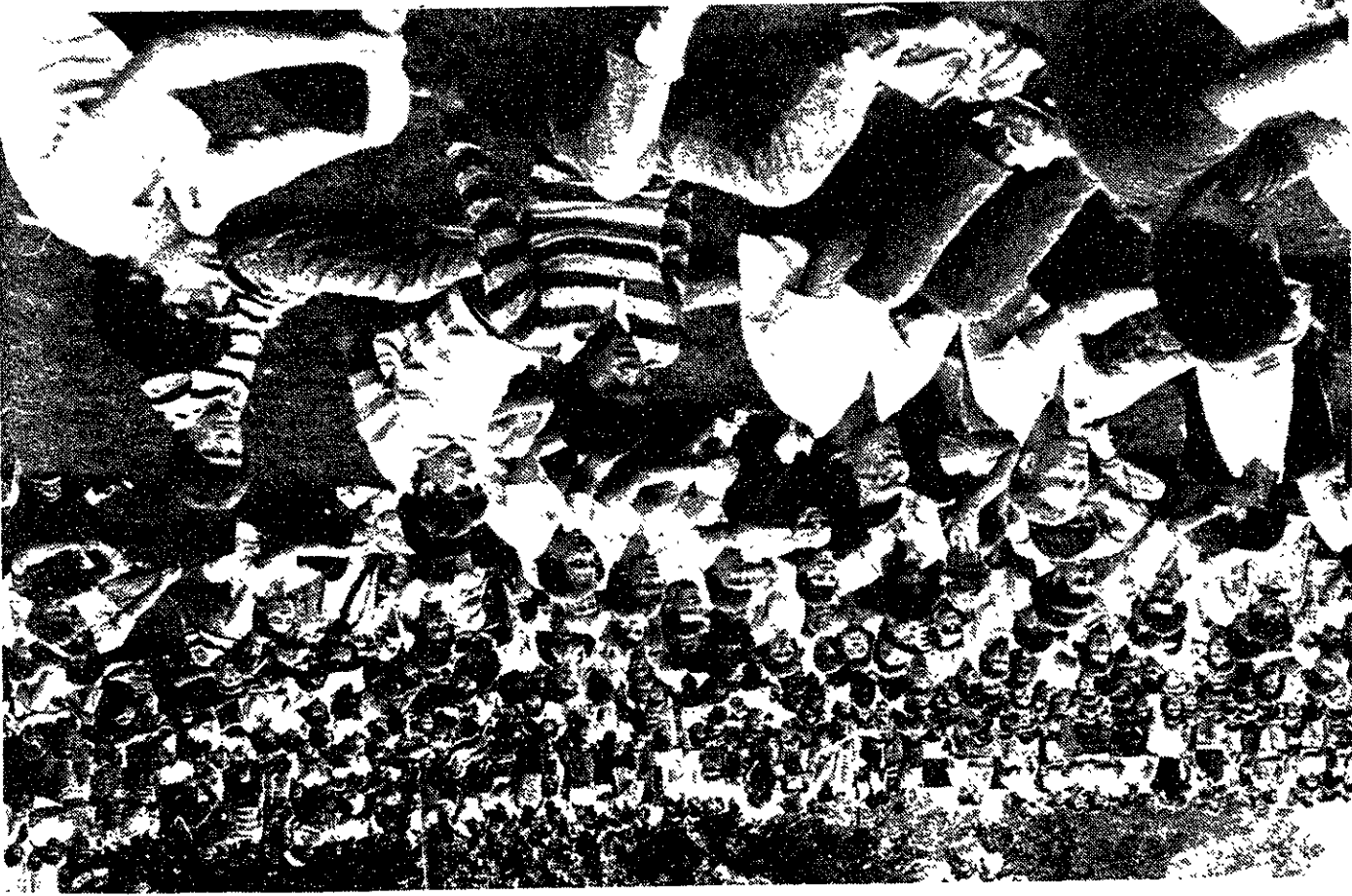


Photo by Billy Leshman



Photo by Ken Snow

The Freshman Picnic



Photo by Billy Leshman

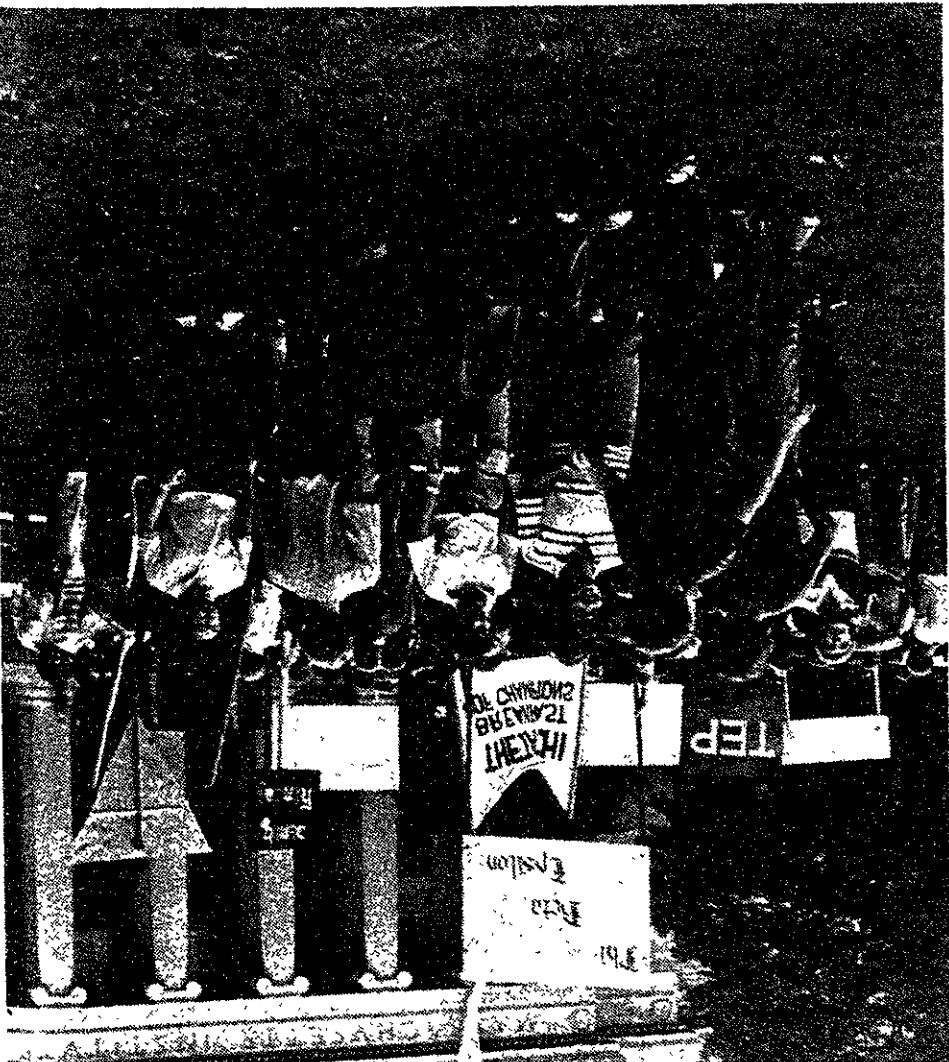


Photo by Billy Leshman

Once Upon A Mattress

Off to a Cushy Start with the Musical Theatre Guild

Once Upon A Mattress, presented by the MIT Musical Theatre Guild, August 29, 1981.

The Princess and the Pea: Once upon a time, on a stormy night, a princess arrived at the door of a castle . . . Everyone knows the story, it's been told for years. The real story, however, has remained a well-kept secret. A certain minstrel was a guest at the aforementioned castle, and he got the inside scoop . . .

It is on this premise that *Once Upon A Mattress* is based. The authors take great advantage of the flimsy construct and pack the story with crazy characters: a mute, skirt-chasing king, his shrewish wife, a daunted prince, an ex-vaudeville wizard, and more. Add a generous number of well-penned tunes and a fast-paced script — resulting in light enjoyable entertainment.

Light, enjoyable entertainment — the perfect summer production, which the Musical Theatre Guild carried off perfectly. The guild seems to have better luck with small-cast plays, probably because they can focus more on the acting and ease up on the technical aspects. All with good results; I have never heard better singing or seen better dancing in any other MTG show.

The acting was also on par with any professional production. Of particular note was Bob Shepard-Blue's performance as King Sextimus the Silent; he managed to create a vivid, realistic character without uttering a line of dialogue. Jane Graham was a suitably aggravating Agravaine (also a bit loud), but she seemed to work best when played opposite her henpecked son, Prince Dauntless. Jim Mahoney found the perfect balance of naivete and manic energy that was necessary for the Dauntless part.



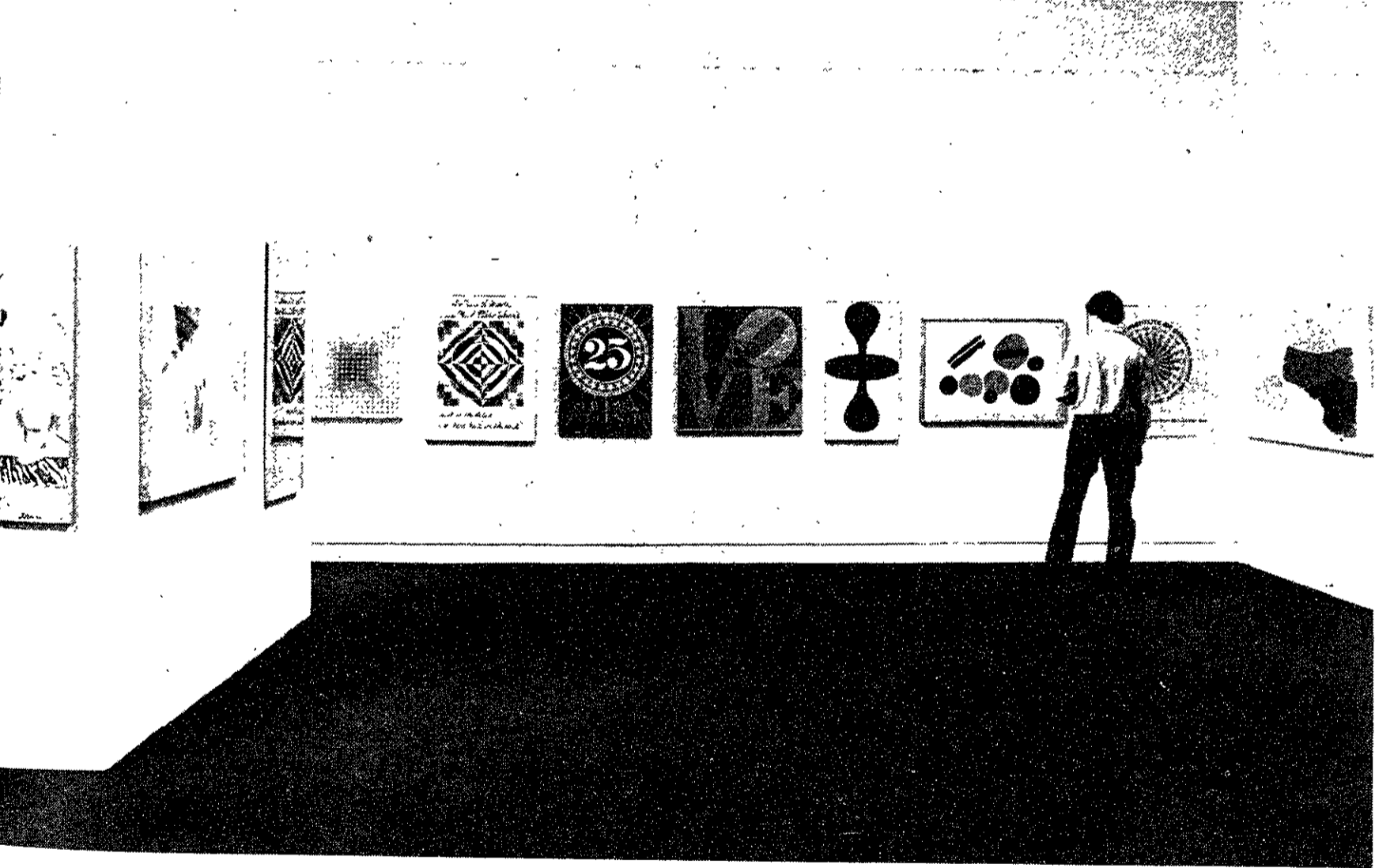
Rather than single out all of the performers, it could be best to say that all of the acting was well above par. The flaws with the show lay more with the staging and music. Quite a few lighting cues were missed; another technical run-through should iron out the difficulties. I don't know if another run-through (or two) will help the band. At times they sounded either out of tune or in danger of drowning out

the actors, problems that were most in evidence during the song "Sensitivity." However, this did not detract from the overall quality of the show.

This will be the last weekend to really enjoy yourself before things get awful (once again), so go and get a few laughs—see the show before it's too late.

David Shaw

Creativity Bankruptcy? Borrow It!



Summer *must* be over — things are happening again. I strolled by MIT's Hayden Gallery yesterday afternoon on the chance that maybe they'd pulled a little something together, only to be completely bowled over by a massive exhibit of prints and posters that sends off this year's student art-loan program. I'm still salivating.

The Committee on the Visual Arts has massed a dazzling selection of the best in 20th Century graphic work; nearly every significant contemporary artist is represented: Rauschenberg, Lichtenstein, Calder, Motherwell, and Warhol to name a few. Best of all, these original works are available to MIT students (Full-time, registered only, pleez . . .) to hang in their own messy little rooms. Both the Catherine N. Stratton (wife of MIT's 11th president) Collection of Graphic Art and the List Student Loan Program Collection are on exhibit, encompassing some 200 framed works. The first collection was established by the Council for the Arts at MIT in 1966; the second was drawn in 1977 from collector/patrons Albert and Vera List's gift to the Institute. The Loan Program aside,

both collections make spectacular exhibits in themselves.

The works are made available through a lottery which will be held at 5pm on September 18. Each student submits a preference card listing three top choices by 1pm September 18. Cards and details are available at the Hayden Gallery. Certain works are available only to student groups and are designated for "group space" only. Student groups recognized by the Association for Student Activities and the Undergraduate Association are eligible for these specially designated works and for all the other prints as well.

There is significant competition: 830 students submitted their names, last year, for some 170 prints. However, this problem pales next to that of *choosing* . . . Some large prints, like Friedel Dzubas's color silkscreen, "Philharmonic," with its bold swaths of color are clearly suited to large working spaces or "group areas." On the other hand, the wide selection of artist-designed posters (impressive works commissioned by every organization imaginable, from the Art Institute of

Chicago to the New York Film Festival) are more conversational and suggest a living-space setting.

But how does one choose between Warhol's infamous "Jackie Kennedy" litho and Chryssa's striking "Chinatown" serigraphs? Nothing in this exhibit is negligible and there is something for every taste. Peter Strand's set of serigraphs, decorative and precise, waver with color, vie for attention with Calder's vibrant, impulsive "Chevrons Noir Sur Rose et Jaune."

While you're making up your mind, tour the hallway exhibit outside the Hayden Gallery — "Looking At Prints from Boston Area Galleries" — a selection of prints borrowed to complement the Loan Program. These are not available to students, but no one should miss the opportunity to ogle this assemblage of Boston's finest holdings. Especially notable are the Rauschenberg ("Rookery Mound — Rose Bay," a fragmented and nostalgic lithograph), the Lichtenstein, Aldoph Gottlieb's "Green Foreground," and Alex Katz's "Blue Umbrella," with its pure true colors.

ARTS

This is hard to imagine, but the Nucleo Eclettico Theatre, 216 Hanover Street, presents **Wanda and Her Dog**, a play about how a couple's marital problems affect their dog . . . September 3-19, 8pm, Thursday, Friday, and Saturday only. May require drugs.

The MIT Musical Theatre Guild presents **Once Upon A Mattress**, with performances on September 5 at 3:30pm, and on September 4, 5, 10, 11, 12 at 8pm. Tickets are \$4.50, or \$2.50 with MIT ID, and are available in Lobby 10 or at the MTG office. For information and reservations, call x3-6294.

ON THE

Levon Helm (soft-rocker, she sneered) appears at cozy Jonathan Swift's, 30 Boylston Street, Harvard Square, on September 2.

Some of Boston's most creative teenagers appear tonight at the Rat, 528 Commonwealth Avenue; **Vitamin** are a bunch of kids doing disjointed, danceable, highly original music. Also appearing are the Fans and an unannounced guest.

Tonite at Metro, England's **Psychedelic Furs** (who play here so often they should make this town their home) with the unlikely **Robert Ellis Orrall**, a Boston new-waver with a new album. The Furs, who purvey a distinctive apocalyptic sound, are politely playing two shows: one for all ages at 5pm, and one for the legalized crowd (20) at 10pm. Tickets are \$5.50 for the first show, and \$7.50 for the second.

TOWN

Dark Star (directed by young American genius John Carpenter) and **Attack of the Killer Tomatoes** (directed by Steve Peace and John Devello) are two pieces of science fiction meta-trash playing this Wednesday and Thursday at the Coolidge Corner Cinema (call for showtimes, 734-2500).

Five years ago, Off the Wall Cinema was closed by the City of Cambridge for screening the controversial program called **Heart Throbs: Short, Non-Sexist Films of Sexuality and Sensuality**. Now, today through September 9, Off the Wall will once again present the original, uncensored **Heart Throbs**. There will be shows daily at 5:45, 7:50, and 9:55pm, plus Friday and Saturday at midnight.



ELWOOD P. STROUPE, MSChE, PURDUE '62 is a design engineer at the Atomic Power Equipment Department. He has contributed to the design of Dresden 2's reactor—heart of the system. He'll follow it right through installation.

UA working on coupons, shuttle, course guide

By Laura Farhie

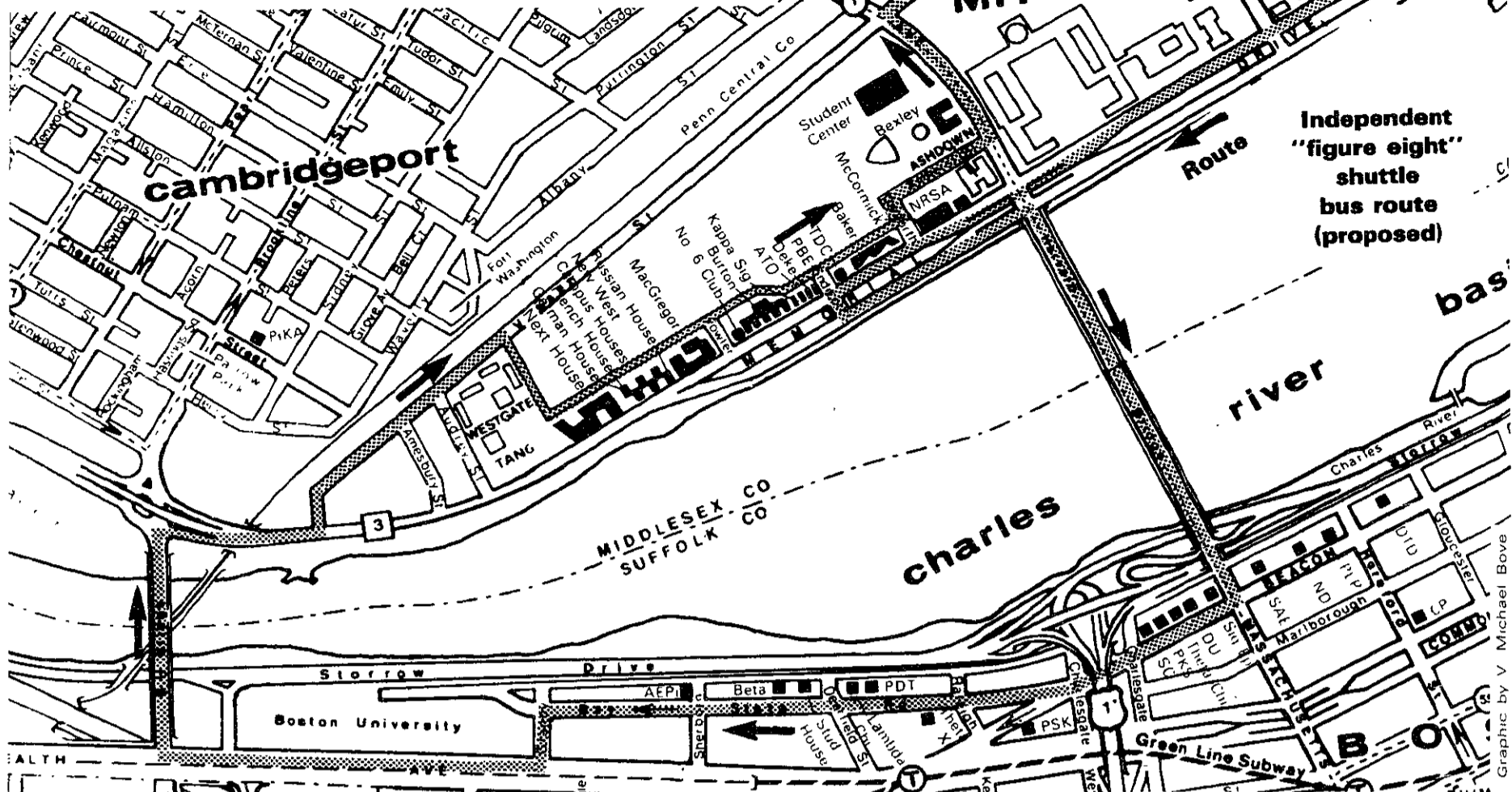
Student discount booklets containing \$988 in coupons will go on sale today for eight dollars a booklet, reported Undergraduate Association President (UAP) John DeRubeis '83.

The 243-coupon booklet, which will be sold by the Undergraduate Association (UA), is one of many special projects the UA worked on last summer, according to DeRubeis. Other ongoing projects include a free Harvard-Dudley bus pass for MIT students, a course evaluation guide for freshmen, a student credit union, and additional lounges in Walker Memorial and the Student Center.

"The minimum discount [in the booklet] is fifteen percent, and there are a lot of buy-one-get-one-frees," said one coordinator of the project, Kurt Kohlberg. He and his partner Timothy Sutton, both Sloan School of Management graduate students, elicited the participation of 105 stores: thirty stores are in Cambridge, thirty in Boston, and thirty-five in suburban areas. The coupon booklet will be sold at other colleges in the Boston area including Harvard, Boston University, Northeastern, Simmons, and Wellesley, according to Kohlberg.

In compliance with his campaign pledge, DeRubeis is negotiating with the Massachusetts Bay Transportation Authority [MBTA] to make the MIT student identification card a free bus pass. DeRubeis explained that the MBTA was interested in this idea because the MBTA was bankrupt and the UA would offer immediate cash. DeRubeis complained, however, that "with increased [bus fare] rates we're back at ground zero."

Two other bussing alternatives exist if negotiations with the MBTA are not fruitful, according to UA Vice-President (UAVP) Ken Dumas '83. The UA is in-



vestigating the possibility of paying one lump sum to make the MIT identification card a bus pass for the green Harvard Medical School shuttle. Right now MIT students must buy fifty-cent tokens at the Cashier's Office to be admitted on the shuttle.

The third possibility, Dumas explained, is an independent shuttle bus that would make a figure eight, covering every dormitory and most fraternities, as well as the MIT buildings. "I can foresee that one of these three alternatives will be implemented by December," said Dumas.

A free course evaluation guide for freshmen will be available "hopefully by registration day," DeRubeis announced. He said that it would contain evaluations of widely-enrolled freshmen courses, "mostly second semester." The guide was produced by the Student Com-

mittee on Education Policy, a committee affiliated with the UA.

The possibility of starting a student credit union is being explored by the UA, in accordance with another campaign pledge. Dumas described two possibilities: either an independent bank could establish one or MIT could begin one in the basement of the Student Center. "In the short run, an independent bank will be of more use to students," said Dumas, because students might be hesitant to use a credit union implemented by MIT.

Special Projects Chairman Bob Wallace '82 is drafting plans for a student lounge in Walker. The Student Center east lounge has also been proposed as a site for a student lounge area. Dumas has asked dining service to remove its tables from the area and the Student Center Committee to remove its ping pong tables.

Admissions puts less emphasis on academics

(continued from page 1)

academics." While 53 percent of the applicants for the Class of 1981 who were in the top tenth of their high school graduating class were offered admission, the figure for the Class of 1985 was 41 percent.

Richardson said that the Admissions Office had changed the personal rating system for applicants in 1977. While the primary quality that had been sought previously was leadership, "the buzzwords are now purpose and style, although they are not very precise," Richardson said.

All admissions applications are rated on both personal and scholastic scales. The scholastic index is derived through a purely mathematical procedure which takes into account grades, test scores, and class rank, according to Langdale. Applications are given a scholastic index on a 99 point scale.

The determination of the personal rating is a more qualitative process, according to Langdale. The personal rating, measured on a ten point scale, is awarded by two people who read each applicant's file. Langdale noted that one of the two readers is usually a

member of the Admissions Office staff while the second is often a faculty member. The personal rating used in determining admissions is the higher of the two numbers given by the readers.

Readers are provided with thumbnail sketches describing each rating level, according to Langdale. A rating of six means the student is withdrawn, according to Langdale, and no applicants given a personal rating of 6 were admitted to the Class of 1985. A rating of 7 indicates that the applicant "sacrificed personal development for academics," according to Langdale. Richardson noted that, while assigning personal ratings is difficult, "the ones at the top just sparkle as you read about them."

Statistics compiled by the Admissions Office demonstrate that a high personal rating greatly increases the chances for admission for a student with a mediocre scholastic index. Among members of the Class of 1985 with a scholastic index of 50-59, 83 percent of those with a personal rating of 9 were offered admission, while only 35 percent of those with a personal rating of 8 received such an offer.

notes

R/O Week

Freshman ID pictures and meal card pictures will be taken today and tomorrow, September 1 and 2, from 9:00 am until 4:00 pm in the R/O Center.

* * * *

The Technology Community Association (TCA) will sponsor an MIT-Red Cross Blood Drive in Room 491 of the Student Center, today and tomorrow, September 1 and 2, from 9:45 until 3:45 pm. Students interested in donating blood should call x3-7911 for further information.

* * * *

The Freshman Quiz will be held today, September 1, in Room 26-100 at 10:00 am. Slide rules and calculators will not be permitted. Number 2 pencils and freshman ID's are required for admittance to the testing area.

* * * *

Informal discussions of freshmen core subjects with faculty members will occur Wednesday, September 2, in the following places:

- Chemistry/Biology in the Chipman Room (8-314)
- Humanities in the Kresge Little Theatre
- Mathematics in Room 2-102
- Physics in Room 4-339

* * * *

The Academic Midway will be held Wednesday, September 2, from 2:00 pm until 4:00 pm in duPont Gymnasium. Representatives from all departments will be on hand to answer any questions about courses, requirements, and departmental programs.

* * * *

The Athletic Midway will be held Thursday, September 3, from 7:00 pm until 9:30 pm in Rockwell Cage.

* * * *

The Activities Midway will be held on Thursday, September 3, from 7:00 pm until 10:00 pm in duPont Gymnasium. Representatives from student activities will be available to answer questions on various aspects of their organizations.

Village Laundry Land
Self Service
Coin-Op Laundromat
Grand Opening
266 Brookline St.
Cambridge
Between Central Square and B.U. Bridge
Daily 8am to 10pm



LECHMERE AUTO WASH CENTERS

N. CAMBRIDGE
Deluxe Exterior Wash
Featuring All New
Brushless Car Wash System
SHINES YOUR CAR
AS IT WASHES
Open Till 8 PM
Also 3 Self Service Car &
Truck Wash Bays
Open 24 Hours
2013 Mass Ave
Porter Square

E. CAMBRIDGE
Deluxe Exterior Wash
Featuring All New
Brushless Car Wash System
SHINES YOUR CAR
AS IT WASHES
Open Till 7 PM
Also 2 Self Service Car &
Truck Wash Bays
Open 24 Hours
262 Mass. O'Brien Hwy.
Lechmere Square

WAKEFIELD
Deluxe Exterior Wash
Open Till 7 PM
Gasoline Open Till 11 PM
Also 4 Self Service Car &
Truck Wash Bays
Open 24 Hours
590 Main St
Corner of North Ave &
Main St

E. SOMERVILLE
4 Self Service Car &
Truck Wash Bays
Open 24 Hours
31 Washington St
Across from Holiday Inn

N. SOMERVILLE
Deluxe Exterior Wash
Open Till 9 PM
680 Somerville Ave
Corner of Elm St &
Somerville Ave

**EXTERIOR WASH
TURTLE WAX
AND
UNDERCARRIAGE**
Regular \$7.25
**Now
\$ 4.25**
SAVE \$3.00

**EXTERIOR WASH
HOT WAX AND
UNDERCARRIAGE**
Regular \$5.50
**Now
\$ 3.50**
SAVE \$2.00

**EXTERIOR
CAR WAX**
Regular \$3.00
**Now
\$ 2.00**
SAVE \$1.00



•With This Coupon
•No Double Discounts
Offer Good to Sept. 30, 1981
MIT

•With This Coupon
•No Double Discounts
Offer Good to Sept. 30, 1981
MIT

•With This Coupon
•No Double Discounts
Offer Good to Sept. 30, 1981
MIT

Self Service Vacuums Available At All Locations
Member, New England and International Car Wash Assoc.