

Commons requirements drop

By Jay Glass and
Jerri-Lynn Scofield

Minimum meal plan requirements for freshmen have been reduced by 50 points in a decision made Friday at 10am and announced in a memorandum later that day.

Based on point usage compiled on the 78th "feeding day" of a 102-day period, only one-third of freshmen had met their consumption requirements. The memorandum was jointly issued by Robert Sherwood, Associate Dean for Student Affairs and H.E. Brammer, Director of Housing and Food Services.

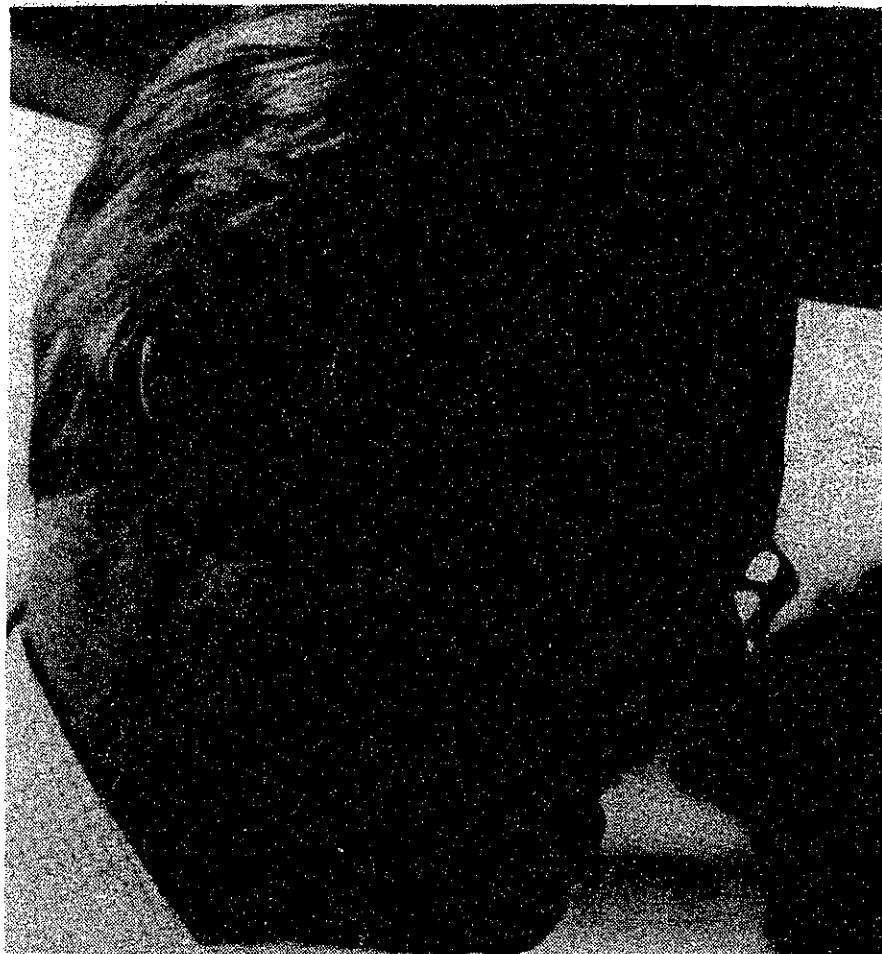
According to Brammer, original point levels were "based on our best idea of the time." When asked if these levels rested on a valid basis, he replied "we won't know until after the fact."

The reduction in point requirements should enable 85 percent of the freshmen to fulfill their responsibilities. The changes will apply to spring term as well. There will be no change in meal plan prices for the spring term. When asked if there might be further adjustments in minimum point plans, Brammer replied, "We have 75 percent of last term's experience behind us — those are not enough data points."

The decision to reduce point requirements was made after consultation with the "Dining Advisory Board, Faculty Residents, the Graduate Resident Tutors, Commons Committees, and individual students." Brammer commented, "One of the things that bothers me is that students think we were doing nothing."



2673409, is the number and title of this part of *Jonathon Borofasky, an Installation* in Hayden gallery through December 24. (Photo by Kevin Osborn)



MIT Corporation President Howard Johnson addressed the GA last Thursday. (*The Tech* file photo by Kevin Osborn)

MIT Corp. meets with GA

By Richard Salz

Editor's note: parts of this article are based on reporting done by Richard Epstein.

The Executive Committee of the General Assembly has formed a Commons Task Force to prepare recommendations students have for the present commons system. Announced at last Thursday's General Assembly (GA) meeting, the committee will be formed in conjunction with the Dormitory Council.

Students feel that nothing is being done, according to GA Floor Leader John Alam '82. "While there are many groups to deal

with gripes and complaints, we want to provide solutions," he explained.

The key point of the GA meeting was the discussion with members of the MIT Corporation's Executive Committee. Speaking for the Corporation, president Howard Johnson said that they had approved of having an outside speaker at commencement "as an experiment" for this June's commencement. Senior Class President Mitchell Brook '81, who had been working for a speaker, said he considered the corporation's decision to be a "minor victory."

The new medical center was also discussed. Johnson pointed

out that new center combines all medical facilities — both research and health care — in one facility and is the only one of its type in the country.

Some GA members expressed concern that the new health could not be located in a more central location. The desired location was the real estate on Ames Street currently owned by the TRW Carr Division, but MIT was unable to obtain the property. The committee also pointed out that, given the direction of the Institute's expansion, the location was not unreasonable.

The committee also discussed with the GA the emphasis on writing at MIT and whether more emphasis should be placed on teaching students how to write. As one student claimed, "to graduate from MIT you don't have to be able to write, but you do have to be able to swim."

Statewatch

Compromise puts T on tracks

By Richard Salz

After an interruption of slightly more than 26 hours, the Massachusetts Bay Transit Authority buses and trains resumed operation early Sunday morning.

"The old MBTA is dead. Long live the new one," declared Democratic Representative John Finnegan of Dorchester, leader of the six-member House-Senate Conference Committee.

The Carmen's Union has plans to file suit seeking an injunction against portions of the compromise legislation, but it is expected that it will probably not result in a new T shutdown.

Under the legislation, the T is to be given \$30 million to keep the system running until the end of the year and cover the expenses incurred by Governor Ed King's takeover in mid-November. An additional \$10 million is expected to come in from collected fares.

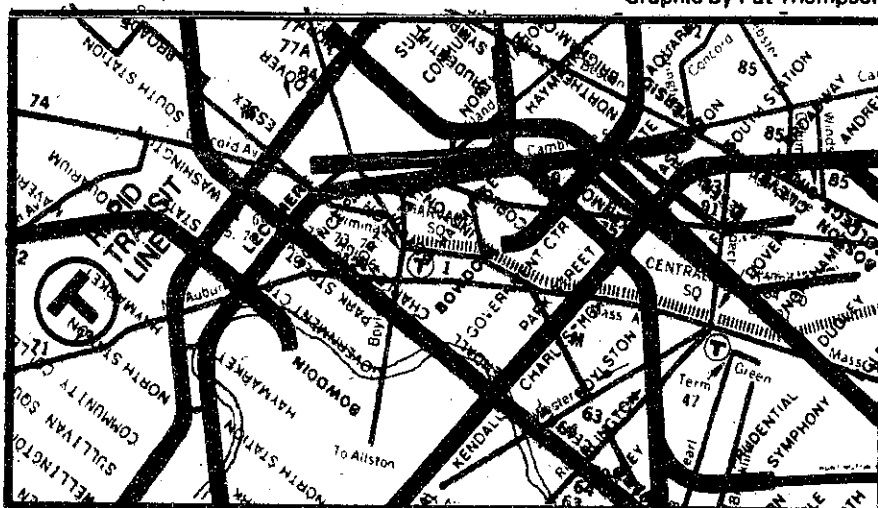
The major breakthrough in the legislative process came when the House and Senate agreed that the state will pick up 75 percent of the deficit, while the MBTA district cities and towns will pick up the other 25 percent.

For most of the week, the Senate had been insisting that the state pay the entire cost of funding the system after November 18, the day the T exhausted its \$302 million budget. The house had wanted the costs to be split 50-50.

The bill also mandated cut-backs in many T routes. For example, eight of the daily runs on the Massachusetts Avenue route connecting Harvard and Dudley Squares will be cancelled. As a result, after 10pm, buses will run every half-hour, as opposed to the previous 15-minute intervals. Similar cuts have been made in other routes across the board.

While many people are satisfied with the solution — if only because it keeps the T running — the MBTA's largest union is not.

"I think we were made scapegoats," said John Gallahue, president of the Boston Carmen's Union, Local 589. "I'm kind of bitter." Gallahue indicated that lawyers for the union would seek an injunction in the US District Court in Boston this week to invalidate a number of sections of the legislation. In particular, the



Graphic by Pat Thompson

union is upset that overtime assignments will be made by management. The current union contract stipulates that overtime is awarded on the basis of seniority.

The legislation also overrode clauses giving the union employees automatic cost-of-living raises. "Some of these issues are on the bargaining table right now," Gallahue said. The current contract expires at the end of the year. Gallahue said that the legislation would put a damper on current negotiations for a three-year contract.

Today's issue of *The Tech* is the last one of the term. During IAP, *The Tech* will be published every Thursday and will resume its normal schedule with the February 3 issue.

inside

"The Night Before Finals" a skewed Christmas poem — page 4

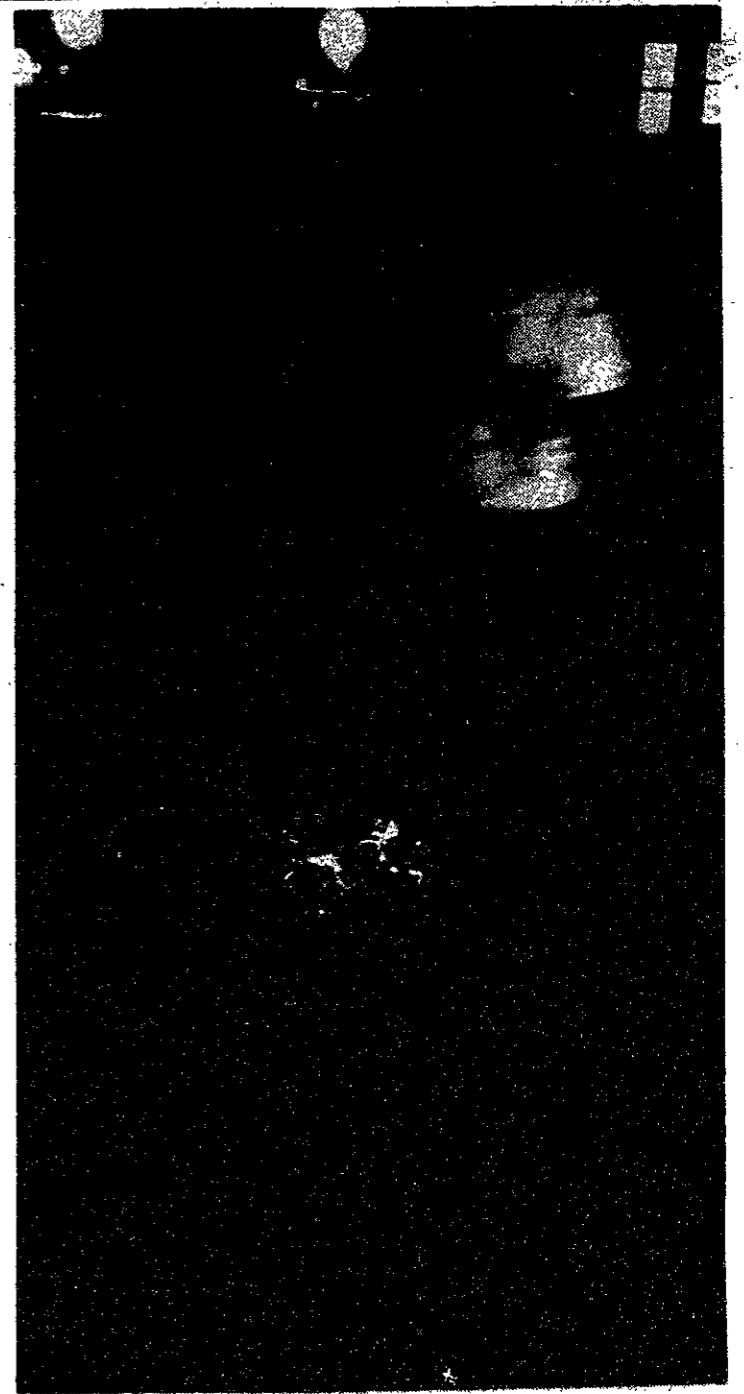
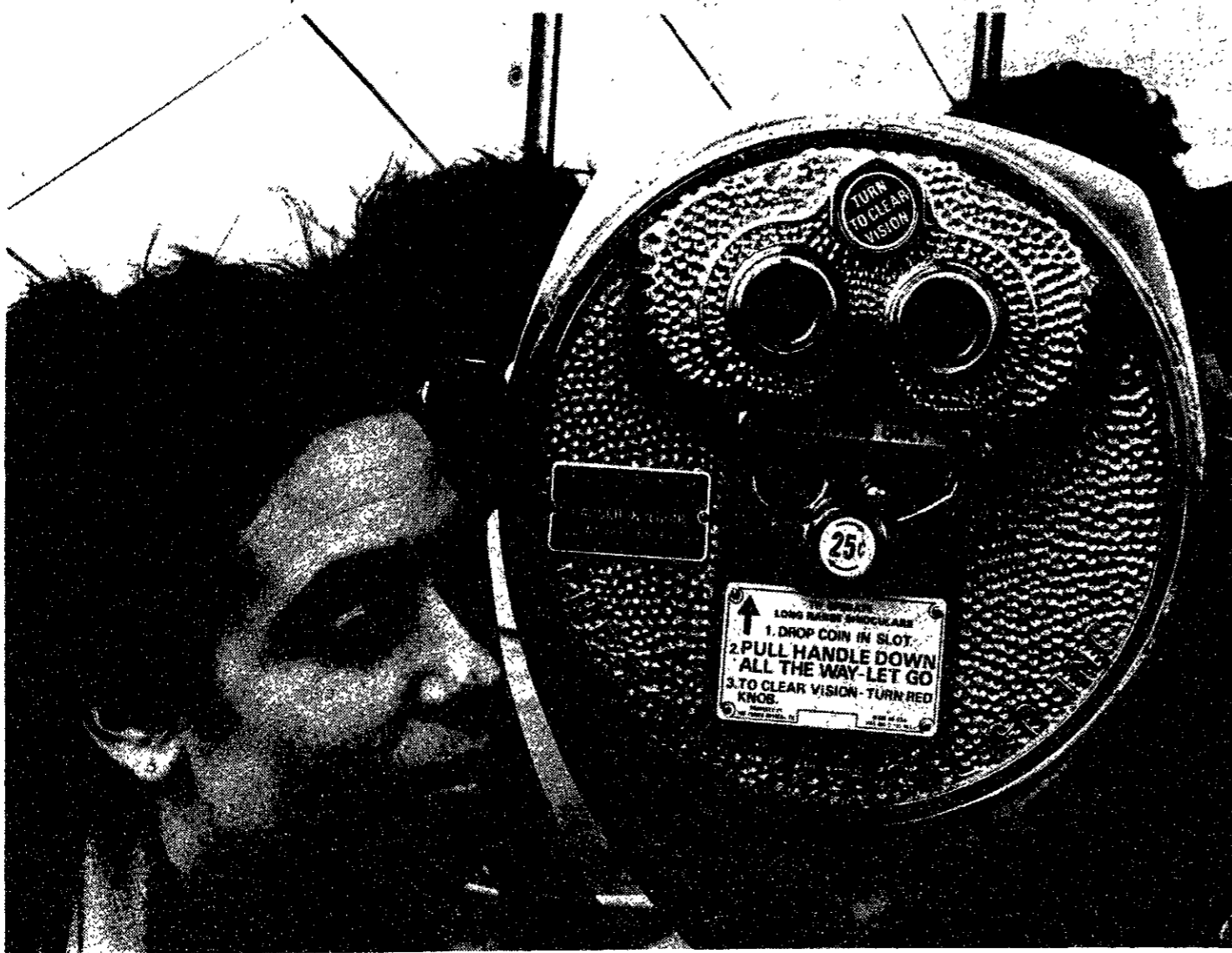
Jonathon Richmond looks at the MIT Symphony Orchestra and the MIT Choral Society. — page 6

Catch the last comics before IAP; the last laugh before grade reports. — page 11

The Fleshtones gain Jon von Zelowitz' scrutiny. — page 7

STAMP COLLECTION

photos by Pat Thompson



classified advertising

Surgeon's Scrub Suits
Shirts \$12; Drawstring Pants \$14.
Colors available: Brite Green, Olive Green, Ciel Blue. Sizes: S-M-L. Visa and MC accepted, or send a check to The Trading Co., Box 1007, Warwick, RI 02888

75 Mazda
Only 29K, clean body, new tires. Mother-in-law gives new car, so I'll share the wealth and sell this at \$800 below blue book retail. MIT only \$1500. Prof. Conroy, x3-4921.

If interested in trading mnemonic lists (physics, mathematics, psychology, anything), please write to the following address: D. Quon; Box 13475; Reno, NV 89507.

ANY U.S. BOOK IN PRINT
ORDERED BY TELEPHONE
DELIVERED DIRECTLY TO YOUR HOME OR OFFICE
ALL MAJOR CREDIT CARDS ACCEPTED
OUR 8TH YEAR WORLD WIDE
944-8060/7 DAY - 24 HOUR SERVICE
COOPERATIVE BOOK SERVICE OF AMERICA, INTERNATIONAL
Reading, Massachusetts 01867 U.S.A.

"At the outset of every endeavour, it is incumbent to look to the end of it . . . of all the arts and sciences, set the children to studying those which will result in advantage to man, will ensure his progress and elevate his rank."

Baha 'U' Llah
M.I.T. Baha'i Association

The MIT Musical Theatre Guild

is interviewing prospective directors for *Tech Show '81* on Dec. 9 & 10 at 7pm in W20-400, and prospective directors, choreographers, and musical directors for an IAP production of *You're A Good Man, Charlie Brown* on Dec. 9 & 10 at 8pm in W20-400.

Auditions for *Charlie Brown* will be held Jan. 5 & 6 at 7pm in the Mezzanine Lounge of the Student Center.
For more information, call 253-6294.

He has been working for this moment his entire life. This is his last chance. For her, this could be the beginning. And it would be the perfect love story if it weren't for...



THE COMPETITION
They broke the cardinal rule of the competition... they fell in love

COLUMBIA PICTURES Presents
A BASTARD/WILLIAM SACKHEM PRODUCTION

DESIGNED BY JEFFREY
ANY MORE LEE DENICK "THE COMPETITION"
SAM WANAMAKER

Original Music by LALO SCHIFANO Story by JOEL BLANKS and WILLIAM SACKHEM Screenplay by JOEL BLANKS
Produced by WILLIAM SACKHEM Directed by JOEL BLANKS From HASTIN
COLUMBIA PICTURES
DOLBY DIGITAL
POSTER BY JEFFREY DENICK
COLUMBIA PICTURES

Coming soon to a select theatre

news roundup

World

White House: Russians ready to move on Poland — "Preparations for possible Soviet intervention in Poland have been completed" by Moscow, according to the White House. The Administration also warned that any such action would have grave consequences. The announcement came after a series of meetings President Carter held with his security advisors. In addition, the Pentagon has prepared some "modest contingency plans," including placing some European-based troops on a higher alert status. Poland has made no comment.

Iran has a better idea — Iran expects to make "some practical suggestions" to help resolve the hostage situation, according to Behzad Nabavi, Iranian minister for executive affairs. Nabavi, speaking on CBS-TV, said that "We are not going to make everything difficult. We are going to find easy ways to finish the job."

El Salvadorian liberal out — Colonel Adolfo Arnaldo Majano, widely regarded as the most liberal member of El Salvador's five-member junta, was forced out of the government Wednesday. This is considered by observers to be the first major victory for the right in this politically-torn country.

Antonia Eanes re-elected — Antonia Ramalho Eanes, the left-of-center incumbent President of Portugal, was re-elected to a five-year term earlier this week. Eanes soundly defeated his major rival, Antonia Soares Carneiro, garnering 57 percent to Soares Carneiro's 39 percent.

Nation

Crime wave strikes Dallas — A gang of six men have robbed at least 20 persons in the last two weeks in the city of Dallas, Texas. Calling themselves the "over the hill gang," the men are all over 60 years old.

Sleeping on job doesn't pay — John Pavao was found sleeping behind a North Bellmore, NY, Dairy Barn Store where he was working. He was promptly arrested and now faces a two-to-four-year jail term. What was his work? Pavao apparently dozed off while robbing \$168 from the store's safe.

Music

John Lennon killed — An unknown assailant shot and killed John Lennon at around 11:30 last night. The singer, songwriter, and former Beatle was walking through a park in New York City. His latest album *Double Fantasy*, was just released a couple of weeks ago.

By Richard Salz

Weather

A cold front will pass through this morning, and winds will shift briefly to the northwest today. Highs 47-51. Not much sunshine, though, and the partial clearing in the afternoon will give way to more clouds and rain overnight and tomorrow morning. Lows tonight near 35. For tomorrow, rain ending during the day and turning much colder. Highs near 40, but lows near 25. Chance of rain 70 percent tonight, 50 percent Wednesday, 10 percent Thursday.

By James Franklin

MIT for
Community



How to... Make it in Massachusetts... ...when it snows

Snow tires, a well maintained car, and good driving practices will help you make it in Massachusetts this winter.

ABOUT SNOW TIRES: Any time there is a snow accumulation of two inches or more, snow tires will provide significantly more traction on the roadway. The open design of a snow (or winter) tire permits it to bite into the snow, whereas the closed design of a conventional (or summer) tire simply compacts the snow.

B F GOODRICH SNOW TRAILMAKER POLY '78		
SIZE	PRICE	F.E.T.
A78-13	\$28.93	\$1.75
B78-13	\$31.90	\$1.89
C78-14	\$33.96	\$2.05
E78-14	\$37.89	\$2.33
F78-14	\$39.77	\$2.46
G78-14	\$40.94	\$2.61
H78-14	\$43.82	\$2.87
G78-15	\$42.66	\$2.68
H78-15	\$44.71	\$2.91

IT IS NOT TRUE THAT CONVENTIONAL RADIAL TIRES ARE A SUBSTITUTE FOR SNOW TIRES. In the Blizzard of '78 many vehicles equipped with conventional radial tires were stuck and immobile when cars with snow tires were moving. For cars with independent wheel suspension, some manufacturers recommend that snow tires be applied to all four wheels. Check your owner's manual. CAUTION: mixing conventional radial tires with bias or belted snow tires can be dangerous. When you come in, ask for our Consumer Information Bulletin, 11 Myths About Tires.

DELTA SNOW DURASTEEL SURE TRAC RADIAL			
SIZE	ALSO		F.E.T.
	FITS	PRICE	
P185/75R-13	BR78-13	\$52.74	\$2.08
P185/80R-13	CR78-13	\$56.87	\$2.08
P195/75R-14	DR78-14	\$58.74	\$2.49
P205/75R-14	FR78-14	\$61.98	\$2.67
P215/75R-14	GR78-14	\$64.87	\$2.80
P225/75R-14	HR78-14	\$68.72	\$3.10
P205/75R-15	FR78-15	\$62.96	\$2.67
P215/75R-15	GR78-15	\$64.99	\$2.95
P225/75R-15	HR78-15	\$70.79	\$3.09
P235/75R-15	LR78-15	\$74.93	\$3.36

HOW WE OPERATE

We do not sell to the general public; we sell exclusively to dealers and to the personnel of companies, organizations, schools, unions, and federal, state or municipal governments. Please present proof of affiliation with your organization. Tire work is done on a first-come, first-served basis. Appointments are accepted for mechanical services.

Delta "48" BATTERIES

24-4 \$41.49
With Exchange
Equal to or stronger than original equipment

DELTA ALL SEASON RADIAL			
P185/75R-13	BR78-13	\$52.93	\$2.02
P185/80R-13	CR78-13	\$55.58	\$1.97
P195/75R-14	DR78-14	\$57.54	\$2.33
P205/75R-14	FR78-14	\$59.43	\$2.48
P215/75R-14	GR78-14	\$62.60	\$2.58
P205/75R-15	FR78-15	\$61.96	\$2.57
P215/75R-15	GR78-15	\$64.99	\$2.75
P225/75R-15	HR78-15	\$68.44	\$2.93
	JR78-15		

ALLIANCE IMPORTED RADIAL SNOW TIRES

FOR FOREIGN AND SPORTS CARS			
SIZE	PRICE	F.E.T.	
155R-12	\$37.50	\$1.63	
155R-13	\$38.89	\$1.86	
165R-13	\$39.31	\$1.99	
165R-14	\$44.32	\$2.07	
175R-14	\$47.83	\$2.07	
165R-15	\$47.85	\$2.13	

ROAD HAZARD COVERAGE

Major tire makers have discontinued road hazard adjustments on tire failures due to cuts, bruises, punctures or blow-outs. However, we offer a road hazard certificate at \$2.25 per tire on new Delta and Alliance tires, as well as Cambridge retreads.

CONTINENTAL RADIAL SNOW TIRES

SIZE	PRICE	F.E.T.
155R-12	\$46.96	\$1.53
155R-13	\$48.84	\$1.64
165R-13	\$52.72	\$1.80
175R-14	\$64.34	\$2.14
165R-15	\$58.23	\$2.07
175/70R-13	\$58.23	\$1.86
185/70R-13	\$61.74	\$2.13
185/70R-14	\$71.58	\$2.24
195/70R-14	\$80.98	\$2.53
205/70R-14	\$88.46	\$2.71

MICHELIN 'X' RADIAL SNOW TIRES

155-13 black	\$50.32	\$1.59
165-13 black	\$56.60	\$1.75
175-14 black	\$68.41	\$2.11
185-14 white	\$76.53	\$2.48
195-14 white	\$80.17	\$2.68
205-15 white	\$89.24	\$3.00

SNOW RETREADS

A78-13	\$18.94	G78-14	\$25.54
B78-13	\$18.94	H78-14	\$27.94
C78-13	\$18.94	560-15	\$18.94
C78-14	\$18.94	G78-15	\$25.94
E78-14	\$23.94	H78-15	\$27.94
F78-14	\$23.94	L78-15	\$30.94

Add 38c to 65c F.E.T. Whitewalls add \$2.00

TIRE PRESSURES should be checked more frequently in the winter, since tires lose a pound of pressure for every 10 degree drop in temperature. Pick up a pocket gauge at any of our stores for only \$2.95. When you buy snow tires, consider having them mounted on their own wheels; you save time, save money on balancing season after season, and keep your tires in better condition when in storage. We offer a full line of original equipment wheels for most domestic and many imported cars.

CAMBRIDGE TIRE COMPANY

BRAINTREE 230 WOOD ROAD 848-6660 At Exit 68 on Route 128	BURLINGTON 84 MIDDLESEX TURNPIKE 272-8230 Opposite Burlington Mall	CAMBRIDGE 290 ALBANY STREET 864-7575 Off Mass. Ave. near M.I.T.
DEDHAM 765 PROVIDENCE HIGHWAY 329-3100 Next to King's at Dedham Plaza	NATICK 339 SPEEN STREET 655-6500 Next to Trailways Bus Depot	REVERE 600 REVERE BEACH PARKWAY 289-5800 Near Bell Circle



MON.	TUES.	WED.	THURS.	FRI.	SAT.
8:00 - 7:00	8:00 - 5:00	8:00 - 5:00	8:00 - 5:00	8:00 - 5:00	7:30 - 3:00

MEMBER: GREATER BOSTON, CAMBRIDGE, QUINCY-SOUTH SHORE, & SO. MIDDLESEX AREA CHAMBERS OF COMMERCE

BULLETIN NO. 63 - WINTER 1980-81 - COPYRIGHT © 1980 - C.T.C. ALL RIGHTS RESERVED

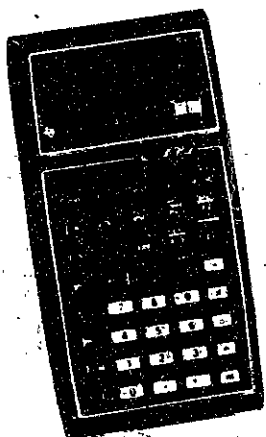
**YOUR SAFETY IS OUR BUSINESS
AND SAVING YOU MONEY IS OUR BUSINESS, TOO!**

HARVARD SQUARE
MIT STUDENT CENTER



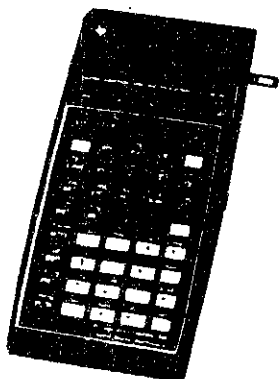
the Coop

SAVINGS YOU CAN COUNT ON
from Texas Instruments



**TI MBA
FINANCIAL
PROGRAMMABLE
CALCULATOR**
Sale 53.98
reg. 59.98

**TI
59 CARD
PROGRAMMABLE
CALCULATOR**
with solid state
memory modules
Sale 204.98
reg. 229.98



TI 59 BONUS Present this ad when you purchase TI 59 calculator and buy a math or statistics module for \$15.00 - our regular price \$39.98 now thru 12/15/80

ABOUT WINTER CAR MAINTENANCE: The first requirement for winter is a well-tuned engine. An engine that is difficult to start, or that stalls, is not reliable transportation. Have us do a COMPU-SCOPE™ Electronic Tune-up using the latest diagnostic equipment.

COMPU-SCOPE™ ELECTRONIC TUNE-UP

Most American and popular foreign cars.
4 and 6 cyl **\$38.00**
8 cyl — \$42.00

WINTER IS ALIGNMENT TIME, TOO: Alignments should be checked twice a year. The pot holes that ruin winter roadways can ruin your alignment. Have us check your alignment and save unnecessary tire wear.

FRONT END ALIGNMENT

Most American Cars **\$125.00**
American imports and most foreign cars \$14.50.
Most vans, campers and light trucks \$15.50.
Now-Ford "Twin I Beam" alignment \$28.50.

OUR MASTER MECHANICS ARE CERTIFIED

We employ skilled mechanics who have been certified by THE NATIONAL INSTITUTE FOR AUTOMOTIVE SERVICE EXCELLENCE



LIFETIME MUFFLERS - INSTALLED

Before you Midasize see us.
Most American Cars **\$285.00**

OUR "STRAIGHT ARROW" LIFETIME GUARANTEE

If our mufflers or shock absorbers fail while you own the car, the part will be replaced free, including labor. Mufflers and shock absorbers used commercially or involved in an accident excepted.

LIFETIME SHOCKS - INSTALLED

PREMIUM HEAVY DUTY **\$1350** EACH INSTALLED

PREMIUM RADIAL HEAVY DUTY \$1850 EACH INSTALLED

MACPHERSON STRUTS \$9750 PER PAIR INSTALLED

(Datsun Z-cars — \$117.50)

DRUM BRAKE PACKAGE

4 wheels Most American Cars **\$680.00**
• Install premium heavy duty brake linings on all four wheels
• Install NEW return and hold-down springs
• Reface and true all four drums
• Install NEW front grease seals
• Clean and repack front wheel bearings
• Inspect hydraulic system
• Road test vehicle

DISC BRAKE PACKAGE \$5300

2 wheels Most American Cars
COMBINATION BRAKE PACKAGE
2 FRONT DISC BRAKES AND 2 REAR DRUM BRAKES
Most American Cars **\$8600**

The Real Paper
AWARD FOR
THE BEST OF BOSTON
for 3 consecutive years

opinion

Editorial

The commons fiasco

The announcement Friday by Robert Sherwood and Eugene Brammer that the minimum meal plan requirements for freshmen were being reduced was amazing in a number of respects.

Their memorandum frankly admitted that the administration had blown it by setting minimum meal plans too high. There can be little dispute over that.

There are three different aspects of the decision, though, which are extremely disturbing:

The Timing

The managers of the dining program waited until exactly two weeks before the end of the term to reduce the meal plan requirements. As a result, students who conscientiously avoided dining out in any of the wide variety of area restaurants in order to use up their minimum meal requirement were penalized. Those who flouted the intent of the administration's program were vindicated.

Had Friday's announcement been made one month earlier, when it was just as clear that students were not on their minimum consumption schedules, students could have adjusted their eating lifestyles.

Had minimum meal requirements been stretched to include IAP, students would also not have felt they were duped into eating on a schedule which would change at the very end.

Admitting a mistake late in the game is certainly preferable to making students pay for the lack of planning. But in changing the minimum with only two weeks left, the administration's lack of consideration for those students who were cooperating with the Dining Service is appalling.

The Method

On the very day that Sherwood and Brammer issued their memorandum, Associate Director of Housing and Food Services George Hartwell and Program Coordinator for Dining and Residence Anita Walton were both quoted in these pages. Hartwell said that any "recommendations" on changing meal requirements would be available by *this* week. Walton said that there would be no *decision* before the end of the term.

The lack of coordination between those supposedly responsible for managing the dining program is laughable. Either Walton and Hartwell were comically misinformed and left out of the decision entirely or they knew full well what was happening and chose to play a game of cloak-and-dagger.

Either way, if students are led to believe that they can't trust the managers of the dining program, the credibility of the entire program will surely be undermined. How this can help the smooth implementation of a comprehensive dining plan eludes us.

(Please turn to page 5)



Stephanie Pollack

The Night Before Finals

'Twas the night 'fore finals
And all through the dorm
Not a freshman was tooling
Which had long been the norm.

The textbooks were lost
Thrown in corners to rot
Had she wanted to nerd
They'd take hours to spot.

This frosh felt like roving
Maybe raising a flap
Since she'd just woken up
From a twelve-hour nap.

First she stopped at the room
Of the local six nerd
He glanced up from the keyboard
But said not a word.

"What's the matter," she asked,
"Don't you have time to talk?"
He just grunted in Fortran —
She continued her walk.

Next, she passed by the lounge
Where a senior in two
Was lamenting he still had
No thesis to do.

For the length of the hall
Every door was shut tight
Rows of blank memo boards
Made a pitiful sight.

Then, what to her wondering eyes
Should appear
But a wide open door
And a tapped keg of beer

She eagerly strode
Toward the light and the noise
In the room was a crowd
But — of course — all were boys

She sighed with dismay
But accepted her plight
Grabbed the nearest free mug
Settled in for the night

She filled up the glass
And went straight to her work
Drained the mug in one gulp
Then she turned with a jerk

For the room that she'd thought
Full of guys on pass/fail
Contained all upperclassmen
Consuming the ale

"How is it," she inquired
"You sit here and rebel;
Whereas everyone else
Stays confined in his cell?"

"The answer is simple,"
A partyer slurred
"We are those privileged few
Who decide not to nerd."

"We belong to the clubs,
And the councils, and teams,
We're the ones who run parties,
And meetings, and schemes."

"We know what's important,
And classes do count
But they're not all that matters
When you finally get out."

"So to round out your life here
And keep yourself sane
Join an extracurricular —
And use more of your brain."

The guy kept on flaming
As she staggered from sight
"Join a club — but 'til then
Merry Christmas, good night."

The Tech

Stephanie L. Pollack '82 — **Chairman**
Steven L. Solnick '81 — **Editor-in-Chief**
Patrick M. Thompson '82 — **Managing Editor**
Michael L. Taviss '81 — **Business Manager**

Volume 100, Number 54
Tuesday, December 9, 1980

News Editors: Jay Glass '82, Richard Salz '82
Night Editors: Cindy Delfino '81, Judy L. Passman '83
Photo Editor: Rick Parker G
Sports Editors: Bob Host '81, Eric Flemming '83
Arts Editors: Linda Schaffir '82, Jon von Zelowitz '82
Advertising Manager: Rich Epstein '83
Production Manager: Cindy Delfino '81
Indexing Project Representative: A. David Boccuti '79
Senior Editor: Leigh J. Passman '81

ARTS DEPARTMENT

Arts Editors: Linda Schaffir '82, Jon von Zelowitz '82; **Staff:** Eric Sohn '81, Jonathan Cohen '82, Kevin Cunningham '82, Joseph Kristl '82, Jonathan Richmond G.

SPORTS DEPARTMENT

Sports Editors: Bob Host '81, Eric R. Fleming '83; **Staff:** Dennis Smith '81, Robert Labarre '83, Steve Kim '83, Arlene Santos '83.

PRODUCTION DEPARTMENT

Production Manager: Cindy Delfino '81; **Night Editors:** Cindy Delfino '81, Judy Passman '83; **Associate Night Editor:** Kevin Osborn '82

PRODUCTION STAFF FOR THIS ISSUE

Night Editors: Robert W. Leishman '82, Pat Thompson '82, Jon von Zelowitz '82; **Staff:** Brenda L. Hamilton '79, Cindy Delfino '81, Kevin Osborn '82, Rich Salz '82, V. Michael Bove '83, Charles Brown '84, Paul Gabudza '84, Bill Spitzak '84, Dale Davidson.

The Tech (ISSN 0148-9607) is published twice a week during the academic year (except during MIT vacations), weekly during January, and once during the last week in July for \$7.00 per year Third Class by The Tech, B4 Massachusetts Ave. Room W20-483, Cambridge, MA 02139. Third Class postage paid at Boston, MA. Non-Profit Org. Permit No. 59720. **POSTMASTER:** Please send all address changes to our mailing address: The Tech, PO Box 29, MIT Branch, Cambridge, MA 02139. Telephone: (617) 253-1541. Advertising, subscription, and typesetting rates available. © 1980 The Tech. Printed by Charles River Publishing, Inc.

Communism
by Karl Marx...
First there will
be economic chaos
and depression...



and workers
will unite and
seize control.



and then
a class
struggle...



labor will rise
up against their
oppressors



except in
poland...



Decision's reasons ignored

(Continued from page 4)

The Scope

While Sherwood and Brammer address freshman underparticipation in their decision, the reasons are wholly ignored.

There must be some reason why freshmen who knew — or at least believed — that they would be losing their meal plan money still chose to avoid commons in droves.

The supposed "payoff" for combined room and board — speaking programs, faculty associates to dormitories, structural changes to facilities, improved menus, a food co-op, special consideration to kosher, vegetarian or foreign diets, greater coordination with dorm activities, and upgraded sanitation and service — have proved illusory. Few could blame the student body for feeling they were sold a bill of goods.

One year after being hired, Dining Coordinator Walton is still "feeling out" her job responsibilities, according to her boss, Dean McBay.

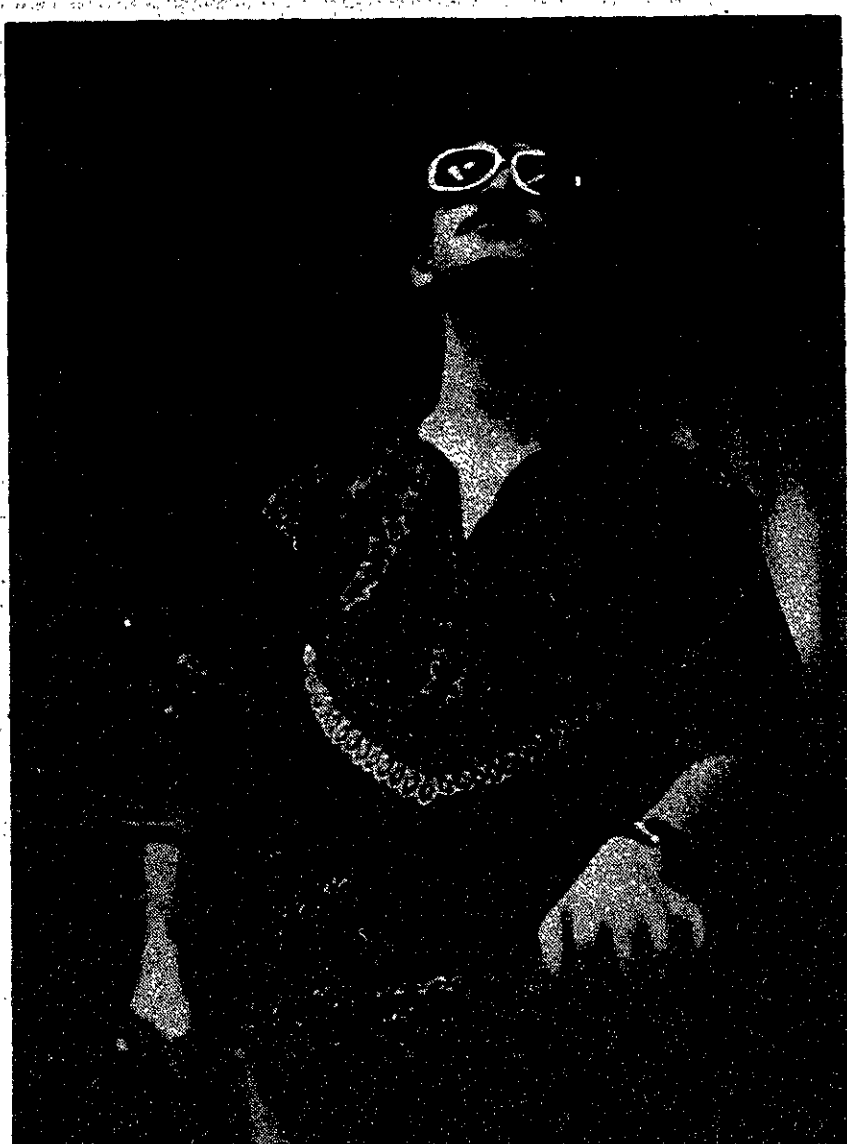
A final determination of the "temporary" status of east campus dining seems to be a low priority.

In short, it seems that 11 months after the implementation of the new dining plan, the time is ripe for the administration to demonstrate that it both knows and cares about what is happening with dining. A public forum or review of the dining program might help. Real action towards realizing the Dining Committee's recommendations would be preferable.

The administration is both shirking its responsibilities and breaking the promise it made with students when the plan was implemented: the promise to be sensitive to student needs and to create a responsive dining program.

It is admirable that Brammer and Sherwood, at some cost to the Dining System's financial base, finally chose to not take students down with the sinking ship.

It seems to be the only admirable note in the whole, drawn-out saga.



MITSFS representative Michael Taviss '81 showed up with his version of "appropriate attire" for the ASA Elections meeting. Elected were Lucinda Linde '82 (President), Jason Weller '82 (Treasurer), Lina Janavicius '82 (Secretary), Raymond Samuel '84 (Finboard Member at Large), and Gerald Palmeri '84, as Member at Large. Linde was formerly ASA treasurer. (Photo by Patrick Michael Thompson)



五福樓
WU FU
RESTAURANT

Mandarin & Szechuan Cuisine

prepared by chef rated 5 stars in New York City

Cocktails • Take Out Service
Open Daily 11:30AM - 12:00PM

CHINESE PASTRIES
SAT. & SUN. only
11:30AM - 2:00 PM

"Everything I tasted there was excellent, and several dishes had that vivid clarity of flavor that first attracted us all to Szechuan food, and that we haven't noticed as much in recent years"

Robert Nadeau - *The Real Paper* June 28 1980

LUNCH BUFFET
\$2.95 ALL YOU CAN EAT

460 Mass. Ave., Cambridge
876-6299

E-Systems continues the tradition of the world's great problem solvers.

Developing the analytical theory known by his name, Joseph Fourier gave the world a basic tool for engineering analysis and system design.

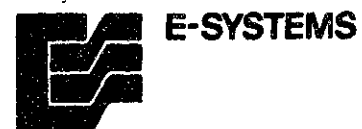
Today, E-Systems engineers are carrying on his tradition. They're using Fourier's mathematical accomplishments to solve some of the world's toughest electronics problems

via computer-designed circuitry.

E-Systems designs and produces communications systems, data systems, antenna systems, intelligence and reconnaissance systems that are often the first-of-a-kind in the world.

For a reprint of the Fourier illustration and information on career opportunities with E-Systems

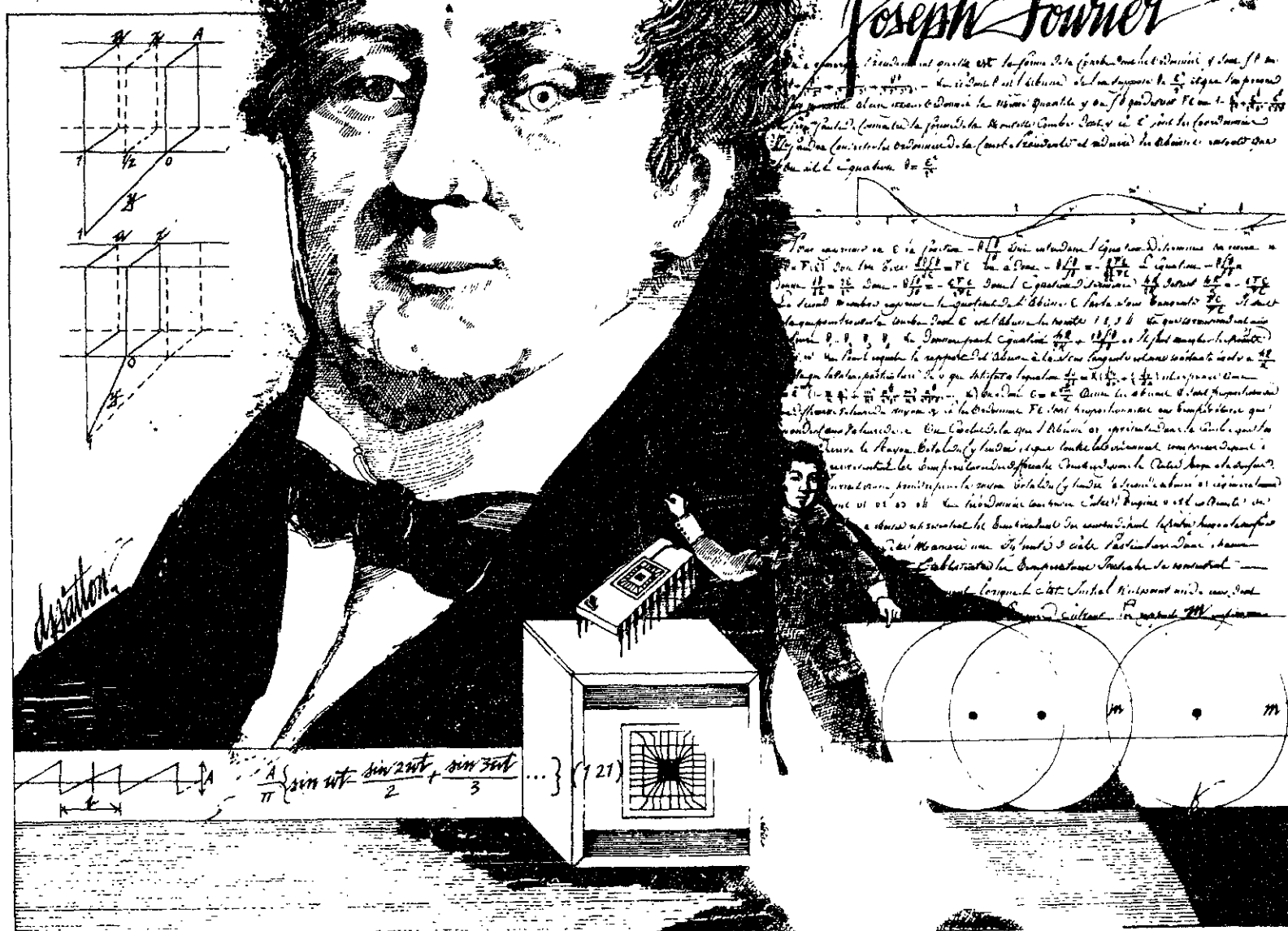
in Texas, Florida, Indiana, Utah or Virginia, write: Lloyd K. Lauderdale, V.P. Research and Engineering, E-Systems, Corporate Headquarters, P.O. Box 226030, Dallas, TX 75266.



The problem solvers.

An equal opportunity employer M.F.H.V.

Jean Baptiste Joseph Fourier
1768 - 1830



THE PERFECT GIFT **LASERART**TM NOTECARDS

BEAUTIFUL
COLOR
LASER OPTICAL EFFECTS

20
ASSORTED
NOTECARDS
WITH ENVELOPES
PACKAGED IN AN
EXECUTIVE WALLET
PROTECTIVE WRAPPED
AND RUSHED TO YOU
FOR ONLY \$15

SEND
CHECK OR MONEY ORDER
TO

TODAY'S TECHNOLOGY TODAY
256 S. Robertson Blvd.
BEVERLY HILLS, CA 90211

Rockpile

Rockpile — *Seconds of Pleasure* Columbia records.

As four energetic solo careers willingly bite the dust, a single band rises from the rubble, clearly exhibiting its solid foundations but leaving some doubt as to whether it is truly a pillar in the rock world. Up un-



this guy's hair is gray!

til now, Rockpile (Nick Lowe, Dave Edmunds, Billy Brenner and Terry Williams) has never recorded an album as a group, though their individual and collective efforts have hardly been negligible. Lowe and Edmunds have both released solo albums in recent years, Rockpile (together as a group) has existed since 1972, with four U.S. tours to its credit since '77.

Rockpile fathered Britain's "Pub Rock" movement as a reaction to the "Mega-Rock" scene, and a nostalgic tribute to the roots of rock 'n' roll, performing at smaller clubs in England along with other such notable bands as Ducks Deluxe, Chili Willi, and Ace and the Debs.

To say that Rockpile's debut album, *Seconds of Pleasure*, has been long awaited is an understatement. The album contains a little bit of everything that Rockpile represents and is known for by their fans and critics. Six original cuts by the band ring with vintage rock 'n' roll, and a half-dozen more revivals of pre-Beatles classics. These latter songs include Kip Anderson's hilarious ode to overeating, "Knife and Fork," Chuck Berry's recently released "Oh What a Thrill," and Joe Tex's "If Sugar Was as Sweet as You."

Also among these is the lead track, "Teacher, Teacher," a rocker that in many ways stands as the strongest cut on the album. The originals mesh with the covers in a blend of the 50's and early 60's classic rock and English New Wave (reflecting Lowe's work at Stiff and EMI), with a trace of the new Pop sound of the 80's. Also included in the package is a seven-inch bonus EP (a potential collector's item) featuring Nick Lowe and Dave Edmunds singing four tunes by the Everly Brothers: "A Message to Mary," "Crying in the Chapel," "Poor Jenny," and "When Will I Be

AR MIT SY

MIT Symphony Orchestra performs Kresge Auditorium on December 7. Choral Society performed in Auditorium on December 7.

As I was leaving Kresge Auditorium, a small, dark object pointed a jeering finger at me. "I wanted to kill you," your last review in *The Tech* wrote a vibrating with anger. "We know where you live," he continued. "Well," I replied, "I won't have to kill me this time because I really enjoyed the concert." And satisfied object bounded off into the Saturday's concert, conducted by Stulberg, represented a vast improvement over the MIT Symphony Orchestra's previous effort; it was a success by standard. Like all Beethoven programs celebrating the composer's 210th birth, this was an ambitious one. The evening started with a prelude of three chamber works: these, the *Elgischer Gesang*, Op. 118, the most successful. The *Quintet for Flute and Woodwinds*, Op. 116, was given a cool performance and just didn't get up momentum. The first work of the concert proper the Beethoven Violin Concerto. After a little uncertainty at the start, the orchestra came together and played in sharp discipline, a quality that was to be noticed for the rest of the concert. Soloist Si Reinhold gave a lyrical performance which, if not all-fire, seemed to have (Please turn to page 8)

Stiff Tour

Stiff Records, the carefree label that brought you Legs, Lovich, Elvis Costello, Ian Dury, and Rachel Sweet has launched the third of its famous ramshackle tours. On Thursday, December 11th, the Paradise hosts the roadweary group (10 countries already!) These tours are a good opportunity to see what the renegade label is taking chances on, now. Elvis Costello was just one of the gang on the Stiff '77 tour — and this year's lineup is as eclectic as ever could wish. The evening's best bet (no one has top billing and performance order changes every night) is Joe "King" Carrasco, a domestic product, and already a Boston favorite. Carrasco and his band play Tex-Mex dance silliness with carnival

keyboards and a lot of jumping around. Carrasco crashes around, draws it resistably, and is probably on speed. Tenpole Tudor have already achieved immortality by appearing in the Sex Pistols film *The Great Rock 'n' Roll Swindle*, however they're a good, punk, noisy band besides. It's outdated, but so what? The other bands you'll have to check for yourself: Dirty Looks are a New York group that moved to London to further their career in heavy cover of "Stepping Stone". The Equators define their music as "reggae-funk," which sounds good to me, and Any Trouble (attractive badges) play clean pop music. Lemme know what they're like, okay?

Sheena

The Formula

The Formula by Steve Shagan, directed by John Avildsen. Scheduled to open in Boston on December 11.



It was when Steve Shagan, who won an Oscar for *The Tiger*. Its director John Avildsen, similar recognition for his directing. Its cast is made up of some international stars, which include George C. Scott, Sir John Gielgud, and Sir John Wood. The title role was developed and used by the Nazis during World War II for synthesizing oil from coal. This formula disappeared mysteriously. The film's implications are that the formula is now in the clutches of a very rotten American oil magnate (George C. Scott) who beats and manipulates the other characters. The film can be seen at the Boston Museum of Science. The Formula got so carried away with

ANNOUNCING ALPHA DELTA PHI'S WORLD MARATHON BASKETBALL RECORD

Attempt at the Pine Street Inn, a shelter for the homeless people of the inner city. Tipoff will be at 11:00 am, Friday January 23 in duPont.

An 80-hour game is planned. PLEASE HELP!

SIGN A SPONSOR SHEET — in Lobby 10, December 9; in your living group, or call ADP: x3-2896

If you stutter...

... you really can do something about it. The Precision Fluency Shaping Program (PFSP) works. And it works for 93% of all people who can muster up the courage to try just one more time. Because that's really all it'll take. It is 3 weeks. It is intensive. And, as we said, it works. The PFSP was developed more than 10 years ago by Dr. Ronald Webster, and is a powerful technique that is not based on speculative causes or on psychological aspects of the disorder. What it is based on are the physical components of the speech pattern. And through carefully defined, progressive steps, the PFSP reconstructs the physical formulation of sounds, syllables, words and sentences to create fluent speech.

The Precision Fluency Shaping Program is an outpatient program offered by the Department of Communication Disorders at New England Rehabilitation Hospital in Woburn. Our next session is scheduled to begin December 29 and will run through January 16. Which means you'll probably be around... and you'll probably be on semester break. (If not, other times can be arranged as sessions run monthly.)

Communicate with us. But do it for yourself. Contact: Christine R. Primiano or Lori Keppler (617)935-5050, Ext. 248

NEW ENGLAND REHABILITATION HOSPITAL 2 Rehabilitation Way Woburn, MA 01801

MIT Choral Society

(Continued from page 7)
 The MIT Choral Society, John Oliver, conductor, as if trying to outdo the Symphony Orchestra in adventurousness, presented a program that included singing in Czech and Russian the following day. I had my doubts as to whether they would pull it off; I'm glad to say that they did.
 The first work performed, Janacek's *Vecne Evangelium*, was also the best. The orchestra played magnificently, bringing out a full complement of colors and textures. It was a performance that was almost sensuously beautiful; the listener felt surrounded by a polyphony of sounds, all in excellent balance. Dean Schoff, tenor, sang expressively and lyrically; Laurie Stewart Otten did well enough in her small part. The chorus didn't seem to be unhappy singing in Czech and, closely coordinated, contributed to the sea of harmonies. I must say, however, that my attention was focused on the

orchestra and soloists.
 Bartok's *Cantata Profana* was given in English; it was an exciting performance, full of the force of Bartok's rhythms. Chorus combined with tenor and orchestra to create a well of magic. Joseph Penrod, baritone, also performed in this piece; although he was fluent, I'm not sure that he understood the work as well as Schoff.
 Rachmaninoff's *Vesna*, op. 20, ended the concert. The women members of the chorus seemed to be rather overdominant but this was, nonetheless, an interesting rendition. Once more the blend of orchestral colors was a delight to the ear. As a storm built up in the orchestra, the chorus came in, a distant spirit led by the baritone. And then . . . the relaxed beauty of cellos and harps. Maybe the chorus was not perfectly structured here. But I enjoyed the performance. And isn't that what matters?
 Jonathan Richmond

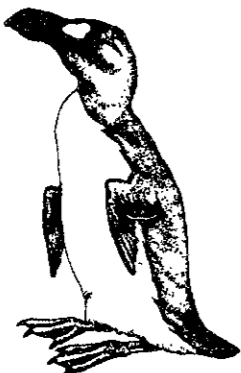
ARIS

Seconds of Pleasure

(Continued from page 6)
 Both the band and the album have a quality that is rarely found today. The four members all share careers in rock 'n' roll that date back to the sixties, and they have maintained the traditions of their genre. For this reason, however, many listeners who were not raised on Chuck Berry, Fats Domino, and Elvis Presley may have trouble relating to the Rockpile sound. But for those of us who don't consider Bruce Springsteen or Devo the only listenable material around, nor Sha-Na-Na-as the only remnant of the Sock-Hop era, *Seconds of Pleasure* merits recommendation.
 Rockpile recently swung through Boston for a show at the Orpheum on the first leg of their 1980 tour. Though they may like the small club scene better, the

show proved that Rockpile is comfortable with any size audience. The highlight of the show was not theatrics but music. Flashbombs and lasers are out; rock 'n' roll takes over.
 The two-hour set following Moon Martin's opening act featured most of the new tunes on the album and a fair amount of early covers including "The Wanderer" and my personal favorite, "Teacher, Teacher". Neither Lowe nor Edmunds are particularly dynamic frontmen so the band played as a whole, rather than letting the show become a collection of self-important solo leads.
 Somewhere between Elvis Presley and Elvis Costello, Rockpile has found a place in Rock and Roll.
 Mark deCew

And then there were none.



The list of already extinct animals grows . . . the great auk, the Texas gray wolf, the Badlands bighorn, the sea mink, the passenger pigeon . . .
 What happens if civilization continues to slowly choke out wildlife species by species?
 Man cannot live on a planet unfit for animals.
 Join an organization that's doing something about preserving our endangered species. Get involved. Write the National Wildlife Federation, Department 105, 1412 16th Street, NW, Washington, DC 20036.
 It's not too late.



UROP Office

Part time help

needed 15-20 hours per week to assist with general office duties including typing, filing & xeroxing, etc. Pay \$4.00 to start. MIT undergraduates only, contact Susan Mitchell, 20B-141, x3-5049.

Friday, Dec. 12
 4-6 PM
MESSIAH
 An unrehearsed sight reading of Handel's Messiah
 Lobby building
 13 **SING** **ALL** **Welcome**

Sponsored by The Lutheran Ministry at MIT. Bring a score if you have one.

75 Mazda

Only 29K clean body new tires
 Mother-in-law gives new car, so I'll share the wealth and sell this at \$800 below blue book retail.
MIT only \$1500.
 Prof. Conroy x3-4921.



Remember when comedy was King...
 Now he's President.

GILDA RADNER · BOB NEWHART · MADELINE KAHN · 'FIRST FAMILY'
 The First Daughter The President The First Lady

AN INDIEPROD COMPANY PRODUCTION

RICHARD BENJAMIN · BOB DISHY · HARVEY KORMAN · AUSTIN PENDLETON
 Press Secretary The Vice President The Ambassador to the U.N. The Presidential Translator

RIP TORN · FRED WILLARD · JOHN PHILIP SOUSA · RALPH BURNS
 Chairman of the Joint Chiefs of Staff Presidential Assistant

DANIEL MELNICK · DUCK HENRY
 PRODUCED BY WRITTEN & DIRECTED BY

RESTRICTED
 UNDER 17 REQUIRES ACCOMPANYING PARENT OR ADULT GUARDIAN
 From Warner Bros. A Warner Communications Company
 ©1980 Warner Bros. All Rights Reserved

**Opening Christmas Day
 At A Theatre Near You.**

notes

Activities

Holiday greeting cards will be on sale in the TCA office, W20-450, from 11am until 3pm on weekdays. Proceeds from the sale will benefit the United Nations International Children's Emergency Fund (UNICEF).

* * * *

The Massachusetts Environmental Education Society will hold its annual fall conference on Tues., Dec. 9, at the Charlestown Navy Yard from 9am-4pm. The conference, entitled "Strategies, Resources, and Case Studies: A Forum for Environmental Educators," will include a variety of workshops in the areas of program planning, interagency collaboration, community action, fundraising, public relations, and career development. Jerry Bertrand, President of Massachusetts Audubon Society, will be the keynote speaker. All interested persons are invited to attend. For more information, contact David Stokes at 696-0920.

* * * *

The Cleveland Invitational Model United Nations Conference (CLEMUNC) consists of simulated sessions of each of the main bodies of the United Nations, i.e., the General Assembly and its various subcommittees, the U.N. Security Council, and the International Court of Justice. Each of the many participating schools are designated to represent one of the numerous different countries of the United Nations, and this forms the procedural basis of the Conference.

The Conference is open to all interested college students. In addition, student organizations on campus are especially encouraged to send delegations of members to the CLEMUNC gathering. This year, the Conference will be held on Jan. 21-25, 1981. The deadline to register for the event is Dec. 20, but preferential treatment is given to those who register by Nov. 20. Any person or group interested in attending should write or call for more information: International Relations Club, University Ctr. 301 #34, Cleveland State University, Cleveland, Ohio 44115 or call (216) 884-7292.

* * * *

The MIT Libraries' Book Sale offers the MIT community an exciting opportunity to choose from thousands of new and used books, maps and records at bargain prices.

The Book Sale will be held on Dec. 10 & 11 from 10am to 4pm in the Library Conference Room, 14-0615.

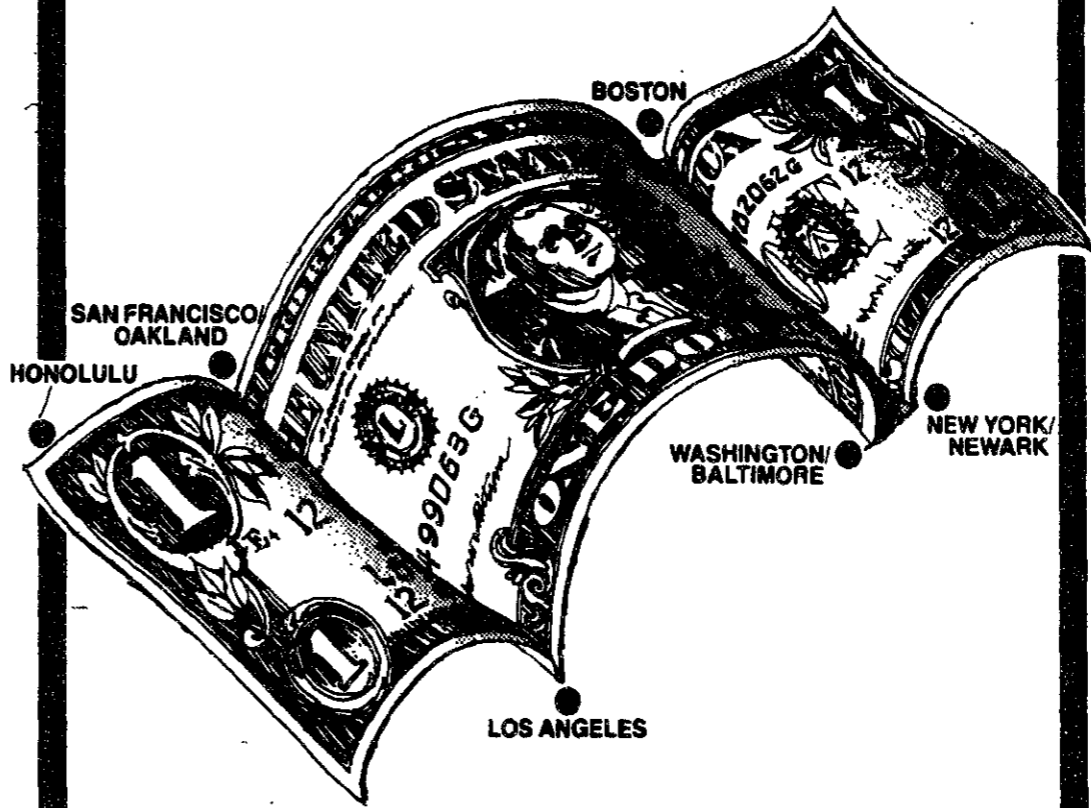
Be sure to stop in at the sale more than once as prices will be further reduced for clearance toward the end of the sale.

All sale items are surplus library materials and proceeds from the sale are applied to the library materials replacement fund.

* * * *

On Thurs., Dec. 11, in the Cheney Room (3-310) there will be letter writing to early admitted women students. All women students are encouraged to come and write personal letters to encourage women to accept admission to MIT.

YOUR MONEY GOES FARTHER ON WORLD.



If you're on a tight budget, you won't find a better deal than World. One, because we give you the most affordable fares from here to there. And two, because we give you great service on our roomy DC-10s. See your Travel Agent or call 800-227-1527. In California, 800-772-3569. The only way you might get there for less is by hitching.

WORLD AIRWAYS
For people who hate to waste money.

Listed on the New York and Pacific Stock Exchanges

B. S. Shirt Company

THE ORIGINAL O.R. APPAREL

The hospital look is now available!

Made of permanent press cotton/polyester fabric for long comfort and easy care.

The V-neck is reversible with pockets at the chest and hip.

Pants have a convenient cross-over drawstring.

Available in jade green only.

SIZES: S(30-32), M(34-36), L(38-40) & XL(42-44)

PRICES: Top = \$13.95 Pants = \$14.95
Top & Pants = \$25.95

STATE: Quantity, Item(s), Size and Price. Add \$2.00 for postage and handling to each order.

Make checks or money order payable to:

B. S. Shirt Company
P.O. Box 323
Elizabethtown, PA 17022

Allow 4 to 6 weeks for delivery.

MONEY BACK GUARANTEE IF NOT DELIGHTED



HOLIDAY SPECIAL

Capelli by norman

Hair cut the way **you** like



This coupon good for 20% off

247 Newbury St.

Boston, Ma.

262-4160

For A Fast Start In Field Service Engineering

Move To An Industry Leader

Autologic, Inc., the world's leading manufacturer of computerized phototypesetting equipment, is ready to offer your career a running start if you're about to graduate with a degree in Engineering Technology or Electrical Engineering.

You should also be familiar with analog/digital troubleshooting of computer systems to the component level

and have a working knowledge of peripheral equipment and at least one programming language.

Move to Autologic and we'll place you in a comprehensive in-house training program before relocating you to a challenging assignment in the field. If you're qualified and motivated, we invite you to fill out and mail in the coupon attached below.

"FAST-START COUPON"

AUTOLOGIC, INCORPORATED
Industrial Relations Department
1050 Rancho Conejo Blvd.
Newbury Park, CA 91320

Name _____

Address _____

City _____ State _____ Zip _____

College _____

Major _____ Will graduate _____

Equal Opportunity Employer M/F

MIT FOOD SERVICE 1980 HOLIDAY SCHEDULE

CONTRACT SYSTEM

Thursday **Dec. 18** Last Day of Commons Contract; McCormick, MacGregor, & Baker will close at 6:30pm

STUDENT CENTER

Friday	Dec. 19	Lobdell	Breakfast	7:30am - 10:30am
			Lunch	11:00am - 2:00pm
			CLOSED	2:00pm
		20 Chimneys	Lunch	11:30am - 1:30pm
			Snack	2:00pm - 4:30pm
			Dinner	5:00pm - 7:00pm

All Valadine Cards can be used exclusively for a la carte purchases from Dec. 19 through Jan. 4, 1981

Saturday - Sunday	Dec. 20-21	Lobdell	CLOSED	
		20 Chimneys	OPEN	9:00am - 5:00pm

Monday - Tuesday	Dec. 22-23	Lobdell	* REGULAR DAILY HOURS	
		20 Chimneys	CLOSED	

Wednesday	Dec. 24	Lobdell	Breakfast	7:30am - 10:30am
			Lunch	11:00am - 2:00pm
			CLOSED	2:00pm
		20 Chimneys	CLOSED	

Thursday	Dec. 25	MERRY CHRISTMAS		Lobdell & 20 Chimneys	CLOSED
-----------------	----------------	------------------------	--	----------------------------------	---------------

Friday - Saturday	Dec. 26-27	20 Chimneys	OPEN	9:00am - 4:00pm
		Lobdell	CLOSED	

Sunday	Dec. 28	Lobdell & 20 Chimneys	CLOSED	
---------------	----------------	----------------------------------	---------------	--

Monday - Wednesday	29-31	Lobdell	* REGULAR DAILY HOURS	
		20 Chimneys	CLOSED	

Thursday	Jan. 1, 81	HAPPY NEW YEAR		Lobdell & 20 Chimneys	CLOSED
-----------------	-------------------	-----------------------	--	----------------------------------	---------------

Friday	Jan. 2	Lobdell	* REGULAR DAILY HOURS	
		20 Chimneys	CLOSED	

Saturday	Jan. 3	Lobdell	CLOSED	
		20 Chimneys	OPEN	9:00am - 5:00pm

Sunday	Jan. 4	Lobdell	CLOSED	
		20 Chimneys	OPEN	9:00am - 12:00pm

* REGULAR DAILY SCHEDULE	Breakfast	7:30am - 10:30am
	Lunch	11:00am - 2:00pm
	Snack	2:20pm - 4:30pm
	Dinner	5:00pm - 7:00pm

WALKER MEMORIAL

Thursday	Dec. 18	Last Day of Commons Contract		
-----------------	----------------	------------------------------	--	--

Friday	Dec. 19	Morss Hall	Breakfast	7:30am - 10:30am
			Lunch	11:00am - 2:00pm
			CLOSED	2:00pm
		Pritchett	CLOSED	

Morss Hall & Pritchett CLOSED Dec. 20, 1980 through Jan. 1, 1981
Dec. 20, 1980 through Jan. 1, 1981

Friday	Jan. 2	Morss Hall	Breakfast	7:30am - 10:30am
			Lunch	11:00am - 2:00pm
			CLOSED	2:00pm
		Pritchett	CLOSED	

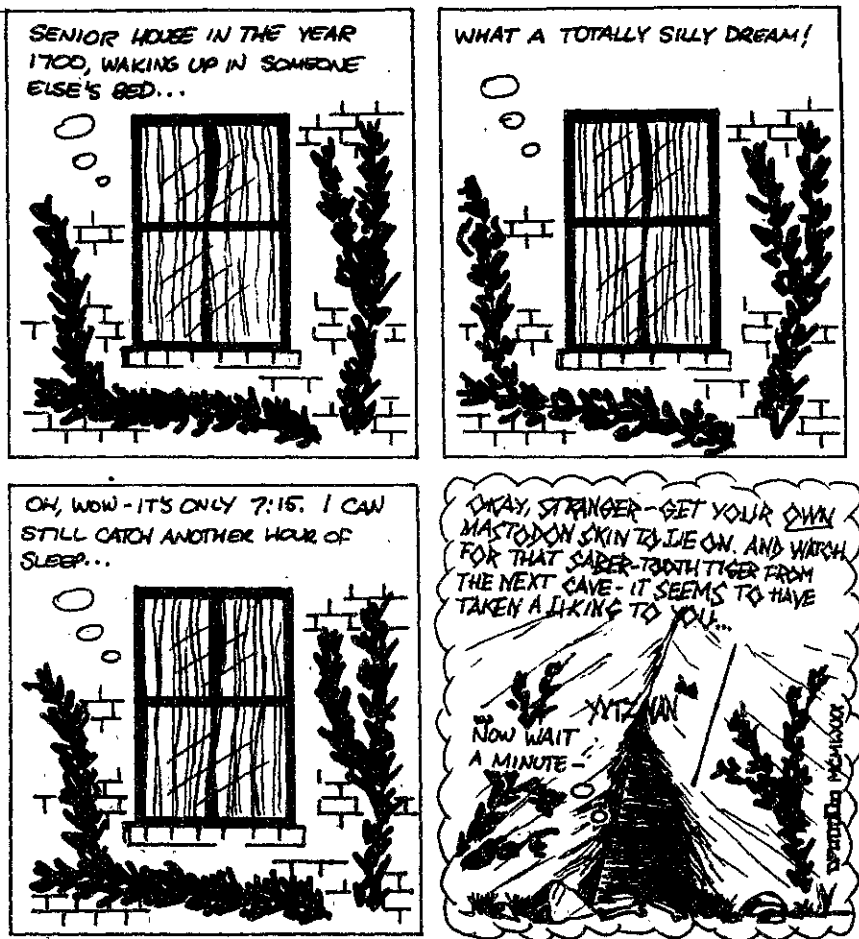
Saturday	Jan. 3	Morss Hall & Pritchett			CLOSED
-----------------	---------------	-----------------------------------	--	--	---------------

Sunday	Jan. 4	Morss Hall	CLOSED	
		Pritchett	OPEN	Noon to Midnight

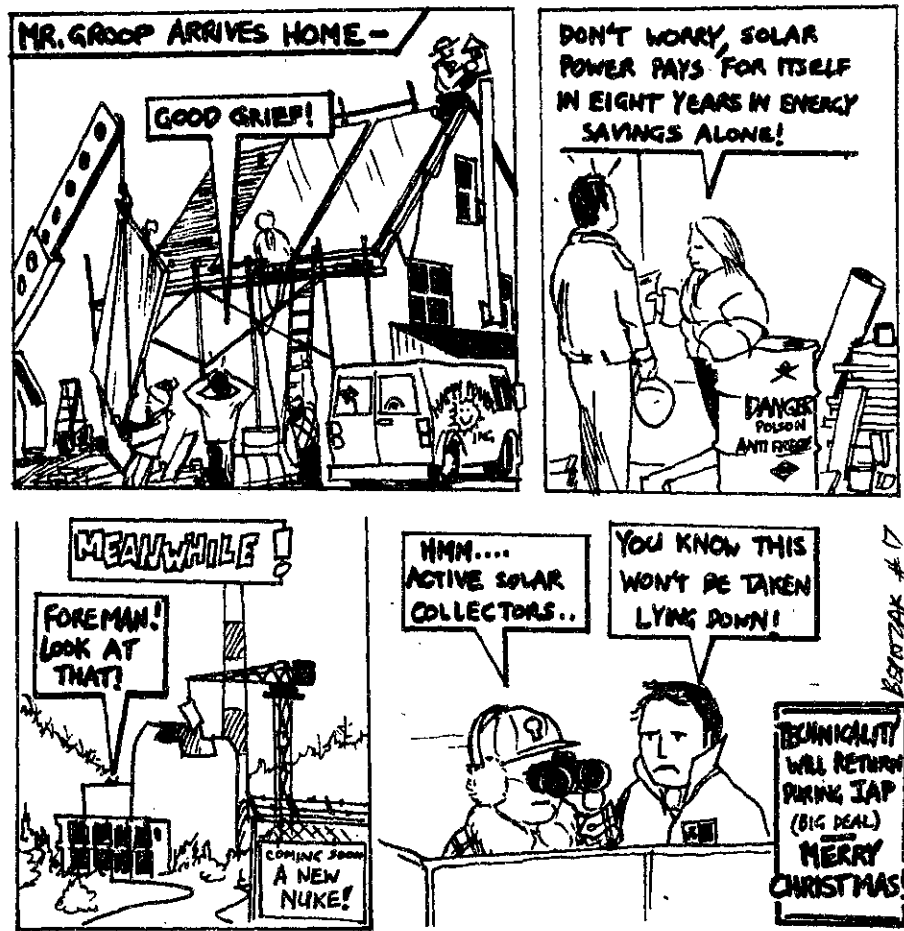
Monday	Jan. 5	ALL DINING UNITS RESUME REGULAR SCHEDULE		
---------------	---------------	---	--	--

comics

Outside Looking In
By V. Michael Bove



Technically
By Bill Spitzak



UA News

Hello!

The UA News appears regularly in the campus media, but nobody ever reads this opening paragraph anymore (Except for Chris MacKenzie, but he doesn't need to anyway). If anyone else out there is reading this, or wants to put something in the UA News, let Chris know at x3-2696 or in Room 400 of the Student Center.

COMMONS TASK FORCE

The UA is forming a task force to study the Commons system at MIT. Over IAP, the group will research the issue and present its final recommendations for spring term. If you are interested in working on this project, call the UA office at x3-2696.

SORORITIES ON CAMPUS

Much discussion has recently taken place regarding the formation of MIT sororities. Interested persons should contact Joyce Pollock at x3-2696.

MIT CORPORATION

December 22 is the deadline for nominations to the Corporation from recent MIT graduating classes (1979, 1980, and 1981). This valuable voice in the decision-making process must have the support and interest of students to continue. For information, contact the Alumni Center, Room 10-110, x3-8220.

UA ELECTIONS

Elections for UAP, UAVP, Class Officers and other positions will be held Wednesday, March 11, 1981. Petitions will be available in the UA office beginning at noon, Tuesday, February 3, 1981.



Extra Income Opportunity

Looking for an easy way to earn some extra money? Turn your spare time into cash by submitting names for mailing list of persons potentially qualified to fill position openings with our member corporations. Receive generous appreciation bonuses. For details, fill out and return coupon.

I am interested in learning more about your extra income opportunity. Please furnish me with all the details.

The Bonus Referral Plan, Inc.
P.O. Box 19722, Dept. P-2
Dallas, Texas 75219

Please Type or Print Legibly

Name _____

Address _____

City _____

State _____

Zip _____

College or University _____

Name of Publication in Which _____

This Ad Appeared _____

NOW OPEN

ELIAS
HAIR CARE
A NEW SALON SERVING
THE MIT COMMUNITY.
CALL FOR AN APPOINTMENT.
319 MASS. AVE.
497-1590
2 DOLLAR DISCOUNT AND
FREE CONSULTATION WITH THIS AD.

ENGINEERING AND COMPUTER SCIENCE GRADUATES.

Come home to a career in Connecticut.

Make plans to attend
Hamilton Standard's

Holiday Career Mixer

Wednesday, January 7th, 1981.

We've set aside this day to give Engineering and Computer Science graduates the opportunity to meet with our Technical Managers—and discuss the future we can offer at Hamilton Standard.

- You'll be able to see a presentation that gives an overview of our operations.
- Many of our high-technology products will be on display.
- You'll also have the chance to get the "inside story" from graduates who've joined us over the past year.
- Activities will run continuously from 9am. And refreshments will be served.

Plan to be with us.

If you want more details call collect: Robert Creech, College Relations, before December 23rd, (203) 623-1621, any weekday 9am-5pm.



**UNITED
TECHNOLOGIES
HAMILTON
STANDARD**

Located at the Windsor Locks Airport,
15 miles from downtown Hartford.

An Equal Opportunity Employer

Regis victim as WBB wins big

By Steve Kim

"This game will show what these girls can really do." If these words from women's basketball coach Jean Heiney eventually prove her to be a prophet through the course of the season, Rockwell Cage may well become something akin to the Black Hole of Calcutta for future Tech opponents. In their home opener last Saturday night, the women Engineers routed Regis College by the unlikely score of 51-6.

Dominating almost every facet of the game, Tech overwhelmed the bewildered and confused Regis squad. Both teams started the game in 2-1-2 zones, but that was where the similarities ended. Regis was wholly incapable of penetrating the tough MIT defense. Their vain attempts to do so resulted in loss of possession 27 times in the game. The three scrappy Tech guards, Anita Flynn '83, Katherine Alston '84, and Terry Felts '84, were able to come up with numerous steals by capitalizing on the errant passes and sloppy ball-handling of the Regis team.

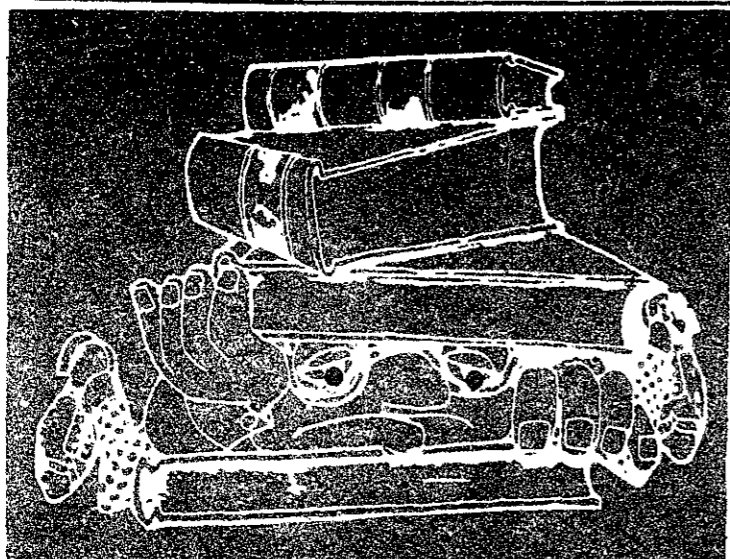
Almost all the Regis shots were attempted from the perimeter, another indication of that team's inability to slip inside the Tech zone for the close shots. In the second half, MIT displayed all of their defensive set ups, going with 2-1-2, 1-3-1, and man-to-man at different points in the game.

On offense, pinpoint outside shooting was the story for the MIT squad. Of the Engineers' 23 field goals, 16 came from buckets launched from the perimeter. Flynn, a transfer student, was responsible for nine of these as she poured in a game-leading 18 points. Being quick and a superb ball handler, she fills in more than adequately for departing guard Karen Samuelsen '81, who elected not to play this year.

The leading rebounders were the two MIT centers, Lisa Richardson '82 and Laura Lesniewski '84, each pulling down eight. In offensive rebounds, the MIT squad dominated under the boards, grabbing 16 to Regis' eight. Forward Donna Wilson '82 hauled in six of these to lead the team.

The entire offensive display was impressive tonight, a marked contrast to last week's 69-27 beating at the hands of Bryant College. Though the main reason for this stark contrast probably lies in the relative quality of the two opponents, there may also be another reason. The MIT squad seems to be relatively unable to effectively and consistently penetrate a defense for the inside shot. Thus, they rely heavily on perimeter shooting for their offense.

Last week, the outside shots were not sinking, whereas this week they were 40 percent from the field. Working the ball inside is something that comes only when a team has played together for a long time. When the eight new members (seven frosh and one transfer) have developed greater confidence in their teammates' abilities, the winning season will not be far behind.



Too Much Reading Getting You Down?

Well, maybe it should. Today, our knowledge is exploding so fast that people who want to keep ahead are actually falling behind. There's simply too much to read. Too much homework. Too many books. Too many reports and memos.

What's the solution? Learn how to read faster and better.

You can do it, too. So far over 1,000,000 other people have done it. People with different jobs, different IQ's, different interests, different educations. Students, businessmen, housewives.

These people have all taken a course developed by Evelyn Wood, a prominent educator. They have at least tripled their reading speed with equal or better comprehension. Most have increased it even more. Some increased it 10, even 20 times.

Think for a moment what that means.

Our average graduate can read the typical novel in less than two hours. They can read this ad in 20 seconds. They can read an entire issue of *Time* in 35 minutes.

They don't skip or skim either. They read every single word. Nor do they use machines. Instead, they let the material they're reading determine how fast they read.

And - mark this well - they actually understand more and remember more and enjoy more than when they read like you. That's right. They understand more. They remember more. They enjoy more.

This is the same course three Presidents have had taught to their staffs. The same one Senators and Congressmen have taken, and the same course successfully completed by thousands of persons in Boston and New England over the past 19 years.

It's seven weeks long, 2 1/2 hours a week, with classes held regularly in Boston, and suburbs.

The IAP classes are tailored to fit the January period. The classes will meet twice weekly for 3 weeks, 3 hours each meeting.

At a greatly reduced rate, you will receive the regular Reading Dynamics course and the nationwide return privileges.

Special class for

INDEPENDENT ACTIVITIES PERIOD

Classes at 380/402 Massachusetts Avenue
(3 minute walk from Student Center)

Outstanding Student and Faculty Group Rates

for information call 536-6380

Evelyn Wood READING DYNAMICS INSTITUTE

17 ARLINGTON STREET • BOSTON MASSACHUSETTS

Men's Basketball — The Engineers suffered a pair of defeats Friday and Saturday at the Southeastern Massachusetts University (SMU) tournament. Friday night saw Tech squander a 13-point lead midway through the second half and lose to Massachusetts Maritime, 73-70. In Saturday's consolation game, SMU defeated MIT, 81-72. Mark Branch '83 led the team in scoring in both games, hitting 44 points in the two contests. Lane Wilson '82, playing for the injured captain Bob Clarke '81, performed well in the SMU game, scoring 16 and hauling in ten rebounds. The team has lost its last four after winning three in a row, and faces Trinity tonight at Hartford.

Hockey — Tom Michalek G fired in four goals, including three in the final period, as MIT whipped Gordon at Gordon, 8-3. Michalek got his first tally only a minute into the game on an assist from junior Joe Minahan. Gordon scored the next two goals, but the Engineers erupted for four unanswered tallies in the second period to put the game away. Goalie Larry Wagner '82 stopped 30 shots for Tech, who evened its record at 1-1.

Indoor Track — The first ever indoor meet in the new Special Events and Athletic Center was held Saturday, with the Engineers

coming out on top of a tri-meet with Brandeis and W.P.I. The final; totals were MIT 72 1/2, WPI 62 1/2, and Brandeis 34. Junior Colin Kerwin highlighted the day's activities by winning both the 1500 and 3000 meter events. Kerwin won the 3000 in 8:48.2, overtaking Brandeis' John Branish in the last lap to win. Other Tech winners included Joe Carangelo '81 in the 35-pound weight throw, Lew Bender '81 in the pole vault, Jim Turlo '81 in the high jump, and Jeff Lukas '82 in the 1000 meter run. MIT hosts Holy Cross tomorrow at 5:30pm.

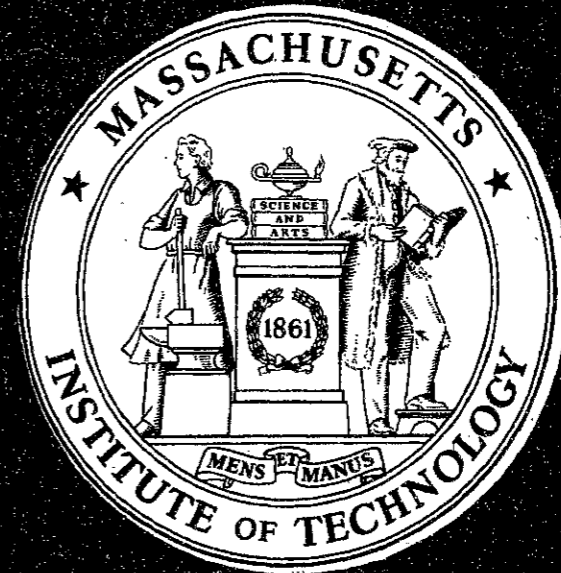
Swimming — Both the men's and women's squads hosted Wesleyan on Saturday, with the men winning by a convincing 71-24 score. Joel Harris '83 was a pleasant surprise for MIT, winning the 50 yard freestyle and taking second in the 100 yard free in his first races at those distances. Harris usually swims the distance events.

Tech women were edged by the visitors, 64-58. Karen Fortul's performance in the butterfly kept MIT close.

Fencing — MIT traveled to New York over the weekend for fencing action, and came away with a good performance. The men's squad won a pair of 18-9 decisions over New York University (NYU) and Brooklyn to up its record to 3-0. The women rebounded from a 51-1 drubbing at the hands of Temple to dispose of Caldwell and NYU by counts of 11-5 and 12-4, respectively. Coupled with a loss at Harvard last Wednesday, the lady Engineers now stand at 2-2. Both teams appear to be on their way to successful seasons.

Squash — At a tourney held at Wesleyan Saturday, MIT squash defeated Wesleyan 5-4, but dropped matches to Stony Brook 8-1, and Lehigh 5-4.

ua SAVES



Participating Merchant

Avis Rent-a-Car 110 Mt. Auburn St. Cambridge 491-3500	House of Roy Restaurant, Inc. 25 Tyler St., Boston 338-8882 or 426-4179
Cambridge Cycle Mart 1108 Cambridge St. Cambridge 547-5454	Image Maker 28 Boylston St. Cambridge 491-2550
Carpet World 55 First St., Cambridge (across from Lechmere Sales) 876-2600	Kendall Drug Corp. 238 Main St. Cambridge 492-7791
CopyQuik 1230 Mass. Ave., Cambridge (Harvard Square)	Mills Hardware Co. 1076 Cambridge St. Cambridge 547-9500
Crimson Travel 39 Boylston St. Cambridge 868-2600	Plywood Ranch 117 First St. Cambridge 661-0631
Elias Hair Care 319 Mass. Ave. Cambridge 497-1590	Rug Den, Ltd. 36 Boylston St., Cambridge (in the Garage) 868-5595
Emack & Bolio's 290 Newbury St. Boston 247-8772	Salad Days 41 Charles St. Beacon Hill 723-7537
Father's Fore 300 Mass. Ave. Cambridge 661-3394	The Garage Harvard Square 661-8979
Ferranti-Dege, Inc. 455 Brookline Ave. Boston 233-3550	Sherman's 11 Bromfield St., Boston (opposite Filene's) 482-9610
General Hardware & Supply Company, Inc. 433 Mass. Ave. Cambridge 864-3324	Sunflower Cafe 22 Boylston St. Cambridge
General Optical Co., Ltd. 400 Comm. Ave. Boston 267-0209	University Stationery, Co. 311 Mass. Ave. Cambridge 547-6650
Graphic Arts Center 1337 Beacon St. Brookline 738-4498	Wine Cellar 922 Beacon St., Boston 247-8100 or 247-9300
Newton Center 1280 Centre St. Newton Center 964-7818	World Wide Vision 1288 Beacon St. Brookline 739-1670

Please present your MIT ID card to receive discount

a service of the MIT Undergraduate Association