

## State deadlocked: T interruption likely

By Richard Salz

The compromise committee failed to reach an agreement as of 12:30 this morning and it seems likely there will be at least a temporary interruption of MBTA service.

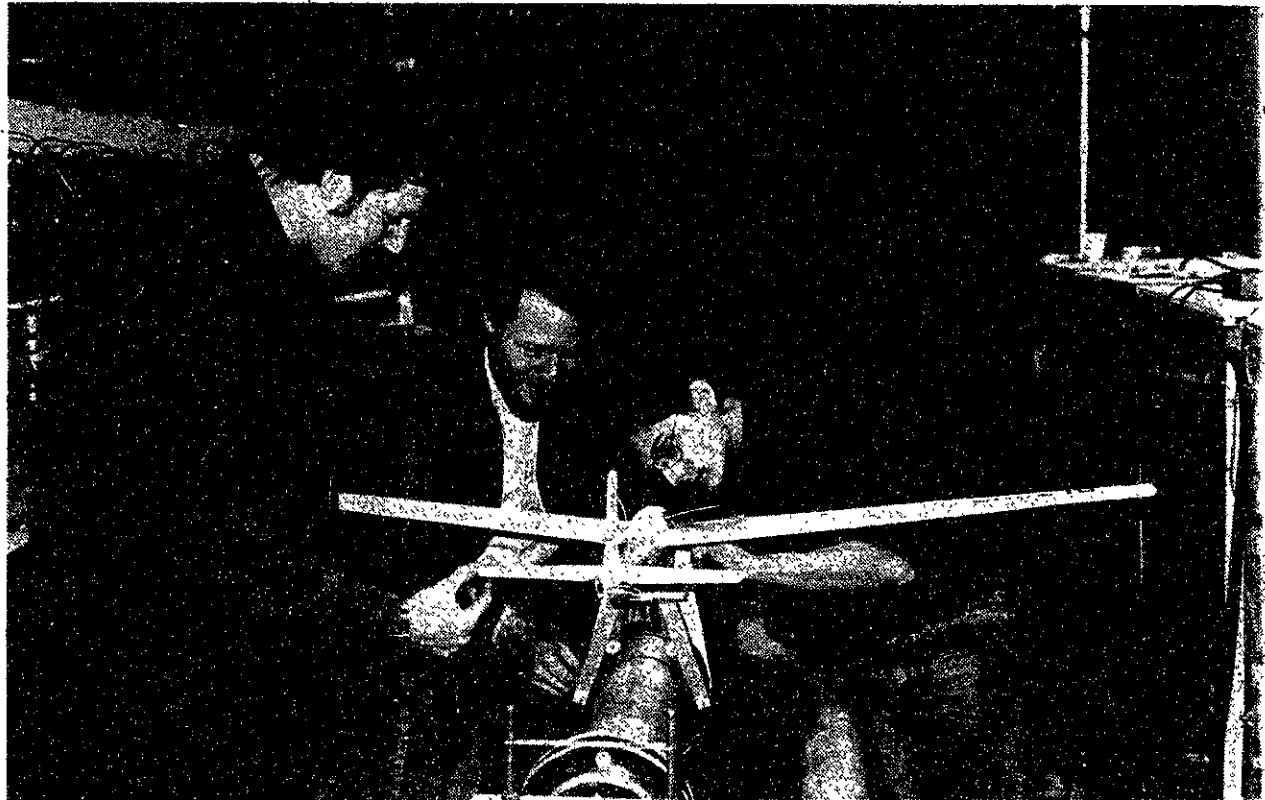
In spite of major differences between the two bills, both based on a proposal by Governor Ed King, officials were confident that a resolution could be easily reached. This was apparently not the case, however, and the state of any final disposition remains to be seen.

Comprised of Massachusetts state senators and representatives, as well as representatives from Governor Ed King's administration and the MBTA Advisor

Board, the committee had been trying to hammer out a compromise bill acceptable to the two houses.

Both the house and the Senate of the Massachusetts Legislature had passed their own bills designed to forestall the court-ordered shutdown of the T for today. Shortly before midnight Wednesday, the house overwhelmingly rejected the Senate's proposal 104 to 38.

The major difference between the two bills was the division of T funding for the remainder of the year. The Senate bill provided for the state to assume the costs, while the House would have the MBTA-served municipalities assume some of the share.



Under the direction of Henry Kolm, a senior scientist at the National Magnet Lab, research is being conducted on electromagnetic "mass drivers." These are expected someday to propel things into space at a lower cost than current methods. (photo by Steve Cohen)



The holiday season has arrived at Tech, as the decorations go up and the temperatures go down. (photo by Steve Cohen)

## Use points minima before IAP

By Jerri-Lynn Scofield

Many MIT freshmen on mandatory meal plans have been laboring under the misconception that they will be able to use points towards their minimum meal requirement during IAP.

According to George Hartwell, Associate Director of Housing and Food Services, this is simply not the case. "They can use their points over IAP, [but] they have to use their minimum points before the end of the term."

"I really don't know" how the misunderstanding arose, he added.

Freshmen point usage is far behind what it should be for students to fulfill their minimum point requirements before the end of the term. Hartwell indicated that meetings are currently being held between students and administration officials to discuss the commons program and minimum meal plans. Some "recommendations" should be available by next week.

Hartwell also indicated that some time will necessarily elapse before minimum meal plans are closed to actual student needs. When asked if students are going to end up paying for this experiment, he replied, "I don't know what the outcome will be. I think

adjustments will be made if our projections were too high."

Anita Walton, Program Coordinator for Dining and Residence Programs, commented, "They [Food Service administrators] really can't do anything until they get to the end of the term. They may look over the total point usage and say maybe we do owe

the freshmen a refund. However, they may look it over and say they really don't."

As for this term, in reference to the idea that dining service policy be altered to allow freshmen to use IAP to help fulfill their minimums, Hartwell replied, "we are in fact investigating that fact as well."

## Frosh behind in points

By Jerri-Lynn Scofield

With the term nearly over, more than 65 percent of the freshmen on mandatory meal plans had not used their points at the rate necessary to fulfill their minimum purchasing requirements.

According to George Hartwell, Associate Director of Housing and Food Services, "There are considerably more behind than ahead, about 35 percent. . . . We are in the process of trying to assess the impact."

On the seventy-eighth day of the 102-day "feeding period," Hartwell had computer-generated working copies of freshmen point usages. He used these as the basis for straight-line projections of probable total usage for this term. He declined to release the actual printouts.

Hartwell noted that of the freshmen on the 410-point plan, 34 percent had met their consumption requirements, while 66 percent had not. By dormitory, 21

percent of Baker House residents were ahead, while 79 percent were behind; 26 percent of the McCormick residents were ahead, with 74 behind; and MacGregor had the highest percentage, with 35 percent of the residents were ahead compared to 65 behind.

For a freshman to finish all 410 points before the end of the term, he should have approximately \$87 left from his initial investment by day 78, according to Hartwell. This works out to an estimated balance of roughly \$100. The figures for East Campus and Senior House were not available by dormitory, although the total projections were comparable to west campus figures. Of the east campus residents required to be on a 310-point plan, 37 percent were meeting their quota. Residents should have a balance today of about \$26, based on Tech extrapolations of Hartwell's data.

These figures cover a total pool of 444 freshmen on some mandatory meal plan.

## Court bars SS number use

By Tom Loreda

Federal District Judge Gerhard A. Gesell ruled last week that the Selective Service System cannot demand Social Security numbers from draft registrants. This decision was announced on November 24 in response to a suit brought by the American Civil Liberties Union.

Gesell ruled that the demand for the numbers violated the Privacy Act of 1974 forbidding the use of the Social Security number as a "universal identification number." The Act authorizes only a few organizations, such as the IRS and banks, to require it.

Gesell ordered the Selective Service System to not ask for Social Security numbers when men register, to provide registrants with an accurate statement of the Privacy Act and to eliminate the space for mandatory

Social Security number disclosure on the forms they use. Men who registered last summer can have the number deleted from their records by sending a written request to the Selective Service System. Those who will register in January need not give the number, regardless of whether new forms are available.

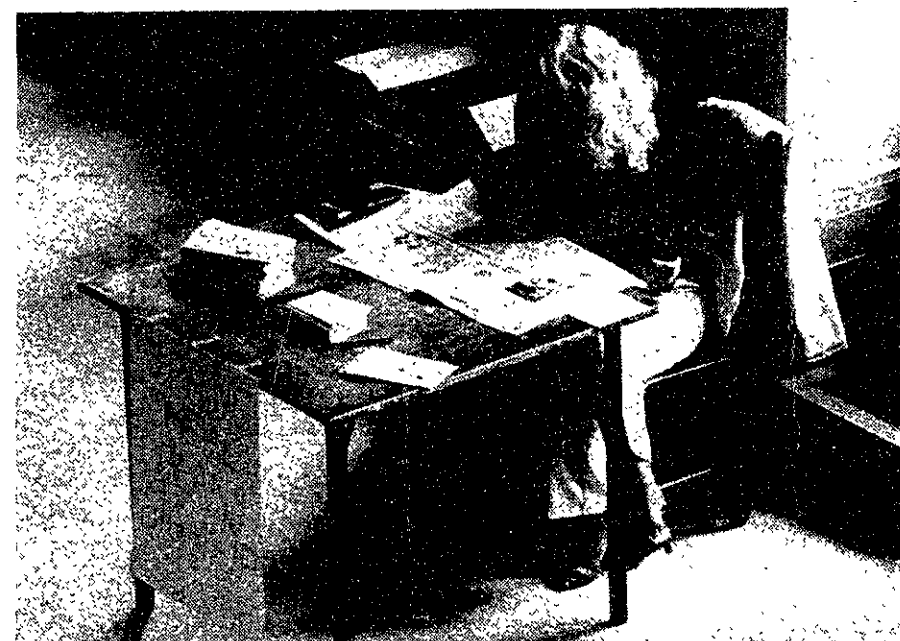
In his decision, Judge Gesell noted that the law reinstating draft registration did not contain provisions authorizing use of the numbers, but that this could have been a "legislative error."

Dr. Louis Menand, member of the MIT Political Science faculty and Special Assistant to the Provost, remarked that Gesell's decision supported the view of many that the Selective Service System misread the law and did not have the authority to demand the number. Menand also noted

that the decision pointed out that the Director of the System was incorrect when he said that there was no confusion regarding the System's right to demand the number. A spokesman for the System said there would be no comment until its legal counsel reviewed the decision.

Menand said that the Carter Administration might request Congress to adopt new legislation allowing use of the number, but he felt that Congress would defer the matter until the new administration entered the White House. He pointed out that though opposed to the draft, President-designate Reagan is under much pressure from the Senate to change his mind regarding this issue.

Menand added that this is "a symbolic issue at best."



Registration materials for next term were given out in Lobby 10 this week, but there didn't seem to be a big rush to sign up for meal plans. (photo by Steve Cohen)

# news roundup

## World

**Italian post-quake "baby racket" suspected** — Officials suspect that people are driving into the earthquake-ravaged zones of southern Italy and seizing newly-orphaned kids to sell to adoptive parents. The chief magistrate of the Naples juvenile court said his office has received reports that young children are being physically removed without first being processed by the court, to probably be sold on the black market. There is currently a five-year waiting list of would-be adoptive parents. No prices were available.

## Nation

**Christmas toys rated** — "Baby Cry and Dry" is one of the 18 toys undeserving of a spot under this year's Christmas tree, according to a report by the Consumer Affairs Committee of Americans for Democratic Action. "Take her out of the box — she smells — and the odor doesn't go away," stated the ninth annual study. Also cited were "Baby Cries for You": "The tears don't drip out, they whoosh out in a three-foot jet stream." Another offender of the 2112 toys tested is "My Puppy Puddles," "a toy whose sole purpose is to make a dog go to the bathroom." What is a good buy this holiday season? "Speak & Math," by Texas Instruments.

By Richard Salz

## Weather

According to the National Weather Service, today will be sunny and clear skiers with winds from the northwest at 15-20mph. Temperatures will be in the mid 20s, highs in the upper 30s. Tonight, clear and cold, with highs in the 20s. Tomorrow will be mostly sunny and a little milder, with highs in the low 40s.

HARVARD SQUARE  
MIT STUDENT  
CENTER

# the Coop



## WOLVERINE® Boots & Shoes

### 49.99 to 54.99

reg. \$60 to \$65

Made of rugged pigskin, stronger, more scuff-resistant than cowhide. Deep cushion insoles - you'll walk in comfort wherever the trail leads.

## SAVE 20% on WARM-UP SUITS

100% creslen acrylic, machine wash. Made in the U.S.A. Small, medium, large, x-large. Kelly/navy, red/grey, navy/grey.

reg. \$26

### sale 18.99

MIT Community



## How to... Make it in Massachusetts... ...when it snows

Snow tires, a well maintained car, and good driving practices will help you make it in Massachusetts this winter.

**ABOUT SNOW TIRES:** Any time there is a snow accumulation of two inches or more, snow tires will provide significantly more traction on the roadway. The open design of a snow (or winter) tire permits it to bite into the snow, whereas the closed design of a conventional (or summer) tire simply compacts the snow.

SIZE	PRICE	F.E.T.
A78-13	\$28.93	\$1.75
B78-13	\$31.90	\$1.89
C78-14	\$33.96	\$2.05
F78-14	\$37.89	\$2.33
F78-14	\$39.77	\$2.46
G78-14	\$40.94	\$2.61
H78-14	\$43.82	\$2.87
G78-15	\$42.66	\$2.68
H78-15	\$44.71	\$2.91

**IT IS NOT TRUE THAT CONVENTIONAL RADIAL TIRES ARE A SUBSTITUTE FOR SNOW TIRES.** In the Blizzard of '78 many vehicles equipped with conventional radial tires were stuck and immobile when cars with snow tires were moving. For cars with independent wheel suspension, some manufacturers recommend that snow tires be applied to all four wheels. Check your owner's manual. CAUTION: mixing conventional radial tires with bias or belted snow tires can be dangerous. When you come in, ask for our Consumer Information Bulletin, 11 Myths About Tires.

SIZE	FITS	PRICE	F.E.T.
P185/75R-13	BR78-13	\$52.74	\$2.08
P185/80R-13	CR78-13	\$56.87	\$2.08
P195/75R-14	DR78-14	\$58.74	\$2.49
P205/75R-14	FR78-14	\$61.98	\$2.67
P215/75R-14	GR78-14	\$64.87	\$2.80
P225/75R-14	HR78-14	\$68.72	\$3.10
P205/75R-15	FR78-15	\$62.96	\$2.67
P215/75R-15	GR78-15	\$64.99	\$2.95
P225/75R-15	HR78-15	\$70.79	\$3.09
P235/75R-15	JR78-15	\$74.93	\$3.36

### HOW WE OPERATE

We do not sell to the general public; we sell exclusively to dealers and to the personnel of companies, organizations, schools, unions, and federal, state or municipal governments. Please present proof of affiliation with your organization. Tire work is done on a first-come, first-served basis. Appointments are accepted for mechanical services.

**Delta "48" BATTERIES**  
24-4 \$41.49  
With Exchange  
Equal to or stronger than original equipment

SIZE	PRICE	F.E.T.
P185/75R-13	BR78-13	\$52.93 \$2.02
P185/80R-13	CR78-13	\$55.58 \$1.97
P195/75R-14	DR78-14	\$57.54 \$2.33
P205/75R-14	FR78-14	\$59.43 \$2.48
P215/75R-14	GR78-14	\$62.00 \$2.58
P205/75R-15	FR78-15	\$61.96 \$2.57
P215/75R-15	GR78-15	\$64.99 \$2.75
P225/75R-15	HR78-15	\$68.44 \$2.93
	JR78-15	

SIZE	PRICE	F.E.T.
155R-12	\$37.59	\$1.83
155R-13	\$39.89	\$1.86
165R-13	\$39.31	\$1.99
165R-14	\$44.32	\$2.07
175R-14	\$47.83	\$2.07
165R-15	\$47.65	\$2.13

**ROAD HAZARD COVERAGE**  
Major tire makers have discontinued road hazard adjustments on tire failures due to cuts, bruises, punctures or blow-outs. However, we offer a road hazard certificate at \$2.25 per tire on new Delta and Alliance tires, as well as Cambridge retreads.

SIZE	PRICE	F.E.T.
155R-12	\$46.95	\$1.53
155R-13	\$48.94	\$1.64
165R-13	\$52.72	\$1.80
175R-14	\$54.34	\$2.14
165R-15	\$58.23	\$2.07
175/70R-13	\$58.23	\$1.86
185/70R-13	\$61.74	\$2.13
185/70R-14	\$71.58	\$2.24
195/70R-14	\$80.98	\$2.53
205/70R-14	\$88.46	\$2.71

SIZE	PRICE	F.E.T.
155-13 black	\$50.32	\$1.59
165-13 black	\$56.80	\$1.75
175-14 black	\$68.41	\$2.11
185-14 white	\$76.53	\$2.48
195-14 white	\$80.17	\$2.68
205-15 white	\$89.24	\$3.00

### SNOW RETREADS

A78-13	\$16.94	G78-14	\$25.94
B78-13	\$18.94	H78-14	\$27.94
C78-13	\$18.94	560-15	\$18.94
C78-14	\$18.94	G78-15	\$25.94
E78-14	\$23.94	H78-15	\$27.94
F78-14	\$23.94	L78-15	\$30.94

Add 38¢ to 65¢ F.E.T. Whitewalls add \$2.00

**TIRE PRESSURES** should be checked more frequently in the winter, since tires lose a pound of pressure for every 10 degree drop in temperature. Pick up a pocket gauge at any of our stores for only \$2.95. When you buy snow tires, consider having them mounted on their own wheels; you save time, save money on balancing season after season, and keep your tires in better condition when in storage. We offer a full line of original equipment wheels for most domestic and many imported cars.

## CAMBRIDGE TIRE COMPANY

**BRAINTREE**  
236 WOOD ROAD  
848-6660  
At Exit 68 on Route 128

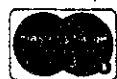
**BURLINGTON**  
84 MIDDLESEX TURNPIKE  
272-8230  
Opposite Burlington Mall

**CAMBRIDGE**  
290 ALBANY STREET  
864-7575  
Off Mass. Ave. near M.I.T.

**DEDHAM**  
765 PROVIDENCE HIGHWAY  
329-3100  
Next to King's at Dedham Plaza

**NATICK**  
339 SPEEN STREET  
655-6500  
Next to Trailways Bus Depot

**REVERE**  
600 REVERE BEACH PARKWAY  
289-5800  
Near Bell Circle



MEMBER: GREATER BOSTON, CAMBRIDGE, QUINCY-SOUTH SHORE, & SO. MIDDLESEX AREA CHAMBERS OF COMMERCE  
BULLETIN NO. 63 — WINTER 1980-81 — COPYRIGHT © 1980 — C.T.C. ALL RIGHTS RESERVED

**YOUR SAFETY IS OUR BUSINESS  
AND SAVING YOU MONEY IS OUR BUSINESS, TOO!**

**ABOUT WINTER CAR MAINTENANCE:** The first requirement for winter is a well-tuned engine. An engine that is difficult to start, or that stalls, is not reliable transportation. Have us do a **COMPU-SCOPE™** Electronic Tune-up using the latest diagnostic equipment.

**COMPU-SCOPE™ ELECTRONIC TUNE-UP**  
Most American and popular foreign cars.  
4 and 6 cyl **\$38.00**  
8 cyl — \$42.00

**WINTER IS ALIGNMENT TIME, TOO:** Alignments should be checked twice a year. The pot holes that ruin winter roadways can ruin your alignment. Have us check your alignment and save unnecessary tire wear.

**FRONT END ALIGNMENT**  
Most American Cars **\$12.50**  
American imports and most foreign cars \$14.50.  
Most vans, campers and light trucks \$15.50.  
Now-Ford "Twin I-Beam" alignment \$28.50.

**OUR MASTER MECHANICS ARE CERTIFIED**

We employ skilled mechanics who have been certified by THE NATIONAL INSTITUTE FOR AUTOMOTIVE SERVICE EXCELLENCE



**LIFETIME MUFFLERS - INSTALLED**  
Before you Midsize see us.  
Most American Cars **\$28.50**

**OUR "STRAIGHT ARROW" LIFETIME GUARANTEE**

If our mufflers or shock absorbers fail while you own the car, the part will be replaced free, including labor. Mufflers and shock absorbers used commercially or involved in an accident excepted.

**LIFETIME SHOCKS - INSTALLED**  
PREMIUM HEAVY DUTY **\$1350** EACH INSTALLED

PREMIUM RADIAL HEAVY DUTY **\$1850** EACH INSTALLED

MACPHERSON STRUTS **\$9750** PER PAIR INSTALLED  
(Datsun Z-cars — \$117.50)

**DRUM BRAKE PACKAGE**  
4 wheels **\$68.00**  
Most American Cars

- Install premium heavy duty brake linings on all four wheels
- Install NEW return and hold-down springs
- Reface and true all four drums
- Install NEW front grease seals
- Clean and repack front wheel bearings
- Inspect hydraulic system
- Road test vehicle

**DISC BRAKE PACKAGE**  
2 wheels **\$53.00**  
Most American Cars

**COMBINATION BRAKE PACKAGE**  
2 FRONT DISC BRAKES AND 2 REAR DRUM BRAKES  
Most American Cars **\$86.00**

The Real Paper

AWARD FOR THE BEST OF BOSTON  
for 3 consecutive years

# sports

## weekend preview

**Men's basketball** — The team faces Massachusetts Maritime in the opening round of the SE Mass. Tournament tonight in North Dartmouth, MA. The team concludes the 1980 portion of its schedule with a game at Trinity next Tuesday.

**Men's swimming** — With sophomore all-American John Schmitz returning, the Engineers open their home season tomorrow at 4pm with a contest against Wesleyan. Schmitz was last year's New England champion in the 400 meter individual medley.

**Women's swimming** — Karen Klinecicz, last year's New England champion in the 200 meter butterfly, leads the team in its home opener tomorrow at 2pm against Wesleyan. Klinecicz set eight individual MIT records last year as a sophomore.

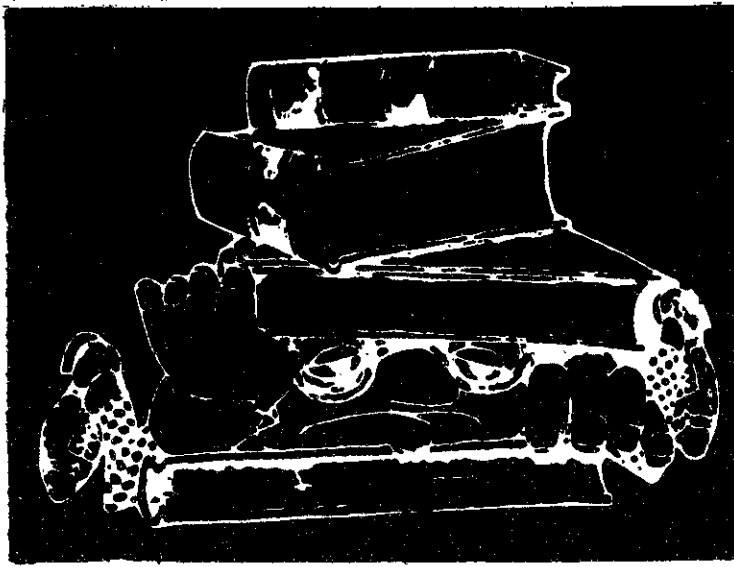
**Indoor Track** — The initial meet in the Special Events and Athletic Center finds the track team taking on Brandeis and WPI Saturday at 1pm. New England champions Paul Neves and Jeff Lukas, winners of the 880 and 1000 yard

runs, respectively, return from last year's 6-2 squad.

**Wrestling** — Tim Walsh's squad looks for its first win tomorrow in a triangular meet with Wesleyan and Bowdoin, starting at 1pm in duPont Gym. On Sunday at the same time, Indiana coach Doug Blubaugh will speak at the New England Regional Wrestling clinic in duPont. Blubaugh was a gold medalist in the 1960 Olympics and coached the US team in the 1971 Pan American and World Games. In addition, he was national freestyle champion in 1957 and 1960.

### sporting notices

The women's ice hockey club is open to all women in the MIT community. Organizational meetings will be held before Christmas break. Practices will start over IAP and will consist of one or two hours per week. For more information, call Liz English at x3-2270 or Sparky Bowden at x3-2272.



## Too Much Reading Getting You Down?

Well, maybe it should. Today, our knowledge is exploding so fast that people who want to keep ahead are actually falling behind. There's simply too much to read. Too much homework. Too many books. Too many reports and memos.

What's the solution? Learn how to read faster and better.

You can do it, too. So far over 1,000,000 other people have done it. People with different jobs, different IQ's, different interests, different educations. Students, businessmen, housewives.

These people have all taken a course developed by Evelyn Wood, a prominent educator. They have at least tripled their reading speed with equal or better comprehension. Most have increased it even more. Some increased it 10, even 20 times.

Think for a moment what that means.

Our average graduate can read the typical novel in less than two hours. They can read this ad in 20 seconds. They can read an entire issue of *Time* in 35 minutes.

They don't skip or skim either. They read every single word. Nor do they use machines. Instead, they let the material they're reading determine how fast they read.

And - mark this well - they actually understand more and remember more and enjoy more than when they read like you. That's right. They understand more. They remember more. They enjoy more.

This is the same course three Presidents have had taught to their staffs. The same one Senators and Congressmen have taken, and the same course successfully completed by thousands of persons in Boston and New England over the past 19 years.

It's seven weeks long, 2½ hours a week, with classes held regularly in Boston, and suburbs.

The IAP classes are tailored to fit the January period. The classes will meet twice weekly for 3 weeks, 3 hours each meeting.

At a greatly reduced rate, you will receive the regular Reading Dynamics course and the nationwide return privileges.

**Special class for**  
**INDEPENDENT ACTIVITIES PERIOD**  
 Classes at 380/402 Massachusetts Avenue  
 (3 minute walk from Student Center)  
**Outstanding Student and Faculty Group Rates**  
 for information call 536-6380

**Evelyn Wood READING DYNAMICS INSTITUTE**  
 17 ARLINGTON STREET • BOSTON MASSACHUSETTS

**THE PERFECT GIFT**  
**LASERART™**  
**NOTECARDS**  
 BEAUTIFUL COLOR  
 LASER OPTICAL EFFECTS  
 20 ASSORTED NOTECARDS  
 WITH ENVELOPES  
 PACKAGED IN AN EXECUTIVE WALLET  
 PROTECTIVE WRAPPED  
 AND RUSHED TO YOU  
 FOR ONLY \$15  
 SEND  
 CHECK OR MONEY ORDER TO  
 TODAY'S TECHNOLOGY TODAY  
 256 S. Robertson Blvd.  
 BEVERLY HILLS, CA 90211

Men's & Ladies  
**COWBOY BOOTS**  
 TONY LAMA ACME  
 JUSTIN DINGO  
 DAN POST TEXAS  
 DURANGO  
 FRYE  
 Starting at \$39.95  
**Walker's**  
 Riding Apparel, 292 Boylston St., Boston

**Turtle Neck**  
**Jerseys \$5.98**  
**Flannel Shirts**  
**White \$5.98**  
**Carpenter**  
**Pants \$11.95**  
**Green Fatigue**  
**Pants \$9.95**  
 Levis-Lees  
 Wrangler  
 Blue Denim Overalls  
 Central War  
 Surplus  
 433 MASS. AVE.  
 CENTRAL SQUARE  
 CAMBRIDGE

Starting at \$5.95  
**COWBOY SHIRTS**  
 LEVI  
 WRANGLER  
 H-BAR-C  
 DEE CEE  
 Walker's can fit you TALL guys too!  
**Walker's**  
 Riding Apparel, 292 Boylston St., Boston

**THE HEBREW UNIVERSITY OF JERUSALEM**  
 1981/82 PROGRAMS FOR AMERICAN STUDENTS

<p><input type="checkbox"/> <b>ONE YEAR PROGRAM</b>—for college sophomores and juniors.</p> <p><input type="checkbox"/> <b>REGULAR STUDIES</b>—for college transfer students toward B.A. and B.Sc. degrees.</p>	<p><input type="checkbox"/> <b>GRADUATE STUDIES</b>—Master's, Doctoral and Visiting Graduate programs.</p> <p><input type="checkbox"/> <b>SUMMER COURSES</b>—given in English.</p>
---	--

PLEASE CHECK DESIRED PROGRAM

For Application and Information, write:  
 Office of Academic Affairs  
 American Friends of the Hebrew University  
 1140 Avenue of the Americas, New York, NY 10036 (212) 840-5820

Name \_\_\_\_\_  
 Address \_\_\_\_\_  
 City/State/Zip \_\_\_\_\_

For further information on campus, contact:  
 Prof. Bernard S. Gould  
 Room 56-511  
 Phone 253-4718

**ELECTRICAL ENGINEERS**

New Ideas  
 and  
 Building Better Mousetraps

<p>X-Ray Astronomy                  Solar Research                  Fusion Plasma Diagnostics</p>	<p>Solar Energy Collectors                  Advanced CT Scanners                  Ultra-Low Dose X-Ray Security                  and Medical Devices</p>
---	--

ASEP® Electric Utility Load Management System

At AS&E we invented a lot of new things and new ways of doing things. What's most important is that those things work and work well. It may not be the first idea that works, but that's the nature of invention, lots of new ideas, many of which fail.

No, AS&E is not one of the largest companies around, but we're not the smallest either. We do have what counts--an open environment where talented people can expand their abilities and make recognized contributions in their respective fields. Everyone is important, and everyone's job is critical.

If you are a degreed Electrical Engineer and are looking for a real opportunity to make something work--in a company where the atmosphere is relaxed, but the pace of work is not--call Lee Binnig at 617-868-1600.

**American Science and Engineering, Inc.**  
 955 Massachusetts Avenue  
 Cambridge, Massachusetts 02139

an equal opportunity employer m/f

AS&E

Steve Solnick

**"Profile", take one...**

A few weeks ago, I was asked to provide a publication with a "profile" of MIT. It turned out to be a tough question to answer. A first draft of my "profile" follows. I'd be interested to see how other members of the MIT community would "profile" MIT; in fact, I'd like to publish some alternative visions during January if there's sufficient response.

\* \* \* \*

MIT is a unique institution in many ways. It has the world's best professors for science and engineering. It is famous. It has the best facilities available. It has a strong liberal arts and social sciences program.

Yet, in many ways, the true paradox about MIT is that it shuns just those qualities which make it unique.

There are actually three component institutions which comprise MIT. The educational institution is probably the chief concern of students and a prime concern of faculty. The research institution is the chief concern of faculty and a prime concern of students.

Yet, strangely, the political institution is largely ignored by students, often with some effort, and involves only interested faculty. Faculty are often surprisingly aware of the social consequences of their research. Yet students rarely care to be.

In some ways, students are an interesting breed here. They are intensely competitive, but not among themselves. They compete against difficult problems to be solved, or against things they do not know. But they are not backstabbers (freshmen pass-fail helps set the stage for this attitude.)

Yet, in terms of what interests them, students sometimes seem obsessed by things which raise few eyebrows at other colleges while they tend to ignore those elements which make MIT unique. Students protested for a year a plan to make commons (institute food) required of some students — a practice commonplace at many schools. Yet few even questioned a decision by a bioengineering firm, with ties to MIT faculty, to move to MIT.

Similarly, students fought tooth and nail (rightly so) a plan to move the drop date earlier in the term, as it is at many schools. Yet few raise an eyebrow at the volume of defense-related research affiliated with MIT.

The drop date case illustrated an interesting feature of the MIT administration. It was for years largely *laissez-faire*. Students were left on their own and regulations were minimized. Yet in recent years, this policy has become expensive. Institute food services were losing money. Grade inflation was reducing the "value" of an MIT degree. So, with tuition going through the roof, the administration moved slowly to exert some more control over the forces at work on the campus.

It has met with stiff resistance—the MIT student is nothing if not independent. How it will proceed under a new administration is unclear.

One thing is less unclear. The MIT administration will doubtless continue its obsessive aversion to the public spotlight. While the Presidents of Harvard or Dartmouth seem to go out of their way to make the front page of the *New York Times*, an MIT President will go to almost any length to avoid it. Even so olitical a figure as Jerome Iesner imposed a moratorium on his political statements while he was president.

Perhaps MIT fears controversy because its myriad research contracts are healthier in the dark. Even in the field of public information and education in science and technology it has been unusually quiet. Nevertheless, there seems impetus from within the MIT community to force the college more into the limelight it could own but for asking.

Even on campus the administration moves efficiently and quietly. Often irrevocably. It is not unreasonable, merely monolithic at times. The campus continues to expand and new research functions are assumed. But instructional labs and large lecture halls continue in short supply.

MIT's strong humanities program is rare for a technical school, yet, despite the best-voiced intentions of the administration, it remains a separate program. There's science and then there's that.

Liberal arts are, like the rest of MIT's unique attributes, there for the asking and taking. But, like political activism, political interest, public attention, and new core facilities, don't expect to see the institute pushing.



IN RESPONSE TO THIS STATION'S EDITORIAL AGAINST THE SEXUAL EXPLOITATION OF CHILDREN IN ADVERTISING... HERE TO REPRESENT THE OPPOSING VIEW...

Column/ Alain d'Heurle

**Cent. America: another Nam?**

What exactly President-elect Reagan's Latin American policy will be only time will tell, but signs point with ever-sharper resolution toward a bloody showdown in El Salvador after January 20. The stage has already been set for direct US military intervention by the Carter Administration. Even without direct

military faction staged a coup in October 1979 promising progressive-sounding reforms, Carter threw his support behind the new junta. However, the junta has never exercised control over the military where hard-line factions have increasingly taken the upper hand. And, as moderate members of the junta have been

nounced a revised approach to foreign policy based on US national interests. Rockefeller undoubtedly believes that the "right" of the multinational corporations and the wealthy elites to exploit everyone else is the only one that matters.

The extremely simplistic world view held by the incoming Reagan Administration bodes ill for the Third World. The earth is once again blindly divided into "Communist" and "Free," and all disputes seen as a question of "us versus them". But rather than secure our influence with the smaller nations, the hysterical response of the US to any threat is certain to drive them directly into the arms of the Soviets, as our policy of hostility toward Cuba has done, or to let them fall after hopeless and devastating conflict, as happened to Vietnam and Cambodia.

Going to the aid of the Salvadoran fascists will only prolong the bloodshed and will surely lower our reputation and influence in a world ever less willing to fit into our geo-political constructions.

**Rockefeller undoubtedly believes that the "right"... to exploit everyone else is the only one that matters.**

US intervention, the brutal repression is likely to increase on a grand scale there.

According to a joint dissent paper by members of the State and Defense Departments, the CIA and the National Security Council, plans have already been made for a US military mission to El Salvador. The US already has five counter-insurgency advisors there, the *New York Times* reports, and is training Salvadoran officers and pilots. The analogy with US involvement in Vietnam during the early sixties is striking.

The Reagan team clearly views Central America as the target of Soviet and Cuban aggression, and has made it clear that human rights considerations won't keep us from defending our "friends" from the Red Menace. The brutal political repression pursued by military dictatorships and the dire socio-economic disparities of Latin America have no place in the Republican interpretation of popular unrest. Rather, it is the evil schemers in Moscow and Havana who are the cause of all the trouble. Last Friday, Reagan advisors promised to increase military aid to the Salvadoran junta.

Although Reagan appears to be totally blind to political nuances and socio-economic problems abroad, Carter proved to have rather limited vision in applying his human rights doctrine and was particularly myopic on El Salvador.

The Carter Administration supports the military-civilian junta and portrays it as caught between left- and right-wing extremists. When a moderate

pushed aside or have left, the junta has moved from lack of control over the military to complicity with its campaign of extermination against the leftist opposition. After last week's incident, the collusion between the military and the fascist vigilante death squads can no longer be doubted.

Last Wednesday, as uniformed policemen and soldiers stood guard outside, civilian-clad gunmen stormed a Catholic high school in San Salvador and kidnapped seven prominent opposition leaders and some twenty other persons who were meeting peacefully. The tortured corpses of six of the leaders were found around the capital city over the weekend. The others are still missing.

Even after this incident, the Carter Administration maintains its fiction of the centrist junta besieged from left and right. The State Department issued a statement on Monday simply deploring the continuing violence. The Salvadoran Catholic Church reports that 9,000 people have died in political violence since January 1. The Church blames 80 percent of the deaths on the fascist death squads and accuses the junta of supporting them.

The Carter Administration has restricted military aid to El Salvador because of human rights violations. However, human rights promises to play a rather different role in the Reagan Administration. Touring South Korea, Chile, Argentina, Paraguay and Brazil (all flagrant military dictatorships despising democracy and human rights), David Rockefeller cheerily an-

**Editorials**, which are marked as such and printed in a distinctive format, represent the official opinion of *The Tech*. They are written by the Editorial Board, which consists of the chairman, editor-in-chief, managing editor, and news editors.

**Columns** are usually written by members of *The Tech* staff and represent the opinion of the author only, not necessarily that of the rest of the staff.

**Letters to the Editor** are written by members of the MIT community and represent the opinion of the writer.

*The Tech* will attempt to publish all letters received, and will consider columns or stories. All submissions should be typed, preferably triple spaced, on a 57-character line. Unsigned letters will not be printed. Authors' names will be withheld upon request.

**The Tech**

Stephanie L. Pollack '82 — Chairman  
Steven L. Solnick '81 — Editor-in-Chief  
Patrick M. Thompson '82 — Managing Editor  
Michael L. Taviss '81 — Business Manager  
Volume 100, Number 53  
Friday, December 5, 1980

**BUSINESS DEPARTMENT**

Advertising Manager: Rich Epstein '83; Staff: Robert W. Leishman '82; Circulation Manager: Donald Gottfried '82.

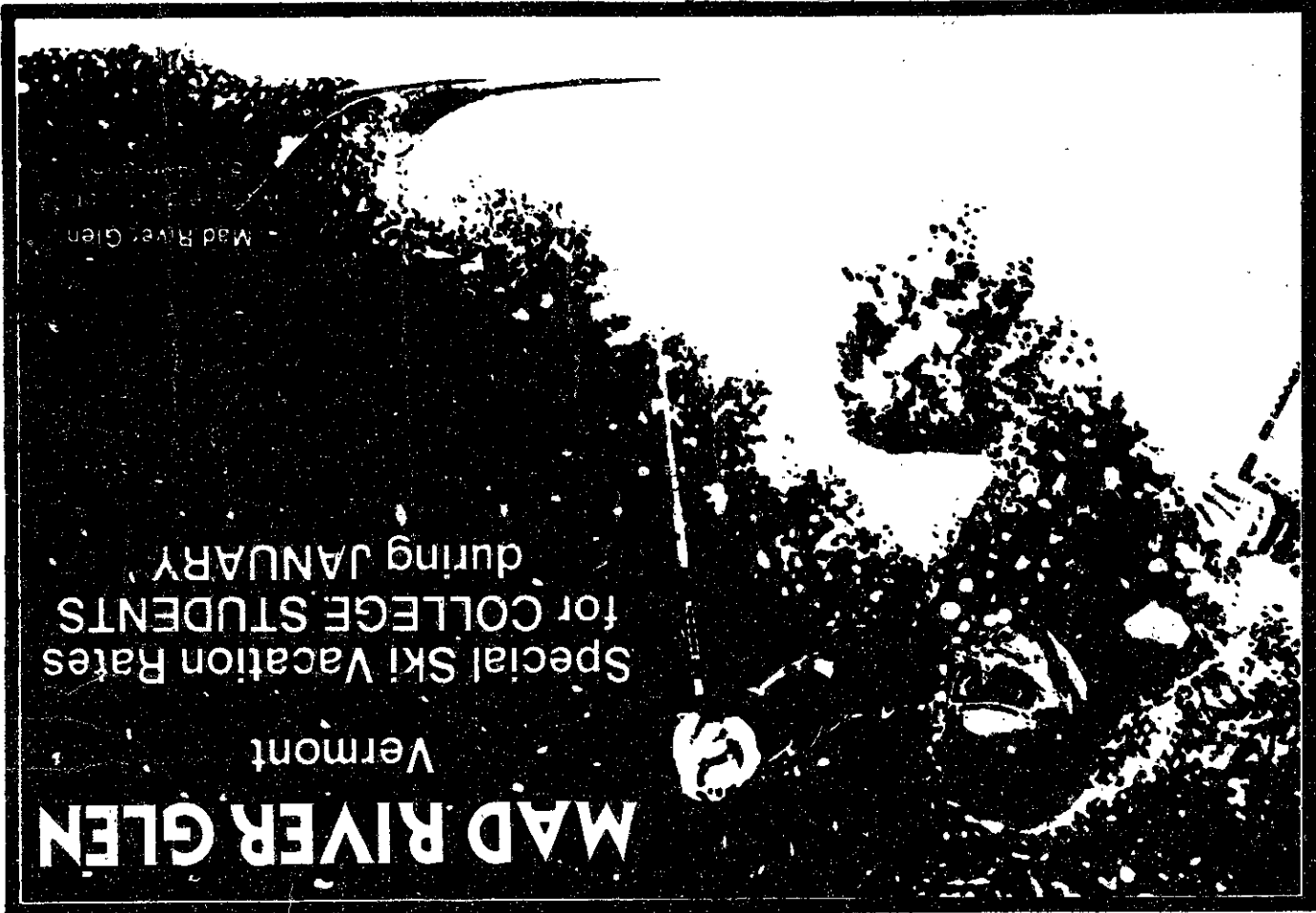
**SPORTS DEPARTMENT**

Sports Editors: Bob Host '81, Erric R. Fleming '83; Staff: Dennis Smith '81, Robert Labarre '83, Steve Kim '83, Arlene Santos '83.

**PRODUCTION STAFF FOR THIS ISSUE**

Night Editor: Pat Thompson '82; Staff: Dale Davidson '75, Cindy Delfino '82, Bill Leishman '82, Rich Salz '82, Bill Spitzak '83, Charlie Brown '84

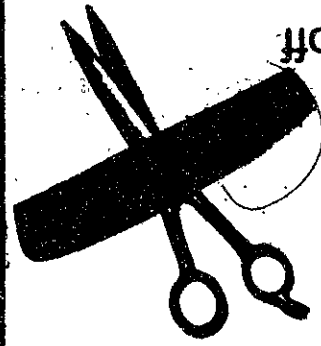
*The Tech* (ISSN 0148-9607) is published twice a week during the academic year (except during MIT vacations), weekly during January, and once during the last week in July for \$7.00 per year Third Class by *The Tech*, 84 Massachusetts Ave. Room W20-483, Cambridge, MA 02139. Third Class postage paid at Boston, MA. Non-Profit Org. Permit No. 59720. POSTMASTER: Please send all address changes to our mailing address: *The Tech*, PO Box 29, MIT Branch, Cambridge, MA 02139. Telephone: (617) 253-1541. Advertising, subscription, and typesetting rates available. © 1980 *The Tech*. Printed by Charles River Publishing, Inc.



**MAD RIVER GLEN**  
 Vermont  
 Special Ski Vacation Rates  
 for COLLEGE STUDENTS  
 during JANUARY

262-4160

Boston, Ma.  
 247 Newbury St.



This coupon good for 20% off

Hair cut the  
 way **you** like

**Gapelli** by **norman**

**HOLIDAY SPECIAL**

**arts**

**read this it's not for punks sknup r of ton s'ti siht daer**

The Concert Opera Orchestra performed Mascagni's *Iris* at Jordan Hall on Nov. 22. The Berlin Requiem and The Seven Deadly Sins plays in repertory at the American Repertory Theatre, Loeb Drama Center.

I had never been to a performance by the Concert Opera Orchestra before. There was plenty of good, fully-staged opera around, I had argued to myself, and it was hardly necessary to go watch a group of singers in evening dress screech from a podium in the antiseptic of an unstaged concert performance. I was proved wrong. The performance of Mascagni's *Iris* by the Concert Opera Orchestra was, quite simply, stunning.

*Iris* is set in Japan and is a story of lust. Iris is abducted by Osaka, who then attempts, and fails, to seduce her. While Kyoto tries to auction the poor girl off, her dad, Ciccio, turns up and, obviously thinking she has been rather naughty, hurls mud at her and curses her. She jumps out of a conveniently-located window and, a few arias later, dies.

Roberta Laws sang *Iris* beautifully, emphasizing the delicate innocence of the character, yet projecting with a strong well-defined voice. Harry Theyard was a perfectly passionate and eloquent Osaka. In the Act II duet where Osaka attempts to seduce Iris, he was seen to be totally lost in desire, Theyard's voice emitting signals of urgent lust. The orchestral playing accompanying them was of sheer beauty, exploiting the marvelous textures of the piece to the full; Iris' voice rose against soft, sympathetic strings, a sound of fragile, perishable flowers suggested on the flute.

Those same strings became magnetically sensuous when under the influence of Osaka's cravings. Andrew Smith sang well as a just-nicely nasty Kyoto, and the rest of the cast was in good form as well.

The highly-disciplined chorus was notable for its split-second timing and coordination with David Stockton's excellent orchestra.

\* \* \* \*

The Raphael Trio gave a highly enjoyable concert of Mozart, Beethoven and Dvorak in the First and Second Church on Marlborough Street in Boston (in the midst of MIT's fraternity land) on Dec. 2. The members of the Trio proved to be idyllically blended. Their well-rounded balance made Mozart's *Trio in G, K. 564* an especial pleasure. Daniel Epstein's fluid piano playing coupled with the impeccable phrasing of Charles Castleman, violin, and Susan Salm, cello, to give pleasure. Admiring my reams of spontaneously jotted-down notes, I made an observation on the "jolly piano" playing in the Allegretto. It was jolly, indeed. This is not a work to overplay; it is one to enjoy. And the audience did enjoy it.

Playing in the Beethoven *Trio in C Minor, Op. 1, No. 3* was spellbinding. It somehow managed to be both relaxed and urgent, have power, charm and style.

Dvorak's *Trio in E Minor, Op. 90, B. 166* ("Dumky") ended the evening in a deeply thought-out performance. Contrasts of mood were marvelously managed, and the beauty of the piano, virtuosity of the violin and detailed approach to the cello once more gave pleasure.

\* \* \* \*

Having seen the spectacular production of Brecht/Weill's *The Seven Deadly Sins* by the English National Opera in London, the American Repertory Theatre's version seemed tatty and dull.

Carmen deLavallade was, admittedly, really rather good as Anna 2; her suggestive, irony-tinged movement was a pleasure to watch. But Ellen Green sang poorly as Anna 1, even if she did manage to

project the image of cold detachment that goes along with the role, and the production was, in general, pretty pedestrian. It was all too sugary and bland; having seen something so much better elsewhere, how could I but be disappointed?

There was no note in the program to explain what *The Berlin Requiem* was about and, as it was difficult to catch the words being sung, I drew a complete blank on this other part of the double-bill.

While there are so many better evenings out to be had for a lot less money, I cannot recommend this evening of significant works reduced to trivia.

Jonathan Richmond

Jon von Zelowitz  
 the future of rock and roll.  
 music as from the crowd, and from seeing  
 I left satisfied, but not as much from the  
 seemed a little thin, it was not annoying  
 problem than usual. Although their mix  
 acoustics of the large room were less of a  
 past, was well-behaved, and the strange  
 been a big problem at the Bradford in the  
 cruder job. The sound system, which had  
 found yourself wishing they'd do a wilder,  
 been at; if you're like me, you would have  
 like records, this was one you should have  
 you are into hearingconcerts that sound  
 Musically, the band was really sharp. If  
 opened sooner.

their last such workout), they all stared off  
 into space or at their instruments for most  
 of the show. When they finally came alive,  
 they were electric. I just wish it had hap-

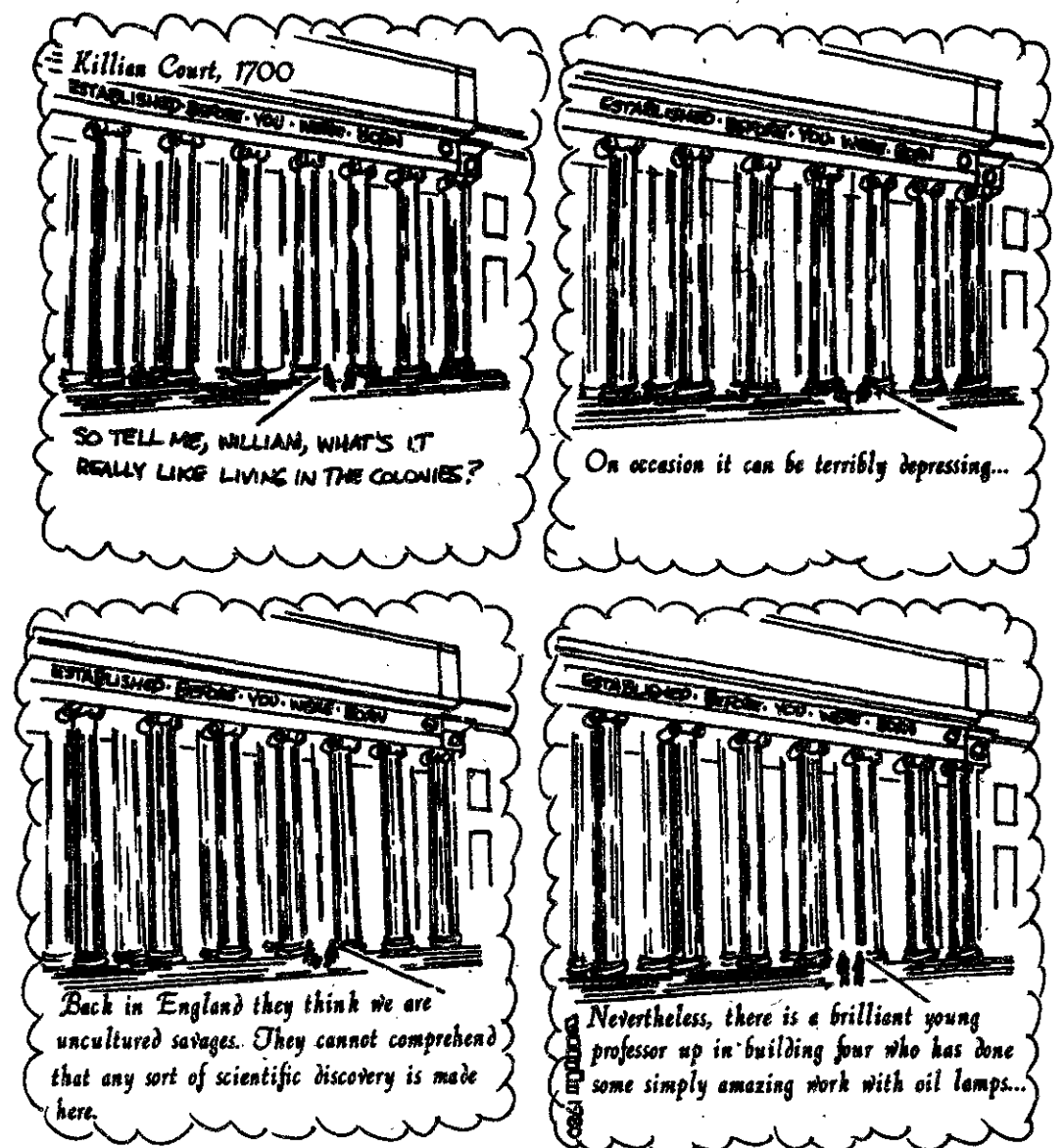
to have sworn off touring forever after  
 victims of a long tour (they were rumored  
 until the last few songs in the set. Probably  
 To me, the performance lacked spark  
 sang during "I Believe"  
 my heart good as over 1,000 pogoed and  
 the standard young peoples' music. It did  
 new wave/punk would ever really become  
 me, since I had been doubtful lately that  
 with the band. This was very significant to  
 pogoing away happily and singing along  
 this bunch of rather normal people was  
 or danceable as, say, a Ramones concert.  
 Although the show was not nearly as wild  
 response I have ever seen at a concert.  
 far. This was the most universal audience  
 This last point is the most interesting by  
 much as I was.  
 leg students who were into the band as  
 to find a house packed full of ordinary col-  
 sized audience of fanatics, I was delighted  
 musicianship. And expecting a medium-  
 ability found on stage, I saw a musical  
 show, I found the usual reduction in musical  
 was a surprise. Expecting a wild stage  
 My first view of the Buzzcocks in concert  
 The Bradford Hotel, Tuesday, Nov. 25.  
 The Buzzcocks, Rantlers and LaPeste at

# comics

## Technicality By Bill Spitzak



## Outside Looking In By V. Michael Bove



To be continued...

**All graduates  
1979, 1980, 1981  
SB, SM, ScD, PhD**

**Nominations for membership in the MIT Corporation  
are due by: December 22**

The MIT Corporation Screening Committee will soon select a slate of candidates from the 1979, 1980, and 1981 MIT graduating classes. One person from this slate will be elected in May 1981 to a five-year term on the MIT Corporation. Each year, a recent or current graduate is elected to such office.

**Have you selected a candidate? Have you references ready?**

for information, see or phone:  
Dorothy Adler  
Alumni Center 10-110  
Tel: 253-8200



# sports

## Colucci chosen IM chairman

By Bob Host

Mike Colucci '82 was elected chairman of the Intramural Council by white ballot at the group's meeting Wednesday night.

Assisting Colucci will be John Alam '82. Alam was elected IM Council secretary, also by white ballot. Intramural Council advisor Dave Michael noted that this was the first time that both concil chairman and secretary were elected in such a manner.

In addition, Bill Dawson '82 and Howard Haber '82 were elected managers for water polo and softball, respectively, also by white ballot. Haber noted that in the forthcoming softball season, if enough umpires sign up, stealing will be reintroduced to B league.

Colucci stressed communication in his address to the Council and brought up the subject of possible UROP credit for IM managers in the department of management. He also pressed for better records regarding football injuries. Alam also stressed the need for records when considering IM decisions that have precedents. Until now, Alam noted,

"the precedent is Dave Michael," who has kept unofficial track of past decisions.

In other Council matters, next week's basketball schedule faces cancellation due to a lack of referees. Michael noted that "of 39 refs [who signed up], only four are refing." The situation has reached the point where one referee would have to officiate eight straight games without a second referee on the court, one athletic chairman explained. To alleviate the situation, basketball manager Kevin Coffey plans to send a letter to A-league team captains over IAP explaining the situation. Coffey noted that he will try to retain as much of next week's schedule as possible.

Tentative plans for other intramural sports were also announced at the meeting. The IM wrestling tournament will probably be held on February 15, and intramural pool will begin the second week in February. In addition, hockey playoffs have been scheduled for the last week before spring break.

### on deck

Friday

Men's basketball: SE Mass. Tournament

Squash: Wesleyan Tournament

Men's fencing at NYU, 7pm

Saturday

Men's basketball: SE Mass. Tournament

Squash: Wesleyan Tournament

Rifle at Coast Guard with UConn, URI and Wentworth, 10am

Women's fencing at NYU with Temple and Caldwell, 11am

Indoor Track vs. Brandeis and WPI, 1pm

Wrestling vs. Bowdoin and Wesleyan, 1pm

Men's fencing at Brooklyn, 2pm

Women's swimming vs. Wesleyan, 2pm

Men's swimming vs. Wesleyan, 4pm

Women's basketball vs. Regis, 7:15pm

Hockey at Gordon, 8pm

Monday

Hockey vs. Tufts, 7pm

### classified advertising

MAKE MONEY!

The Tech needs a fast, accurate typist to type the copy for our issues. The job requires a commitment every Monday and Thursday morning. Call 253-1541 and ask for Jon, or leave a message.

Waterbed

New queensize waterbed, never opened, 10-year warranty, walnut-stained pine frame, deck, pedestal, mattress, safety liner, heater. Originally \$330. NOW ONLY \$199. 334-6226. Lynnfield.

### The MIT Musical Theatre Guild

is interviewing prospective directors for Tech Show '81 on Dec. 9 & 10 at 7pm in W2-400, and prospective directors, choreographers, and musical directors for an IAP production of *You're a Good Man Charlie Brown* on Dec. 9 & 10 at 8pm in W20-400.

Auditions for *Charlie Brown* will be held Jan. 5 & 6 at 7pm in the Mezzanine Lounge of the Student Center.

For more information, call 253-6294.

### score board

Harvard 94, Basketball 71

Boston State 99.4, Women's gymnastics 41.6

Tufts 9, Squash 0

Northeastern 108, Women's swimming 34

Plymouth State 9, Hockey 4

Starting at \$15

### COWBOY HATS



Hats by STETSON & other Famous makers!

**Walker's**

Riding Apparel, 292 Boylston St., Boston



**Mandarin & Szechuan Cuisine**

prepared by chef rated 5 stars in New York City

**Cocktails • Take Out Service**  
Open Daily 11:30AM - 12:00PM


**CHINESE PASTRIES**  
SAT. & SUN. only  
11:30AM - 2:00 PM

"Everything I tasted there was excellent, and several dishes had that vivid clarity of flavor that first attracted us all to Szechuan food, and that we haven't noticed as much in recent years."

Robert Nadeau - The Real Paper - June 28, 1980

**LUNCH BUFFET**  
\$2.95 ALL YOU CAN EAT

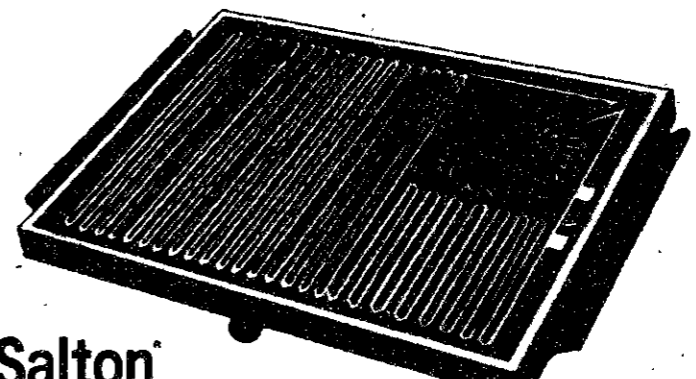
460 Mass. Ave., Cambridge  
876-6299



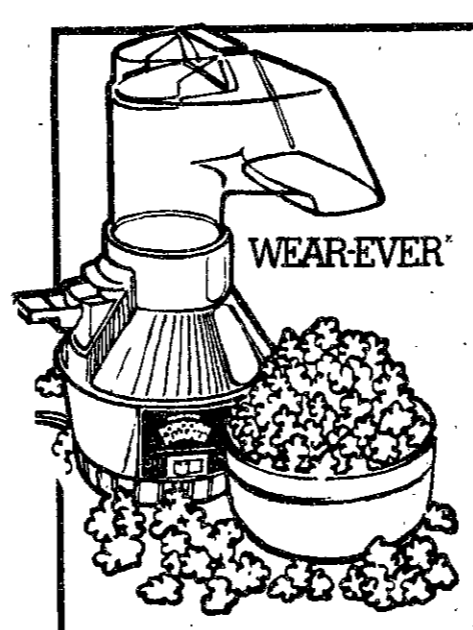
HARVARD SQUARE DAILY UNTIL 9 SUNDAYS 12 - 5:45

## CHRISTMAS SPECIALS


**SALTON SUPERB HOTRAY® FOOD WARMER**  
Sale 21.99  
reg. 27.99



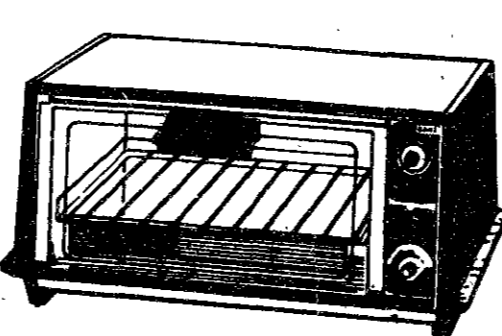
**WEAREVER CORN POPPER**  
Sale 25.99  
reg. 33.99




**FABERWARE 2 to 8 CUP COFFEEMAKER**  
Sale 33.99  
reg. 38.99




**TOAST-R-OVEN**  
Sale 34.99  
reg. 38.99




**TOAST-R-BROIL TOAST-R-OVEN**  
Sale 44.99  
reg. 49.99



GE logo



up ideas FOR THE HOME downstairs



## Electronic Department Store

STARTERS

from \$59

40 CHANNEL

from \$59

19" COLOR

only \$319

DISCOUNT!

POCKET CALCULATORS

LOW PRICES & WE INSTALL

VIDEO TAPES

from \$89

HOME • AUTO • BUSINESS

VIDEO COMPUTERS

ATARI APPLE

TUFTS

# sports

## Plymouth State tops MIT in hockey rink opener



Paul Dinnage '84 scores the first goal ever scored in MIT's new Alumni Arena. However, it was not enough, as MIT dropped their opener 9-4 to Plymouth State. (photo by Al O'Connor)

By Barry S. Surman

Freshman Paul Dinnage, in his first appearance with the Beavers, scored the first goal in MIT's new special events/athletic center, but the club hockey team fell in its season opener to Plymouth State College by a 10-4 margin.

Dinnage's goal was answered a minute and a half later by the Panthers' C. J. Sweet, who also tallied two assists later in the contest. Tom Michalek G scored the first of his two goals just 24 seconds later, but within five minutes, Plymouth answered with another three goals to close the first period with a 4-2 lead.

Following the wide-open, free-skating first period, the Beavers seemed to tighten up, giving up four goals. Defense, or lack thereof, was the downfall of the Beavers, as Plymouth seemed to carry the puck down the ice almost at will. In the closing period, the Beavers seemed ready to rally, as Michalek and Harvey Stenger G combined for a pair of near-misses. Chris Johannesen connected with Dennis Clarke and Allan Matthews at the 4:41 mark to put the puck past Plymouth's Andy Stowell. The goal gave MIT a much-needed lift and it dominated play for the first

half of the period. Capitalizing on a Panther penalty, Stenger passed the puck to Michalek, who beat Stowell to bring the Beavers back. Plymouth State had other ideas, however, scoring two more goals, including the third of the night for freshman Bob Deguio with just three seconds remaining to finish off the Beavers. Penalties took the wind out of MIT's sails in the latter half of the period, which saw a total of 22 penalty minutes assessed in the 20 minute stanza.

Goalies Larry Wagner '82 and Randy Grace '81 each stopped 11 Plymouth shots, while MIT fired 25 at the Panthers' net. The victory raised Plymouth's record to 2-0.

MIT's season does not look bleak, however. Captains Scott Schwartz '81 and Dale Malone '83, both moved back from the forward line to fill the gap on defense, are developing their skills as defensemen rapidly, and new players such as Michalek and Dinnage add depth to the core of returning players such as Frank Scarabino G. With new coach Joe Quinn, new assistant, Greg McManus, and a new indoor rink, the prospects for a winning season are bright.

## IM backgammon results

A League		Division 4		Division 2	
<b>Division 1</b>	(Wins)	Kamikazes	5	Wholly Rollers	3
NTS A2	5	Beast from the East	4	Les Schmoiks	3
Theta Xi #1	4	Amazing	3	Beacon Hill Polo Club	3
First East	3	DKE "A"	2	Burton Ultimate Spinach	3
Dingleberries	2	Lunatic Fringe	1	PKS-B	2
Burton 3rd Bombers "FF"	1	Theta Xi #2	0	The Backgammon Team	1
McCormick	1				
<b>Division 2</b>		<b>Division 5</b>		<b>Division 3</b>	
Hillel	4	Bung's Champs	4	Sig Ep	5
Pisto Express	3	NTS-AI	3	41st West	4
Pi Rollers	3	Wednesday Afternoon		Vacant Lot	4
PBE Warlocks	3	Bridge Club	2	Burton 4 Players	4
Die Zurueckspieler	2	PKS-A	2	Burton One	2
Chocolate City	0	Burton 3rd Bombers	1	Abusers	2
		Alpha Deltas "A"	1	Chemical Engineering	0
<b>Division 3</b>		<b>B League</b>		<b>C League</b>	
Armenian Devils	5	<b>Division 1</b>		Anti-Pions	6
Prime Time Players	3	Conner 3	5	Third East	5
Invisible Hands	3	ZBT "B"	3	Ashdown 8	3
PBE-PT's	2	Exploding Mice	3	WILG	3
Mota Express	1	The Squid	2	The Other	
Phi Sigs	0	Bay State Rollers	1	Backgammon Team	2
		New House II	1	Vard House	1
				Abusees	0

### SOUTH AMERICAN STUDENTS: EARN CASH DURING CHRISTMAS VACATION!

Busy Spanish publications firm located just north of Boston seeks graduate engineering students to translate, edit, or proofread documents for two to four weeks during semester break. Strong bilingual skills and technical expertise are required.

Call us at 944-1947, or write P.O. Box 450, Reading, MA 01867.

## Intercity Cares

for Elderly, Children or Disabled



Earn excellent pay caring for people in their own homes. Work as many hours as you wish in your own community. Join the Biggest and the Best **HOMEMAKER** agency in the state .... call us today .....

**Intercity Homemaker Service, Inc.**  
An equal opportunity employer  
CALL 321-6300 or 623-5210

## CHRISTMAS IS COMING ...

Prepare for it by joining with the Tech Catholic Community in observing the

### FEAST OF THE IMMACULATE CONCEPTION OF MARY

Monday  
Dec. 8  
MIT Chapel  
12 noon,  
5 pm  
9 pm



"Let your vision be world embracing rather than confined to your own self."

-- BAHU'ULLAH

MIT BAHU' ASSOCIATION



**COWBOY JEANS**  
BUTTON FLY  
**Levi's**  
501's Guaranteed to  
• FADE • SHRINK  
• OUTLAST 'M ALL  
**Walker's**  
Riding Apparel, 292 Boylston St., Boston

NOW OPEN

**ELIAS**  
HAIR CARE  
A NEW SALON SERVING  
THE MIT COMMUNITY.  
CALL FOR AN APPOINTMENT.  
319 MASS. AVE.  
497-1590  
2 DOLLAR DISCOUNT AND  
FREE CONSULTATION WITH THIS AD.