

## 'Limbo' freshmen given emergency housing Massive dorm overcrowding yields 204 crowded spaces, leaves 32 with no spaces

By Steven Solnick and Ivan Fong  
Thirty-two freshmen spent last night in temporary barracks set up in Ashdown House and the Non-Resident Student Association House as the final round of the freshman housing lottery left them in limbo.

The crowding situation in Institute Houses exceeded the worst fears of the Deans' Office at about 2pm yesterday. The final round of assignments of students in limbo left twenty freshmen assigned temporarily to Ashdown House's basement and twelve to study rooms and television rooms in the Non-Resident Students' House. The Deans' Office told the freshmen it hoped to give them permanent assignments as more freshmen pledged fraternities and upperclassmen failed to return for registration.

As of yesterday afternoon, IFC Rush Chairman Jim Wilber '81 said the fraternity system still had "about thirty openings." He added, "We expect about ten more

people to pledge in the next 24 hours." Wilber said the resulting figure of about twenty openings was not an unusual one due to the IFC practice of allowing a freshman to accept bids from more than one house and then allowing him at least the rest of the week to decide upon either.

Dormitory Council Chairman Nelson Ronkin '82 said that the Institute dormitories were "crowded to capacity," and echoed the statements of Associate Dean for Student Affairs Robert Sherwood that students still in temporary housing will be moved as spaces open up.

"I think if my mother was coming she'd take me home."

See Page 4

Wilber announced that the IFC would hold an unprecedented "mixer" in the Sala this Sunday at noon to allow freshman one more chance to meet houses which still contained openings. Wilber said the event was part of a "large effort to help the Deans' Office alleviate the problem by trying to fill the IFC Houses to their capacity."

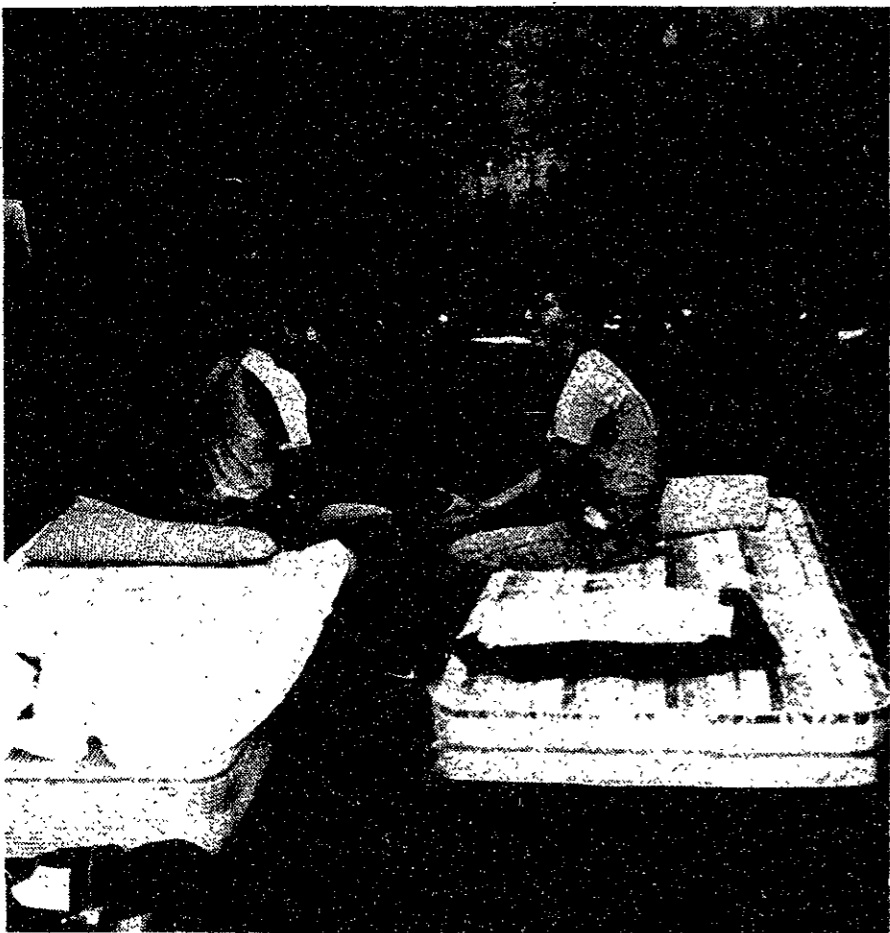
Members of the Deans' Office confirmed that upperclassmen who have not returned by Registration Day will forfeit their fall assignments if students are still in limbo.

A number of dormitories, including Burton House, were forced to overcrowd upperclassmen. Room assignments are internal to each house, according to Ronkin, and he explained, "If

(Please turn to page 2)



This NRSA television room has become a temporary dormitory room. (Photo by Rick Parker)



Twelve cots have been placed in the basement of Ashdown House for freshman still in limbo. (Photo by Rick Parker)

## Senate to mull loan ceilings

by Stuart Gitlow

Financing for the National Direct Student Loan (NDSL) program would drop by 35 percent to \$186-million under a bill passed by the House of Representatives last week.

The resolution, now in the Senate, would allocate \$63-million less than was appropriated for the current fiscal year. However, the total of \$3.36-billion is still some \$200-million more than President Carter requested. "Action [within the Senate] is imminent," according to MIT Director of Financial Aid Jack Frailey.

The House Appropriations Committee argued that the cut-back is insignificant when the "availability of \$400-million in collections on prior year loans, and the 10 percent matching required from institutions" is taken into account.

According to a report published Tuesday in the *Chronicle of Higher Education*, the default rate within the loan program is about 16 percent; as such, increased collection efforts to recover the \$100-million cut-back from defaults are not expected.

Originally, the Carter Administration had proposed drastic changes within the Guaranteed Student Loan program as seen in the higher-education bill, HR5192, which maintained the current seven percent interest rate.

Frailey commented that the final bill has left "most of the program essentially unchanged. It is possible that those who formerly received student loans will no longer be eligible. If the bill does pass the Senate, this would not occur until 1982." Frailey, although very much concerned with the possible outcomes of the bill, does not foresee any great changes within the loan programs.

If the guaranteed and direct loan programs clearly fall short of necessary funds, lobbyists hope Congress might pass additional appropriations next year for the student loan programs, according to the *Chronicle* report.

## Dining funding changes begin

By Jerri-Lynn Scofield

The new commons system introduced to this year's freshmen involves changes in the financing and operation of the dining program that may affect many members of the undergraduate MIT community.

The student budget board allowance has been reduced by four percent. The Financial Aid Office arrived at this figure by the following reasoning. If inflation had no impact on food costs, it was assumed that implementation of the new plans, because of efficiency improvements, would save fifteen percent over last year's commons costs. However, since inflation has increased food prices by approximately eleven

percent, there is a net four percent decrease in commons costs.

One of the strongest objections to commons is its high cost. While food prices have increased in the past year, visible commons prices have remained roughly the same. When asked what is being done to lower commons costs, Associate Director of Food Services George Hartwell replied, "... part of the program is being subsidized by Institute funds... I don't really know where they come from... A commitment has been made by the Institute to help support the commons system..."

Director of Finance John Currie commented on the funds needed to enact the new meal plans: "We have them budgeted as what we call special items... These things are not recurring... [They are] in the nature of a transition plan... That funding is generally irrelevant to the student

tuition problem."

Eugene Brammer, Director of Food Services, indicated that he had been authorized to overrun expenditures by approximately 600,000 dollars. Currie said that 400,000 dollars would be used for operating expenses, while 200,000 dollars would be used as capital. Currie emphasized, "That is not coming out of today's tuitions. There will be other funding found that does not impact the students... If we continue this type of program... this might [have] impact on the students."

Some changes that will be instituted in the dining program involve the reopening of the McCormick Dining Hall. When asked whether persons wishing to eat in the McCormick Dining Hall would have to be on the McCormick guest list, Hartwell replied, "The males will... Any

(Please turn to page 3)

## inside

A discouraging picture is painted by freshman still in limbo. Page 4.

The second in a series introduces punked-out readers to Cantone's. Page 6.



Harlan Ellison was one of over 6000 science fiction authors, fans, and artists present at NOREASCON II, the 38th Annual World Science Fiction Convention held in Boston last weekend. (photo by Kevin Osborn)

# Frat 'mixer' will extend rush

(Continued from page 1)

they need to crowd upperclassmen, they will."

McCormick was forced to create a class, for the first time in its history, in its West tower, and Senior House was forced to crowd into quads as well. Baker House created five additional quads out of triples to try to accommodate the overflow of freshmen.

The extreme situation this year was created by the arrival of a larger freshman class than was hoped for. The situation was exacerbated by a larger than usual number of upperclassmen returning to the dormitory system, due to the scarcity of off-campus housing in Cambridge and Boston.

Burton President Guy Petrillo '82 said that "People are up in arms at Burton House." He continued, "A number of upperclassmen who remained doubled last year to preserve suites were assured by the Deans' Office they would not be tripled, and they are now tripled." He charged the Deans' Office of assigning freshmen to Burton without regard for the House's coedity rules for its suites, and added, "It is incredibly hard to assign rooms to women who want to live in single sex suites."

Many women are unhappy with the unavailability of spaces in single-sex dorms. The popularity of McCormick Hall exceeded its capacity by three-to-one ratio, and so over two-thirds of its applicants must resort to two single-sex suites in Burton, Bexley and Random Hall, according to Sherwood.

Random Hall was also being overcrowded a year earlier than the Deans' Office had said it would be. The Class of '81 had previously been told, according to house residents, that they would not see Random Hall become crowded unless the most severe crowding possible were to occur.

Sherwood was not available for comment late yesterday but it is likely he would have given that classification to this year's situation.

The students living temporarily in Ashdown and NRSA said that they were particularly upset that the Deans' Office continued to assure them they would be out of limbo after the last round of the housing lottery. They said they were given "no assurances we would have housing by Registration Day."

Wilber said Sunday's rush party, if it filled the IFC Houses to capacity, could "single-handedly alleviate the problem" of housing the displaced freshmen. Ronkin said that he "appreciated what the IFC is doing to help the situation and I support them." He said that Dormcon would meet today to discuss the issue.

Undergraduate Association President Chuck Markham '81 said he hoped "fraternities would consider overcrowding as an 'insurance policy' for next year," when Next House will open up more dormitory beds and when he said he expected the Admissions Office to be more conservative in their numbers of admitted freshman.

Ronkin said he thought the class size of 1100 currently expected as a target for next year "would be tight" to fit into Institute Housing.

With the exception of record overcrowding in almost all dormitories, R/O Coordinator Jeff Solof '81 considers this year's R/O Week to have gone "very well." Due to the size of the incoming class, Solof says overcrowding was "inevitable, and we [the R/O Center] are doing the best we can to alleviate the situation."

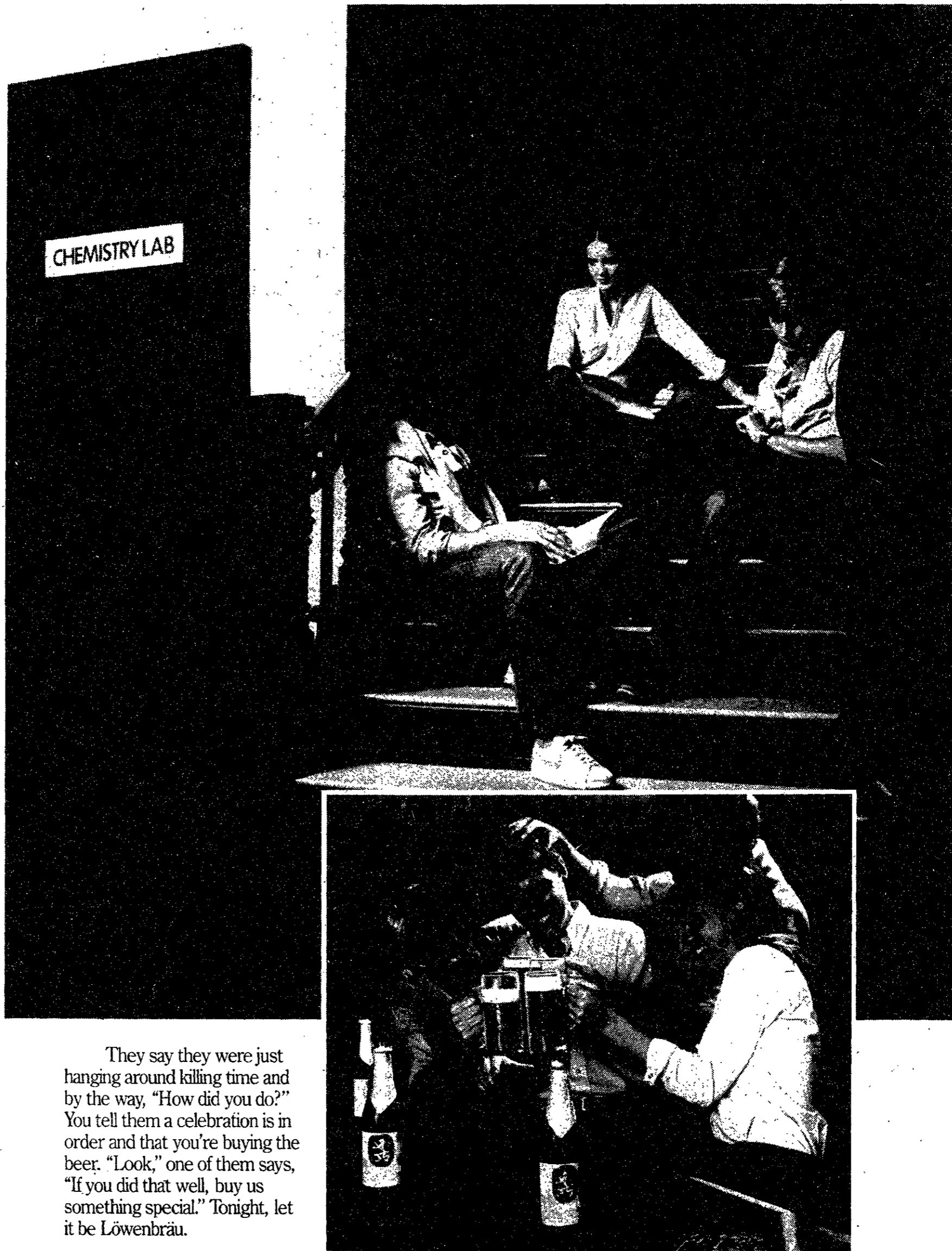
Dormitory	Original Crowds	Extra Crowds	New Total	
Baker	10	+	5	= 15
Bexley	5	+	1	= 6
Burton	40	+	5	= 45
EC	41	+	21	= 62
MacGregor	18	+	2	= 20
McCormick	12	+	6	= 18
New House	14	+	3	= 17
Random	0	+	4	= 4
Senior	8	+	2	= 10
French	1	+	1	= 2
German	0	+	0	= 0
Russian	2	+	0	= 2
Spanish	1	+	0	= 1
(loc. unknown)			2	= 2
	152		52	204

Two freshmen were given permanent assignments in unknown dormitories late Thursday, leaving 32 freshmen (12 in NRSA, 20 in Ashdown) in limbo last night.



TUFTED TAPE TREE TUFTSS  
SOMERVILLE, MASS. 02144 (617) 776-1279 46 WHITE STREET  
OPPOSITE STAR MARKET - PORTER SQUARE SHOPPING CENTER  
TUESDAY, WEDNESDAY - 12-7 THURSDAY, FRIDAY, SATURDAY - 10-7

## Friends wish you luck on a big exam. Good friends stick around to see how you did.



They say they were just hanging around killing time and by the way, "How did you do?" You tell them a celebration is in order and that you're buying the beer. "Look," one of them says, "If you did that well, buy us something special." Tonight, let it be Löwenbräu.

**Löwenbräu. Here's to good friends.**

© 1980 Beer brewed in U.S.A. by Miller Brewing Company, Milwaukee, Wisconsin

## Dining hall access limited

(Continued from page 1)

woman can eat in McCormick. . . We are letting the residents of McCormick determine who can go on their guest list. . . They are going to control who goes into their dining hall as far as males are concerned."

Anita Walton, Program Coordinator for Dining and Residence Programs, confirmed these statements. "It [McCormick Dining Hall] is open to all women on campus. . . where the dining hall is placed, there is a problem with security." When asked how McCormick's security problem differed from other dormitories with centrally located dining facilities, Walton said, "McCormick is a special case," because of its status as the only all-women's dormitory on campus.

Important recommendations from last year's Report on Campus Dining have not yet been implemented. Plans for purchasing food items in bulk for all dining facilities have not yet materialized, primarily because adequate storage areas for large quantities of food do not now exist on campus. Both Hartwell and Walton said that bulk food buying will probably not go into effect until "Next House," with its proposed additional storage facilities, is completed.

Suggestions for a student food cooperative have also been dormant. Hartwell said, "Those have not been worked on this summer." Hartwell and Walton both said that these proposals would be considered this fall.

## notes

### Announcements

Registration for **Physical Education** classes for the first quarter will be held Tuesday September 9 at 8:30-11:30am in the du Pont Gymnasium. Seniors should be sure of their status.

\* \* \* \*

The **Student Accounts Office** will be open Friday, September 5, from 9am to 4pm for receipt of payments and emergency dean fund loans only. Students who have other financial matters to discuss should delay coming to the Student Accounts Office until Monday, September 8, 1980, when normal office hours will resume.

\* \* \* \*

Auditions for the MIT Musical Theatre Guild's production of *Cabaret* will be held September 8, 9 and 10 at 7pm in Kresge Little Theater. Call 253-6294 for more information.

### Activities

MIT **Dance Workshop's** first meeting will be Wednesday, September 10, at 3pm in the T-Club Lounge of du Pont. For more information, call 253-4441.

## classified advertising

Wu-Tang Chinese Martial Arts Club. Improve strength, endurance, agility, and concentration by practicing Kung Fu. Praying Mantis and T'ai Chi taught. Practices Sat 10-2 & 2 weekday evenings. Call Howard 247-8691 for information.

## news roundup

### World

**Chinese premier quits post** — Hua Guofeng, the Prime Minister of the National People's Congress of China resigned his post Wednesday. The resignation took place amidst a full-scale shakeup of high Chinese government officials. Hua will retain his position as chairman of the Chinese Communist party.

### Nation

**FDA to release caffeine report** — The Food and Drug Administration (FDA) is planning to release a study which links caffeine to birth defects. After much discussion, the FDA has decided not to require warning labels for caffeine-containing beverages such as coffee, cola, tea, and hot cocoa, but the agency will propose that soft-drink makers be allowed to market decaffeinated versions of their products under the name "colas," which they presently cannot do. In the meantime, the agency has warned pregnant women to cut down or totally stop their intake of caffeine until more conclusive tests can be run.

—By Bob Host and Alan Lichtenstein

### Weather

Generally cloudy today with occasional periods of rain. Daytime highs will be 75-79. Damp and cool tonight with scattered showers and lows 62-66. Rain ending and skies clearing by or during the morning on Saturday, and by afternoon under sunny skies highs should reach 80. Clear and cool Saturday night with lows 60-64. Mostly sunny and pleasant Sunday, highs again near 80. Chance of rain 60 percent today, 50 percent tonight, decreasing to 20 percent Saturday afternoon through Sunday.

— By James Franklin

If you registered for the draft  
(or even if you didn't)  
If you aren't satisfied with the current Drinking Law  
Maybe its time you

REGISTER AND  
**VOTE**

**8000 MIT VOTERS  
CAN MAKE A  
DIFFERENCE**

How to register: If you are 18 or over and you are currently living in Cambridge or Boston, you can register to vote on MIT Registration Day, Monday Sept. 8 in DuPont Gymnasium from 8:45am on. Why not register to vote while you register for classes?

TASTE THE BEER THAT OUTSELLS  
ALL THE OTHERS IN CANADA:  
LABATT'S.

Good news!  
Labatt's, Canada's No. 1 selling beer, is now imported to the U.S.  
So, now it's easier to try our Labatt's—and understand the secret  
of its popularity.  
We think you'll discover a taste that's crisp, clean and natural—  
truly, the beer that tastes as good as the country it comes from.

THINK OF CANADA  
THINK OF LABATT'S

© Labatt Importers, Inc., Amherst, N.Y., 1980



P.S. The green Labatt's bottle comes equipped with one of those twist-off tops—which can be rather handy, especially whilst one is otherwise engaged.

# opinion

## Editorial

# Learning lessons the hard way

Everyone will have a housing assignment by the Thursday before Registration Day.

1980/81 Freshman Handbook, page 34.

This statement, generally overlooked and previously accepted as fact, proved false yesterday. Given the method used to estimate class size and the housing situation in Boston, it was inevitable that the system would eventually break down. For at least the past three years, the incoming class size has exceeded predictions, and as upperclassmen find it difficult to move off campus, the housing system has become increasingly overcrowded.

The first priority of the Deans' Office must be to remedy the unacceptable situation of the 32 displaced persons currently housed in Ashdown and the Non-Resident Students' Association now that the system has failed to place them.

The Deans' Office must next look to next year to be sure this year's unacceptable happenings become the exception and not the rule. MIT's luck with the success of its unorthodox housing assignment process may be close to running out. Unless all parties involved conduct a careful reassessment of their plans, this year's absurd 11th hour limbo dance may prove only the beginning of a long, tragic, jitterbug.

Specifically, next fall's opening of a new dormitory is currently scheduled to coincide with a raising of the class size to the long-discussed figure of 1100. Considering this year's problems, this plan can no longer be taken seriously.

Next House was heralded as a home for 150 transfer and readmitted students. If we consider the undergraduates moved in to alleviate overcrowding and add an increased class size on top of this, we will find ourselves quickly back where we started from.

The system needs a rest. MIT's housing system must move back from the cliff it has been edging itself off of for the last six years. New House saved the operation once, then Random Hall and Zeta Psi helped, and next year, Next House will get to play safety valve.

There is nothing after Next House for a while.

Overcrowding can not continue as it now stands. The goal of housing transfers and readmits must not be forgotten. Fraternity rush should not be forced to continue as late as the day before Registration. Freshmen should never again be forced to return from registration to the basement of Ashdown House.

The class size should not be raised.



Steven Solnick

# A journey beyond the fringe

The Ashdown desk worker was reluctant to even talk about the undergraduates camped out in the basement. He finally pointed in the general direction of downstairs and we went off in search of the unfortunates.

Unfortunate they were. We passed two as we entered the game room, but they popped back in later to talk to us when we promised them anonymity. We leaned against the pool table and sweated as we discussed their plight.

Stan (not his real name) was angry, resentful, and very talkative. "They got some kind of nerve," he told me. "They're breaching some kind of promise. They said we'd have housing by Thursday. I don't think you could call this housing."

I looked around as his friend pushed a ball around the pool table. I had to agree. Twelve beds clustered around a medium-sized room, with a communal shower a few steps away and no furniture at all in sight seemed hardly plush for \$10,000 a year.

"I spoke to Barbara Chuck in the Deans' Office," Stan told me. "She was sympathetic. Sympathy is well and good but where are we supposed to live?"

Stan grappled to find words as his friend continued to bounce a 5-ball off two cushions and back. "My Dad will be here tomorrow. He won't be happy about this but what the hell can he do?"

"This way it looks like they're just sweeping us into the basement. It would have been better if they'd put us in a motel room or some thing; at least that would have shown some intent."

Stan slammed the brown door to his temporary home — it sounded paper thin. "I'm not an activist or a militant by nature," he pointed out. "I'm just pissed off."

The seven freshmen upstairs in Ashdown have it a bit better. Still barracks, but some very bright carpeting. No signs of any semblance of furniture, and no signs of any freshmen either. We jogged over to NRSA and peered cautiously through the front door.

The House Manager in the kitchen stared blankly at us. "Can I help you?" he asked coolly, fearing we'd identify ourselves as more freshmen to be housed.

He let out a chuckle when we told him we wanted to see the freshmen's "accommodations." He took us upstairs, past the renovations and beside the bathroom that worked "if you flush twice."

He showed us the four beds in the "study room." "I guess our people will eventually want to study," he told me, "but I suppose they won't try it just now." He said the freshmen arrived just as he was in mid-renovations and he would probably paint one of the frosh's temporary rooms anyway "and just hope the paint smell was gone by night."

When we got downstairs he pointed out four freshmen in the cluttered living room "all getting pissed together," as one told me.

I narrowly avoided sitting on the cat as they began to describe the same plight I had just heard.

"There's just nothing we can do," they all lamented.

"They said we would definitely have a permanent assignment today. They told me that as late as 1:30 today. All week there was a day we could shoot for. Now the impression I got from Dean Sherwood was 'Don't call us, we'll call you.'"

At that very moment, the entire Deans' Office, especially Sherwood, was trying to weather a storm of phone calls from angry students and distraught parents. It was not a good day for anyone.

"It seems like it just keeps dragging on," whined one of the freshmen sitting next to a Tech which beamed "Record Crowding to Greet '84."

One Californian freshman looked up and shook his head, "I think if my mother was coming she'd take me home."

Another chimed in, "If I would have known about this beforehand it might have changed my decision to come to MIT."

Still another, sitting beside an unstrung banjo, "If I'd known it was this much hassle to get a dorm room, I would have moved into a frat." None said they were still looking at frats, though.

"We just can't do anything. We don't have a permanent address. We can't open a checking account, can't get mail, can't get stuff shipped... I just hope the professors understand. There are no desks here or anything. I wouldn't be able to take living out of a suitcase for two weeks."

They started to joke about drying their laundry out on the sidewalk. Then the room quieted down for a second.

"I just can't believe they screwed up this much," from one. Then they all went out for Chinese food.

# The Tech

Stephanie L. Pollack '82 — Chairman  
 Steven L. Solnick '81 — Editor-in-Chief  
 Patrick M. Thompson '82 — Managing Editor  
 Michael L. Taviss '81 — Business Manager  
 Gordon B. Hunter '80 — Executive Editor

Volume 100, Number 30  
 Friday, September 5, 1980

## PHOTOGRAPHY DEPARTMENT

Photo Editor: Kevin Osborn '82; Associate Editor: James Mihori '83; Darkroom Manager: Timothy Hilby '82; Staff: Jim Oker '81, Richard Blumenfeld '82, Matthew B. Alschuler '83, Linda Custer '83, John Moses '83, David Radin '83, Eric Shrader '83; Photographic Consultant: David Tenenbaum '75.

## SPORTS DEPARTMENT

Sports Editors: Bob Host '81, Rich Auchus '82; Associate Editor: Eric R. Fleming '83; Staff: Dennis Smith '81, Robert Labarre '83, Steve Kim '83, Arlene Santos '83.

## BUSINESS DEPARTMENT

Advertising Manager: Robert W. Leishman '82; Advertising Accounts Manager: Rich Epstein '83; Circulation Manager: Donald Gottfried '82.

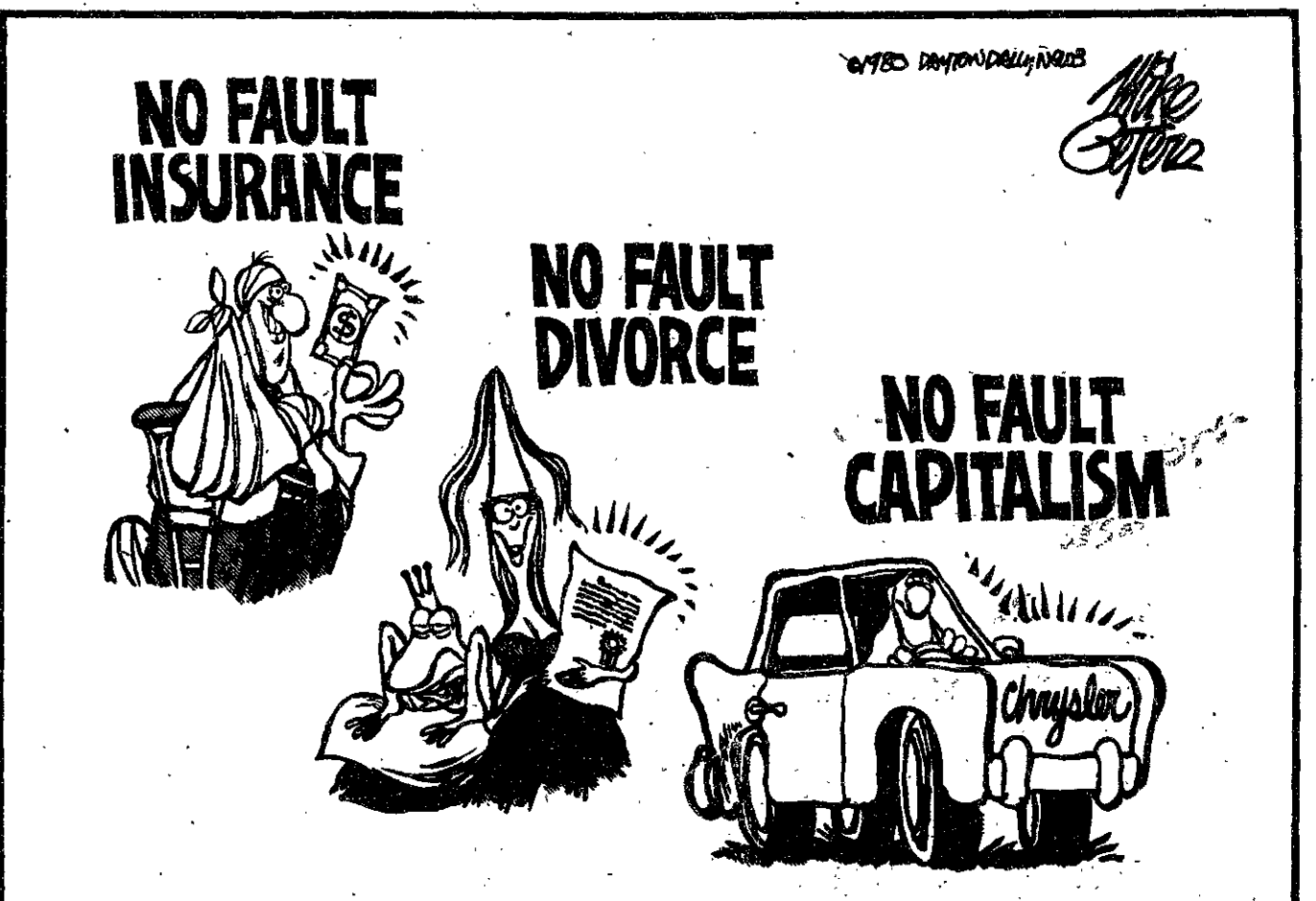
## SENIOR EDITORS

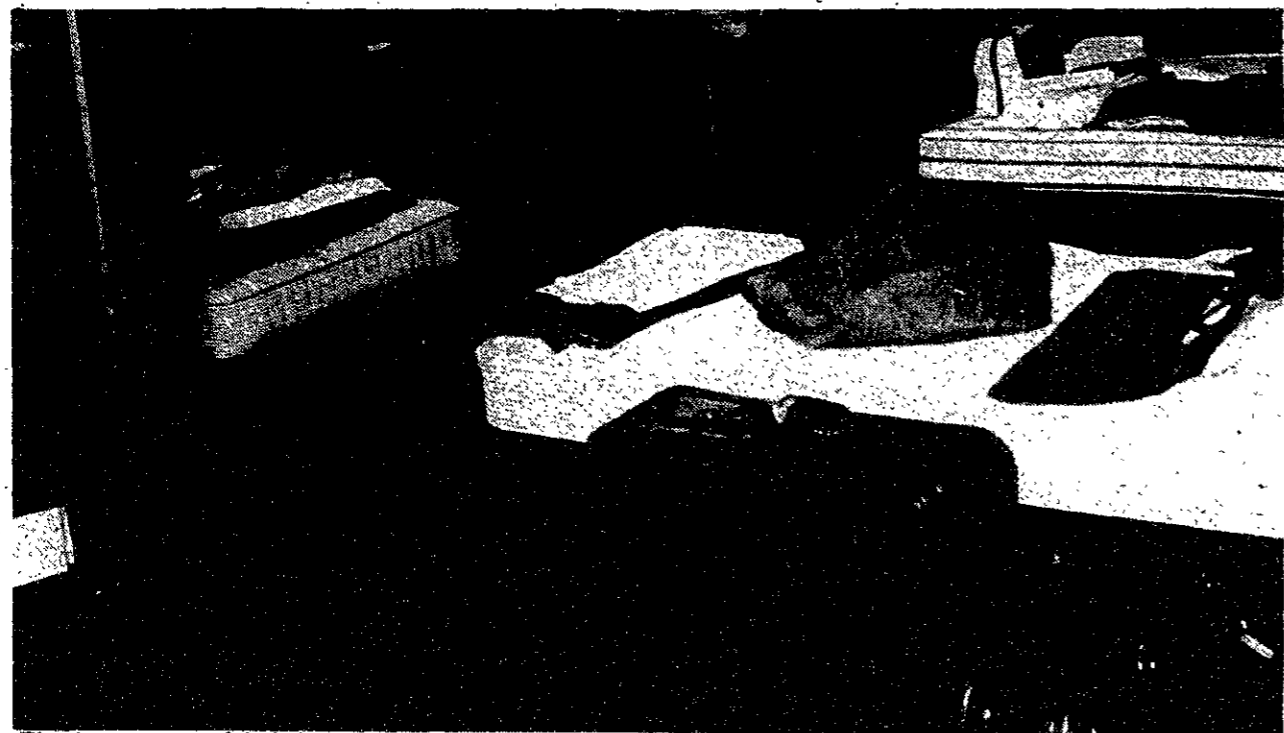
Steven F. Frann '80, Kathryn E. Gropp '80.

## PRODUCTION STAFF FOR THIS ISSUE

Cindy Delfino '81, Jay Glass '82, Robert W. Leishman '82, Kevin Osborn '82, Stephanie Pollack '82, Pat Thompson '82, Jon von Zelowitz '82, Duffy Craven '83, Rich Epstein '83, Judy Passman, '83, Stuart Gitlow '84

The Tech (ISSN 0148-9607) is published twice a week during the academic year (except during MIT vacations), weekly during January, and once during the last week in July for \$7.00 per year Third Class by The Tech, 84 Massachusetts Ave. Room W20-483, Cambridge, MA 02139. Third Class postage paid at Boston, MA. Non-Profit Org. Permit No. 59720. POSTMASTER: Please send all address changes to our mailing address: The Tech, PO Box 29, MIT Branch, Cambridge, MA 02139. Telephone: (617) 253-1541. Advertising, subscription, and typesetting rates available. © 1980 The Tech. Printed by Charles River Publishing, Inc.





The basement of Ashdown House is home for an indefinite period of time for twelve freshmen who remain in limbo after yesterday's final housing lottery round. (Photo by Rick Parker)

**Roller Skate Sales, Service, Rentals**

**ROLLER  
POWER**



**Annual Fall Clearance Sale**

Dominion Hi-top Leather Boot

complete package ~~\$109<sup>95</sup>~~  
sale \$79<sup>95</sup>

also  
**Special Rental Sell-off: 40 to 60% off!**

85A Mt. Auburn St.  
Harvard Square  
Cambridge, Mass.

547-0695

7 days a week  
10-8

Call and ask about our roller skate catering.  
We pick up and deliver for any party.

*The M.I.T.*  
**Symphony Orchestra**

**NEAL STULBERG, Conductor**

announces

**AUDITIONS** for the 1980-1981 season.

Dates Sept. 8, 9, 10, 13

**ALL UNIVERSITY  
INSTRUMENTALISTS  
WELCOME.**

Forms available at 14N-430,  
MIT. Phone 253-2826 (11am -  
5pm) for further information.

Program highlights include:

**BARTOK** Concerto for Orchestra;  
**BRAHMS** Symphony No. 2;  
**BEETHOVEN** Violin Concerto.

**the  
Coop**

MIT STUDENT  
CENTER

**open  
nights  
till 7 pm  
Sept  
8-9-10**

**Ignore This Ad!!!!**

**Unless you could use Extra Money  
and a part-time job.**

**MIT Dining Service needs students to  
staff the various Dining Halls on campus.**

**We offer flexible hours, convenient locations  
and free meals.**

Interested?

Then come to any of the following signups on Monday Sept. 8

**Student Center Room 353**

**7:00pm**

**Baker House Dining Hall**

**7:30pm**

**MacGregor House Dining Hall**

**7:30pm**

and Tuesday, Sept. 9

**Morss Dining Hall (Walker Memorial)**

**8:00pm**

PUNK  
 OUT  
 AT  
 CANTONE'S  
 NOON  
 ZONE'S

*Editor's note: this article is one of a series describing aspects of the Boston new wave scene.*

The most amazing transformation in Boston takes place each evening between 7pm and 8pm. This is when Cantone's, a run-down Italian restaurant and bar, kicks out the bums and turns into the city's smallest new wave club.

**Location**

Cantone's is in Boston's financial district, at 69 Broad Street. From MIT, your best bet is to take the T to Government Center and then walk down the steps. Follow State Street to Broad, and you're there. The walk takes less than five minutes. Unfortunately, the last green line train, back from Government Center is a little after 1am, which means you have to miss the last set to take the T back.

It is possible to walk to Cantone's, either through Boston or along Charles Street via the Longfellow Bridge. This takes about a half hour. However, the walk can be dangerous late at night; a \$4.50 cab fare might be a safer alternative.

**Physical Description**

Cantone's is best described as small, dump, and comfortable. There are two rooms: a bar and a "dining room." The bands play in the dimly lit dining room, and people retreat to the bar to talk.

**Management**

Cantone's management is generally pleasant and fair to bands. There are usually only bouncers on weekends; on other days the bands handle the door. This often leads to lenient carding practices on weekdays.

**Prices**

Cantone's is the least expensive club in town, charging \$2 cover on weeknights and \$3 cover on most weekends. Beers will cost you about \$1.10.

**Timing**

Cantone's has two bands per night, with three sets from each band. The opening act usually comes on a little after 10pm, and the headliners are on around 11. Second sets follow at midnight and 1am. The club closes by 2am.

**Audience**

Cantone's has a crowd of regulars who are involved in "the scene." Much of the rest of the audience is students. Everyone's quite friendly; it's probably the best club in town for striking up a conversation with the person next to you.

Jon von Zelowitz



Lou Miami, lead singer for the Kozmetix, and another unidentified punk belly up to the bar between sets at Cantone's. (Photo by Kevin Osborn)

ON THE TOWN

MIT

The MIT Musical Theatre Guild is proud to present *Pippin*, Stephen Schwartz's widely acclaimed musical comedy about Charlemagne's son's search for personal fulfillment. Performances are at 8pm September 5, 6, 11, 12 and 13 and 2pm September 6. Tickets are \$4.50, or \$2.50 with MIT ID. For reservations and information, call 253-6294. There will also be a special free freshman matinee performance September 7 at 3:30 pm.

MUSIC

Mission of Burma, Pylon at the Underground, 1110 Commonwealth Ave., Fri. and Sat.  
 Mundanes, Peytons, Boys Life at The Rat, 528 Commonwealth Ave., Fri.  
 Atlantics, LaPeste, 2 x 4's at the Channel, 25 Necco St., Fri.  
 Trademarks, MPC and the Instigators at Cantone's, 69 Broad St., Fri.

Pastiche, Taxi Boys, Slow Children at the Rat Sat.  
 Trademarks, Vacuumheads at Cantone's Sat.  
 New England, Billies, France at the Channel Sat.  
 Shirts, Elevators at the Paradise, 967 Commonwealth Ave., Sat.  
 Rems, Hilton James at the Underground Sun.  
 Vacuumheads, Havoc Inc. at Cantone's Mon.  
 Mink DeVille at the Paradise Tue. and Wed. Sept. 9-10.  
 Vapors, Quincy at Boston-Boston, 15 Lansdowne St., Thurs. Sept. 11.  
 Human Sexual Response at the Paradise Fri. Sept. 19.

MOVIES

*This week's LSC lineup:*  
 American Graffiti Fri. at 7 & 9:30 in Kresge.  
 Oh, God! Sat. at 7 & 9:30 in Kresge.  
 Doctor Strangelove Sun. at 6:30 & 9 in 26-100.



五 福 樓

WU FU  
 RESTAURANT

Mandarin & Szechuan Cuisine

prepared by chef rated 5 stars in New York City

Cocktails

Take Out Service

Open Daily

11:30AM - 12:00PM

CHINESE PASTRIES

SAT. & SUN. only

11:30AM - 2:00 PM

*"Everything I tasted there was excellent, and several dishes had that vivid clarity of flavor that first attracted us all to Szechuan food, and that we haven't noticed as much in recent years."*

Robert Nadeau - *The Real Paper* - June 28, 1980

LUNCH BUFFET

\$2.95 ALL YOU CAN EAT

460 Mass. Ave., Cambridge

876-6299

## ON THE TOWN

*The Last Minstrel Show*, a full scale musical production, will have its pre-Broadway tryouts at the Charles Playhouse beginning September 7. Performances Tues.- Fri. at 8pm; Sat. at 6:30 and 9:30pm; Sun. at 3 and 7:30. For more information and reservations, call 426-6912.

\*\*\*\*\*

The Lyric Stage opens its fall season with Shaw's comic masterpiece *Arms and the Man*. Performances begin September 10, and run on Wednesdays through Saturdays, with Sunday matinees at 3pm. Tickets are \$5 to \$7. For information, call 742-8703.

\*\*\*\*\*

The American Repertory Theatre announces its first scheduled production of its 1980-81 season. William Shakespeare's comedy *As You Like It*, opening September 11 and running through October 18. For ticket information, call 547-8300.



# MAKE MONEY WHILE YOU SLEEP.

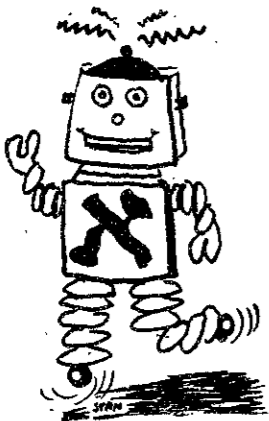
Open a NOW Account at Cambridge Savings Bank. A NOW Account works just like a checking account. Only a NOW Account pays you 5% interest on your balance. So you can be making

money while you doze through *Finnegan's Wake*. Nap through "Grand Illusion." Snore through the Harvard-Yale game. 5% interest on your checking account.

Why wait till graduation to start making money?

**Cambridge Savings Bank**  
Offices in Cambridge & Belmont  
Member FDIC

**MONEY IN THE BANK IS STILL THE BEST FEELING IN THE WORLD.**



### CLOSE ENCOUNTERS of a JEWISH KIND

This fall explore new worlds at Hebrew College. There's a galaxy of courses in conversational Hebrew plus bachelor's and master's degree programs, with cross-registration privileges at many nearby colleges.

Hebrew College also offers preparatory courses in Jewish literature, law and sociology, given in English, for those without Hebrew language skills.

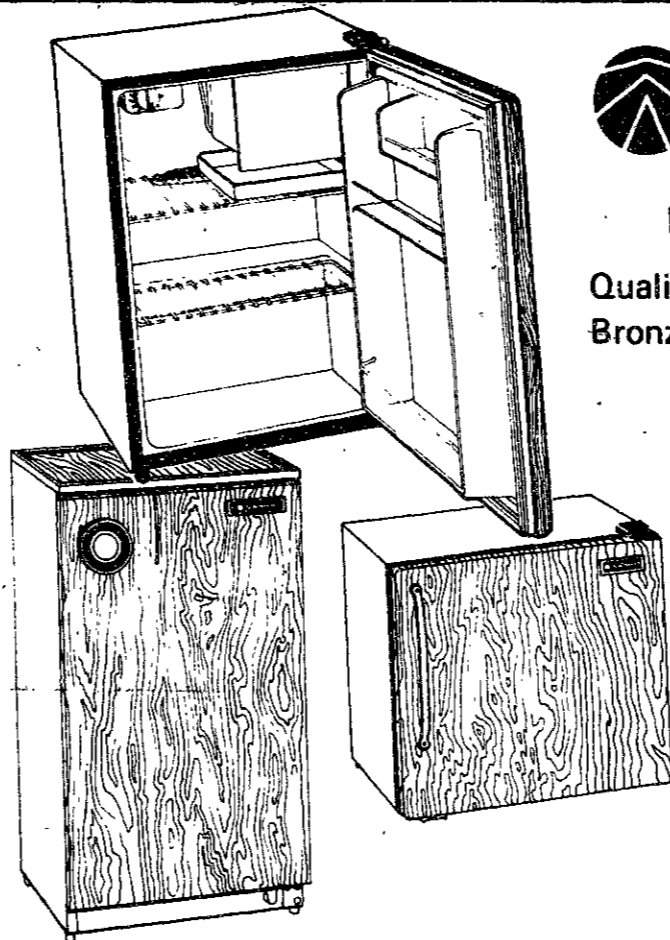
Registration open now. Classes begin Sept. 21. Many evening classes available.

Hebrew College  
43 Hawes Street (off Beacon)  
Brookline

For information and catalogue  
232-8710

Coming in October... our adult education course in Bible, Jewish thought and history, Hebrew calligraphy, Kosher gourmet cooking, and more.

Our courses are out of this world.



refrigerators - 3 sizes

Quality compacts with lots of storage space. Bronze and simulated walnut finish.

counter top	179.95
table top	159.95
cube	114.95

**the Coop**

MIT STUDENT CENTER

## Three Ways to Share Your Knowledge . . .

### Massachusetts Science Institute

MSI offers intensive science courses to Boston students whose schools do not offer the level of material necessary for a technical college. Teachers in broad and specific fields of science are needed.

### S.A.T. Preparation

S.A.T.P. works on the three major areas of the S.A.T.'s — Math, Verbal and testmanship. Individual concentrations on grammar, analogies, geometry and the like are planned. We need your specialty.

### High School Studies Program

H.S.S.P. presents greater Boston high school students with seventy or more courses ranging from astronomy to zoology and Newtonian Mech. to Origami to Theatrecraft. Design your own course, for students who want to learn.

## Teach With Us.



W20-467  
MIT Student Center  
84 Massachusetts Ave.  
Cambridge, MA 02139  
(617) 253-4882



**...an experience you'll never forget!**

Dramatically explores life, death . . . and beyond.  
Multiple imagery and hard-hitting music carry you beyond death into reality.  
Music from Blood Sweat & Tears, Jim Croce, Bloodrock, Black Sabbath and others. Don't miss it!

Thursday September 4  
8:00, 9:30 PM  
Sala de Puerto Rico  
MIT Student Center

Friday September 5  
8:00, 9:30 PM  
Room 54-100

PARAGON EXPERIENCE

## Fall sports schedules

### Baseball

Sept. 11 vs. Babson, 3:30pm  
 Sept. 13 vs. Stonehill (2), 12noon  
 Sept. 17 vs. Brandeis, 3pm  
 Sept. 20-23, Collegiate Tournament  
 Sept. 27 vs. St. Anselm's (2), 12noon  
 Sept. 30 vs. Mass. Bay Community, 3pm  
 Oct. 2 at Brandeis, 3pm  
 Oct. 6 at Lowell (2) 12noon



### Cross Country

Sept. 20 vs. RPI and WPI, 1pm  
 Sept. 27 at Coast Guard with Conn. College, 1:30pm  
 Oct. 3 at Lowell, 4pm  
 Oct. 14, GBC Meet, 4:15pm  
 Oct. 18 at Williams with Tufts, 1:30pm  
 Oct. 20, IC4As  
 Oct. 25, Easterns  
 Nov. 8, New England  
 Nov. 15, NCAA Division III Qualifier  
 Nov. 22, NCAA Division III Championships

### Men's Sailing

Sept. 13, MIT Invitational, 9:30am  
 Sept. 14, Harvard Invitational, 9:30am  
 Sept. 20, Lane Trophy at Tufts, 9:30am  
 Sept. 20-21, Nevins Trophy at Kings Point, 9:30am  
 Sept. 28, 3-crew team race at BU, 9:30am  
 Oct. 4-5, Danmark Trophy at Coast Guard, 9:30am  
 Oct. 5, Tufts Invitational, 9:30am  
 Oct. 11, GBC Oberg Trophy, 9:30am  
 Oct. 11, Sloop Championships at Coast Guard, 9:30am  
 Oct. 11, Harvard Invitational, 9:30am  
 Oct. 12, Hoyt Trophy at Brown, 9:30am  
 Oct. 18, Harvard Invitational, 9:30am  
 Oct. 18, BU Trophy, 9:30am  
 Oct. 19, Smith Trophy, 9:30am  
 Oct. 19, Tufts Invitational, 9:30am  
 Oct. 25, Dartmouth Bowl, 9:30am  
 Oct. 26, Wood Trophy at Brown, 9:30am  
 Nov. 1, Coast Guard Invitational, 9:30am  
 Nov. 1-2, Schell Trophy, 9:30am

### Women's Tennis

Sept. 18 vs. Brandeis, 3:30pm  
 Sept. 21, GBC Mixed Doubles  
 Sept. 23 at Babson, 3:30pm  
 Sept. 26 at Bowdoin, 4pm  
 Sept. 27 at Bates, 11am  
 Oct. 1 at Endicott, 3:30pm  
 Oct. 4, GBC Tournament  
 Oct. 7 at Holy Cross, 3pm  
 Oct. 9 at Clark, 3:30pm  
 Oct. 11, MAIAW Championships  
 Oct. 13 vs. Wheaton, 3:30pm  
 Oct. 15 at Wellesley, 4pm  
 Oct. 18-19, New England  
 Oct. 23 vs. Boston State, 3:30pm

### Field Hockey

Sept. 22 at Pine Manor, 3:45pm  
 Sept. 24 vs. Nichols, 3:30pm  
 Sept. 26 at Colby, 4:15pm  
 Sept. 27 at Bates, 11pm  
 Oct. 1 at Endicott, 3:30pm  
 Oct. 4 at Clark, 1pm  
 Oct. 6 vs. Gordon, 3:30pm  
 Oct. 8 vs. Franklin Pierce, 4pm  
 Oct. 11 vs. Clark, 10am  
 Oct. 13 at Fitchburg State, 1pm  
 Oct. 17 at WPI, 4pm  
 Oct. 18, MAIAW Championships  
 Oct. 20 vs. Pine Manor, 4pm  
 Oct. 23 vs. Endicott, 3:30pm

### Football

Sept. 21 at Norwalk Community, 1pm  
 Sept. 28 at Fitchburg, 2:30pm  
 Oct. 4 vs. Fairfield, 1:30pm  
 Oct. 11 at New York Maritime, 1:30pm  
 Oct. 18 vs. Roger Williams, 1:30pm  
 Oct. 25 vs. Siena, 1:30pm  
 Nov. 2 vs. Buffalo State, 1pm

### Women's Sailing

Sept. 13, MIT Invitational, 9:30am  
 Sept. 14, Wheaton Invitational, 9:30am  
 Sept. 20, President's Trophy at BU, 9:30am  
 Sept. 20, Learner's Regatta, 9:30am  
 Sept. 21, Captain's Cup at Tufts, 9:30am  
 Sept. 27-8, Man-Labs Trophy, 9:30am  
 Oct. 4-5, Single-handed Championships, 9:30am  
 Oct. 11-12, Yale Intersectional, 9:30am  
 Oct. 18, 3-crew team race, Marchiando Trophy, 9:30am  
 Oct. 19, Rhode Island Invitational, 9:30am  
 Oct. 25-6, Victorian Urn at Radcliffe, 9:30am  
 Oct. 25, MIT Invitational, 9:30am

### Volleyball

Sept. 24 vs. Salem State, 7:30pm  
 Sept. 26, Salem State Tournament  
 Oct. 2 at BC with UMass, 6pm  
 Oct. 4 at East. Nazarene with Smith, 1pm  
 Oct. 9 vs. Bridgewater State, 7:45pm  
 Oct. 11, Bates Tournament  
 Oct. 14 vs. Wellesley, 7:45pm  
 Oct. 18 at New Hampshire with Maine and BC, 9am  
 Oct. 22 at Wheaton, 6pm  
 Oct. 25 at Keene State with Eastern Conn. and Fitchburg, 1pm  
 Oct. 28 at Noeastern with Salem State  
 Nov. 1, BC Tournament, 9am  
 Nov. 4 at Springfield  
 Nov. 8, MAIAW Championships

### Men's Tennis

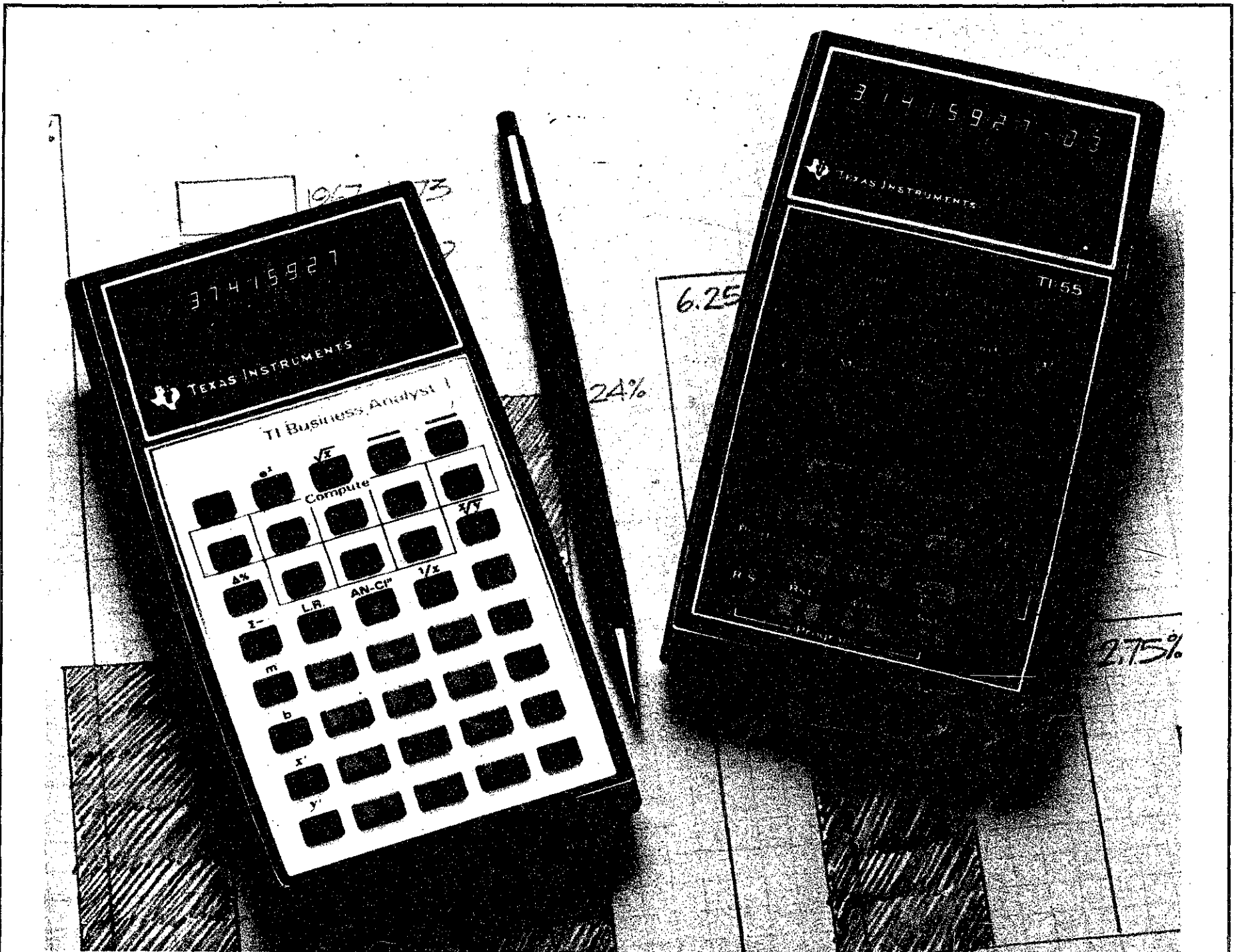
Sept. 16 vs. Clark, 3pm  
 Sept. 21, Mixed Doubles, 9am  
 Sept. 25 vs. Brandeis, 3pm  
 Sept. 26 vs. Maine, 4pm  
 Oct. 1 vs. BU, 3pm  
 Oct. 3-5, ECACs

### Water Polo

Sept. 17 vs. BU, 7pm  
 Sept. 19 vs. Harvard, 5pm  
 Sept. 26-28, Brown Tournament  
 Oct. 1 at Connecticut, 5:30pm  
 Oct. 3-4, MIT Invitational  
 Oct. 8 vs. Amherst, 6pm  
 Oct. 11, Harvard League Tournament  
 Oct. 15 vs. Air Force  
 Oct. 22 at Exeter, 4:30pm  
 Oct. 25, Yale League Tournament  
 Oct. 31, National AAU Championships at Brown  
 Nov. 7-8, New England at Harvard

### Golf

Sept. 11 at St. Anselm's with Merrimack, 12:30pm  
 Sept. 15 vs. Northeastern and Merrimack, 1pm  
 Sept. 23 vs. Boston College and Bentley, 1:30pm  
 Sept. 26 at Bryant, 2pm  
 Sept. 29-30, New England  
 Oct. 10, ECACs



**These two TI calculators can help you handle courses in math, in science, or business. Now, and in the real world.**

One real-world lesson you'll learn in school is the importance of productivity. Time you spend doing the math part of the problem is time you can't spend learning concepts.

A Texas Instruments professional calculator will help make your study time more productive. And it can also help you move into the world of a professional. A world where knowing the concept is only part of the solution. Bringing out the answer requires a working knowledge of a powerful personal calculator. **Economical TI Business Analyst-I with Statistics and advanced busi-**

**ness functions.**

Pre-programmed with business functions for time-value of money, statistics, profit margin. And other problems you'll encounter in business school. Other capabilities include percent, squares, logs, and powers. Its 140-page book, "Keys to Money Management" (a \$4.95 value), has step-by-step instructions plus sample problems. It's an extra value with every BA-I.



**The TI-55 advanced slide rule with statistics and programmability.**

This capable calculator has AOS™ easy entry system, statistical functions, 10 memories, 9 levels of parenthesis, trig, powers and roots, plus programmability. Its book, "Calculator Decision Making Sourcebook" (a \$4.95 value), helps you get all the power pre-programmed into the TI-55.

See the whole line of TI calculators at your college bookstore or other retailer.

\*Trademark of Texas Instruments Incorporated.



**Welcome Students**  
**Metropolitan Baptist Church**  
 Southern Baptist Convention  
 16 Beech Street, Cambridge  
 Morning Worship 11am  
**Tel. 868-3261 for information**

*Texas Instruments technology — bringing affordable electronics to your fingertips.*

**TEXAS INSTRUMENTS**  
 INCORPORATED