

Fugitives shot, apprehended on campus

By Steven Solnick

MIT was the site of a dramatic chase and shootout last Saturday morning which saw two Campus Policemen risk their lives in Westgate parking lot.

The incident began in Boston at about 1:15am Saturday morning. Robert Byers of the MIT News Office provided the official recounting of events.

A "suspicious looking car" with its lights off was observed by Metropolitan District Commission (MDC) Police sitting at Charles Street Circle at the foot of the Longfellow Bridge. As the MDC officers approached the car, it turned on its lights and one of the passengers opened fire on the MDC car. The suspects then fled across the Longfellow Bridge.

The MDC police pursued the car across the bridge and radioed requests for assistance to the Cambridge Police and the MIT Campus Police (CP). The cars turned west on Memorial Drive,

and shots were exchanged between the moving cars in the vicinity of East Campus.

The cars continued along Memorial Drive, passing under the Massachusetts Avenue Bridge. The fleeing car was finally forced off the road "approximately in front of New House." The car struck a telephone pole there, and its driver jumped from the car and fired again at MDC police. The MDC returned the fire, striking the driver in the face.

The passenger of the car fled into the Westgate parking lot. MDC officers were joined there by both Cambridge Police and MIT Campus Police, who had been asked by the MDC to close off Vassar and Audrey Streets as the MDC approached from Memorial Drive.

The entire area was by now blanketed with police vehicles.

Two of the Campus Policemen participating in the search in Westgate Lot were Policemen Richard Cox and Policeman Brent Nelson. As police officers fanned out across the lot, Nelson spotted the fugitive crouched and pointing a gun directly at Cox.

Nelson shouted for the suspect to drop the gun. The gunmen responded by bolting toward Westgate and pointing the .22 caliber handgun directly at Nelson.

According to Byers, it is "not

clear whether the fugitive pulled the trigger and the gun misfired or whether he did not pull the trigger at all."

Nelson again shouted for the gunman to halt and then fired two shots. Cox, alerted to the danger now, turned and fired once. "There is a possibility that an MDC officer coming in from Memorial Drive also fired a shot," said Byers.

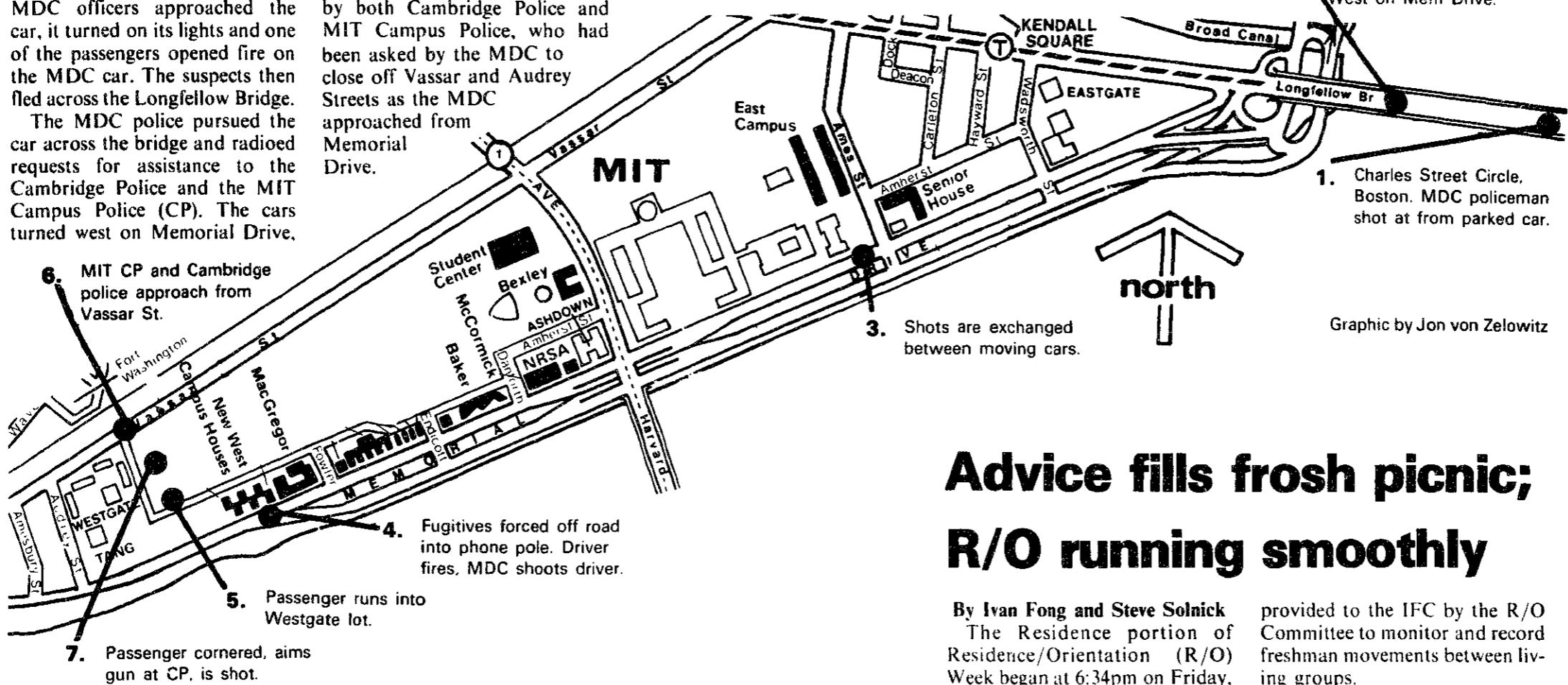
The gunman was hit in the shoulder, and quickly apprehended. Both suspects were taken to Mt. Auburn Hospital and were listed in fair condition

yesterday.

The bullet which struck the gunman in Westgate passed through his shoulder and was not recovered. "It is not clear," explained Byers, "who shot the fugitive shot on the MIT Campus." The gunman could have been struck by either CP or MDC fire.

Byers commented that investigation and prosecution of the

(Please turn to page 2)



Advice fills frosh picnic; R/O running smoothly

By Ivan Fong and Steve Solnick

The Residence portion of Residence/Orientation (R/O) Week began at 6:34pm on Friday, and, despite some threatening weather, it has been proceeding smoothly since, according to R/O officials.

There have been no instances of any reported rush violations.

Todd Sherman '81, Interfraternity Conference (IFC) Chairman, concluded the Freshman Picnic Friday with: "The words I have been waiting three years to say—'Let the Rush begin!'"

By noon yesterday, freshmen and transfer students had made an average of seven visits to slightly over three fraternities. The figures were supplied by the MIT Clearinghouse, a service

provided to the IFC by the R/O Committee to monitor and record freshman movements between living groups.

According to the Clearinghouse, 27 people had not visited any fraternities as of yesterday noon, compared with one student who had made a total of twenty visits, and four students who had each visited eleven different fraternities.

IFC Rush Chairman Jim Wilber '81 called this year's rush "very active, with only the usual minor problems." He noted that freshmen may begin to pledge today and that the number of pledges will give a better indication than R/O activities of the success of this year's rush.

(Please turn to page 4)

Dean urges safety precautions

By Laura Farhie

Following several serious crimes on or near campus, a request that students be concerned about personal safety has been made by the Office of the Dean for Student Affairs.

"It is especially important that caution be exercised during the evening and early morning hours in moving around campus as well as in securing possible entries into the various living groups," states Dean for Student Affairs Shirley McBay, in a statement issued last Tuesday by the Dean's Office.

Twenty students have been victims of serious crimes this year to date, including unarmed or armed robbery and assault and battery. The assault and battery varied from a fight between two students to a mugging or a "knock out" delivered by a stranger, stated Chief James Olivieri of the Campus Police. The serious crimes statistics include those crimes against students at nearby off-campus locations, such as a knife-throwing at a student in Government Center, as well as those crimes committed on campus.

A woman was raped in the early morning hours this past summer at one of the living groups. The assailant climbed in unnoticed through an open first-floor window. "Both men and women were in the living group at the time, which indicates that the presence of males is not necessarily a deterrent to a violent crime," stated McBay. Olivieri emphasized,

"The summer conditions in the living group in no way resembled the security process during the year." According to the Campus Police, the last reported rape was in 1975. This summer's crime was the second rape in ten years.

Further details of the recent serious crimes are being withheld to protect the identities of the victims.

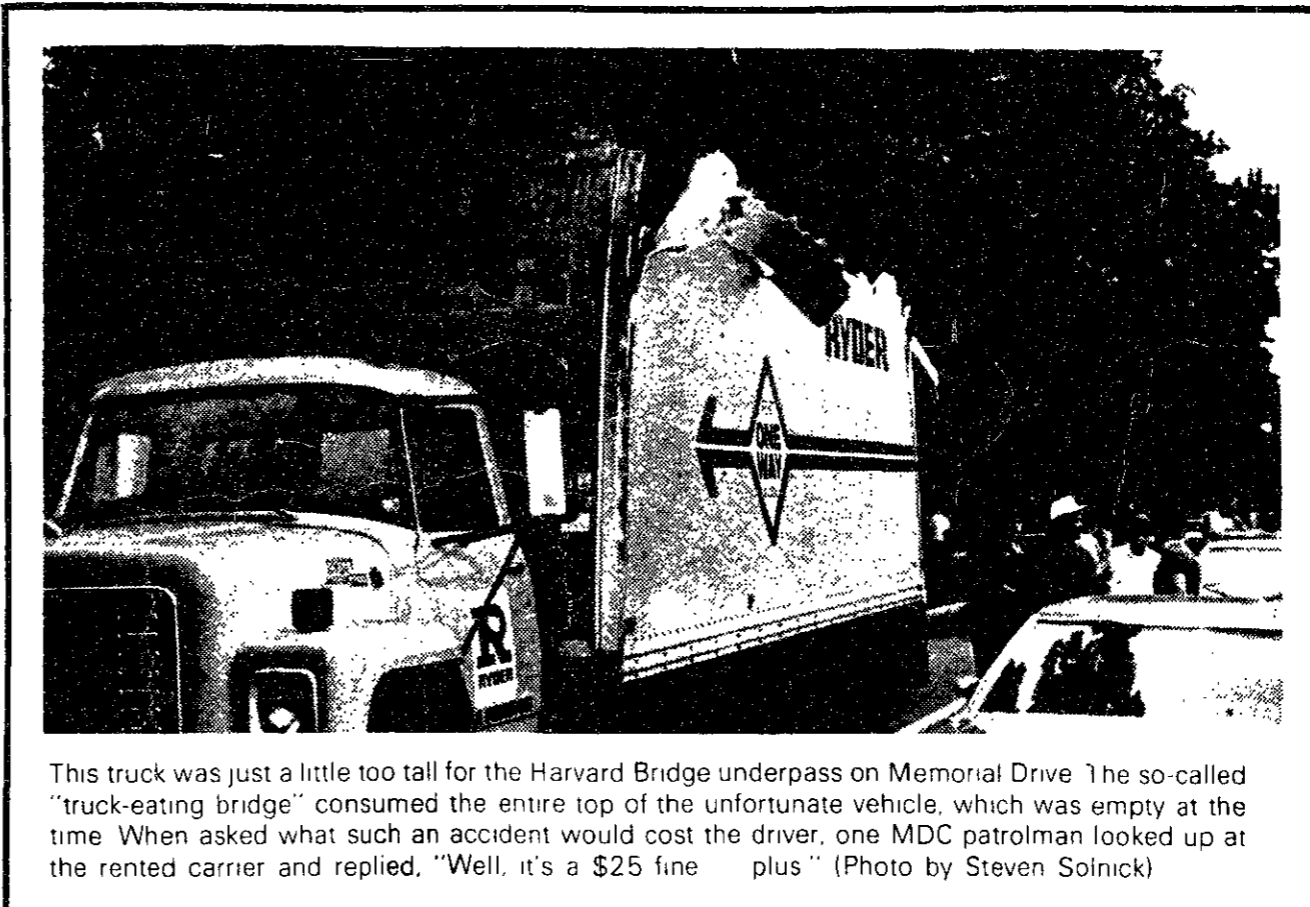
Olivieri stressed that it is important to place the number of serious crimes at MIT in perspective with the number committed in the city of Cambridge. According to Olivieri, Cambridge has had forty rapes this year to date and fifty-four in 1979, while MIT has had only two in ten years. Additionally, MIT has had twenty serious crimes this year to date, compared with 109 assaults committed in Cambridge in the three-month period of January to March, 1980.

"In MIT's location, with no fences or walls, our campus area is a continuation of the city street," explained Olivieri. Because of this accessibility, the Campus Police has eight patrol zones on campus, and it urges that students use its escort service on or around campus when needed at night.

McBay has outlined a series of precautions she feels will improve personal safety around campus: "It is important to take appropriate security measures within living groups such as keeping doors locked, closing and locking windows or installing

devices which would prevent windows from being fully opened. Traveling with someone else, particularly at late hours and in isolated areas, is extremely important. Other precautions include not offering accommodations to strangers and calling Campus Police, by dialing 100 from any Institute phone, if anyone is observed acting in a suspicious manner."

A "crime prevention fair" will be held by the Campus Police in Lobby 7 in mid-October.



This truck was just a little too tall for the Harvard Bridge underpass on Memorial Drive. The so-called "truck-eating bridge" consumed the entire top of the unfortunate vehicle, which was empty at the time. When asked what such an accident would cost the driver, one MDC patrolman looked up at the rented carrier and replied, "Well, it's a \$25 fine plus" (Photo by Steven Solnick)

Campus officers praised

(Continued from page 1)

gunmen is an MDC matter and MIT's role was limited to "responding to a radioed request for help by the MDC." Byers called the CP's actions "an outstanding piece of police work."

Campus Police Chief Olivieri, who conducted a review of the incident immediately after its conclusion early Saturday morning, said the actions of Cox and Nelson "were in accordance with the Campus Patrol's firearms policy" and praised the officers' conduct in the field: "They reacted in a professional manner under extremely stressful and threatening conditions."

The suspects' car, when examined by the MDC, was found to contain two ski masks, drugs, ammunition and a variety of jewelry, including diamonds. According to Byers, the MDC is investigating the possibility that the gunmen had been engaged in burglaries that evening in Beacon Hill and panicked when they were approached by the MDC car.

Errata

The Tech regrets a typographical error made in an article in the August 29 issue on dormitories becoming coed. The sentence should have read "Random Hall will now provide an entire single-sex floor for non-commons women of all classes."

The Tech

A Stylish Production

Thursday 8-10pm

AEPi RUSH WEEK MIXER FEATURING MIDNIGHT TRAVELER

Tuesday, September 2 8 PM

155 Bay State Road, Boston

Call 536-3723 or 267-8574 for rides and information.



五福樓

WU FU RESTAURANT

Mandarin & Szechuan Cuisine

prepared by chef rated 5 stars in New York City

Cocktails • Take Out Service
Open Daily 11:30 AM-11:00 PM

"Everything I tasted there was excellent, and several dishes had that vivid clarity of flavor that first attracted us all to Szechuan food, and that we haven't noticed as much in recent years"

Robert Nadeau - *The Real Paper* - June 28, 1980

LUNCH BUFFET
\$2.95 ALL YOU CAN EAT

460 Mass. Ave., Cambridge
876-6299

The M.I.T. Symphony Orchestra

NEAL STULBERG, Conductor
announces

AUDITIONS

for the 1980-1981 season. Program highlights include: **BARTOK** Concerto for Orchestra; **BRAHMS** Symphony No. 2; **BEETHOVEN** Violin Concerto.

Dates: SEPT. 8, 9, 10, 13

ALL UNIVERSITY INSTRUMENTALISTS WELCOME. Forms available at 14N-430, MIT. Phone 253-2826 (11am - 5 pm) for further information.



20% off



Brittania

jeans and tops

jeans 20.00 to 29.60
reg. 25.00 to 37.00

Save on great fitting 100% cotton denim jeans. Straight leg or boot cut.

tops 14.40 to 19.20
reg. 18.00 to 24.00

Assorted knit sportshirts with the Brittania touch. Fall colors in S to XL.

the COOP

MIT STUDENT CENTER



Announcing
Interviews for

CONCOURSE

Tuesday September 2 3-9pm



- All freshman requirements
- Theme of "Mind, Machine and Meaning"
- Multidisciplinary approach



- Well known and well qualified
- Specialties from linguistics to orthopaedics
- Always available to help



- Small class size
- Co-operative learning
- Come by and see!



J. Lettvin Lounge, 20C-221

ARTS

Mr. Smith goes to the Rat

Editor's note: This is the first in a series of articles which will describe aspects of the Boston new wave scene.

The Rat seems to be the first place people think of when you mention punk in Boston. One of the original clubs featuring Boston's "first wave" (DMZ, Willie Alexander, Marc Thor, Real Kids), the Rat has become less a hardcore hangout and more a B.U. bar where bands play.

Location

The Rat is the closest club to MIT. It's on the west end of Kenmore Square, at 528 Commonwealth Avenue. This is about a 15-20 minute walk from MIT, although you can save time by taking the #1 Dudley bus to Comm Ave. If you're the insecure sort, don't walk back alone at closing time — Kenmore square can be dangerous late at night. Cab fare from MIT is under \$3.

Physical Description

Ambience at the Rat is rather crude. The club is downstairs in the basement; another bar occupies the first floor. The ceiling is low, with pipes everywhere. The stage is in one corner of the room, and a bar fills the opposite side. Don't go barefoot.

Management

Rat bouncers are notoriously rough if you step out of line too far, but as long as you don't pick fights there's nothing to worry about. Carding has become very tough lately, but if you have a



The Rathskeller, more popularly known as the Rat, a club in Kenmore Square featuring local new wave bands. (Photo by Jon von Zelowitz)

reasonable false ID you'll get in on most nights.

Rat management is also notoriously tough on bands. Although it is still a prestigious place to play, a band's first one or two gigs at the Rat are unpaid — an unpleasant practice.

Prices

The Rat is not for the budget-conscious punk any more. The standard cover is now \$3.50, and it's very firm. They usually won't lower it until 1am. Bottled beer is about \$1.50.

Timing

Most weekend nights at the Rat feature three bands, for a total of

six sets. Because so many sets are packed in, the first band will start promptly at 8:30. The second band comes on a little after 9, and the headliners appear around 10. Then this sequence repeats for bands' second sets. The last set ends around 1:45, and the club closes at 2am.

Audience

The real hardcore audiences seem to have left the Rat, and in their place are the B.U. students who have enough of a grip not to be across the street at Narcissus. On some nights it almost seems like a B.U. cruising bar rather than a punk club.

Jon von Zelowitz



TUFTED TAPESTREE TUFTSS
SOMERVILLE, MASS 02144 (617) 776-1279
OPPOSITE STAR MARKET PORTER SQUARE SHOPPING CENTER
TUESDAY WEDNESDAY 12 7 THURSDAY FRIDAY SATURDAY 10 7

Three Ways to Share Your Knowledge . . .

Massachusetts Science Institute

MSI offers intensive science courses to Boston students whose schools do not offer the level of material necessary for a technical college. Teachers in broad and specific fields of science are needed.

S.A.T. Preparation

S.A.T.P. works on the three major areas of the S.A.T.'s — Math, Verbal and testmanship. Individual concentrations on grammar, analogies, geometry and the like are planned. We need your specialty.

High School Studies Program

H.S.S.P. presents greater Boston high school students with seventy or more courses ranging from astronomy to zoology and Newtonian Mech. to Origami to Theatrecraft. Design your own course, for students who want to learn.

Teach With Us.



W20-467
MIT Student Center
84 Massachusetts Ave.
Cambridge, MA 02139
(617) 253-4882

ON THE TOWN

MIT

The MIT Musical Theatre Guild is proud to present *Pippin*. Stephen Schwartz's widely-acclaimed musical comedy about Charlemagne's son's search for personal fulfillment. Performances are at 8pm September 5, 6, 11, 12 and 13 and 2pm September 6. Tickets are \$4.50, or \$2.50 with MIT ID. For reservations and information, call 253-6294. There will also be a special free freshman matinee performance September 7 at 2pm.

MOVIES

Off the Wall presents a double opening on Wednesday, September 3. Off the Wall (the cinema) returns to Central Square (15 Pearl Street) and presents, in celebration of its opening, *Off the*

Wall (the movie). Visible proof that a big budget and established stars aren't necessary to produce an intelligent, entertaining feature, the movie runs daily at 6:20, 8:10, 10pm, plus 4:30pm Sat. & Sun. and midnight Fri. & Sat.

THEATER

The American Repertory Theatre announces its first scheduled production of its 1980-81 season; William Shakespeare's comedy *As You Like It*, opening September 11 and running through October 18. For ticket information, call 547-8300.

The Last Minstrel Show, a full-scale musical production, will have its pre-Broadway tryouts at the Charles Playhouse beginning September 7. Performances Tues.-Fri. at 8pm; Sat at 6:30 and

9:30pm; Sun. at 3 and 7:30. For more information and reservations, call 426-6912.

MUSIC

Peter Dayton and New Models at the Rat, 528 Comm. Ave., Mon.

White Women and Ruff Mix at the Underground, 1110 Comm. Ave., Mon.

Admission of Guilt and Jinx at Cantone's, 69 Broad St., Mon.

Johnny Barnes and Harlequin at the Rat Tue.

Loners and Reader at the Underground Tue.

Duce and Labels at Cantone's Tue.

Mission of Burma and Lyres at the Rat Wed.

Vacuumheads and V; at the Underground Wed.

Broken Idols and Design at Cantone's Wed.

The Tech

Stephanie L. Pollack '82 — Chairman
Steven L. Solnick '81 — Editor-in-Chief
Patrick M. Thompson '82 — Managing Editor
Michael L. Taviss '81 — Business Manager
Gordon B. Hunter '80 — Executive Editor

Volume 100, Number 28
Monday, September 1, 1980

PRODUCTION STAFF FOR THIS ISSUE

Brian Jay Glass '82, Robert W. Leishman '82, Stephanie Pollack '82, Patrick M. Thompson '82, Jon von Zelowitz '82, Judy Passman '83

ARTS DEPARTMENT

Arts Editors: Linda Schaffir '82, Jon von Zelowitz '82, Staff: Shawn Wilson '81, Jonathan Cohen '82, Kevin Cunningham '82, Joseph Kristl '82, Jonathan Richmond G.

Special thanks to LSC for use of their printing facilities.

The Tech (ISSN 0148-9607) is published twice a week during the academic year (except during MIT vacations), weekly during January, and once during the last week in July for \$7.00 per year Third Class by *The Tech*, 84 Massachusetts Ave, Room W20-483, Cambridge, MA 02139. Third Class postage paid at Boston, MA. Non-Profit Org. Permit No. 59720. POSTMASTER: Please send all address changes to our mailing address: *The Tech*, PO Box 29, MIT Branch, Cambridge, MA 02139. Telephone: (617) 253-1541. Advertising, subscription, and typesetting rates available. © 1980 The Tech. Printed by Charles River Publishing, Inc.

lie down
and
be counted

TCA
Blood Drive

Student Center 4th floor

Tuesday and Wednesday

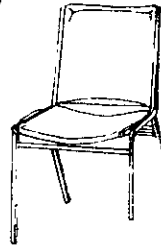
11am - 5pm

for info, call x3-7911

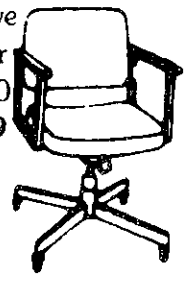
This space donated by *The Tech*

Student Sale

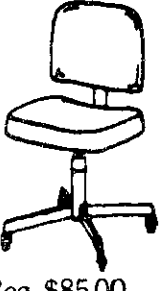
Swivel Chairs, File Cabinets, Folding Tables



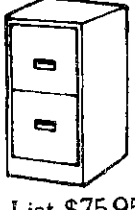
Reg. \$37.99
Sale \$19.99



Executive Swivel Chair
Reg. \$110
Sale \$54.99

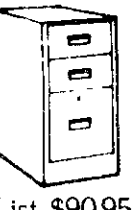


Reg. \$85.00
Sale \$44.99



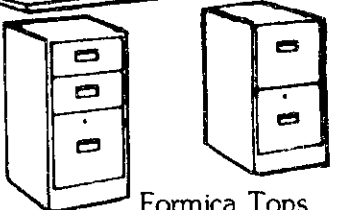
List \$75.95
Sale \$51.99

+



List \$90.95
Sale \$62.99

=



Formica Tops
(Available in 3 colors)
\$32.00

CAMBRIDGE
Office Furniture

(New and Used)

57 Walden St., North Cambridge
Walden St. off Mass. Ave. (2100 block)
876-6614 or 876-6790
Hours: 8-5 Mon. - Fri.

R/O officials express worries about dormitory overcrowding



Some of the many happy faces at this year's Freshman Picnic. (Photo by Pat Thompson)

(Continued from page 1)

HCC Judicial Committee Chairman Chip Hance '81 and Dormitory Council Chairman Nelson Ronkin '82 both agreed with Wilber's assessment of the rush. Hance reported no problems concerning freshman drinking. Ronkin mentioned "prevalent overcrowding in all dorms" as a serious concern, particularly for East Campus doubles, Baker quads and Burton triples. He said he foresaw "little or no problem in dormitory preference selections."

Ronkin was also one of the speakers at Friday's picnic. He joined President Paul Gray '54, Dean for Student Affairs Shirley McBay, Director of Admissions Peter Richardson '48, Undergraduate Association President Chuck Markham '81, R/O Coordinator Jeff Solof '81 and Sherman in offering advice to the Class of '84. Each speaker at the picnic also cautioned the class to be wary of accepting too much advice.

Gray cautioned the freshmen

against becoming too anxious about their academic careers. He warned them to avoid a "narrowly defined academic course" and to not worry too much about studying. Markham echoed Gray's message, urging the class to pursue a "generalist" education.

McBay provided a voice of moderation, telling the freshmen to "manage their time well," and

urging them to "clean your room... shower... wash your clothes... and write home." She also called on them to make an effort to get to know the members of their class.

Ronkin urged the class to look at the people in the living groups, not just the facilities. Sherman warned them to disregard the "Animal House" image of fraternities.

classified advertising

Interdenominational Service of Holy Communion - Wednesday at 5:30 in the Chapel, sponsored by the Lutheran and Episcopal Ministers. Join us for supper after the service in the basement of 312 Memorial Drive (between Ashdown and McCormick).

Do you have a car? Would you like to earn some extra money? Are you free from 8:10am Tuesdays and Fridays during the term? If so, come in to THE TECH, Room 485 Student Center or call x3 1541 and ask for Mike to find out how you could become the Distribution Manager for THE TECH.

Wu Tang Chinese Martial Arts Club. Improve strength, endurance, agility and concentration by practicing Kung Fu, Praying Mantis and Tai Chi taught Practices. Sat 10:2 & 2 weekday evenings. Call Howard 247-8691 for information.

We of the Christian community here at MIT would like to invite you to come and see us during R/O week. The times of our activities will be available in the Daily Confusion. If you are a freshman looking for a Christian roommate or just want to meet us, drop by the Christian Activities Center in 8 105. Also, plan now to come to the Registration Day Service at 7:00pm in the Mezzanine Lounge on the third floor of the Student Center. Come on in, we want to meet you!

IDS dot matrix line printer RS232 and parallel interfaces \$325. Databyte S100 bus data analyzer \$350. 9 channel tape drive 800 BPI 10 IPS can be driven with three 8 bit parallel controller chips TTL levels \$150. Call 1-837-0672 nights after 8.

This Week!

IF I SHOULD DIE...

...an experience you'll never forget!

Need Part-Time Work?

Dining Service needs part-time workers to staff various Dining Halls on campus. Flexible hours, friendly workers, and convenient locations.

Starting pay \$3.85 per hour

For more information contact:

Student Center Dining (Lobdell, Twenty Chimneys)	3-6491
Baker Dining Hall	3-2717
MacGregor Dining Hall	3-1467
Walker Dining Hall	3-2711

TWENTY CHIMNEYS

Open nightly 7:00PM-Midnight beginning Tuesday, Sept. 2

Inexpensive sandwiches, burgers, ice cream, and Michelob on tap

And for Lunch

Salad Bar and Hot Sandwiches only \$2.00 each

Monday thru Friday 11:30AM- 1:30PM

3rd floor Student Center

Meal plan cards accepted



MAKE MONEY WHILE YOU SLEEP.

Open a NOW Account at Cambridge Savings Bank. A NOW Account works just like a checking account.

Only a NOW Account pays you 5% interest on your balance.

So you can be making

money while you doze through *Finnegan's Wake*. Nap through "Grand Illusion."

Snore through the Harvard-Yale game.

5% interest on your checking account.

Why wait till graduation to start making money?

Cambridge Savings Bank

Offices in Cambridge & Belmont Member FDIC

MONEY IN THE BANK IS STILL THE BEST FEELING IN THE WORLD.